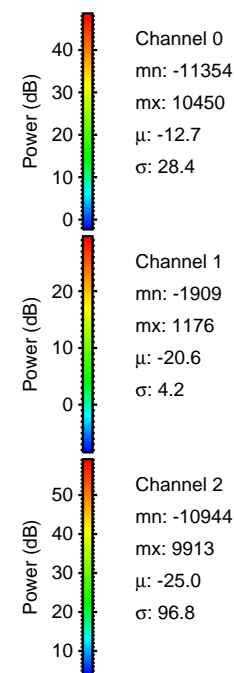
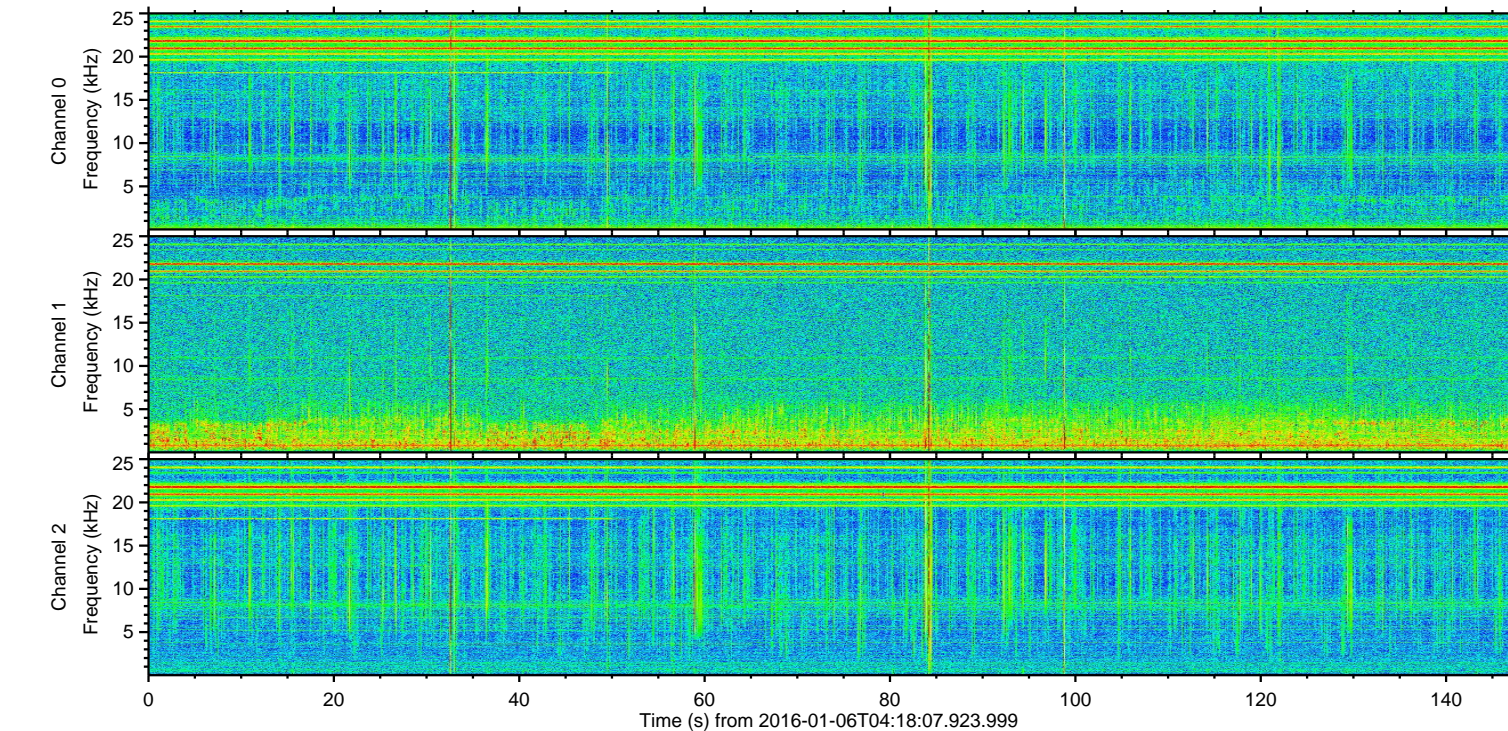
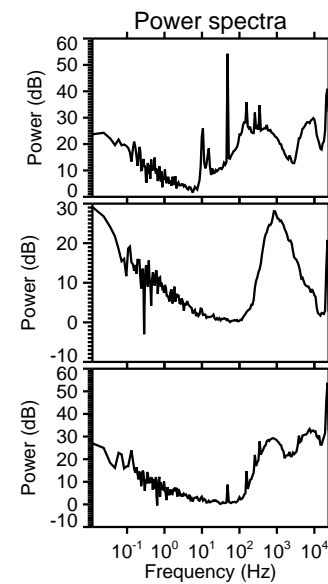
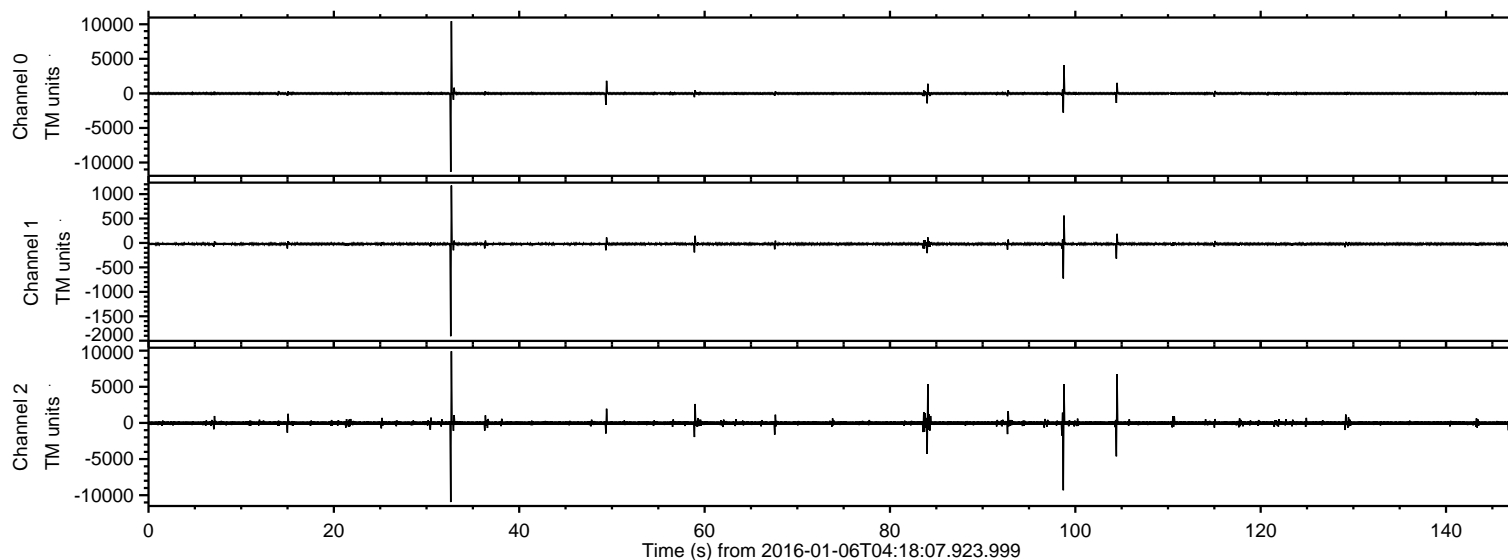


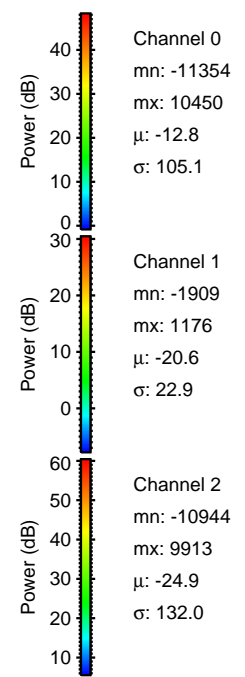
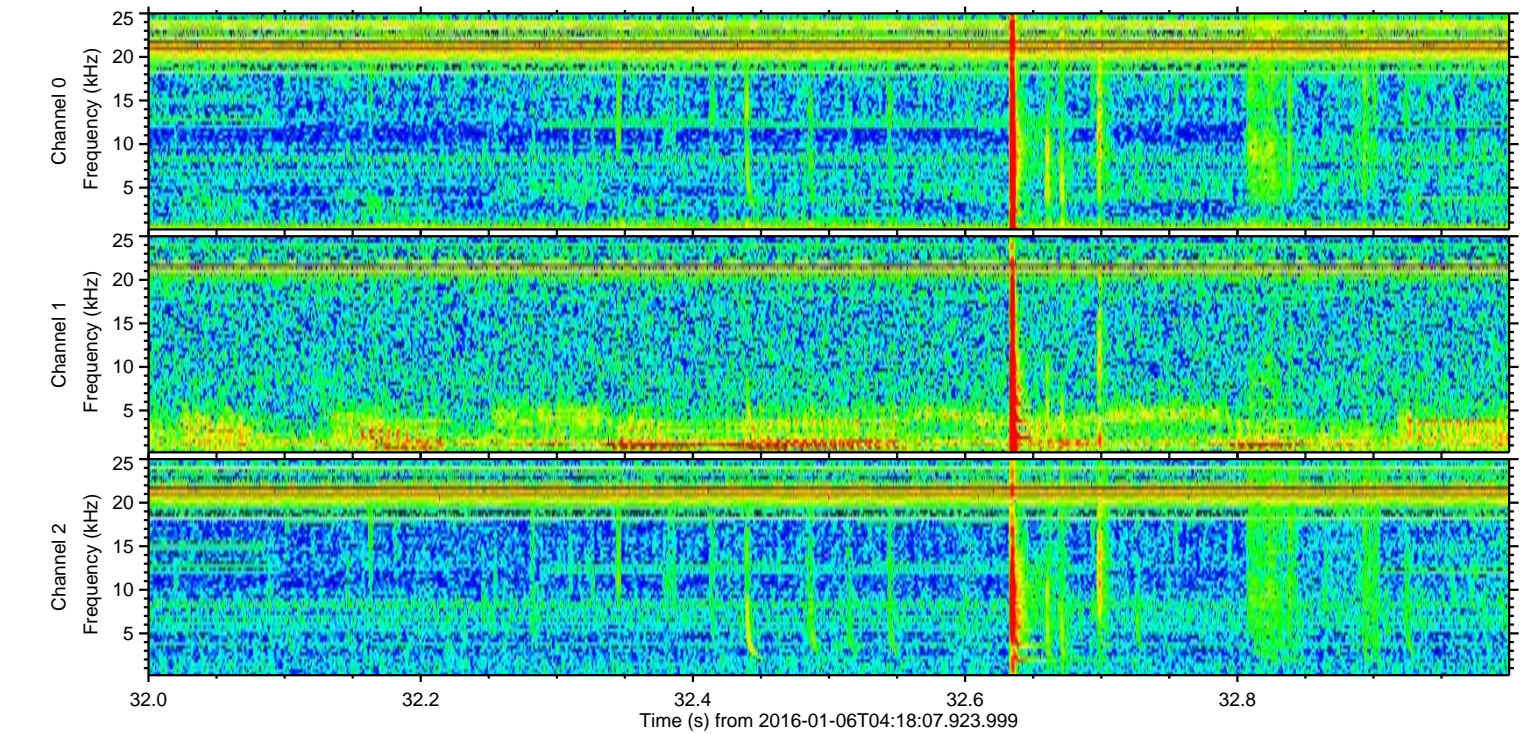
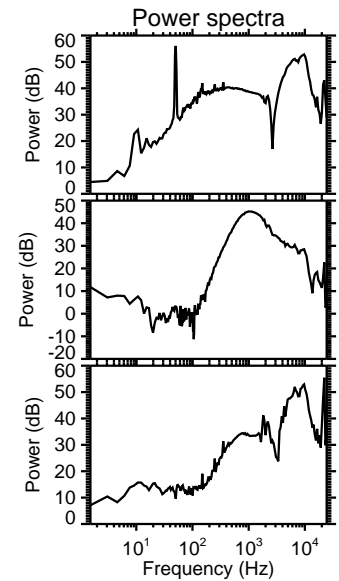
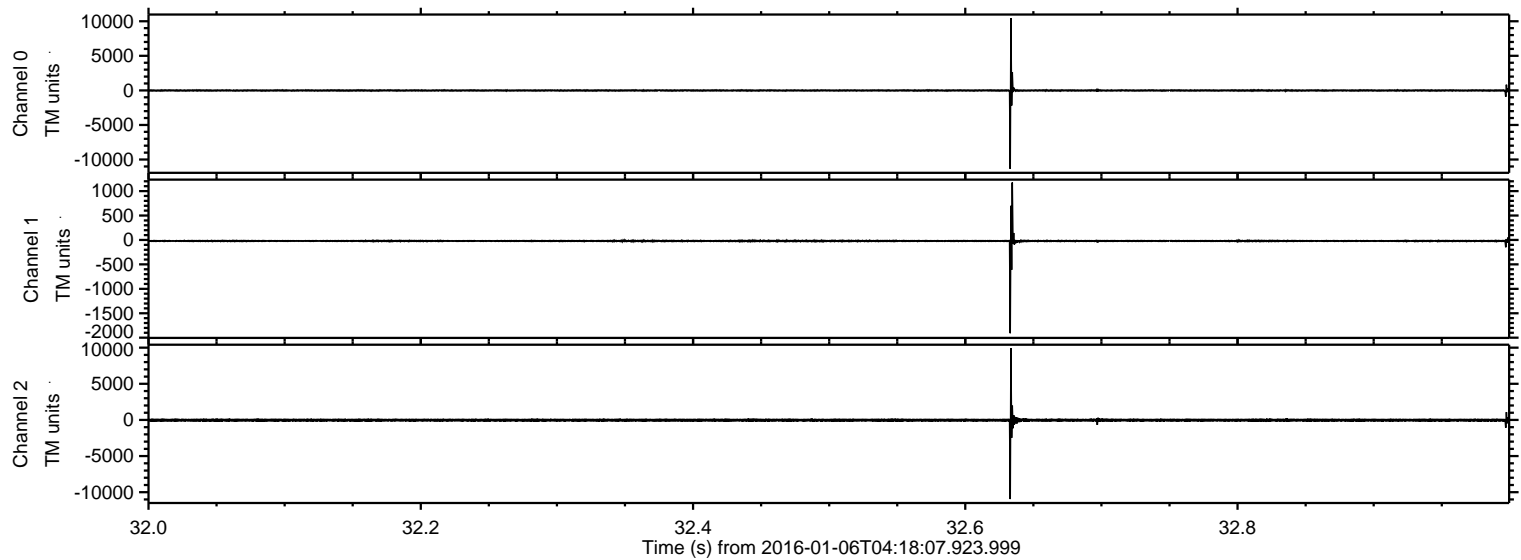
ELMAVAN 3D WAVEFORMS (Measured data sampled at 50 kHz) 51000 packets of 144 samples from 2016-01-06T04:18:07.923.999.

Processed Tue Mar 22 17:22:00 2016 by ELM ver.2012-10-06 from 001__elm20160106_041806__dat00.bin

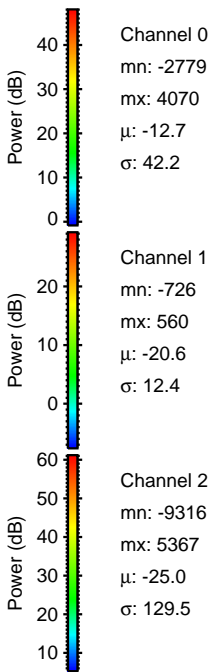
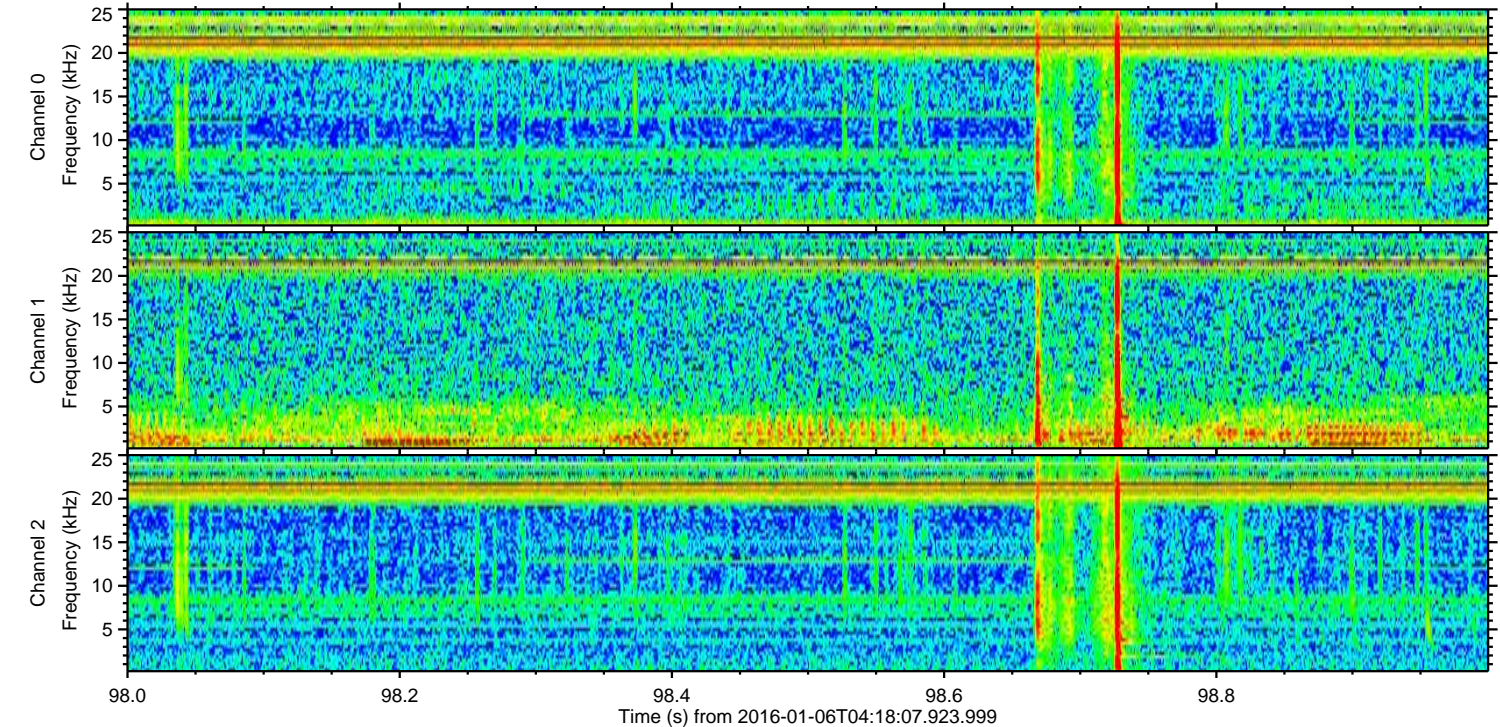
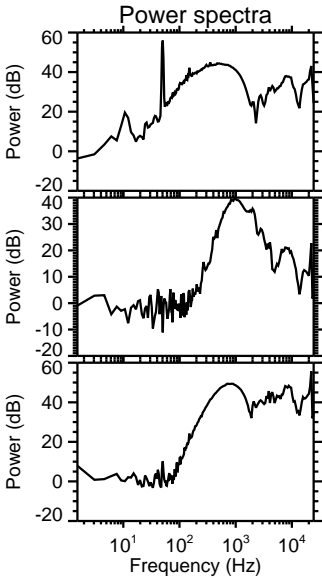
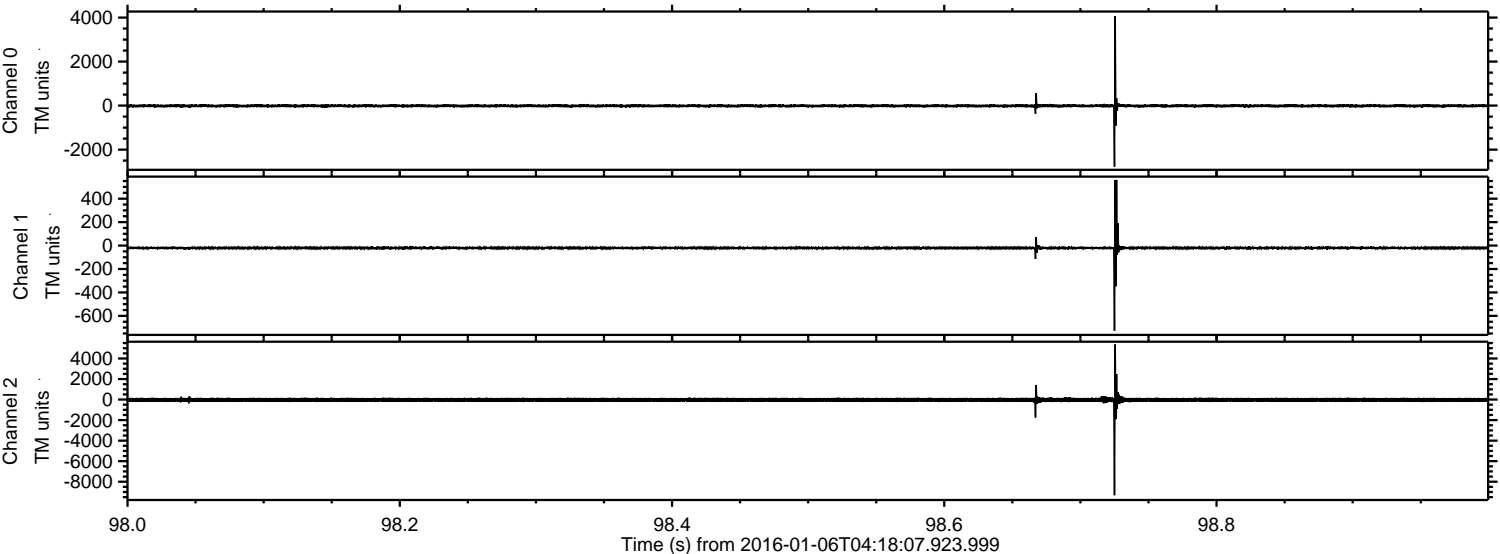


ELMAVAN 3D WAVEFORMS (Measured data sampled at 50 kHz) 51000 packets of 144 samples from 2016-01-06T04:18:07.923.999. Part 33/147

Processed Tue Mar 22 17:22:12 2016 by ELM ver.2012-10-06 from 001__elm20160106_041806__dat00.bin

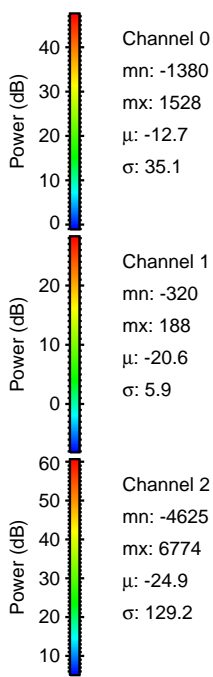
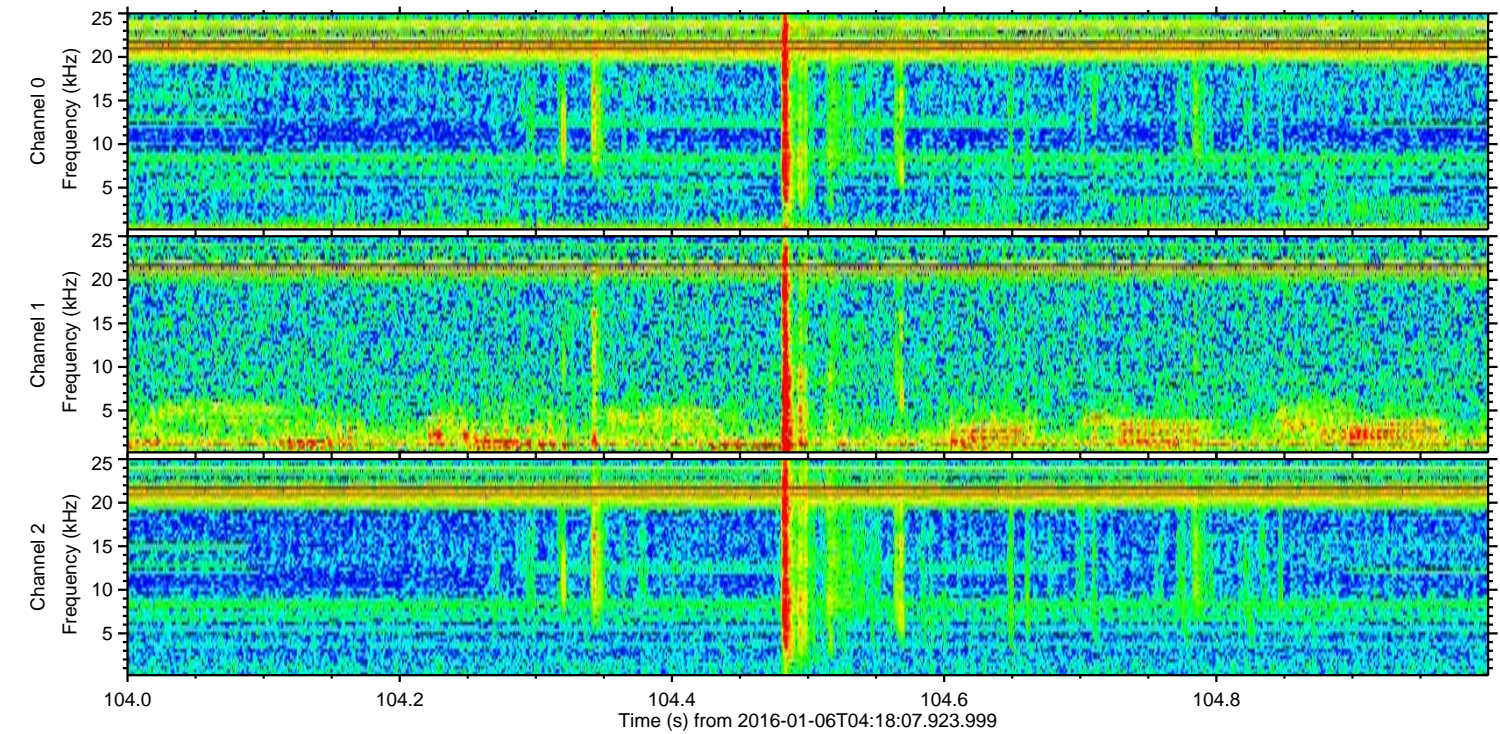
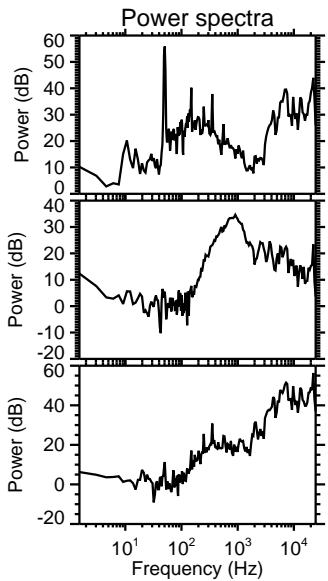
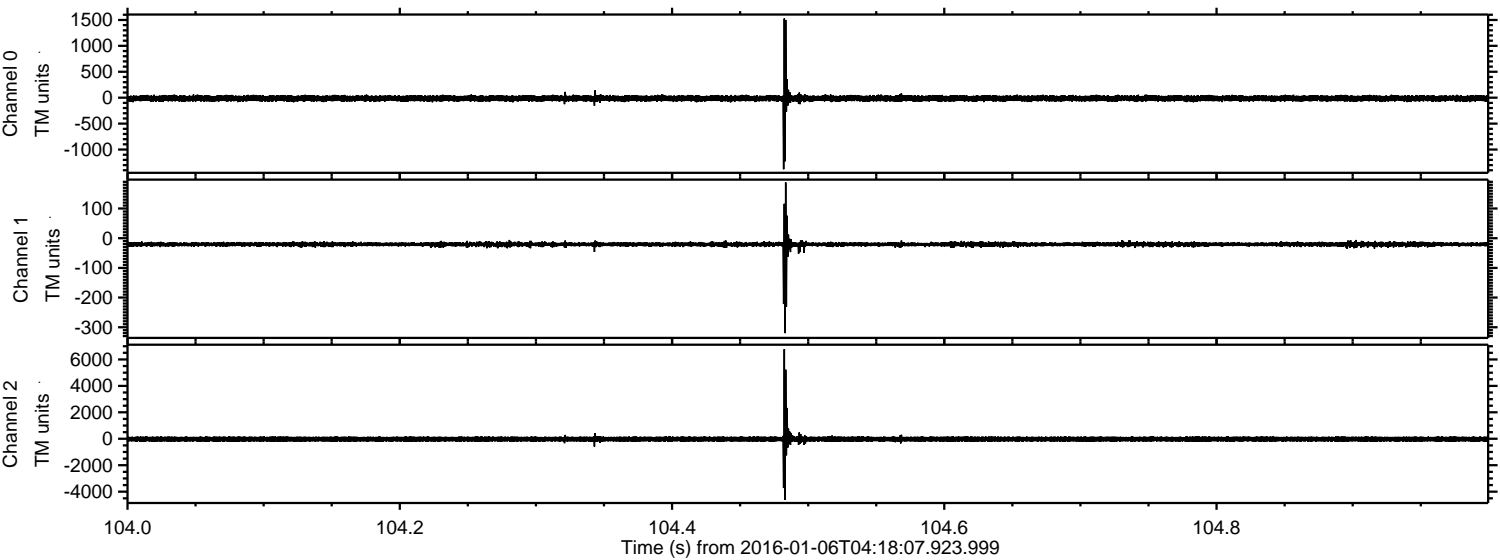


Processed Tue Mar 22 17:22:13 2016 by ELM ver.2012-10-06 from 001__elm20160106_041806__dat00.bin



ELMAVAN 3D WAVEFORMS (Measured data sampled at 50 kHz) 51000 packets of 144 samples from 2016-01-06T04:18:07.923.999. Part 105/147

Processed Tue Mar 22 17:22:14 2016 by ELM ver.2012-10-06 from 001__elm20160106_041806__dat00.bin

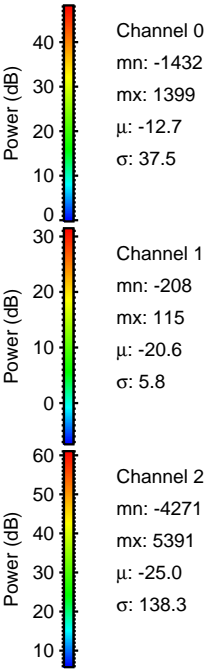
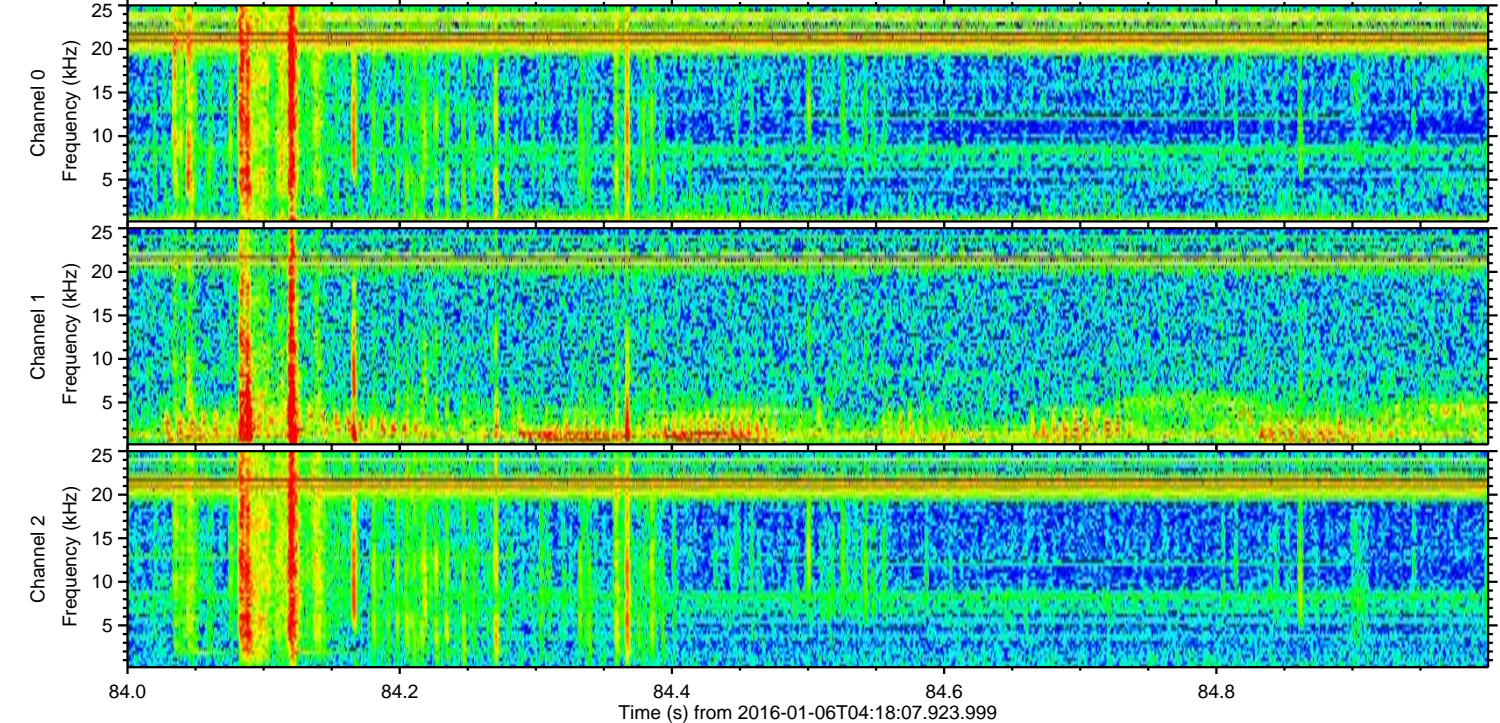
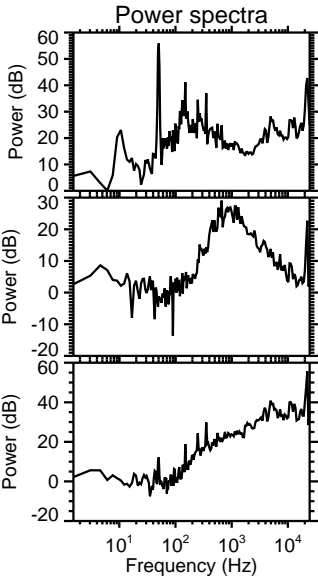
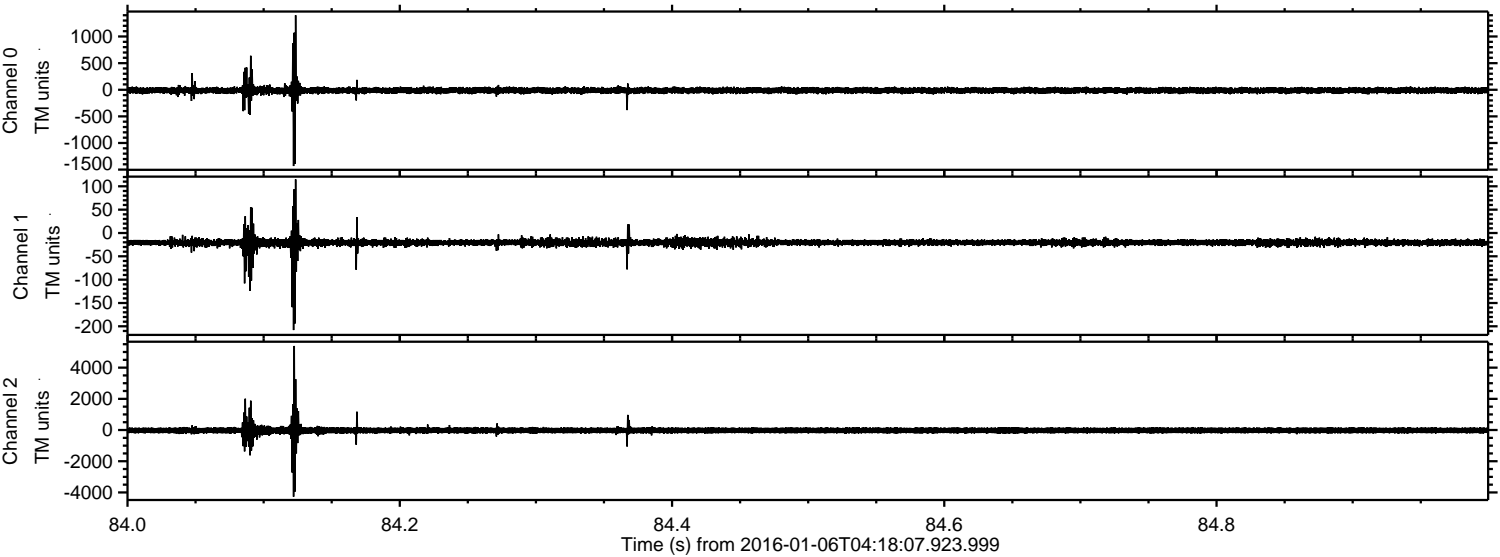


Channel 0
mn: -1380
mx: 1528
 μ : -12.7
 σ : 35.1

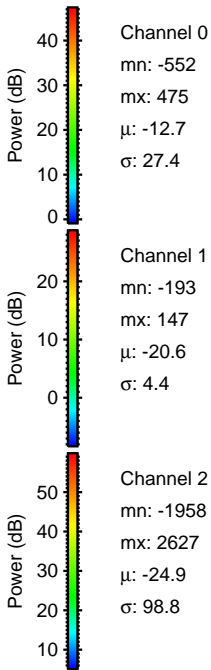
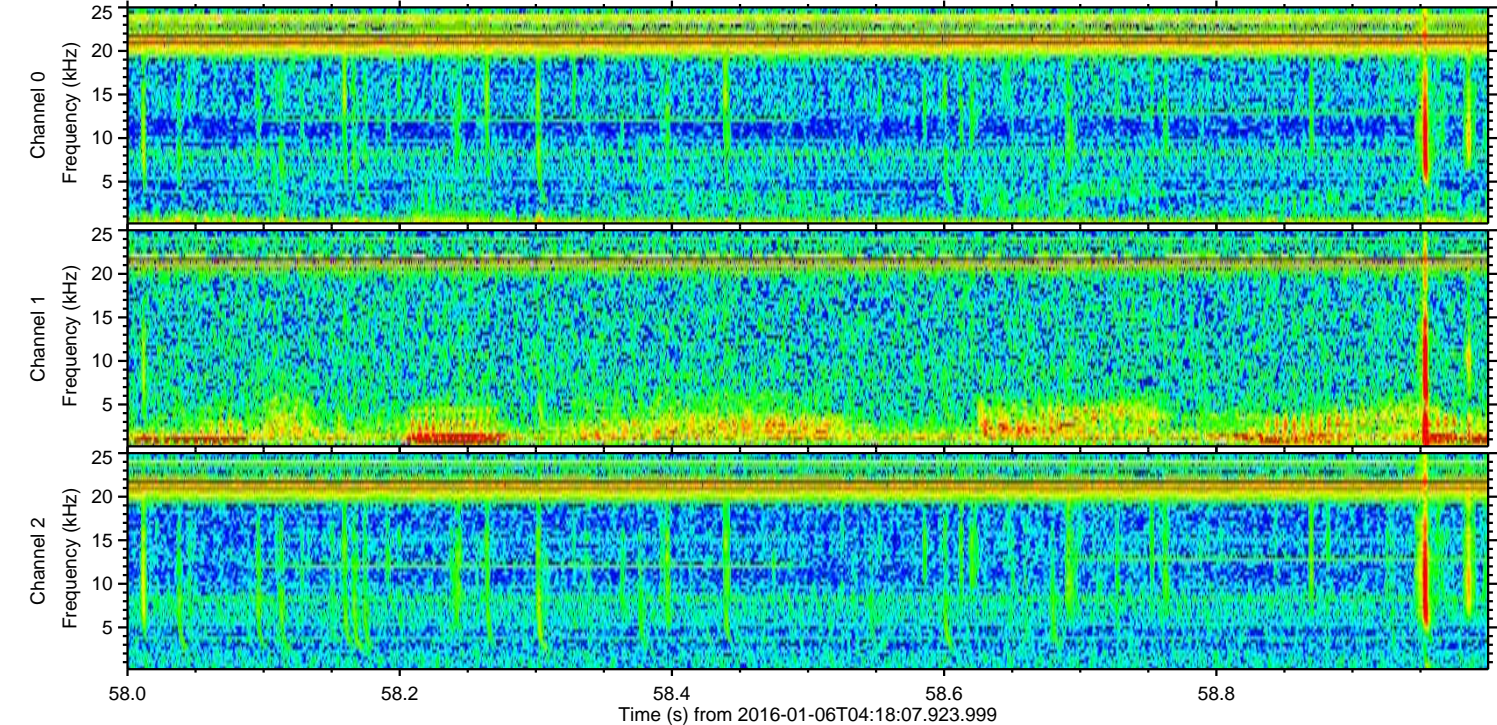
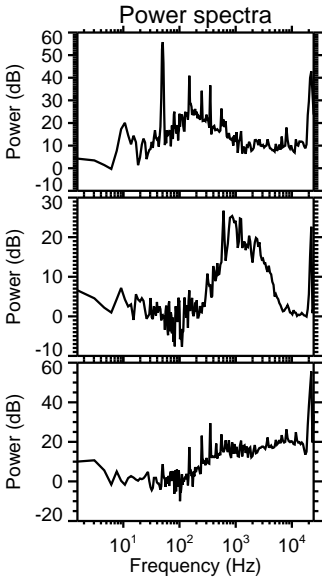
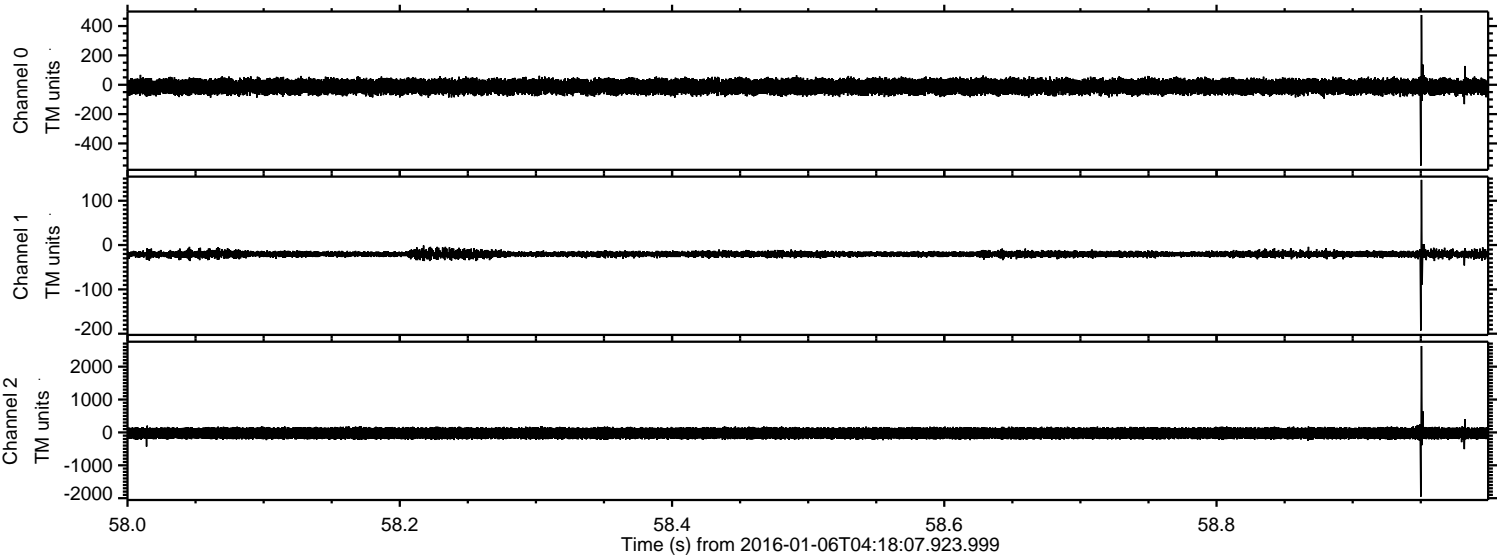
Channel 1
mn: -320
mx: 188
 μ : -20.6
 σ : 5.9

Channel 2
mn: -4625
mx: 6774
 μ : -24.9
 σ : 129.2

Processed Tue Mar 22 17:22:15 2016 by ELM ver.2012-10-06 from 001__elm20160106_041806__dat00.bin



Processed Tue Mar 22 17:22:16 2016 by ELM ver.2012-10-06 from 001__elm20160106_041806__dat00.bin

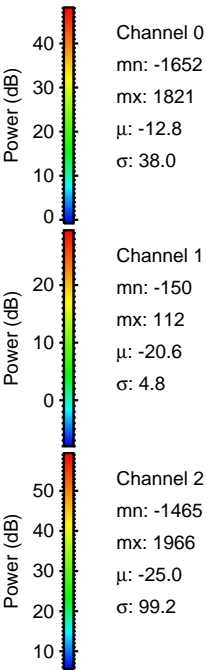
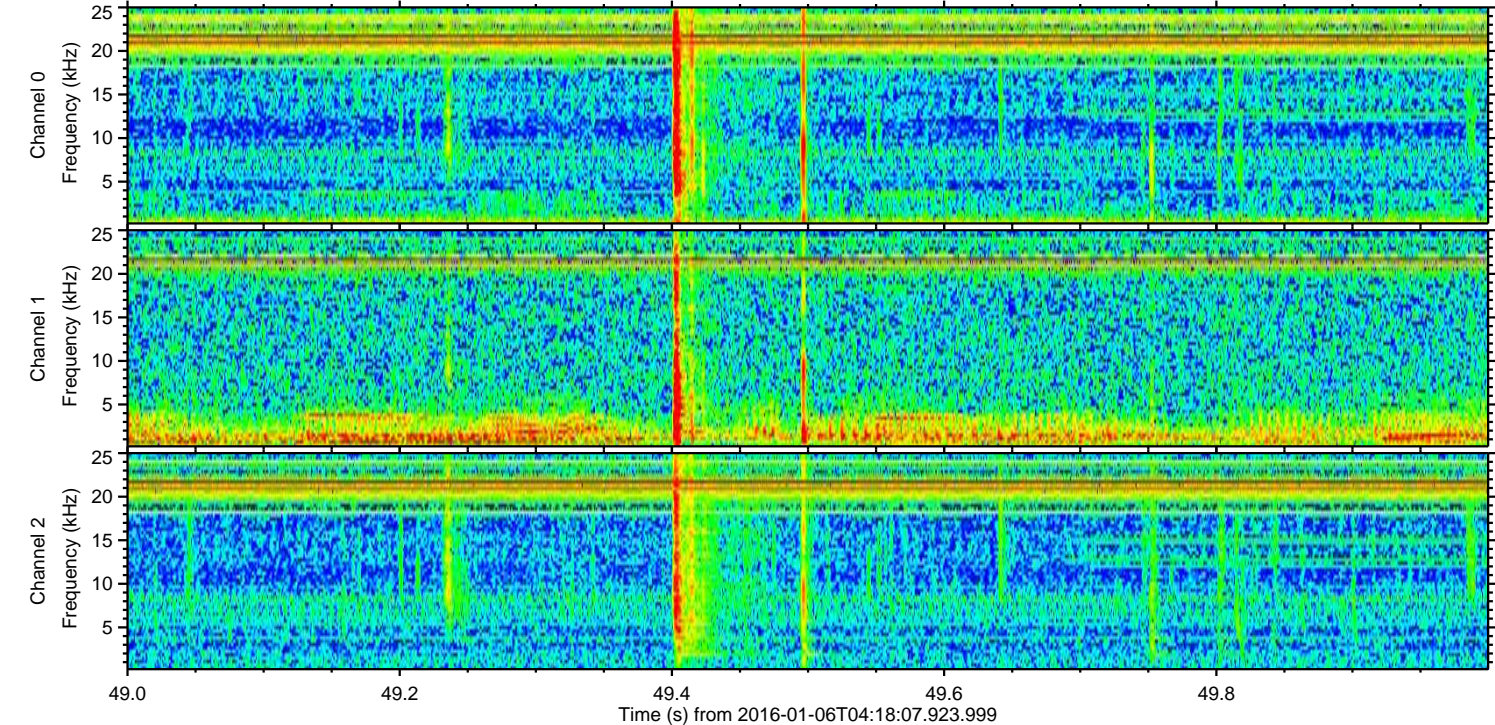
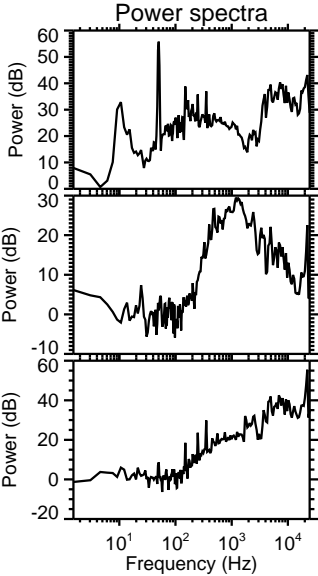
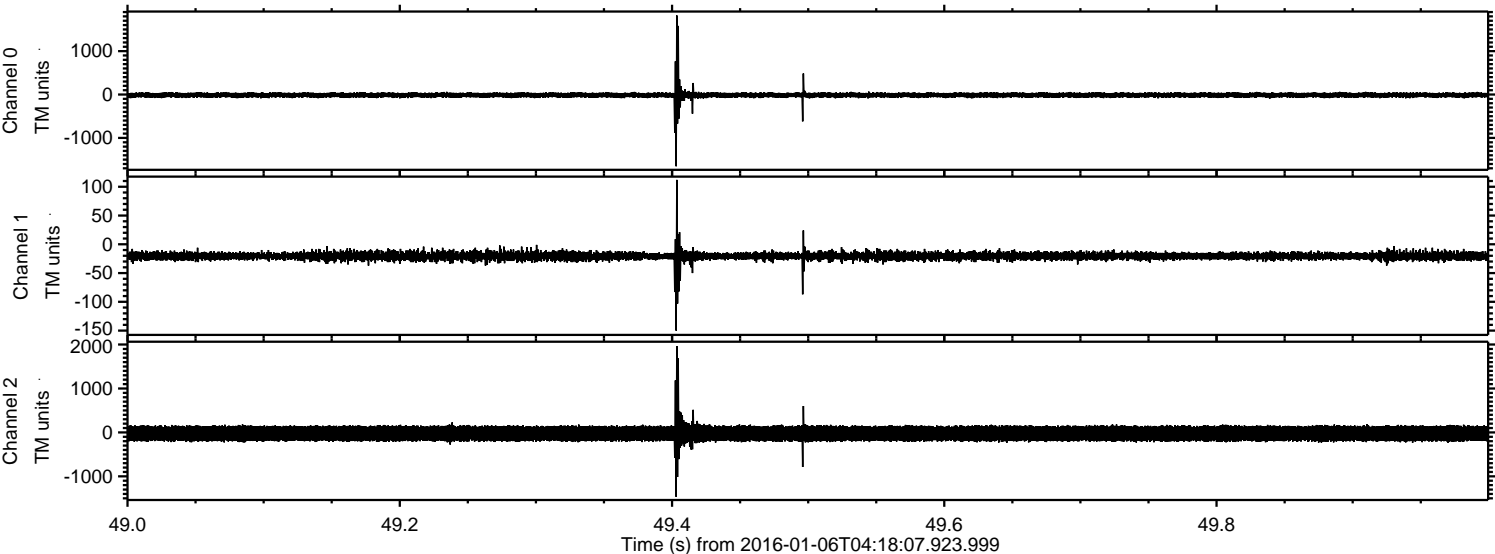


Channel 0
mn: -552
mx: 475
 μ : -12.7
 σ : 27.4

Channel 1
mn: -193
mx: 147
 μ : -20.6
 σ : 4.4

Channel 2
mn: -1958
mx: 2627
 μ : -24.9
 σ : 98.8

Processed Tue Mar 22 17:22:16 2016 by ELM ver.2012-10-06 from 001__elm20160106_041806__dat00.bin

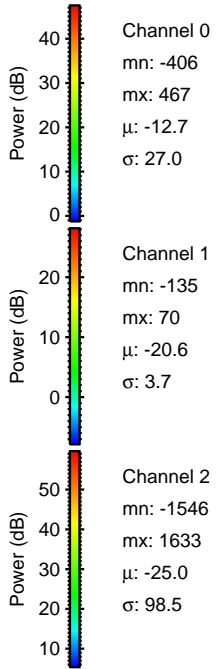
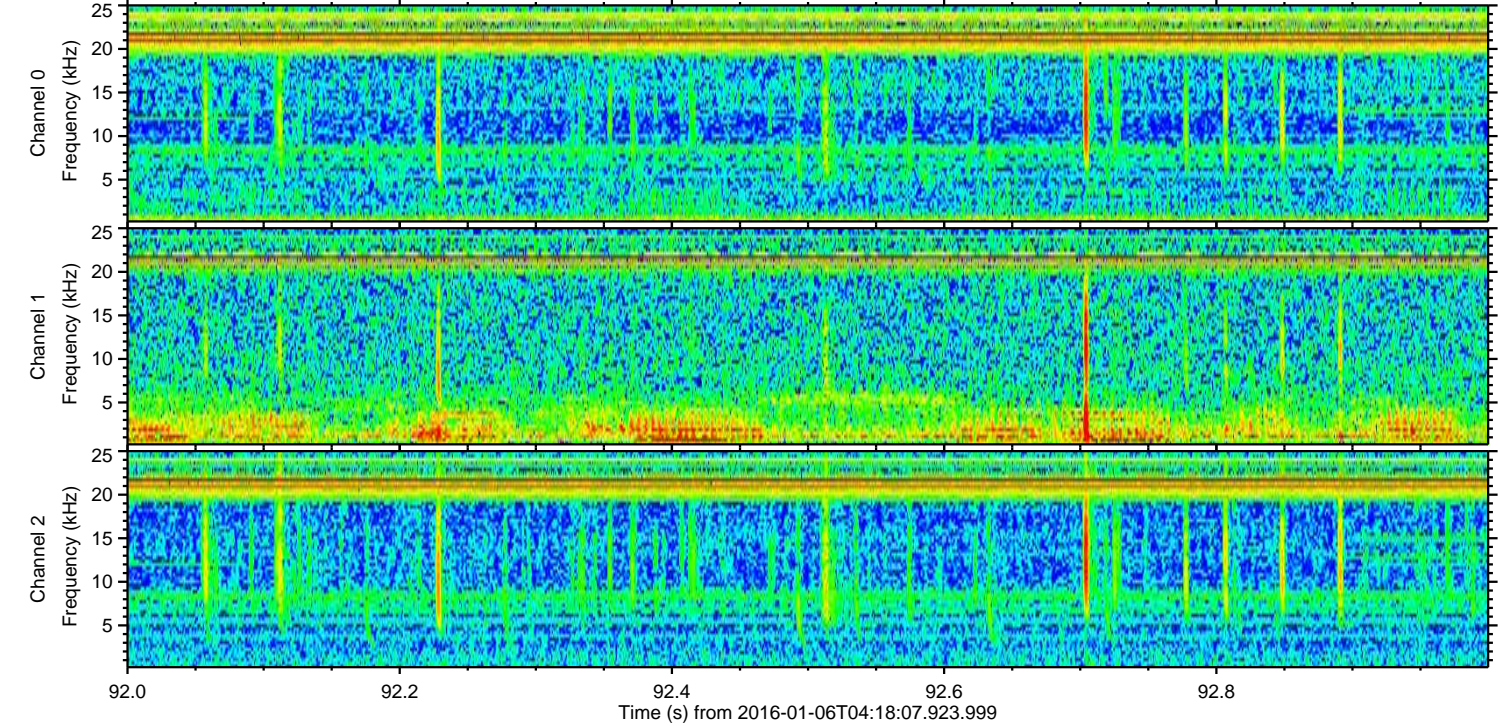
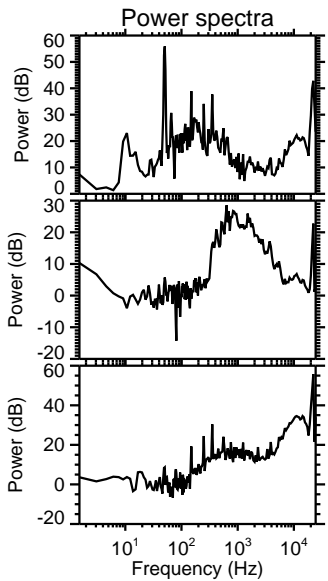
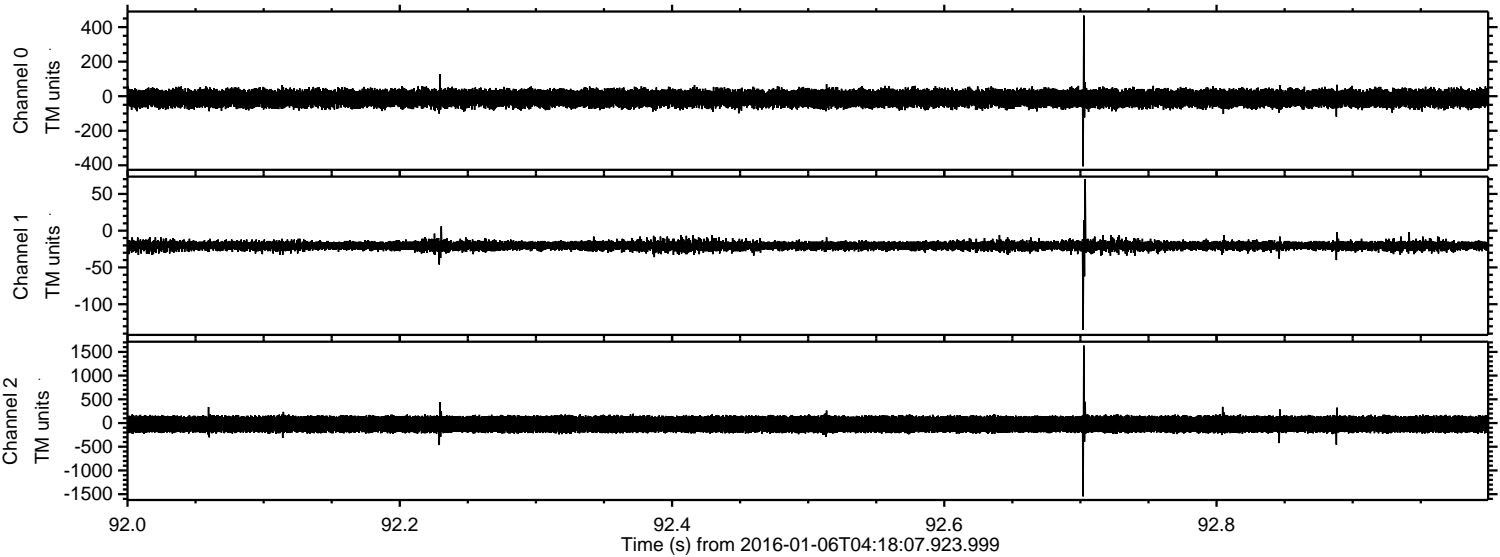


Channel 0
mn: -1652
mx: 1821
 μ : -12.8
 σ : 38.0

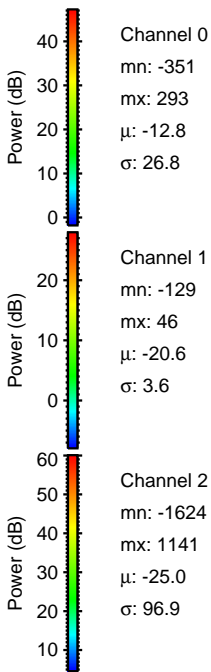
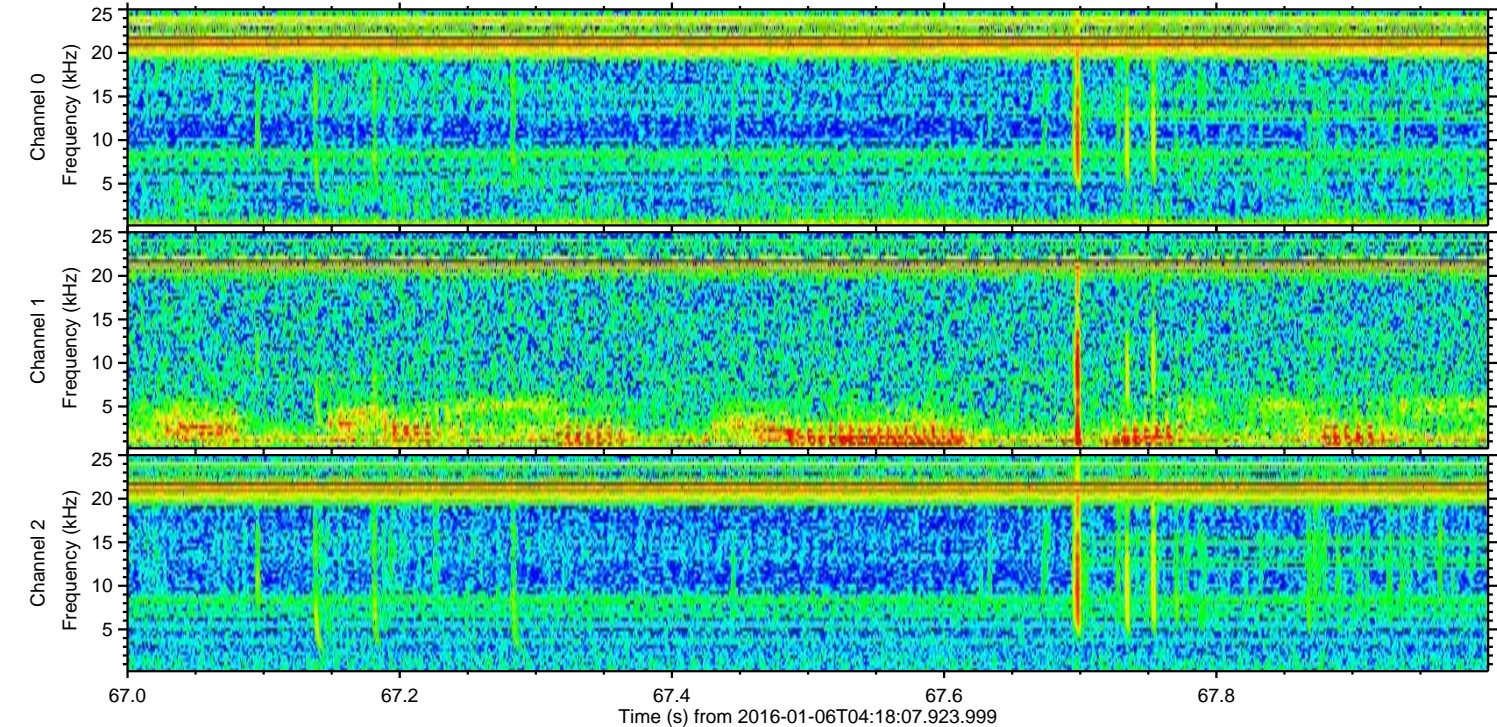
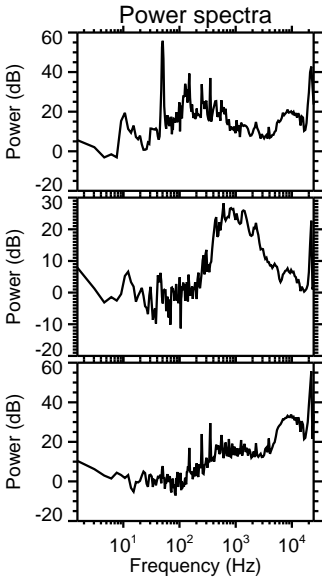
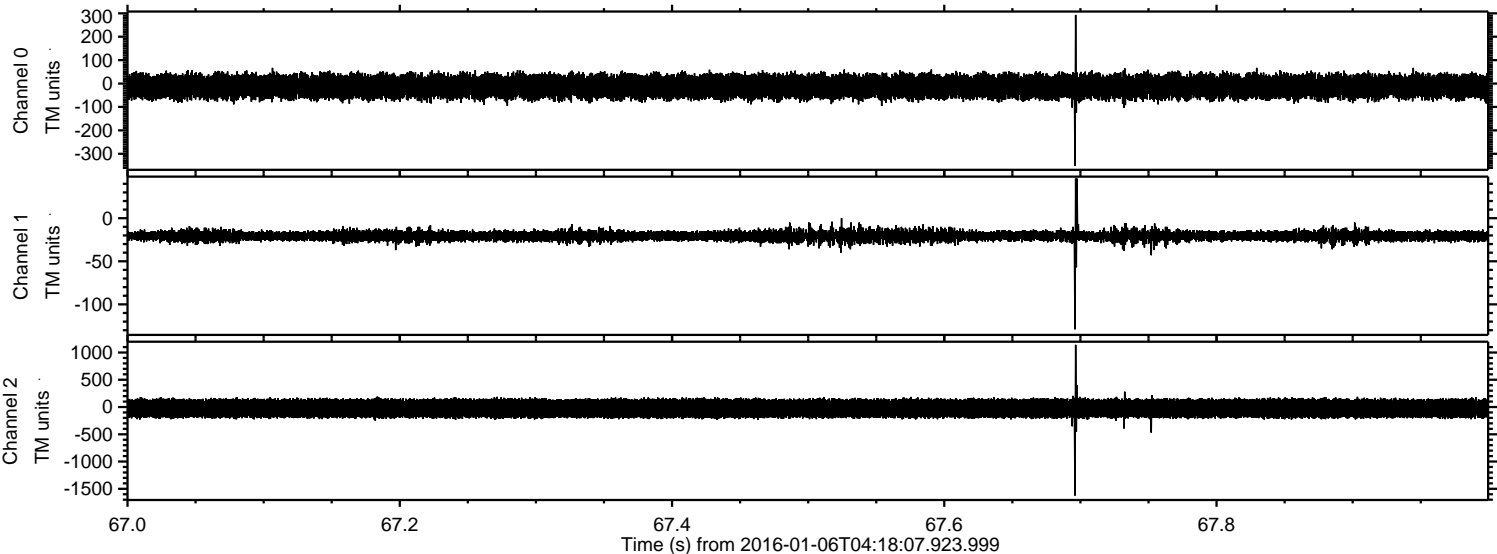
Channel 1
mn: -150
mx: 112
 μ : -20.6
 σ : 4.8

Channel 2
mn: -1465
mx: 1966
 μ : -25.0
 σ : 99.2

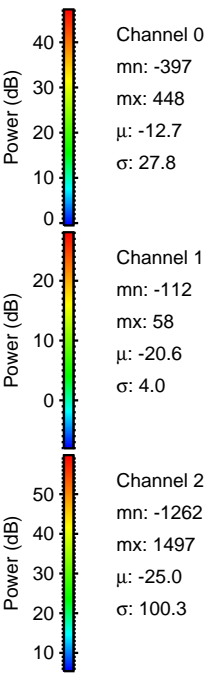
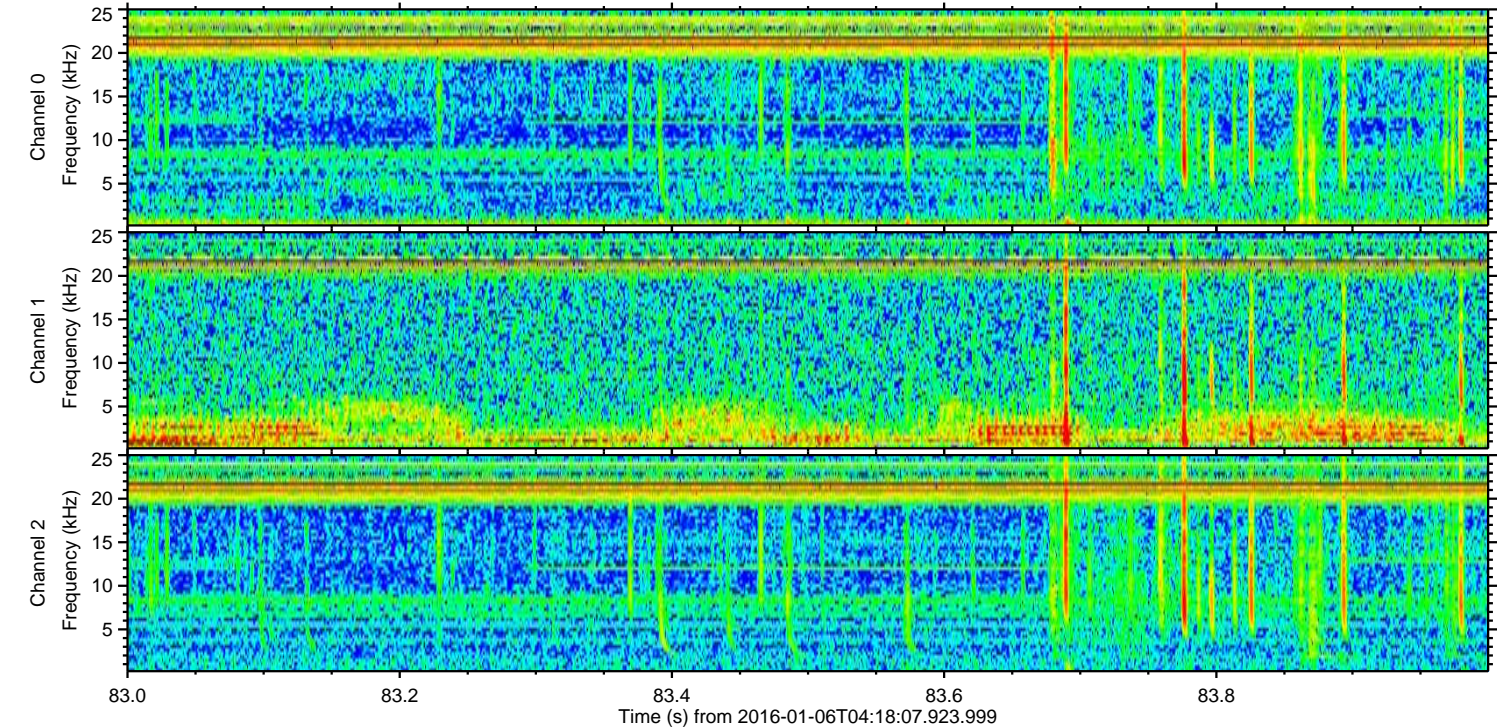
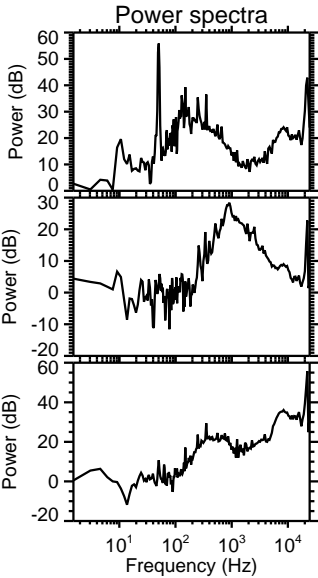
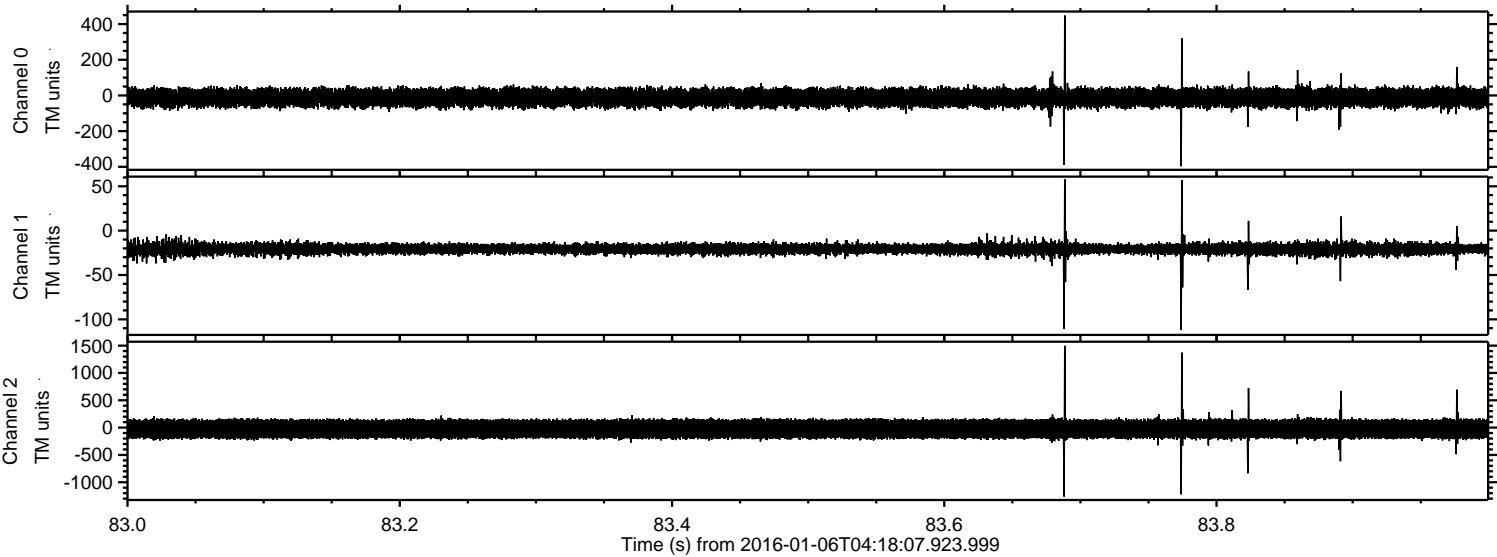
Processed Tue Mar 22 17:22:17 2016 by ELM ver.2012-10-06 from 001__elm20160106_041806__dat00.bin



Processed Tue Mar 22 17:22:18 2016 by ELM ver.2012-10-06 from 001__elm20160106_041806__dat00.bin



Processed Tue Mar 22 17:22:19 2016 by ELM ver.2012-10-06 from 001__elm20160106_041806__dat00.bin



Processed Tue Mar 22 17:22:20 2016 by ELM ver.2012-10-06 from 001__elm20160106_041806__dat00.bin

