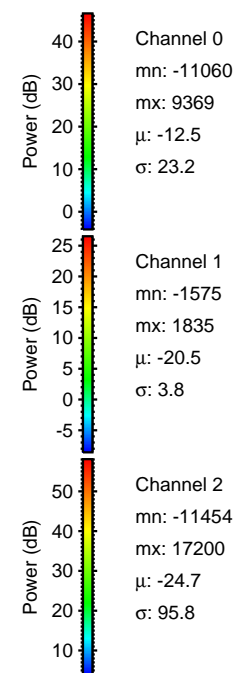
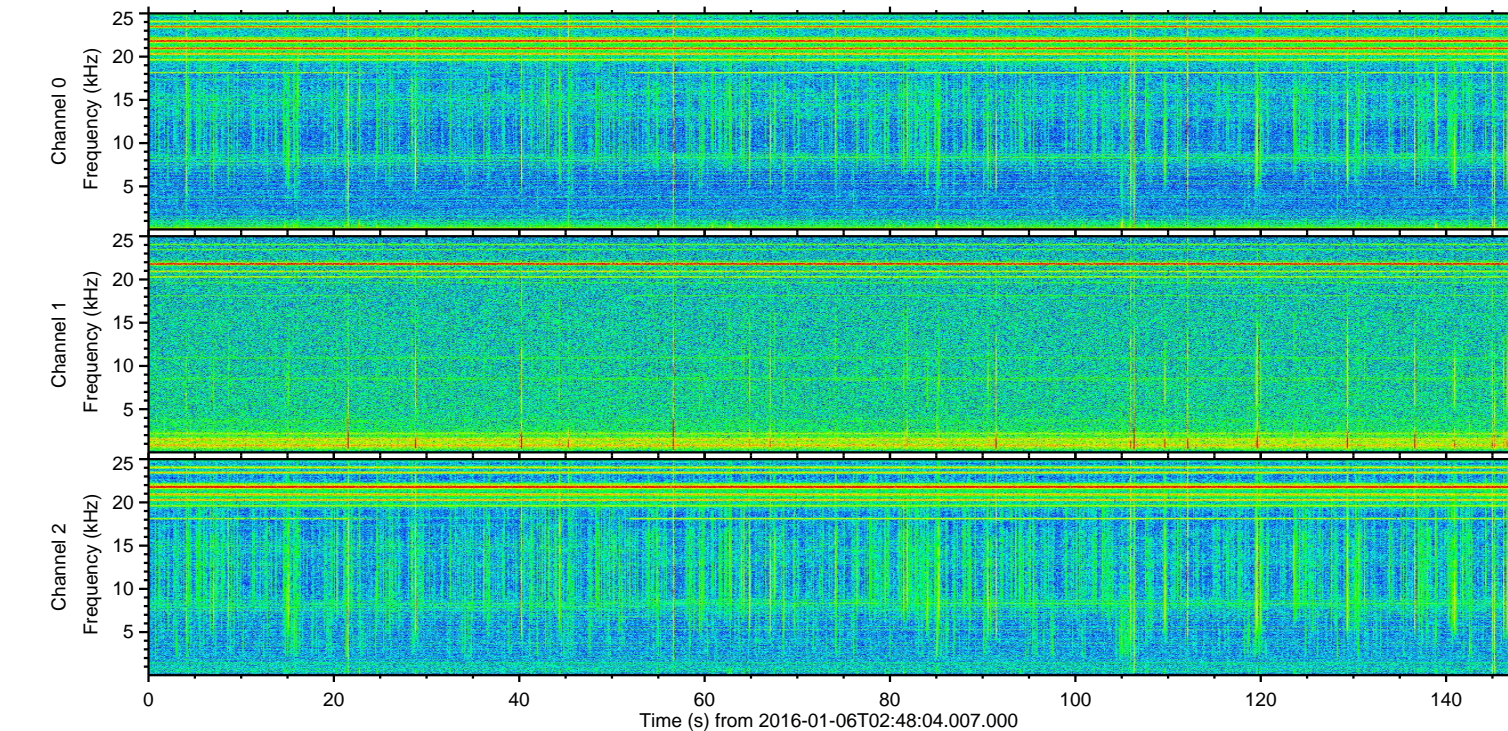
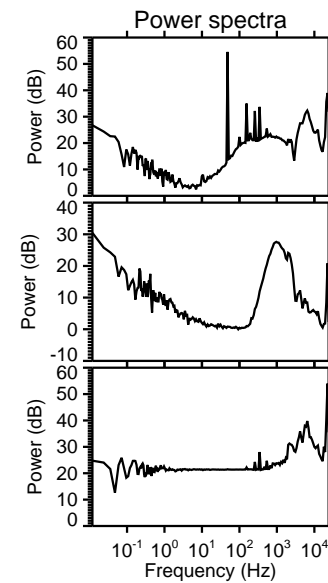
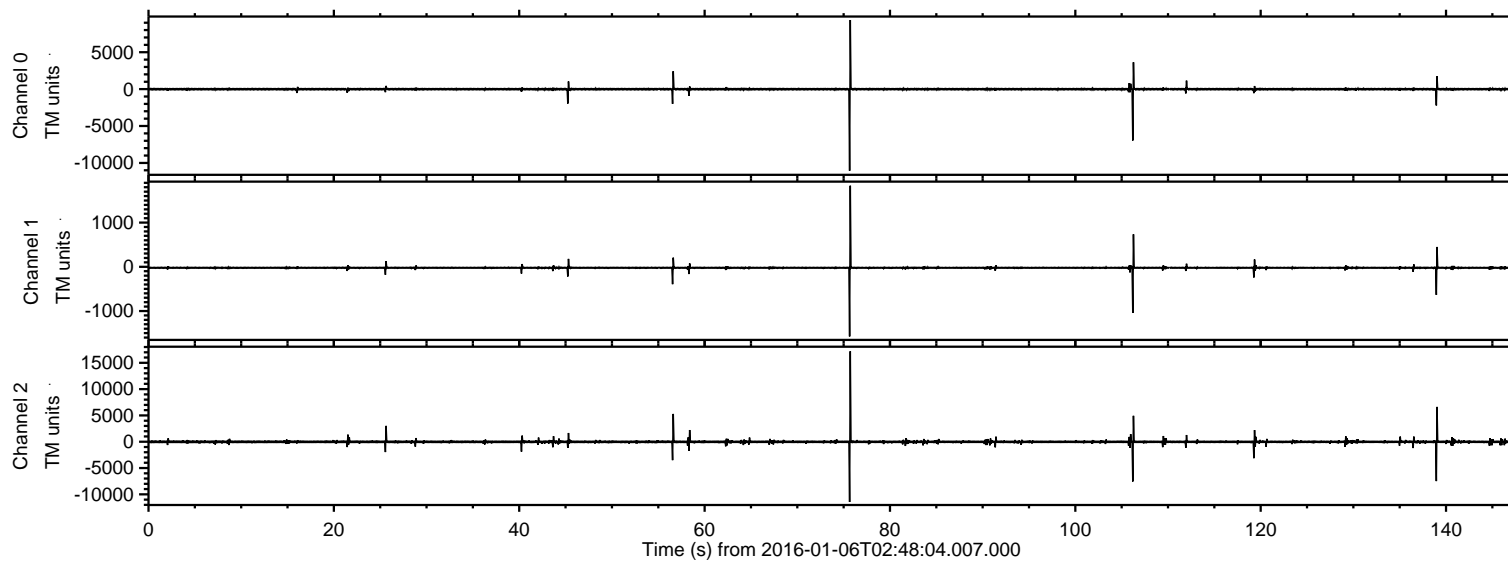
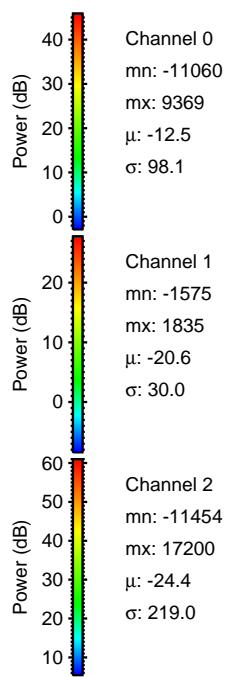
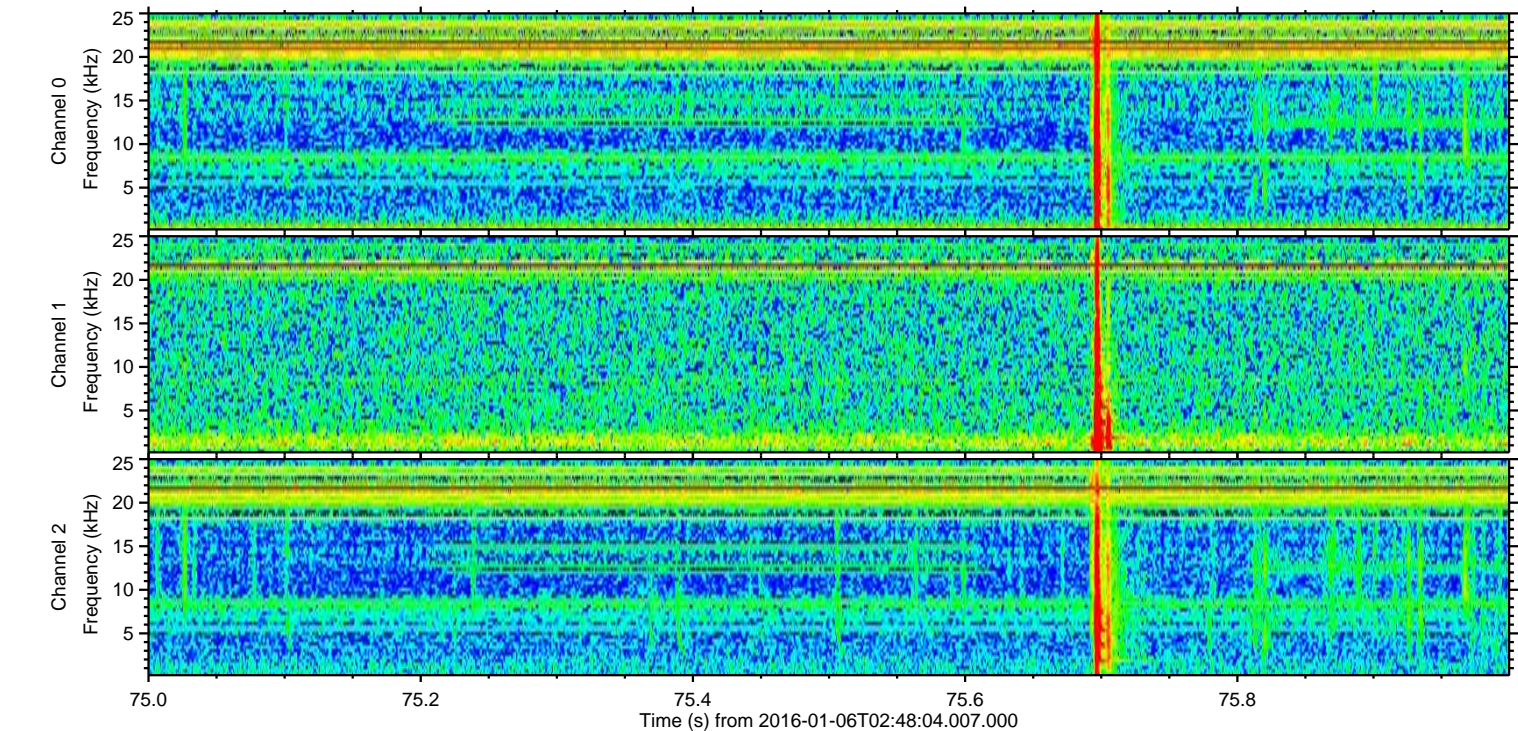
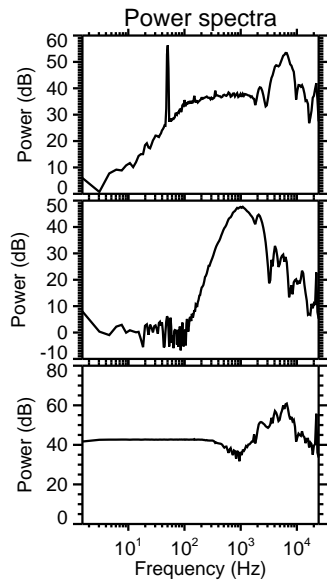
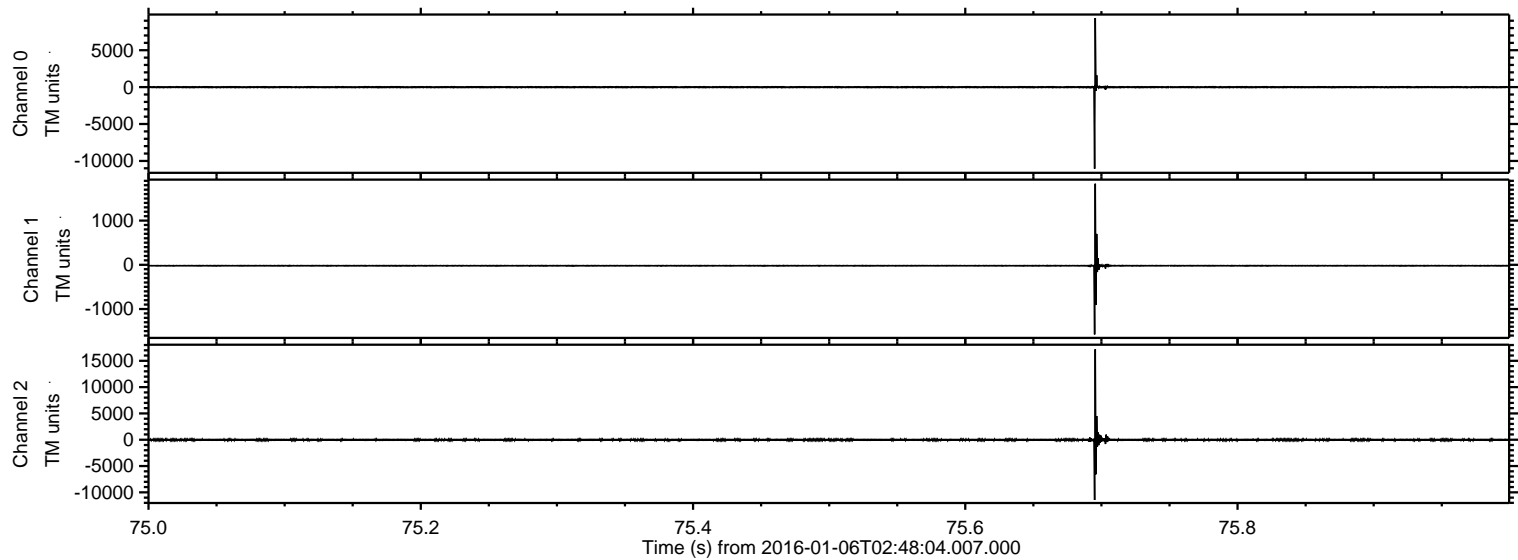


ELMAVAN 3D WAVEFORMS (Measured data sampled at 50 kHz) 51000 packets of 144 samples from 2016-01-06T02:48:04.007.000.

Processed Tue Mar 22 17:01:15 2016 by ELM ver.2012-10-06 from 001__elm20160106_024803__dat00.bin

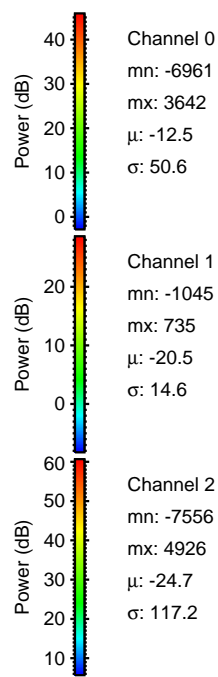
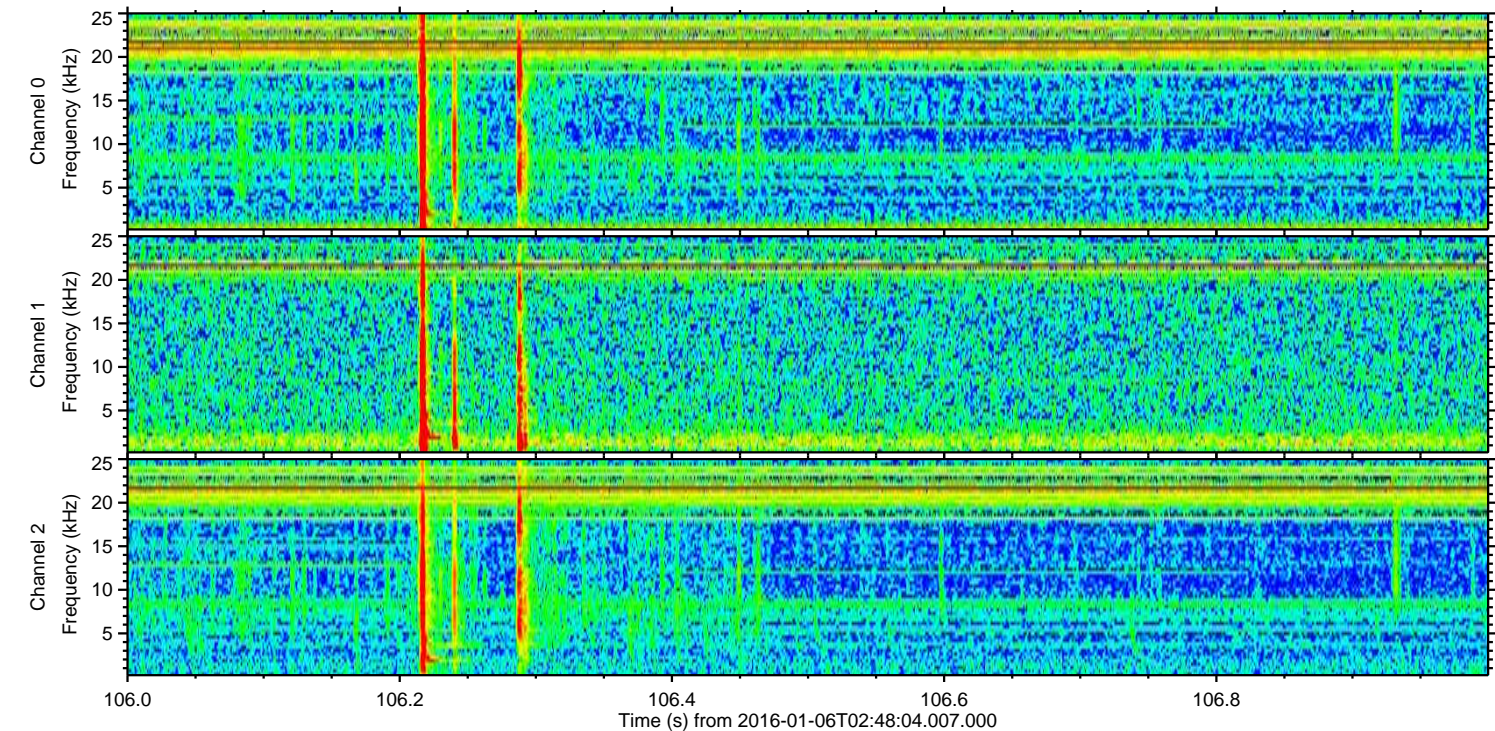
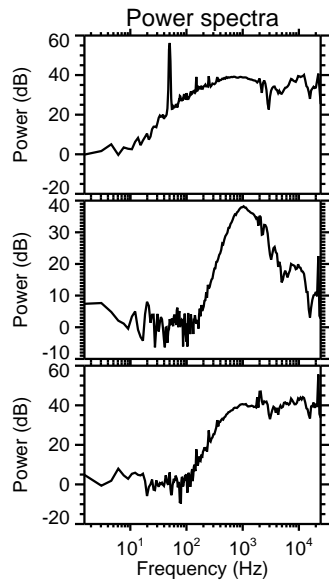
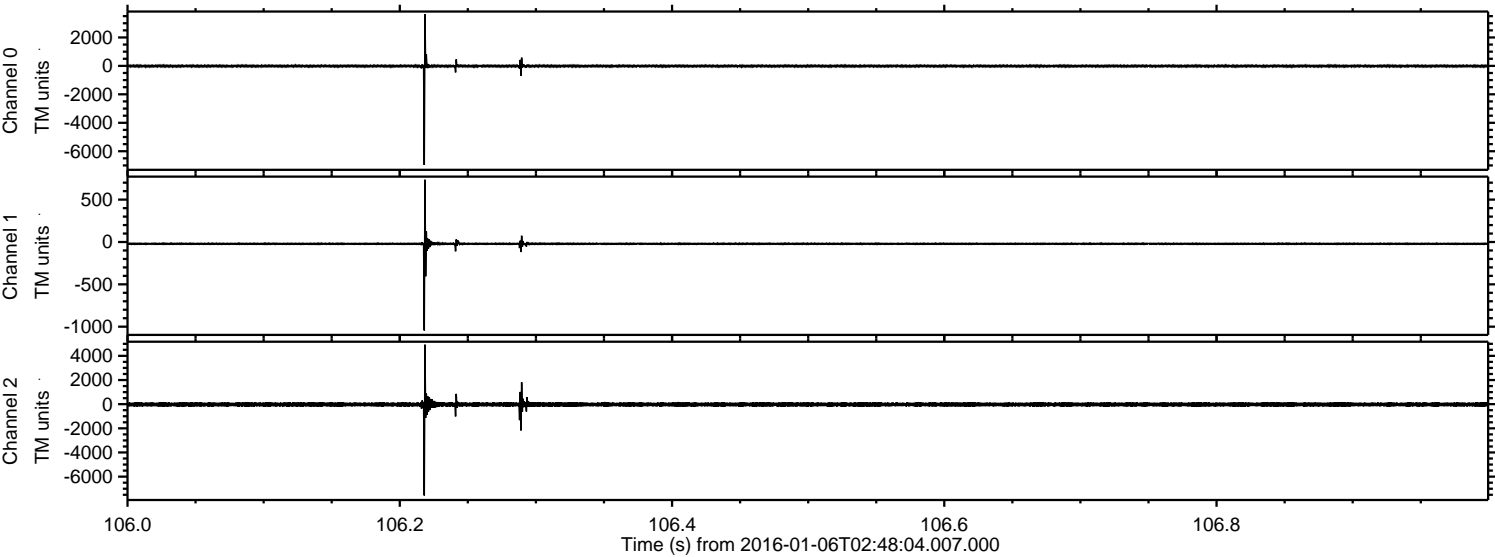


Processed Tue Mar 22 17:01:27 2016 by ELM ver.2012-10-06 from 001__elm20160106_024803__dat00.bin



ELMAVAN 3D WAVEFORMS (Measured data sampled at 50 kHz) 51000 packets of 144 samples from 2016-01-06T02:48:04.007.000. Part 107/147

Processed Tue Mar 22 17:01:27 2016 by ELM ver.2012-10-06 from 001__elm20160106_024803__dat00.bin



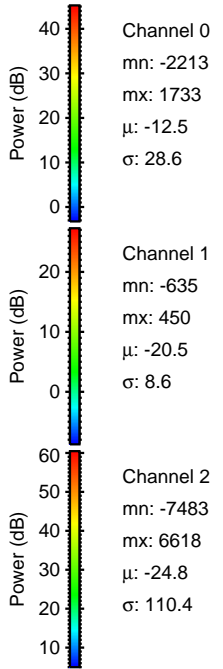
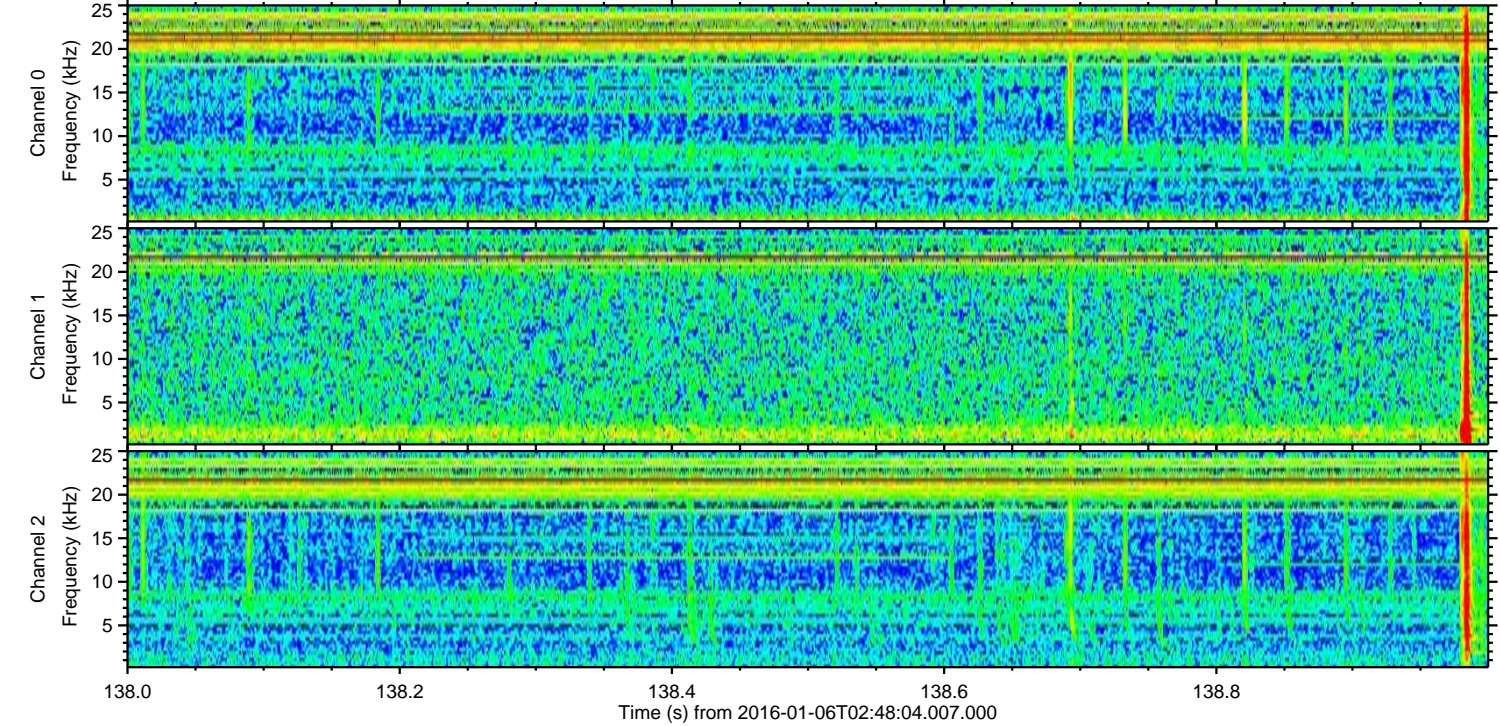
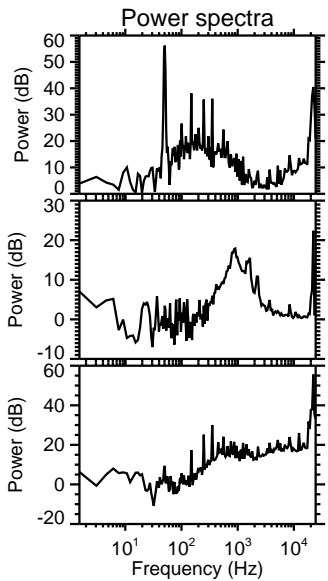
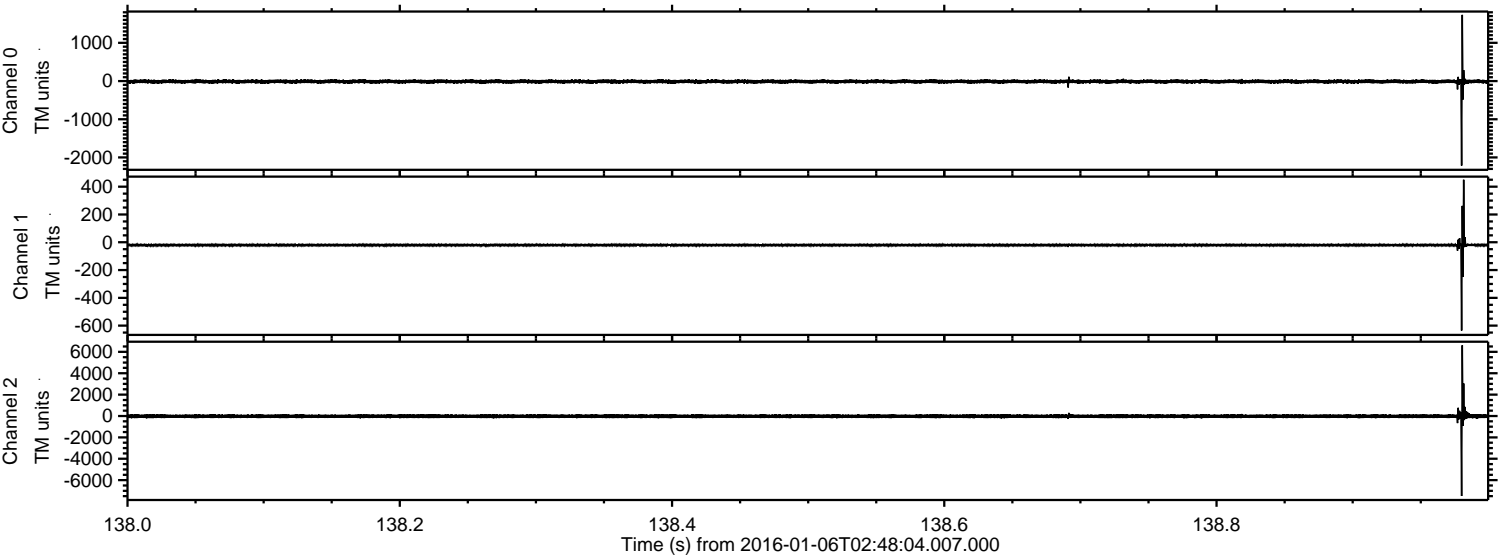
Channel 0
mn: -6961
mx: 3642
 μ : -12.5
 σ : 50.6

Channel 1
mn: -1045
mx: 735
 μ : -20.5
 σ : 14.6

Channel 2
mn: -7556
mx: 4926
 μ : -24.7
 σ : 117.2

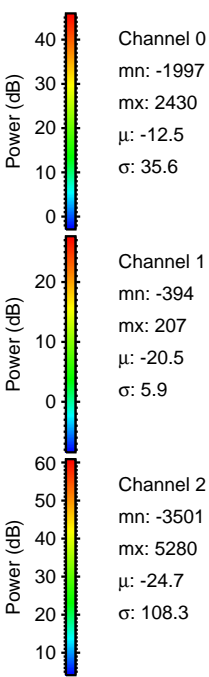
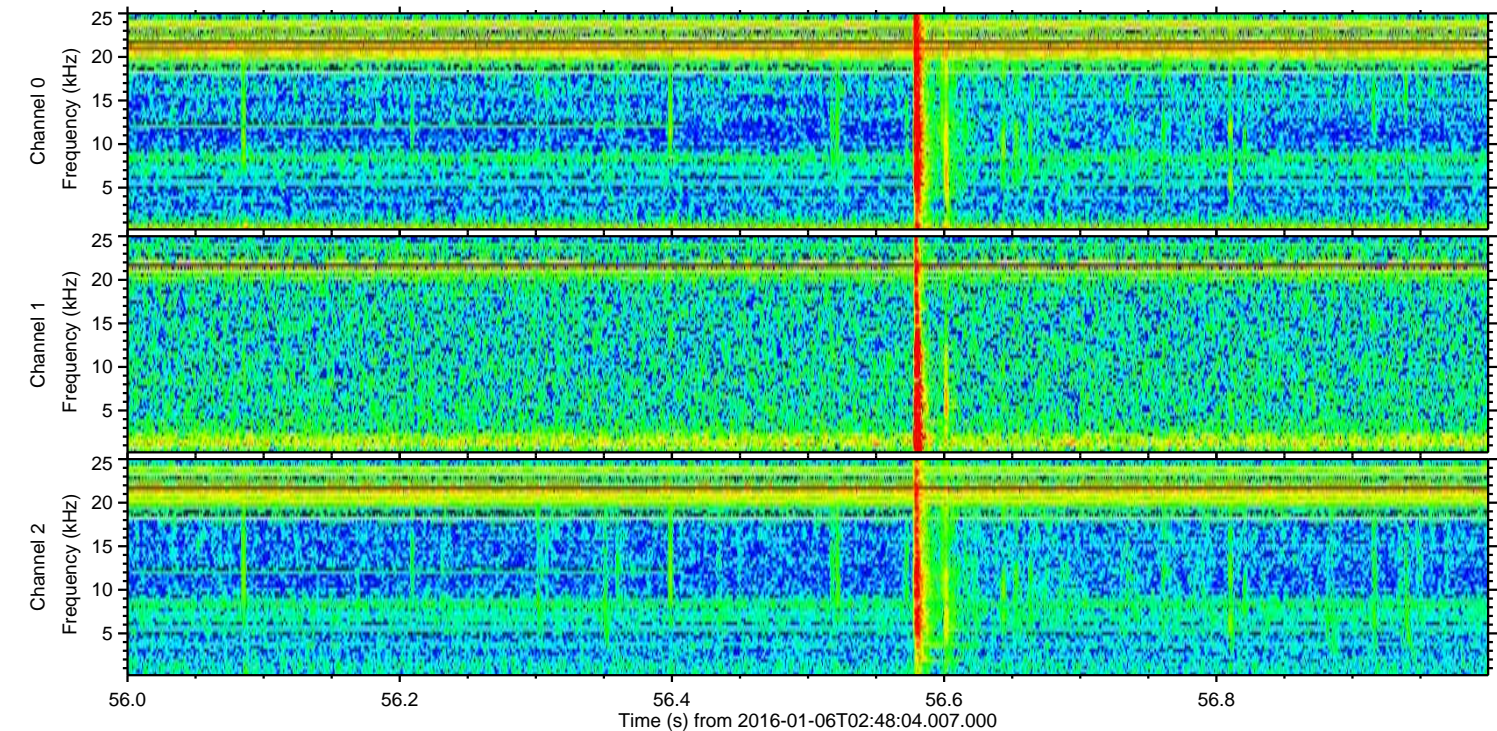
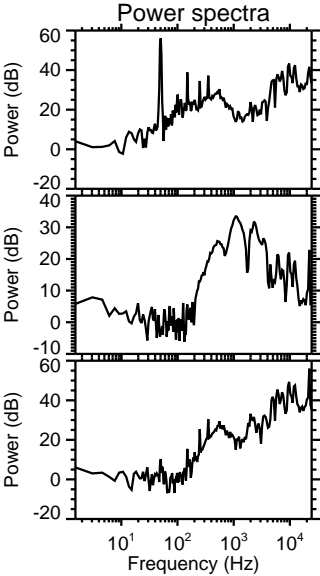
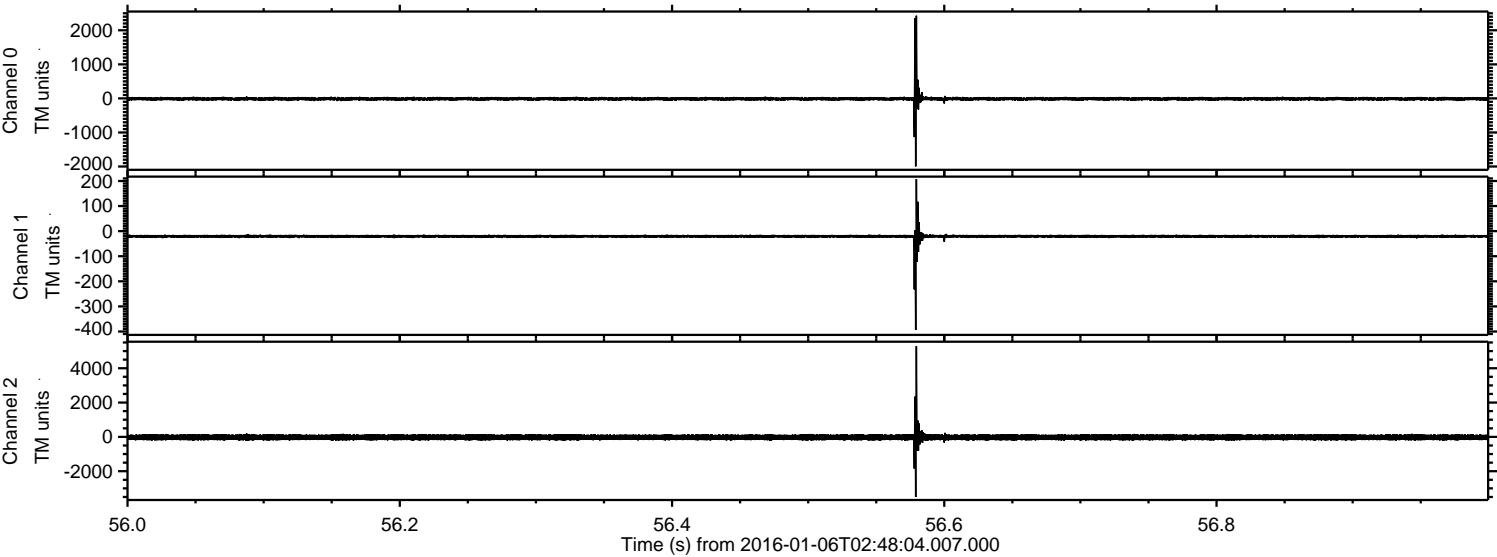
ELMAVAN 3D WAVEFORMS (Measured data sampled at 50 kHz) 51000 packets of 144 samples from 2016-01-06T02:48:04.007.000. Part 139/147

Processed Tue Mar 22 17:01:28 2016 by ELM ver.2012-10-06 from 001__elm20160106_024803__dat00.bin



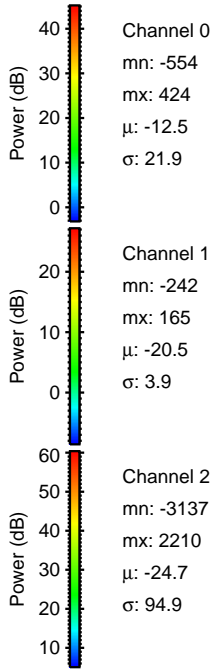
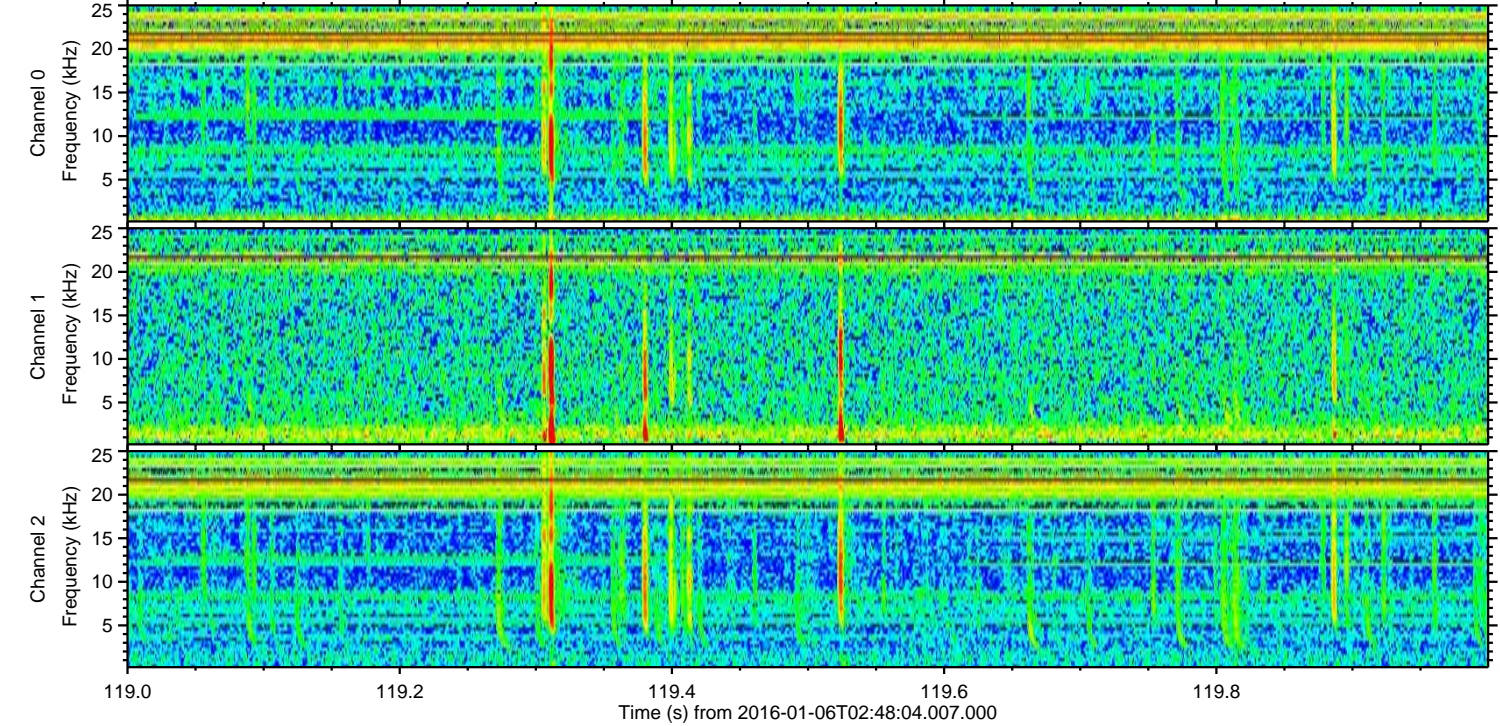
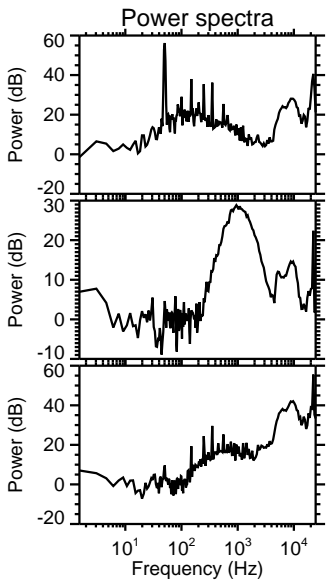
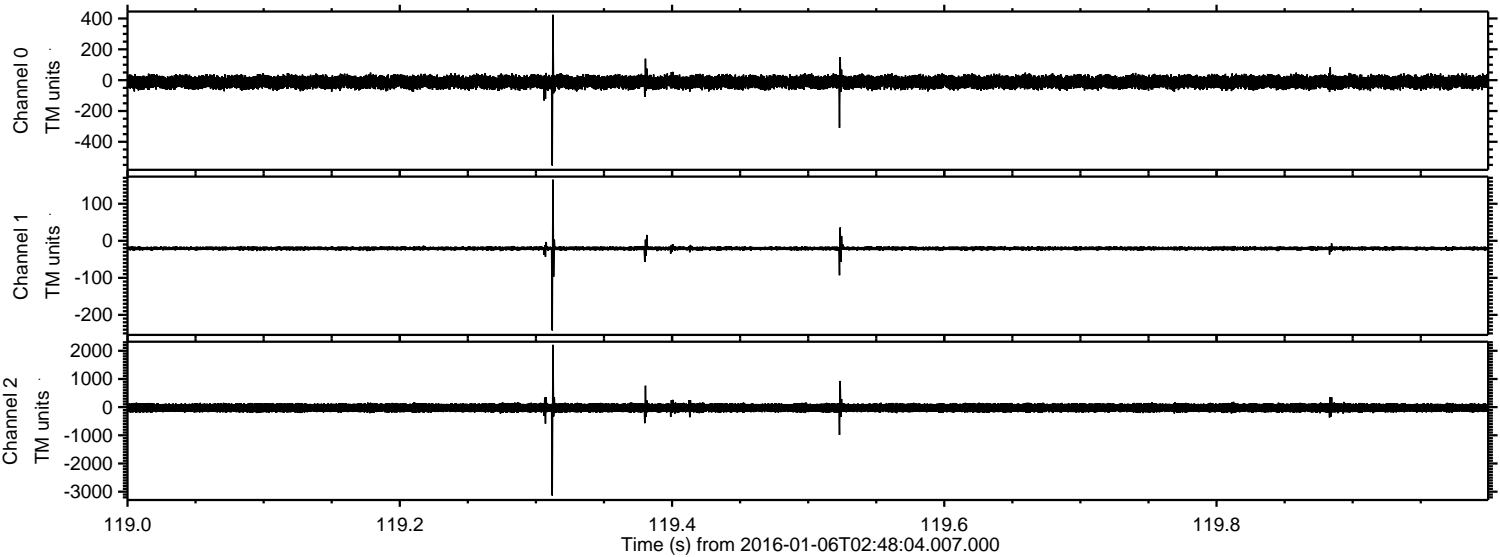
ELMAVAN 3D WAVEFORMS (Measured data sampled at 50 kHz) 51000 packets of 144 samples from 2016-01-06T02:48:04.007.000. Part 57/147

Processed Tue Mar 22 17:01:29 2016 by ELM ver.2012-10-06 from 001__elm20160106_024803__dat00.bin

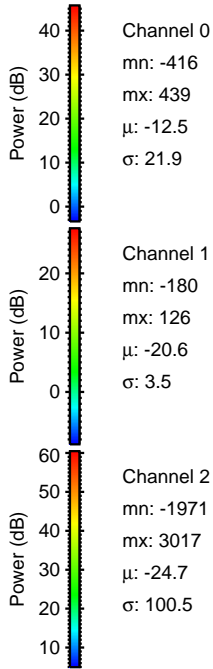
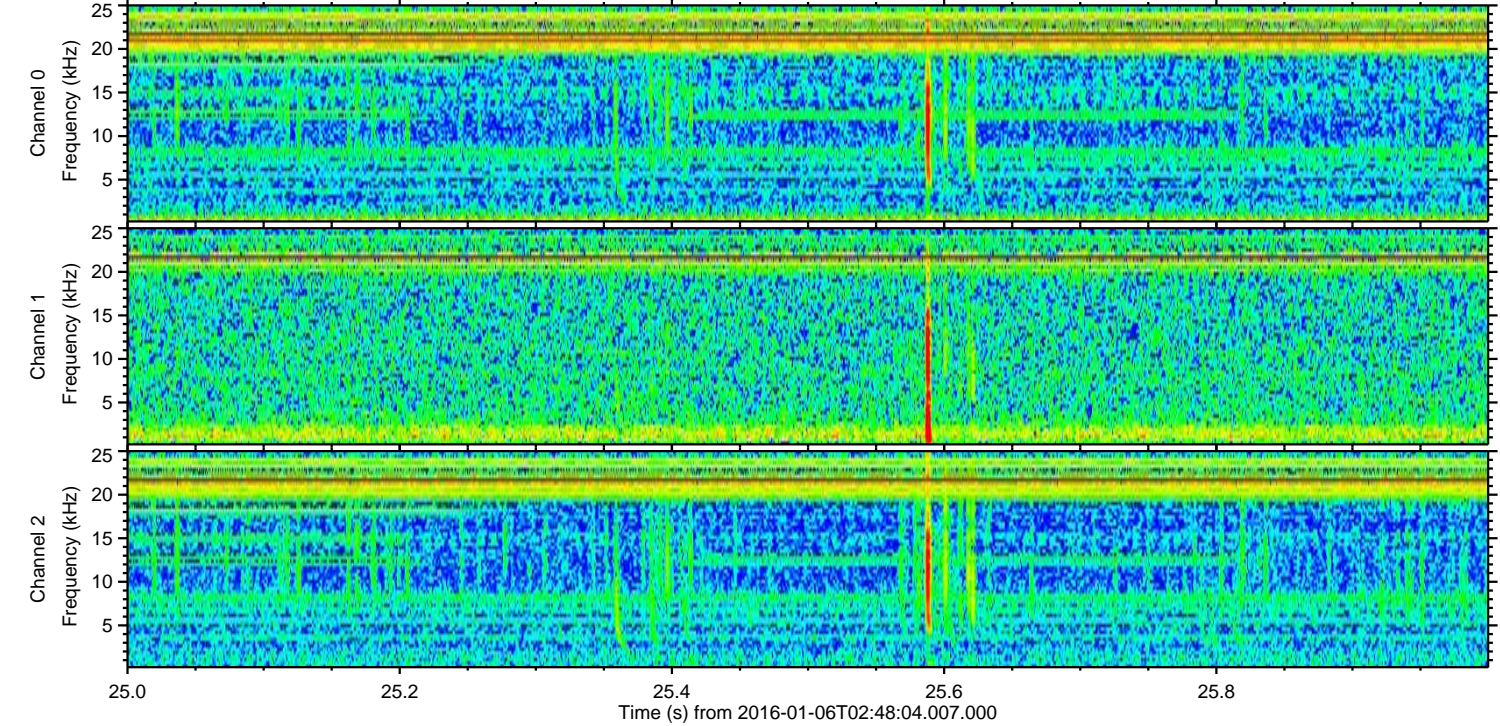
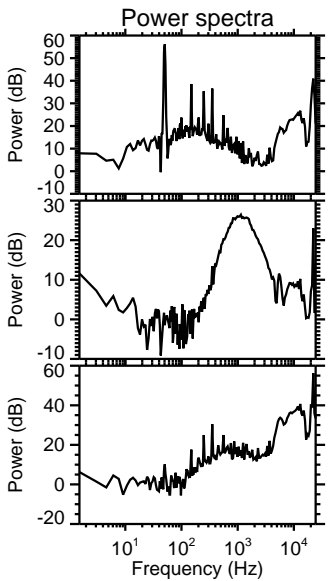
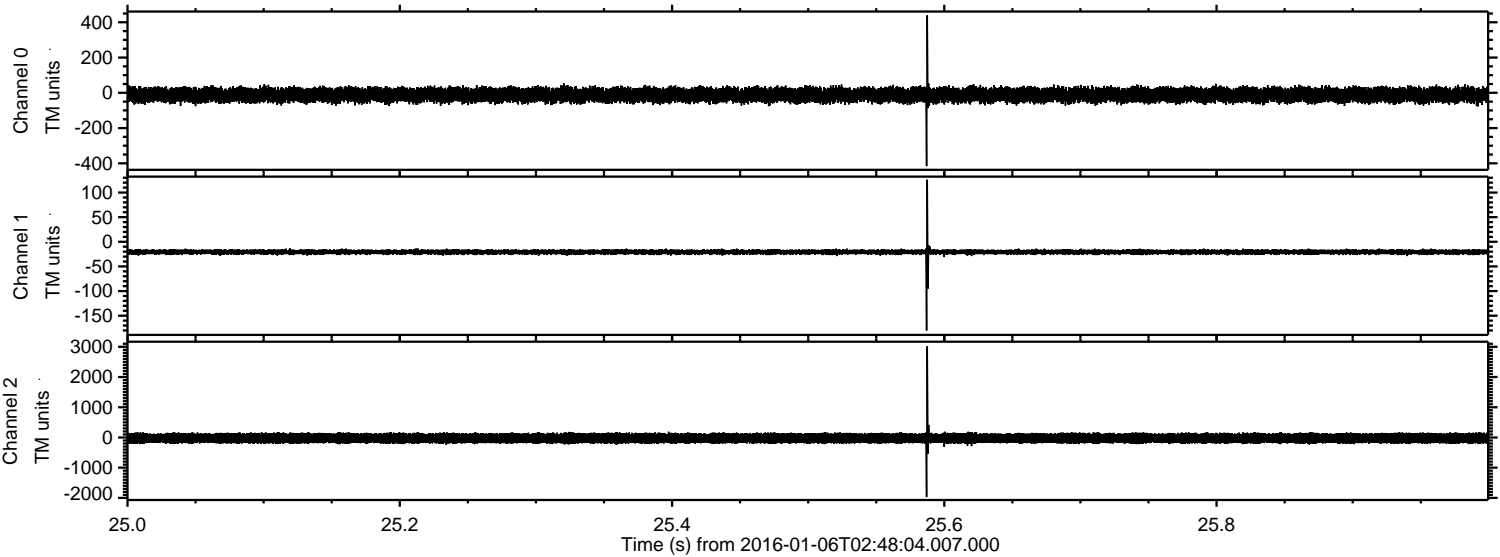


ELMAVAN 3D WAVEFORMS (Measured data sampled at 50 kHz) 51000 packets of 144 samples from 2016-01-06T02:48:04.007.000. Part 120/147

Processed Tue Mar 22 17:01:30 2016 by ELM ver.2012-10-06 from 001__elm20160106_024803__dat00.bin



Processed Tue Mar 22 17:01:31 2016 by ELM ver.2012-10-06 from 001__elm20160106_024803__dat00.bin

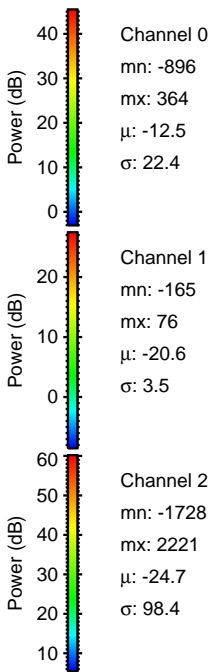
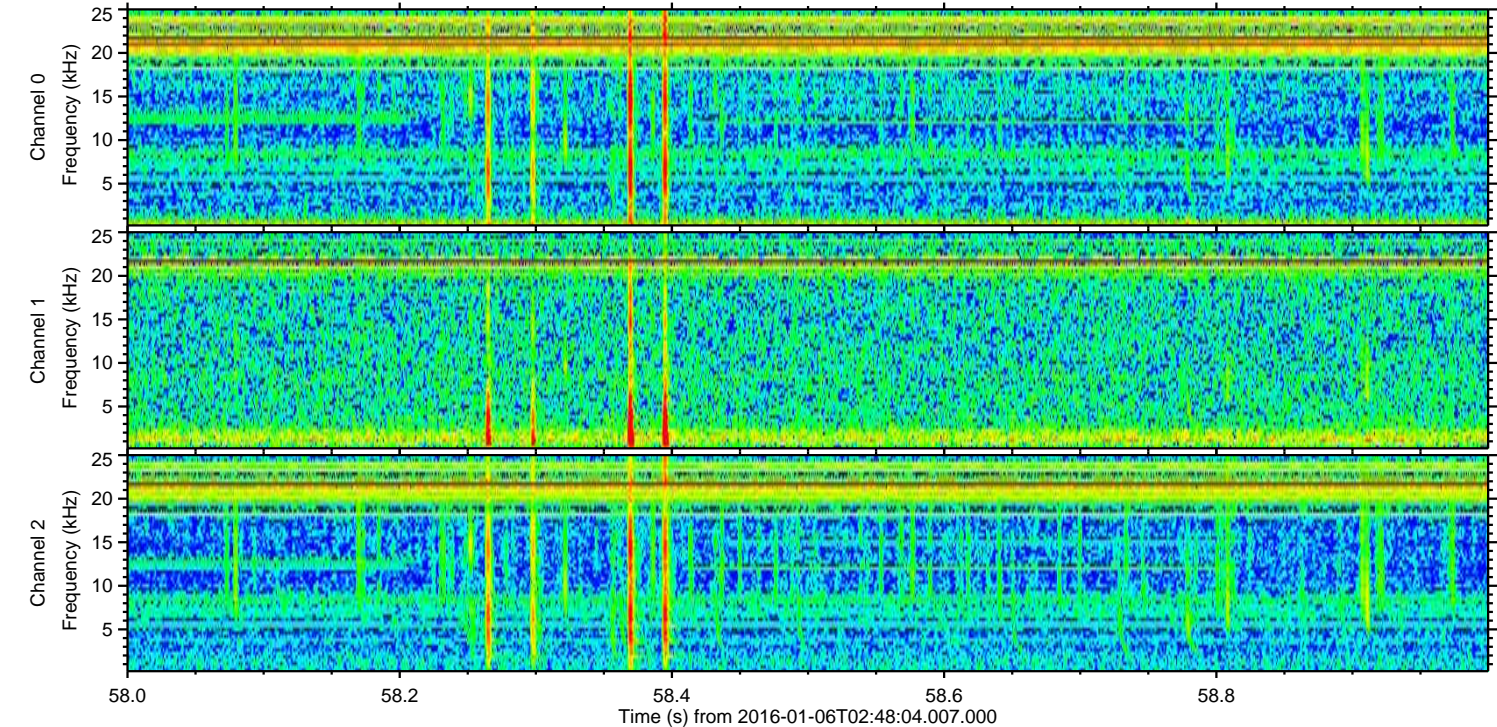
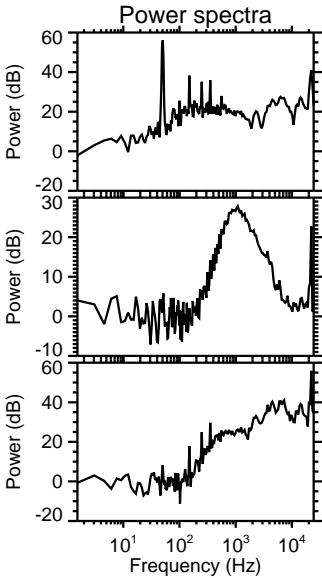
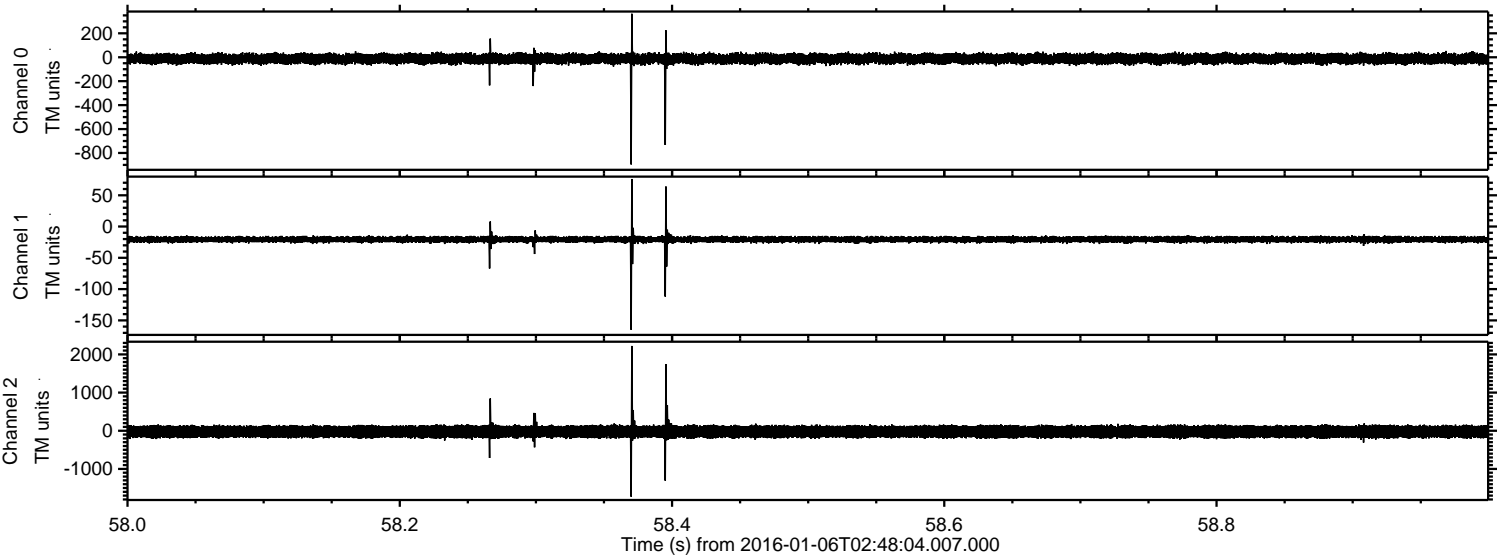


Channel 0
mn: -416
mx: 439
 μ : -12.5
 σ : 21.9

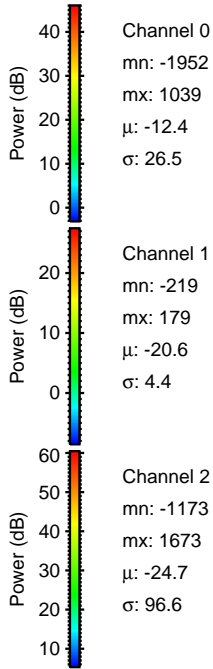
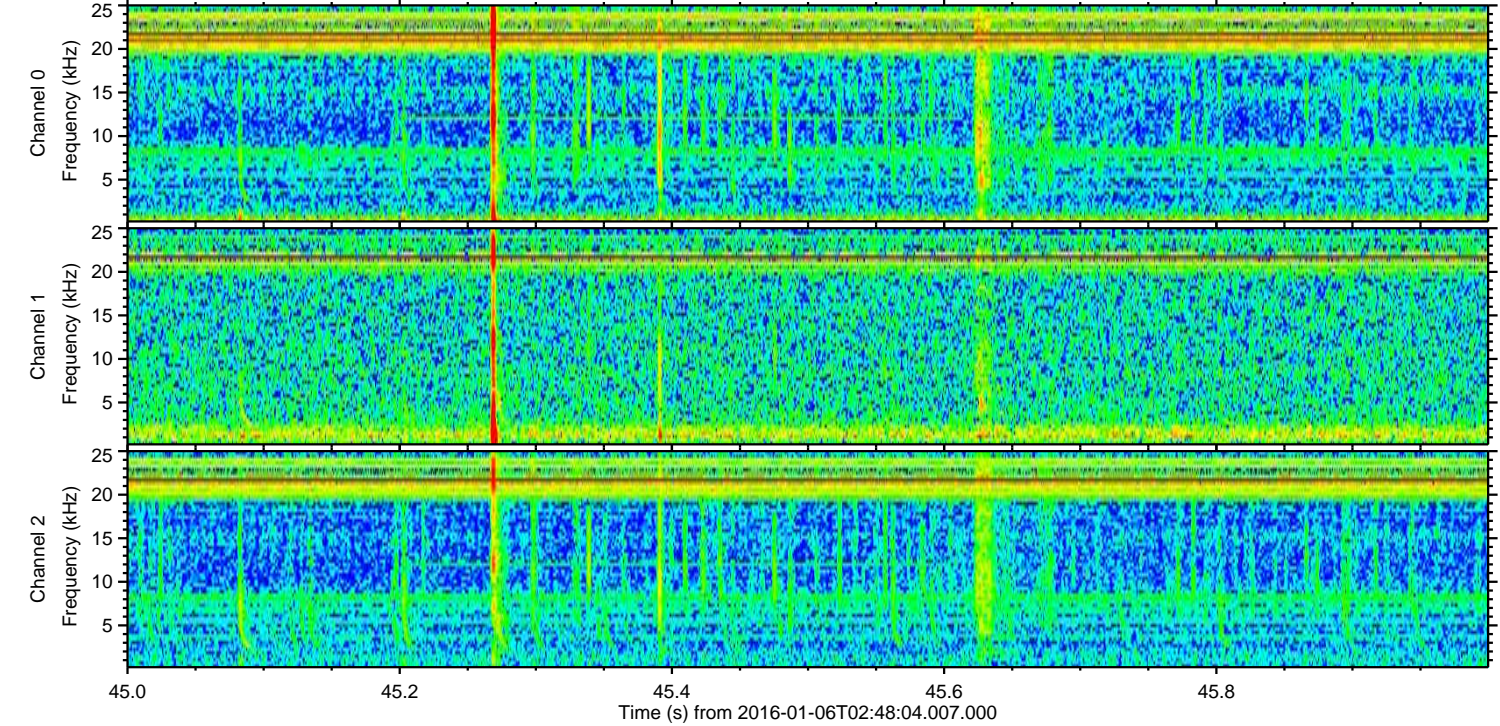
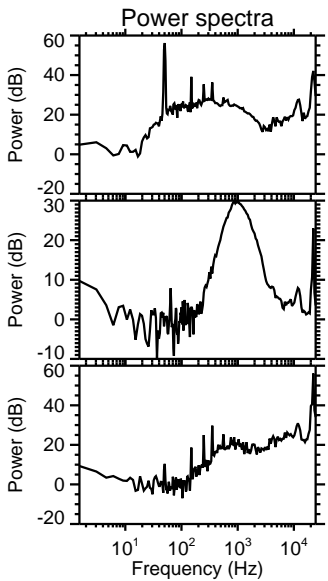
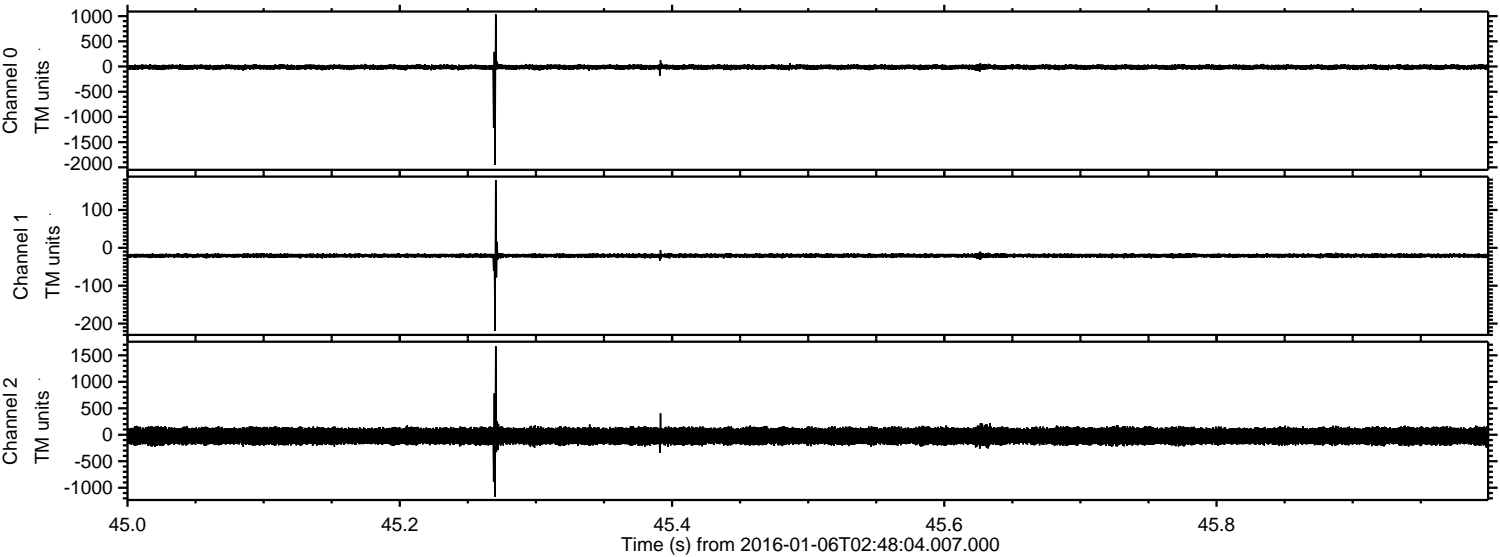
Channel 1
mn: -180
mx: 126
 μ : -20.6
 σ : 3.5

Channel 2
mn: -1971
mx: 3017
 μ : -24.7
 σ : 100.5

Processed Tue Mar 22 17:01:32 2016 by ELM ver.2012-10-06 from 001__elm20160106_024803__dat00.bin



Processed Tue Mar 22 17:01:33 2016 by ELM ver.2012-10-06 from 001__elm20160106_024803__dat00.bin



Processed Tue Mar 22 17:01:34 2016 by ELM ver.2012-10-06 from 001__elm20160106_024803__dat00.bin

