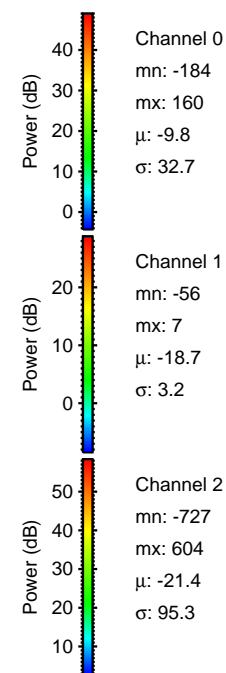
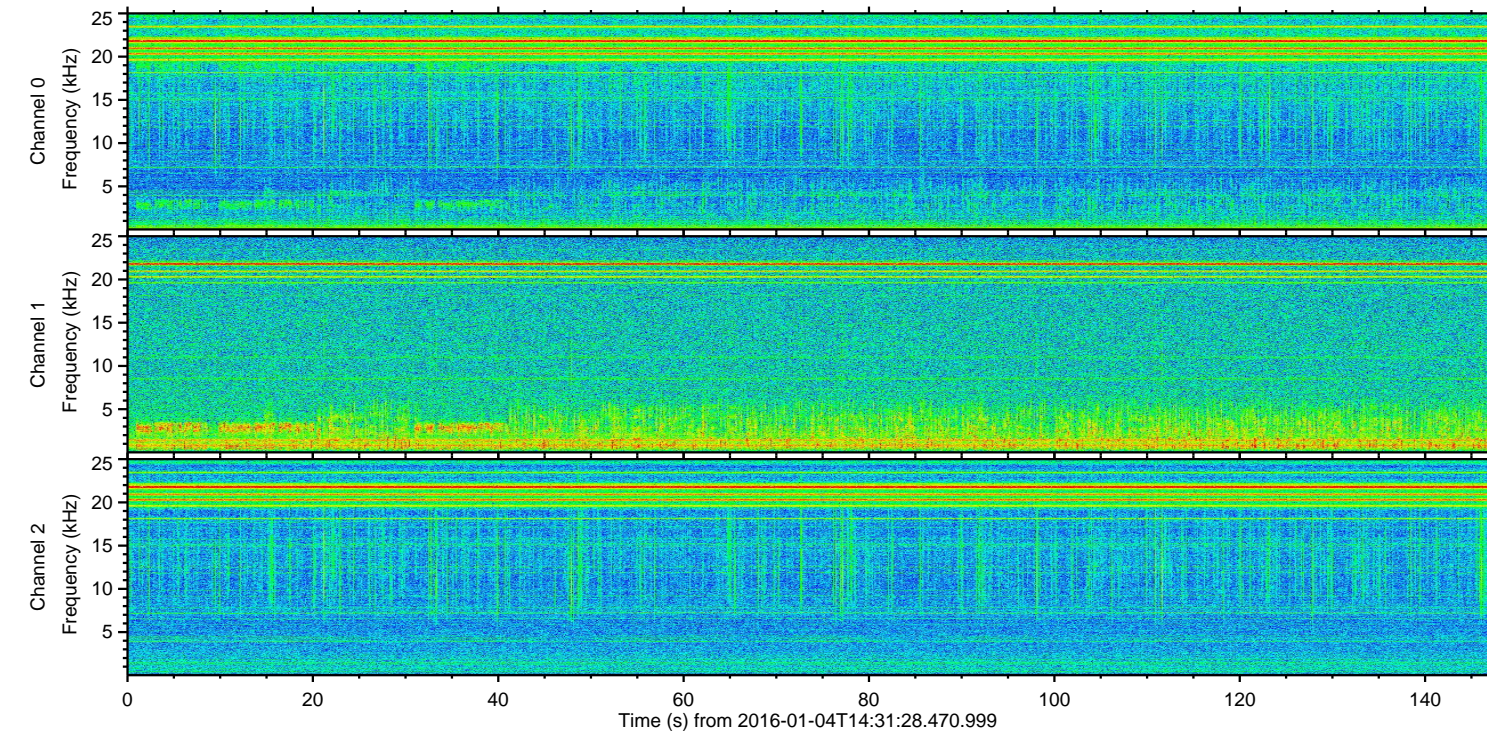
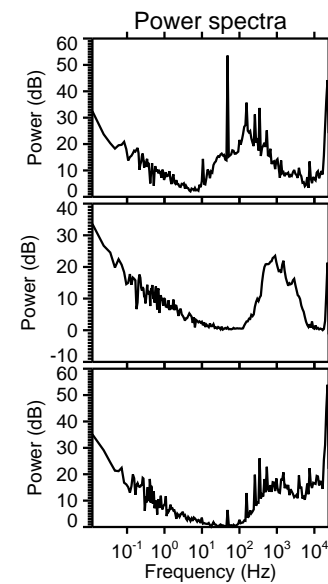
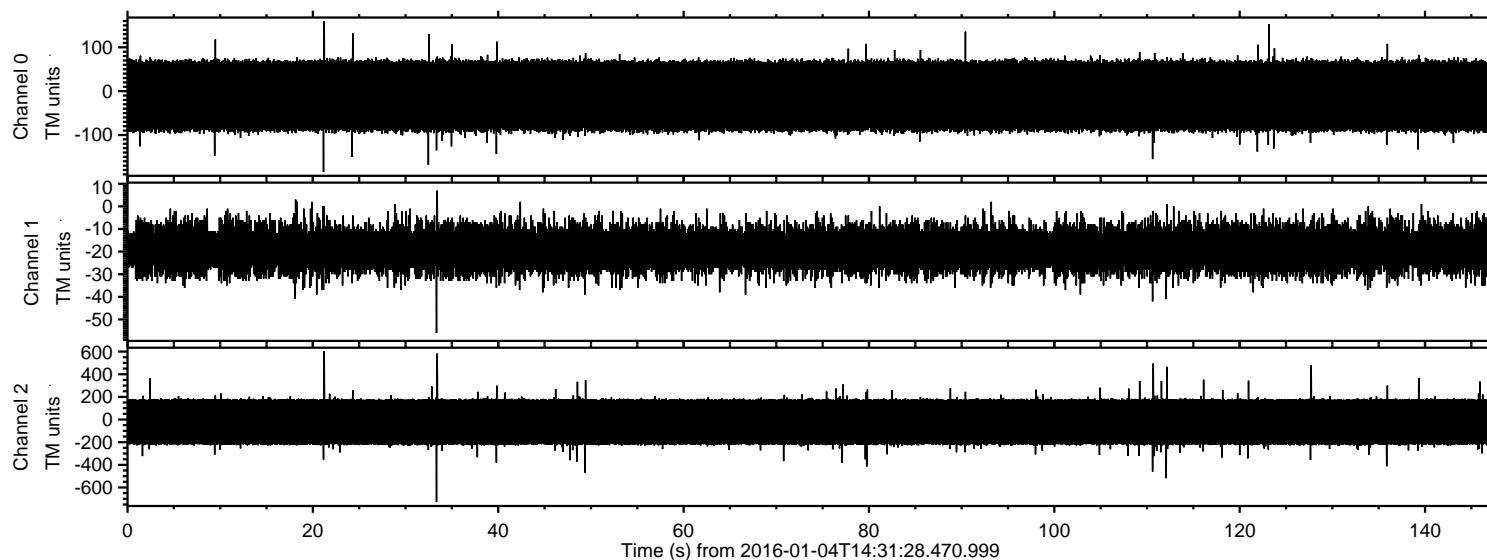
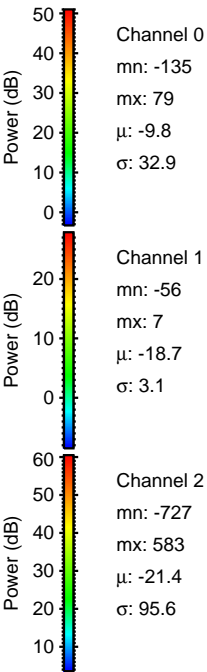
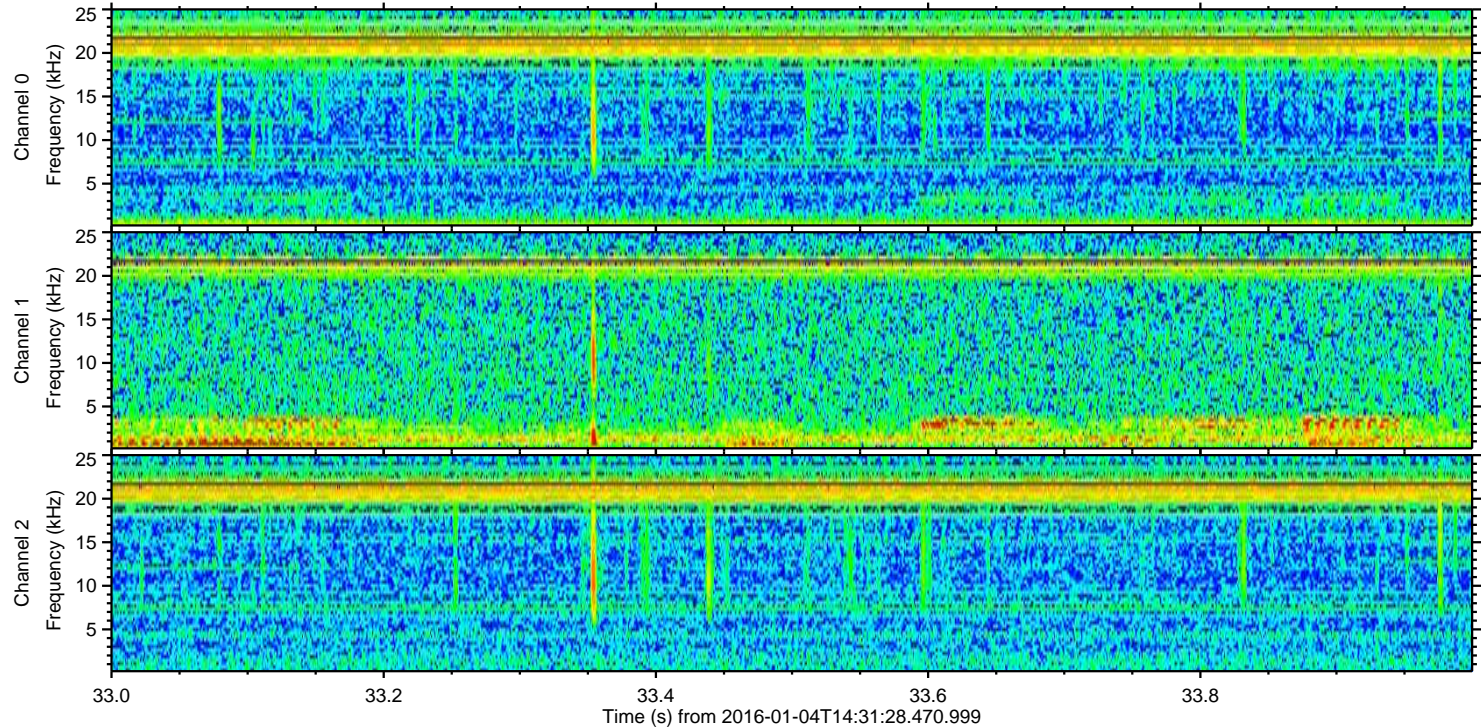
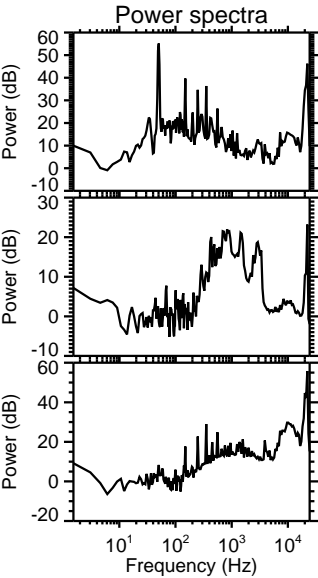
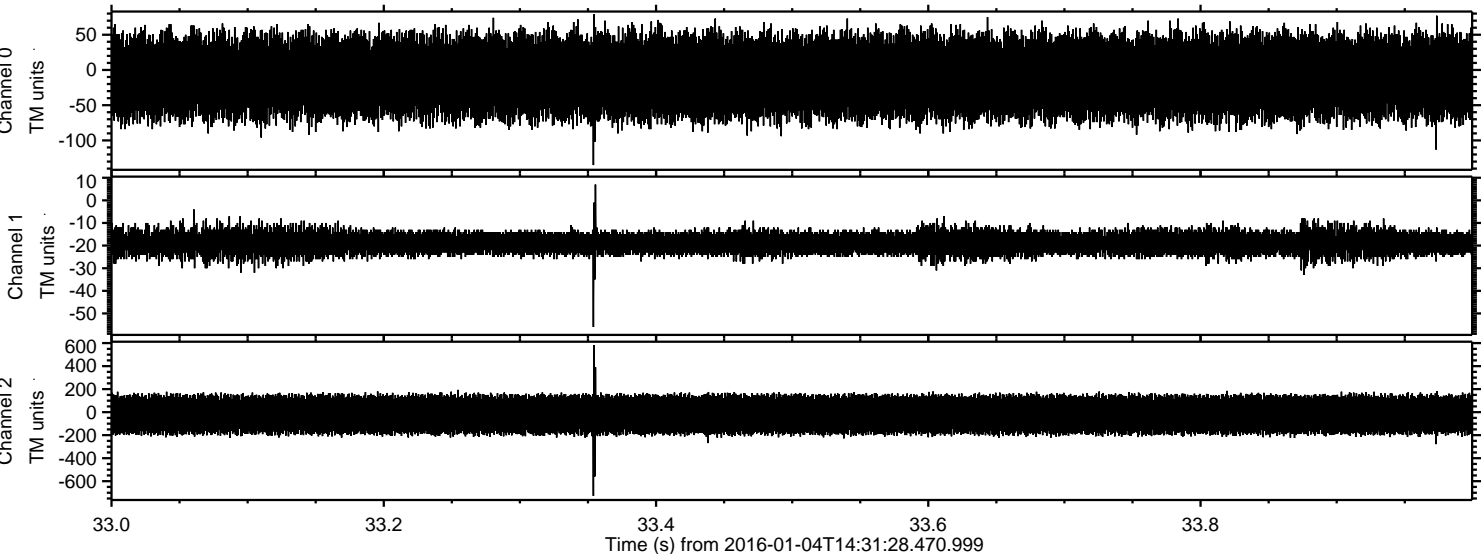


ELMAVAN 3D WAVEFORMS (Measured data sampled at 50 kHz) 51000 packets of 144 samples from 2016-01-04T14:31:28.470.999.

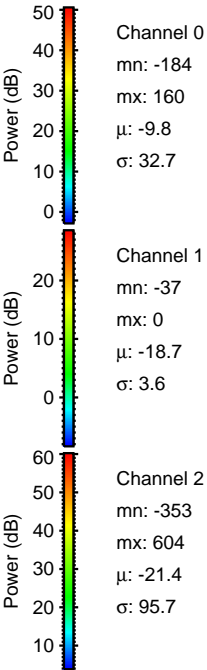
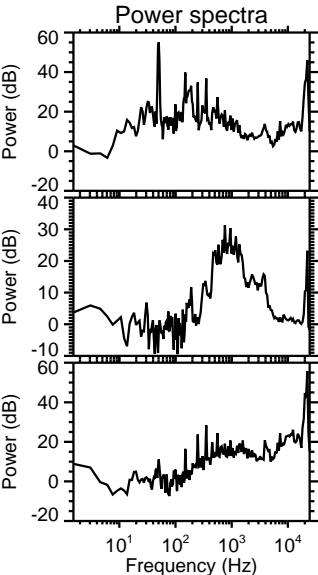
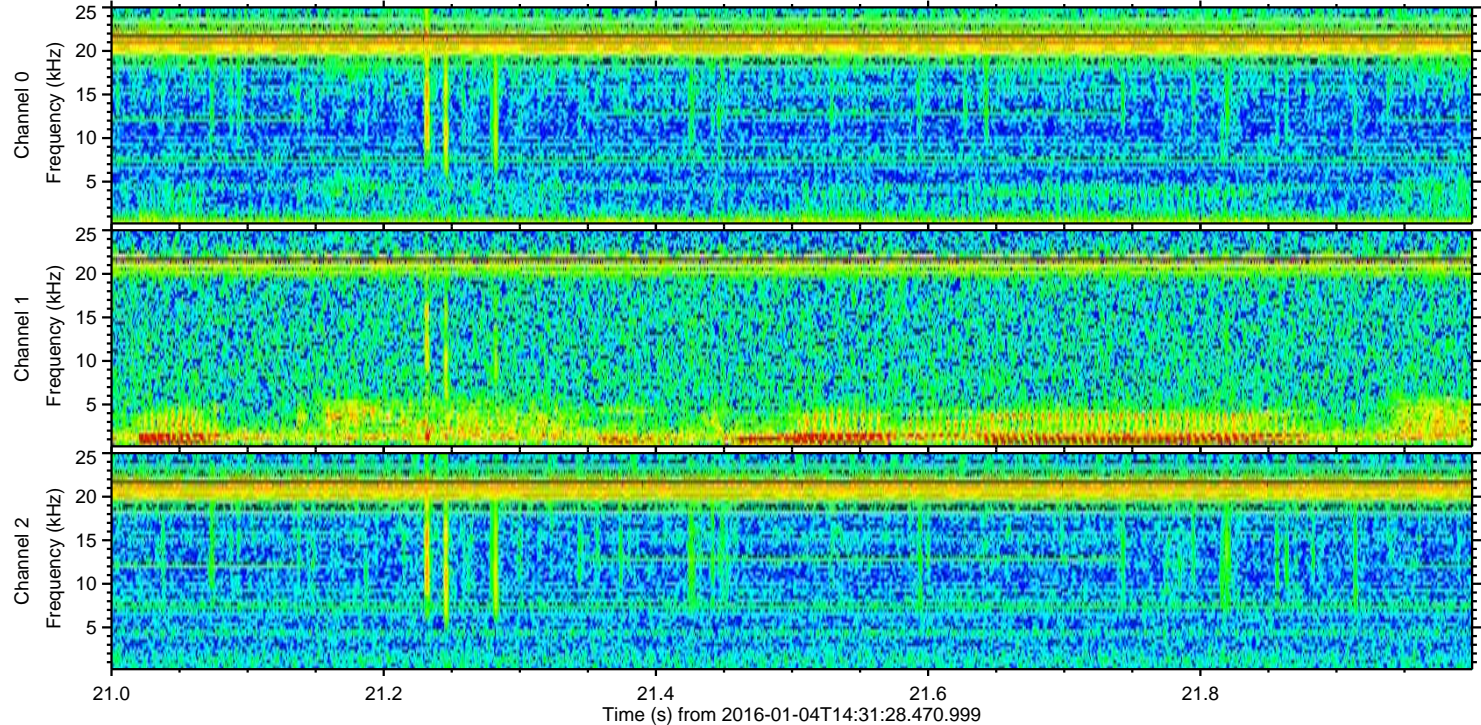
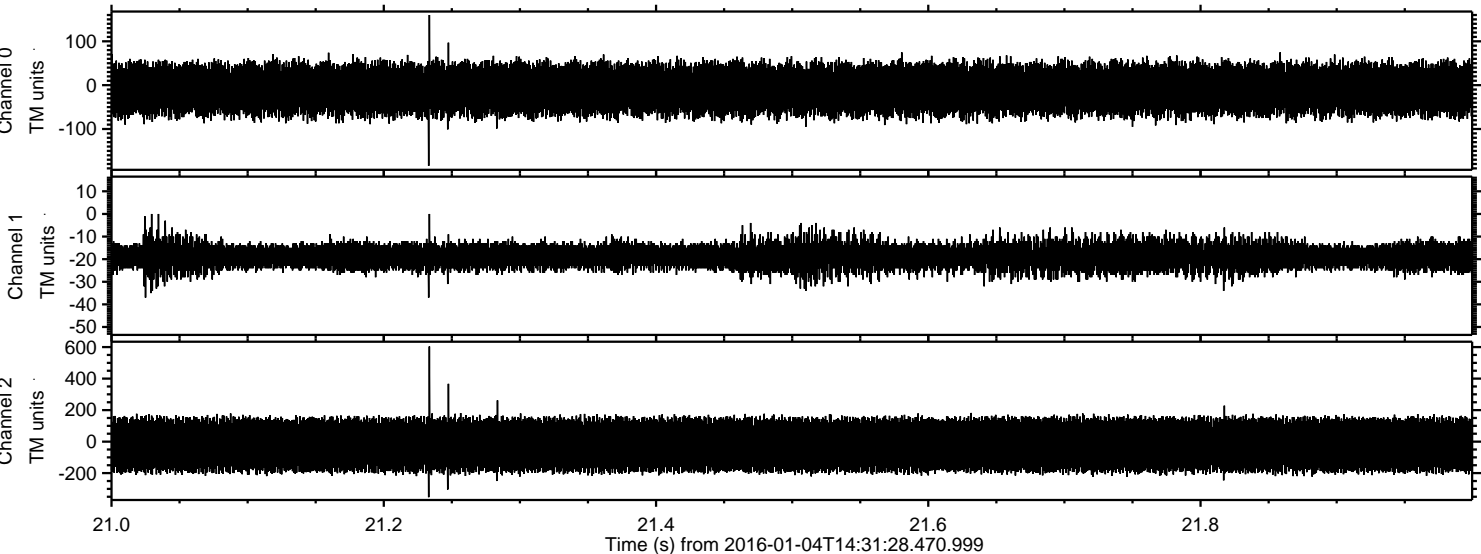
Processed Tue Mar 22 02:47:52 2016 by ELM ver.2012-10-06 from 001__elm20160104_143127__dat00.bin



Processed Tue Mar 22 02:48:04 2016 by ELM ver.2012-10-06 from 001__elm20160104_143127__dat00.bin

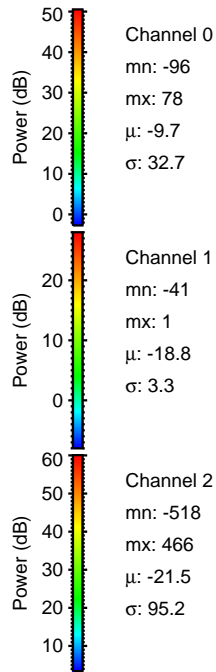
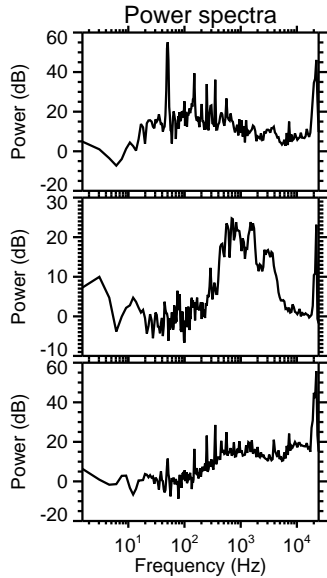
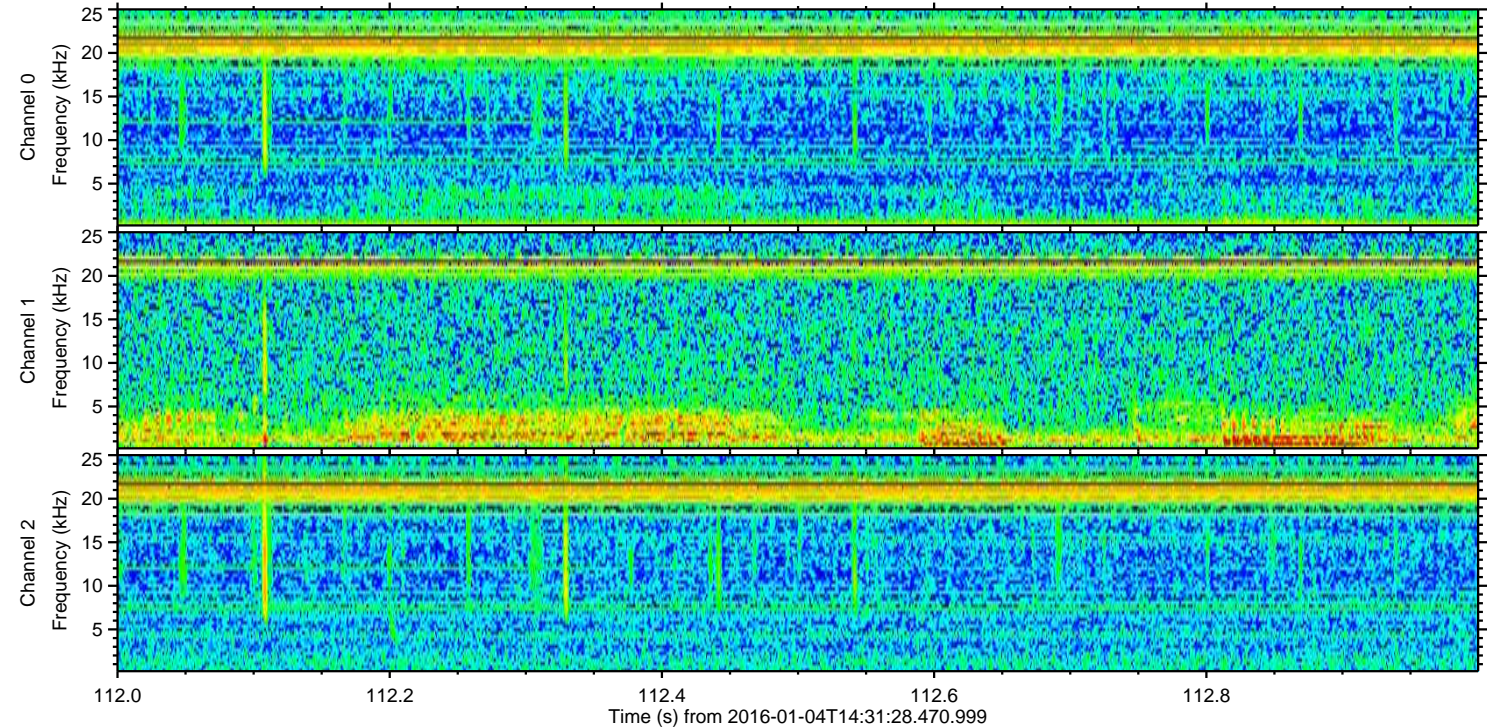
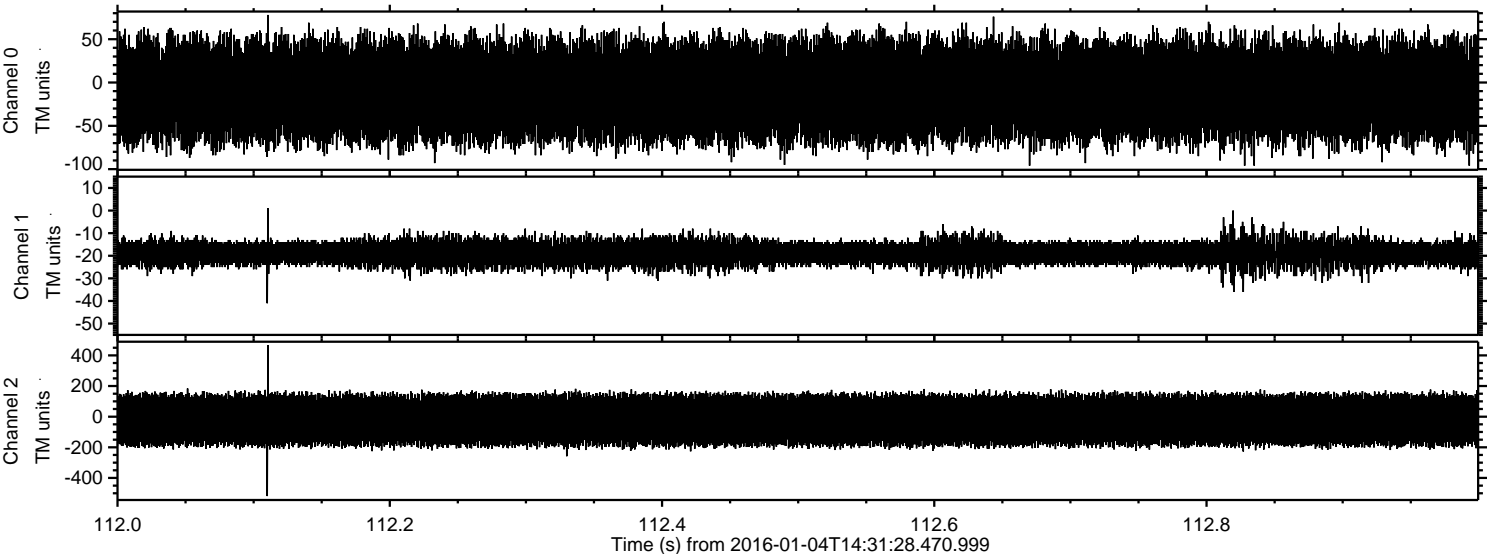


Processed Tue Mar 22 02:48:05 2016 by ELM ver.2012-10-06 from 001__elm20160104_143127__dat00.bin



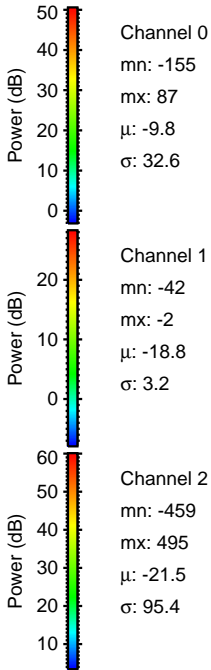
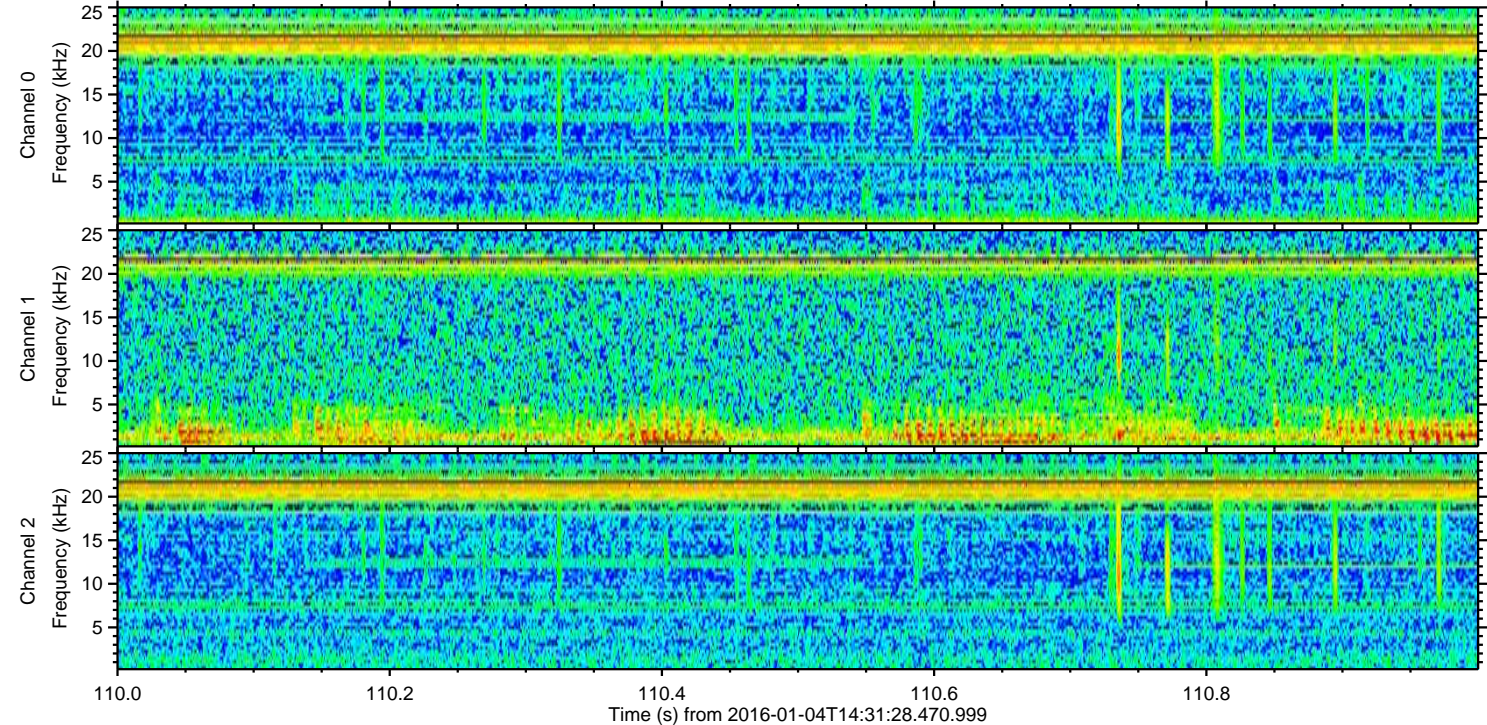
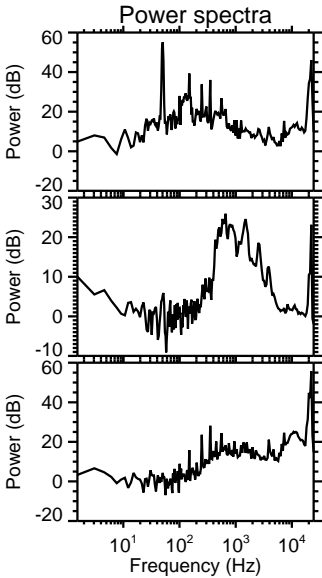
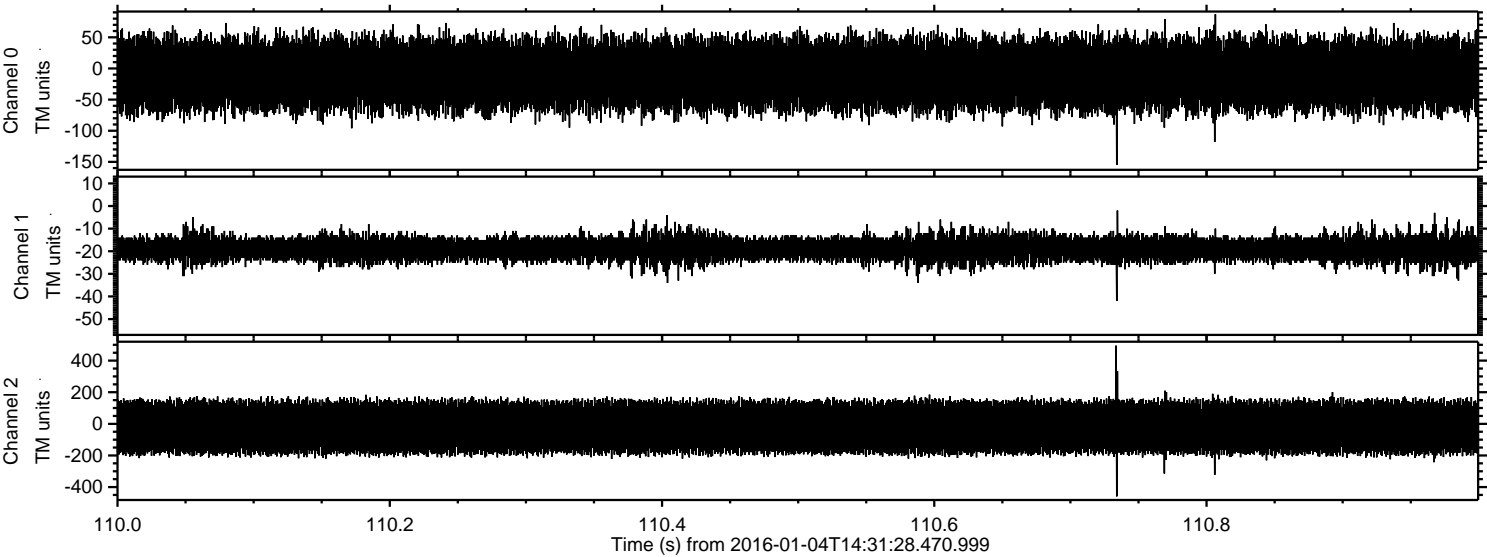
ELMAVAN 3D WAVEFORMS (Measured data sampled at 50 kHz) 51000 packets of 144 samples from 2016-01-04T14:31:28.470.999. Part 113/147

Processed Tue Mar 22 02:48:06 2016 by ELM ver.2012-10-06 from 001__elm20160104_143127__dat00.bin

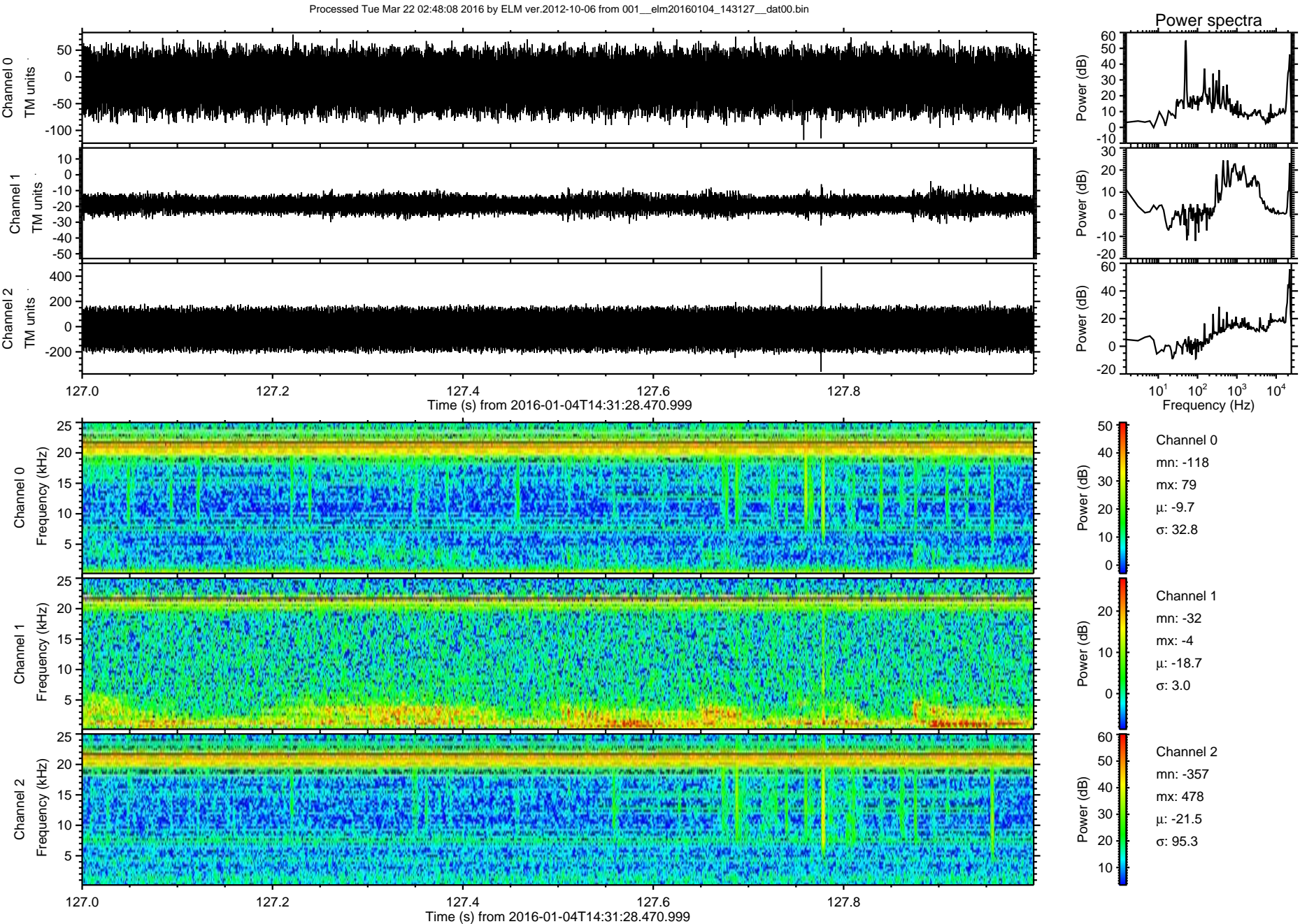


ELMAVAN 3D WAVEFORMS (Measured data sampled at 50 kHz) 51000 packets of 144 samples from 2016-01-04T14:31:28.470.999. Part 111/147

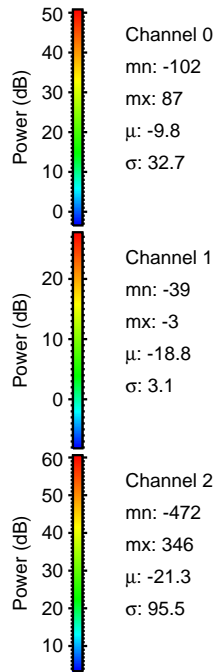
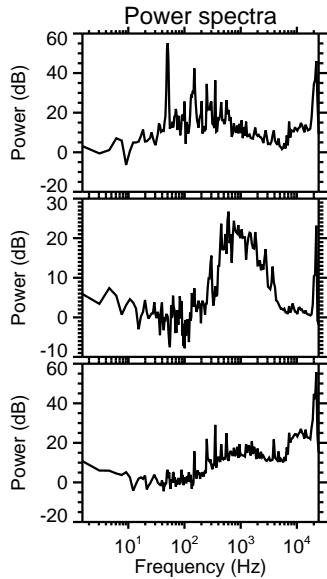
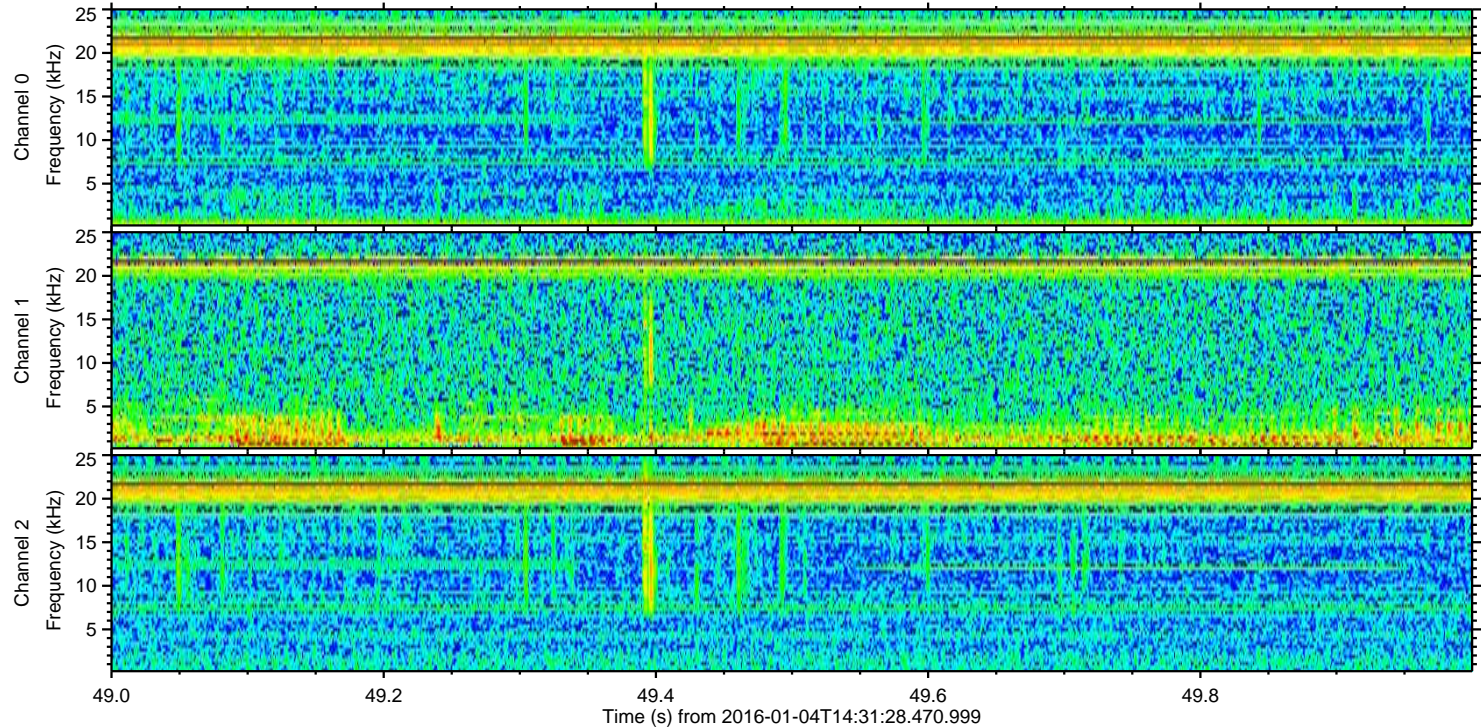
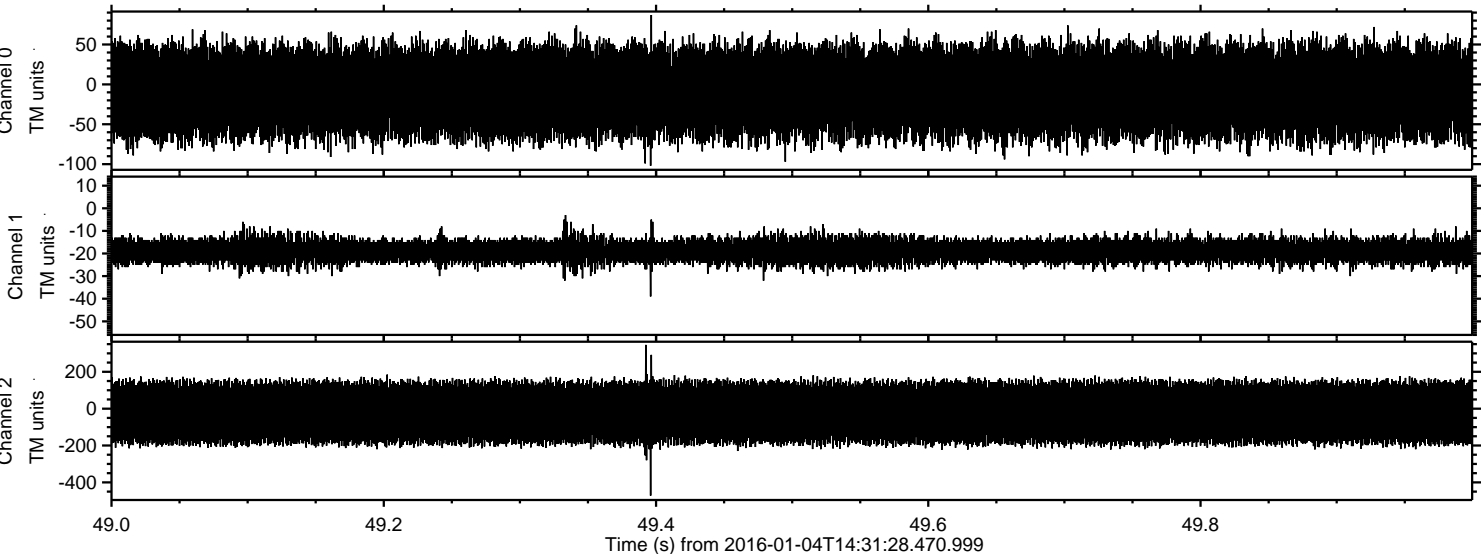
Processed Tue Mar 22 02:48:07 2016 by ELM ver.2012-10-06 from 001__elm20160104_143127__dat00.bin



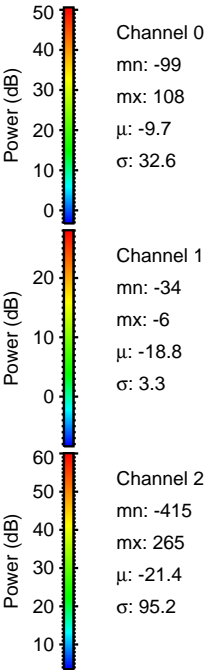
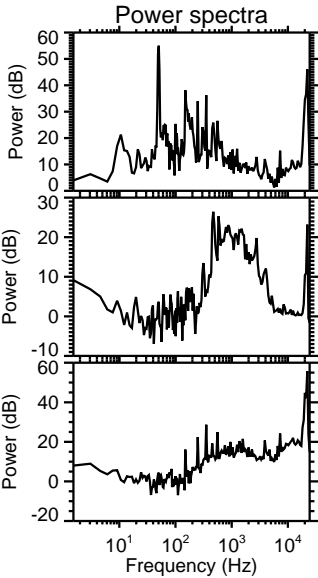
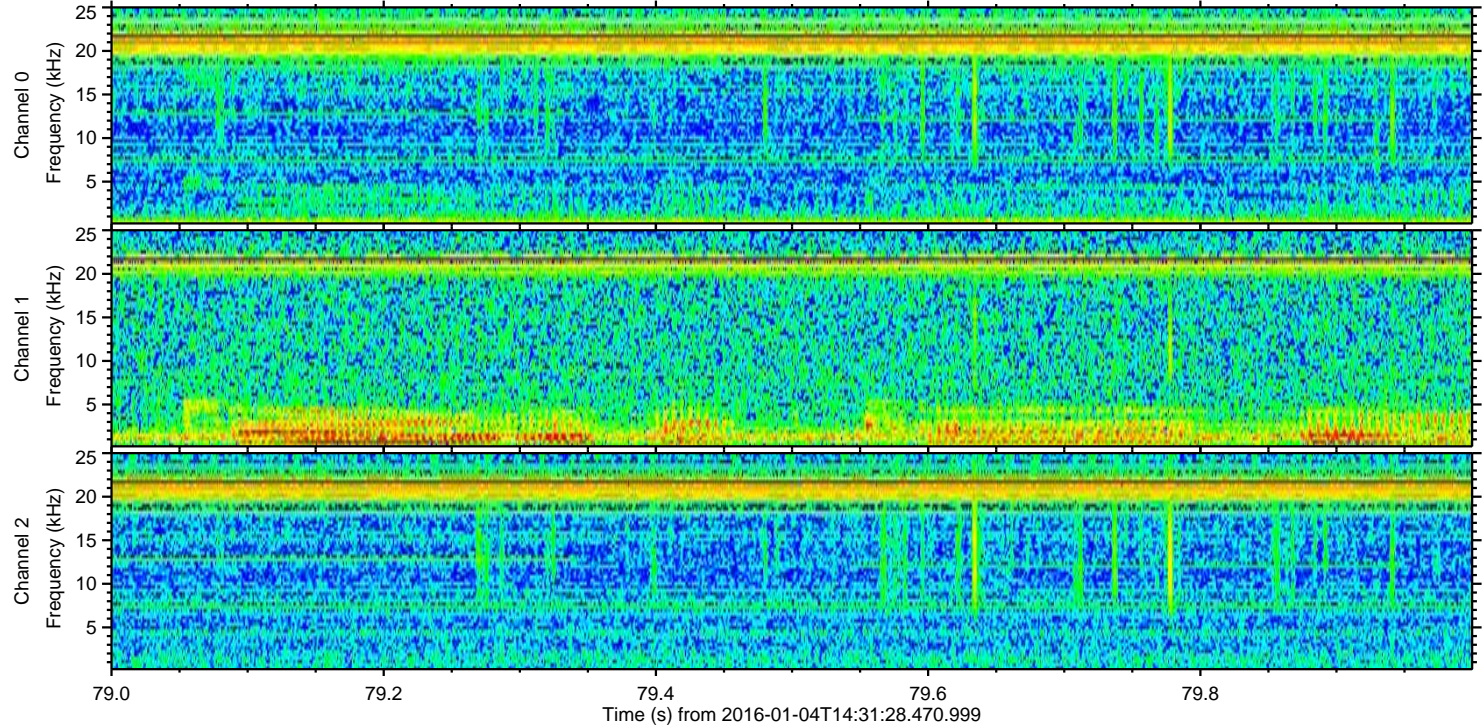
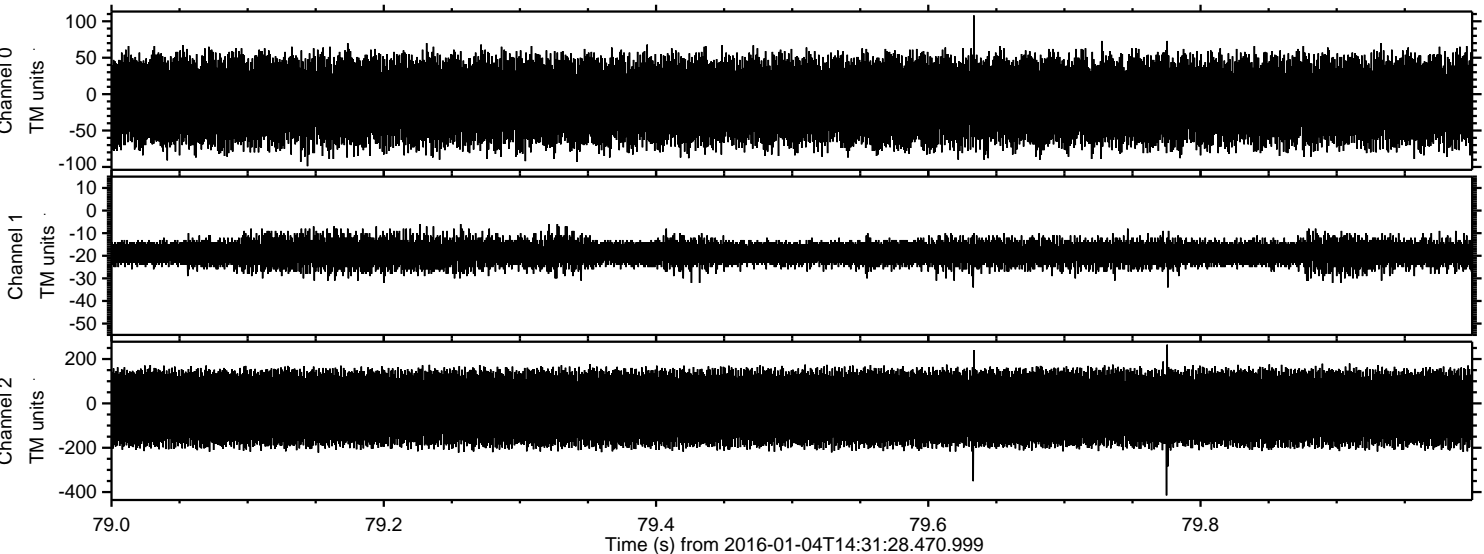
ELMAVAN 3D WAVEFORMS (Measured data sampled at 50 kHz) 51000 packets of 144 samples from 2016-01-04T14:31:28.470.999. Part 128/147



Processed Tue Mar 22 02:48:09 2016 by ELM ver.2012-10-06 from 001__elm20160104_143127__dat00.bin

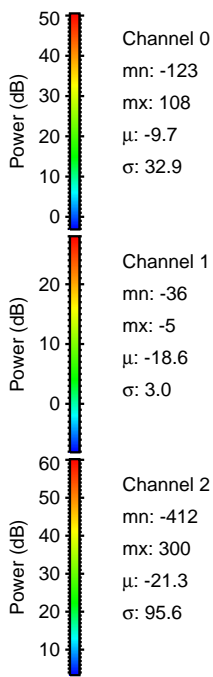
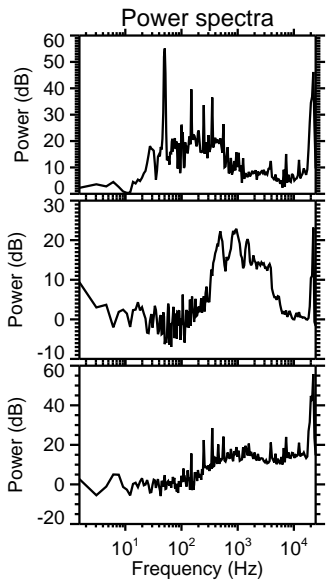
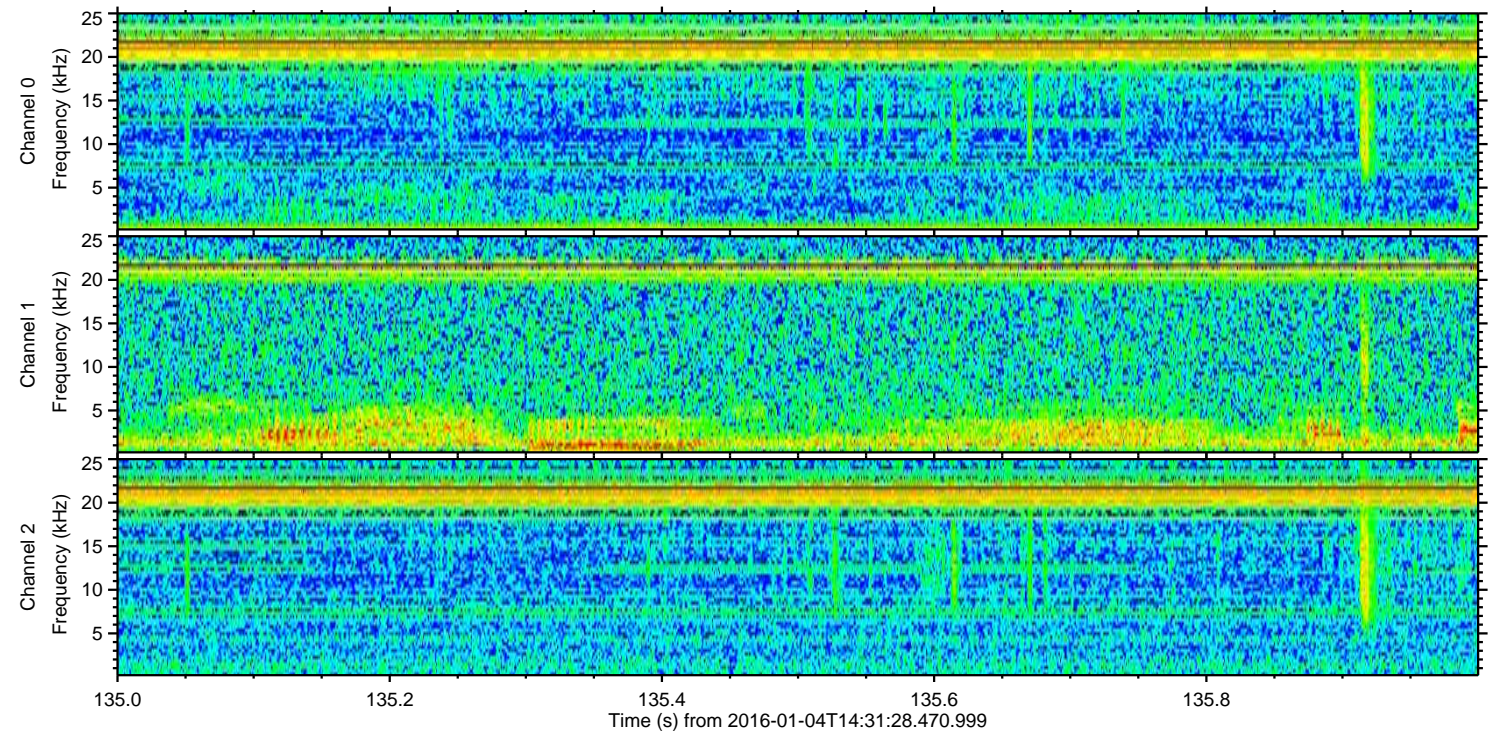
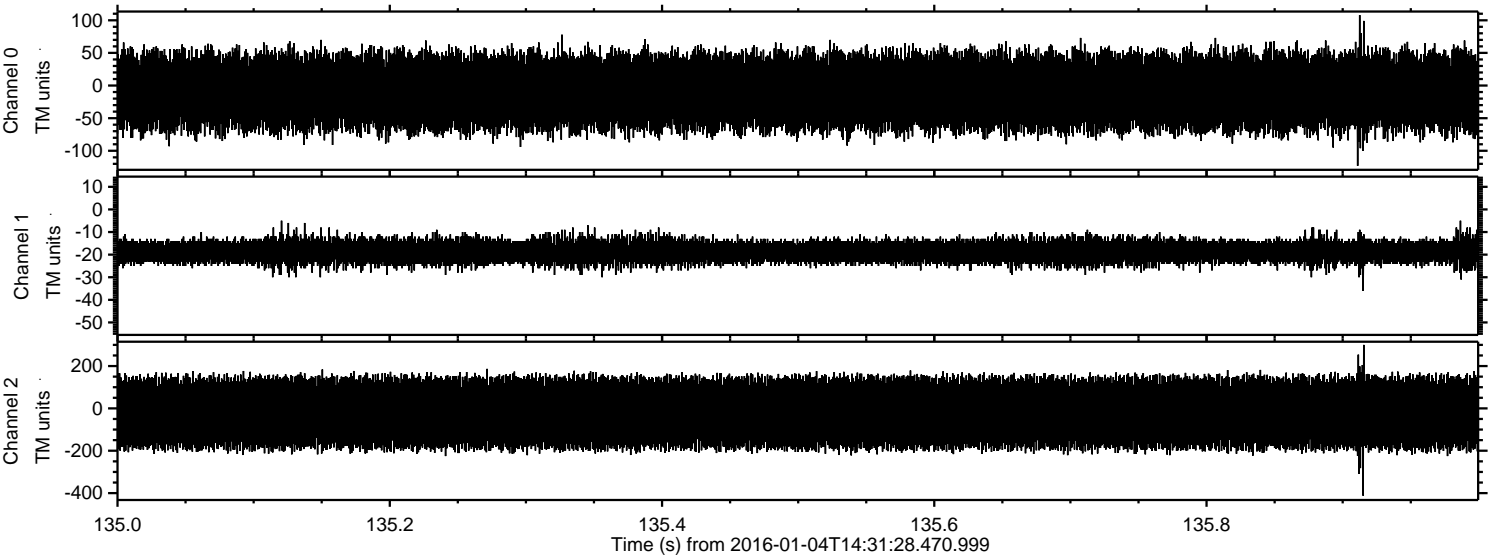


Processed Tue Mar 22 02:48:10 2016 by ELM ver.2012-10-06 from 001__elm20160104_143127__dat00.bin

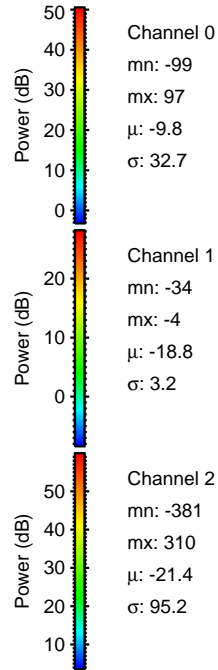
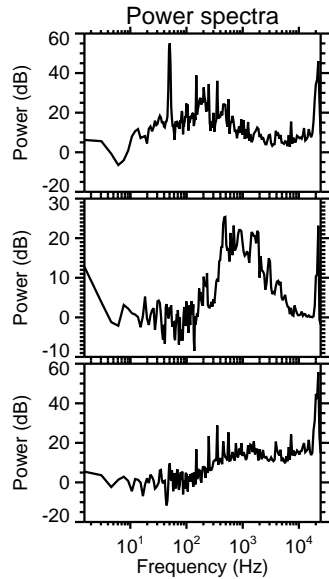
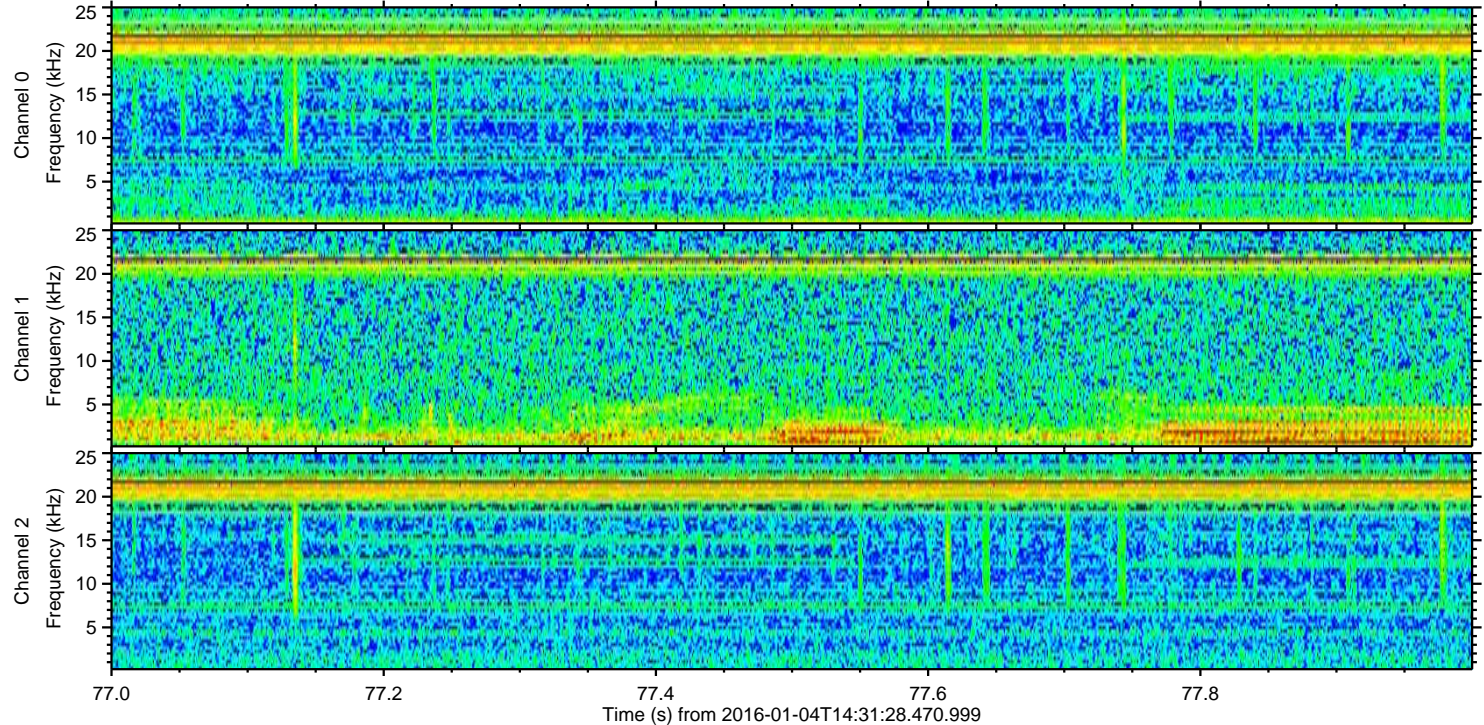
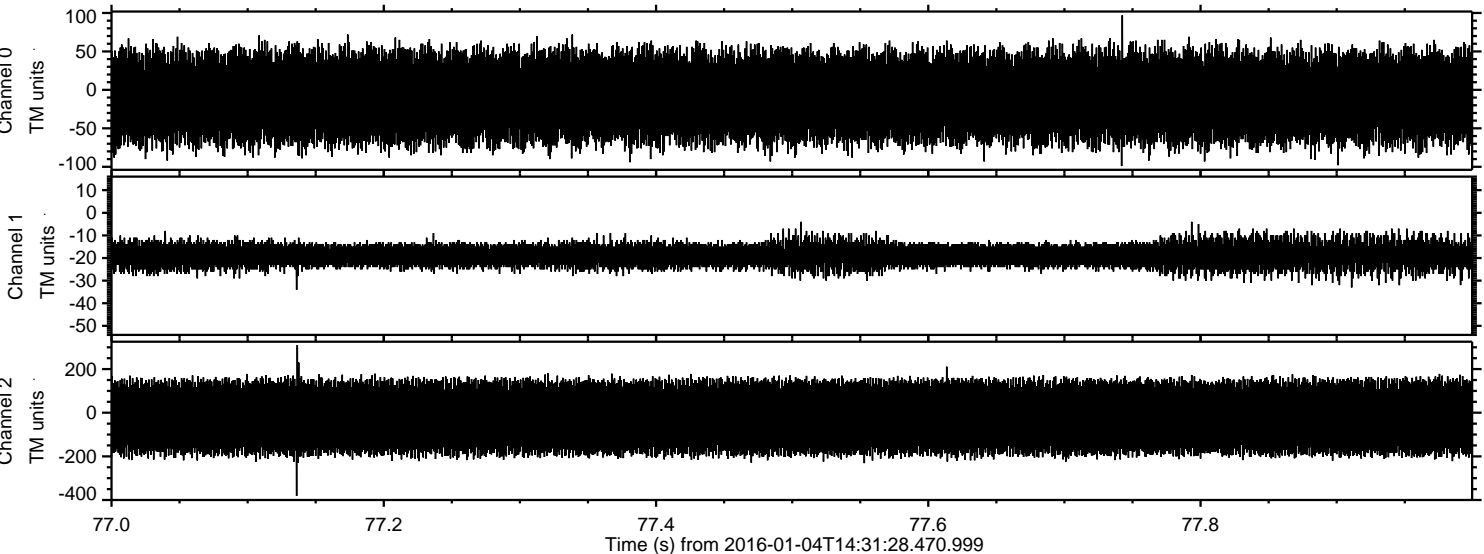


ELMAVAN 3D WAVEFORMS (Measured data sampled at 50 kHz) 51000 packets of 144 samples from 2016-01-04T14:31:28.470.999. Part 136/147

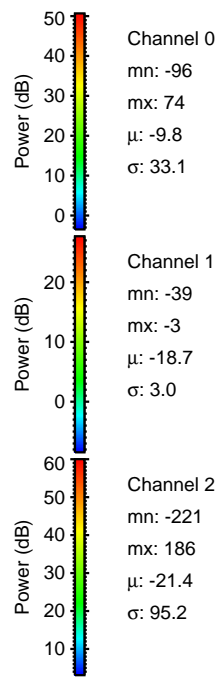
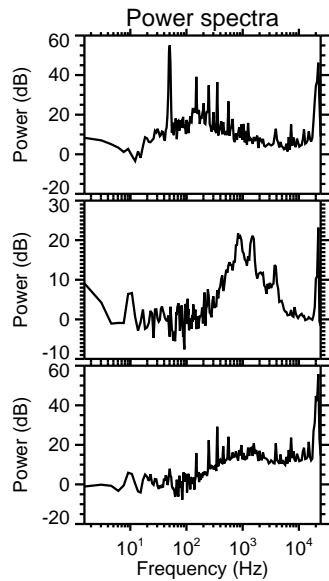
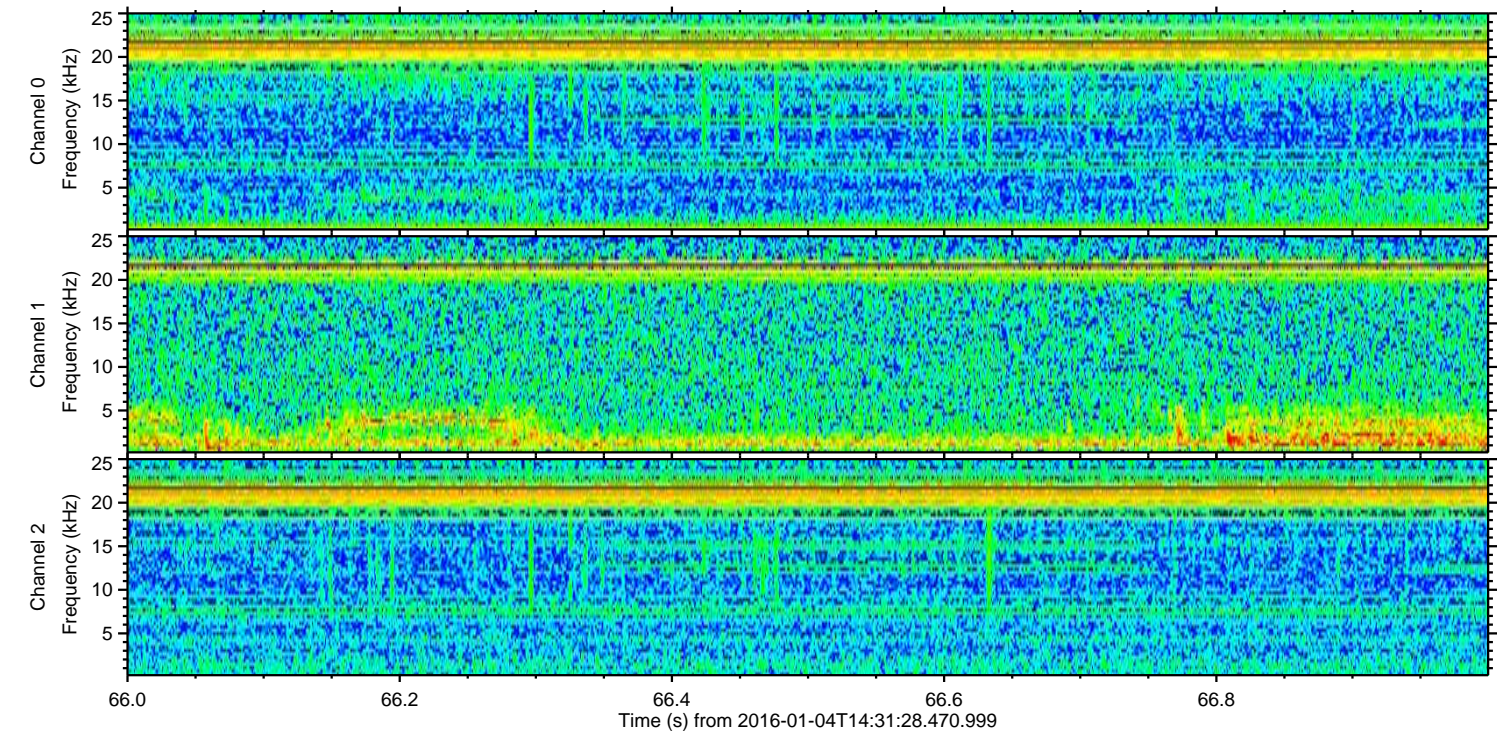
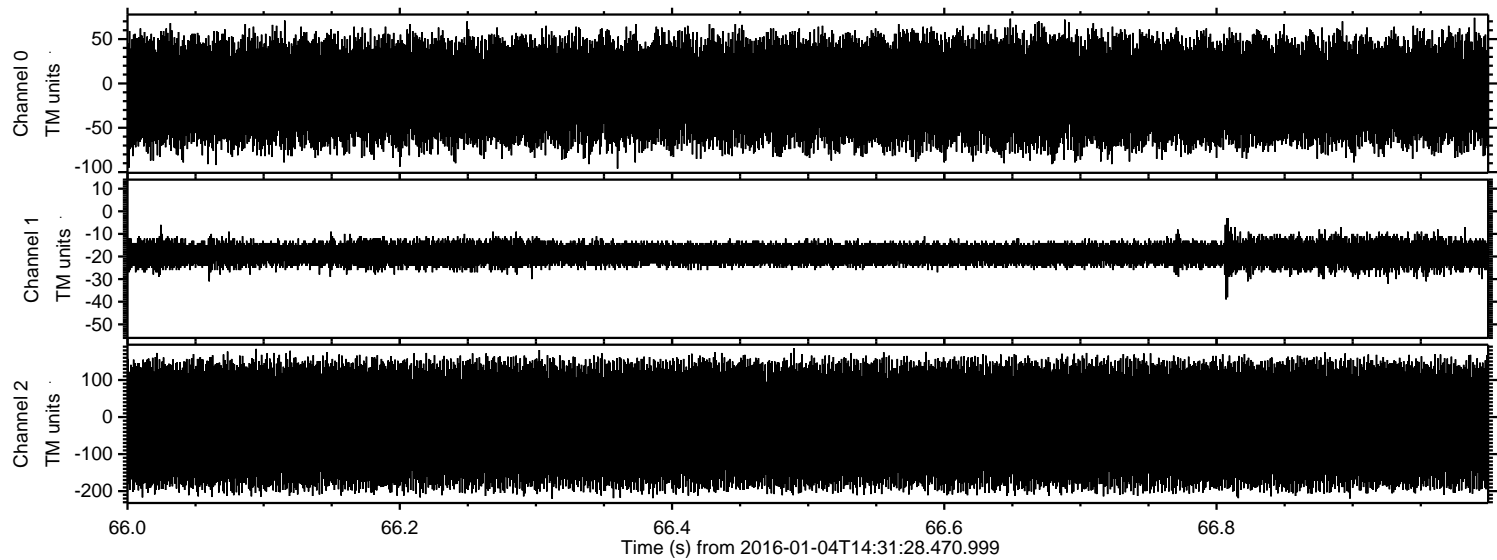
Processed Tue Mar 22 02:48:10 2016 by ELM ver.2012-10-06 from 001__elm20160104_143127__dat00.bin



Processed Tue Mar 22 02:48:11 2016 by ELM ver.2012-10-06 from 001__elm20160104_143127__dat00.bin



Processed Tue Mar 22 02:48:12 2016 by ELM ver.2012-10-06 from 001__elm20160104_143127__dat00.bin



Power spectra

Channel 0
mn: -96
mx: 74
 μ : -9.8
 σ : 33.1

Channel 1
mn: -39
mx: -3
 μ : -18.7
 σ : 3.0

Channel 2
mn: -221
mx: 186
 μ : -21.4
 σ : 95.2