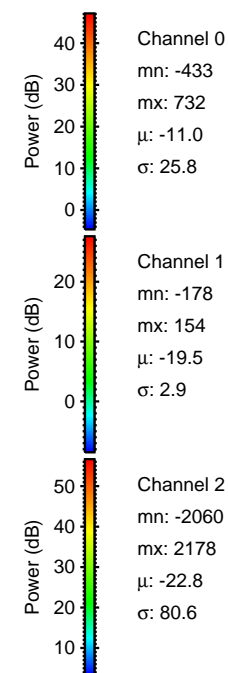
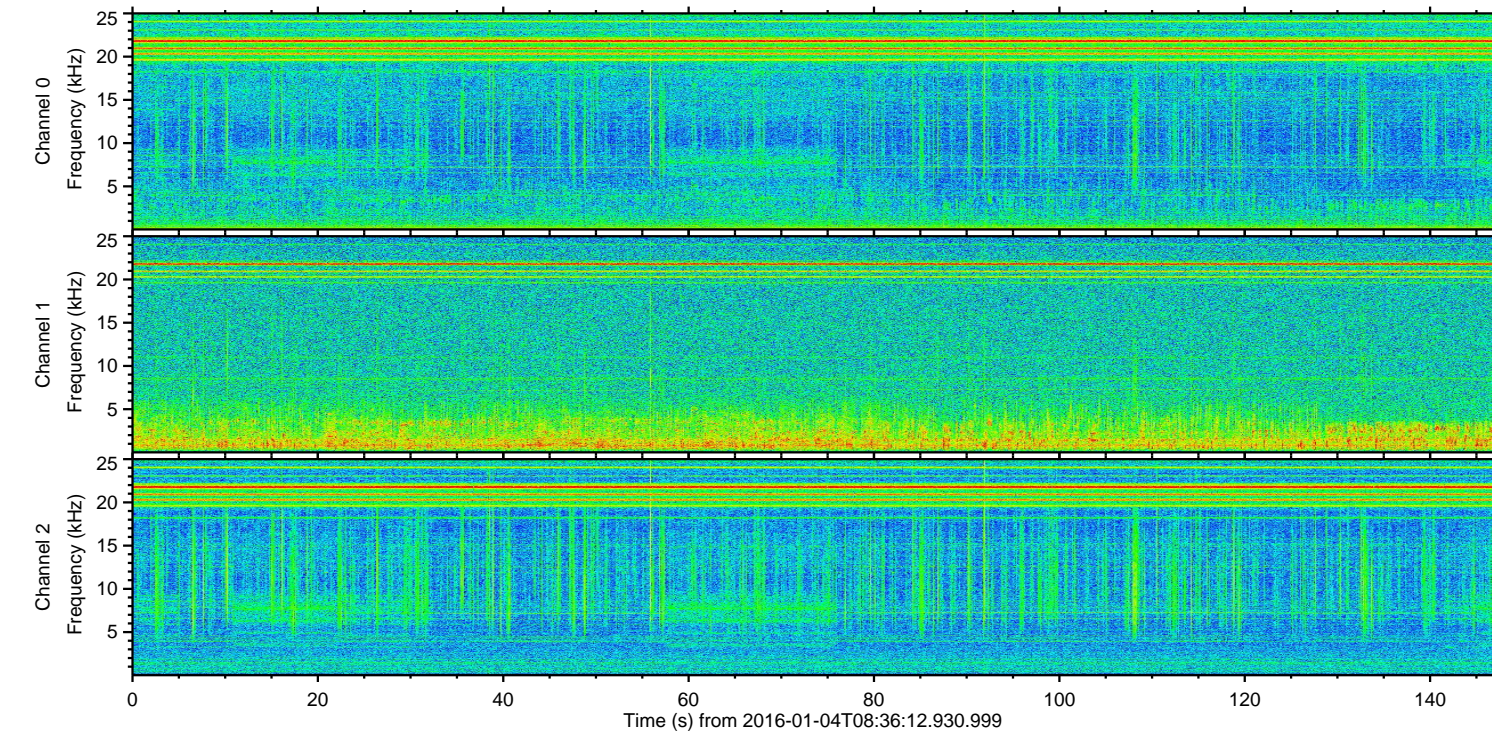
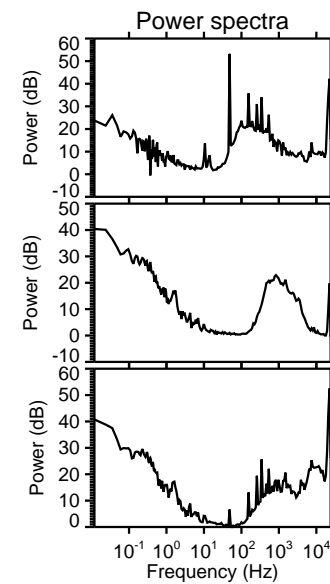
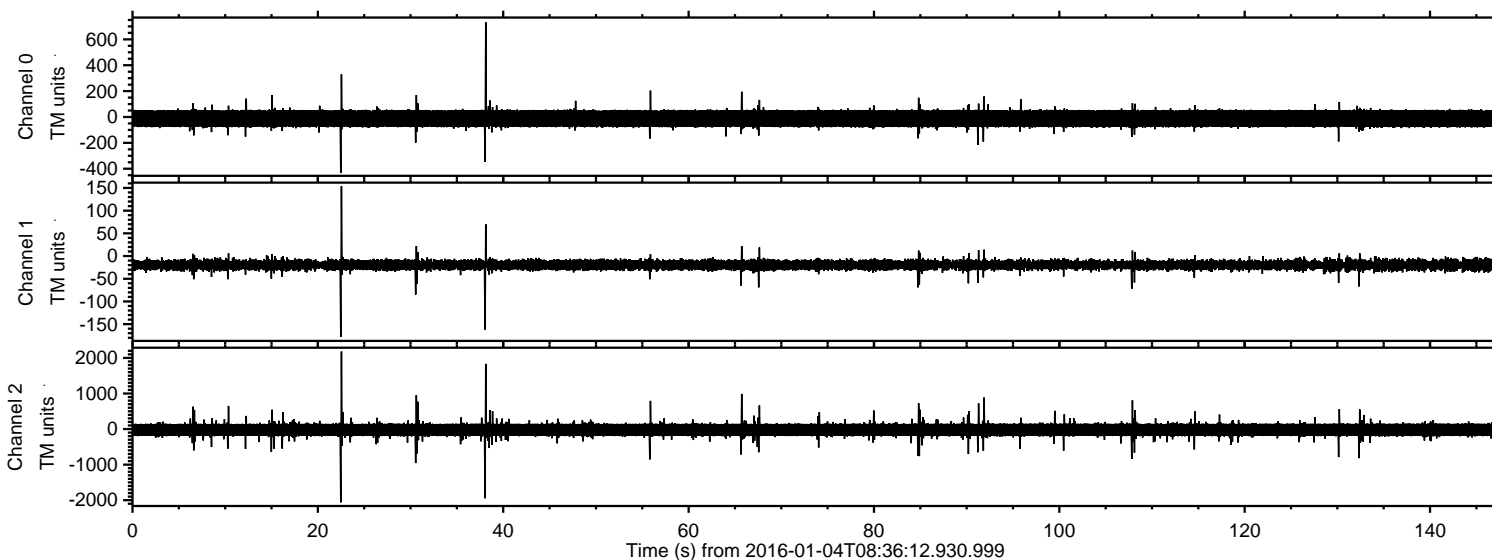
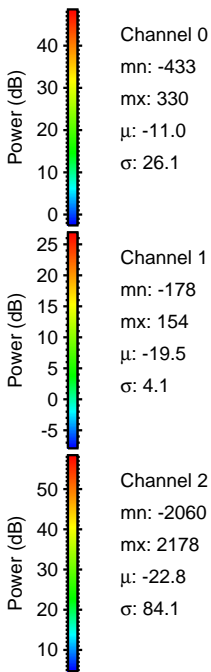
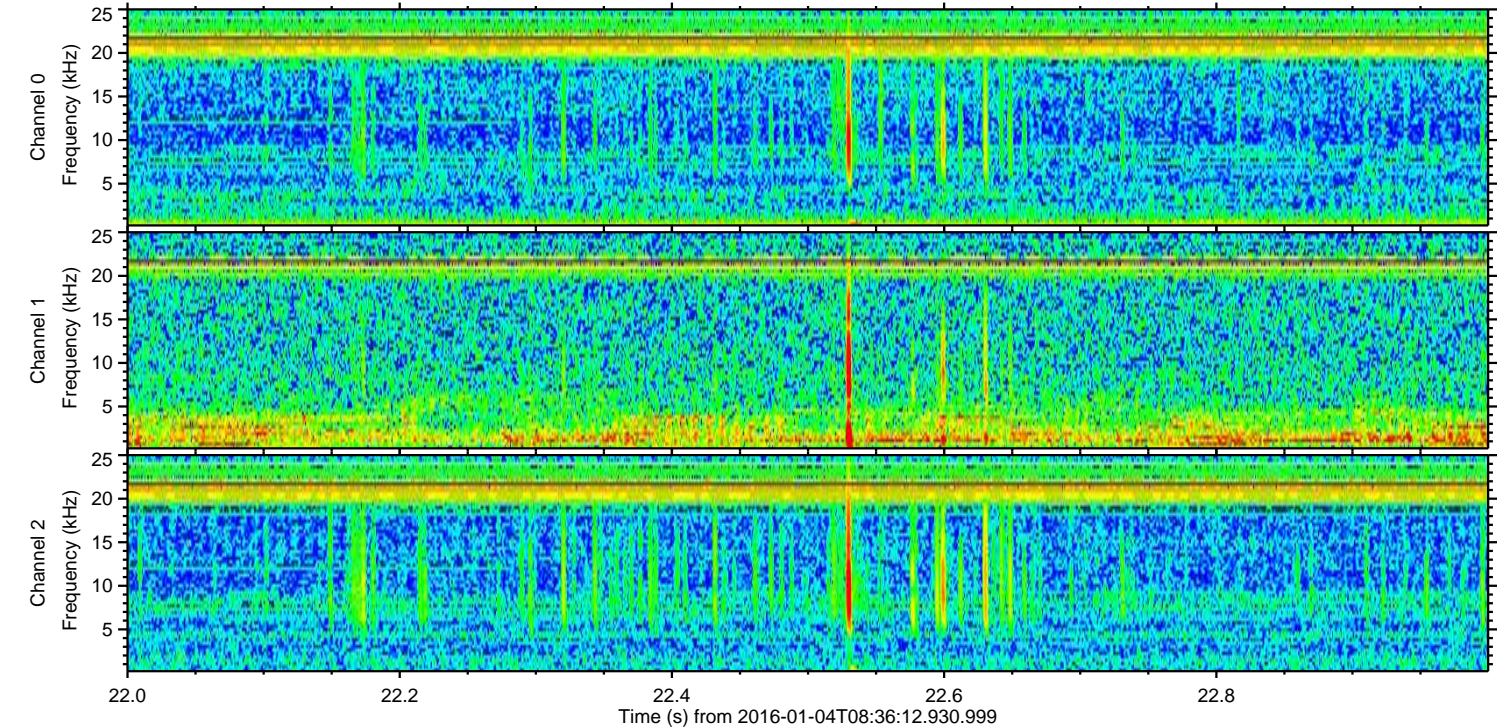
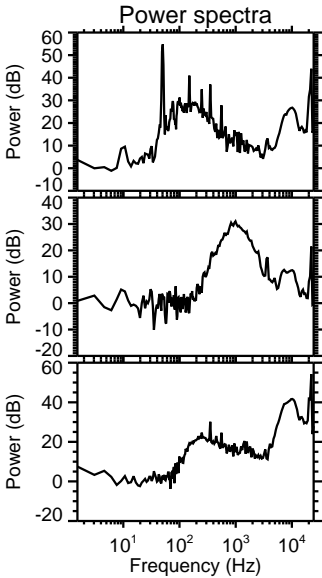
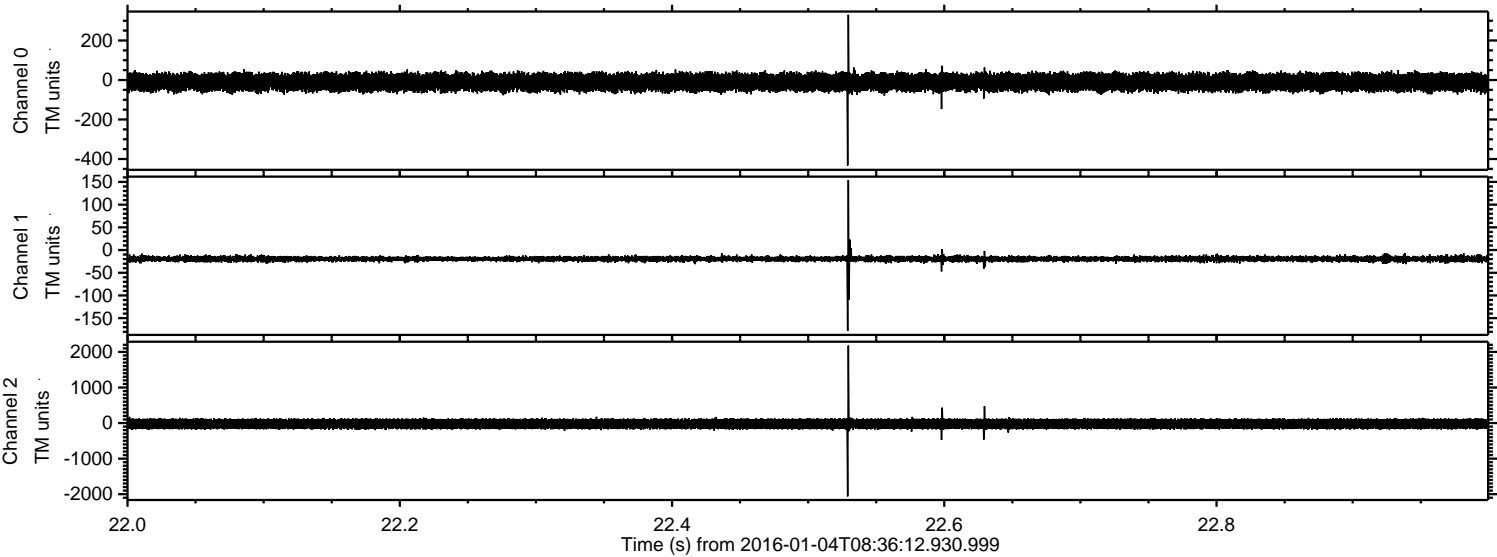


ELMAVAN 3D WAVEFORMS (Measured data sampled at 50 kHz) 51000 packets of 144 samples from 2016-01-04T08:36:12.930.999.

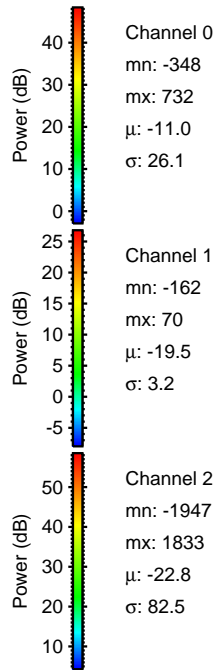
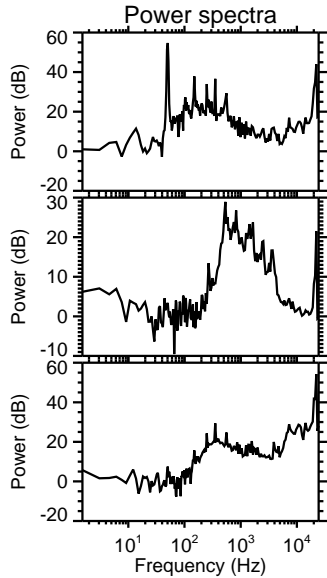
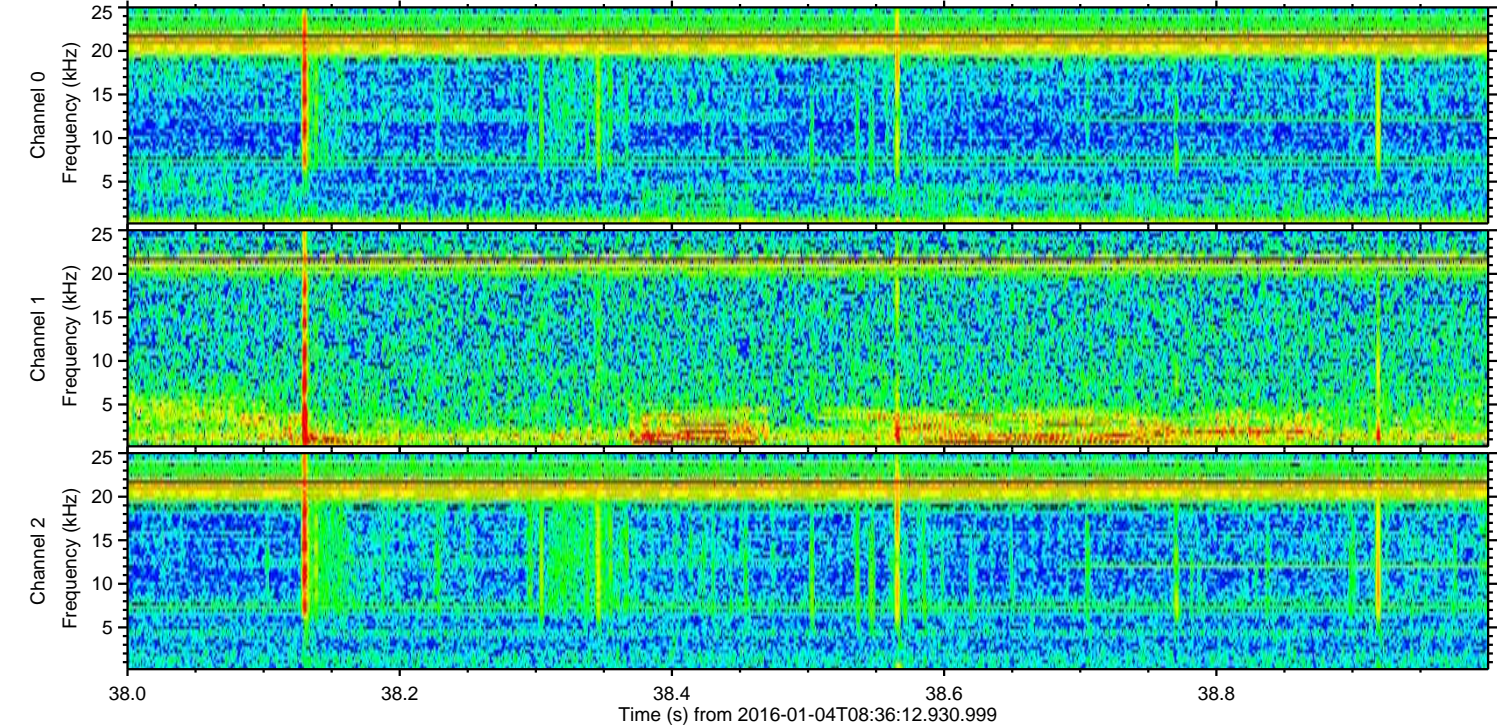
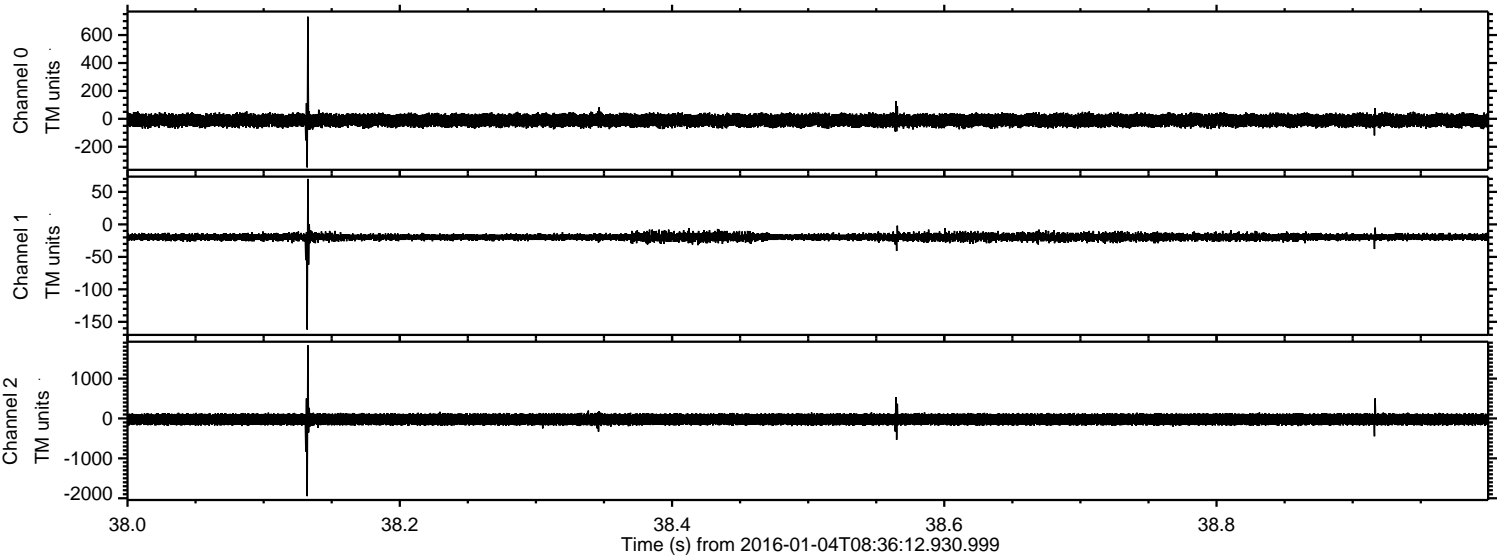
Processed Tue Mar 22 00:41:28 2016 by ELM ver.2012-10-06 from 001__elm20160104_083611__dat00.bin



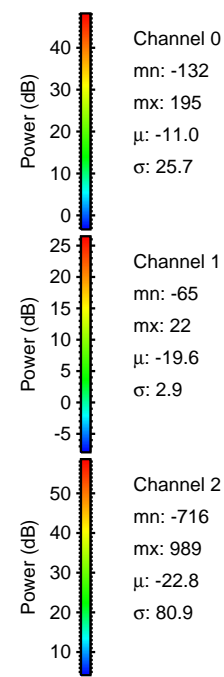
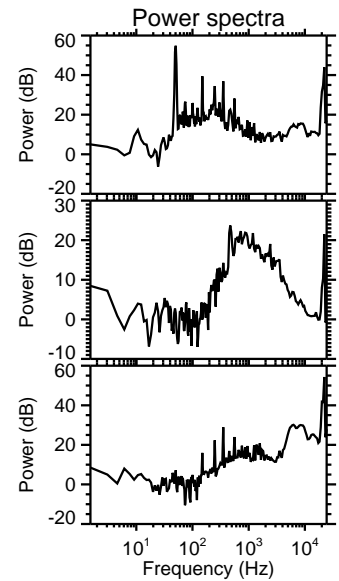
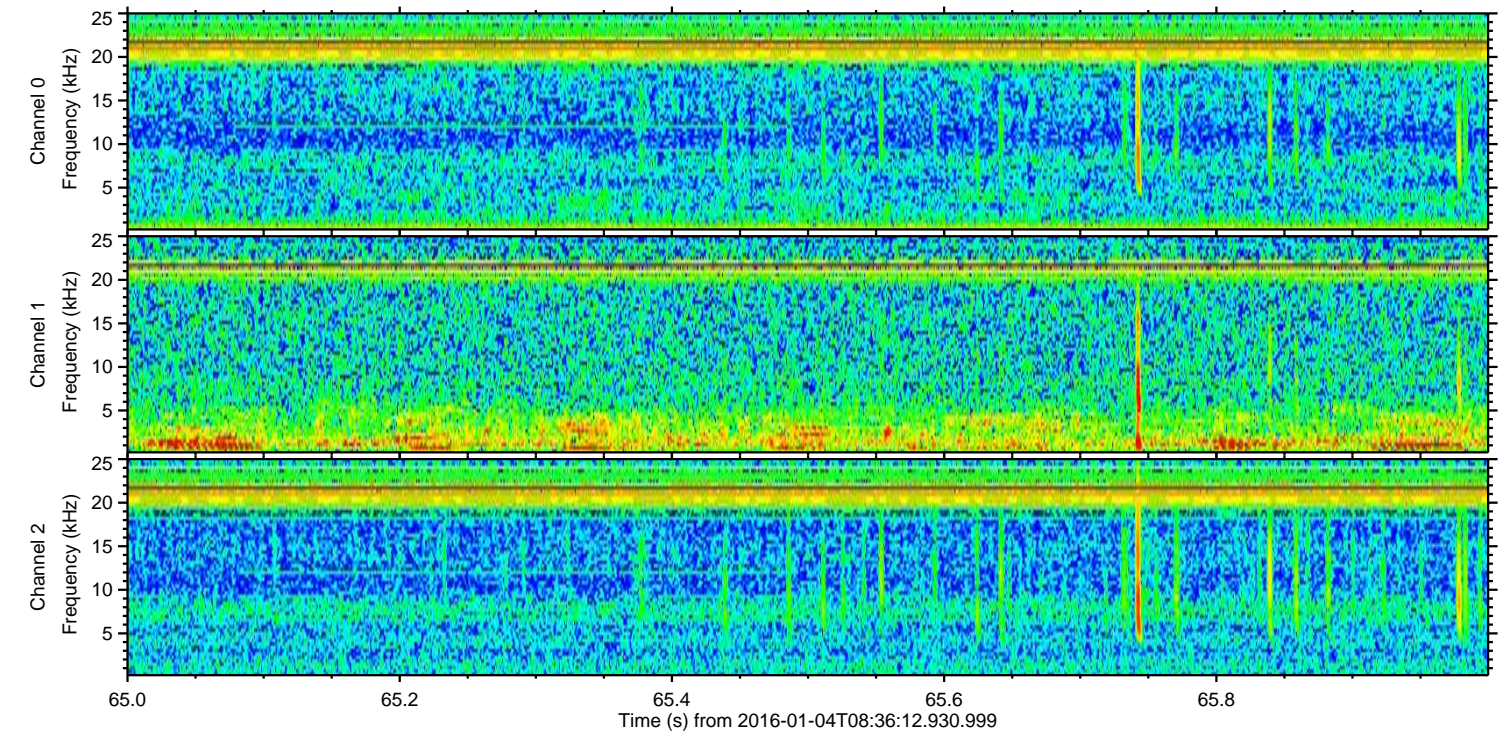
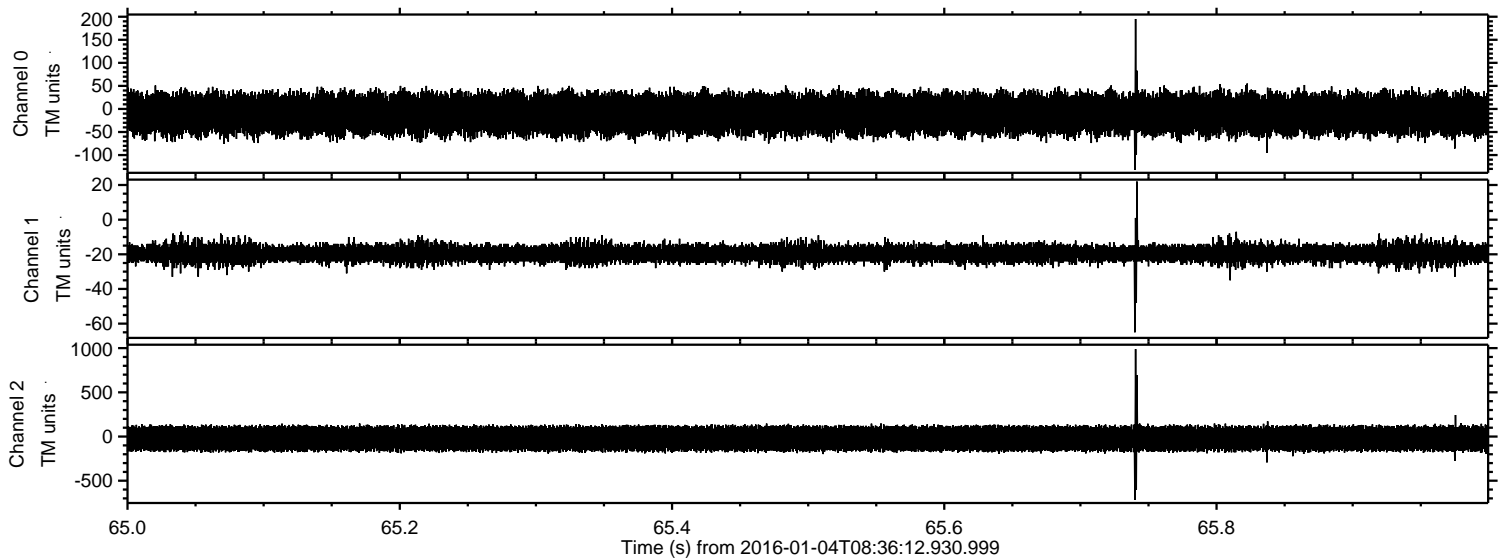
Processed Tue Mar 22 00:41:39 2016 by ELM ver.2012-10-06 from 001__elm20160104_083611__dat00.bin



Processed Tue Mar 22 00:41:40 2016 by ELM ver.2012-10-06 from 001__elm20160104_083611__dat00.bin



Processed Tue Mar 22 00:41:41 2016 by ELM ver.2012-10-06 from 001__elm20160104_083611__dat00.bin

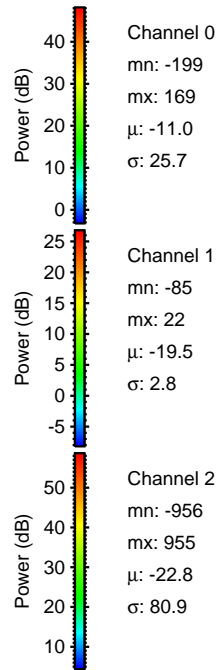
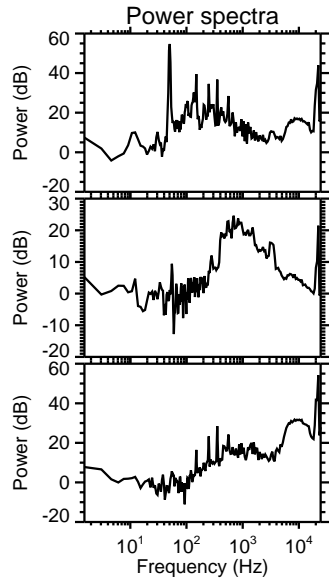
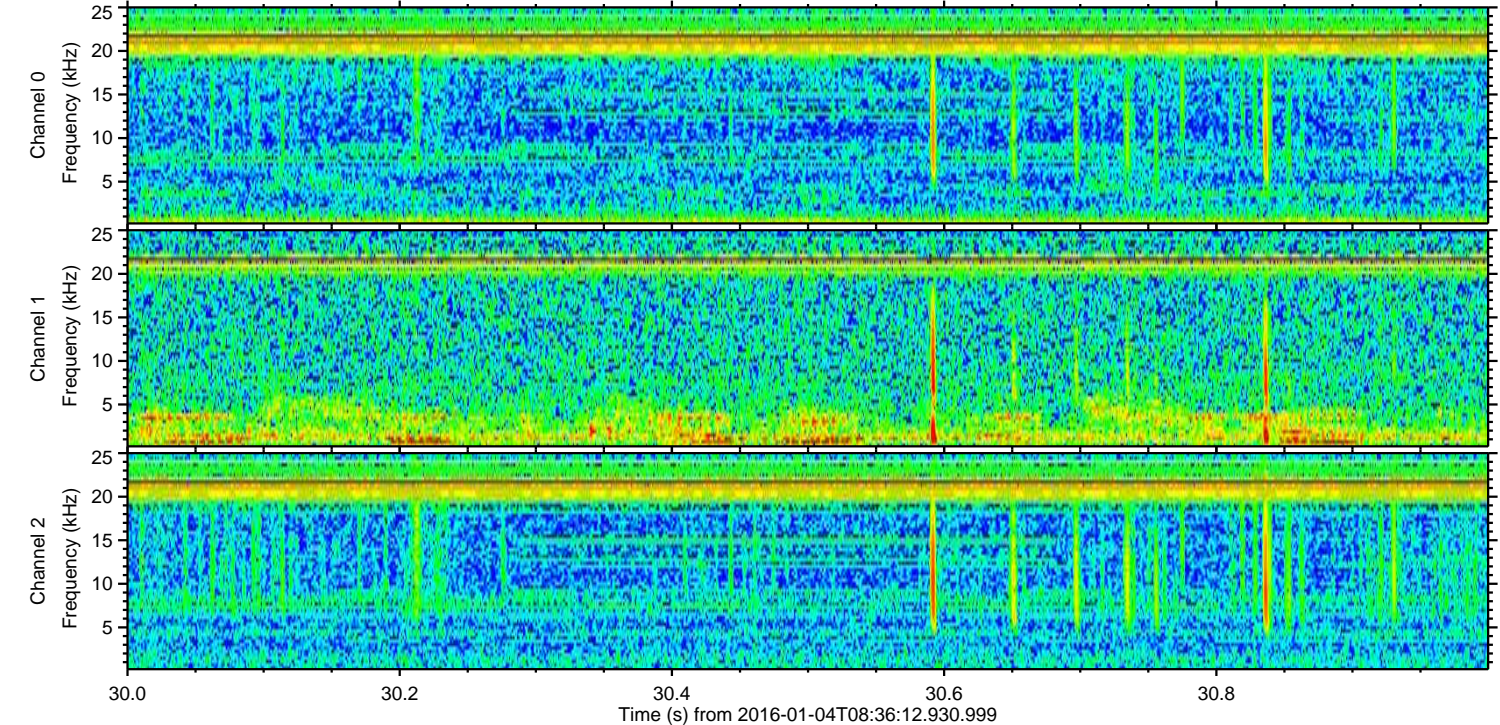
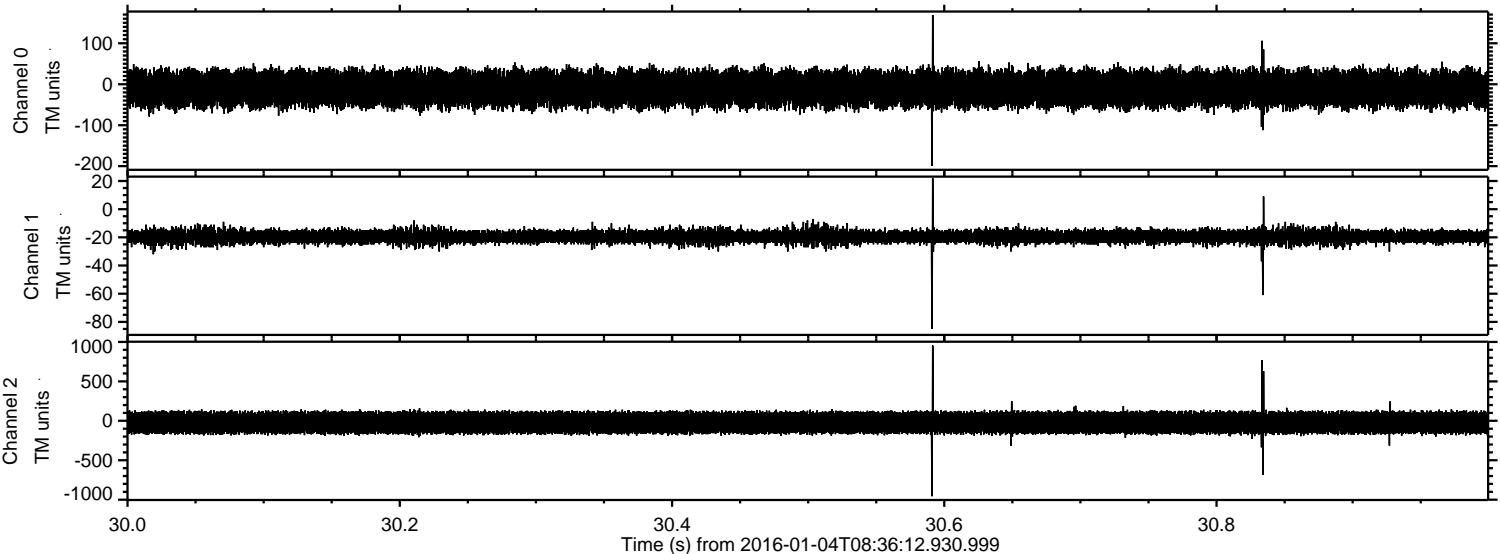


Channel 0
mn: -132
mx: 195
 μ : -11.0
 σ : 25.7

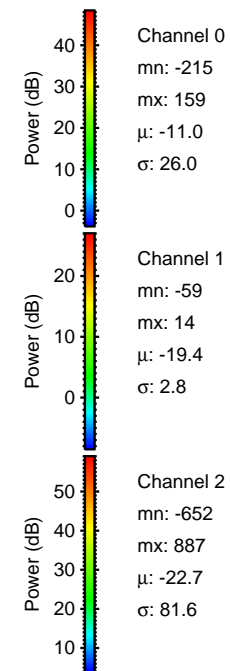
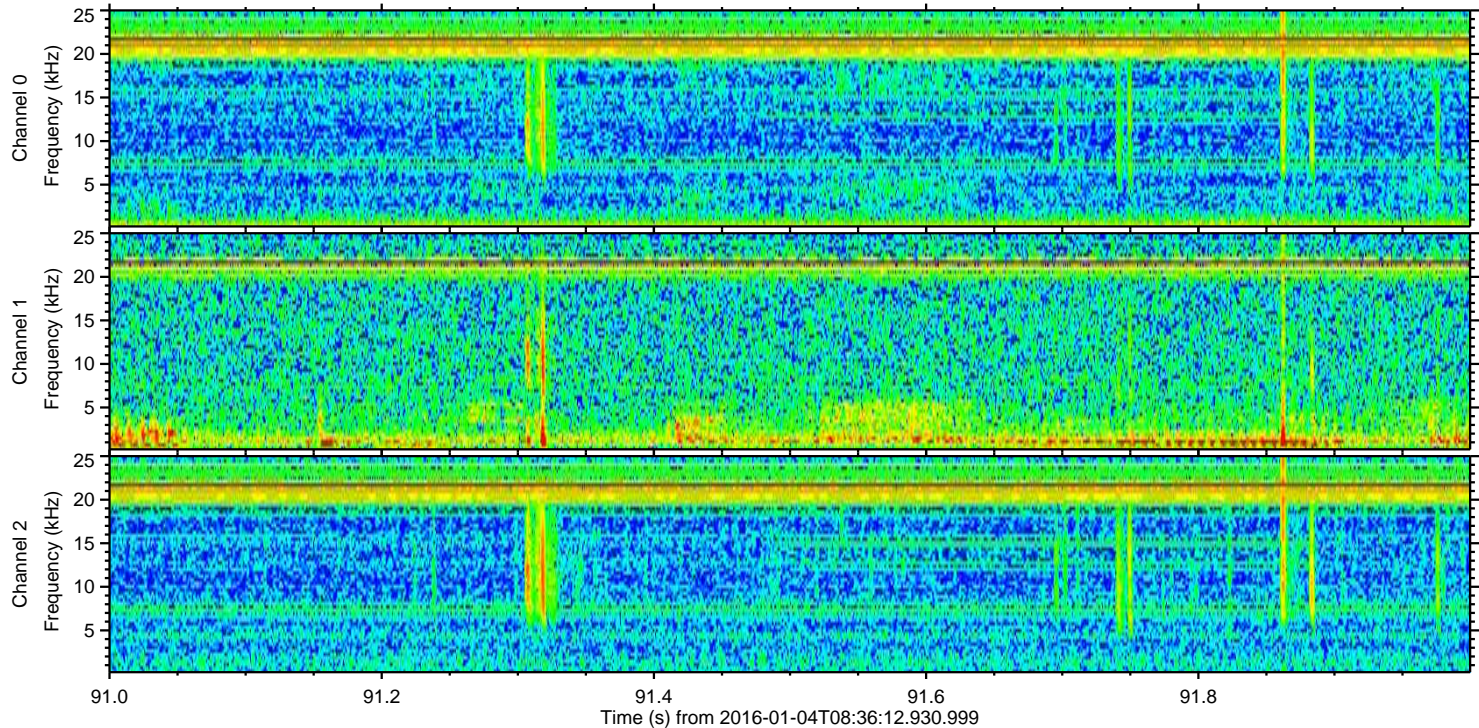
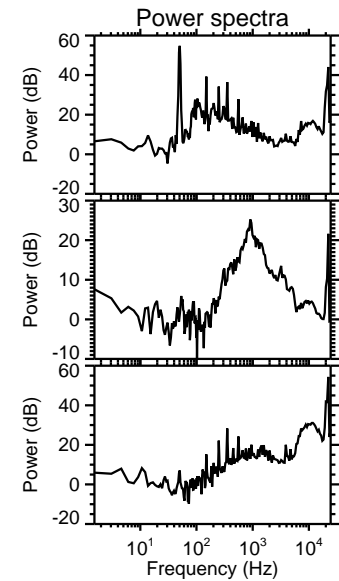
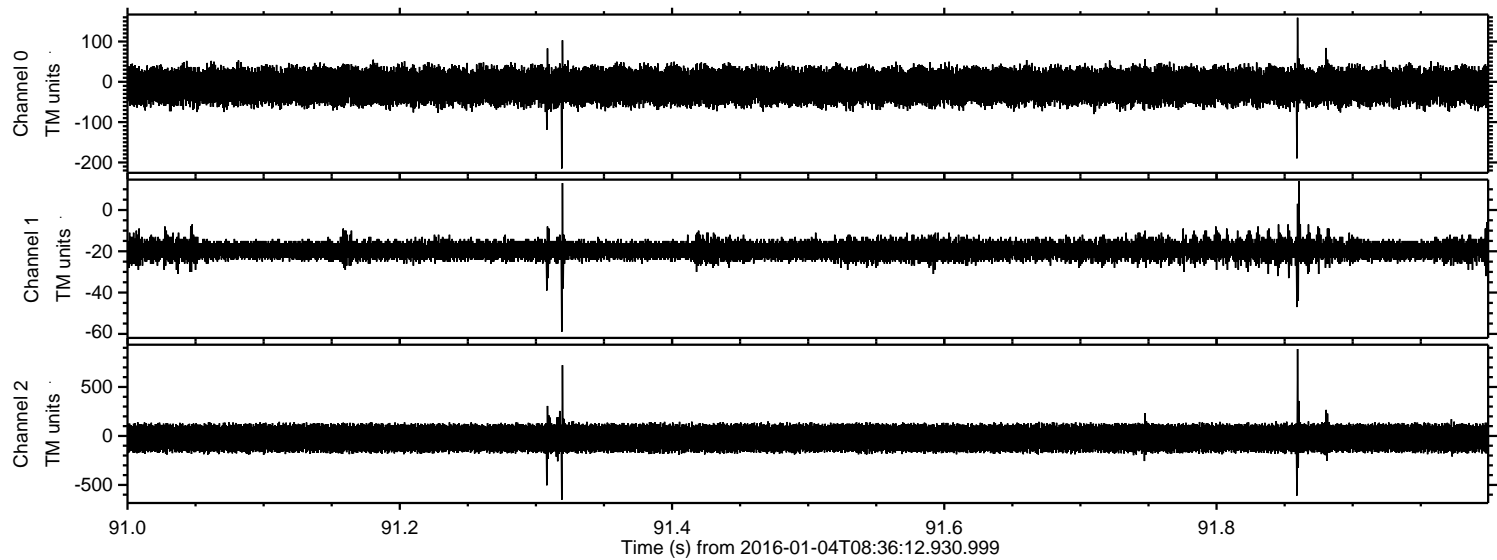
Channel 1
mn: -65
mx: 22
 μ : -19.6
 σ : 2.9

Channel 2
mn: -716
mx: 989
 μ : -22.8
 σ : 80.9

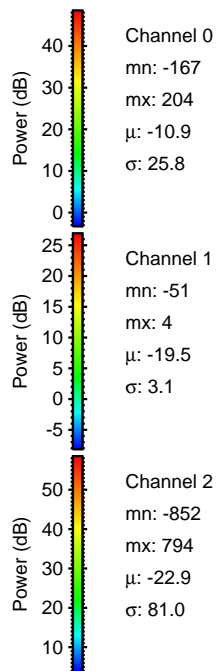
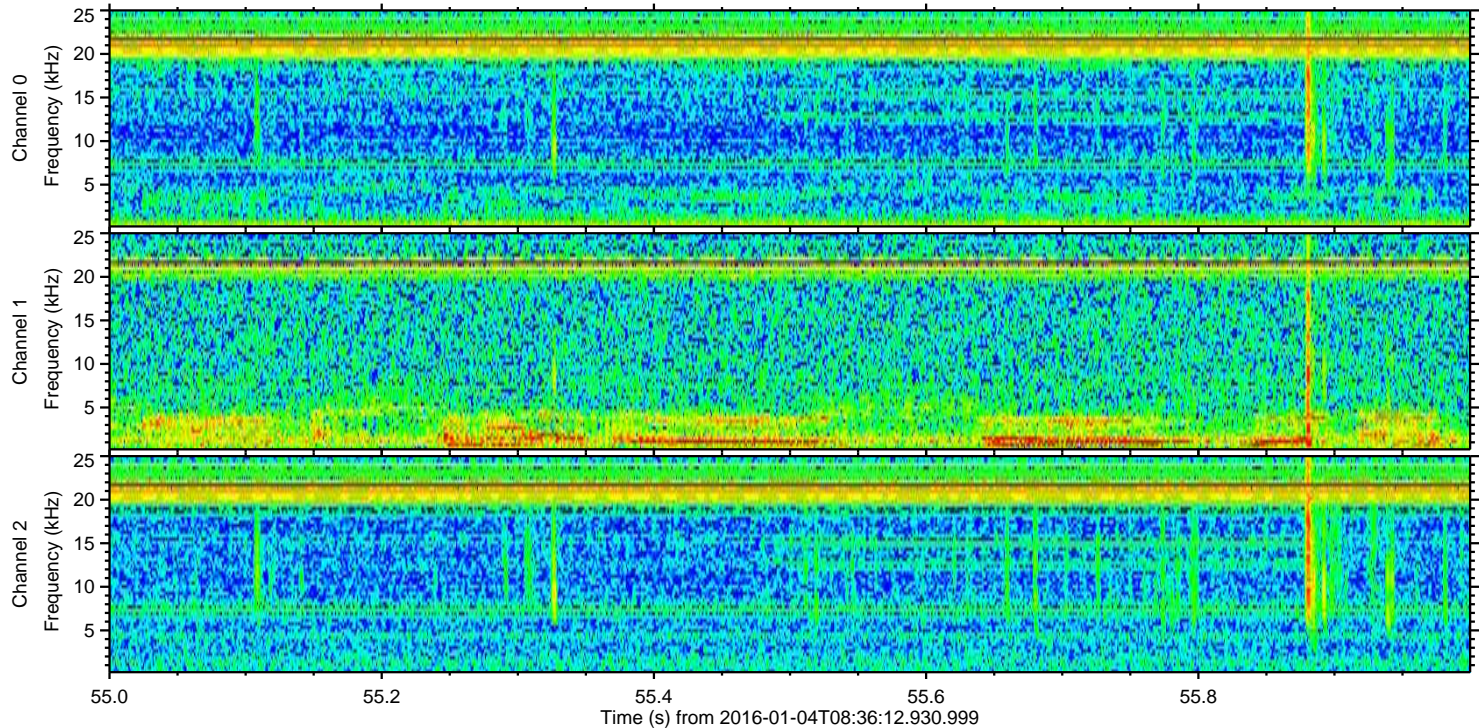
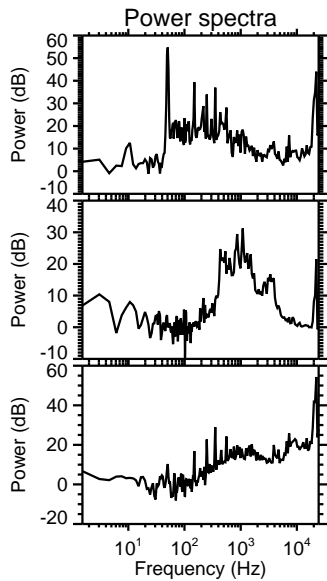
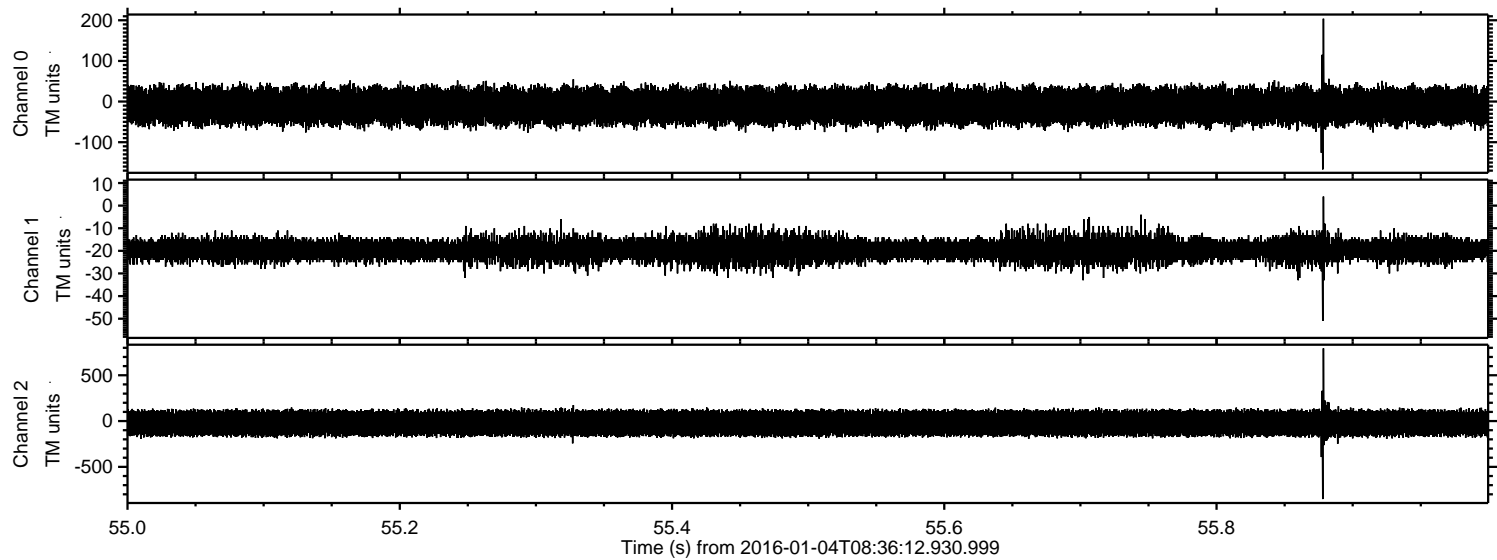
Processed Tue Mar 22 00:41:42 2016 by ELM ver.2012-10-06 from 001__elm20160104_083611__dat00.bin



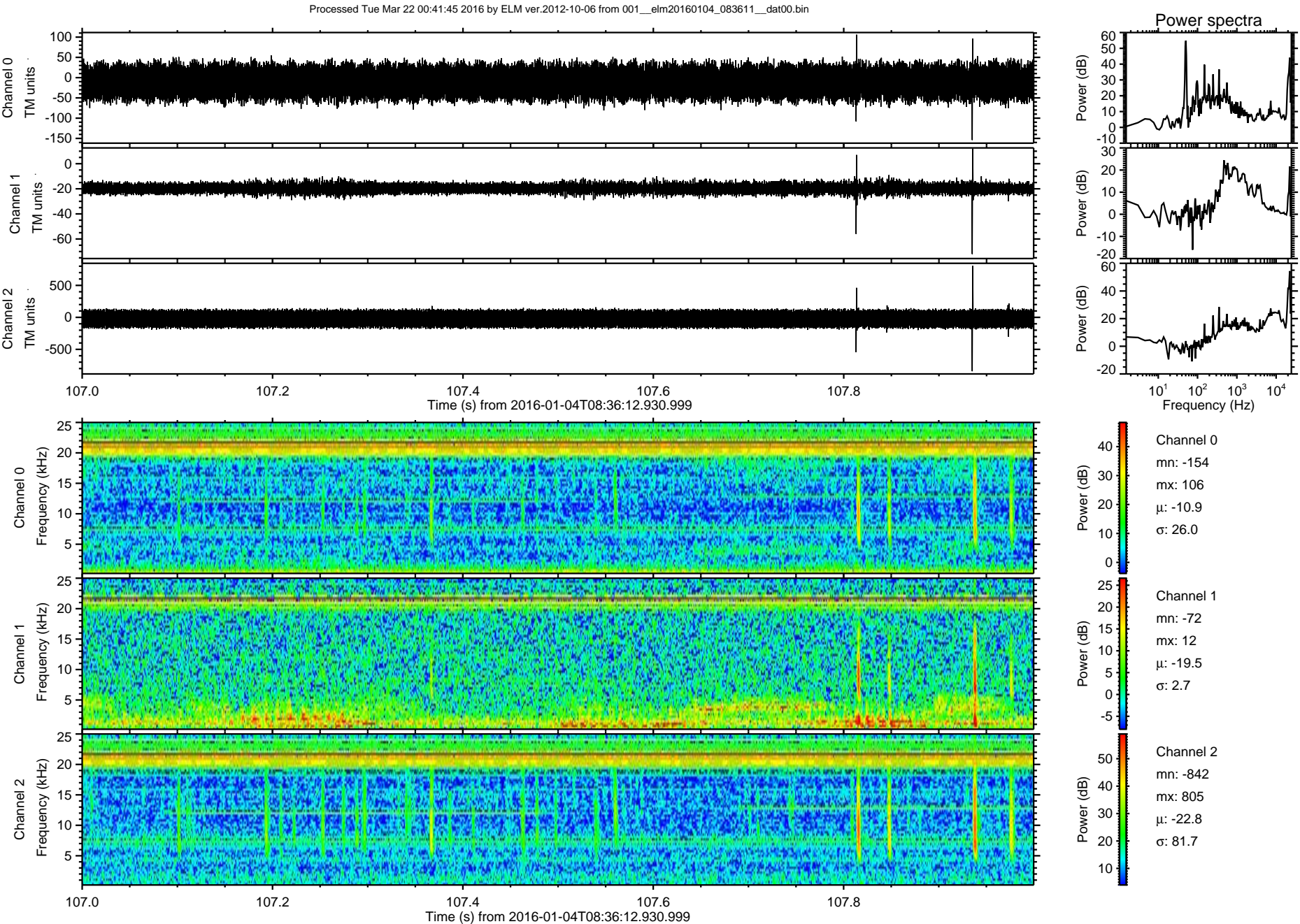
Processed Tue Mar 22 00:41:43 2016 by ELM ver.2012-10-06 from 001__elm20160104_083611__dat00.bin



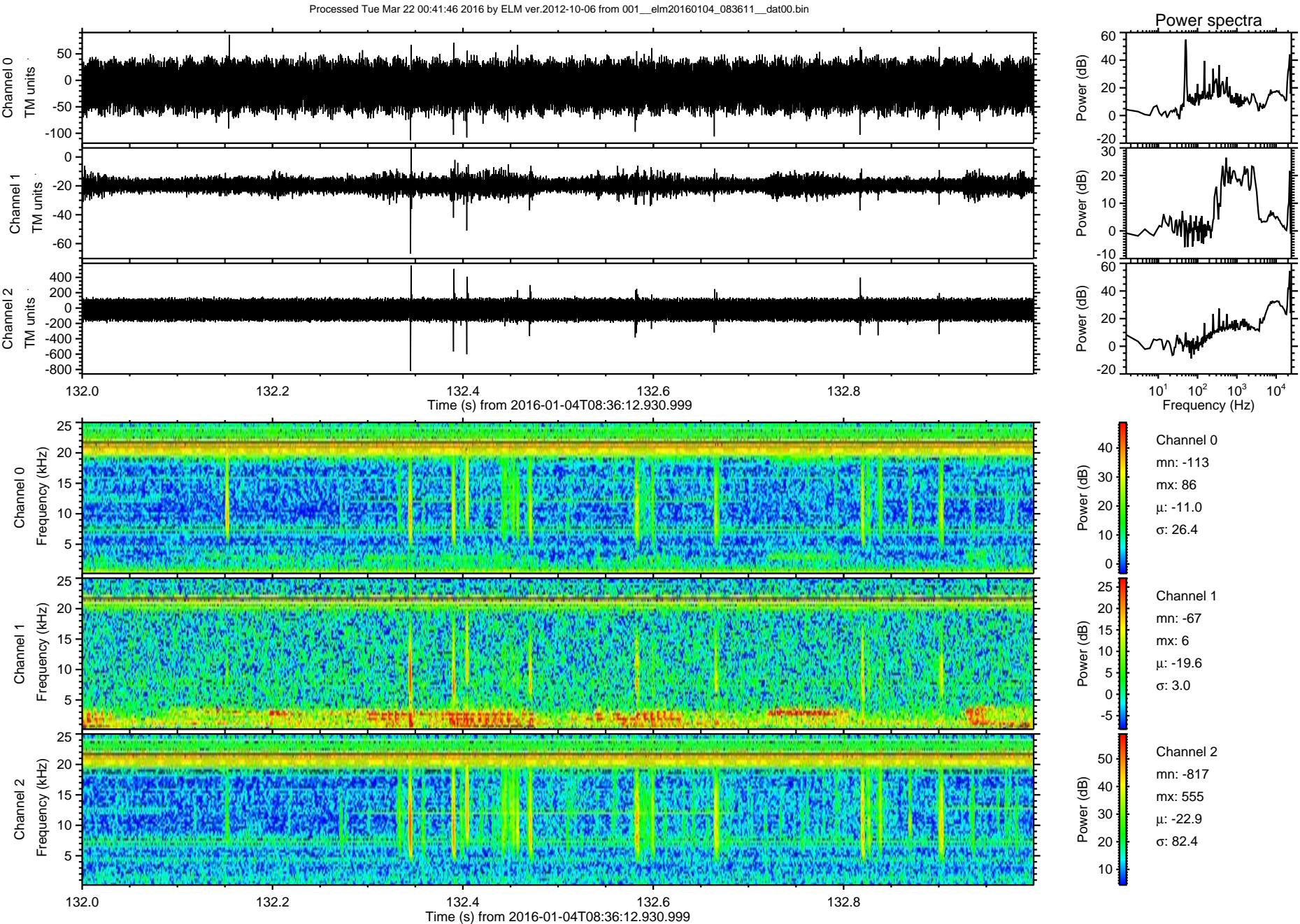
Processed Tue Mar 22 00:41:44 2016 by ELM ver.2012-10-06 from 001__elm20160104_083611__dat00.bin



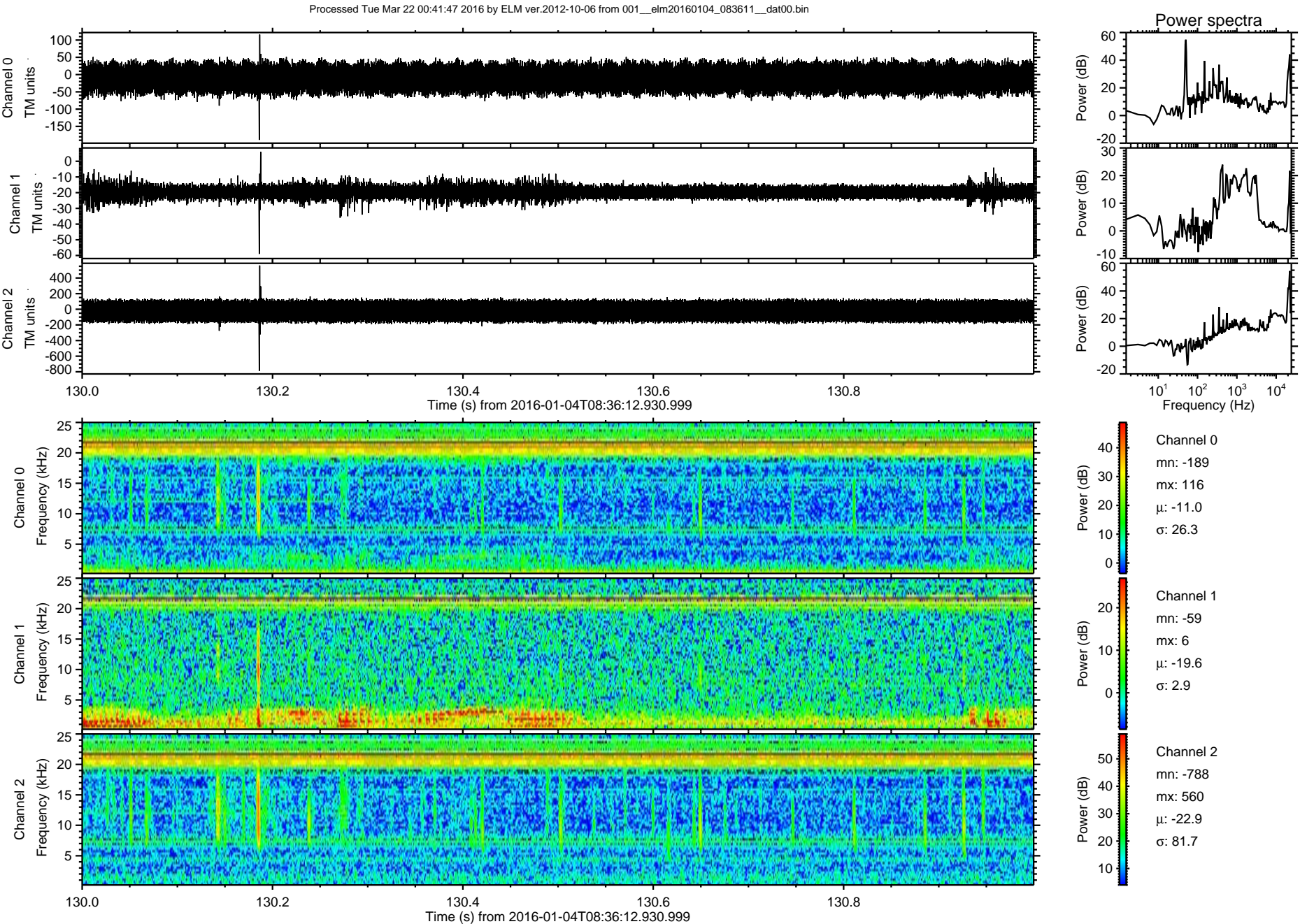
ELMAVAN 3D WAVEFORMS (Measured data sampled at 50 kHz) 51000 packets of 144 samples from 2016-01-04T08:36:12.930.999. Part 108/147



ELMAVAN 3D WAVEFORMS (Measured data sampled at 50 kHz) 51000 packets of 144 samples from 2016-01-04T08:36:12.930.999. Part 133/147



ELMAVAN 3D WAVEFORMS (Measured data sampled at 50 kHz) 51000 packets of 144 samples from 2016-01-04T08:36:12.930.999. Part 131/147



Processed Tue Mar 22 00:41:48 2016 by ELM ver.2012-10-06 from 001__elm20160104_083611__dat00.bin

