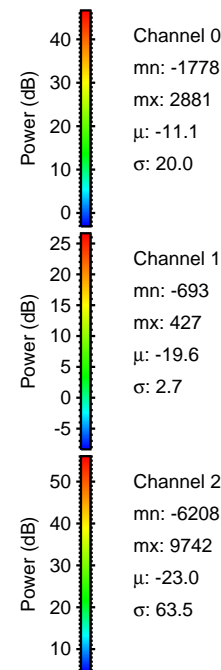
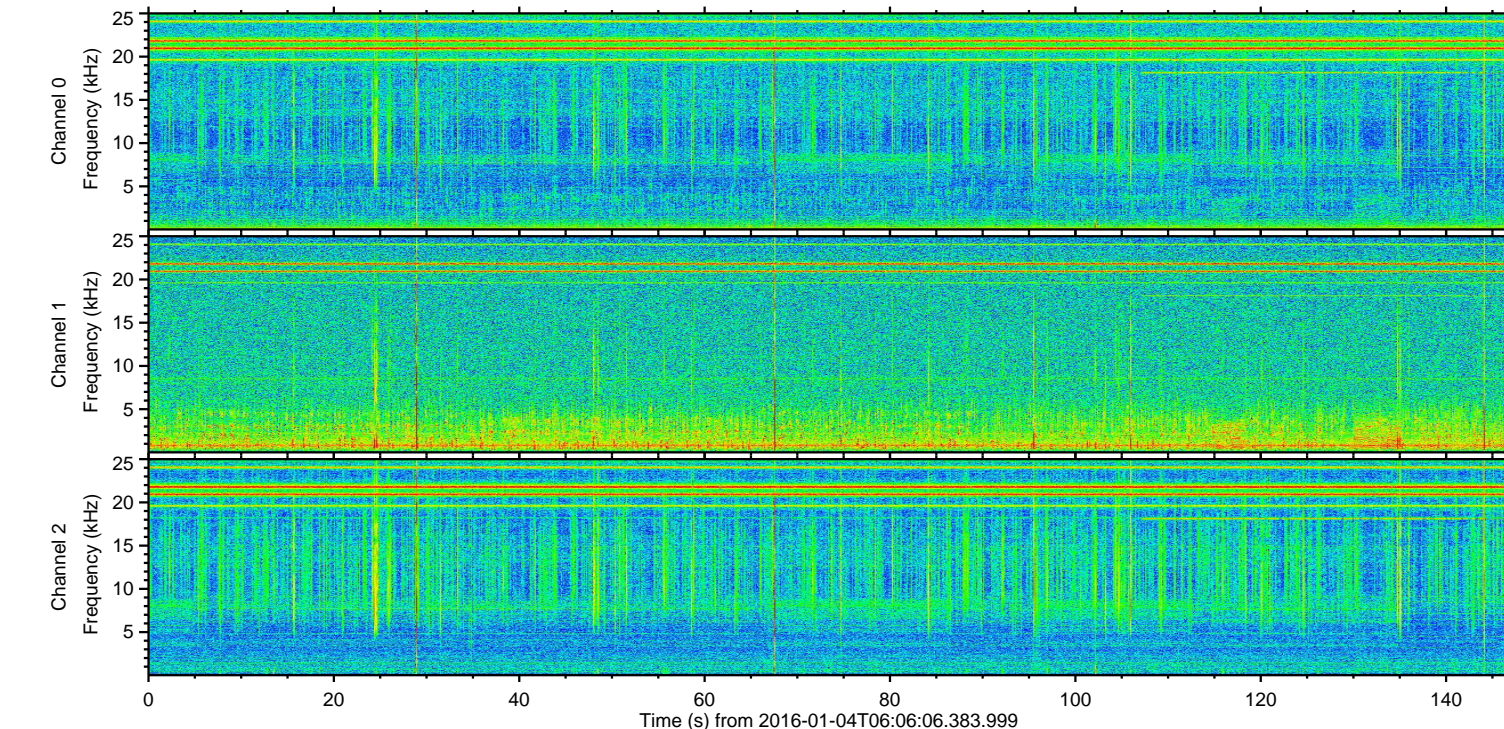
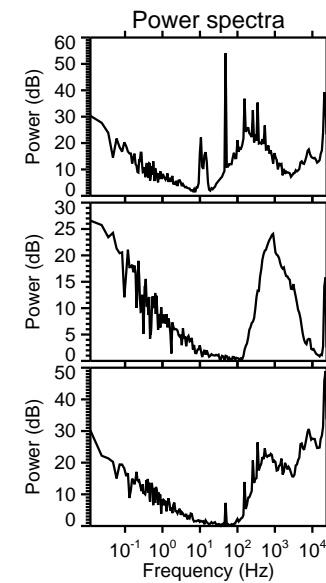
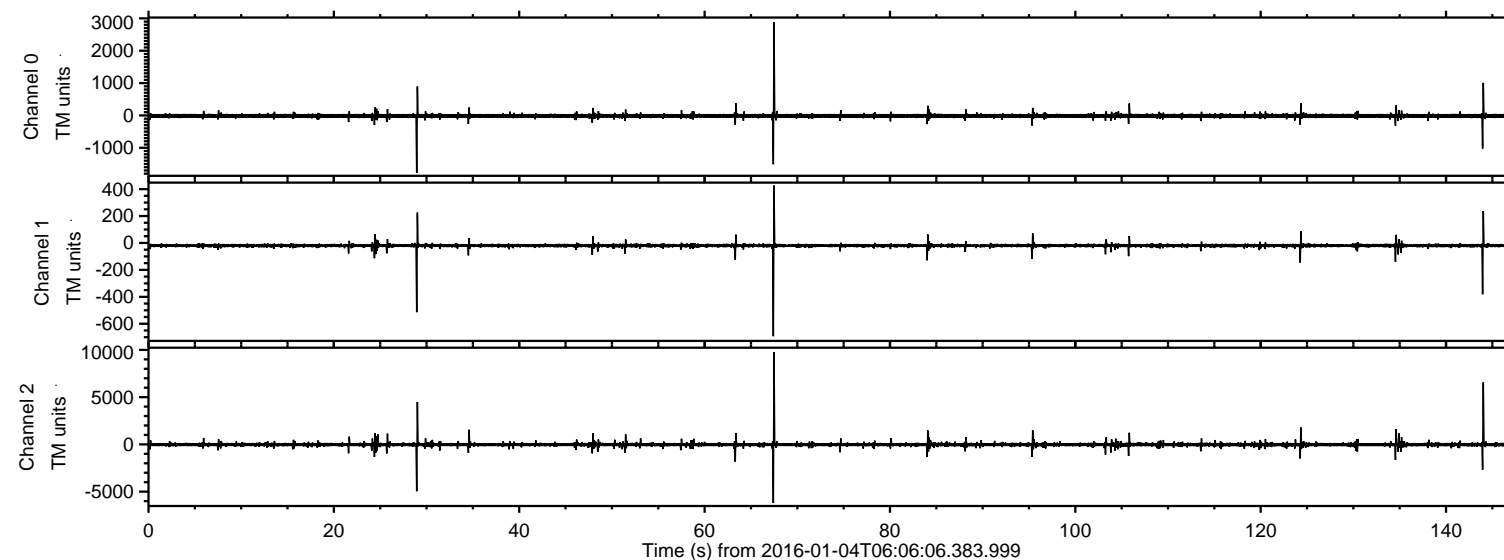
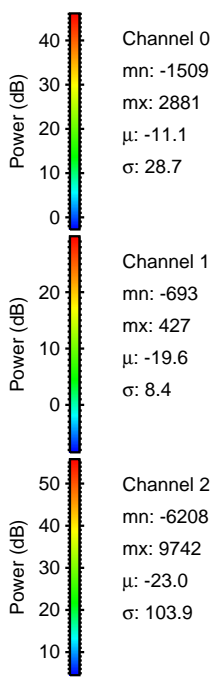
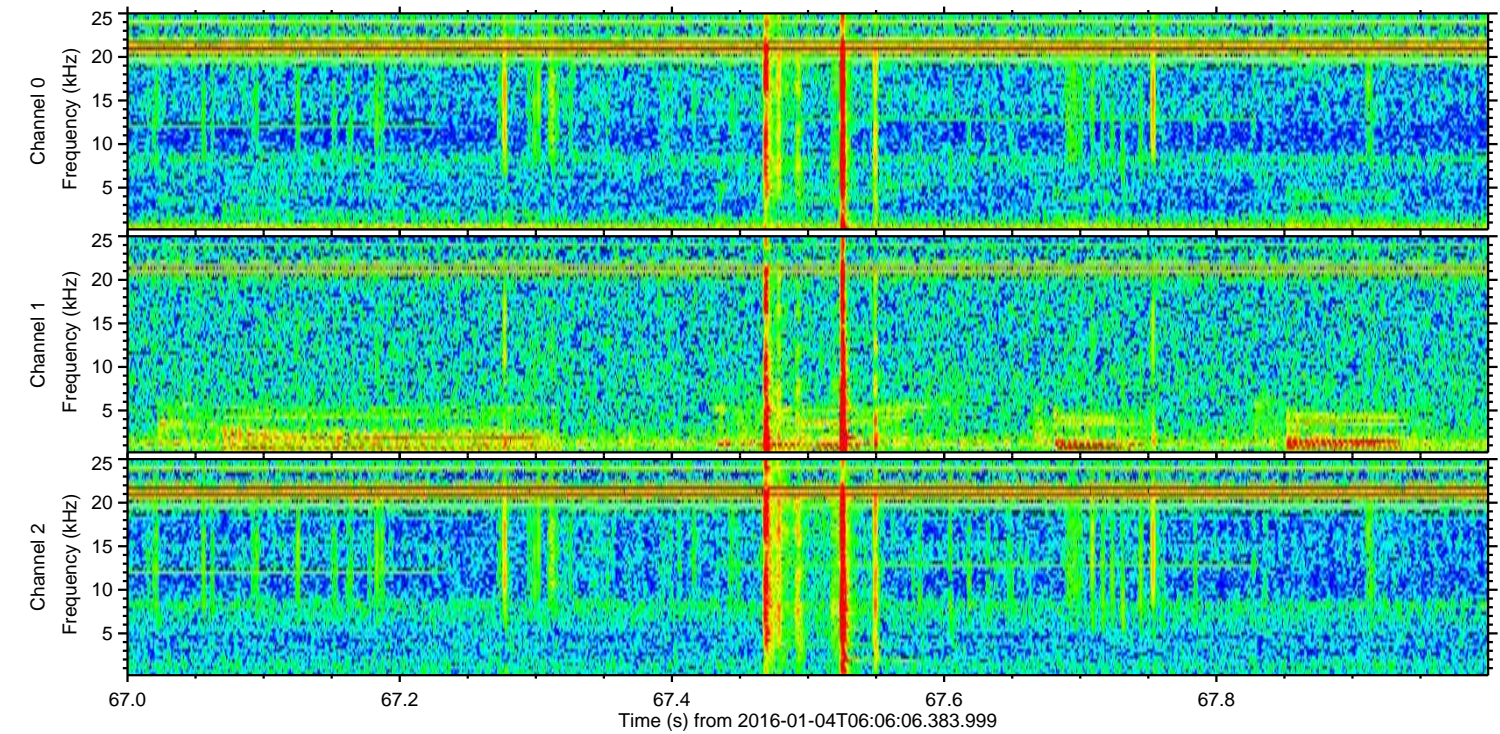
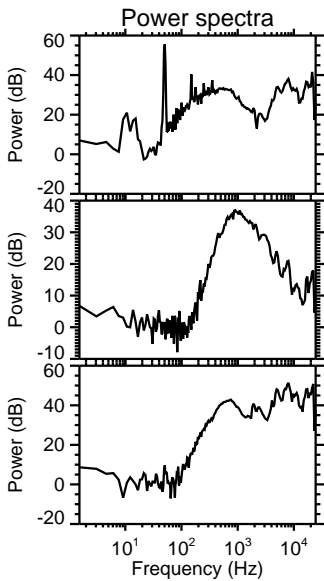
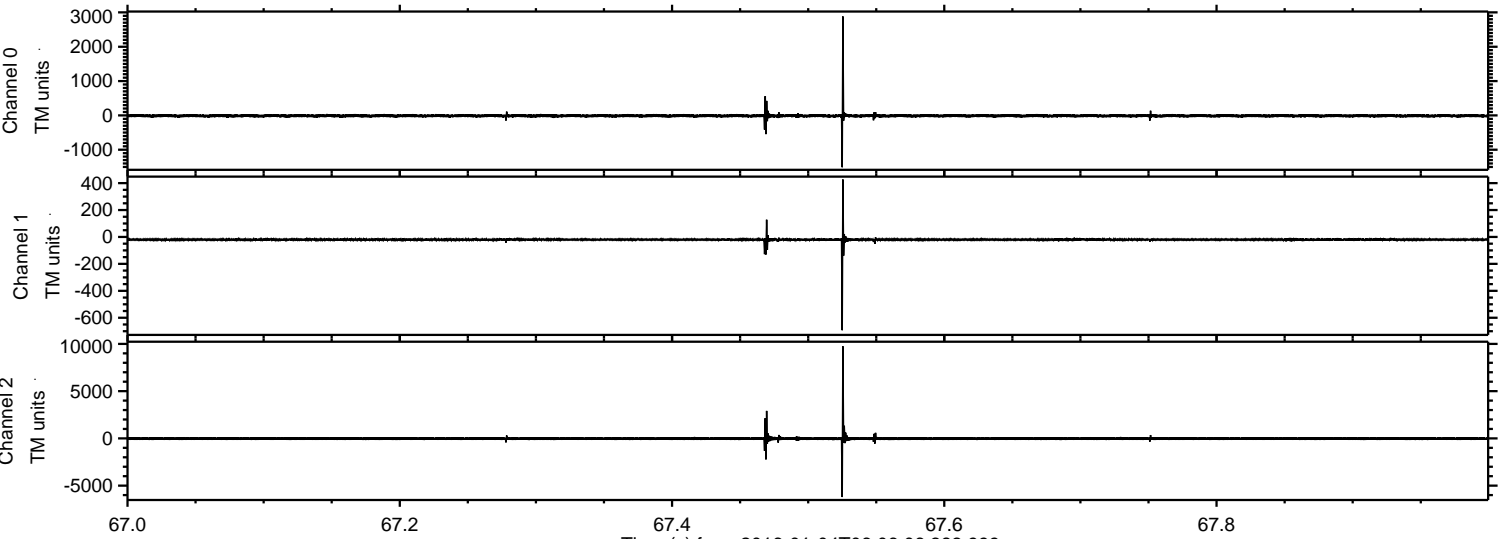


ELMAVAN 3D WAVEFORMS (Measured data sampled at 50 kHz) 51000 packets of 144 samples from 2016-01-04T06:06:06.383.999.

Processed Tue Mar 22 00:08:18 2016 by ELM ver.2012-10-06 from 001__elm20160104_060605__dat00.bin

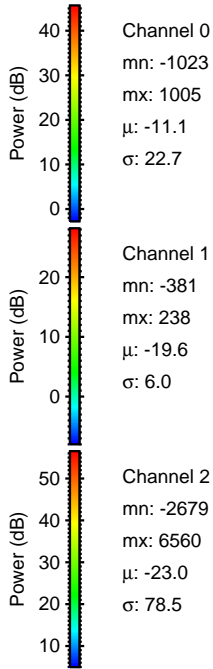
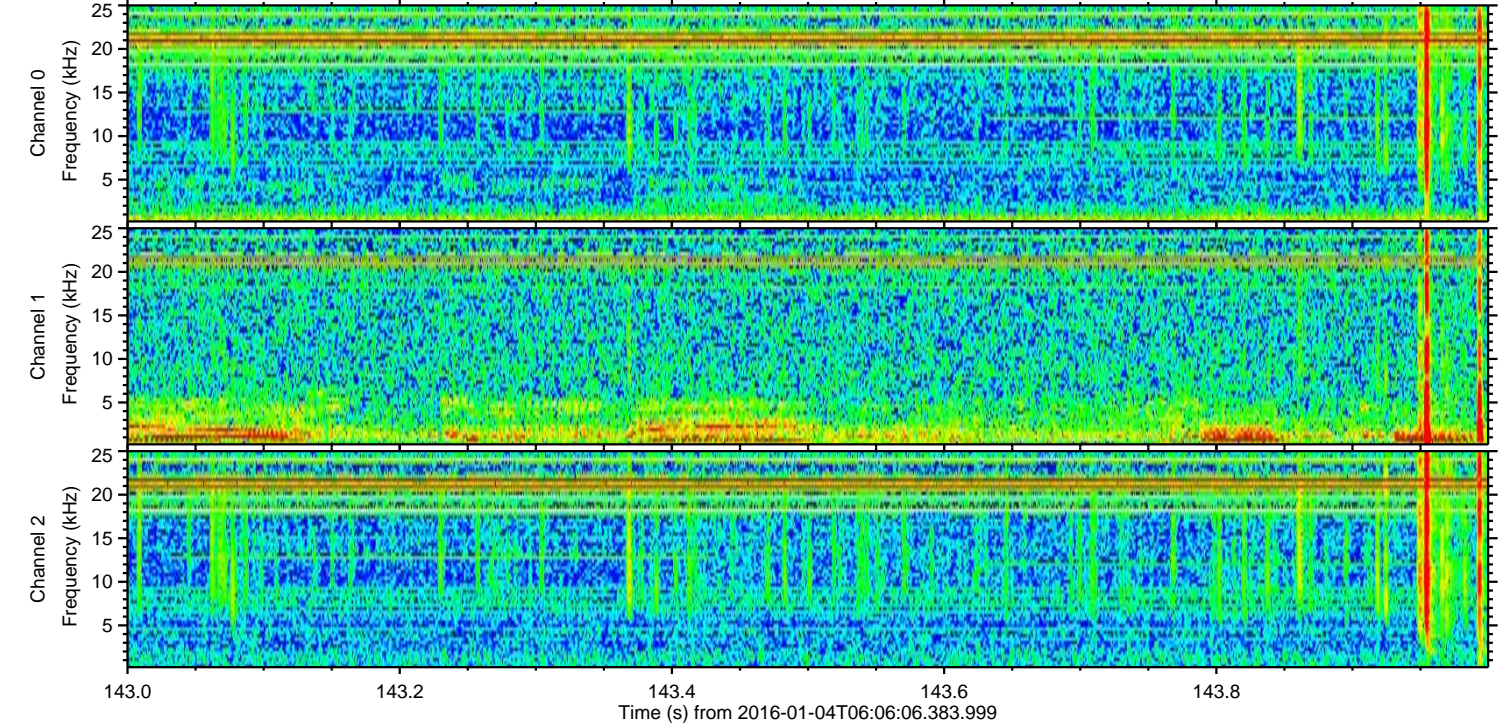
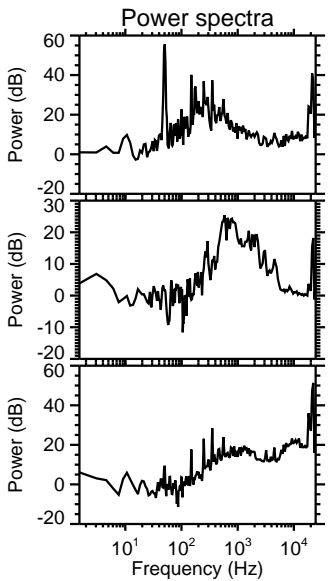
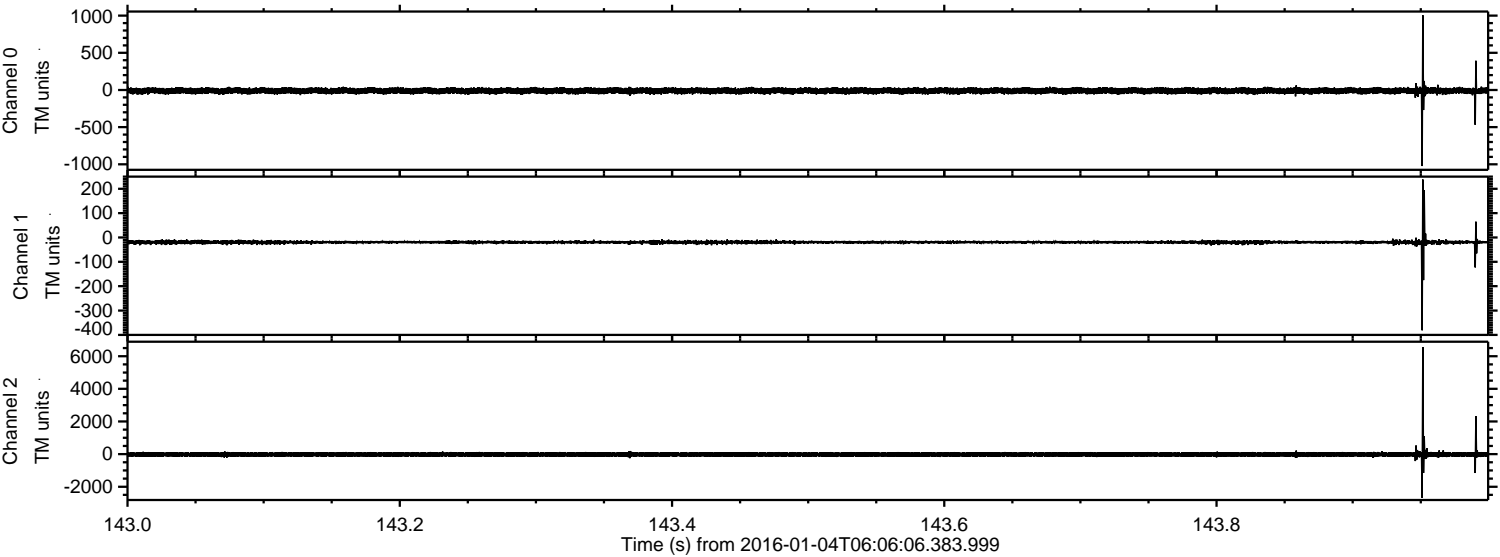


Processed Tue Mar 22 00:08:29 2016 by ELM ver.2012-10-06 from 001__elm20160104_060605__dat00.bin



ELMAVAN 3D WAVEFORMS (Measured data sampled at 50 kHz) 51000 packets of 144 samples from 2016-01-04T06:06:06.383.999. Part 144/147

Processed Tue Mar 22 00:08:30 2016 by ELM ver.2012-10-06 from 001__elm20160104_060605__dat00.bin

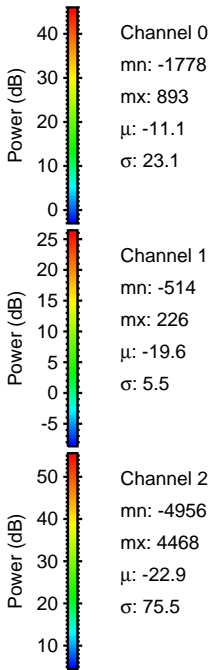
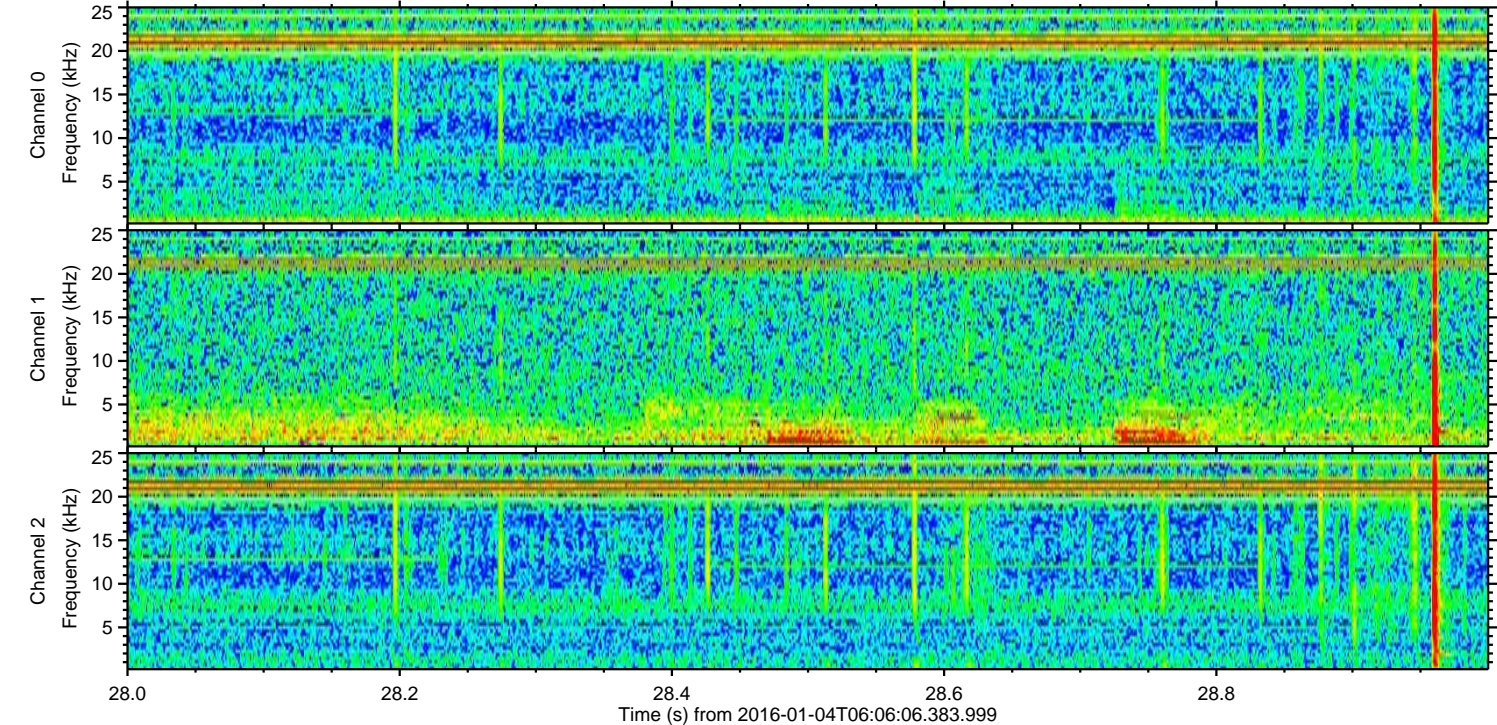
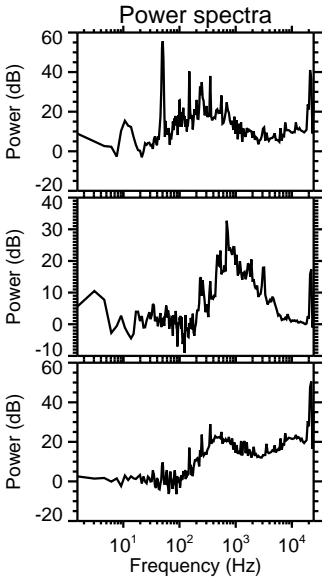
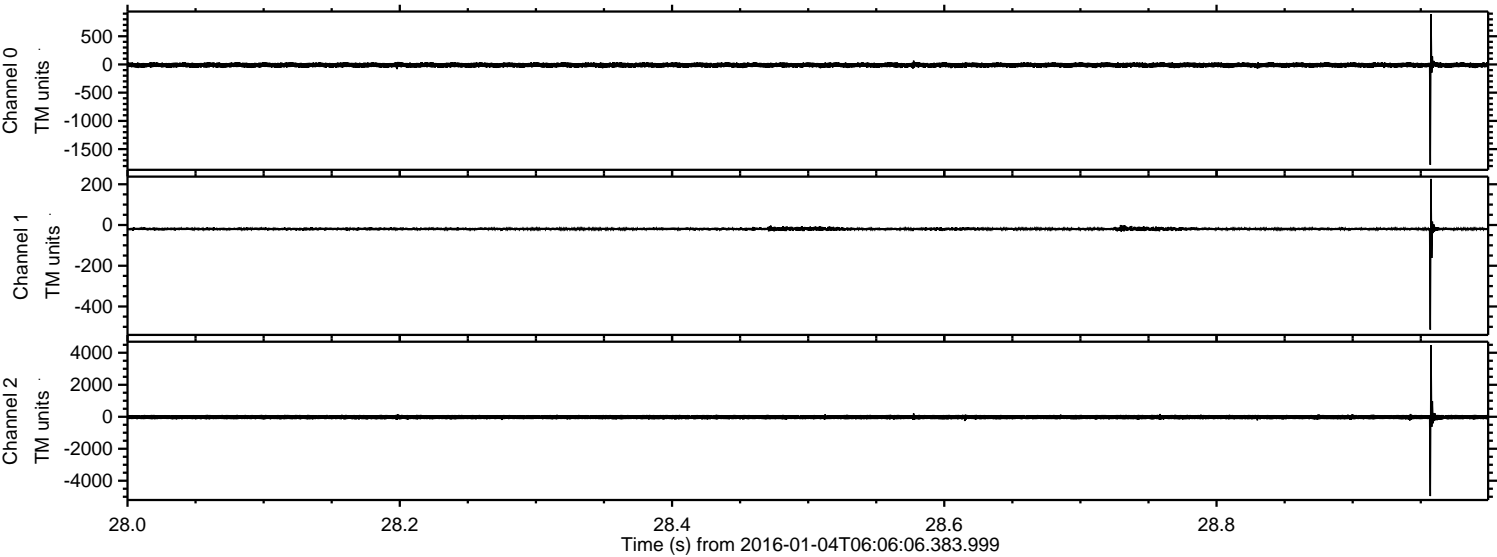


Channel 0
mn: -1023
mx: 1005
 μ : -11.1
 σ : 22.7

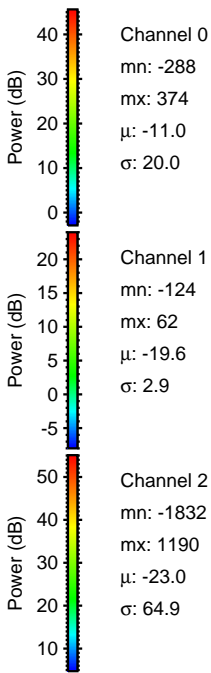
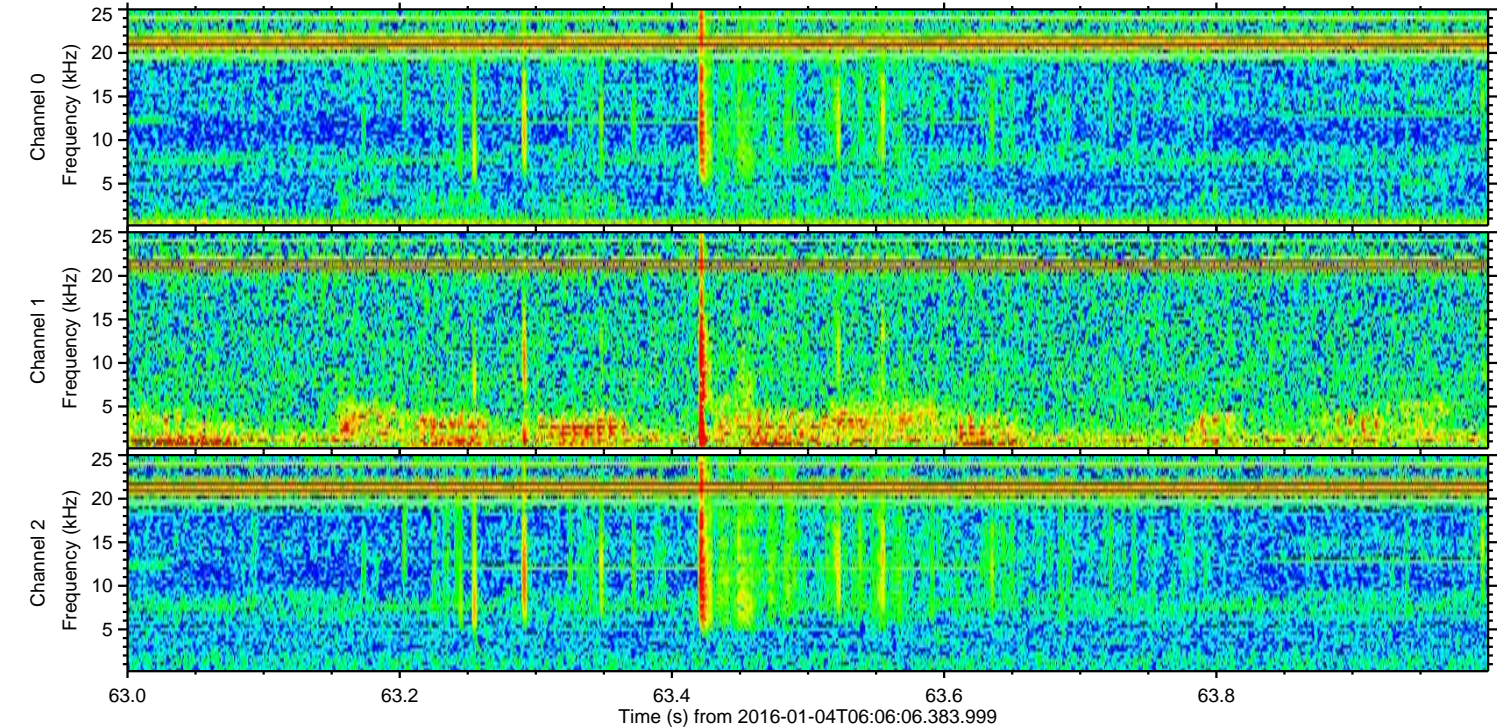
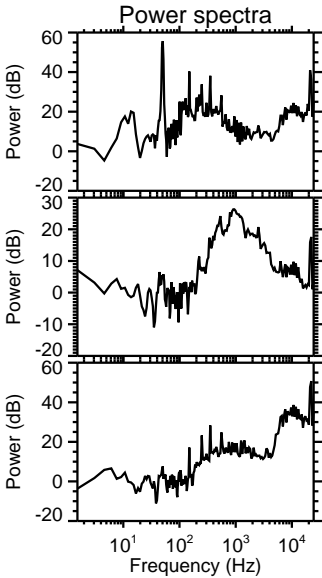
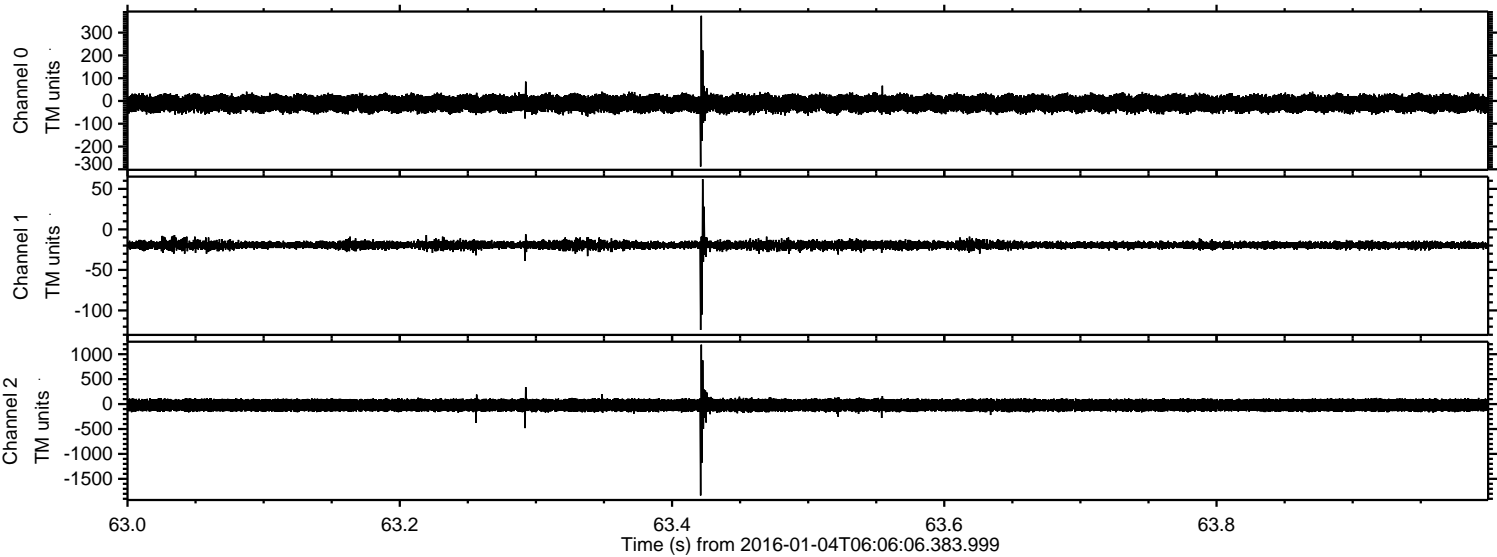
Channel 1
mn: -381
mx: 238
 μ : -19.6
 σ : 6.0

Channel 2
mn: -2679
mx: 6560
 μ : -23.0
 σ : 78.5

Processed Tue Mar 22 00:08:31 2016 by ELM ver.2012-10-06 from 001__elm20160104_060605__dat00.bin

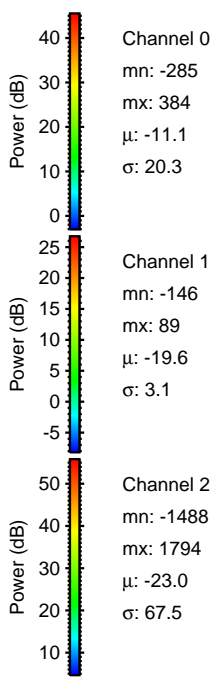
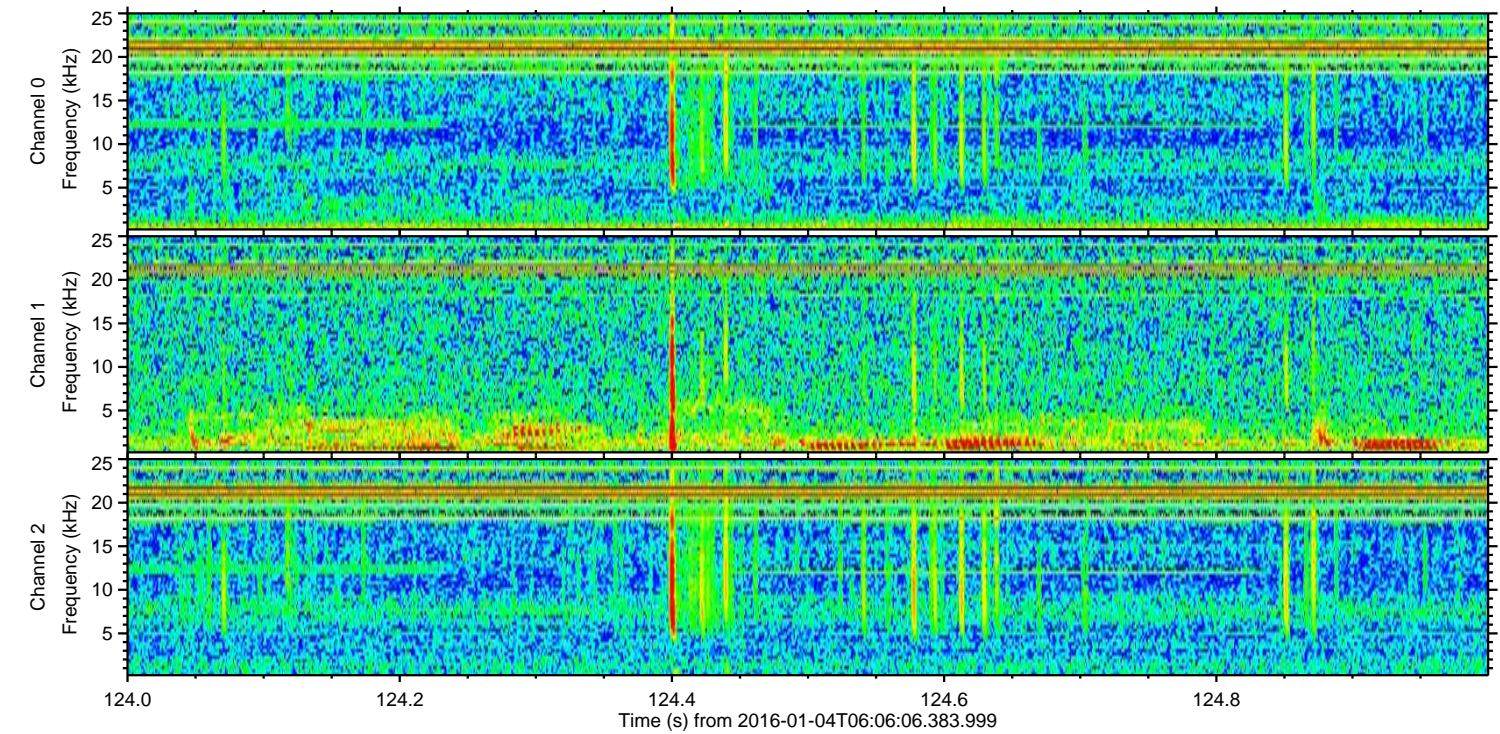
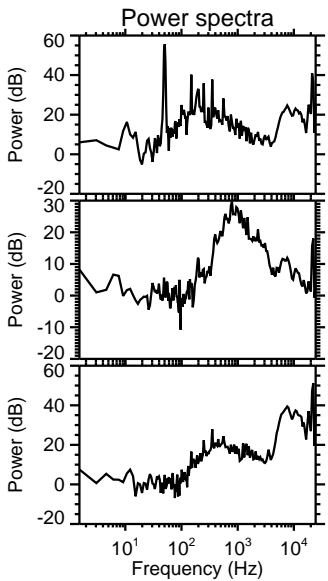
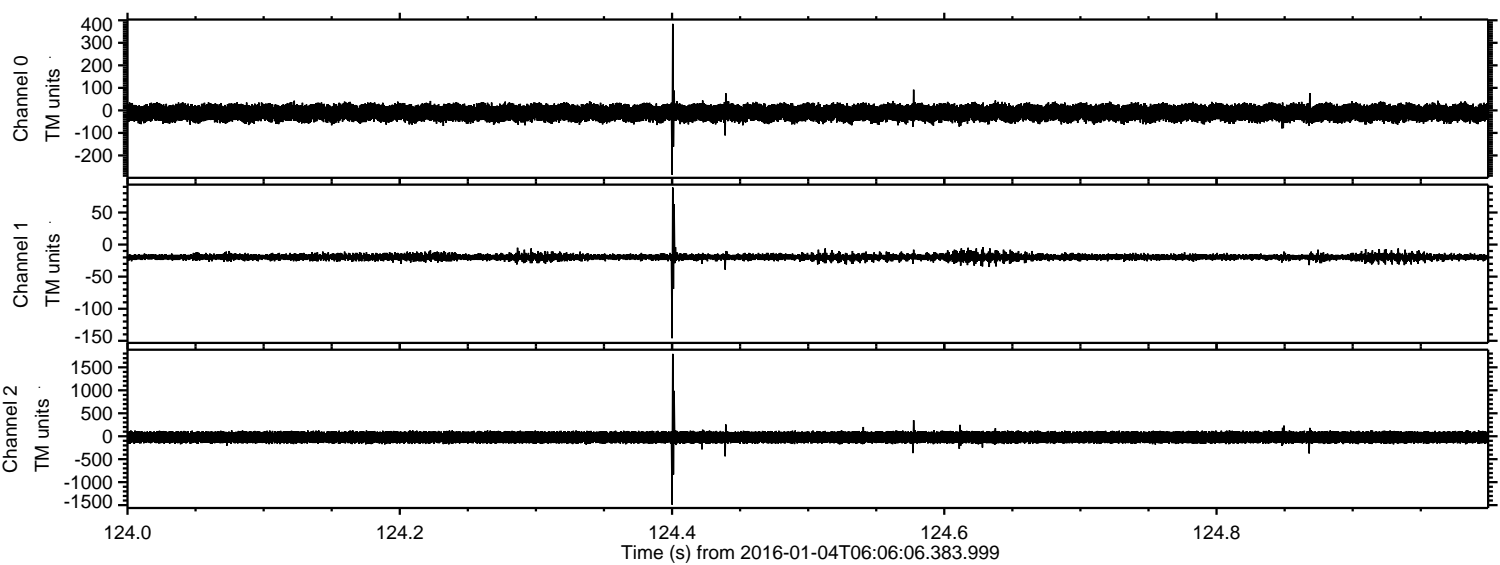


Processed Tue Mar 22 00:08:32 2016 by ELM ver.2012-10-06 from 001__elm20160104_060605__dat00.bin



ELMAVAN 3D WAVEFORMS (Measured data sampled at 50 kHz) 51000 packets of 144 samples from 2016-01-04T06:06:06.383.999. Part 125/147

Processed Tue Mar 22 00:08:33 2016 by ELM ver.2012-10-06 from 001__elm20160104_060605__dat00.bin



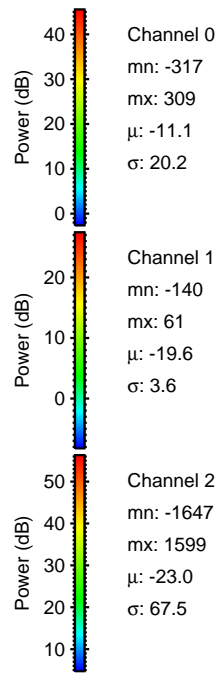
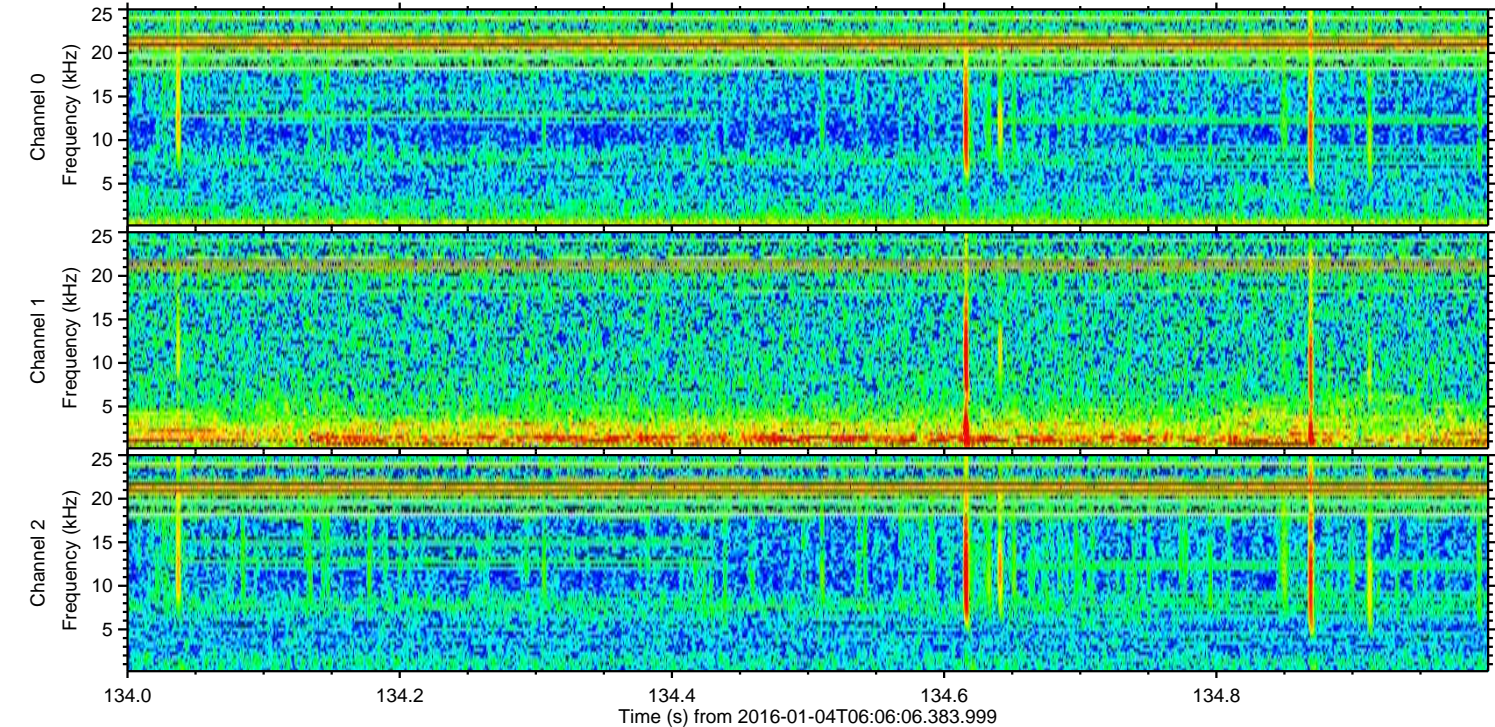
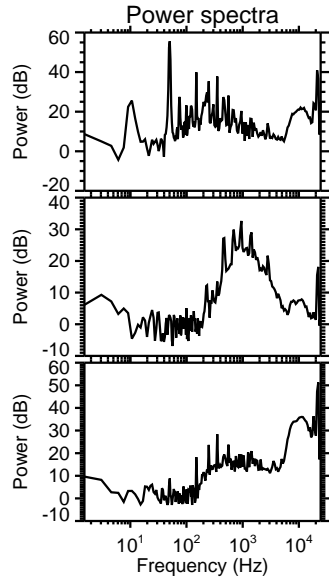
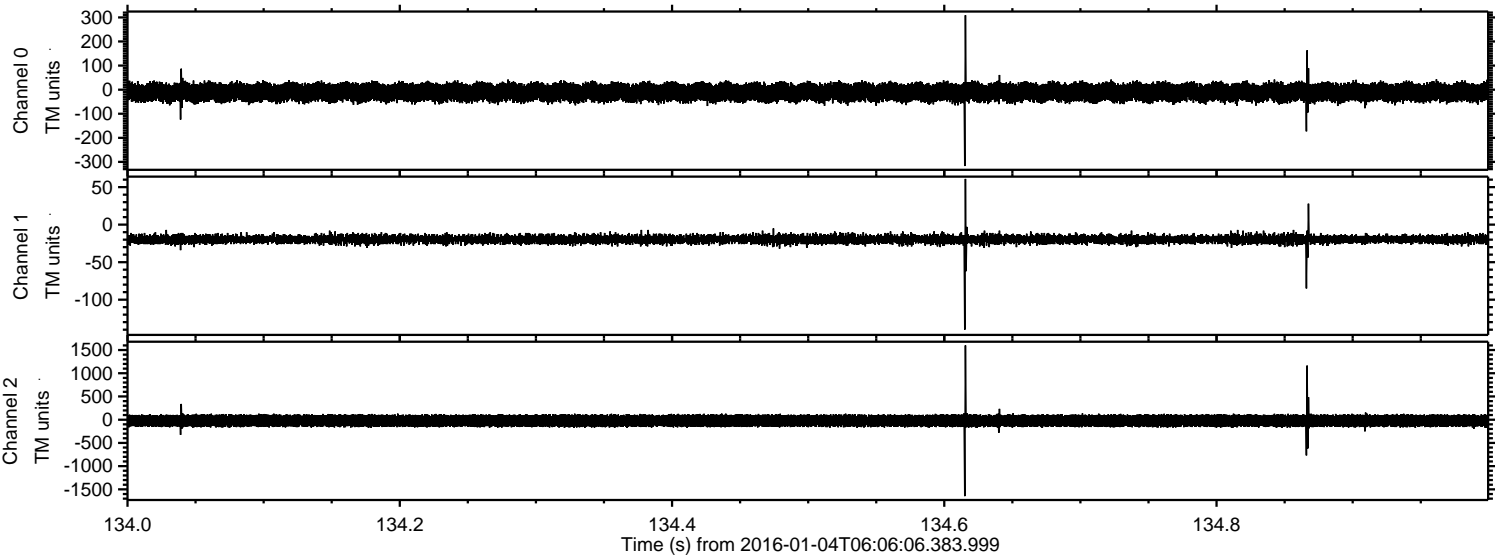
Channel 0
mn: -285
mx: 384
 μ : -11.1
 σ : 20.3

Channel 1
mn: -146
mx: 89
 μ : -19.6
 σ : 3.1

Channel 2
mn: -1488
mx: 1794
 μ : -23.0
 σ : 67.5

ELMAVAN 3D WAVEFORMS (Measured data sampled at 50 kHz) 51000 packets of 144 samples from 2016-01-04T06:06:06.383.999. Part 135/147

Processed Tue Mar 22 00:08:34 2016 by ELM ver.2012-10-06 from 001__elm20160104_060605__dat00.bin

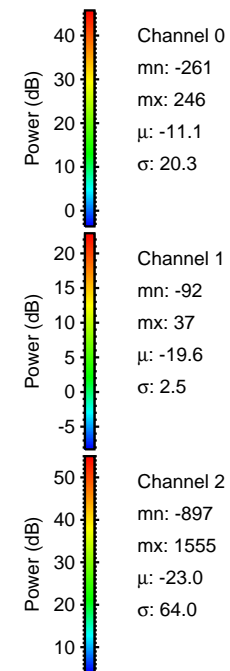
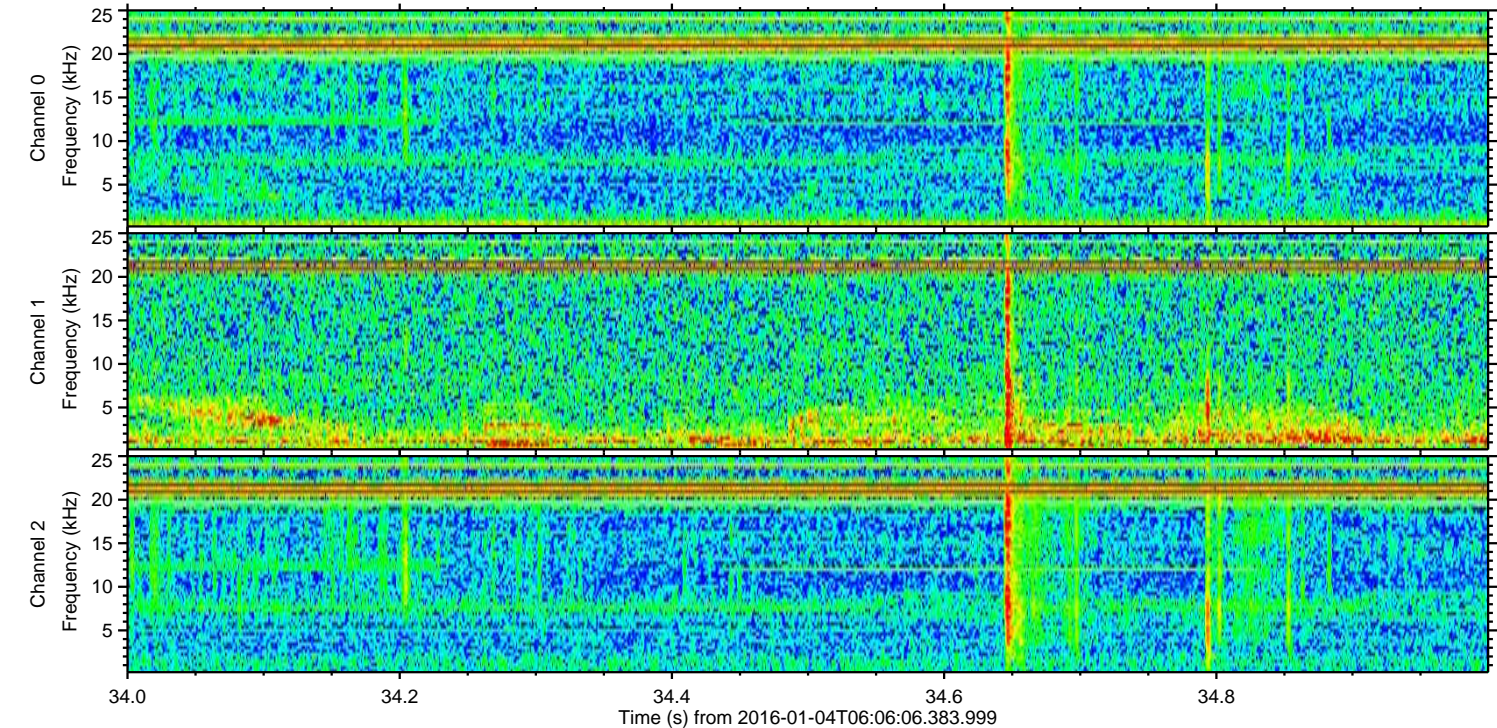
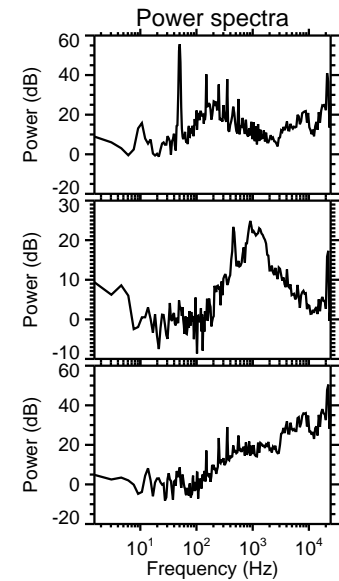
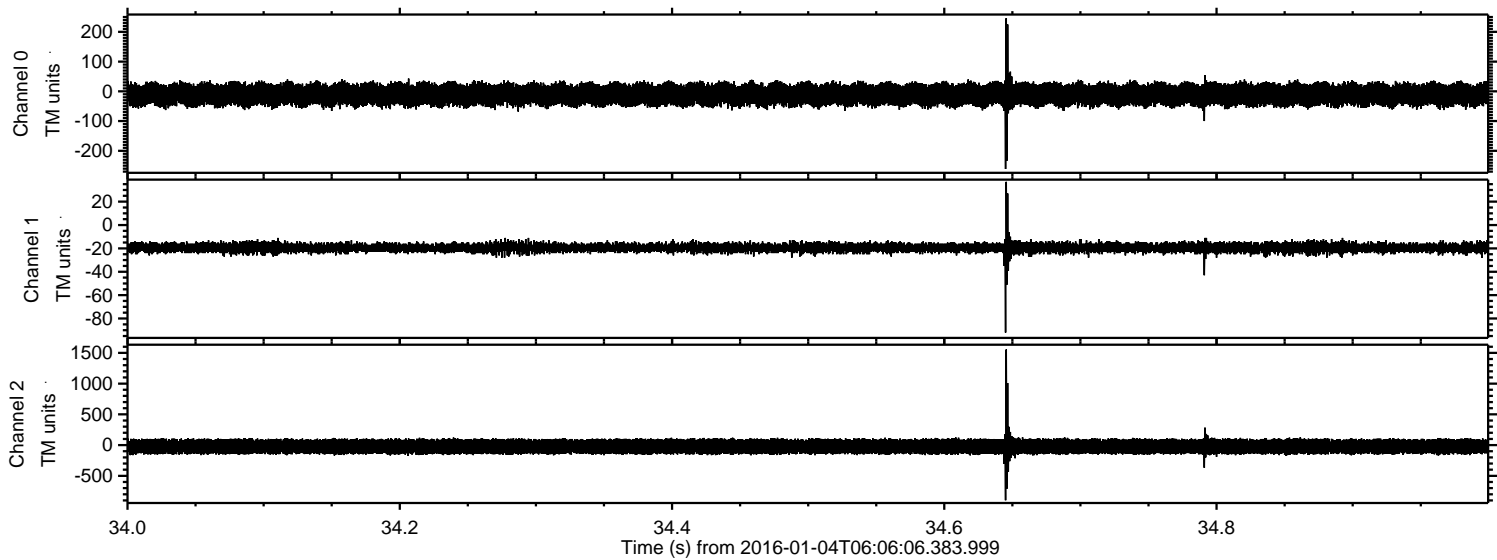


Channel 0
mn: -317
mx: 309
 μ : -11.1
 σ : 20.2

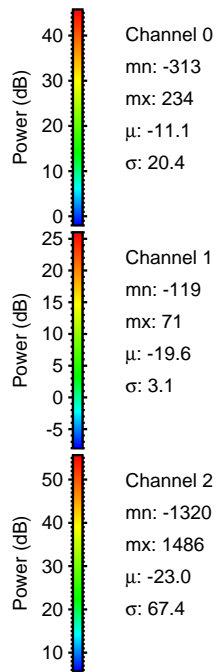
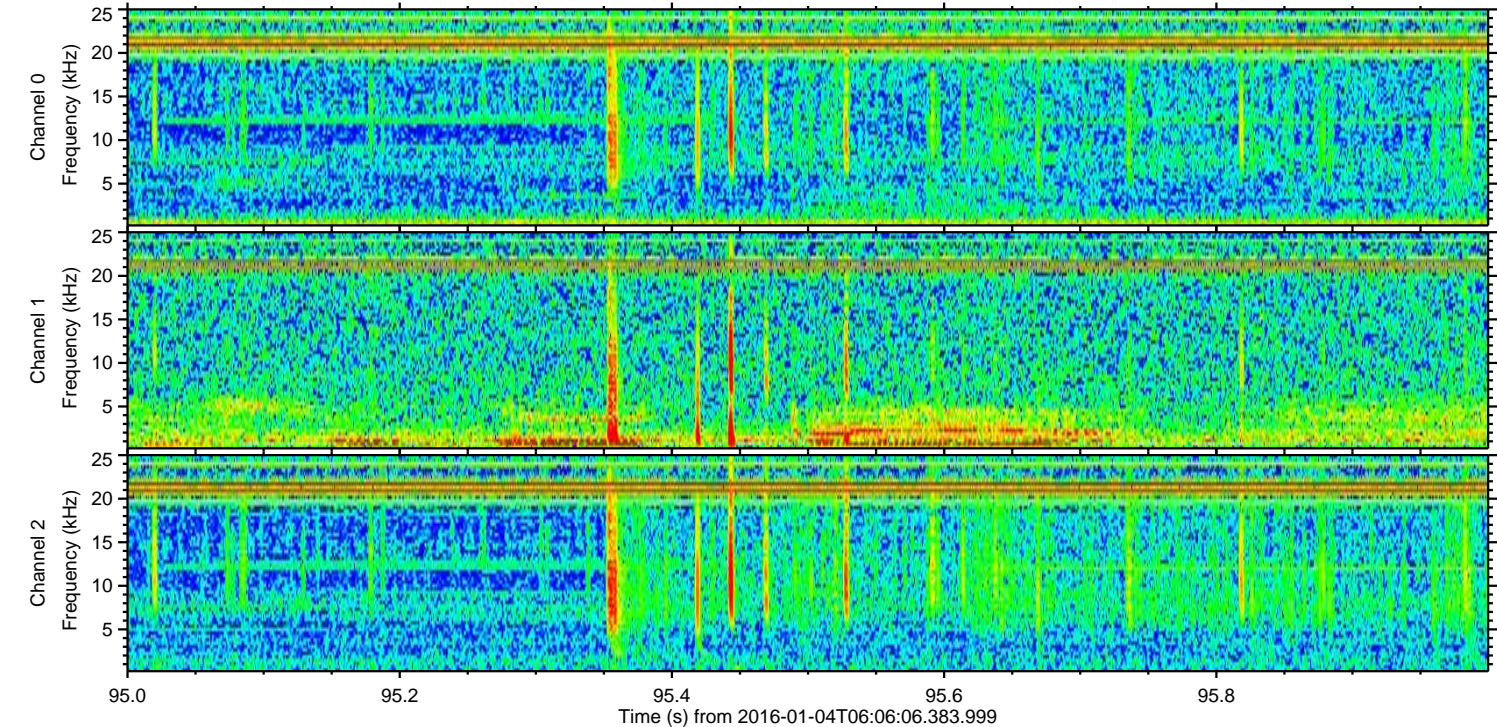
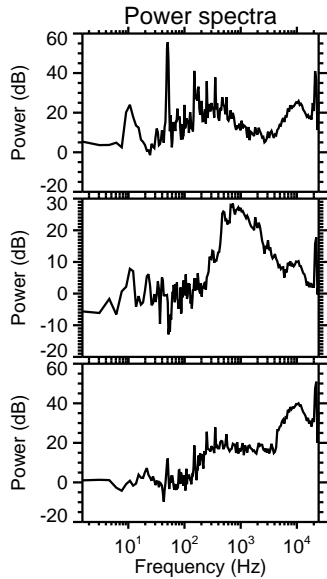
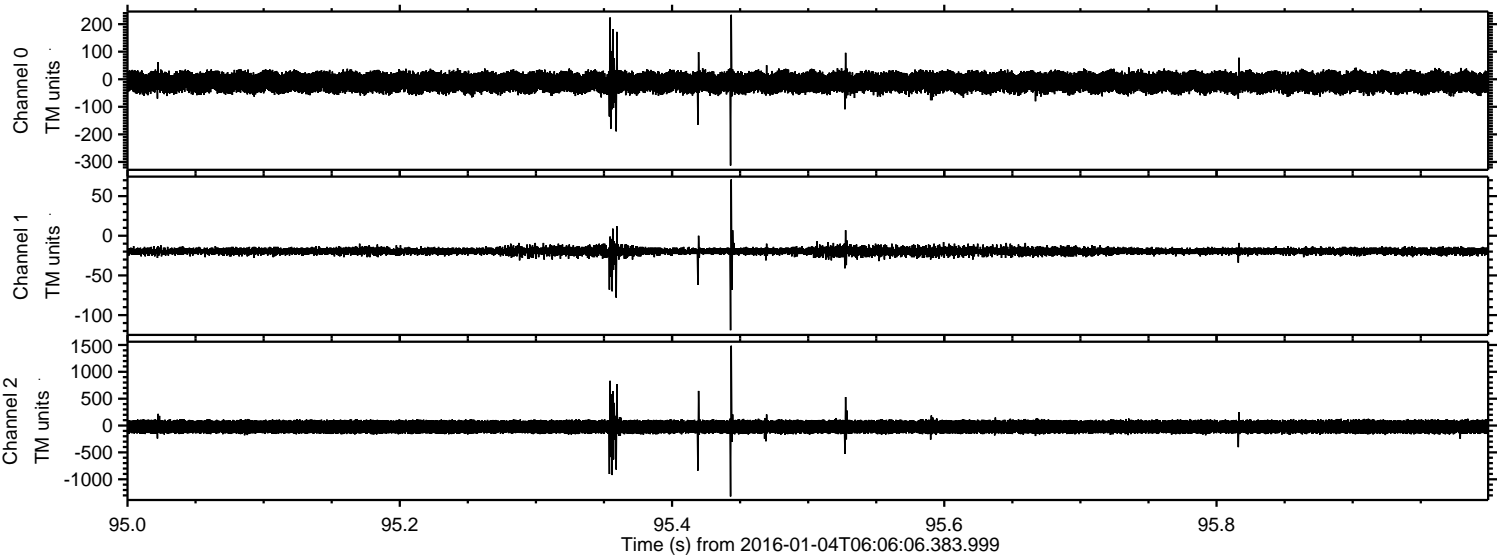
Channel 1
mn: -140
mx: 61
 μ : -19.6
 σ : 3.6

Channel 2
mn: -1647
mx: 1599
 μ : -23.0
 σ : 67.5

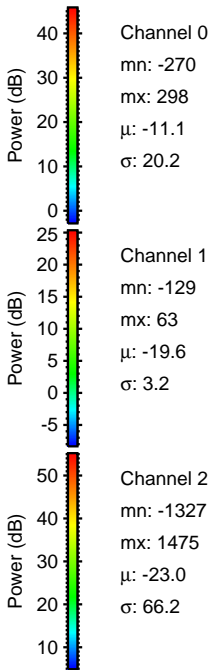
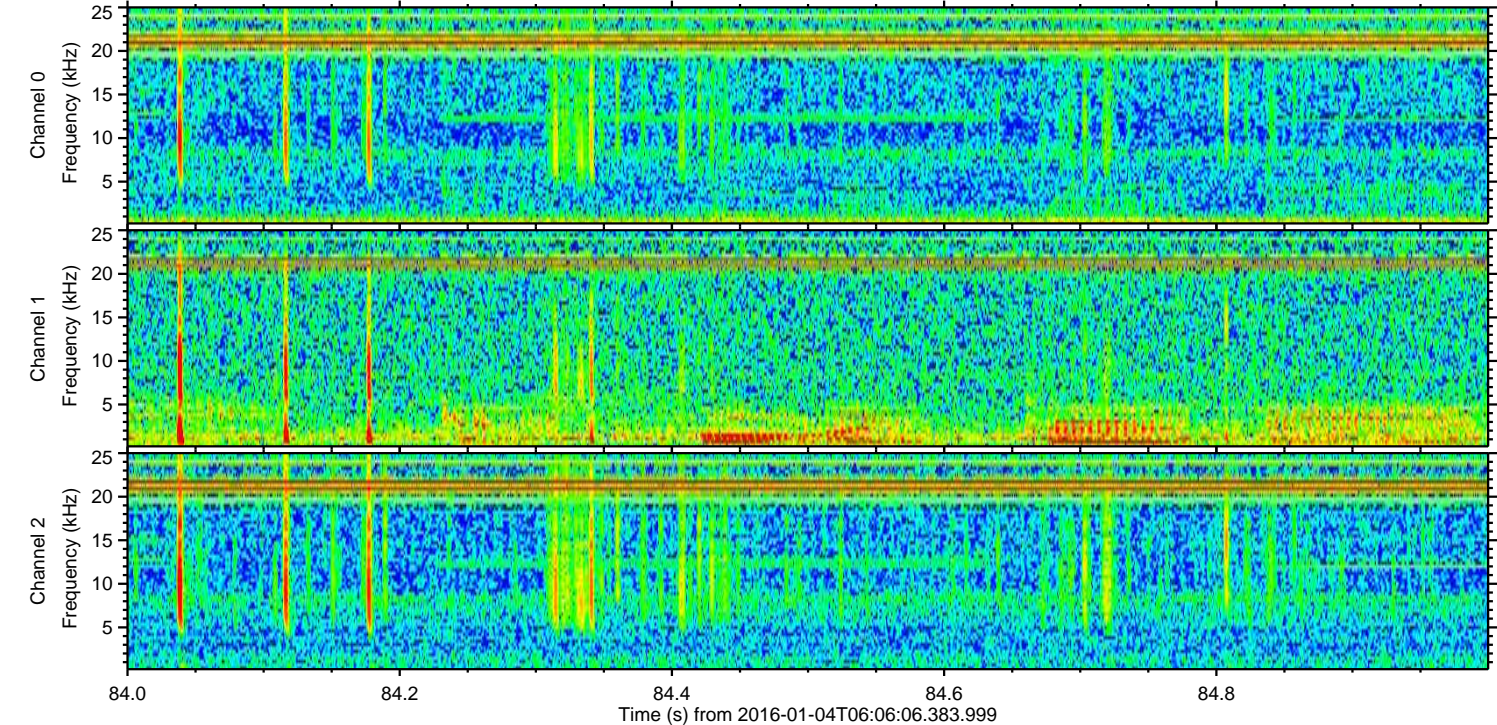
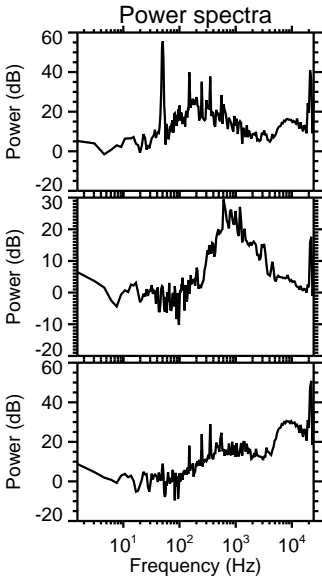
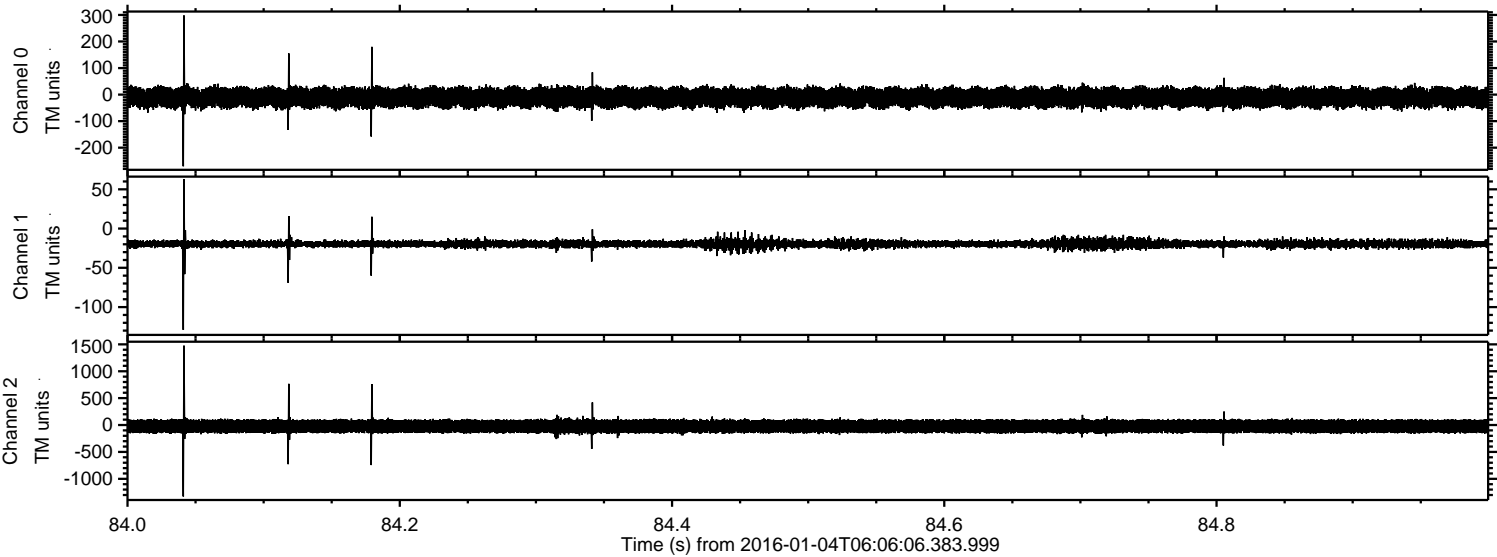
Processed Tue Mar 22 00:08:35 2016 by ELM ver.2012-10-06 from 001__elm20160104_060605__dat00.bin



Processed Tue Mar 22 00:08:36 2016 by ELM ver.2012-10-06 from 001__elm20160104_060605__dat00.bin



Processed Tue Mar 22 00:08:37 2016 by ELM ver.2012-10-06 from 001__elm20160104_060605__dat00.bin



Processed Tue Mar 22 00:08:38 2016 by ELM ver.2012-10-06 from 001__elm20160104_060605__dat00.bin

