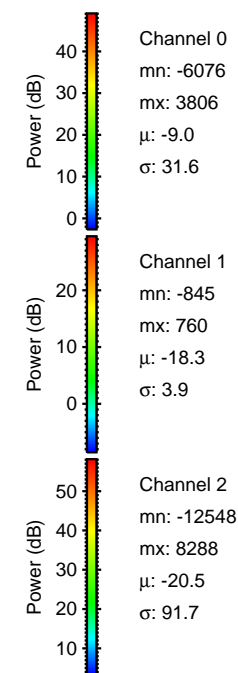
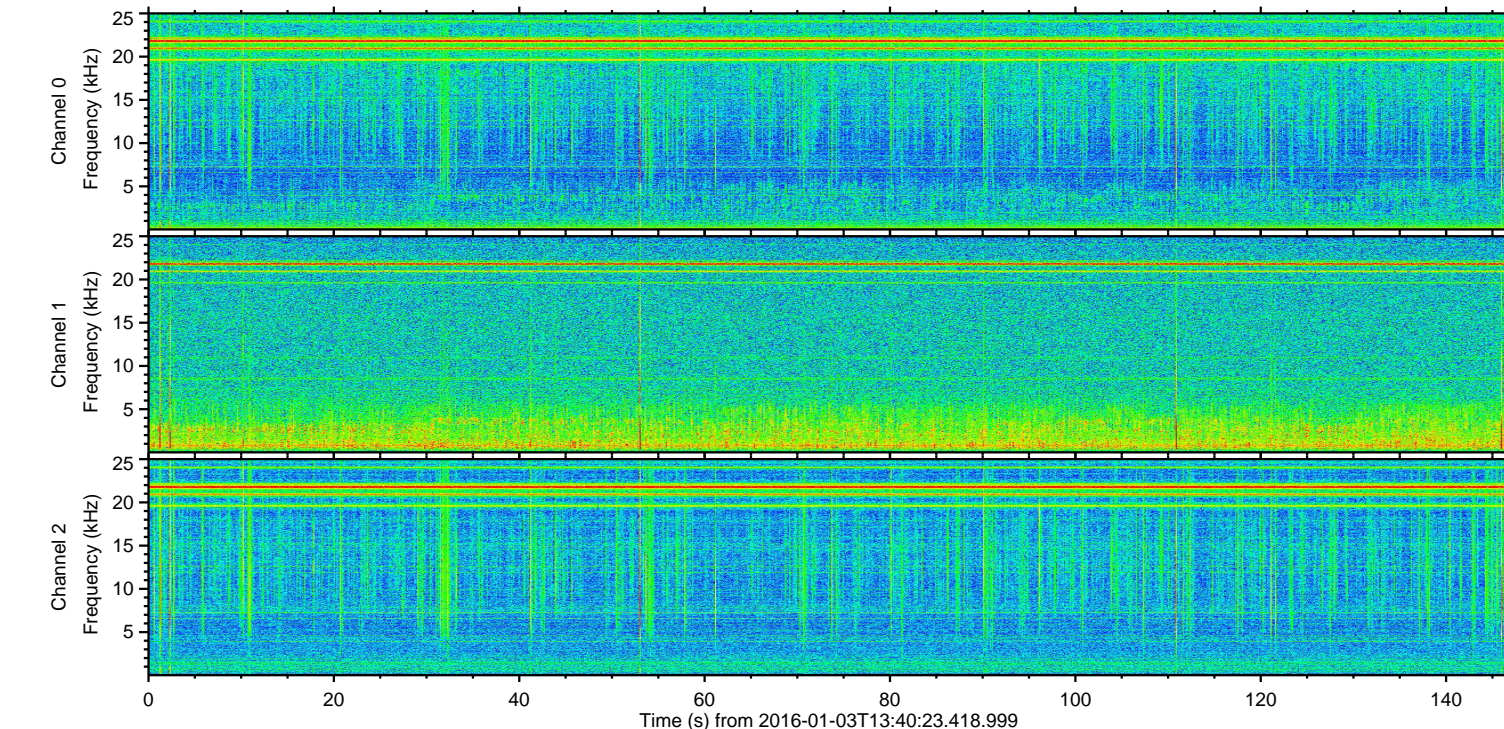
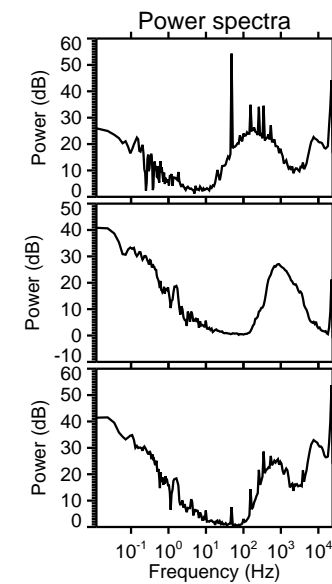
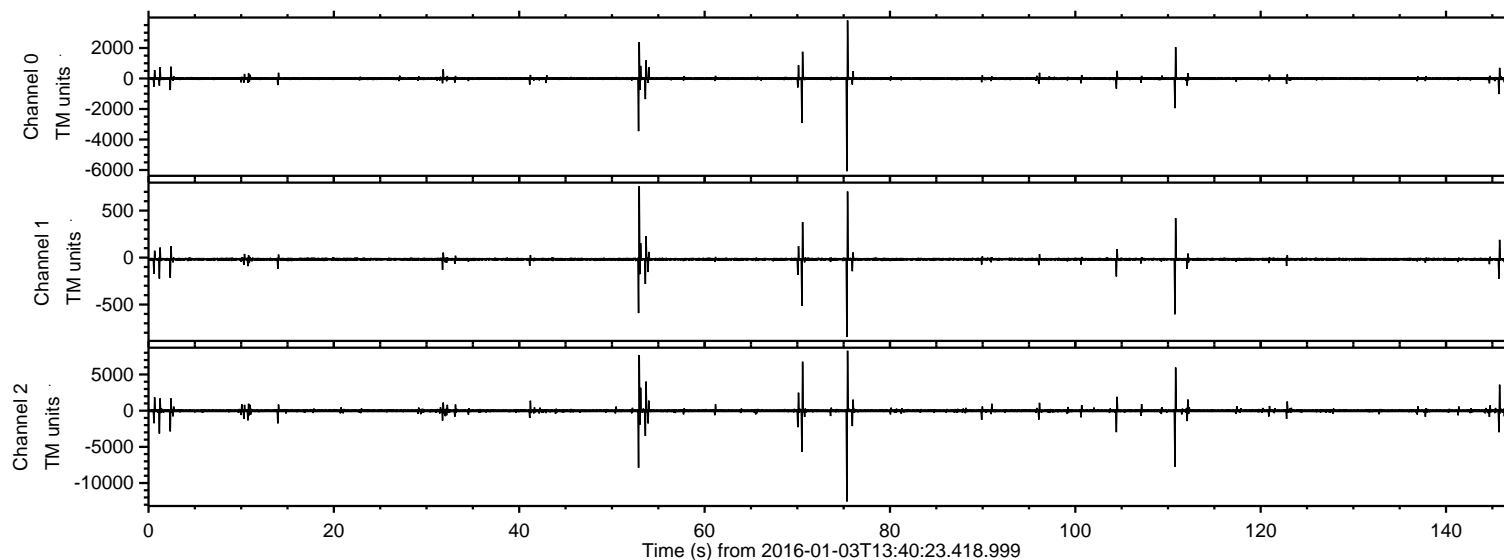


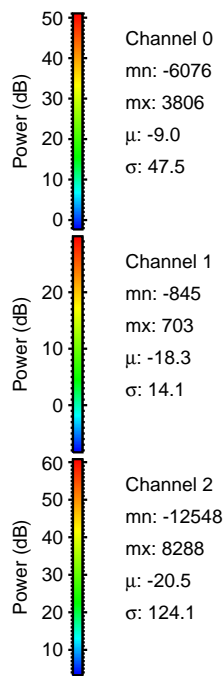
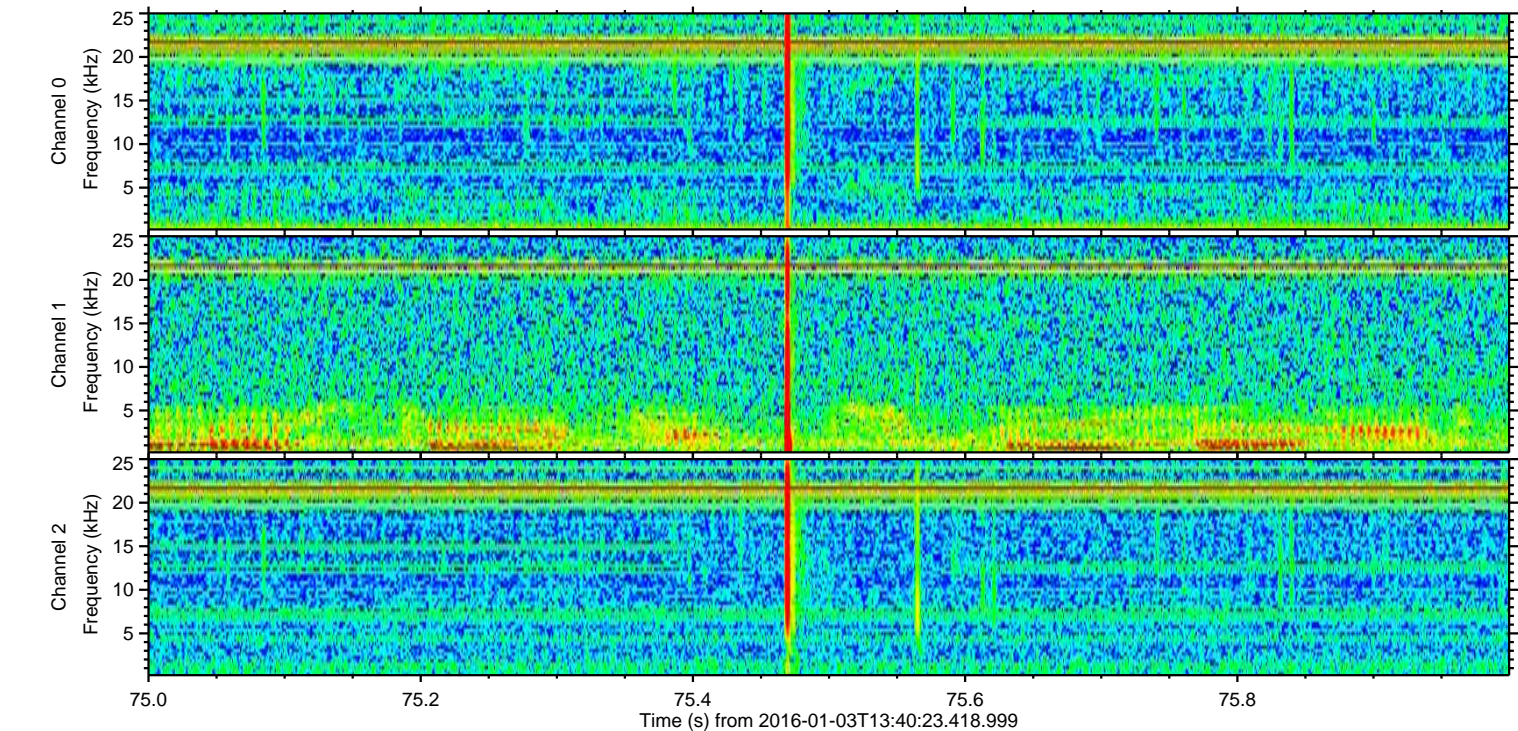
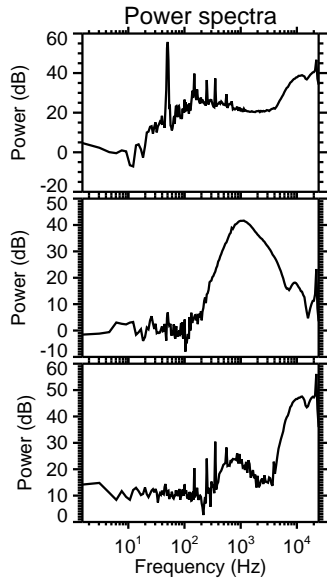
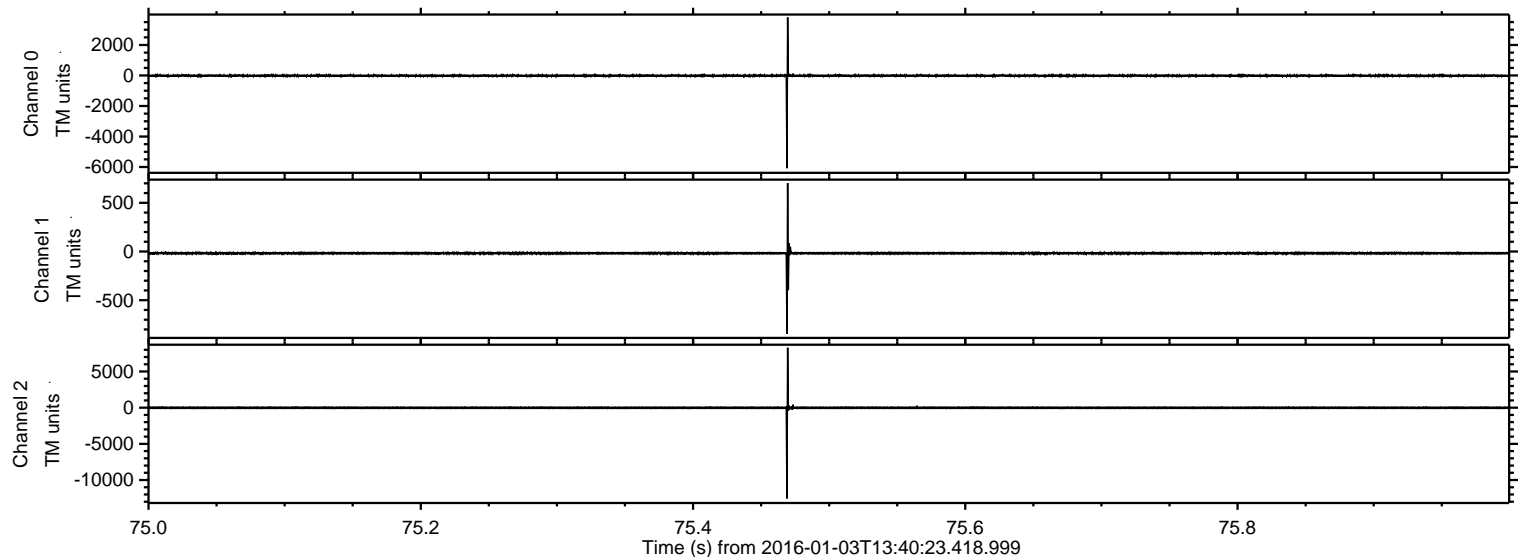
# ELMAVAN 3D WAVEFORMS (Measured data sampled at 50 kHz) 51000 packets of 144 samples from 2016-01-03T13:40:23.418.999.

Processed Mon Mar 21 20:27:07 2016 by ELM ver.2012-10-06 from 001\_\_elm20160103\_134022\_\_dat00.bin



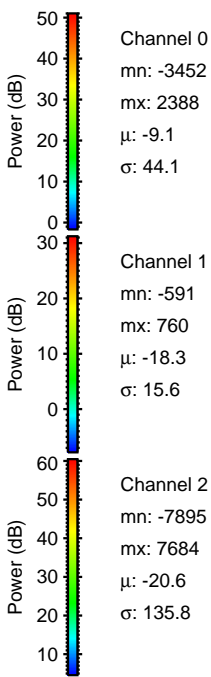
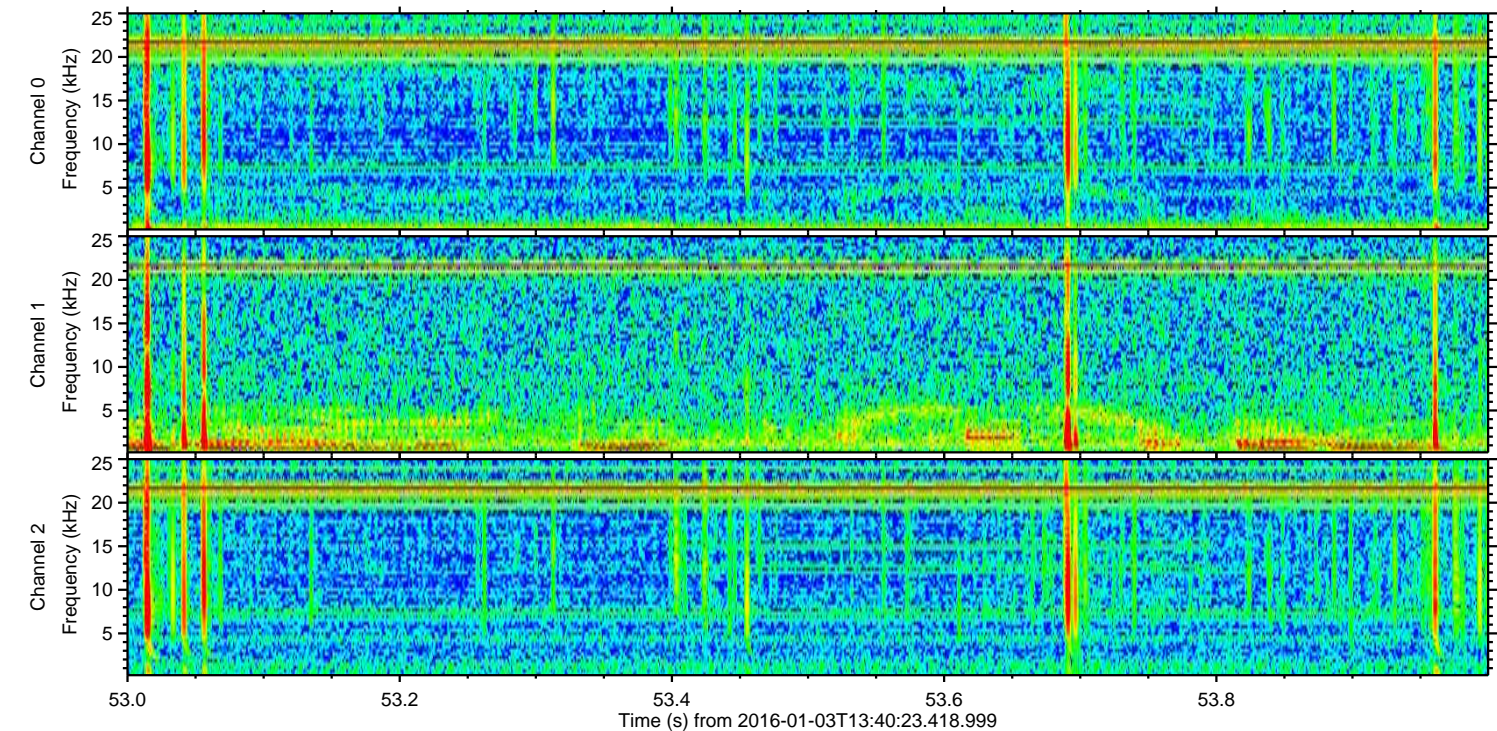
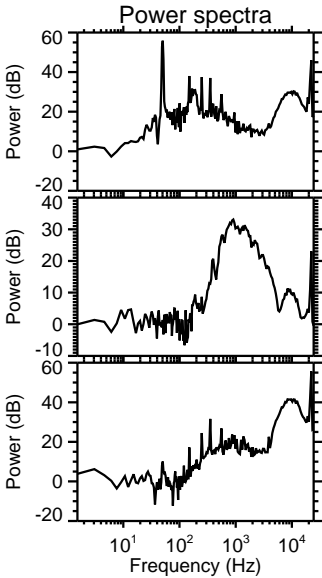
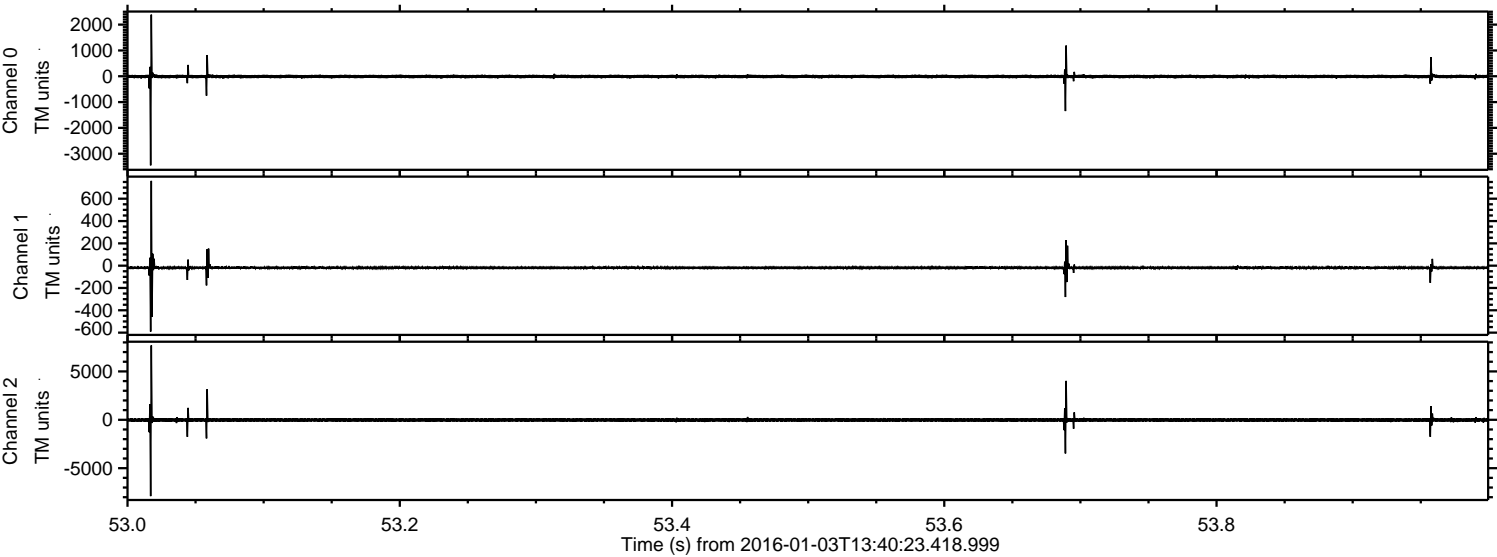


Processed Mon Mar 21 20:27:18 2016 by ELM ver.2012-10-06 from 001\_\_elm20160103\_134022\_\_dat00.bin





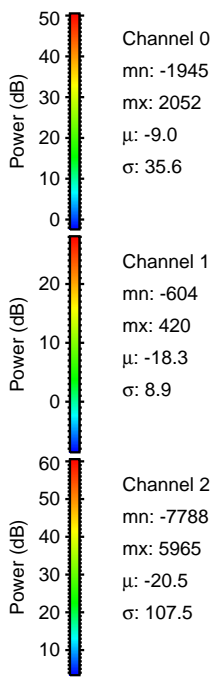
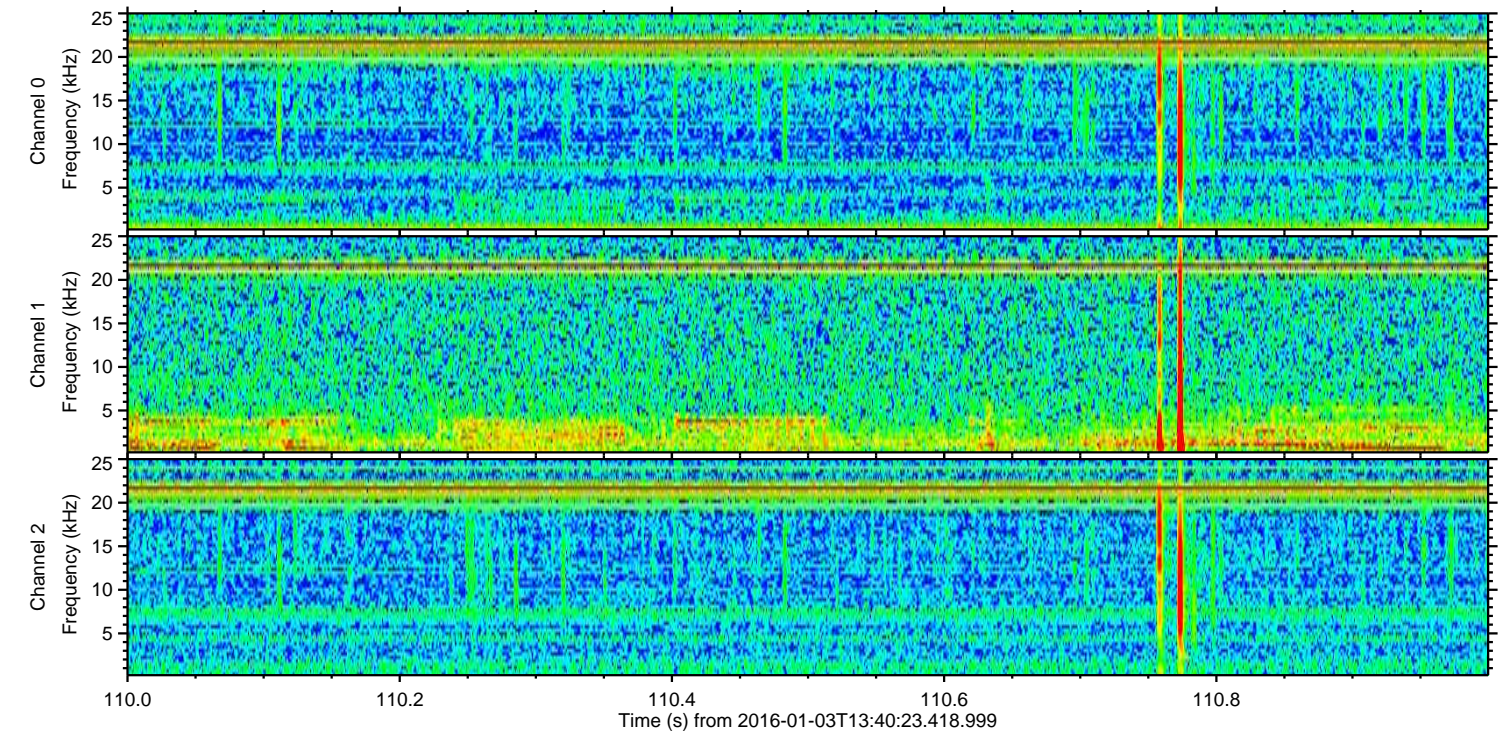
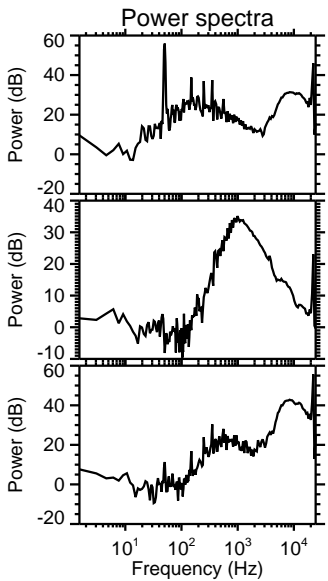
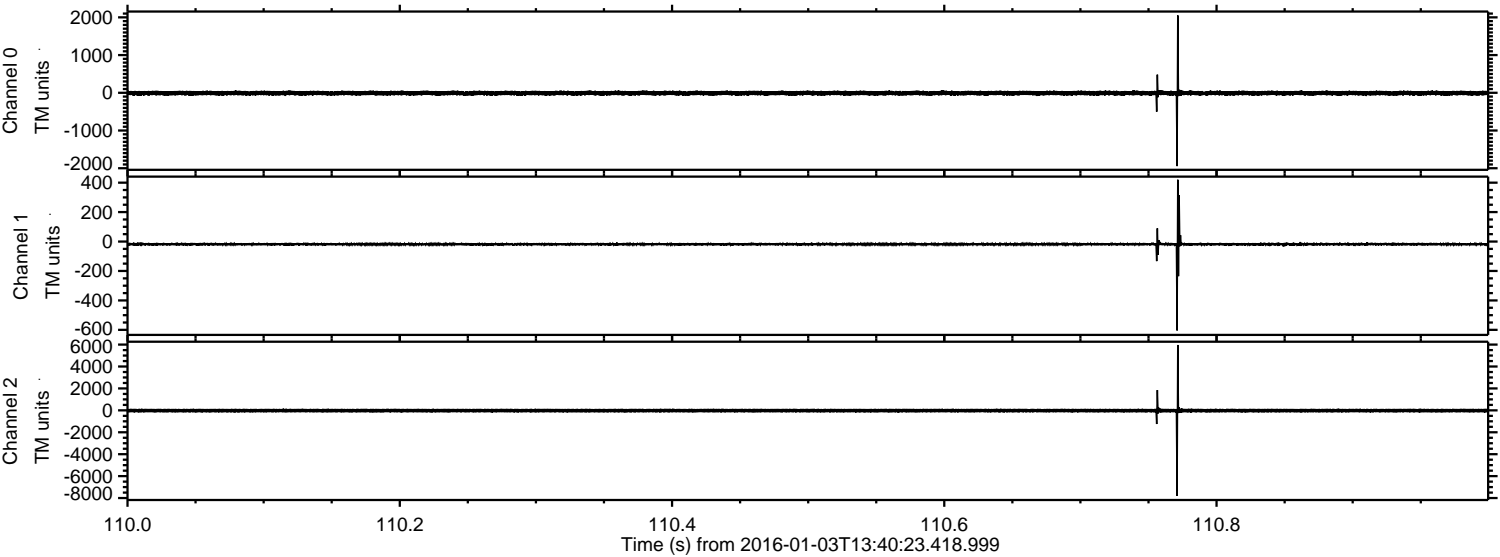
Processed Mon Mar 21 20:27:19 2016 by ELM ver.2012-10-06 from 001\_\_elm20160103\_134022\_\_dat00.bin





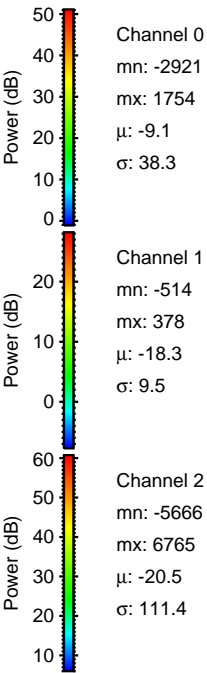
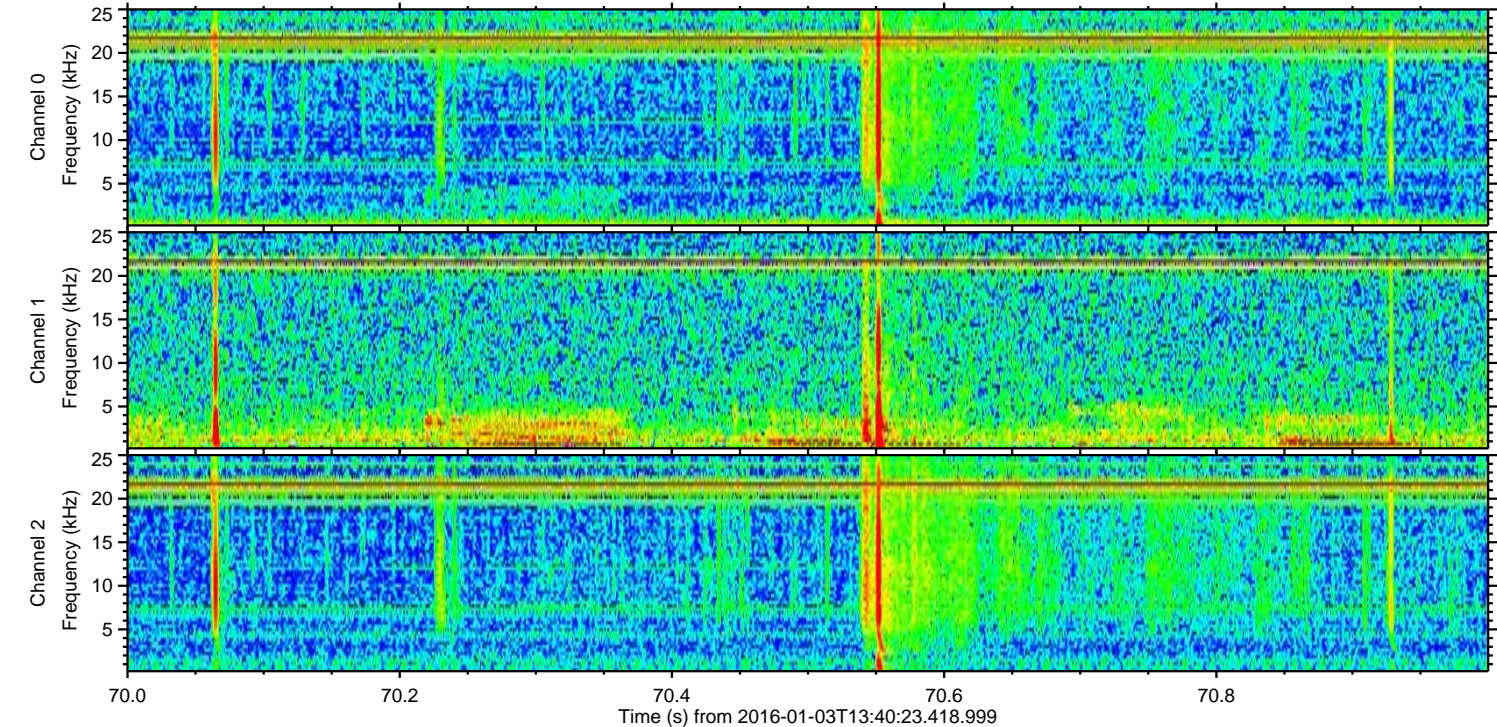
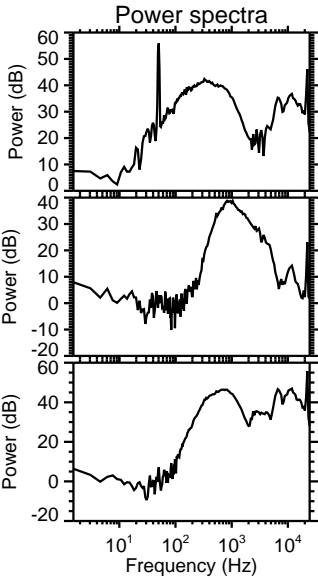
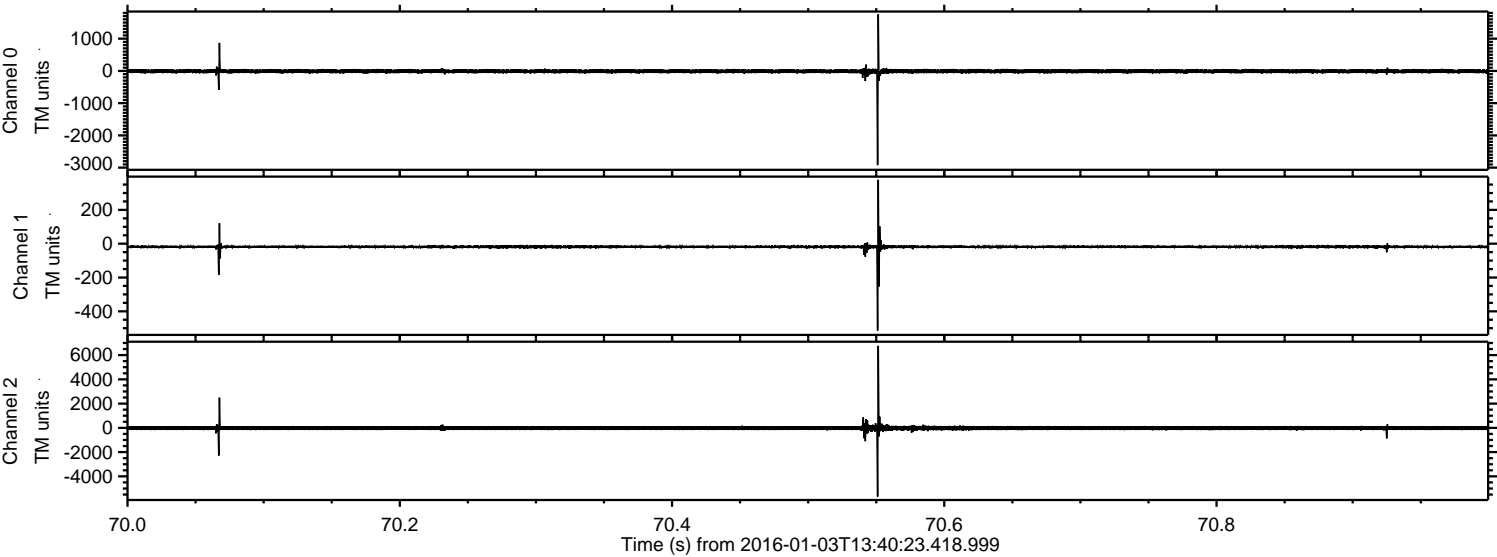
ELMAVAN 3D WAVEFORMS (Measured data sampled at 50 kHz) 51000 packets of 144 samples from 2016-01-03T13:40:23.418.999. Part 111/147

Processed Mon Mar 21 20:27:20 2016 by ELM ver.2012-10-06 from 001\_\_elm20160103\_134022\_\_dat00.bin





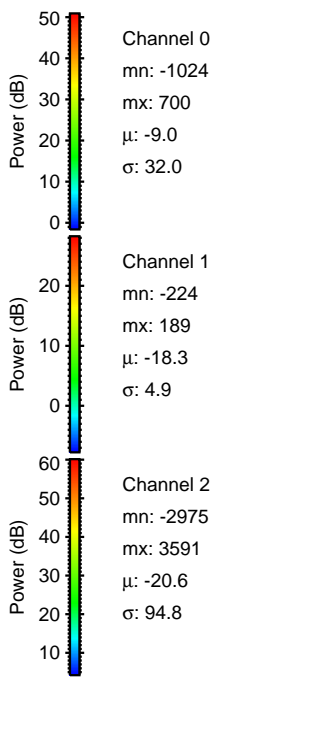
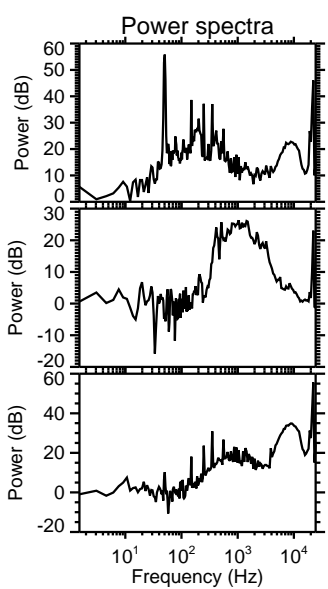
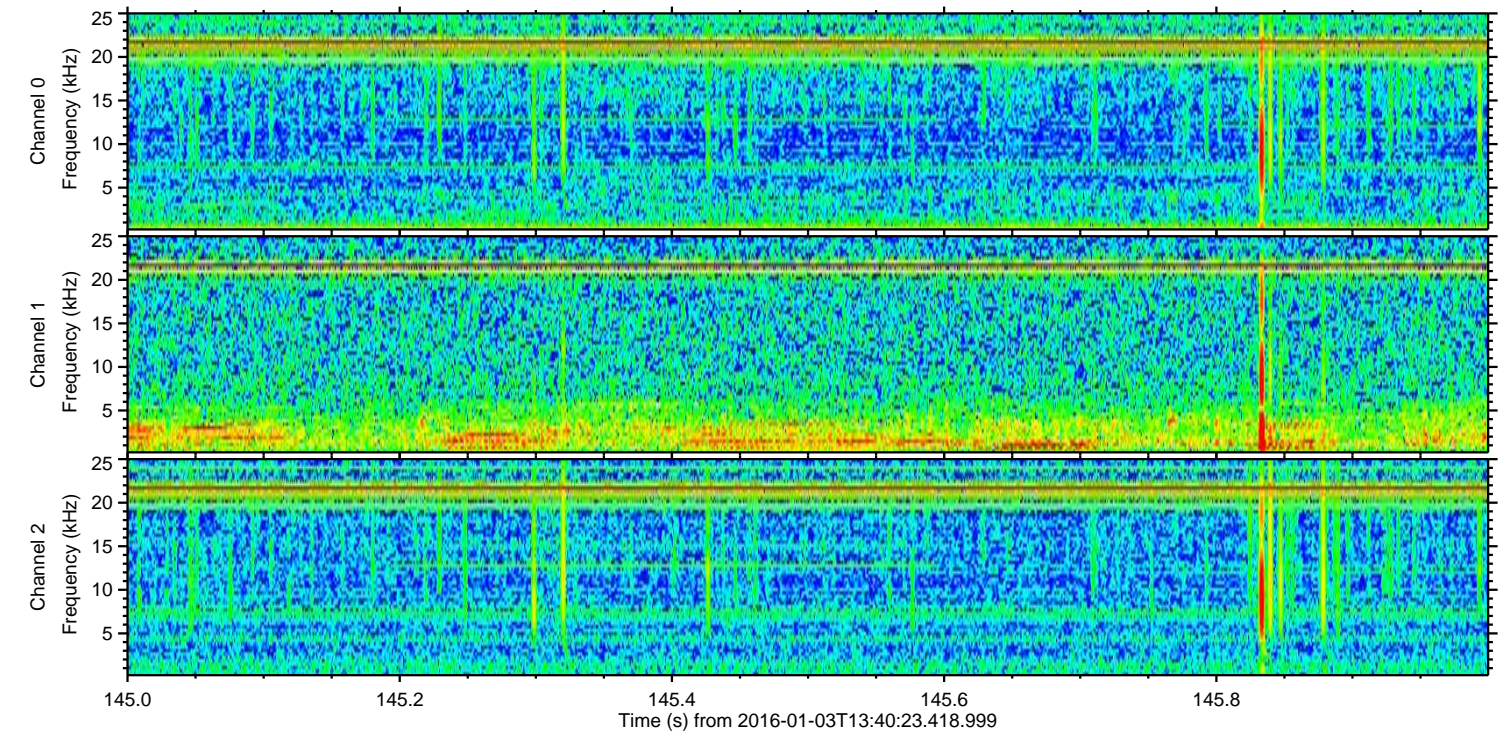
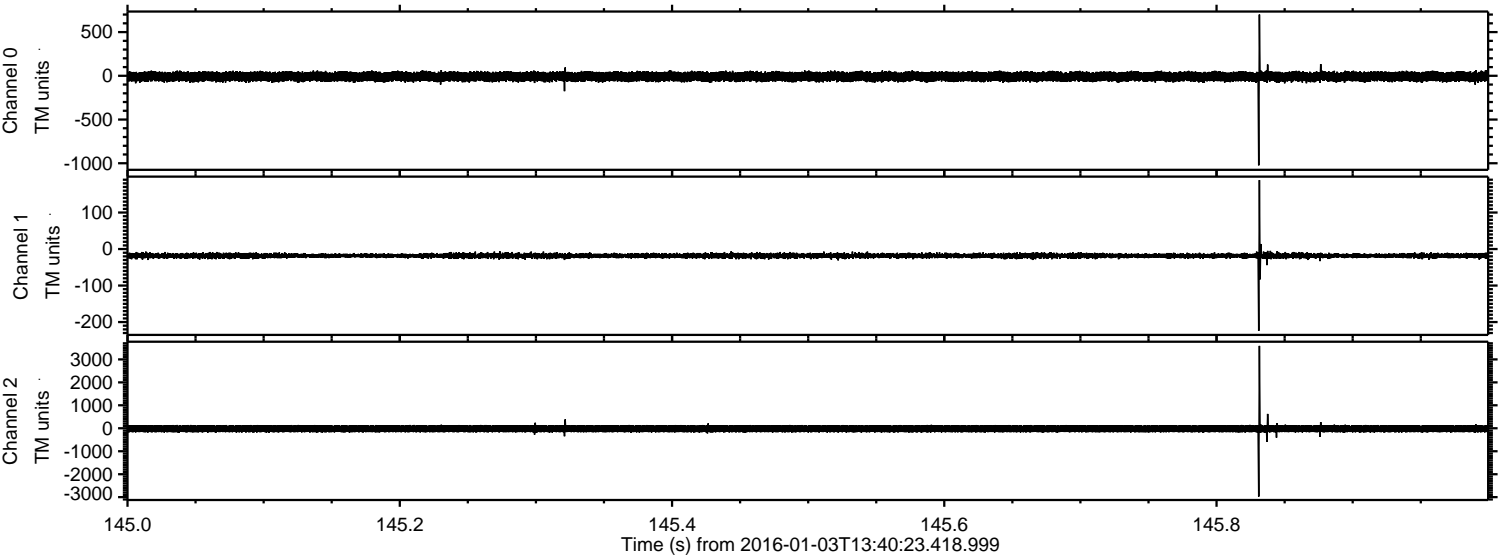
Processed Mon Mar 21 20:27:21 2016 by ELM ver.2012-10-06 from 001\_\_elm20160103\_134022\_\_dat00.bin





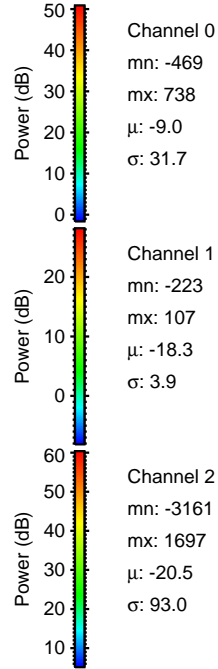
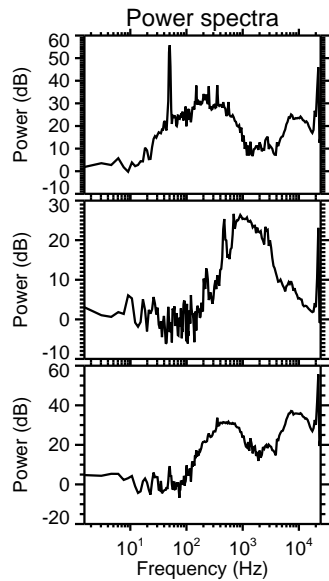
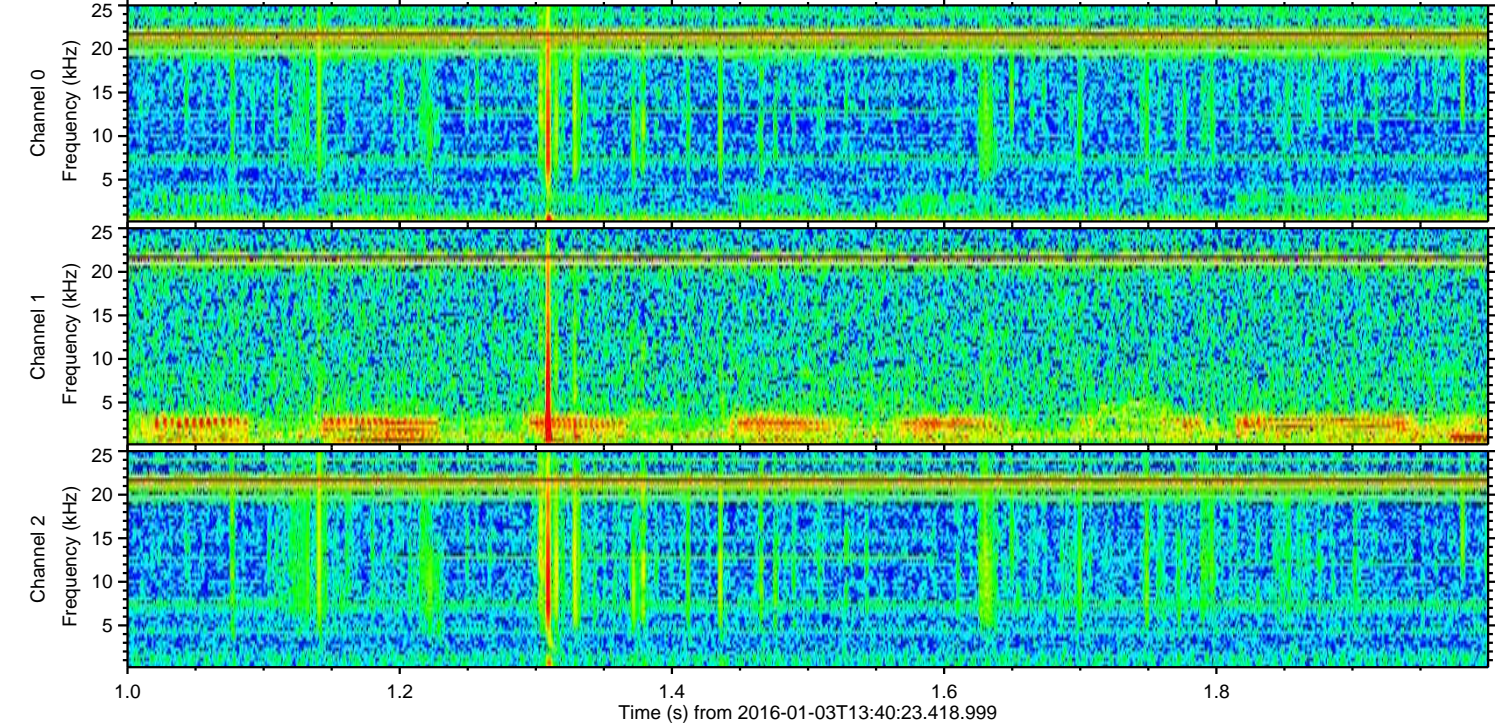
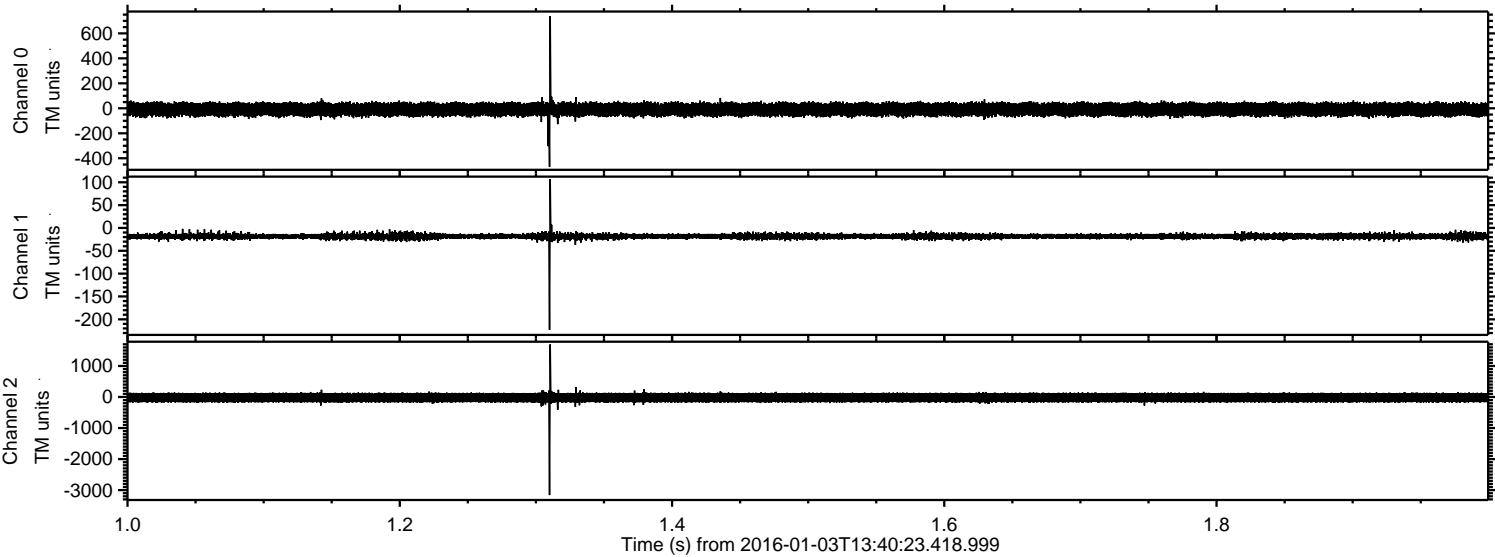
ELMAVAN 3D WAVEFORMS (Measured data sampled at 50 kHz) 51000 packets of 144 samples from 2016-01-03T13:40:23.418.999. Part 146/147

Processed Mon Mar 21 20:27:22 2016 by ELM ver.2012-10-06 from 001\_\_elm20160103\_134022\_\_dat00.bin





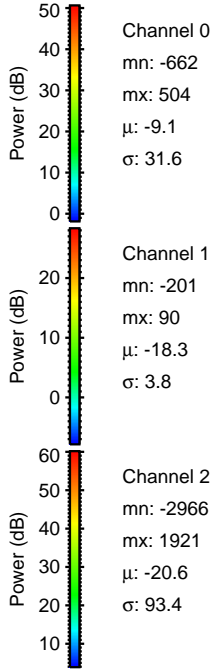
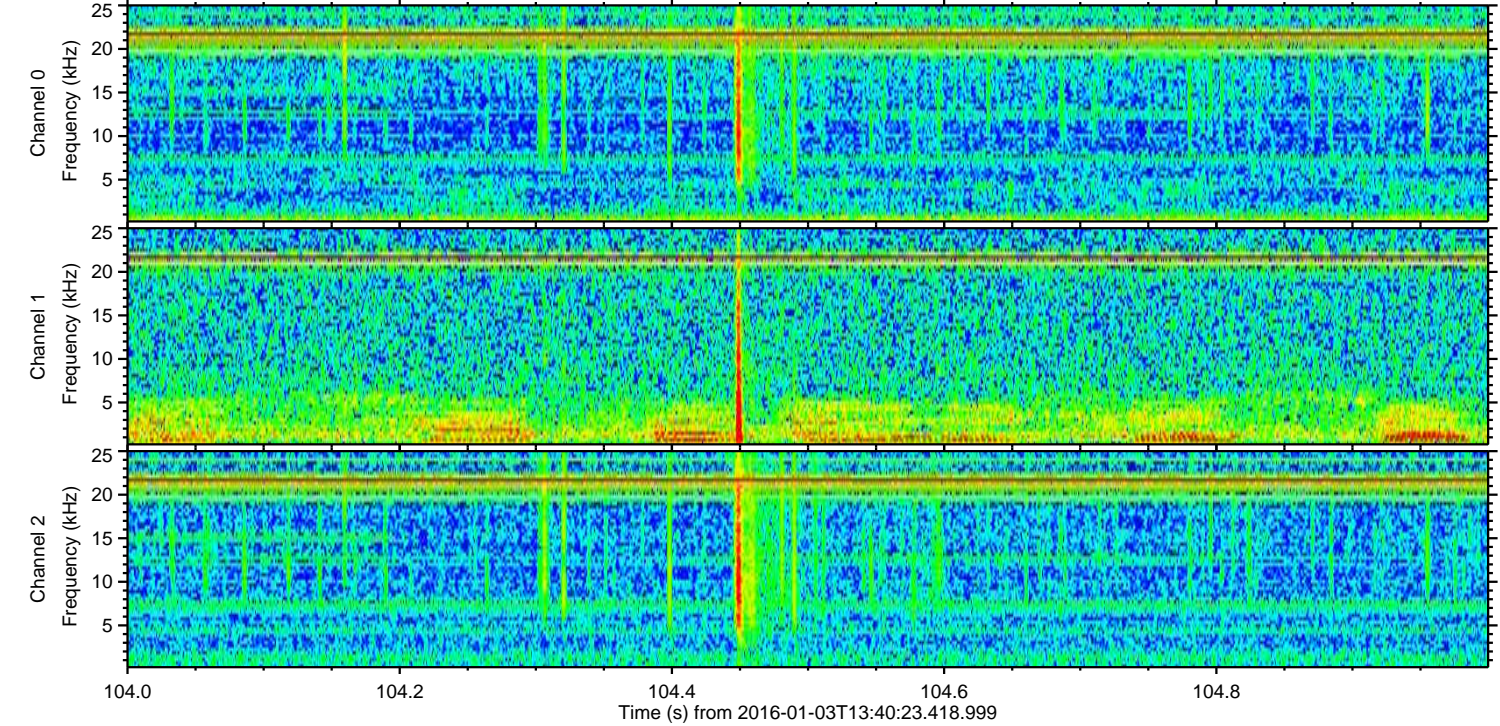
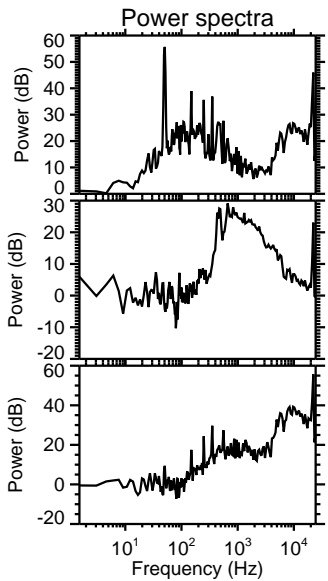
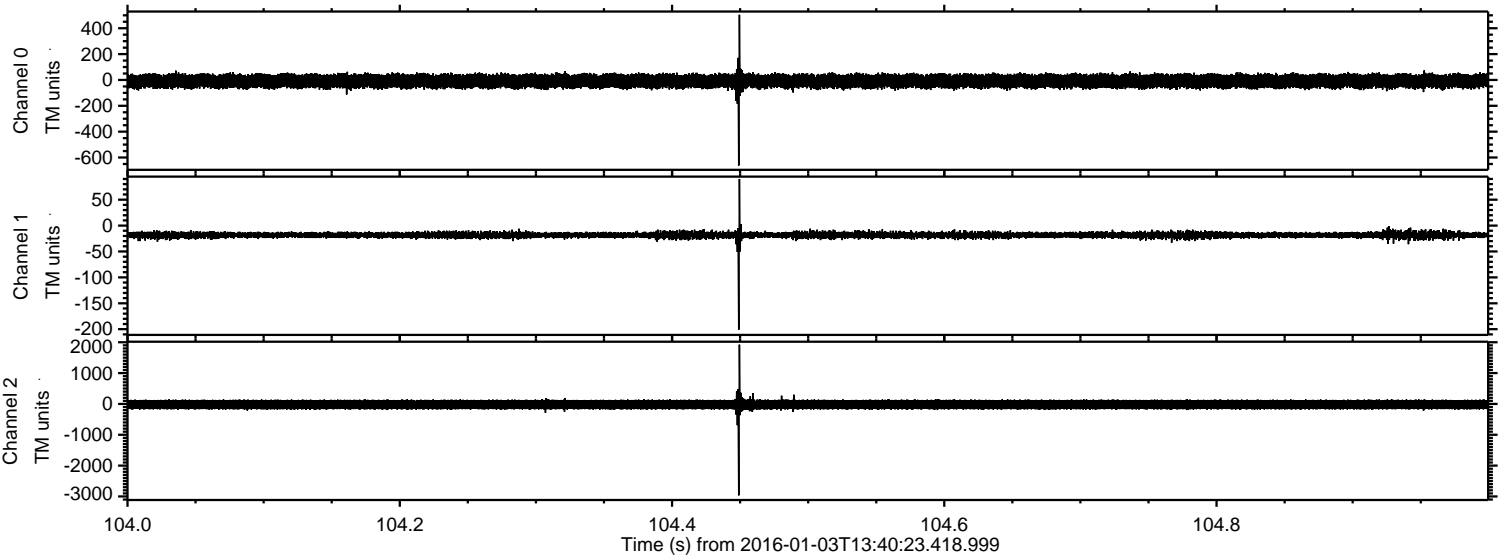
Processed Mon Mar 21 20:27:23 2016 by ELM ver.2012-10-06 from 001\_\_elm20160103\_134022\_\_dat00.bin





ELMAVAN 3D WAVEFORMS (Measured data sampled at 50 kHz) 51000 packets of 144 samples from 2016-01-03T13:40:23.418.999. Part 105/147

Processed Mon Mar 21 20:27:24 2016 by ELM ver.2012-10-06 from 001\_\_elm20160103\_134022\_\_dat00.bin



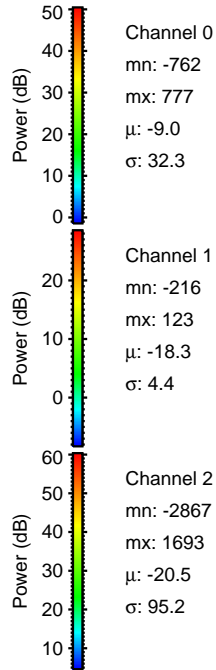
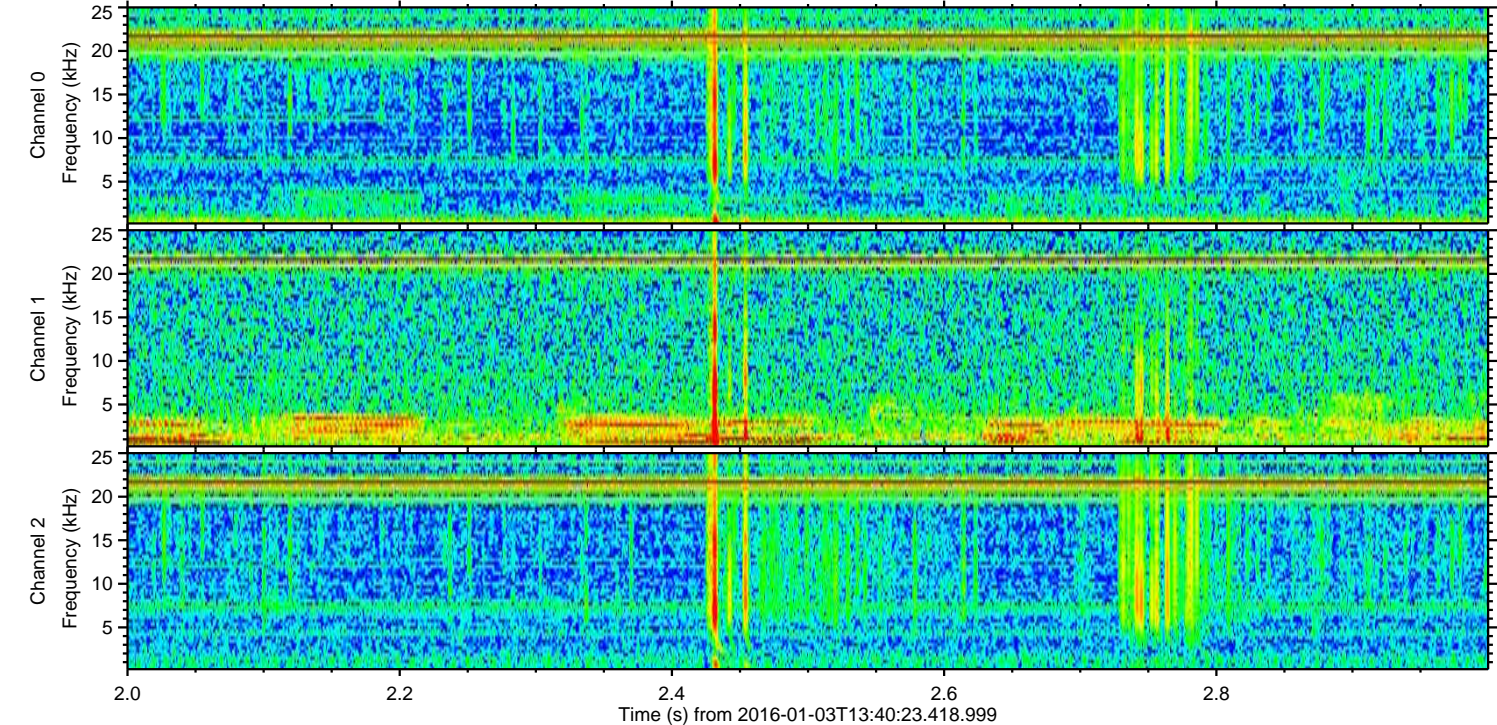
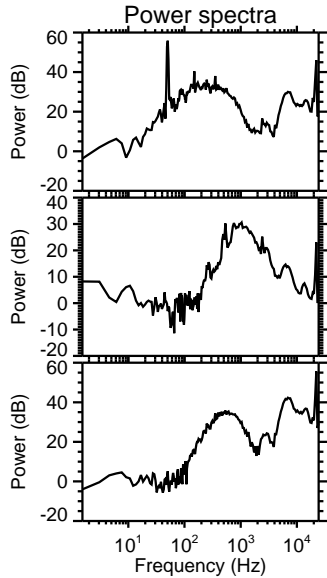
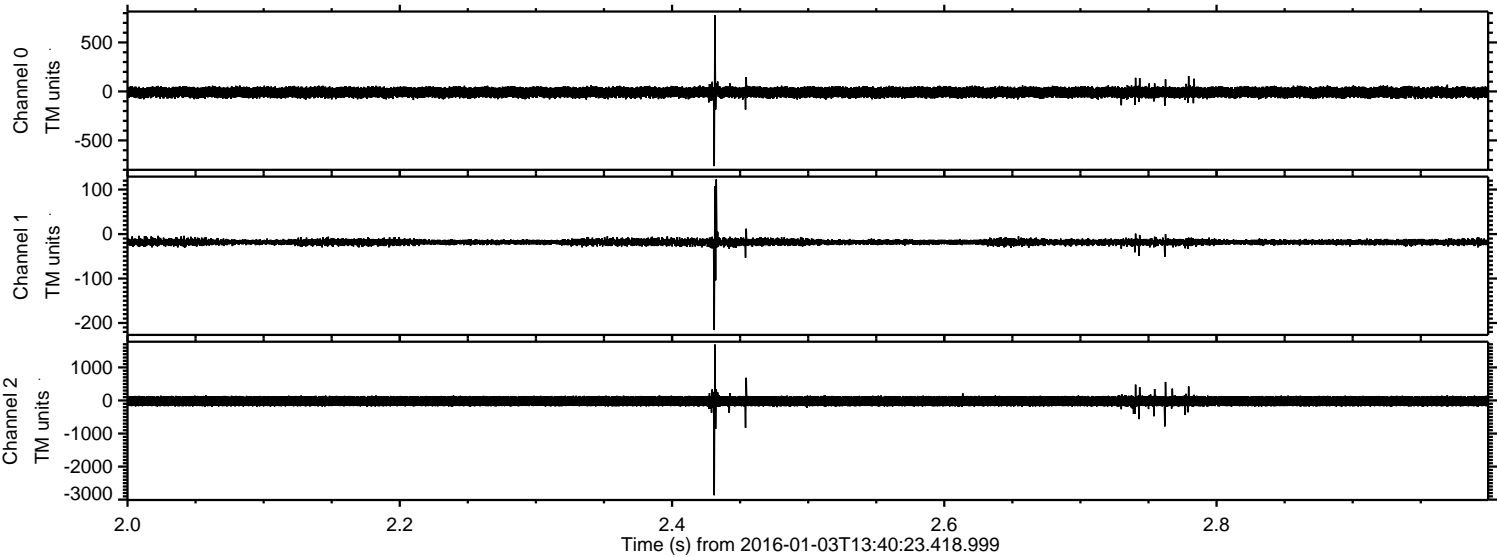
Channel 0  
mn: -662  
mx: 504  
 $\mu$ : -9.1  
 $\sigma$ : 31.6

Channel 1  
mn: -201  
mx: 90  
 $\mu$ : -18.3  
 $\sigma$ : 3.8

Channel 2  
mn: -2966  
mx: 1921  
 $\mu$ : -20.6  
 $\sigma$ : 93.4

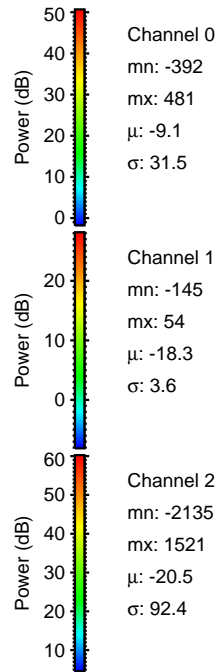
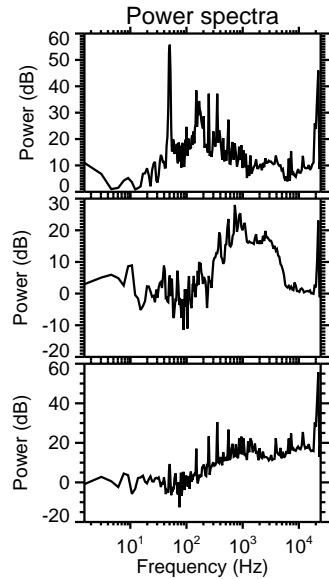
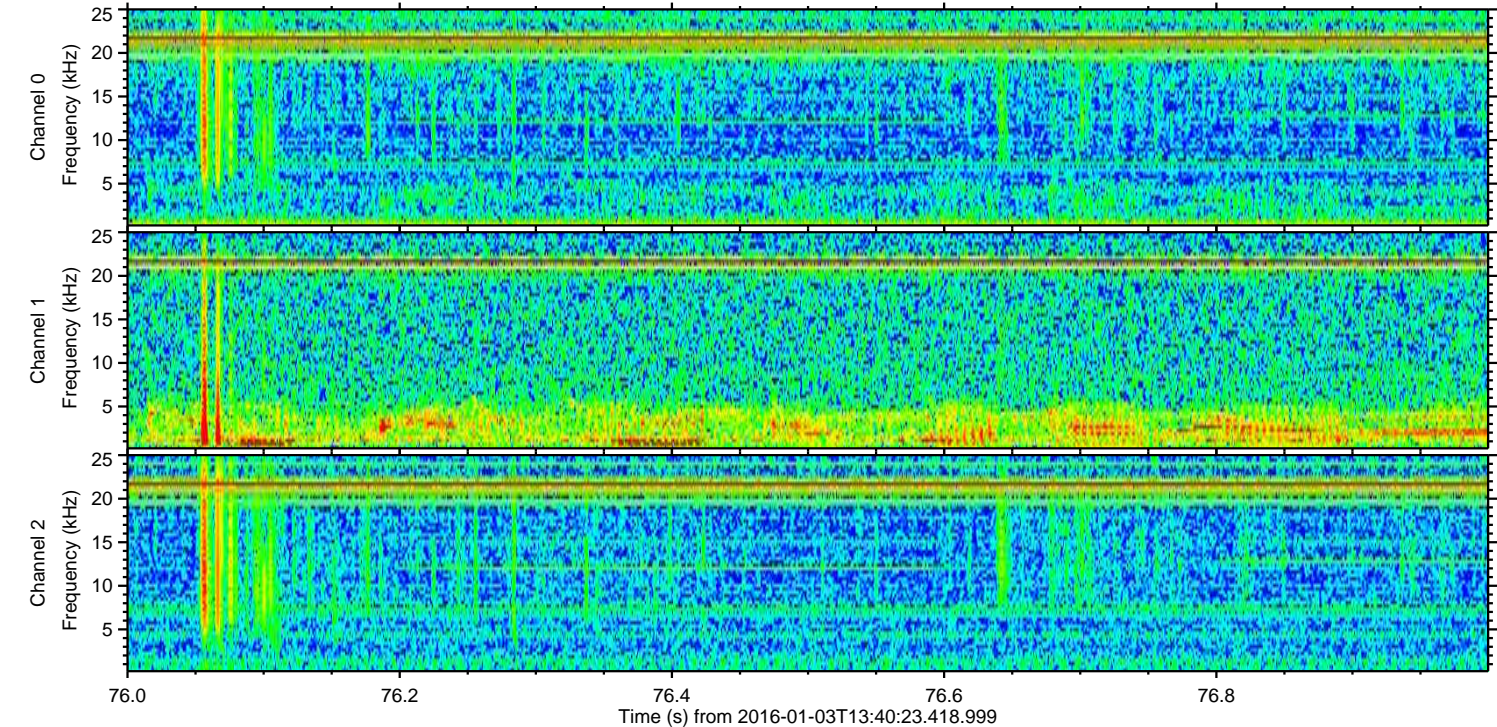
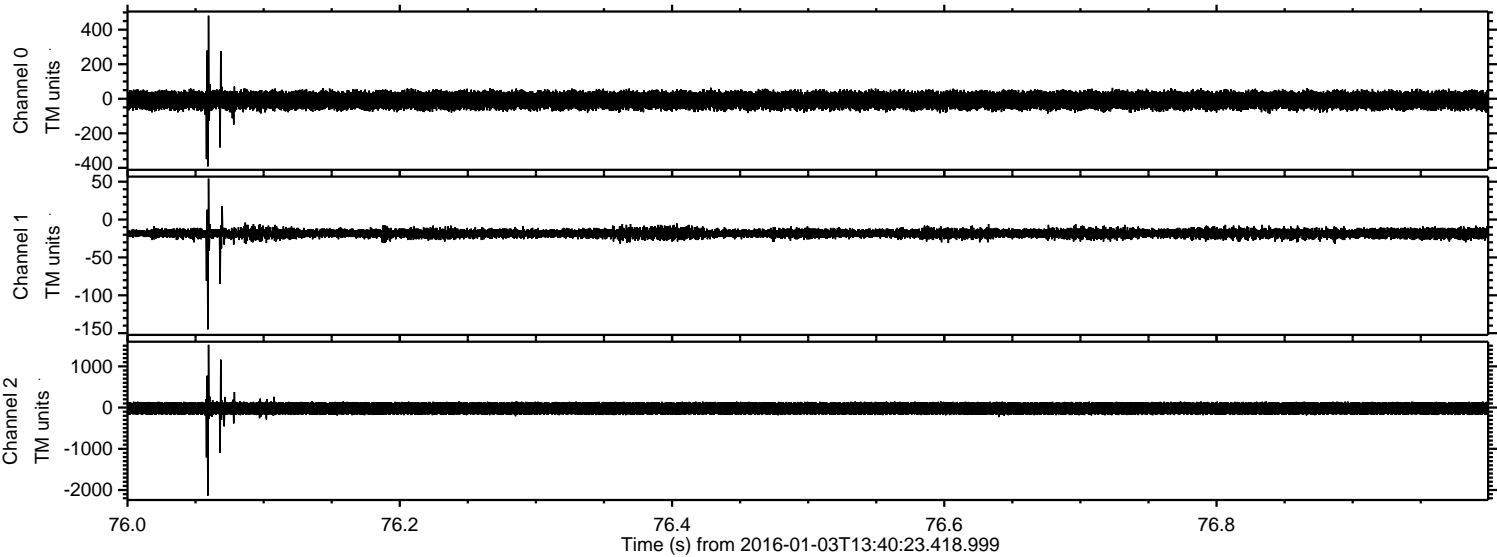


Processed Mon Mar 21 20:27:25 2016 by ELM ver.2012-10-06 from 001\_\_elm20160103\_134022\_\_dat00.bin





Processed Mon Mar 21 20:27:26 2016 by ELM ver.2012-10-06 from 001\_\_elm20160103\_134022\_\_dat00.bin





Processed Mon Mar 21 20:27:27 2016 by ELM ver.2012-10-06 from 001\_\_elm20160103\_134022\_\_dat00.bin

