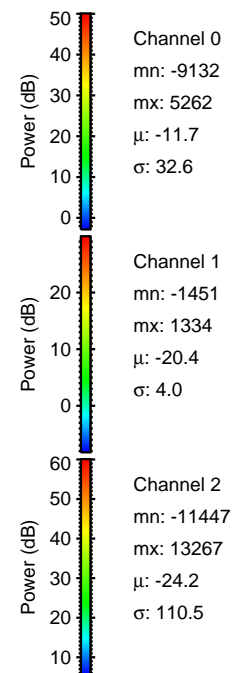
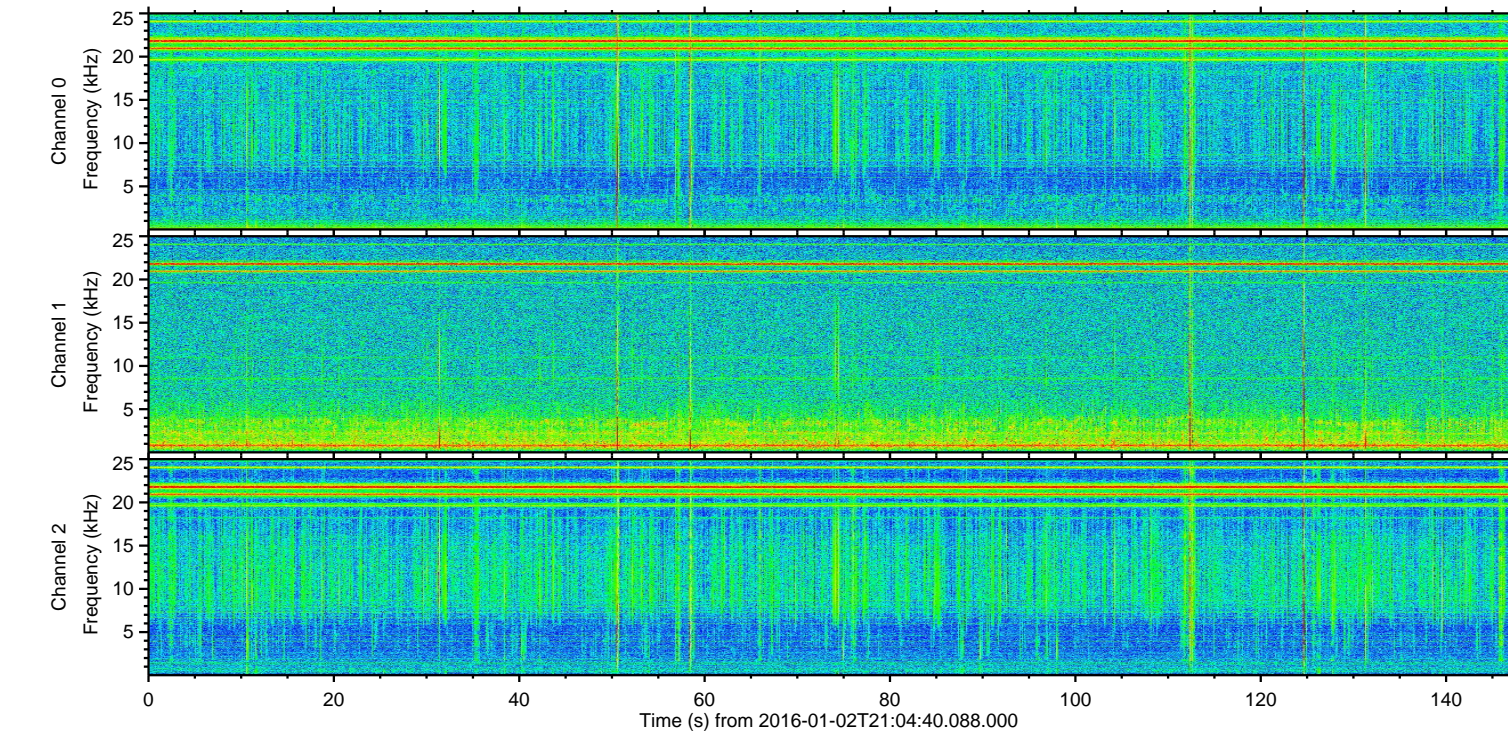
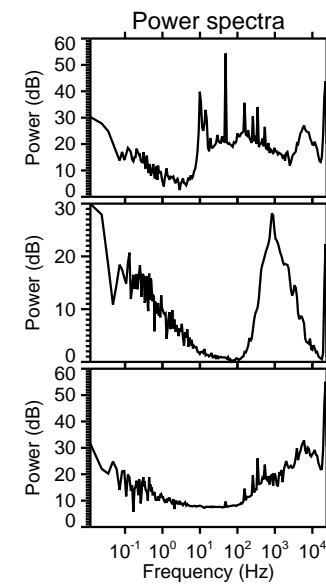
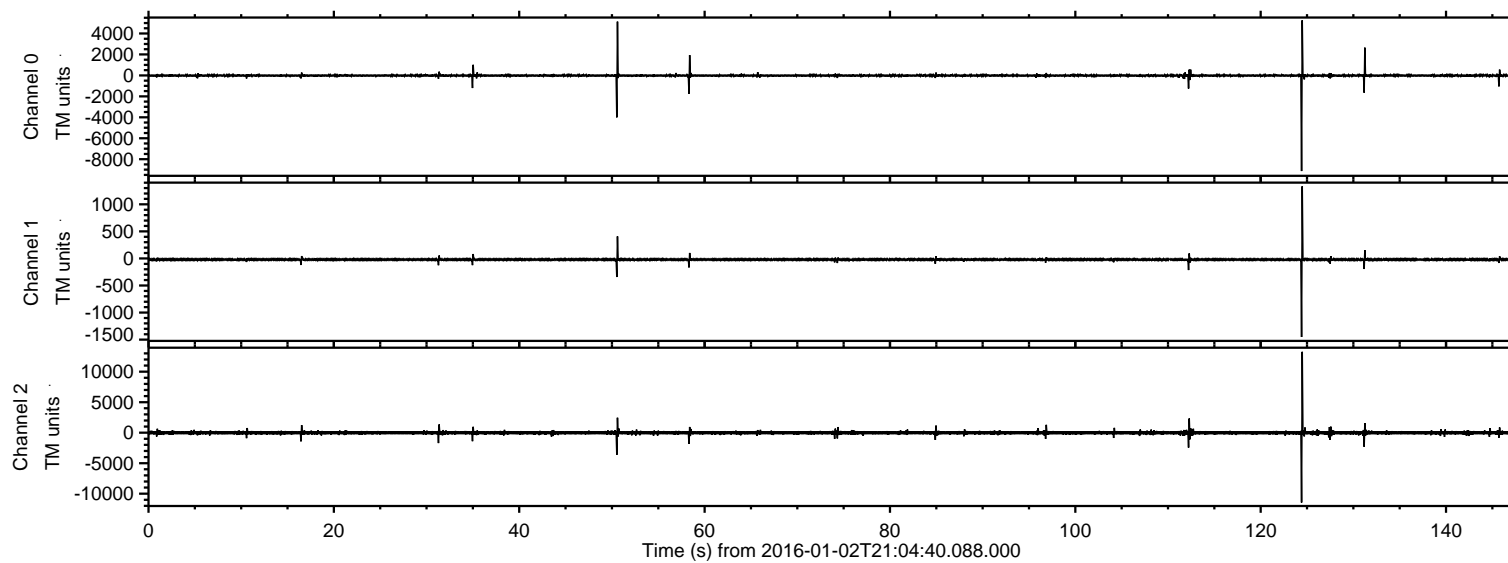


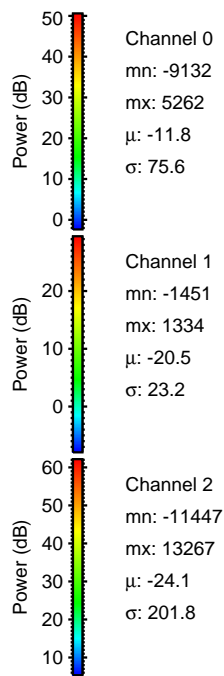
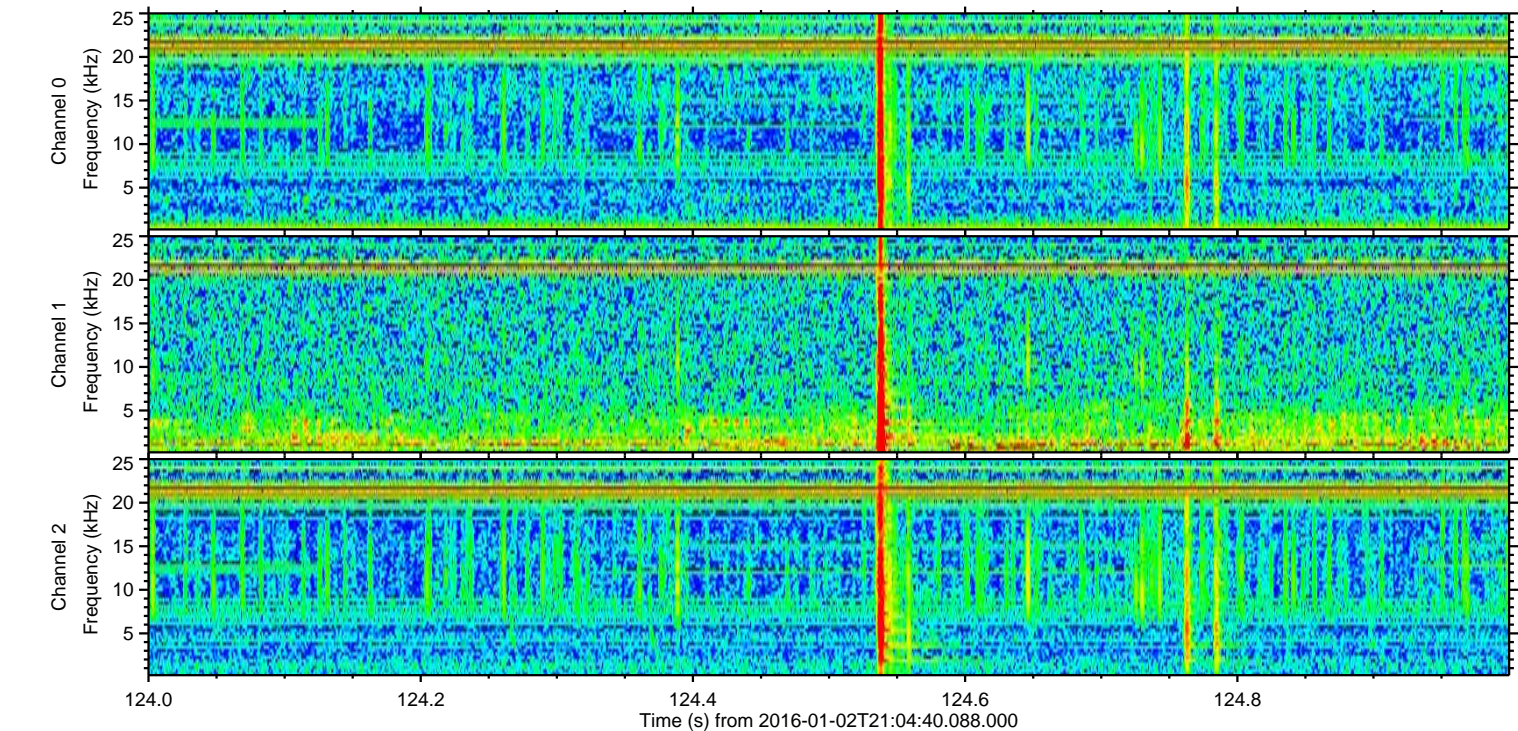
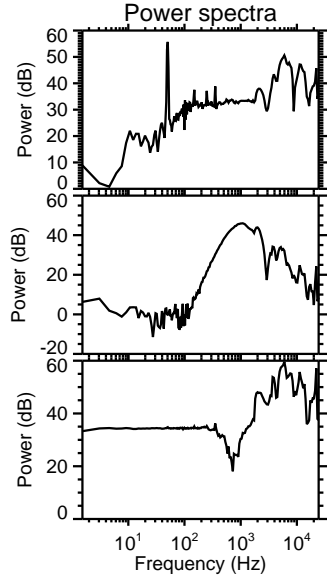
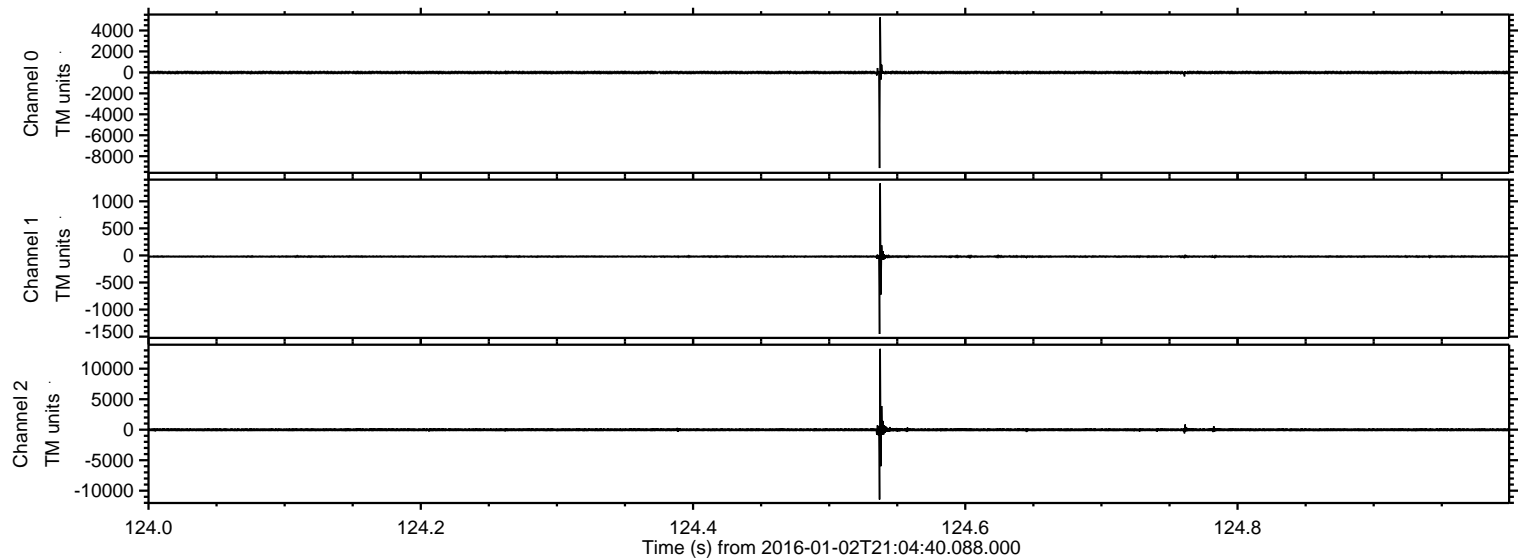
ELMAVAN 3D WAVEFORMS (Measured data sampled at 50 kHz) 51000 packets of 144 samples from 2016-01-02T21:04:40.088.000.

Processed Mon Mar 21 16:38:57 2016 by ELM ver.2012-10-06 from 001__elm20160102_210439__dat00.bin

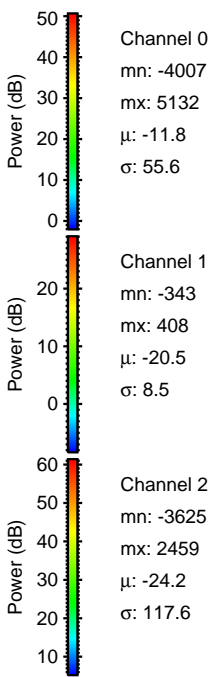
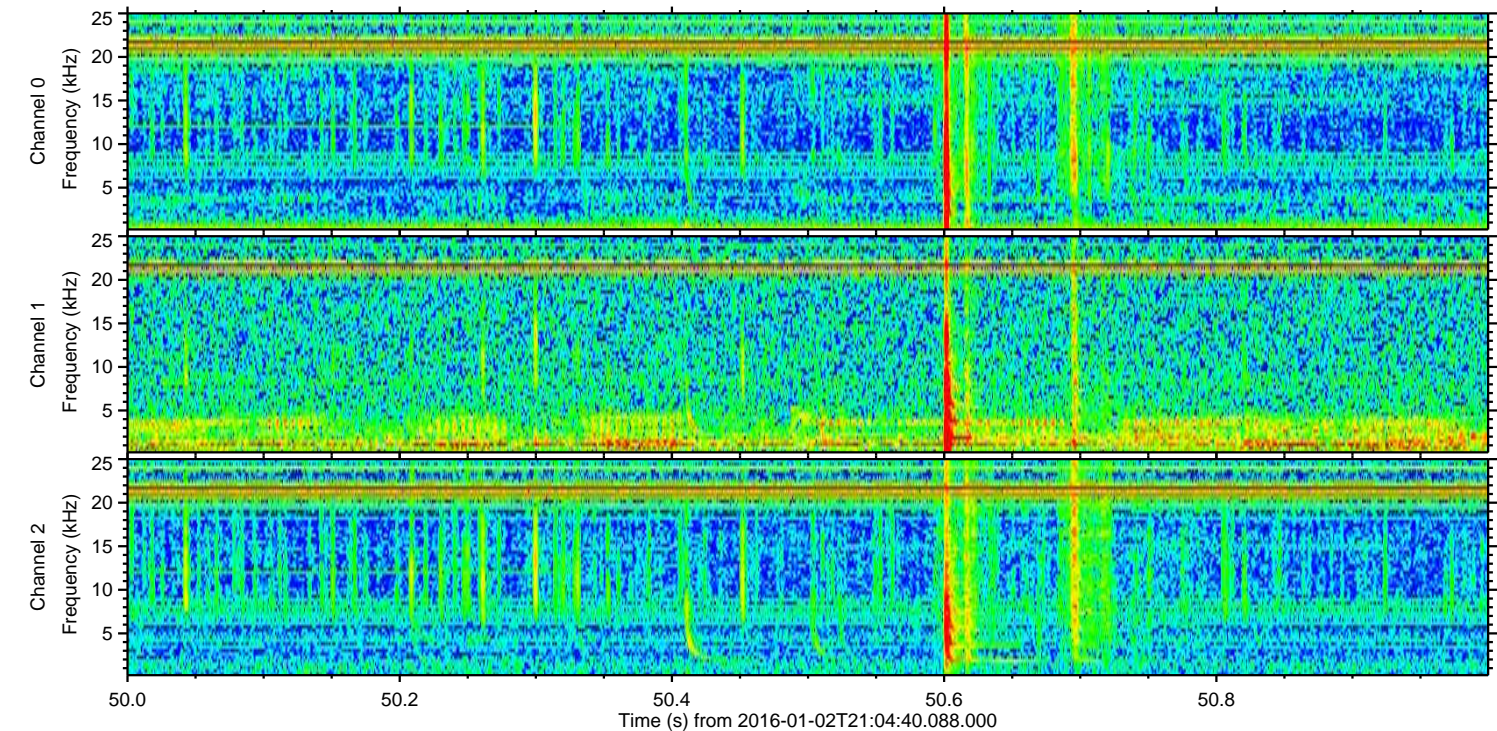
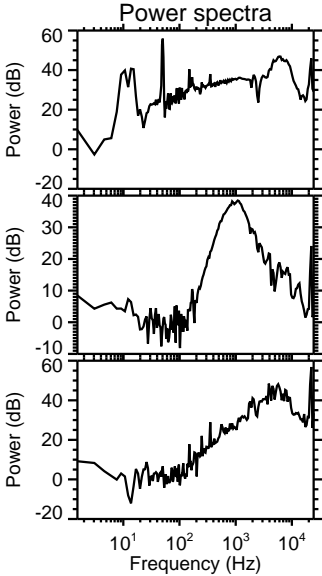
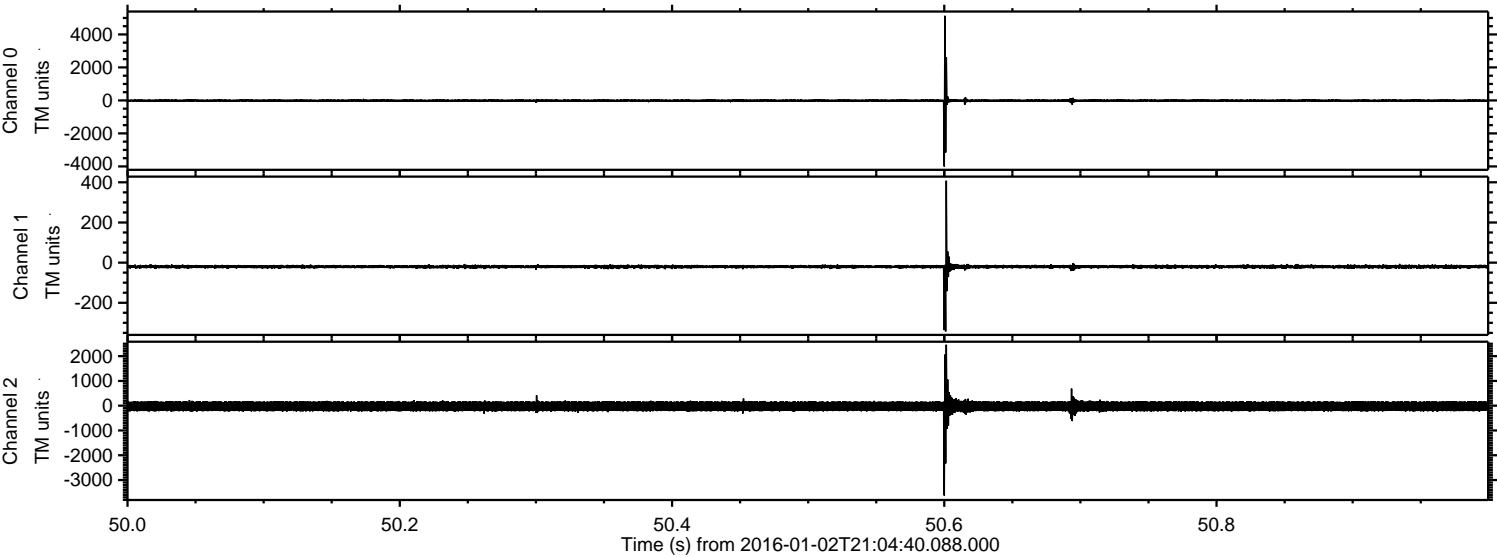


ELMAVAN 3D WAVEFORMS (Measured data sampled at 50 kHz) 51000 packets of 144 samples from 2016-01-02T21:04:40.088.000. Part 125/147

Processed Mon Mar 21 16:39:08 2016 by ELM ver.2012-10-06 from 001__elm20160102_210439__dat00.bin

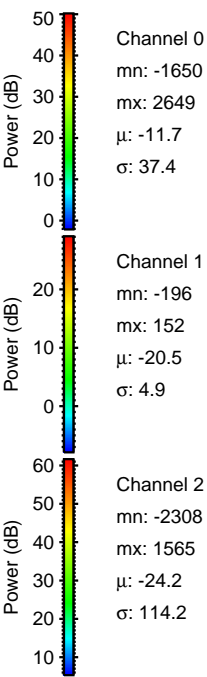
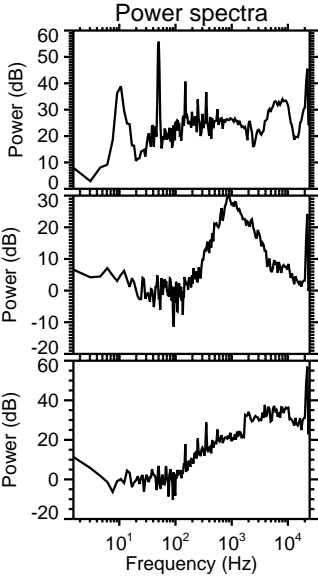
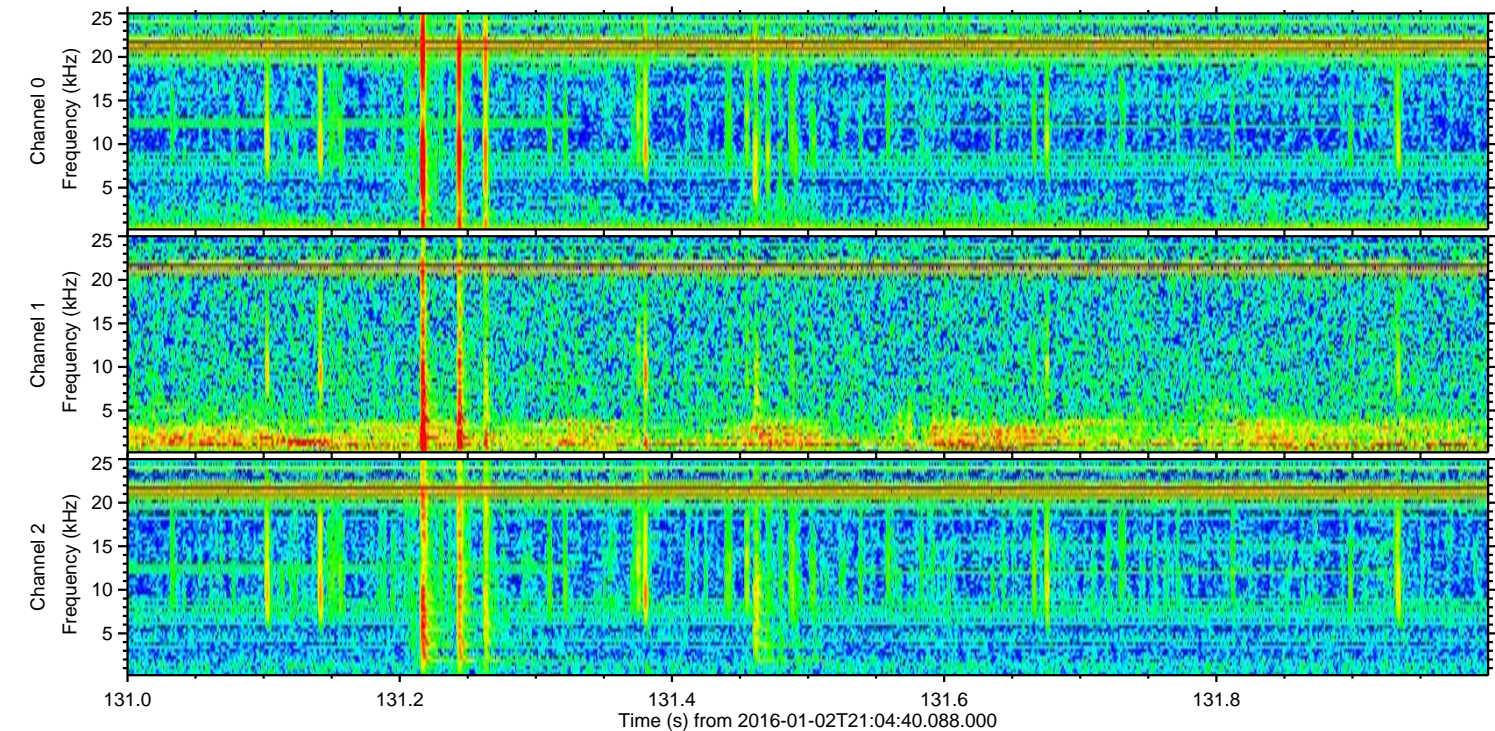
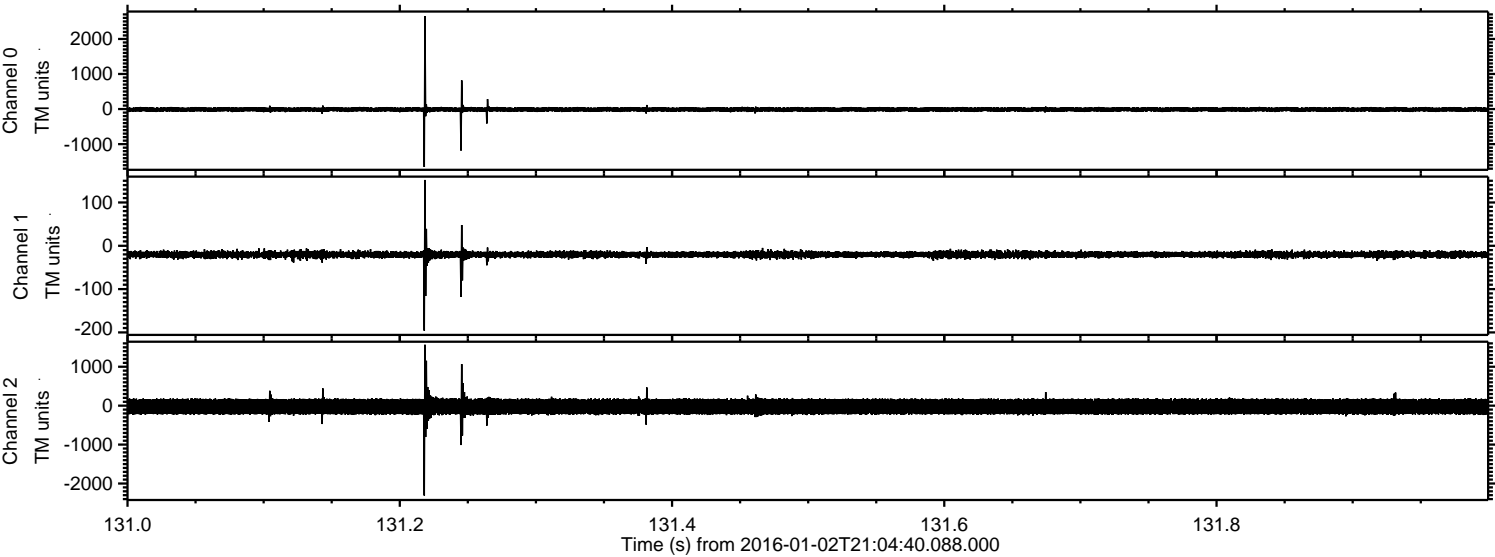


Processed Mon Mar 21 16:39:09 2016 by ELM ver.2012-10-06 from 001__elm20160102_210439__dat00.bin



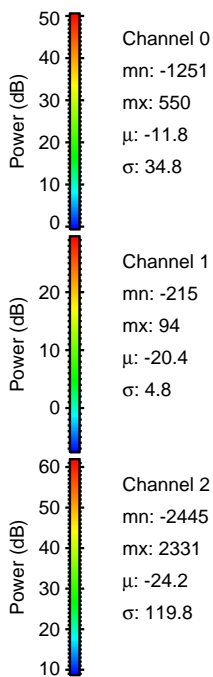
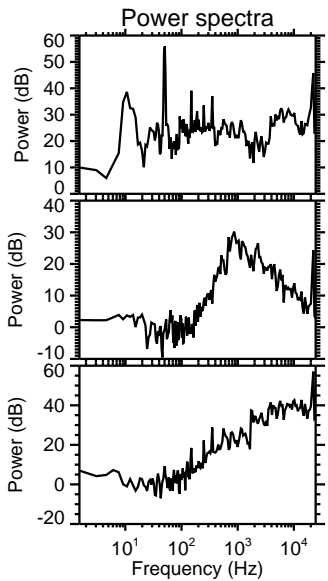
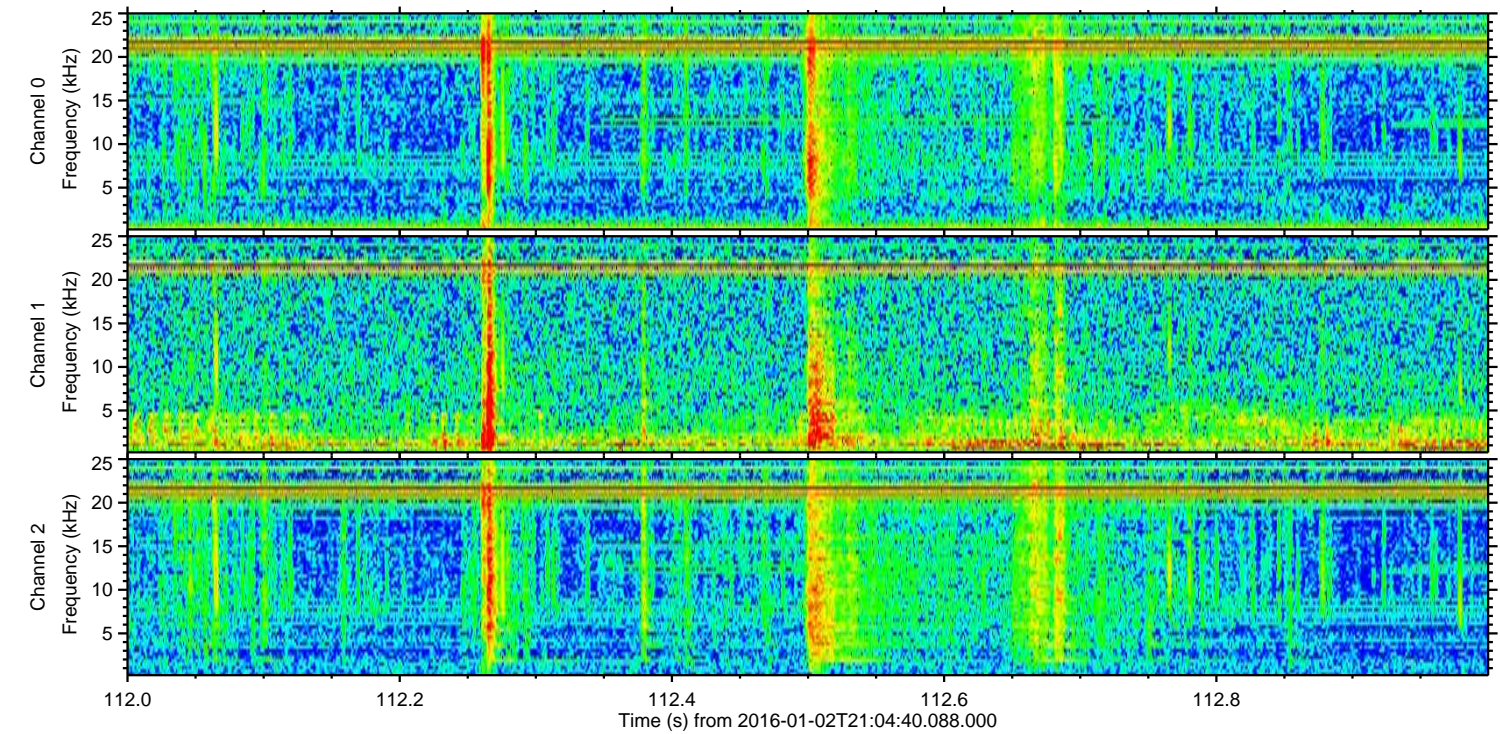
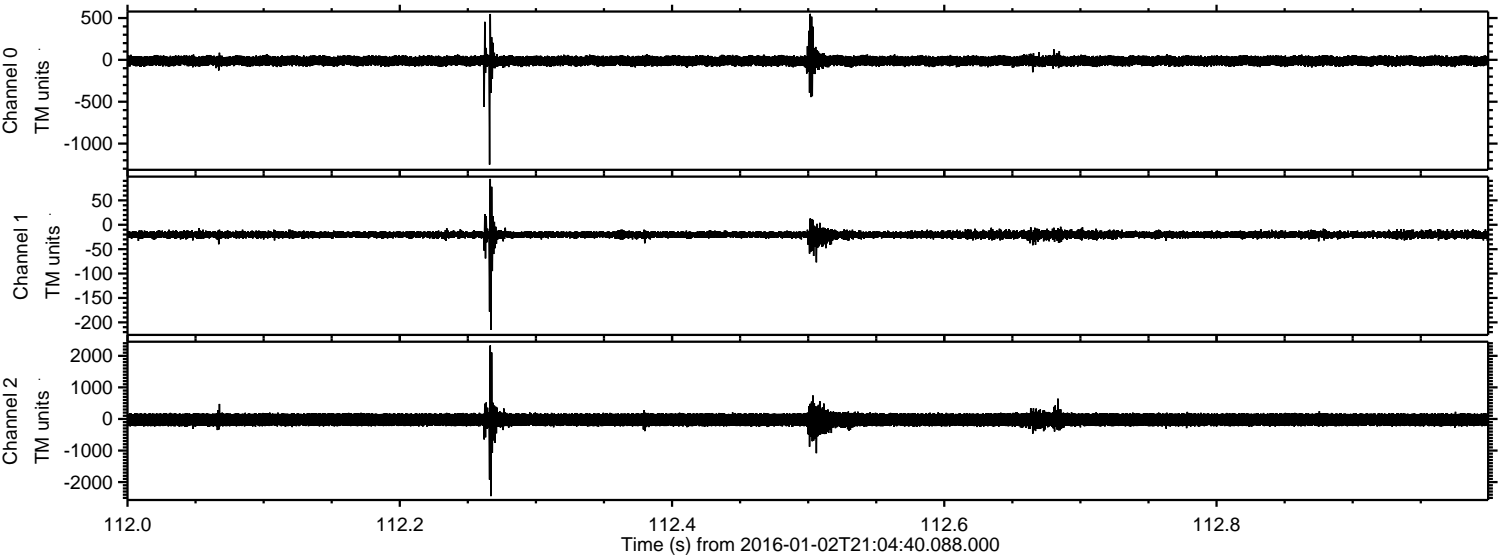
ELMAVAN 3D WAVEFORMS (Measured data sampled at 50 kHz) 51000 packets of 144 samples from 2016-01-02T21:04:40.088.000. Part 132/147

Processed Mon Mar 21 16:39:10 2016 by ELM ver.2012-10-06 from 001__elm20160102_210439__dat00.bin

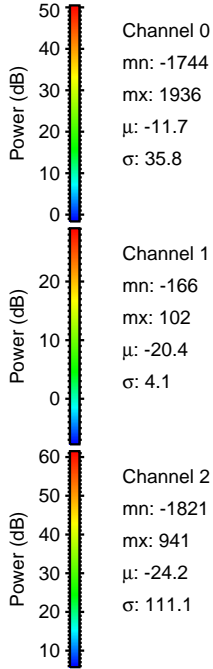
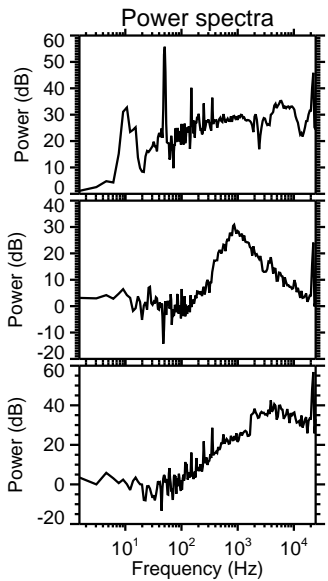
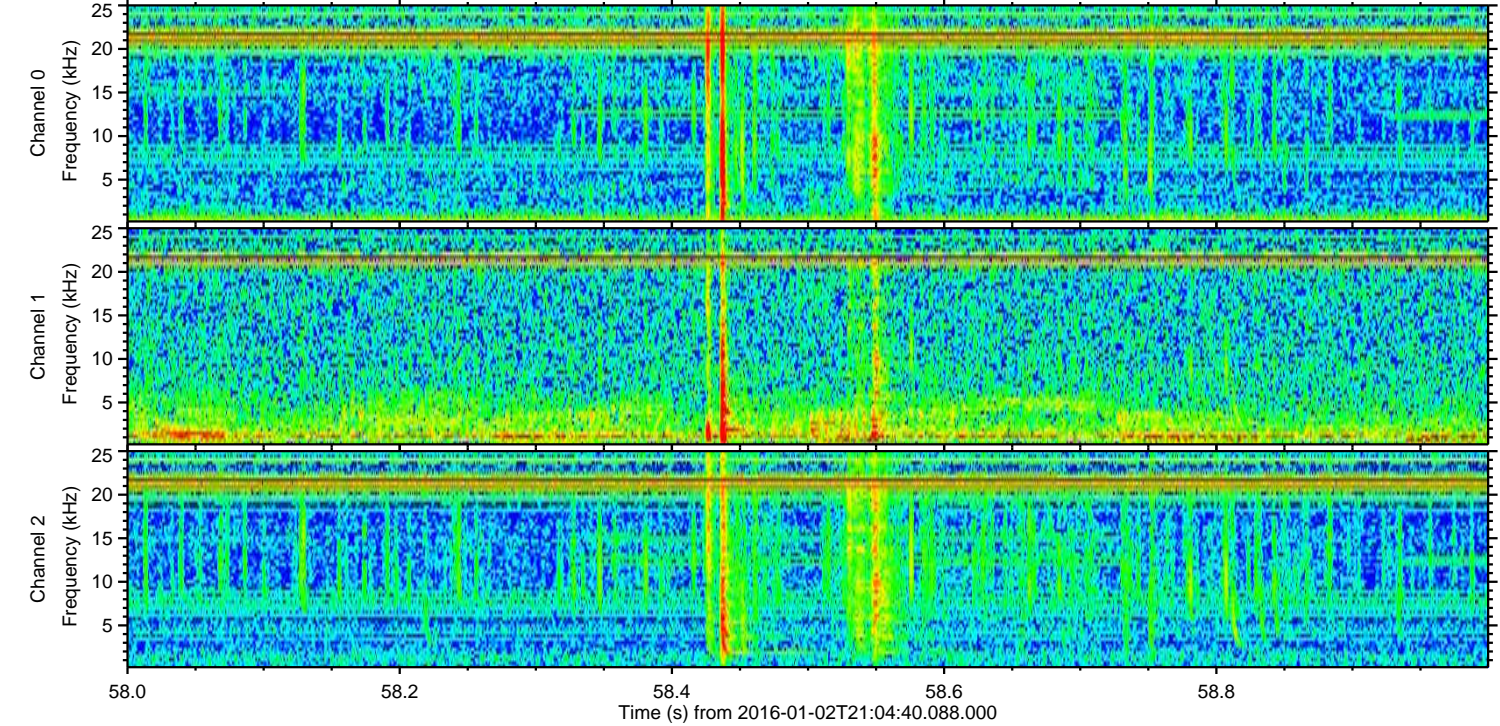
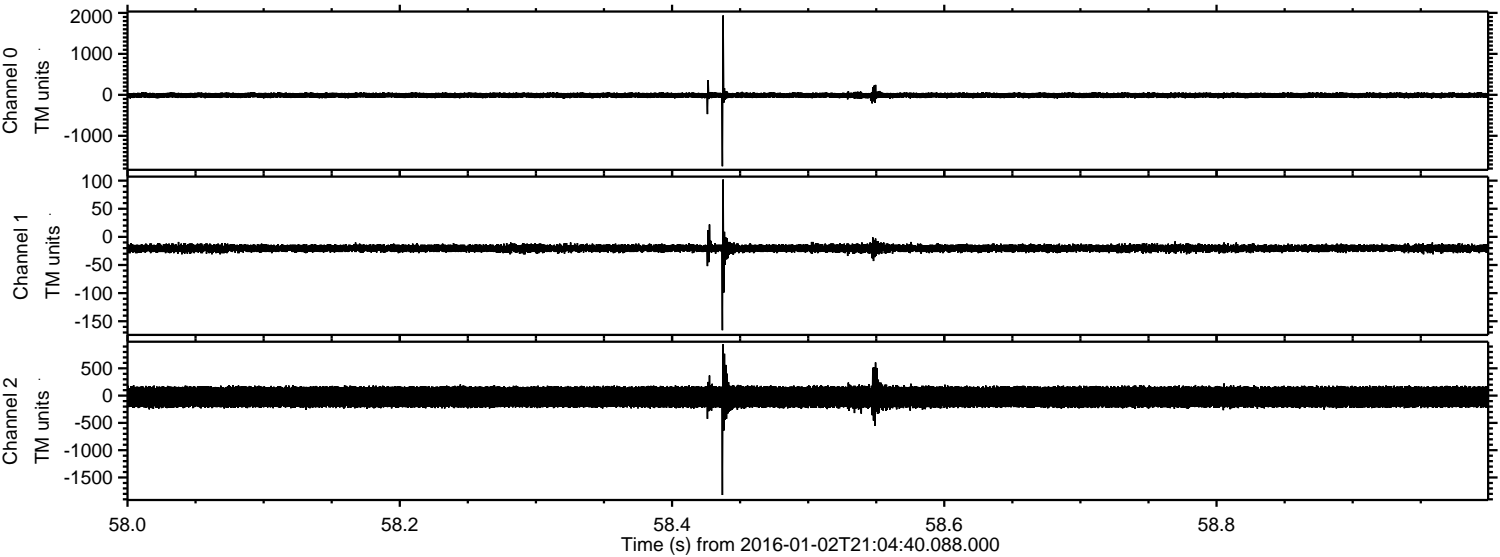


ELMAVAN 3D WAVEFORMS (Measured data sampled at 50 kHz) 51000 packets of 144 samples from 2016-01-02T21:04:40.088.000. Part 113/147

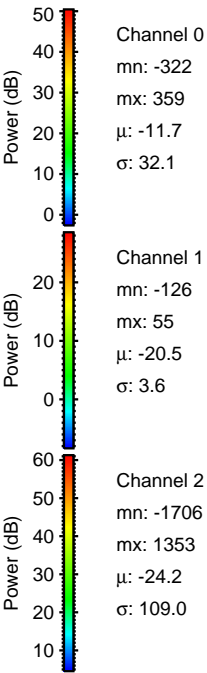
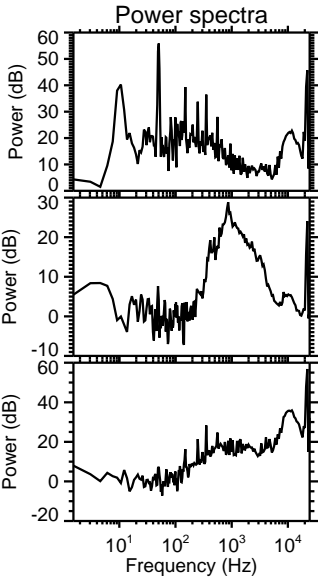
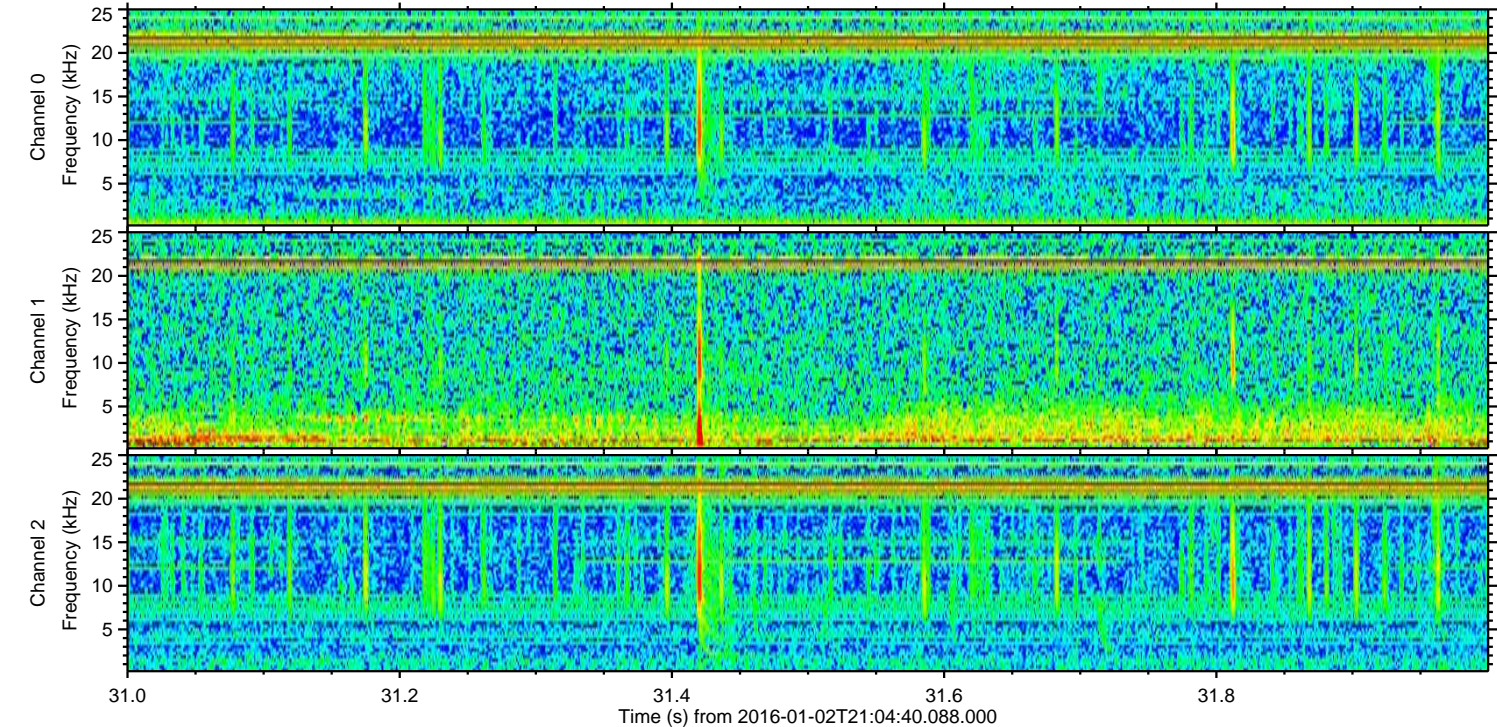
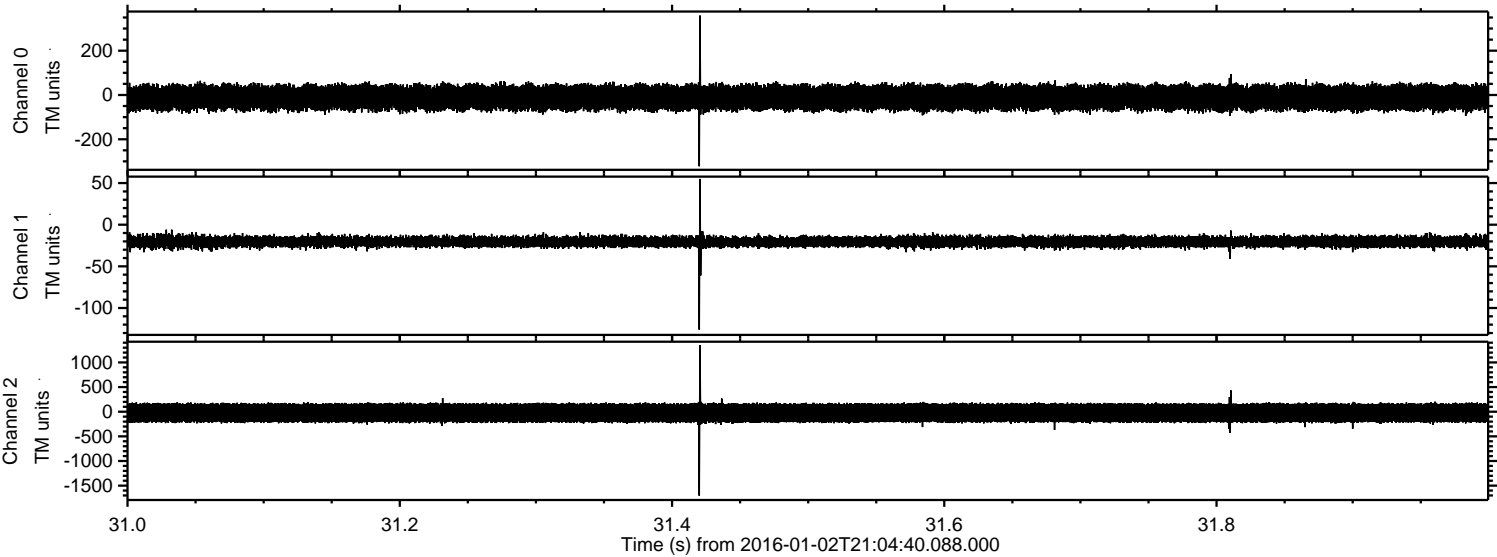
Processed Mon Mar 21 16:39:11 2016 by ELM ver.2012-10-06 from 001__elm20160102_210439__dat00.bin



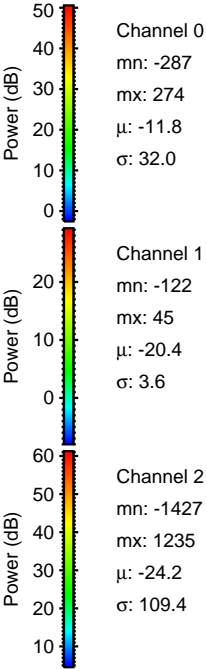
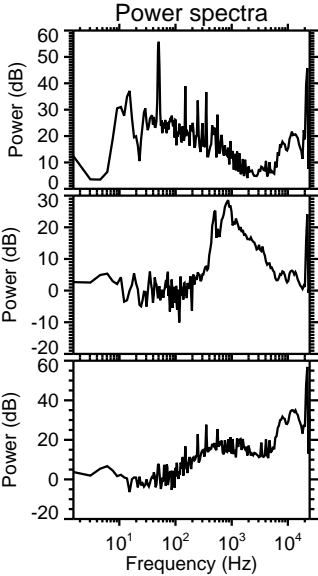
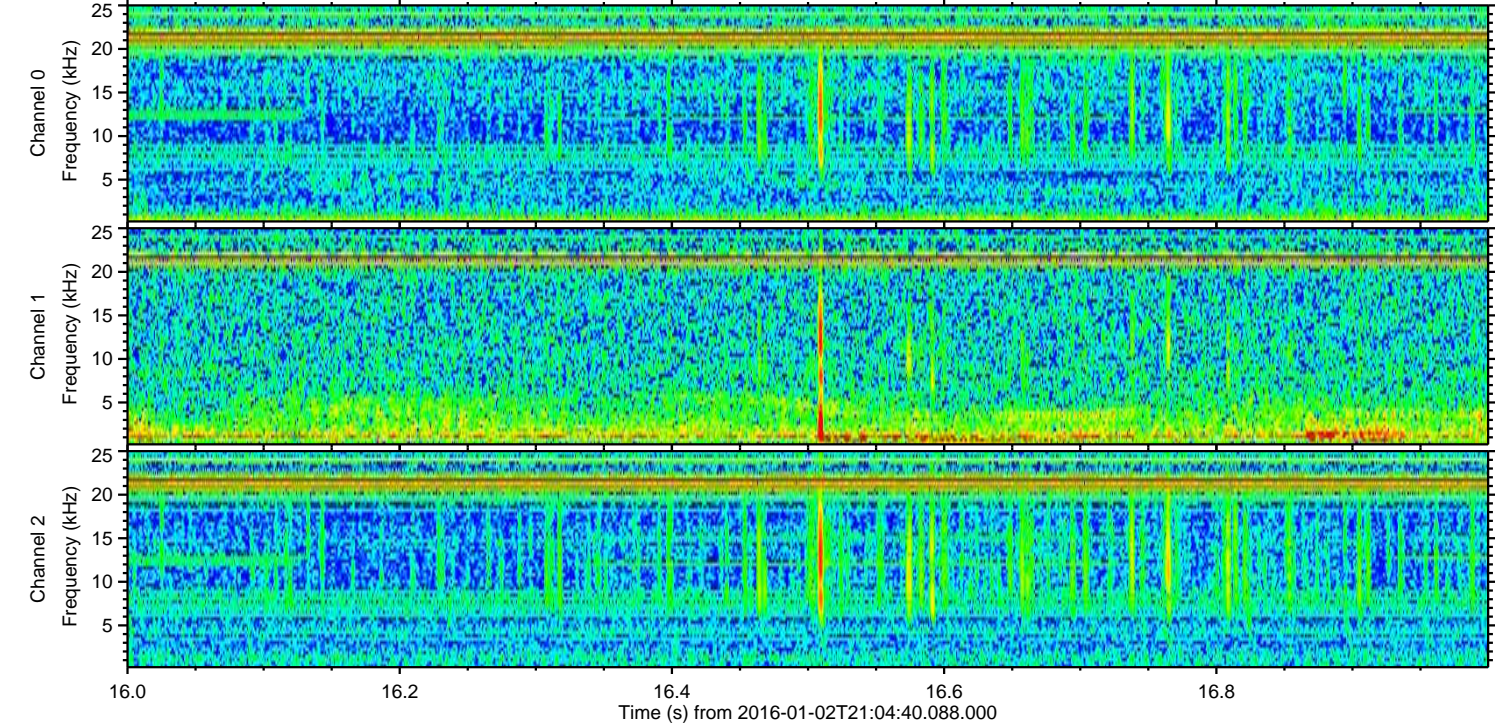
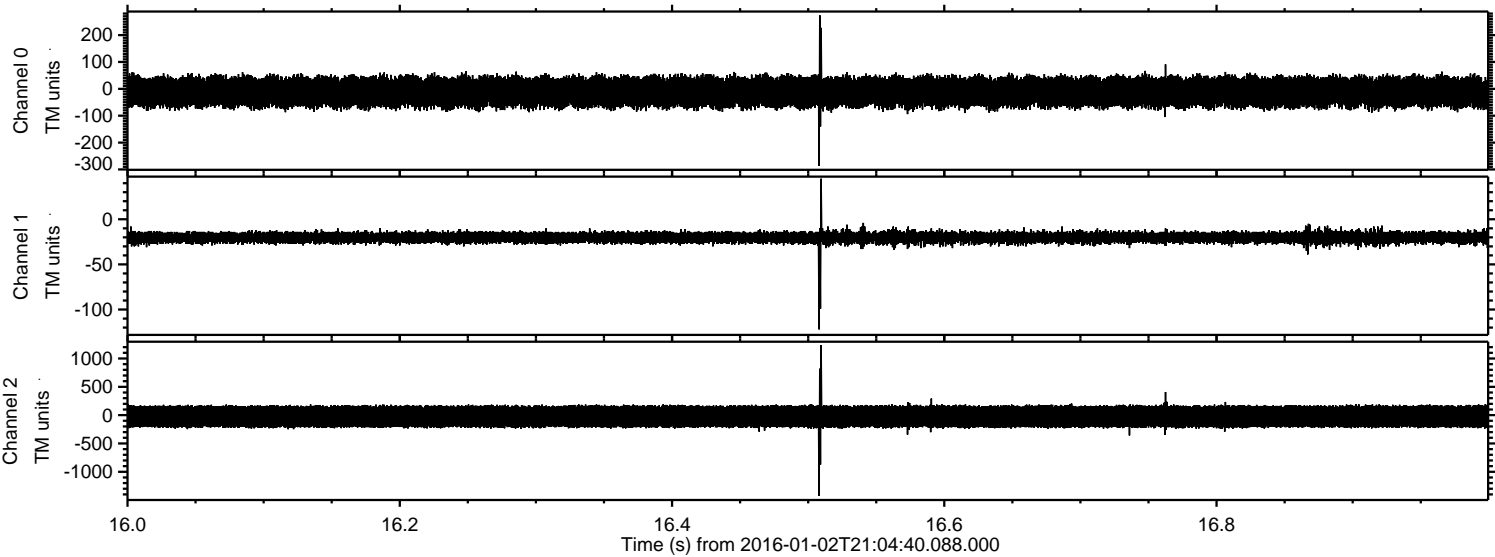
Processed Mon Mar 21 16:39:12 2016 by ELM ver.2012-10-06 from 001__elm20160102_210439__dat00.bin



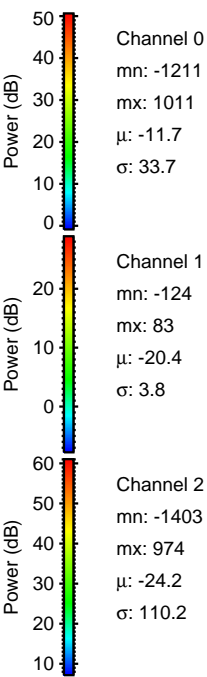
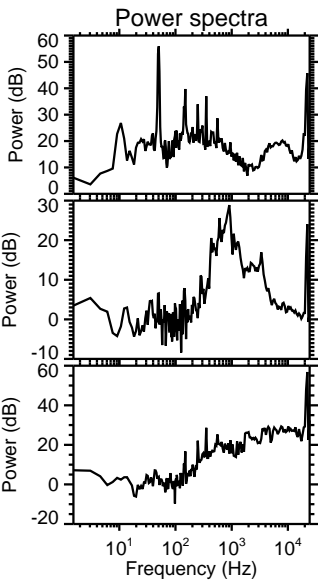
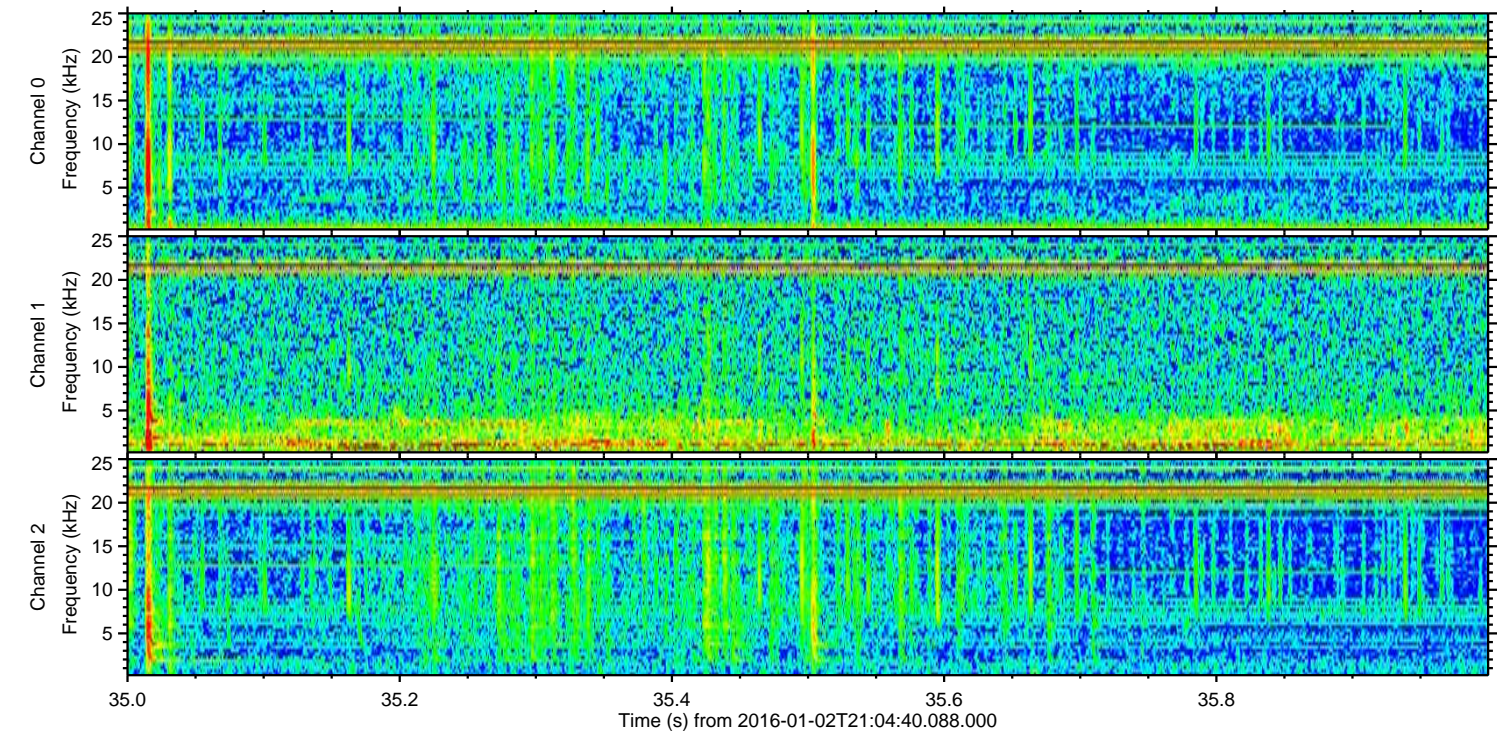
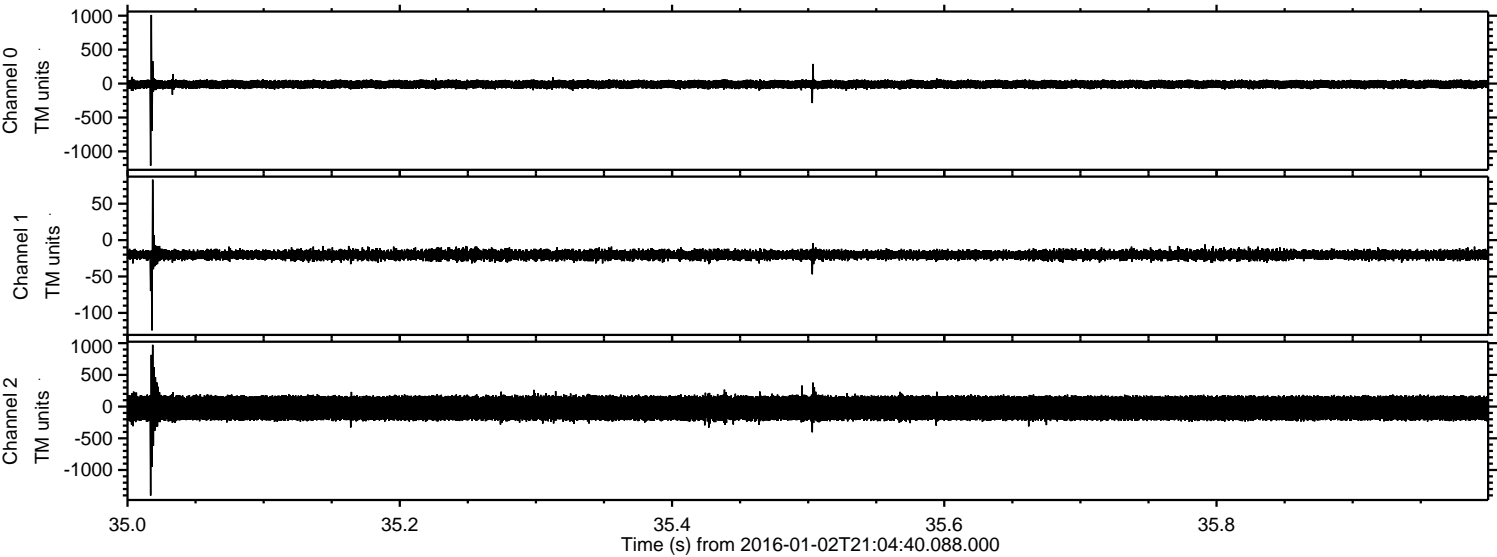
Processed Mon Mar 21 16:39:13 2016 by ELM ver.2012-10-06 from 001__elm20160102_210439__dat00.bin



Processed Mon Mar 21 16:39:14 2016 by ELM ver.2012-10-06 from 001__elm20160102_210439__dat00.bin



Processed Mon Mar 21 16:39:15 2016 by ELM ver.2012-10-06 from 001__elm20160102_210439__dat00.bin

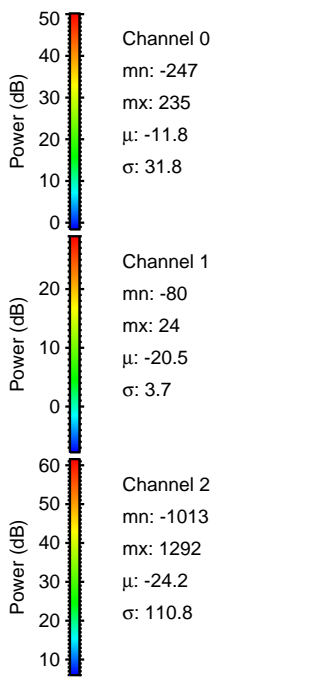
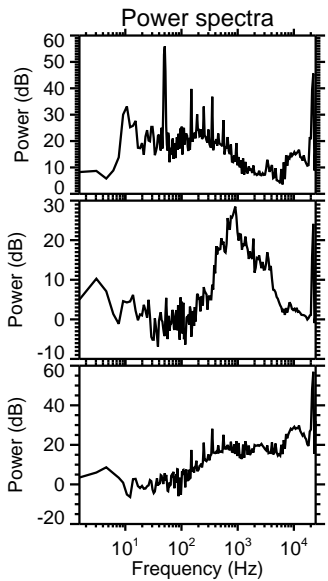
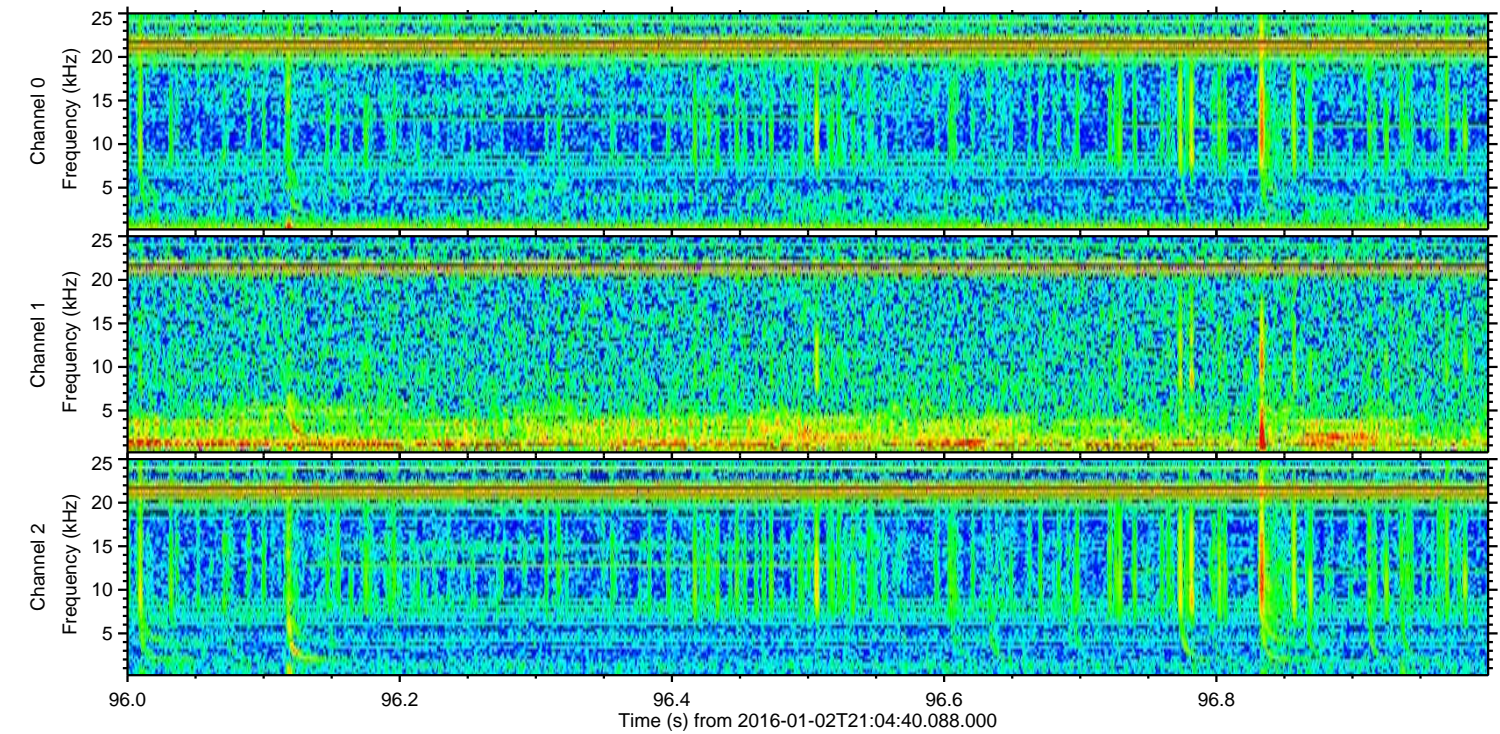
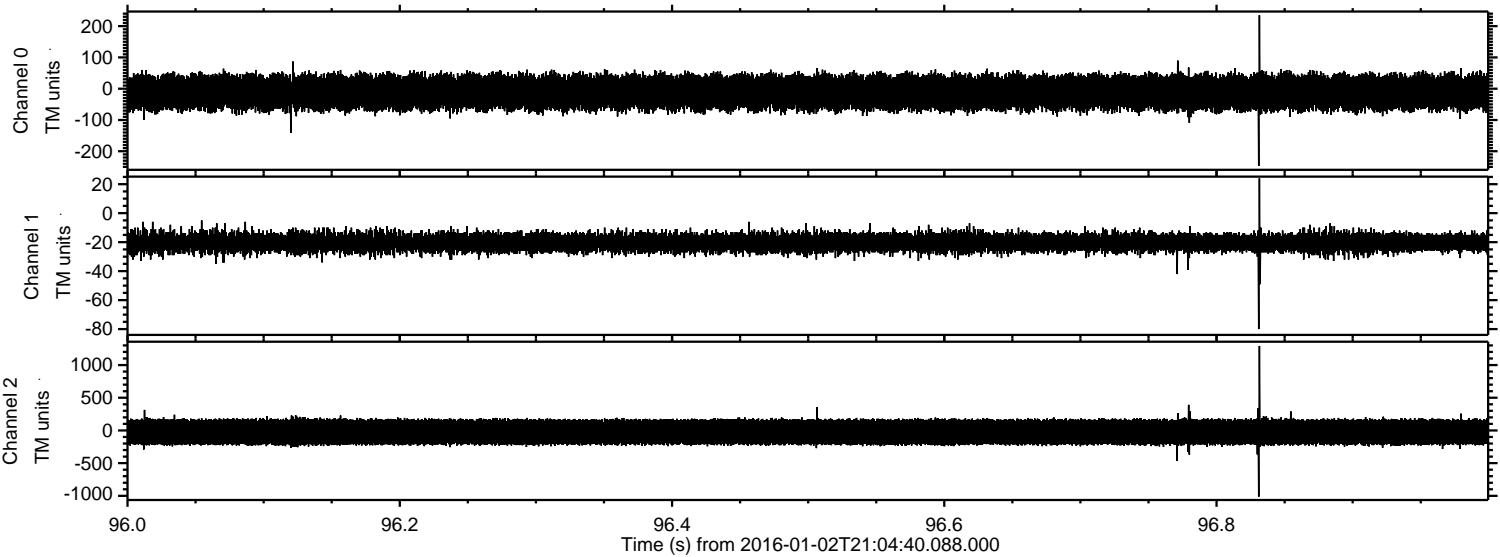


Channel 0
mn: -1211
mx: 1011
 μ : -11.7
 σ : 33.7

Channel 1
mn: -124
mx: 83
 μ : -20.4
 σ : 3.8

Channel 2
mn: -1403
mx: 974
 μ : -24.2
 σ : 110.2

Processed Mon Mar 21 16:39:16 2016 by ELM ver.2012-10-06 from 001__elm20160102_210439__dat00.bin



Processed Mon Mar 21 16:39:17 2016 by ELM ver.2012-10-06 from 001__elm20160102_210439__dat00.bin

