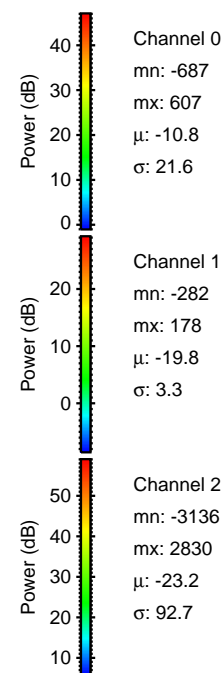
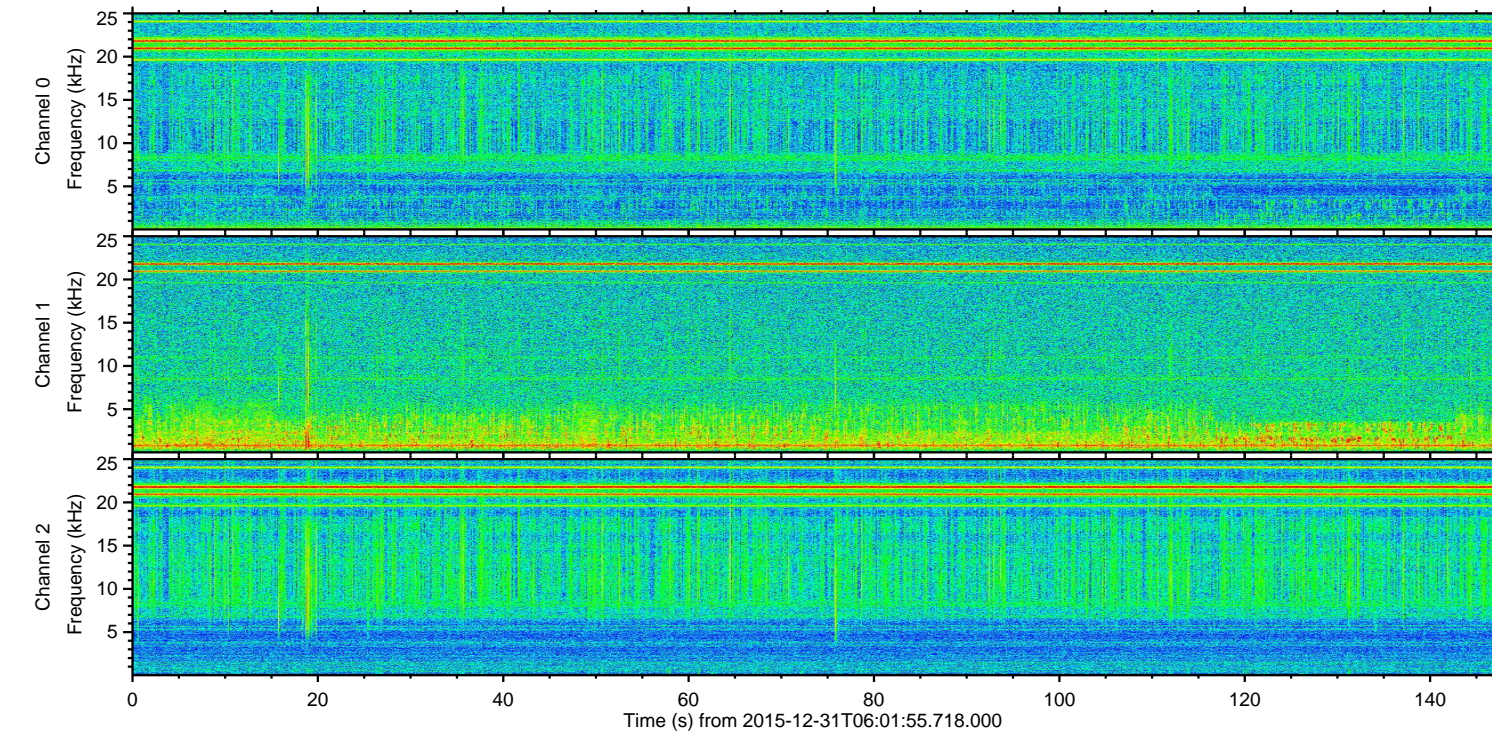
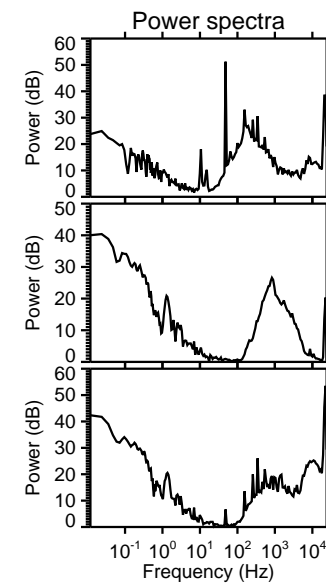
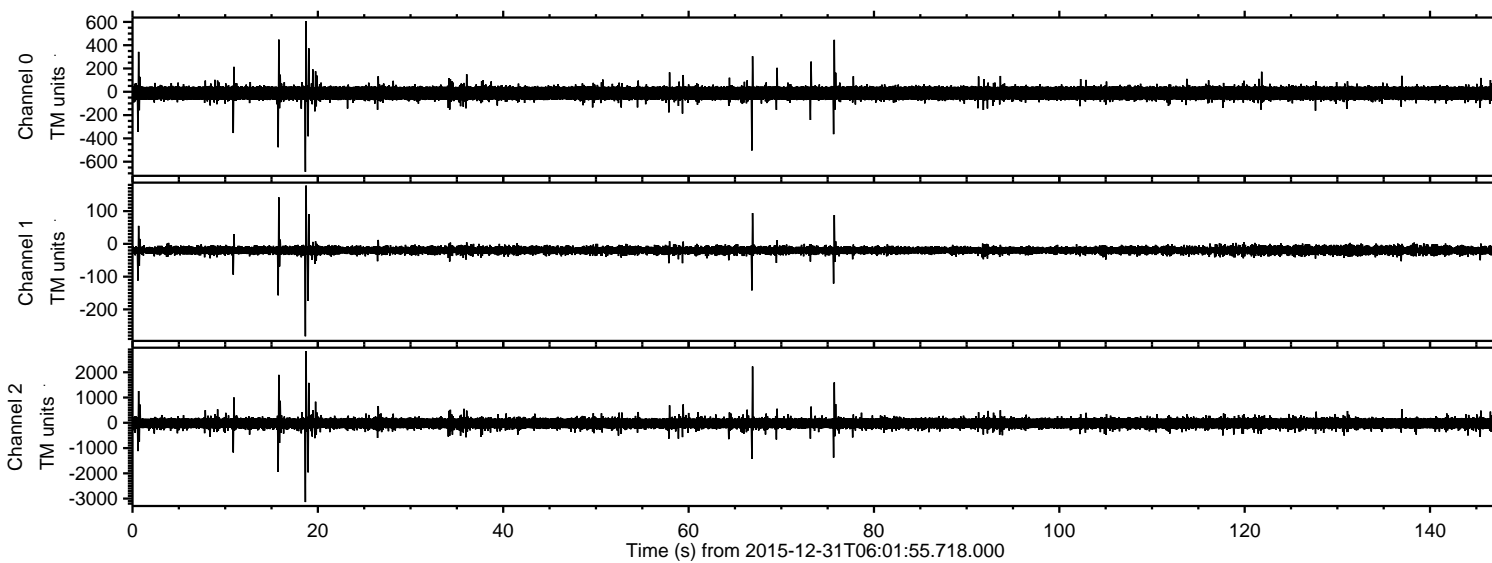


# ELMAVAN 3D WAVEFORMS (Measured data sampled at 50 kHz) 51000 packets of 144 samples from 2015-12-31T06:01:55.718.000.

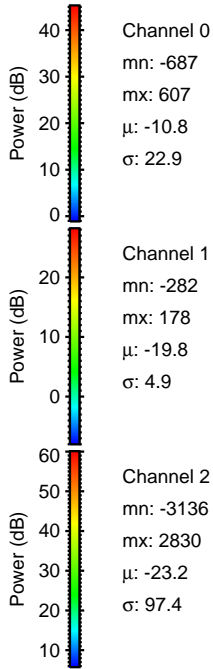
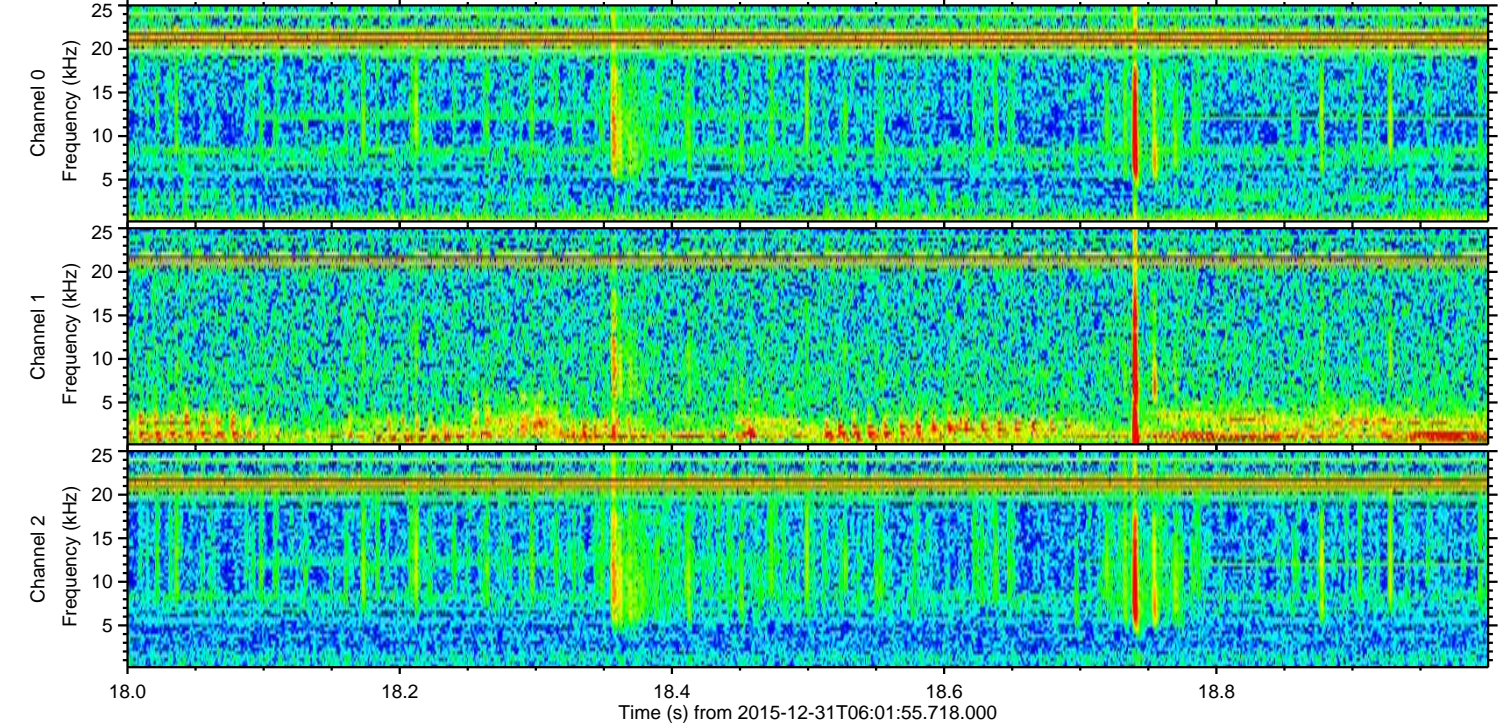
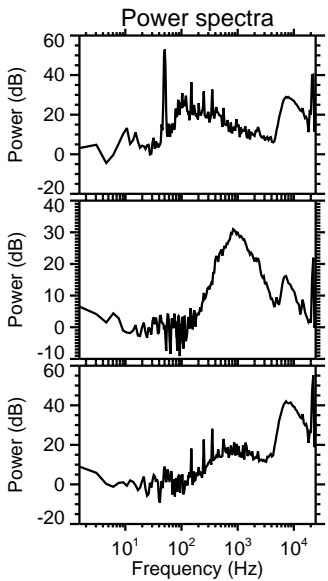
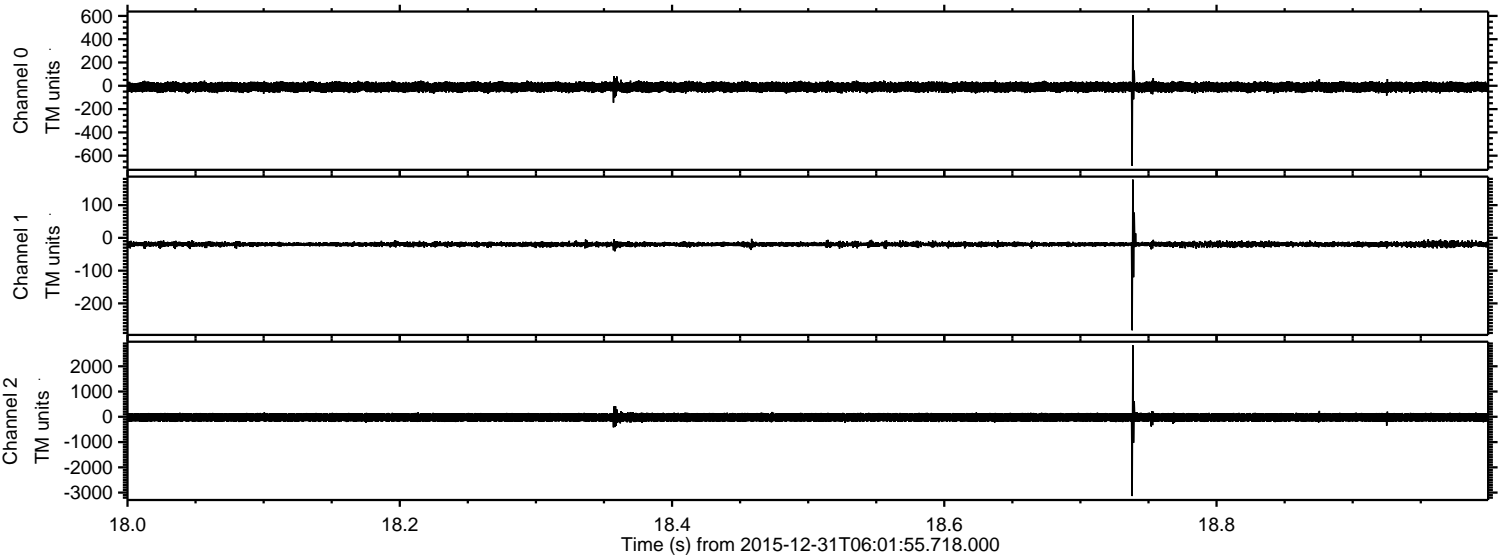
Processed Sat Mar 19 19:43:32 2016 by ELM ver.2012-10-06 from 001\_\_elm20151231\_060154\_\_dat00.bin





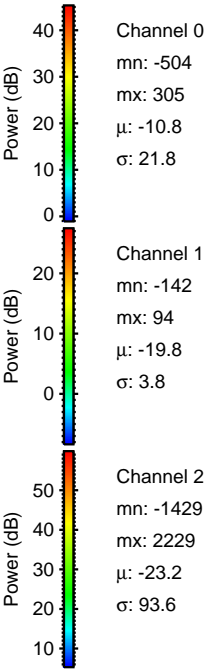
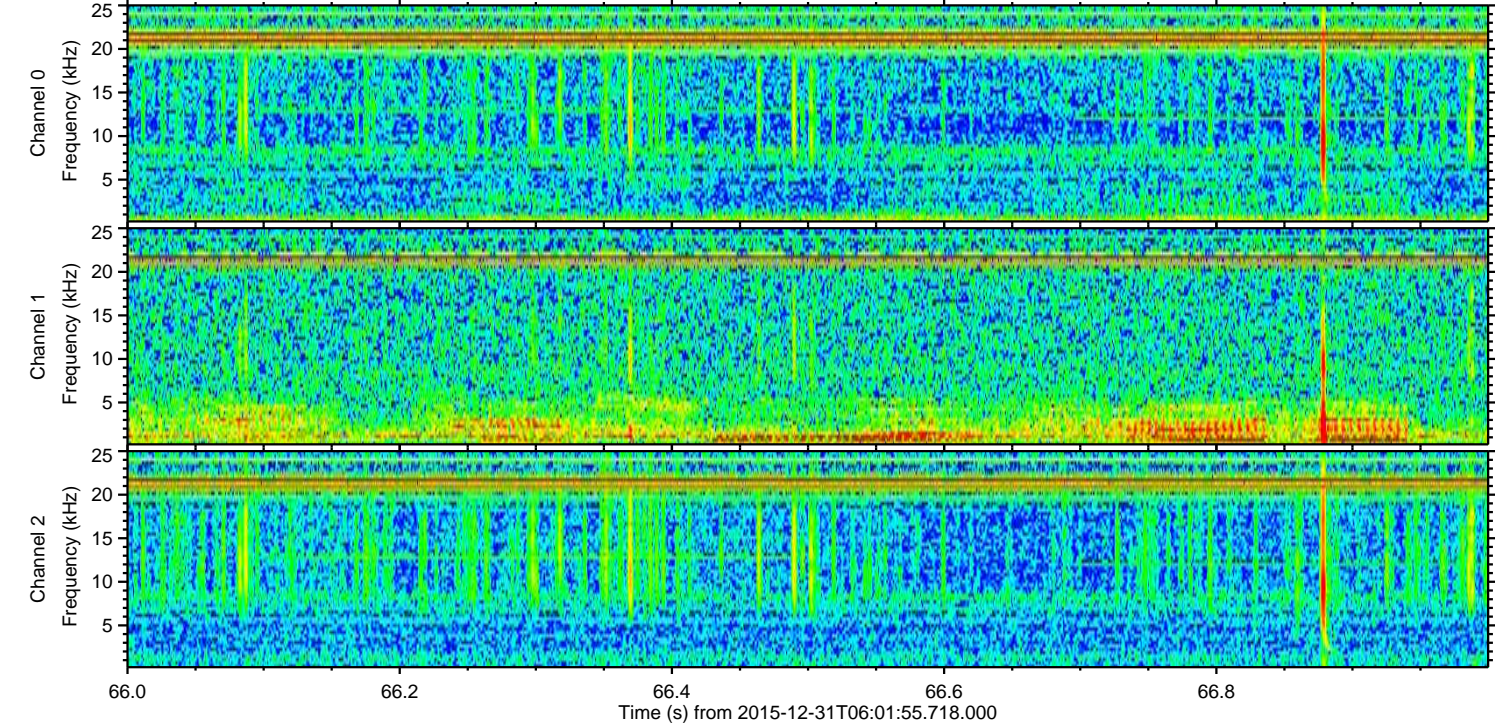
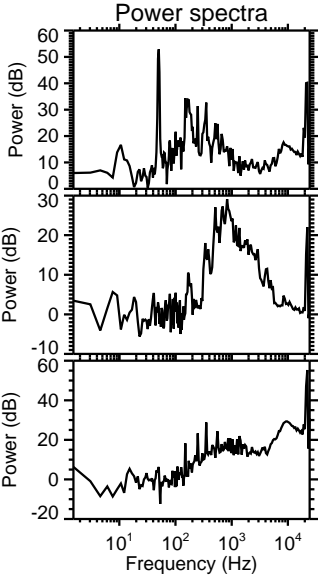
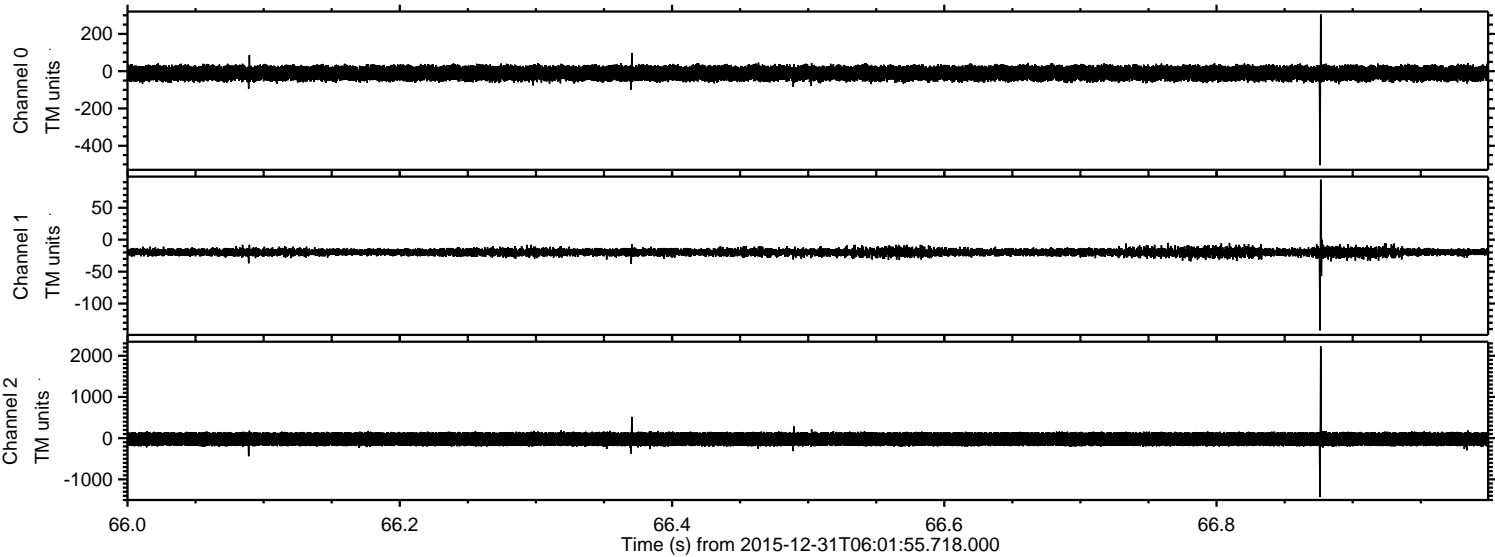
ELMAVAN 3D WAVEFORMS (Measured data sampled at 50 kHz) 51000 packets of 144 samples from 2015-12-31T06:01:55.718.000. Part 19/147

Processed Sat Mar 19 19:43:44 2016 by ELM ver.2012-10-06 from 001\_\_elm20151231\_060154\_\_dat00.bin



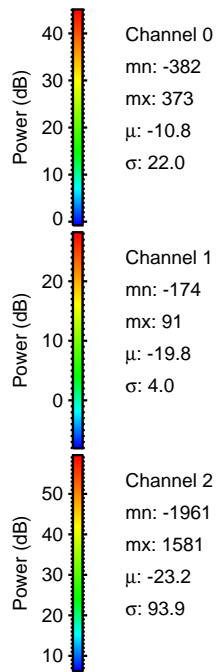
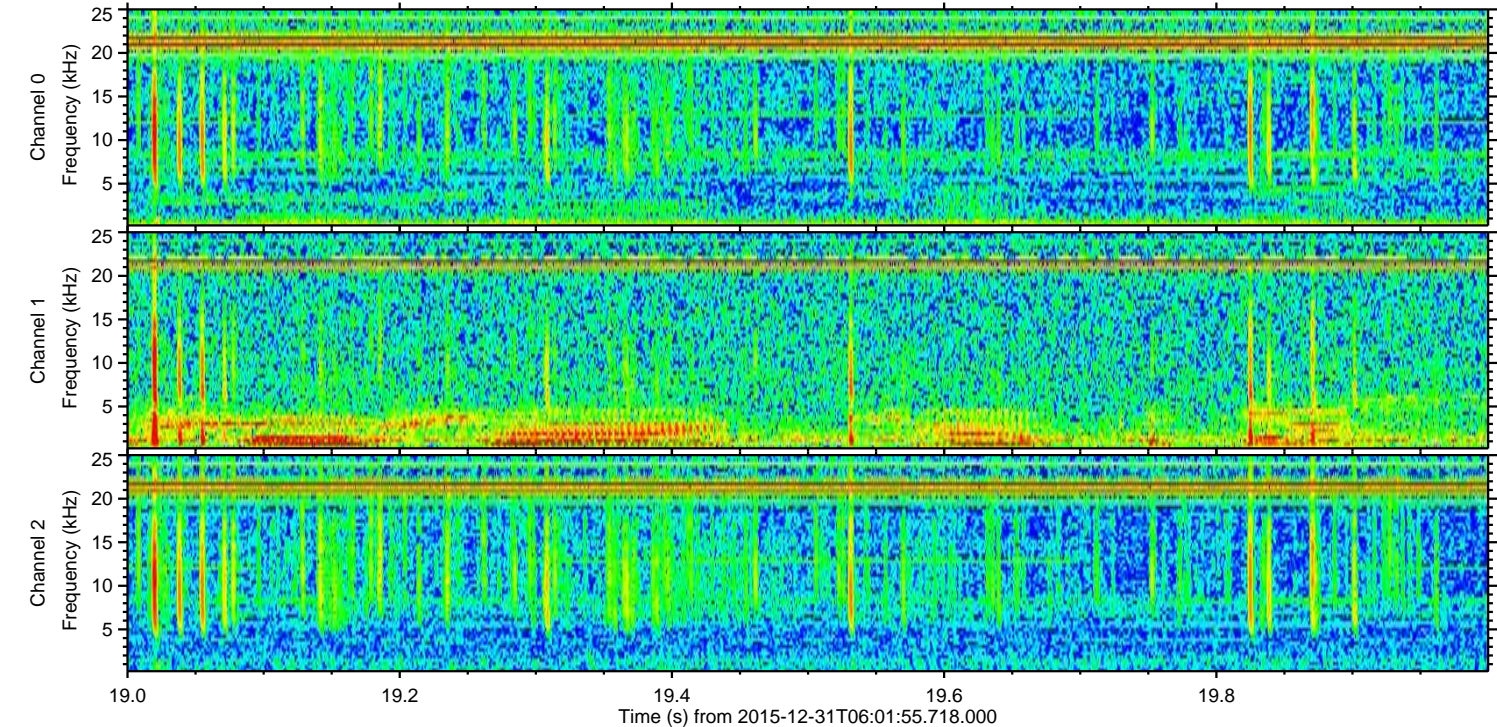
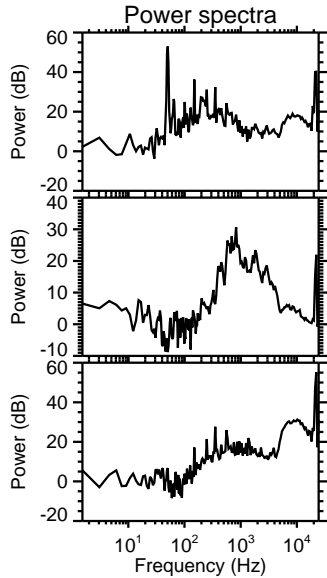
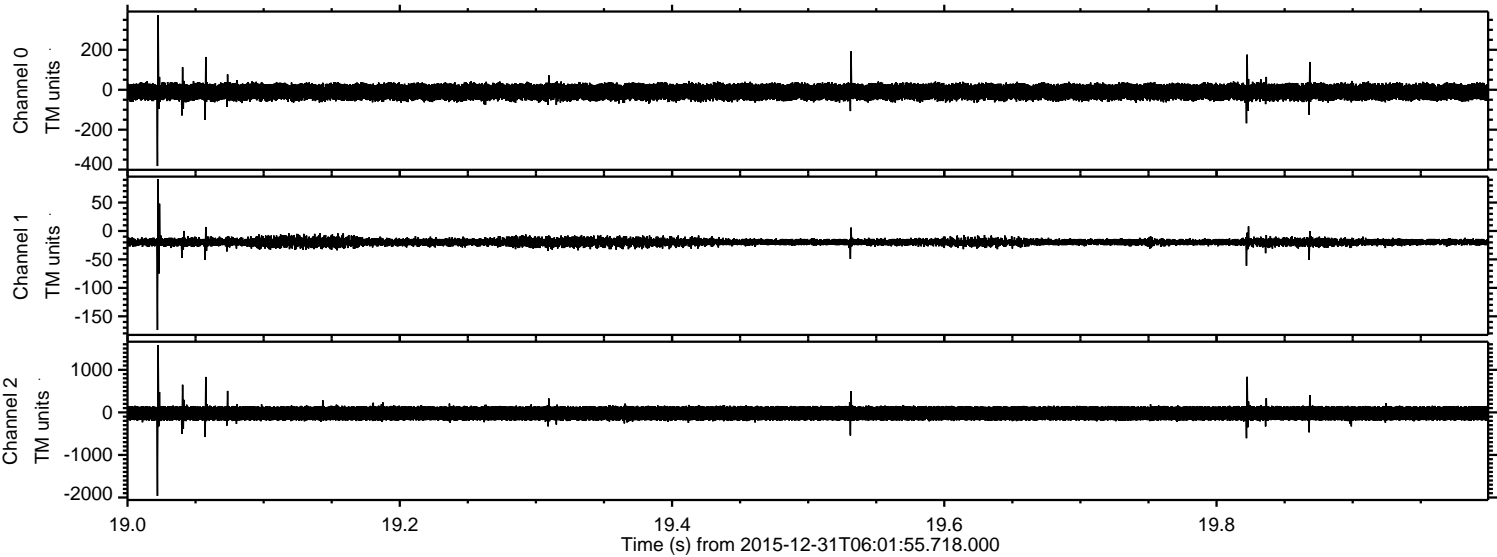


Processed Sat Mar 19 19:43:45 2016 by ELM ver.2012-10-06 from 001\_\_elm20151231\_060154\_\_dat00.bin





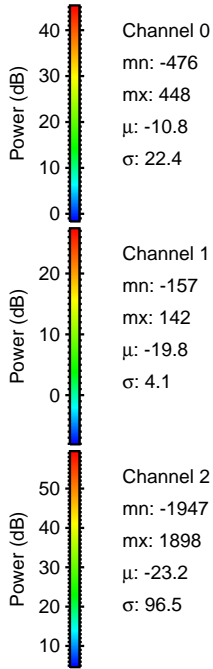
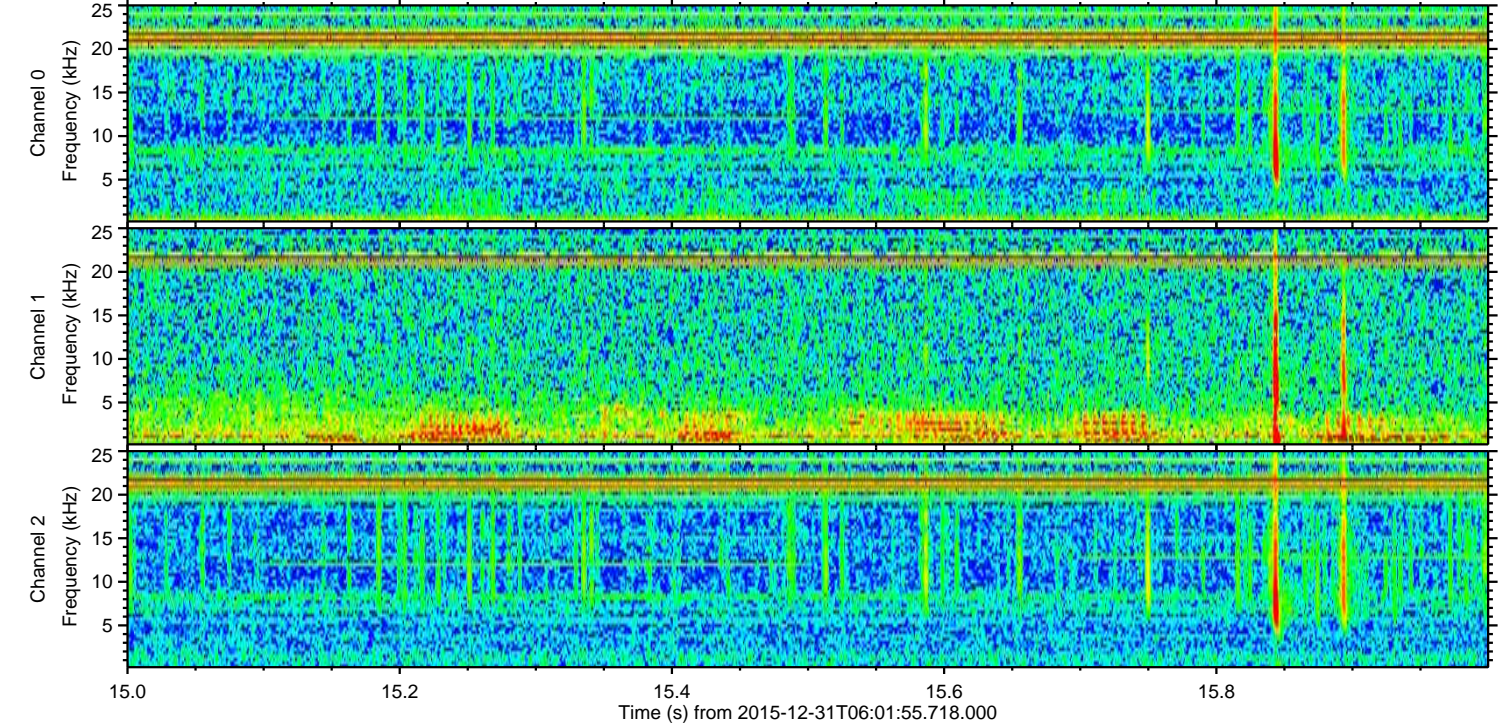
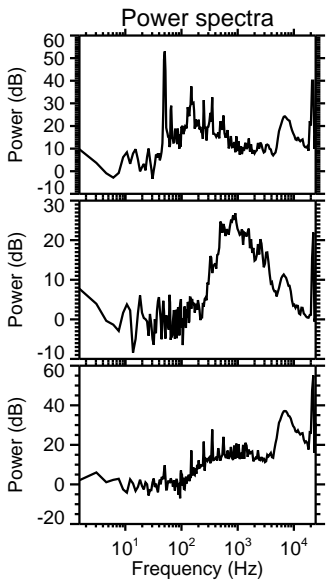
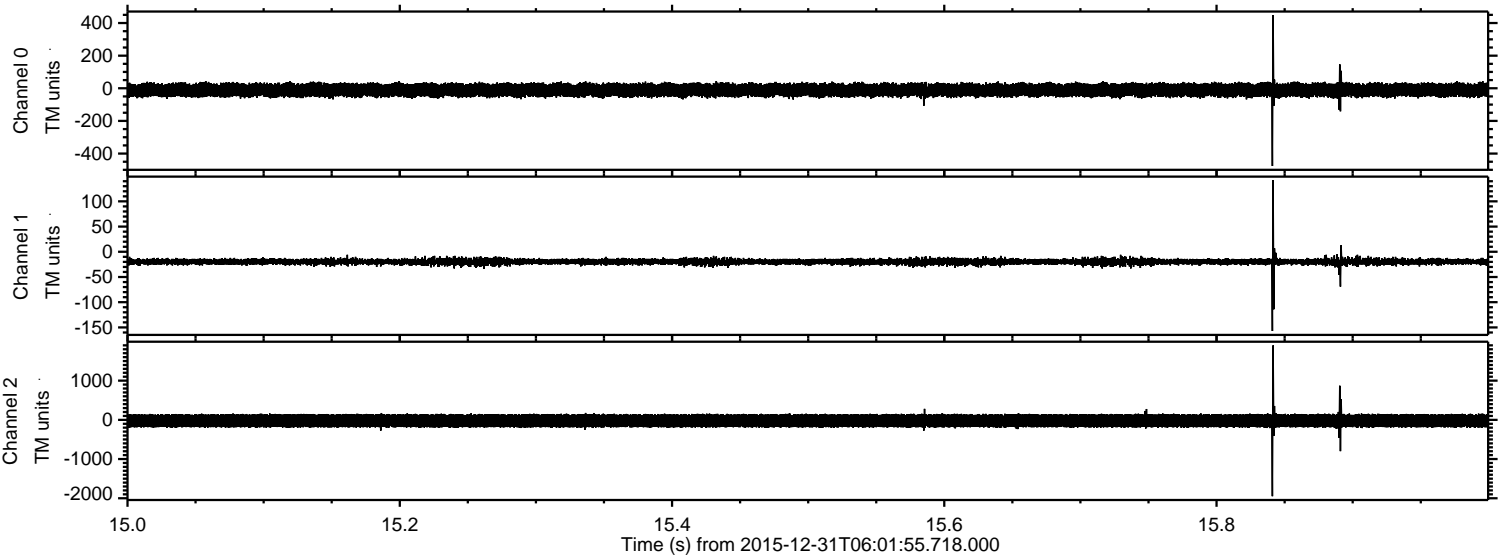
Processed Sat Mar 19 19:43:46 2016 by ELM ver.2012-10-06 from 001\_\_elm20151231\_060154\_\_dat00.bin





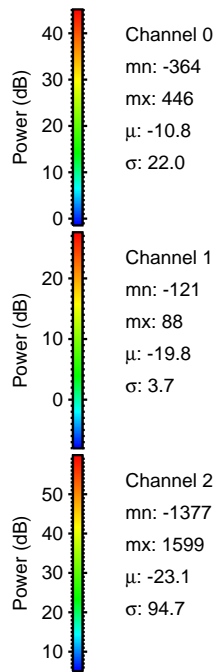
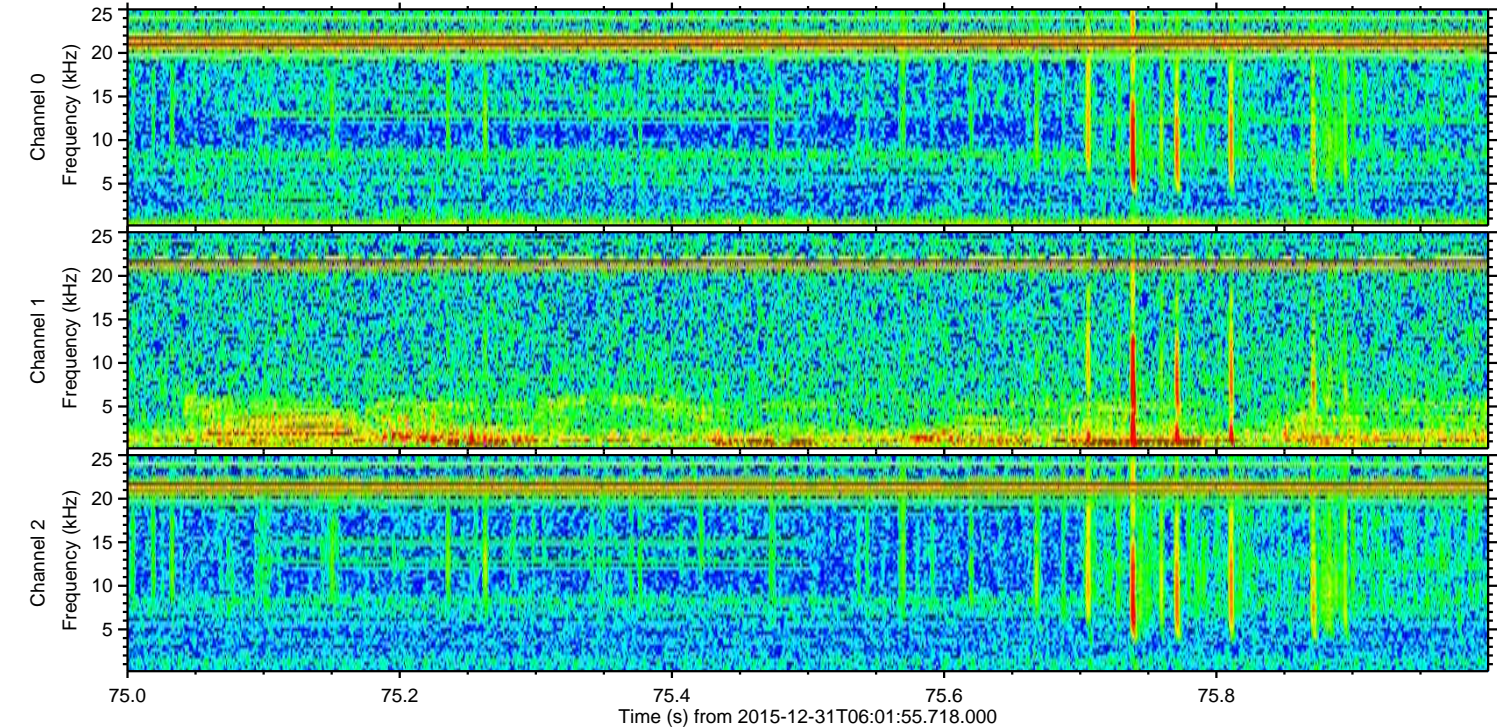
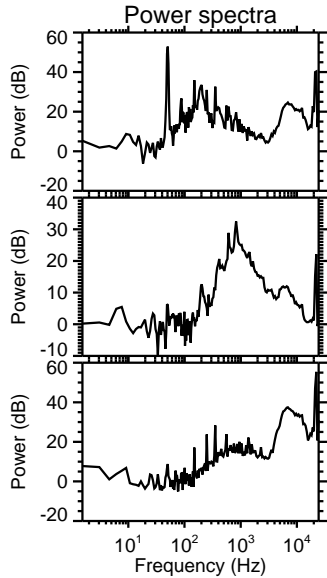
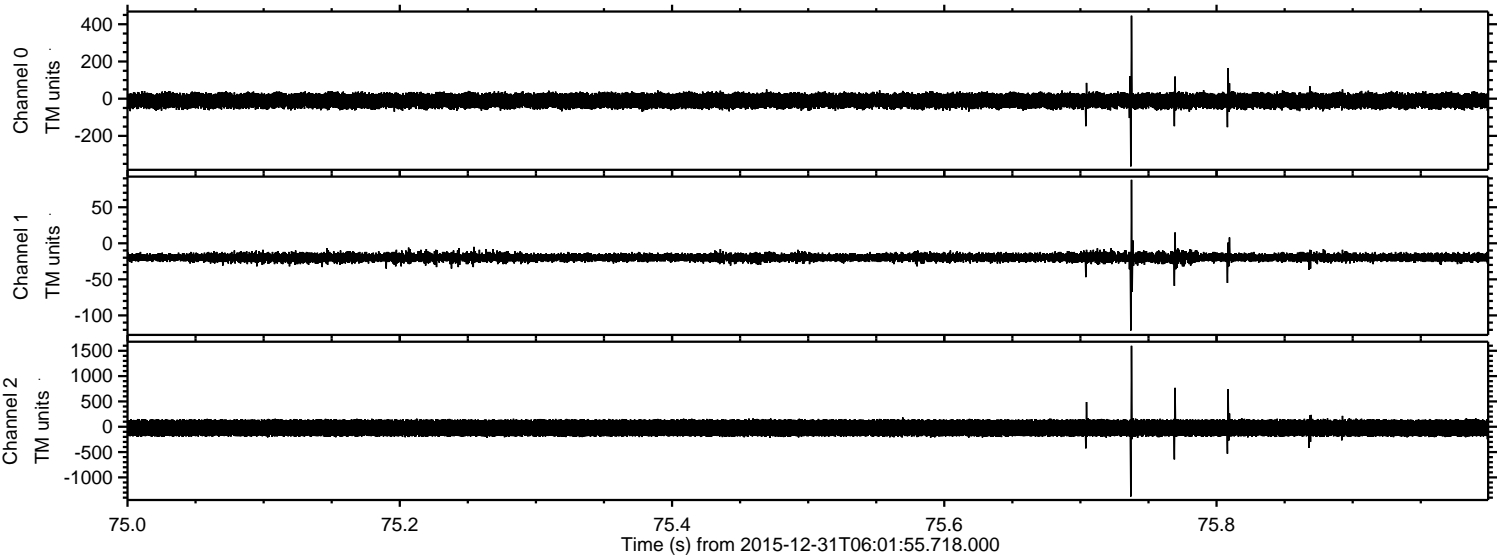
ELMAVAN 3D WAVEFORMS (Measured data sampled at 50 kHz) 51000 packets of 144 samples from 2015-12-31T06:01:55.718.000. Part 16/147

Processed Sat Mar 19 19:43:47 2016 by ELM ver.2012-10-06 from 001\_\_elm20151231\_060154\_\_dat00.bin



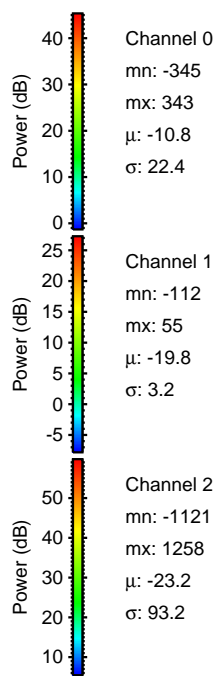
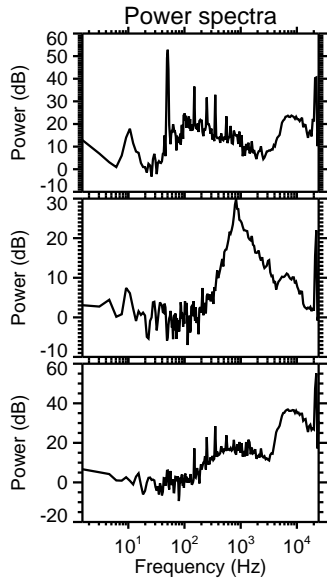
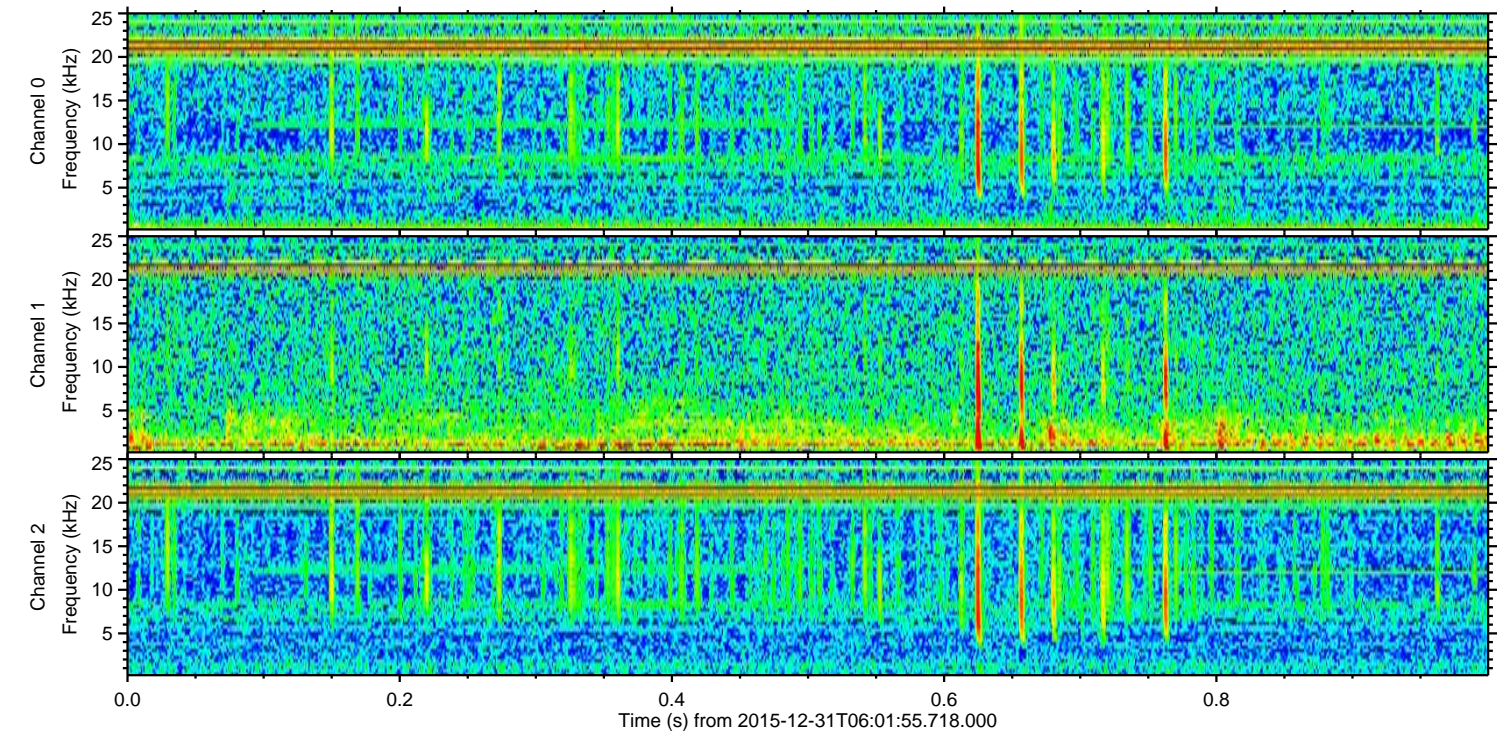
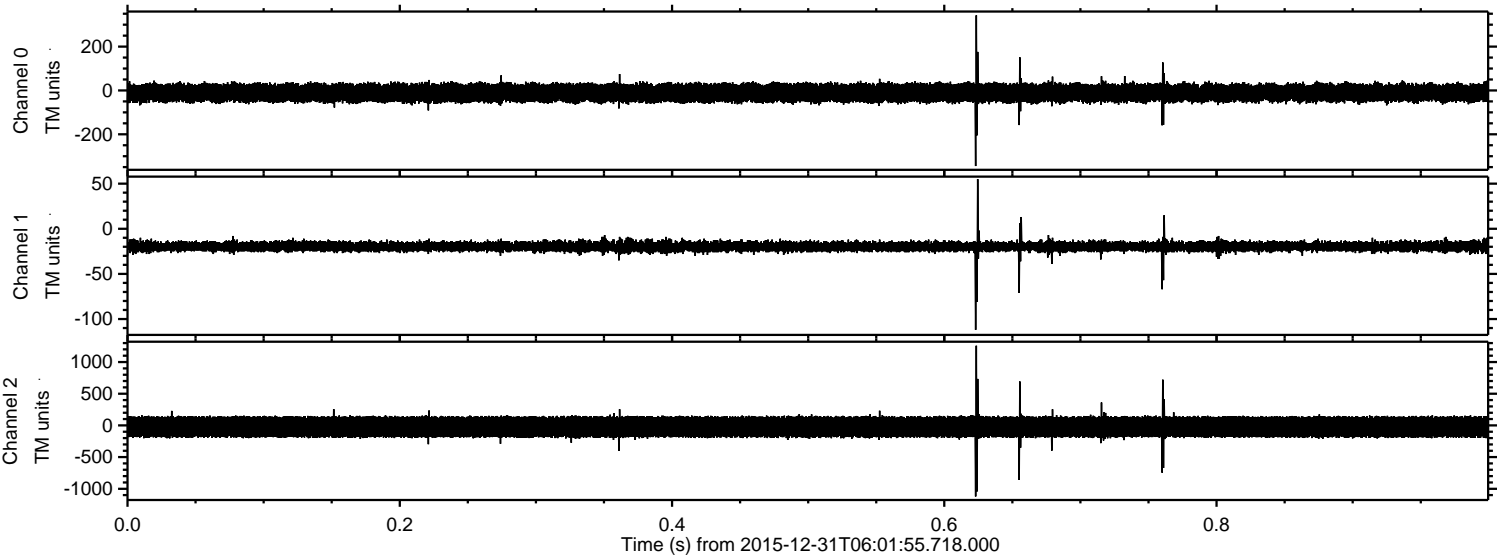


Processed Sat Mar 19 19:43:47 2016 by ELM ver.2012-10-06 from 001\_\_elm20151231\_060154\_\_dat00.bin





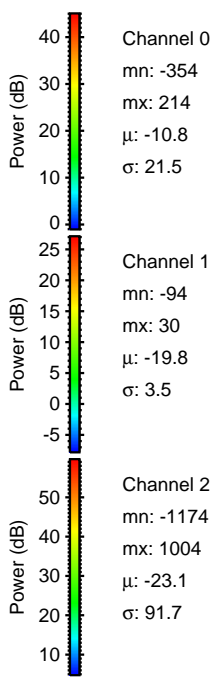
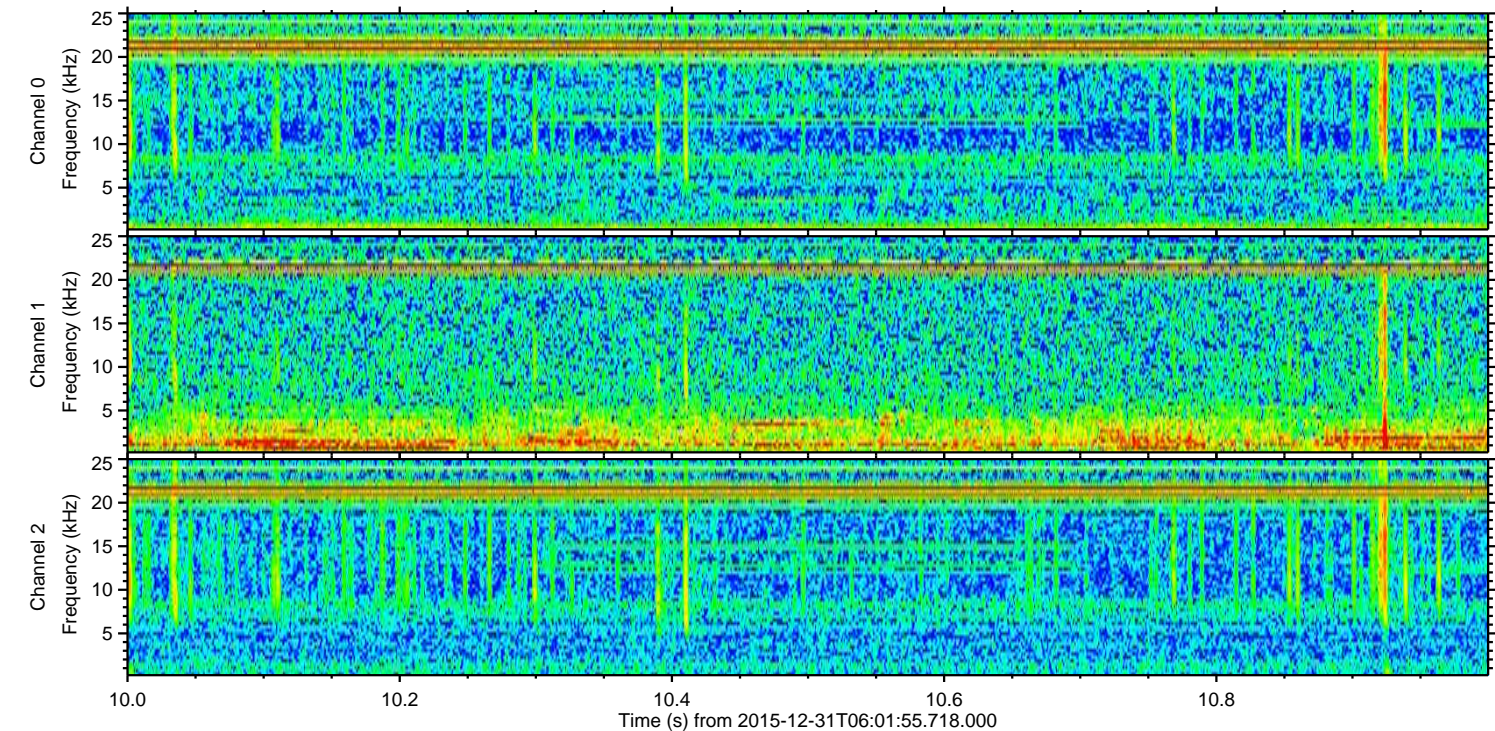
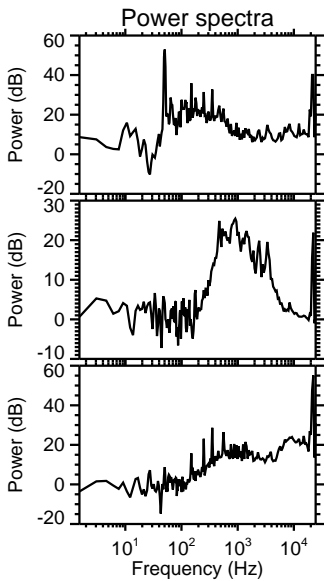
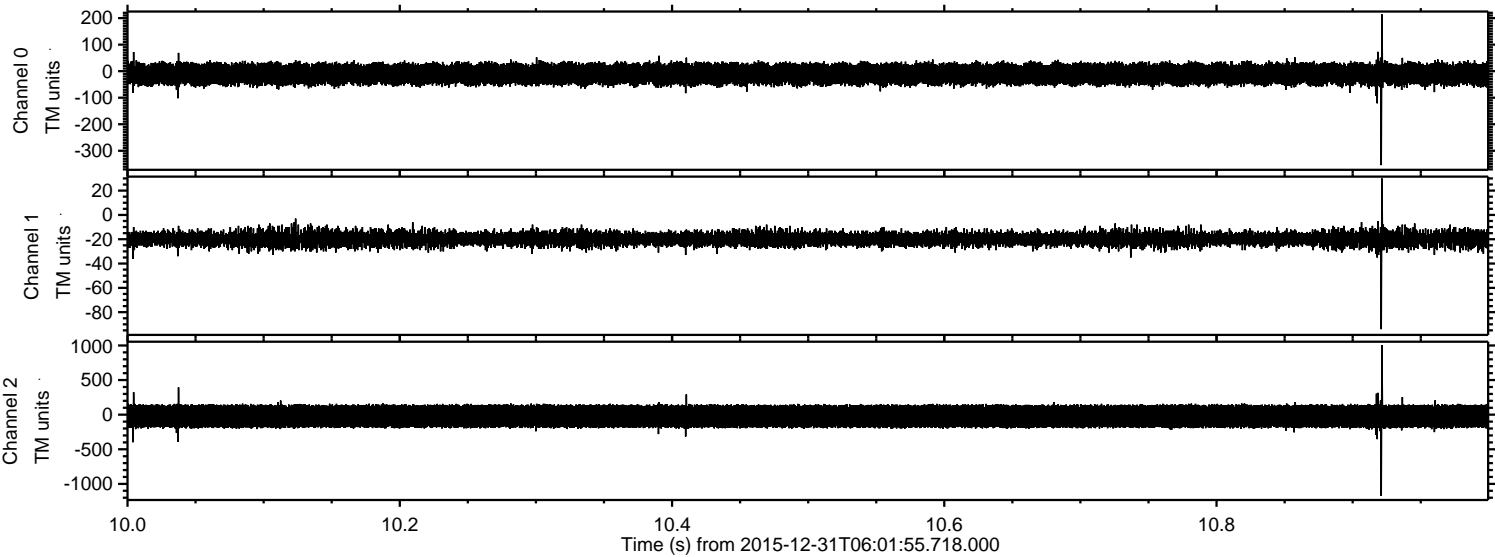
Processed Sat Mar 19 19:43:48 2016 by ELM ver.2012-10-06 from 001\_\_elm20151231\_060154\_\_dat00.bin





ELMAVAN 3D WAVEFORMS (Measured data sampled at 50 kHz) 51000 packets of 144 samples from 2015-12-31T06:01:55.718.000. Part 11/147

Processed Sat Mar 19 19:43:49 2016 by ELM ver.2012-10-06 from 001\_\_elm20151231\_060154\_\_dat00.bin



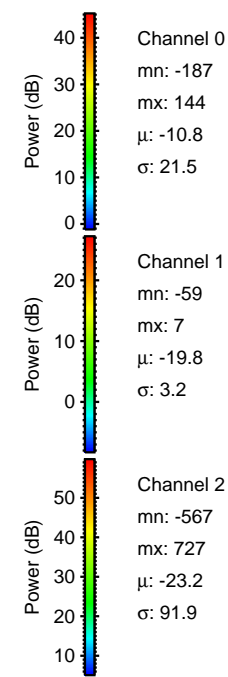
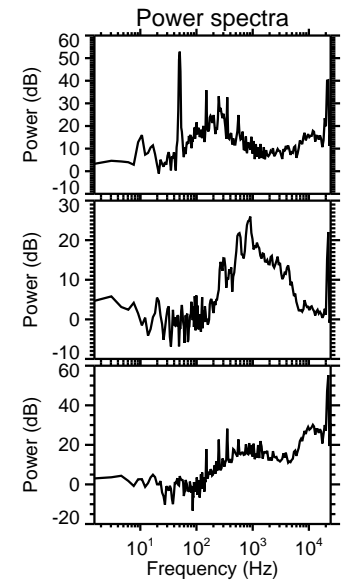
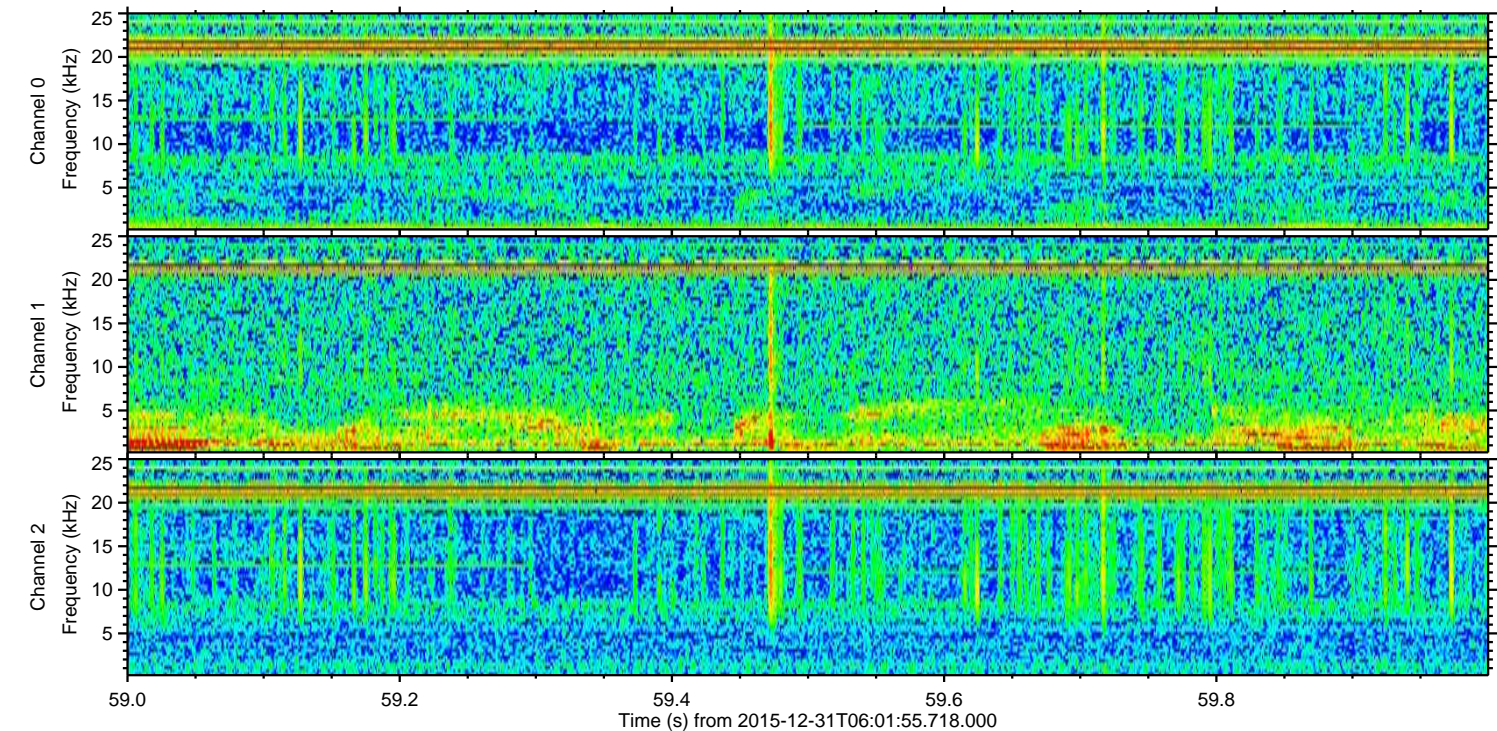
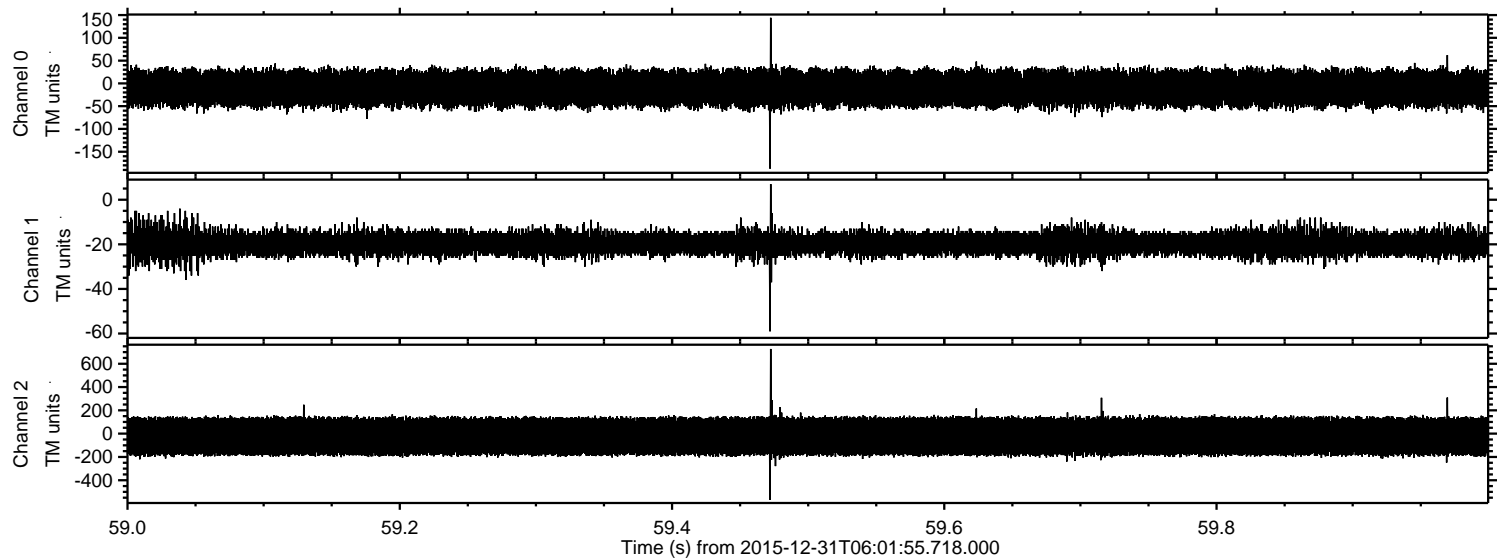
Channel 0  
mn: -354  
mx: 214  
 $\mu$ : -10.8  
 $\sigma$ : 21.5

Channel 1  
mn: -94  
mx: 30  
 $\mu$ : -19.8  
 $\sigma$ : 3.5

Channel 2  
mn: -1174  
mx: 1004  
 $\mu$ : -23.1  
 $\sigma$ : 91.7



Processed Sat Mar 19 19:43:50 2016 by ELM ver.2012-10-06 from 001\_\_elm20151231\_060154\_\_dat00.bin





Processed Sat Mar 19 19:43:51 2016 by ELM ver.2012-10-06 from 001\_\_elm20151231\_060154\_\_dat00.bin

