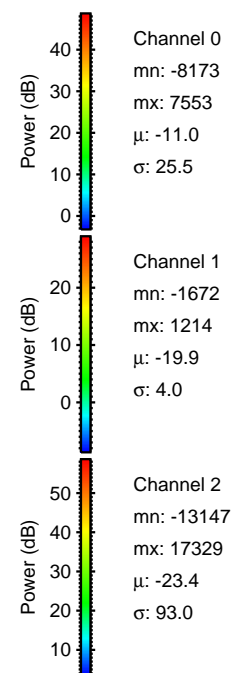
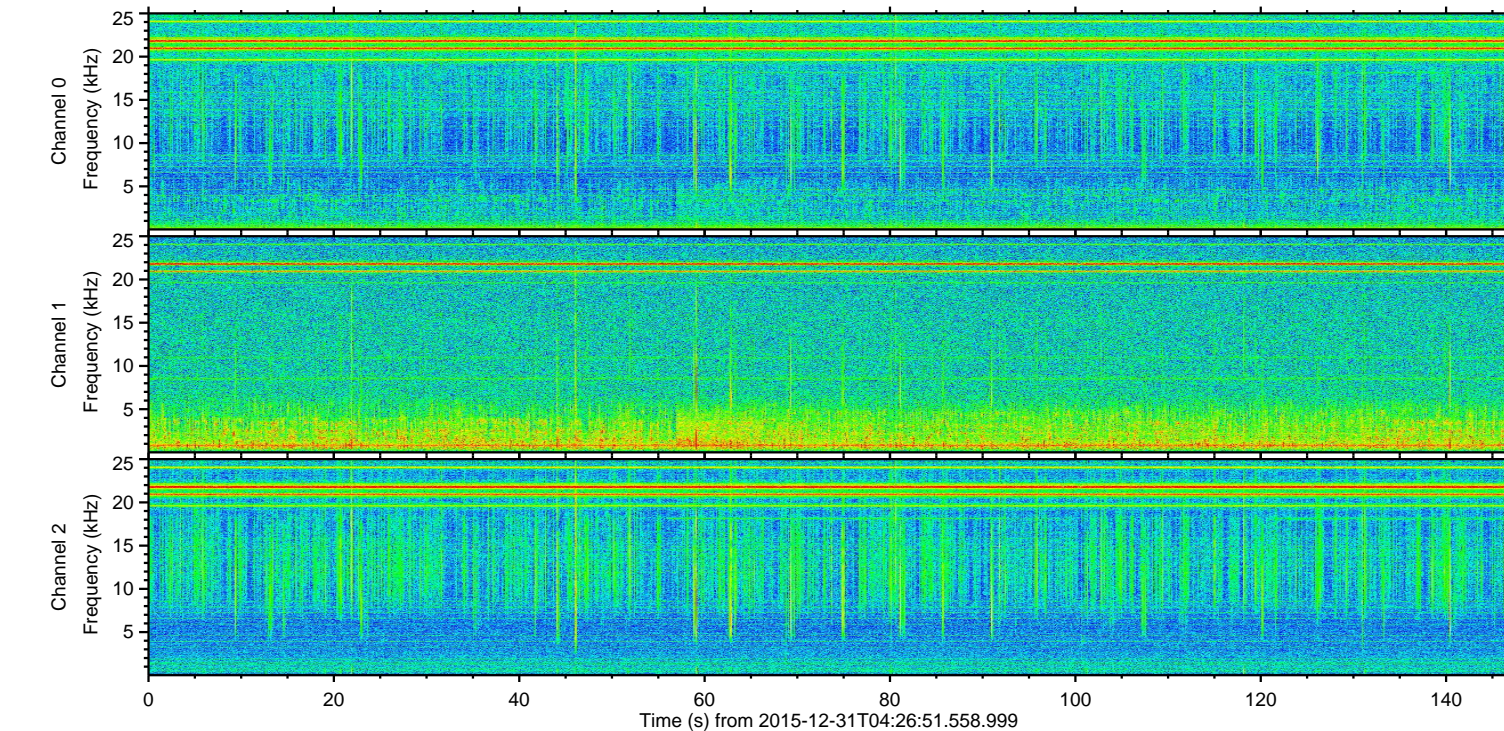
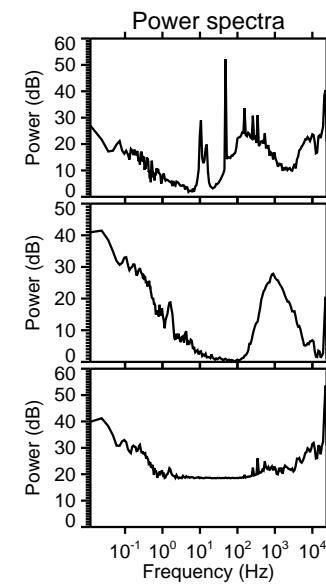
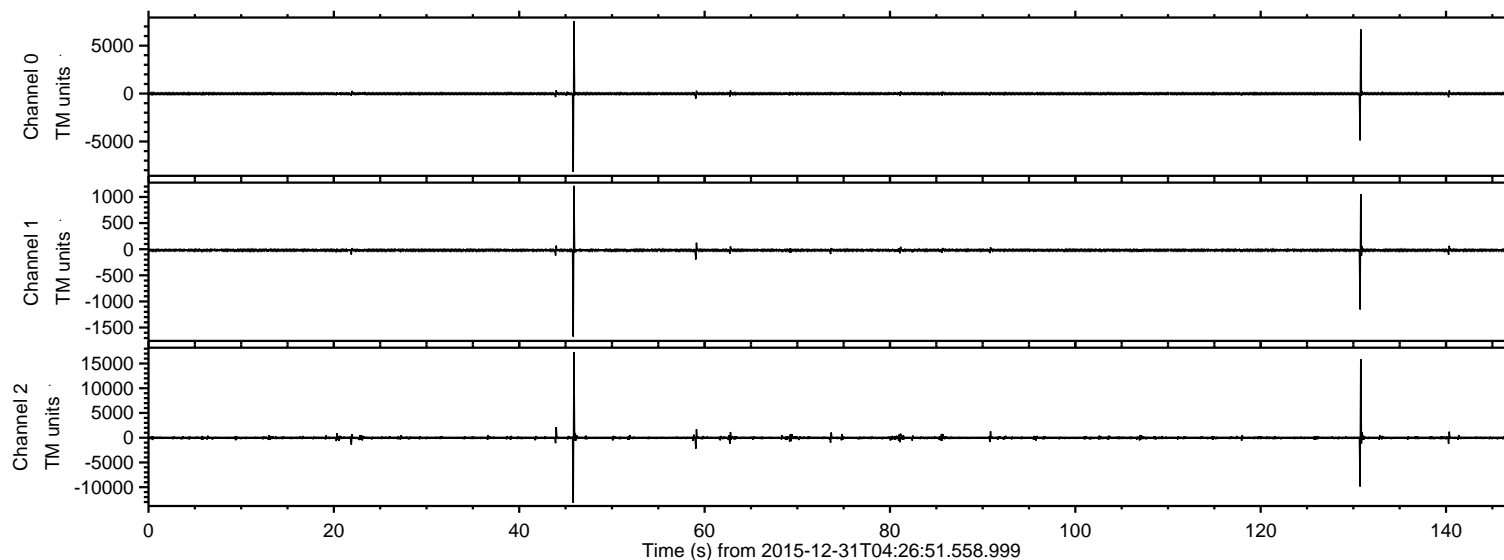
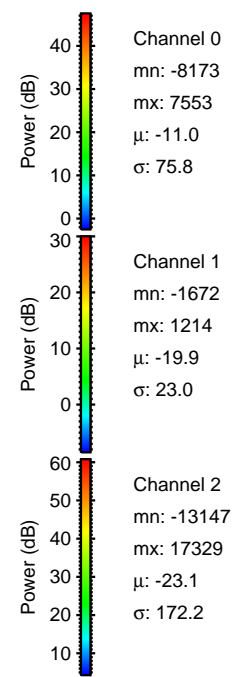
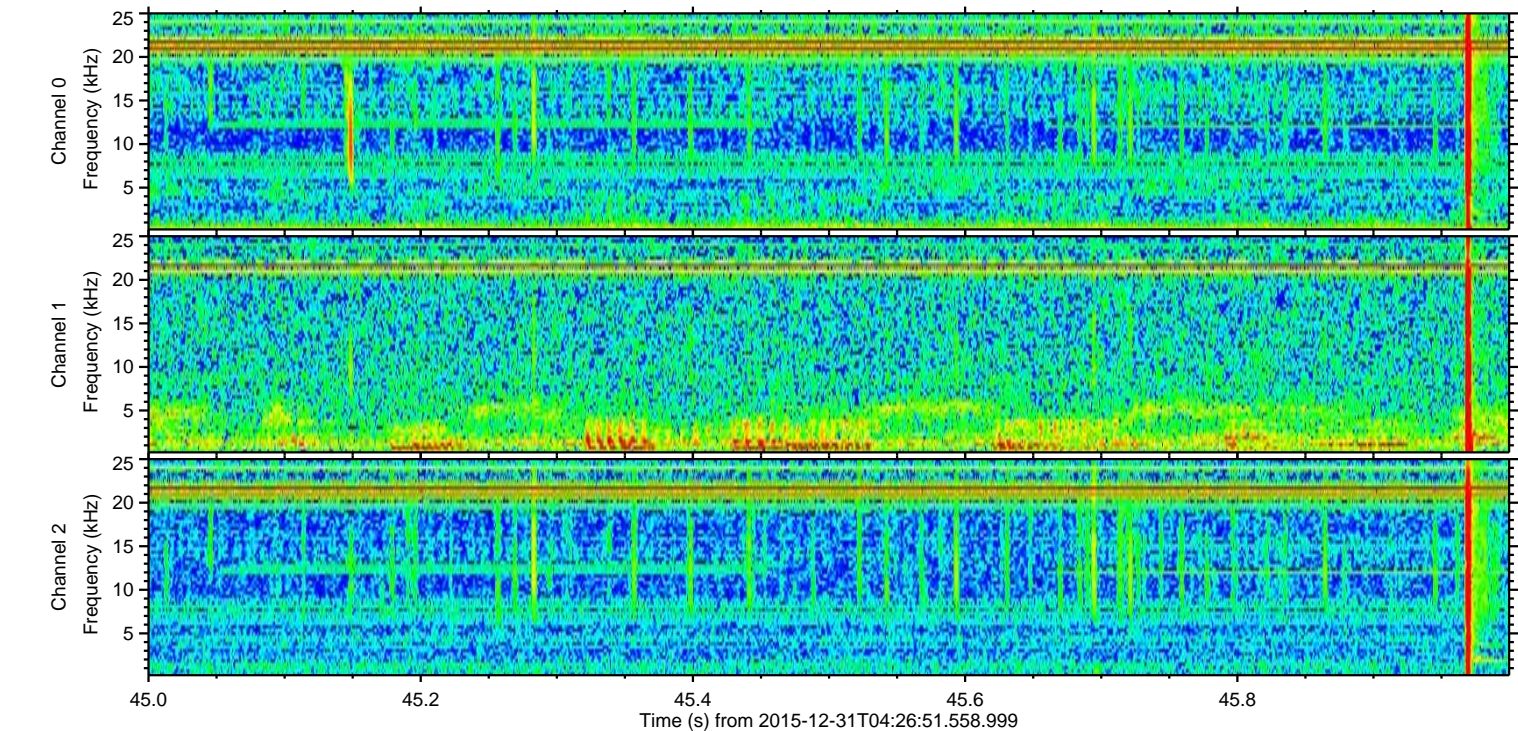
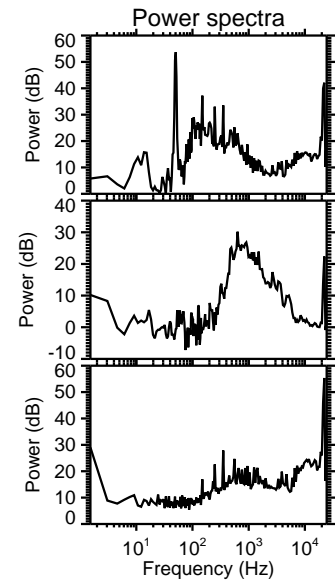
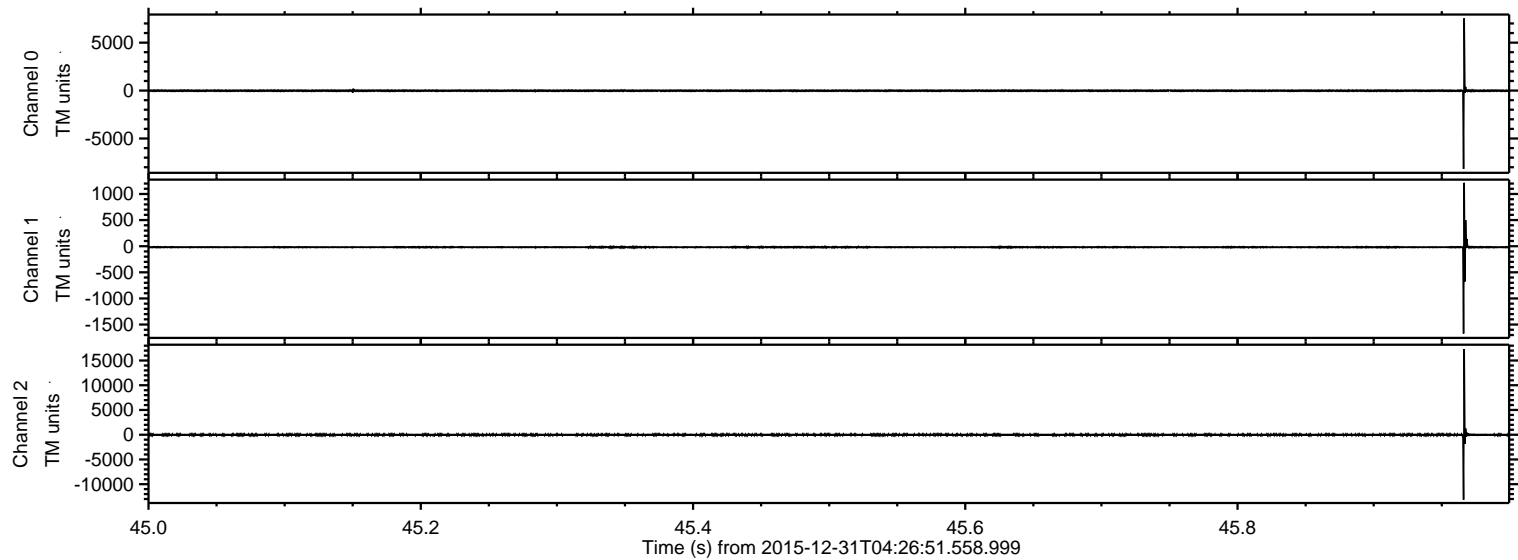


ELMAVAN 3D WAVEFORMS (Measured data sampled at 50 kHz) 51000 packets of 144 samples from 2015-12-31T04:26:51.558.999.

Processed Sat Mar 19 19:18:01 2016 by ELM ver.2012-10-06 from 001__elm20151231_042650__dat00.bin

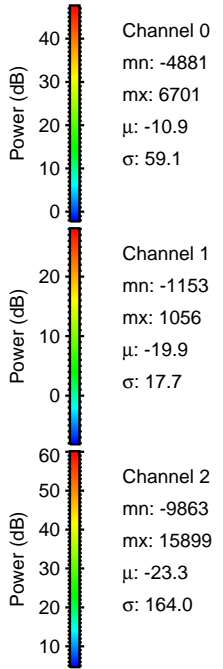
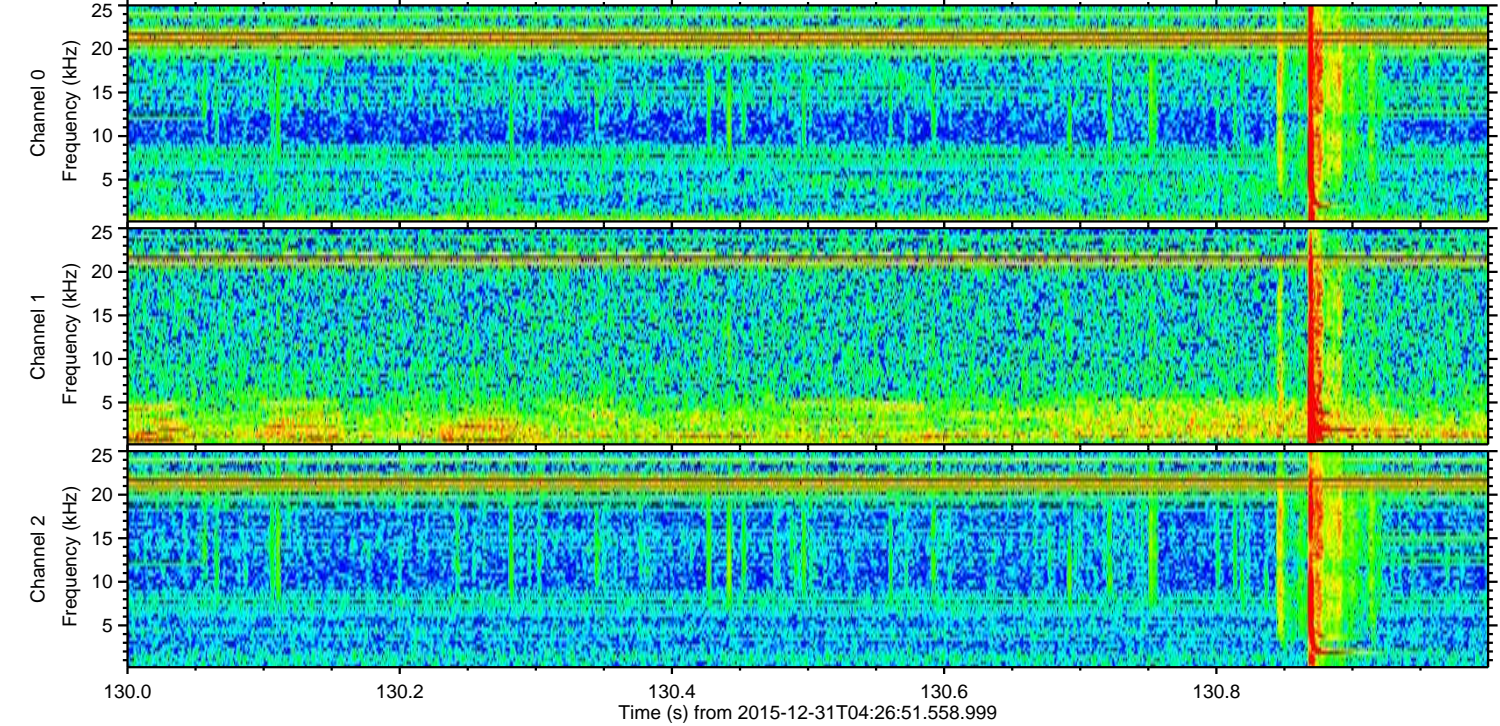
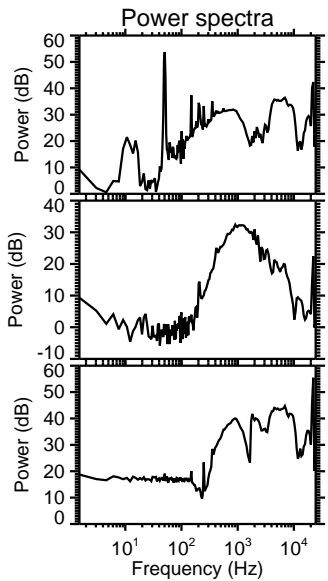
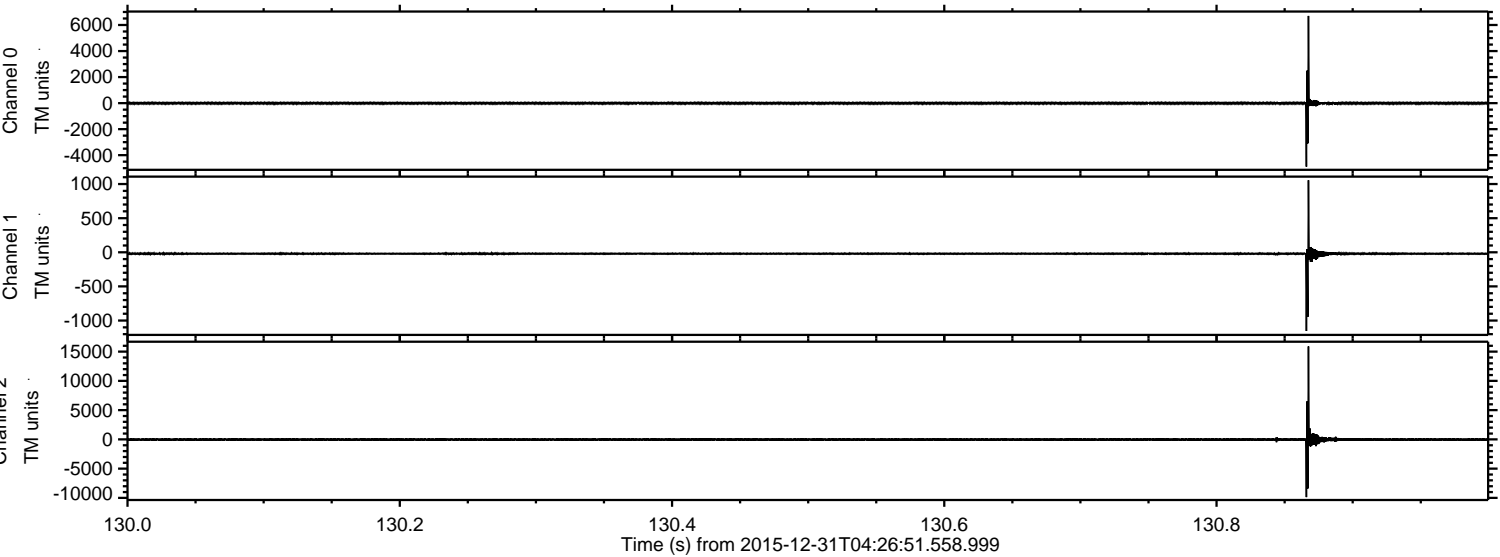


Processed Sat Mar 19 19:18:17 2016 by ELM ver.2012-10-06 from 001__elm20151231_042650__dat00.bin



ELMAVAN 3D WAVEFORMS (Measured data sampled at 50 kHz) 51000 packets of 144 samples from 2015-12-31T04:26:51.558.999. Part 131/147

Processed Sat Mar 19 19:18:18 2016 by ELM ver.2012-10-06 from 001__elm20151231_042650__dat00.bin

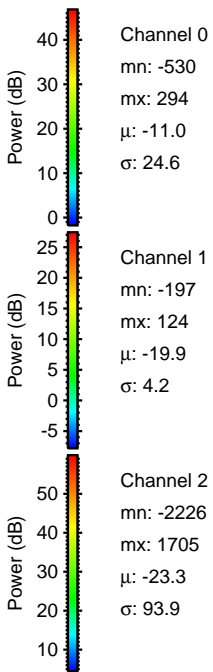
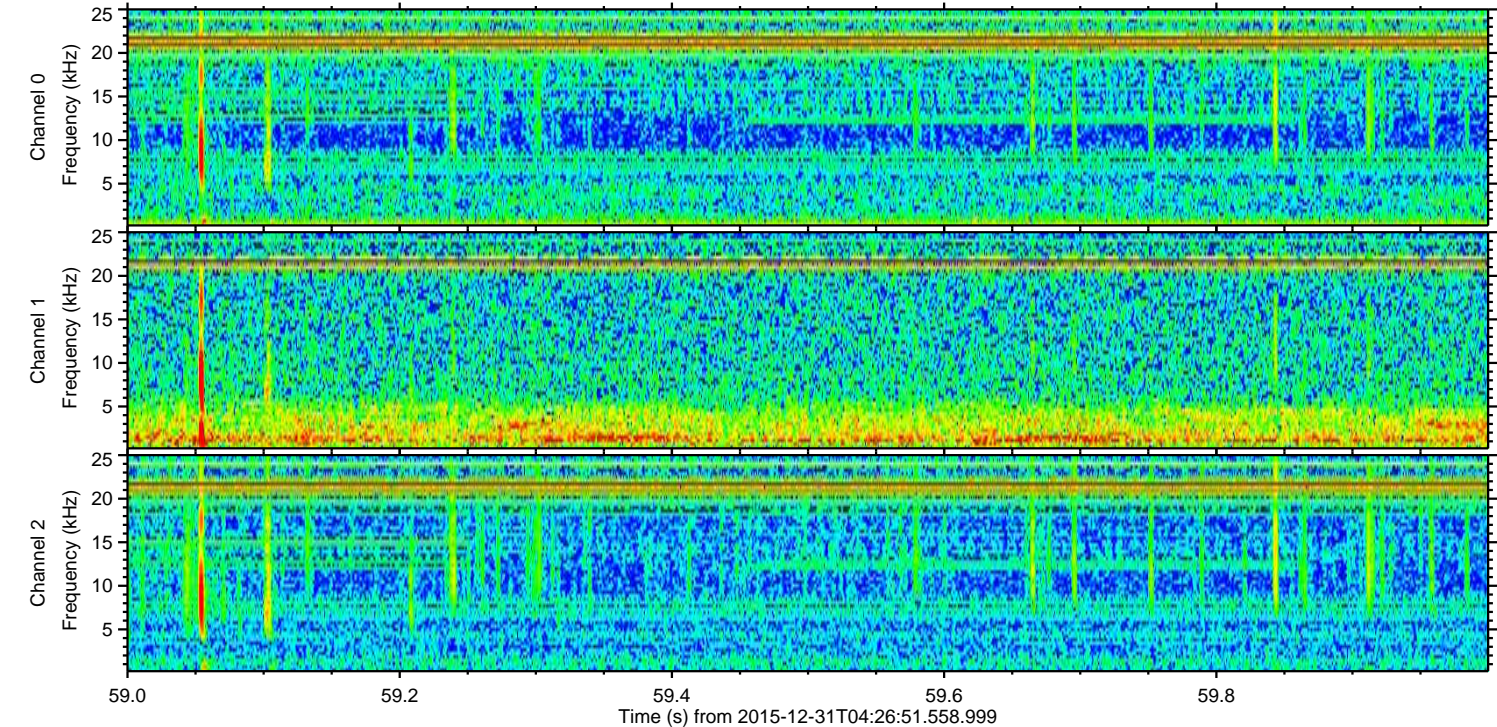
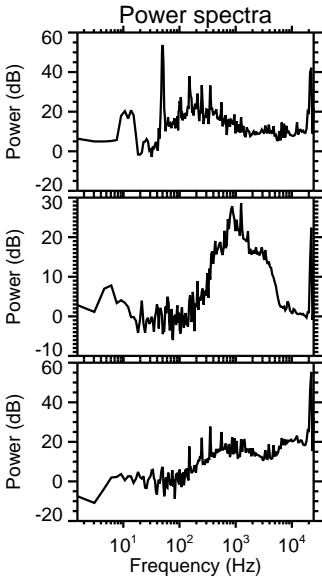
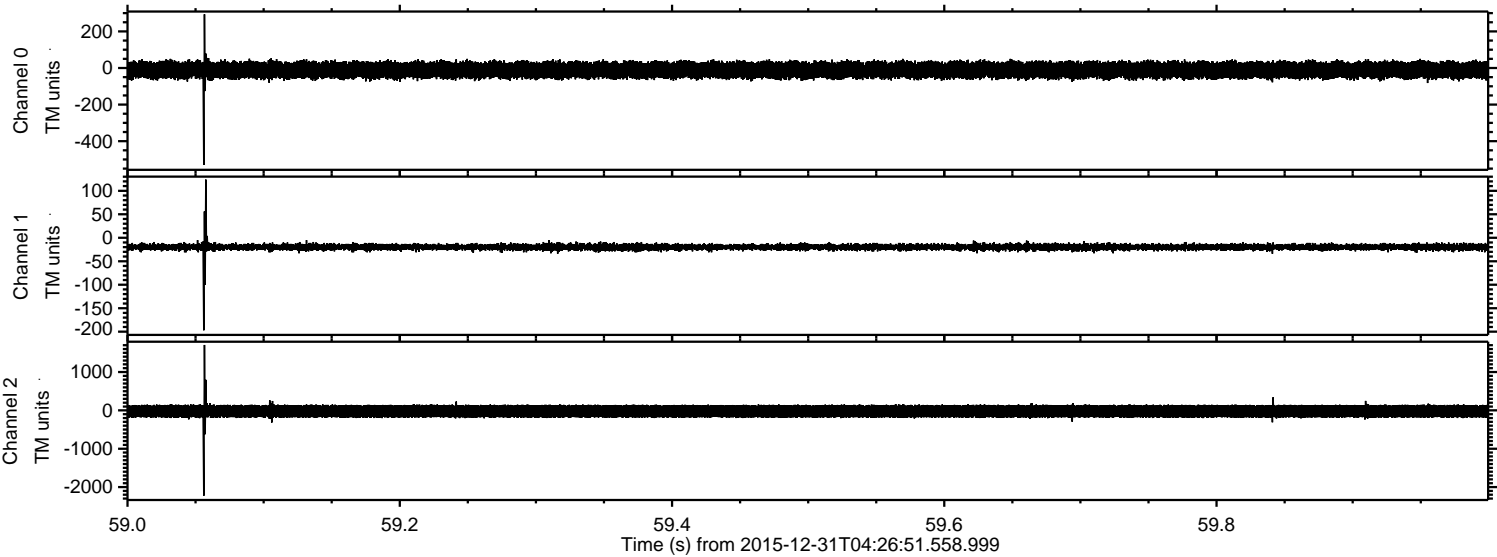


Channel 0
mn: -4881
mx: 6701
 μ : -10.9
 σ : 59.1

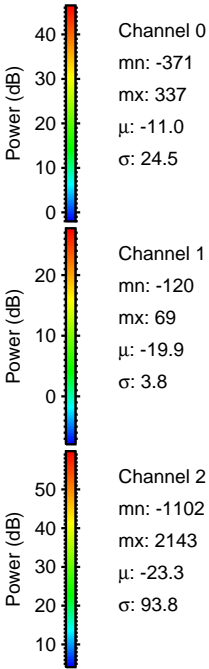
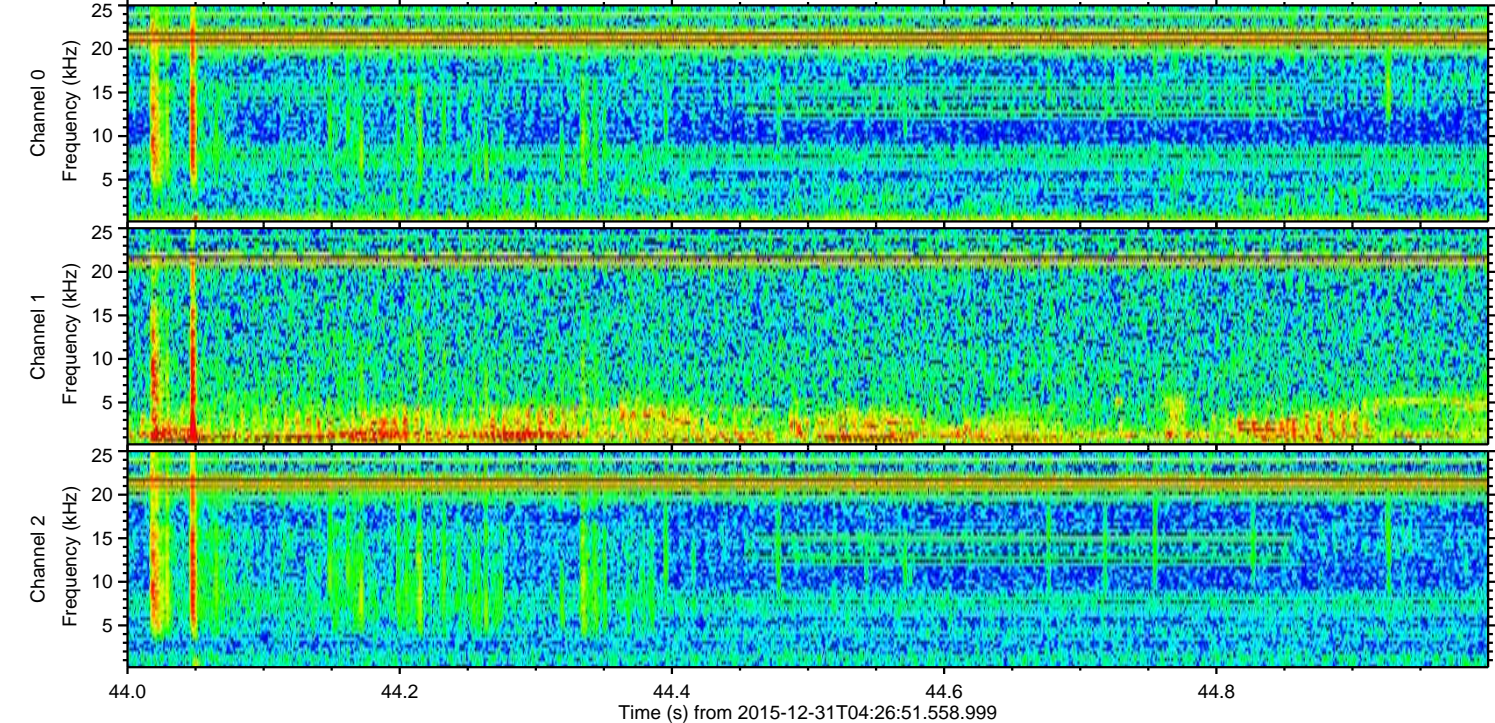
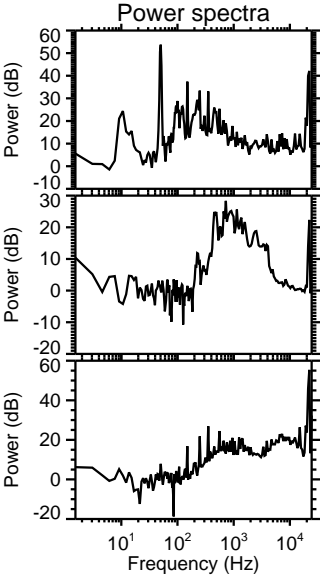
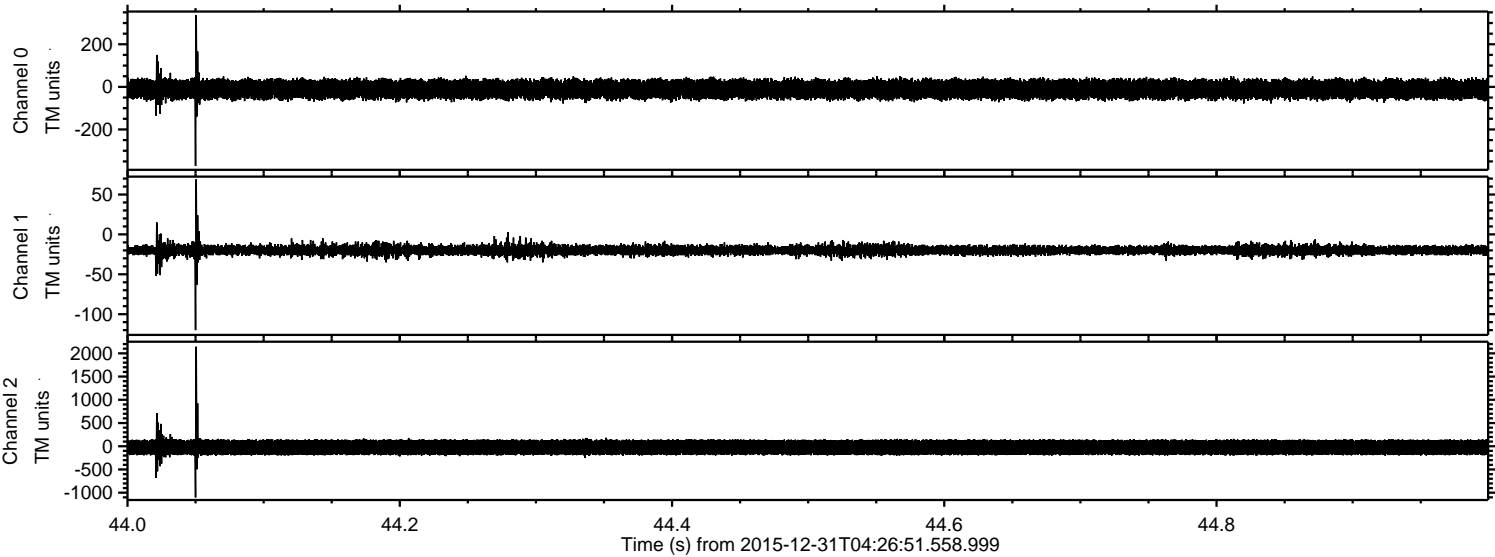
Channel 1
mn: -1153
mx: 1056
 μ : -19.9
 σ : 17.7

Channel 2
mn: -9863
mx: 15899
 μ : -23.3
 σ : 164.0

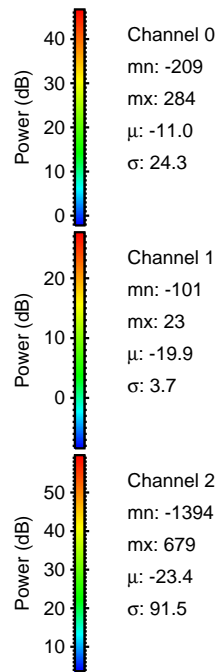
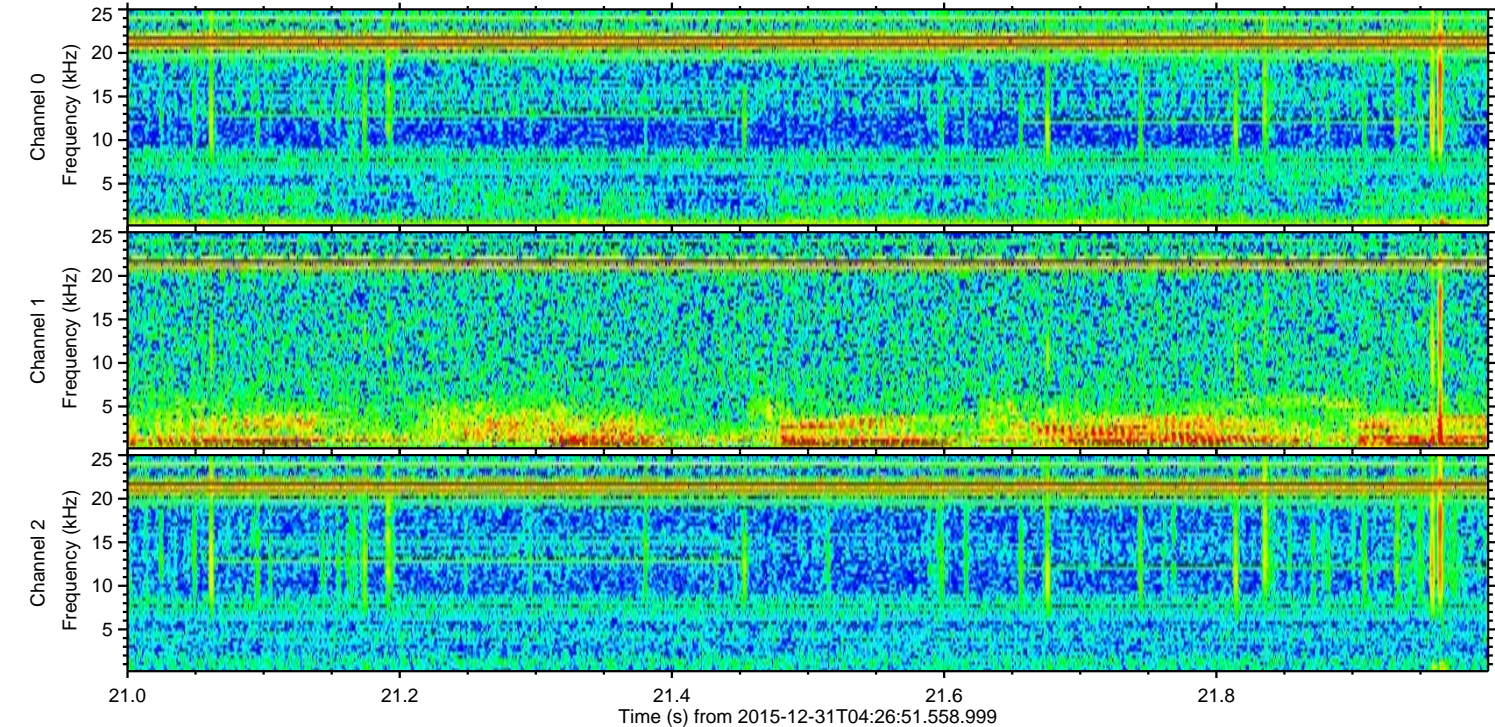
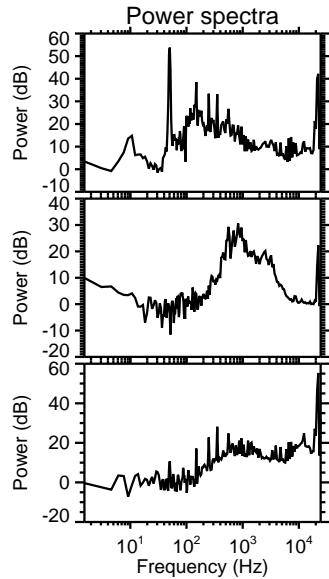
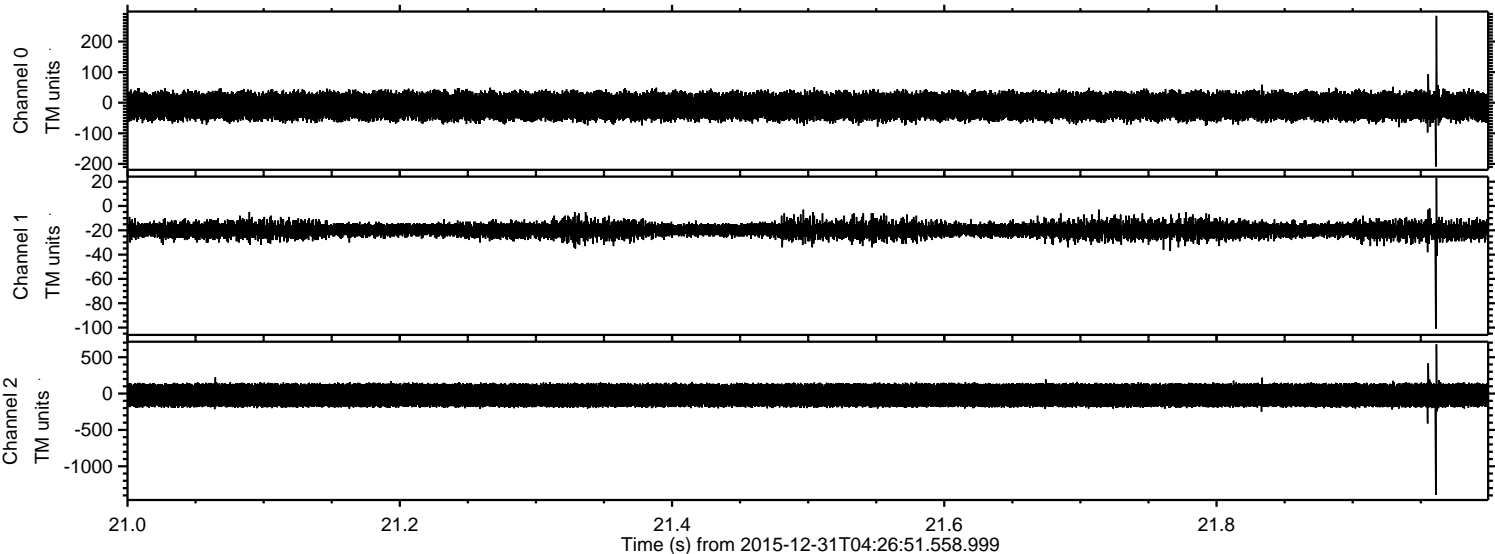
Processed Sat Mar 19 19:18:19 2016 by ELM ver.2012-10-06 from 001__elm20151231_042650__dat00.bin



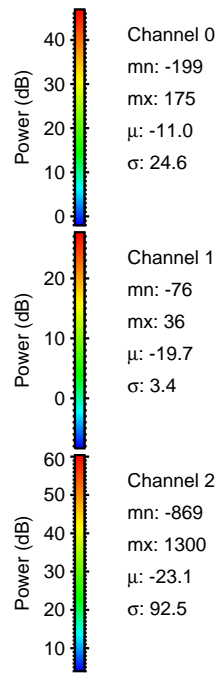
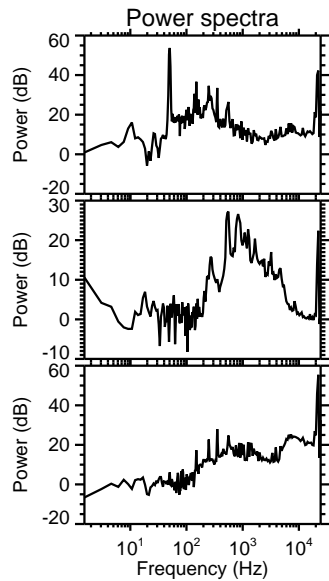
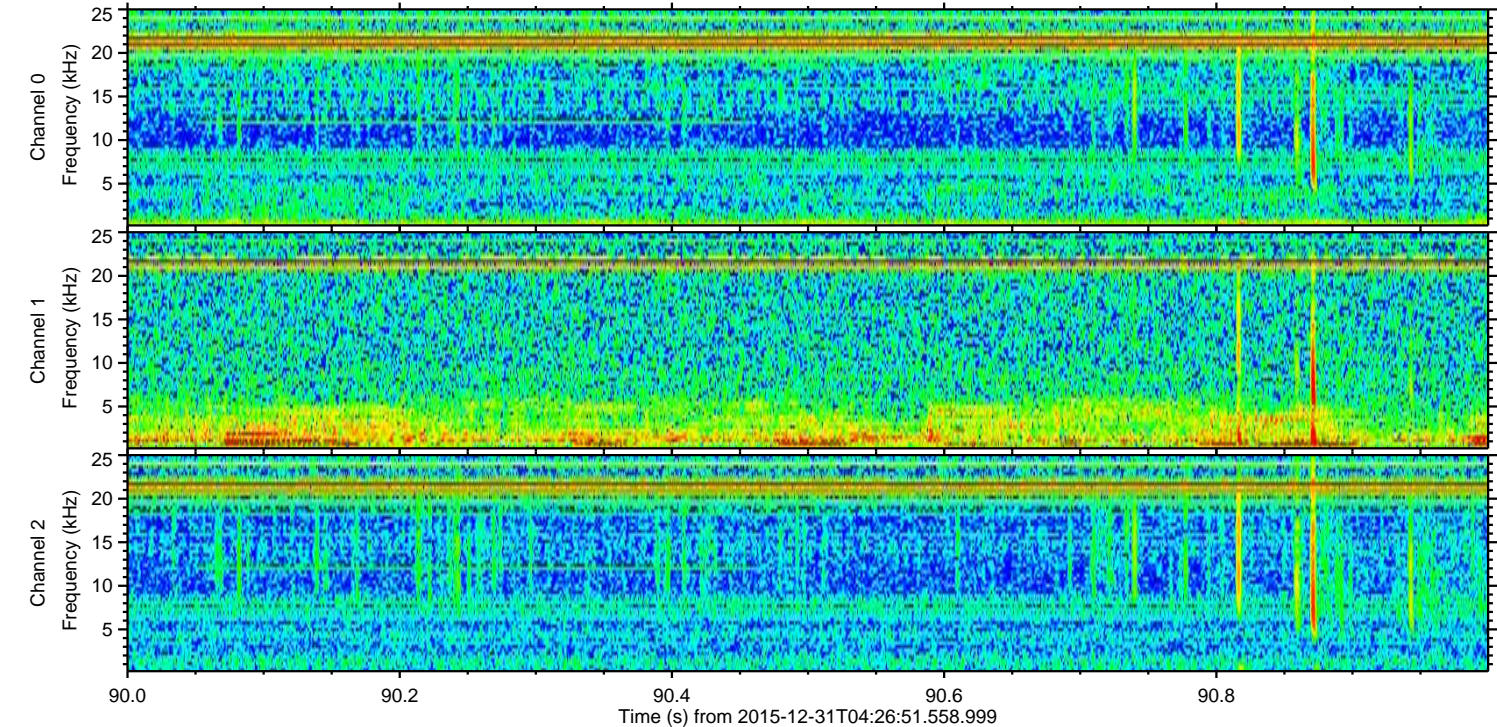
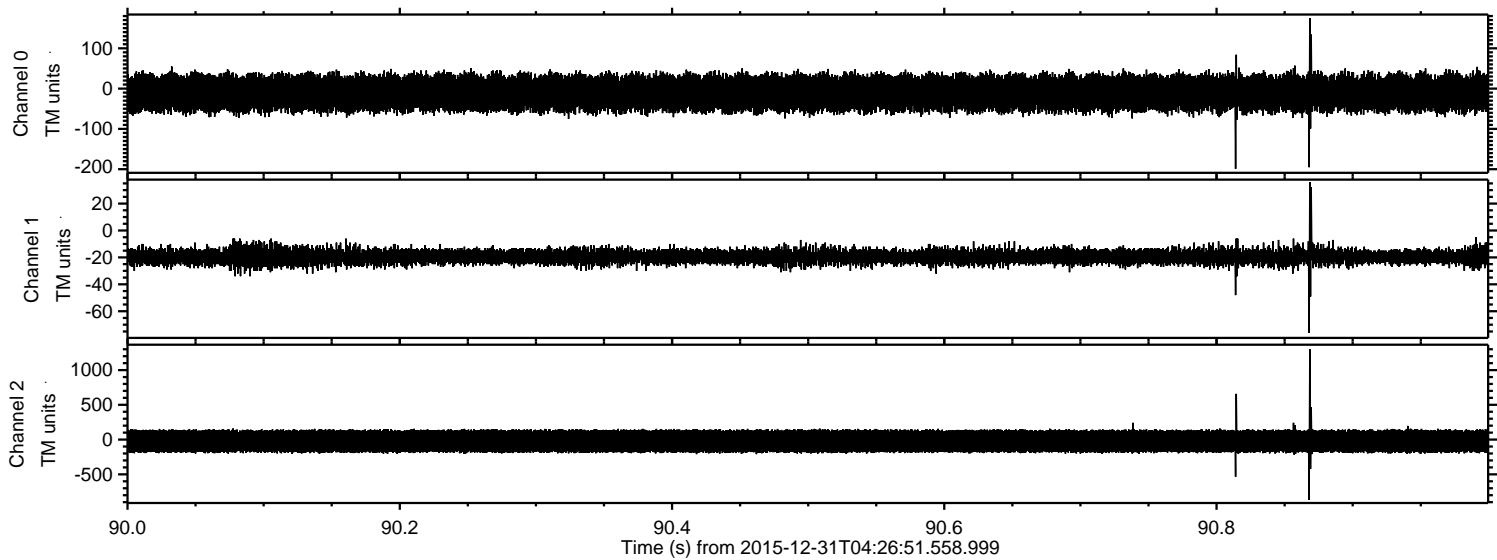
Processed Sat Mar 19 19:18:20 2016 by ELM ver.2012-10-06 from 001__elm20151231_042650__dat00.bin



Processed Sat Mar 19 19:18:21 2016 by ELM ver.2012-10-06 from 001__elm20151231_042650__dat00.bin

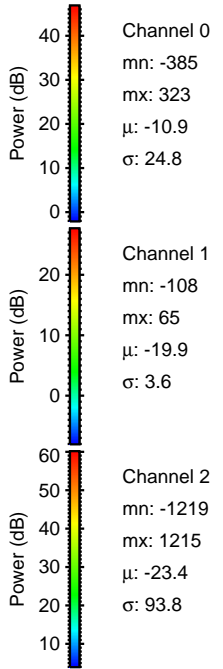
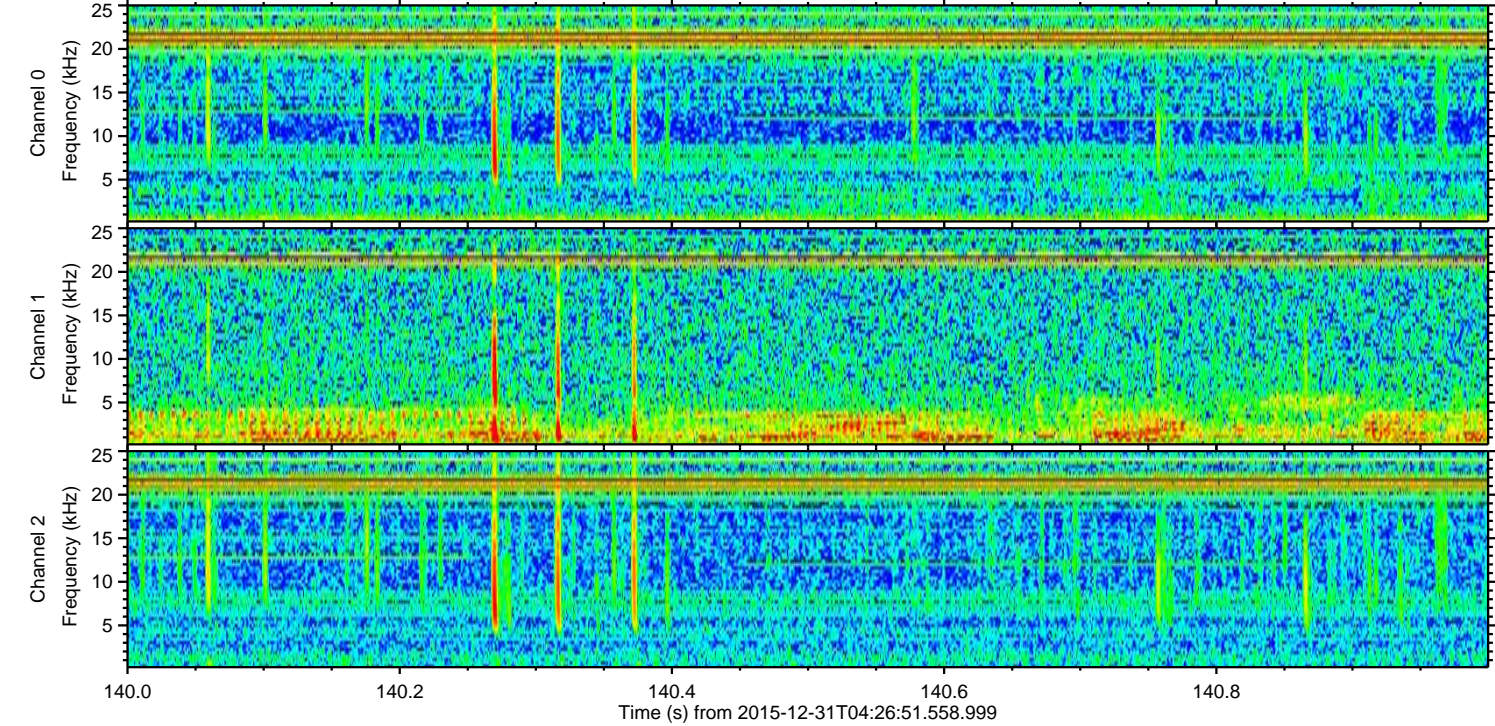
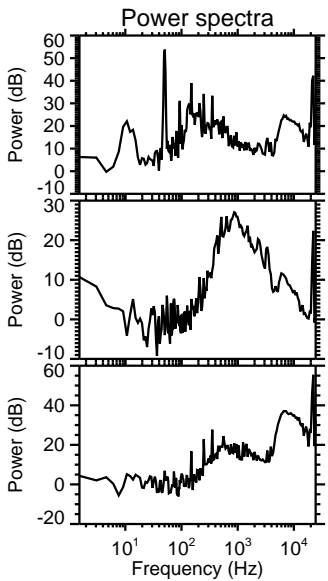
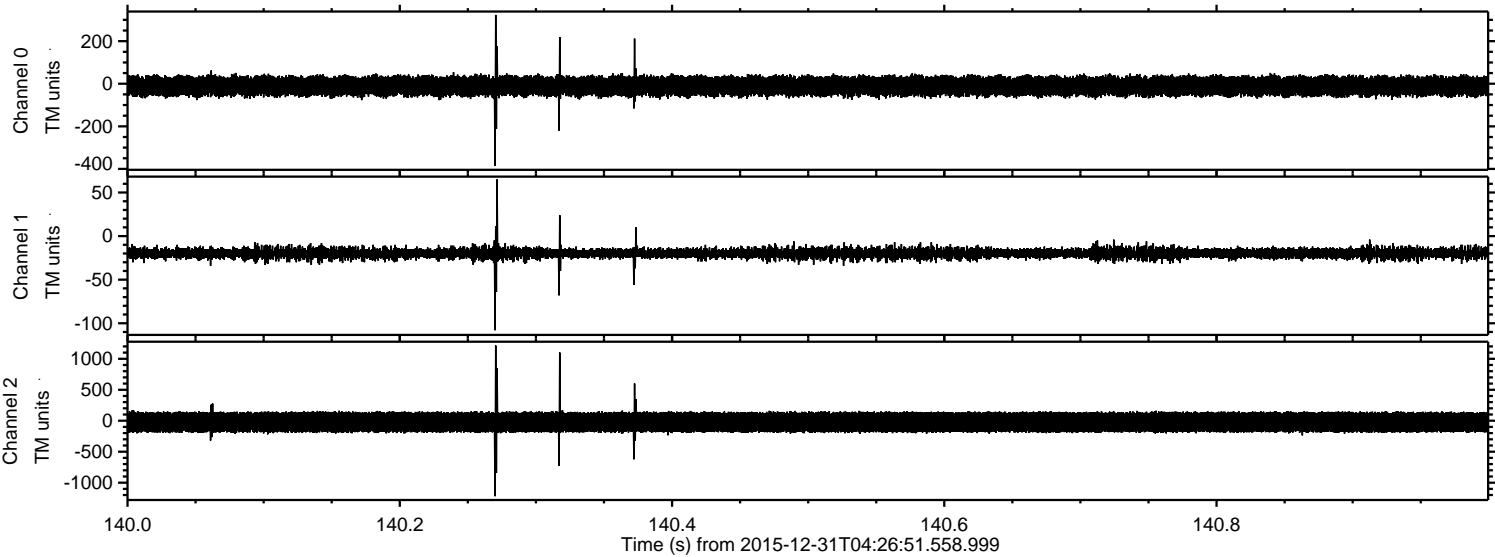


Processed Sat Mar 19 19:18:22 2016 by ELM ver.2012-10-06 from 001__elm20151231_042650__dat00.bin

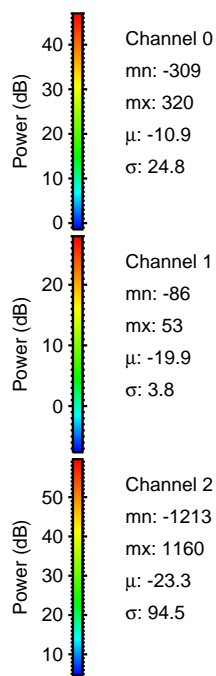
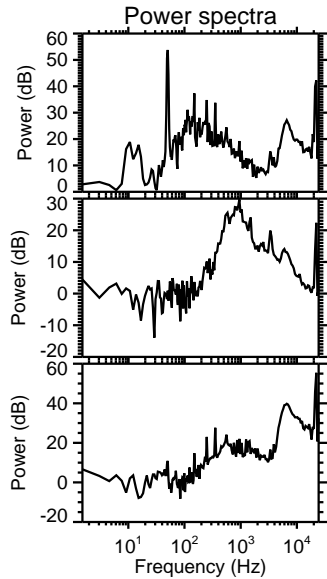
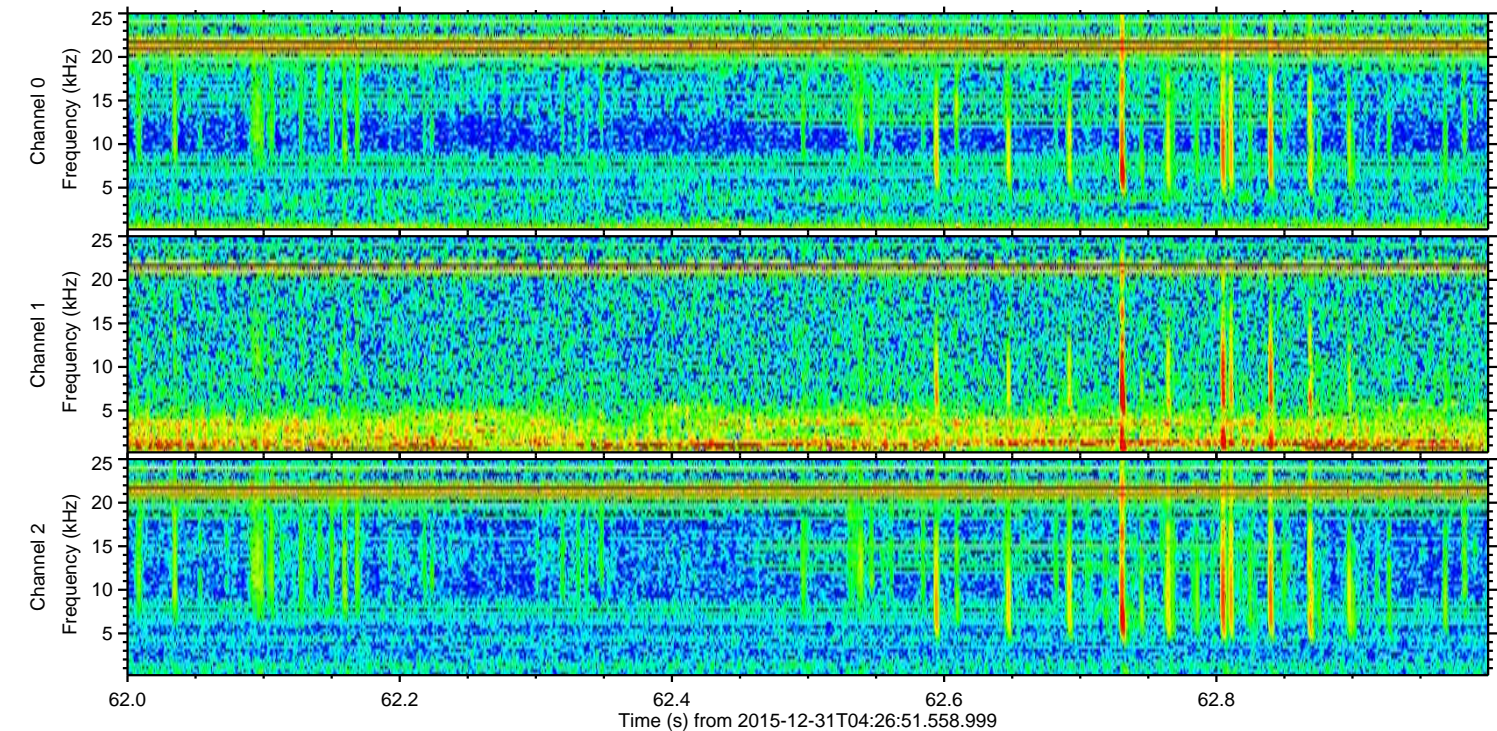
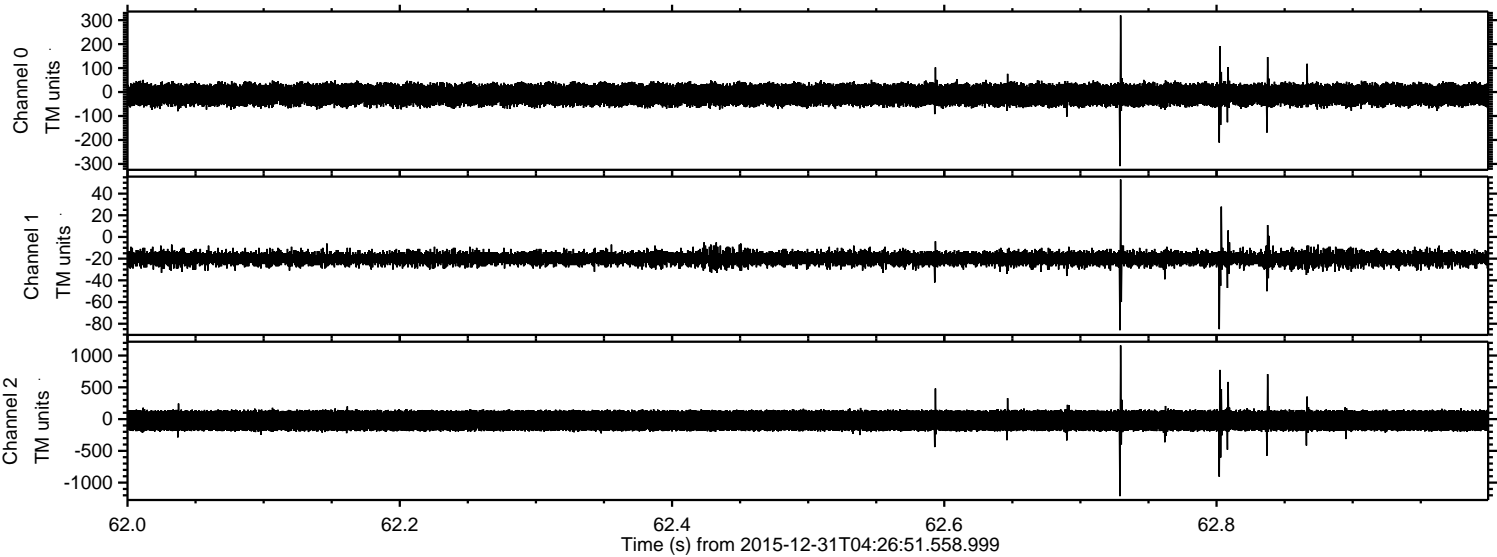


ELMAVAN 3D WAVEFORMS (Measured data sampled at 50 kHz) 51000 packets of 144 samples from 2015-12-31T04:26:51.558.999. Part 141/147

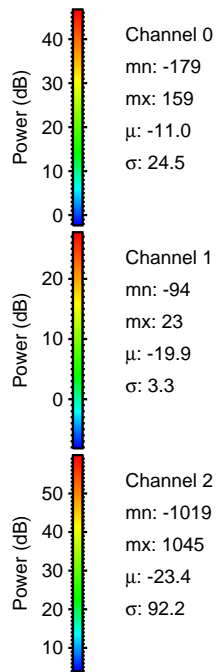
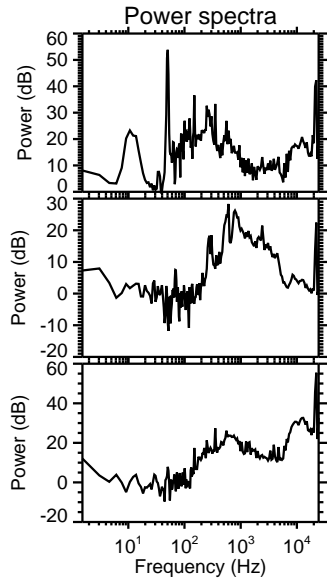
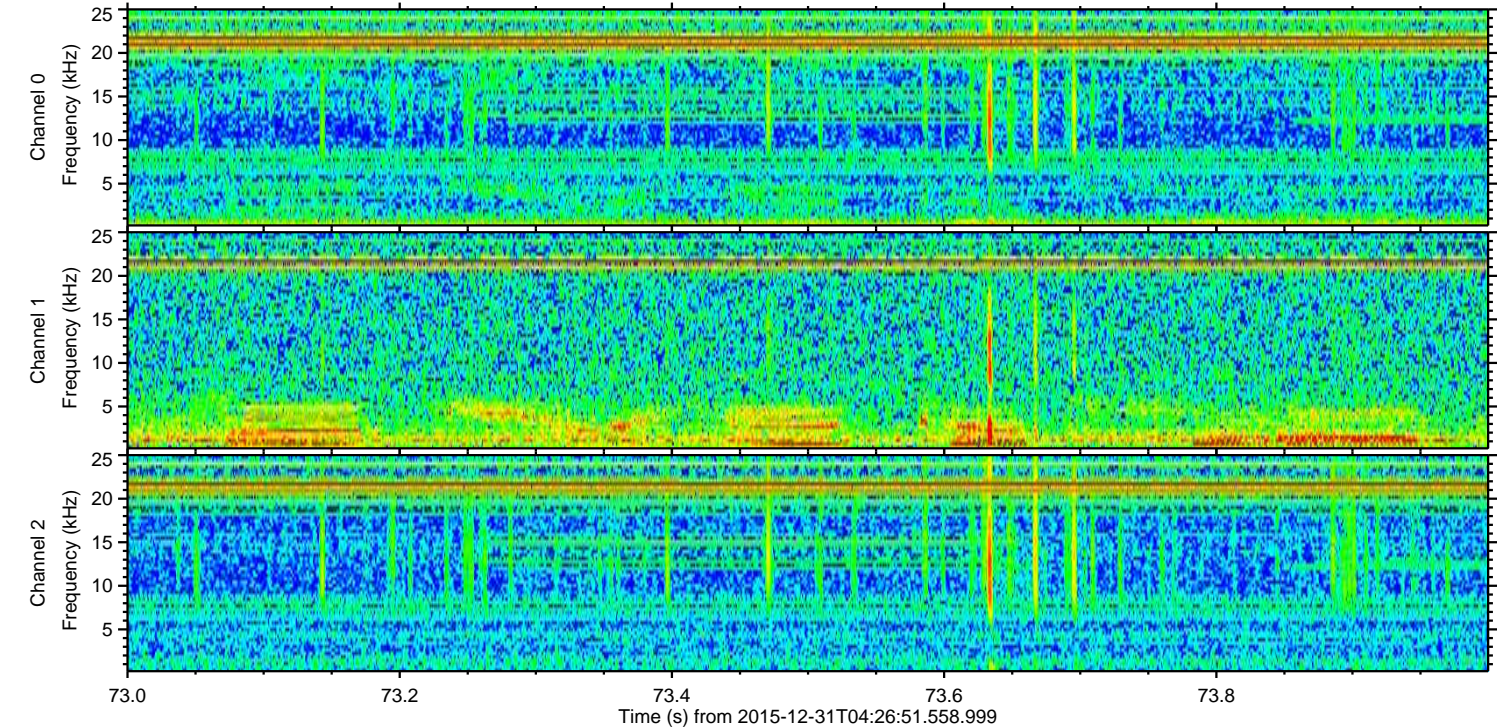
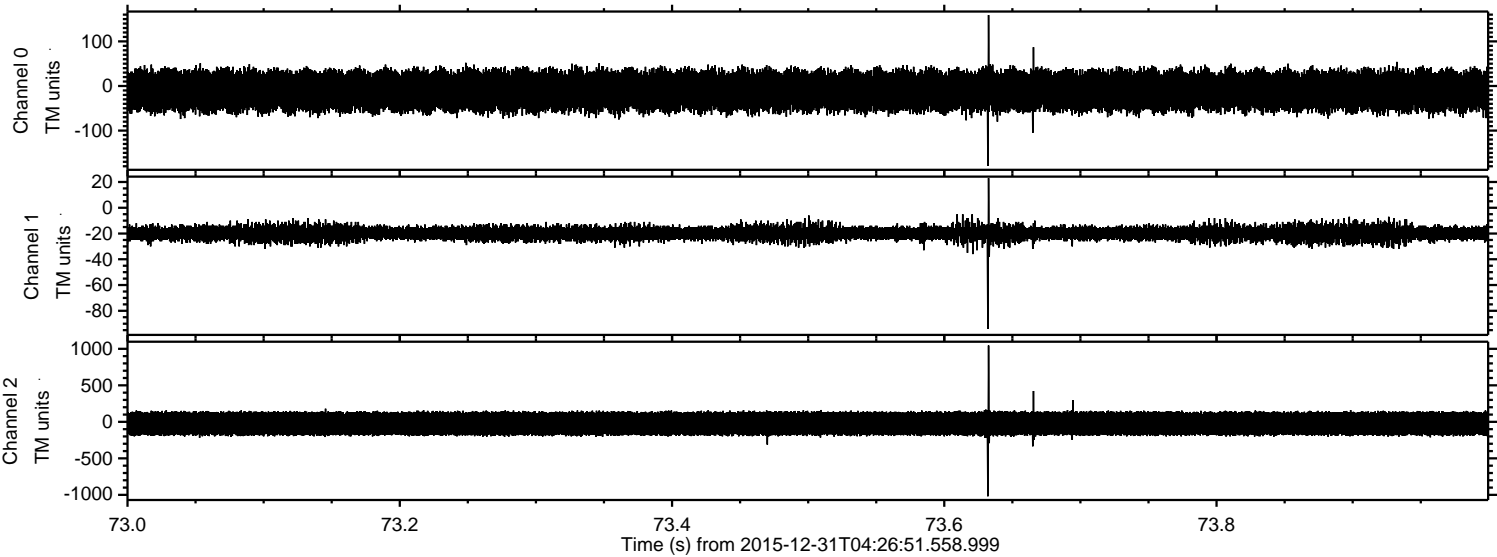
Processed Sat Mar 19 19:18:23 2016 by ELM ver.2012-10-06 from 001__elm20151231_042650__dat00.bin



Processed Sat Mar 19 19:18:25 2016 by ELM ver.2012-10-06 from 001__elm20151231_042650__dat00.bin



Processed Sat Mar 19 19:18:26 2016 by ELM ver.2012-10-06 from 001__elm20151231_042650__dat00.bin



Processed Sat Mar 19 19:18:27 2016 by ELM ver.2012-10-06 from 001__elm20151231_042650__dat00.bin

