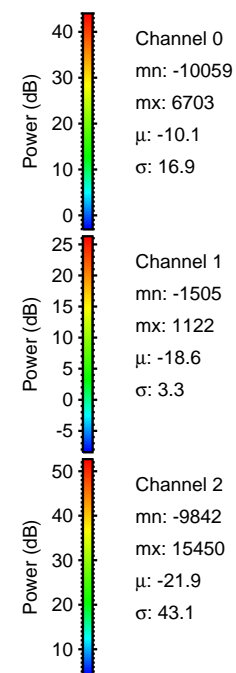
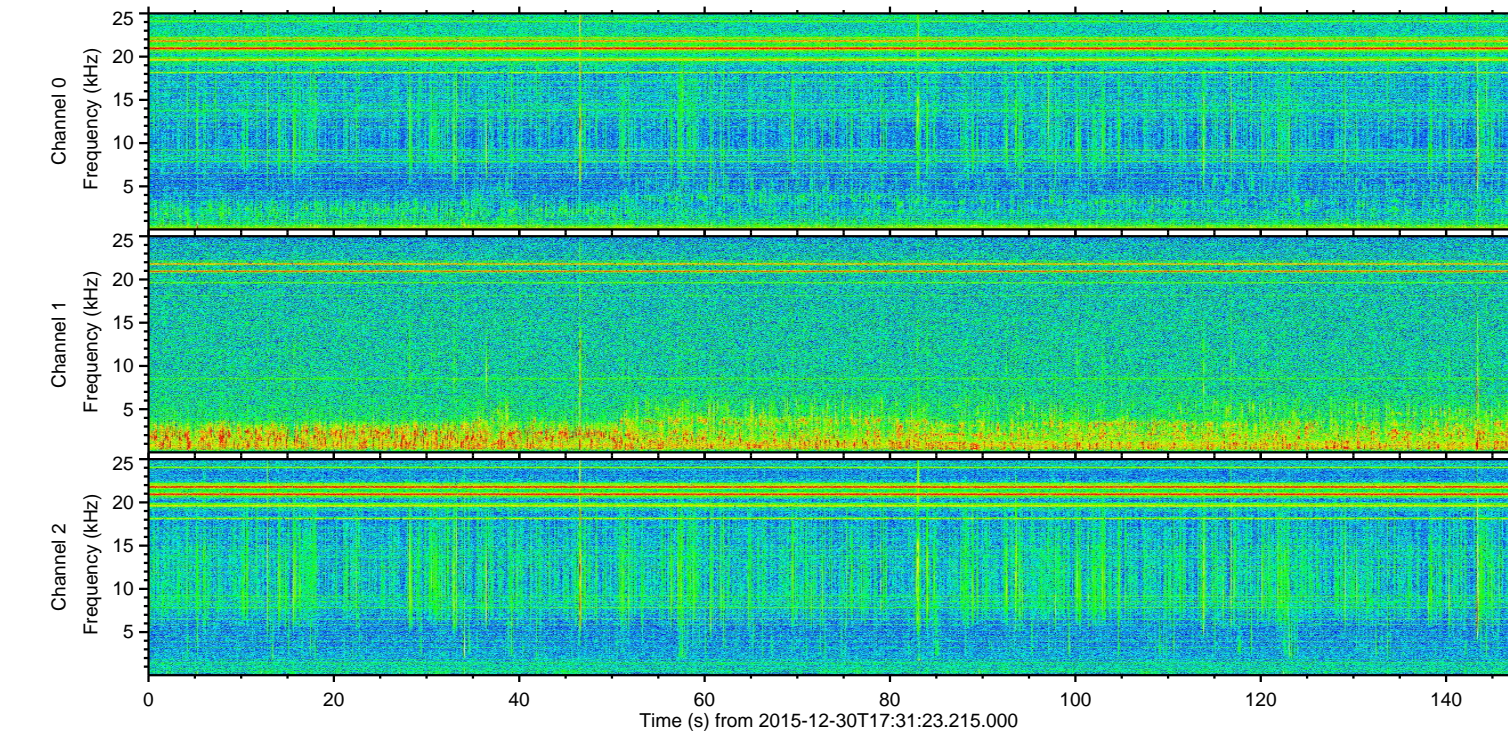
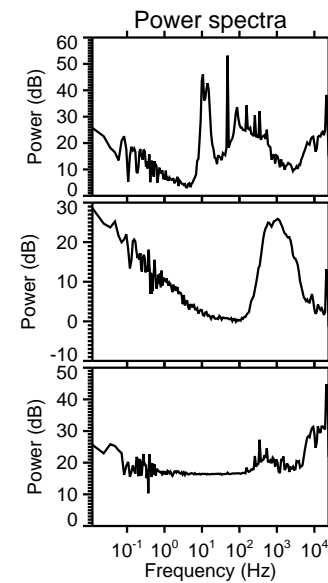
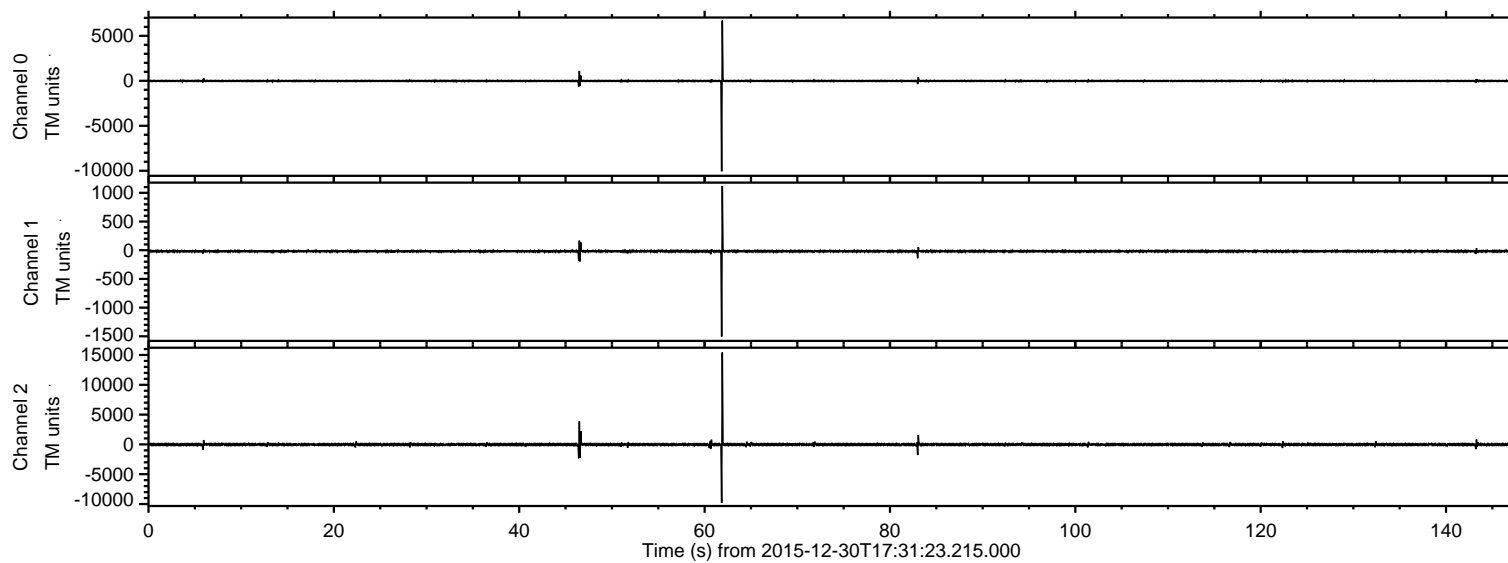


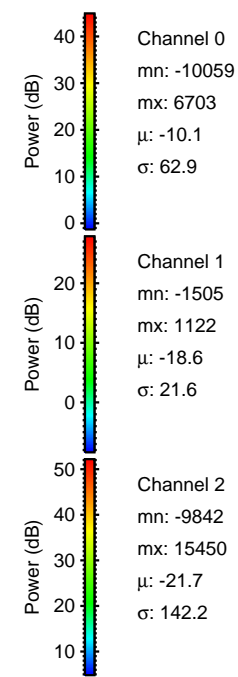
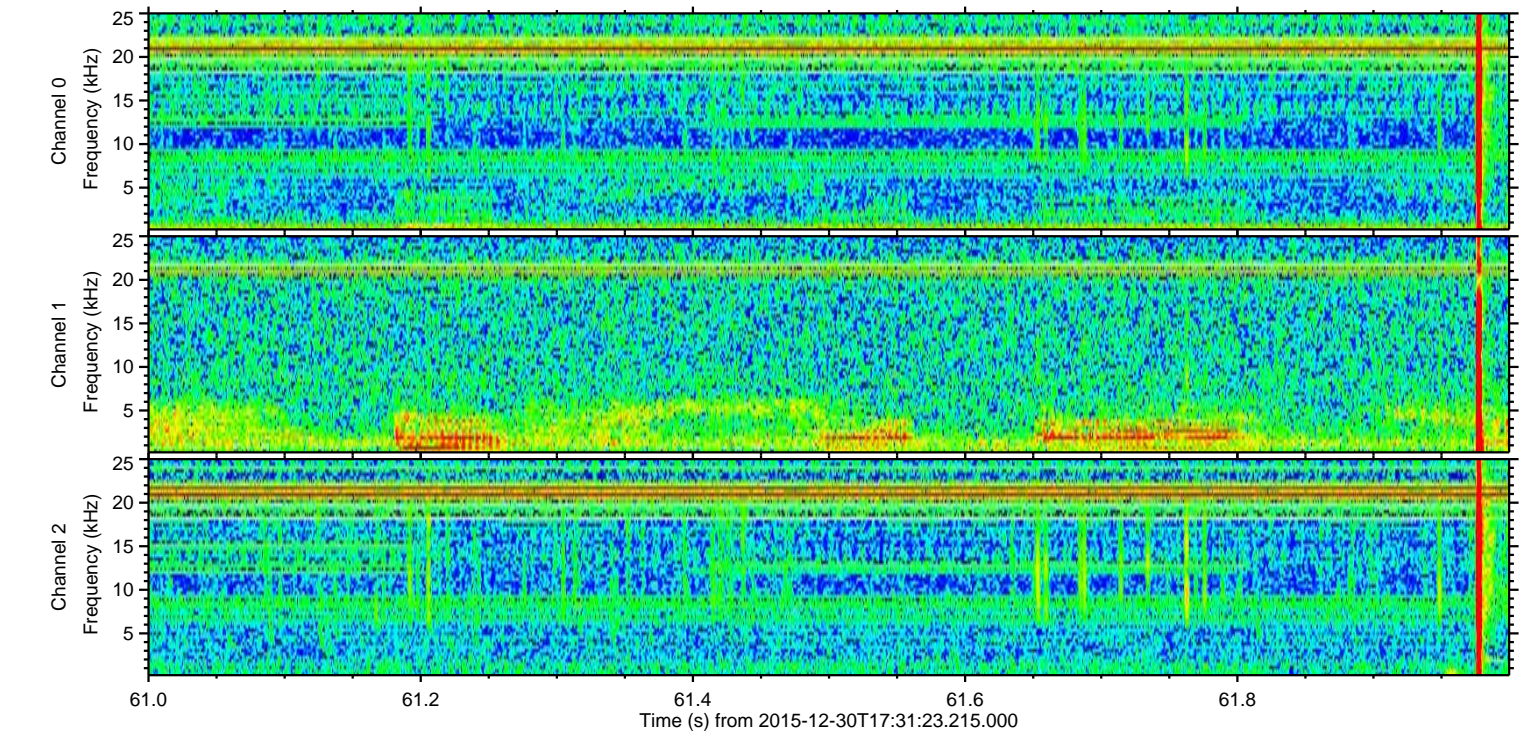
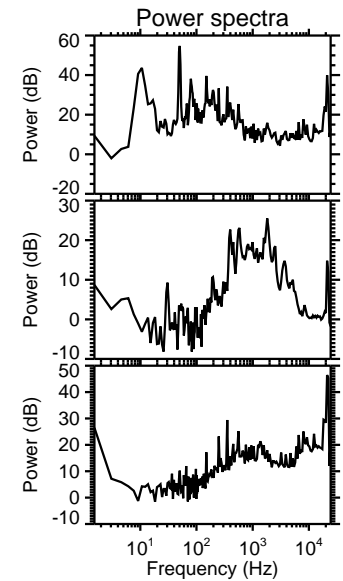
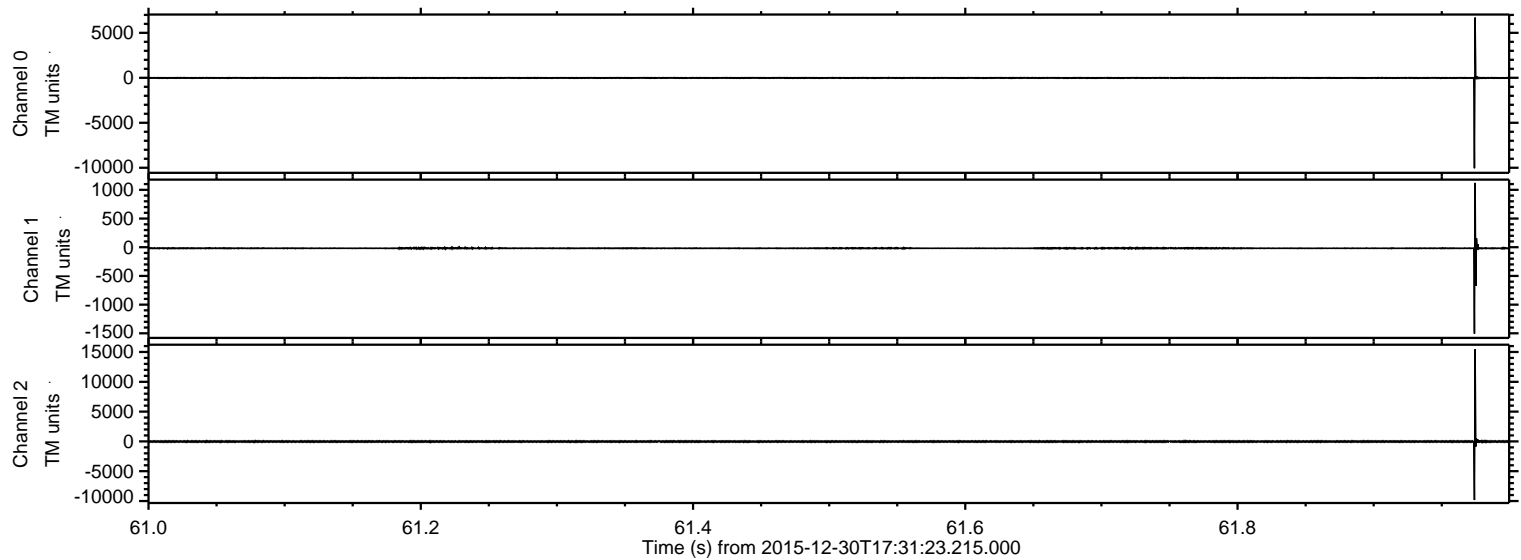
# ELMAVAN 3D WAVEFORMS (Measured data sampled at 50 kHz) 51000 packets of 144 samples from 2015-12-30T17:31:23.215.000.

Processed Sat Mar 19 15:55:30 2016 by ELM ver.2012-10-06 from 001\_\_elm20151230\_173122\_\_dat00.bin





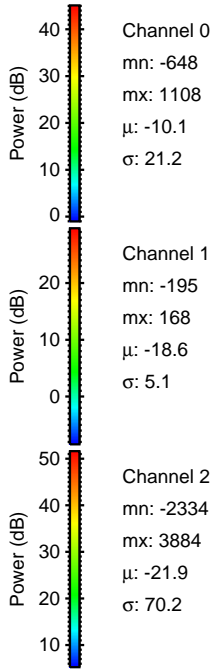
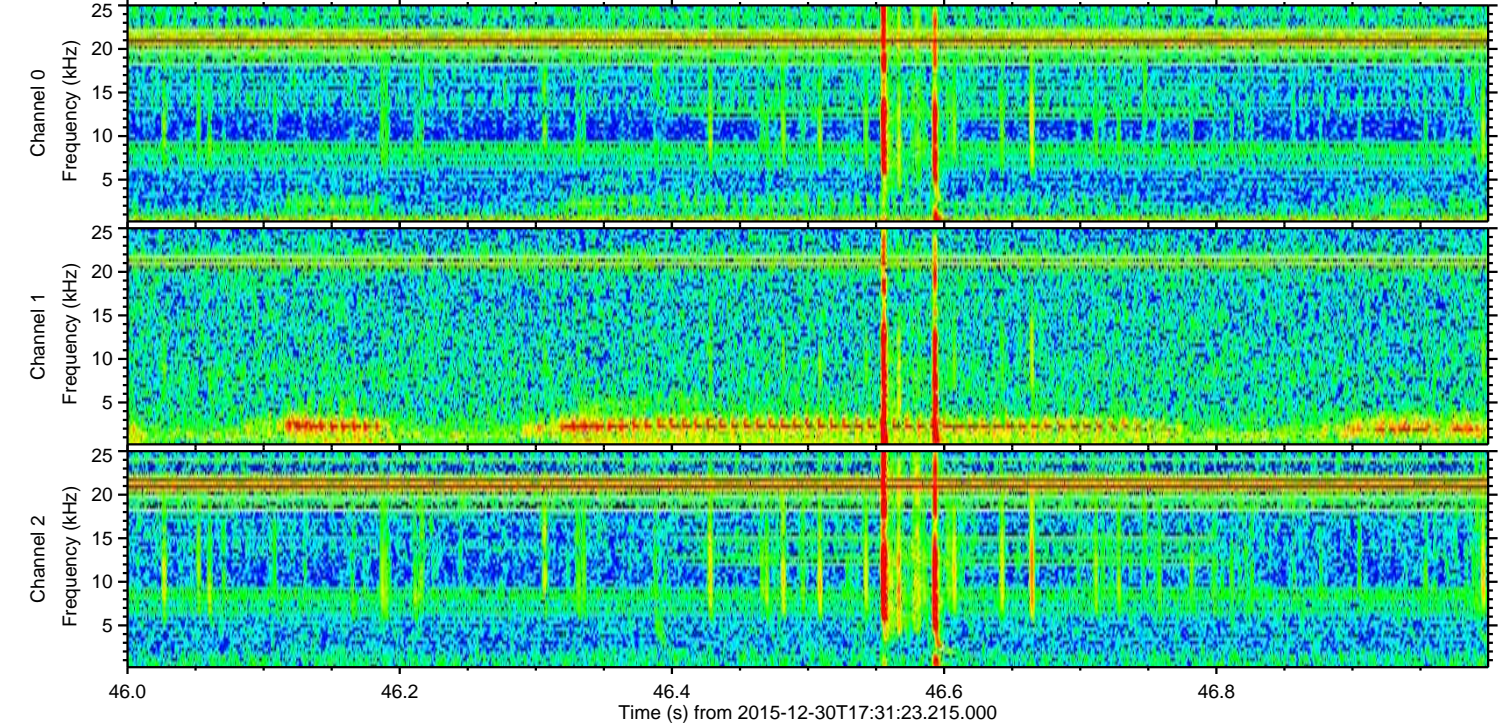
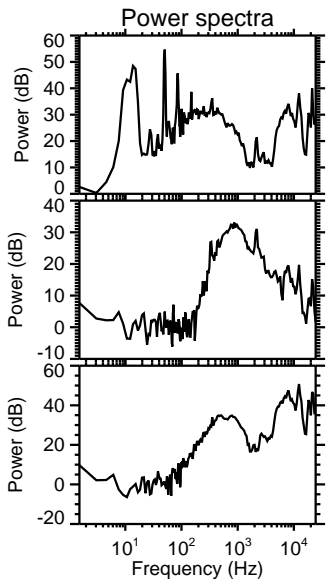
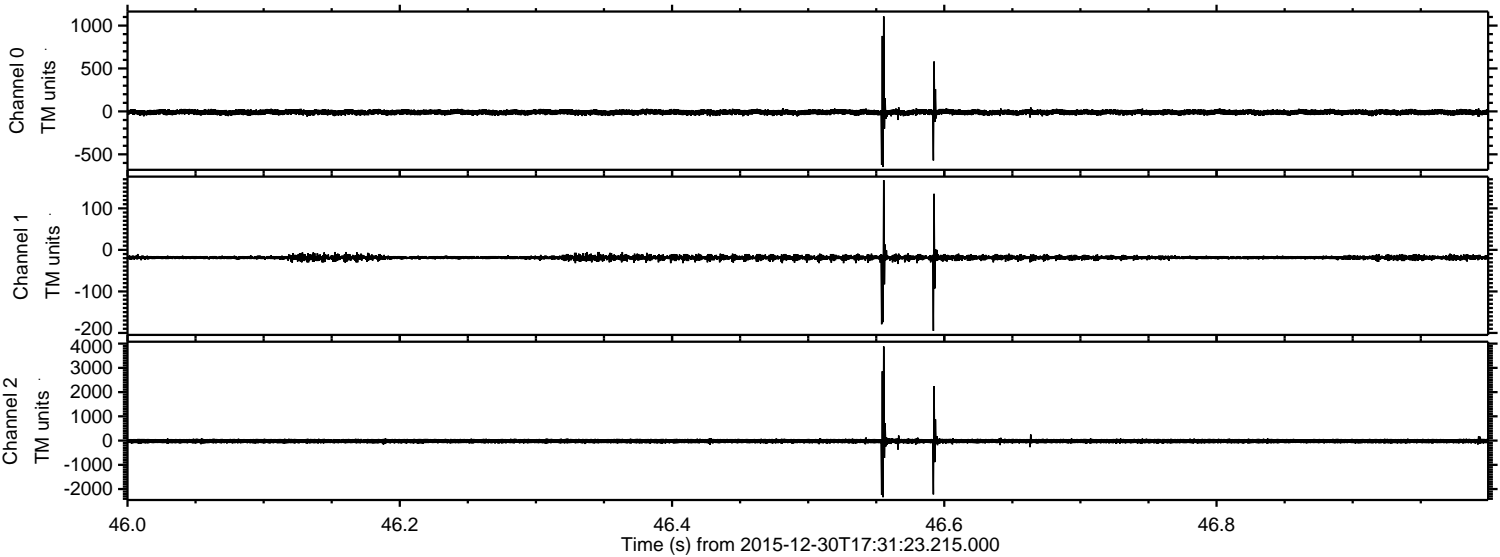
Processed Sat Mar 19 15:55:41 2016 by ELM ver.2012-10-06 from 001\_\_elm20151230\_173122\_\_dat00.bin





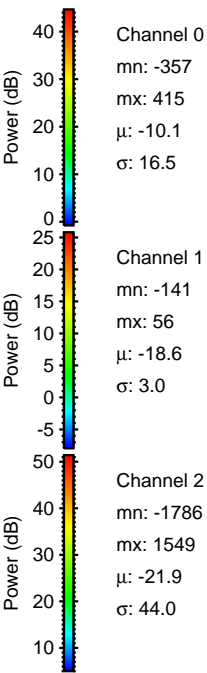
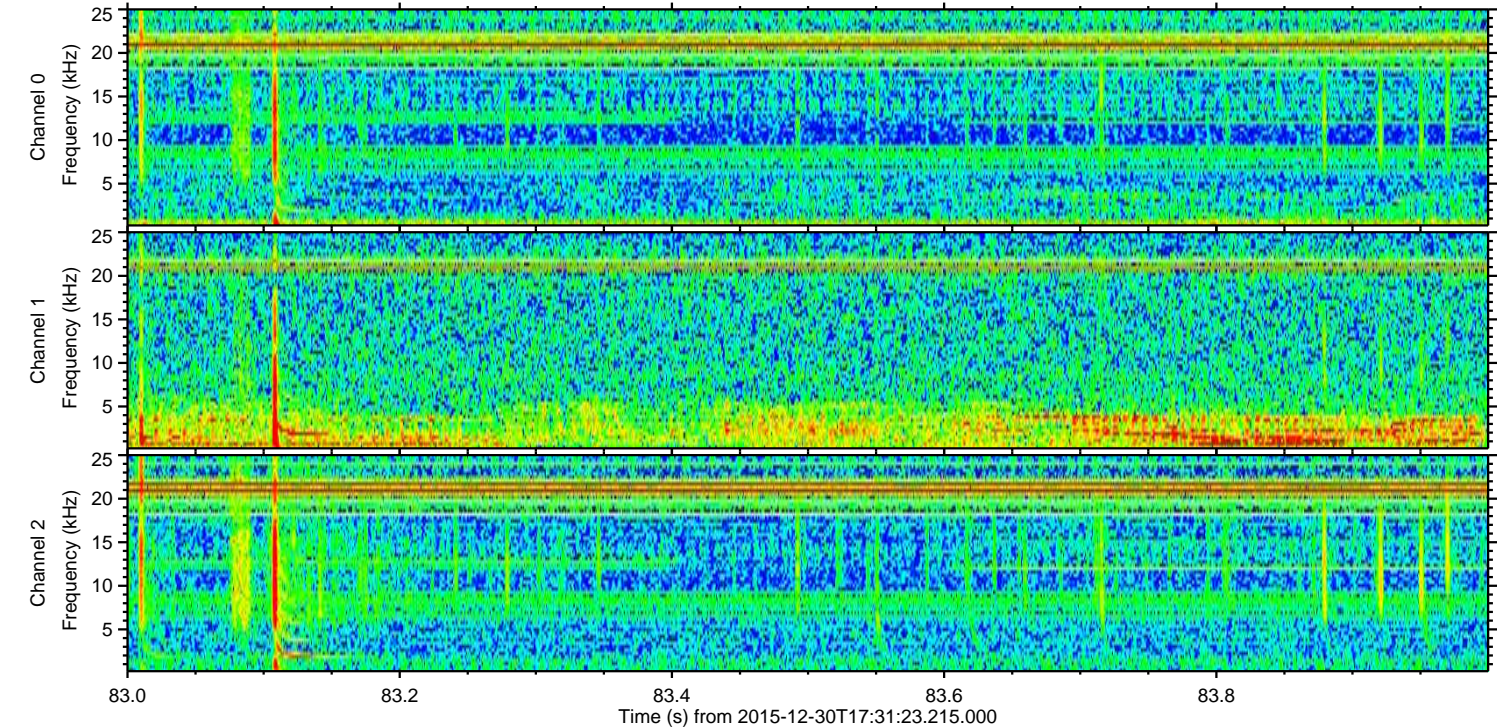
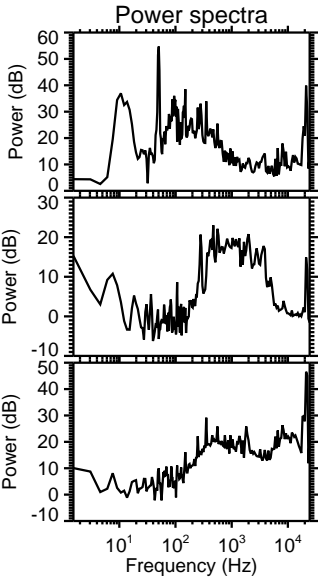
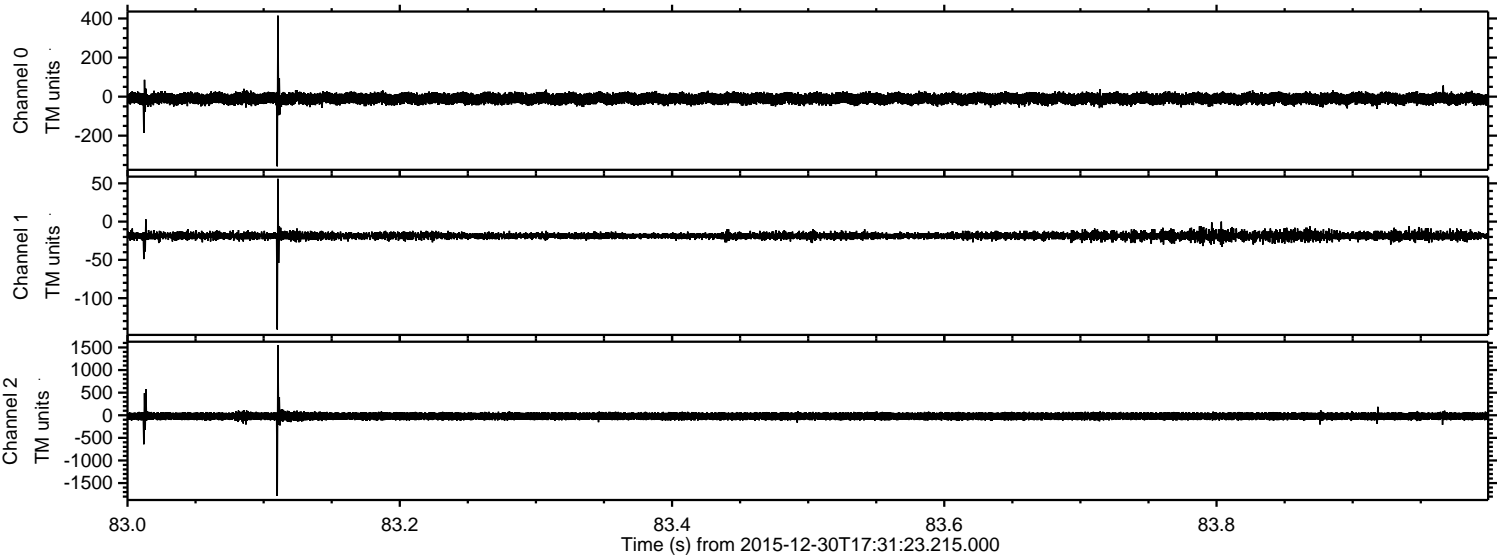
ELMAVAN 3D WAVEFORMS (Measured data sampled at 50 kHz) 51000 packets of 144 samples from 2015-12-30T17:31:23.215.000. Part 47/147

Processed Sat Mar 19 15:55:42 2016 by ELM ver.2012-10-06 from 001\_\_elm20151230\_173122\_\_dat00.bin



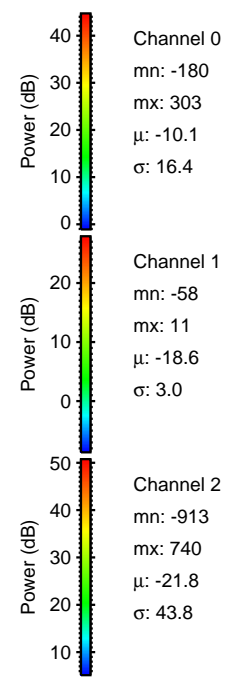
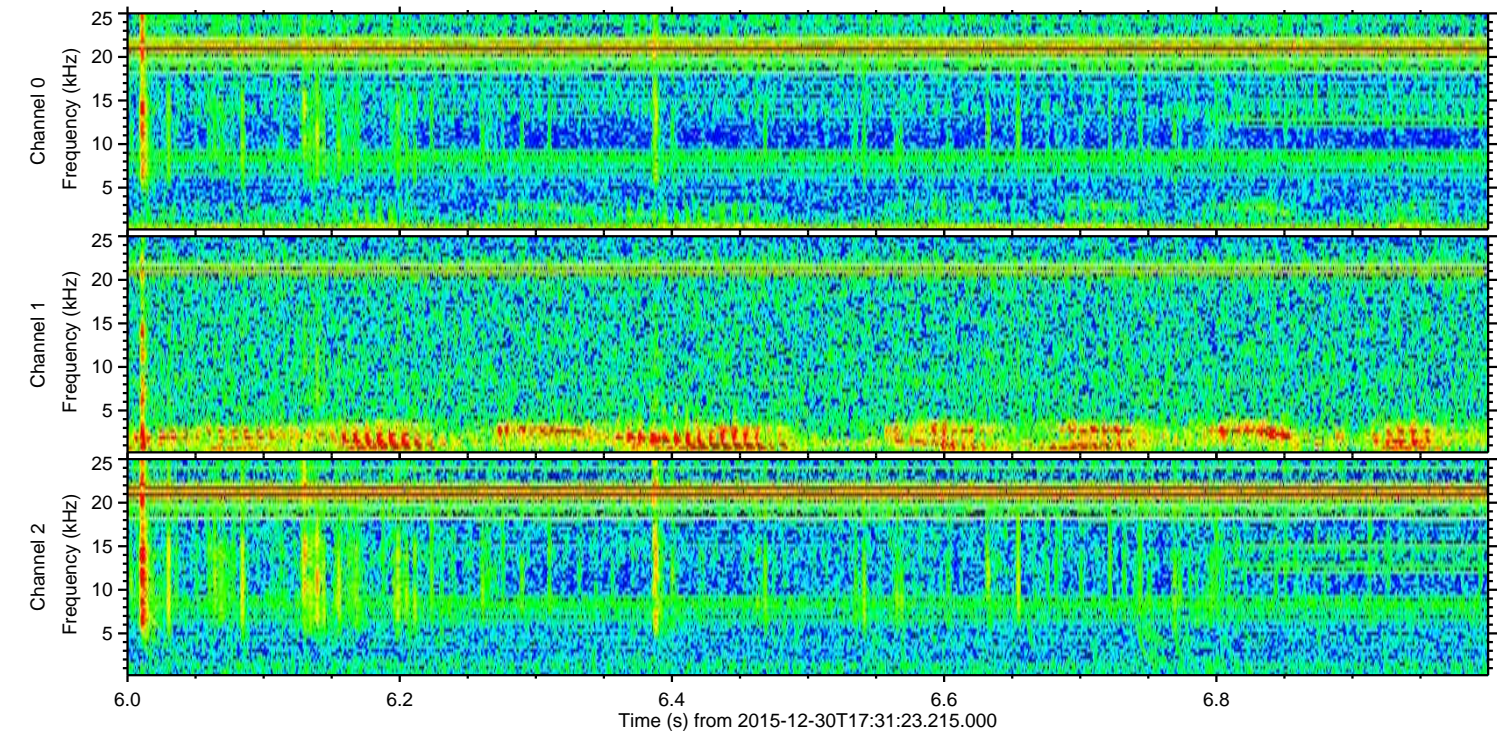
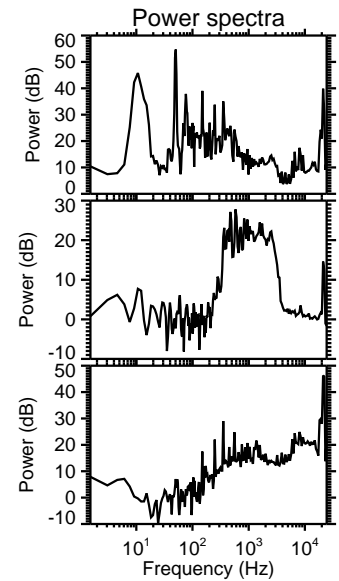
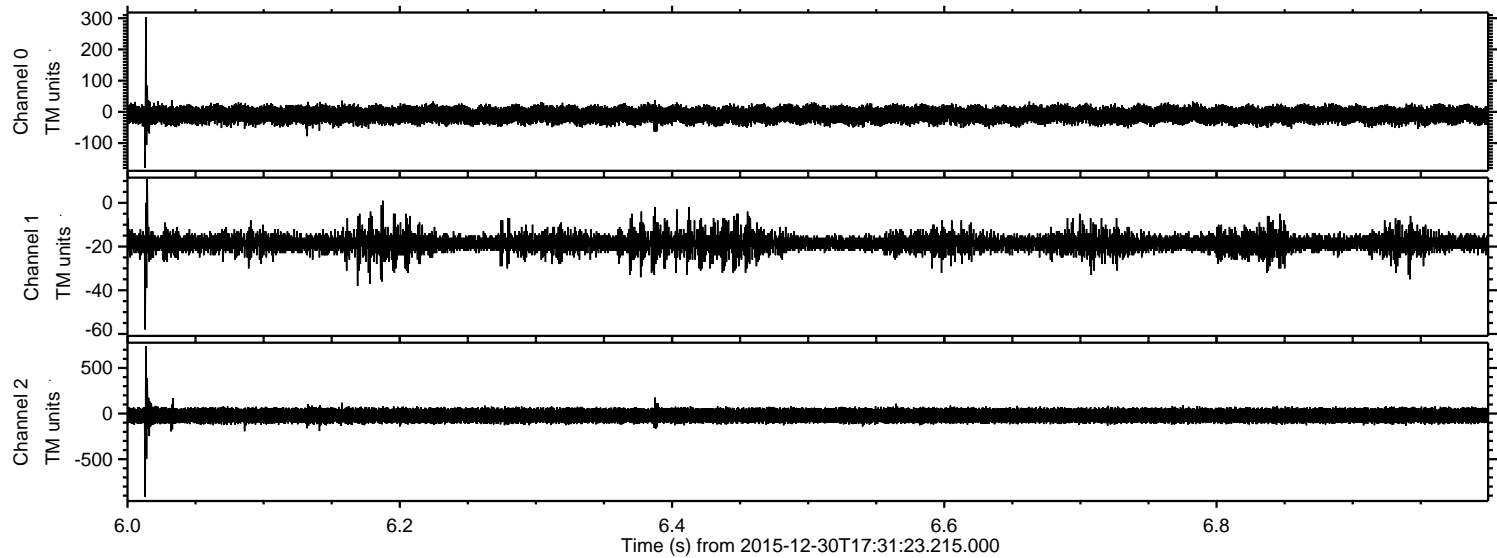


Processed Sat Mar 19 15:55:43 2016 by ELM ver.2012-10-06 from 001\_\_elm20151230\_173122\_\_dat00.bin



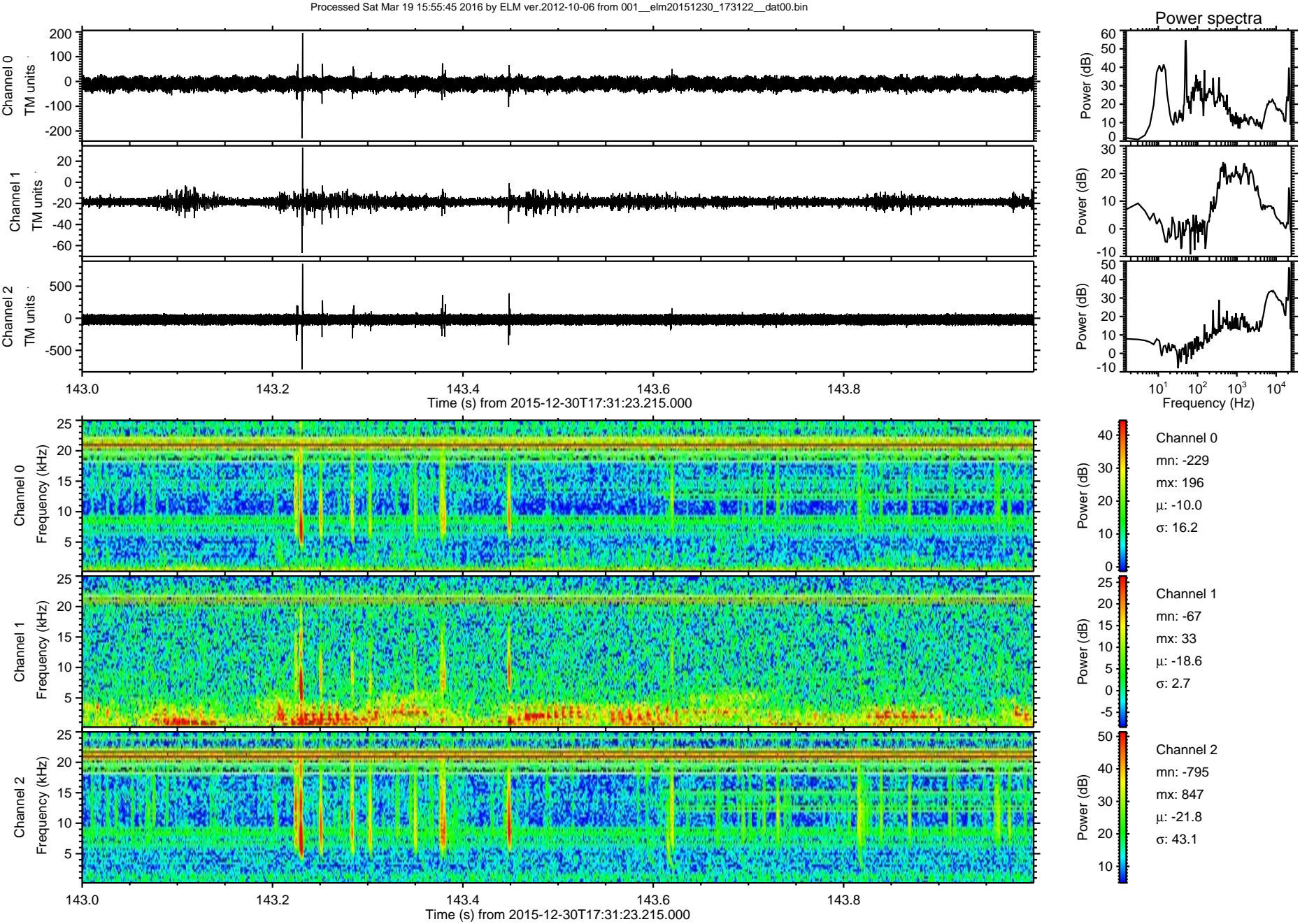


Processed Sat Mar 19 15:55:44 2016 by ELM ver.2012-10-06 from 001\_\_elm20151230\_173122\_\_dat00.bin



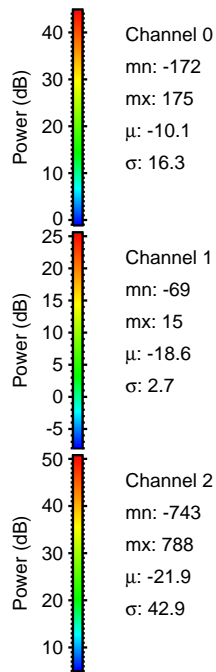
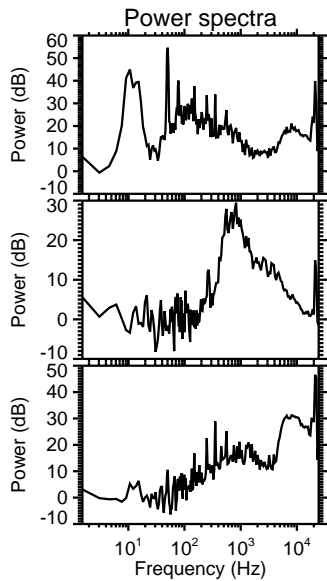
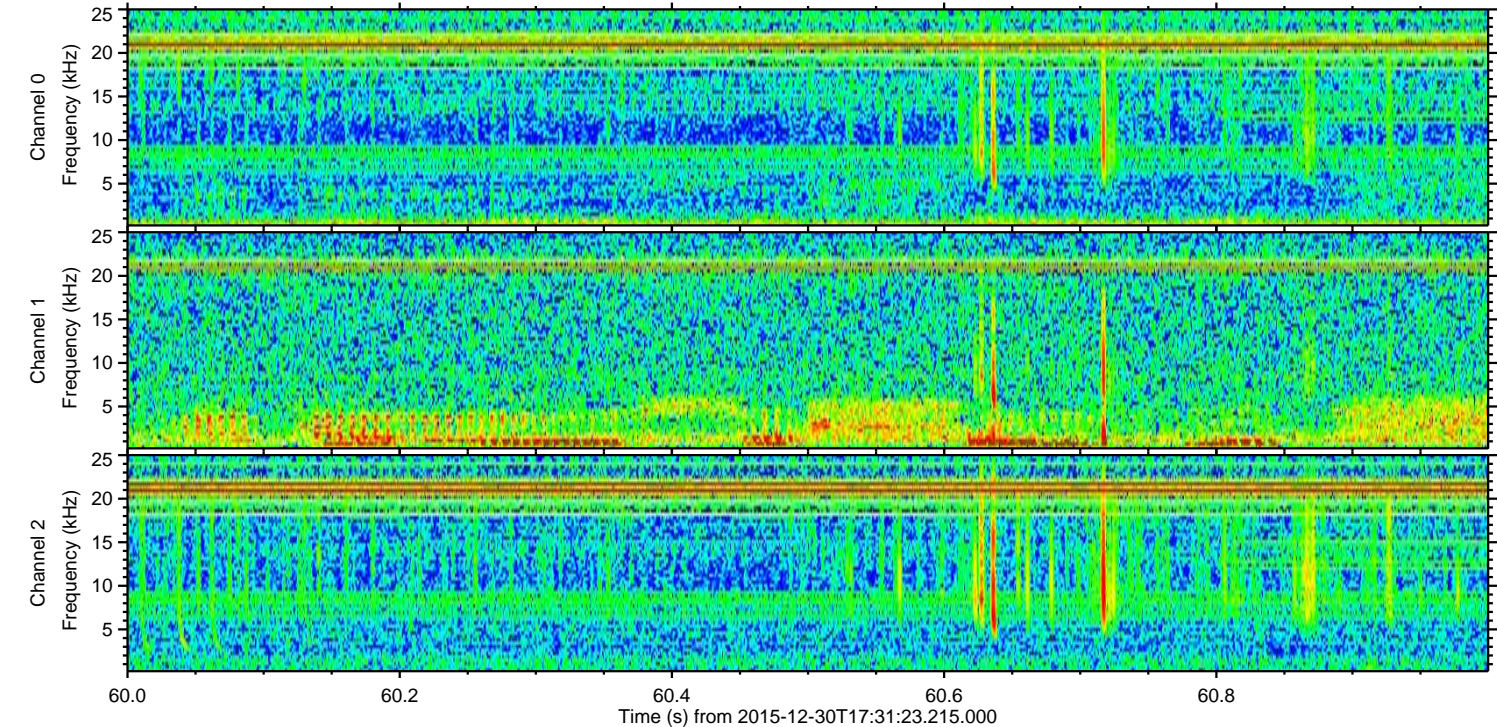
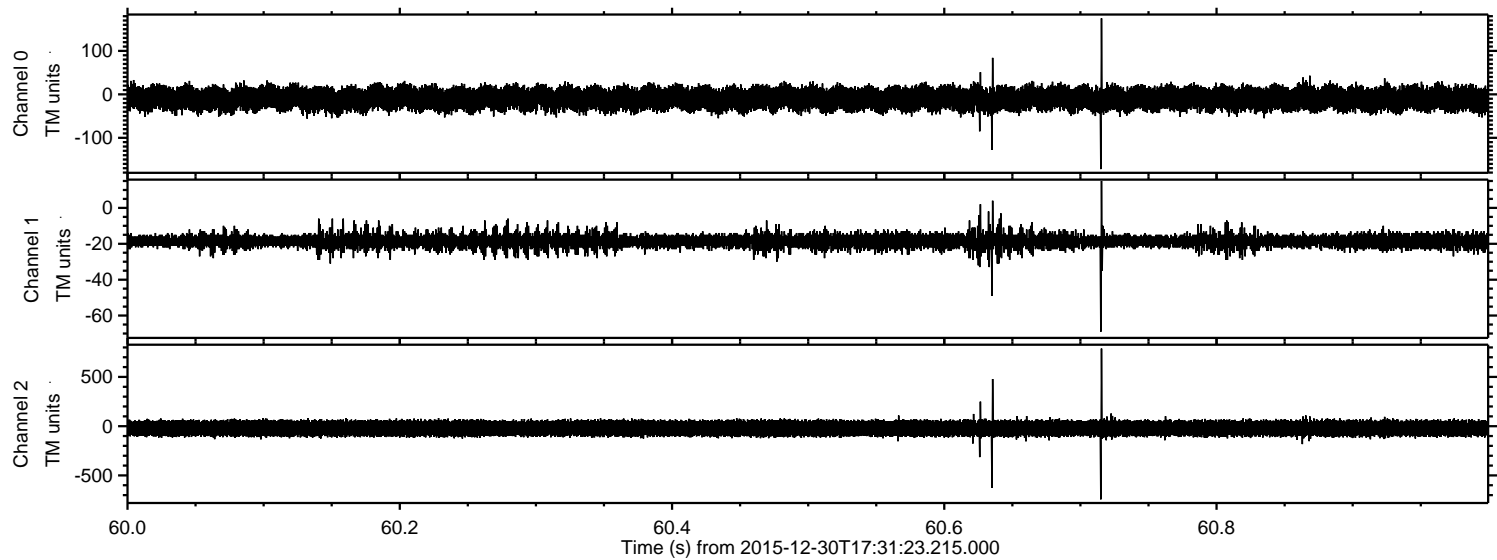


ELMAVAN 3D WAVEFORMS (Measured data sampled at 50 kHz) 51000 packets of 144 samples from 2015-12-30T17:31:23.215.000. Part 144/147



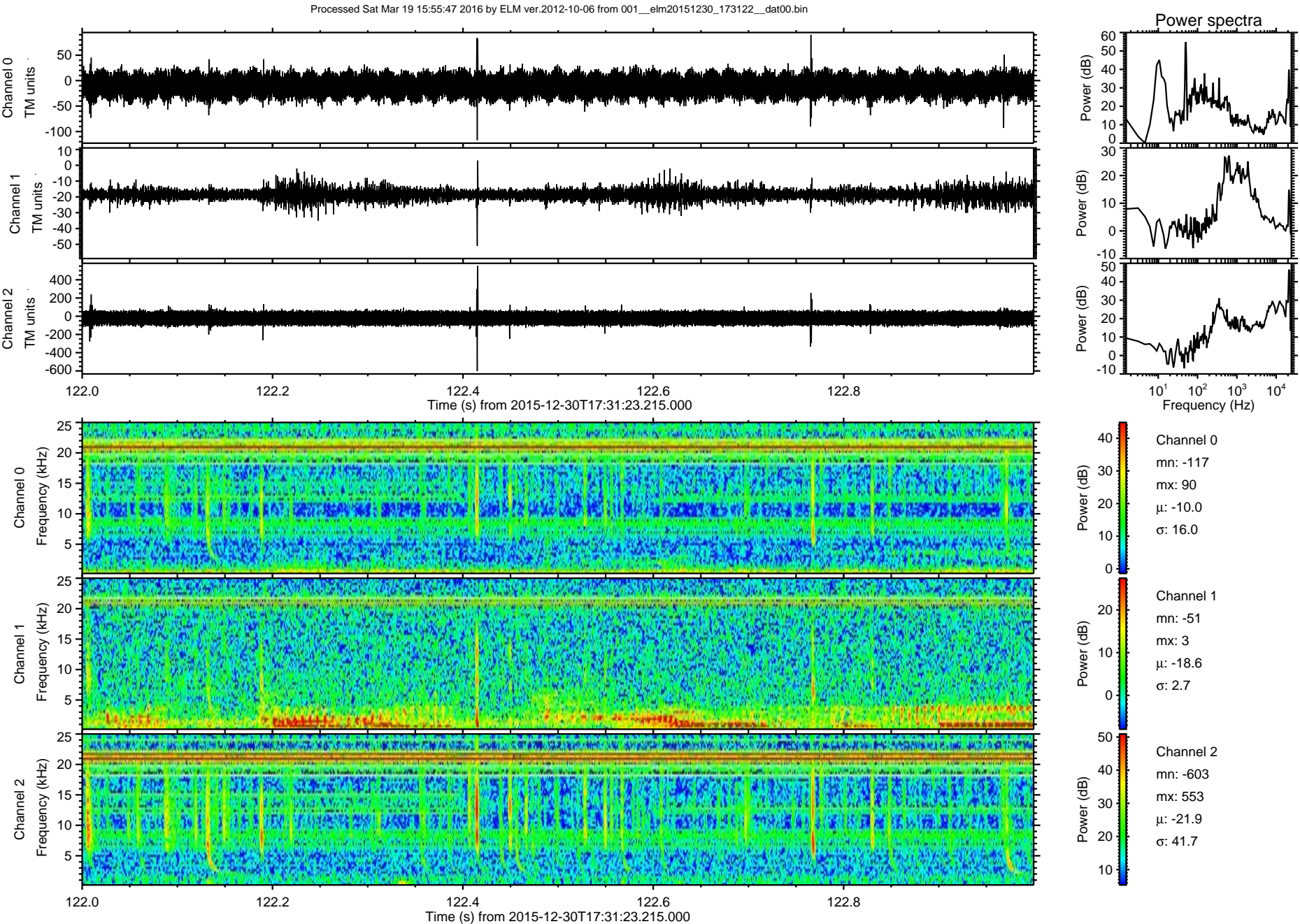


Processed Sat Mar 19 15:55:46 2016 by ELM ver.2012-10-06 from 001\_\_elm20151230\_173122\_\_dat00.bin



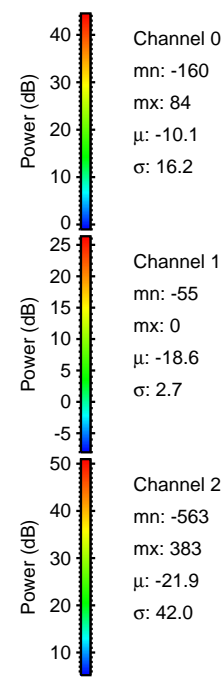
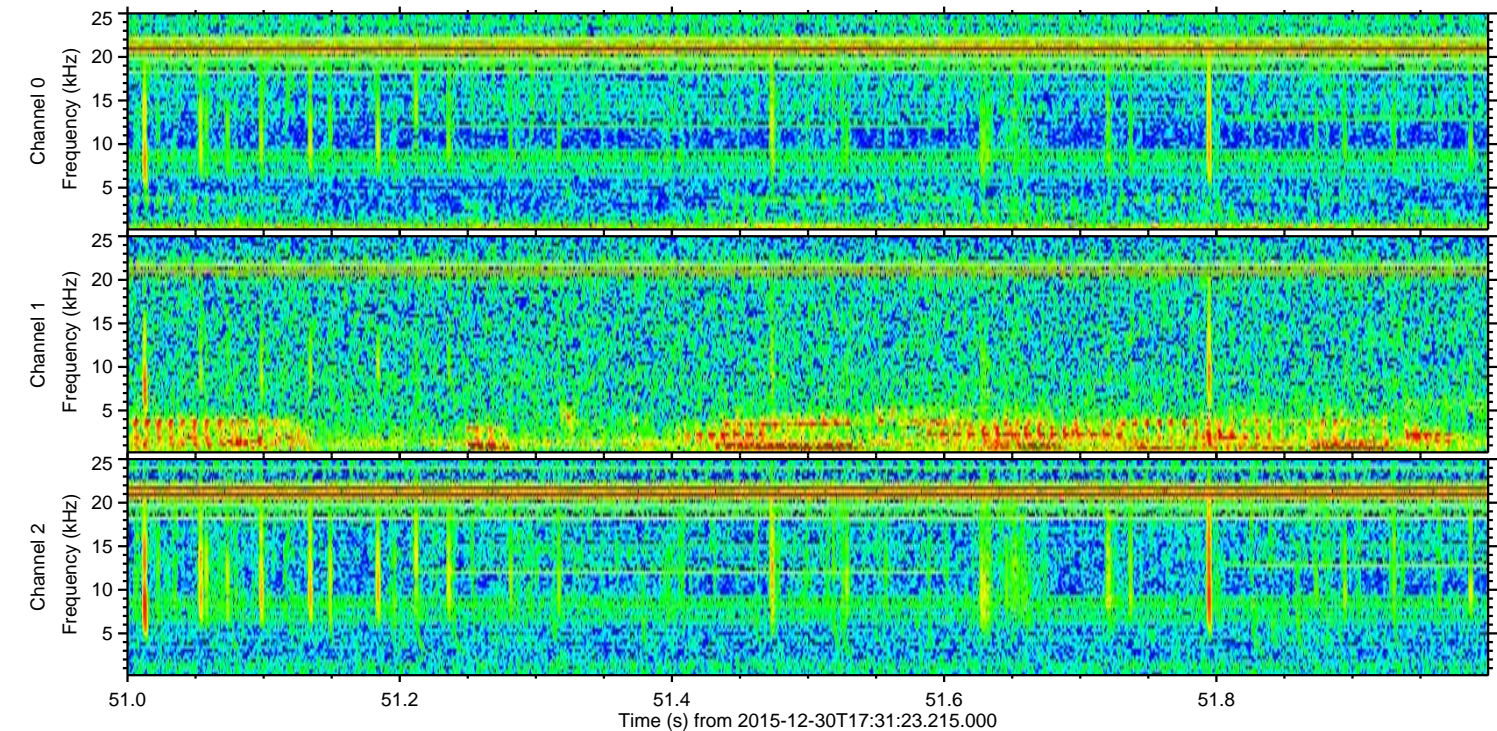
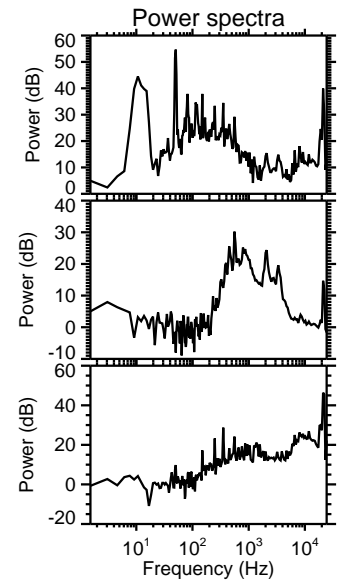
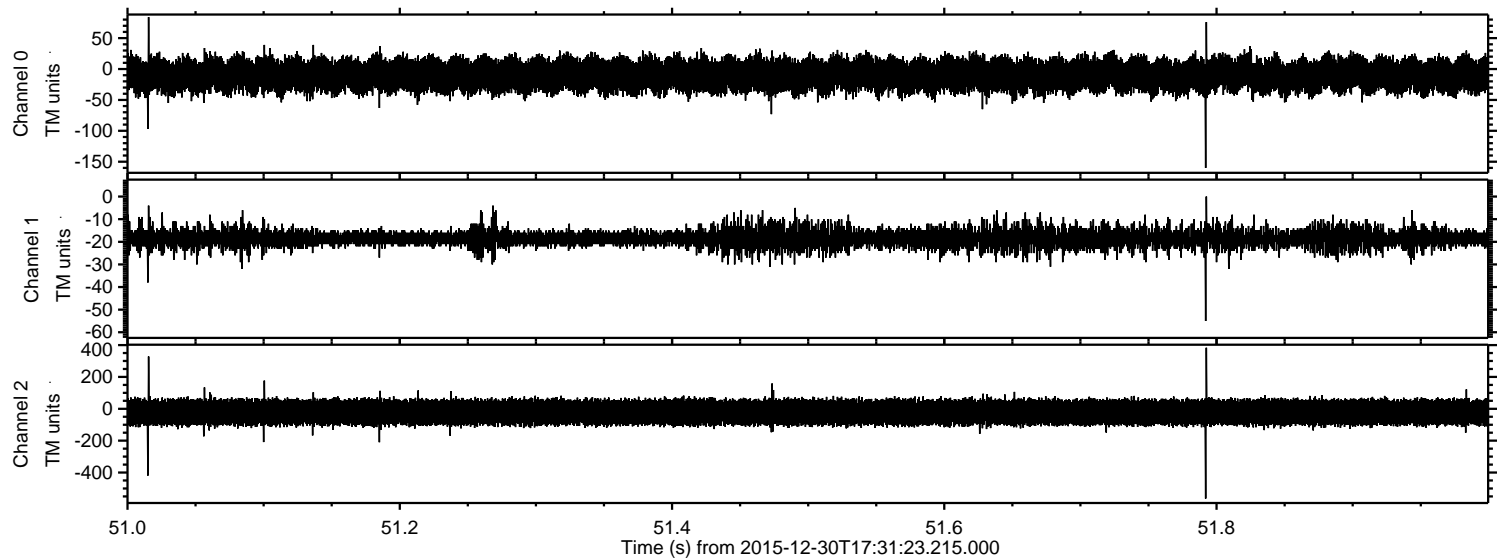


ELMAVAN 3D WAVEFORMS (Measured data sampled at 50 kHz) 51000 packets of 144 samples from 2015-12-30T17:31:23.215.000. Part 123/147



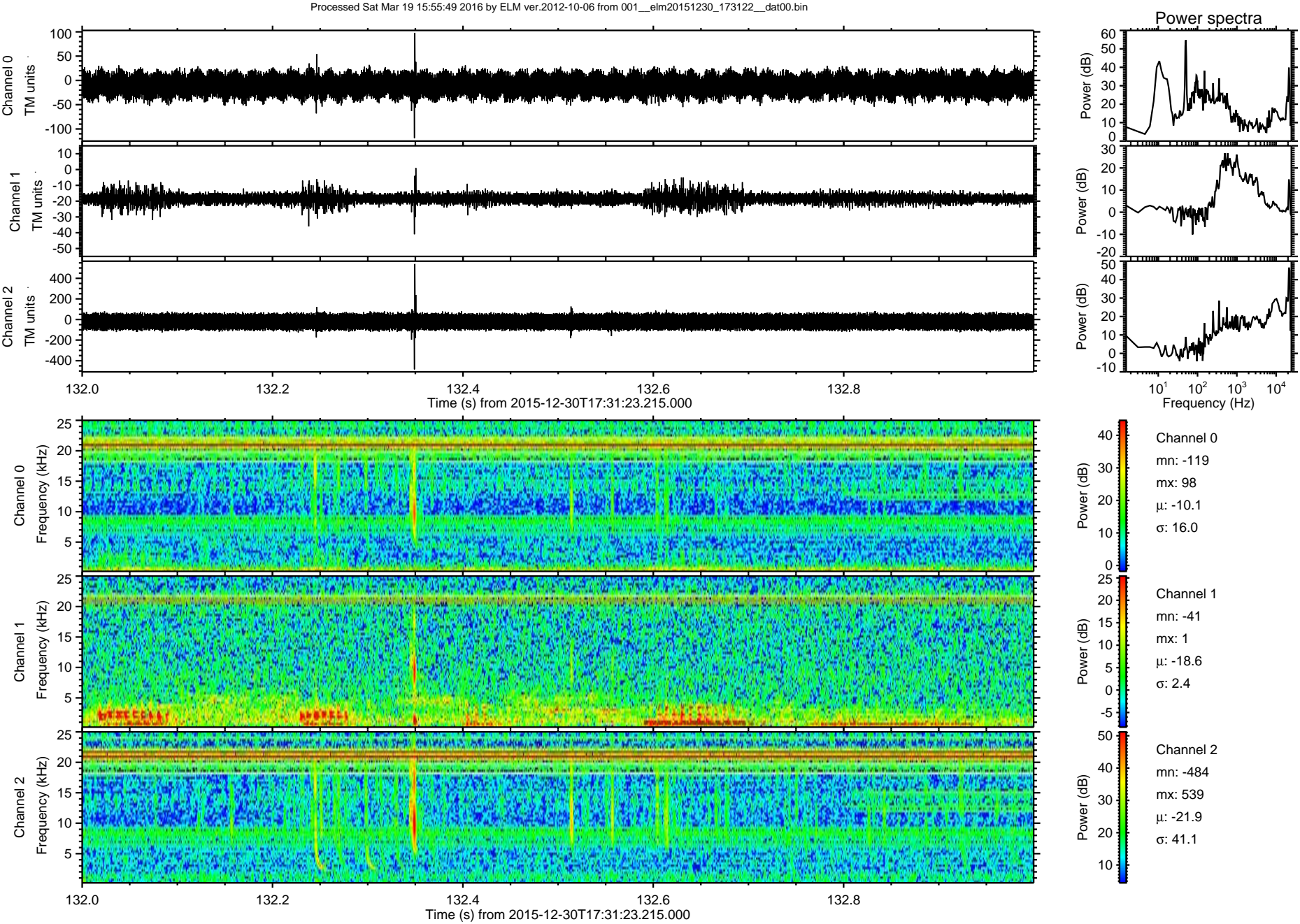


Processed Sat Mar 19 15:55:48 2016 by ELM ver.2012-10-06 from 001\_\_elm20151230\_173122\_\_dat00.bin





ELMAVAN 3D WAVEFORMS (Measured data sampled at 50 kHz) 51000 packets of 144 samples from 2015-12-30T17:31:23.215.000. Part 133/147





Processed Sat Mar 19 15:55:50 2016 by ELM ver.2012-10-06 from 001\_\_elm20151230\_173122\_\_dat00.bin

