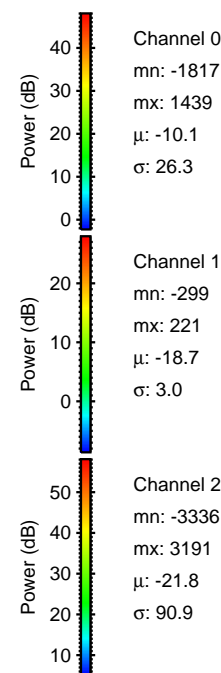
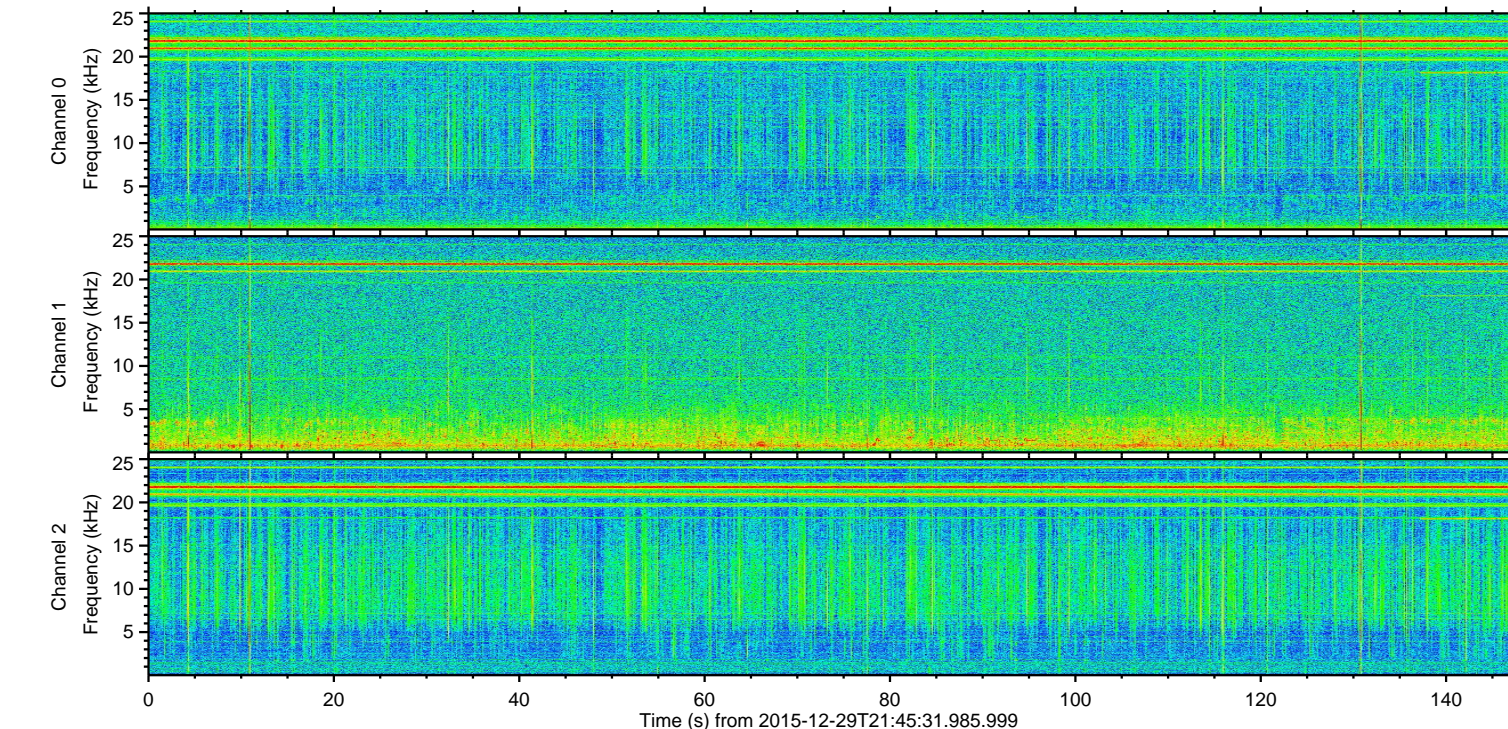
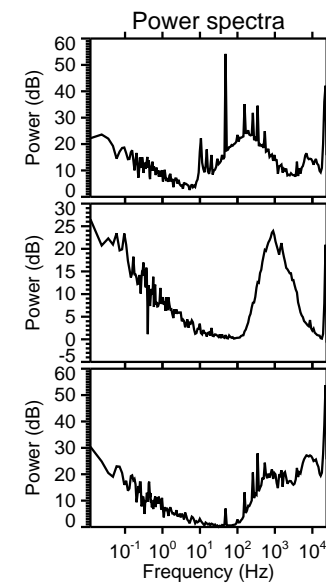
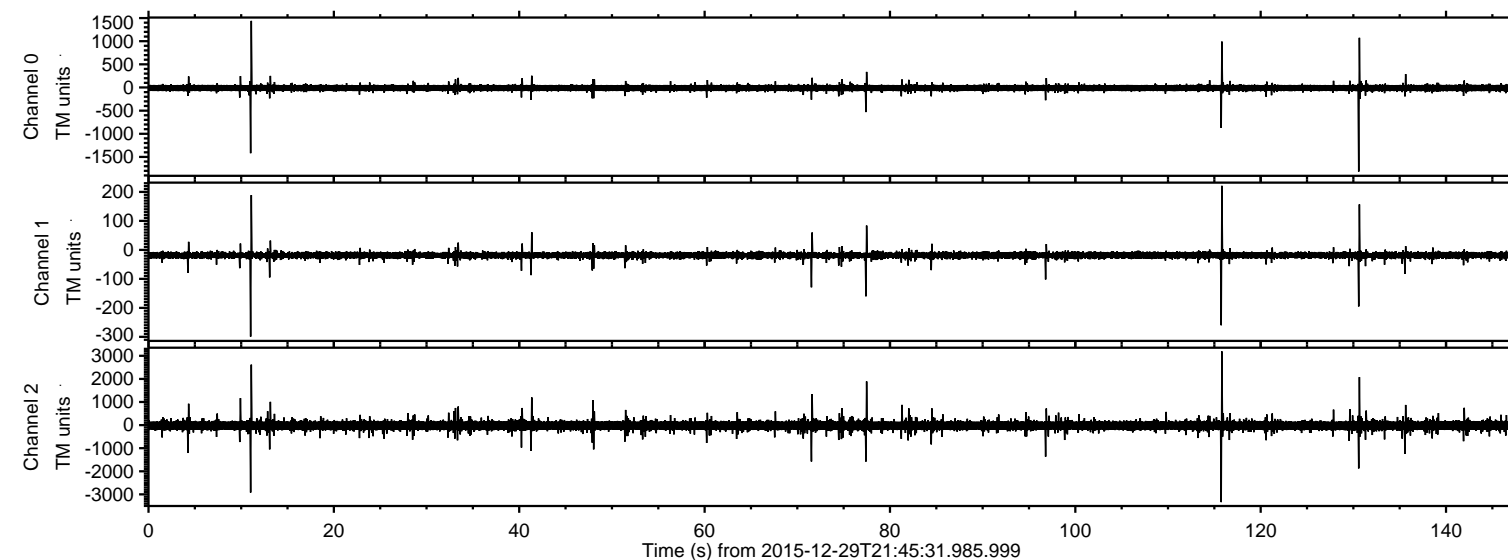


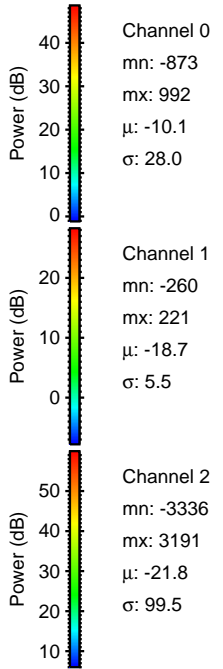
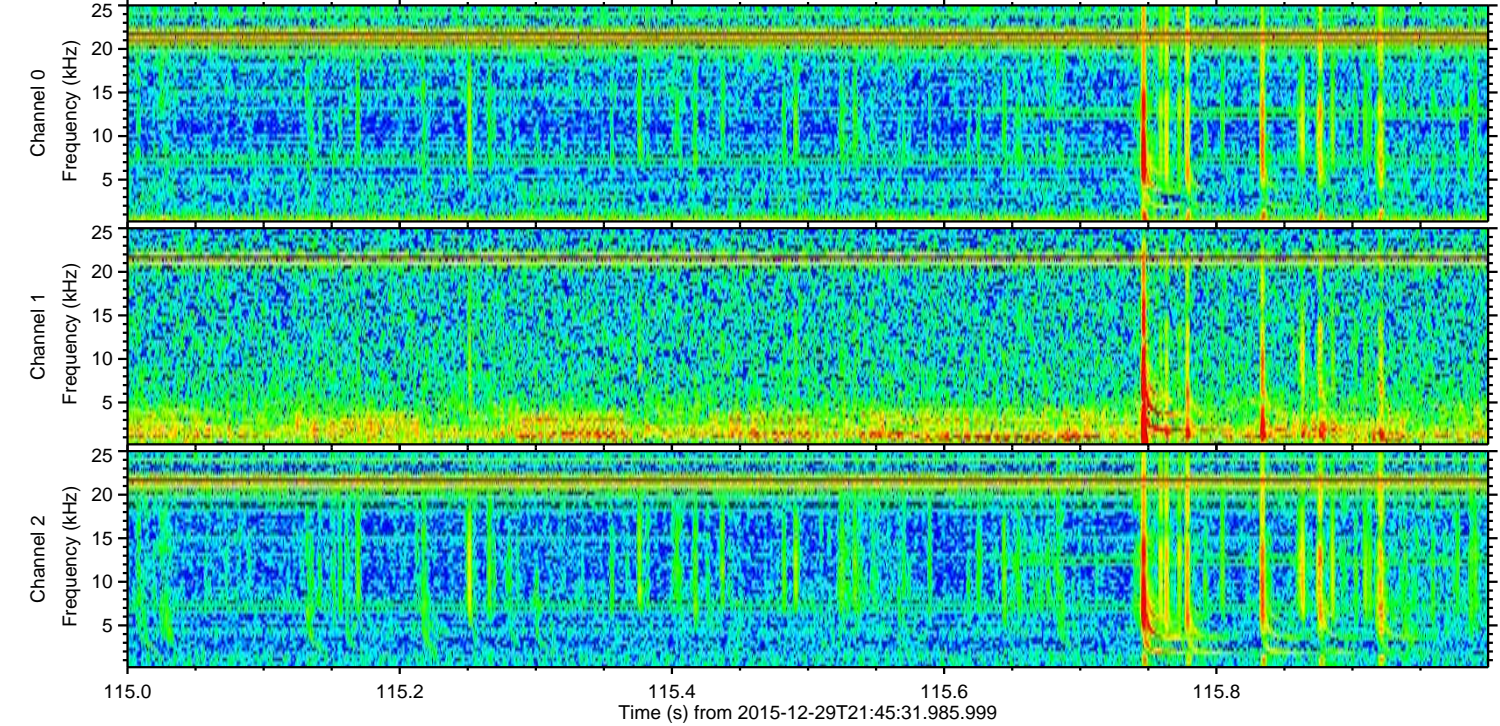
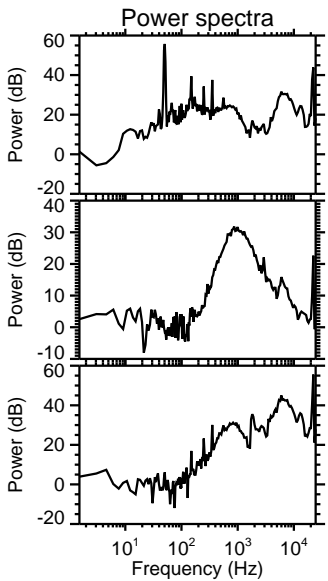
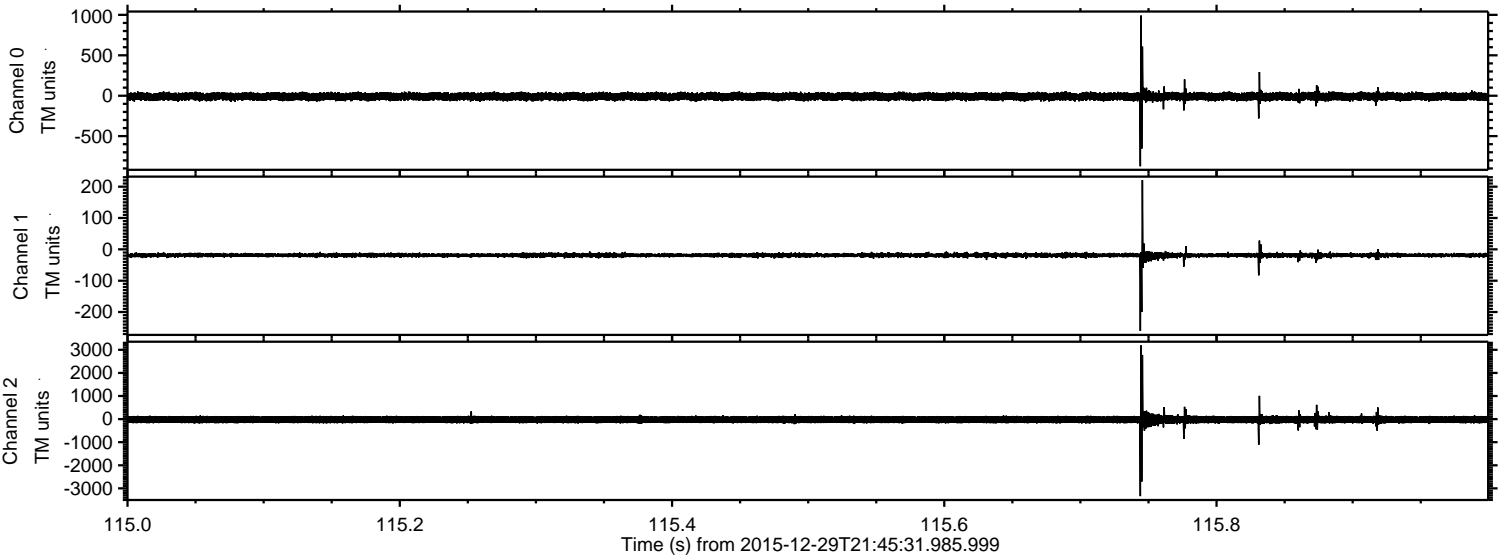
ELMAVAN 3D WAVEFORMS (Measured data sampled at 50 kHz) 51000 packets of 144 samples from 2015-12-29T21:45:31.985.999.

Processed Fri Mar 18 19:27:15 2016 by ELM ver.2012-10-06 from 001__elm20151229_214530__dat00.bin

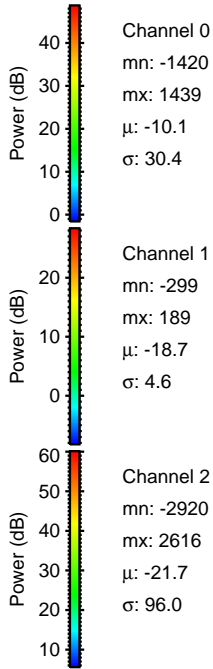
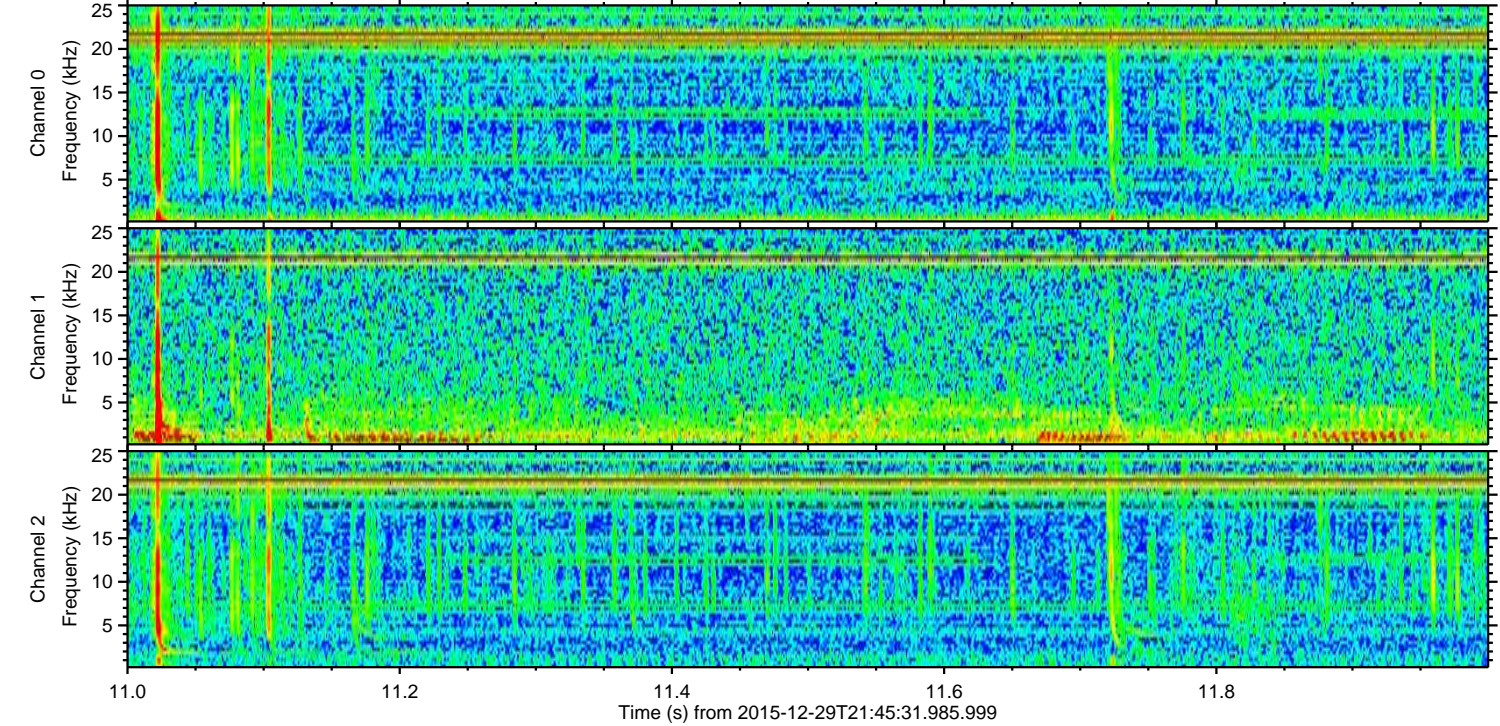
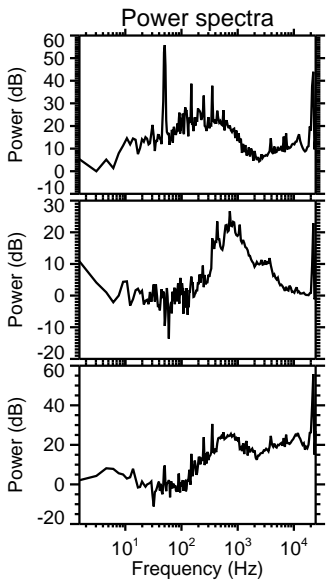
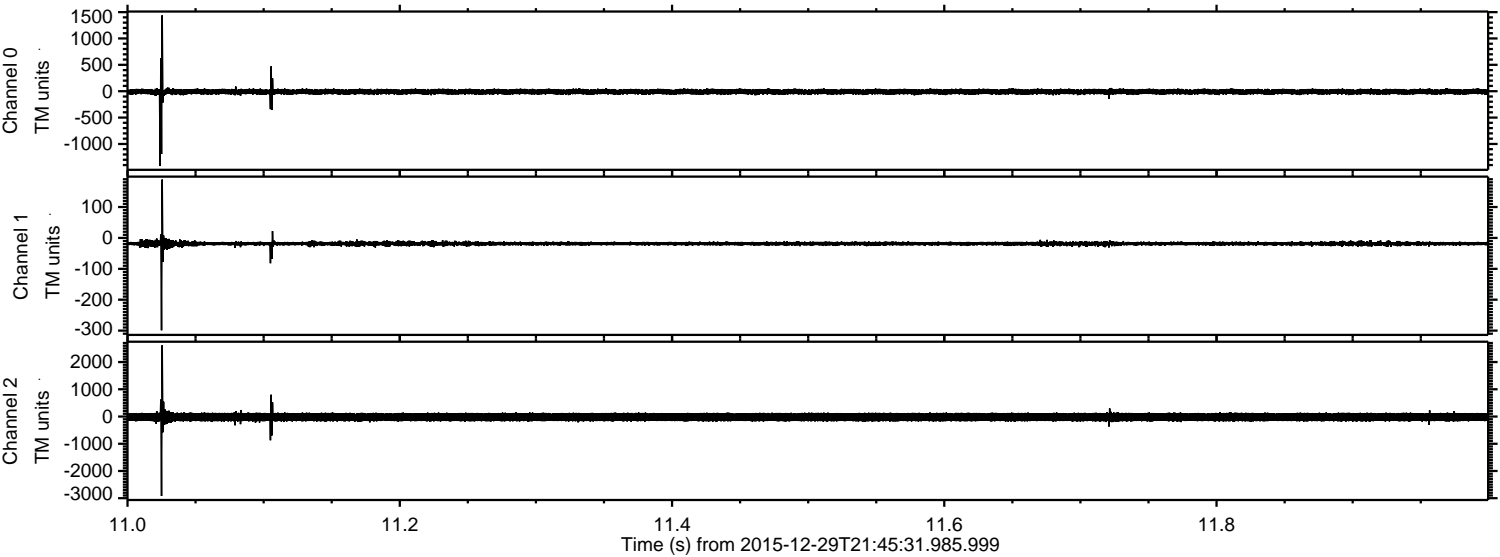


ELMAVAN 3D WAVEFORMS (Measured data sampled at 50 kHz) 51000 packets of 144 samples from 2015-12-29T21:45:31.985.999. Part 116/147

Processed Fri Mar 18 19:27:31 2016 by ELM ver.2012-10-06 from 001__elm20151229_214530__dat00.bin

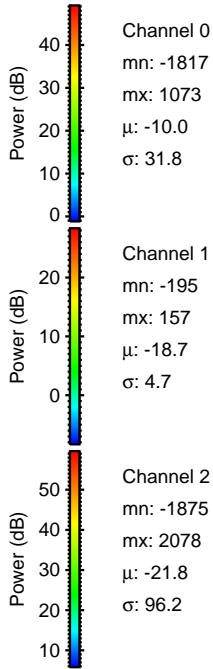
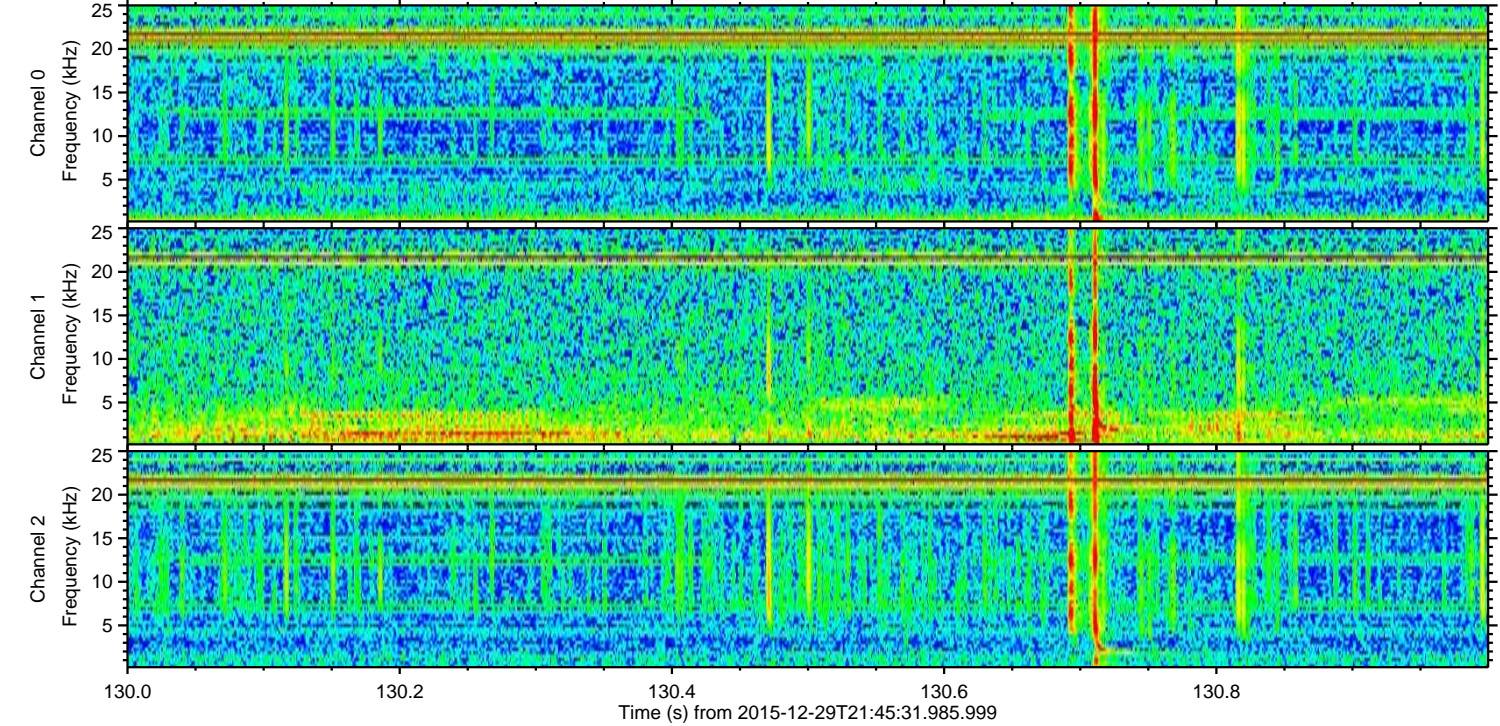
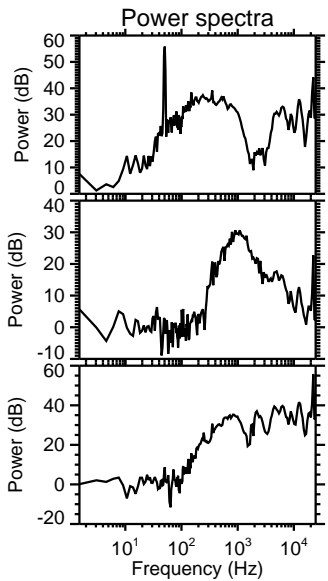
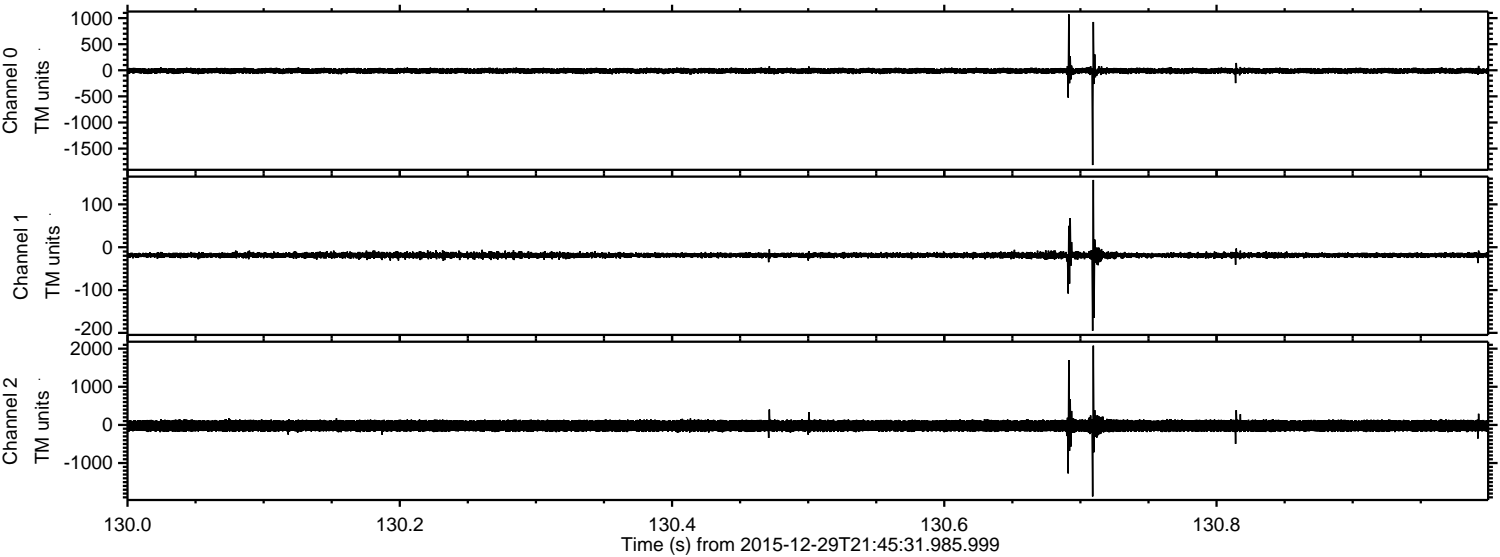


Processed Fri Mar 18 19:27:32 2016 by ELM ver.2012-10-06 from 001__elm20151229_214530__dat00.bin

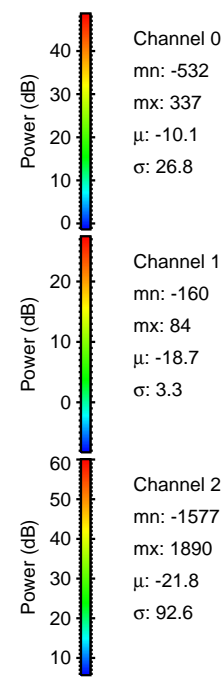
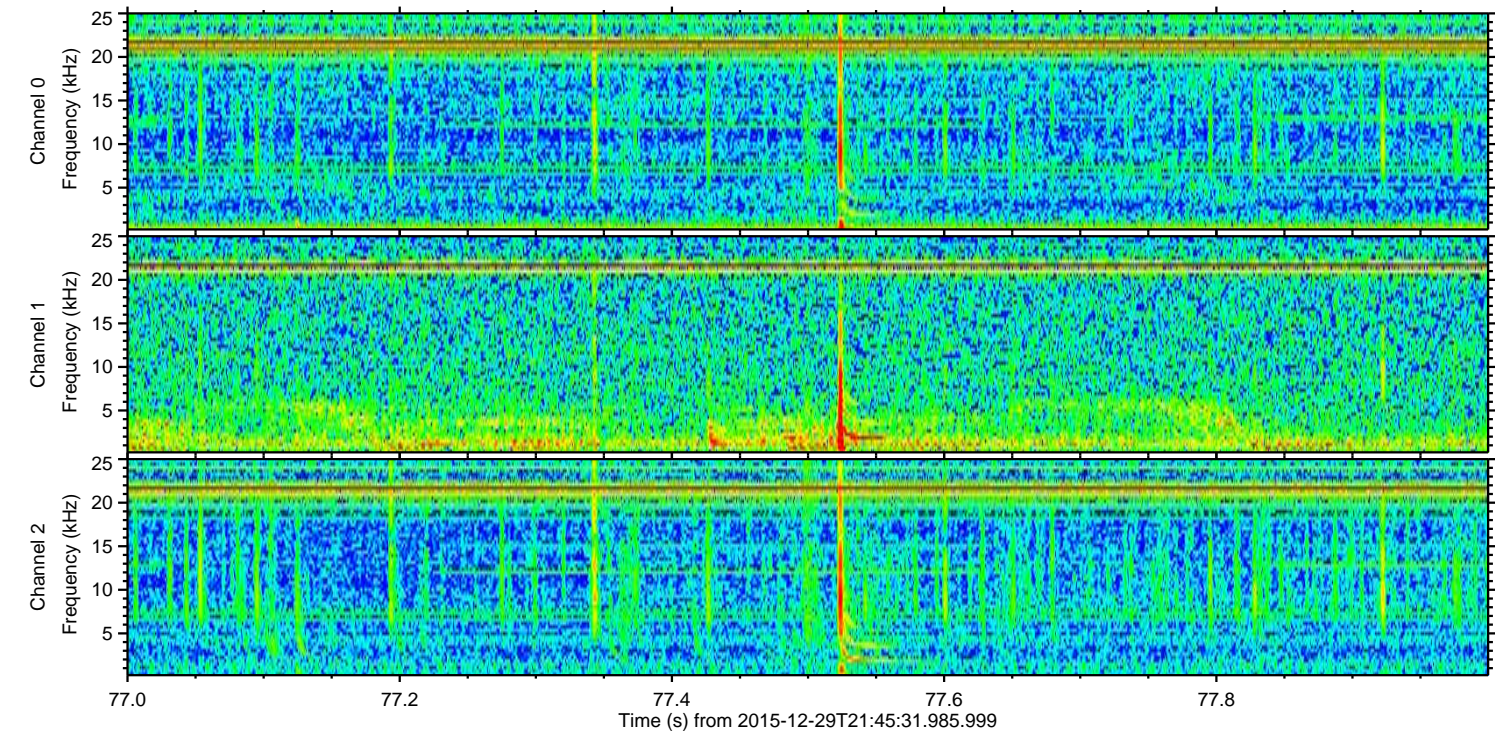
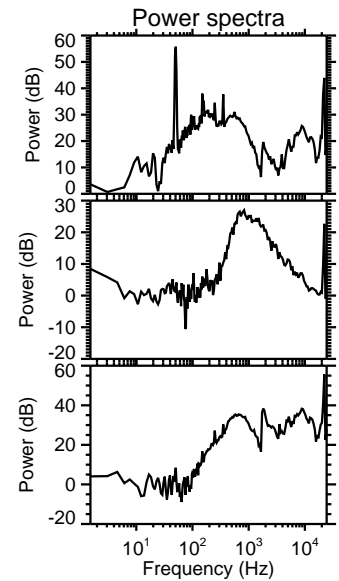
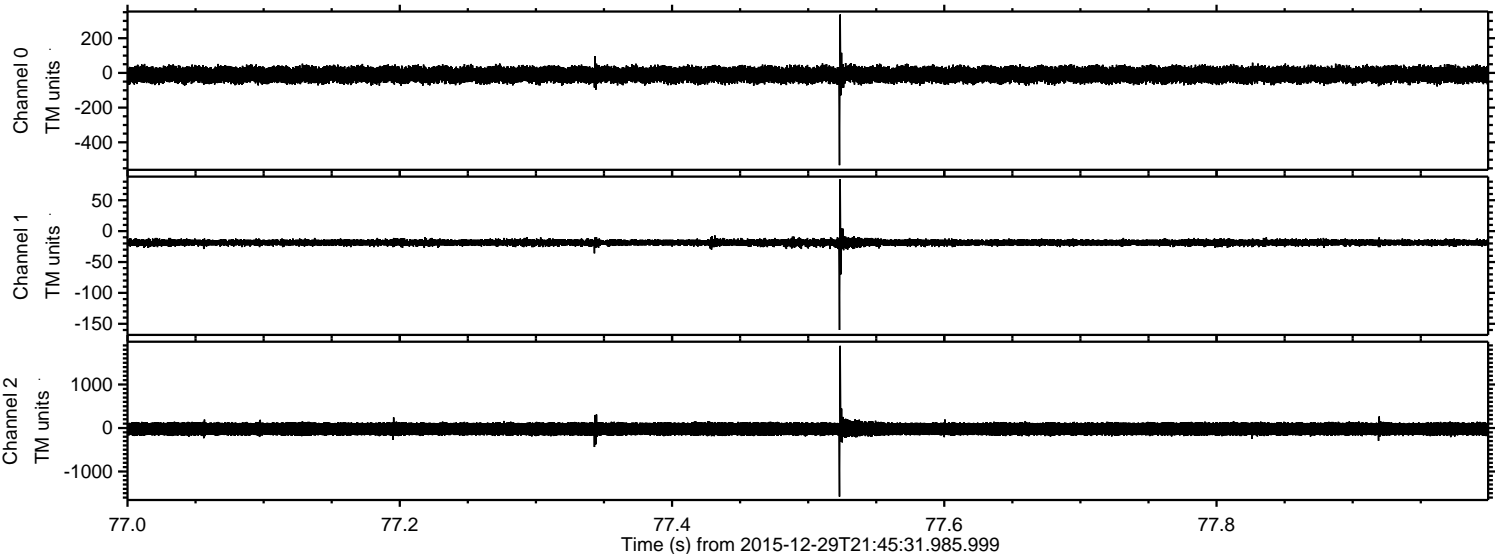


ELMAVAN 3D WAVEFORMS (Measured data sampled at 50 kHz) 51000 packets of 144 samples from 2015-12-29T21:45:31.985.999. Part 131/147

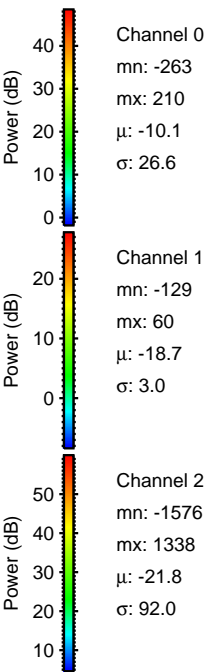
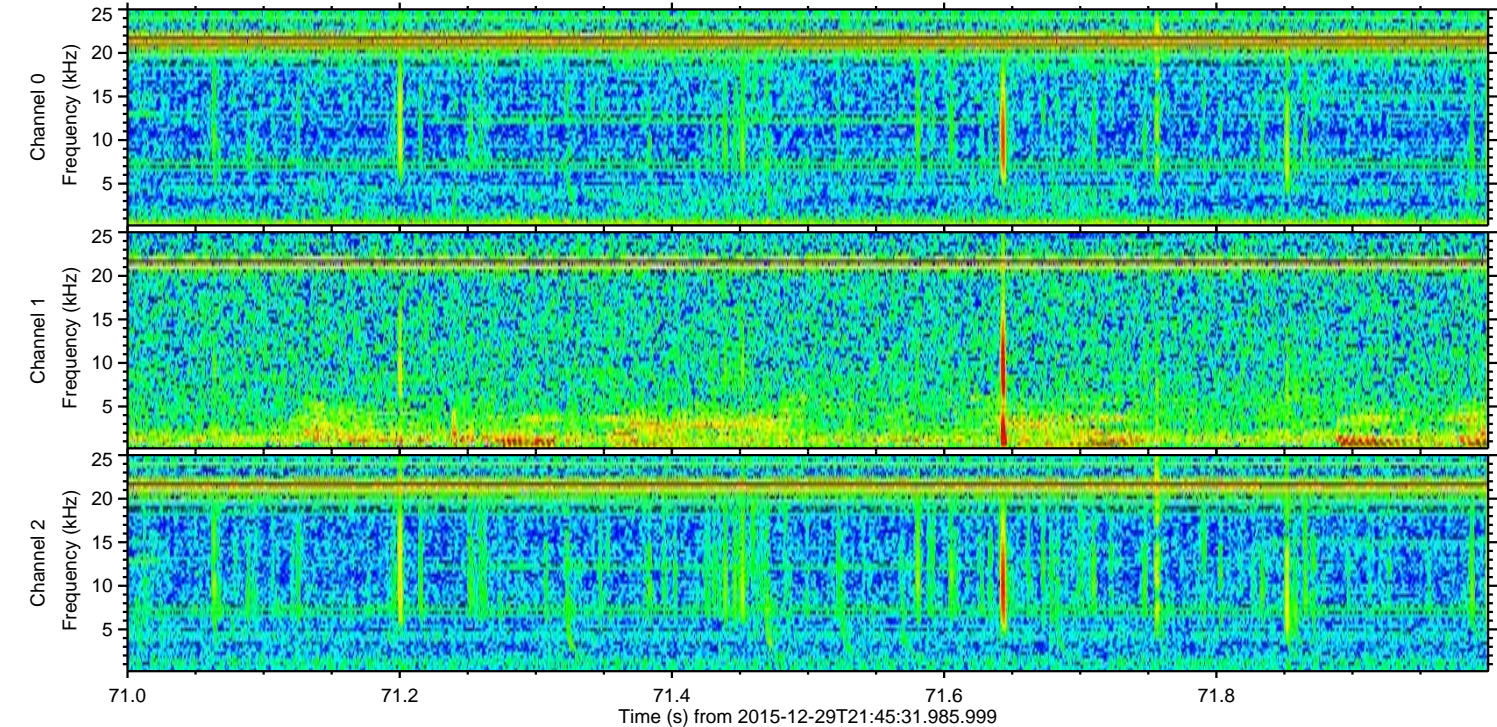
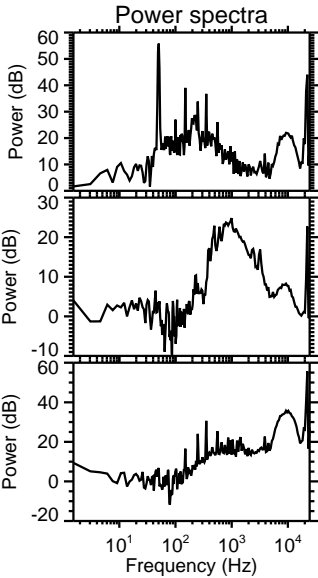
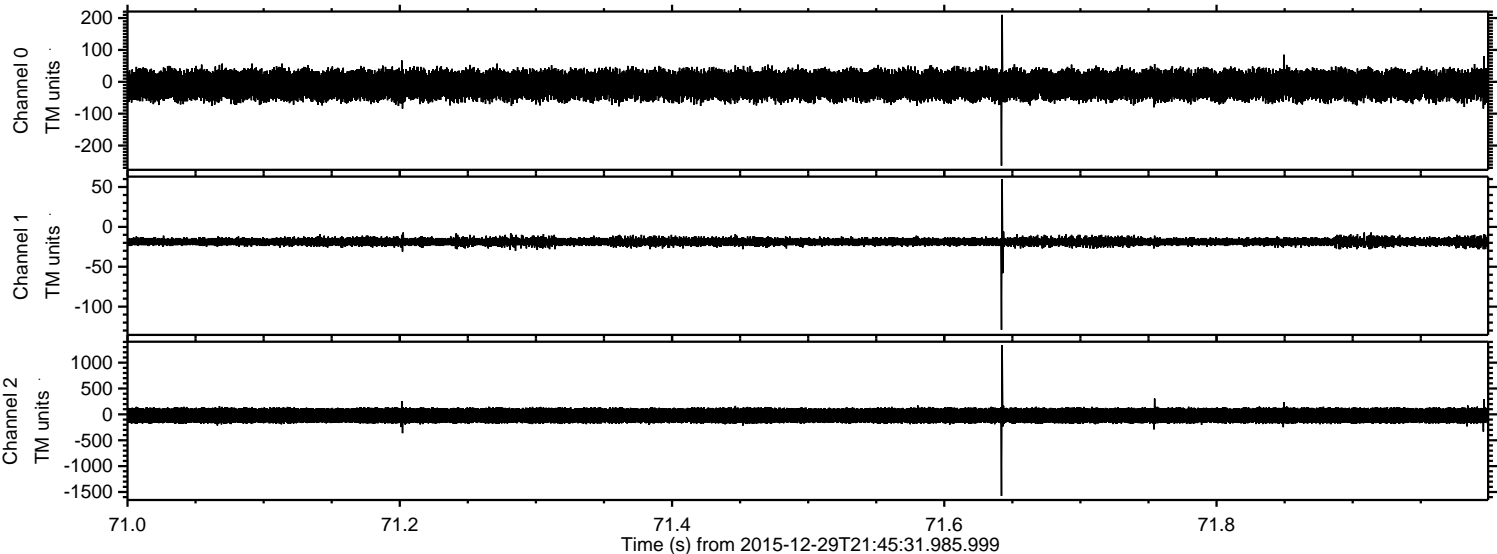
Processed Fri Mar 18 19:27:33 2016 by ELM ver.2012-10-06 from 001__elm20151229_214530__dat00.bin



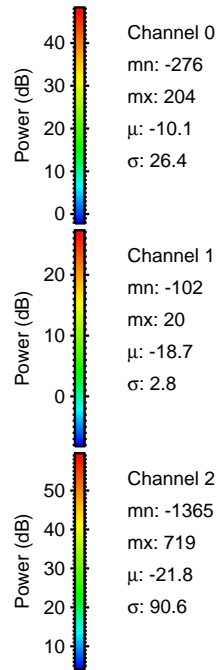
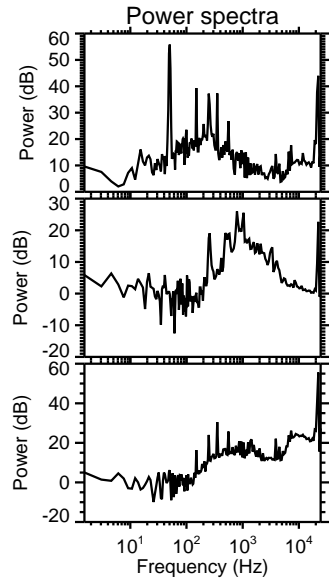
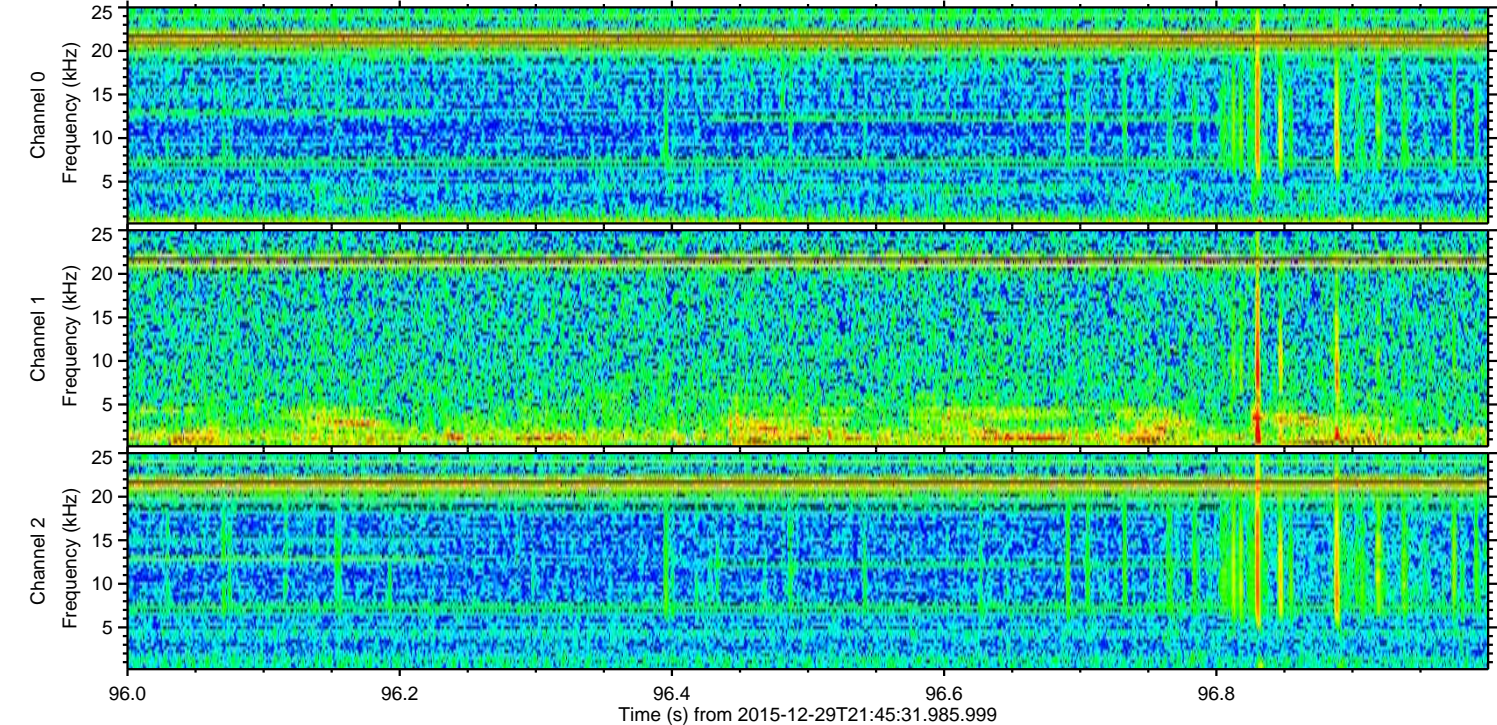
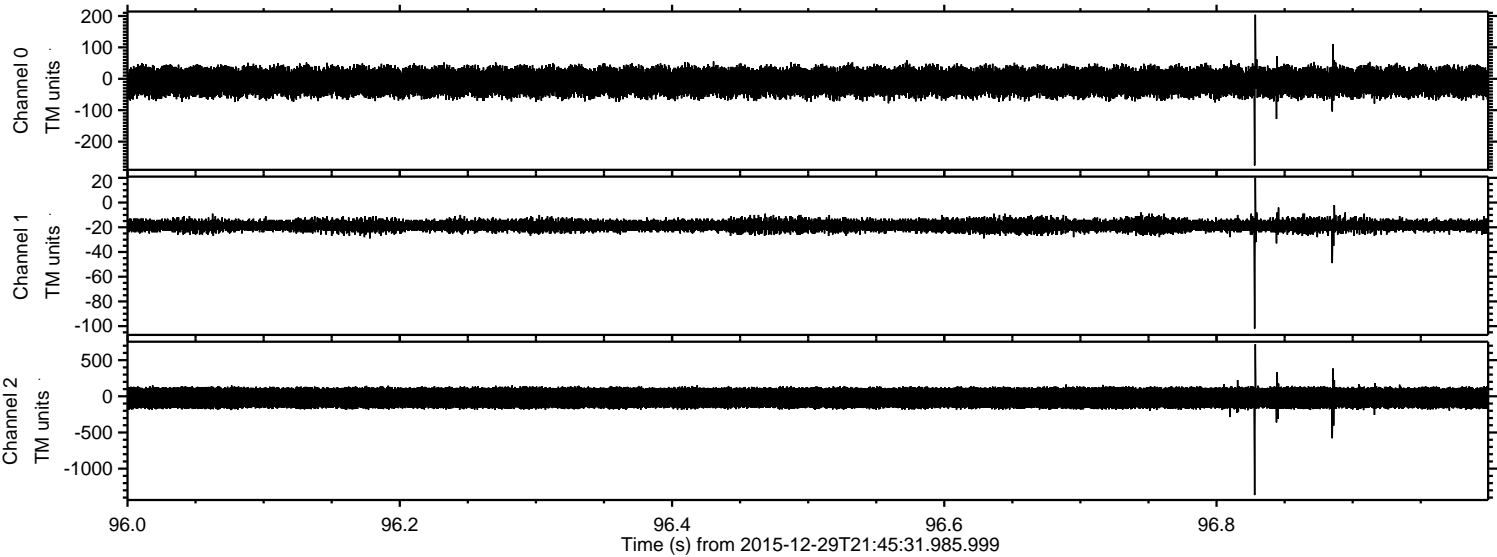
Processed Fri Mar 18 19:27:34 2016 by ELM ver.2012-10-06 from 001__elm20151229_214530__dat00.bin



Processed Fri Mar 18 19:27:35 2016 by ELM ver.2012-10-06 from 001__elm20151229_214530__dat00.bin

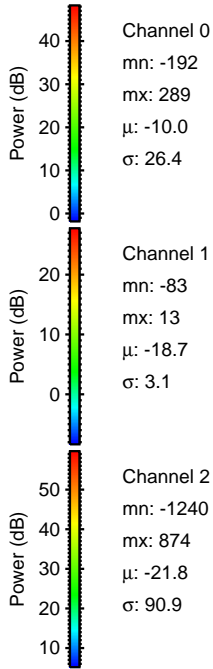
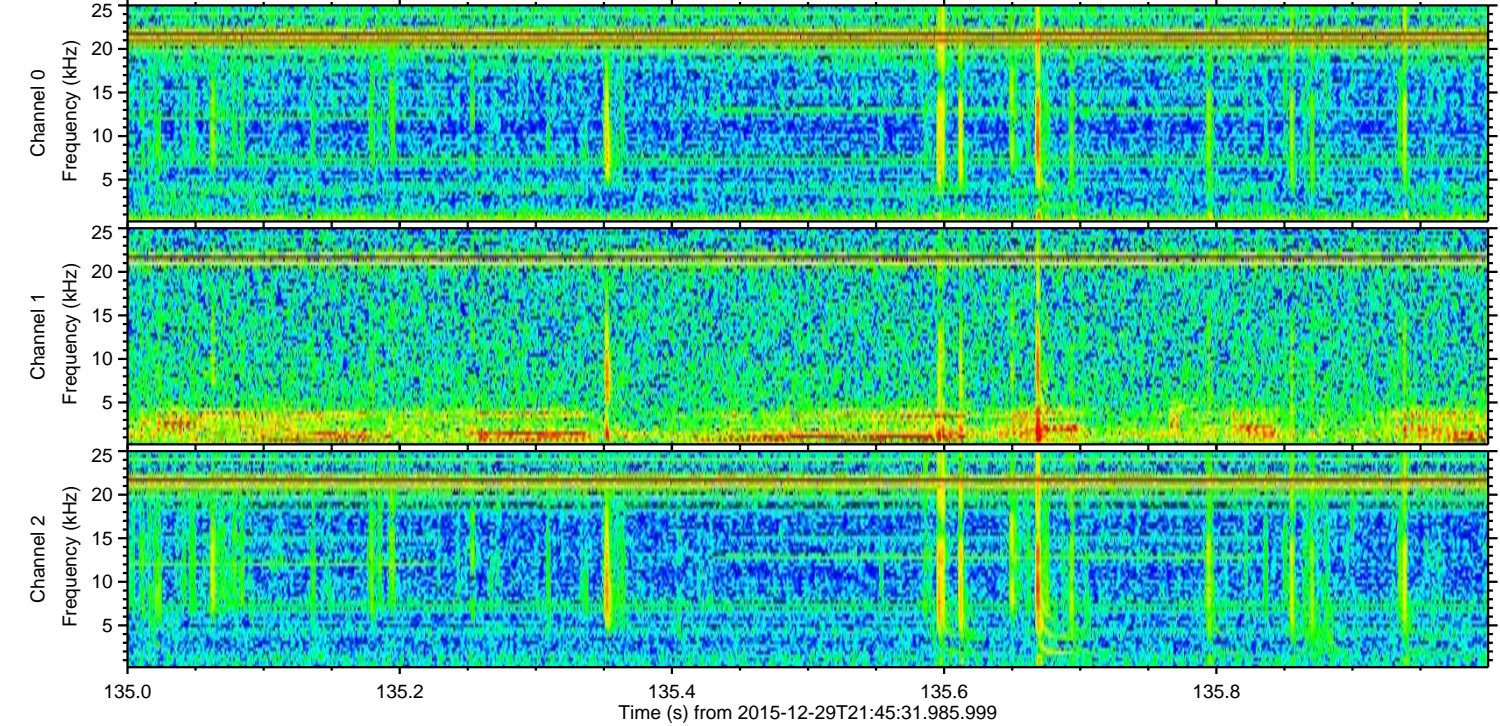
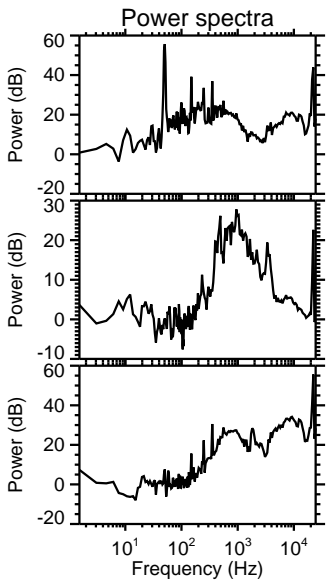
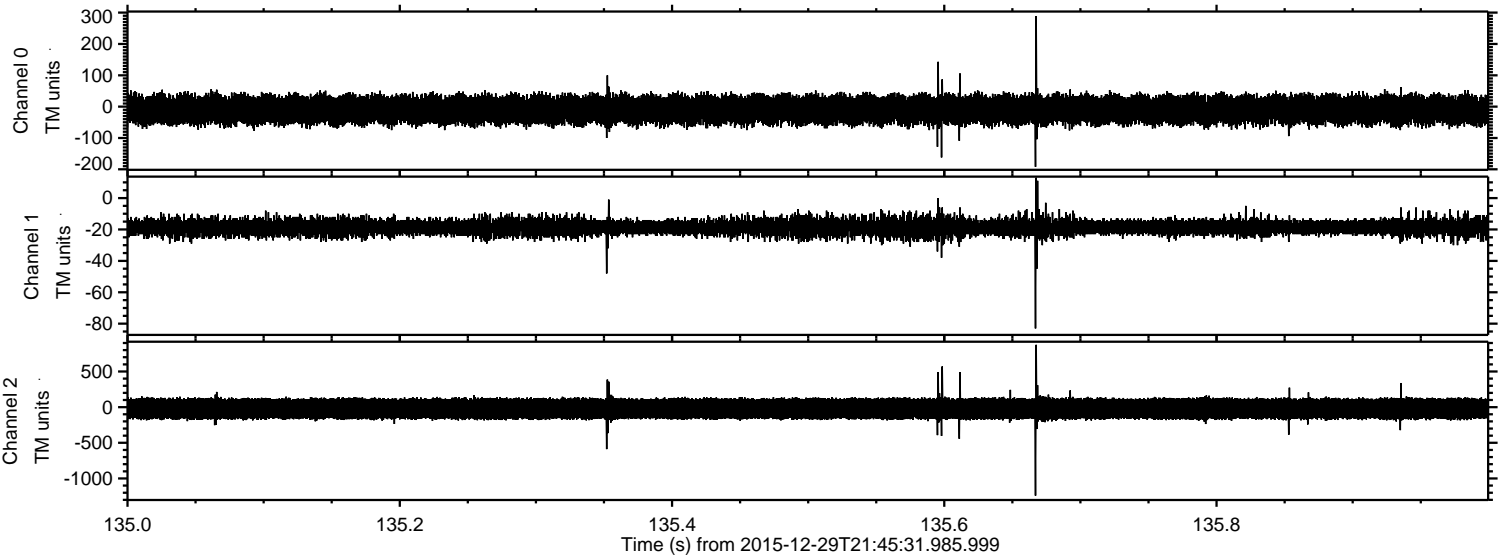


Processed Fri Mar 18 19:27:38 2016 by ELM ver.2012-10-06 from 001__elm20151229_214530__dat00.bin



ELMAVAN 3D WAVEFORMS (Measured data sampled at 50 kHz) 51000 packets of 144 samples from 2015-12-29T21:45:31.985.999. Part 136/147

Processed Fri Mar 18 19:27:40 2016 by ELM ver.2012-10-06 from 001__elm20151229_214530__dat00.bin

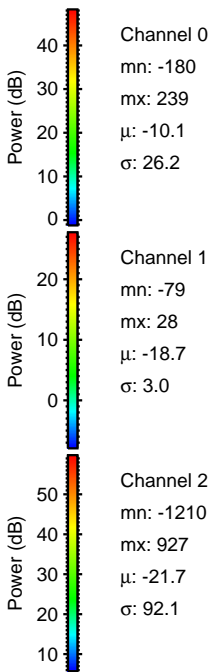
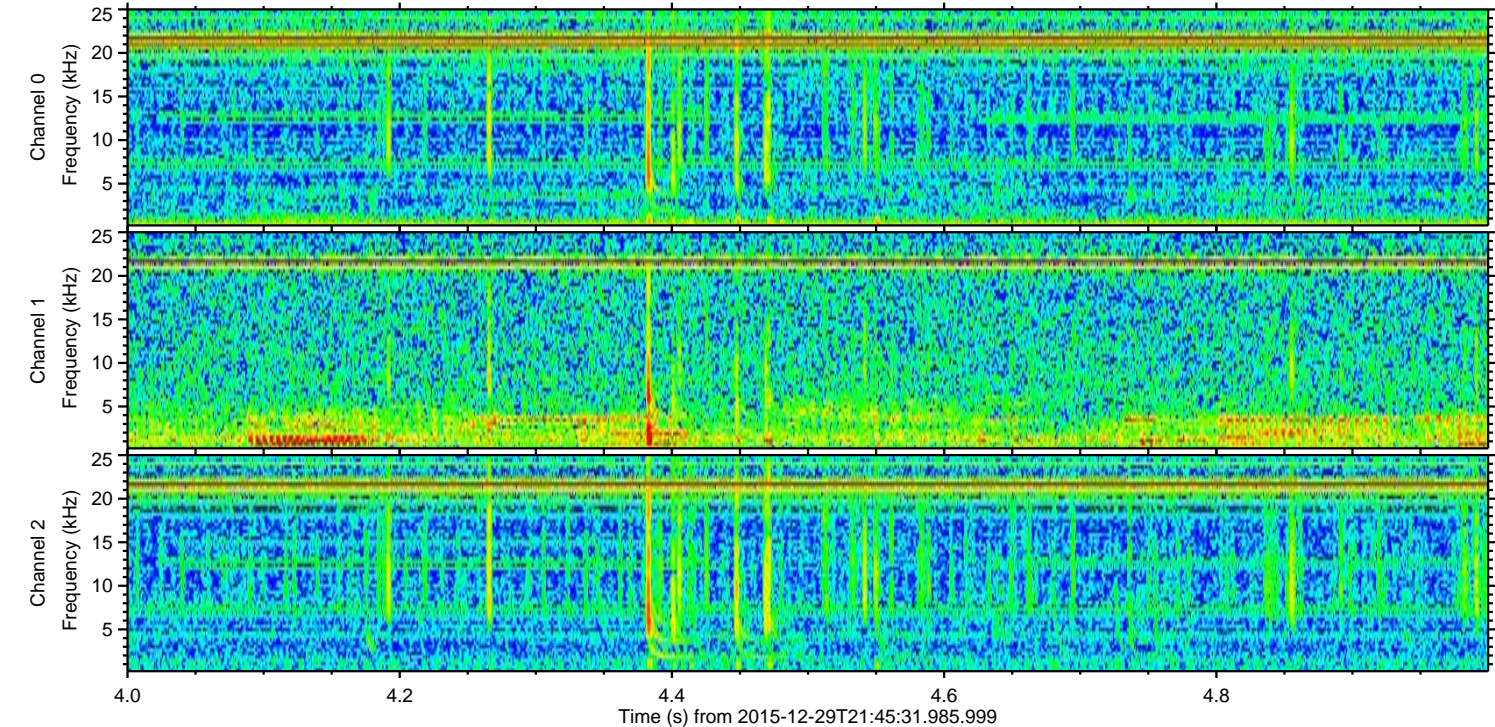
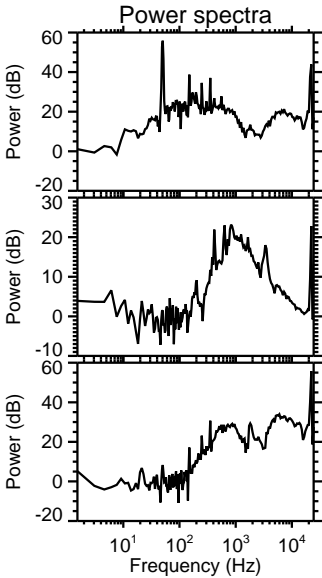
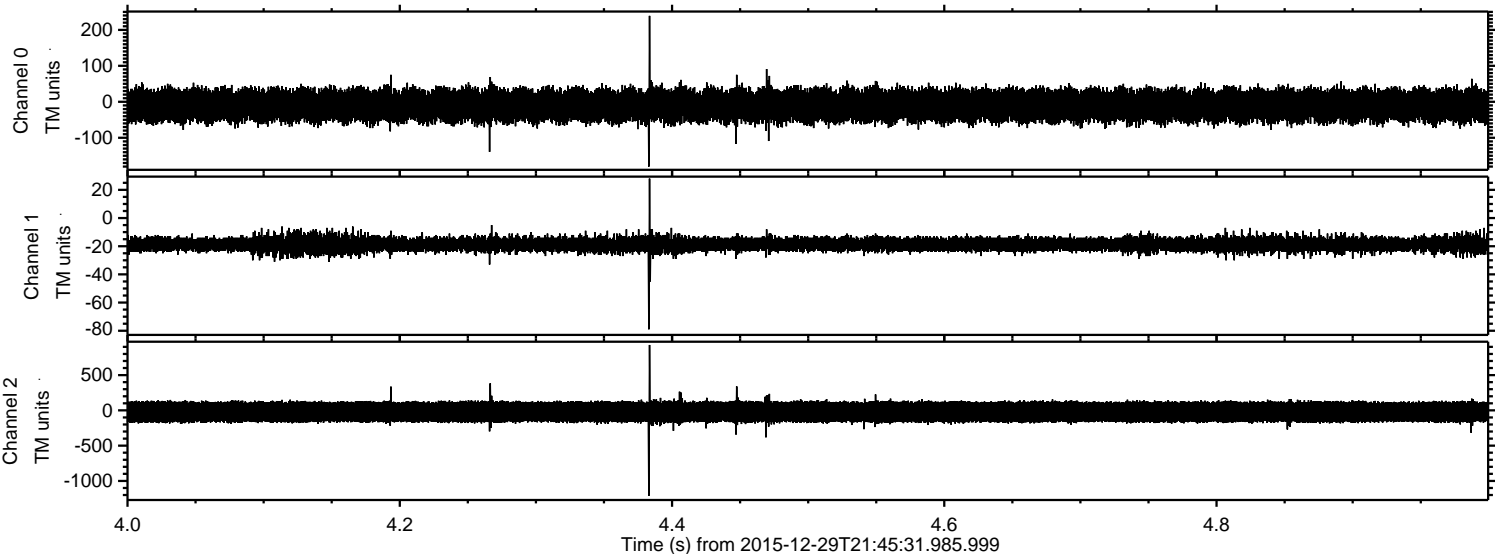


Channel 0
mn: -192
mx: 289
 μ : -10.0
 σ : 26.4

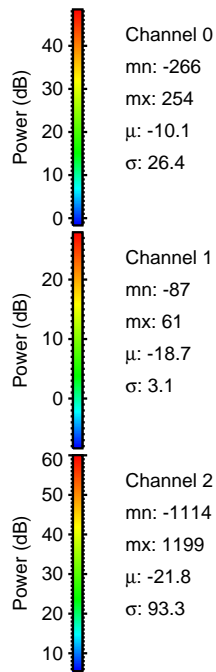
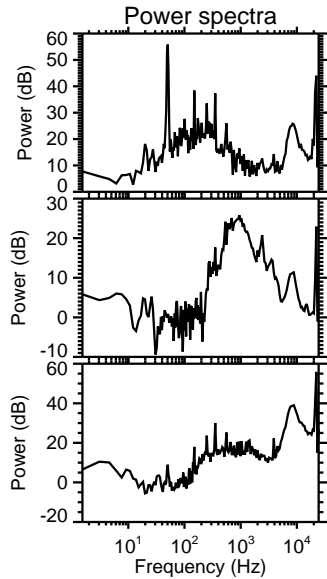
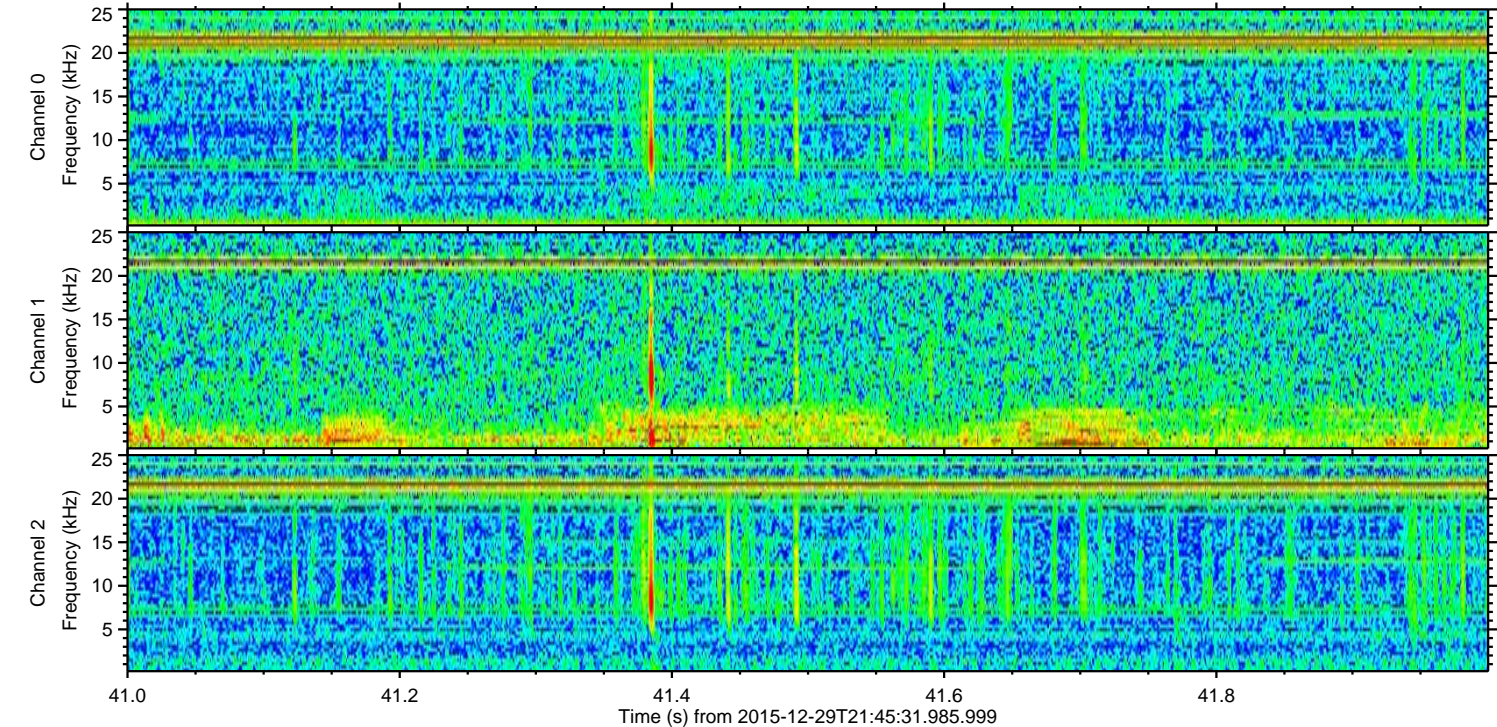
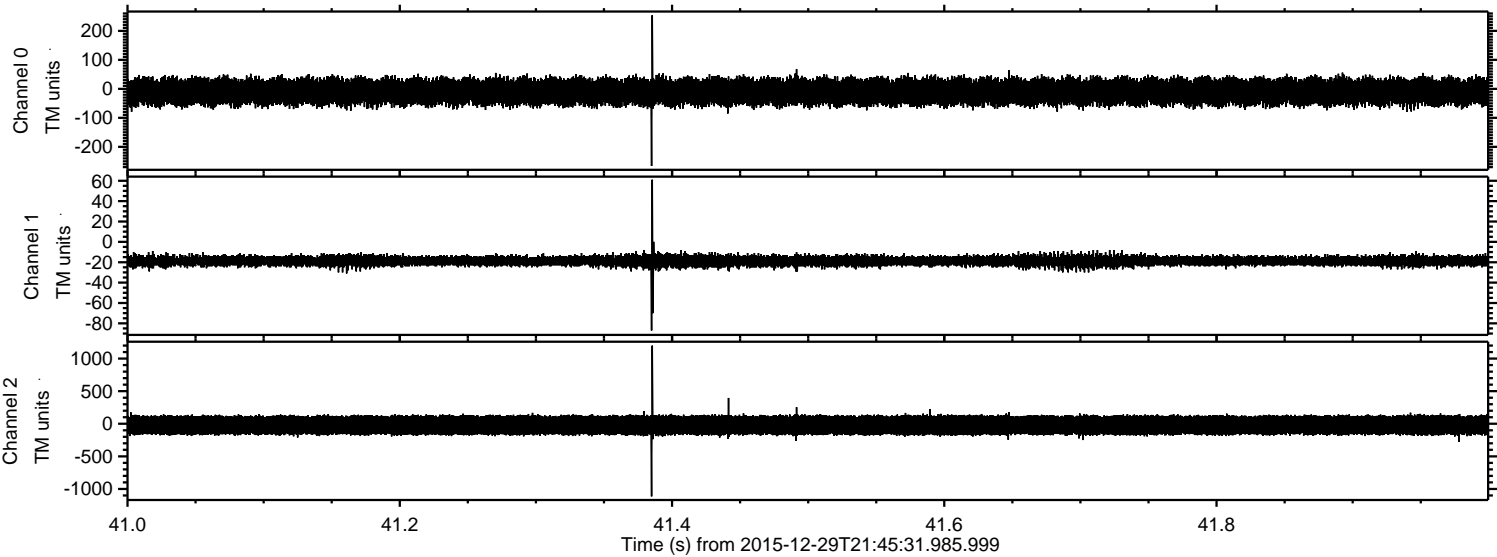
Channel 1
mn: -83
mx: 13
 μ : -18.7
 σ : 3.1

Channel 2
mn: -1240
mx: 874
 μ : -21.8
 σ : 90.9

Processed Fri Mar 18 19:27:42 2016 by ELM ver.2012-10-06 from 001__elm20151229_214530__dat00.bin



Processed Fri Mar 18 19:27:45 2016 by ELM ver.2012-10-06 from 001__elm20151229_214530__dat00.bin



Processed Fri Mar 18 19:27:45 2016 by ELM ver.2012-10-06 from 001__elm20151229_214530__dat00.bin

