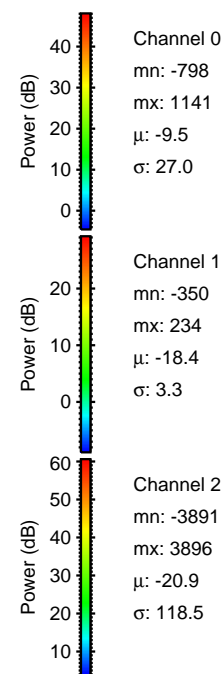
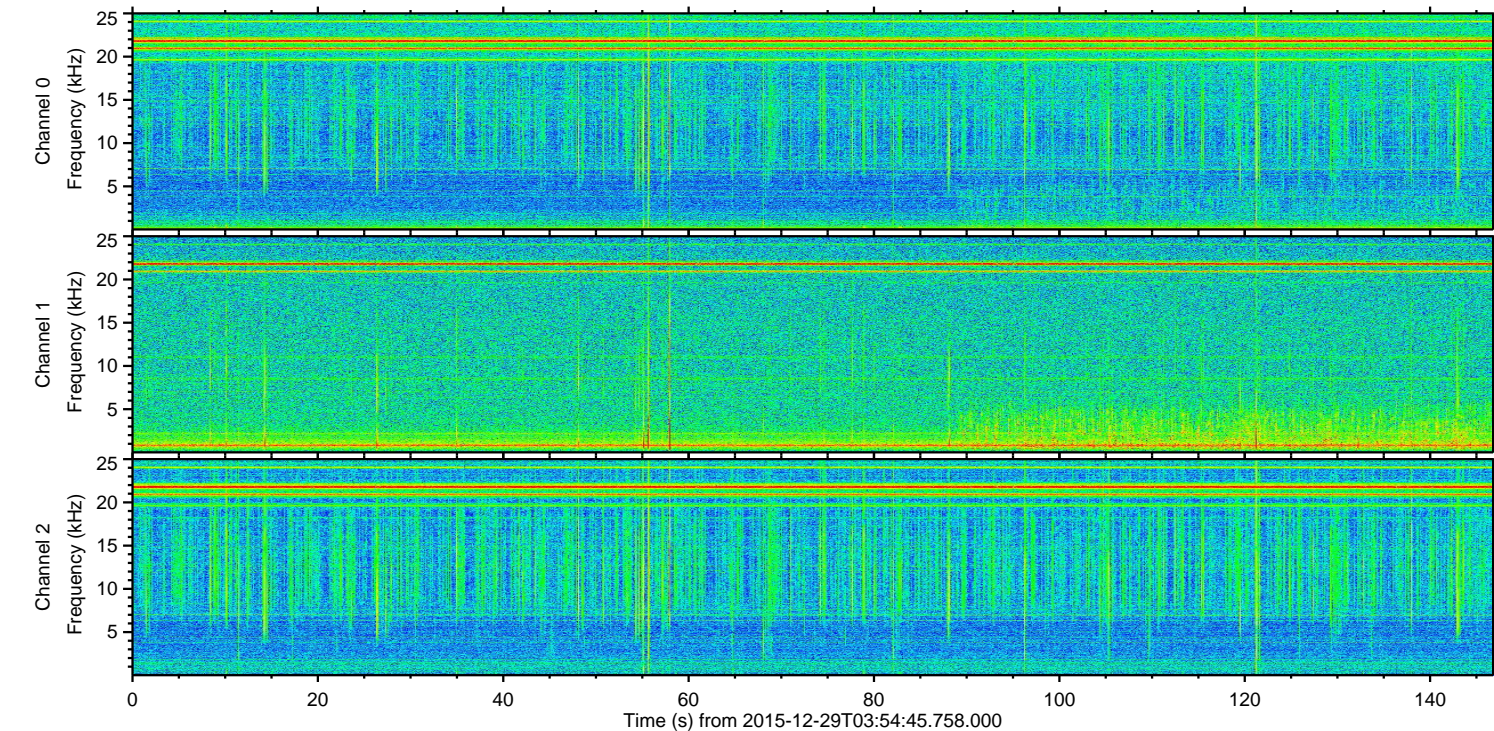
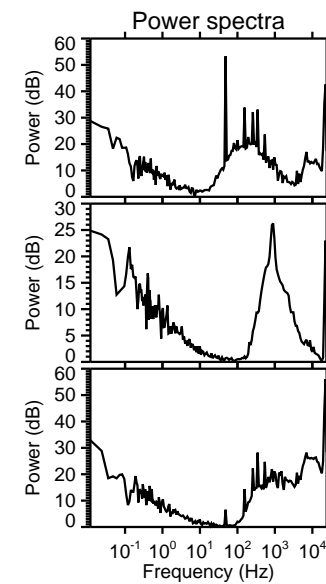
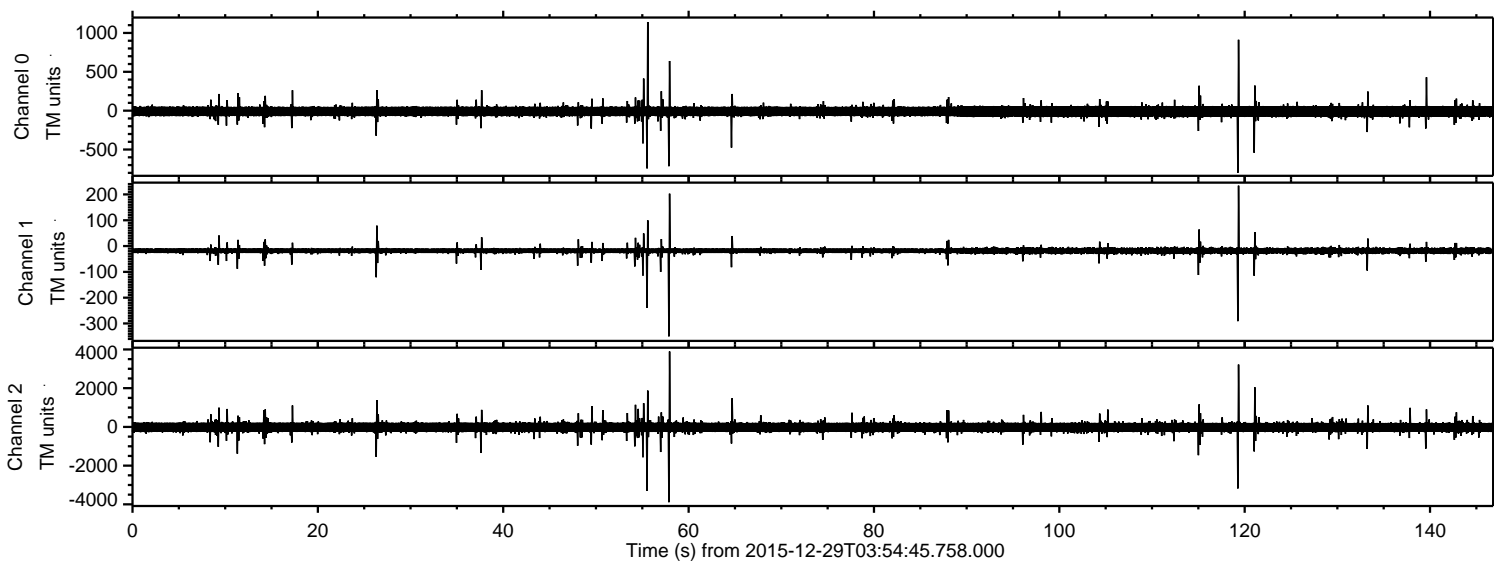
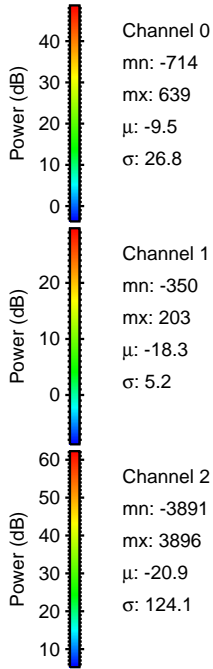
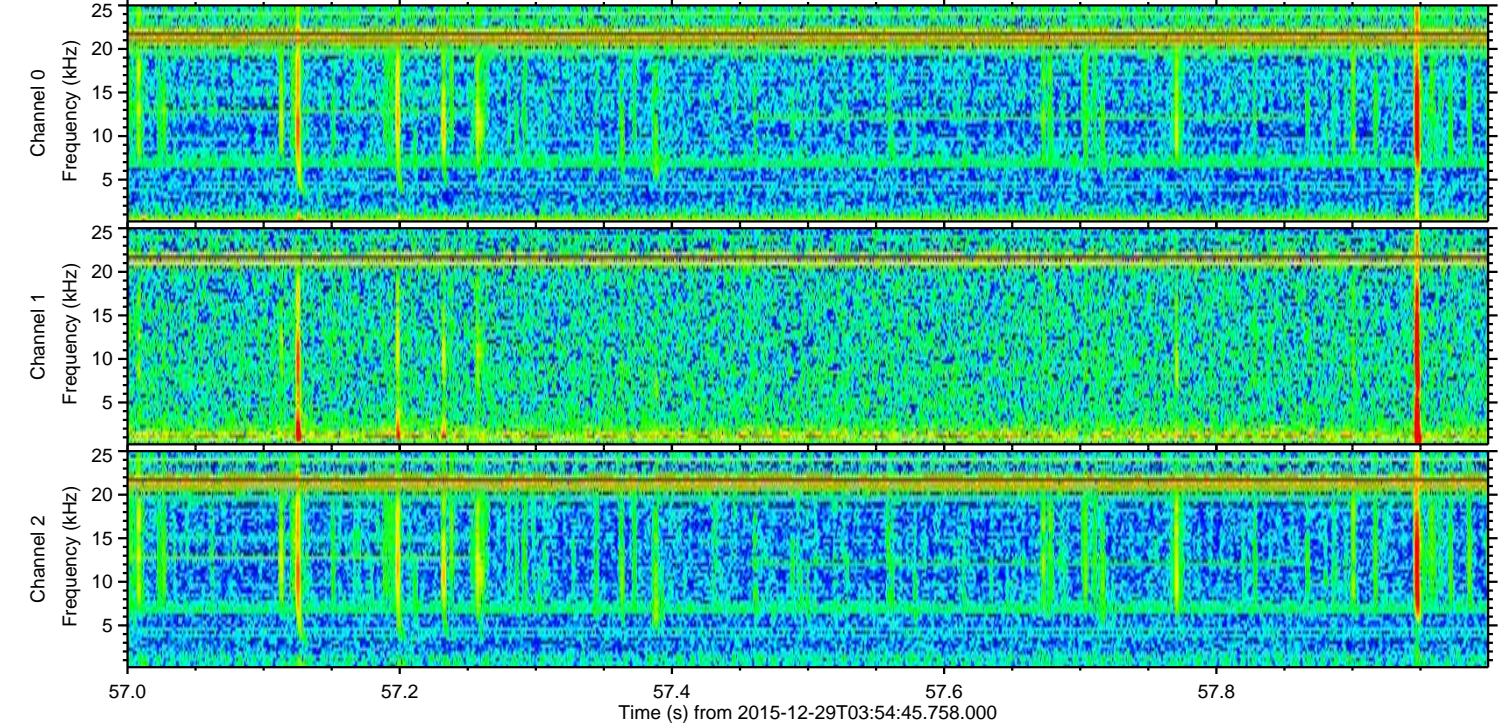
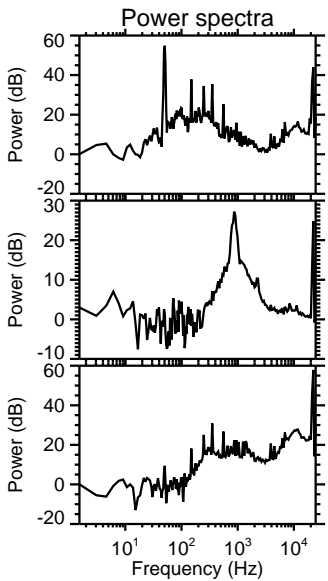
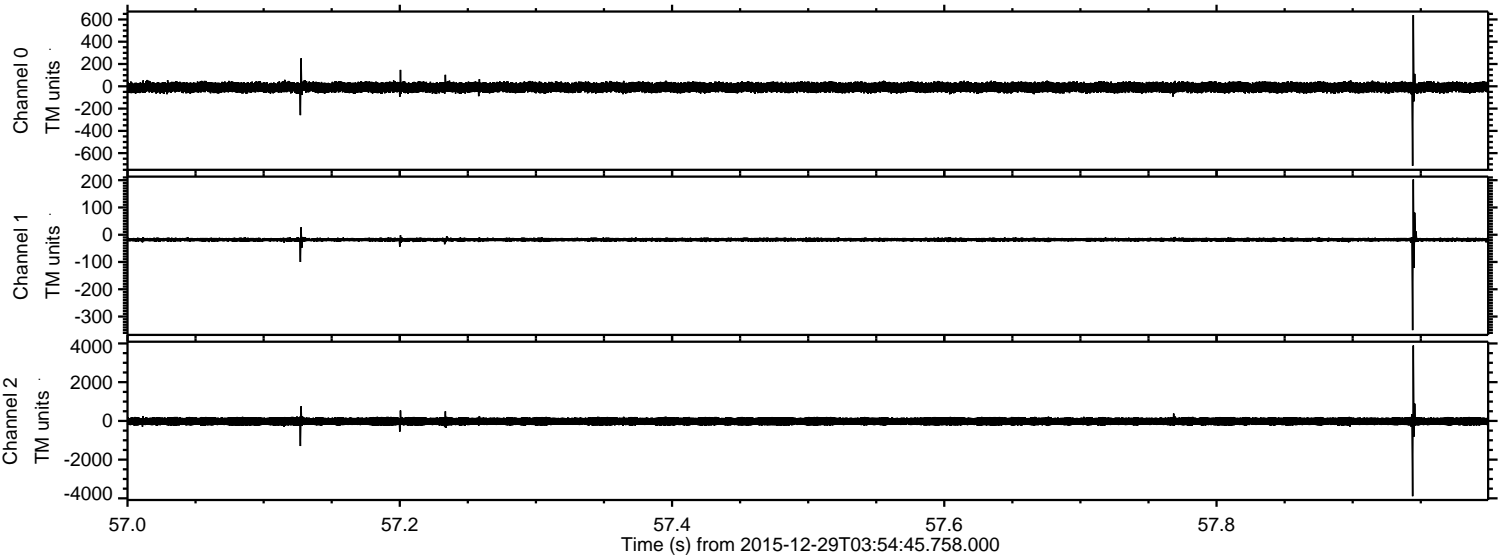


ELMAVAN 3D WAVEFORMS (Measured data sampled at 50 kHz) 51000 packets of 144 samples from 2015-12-29T03:54:45.758.000.

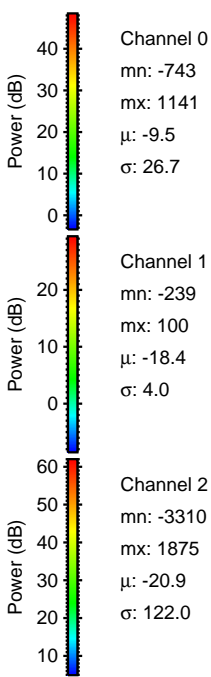
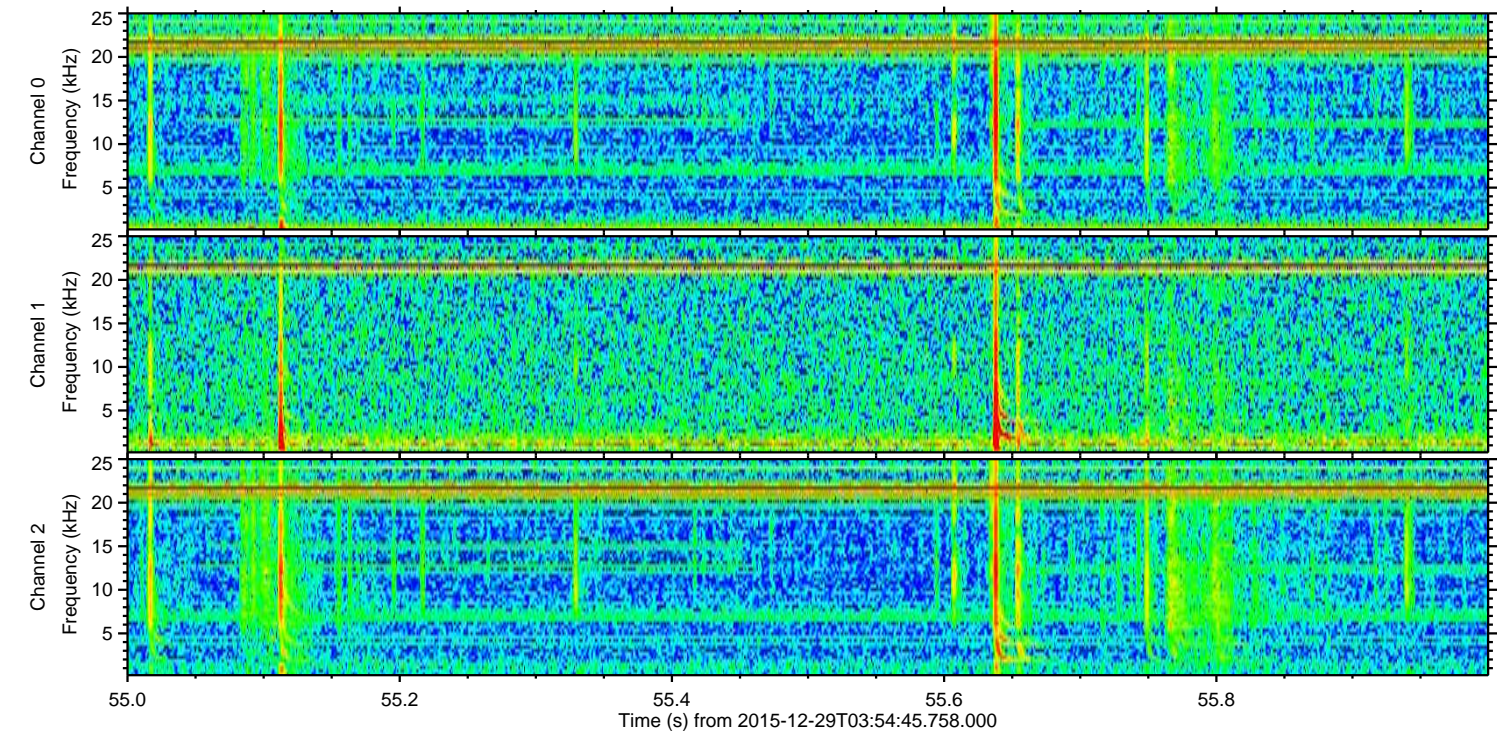
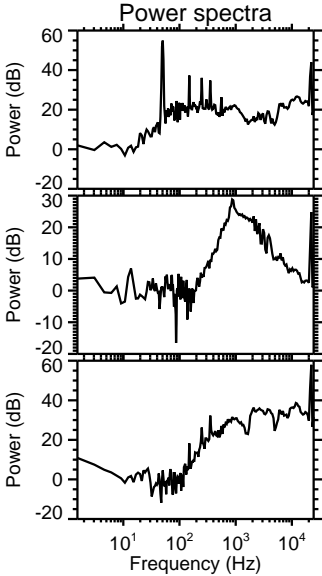
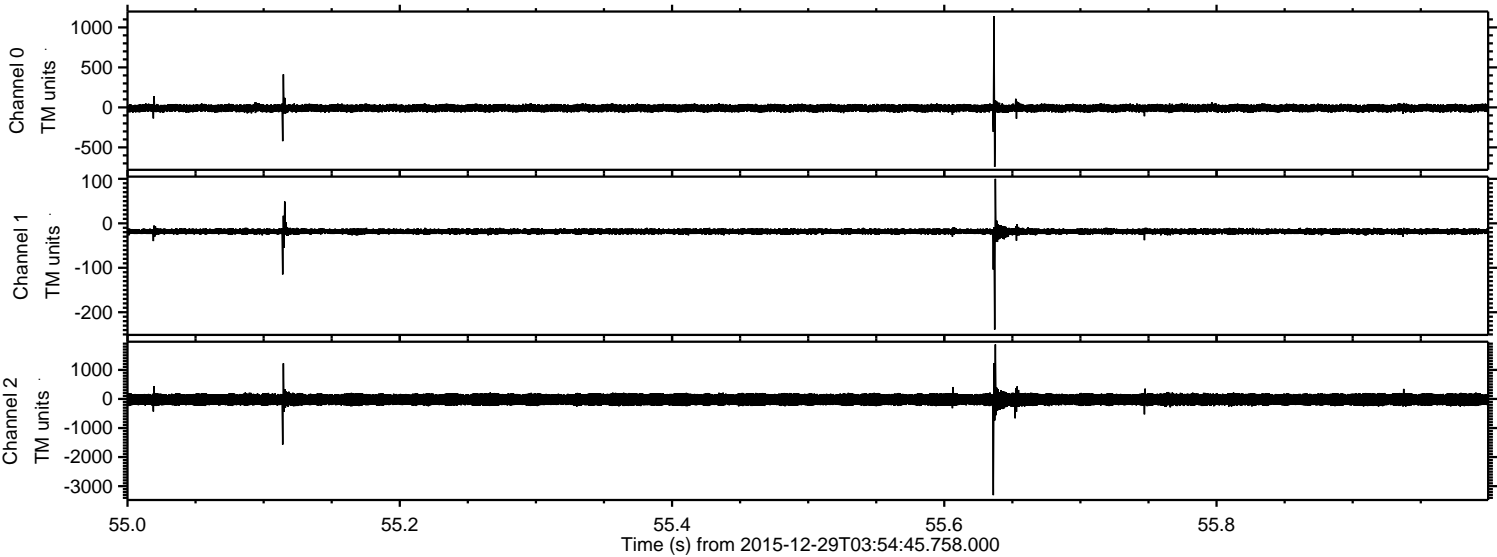
Processed Tue Mar 15 17:23:37 2016 by ELM ver.2012-10-06 from 001__elm20151229_035444__dat00.bin



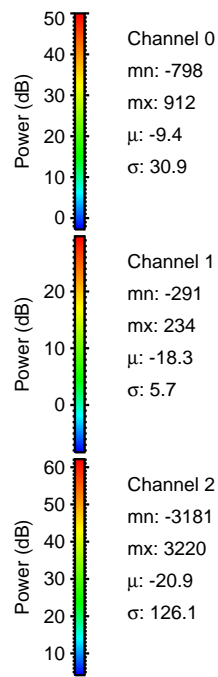
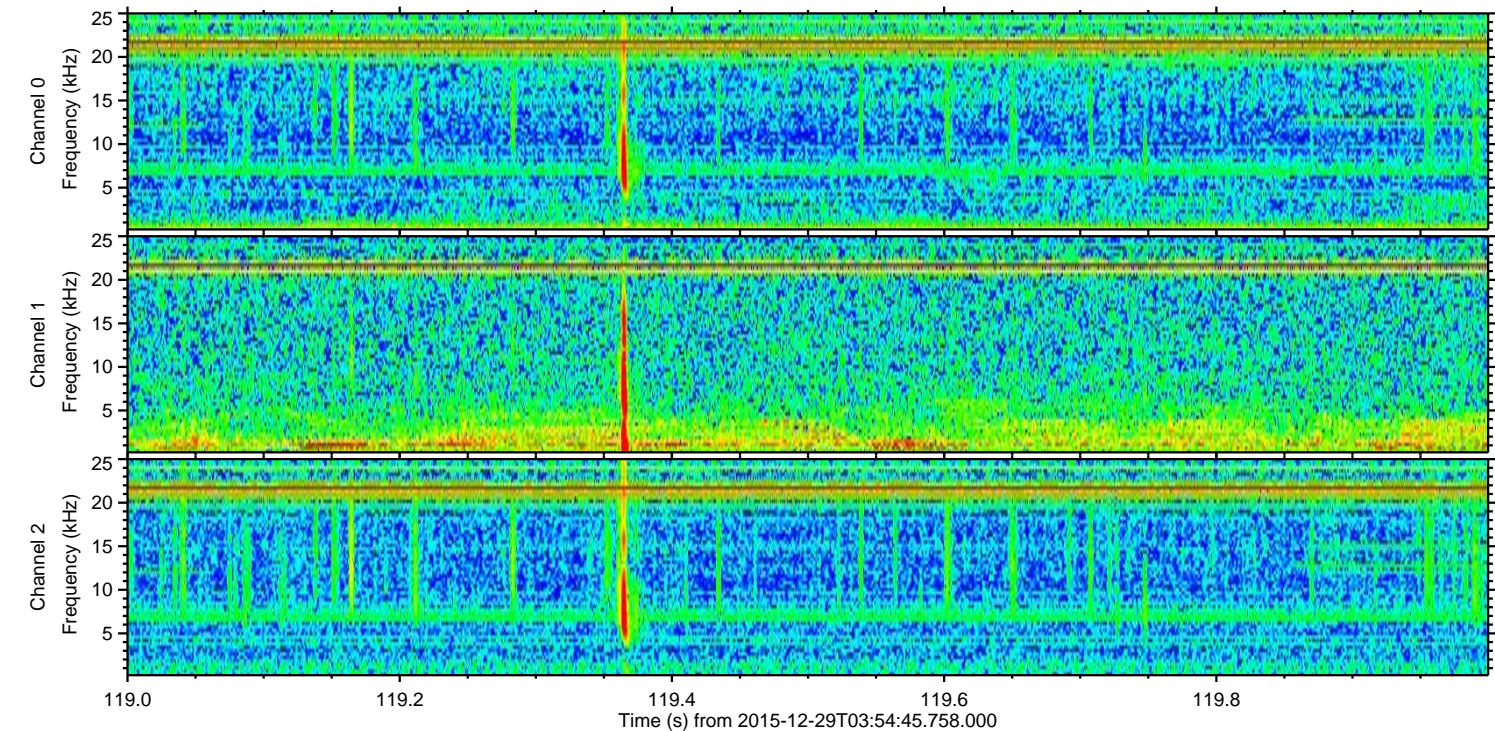
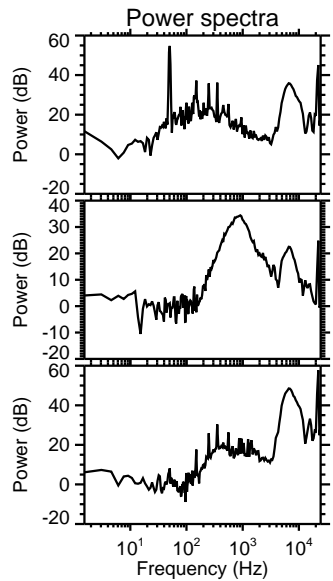
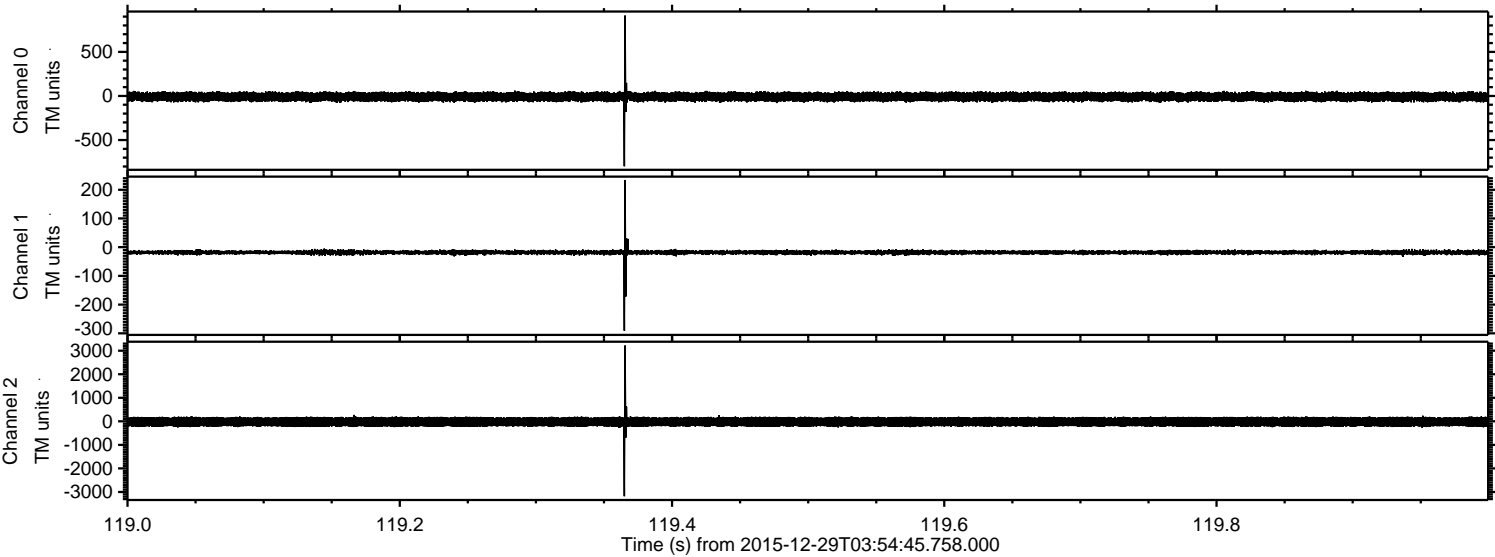
Processed Tue Mar 15 17:23:49 2016 by ELM ver.2012-10-06 from 001__elm20151229_035444__dat00.bin



Processed Tue Mar 15 17:23:50 2016 by ELM ver.2012-10-06 from 001__elm20151229_035444__dat00.bin

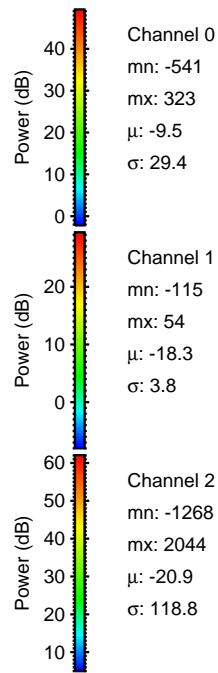
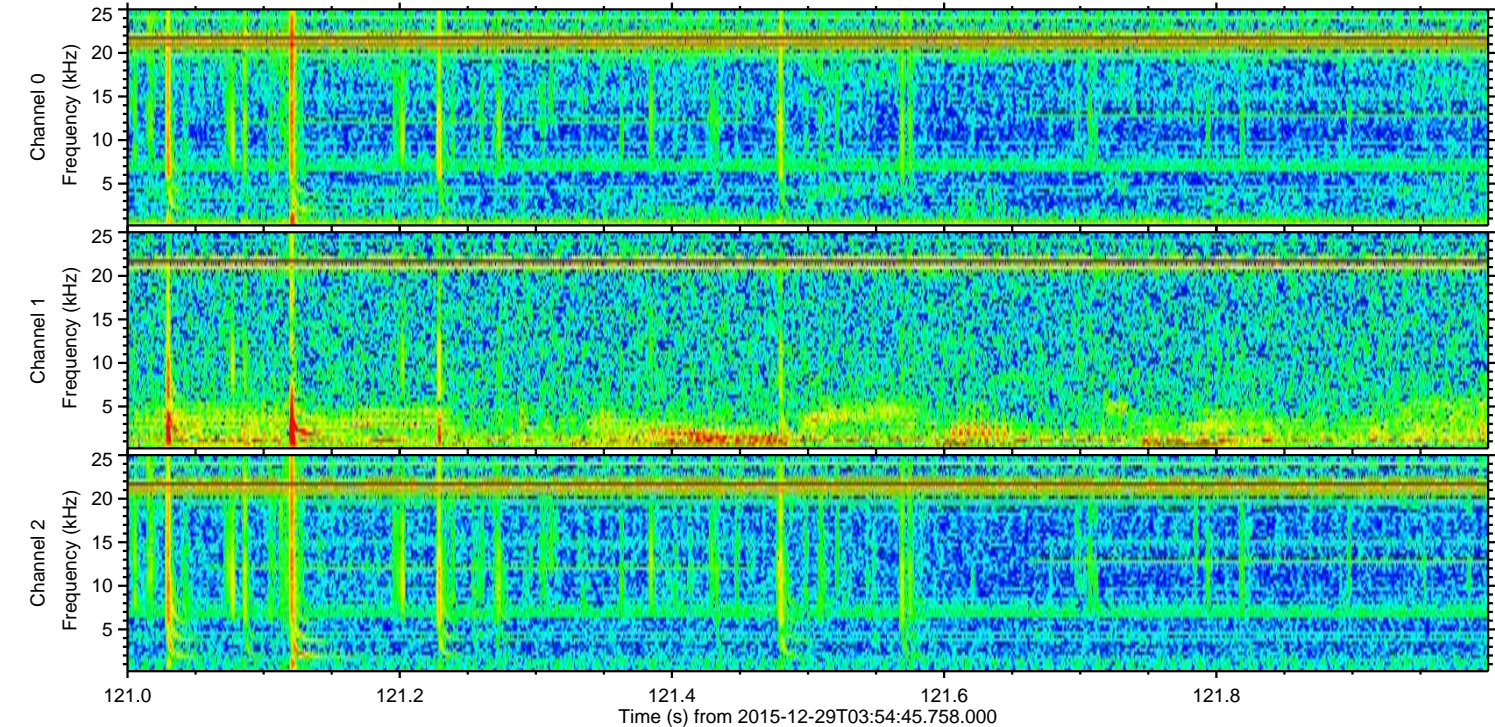
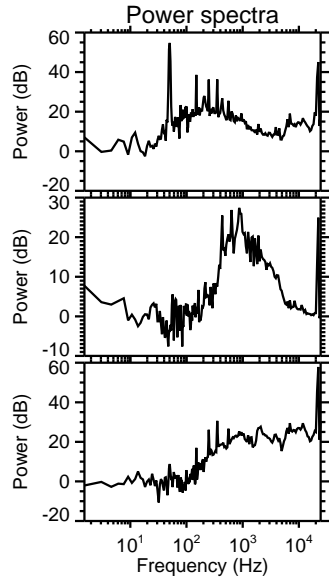
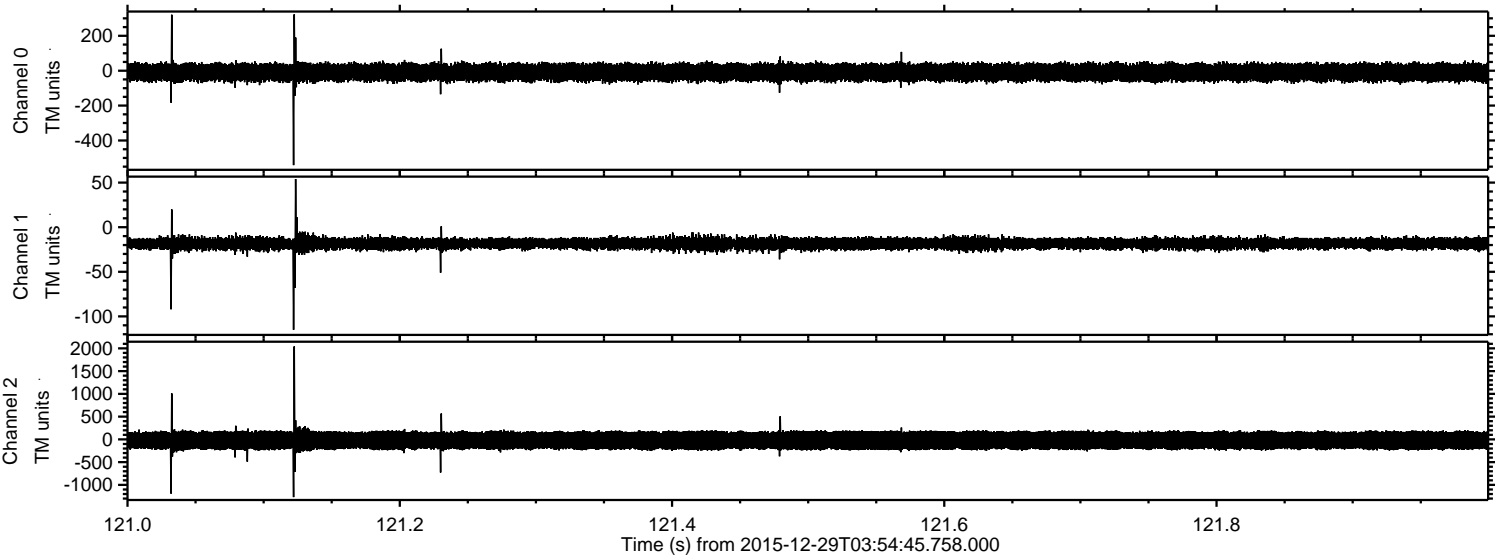


Processed Tue Mar 15 17:23:51 2016 by ELM ver.2012-10-06 from 001__elm20151229_035444__dat00.bin



ELMAVAN 3D WAVEFORMS (Measured data sampled at 50 kHz) 51000 packets of 144 samples from 2015-12-29T03:54:45.758.000. Part 122/147

Processed Tue Mar 15 17:23:52 2016 by ELM ver.2012-10-06 from 001__elm20151229_035444__dat00.bin

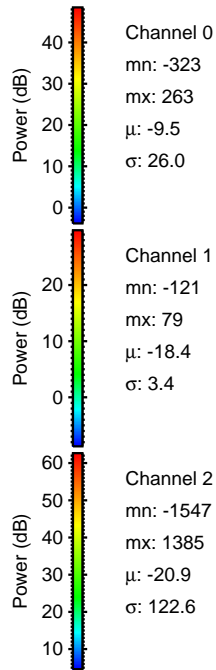
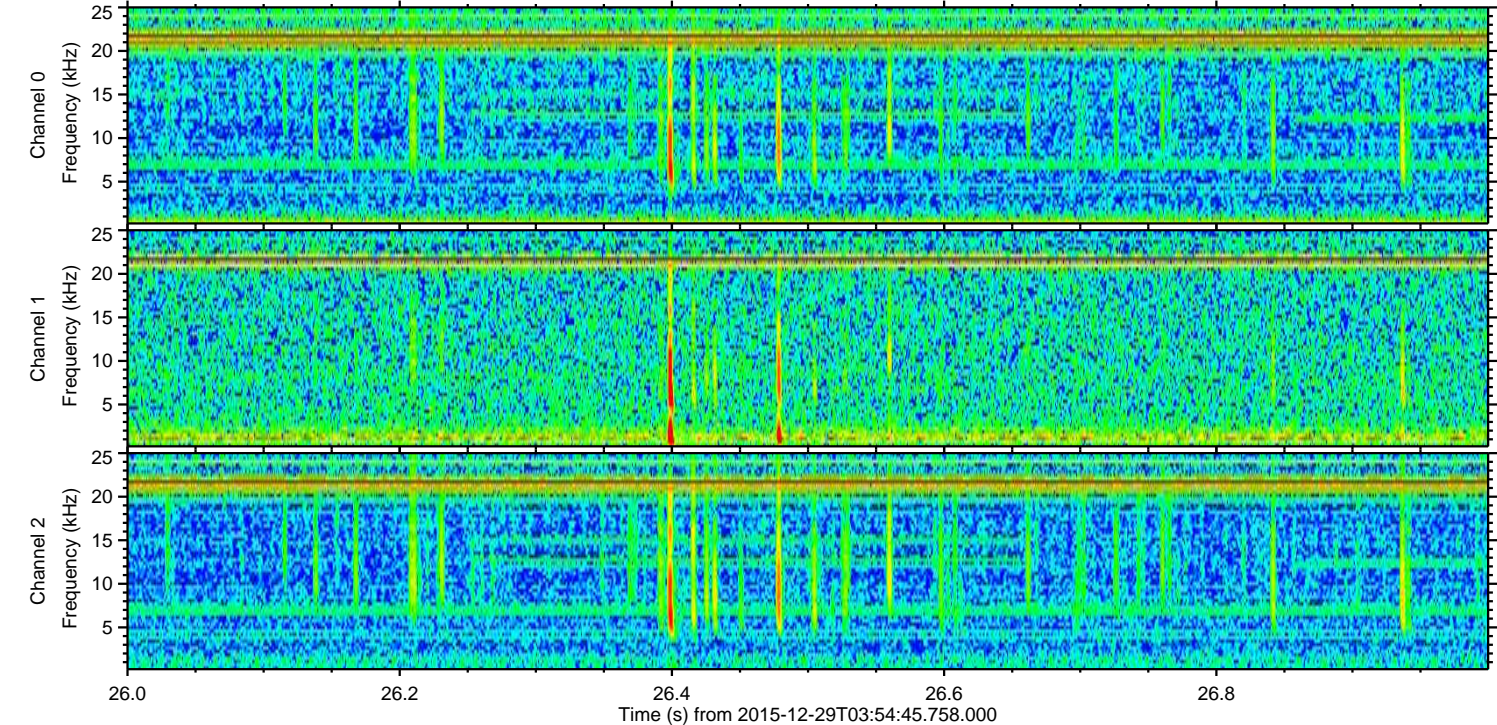
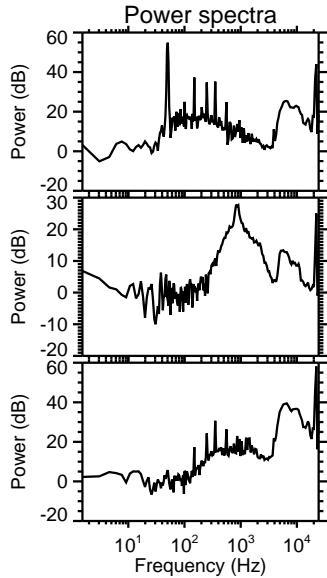
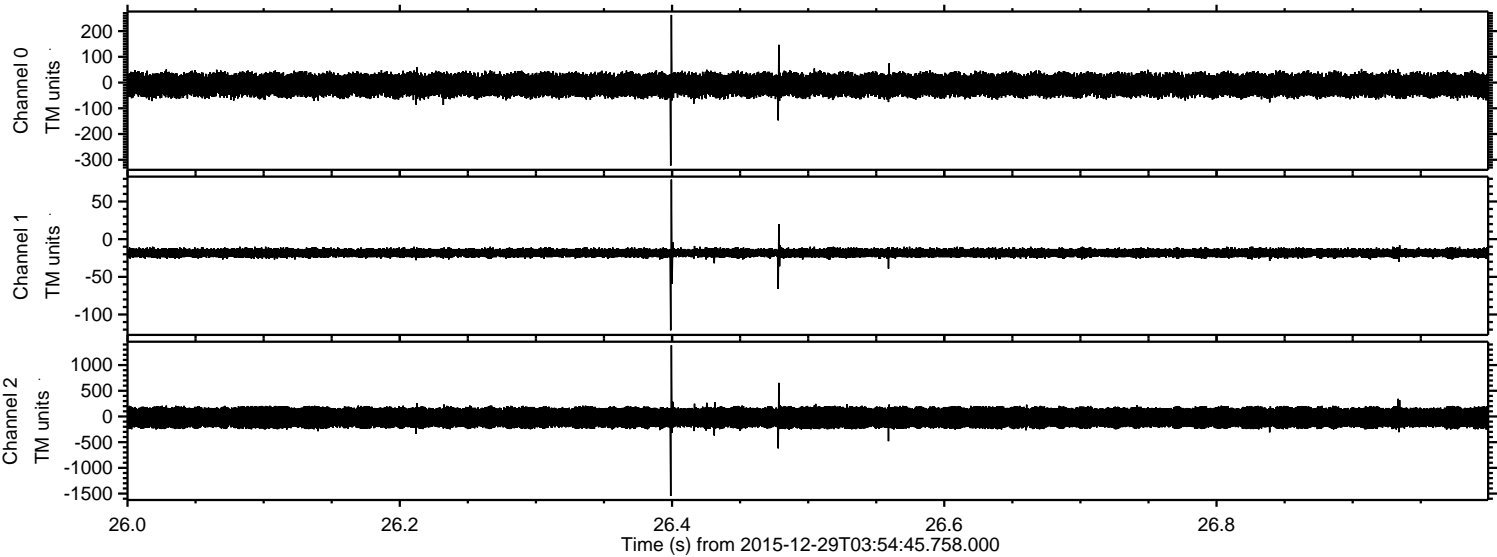


Channel 0
mn: -541
mx: 323
 μ : -9.5
 σ : 29.4

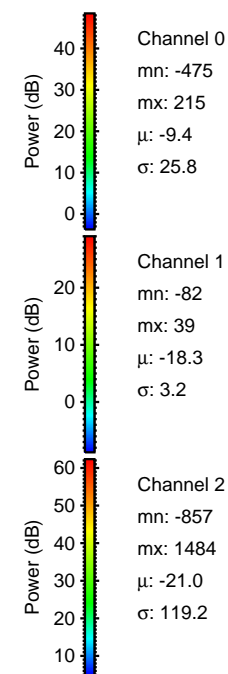
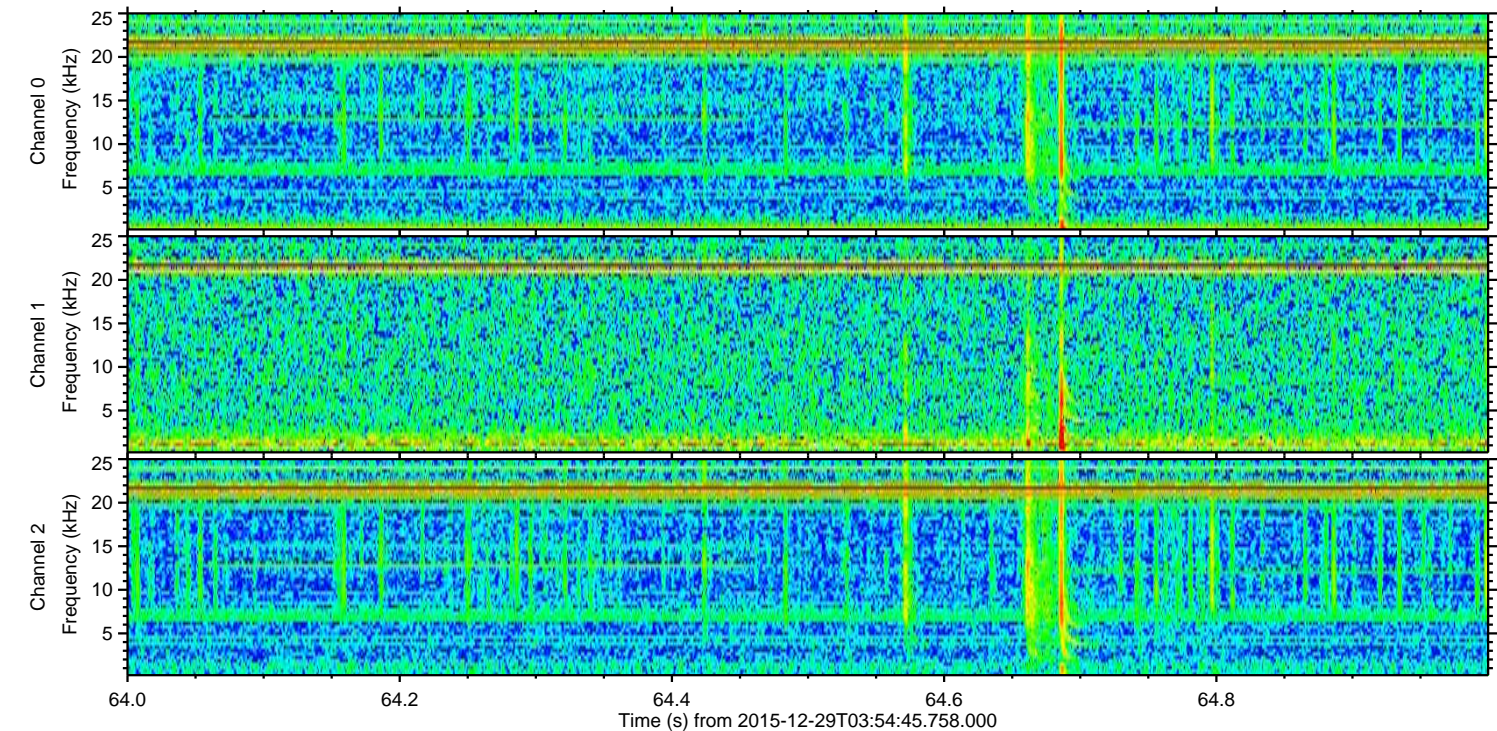
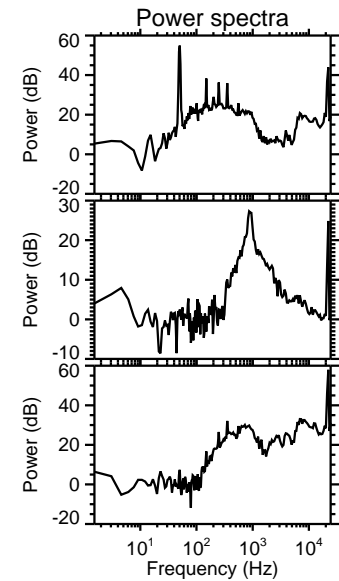
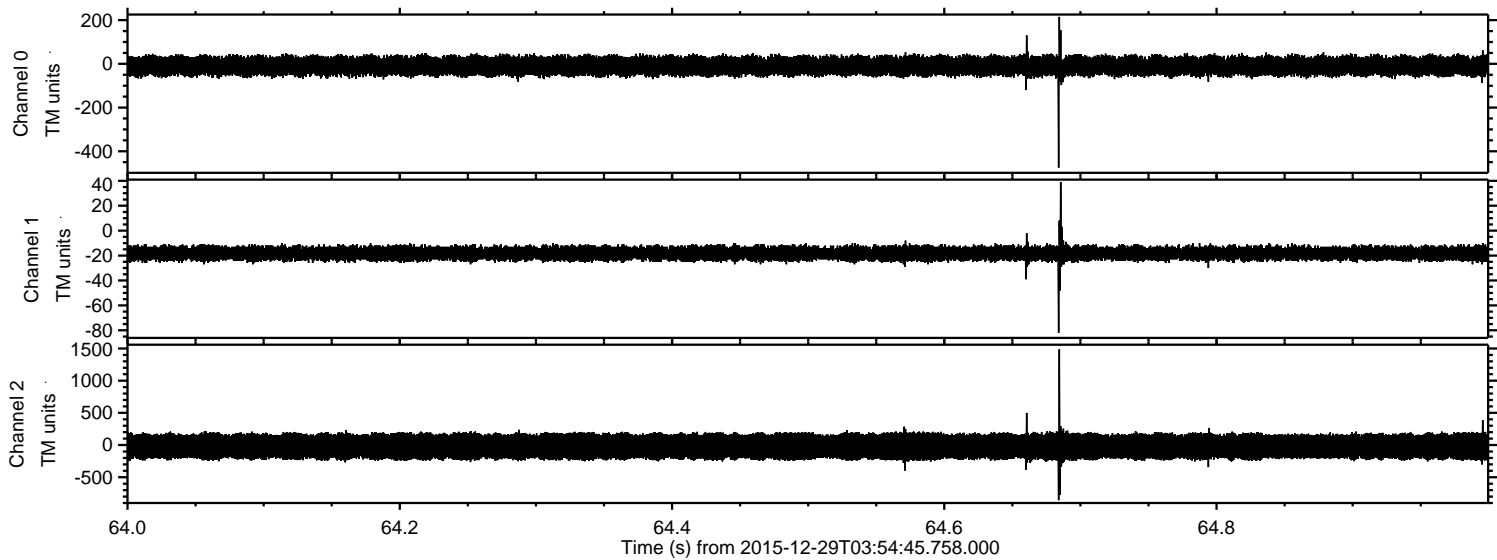
Channel 1
mn: -115
mx: 54
 μ : -18.3
 σ : 3.8

Channel 2
mn: -1268
mx: 2044
 μ : -20.9
 σ : 118.8

Processed Tue Mar 15 17:23:53 2016 by ELM ver.2012-10-06 from 001__elm20151229_035444__dat00.bin

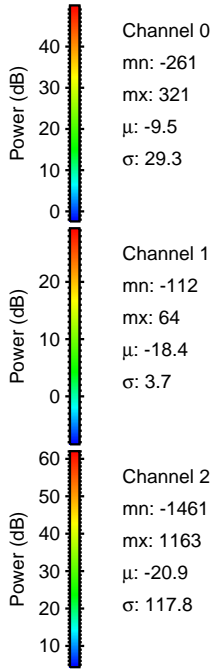
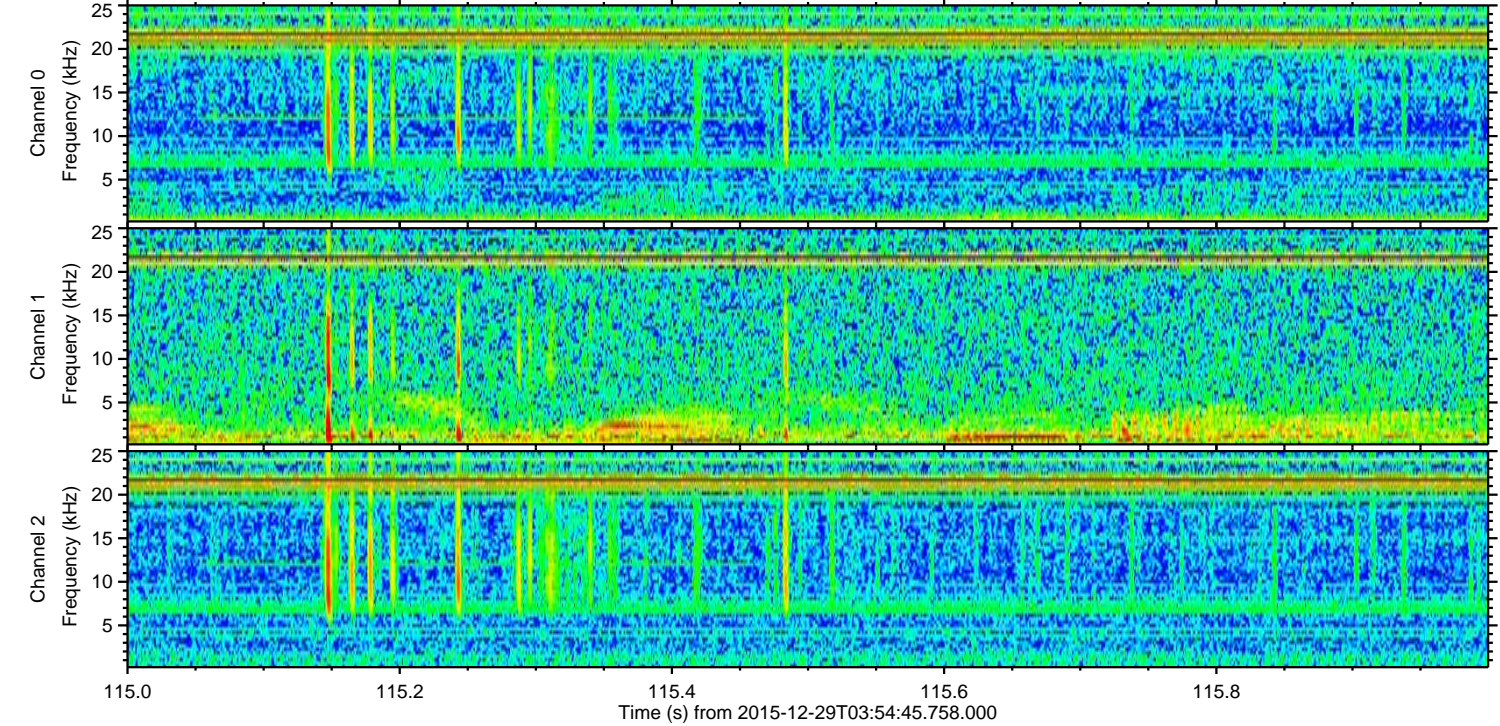
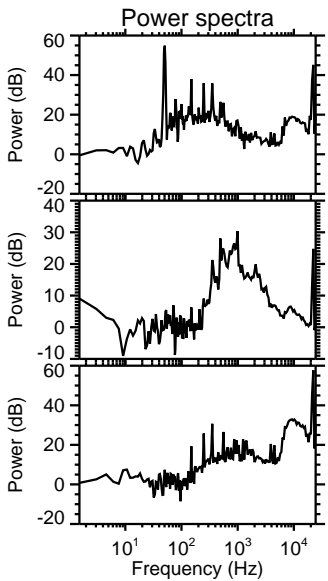
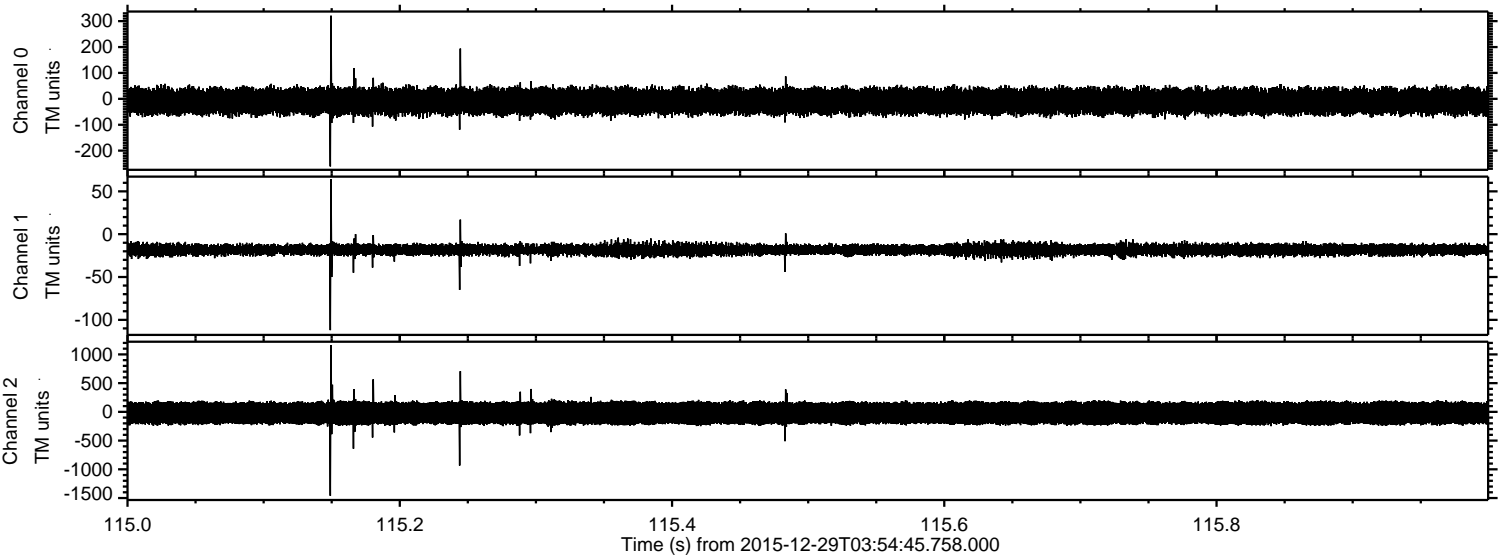


Processed Tue Mar 15 17:23:54 2016 by ELM ver.2012-10-06 from 001__elm20151229_035444__dat00.bin

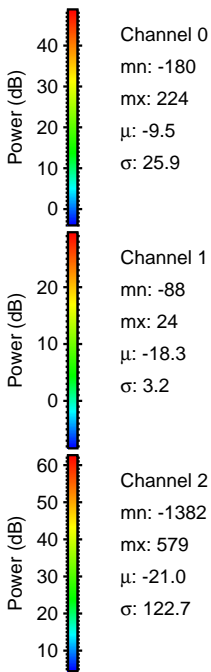
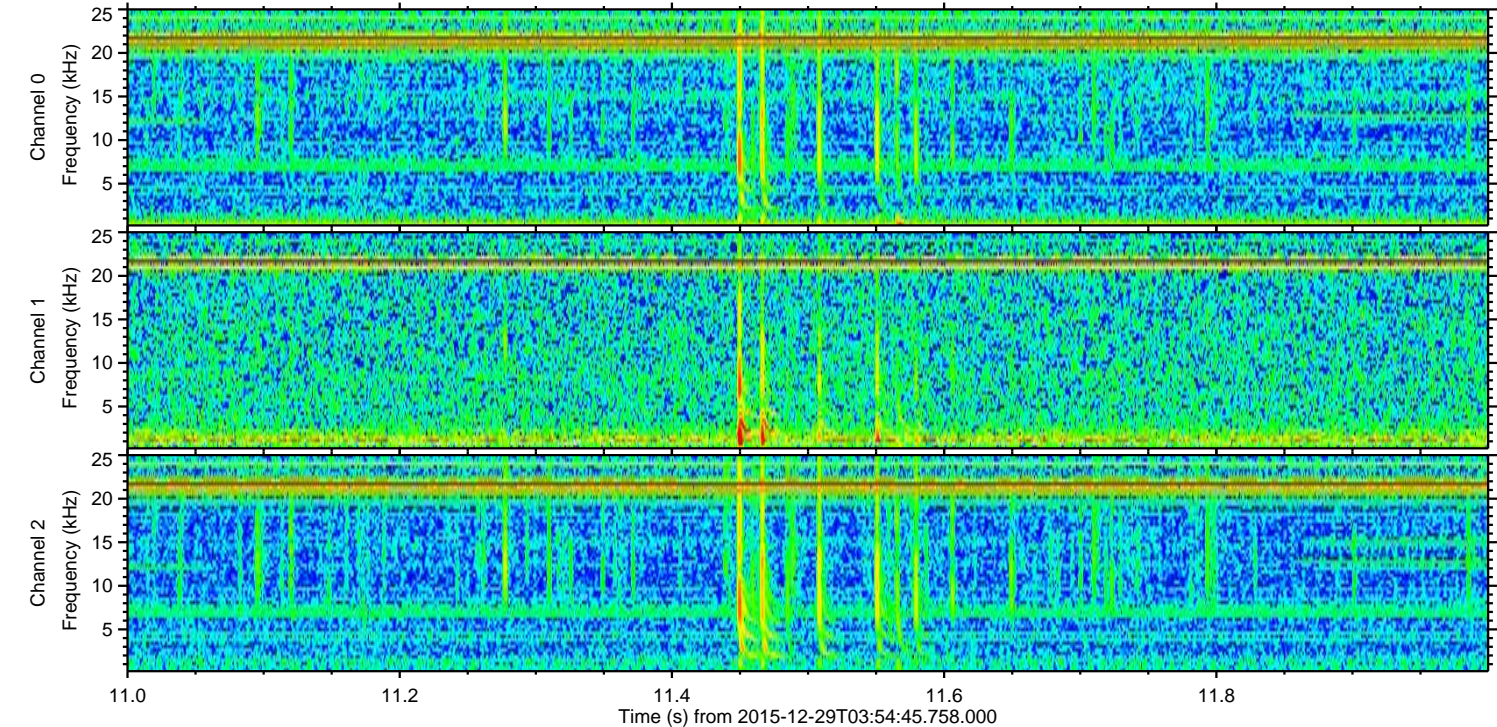
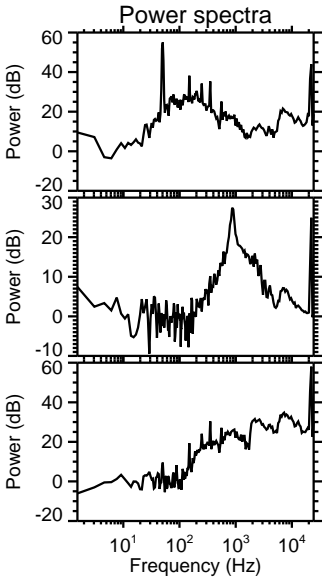
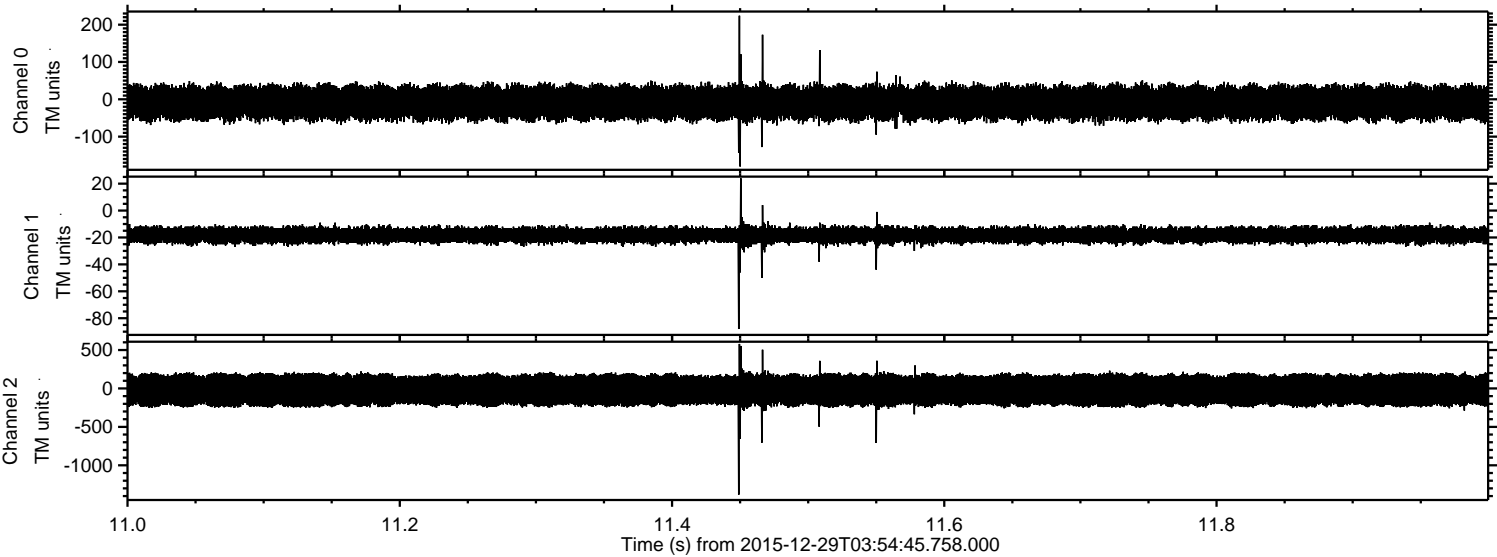


ELMAVAN 3D WAVEFORMS (Measured data sampled at 50 kHz) 51000 packets of 144 samples from 2015-12-29T03:54:45.758.000. Part 116/147

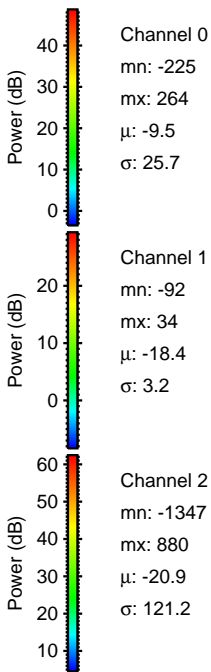
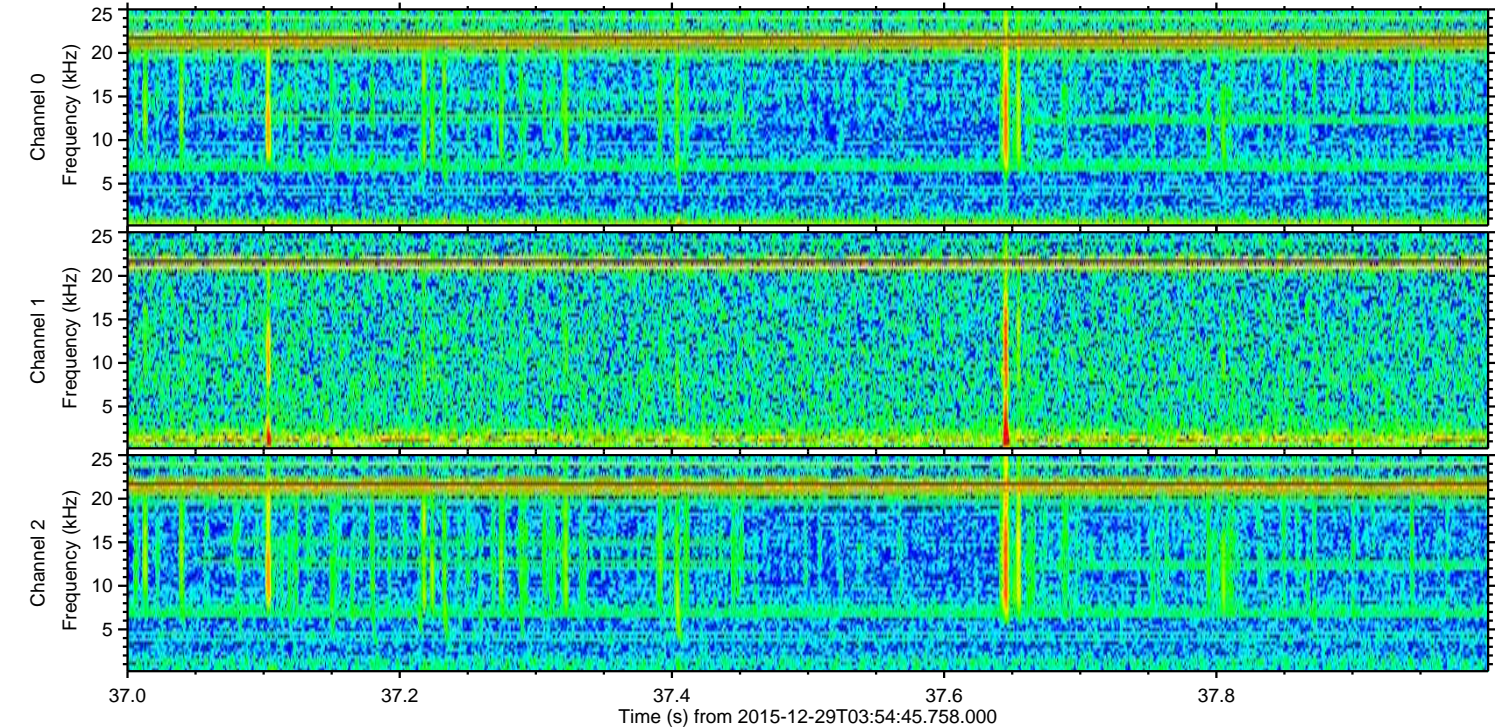
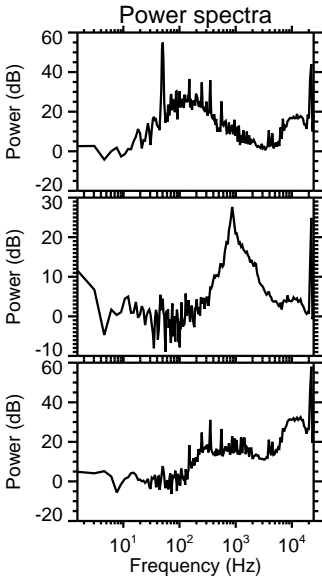
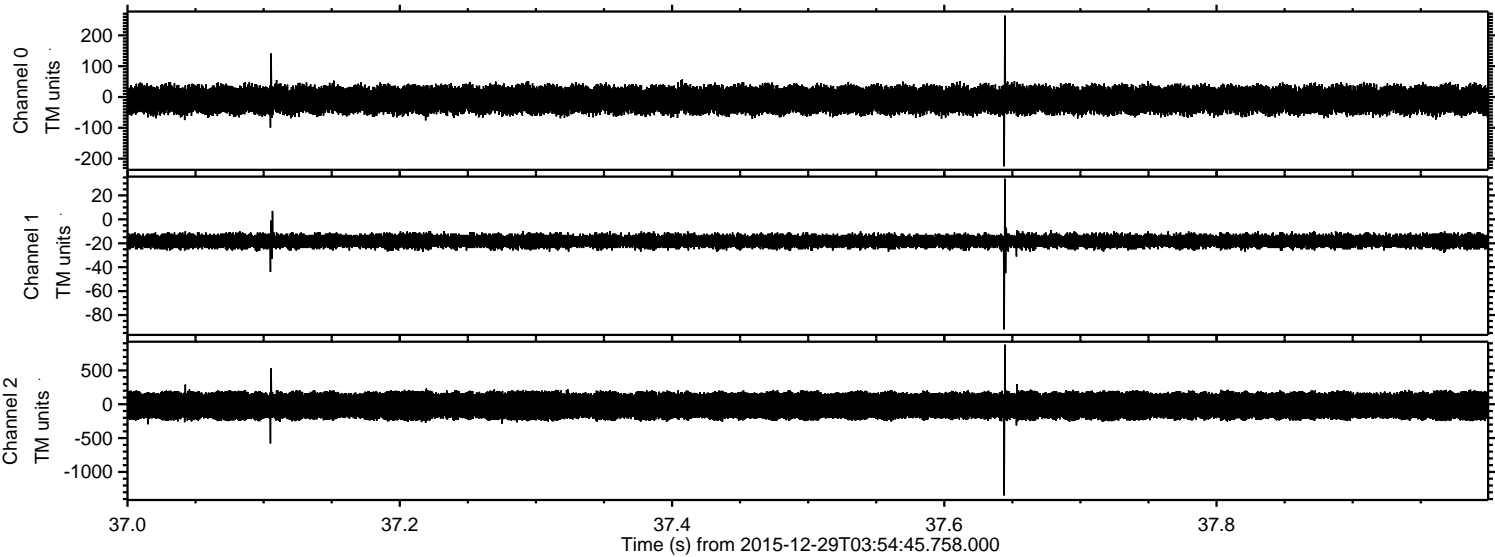
Processed Tue Mar 15 17:23:55 2016 by ELM ver.2012-10-06 from 001__elm20151229_035444__dat00.bin



Processed Tue Mar 15 17:23:56 2016 by ELM ver.2012-10-06 from 001__elm20151229_035444__dat00.bin



Processed Tue Mar 15 17:23:56 2016 by ELM ver.2012-10-06 from 001__elm20151229_035444__dat00.bin



Processed Tue Mar 15 17:23:57 2016 by ELM ver.2012-10-06 from 001__elm20151229_035444__dat00.bin

