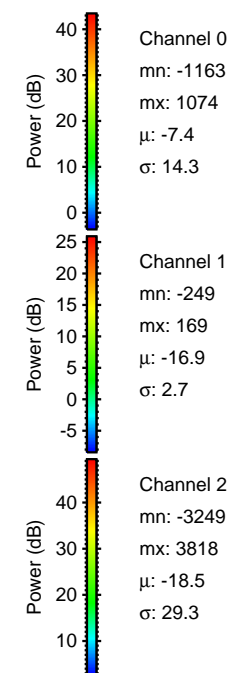
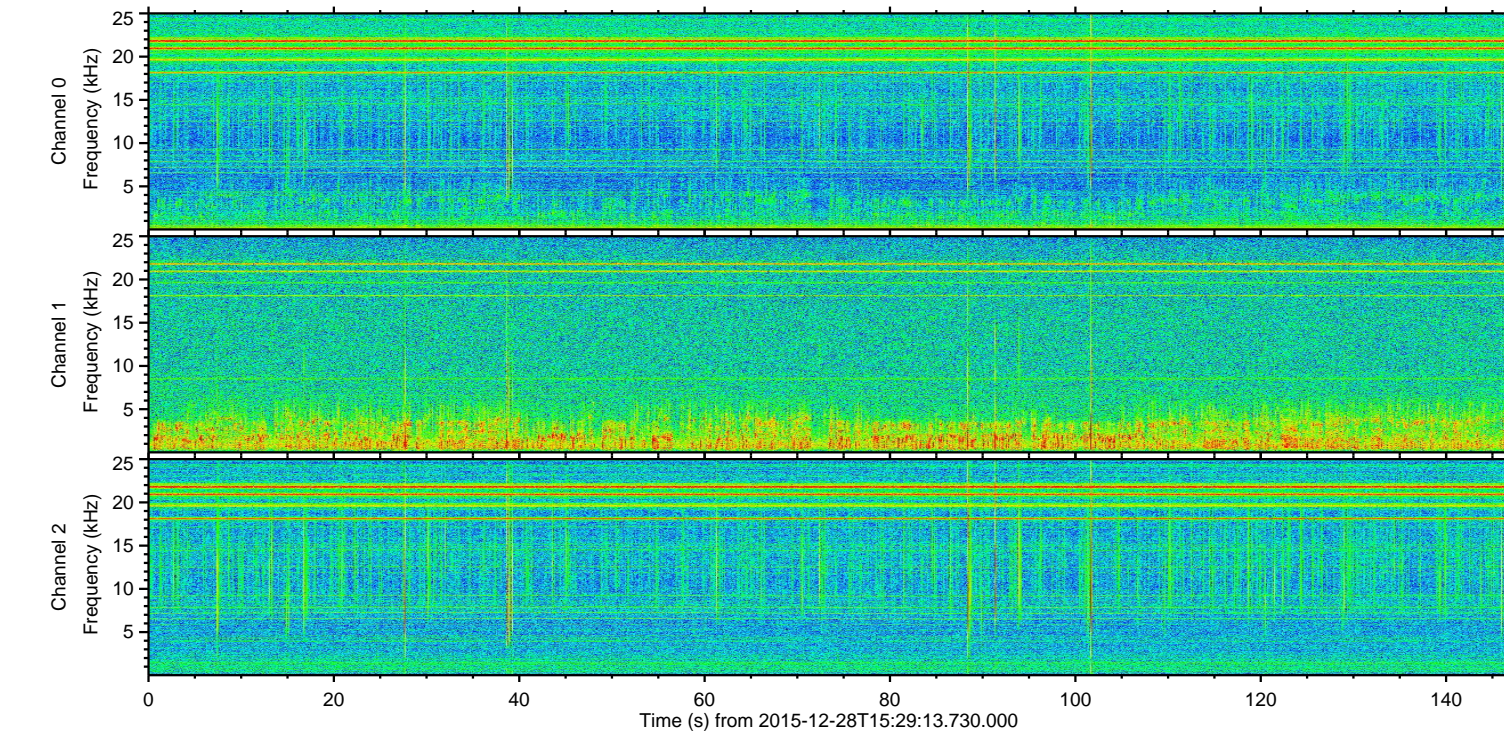
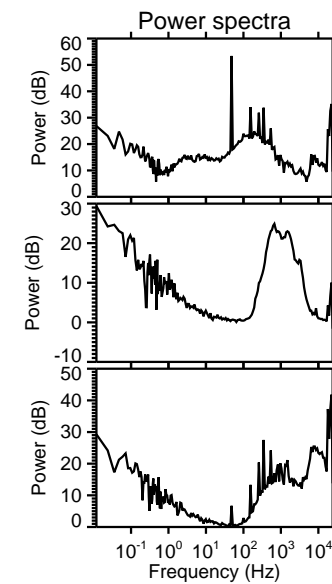
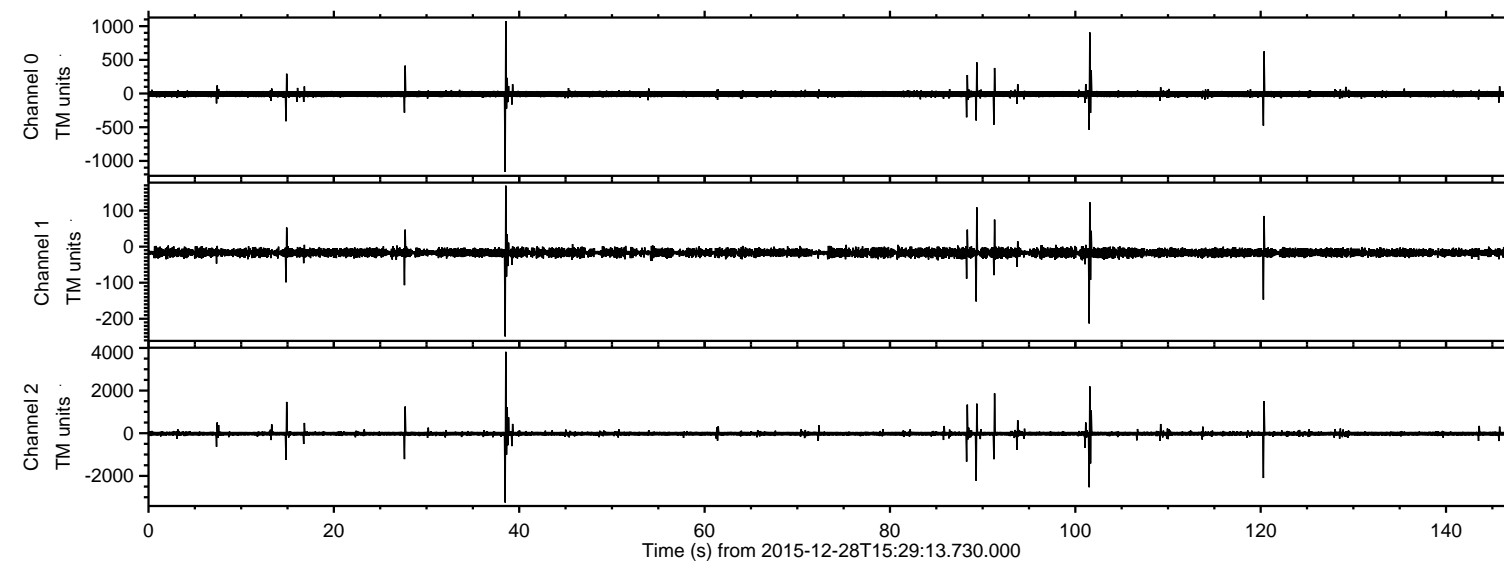


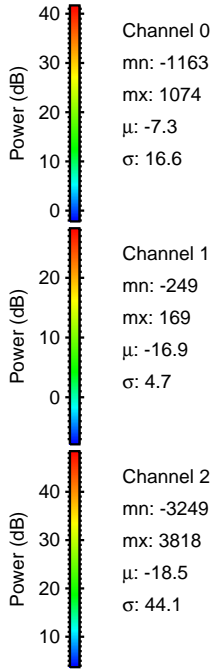
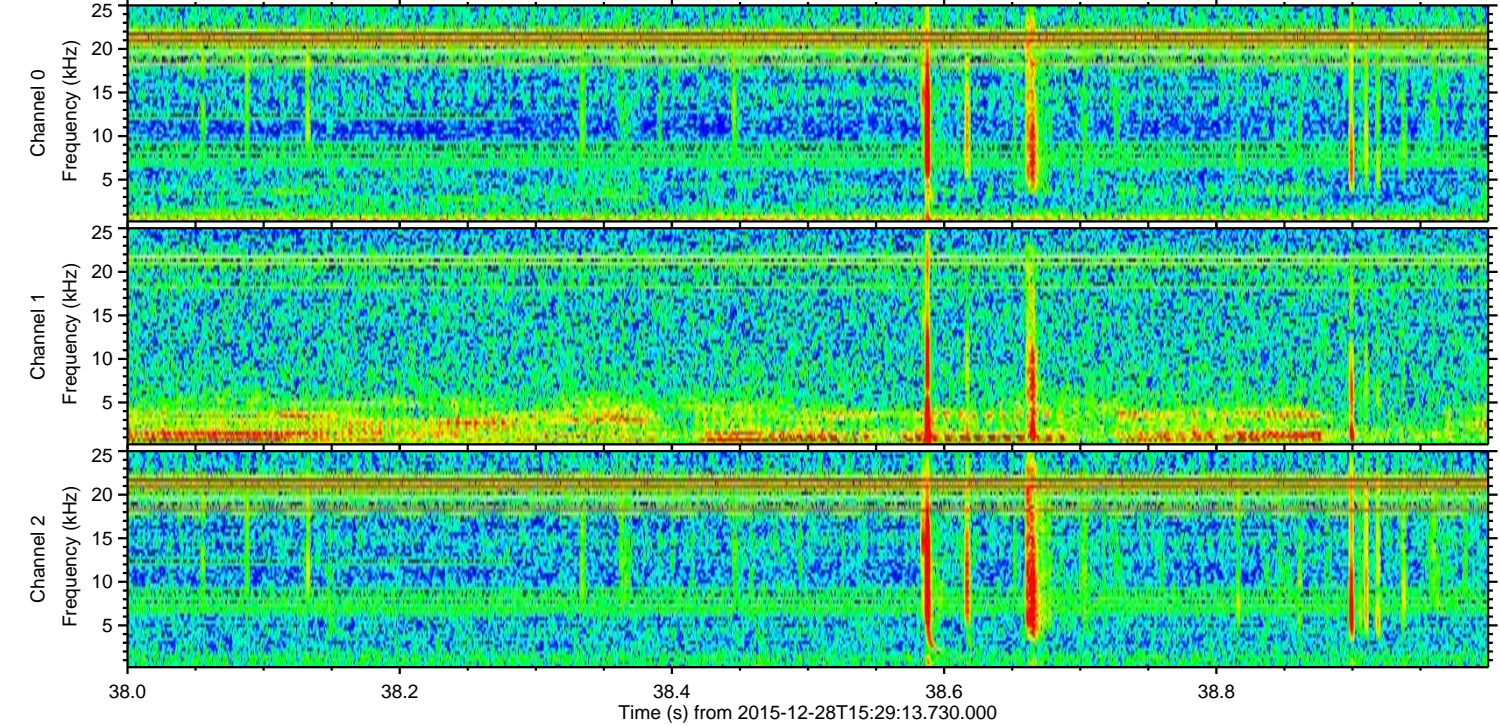
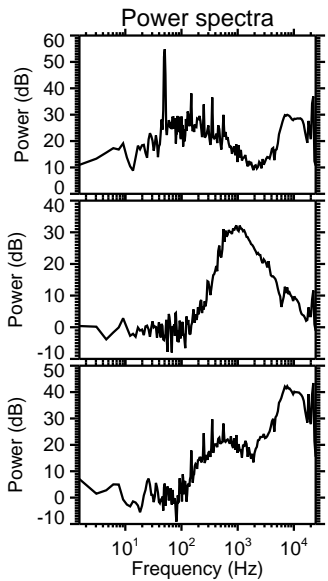
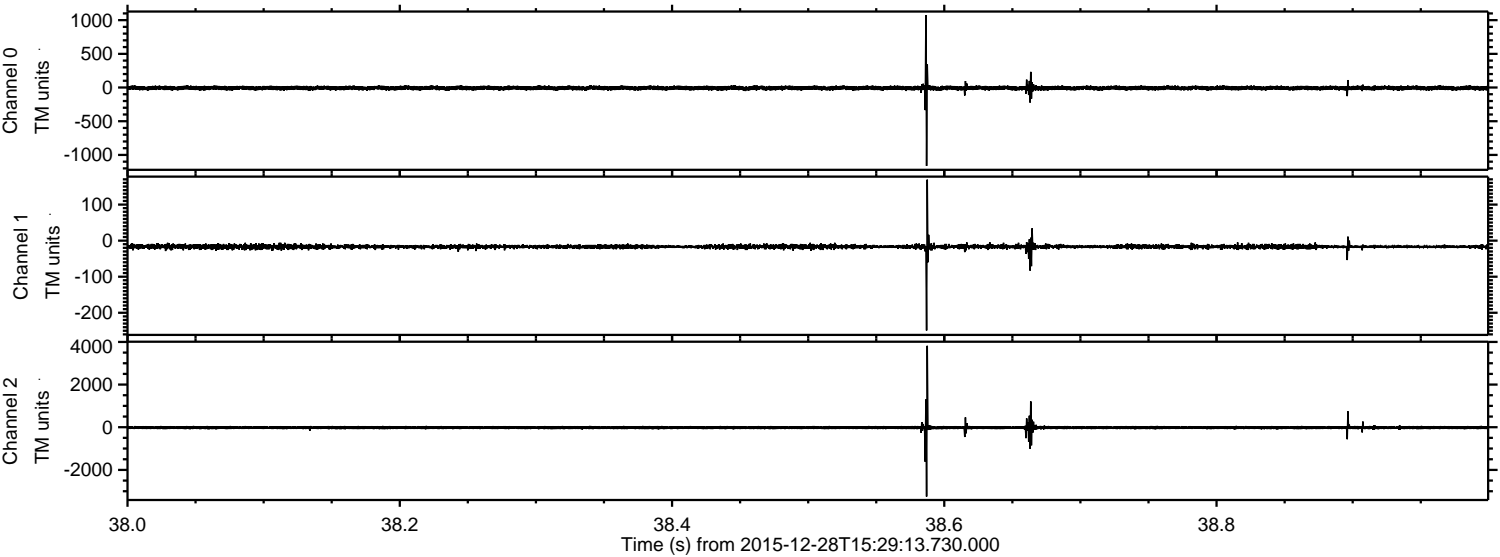
ELMAVAN 3D WAVEFORMS (Measured data sampled at 50 kHz) 51000 packets of 144 samples from 2015-12-28T15:29:13.730.000.

Processed Sun Mar 13 14:10:31 2016 by ELM ver.2012-10-06 from 001__elm20151228_152912__dat00.bin



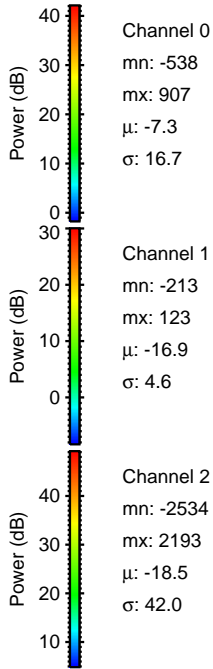
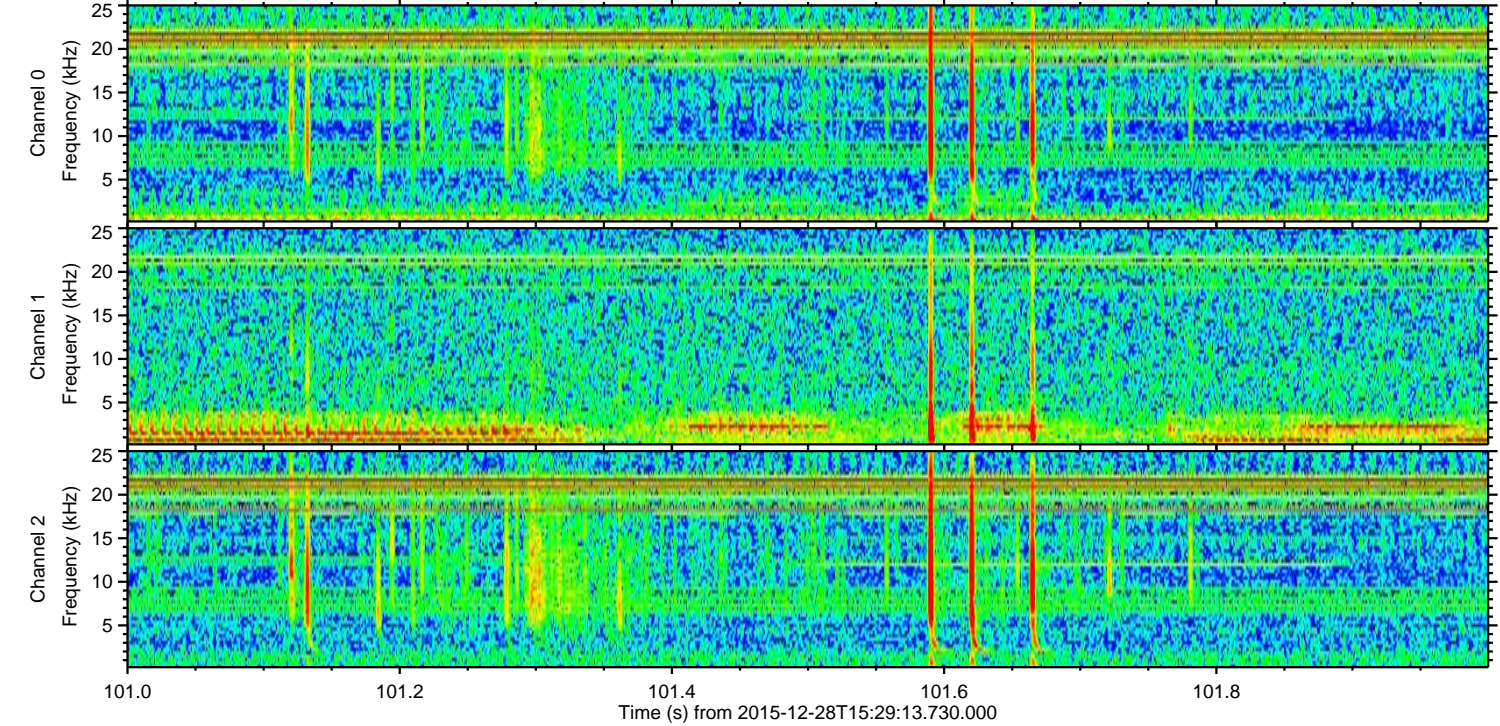
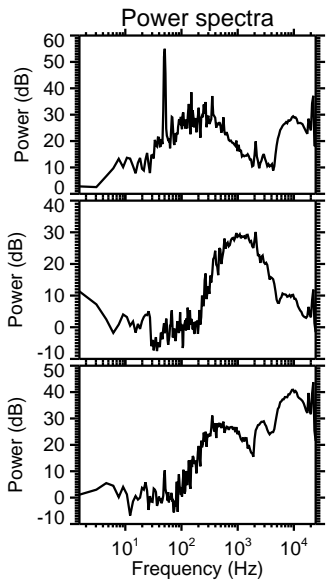
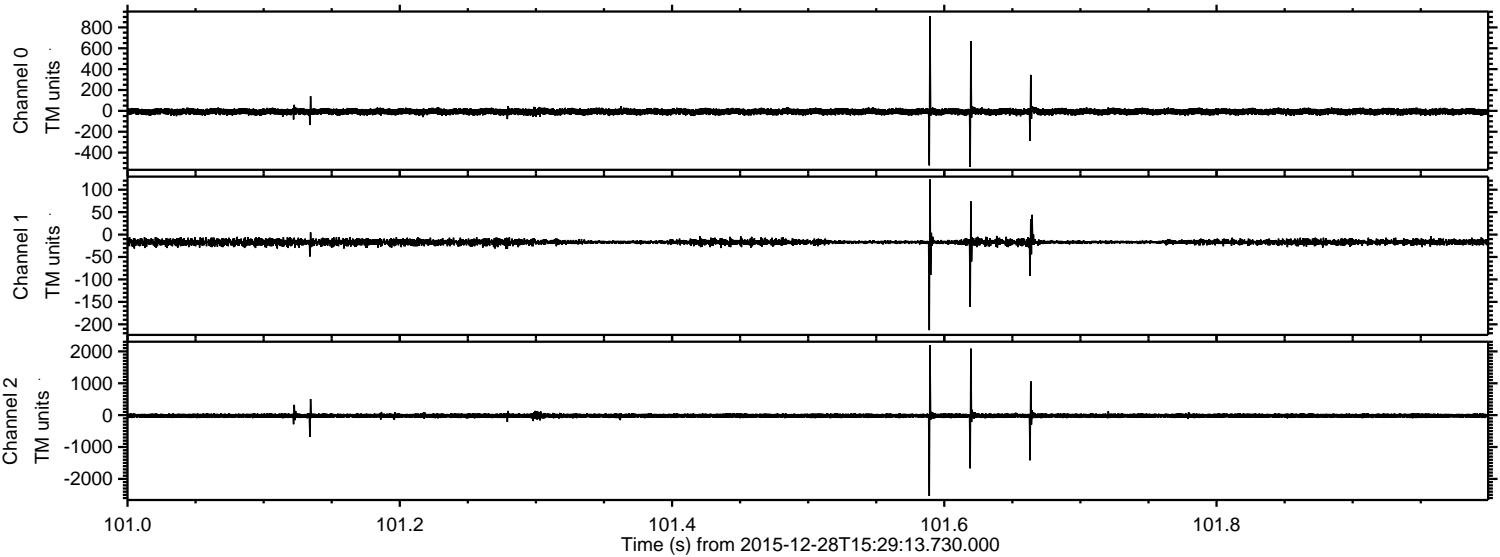
ELMAVAN 3D WAVEFORMS (Measured data sampled at 50 kHz) 51000 packets of 144 samples from 2015-12-28T15:29:13.730.000. Part 39/147

Processed Sun Mar 13 14:10:43 2016 by ELM ver.2012-10-06 from 001__elm20151228_152912__dat00.bin

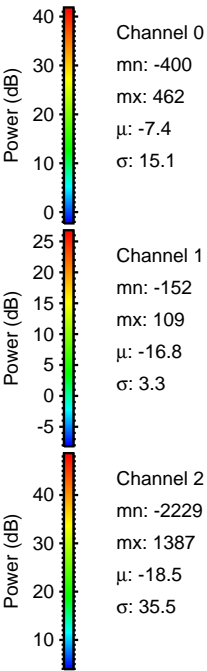
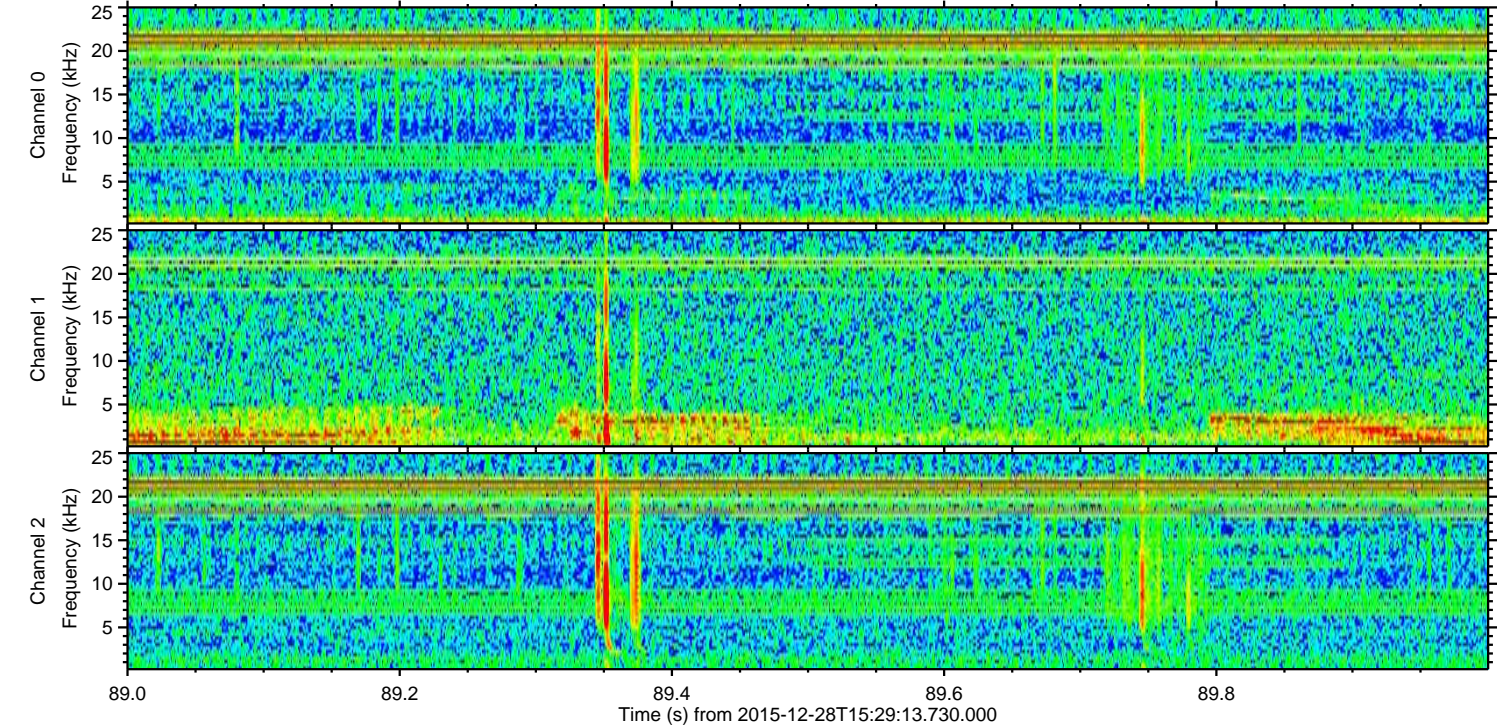
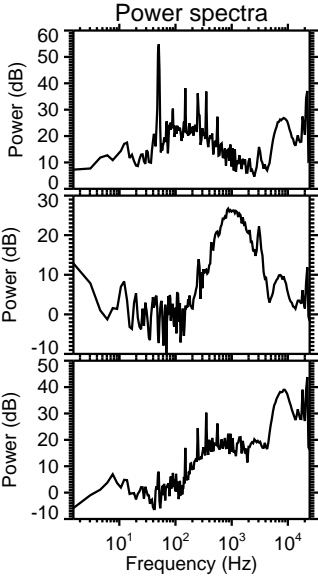
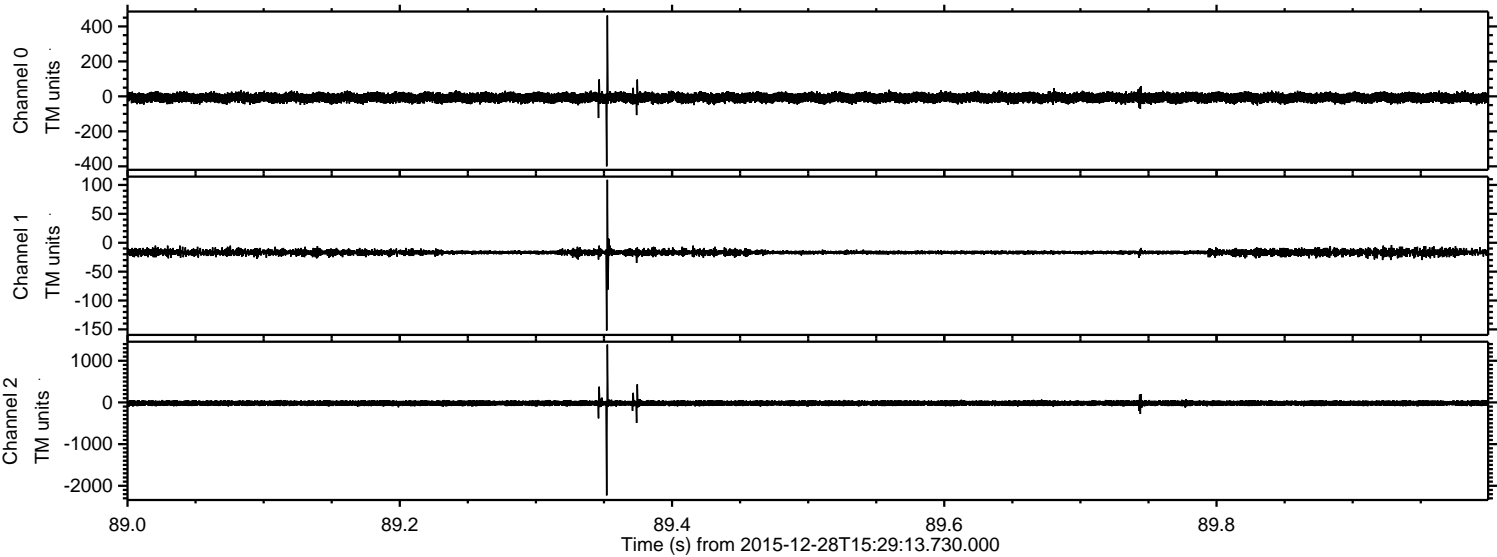


ELMAVAN 3D WAVEFORMS (Measured data sampled at 50 kHz) 51000 packets of 144 samples from 2015-12-28T15:29:13.730.000. Part 102/147

Processed Sun Mar 13 14:10:44 2016 by ELM ver.2012-10-06 from 001__elm20151228_152912__dat00.bin

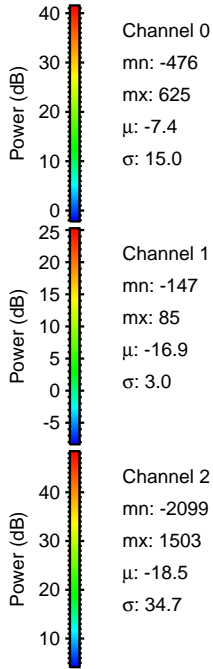
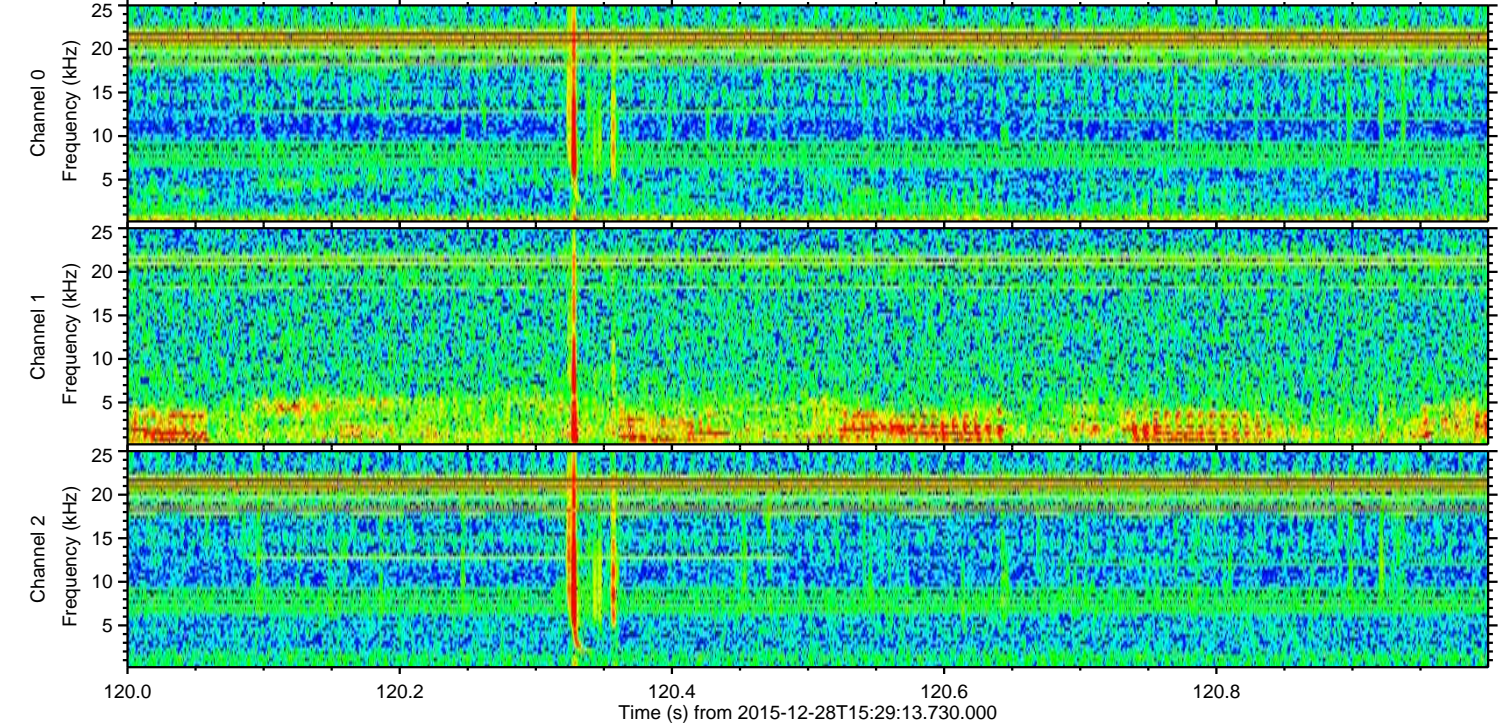
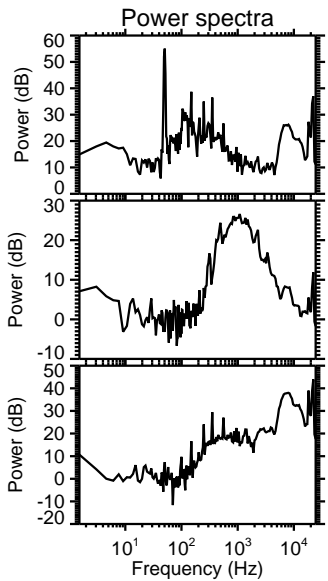
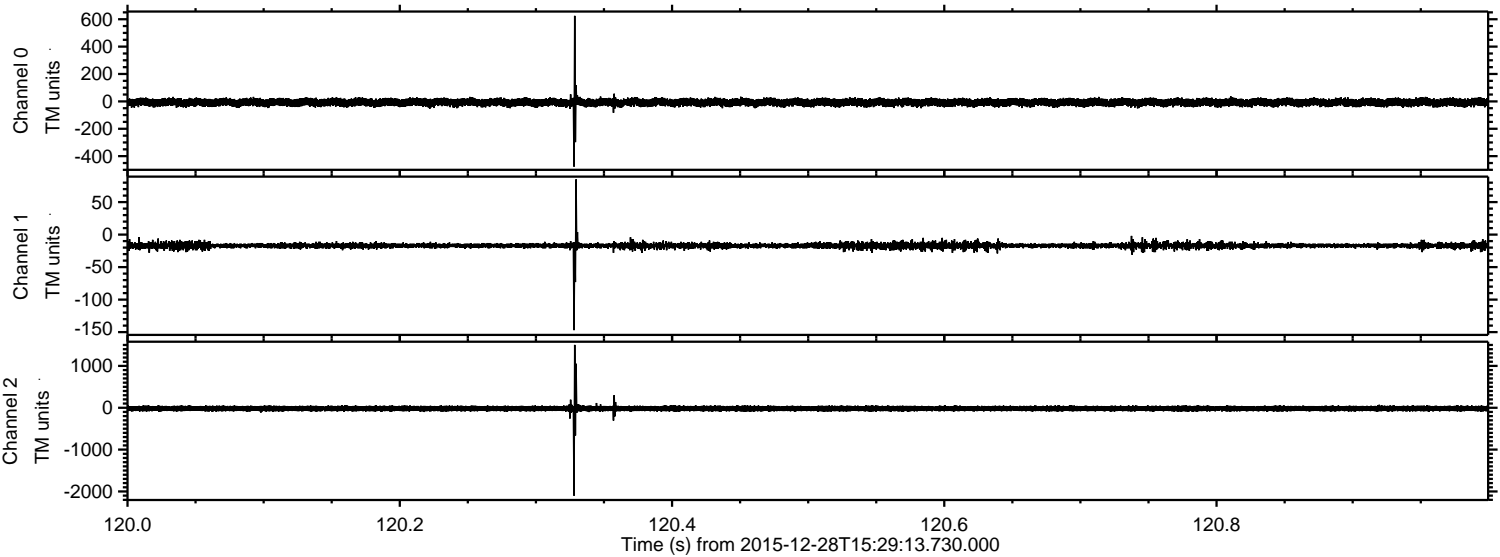


Processed Sun Mar 13 14:10:44 2016 by ELM ver.2012-10-06 from 001__elm20151228_152912__dat00.bin

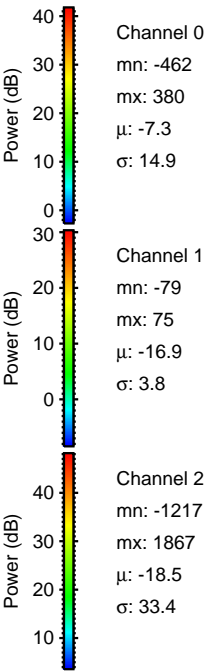
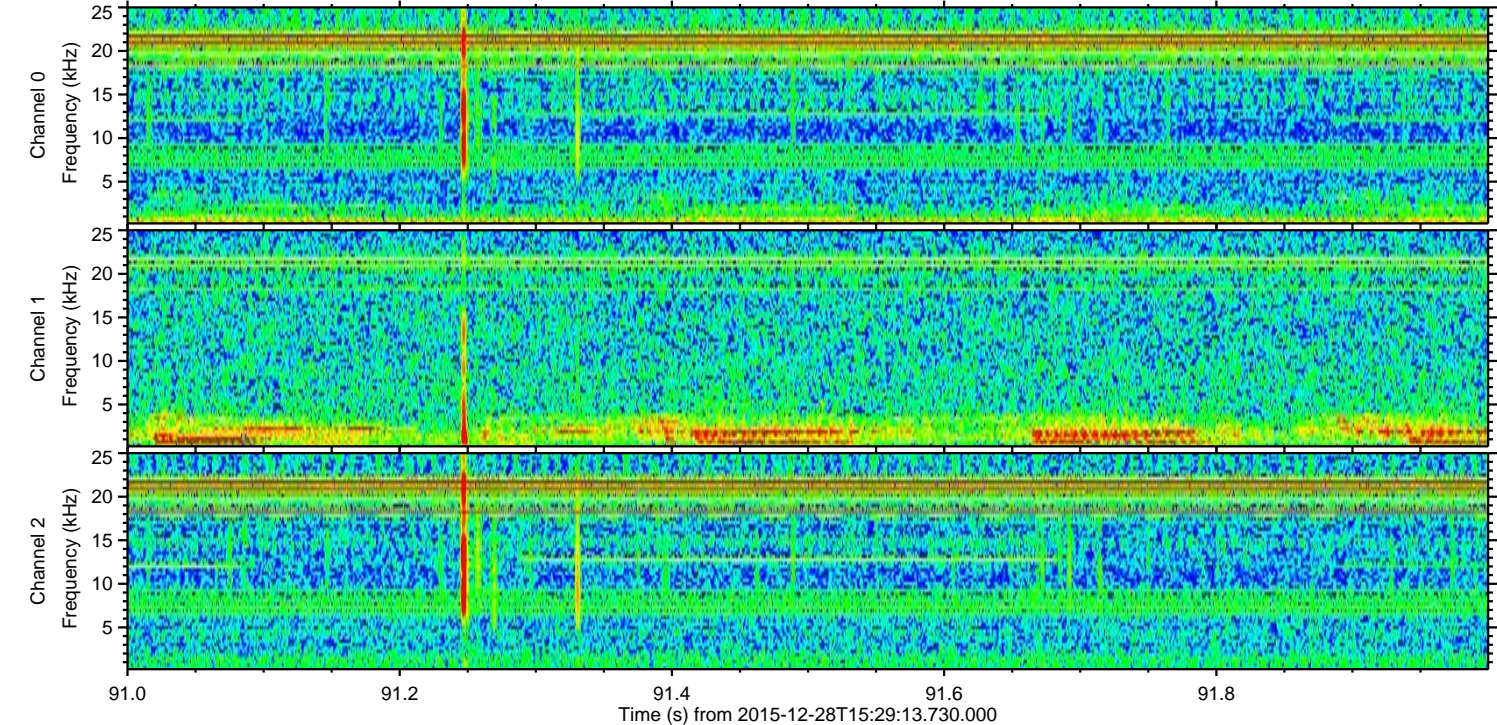
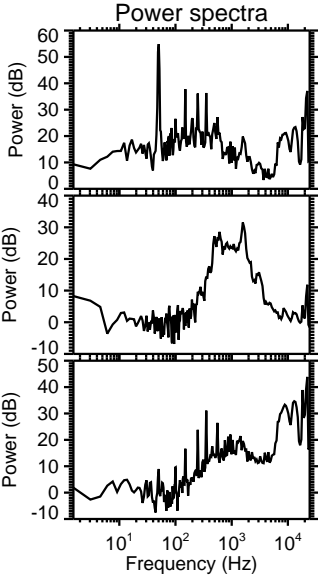
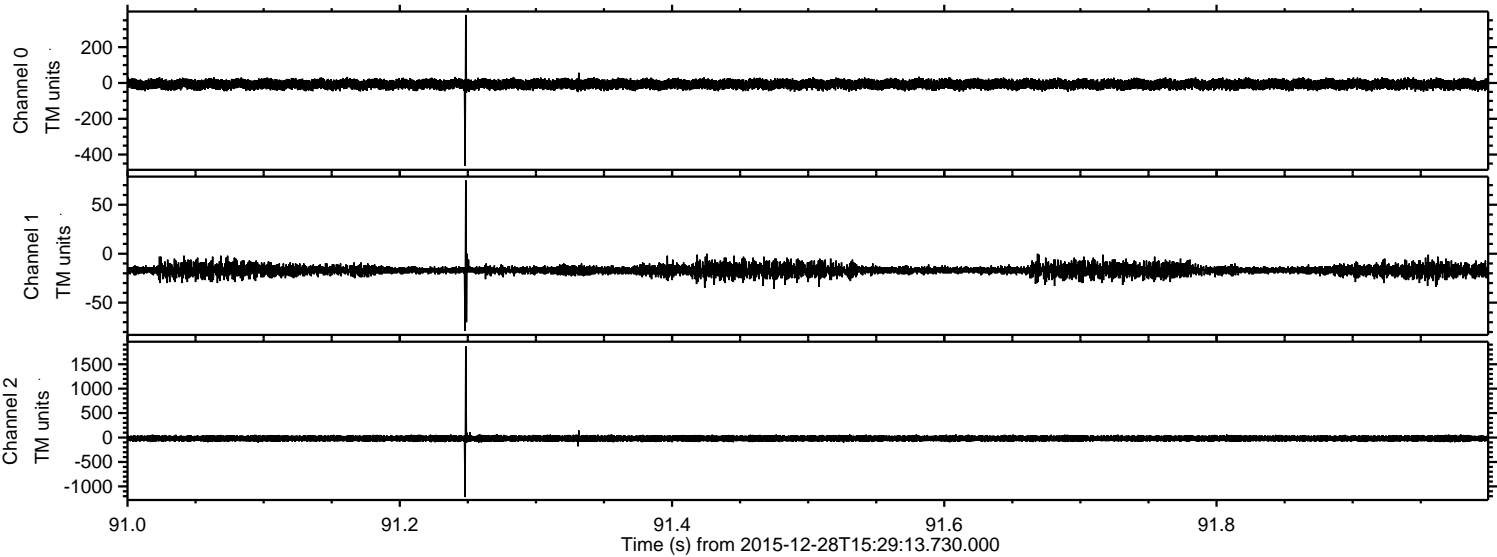


ELMAVAN 3D WAVEFORMS (Measured data sampled at 50 kHz) 51000 packets of 144 samples from 2015-12-28T15:29:13.730.000. Part 121/147

Processed Sun Mar 13 14:10:45 2016 by ELM ver.2012-10-06 from 001__elm20151228_152912__dat00.bin

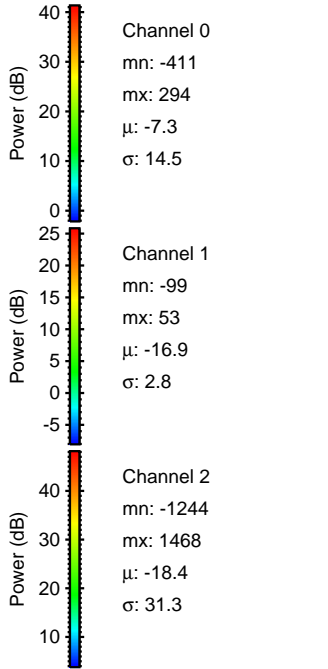
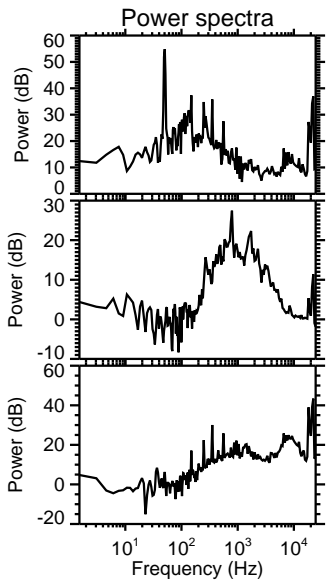
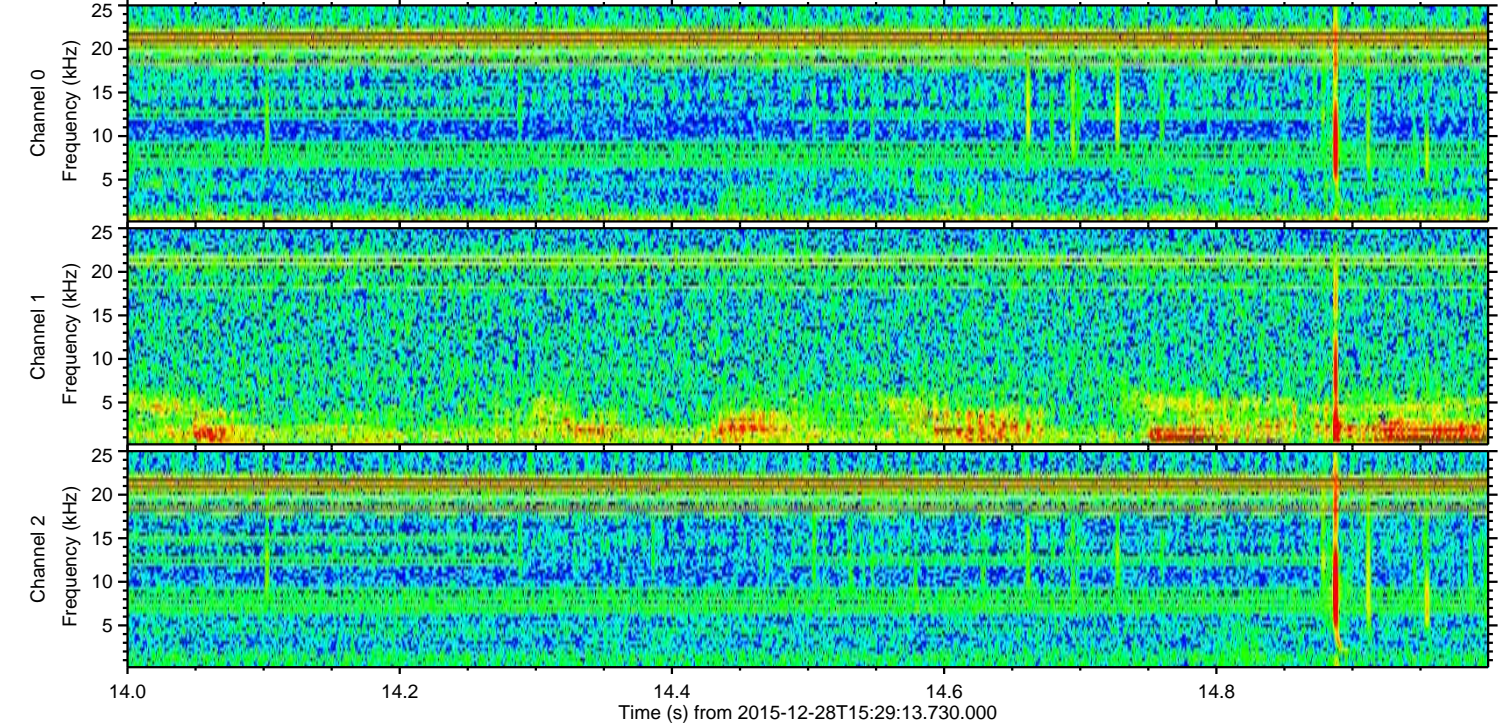
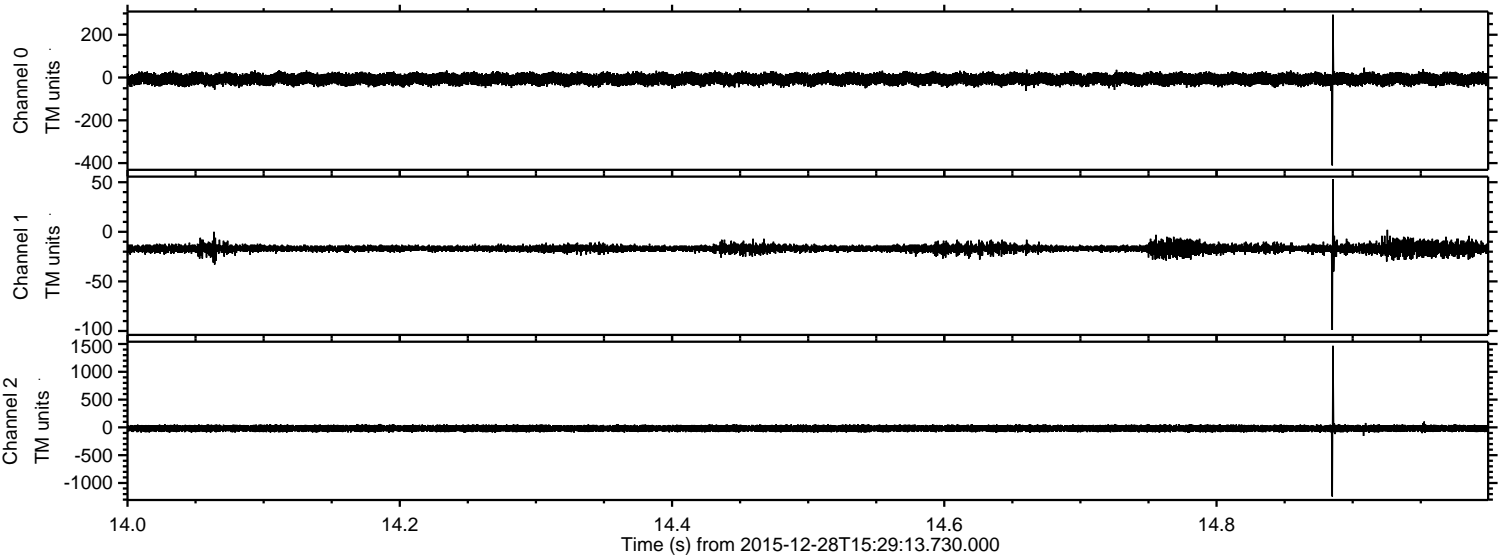


Processed Sun Mar 13 14:10:46 2016 by ELM ver.2012-10-06 from 001__elm20151228_152912__dat00.bin

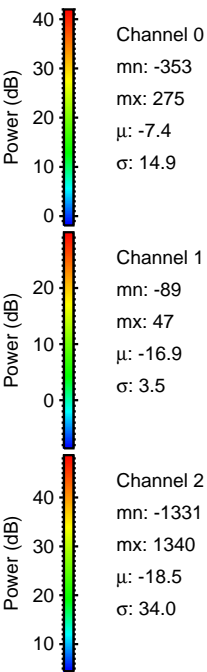
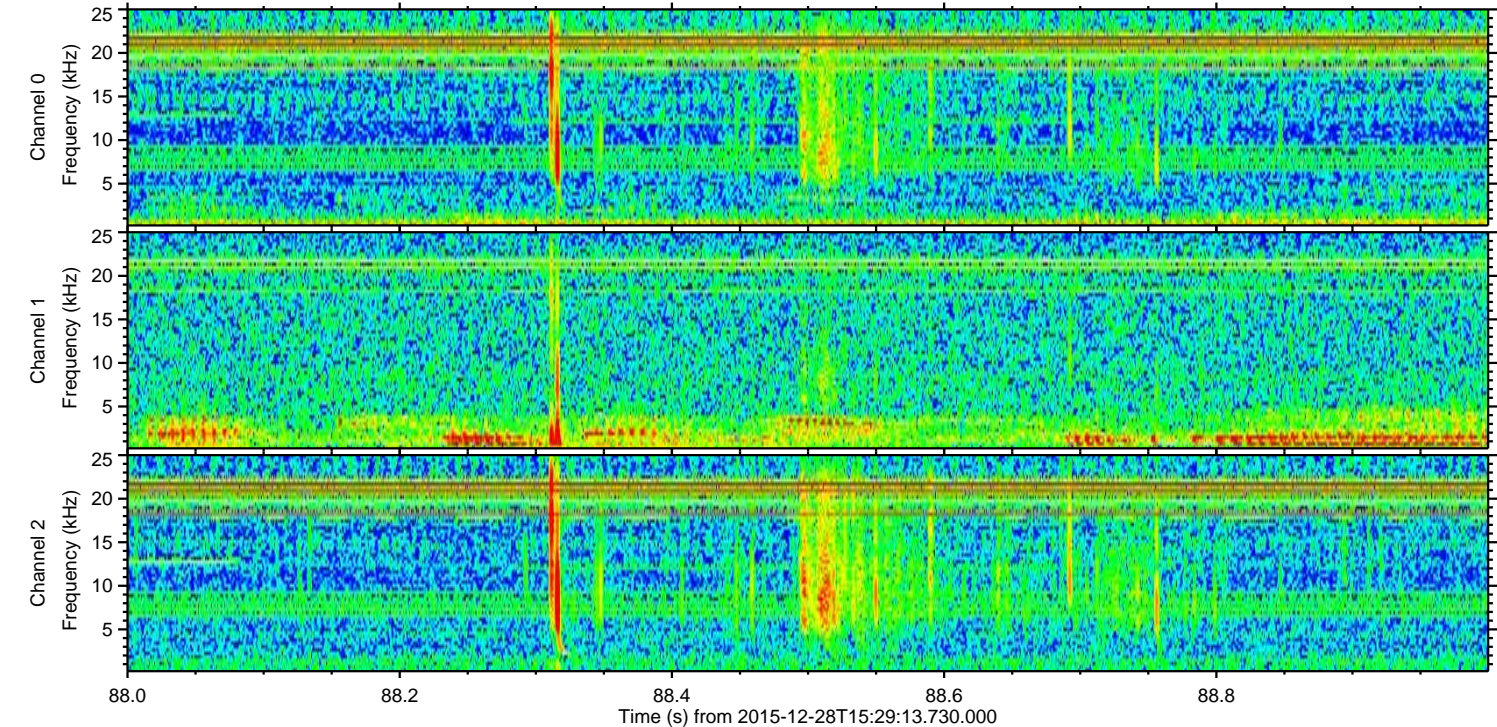
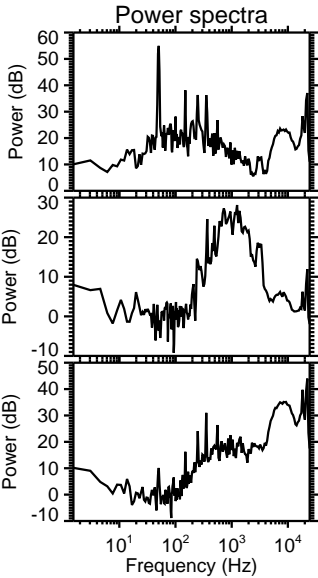
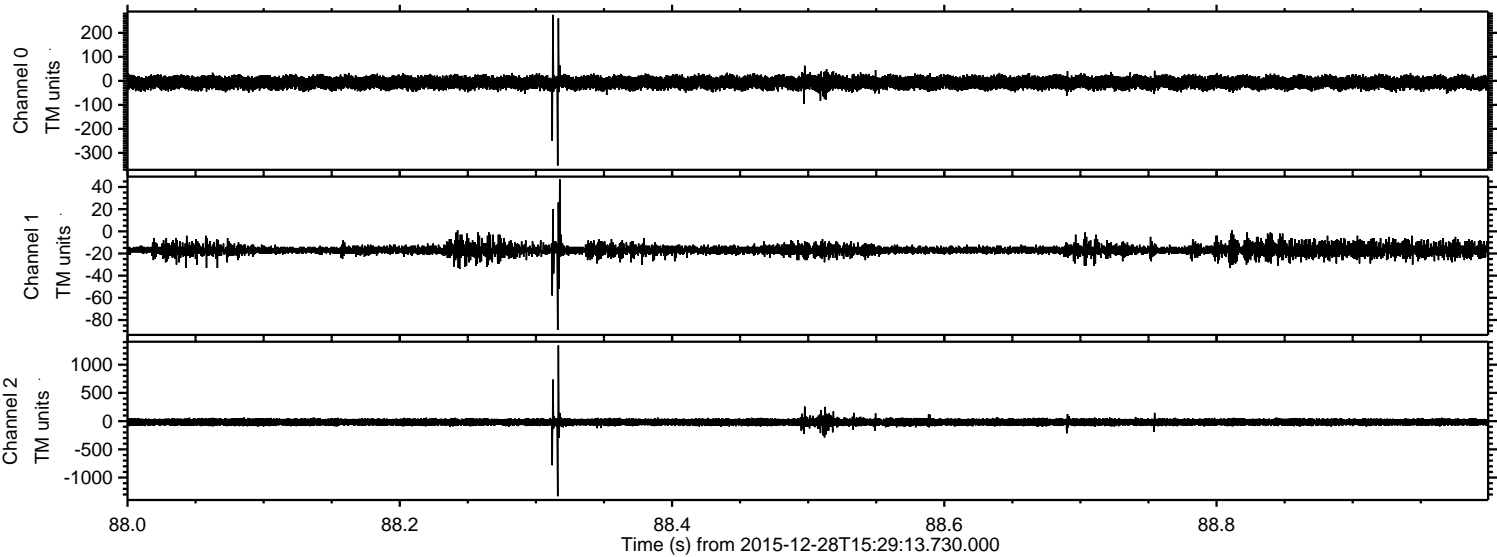


ELMAVAN 3D WAVEFORMS (Measured data sampled at 50 kHz) 51000 packets of 144 samples from 2015-12-28T15:29:13.730.000. Part 15/147

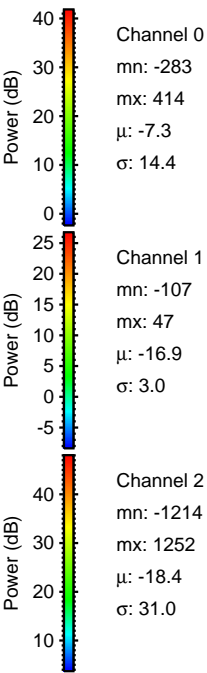
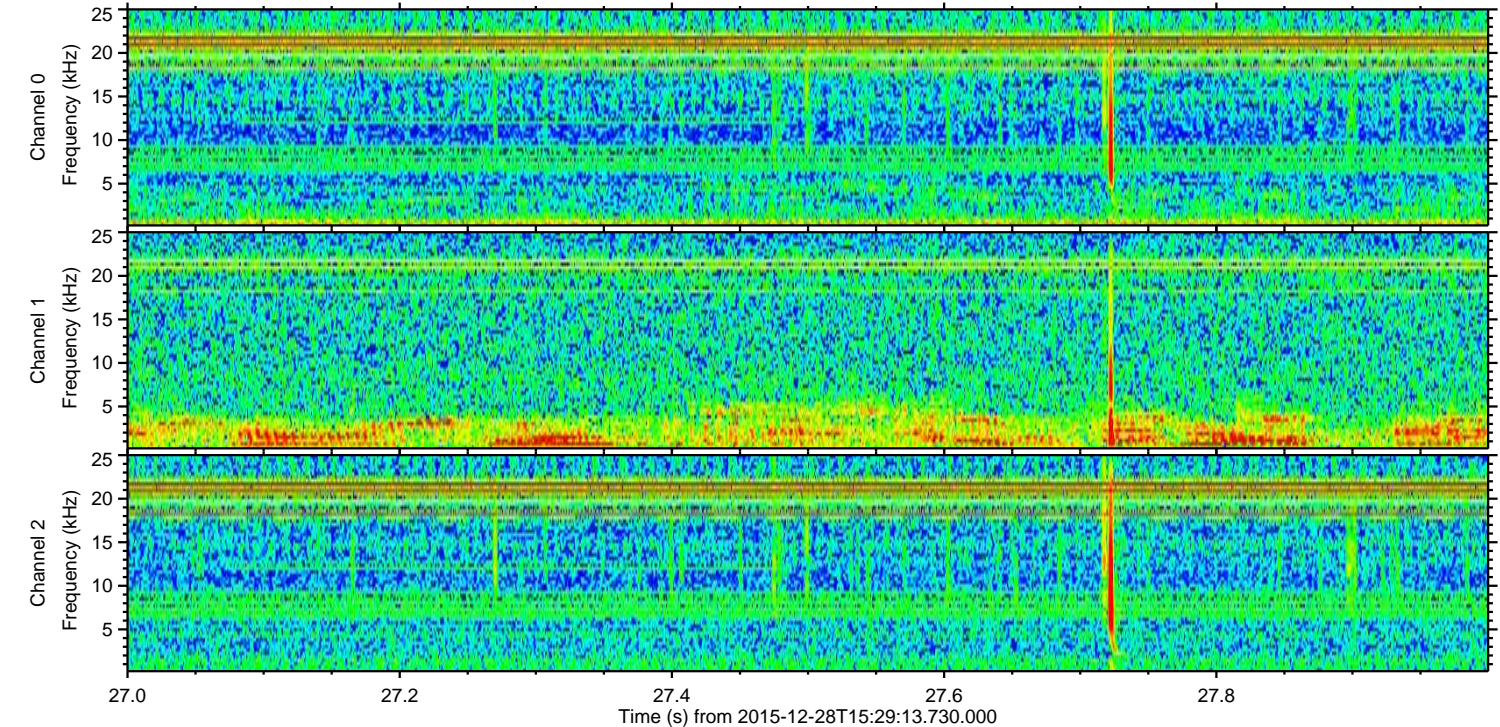
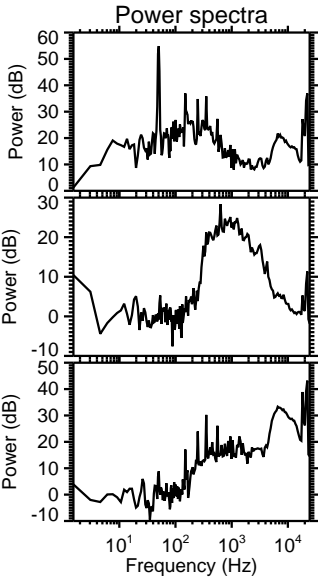
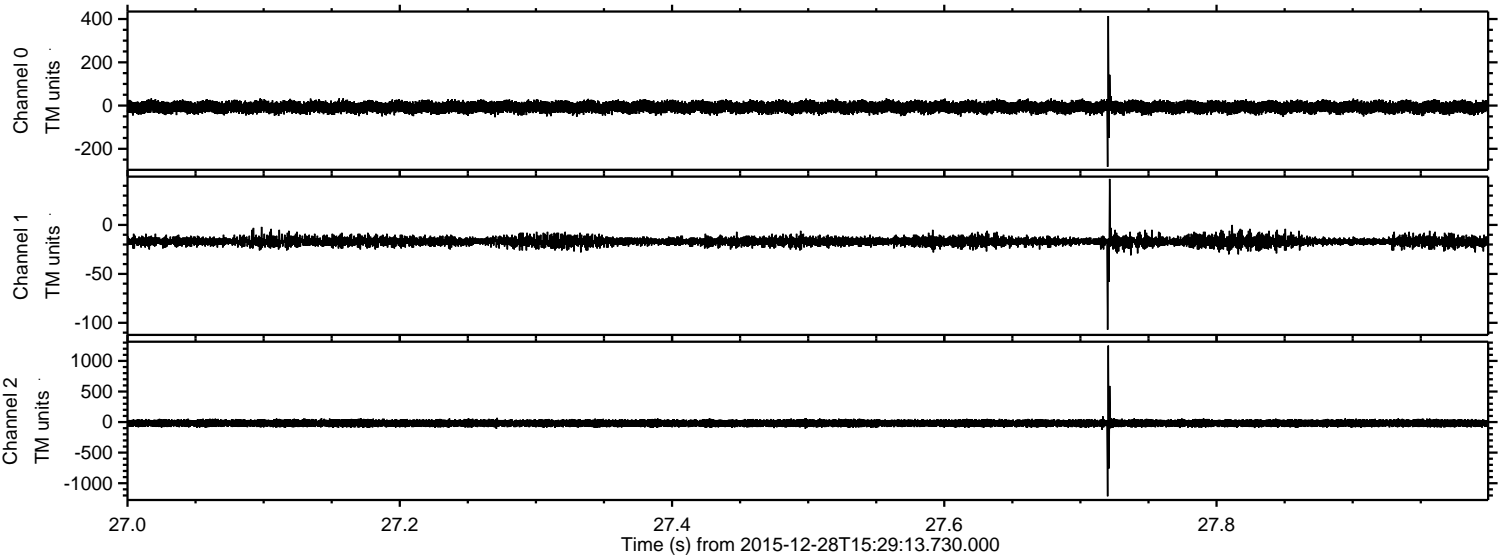
Processed Sun Mar 13 14:10:47 2016 by ELM ver.2012-10-06 from 001__elm20151228_152912__dat00.bin



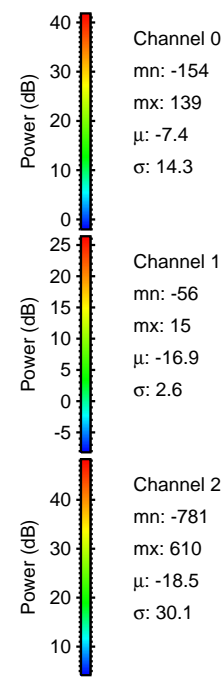
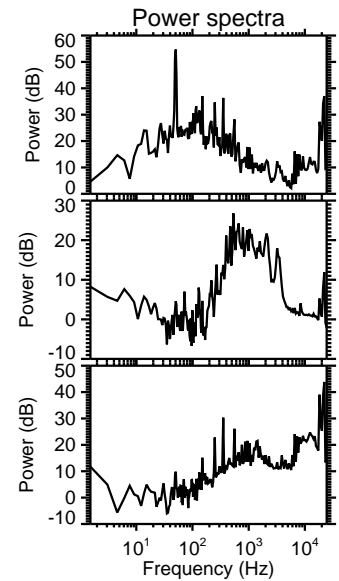
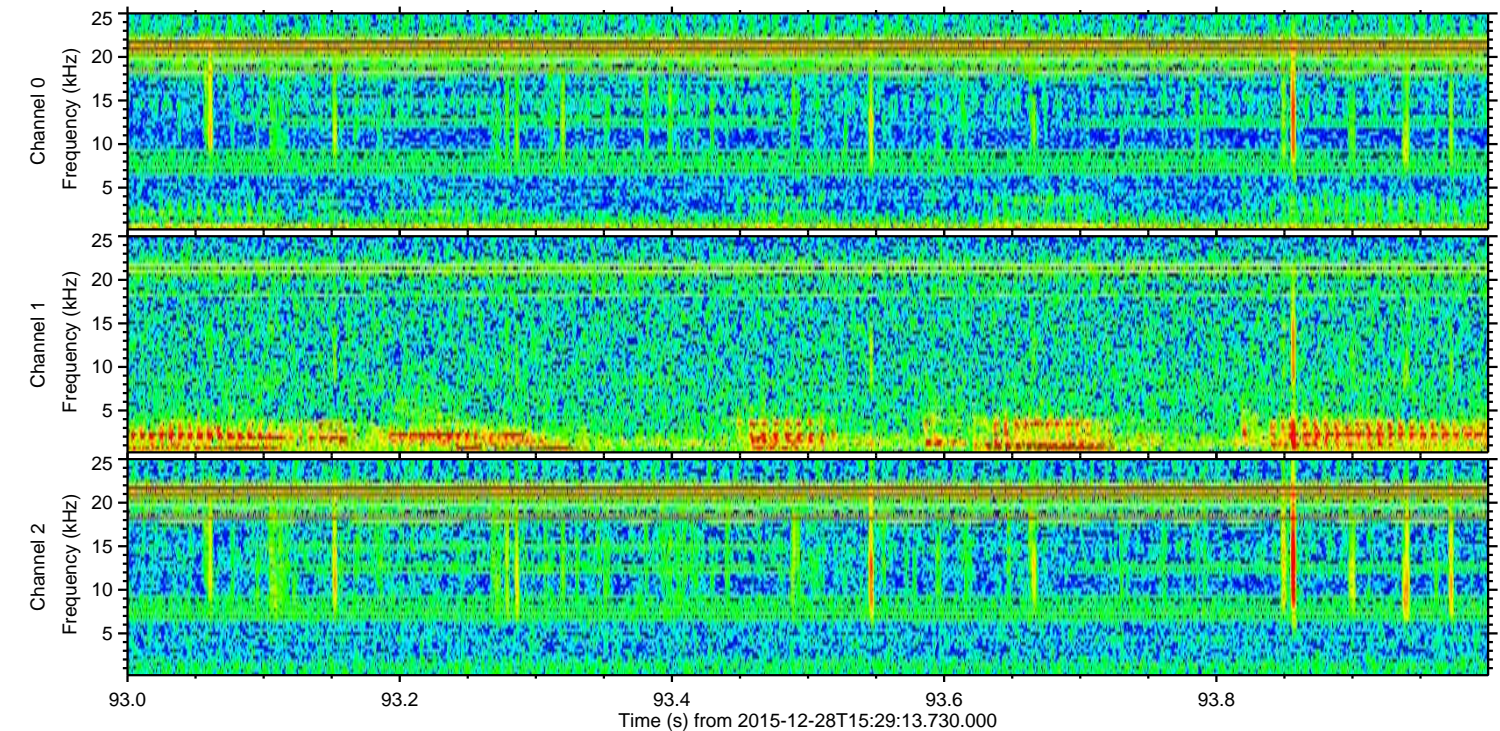
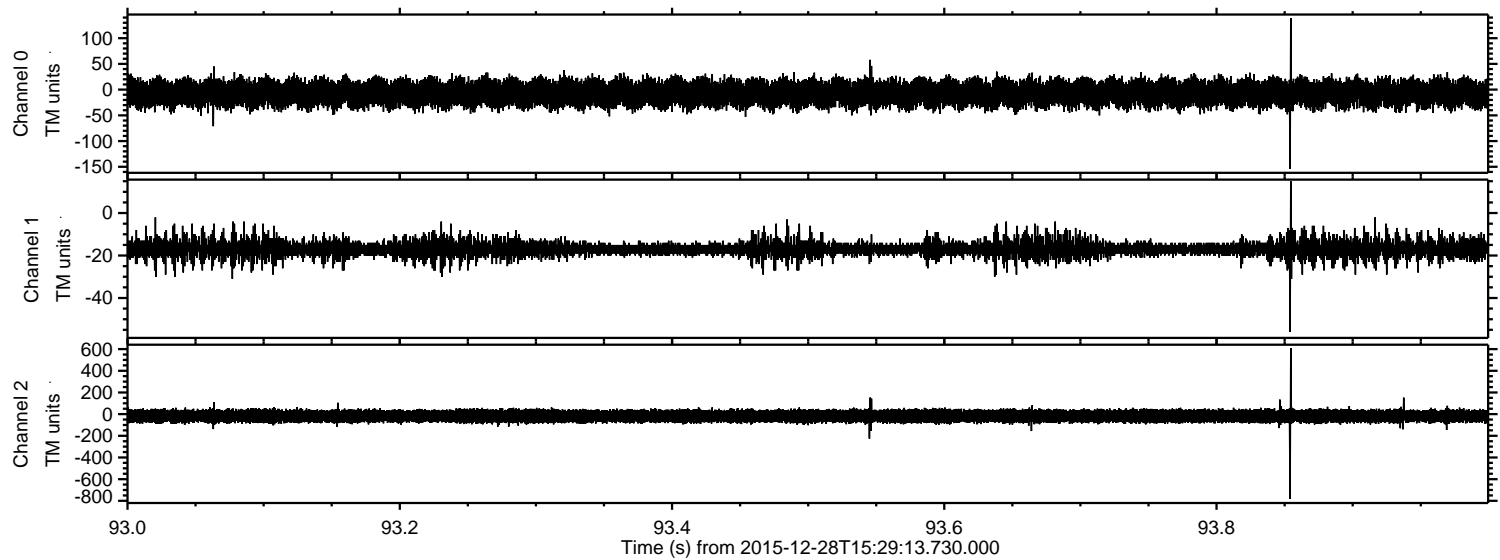
Processed Sun Mar 13 14:10:48 2016 by ELM ver.2012-10-06 from 001__elm20151228_152912__dat00.bin



Processed Sun Mar 13 14:10:49 2016 by ELM ver.2012-10-06 from 001__elm20151228_152912__dat00.bin



Processed Sun Mar 13 14:10:50 2016 by ELM ver.2012-10-06 from 001__elm20151228_152912__dat00.bin



Power spectra

Channel 0

mn: -154
mx: 139
 μ : -7.4
 σ : 14.3

Channel 1

mn: -56
mx: 15
 μ : -16.9
 σ : 2.6

Channel 2

mn: -781
mx: 610
 μ : -18.5
 σ : 30.1

Processed Sun Mar 13 14:10:51 2016 by ELM ver.2012-10-06 from 001__elm20151228_152912__dat00.bin

