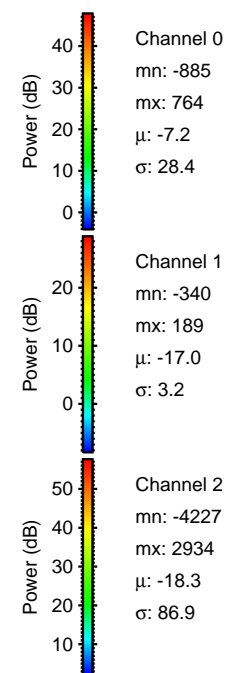
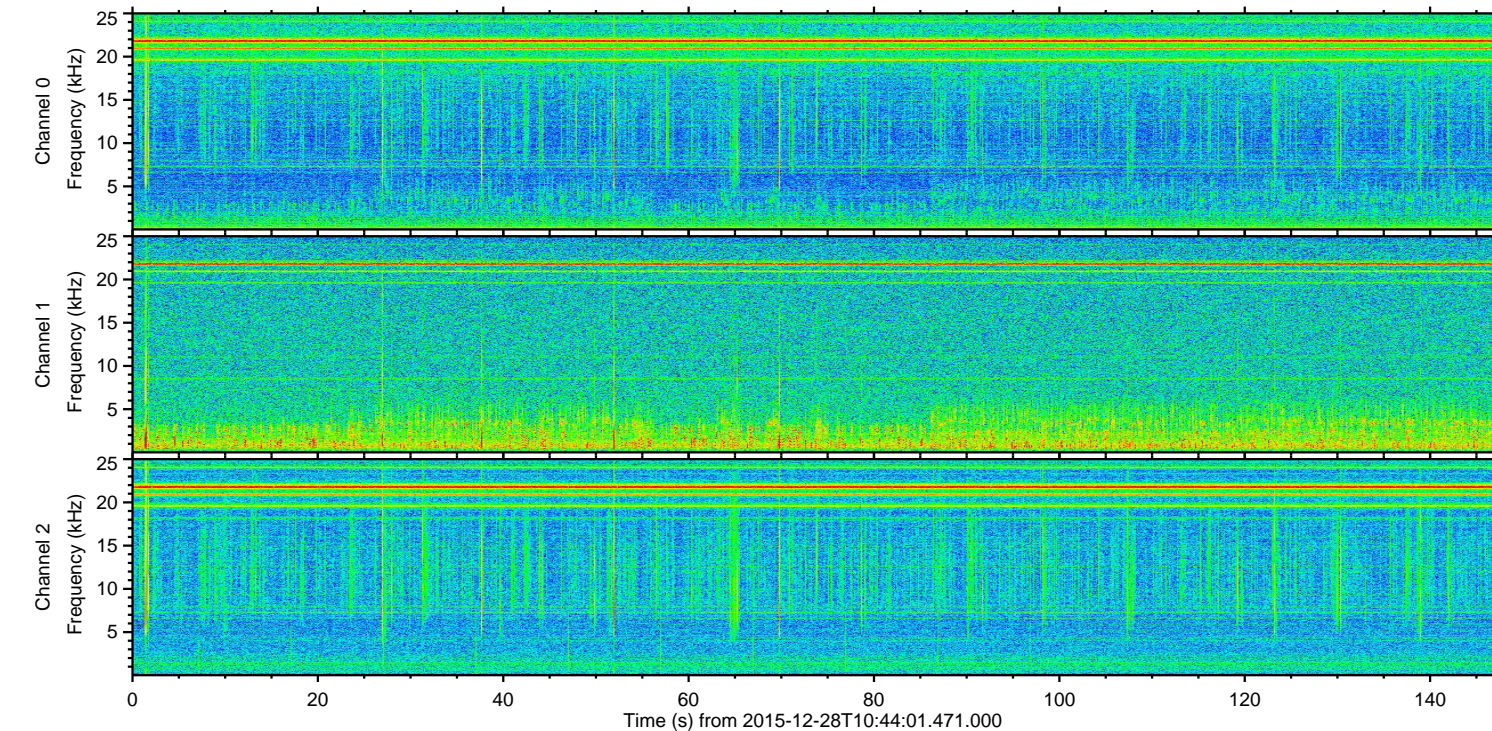
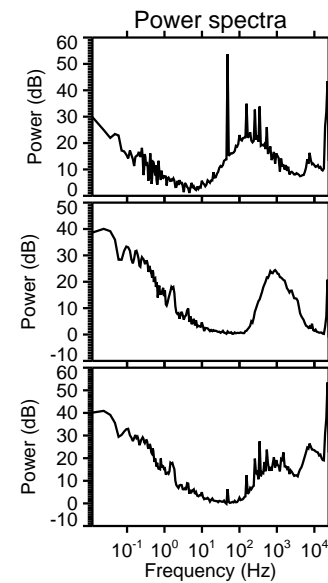
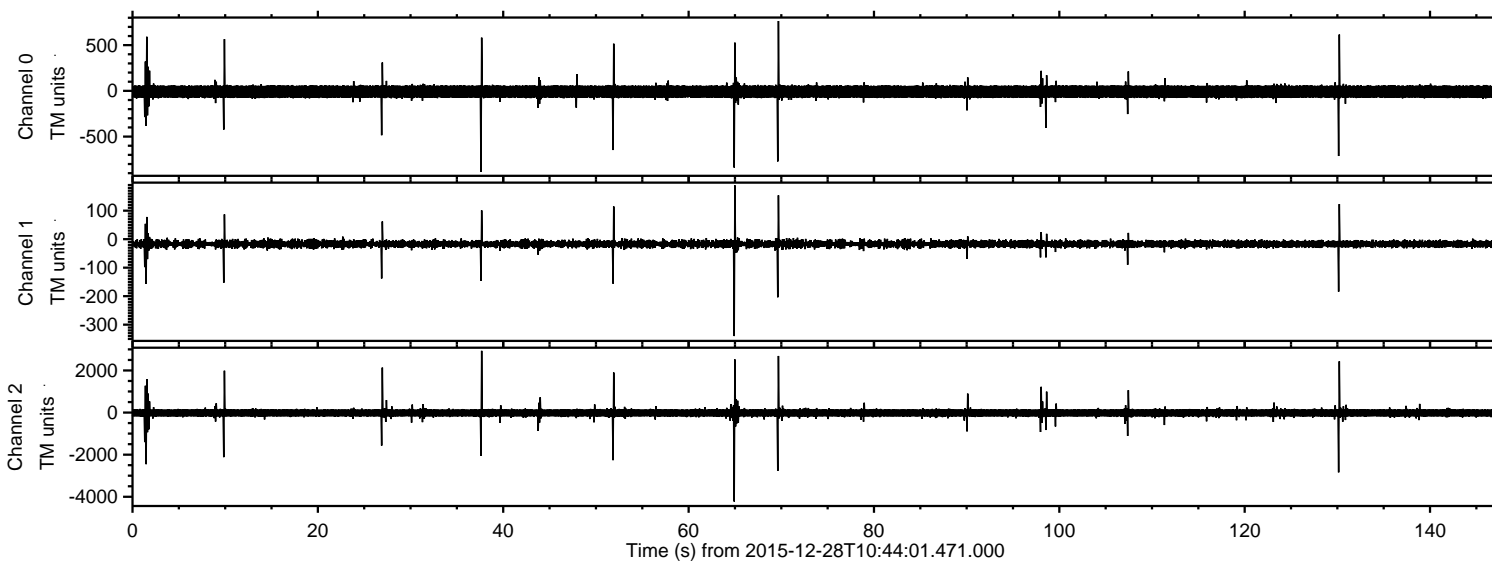
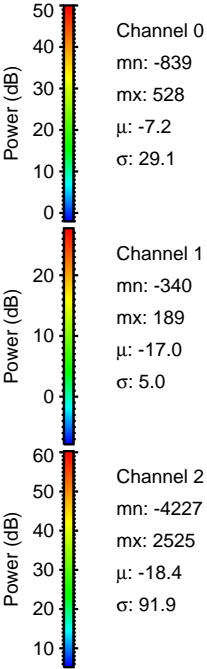
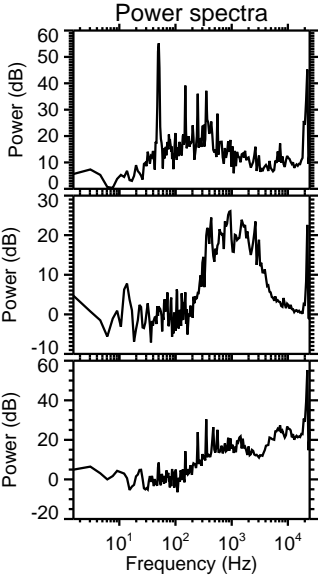
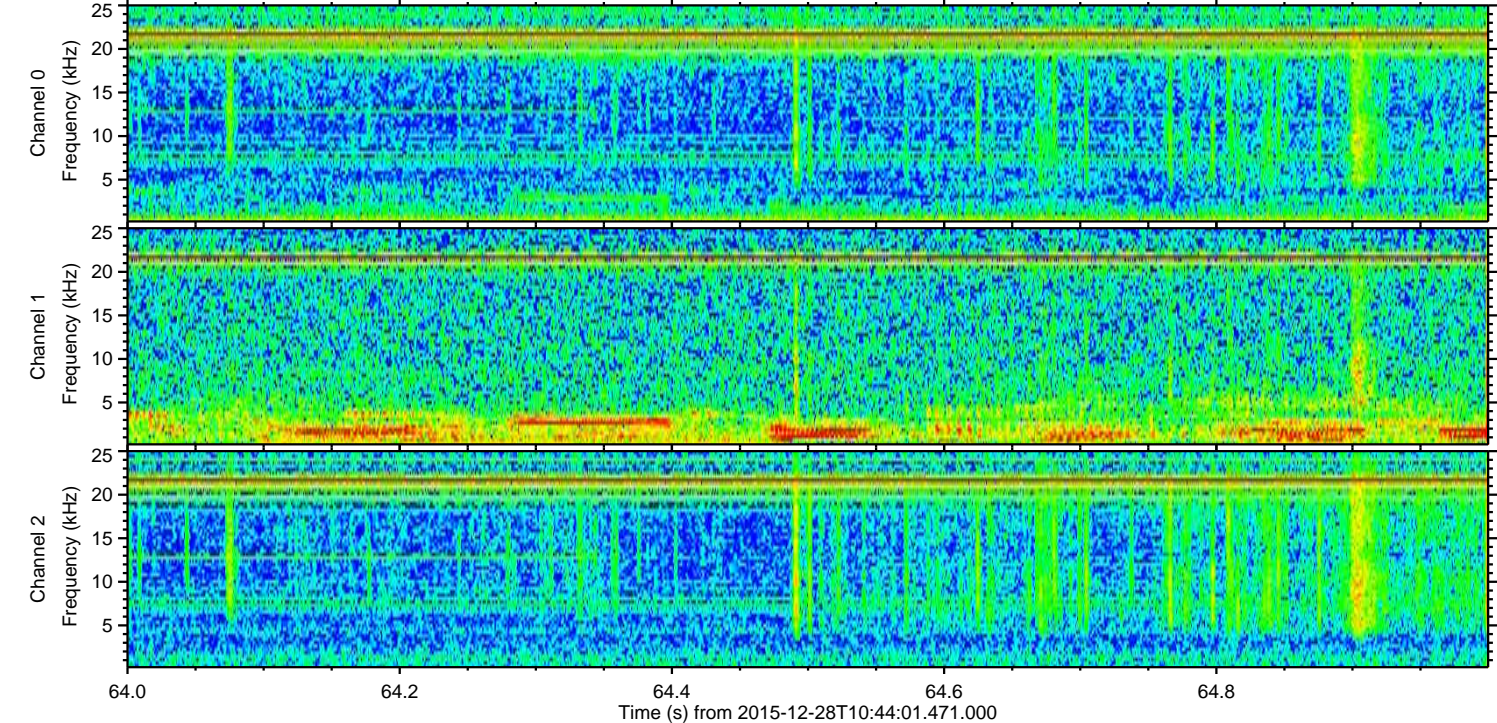
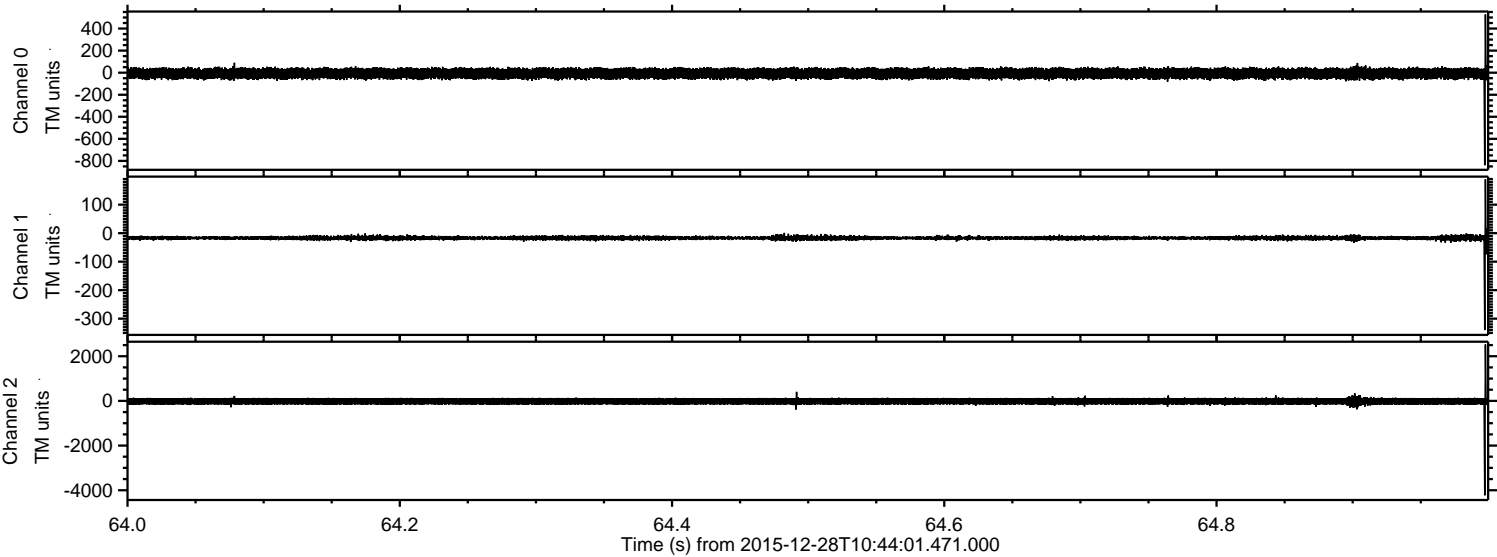


ELMAVAN 3D WAVEFORMS (Measured data sampled at 50 kHz) 51000 packets of 144 samples from 2015-12-28T10:44:01.471.000.

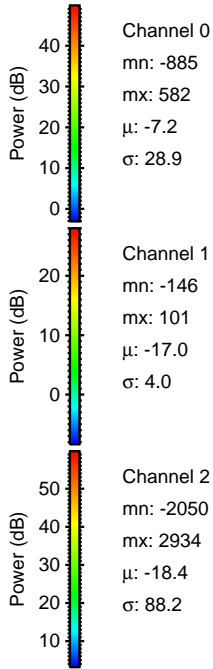
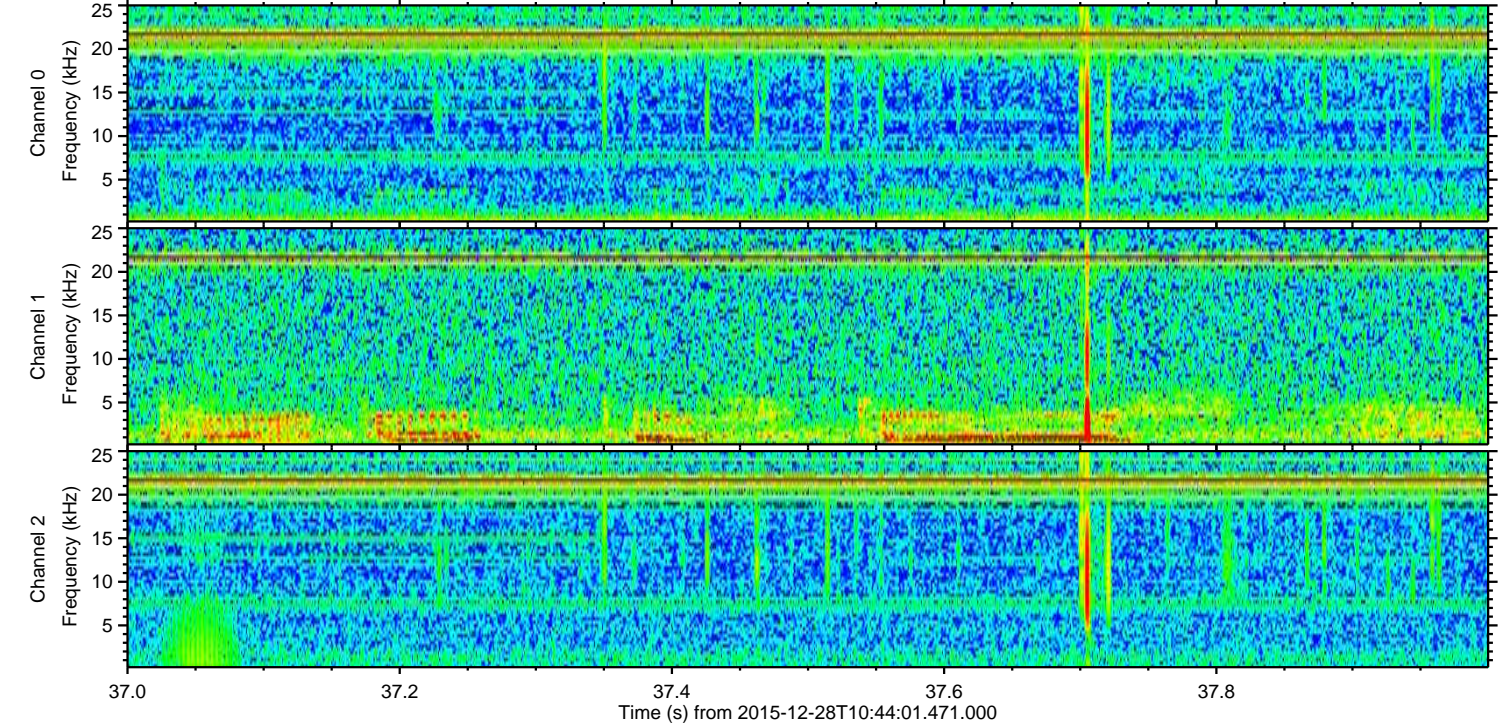
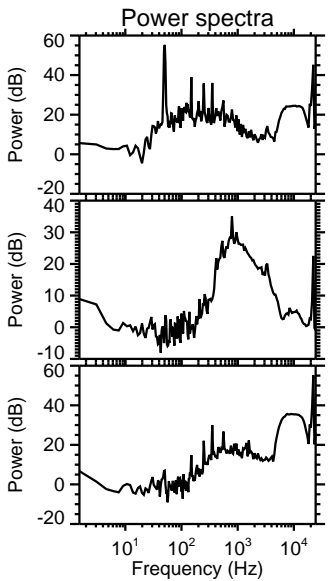
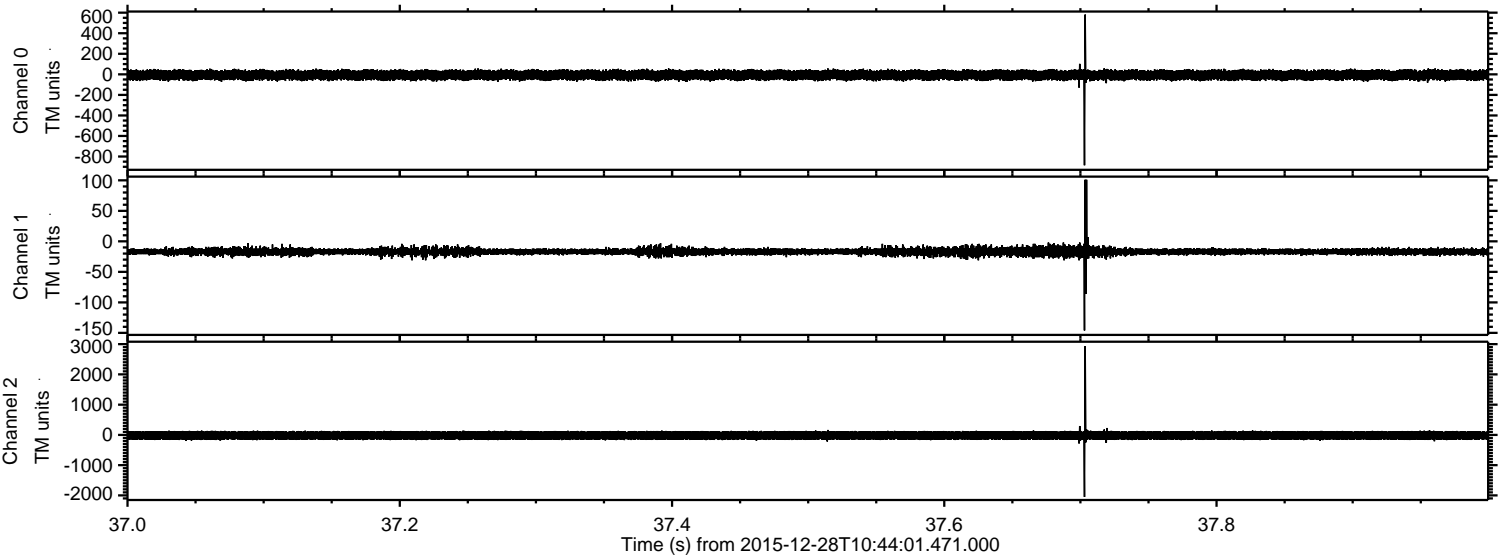
Processed Sat Mar 12 22:03:14 2016 by ELM ver.2012-10-06 from 001__elm20151228_104400__dat00.bin



Processed Sat Mar 12 22:03:26 2016 by ELM ver.2012-10-06 from 001__elm20151228_104400__dat00.bin

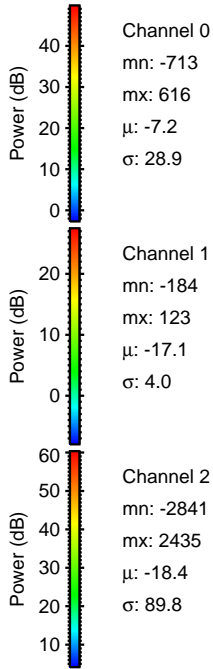
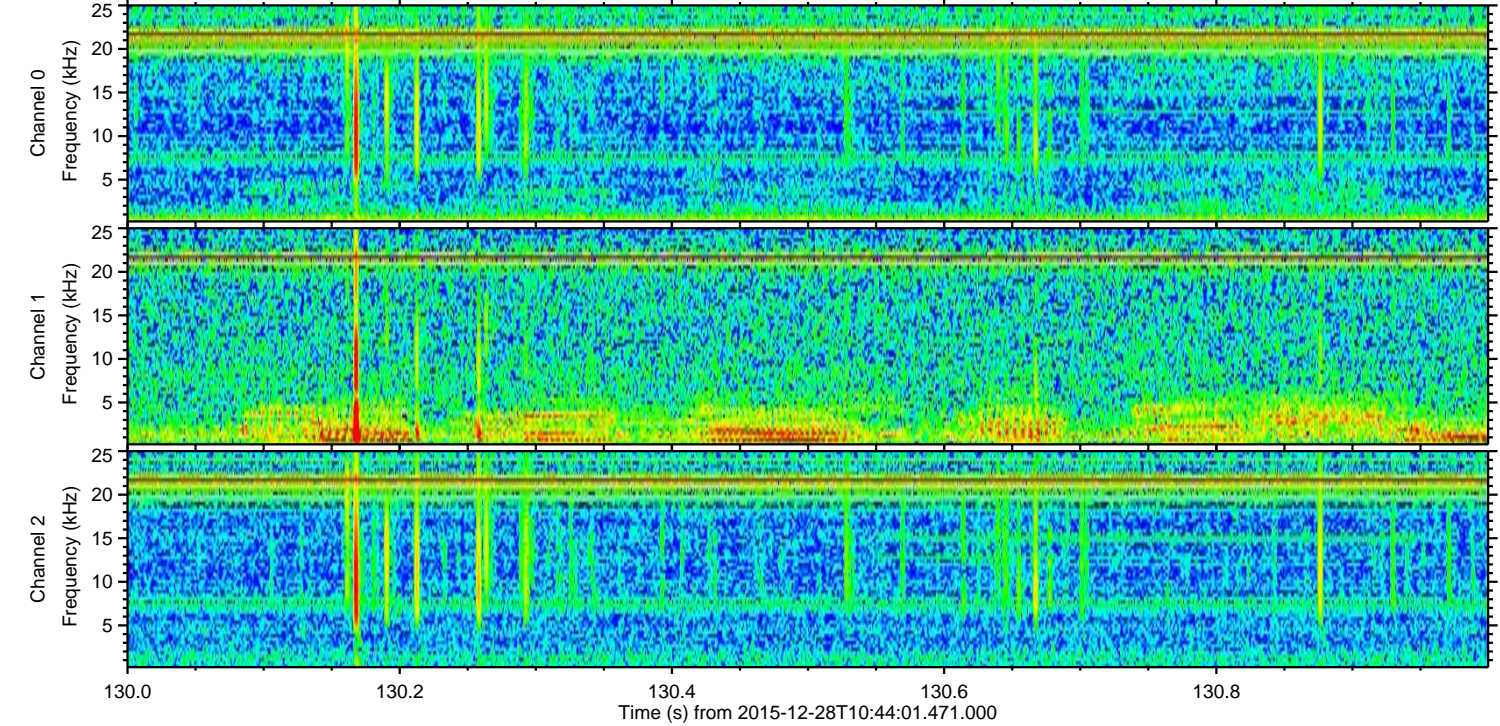
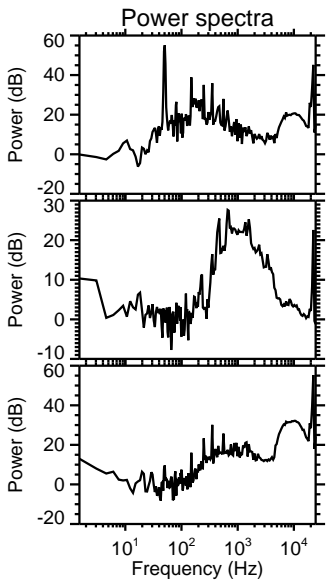
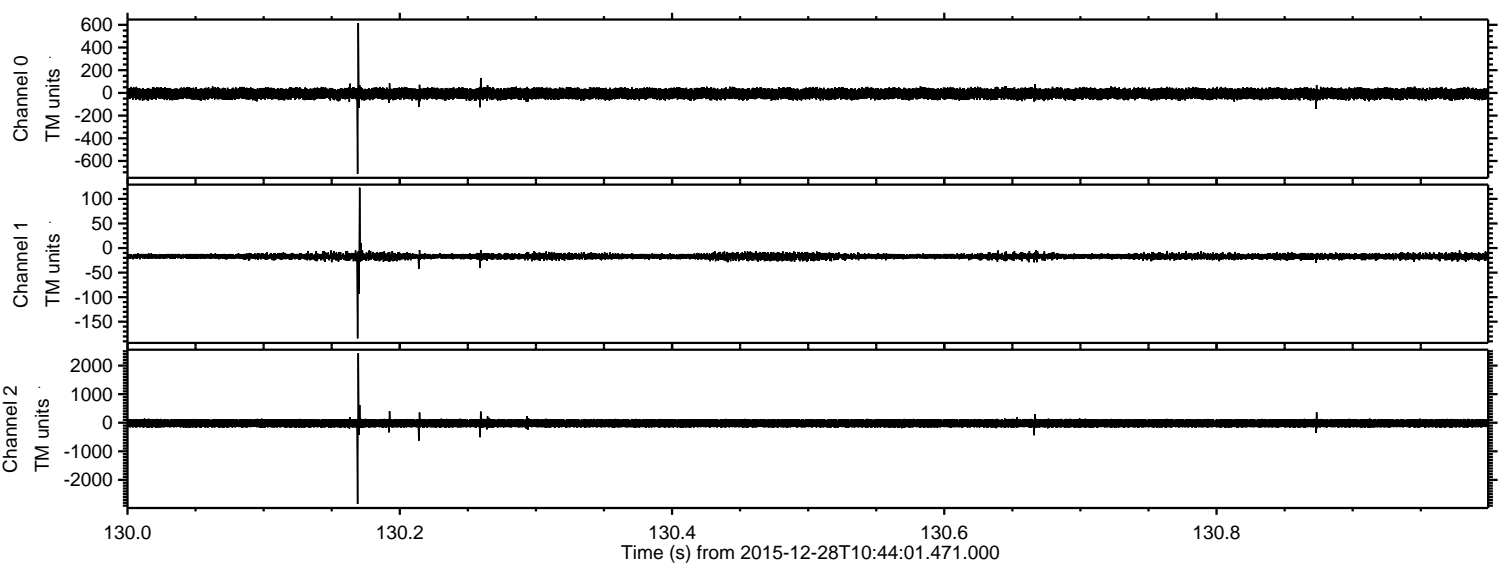


Processed Sat Mar 12 22:03:27 2016 by ELM ver.2012-10-06 from 001__elm20151228_104400__dat00.bin



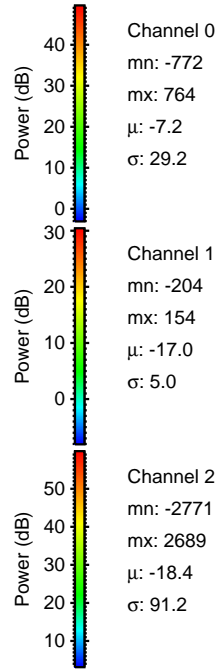
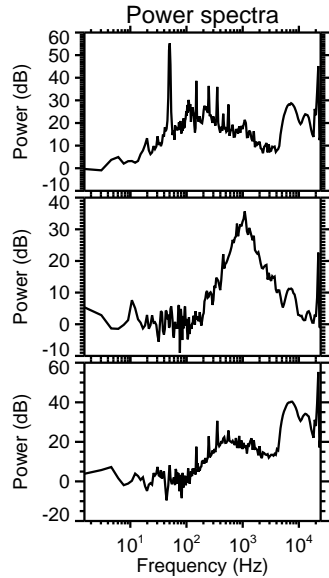
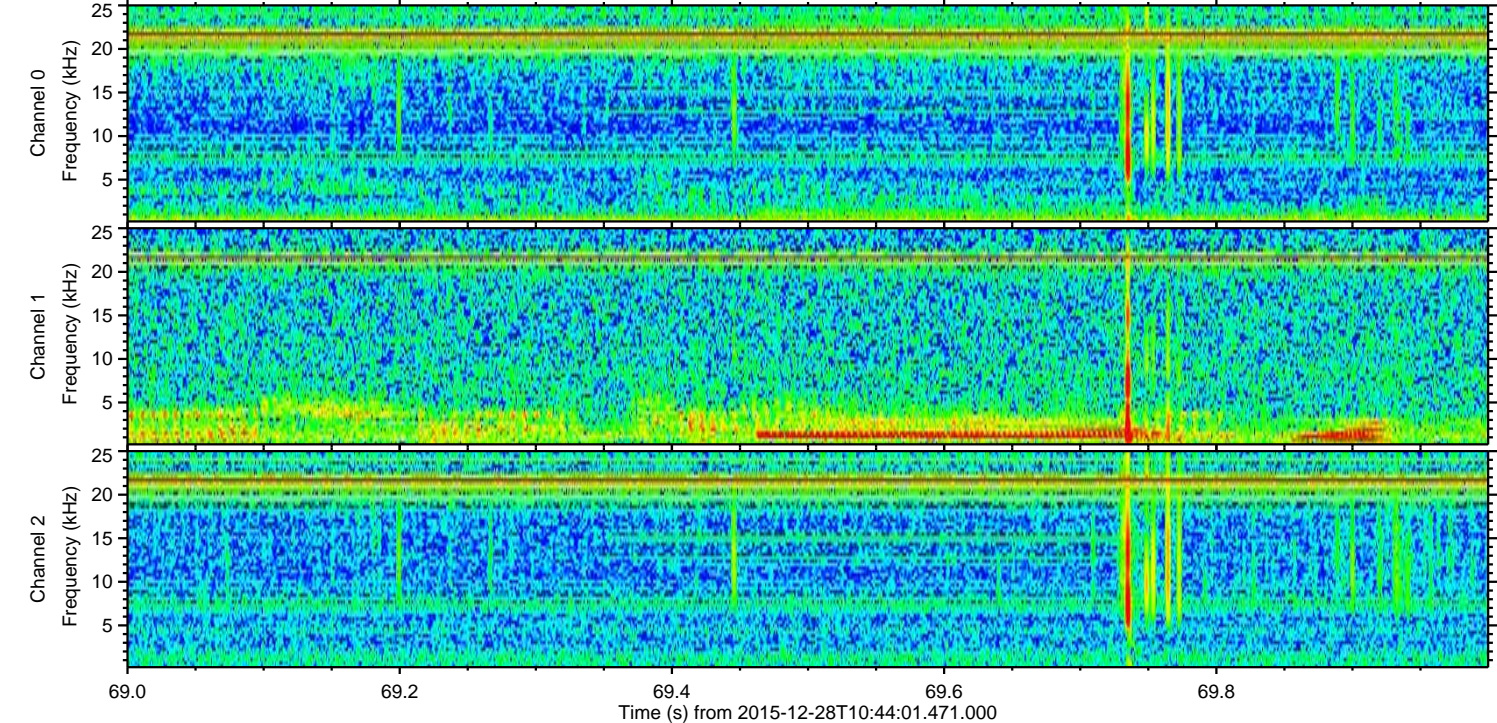
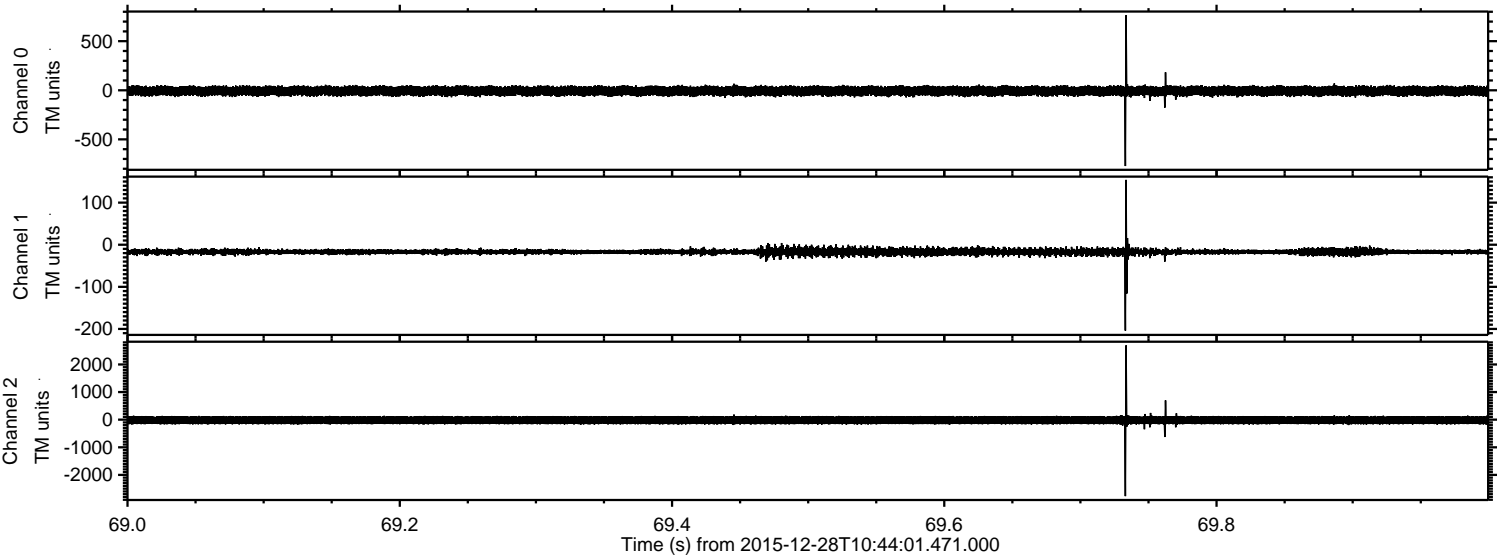
ELMAVAN 3D WAVEFORMS (Measured data sampled at 50 kHz) 51000 packets of 144 samples from 2015-12-28T10:44:01.471.000. Part 131/147

Processed Sat Mar 12 22:03:28 2016 by ELM ver.2012-10-06 from 001__elm20151228_104400__dat00.bin



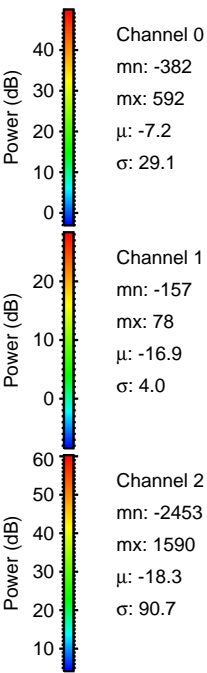
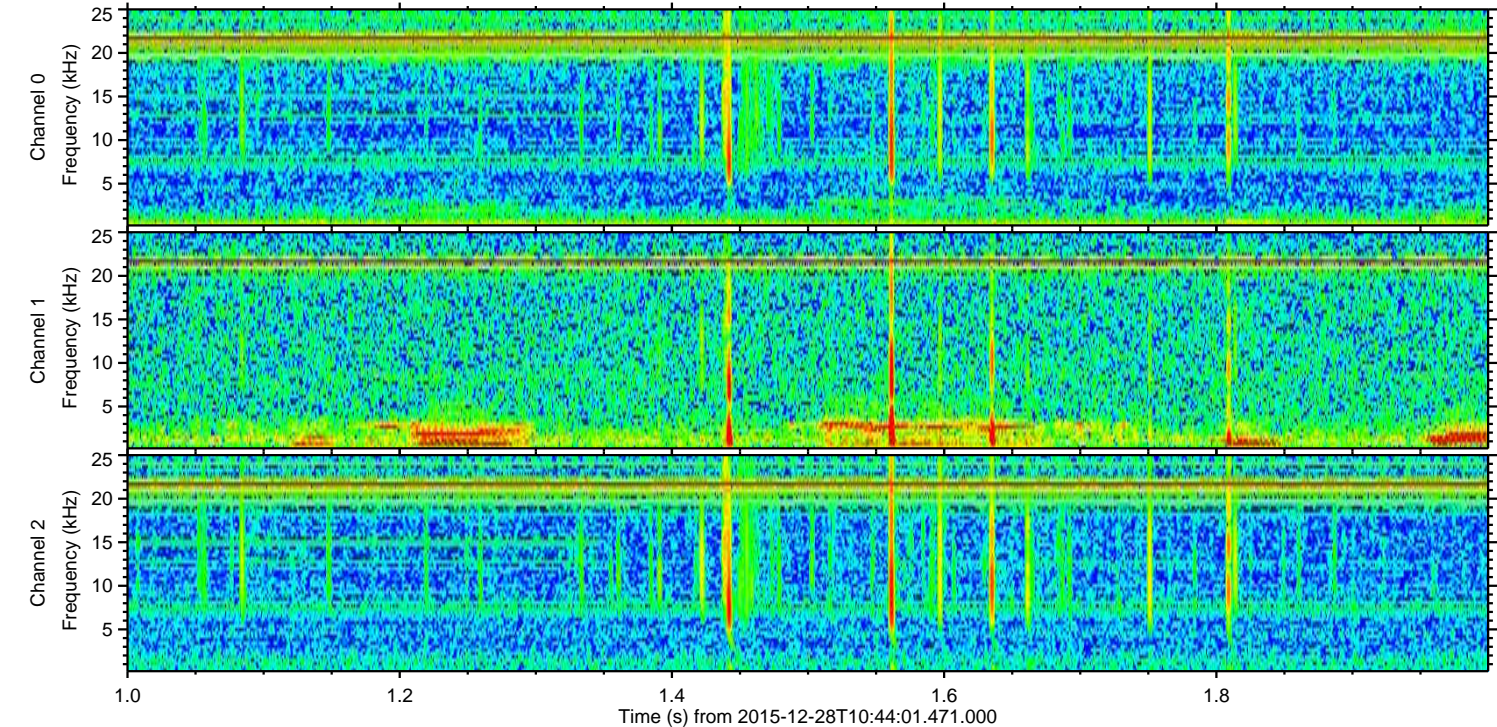
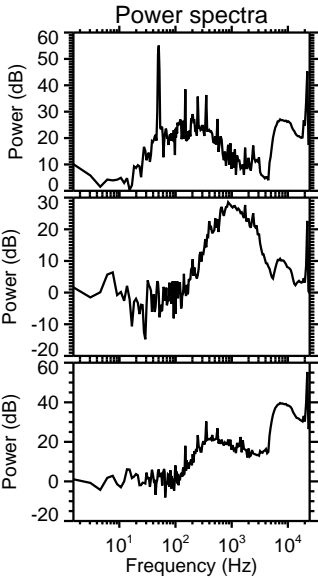
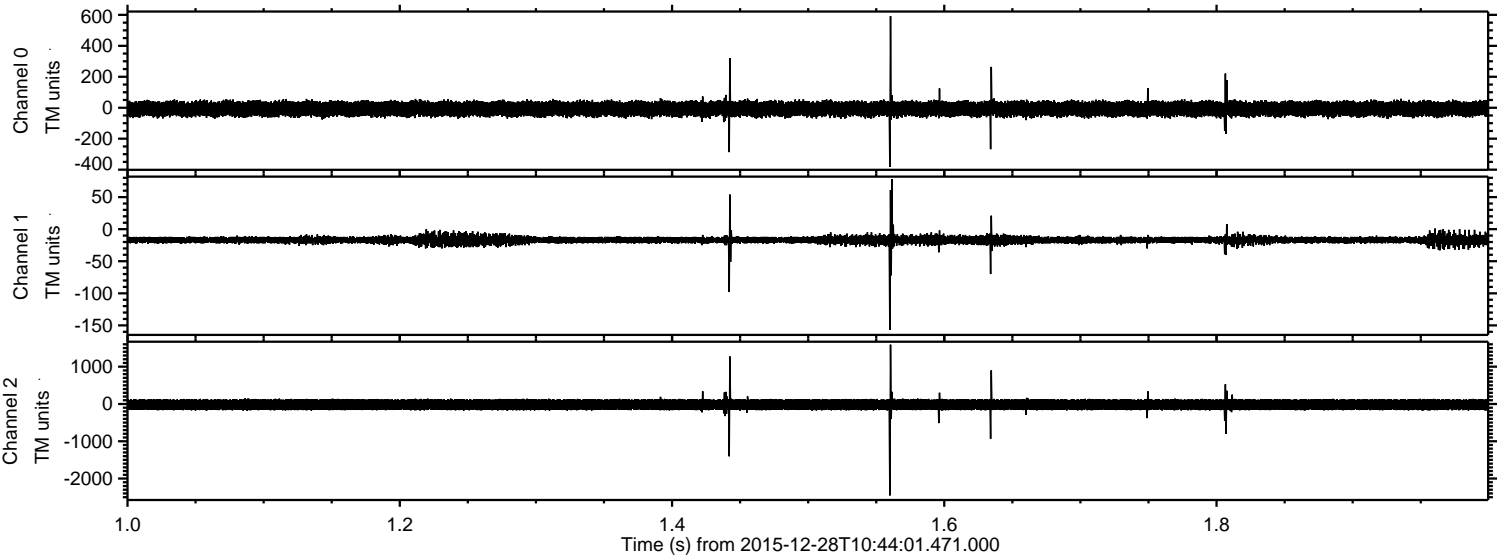
ELMAVAN 3D WAVEFORMS (Measured data sampled at 50 kHz) 51000 packets of 144 samples from 2015-12-28T10:44:01.471.000. Part 70/147

Processed Sat Mar 12 22:03:29 2016 by ELM ver.2012-10-06 from 001__elm20151228_104400__dat00.bin

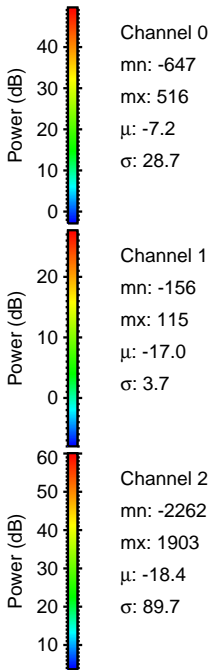
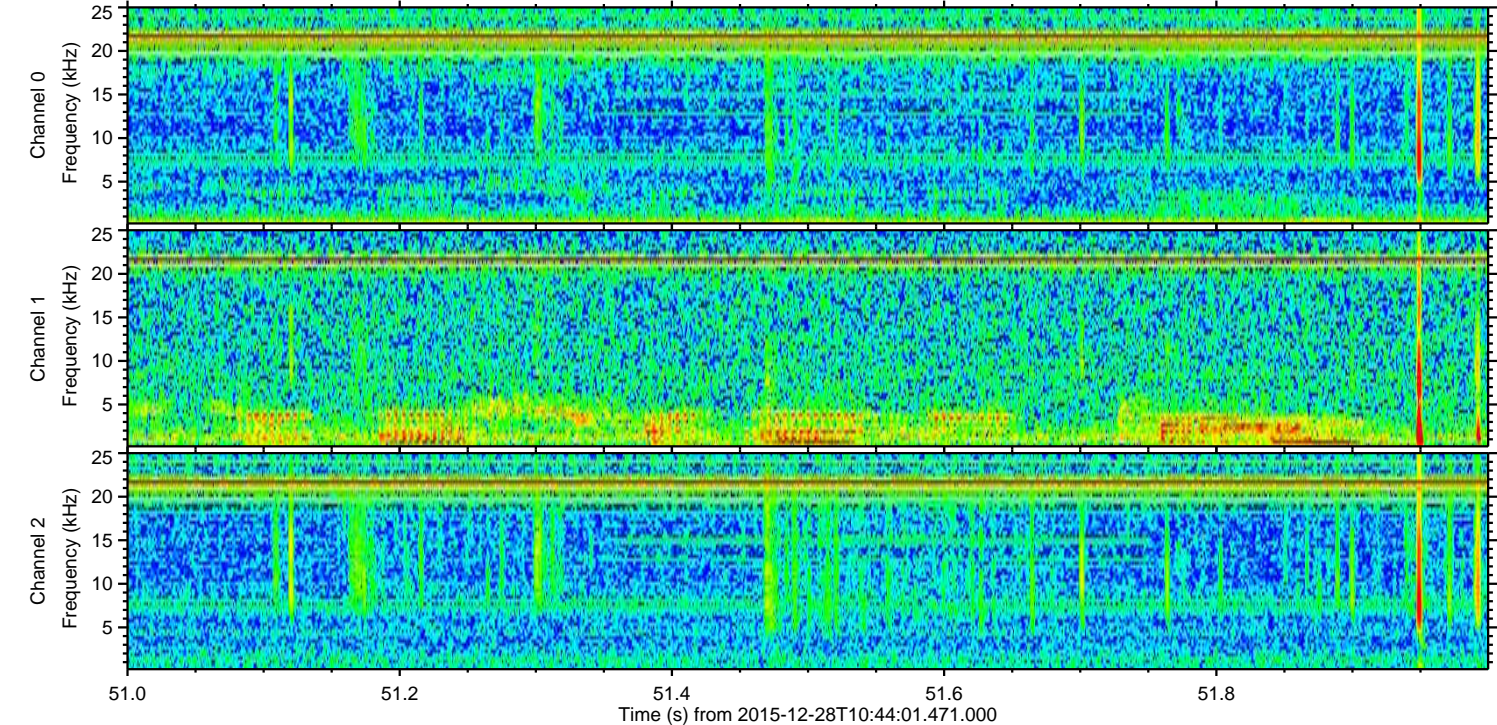
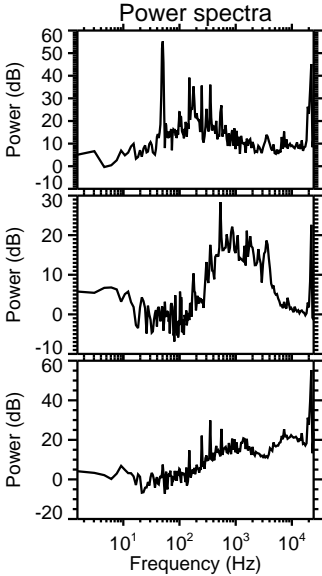
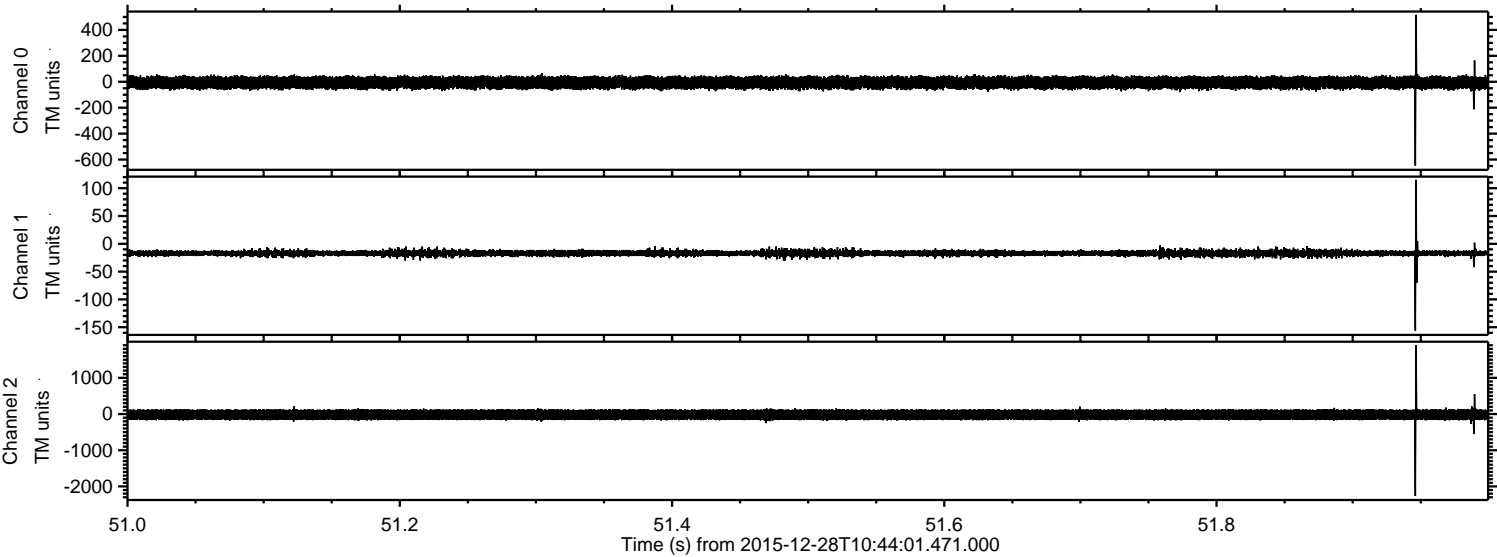


ELMAVAN 3D WAVEFORMS (Measured data sampled at 50 kHz) 51000 packets of 144 samples from 2015-12-28T10:44:01.471.000. Part 2/147

Processed Sat Mar 12 22:03:30 2016 by ELM ver.2012-10-06 from 001__elm20151228_104400__dat00.bin

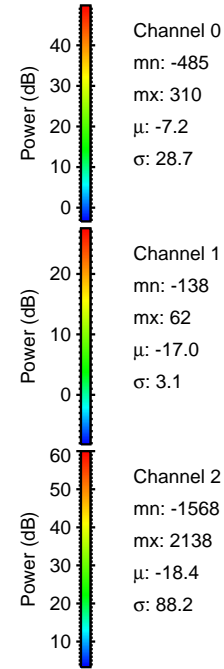
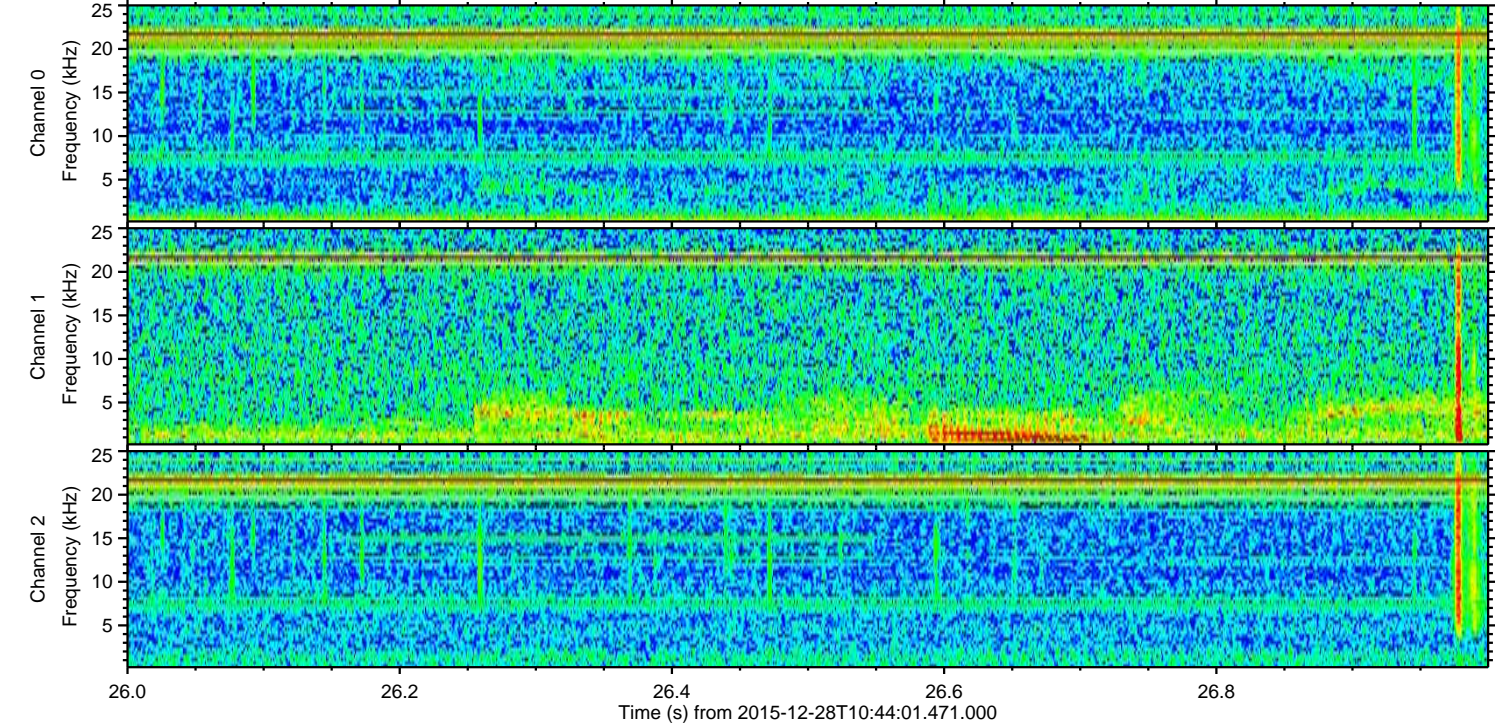
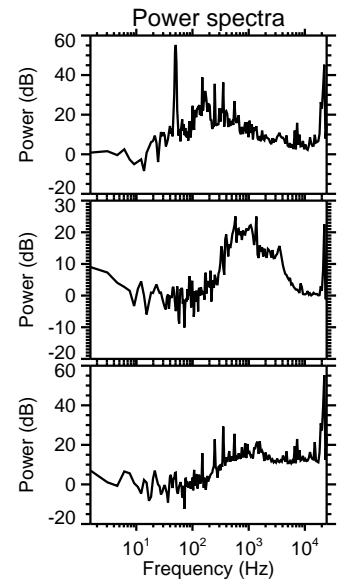
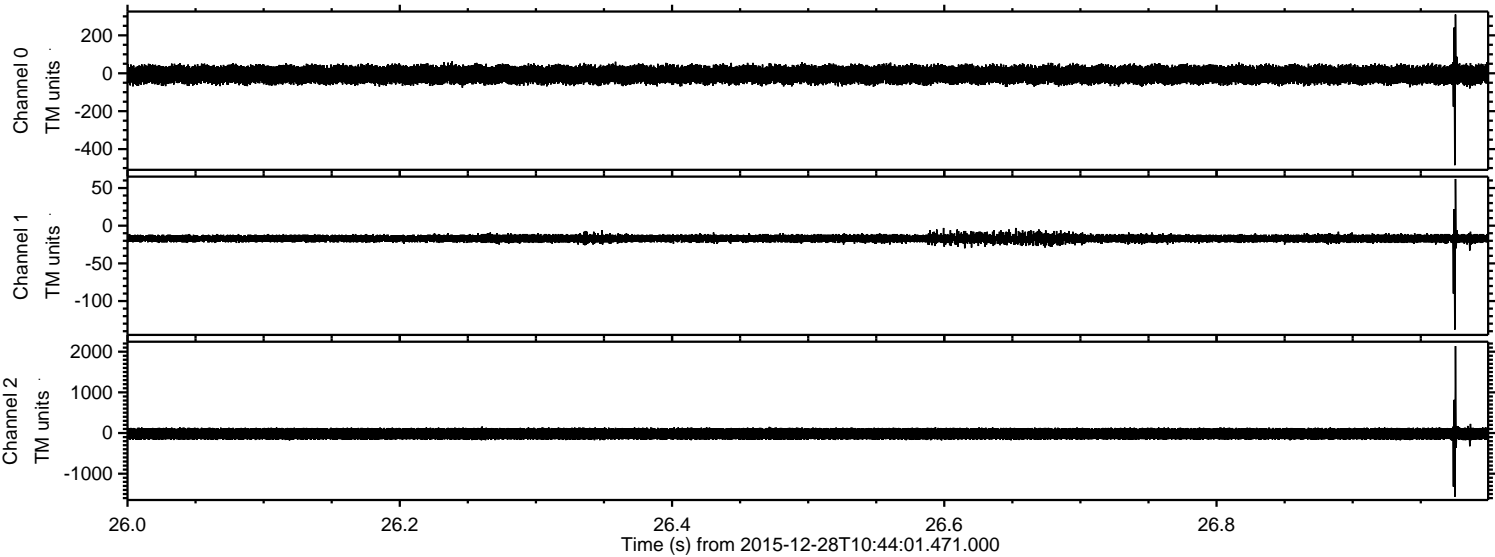


Processed Sat Mar 12 22:03:31 2016 by ELM ver.2012-10-06 from 001__elm20151228_104400__dat00.bin



ELMAVAN 3D WAVEFORMS (Measured data sampled at 50 kHz) 51000 packets of 144 samples from 2015-12-28T10:44:01.471.000. Part 27/147

Processed Sat Mar 12 22:03:32 2016 by ELM ver.2012-10-06 from 001__elm20151228_104400__dat00.bin

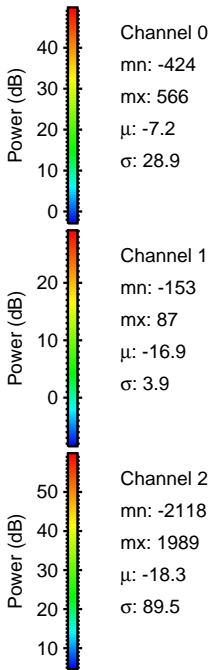
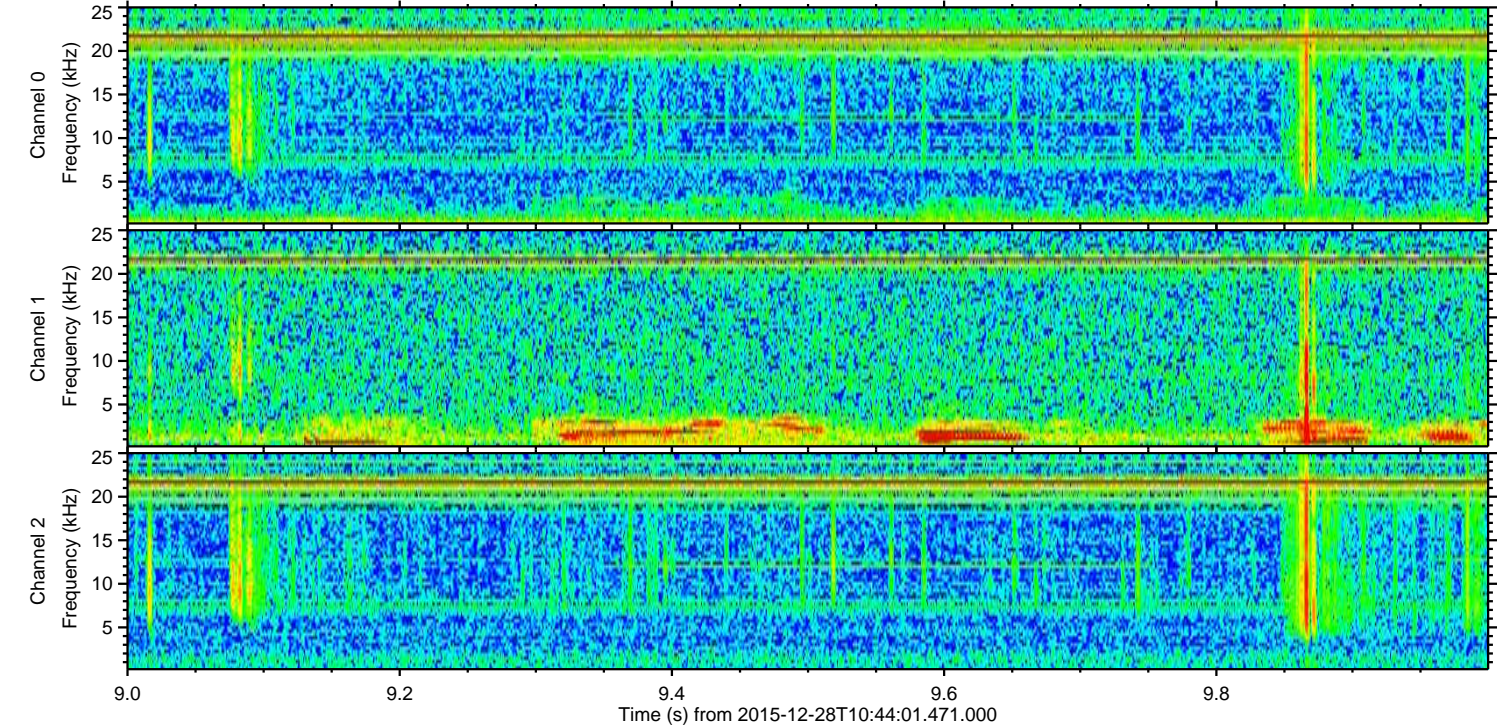
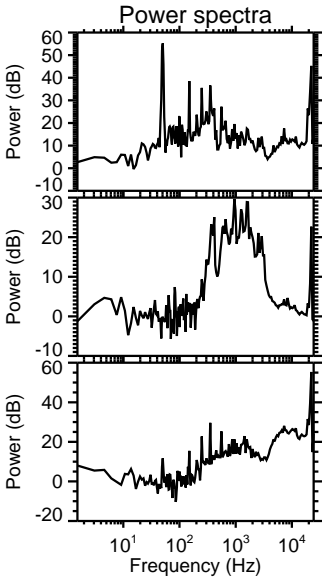
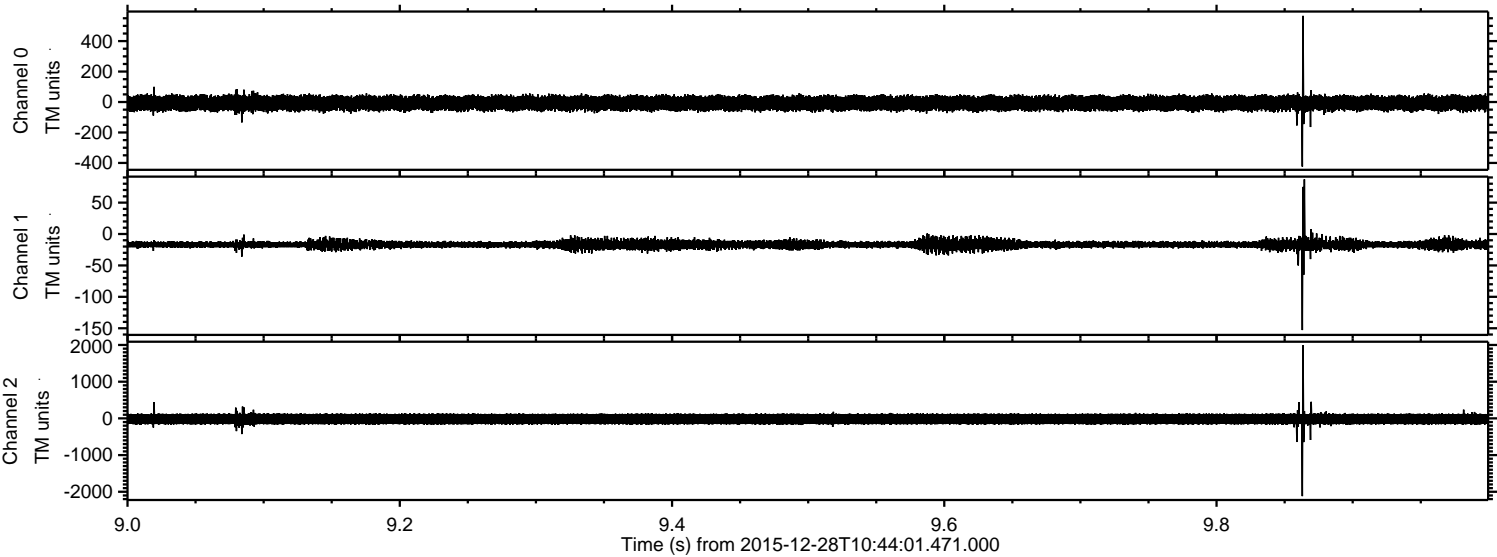


Channel 0
mn: -485
mx: 310
 μ : -7.2
 σ : 28.7

Channel 1
mn: -138
mx: 62
 μ : -17.0
 σ : 3.1

Channel 2
mn: -1568
mx: 2138
 μ : -18.4
 σ : 88.2

Processed Sat Mar 12 22:03:33 2016 by ELM ver.2012-10-06 from 001__elm20151228_104400__dat00.bin



Processed Sat Mar 12 22:03:34 2016 by ELM ver.2012-10-06 from 001__elm20151228_104400__dat00.bin

