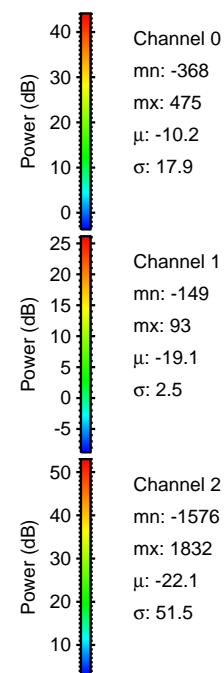
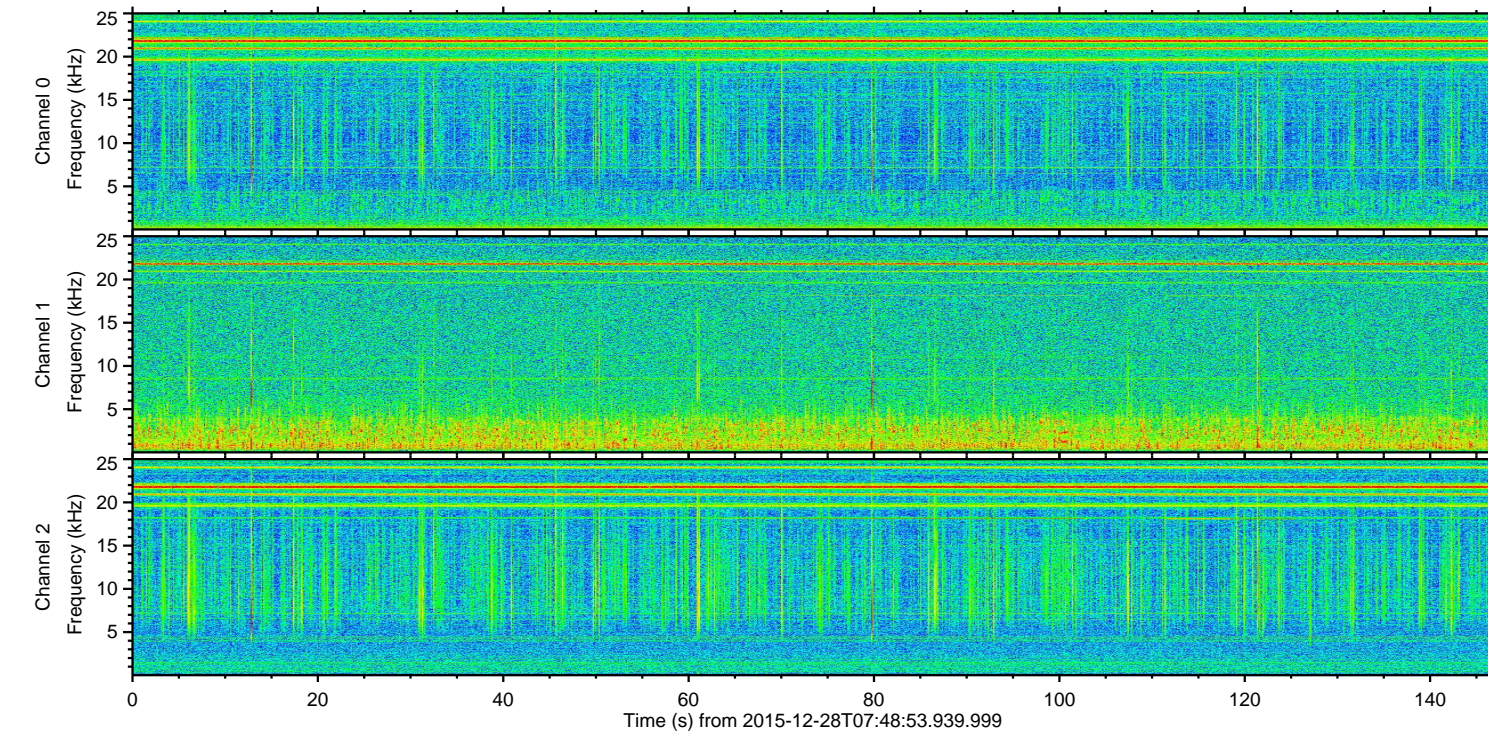
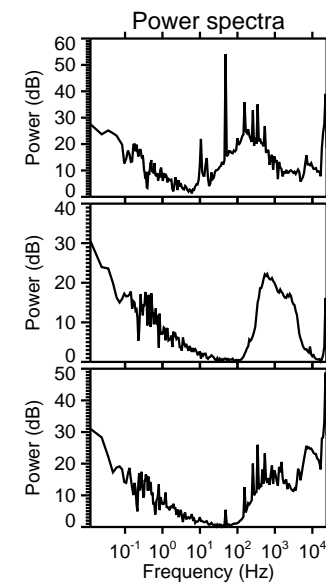
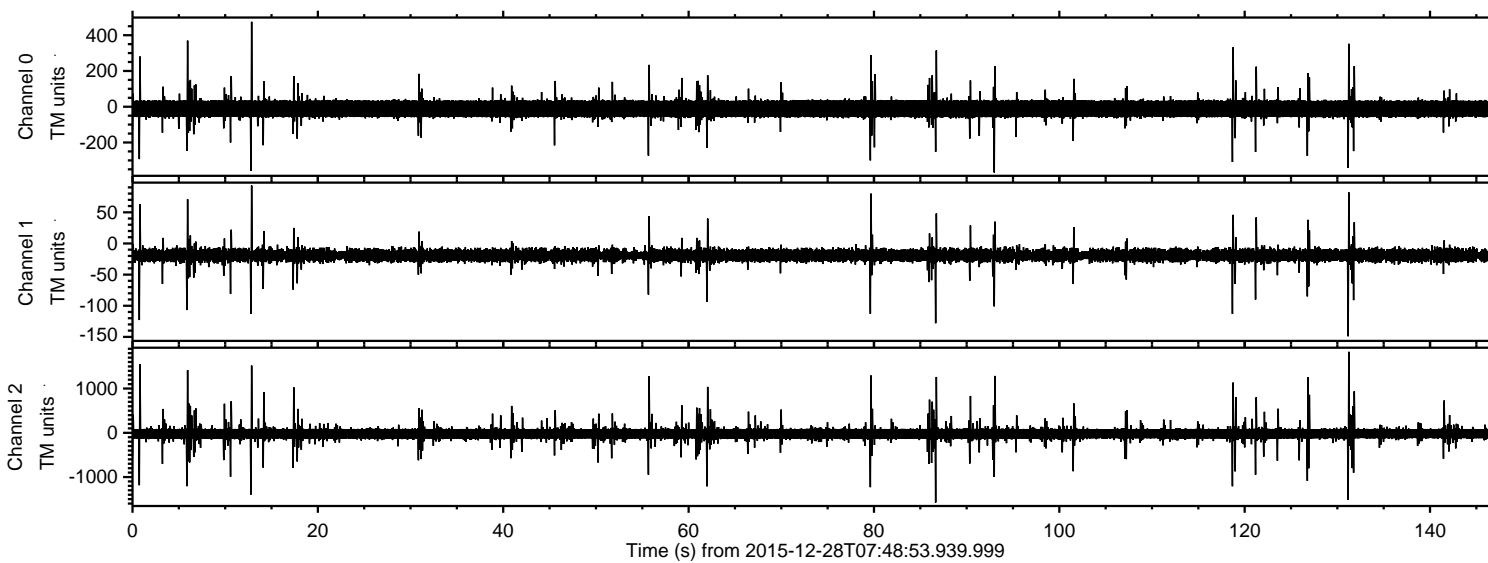


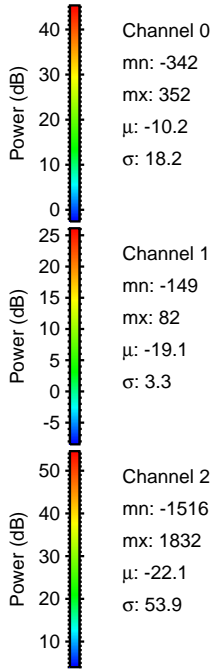
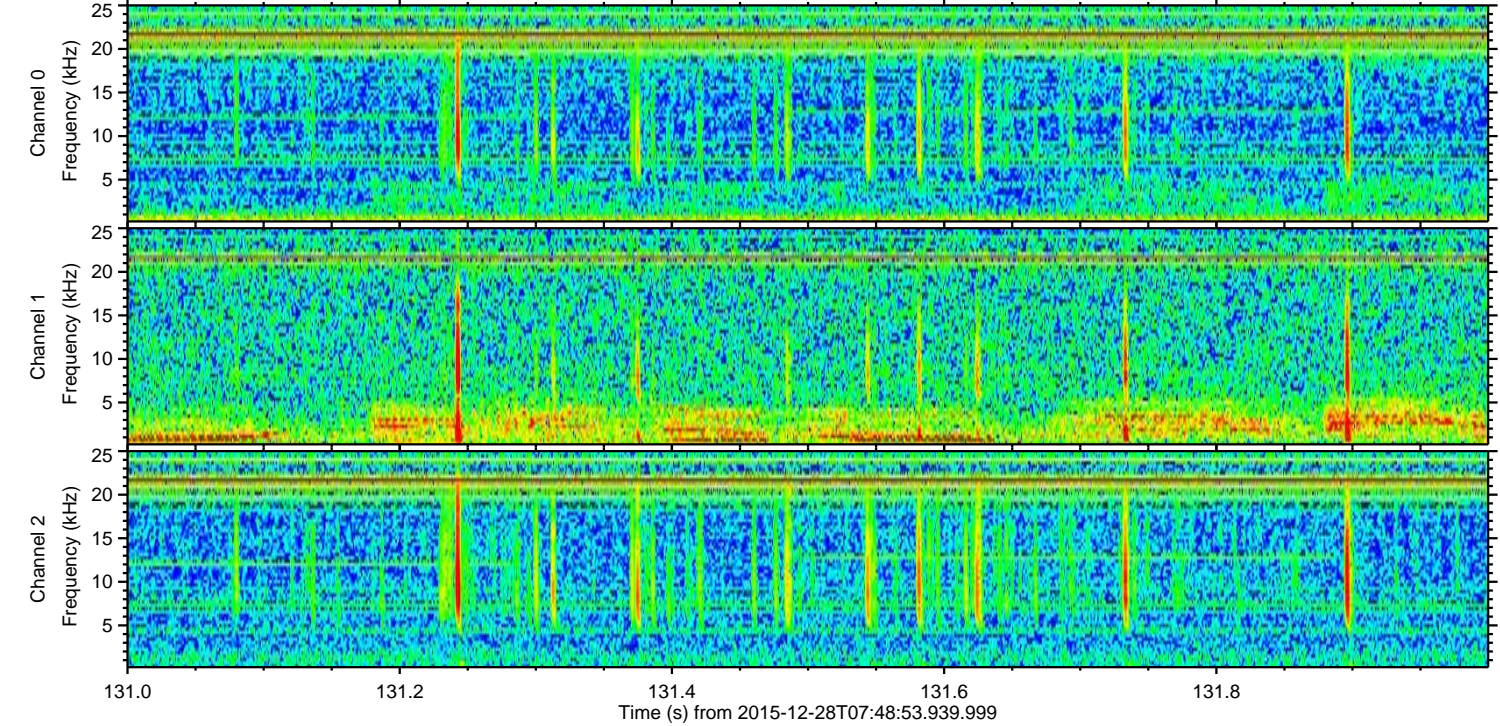
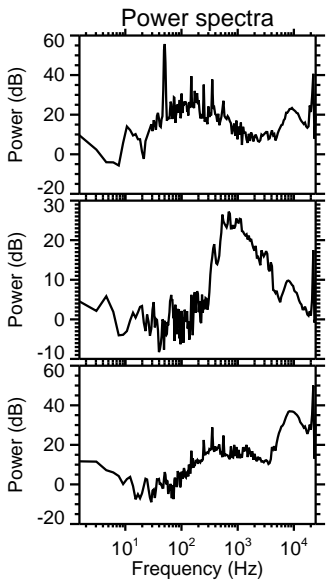
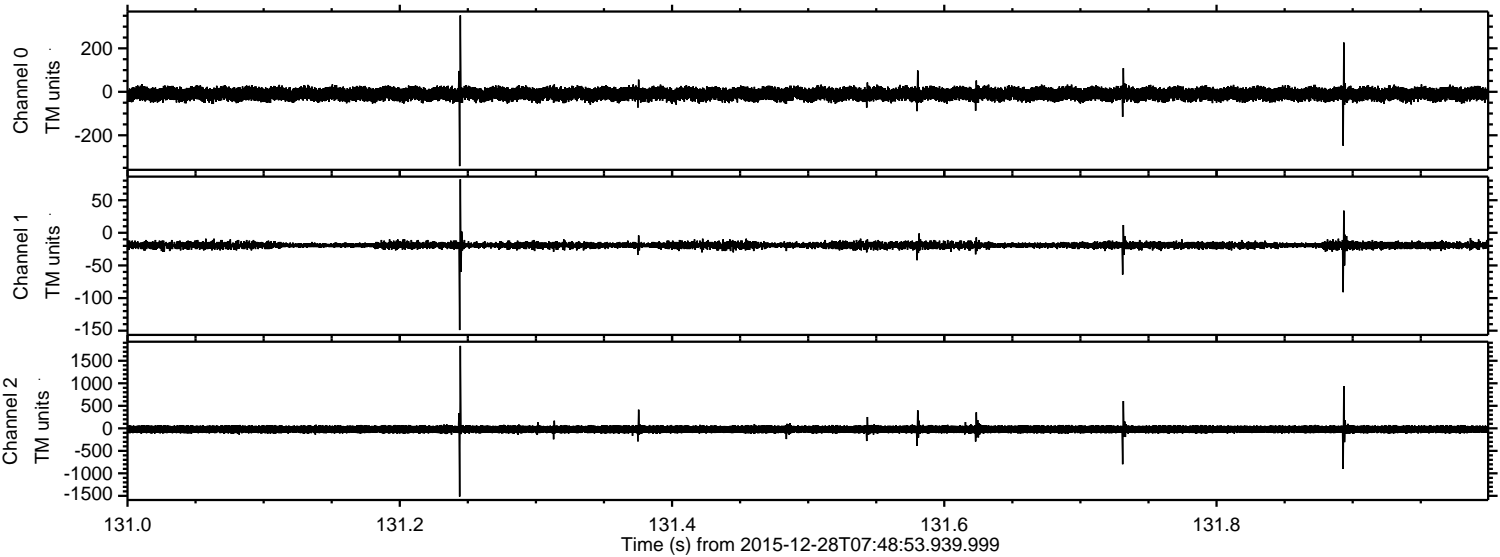
ELMAVAN 3D WAVEFORMS (Measured data sampled at 50 kHz) 51000 packets of 144 samples from 2015-12-28T07:48:53.939.999.

Processed Sat Mar 12 19:25:16 2016 by ELM ver.2012-10-06 from 001__elm20151228_074852__dat00.bin



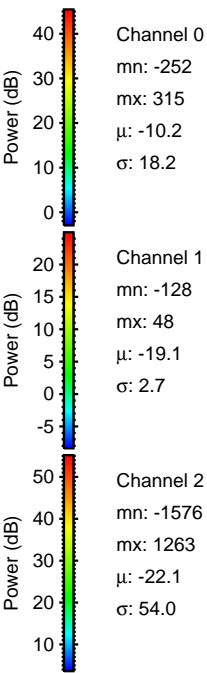
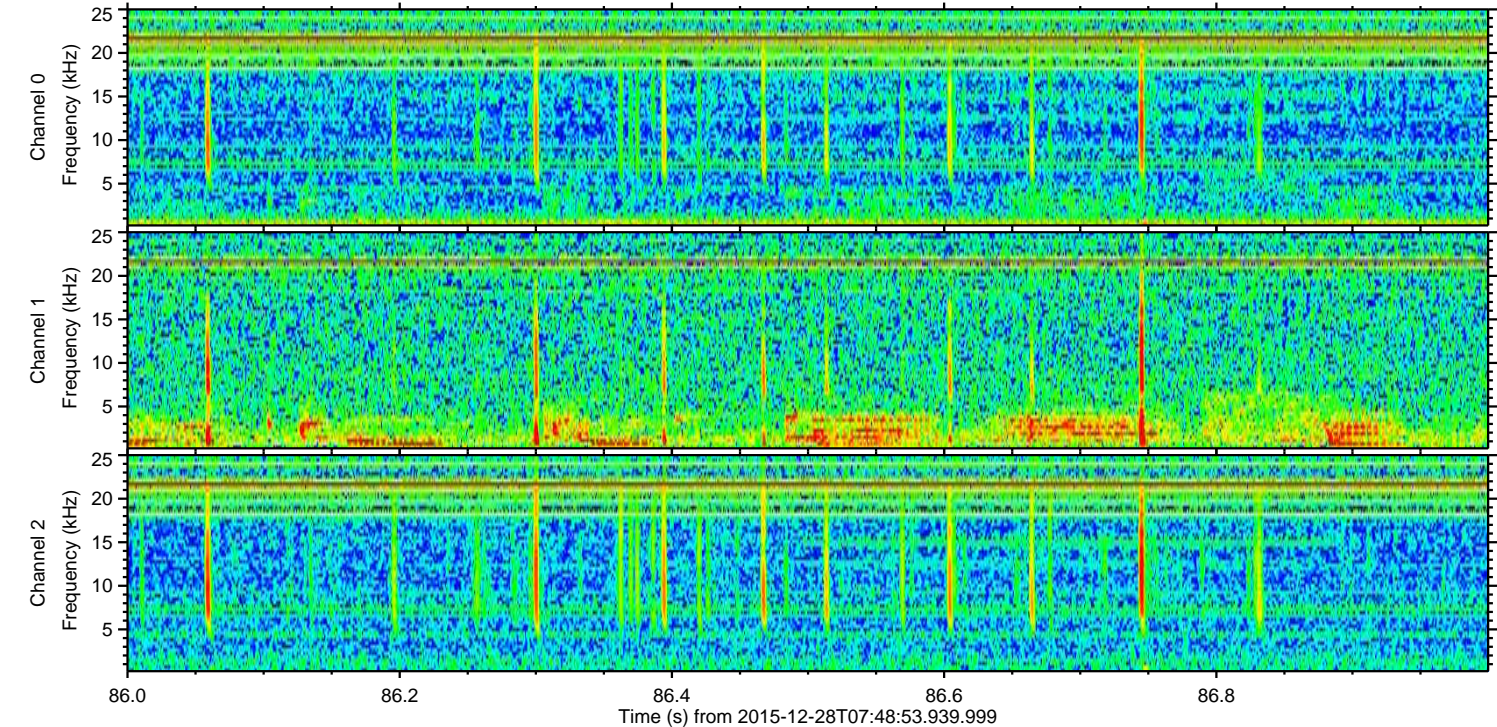
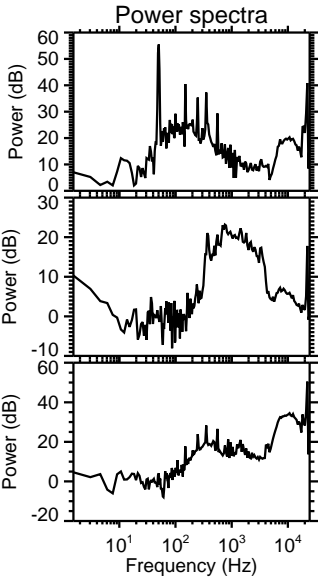
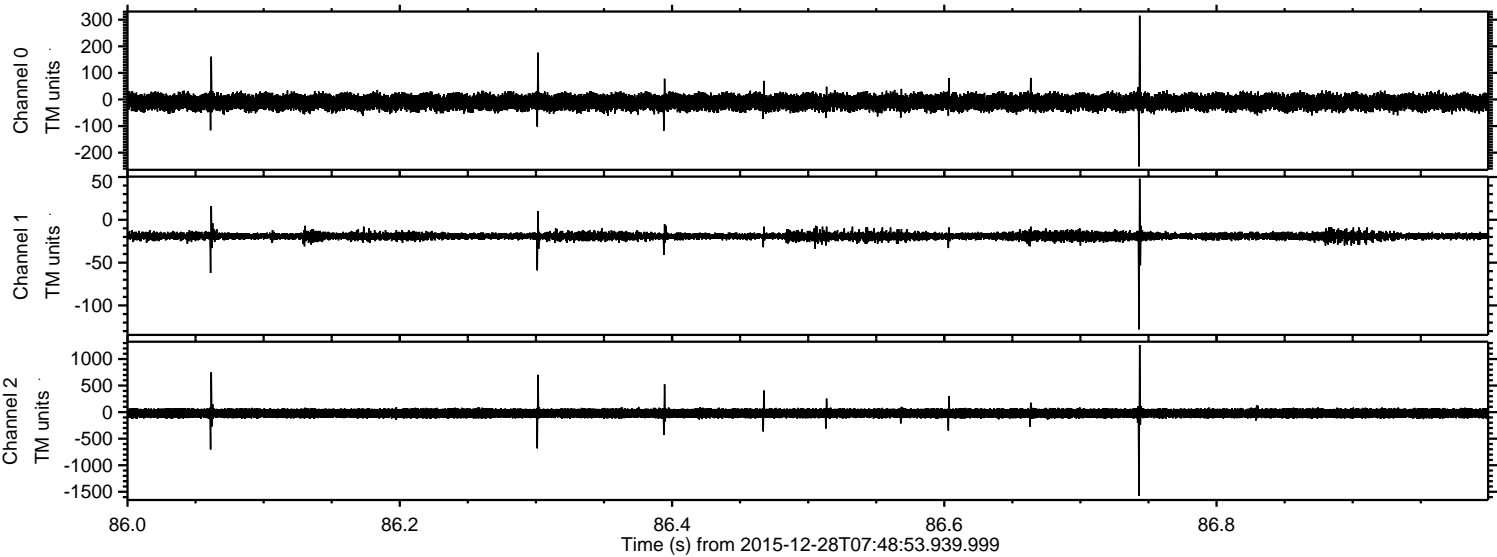
ELMAVAN 3D WAVEFORMS (Measured data sampled at 50 kHz) 51000 packets of 144 samples from 2015-12-28T07:48:53.939.999. Part 132/147

Processed Sat Mar 12 19:25:27 2016 by ELM ver.2012-10-06 from 001__elm20151228_074852__dat00.bin



ELMAVAN 3D WAVEFORMS (Measured data sampled at 50 kHz) 51000 packets of 144 samples from 2015-12-28T07:48:53.939.999. Part 87/147

Processed Sat Mar 12 19:25:28 2016 by ELM ver.2012-10-06 from 001__elm20151228_074852__dat00.bin



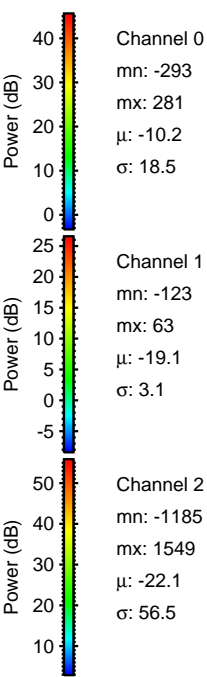
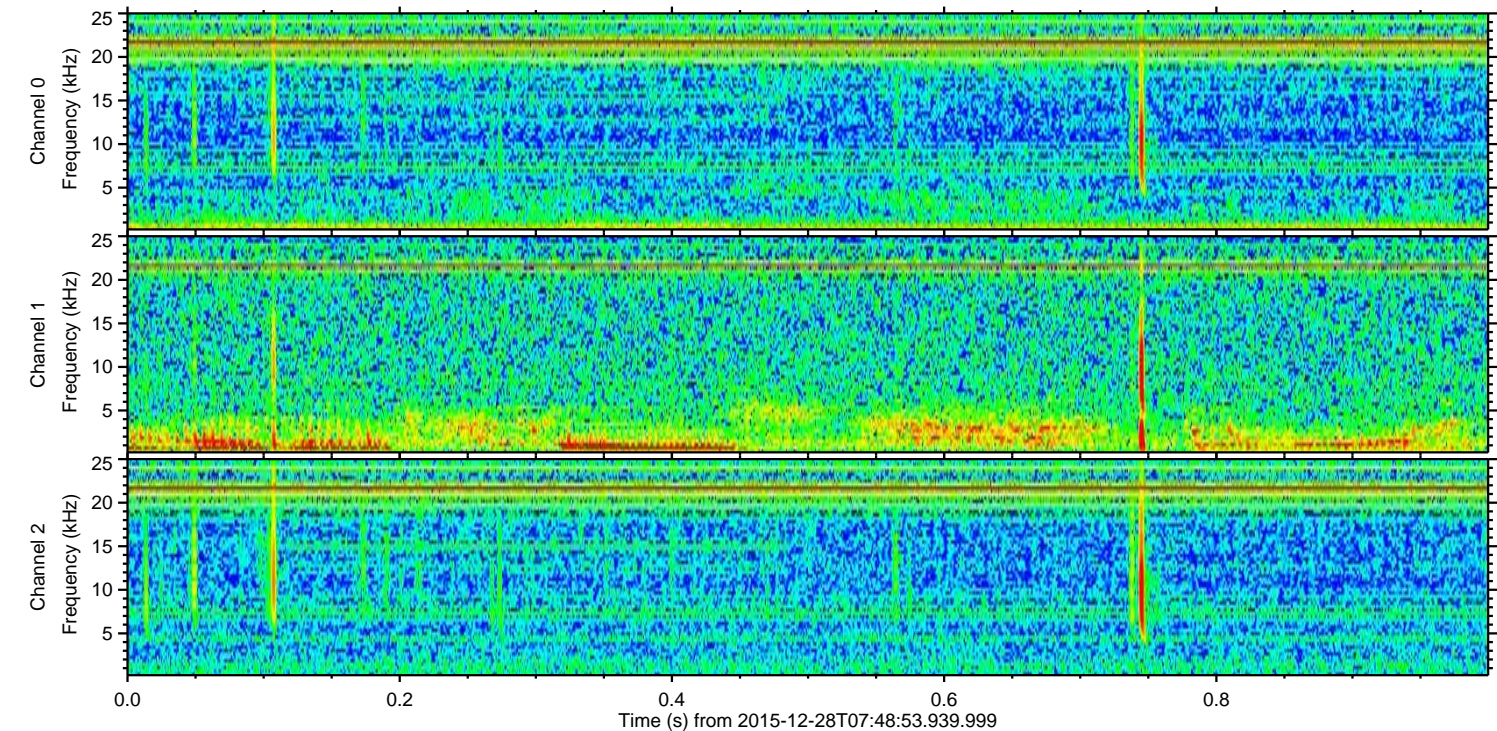
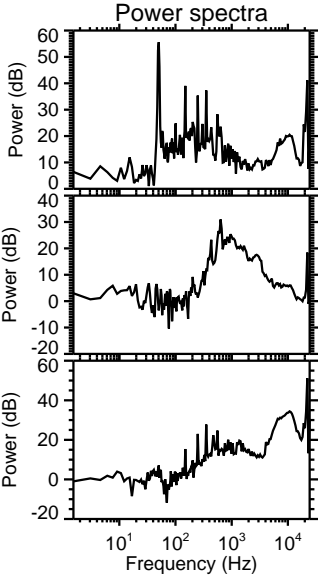
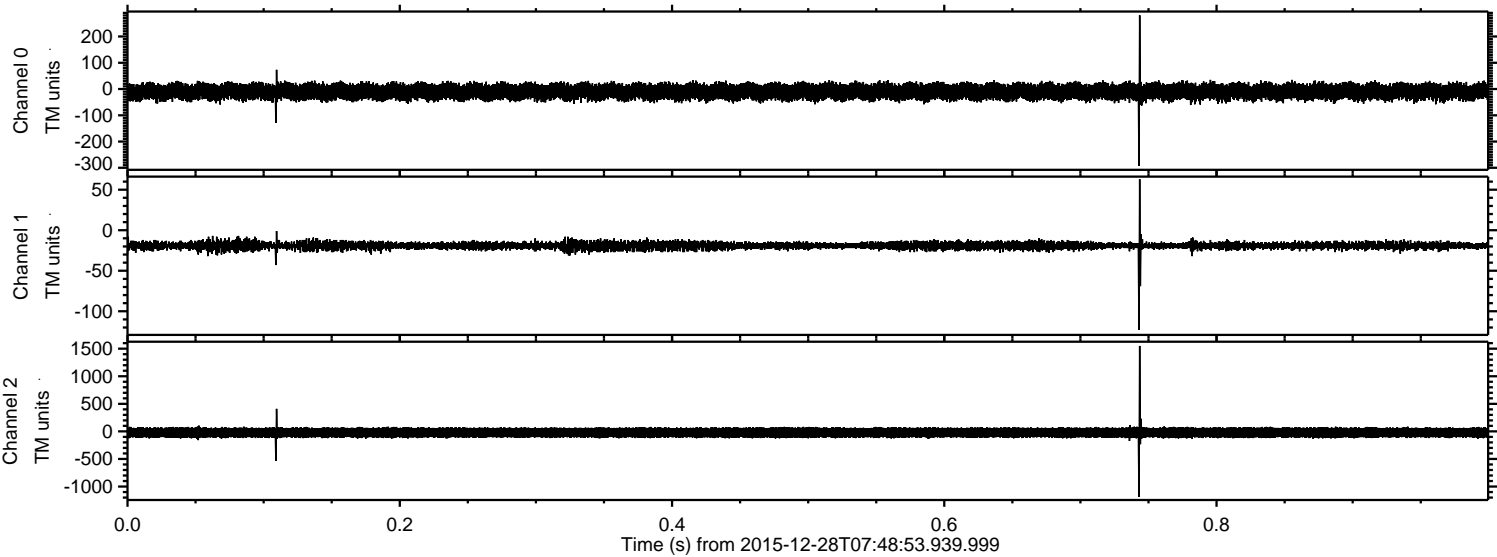
Channel 0
mn: -252
mx: 315
 μ : -10.2
 σ : 18.2

Channel 1
mn: -128
mx: 48
 μ : -19.1
 σ : 2.7

Channel 2
mn: -1576
mx: 1263
 μ : -22.1
 σ : 54.0

ELMAVAN 3D WAVEFORMS (Measured data sampled at 50 kHz) 51000 packets of 144 samples from 2015-12-28T07:48:53.939.999. Part 1/147

Processed Sat Mar 12 19:25:29 2016 by ELM ver.2012-10-06 from 001__elm20151228_074852__dat00.bin



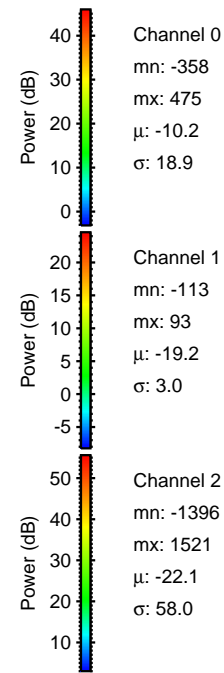
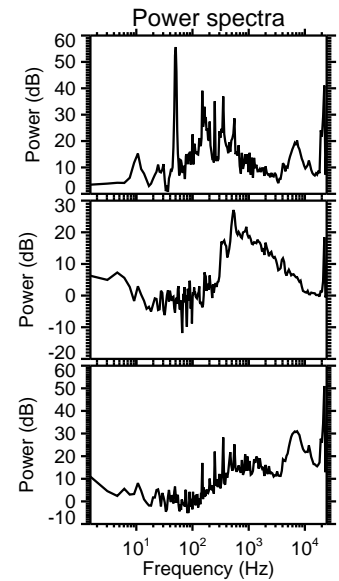
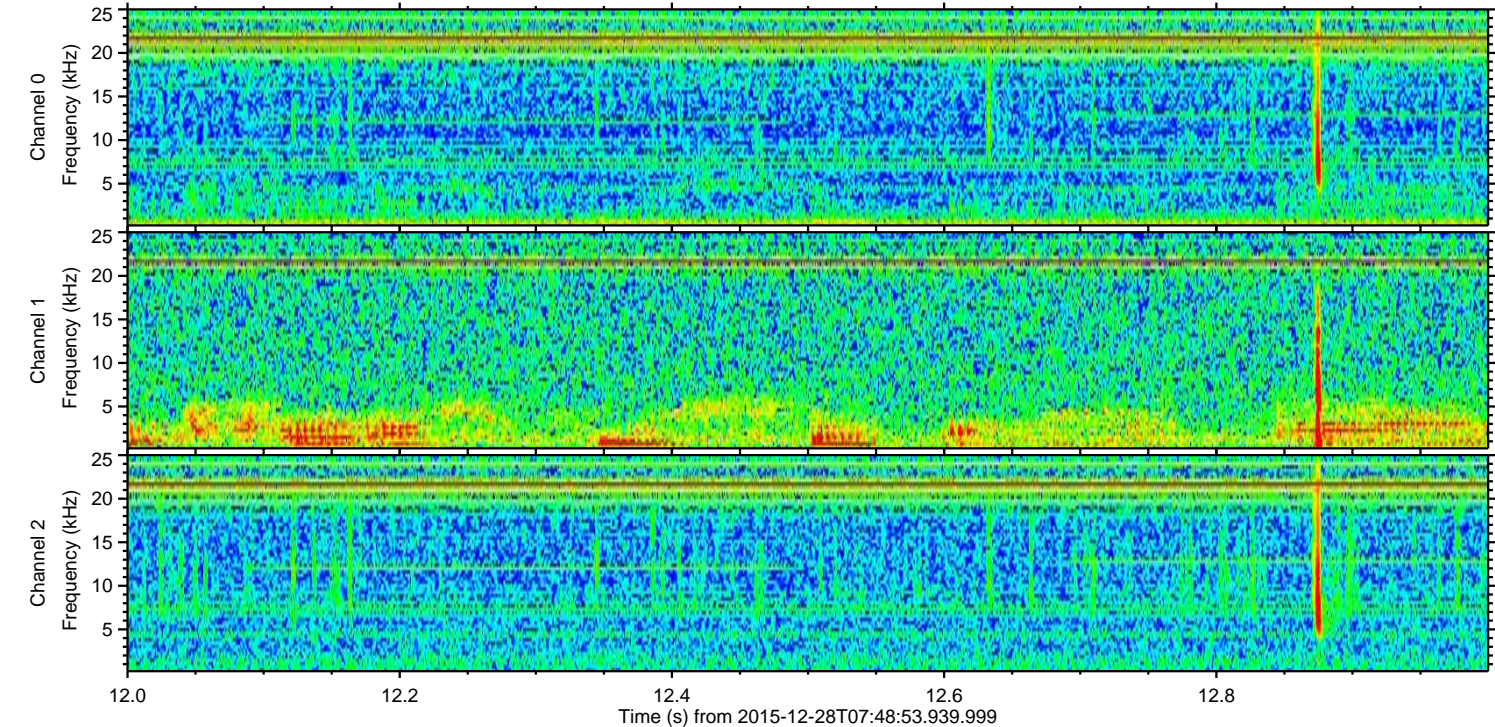
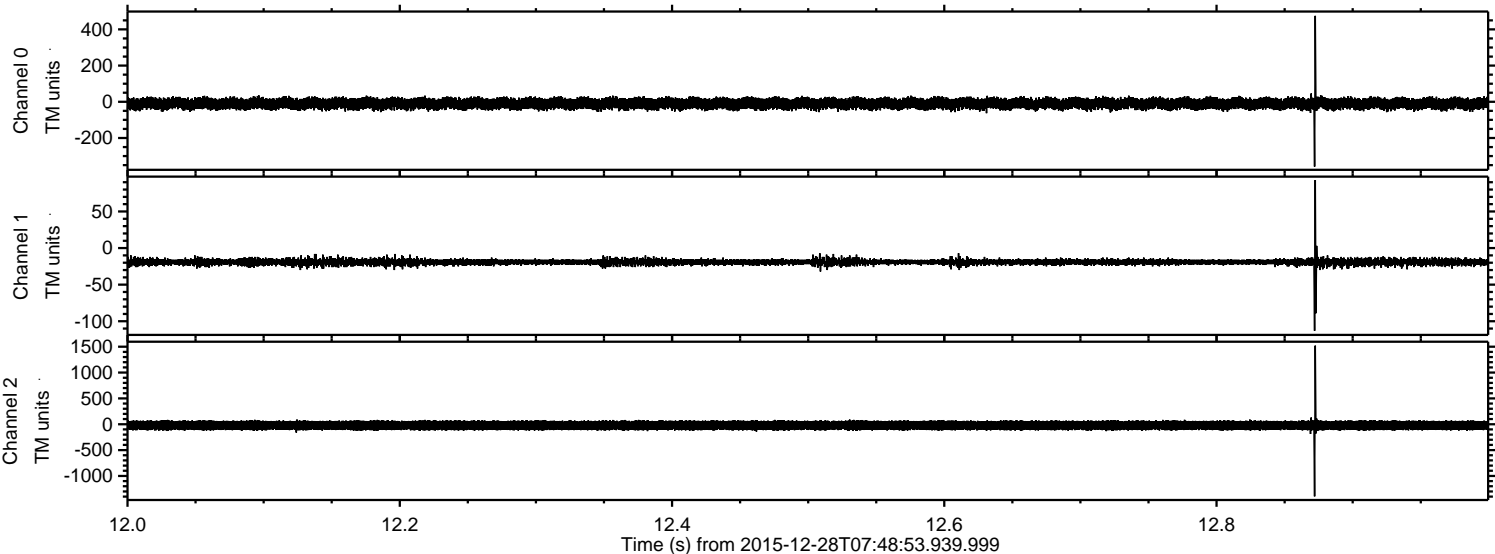
Channel 0
mn: -293
mx: 281
 μ : -10.2
 σ : 18.5

Channel 1
mn: -123
mx: 63
 μ : -19.1
 σ : 3.1

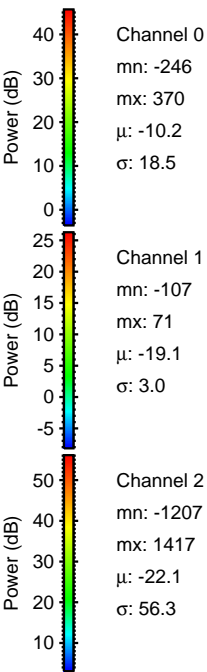
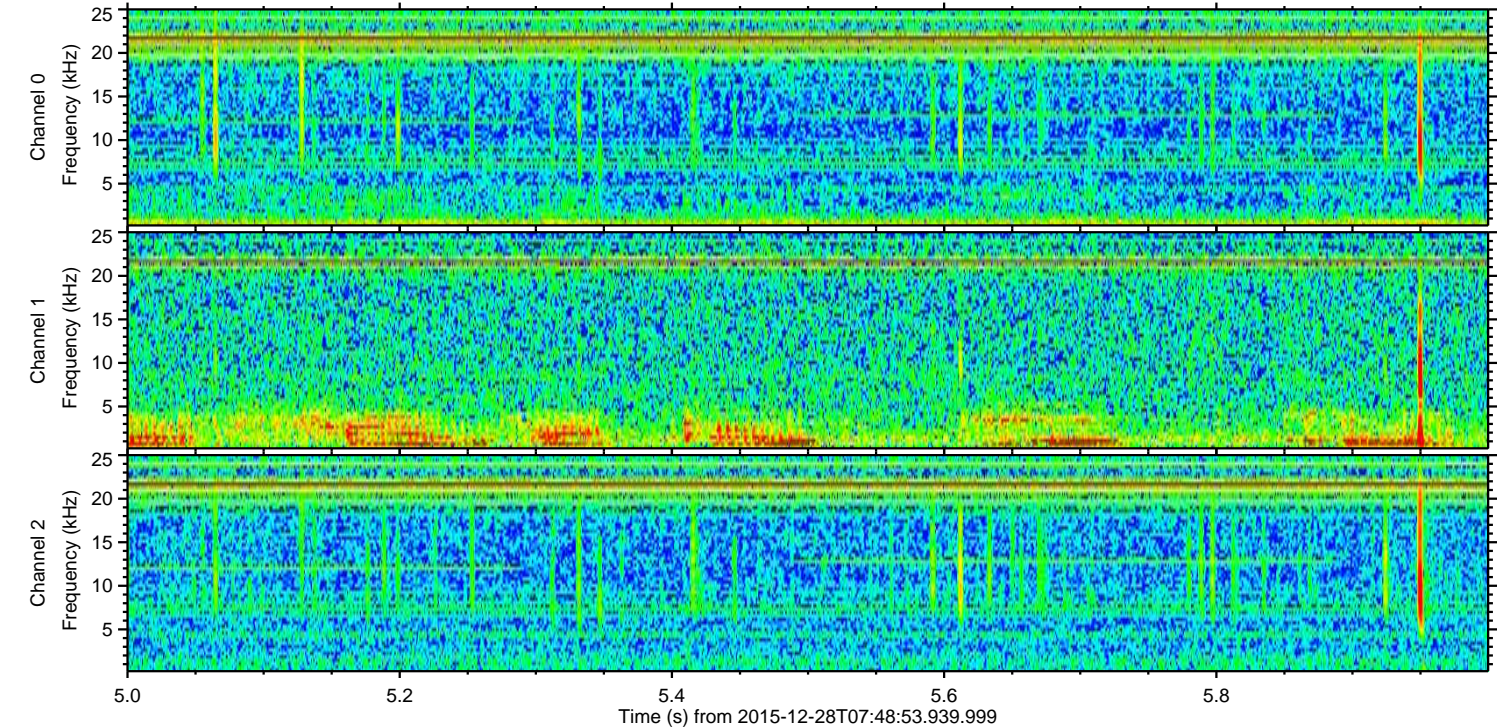
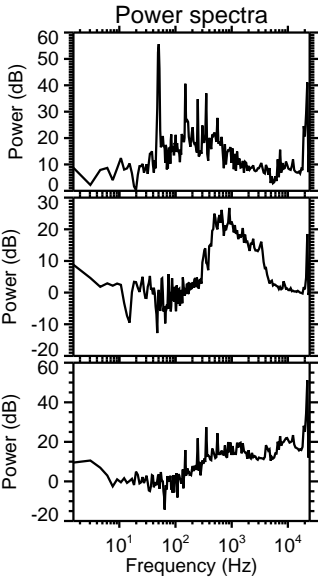
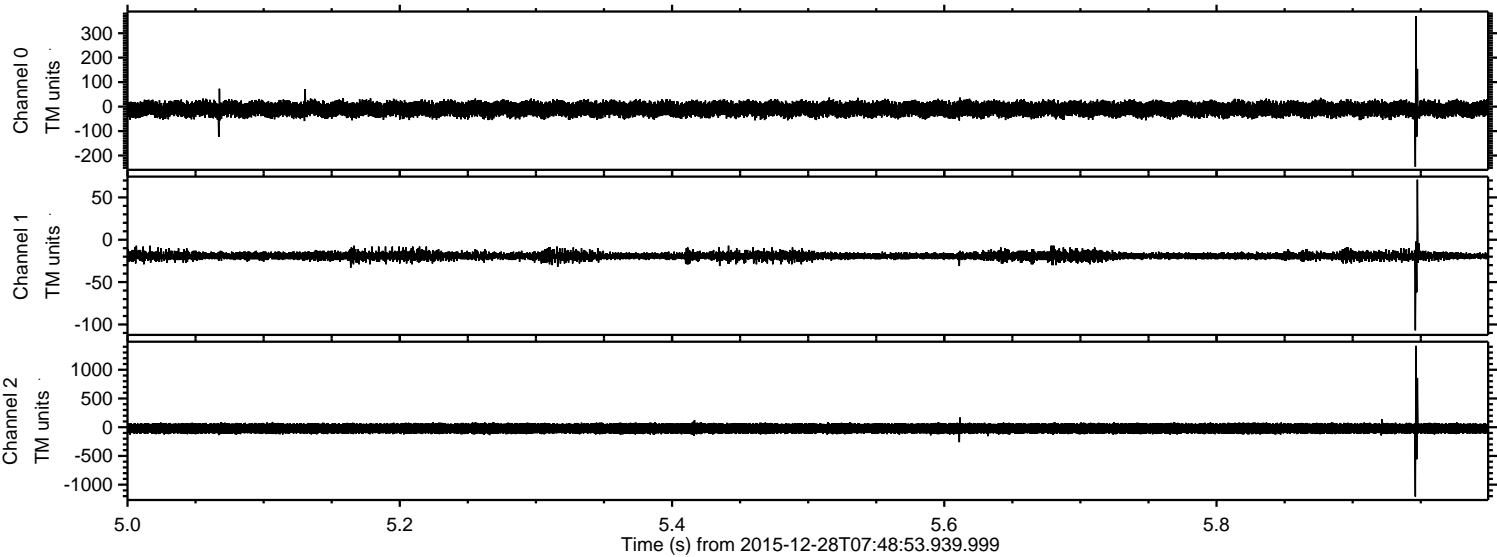
Channel 2
mn: -1185
mx: 1549
 μ : -22.1
 σ : 56.5

ELMAVAN 3D WAVEFORMS (Measured data sampled at 50 kHz) 51000 packets of 144 samples from 2015-12-28T07:48:53.939.999. Part 13/147

Processed Sat Mar 12 19:25:30 2016 by ELM ver.2012-10-06 from 001__elm20151228_074852__dat00.bin

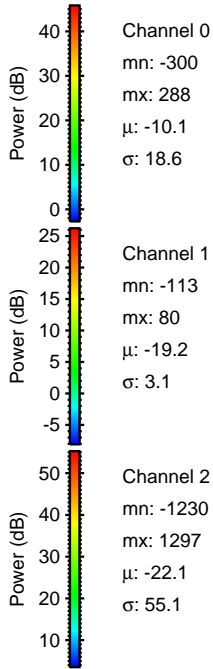
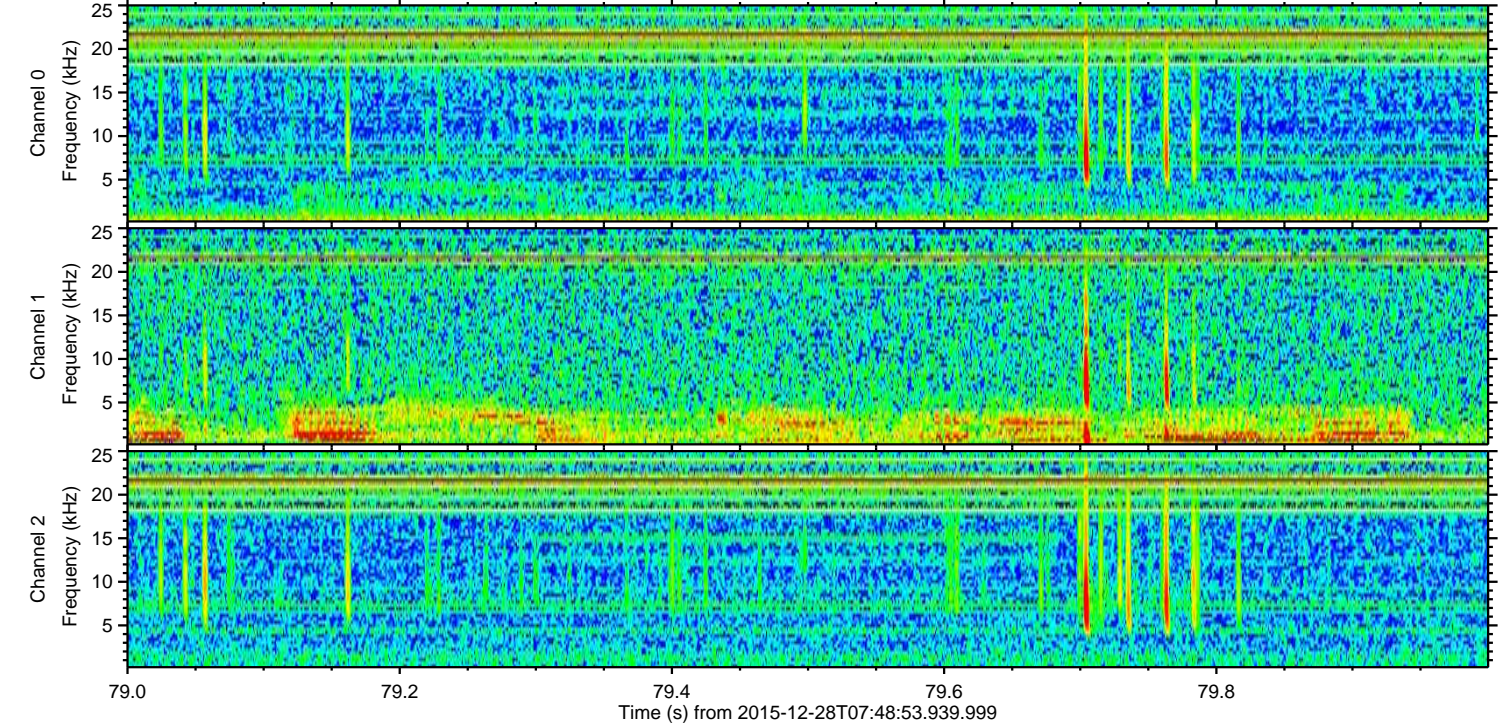
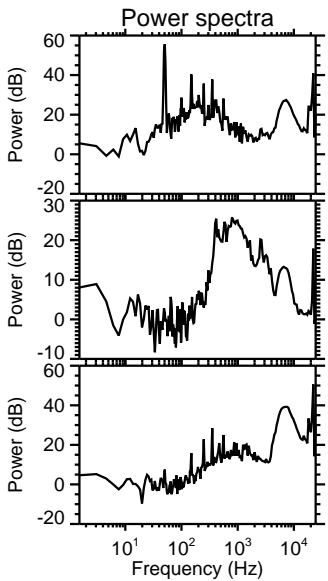
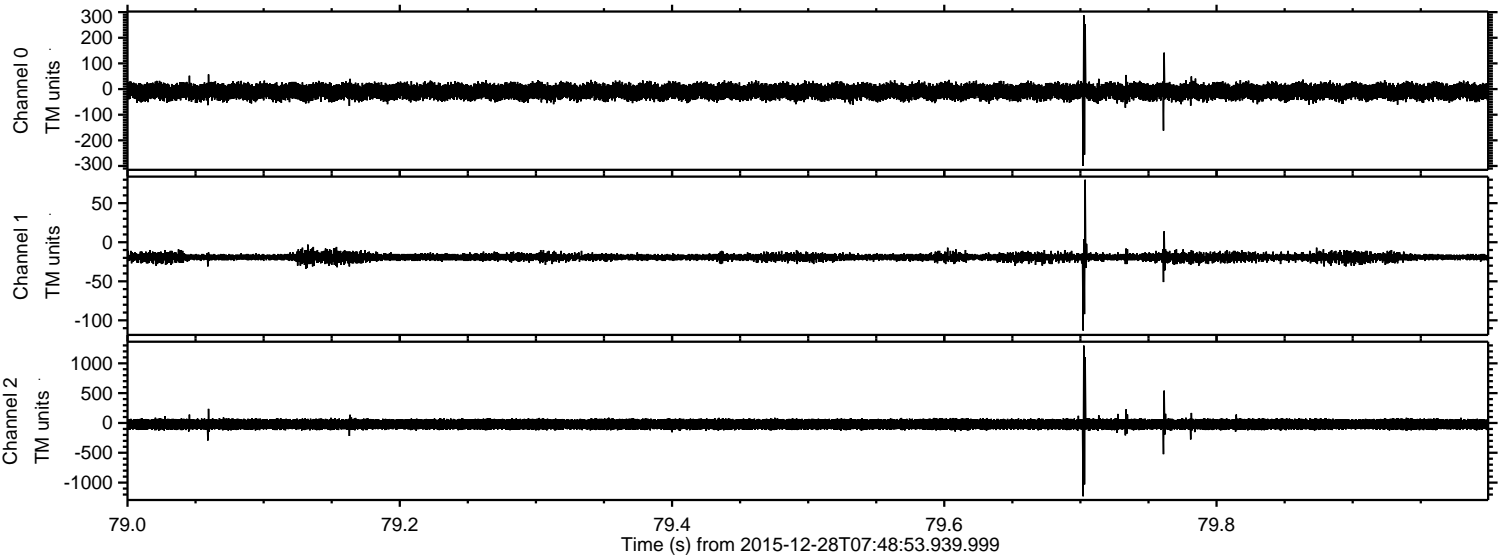


Processed Sat Mar 12 19:25:31 2016 by ELM ver.2012-10-06 from 001__elm20151228_074852__dat00.bin



ELMAVAN 3D WAVEFORMS (Measured data sampled at 50 kHz) 51000 packets of 144 samples from 2015-12-28T07:48:53.939.999. Part 80/147

Processed Sat Mar 12 19:25:32 2016 by ELM ver.2012-10-06 from 001__elm20151228_074852__dat00.bin



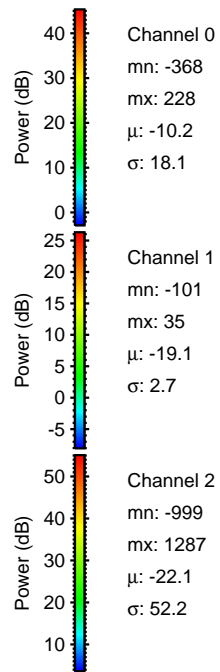
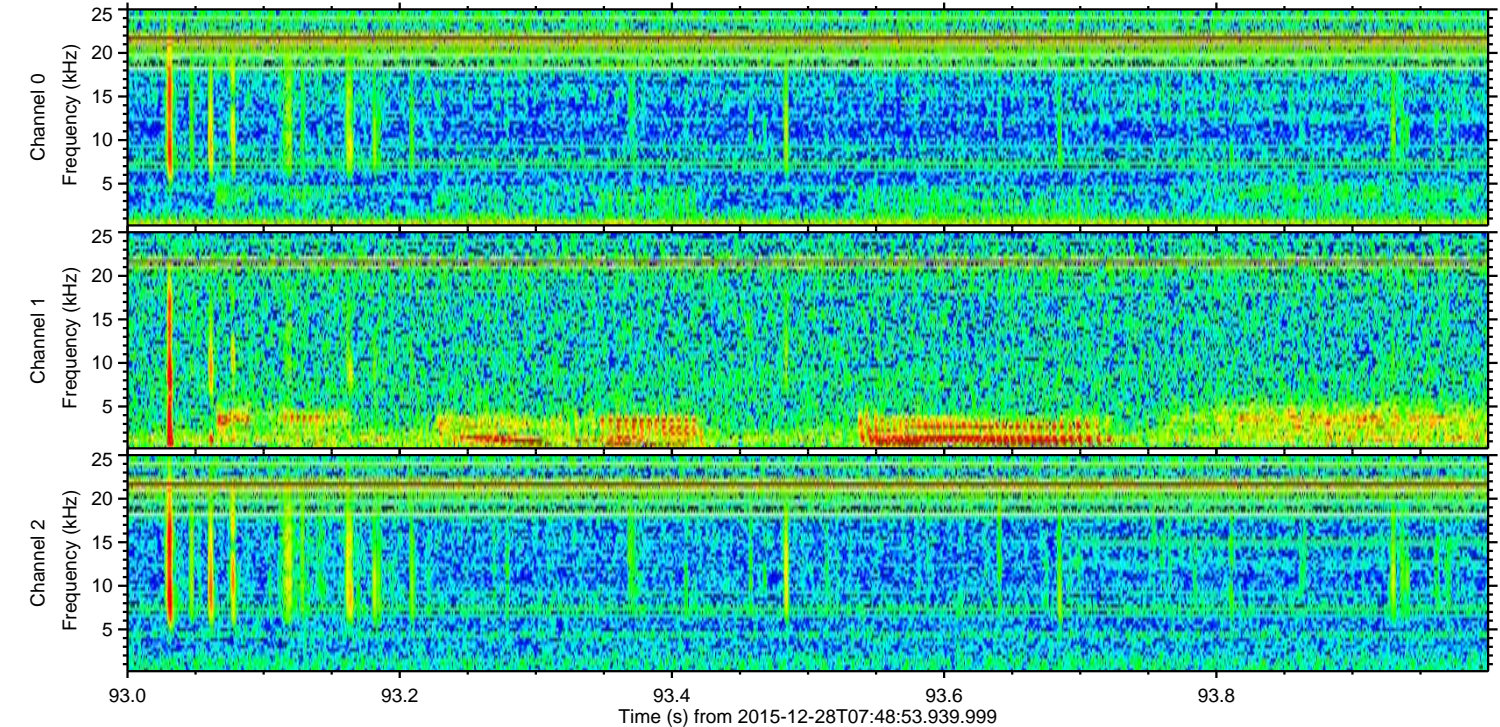
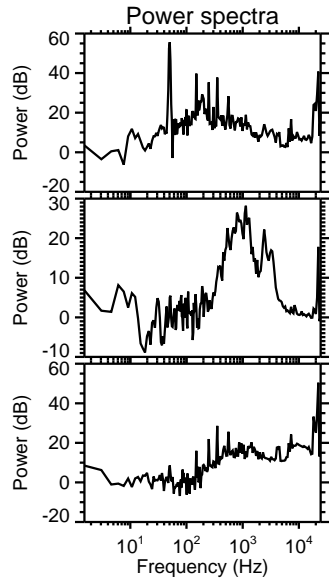
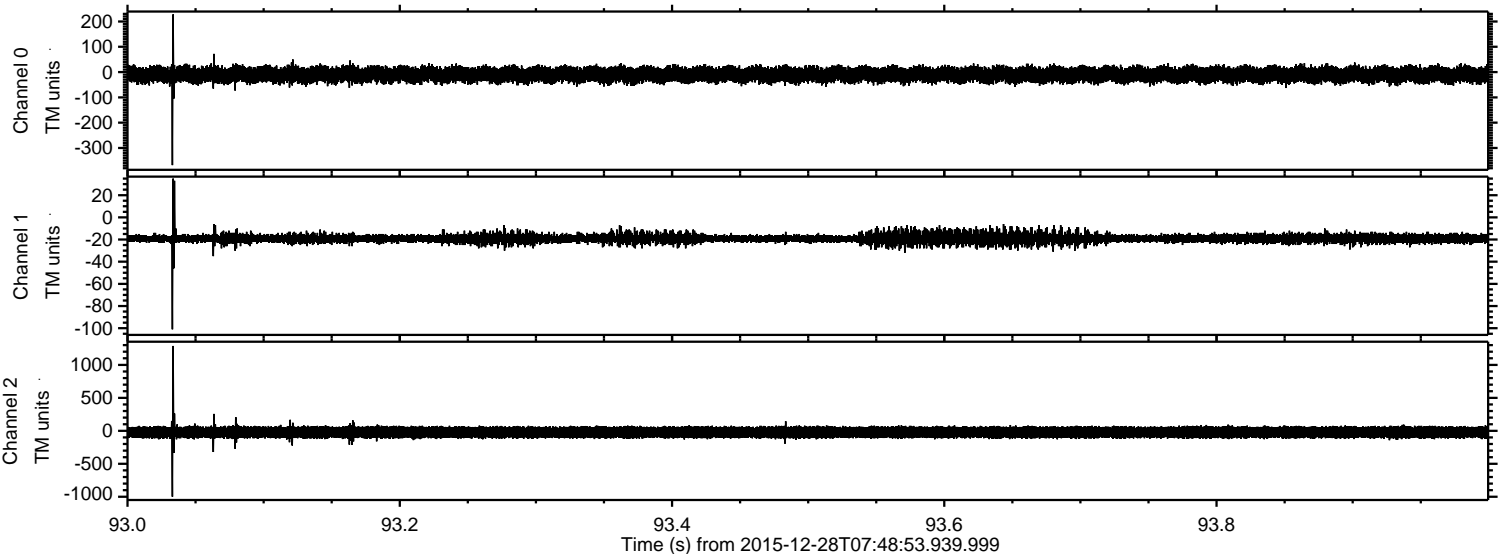
Channel 0
mn: -300
mx: 288
 μ : -10.1
 σ : 18.6

Channel 1
mn: -113
mx: 80
 μ : -19.2
 σ : 3.1

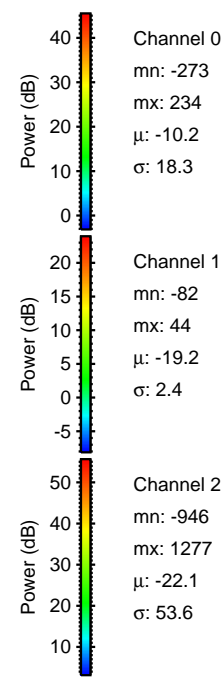
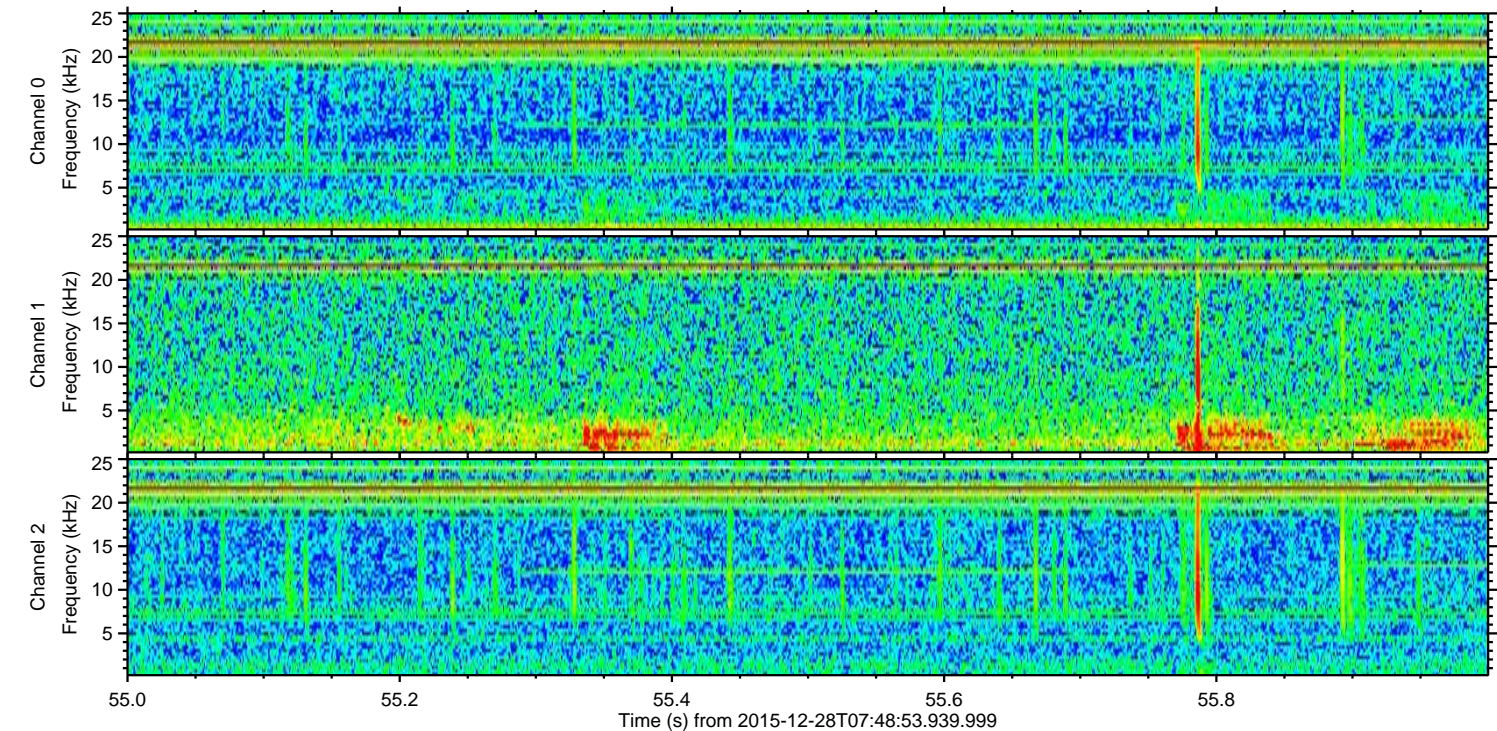
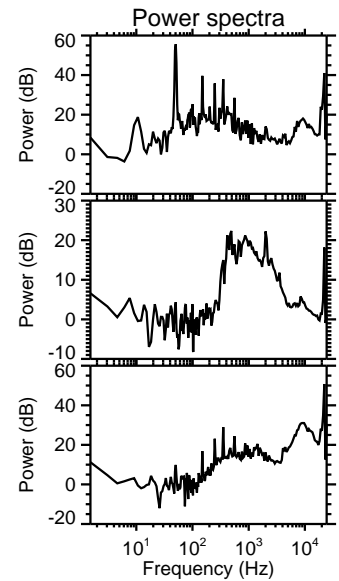
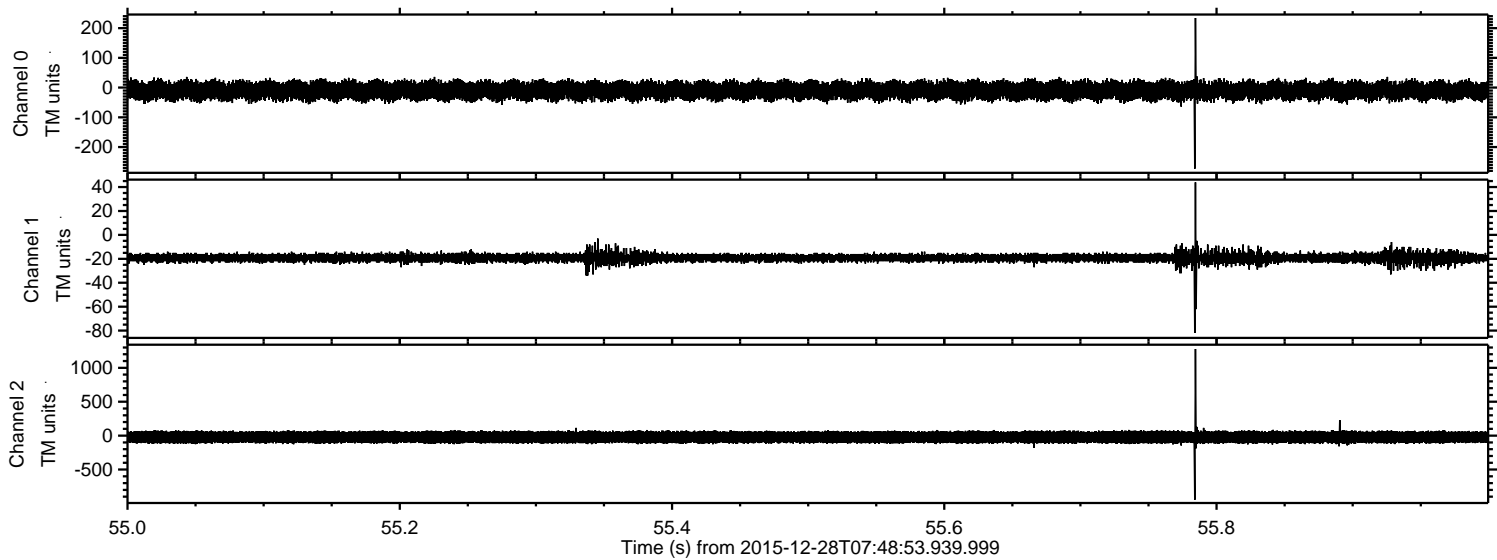
Channel 2
mn: -1230
mx: 1297
 μ : -22.1
 σ : 55.1

ELMAVAN 3D WAVEFORMS (Measured data sampled at 50 kHz) 51000 packets of 144 samples from 2015-12-28T07:48:53.939.999. Part 94/147

Processed Sat Mar 12 19:25:33 2016 by ELM ver.2012-10-06 from 001__elm20151228_074852__dat00.bin

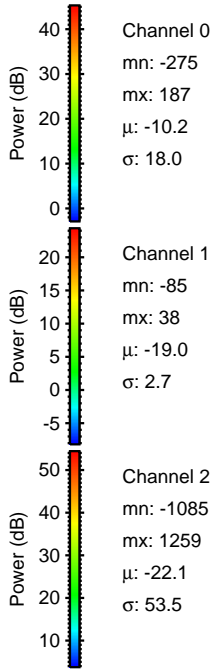
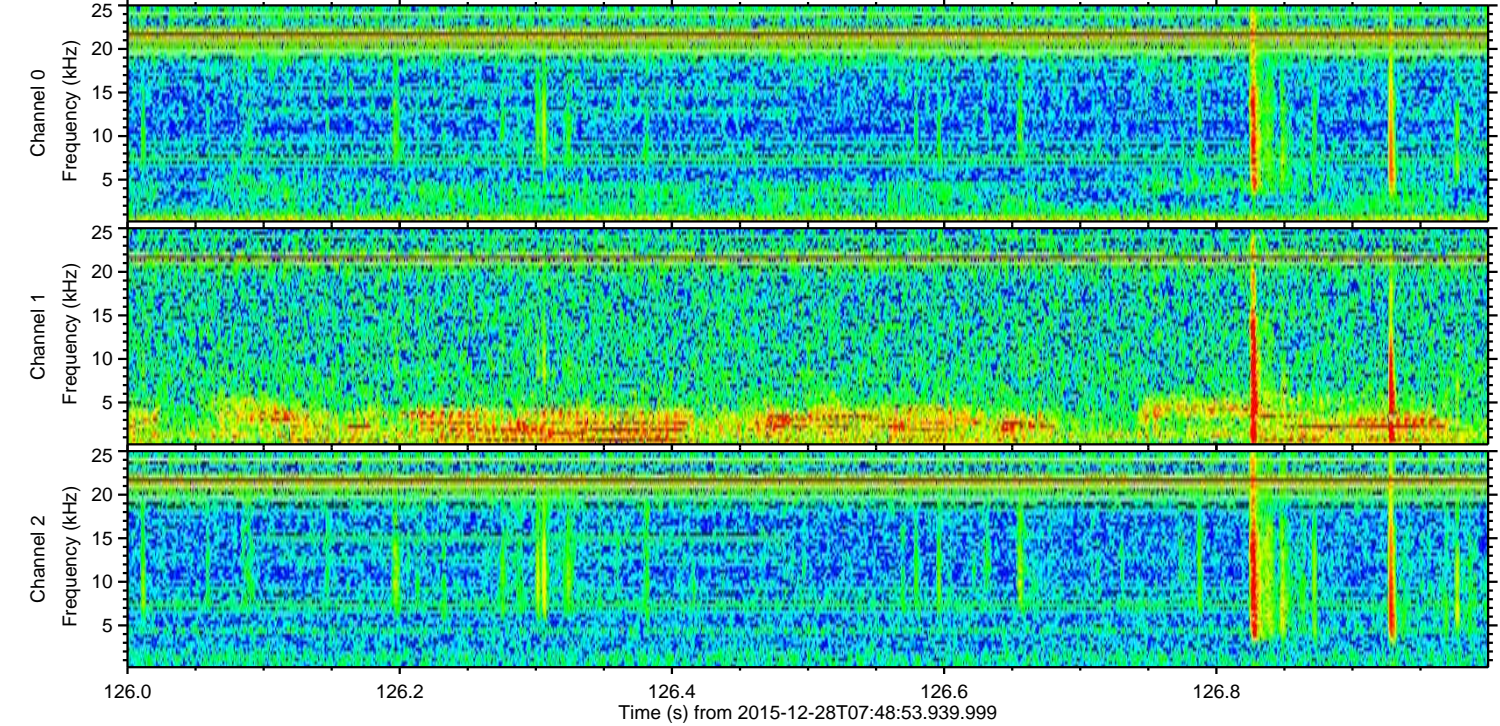
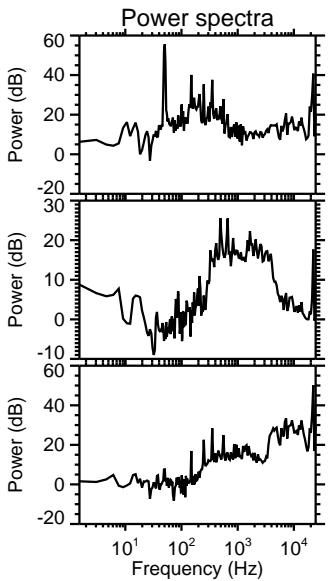
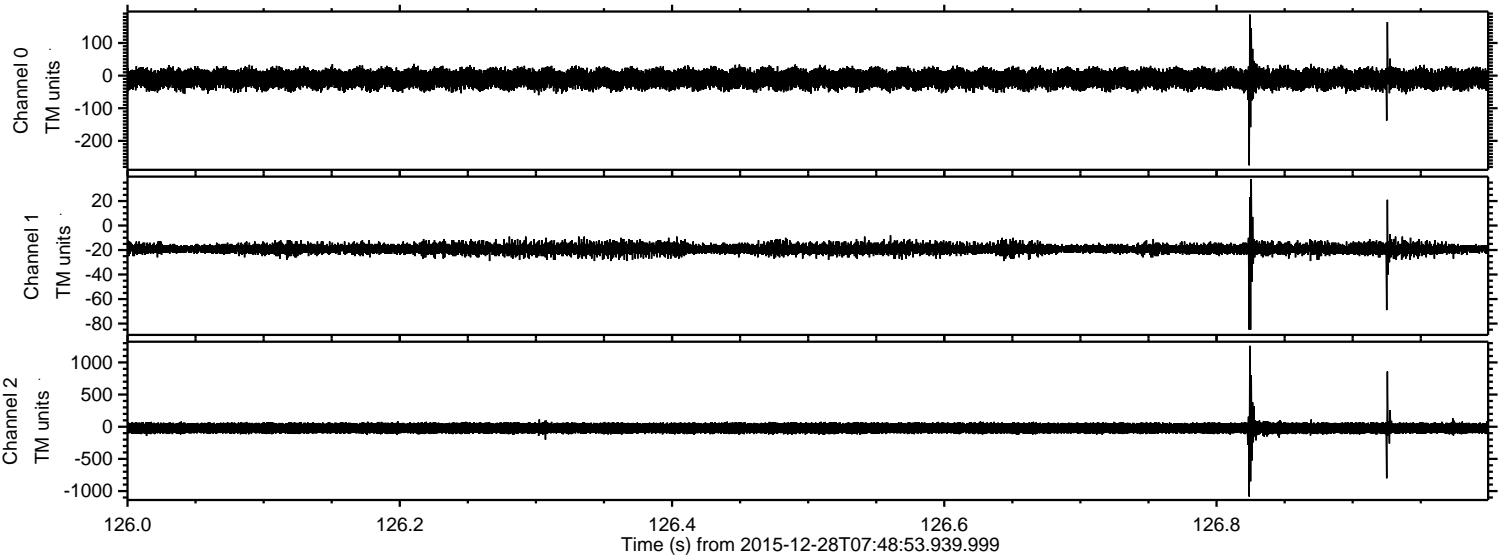


Processed Sat Mar 12 19:25:34 2016 by ELM ver.2012-10-06 from 001__elm20151228_074852__dat00.bin



ELMAVAN 3D WAVEFORMS (Measured data sampled at 50 kHz) 51000 packets of 144 samples from 2015-12-28T07:48:53.939.999. Part 127/147

Processed Sat Mar 12 19:25:35 2016 by ELM ver.2012-10-06 from 001__elm20151228_074852__dat00.bin



Channel 0
mn: -275
mx: 187
 μ : -10.2
 σ : 18.0

Channel 1
mn: -85
mx: 38
 μ : -19.0
 σ : 2.7

Channel 2
mn: -1085
mx: 1259
 μ : -22.1
 σ : 53.5

ELMAVAN 3D WAVEFORMS (Measured data sampled at 50 kHz) 51000 packets of 144 samples from 2015-12-28T07:48:53.939.999. Part 133/147

