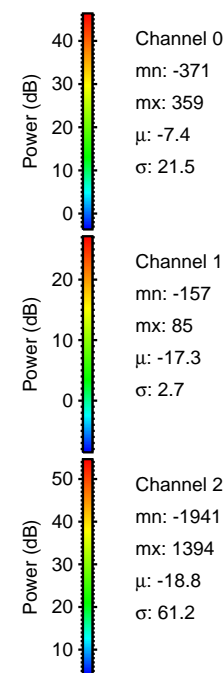
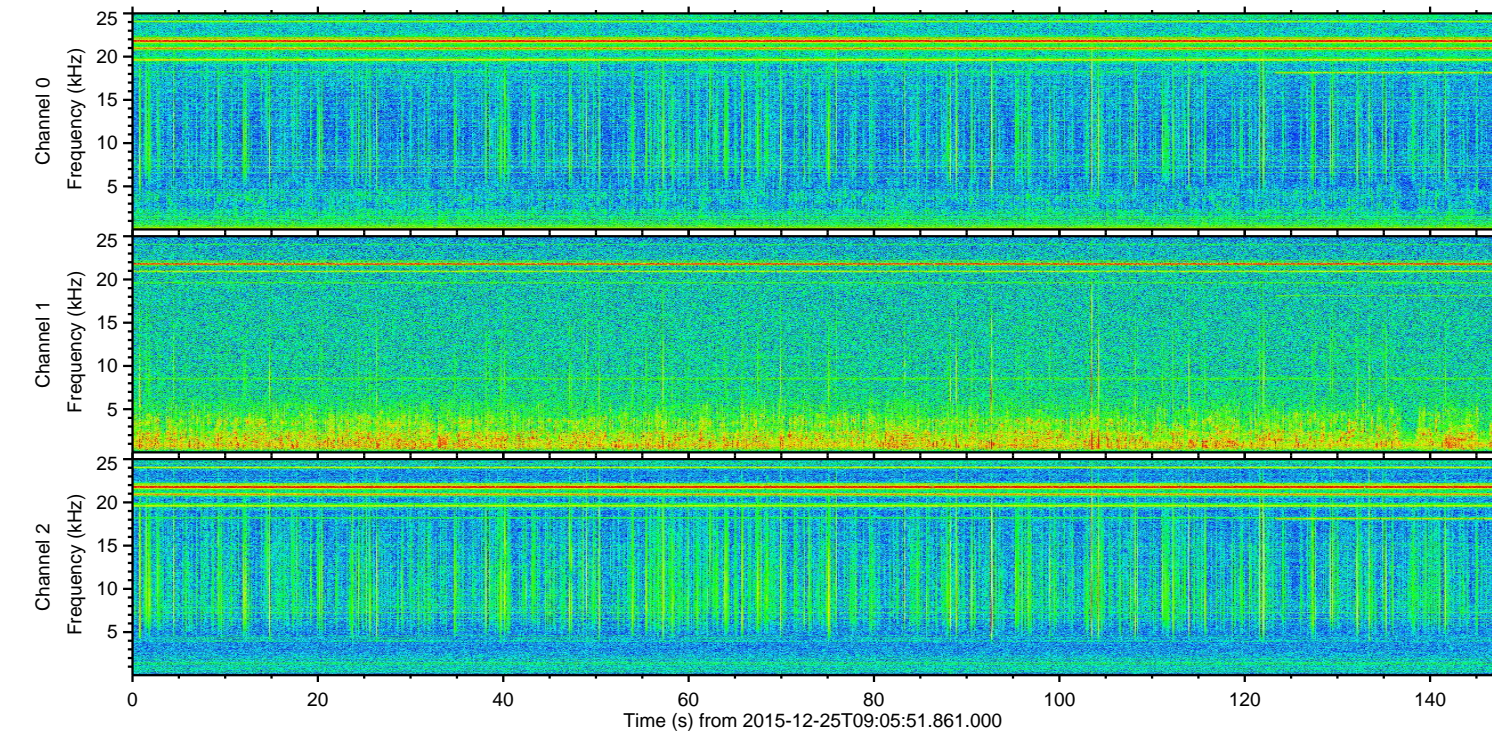
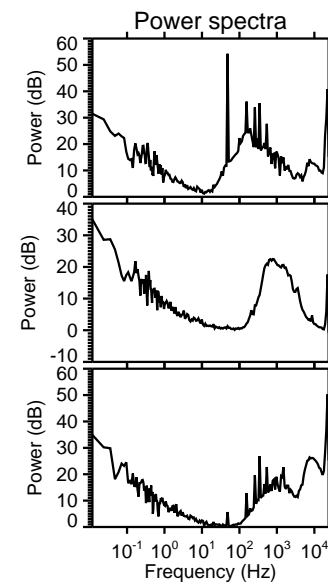
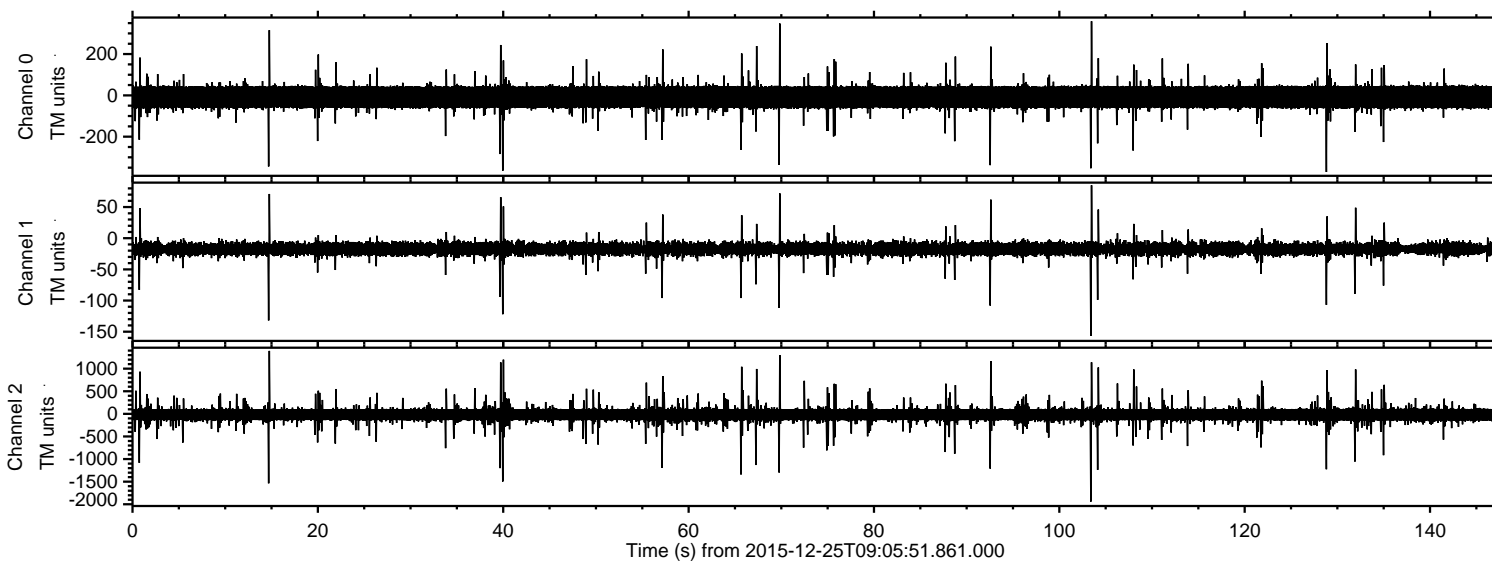


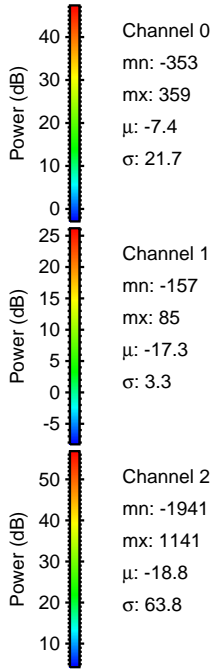
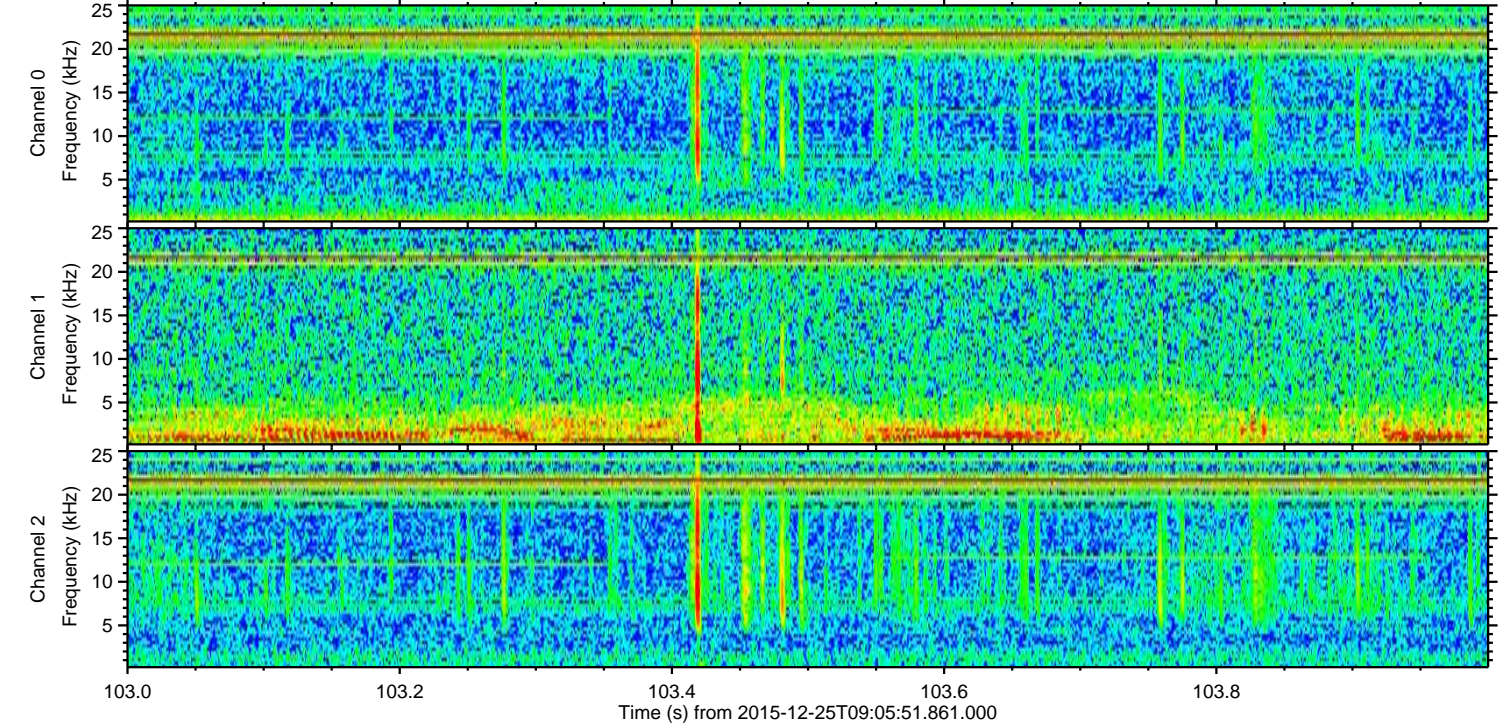
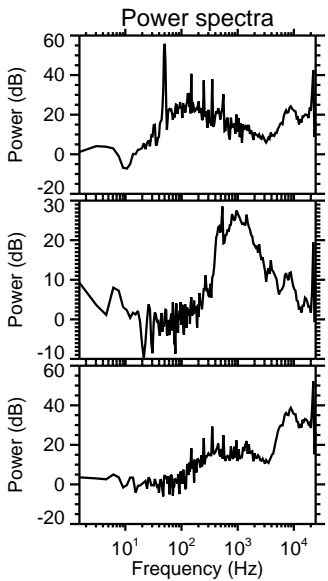
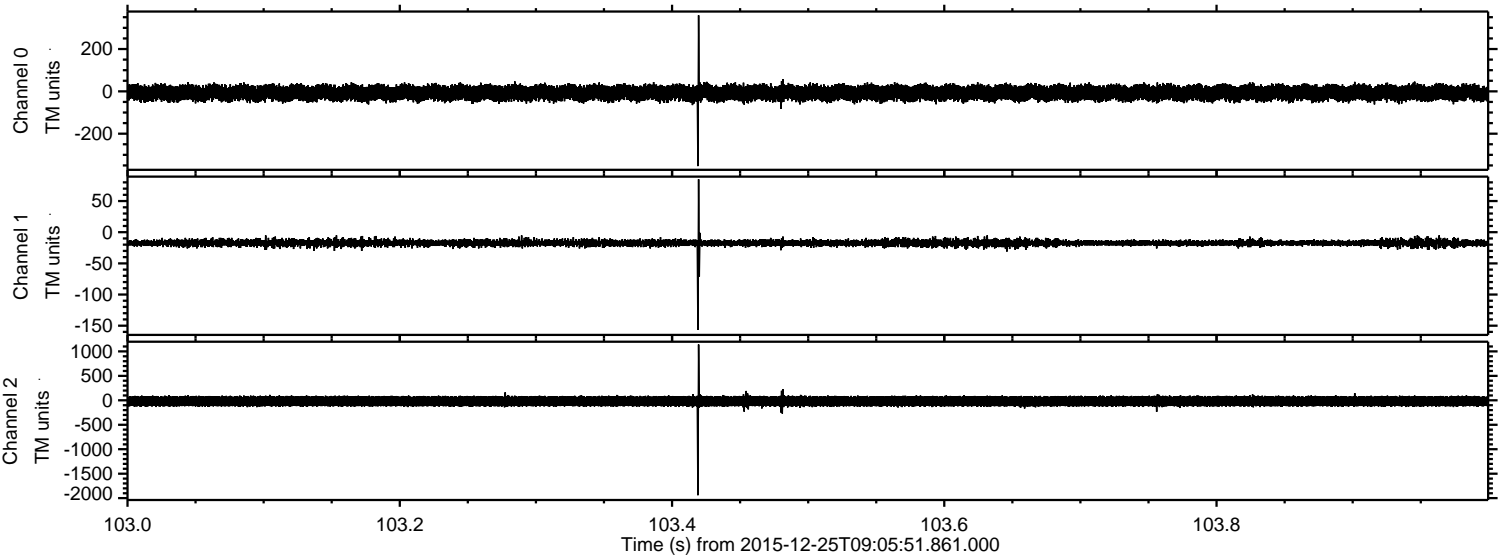
ELMAVAN 3D WAVEFORMS (Measured data sampled at 50 kHz) 51000 packets of 144 samples from 2015-12-25T09:05:51.861.000.

Processed Mon Feb 22 05:54:45 2016 by ELM ver.2012-10-06 from 001__elm20151225_090550__dat00.bin

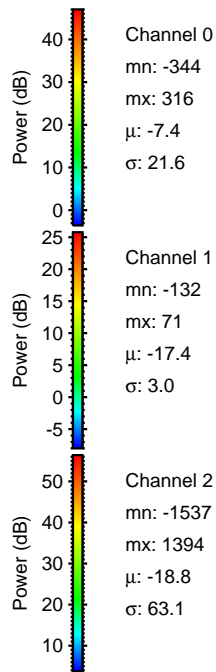
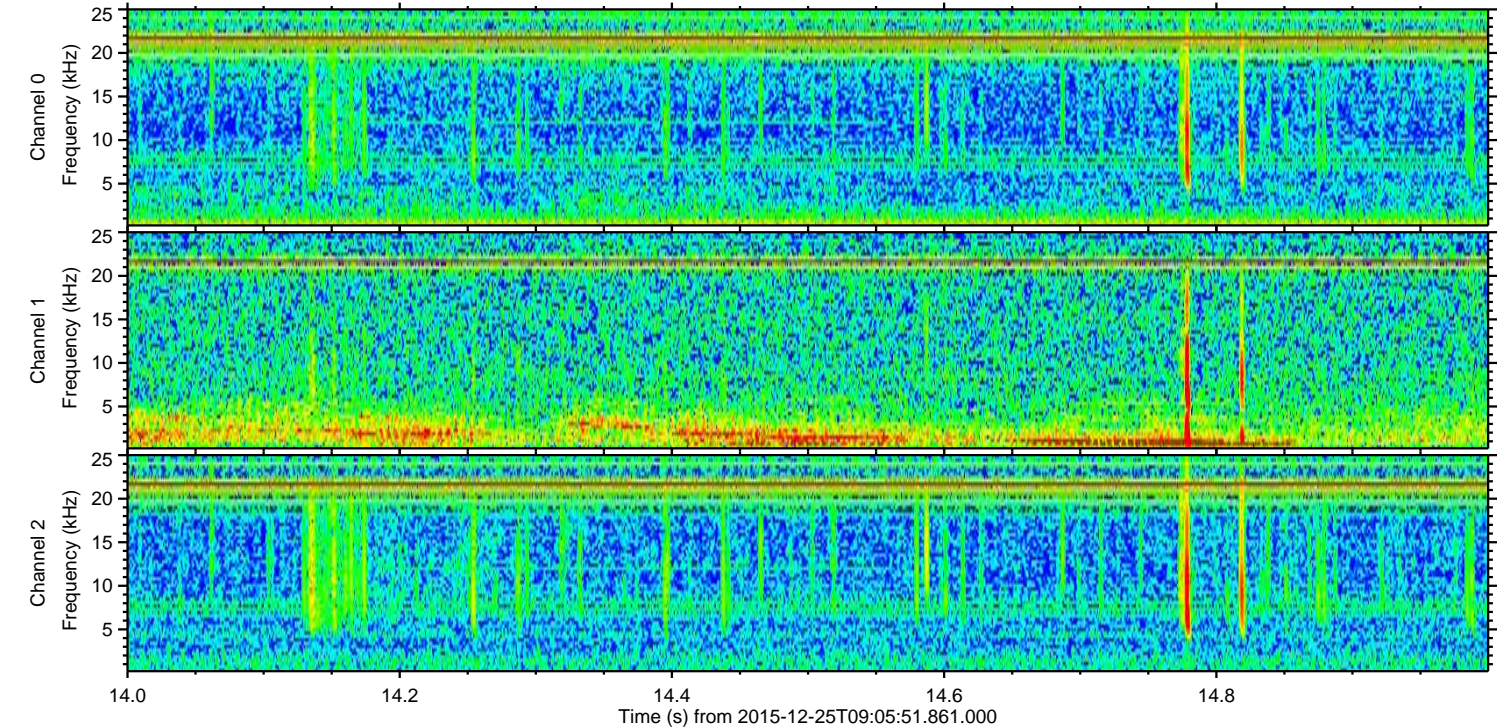
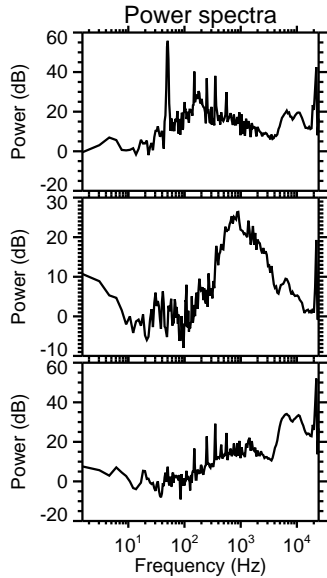
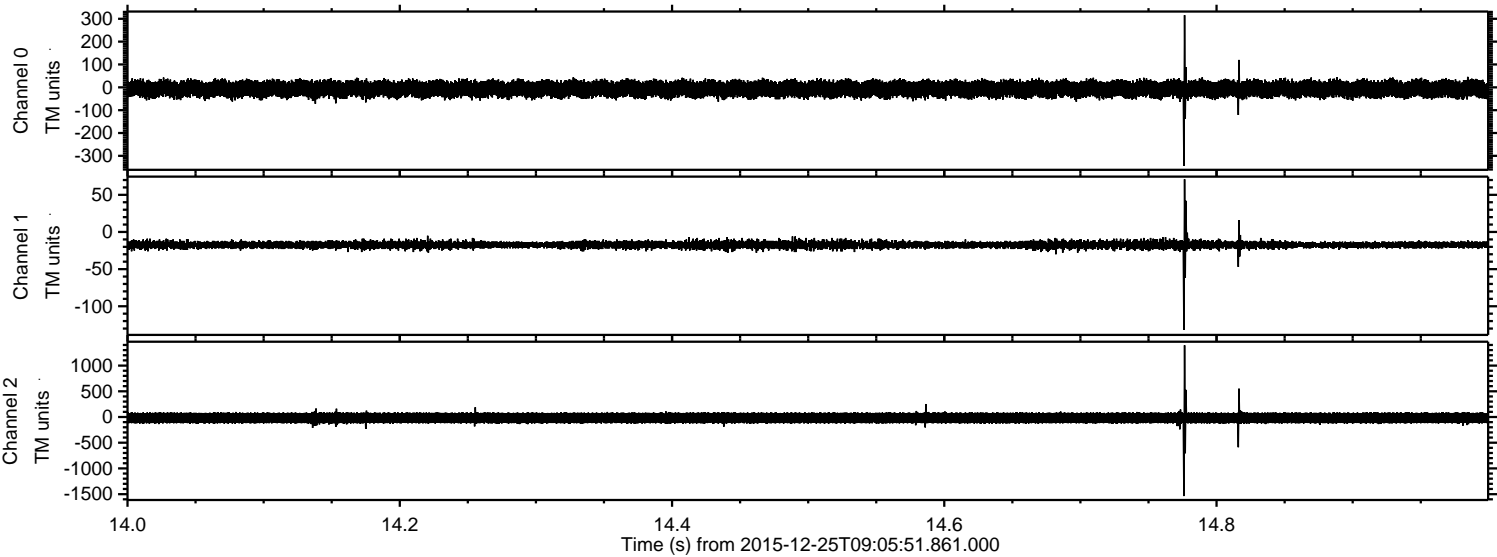


ELMAVAN 3D WAVEFORMS (Measured data sampled at 50 kHz) 51000 packets of 144 samples from 2015-12-25T09:05:51.861.000. Part 104/147

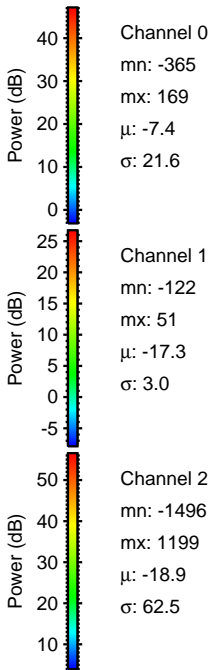
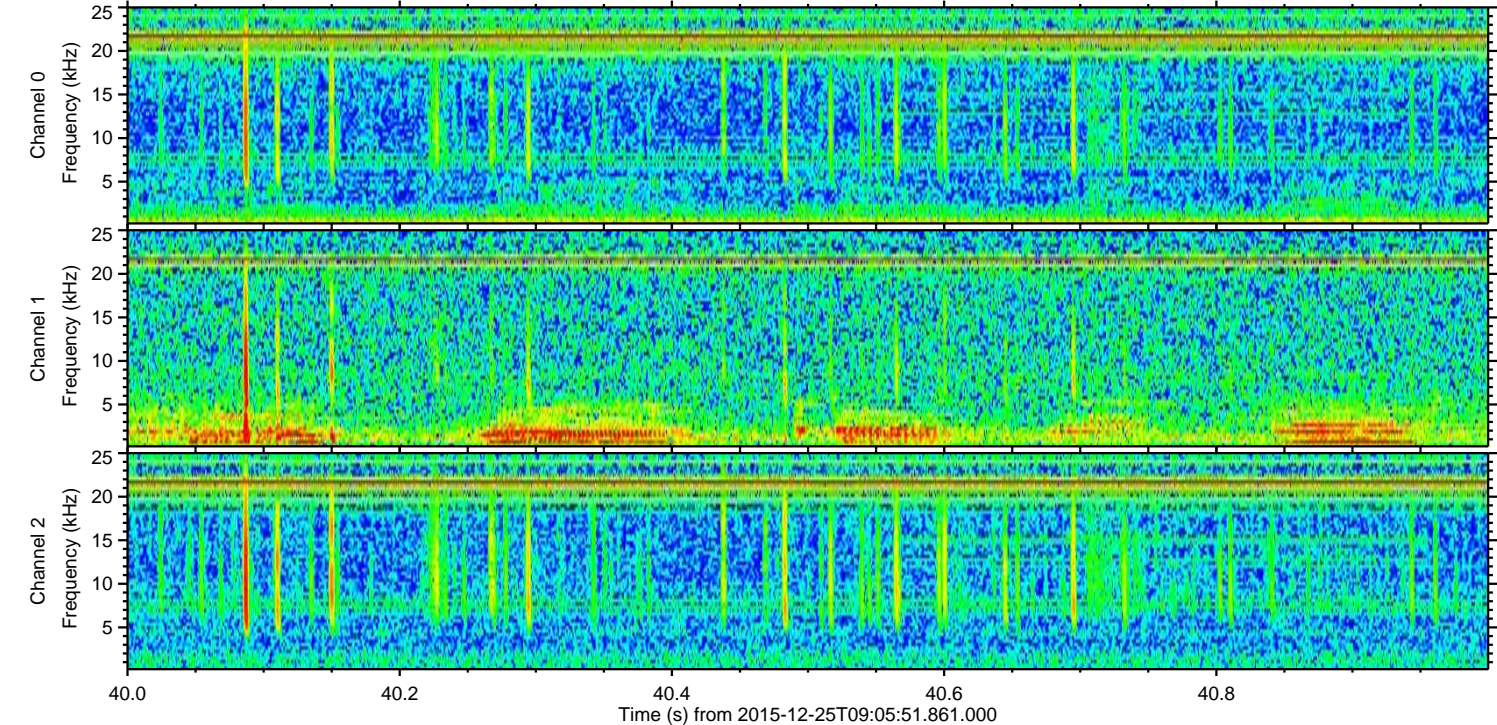
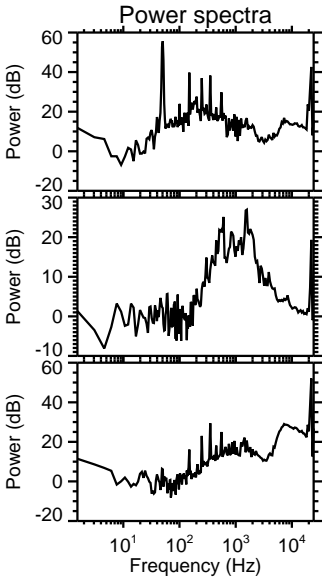
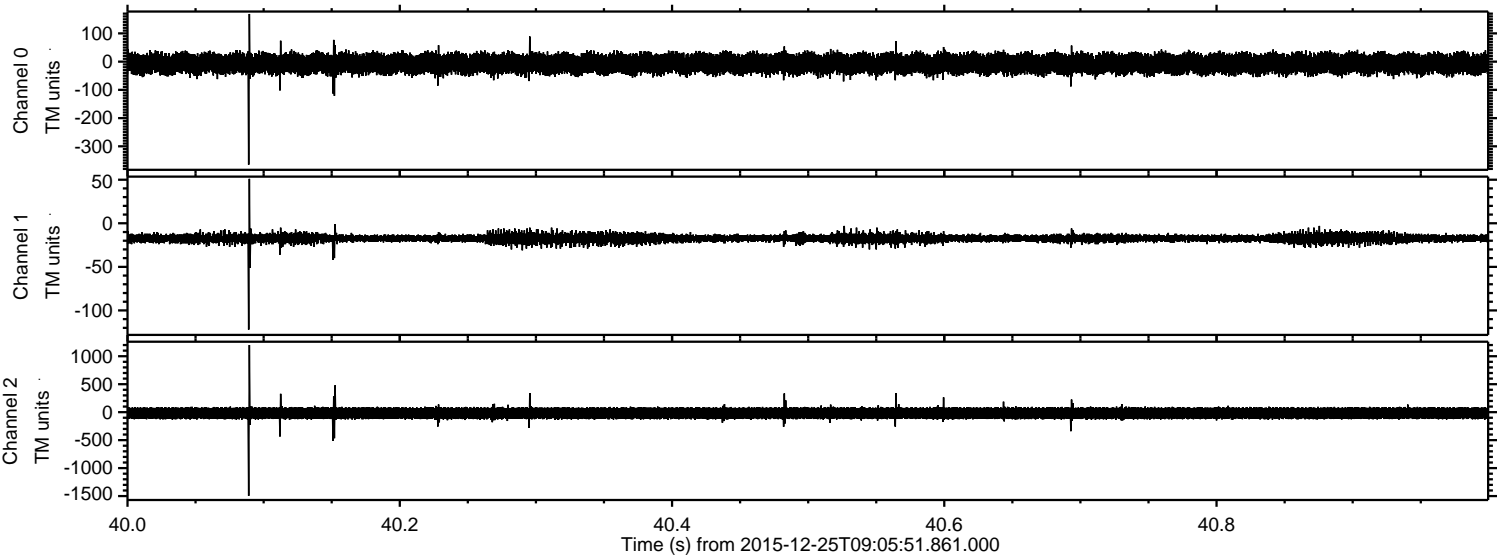
Processed Mon Feb 22 05:54:56 2016 by ELM ver.2012-10-06 from 001__elm20151225_090550__dat00.bin



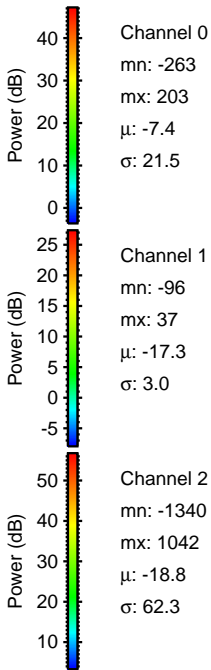
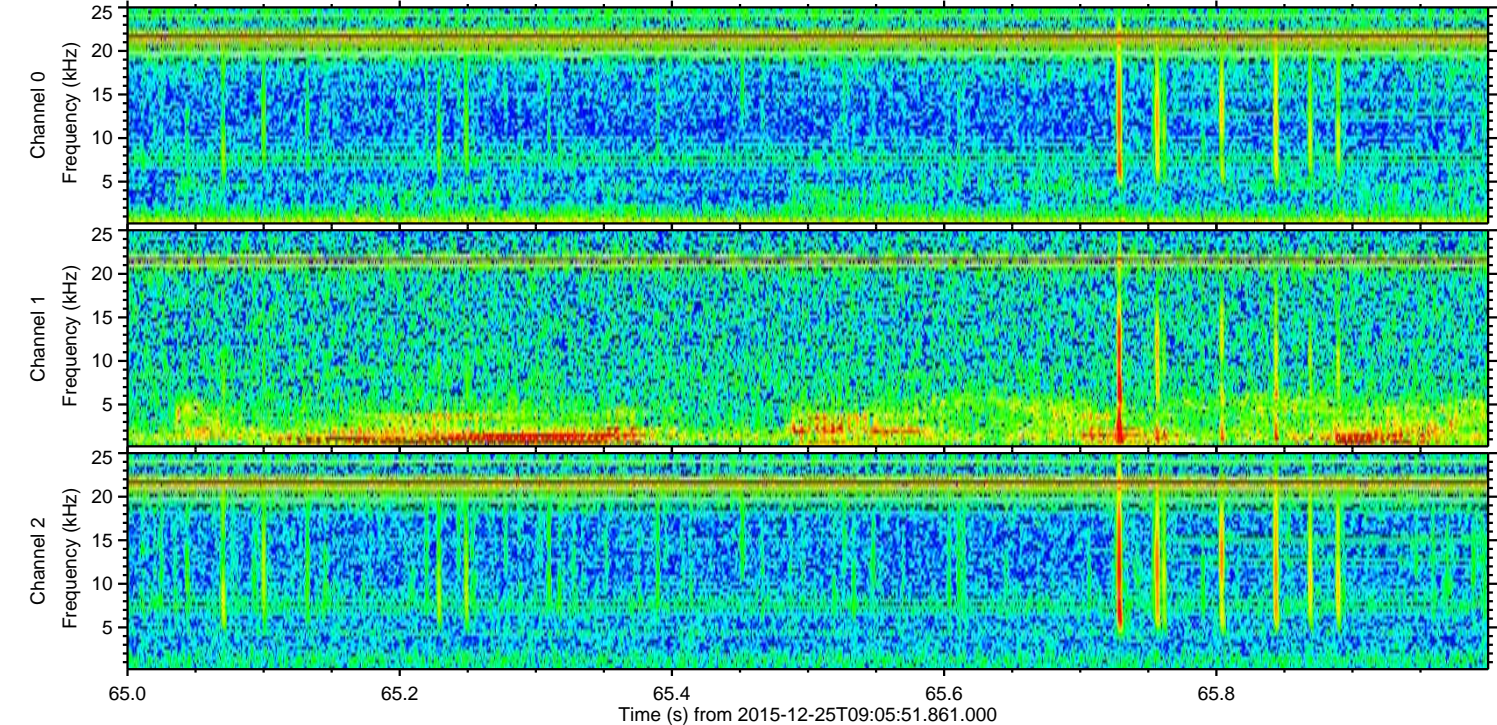
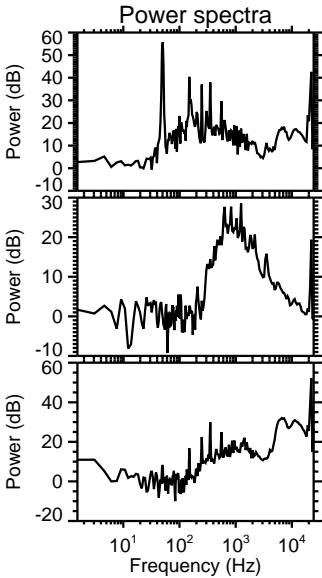
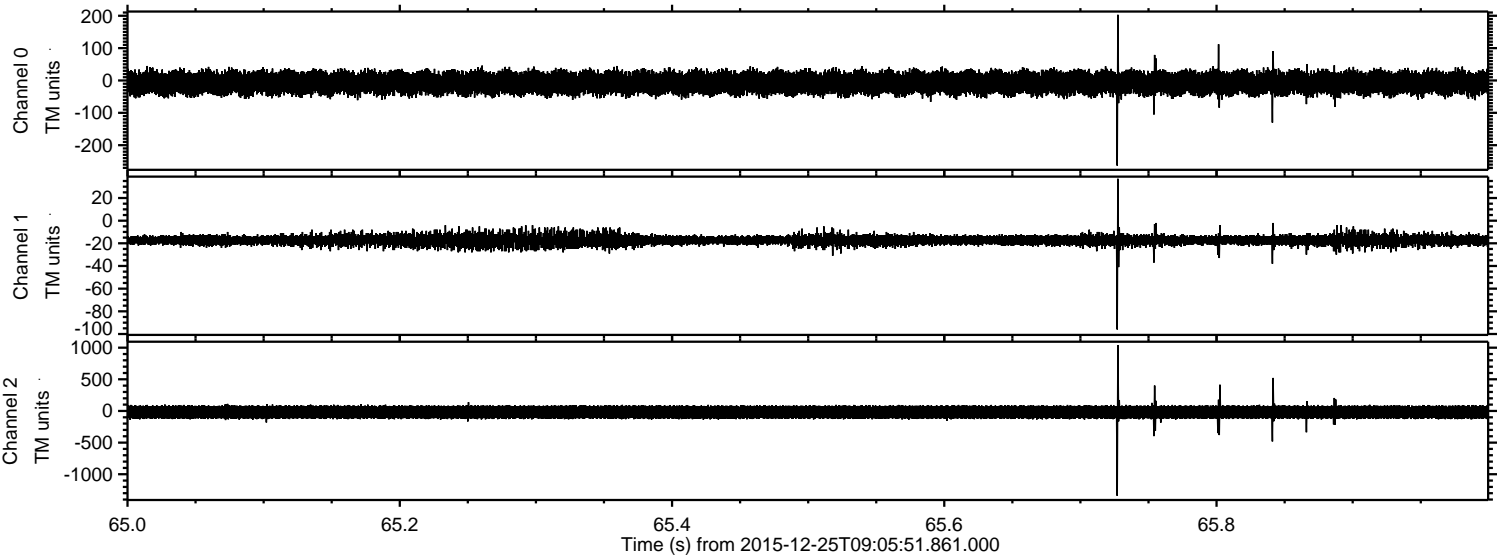
Processed Mon Feb 22 05:54:57 2016 by ELM ver.2012-10-06 from 001__elm20151225_090550__dat00.bin



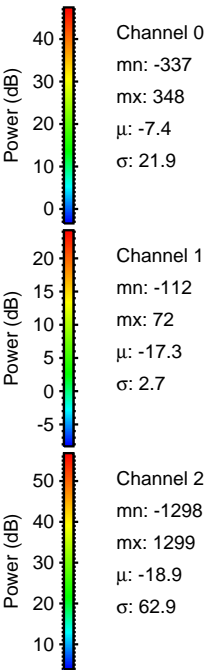
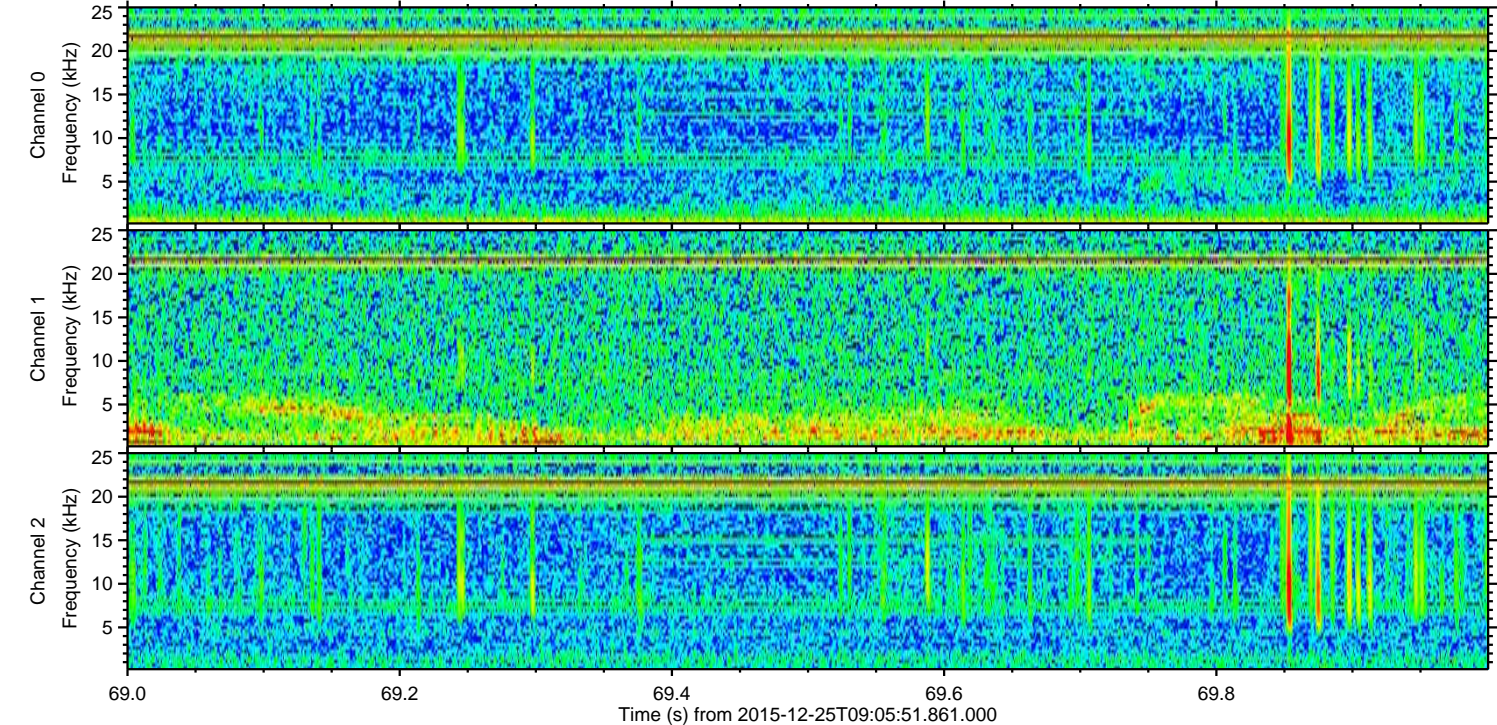
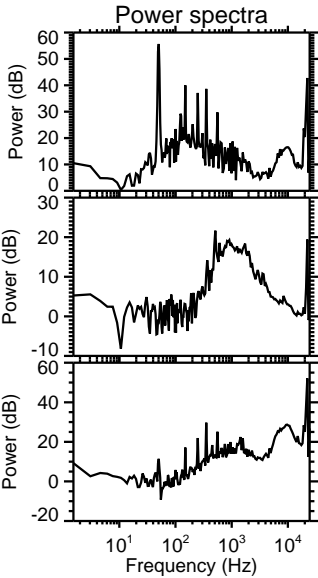
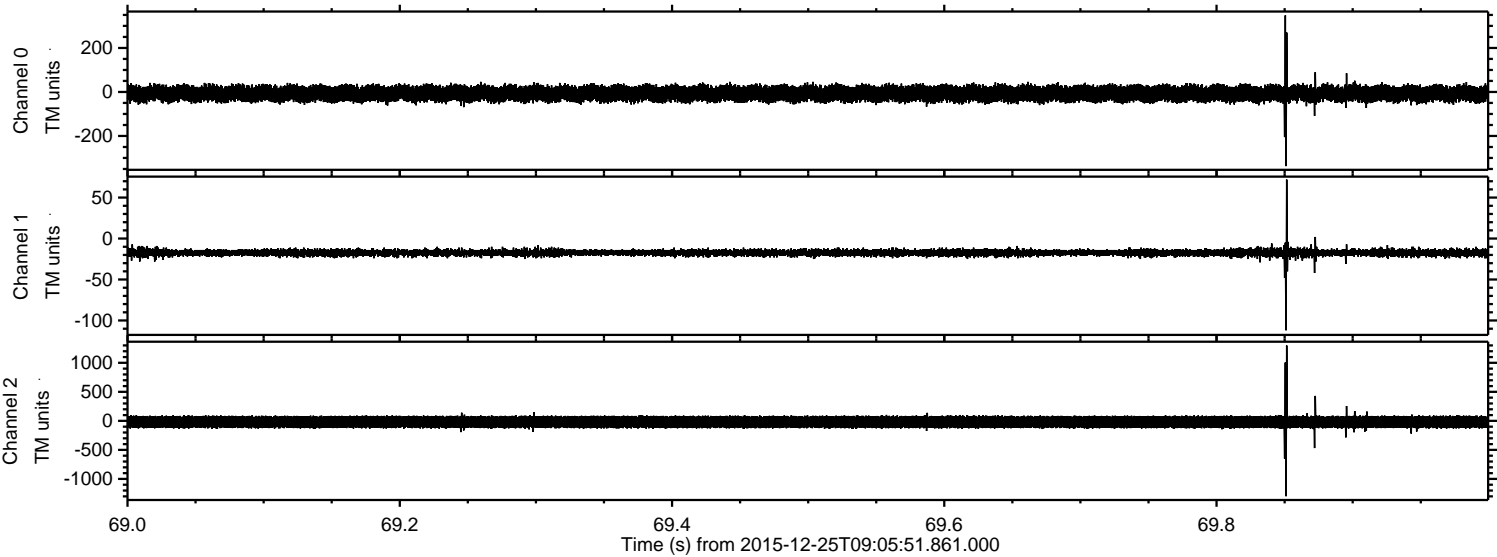
Processed Mon Feb 22 05:54:58 2016 by ELM ver.2012-10-06 from 001__elm20151225_090550__dat00.bin



Processed Mon Feb 22 05:54:59 2016 by ELM ver.2012-10-06 from 001__elm20151225_090550__dat00.bin

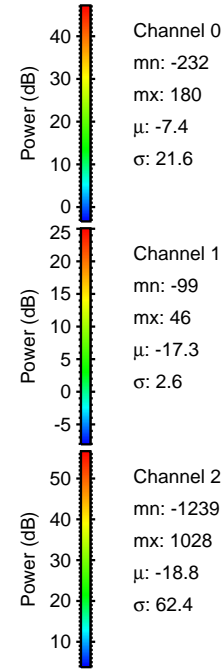
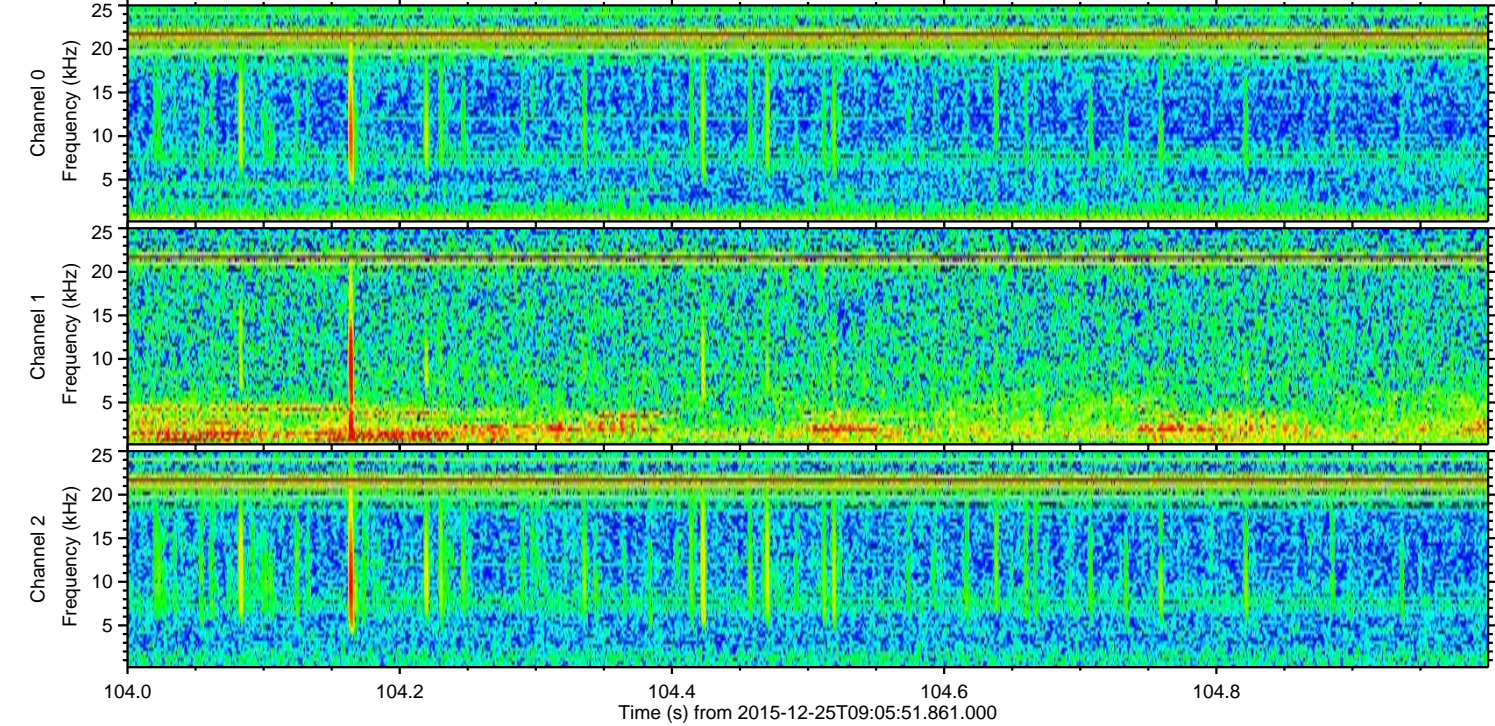
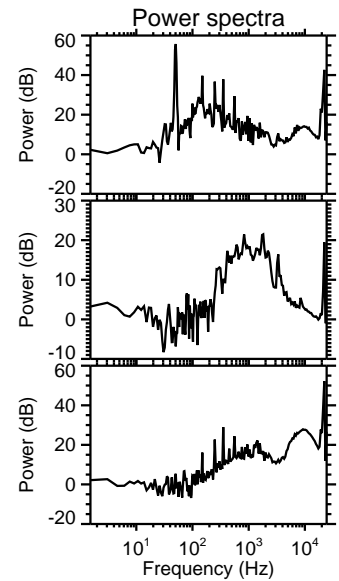
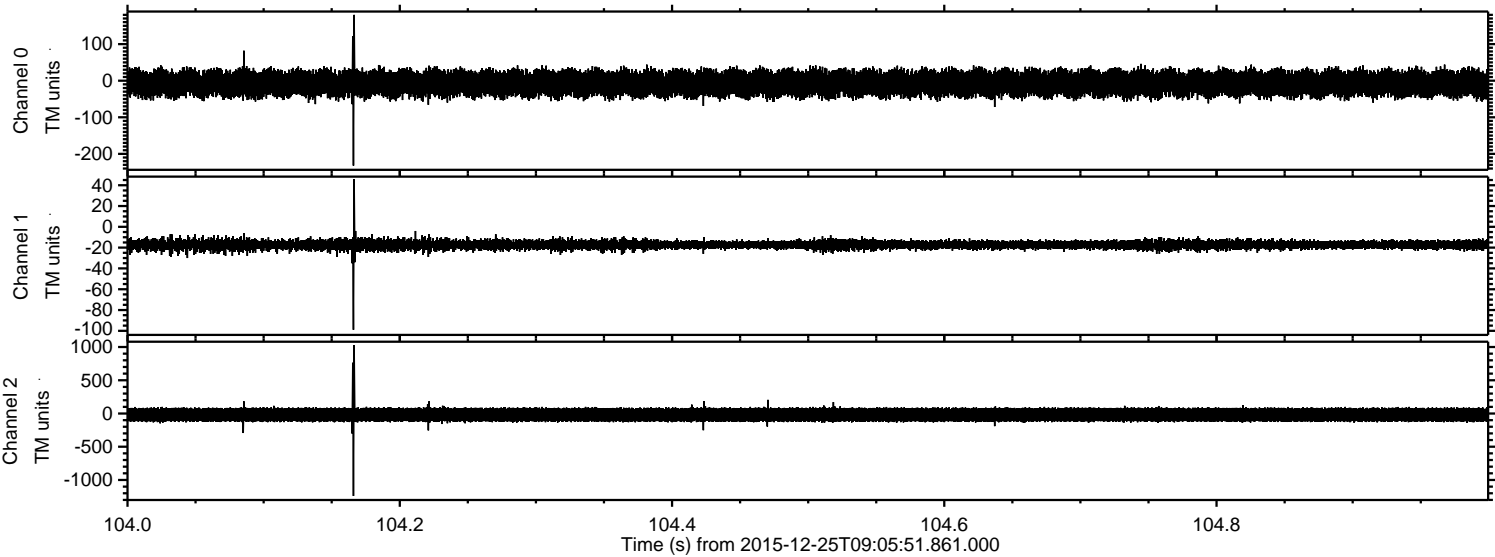


Processed Mon Feb 22 05:55:00 2016 by ELM ver.2012-10-06 from 001__elm20151225_090550__dat00.bin



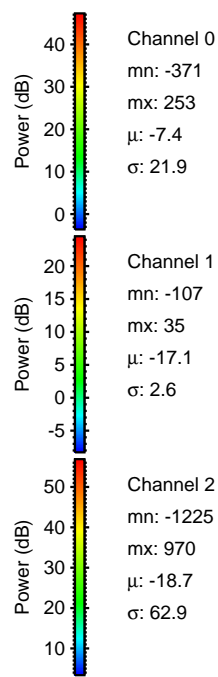
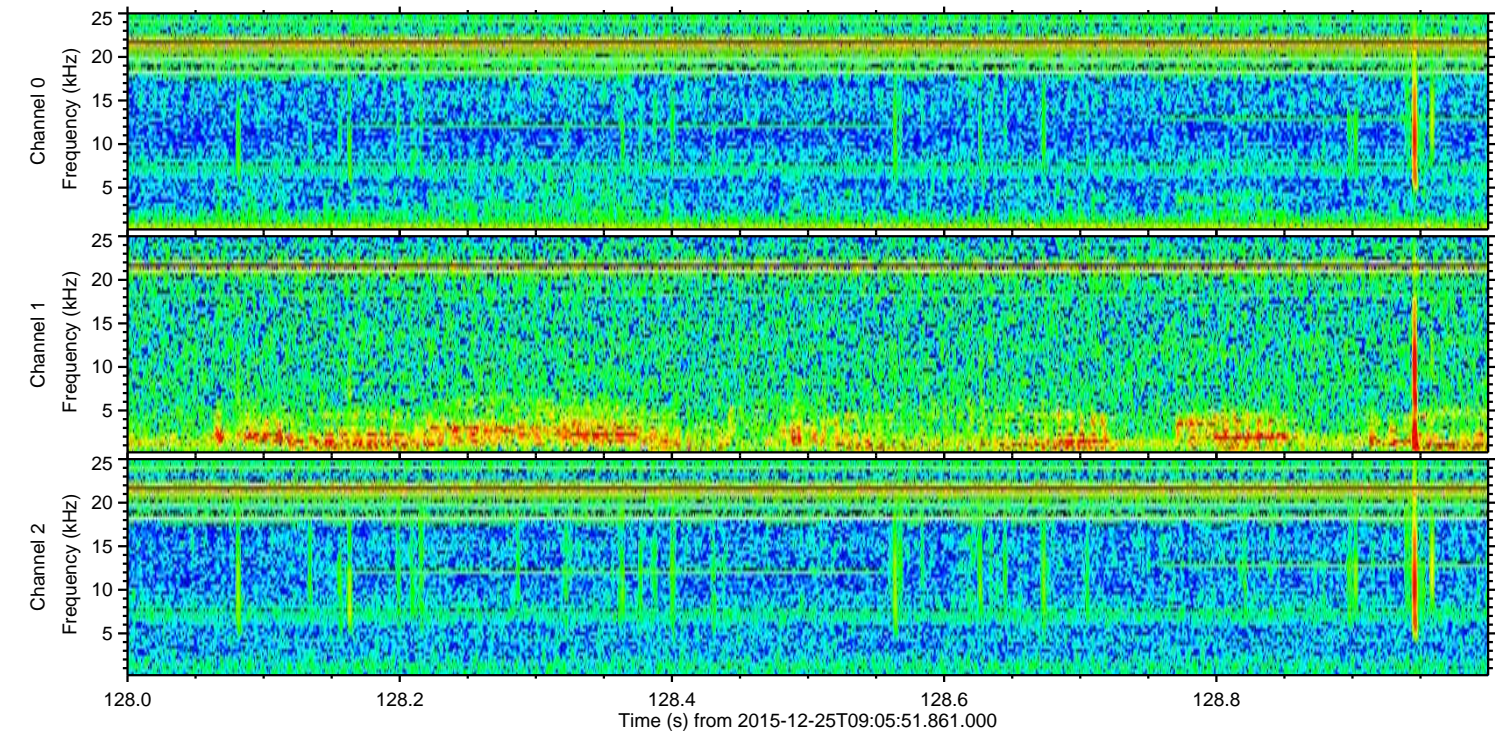
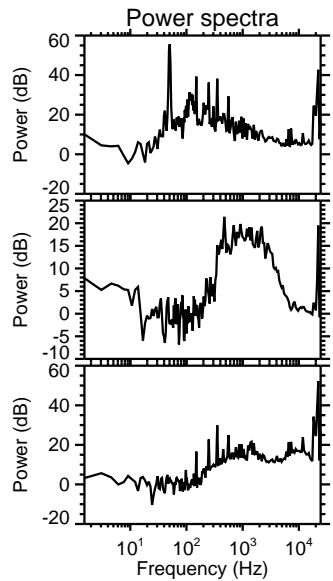
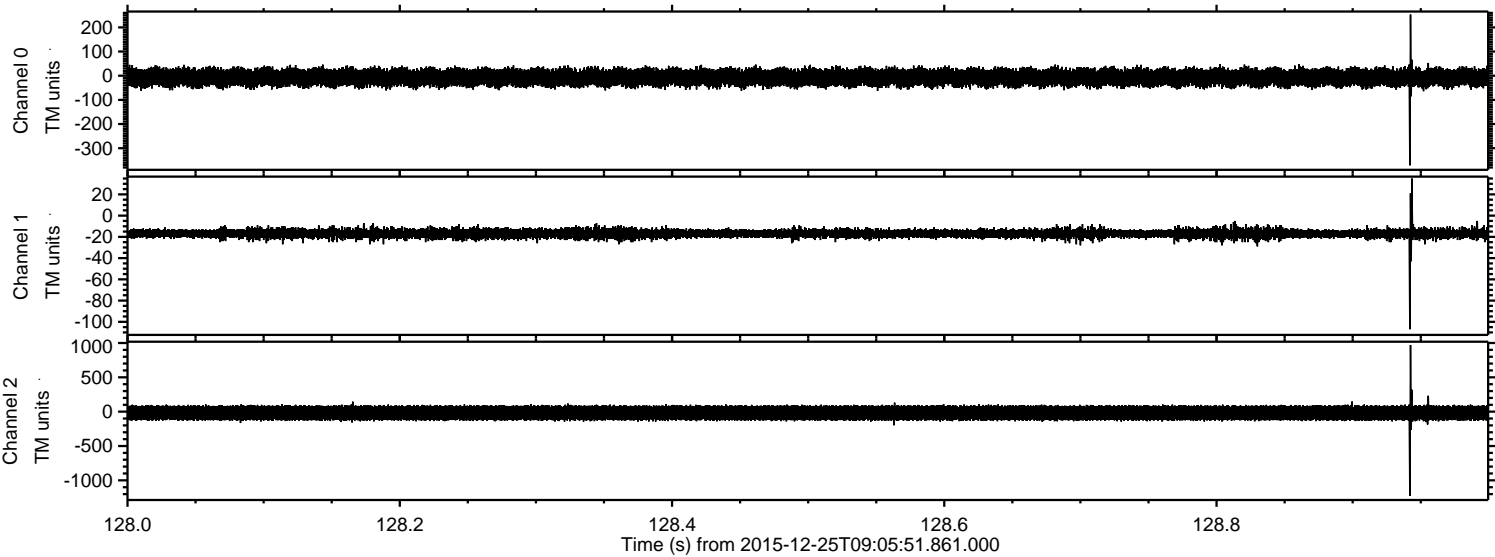
ELMAVAN 3D WAVEFORMS (Measured data sampled at 50 kHz) 51000 packets of 144 samples from 2015-12-25T09:05:51.861.000. Part 105/147

Processed Mon Feb 22 05:55:01 2016 by ELM ver.2012-10-06 from 001__elm20151225_090550__dat00.bin



ELMAVAN 3D WAVEFORMS (Measured data sampled at 50 kHz) 51000 packets of 144 samples from 2015-12-25T09:05:51.861.000. Part 129/147

Processed Mon Feb 22 05:55:02 2016 by ELM ver.2012-10-06 from 001__elm20151225_090550__dat00.bin

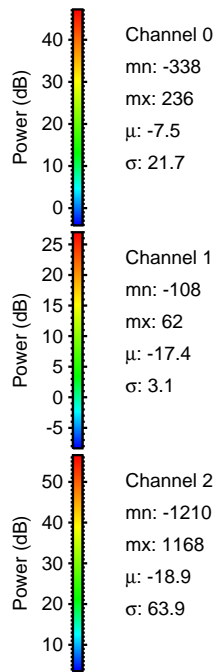
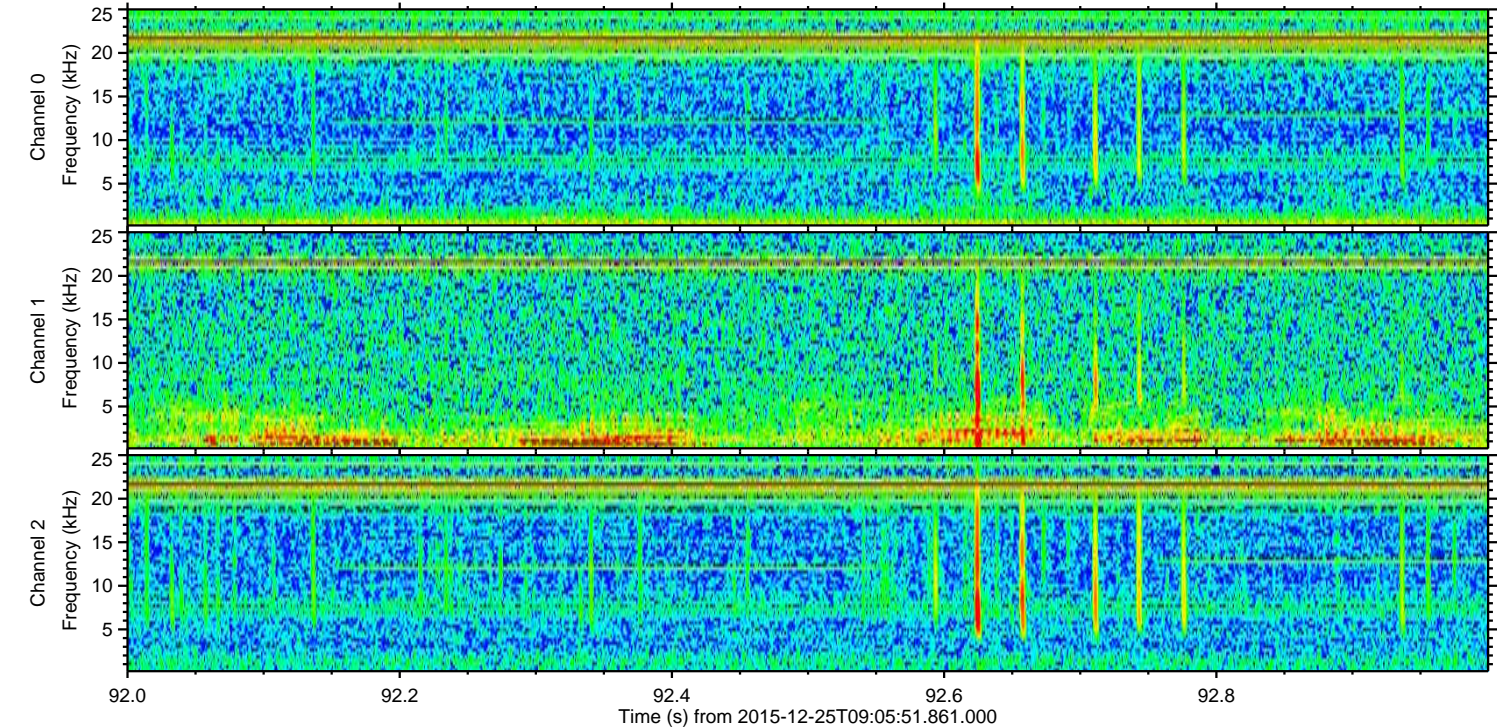
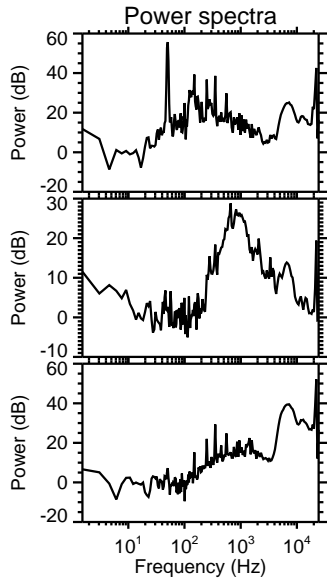
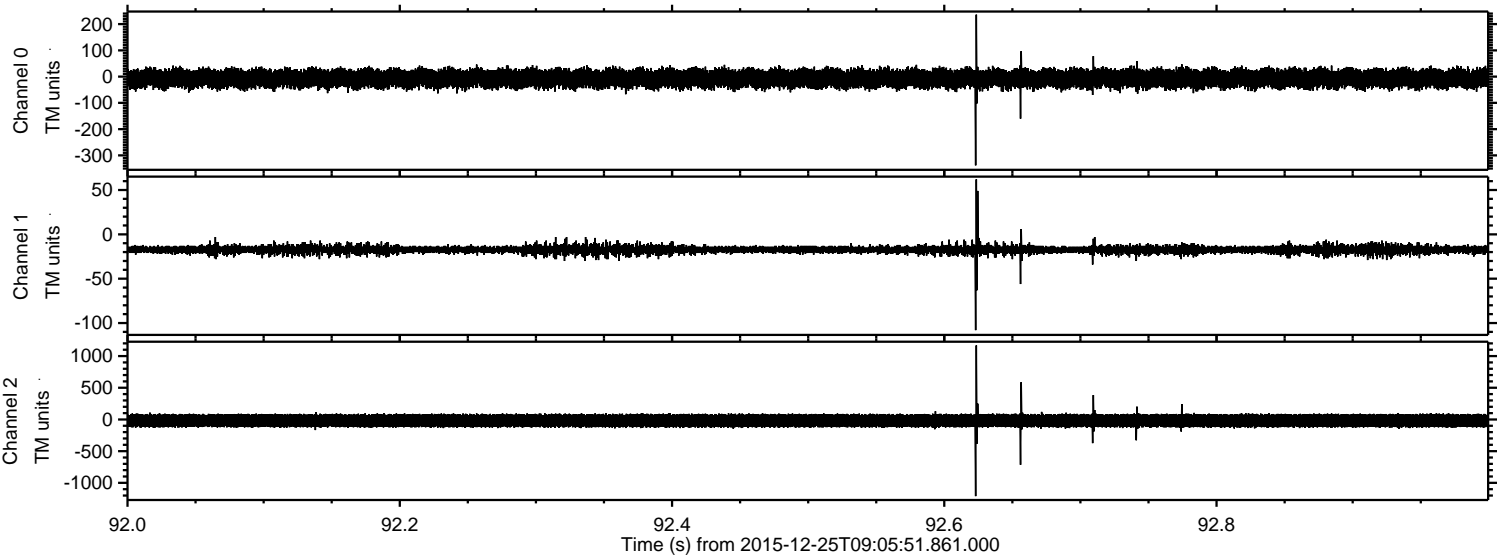


Channel 0
mn: -371
mx: 253
 μ : -7.4
 σ : 21.9

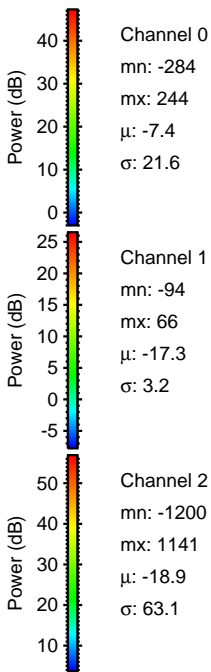
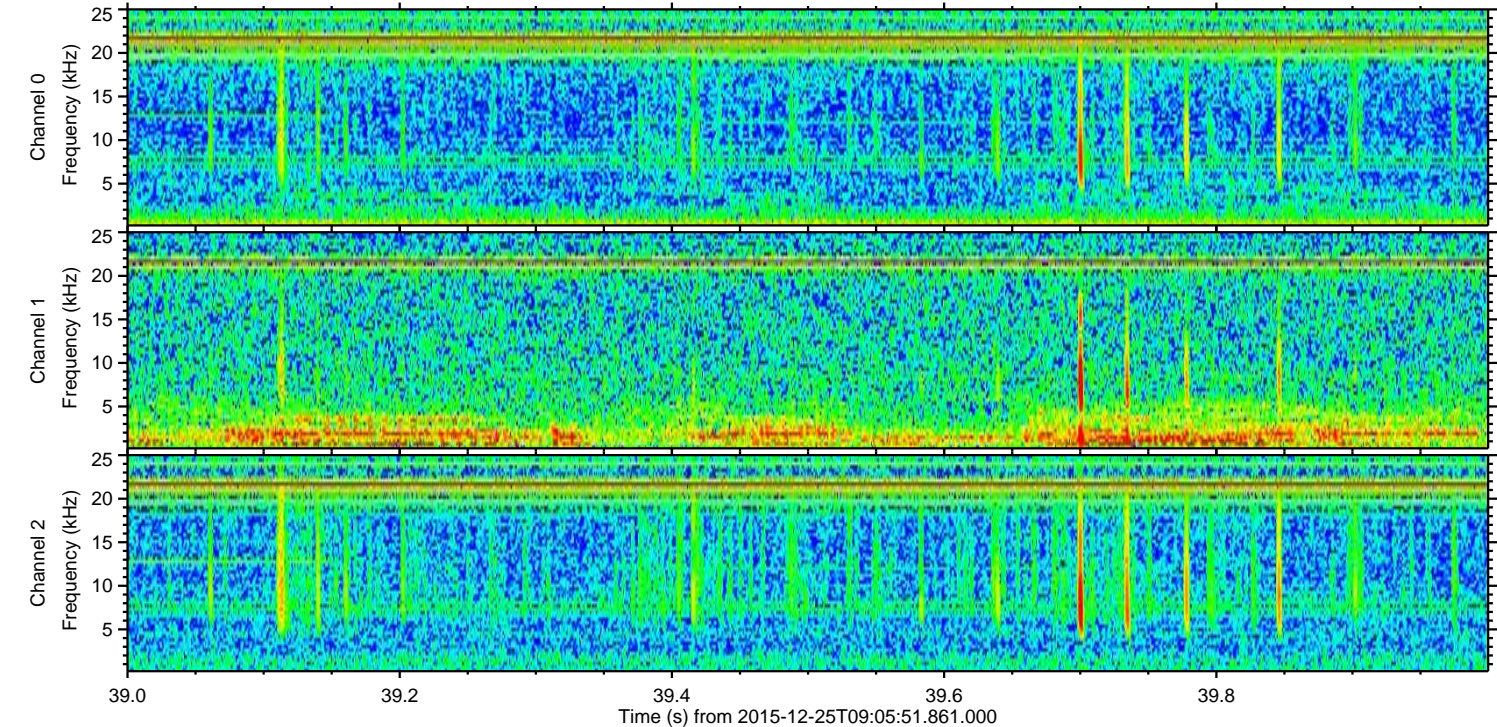
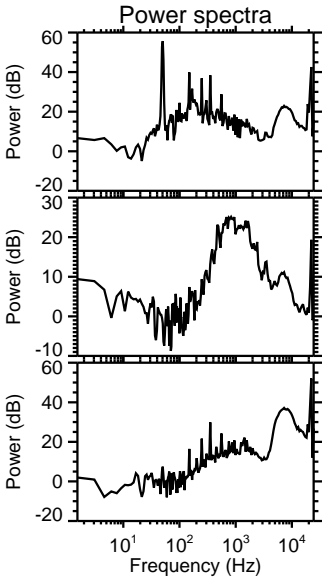
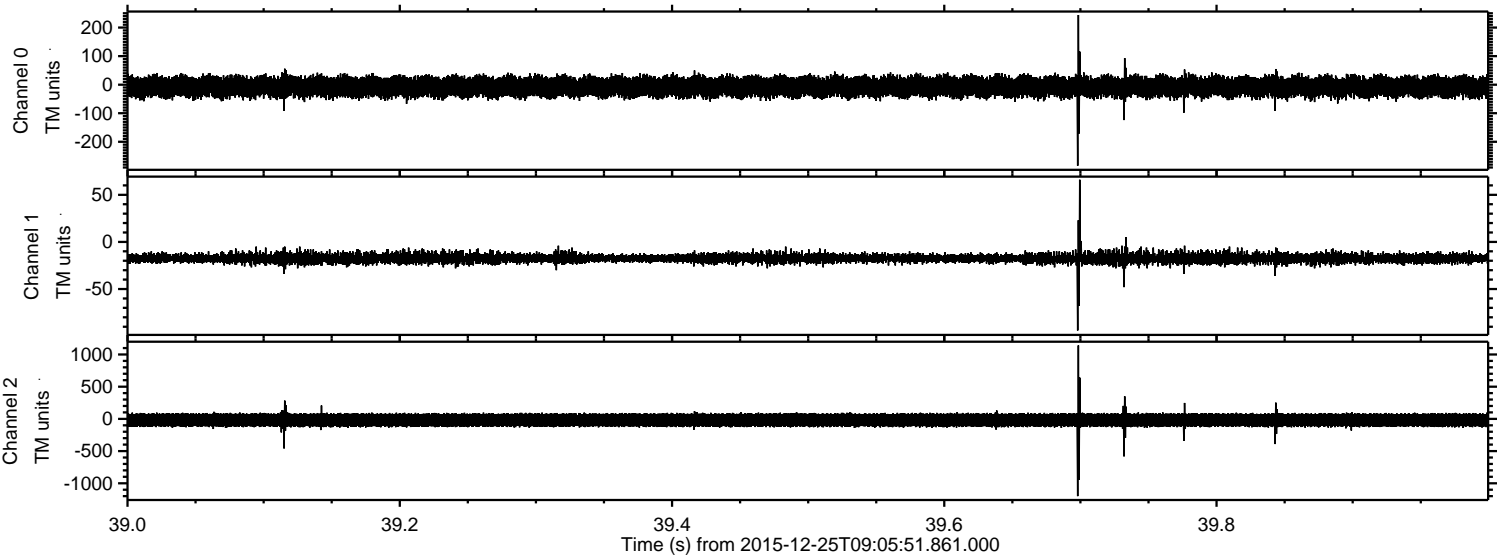
Channel 1
mn: -107
mx: 35
 μ : -17.1
 σ : 2.6

Channel 2
mn: -1225
mx: 970
 μ : -18.7
 σ : 62.9

Processed Mon Feb 22 05:55:03 2016 by ELM ver.2012-10-06 from 001__elm20151225_090550__dat00.bin



Processed Mon Feb 22 05:55:04 2016 by ELM ver.2012-10-06 from 001__elm20151225_090550__dat00.bin



Processed Mon Feb 22 05:55:05 2016 by ELM ver.2012-10-06 from 001__elm20151225_090550__dat00.bin

