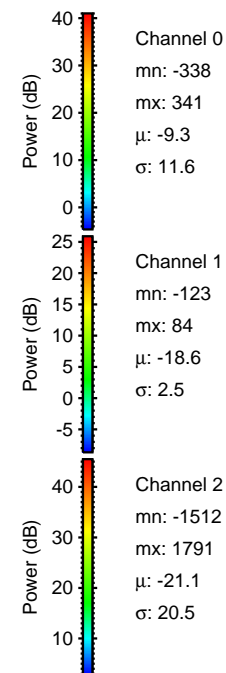
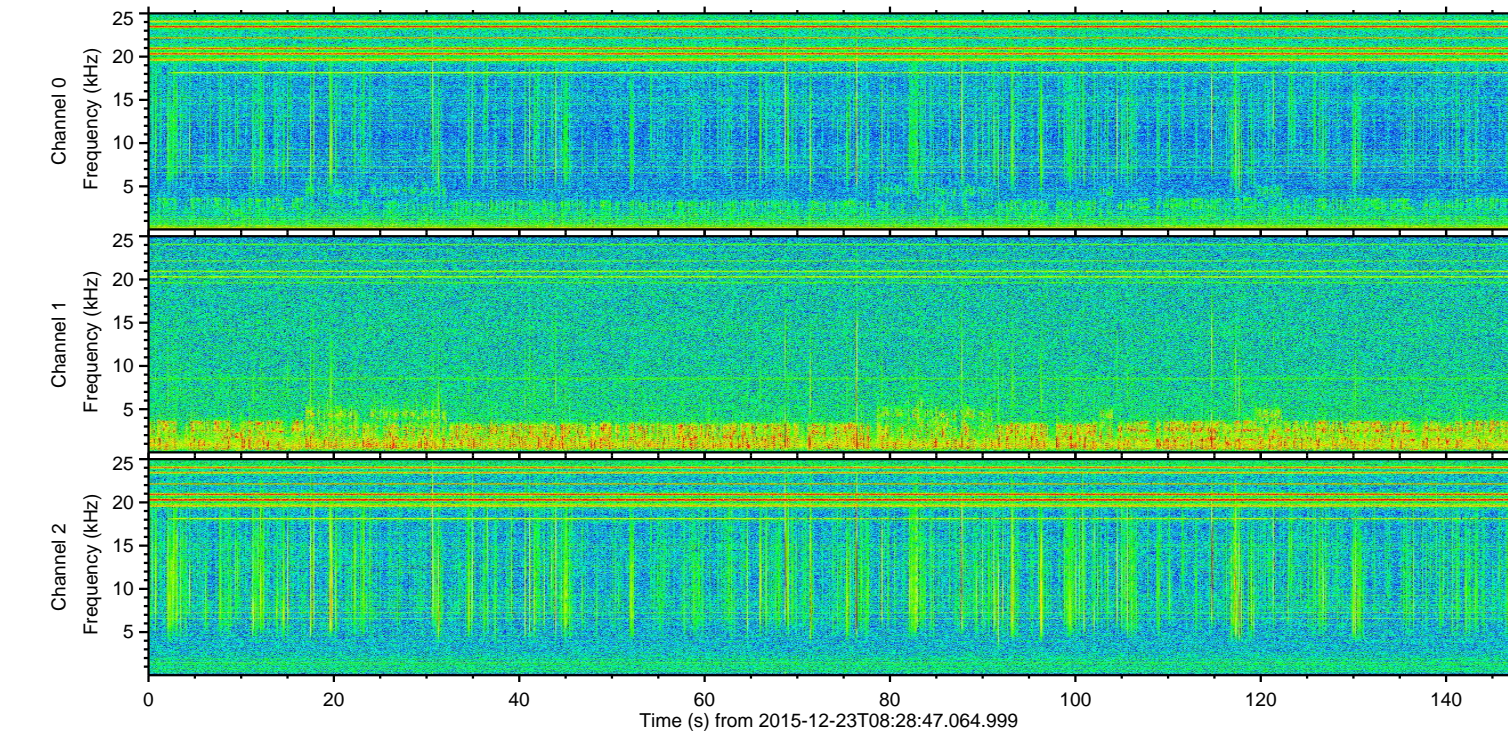
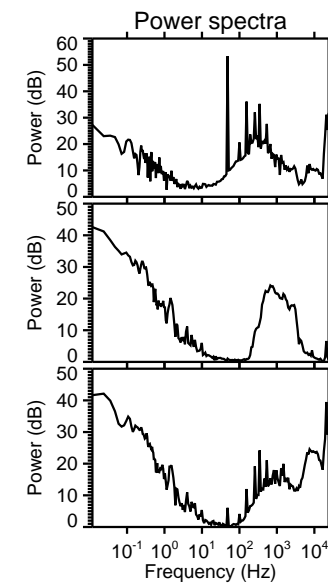
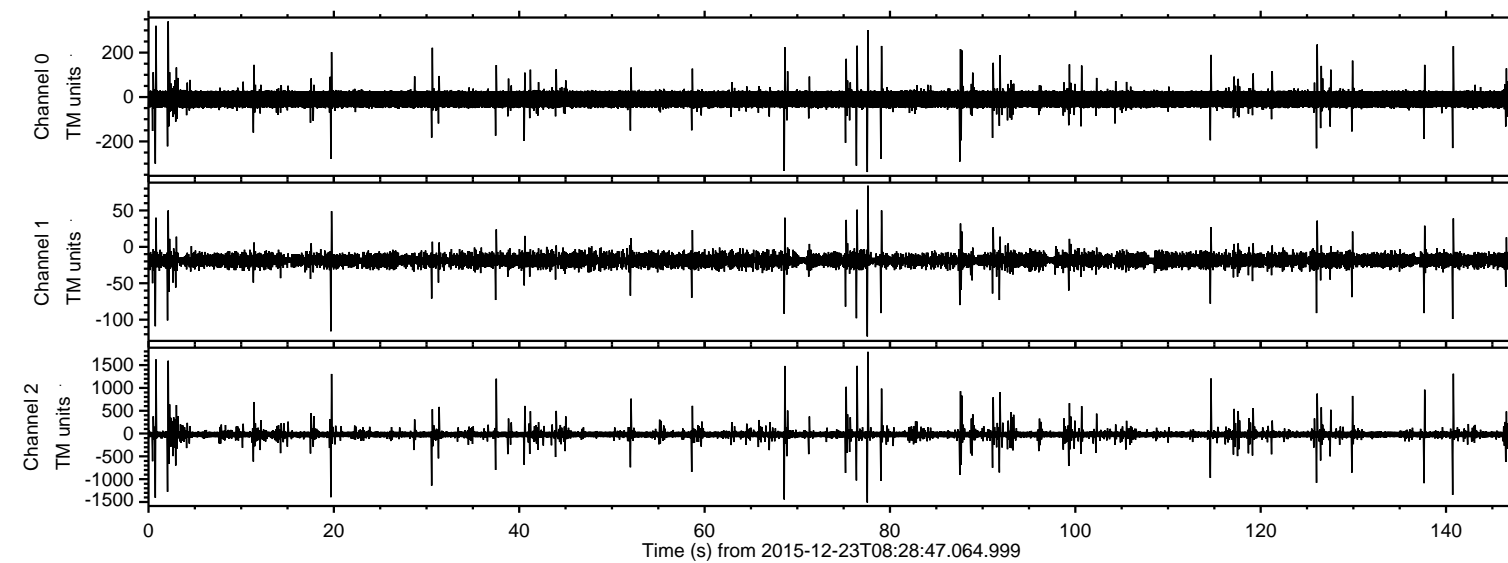
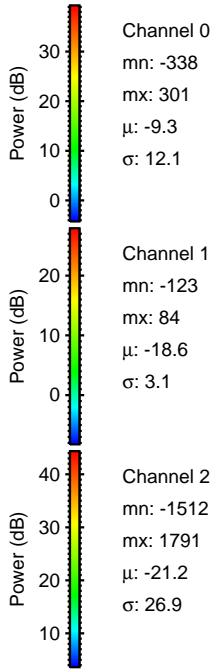
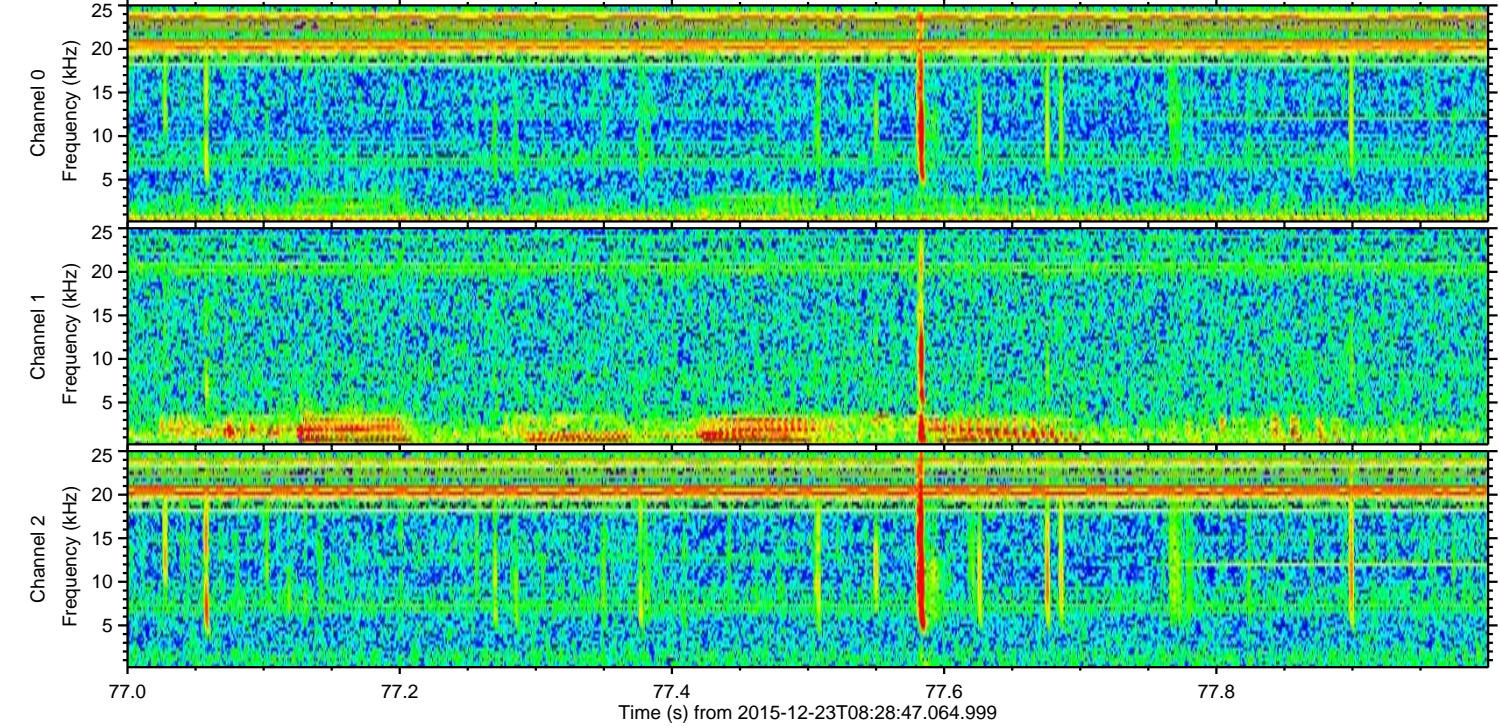
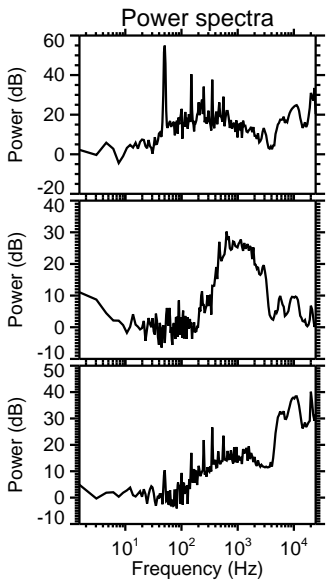
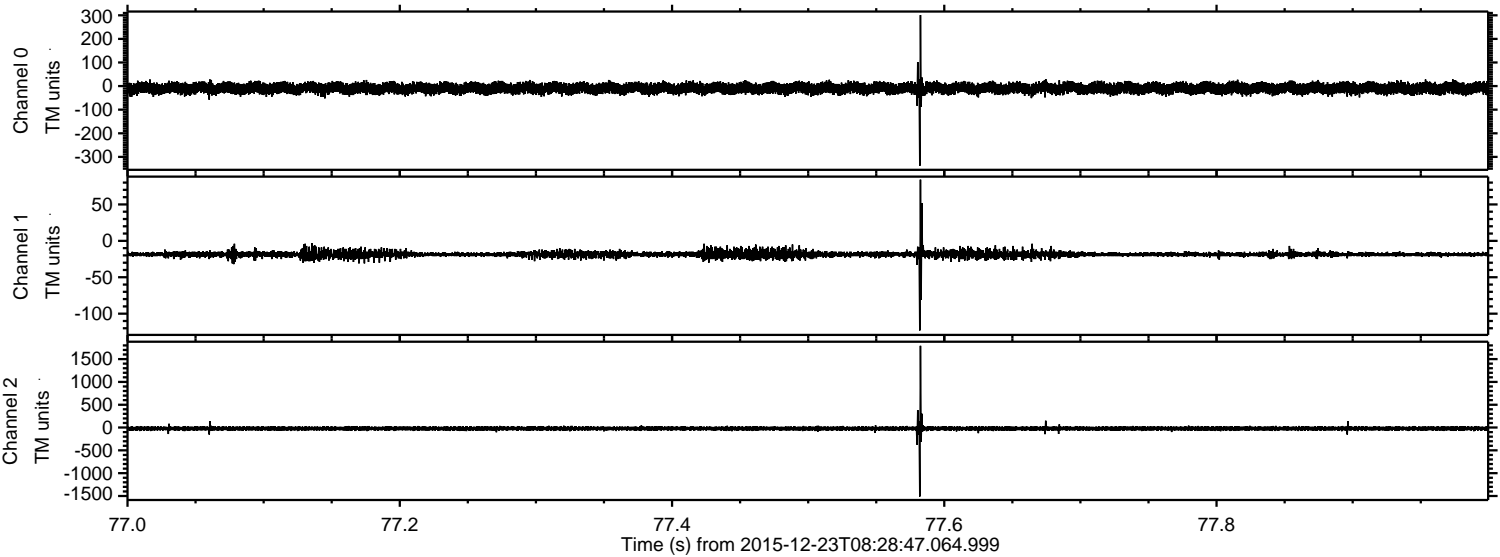


ELMAVAN 3D WAVEFORMS (Measured data sampled at 50 kHz) 51000 packets of 144 samples from 2015-12-23T08:28:47.064.999.

Processed Fri Feb 5 23:49:31 2016 by ELM ver.2012-10-06 from 001__elm20151223_082846__dat00.bin

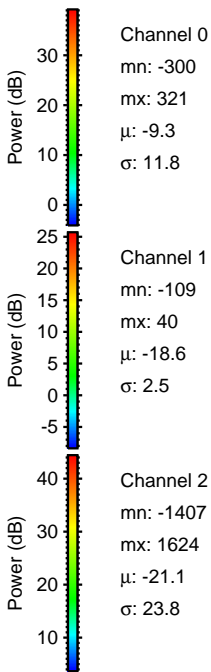
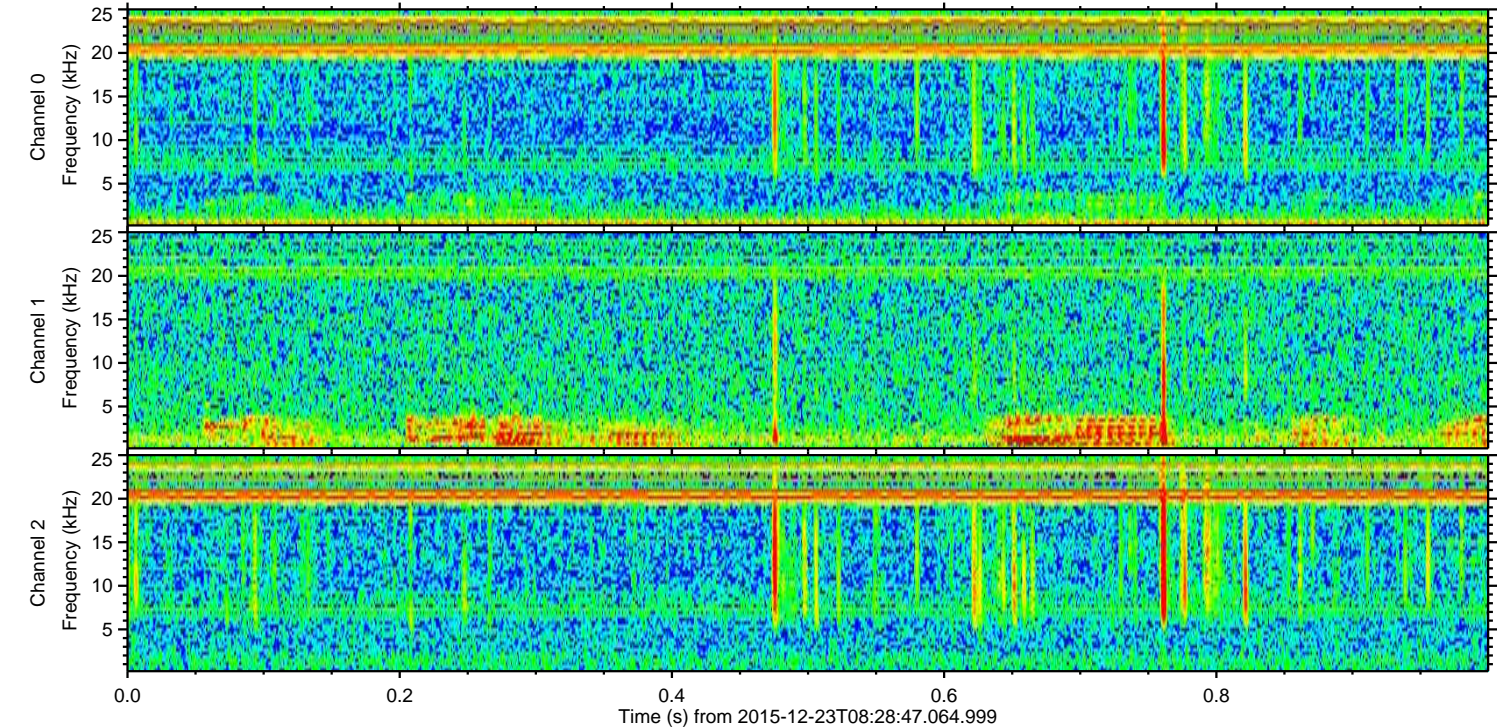
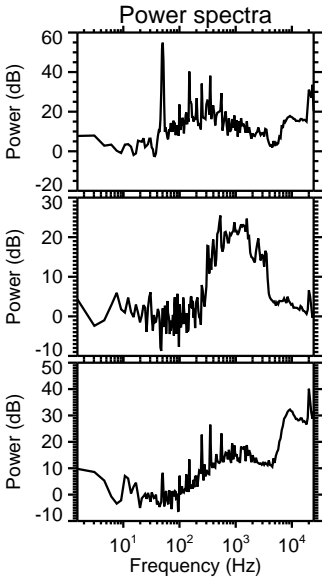
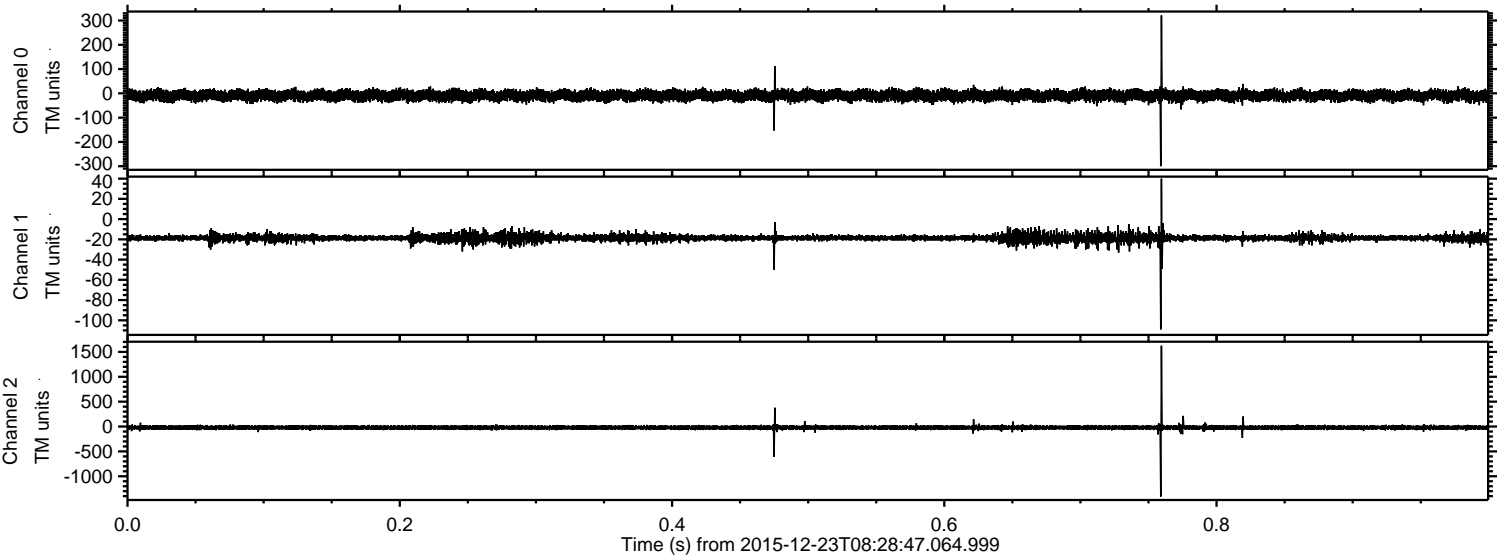


Processed Fri Feb 5 23:49:48 2016 by ELM ver.2012-10-06 from 001__elm20151223_082846__dat00.bin

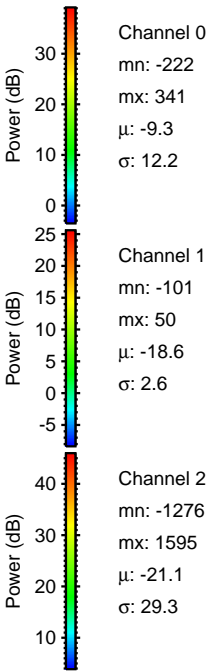
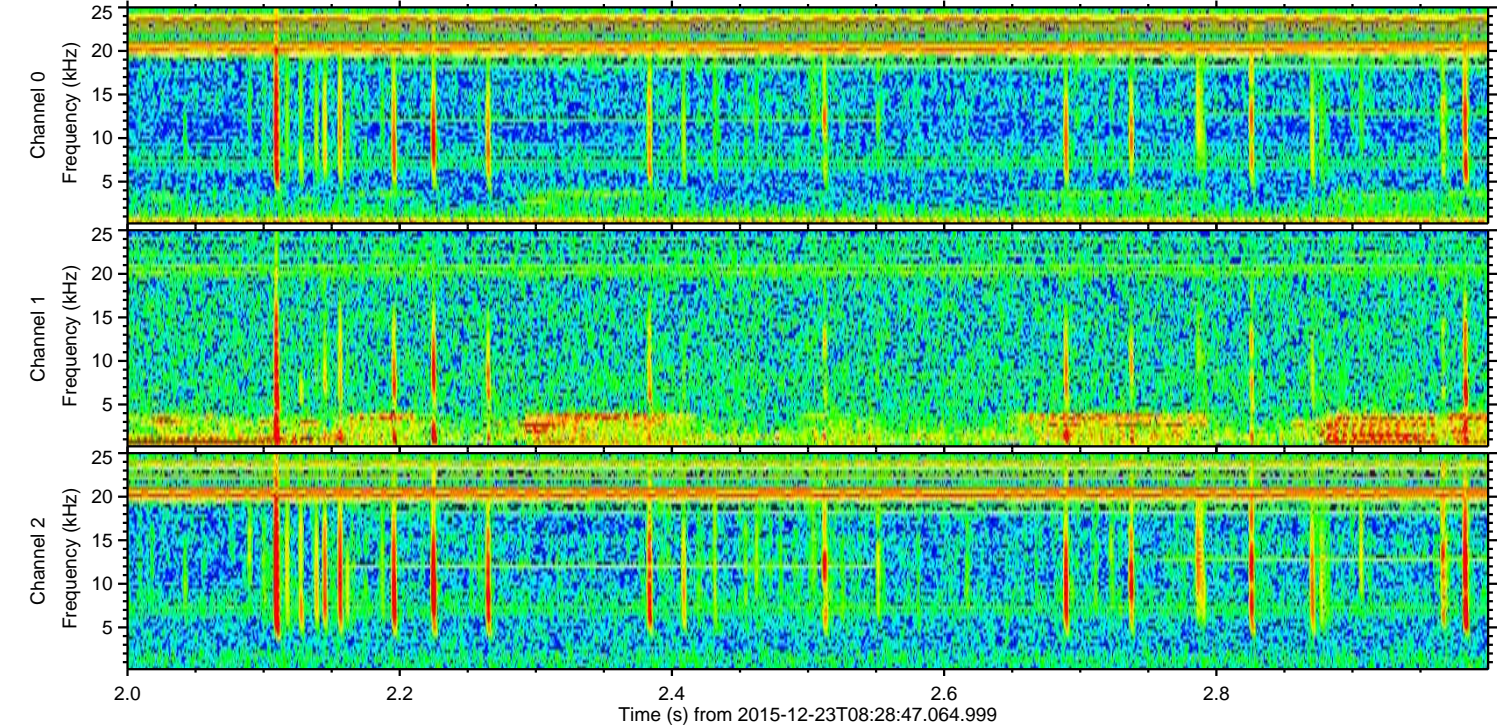
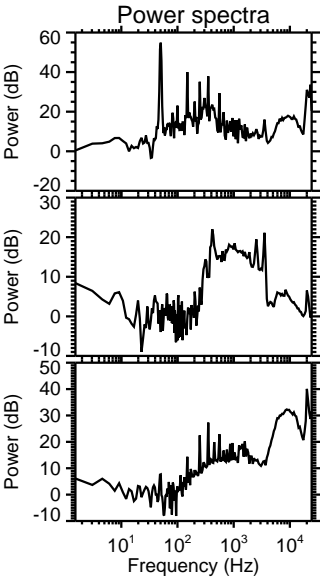
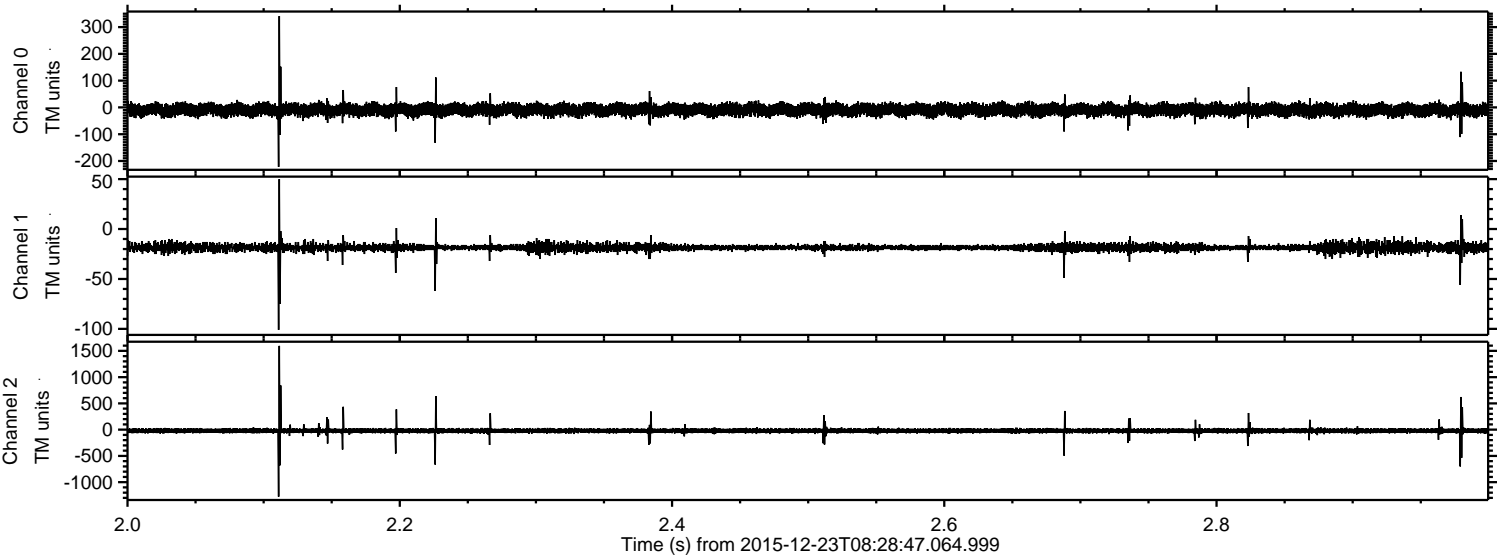


ELMAVAN 3D WAVEFORMS (Measured data sampled at 50 kHz) 51000 packets of 144 samples from 2015-12-23T08:28:47.064.999. Part 1/147

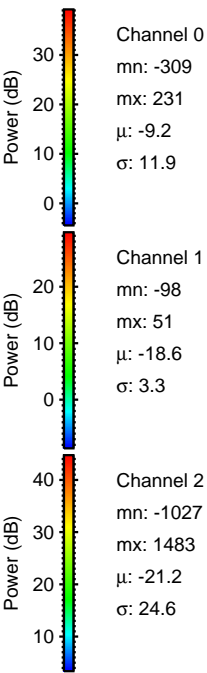
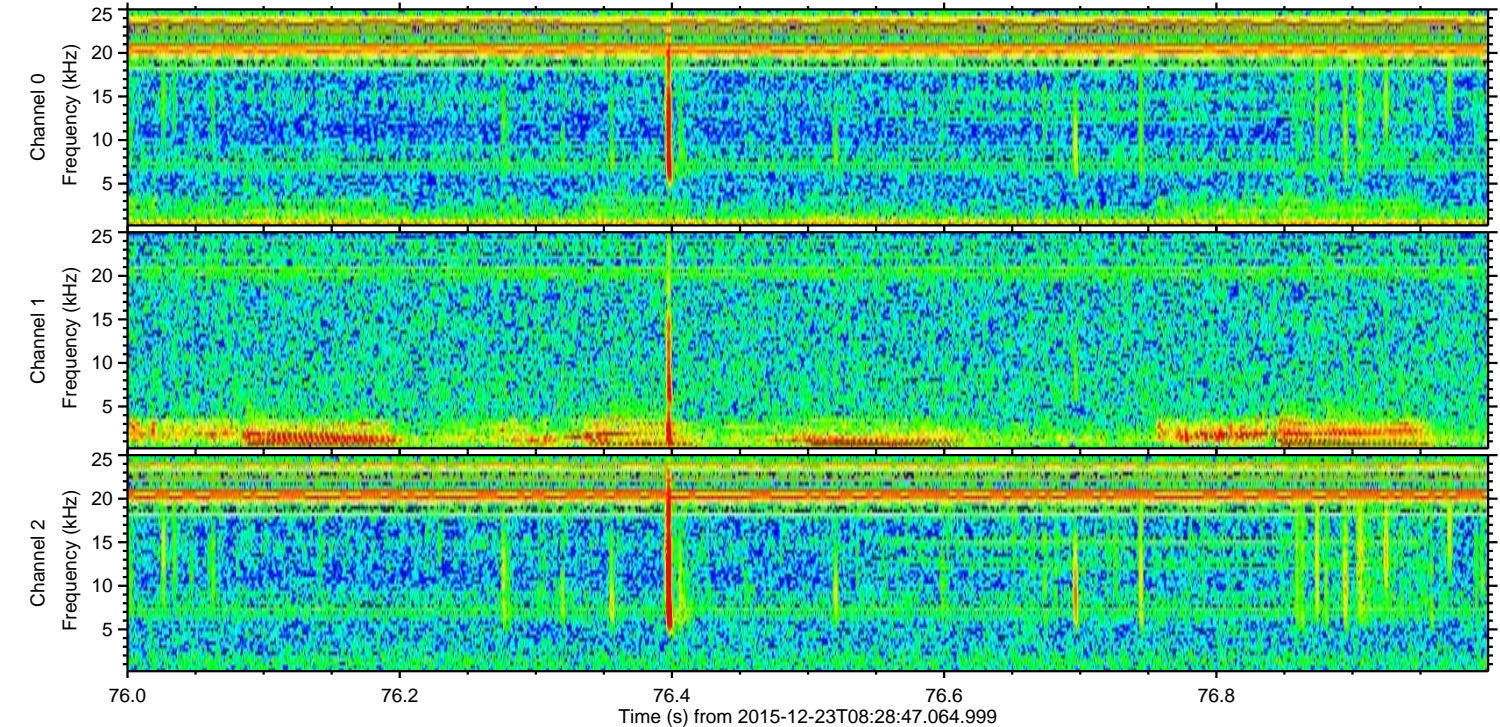
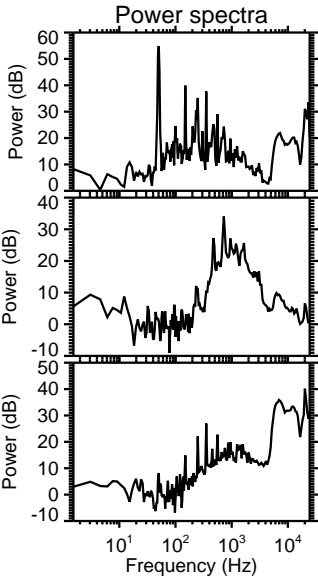
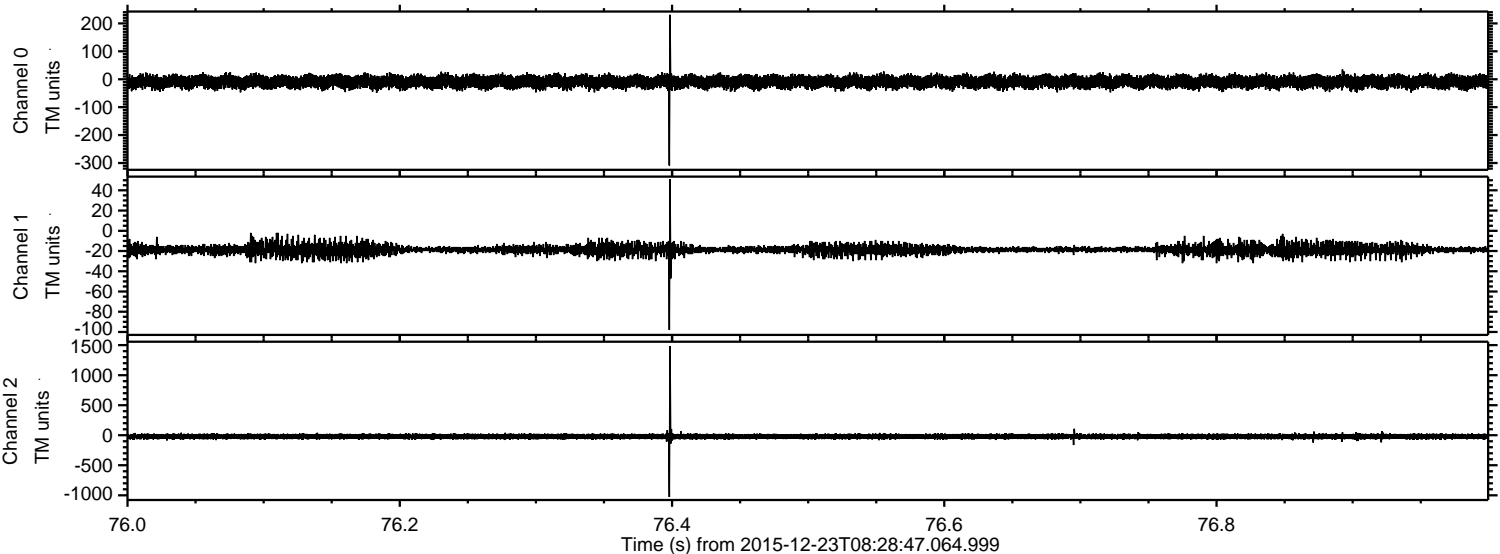
Processed Fri Feb 5 23:49:50 2016 by ELM ver.2012-10-06 from 001__elm20151223_082846__dat00.bin



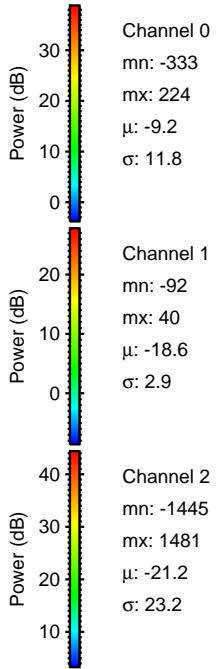
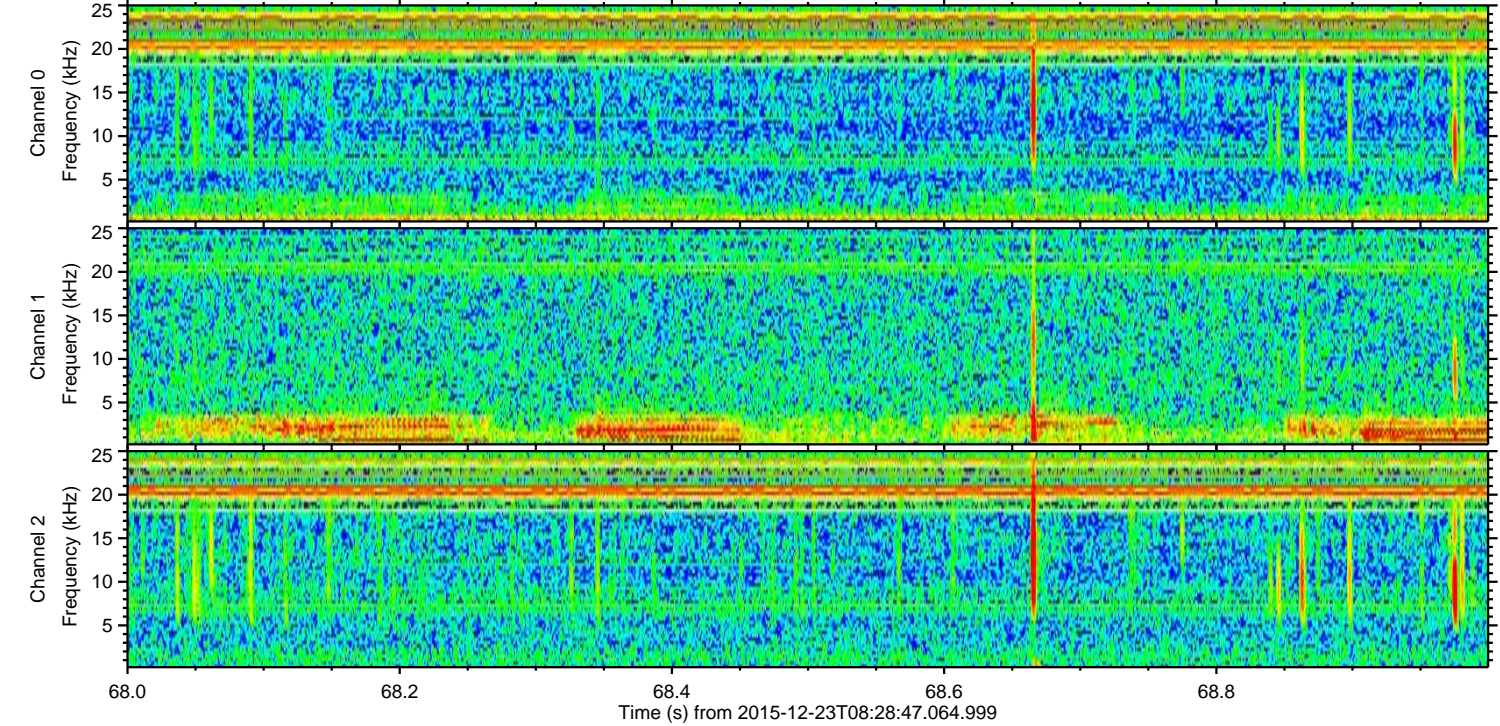
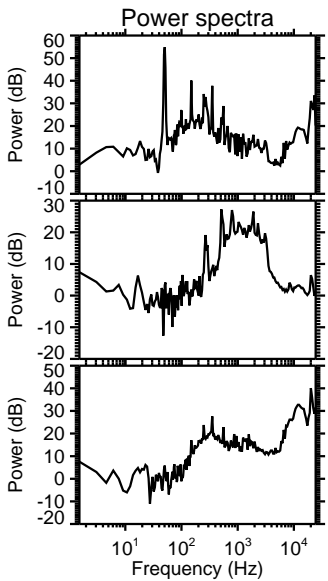
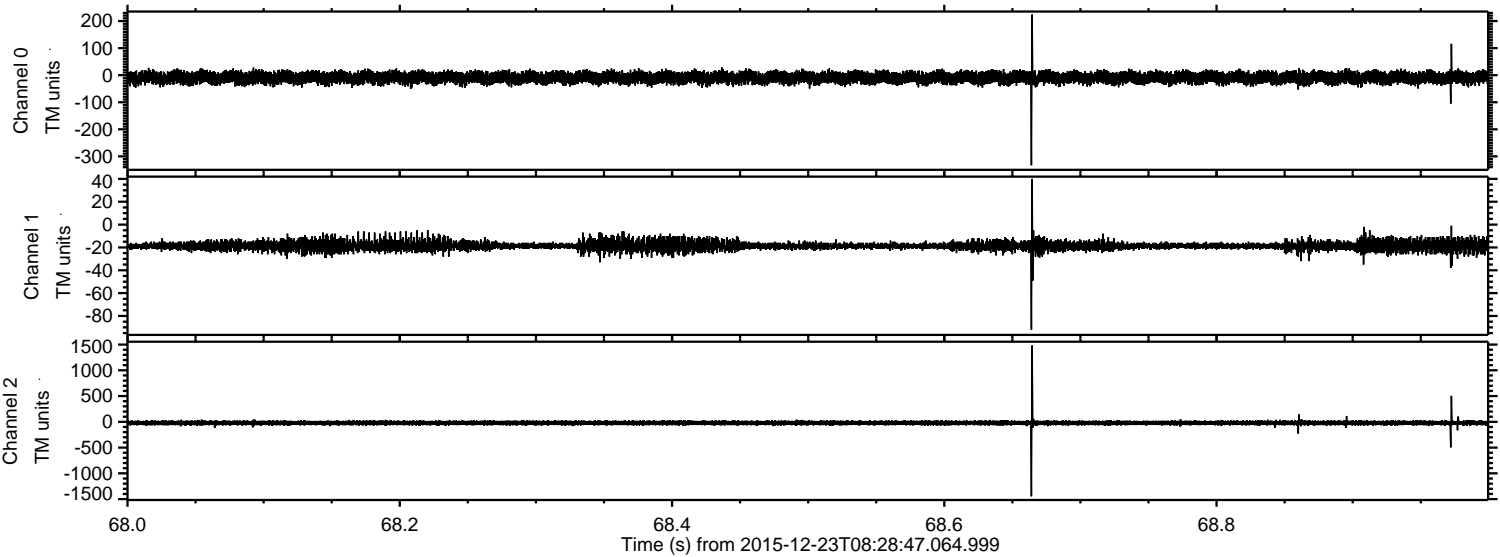
Processed Fri Feb 5 23:49:52 2016 by ELM ver.2012-10-06 from 001__elm20151223_082846__dat00.bin



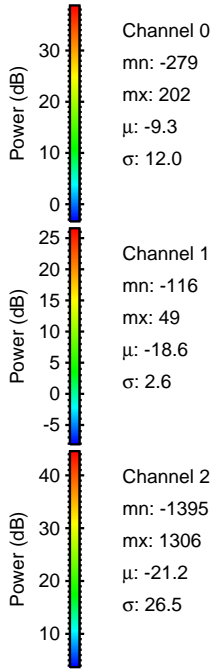
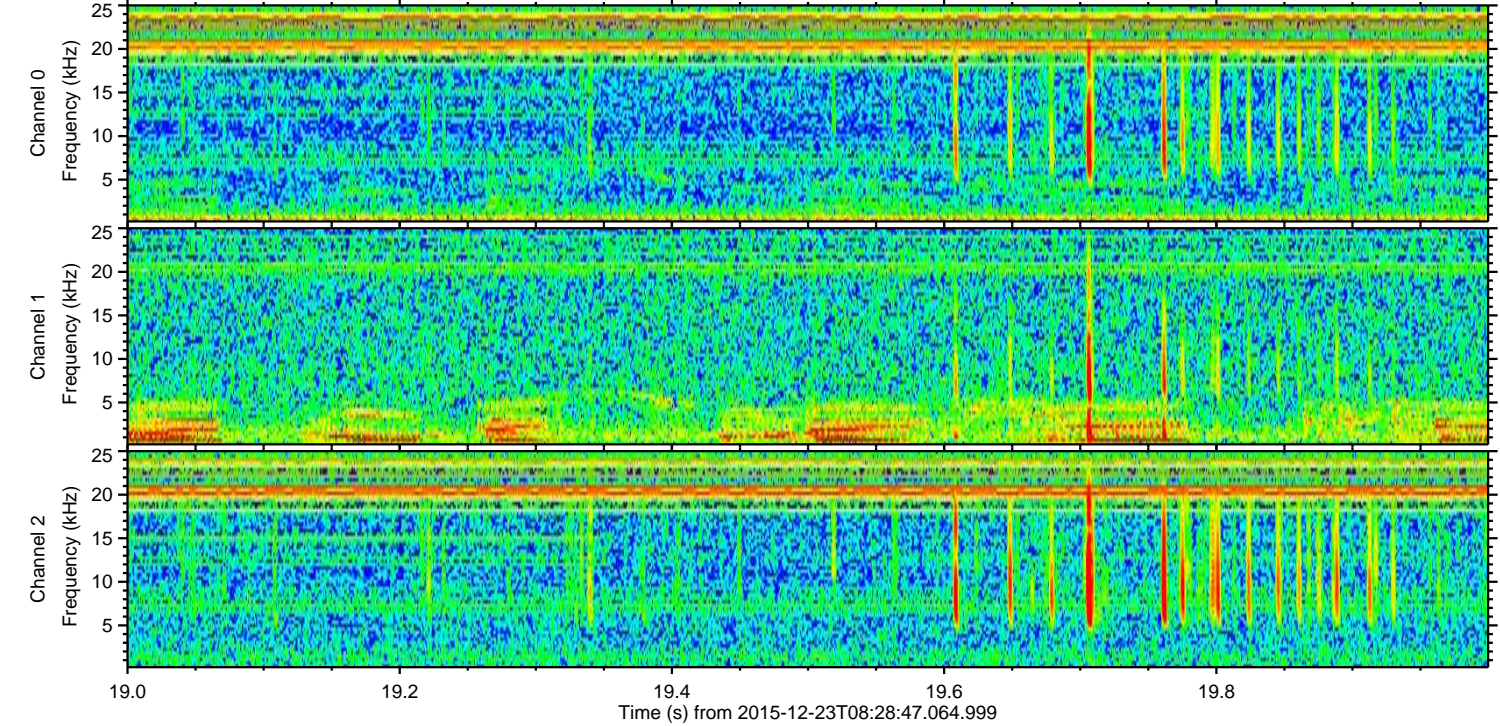
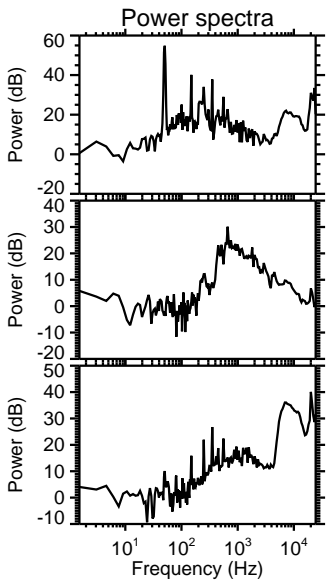
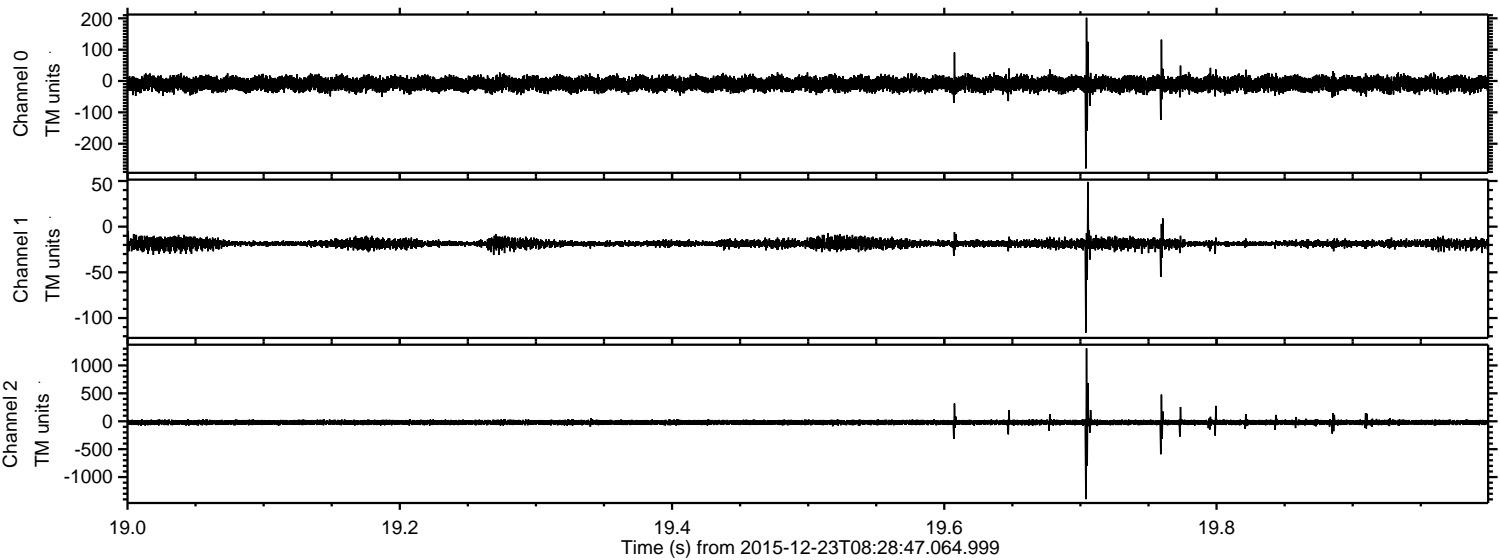
Processed Fri Feb 5 23:49:53 2016 by ELM ver.2012-10-06 from 001__elm20151223_082846__dat00.bin



Processed Fri Feb 5 23:49:54 2016 by ELM ver.2012-10-06 from 001__elm20151223_082846__dat00.bin

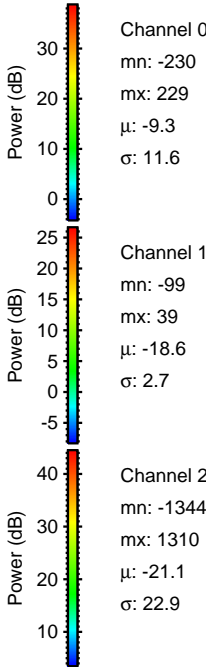
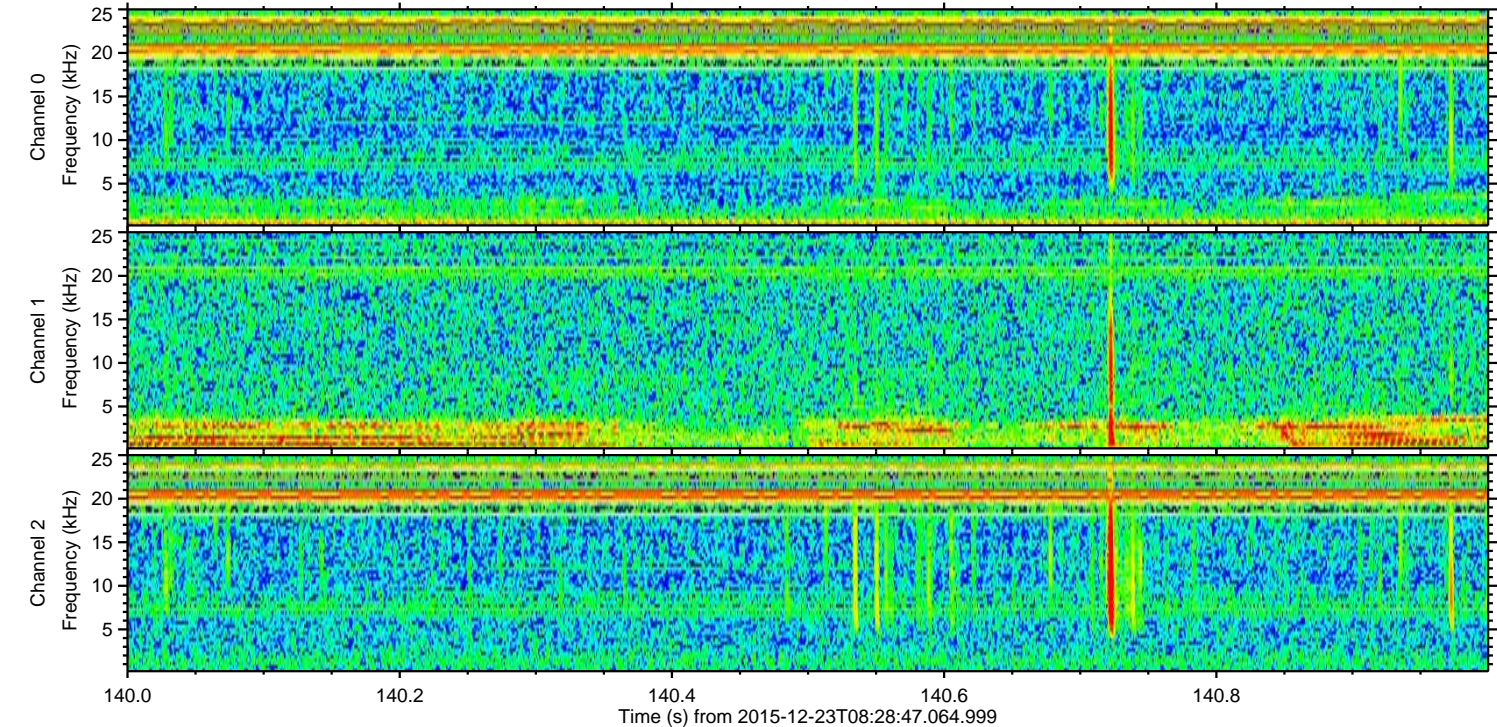
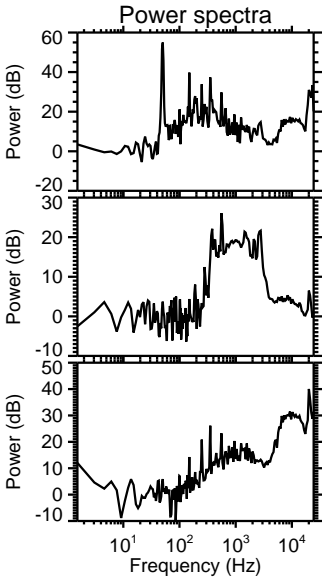
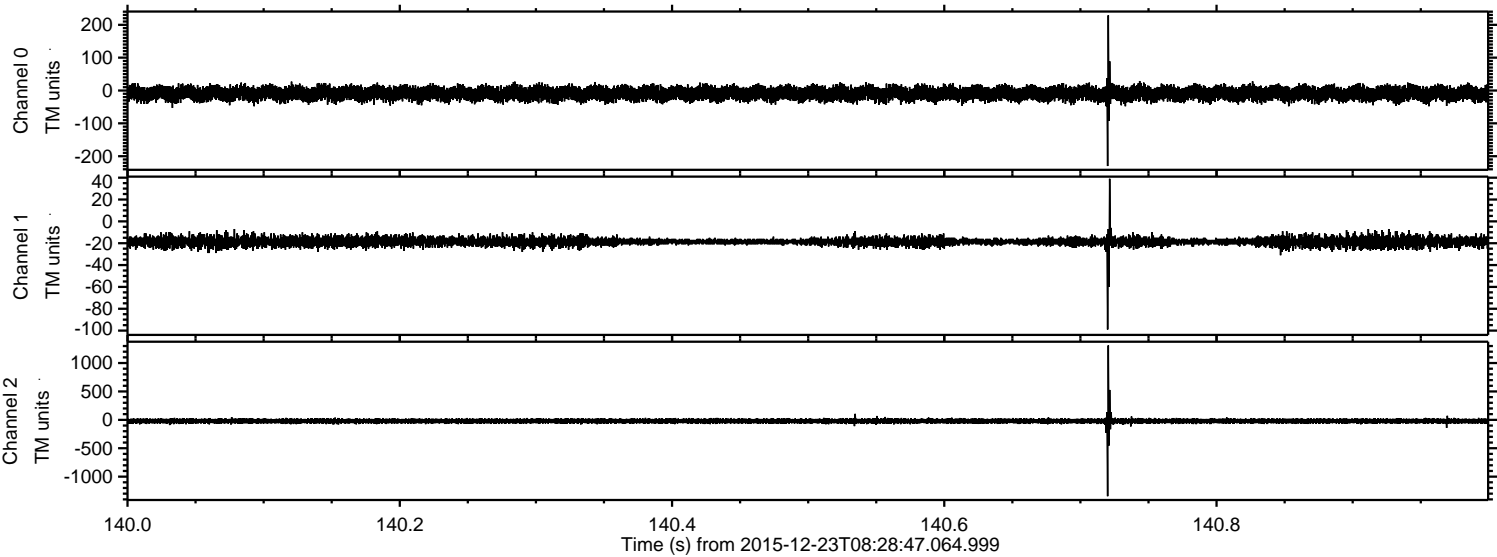


Processed Fri Feb 5 23:49:55 2016 by ELM ver.2012-10-06 from 001__elm20151223_082846__dat00.bin



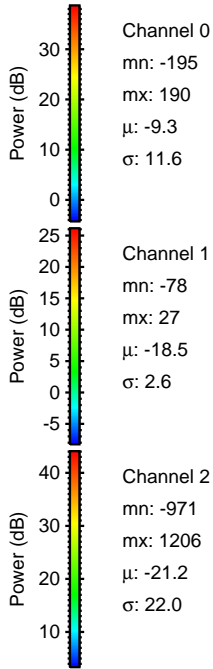
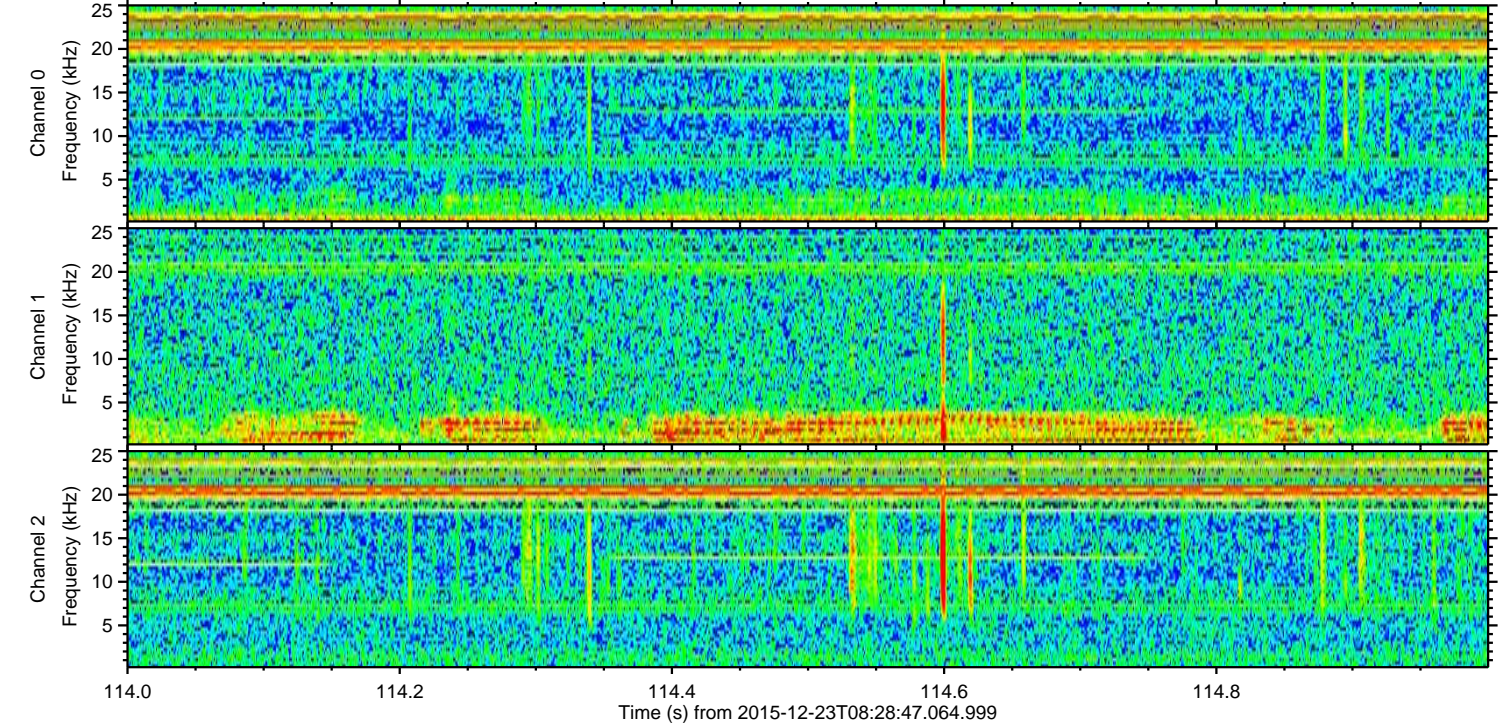
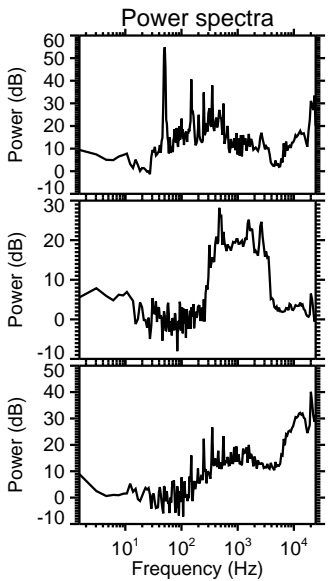
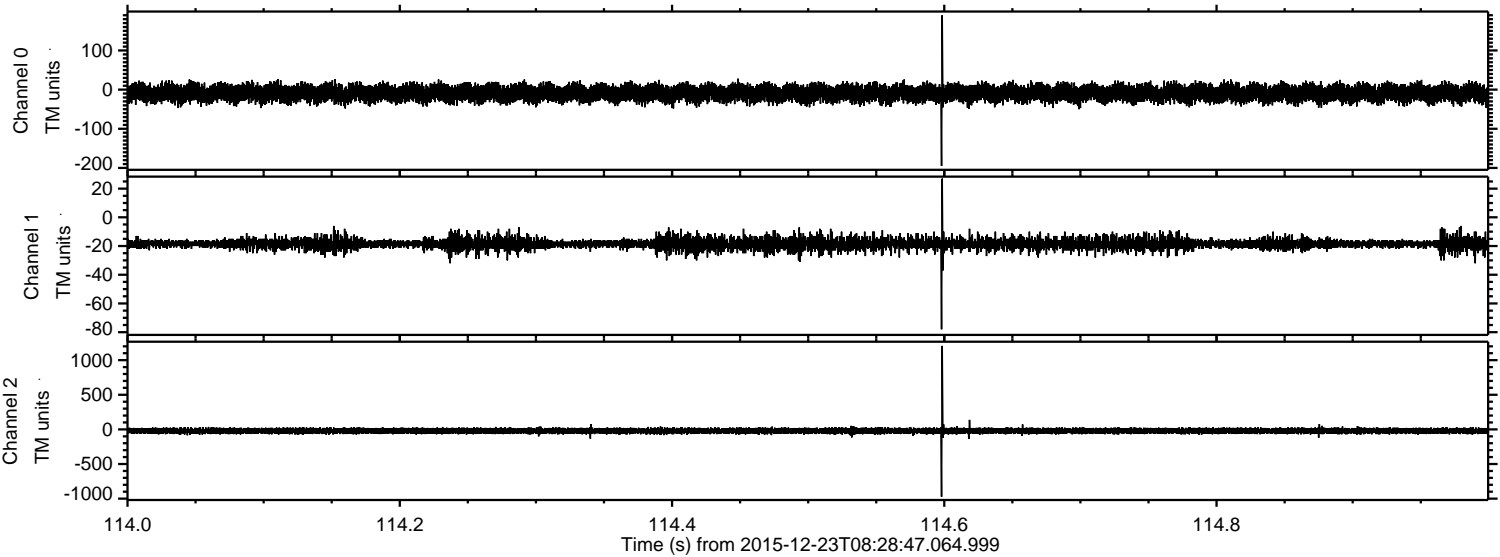
ELMAVAN 3D WAVEFORMS (Measured data sampled at 50 kHz) 51000 packets of 144 samples from 2015-12-23T08:28:47.064.999. Part 141/147

Processed Fri Feb 5 23:49:57 2016 by ELM ver.2012-10-06 from 001__elm20151223_082846__dat00.bin

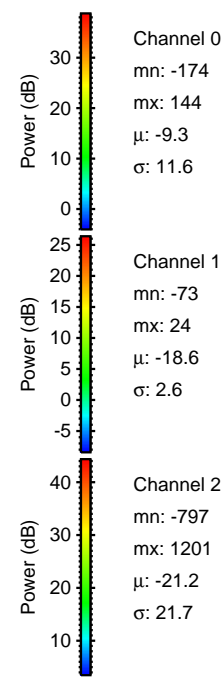
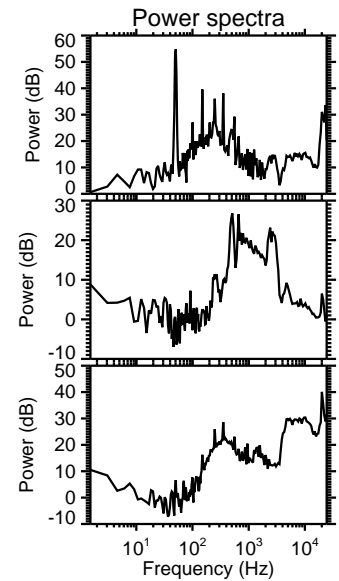
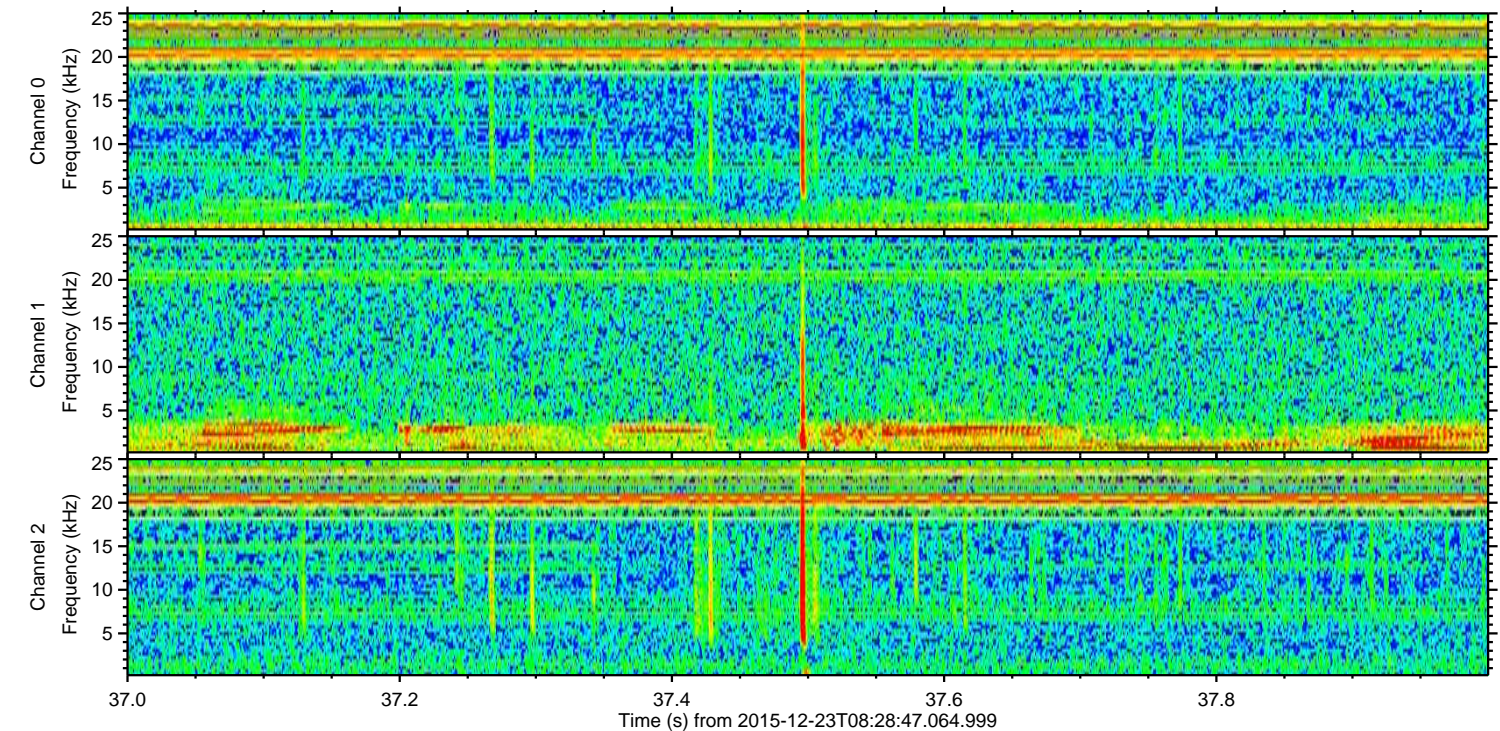
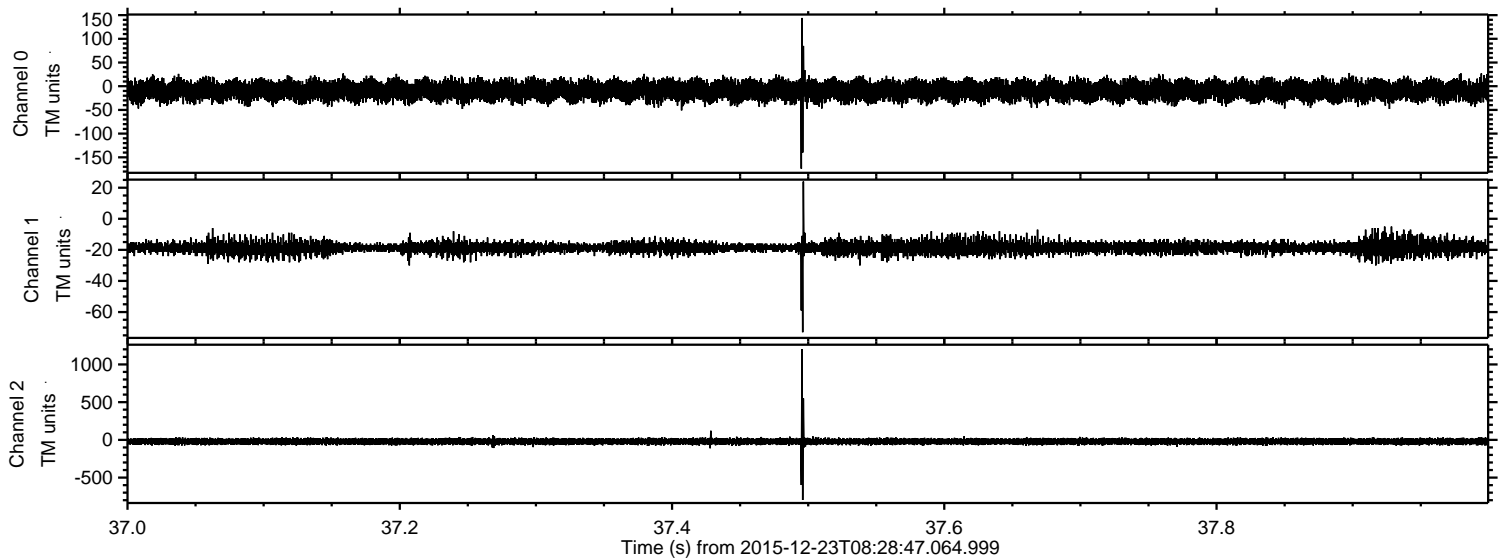


ELMAVAN 3D WAVEFORMS (Measured data sampled at 50 kHz) 51000 packets of 144 samples from 2015-12-23T08:28:47.064.999. Part 115/147

Processed Fri Feb 5 23:49:59 2016 by ELM ver.2012-10-06 from 001__elm20151223_082846__dat00.bin



Processed Fri Feb 5 23:50:00 2016 by ELM ver.2012-10-06 from 001__elm20151223_082846__dat00.bin



Channel 0
mn: -174
mx: 144
 μ : -9.3
 σ : 11.6

Channel 1
mn: -73
mx: 24
 μ : -18.6
 σ : 2.6

Channel 2
mn: -797
mx: 1201
 μ : -21.2
 σ : 21.7

Processed Fri Feb 5 23:50:02 2016 by ELM ver.2012-10-06 from 001__elm20151223_082846__dat00.bin

