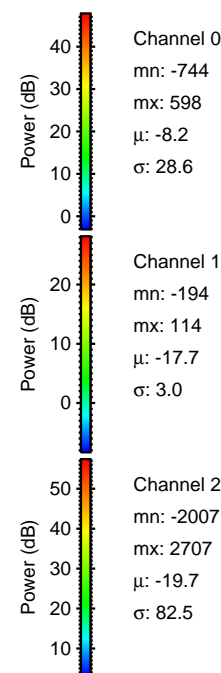
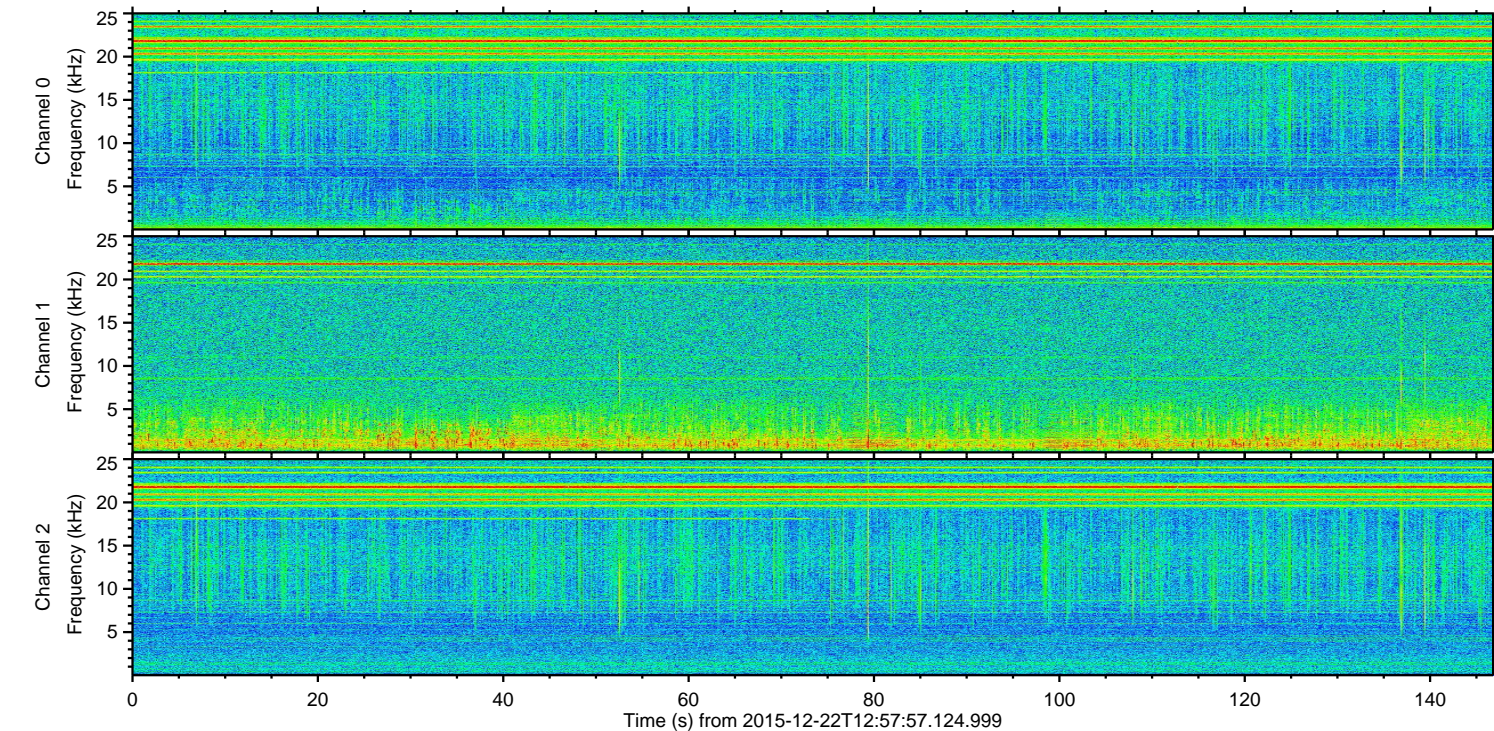
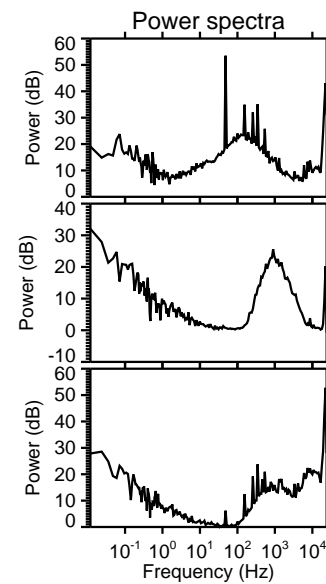
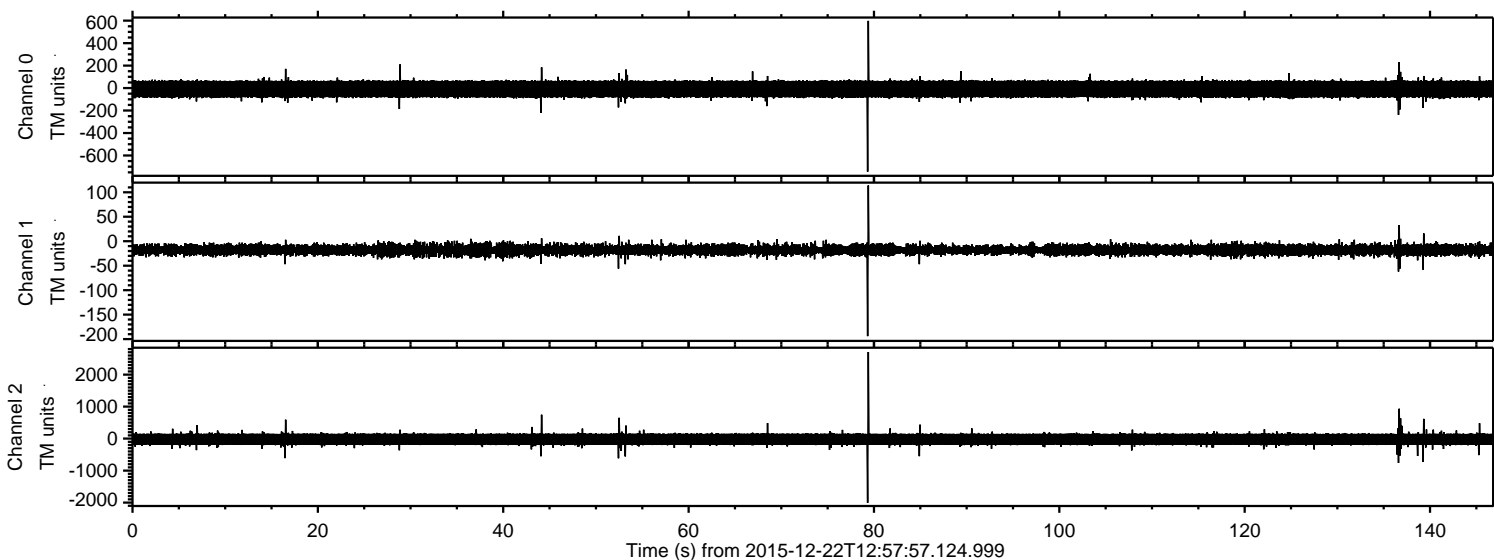
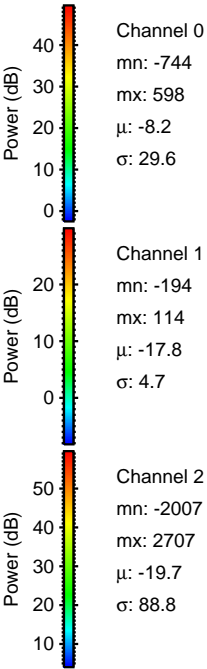
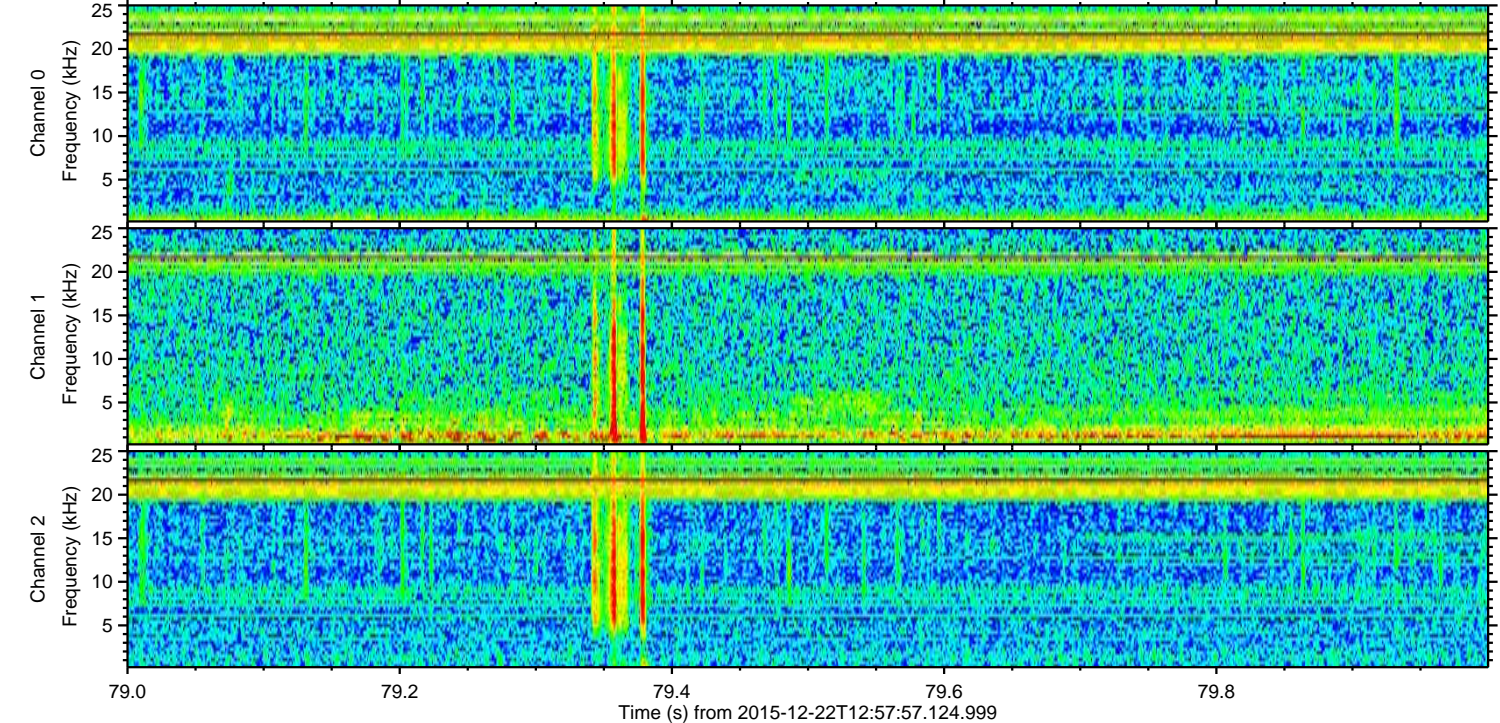
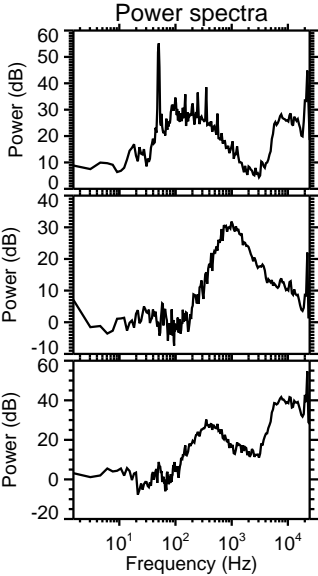
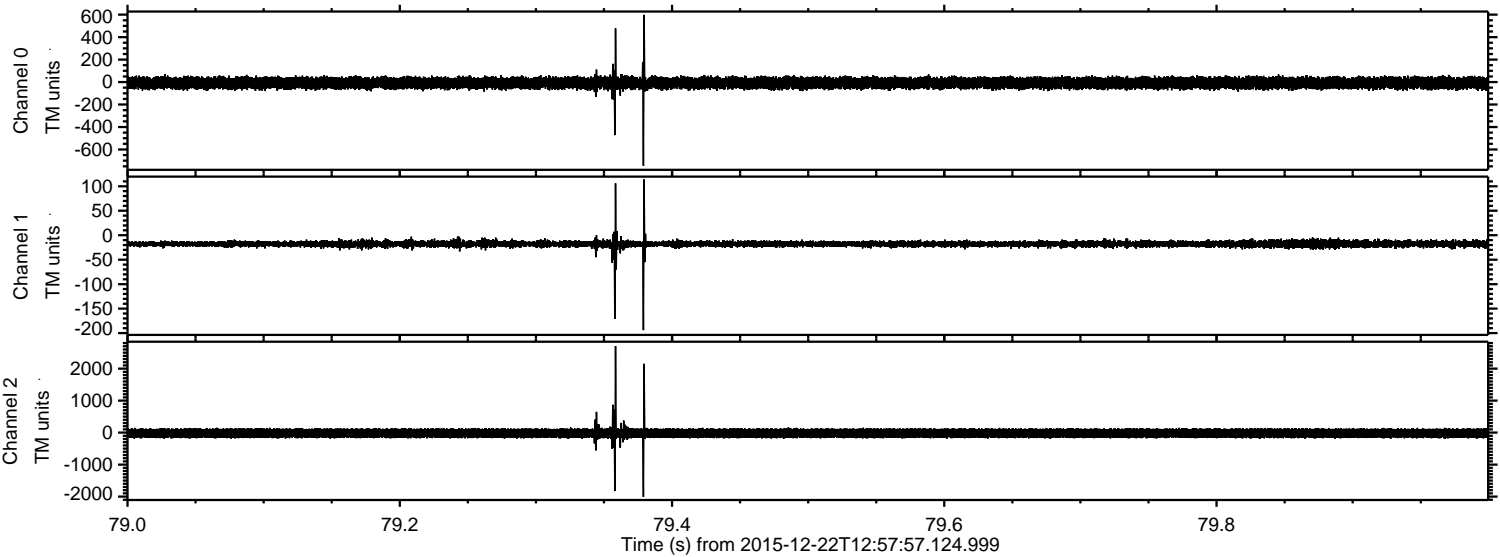


# ELMAVAN 3D WAVEFORMS (Measured data sampled at 50 kHz) 51000 packets of 144 samples from 2015-12-22T12:57:57.124.999.

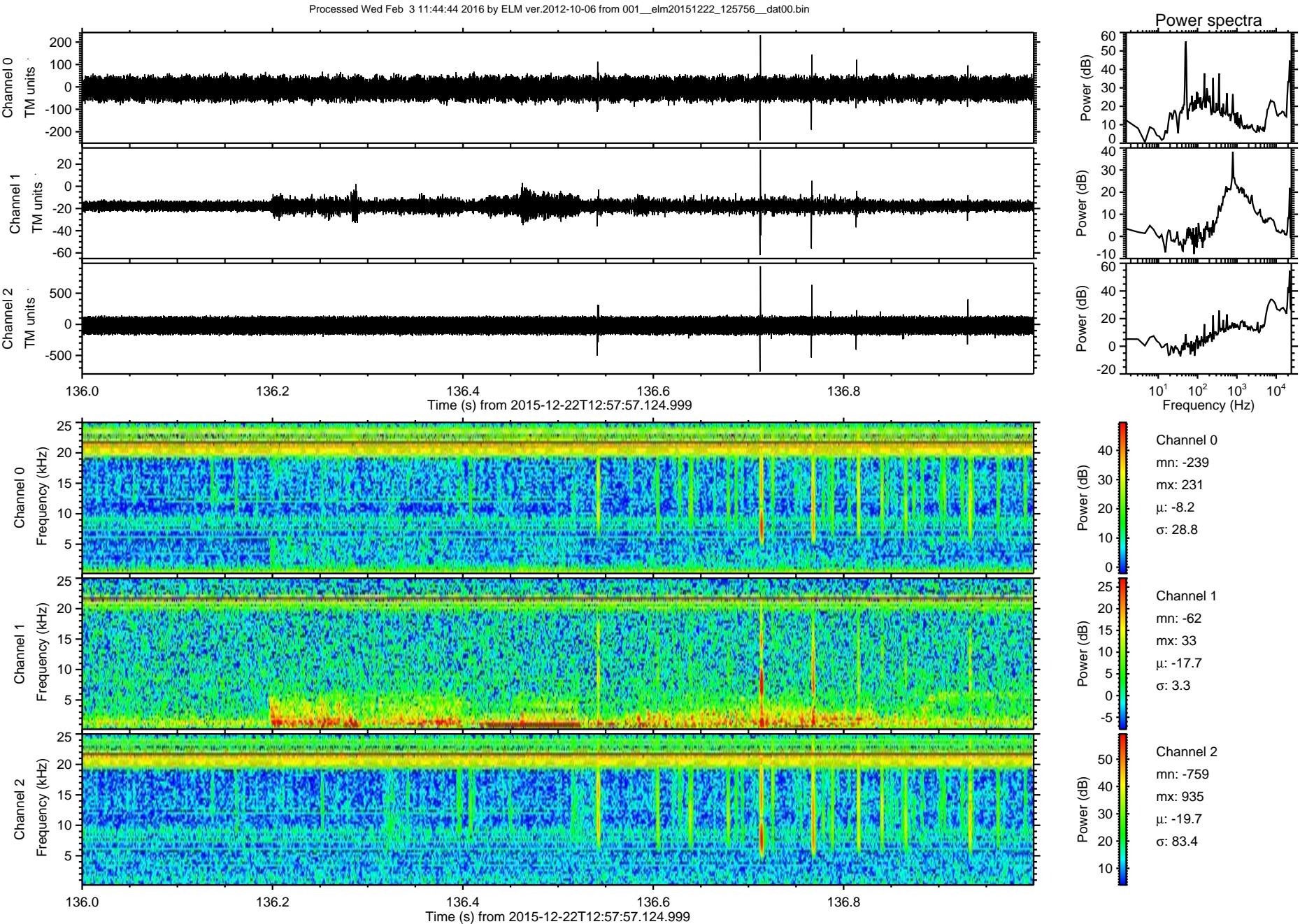
Processed Wed Feb 3 11:44:28 2016 by ELM ver.2012-10-06 from 001\_\_elm20151222\_125756\_\_dat00.bin



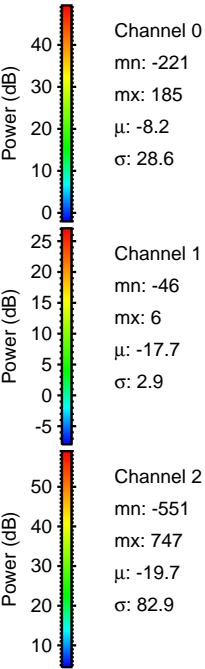
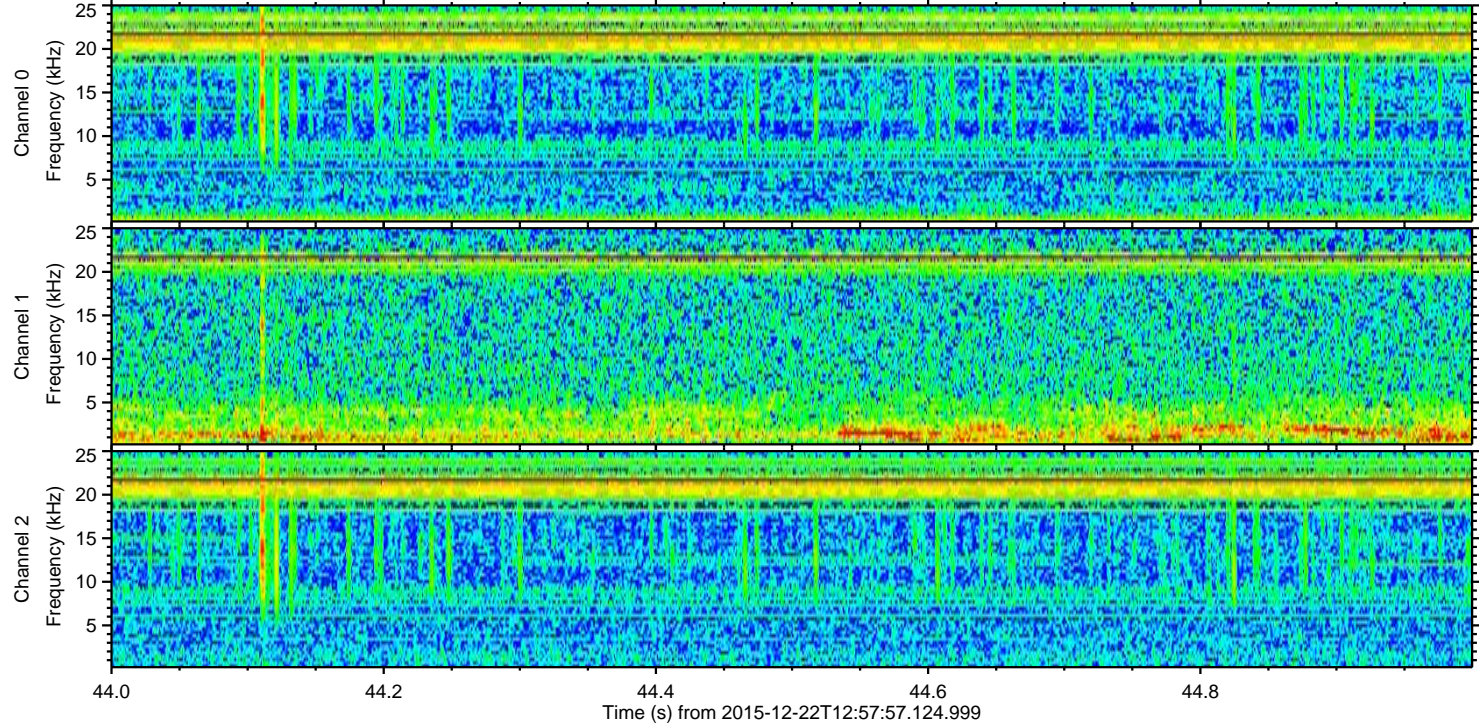
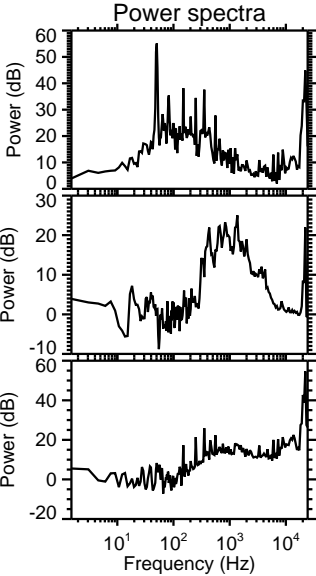
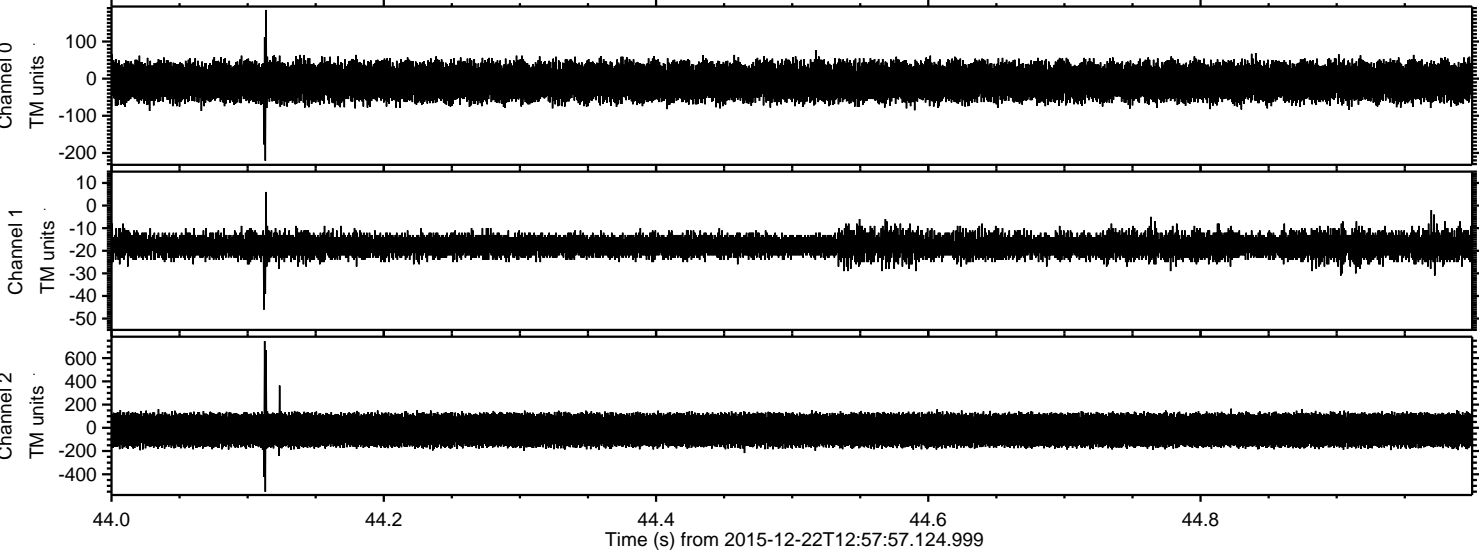
Processed Wed Feb 3 11:44:43 2016 by ELM ver.2012-10-06 from 001\_\_elm20151222\_125756\_\_dat00.bin



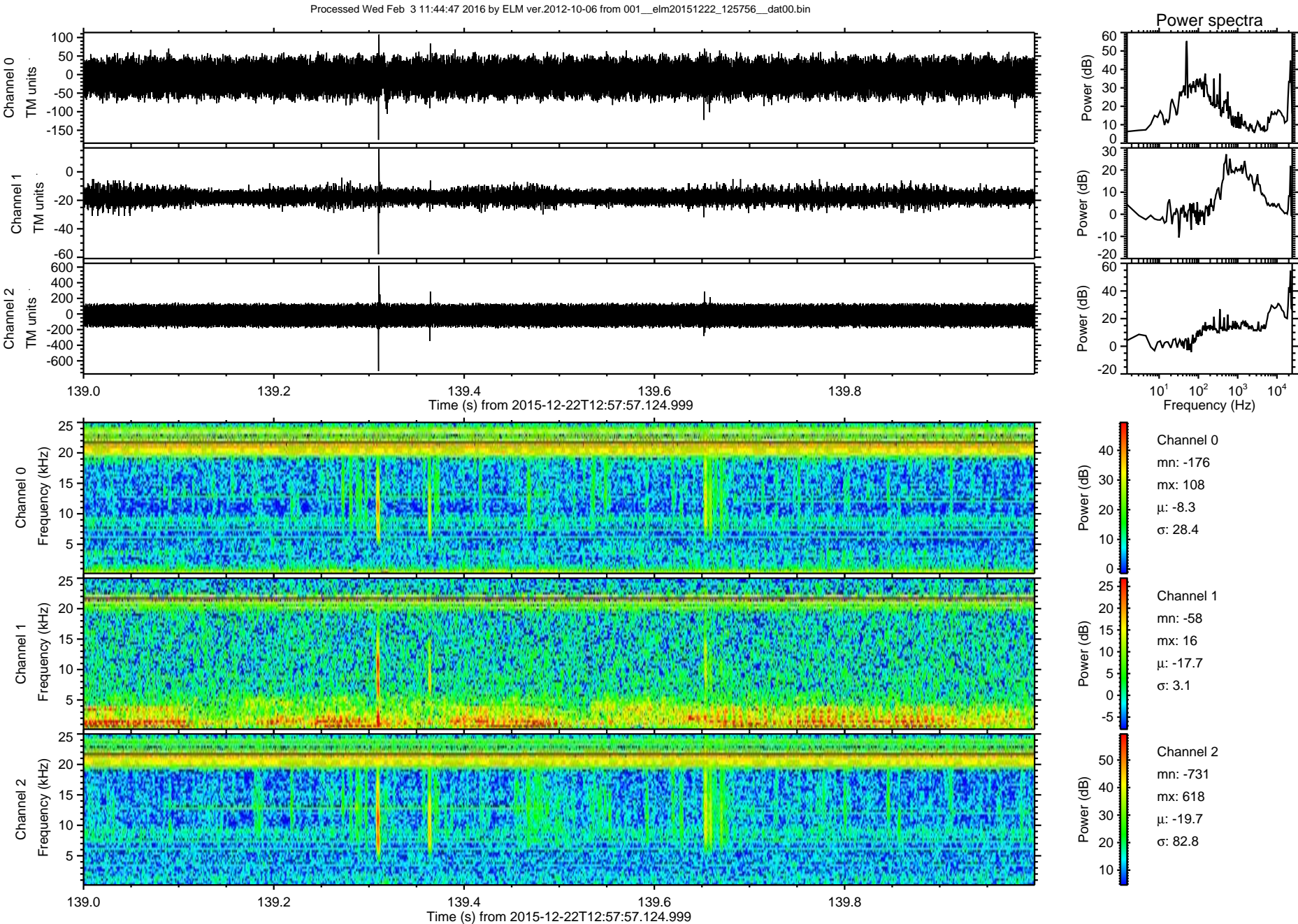
ELMAVAN 3D WAVEFORMS (Measured data sampled at 50 kHz) 51000 packets of 144 samples from 2015-12-22T12:57:57.124.999. Part 137/147



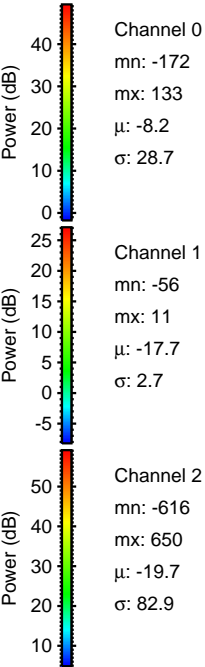
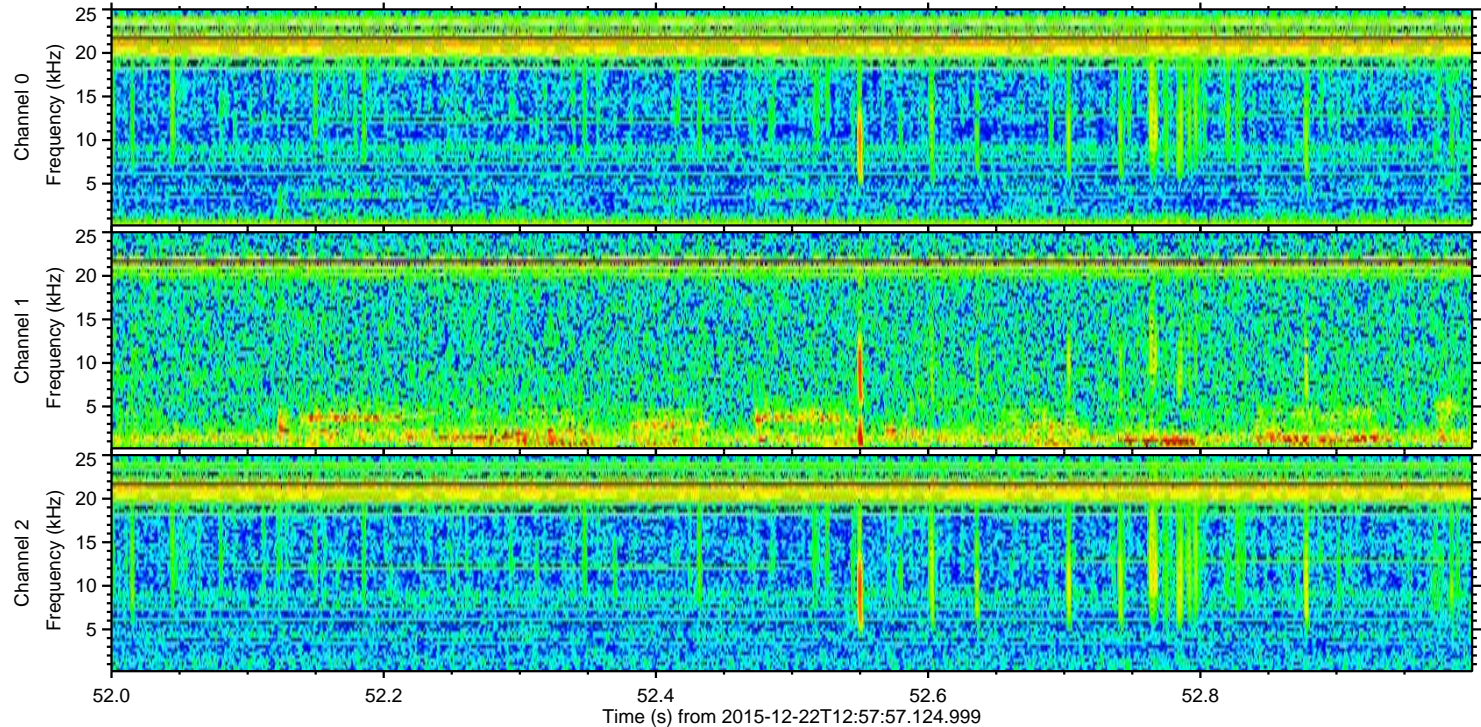
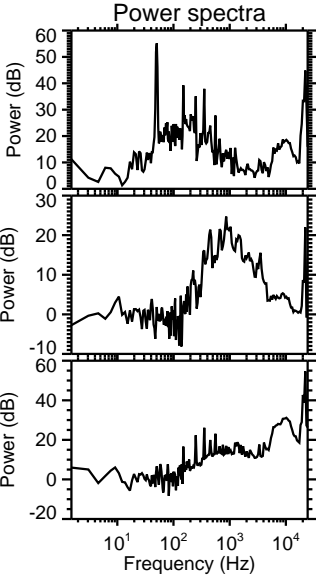
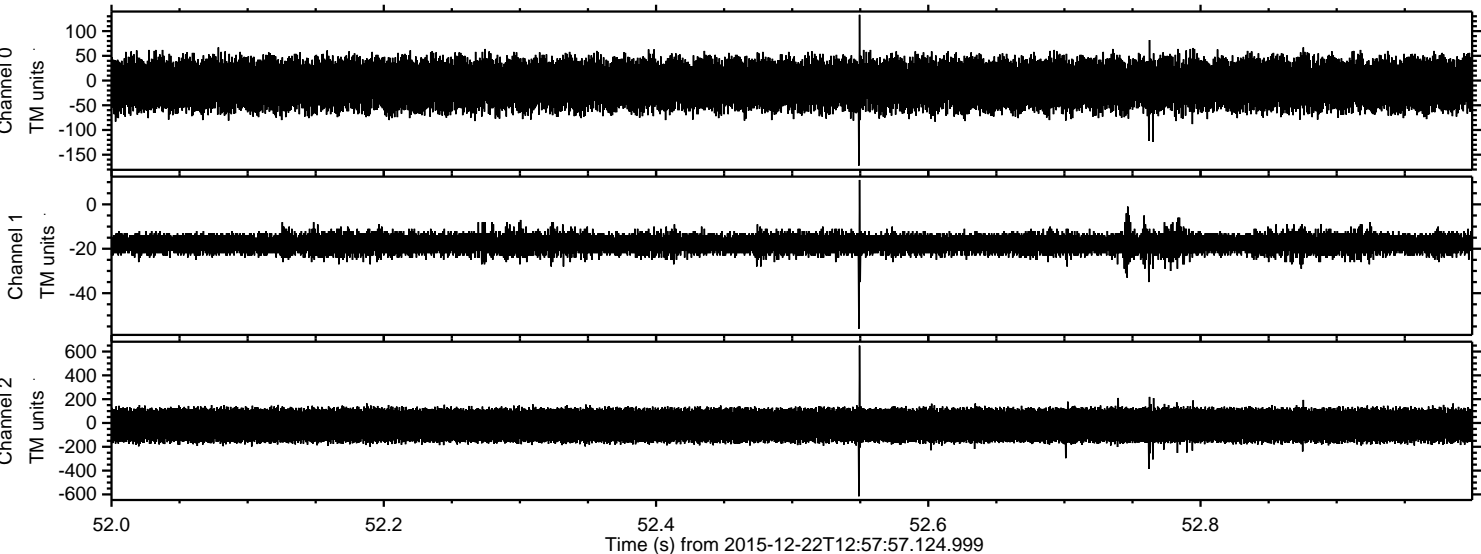
Processed Wed Feb 3 11:44:46 2016 by ELM ver.2012-10-06 from 001\_\_elm20151222\_125756\_\_dat00.bin



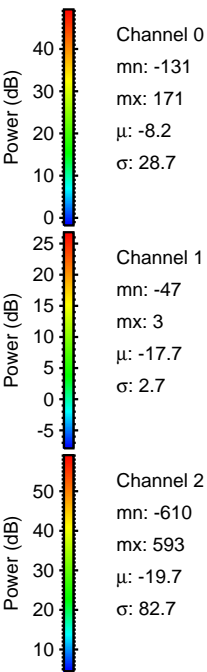
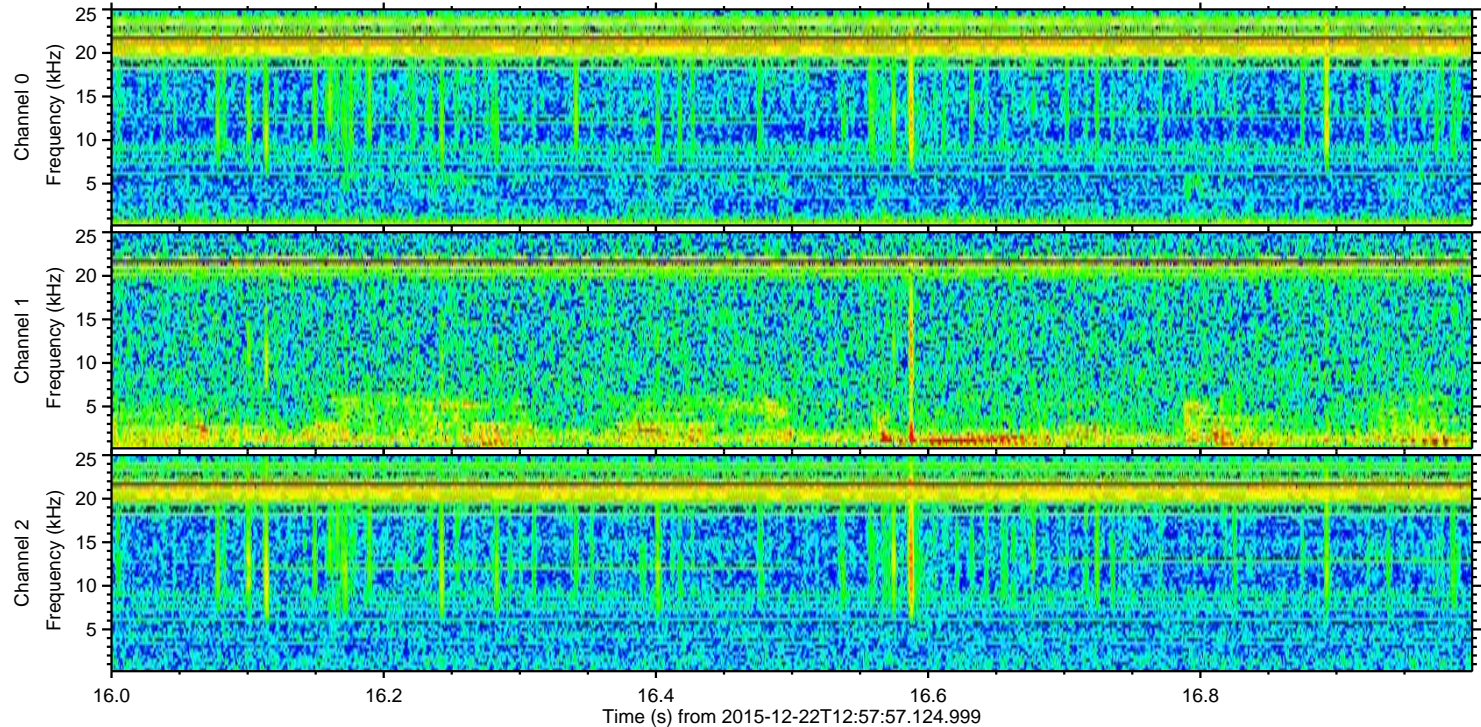
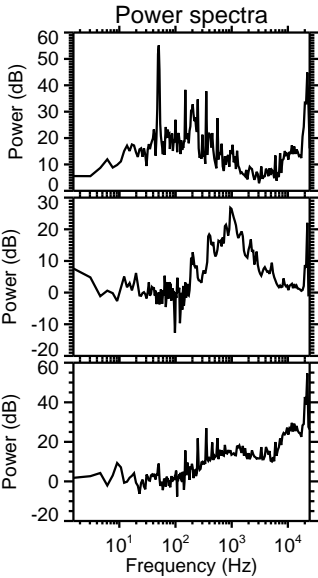
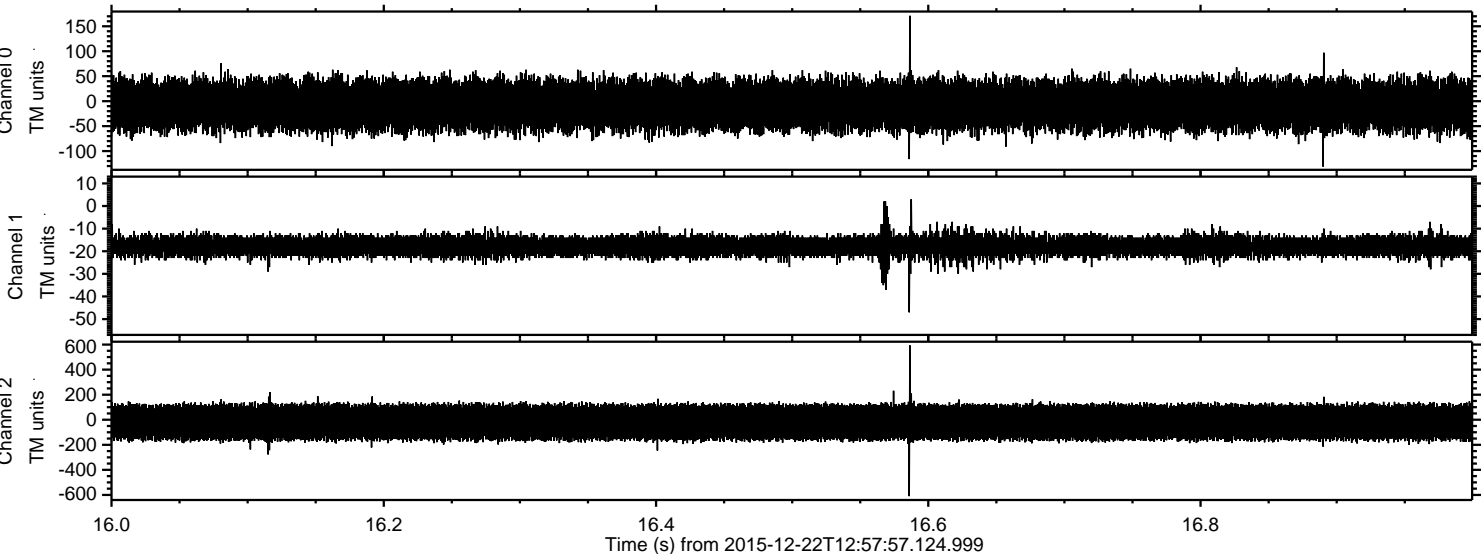
ELMAVAN 3D WAVEFORMS (Measured data sampled at 50 kHz) 51000 packets of 144 samples from 2015-12-22T12:57:57.124.999. Part 140/147



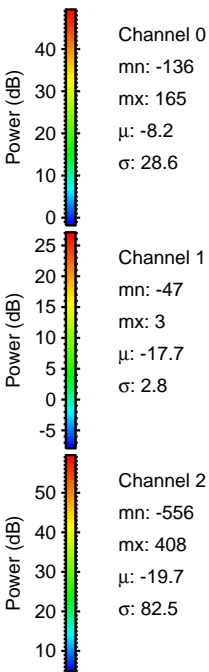
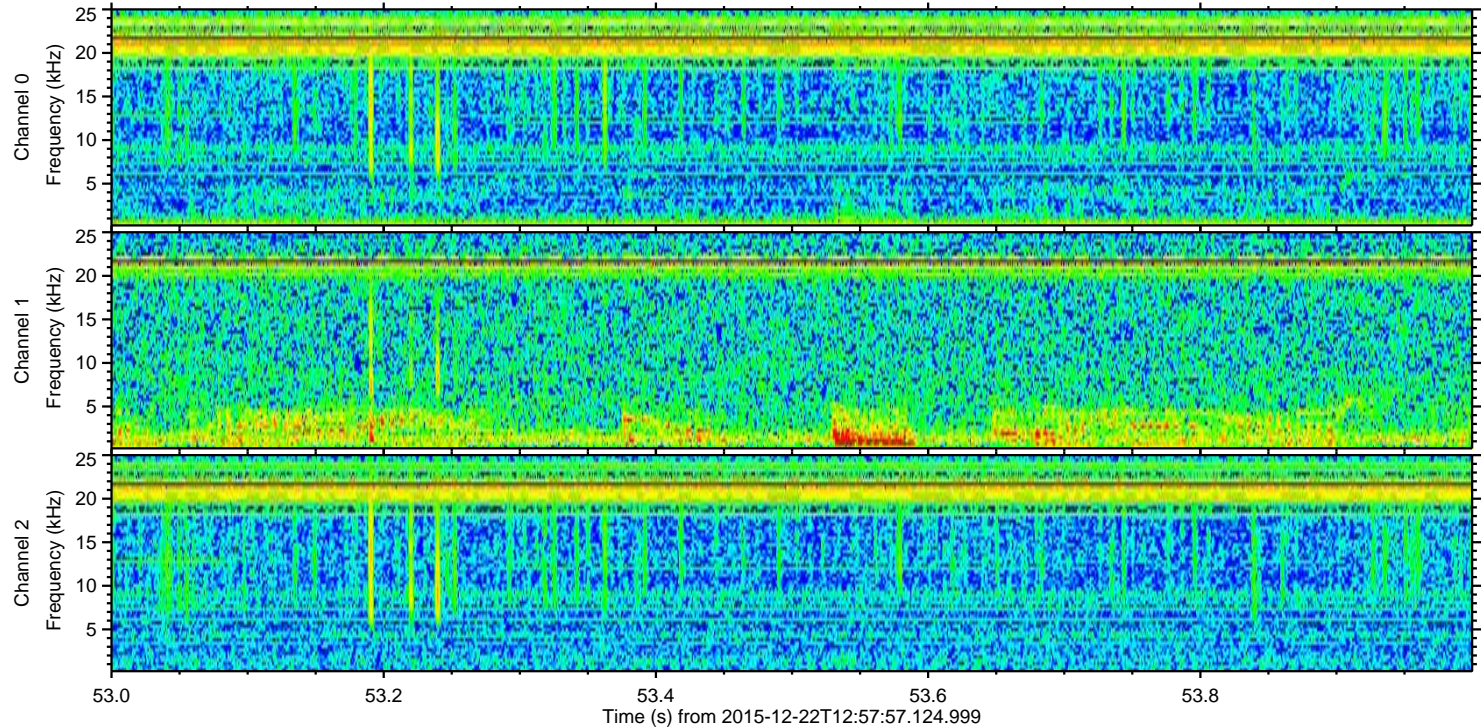
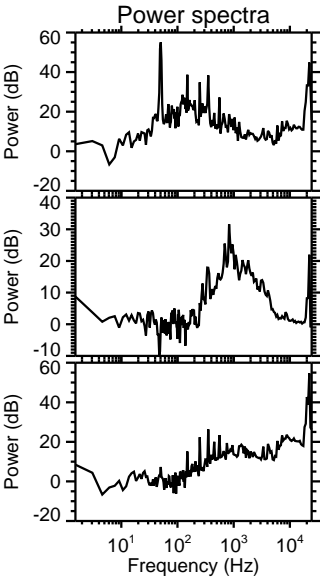
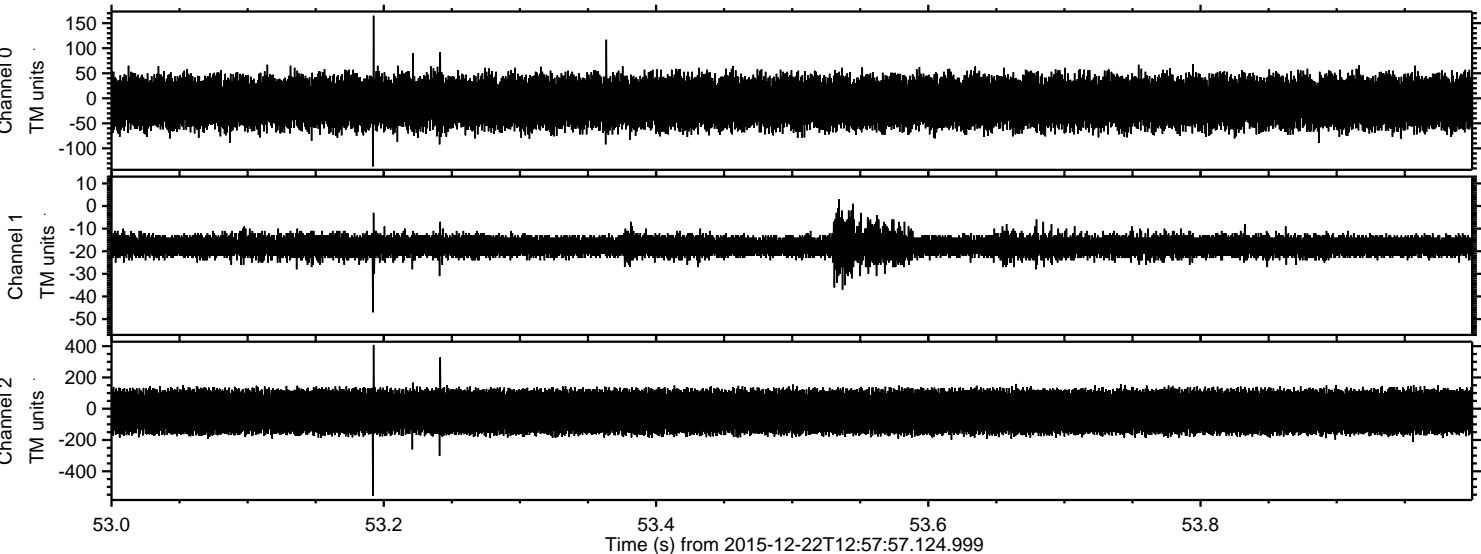
Processed Wed Feb 3 11:44:49 2016 by ELM ver.2012-10-06 from 001\_\_elm20151222\_125756\_\_dat00.bin



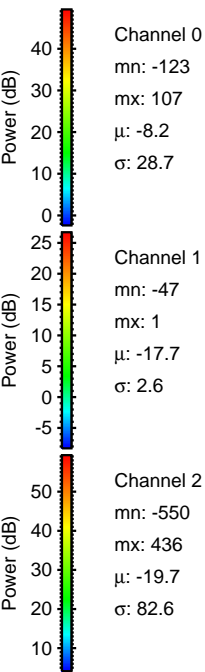
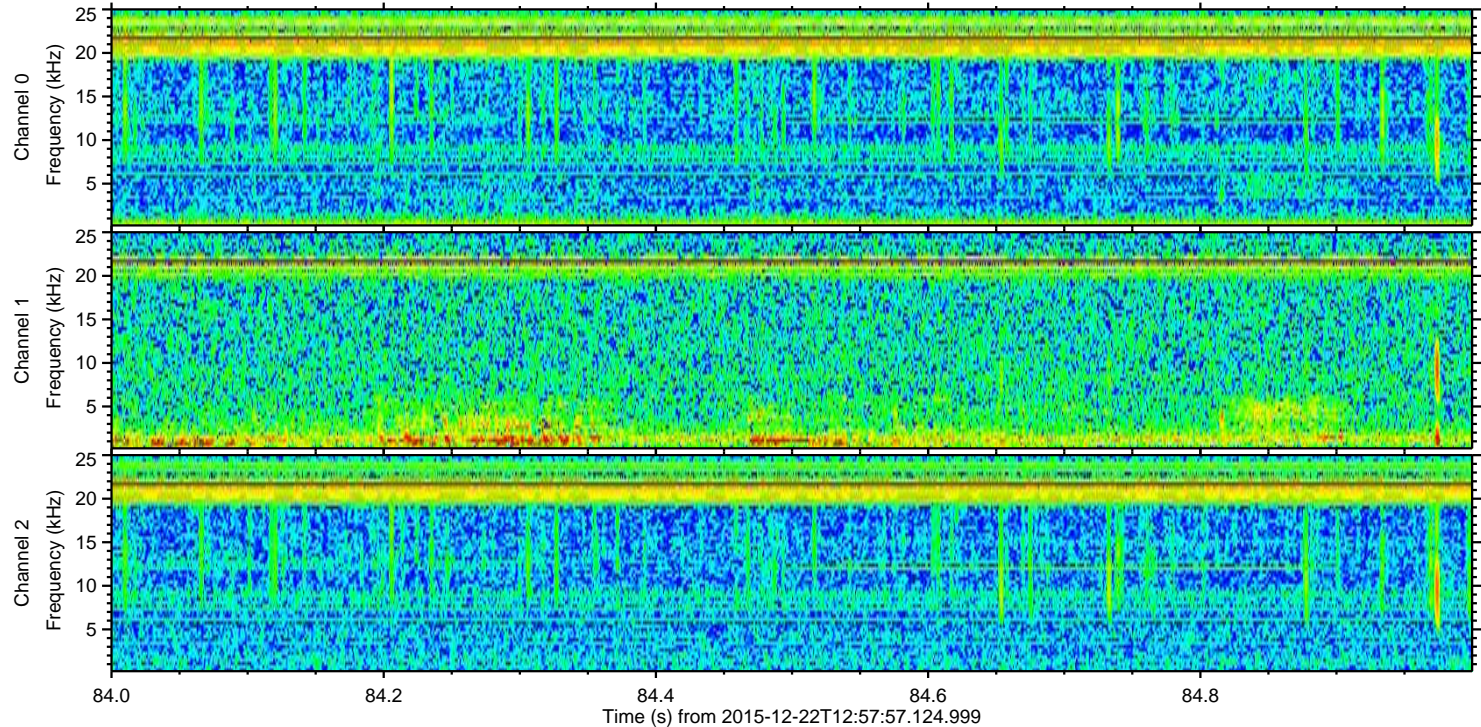
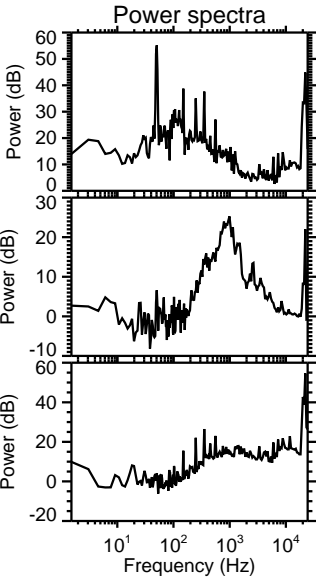
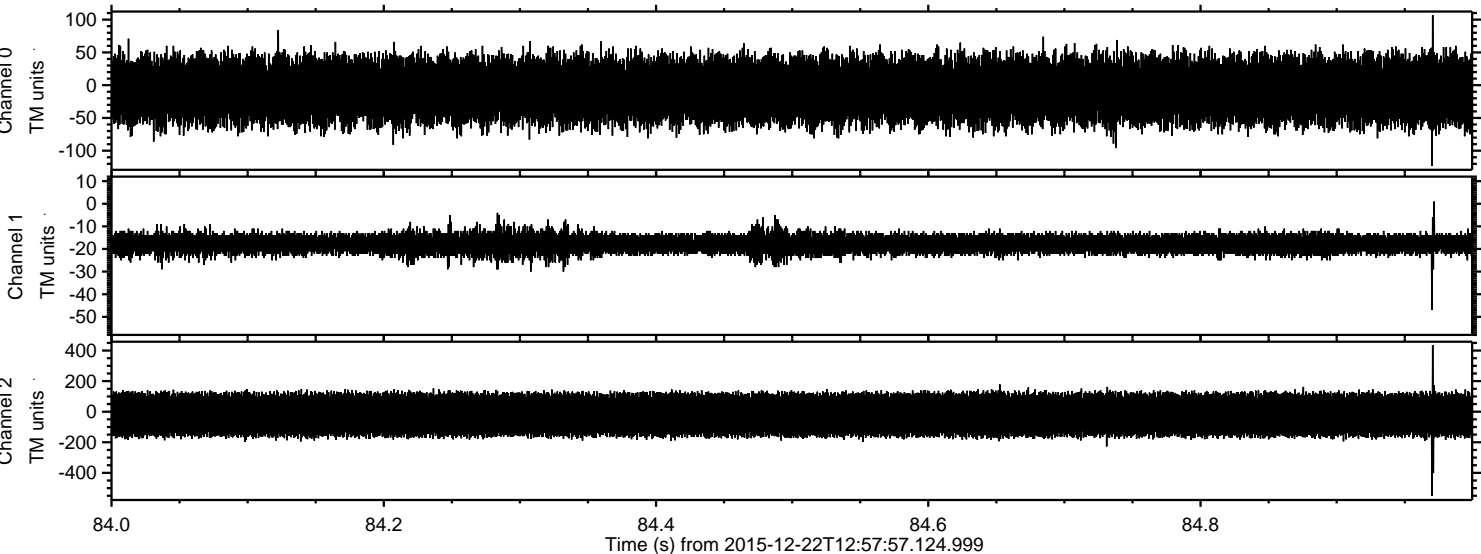
Processed Wed Feb 3 11:44:50 2016 by ELM ver.2012-10-06 from 001\_\_elm20151222\_125756\_\_dat00.bin



Processed Wed Feb 3 11:44:52 2016 by ELM ver.2012-10-06 from 001\_\_elm20151222\_125756\_\_dat00.bin

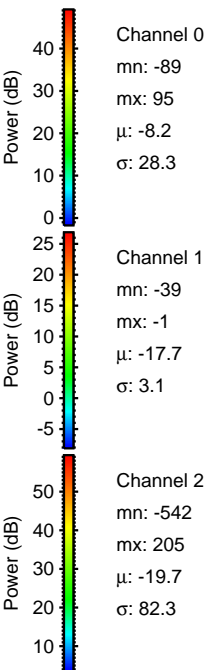
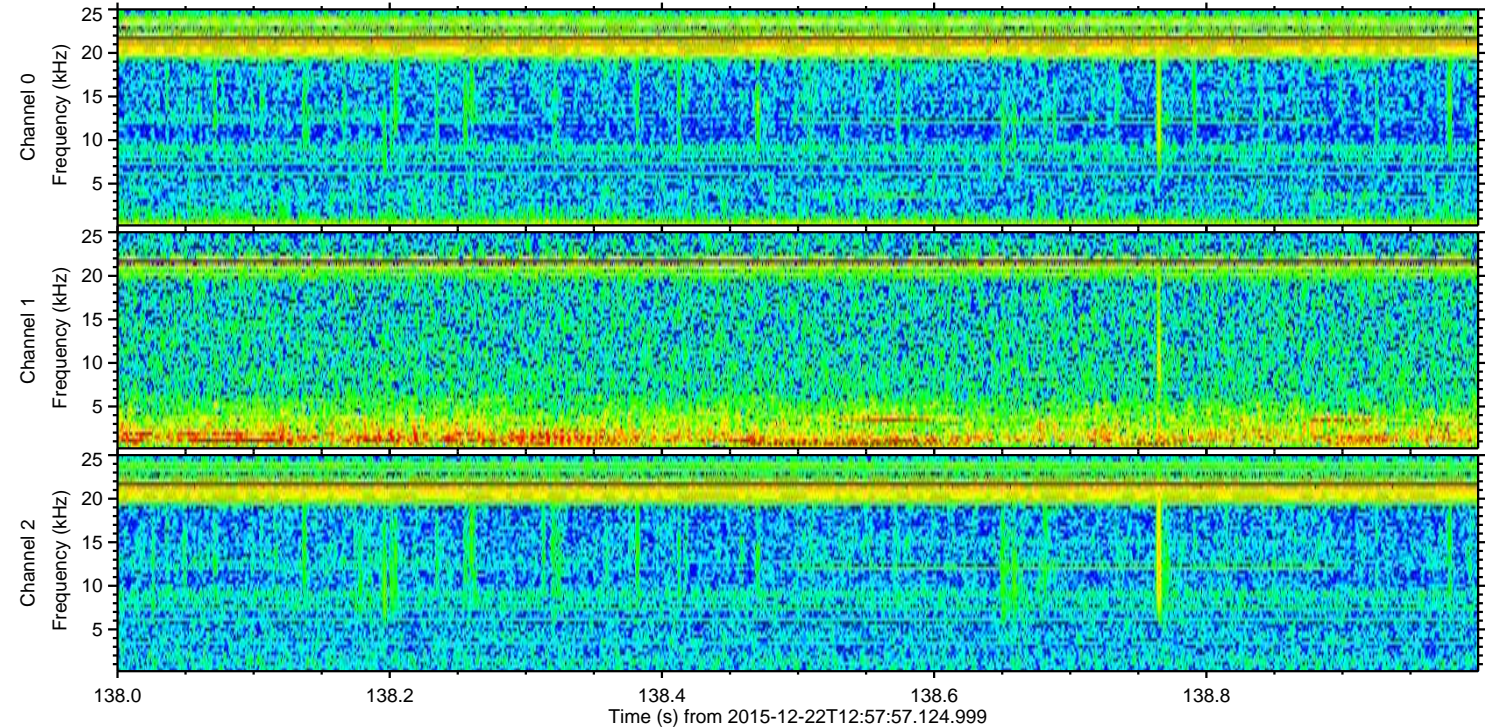
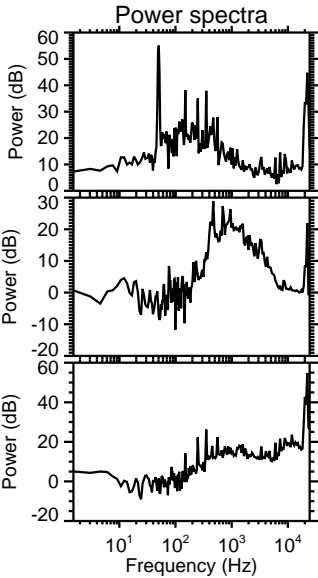
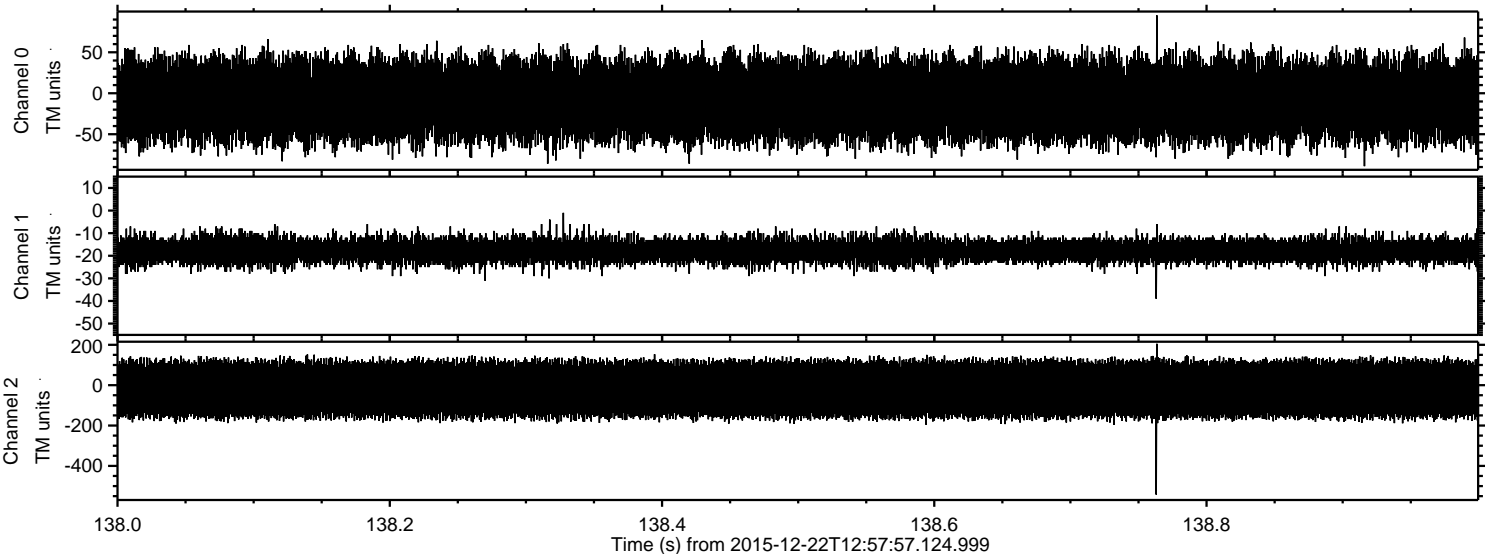


Processed Wed Feb 3 11:44:53 2016 by ELM ver.2012-10-06 from 001\_\_elm20151222\_125756\_\_dat00.bin



ELMAVAN 3D WAVEFORMS (Measured data sampled at 50 kHz) 51000 packets of 144 samples from 2015-12-22T12:57:57.124.999. Part 139/147

Processed Wed Feb 3 11:44:55 2016 by ELM ver.2012-10-06 from 001\_\_elm20151222\_125756\_\_dat00.bin



Processed Wed Feb 3 11:44:56 2016 by ELM ver.2012-10-06 from 001\_\_elm20151222\_125756\_\_dat00.bin

