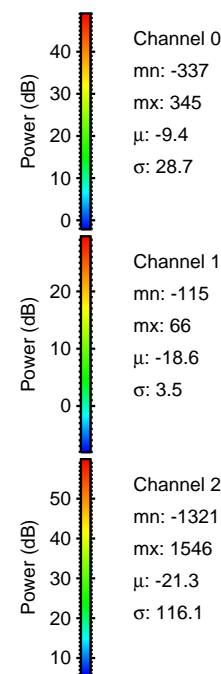
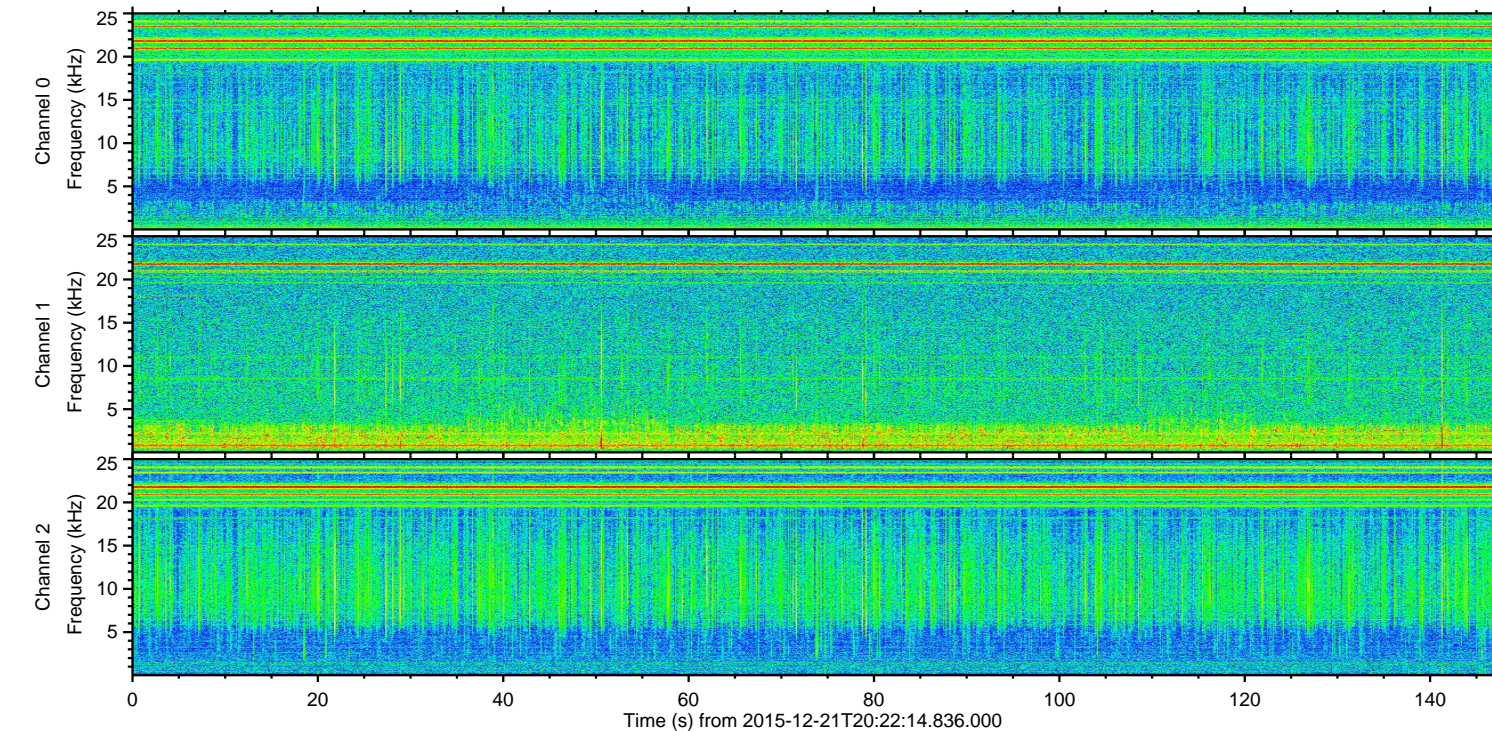
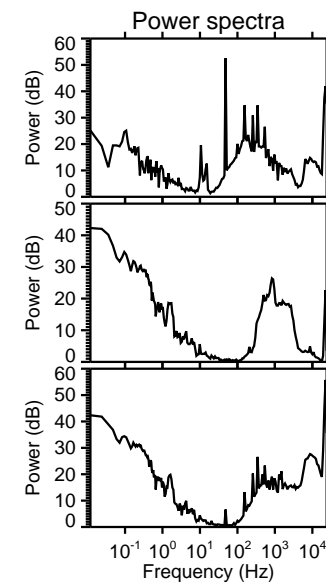
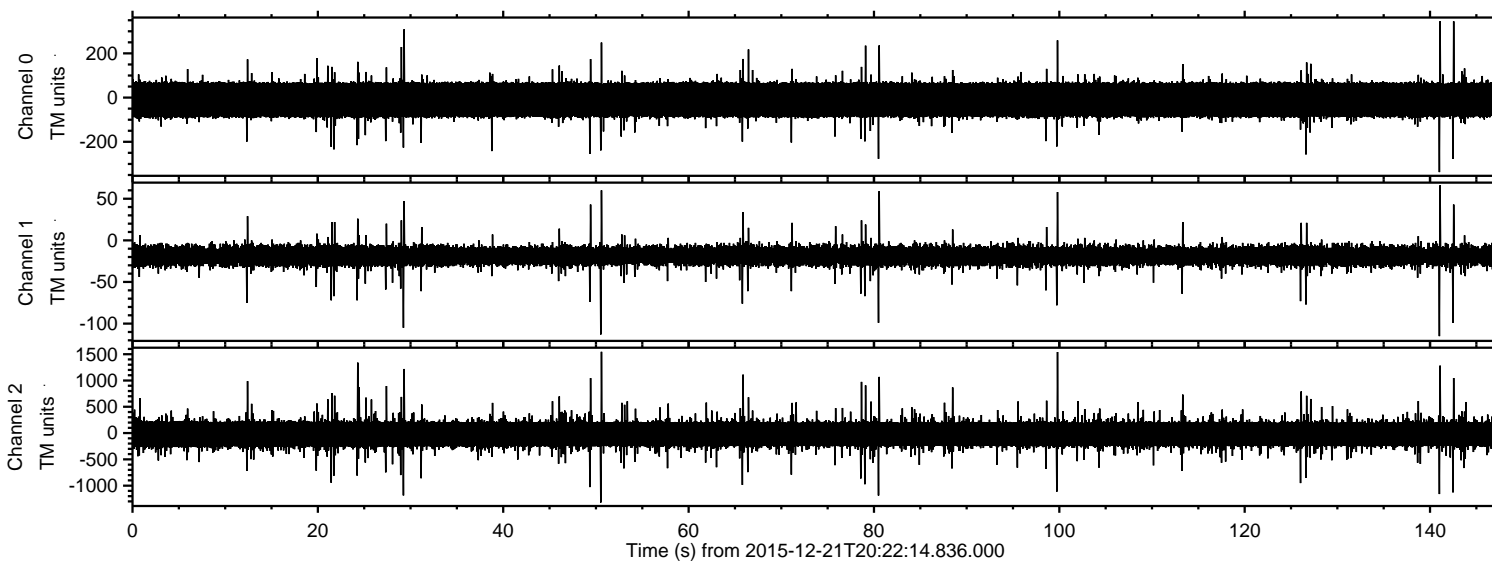
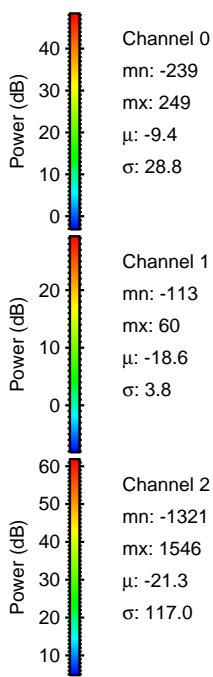
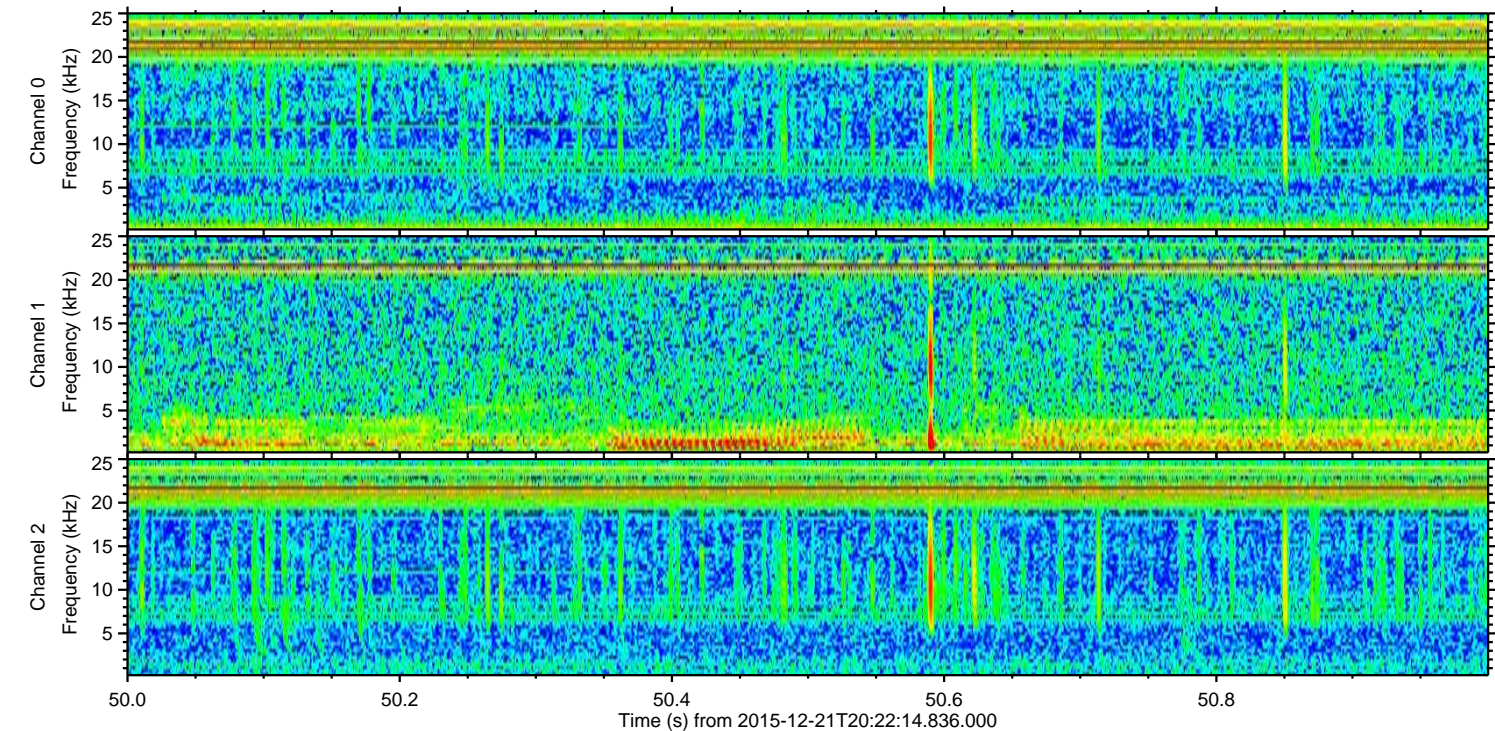
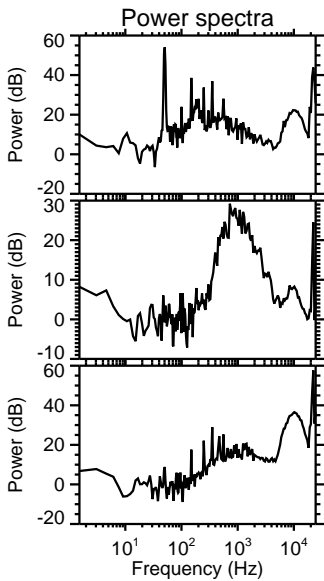
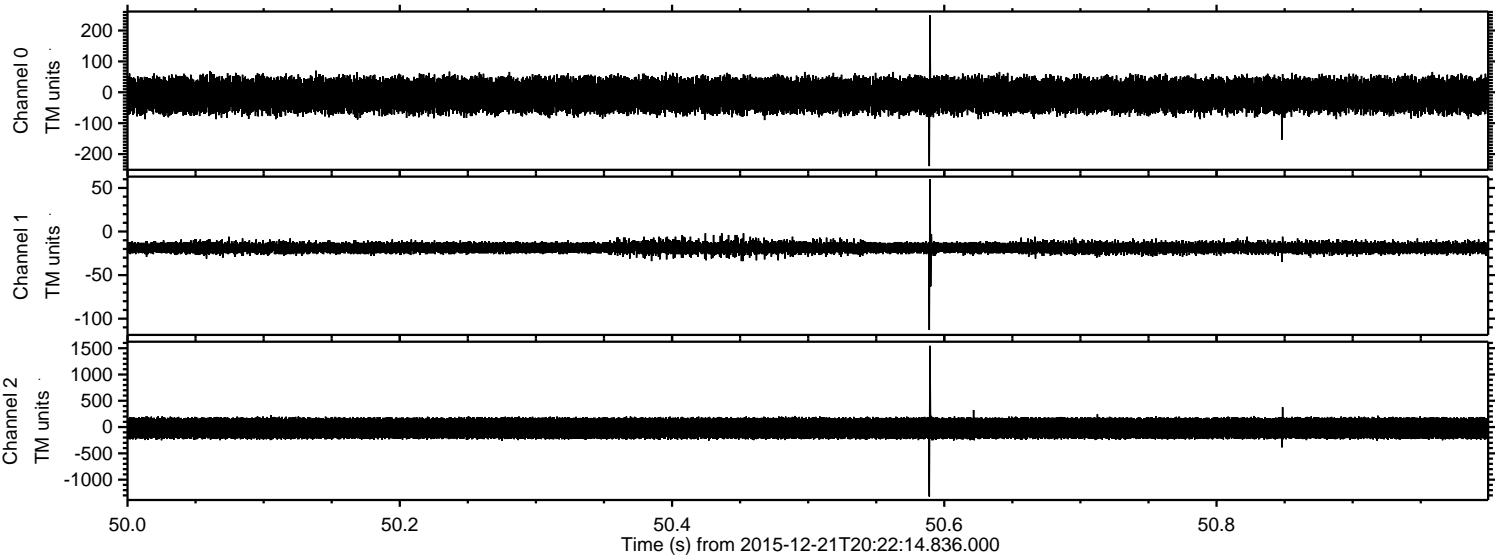


ELMAVAN 3D WAVEFORMS (Measured data sampled at 50 kHz) 51000 packets of 144 samples from 2015-12-21T20:22:14.836.000.

Processed Tue Feb 2 17:46:10 2016 by ELM ver.2012-10-06 from 001__elm20151221_202213__dat00.bin

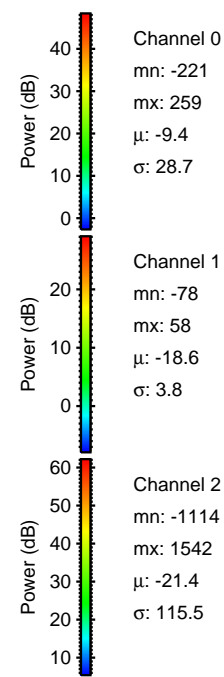
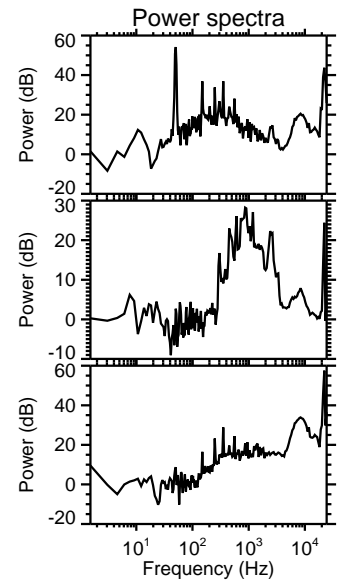
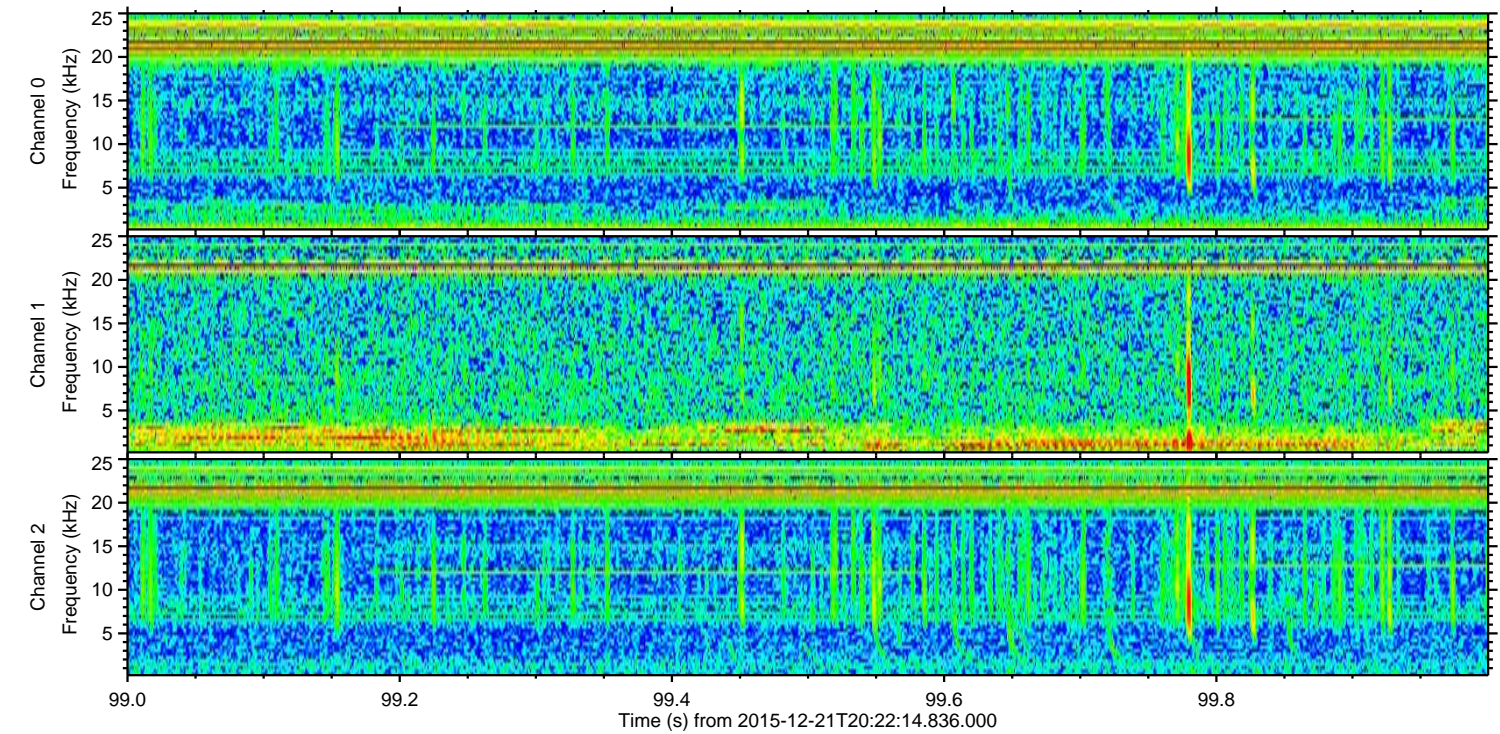
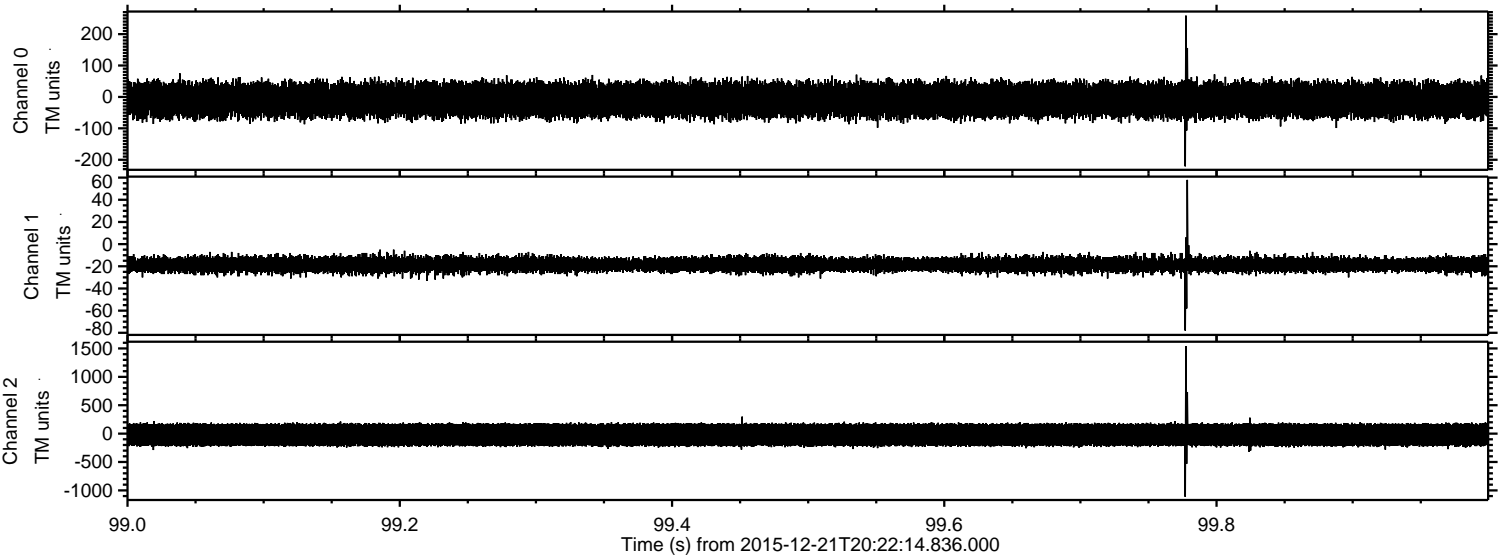


Processed Tue Feb 2 17:46:25 2016 by ELM ver.2012-10-06 from 001__elm20151221_202213__dat00.bin

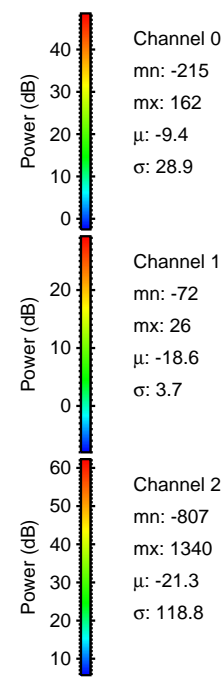
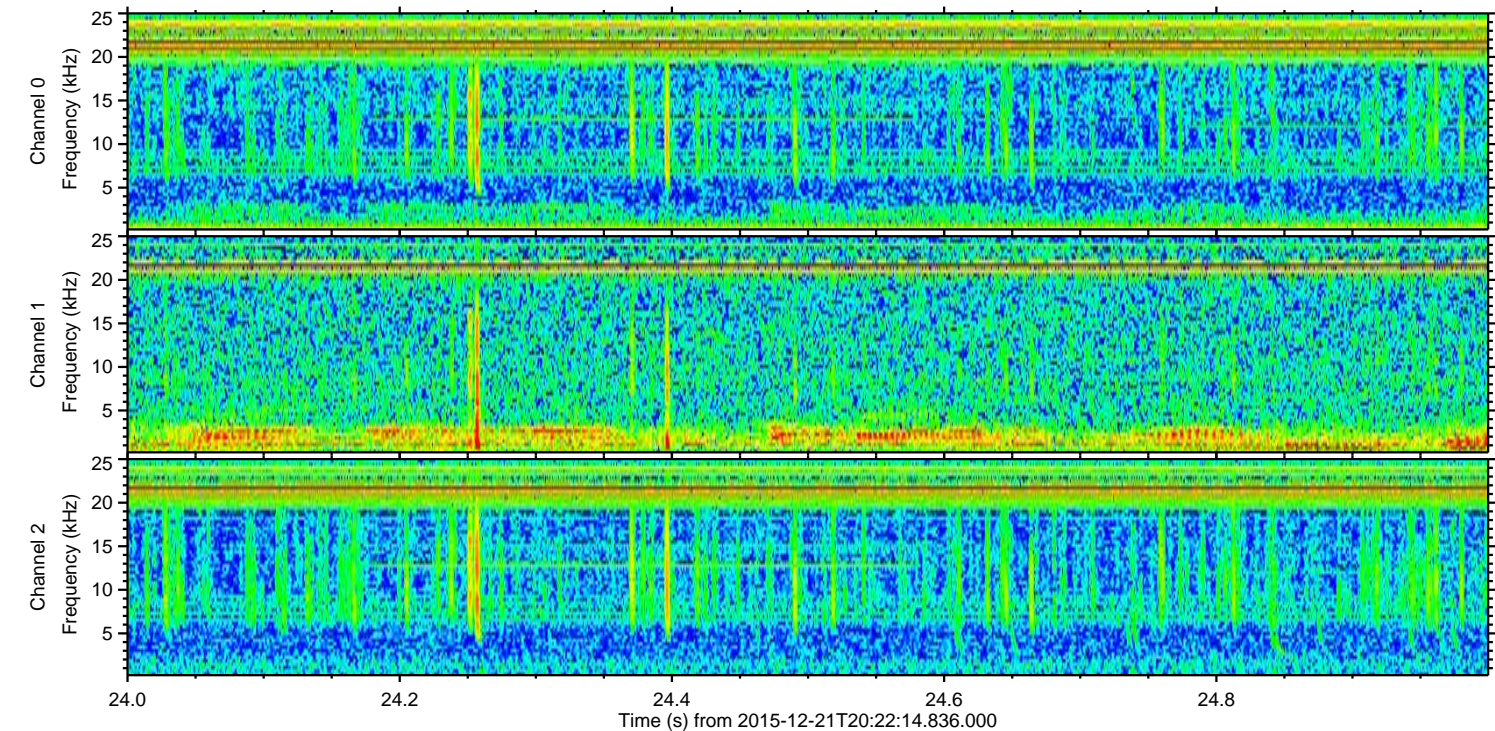
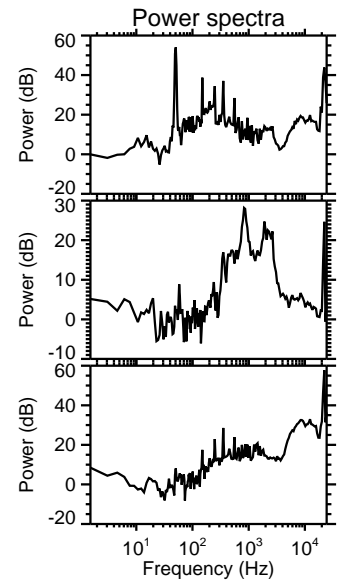
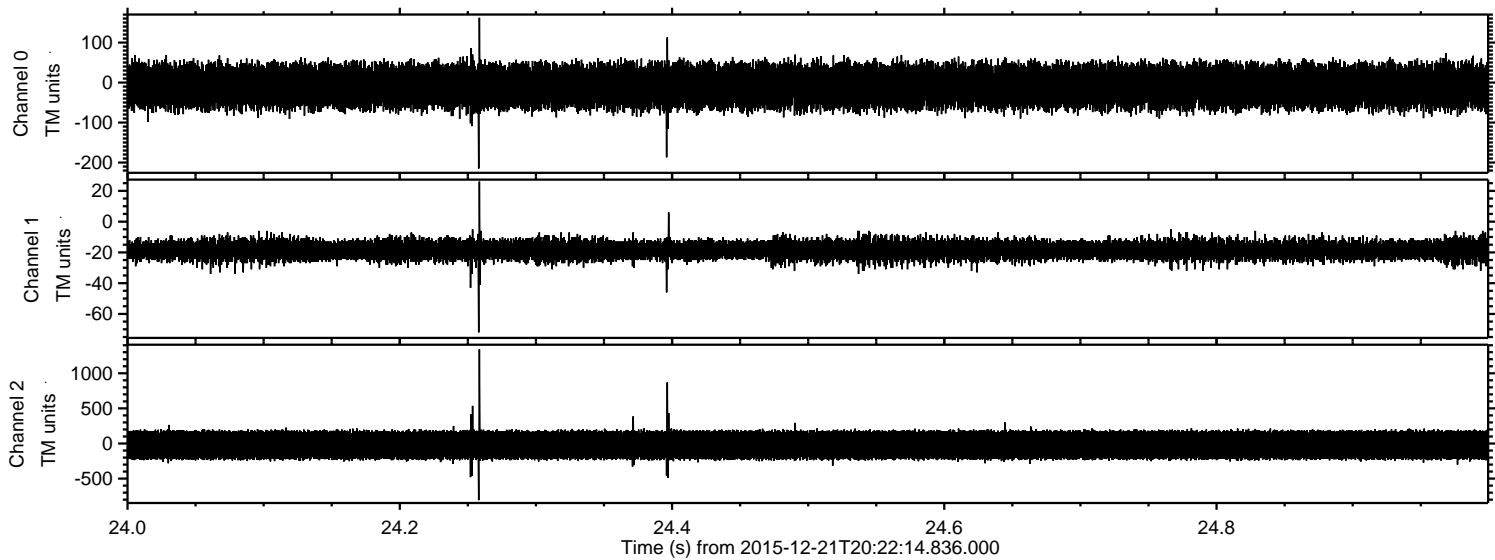


ELMAVAN 3D WAVEFORMS (Measured data sampled at 50 kHz) 51000 packets of 144 samples from 2015-12-21T20:22:14.836.000. Part 100/147

Processed Tue Feb 2 17:46:26 2016 by ELM ver.2012-10-06 from 001__elm20151221_202213__dat00.bin

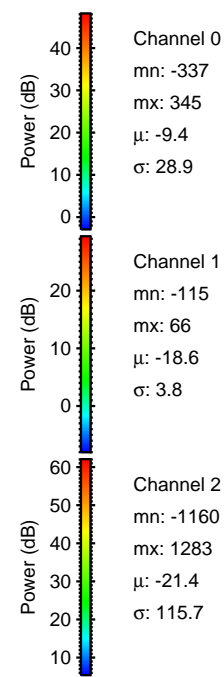
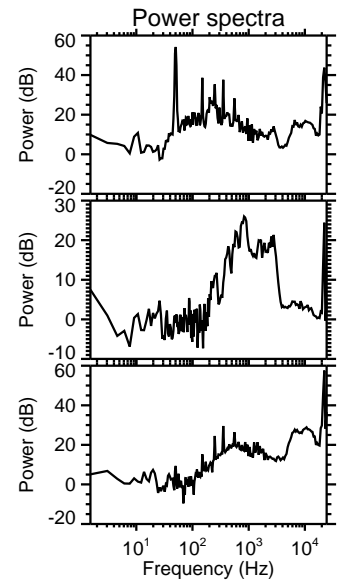
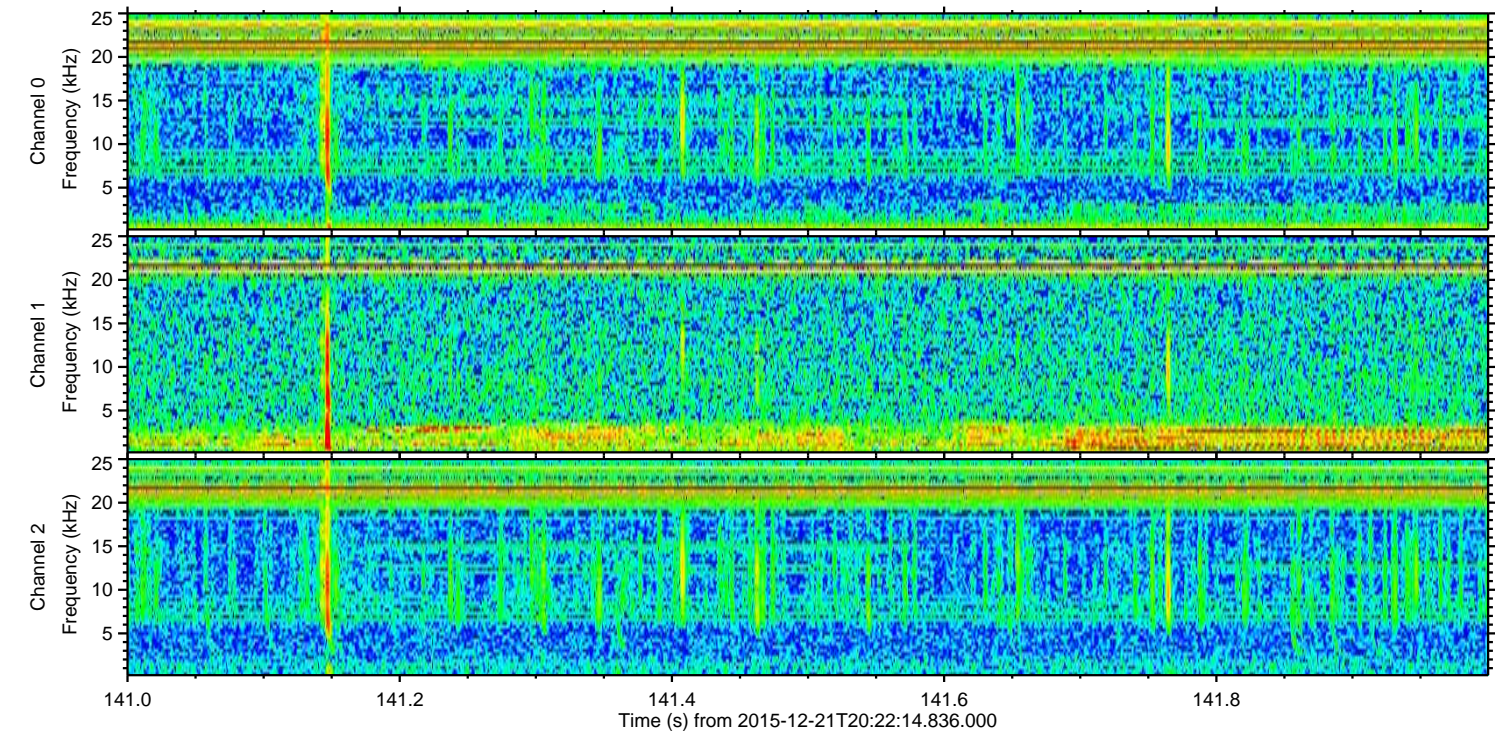
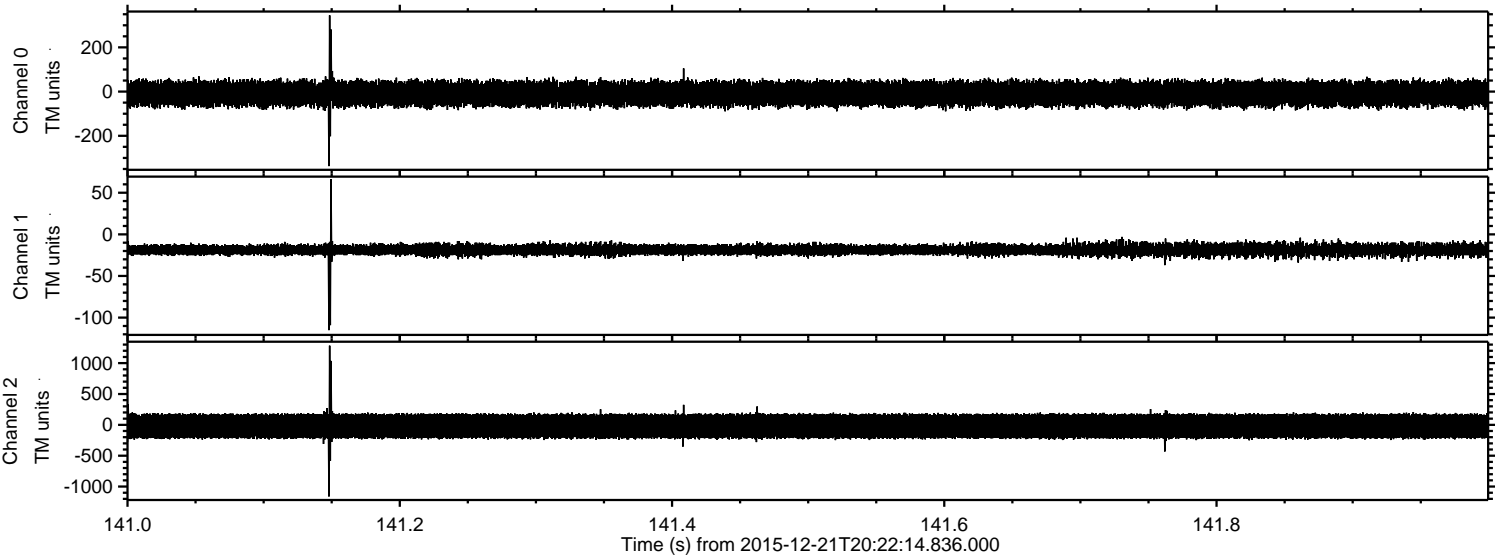


Processed Tue Feb 2 17:46:27 2016 by ELM ver.2012-10-06 from 001__elm20151221_202213__dat00.bin

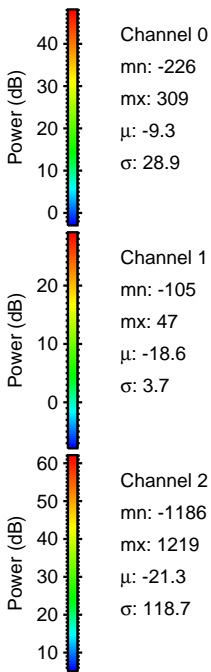
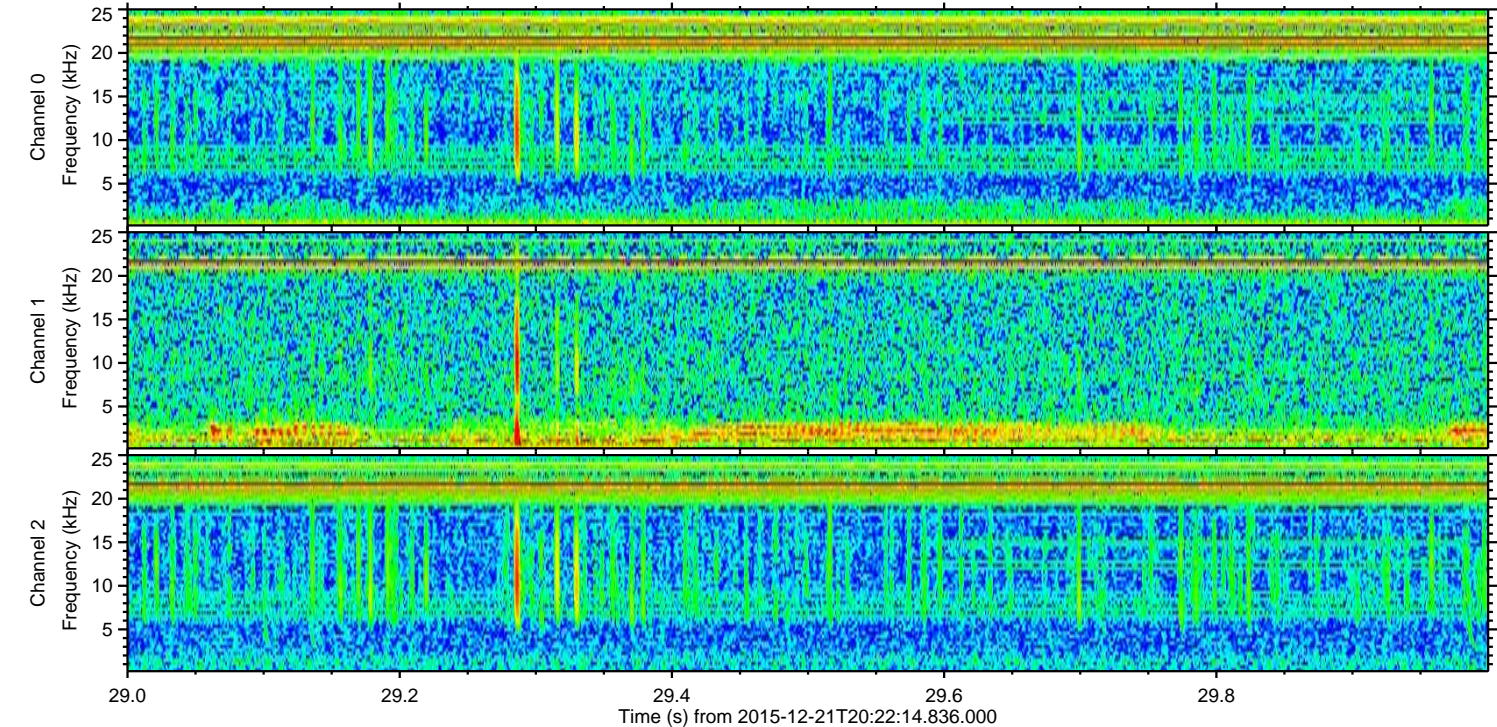
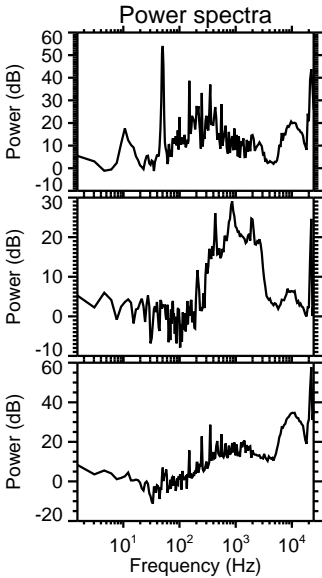
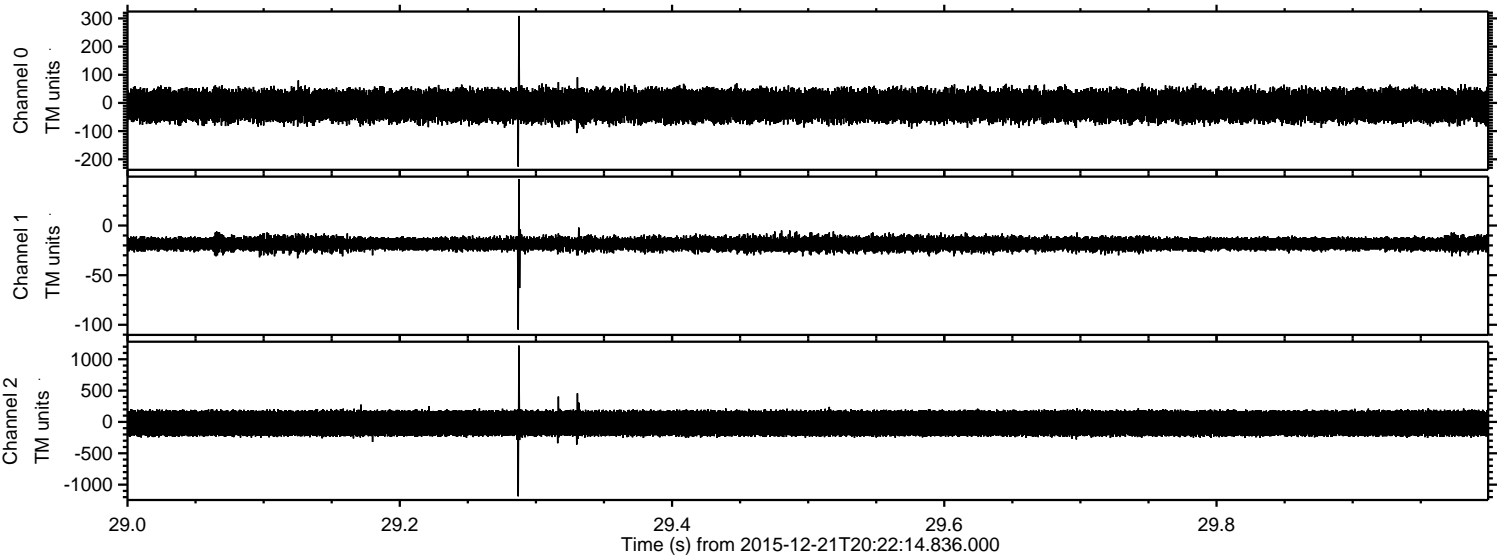


ELMAVAN 3D WAVEFORMS (Measured data sampled at 50 kHz) 51000 packets of 144 samples from 2015-12-21T20:22:14.836.000. Part 142/147

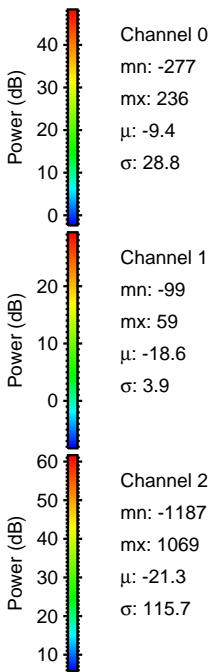
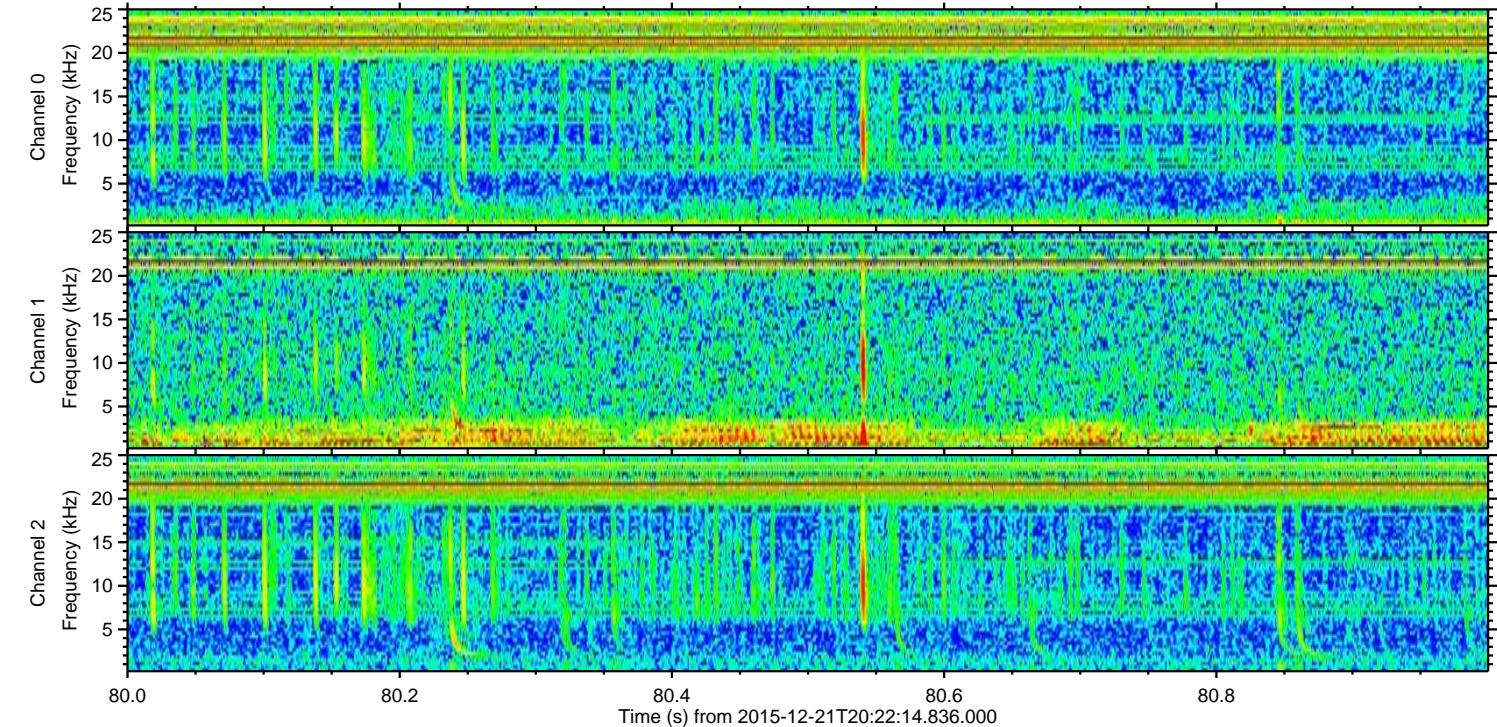
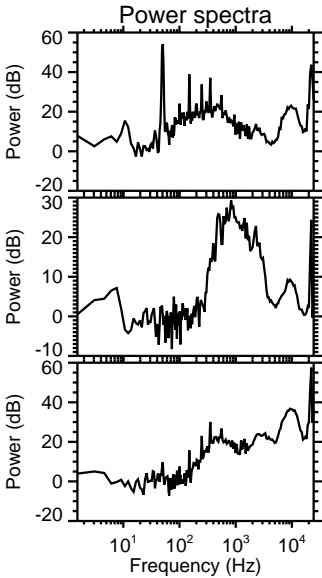
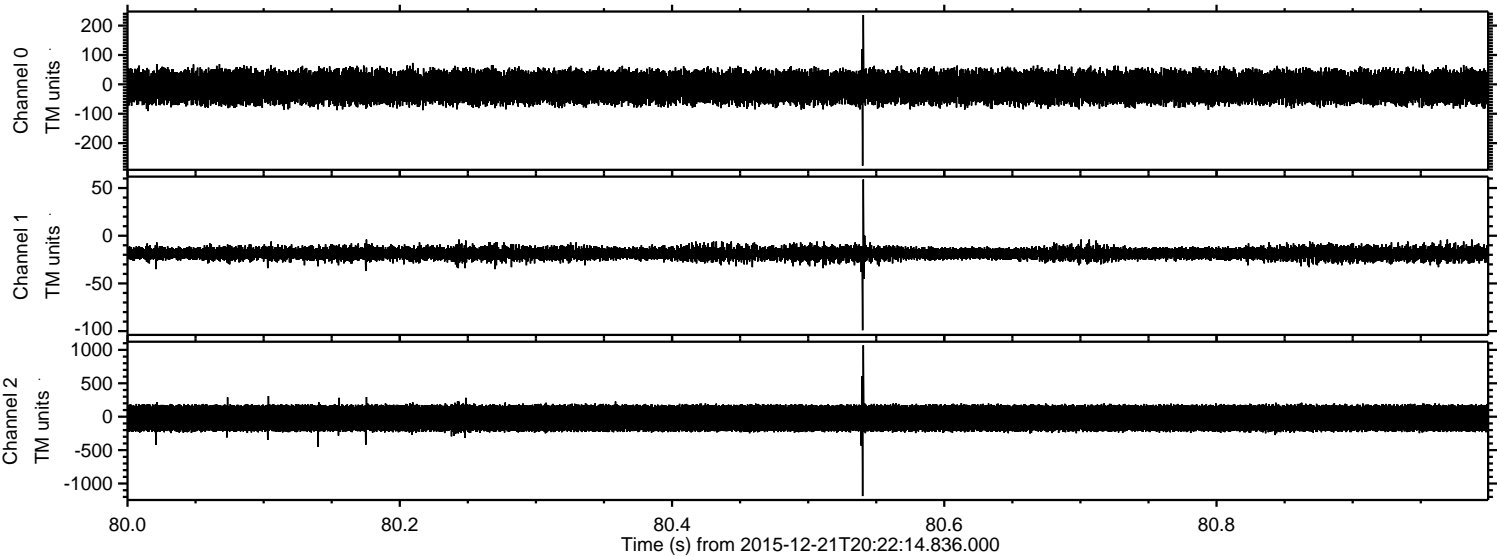
Processed Tue Feb 2 17:46:28 2016 by ELM ver.2012-10-06 from 001__elm20151221_202213__dat00.bin



Processed Tue Feb 2 17:46:30 2016 by ELM ver.2012-10-06 from 001__elm20151221_202213__dat00.bin

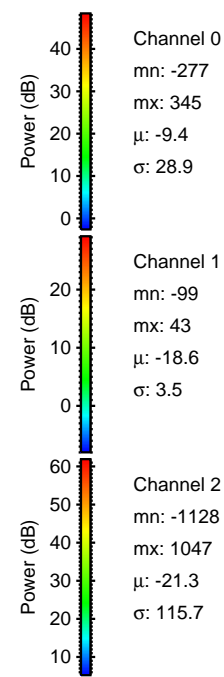
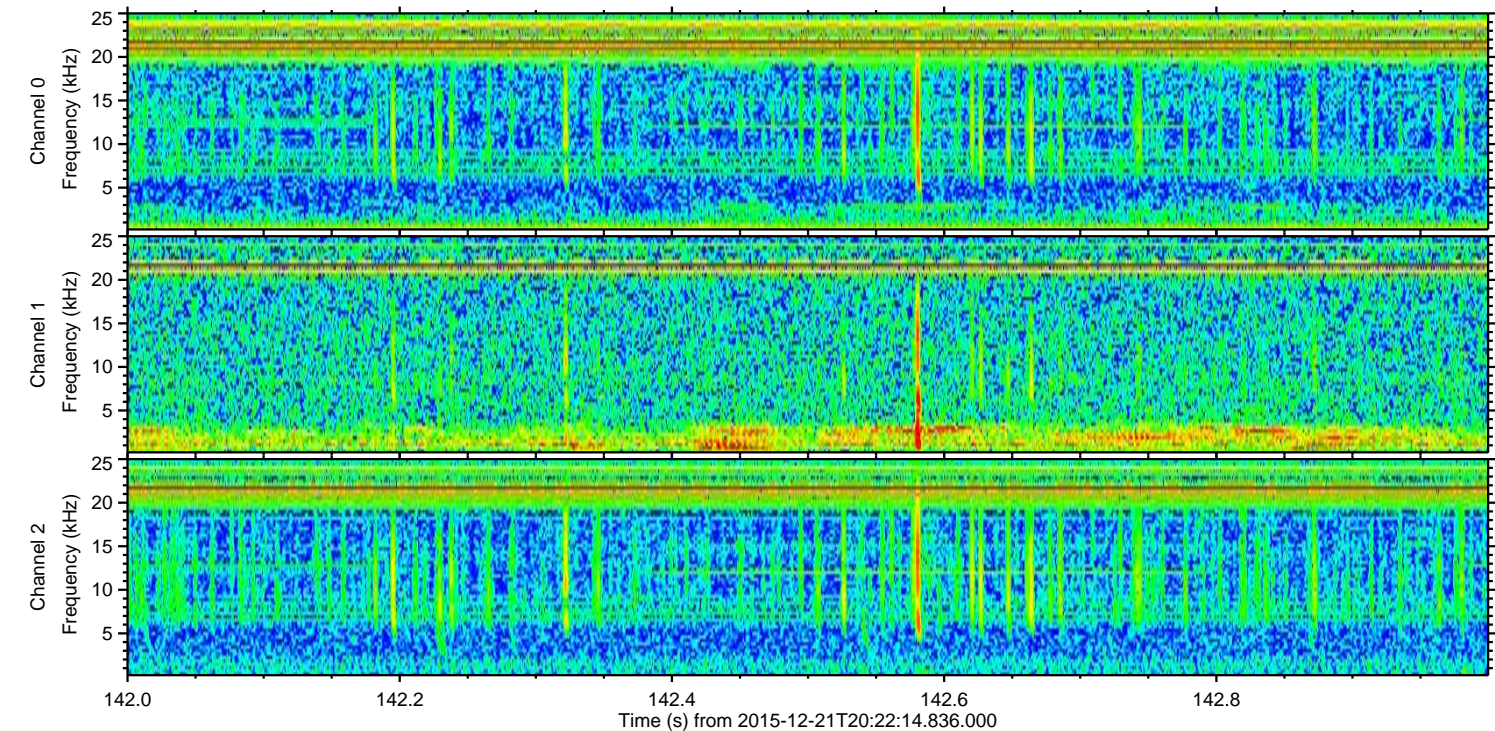
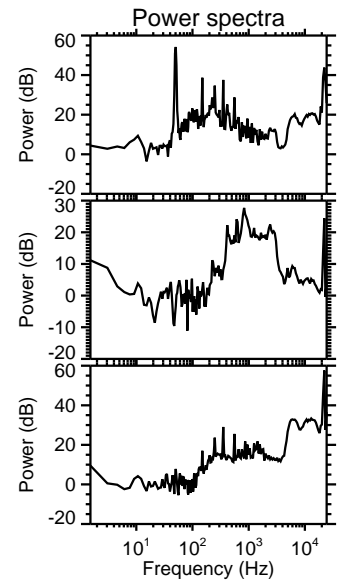
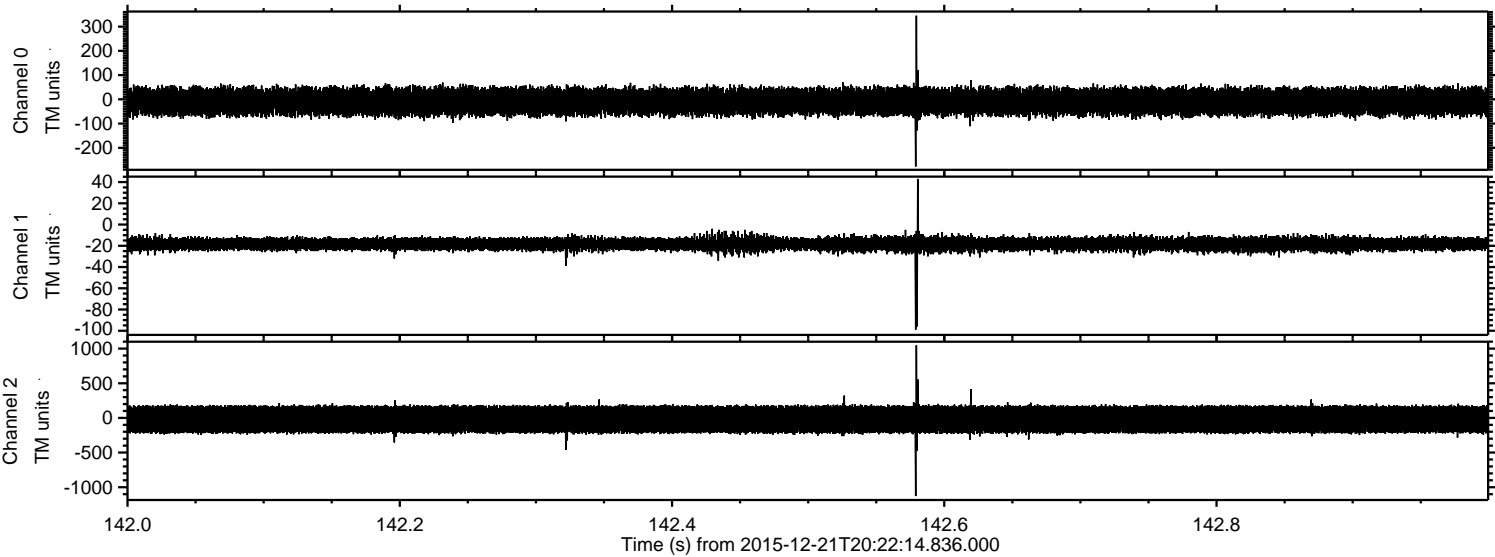


Processed Tue Feb 2 17:46:31 2016 by ELM ver.2012-10-06 from 001__elm20151221_202213__dat00.bin

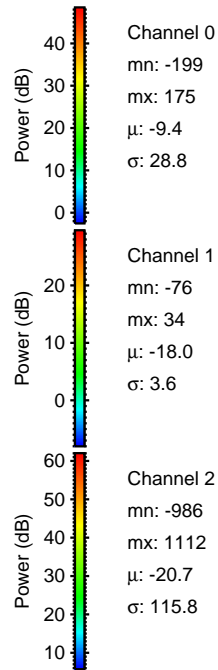
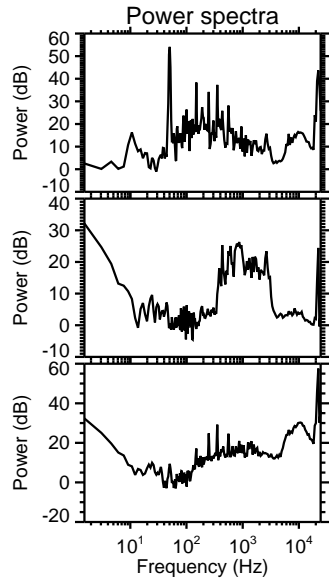
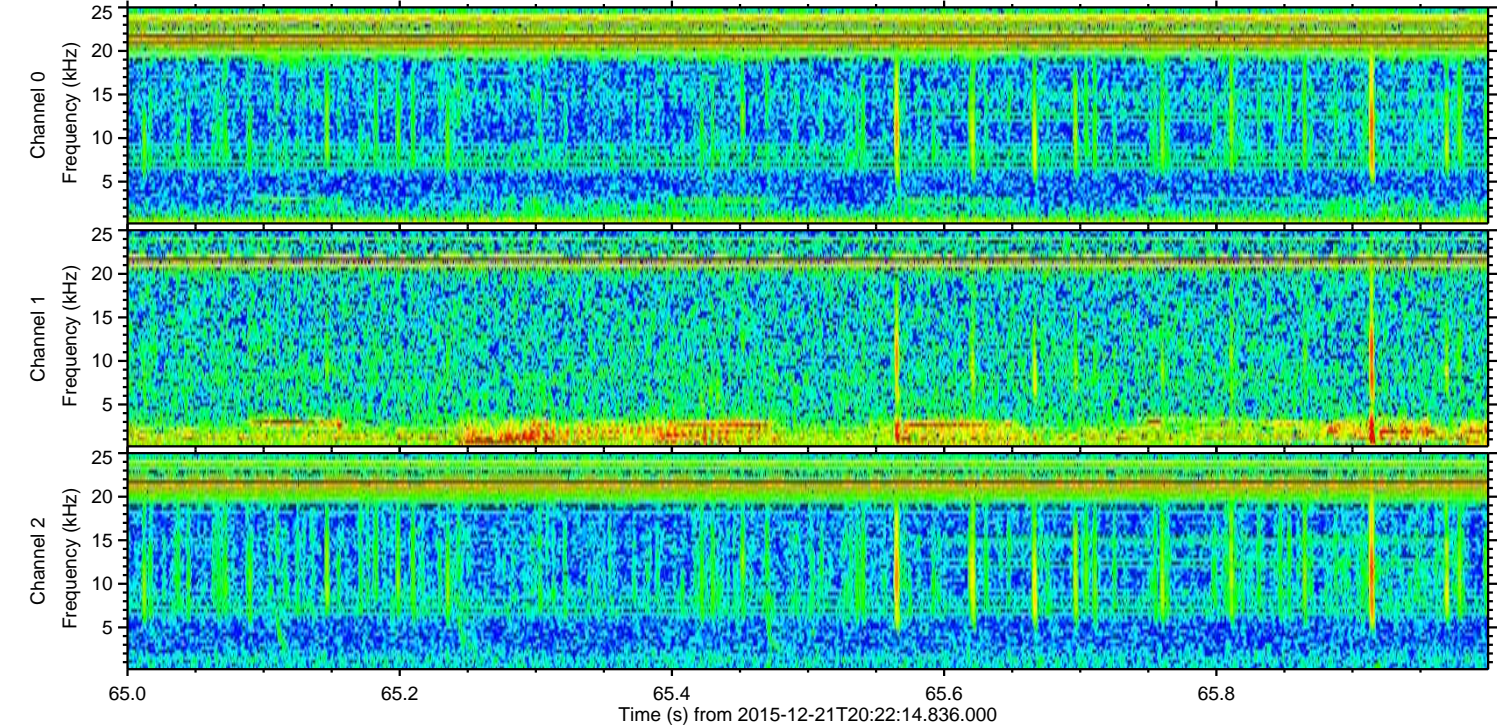
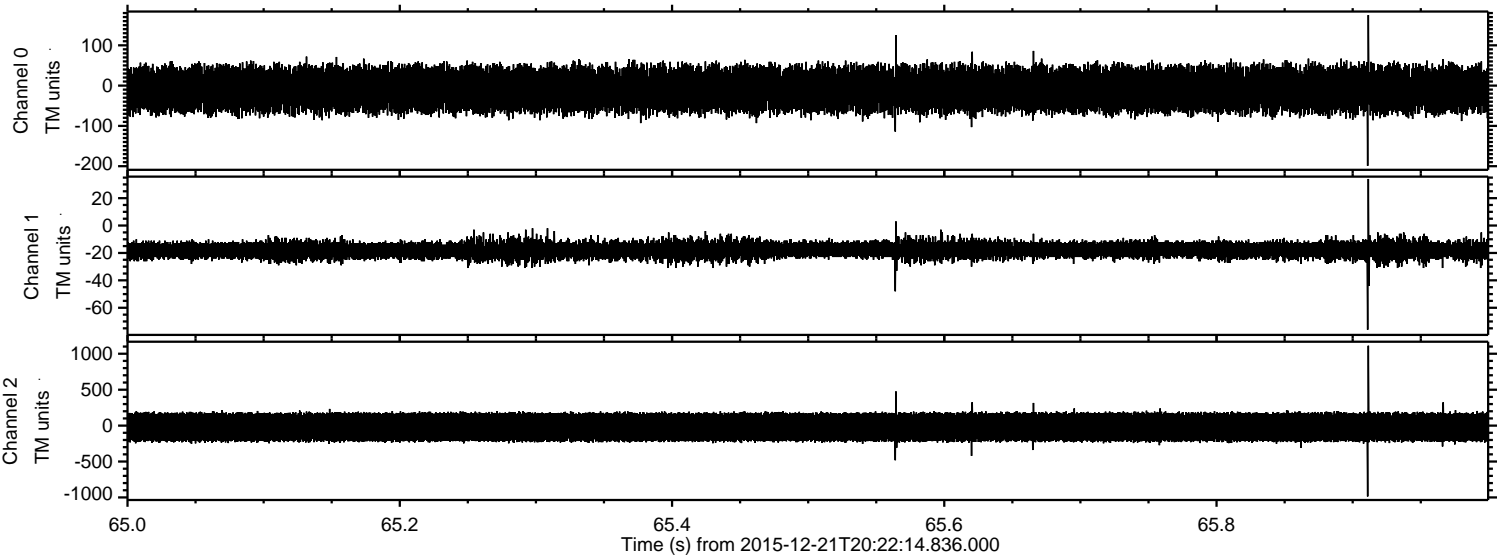


ELMAVAN 3D WAVEFORMS (Measured data sampled at 50 kHz) 51000 packets of 144 samples from 2015-12-21T20:22:14.836.000. Part 143/147

Processed Tue Feb 2 17:46:32 2016 by ELM ver.2012-10-06 from 001__elm20151221_202213__dat00.bin



Processed Tue Feb 2 17:46:33 2016 by ELM ver.2012-10-06 from 001__elm20151221_202213__dat00.bin

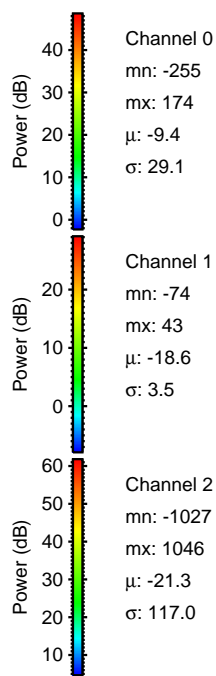
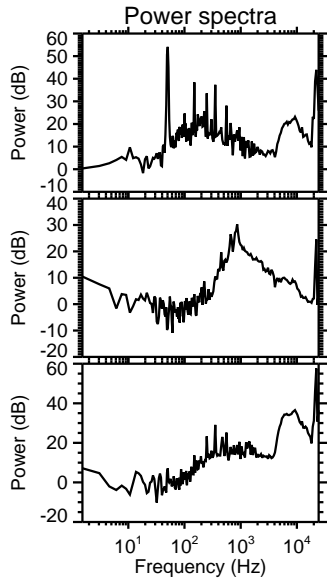
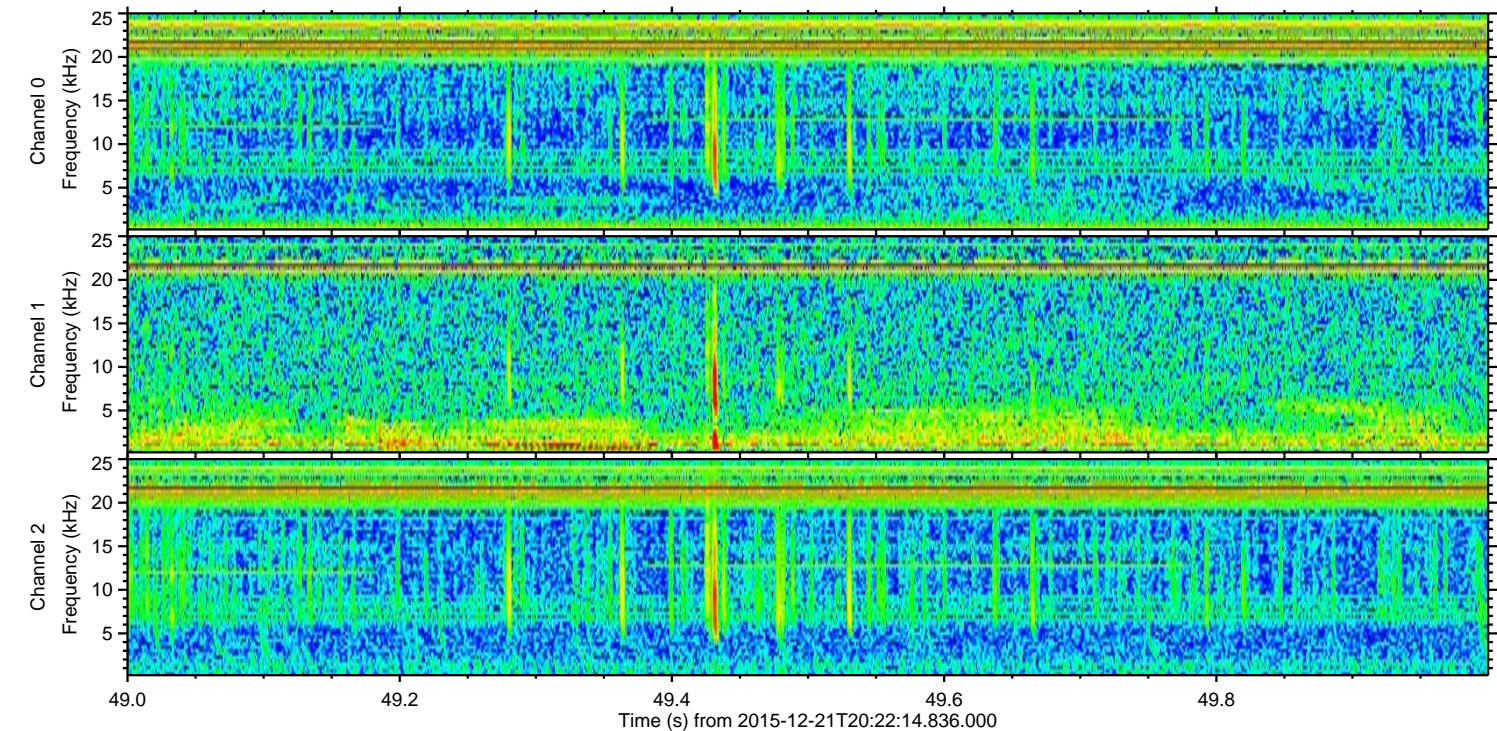
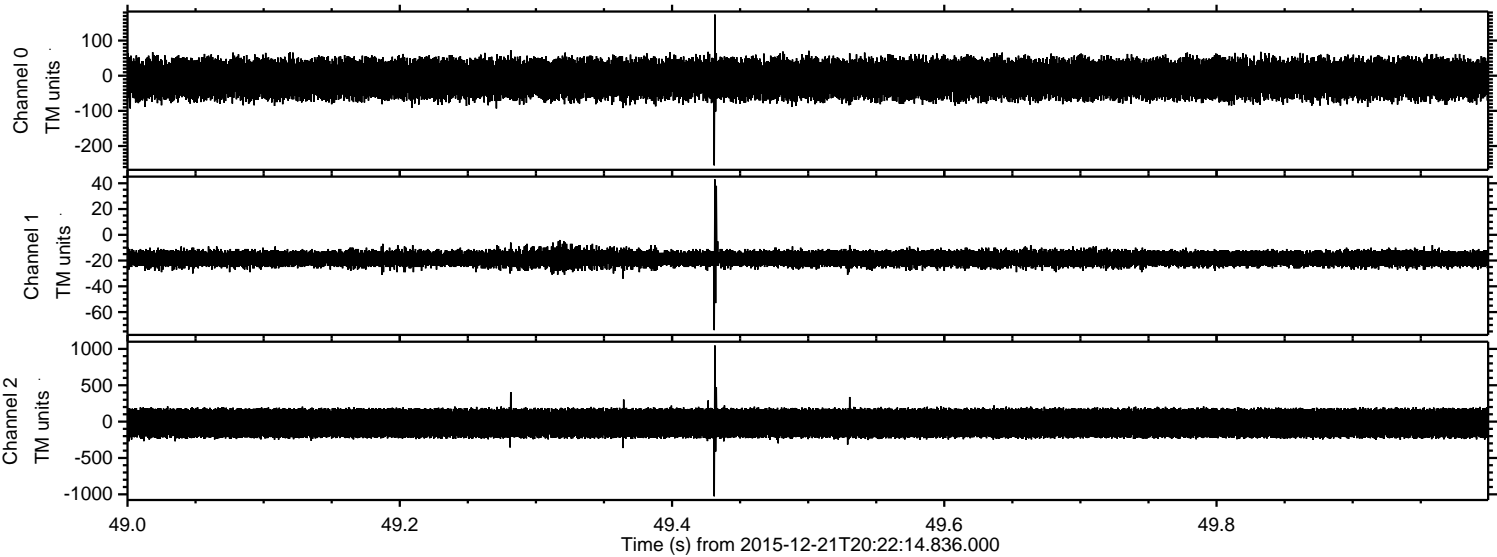


Channel 0
mn: -199
mx: 175
 μ : -9.4
 σ : 28.8

Channel 1
mn: -76
mx: 34
 μ : -18.0
 σ : 3.6

Channel 2
mn: -986
mx: 1112
 μ : -20.7
 σ : 115.8

Processed Tue Feb 2 17:46:34 2016 by ELM ver.2012-10-06 from 001__elm20151221_202213__dat00.bin



Power spectra

Channel 0

mn: -255
mx: 174
 μ : -9.4
 σ : 29.1

Channel 1

mn: -74
mx: 43
 μ : -18.6
 σ : 3.5

Channel 2

mn: -1027
mx: 1046
 μ : -21.3
 σ : 117.0

Processed Tue Feb 2 17:46:35 2016 by ELM ver.2012-10-06 from 001__elm20151221_202213__dat00.bin

