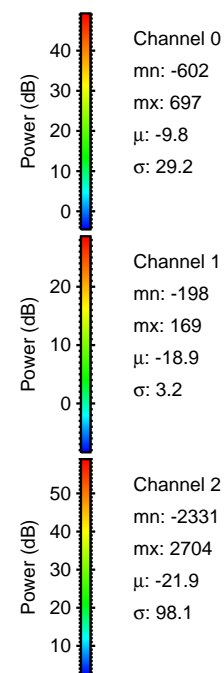
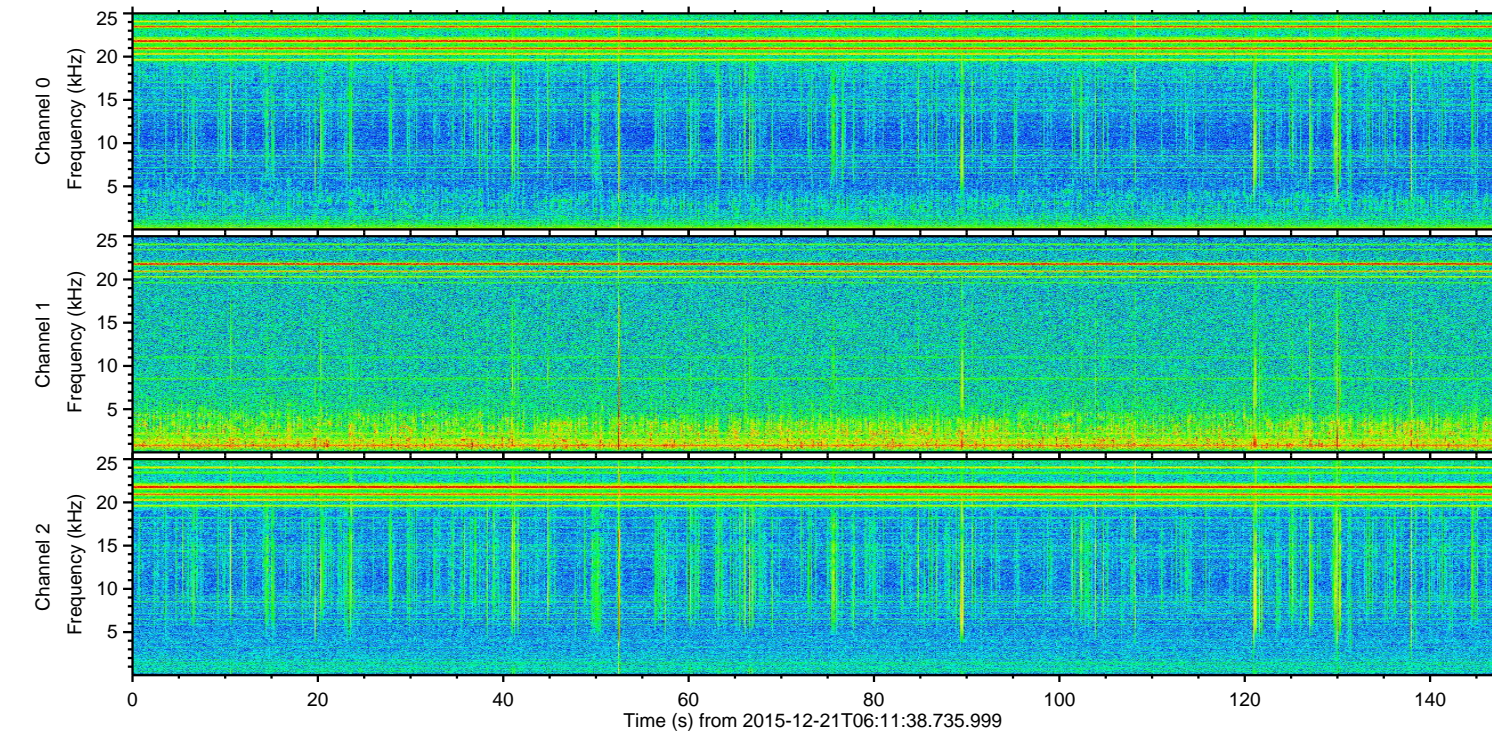
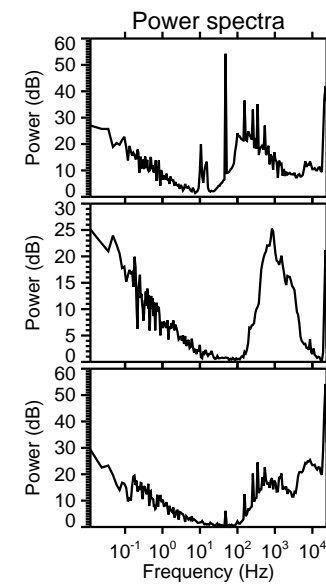
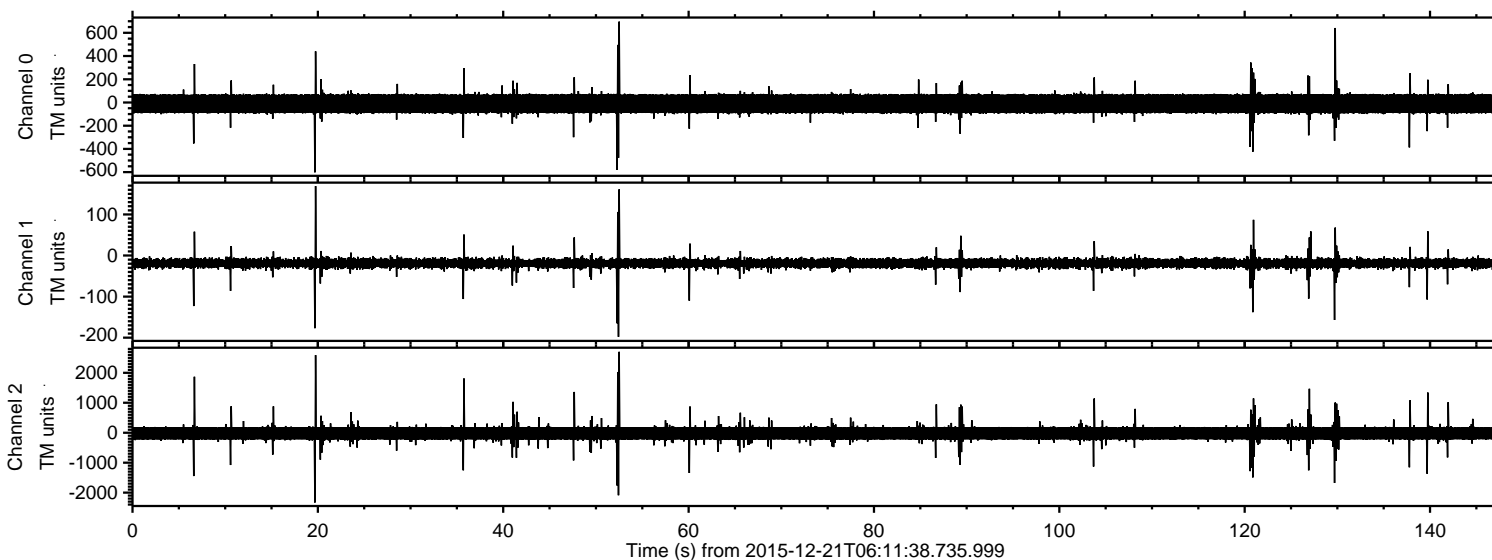


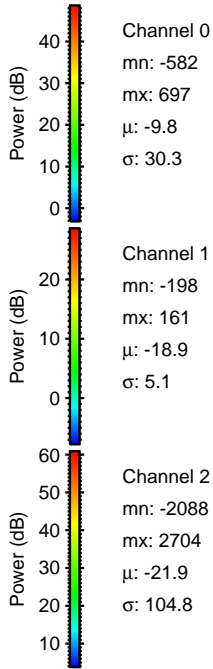
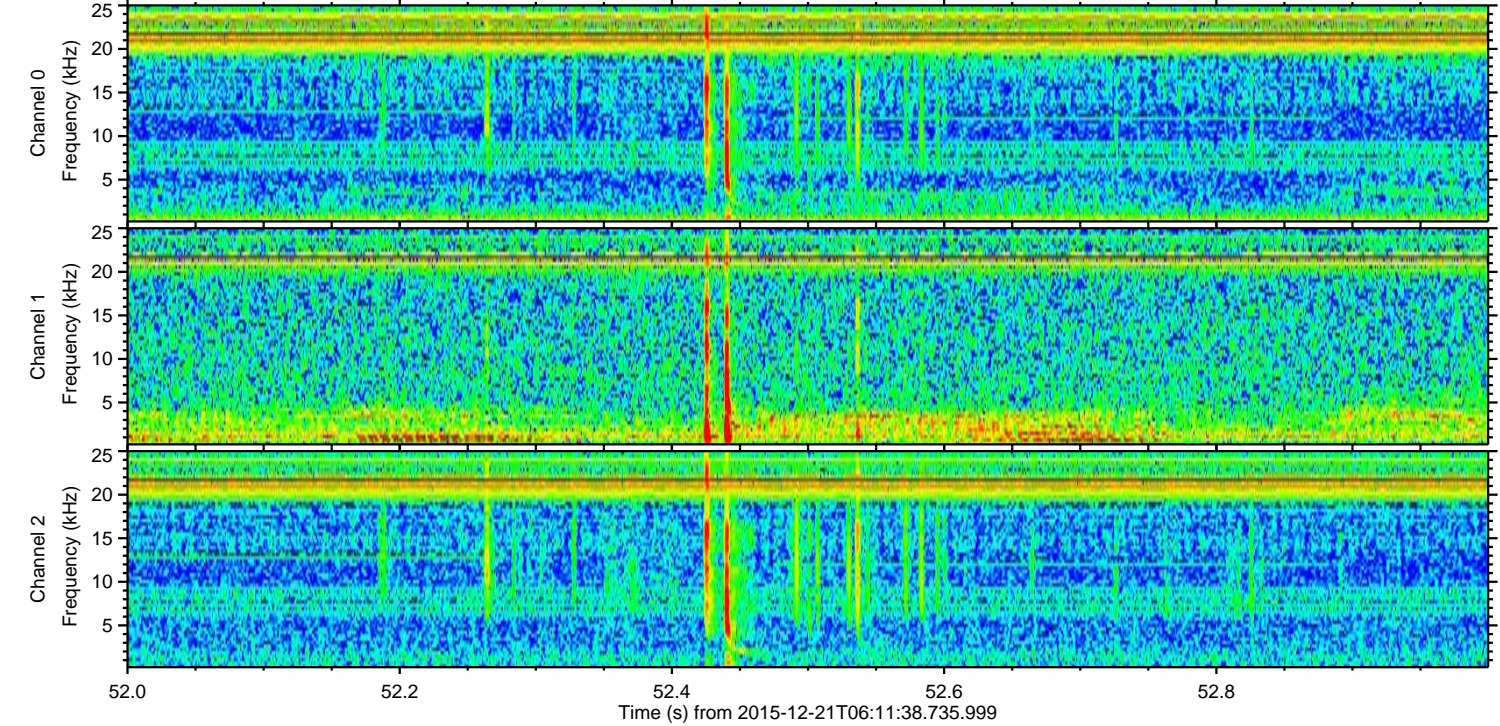
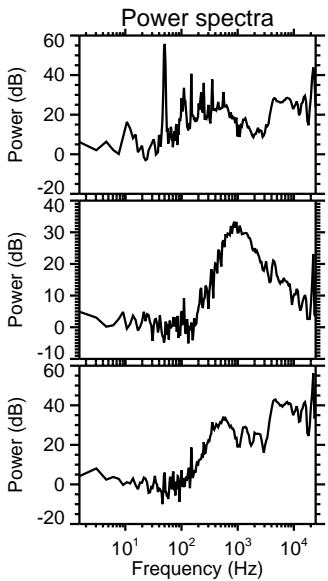
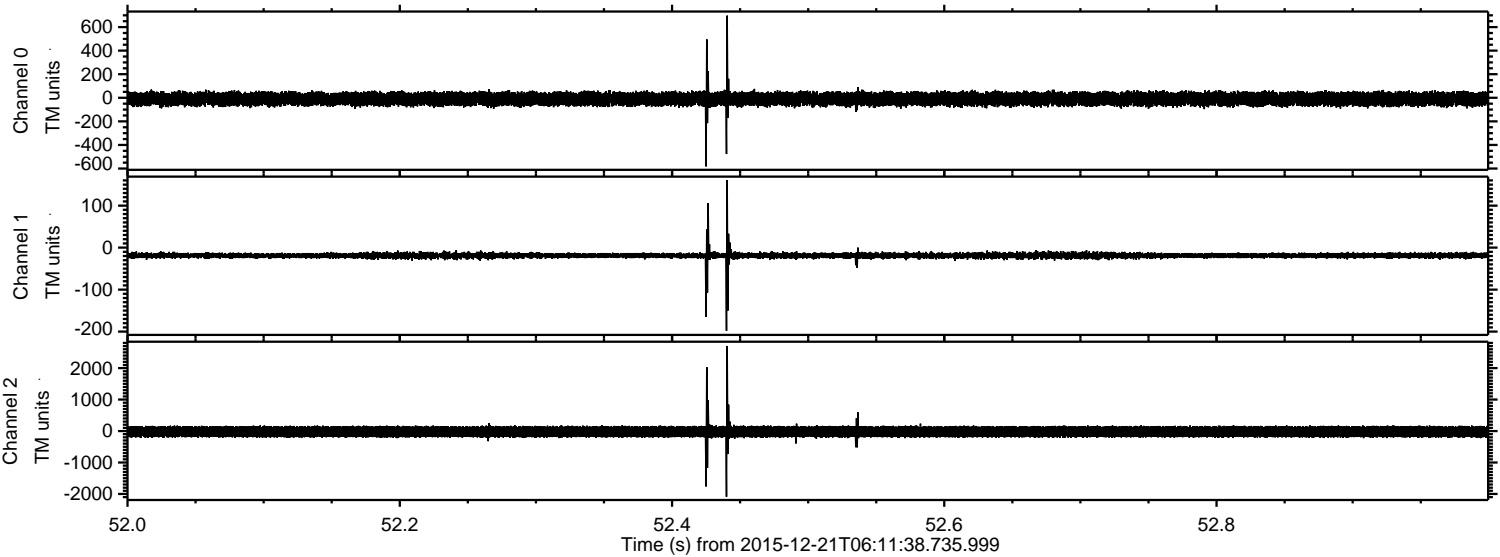
# ELMAVAN 3D WAVEFORMS (Measured data sampled at 50 kHz) 51000 packets of 144 samples from 2015-12-21T06:11:38.735.999.

Processed Tue Feb 2 07:13:32 2016 by ELM ver.2012-10-06 from 001\_\_elm20151221\_061137\_\_dat00.bin





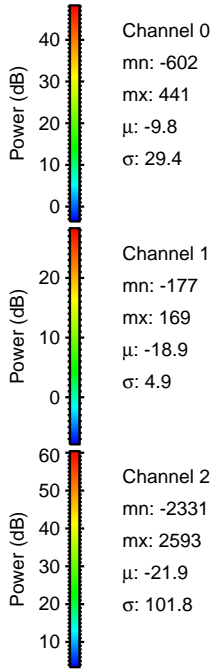
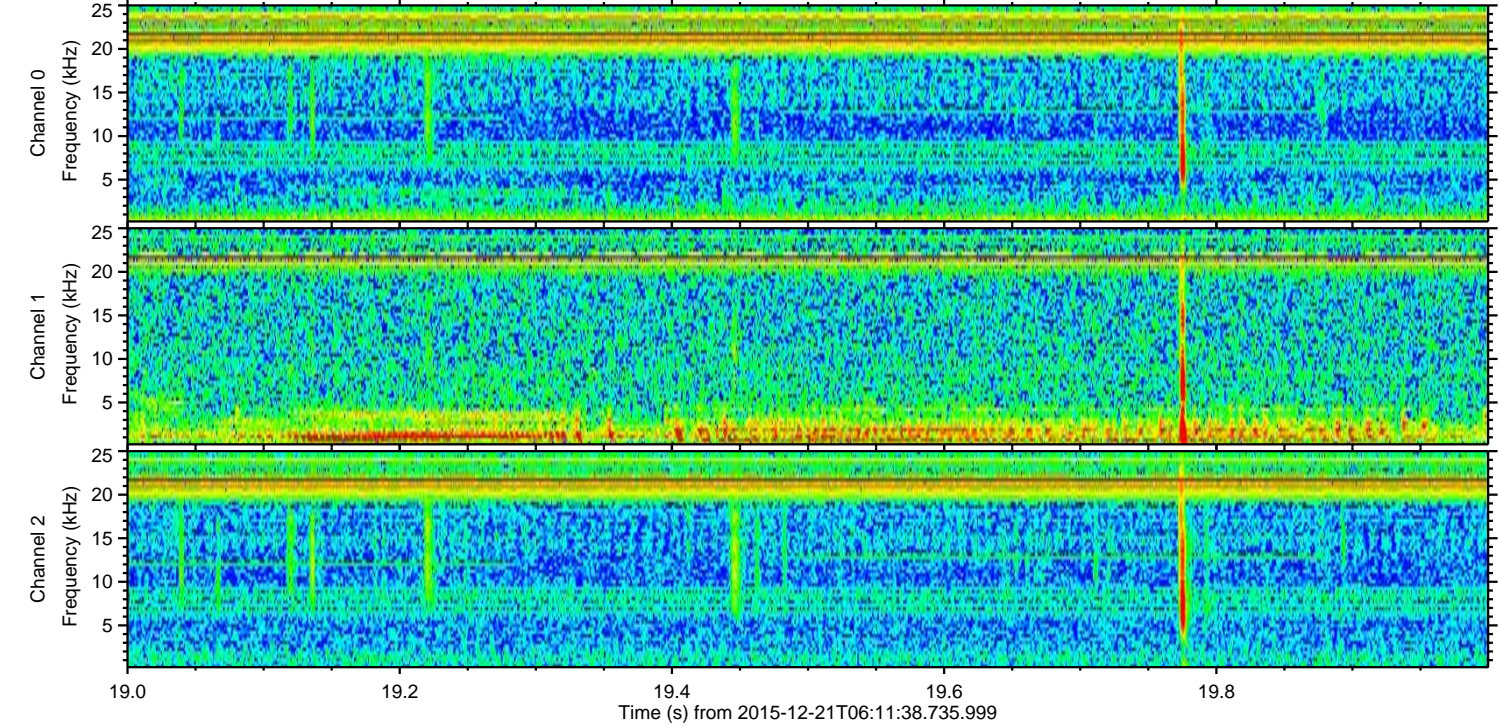
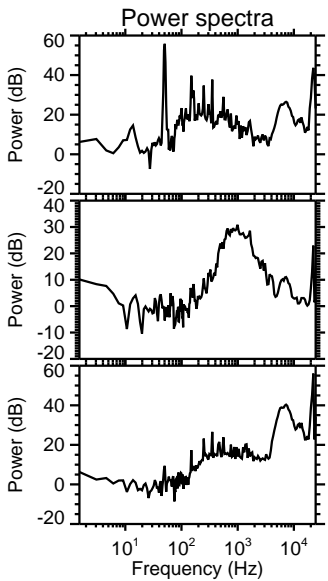
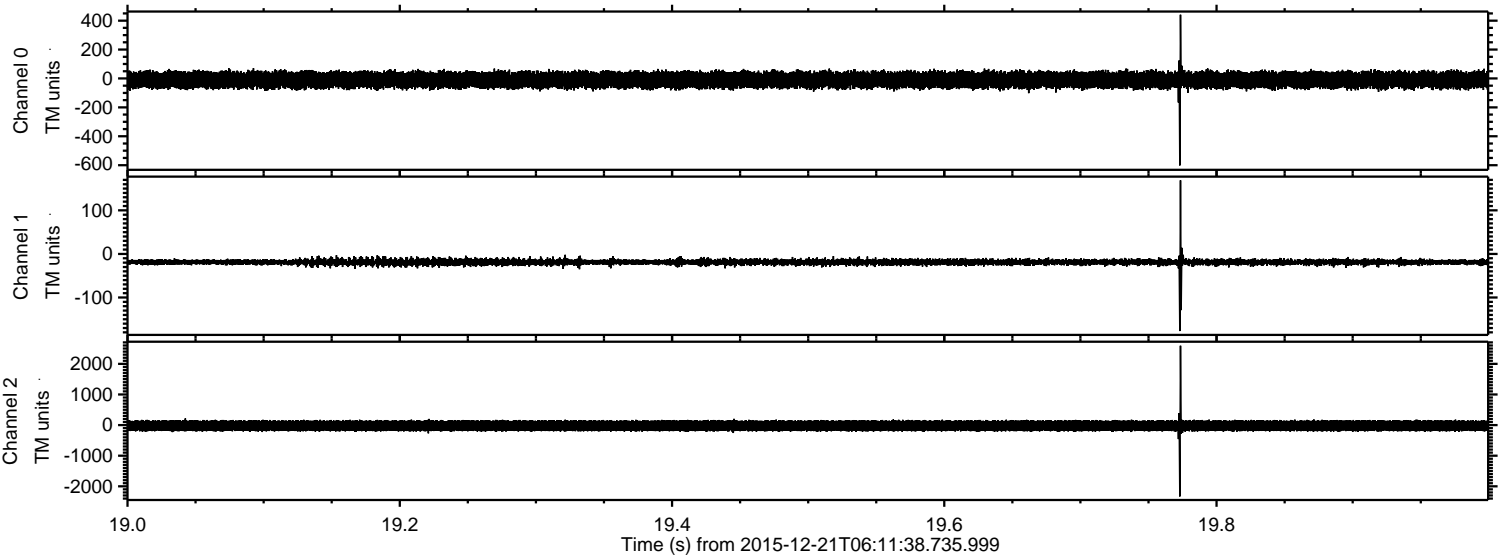
Processed Tue Feb 2 07:13:48 2016 by ELM ver.2012-10-06 from 001\_\_elm20151221\_061137\_\_dat00.bin





ELMAVAN 3D WAVEFORMS (Measured data sampled at 50 kHz) 51000 packets of 144 samples from 2015-12-21T06:11:38.735.999. Part 20/147

Processed Tue Feb 2 07:13:49 2016 by ELM ver.2012-10-06 from 001\_\_elm20151221\_061137\_\_dat00.bin



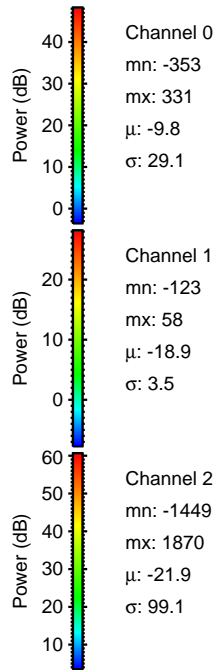
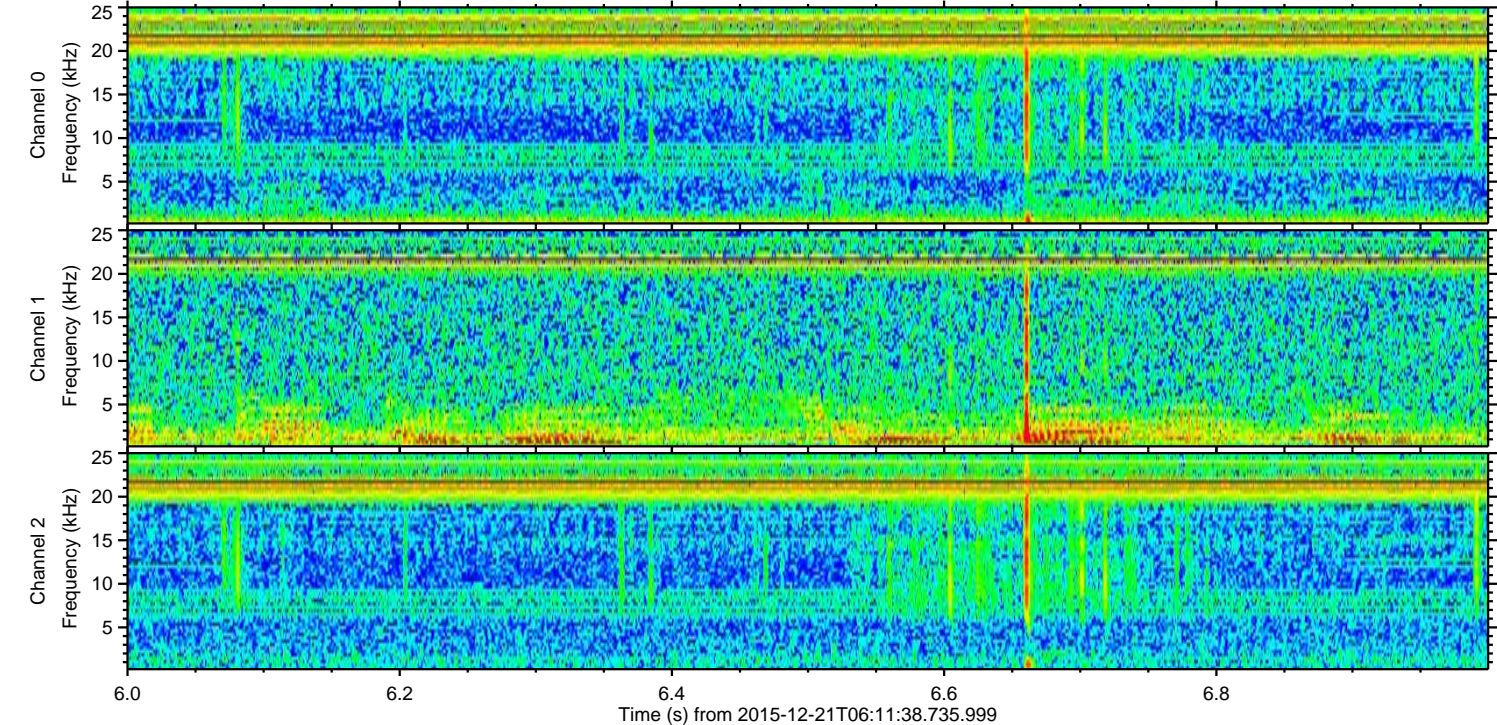
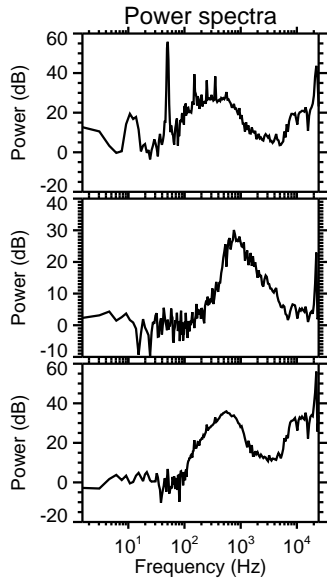
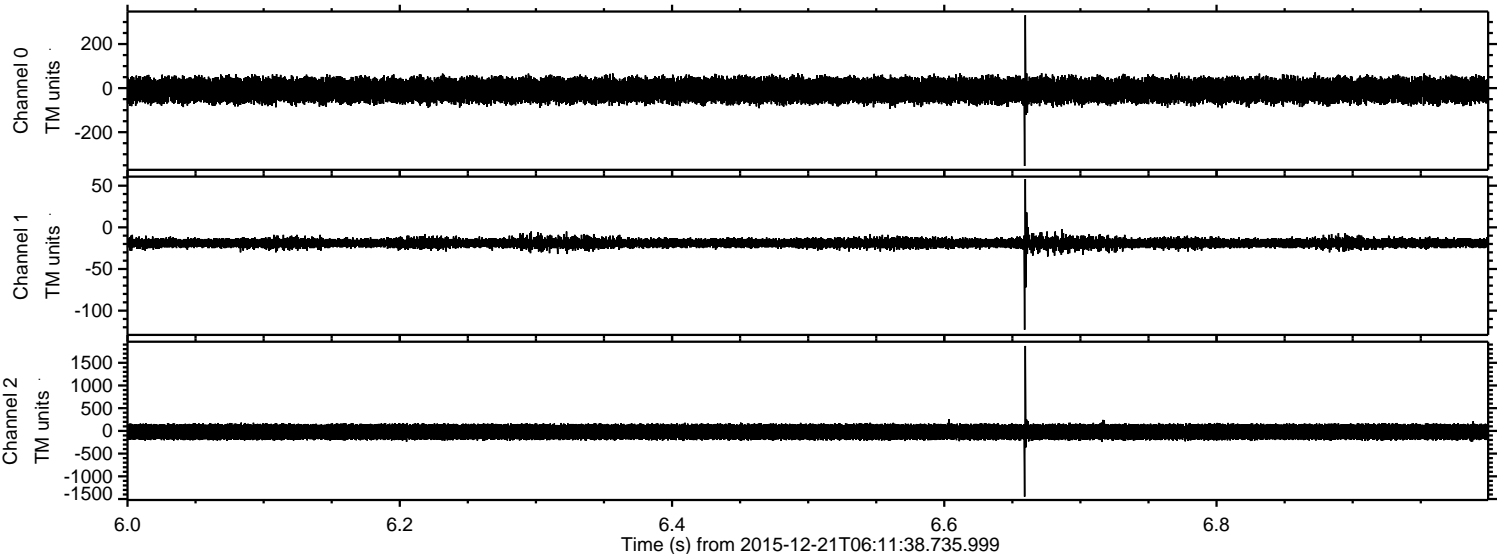
Channel 0  
mn: -602  
mx: 441  
 $\mu$ : -9.8  
 $\sigma$ : 29.4

Channel 1  
mn: -177  
mx: 169  
 $\mu$ : -18.9  
 $\sigma$ : 4.9

Channel 2  
mn: -2331  
mx: 2593  
 $\mu$ : -21.9  
 $\sigma$ : 101.8



Processed Tue Feb 2 07:13:50 2016 by ELM ver.2012-10-06 from 001\_\_elm20151221\_061137\_\_dat00.bin



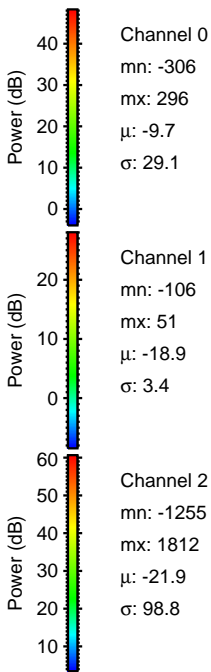
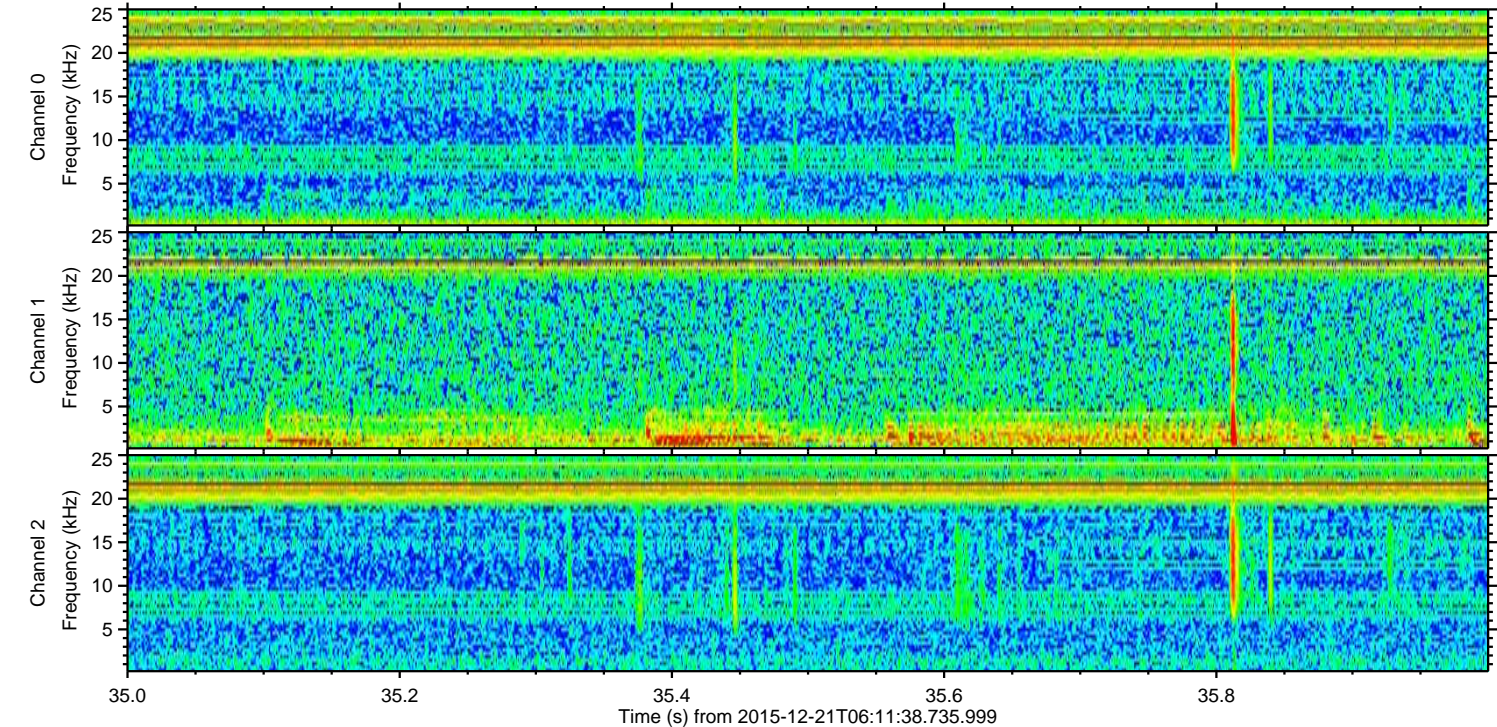
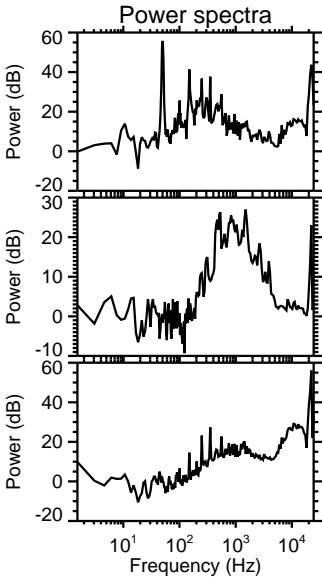
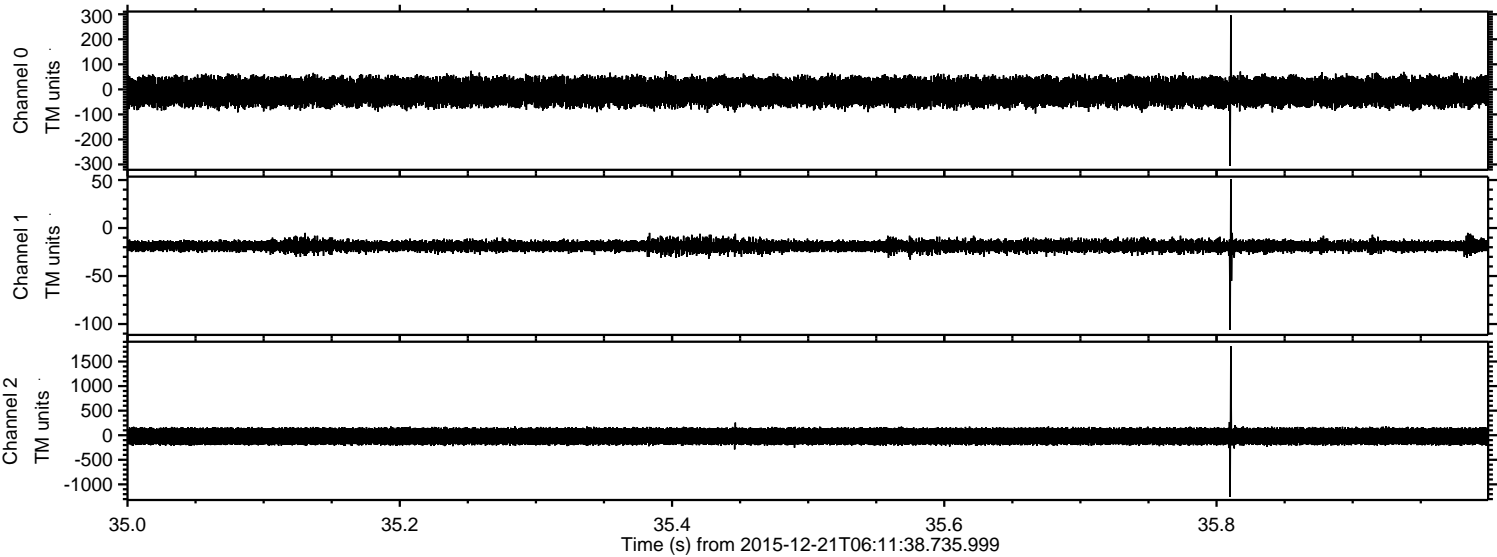
Channel 0  
mn: -353  
mx: 331  
 $\mu$ : -9.8  
 $\sigma$ : 29.1

Channel 1  
mn: -123  
mx: 58  
 $\mu$ : -18.9  
 $\sigma$ : 3.5

Channel 2  
mn: -1449  
mx: 1870  
 $\mu$ : -21.9  
 $\sigma$ : 99.1



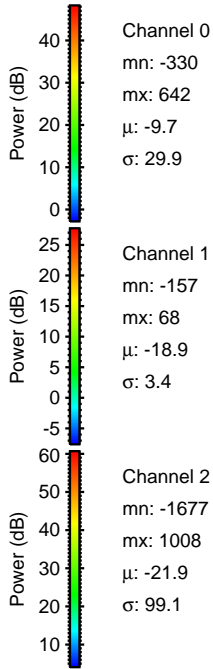
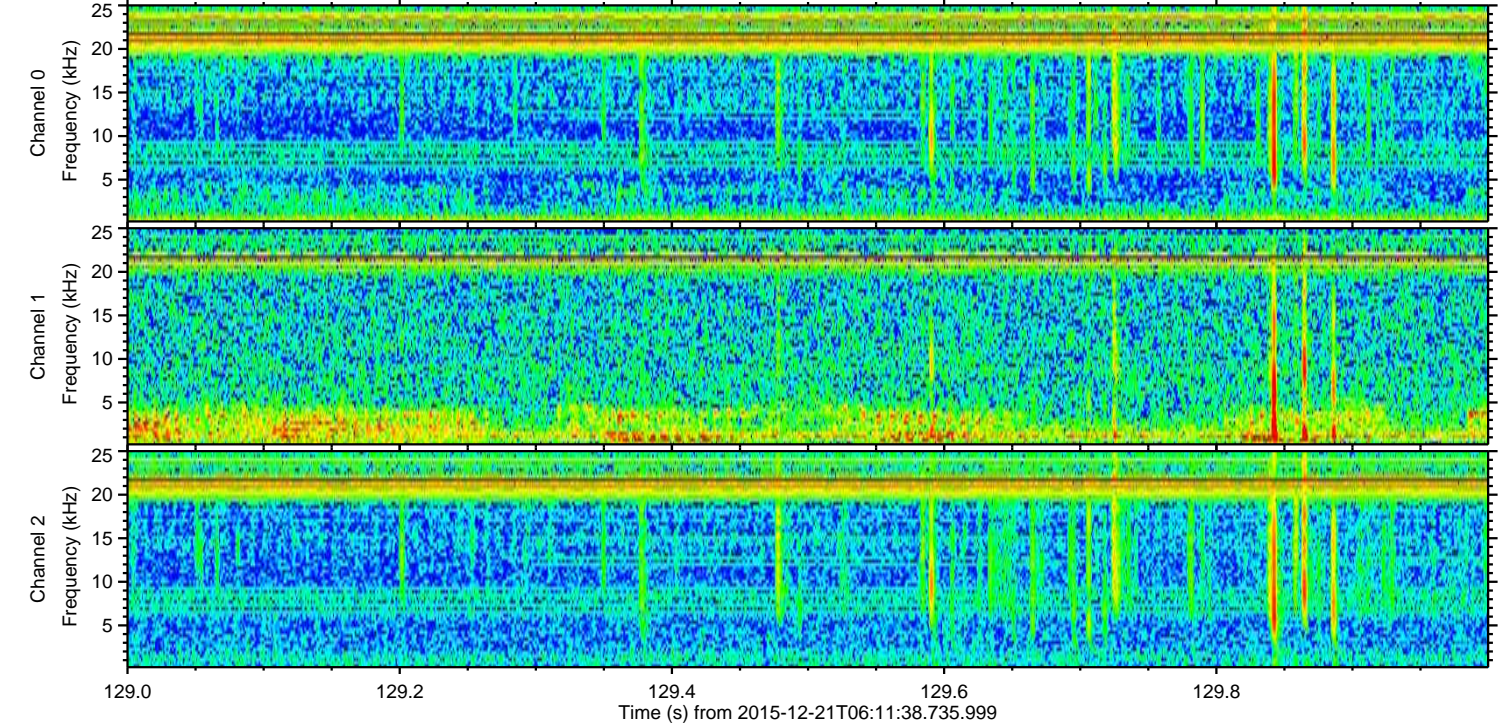
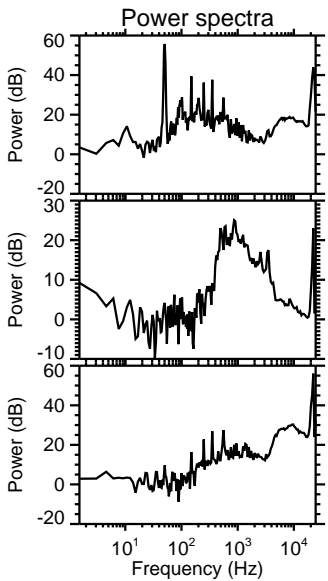
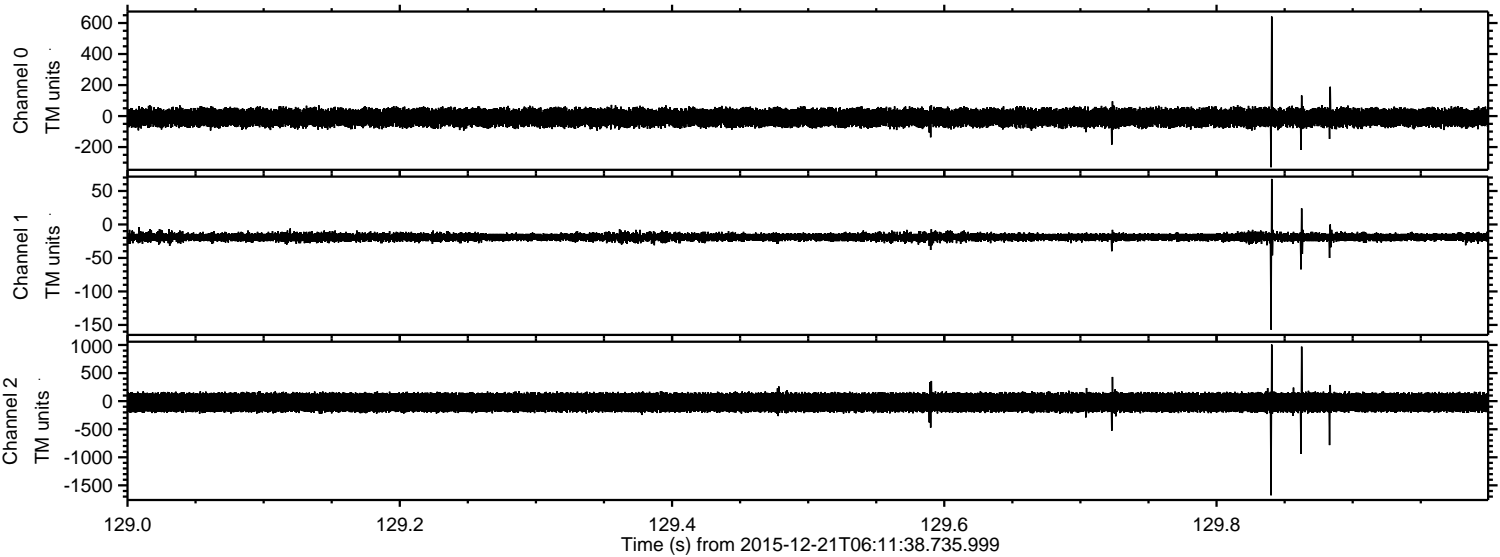
Processed Tue Feb 2 07:13:51 2016 by ELM ver.2012-10-06 from 001\_\_elm20151221\_061137\_\_dat00.bin





ELMAVAN 3D WAVEFORMS (Measured data sampled at 50 kHz) 51000 packets of 144 samples from 2015-12-21T06:11:38.735.999. Part 130/147

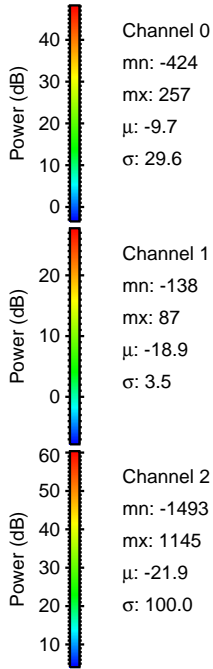
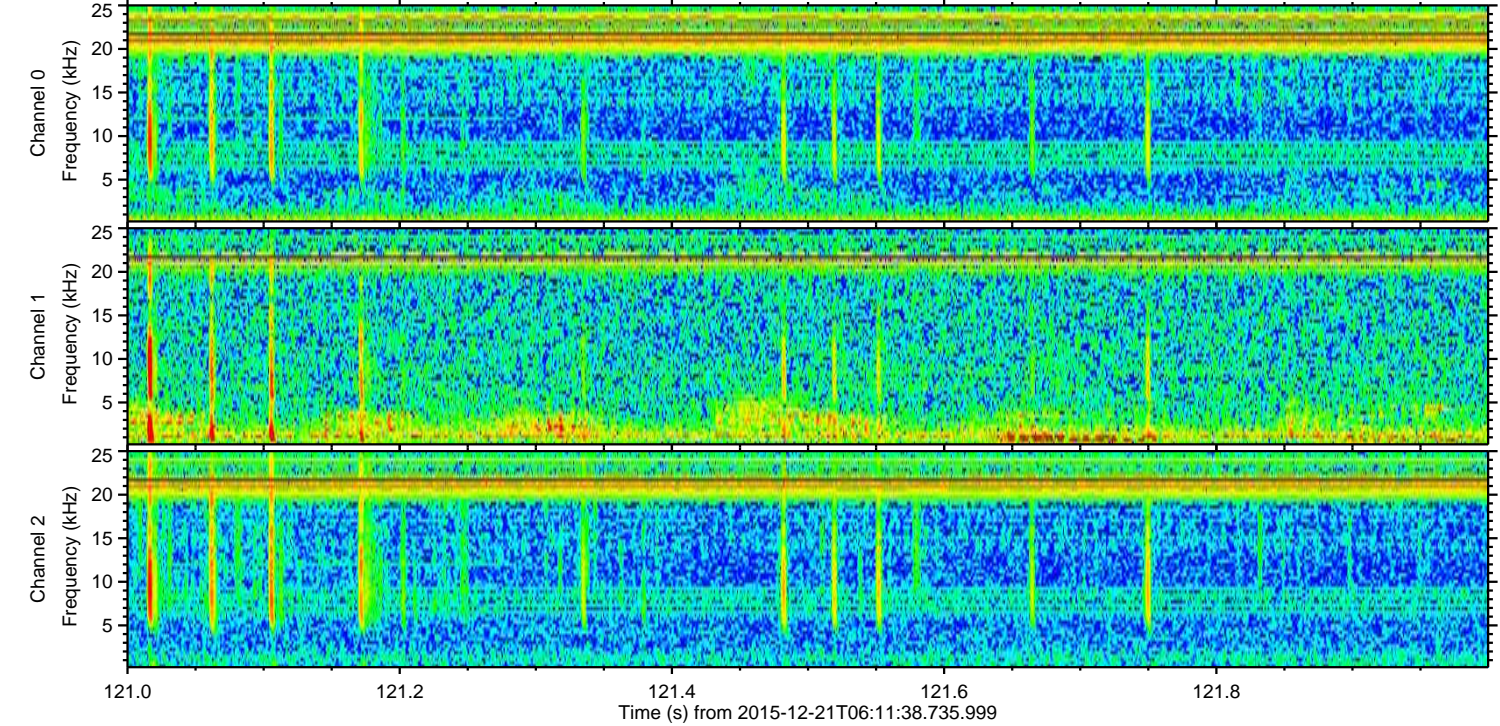
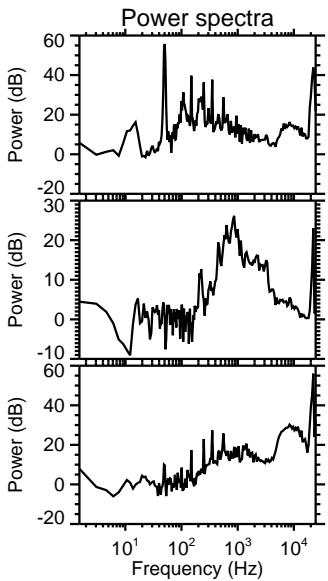
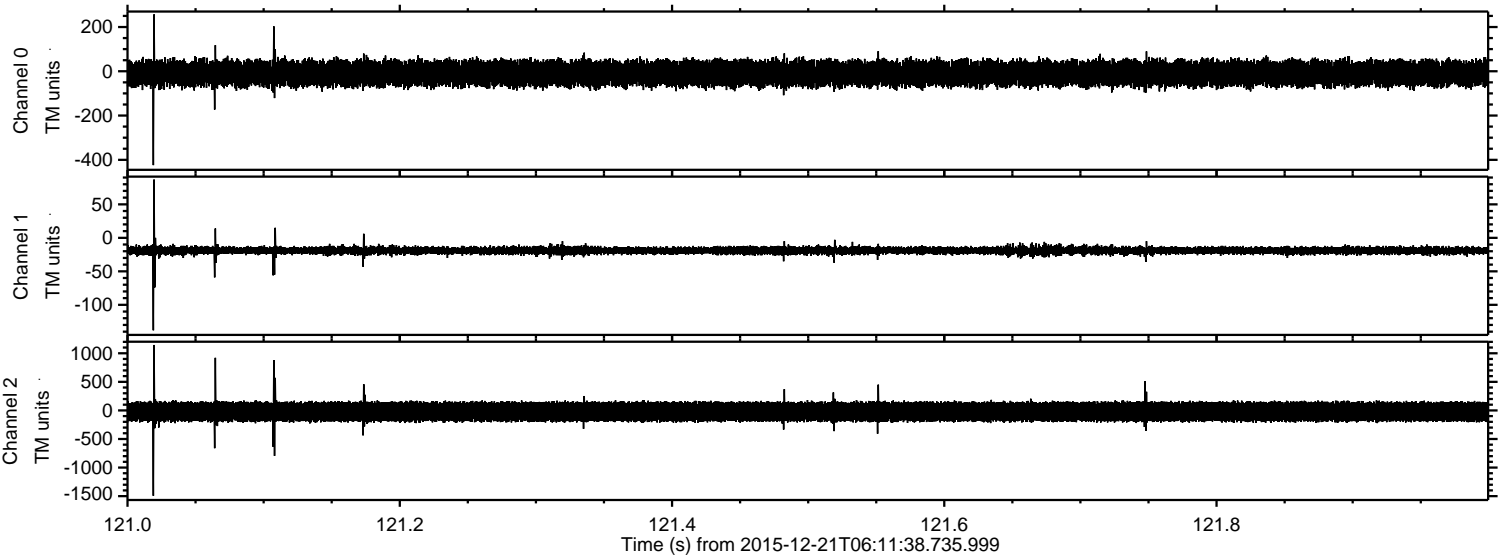
Processed Tue Feb 2 07:13:53 2016 by ELM ver.2012-10-06 from 001\_\_elm20151221\_061137\_\_dat00.bin





ELMAVAN 3D WAVEFORMS (Measured data sampled at 50 kHz) 51000 packets of 144 samples from 2015-12-21T06:11:38.735.999. Part 122/147

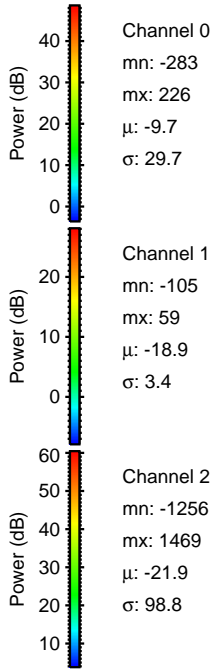
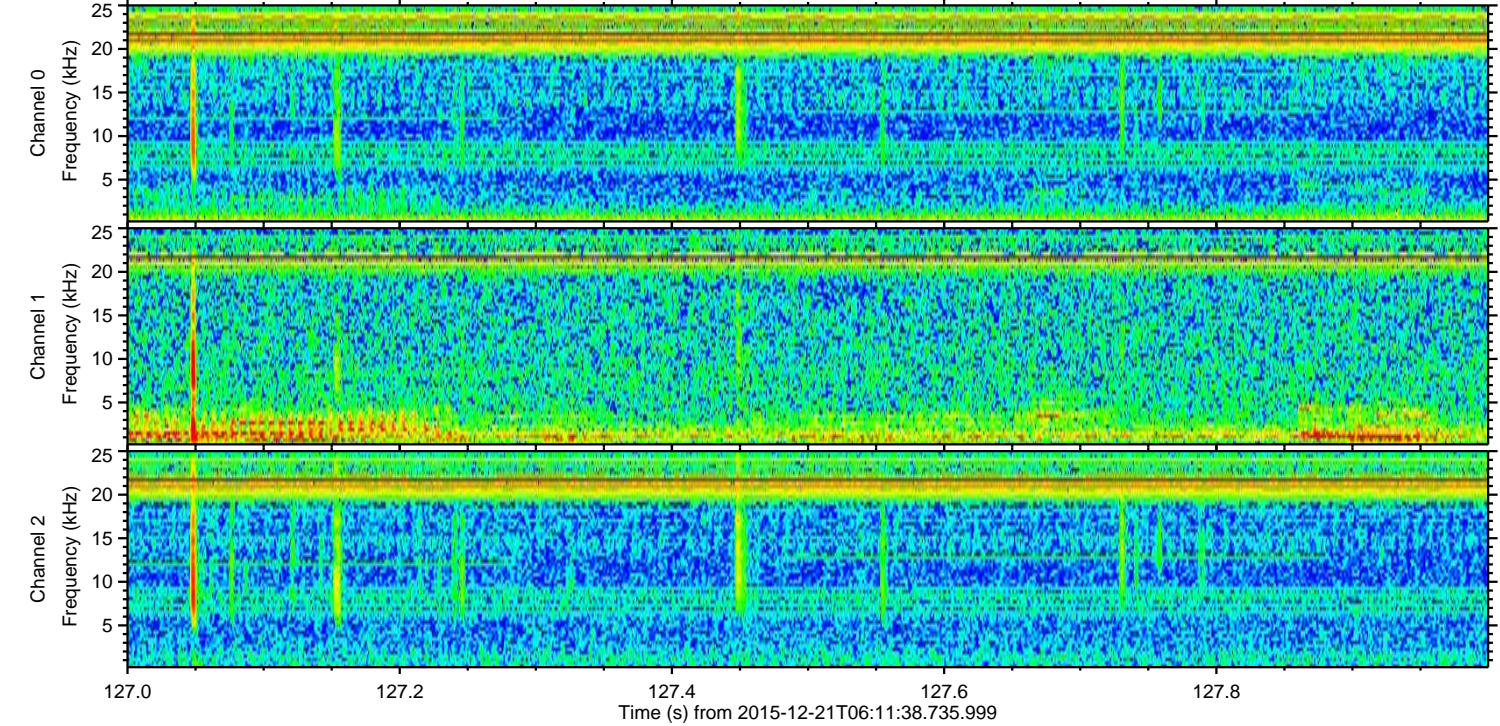
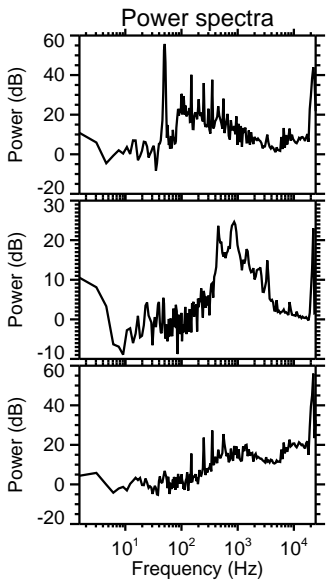
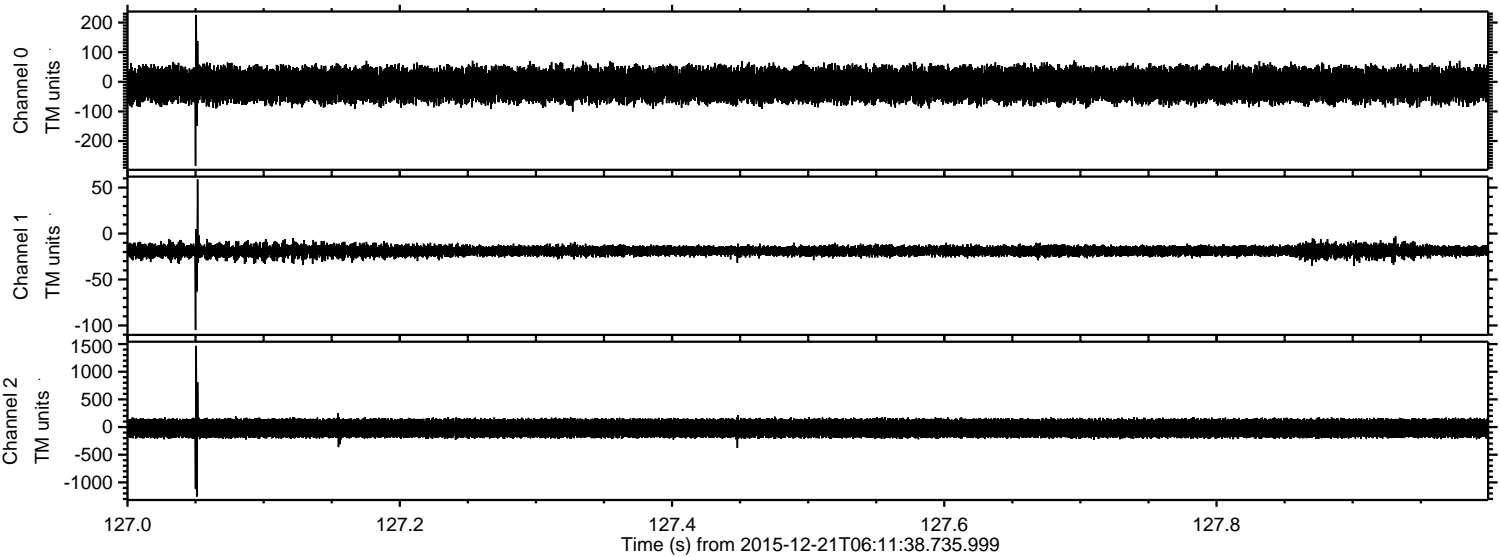
Processed Tue Feb 2 07:13:54 2016 by ELM ver.2012-10-06 from 001\_\_elm20151221\_061137\_\_dat00.bin





ELMAVAN 3D WAVEFORMS (Measured data sampled at 50 kHz) 51000 packets of 144 samples from 2015-12-21T06:11:38.735.999. Part 128/147

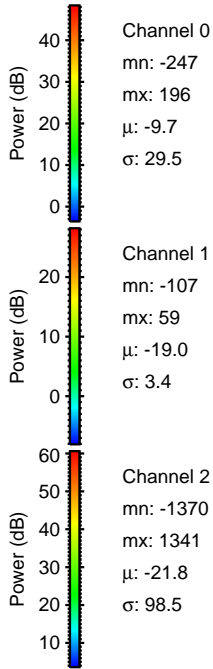
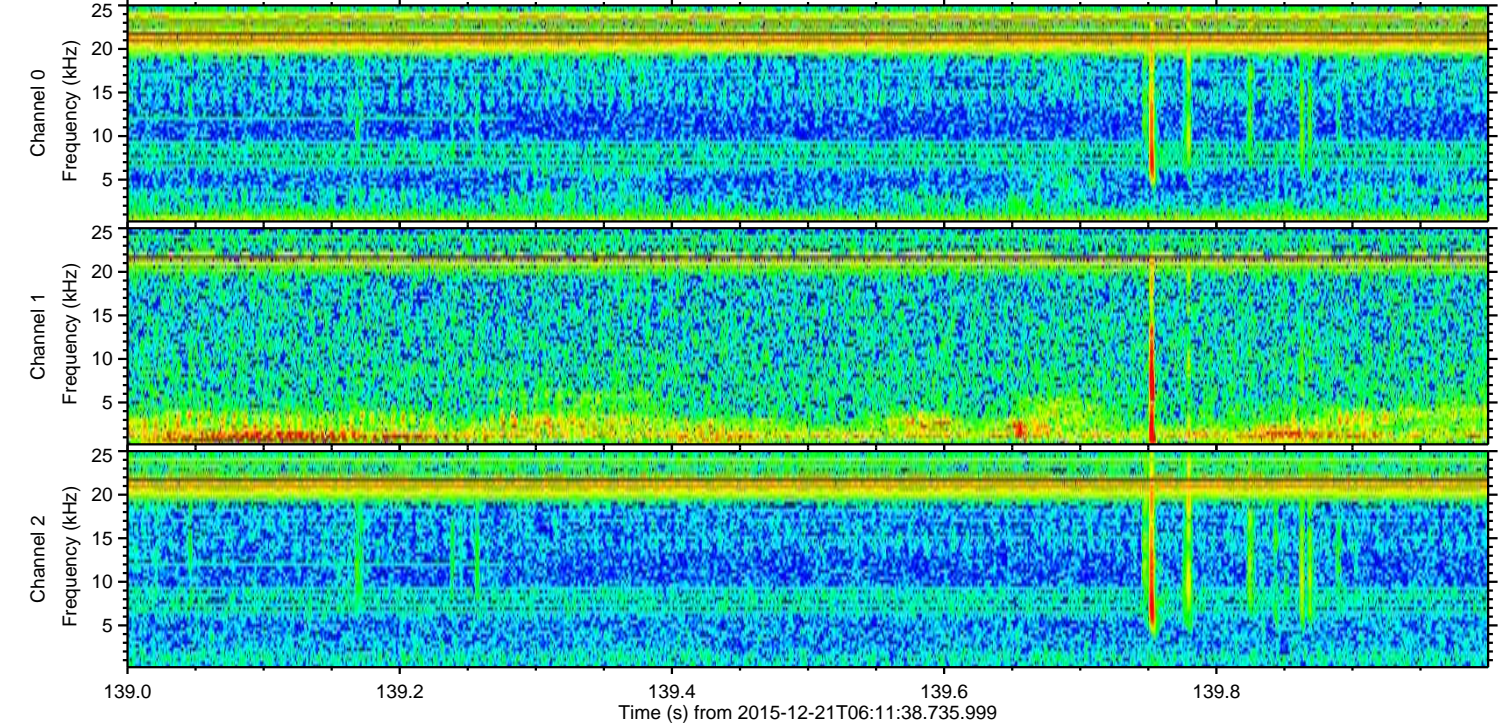
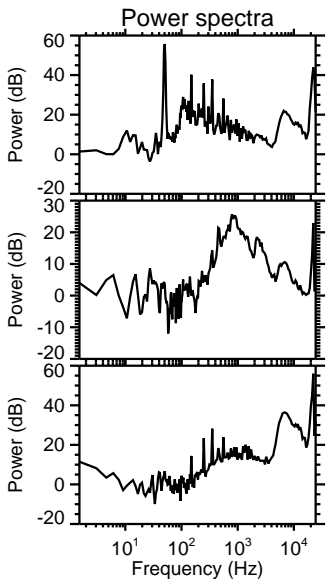
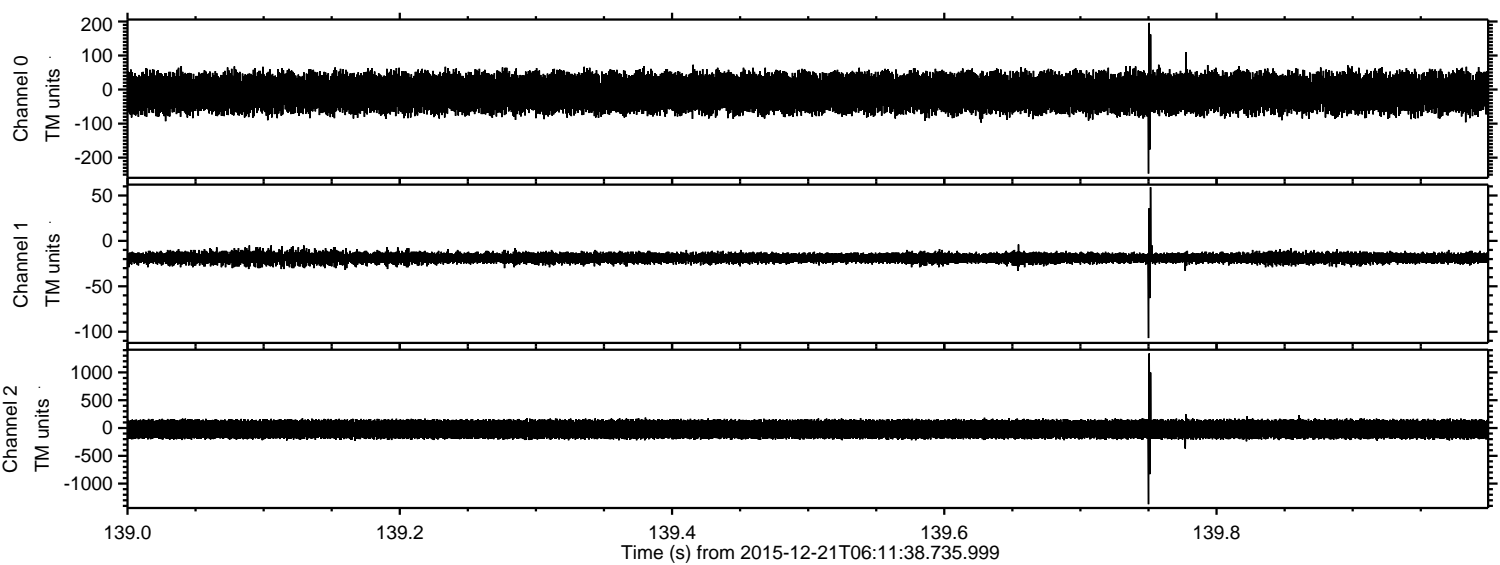
Processed Tue Feb 2 07:13:55 2016 by ELM ver.2012-10-06 from 001\_\_elm20151221\_061137\_\_dat00.bin





ELMAVAN 3D WAVEFORMS (Measured data sampled at 50 kHz) 51000 packets of 144 samples from 2015-12-21T06:11:38.735.999. Part 140/147

Processed Tue Feb 2 07:13:57 2016 by ELM ver.2012-10-06 from 001\_\_elm20151221\_061137\_\_dat00.bin



Channel 0  
mn: -247  
mx: 196  
 $\mu$ : -9.7  
 $\sigma$ : 29.5

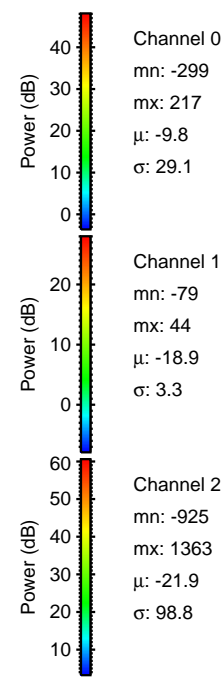
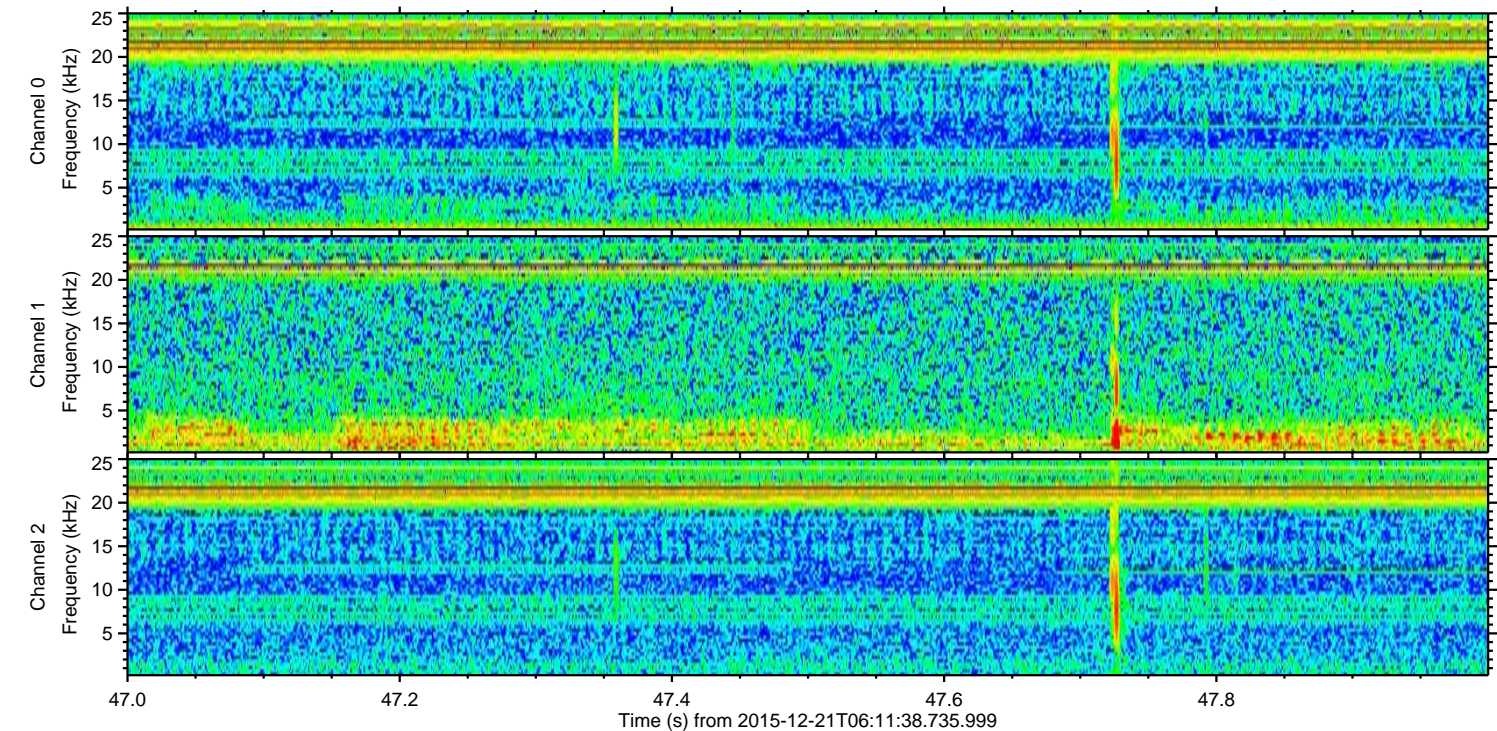
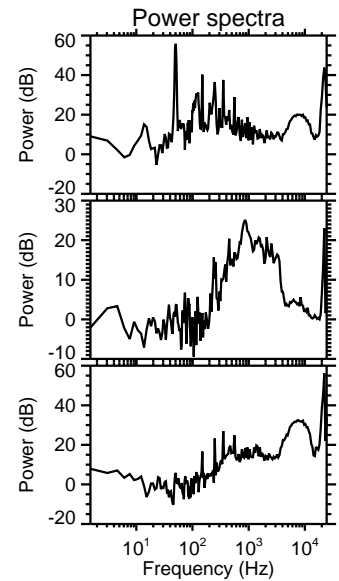
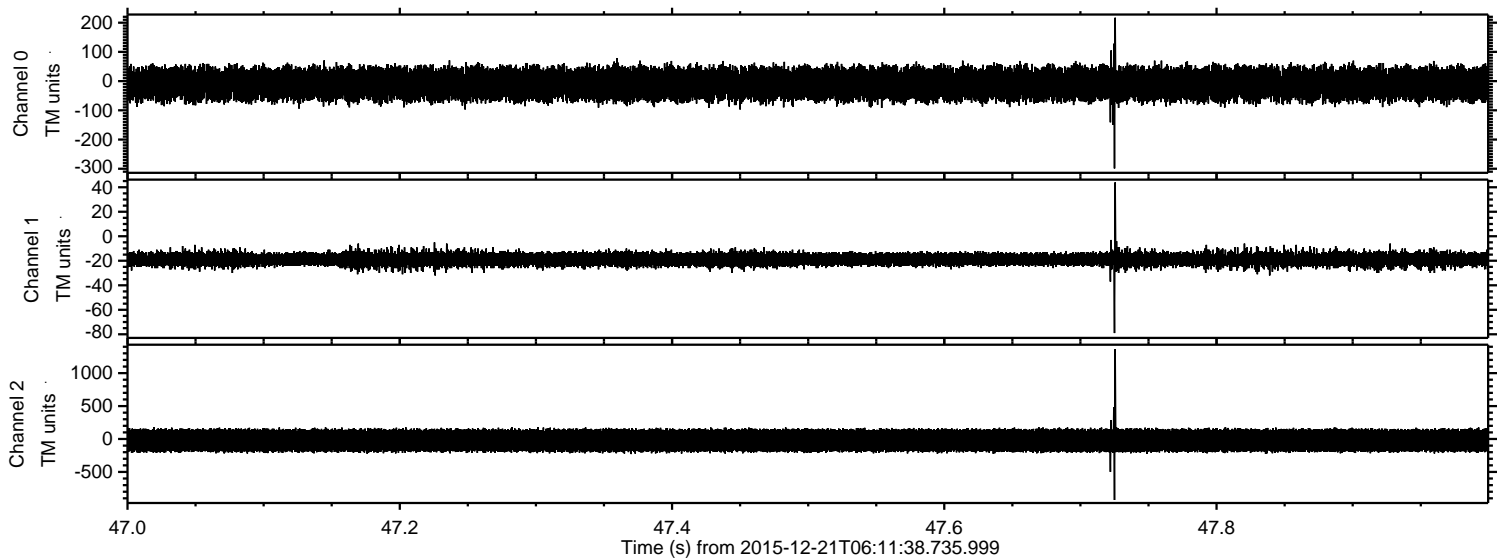
Channel 1  
mn: -107  
mx: 59  
 $\mu$ : -19.0  
 $\sigma$ : 3.4

Channel 2  
mn: -1370  
mx: 1341  
 $\mu$ : -21.8  
 $\sigma$ : 98.5



ELMAVAN 3D WAVEFORMS (Measured data sampled at 50 kHz) 51000 packets of 144 samples from 2015-12-21T06:11:38.735.999. Part 48/147

Processed Tue Feb 2 07:13:58 2016 by ELM ver.2012-10-06 from 001\_\_elm20151221\_061137\_\_dat00.bin





ELMAVAN 3D WAVEFORMS (Measured data sampled at 50 kHz) 51000 packets of 144 samples from 2015-12-21T06:11:38.735.999. Part 101/147

