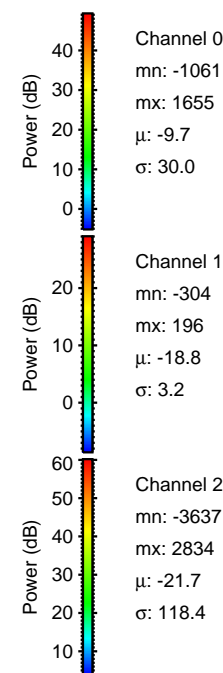
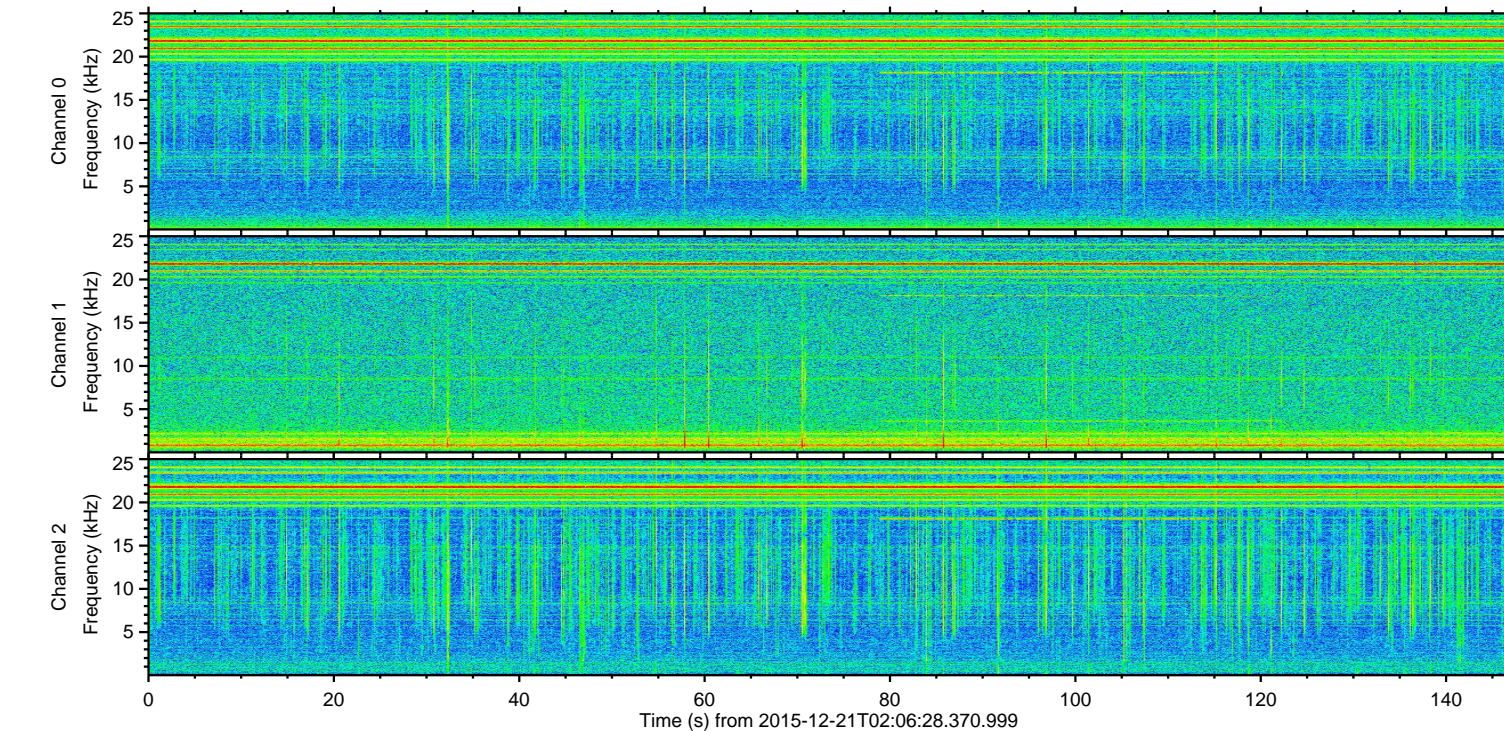
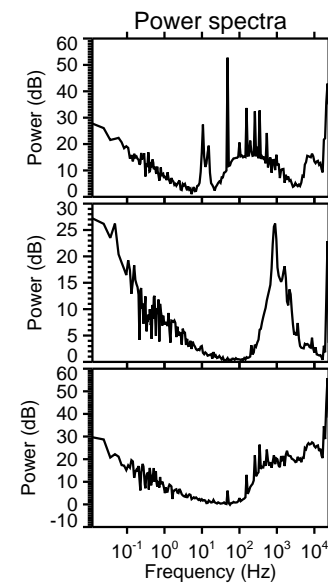
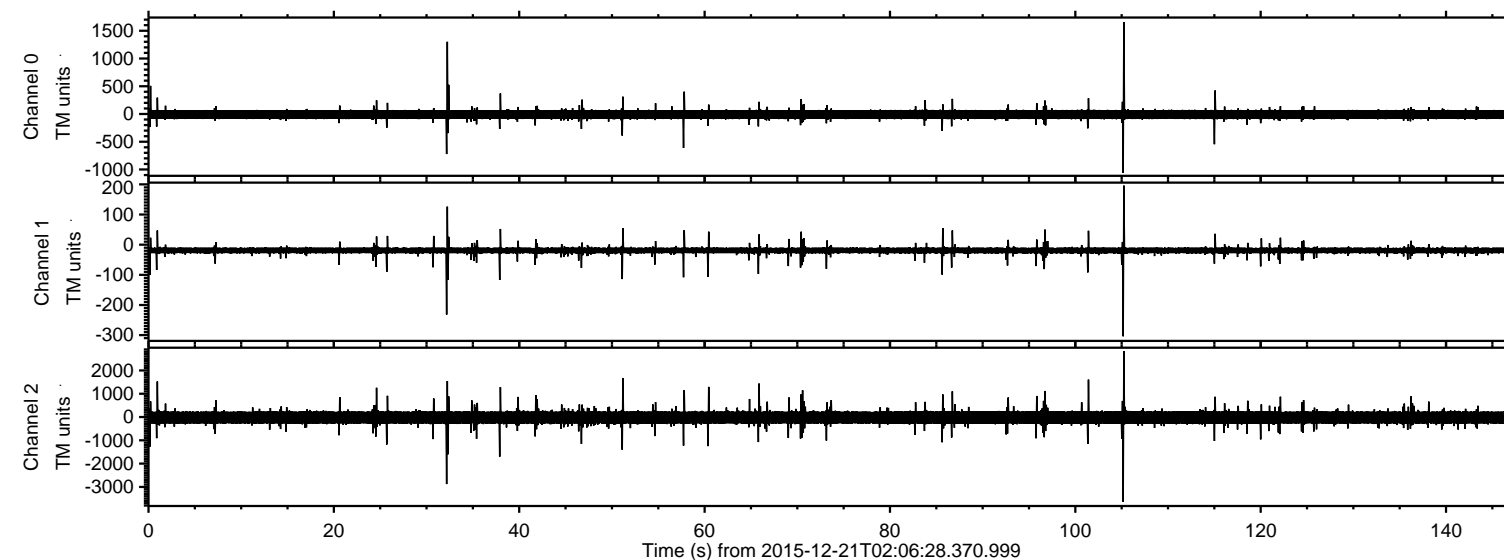


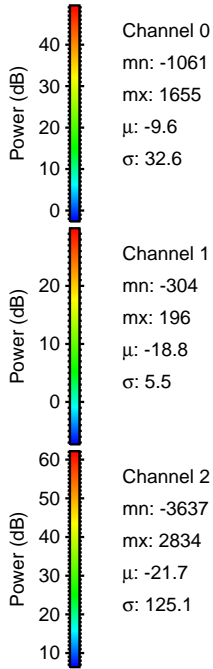
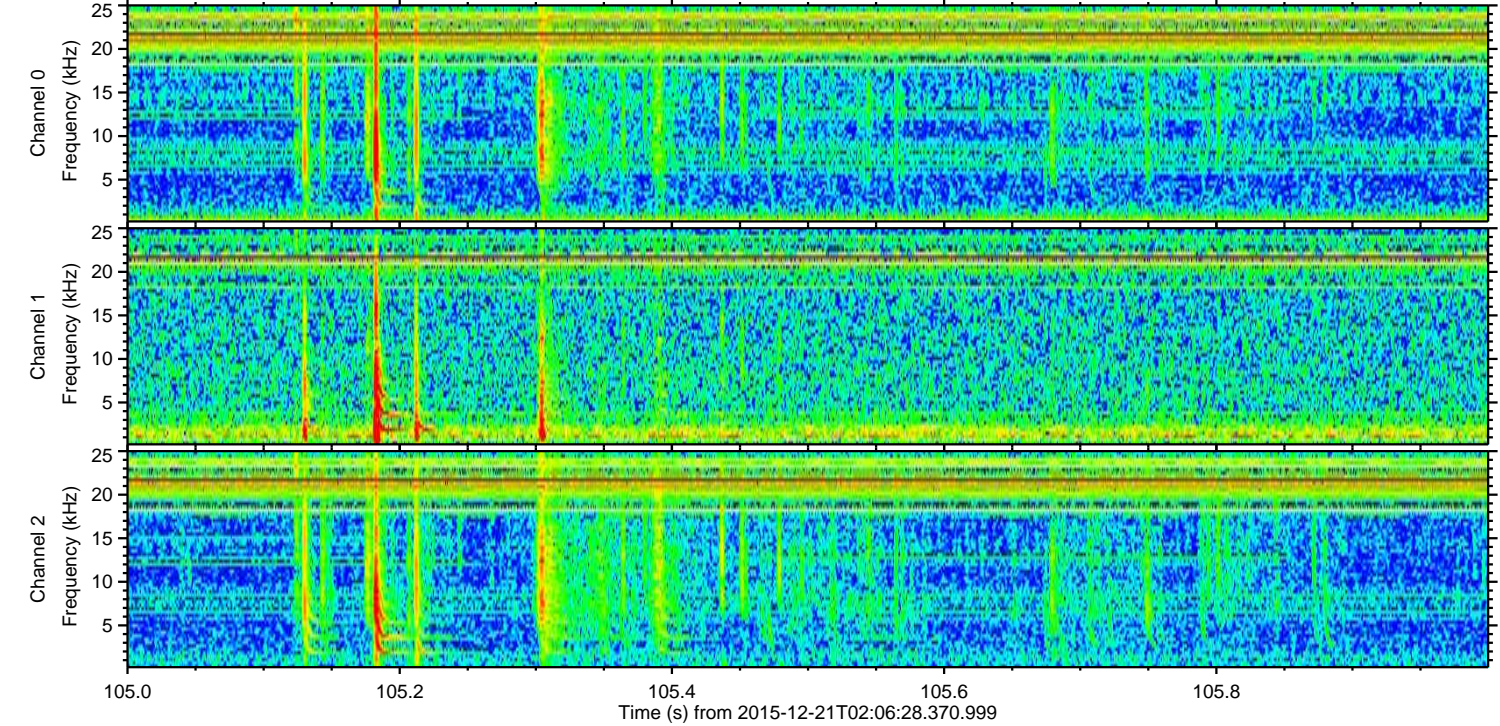
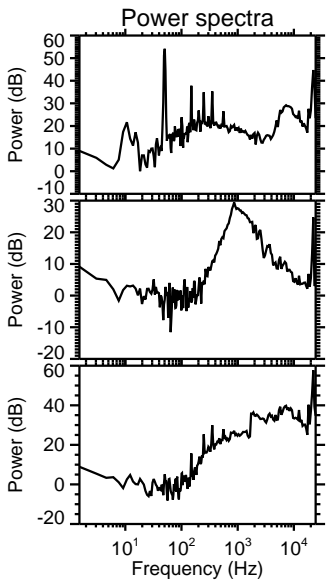
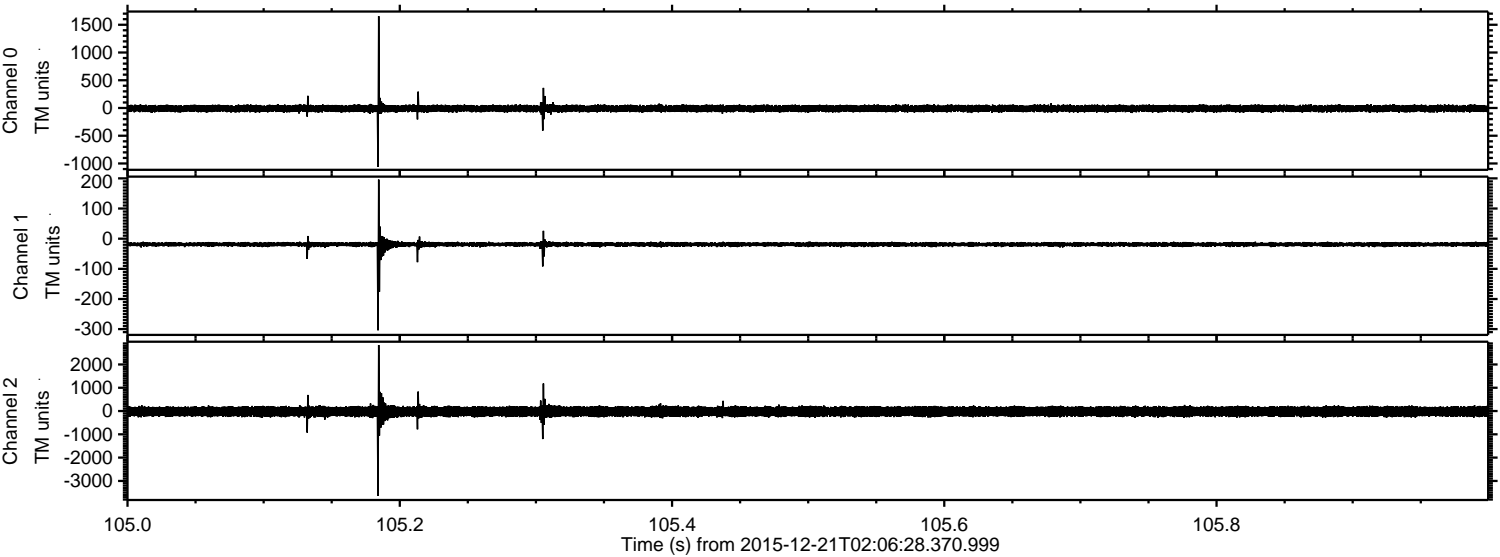
ELMAVAN 3D WAVEFORMS (Measured data sampled at 50 kHz) 51000 packets of 144 samples from 2015-12-21T02:06:28.370.999.

Processed Tue Feb 2 04:07:40 2016 by ELM ver.2012-10-06 from 001__elm20151221_020627__dat00.bin

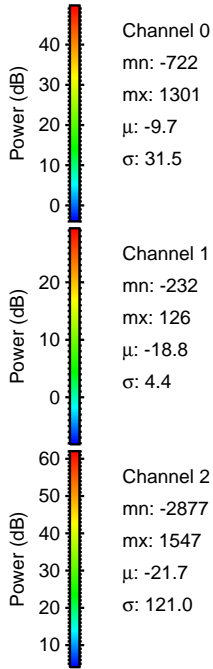
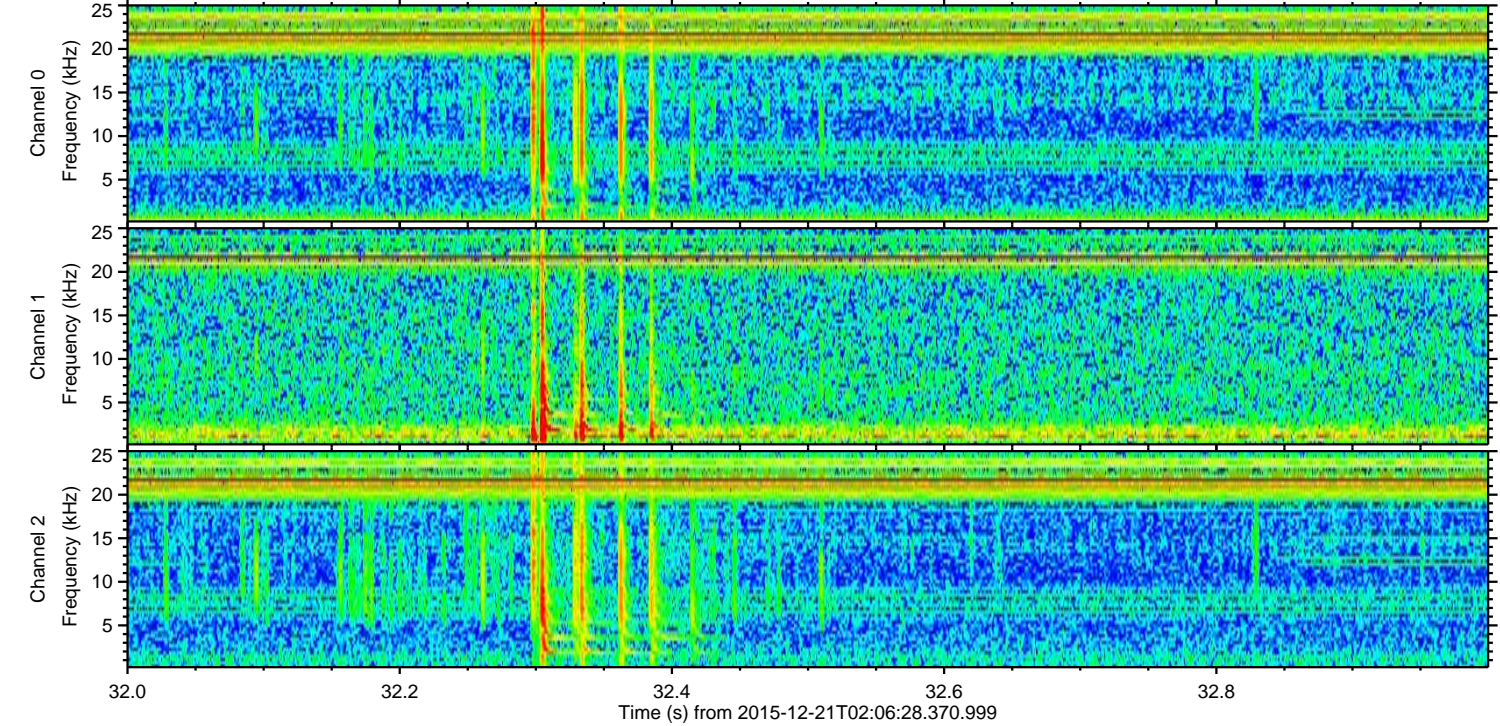
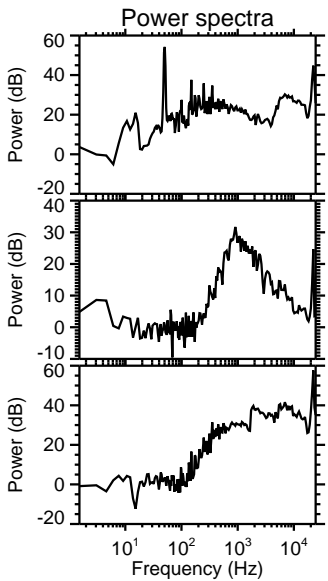
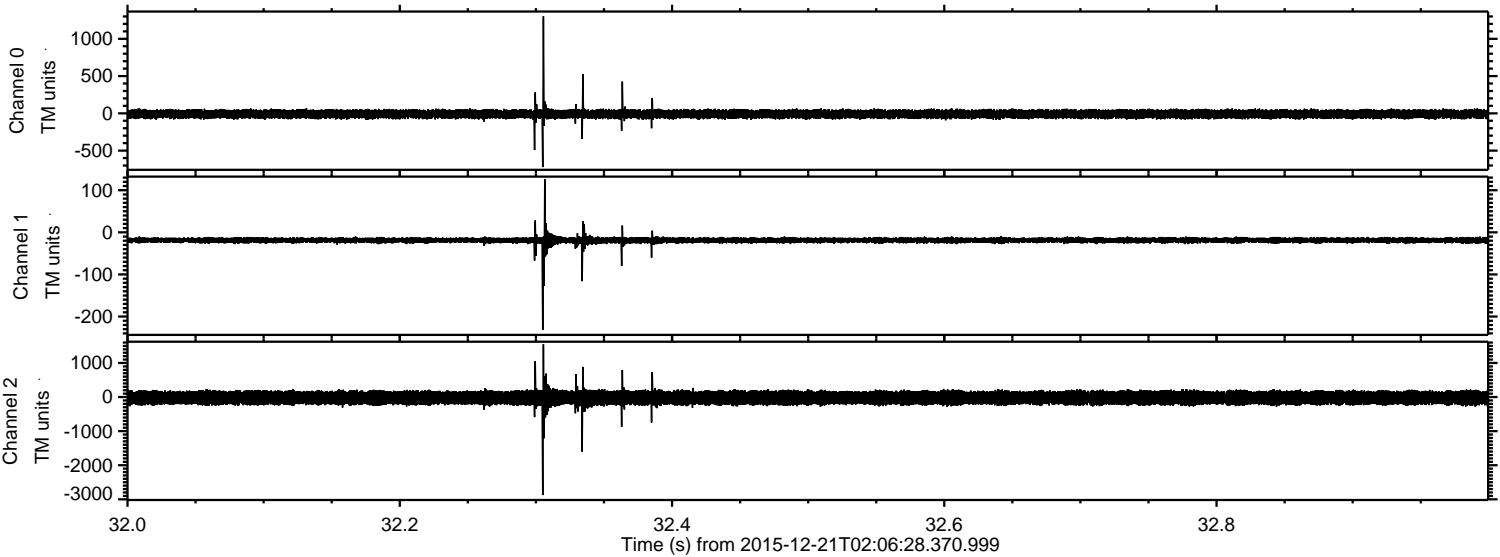


ELMAVAN 3D WAVEFORMS (Measured data sampled at 50 kHz) 51000 packets of 144 samples from 2015-12-21T02:06:28.370.999. Part 106/147

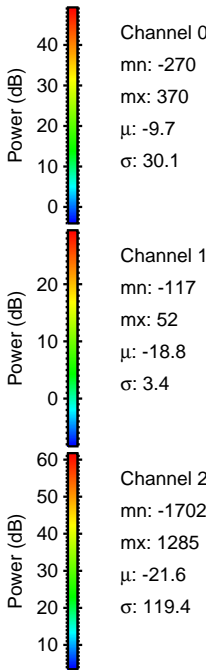
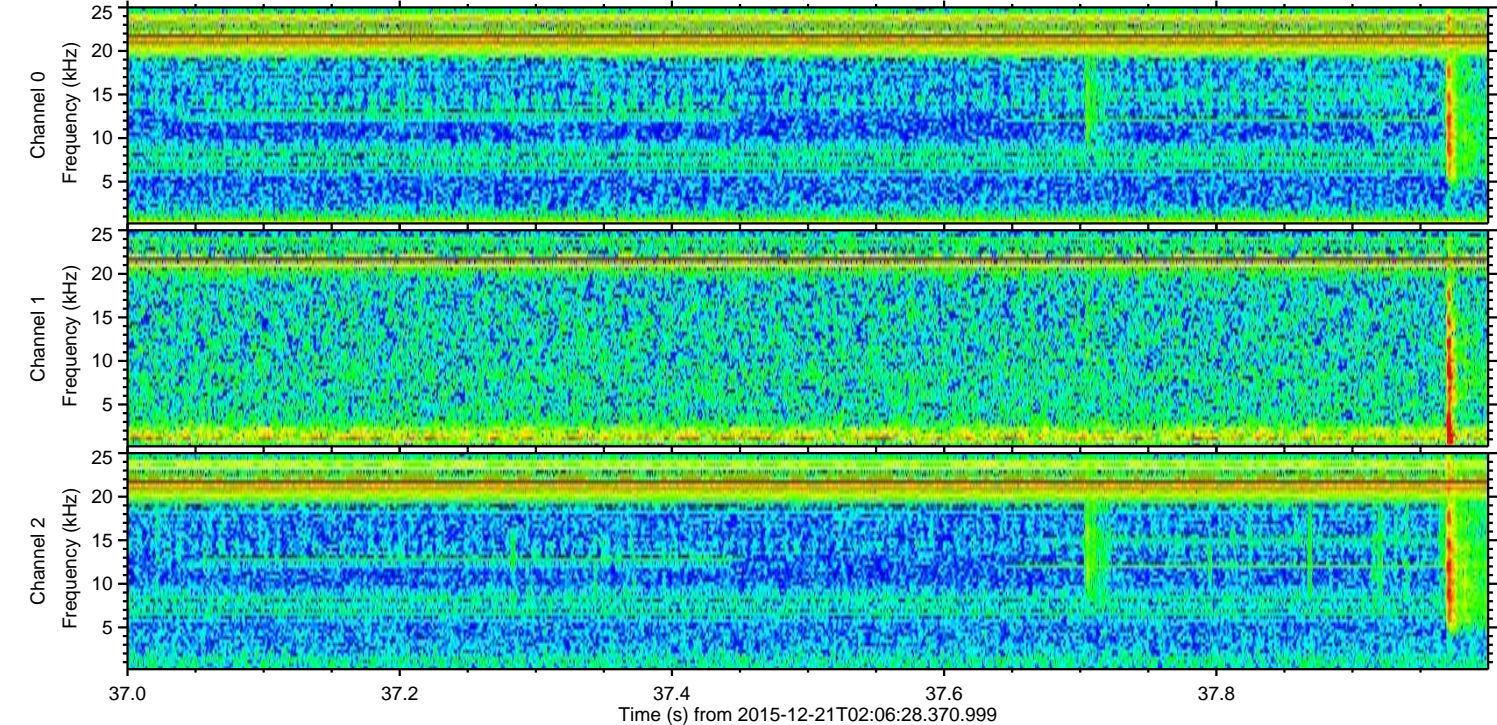
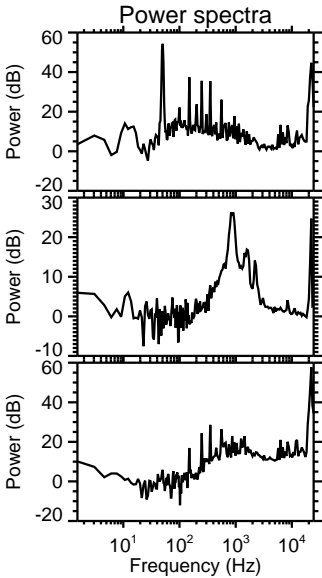
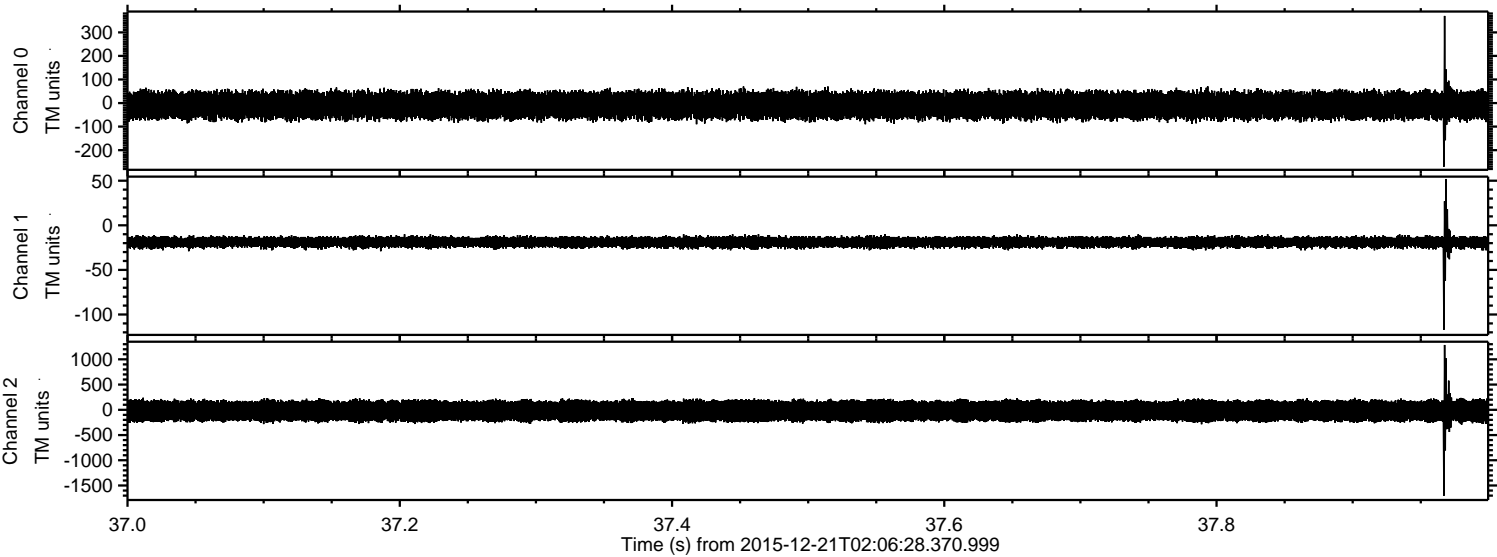
Processed Tue Feb 2 04:07:54 2016 by ELM ver.2012-10-06 from 001__elm20151221_020627__dat00.bin



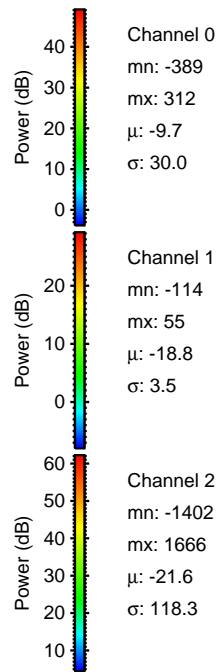
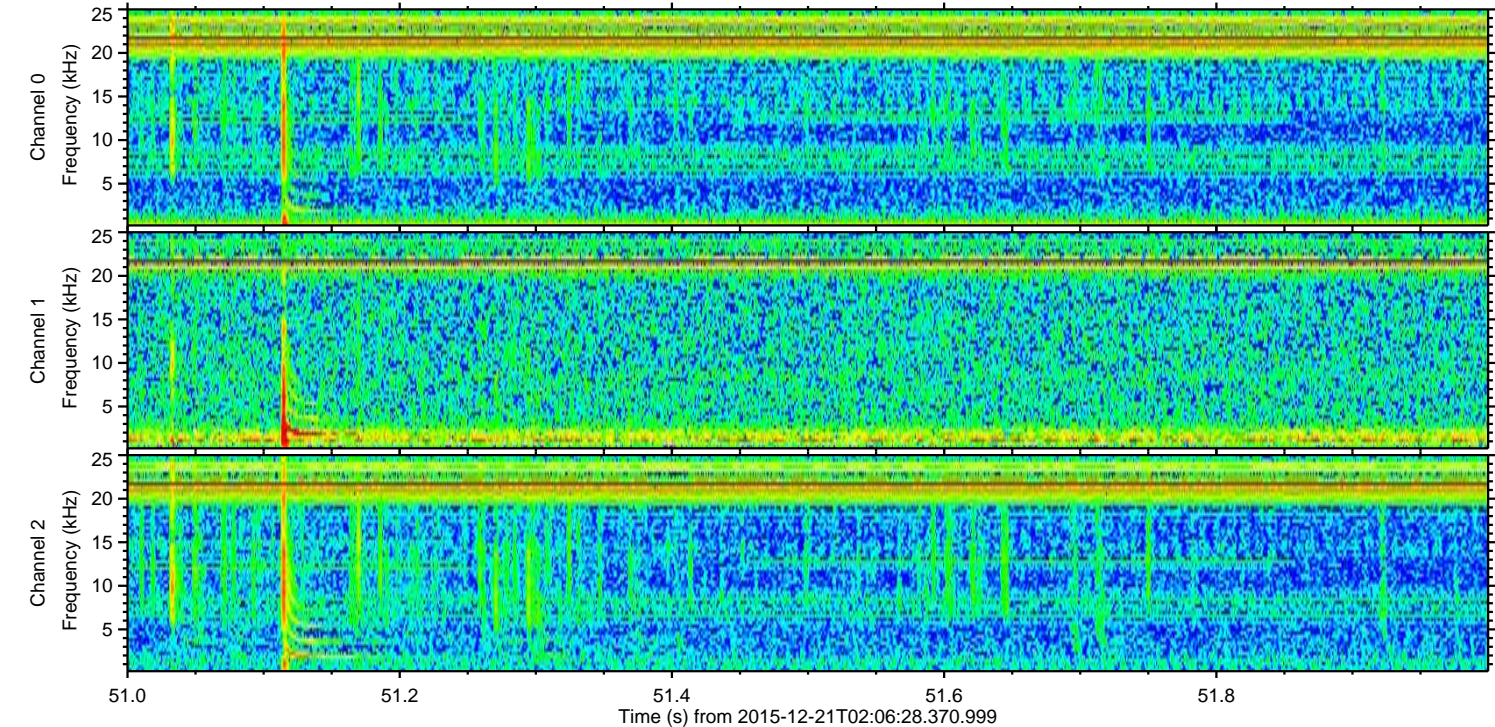
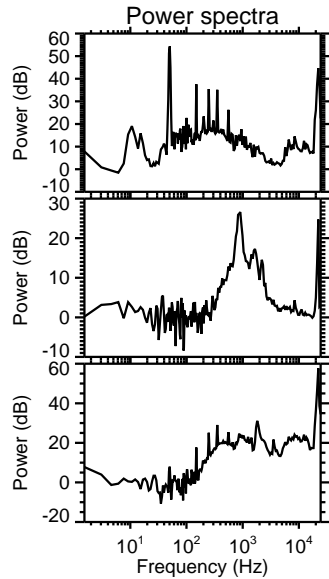
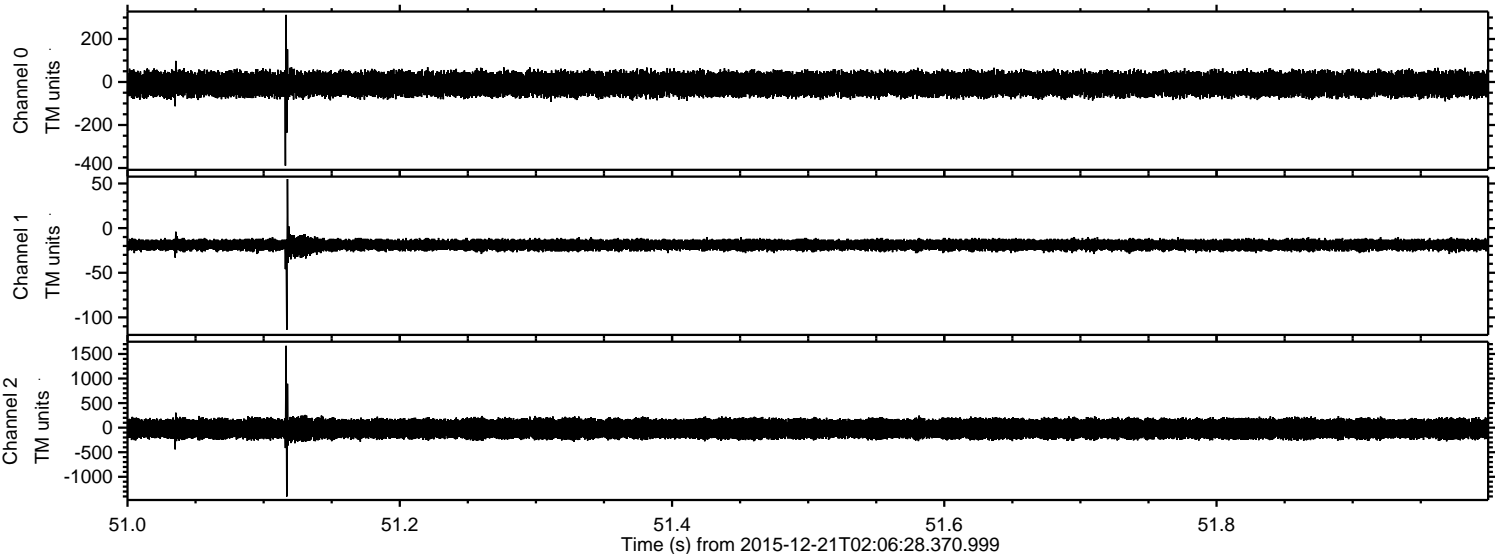
Processed Tue Feb 2 04:07:56 2016 by ELM ver.2012-10-06 from 001__elm20151221_020627__dat00.bin



Processed Tue Feb 2 04:07:57 2016 by ELM ver.2012-10-06 from 001__elm20151221_020627__dat00.bin

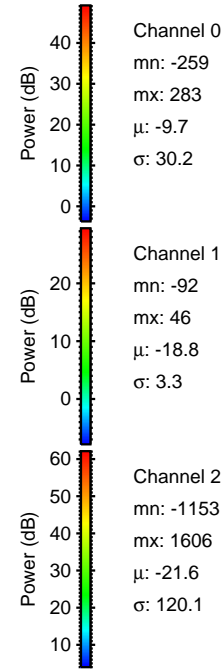
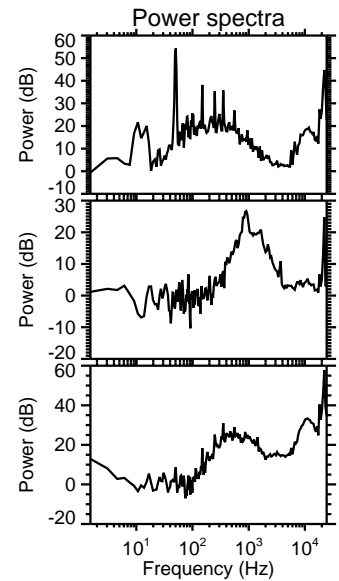
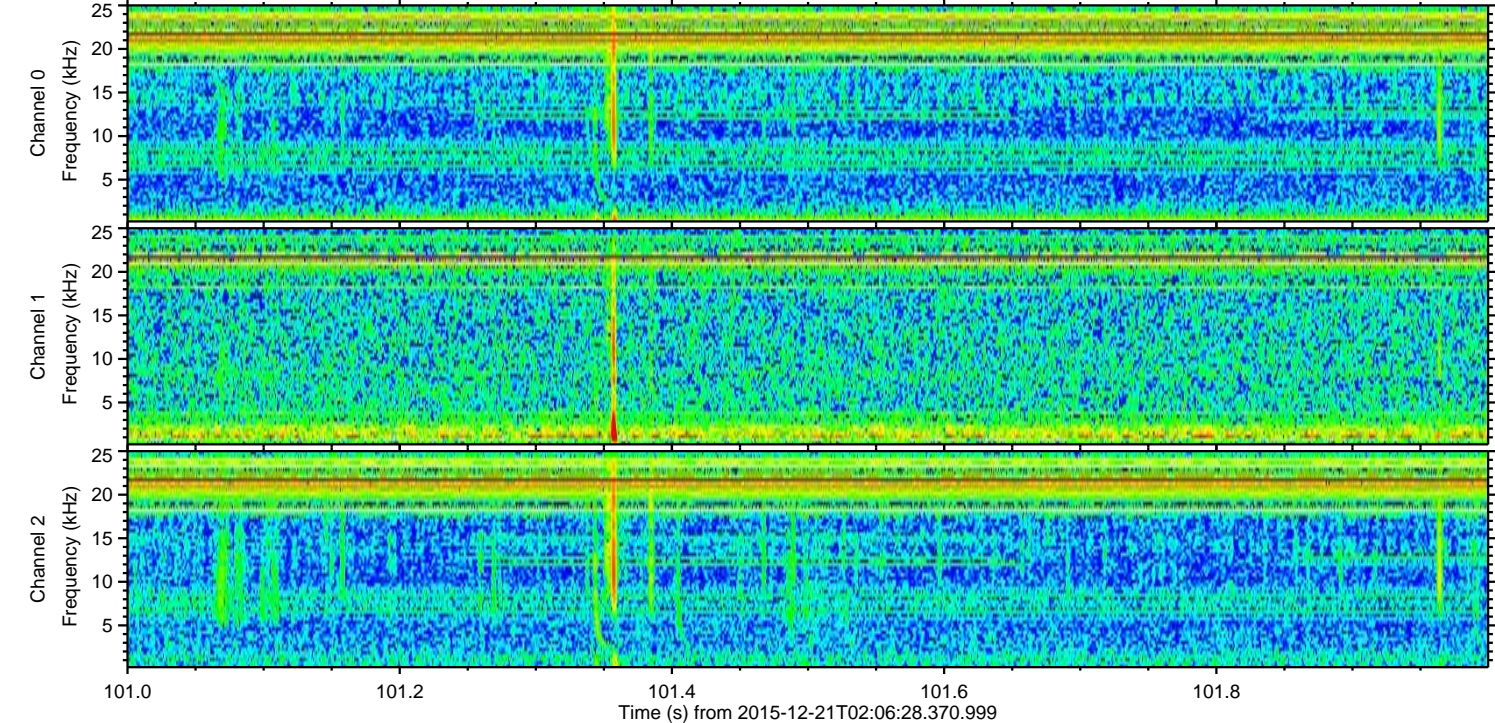
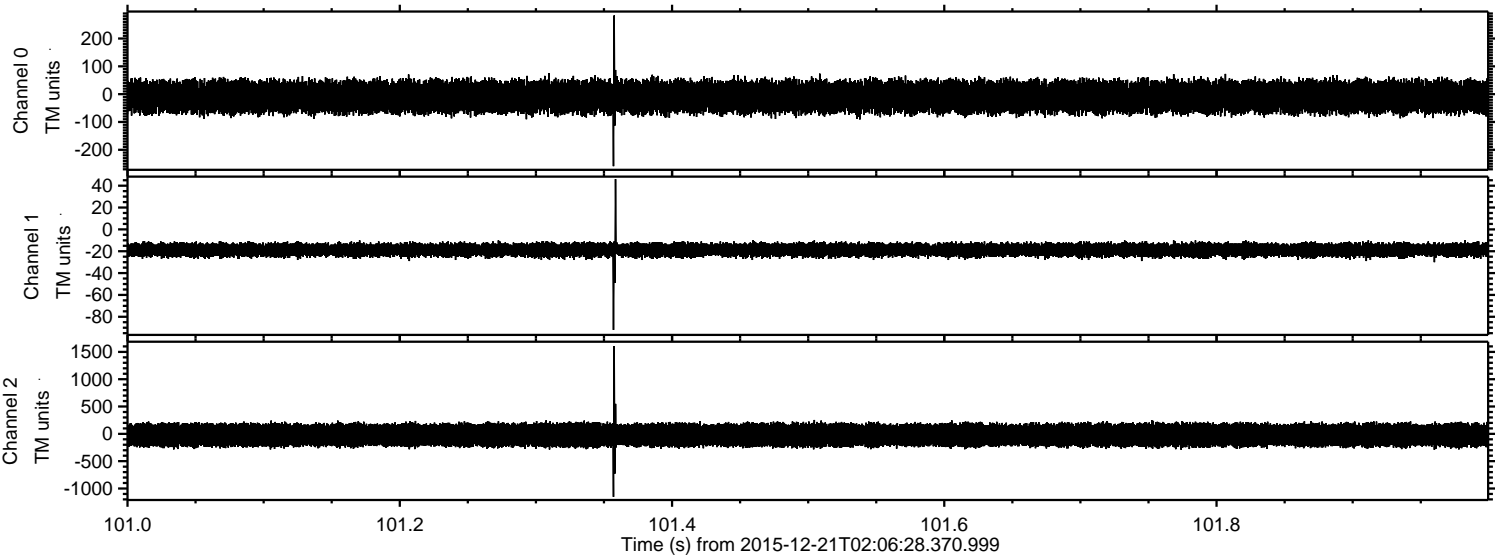


Processed Tue Feb 2 04:07:58 2016 by ELM ver.2012-10-06 from 001__elm20151221_020627__dat00.bin



ELMAVAN 3D WAVEFORMS (Measured data sampled at 50 kHz) 51000 packets of 144 samples from 2015-12-21T02:06:28.370.999. Part 102/147

Processed Tue Feb 2 04:07:59 2016 by ELM ver.2012-10-06 from 001__elm20151221_020627__dat00.bin

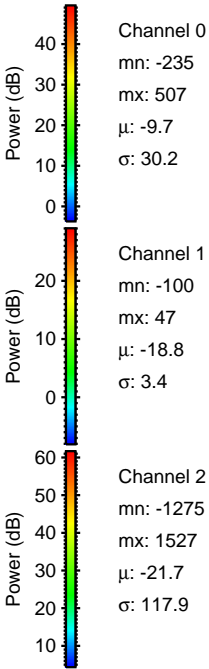
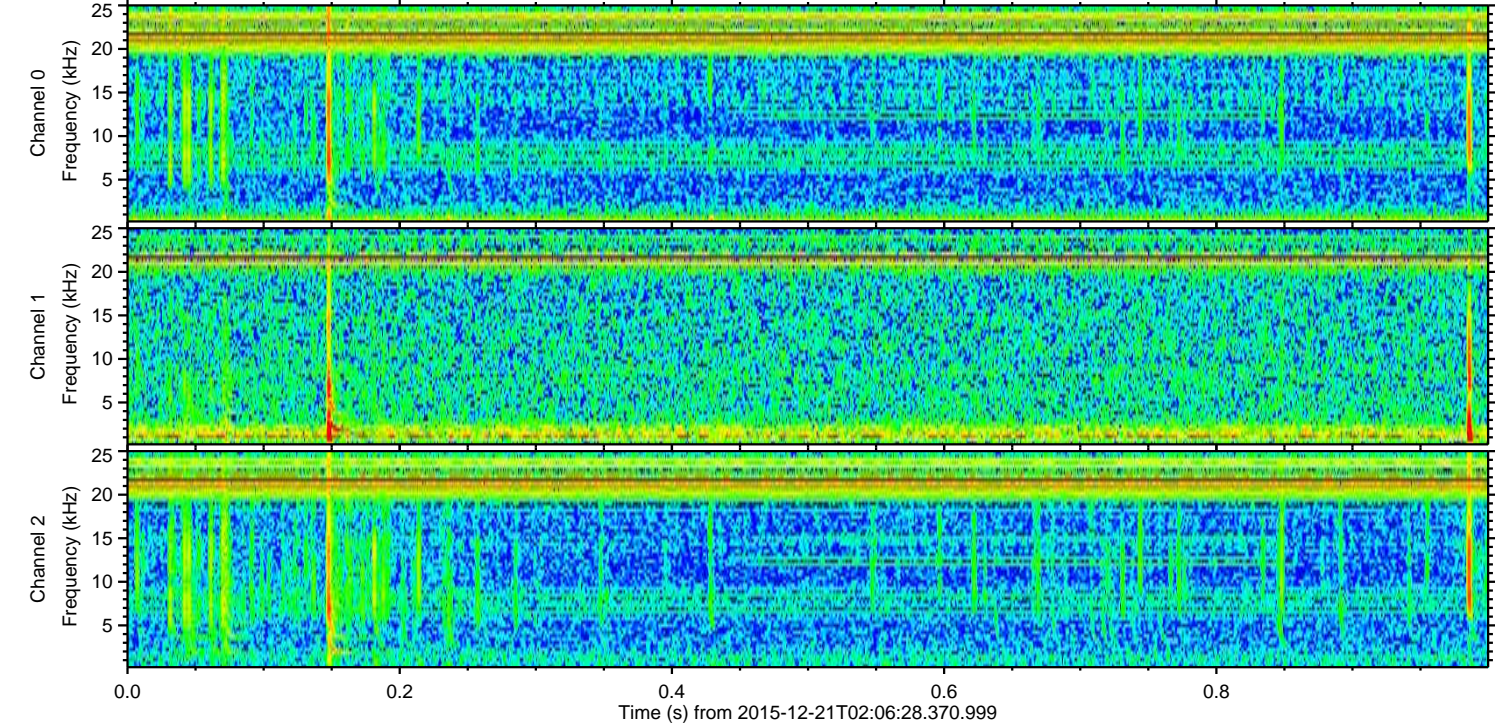
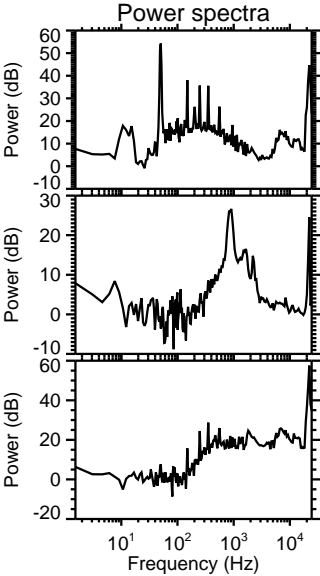
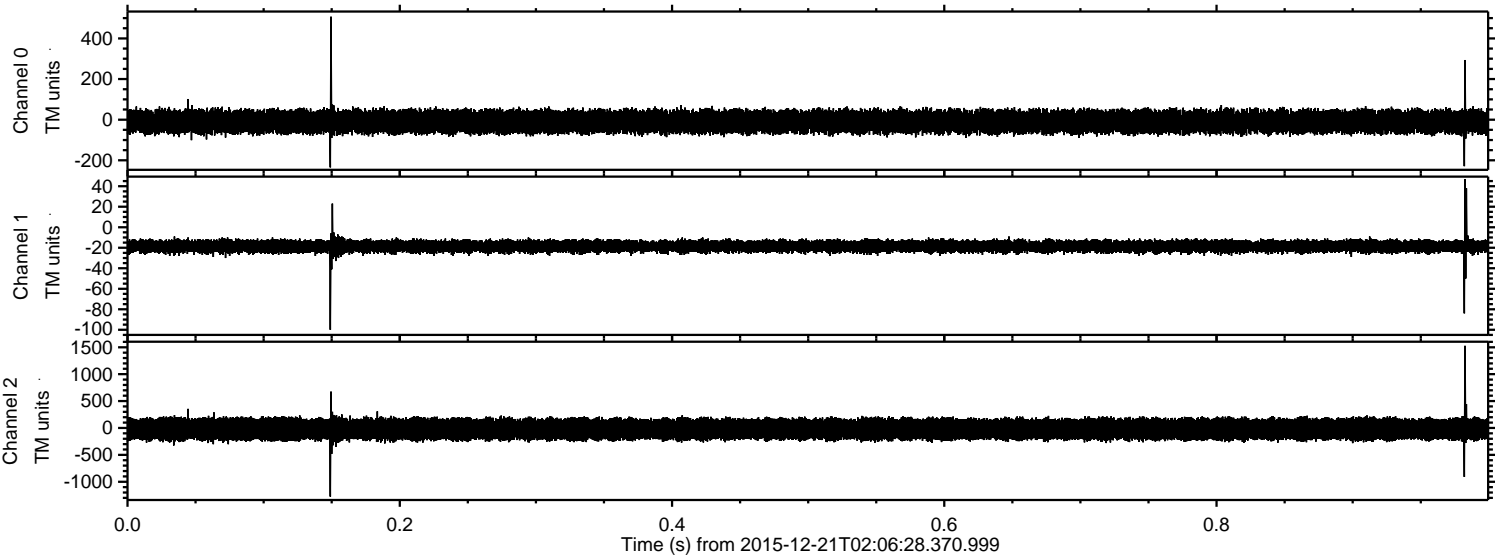


Channel 0
mn: -259
mx: 283
 μ : -9.7
 σ : 30.2

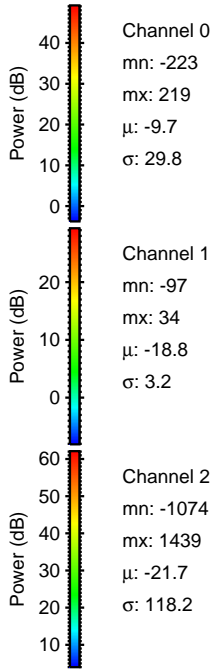
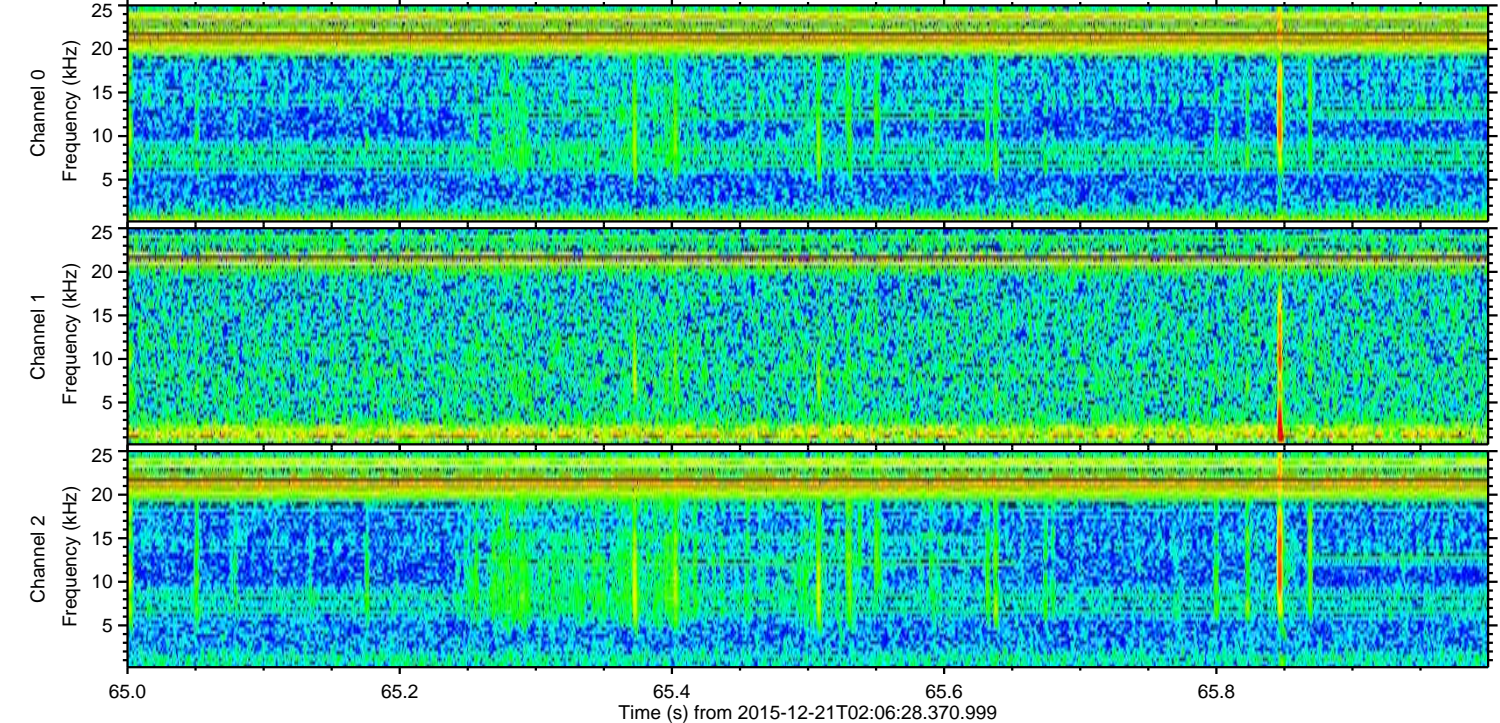
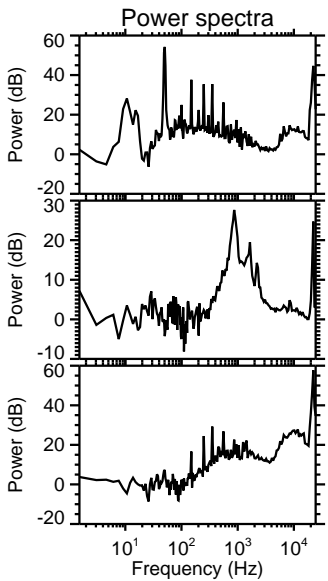
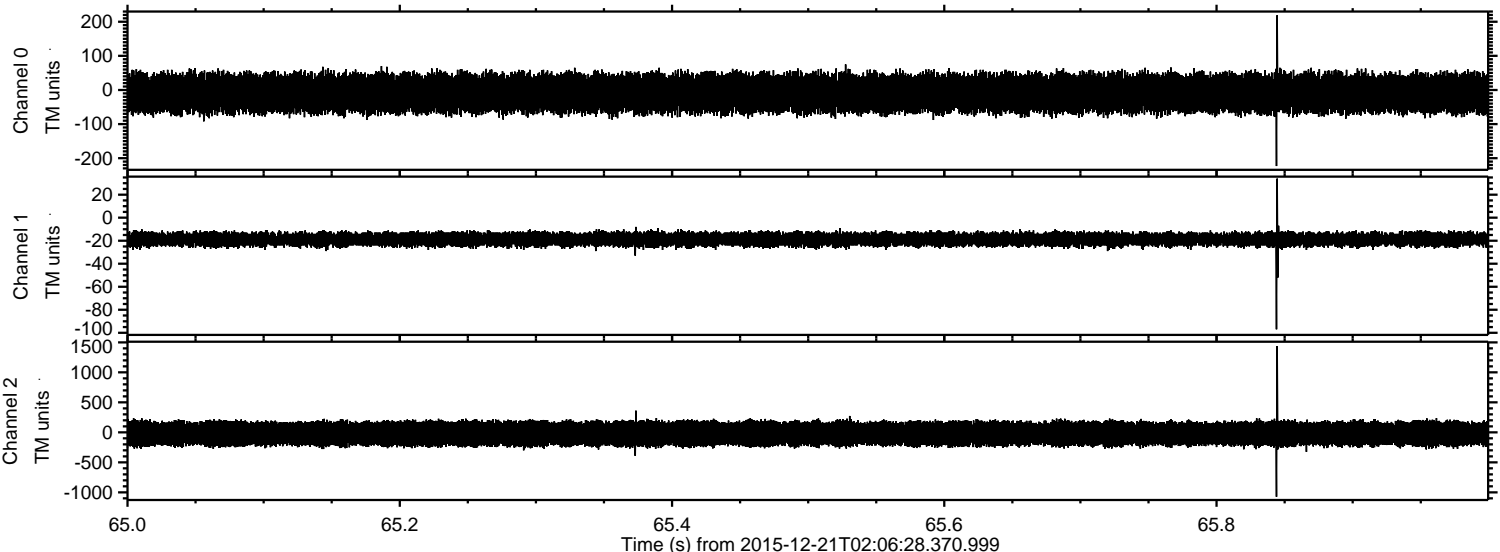
Channel 1
mn: -92
mx: 46
 μ : -18.8
 σ : 3.3

Channel 2
mn: -1153
mx: 1606
 μ : -21.6
 σ : 120.1

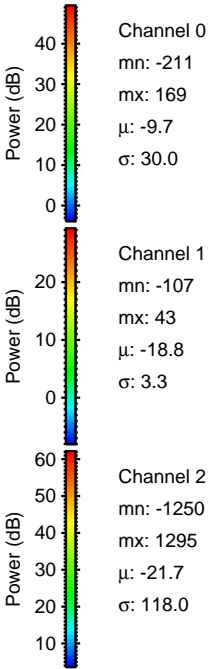
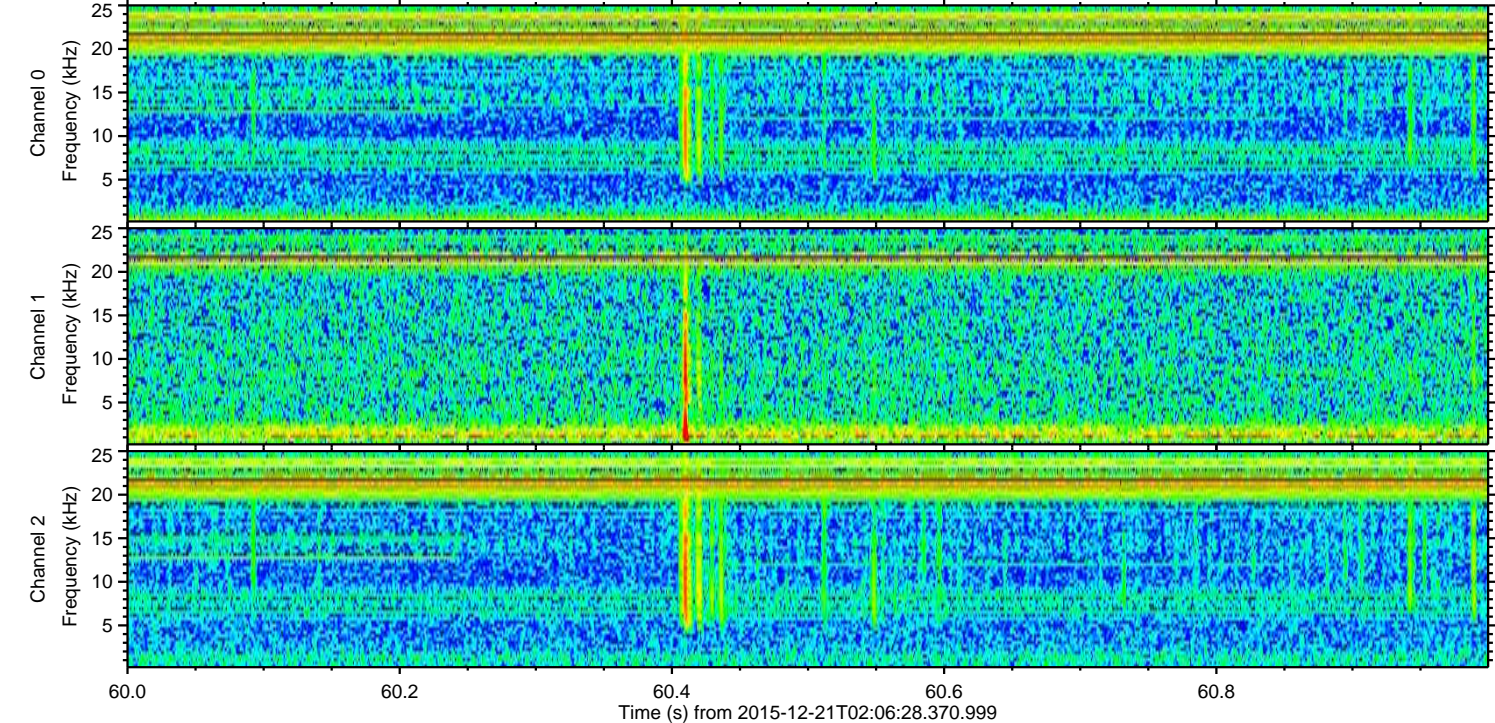
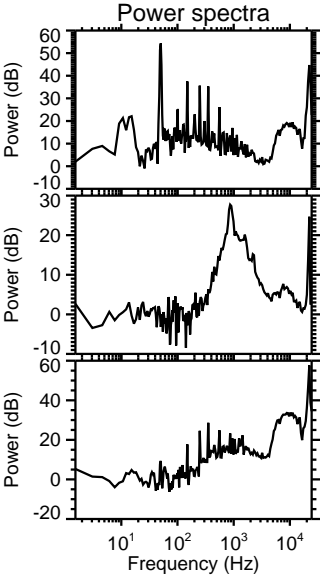
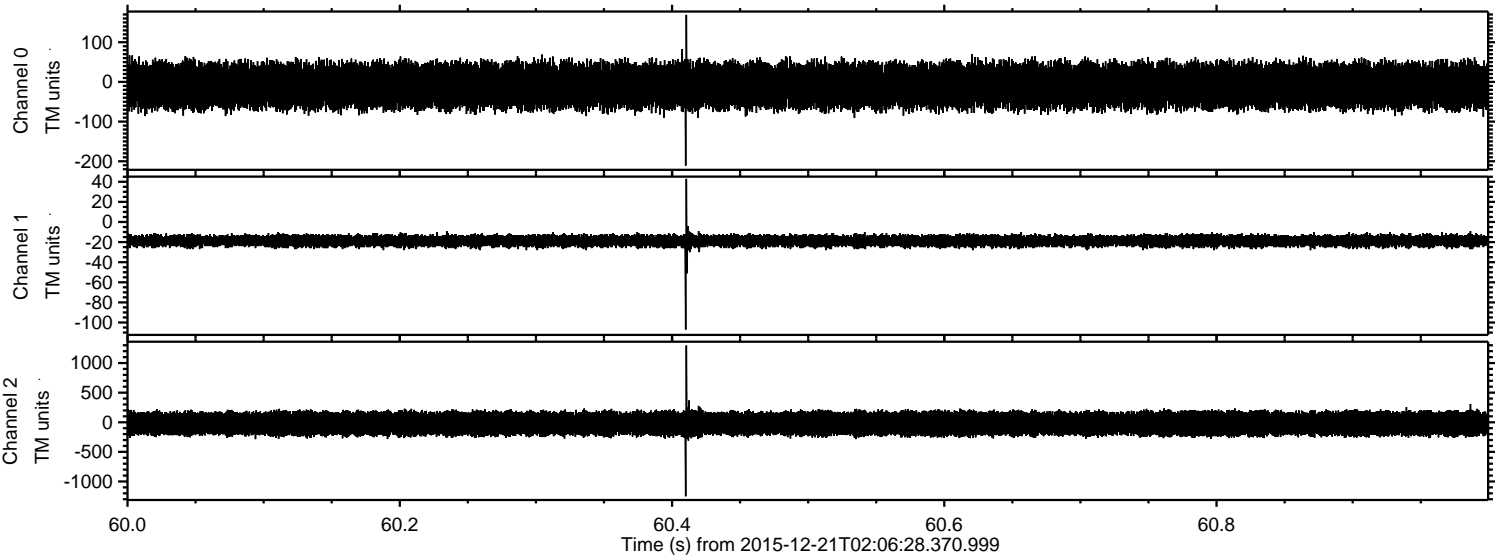
Processed Tue Feb 2 04:08:00 2016 by ELM ver.2012-10-06 from 001__elm20151221_020627__dat00.bin



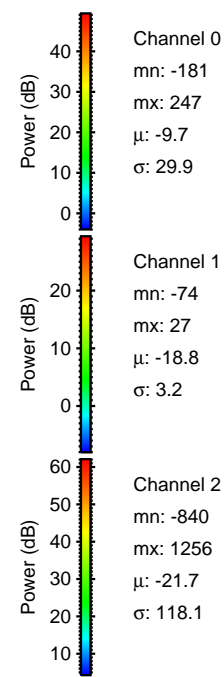
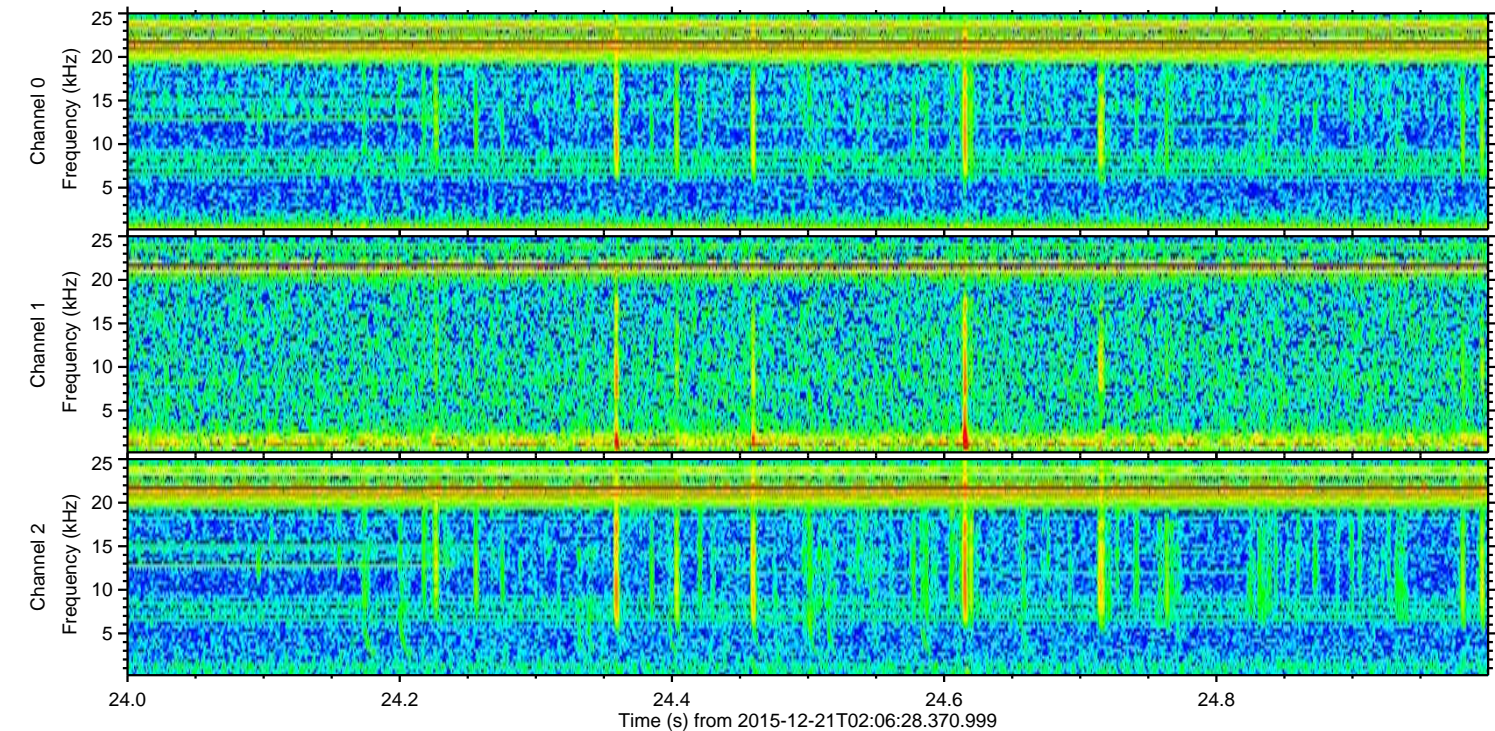
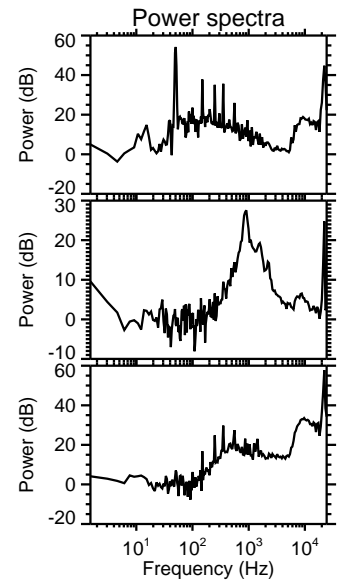
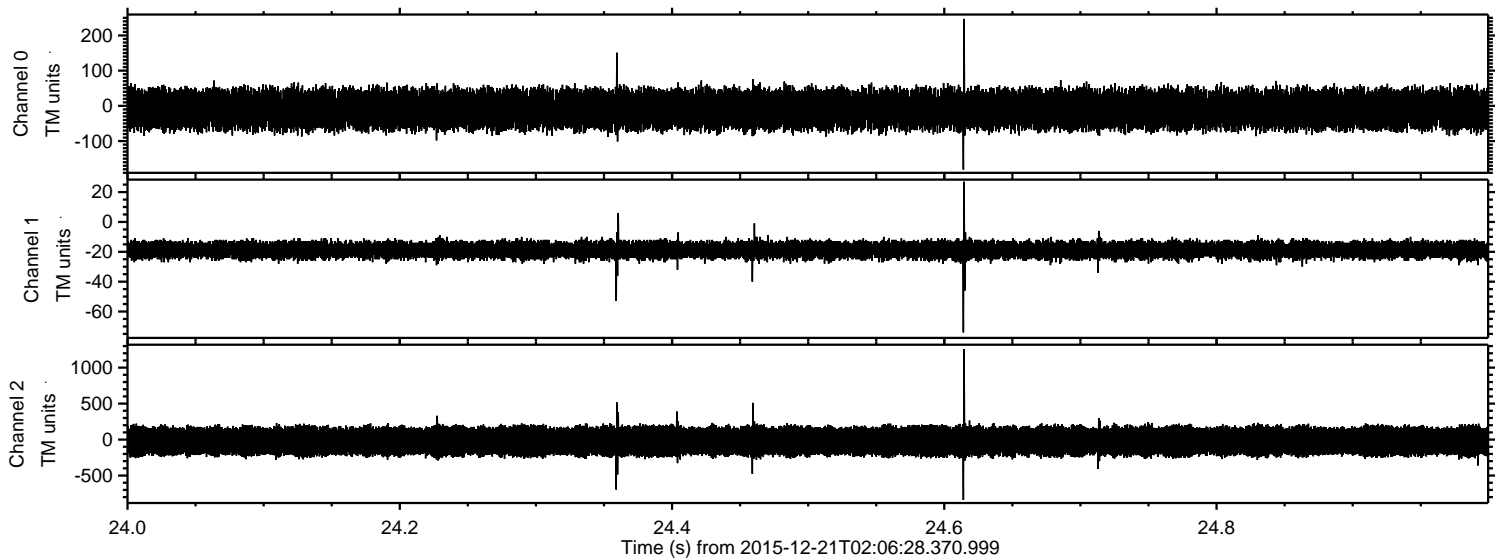
Processed Tue Feb 2 04:08:01 2016 by ELM ver.2012-10-06 from 001__elm20151221_020627__dat00.bin



Processed Tue Feb 2 04:08:03 2016 by ELM ver.2012-10-06 from 001__elm20151221_020627__dat00.bin



Processed Tue Feb 2 04:08:04 2016 by ELM ver.2012-10-06 from 001__elm20151221_020627__dat00.bin



Processed Tue Feb 2 04:08:05 2016 by ELM ver.2012-10-06 from 001__elm20151221_020627__dat00.bin

