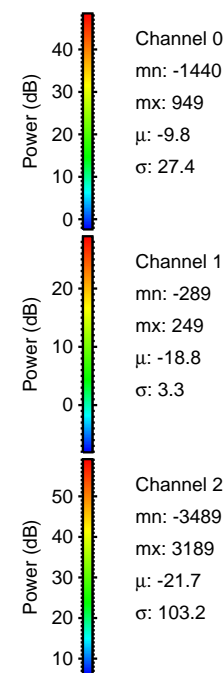
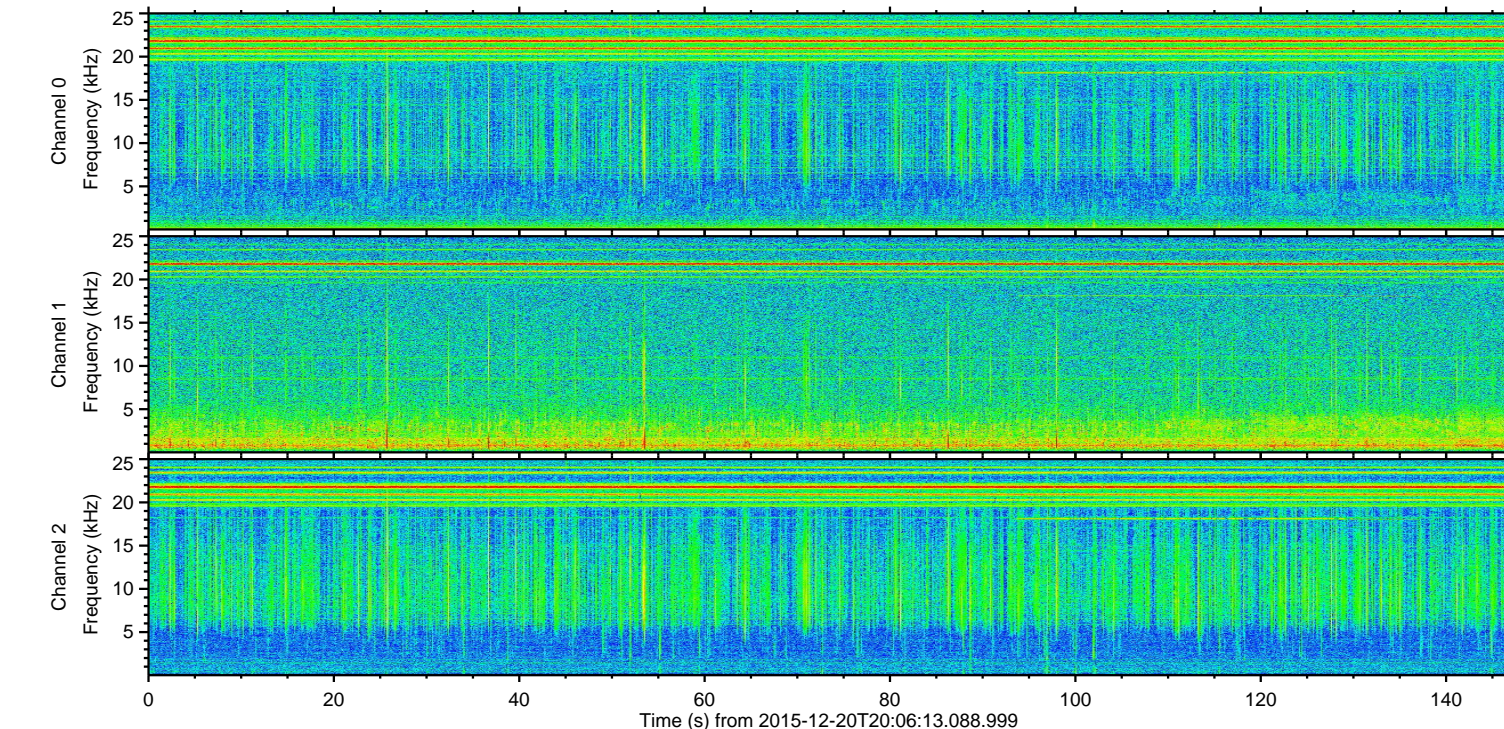
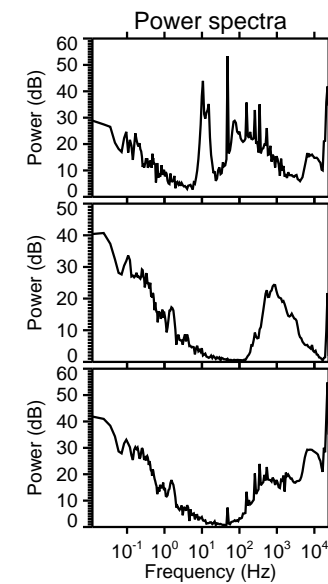
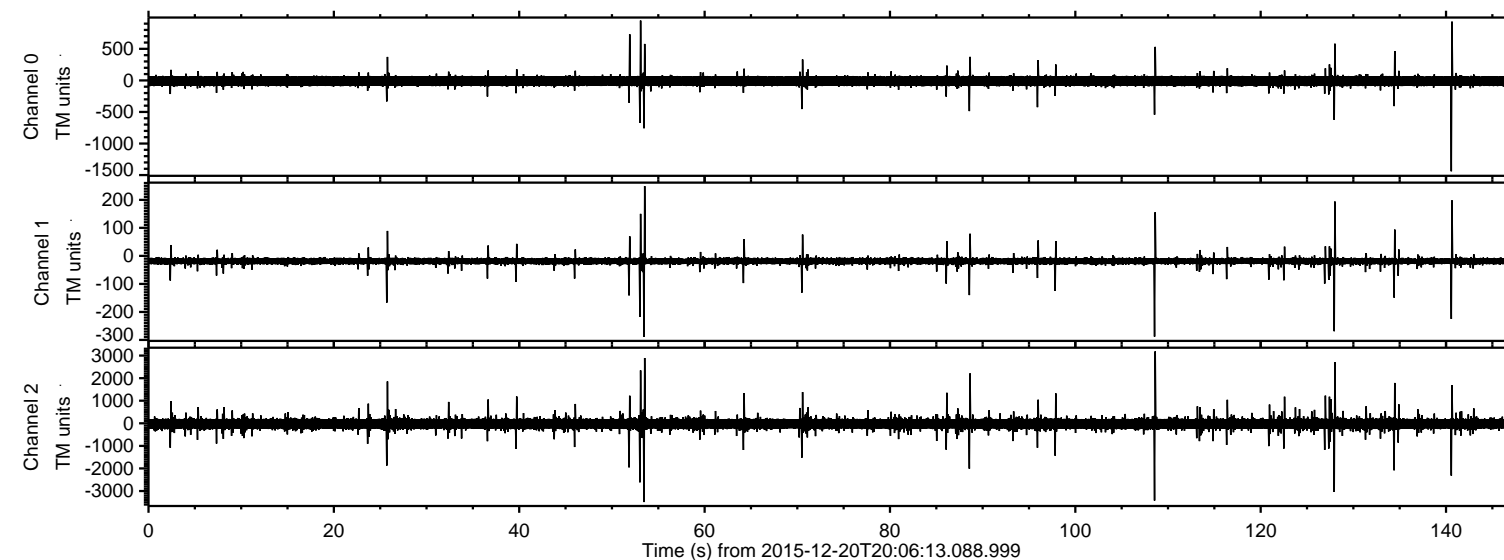
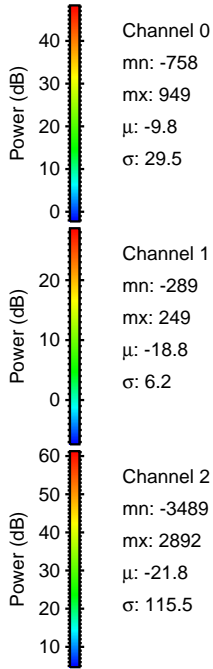
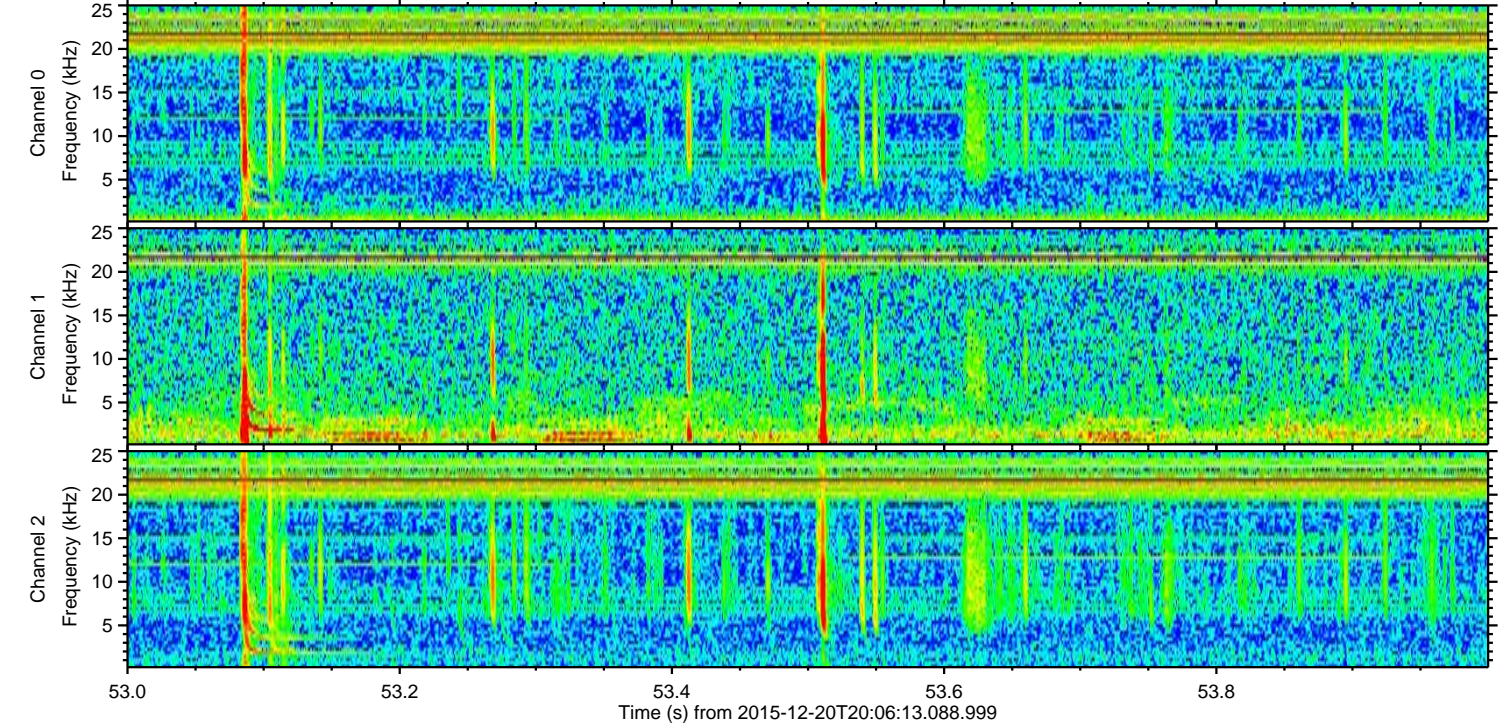
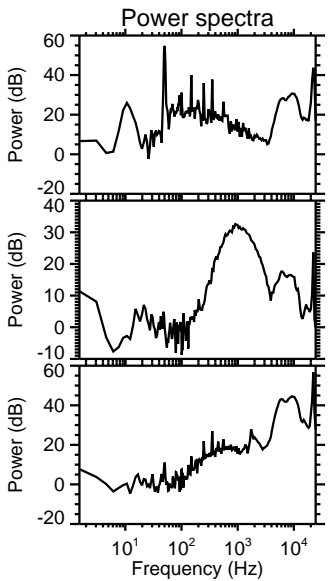
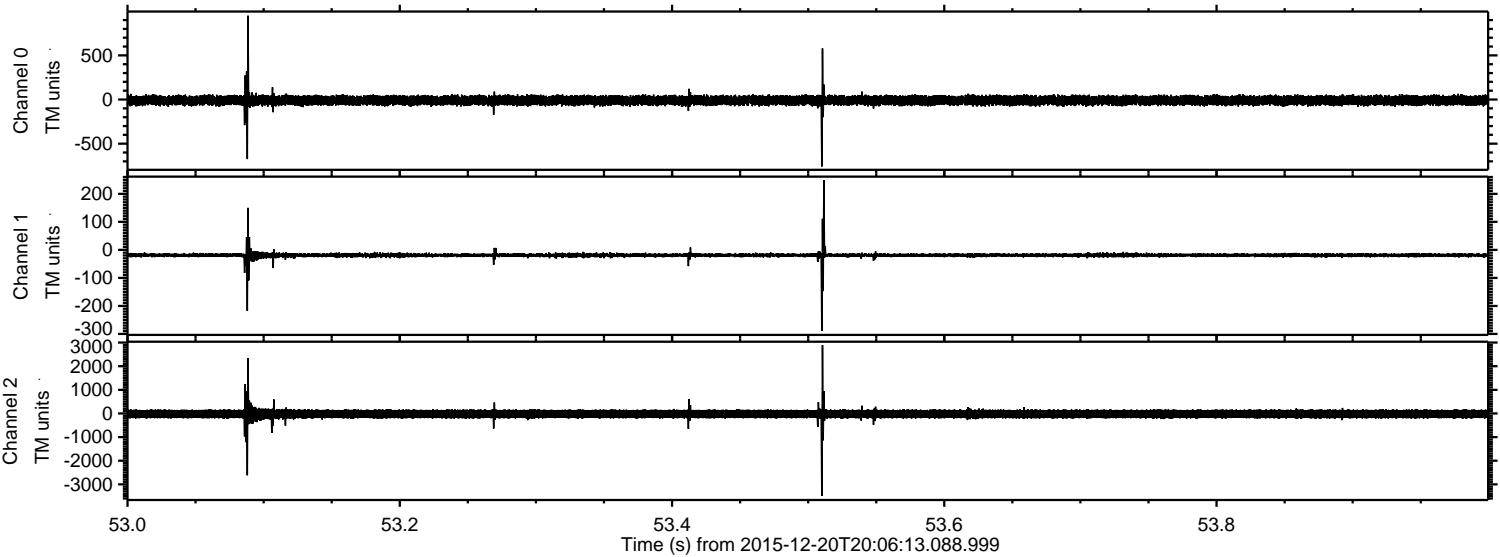


ELMAVAN 3D WAVEFORMS (Measured data sampled at 50 kHz) 51000 packets of 144 samples from 2015-12-20T20:06:13.088.999.

Processed Tue Feb 2 00:57:03 2016 by ELM ver.2012-10-06 from 001__elm20151220_200612__dat00.bin

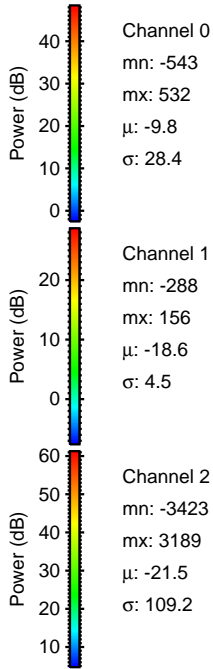
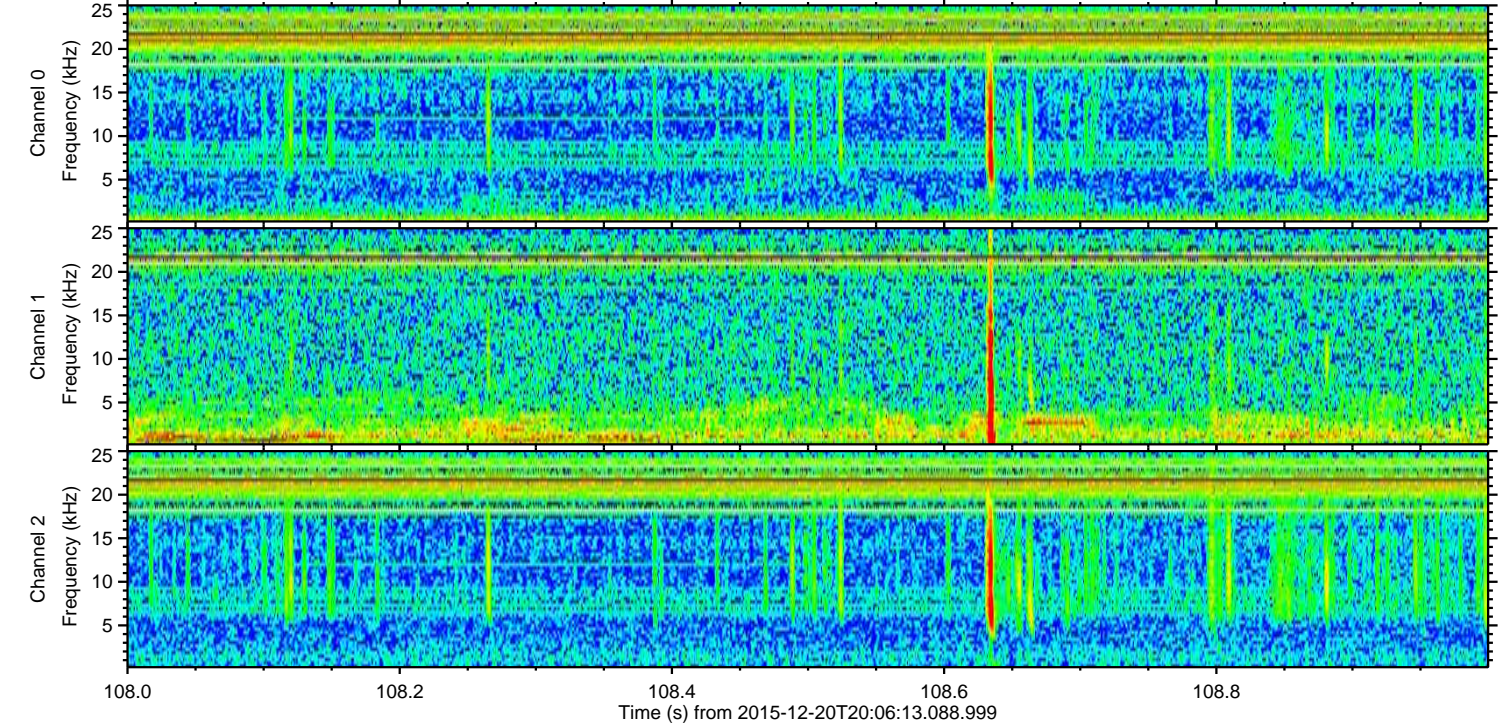
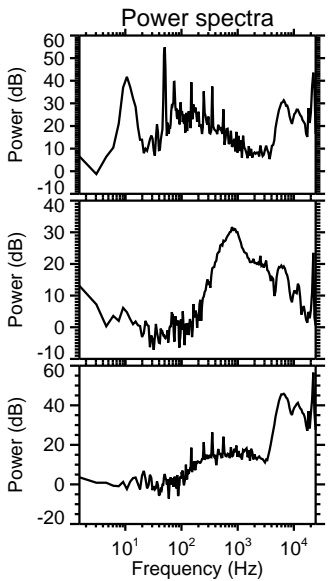
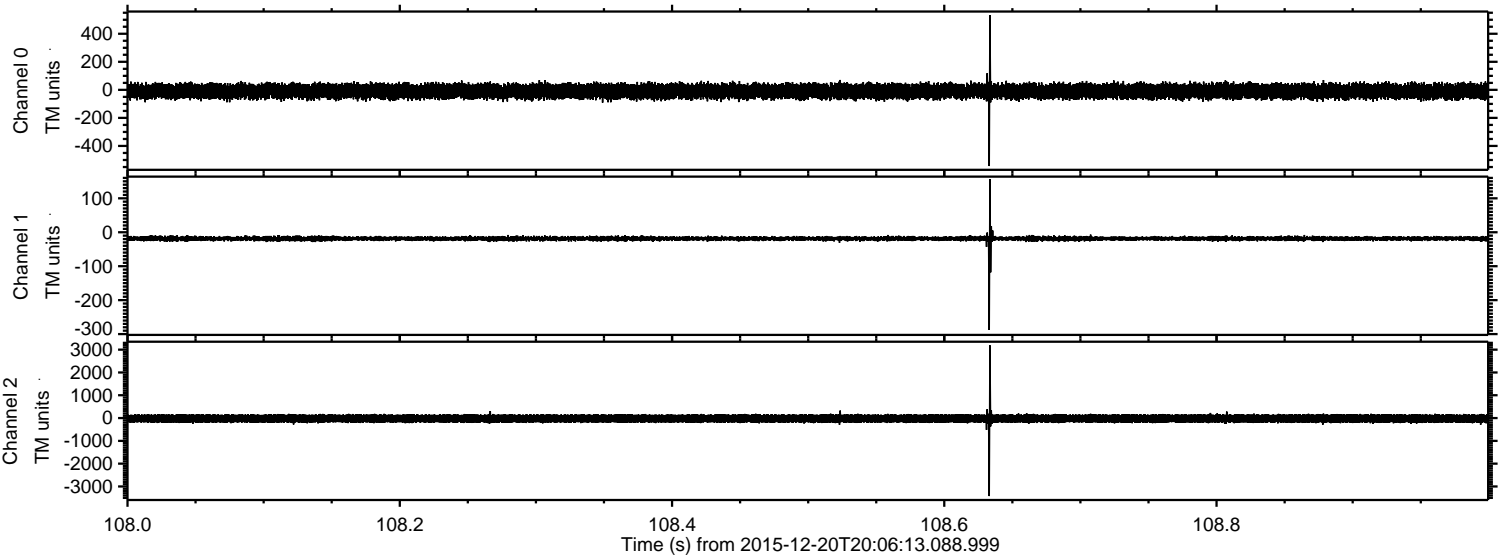


Processed Tue Feb 2 00:57:18 2016 by ELM ver.2012-10-06 from 001__elm20151220_200612__dat00.bin



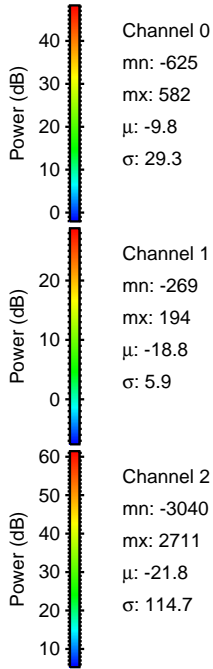
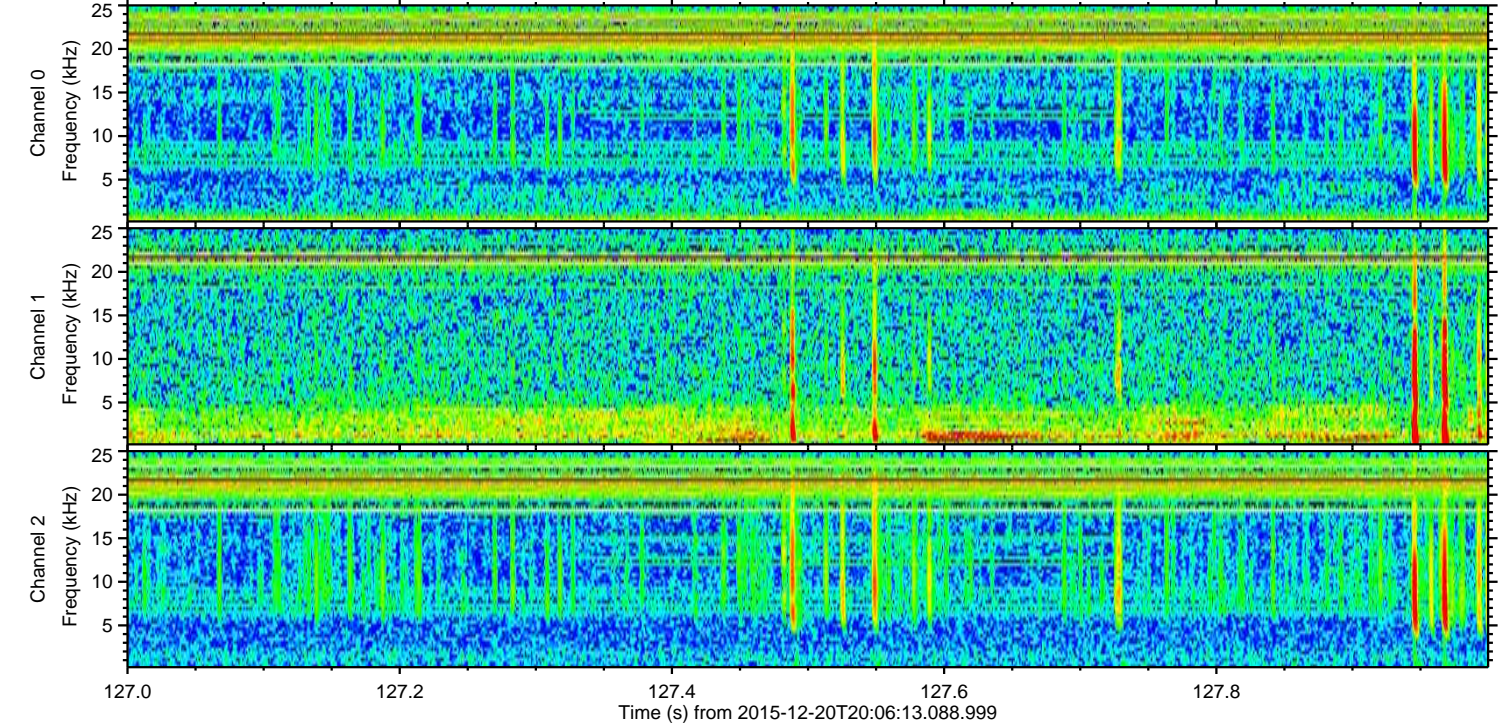
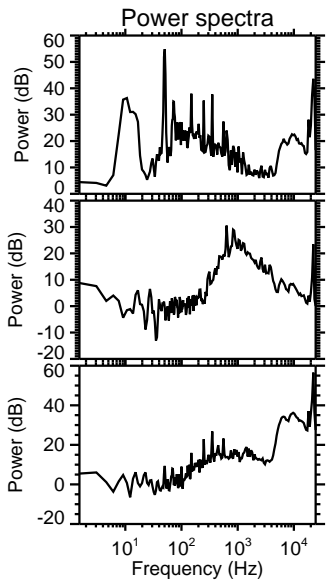
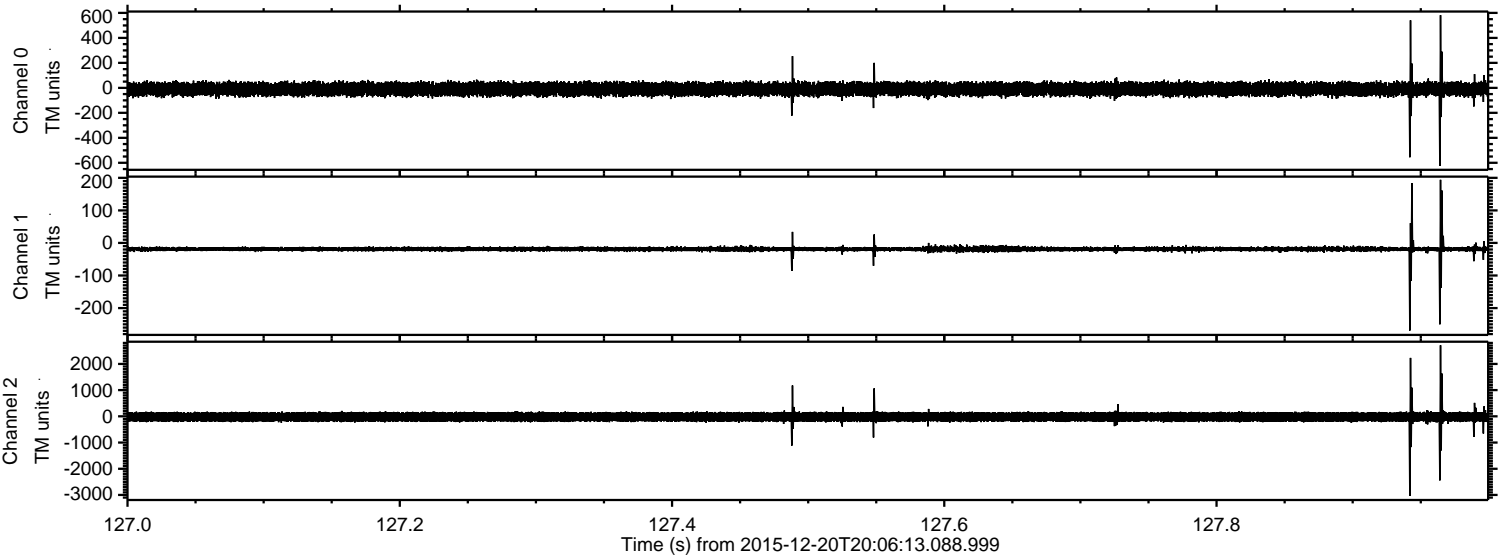
ELMAVAN 3D WAVEFORMS (Measured data sampled at 50 kHz) 51000 packets of 144 samples from 2015-12-20T20:06:13.088.999. Part 109/147

Processed Tue Feb 2 00:57:19 2016 by ELM ver.2012-10-06 from 001__elm20151220_200612__dat00.bin



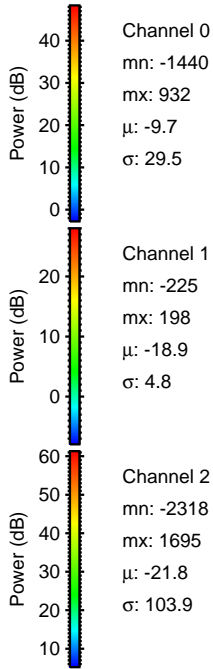
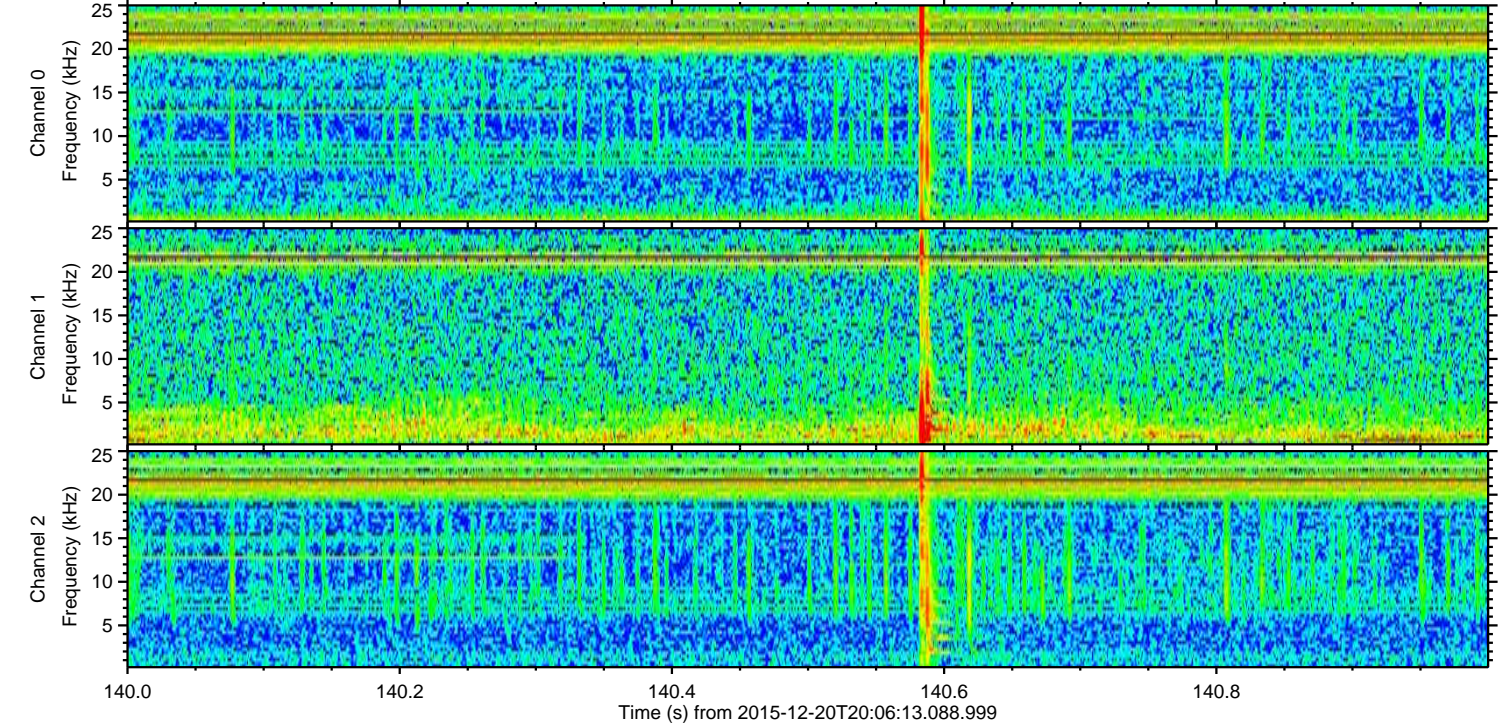
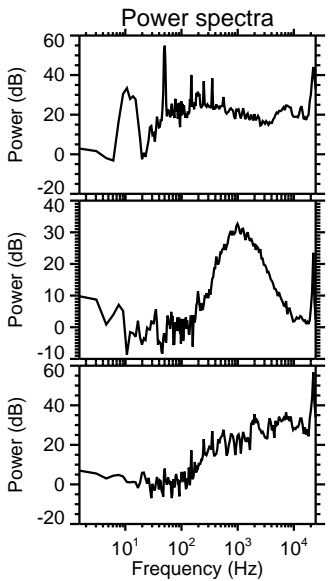
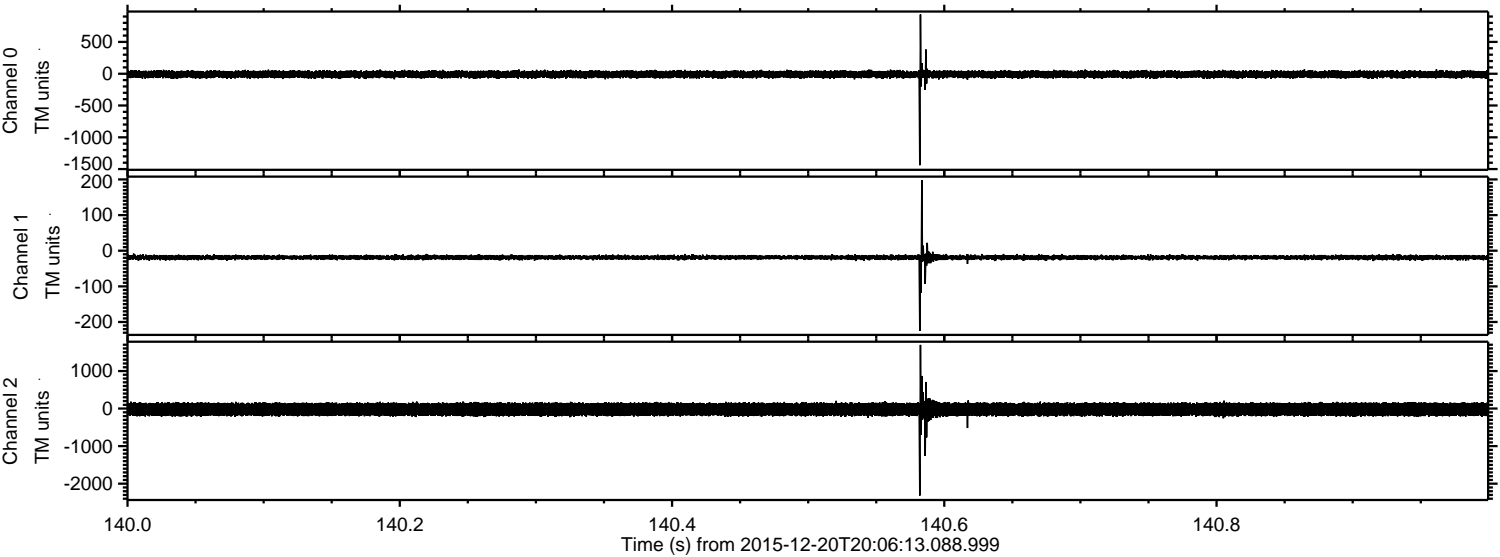
ELMAVAN 3D WAVEFORMS (Measured data sampled at 50 kHz) 51000 packets of 144 samples from 2015-12-20T20:06:13.088.999. Part 128/147

Processed Tue Feb 2 00:57:20 2016 by ELM ver.2012-10-06 from 001__elm20151220_200612__dat00.bin

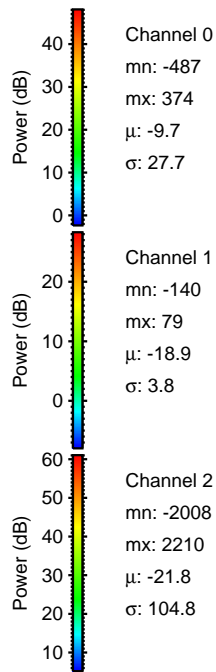
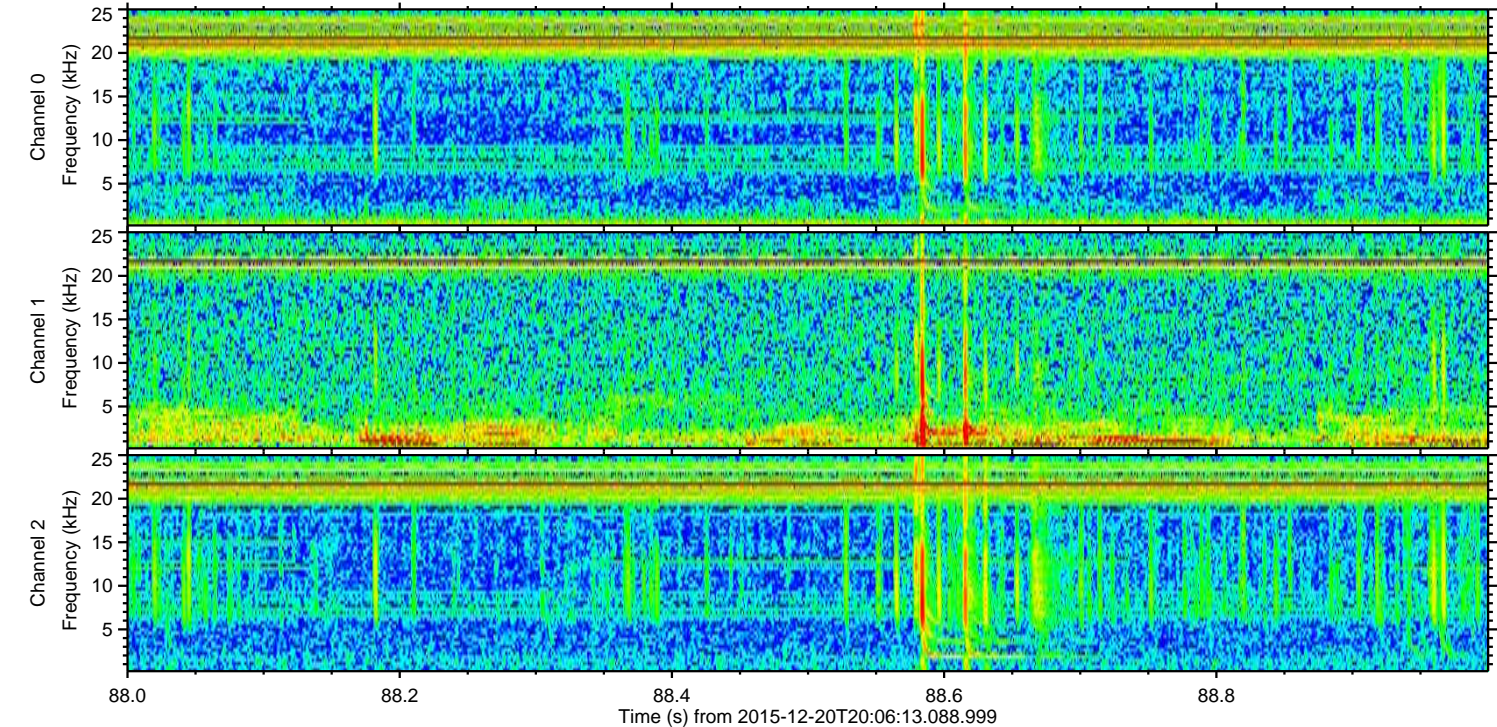
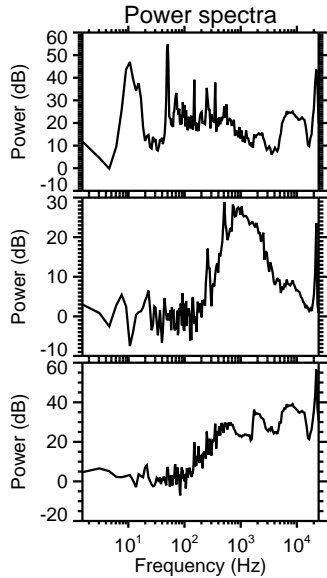
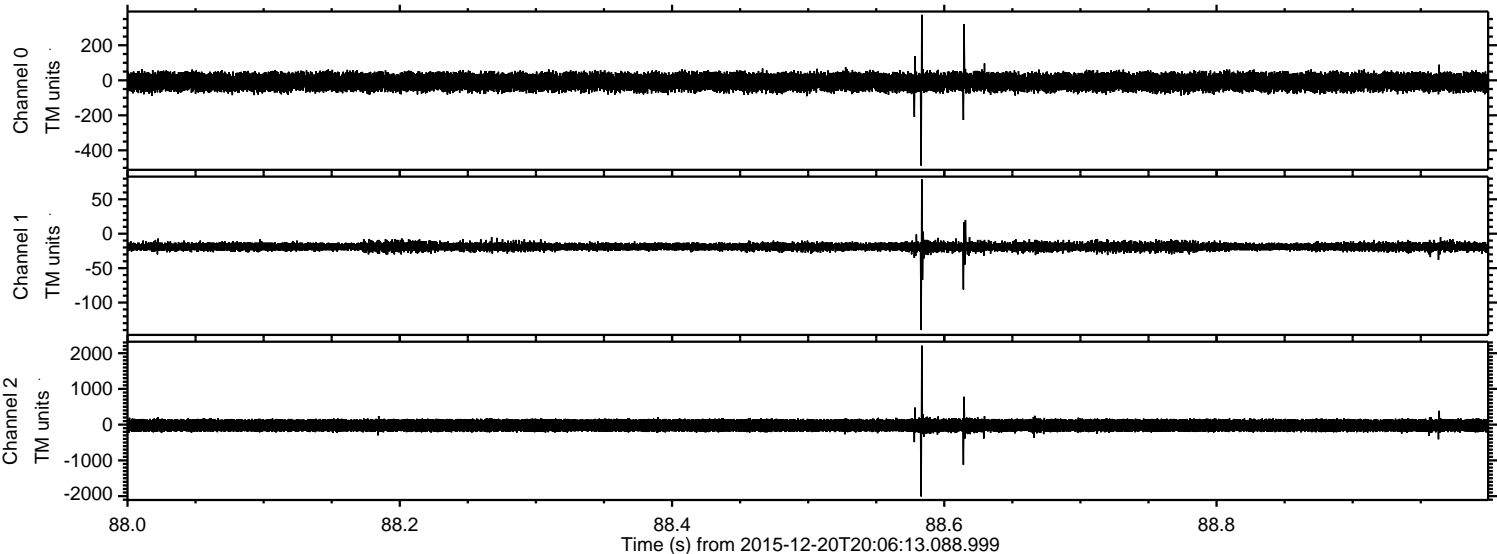


ELMAVAN 3D WAVEFORMS (Measured data sampled at 50 kHz) 51000 packets of 144 samples from 2015-12-20T20:06:13.088.999. Part 141/147

Processed Tue Feb 2 00:57:21 2016 by ELM ver.2012-10-06 from 001__elm20151220_200612__dat00.bin

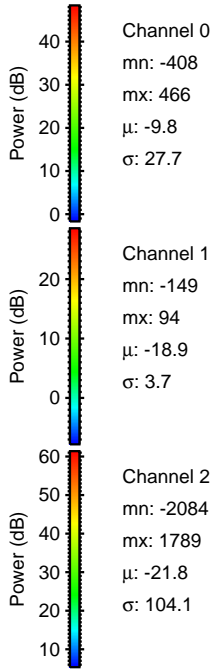
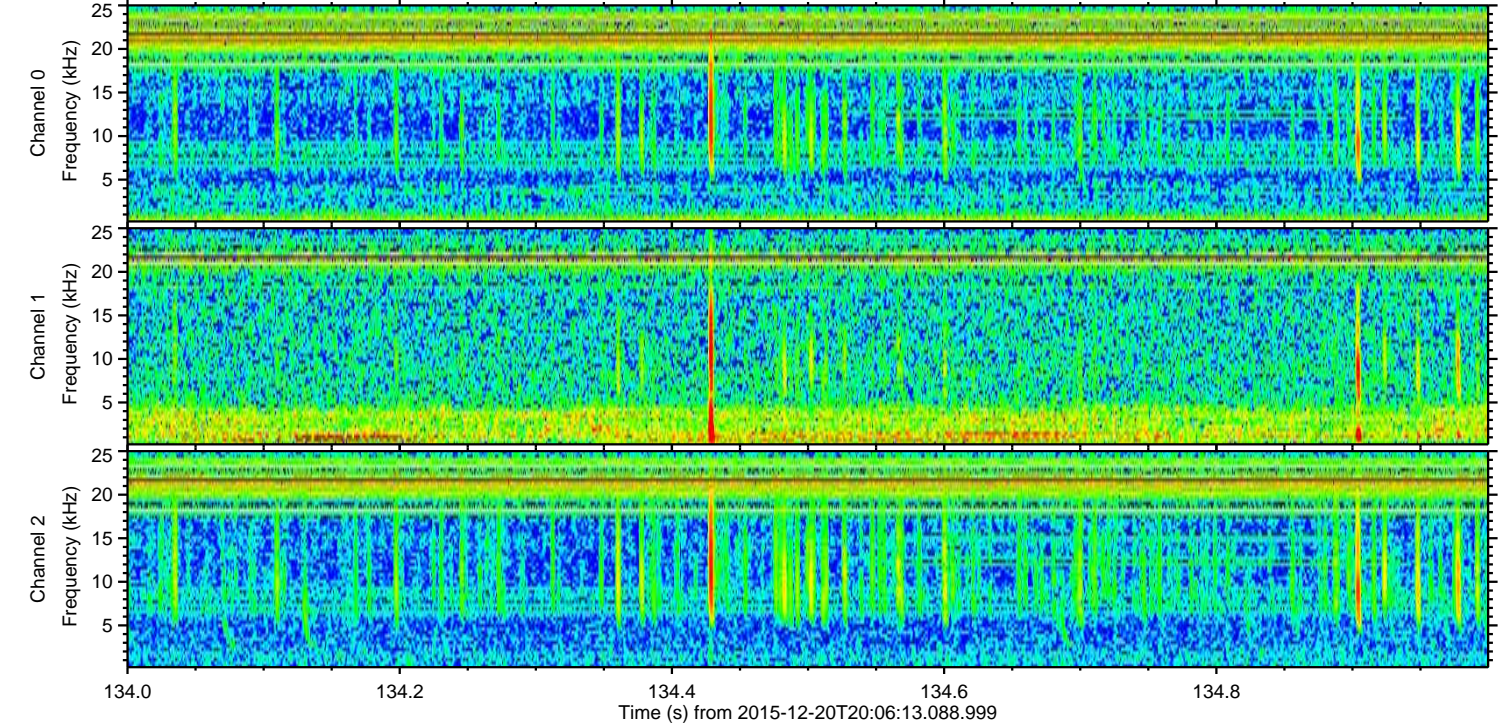
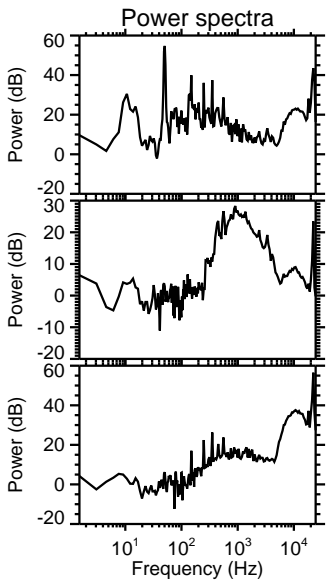
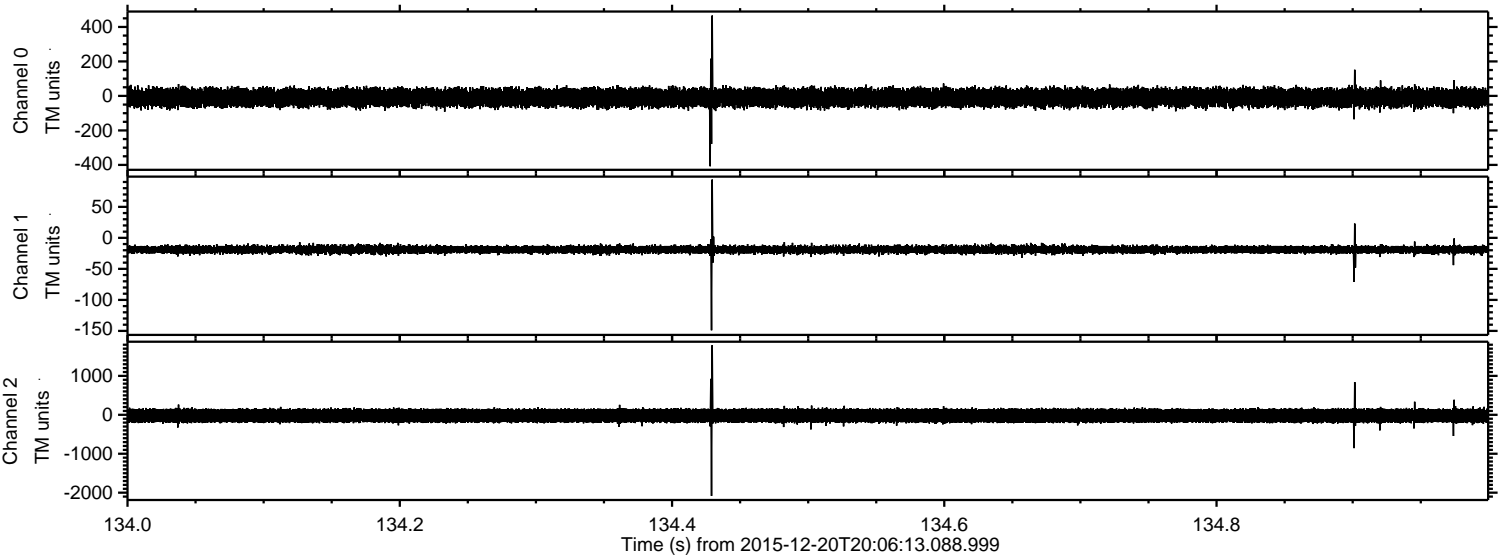


Processed Tue Feb 2 00:57:22 2016 by ELM ver.2012-10-06 from 001__elm20151220_200612__dat00.bin

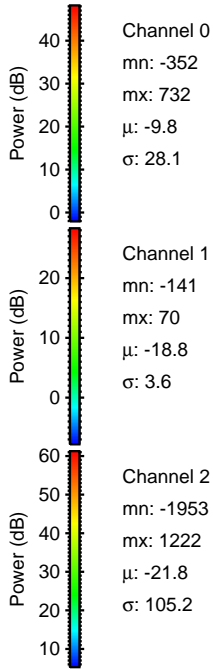
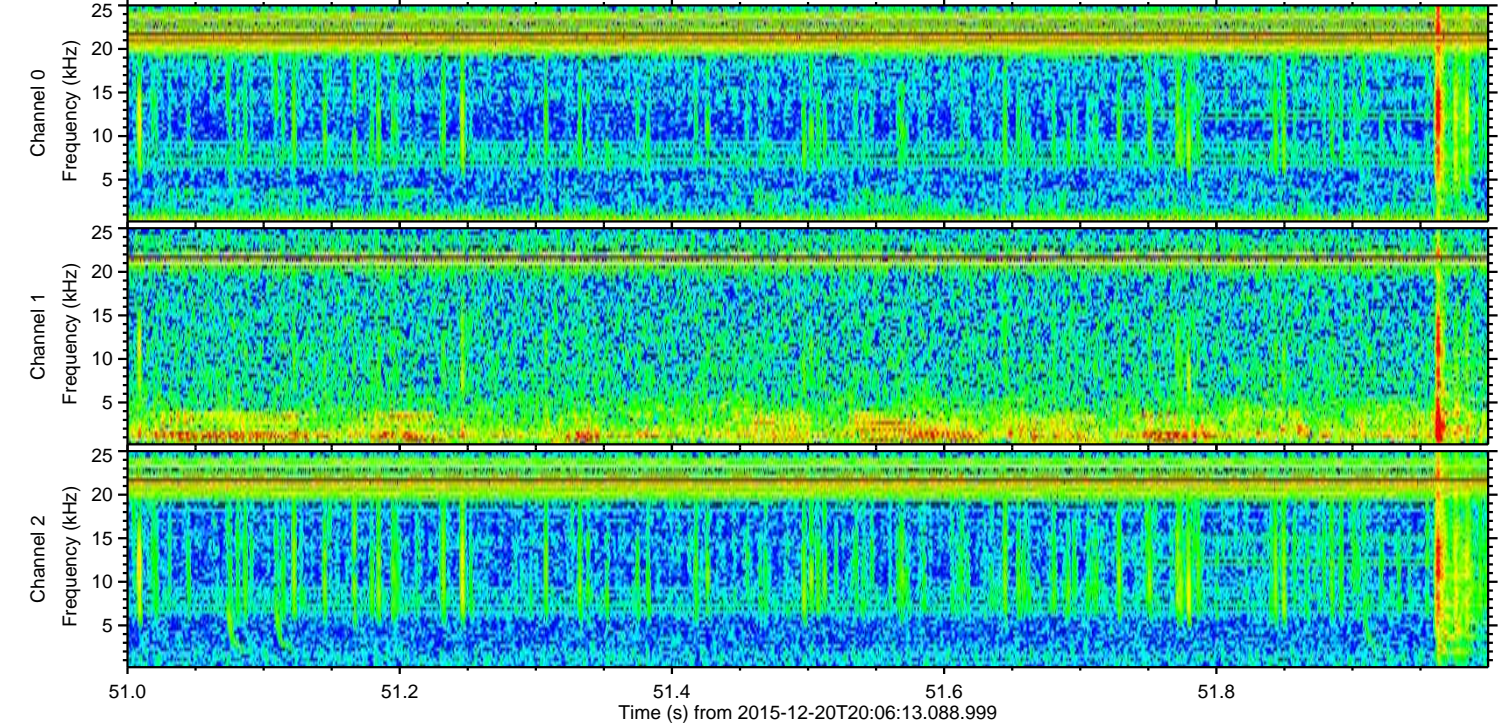
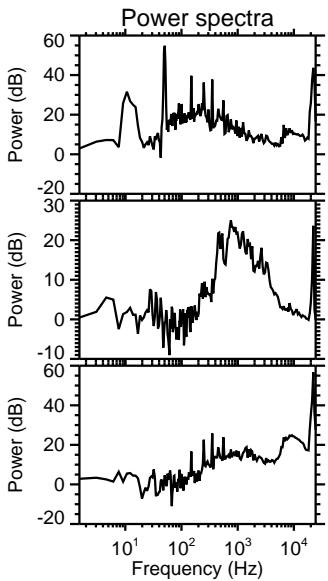
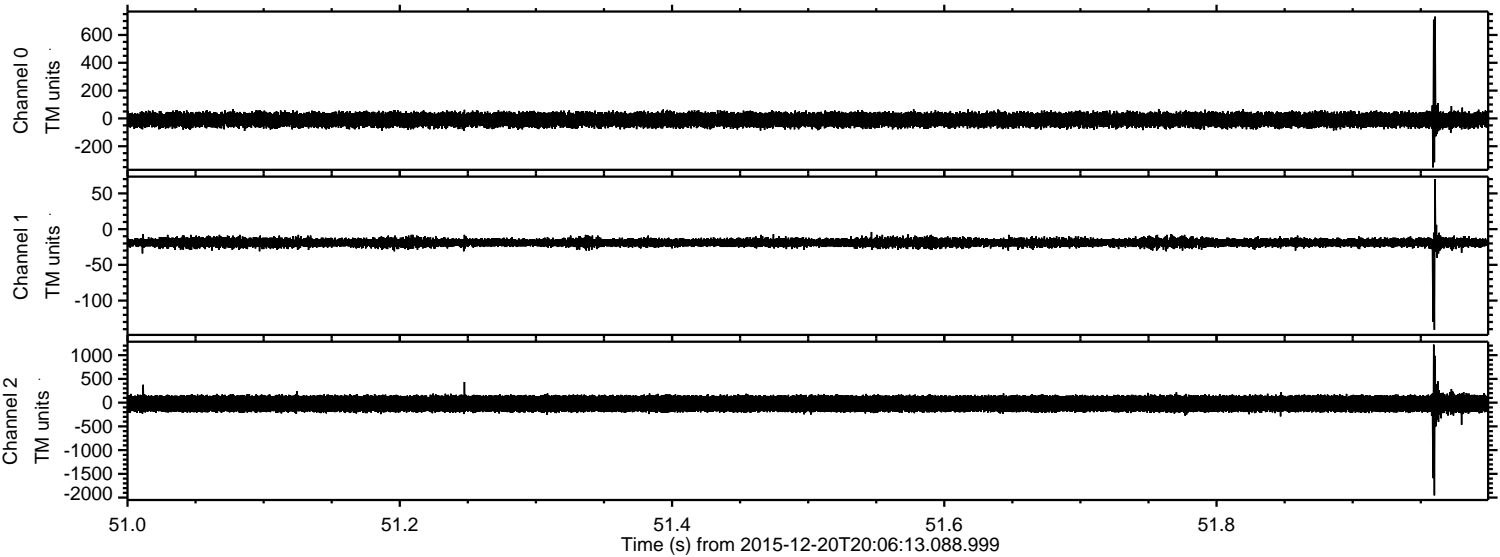


ELMAVAN 3D WAVEFORMS (Measured data sampled at 50 kHz) 51000 packets of 144 samples from 2015-12-20T20:06:13.088.999. Part 135/147

Processed Tue Feb 2 00:57:23 2016 by ELM ver.2012-10-06 from 001__elm20151220_200612__dat00.bin



Processed Tue Feb 2 00:57:24 2016 by ELM ver.2012-10-06 from 001__elm20151220_200612__dat00.bin

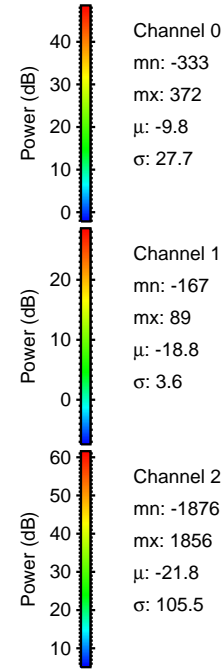
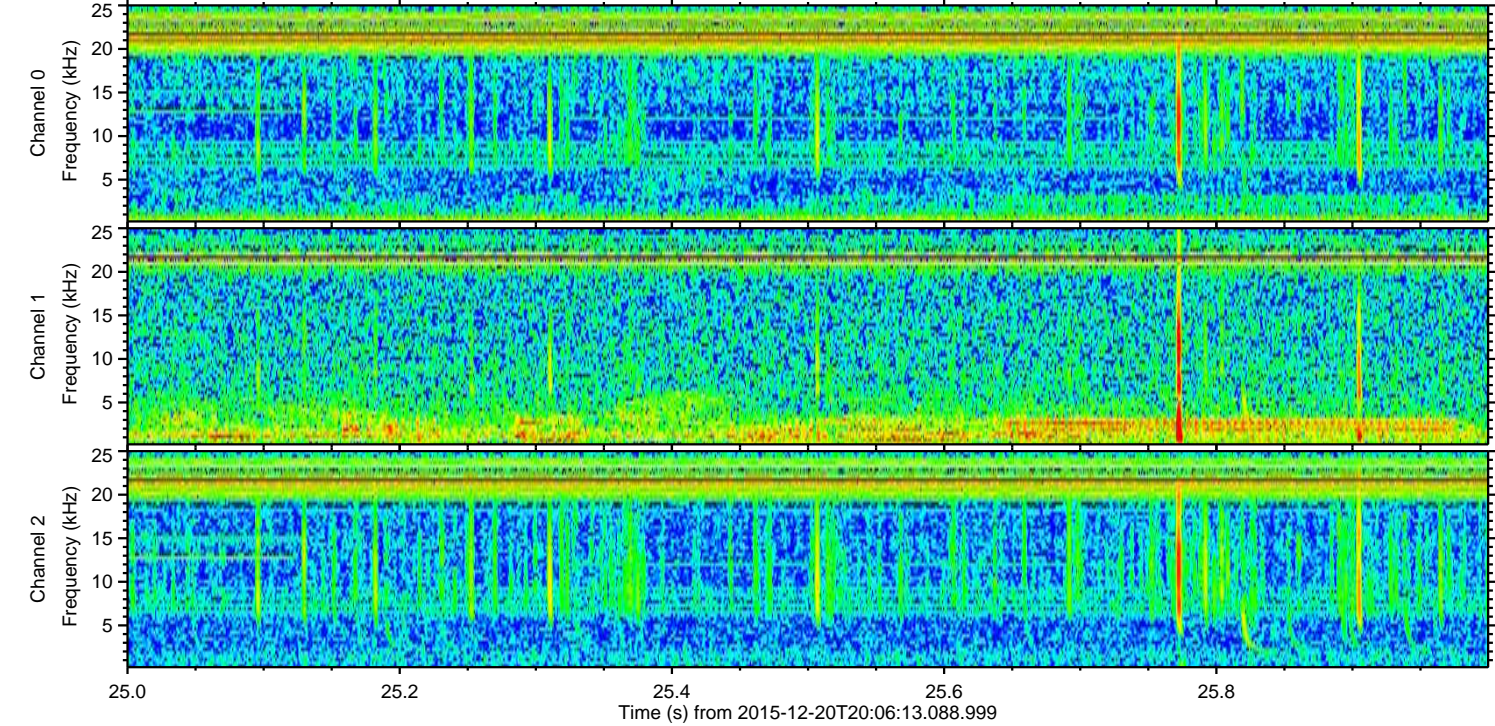
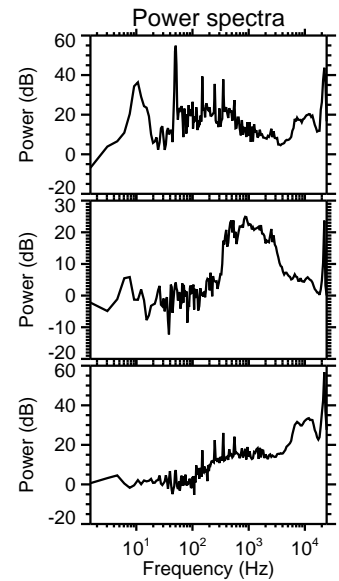
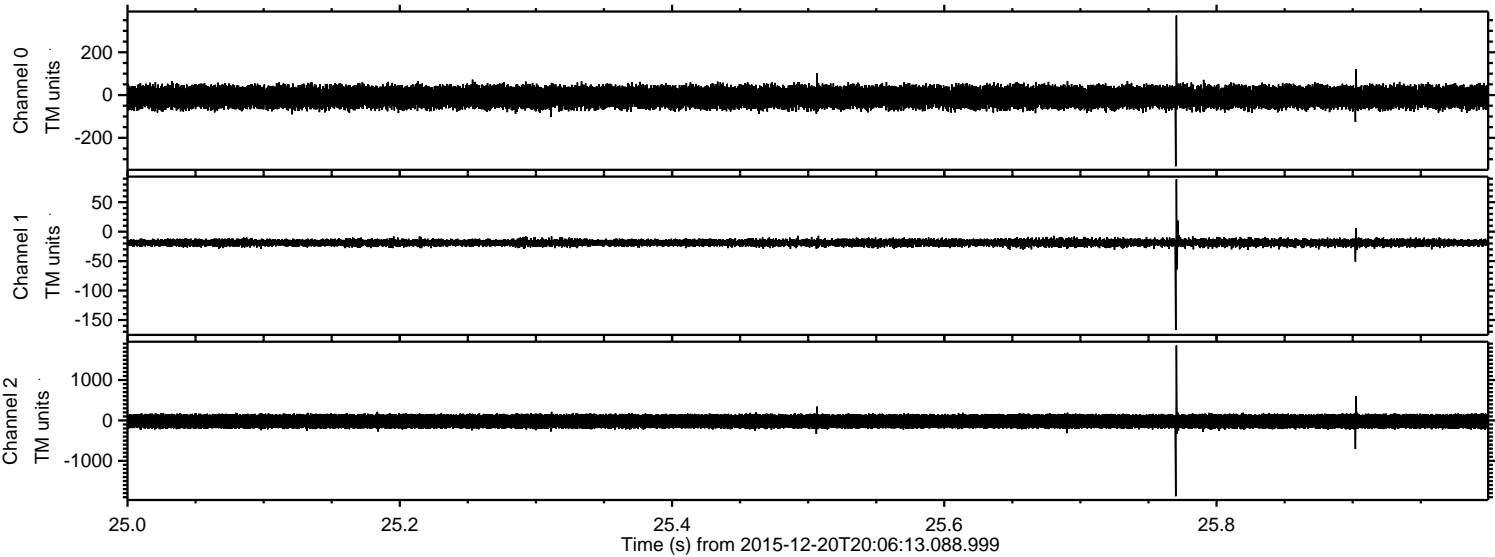


Channel 0
mn: -352
mx: 732
 μ : -9.8
 σ : 28.1

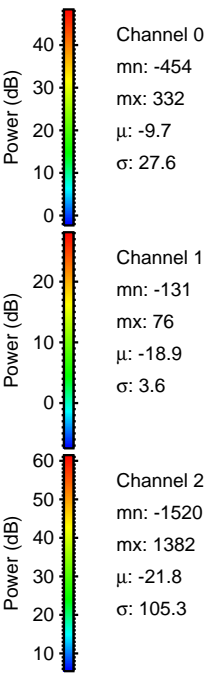
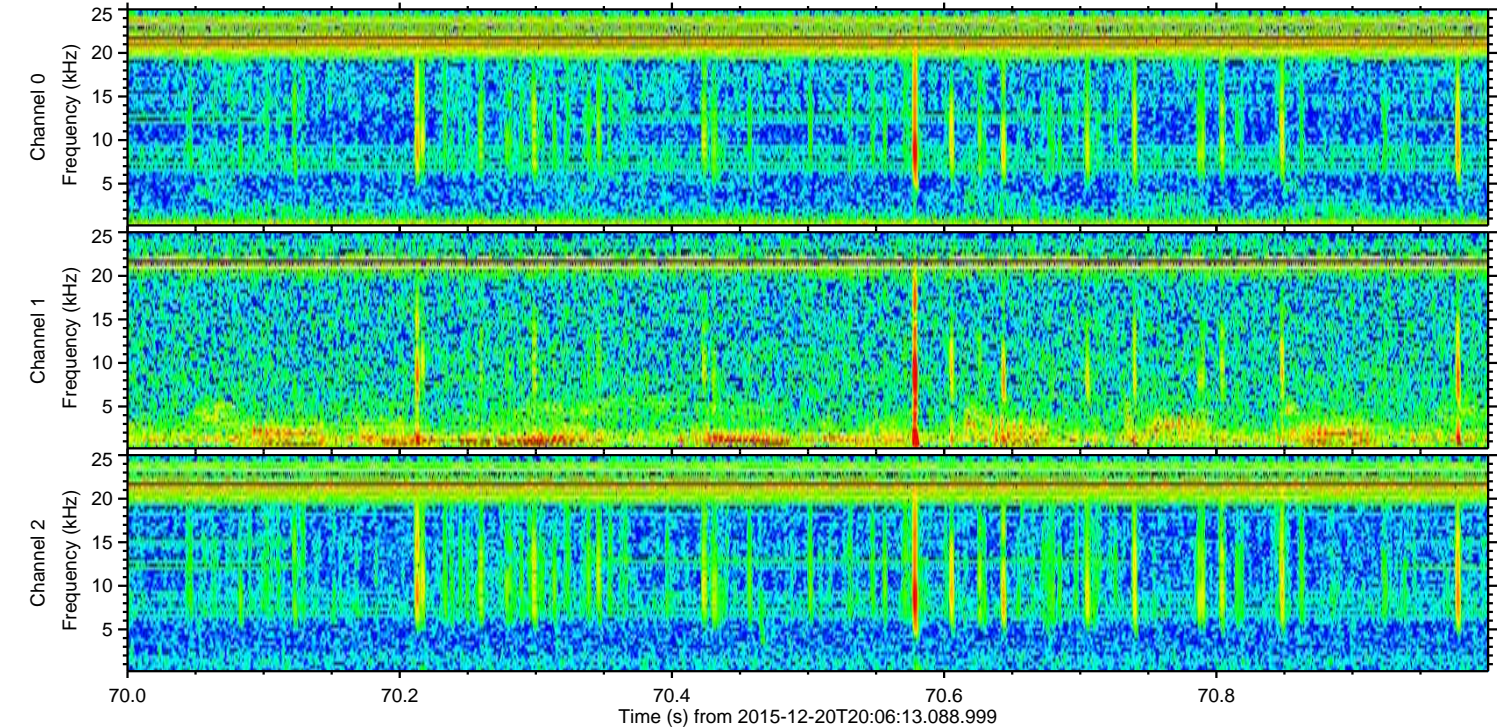
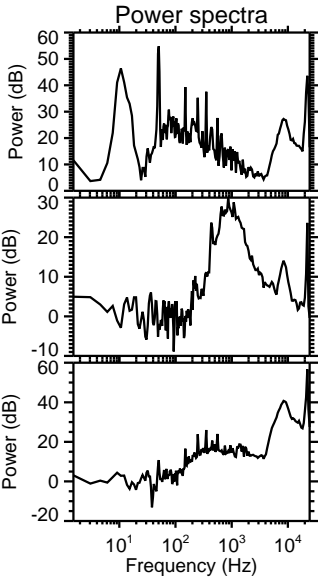
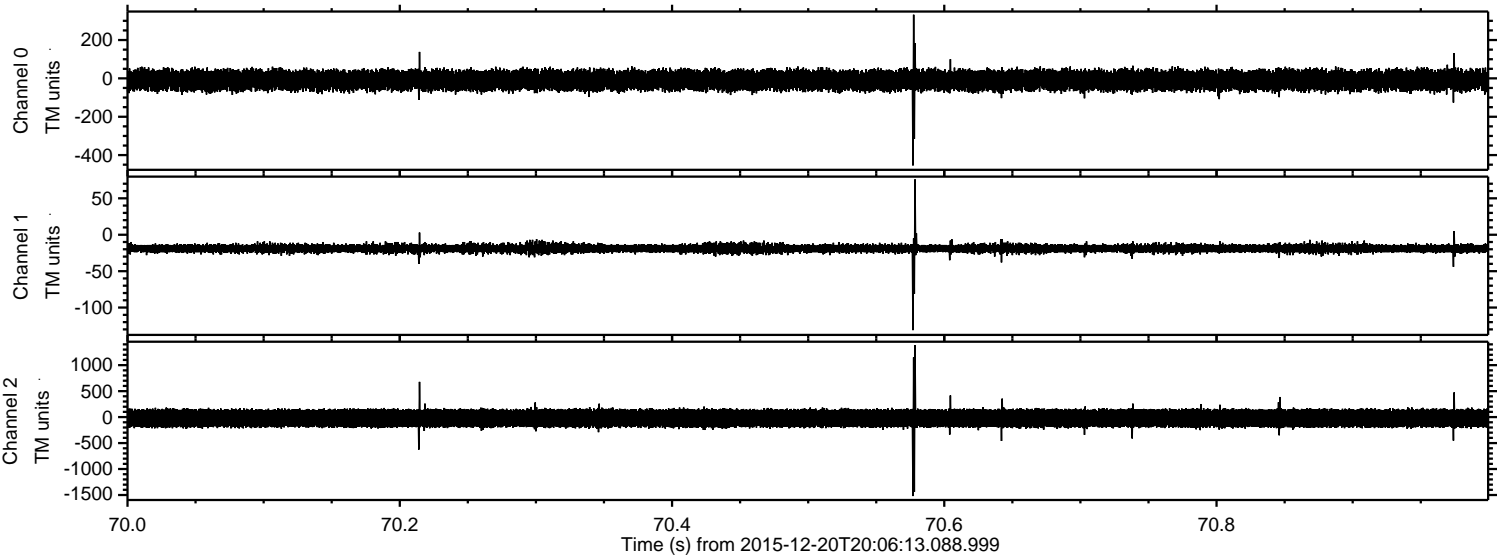
Channel 1
mn: -141
mx: 70
 μ : -18.8
 σ : 3.6

Channel 2
mn: -1953
mx: 1222
 μ : -21.8
 σ : 105.2

Processed Tue Feb 2 00:57:24 2016 by ELM ver.2012-10-06 from 001__elm20151220_200612__dat00.bin



Processed Tue Feb 2 00:57:25 2016 by ELM ver.2012-10-06 from 001__elm20151220_200612__dat00.bin



Processed Tue Feb 2 00:57:26 2016 by ELM ver.2012-10-06 from 001__elm20151220_200612__dat00.bin

