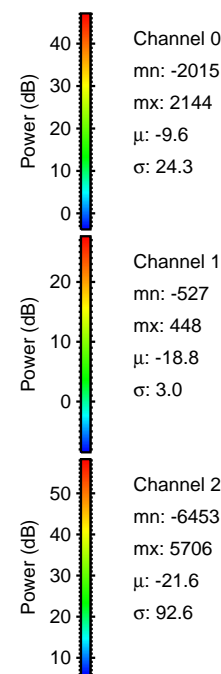
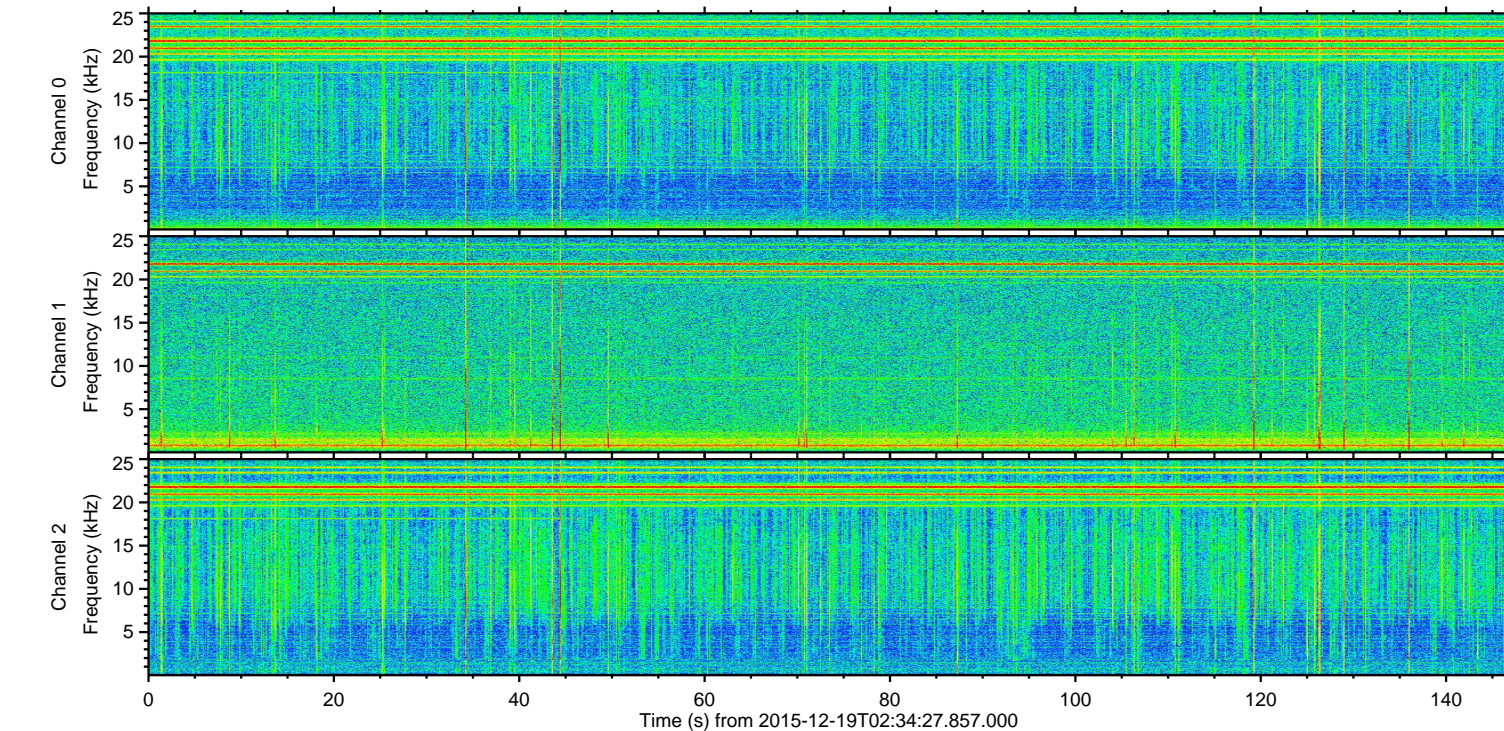
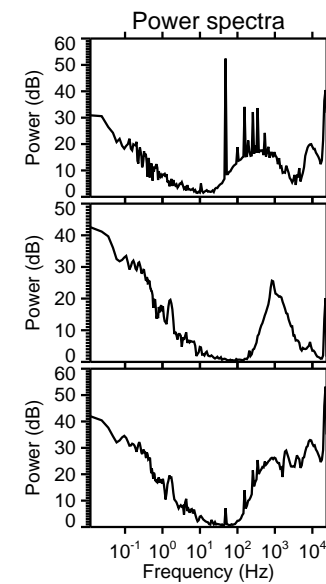
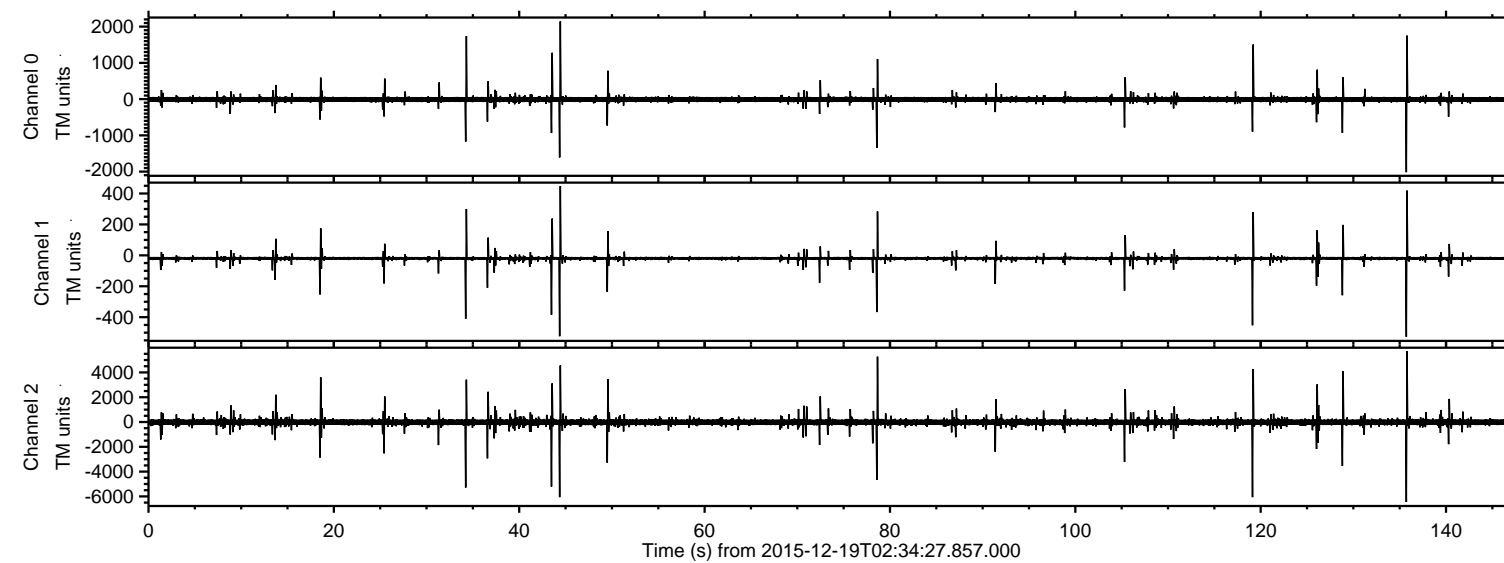


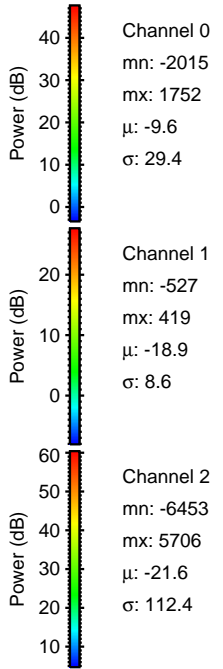
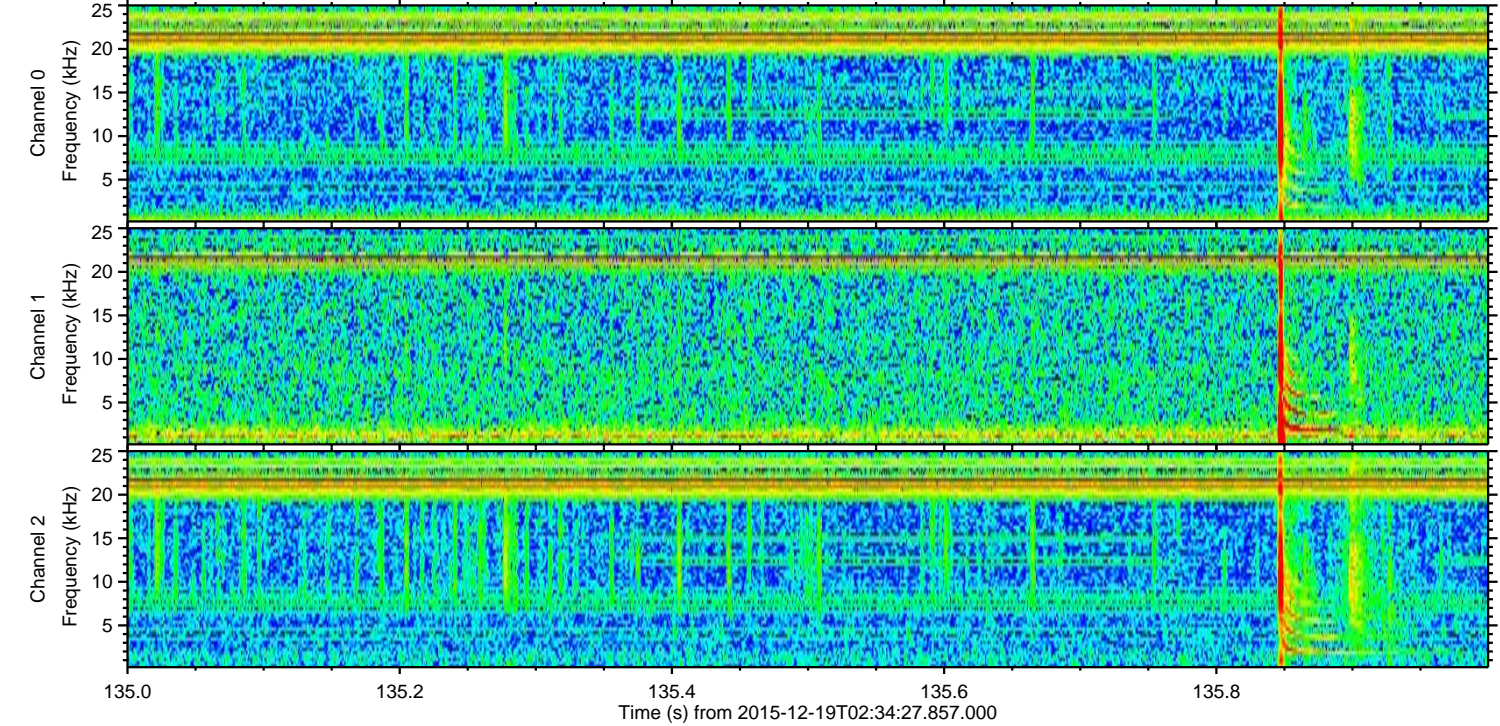
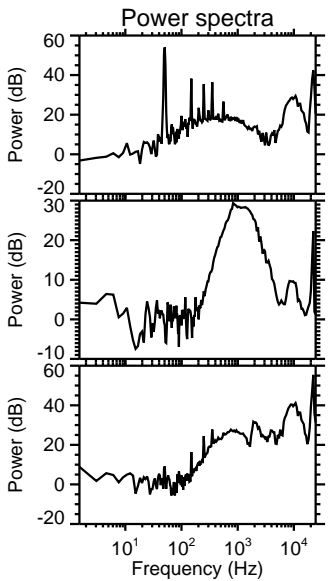
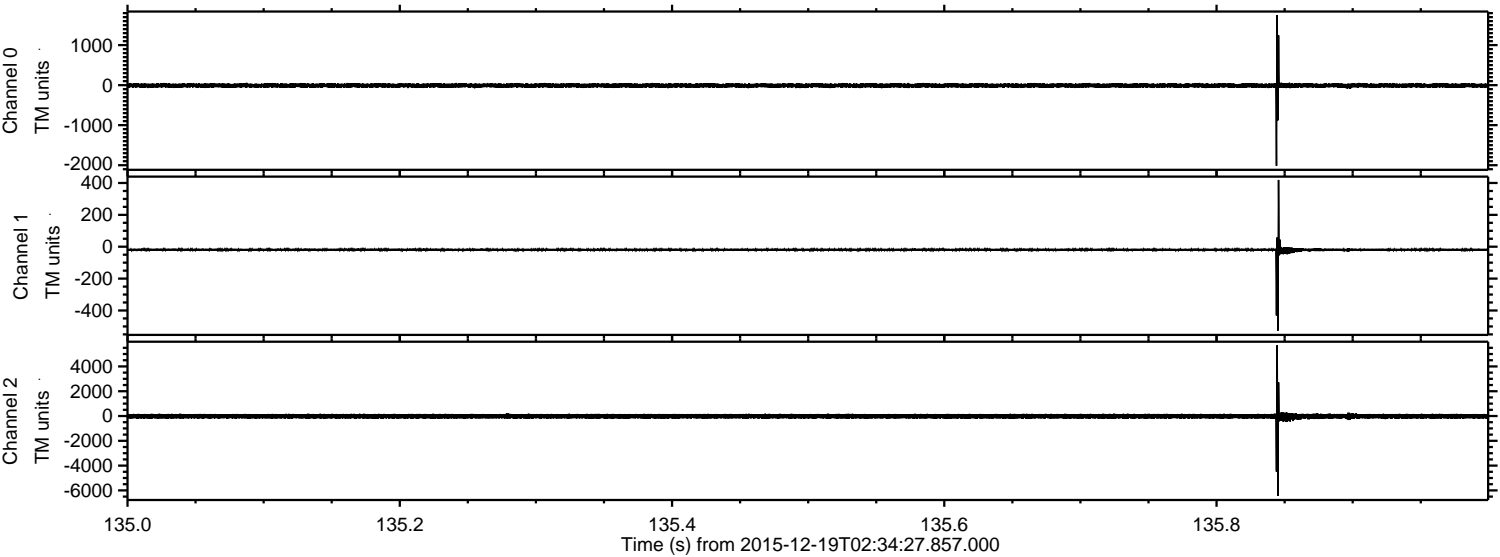
ELMAVAN 3D WAVEFORMS (Measured data sampled at 50 kHz) 51000 packets of 144 samples from 2015-12-19T02:34:27.857.000.

Processed Sat Jan 30 15:02:09 2016 by ELM ver.2012-10-06 from 001__elm20151219_023426__dat00.bin

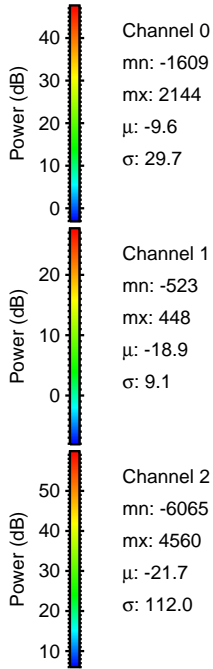
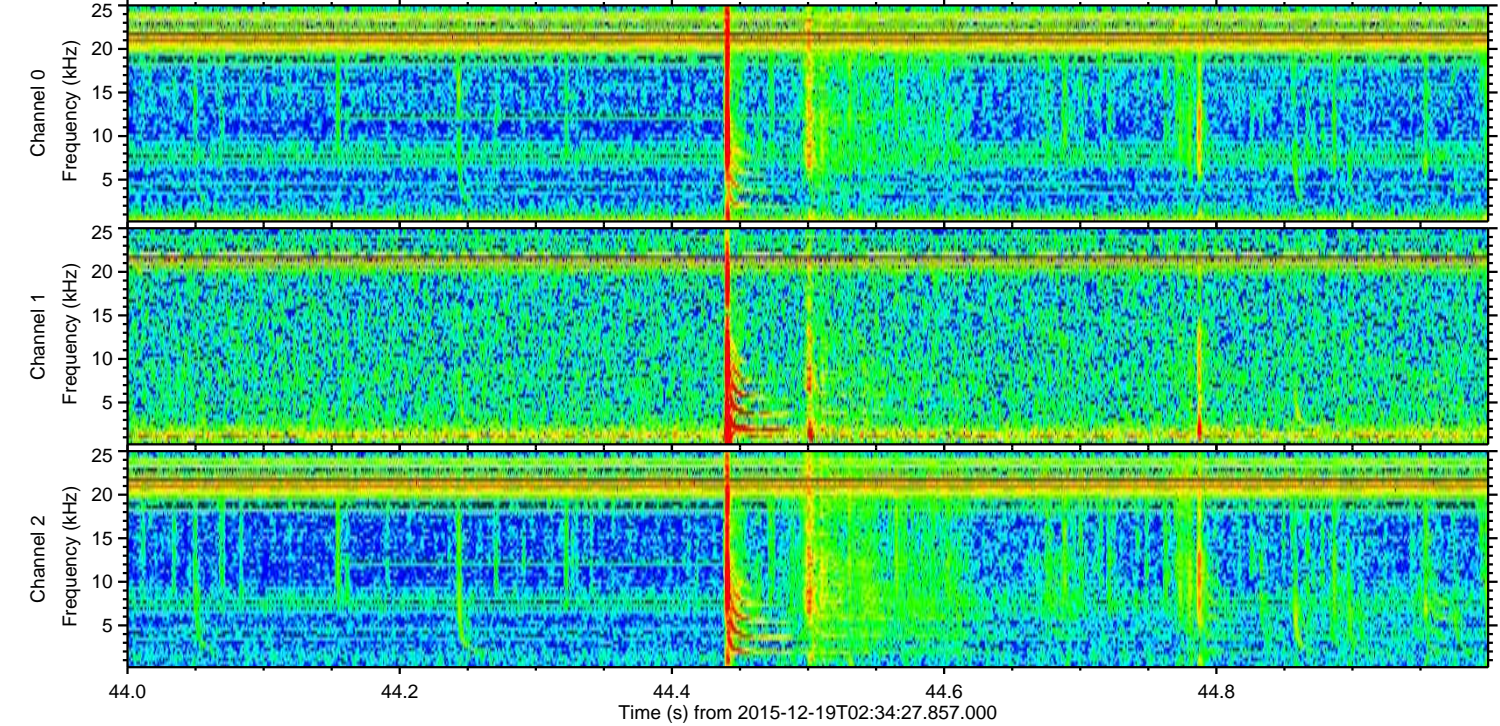
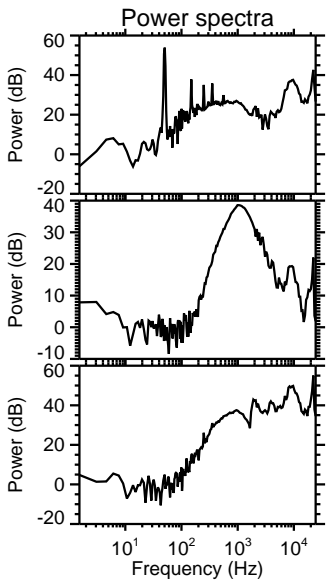
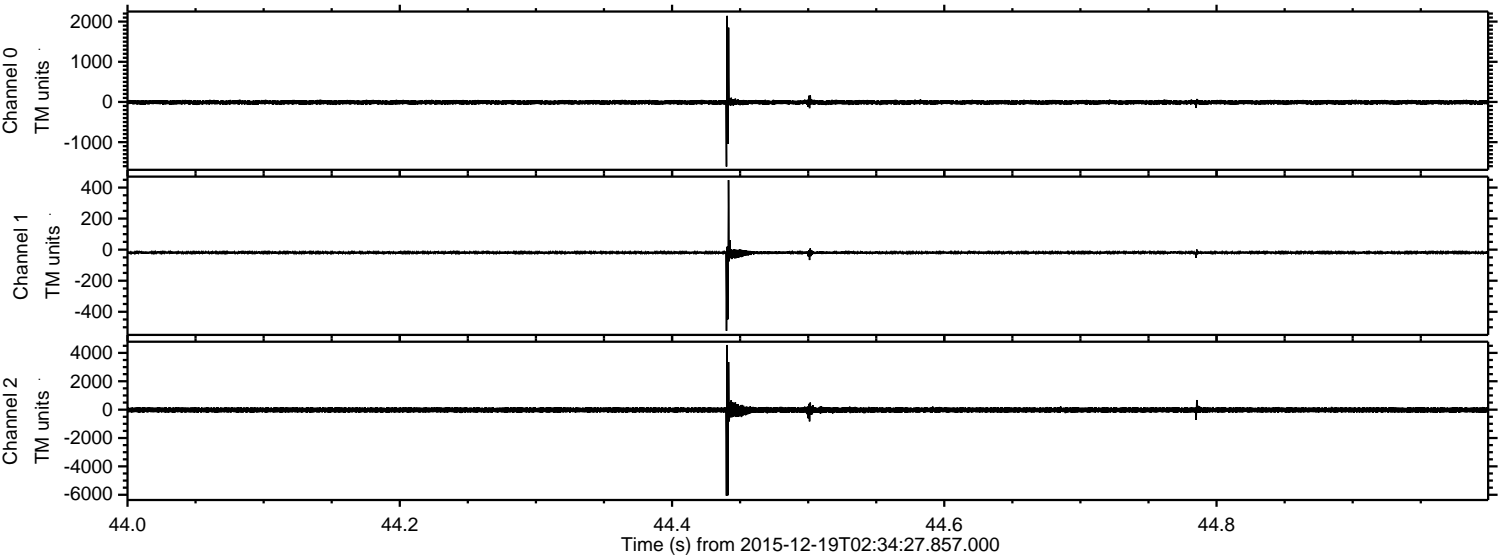


ELMAVAN 3D WAVEFORMS (Measured data sampled at 50 kHz) 51000 packets of 144 samples from 2015-12-19T02:34:27.857.000. Part 136/147

Processed Sat Jan 30 15:02:22 2016 by ELM ver.2012-10-06 from 001__elm20151219_023426__dat00.bin



Processed Sat Jan 30 15:02:23 2016 by ELM ver.2012-10-06 from 001__elm20151219_023426__dat00.bin



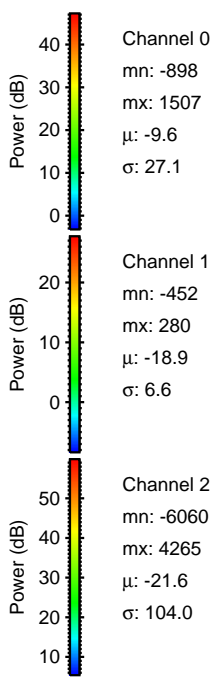
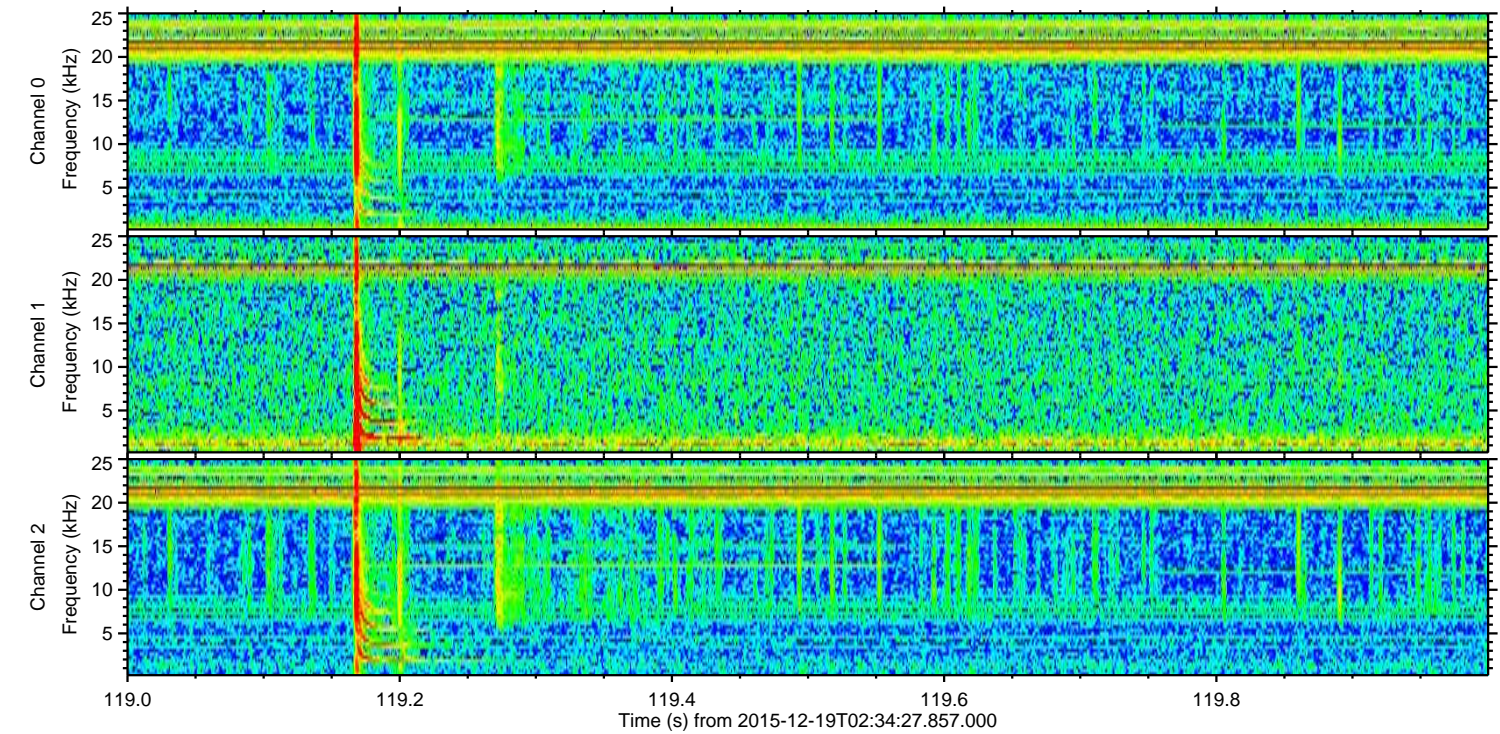
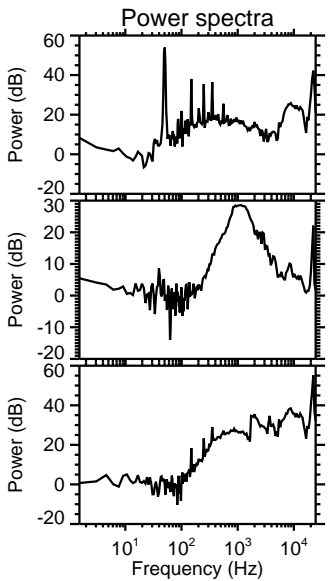
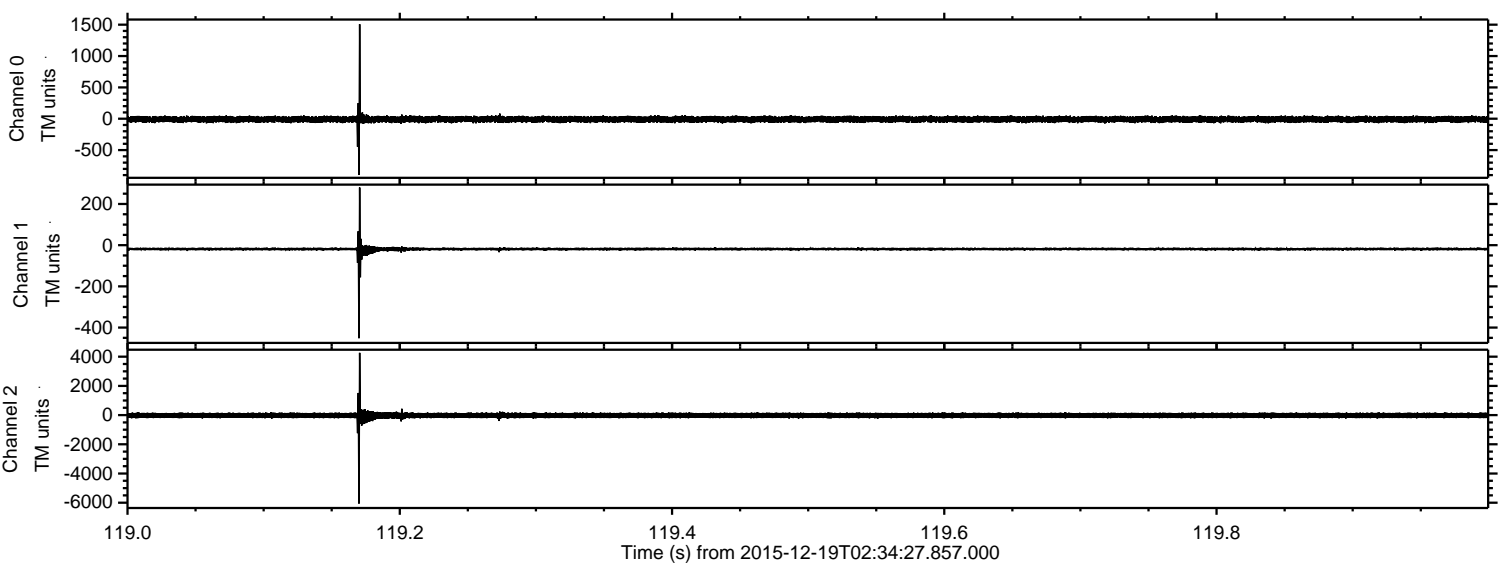
Channel 0
mn: -1609
mx: 2144
 μ : -9.6
 σ : 29.7

Channel 1
mn: -523
mx: 448
 μ : -18.9
 σ : 9.1

Channel 2
mn: -6065
mx: 4560
 μ : -21.7
 σ : 112.0

ELMAVAN 3D WAVEFORMS (Measured data sampled at 50 kHz) 51000 packets of 144 samples from 2015-12-19T02:34:27.857.000. Part 120/147

Processed Sat Jan 30 15:02:24 2016 by ELM ver.2012-10-06 from 001__elm20151219_023426__dat00.bin

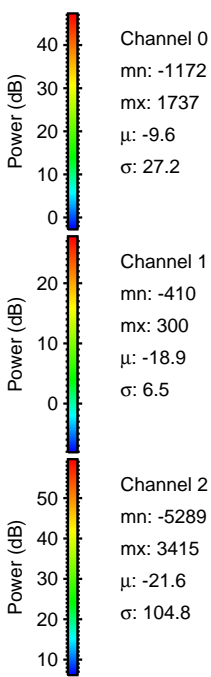
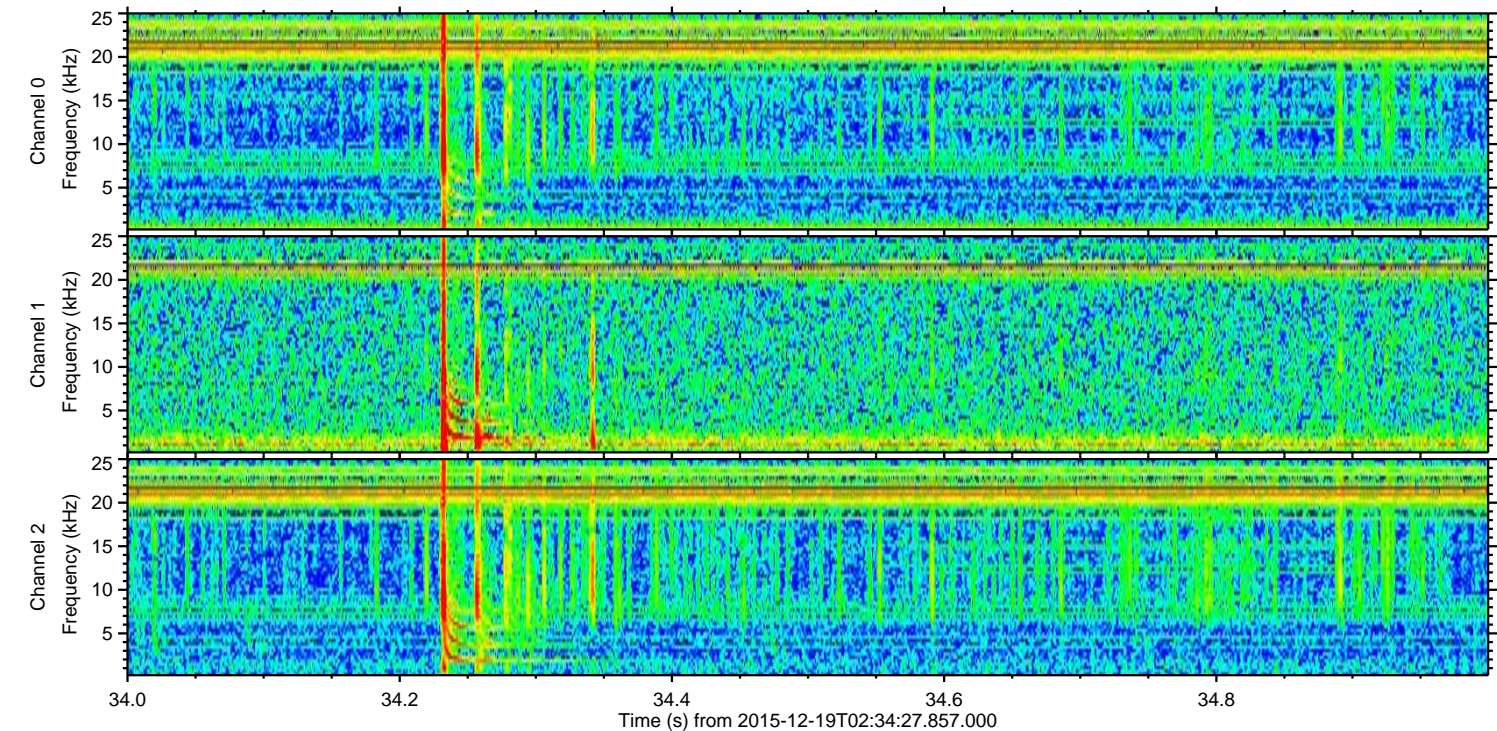
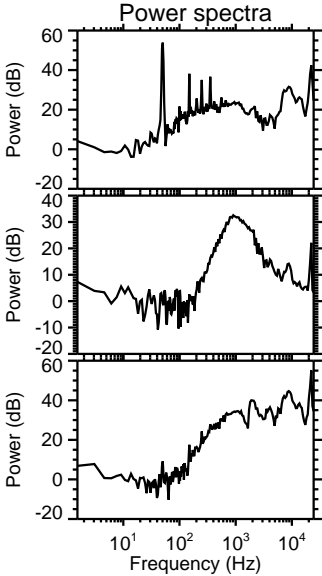
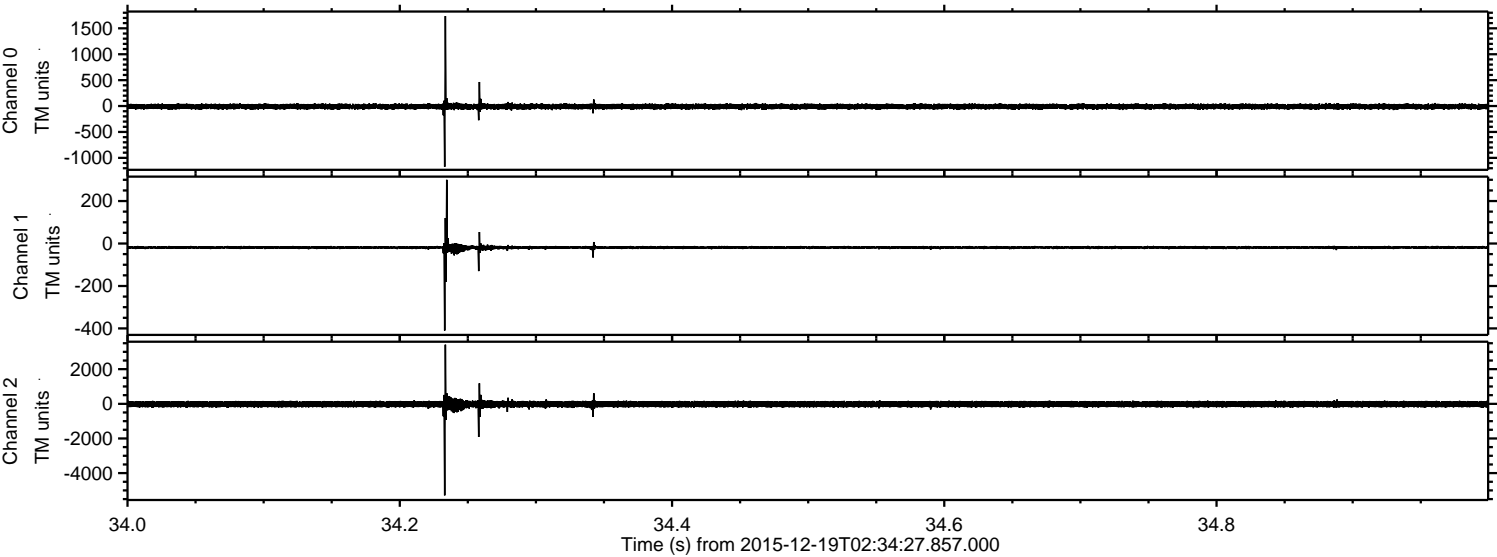


Channel 0
mn: -898
mx: 1507
 μ : -9.6
 σ : 27.1

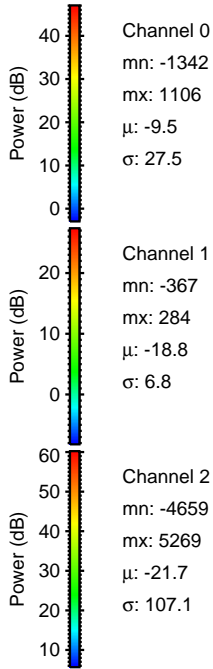
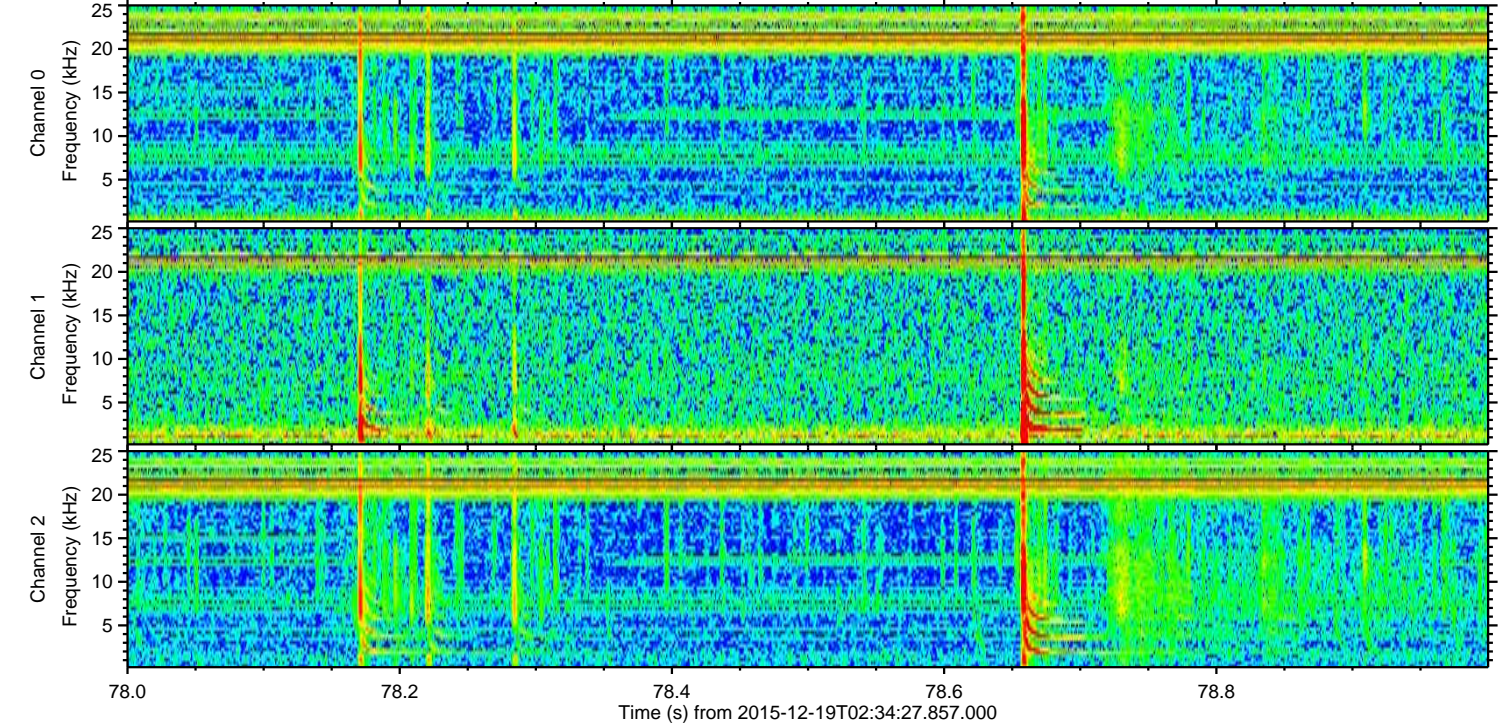
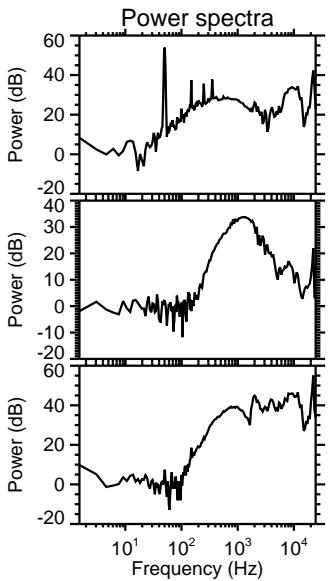
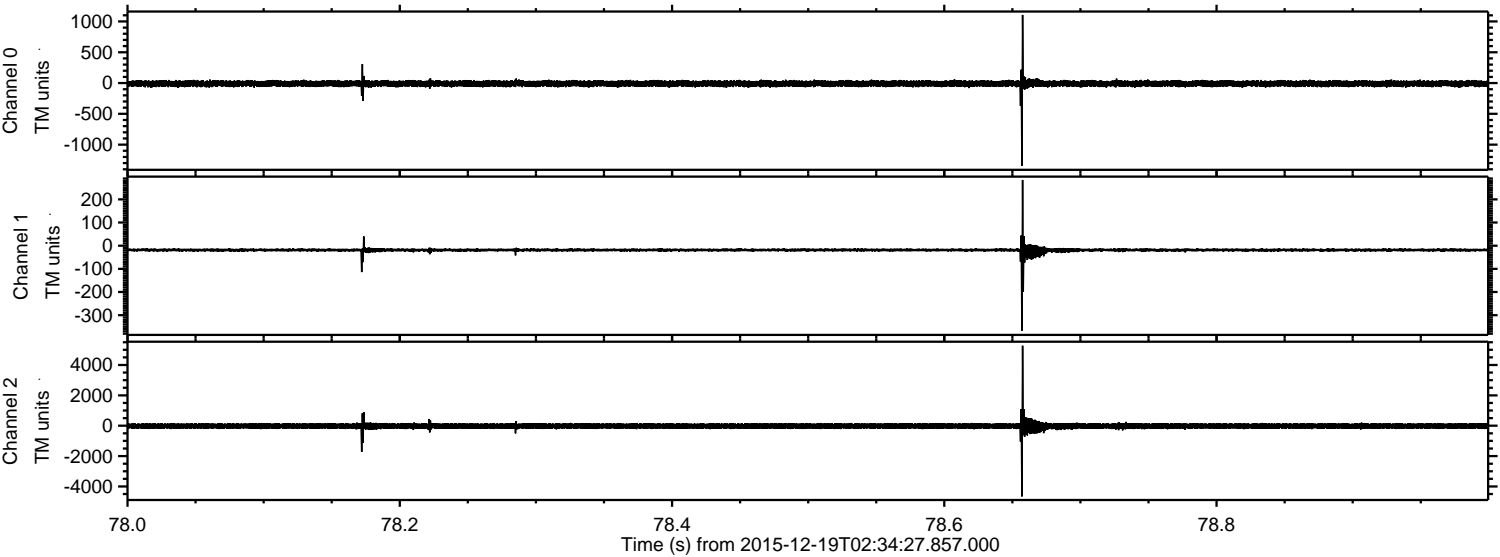
Channel 1
mn: -452
mx: 280
 μ : -18.9
 σ : 6.6

Channel 2
mn: -6060
mx: 4265
 μ : -21.6
 σ : 104.0

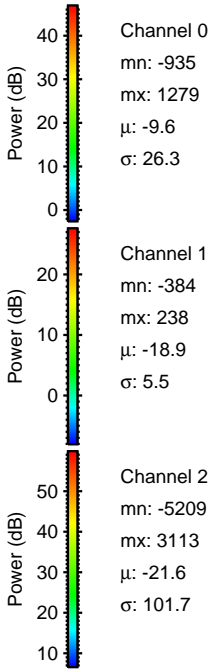
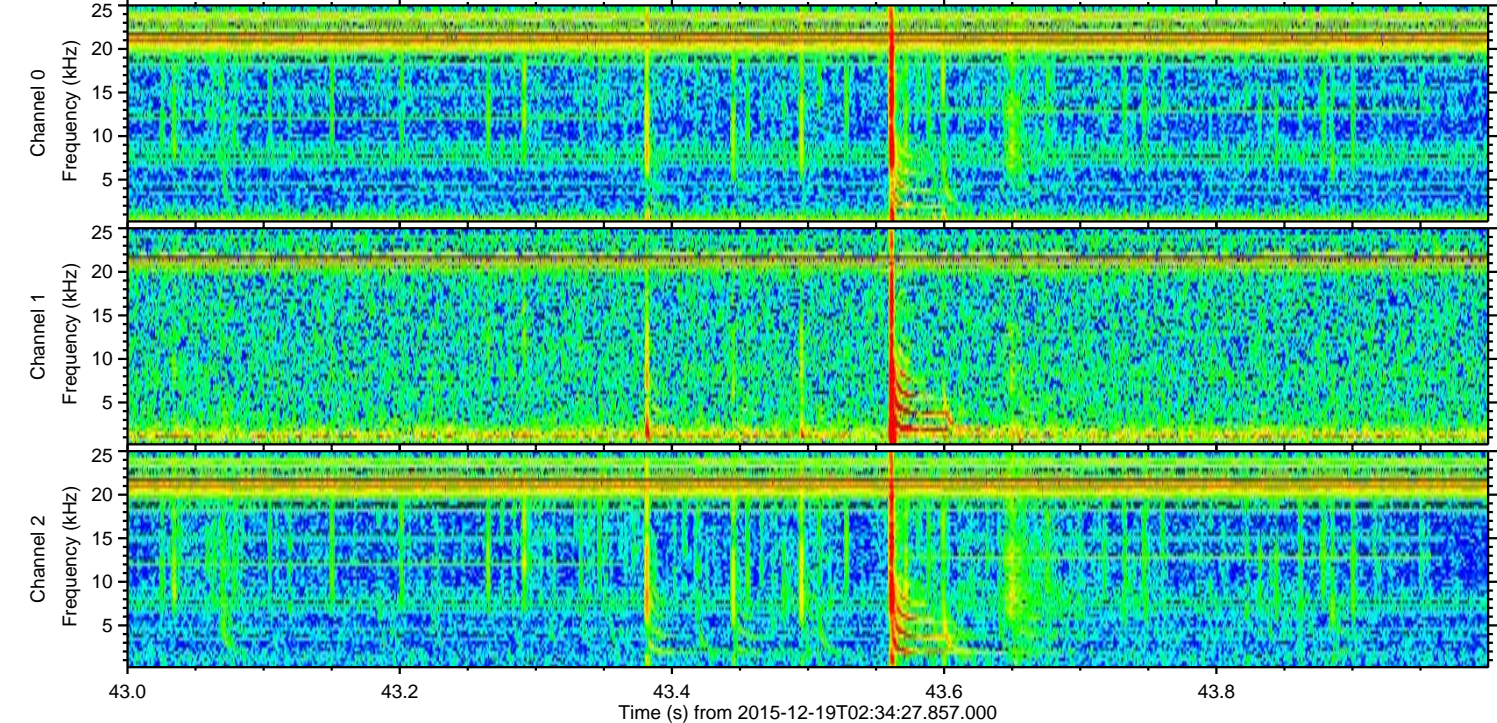
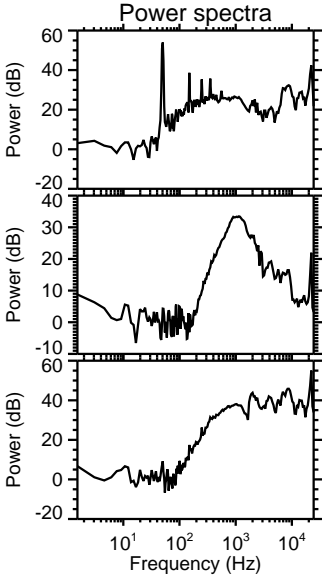
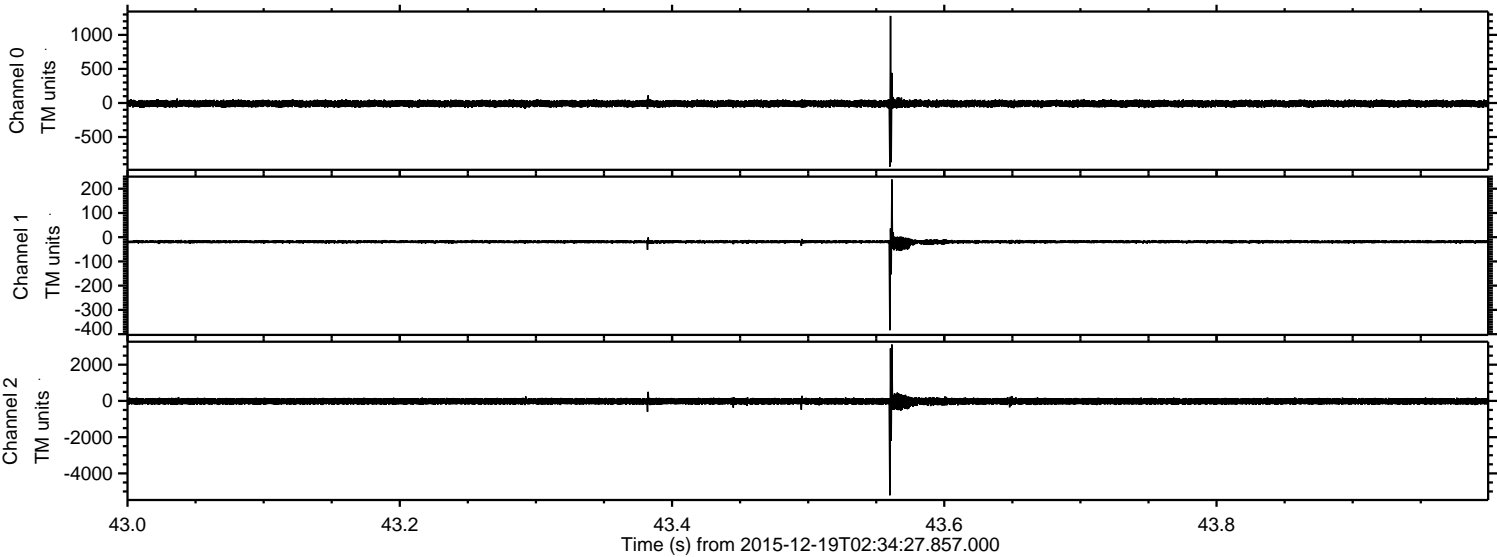
Processed Sat Jan 30 15:02:25 2016 by ELM ver.2012-10-06 from 001__elm20151219_023426__dat00.bin



Processed Sat Jan 30 15:02:26 2016 by ELM ver.2012-10-06 from 001__elm20151219_023426__dat00.bin

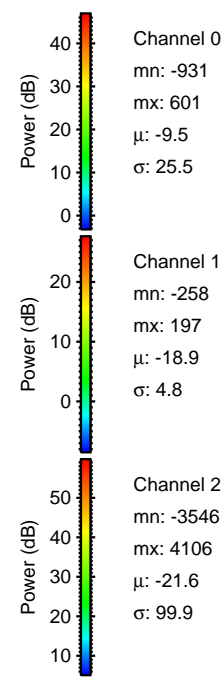
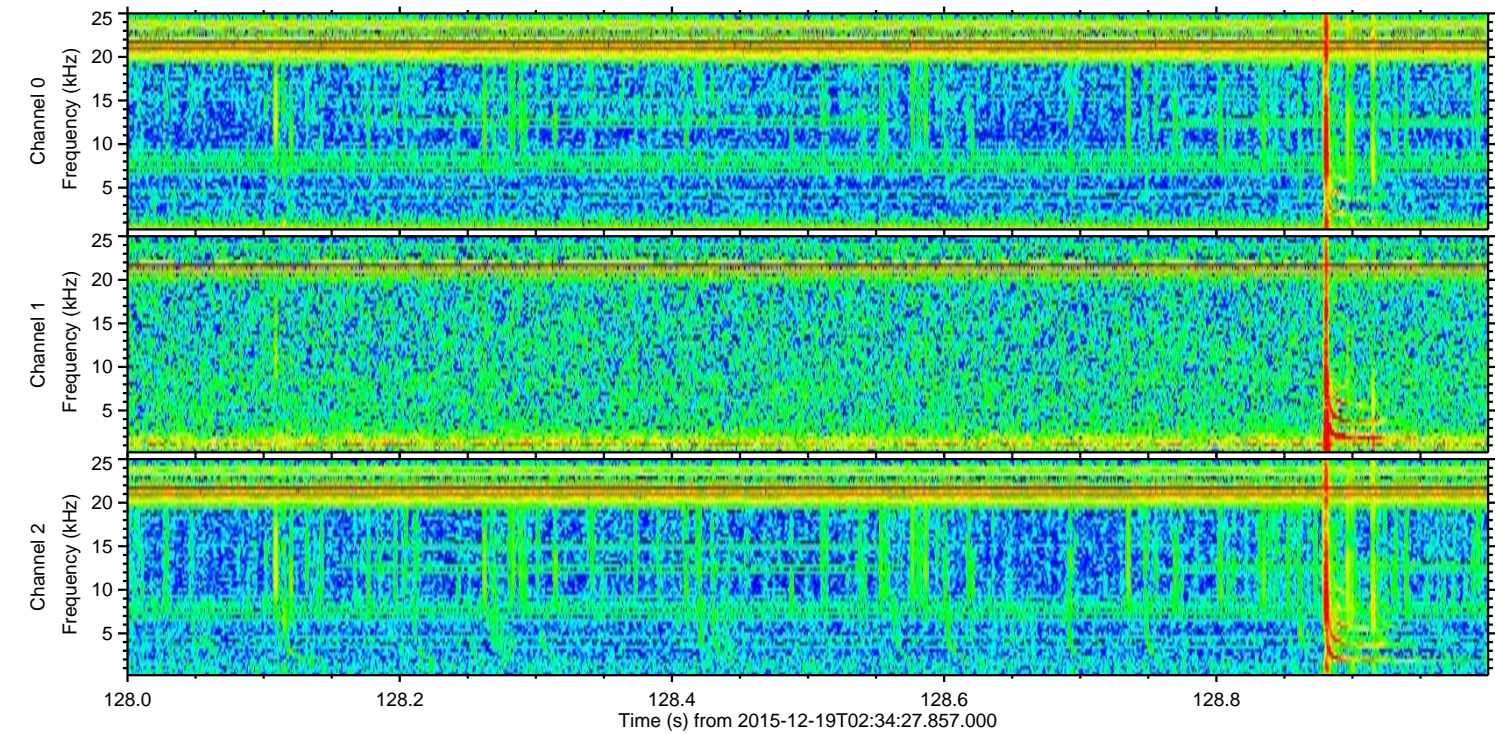
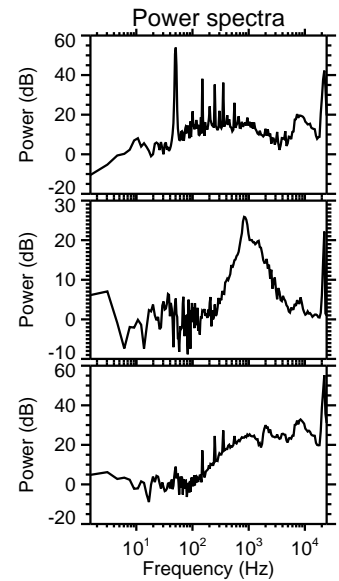
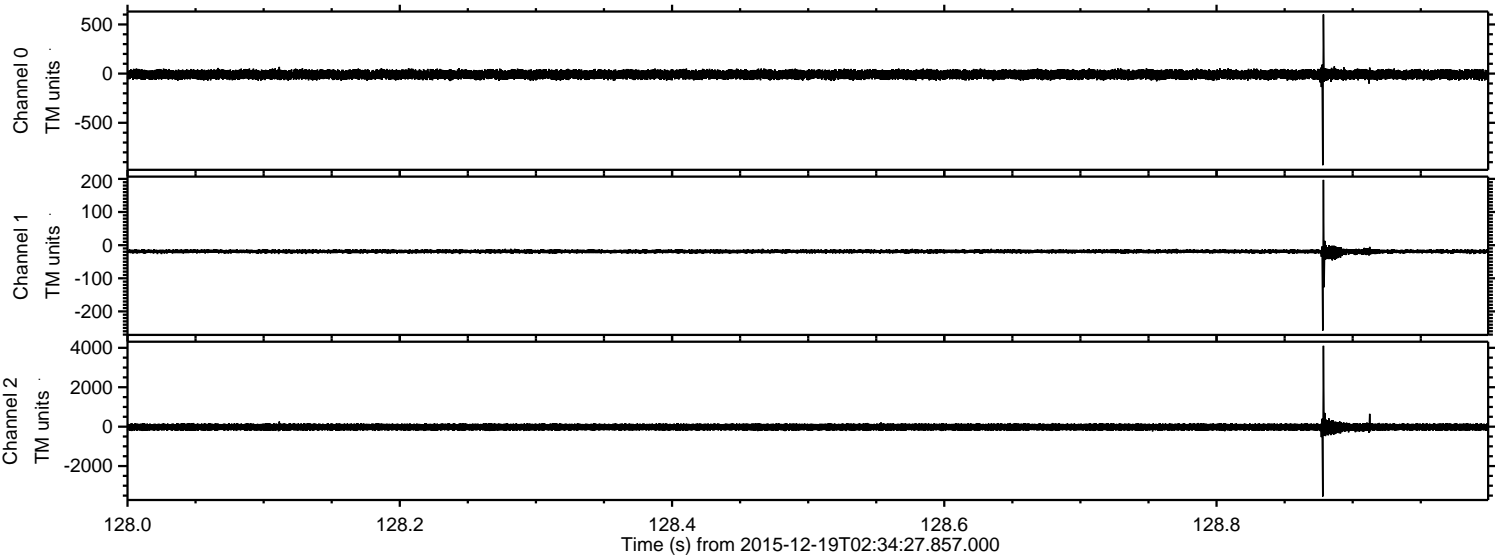


Processed Sat Jan 30 15:02:27 2016 by ELM ver.2012-10-06 from 001__elm20151219_023426__dat00.bin



ELMAVAN 3D WAVEFORMS (Measured data sampled at 50 kHz) 51000 packets of 144 samples from 2015-12-19T02:34:27.857.000. Part 129/147

Processed Sat Jan 30 15:02:28 2016 by ELM ver.2012-10-06 from 001__elm20151219_023426__dat00.bin

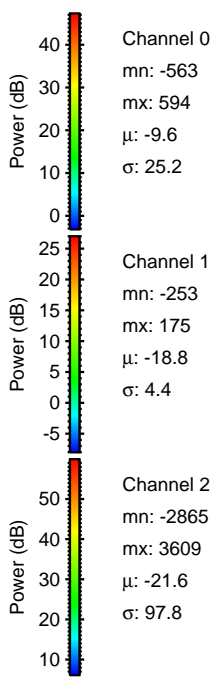
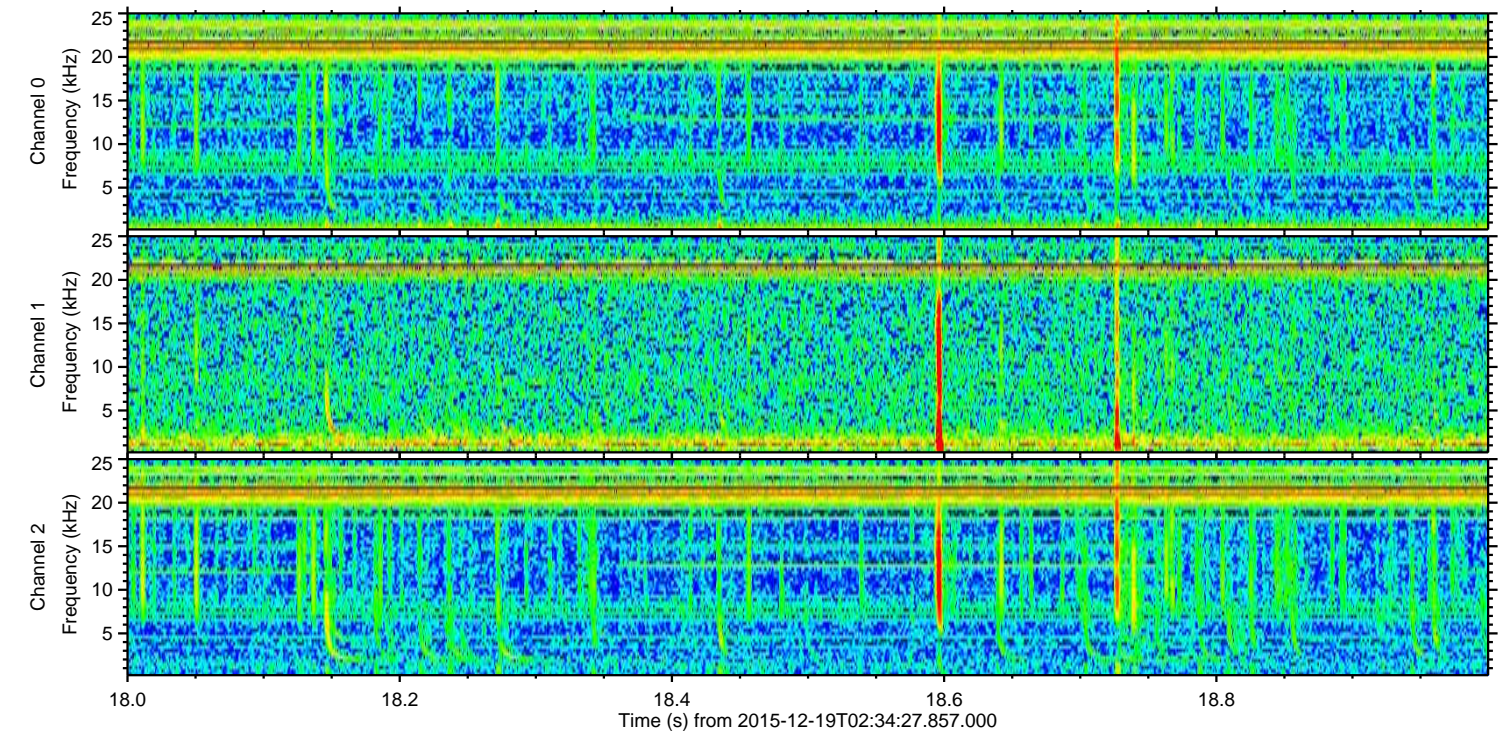
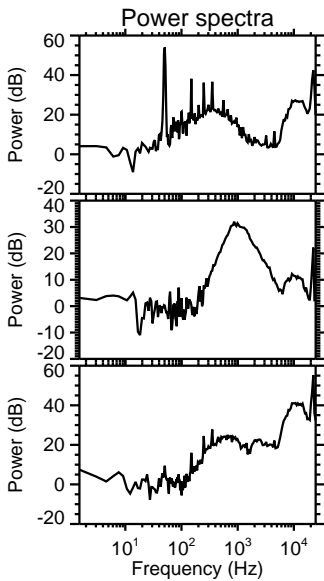
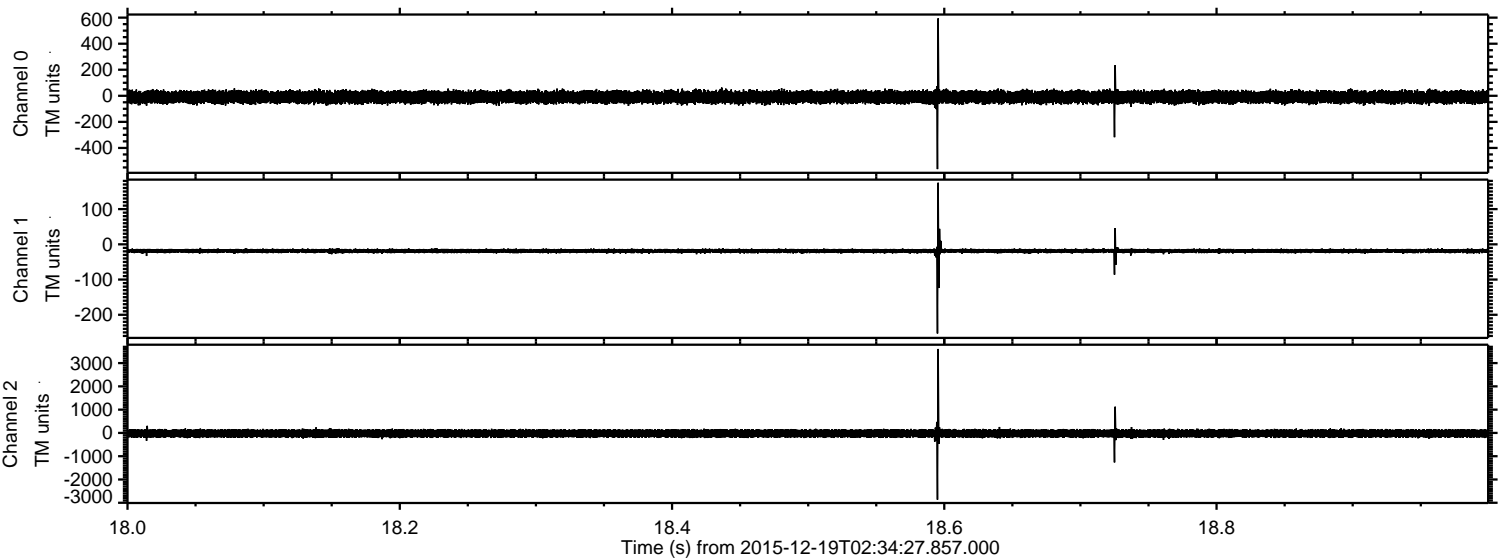


Channel 0
mn: -931
mx: 601
 μ : -9.5
 σ : 25.5

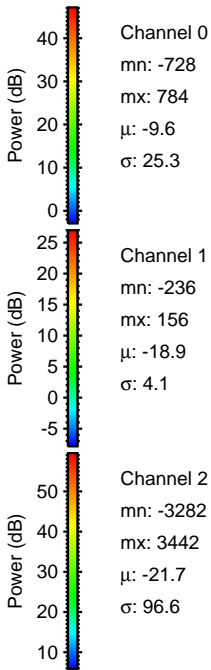
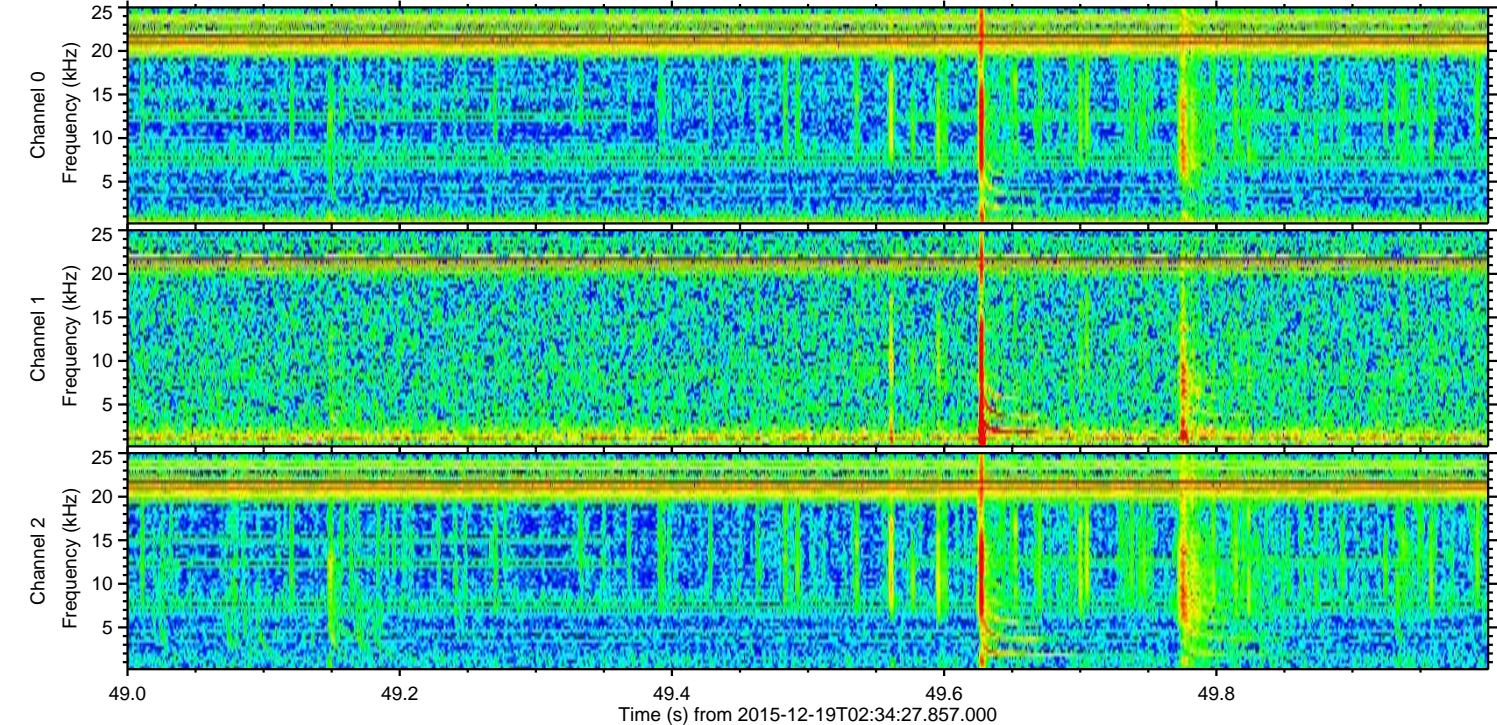
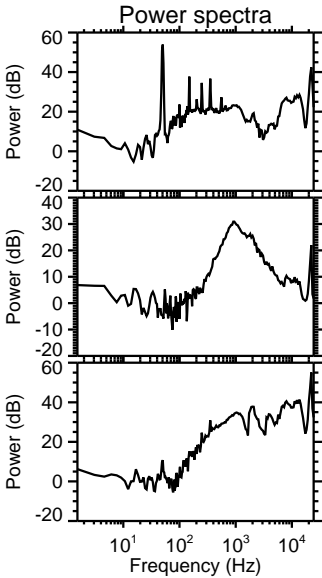
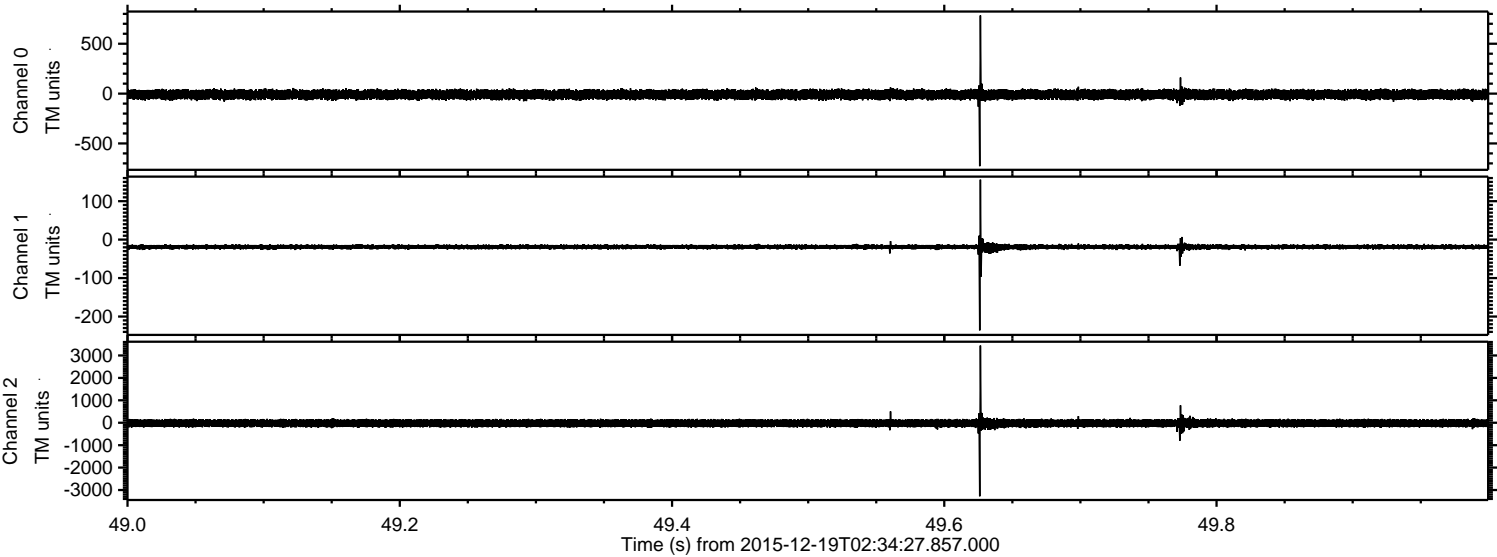
Channel 1
mn: -258
mx: 197
 μ : -18.9
 σ : 4.8

Channel 2
mn: -3546
mx: 4106
 μ : -21.6
 σ : 99.9

Processed Sat Jan 30 15:02:29 2016 by ELM ver.2012-10-06 from 001__elm20151219_023426__dat00.bin



Processed Sat Jan 30 15:02:30 2016 by ELM ver.2012-10-06 from 001__elm20151219_023426__dat00.bin



Channel 0
mn: -728
mx: 784
 μ : -9.6
 σ : 25.3

Channel 1
mn: -236
mx: 156
 μ : -18.9
 σ : 4.1

Channel 2
mn: -3282
mx: 3442
 μ : -21.7
 σ : 96.6

Processed Sat Jan 30 15:02:31 2016 by ELM ver.2012-10-06 from 001__elm20151219_023426__dat00.bin

