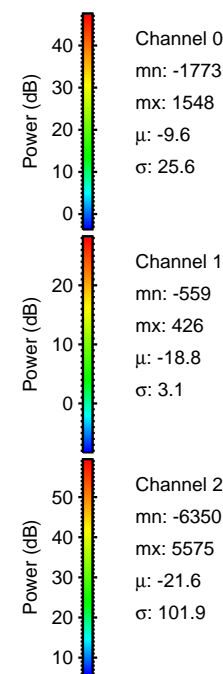
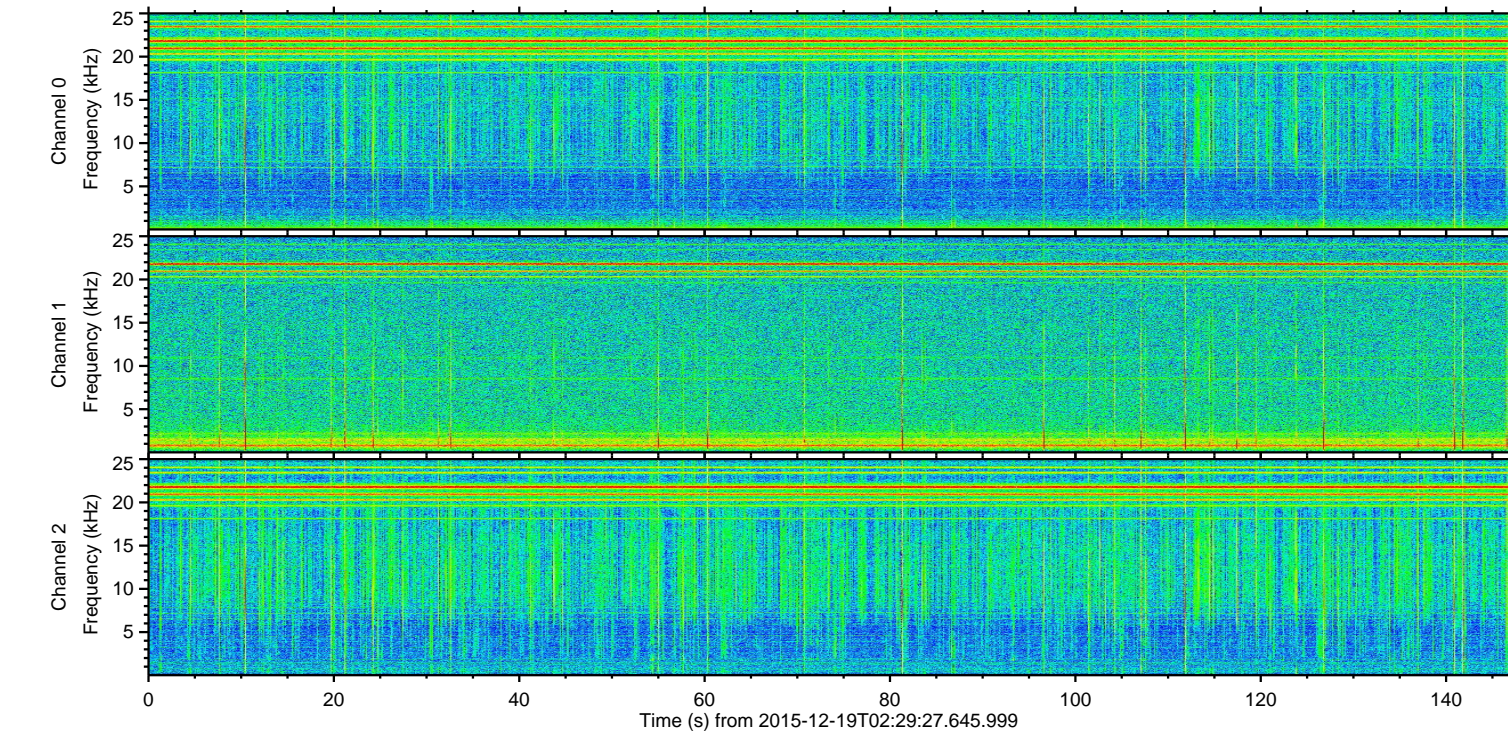
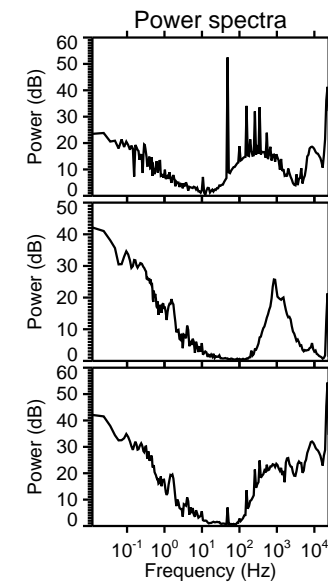
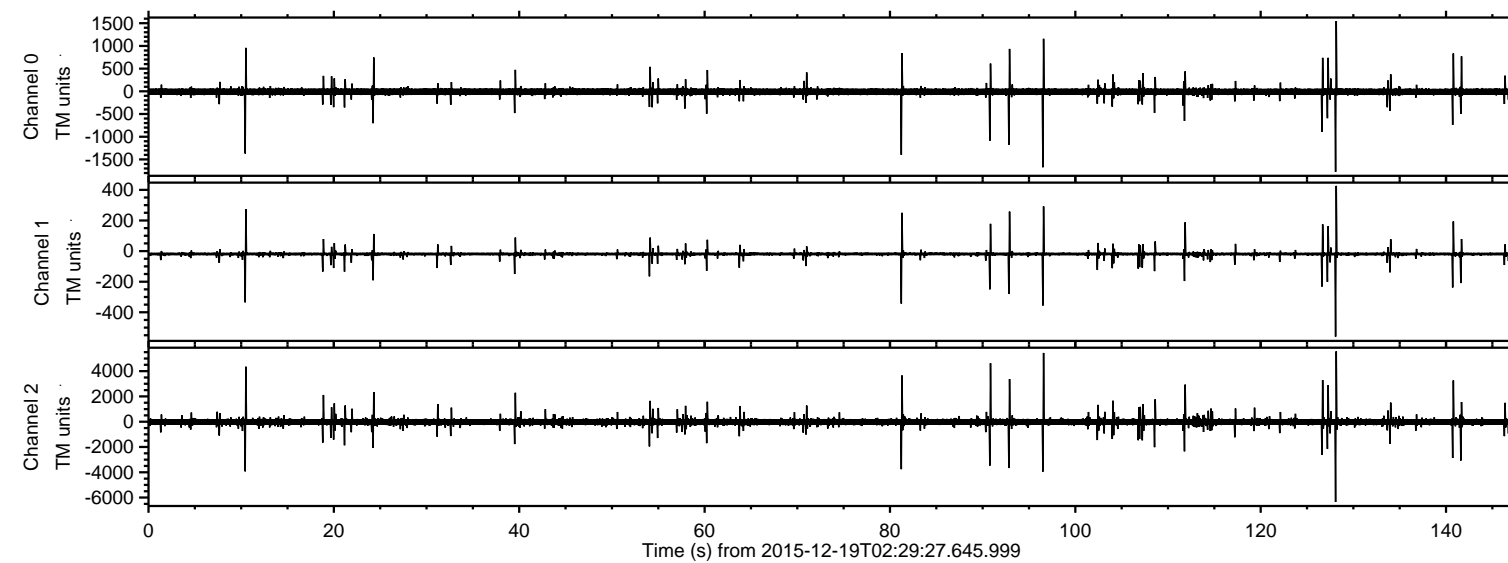


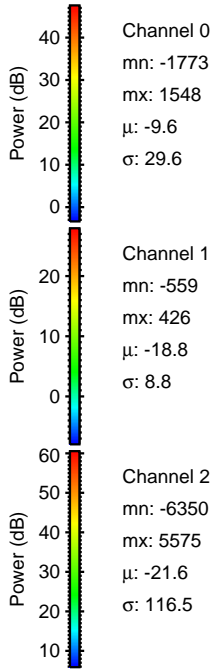
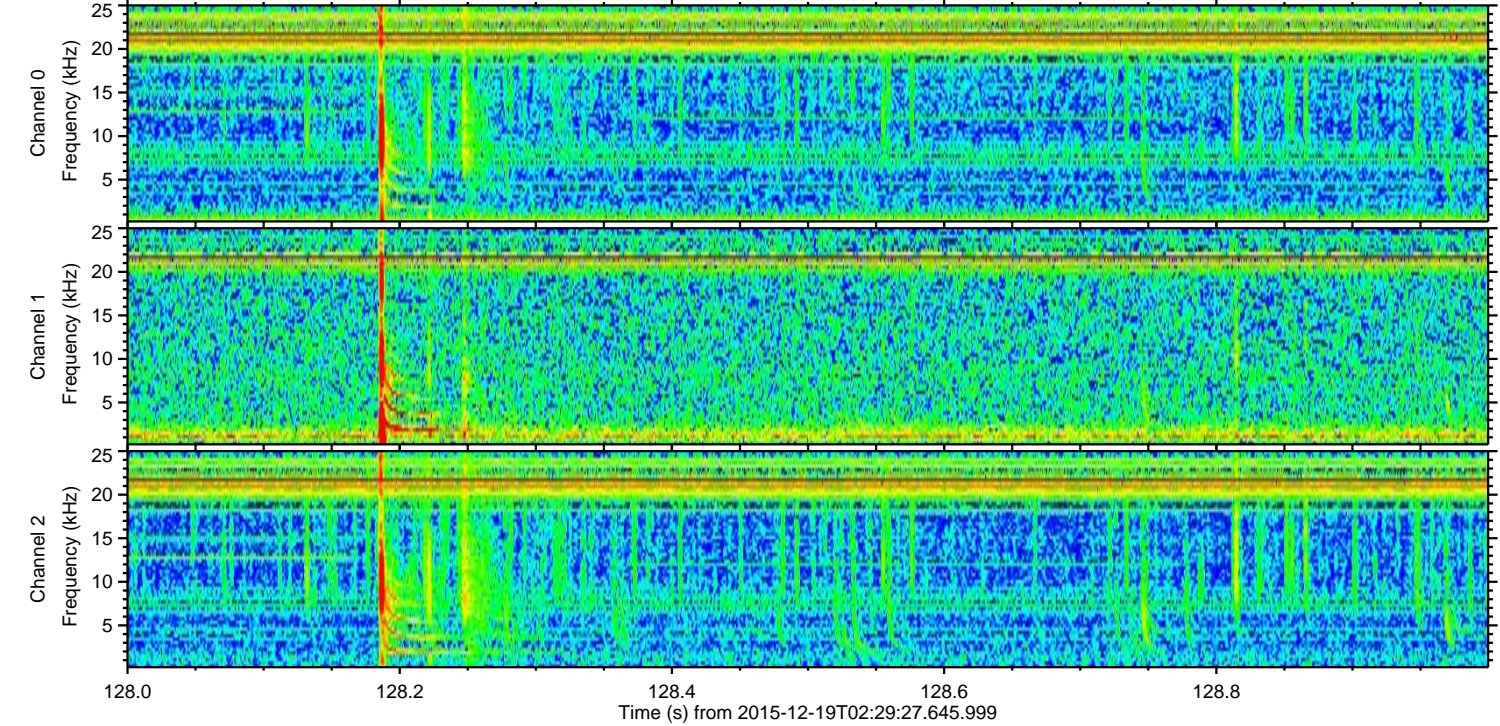
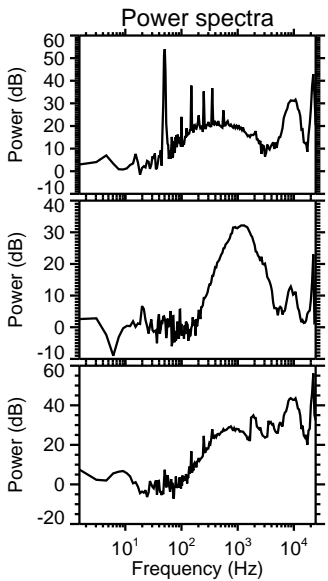
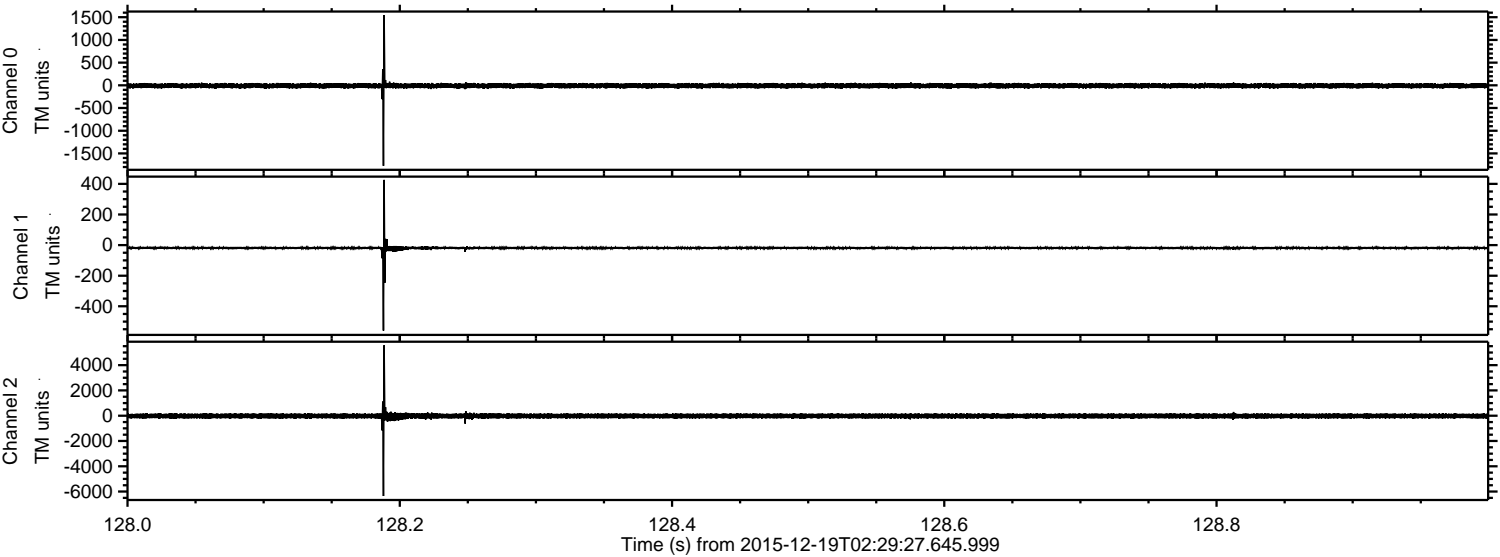
ELMAVAN 3D WAVEFORMS (Measured data sampled at 50 kHz) 51000 packets of 144 samples from 2015-12-19T02:29:27.645.999.

Processed Sat Jan 30 14:59:27 2016 by ELM ver.2012-10-06 from 001__elm20151219_022926__dat00.bin



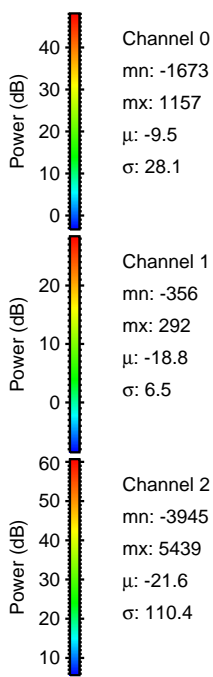
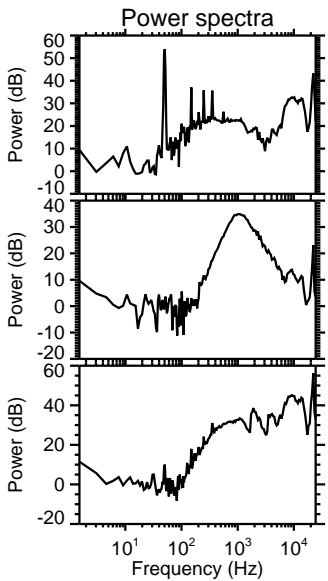
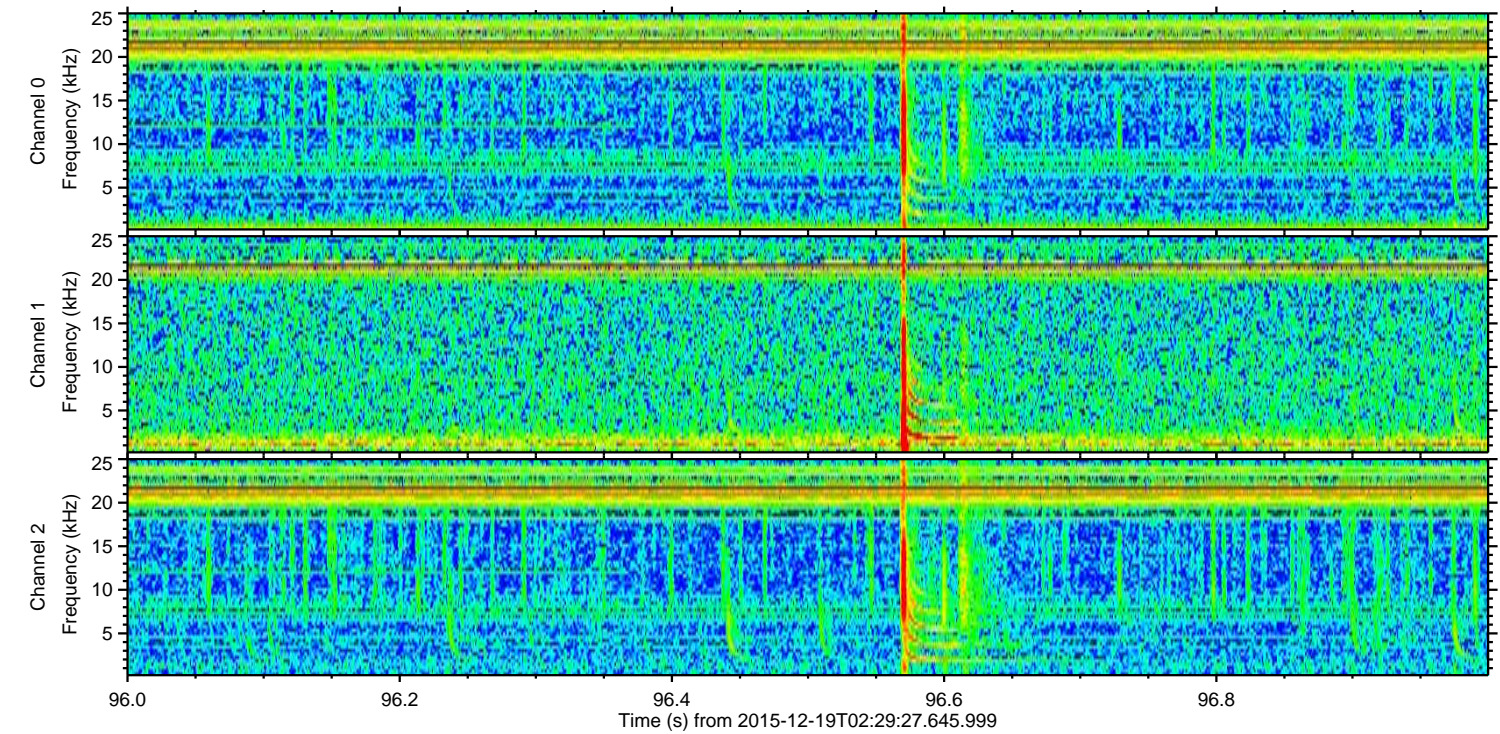
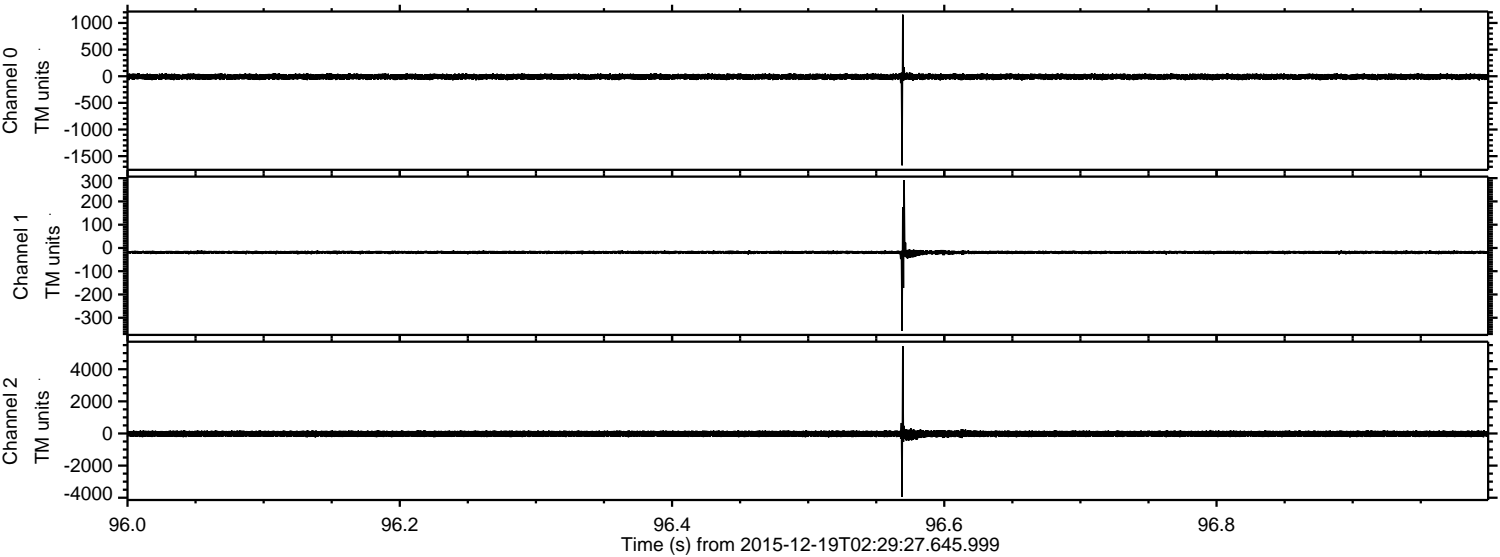
ELMAVAN 3D WAVEFORMS (Measured data sampled at 50 kHz) 51000 packets of 144 samples from 2015-12-19T02:29:27.645.999. Part 129/147

Processed Sat Jan 30 14:59:39 2016 by ELM ver.2012-10-06 from 001__elm20151219_022926__dat00.bin



ELMAVAN 3D WAVEFORMS (Measured data sampled at 50 kHz) 51000 packets of 144 samples from 2015-12-19T02:29:27.645.999. Part 97/147

Processed Sat Jan 30 14:59:40 2016 by ELM ver.2012-10-06 from 001__elm20151219_022926__dat00.bin

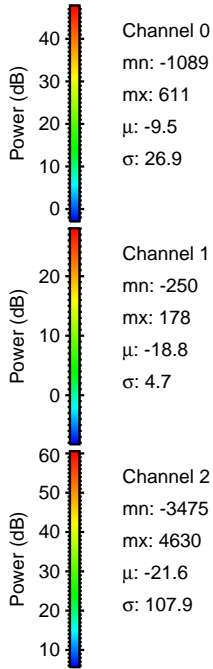
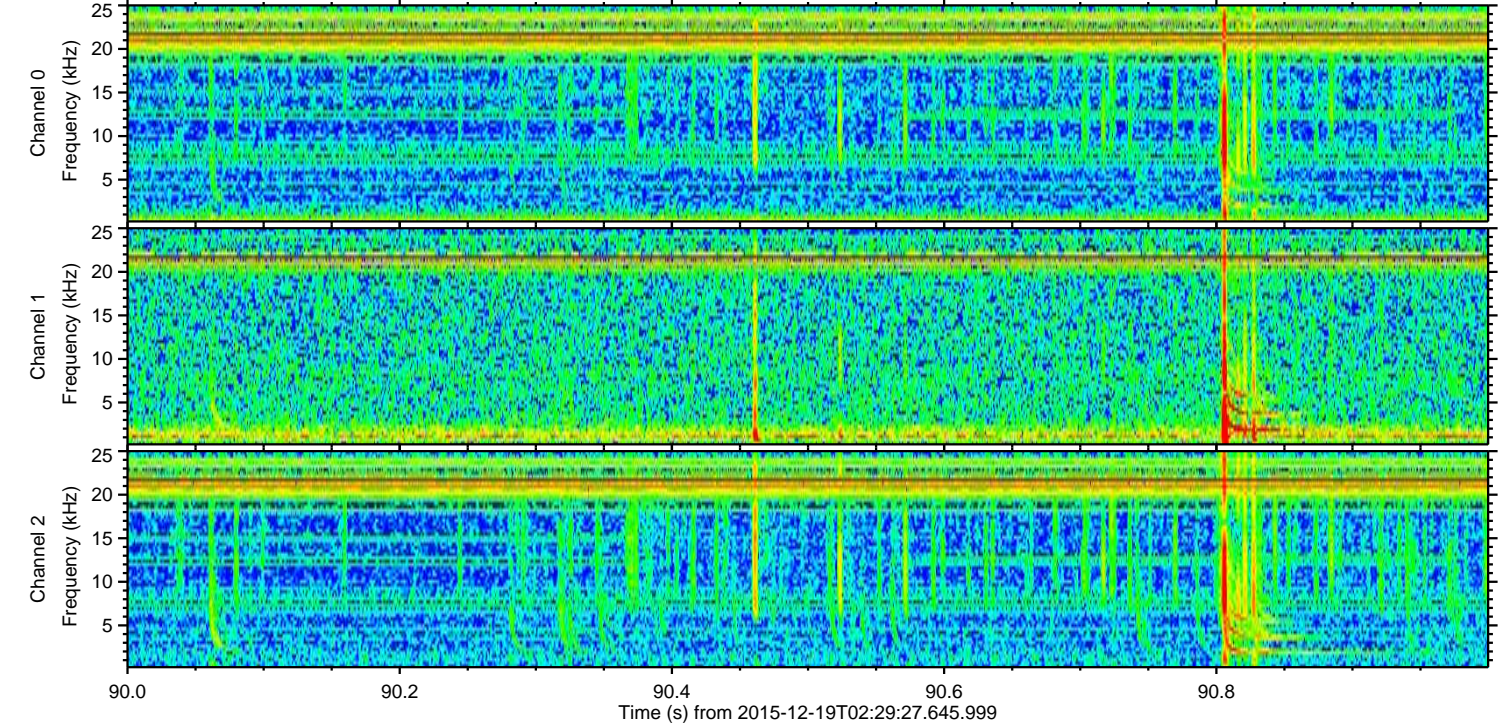
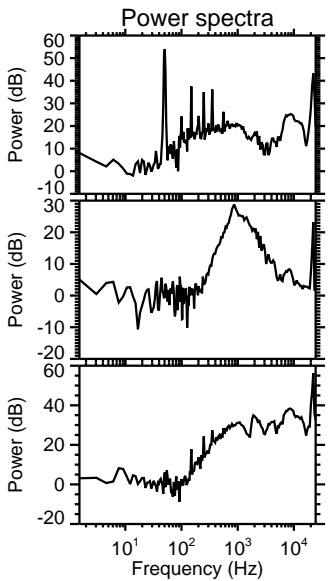
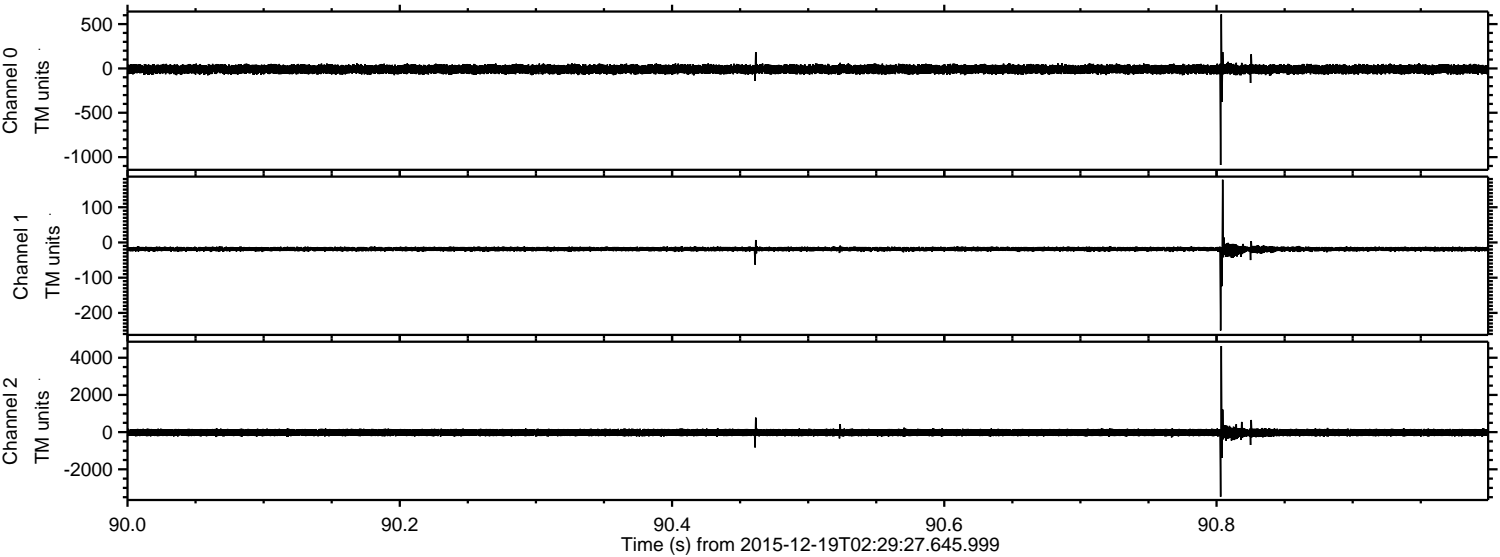


Channel 0
mn: -1673
mx: 1157
 μ : -9.5
 σ : 28.1

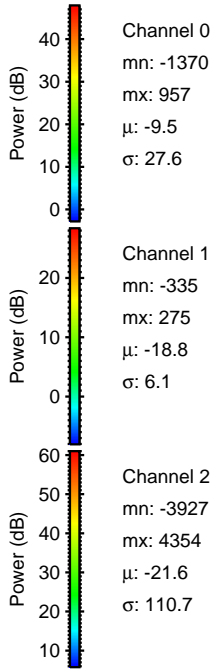
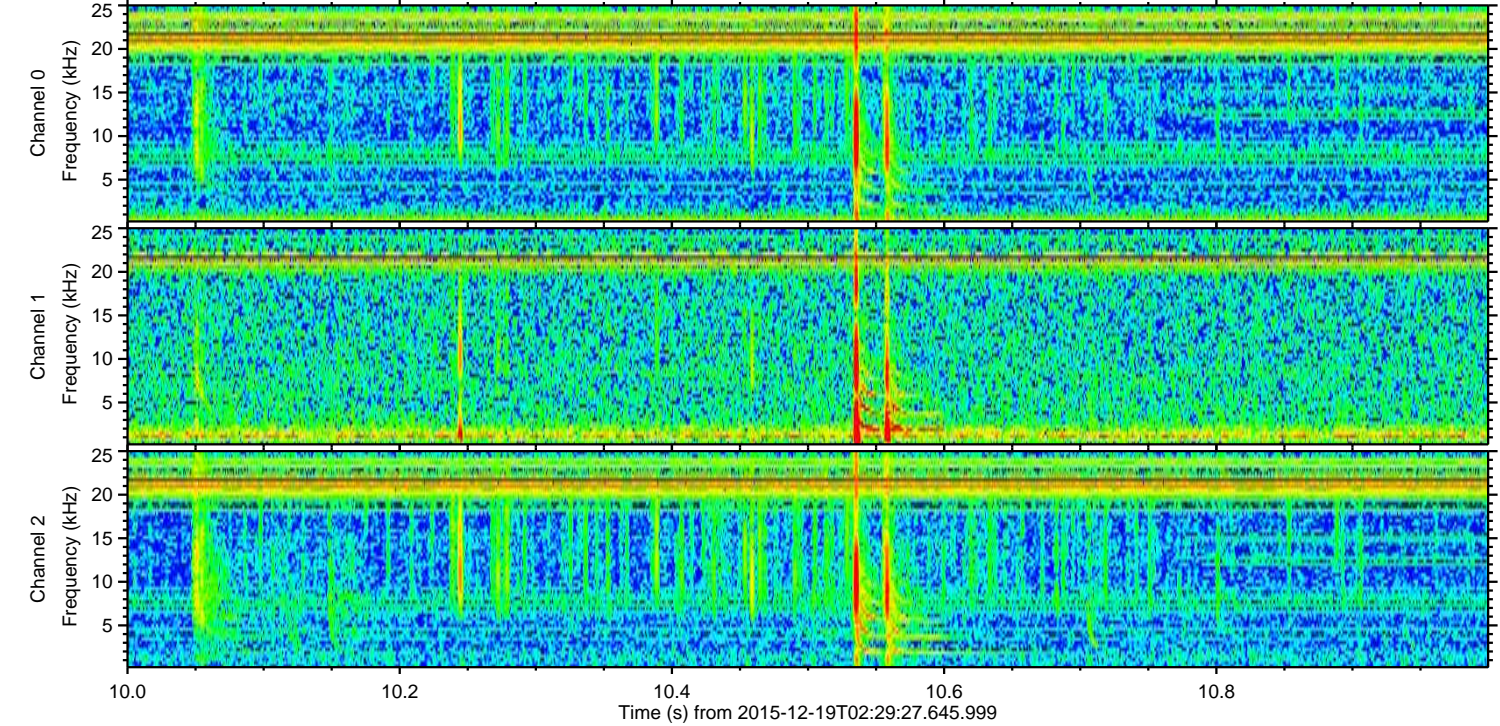
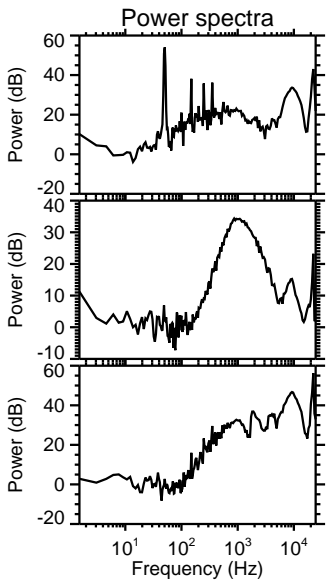
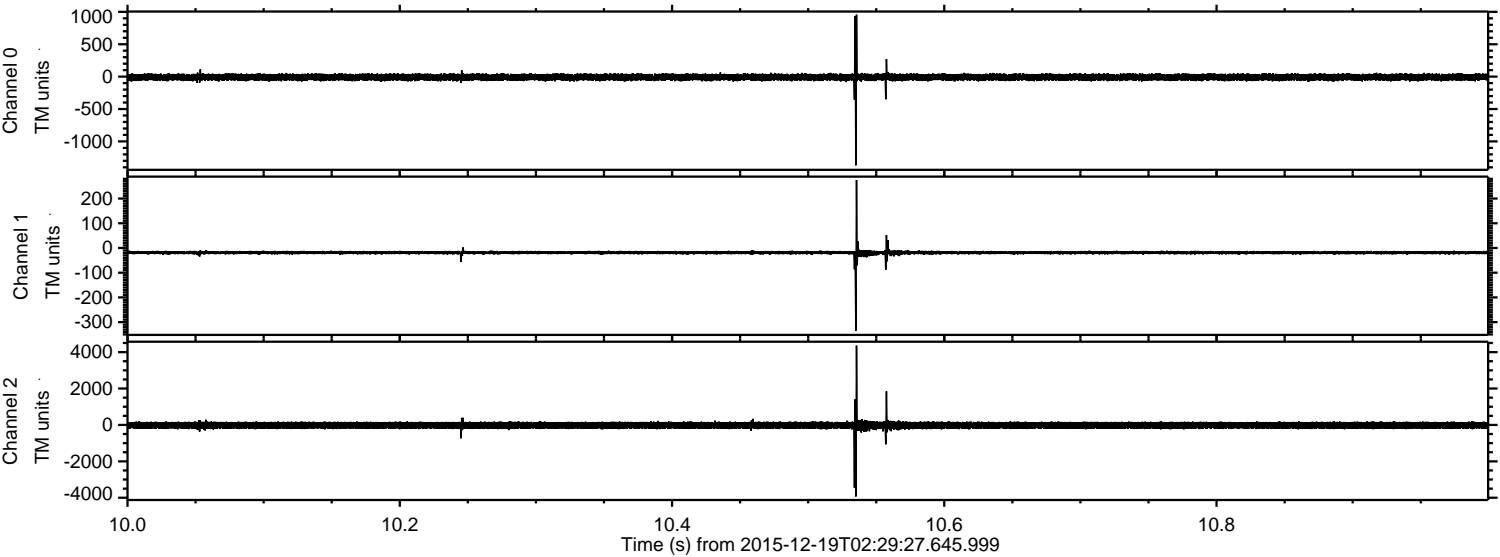
Channel 1
mn: -356
mx: 292
 μ : -18.8
 σ : 6.5

Channel 2
mn: -3945
mx: 5439
 μ : -21.6
 σ : 110.4

Processed Sat Jan 30 14:59:41 2016 by ELM ver.2012-10-06 from 001__elm20151219_022926__dat00.bin



Processed Sat Jan 30 14:59:42 2016 by ELM ver.2012-10-06 from 001__elm20151219_022926__dat00.bin

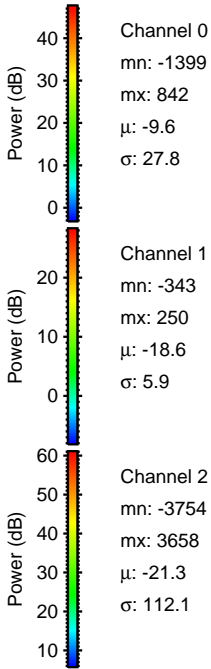
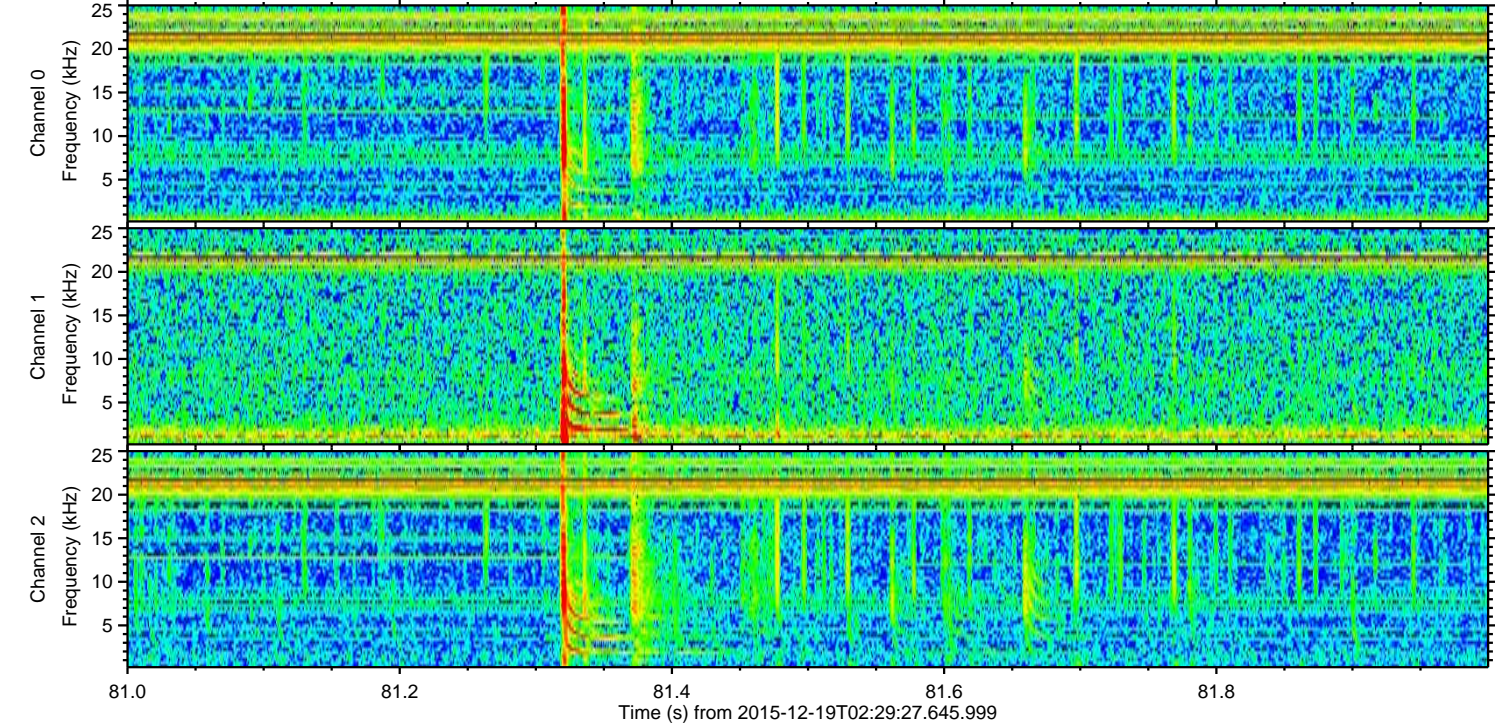
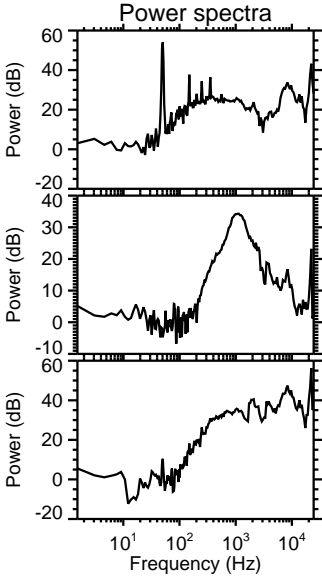
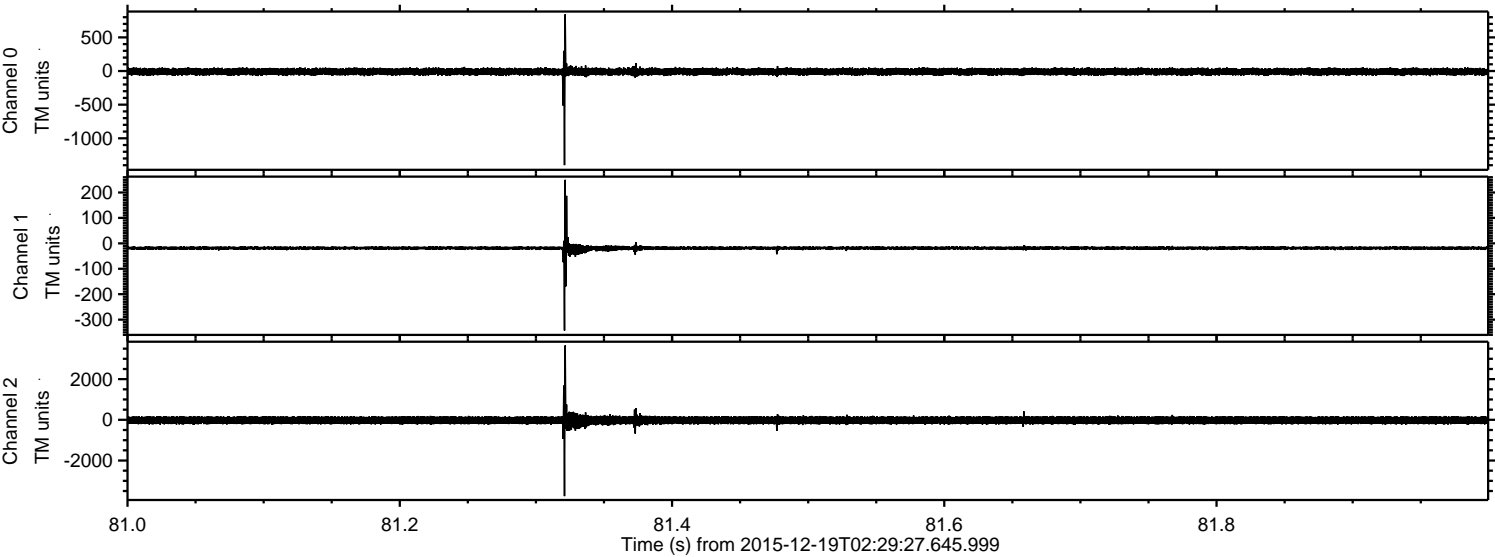


Channel 0
mn: -1370
mx: 957
 μ : -9.5
 σ : 27.6

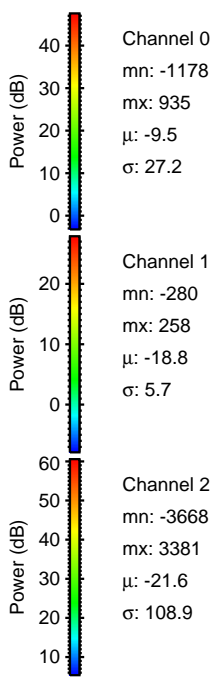
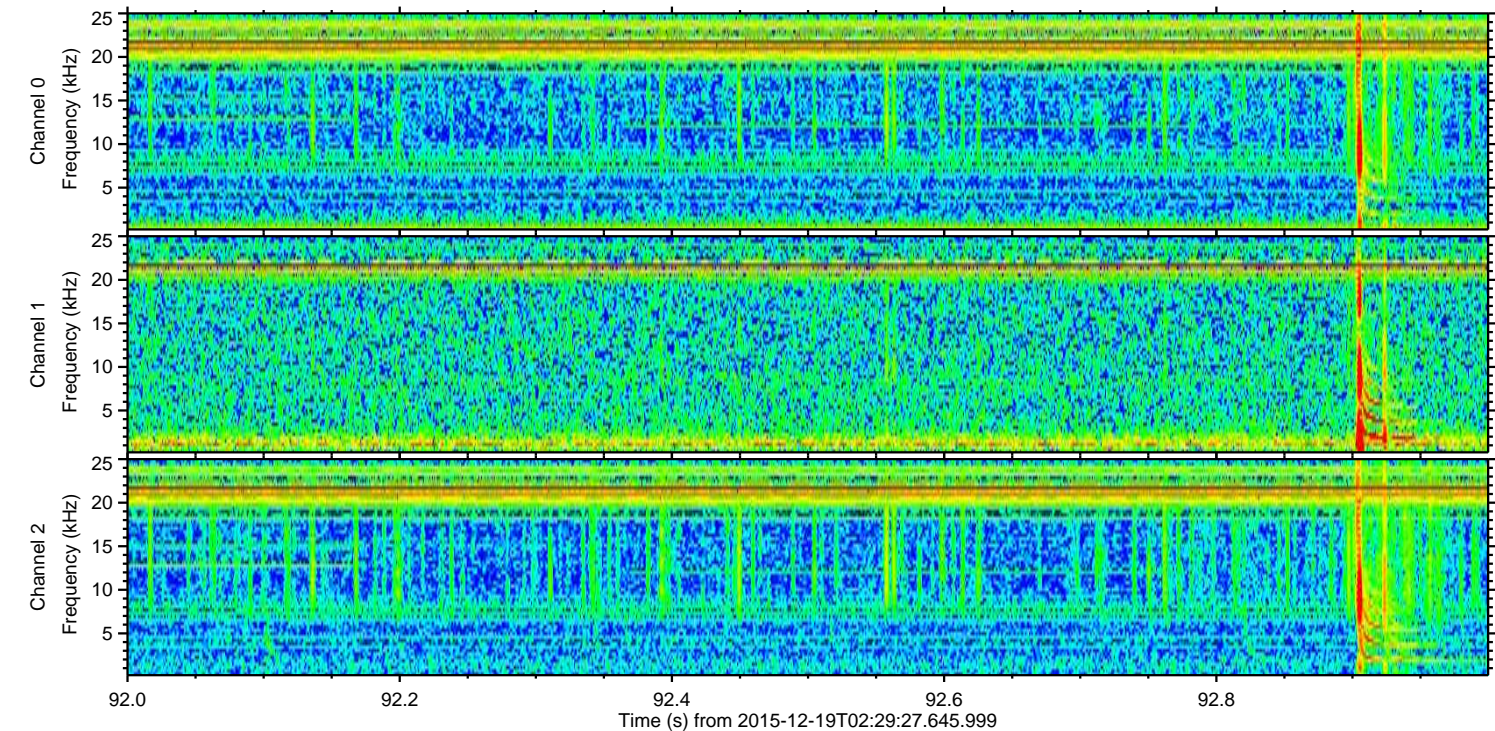
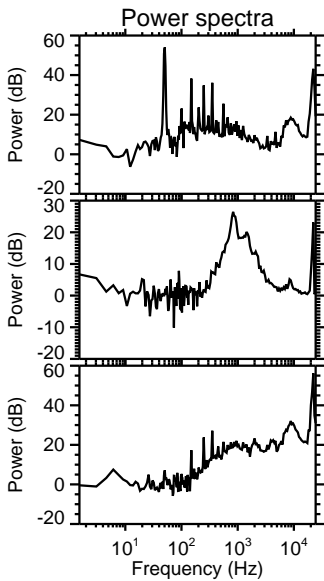
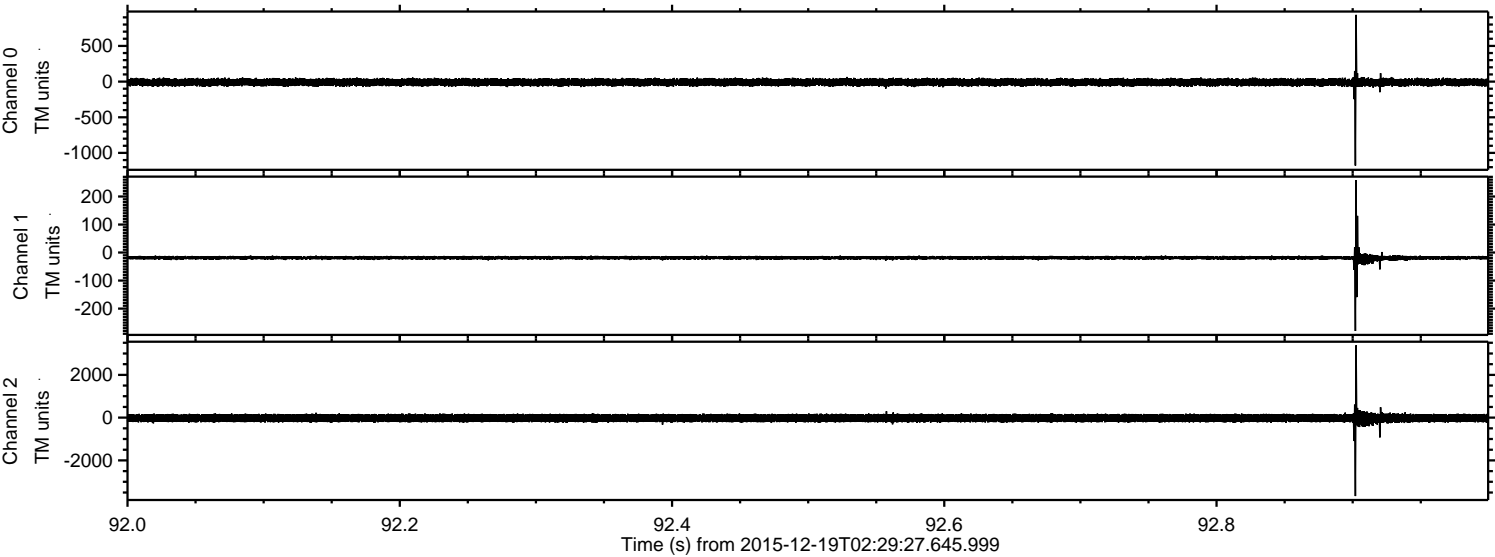
Channel 1
mn: -335
mx: 275
 μ : -18.8
 σ : 6.1

Channel 2
mn: -3927
mx: 4354
 μ : -21.6
 σ : 110.7

Processed Sat Jan 30 14:59:43 2016 by ELM ver.2012-10-06 from 001__elm20151219_022926__dat00.bin



Processed Sat Jan 30 14:59:44 2016 by ELM ver.2012-10-06 from 001__elm20151219_022926__dat00.bin



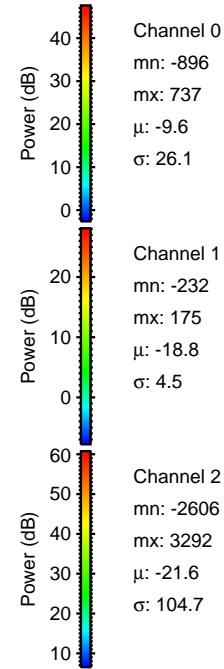
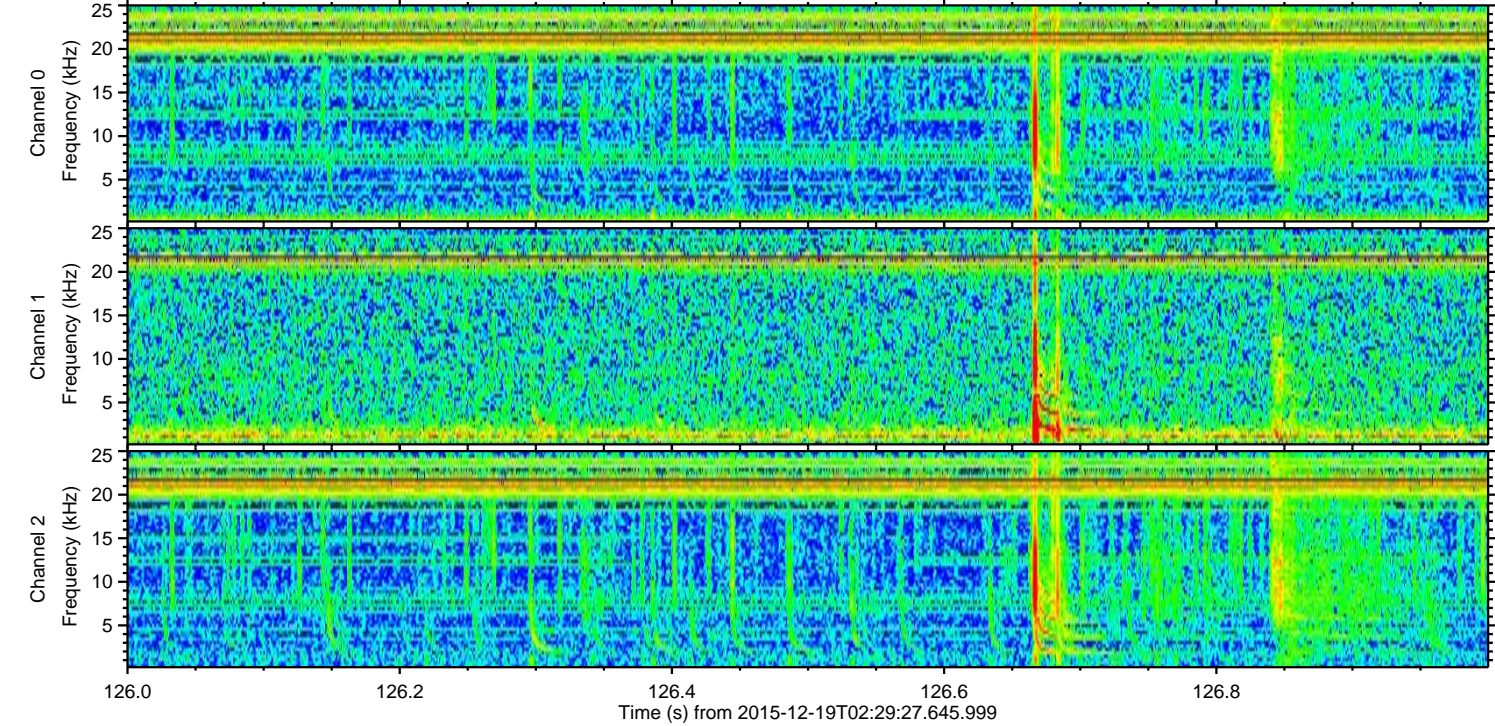
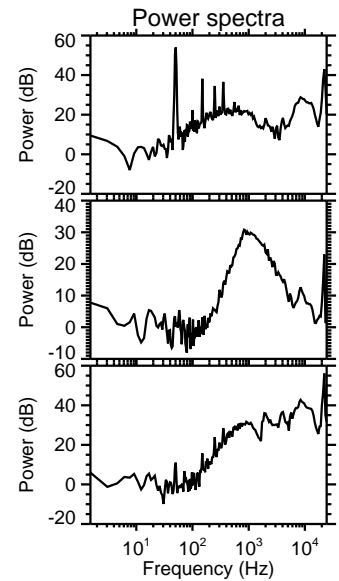
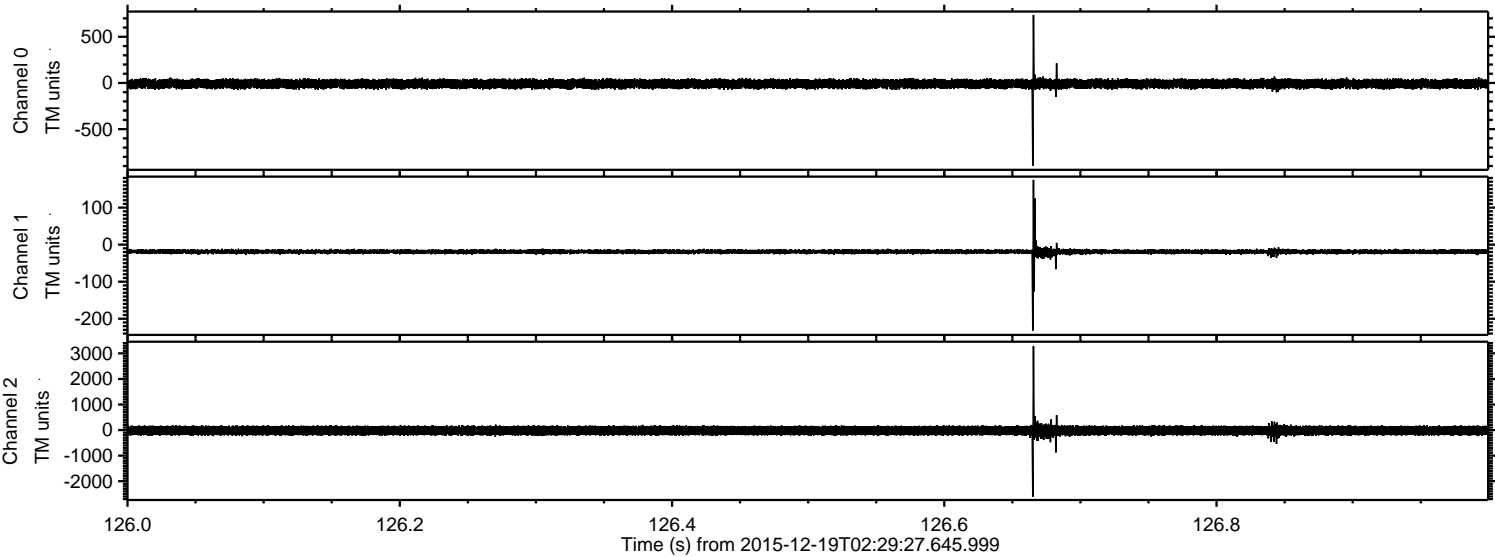
Channel 0
mn: -1178
mx: 935
 μ : -9.5
 σ : 27.2

Channel 1
mn: -280
mx: 258
 μ : -18.8
 σ : 5.7

Channel 2
mn: -3668
mx: 3381
 μ : -21.6
 σ : 108.9

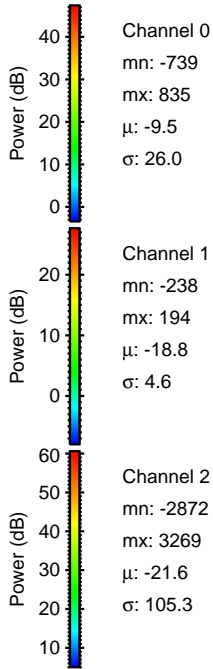
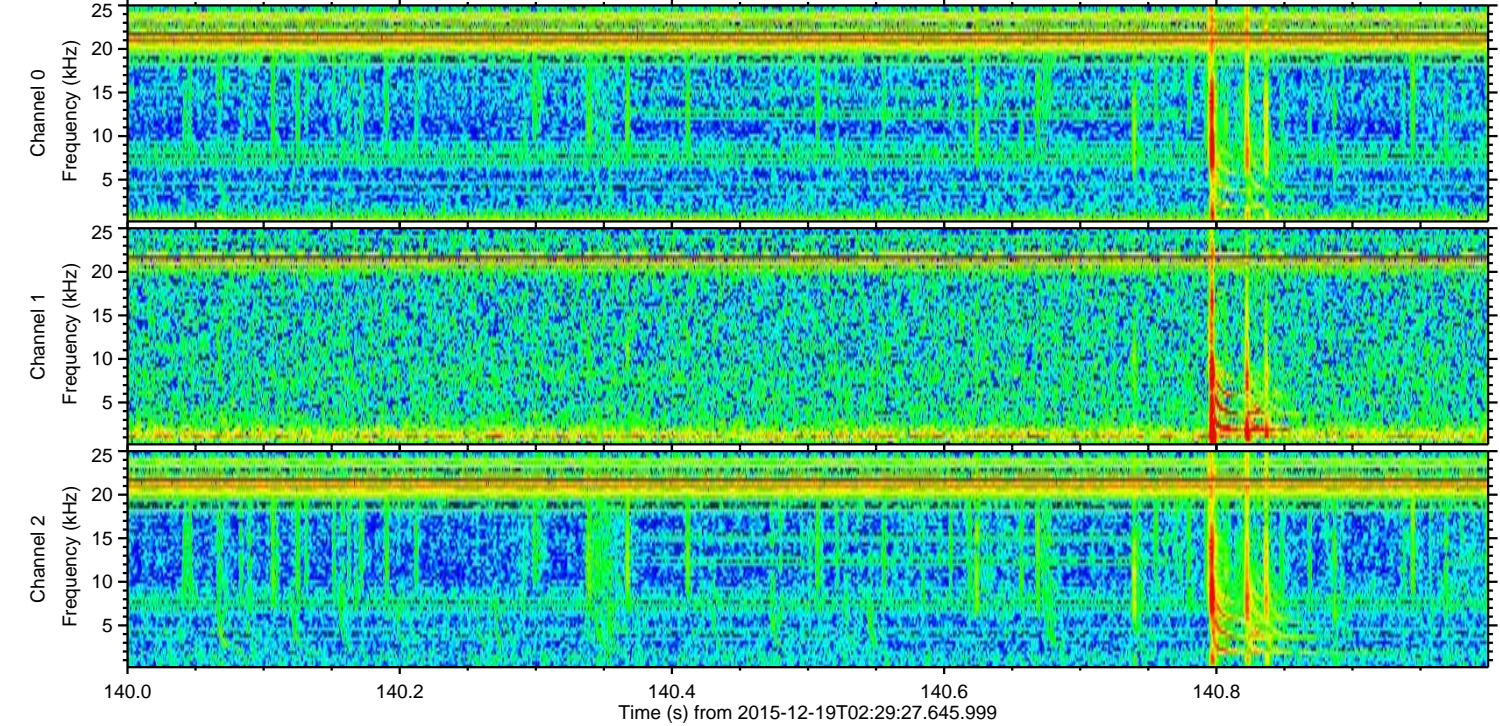
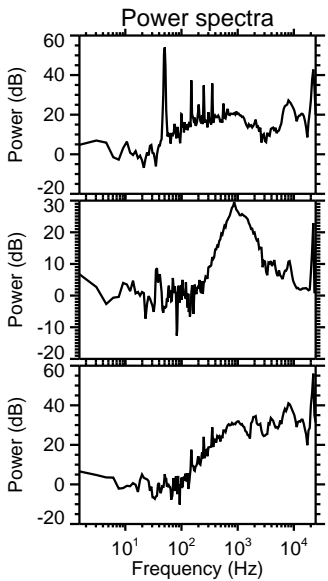
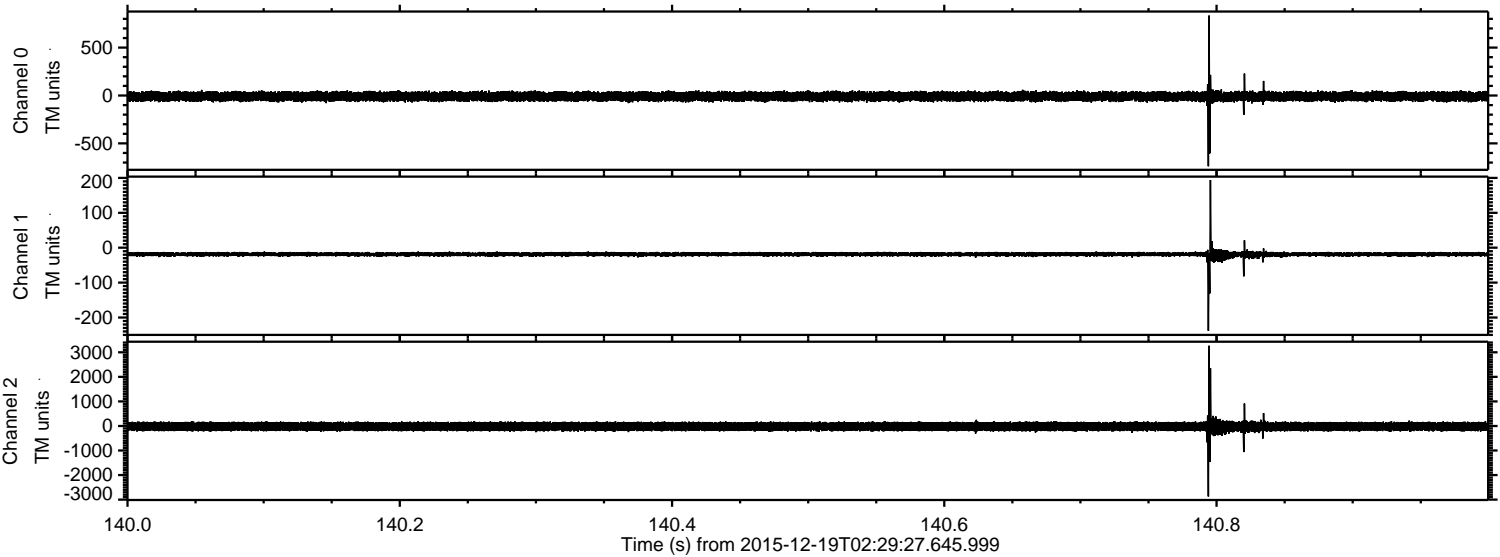
ELMAVAN 3D WAVEFORMS (Measured data sampled at 50 kHz) 51000 packets of 144 samples from 2015-12-19T02:29:27.645.999. Part 127/147

Processed Sat Jan 30 14:59:45 2016 by ELM ver.2012-10-06 from 001__elm20151219_022926__dat00.bin



ELMAVAN 3D WAVEFORMS (Measured data sampled at 50 kHz) 51000 packets of 144 samples from 2015-12-19T02:29:27.645.999. Part 141/147

Processed Sat Jan 30 14:59:46 2016 by ELM ver.2012-10-06 from 001__elm20151219_022926__dat00.bin



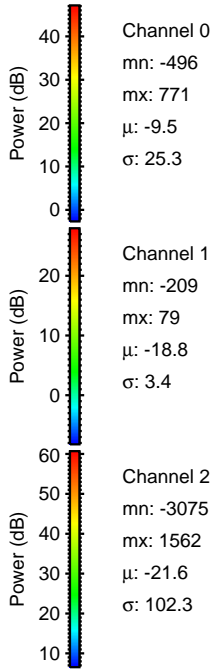
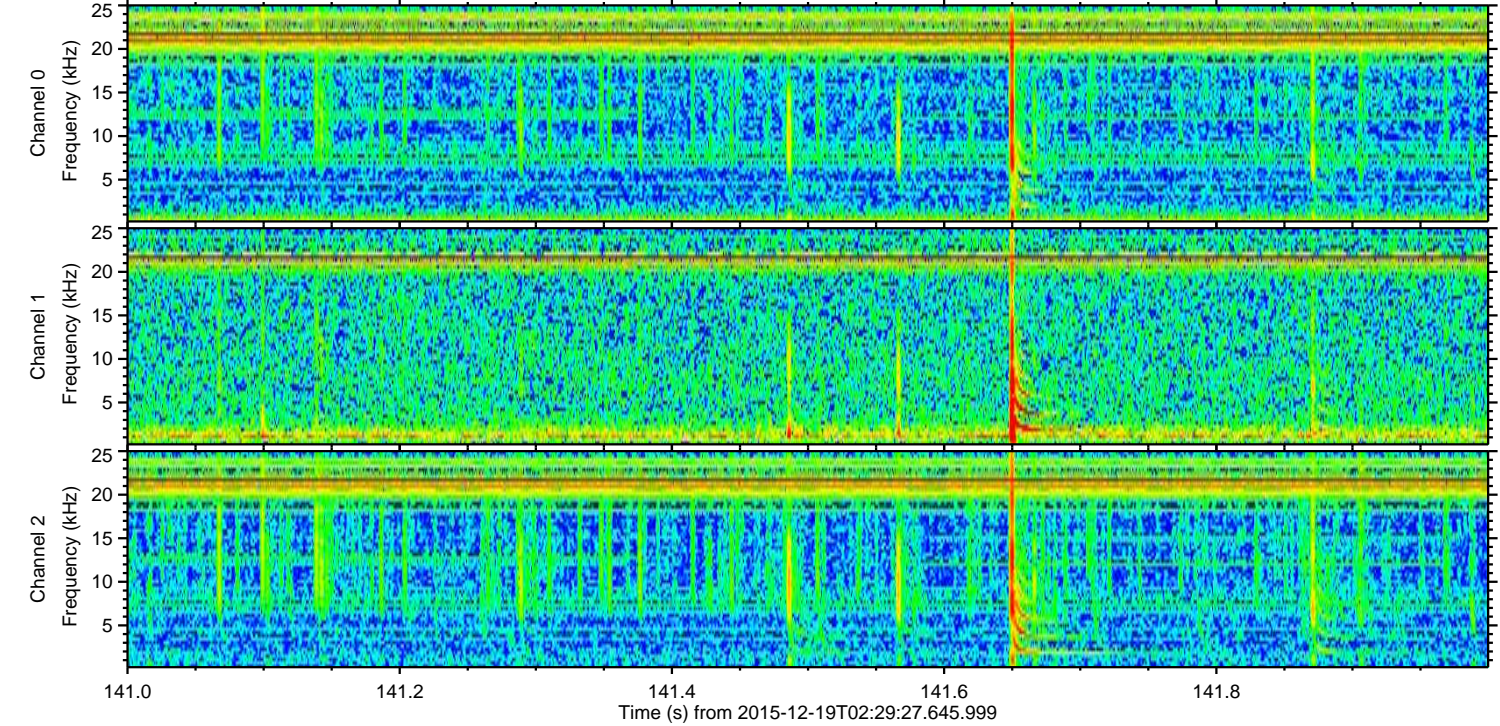
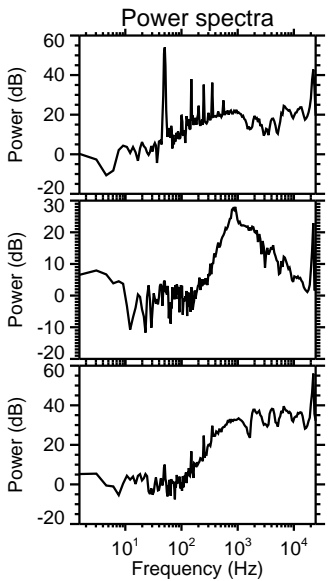
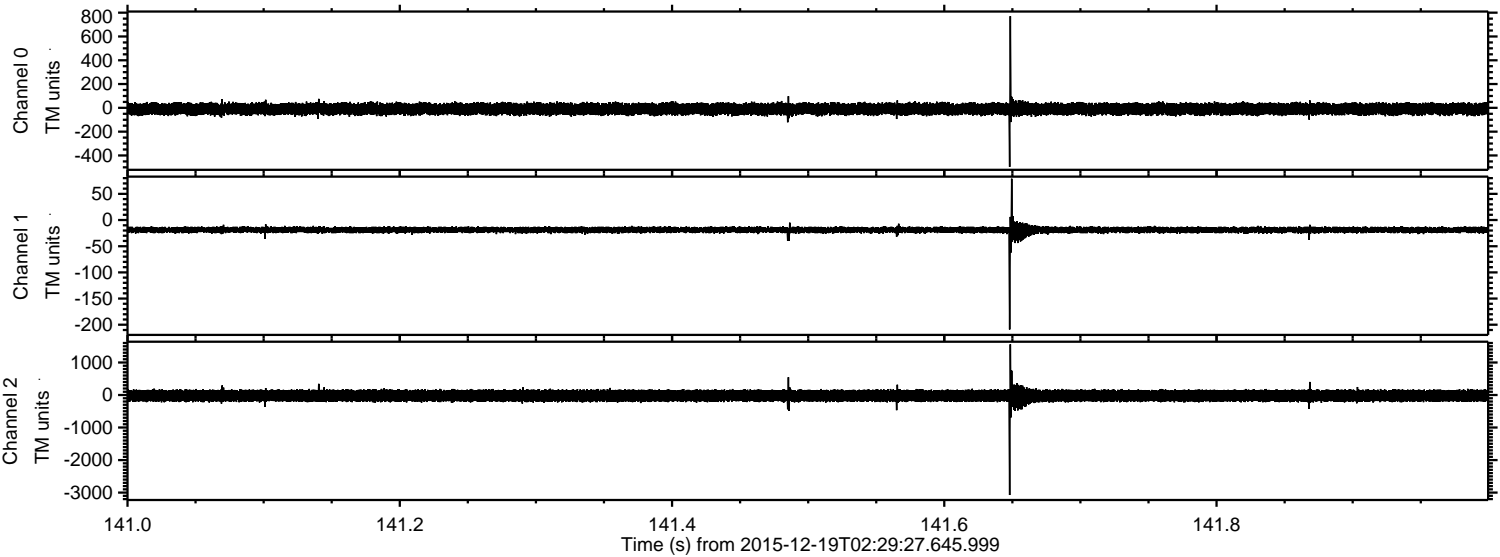
Channel 0
mn: -739
mx: 835
 μ : -9.5
 σ : 26.0

Channel 1
mn: -238
mx: 194
 μ : -18.8
 σ : 4.6

Channel 2
mn: -2872
mx: 3269
 μ : -21.6
 σ : 105.3

ELMAVAN 3D WAVEFORMS (Measured data sampled at 50 kHz) 51000 packets of 144 samples from 2015-12-19T02:29:27.645.999. Part 142/147

Processed Sat Jan 30 14:59:47 2016 by ELM ver.2012-10-06 from 001__elm20151219_022926__dat00.bin



Channel 0
mn: -496
mx: 771
 μ : -9.5
 σ : 25.3

Channel 1
mn: -209
mx: 79
 μ : -18.8
 σ : 3.4

Channel 2
mn: -3075
mx: 1562
 μ : -21.6
 σ : 102.3

ELMAVAN 3D WAVEFORMS (Measured data sampled at 50 kHz) 51000 packets of 144 samples from 2015-12-19T02:29:27.645.999. Part 3/147

Processed Sat Jan 30 14:59:48 2016 by ELM ver.2012-10-06 from 001__elm20151219_022926__dat00.bin

