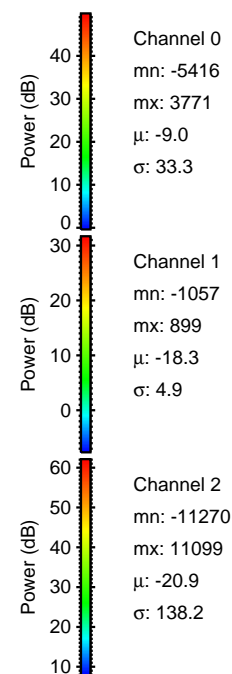
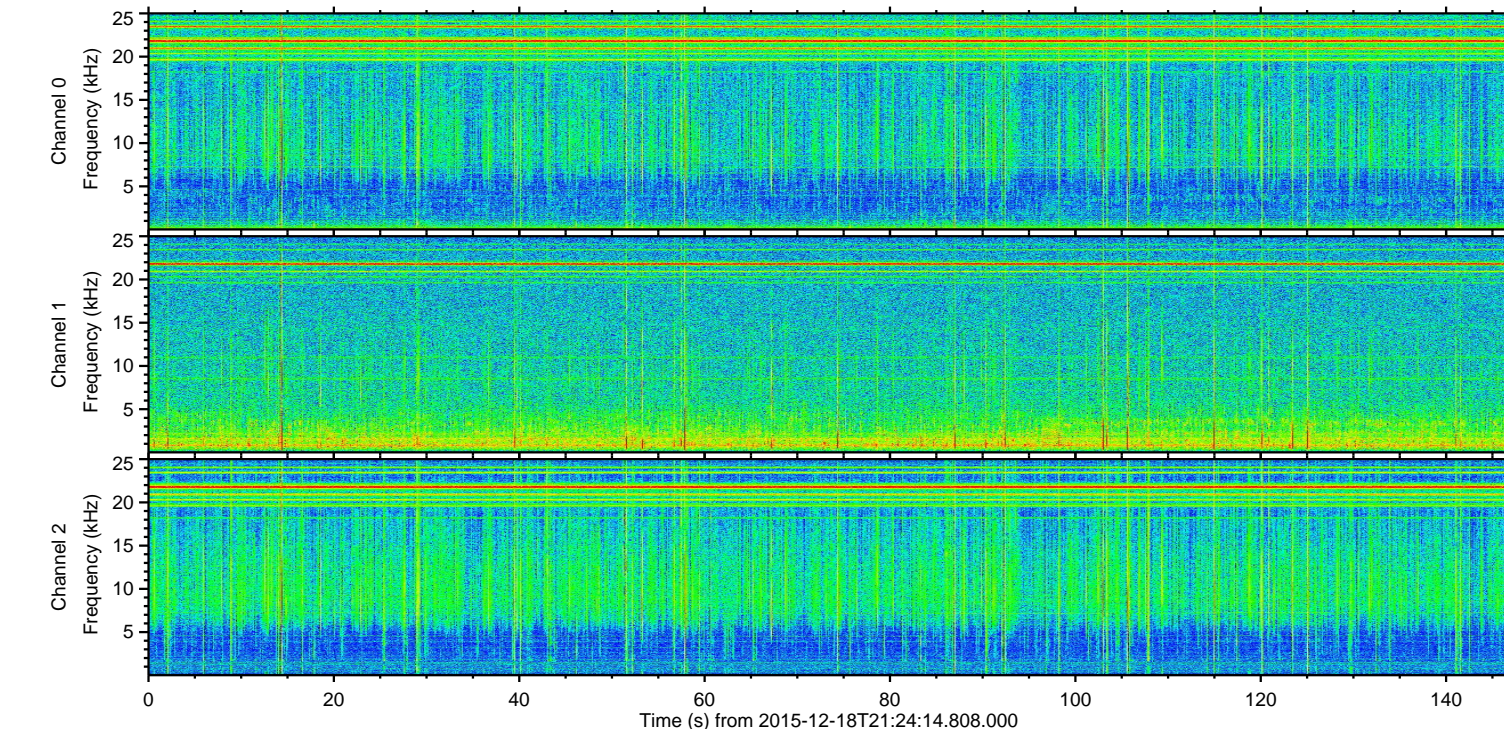
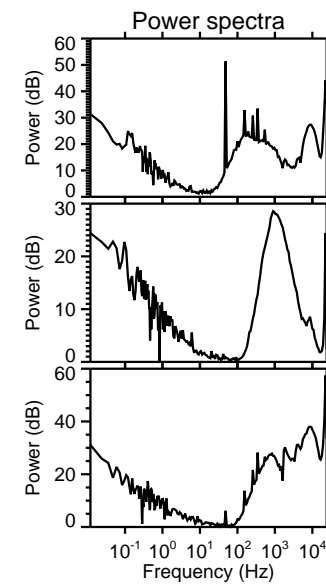
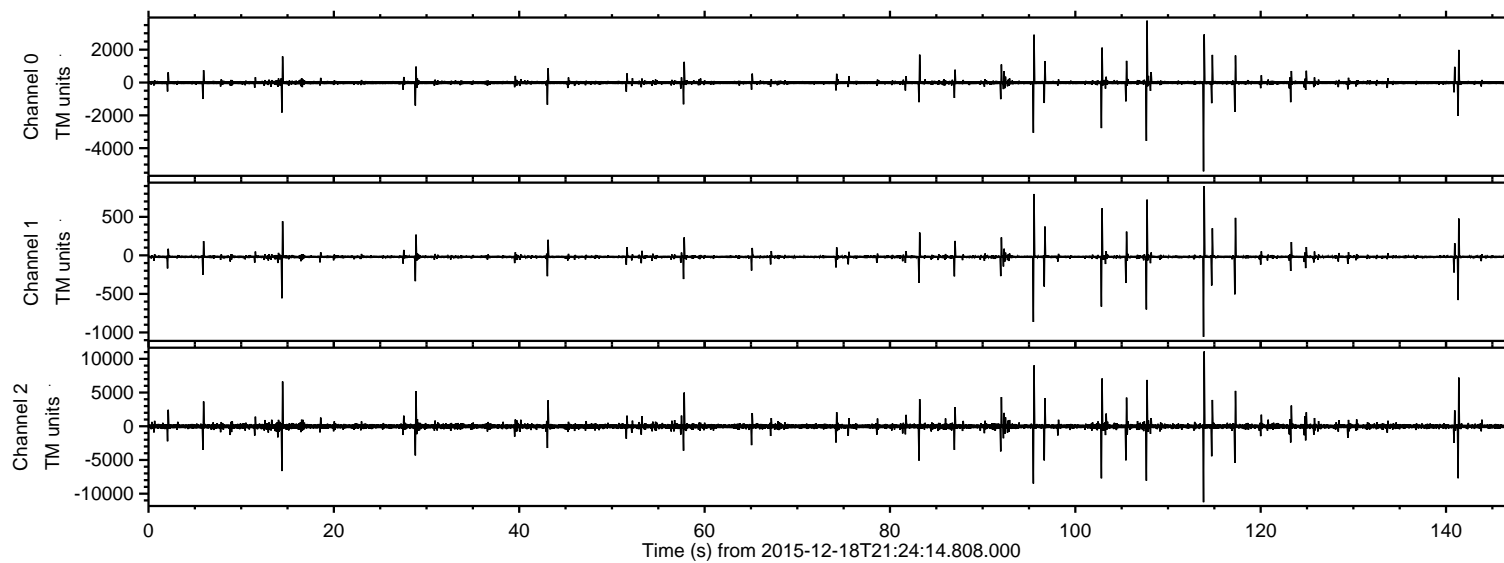


# ELMAVAN 3D WAVEFORMS (Measured data sampled at 50 kHz) 51000 packets of 144 samples from 2015-12-18T21:24:14.808.000.

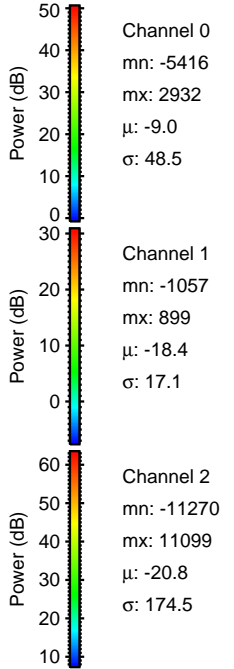
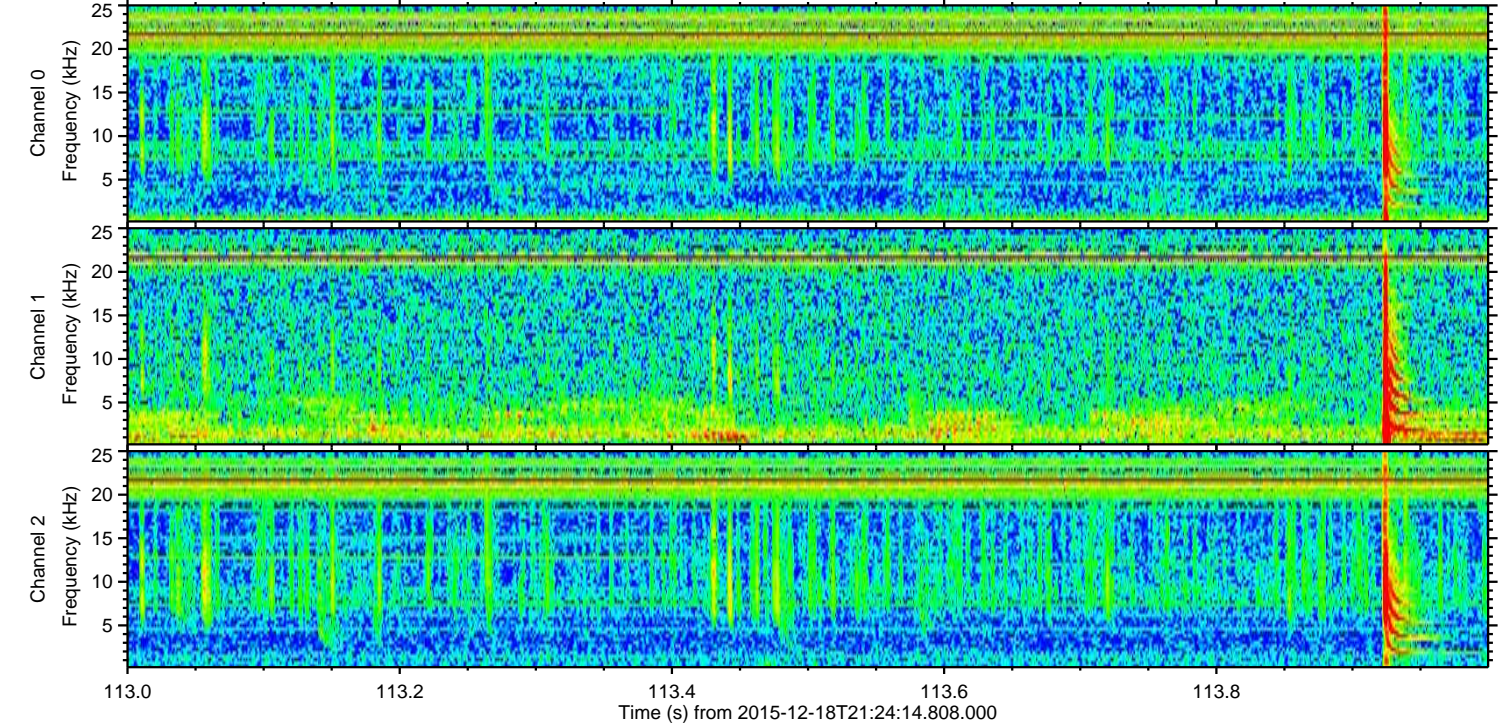
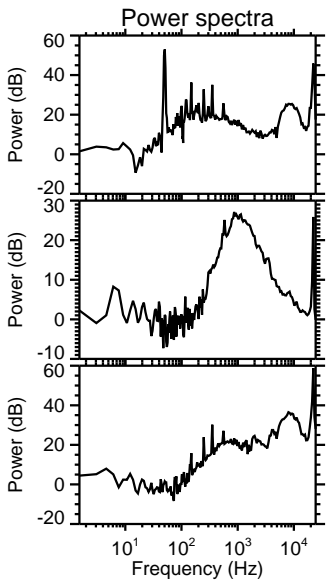
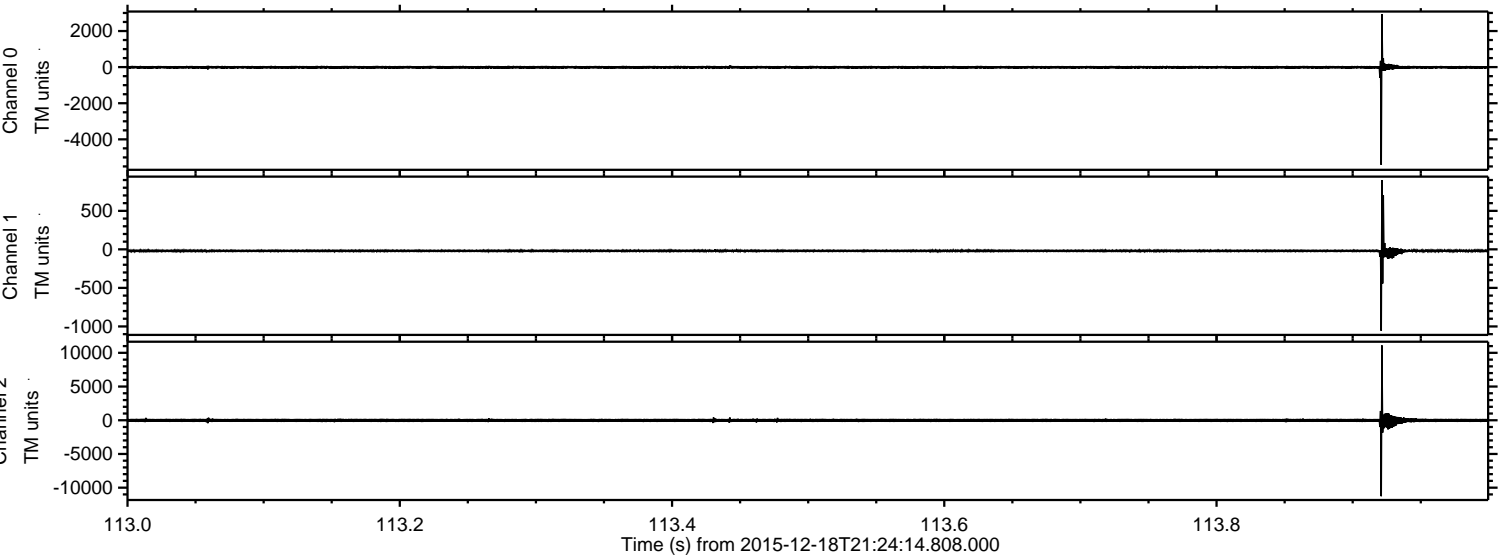
Processed Sat Jan 30 00:52:14 2016 by ELM ver.2012-10-06 from 001\_\_elm20151218\_212413\_\_dat00.bin





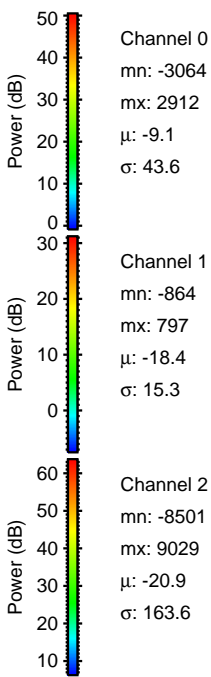
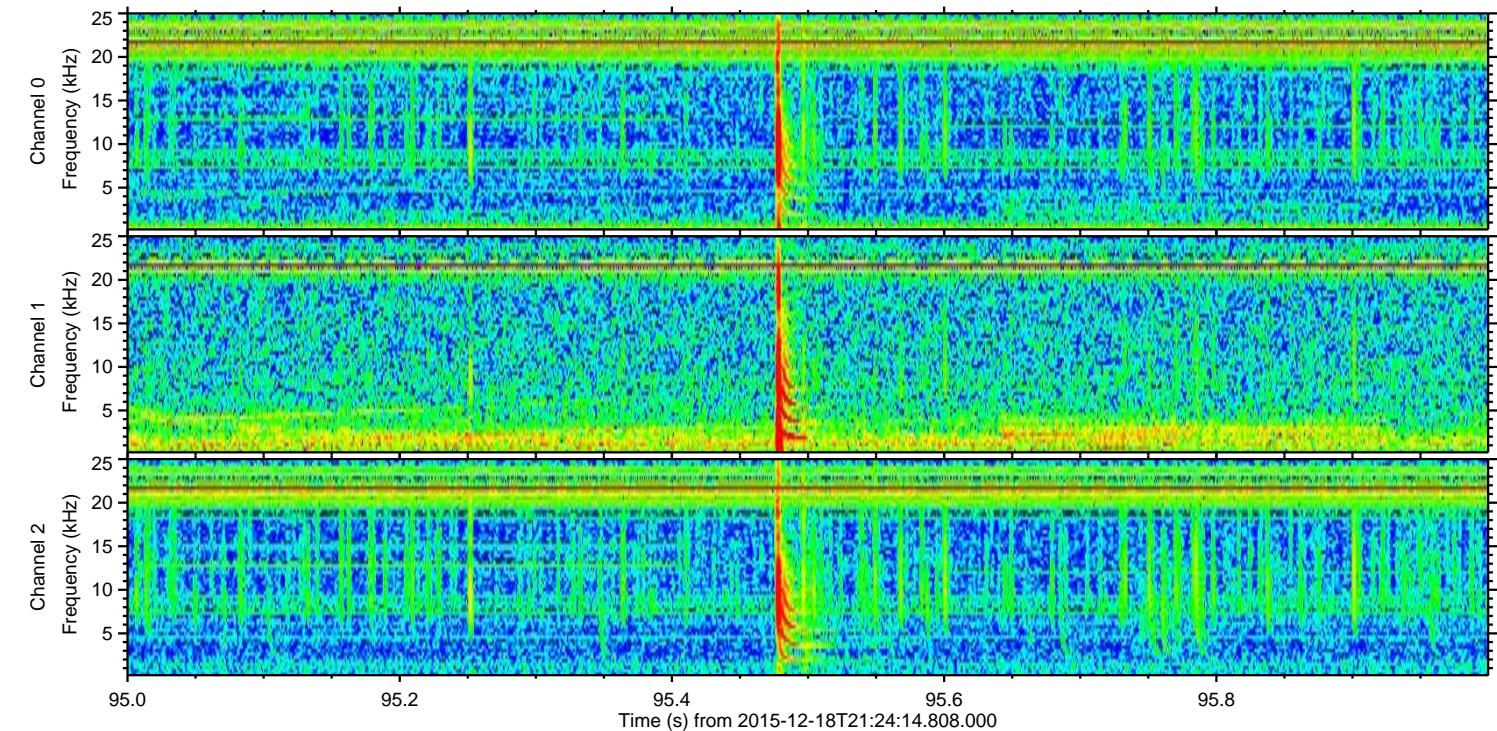
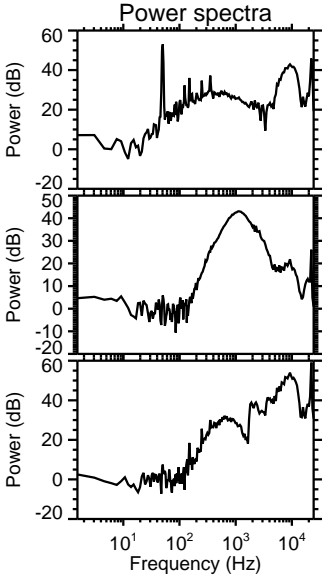
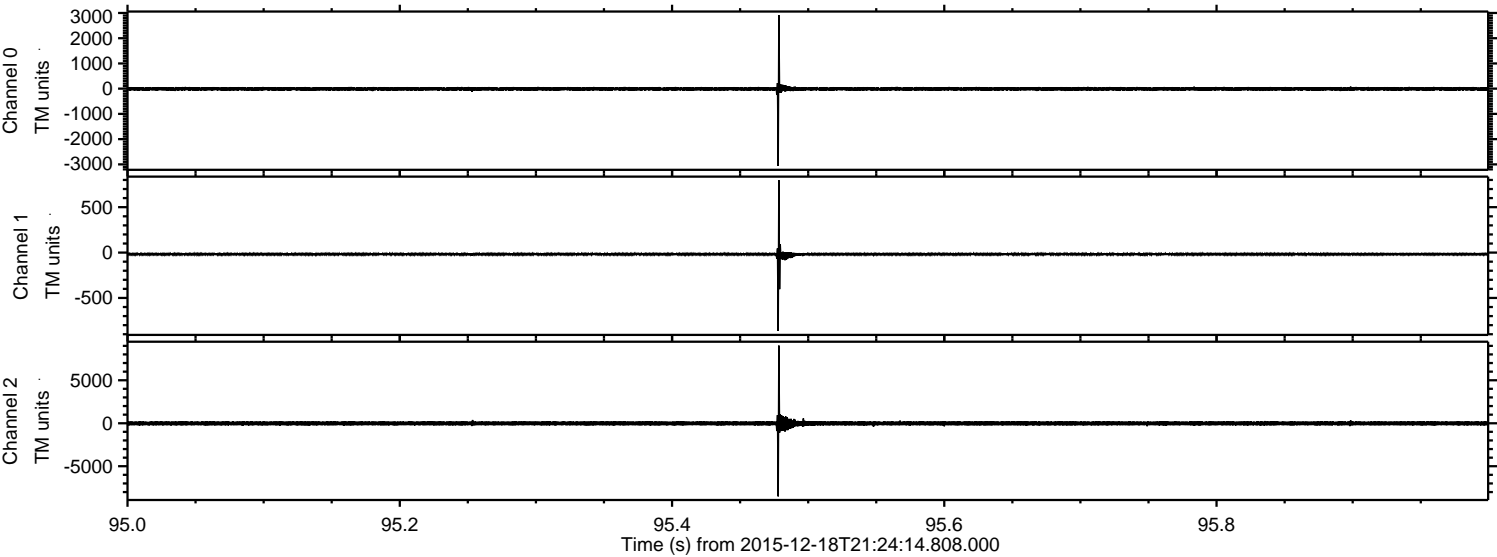
ELMAVAN 3D WAVEFORMS (Measured data sampled at 50 kHz) 51000 packets of 144 samples from 2015-12-18T21:24:14.808.000. Part 114/147

Processed Sat Jan 30 00:52:27 2016 by ELM ver.2012-10-06 from 001\_\_elm20151218\_212413\_\_dat00.bin





Processed Sat Jan 30 00:52:28 2016 by ELM ver.2012-10-06 from 001\_\_elm20151218\_212413\_\_dat00.bin



Channel 0  
mn: -3064  
mx: 2912  
 $\mu$ : -9.1  
 $\sigma$ : 43.6

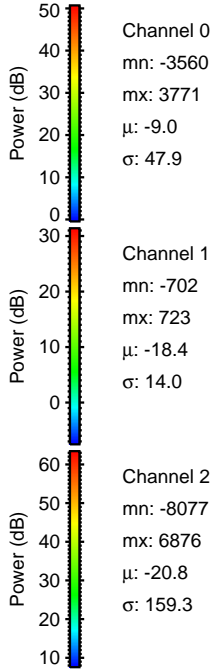
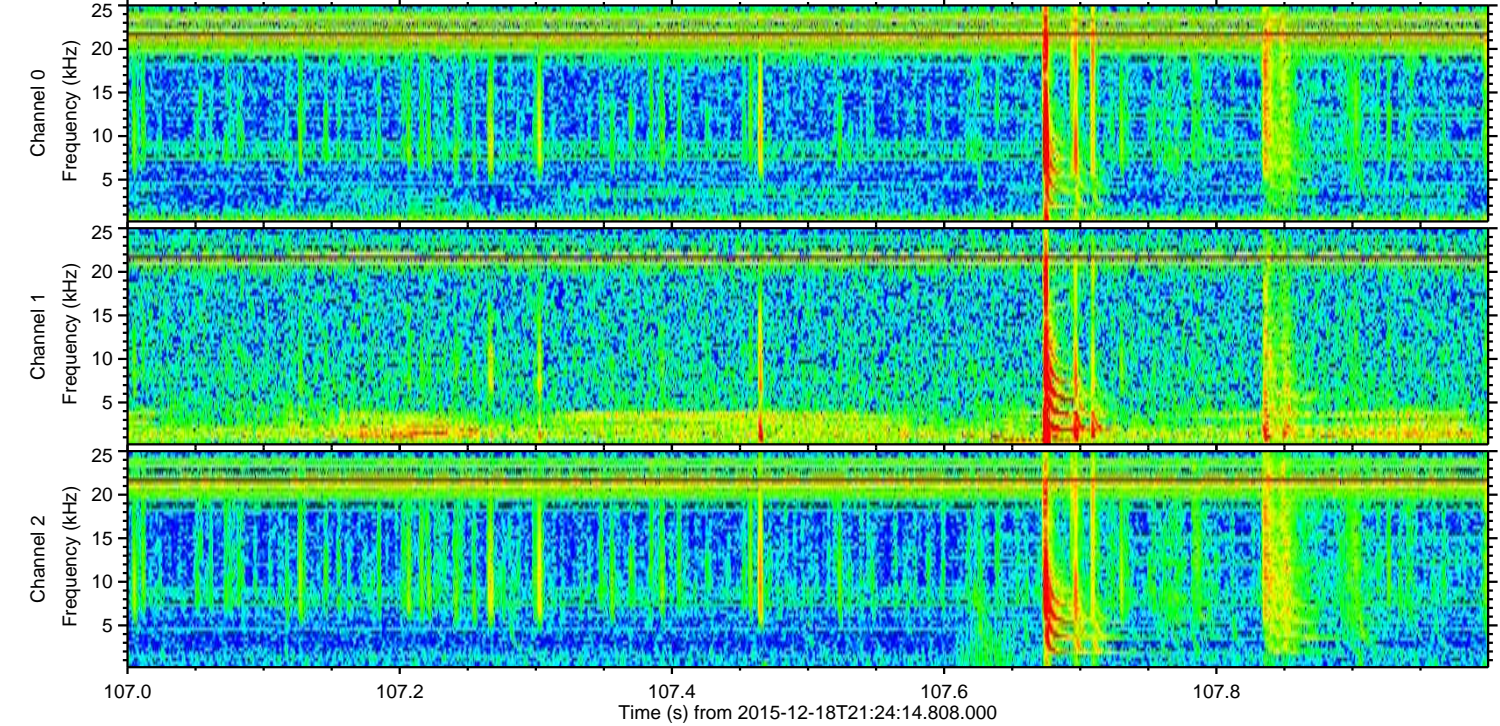
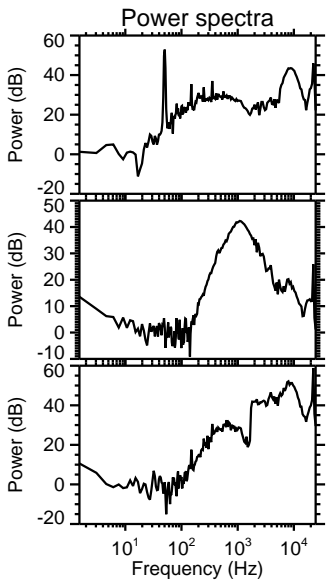
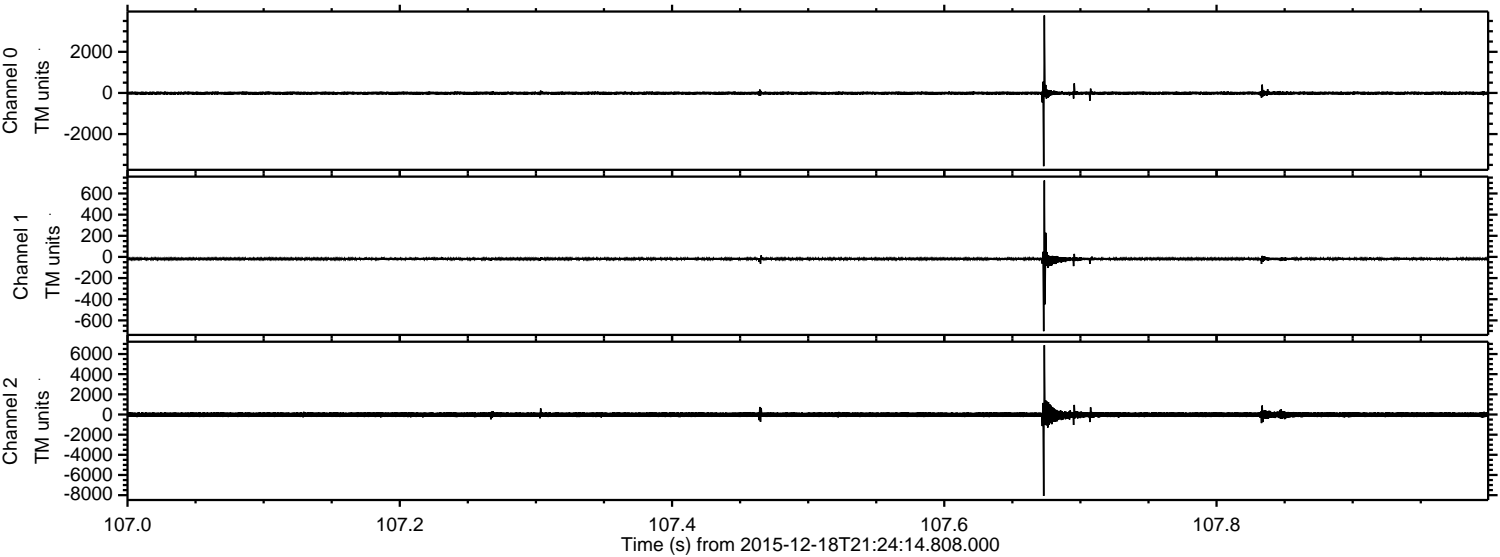
Channel 1  
mn: -864  
mx: 797  
 $\mu$ : -18.4  
 $\sigma$ : 15.3

Channel 2  
mn: -8501  
mx: 9029  
 $\mu$ : -20.9  
 $\sigma$ : 163.6



ELMAVAN 3D WAVEFORMS (Measured data sampled at 50 kHz) 51000 packets of 144 samples from 2015-12-18T21:24:14.808.000. Part 108/147

Processed Sat Jan 30 00:52:29 2016 by ELM ver.2012-10-06 from 001\_\_elm20151218\_212413\_\_dat00.bin



Channel 0  
mn: -3560  
mx: 3771  
 $\mu$ : -9.0  
 $\sigma$ : 47.9

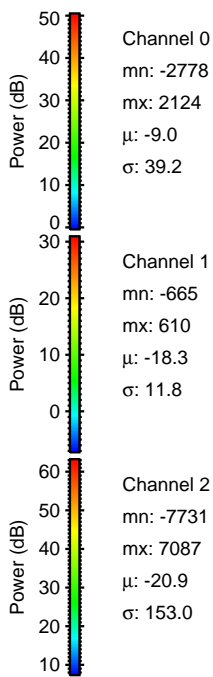
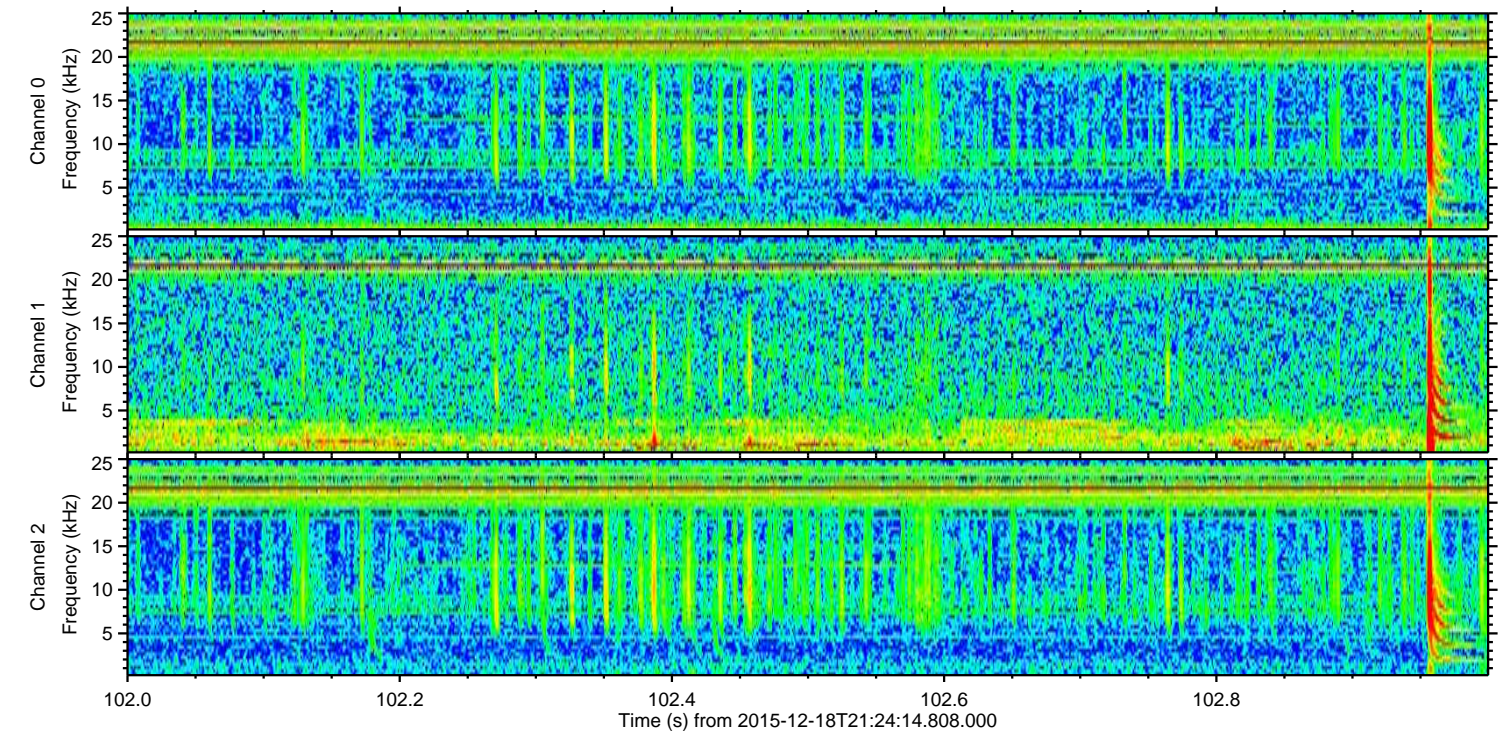
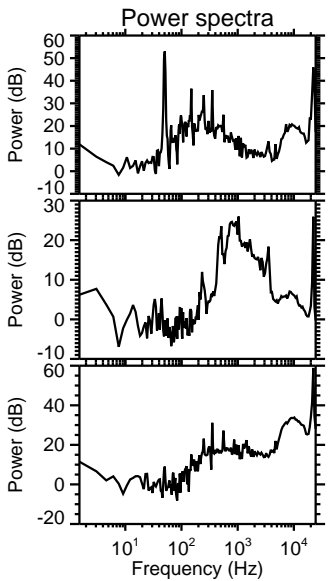
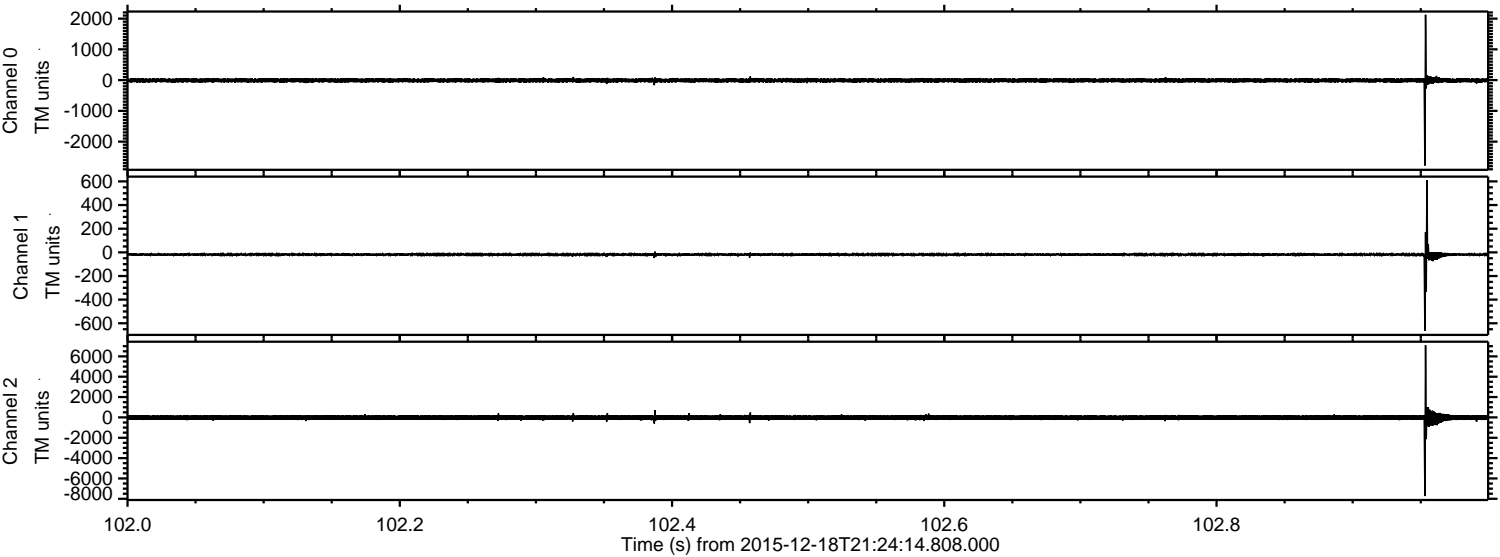
Channel 1  
mn: -702  
mx: 723  
 $\mu$ : -18.4  
 $\sigma$ : 14.0

Channel 2  
mn: -8077  
mx: 6876  
 $\mu$ : -20.8  
 $\sigma$ : 159.3



ELMAVAN 3D WAVEFORMS (Measured data sampled at 50 kHz) 51000 packets of 144 samples from 2015-12-18T21:24:14.808.000. Part 103/147

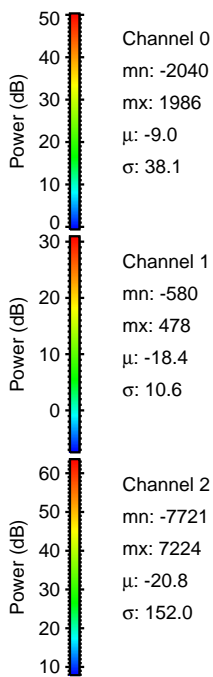
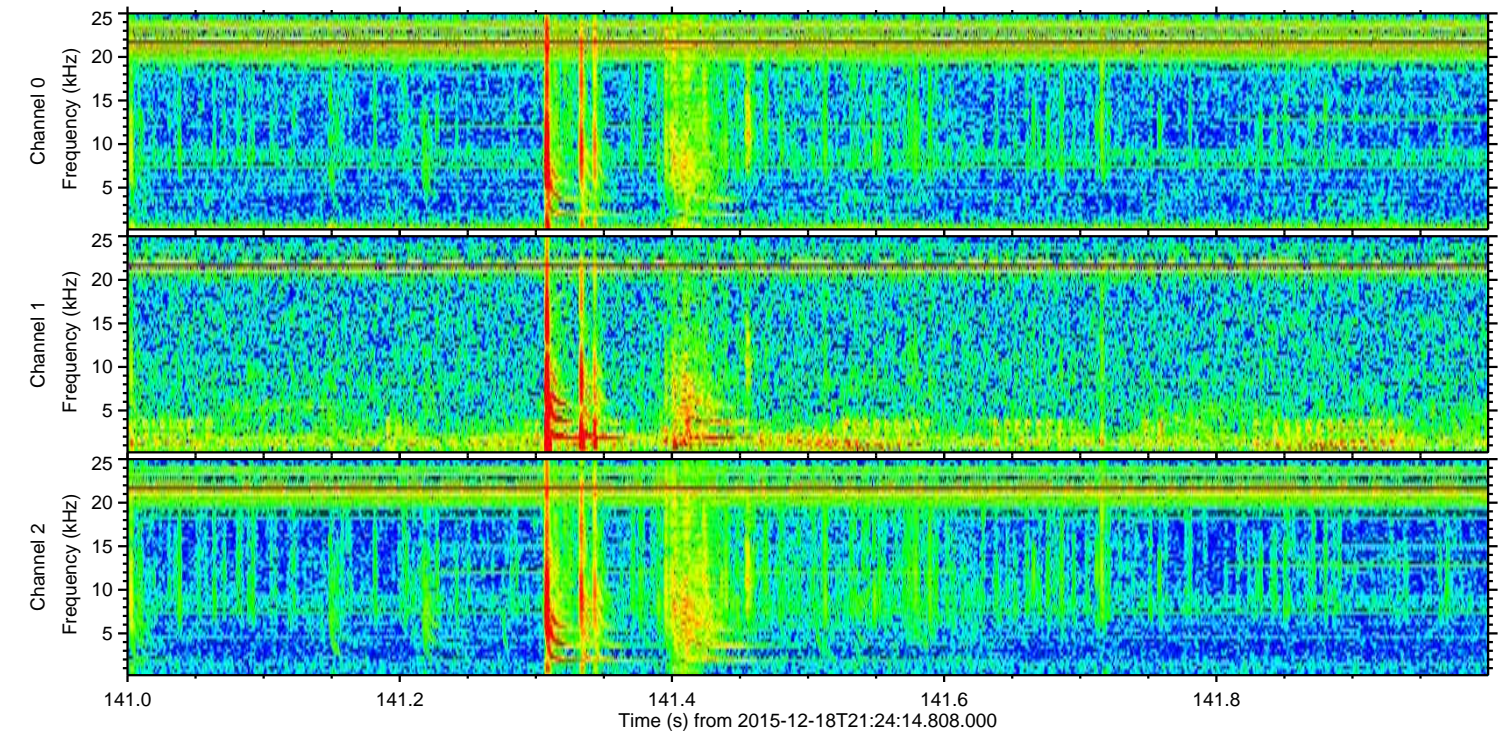
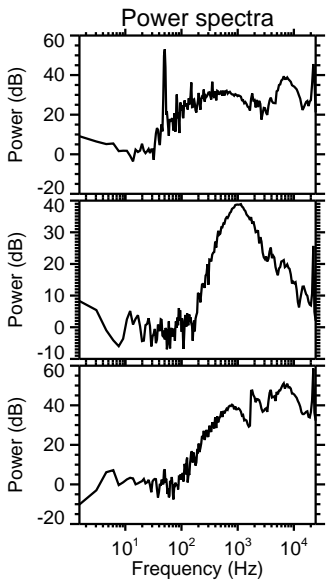
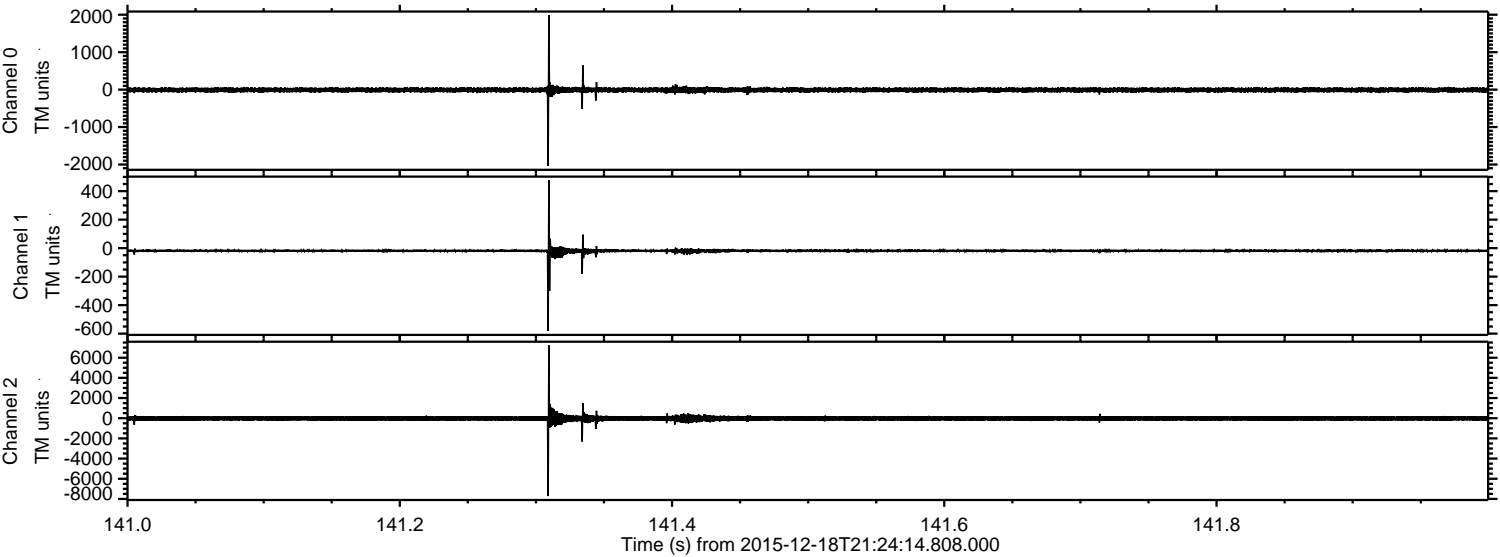
Processed Sat Jan 30 00:52:29 2016 by ELM ver.2012-10-06 from 001\_\_elm20151218\_212413\_\_dat00.bin





ELMAVAN 3D WAVEFORMS (Measured data sampled at 50 kHz) 51000 packets of 144 samples from 2015-12-18T21:24:14.808.000. Part 142/147

Processed Sat Jan 30 00:52:30 2016 by ELM ver.2012-10-06 from 001\_\_elm20151218\_212413\_\_dat00.bin



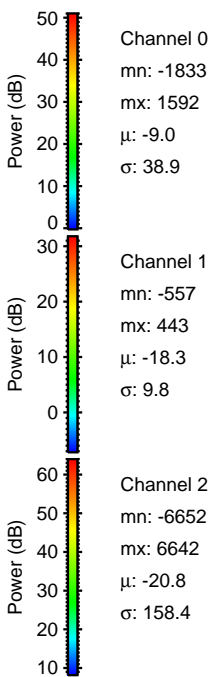
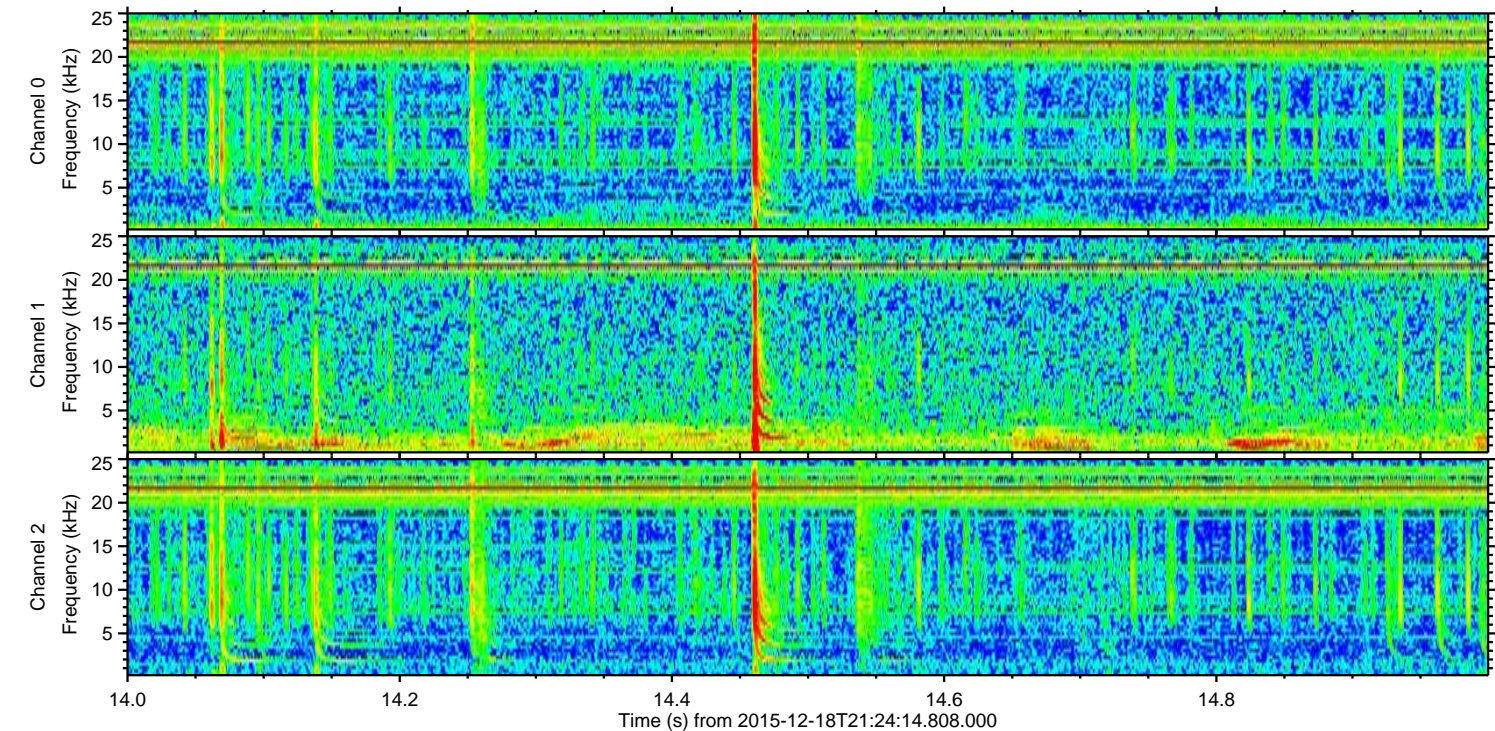
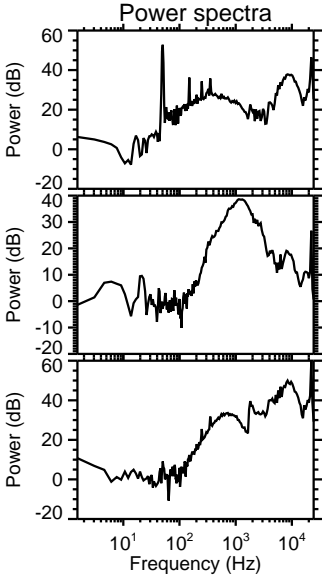
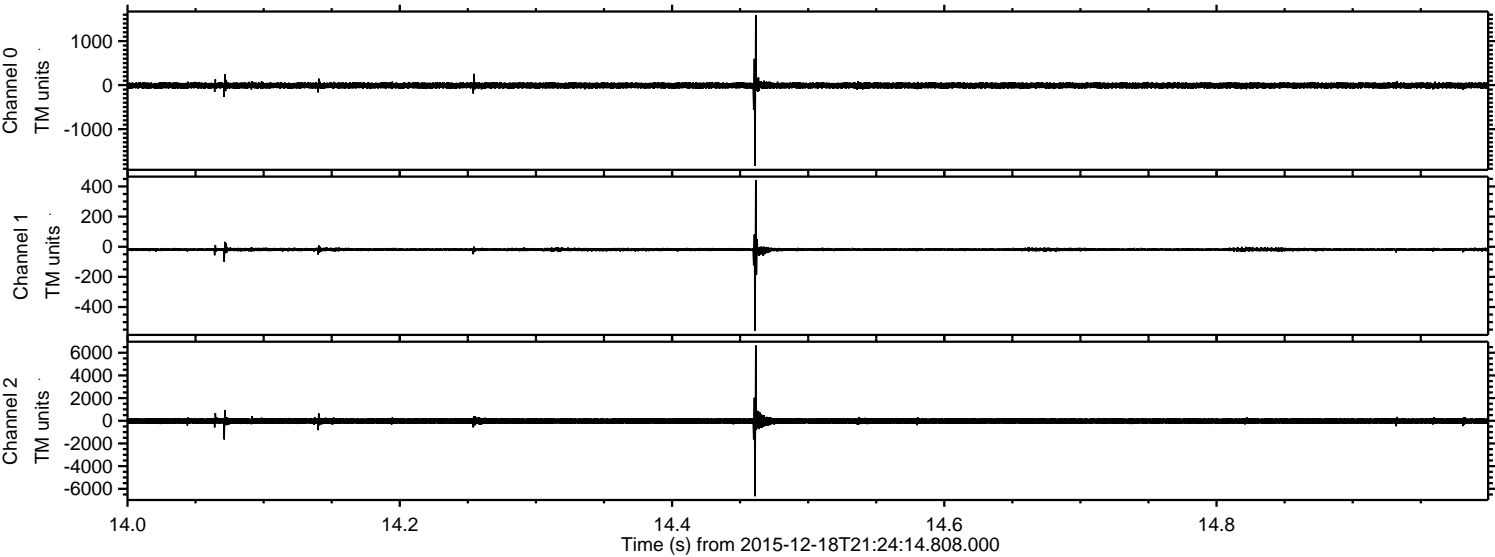
Channel 0  
mn: -2040  
mx: 1986  
 $\mu$ : -9.0  
 $\sigma$ : 38.1

Channel 1  
mn: -580  
mx: 478  
 $\mu$ : -18.4  
 $\sigma$ : 10.6

Channel 2  
mn: -7721  
mx: 7224  
 $\mu$ : -20.8  
 $\sigma$ : 152.0



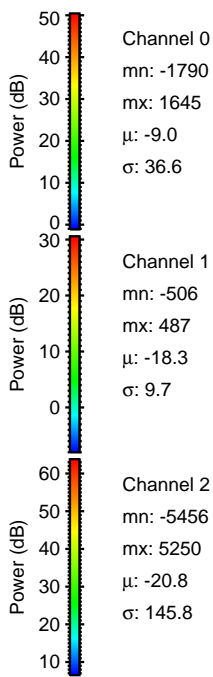
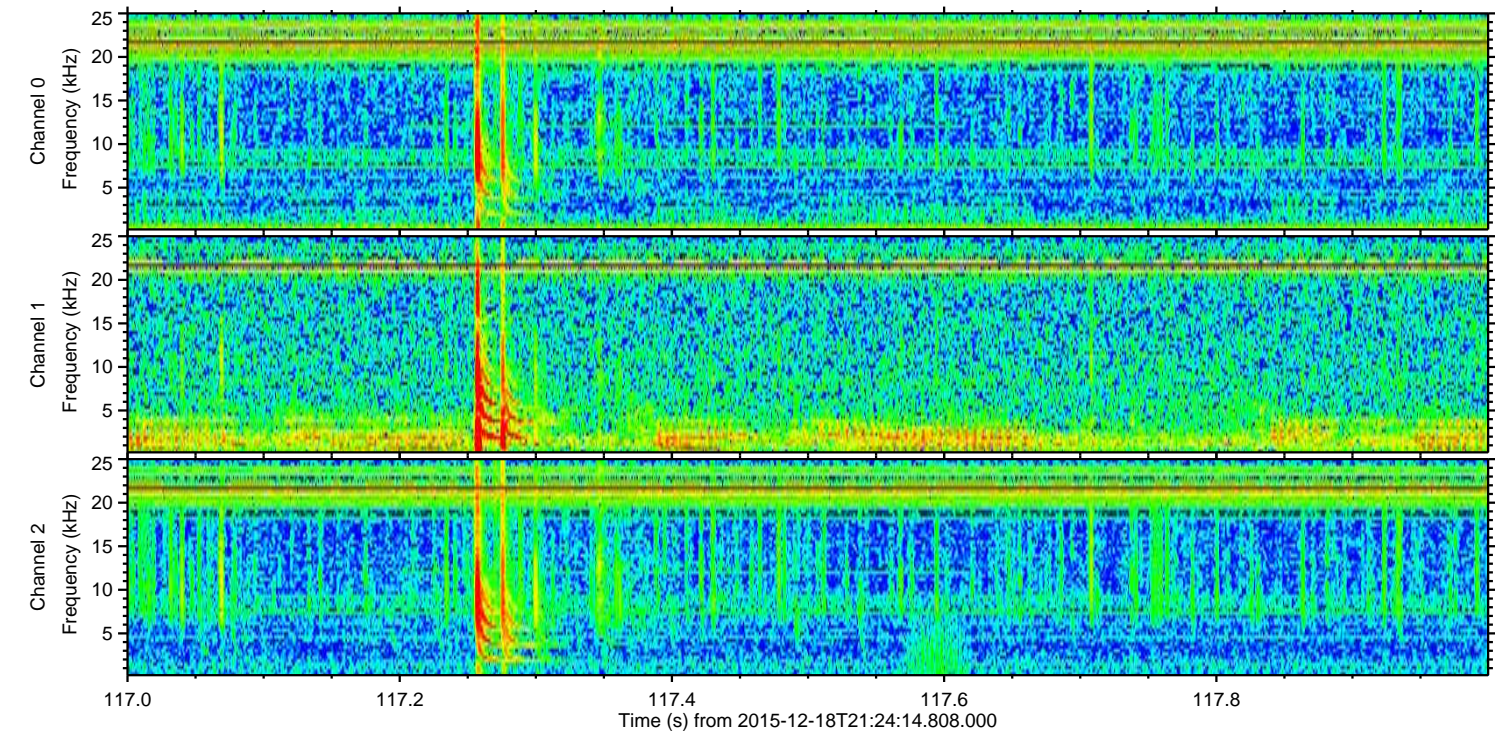
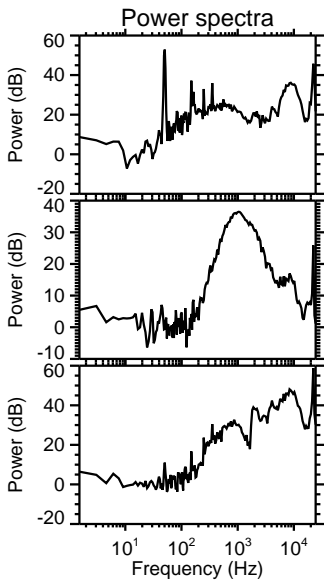
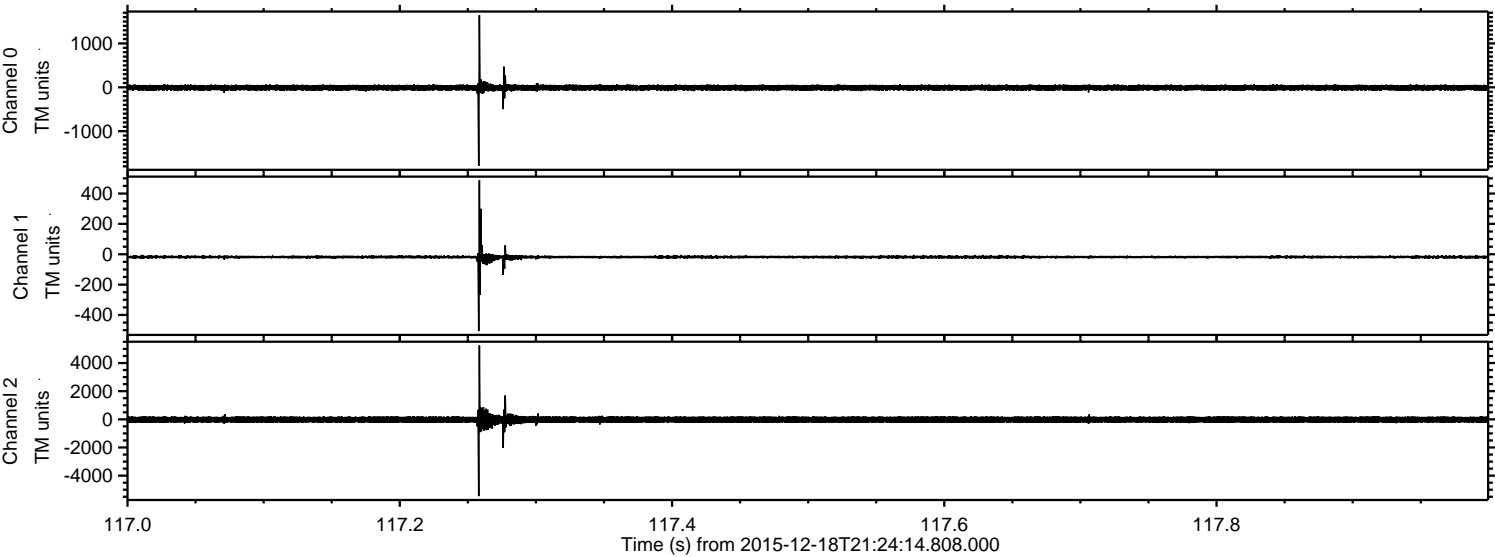
Processed Sat Jan 30 00:52:31 2016 by ELM ver.2012-10-06 from 001\_\_elm20151218\_212413\_\_dat00.bin





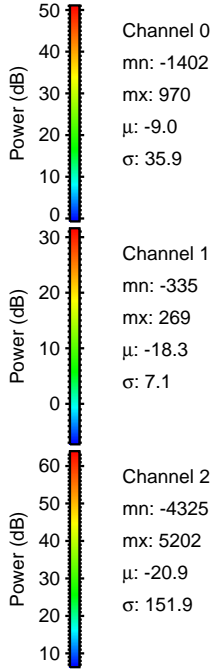
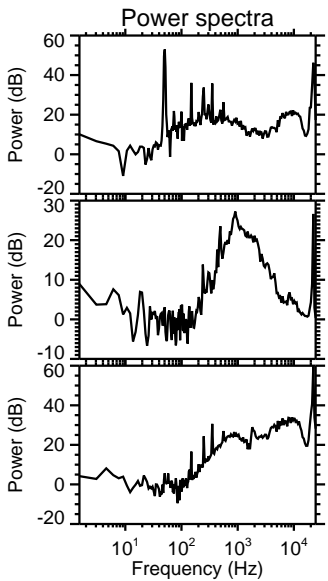
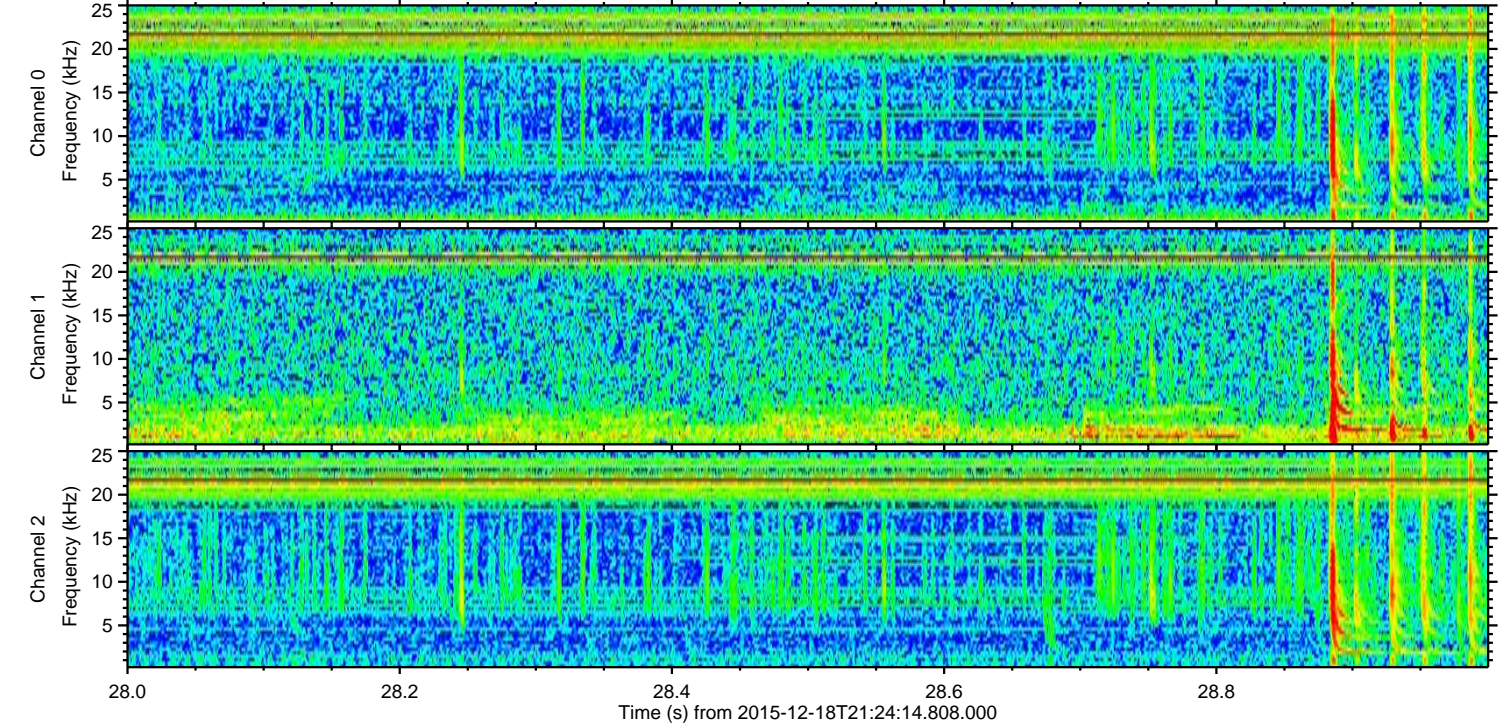
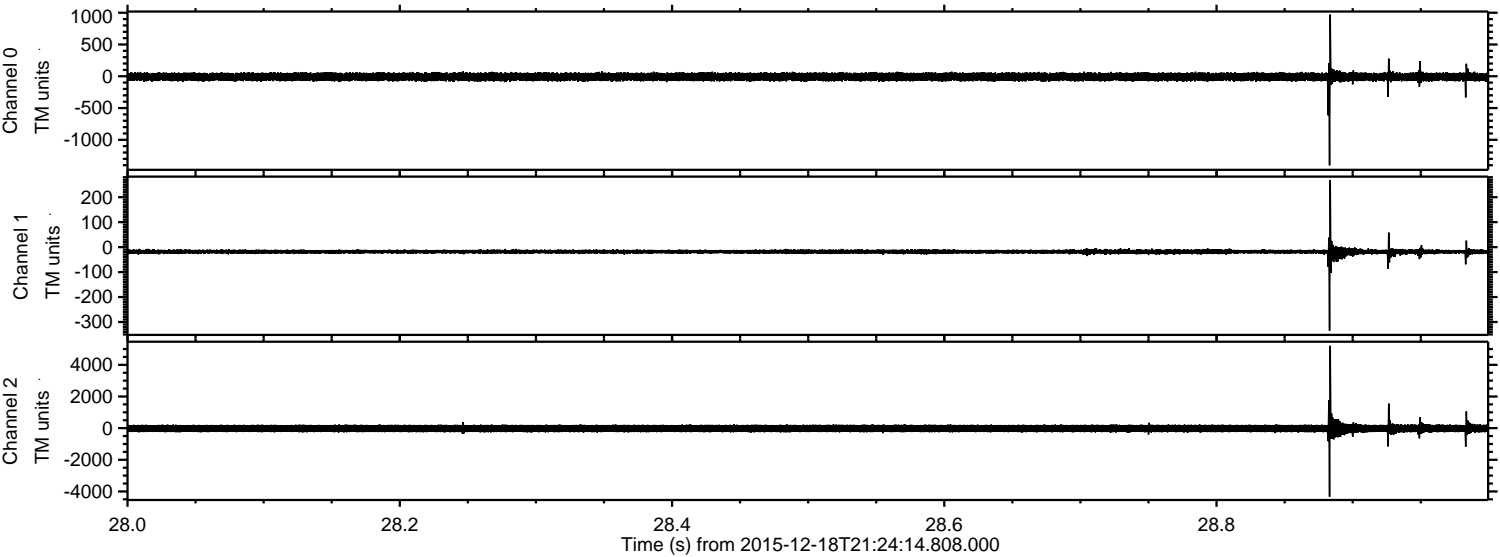
ELMAVAN 3D WAVEFORMS (Measured data sampled at 50 kHz) 51000 packets of 144 samples from 2015-12-18T21:24:14.808.000. Part 118/147

Processed Sat Jan 30 00:52:33 2016 by ELM ver.2012-10-06 from 001\_\_elm20151218\_212413\_\_dat00.bin



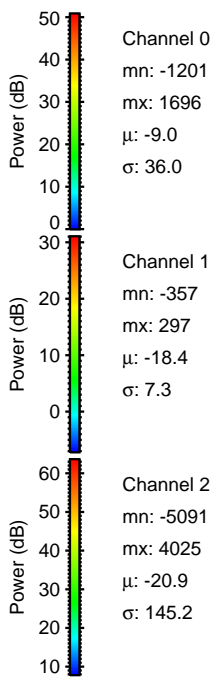
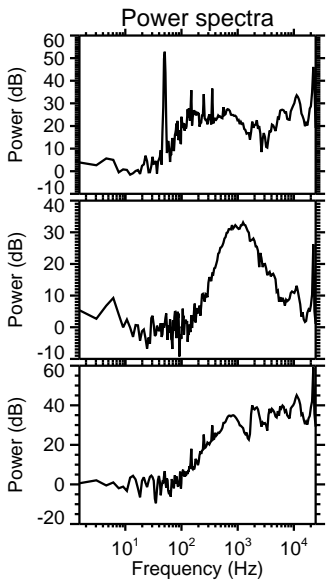
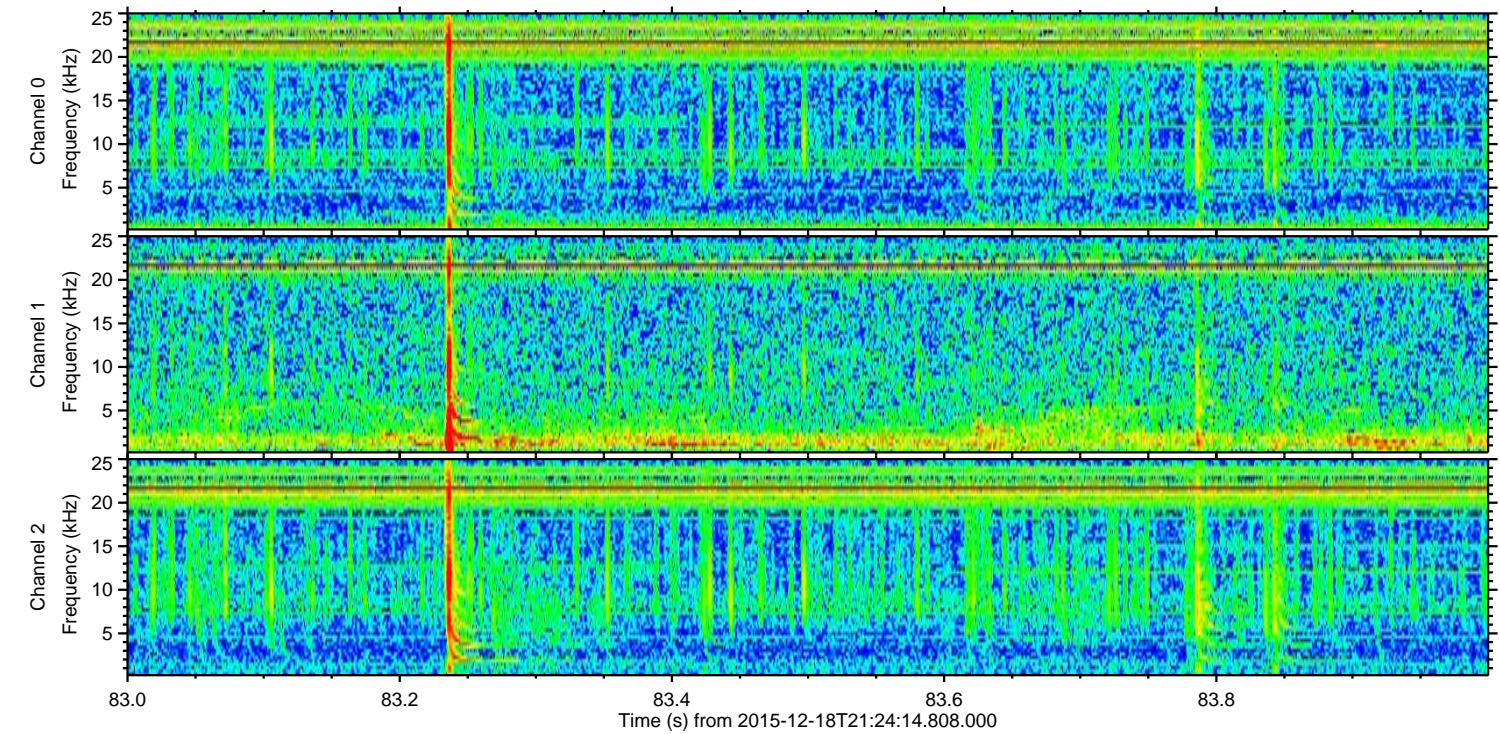
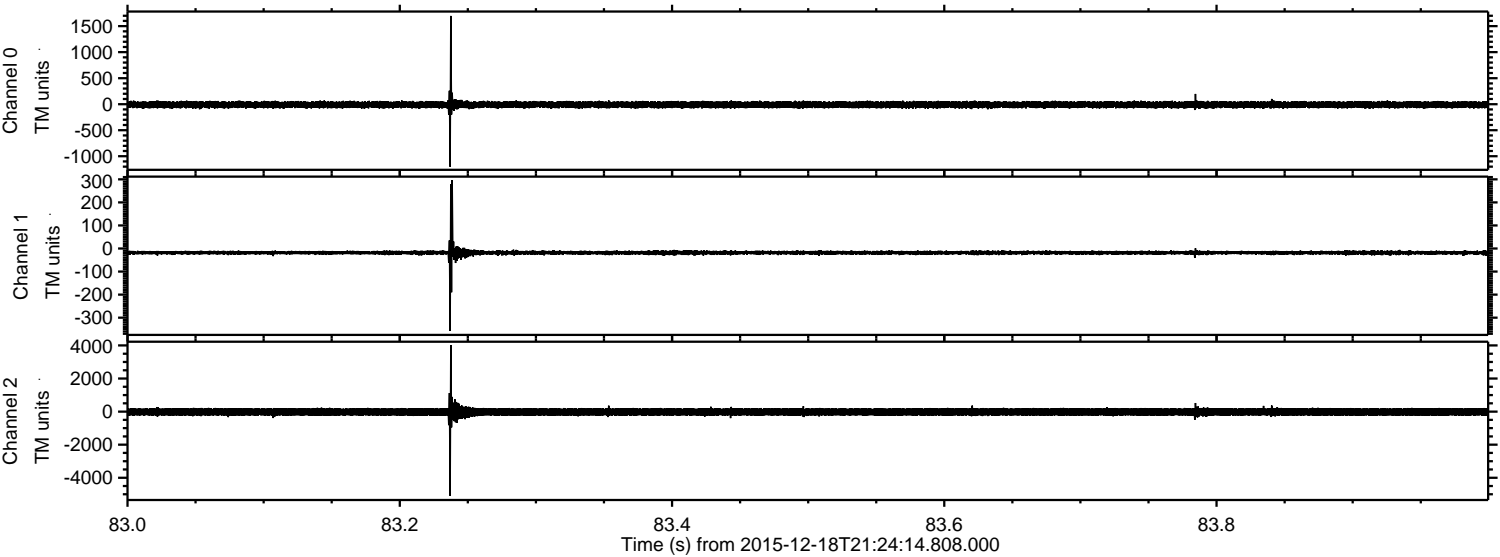


Processed Sat Jan 30 00:52:34 2016 by ELM ver.2012-10-06 from 001\_\_elm20151218\_212413\_\_dat00.bin





Processed Sat Jan 30 00:52:35 2016 by ELM ver.2012-10-06 from 001\_\_elm20151218\_212413\_\_dat00.bin





Processed Sat Jan 30 00:52:36 2016 by ELM ver.2012-10-06 from 001\_\_elm20151218\_212413\_\_dat00.bin

