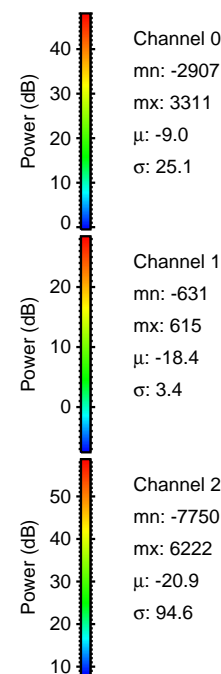
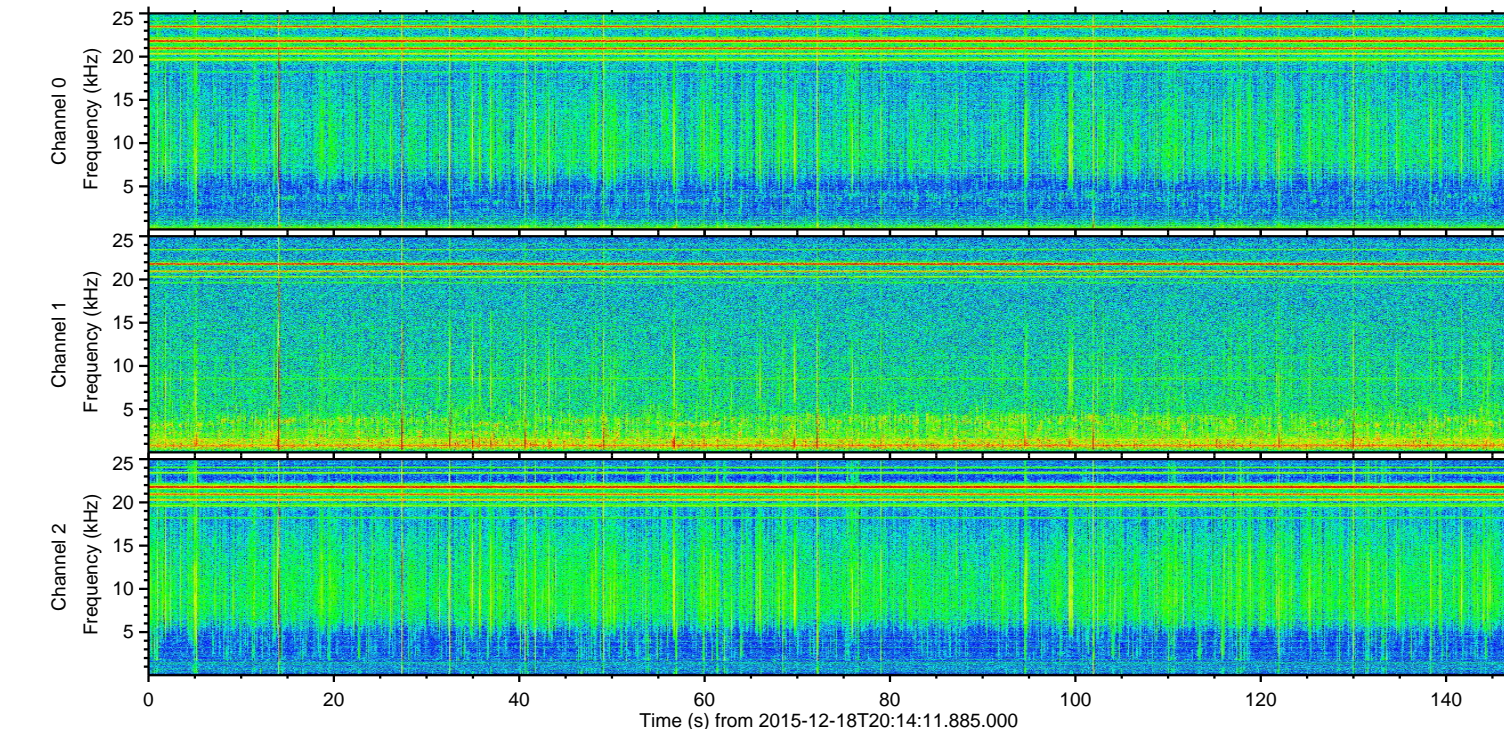
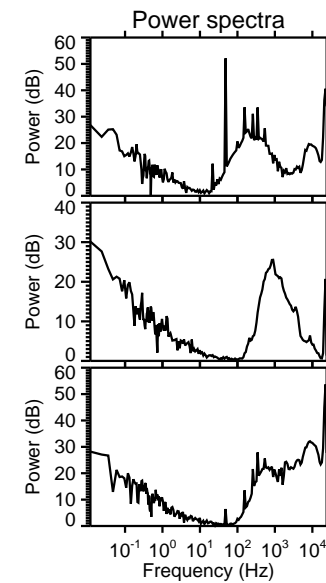
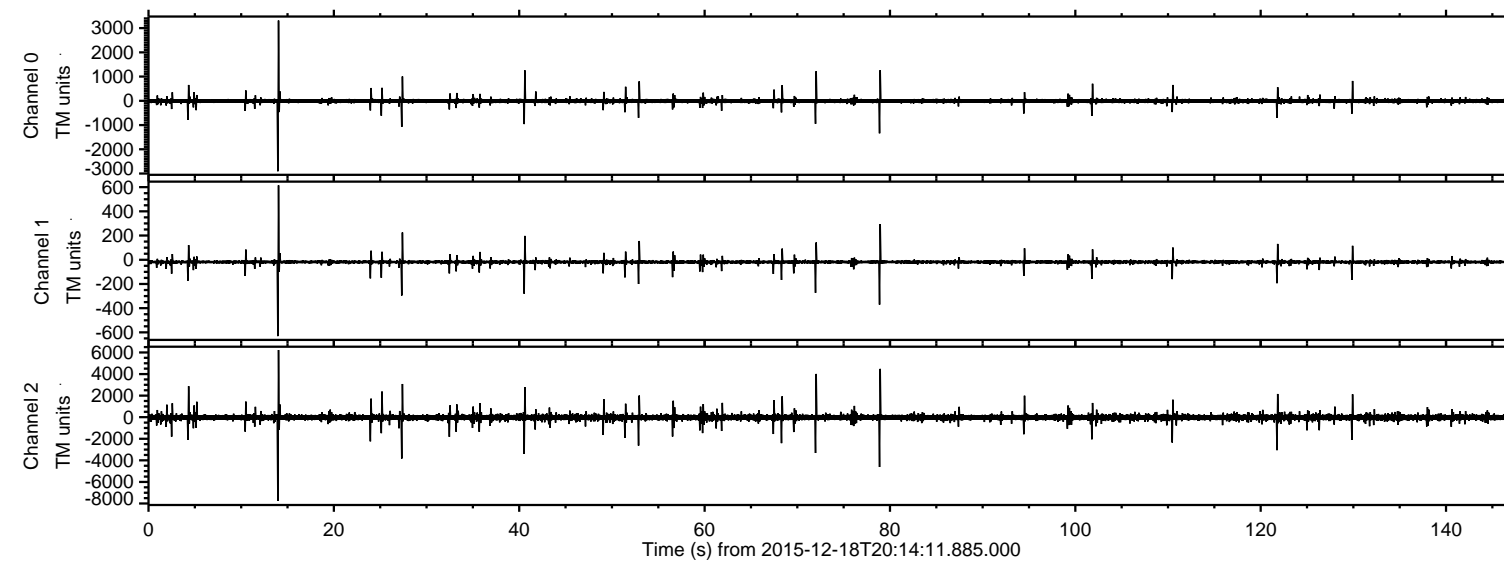
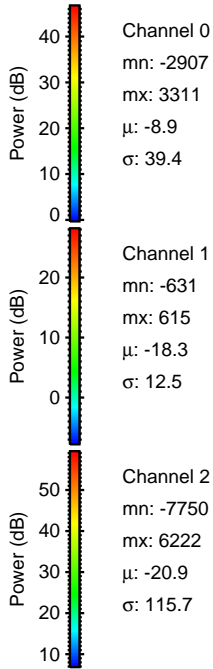
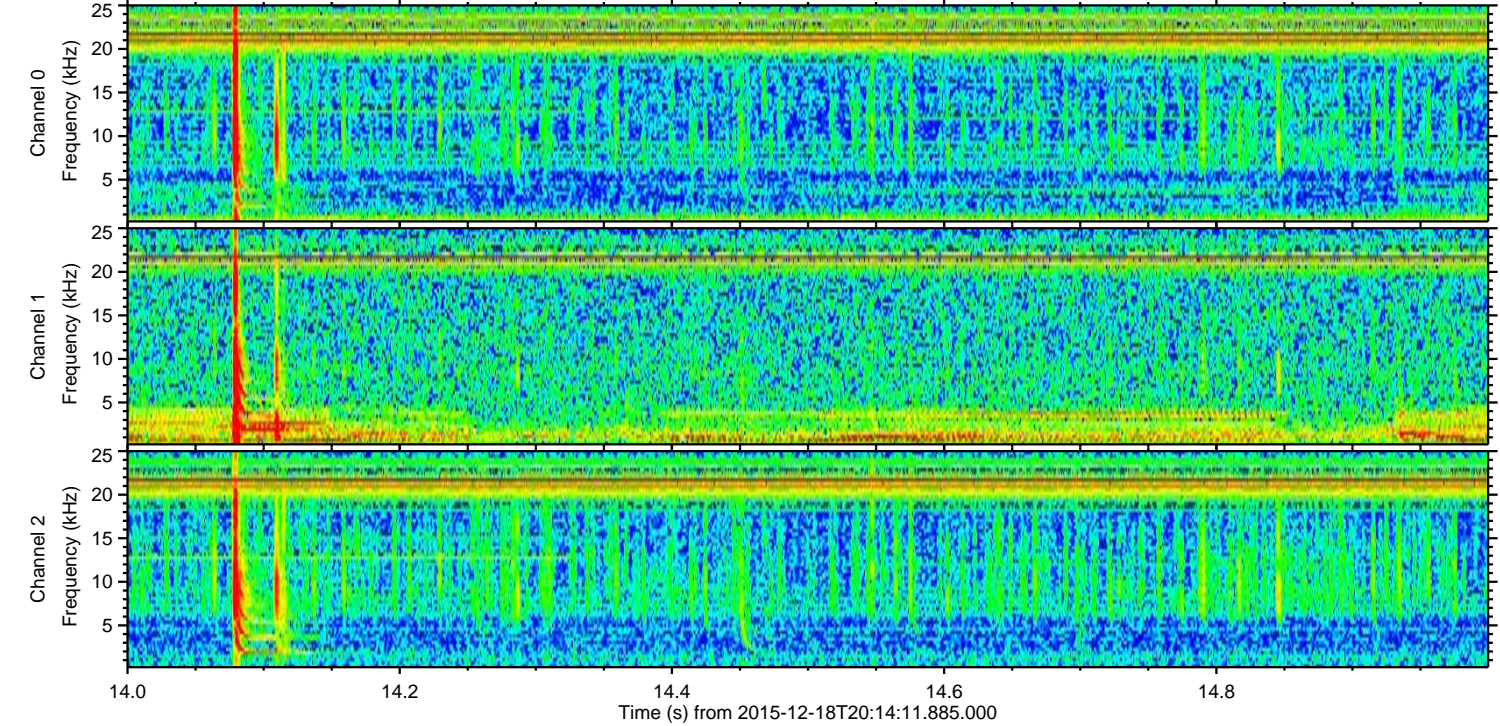
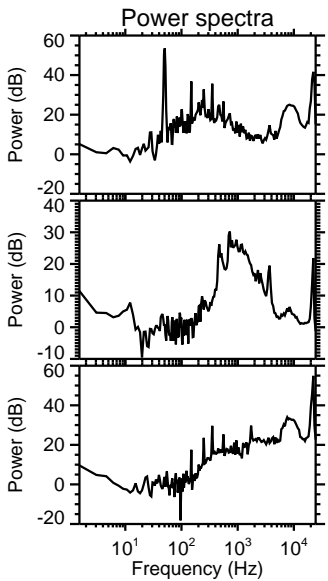
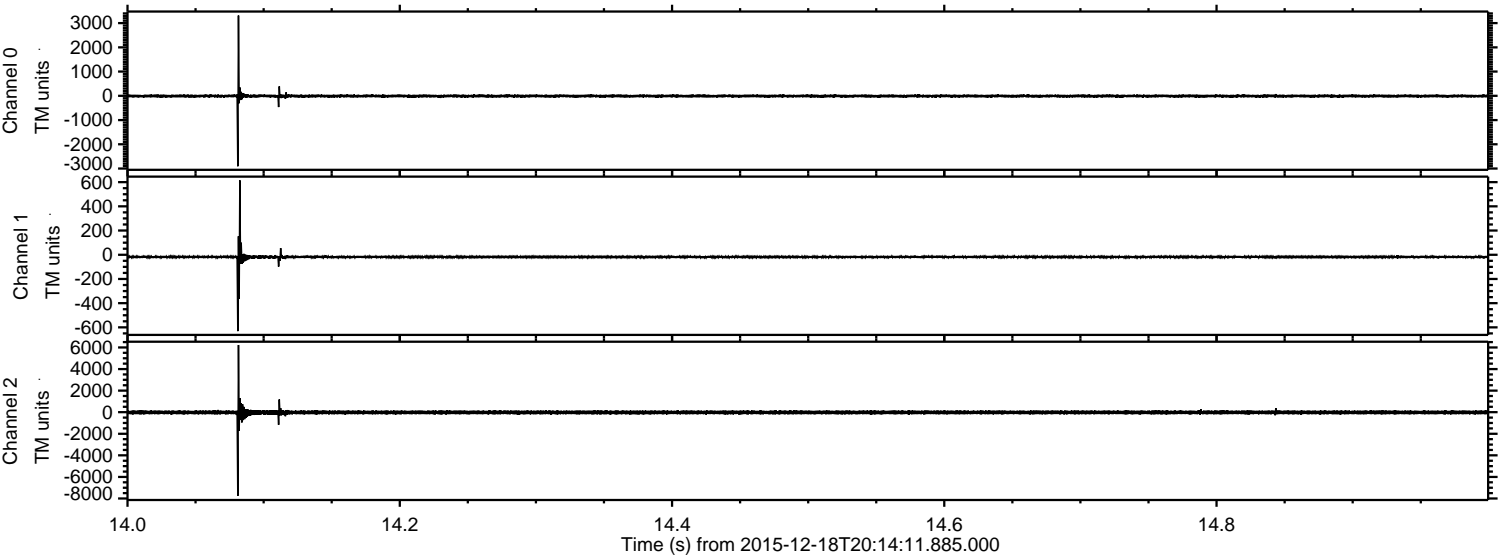


ELMAVAN 3D WAVEFORMS (Measured data sampled at 50 kHz) 51000 packets of 144 samples from 2015-12-18T20:14:11.885.000.

Processed Fri Jan 29 22:49:13 2016 by ELM ver.2012-10-06 from 001__elm20151218_201410__dat00.bin



Processed Fri Jan 29 22:49:26 2016 by ELM ver.2012-10-06 from 001__elm20151218_201410__dat00.bin

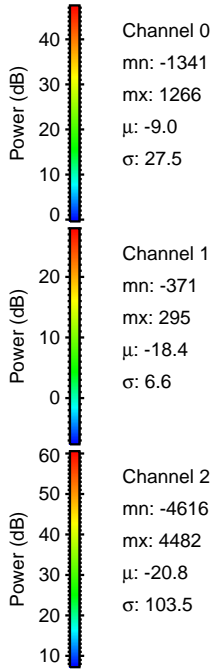
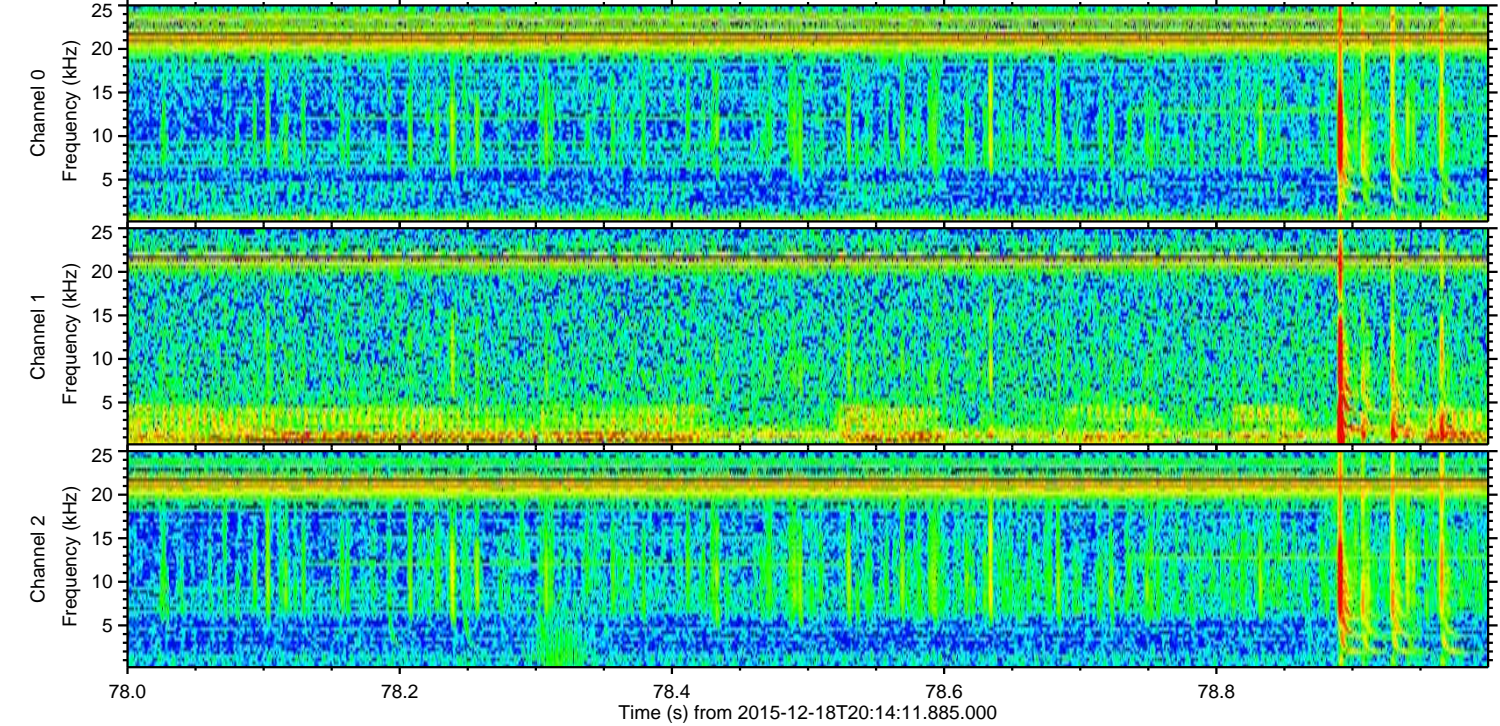
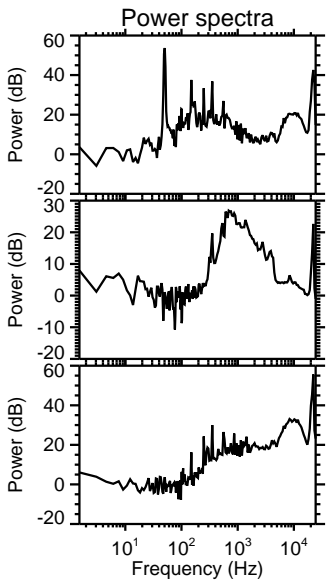
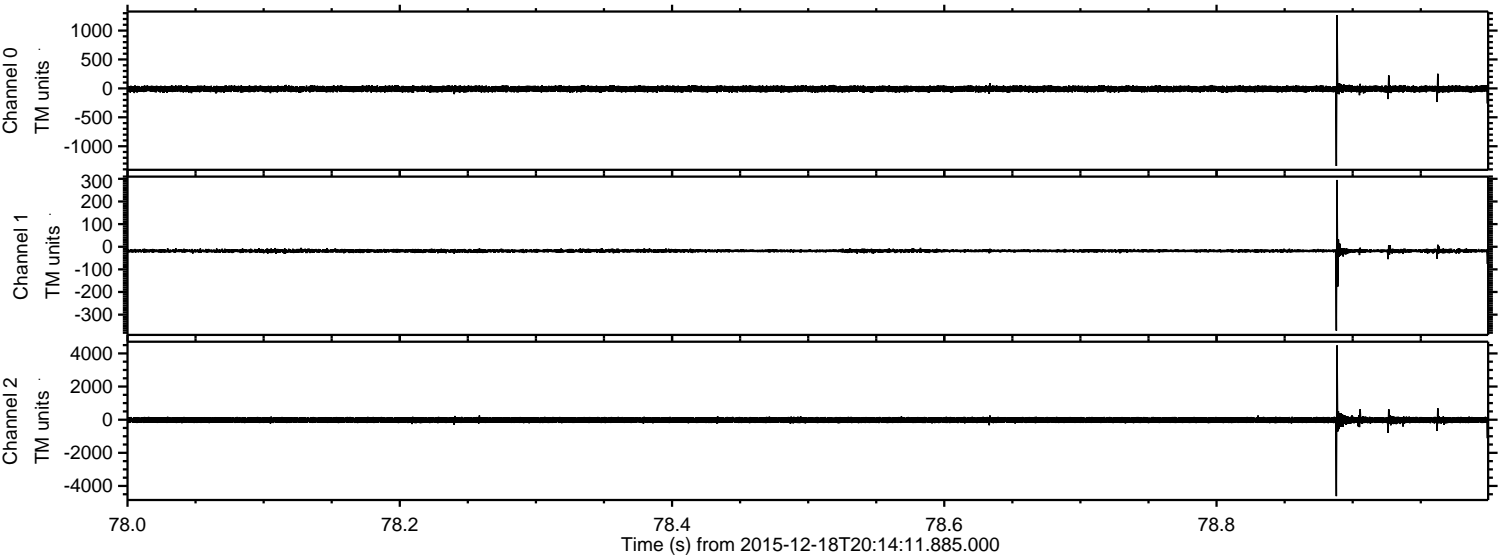


Channel 0
mn: -2907
mx: 3311
 μ : -8.9
 σ : 39.4

Channel 1
mn: -631
mx: 615
 μ : -18.3
 σ : 12.5

Channel 2
mn: -7750
mx: 6222
 μ : -20.9
 σ : 115.7

Processed Fri Jan 29 22:49:27 2016 by ELM ver.2012-10-06 from 001__elm20151218_201410__dat00.bin

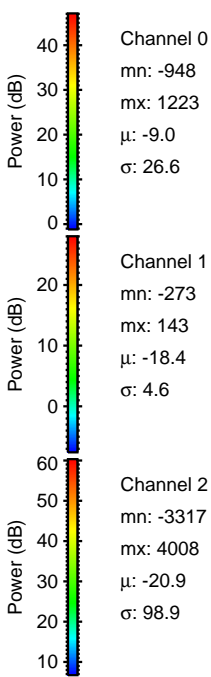
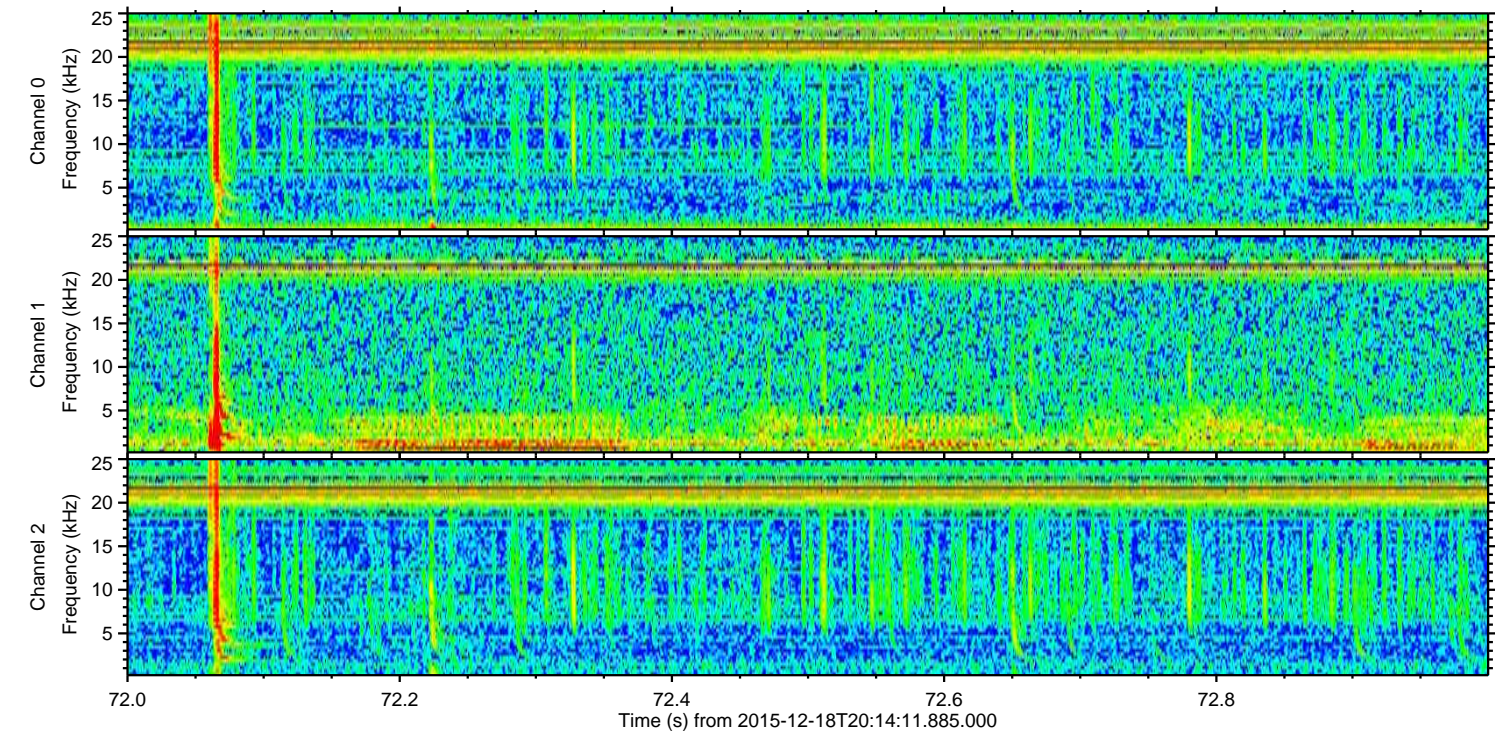
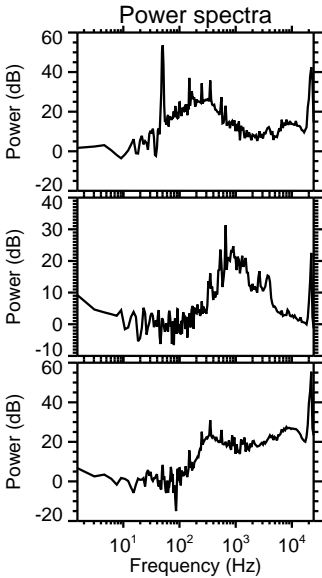
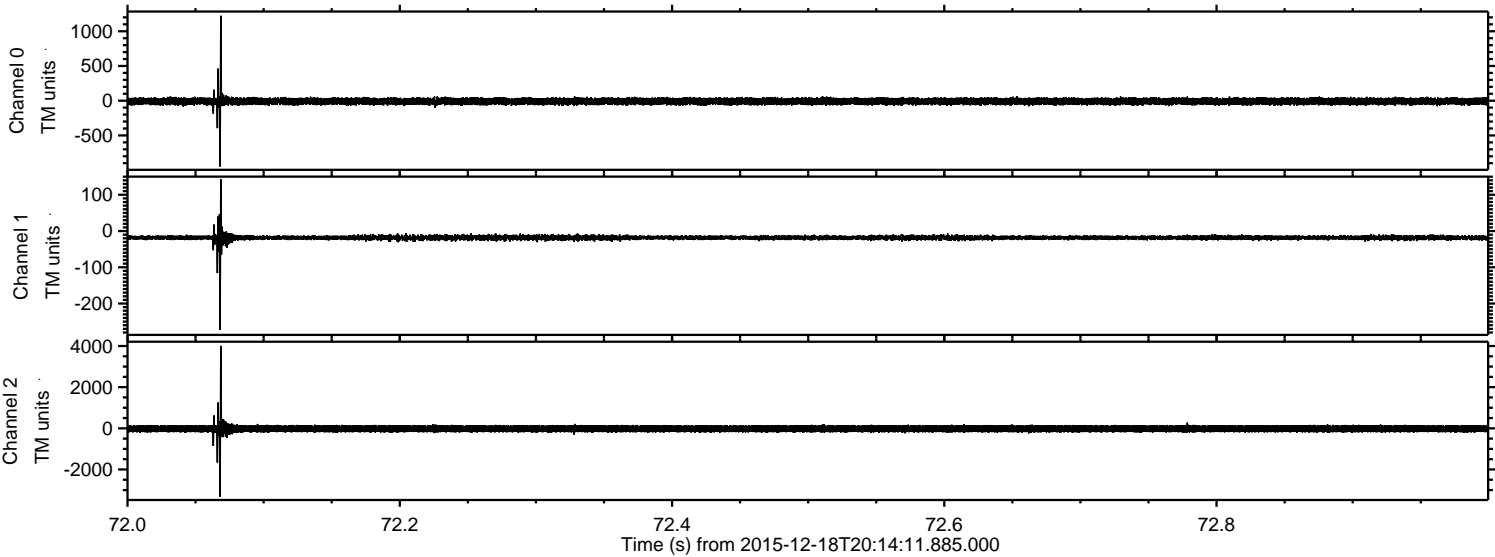


Channel 0
mn: -1341
mx: 1266
 μ : -9.0
 σ : 27.5

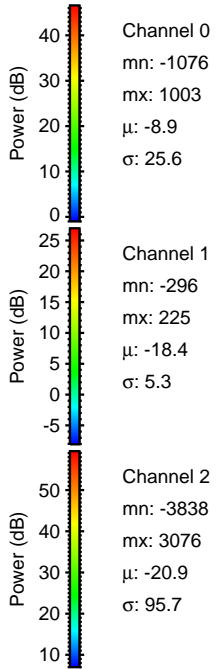
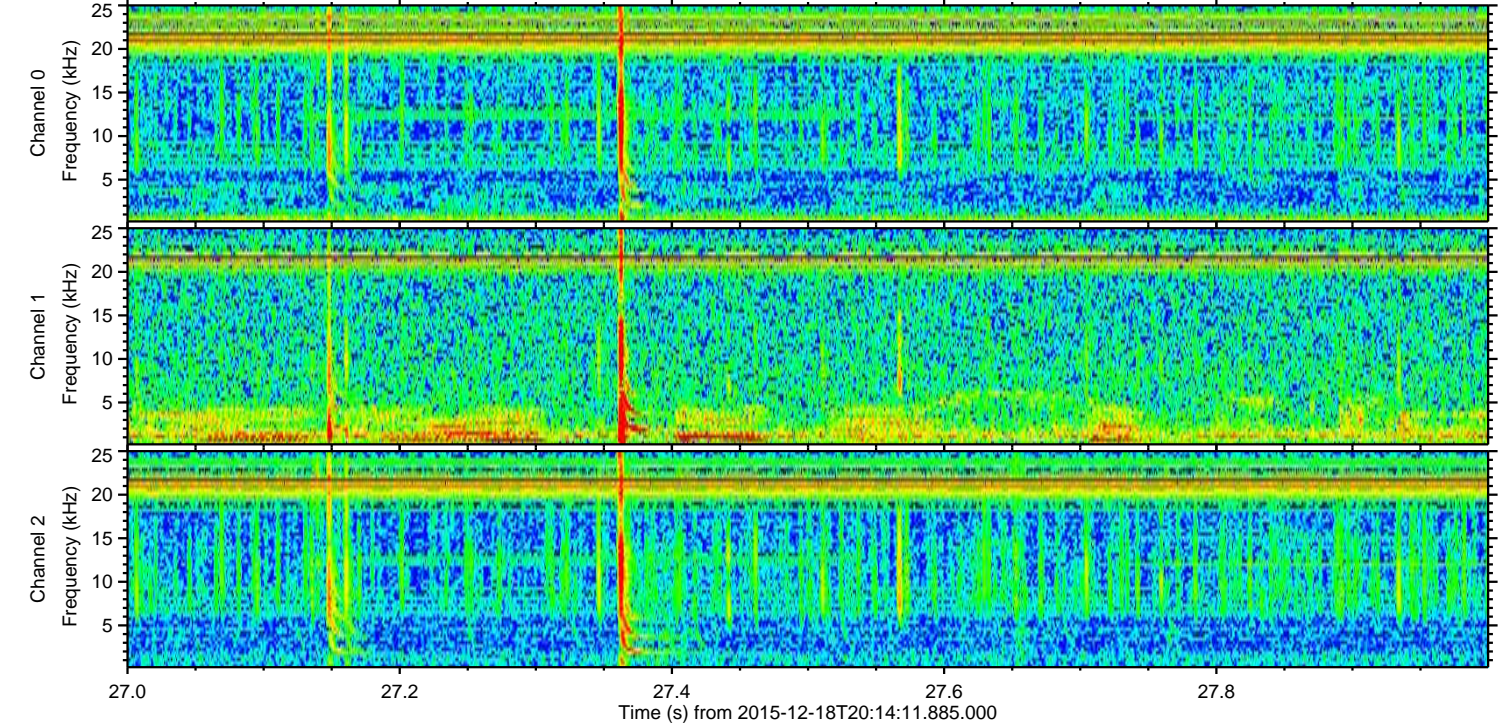
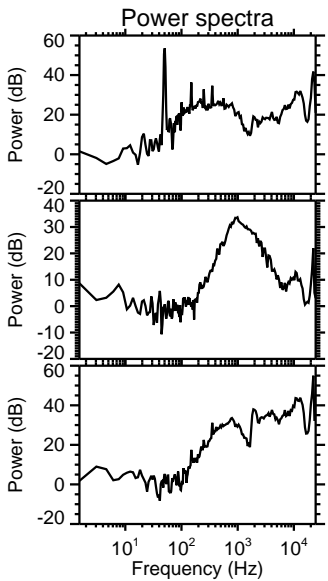
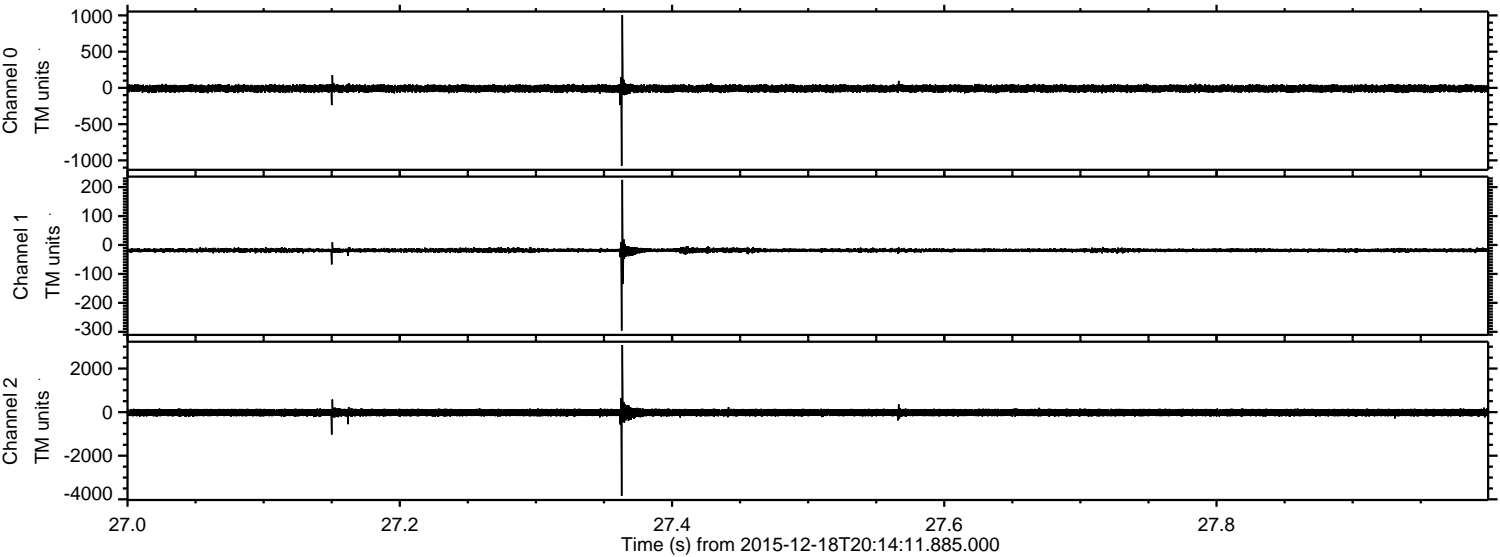
Channel 1
mn: -371
mx: 295
 μ : -18.4
 σ : 6.6

Channel 2
mn: -4616
mx: 4482
 μ : -20.8
 σ : 103.5

Processed Fri Jan 29 22:49:28 2016 by ELM ver.2012-10-06 from 001__elm20151218_201410__dat00.bin



Processed Fri Jan 29 22:49:29 2016 by ELM ver.2012-10-06 from 001__elm20151218_201410__dat00.bin

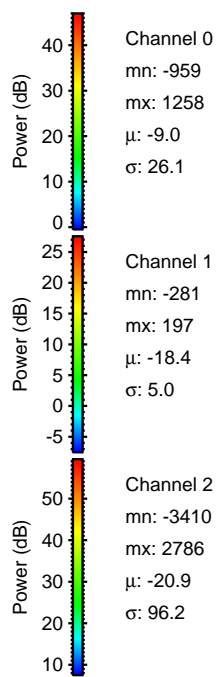
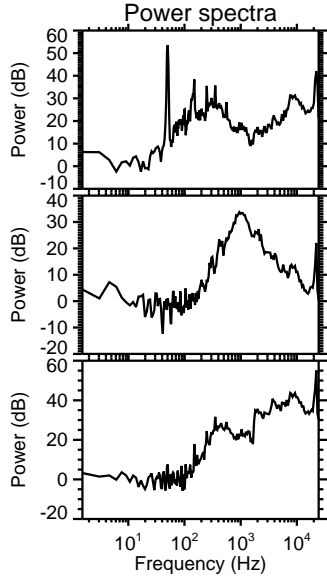
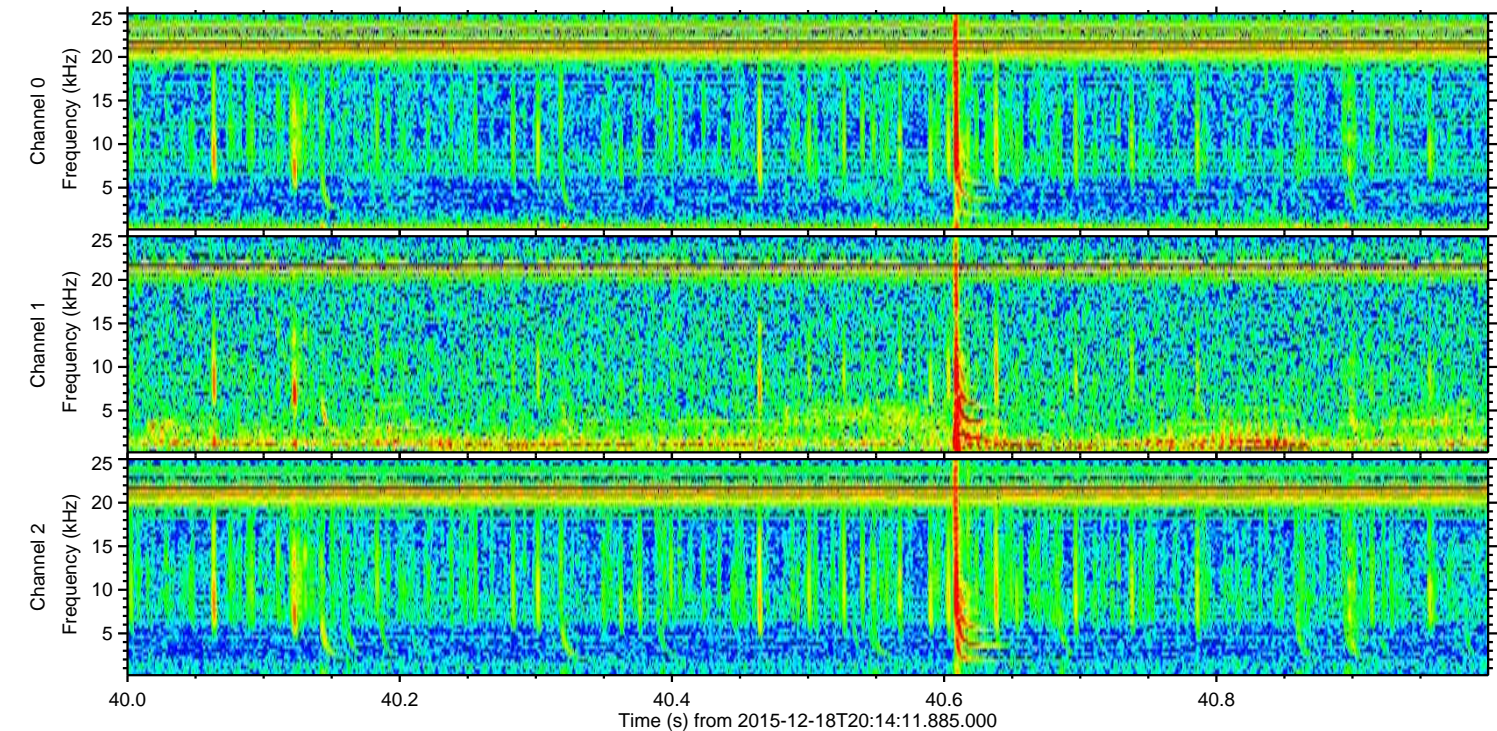
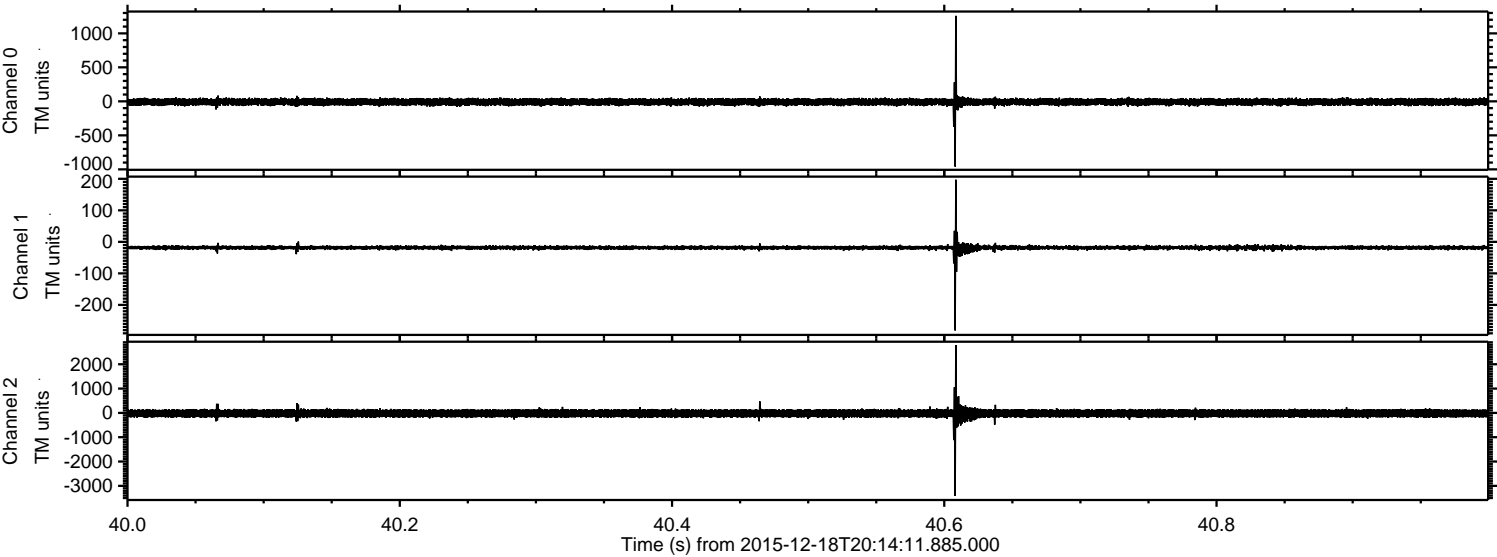


Channel 0
mn: -1076
mx: 1003
 μ : -8.9
 σ : 25.6

Channel 1
mn: -296
mx: 225
 μ : -18.4
 σ : 5.3

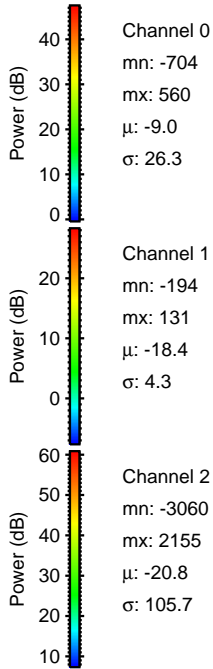
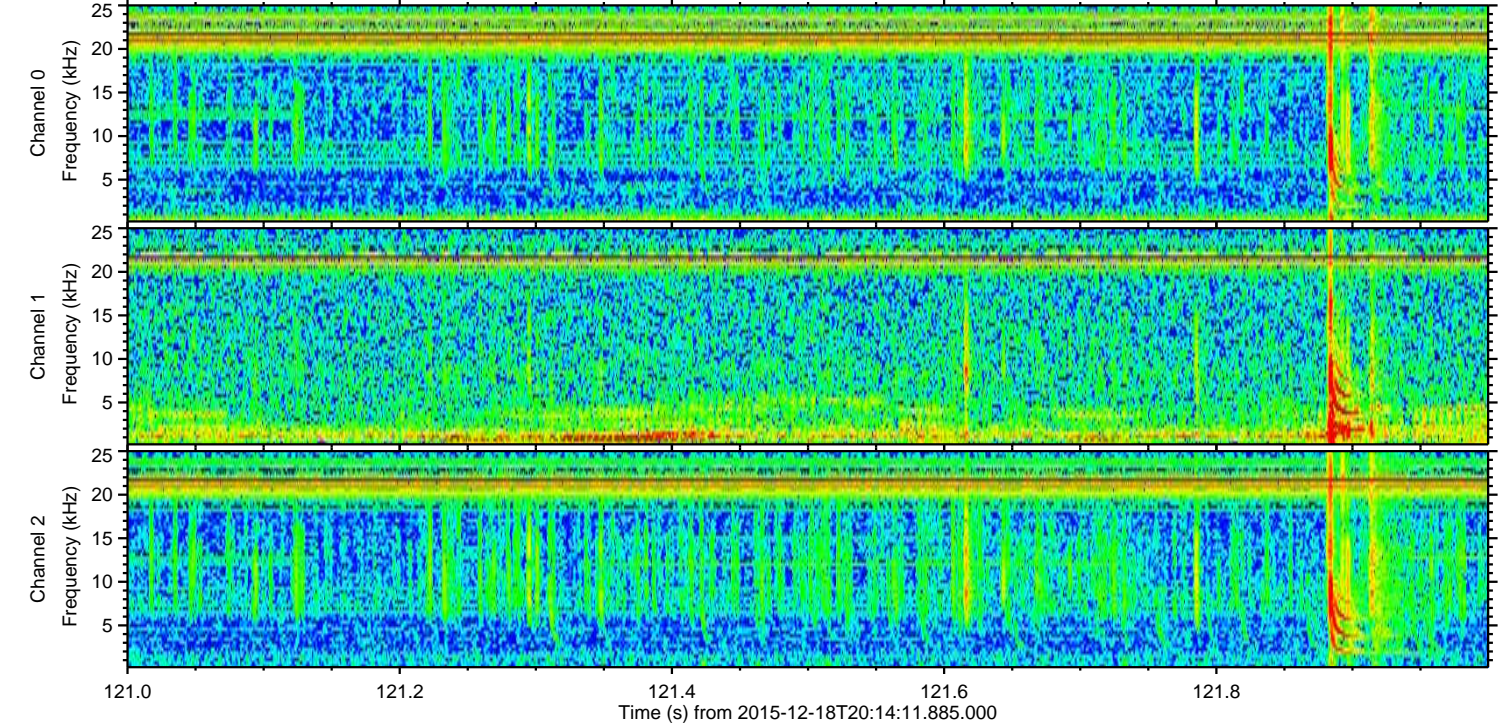
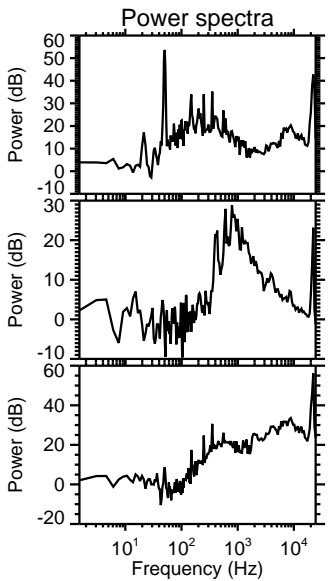
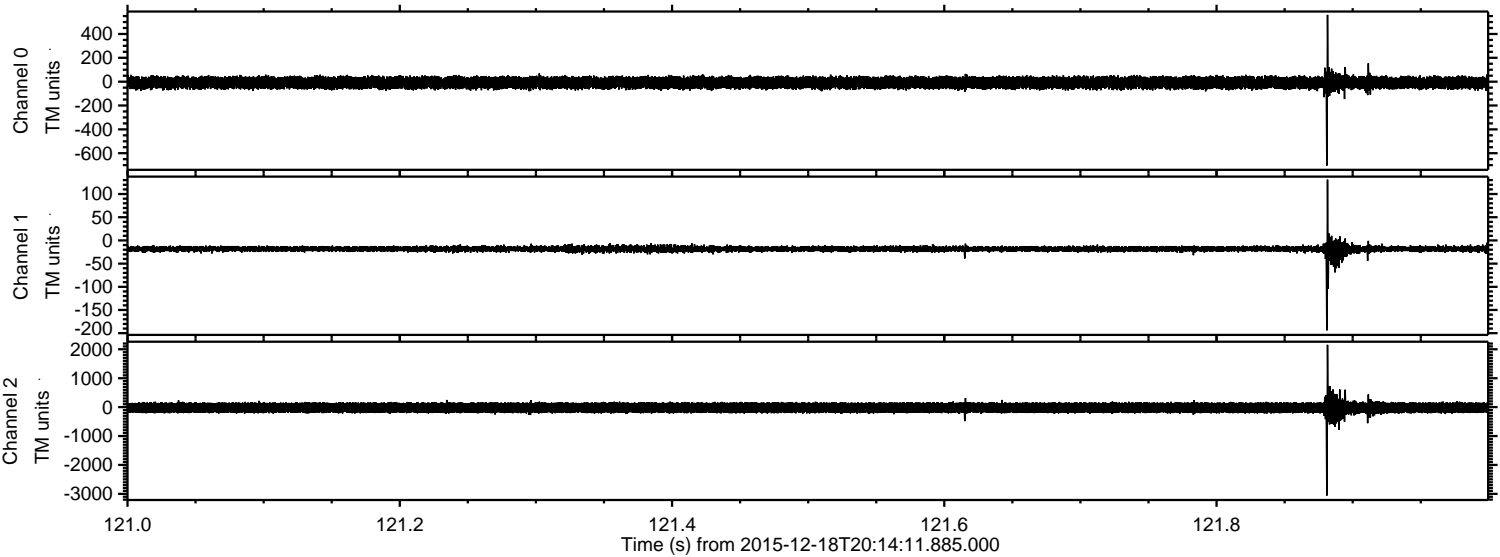
Channel 2
mn: -3838
mx: 3076
 μ : -20.9
 σ : 95.7

Processed Fri Jan 29 22:49:30 2016 by ELM ver.2012-10-06 from 001__elm20151218_201410__dat00.bin



ELMAVAN 3D WAVEFORMS (Measured data sampled at 50 kHz) 51000 packets of 144 samples from 2015-12-18T20:14:11.885.000. Part 122/147

Processed Fri Jan 29 22:49:31 2016 by ELM ver.2012-10-06 from 001__elm20151218_201410__dat00.bin

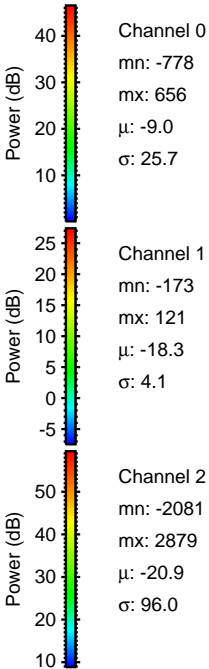
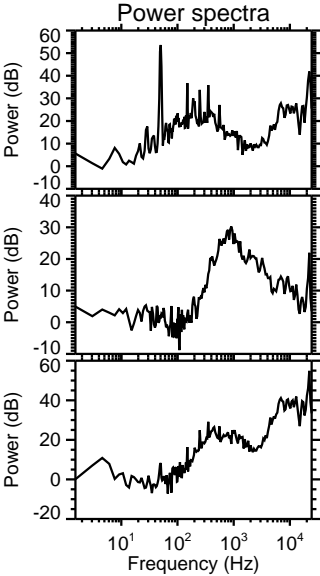
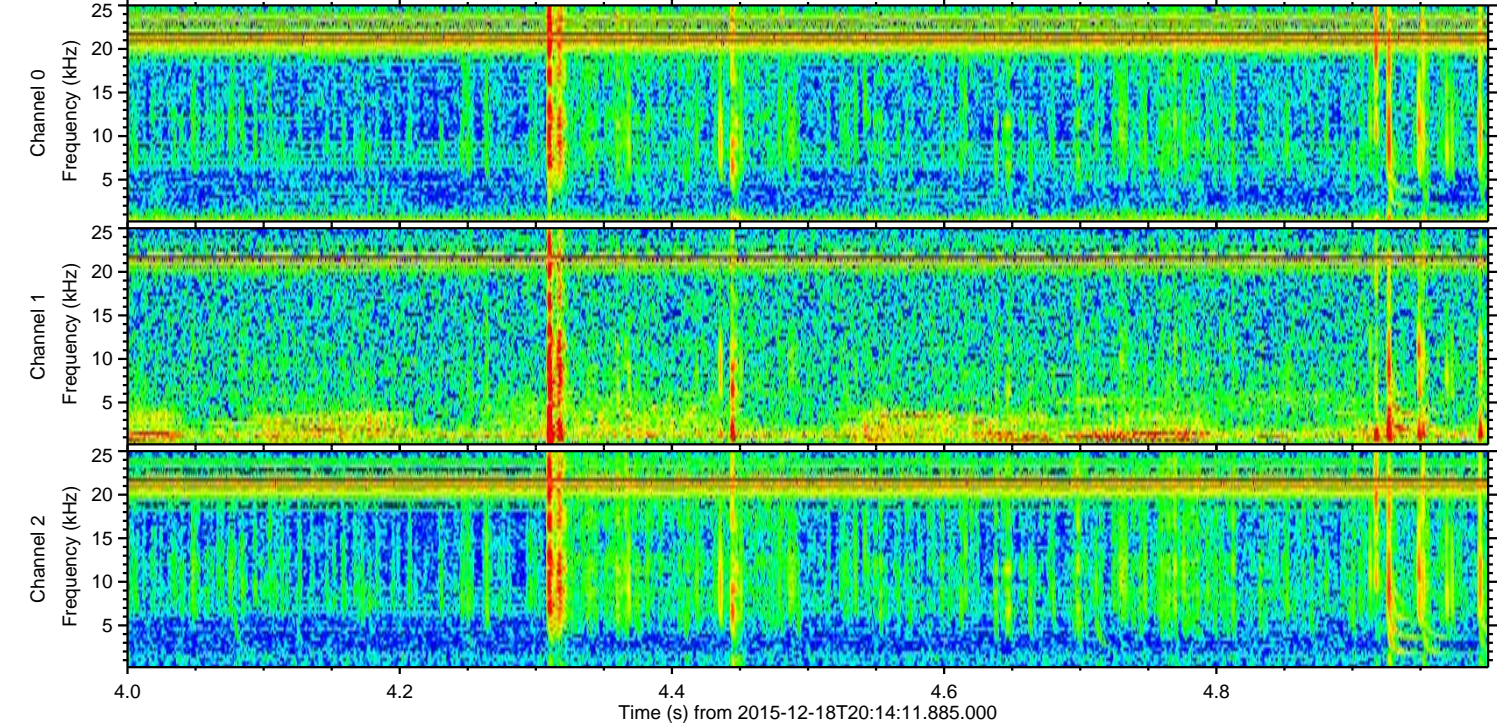
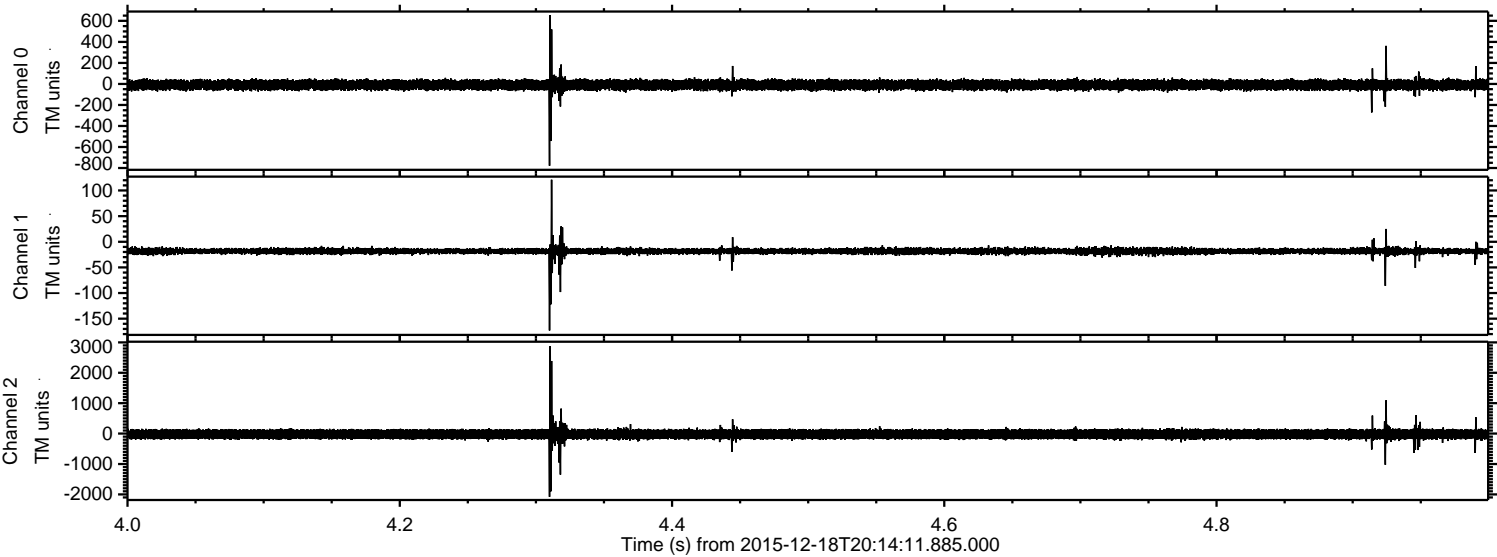


Channel 0
mn: -704
mx: 560
 μ : -9.0
 σ : 26.3

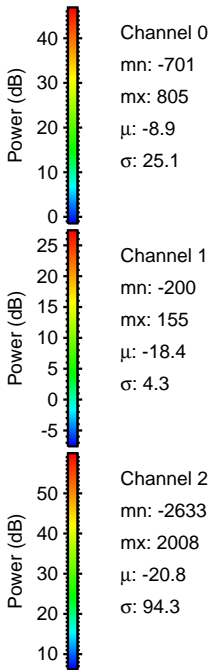
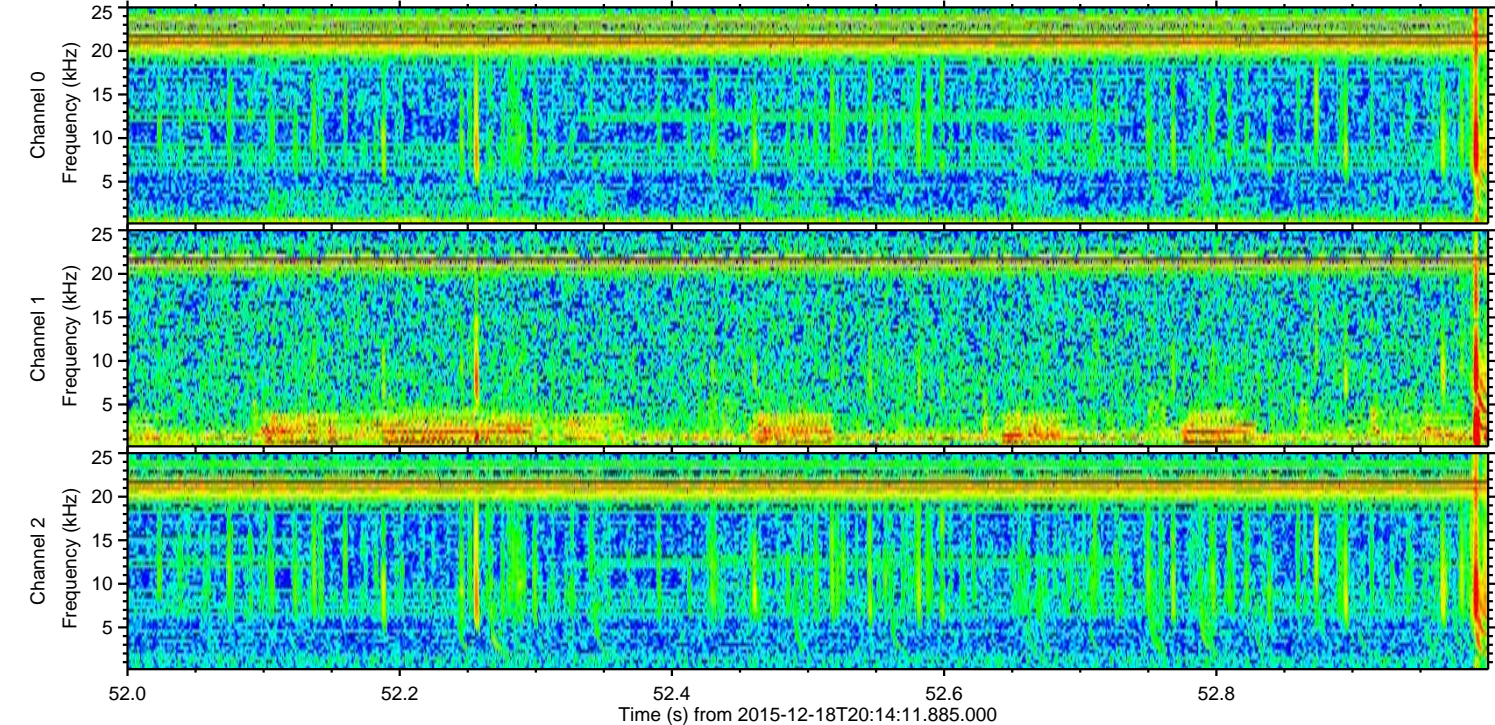
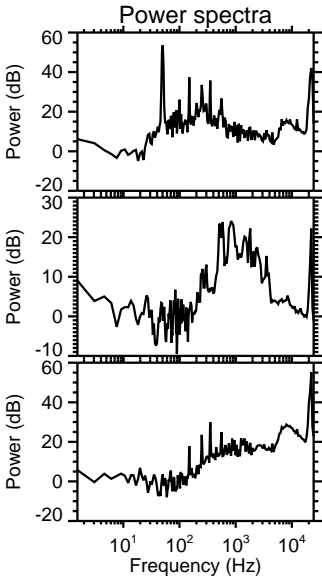
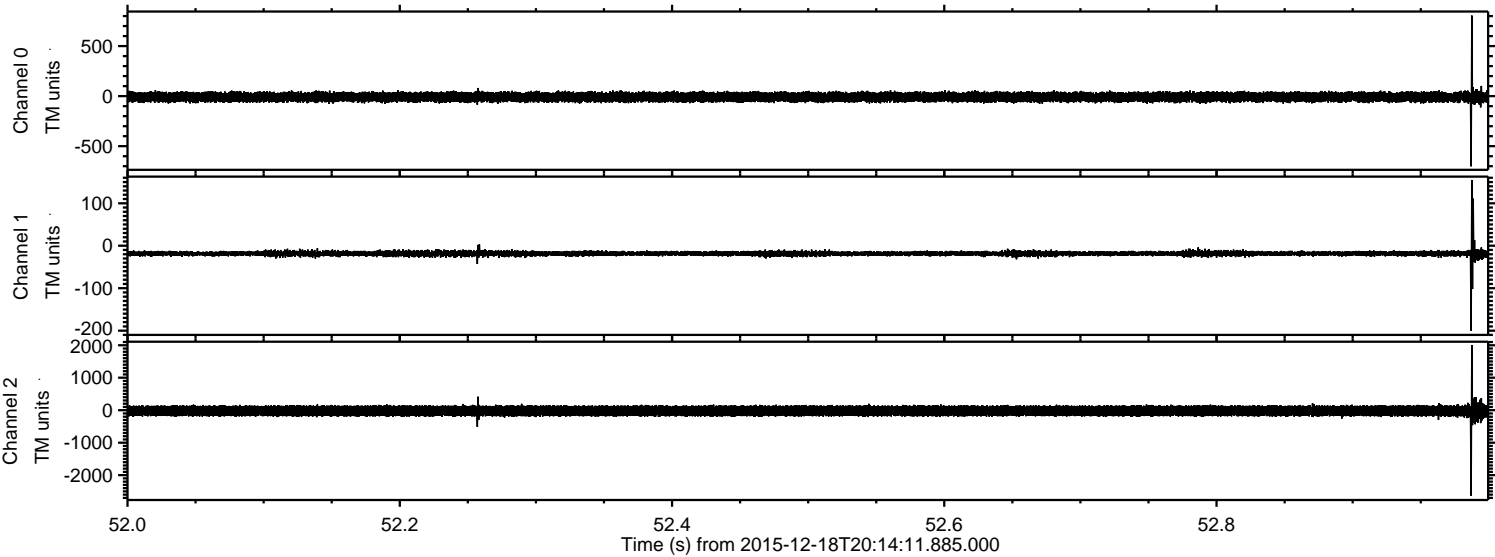
Channel 1
mn: -194
mx: 131
 μ : -18.4
 σ : 4.3

Channel 2
mn: -3060
mx: 2155
 μ : -20.8
 σ : 105.7

Processed Fri Jan 29 22:49:32 2016 by ELM ver.2012-10-06 from 001__elm20151218_201410__dat00.bin



Processed Fri Jan 29 22:49:33 2016 by ELM ver.2012-10-06 from 001__elm20151218_201410__dat00.bin



Processed Fri Jan 29 22:49:34 2016 by ELM ver.2012-10-06 from 001__elm20151218_201410__dat00.bin

