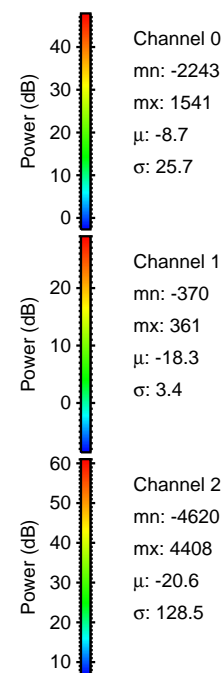
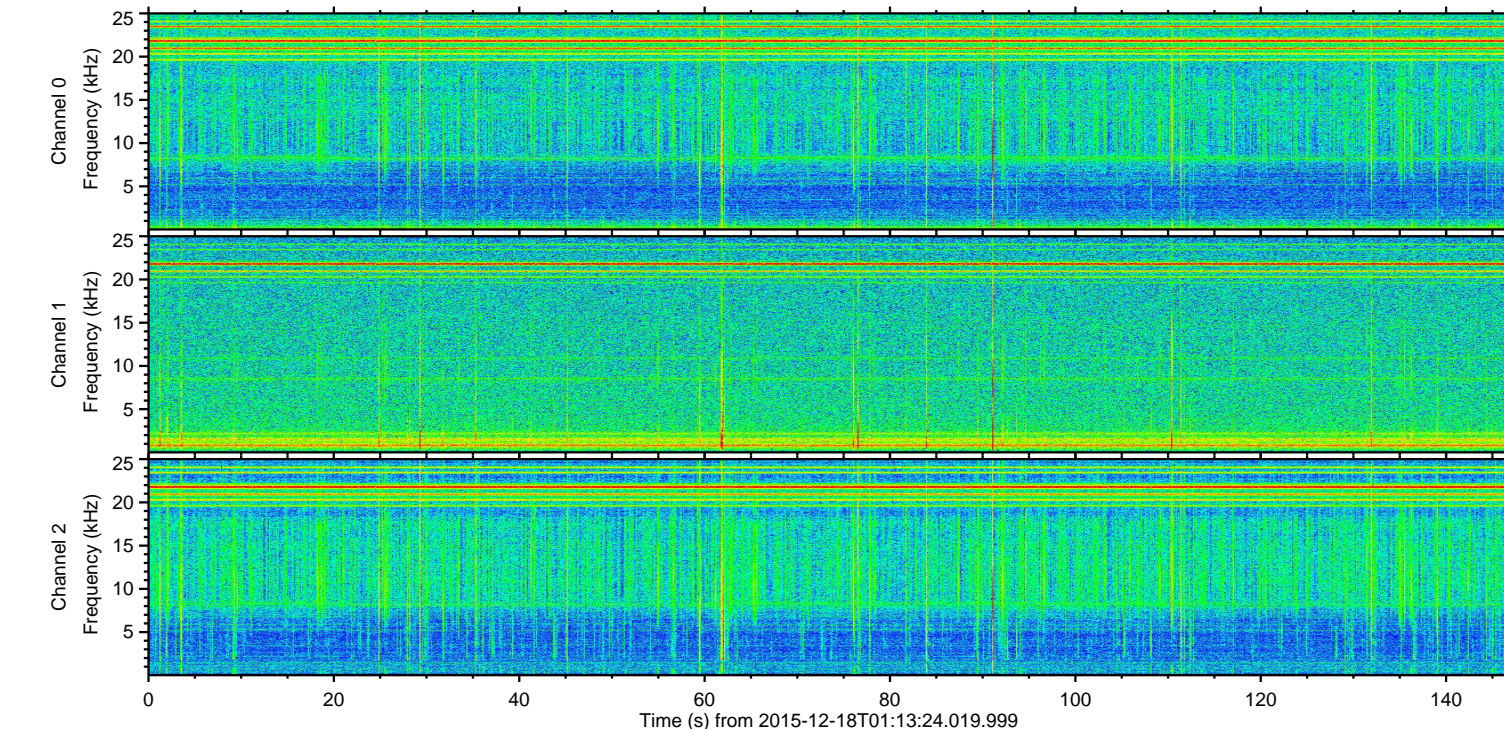
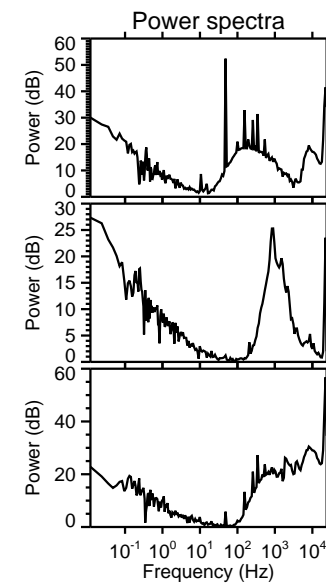
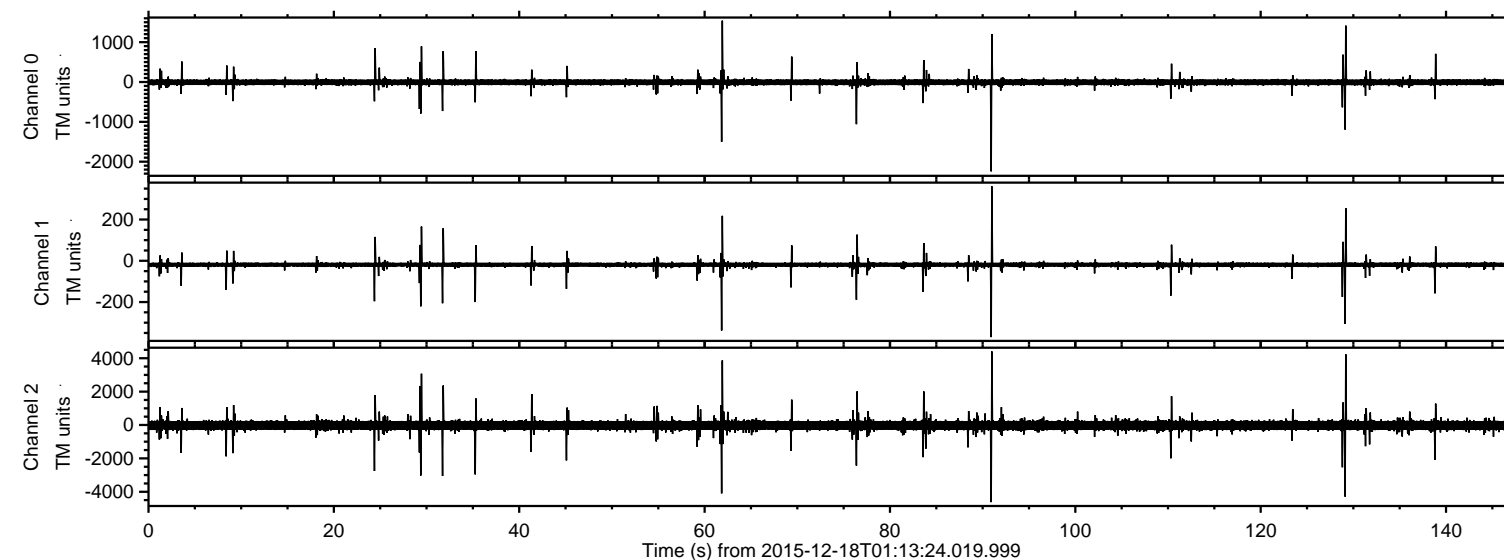
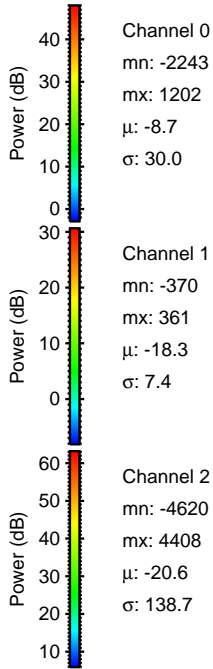
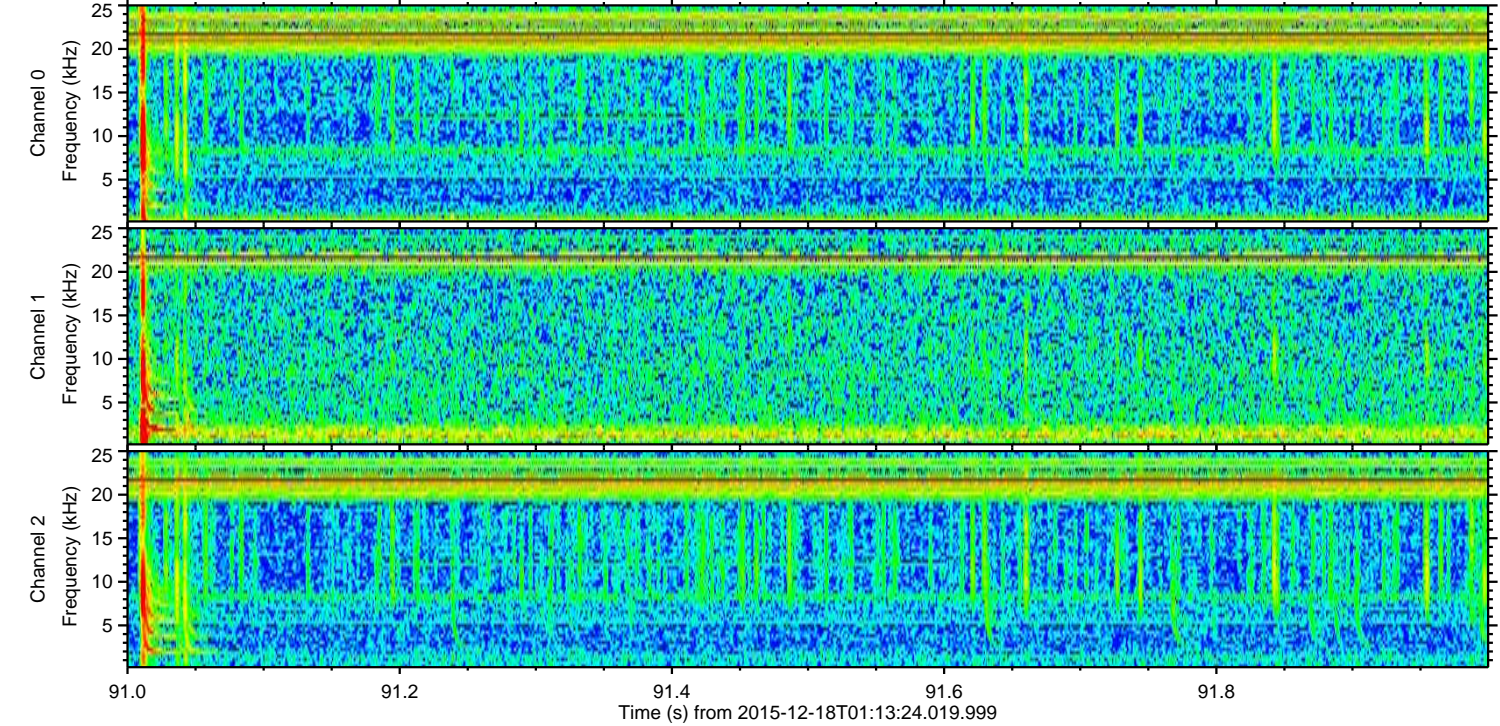
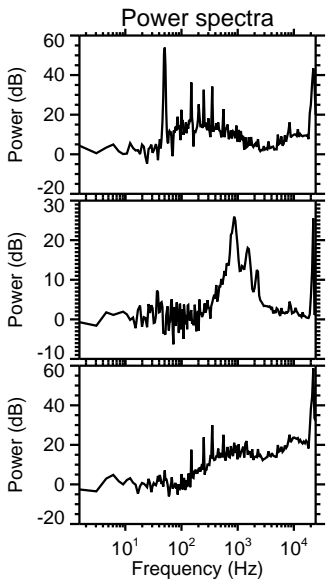
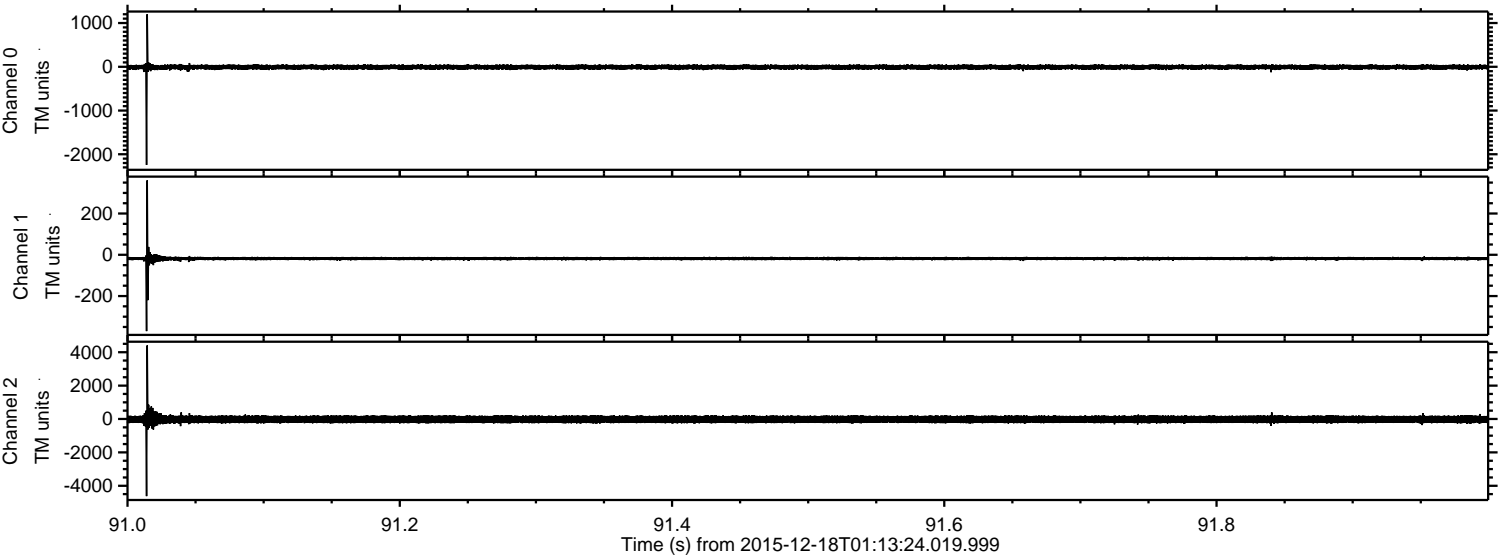


ELMAVAN 3D WAVEFORMS (Measured data sampled at 50 kHz) 51000 packets of 144 samples from 2015-12-18T01:13:24.019.999.

Processed Fri Jan 29 10:25:40 2016 by ELM ver.2012-10-06 from 001__elm20151218_011323__dat00.bin

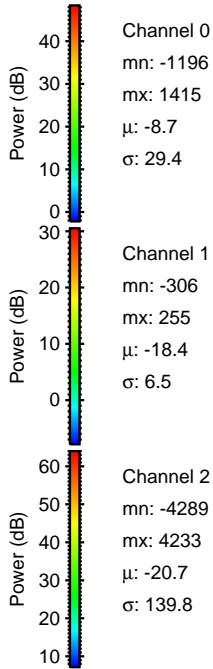
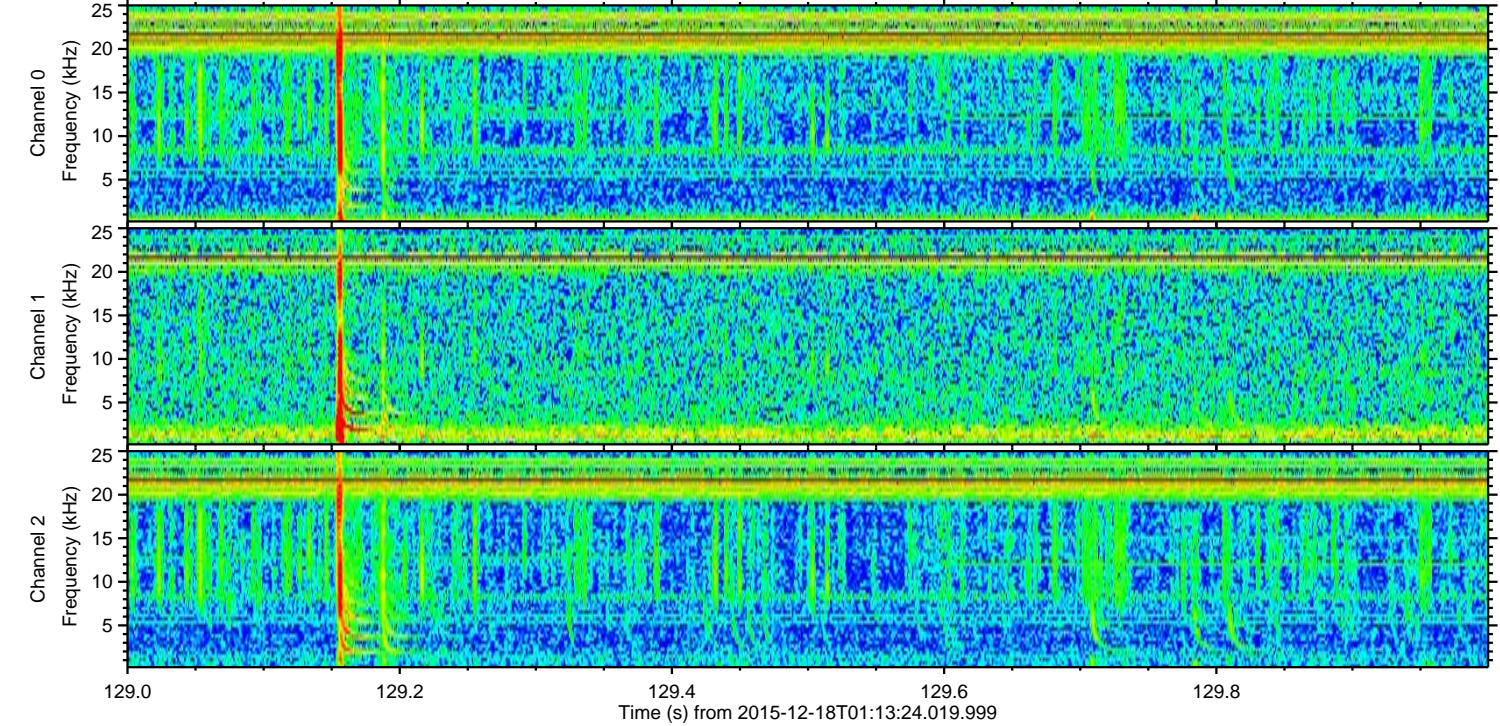
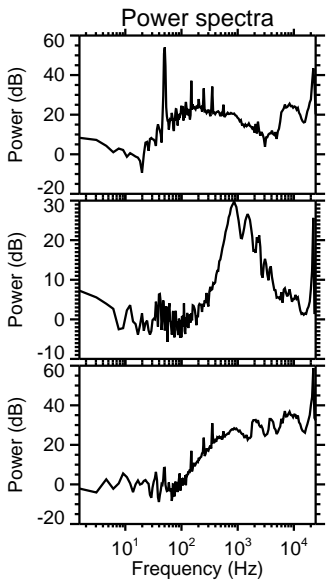
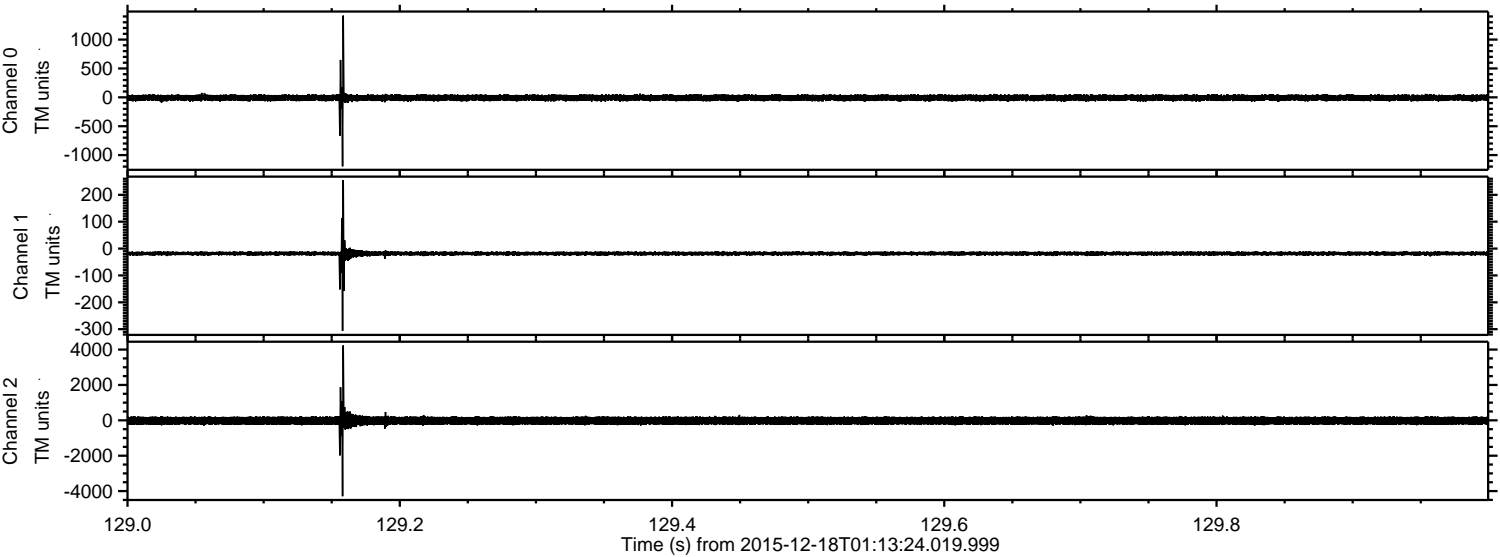


Processed Fri Jan 29 10:25:52 2016 by ELM ver.2012-10-06 from 001__elm20151218_011323__dat00.bin



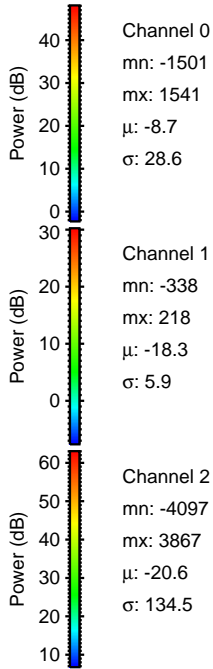
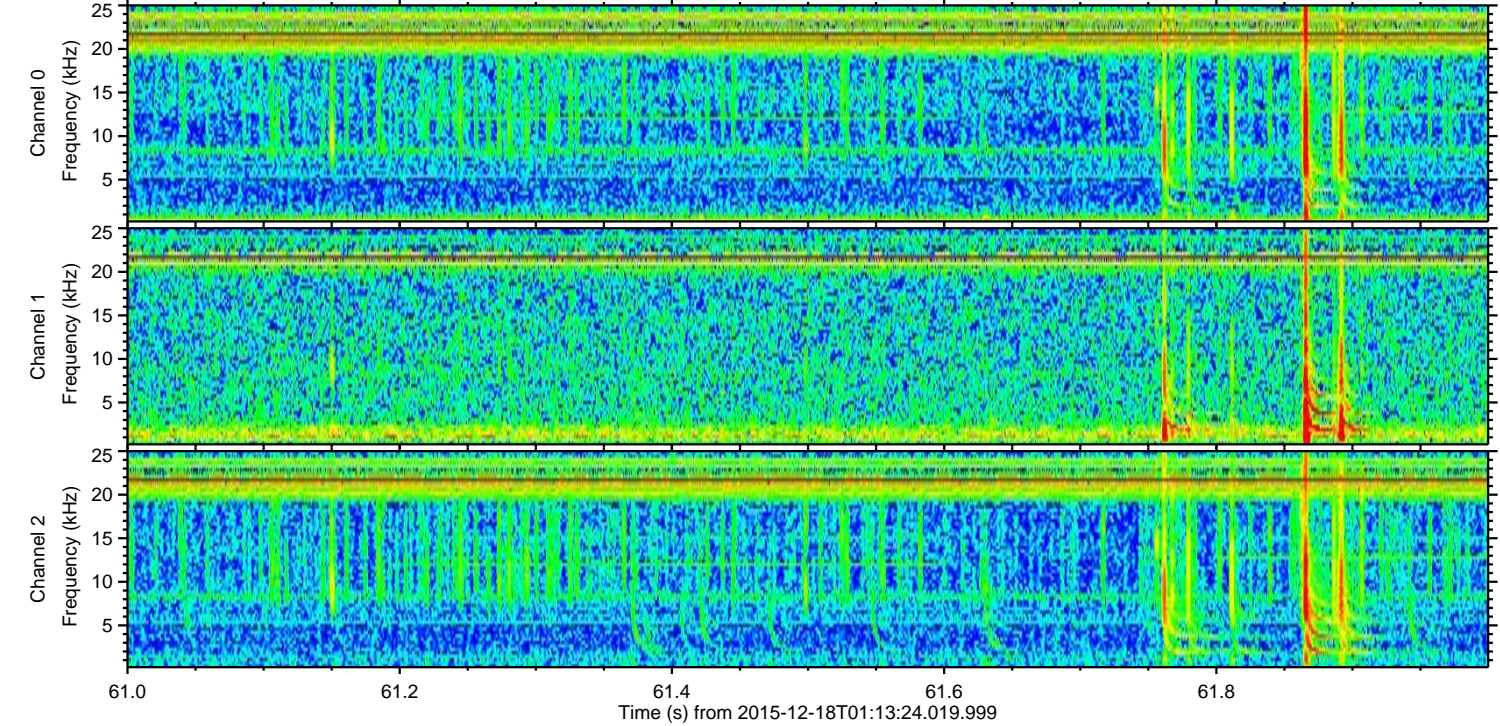
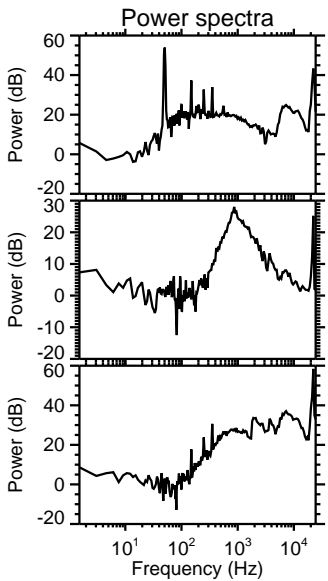
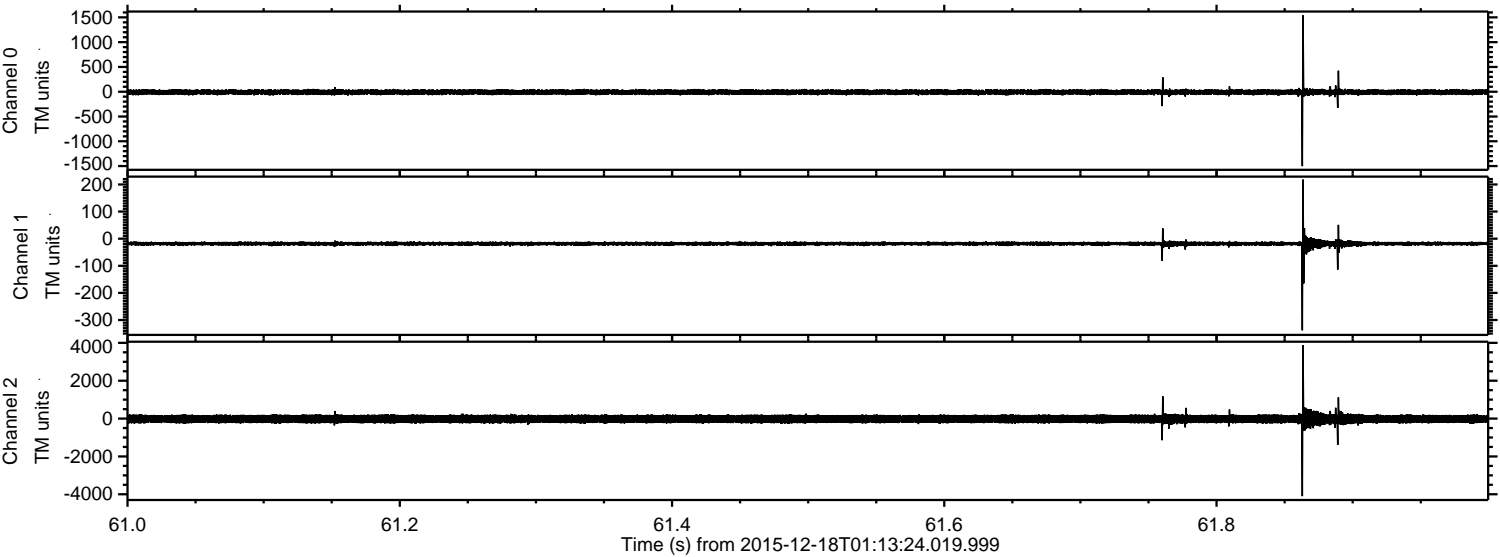
ELMAVAN 3D WAVEFORMS (Measured data sampled at 50 kHz) 51000 packets of 144 samples from 2015-12-18T01:13:24.019.999. Part 130/147

Processed Fri Jan 29 10:25:53 2016 by ELM ver.2012-10-06 from 001__elm20151218_011323__dat00.bin

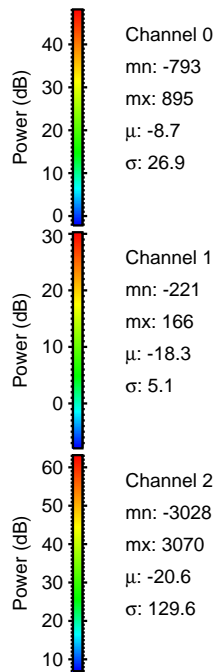
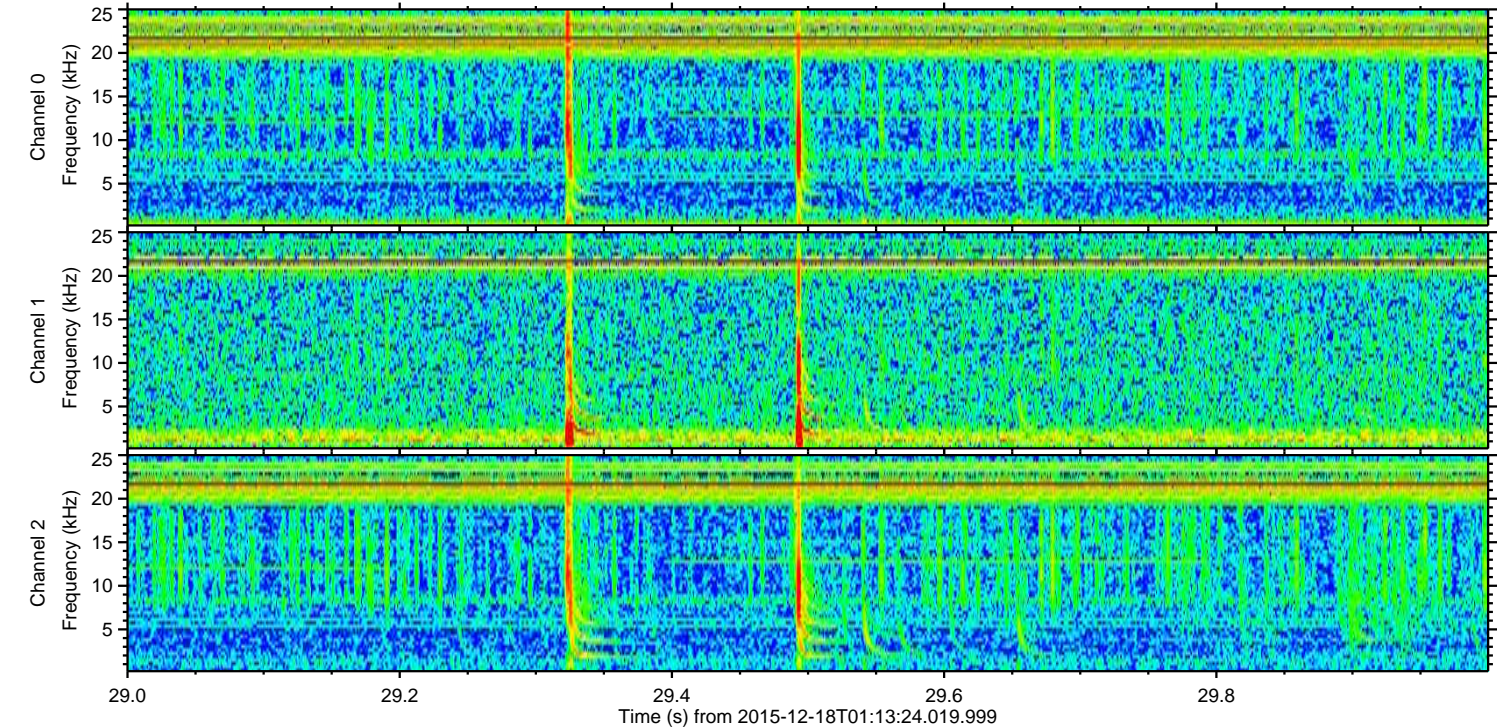
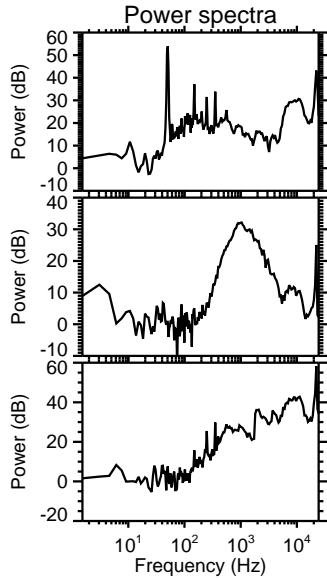
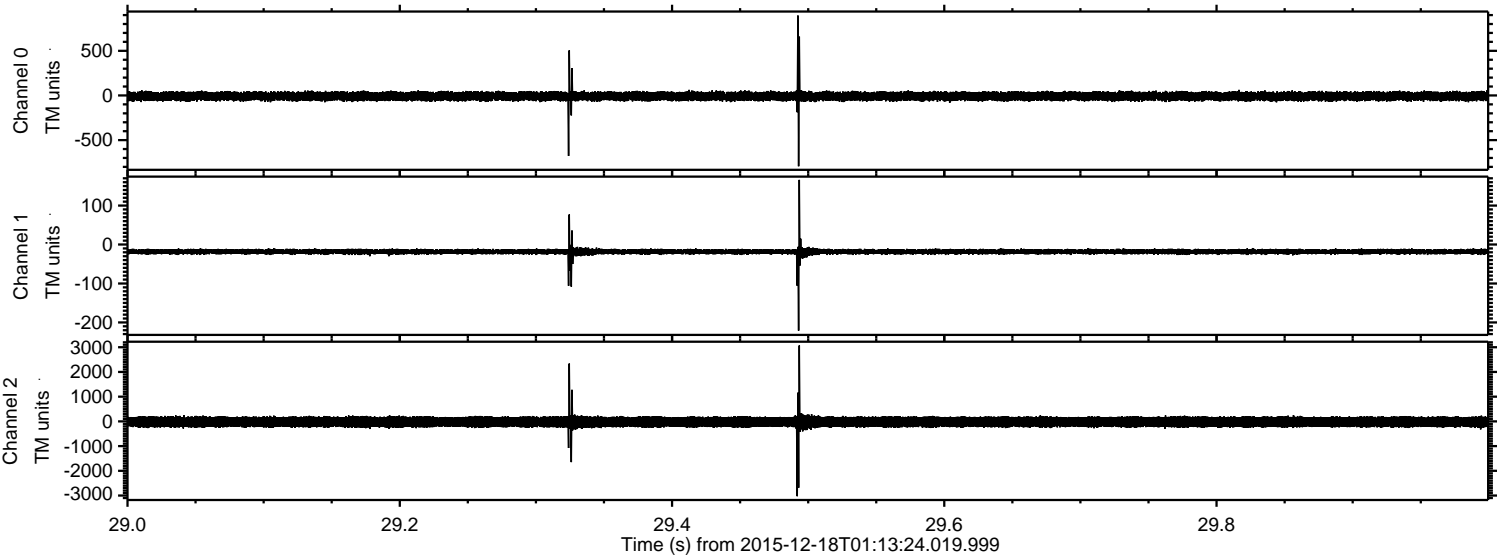


ELMAVAN 3D WAVEFORMS (Measured data sampled at 50 kHz) 51000 packets of 144 samples from 2015-12-18T01:13:24.019.999. Part 62/147

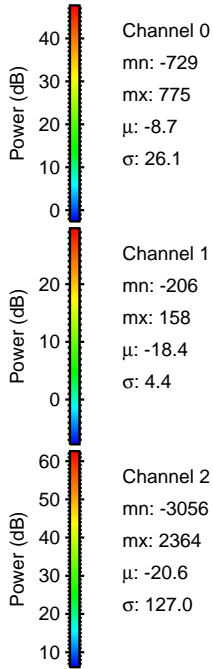
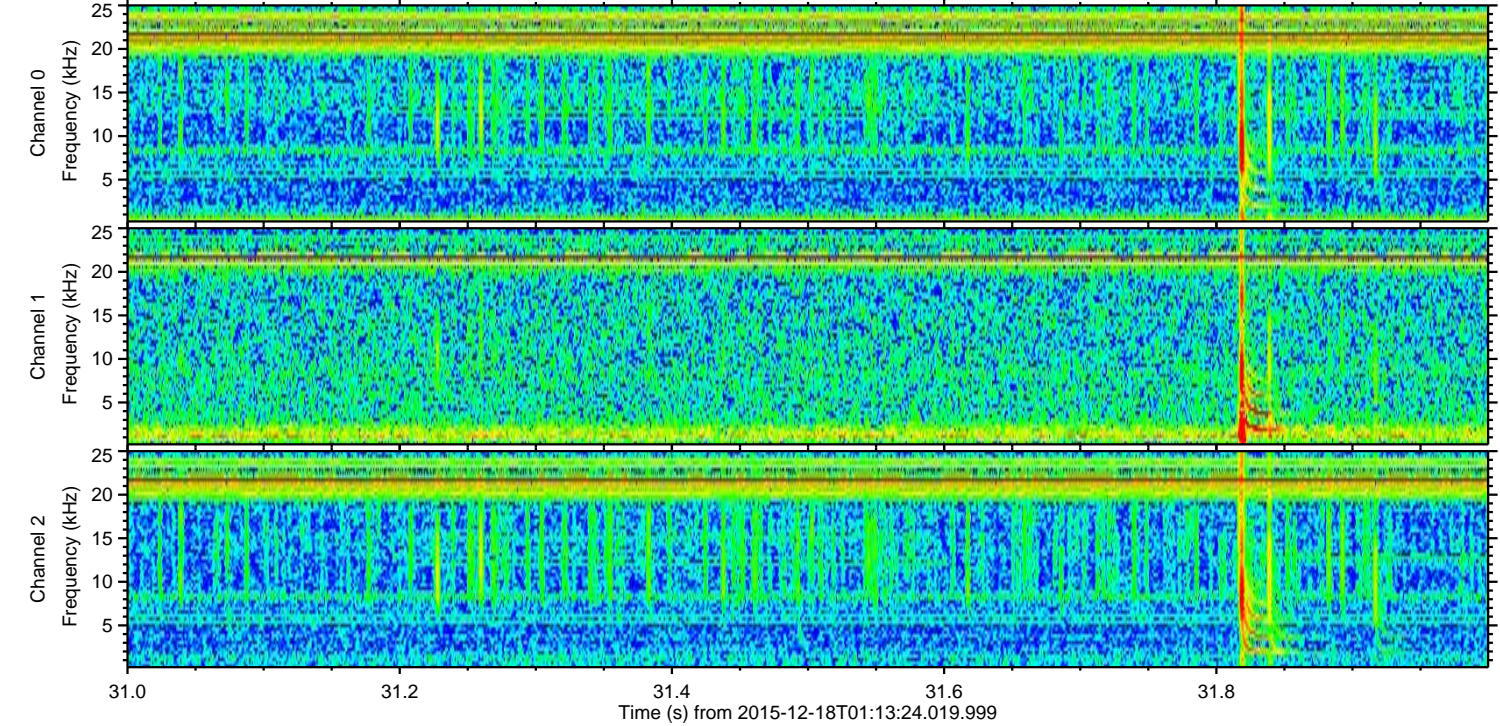
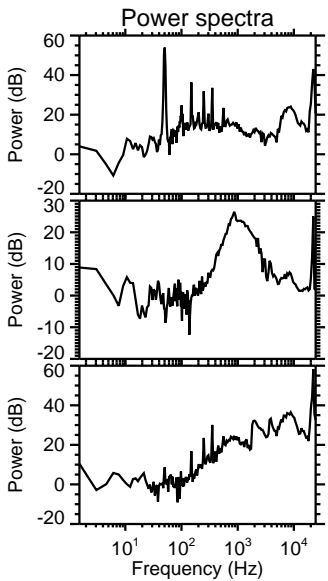
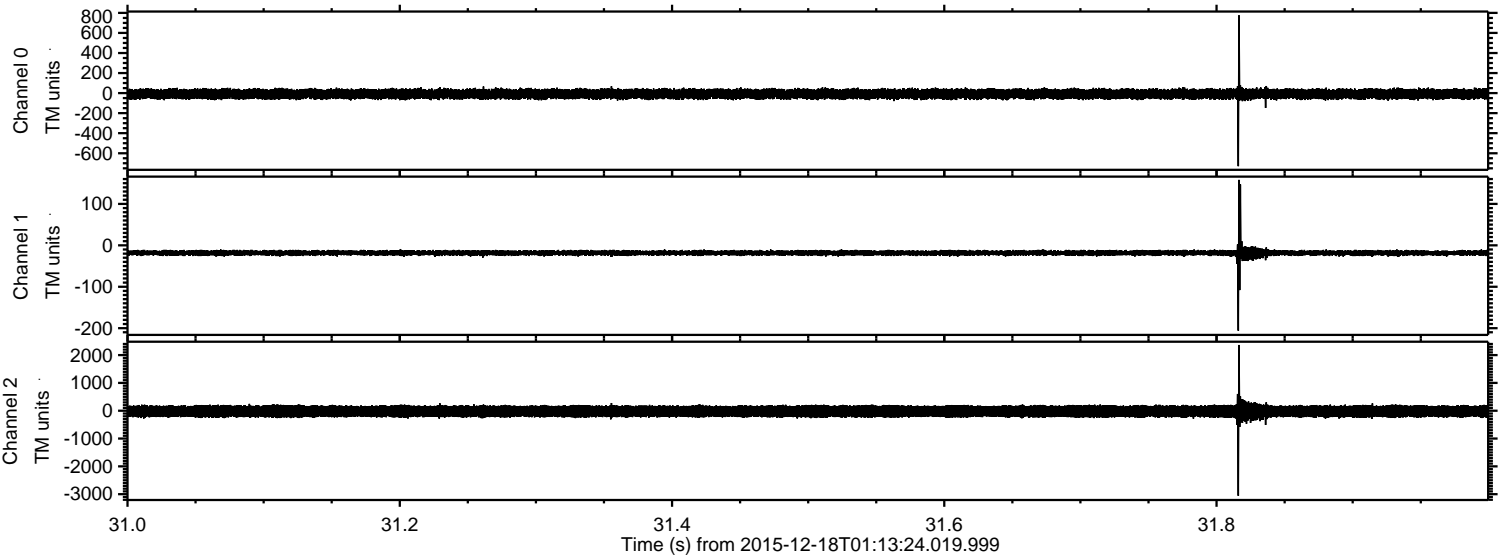
Processed Fri Jan 29 10:25:54 2016 by ELM ver.2012-10-06 from 001__elm20151218_011323__dat00.bin



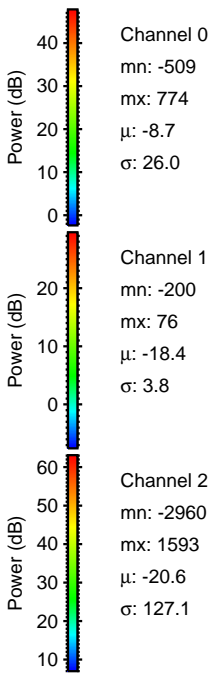
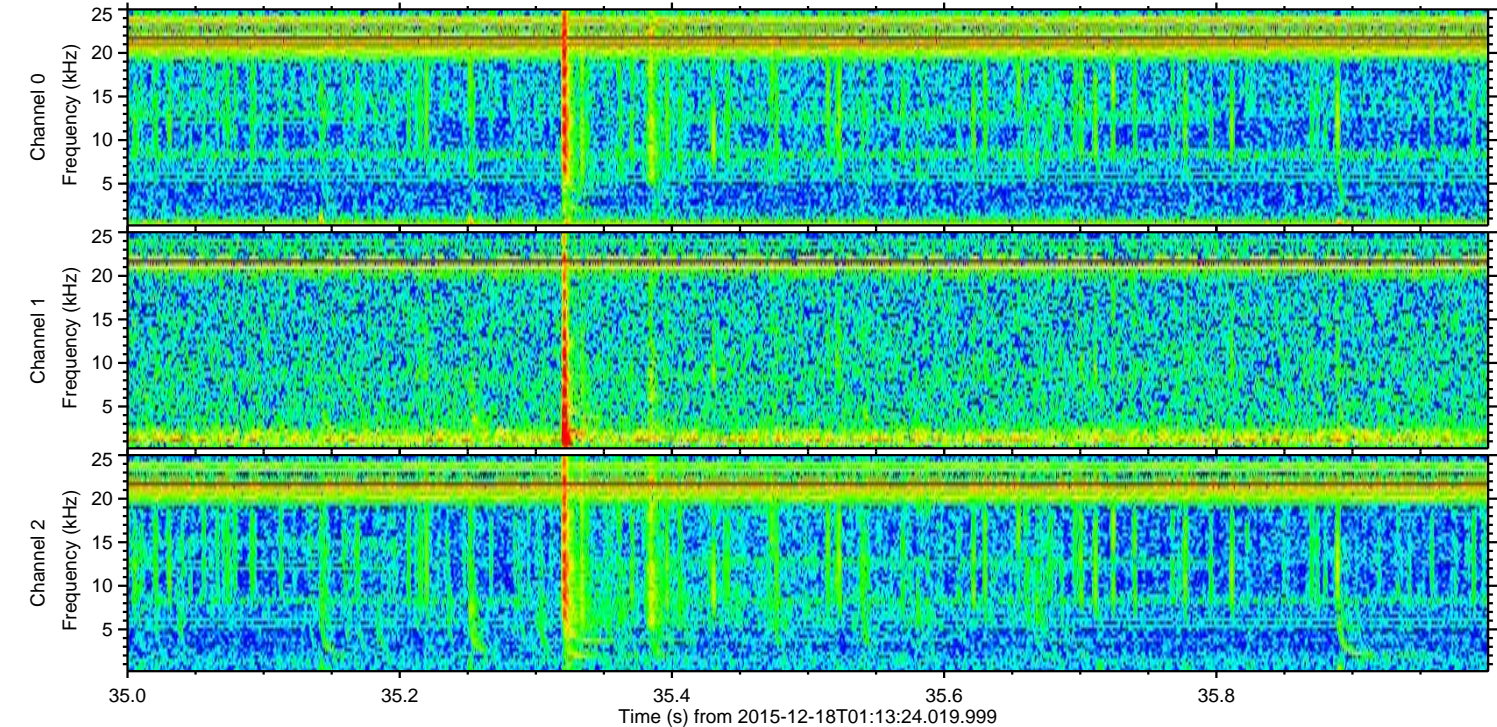
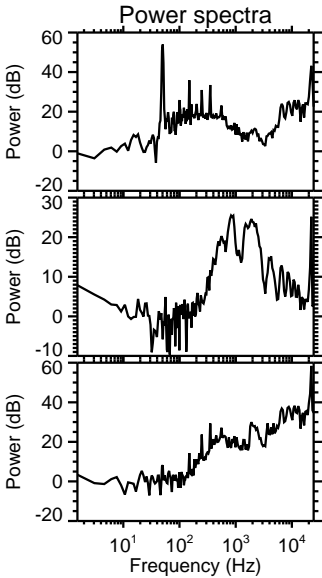
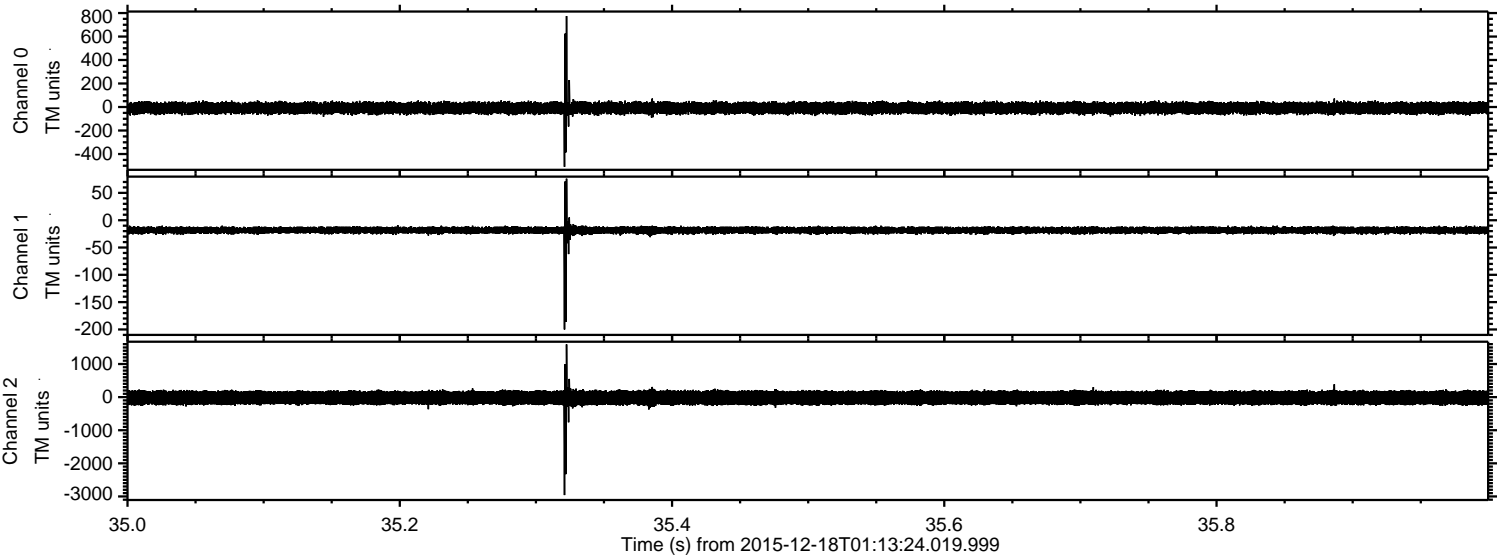
Processed Fri Jan 29 10:25:55 2016 by ELM ver.2012-10-06 from 001__elm20151218_011323__dat00.bin



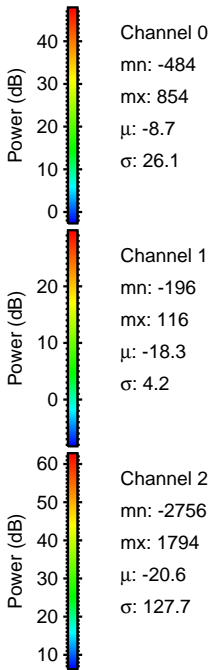
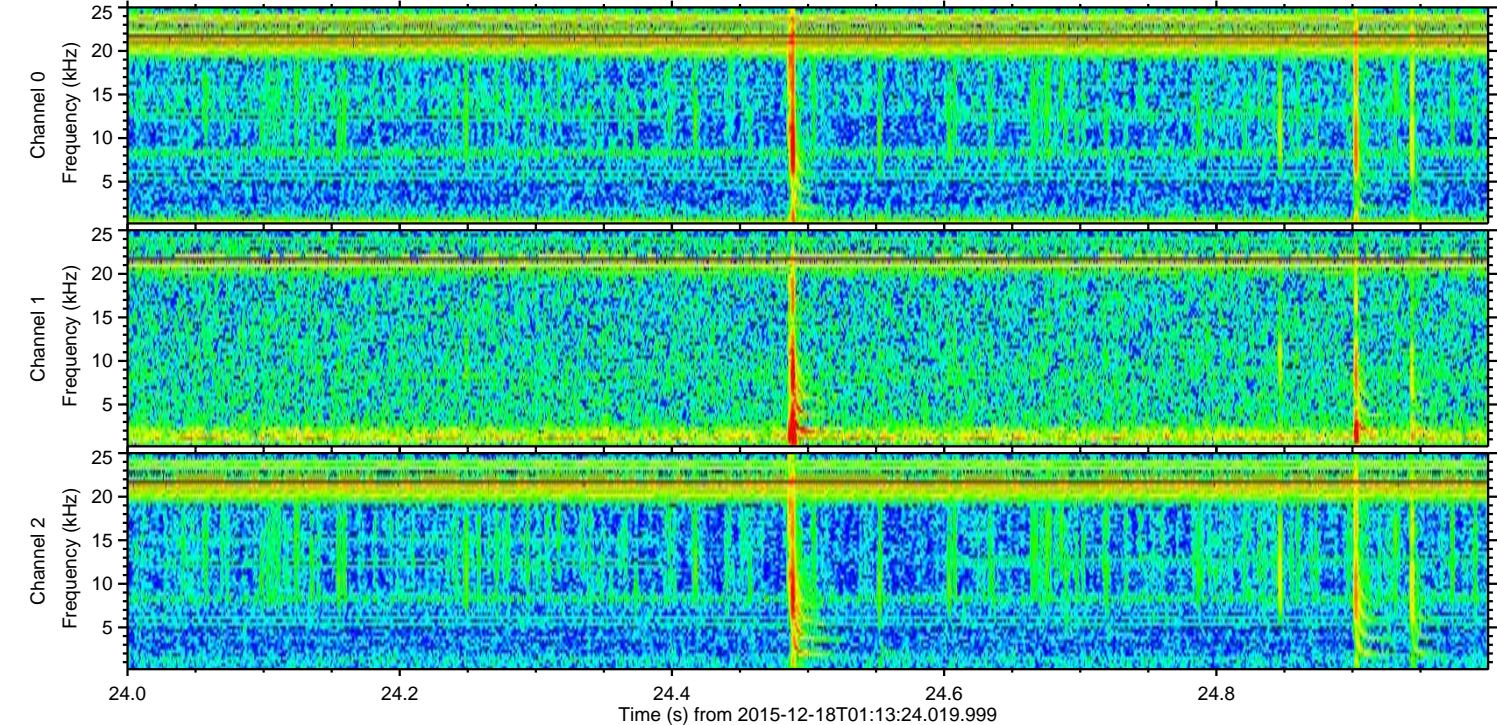
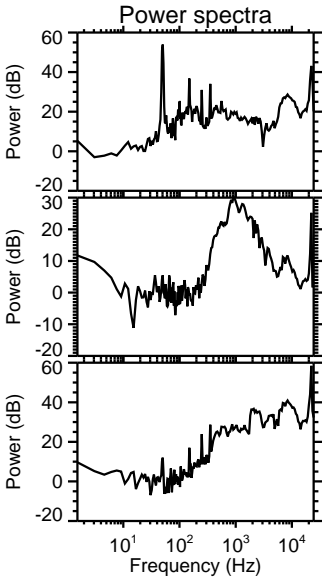
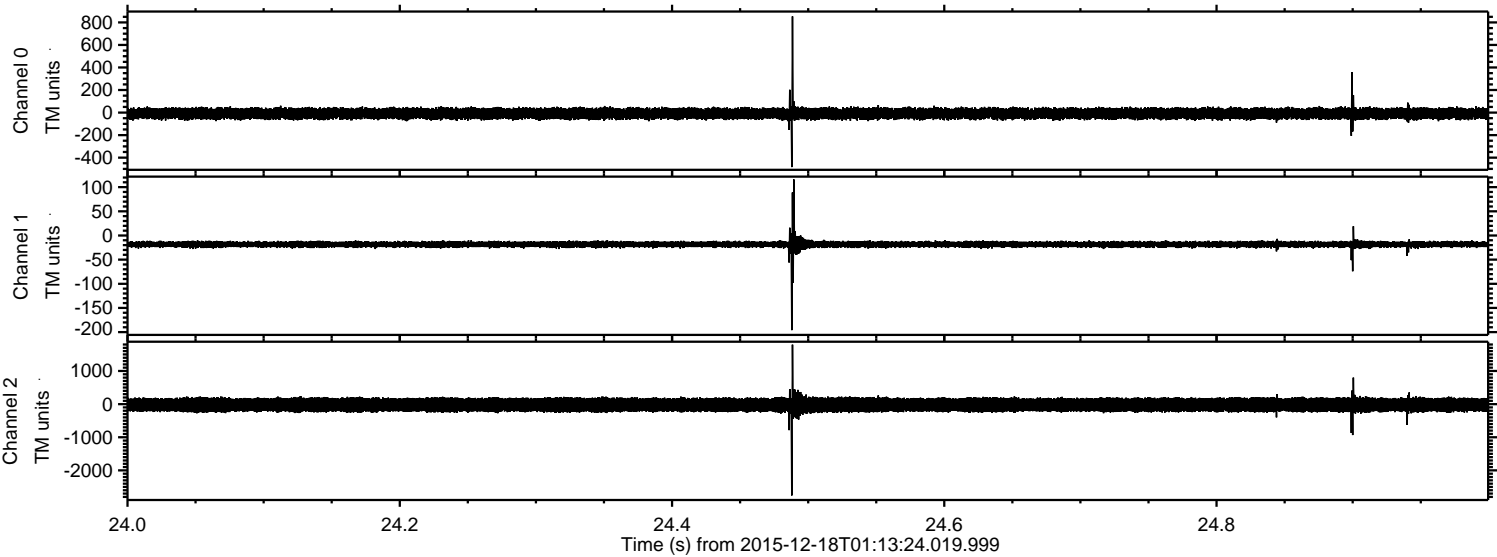
Processed Fri Jan 29 10:25:56 2016 by ELM ver.2012-10-06 from 001__elm20151218_011323__dat00.bin



Processed Fri Jan 29 10:25:57 2016 by ELM ver.2012-10-06 from 001__elm20151218_011323__dat00.bin

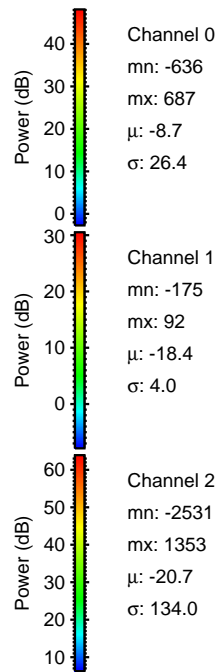
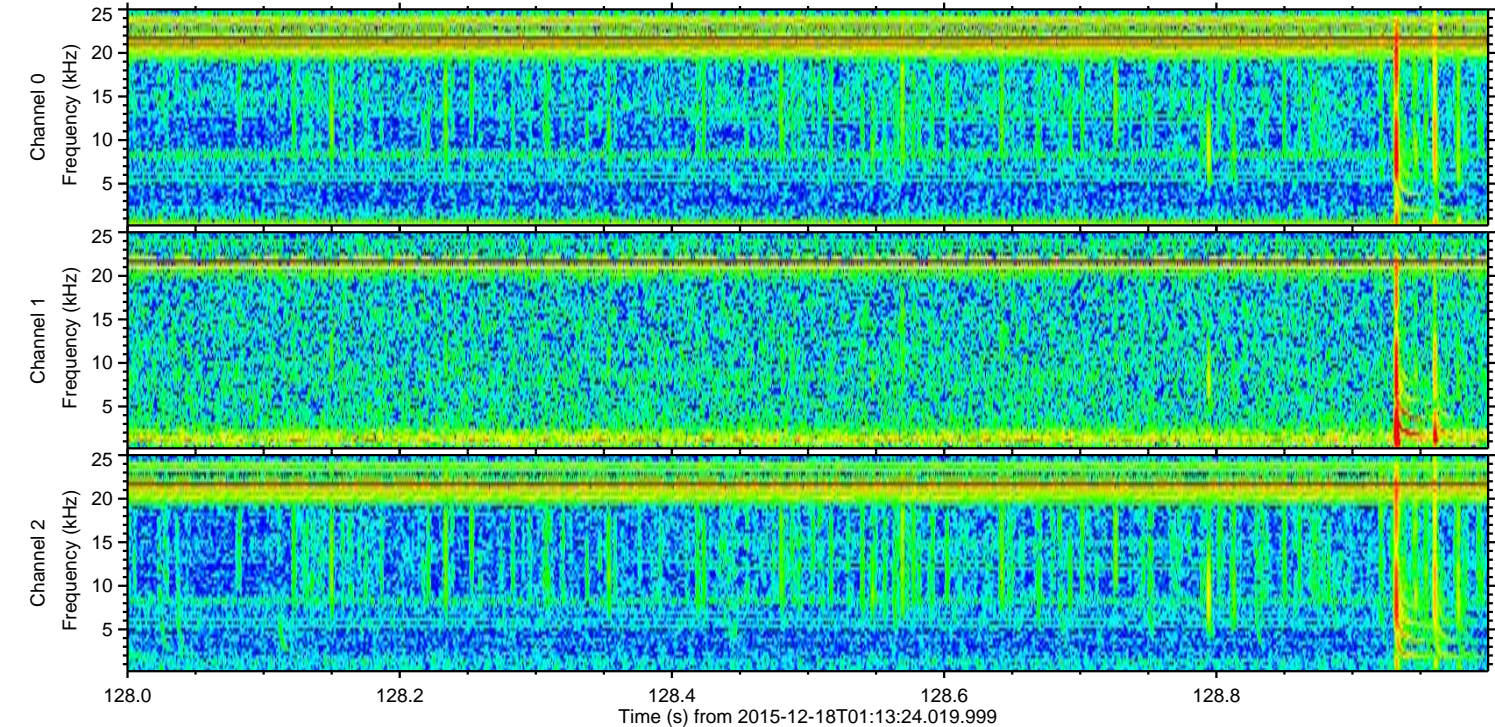
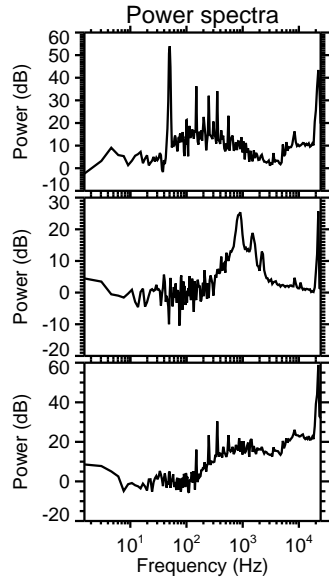
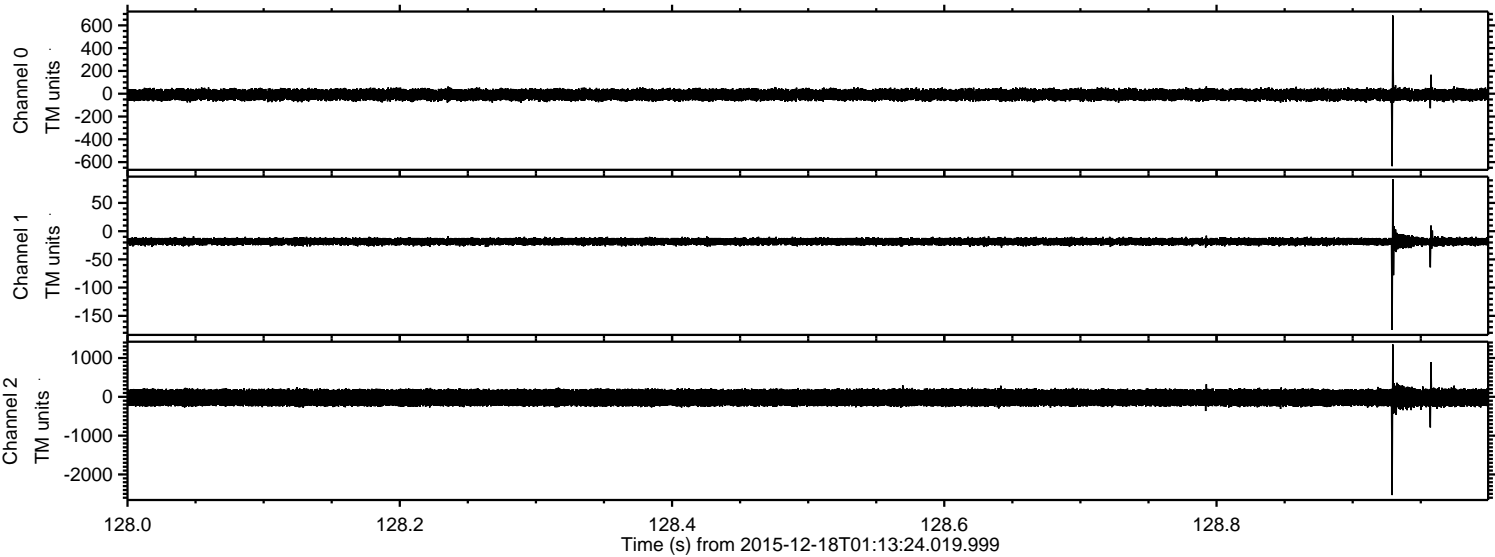


Processed Fri Jan 29 10:25:58 2016 by ELM ver.2012-10-06 from 001__elm20151218_011323__dat00.bin

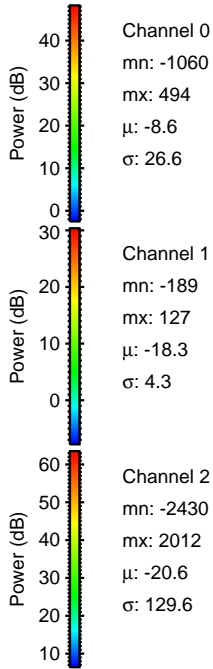
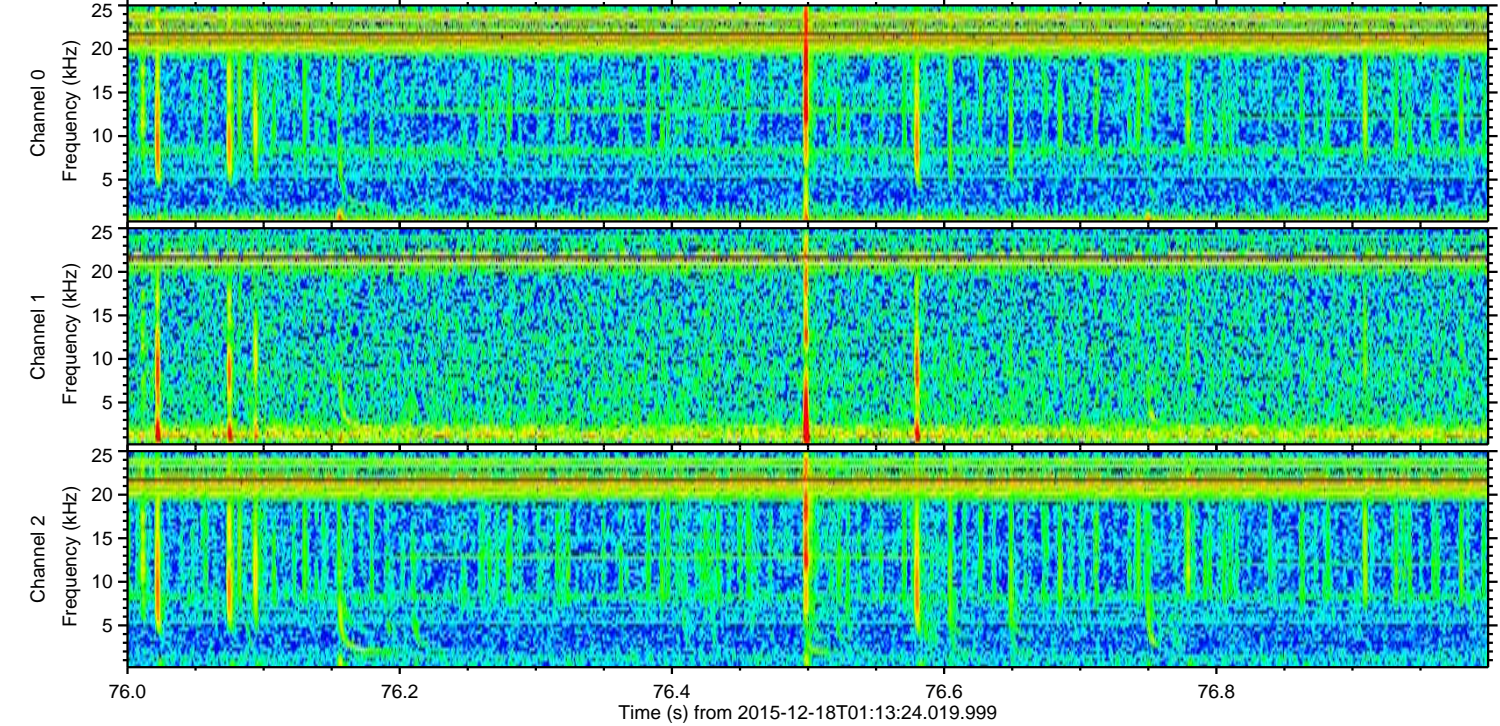
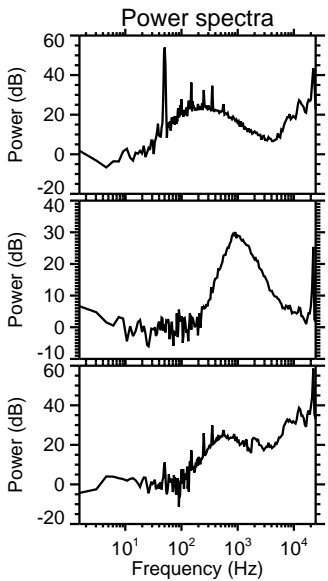
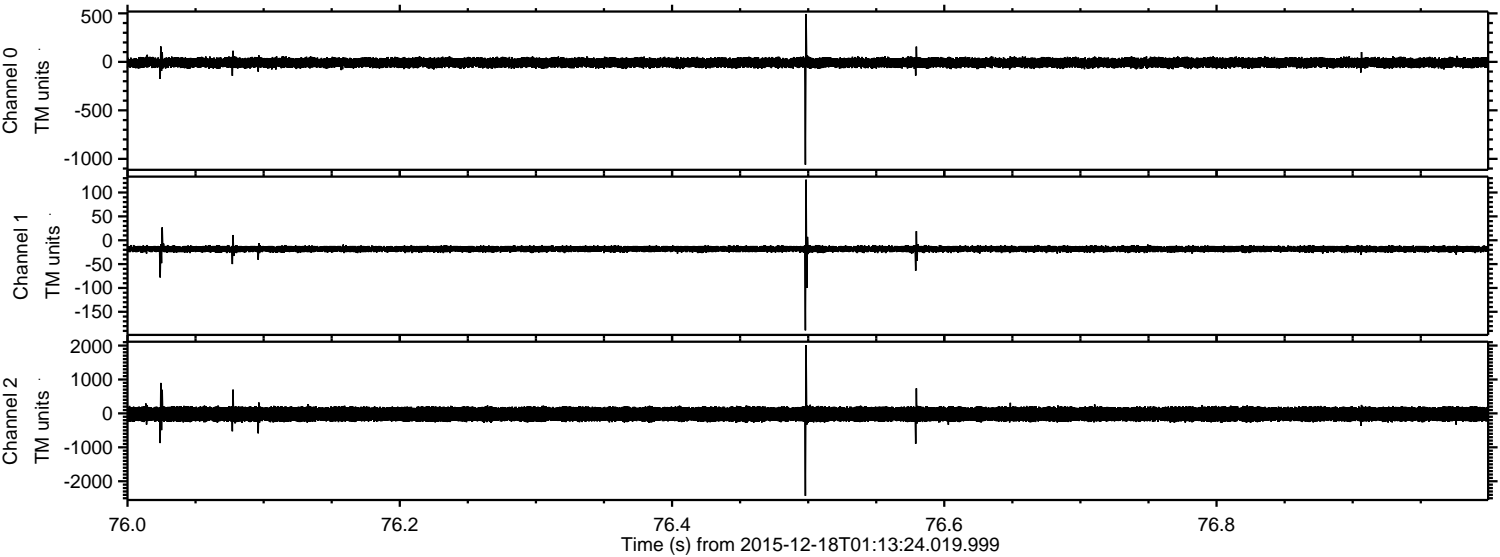


ELMAVAN 3D WAVEFORMS (Measured data sampled at 50 kHz) 51000 packets of 144 samples from 2015-12-18T01:13:24.019.999. Part 129/147

Processed Fri Jan 29 10:25:59 2016 by ELM ver.2012-10-06 from 001__elm20151218_011323__dat00.bin



Processed Fri Jan 29 10:26:00 2016 by ELM ver.2012-10-06 from 001__elm20151218_011323__dat00.bin



Channel 0
mn: -1060
mx: 494
 μ : -8.6
 σ : 26.6

Channel 1
mn: -189
mx: 127
 μ : -18.3
 σ : 4.3

Channel 2
mn: -2430
mx: 2012
 μ : -20.6
 σ : 129.6

Processed Fri Jan 29 10:26:01 2016 by ELM ver.2012-10-06 from 001__elm20151218_011323__dat00.bin

