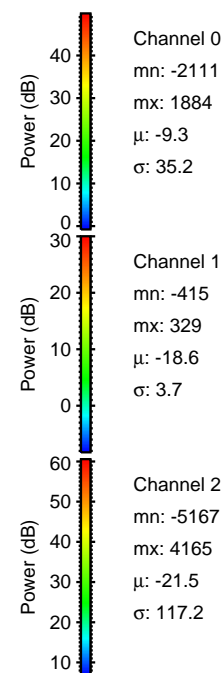
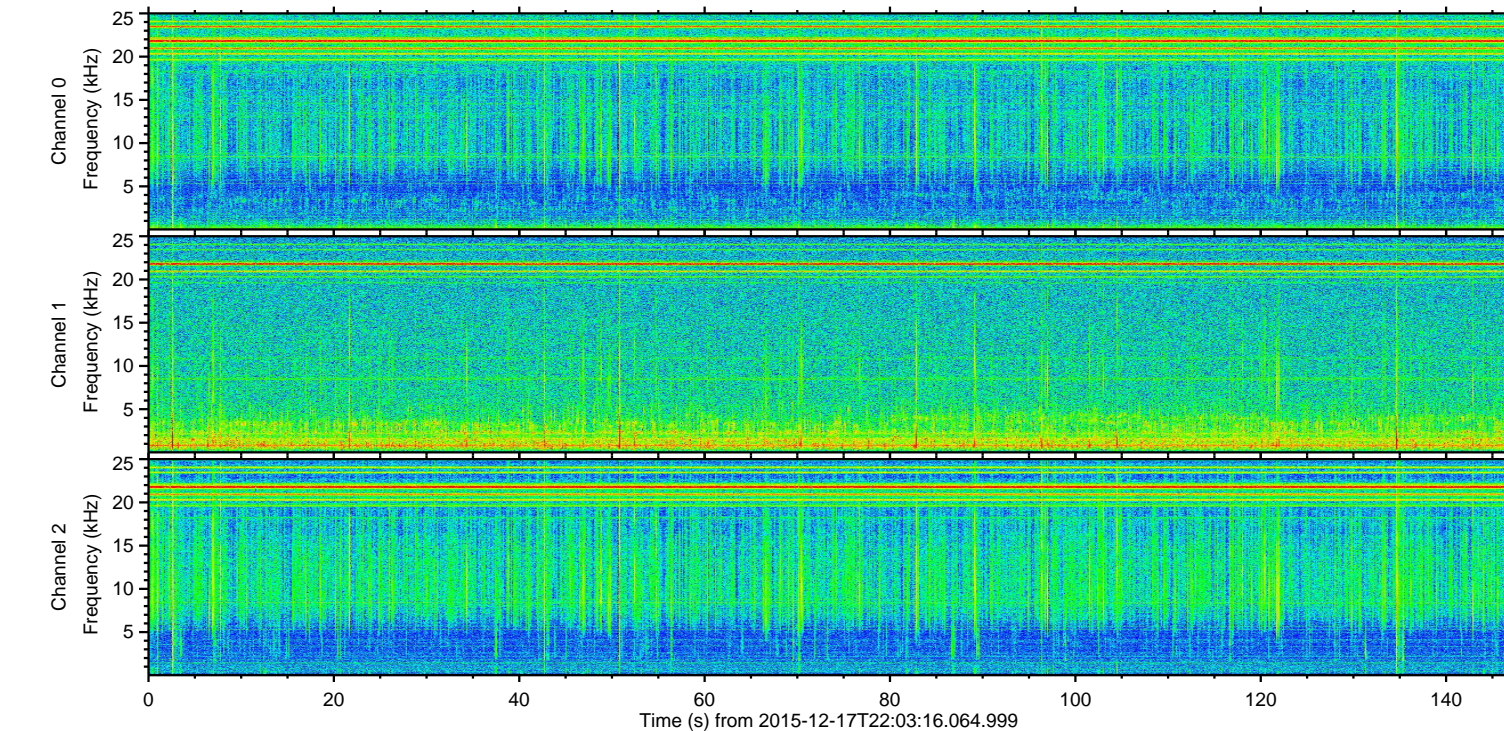
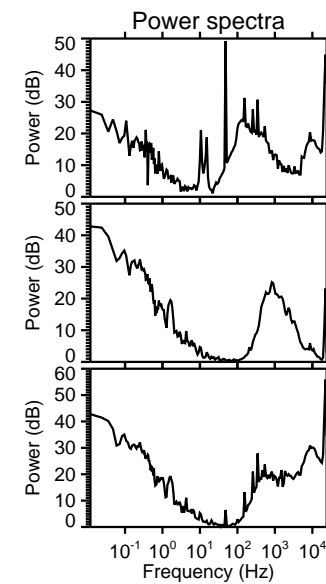
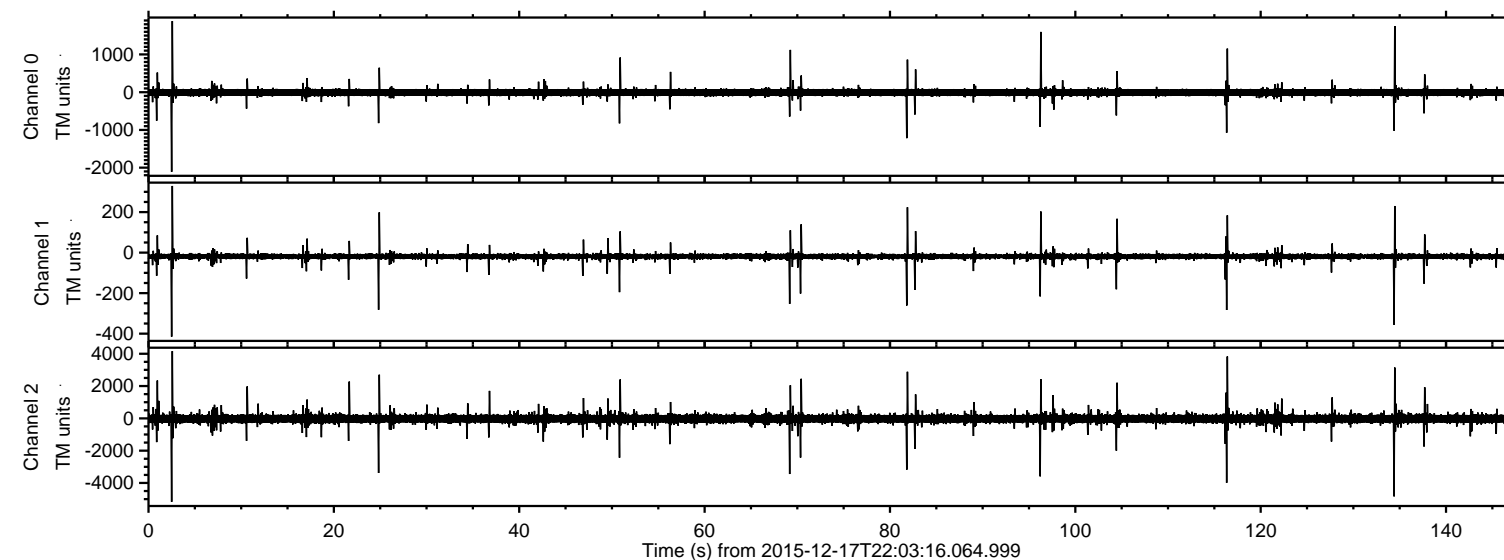
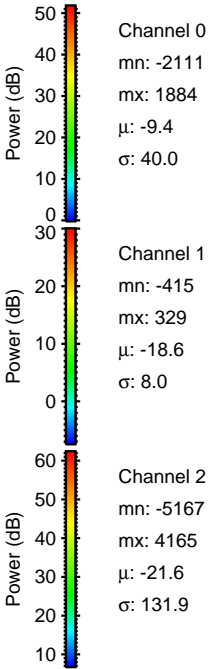
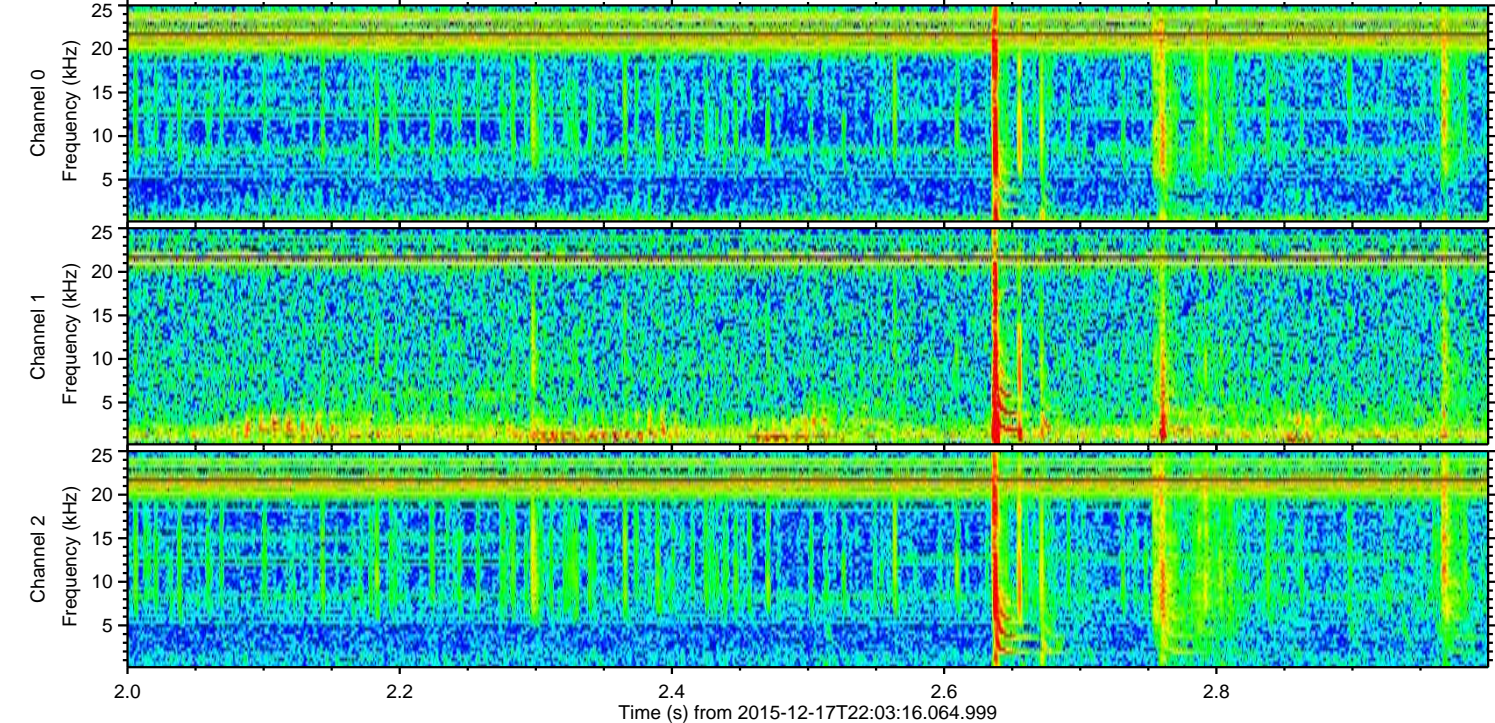
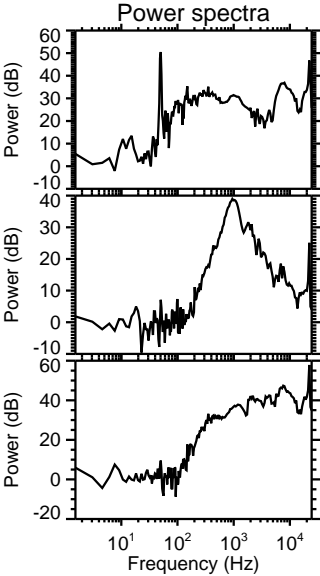
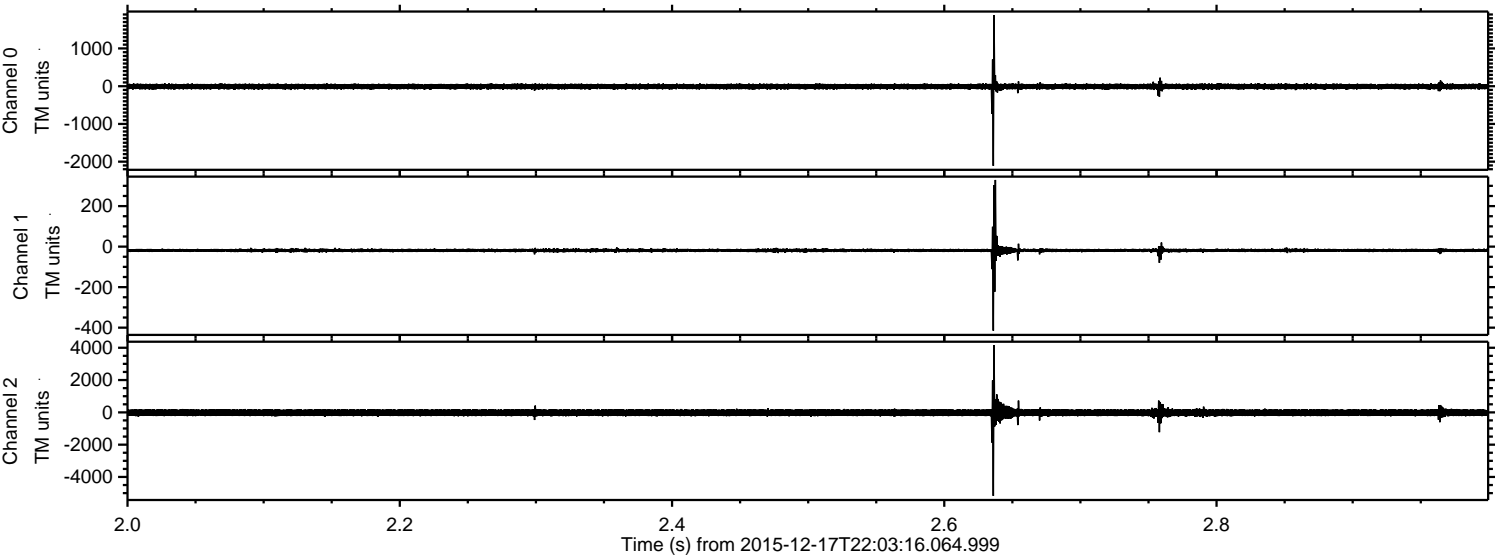


ELMAVAN 3D WAVEFORMS (Measured data sampled at 50 kHz) 51000 packets of 144 samples from 2015-12-17T22:03:16.064.999.

Processed Fri Jan 29 09:41:23 2016 by ELM ver.2012-10-06 from 001__elm20151217_220315__dat00.bin

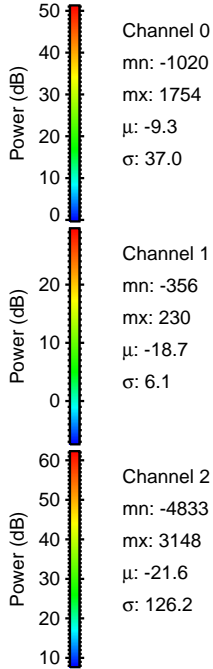
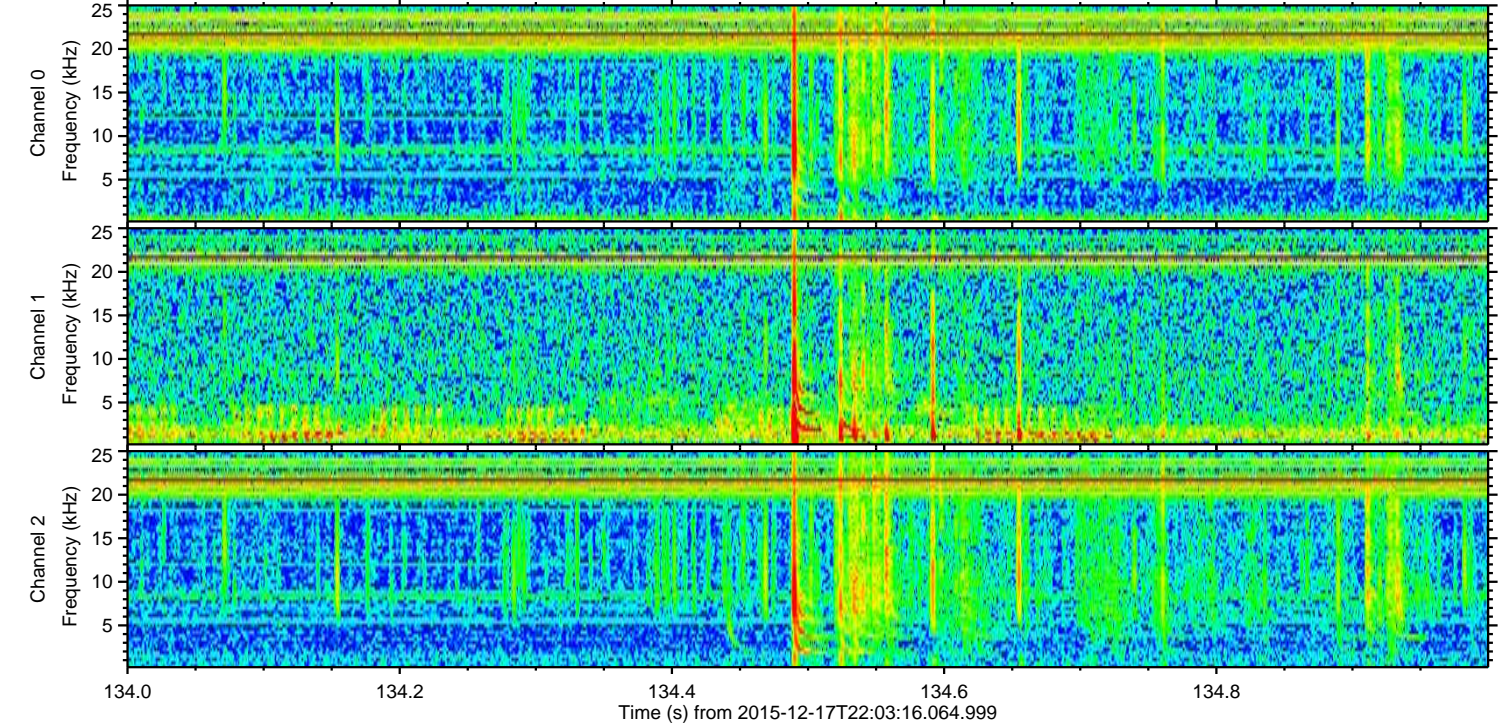
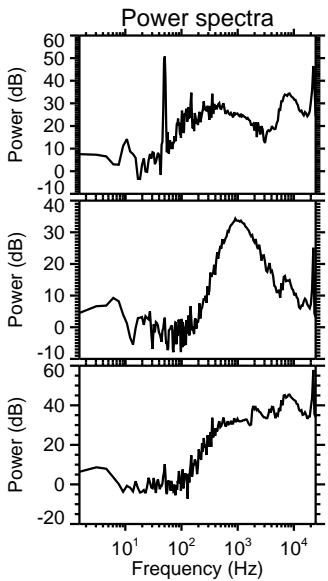
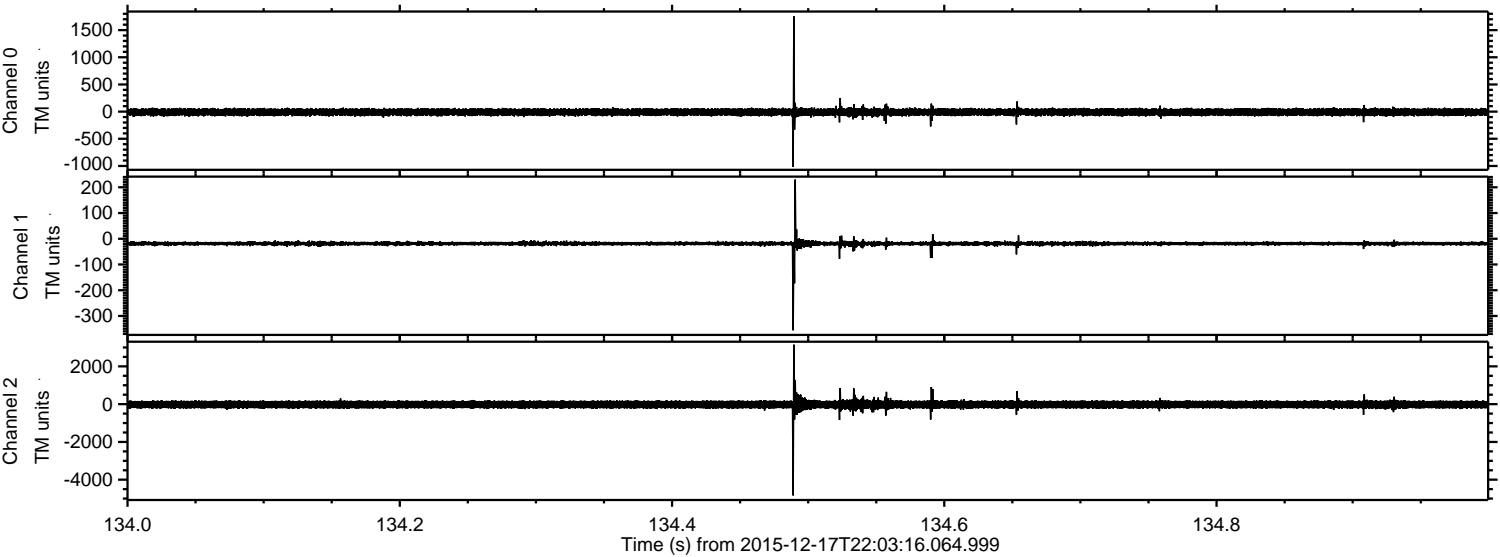


Processed Fri Jan 29 09:41:36 2016 by ELM ver.2012-10-06 from 001__elm20151217_220315__dat00.bin



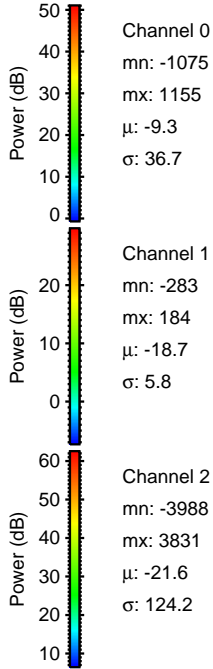
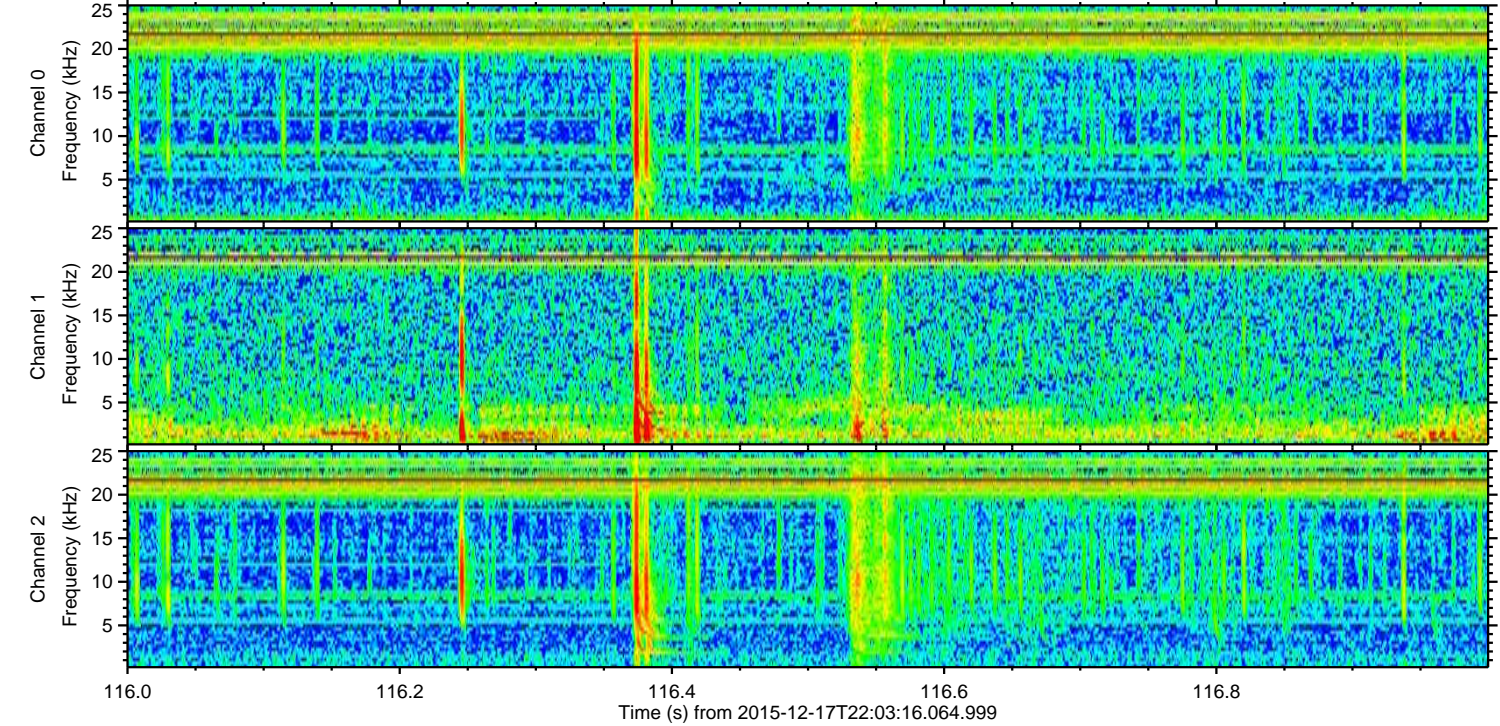
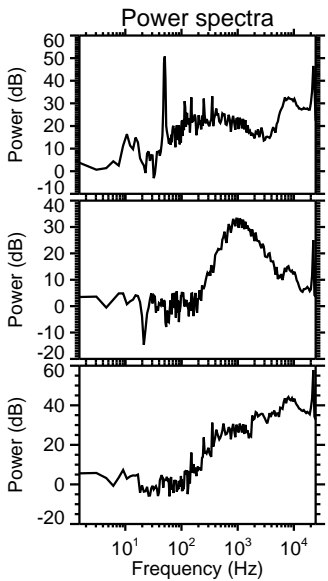
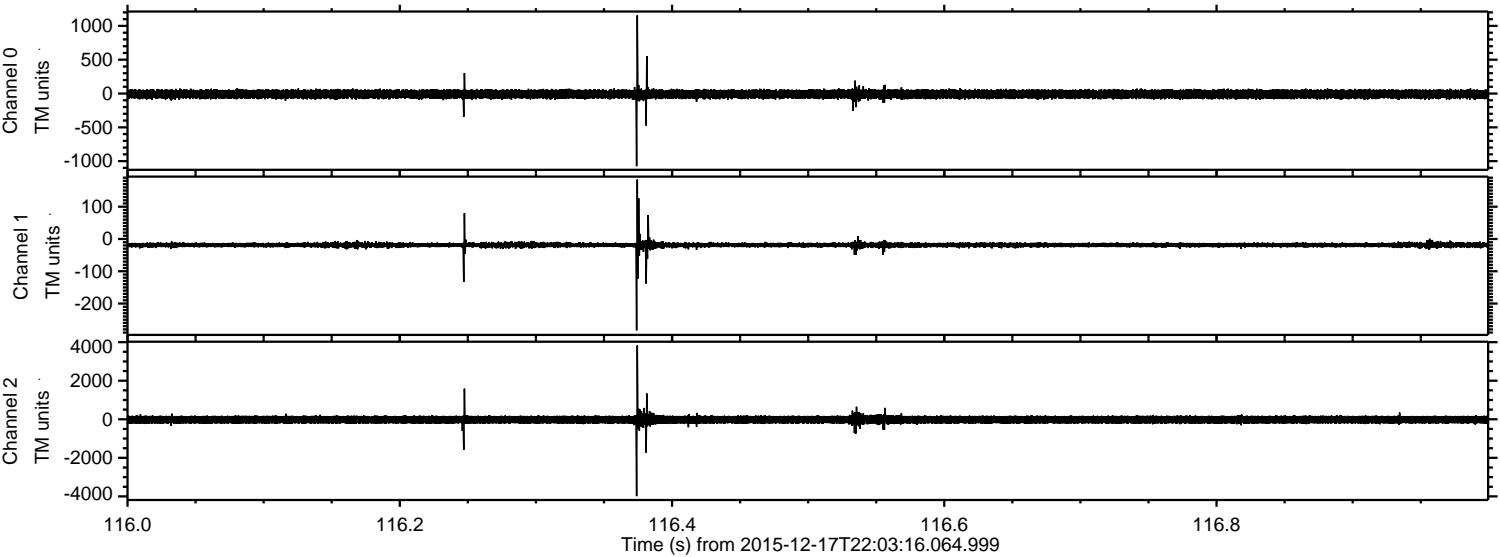
ELMAVAN 3D WAVEFORMS (Measured data sampled at 50 kHz) 51000 packets of 144 samples from 2015-12-17T22:03:16.064.999. Part 135/147

Processed Fri Jan 29 09:41:37 2016 by ELM ver.2012-10-06 from 001__elm20151217_220315__dat00.bin

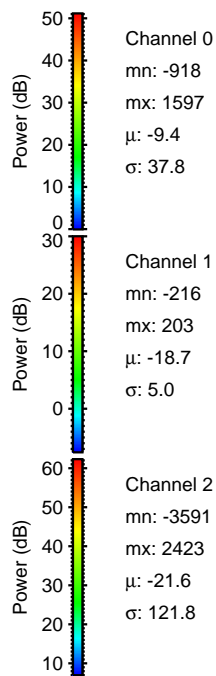
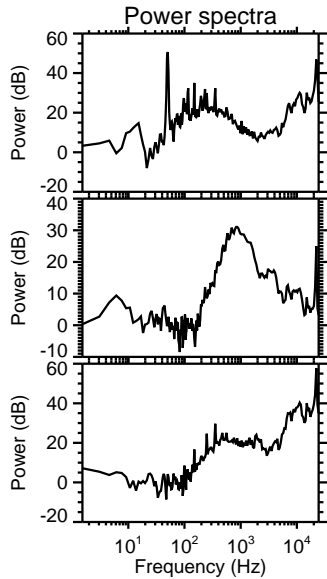
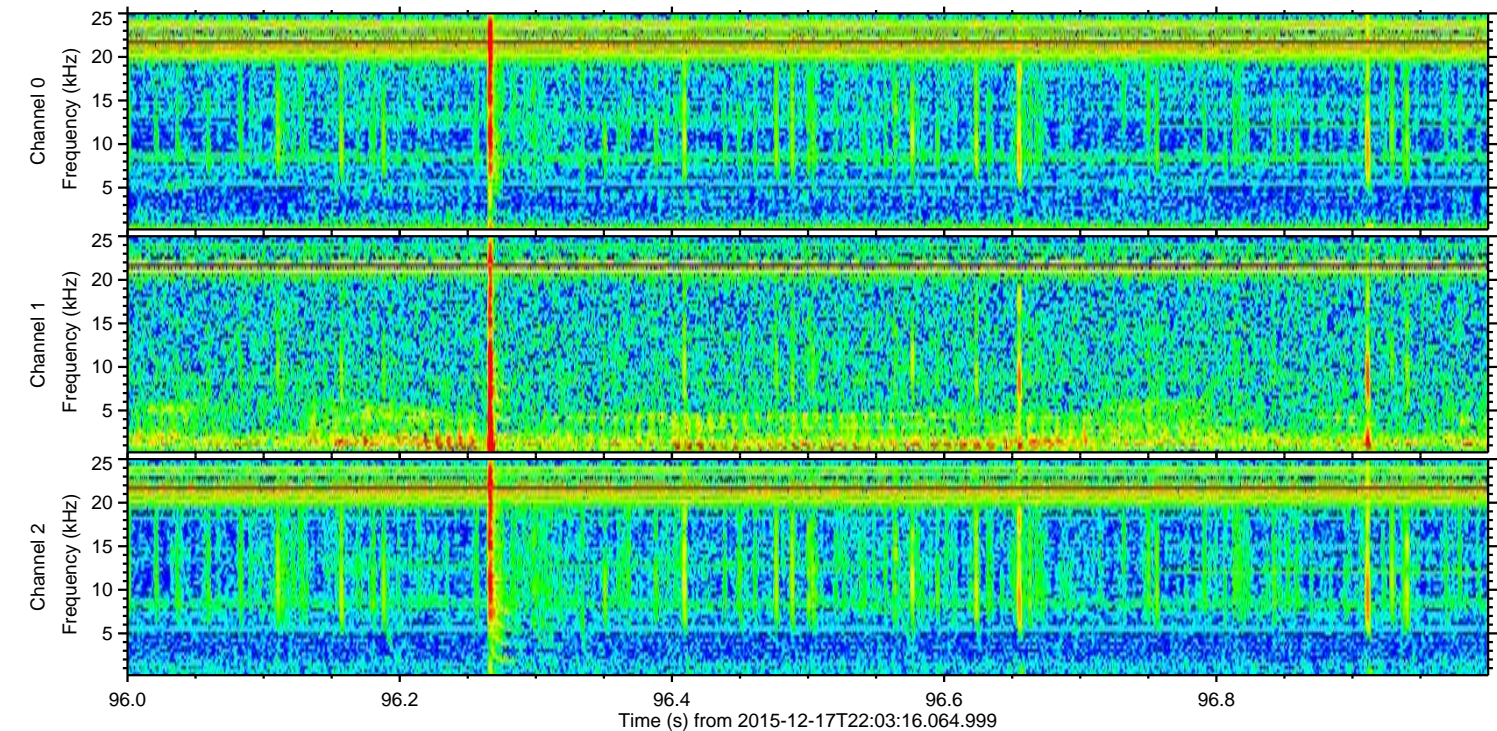
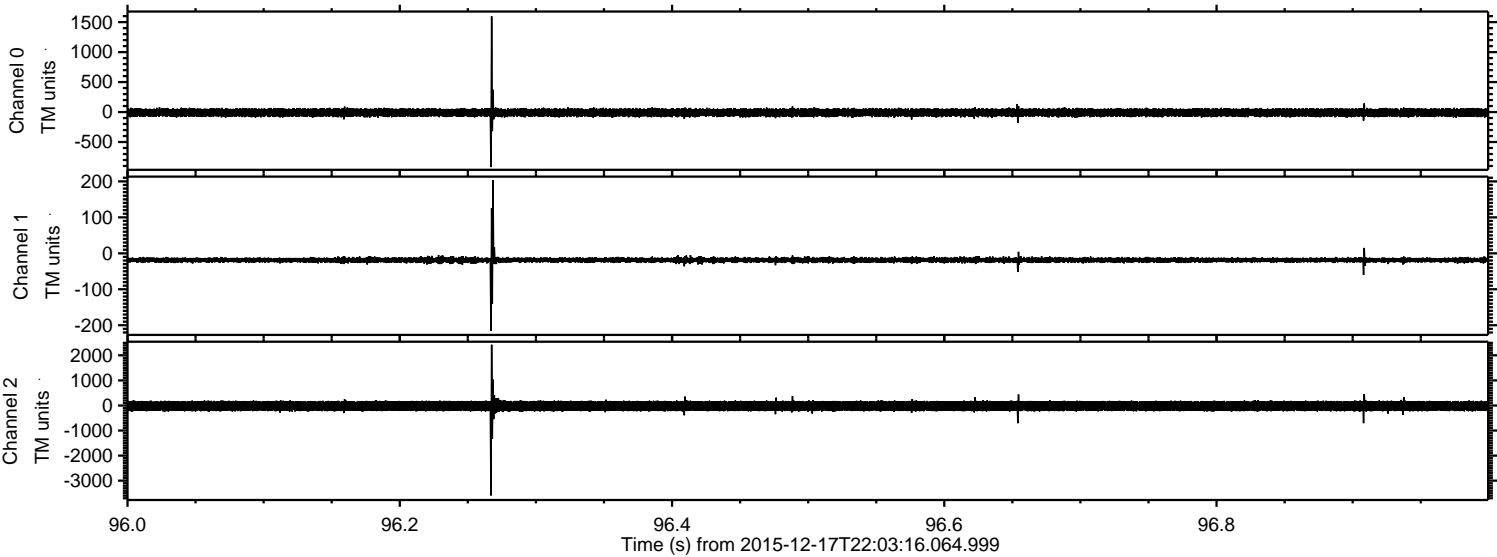


ELMAVAN 3D WAVEFORMS (Measured data sampled at 50 kHz) 51000 packets of 144 samples from 2015-12-17T22:03:16.064.999. Part 117/147

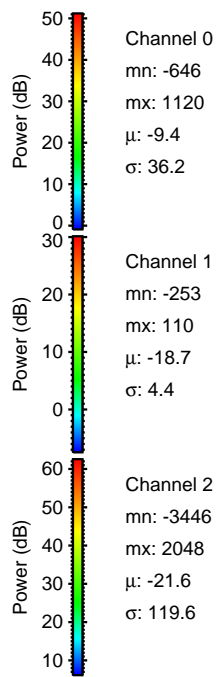
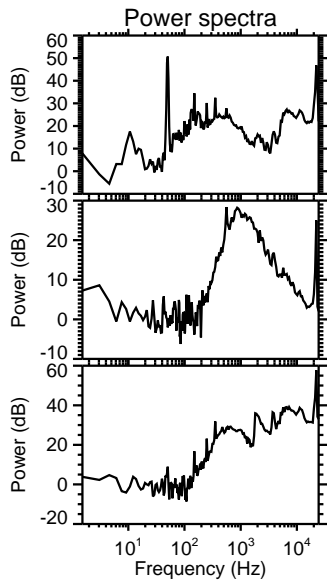
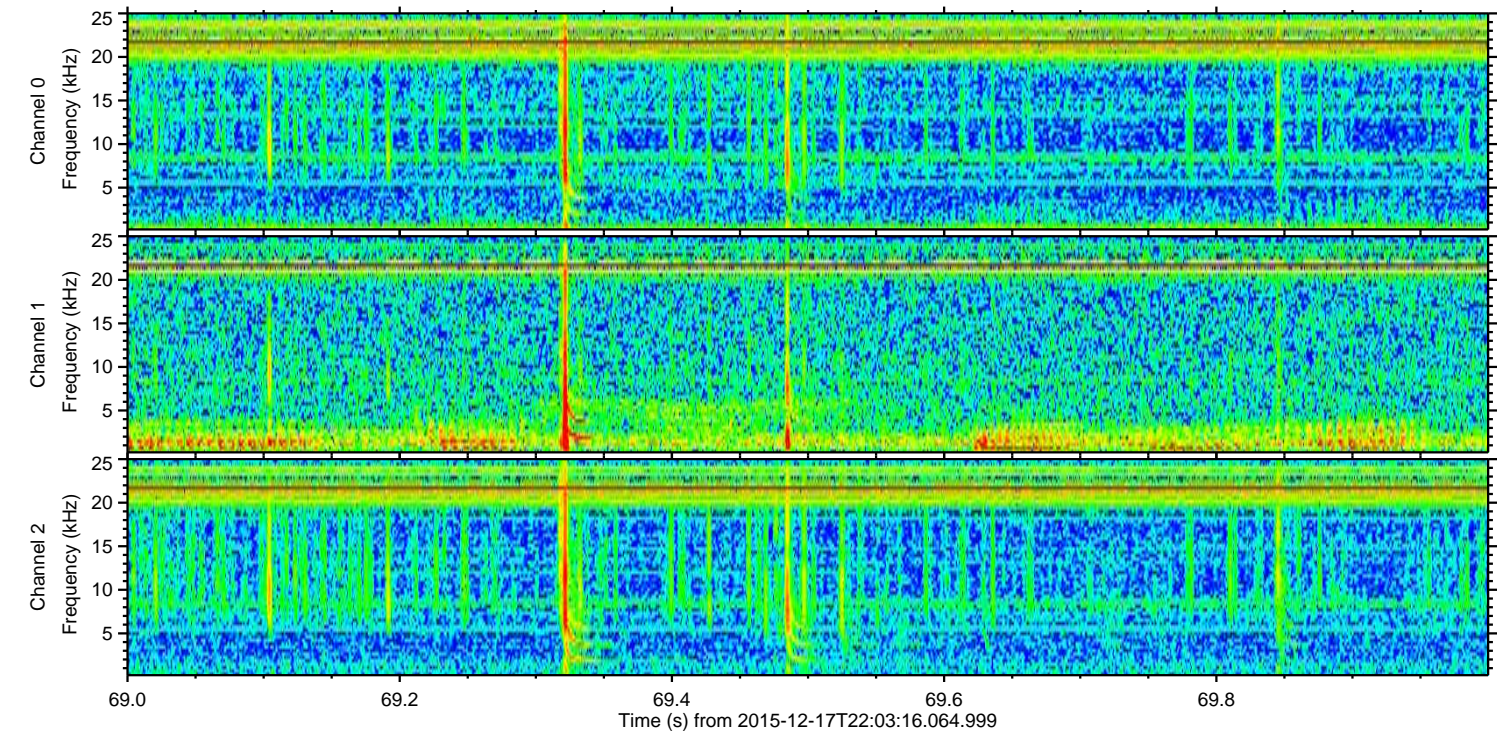
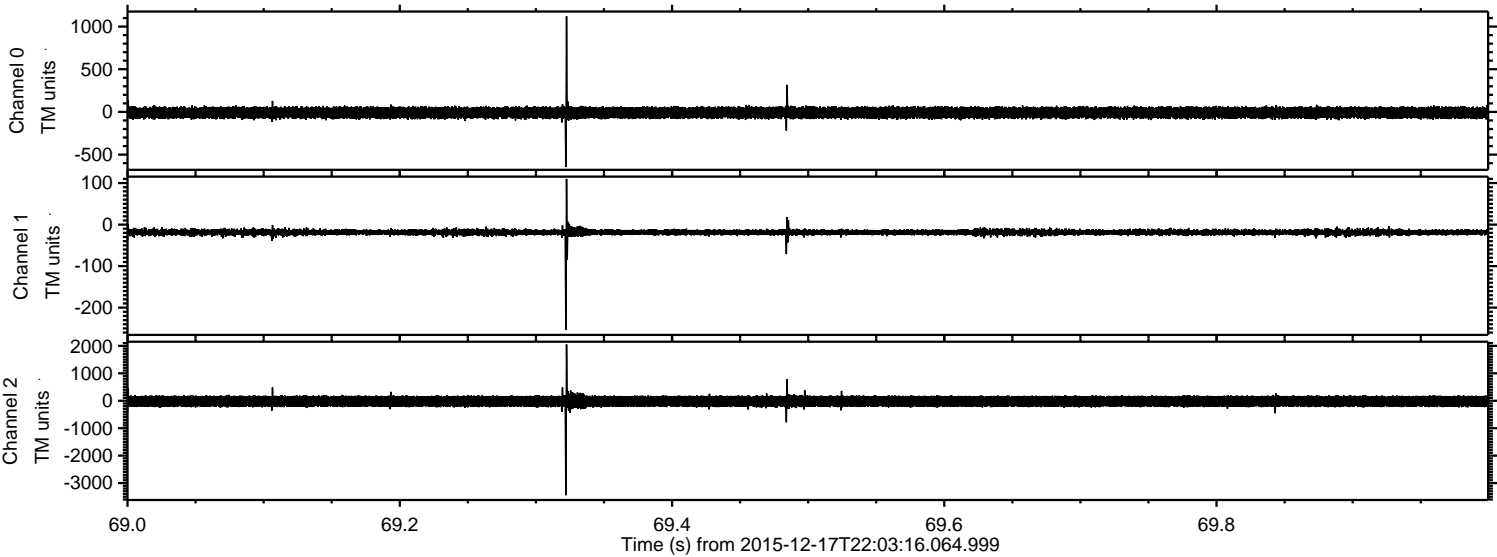
Processed Fri Jan 29 09:41:38 2016 by ELM ver.2012-10-06 from 001__elm20151217_220315__dat00.bin



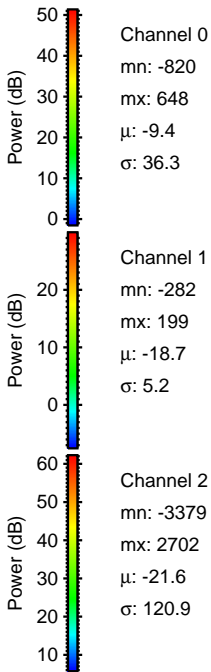
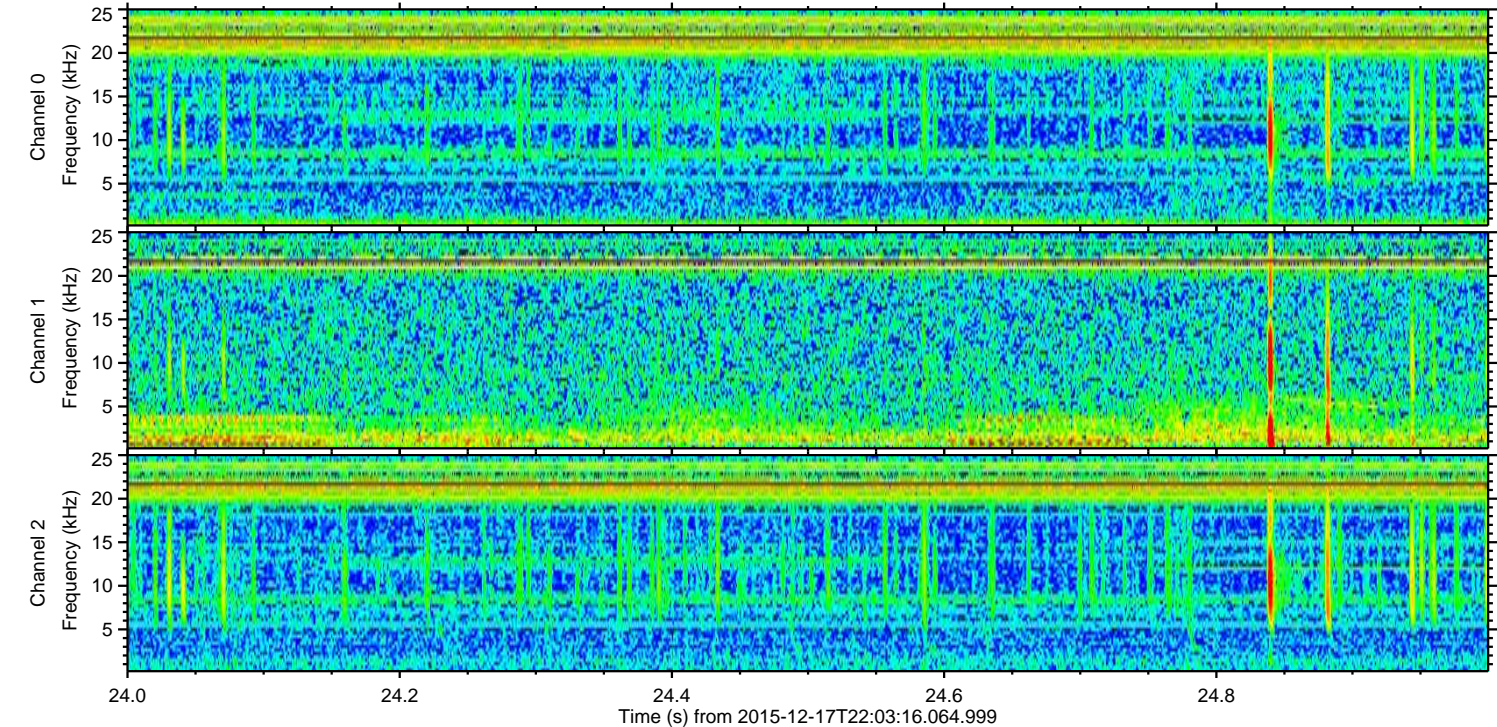
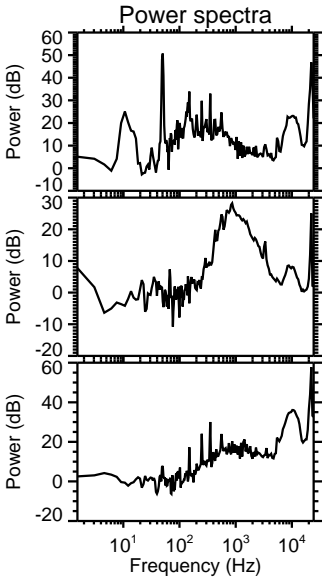
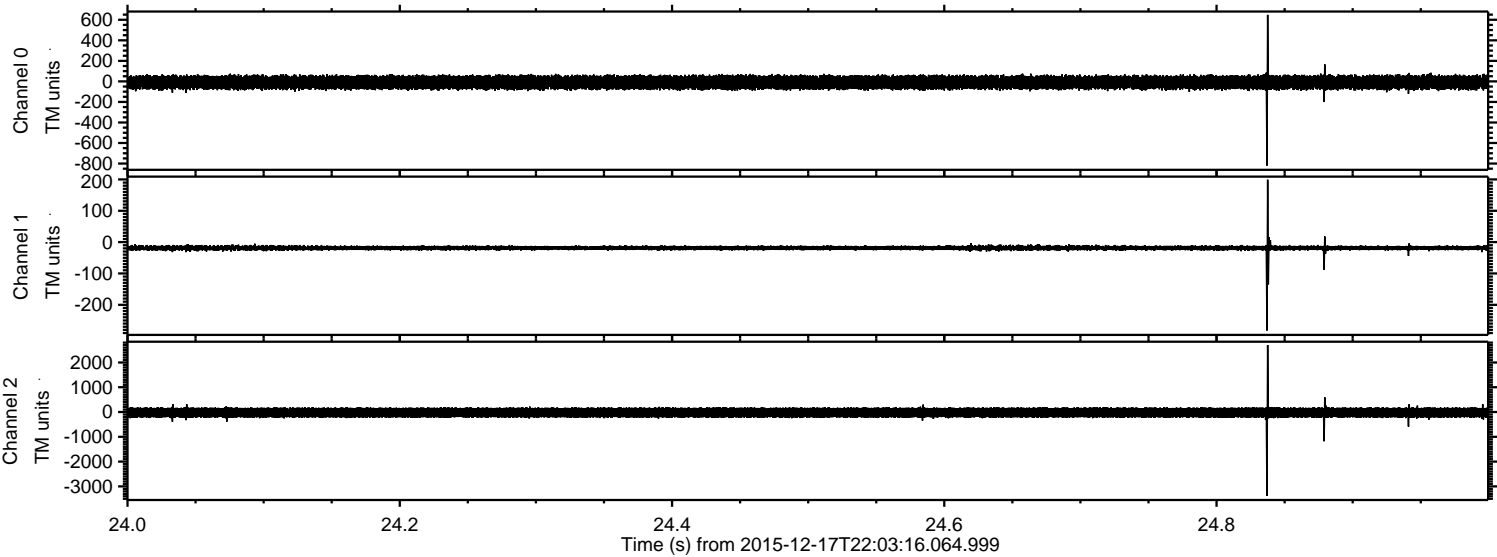
Processed Fri Jan 09 09:41:39 2016 by ELM ver.2012-10-06 from 001__elm20151217_220315__dat00.bin



Processed Fri Jan 29 09:41:40 2016 by ELM ver.2012-10-06 from 001__elm20151217_220315__dat00.bin

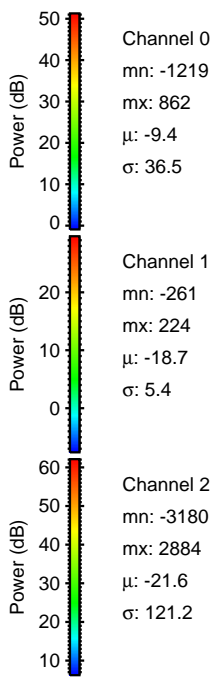
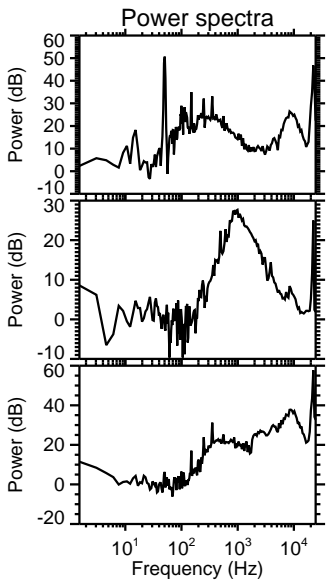
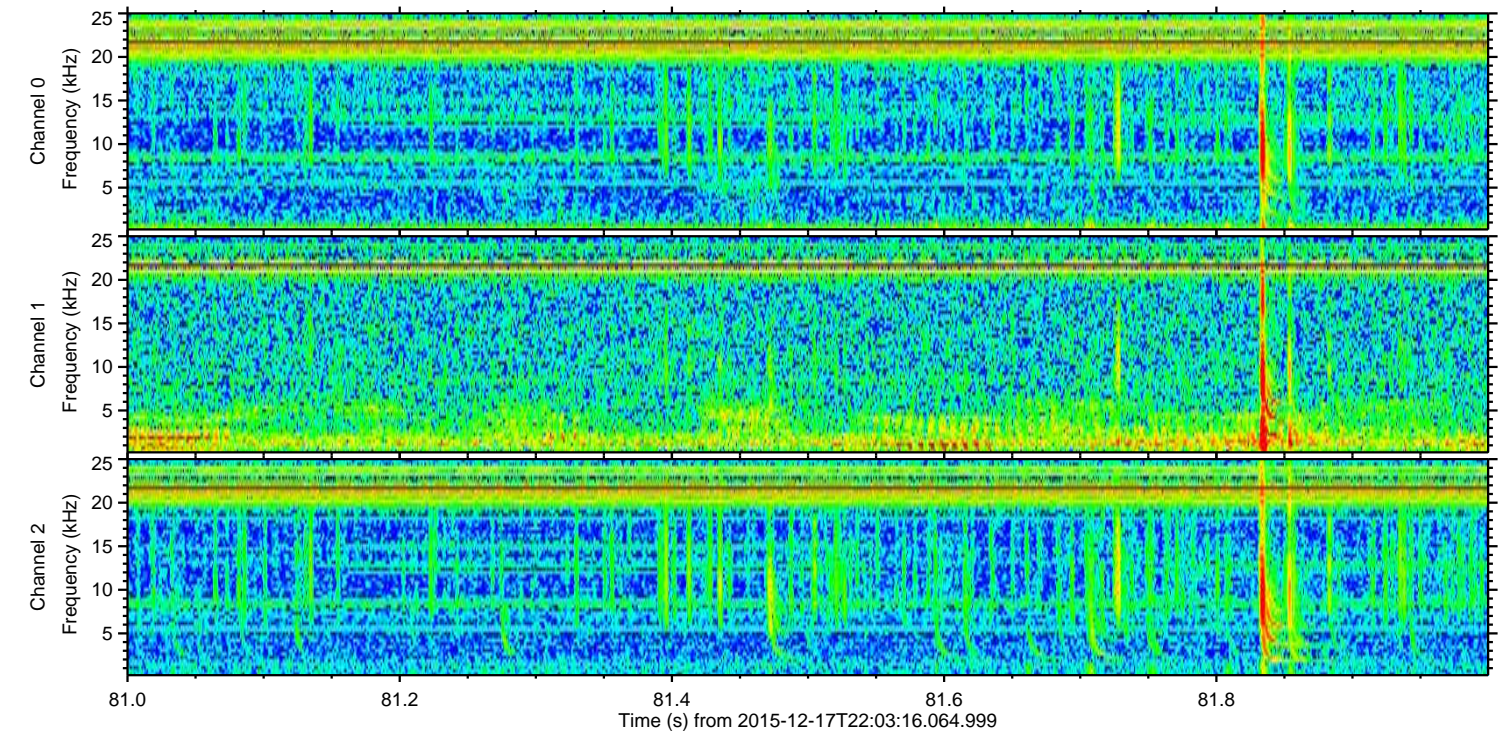
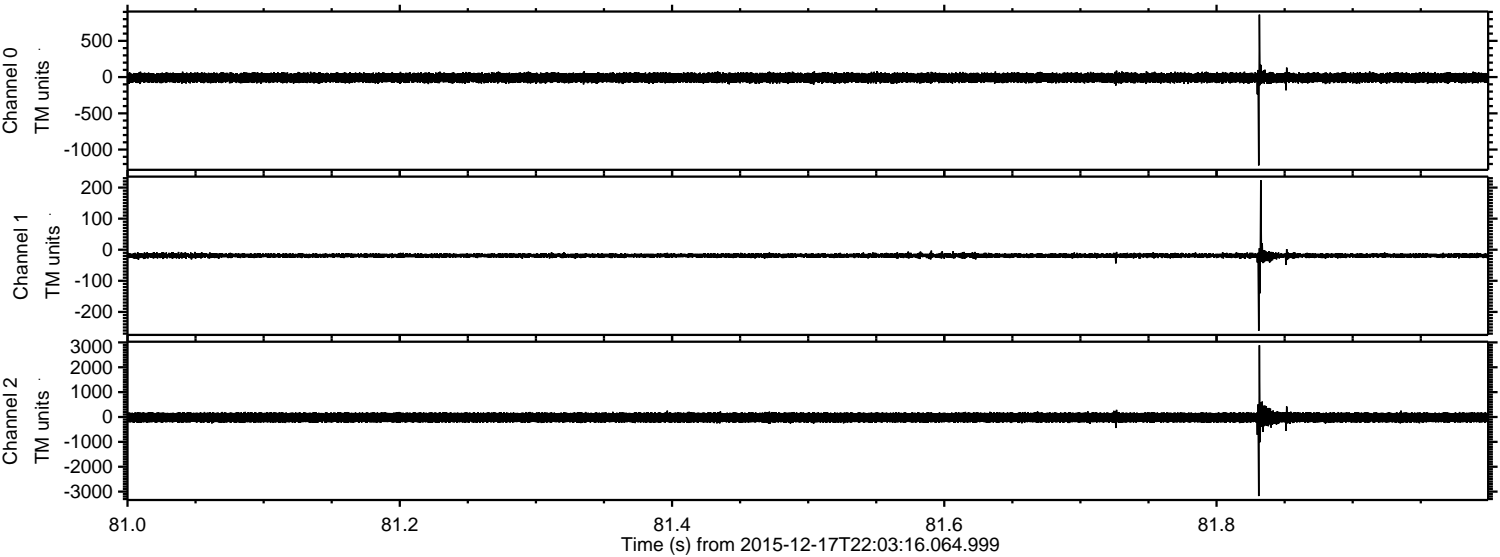


Processed Fri Jan 29 09:41:41 2016 by ELM ver.2012-10-06 from 001__elm20151217_220315__dat00.bin



ELMAVAN 3D WAVEFORMS (Measured data sampled at 50 kHz) 51000 packets of 144 samples from 2015-12-17T22:03:16.064.999. Part 82/147

Processed Fri Jan 29 09:41:42 2016 by ELM ver.2012-10-06 from 001__elm20151217_220315__dat00.bin

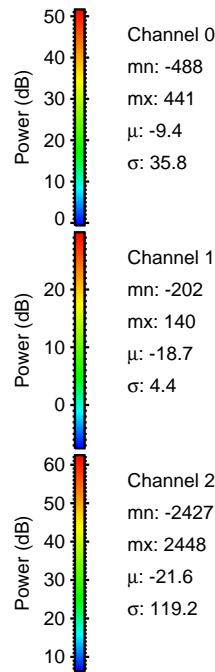
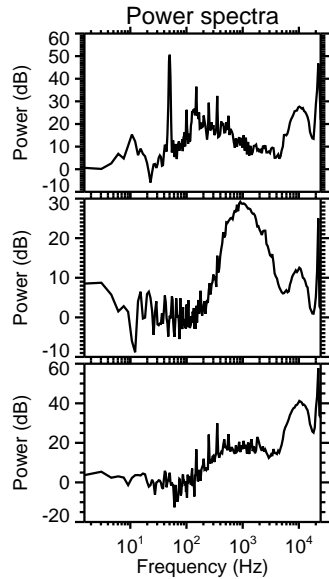
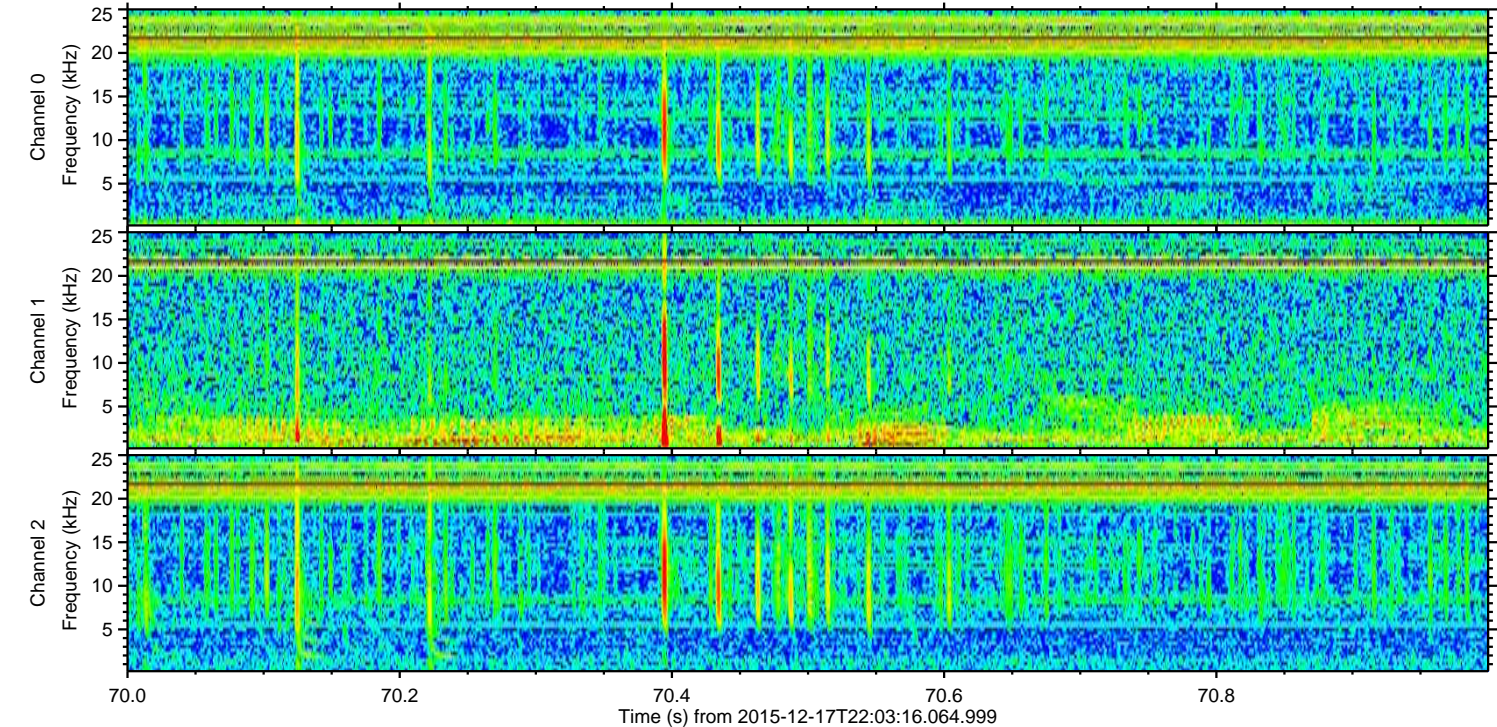
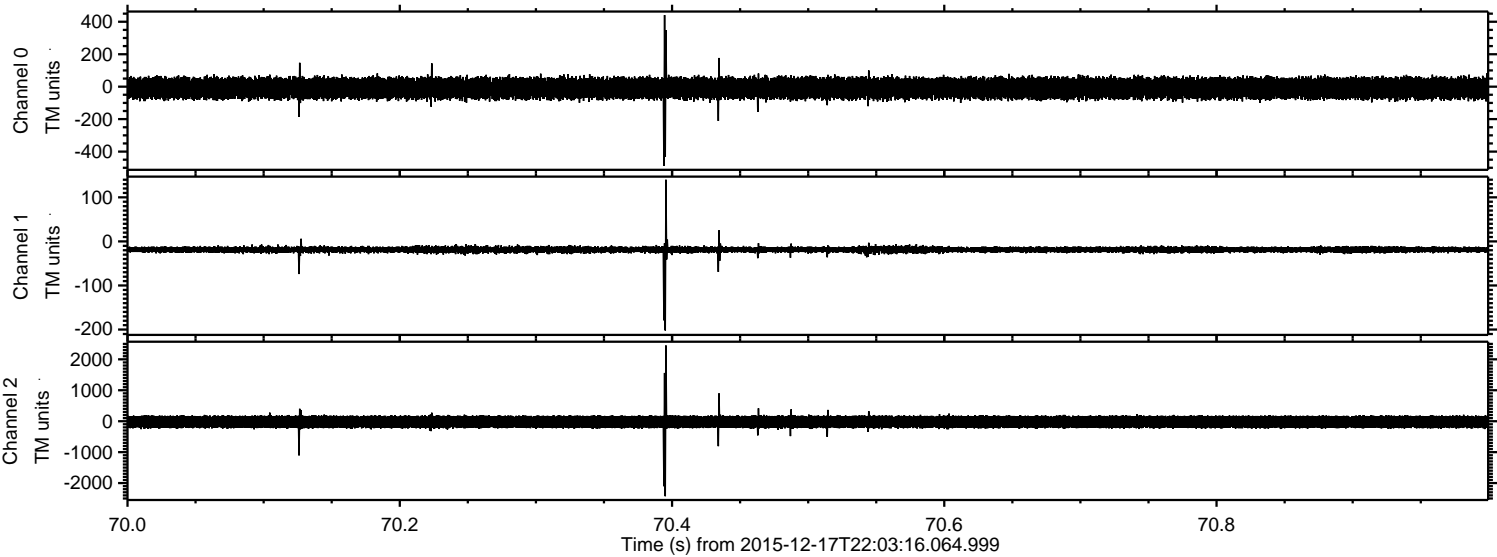


Channel 0
mn: -1219
mx: 862
 μ : -9.4
 σ : 36.5

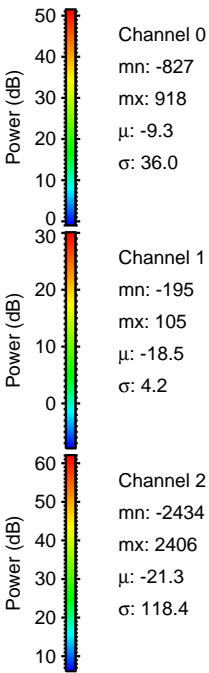
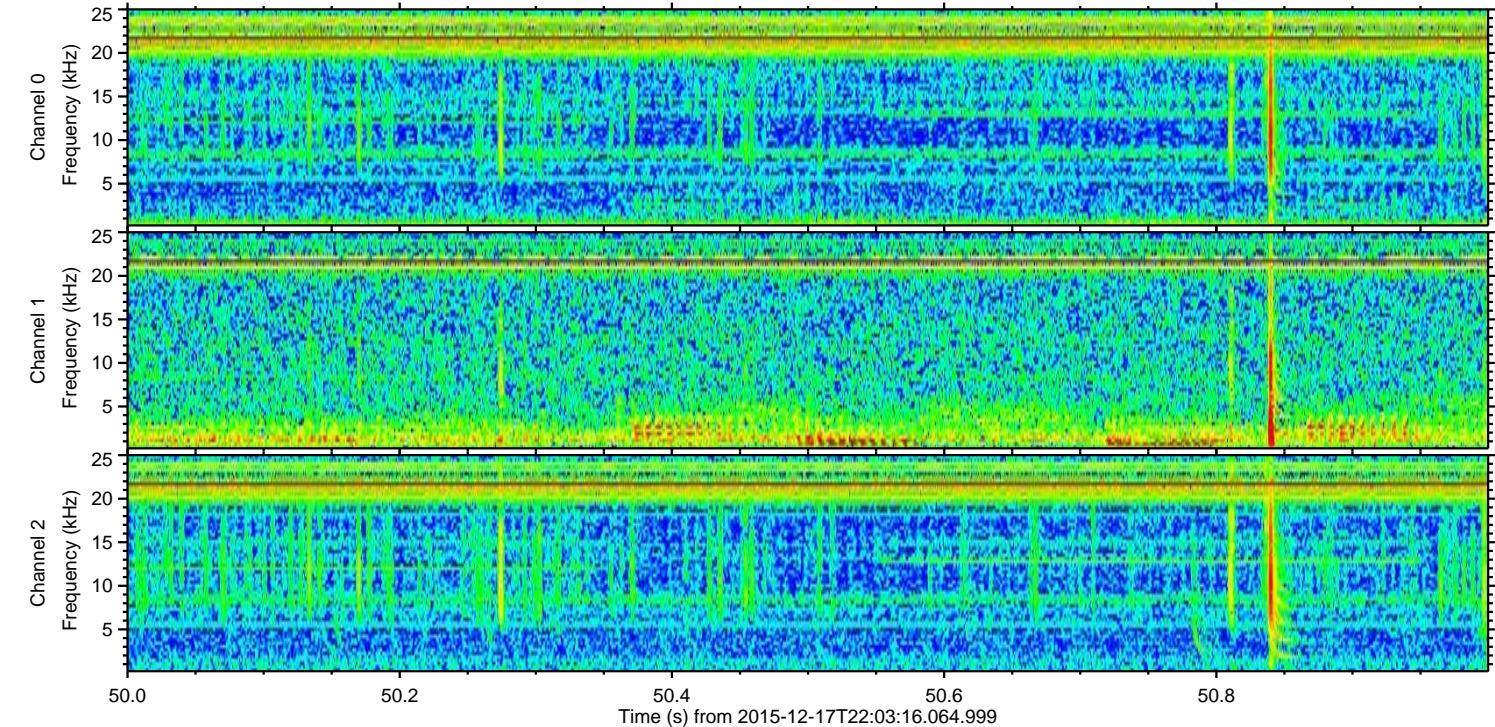
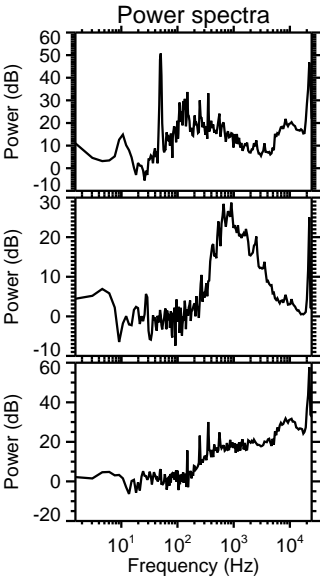
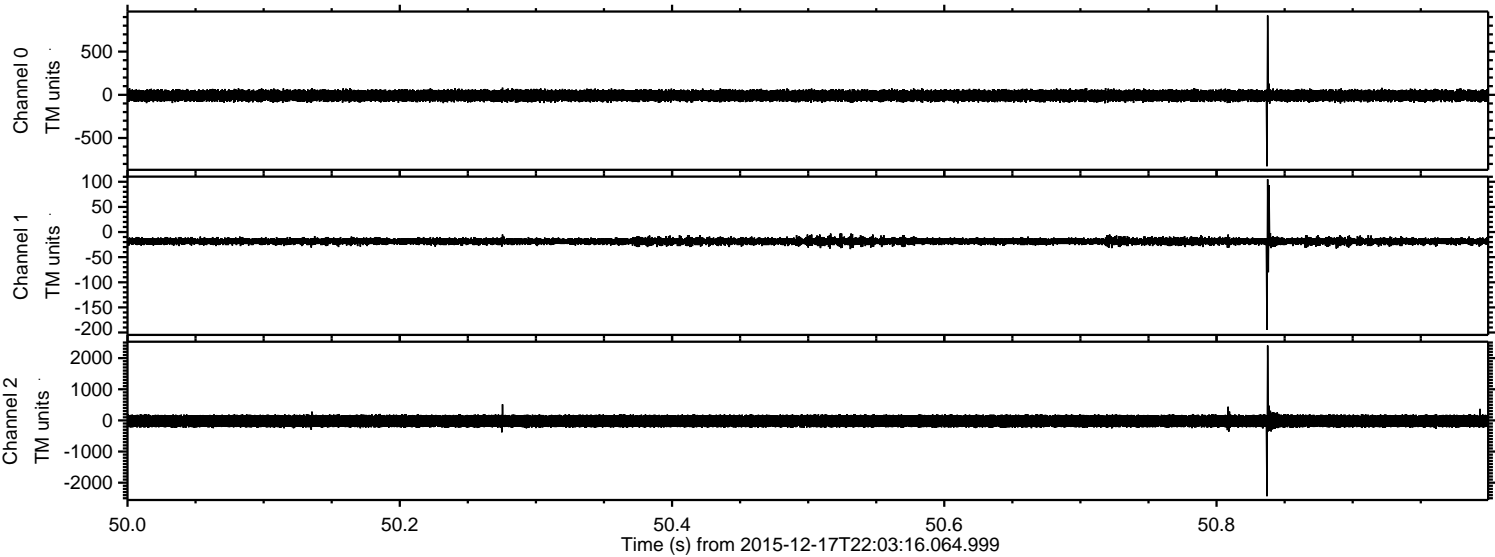
Channel 1
mn: -261
mx: 224
 μ : -18.7
 σ : 5.4

Channel 2
mn: -3180
mx: 2884
 μ : -21.6
 σ : 121.2

Processed Fri Jan 29 09:41:43 2016 by ELM ver.2012-10-06 from 001__elm20151217_220315__dat00.bin



Processed Fri Jan 29 09:41:44 2016 by ELM ver.2012-10-06 from 001__elm20151217_220315__dat00.bin



Processed Fri Jan 29 09:41:45 2016 by ELM ver.2012-10-06 from 001__elm20151217_220315__dat00.bin

