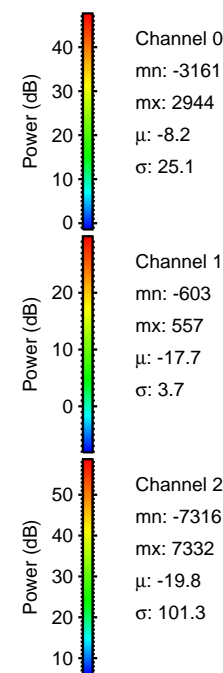
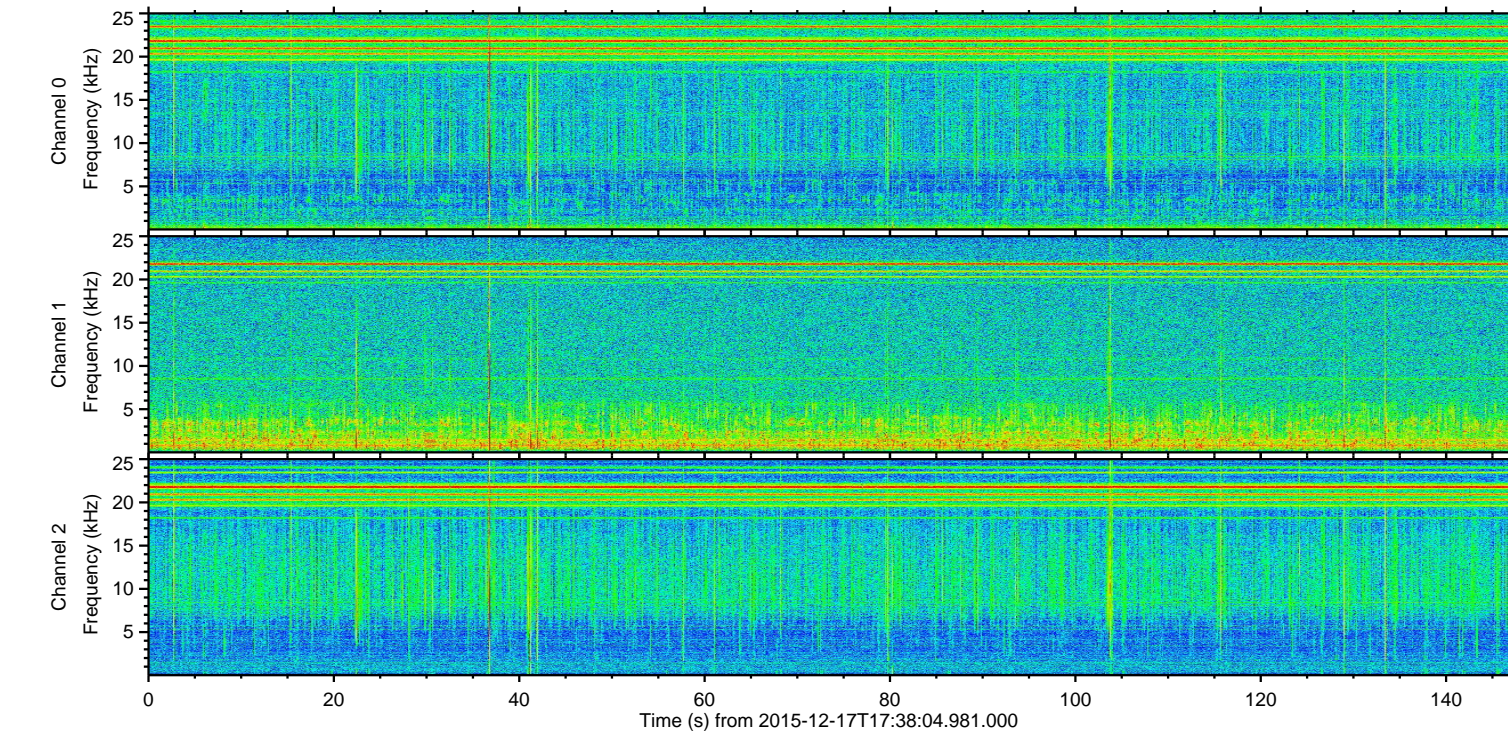
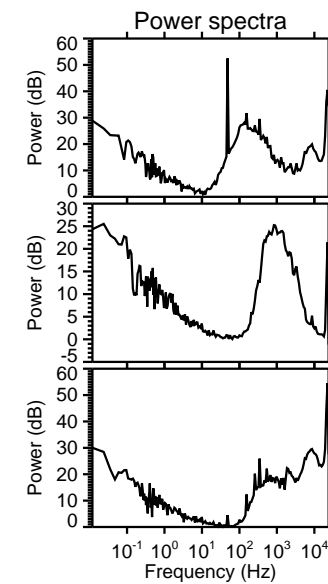
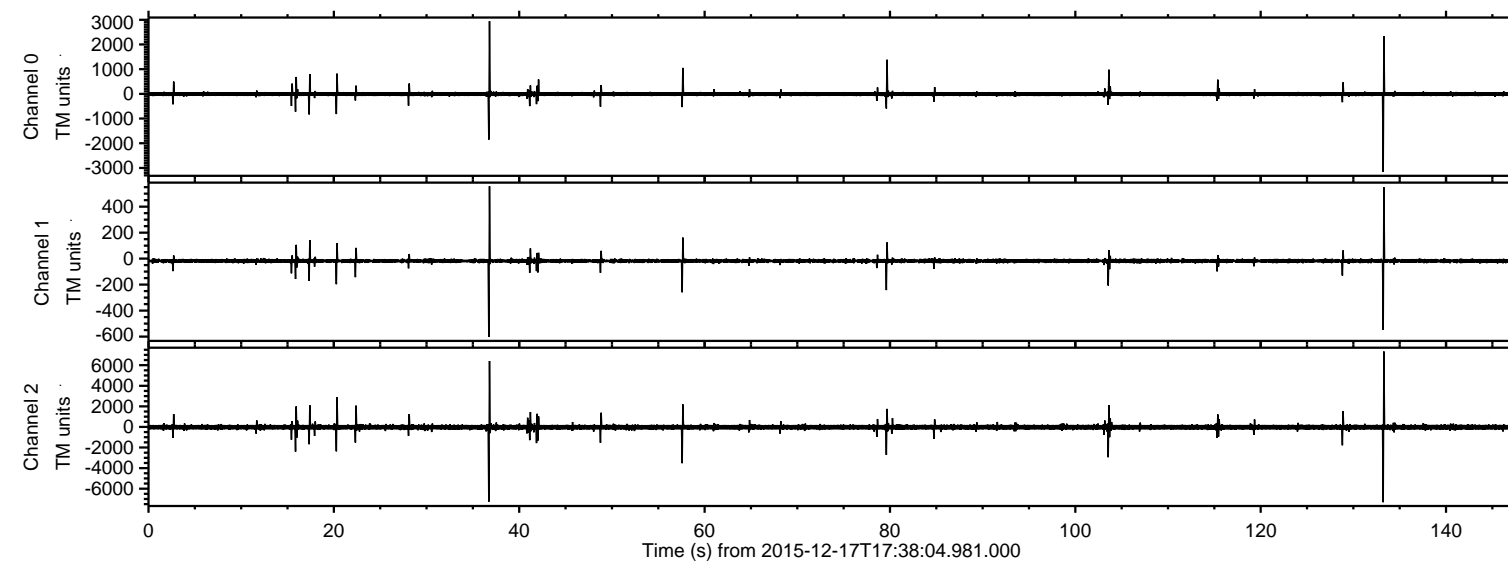


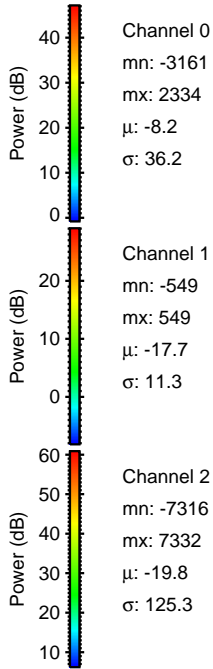
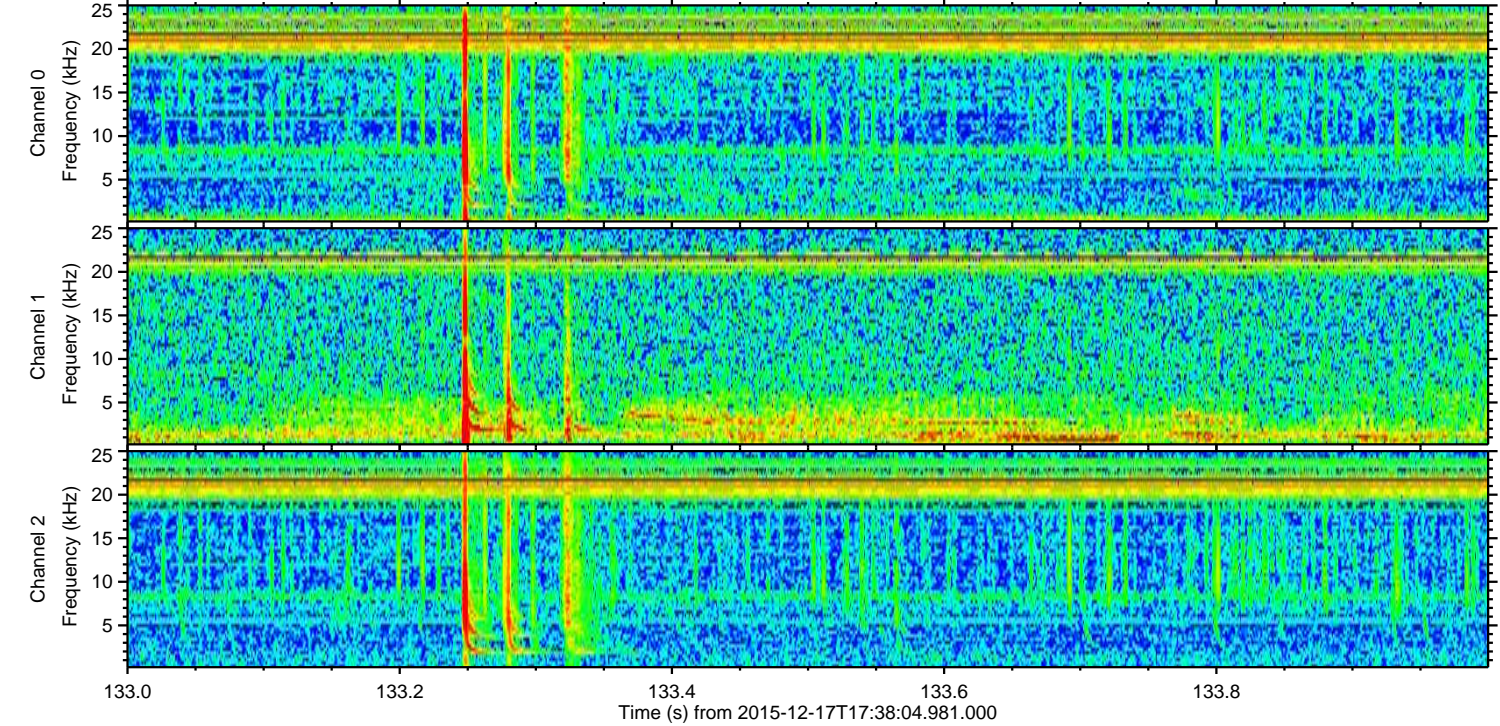
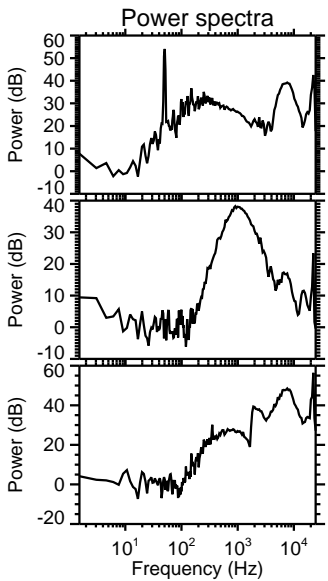
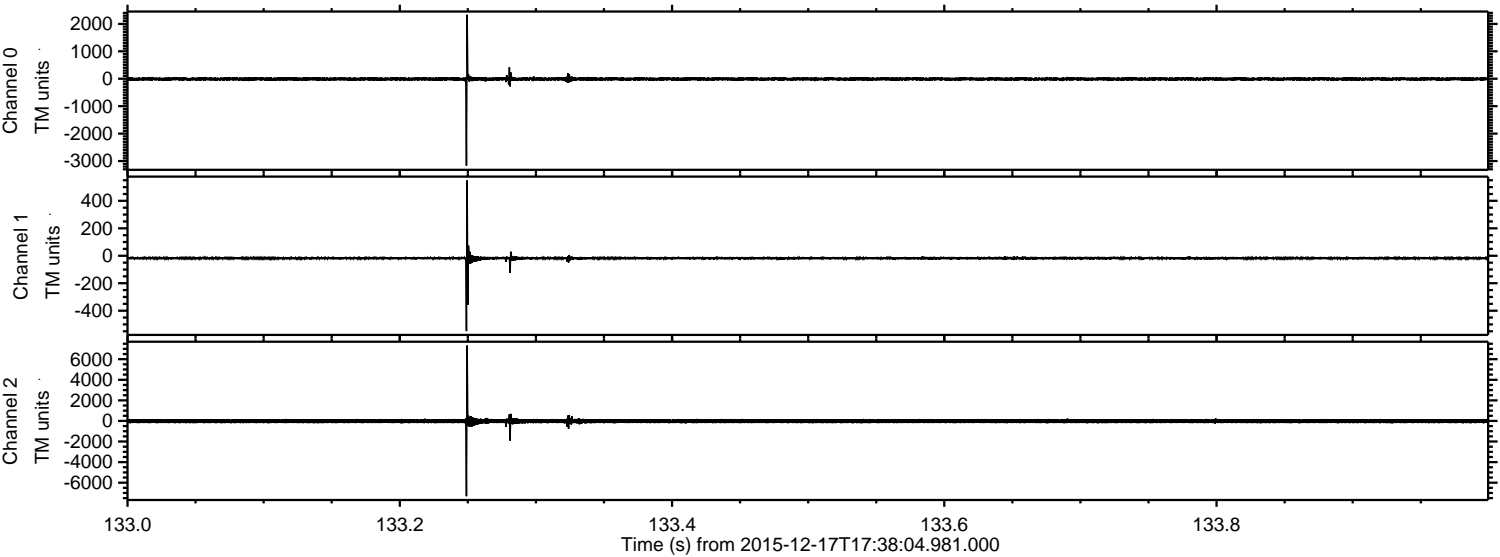
ELMAVAN 3D WAVEFORMS (Measured data sampled at 50 kHz) 51000 packets of 144 samples from 2015-12-17T17:38:04.981.000.

Processed Fri Jan 29 08:41:40 2016 by ELM ver.2012-10-06 from 001__elm20151217_173803__dat00.bin



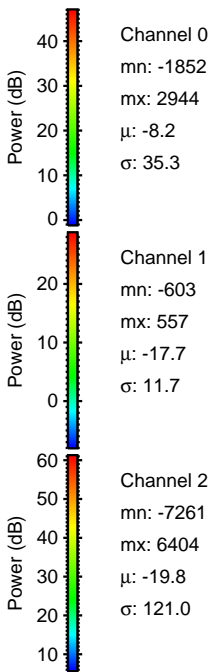
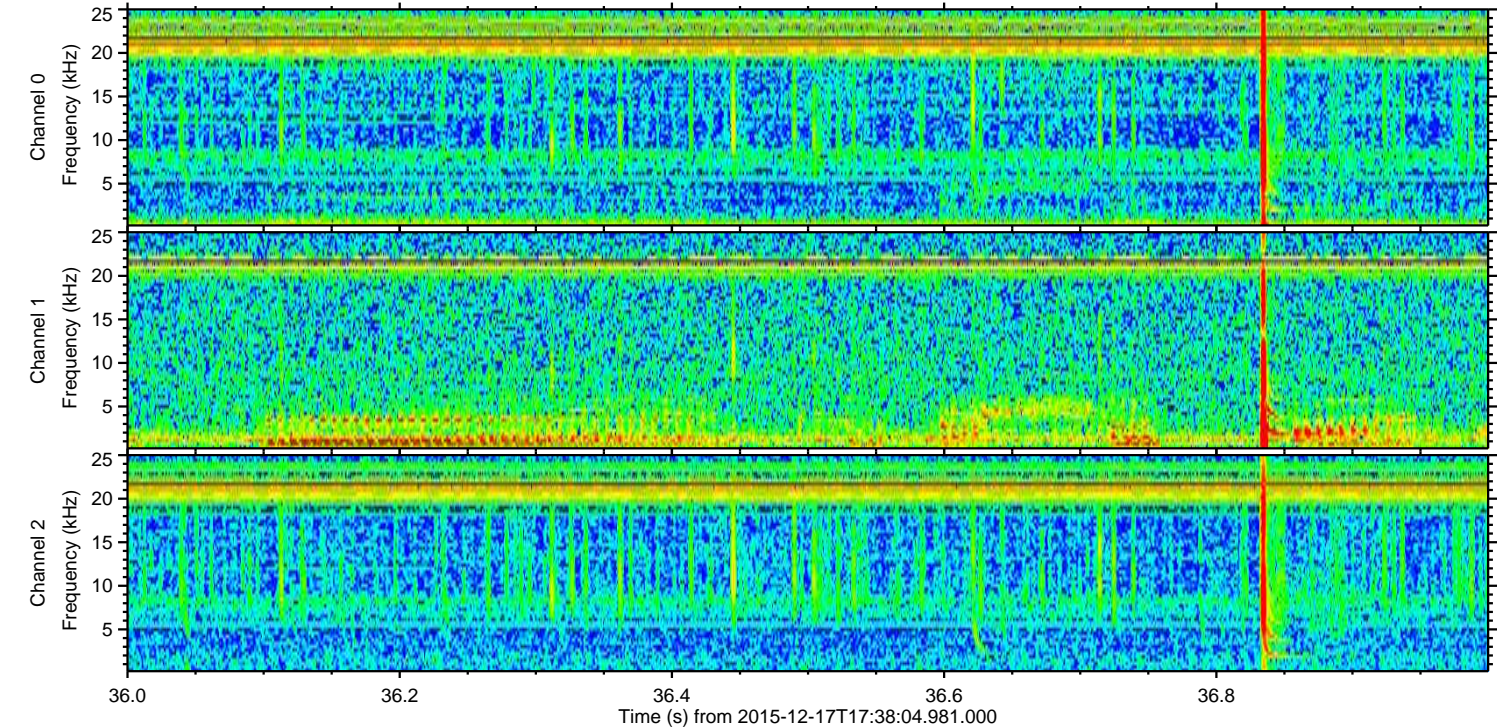
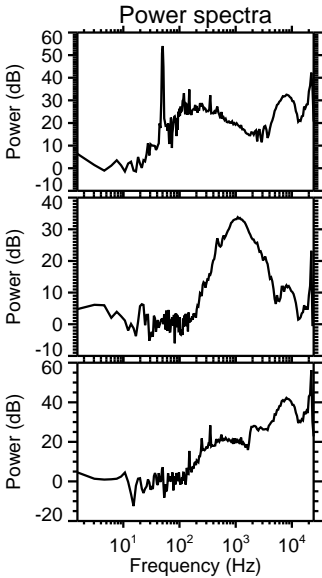
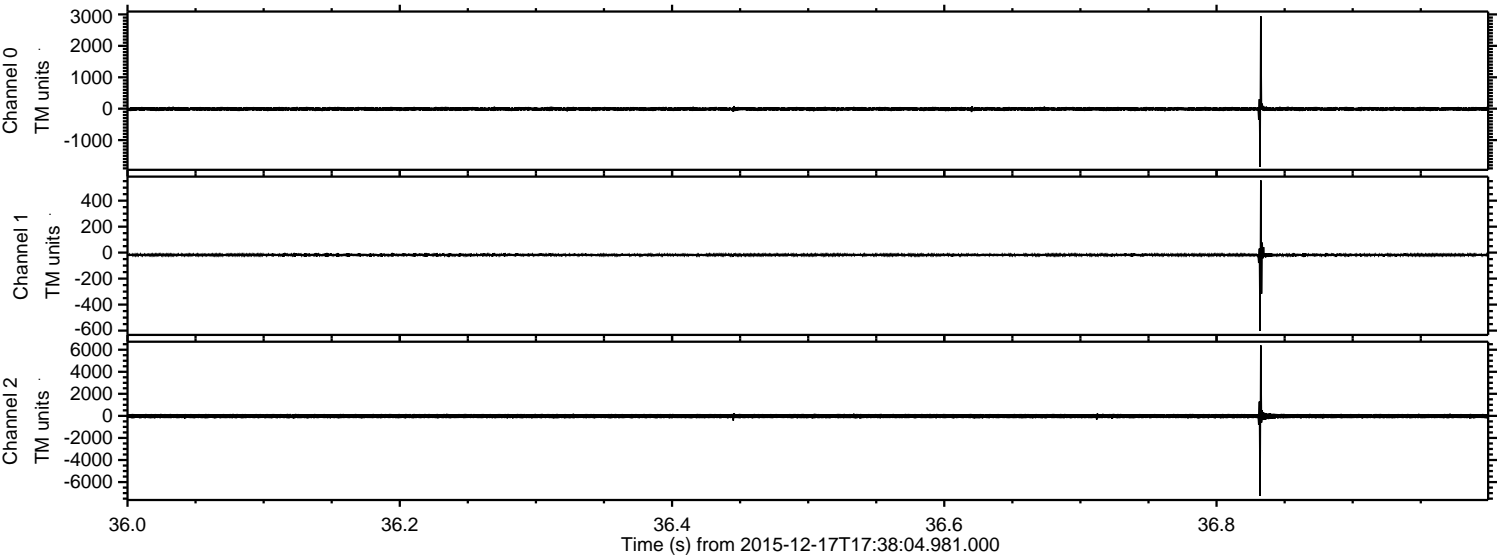
ELMAVAN 3D WAVEFORMS (Measured data sampled at 50 kHz) 51000 packets of 144 samples from 2015-12-17T17:38:04.981.000. Part 134/147

Processed Fri Jan 29 08:41:52 2016 by ELM ver.2012-10-06 from 001__elm20151217_173803__dat00.bin

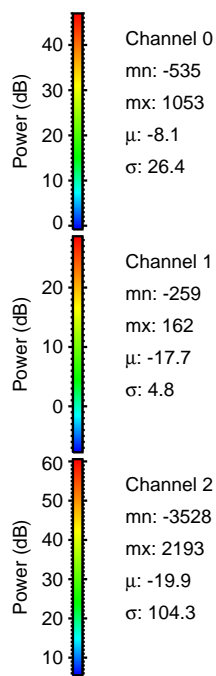
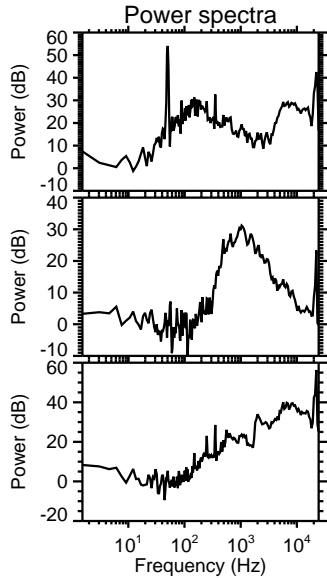
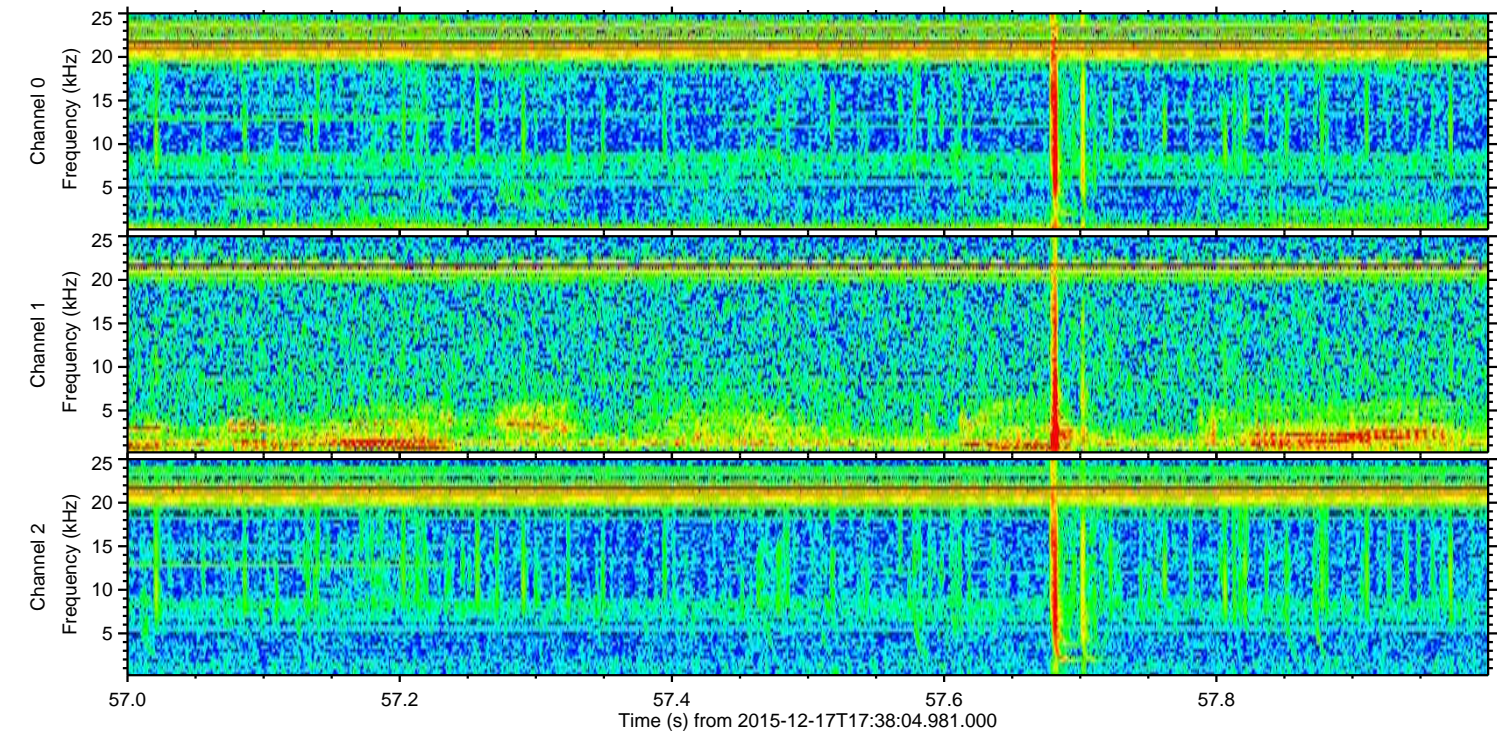
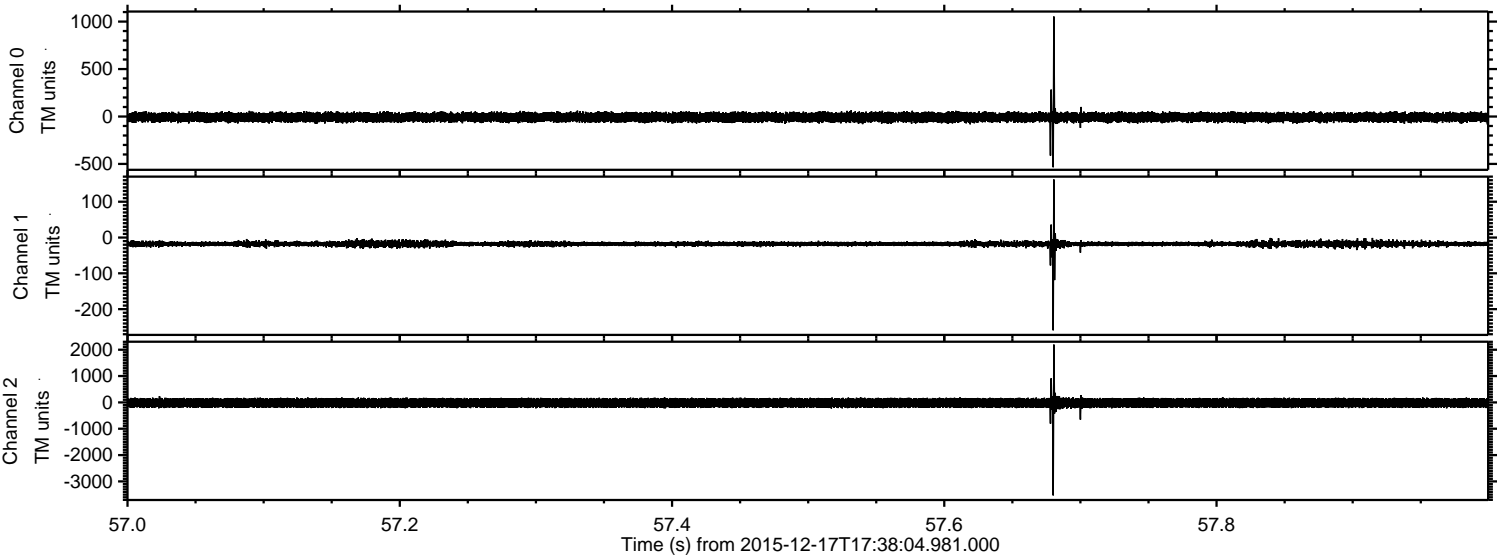


ELMAVAN 3D WAVEFORMS (Measured data sampled at 50 kHz) 51000 packets of 144 samples from 2015-12-17T17:38:04.981.000. Part 37/147

Processed Fri Jan 29 08:41:53 2016 by ELM ver.2012-10-06 from 001__elm20151217_173803__dat00.bin

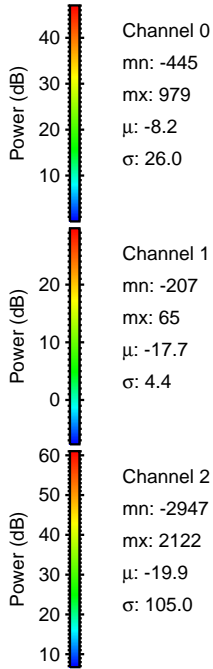
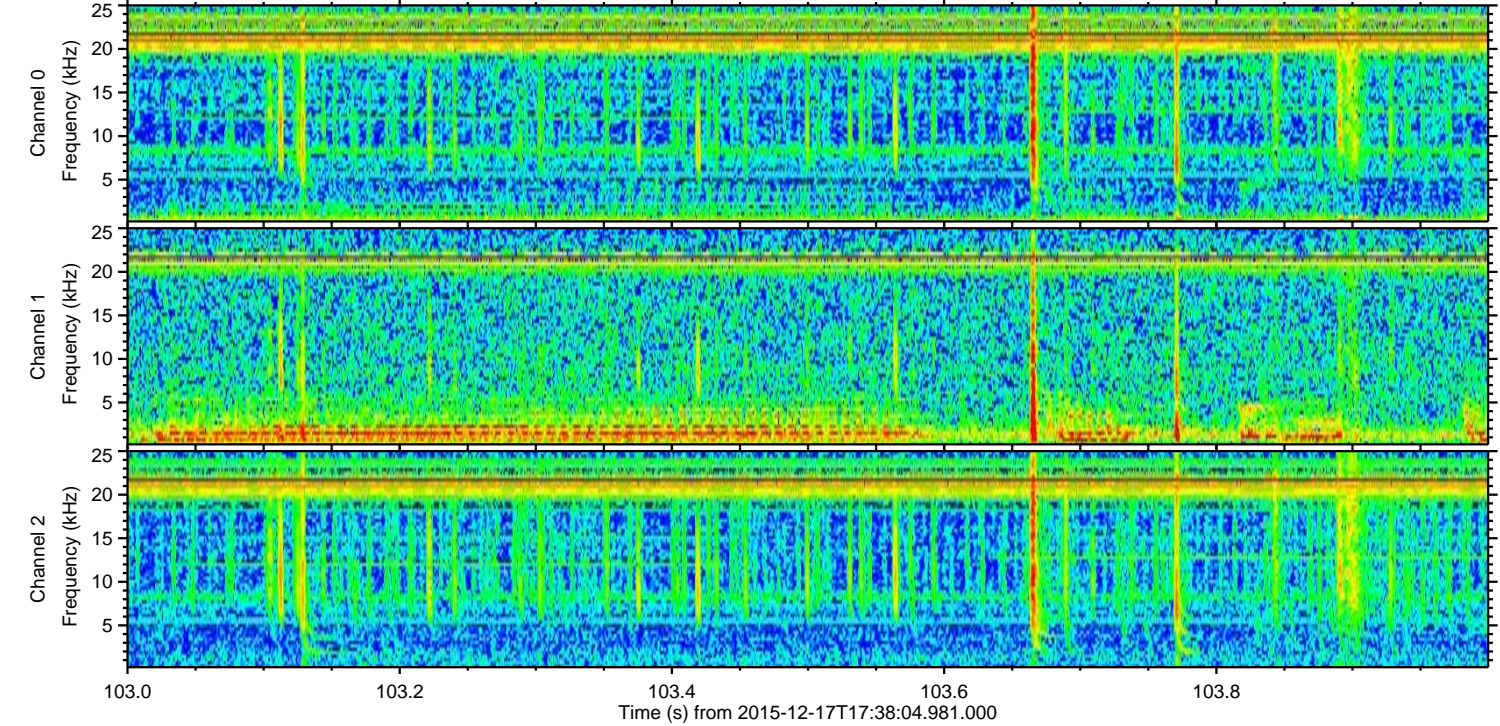
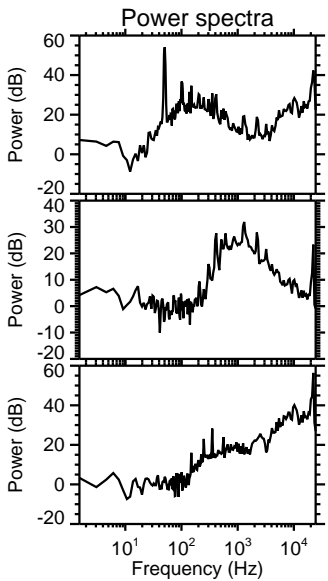
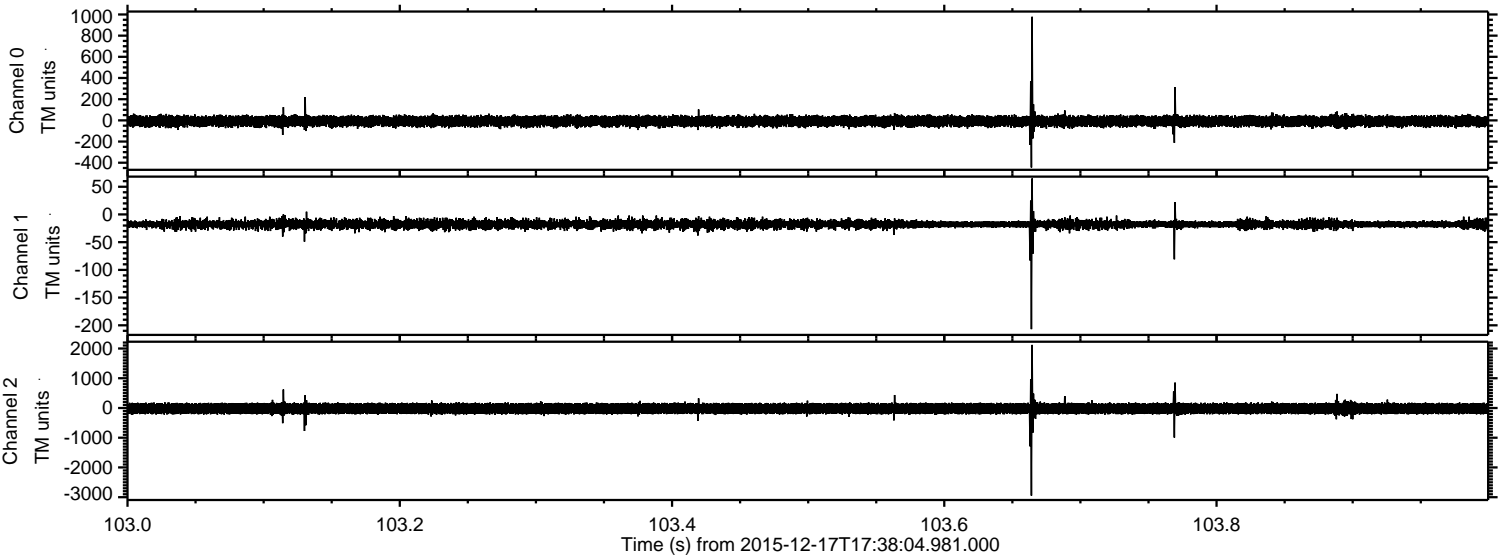


Processed Fri Jan 29 08:41:54 2016 by ELM ver.2012-10-06 from 001__elm20151217_173803__dat00.bin

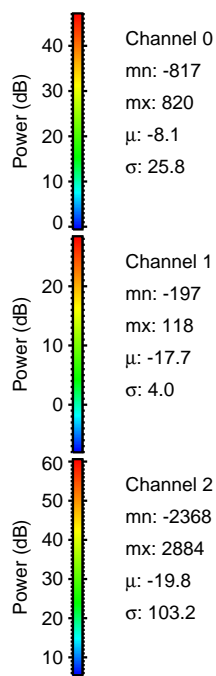
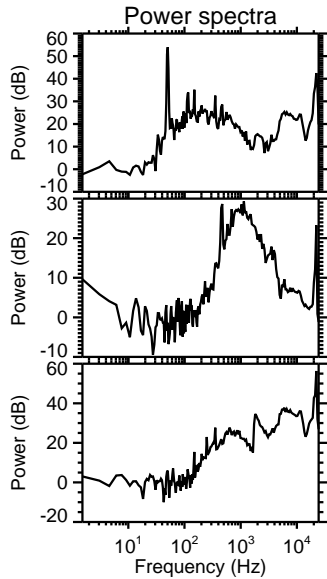
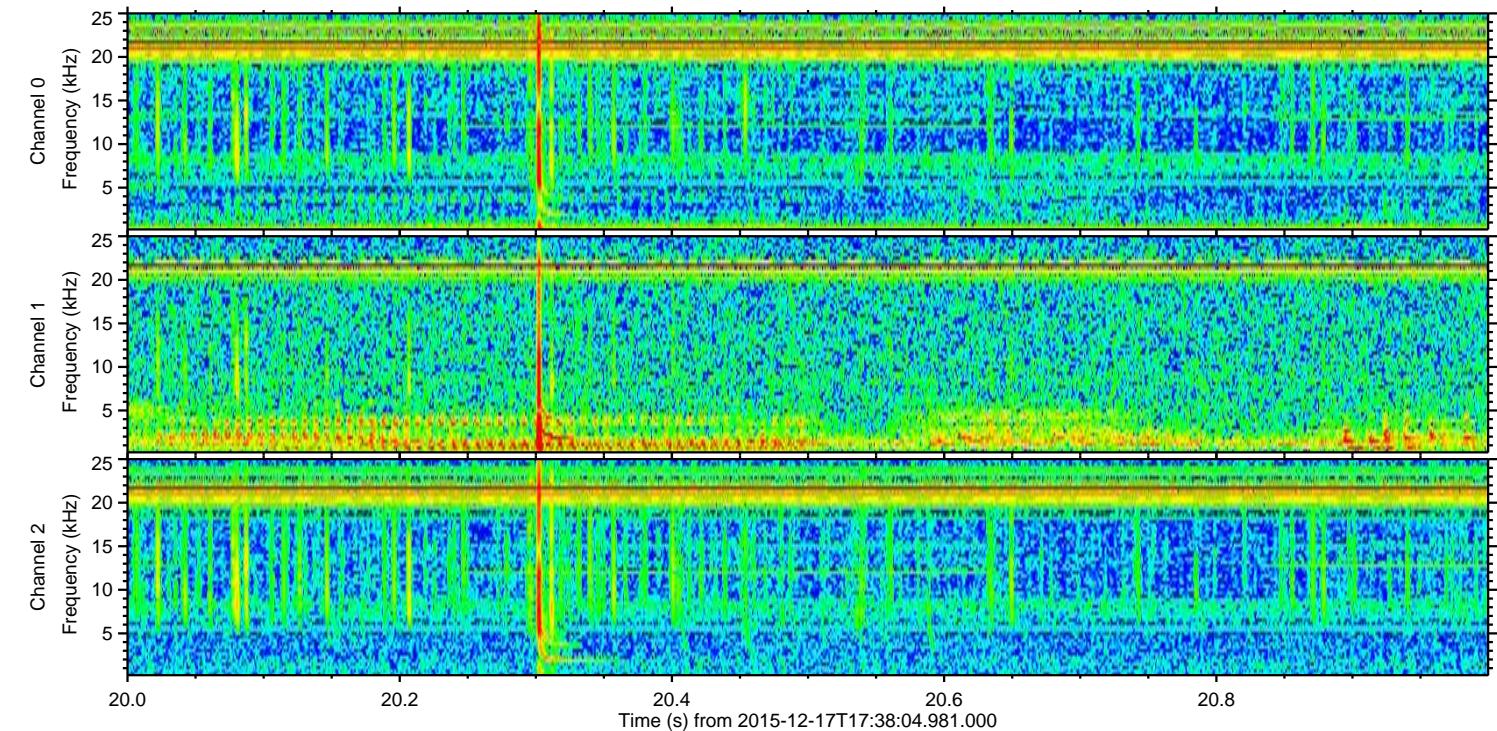
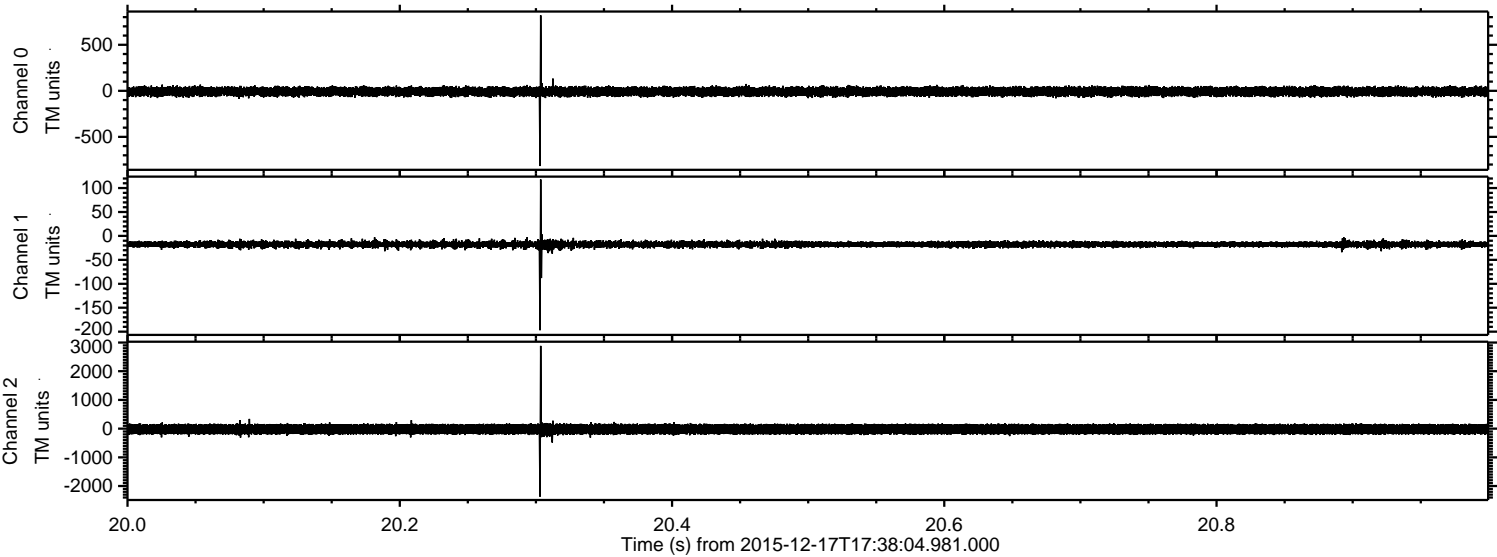


ELMAVAN 3D WAVEFORMS (Measured data sampled at 50 kHz) 51000 packets of 144 samples from 2015-12-17T17:38:04.981.000. Part 104/147

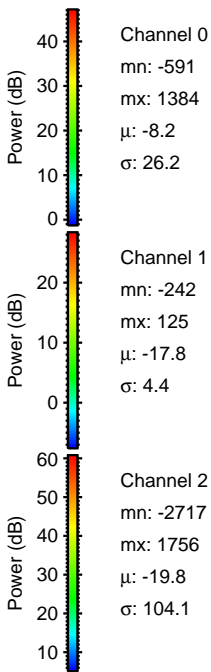
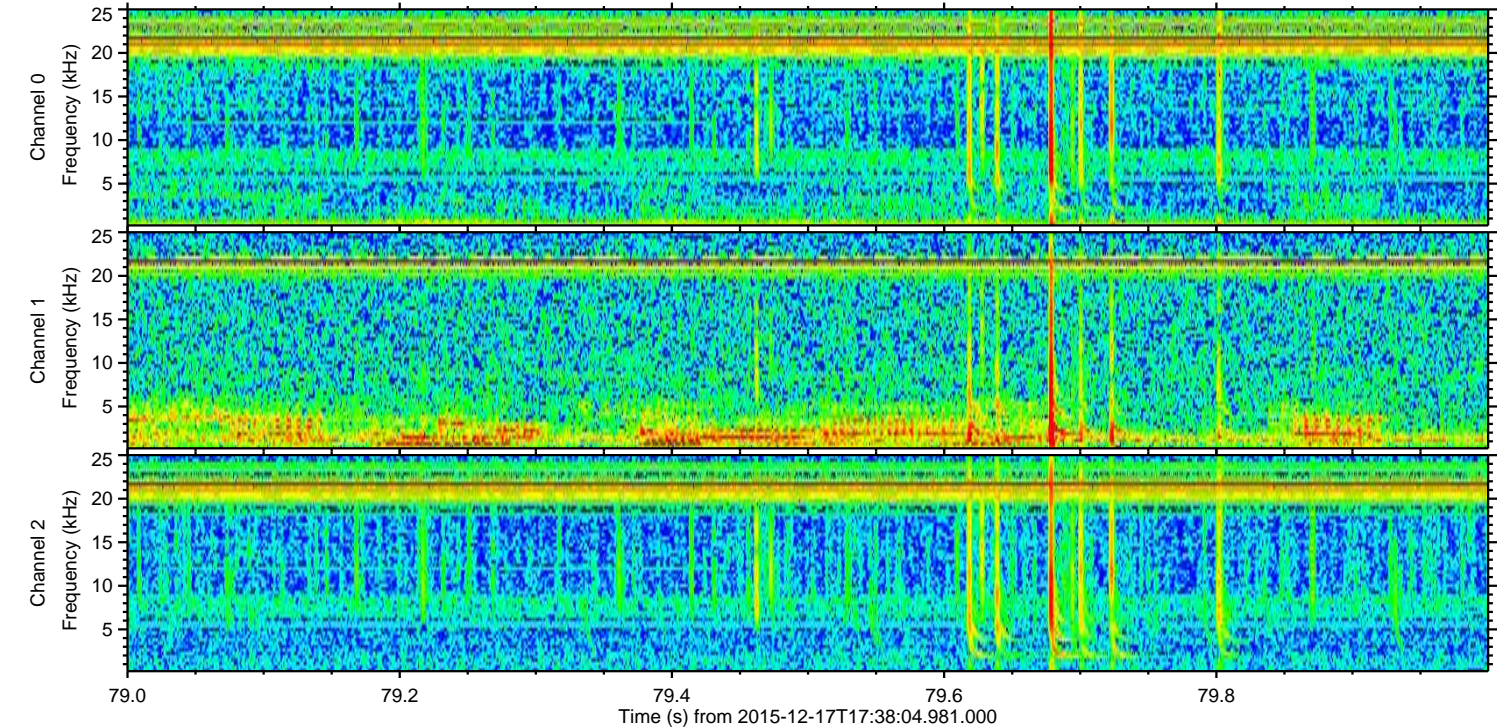
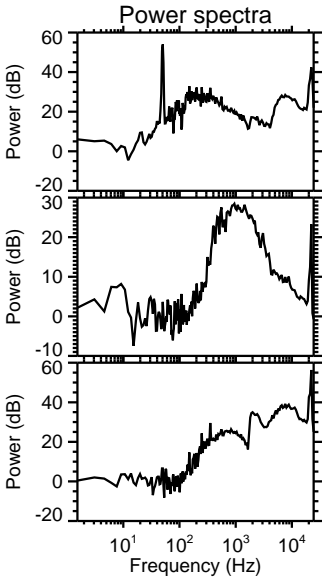
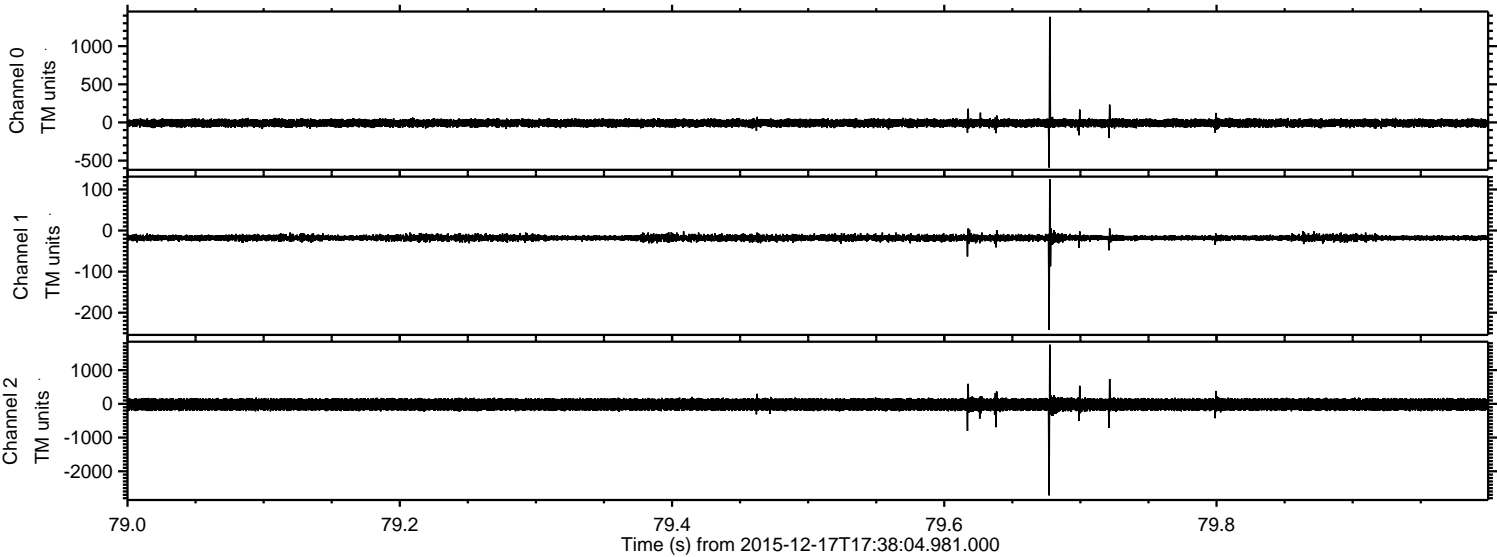
Processed Fri Jan 29 08:41:55 2016 by ELM ver.2012-10-06 from 001__elm20151217_173803__dat00.bin



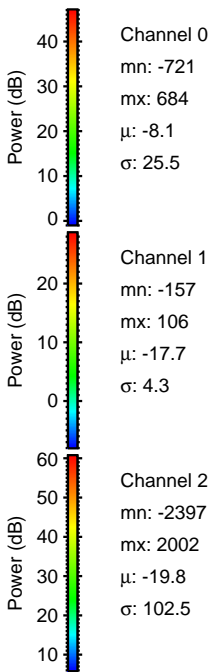
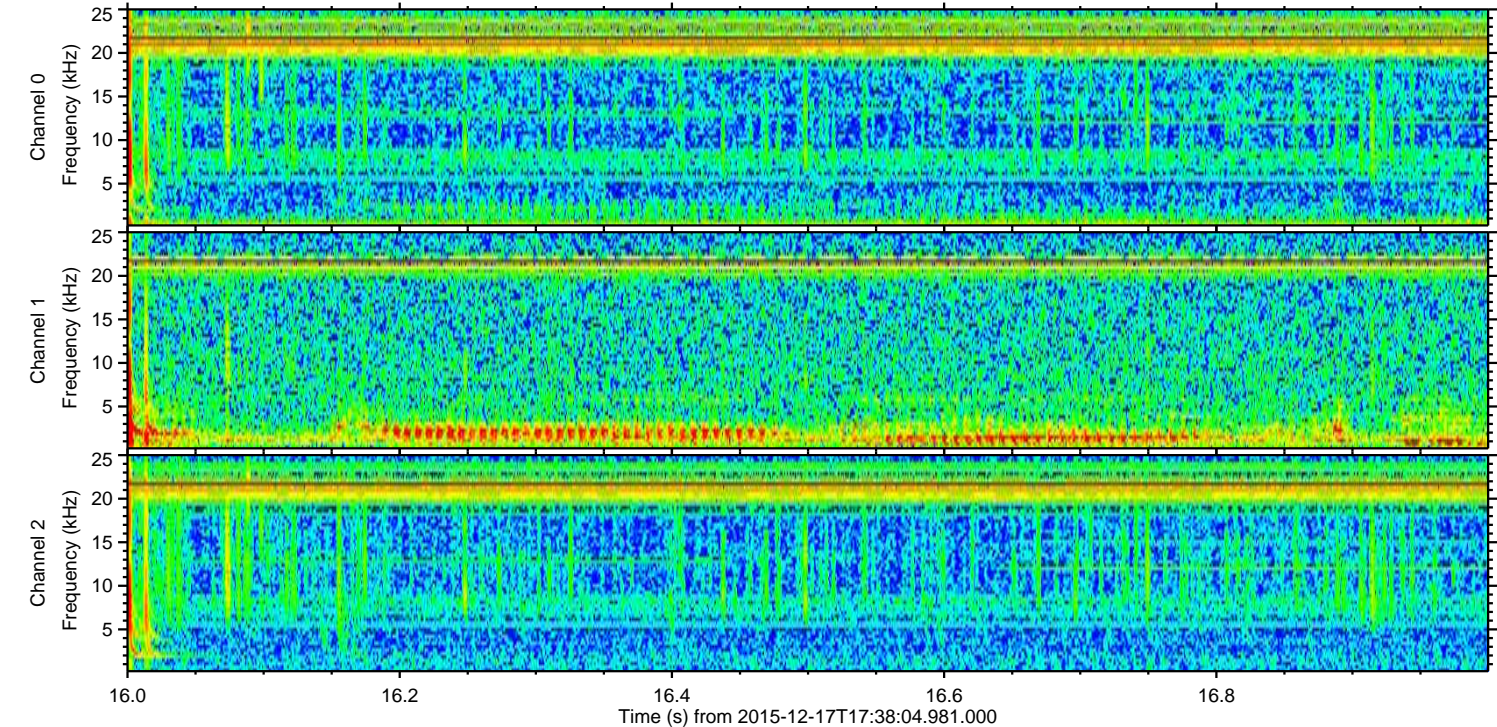
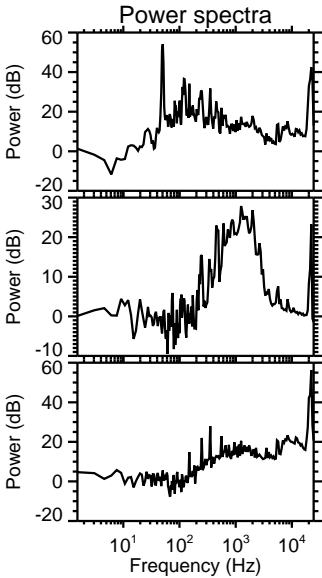
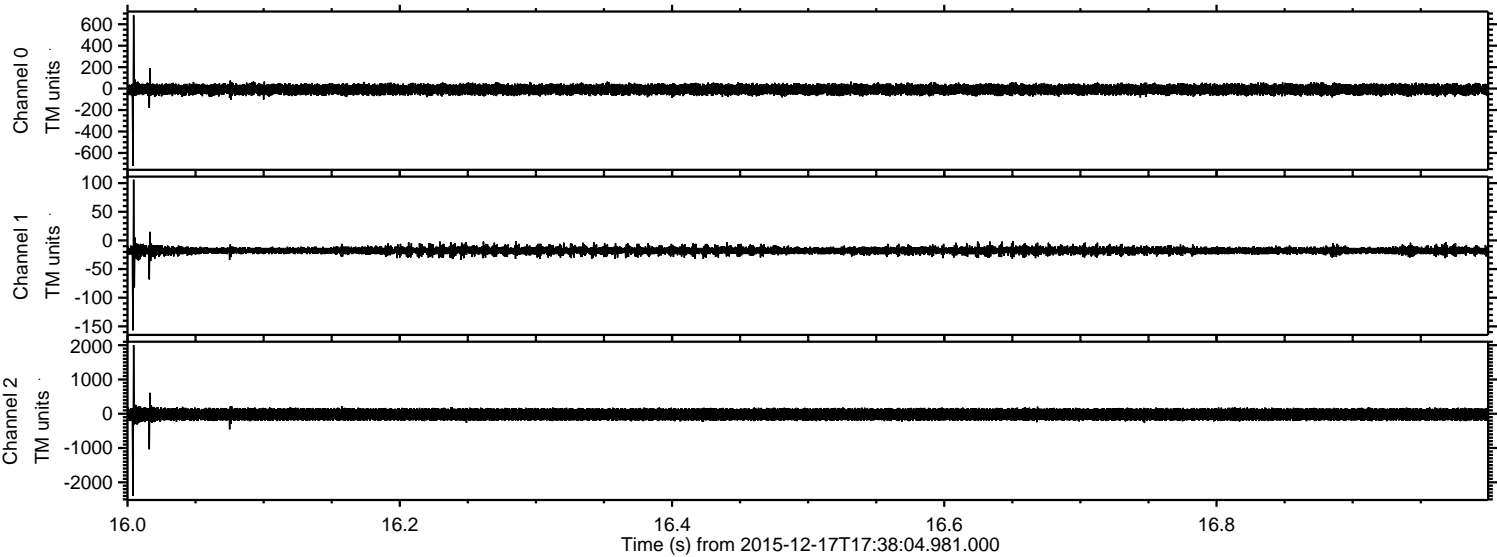
Processed Fri Jan 29 08:41:56 2016 by ELM ver.2012-10-06 from 001__elm20151217_173803__dat00.bin



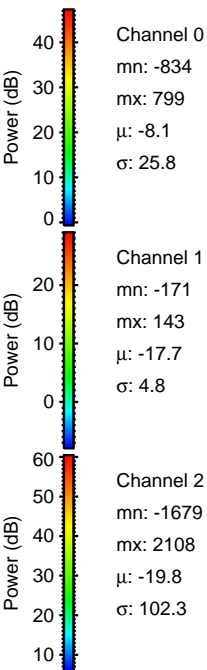
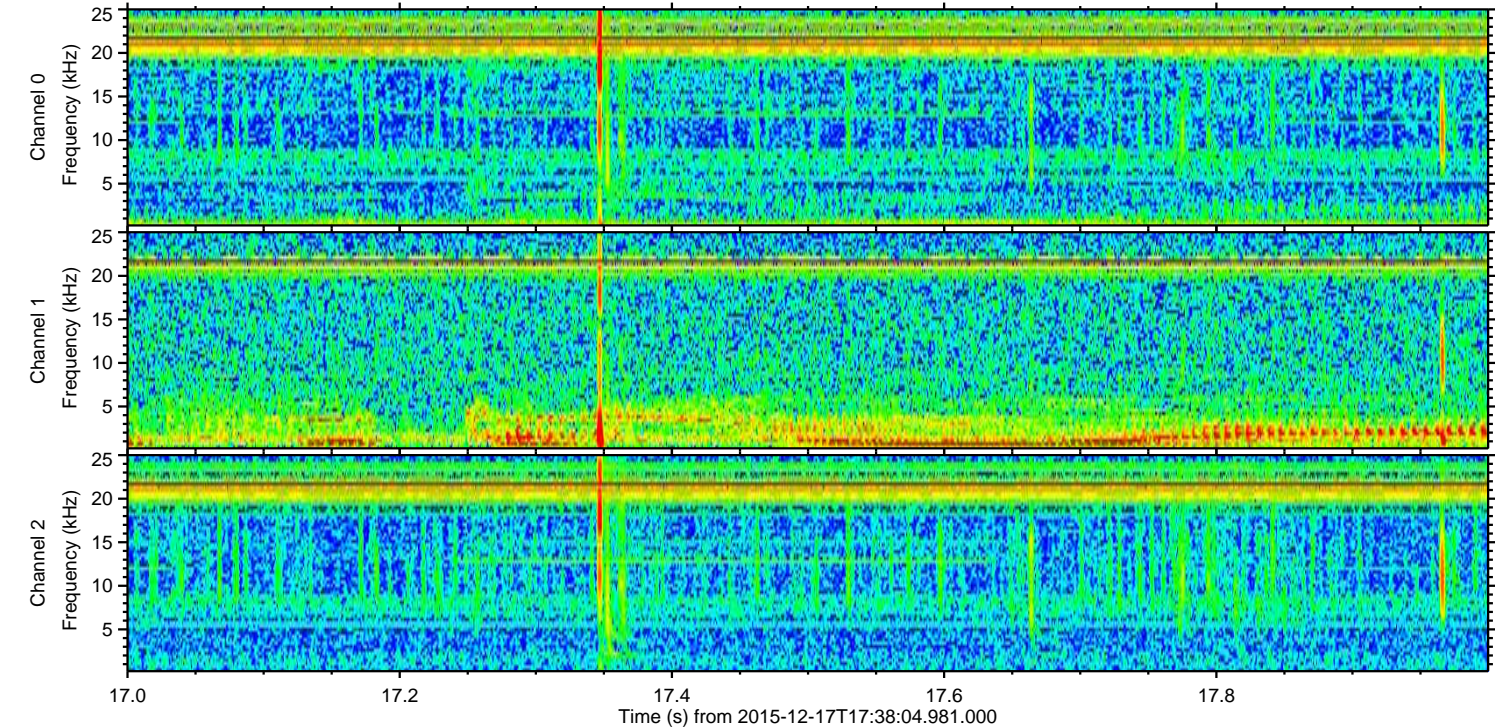
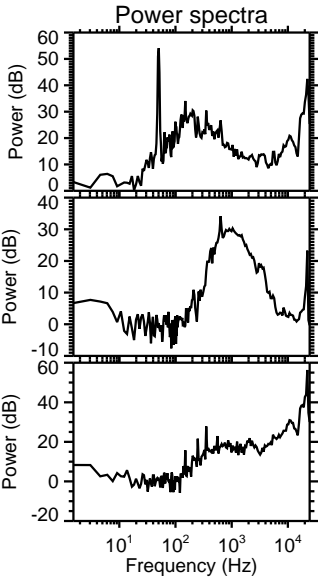
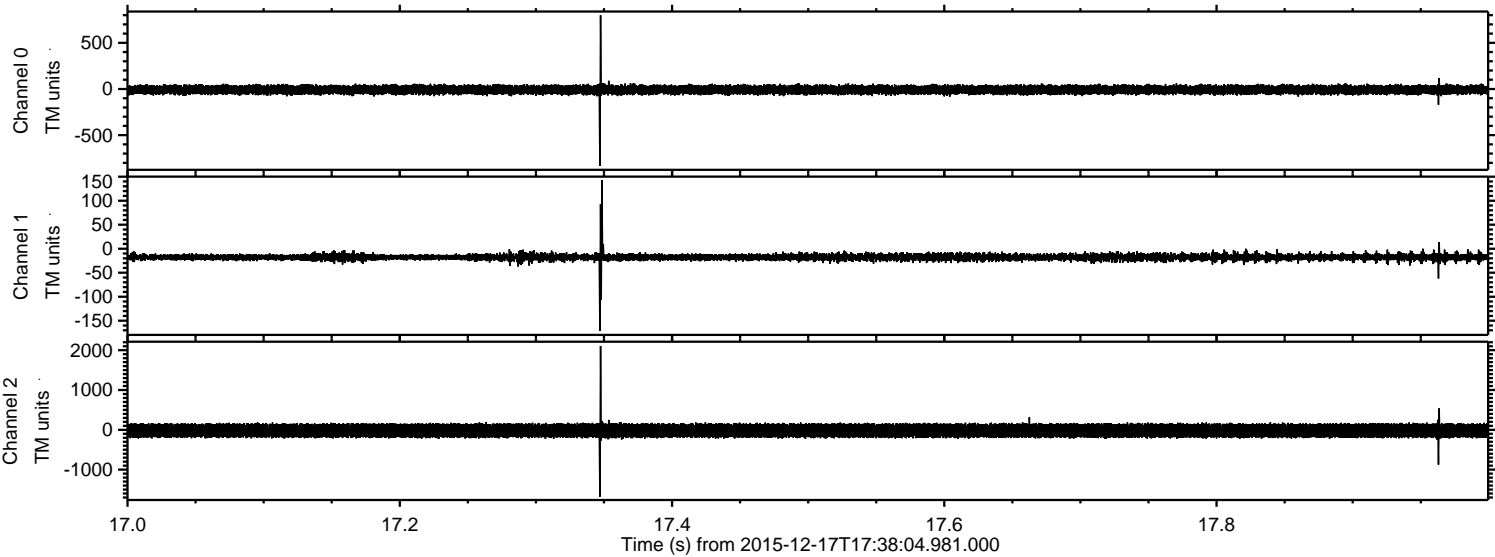
Processed Fri Jan 29 08:41:57 2016 by ELM ver.2012-10-06 from 001__elm20151217_173803__dat00.bin



Processed Fri Jan 29 08:41:58 2016 by ELM ver.2012-10-06 from 001__elm20151217_173803__dat00.bin



Processed Fri Jan 29 08:41:59 2016 by ELM ver.2012-10-06 from 001__elm20151217_173803__dat00.bin

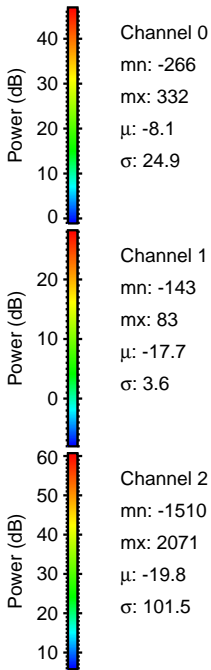
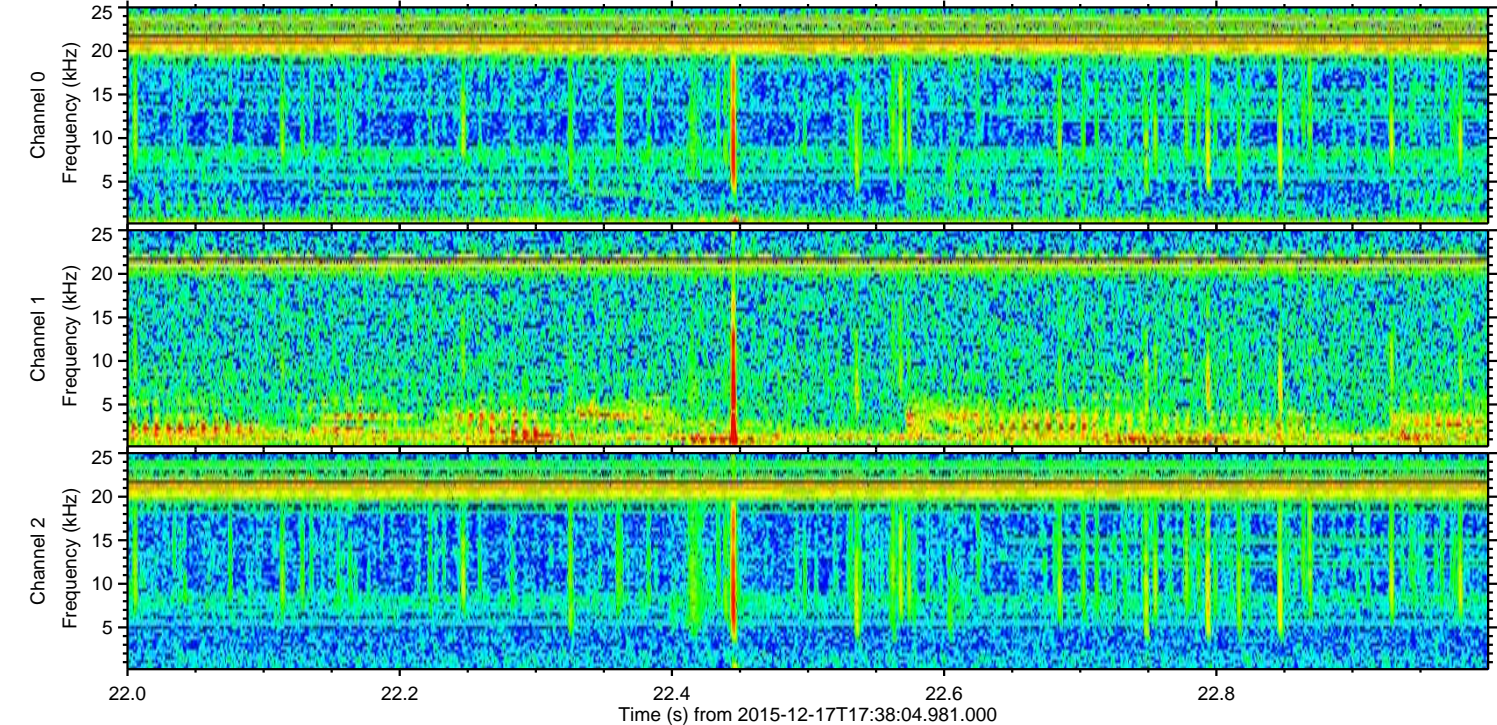
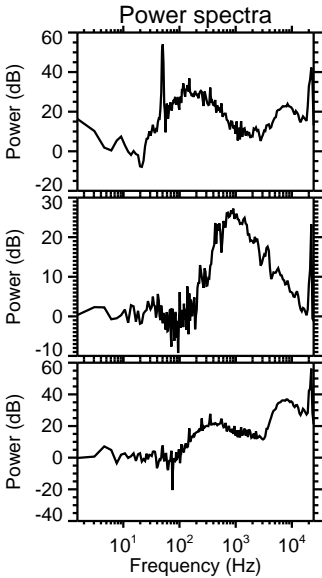
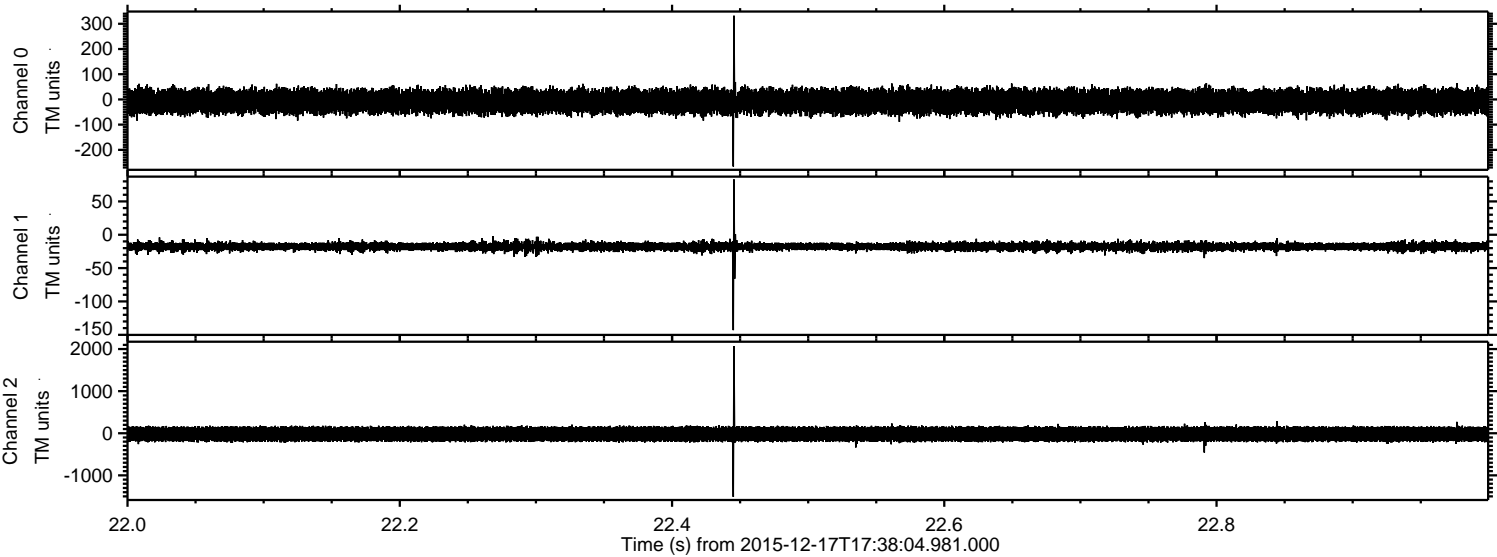


Channel 0
mn: -834
mx: 799
 μ : -8.1
 σ : 25.8

Channel 1
mn: -171
mx: 143
 μ : -17.7
 σ : 4.8

Channel 2
mn: -1679
mx: 2108
 μ : -19.8
 σ : 102.3

Processed Fri Jan 29 08:42:00 2016 by ELM ver.2012-10-06 from 001__elm20151217_173803__dat00.bin



Processed Fri Jan 29 08:42:01 2016 by ELM ver.2012-10-06 from 001__elm20151217_173803__dat00.bin

