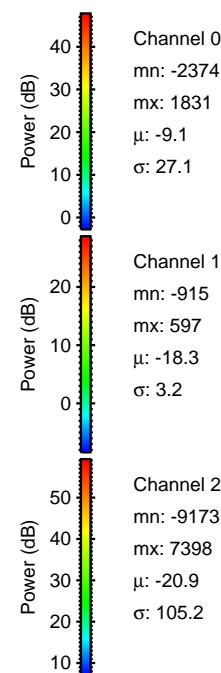
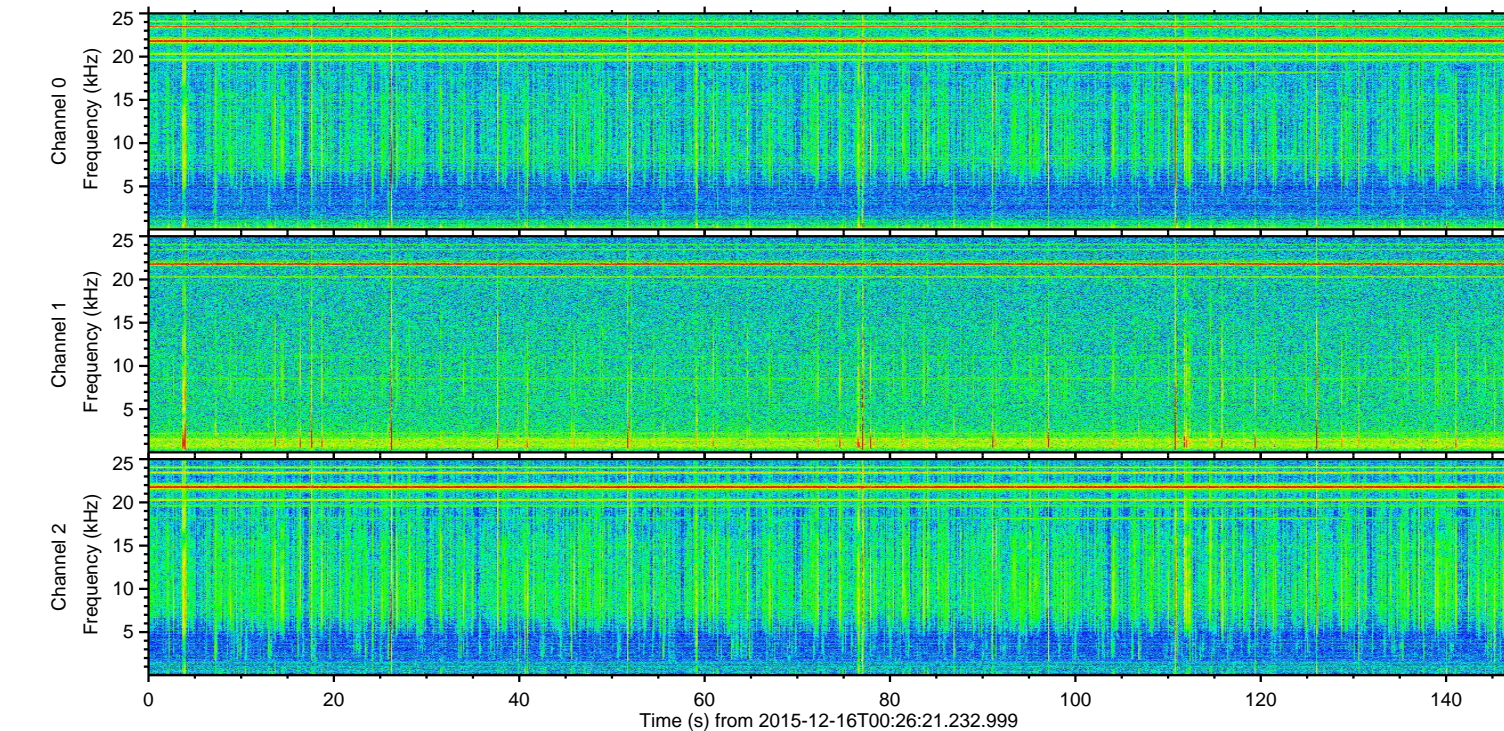
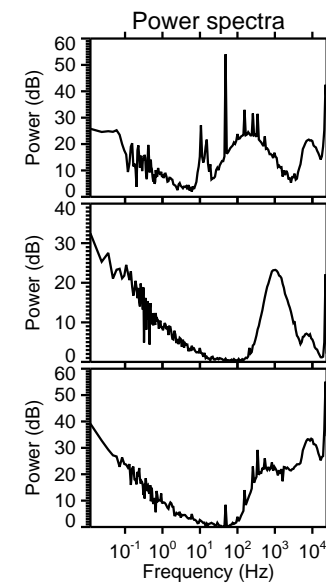
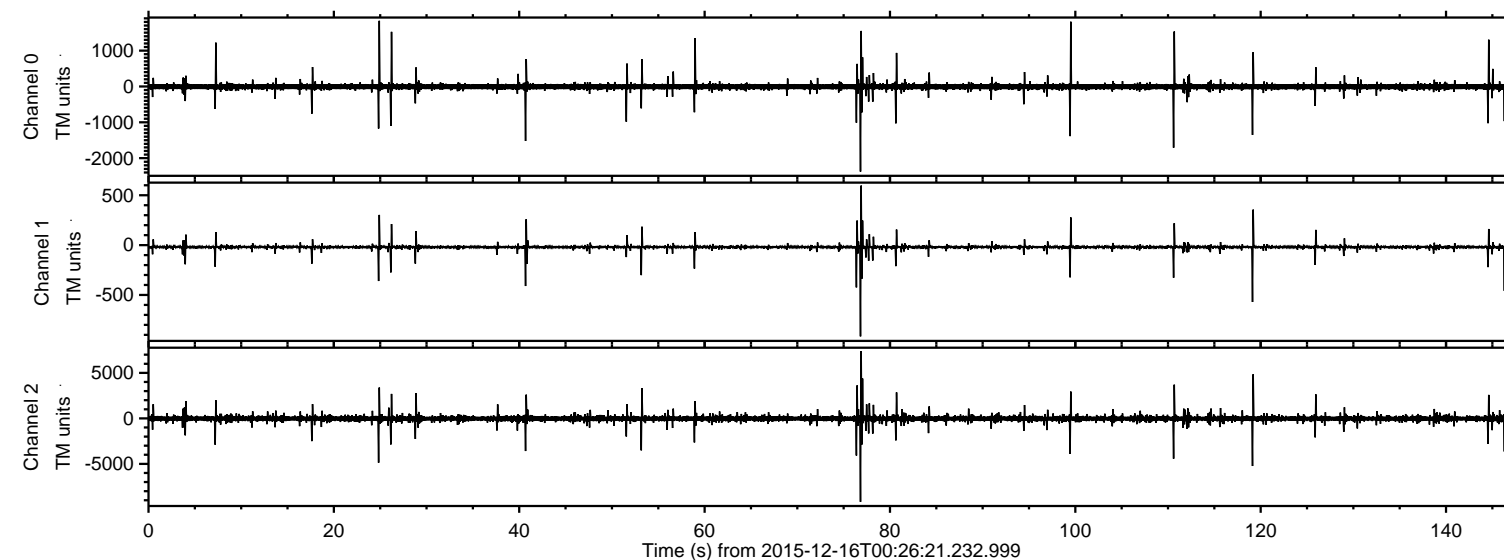


# ELMAVAN 3D WAVEFORMS (Measured data sampled at 50 kHz) 51000 packets of 144 samples from 2015-12-16T00:26:21.232.999.

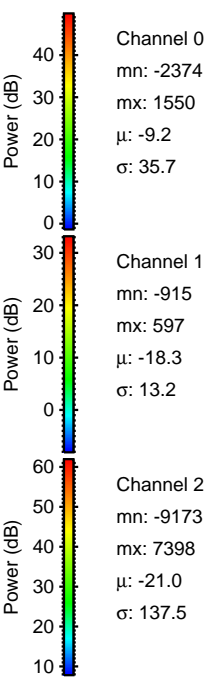
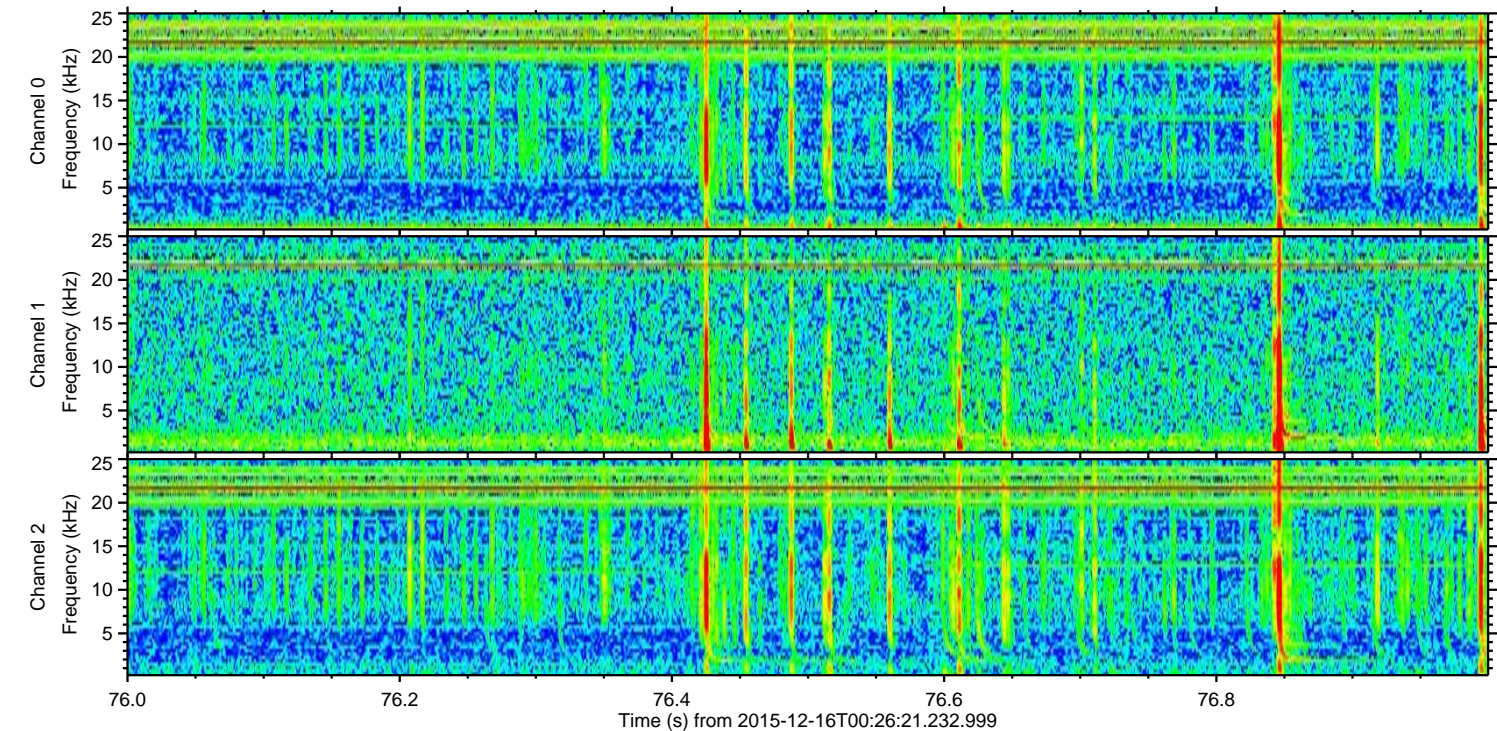
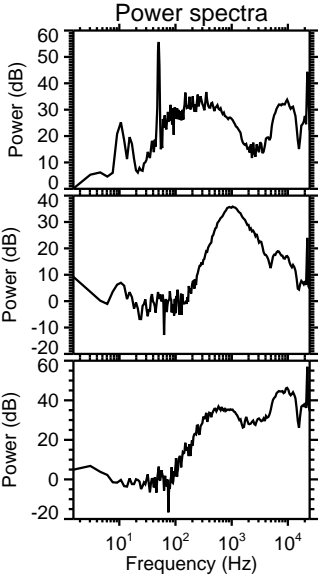
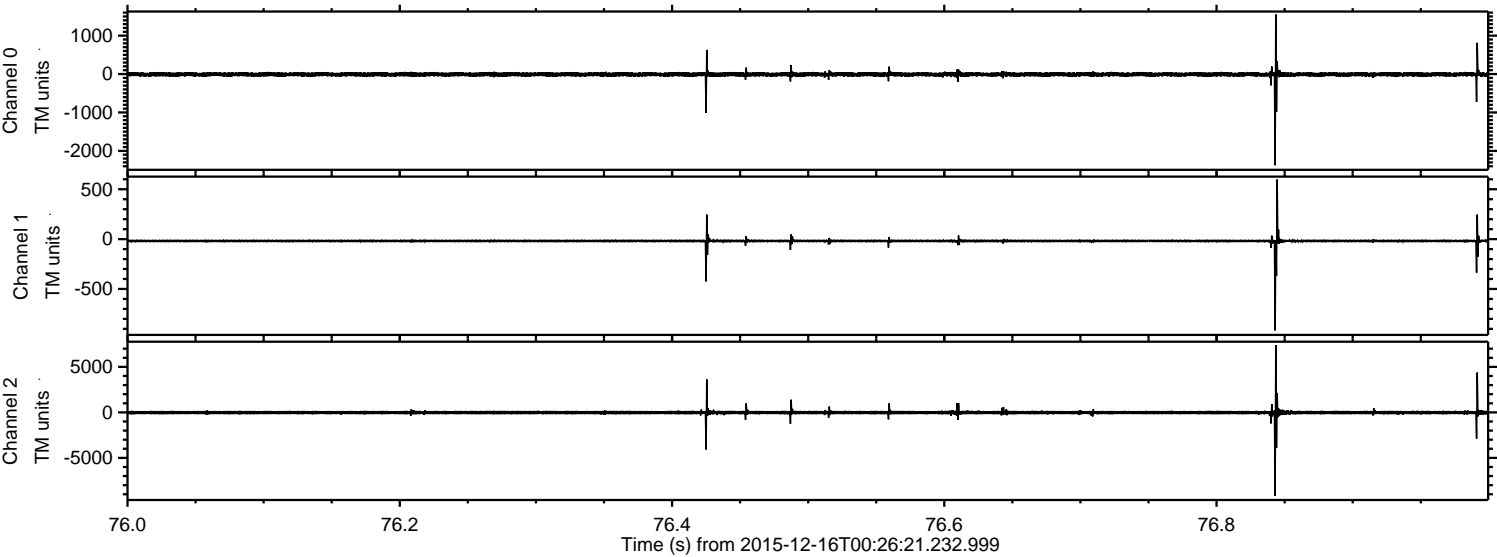
Processed Thu Jan 28 23:15:03 2016 by ELM ver.2012-10-06 from 001\_\_elm20151216\_002620\_\_dat00.bin





ELMAVAN 3D WAVEFORMS (Measured data sampled at 50 kHz) 51000 packets of 144 samples from 2015-12-16T00:26:21.232.999. Part 77/147

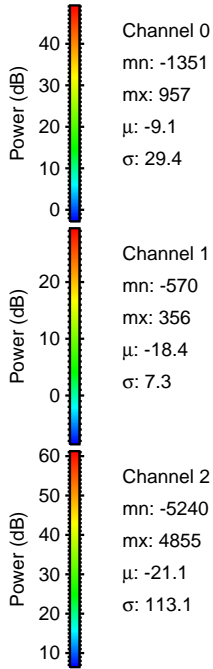
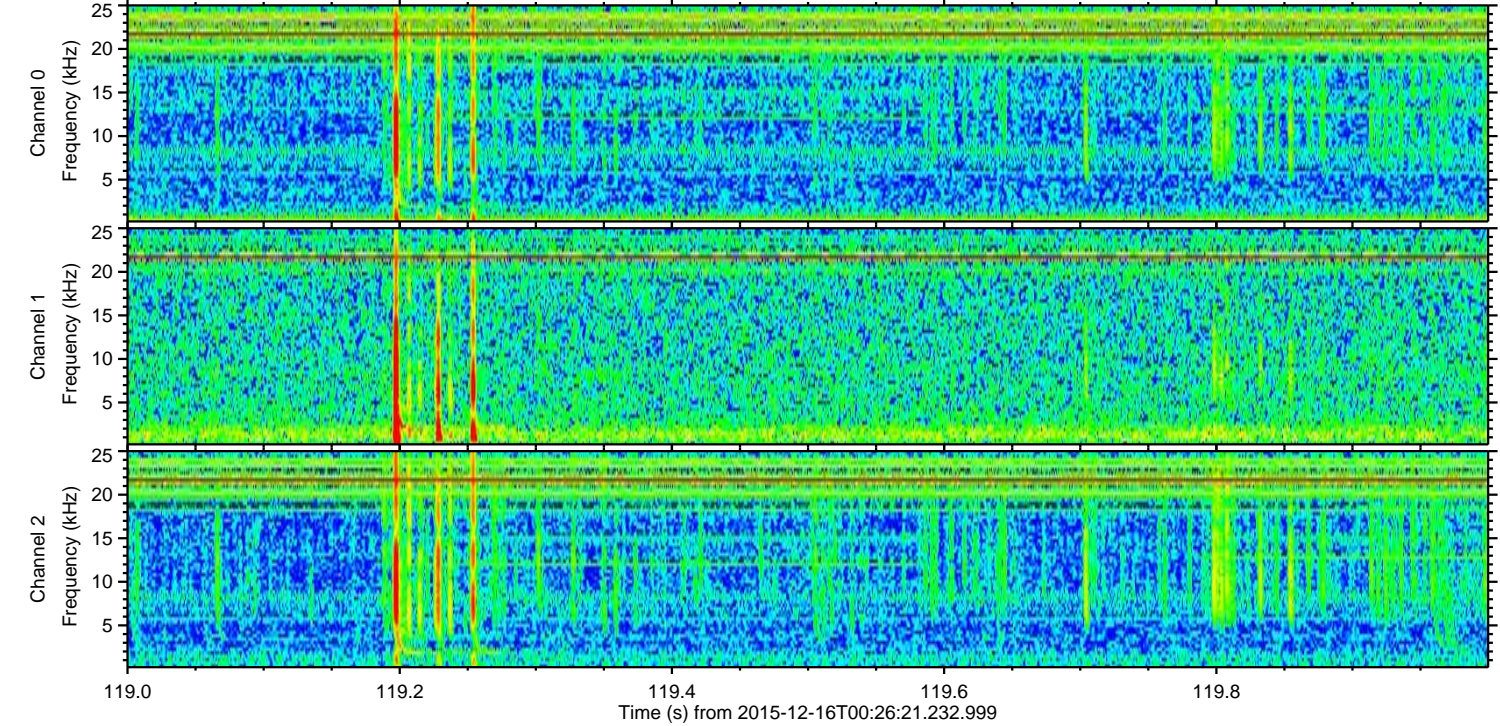
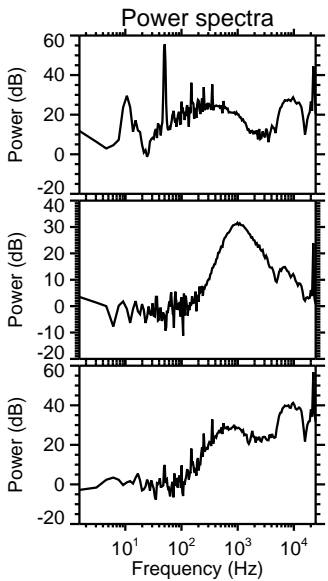
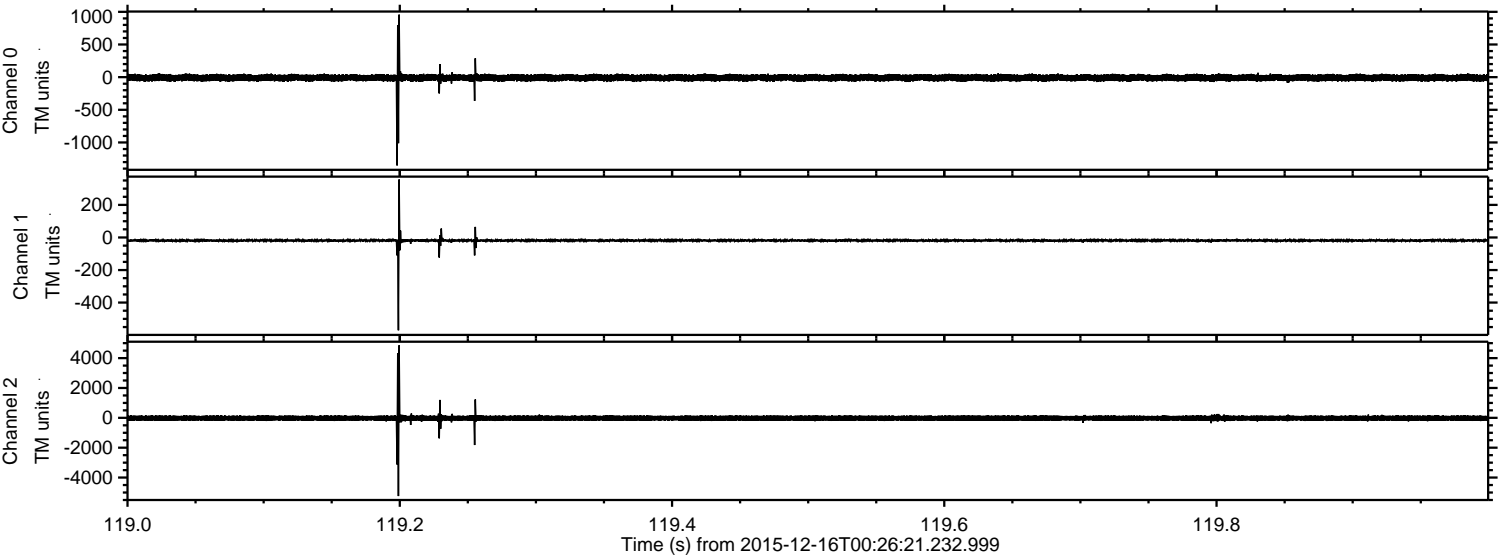
Processed Thu Jan 28 23:15:15 2016 by ELM ver.2012-10-06 from 001\_\_elm20151216\_002620\_\_dat00.bin





ELMAVAN 3D WAVEFORMS (Measured data sampled at 50 kHz) 51000 packets of 144 samples from 2015-12-16T00:26:21.232.999. Part 120/147

Processed Thu Jan 28 23:15:16 2016 by ELM ver.2012-10-06 from 001\_\_elm20151216\_002620\_\_dat00.bin



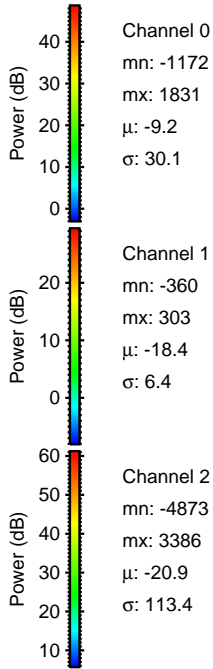
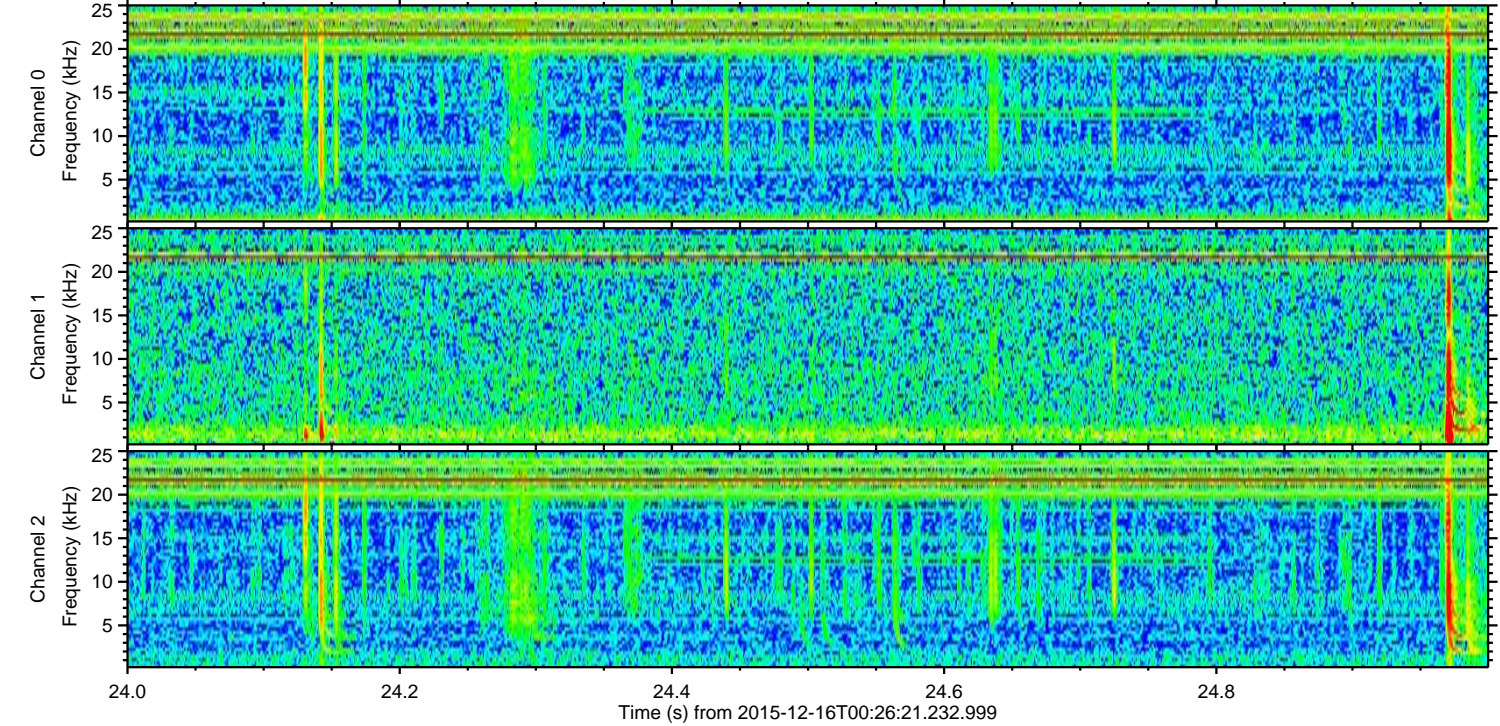
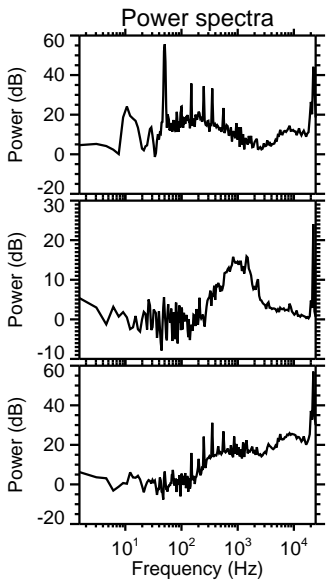
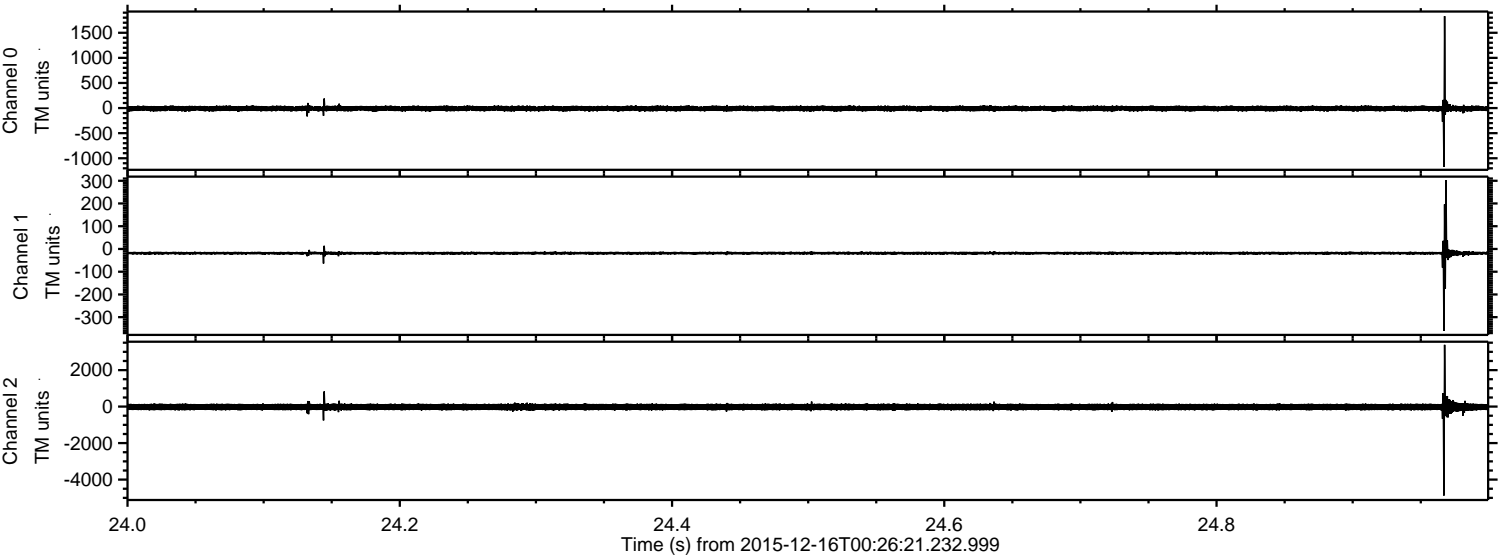
Channel 0  
mn: -1351  
mx: 957  
 $\mu$ : -9.1  
 $\sigma$ : 29.4

Channel 1  
mn: -570  
mx: 356  
 $\mu$ : -18.4  
 $\sigma$ : 7.3

Channel 2  
mn: -5240  
mx: 4855  
 $\mu$ : -21.1  
 $\sigma$ : 113.1



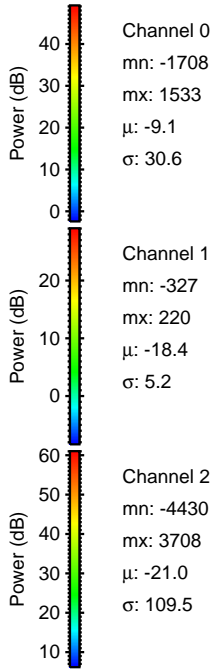
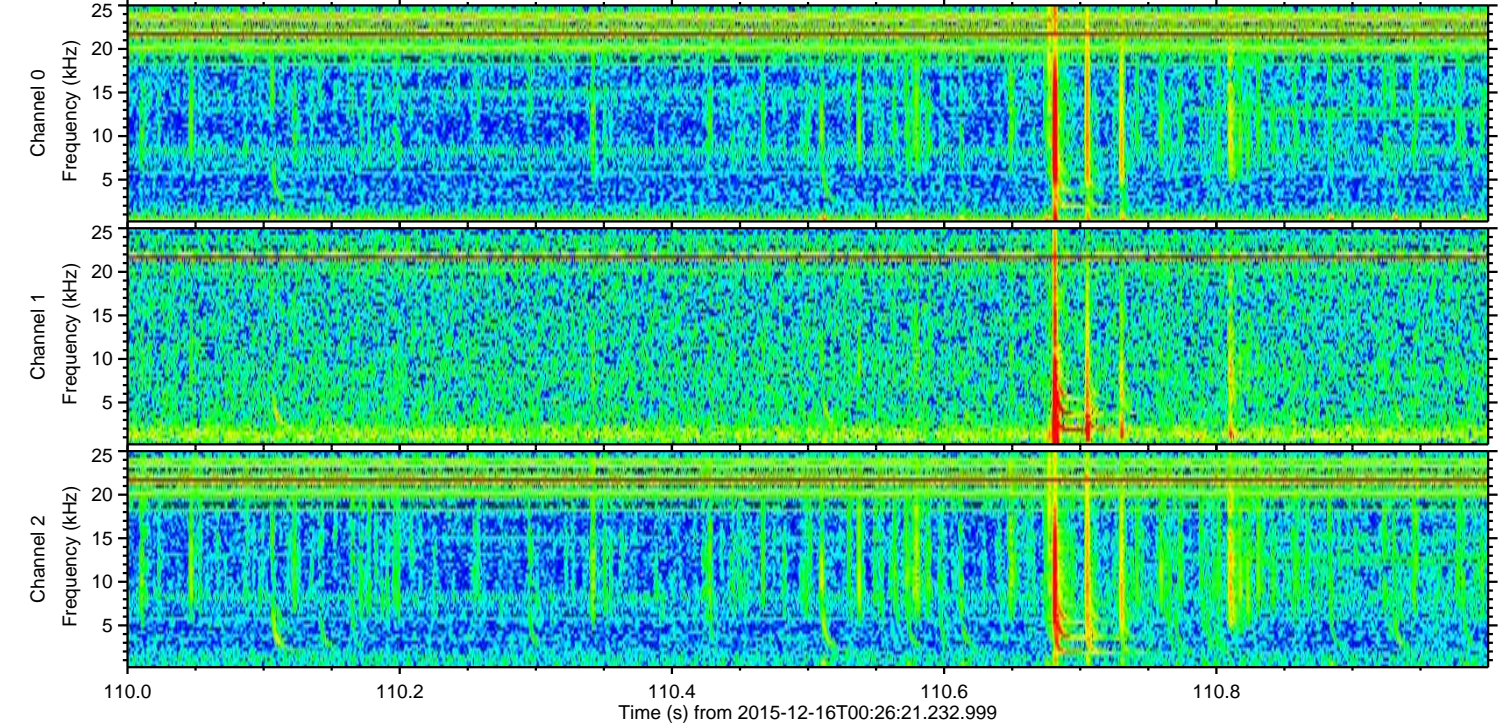
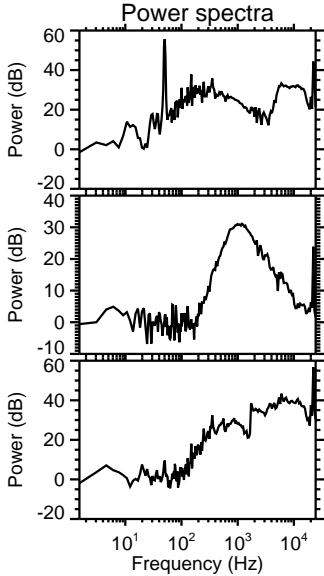
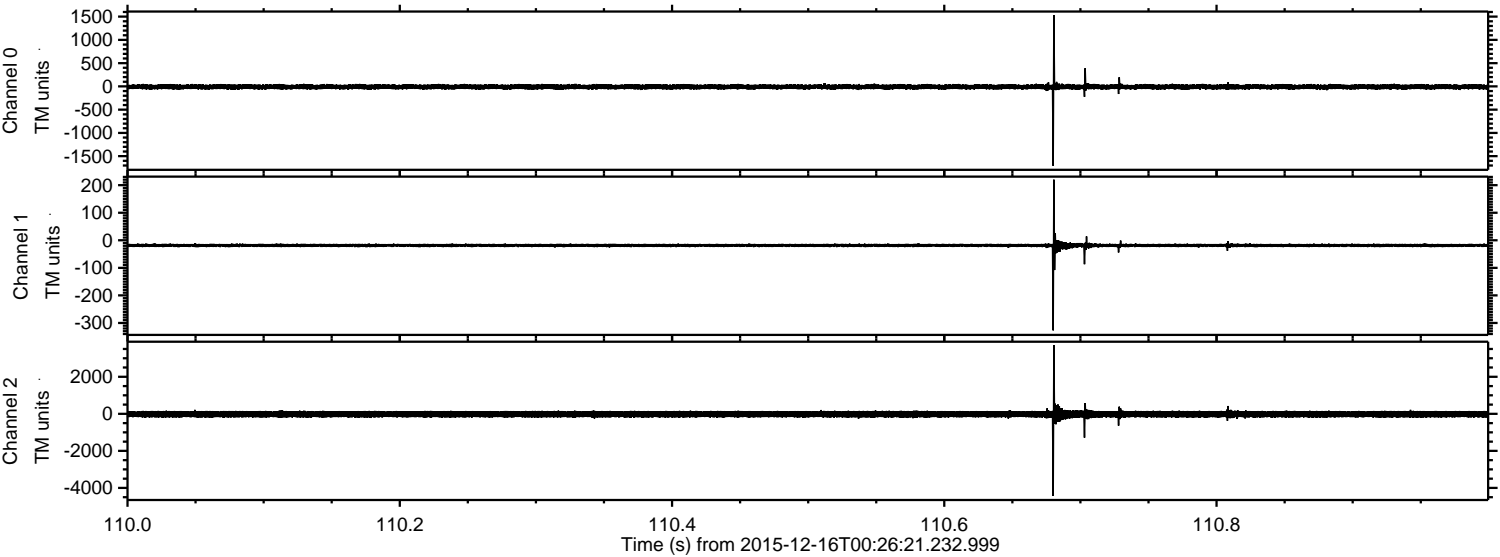
Processed Thu Jan 28 23:15:17 2016 by ELM ver.2012-10-06 from 001\_\_elm20151216\_002620\_\_dat00.bin





ELMAVAN 3D WAVEFORMS (Measured data sampled at 50 kHz) 51000 packets of 144 samples from 2015-12-16T00:26:21.232.999. Part 111/147

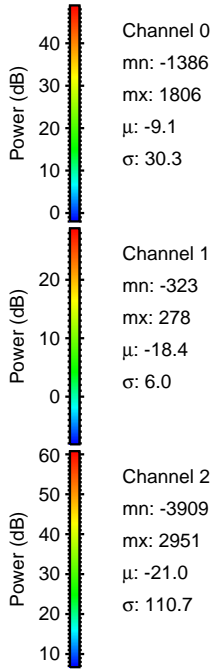
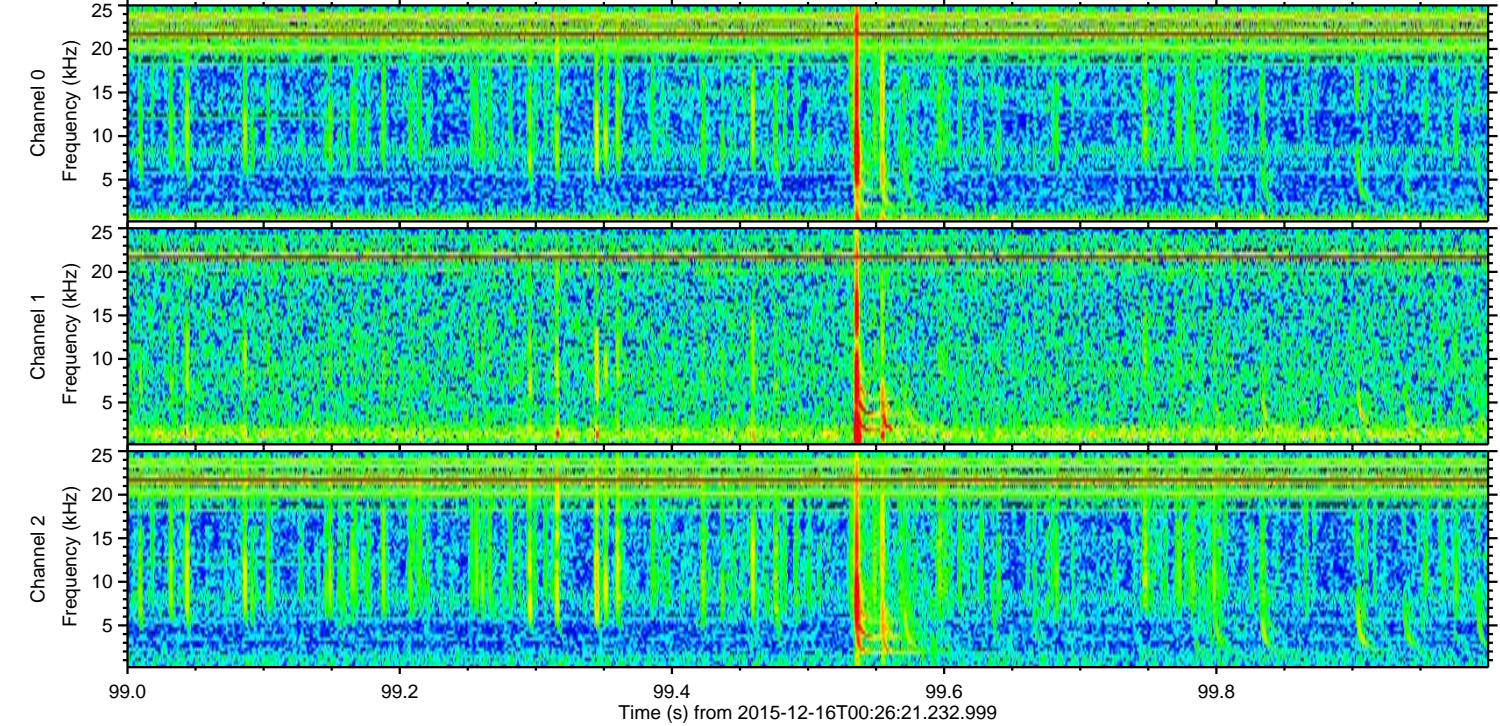
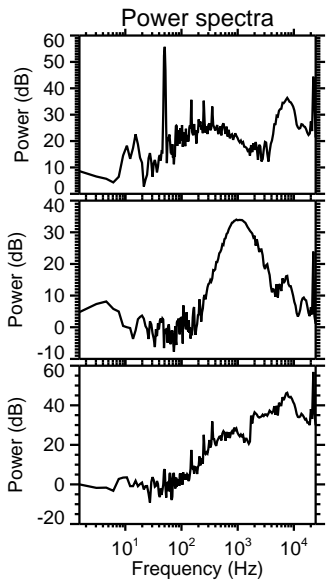
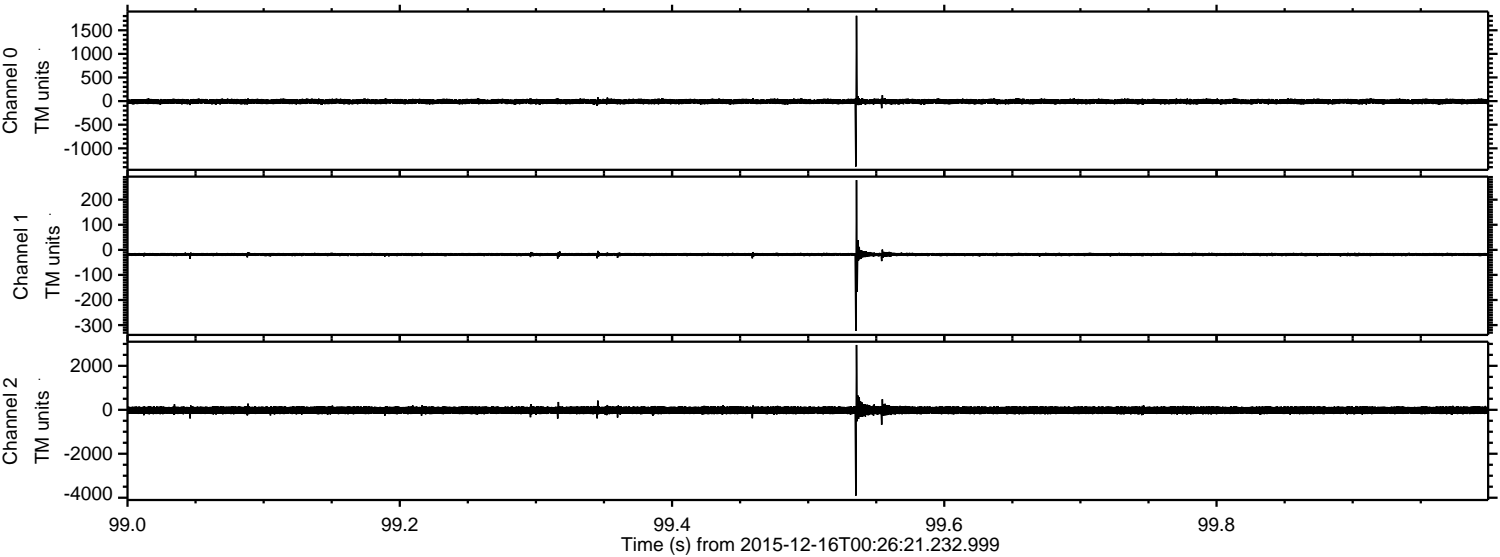
Processed Thu Jan 28 23:15:18 2016 by ELM ver.2012-10-06 from 001\_\_elm20151216\_002620\_\_dat00.bin





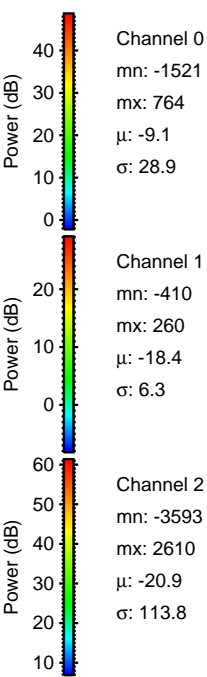
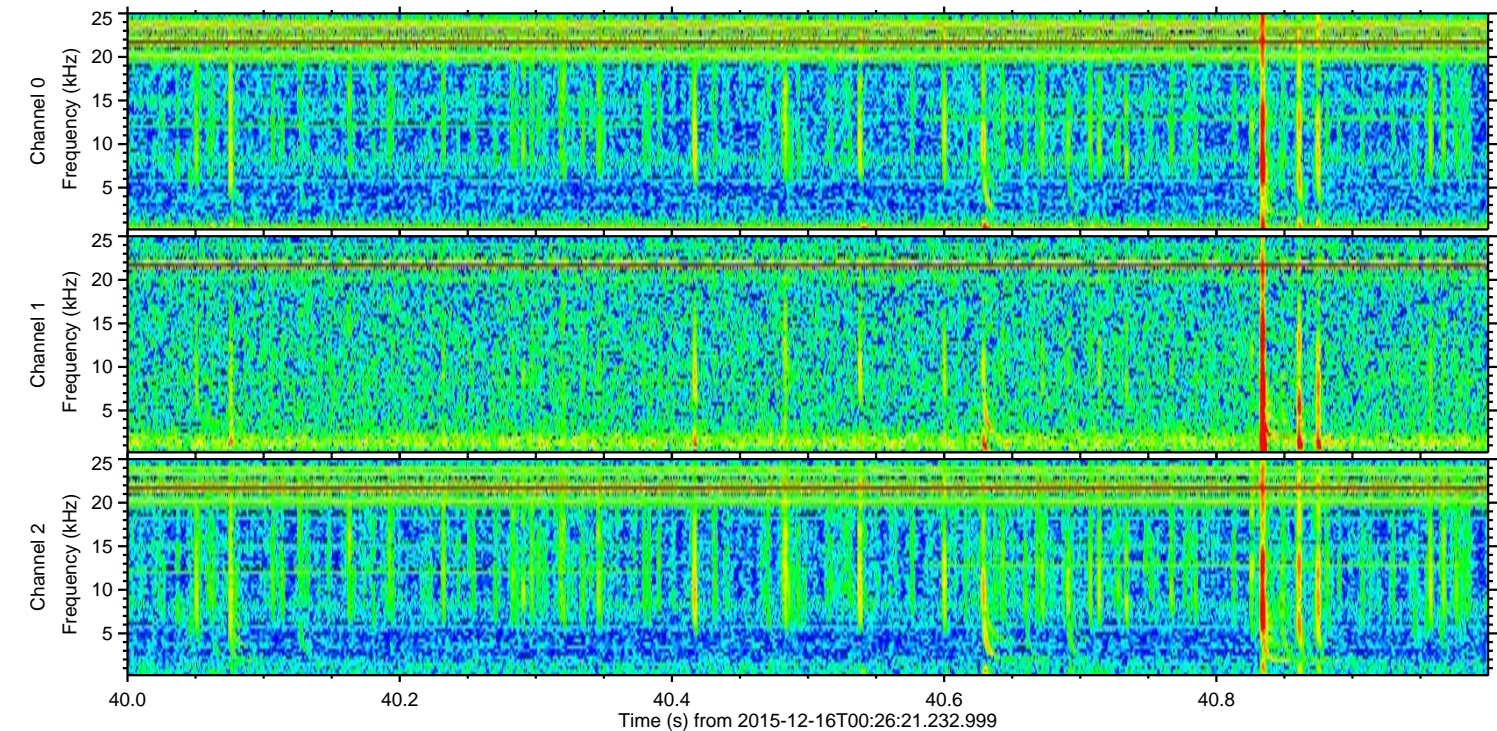
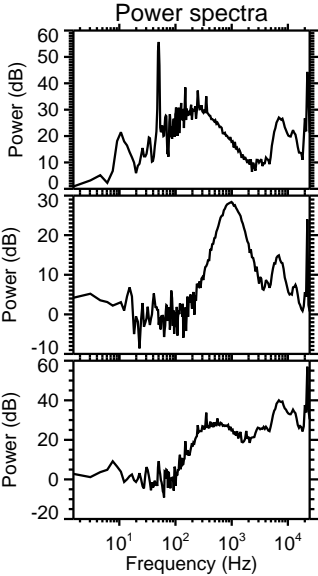
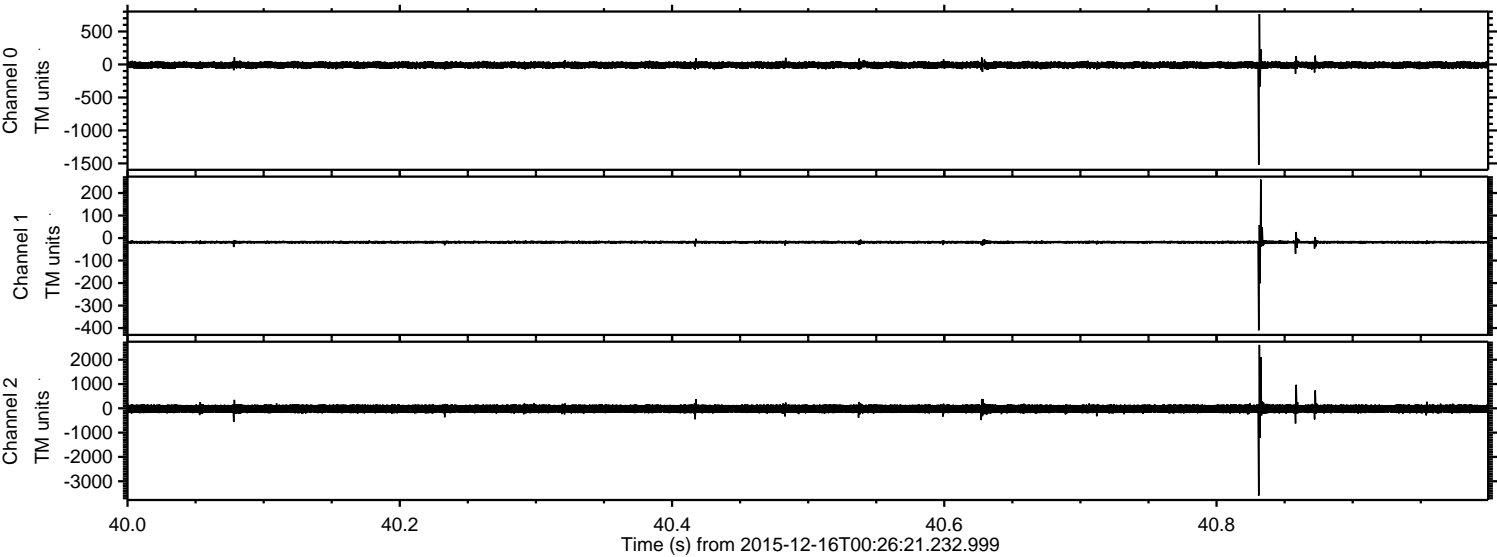
ELMAVAN 3D WAVEFORMS (Measured data sampled at 50 kHz) 51000 packets of 144 samples from 2015-12-16T00:26:21.232.999. Part 100/147

Processed Thu Jan 28 23:15:19 2016 by ELM ver.2012-10-06 from 001\_\_elm20151216\_002620\_\_dat00.bin



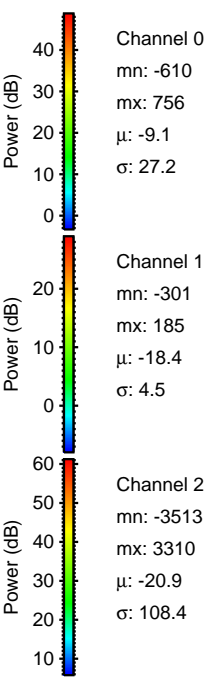
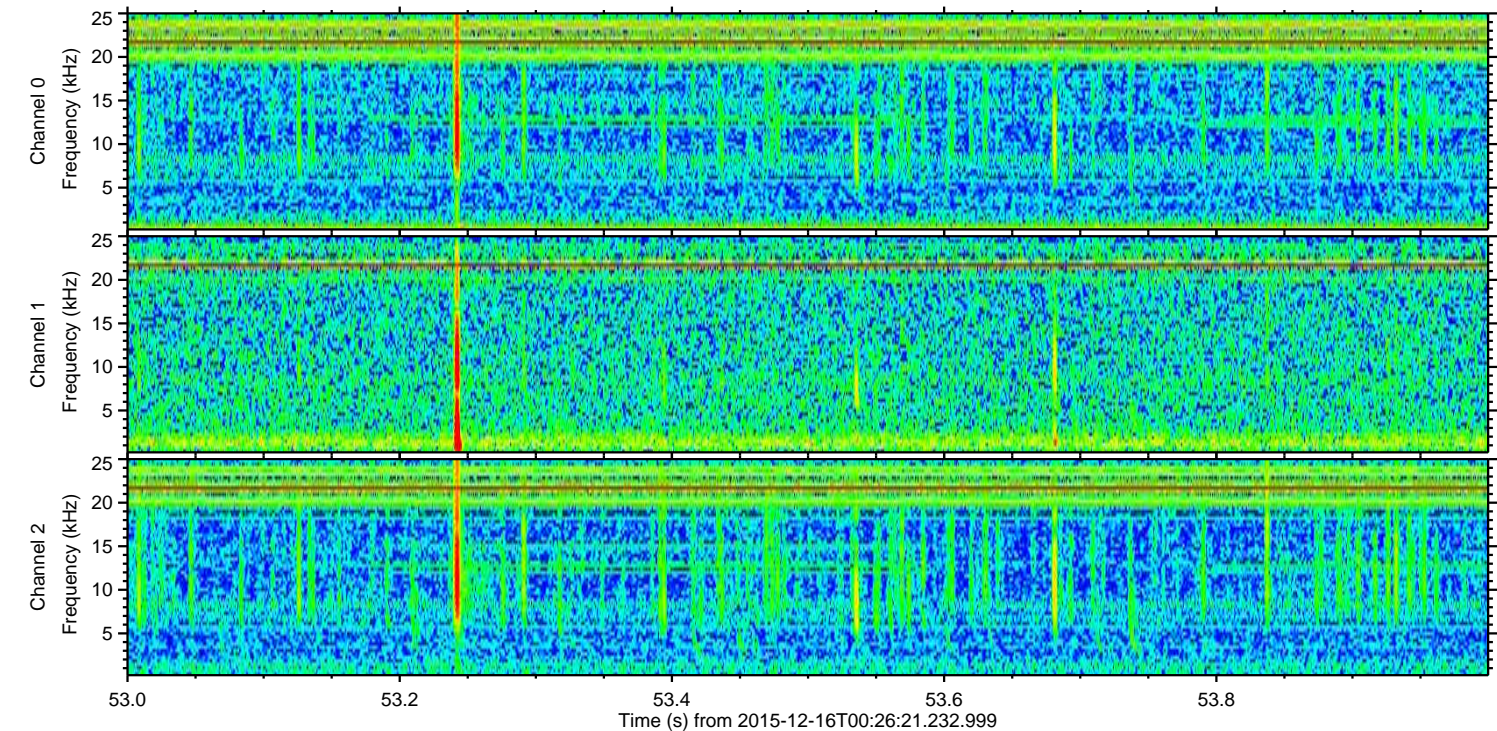
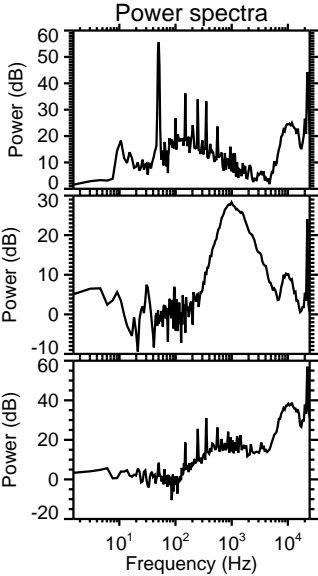
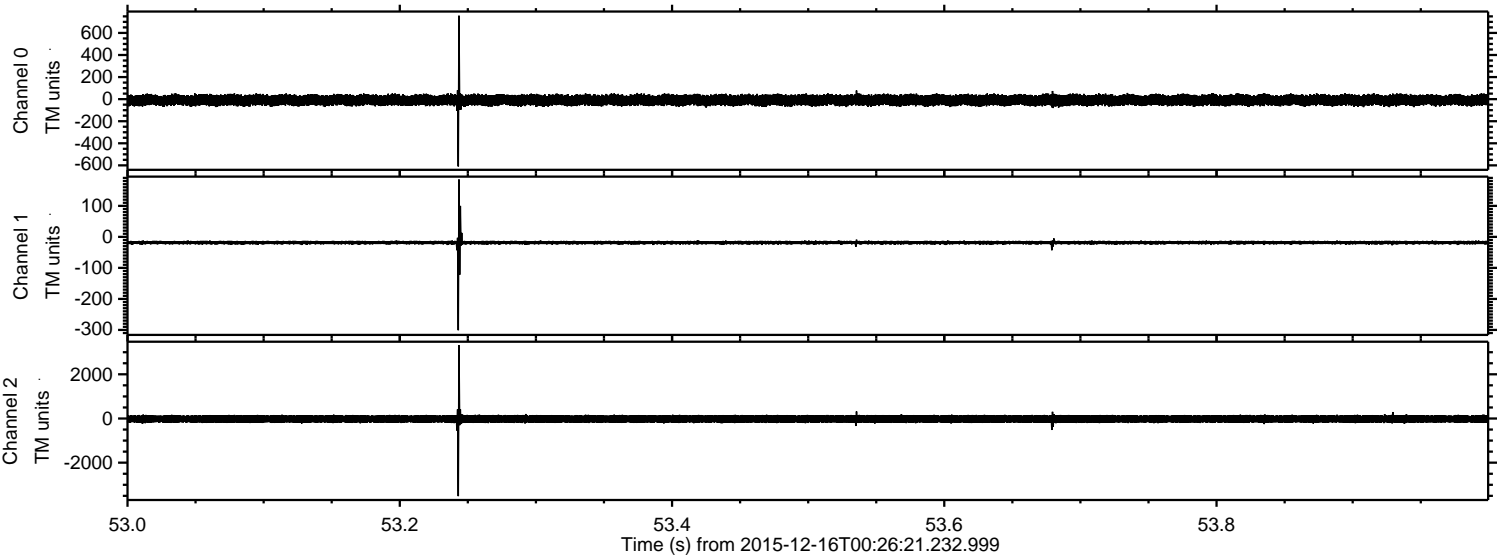


Processed Thu Jan 28 23:15:20 2016 by ELM ver.2012-10-06 from 001\_\_elm20151216\_002620\_\_dat00.bin



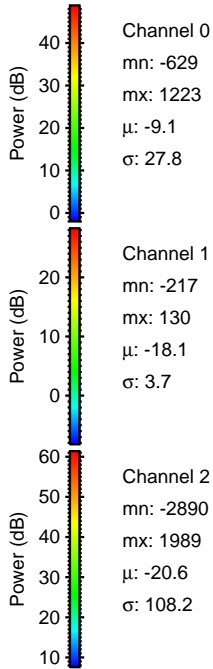
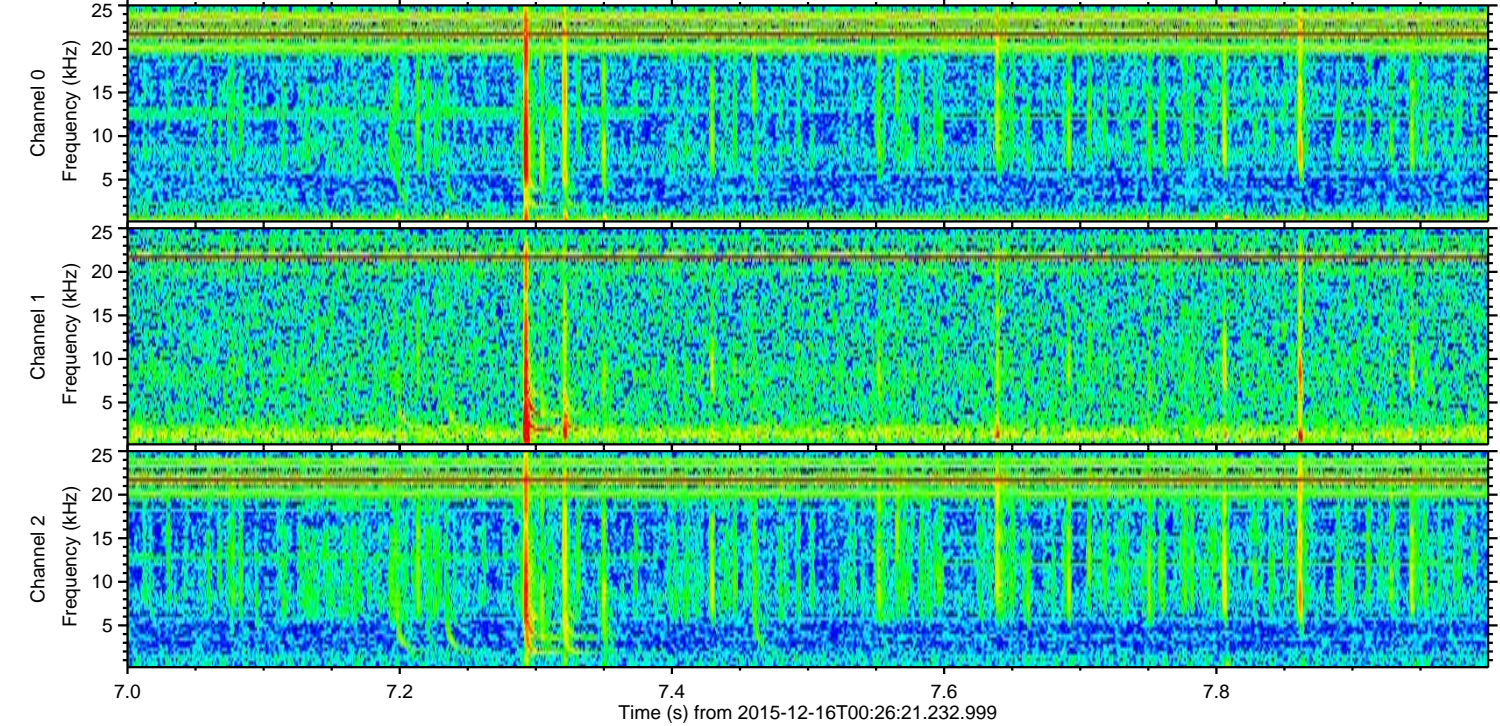
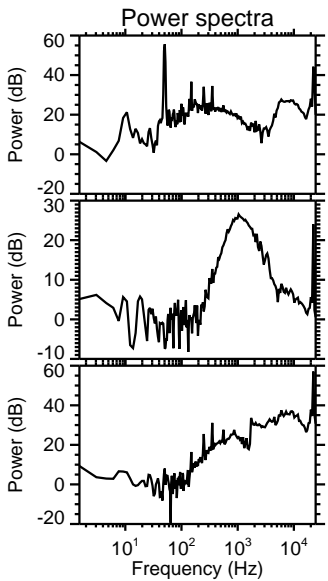
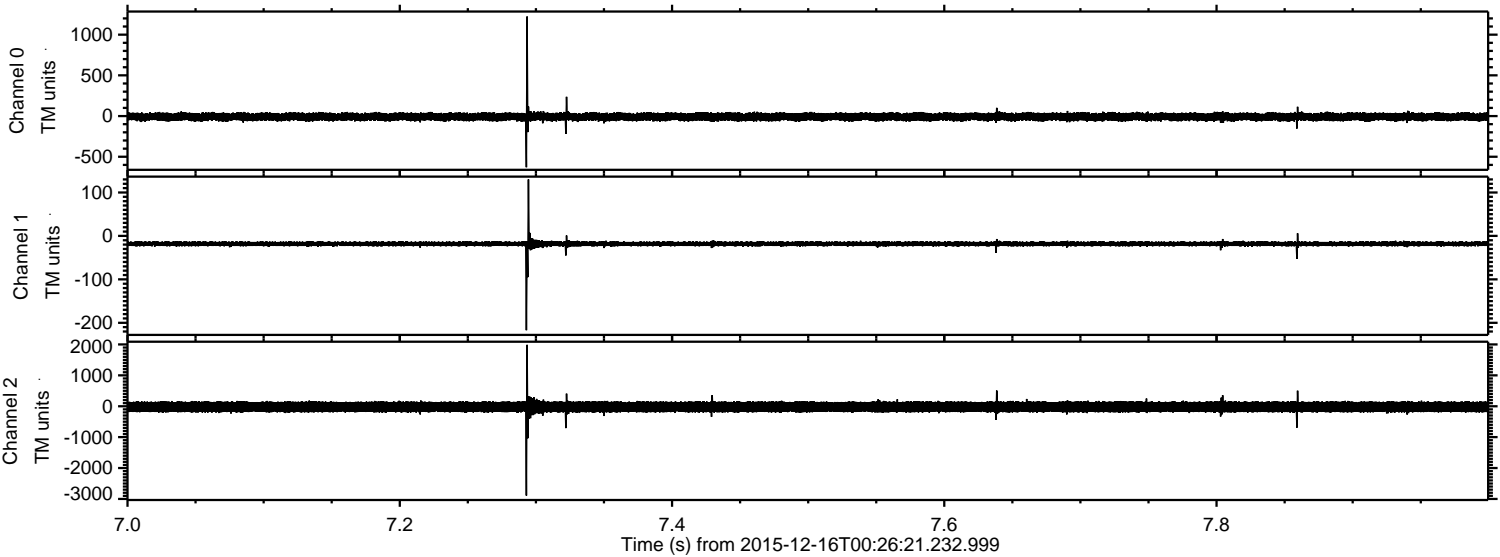


Processed Thu Jan 28 23:15:21 2016 by ELM ver.2012-10-06 from 001\_\_elm20151216\_002620\_\_dat00.bin





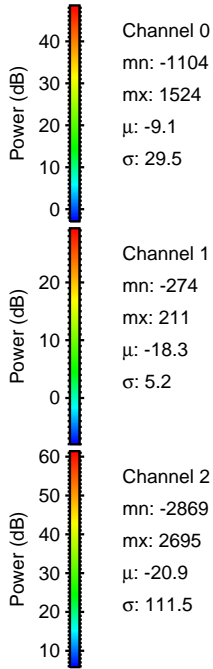
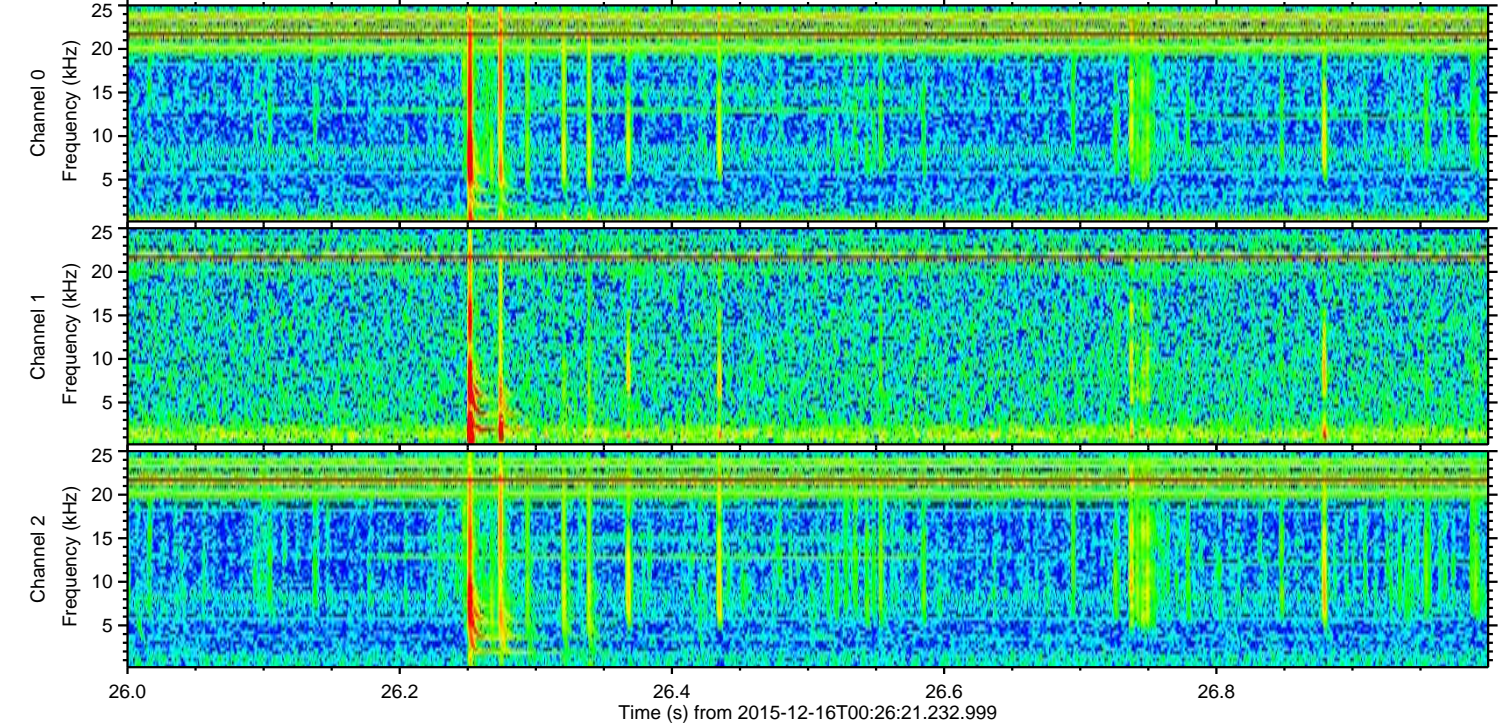
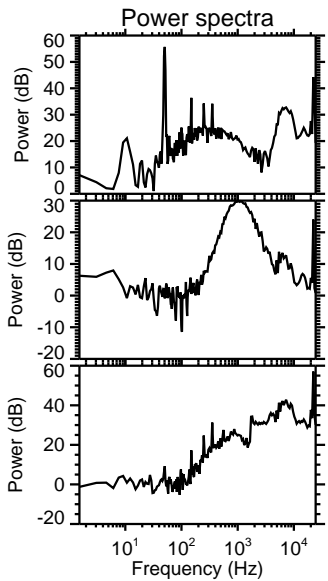
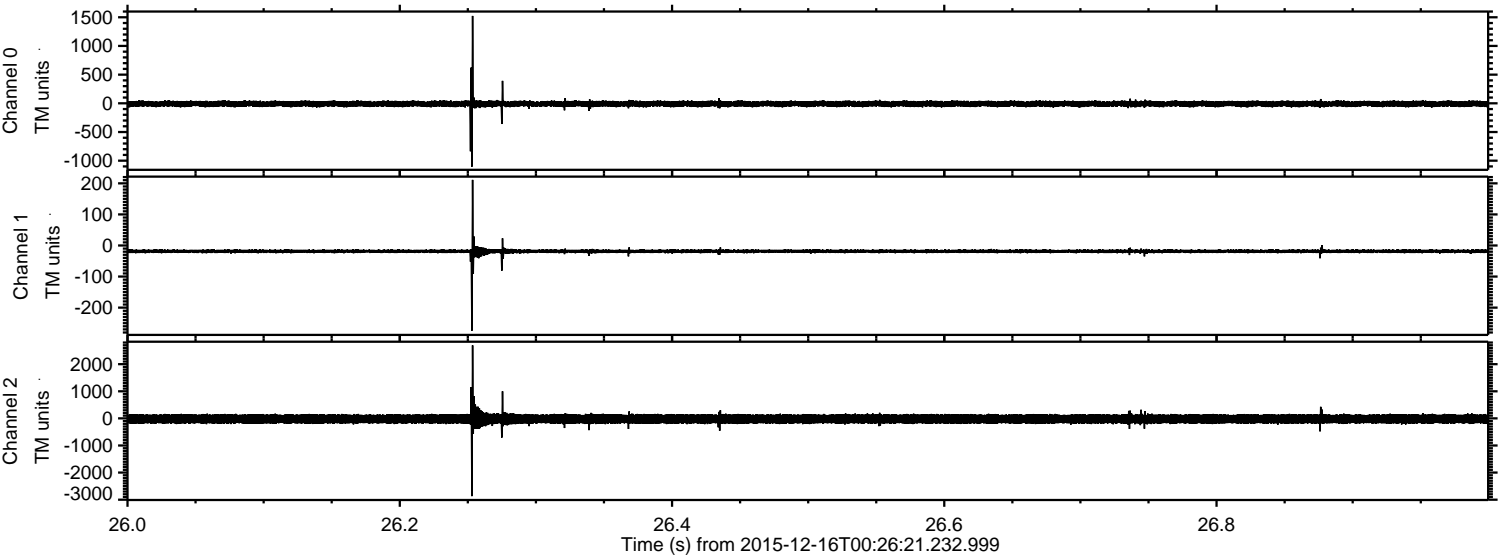
Processed Thu Jan 28 23:15:22 2016 by ELM ver.2012-10-06 from 001\_\_elm20151216\_002620\_\_dat00.bin





ELMAVAN 3D WAVEFORMS (Measured data sampled at 50 kHz) 51000 packets of 144 samples from 2015-12-16T00:26:21.232.999. Part 27/147

Processed Thu Jan 28 23:15:23 2016 by ELM ver.2012-10-06 from 001\_\_elm20151216\_002620\_\_dat00.bin



Channel 0  
mn: -1104  
mx: 1524  
 $\mu$ : -9.1  
 $\sigma$ : 29.5

Channel 1  
mn: -274  
mx: 211  
 $\mu$ : -18.3  
 $\sigma$ : 5.2

Channel 2  
mn: -2869  
mx: 2695  
 $\mu$ : -20.9  
 $\sigma$ : 111.5



ELMAVAN 3D WAVEFORMS (Measured data sampled at 50 kHz) 51000 packets of 144 samples from 2015-12-16T00:26:21.232.999. Part 124/147

Processed Thu Jan 28 23:15:24 2016 by ELM ver.2012-10-06 from 001\_\_elm20151216\_002620\_\_dat00.bin

