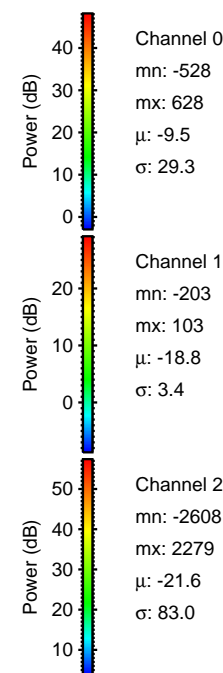
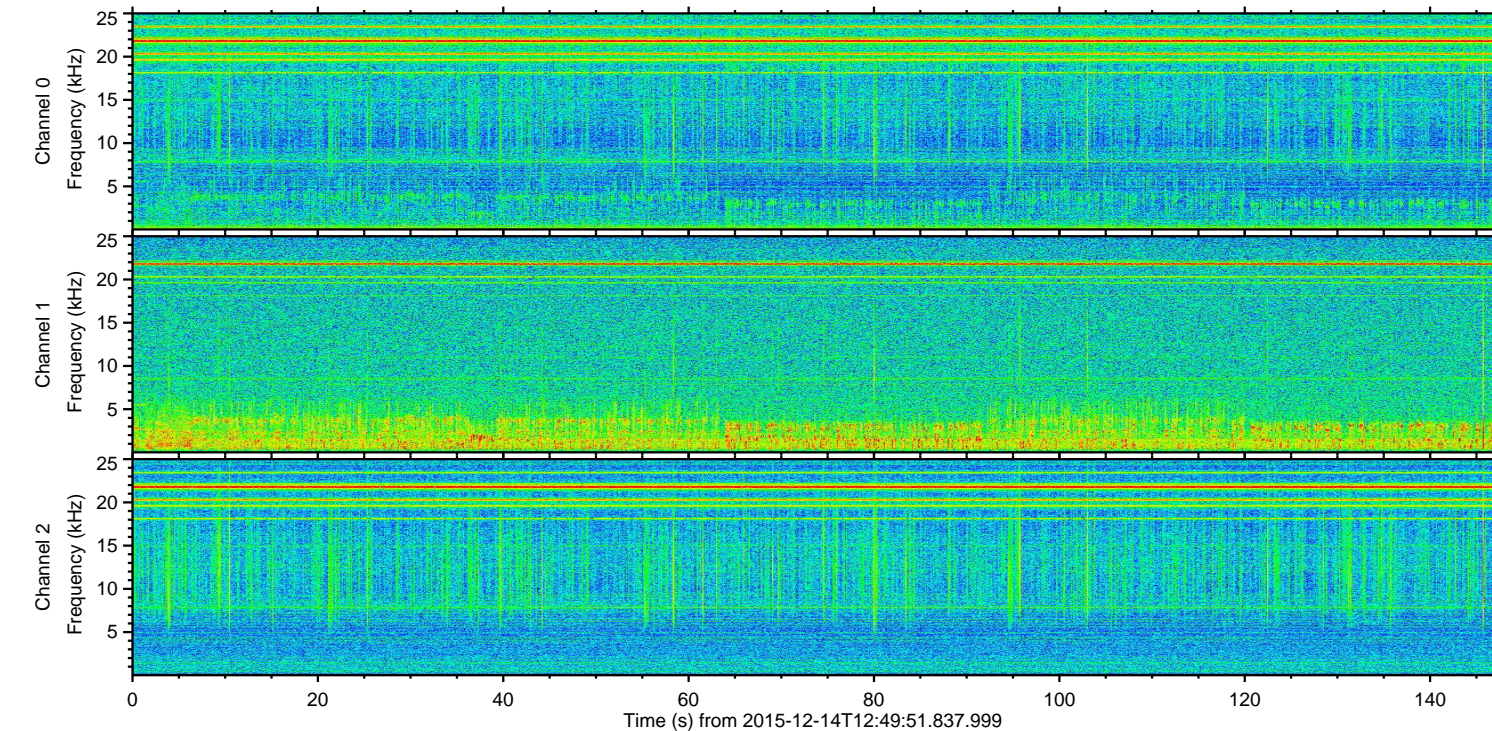
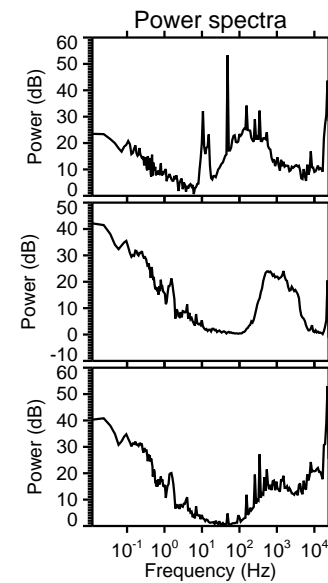
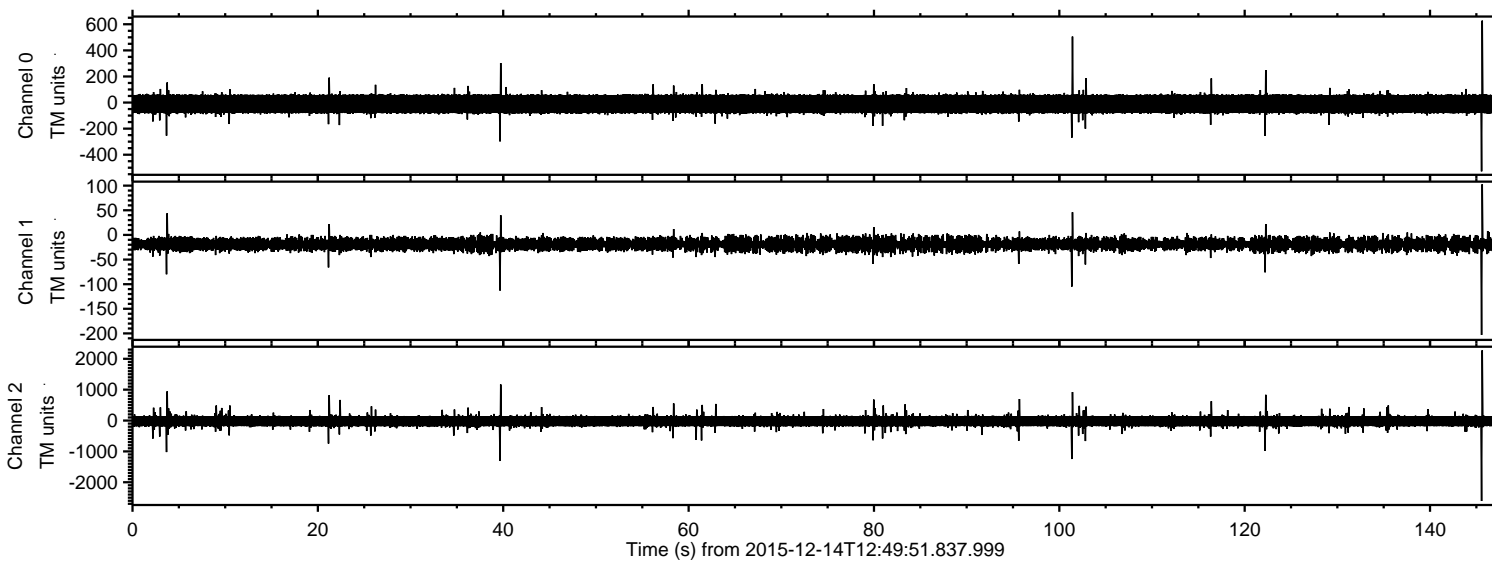


# ELMAVAN 3D WAVEFORMS (Measured data sampled at 50 kHz) 51000 packets of 144 samples from 2015-12-14T12:49:51.837.999.

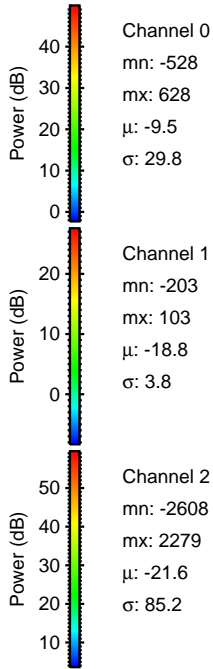
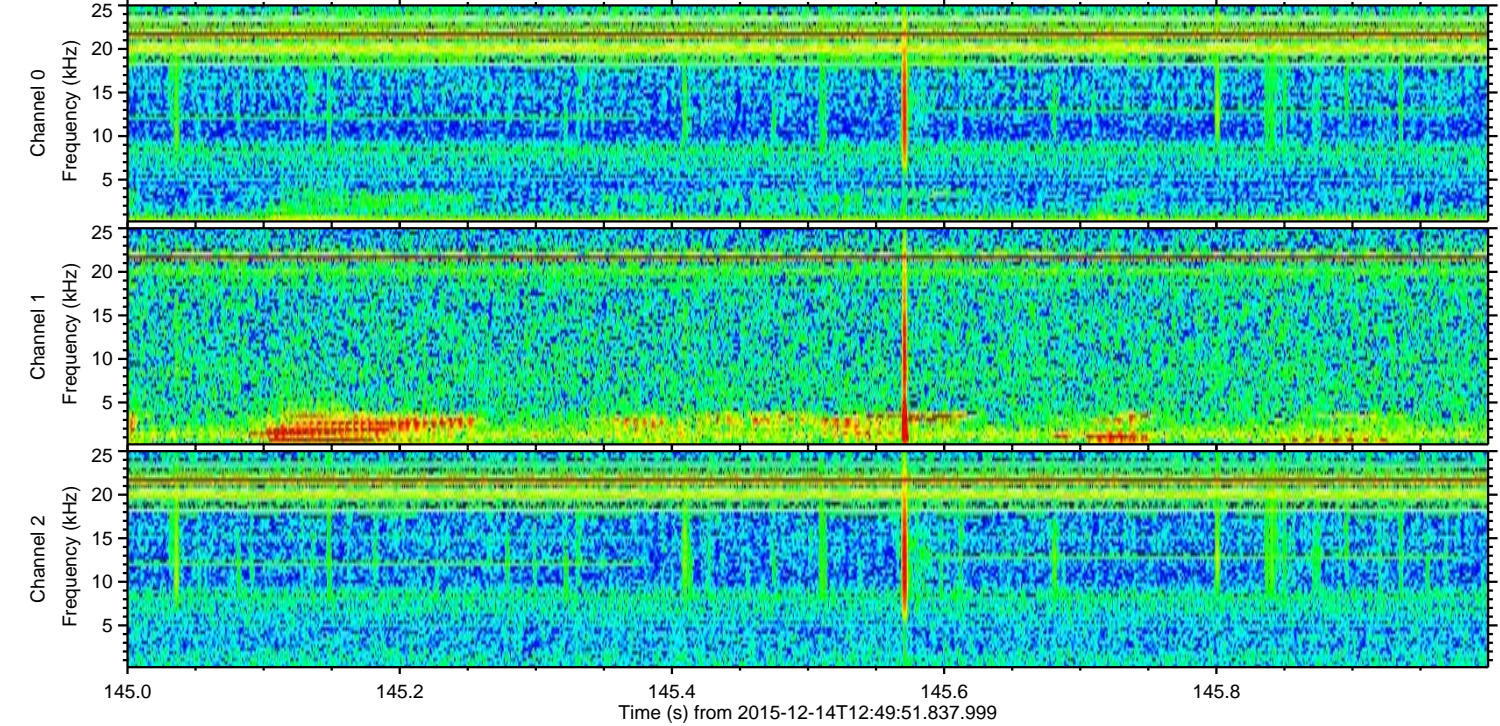
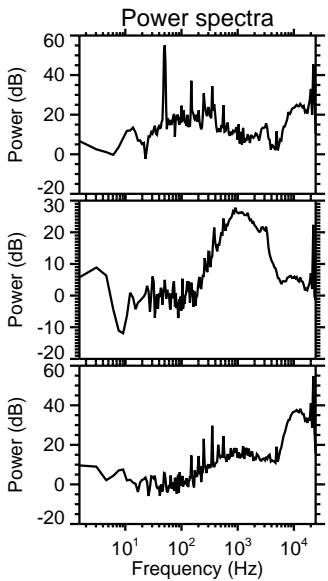
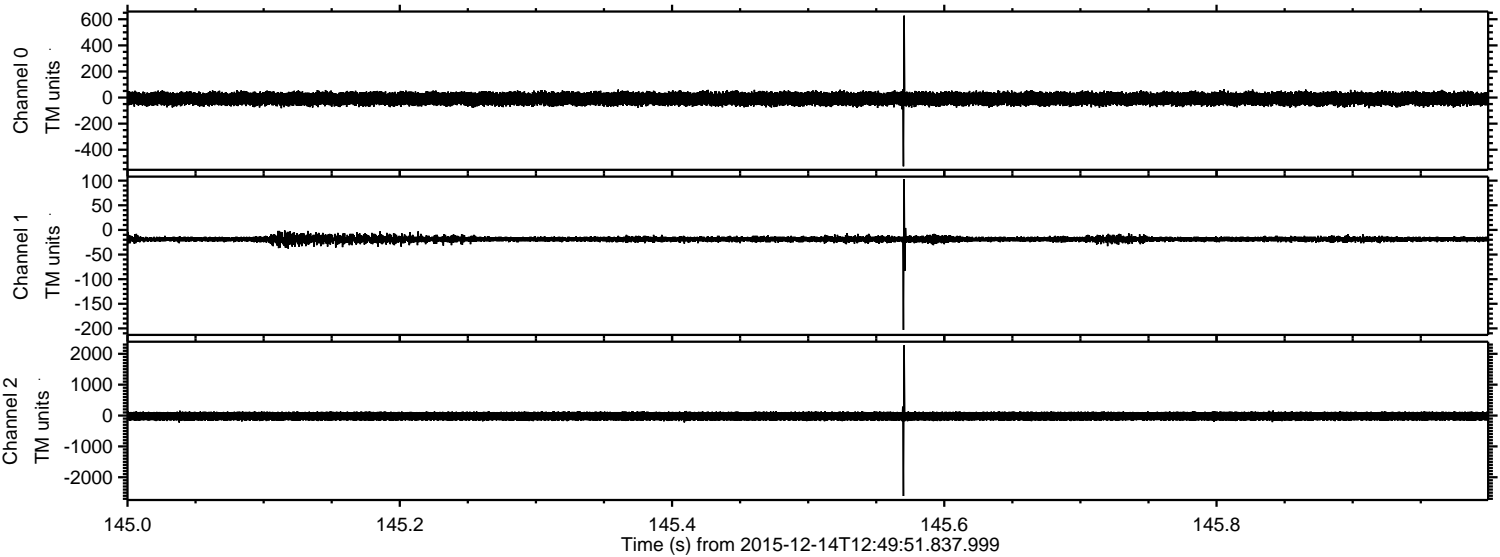
Processed Thu Jan 28 14:55:50 2016 by ELM ver.2012-10-06 from 001\_\_elm20151214\_124950\_\_dat00.bin





ELMAVAN 3D WAVEFORMS (Measured data sampled at 50 kHz) 51000 packets of 144 samples from 2015-12-14T12:49:51.837.999. Part 146/147

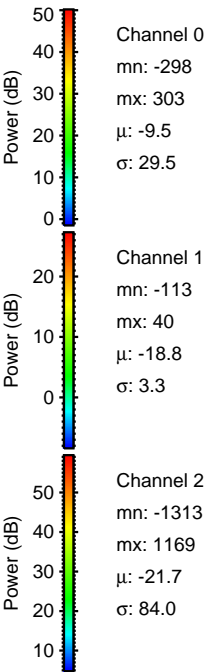
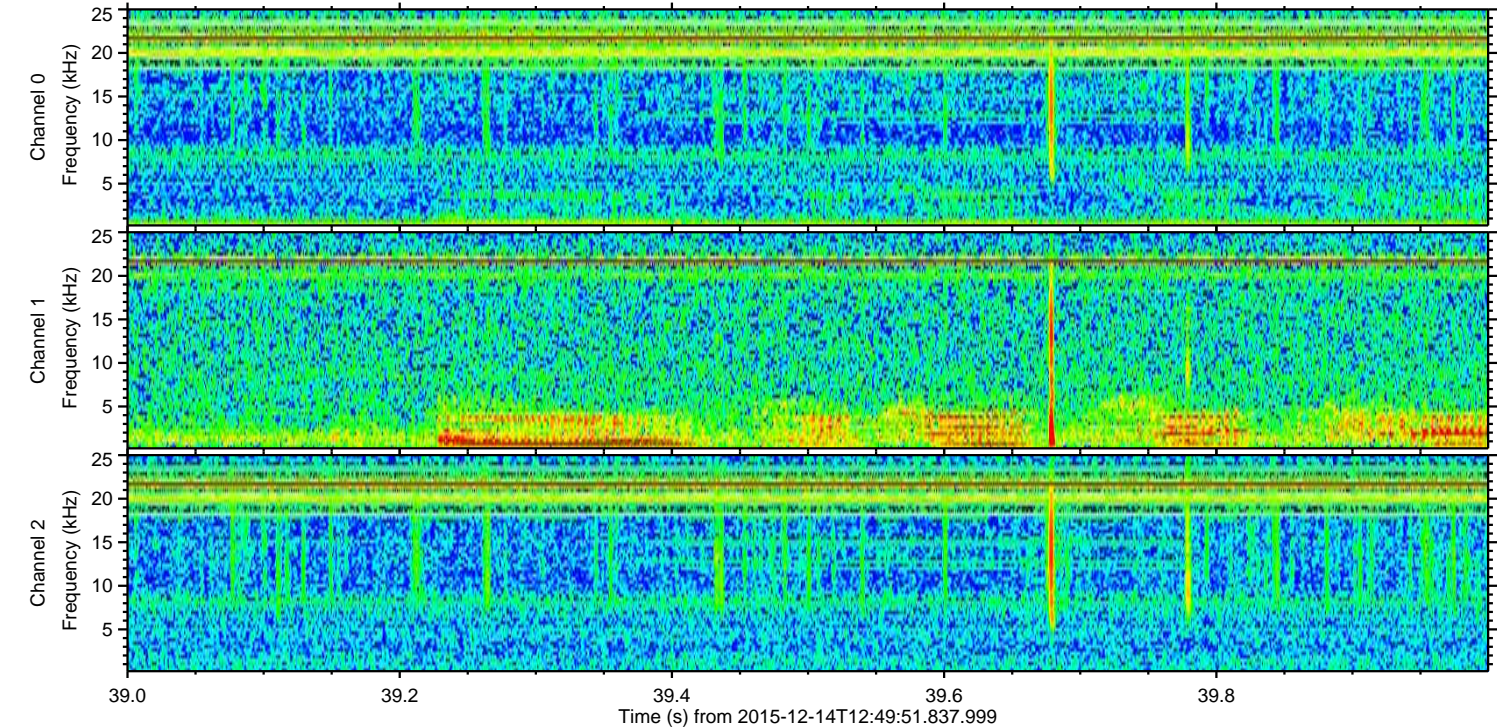
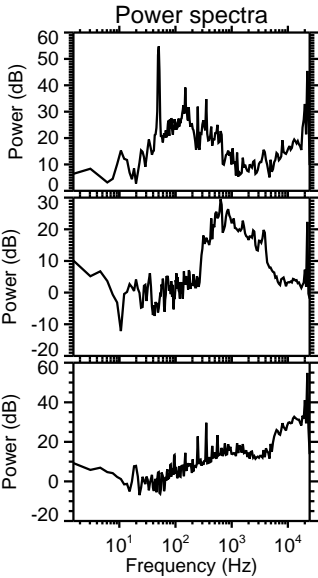
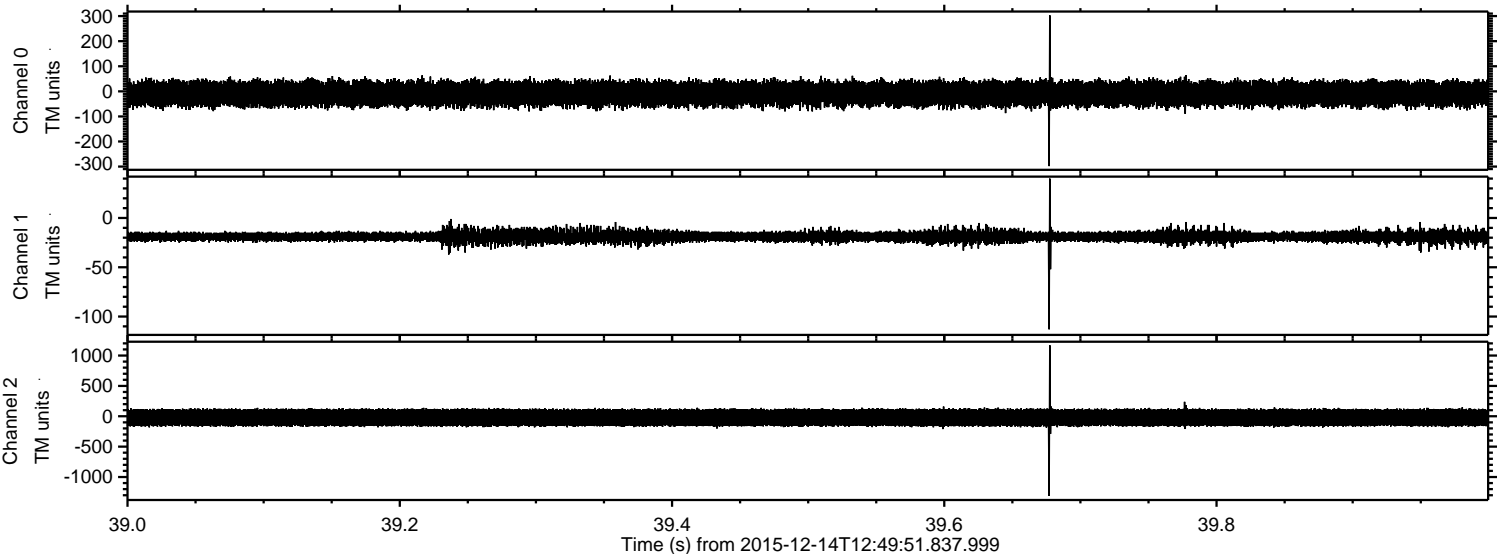
Processed Thu Jan 28 14:56:02 2016 by ELM ver.2012-10-06 from 001\_\_elm20151214\_124950\_\_dat00.bin





ELMAVAN 3D WAVEFORMS (Measured data sampled at 50 kHz) 51000 packets of 144 samples from 2015-12-14T12:49:51.837.999. Part 40/147

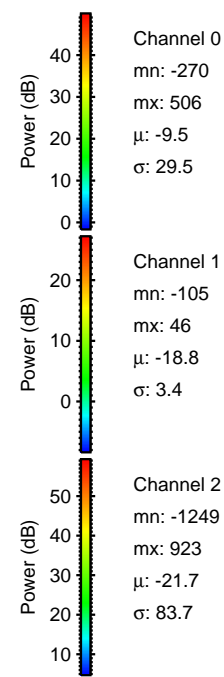
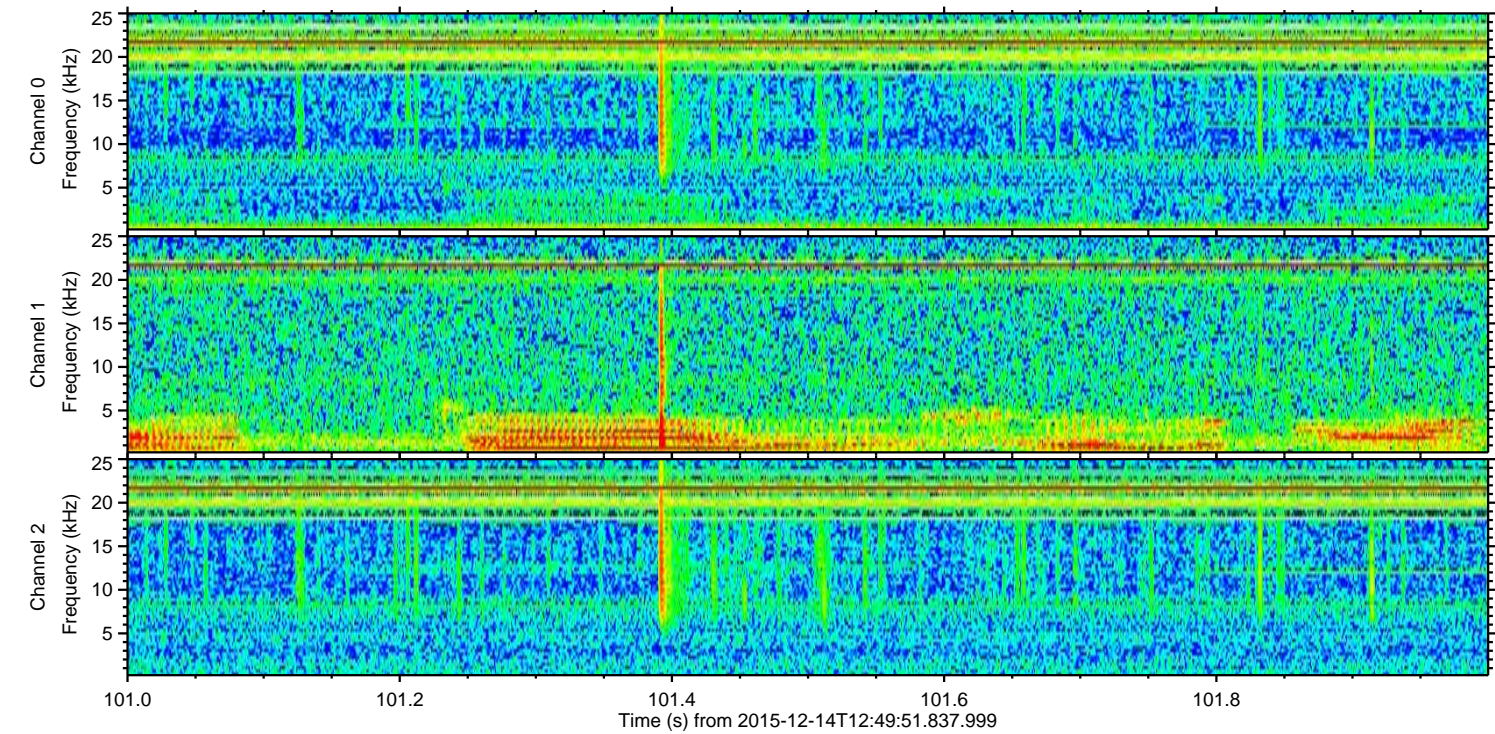
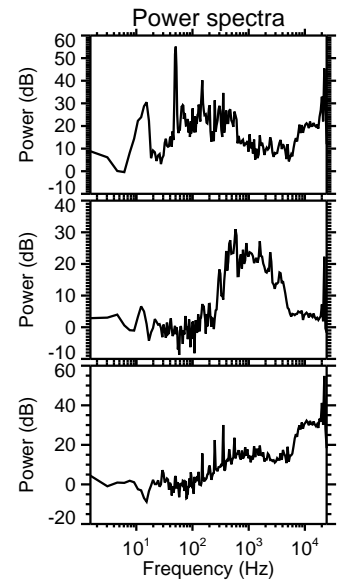
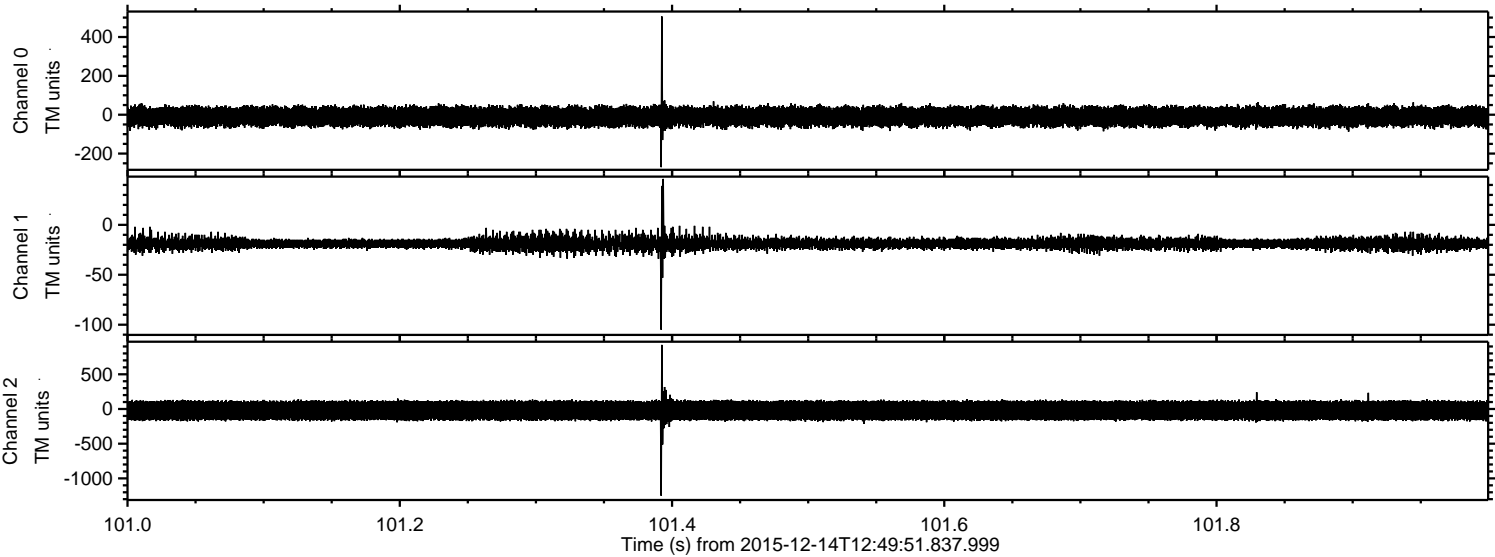
Processed Thu Jan 28 14:56:03 2016 by ELM ver.2012-10-06 from 001\_\_elm20151214\_124950\_\_dat00.bin





ELMAVAN 3D WAVEFORMS (Measured data sampled at 50 kHz) 51000 packets of 144 samples from 2015-12-14T12:49:51.837.999. Part 102/147

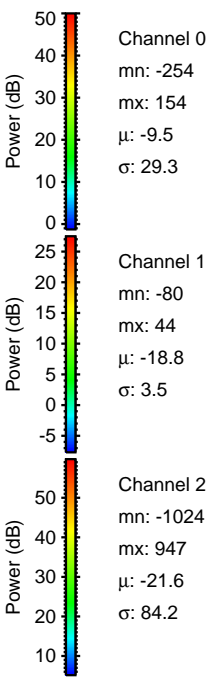
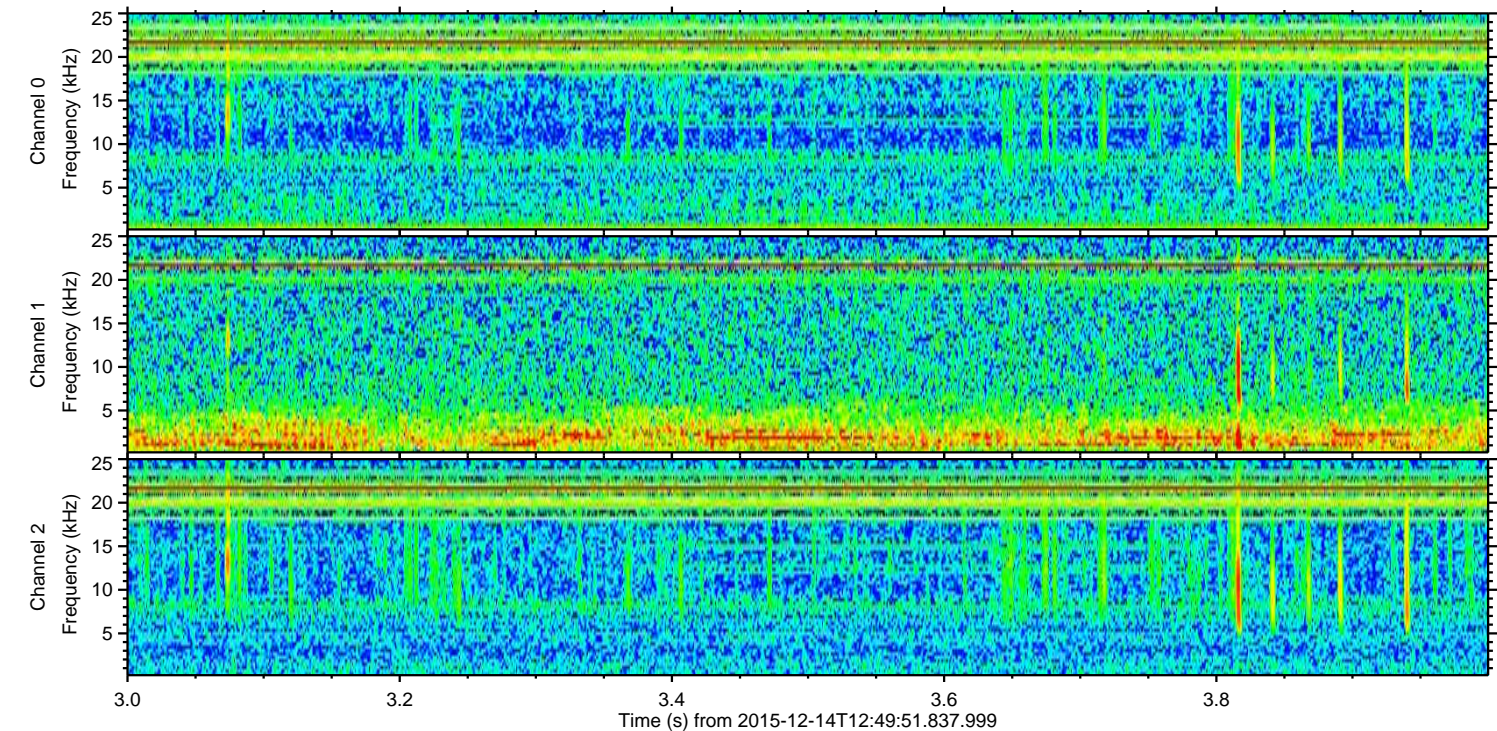
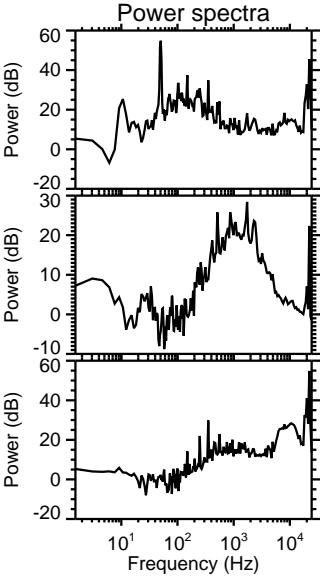
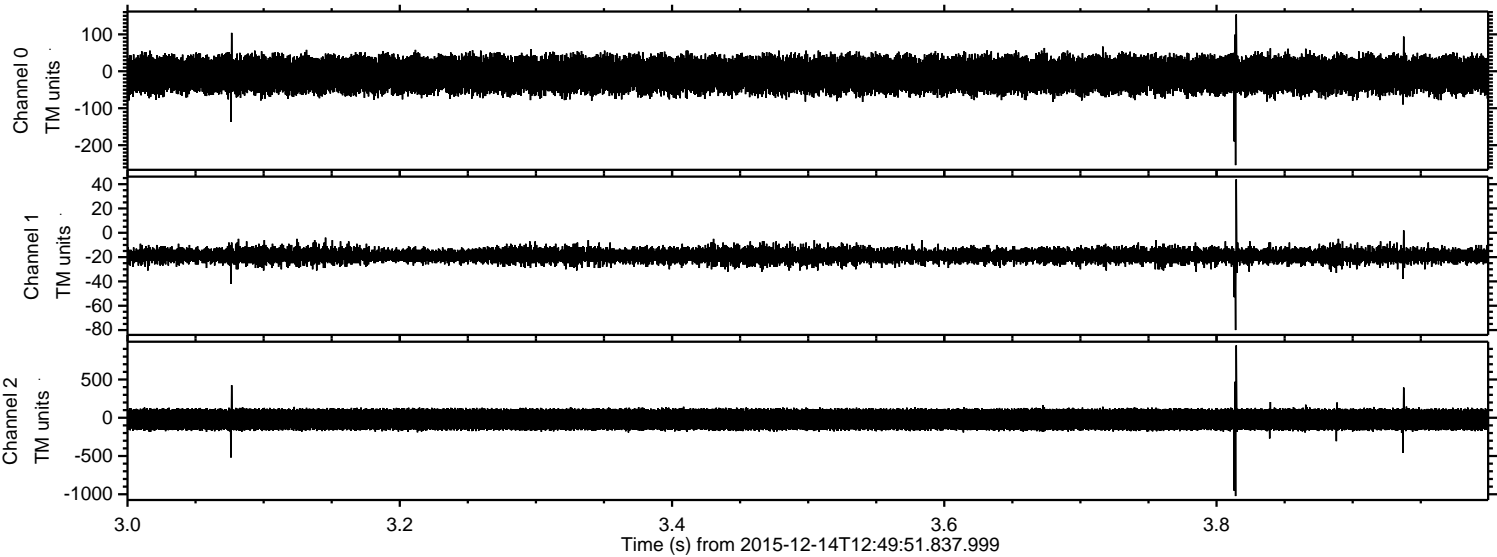
Processed Thu Jan 28 14:56:04 2016 by ELM ver.2012-10-06 from 001\_\_elm20151214\_124950\_\_dat00.bin





ELMAVAN 3D WAVEFORMS (Measured data sampled at 50 kHz) 51000 packets of 144 samples from 2015-12-14T12:49:51.837.999. Part 4/147

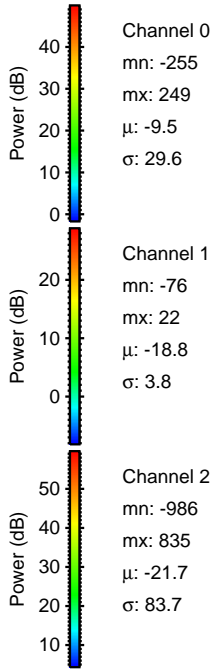
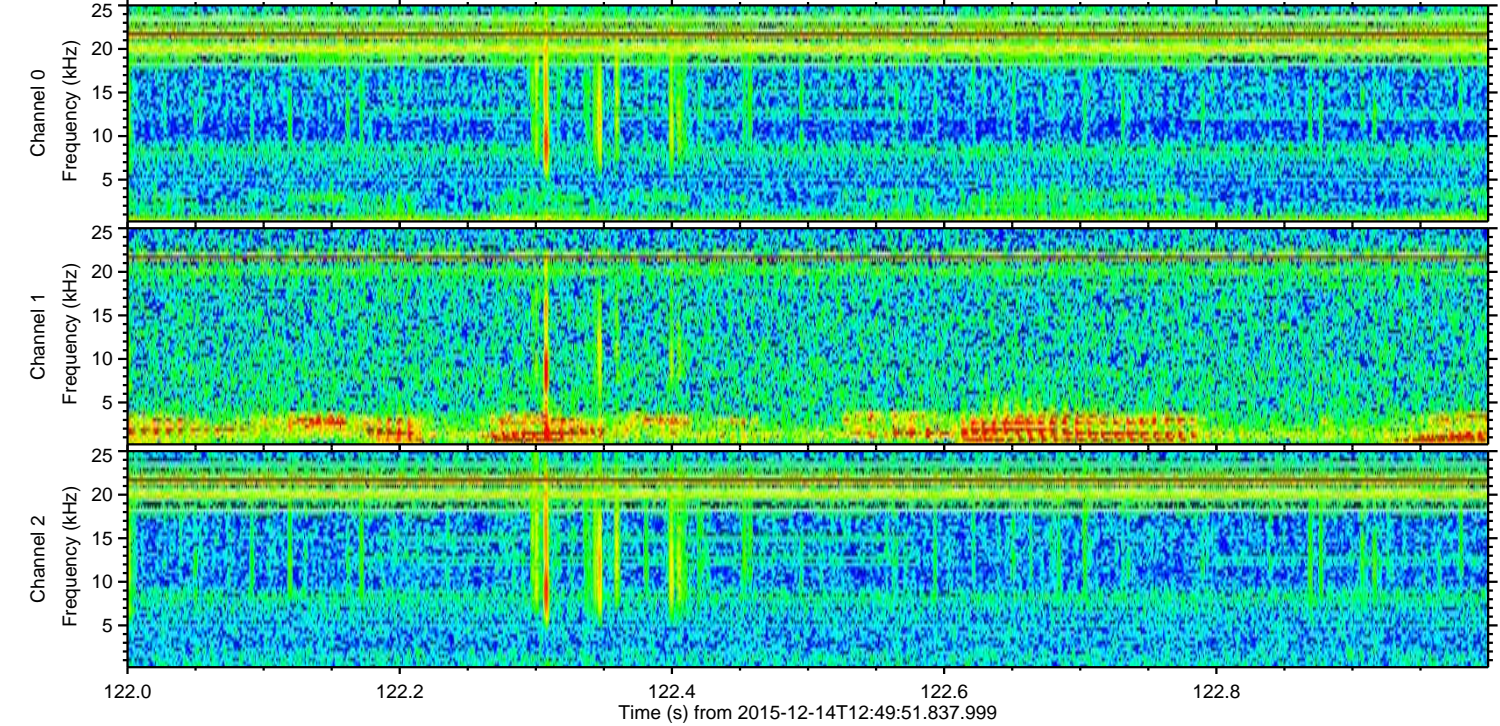
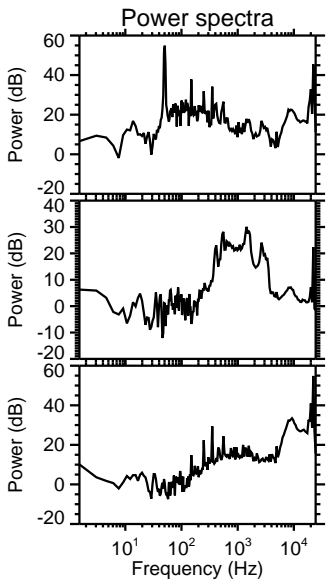
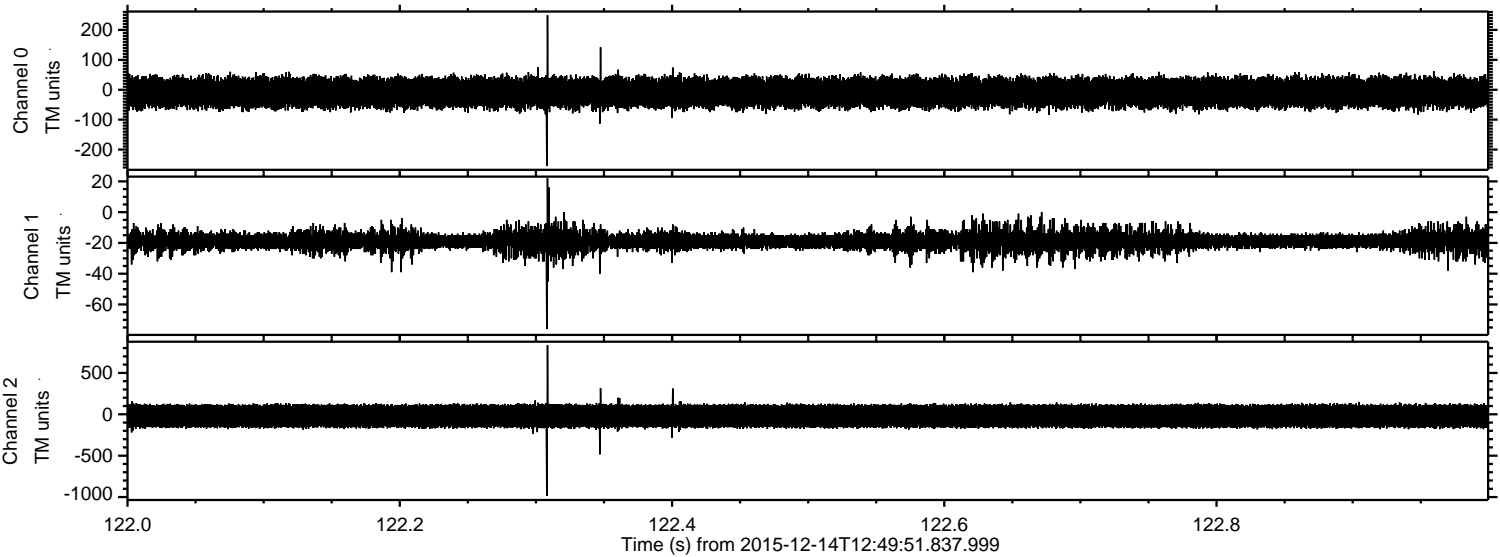
Processed Thu Jan 28 14:56:05 2016 by ELM ver.2012-10-06 from 001\_\_elm20151214\_124950\_\_dat00.bin





ELMAVAN 3D WAVEFORMS (Measured data sampled at 50 kHz) 51000 packets of 144 samples from 2015-12-14T12:49:51.837.999. Part 123/147

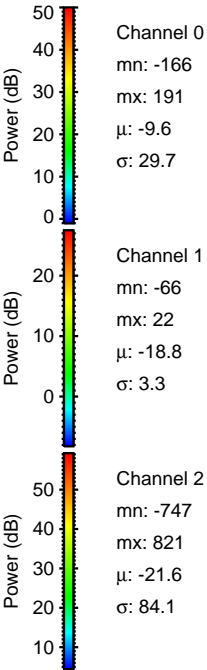
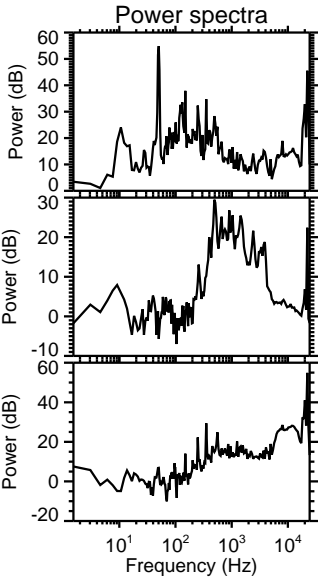
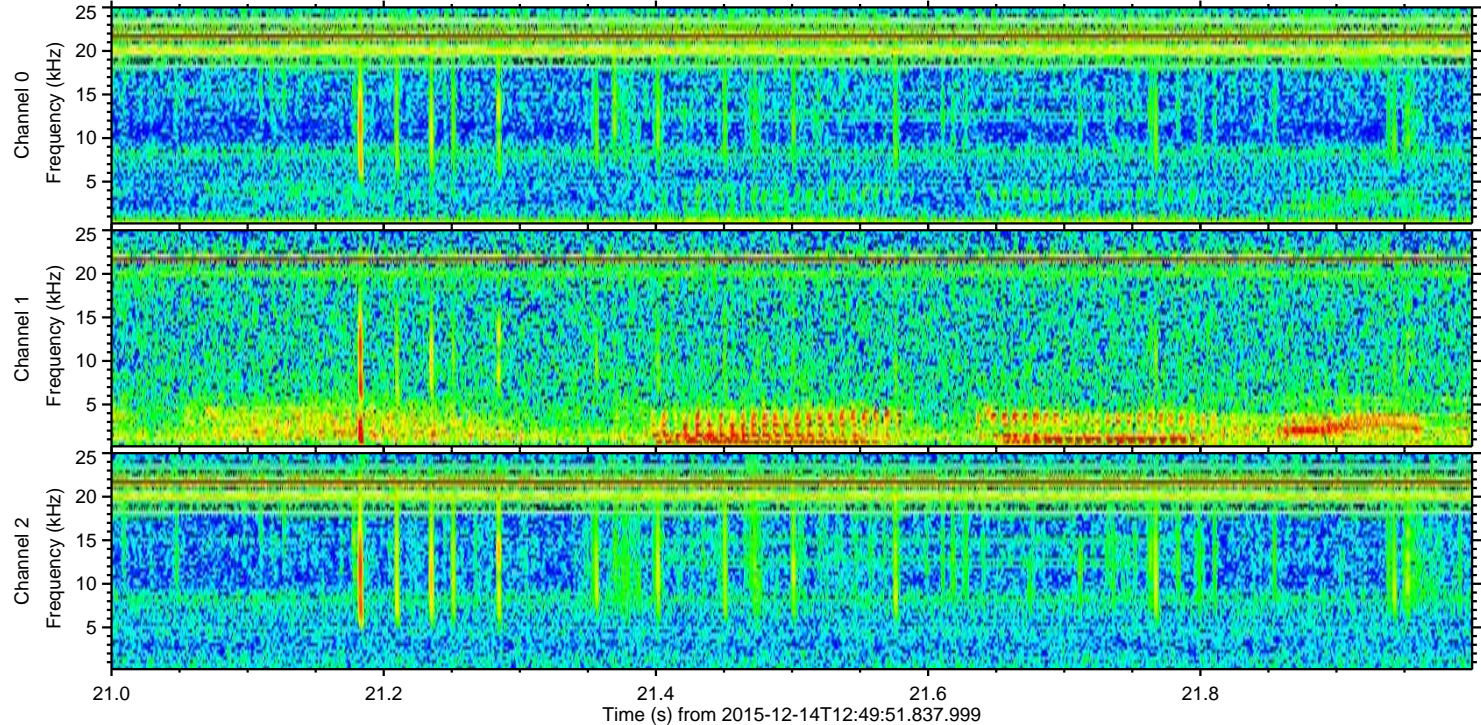
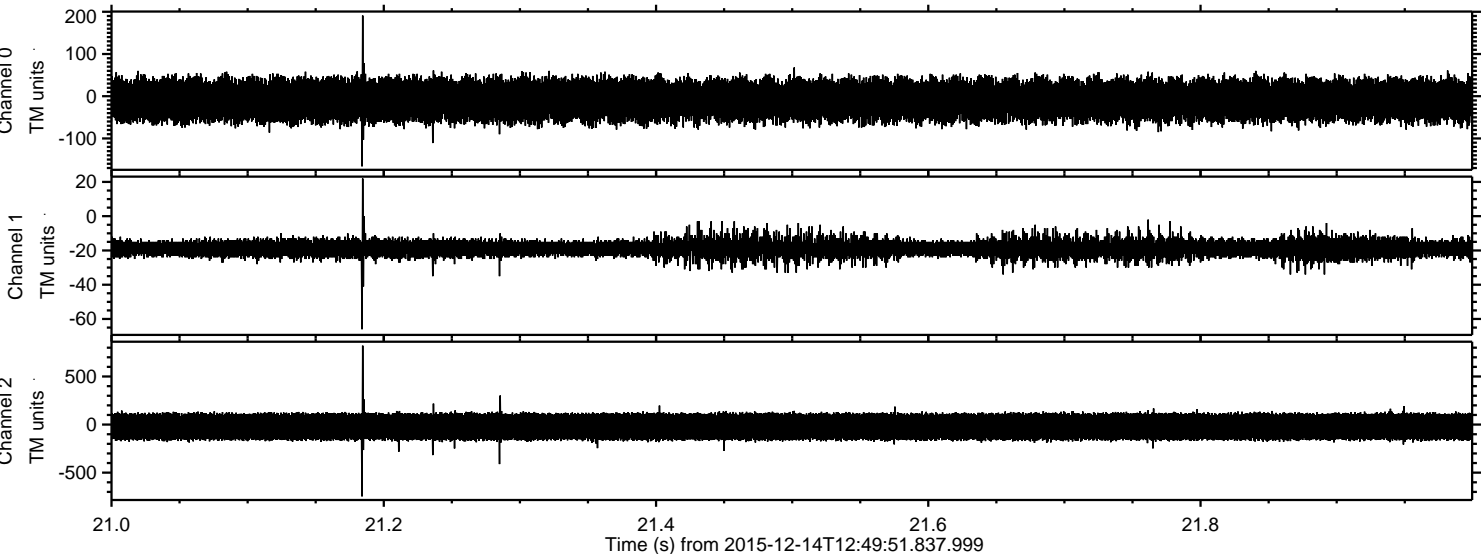
Processed Thu Jan 28 14:56:06 2016 by ELM ver.2012-10-06 from 001\_\_elm20151214\_124950\_\_dat00.bin





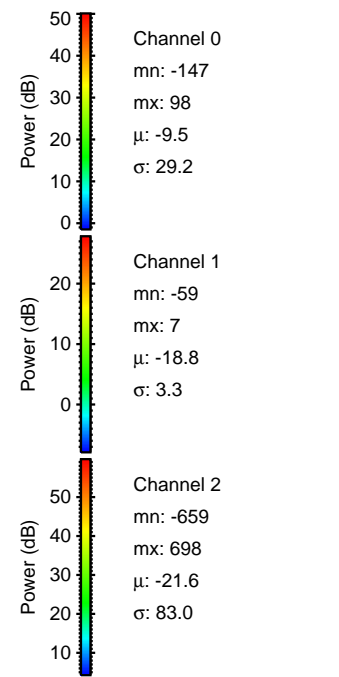
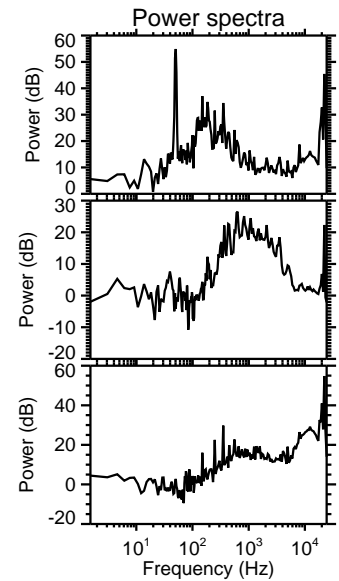
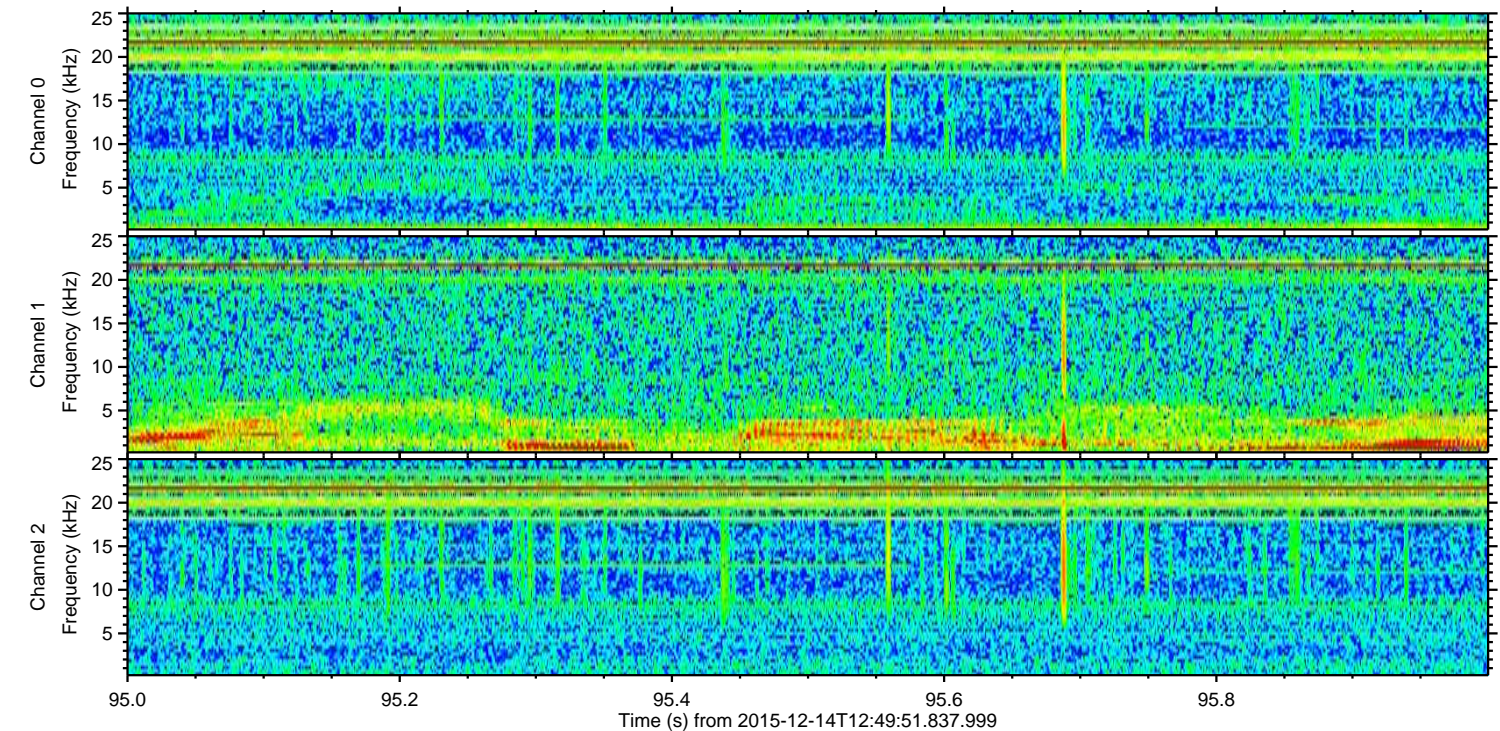
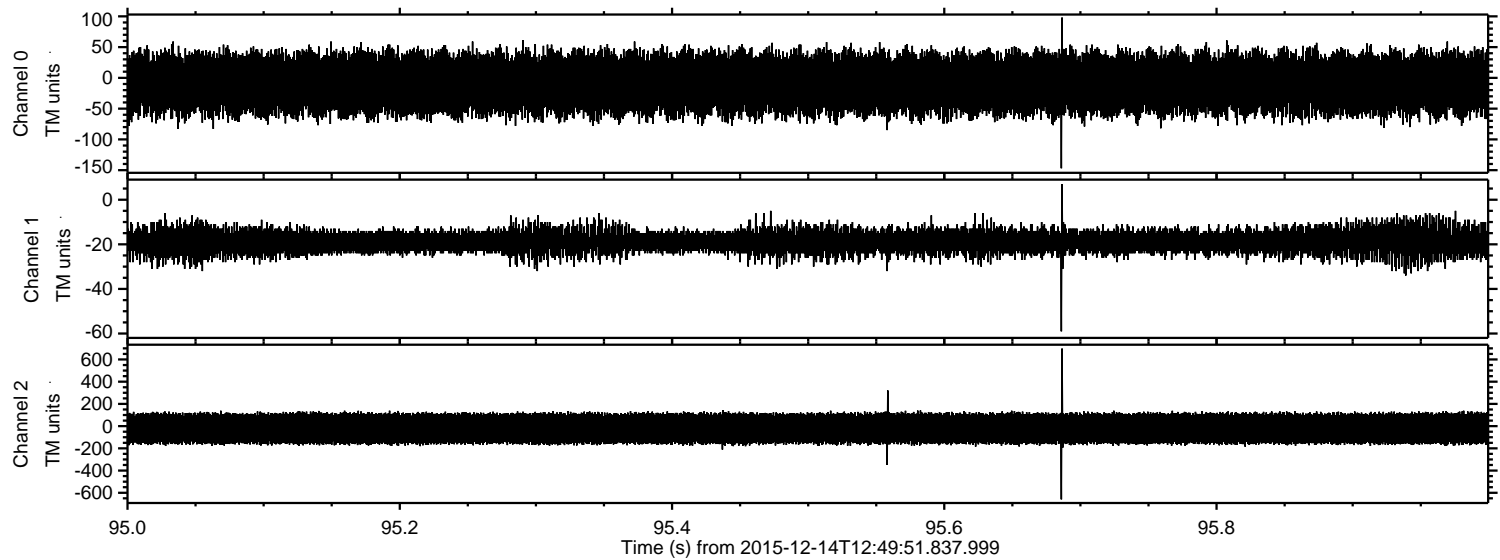
ELMAVAN 3D WAVEFORMS (Measured data sampled at 50 kHz) 51000 packets of 144 samples from 2015-12-14T12:49:51.837.999. Part 22/147

Processed Thu Jan 28 14:56:07 2016 by ELM ver.2012-10-06 from 001\_\_elm20151214\_124950\_\_dat00.bin





Processed Thu Jan 28 14:56:08 2016 by ELM ver.2012-10-06 from 001\_\_elm20151214\_124950\_\_dat00.bin



Power spectra

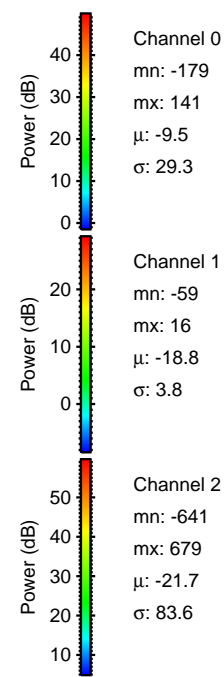
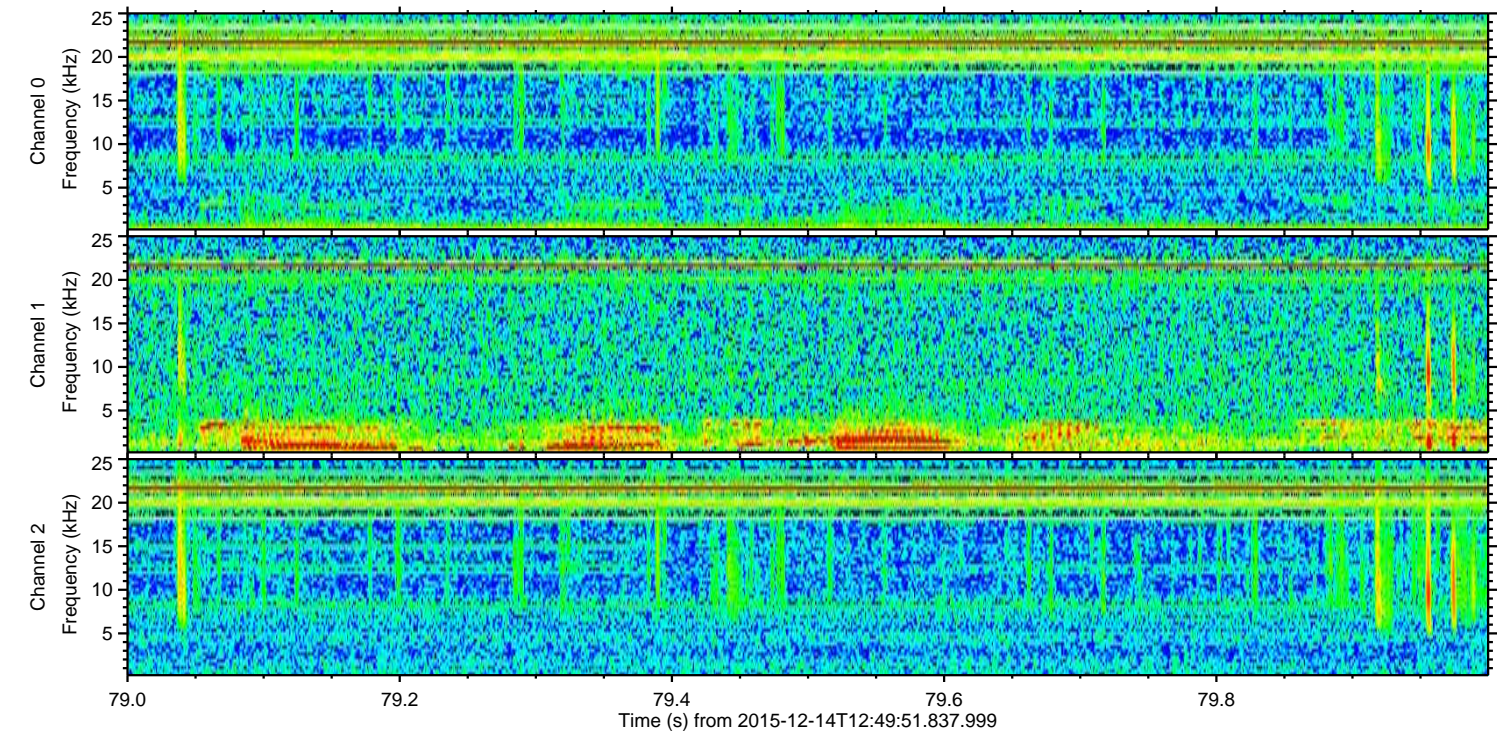
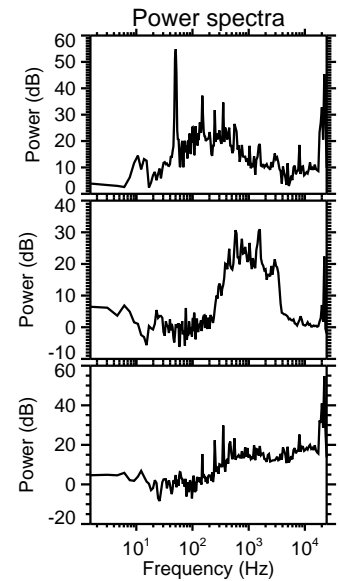
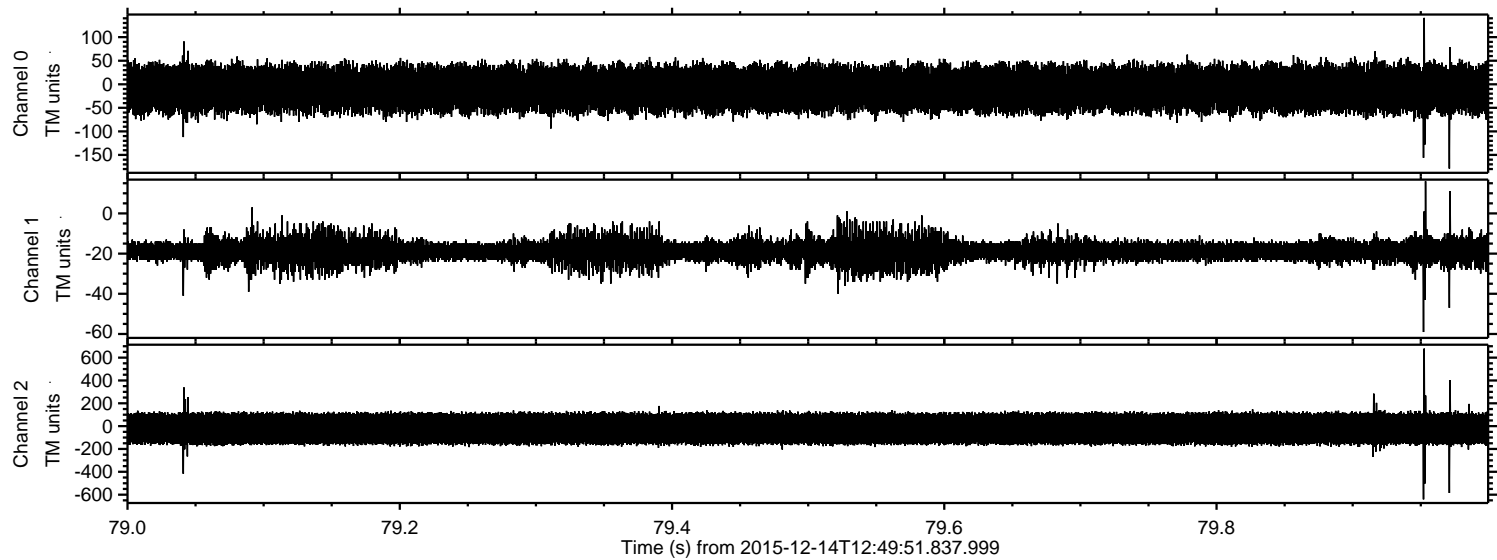
Channel 0  
mn: -147  
mx: 98  
 $\mu$ : -9.5  
 $\sigma$ : 29.2

Channel 1  
mn: -59  
mx: 7  
 $\mu$ : -18.8  
 $\sigma$ : 3.3

Channel 2  
mn: -659  
mx: 698  
 $\mu$ : -21.6  
 $\sigma$ : 83.0



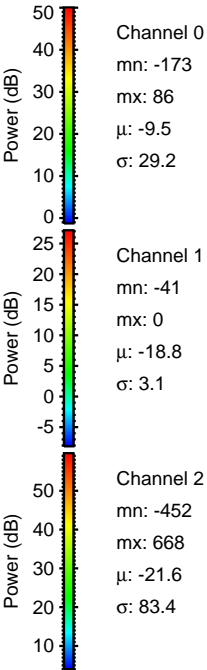
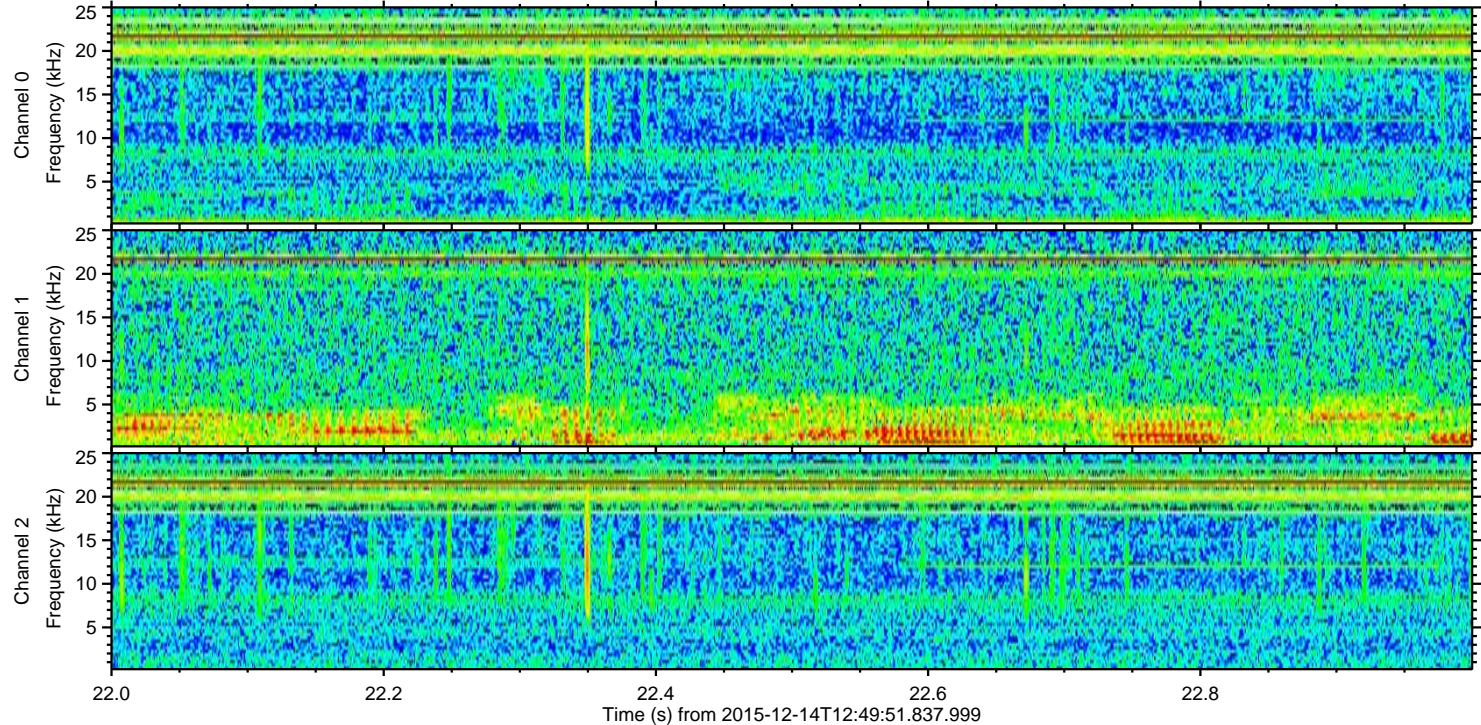
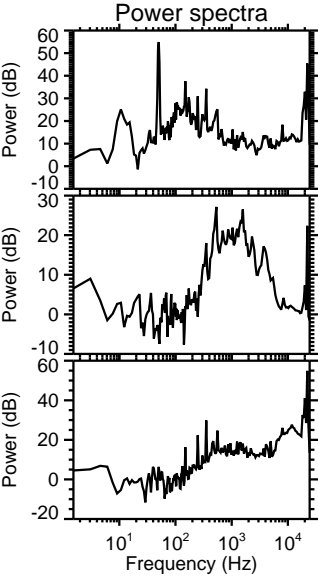
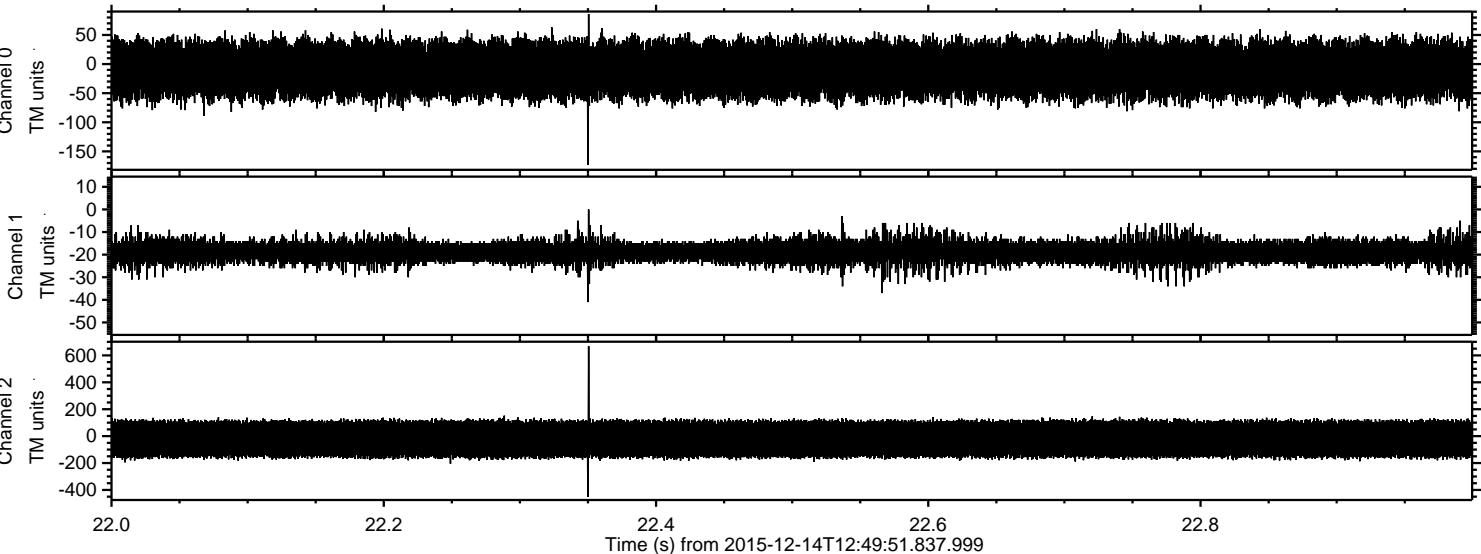
Processed Thu Jan 28 14:56:09 2016 by ELM ver.2012-10-06 from 001\_\_elm20151214\_124950\_\_dat00.bin





ELMAVAN 3D WAVEFORMS (Measured data sampled at 50 kHz) 51000 packets of 144 samples from 2015-12-14T12:49:51.837.999. Part 23/147

Processed Thu Jan 28 14:56:10 2016 by ELM ver.2012-10-06 from 001\_\_elm20151214\_124950\_\_dat00.bin





ELMAVAN 3D WAVEFORMS (Measured data sampled at 50 kHz) 51000 packets of 144 samples from 2015-12-14T12:49:51.837.999. Part 134/147

Processed Thu Jan 28 14:56:11 2016 by ELM ver.2012-10-06 from 001\_\_elm20151214\_124950\_\_dat00.bin

