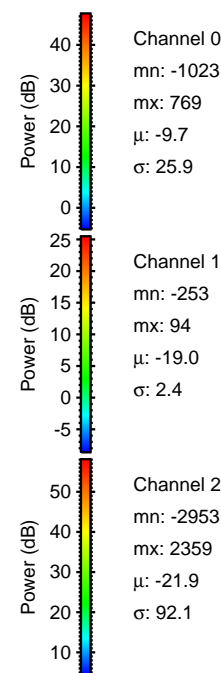
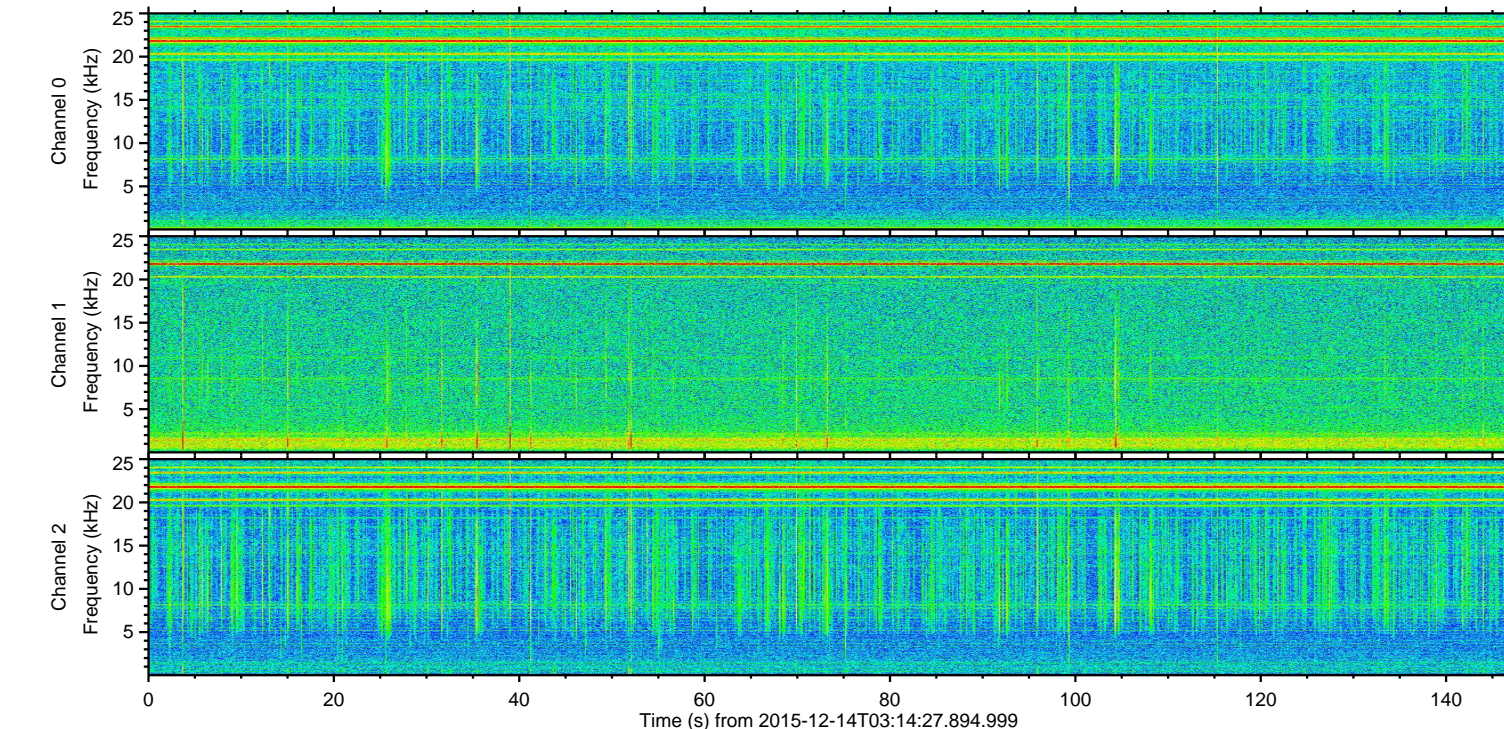
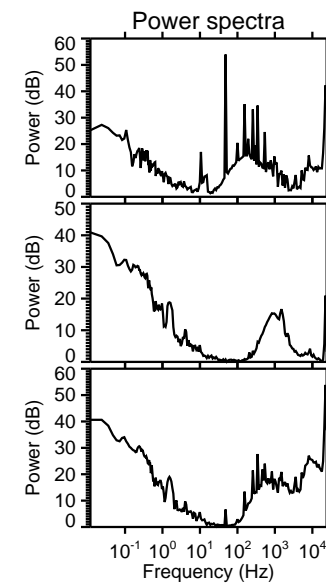
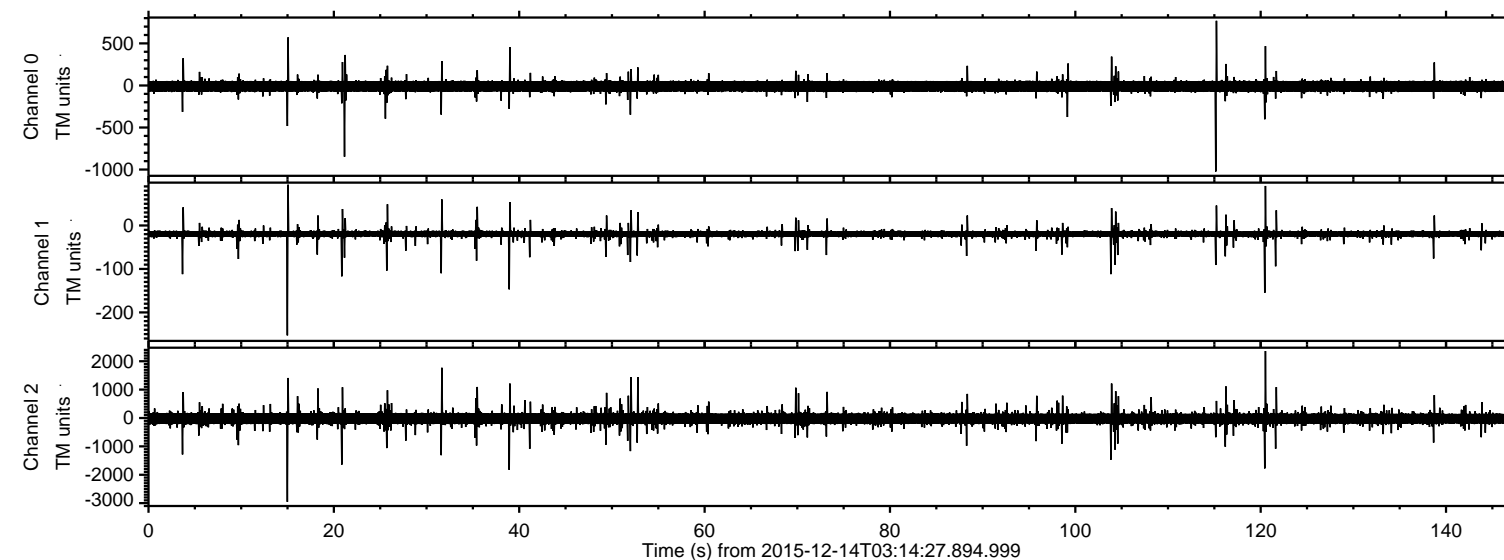
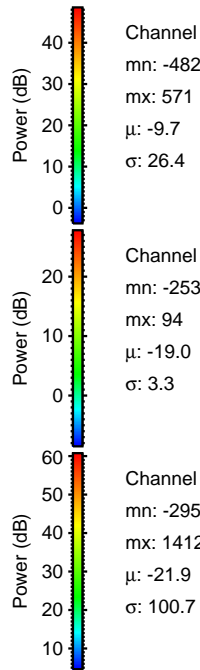
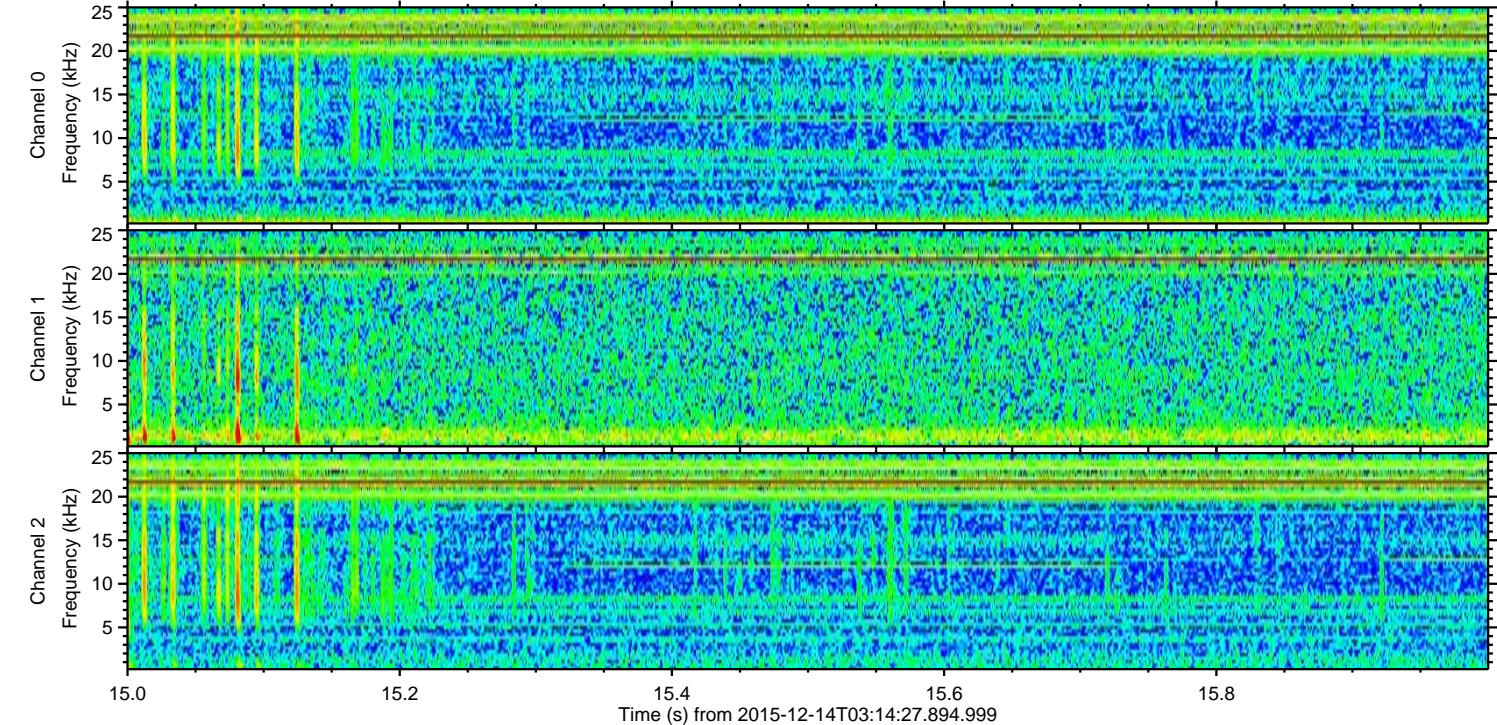
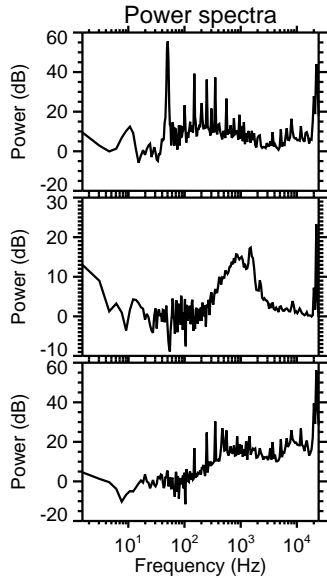
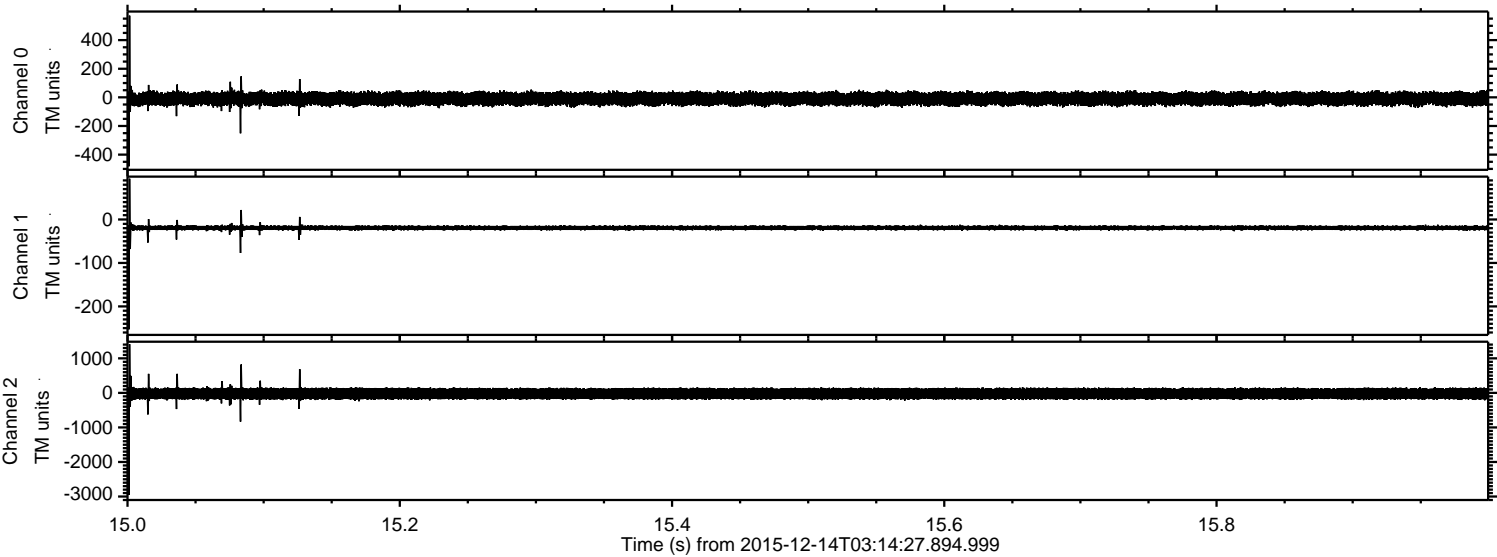


ELMAVAN 3D WAVEFORMS (Measured data sampled at 50 kHz) 51000 packets of 144 samples from 2015-12-14T03:14:27.894.999.

Processed Thu Jan 28 12:41:02 2016 by ELM ver.2012-10-06 from 001__elm20151214_031426__dat00.bin



Processed Thu Jan 28 12:41:15 2016 by ELM ver.2012-10-06 from 001__elm20151214_031426__dat00.bin



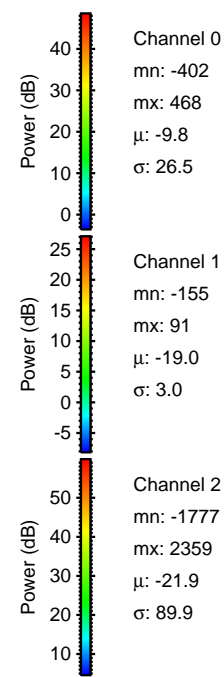
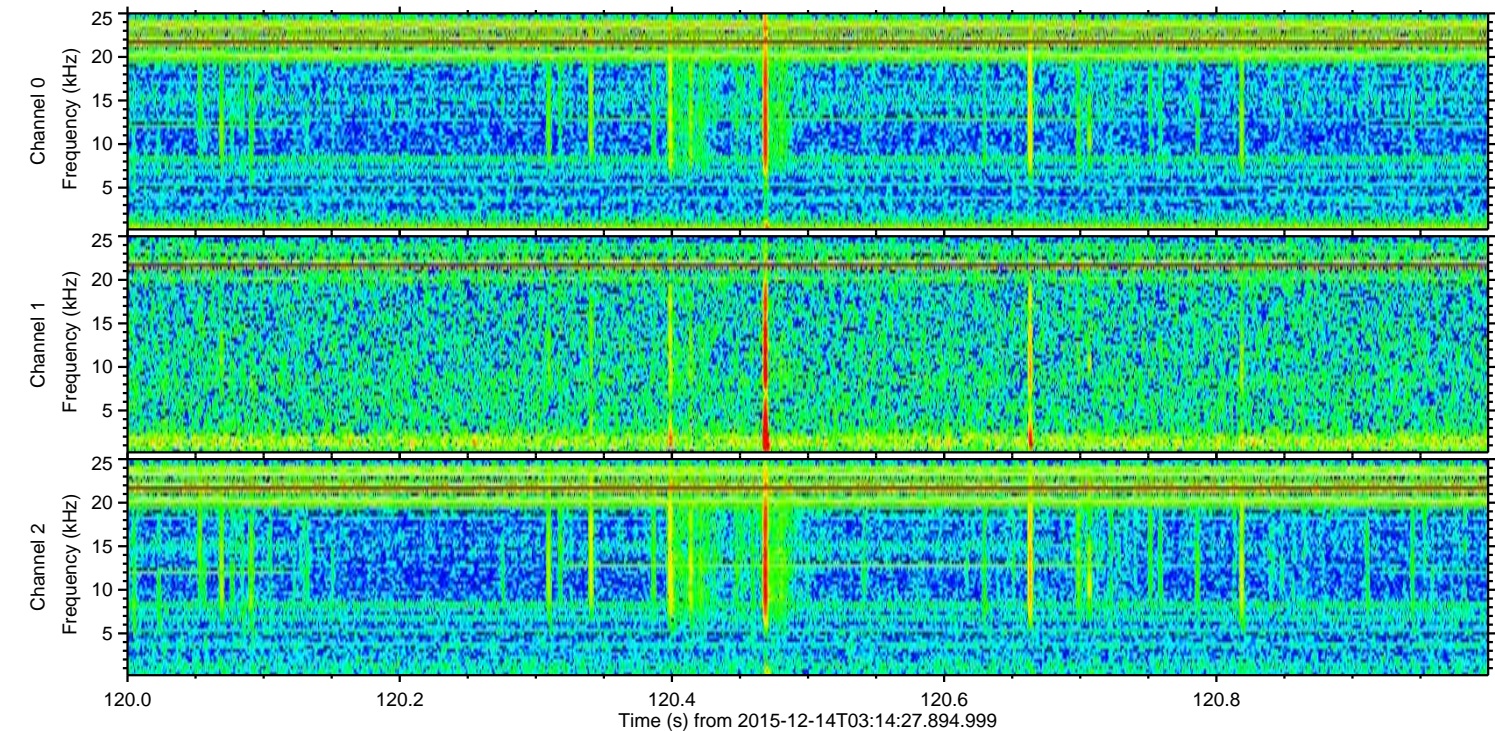
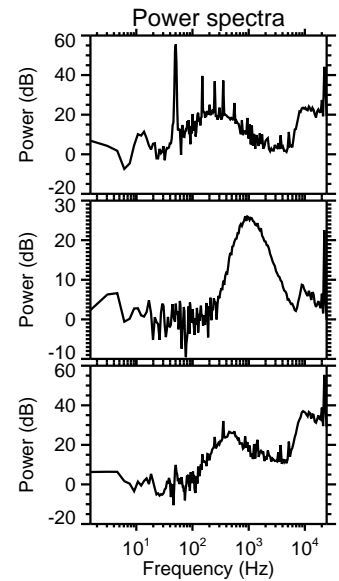
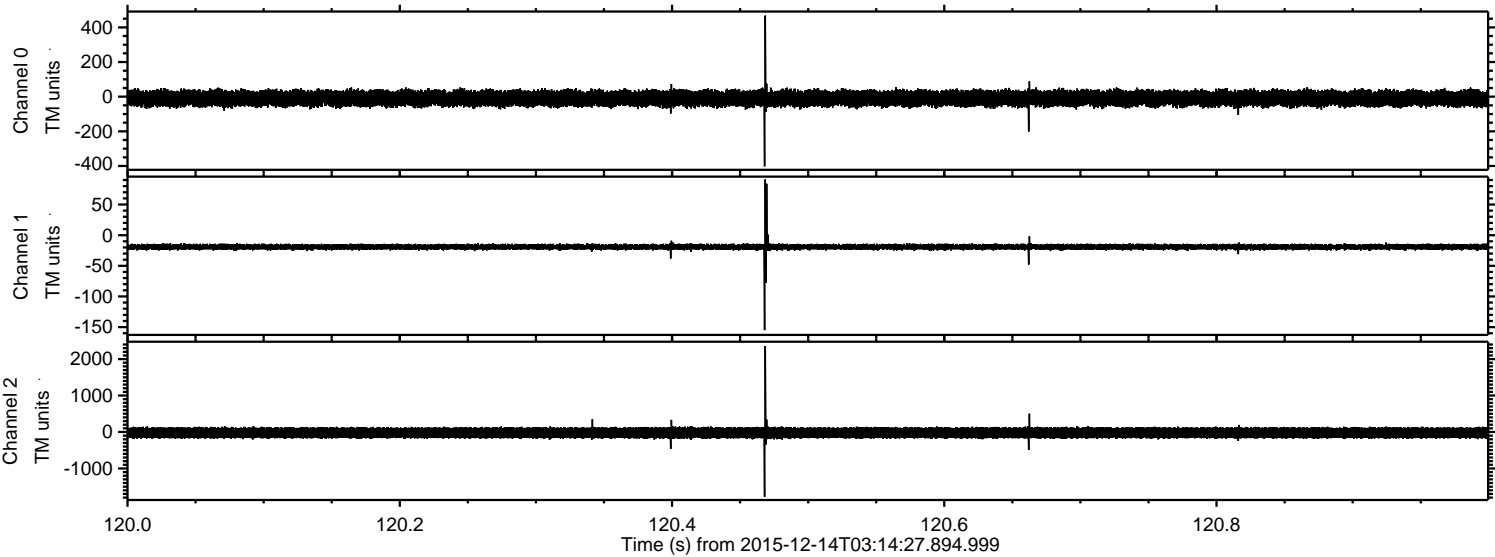
Channel 0
mn: -482
mx: 571
 μ : -9.7
 σ : 26.4

Channel 1
mn: -253
mx: 94
 μ : -19.0
 σ : 3.3

Channel 2
mn: -2953
mx: 1412
 μ : -21.9
 σ : 100.7

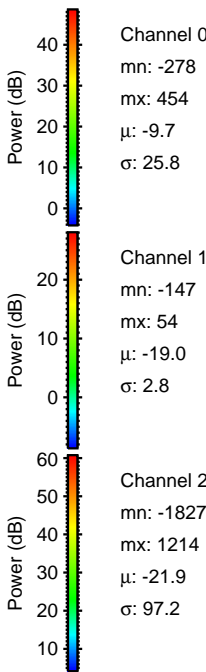
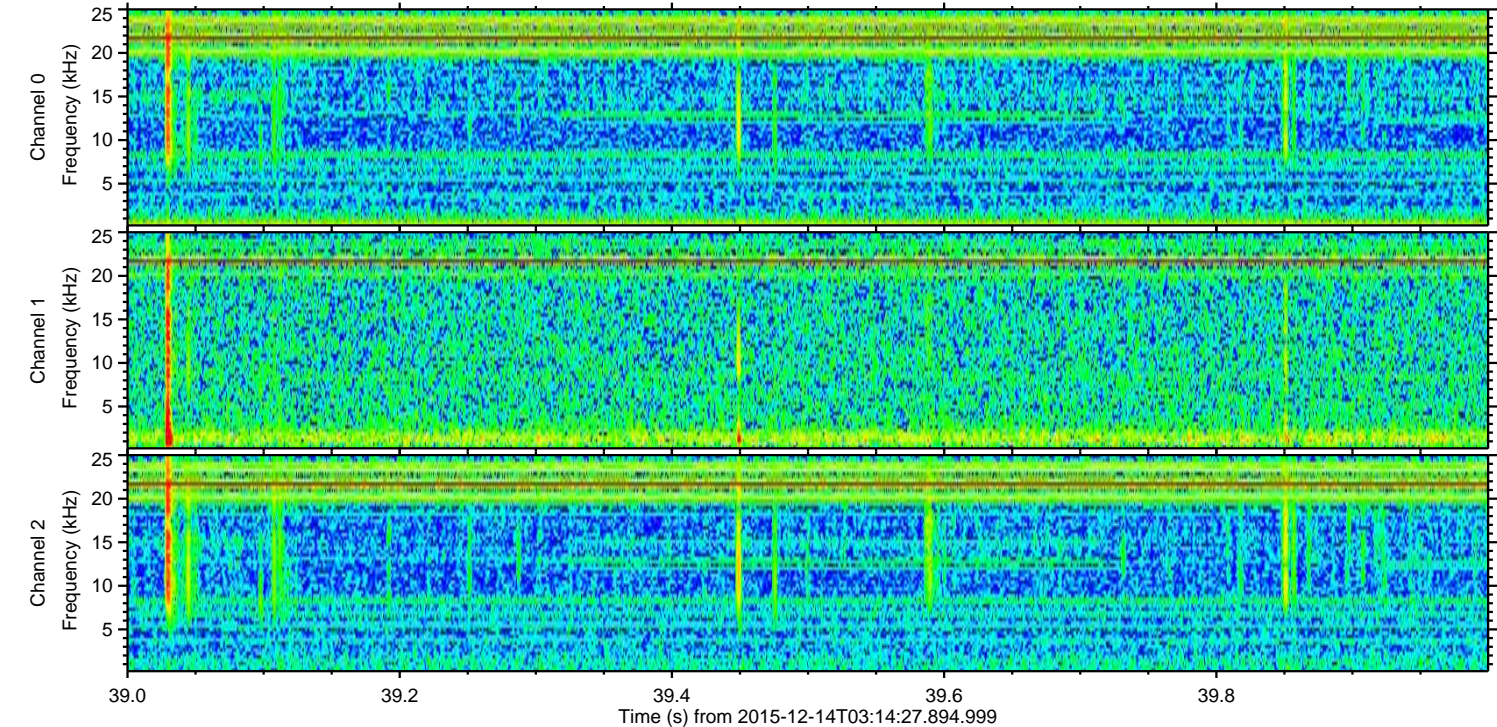
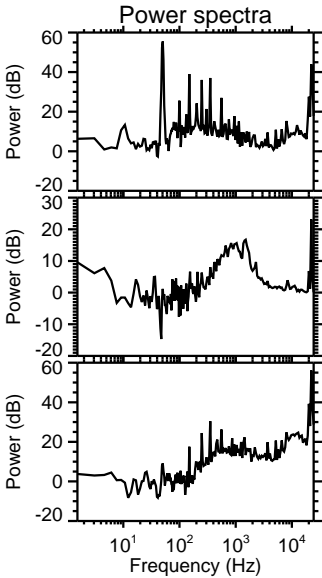
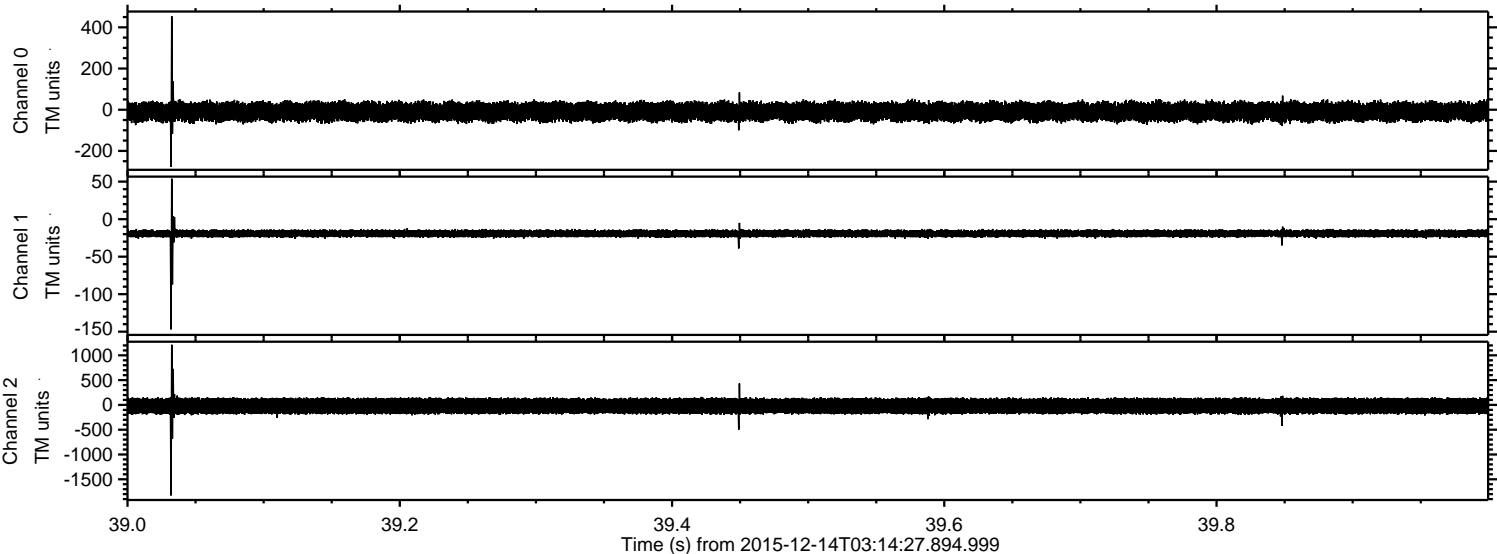
ELMAVAN 3D WAVEFORMS (Measured data sampled at 50 kHz) 51000 packets of 144 samples from 2015-12-14T03:14:27.894.999. Part 121/147

Processed Thu Jan 28 12:41:16 2016 by ELM ver.2012-10-06 from 001__elm20151214_031426__dat00.bin



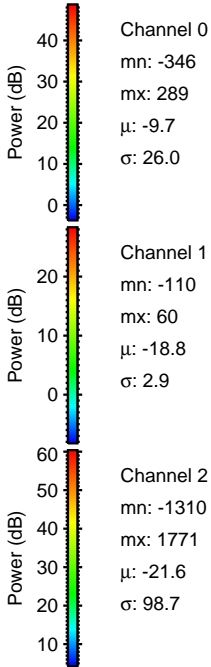
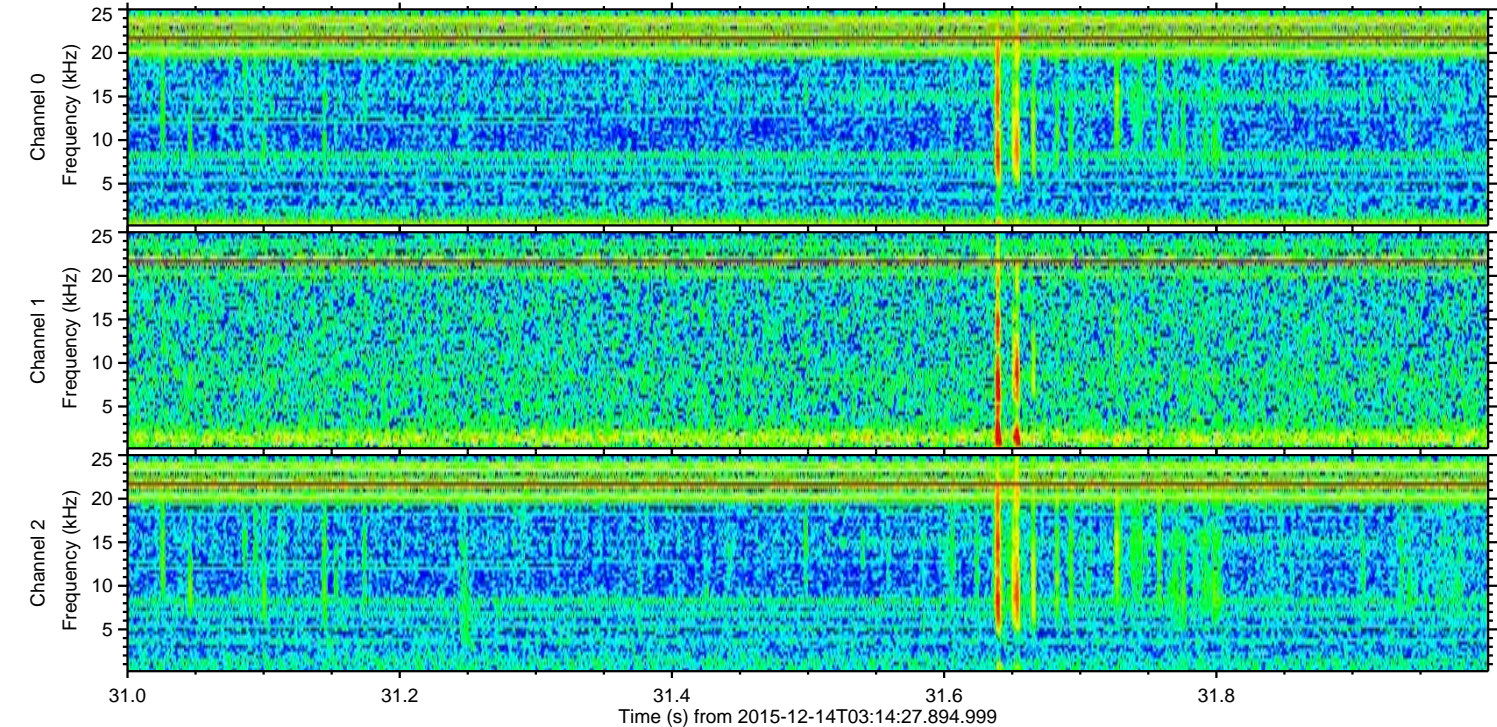
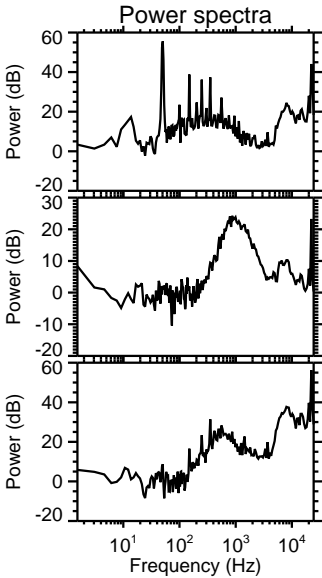
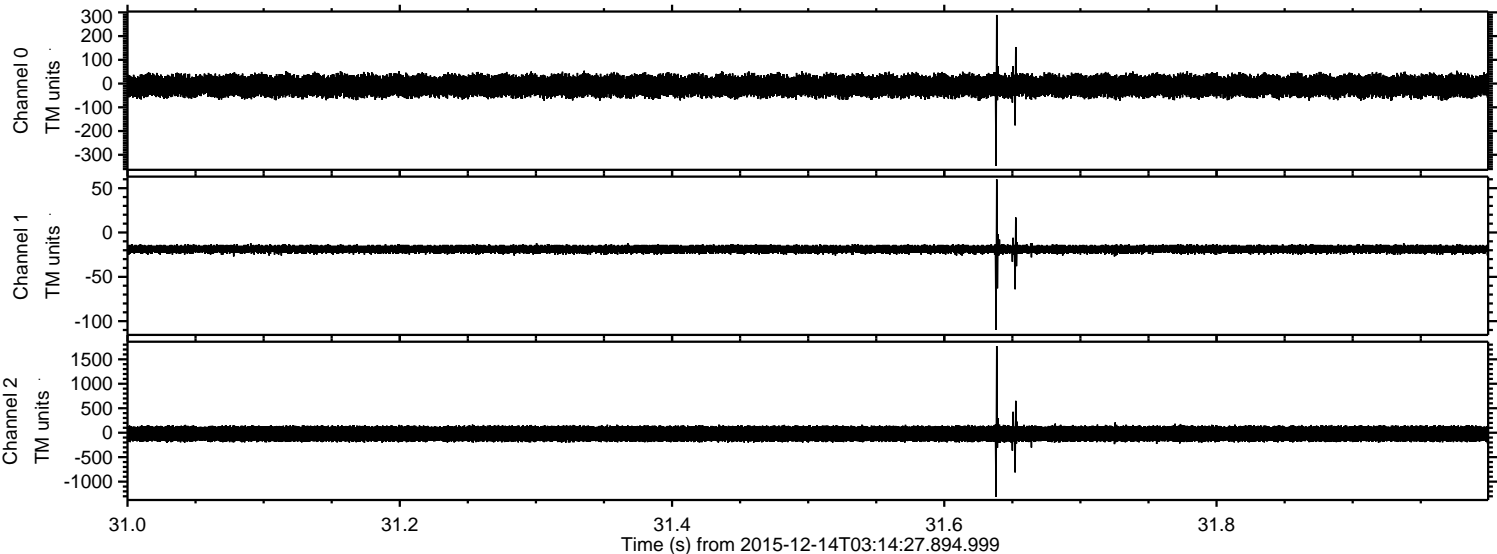
ELMAVAN 3D WAVEFORMS (Measured data sampled at 50 kHz) 51000 packets of 144 samples from 2015-12-14T03:14:27.894.999. Part 40/147

Processed Thu Jan 28 12:41:17 2016 by ELM ver.2012-10-06 from 001__elm20151214_031426__dat00.bin



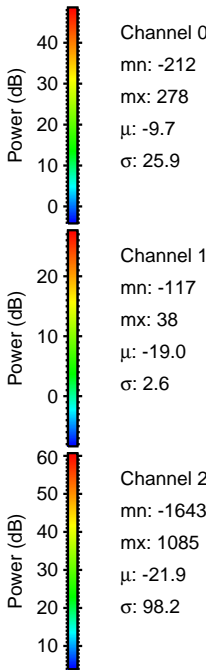
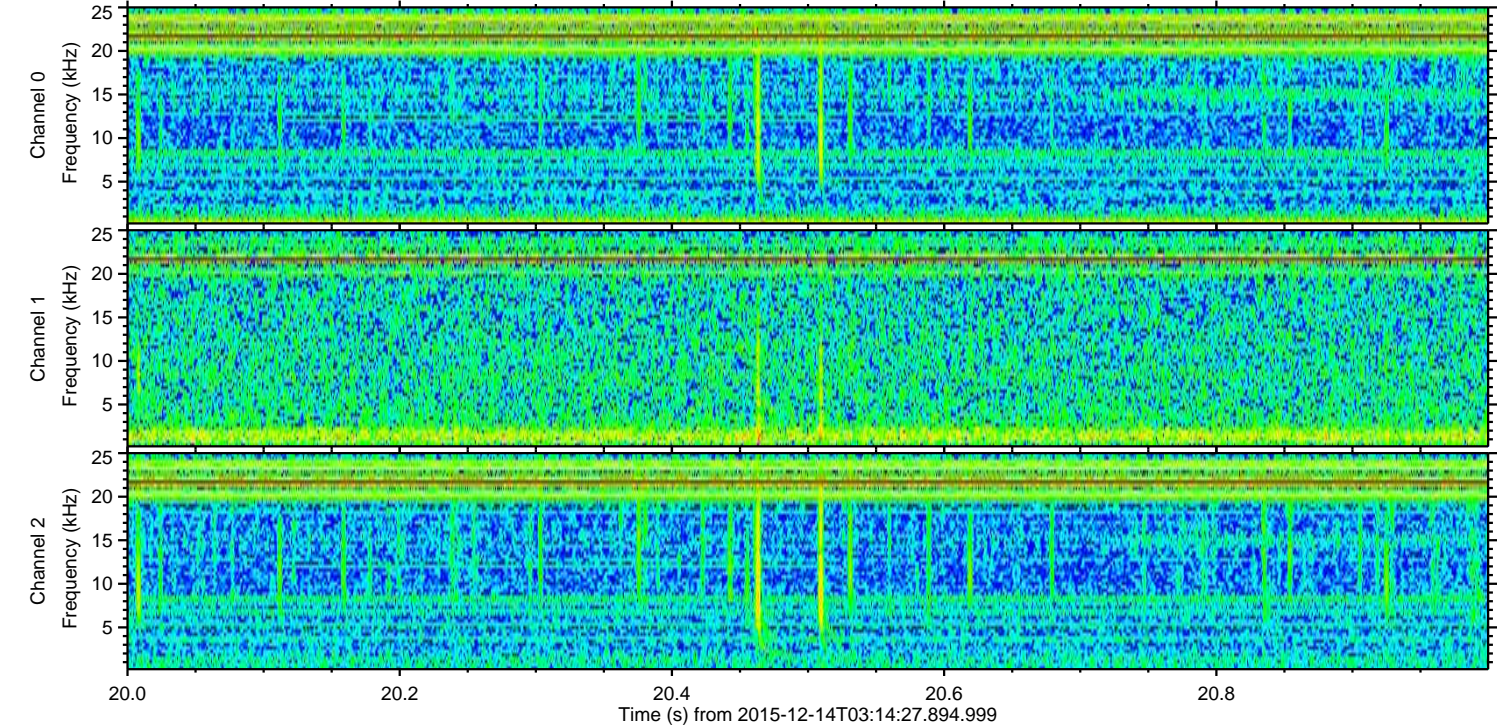
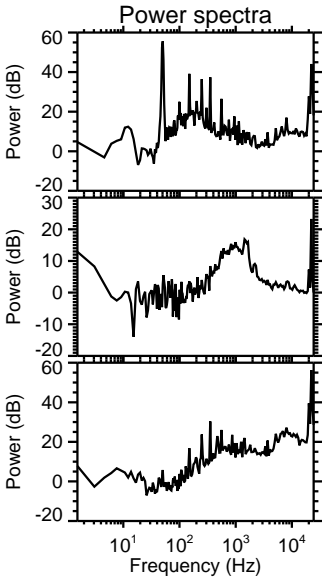
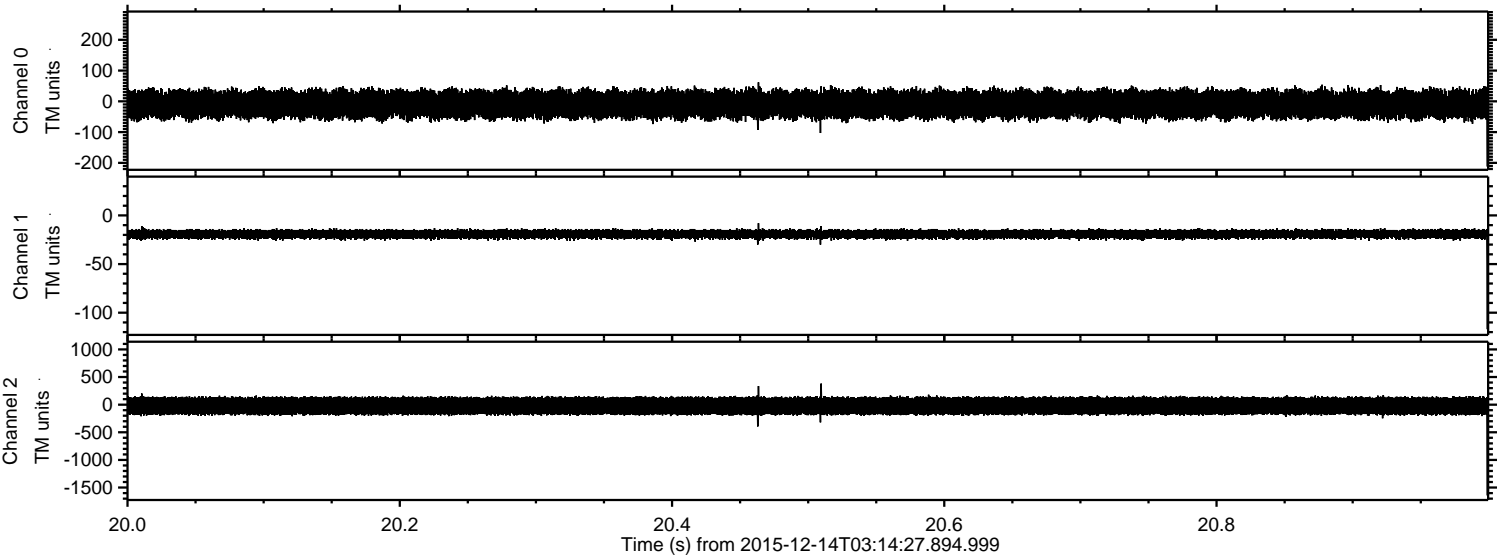
ELMAVAN 3D WAVEFORMS (Measured data sampled at 50 kHz) 51000 packets of 144 samples from 2015-12-14T03:14:27.894.999. Part 32/147

Processed Thu Jan 28 12:41:18 2016 by ELM ver.2012-10-06 from 001__elm20151214_031426__dat00.bin



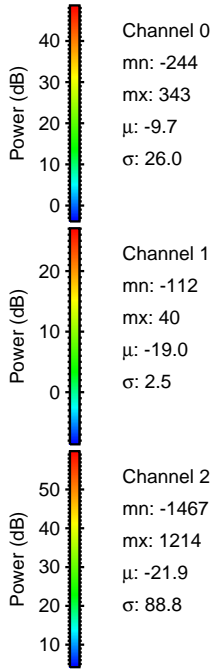
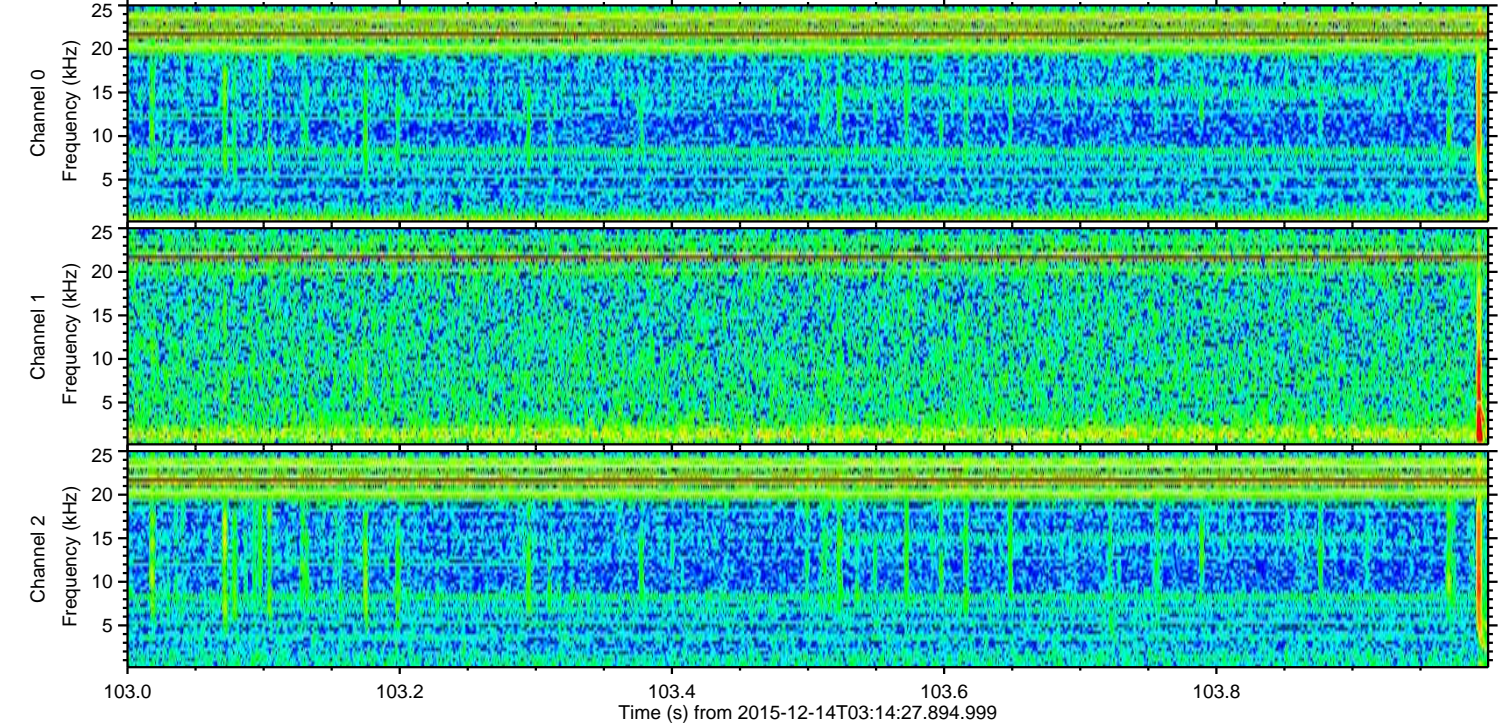
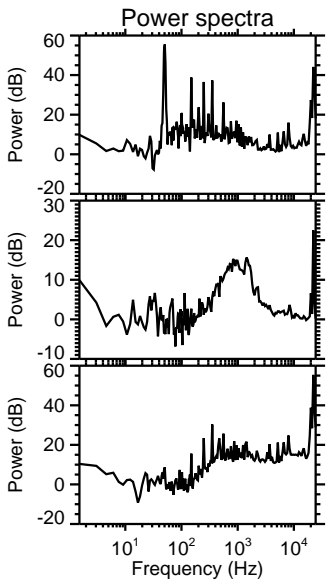
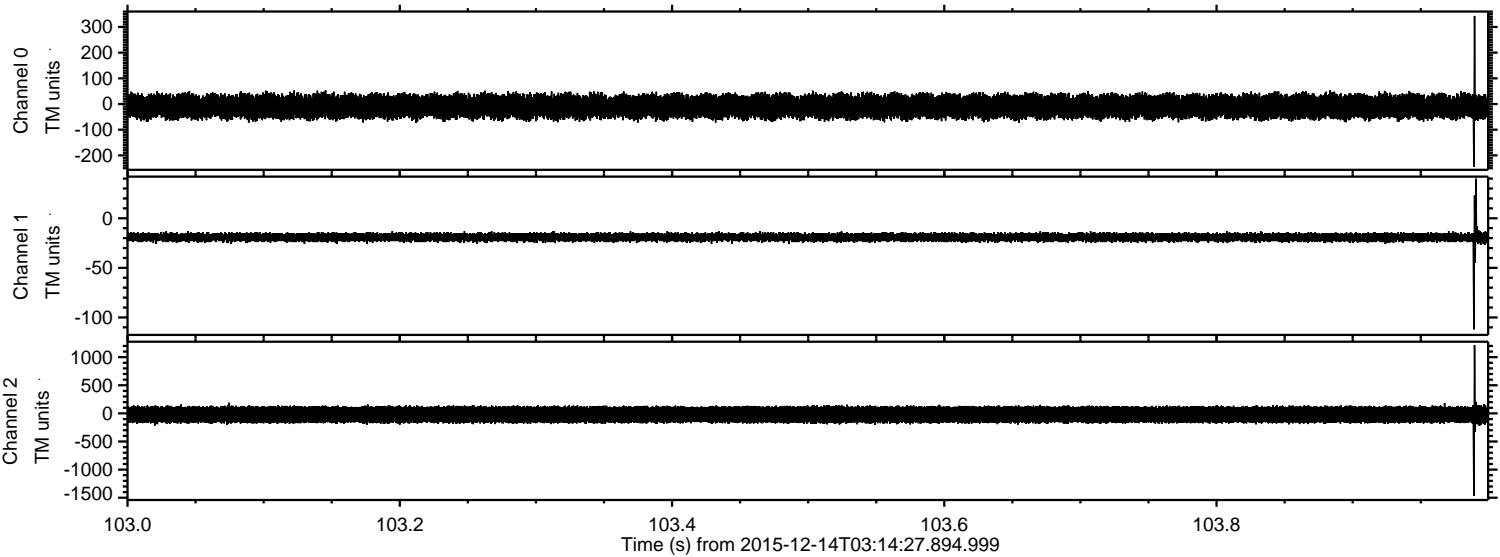
ELMAVAN 3D WAVEFORMS (Measured data sampled at 50 kHz) 51000 packets of 144 samples from 2015-12-14T03:14:27.894.999. Part 21/147

Processed Thu Jan 28 12:41:19 2016 by ELM ver.2012-10-06 from 001__elm20151214_031426__dat00.bin



ELMAVAN 3D WAVEFORMS (Measured data sampled at 50 kHz) 51000 packets of 144 samples from 2015-12-14T03:14:27.894.999. Part 104/147

Processed Thu Jan 28 12:41:19 2016 by ELM ver.2012-10-06 from 001__elm20151214_031426__dat00.bin

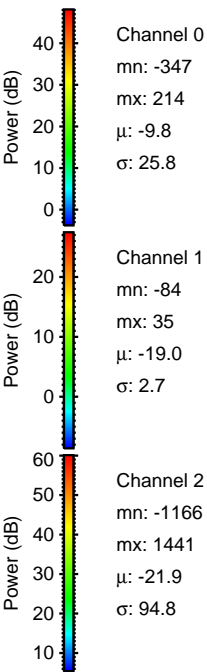
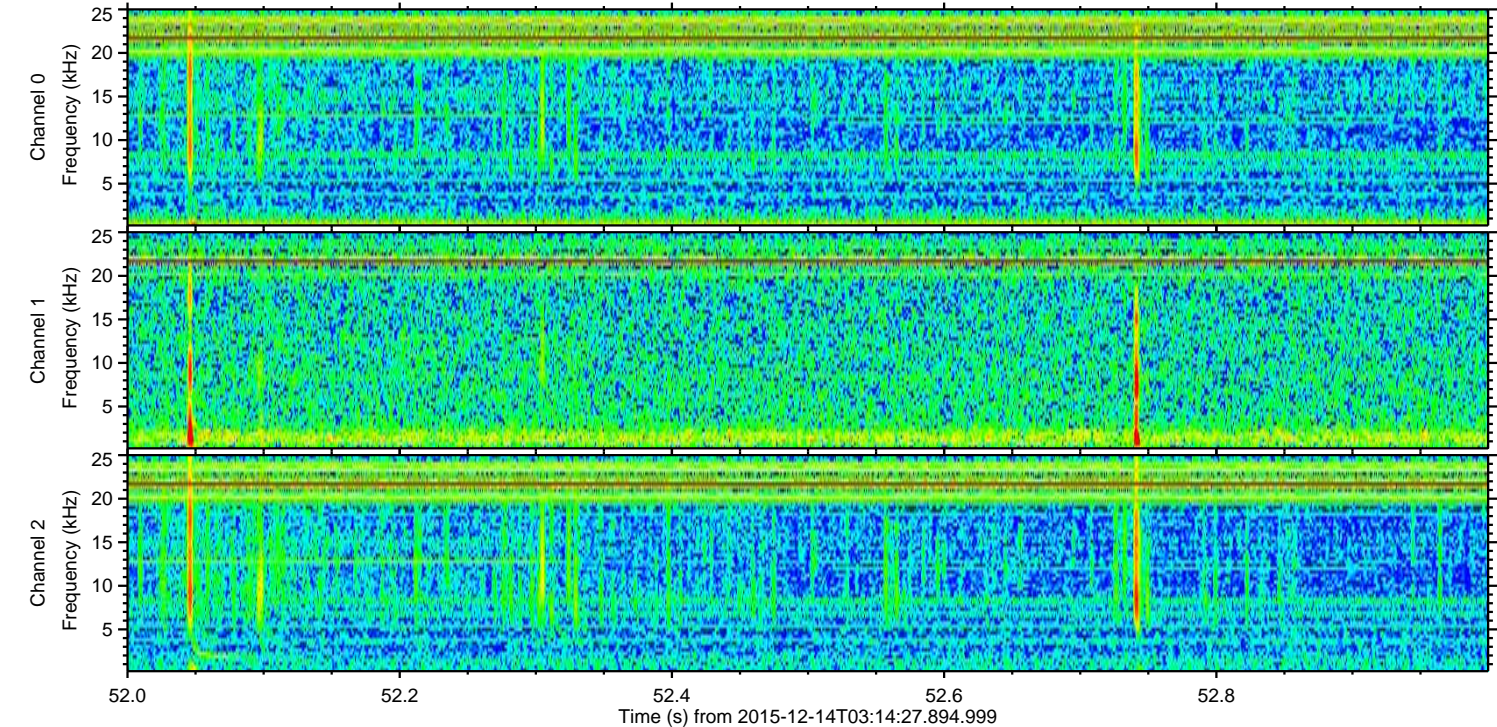
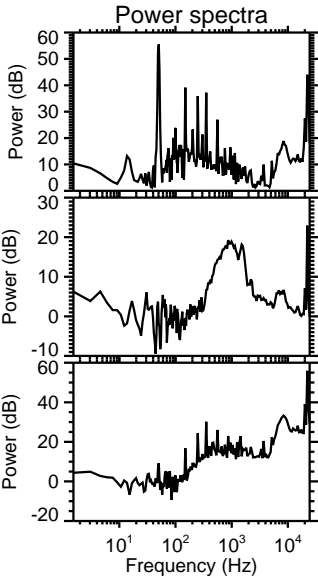
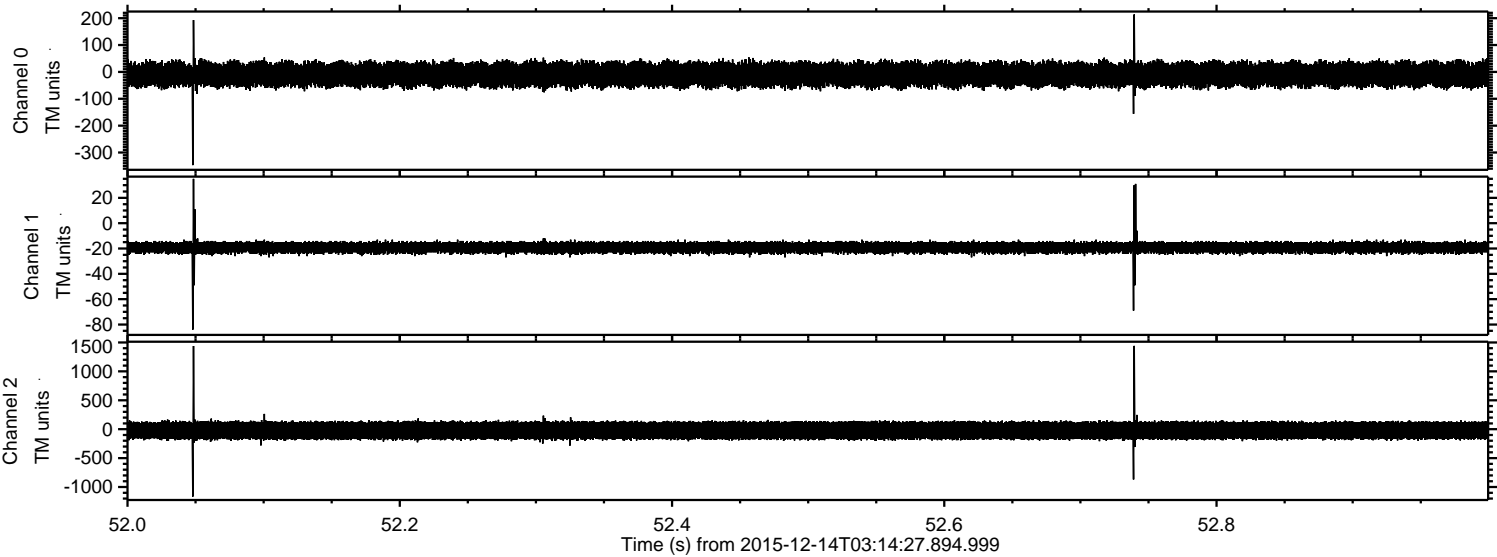


Channel 0
mn: -244
mx: 343
 μ : -9.7
 σ : 26.0

Channel 1
mn: -112
mx: 40
 μ : -19.0
 σ : 2.5

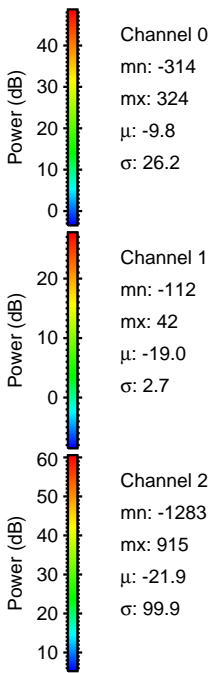
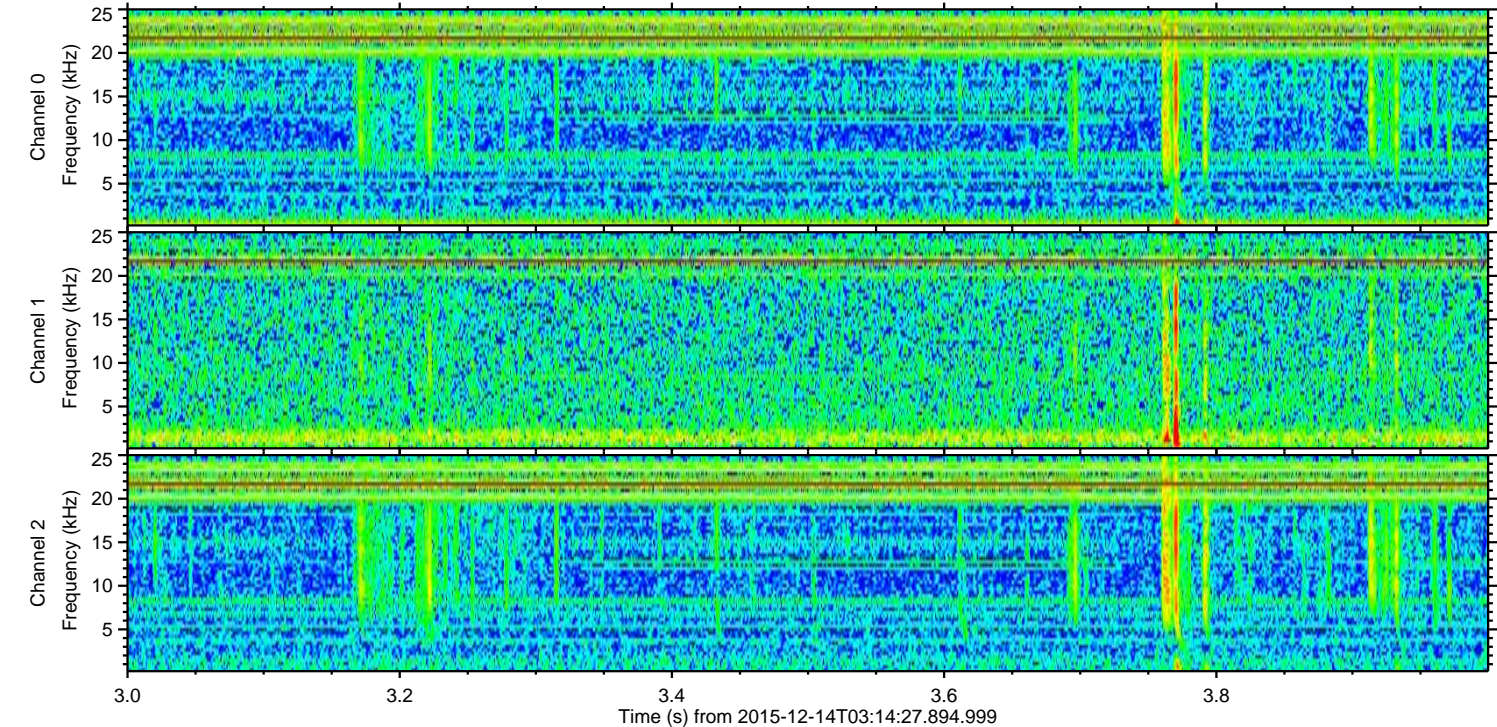
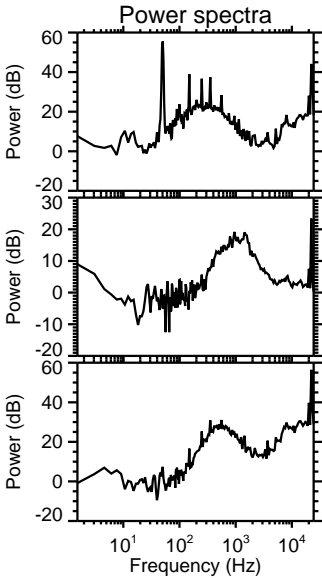
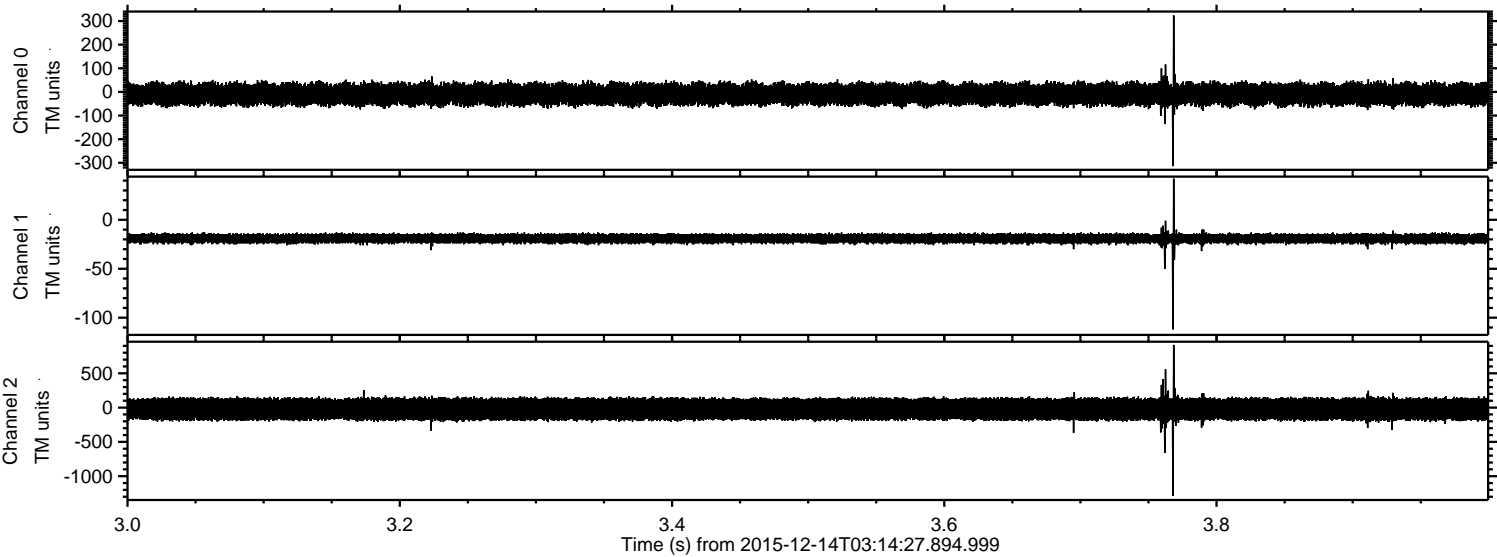
Channel 2
mn: -1467
mx: 1214
 μ : -21.9
 σ : 88.8

Processed Thu Jan 28 12:41:20 2016 by ELM ver.2012-10-06 from 001__elm20151214_031426__dat00.bin



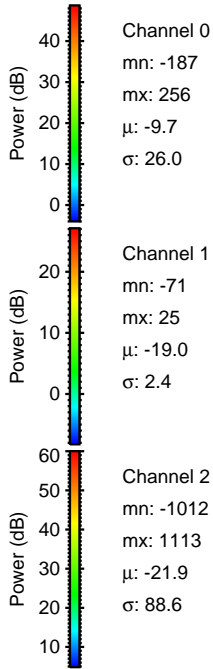
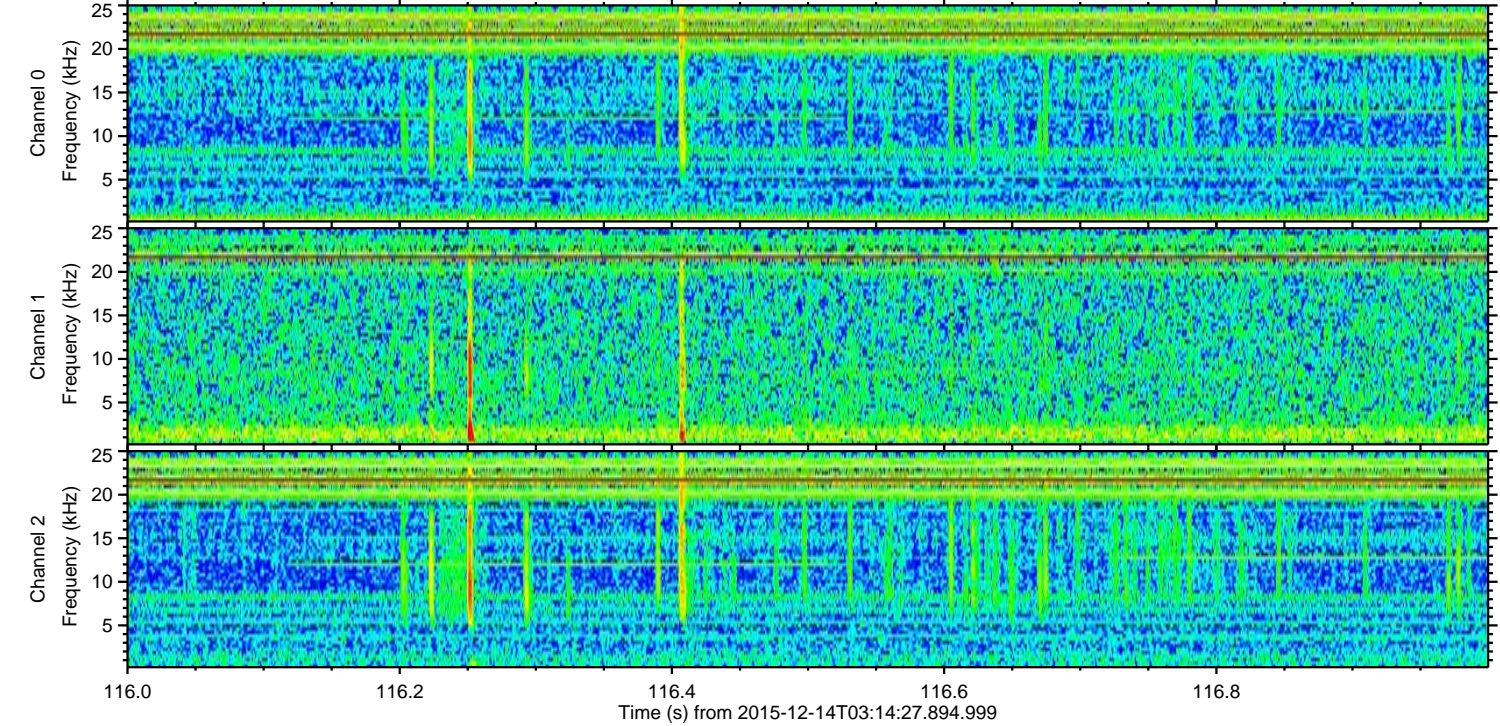
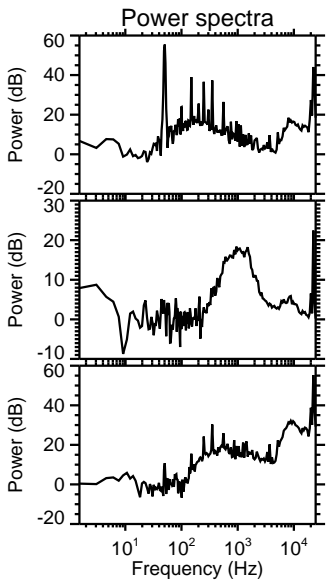
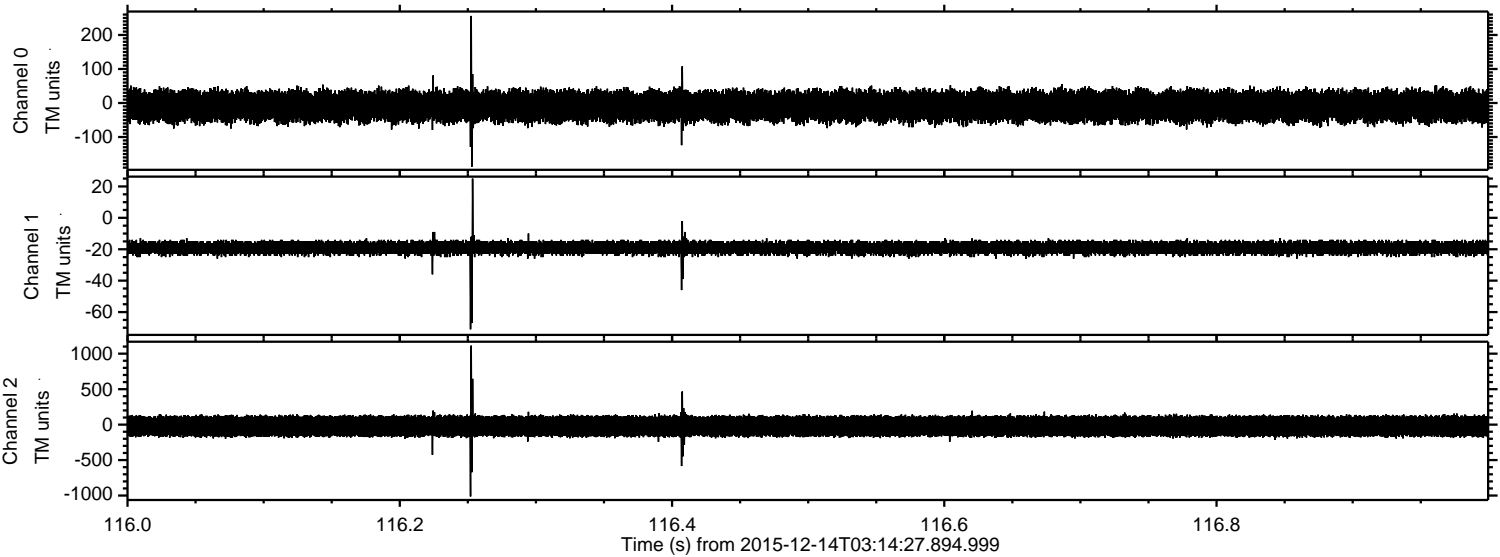
ELMAVAN 3D WAVEFORMS (Measured data sampled at 50 kHz) 51000 packets of 144 samples from 2015-12-14T03:14:27.894.999. Part 4/147

Processed Thu Jan 28 12:41:21 2016 by ELM ver.2012-10-06 from 001__elm20151214_031426__dat00.bin



ELMAVAN 3D WAVEFORMS (Measured data sampled at 50 kHz) 51000 packets of 144 samples from 2015-12-14T03:14:27.894.999. Part 117/147

Processed Thu Jan 28 12:41:22 2016 by ELM ver.2012-10-06 from 001__elm20151214_031426__dat00.bin



ELMAVAN 3D WAVEFORMS (Measured data sampled at 50 kHz) 51000 packets of 144 samples from 2015-12-14T03:14:27.894.999. Part 141/147

