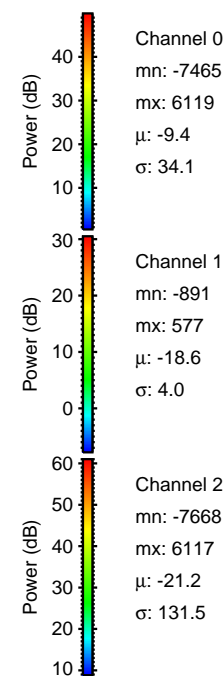
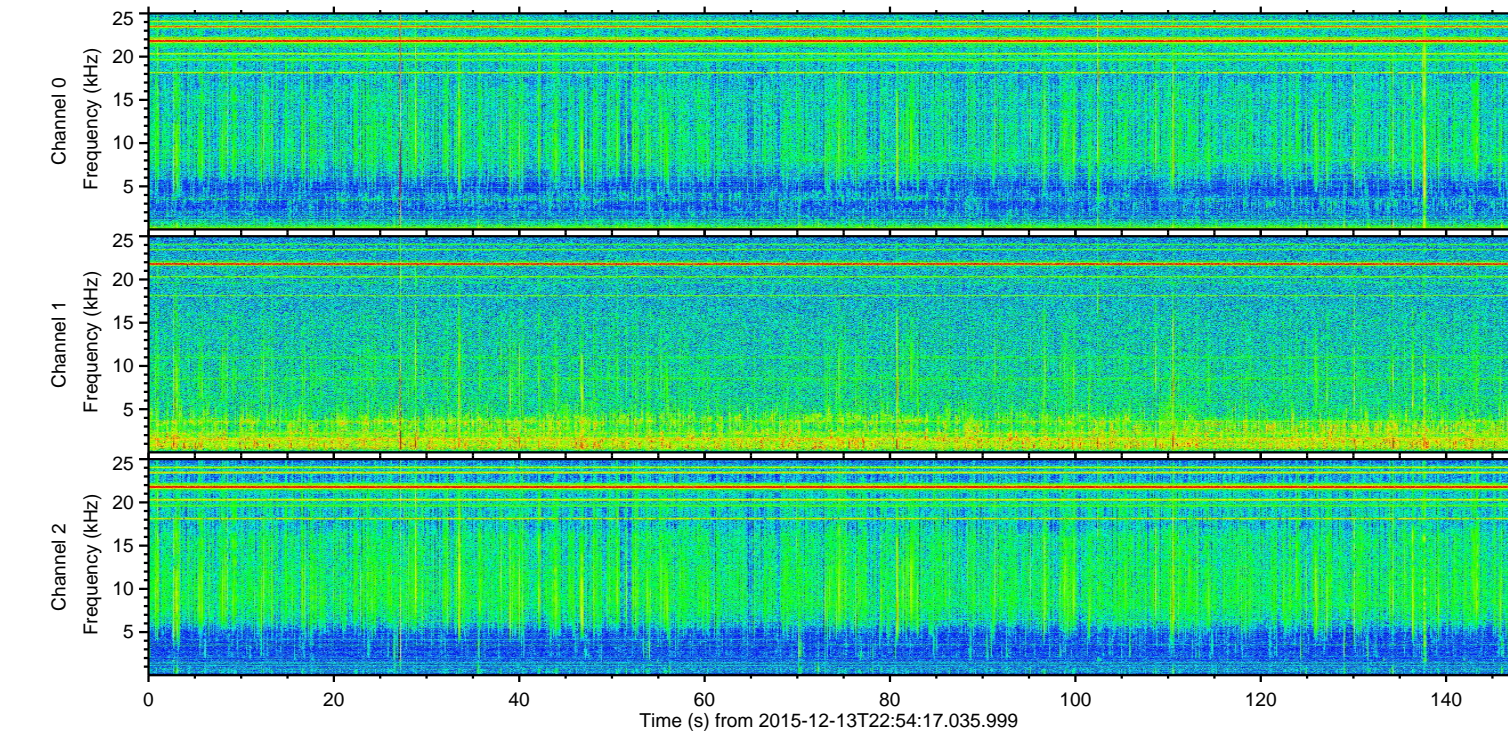
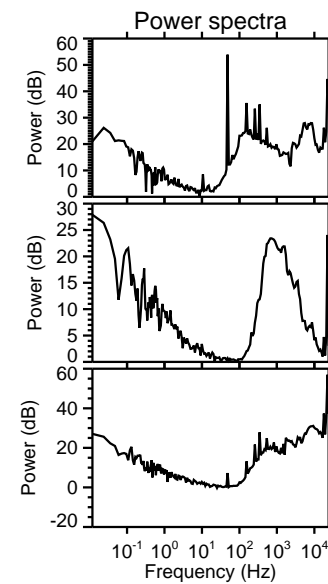
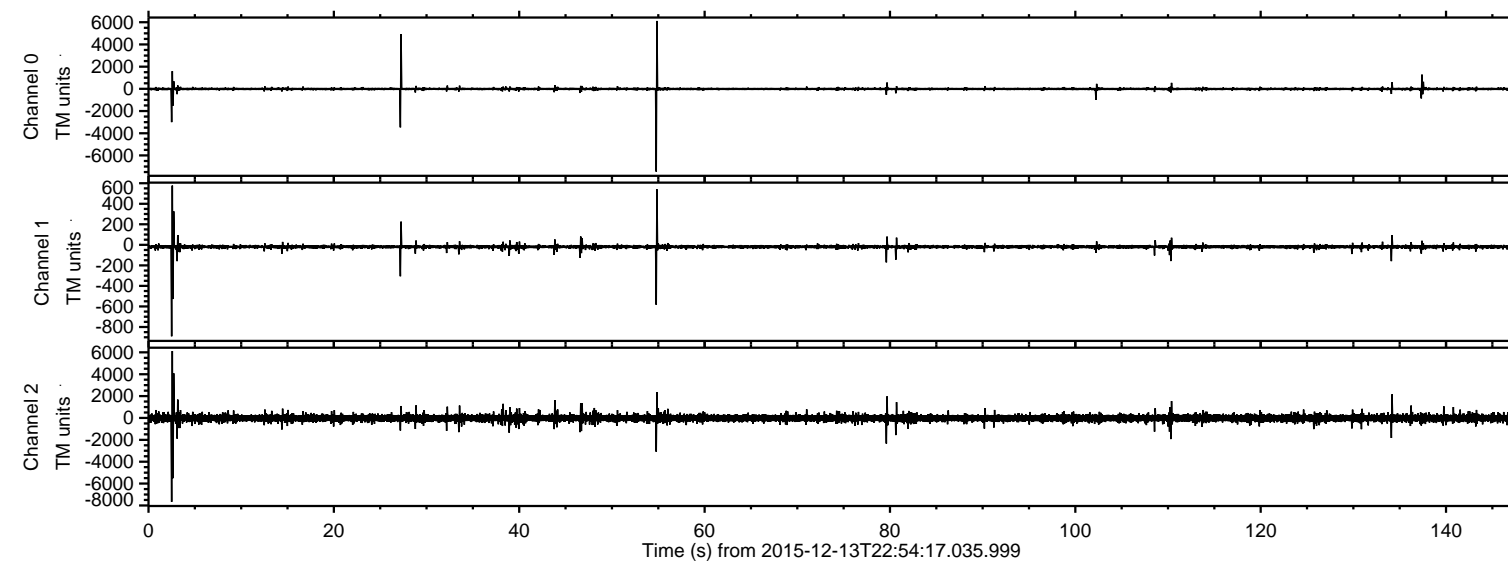


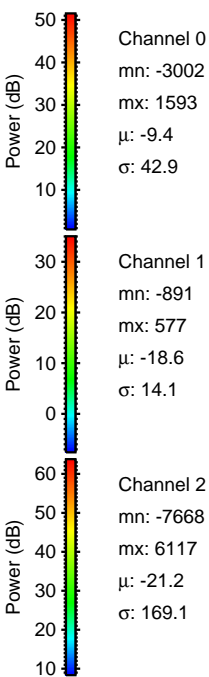
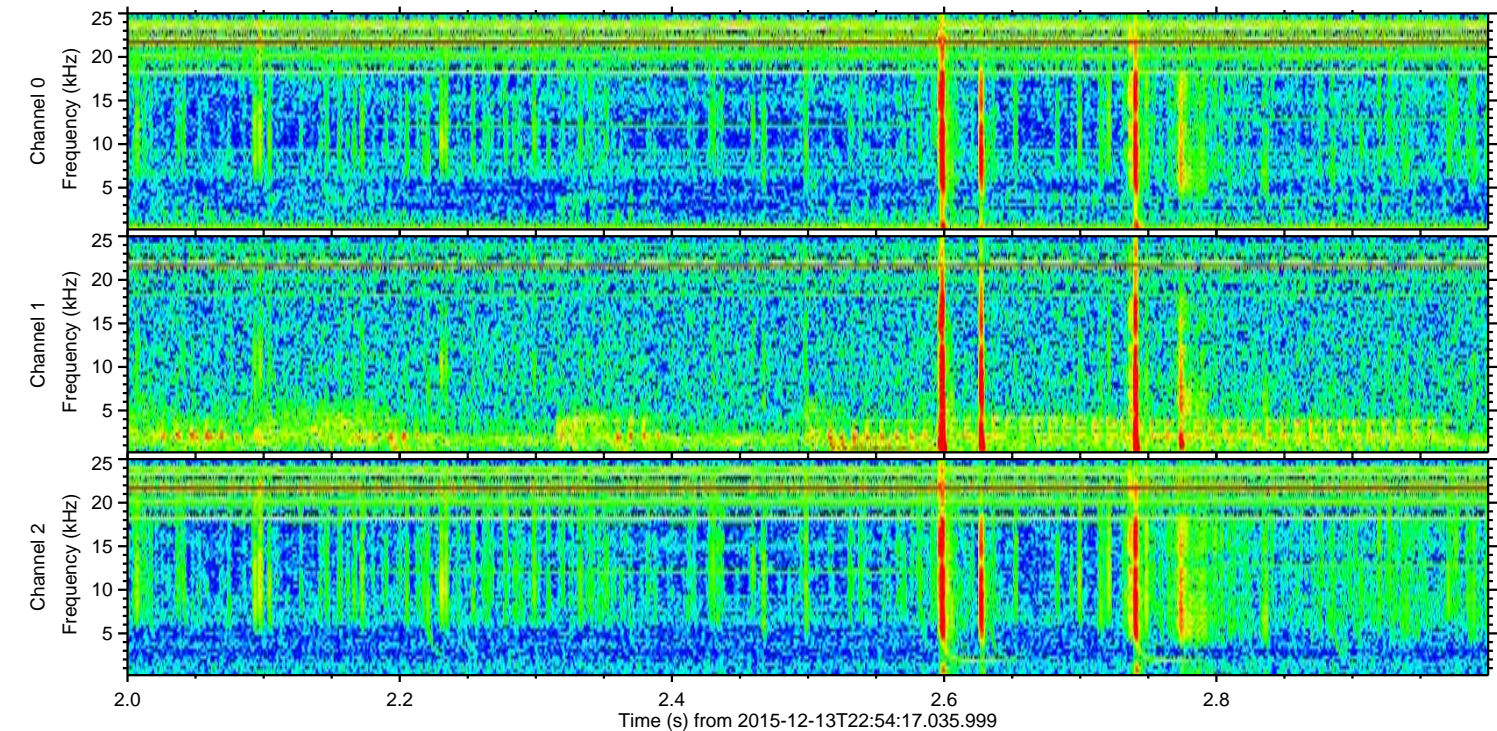
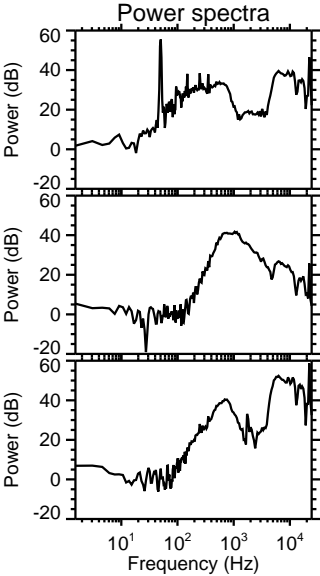
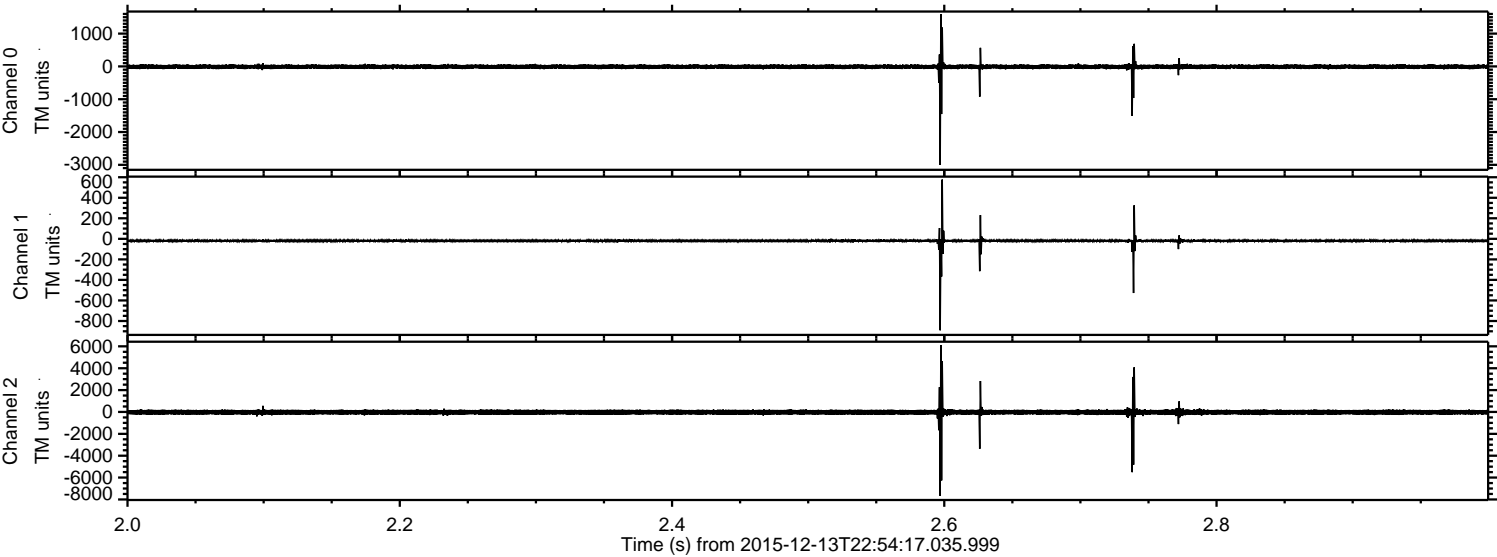
ELMAVAN 3D WAVEFORMS (Measured data sampled at 50 kHz) 51000 packets of 144 samples from 2015-12-13T22:54:17.035.999.

Processed Thu Jan 28 11:39:41 2016 by ELM ver.2012-10-06 from 001__elm20151213_225416__dat00.bin

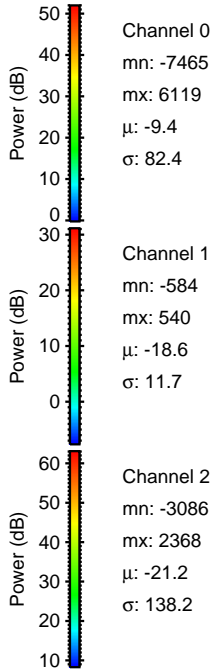
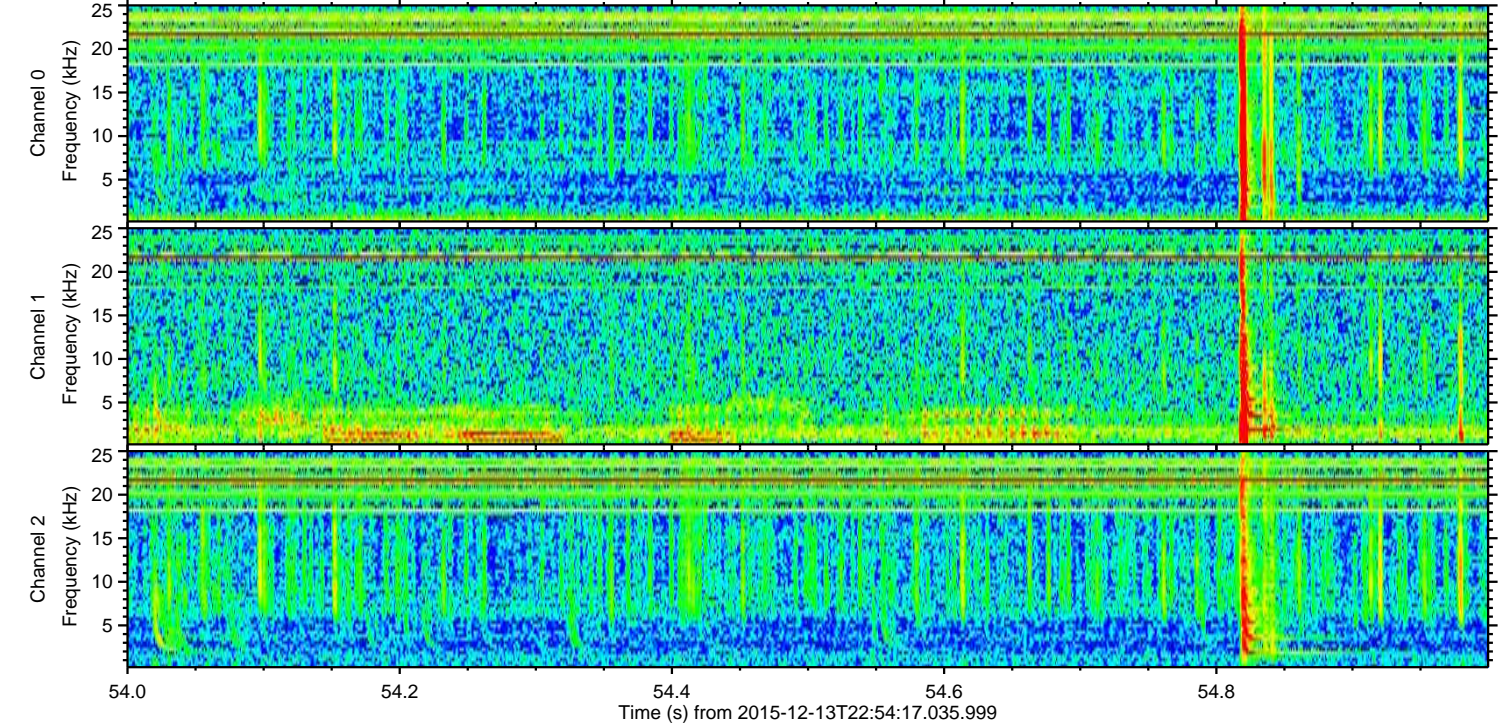
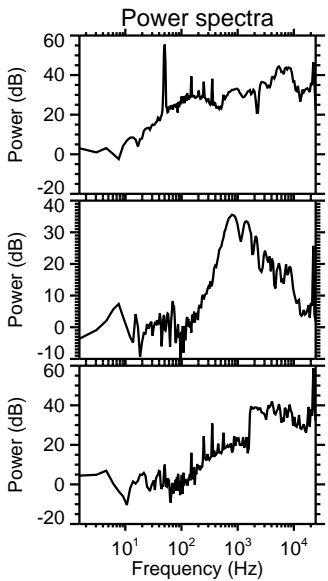
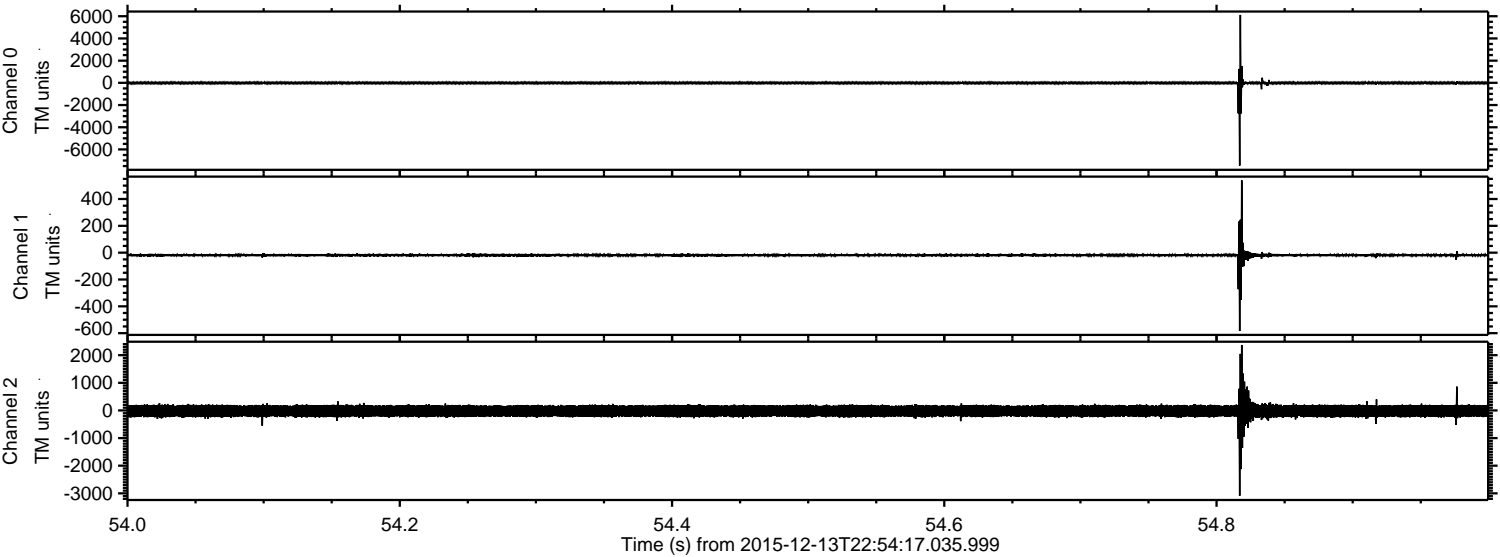


ELMAVAN 3D WAVEFORMS (Measured data sampled at 50 kHz) 51000 packets of 144 samples from 2015-12-13T22:54:17.035.999. Part 3/147

Processed Thu Jan 28 11:39:54 2016 by ELM ver.2012-10-06 from 001__elm20151213_225416__dat00.bin

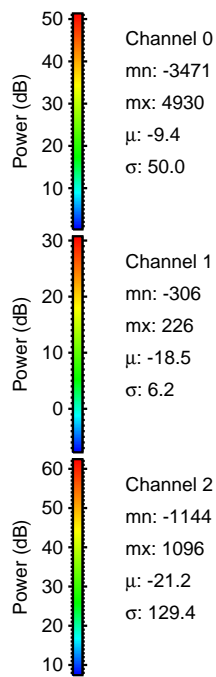
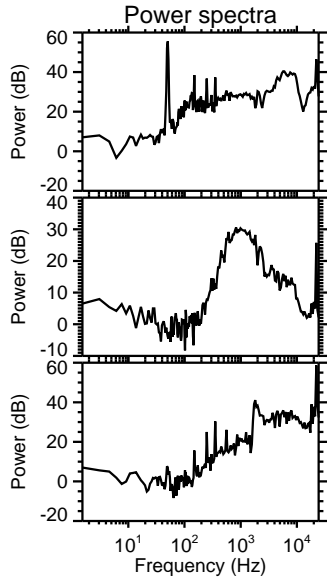
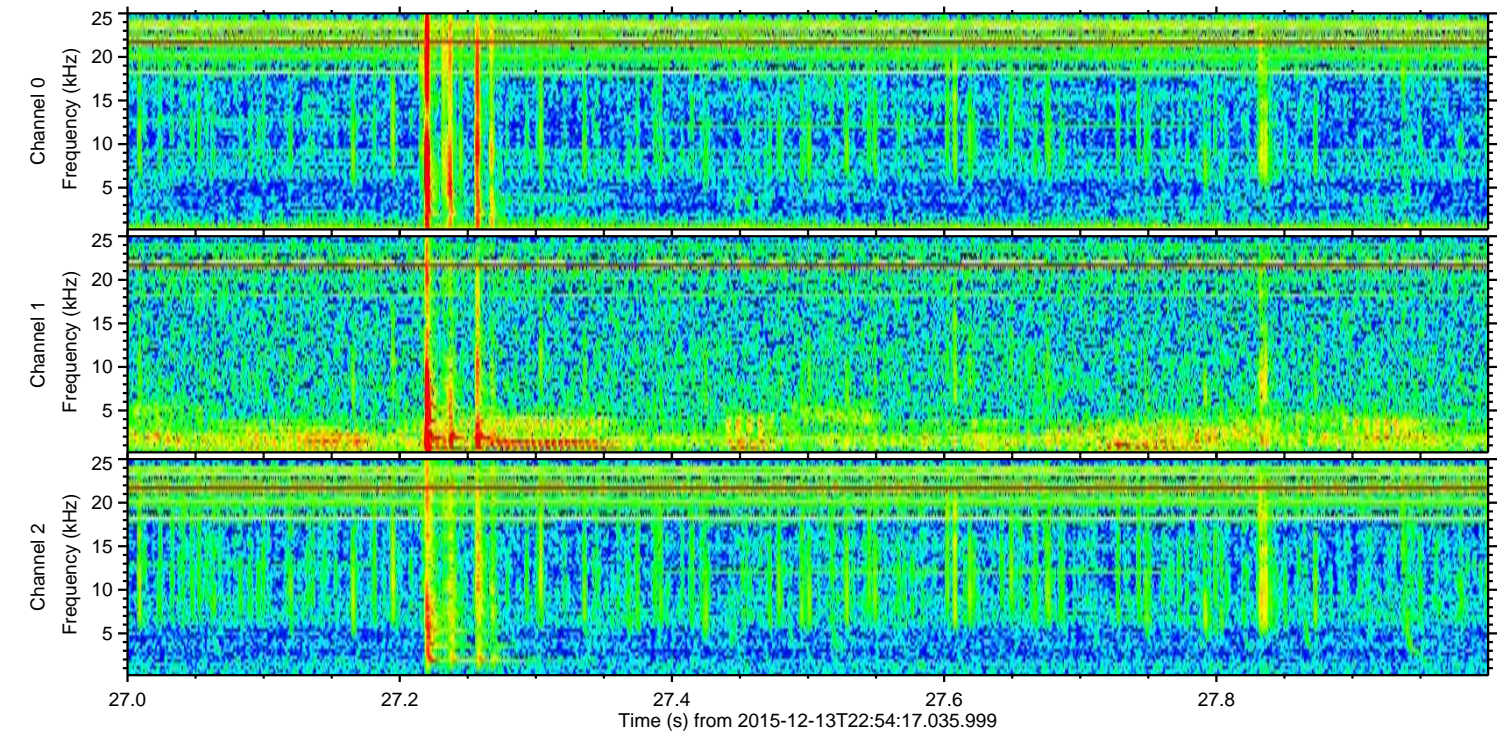
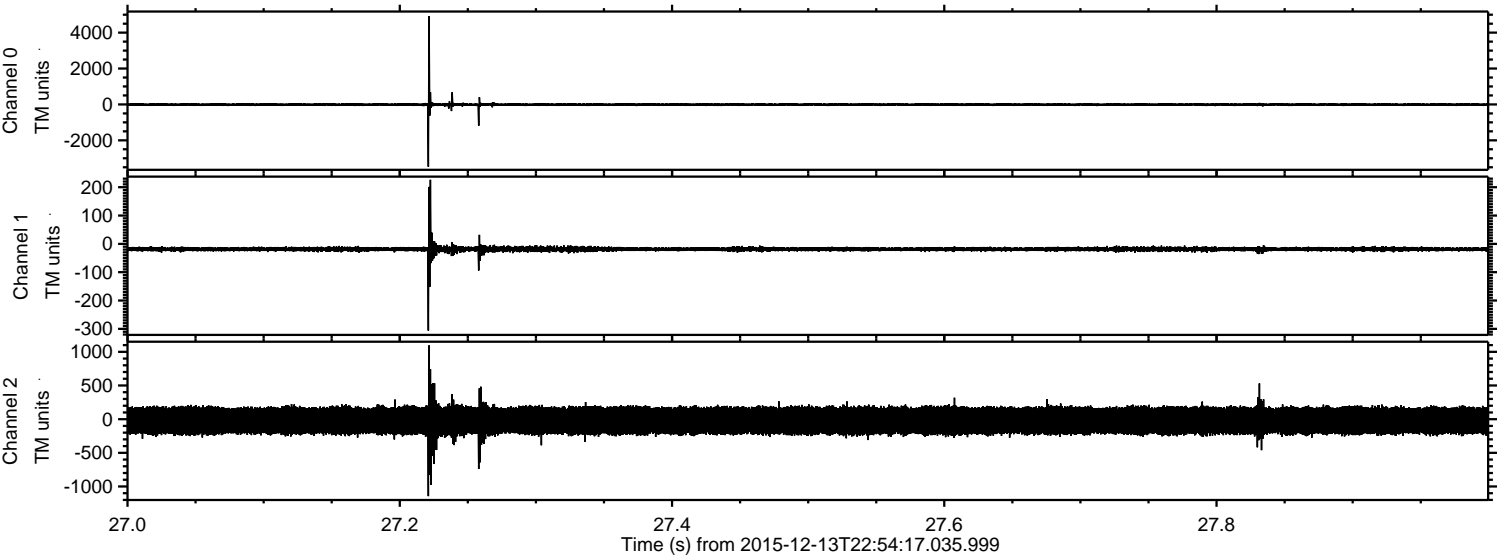


Processed Thu Jan 28 11:39:55 2016 by ELM ver.2012-10-06 from 001__elm20151213_225416__dat00.bin

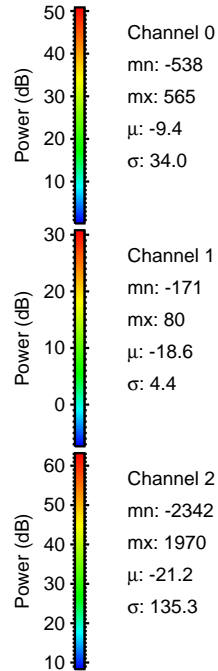
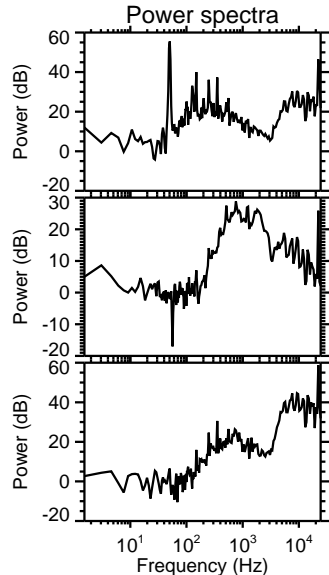
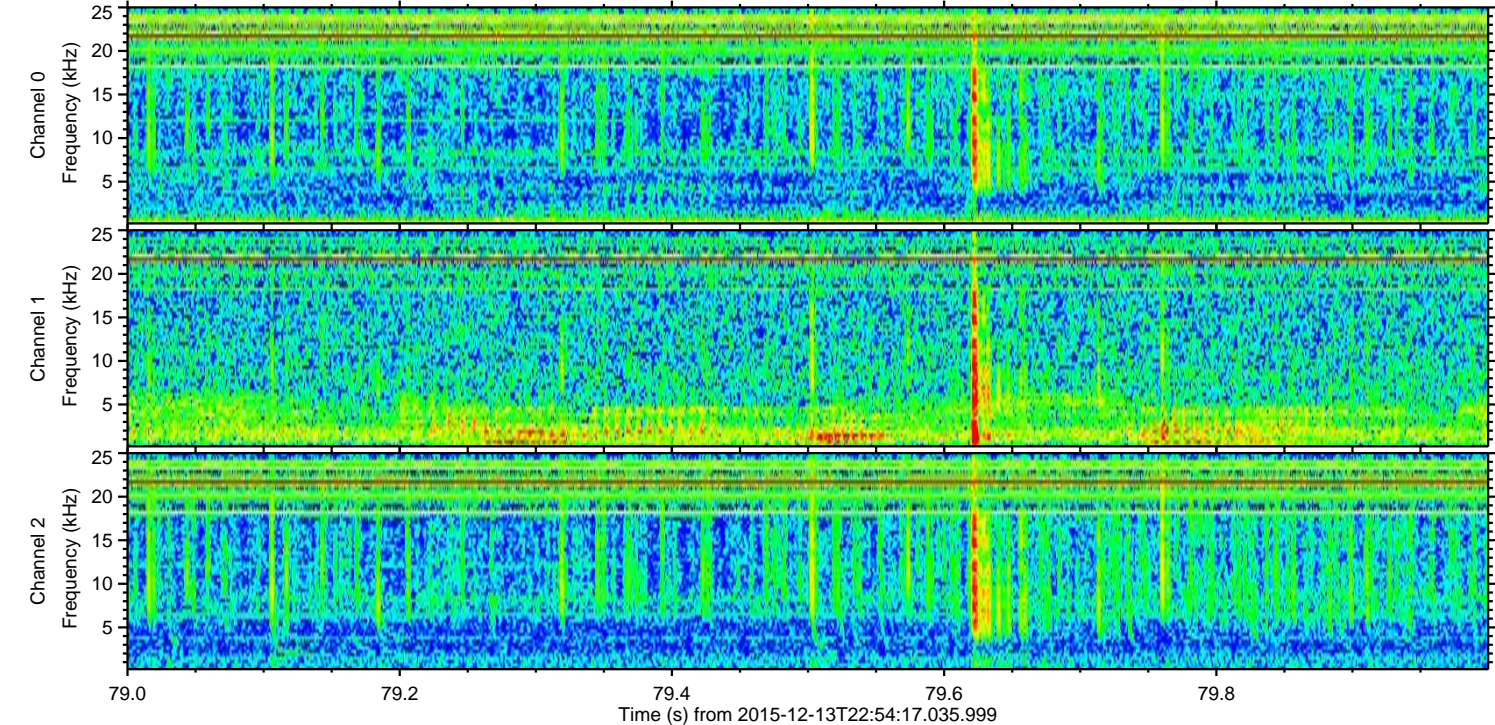
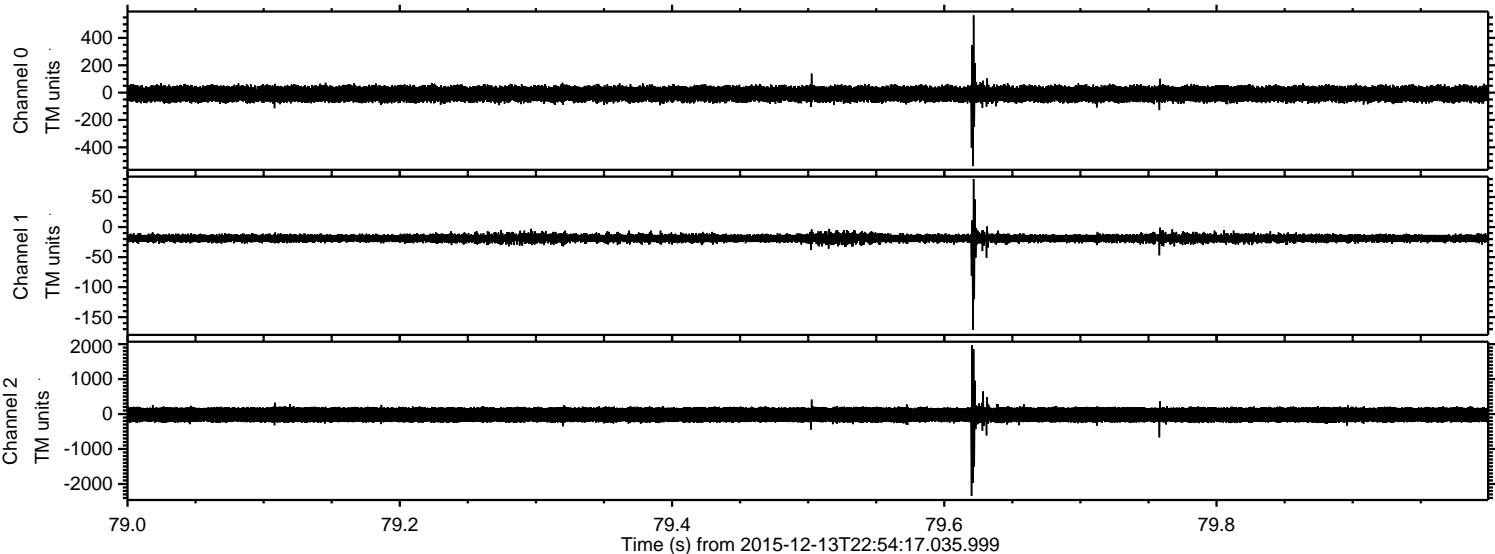


ELMAVAN 3D WAVEFORMS (Measured data sampled at 50 kHz) 51000 packets of 144 samples from 2015-12-13T22:54:17.035.999. Part 28/147

Processed Thu Jan 28 11:39:56 2016 by ELM ver.2012-10-06 from 001__elm20151213_225416__dat00.bin

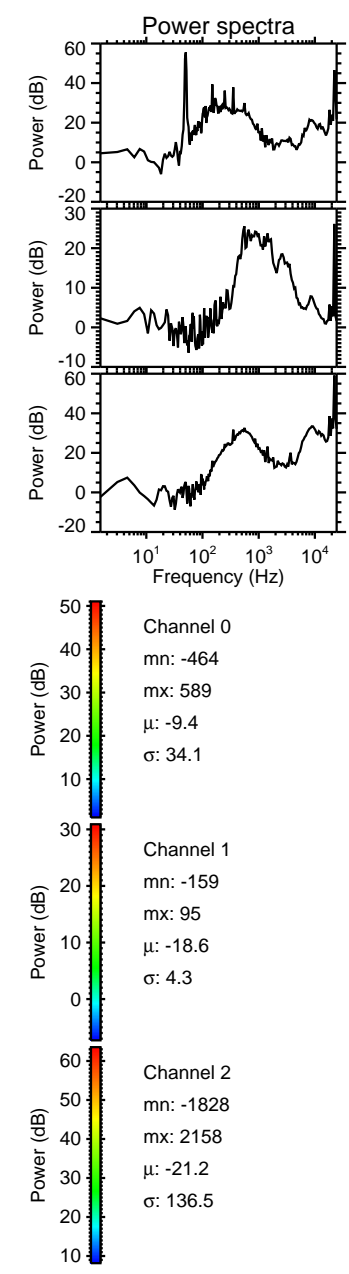
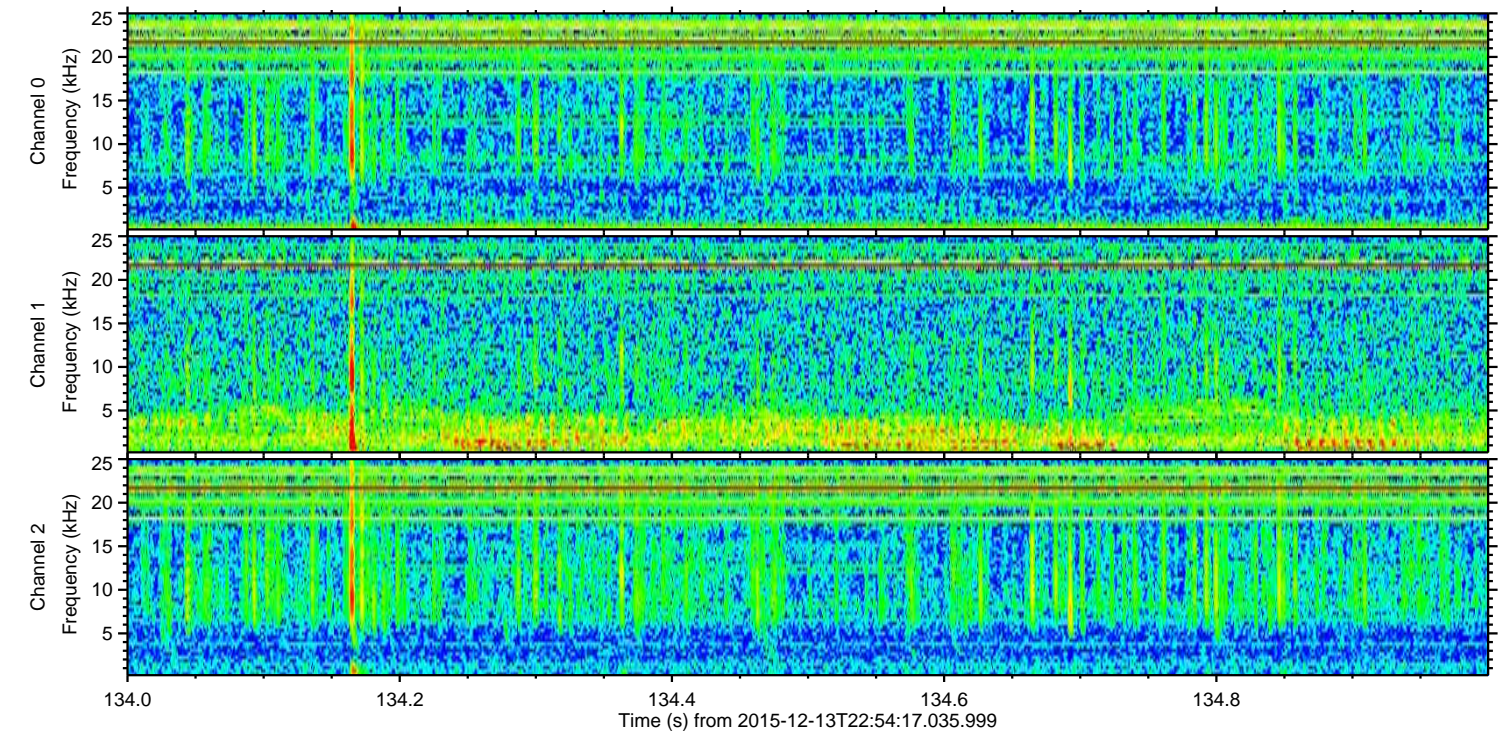
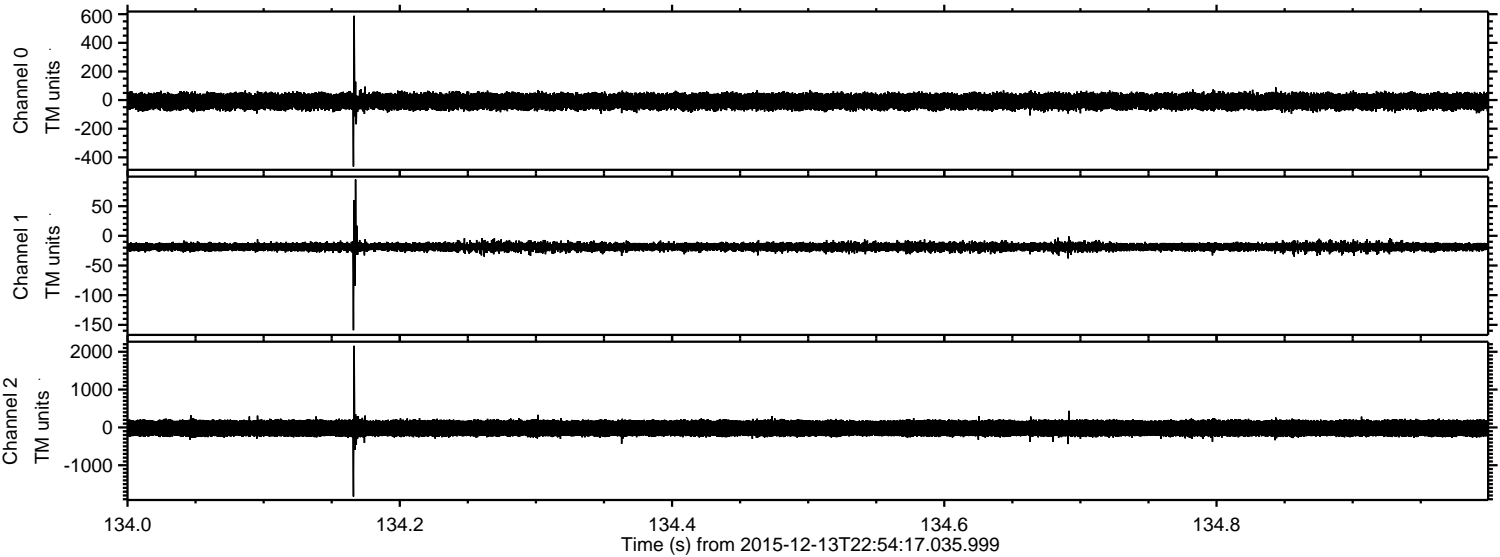


Processed Thu Jan 28 11:39:57 2016 by ELM ver.2012-10-06 from 001__elm20151213_225416__dat00.bin



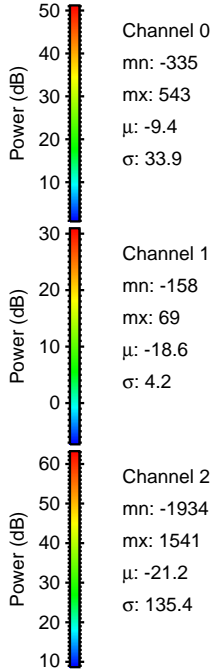
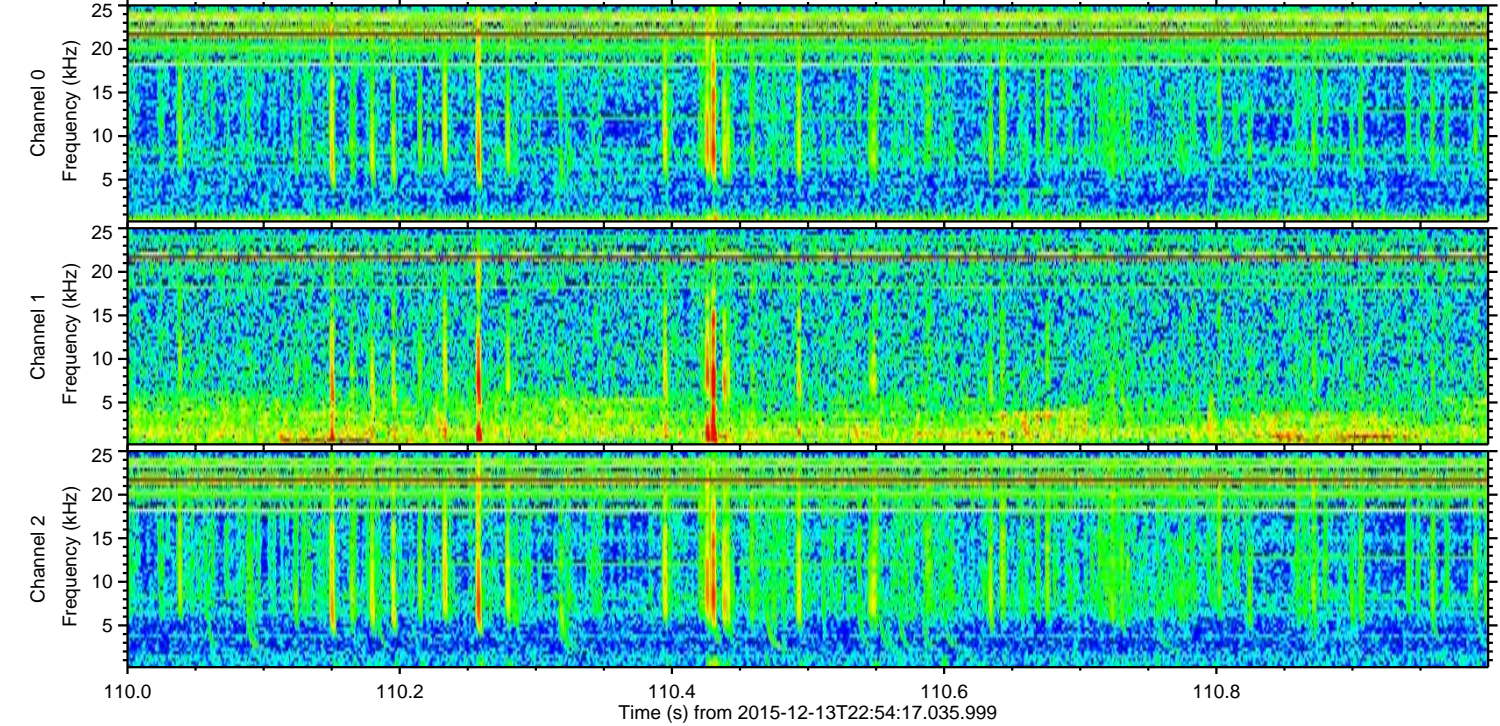
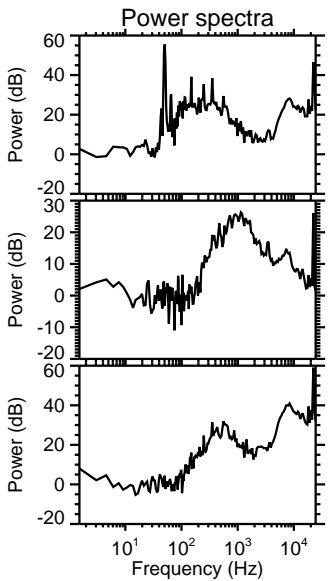
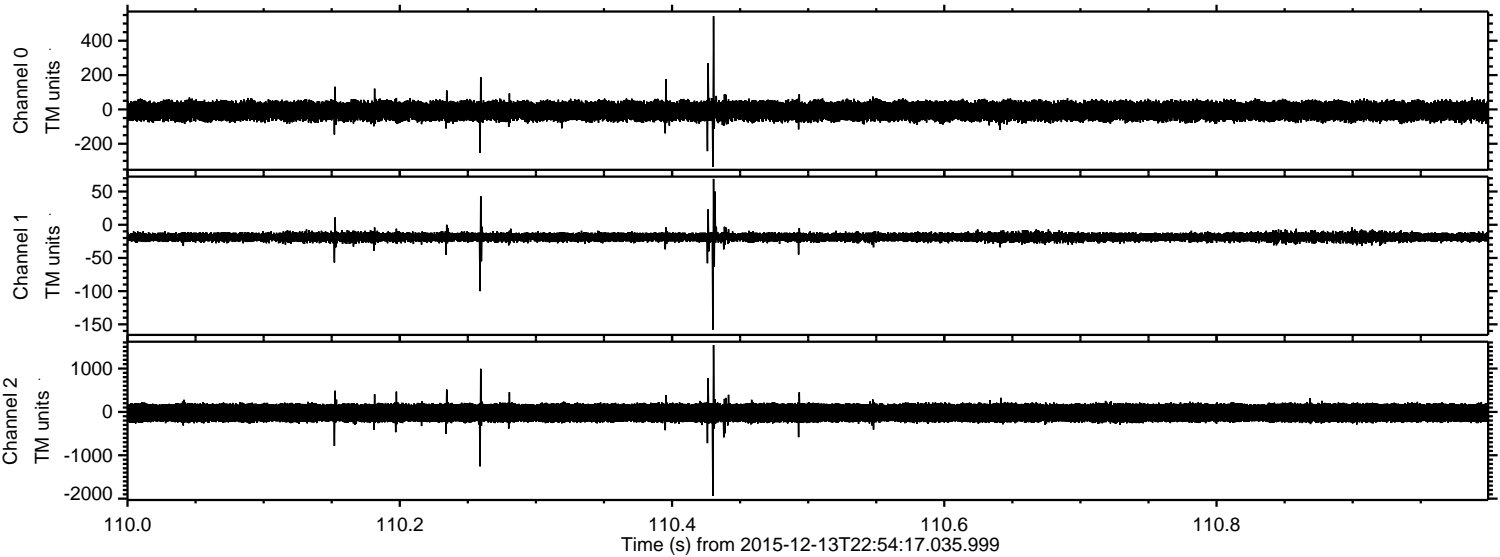
ELMAVAN 3D WAVEFORMS (Measured data sampled at 50 kHz) 51000 packets of 144 samples from 2015-12-13T22:54:17.035.999. Part 135/147

Processed Thu Jan 28 11:39:58 2016 by ELM ver.2012-10-06 from 001__elm20151213_225416__dat00.bin

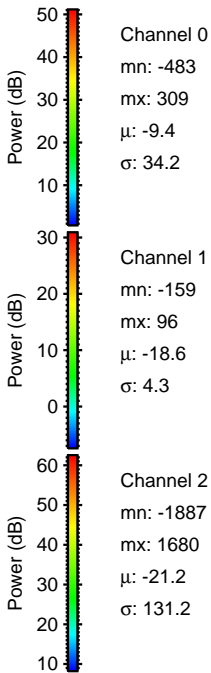
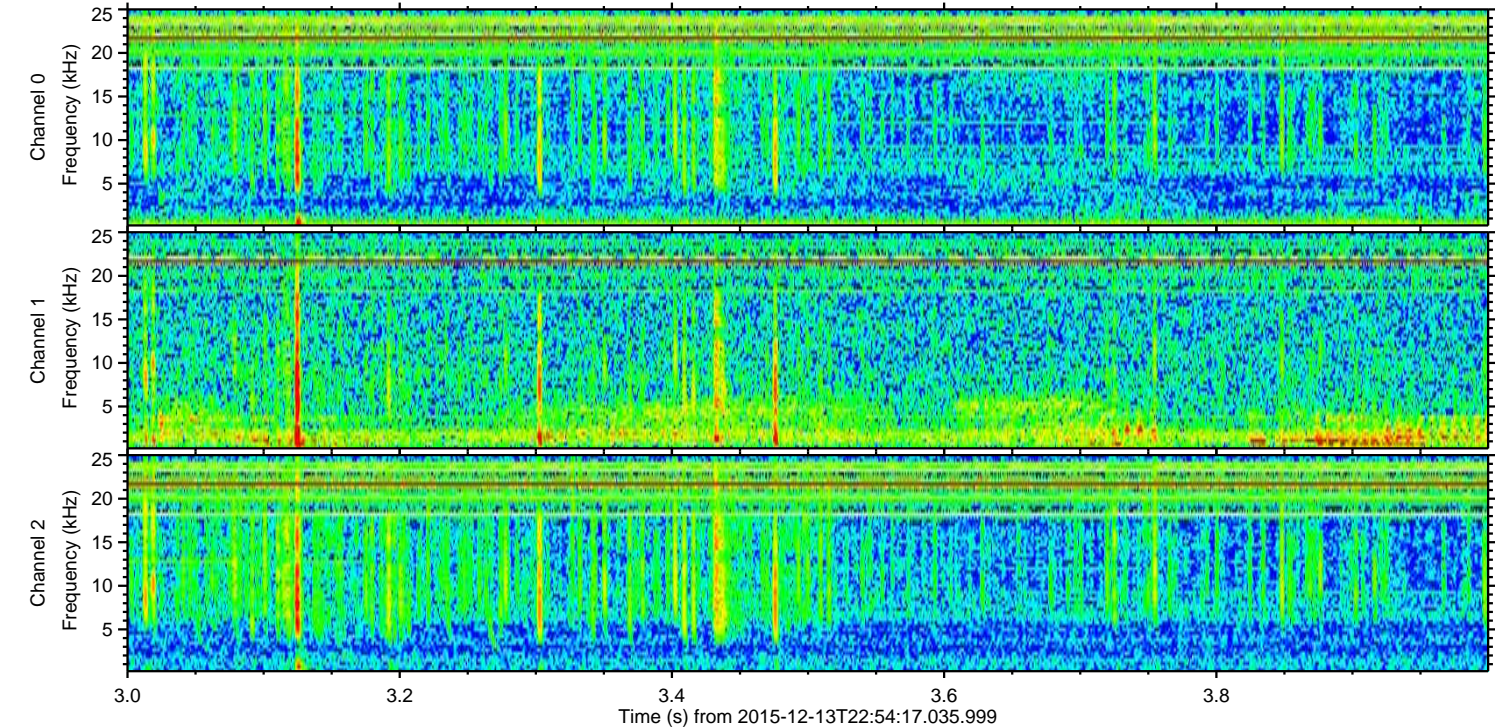
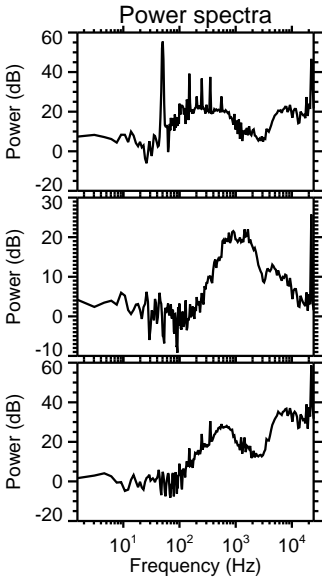
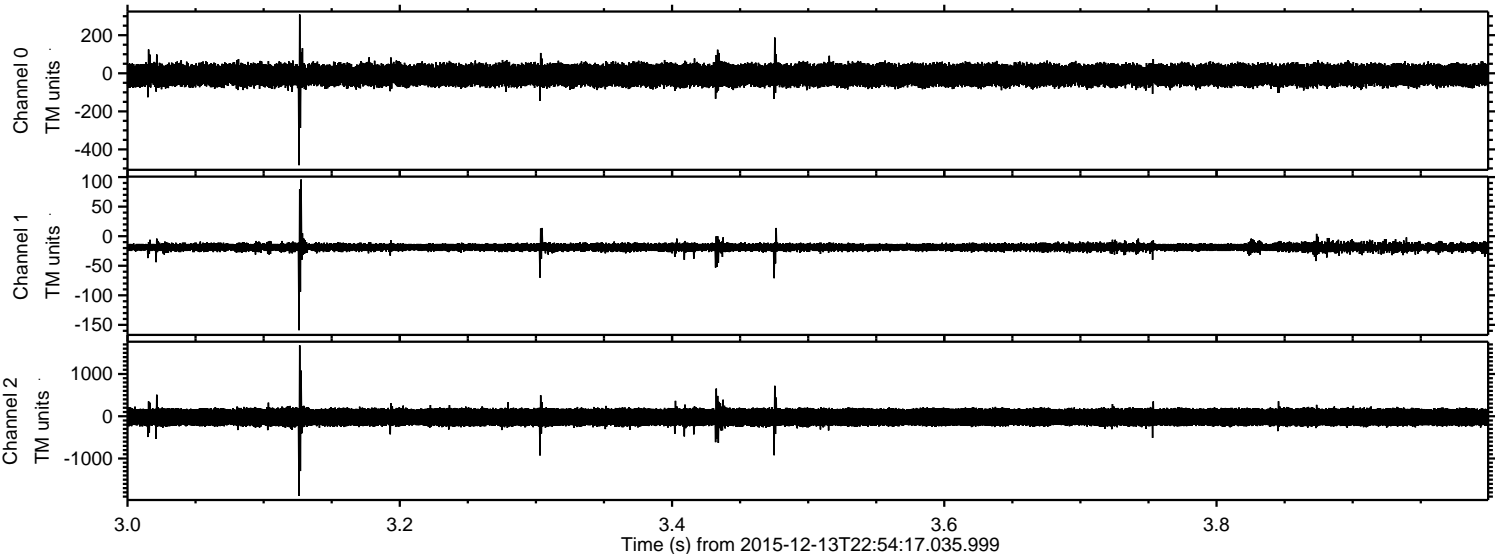


ELMAVAN 3D WAVEFORMS (Measured data sampled at 50 kHz) 51000 packets of 144 samples from 2015-12-13T22:54:17.035.999. Part 111/147

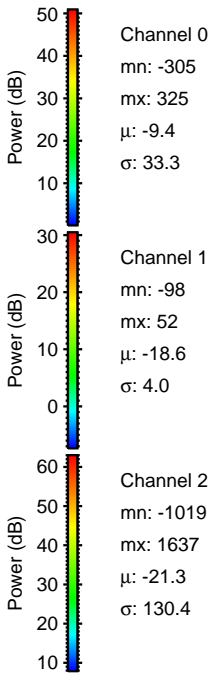
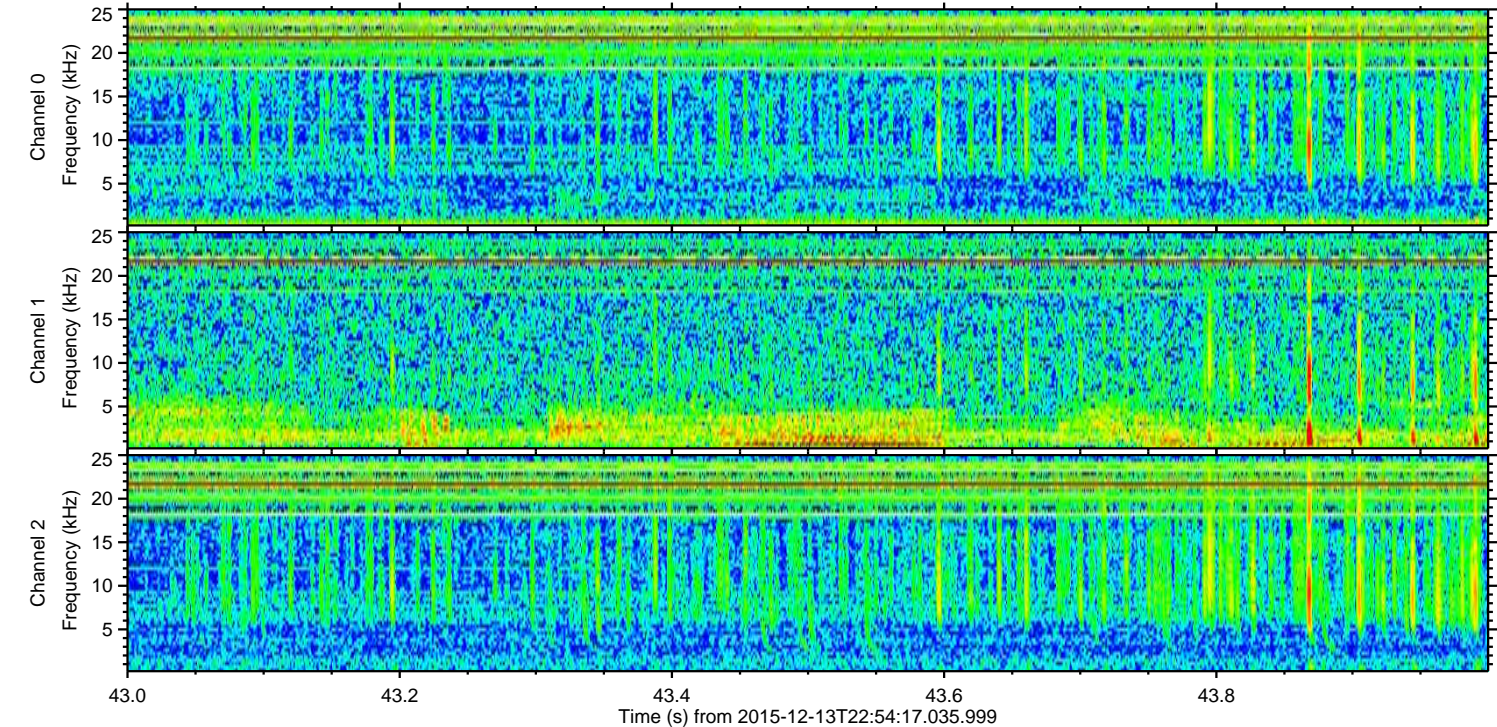
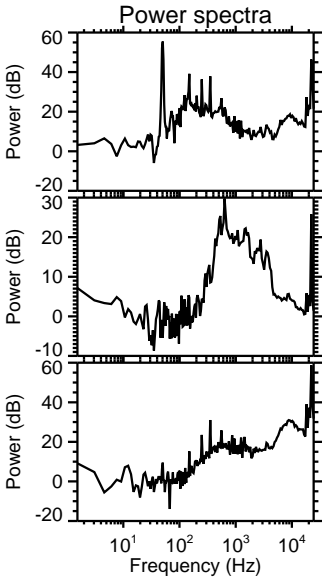
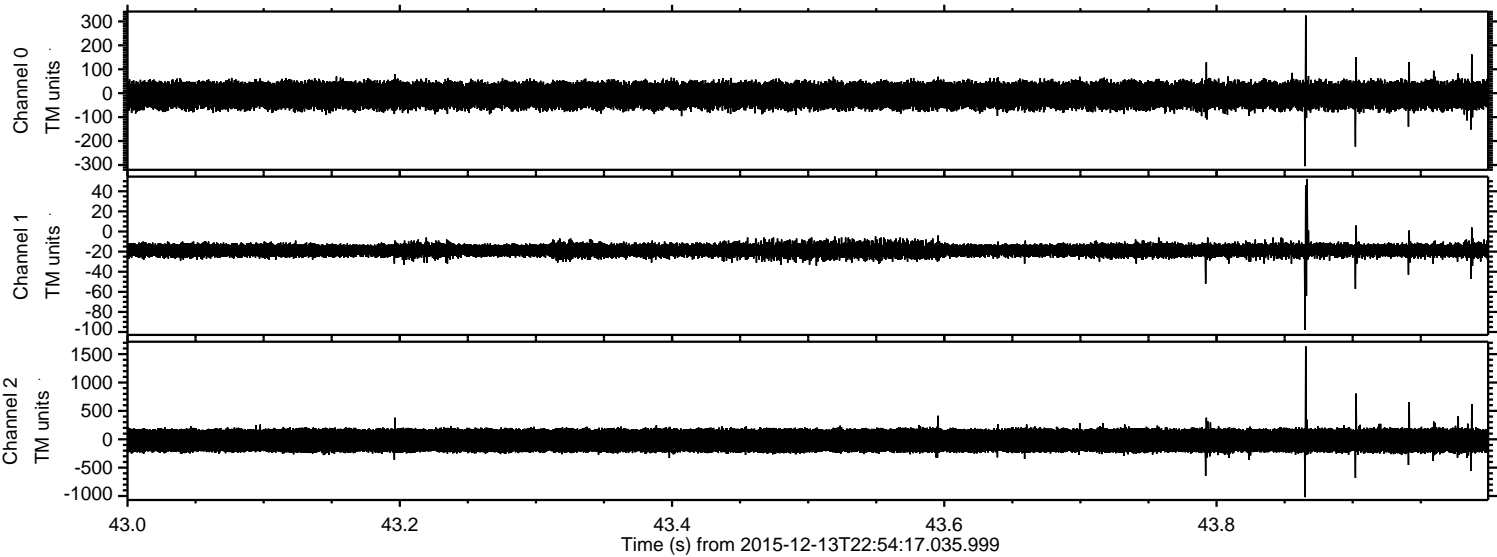
Processed Thu Jan 28 11:39:59 2016 by ELM ver.2012-10-06 from 001__elm20151213_225416__dat00.bin



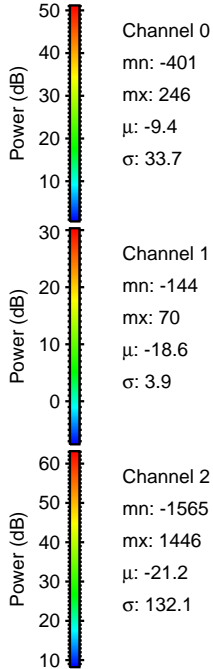
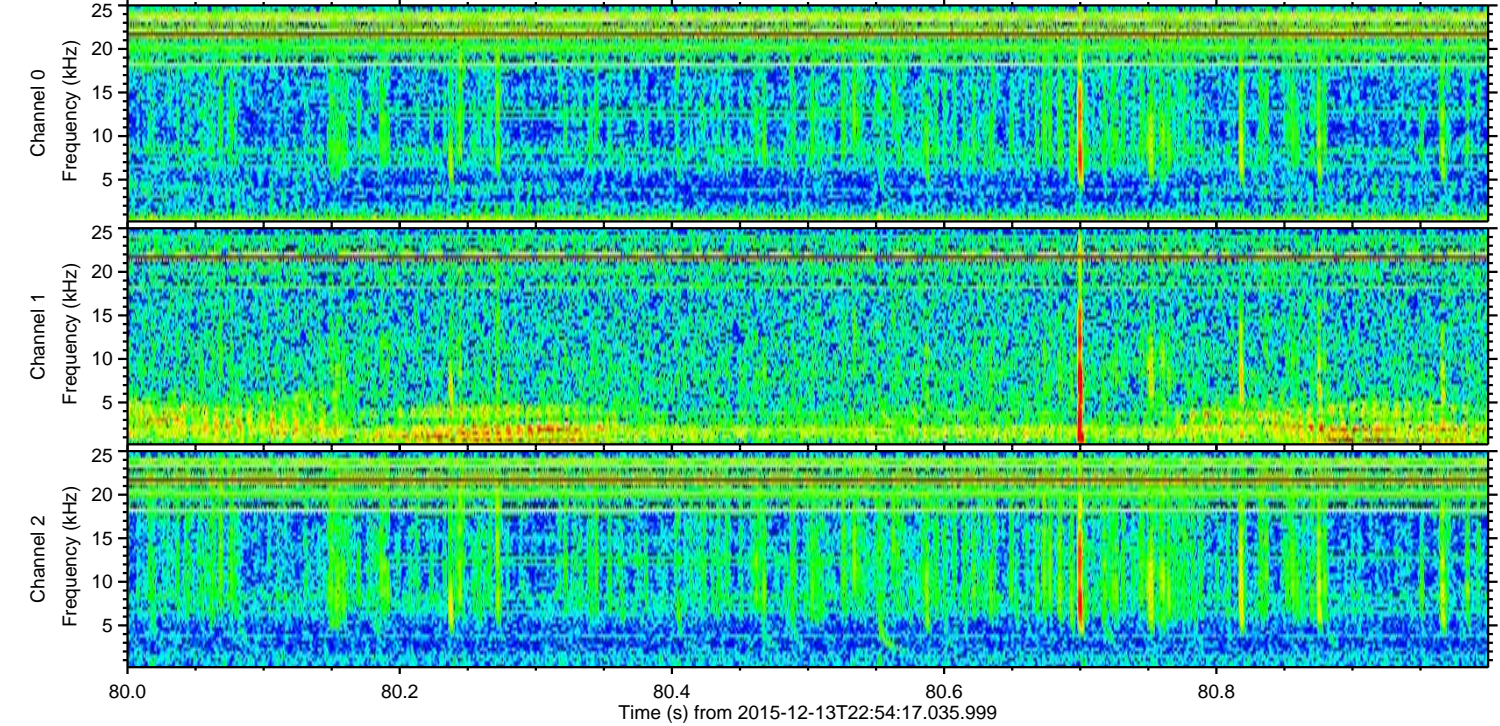
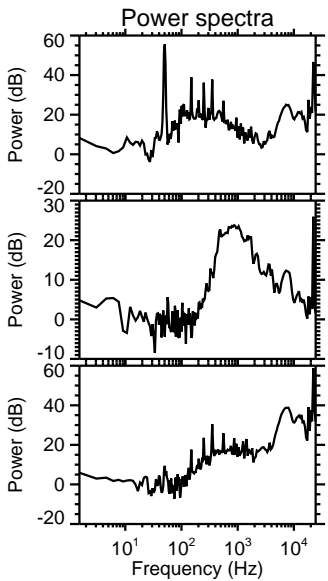
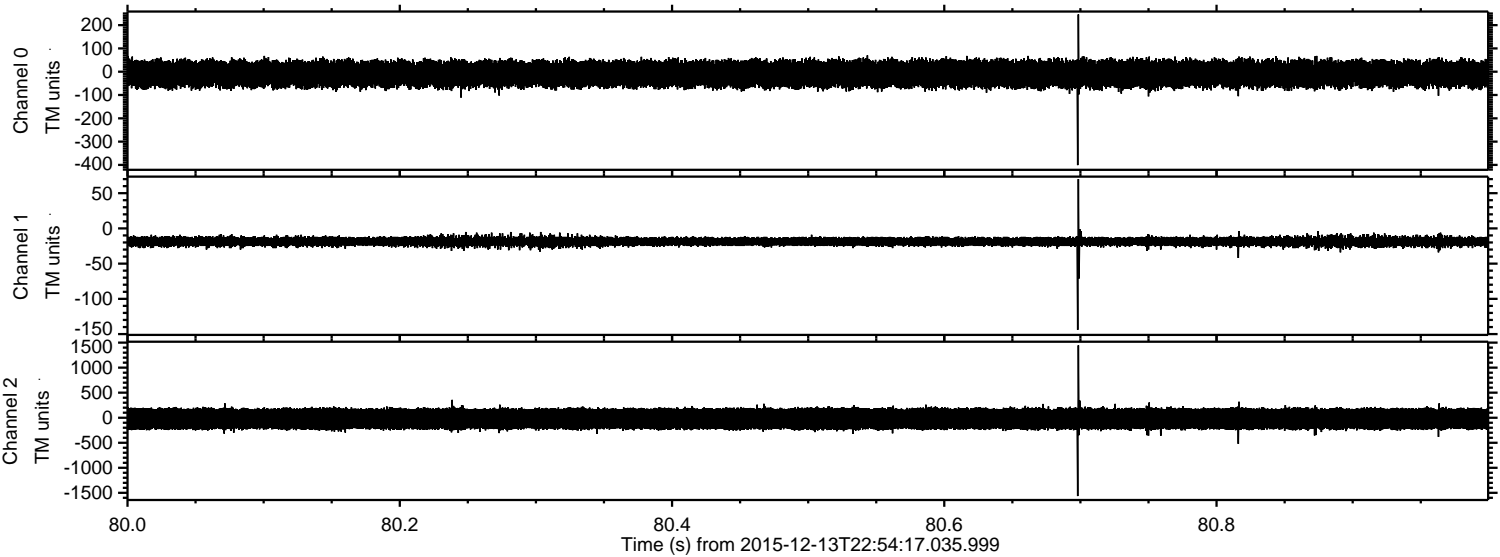
Processed Thu Jan 28 11:40:00 2016 by ELM ver.2012-10-06 from 001__elm20151213_225416__dat00.bin



Processed Thu Jan 28 11:40:01 2016 by ELM ver.2012-10-06 from 001__elm20151213_225416__dat00.bin



Processed Thu Jan 28 11:40:02 2016 by ELM ver.2012-10-06 from 001__elm20151213_225416__dat00.bin



Channel 0
mn: -401
mx: 246
 μ : -9.4
 σ : 33.7

Channel 1
mn: -144
mx: 70
 μ : -18.6
 σ : 3.9

Channel 2
mn: -1565
mx: 1446
 μ : -21.2
 σ : 132.1

Processed Thu Jan 28 11:40:03 2016 by ELM ver.2012-10-06 from 001__elm20151213_225416__dat00.bin

