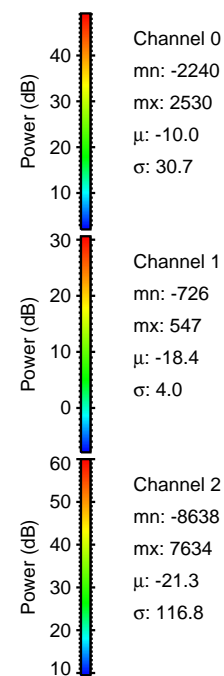
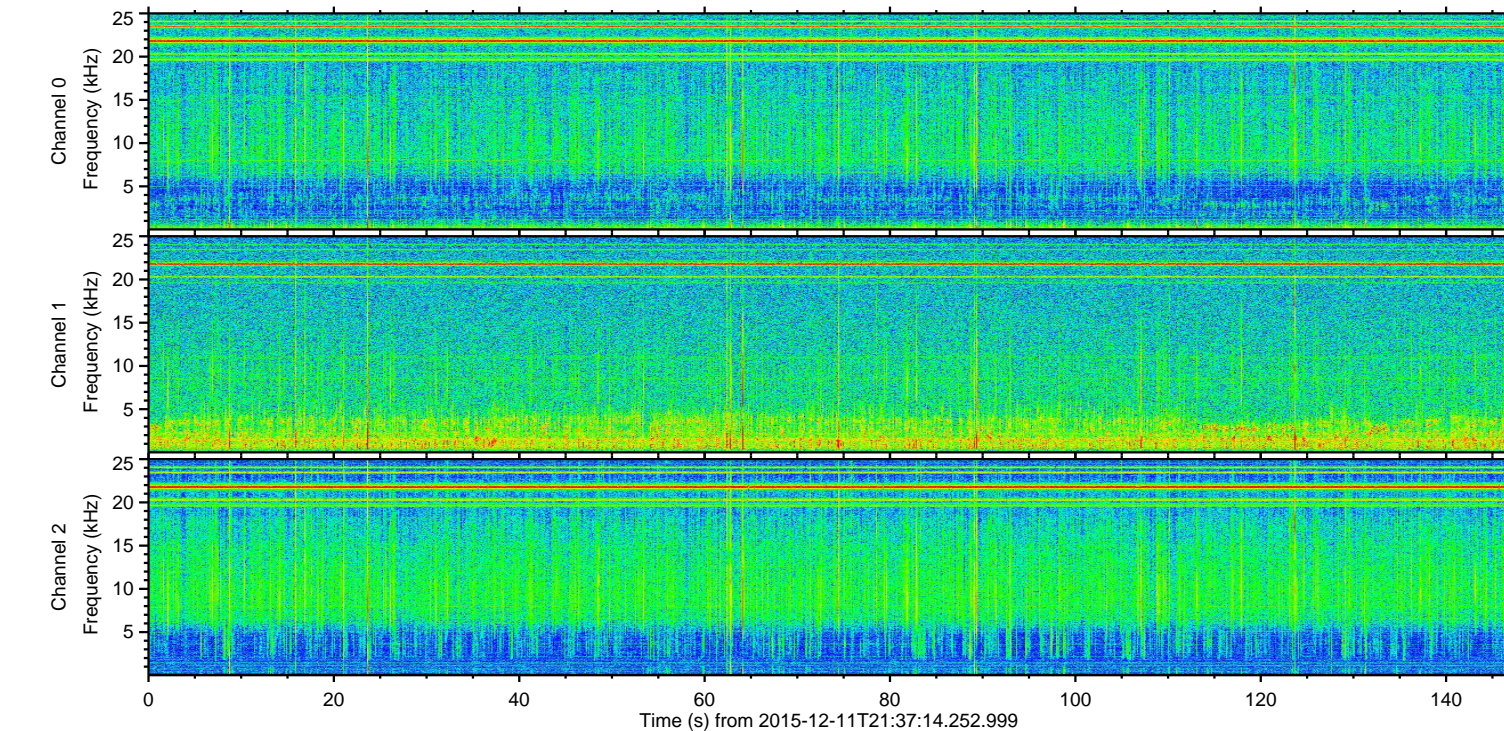
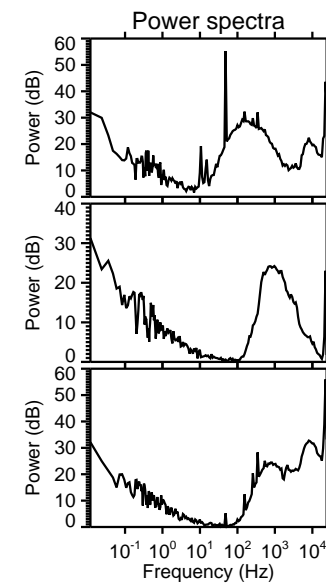
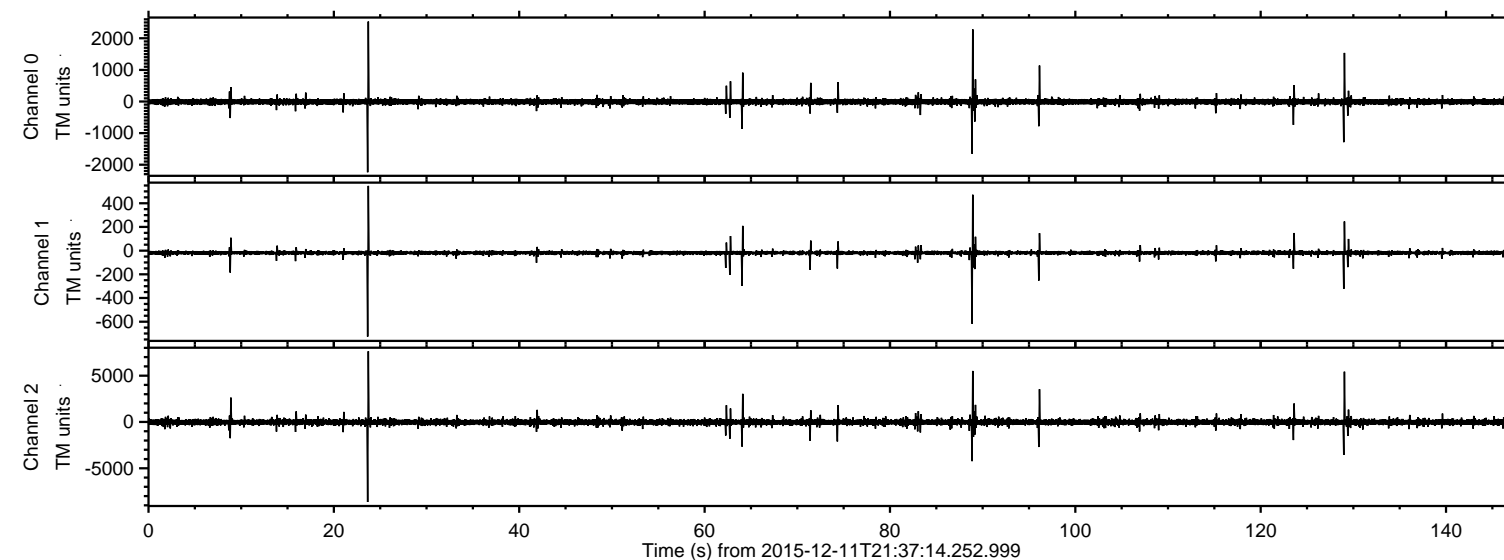


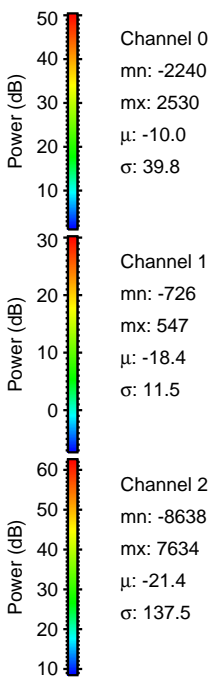
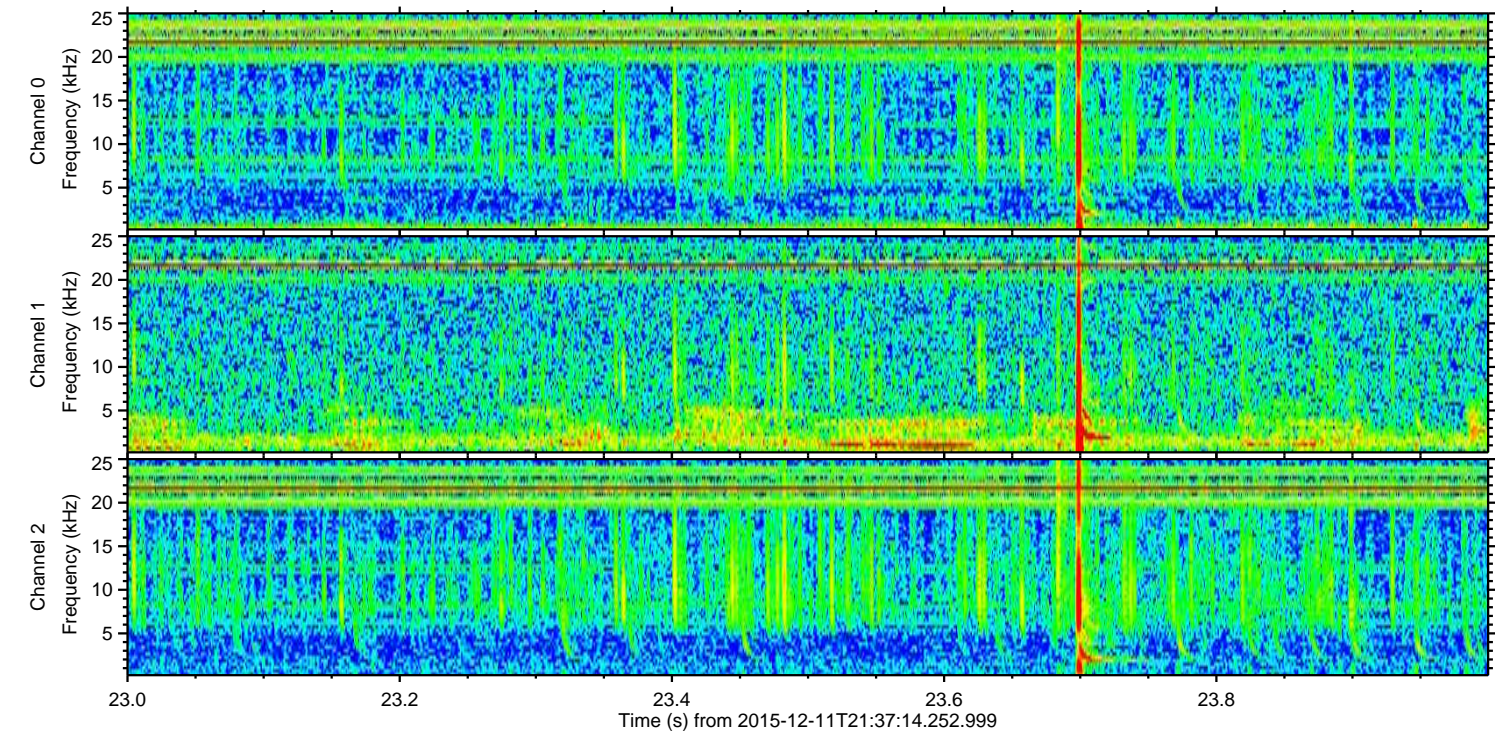
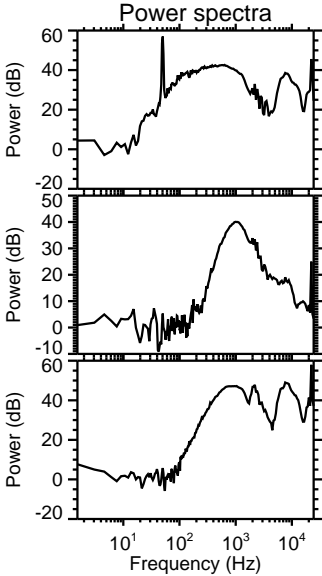
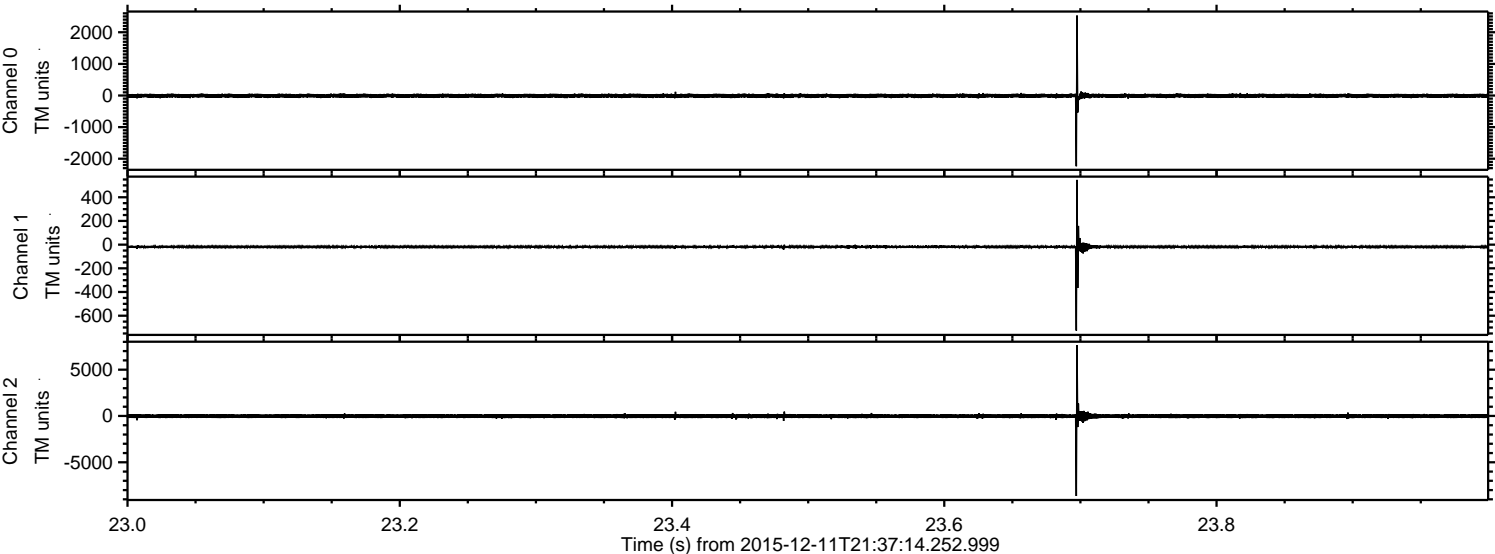
ELMAVAN 3D WAVEFORMS (Measured data sampled at 50 kHz) 51000 packets of 144 samples from 2015-12-11T21:37:14.252.999.

Processed Mon Dec 28 17:26:22 2015 by ELM ver.2012-10-06 from 001__elm20151211_213713__dat00.bin



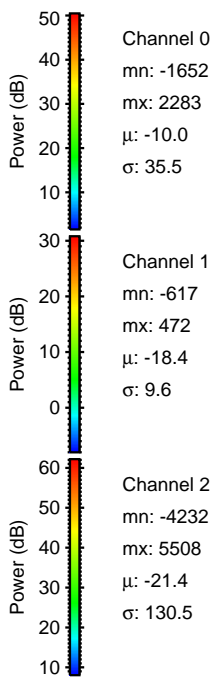
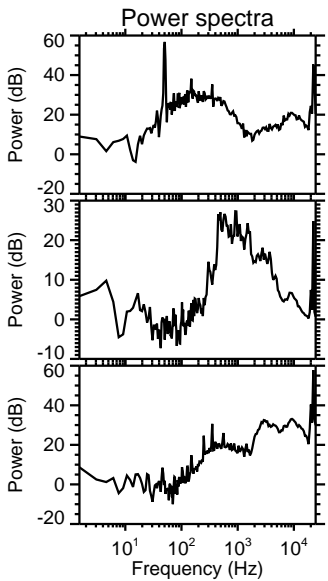
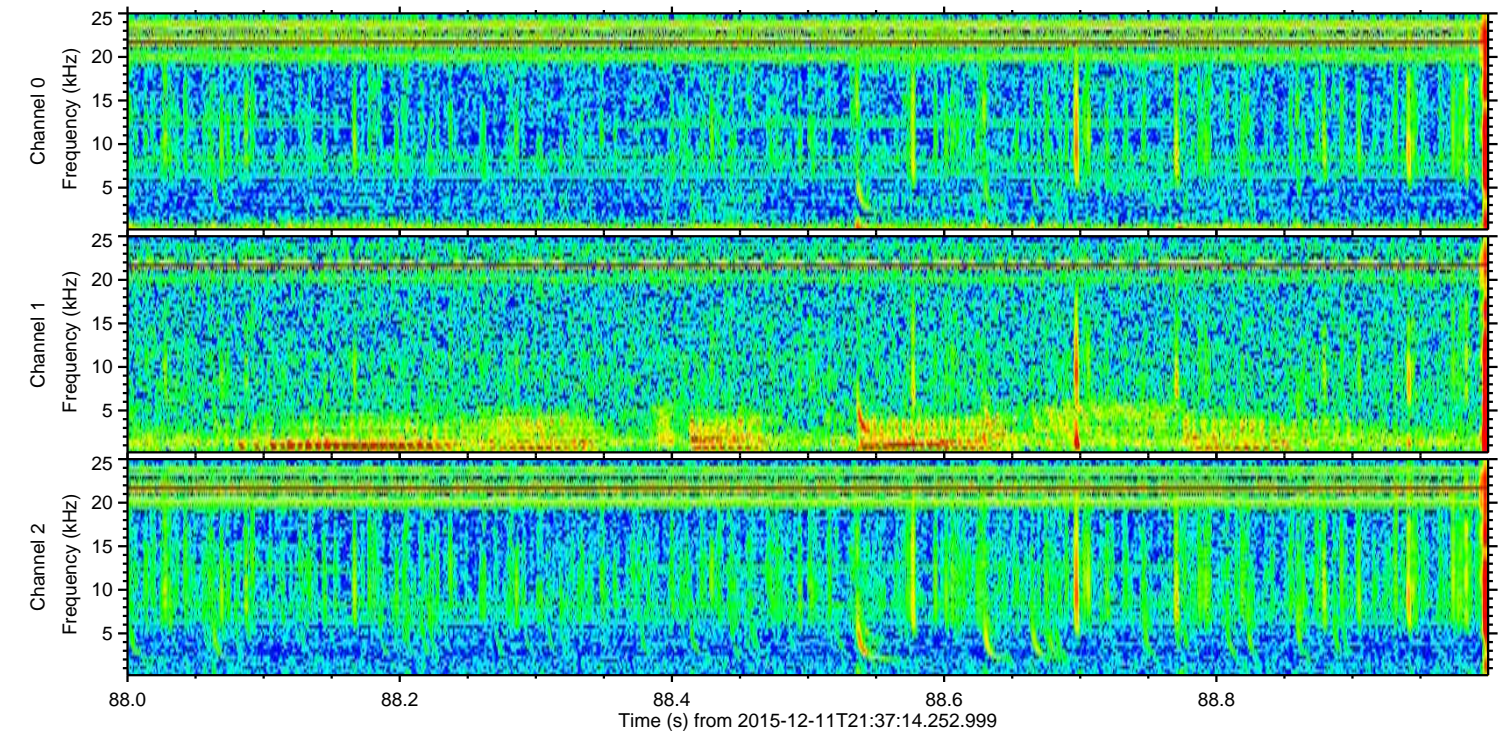
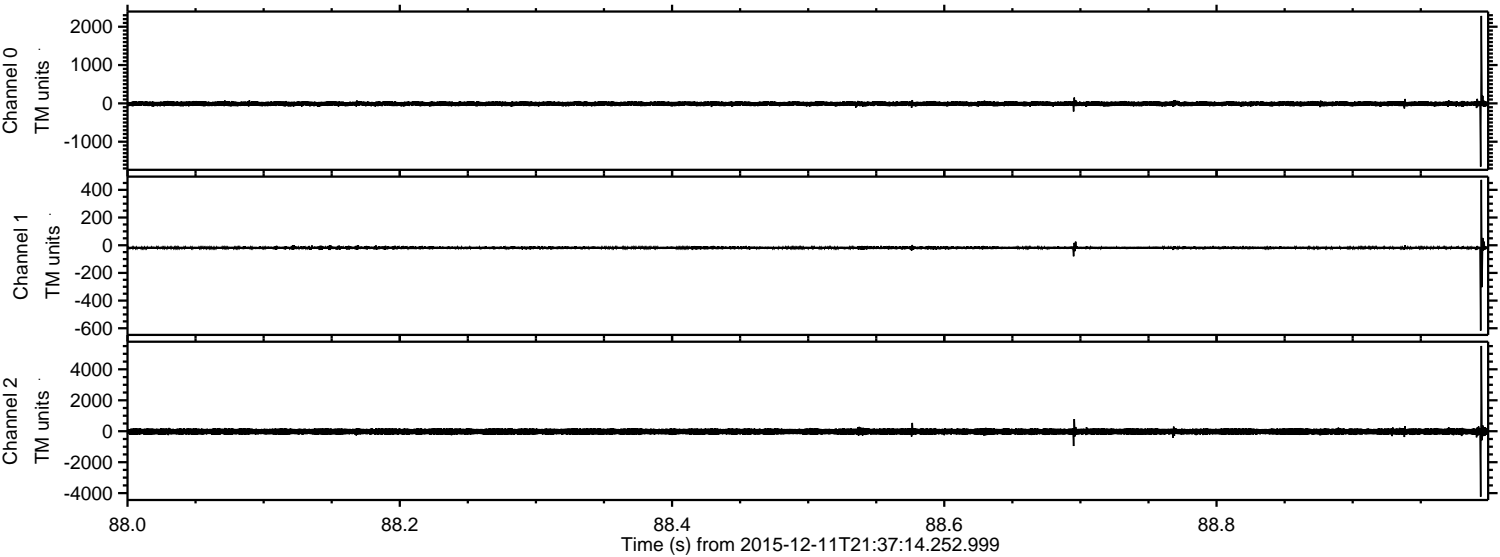
ELMAVAN 3D WAVEFORMS (Measured data sampled at 50 kHz) 51000 packets of 144 samples from 2015-12-11T21:37:14.252.999. Part 24/147

Processed Mon Dec 28 17:26:33 2015 by ELM ver.2012-10-06 from 001__elm20151211_213713__dat00.bin



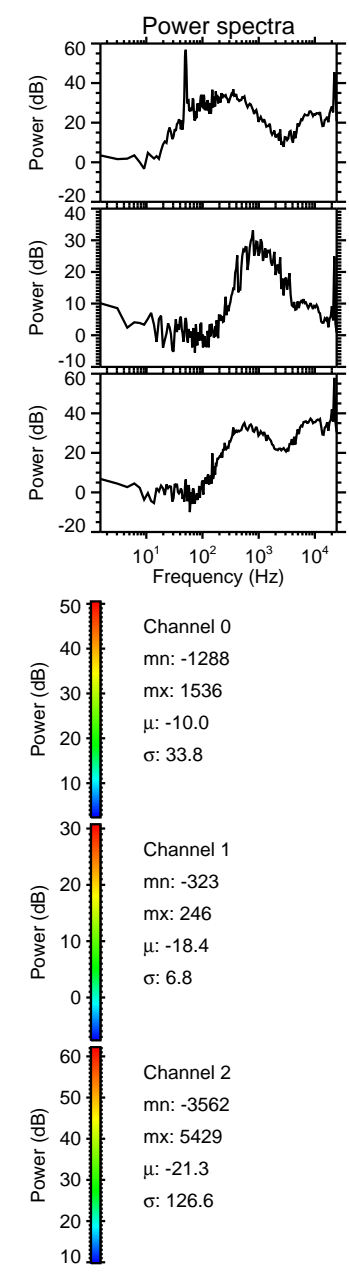
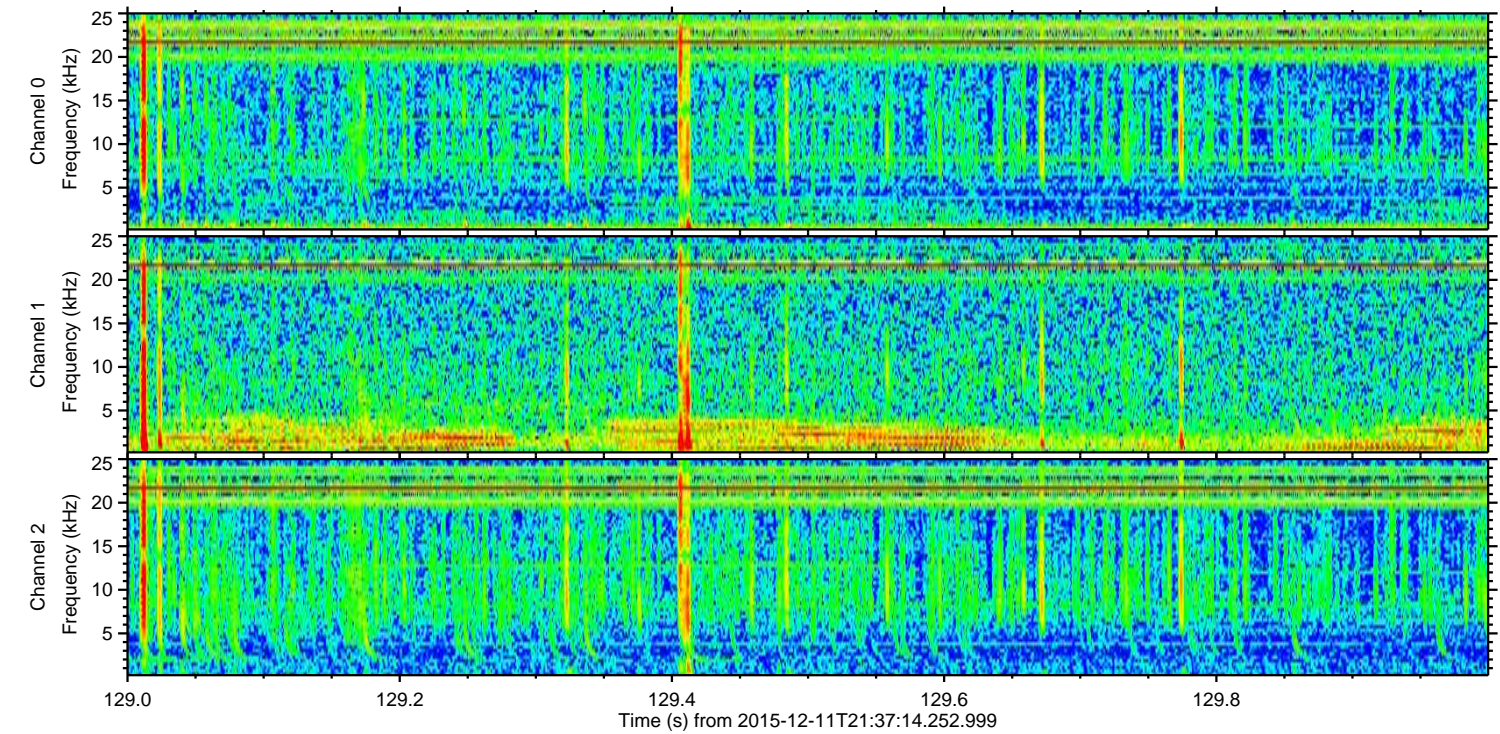
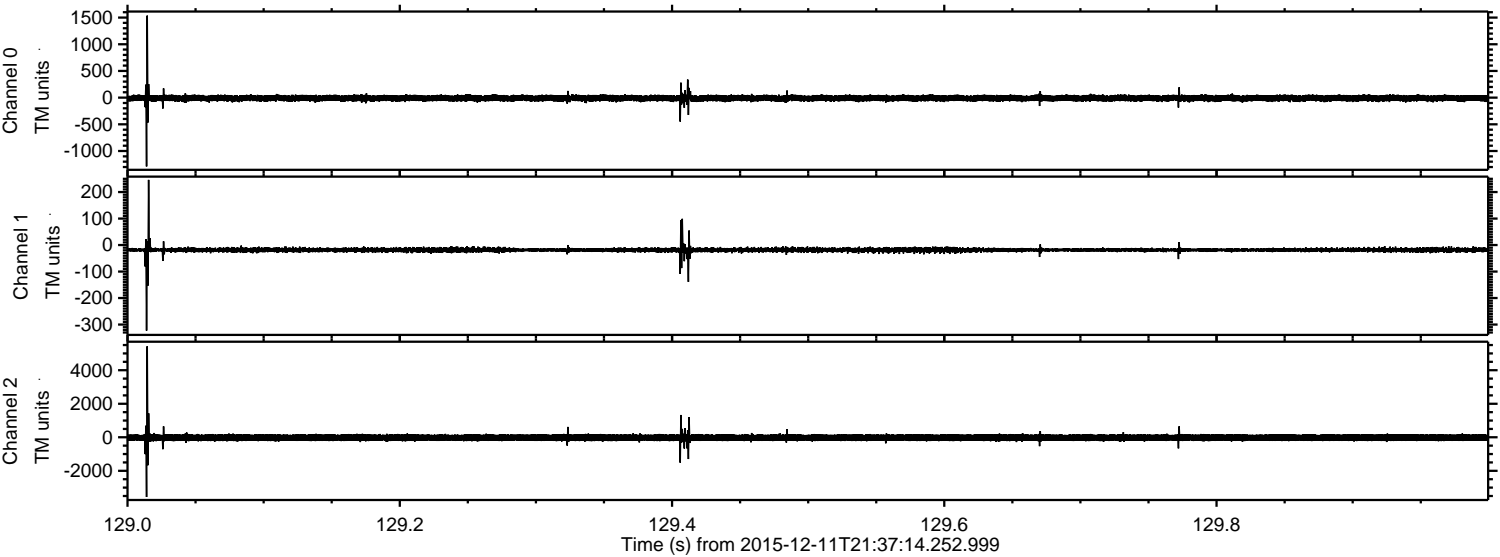
ELMAVAN 3D WAVEFORMS (Measured data sampled at 50 kHz) 51000 packets of 144 samples from 2015-12-11T21:37:14.252.999. Part 89/147

Processed Mon Dec 28 17:26:34 2015 by ELM ver.2012-10-06 from 001__elm20151211_213713__dat00.bin



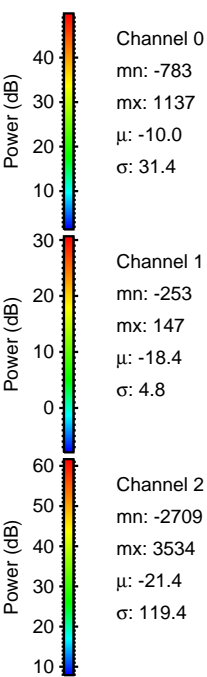
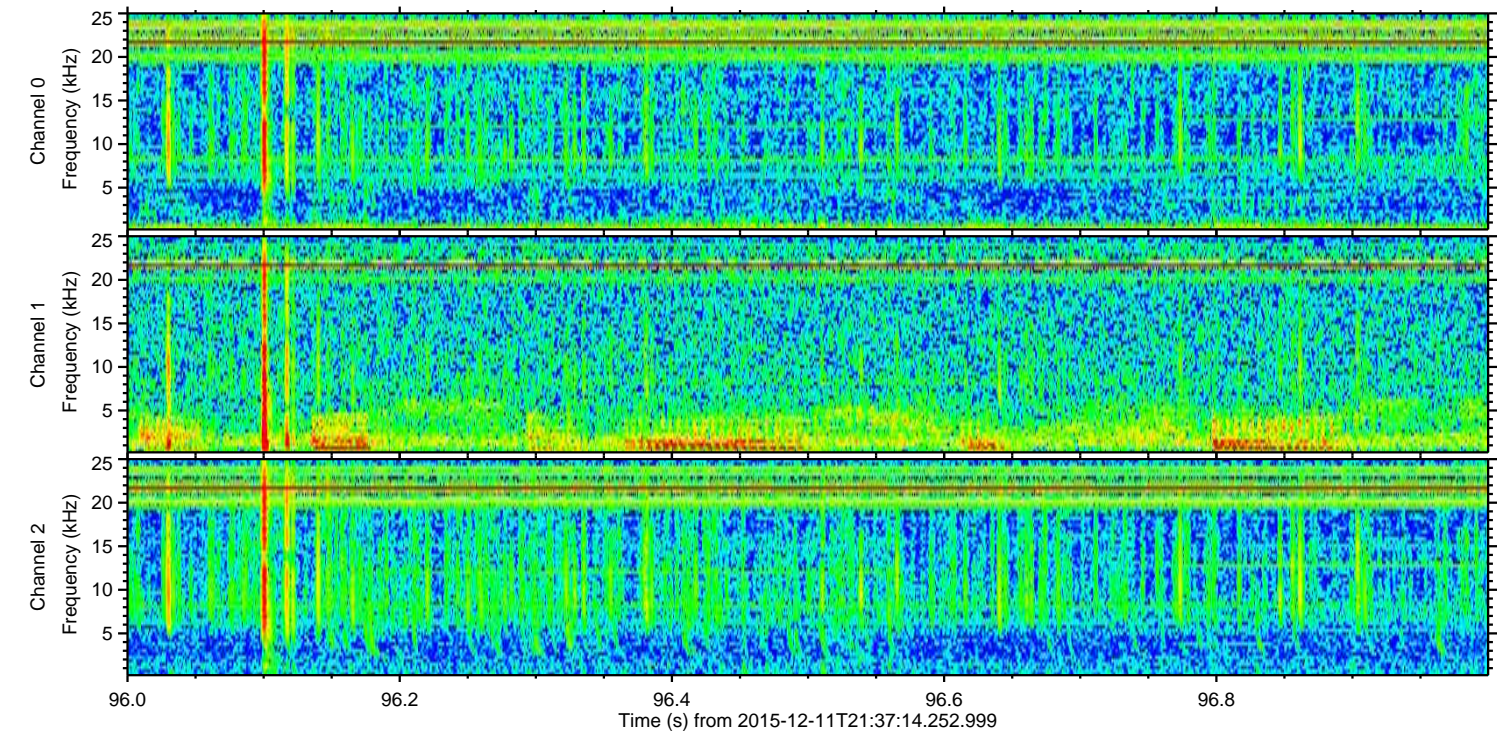
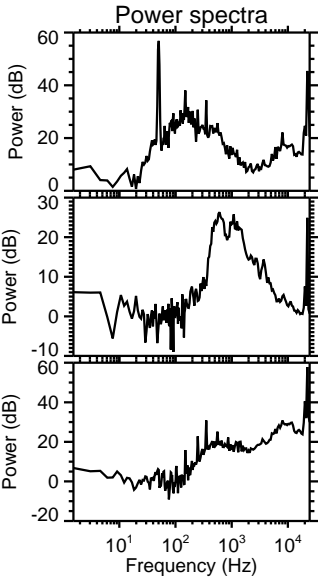
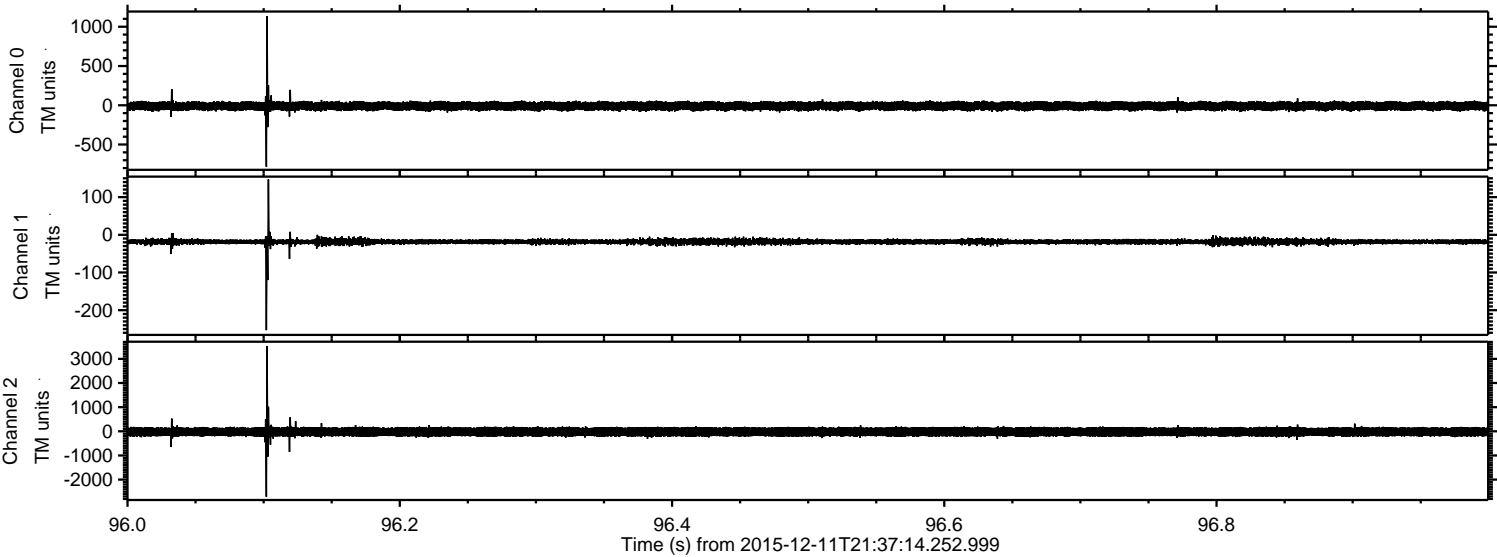
ELMAVAN 3D WAVEFORMS (Measured data sampled at 50 kHz) 51000 packets of 144 samples from 2015-12-11T21:37:14.252.999. Part 130/147

Processed Mon Dec 28 17:26:35 2015 by ELM ver.2012-10-06 from 001__elm20151211_213713__dat00.bin

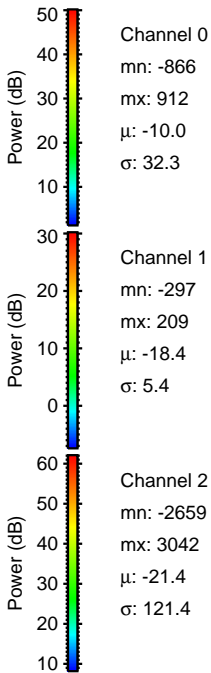
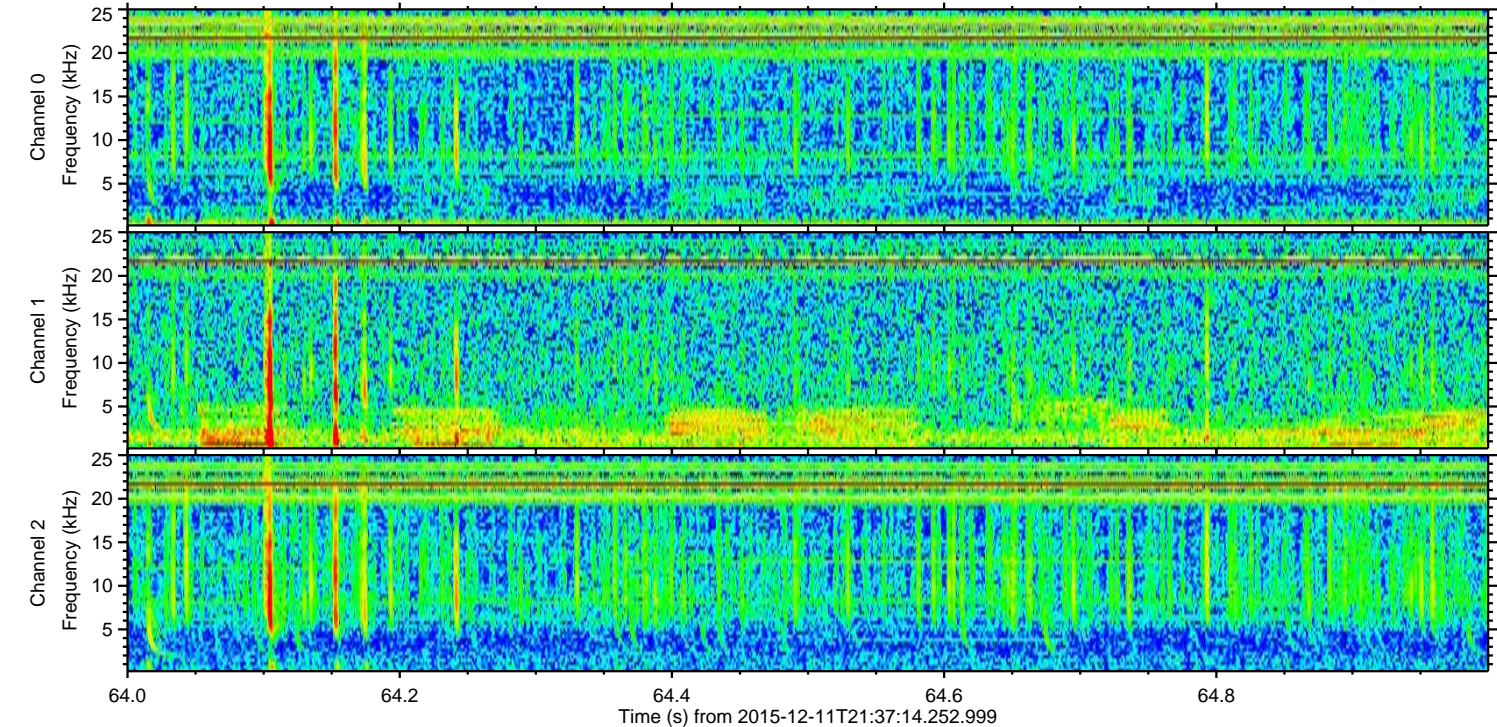
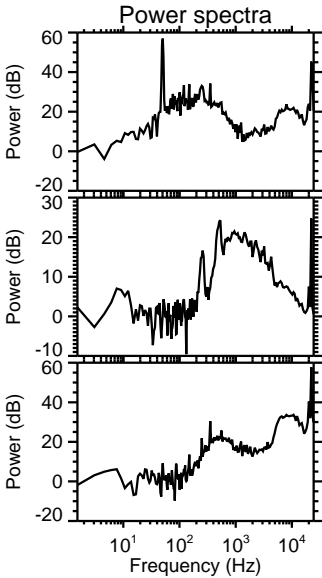
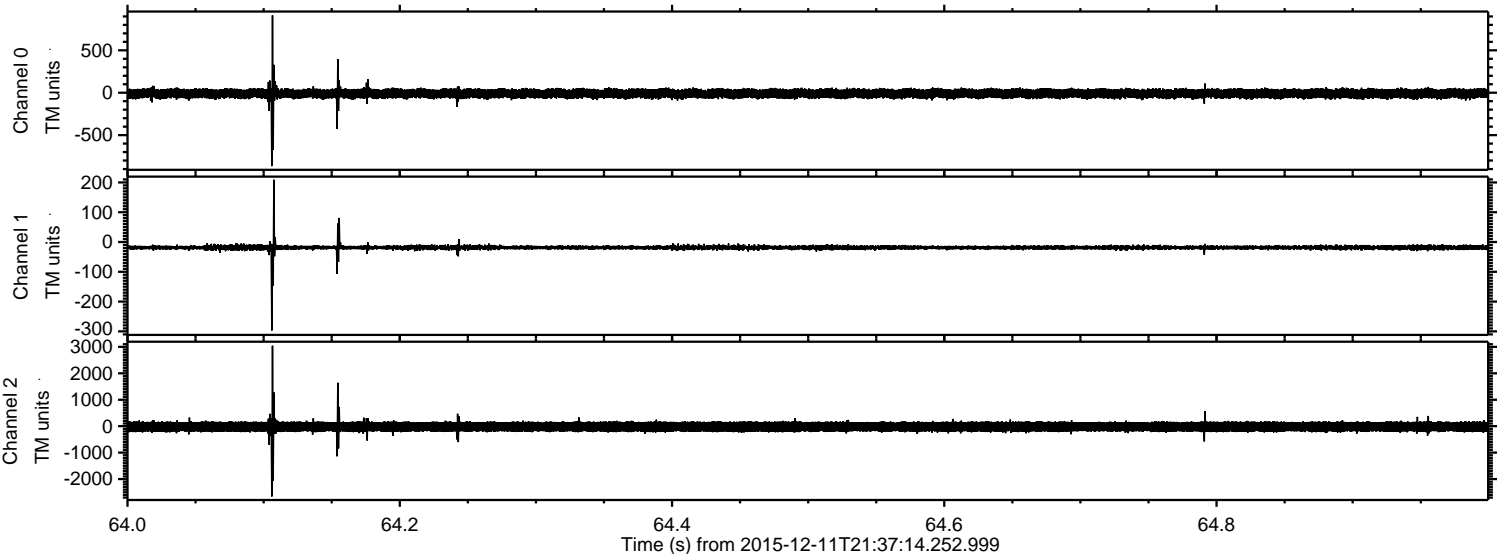


ELMAVAN 3D WAVEFORMS (Measured data sampled at 50 kHz) 51000 packets of 144 samples from 2015-12-11T21:37:14.252.999. Part 97/147

Processed Mon Dec 28 17:26:36 2015 by ELM ver.2012-10-06 from 001__elm20151211_213713__dat00.bin

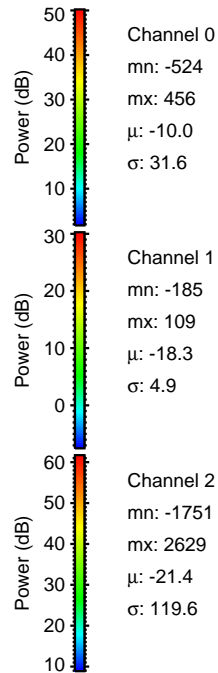
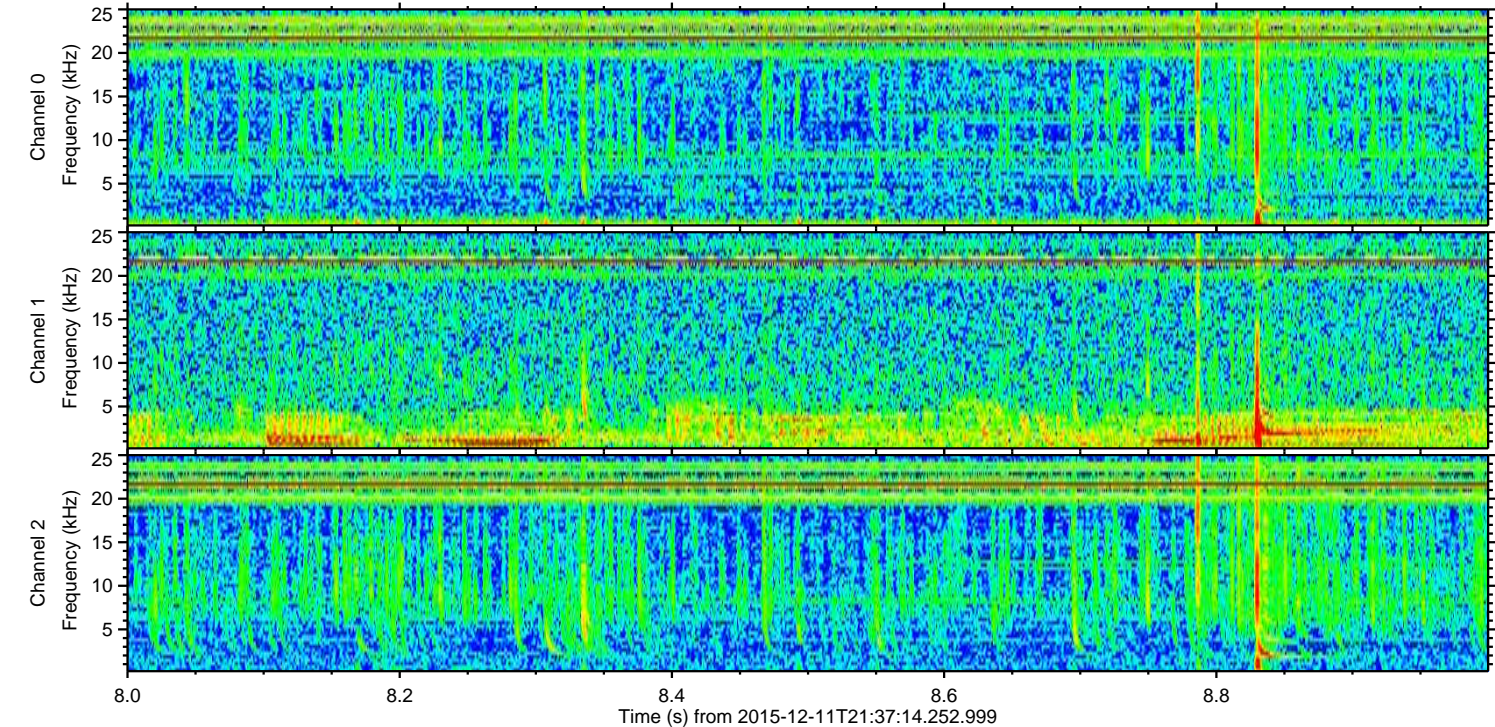
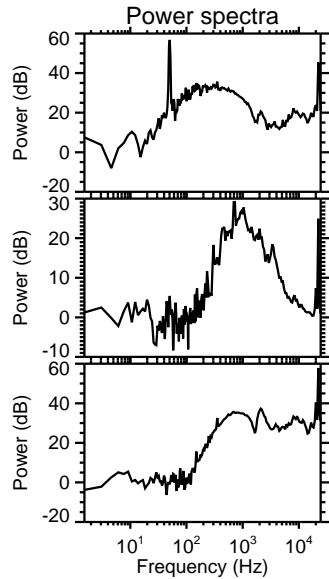
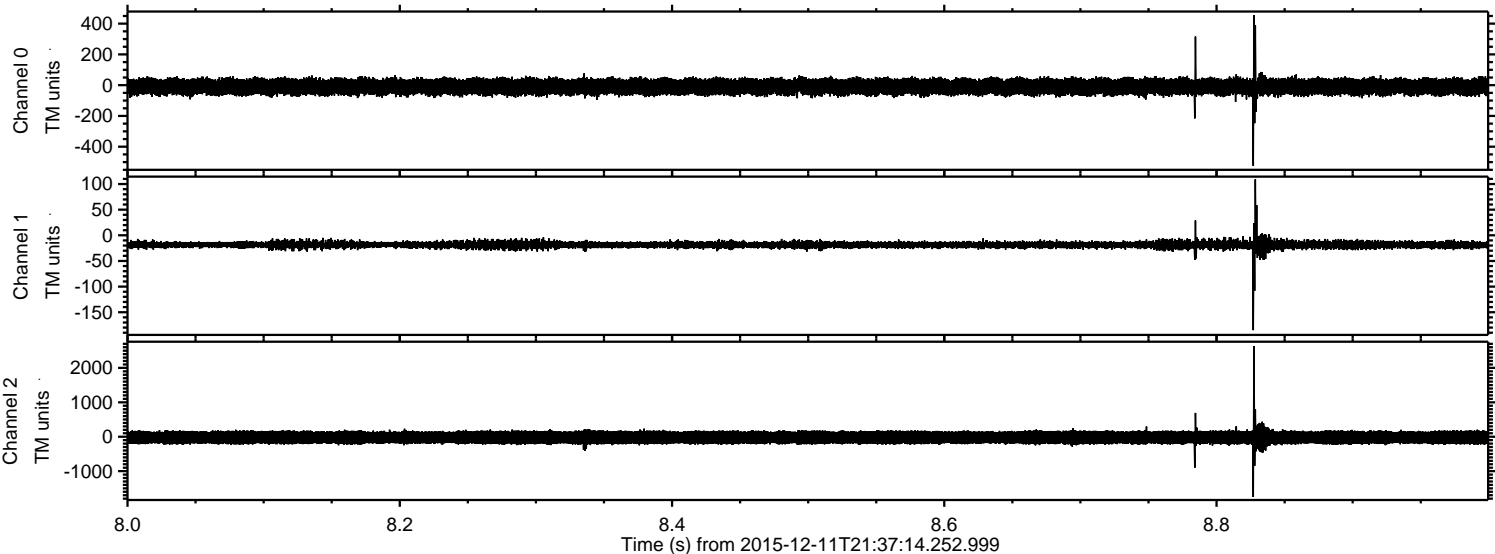


Processed Mon Dec 28 17:26:37 2015 by ELM ver.2012-10-06 from 001__elm20151211_213713__dat00.bin

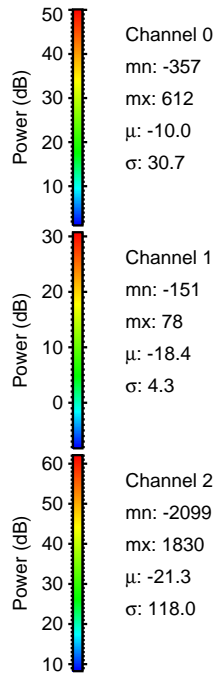
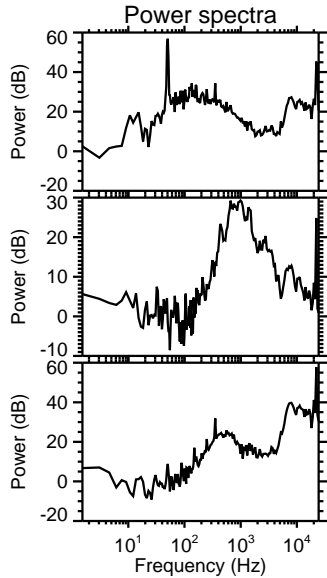
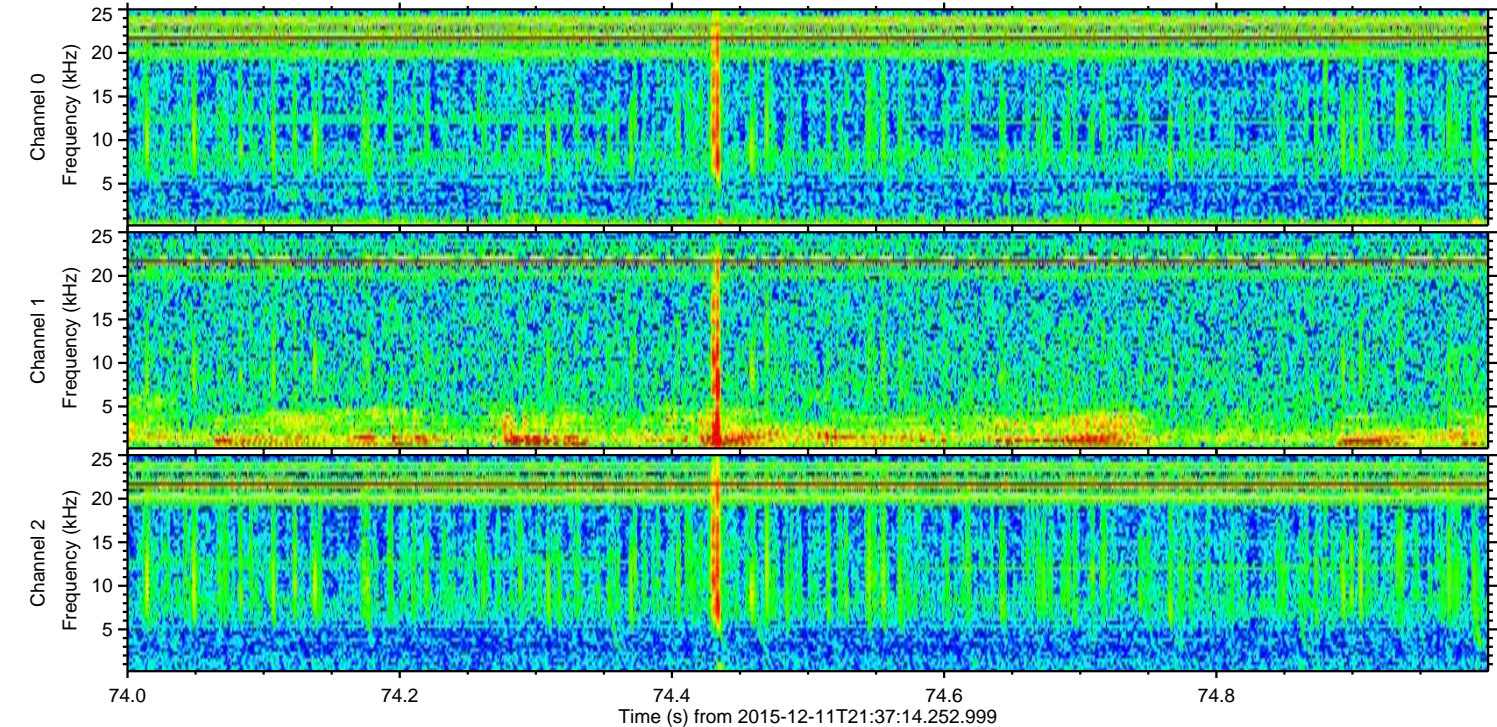
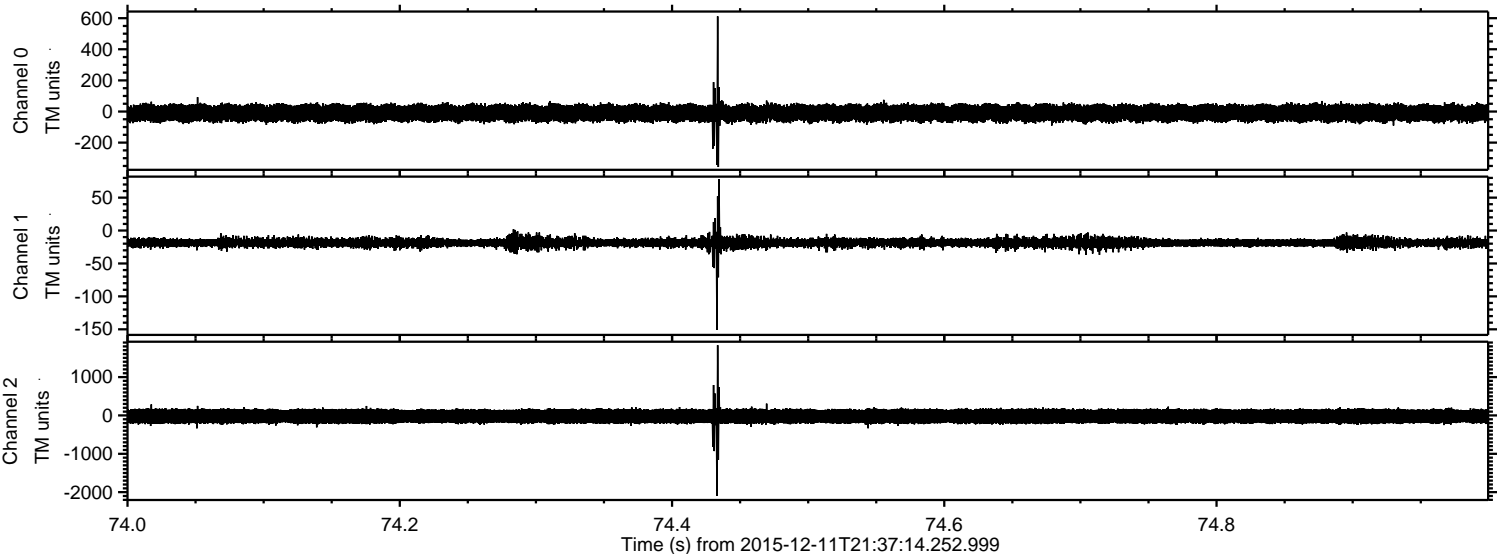


ELMAVAN 3D WAVEFORMS (Measured data sampled at 50 kHz) 51000 packets of 144 samples from 2015-12-11T21:37:14.252.999. Part 9/147

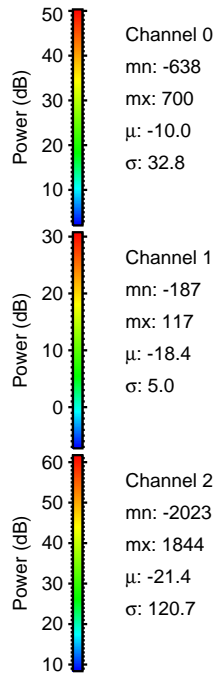
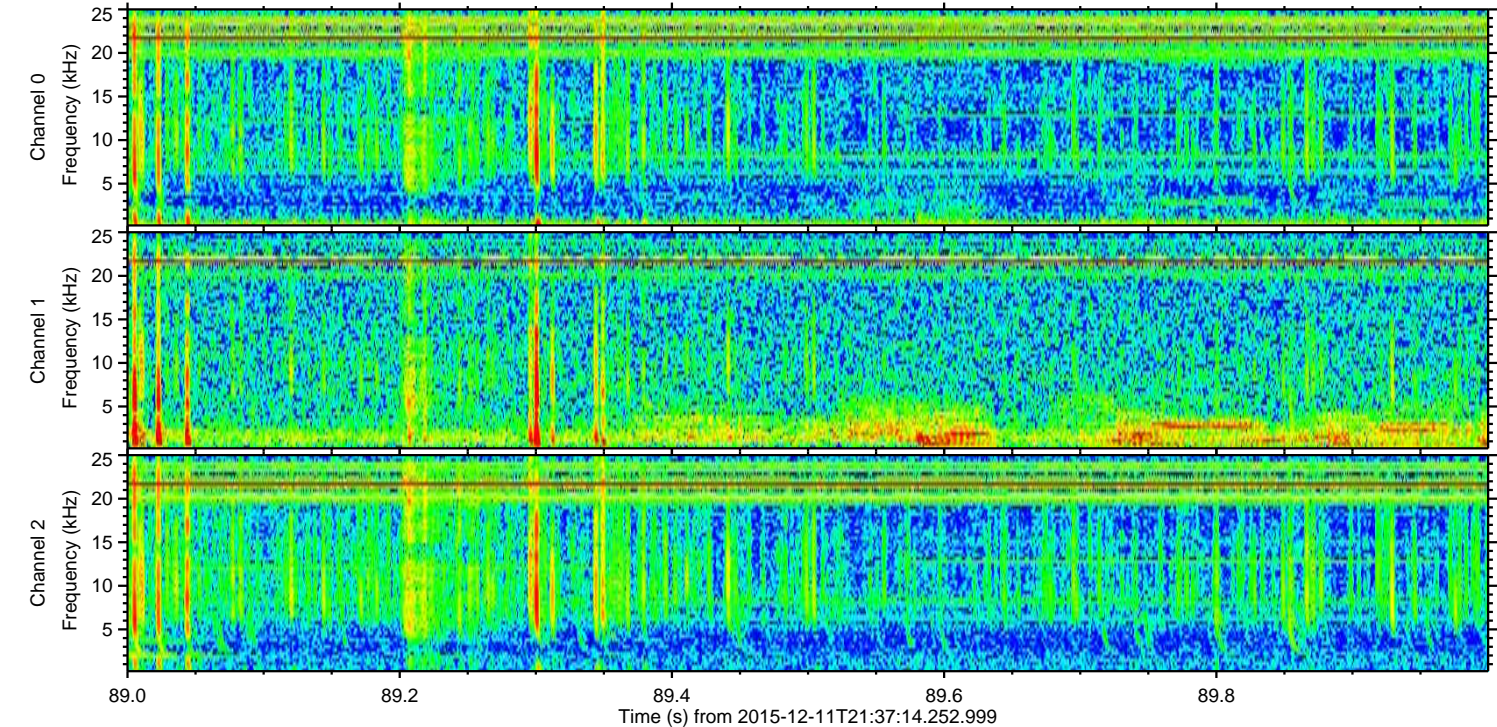
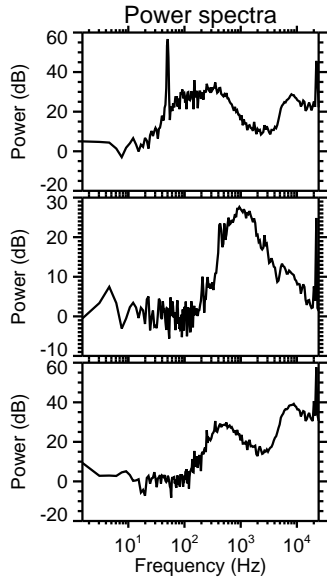
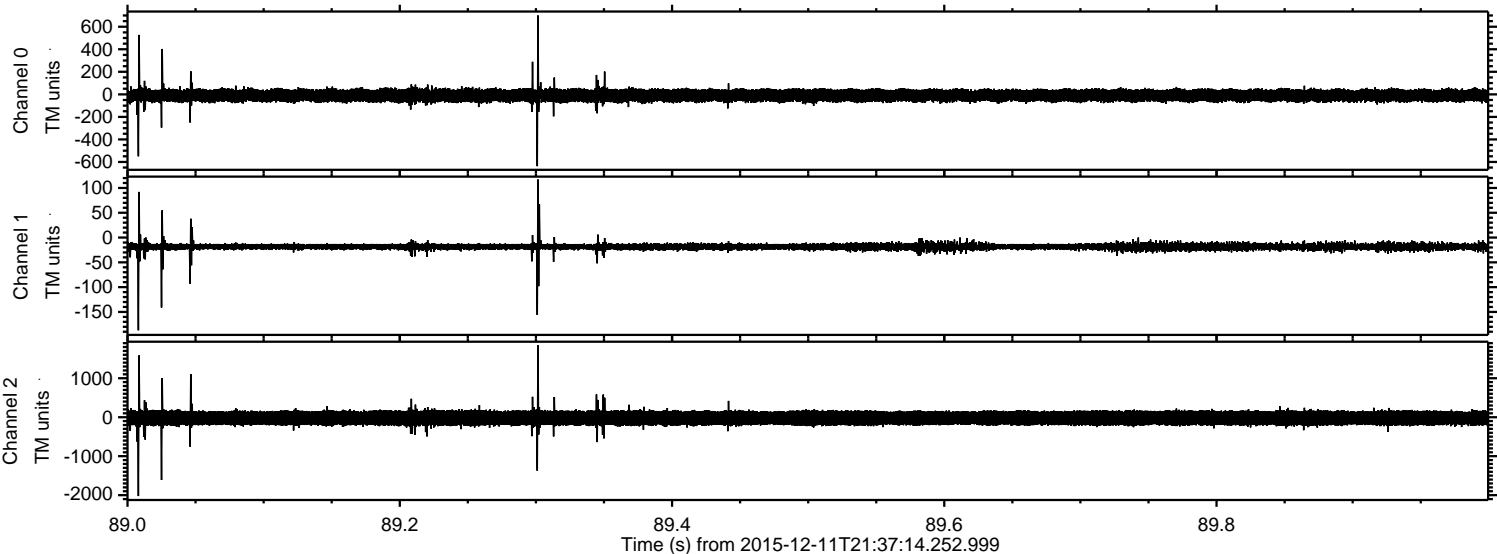
Processed Mon Dec 28 17:26:38 2015 by ELM ver.2012-10-06 from 001__elm20151211_213713__dat00.bin



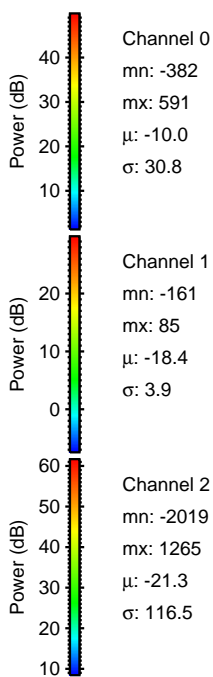
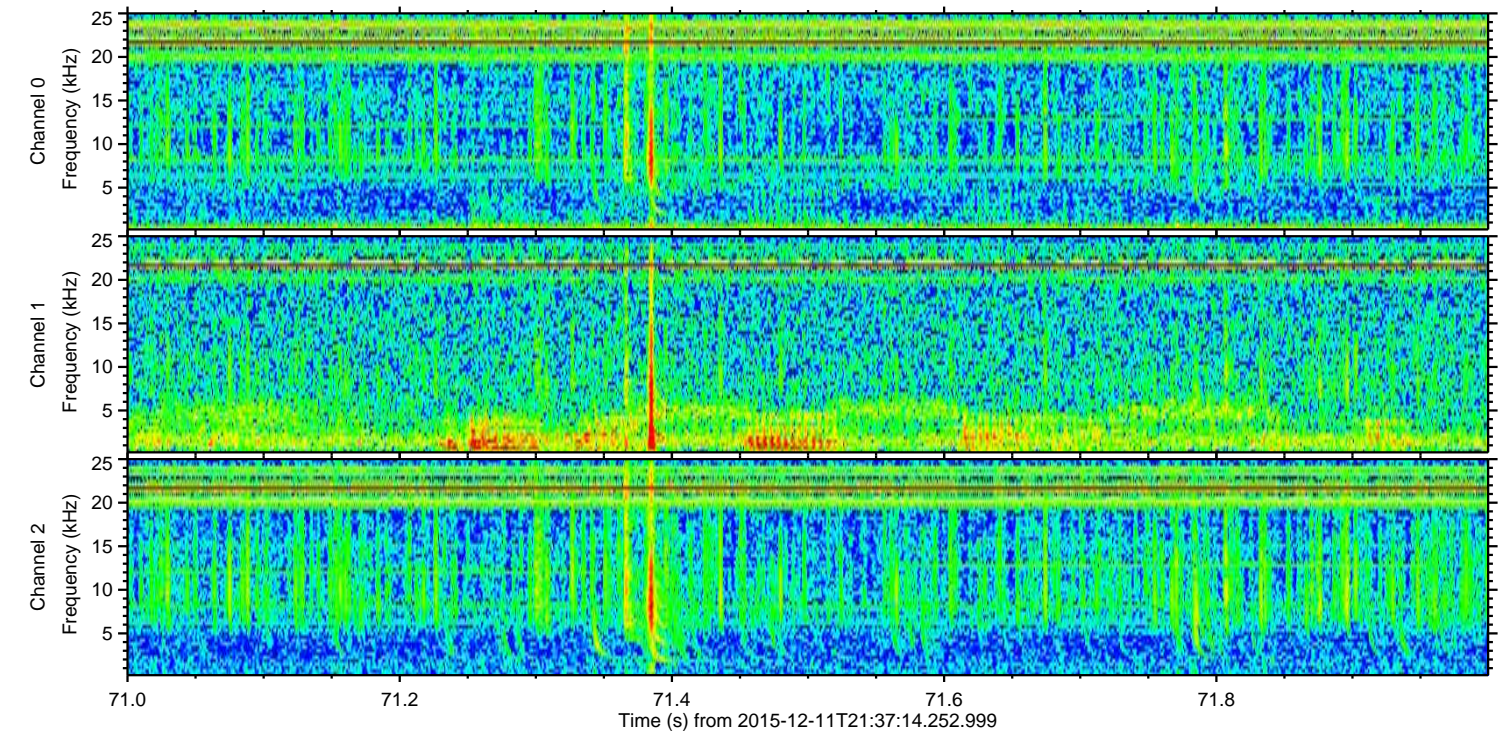
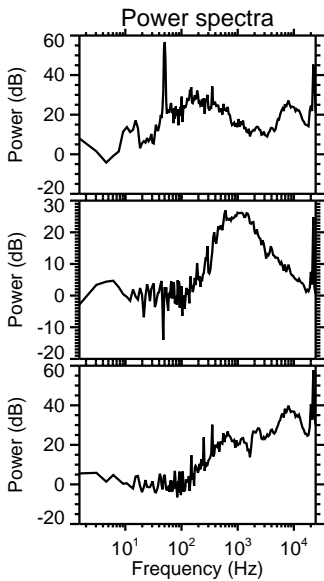
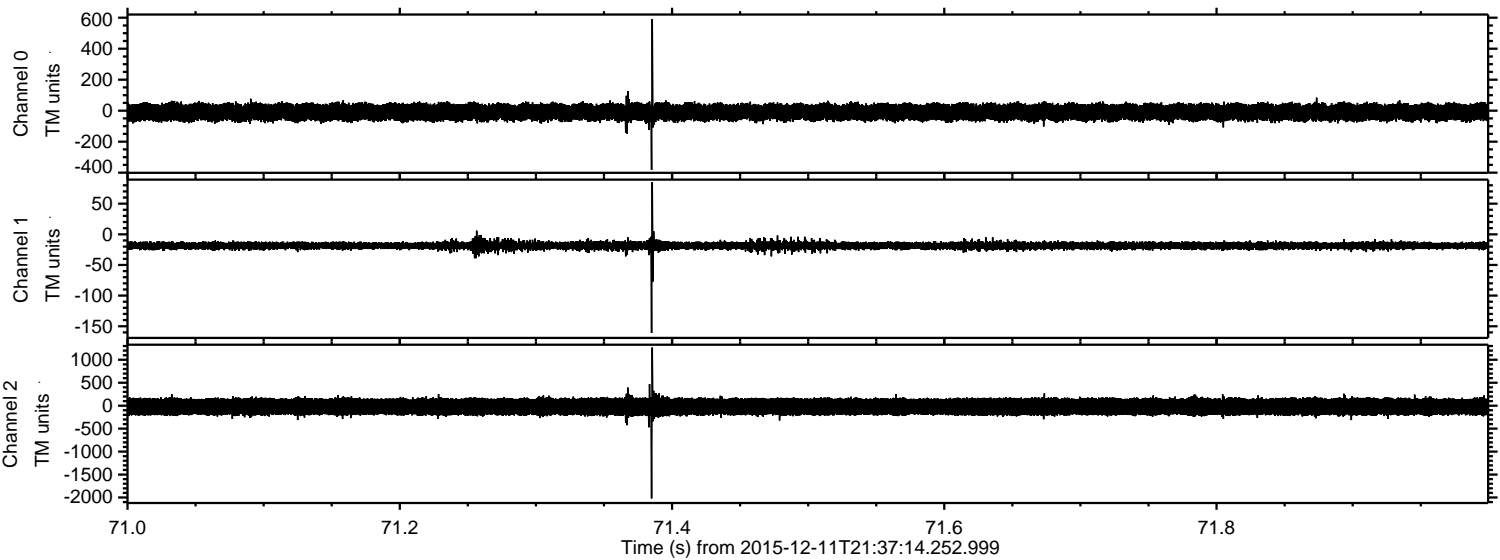
Processed Mon Dec 28 17:26:39 2015 by ELM ver.2012-10-06 from 001__elm20151211_213713__dat00.bin



Processed Mon Dec 28 17:26:40 2015 by ELM ver.2012-10-06 from 001__elm20151211_213713__dat00.bin



Processed Mon Dec 28 17:26:41 2015 by ELM ver.2012-10-06 from 001__elm20151211_213713__dat00.bin



Channel 0
mn: -382
mx: 591
 μ : -10.0
 σ : 30.8

Channel 1
mn: -161
mx: 85
 μ : -18.4
 σ : 3.9

Channel 2
mn: -2019
mx: 1265
 μ : -21.3
 σ : 116.5

Processed Mon Dec 28 17:26:42 2015 by ELM ver.2012-10-06 from 001__elm20151211_213713__dat00.bin

