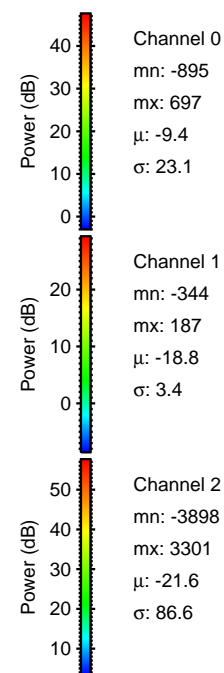
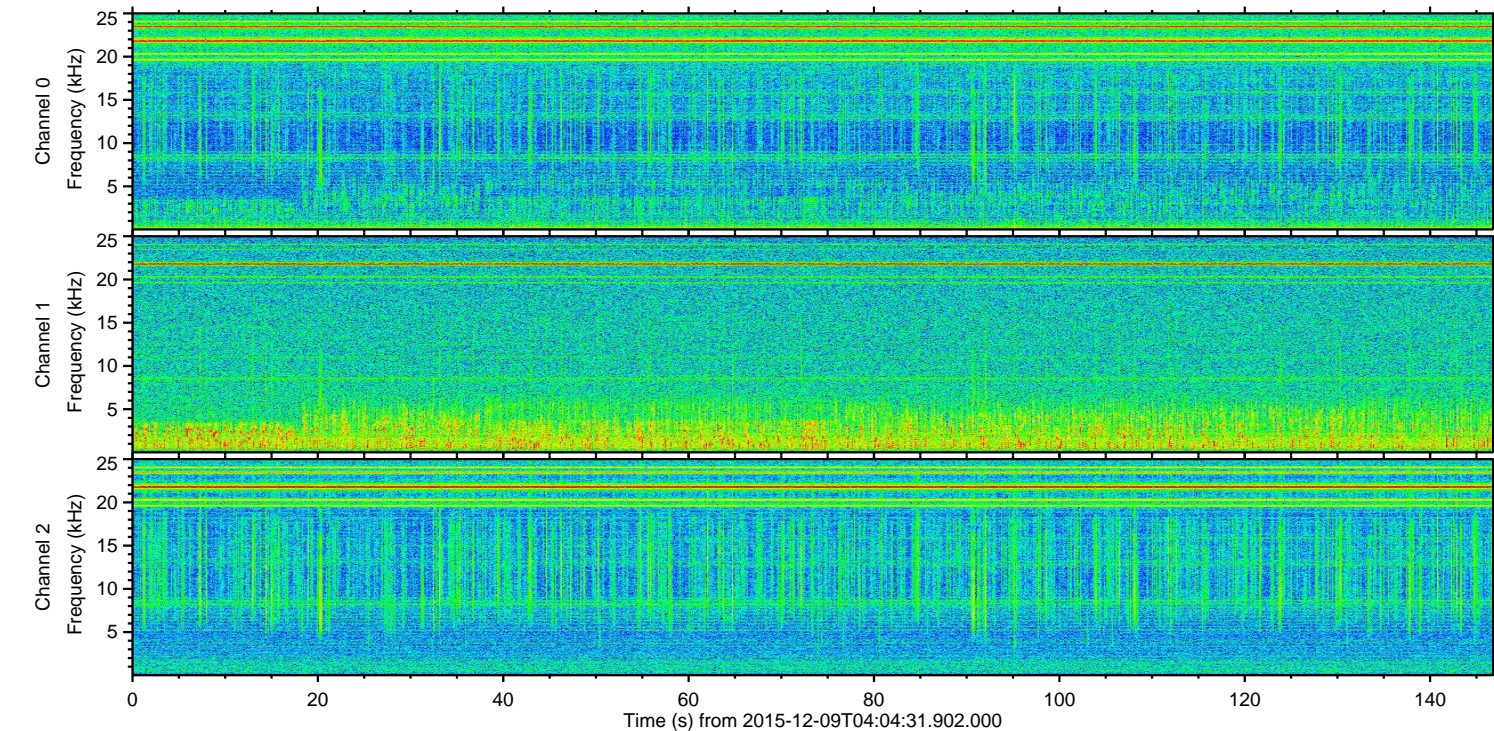
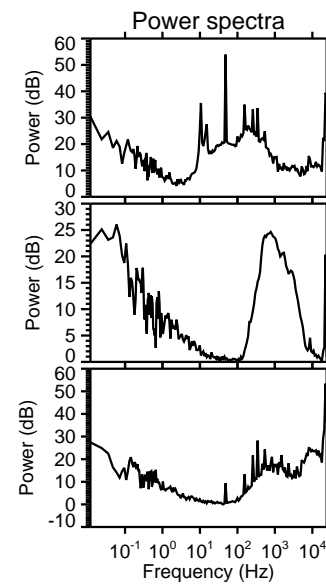
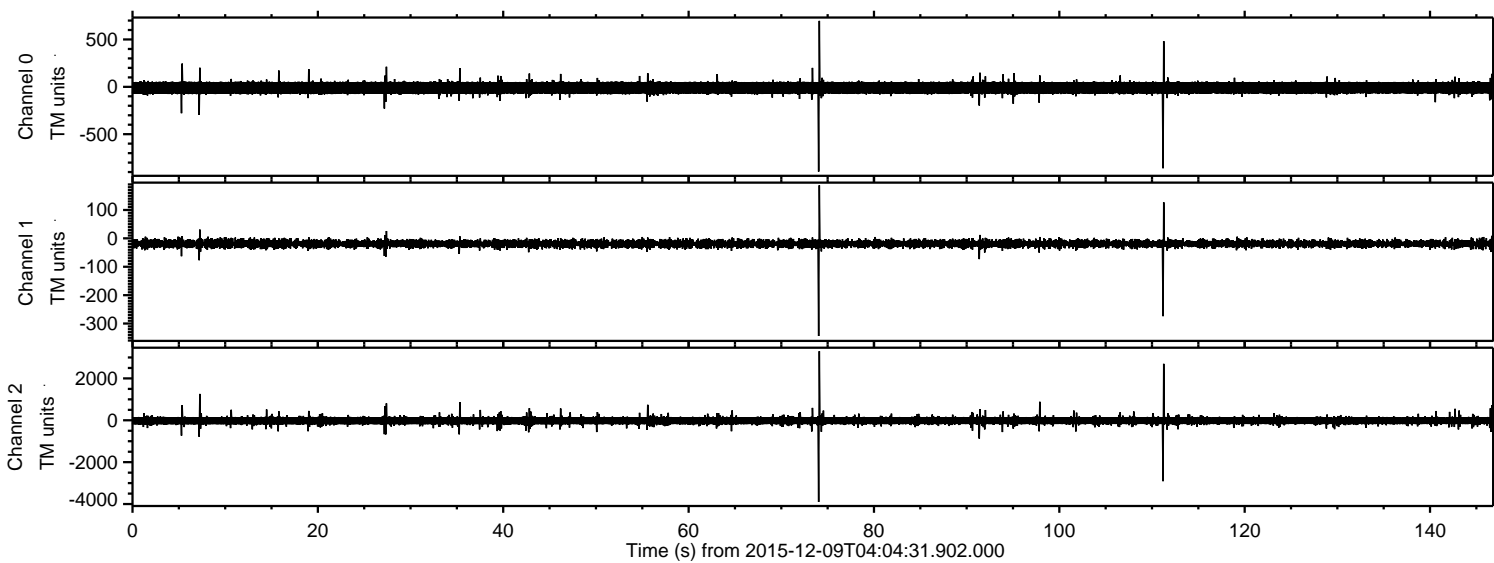


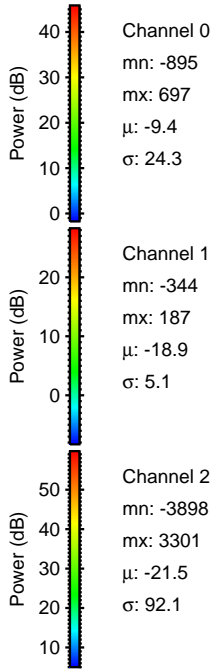
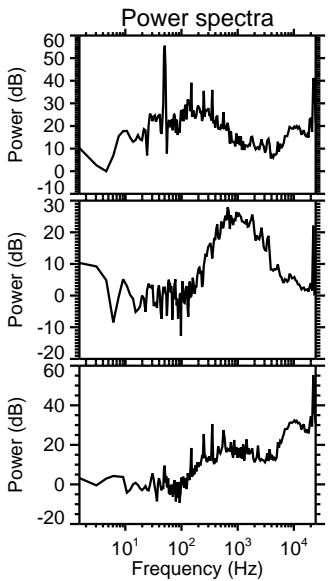
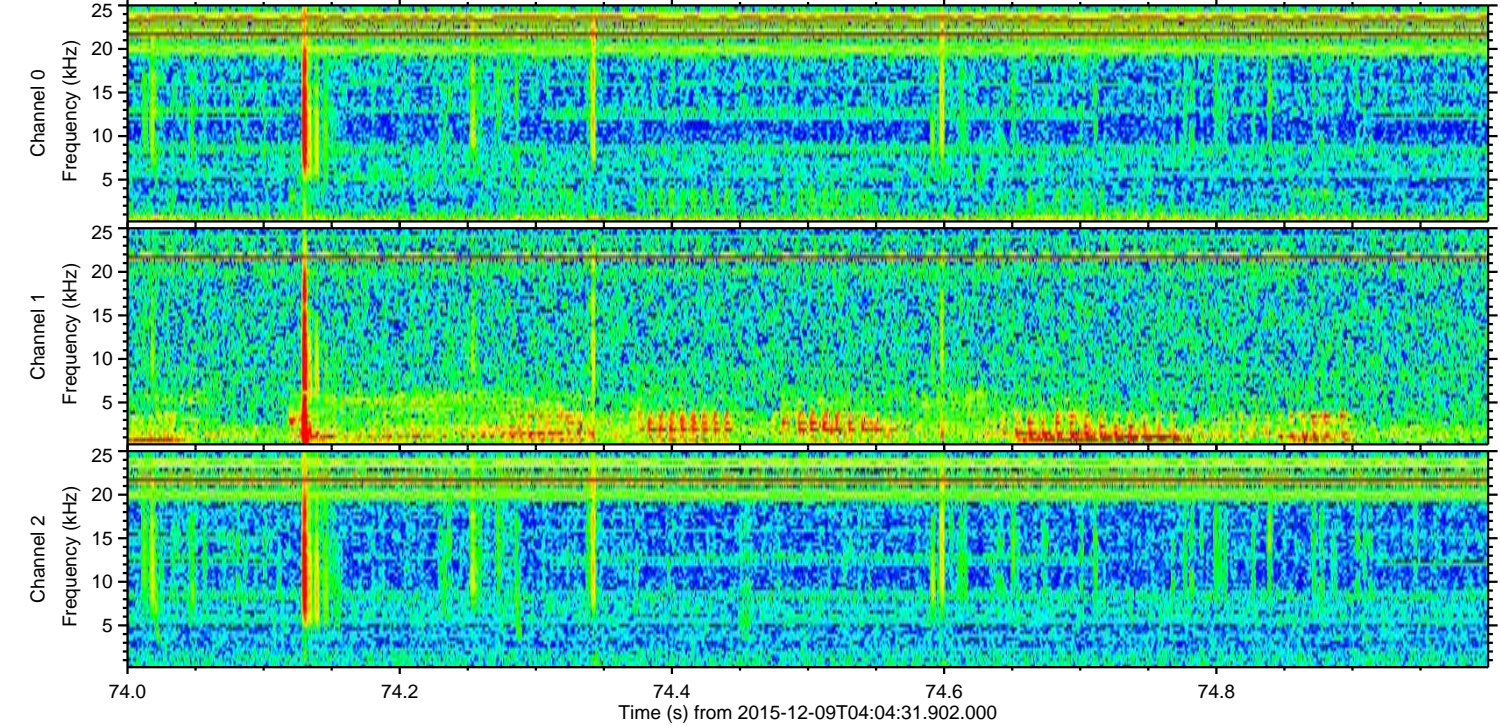
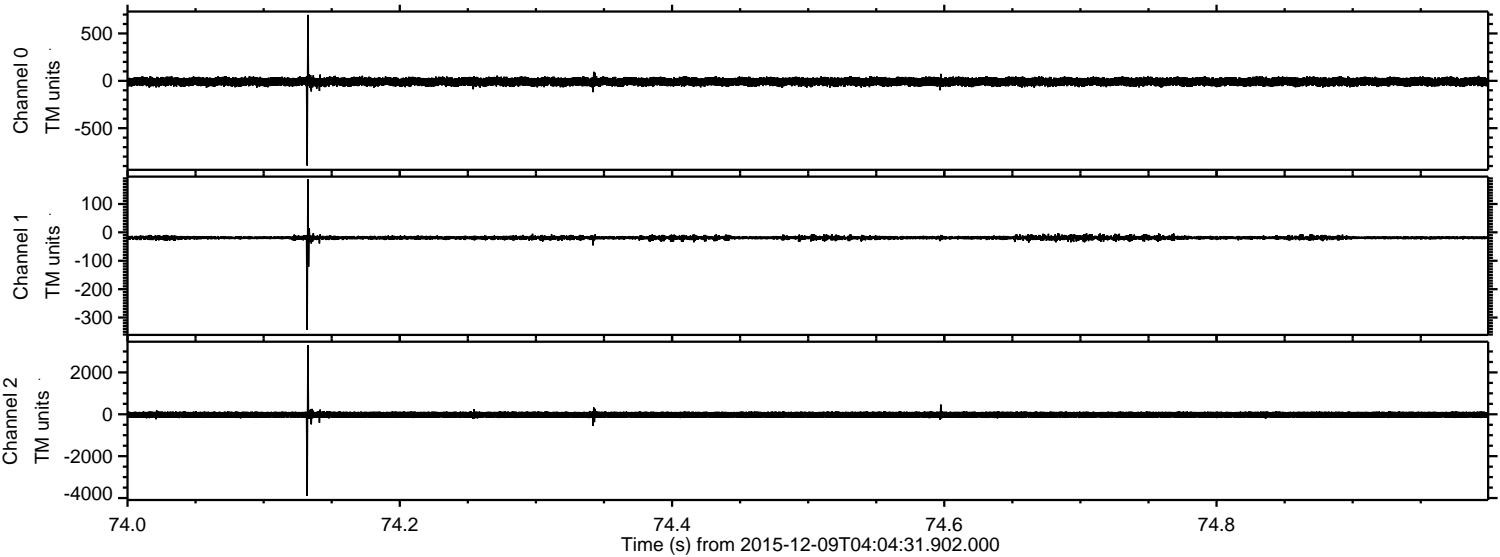
# ELMAVAN 3D WAVEFORMS (Measured data sampled at 50 kHz) 51000 packets of 144 samples from 2015-12-09T04:04:31.902.000.

Processed Sun Dec 20 03:35:23 2015 by ELM ver.2012-10-06 from 001\_\_elm20151209\_040430\_\_dat00.bin





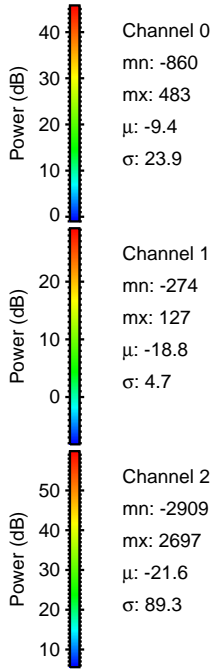
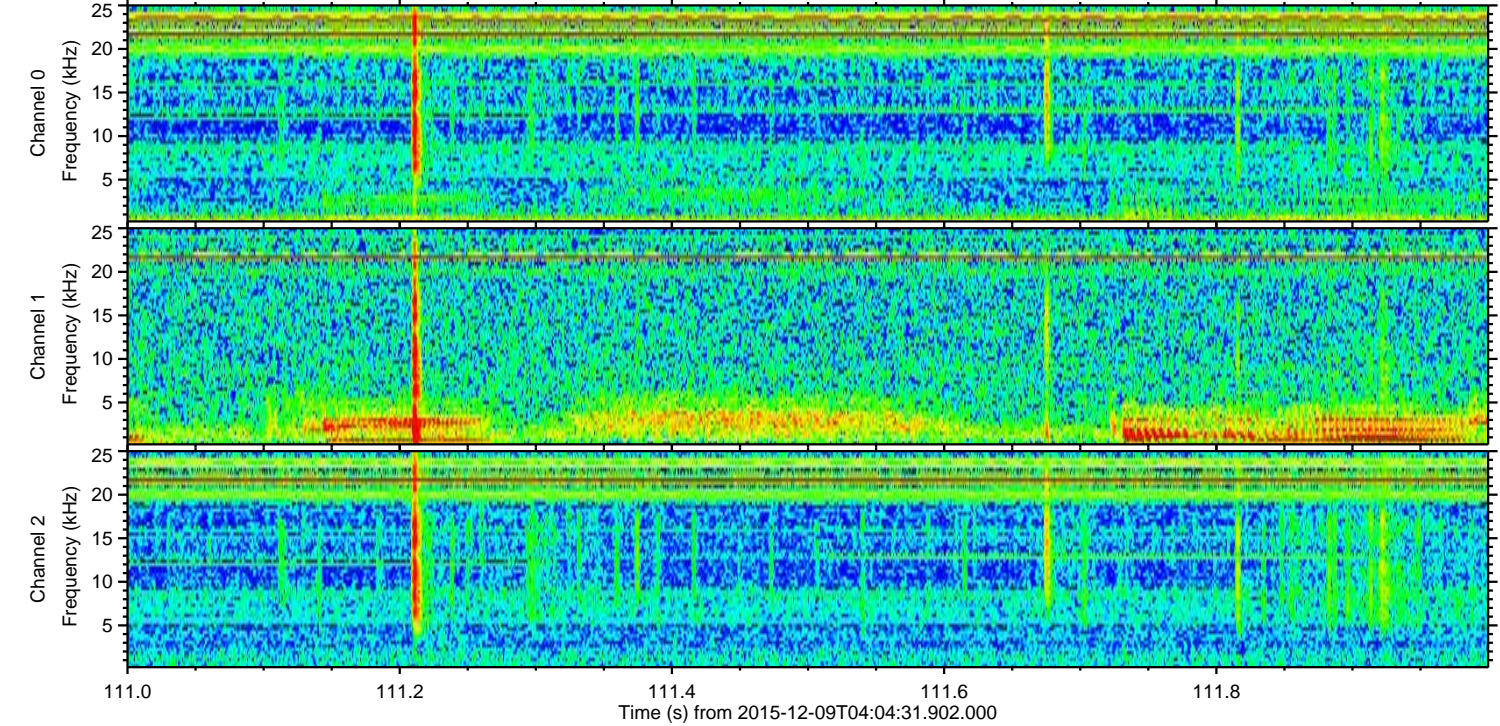
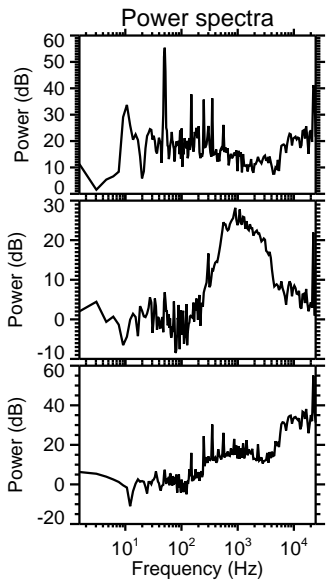
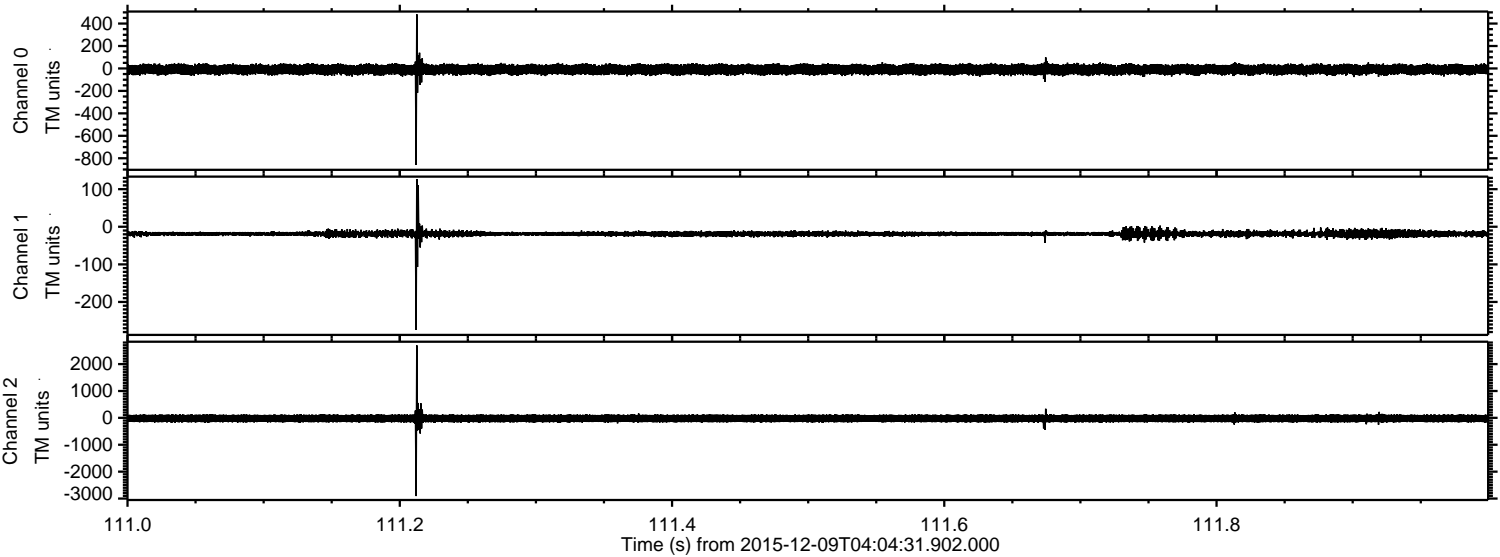
Processed Sun Dec 20 03:35:34 2015 by ELM ver.2012-10-06 from 001\_\_elm20151209\_040430\_\_dat00.bin





ELMAVAN 3D WAVEFORMS (Measured data sampled at 50 kHz) 51000 packets of 144 samples from 2015-12-09T04:04:31.902.000. Part 112/147

Processed Sun Dec 20 03:35:35 2015 by ELM ver.2012-10-06 from 001\_\_elm20151209\_040430\_\_dat00.bin



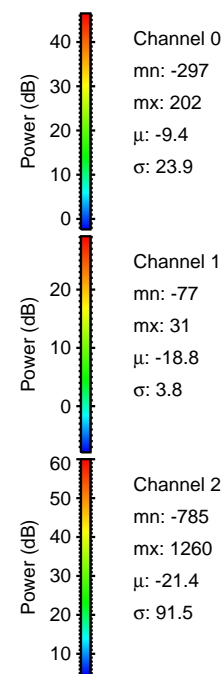
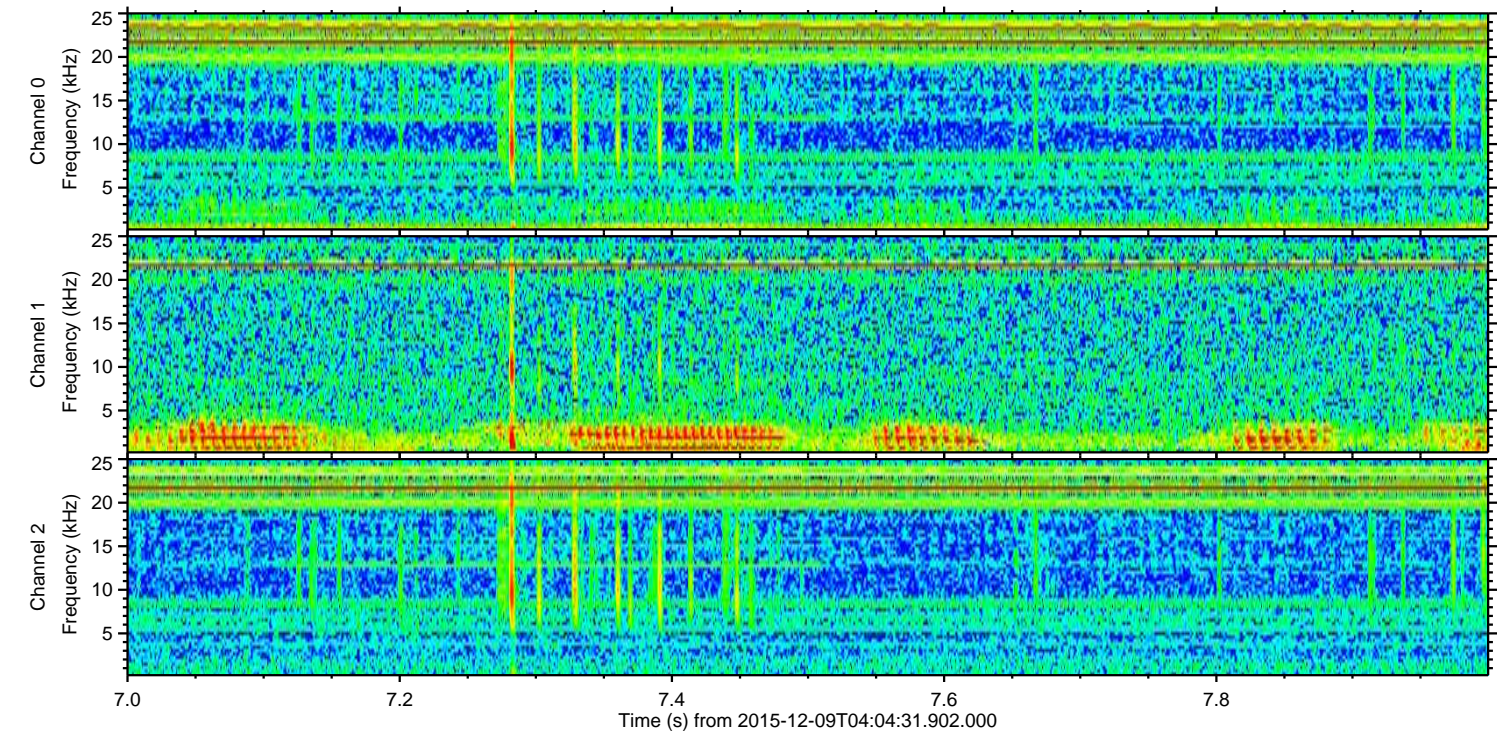
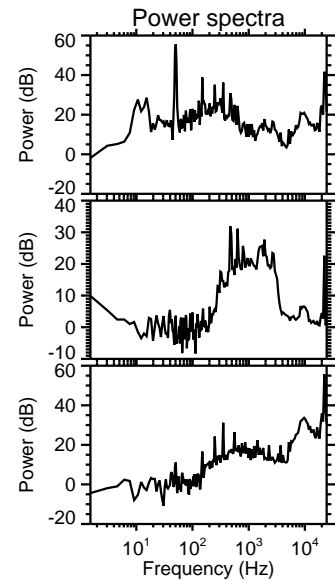
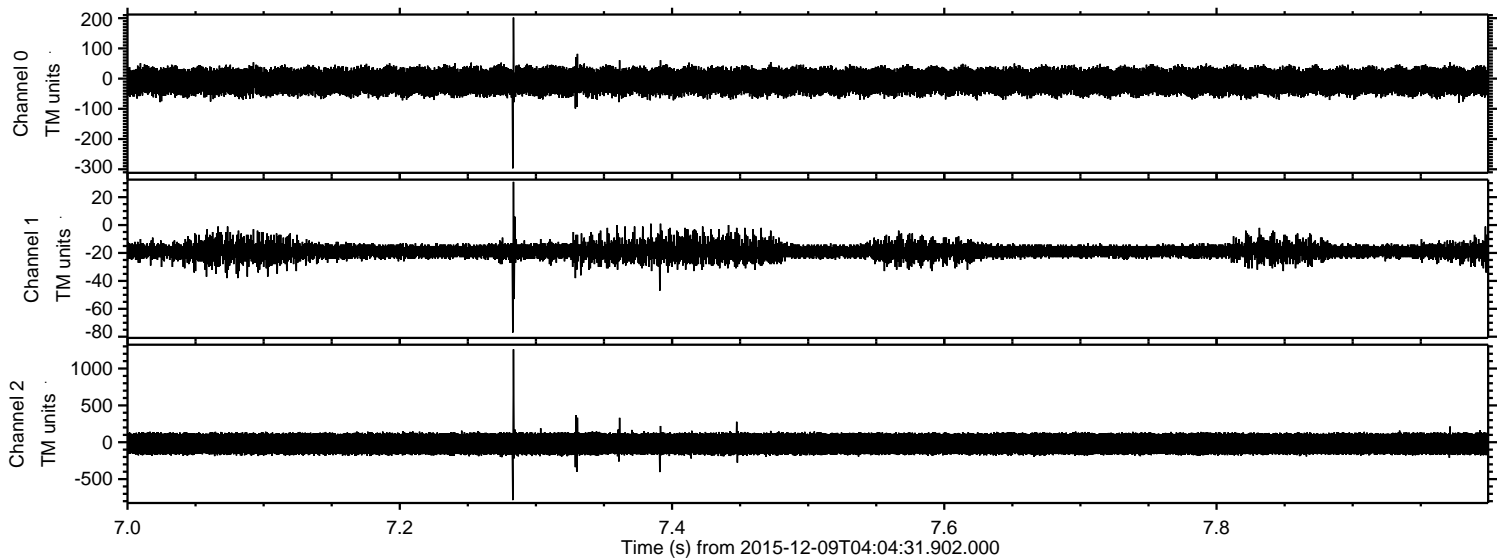
Channel 0  
mn: -860  
mx: 483  
 $\mu$ : -9.4  
 $\sigma$ : 23.9

Channel 1  
mn: -274  
mx: 127  
 $\mu$ : -18.8  
 $\sigma$ : 4.7

Channel 2  
mn: -2909  
mx: 2697  
 $\mu$ : -21.6  
 $\sigma$ : 89.3

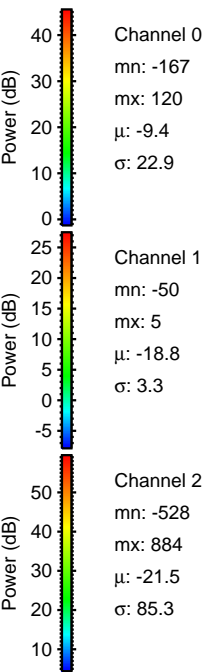
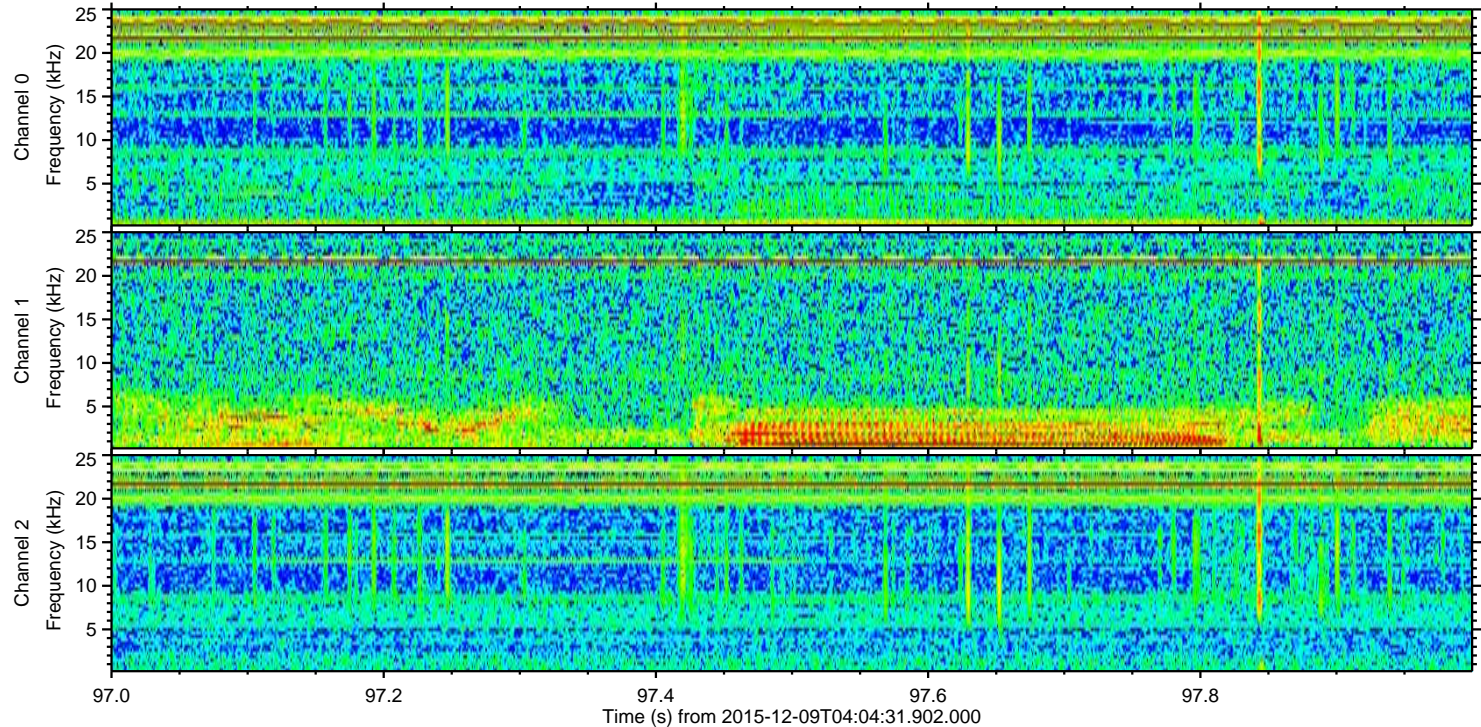
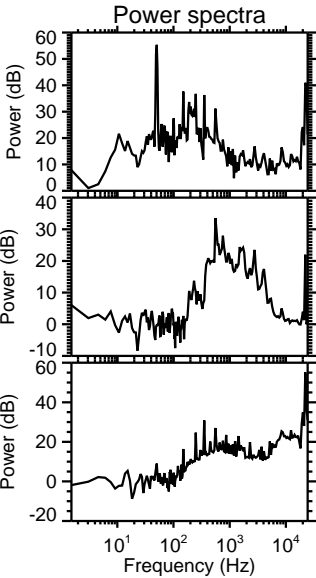
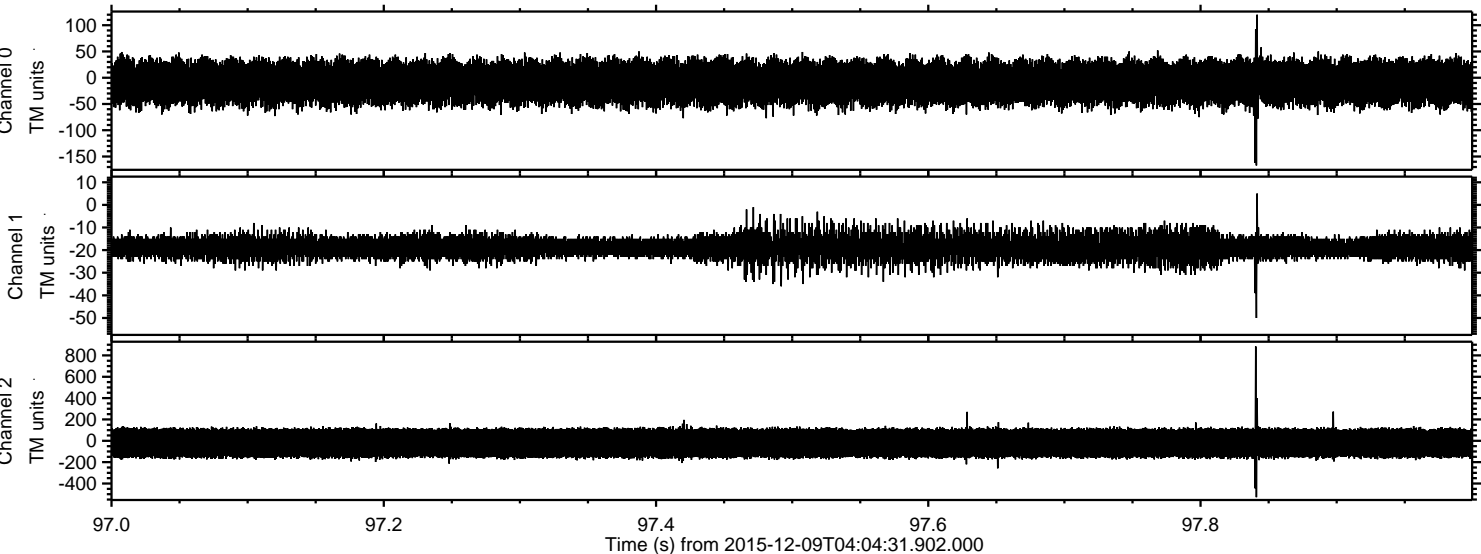


Processed Sun Dec 20 03:35:36 2015 by ELM ver.2012-10-06 from 001\_\_elm20151209\_040430\_\_dat00.bin



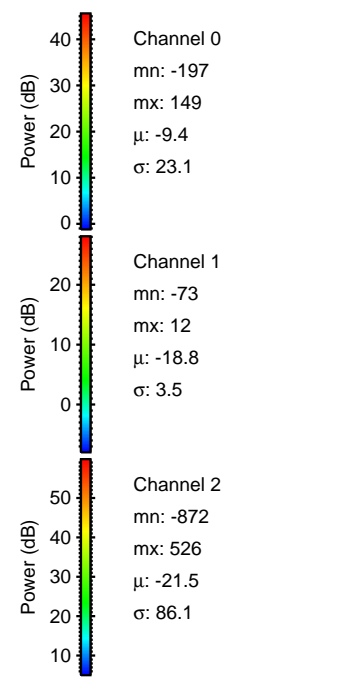
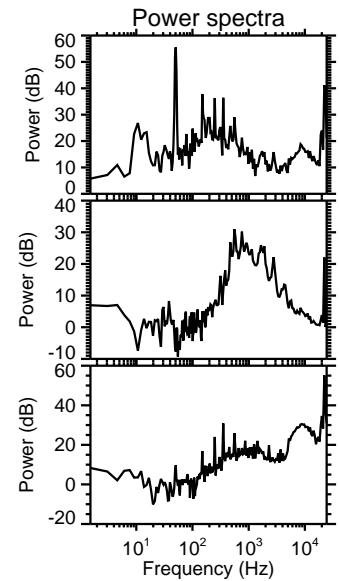
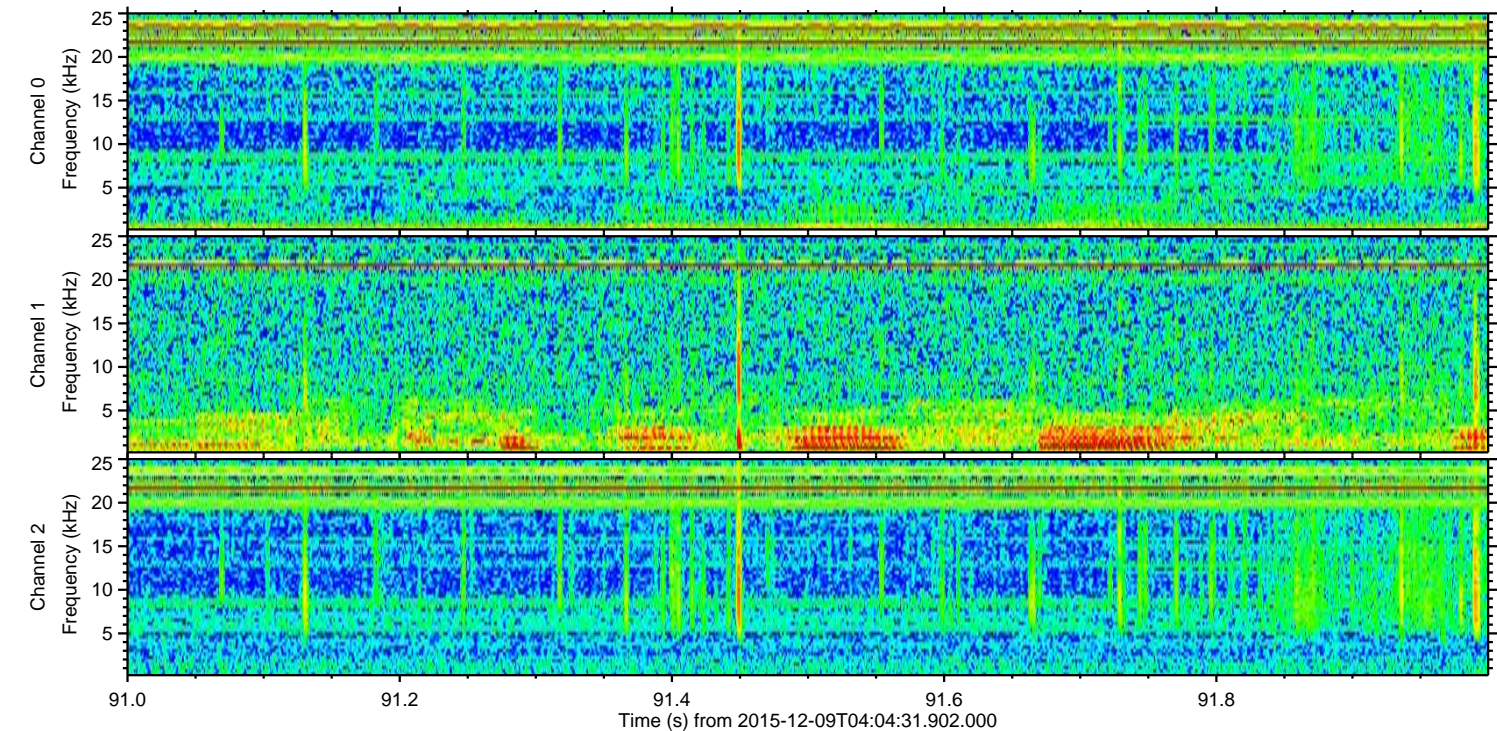
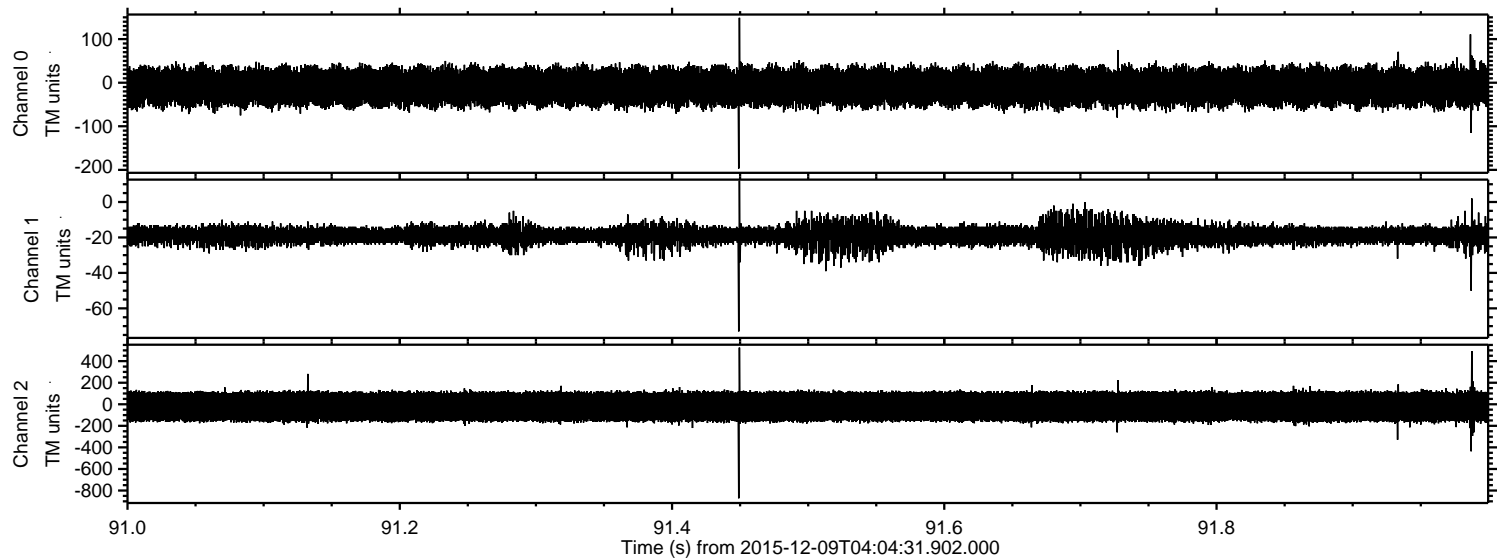


Processed Sun Dec 20 03:35:37 2015 by ELM ver.2012-10-06 from 001\_\_elm20151209\_040430\_\_dat00.bin





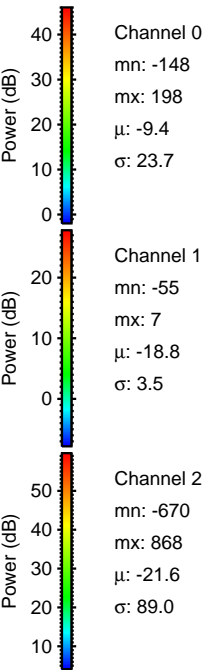
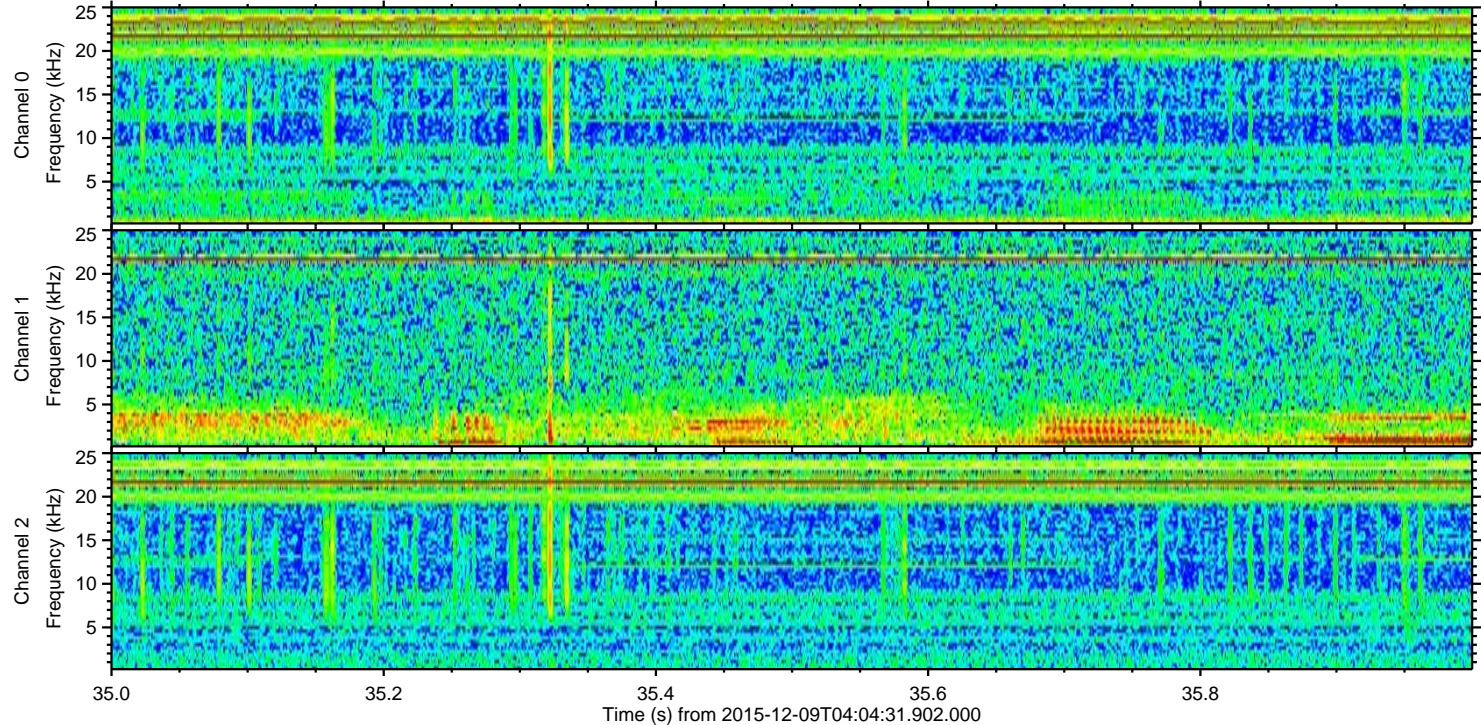
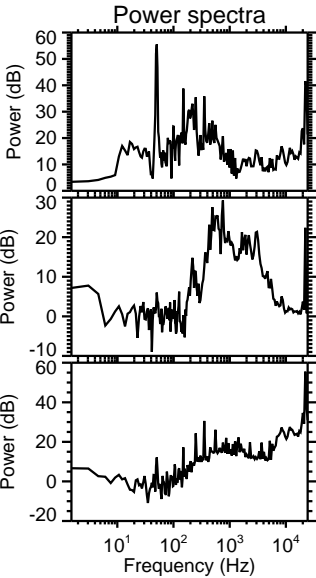
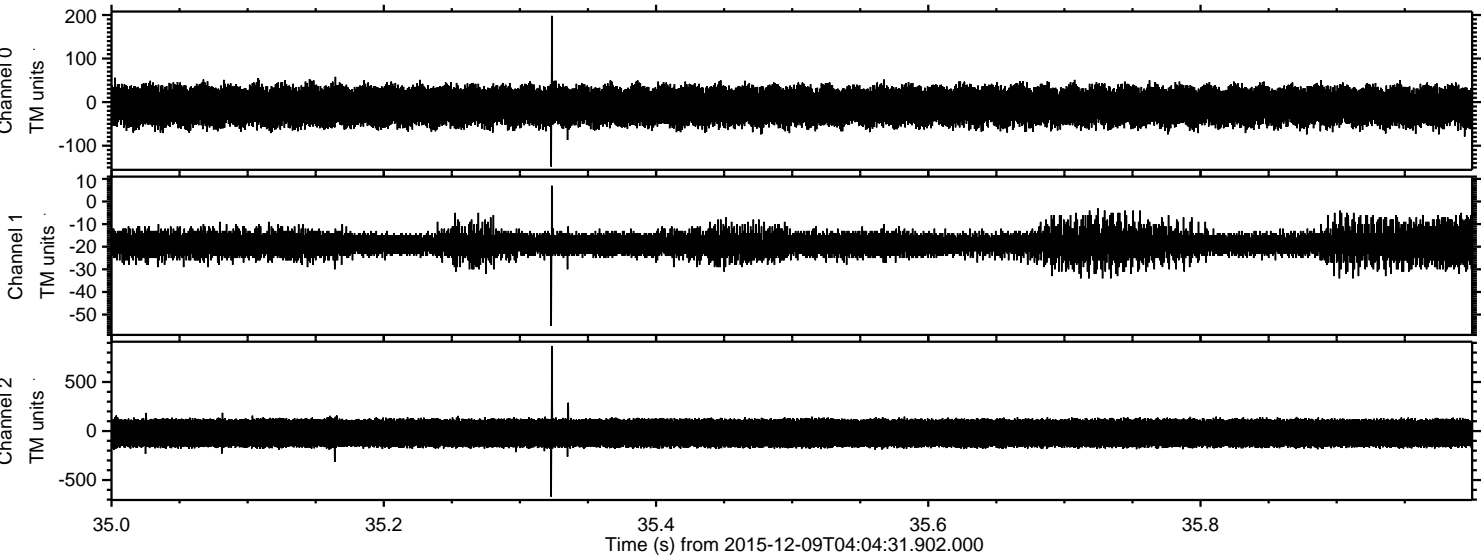
Processed Sun Dec 20 03:35:38 2015 by ELM ver.2012-10-06 from 001\_\_elm20151209\_040430\_\_dat00.bin





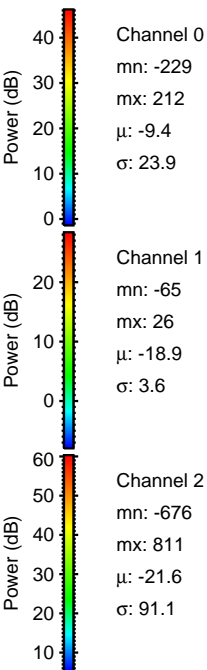
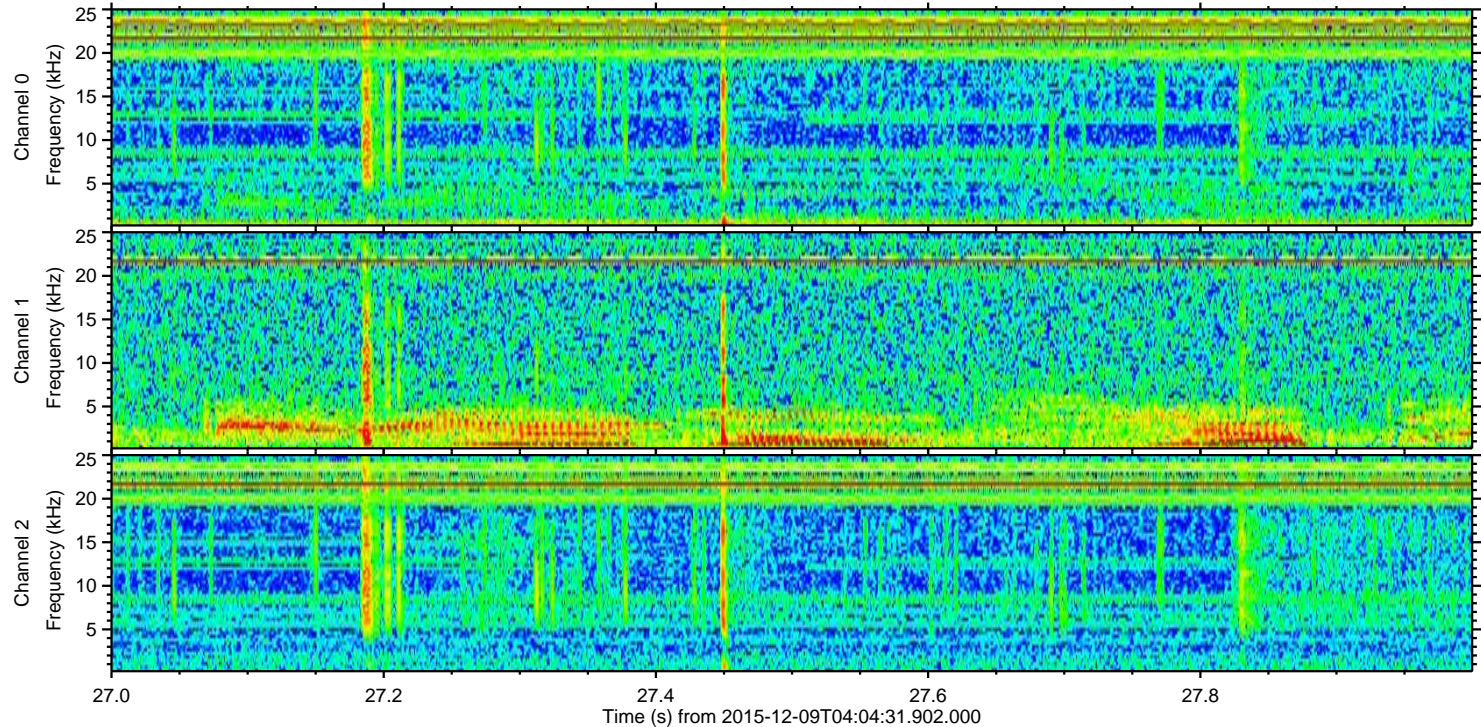
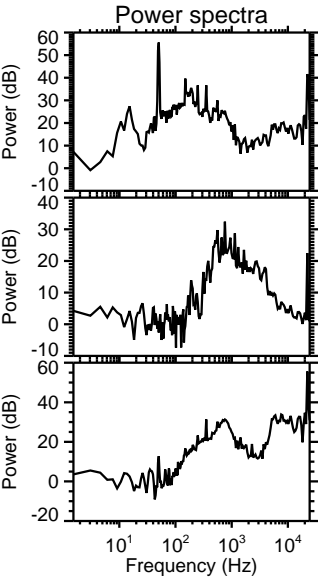
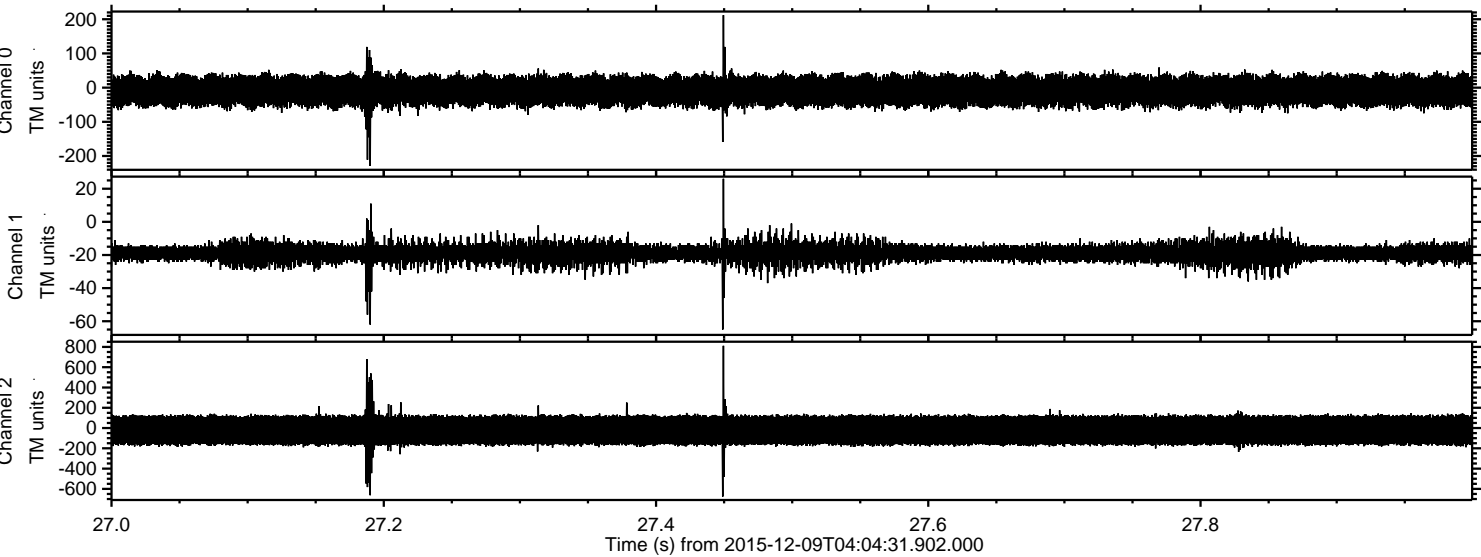
ELMAVAN 3D WAVEFORMS (Measured data sampled at 50 kHz) 51000 packets of 144 samples from 2015-12-09T04:04:31.902.000. Part 36/147

Processed Sun Dec 20 03:35:39 2015 by ELM ver.2012-10-06 from 001\_\_elm20151209\_040430\_\_dat00.bin



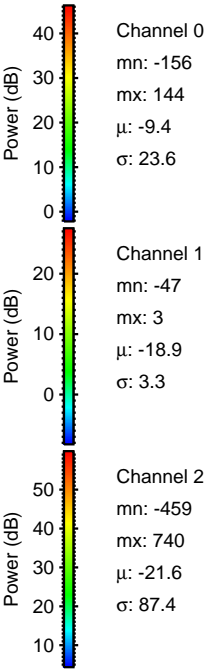
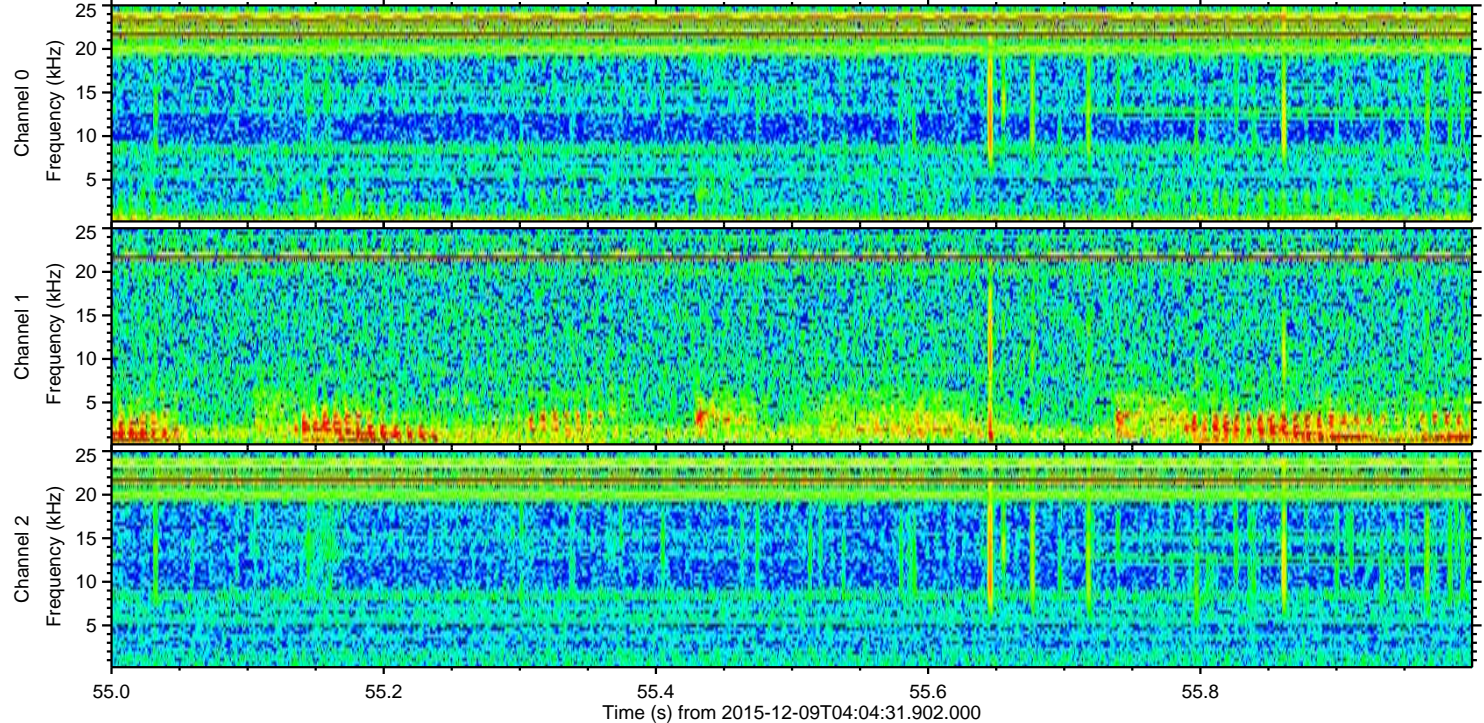
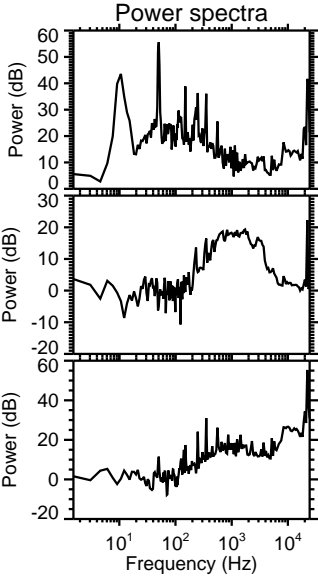
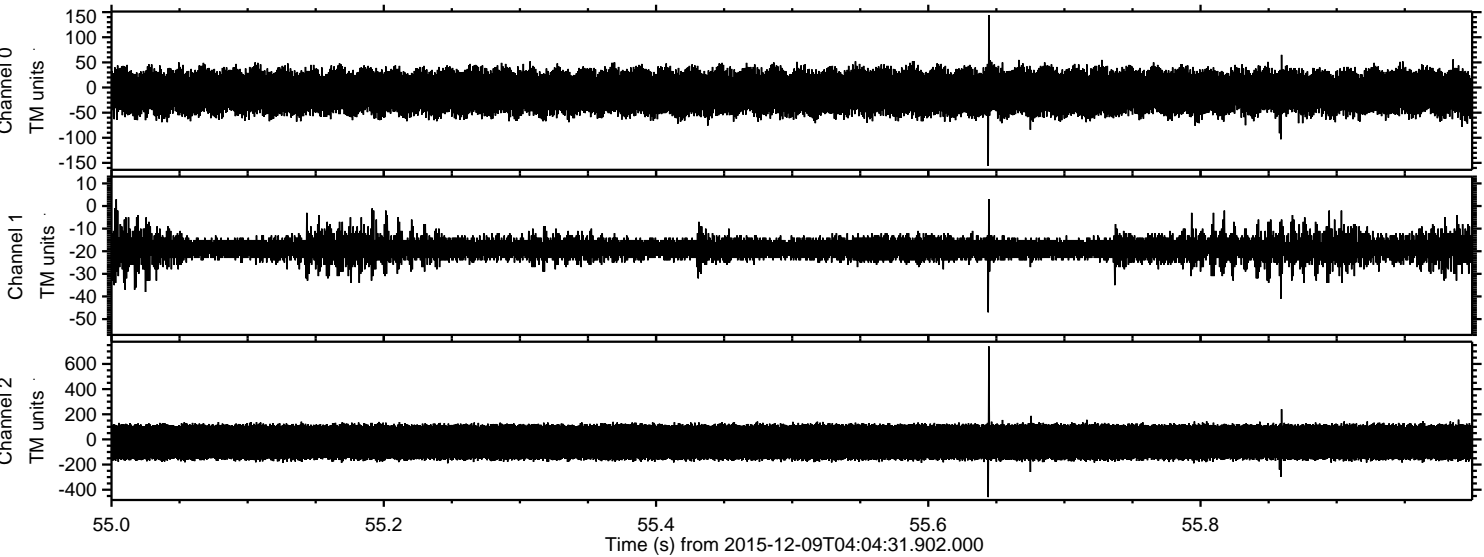


Processed Sun Dec 20 03:35:40 2015 by ELM ver.2012-10-06 from 001\_\_elm20151209\_040430\_\_dat00.bin



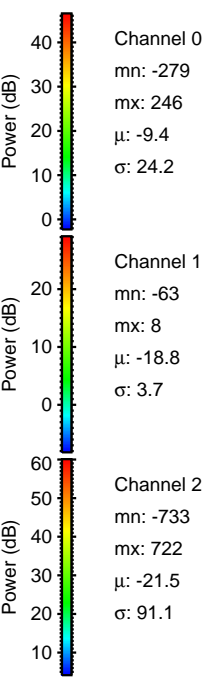
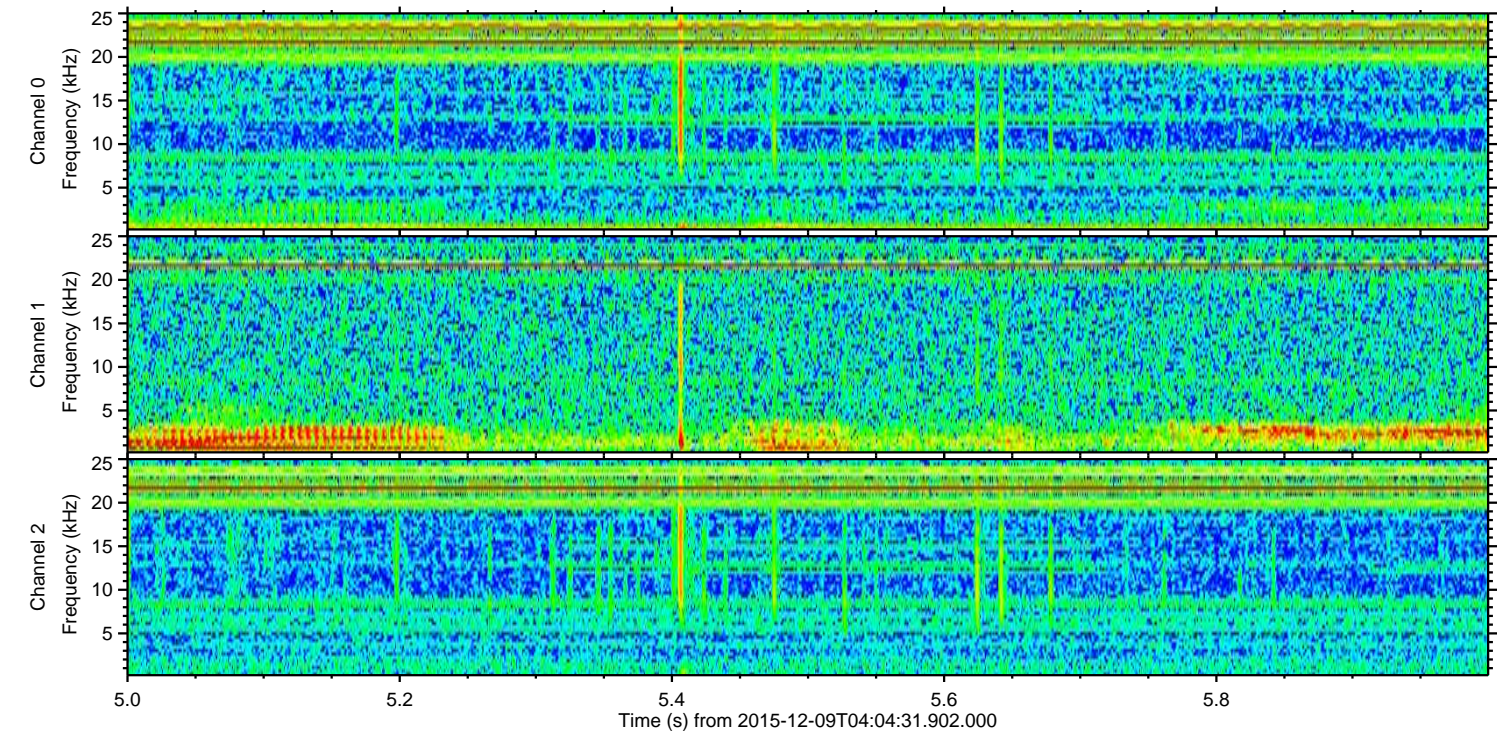
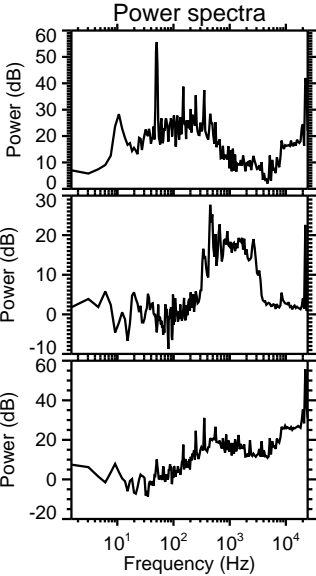
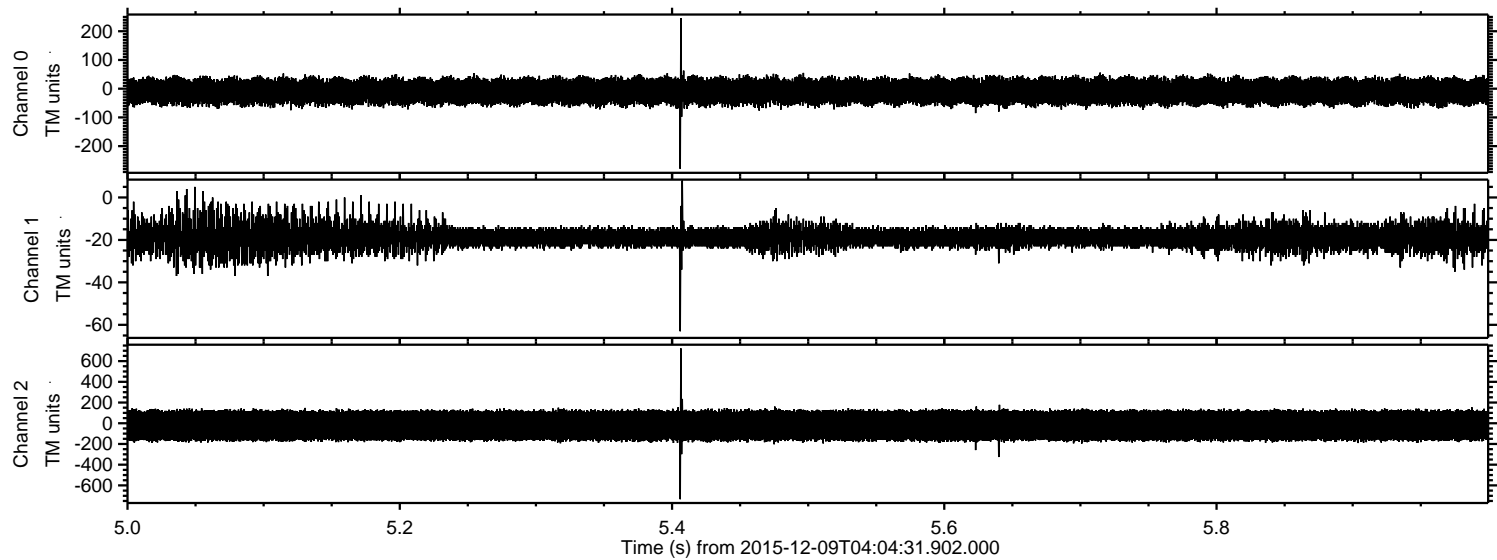


Processed Sun Dec 20 03:35:41 2015 by ELM ver.2012-10-06 from 001\_\_elm20151209\_040430\_\_dat00.bin





Processed Sun Dec 20 03:35:41 2015 by ELM ver.2012-10-06 from 001\_\_elm20151209\_040430\_\_dat00.bin





Processed Sun Dec 20 03:35:42 2015 by ELM ver.2012-10-06 from 001\_\_elm20151209\_040430\_\_dat00.bin

