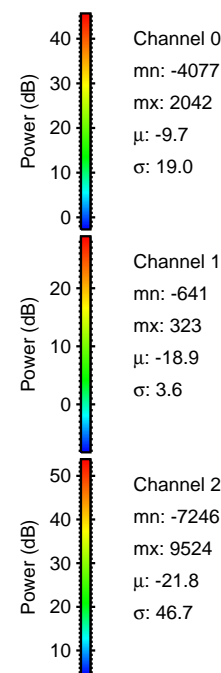
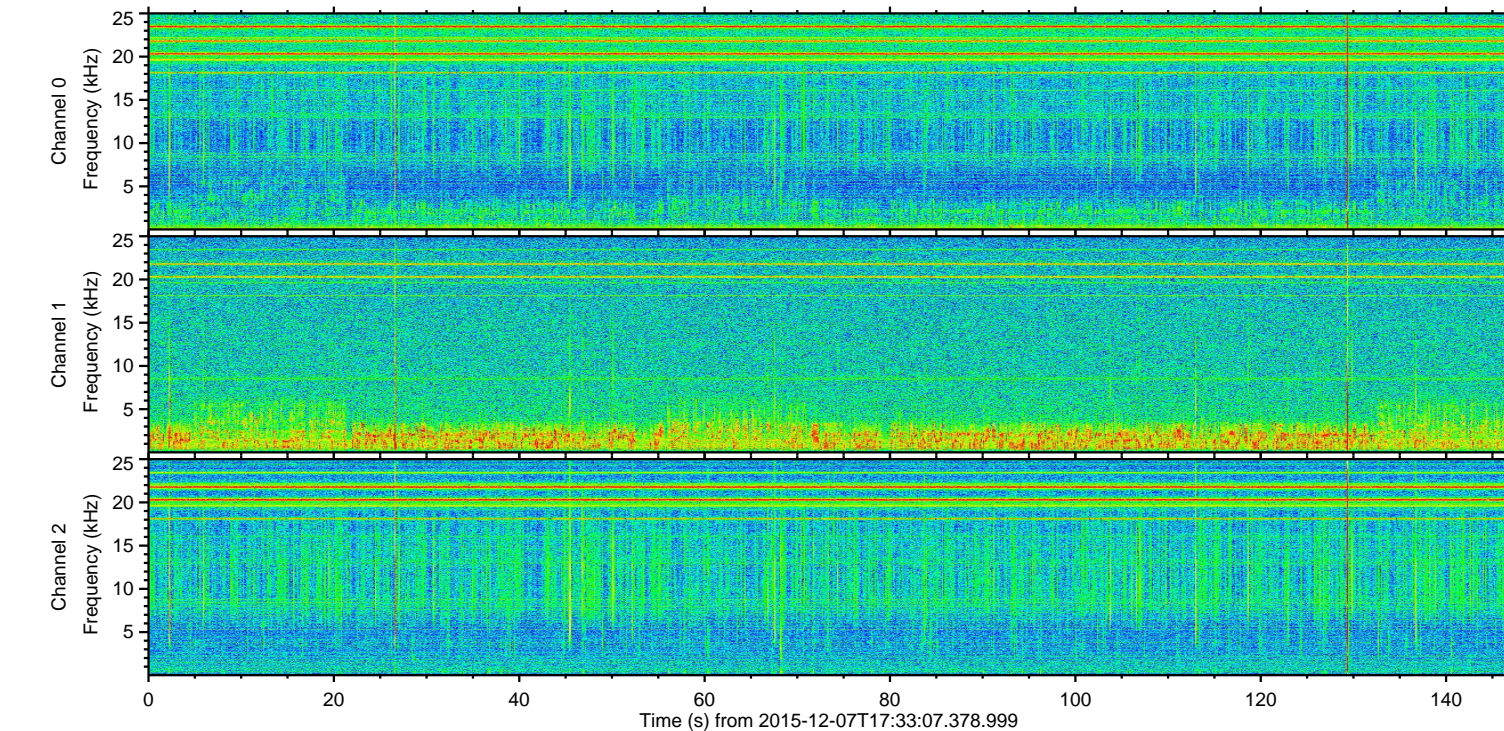
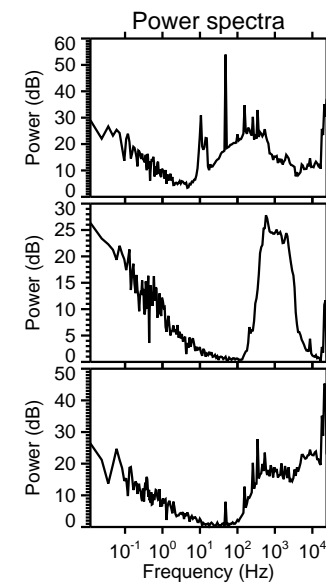
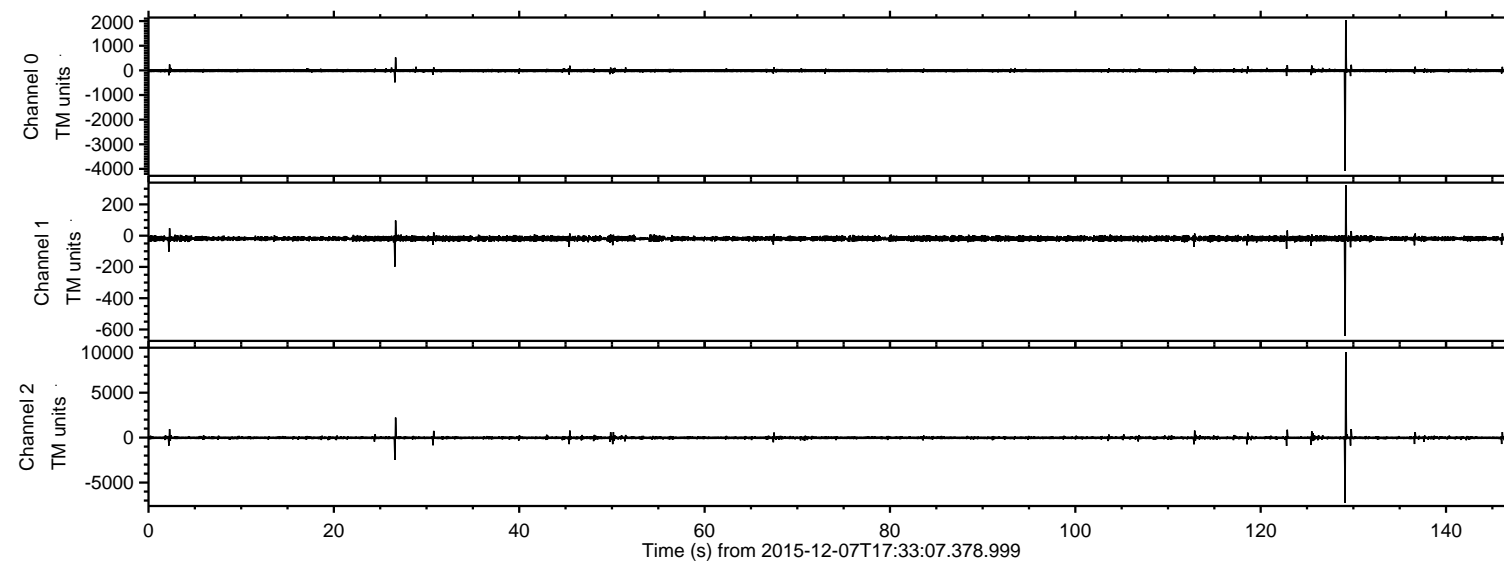


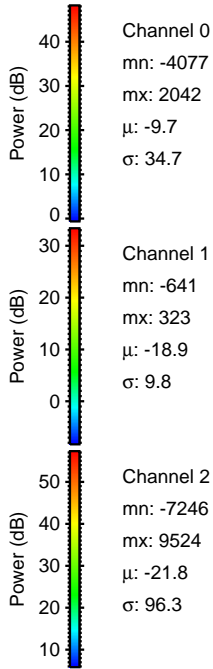
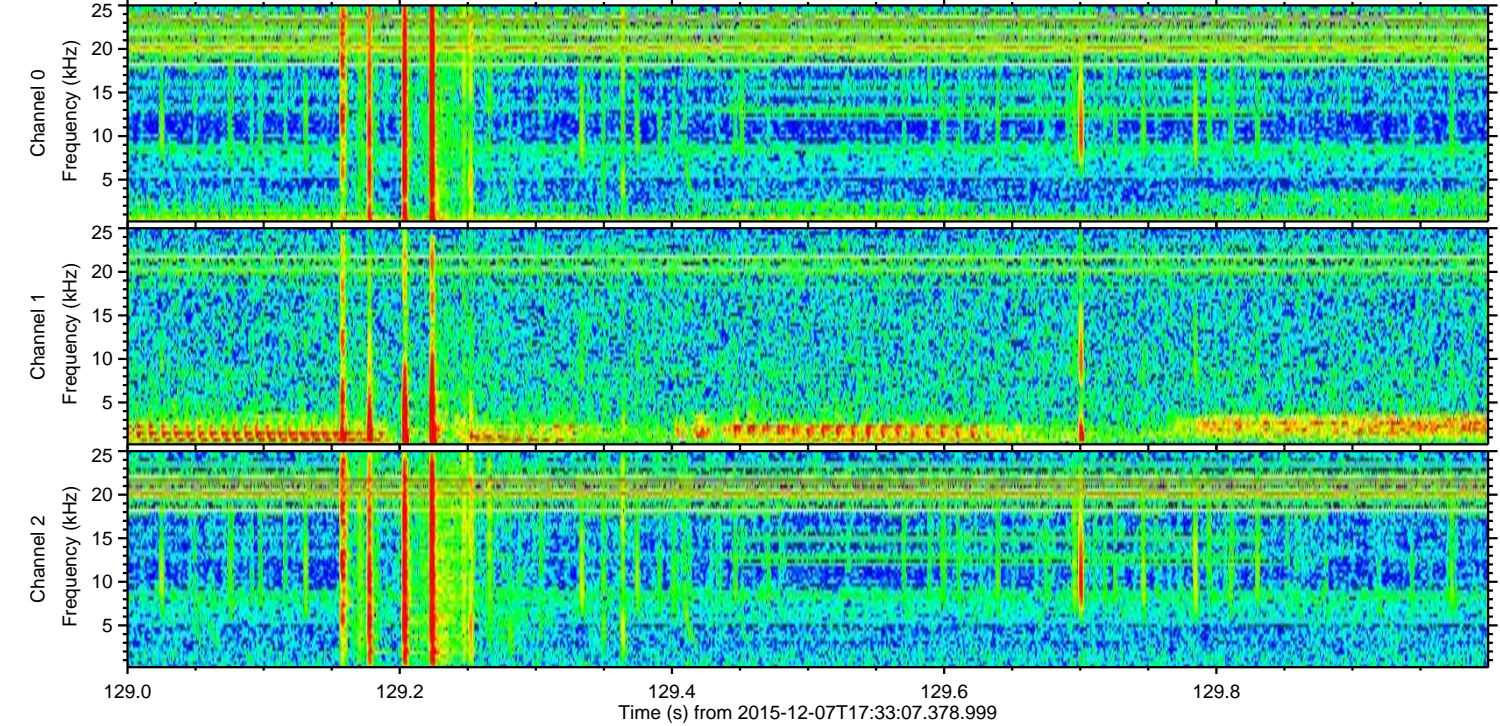
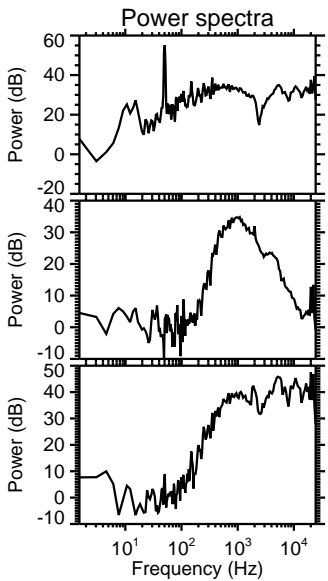
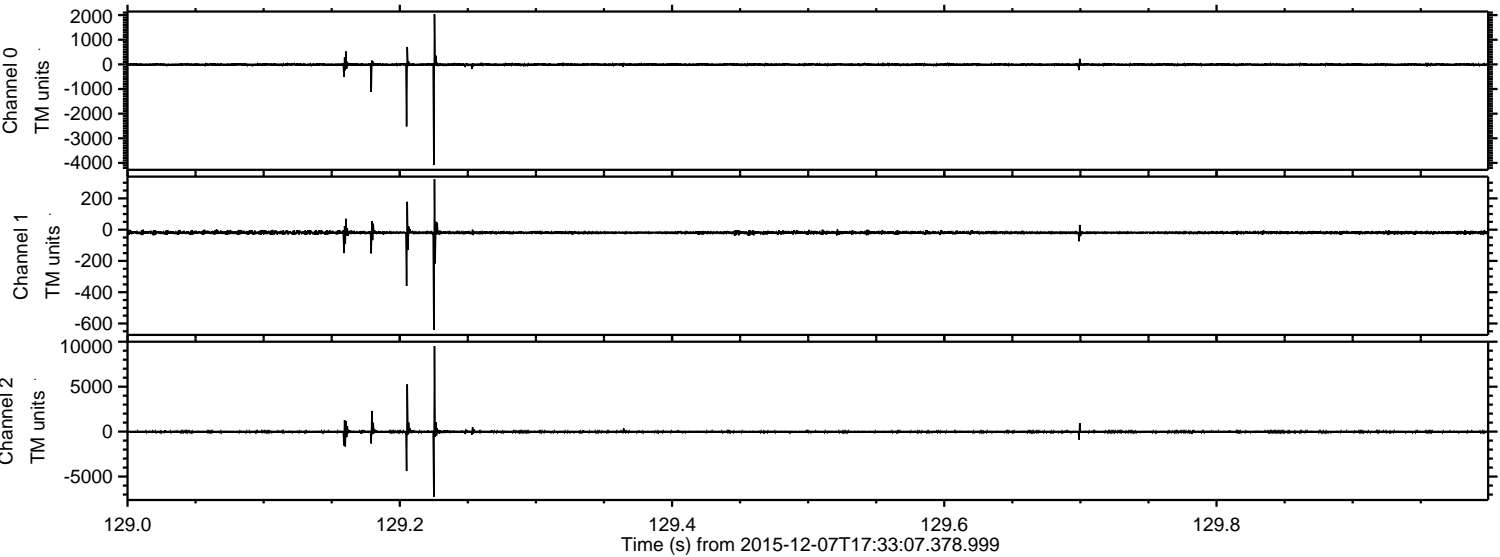
ELMAVAN 3D WAVEFORMS (Measured data sampled at 50 kHz) 51000 packets of 144 samples from 2015-12-07T17:33:07.378.999.

Processed Thu Dec 17 17:49:08 2015 by ELM ver.2012-10-06 from 001__elm20151207_173306__dat00.bin



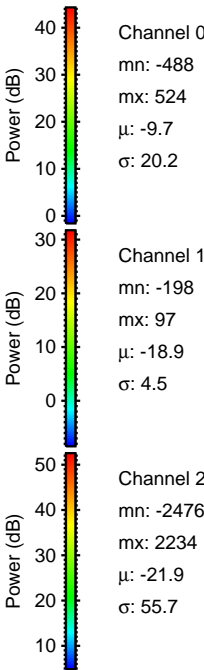
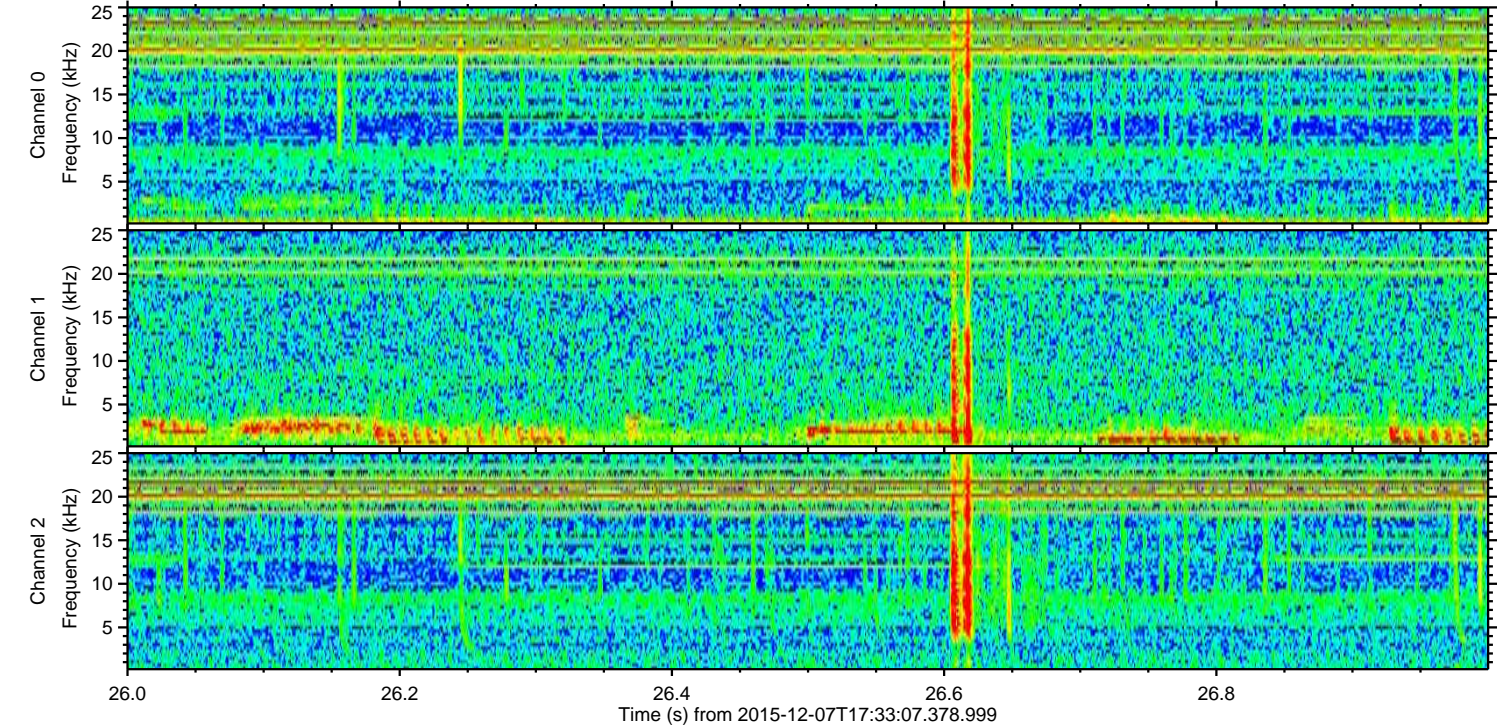
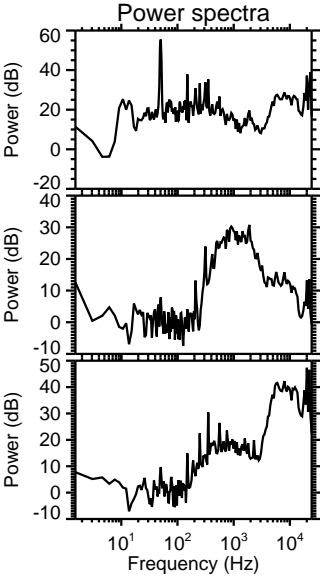
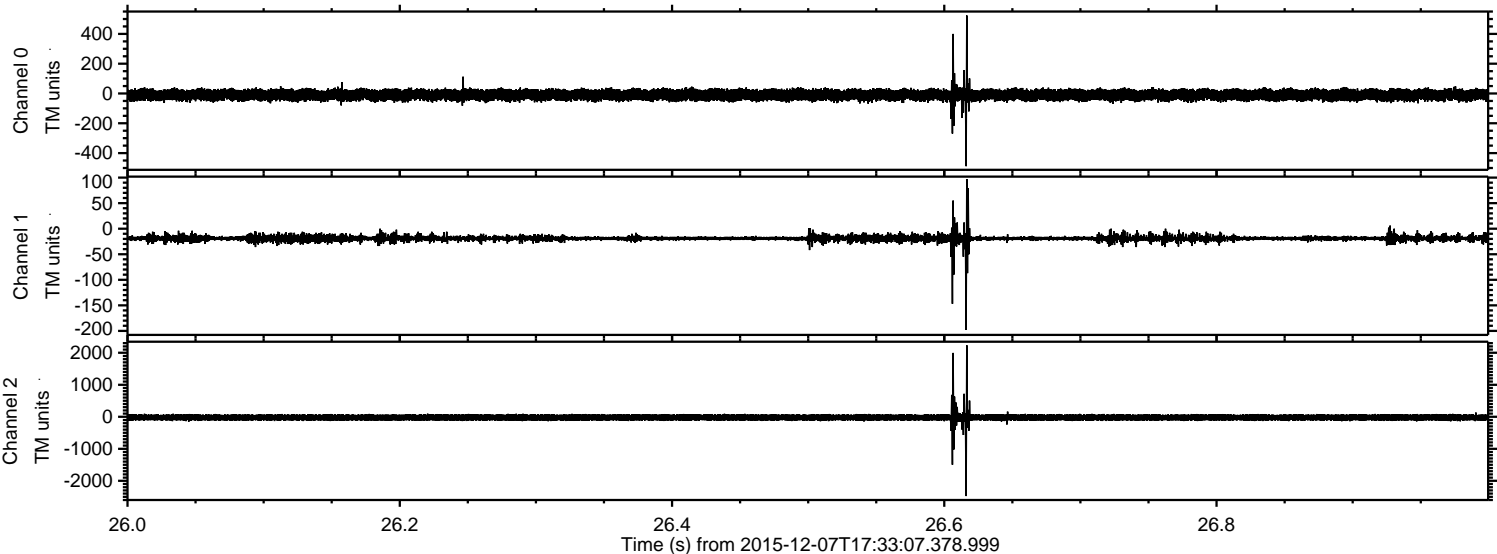
ELMAVAN 3D WAVEFORMS (Measured data sampled at 50 kHz) 51000 packets of 144 samples from 2015-12-07T17:33:07.378.999. Part 130/147

Processed Thu Dec 17 17:49:19 2015 by ELM ver.2012-10-06 from 001__elm20151207_173306__dat00.bin



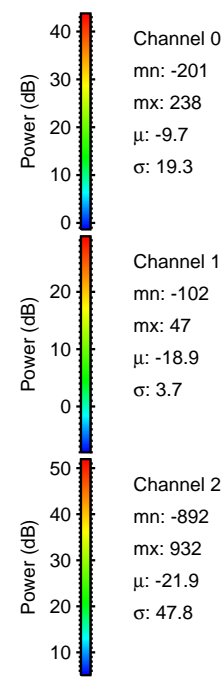
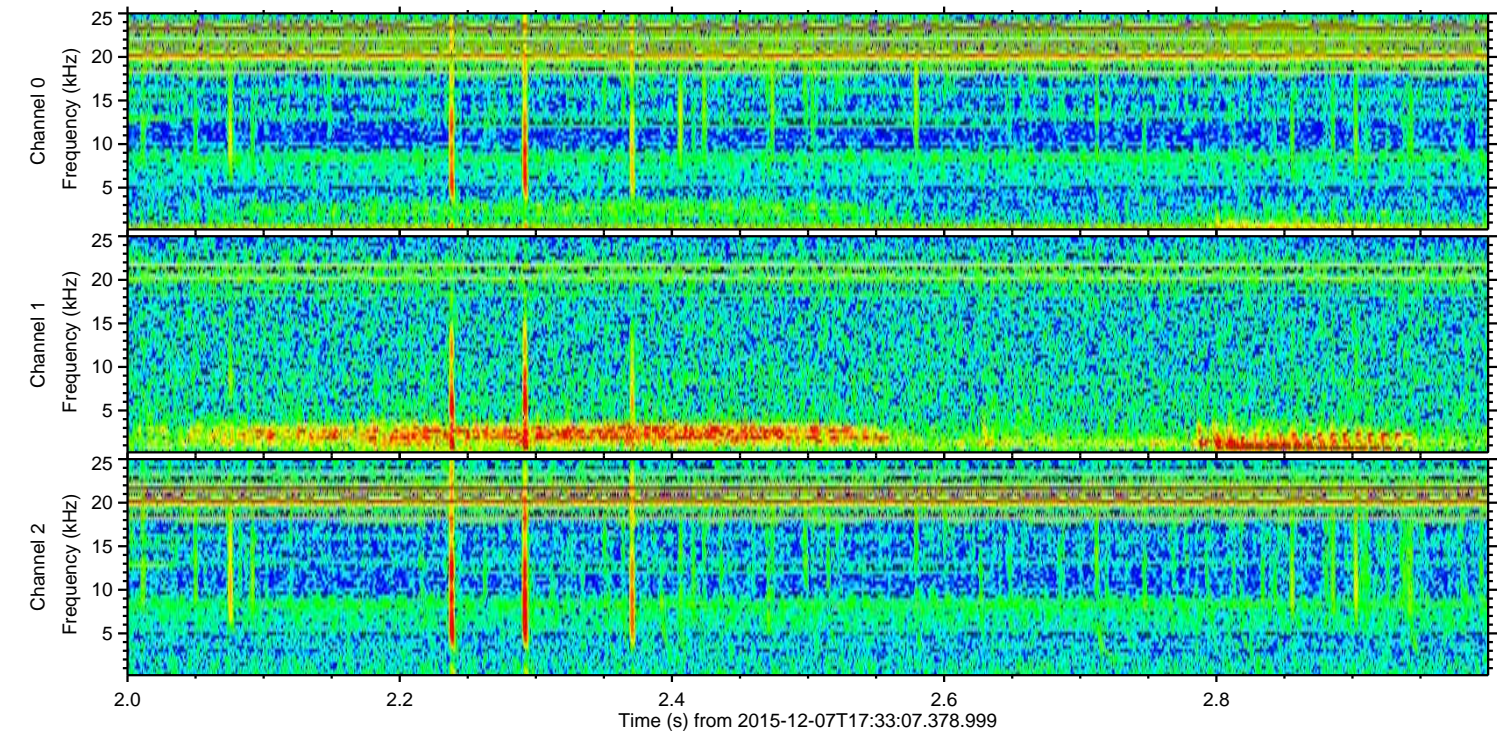
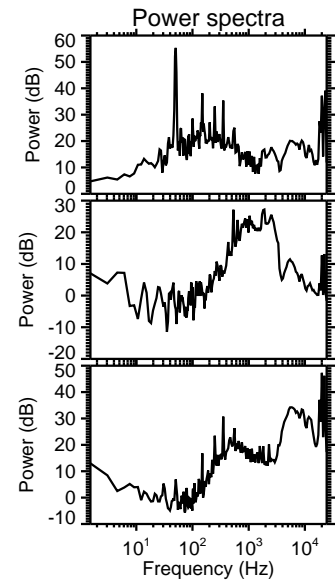
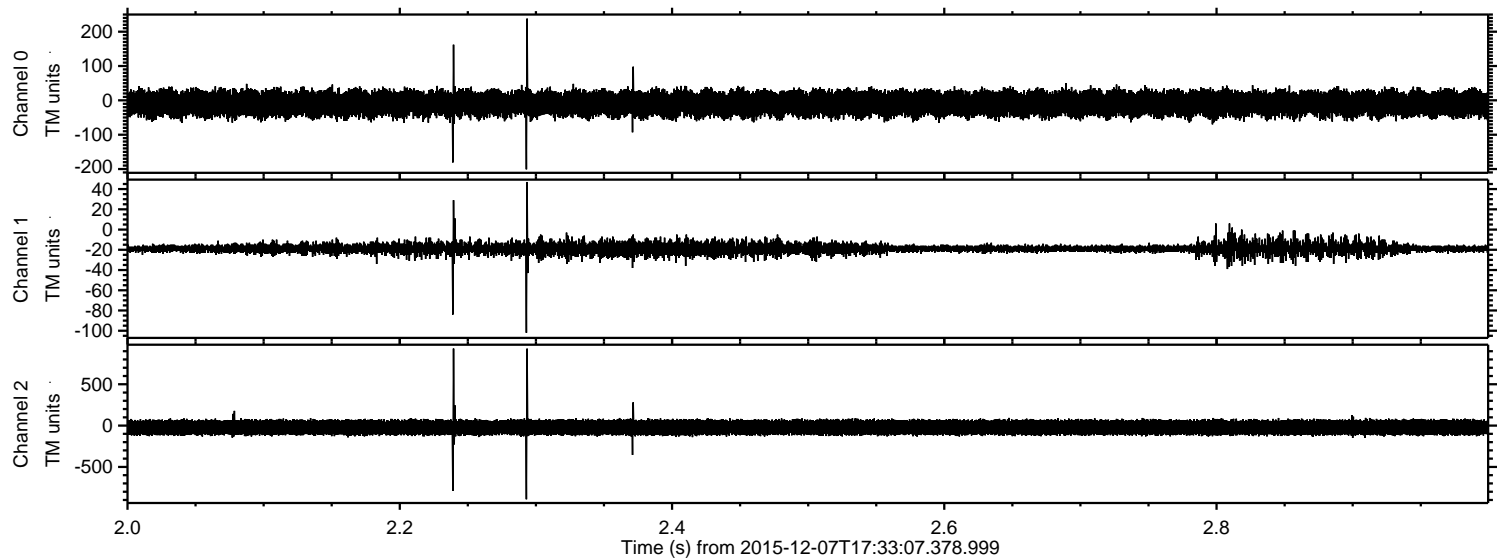
ELMAVAN 3D WAVEFORMS (Measured data sampled at 50 kHz) 51000 packets of 144 samples from 2015-12-07T17:33:07.378.999. Part 27/147

Processed Thu Dec 17 17:49:20 2015 by ELM ver.2012-10-06 from 001__elm20151207_173306__dat00.bin



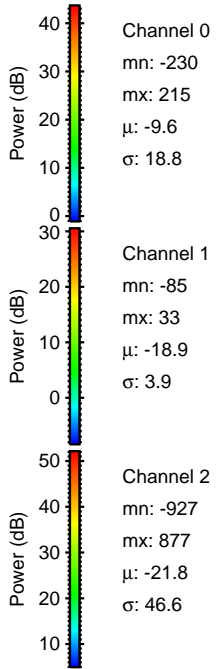
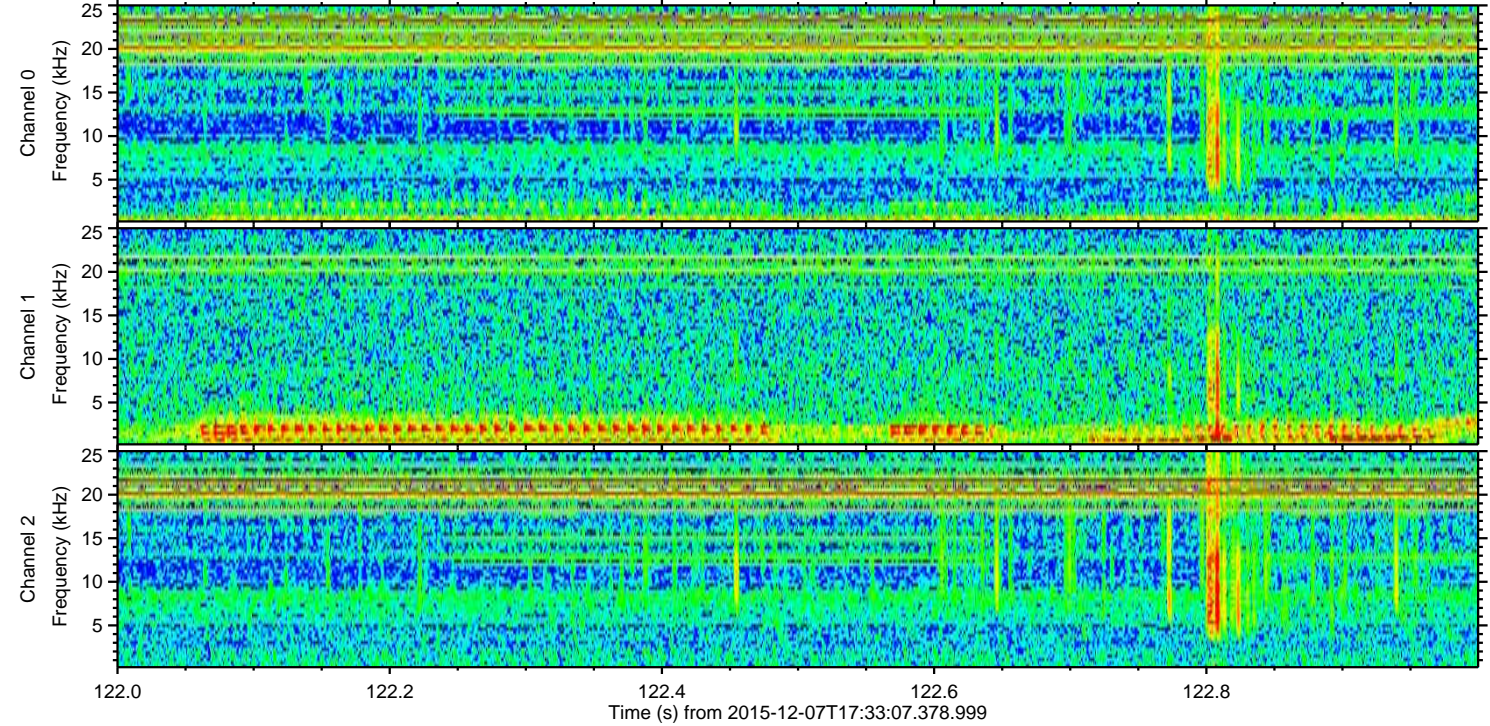
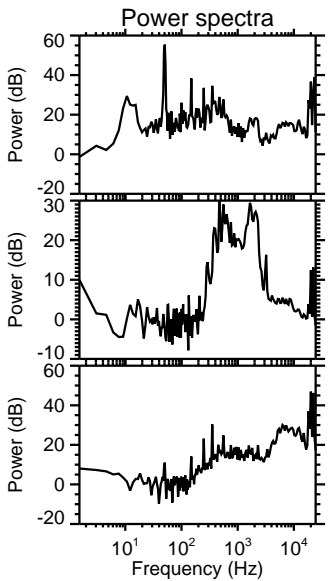
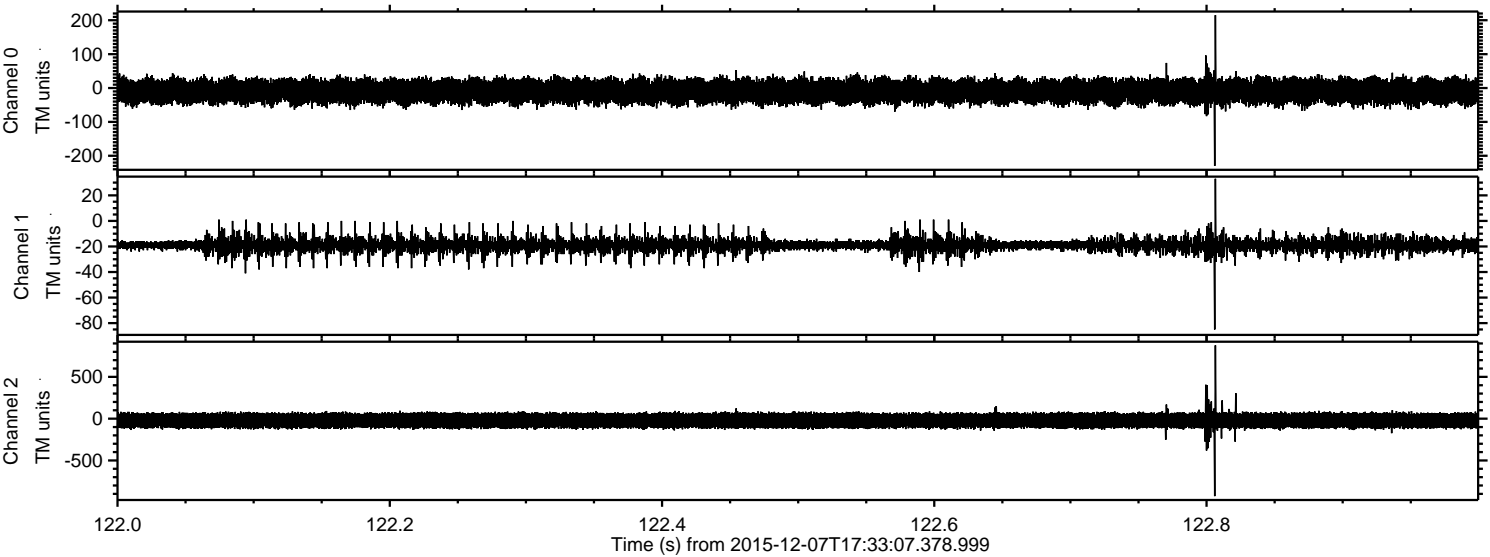
ELMAVAN 3D WAVEFORMS (Measured data sampled at 50 kHz) 51000 packets of 144 samples from 2015-12-07T17:33:07.378.999. Part 3/147

Processed Thu Dec 17 17:49:21 2015 by ELM ver.2012-10-06 from 001__elm20151207_173306__dat00.bin



ELMAVAN 3D WAVEFORMS (Measured data sampled at 50 kHz) 51000 packets of 144 samples from 2015-12-07T17:33:07.378.999. Part 123/147

Processed Thu Dec 17 17:49:22 2015 by ELM ver.2012-10-06 from 001__elm20151207_173306__dat00.bin



Power spectra

Channel 0

mn: -230
mx: 215
 μ : -9.6
 σ : 18.8

Channel 1

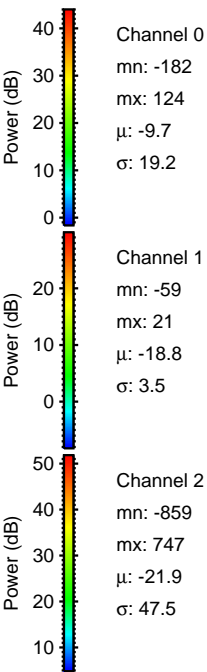
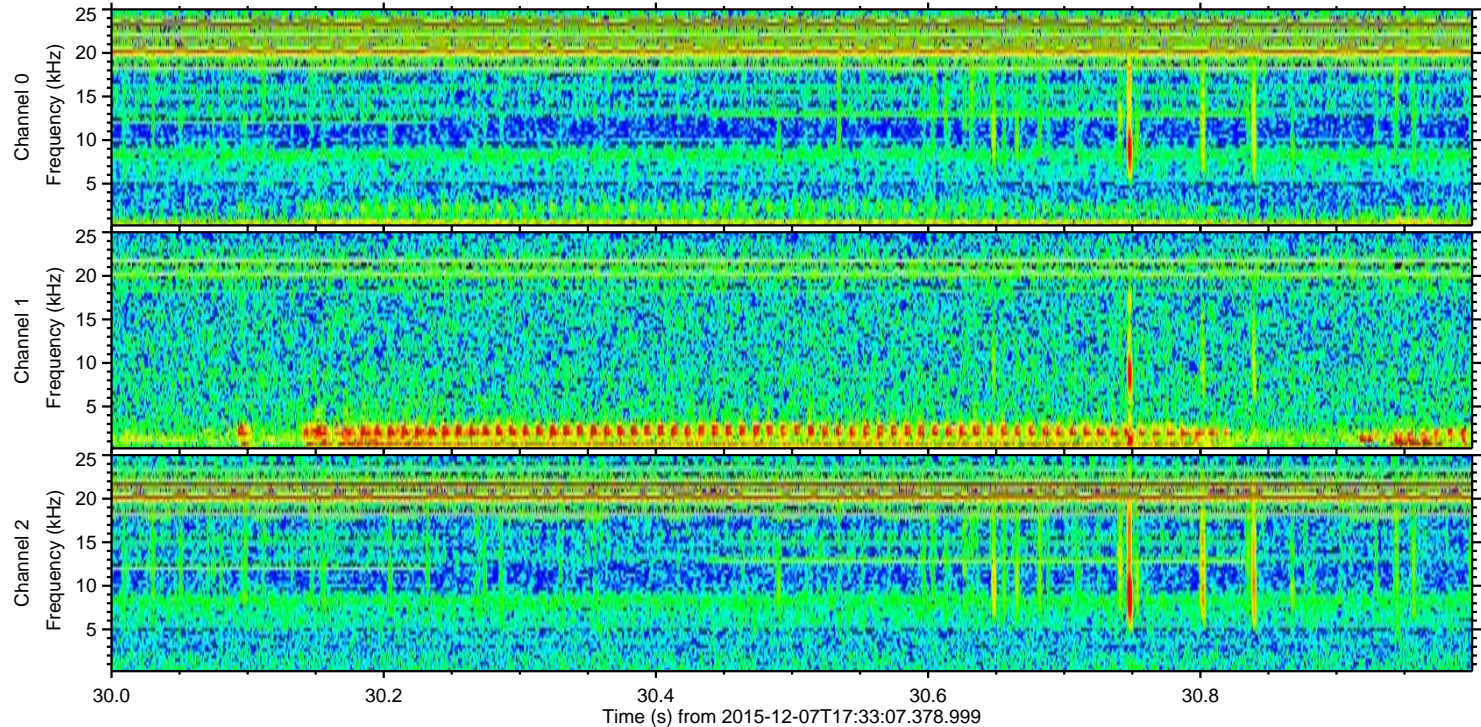
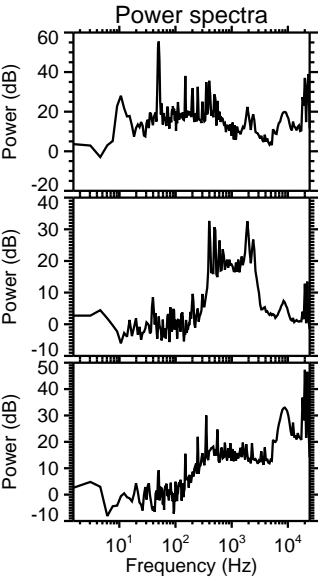
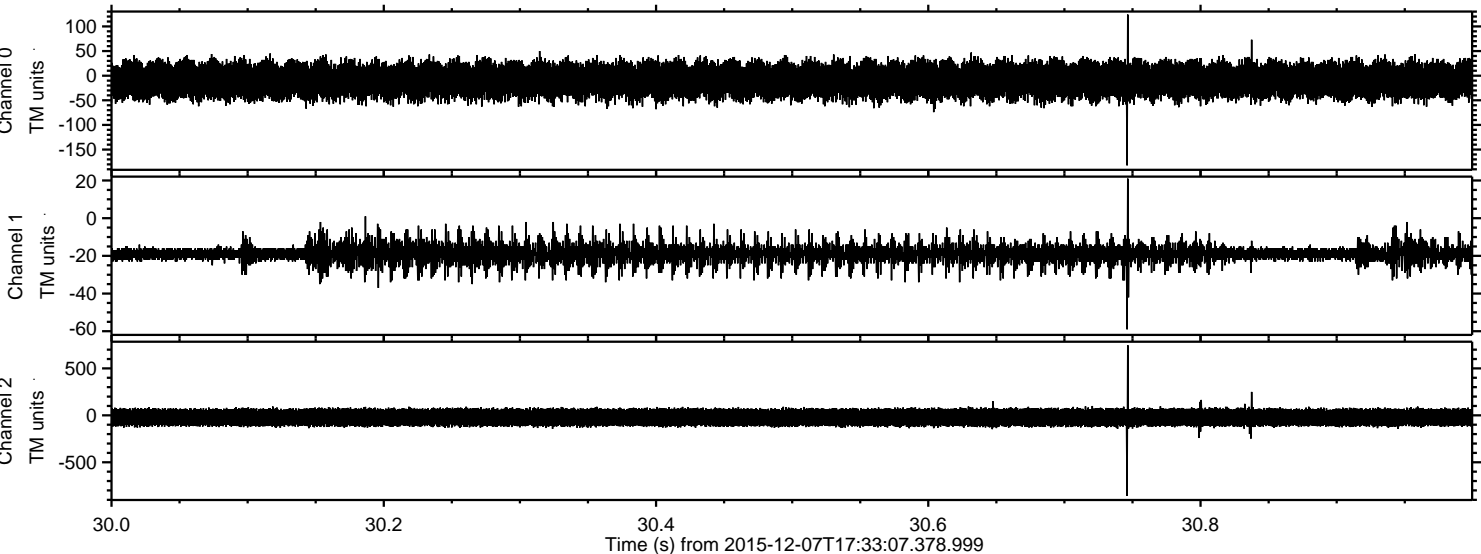
mn: -85
mx: 33
 μ : -18.9
 σ : 3.9

Channel 2

mn: -927
mx: 877
 μ : -21.8
 σ : 46.6

ELMAVAN 3D WAVEFORMS (Measured data sampled at 50 kHz) 51000 packets of 144 samples from 2015-12-07T17:33:07.378.999. Part 31/147

Processed Thu Dec 17 17:49:23 2015 by ELM ver.2012-10-06 from 001__elm20151207_173306__dat00.bin



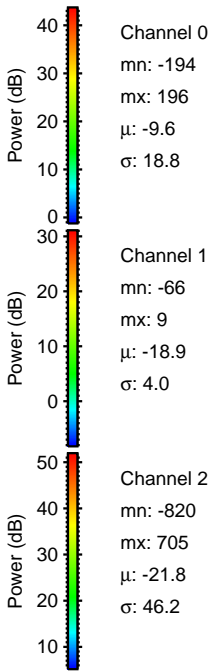
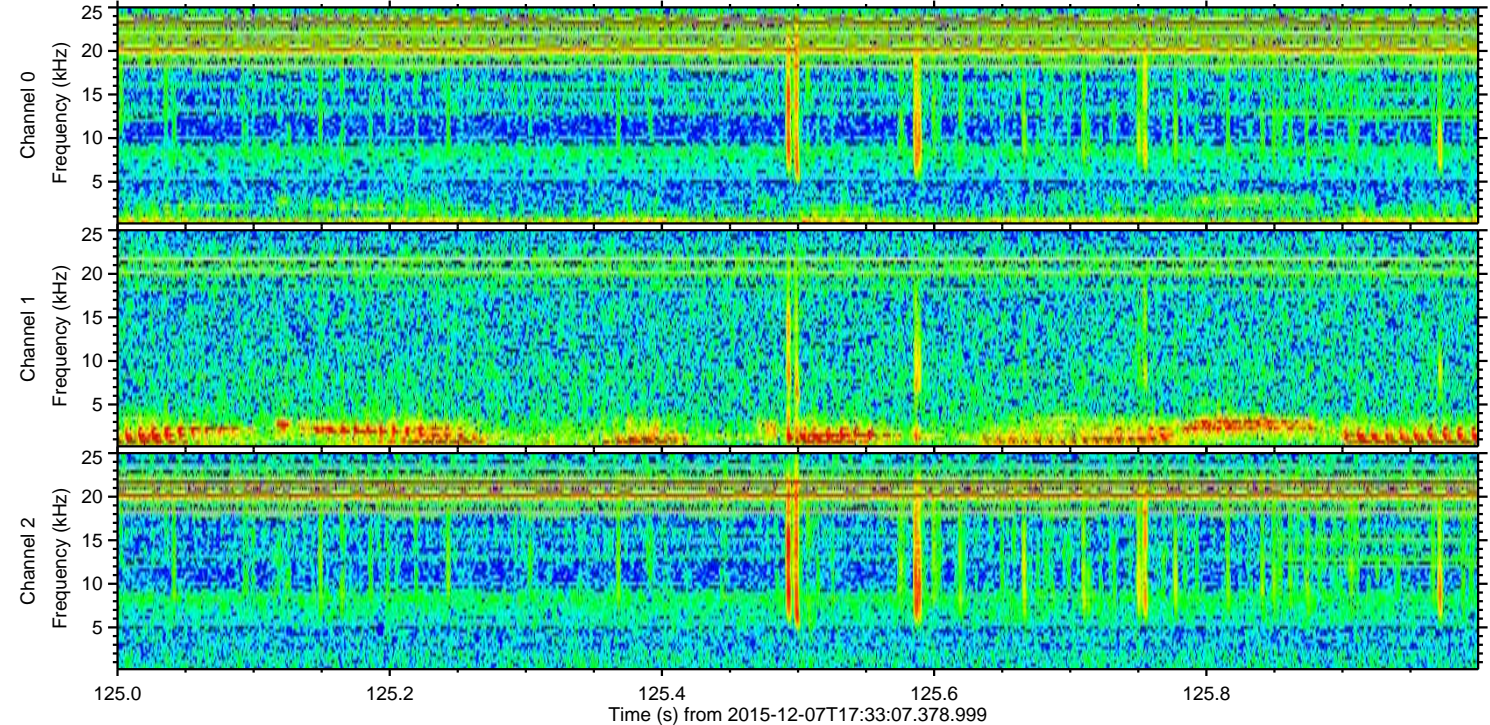
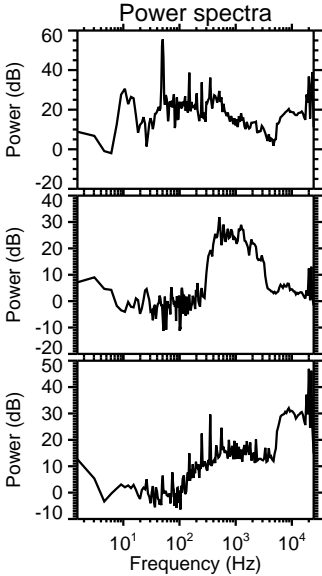
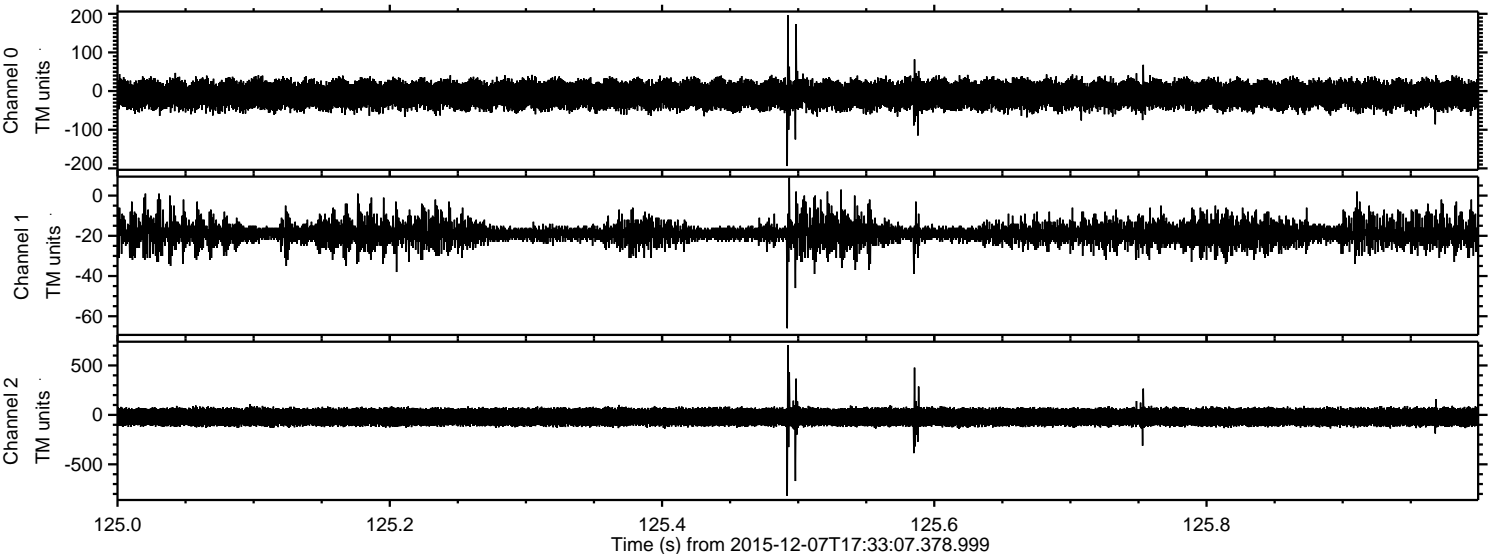
Channel 0
mn: -182
mx: 124
 μ : -9.7
 σ : 19.2

Channel 1
mn: -59
mx: 21
 μ : -18.8
 σ : 3.5

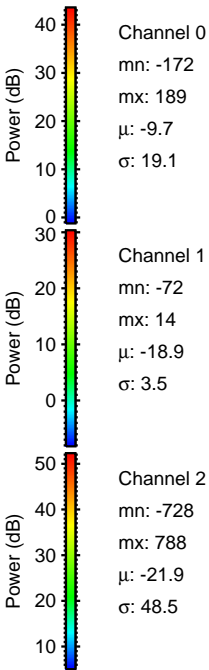
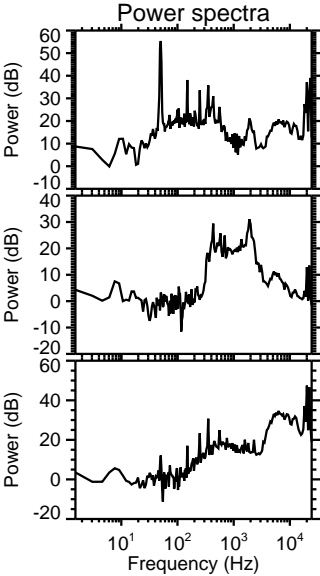
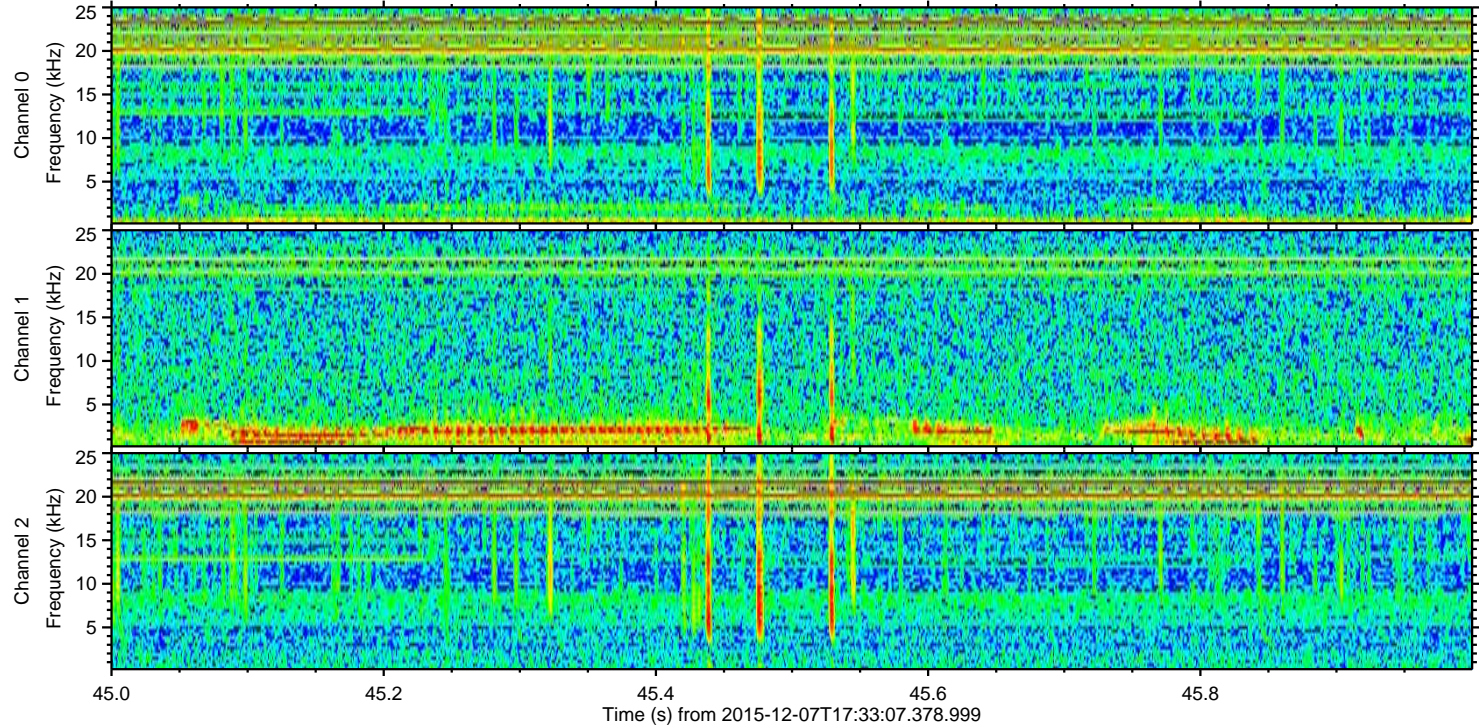
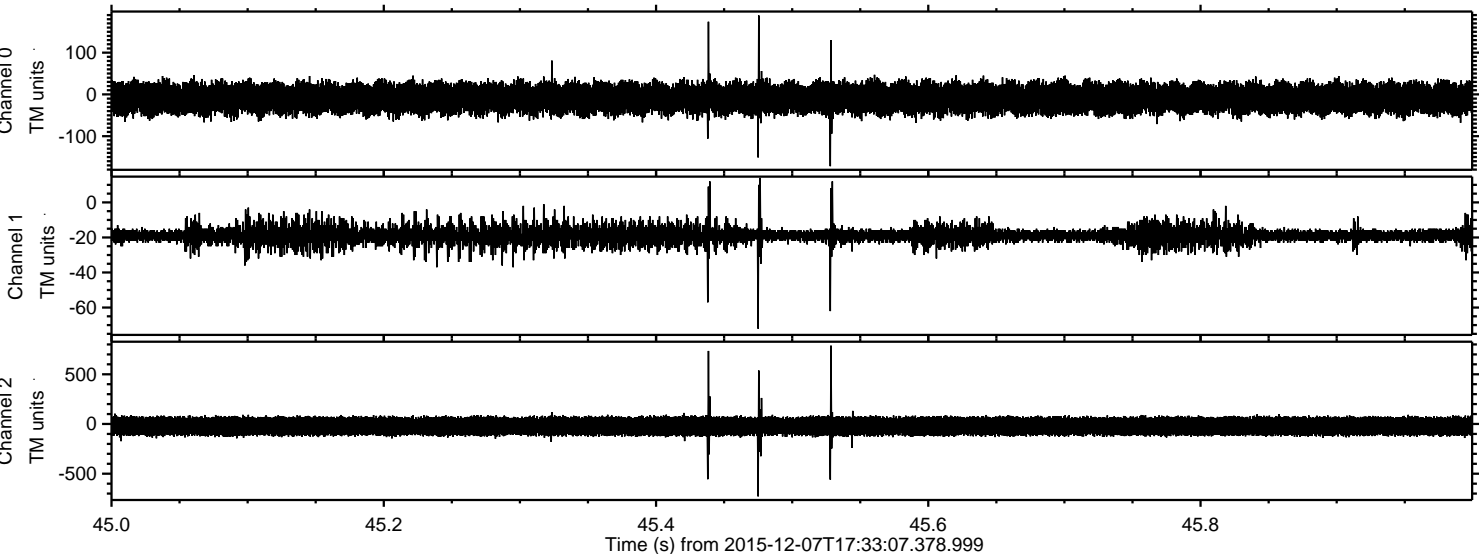
Channel 2
mn: -859
mx: 747
 μ : -21.9
 σ : 47.5

ELMAVAN 3D WAVEFORMS (Measured data sampled at 50 kHz) 51000 packets of 144 samples from 2015-12-07T17:33:07.378.999. Part 126/147

Processed Thu Dec 17 17:49:24 2015 by ELM ver.2012-10-06 from 001__elm20151207_173306__dat00.bin

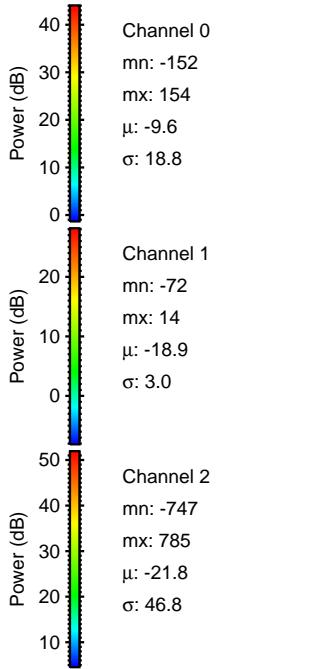
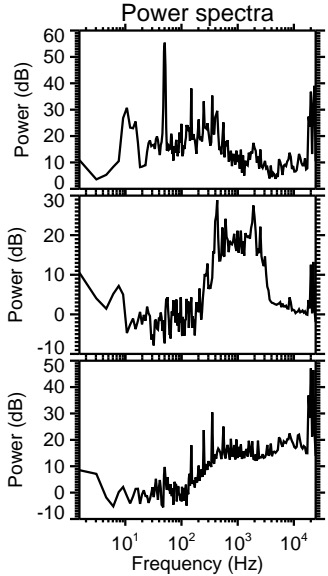
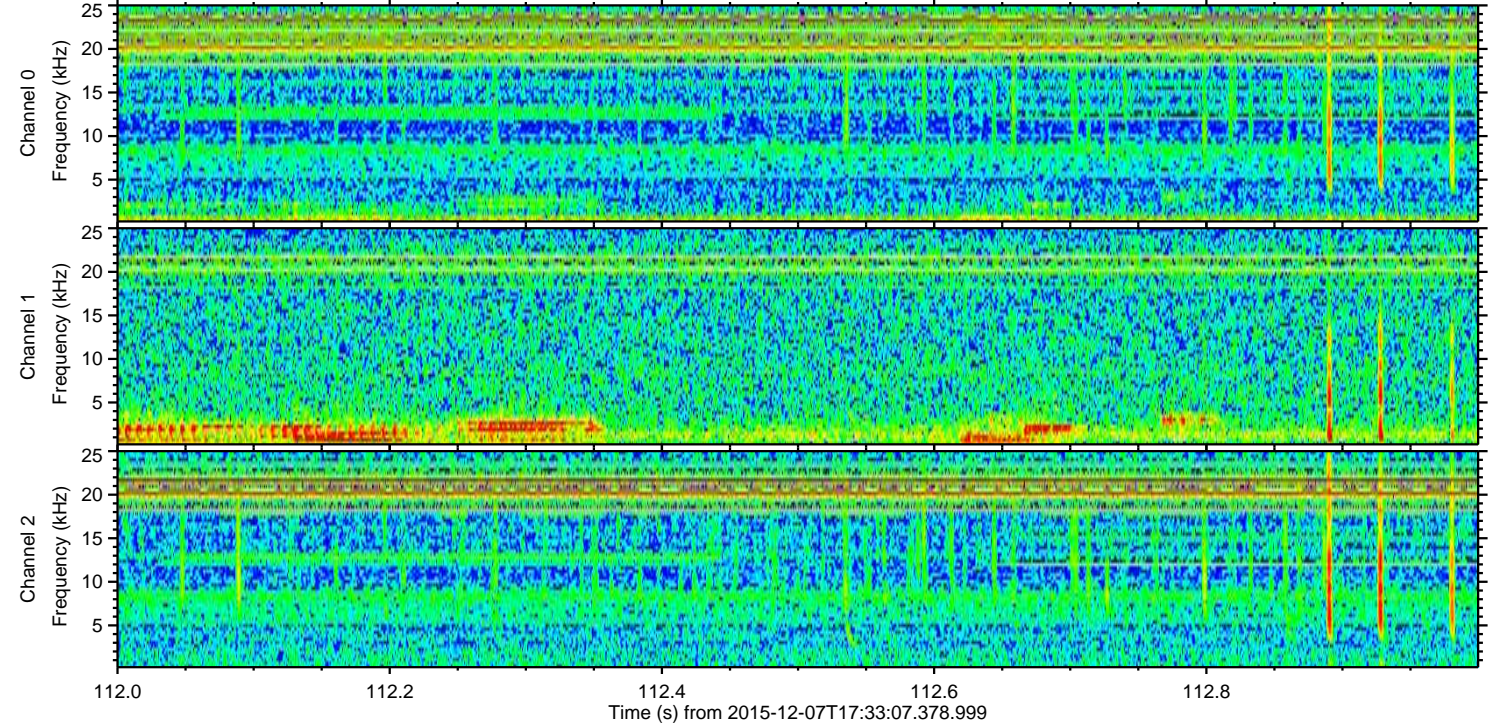
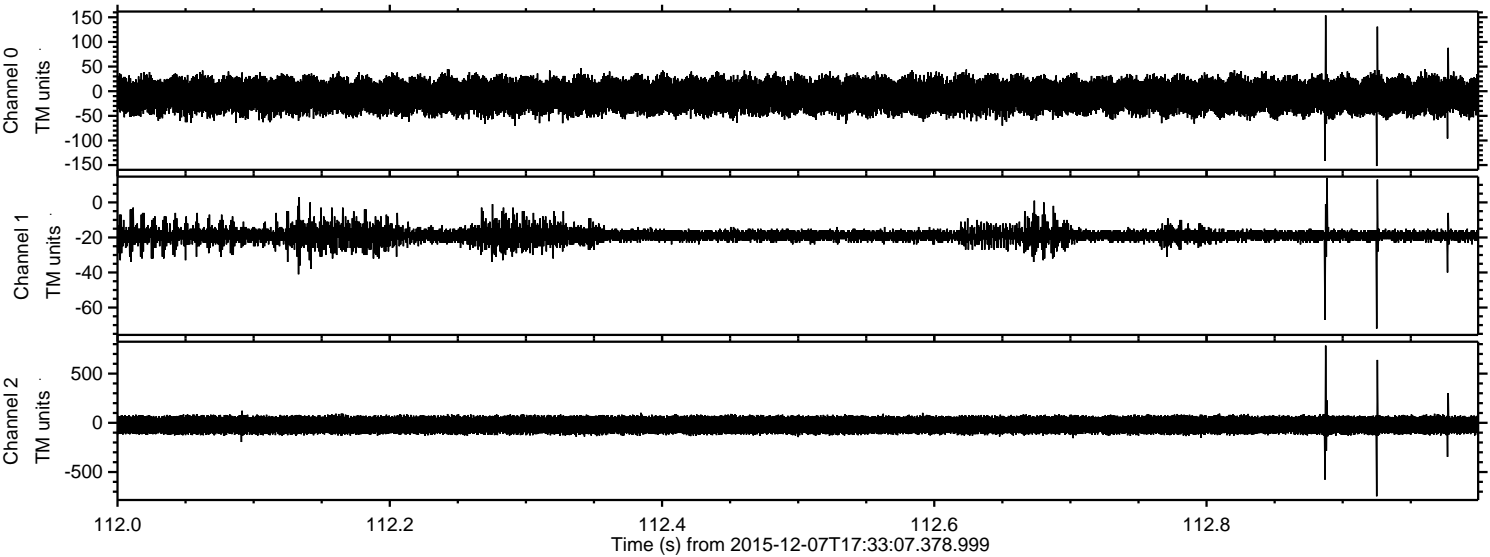


Processed Thu Dec 17 17:49:25 2015 by ELM ver.2012-10-06 from 001__elm20151207_173306__dat00.bin



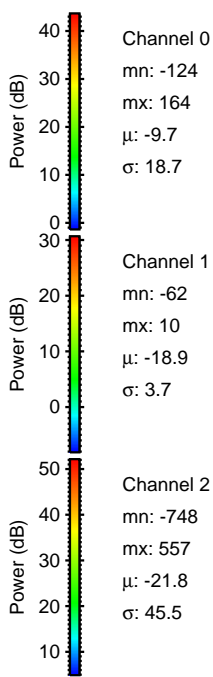
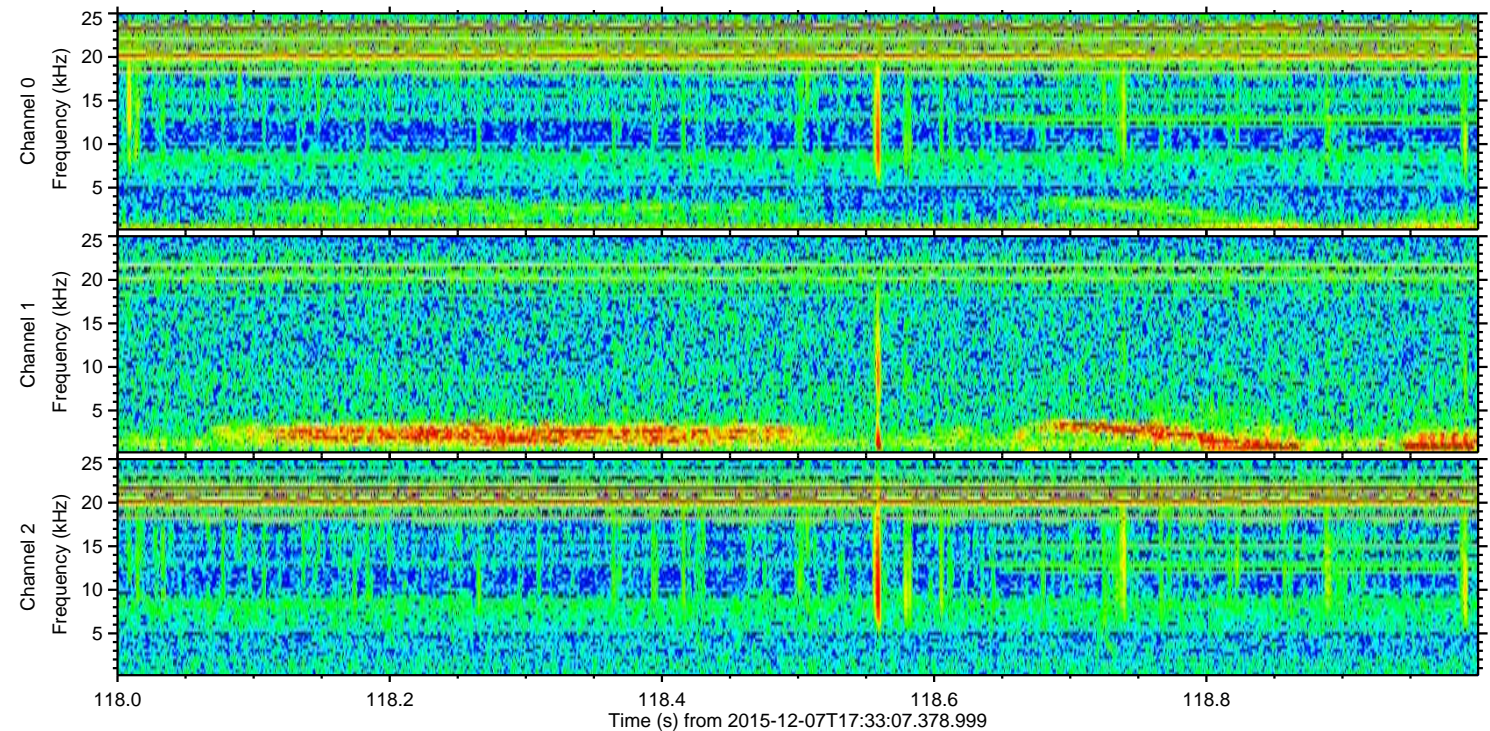
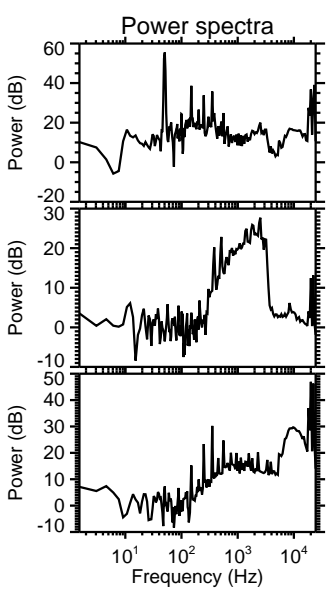
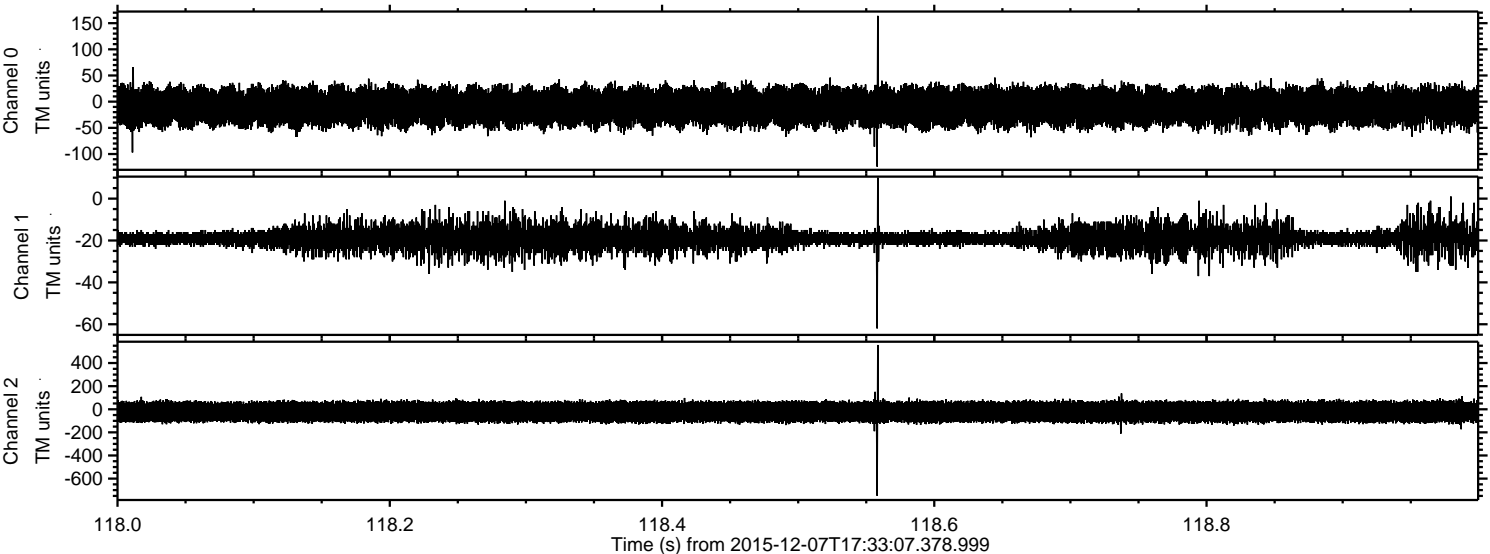
ELMAVAN 3D WAVEFORMS (Measured data sampled at 50 kHz) 51000 packets of 144 samples from 2015-12-07T17:33:07.378.999. Part 113/147

Processed Thu Dec 17 17:49:26 2015 by ELM ver.2012-10-06 from 001__elm20151207_173306__dat00.bin



ELMAVAN 3D WAVEFORMS (Measured data sampled at 50 kHz) 51000 packets of 144 samples from 2015-12-07T17:33:07.378.999. Part 119/147

Processed Thu Dec 17 17:49:27 2015 by ELM ver.2012-10-06 from 001__elm20151207_173306__dat00.bin



Channel 0
mn: -124
mx: 164
 μ : -9.7
 σ : 18.7

Channel 1
mn: -62
mx: 10
 μ : -18.9
 σ : 3.7

Channel 2
mn: -748
mx: 557
 μ : -21.8
 σ : 45.5

Processed Thu Dec 17 17:49:28 2015 by ELM ver.2012-10-06 from 001__elm20151207_173306__dat00.bin

