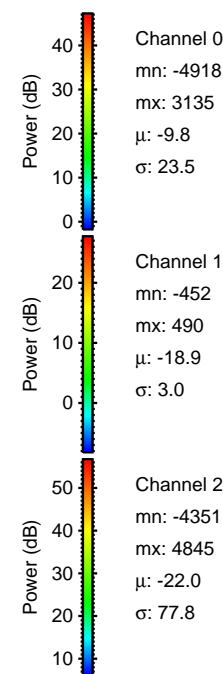
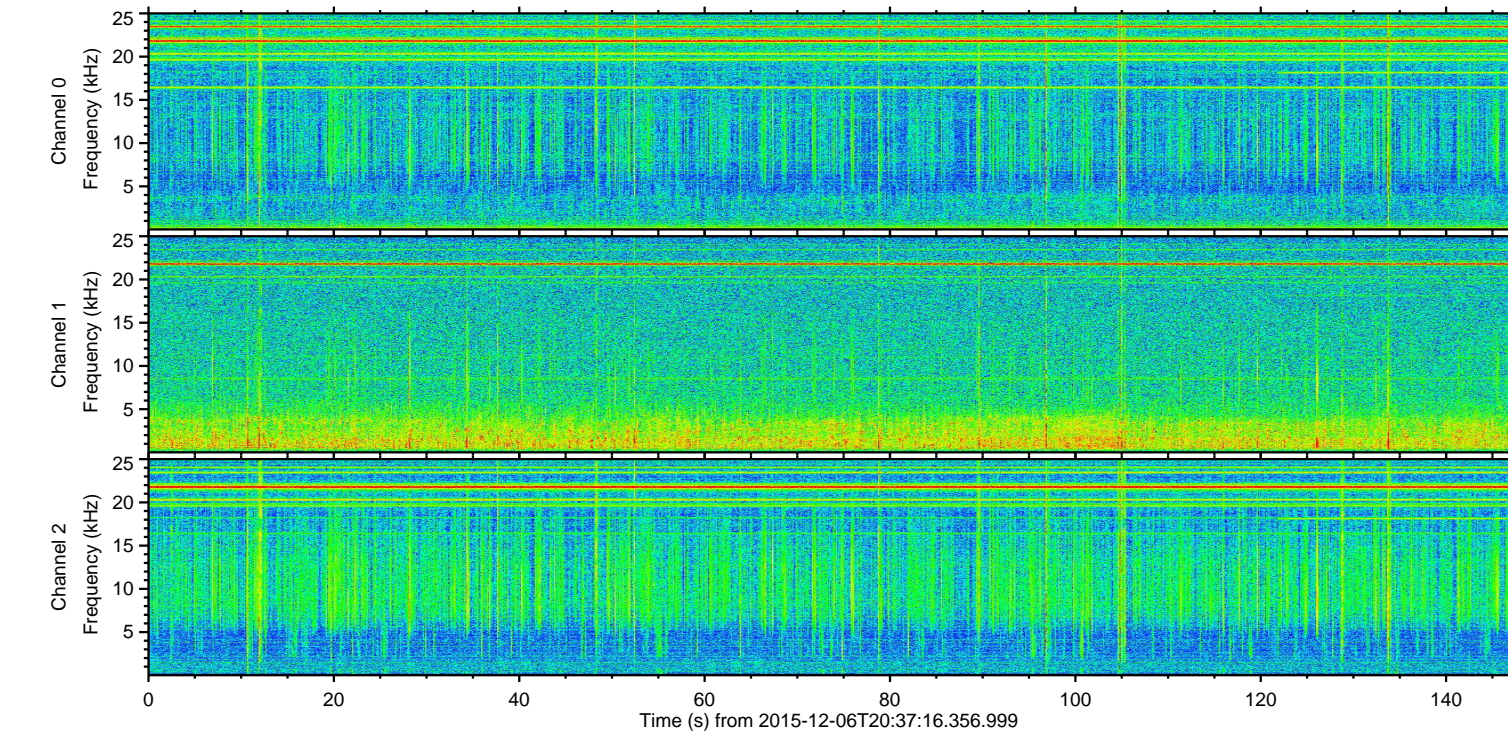
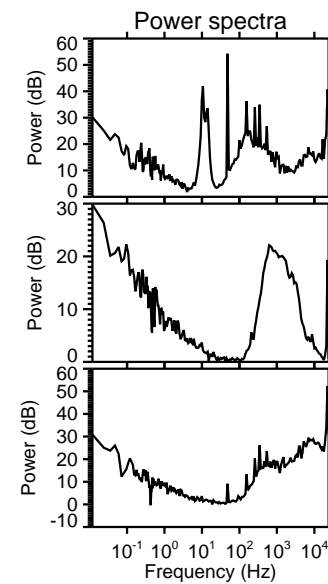
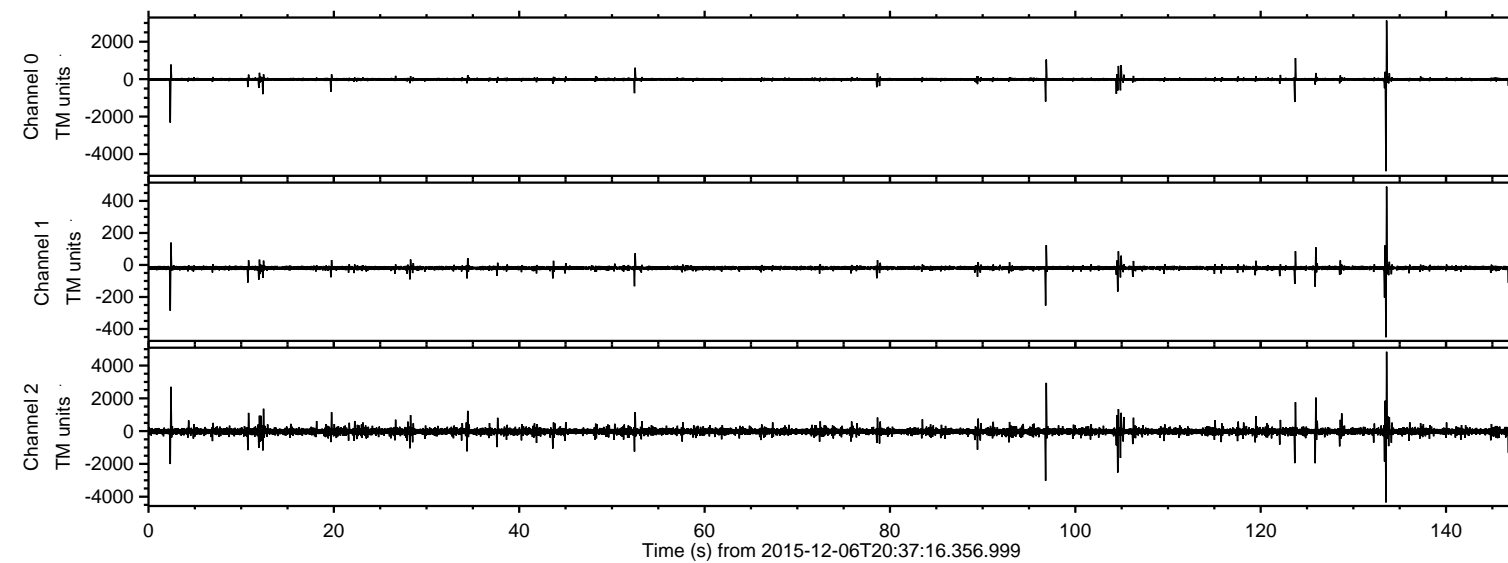


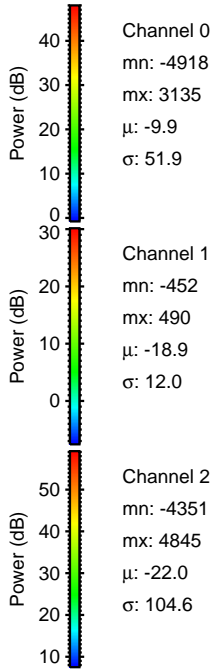
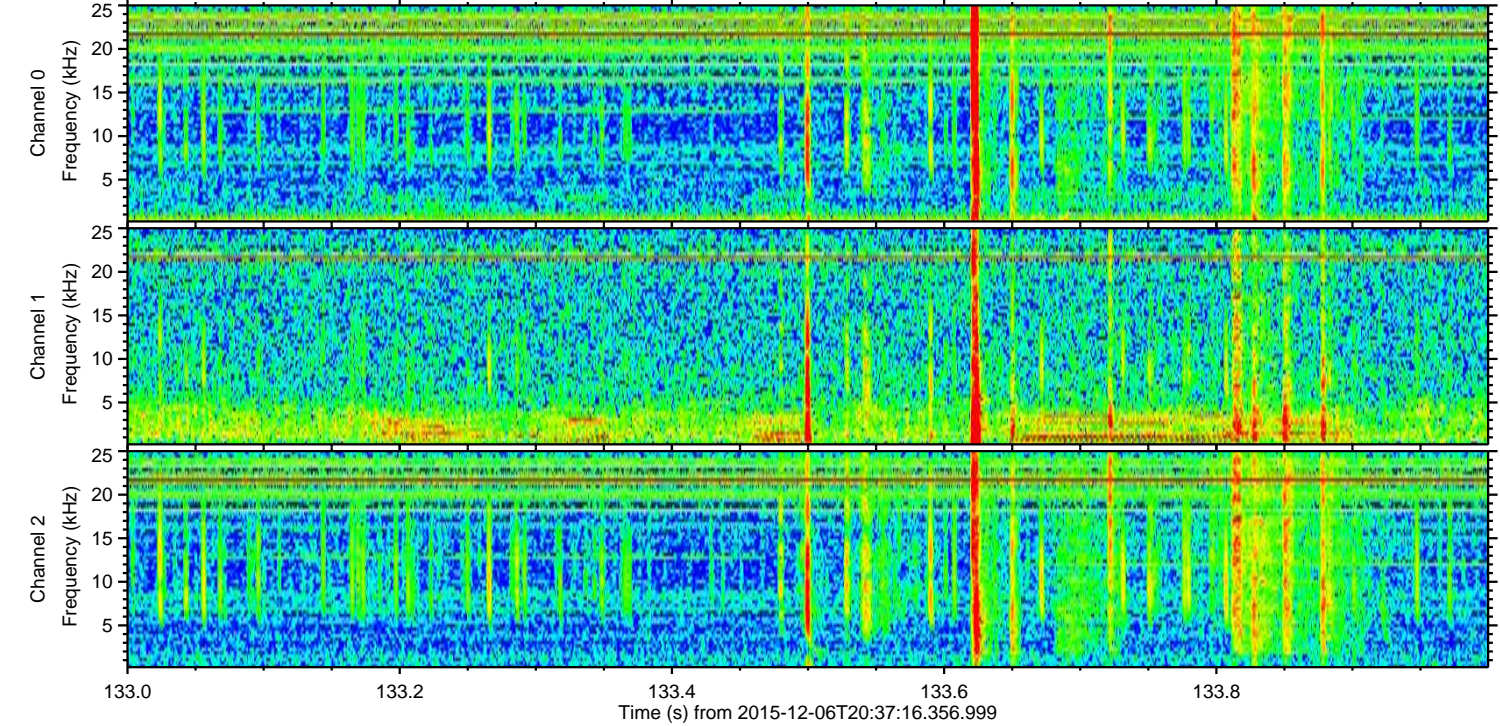
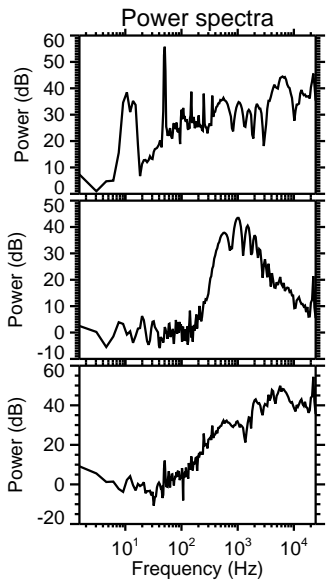
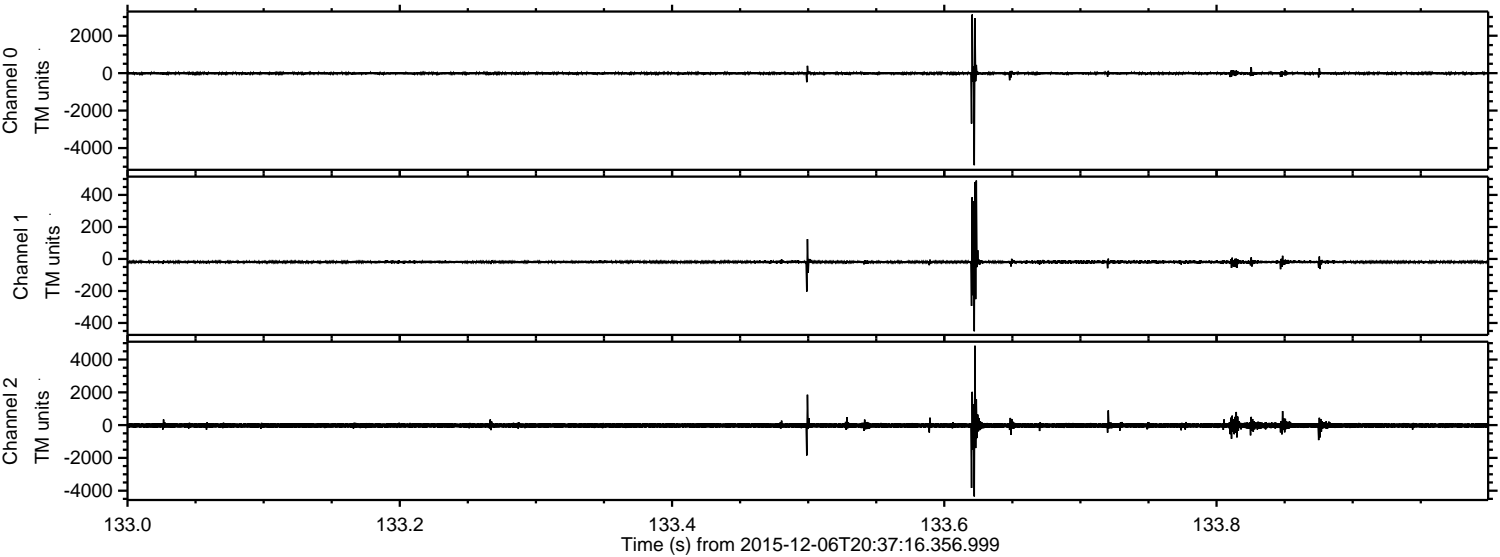
ELMAVAN 3D WAVEFORMS (Measured data sampled at 50 kHz) 51000 packets of 144 samples from 2015-12-06T20:37:16.356.999.

Processed Wed Dec 16 22:34:14 2015 by ELM ver.2012-10-06 from 001__elm20151206_203715__dat00.bin



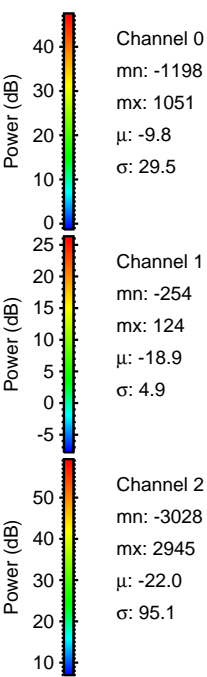
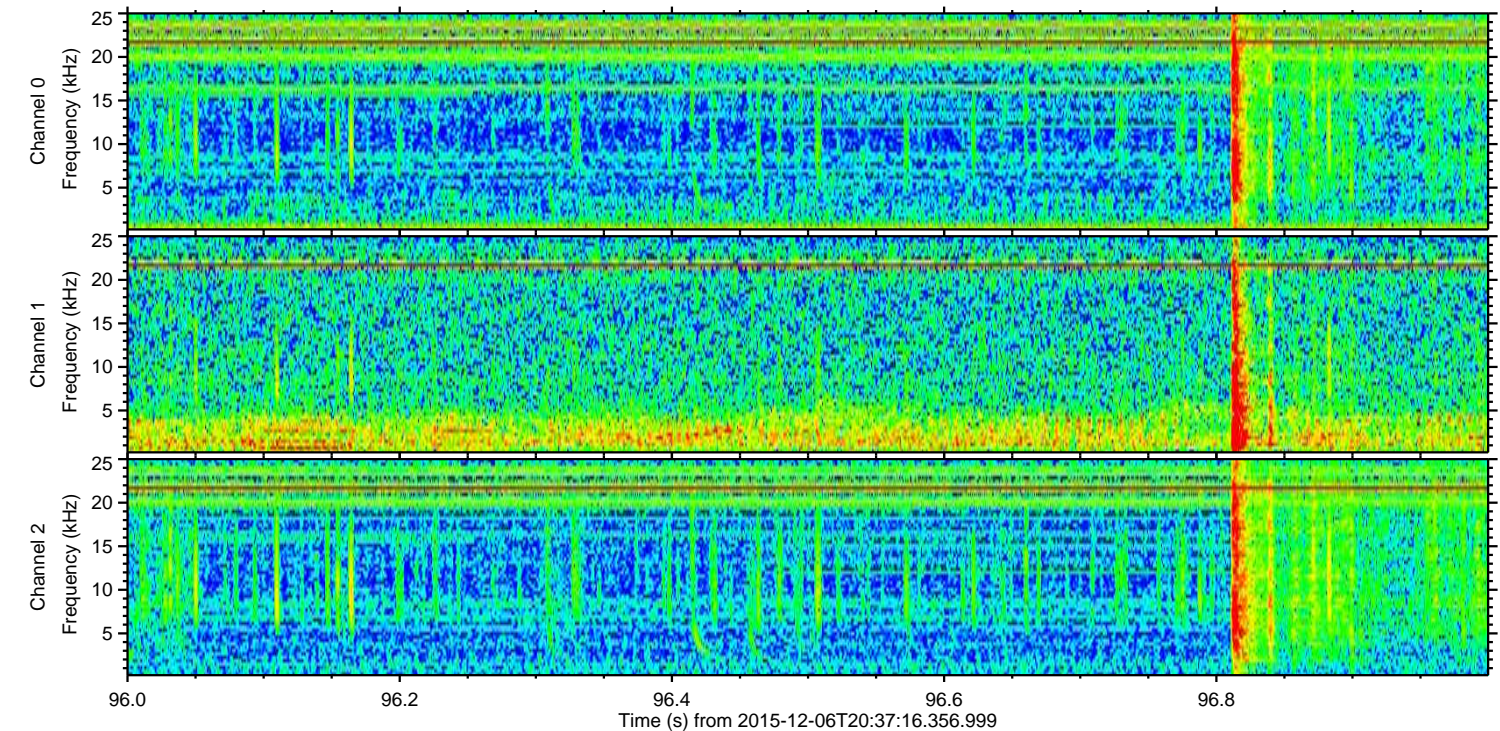
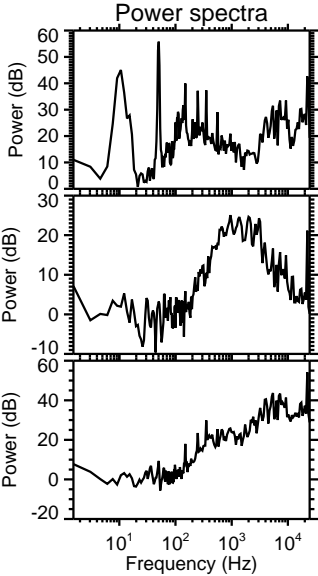
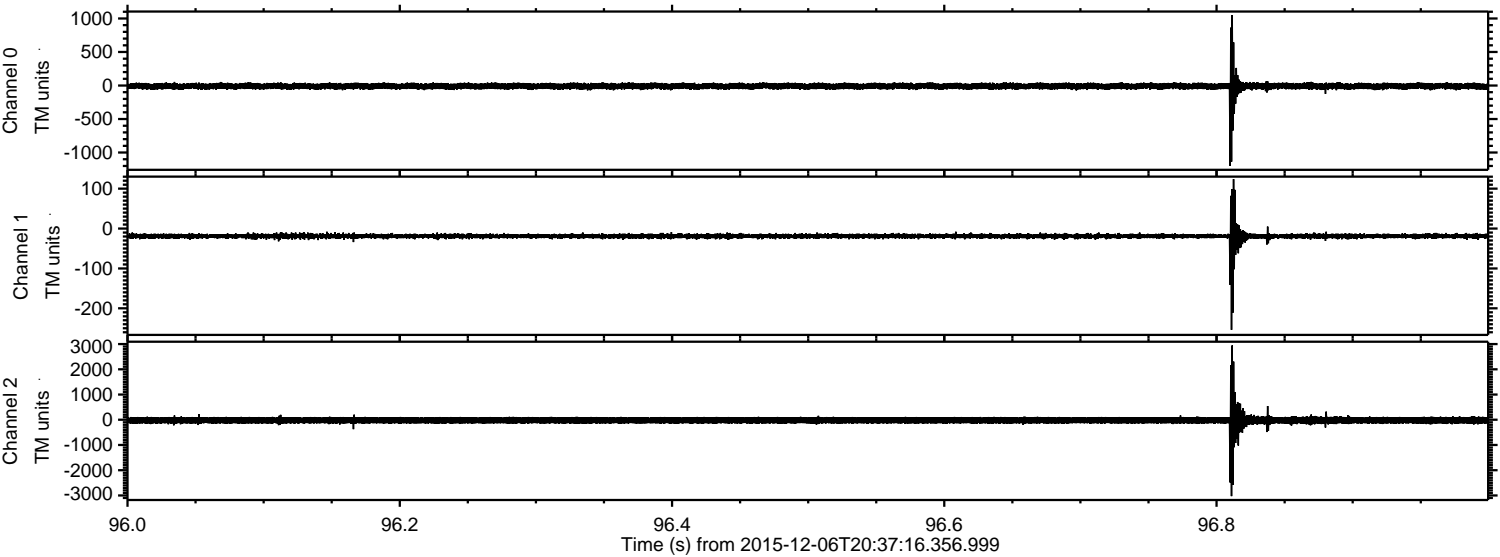
ELMAVAN 3D WAVEFORMS (Measured data sampled at 50 kHz) 51000 packets of 144 samples from 2015-12-06T20:37:16.356.999. Part 134/147

Processed Wed Dec 16 22:34:26 2015 by ELM ver.2012-10-06 from 001__elm20151206_203715__dat00.bin



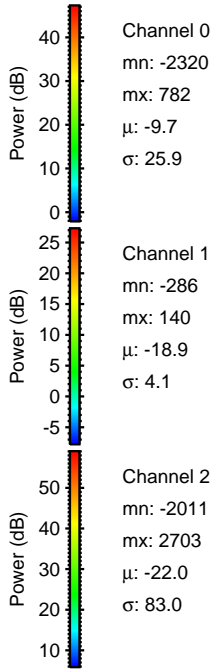
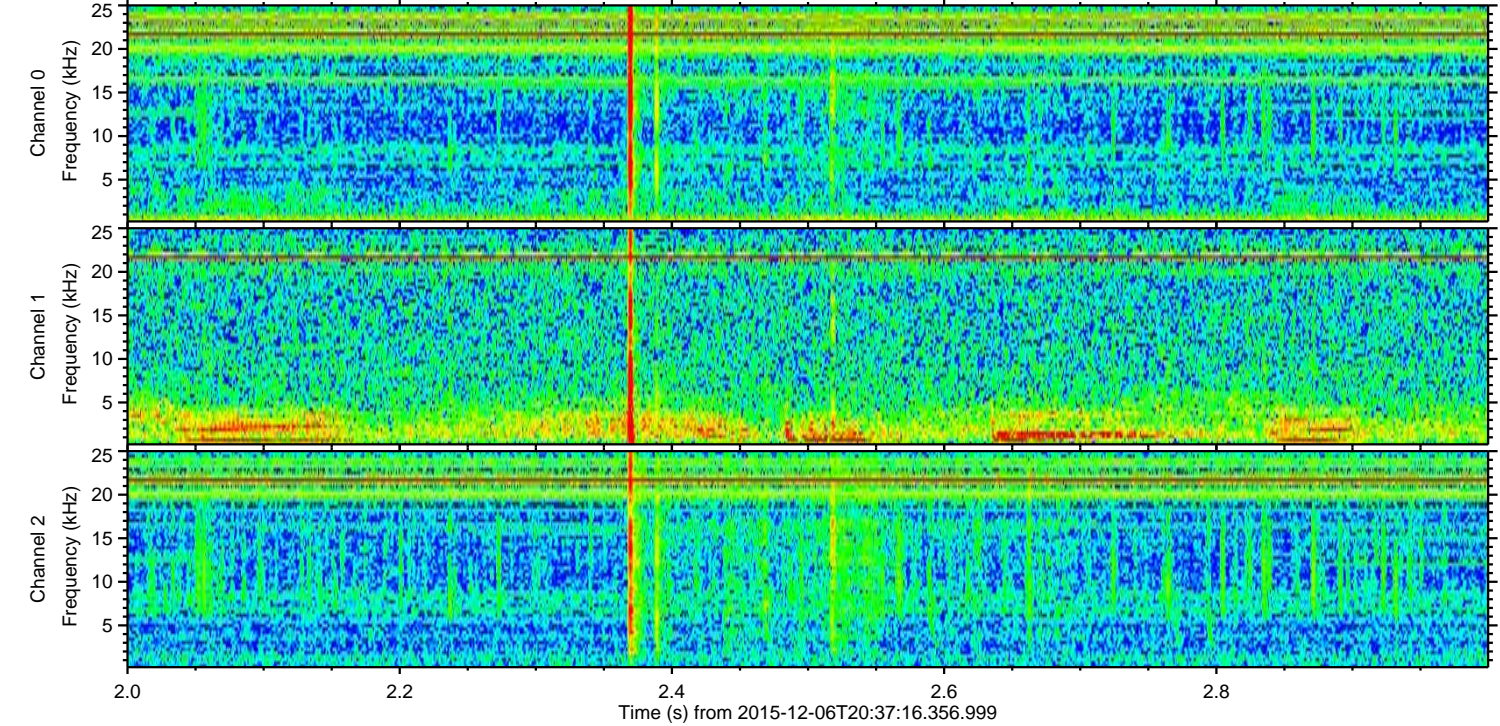
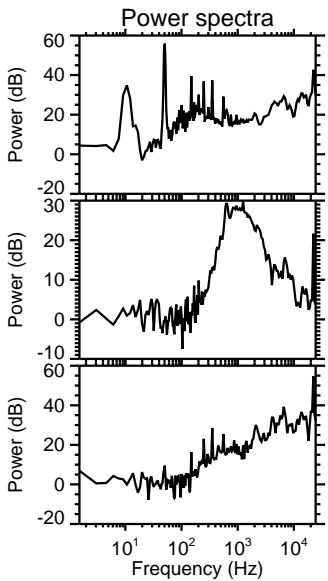
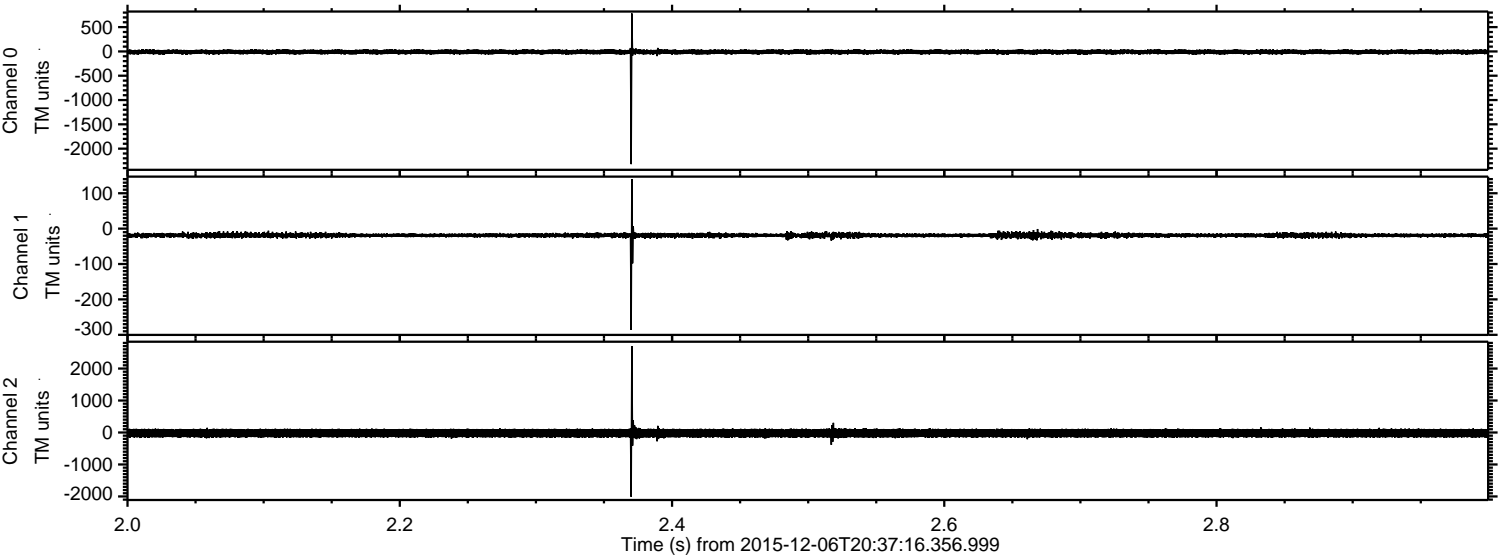
ELMAVAN 3D WAVEFORMS (Measured data sampled at 50 kHz) 51000 packets of 144 samples from 2015-12-06T20:37:16.356.999. Part 97/147

Processed Wed Dec 16 22:34:27 2015 by ELM ver.2012-10-06 from 001__elm20151206_203715__dat00.bin



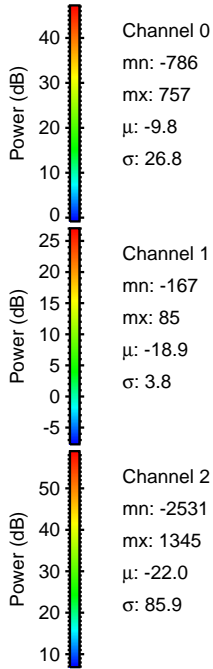
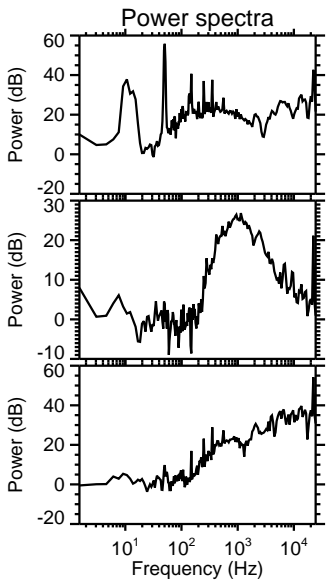
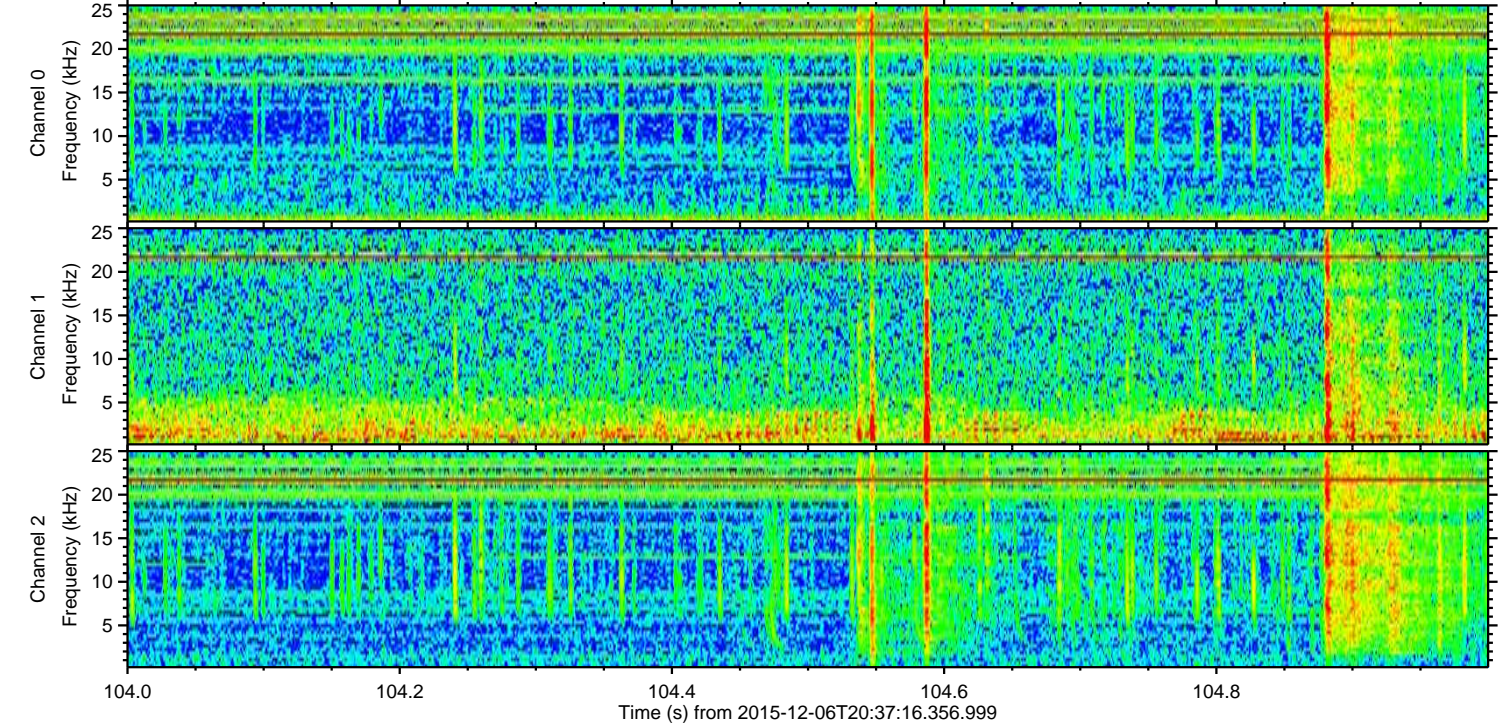
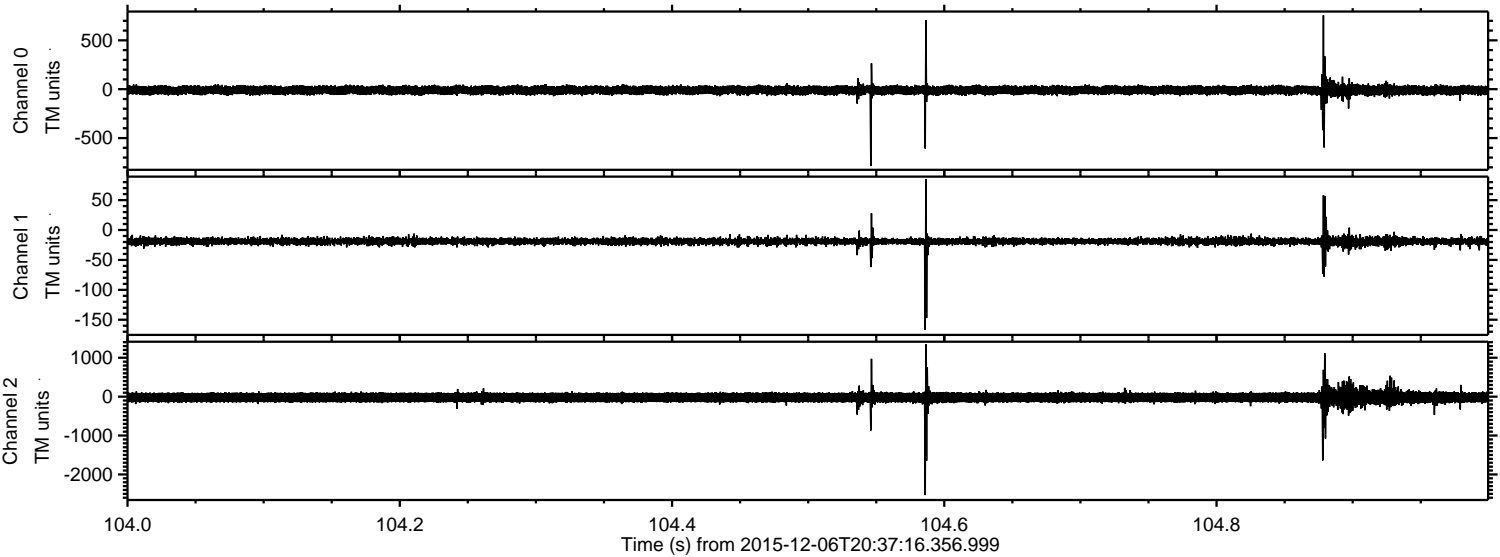
ELMAVAN 3D WAVEFORMS (Measured data sampled at 50 kHz) 51000 packets of 144 samples from 2015-12-06T20:37:16.356.999. Part 3/147

Processed Wed Dec 16 22:34:28 2015 by ELM ver.2012-10-06 from 001__elm20151206_203715__dat00.bin



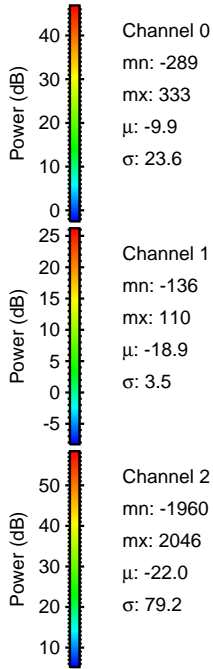
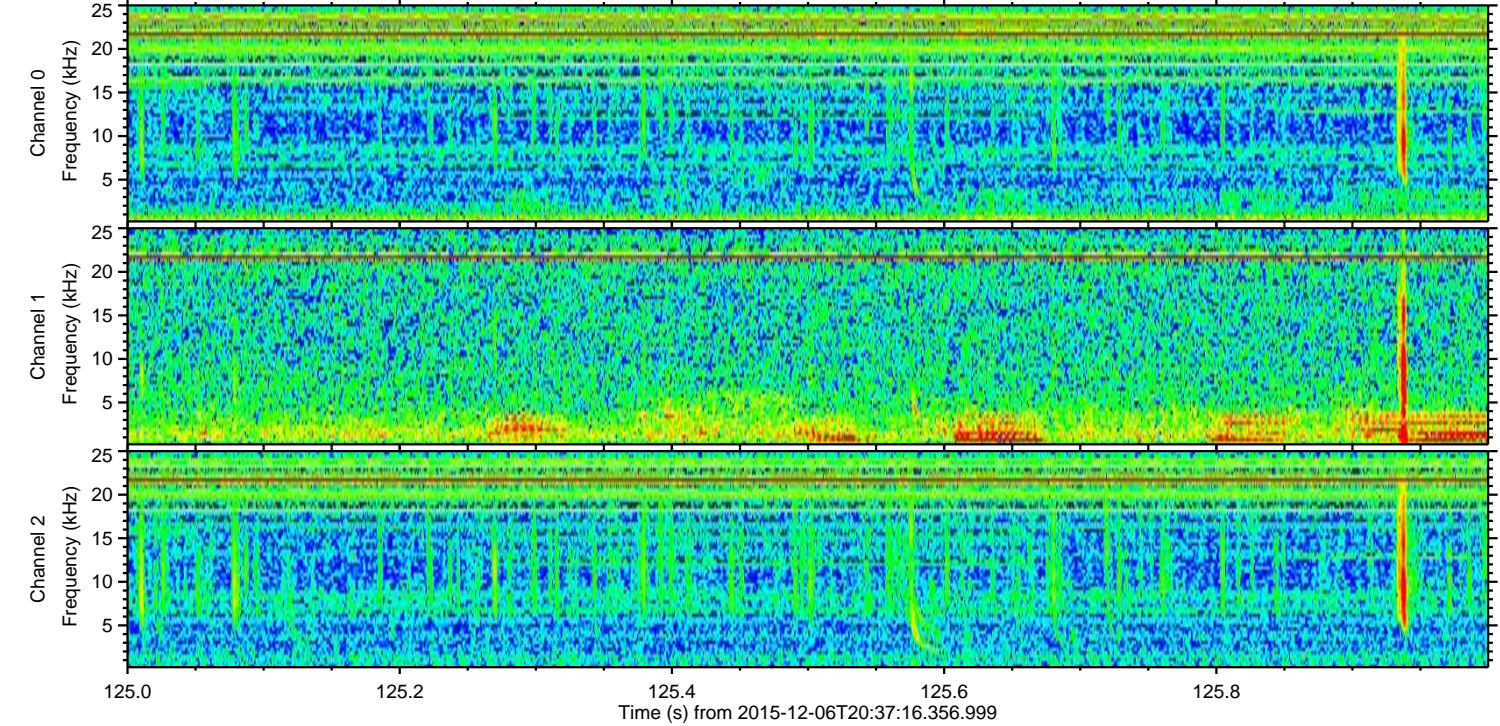
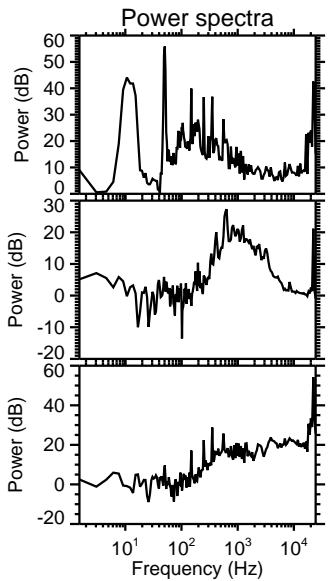
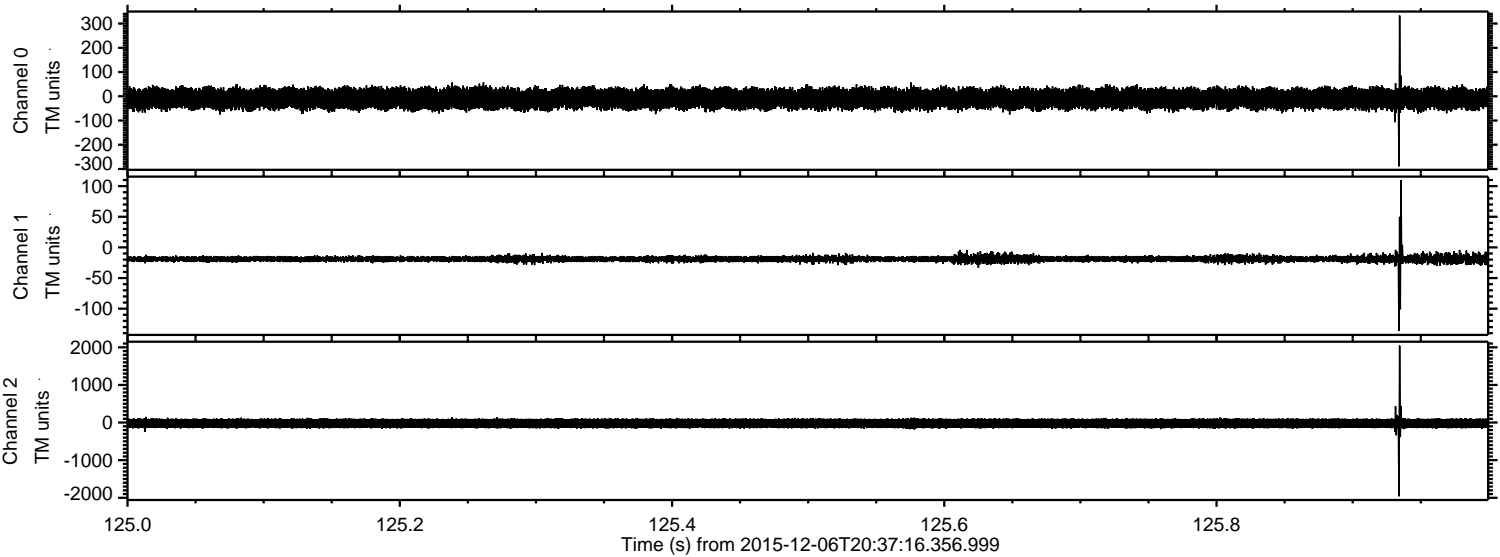
ELMAVAN 3D WAVEFORMS (Measured data sampled at 50 kHz) 51000 packets of 144 samples from 2015-12-06T20:37:16.356.999. Part 105/147

Processed Wed Dec 16 22:34:29 2015 by ELM ver.2012-10-06 from 001__elm20151206_203715__dat00.bin



ELMAVAN 3D WAVEFORMS (Measured data sampled at 50 kHz) 51000 packets of 144 samples from 2015-12-06T20:37:16.356.999. Part 126/147

Processed Wed Dec 16 22:34:30 2015 by ELM ver.2012-10-06 from 001__elm20151206_203715__dat00.bin



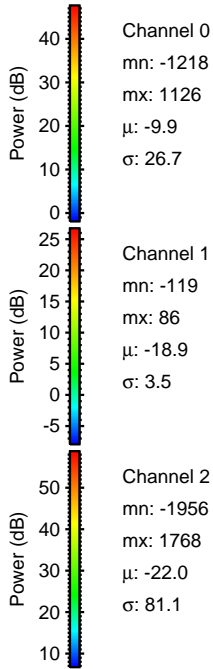
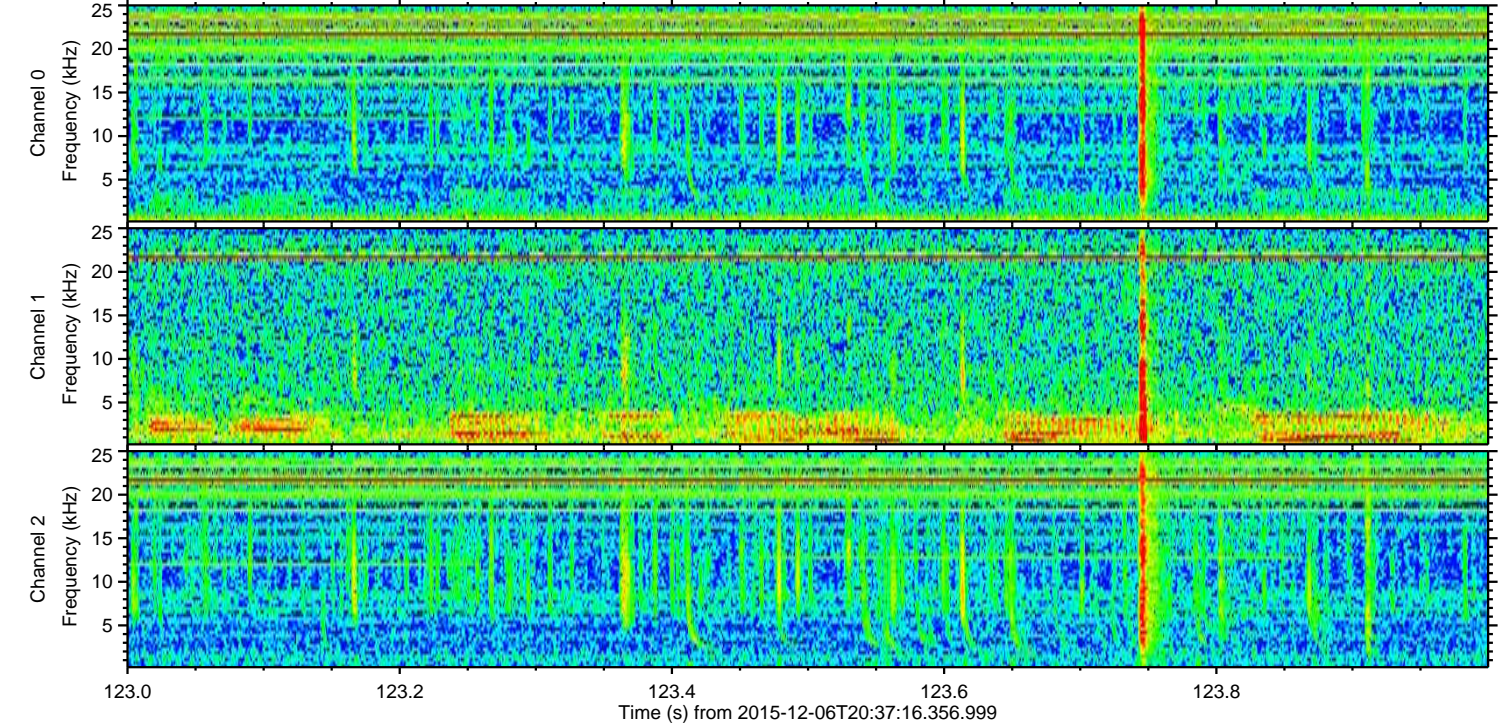
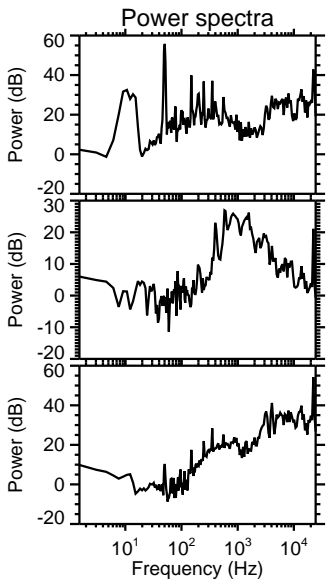
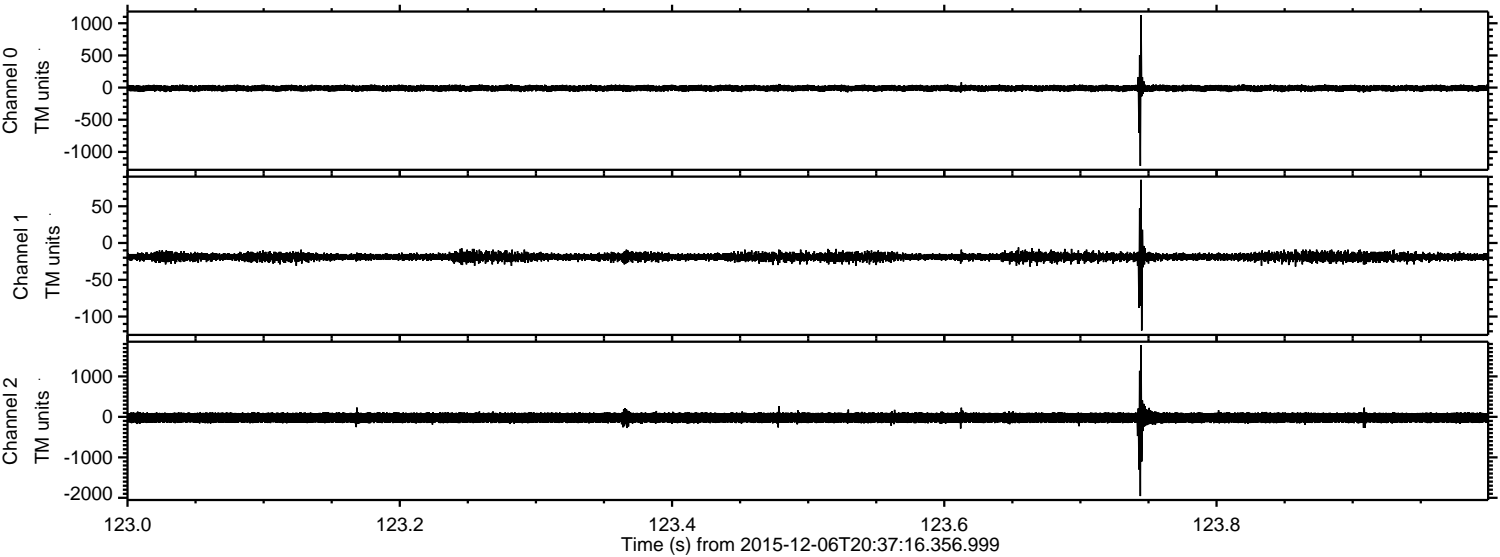
Channel 0
mn: -289
mx: 333
 μ : -9.9
 σ : 23.6

Channel 1
mn: -136
mx: 110
 μ : -18.9
 σ : 3.5

Channel 2
mn: -1960
mx: 2046
 μ : -22.0
 σ : 79.2

ELMAVAN 3D WAVEFORMS (Measured data sampled at 50 kHz) 51000 packets of 144 samples from 2015-12-06T20:37:16.356.999. Part 124/147

Processed Wed Dec 16 22:34:31 2015 by ELM ver.2012-10-06 from 001__elm20151206_203715__dat00.bin

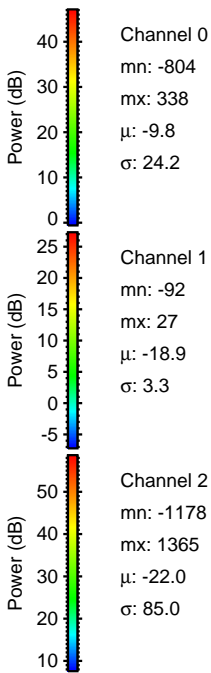
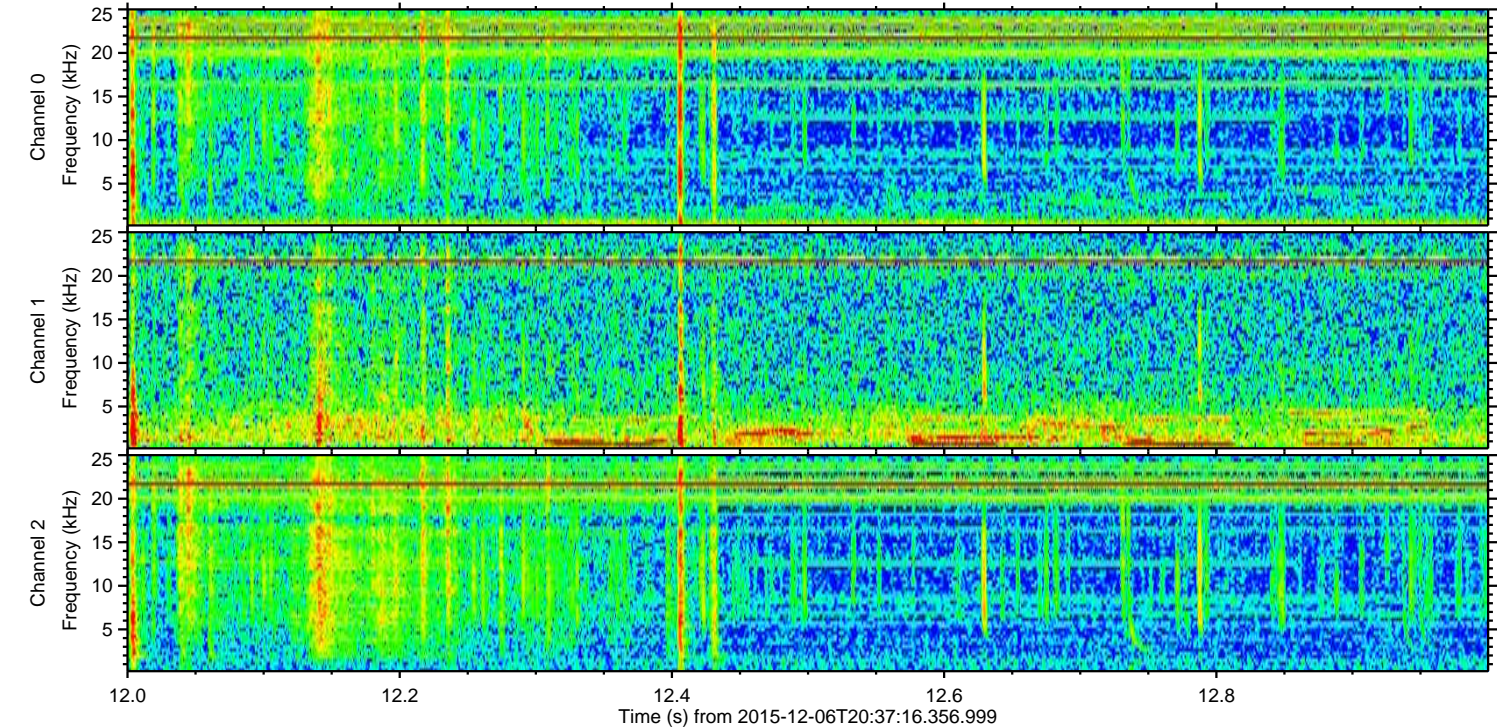
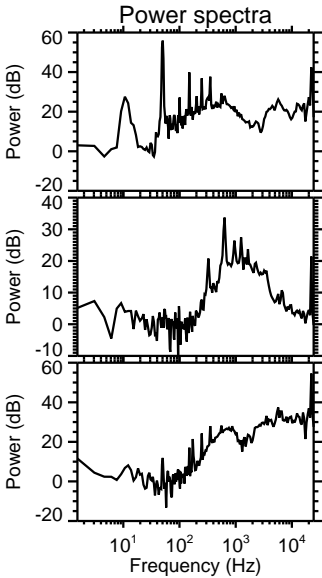
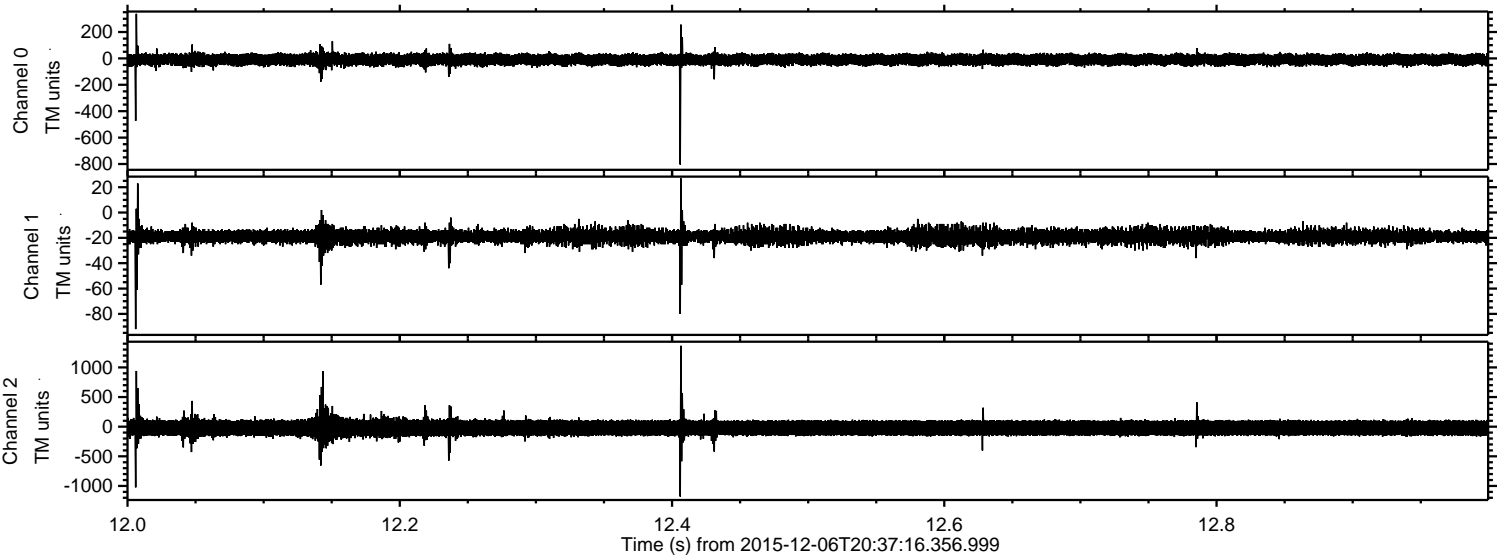


Channel 0
mn: -1218
mx: 1126
 μ : -9.9
 σ : 26.7

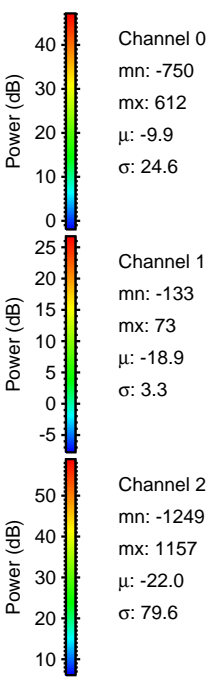
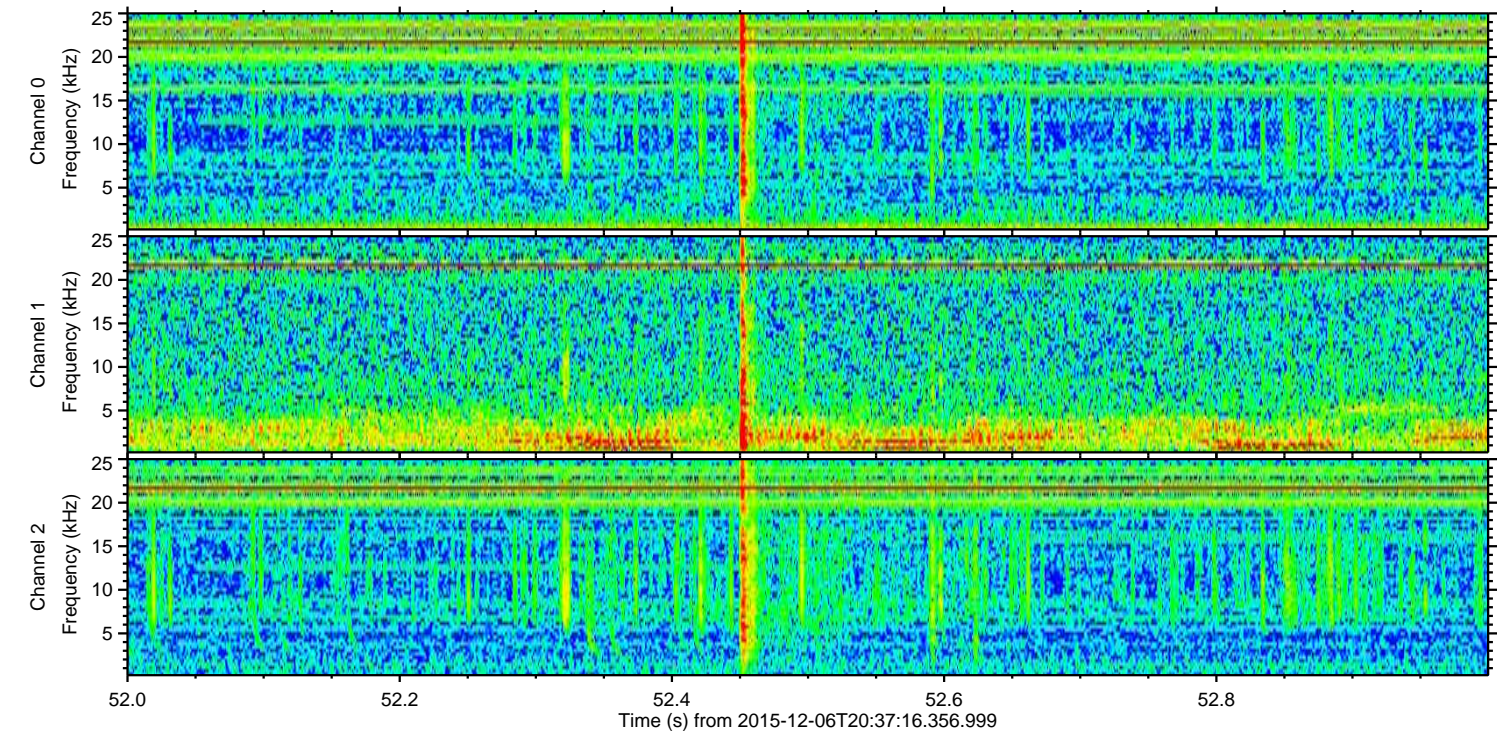
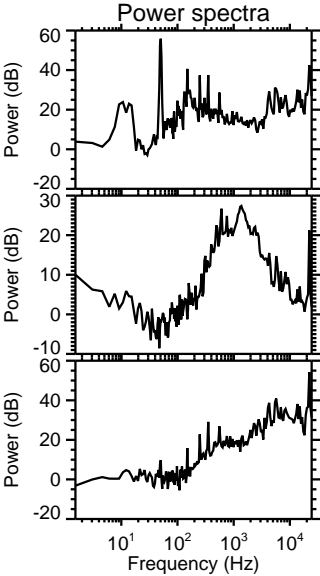
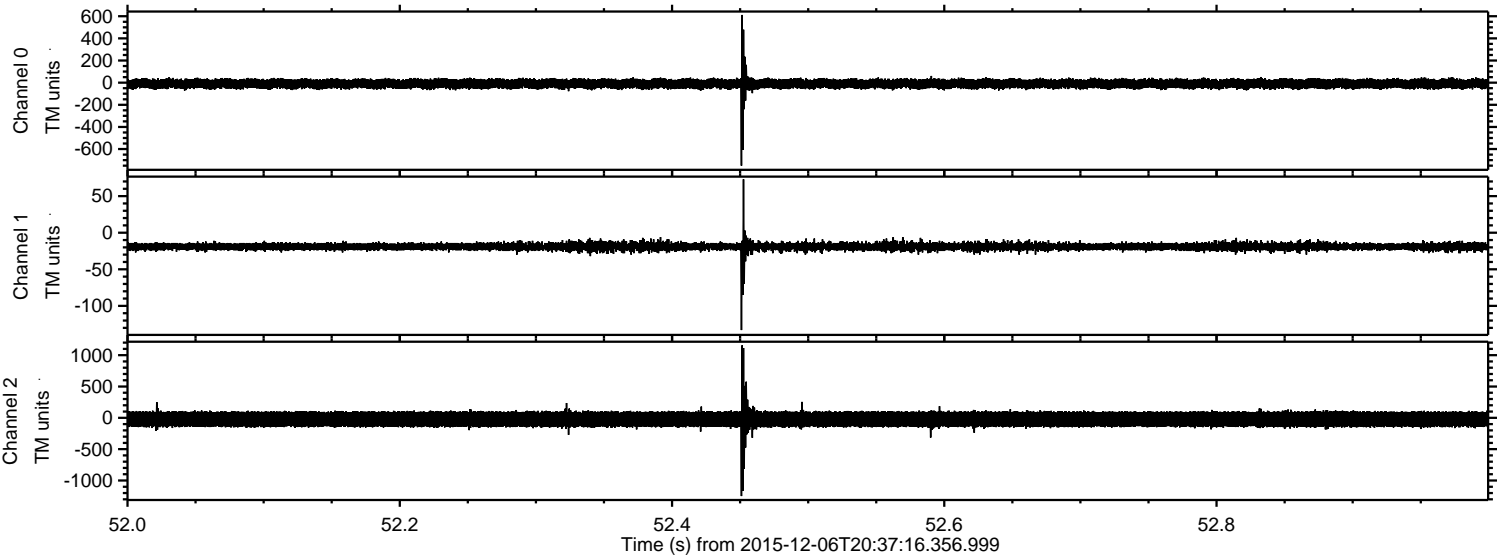
Channel 1
mn: -119
mx: 86
 μ : -18.9
 σ : 3.5

Channel 2
mn: -1956
mx: 1768
 μ : -22.0
 σ : 81.1

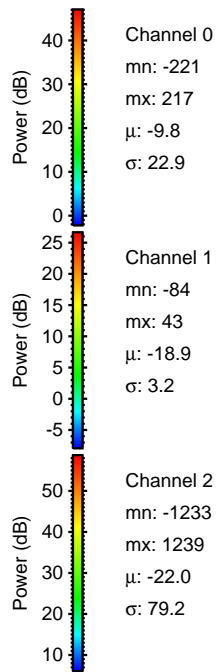
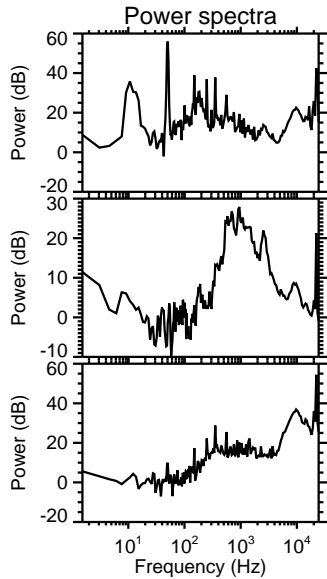
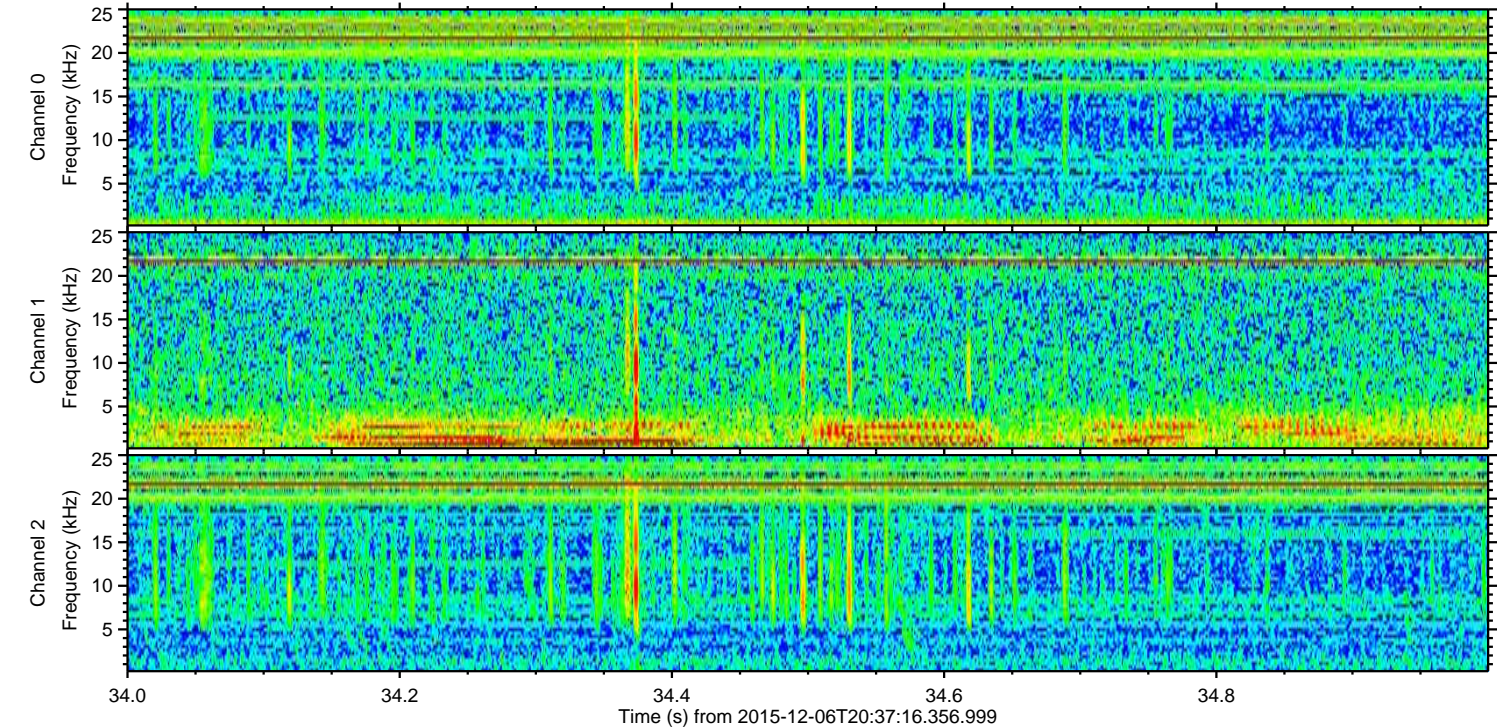
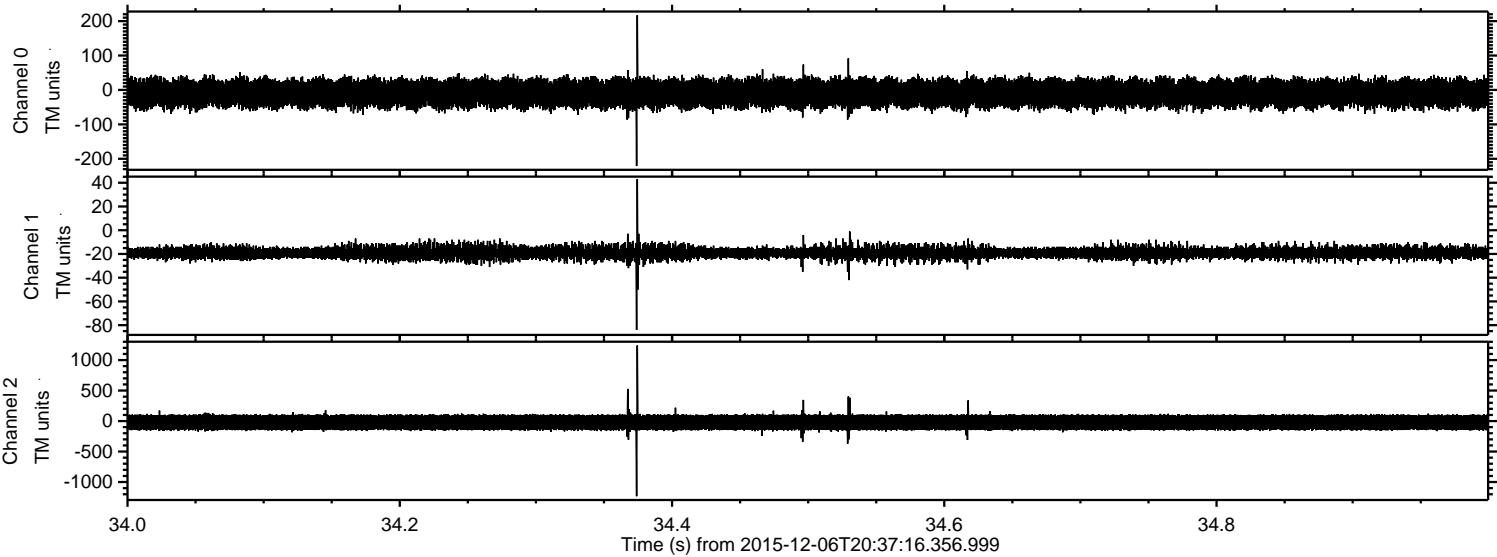
Processed Wed Dec 16 22:34:32 2015 by ELM ver.2012-10-06 from 001__elm20151206_203715__dat00.bin



Processed Wed Dec 16 22:34:32 2015 by ELM ver.2012-10-06 from 001__elm20151206_203715__dat00.bin



Processed Wed Dec 16 22:34:33 2015 by ELM ver.2012-10-06 from 001__elm20151206_203715__dat00.bin



Processed Wed Dec 16 22:34:34 2015 by ELM ver.2012-10-06 from 001__elm20151206_203715__dat00.bin

