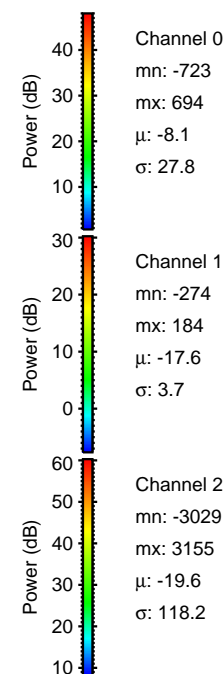
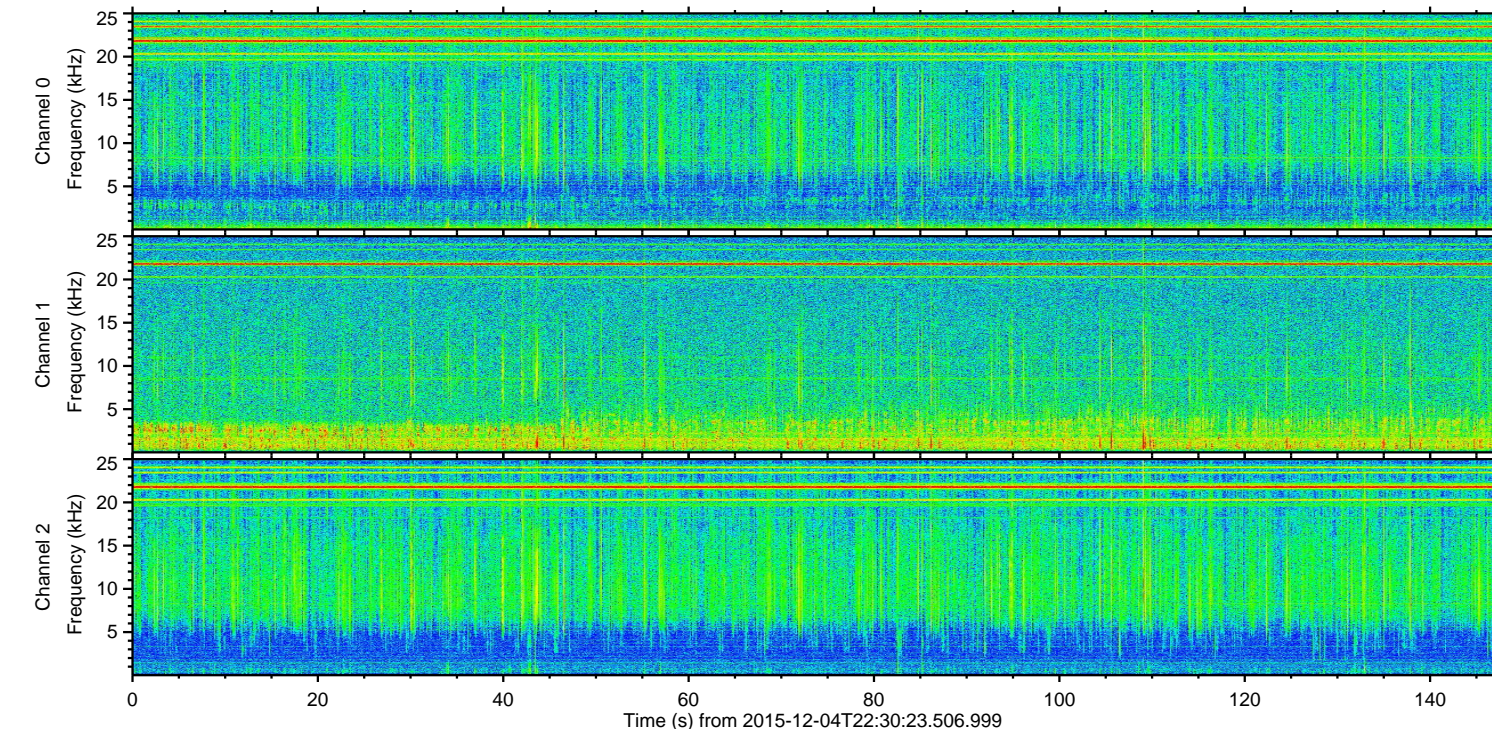
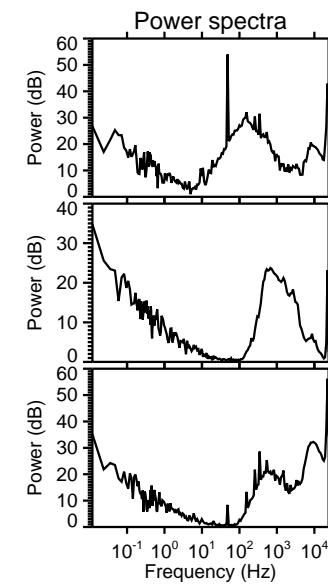
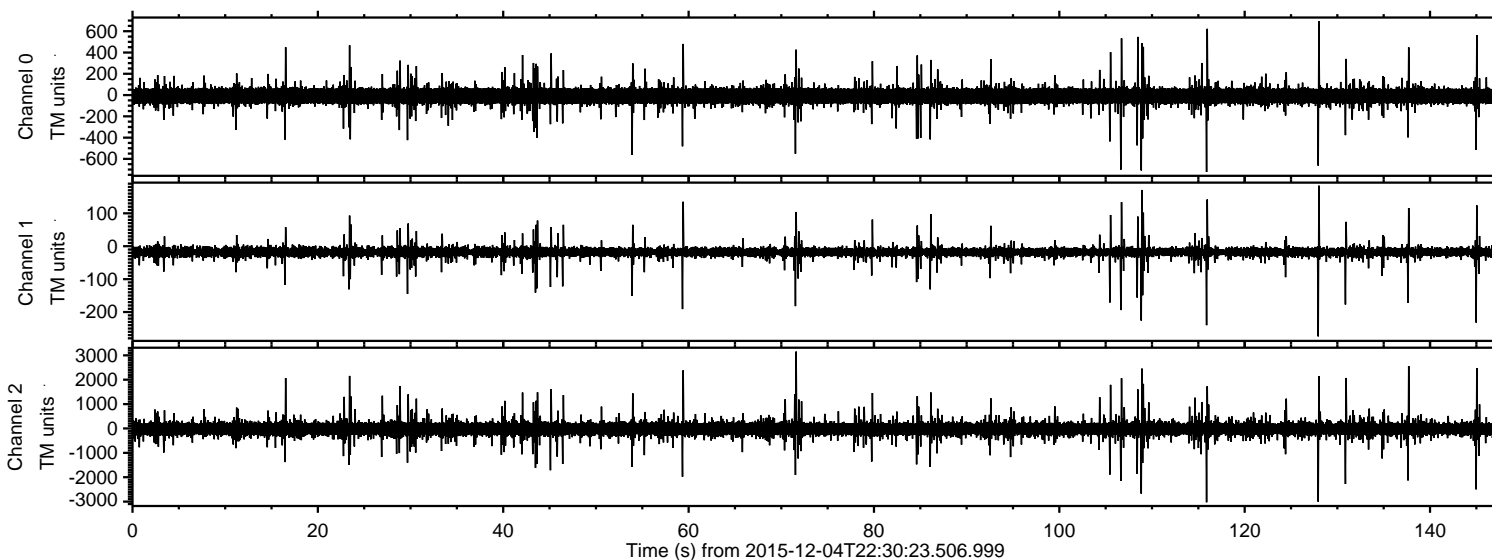
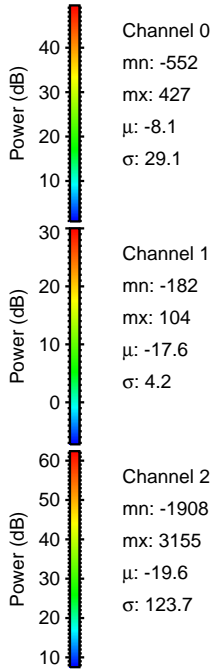
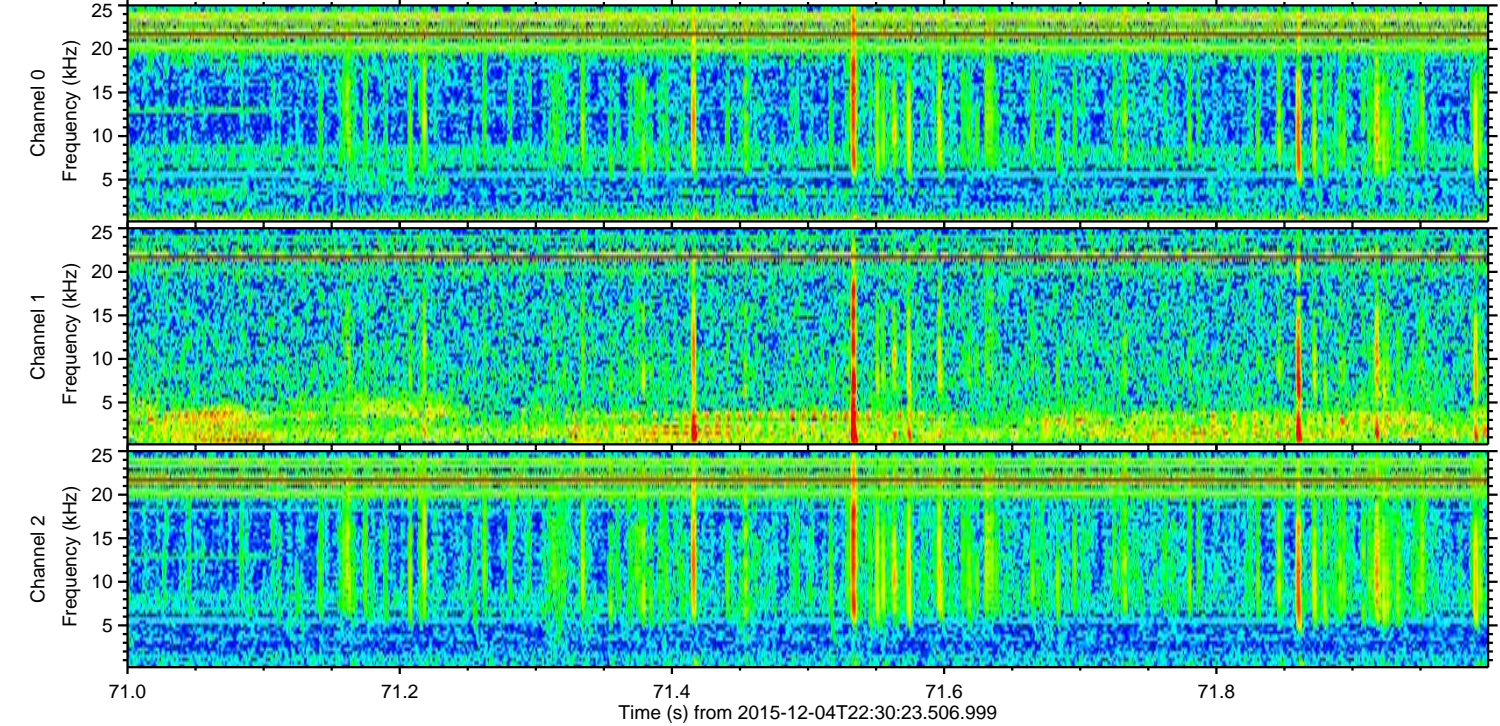
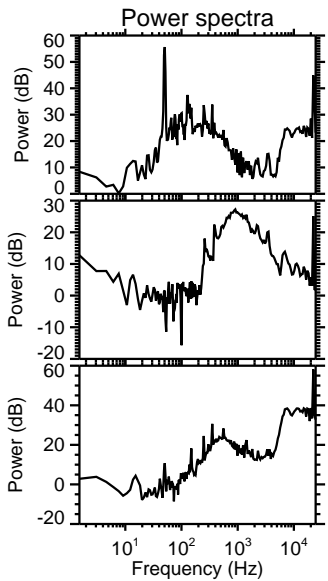
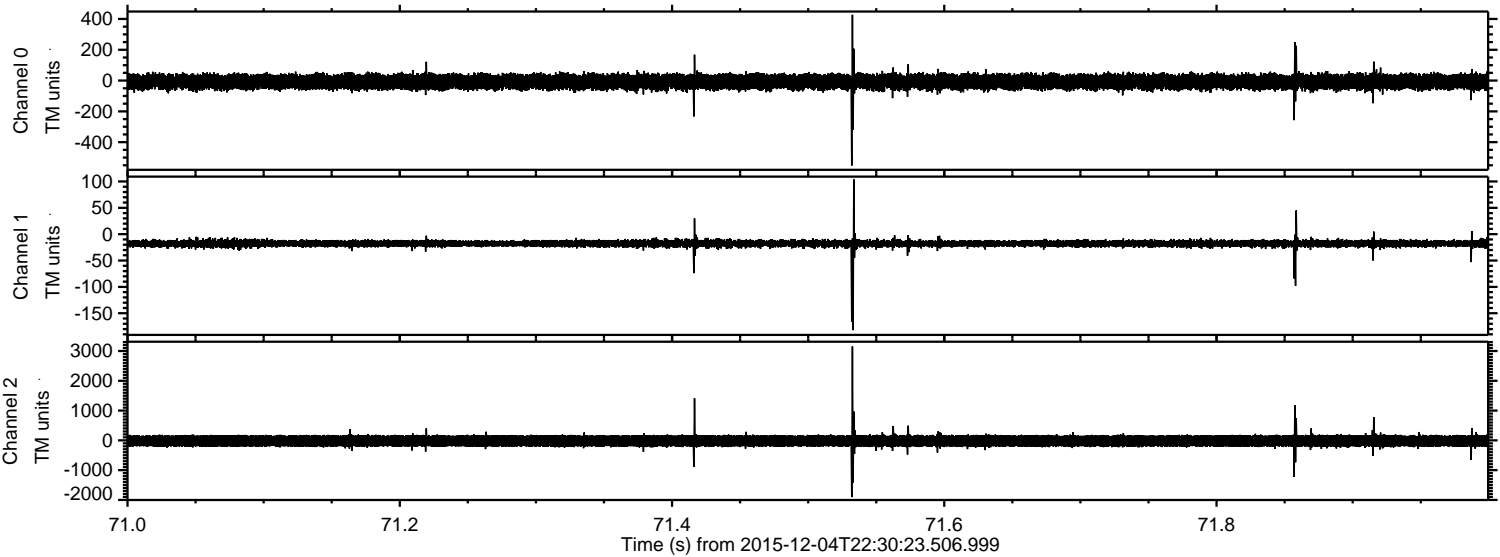


ELMAVAN 3D WAVEFORMS (Measured data sampled at 50 kHz) 51000 packets of 144 samples from 2015-12-04T22:30:23.506.999.

Processed Sun Dec 13 08:17:48 2015 by ELM ver.2012-10-06 from 001__elm20151204_223022__dat00.bin

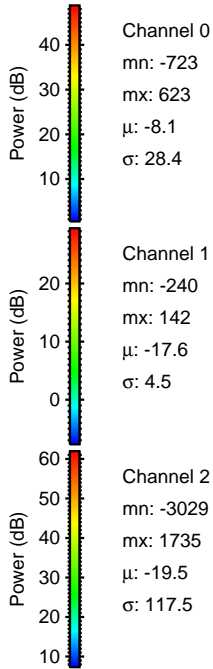
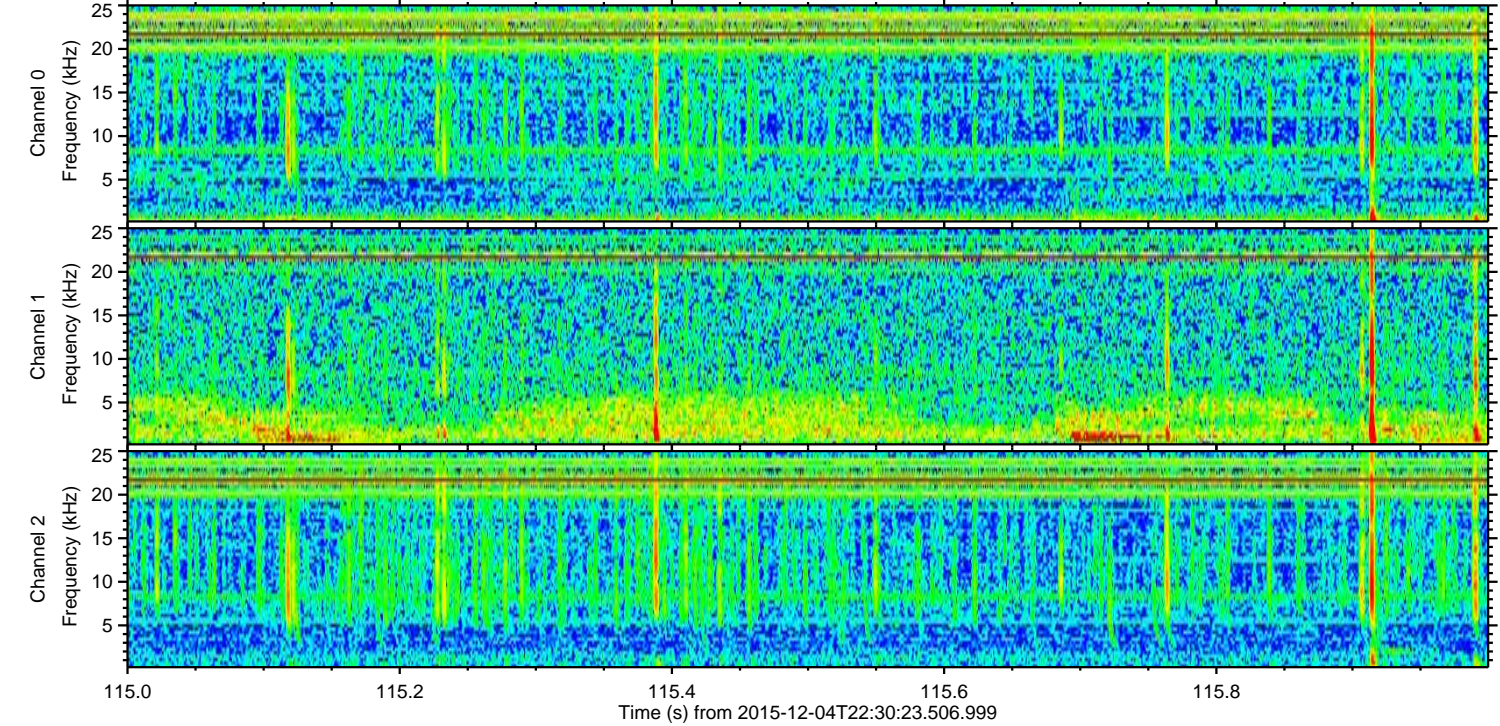
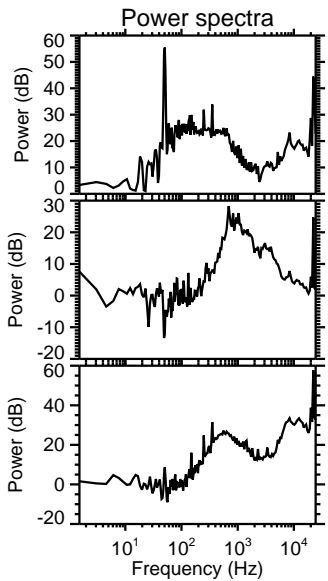
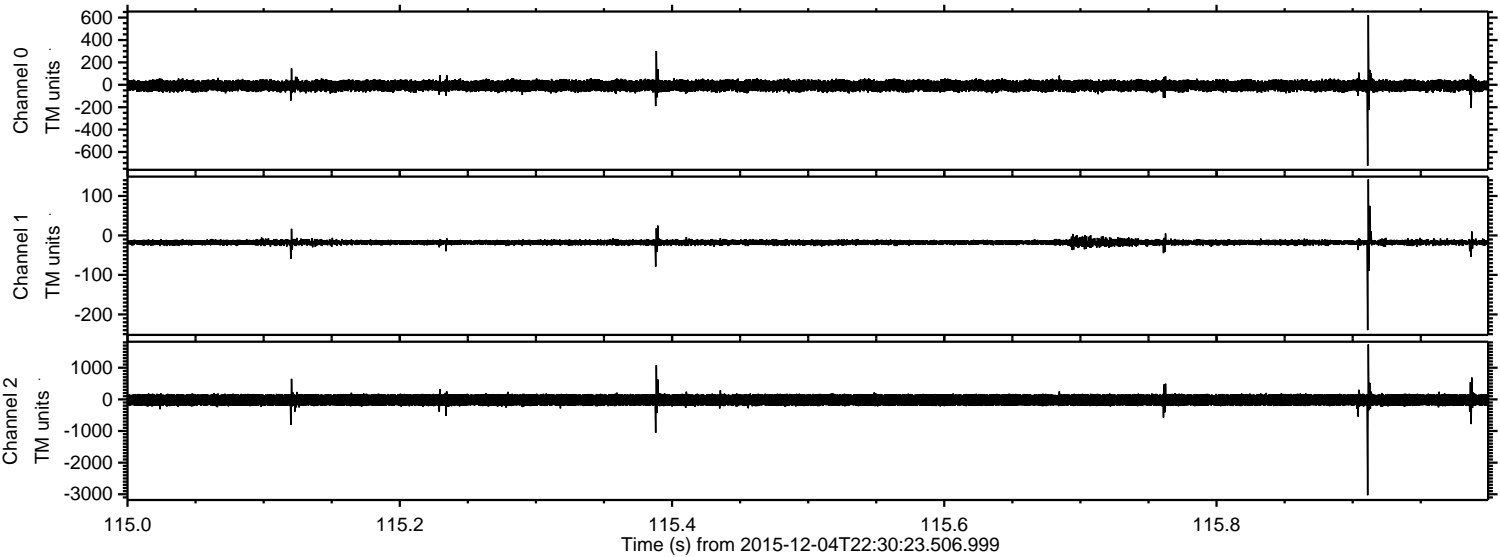


Processed Sun Dec 13 08:17:59 2015 by ELM ver.2012-10-06 from 001__elm20151204_223022__dat00.bin



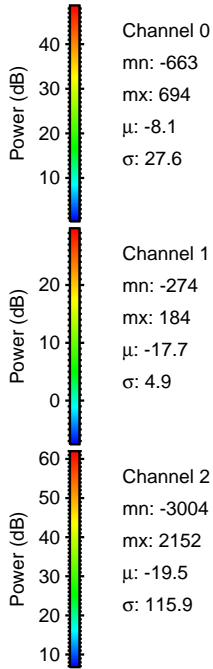
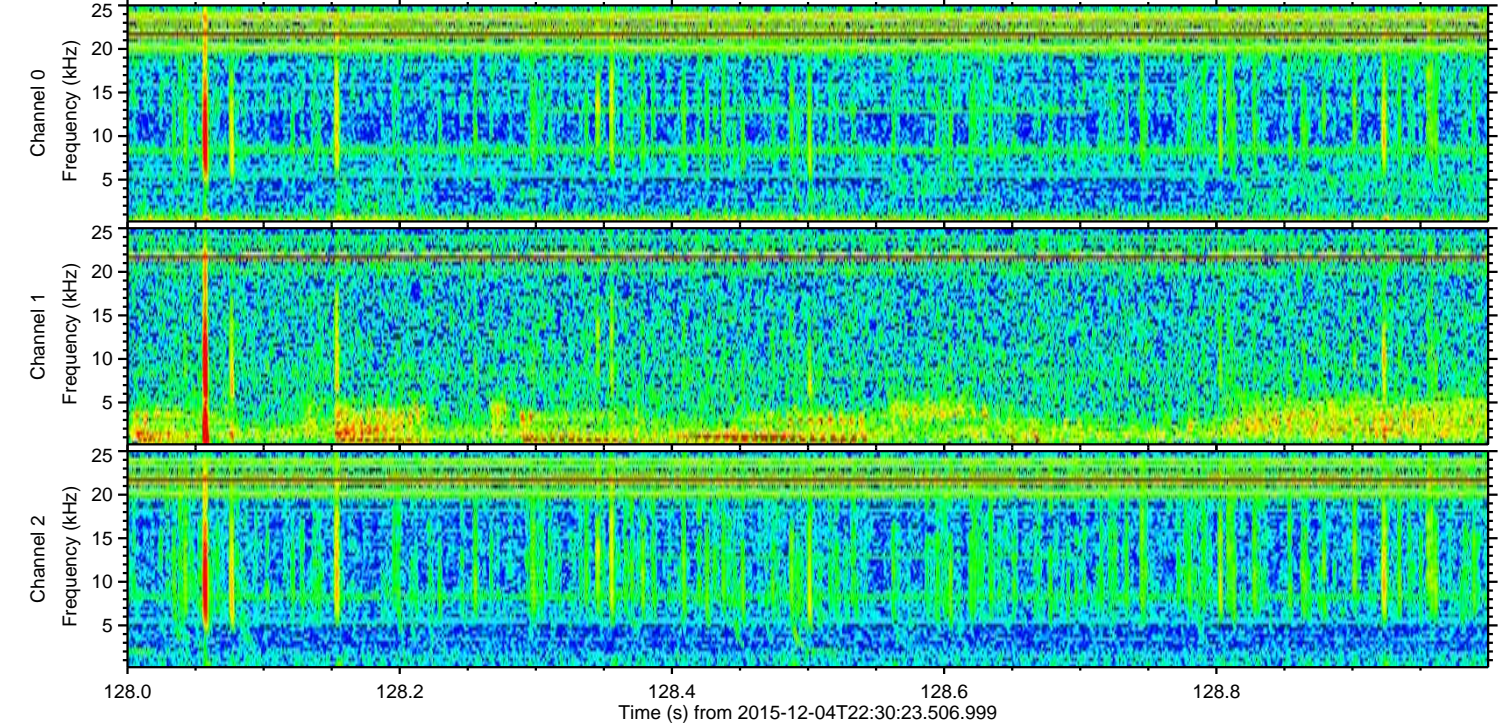
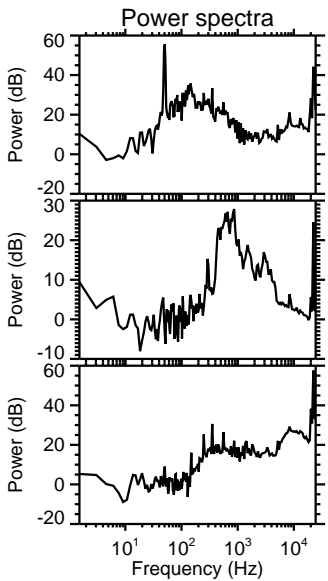
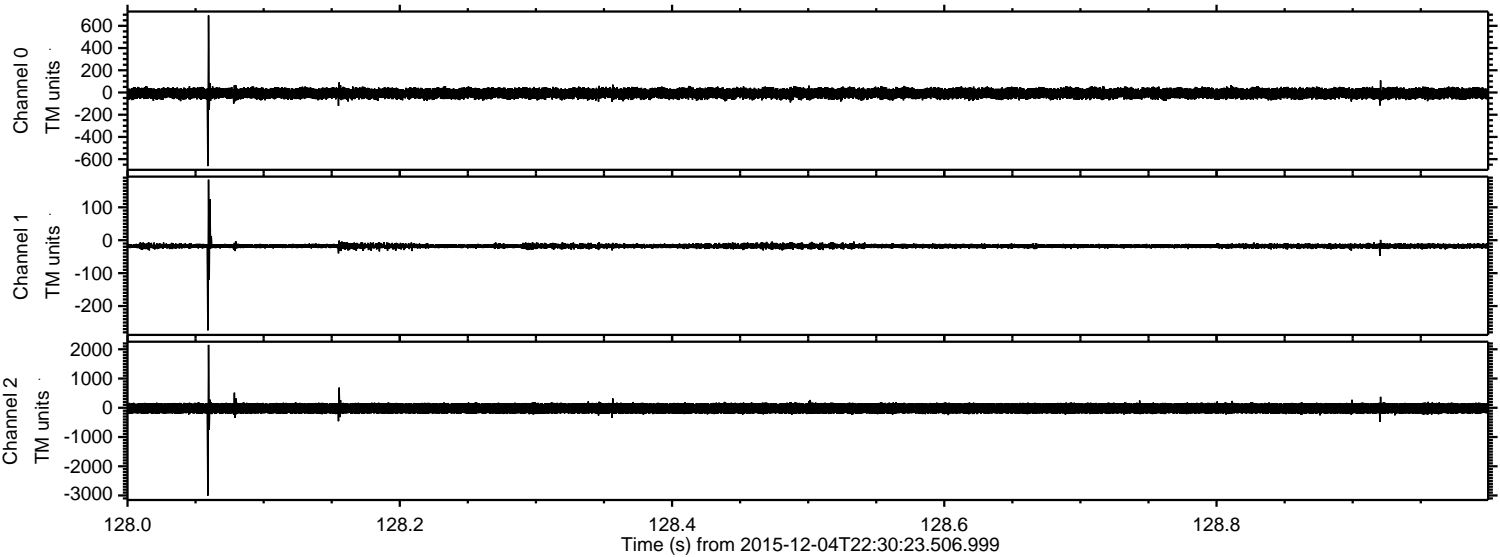
ELMAVAN 3D WAVEFORMS (Measured data sampled at 50 kHz) 51000 packets of 144 samples from 2015-12-04T22:30:23.506.999. Part 116/147

Processed Sun Dec 13 08:18:00 2015 by ELM ver.2012-10-06 from 001__elm20151204_223022__dat00.bin



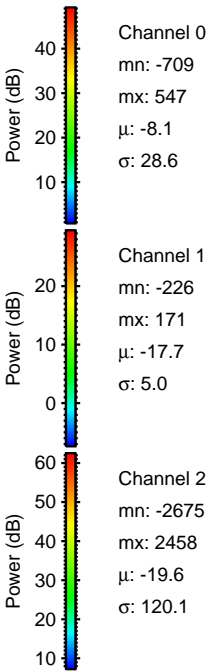
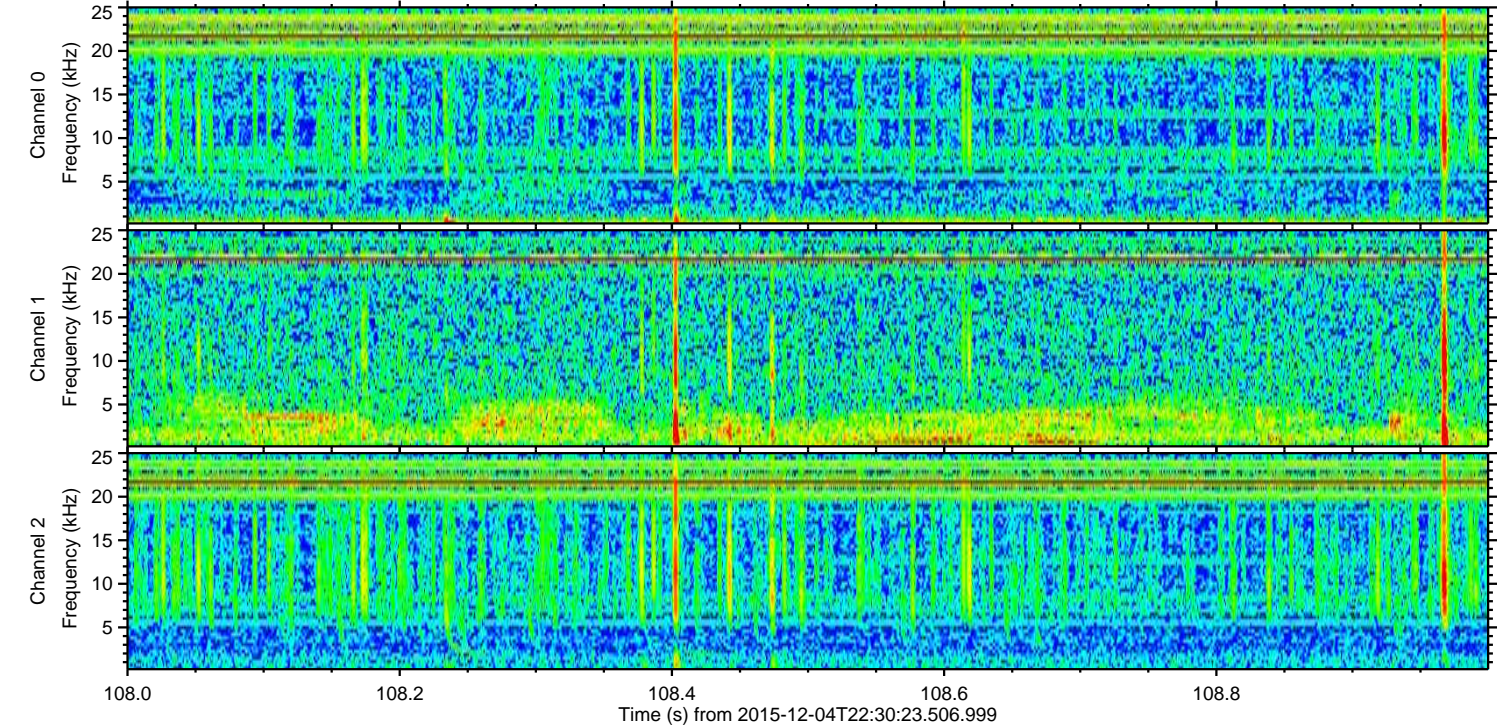
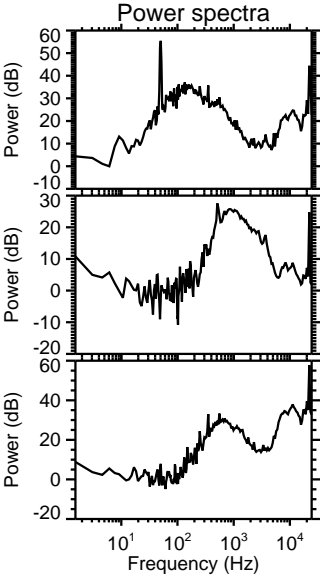
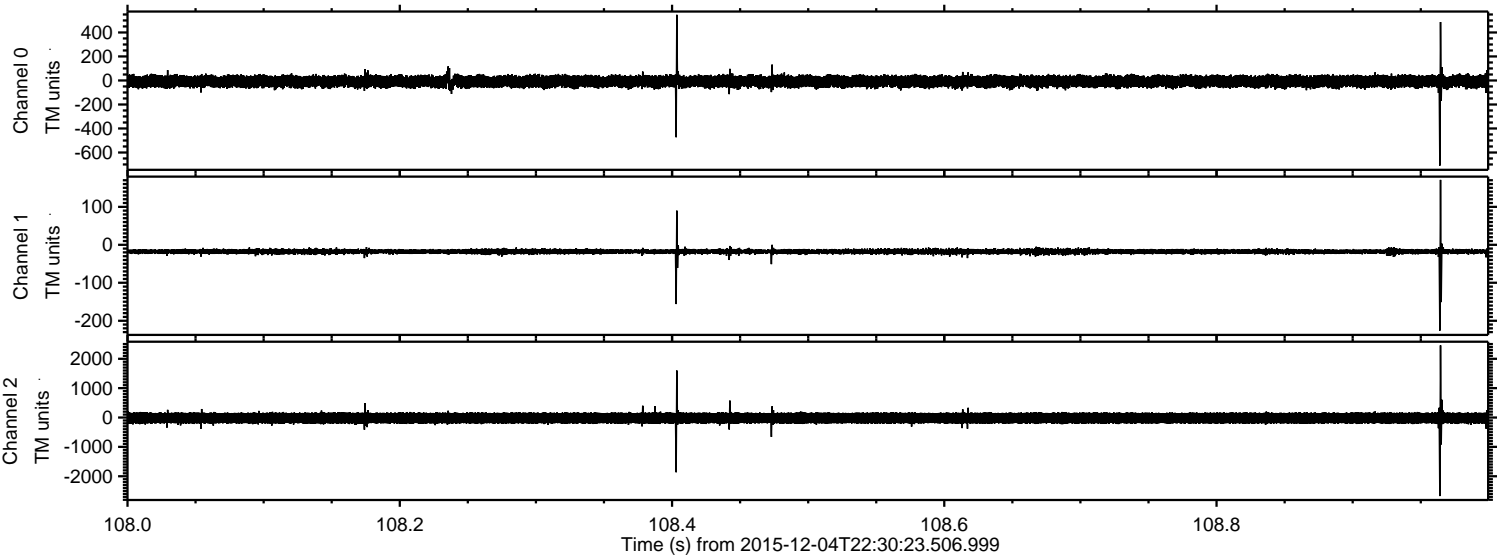
ELMAVAN 3D WAVEFORMS (Measured data sampled at 50 kHz) 51000 packets of 144 samples from 2015-12-04T22:30:23.506.999. Part 129/147

Processed Sun Dec 13 08:18:01 2015 by ELM ver.2012-10-06 from 001__elm20151204_223022__dat00.bin



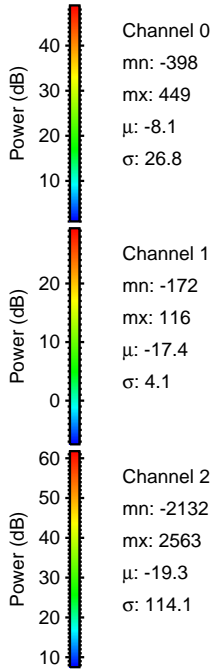
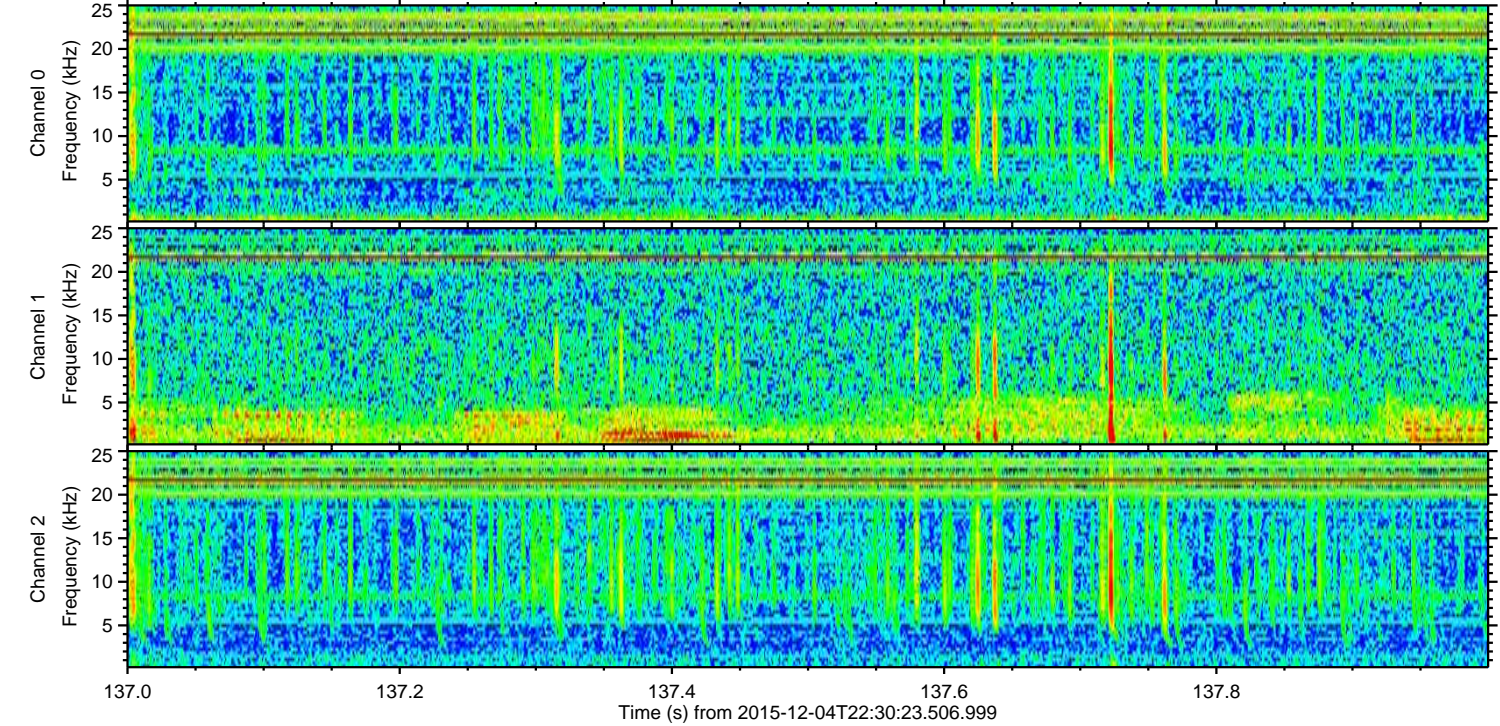
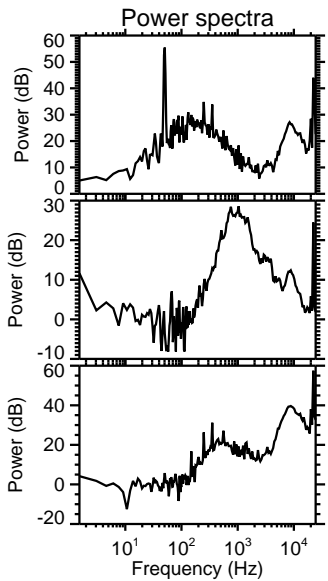
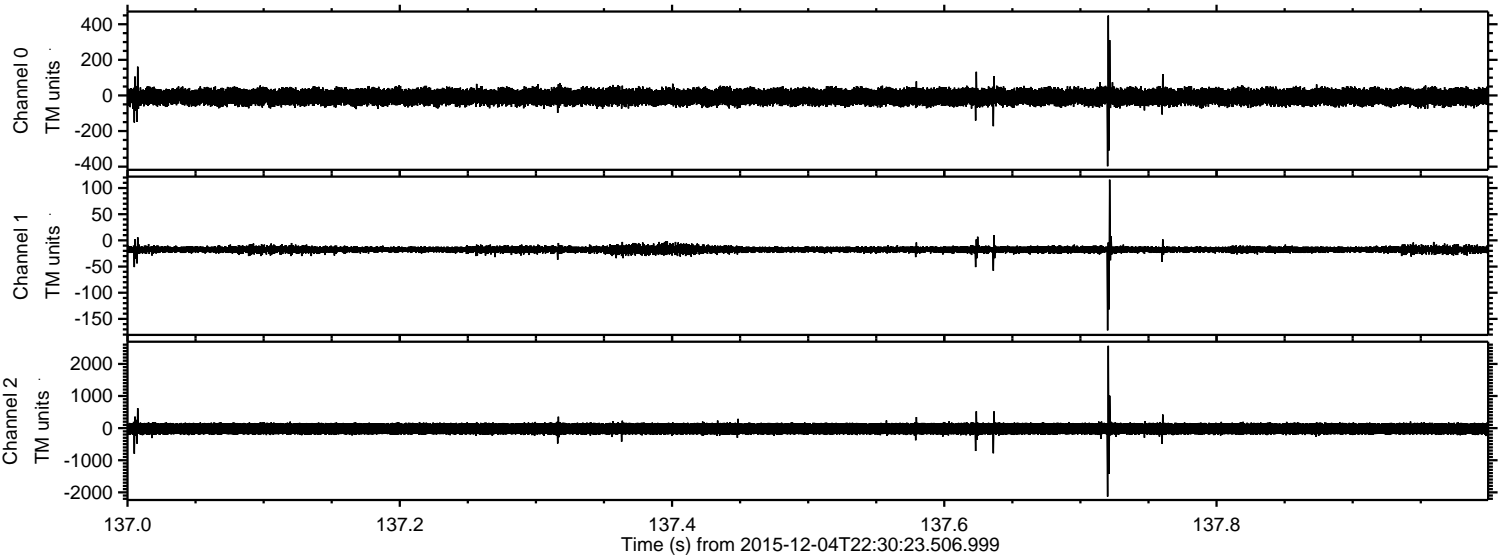
ELMAVAN 3D WAVEFORMS (Measured data sampled at 50 kHz) 51000 packets of 144 samples from 2015-12-04T22:30:23.506.999. Part 109/147

Processed Sun Dec 13 08:18:02 2015 by ELM ver.2012-10-06 from 001__elm20151204_223022__dat00.bin



ELMAVAN 3D WAVEFORMS (Measured data sampled at 50 kHz) 51000 packets of 144 samples from 2015-12-04T22:30:23.506.999. Part 138/147

Processed Sun Dec 13 08:18:03 2015 by ELM ver.2012-10-06 from 001__elm20151204_223022__dat00.bin



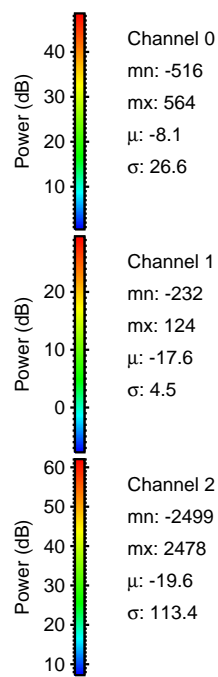
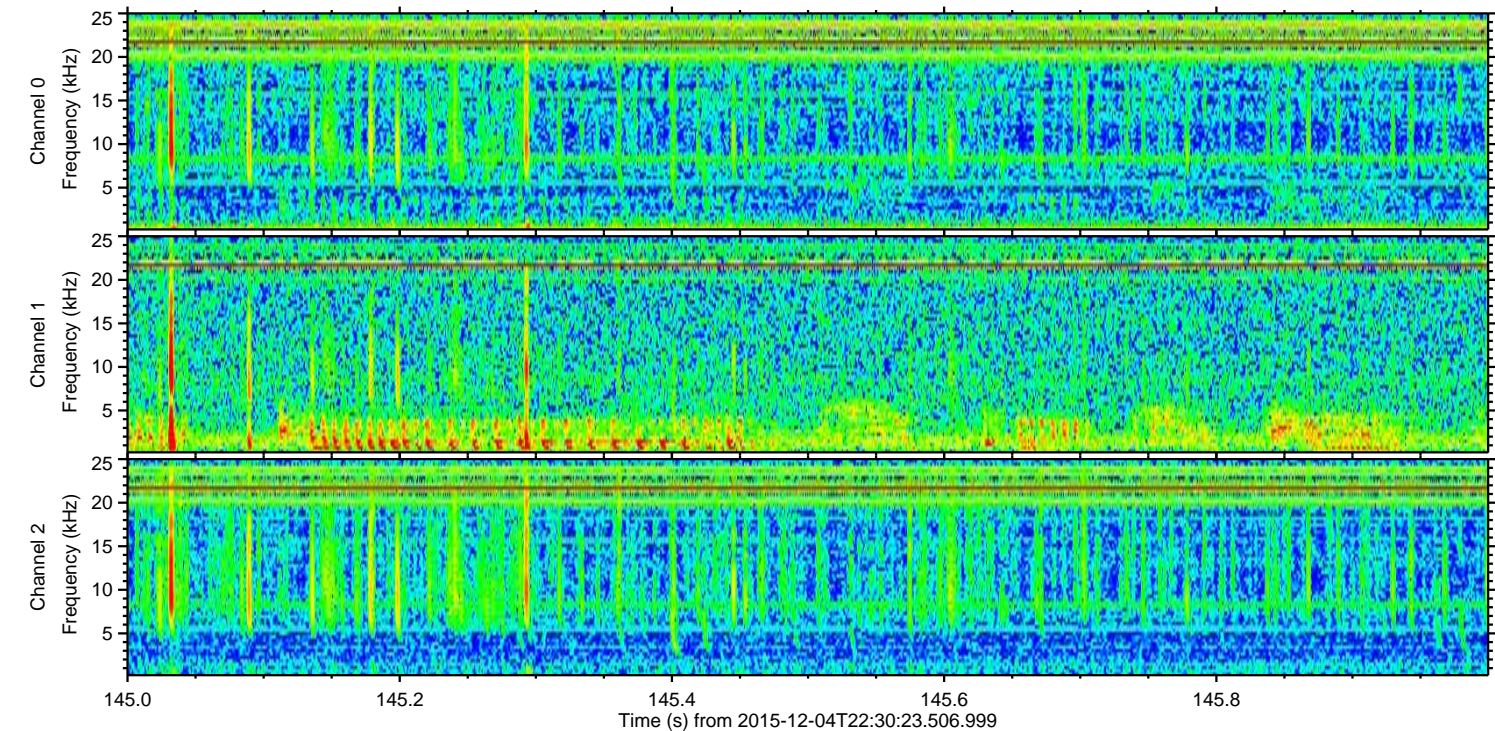
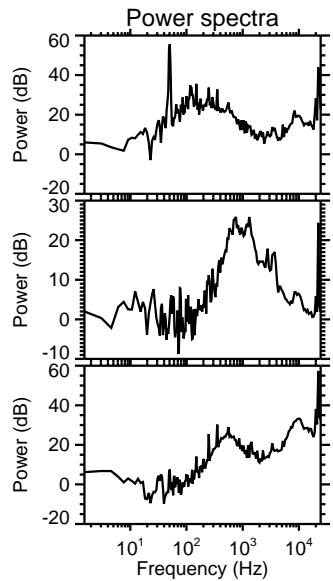
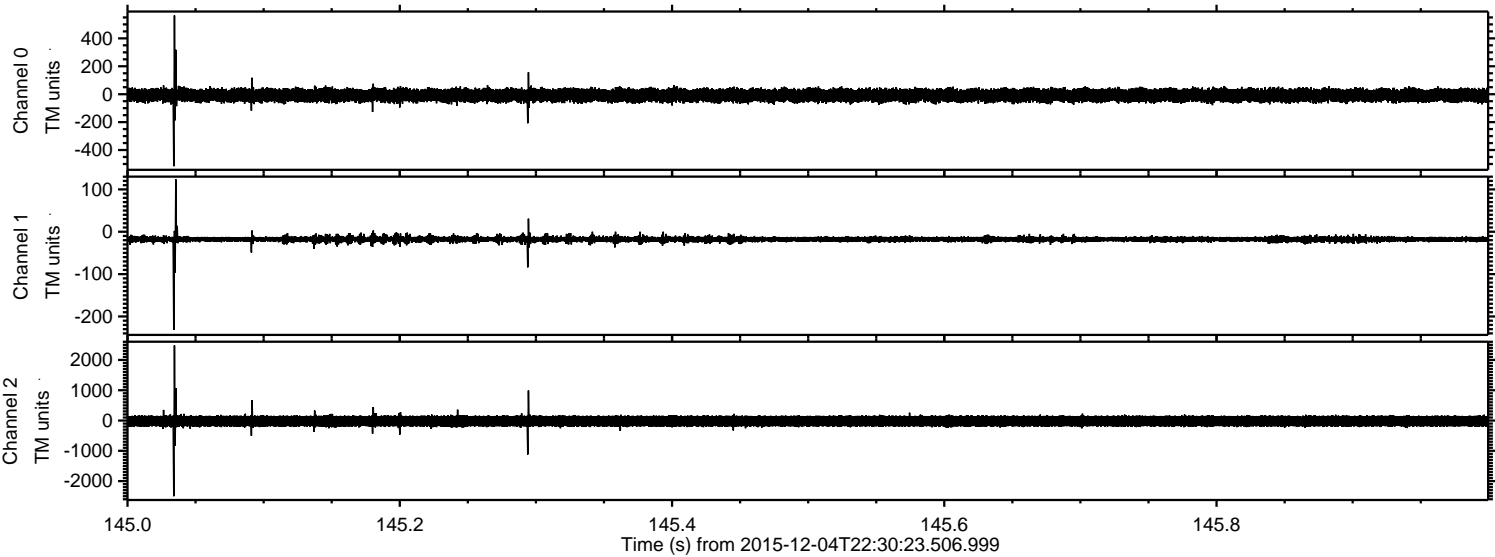
Channel 0
mn: -398
mx: 449
 μ : -8.1
 σ : 26.8

Channel 1
mn: -172
mx: 116
 μ : -17.4
 σ : 4.1

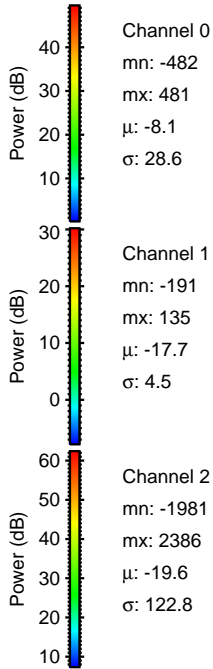
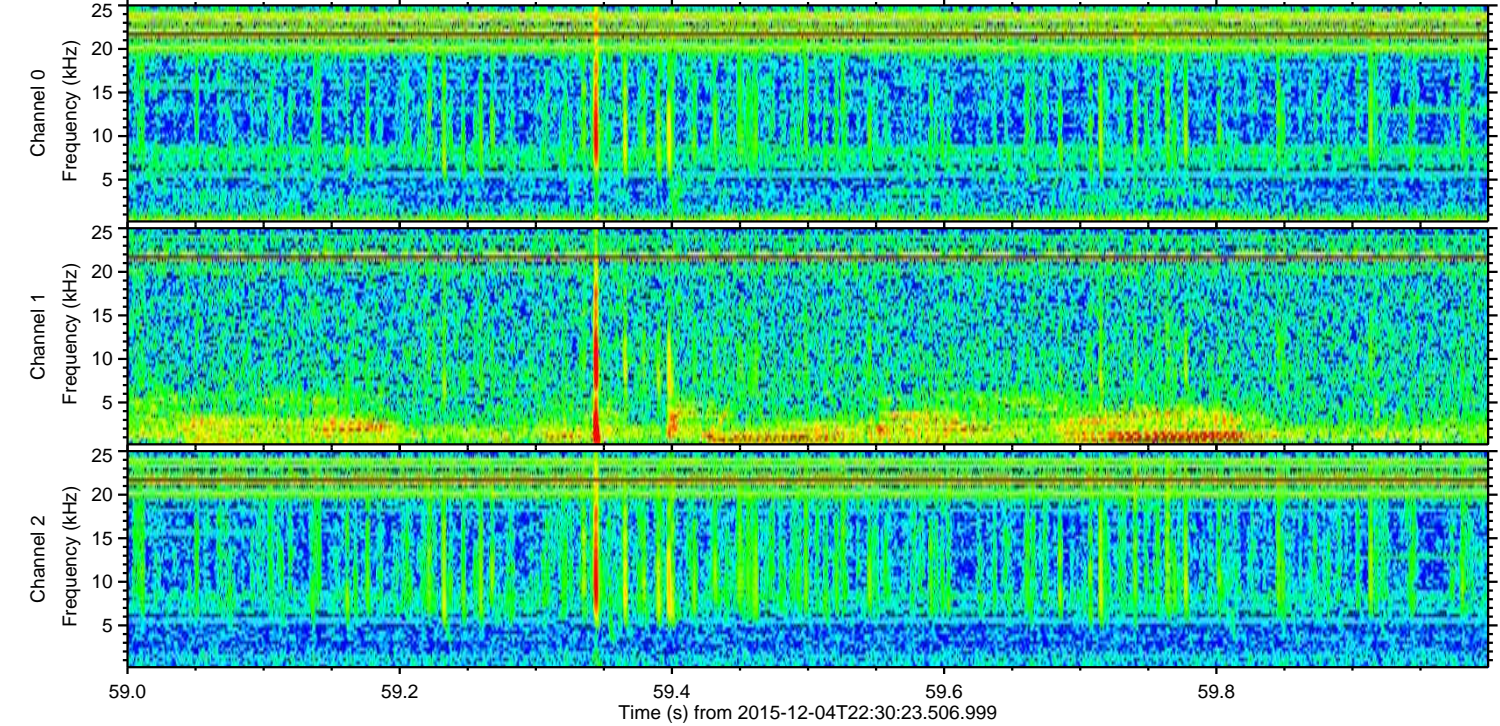
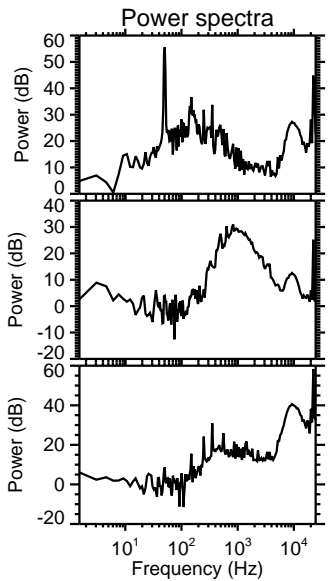
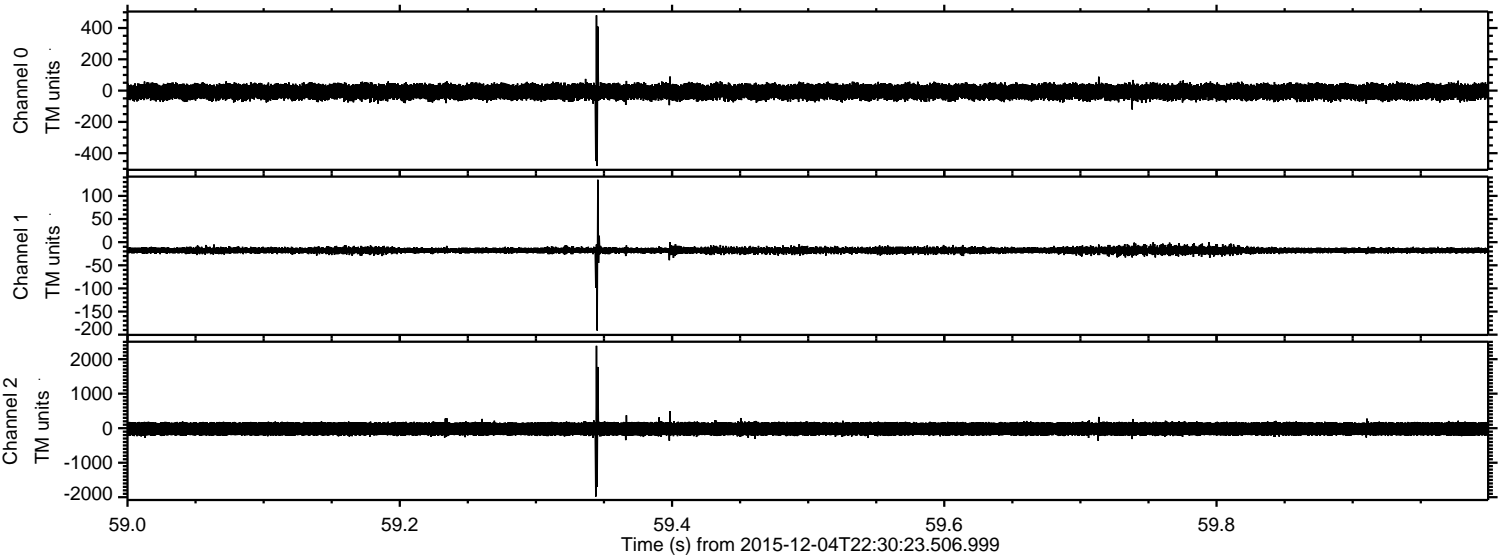
Channel 2
mn: -2132
mx: 2563
 μ : -19.3
 σ : 114.1

ELMAVAN 3D WAVEFORMS (Measured data sampled at 50 kHz) 51000 packets of 144 samples from 2015-12-04T22:30:23.506.999. Part 146/147

Processed Sun Dec 13 08:18:04 2015 by ELM ver.2012-10-06 from 001__elm20151204_223022__dat00.bin



Processed Sun Dec 13 08:18:05 2015 by ELM ver.2012-10-06 from 001__elm20151204_223022__dat00.bin



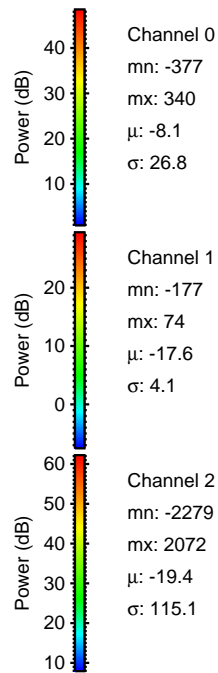
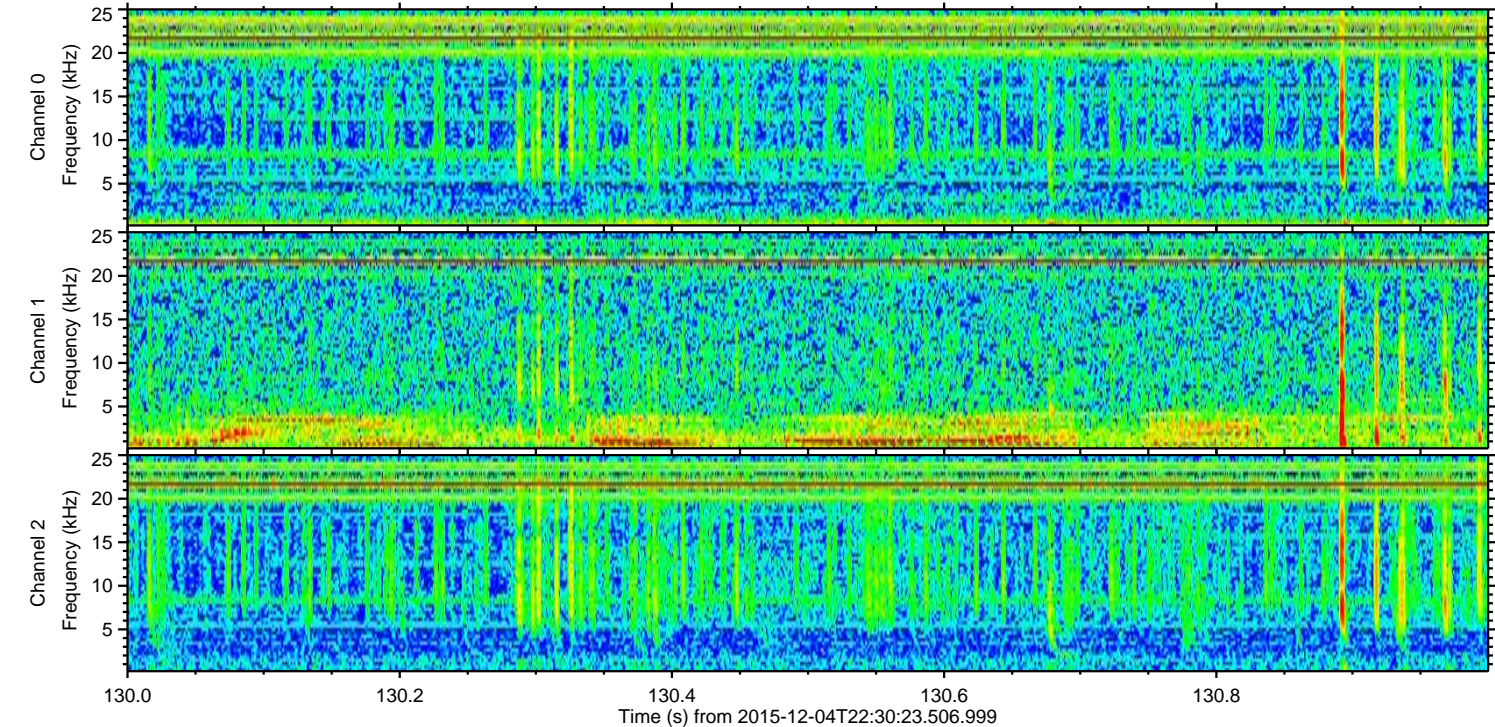
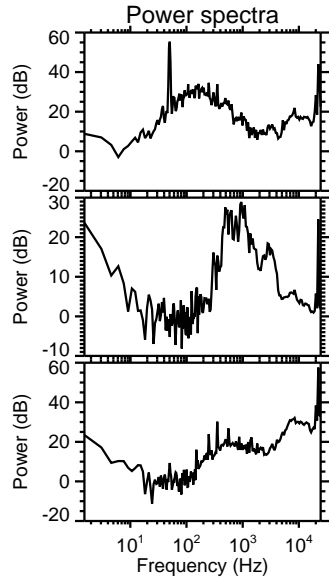
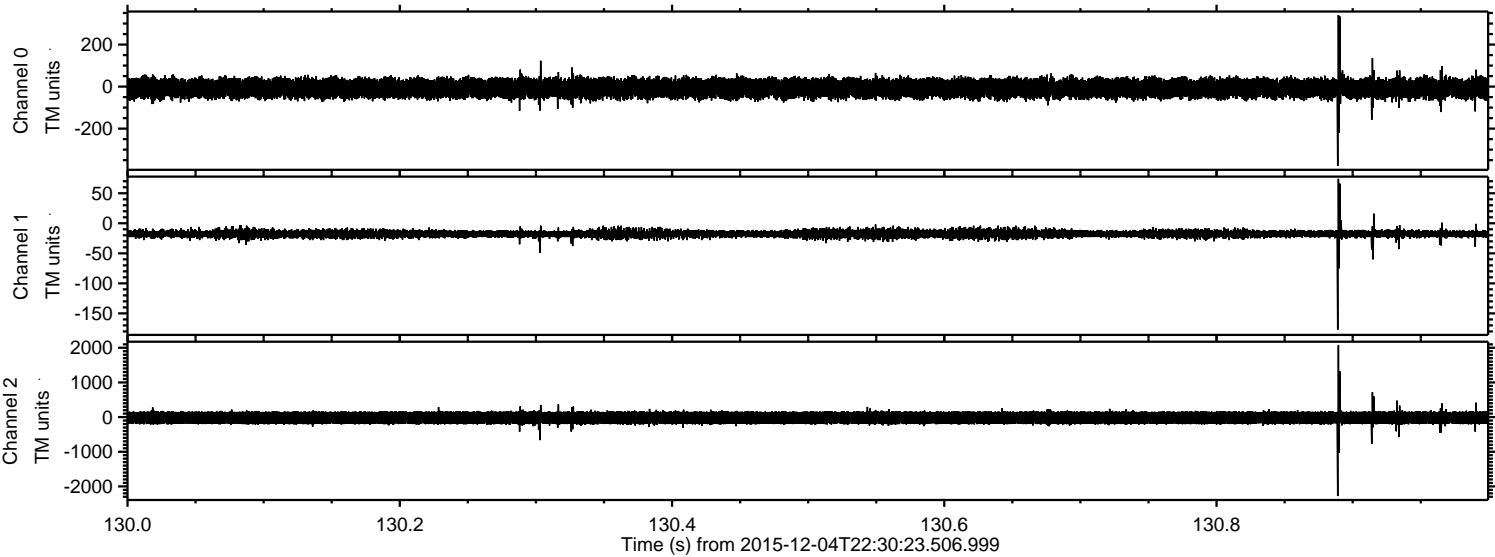
Channel 0
mn: -482
mx: 481
 μ : -8.1
 σ : 28.6

Channel 1
mn: -191
mx: 135
 μ : -17.7
 σ : 4.5

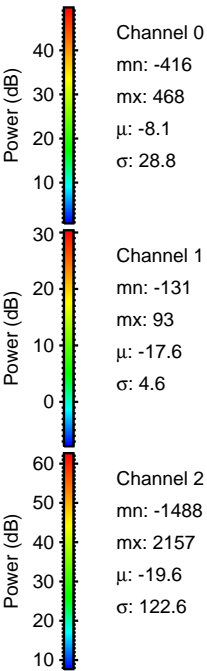
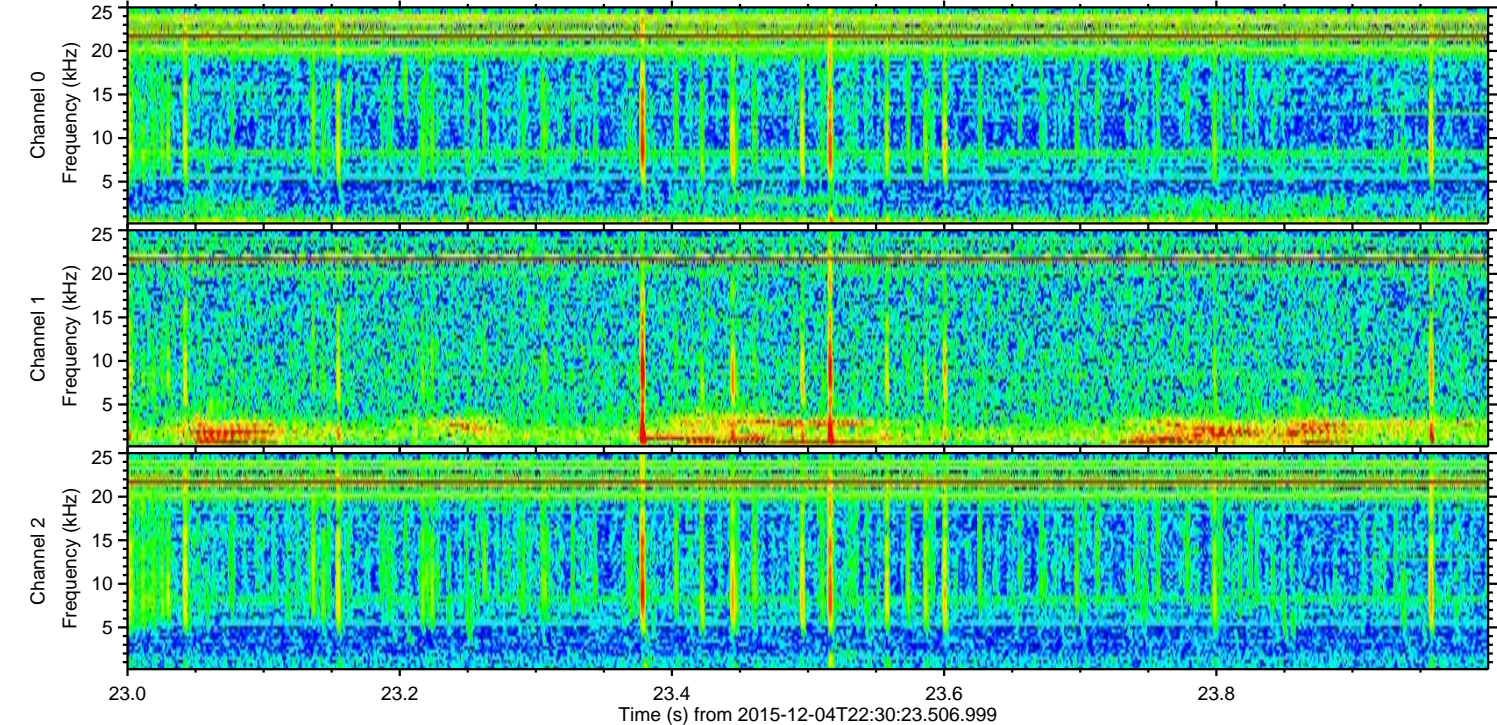
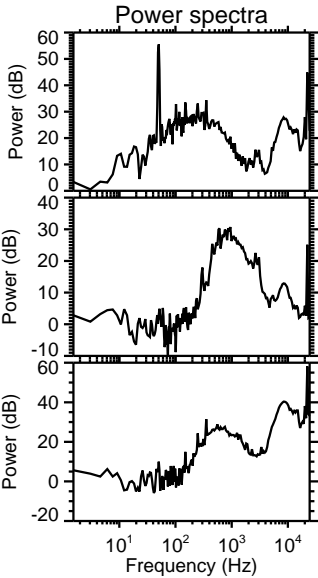
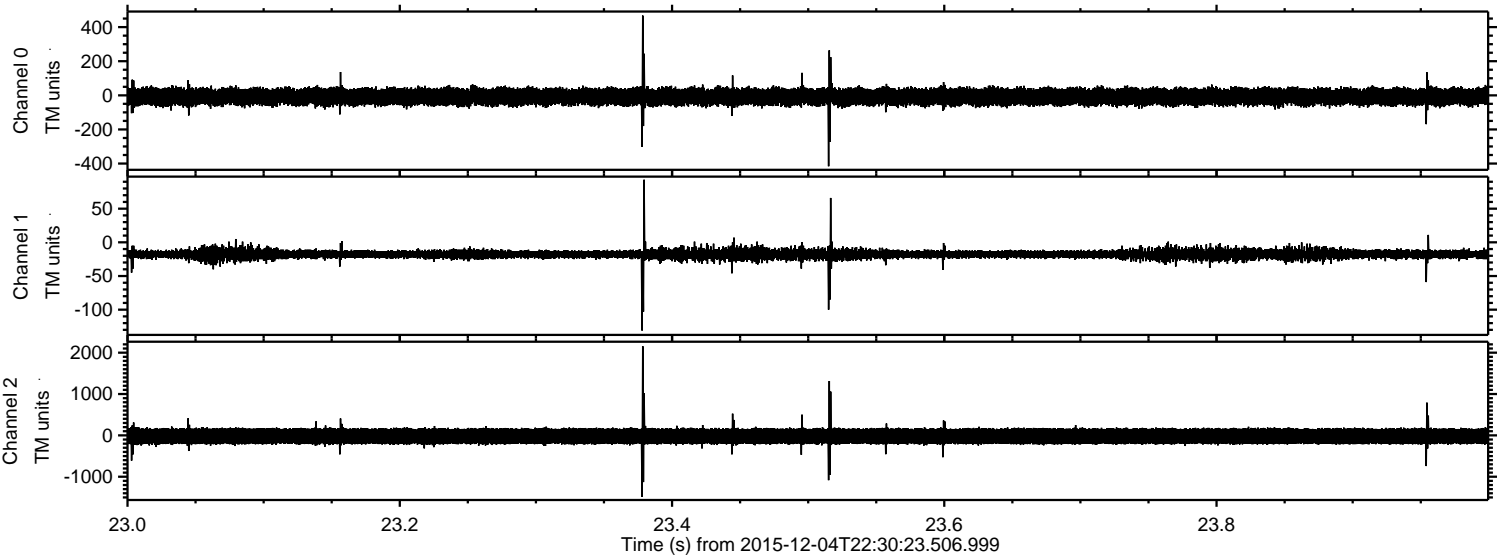
Channel 2
mn: -1981
mx: 2386
 μ : -19.6
 σ : 122.8

ELMAVAN 3D WAVEFORMS (Measured data sampled at 50 kHz) 51000 packets of 144 samples from 2015-12-04T22:30:23.506.999. Part 131/147

Processed Sun Dec 13 08:18:06 2015 by ELM ver.2012-10-06 from 001__elm20151204_223022__dat00.bin



Processed Sun Dec 13 08:18:07 2015 by ELM ver.2012-10-06 from 001__elm20151204_223022__dat00.bin



ELMAVAN 3D WAVEFORMS (Measured data sampled at 50 kHz) 51000 packets of 144 samples from 2015-12-04T22:30:23.506.999. Part 143/147

Processed Sun Dec 13 08:18:07 2015 by ELM ver.2012-10-06 from 001__elm20151204_223022__dat00.bin

