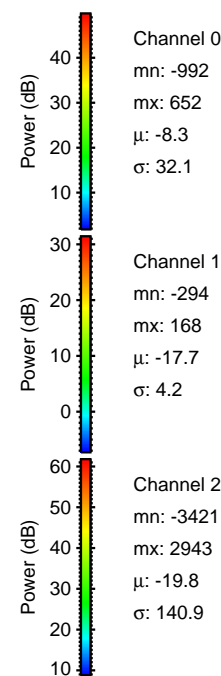
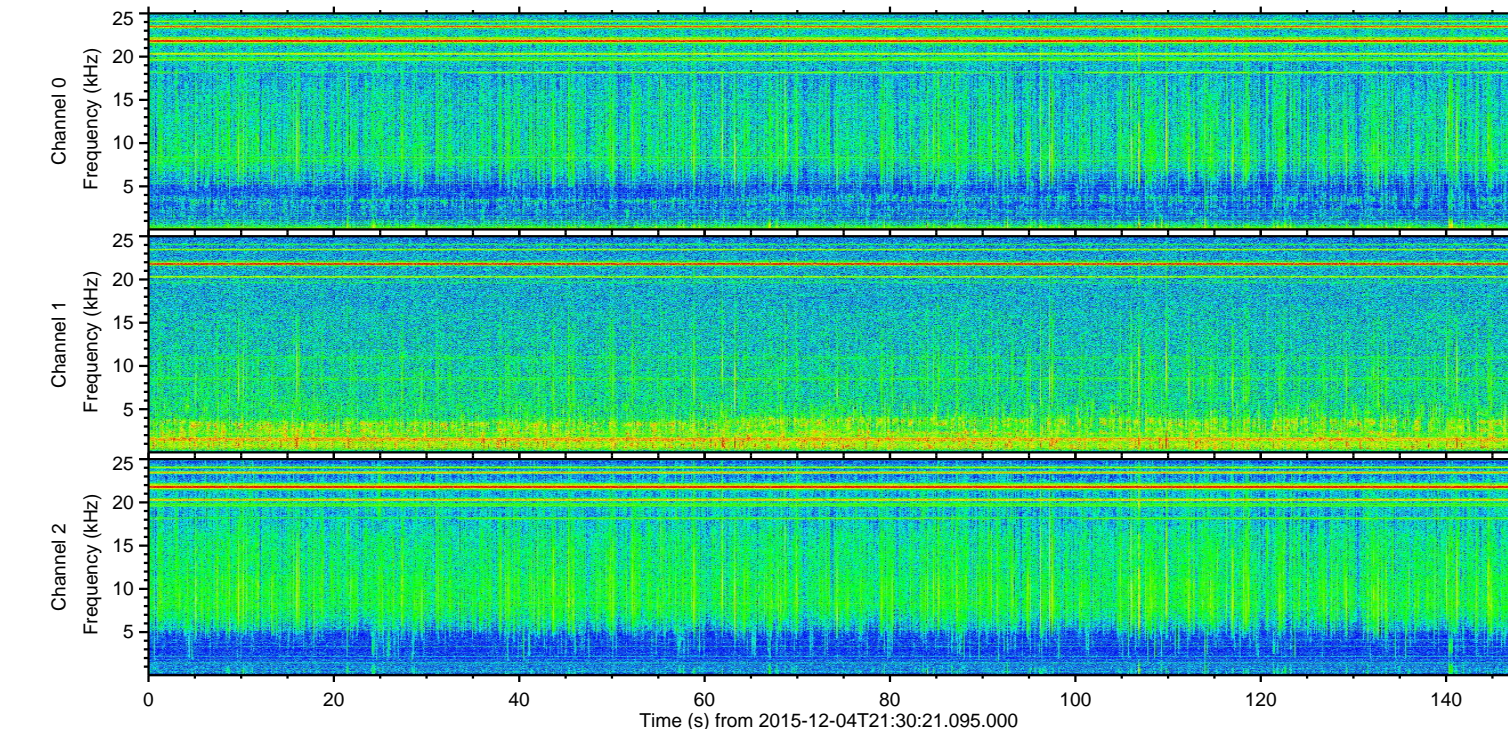
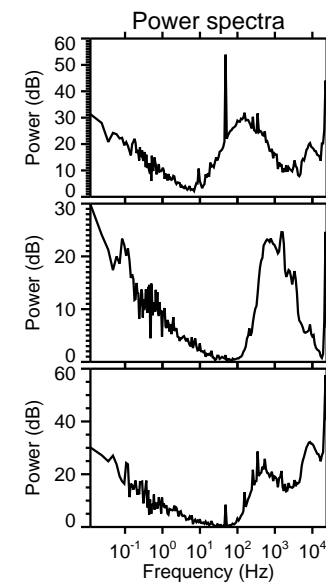
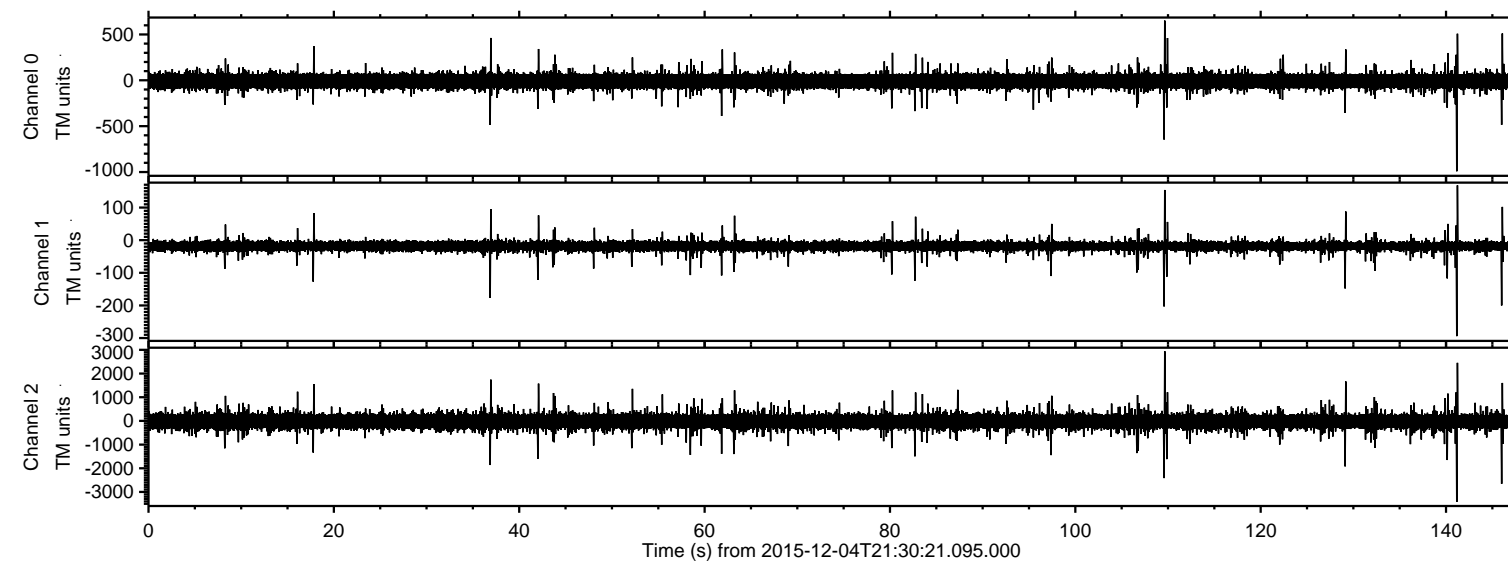


# ELMAVAN 3D WAVEFORMS (Measured data sampled at 50 kHz) 51000 packets of 144 samples from 2015-12-04T21:30:21.095.000.

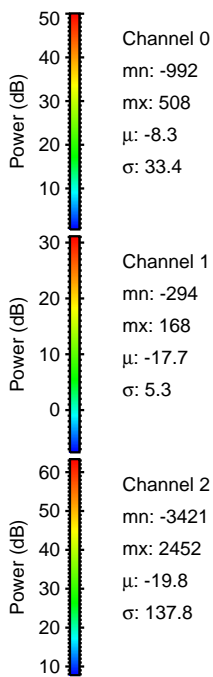
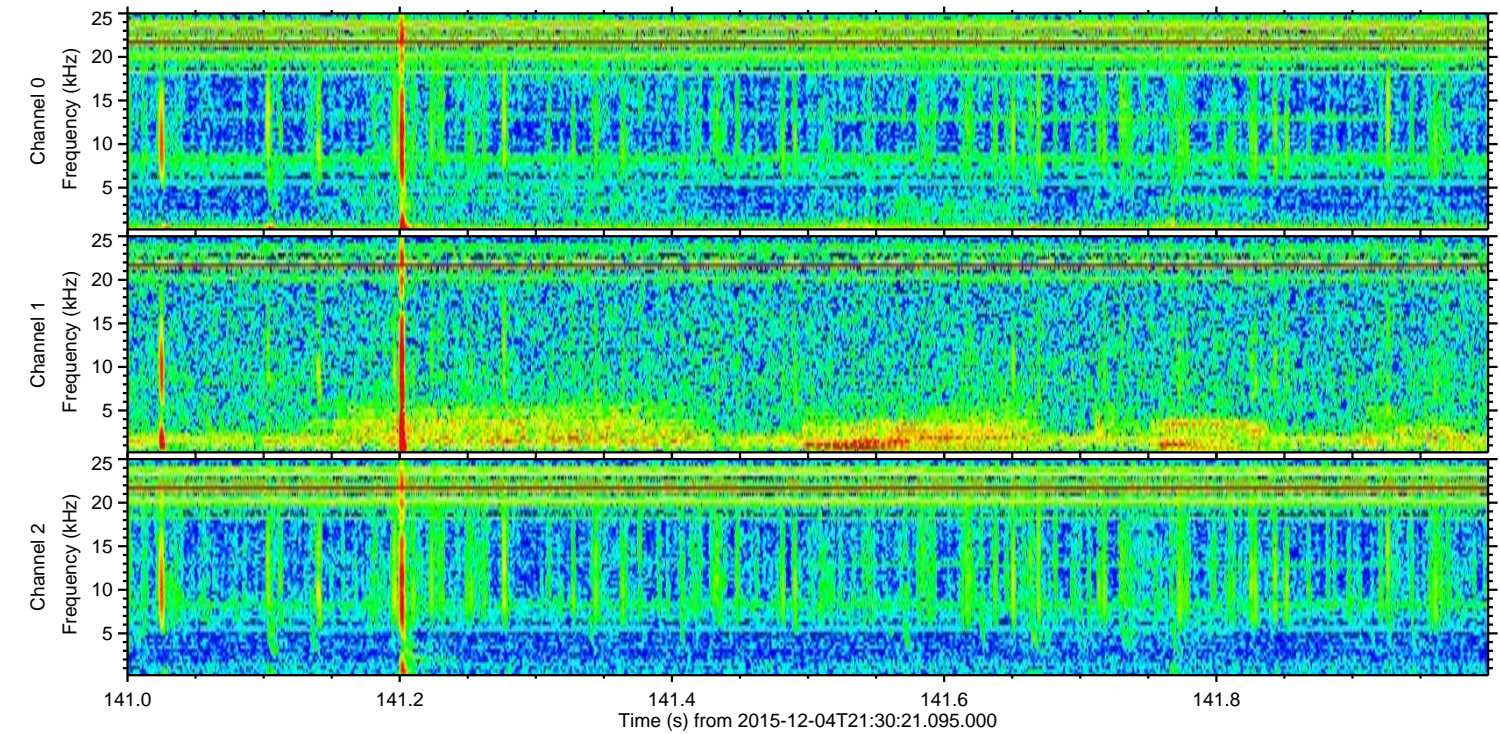
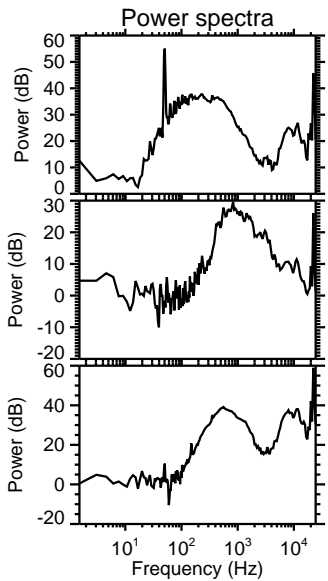
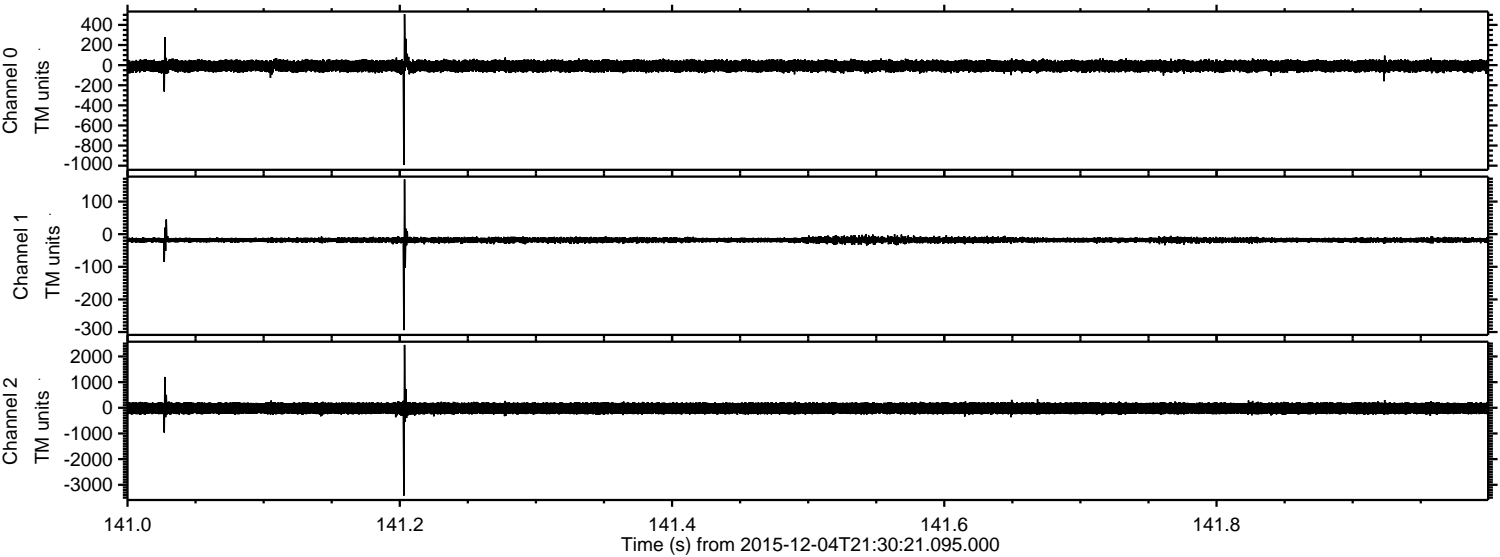
Processed Sun Dec 13 06:44:15 2015 by ELM ver.2012-10-06 from 001\_\_elm20151204\_213020\_\_dat00.bin





ELMAVAN 3D WAVEFORMS (Measured data sampled at 50 kHz) 51000 packets of 144 samples from 2015-12-04T21:30:21.095.000. Part 142/147

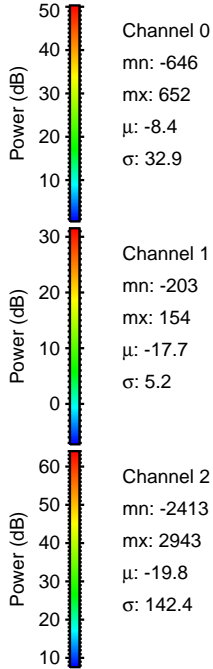
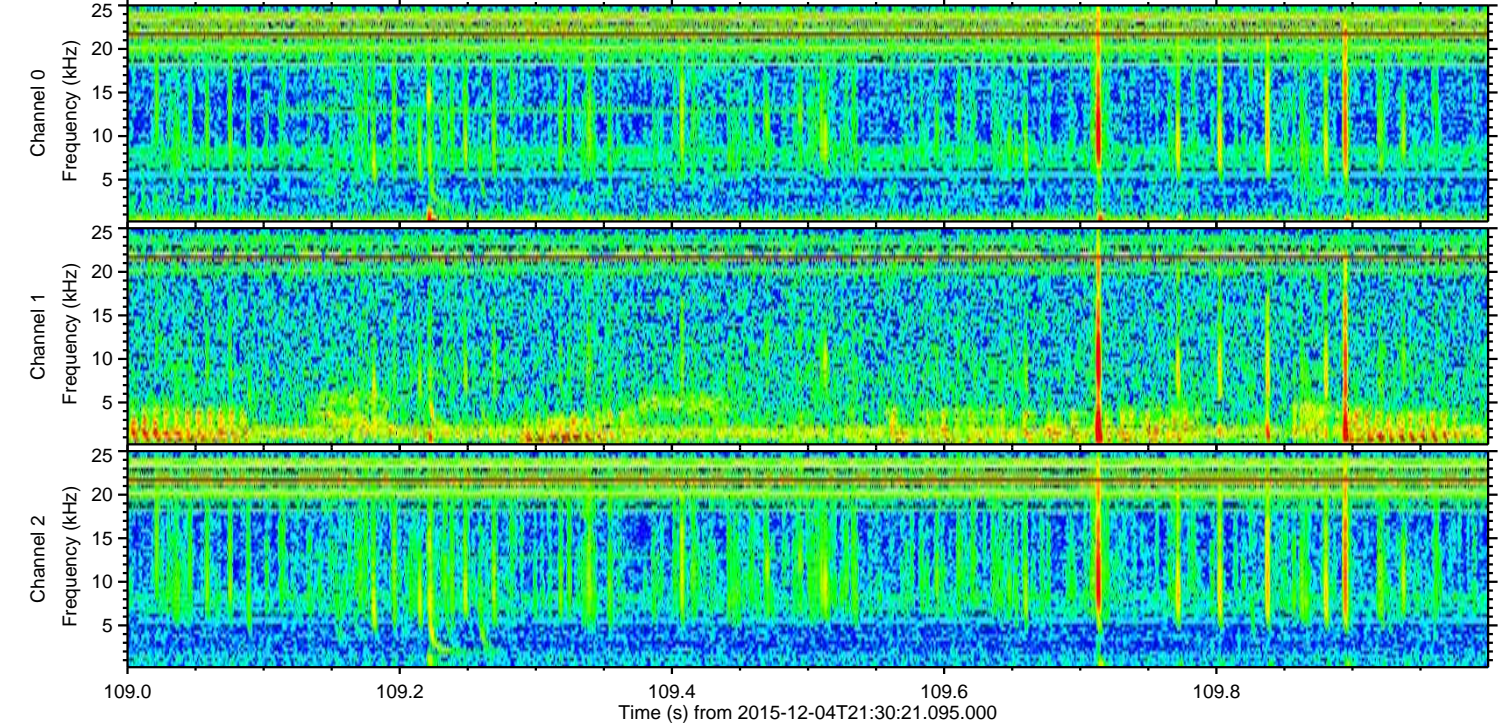
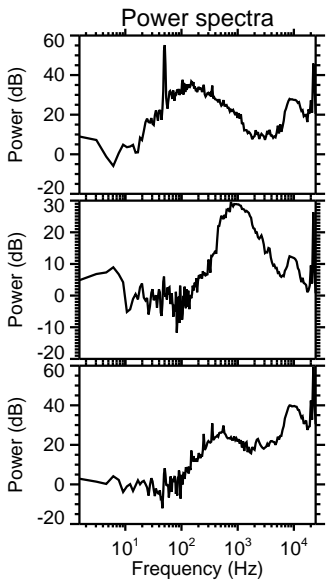
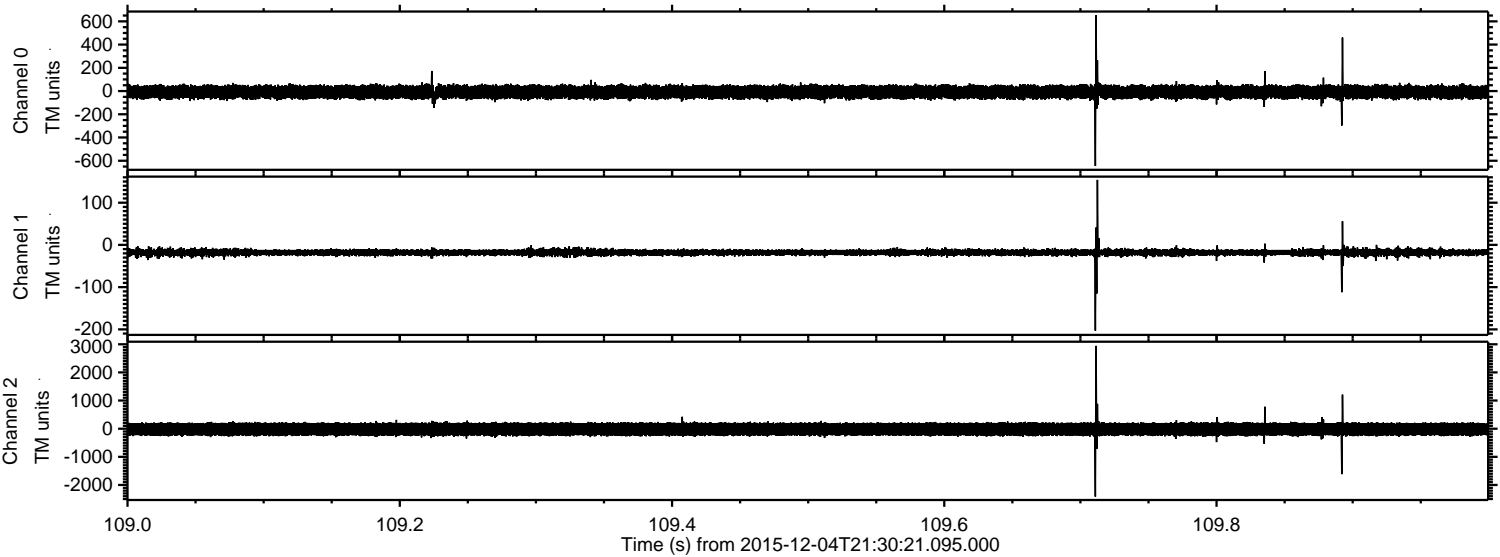
Processed Sun Dec 13 06:44:27 2015 by ELM ver.2012-10-06 from 001\_\_elm20151204\_213020\_\_dat00.bin





ELMAVAN 3D WAVEFORMS (Measured data sampled at 50 kHz) 51000 packets of 144 samples from 2015-12-04T21:30:21.095.000. Part 110/147

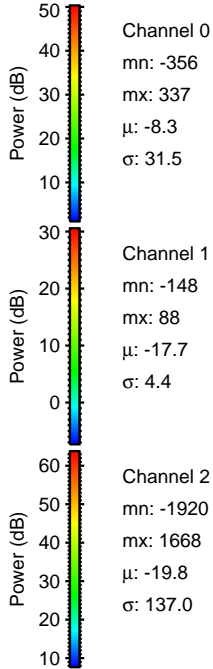
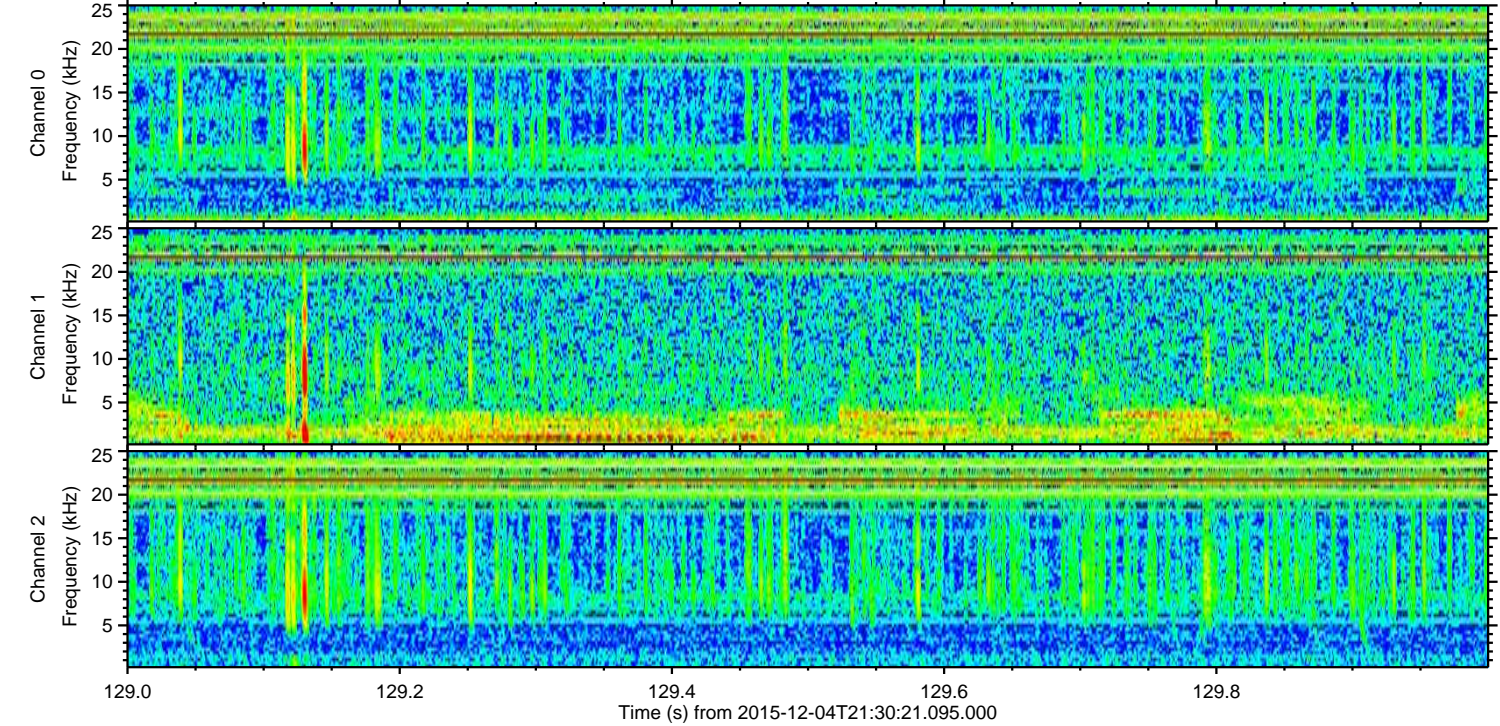
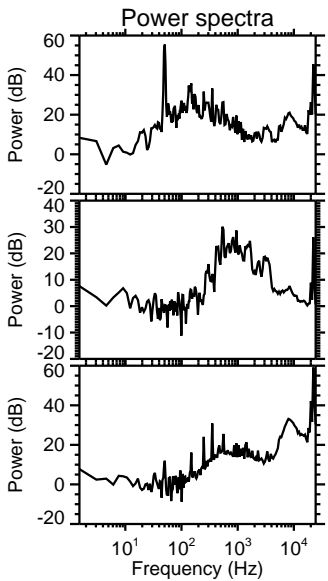
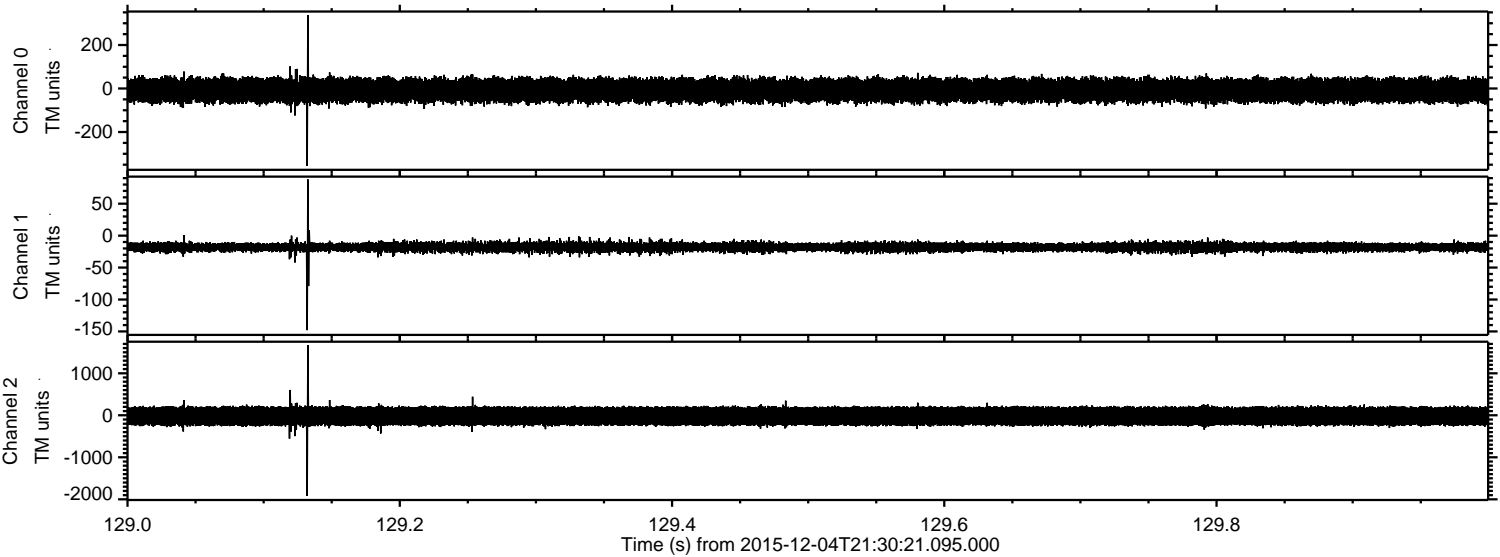
Processed Sun Dec 13 06:44:27 2015 by ELM ver.2012-10-06 from 001\_\_elm20151204\_213020\_\_dat00.bin





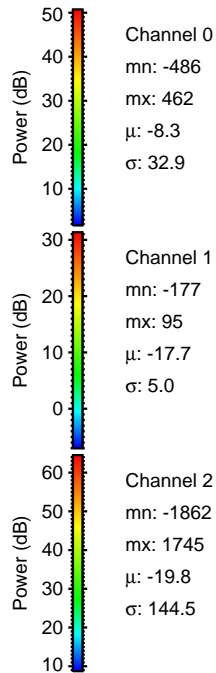
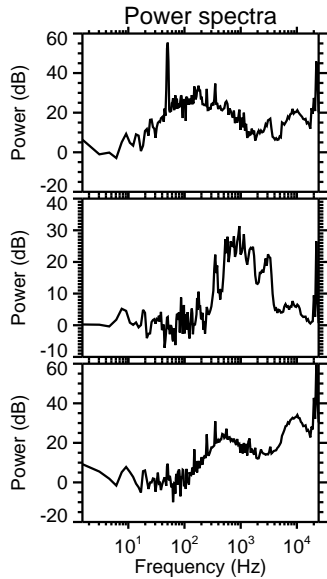
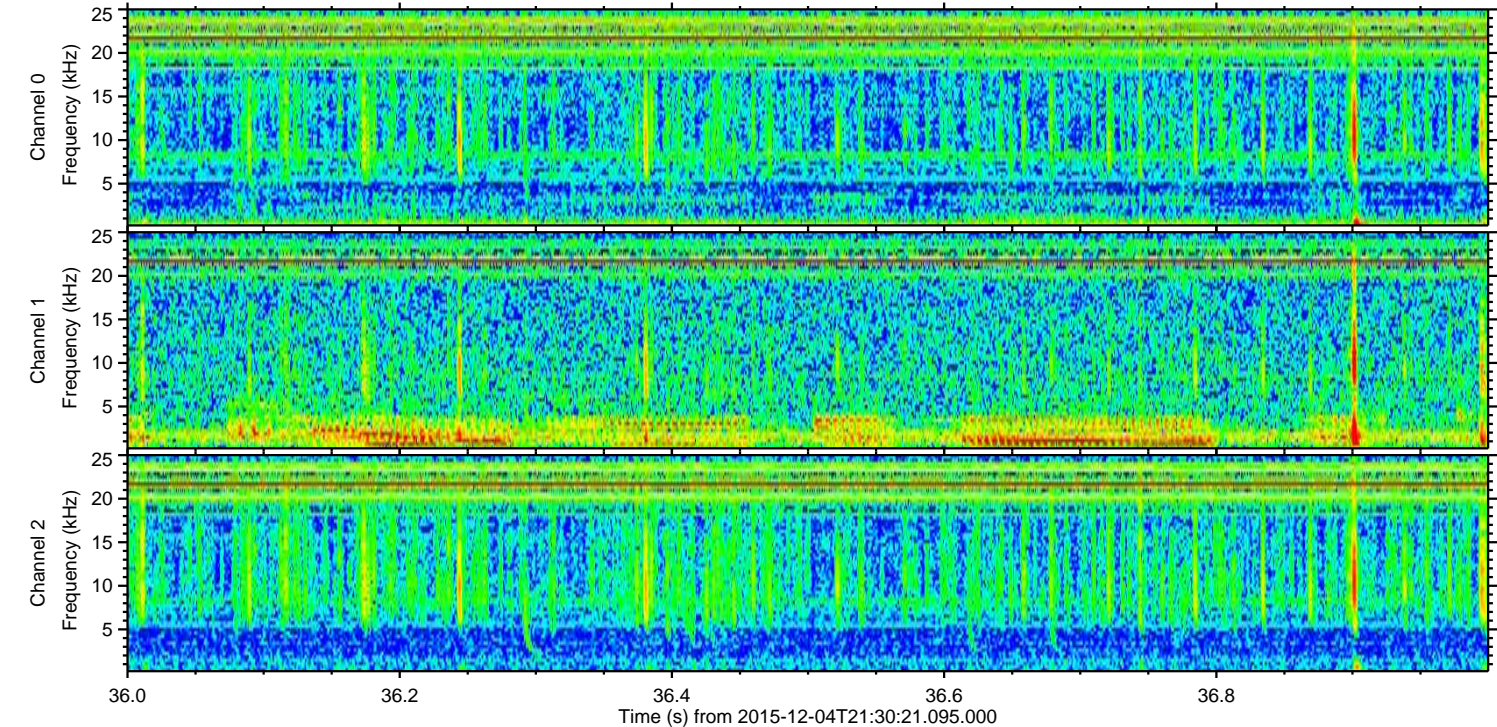
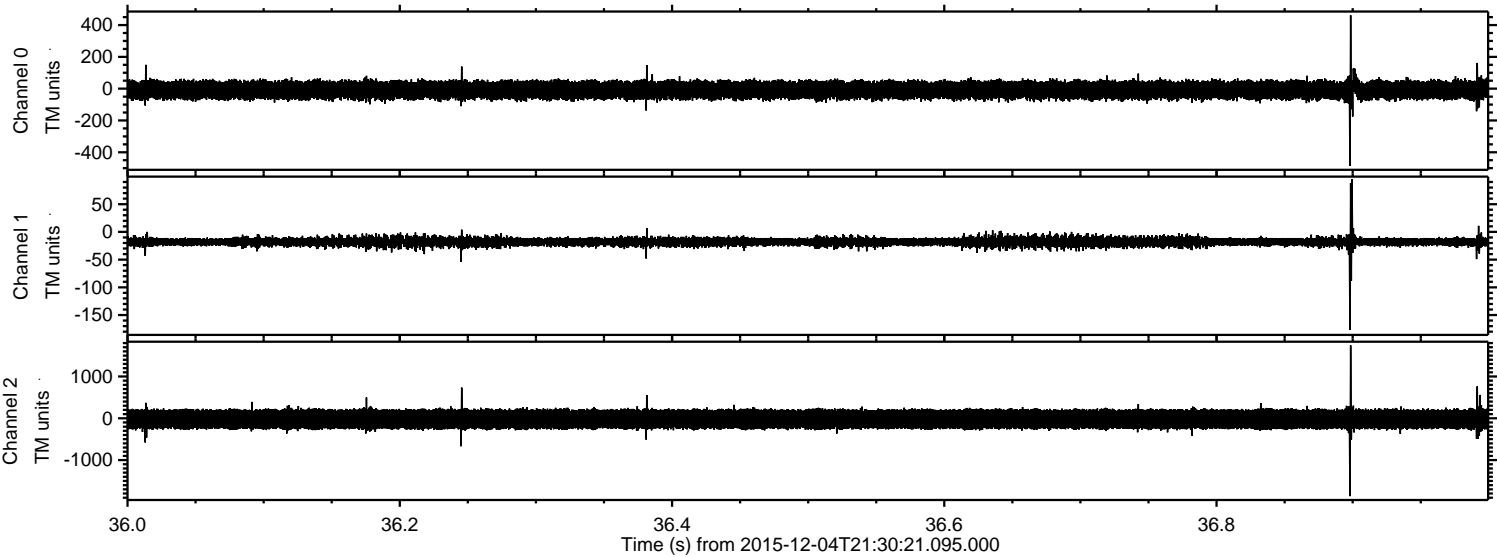
ELMAVAN 3D WAVEFORMS (Measured data sampled at 50 kHz) 51000 packets of 144 samples from 2015-12-04T21:30:21.095.000. Part 130/147

Processed Sun Dec 13 06:44:28 2015 by ELM ver.2012-10-06 from 001\_\_elm20151204\_213020\_\_dat00.bin





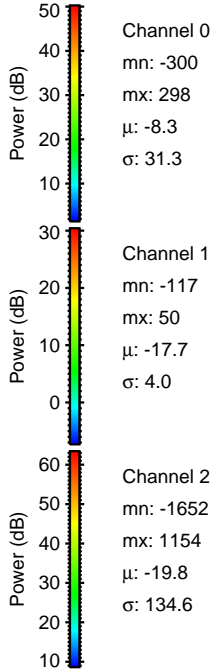
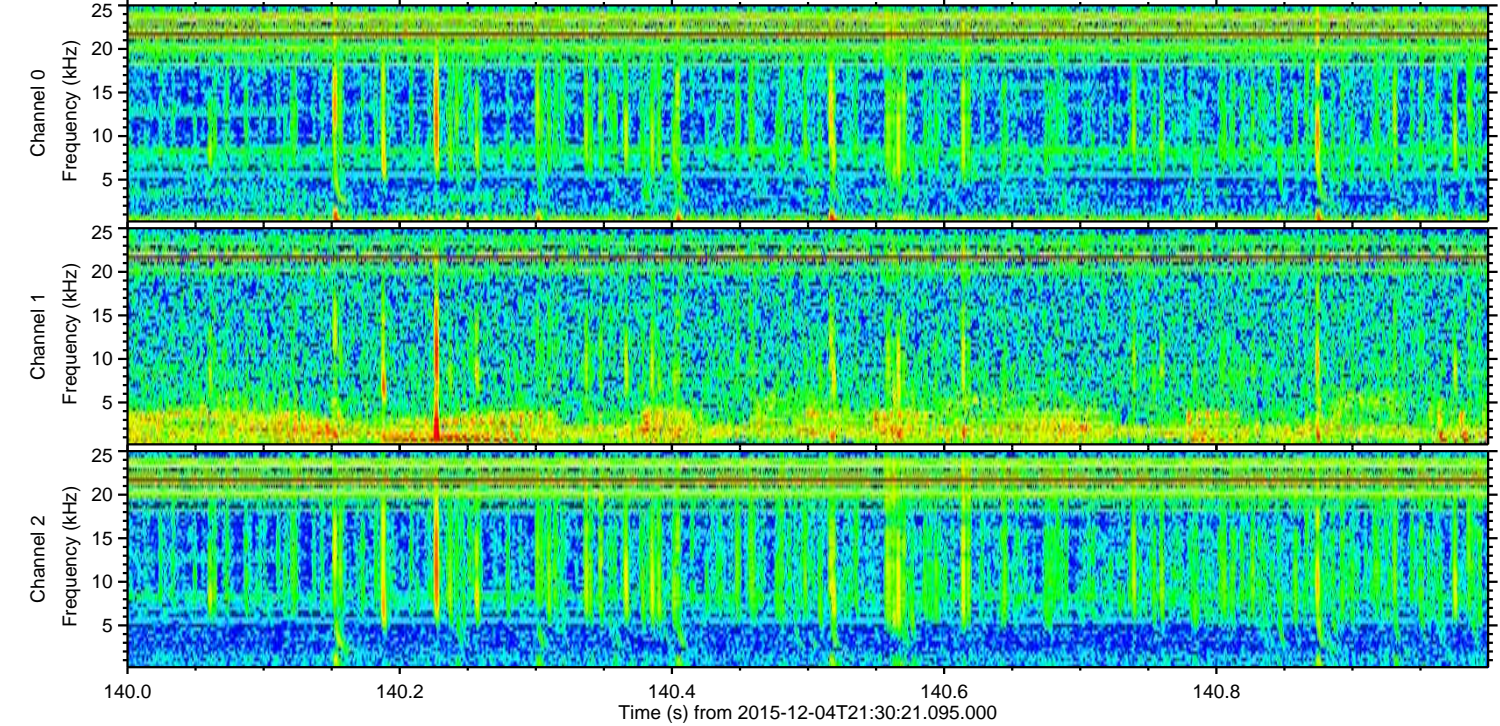
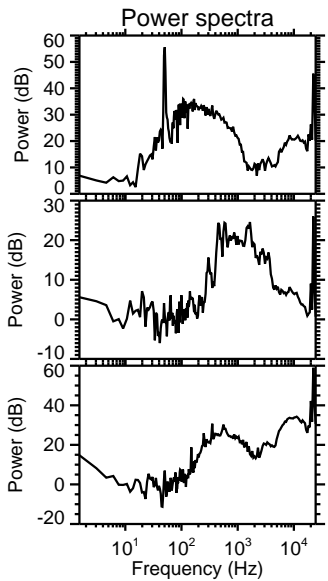
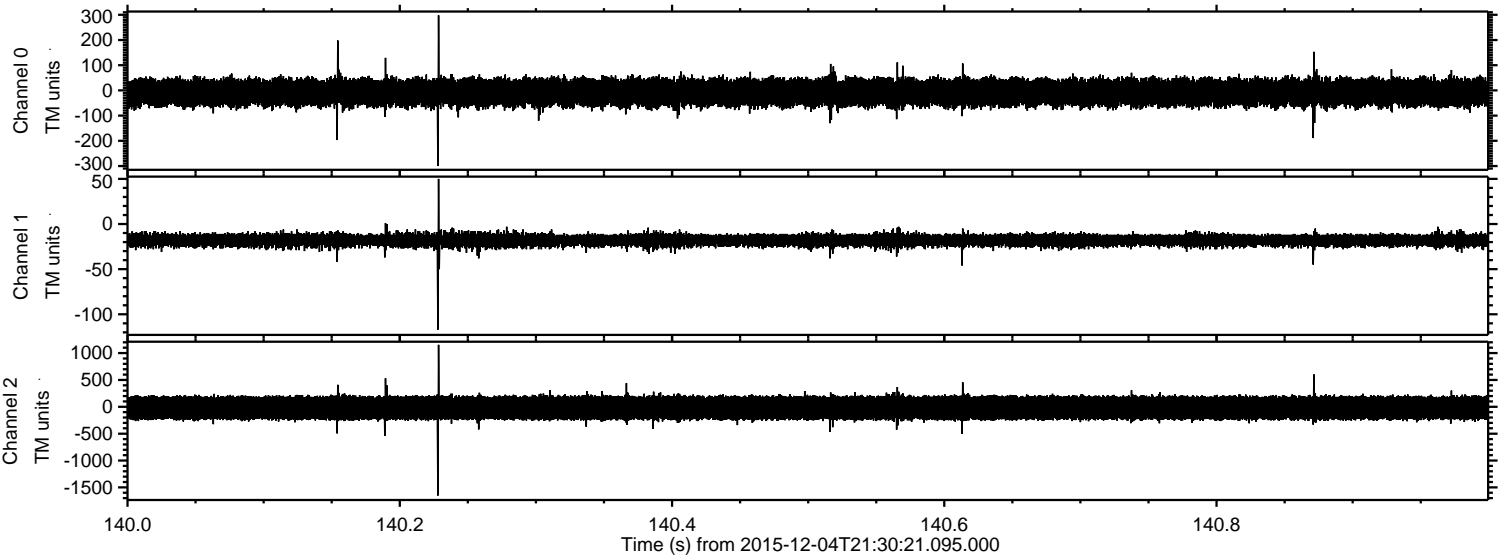
Processed Sun Dec 13 06:44:29 2015 by ELM ver.2012-10-06 from 001\_\_elm20151204\_213020\_\_dat00.bin





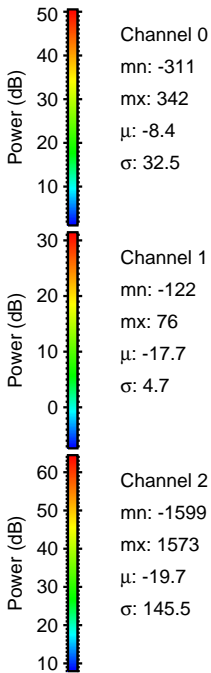
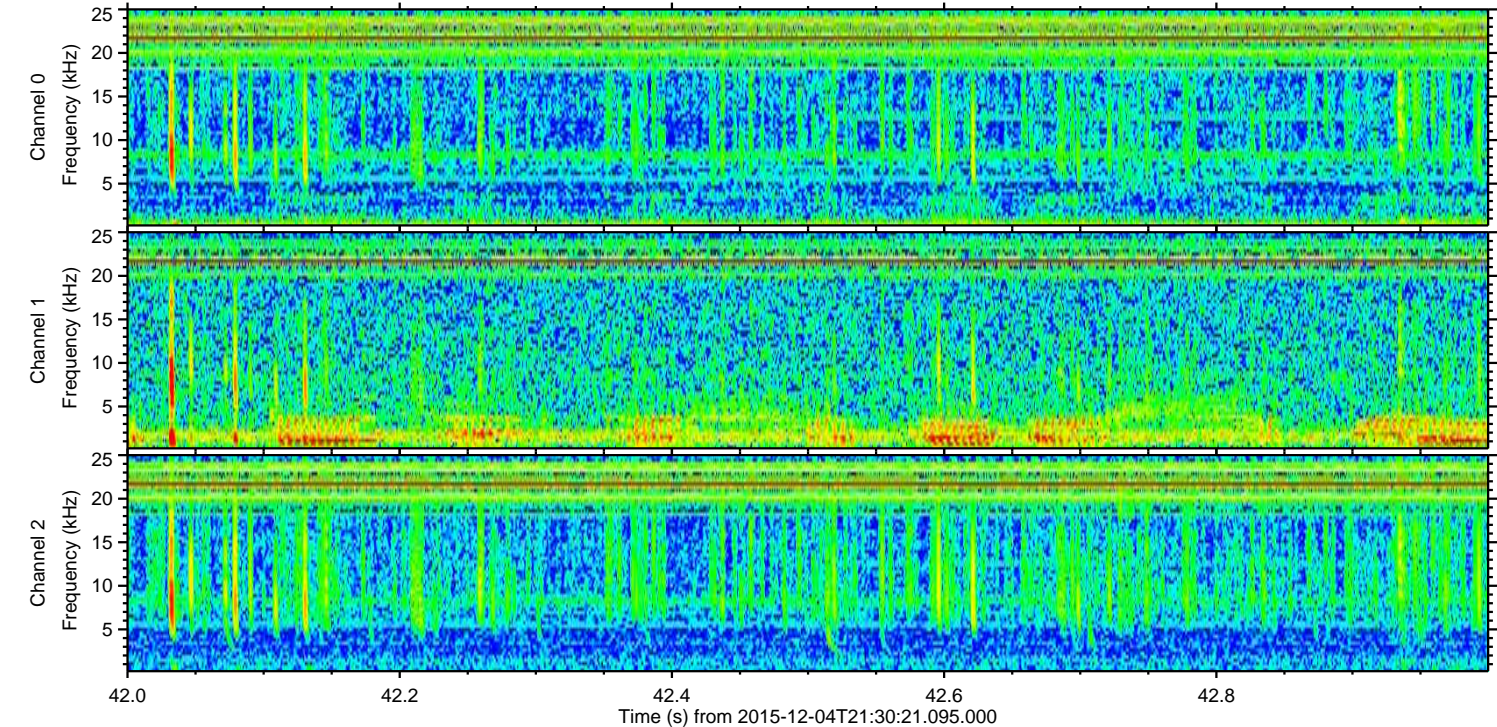
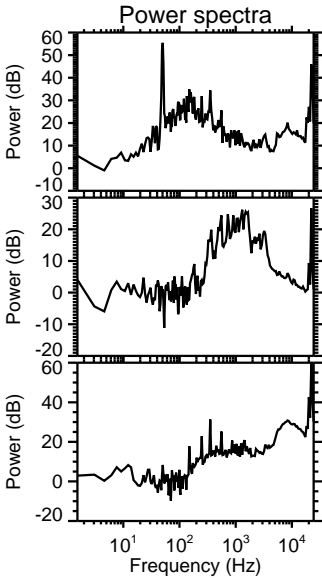
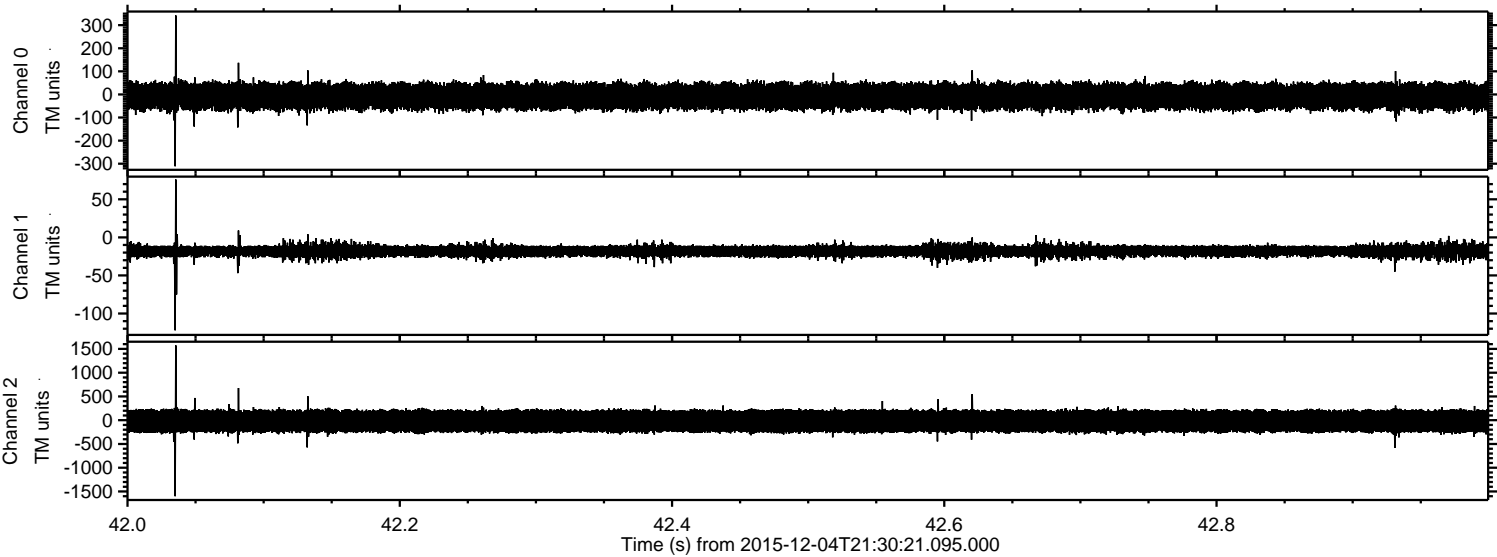
ELMAVAN 3D WAVEFORMS (Measured data sampled at 50 kHz) 51000 packets of 144 samples from 2015-12-04T21:30:21.095.000. Part 141/147

Processed Sun Dec 13 06:44:30 2015 by ELM ver.2012-10-06 from 001\_\_elm20151204\_213020\_\_dat00.bin





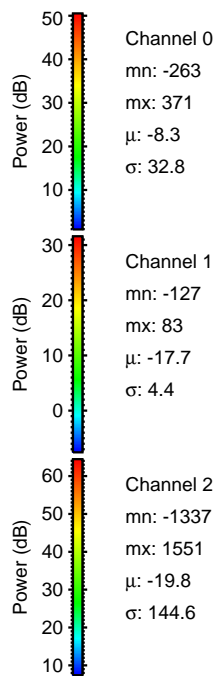
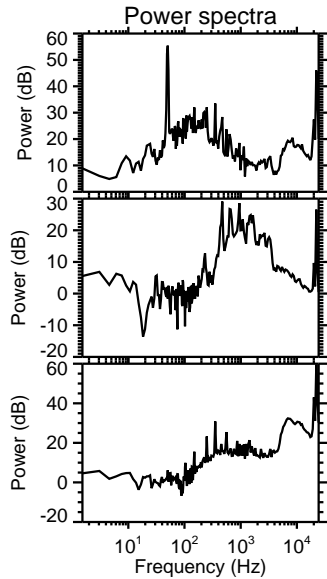
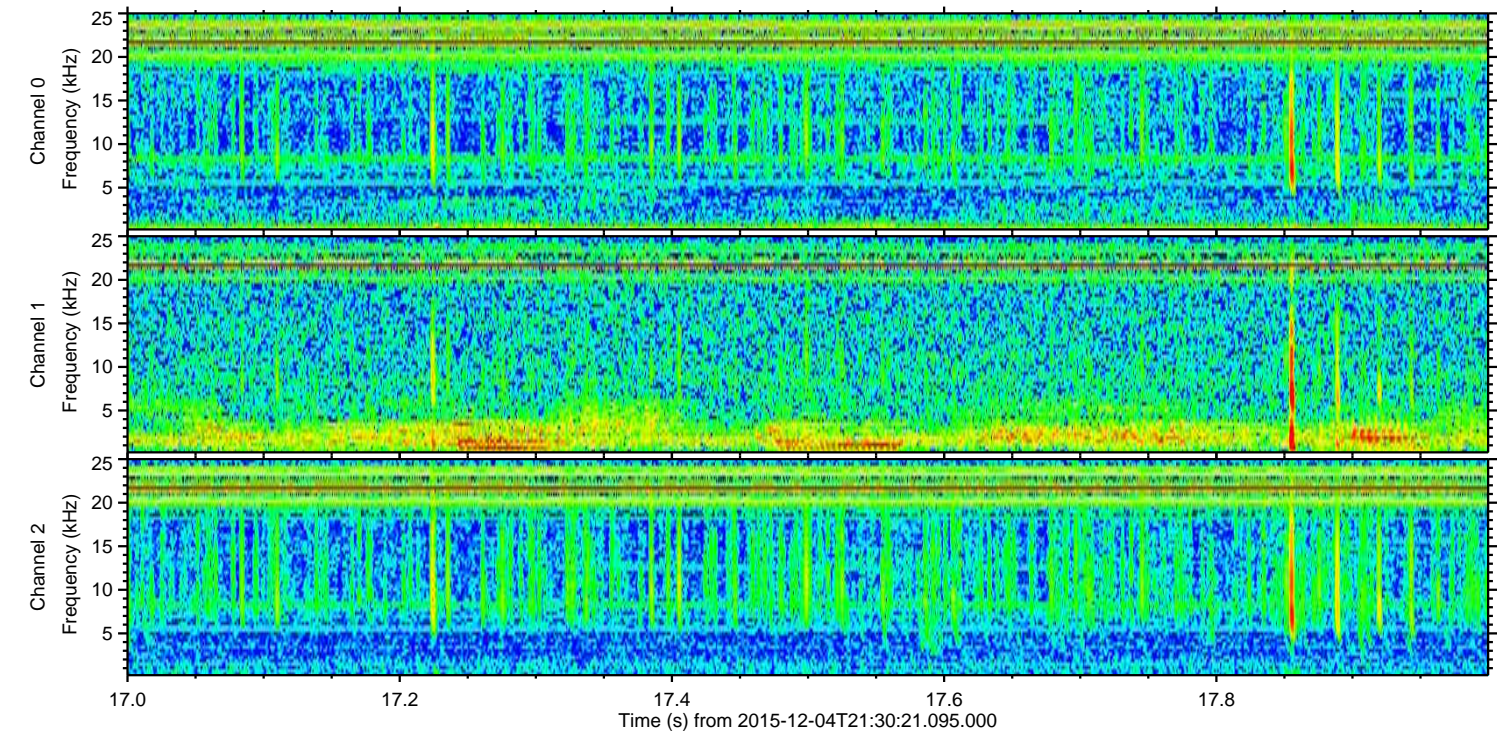
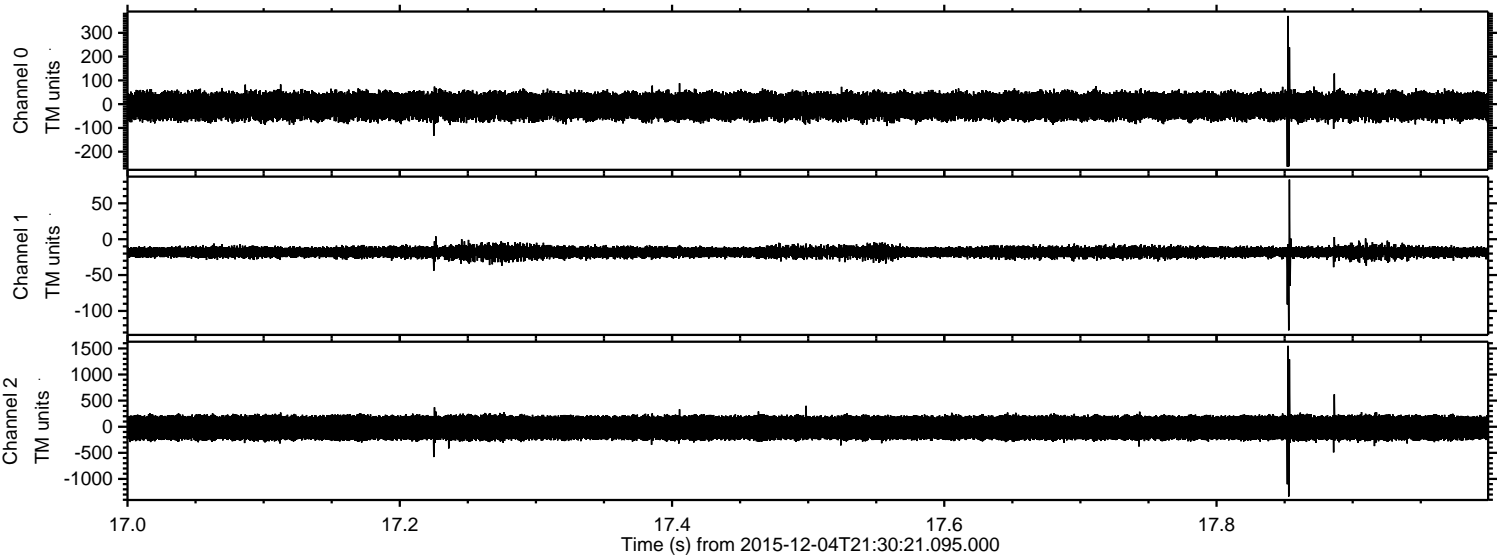
Processed Sun Dec 13 06:44:31 2015 by ELM ver.2012-10-06 from 001\_\_elm20151204\_213020\_\_dat00.bin





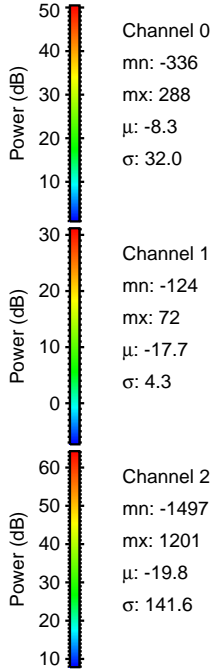
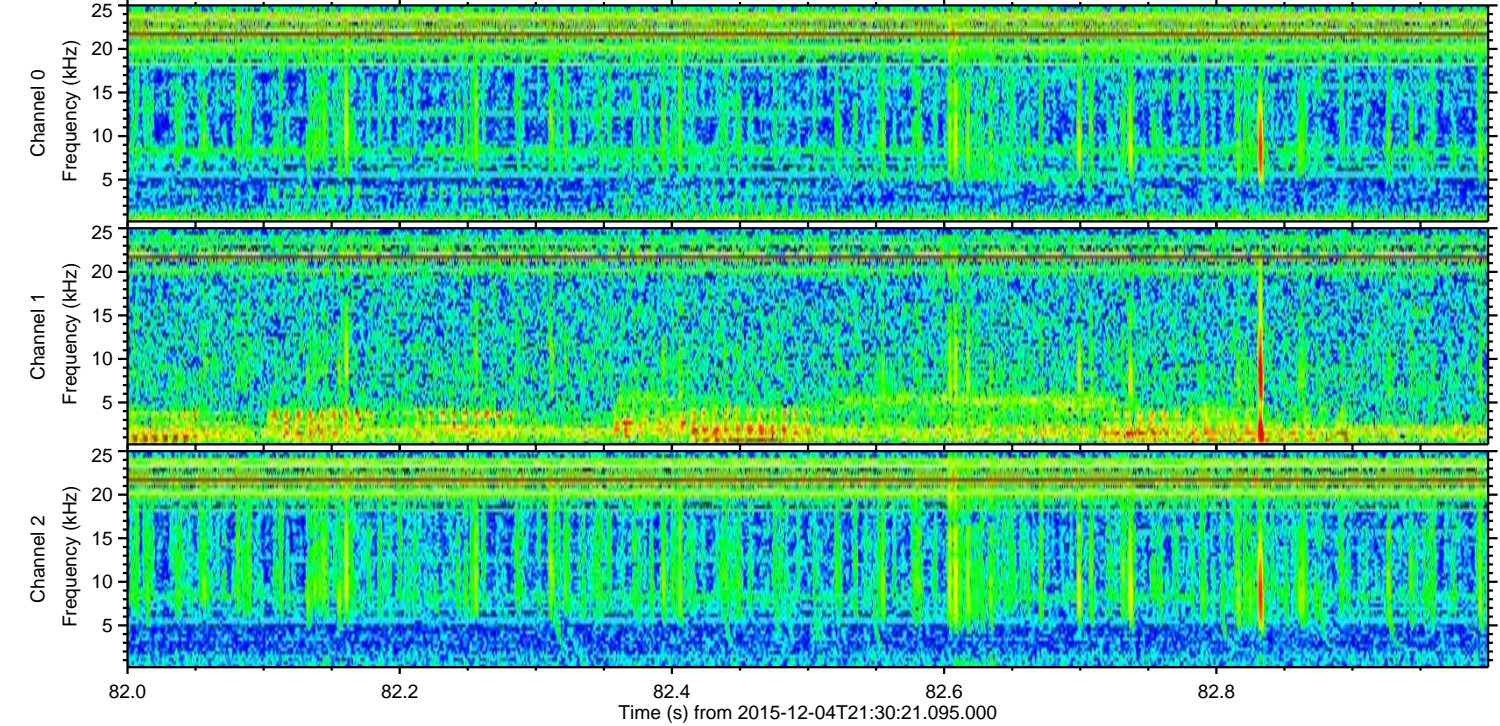
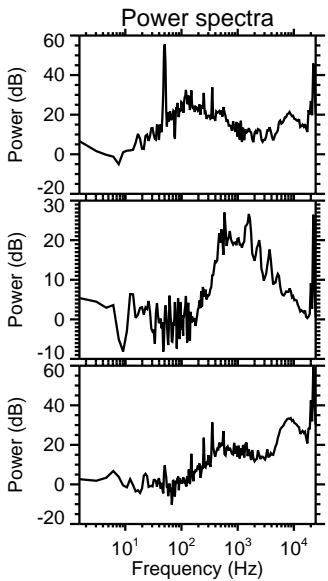
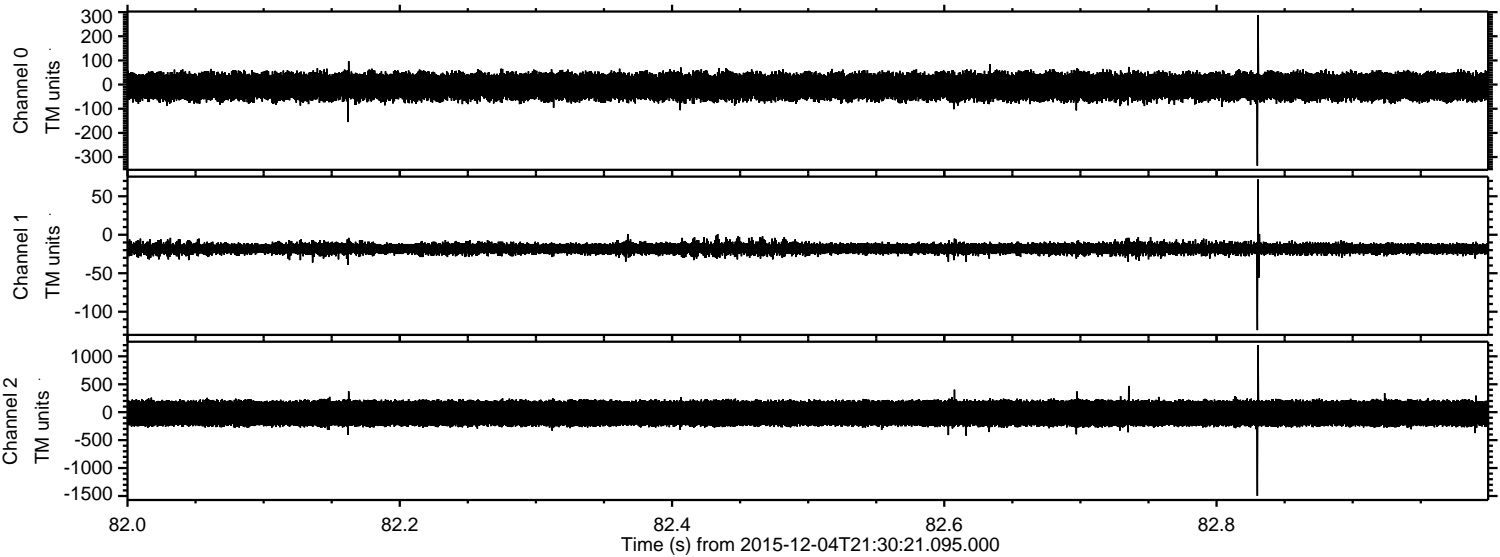
ELMAVAN 3D WAVEFORMS (Measured data sampled at 50 kHz) 51000 packets of 144 samples from 2015-12-04T21:30:21.095.000. Part 18/147

Processed Sun Dec 13 06:44:32 2015 by ELM ver.2012-10-06 from 001\_\_elm20151204\_213020\_\_dat00.bin





Processed Sun Dec 13 06:44:33 2015 by ELM ver.2012-10-06 from 001\_\_elm20151204\_213020\_\_dat00.bin



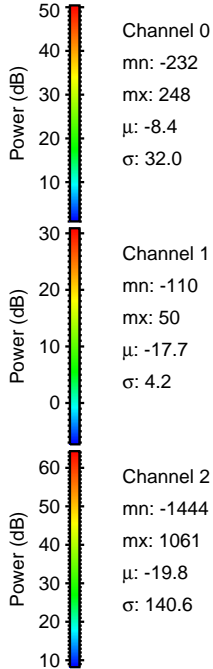
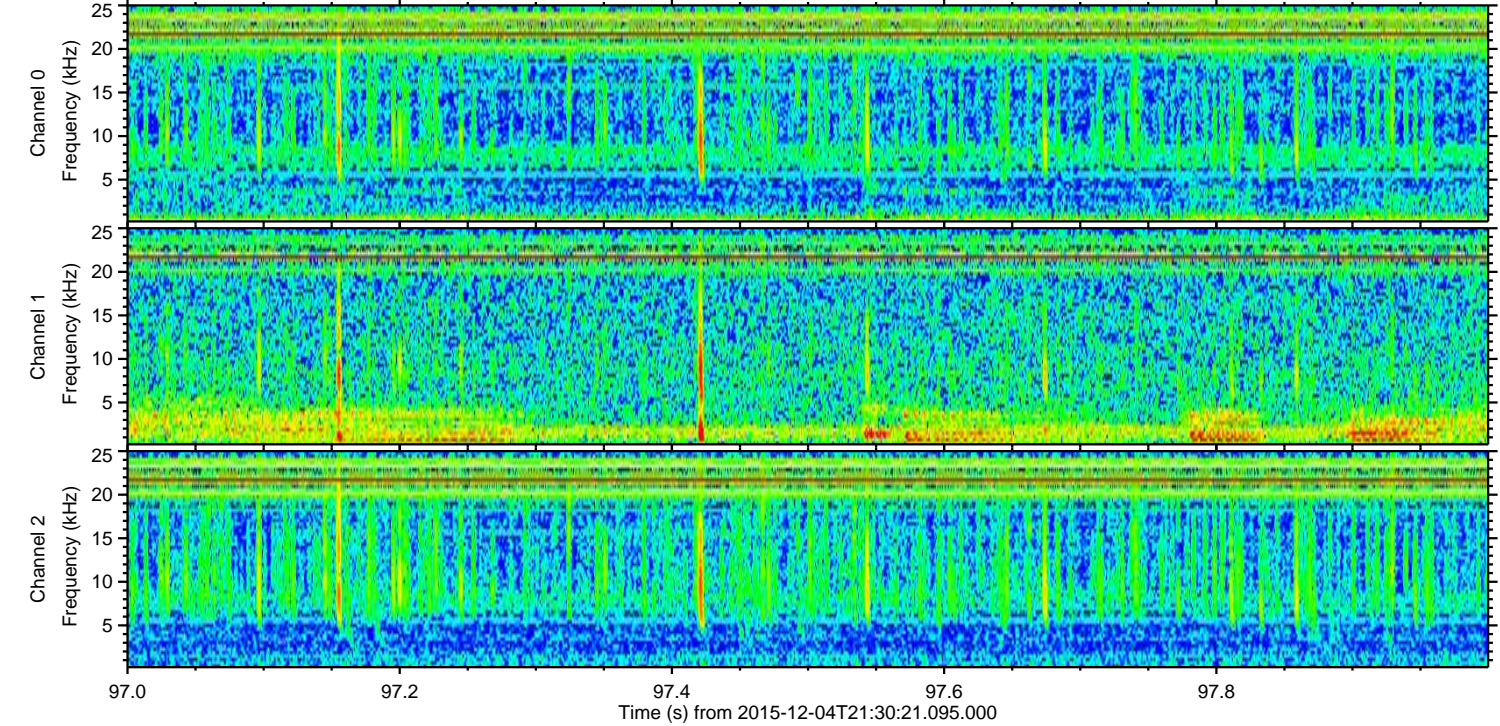
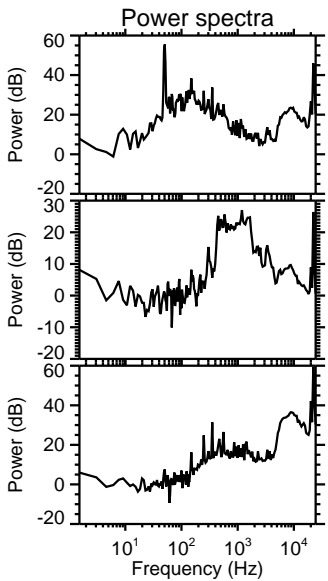
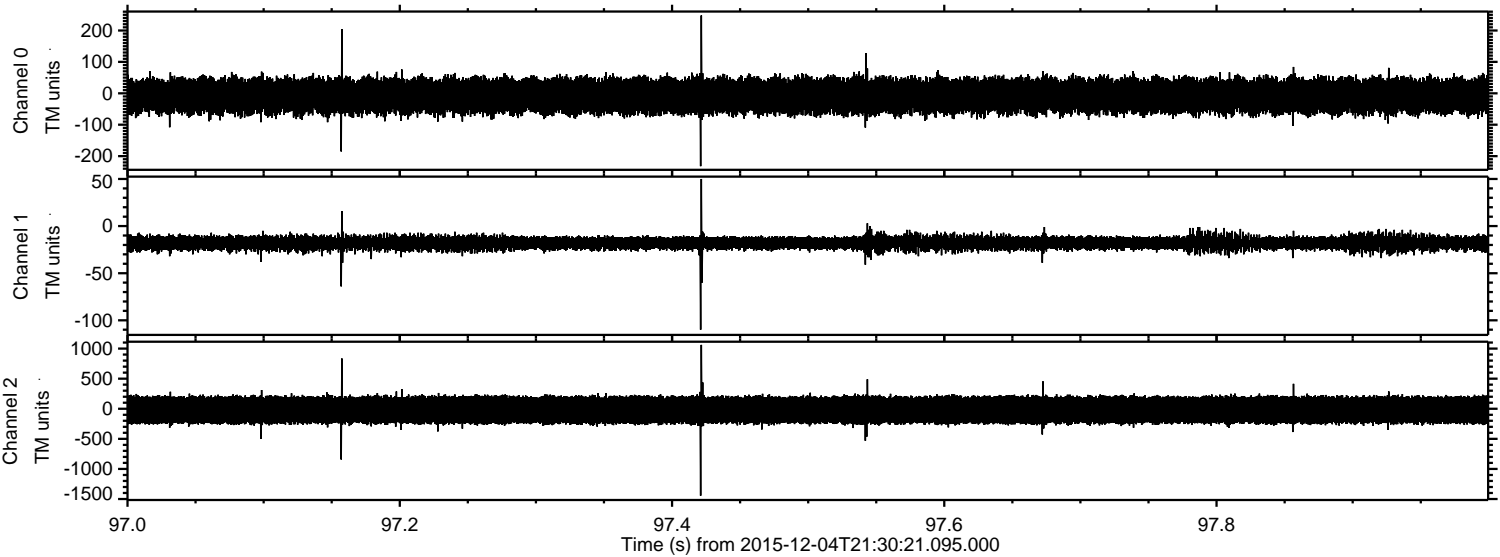
Channel 0  
mn: -336  
mx: 288  
 $\mu$ : -8.3  
 $\sigma$ : 32.0

Channel 1  
mn: -124  
mx: 72  
 $\mu$ : -17.7  
 $\sigma$ : 4.3

Channel 2  
mn: -1497  
mx: 1201  
 $\mu$ : -19.8  
 $\sigma$ : 141.6



Processed Sun Dec 13 06:44:34 2015 by ELM ver.2012-10-06 from 001\_\_elm20151204\_213020\_\_dat00.bin





Processed Sun Dec 13 06:44:35 2015 by ELM ver.2012-10-06 from 001\_\_elm20151204\_213020\_\_dat00.bin

