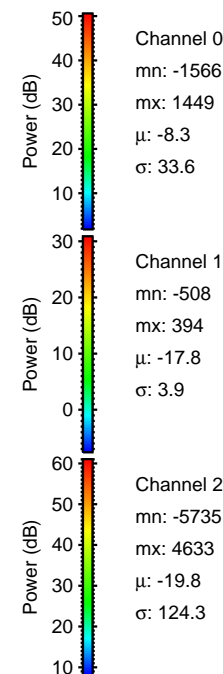
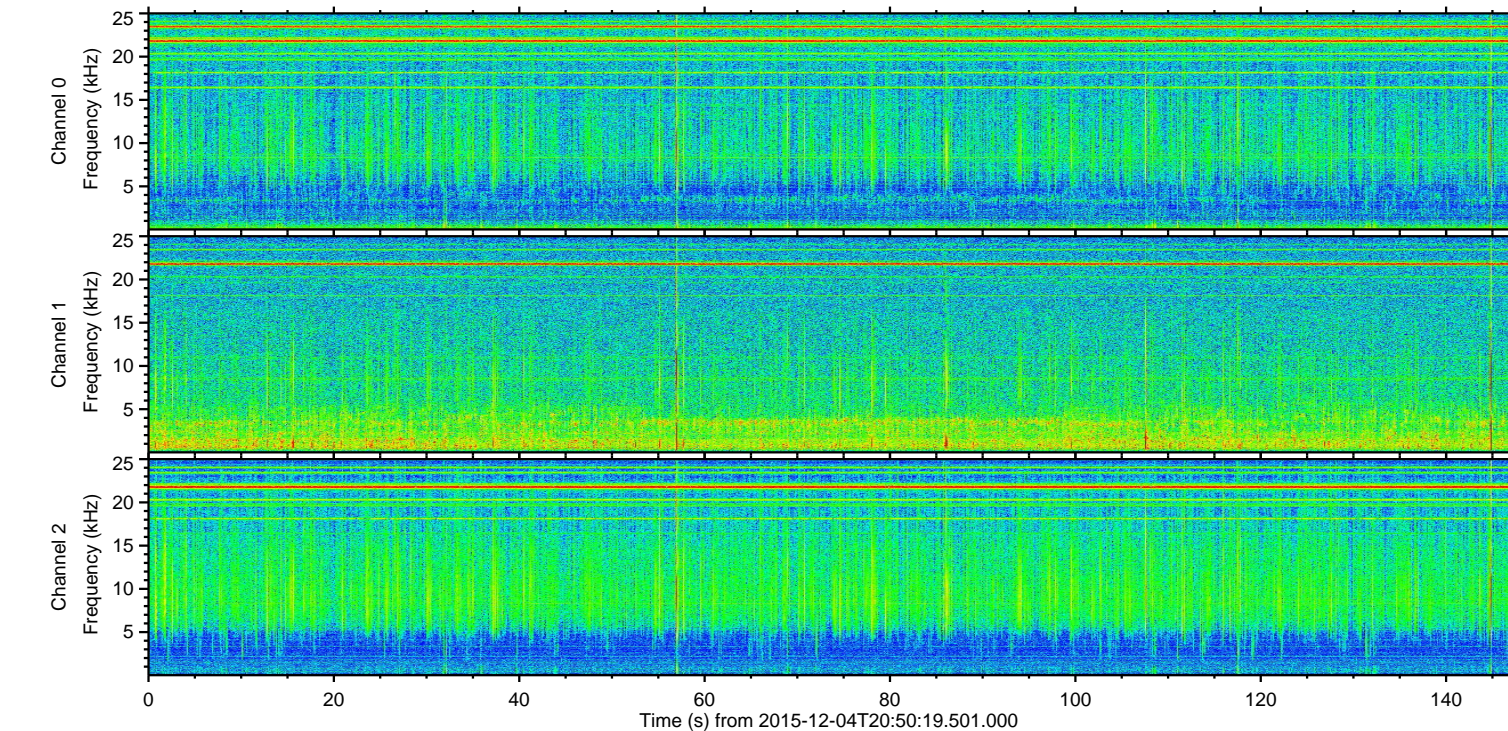
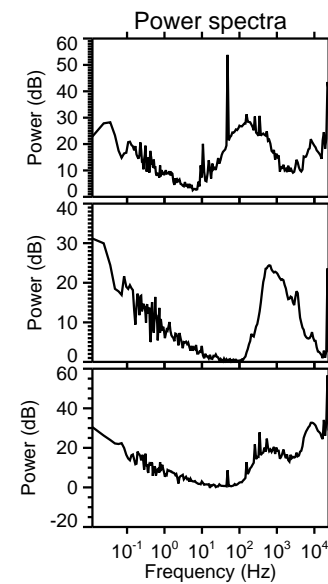
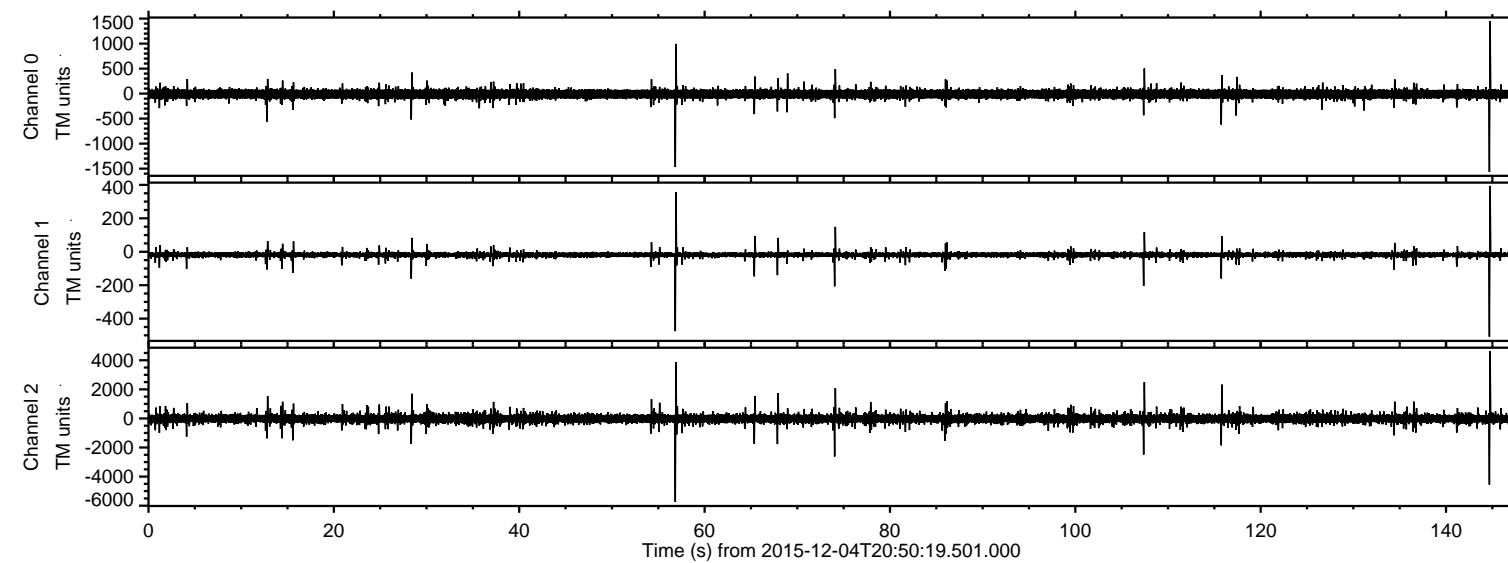


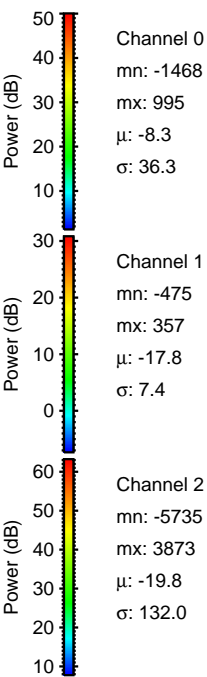
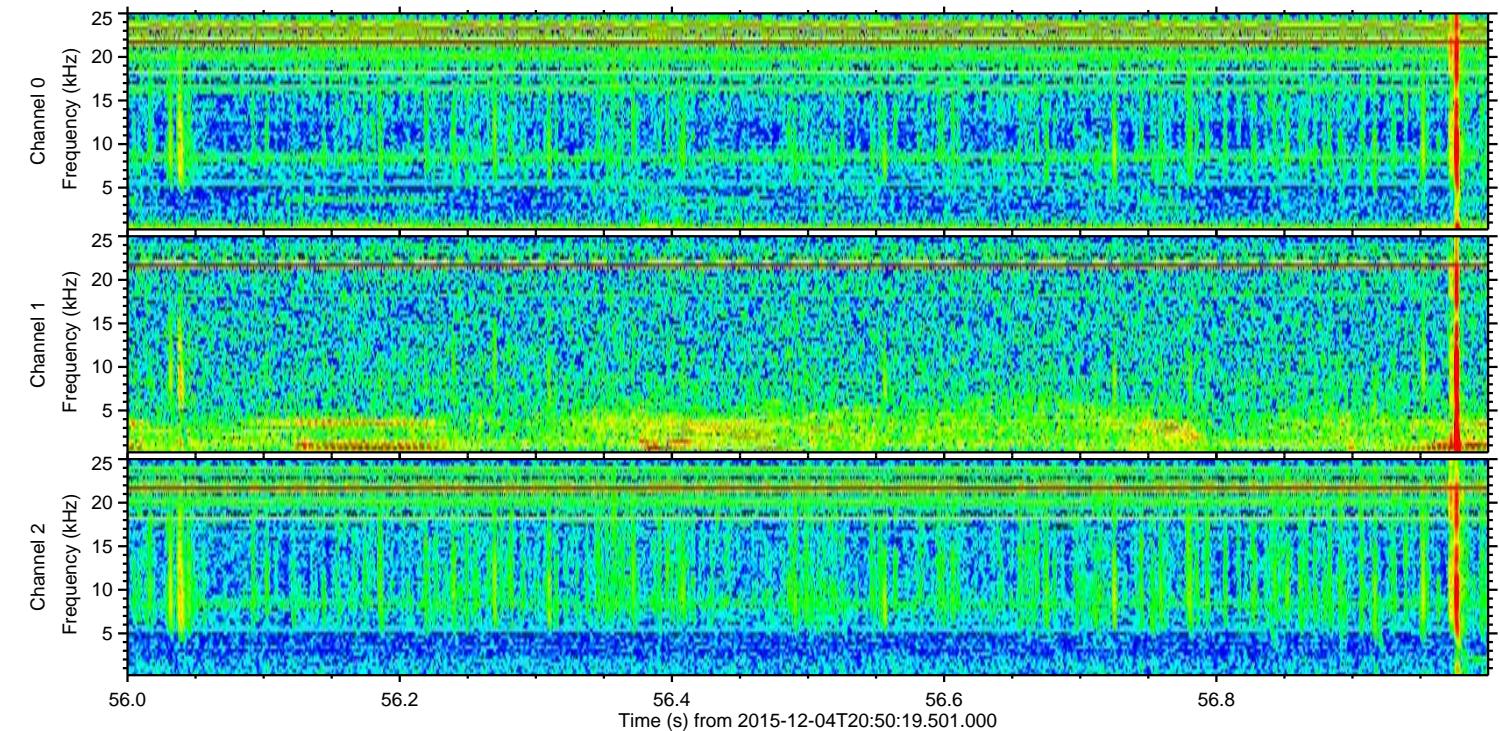
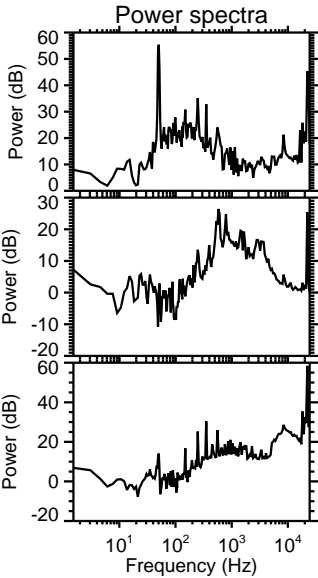
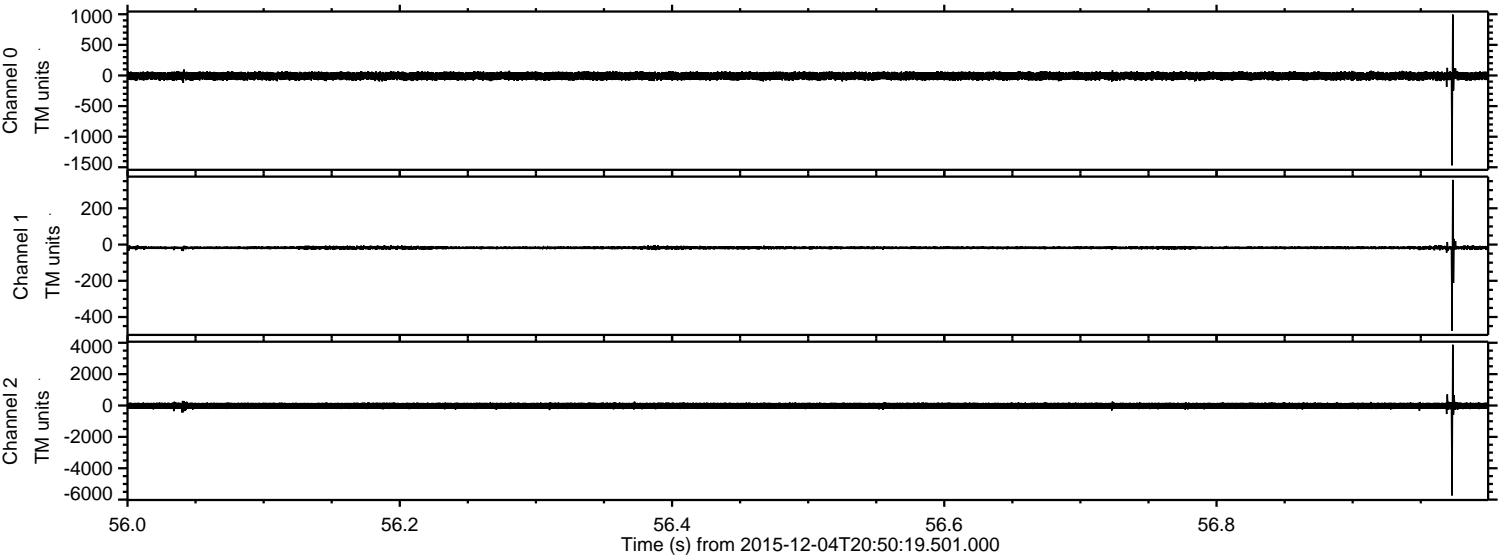
ELMAVAN 3D WAVEFORMS (Measured data sampled at 50 kHz) 51000 packets of 144 samples from 2015-12-04T20:50:19.501.000.

Processed Sun Dec 13 05:53:40 2015 by ELM ver.2012-10-06 from 001__elm20151204_205018__dat00.bin



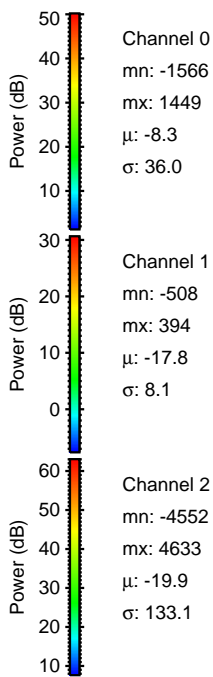
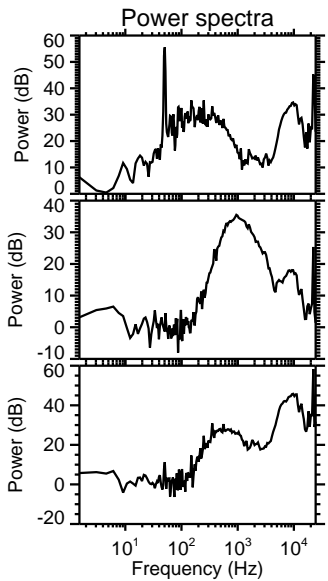
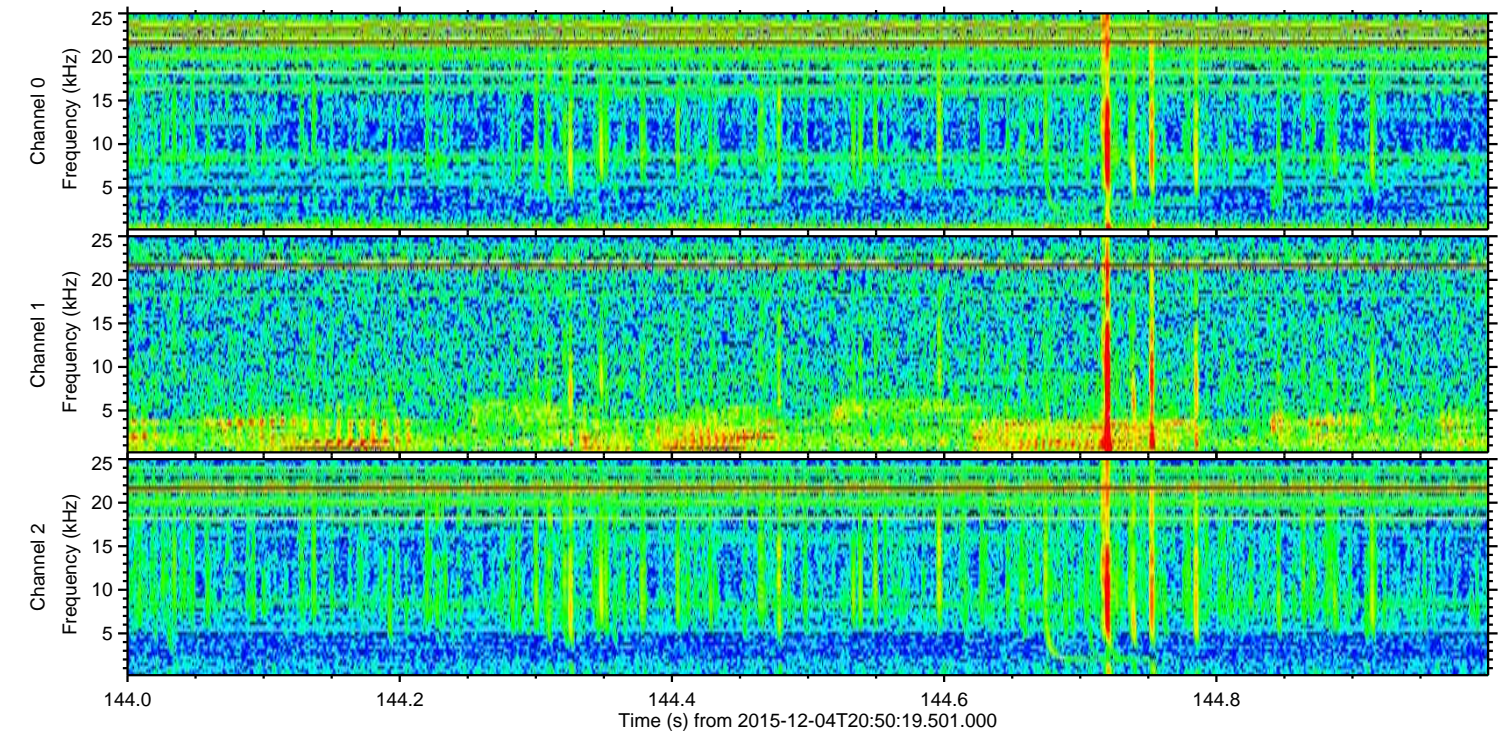
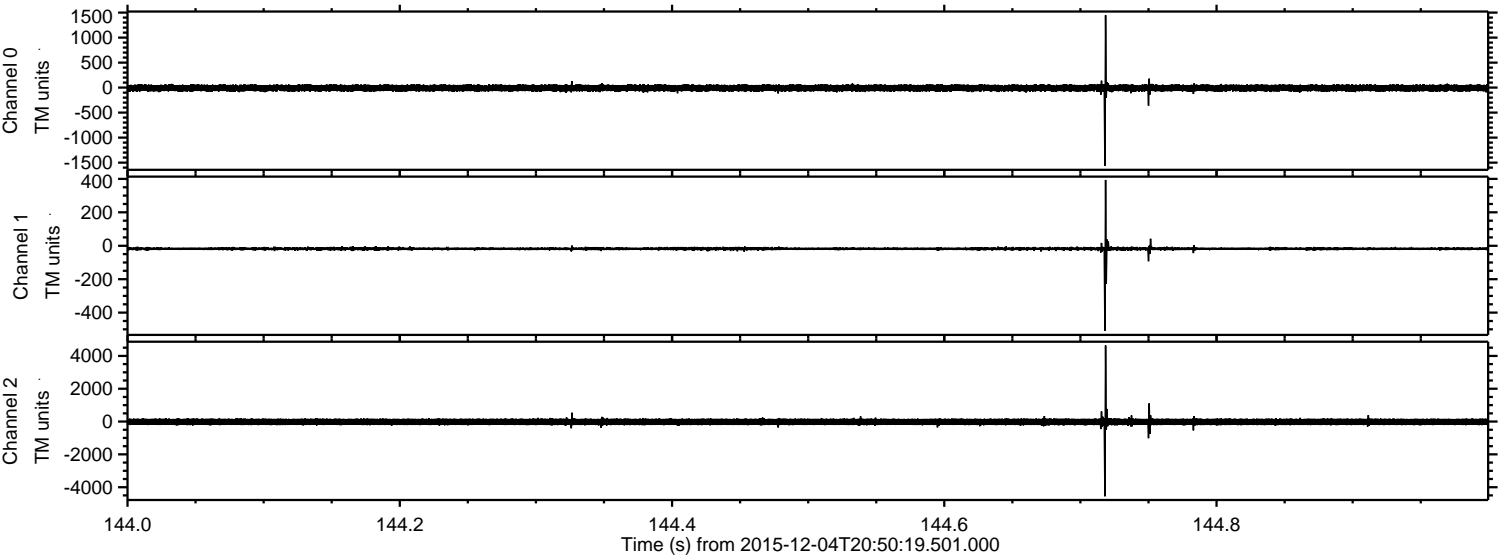
ELMAVAN 3D WAVEFORMS (Measured data sampled at 50 kHz) 51000 packets of 144 samples from 2015-12-04T20:50:19.501.000. Part 57/147

Processed Sun Dec 13 05:53:51 2015 by ELM ver.2012-10-06 from 001__elm20151204_205018__dat00.bin

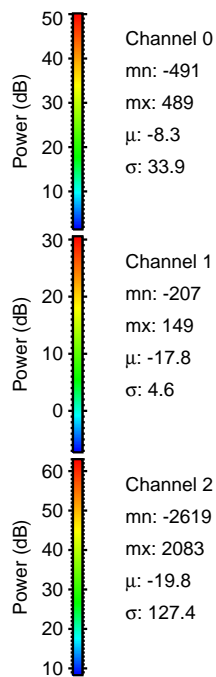
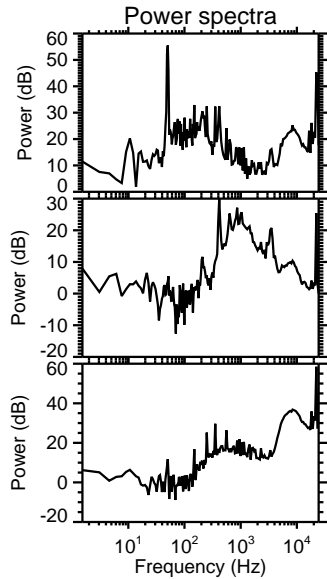
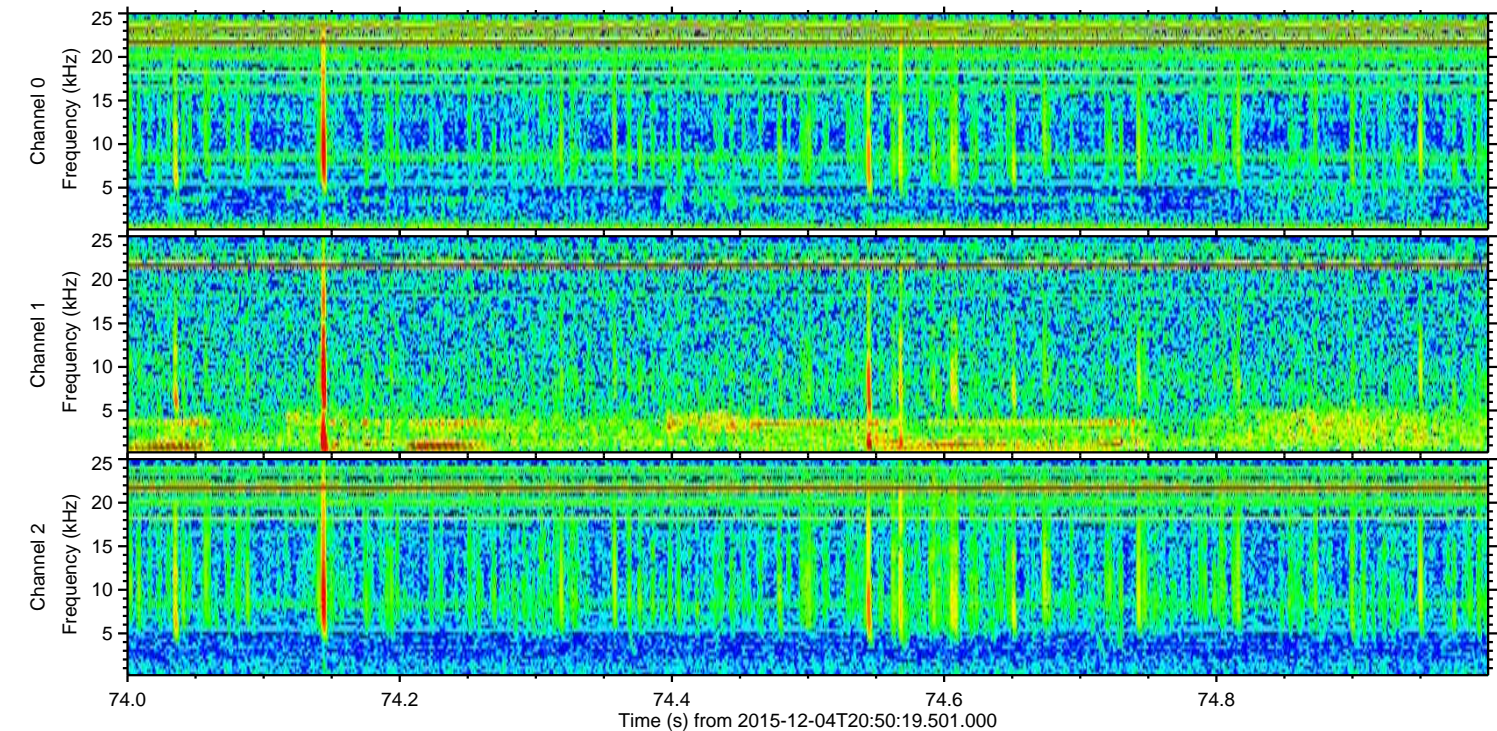
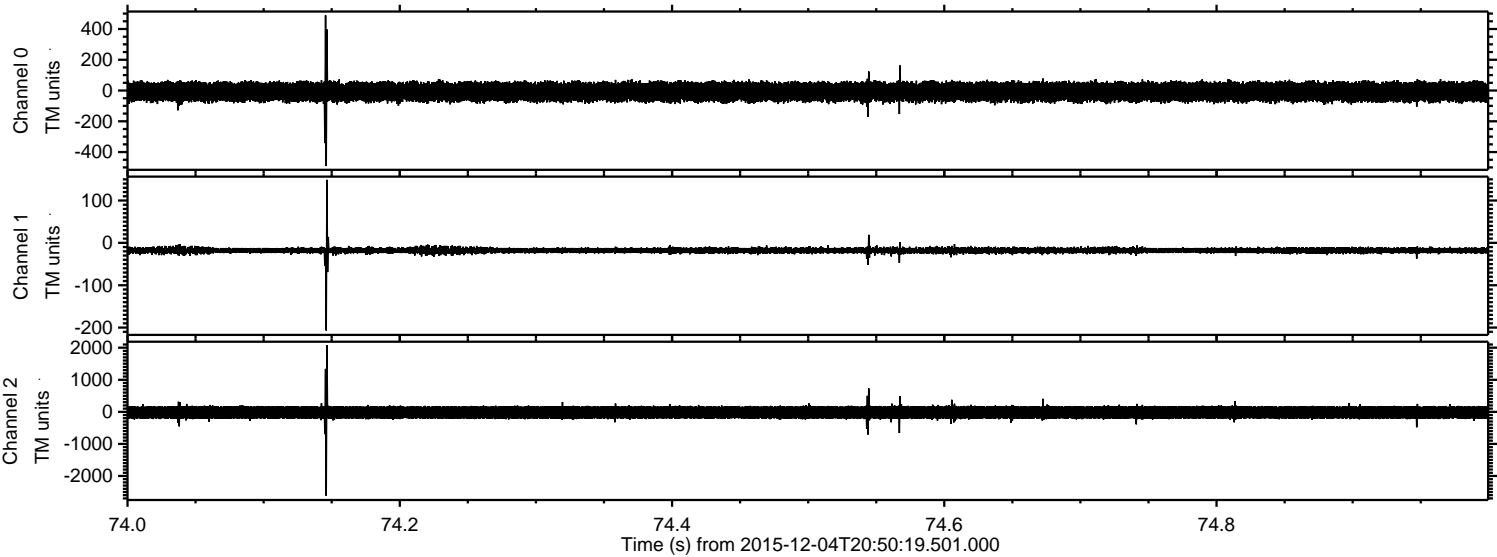


ELMAVAN 3D WAVEFORMS (Measured data sampled at 50 kHz) 51000 packets of 144 samples from 2015-12-04T20:50:19.501.000. Part 145/147

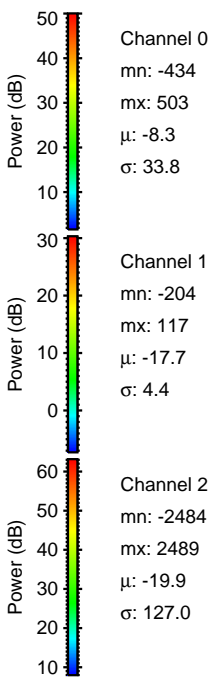
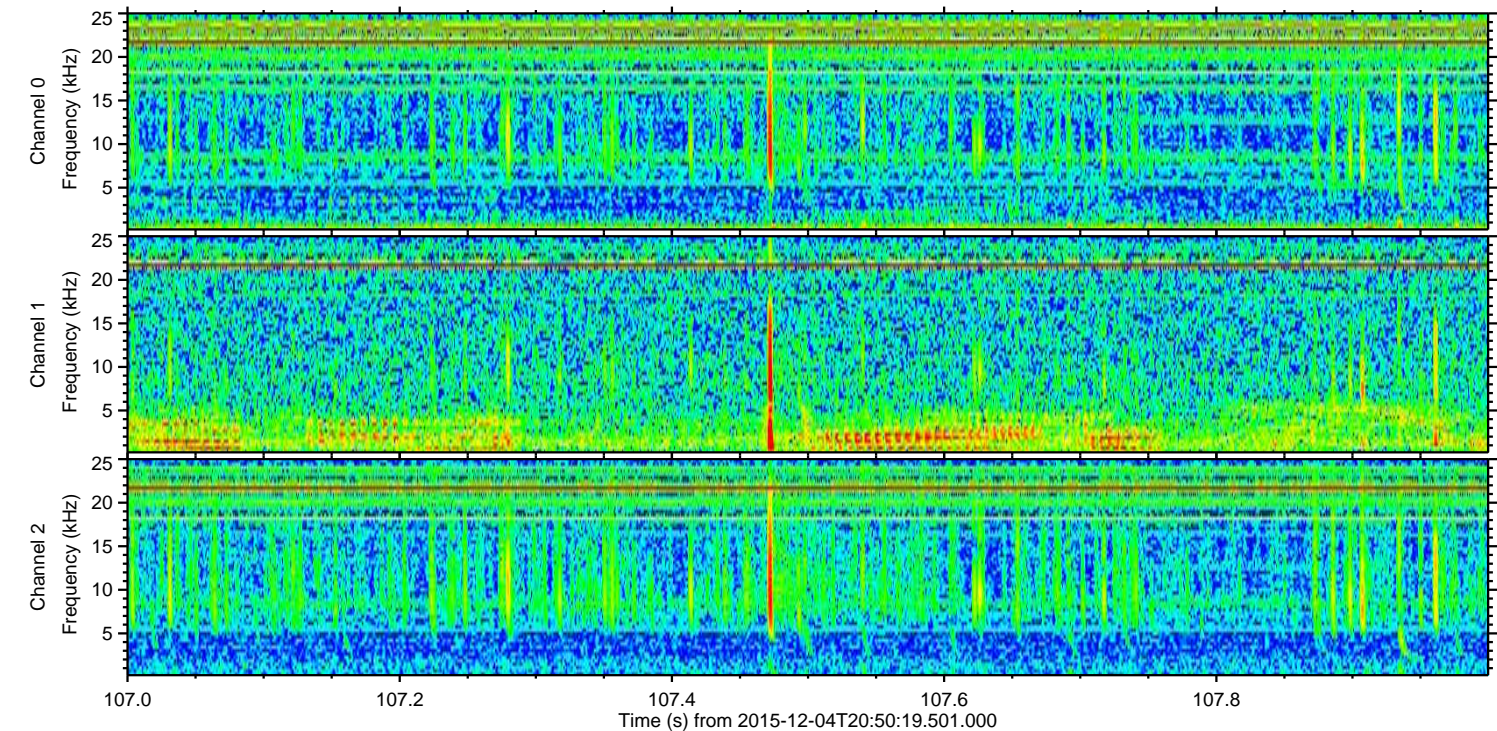
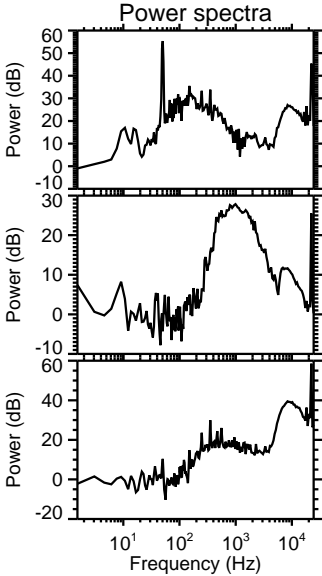
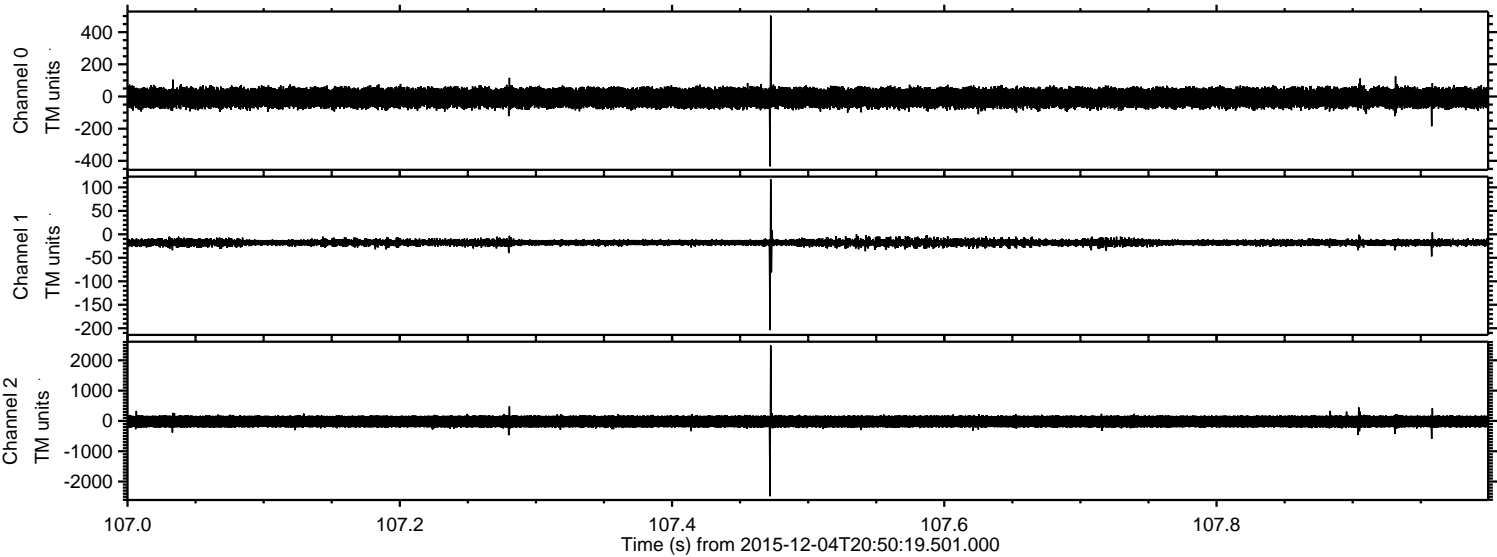
Processed Sun Dec 13 05:53:52 2015 by ELM ver.2012-10-06 from 001__elm20151204_205018__dat00.bin



Processed Sun Dec 13 05:53:53 2015 by ELM ver.2012-10-06 from 001__elm20151204_205018__dat00.bin

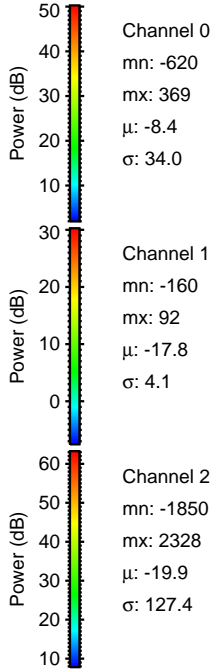
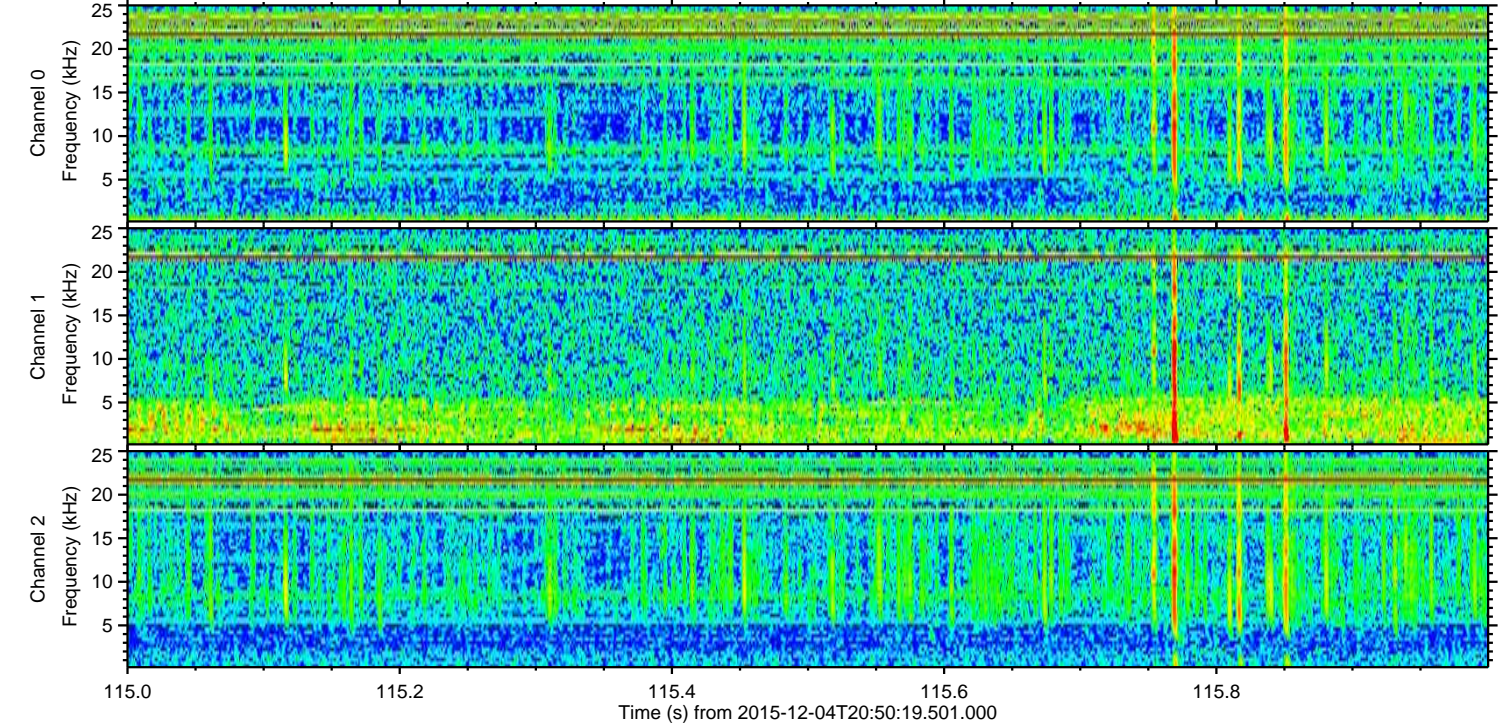
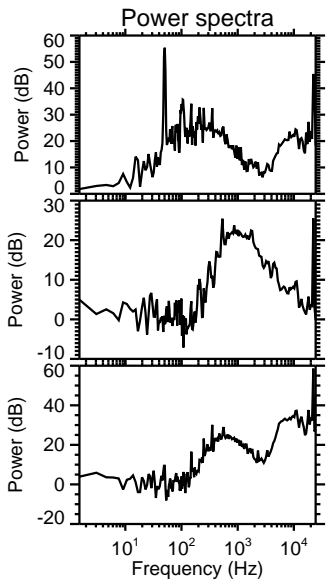
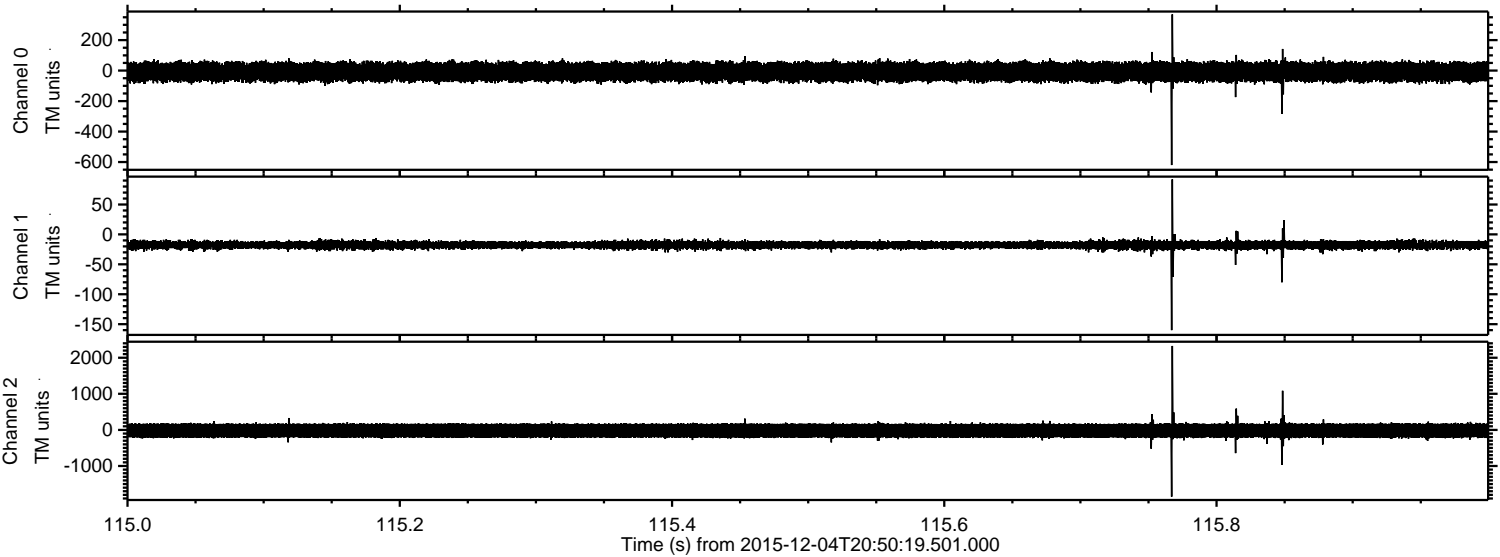


Processed Sun Dec 13 05:53:54 2015 by ELM ver.2012-10-06 from 001__elm20151204_205018__dat00.bin

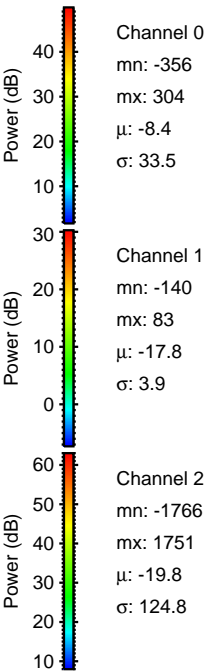
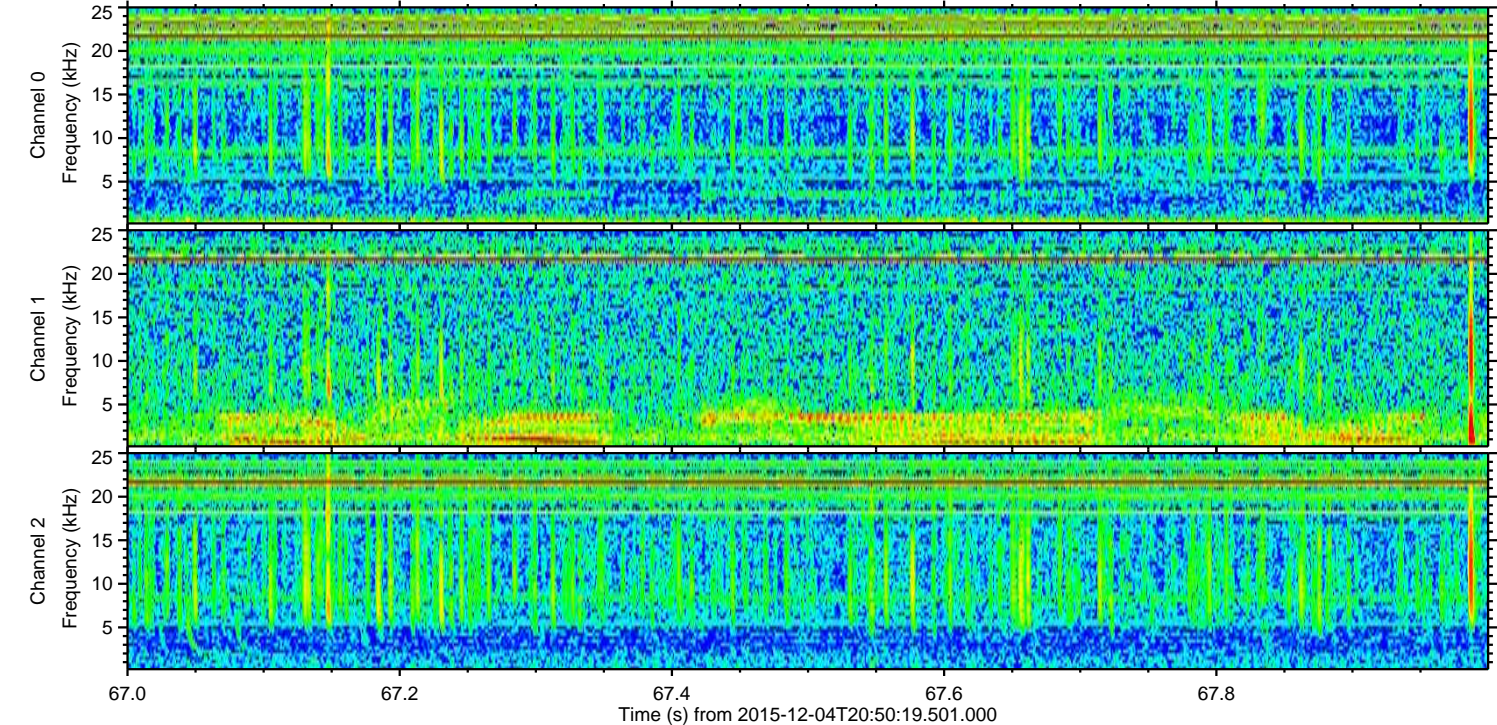
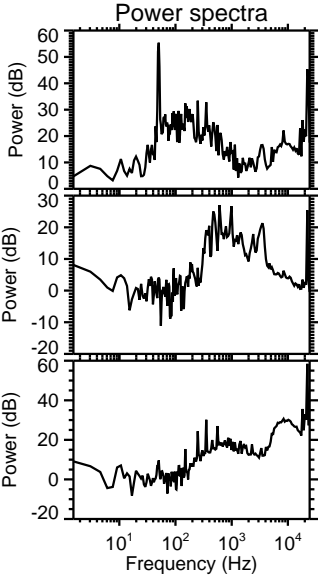
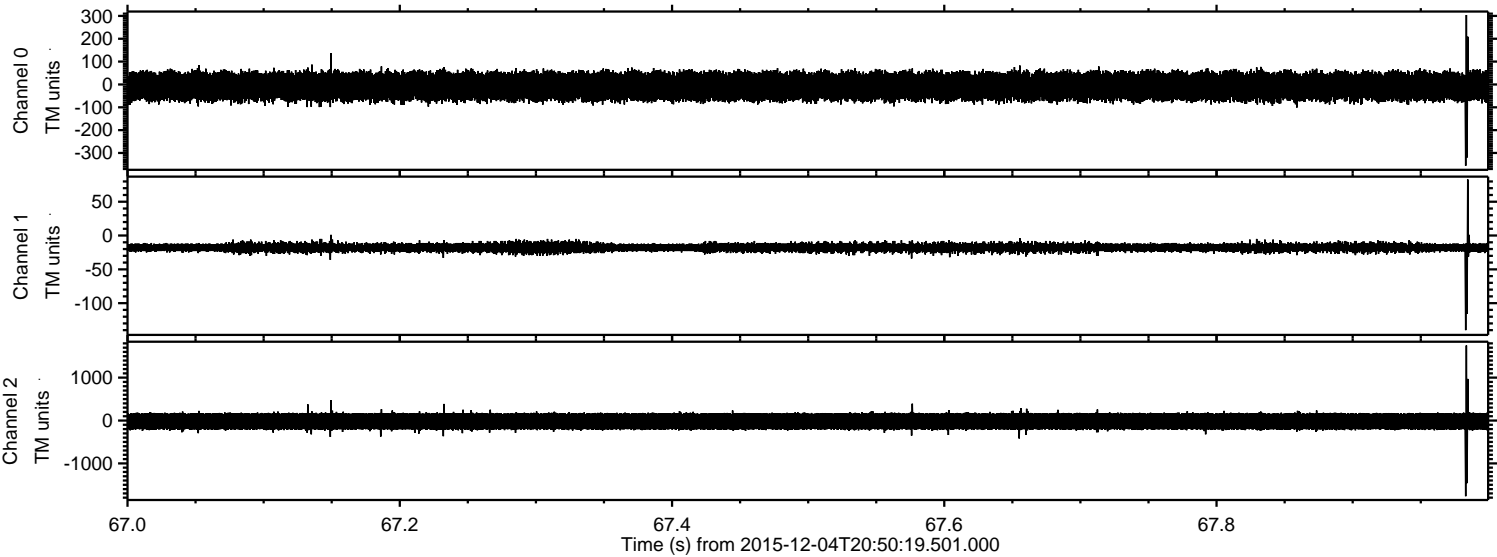


ELMAVAN 3D WAVEFORMS (Measured data sampled at 50 kHz) 51000 packets of 144 samples from 2015-12-04T20:50:19.501.000. Part 116/147

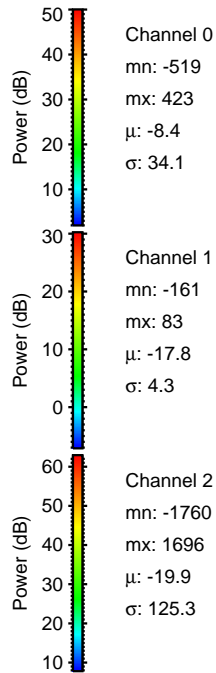
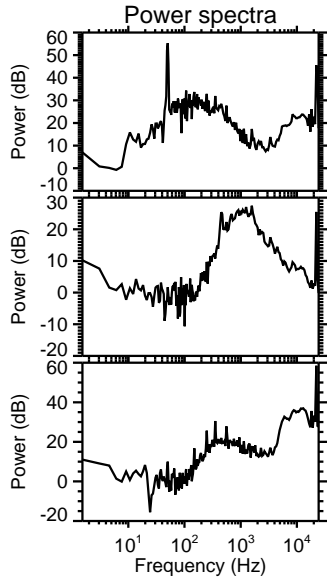
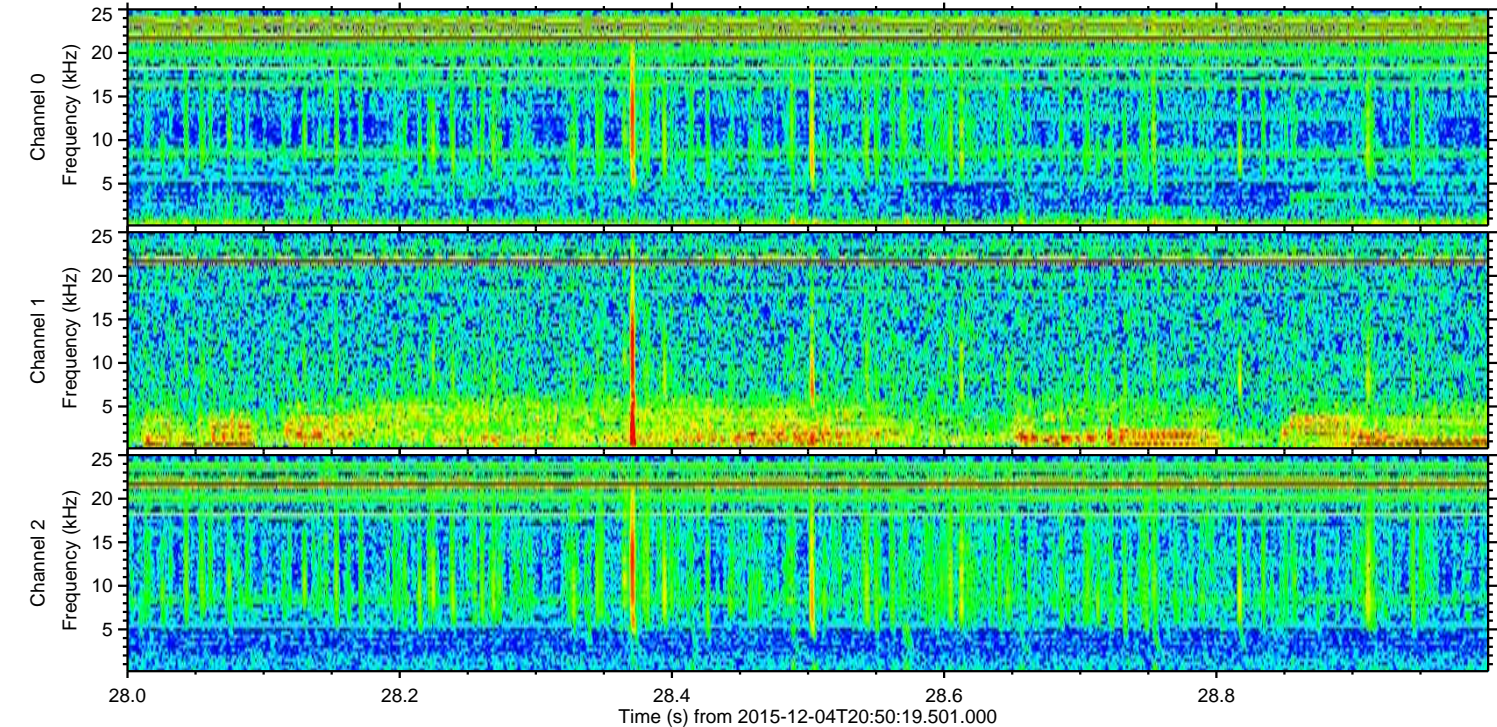
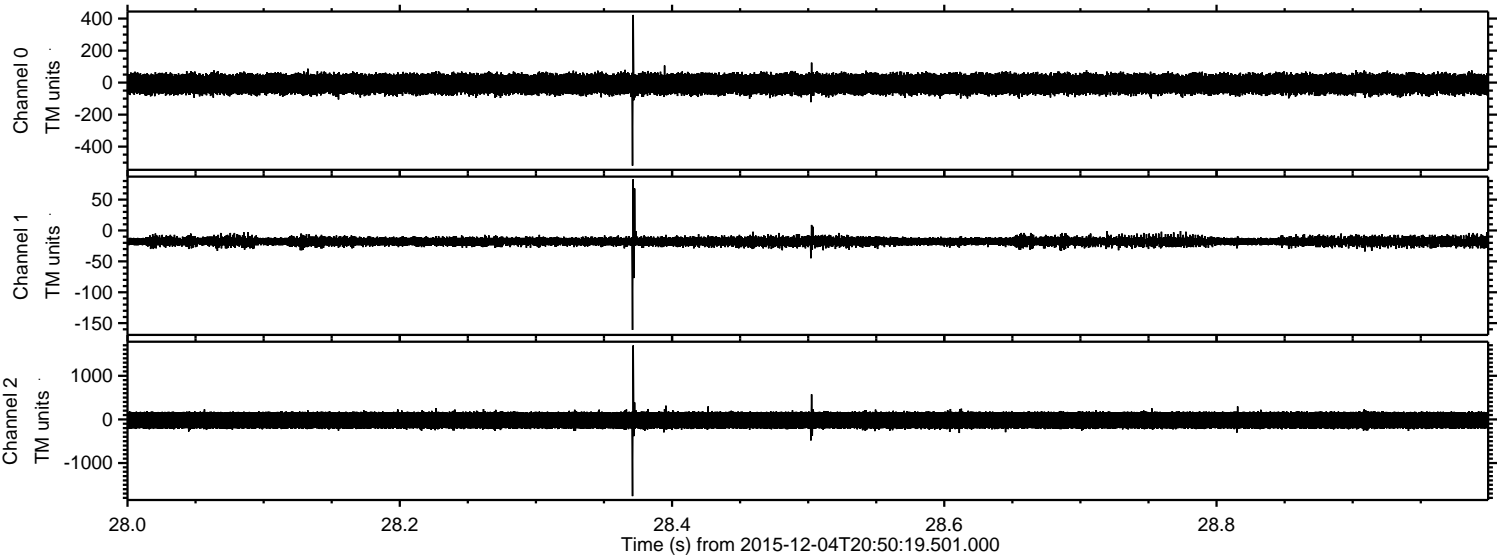
Processed Sun Dec 13 05:53:55 2015 by ELM ver.2012-10-06 from 001__elm20151204_205018__dat00.bin



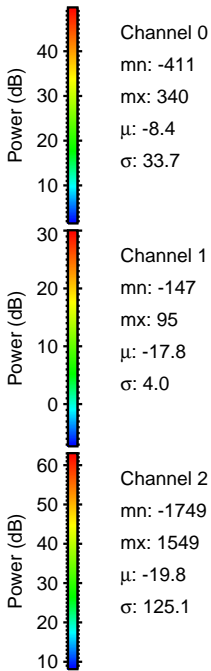
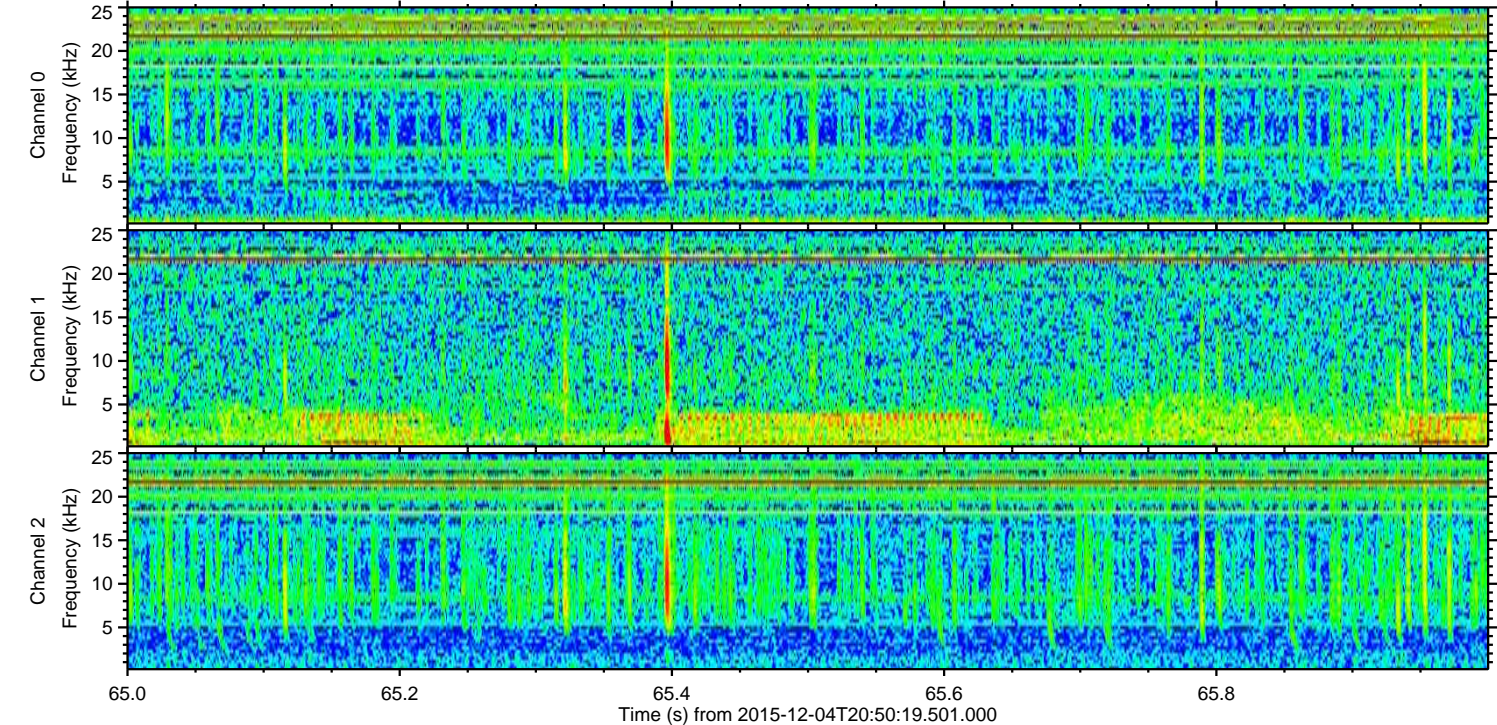
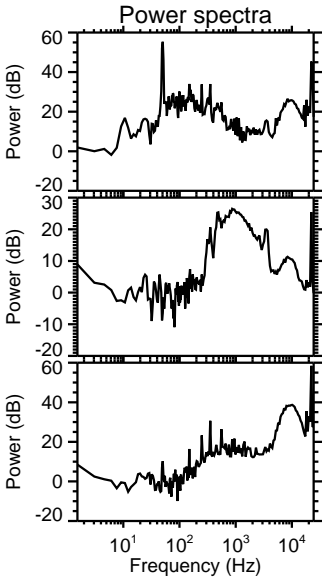
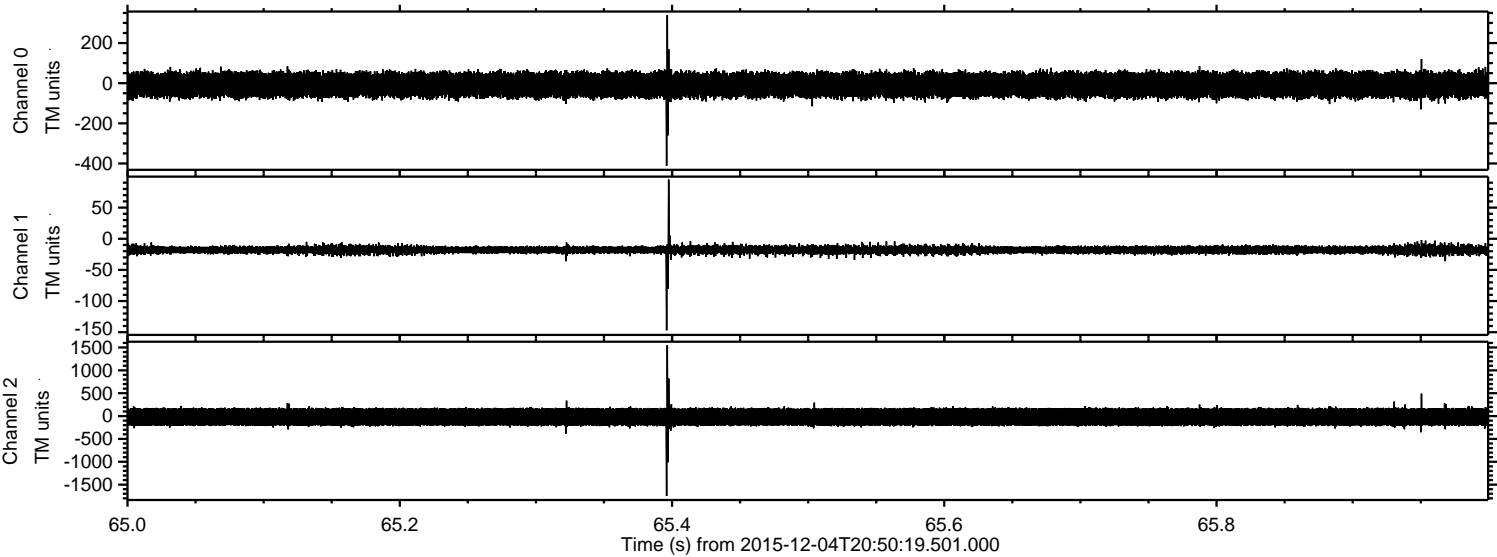
Processed Sun Dec 13 05:53:56 2015 by ELM ver.2012-10-06 from 001__elm20151204_205018__dat00.bin



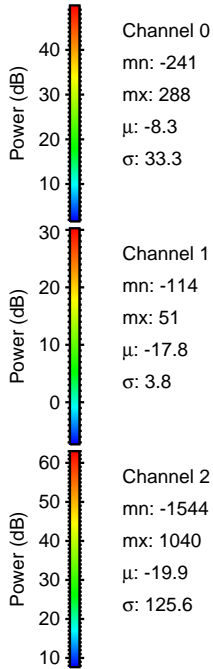
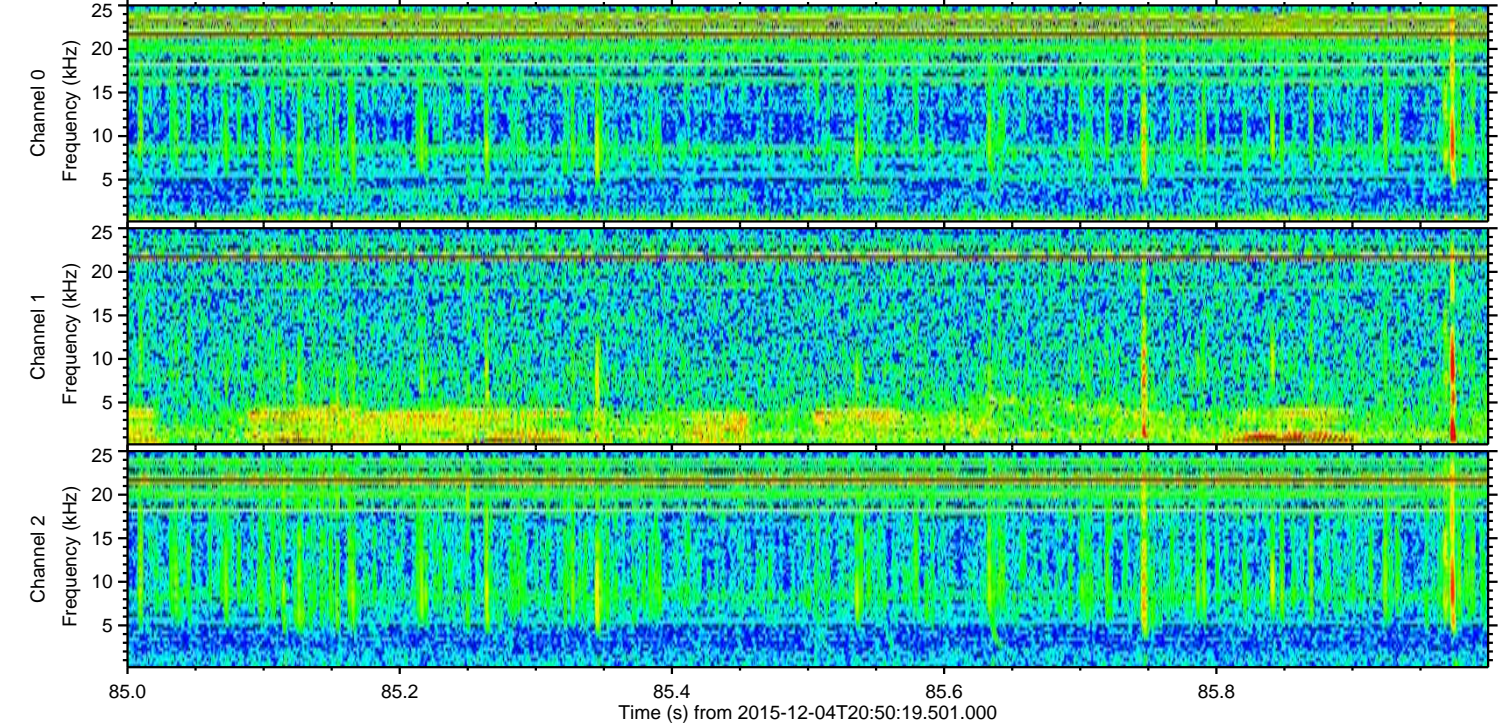
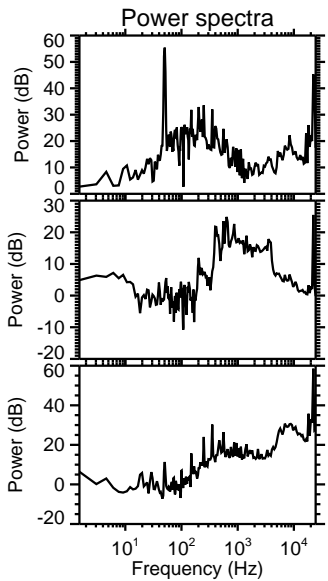
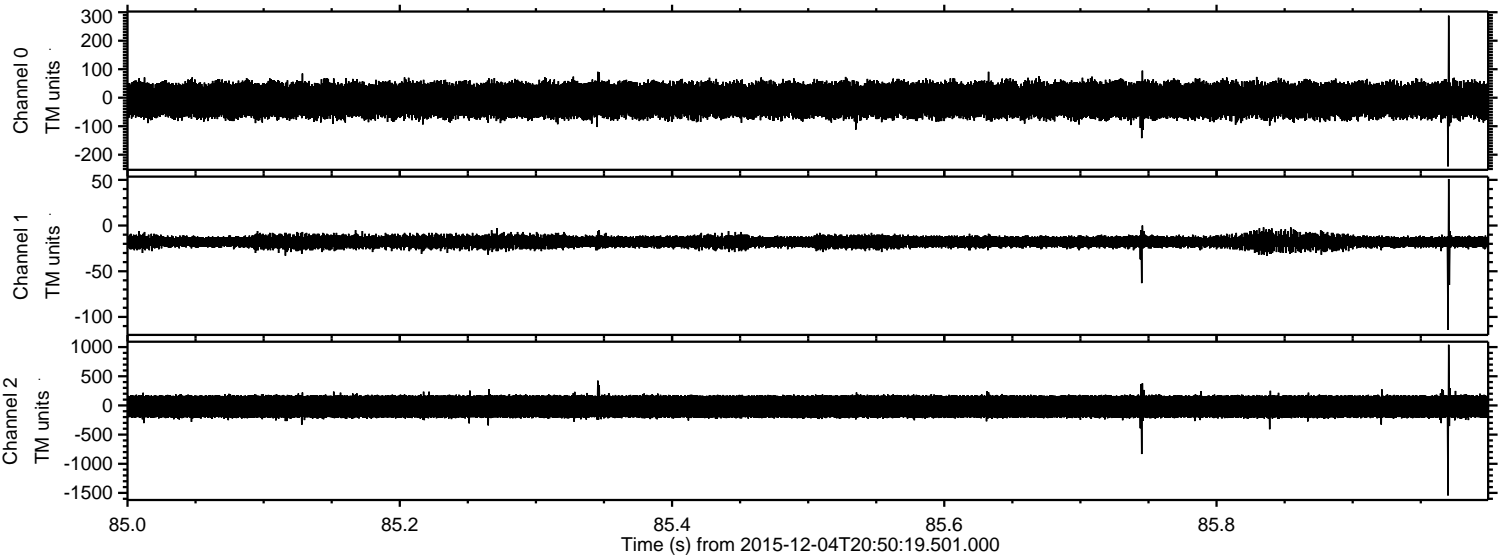
Processed Sun Dec 13 05:53:57 2015 by ELM ver.2012-10-06 from 001__elm20151204_205018__dat00.bin



Processed Sun Dec 13 05:53:58 2015 by ELM ver.2012-10-06 from 001__elm20151204_205018__dat00.bin



Processed Sun Dec 13 05:53:59 2015 by ELM ver.2012-10-06 from 001__elm20151204_205018__dat00.bin



Channel 0
mn: -241
mx: 288
 μ : -8.3
 σ : 33.3

Channel 1
mn: -114
mx: 51
 μ : -17.8
 σ : 3.8

Channel 2
mn: -1544
mx: 1040
 μ : -19.9
 σ : 125.6

Processed Sun Dec 13 05:54:00 2015 by ELM ver.2012-10-06 from 001__elm20151204_205018__dat00.bin

