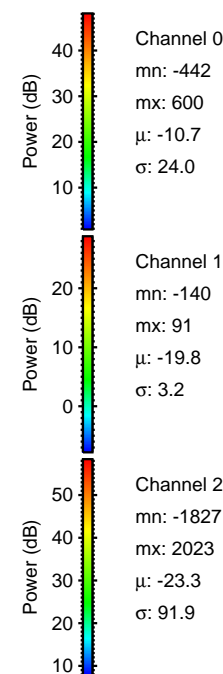
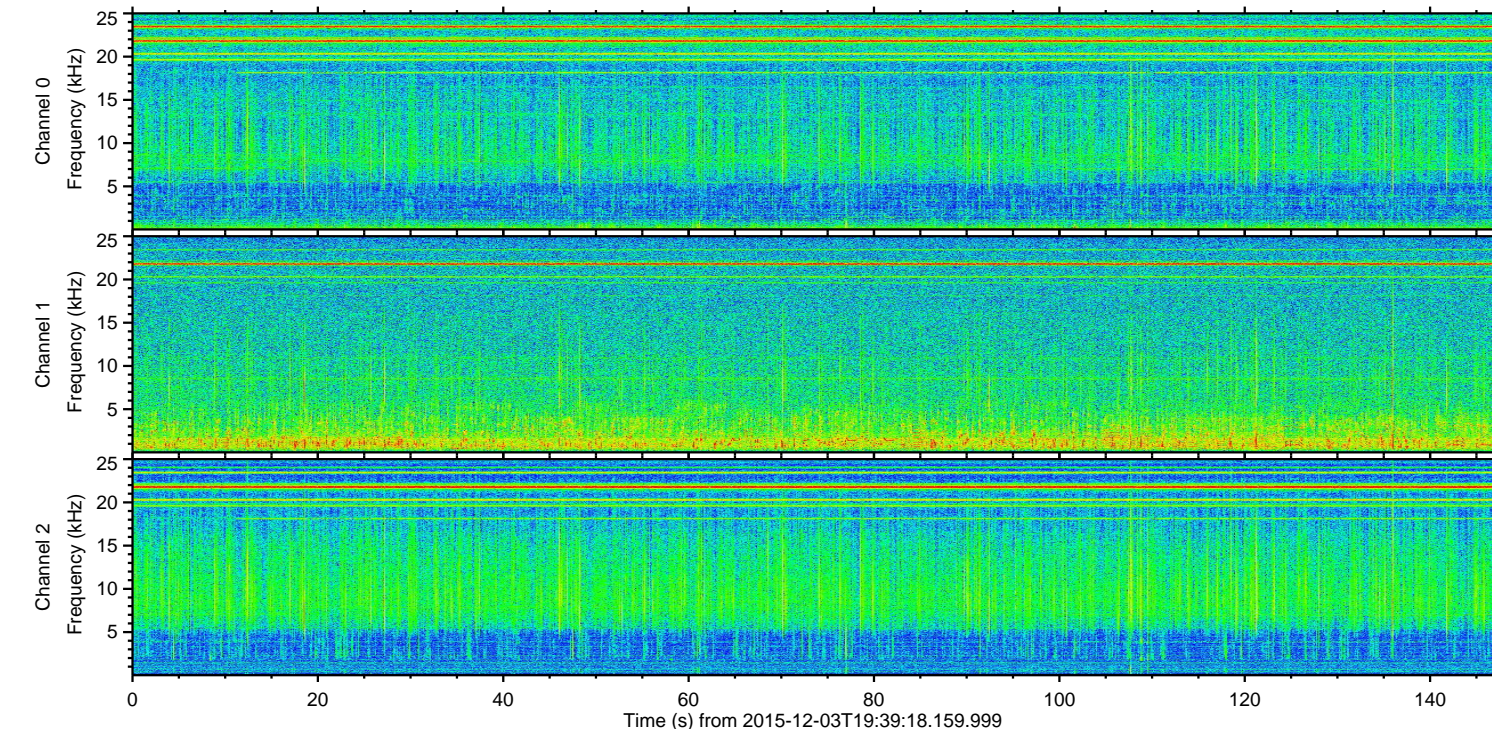
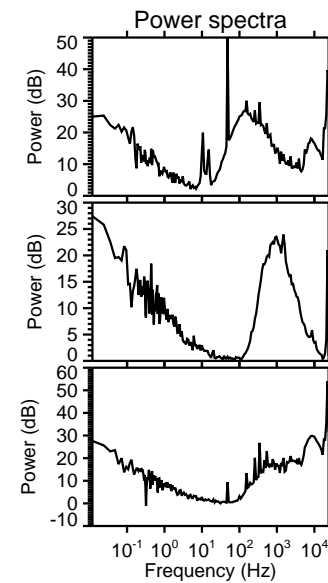
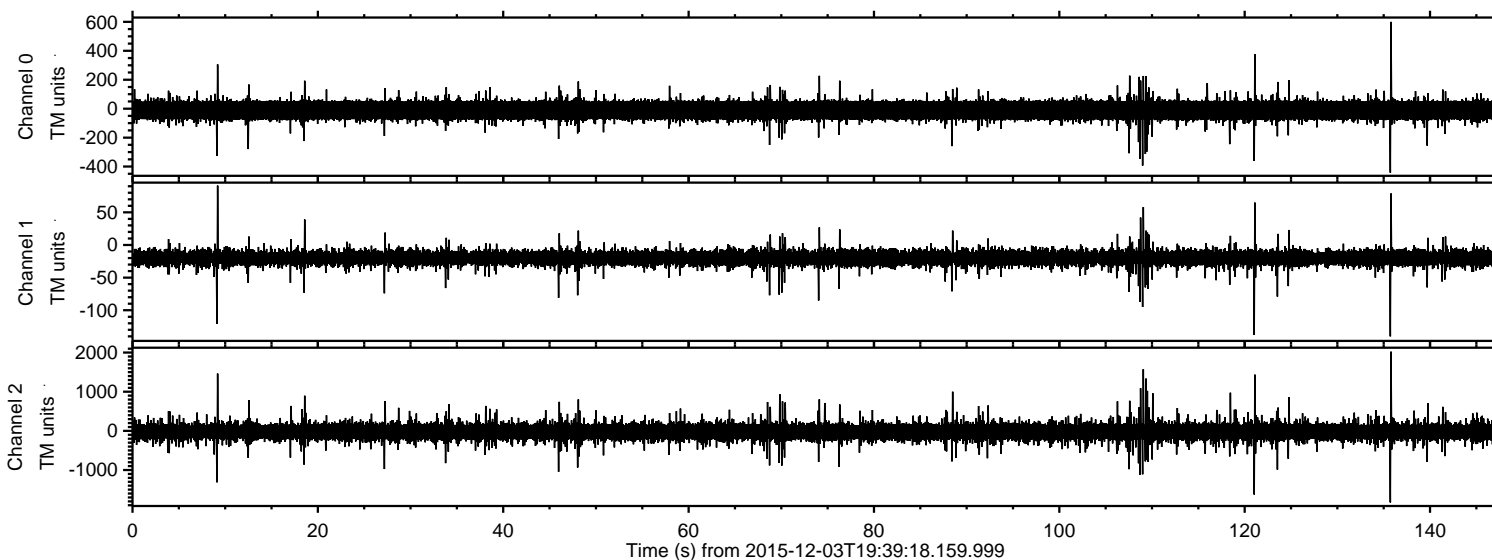


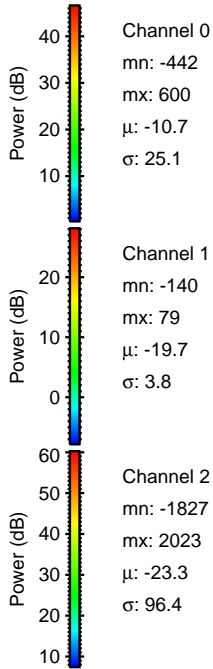
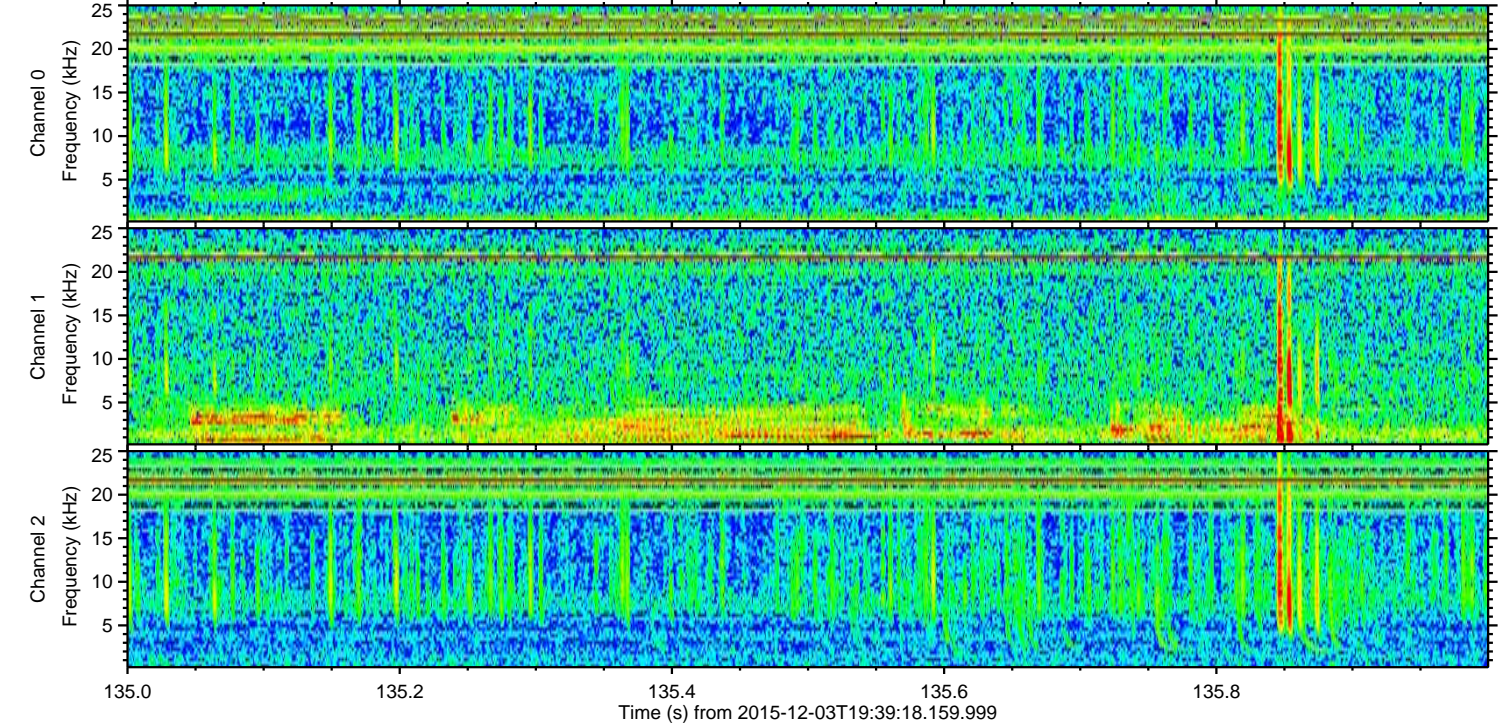
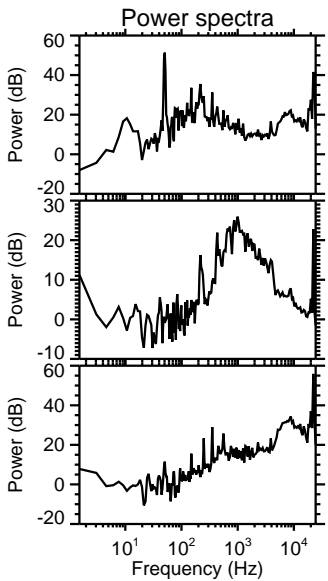
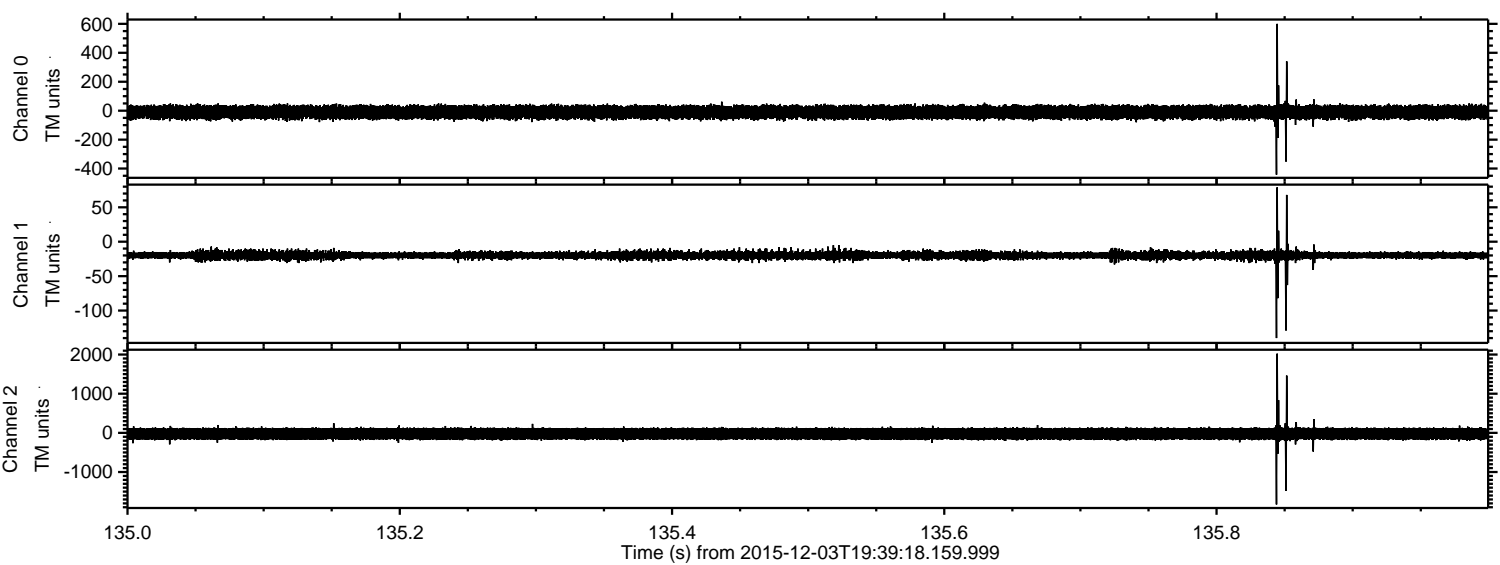
ELMAVAN 3D WAVEFORMS (Measured data sampled at 50 kHz) 51000 packets of 144 samples from 2015-12-03T19:39:18.159.999.

Processed Sat Dec 12 16:11:31 2015 by ELM ver.2012-10-06 from 001__elm20151203_193917__dat00.bin



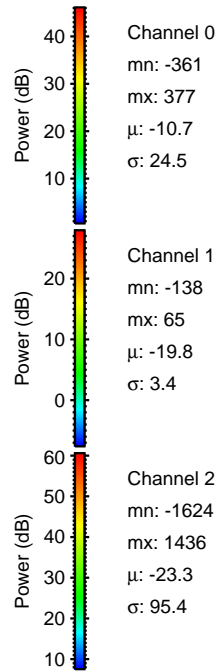
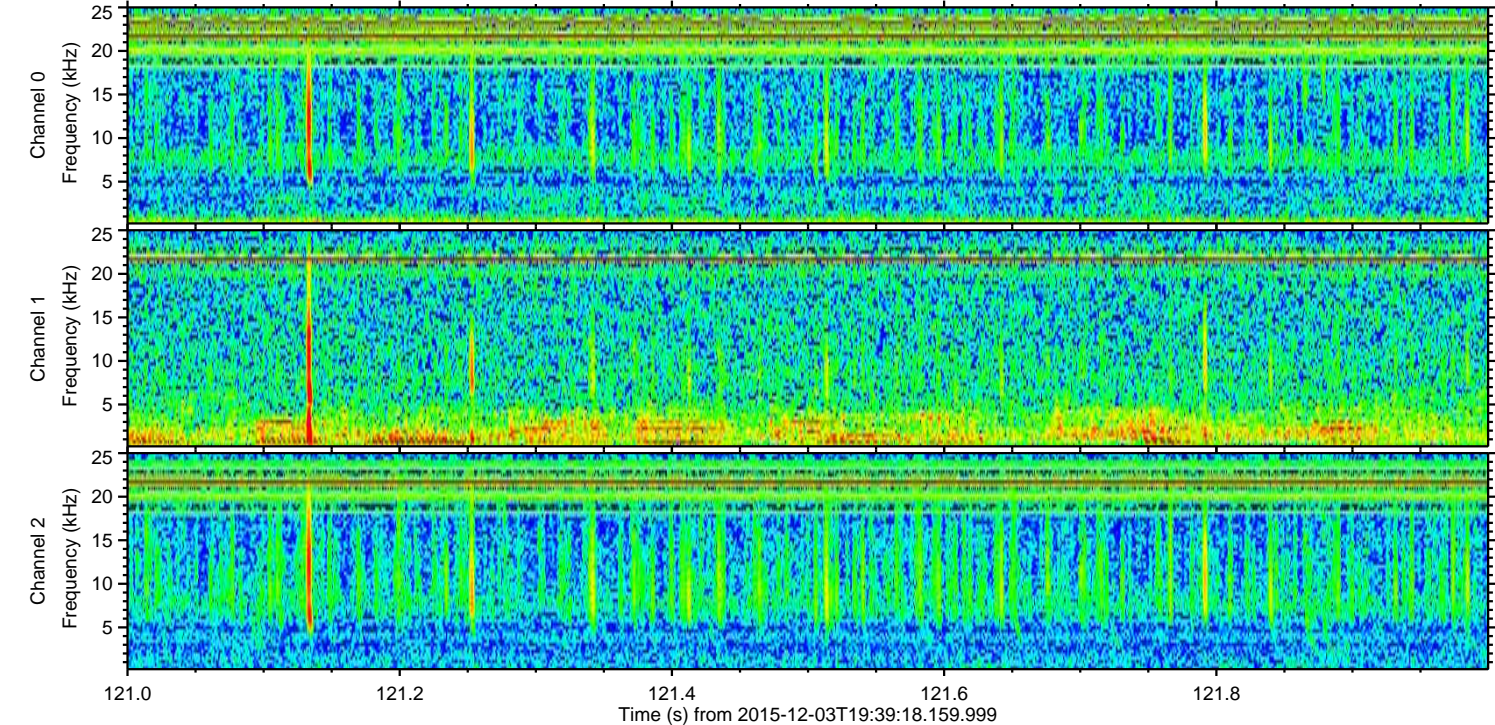
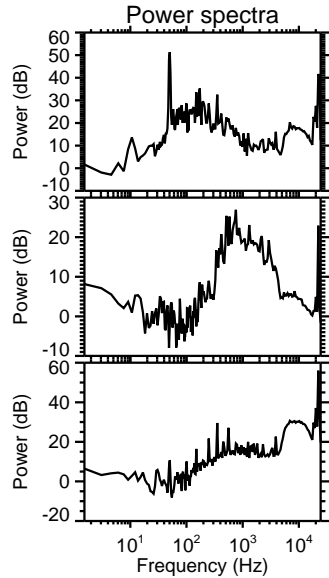
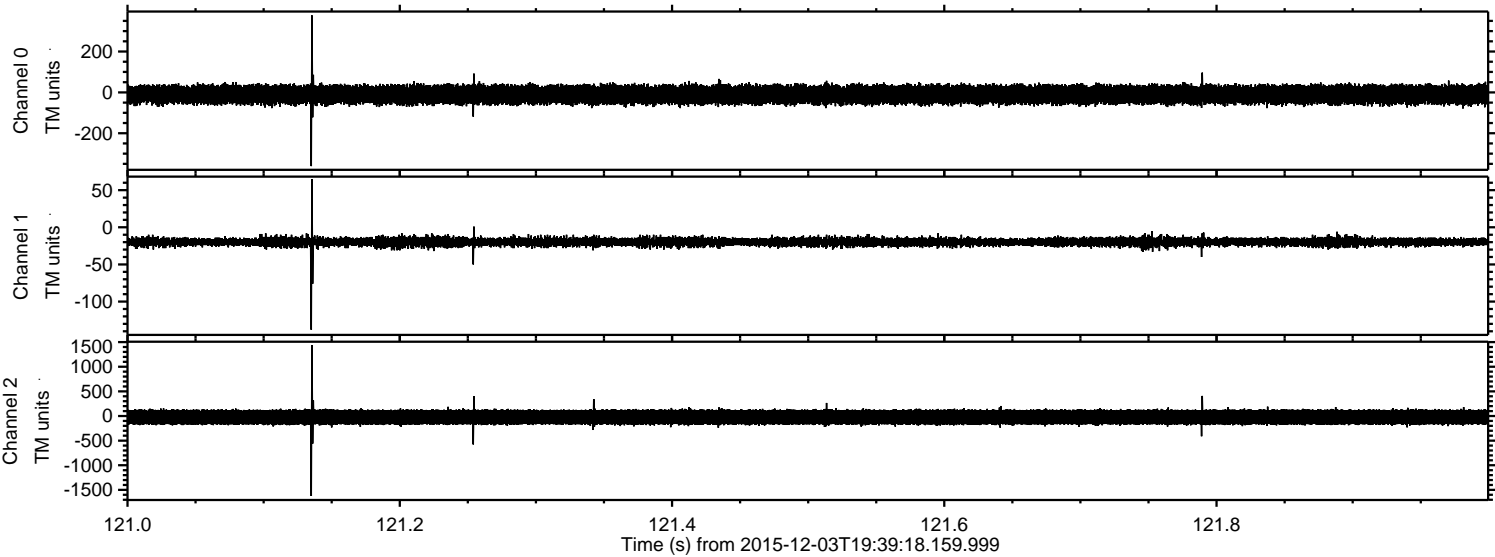
ELMAVAN 3D WAVEFORMS (Measured data sampled at 50 kHz) 51000 packets of 144 samples from 2015-12-03T19:39:18.159.999. Part 136/147

Processed Sat Dec 12 16:11:42 2015 by ELM ver.2012-10-06 from 001__elm20151203_193917__dat00.bin



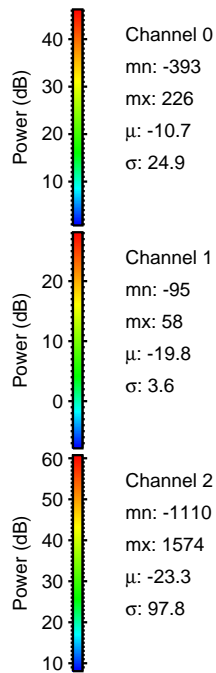
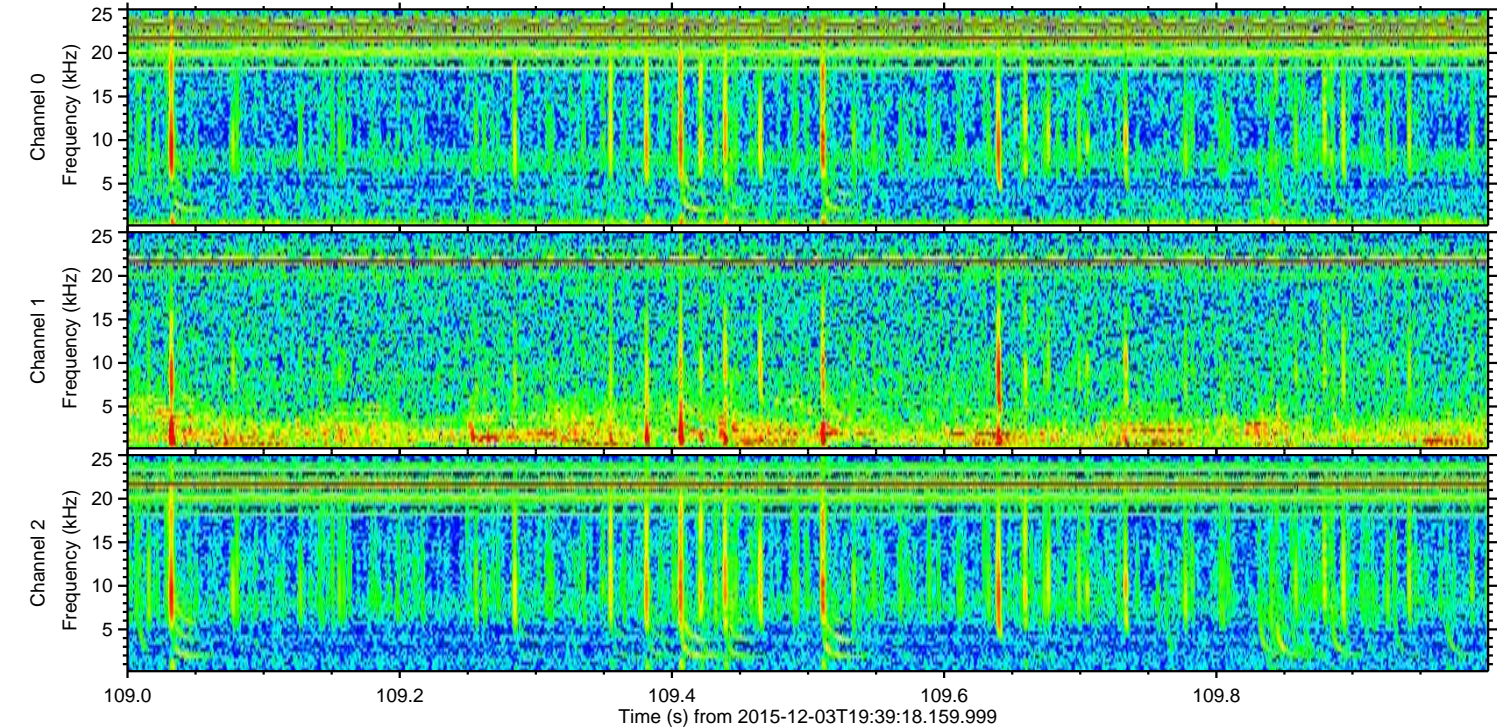
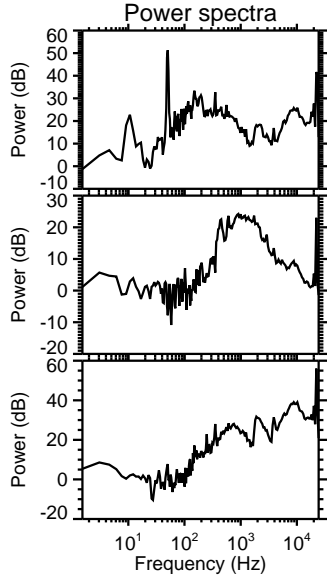
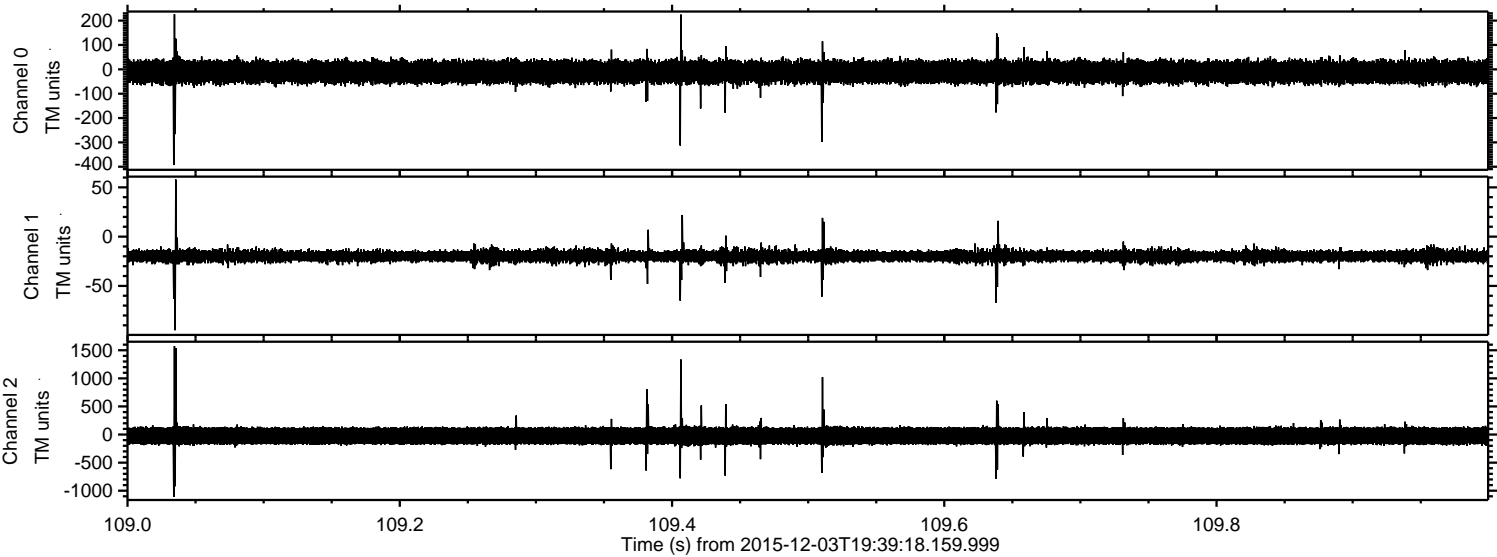
ELMAVAN 3D WAVEFORMS (Measured data sampled at 50 kHz) 51000 packets of 144 samples from 2015-12-03T19:39:18.159.999. Part 122/147

Processed Sat Dec 12 16:11:43 2015 by ELM ver.2012-10-06 from 001__elm20151203_193917__dat00.bin



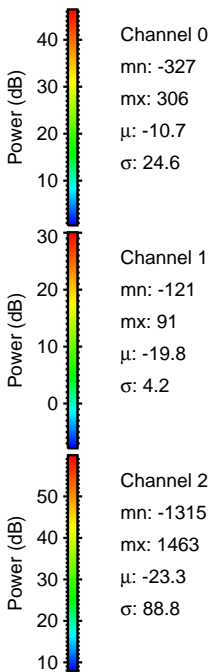
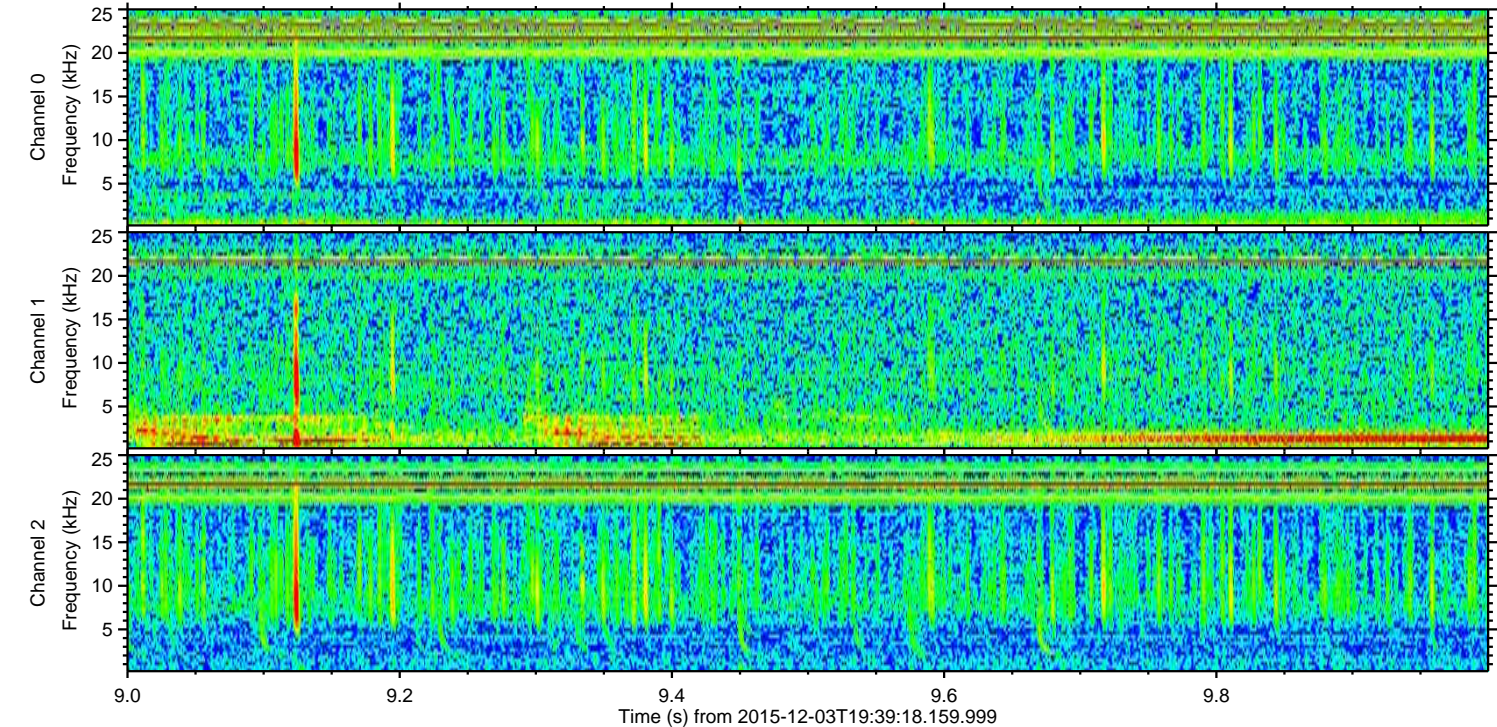
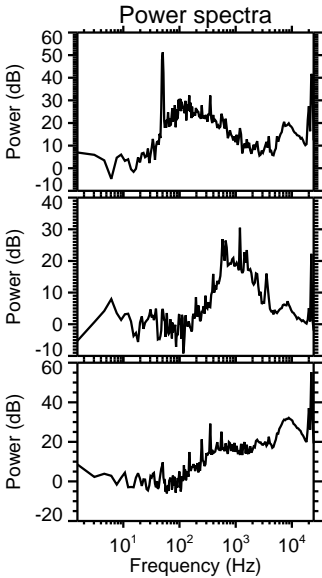
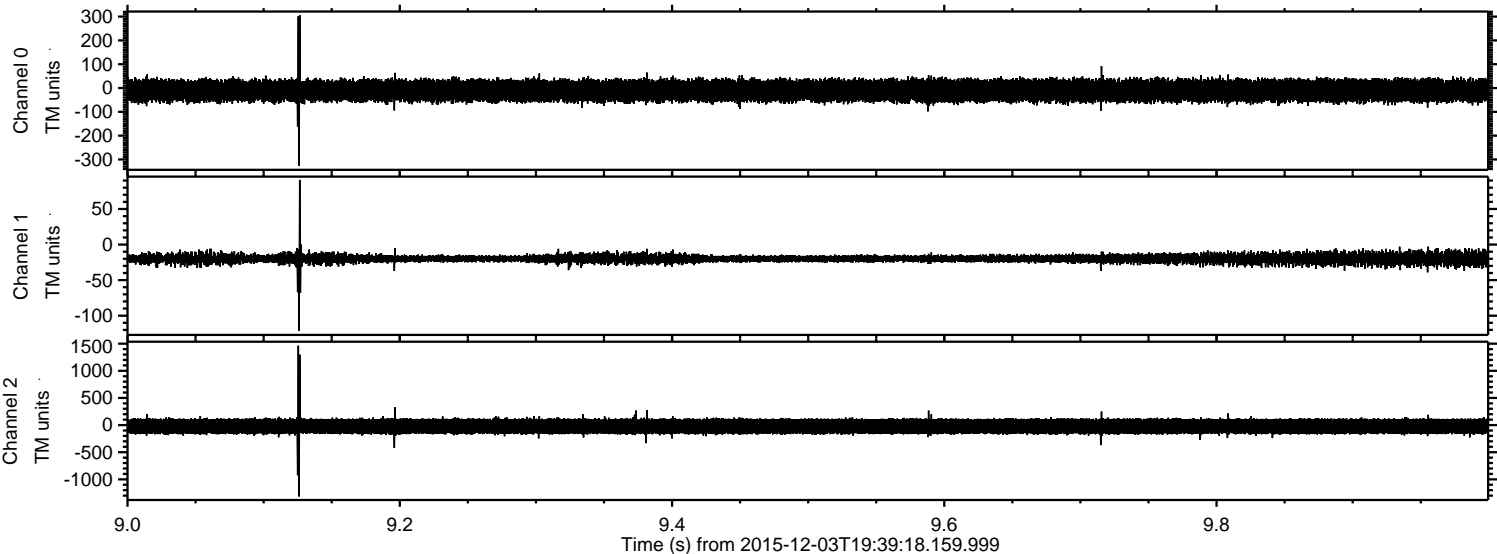
ELMAVAN 3D WAVEFORMS (Measured data sampled at 50 kHz) 51000 packets of 144 samples from 2015-12-03T19:39:18.159.999. Part 110/147

Processed Sat Dec 12 16:11:44 2015 by ELM ver.2012-10-06 from 001__elm20151203_193917__dat00.bin



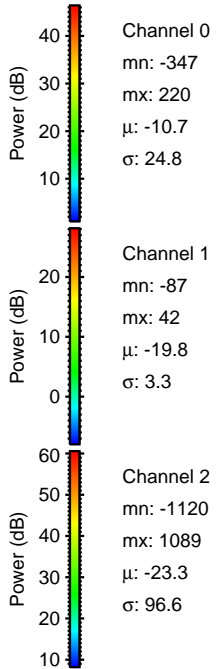
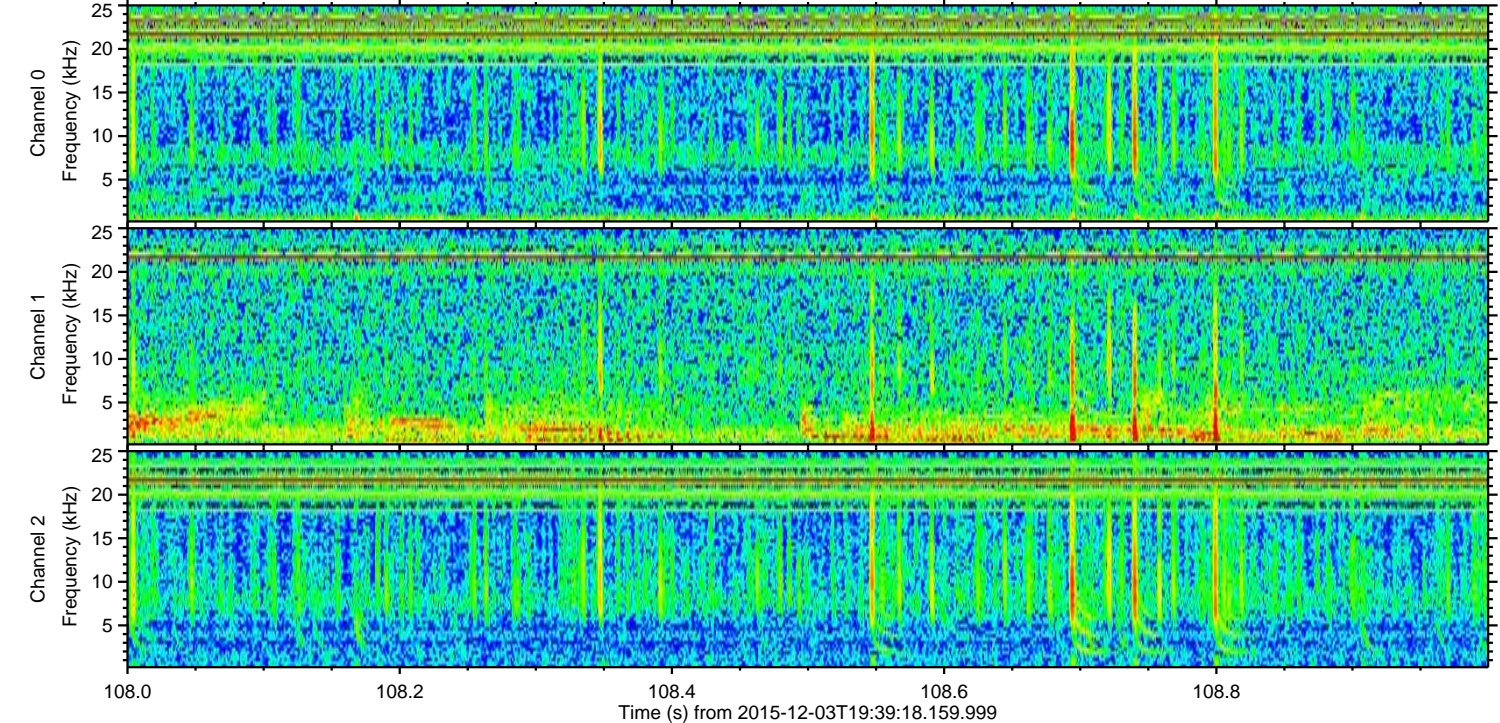
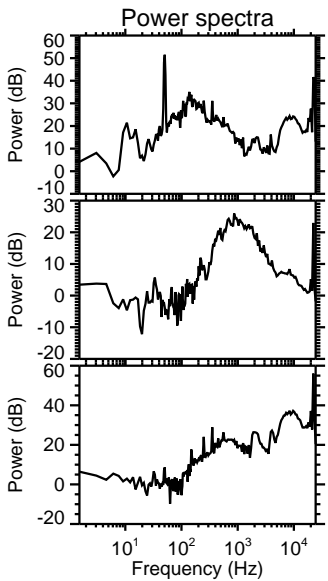
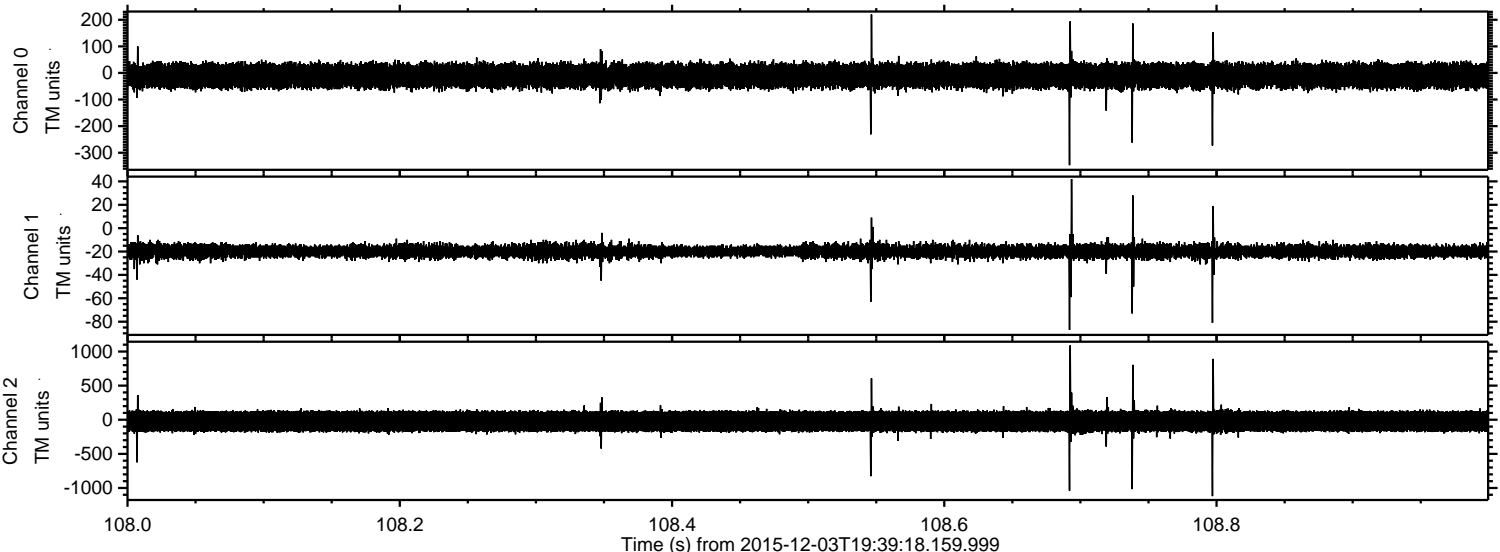
ELMAVAN 3D WAVEFORMS (Measured data sampled at 50 kHz) 51000 packets of 144 samples from 2015-12-03T19:39:18.159.999. Part 10/147

Processed Sat Dec 12 16:11:45 2015 by ELM ver.2012-10-06 from 001__elm20151203_193917__dat00.bin



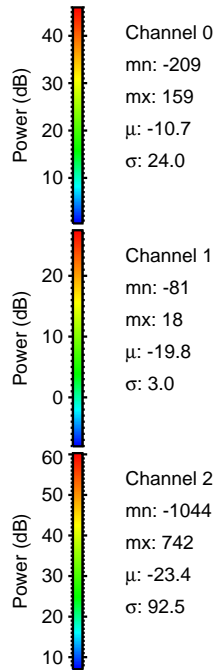
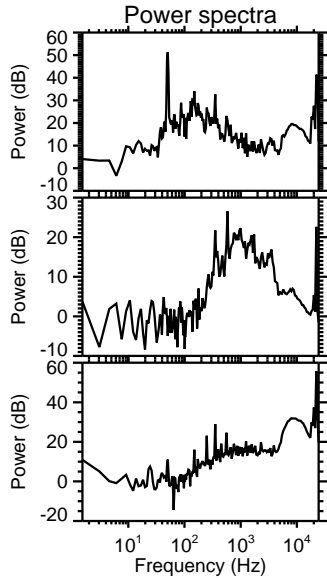
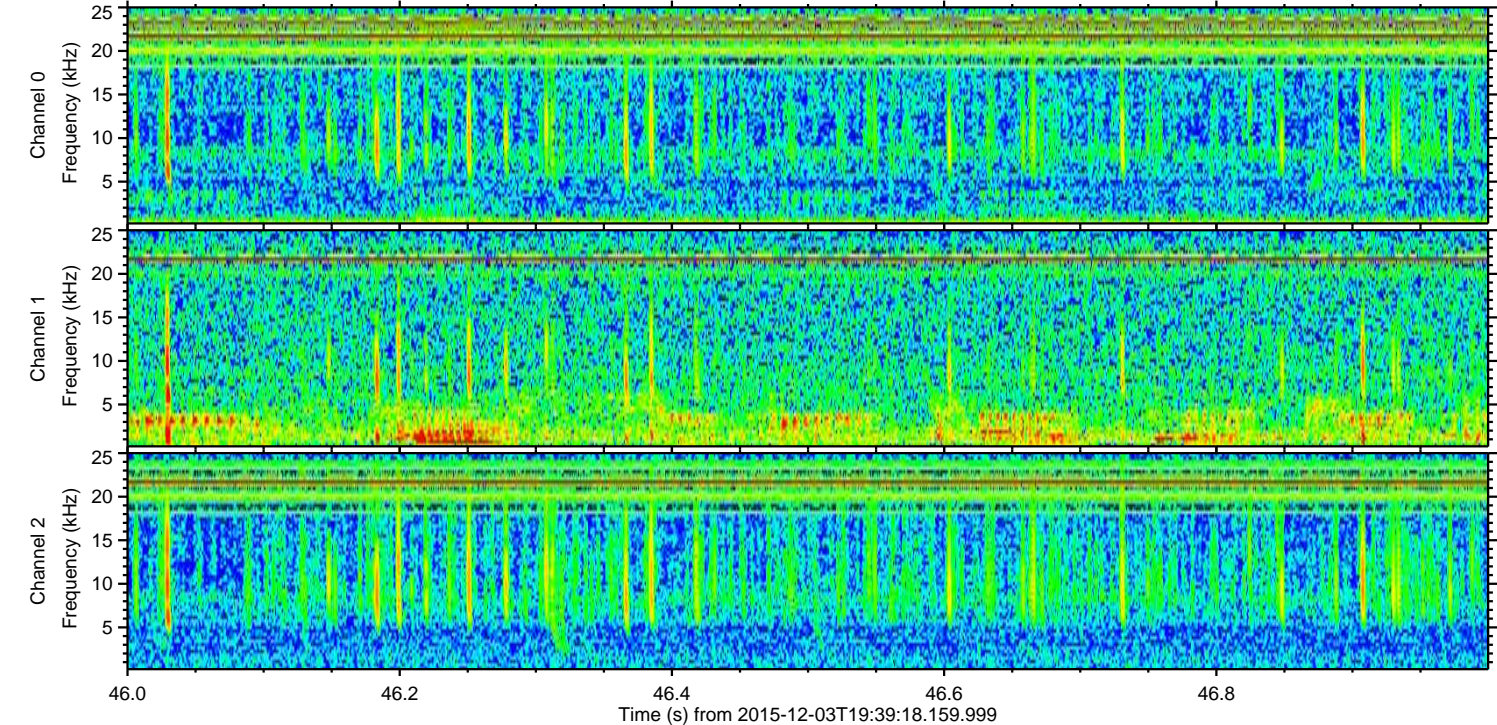
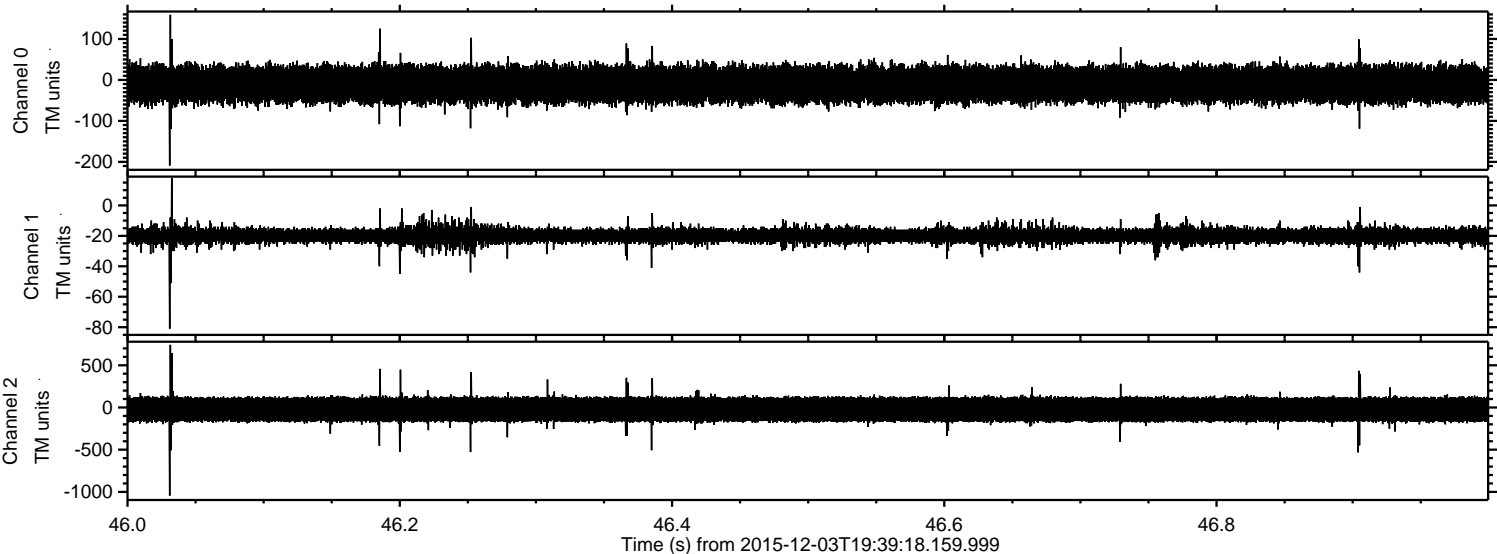
ELMAVAN 3D WAVEFORMS (Measured data sampled at 50 kHz) 51000 packets of 144 samples from 2015-12-03T19:39:18.159.999. Part 109/147

Processed Sat Dec 12 16:11:46 2015 by ELM ver.2012-10-06 from 001__elm20151203_193917__dat00.bin



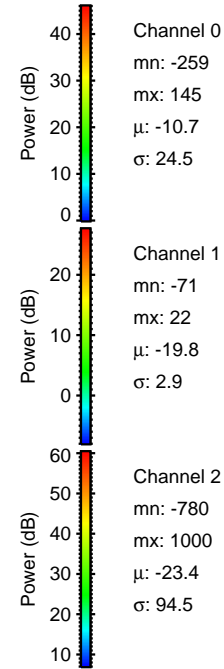
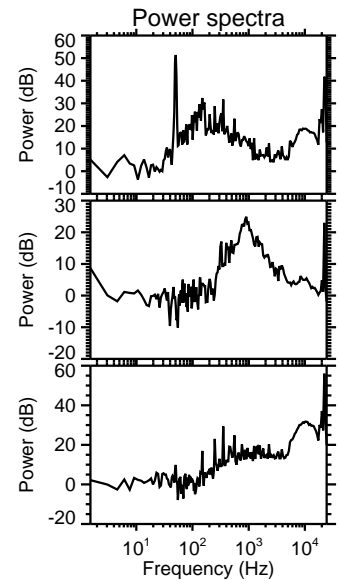
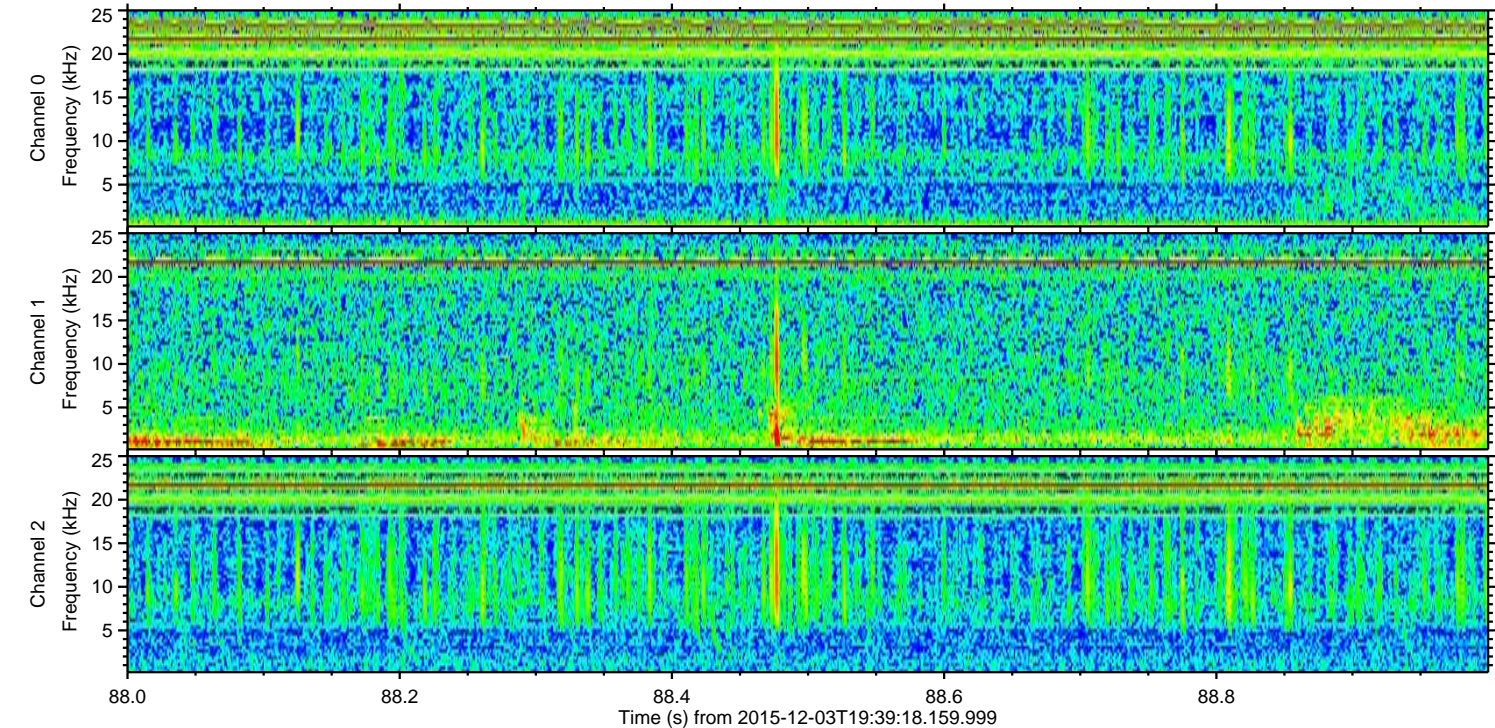
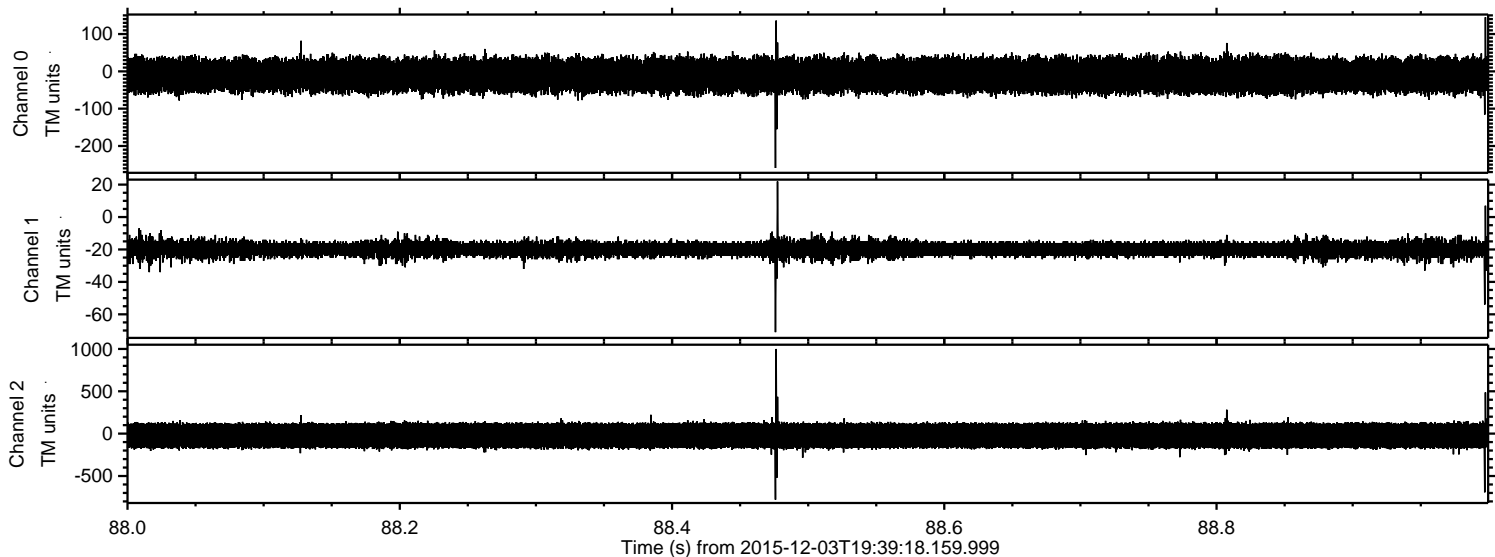
ELMAVAN 3D WAVEFORMS (Measured data sampled at 50 kHz) 51000 packets of 144 samples from 2015-12-03T19:39:18.159.999. Part 47/147

Processed Sat Dec 12 16:11:47 2015 by ELM ver.2012-10-06 from 001__elm20151203_193917__dat00.bin



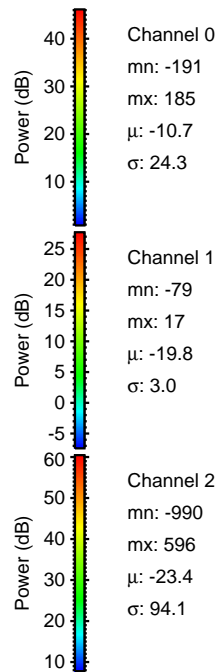
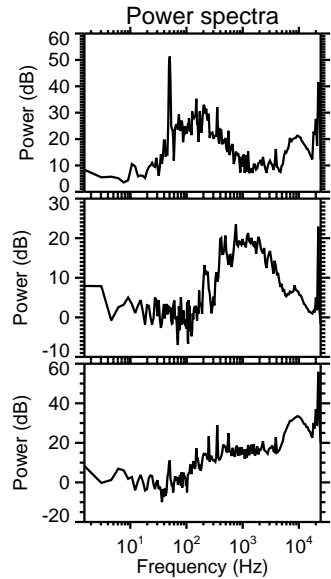
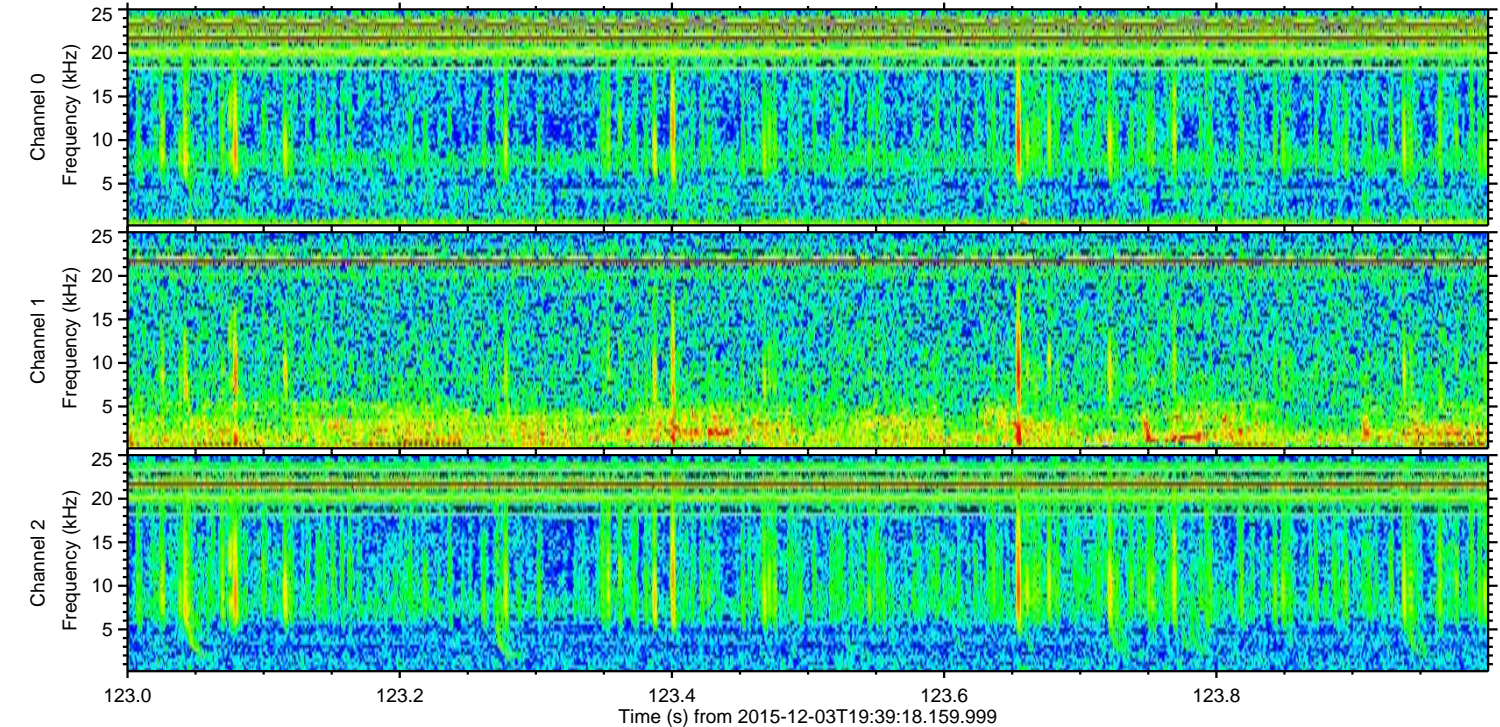
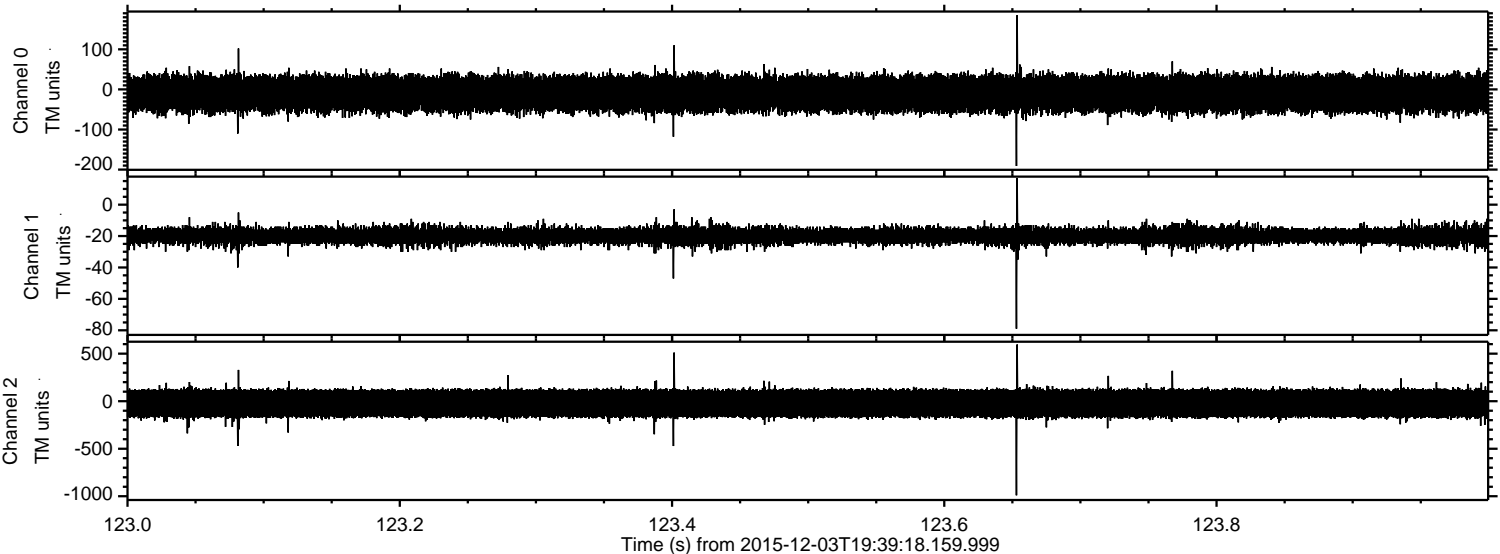
ELMAVAN 3D WAVEFORMS (Measured data sampled at 50 kHz) 51000 packets of 144 samples from 2015-12-03T19:39:18.159.999. Part 89/147

Processed Sat Dec 12 16:11:48 2015 by ELM ver.2012-10-06 from 001__elm20151203_193917__dat00.bin



ELMAVAN 3D WAVEFORMS (Measured data sampled at 50 kHz) 51000 packets of 144 samples from 2015-12-03T19:39:18.159.999. Part 124/147

Processed Sat Dec 12 16:11:49 2015 by ELM ver.2012-10-06 from 001__elm20151203_193917__dat00.bin



Power spectra

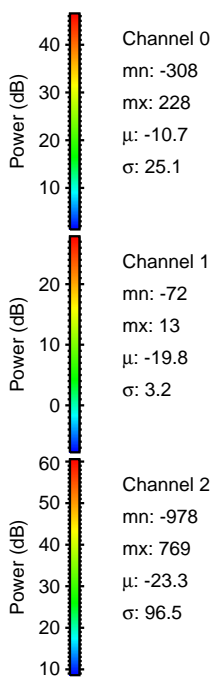
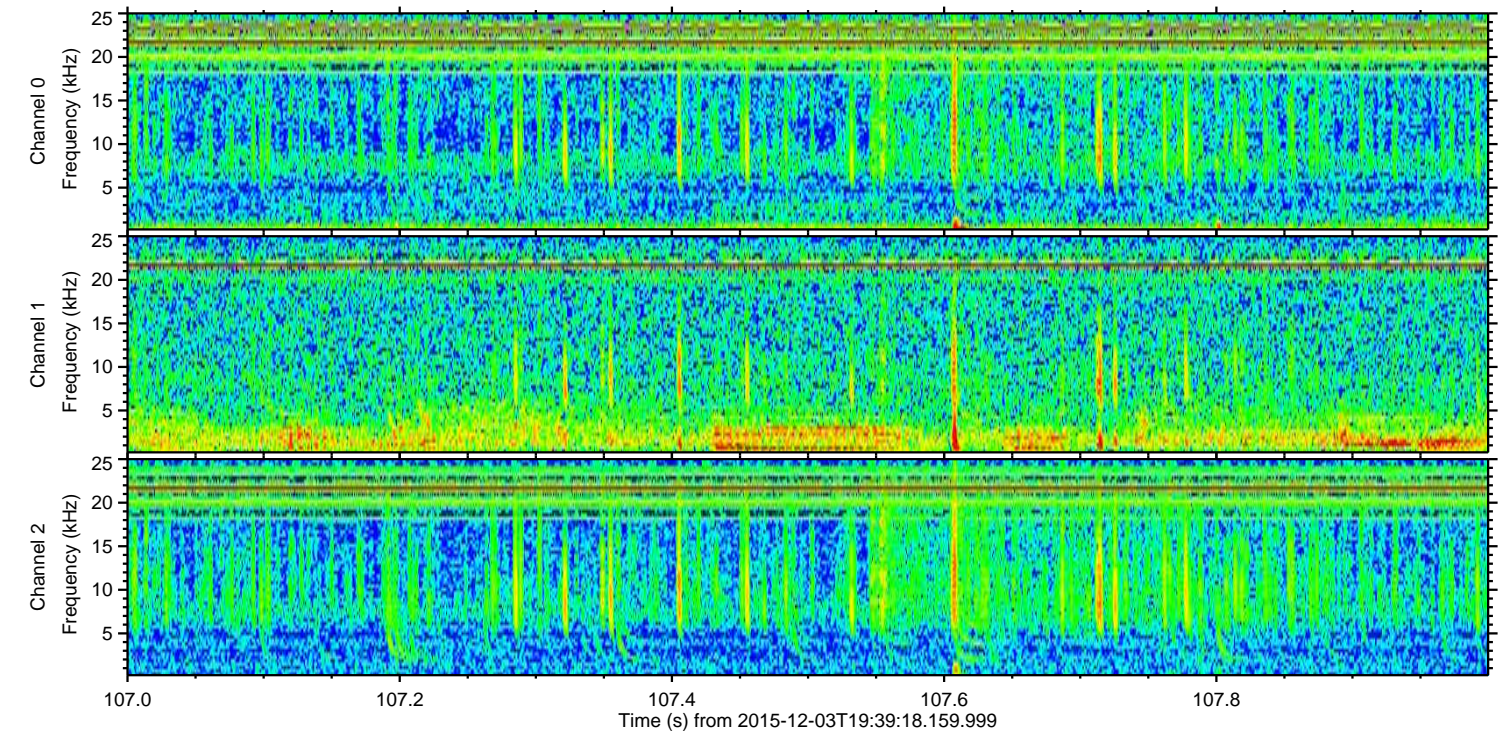
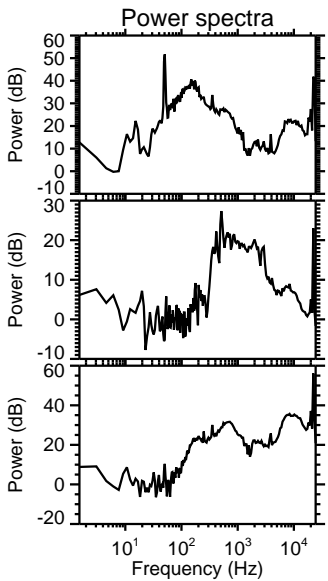
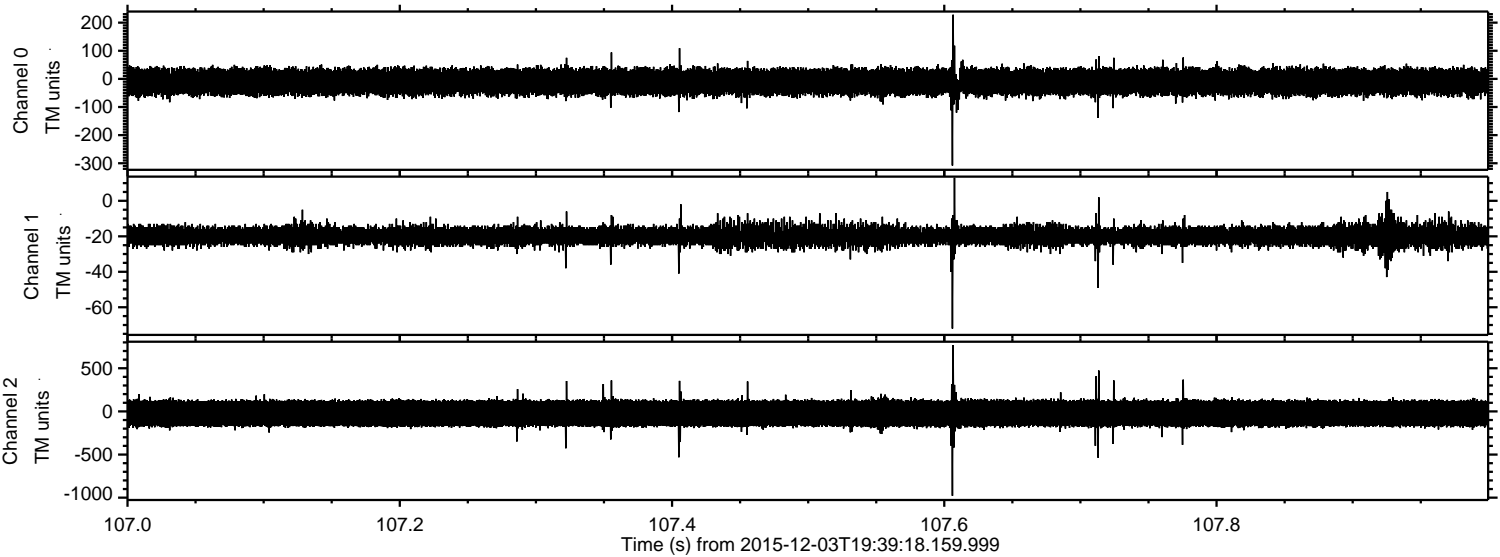
Channel 0
mn: -191
mx: 185
 μ : -10.7
 σ : 24.3

Channel 1
mn: -79
mx: 17
 μ : -19.8
 σ : 3.0

Channel 2
mn: -990
mx: 596
 μ : -23.4
 σ : 94.1

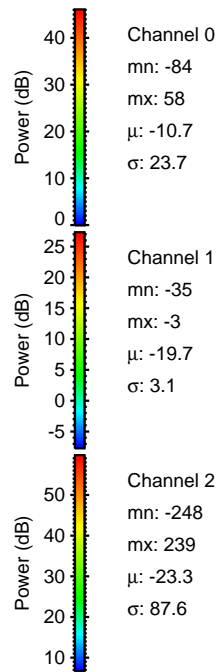
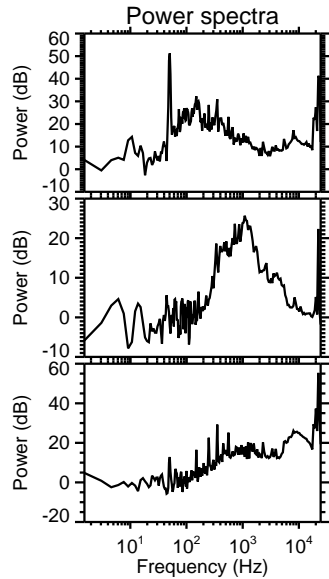
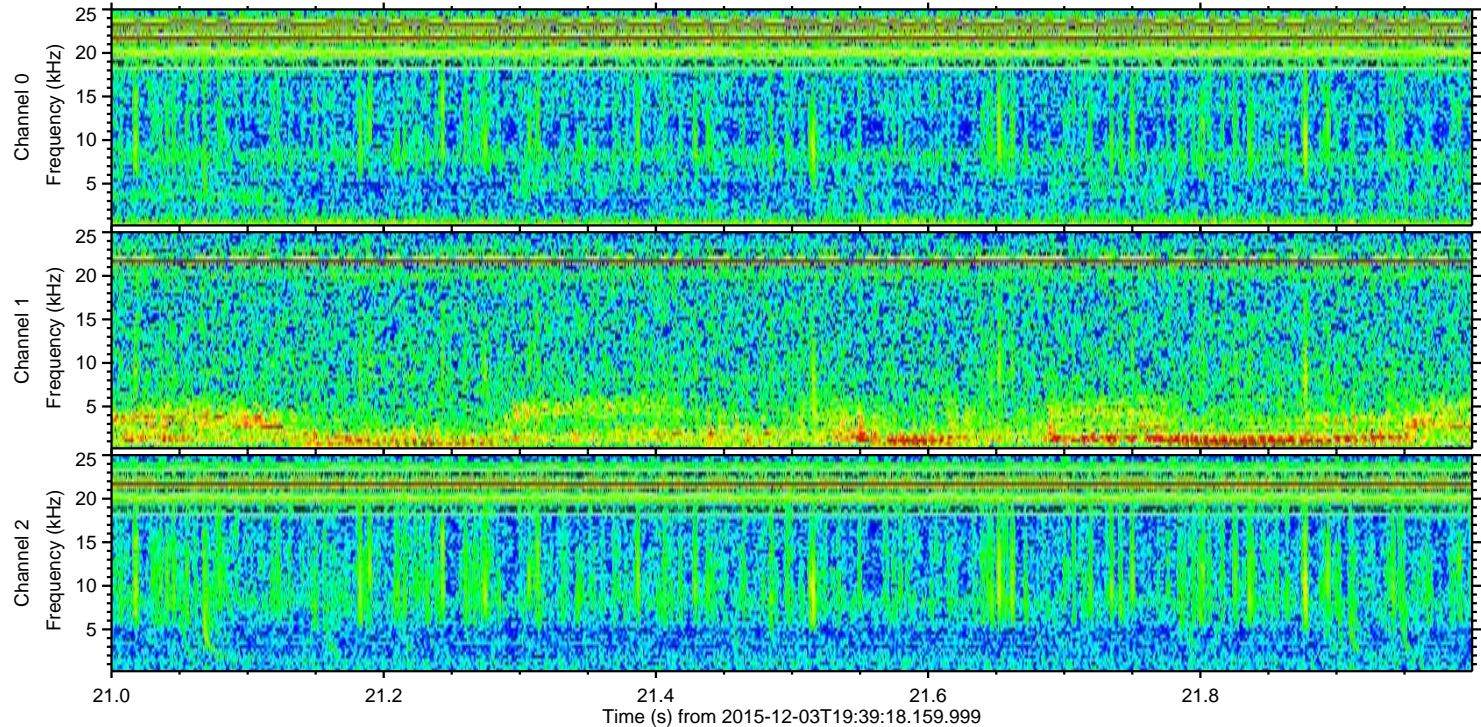
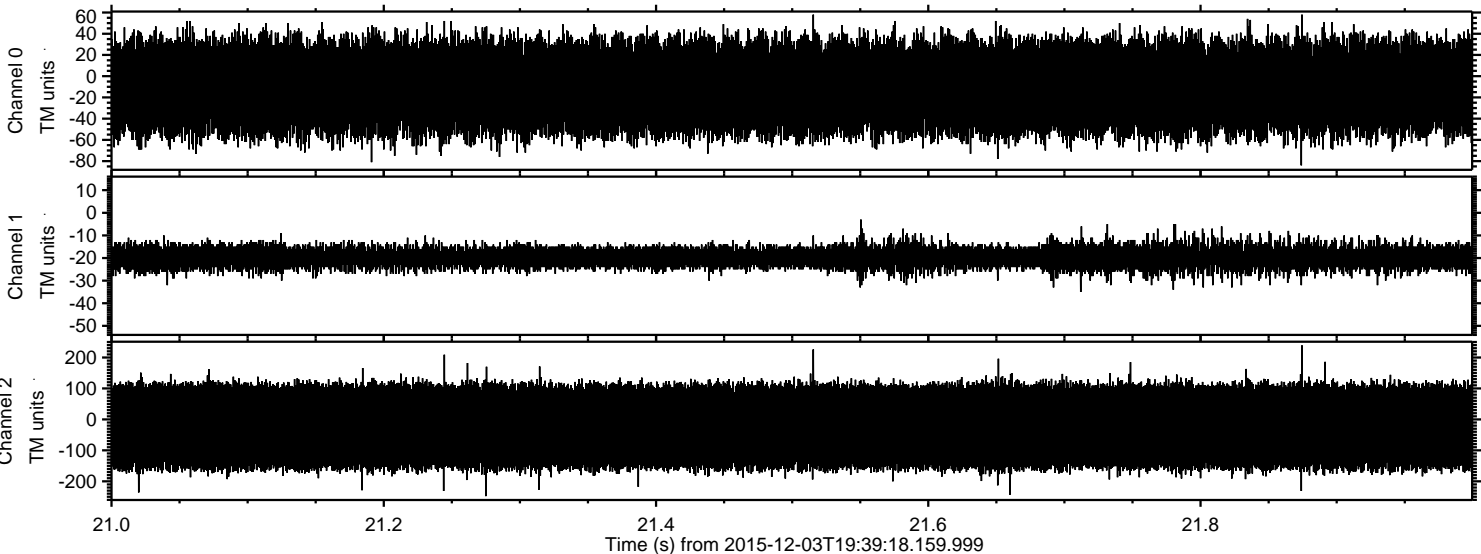
ELMAVAN 3D WAVEFORMS (Measured data sampled at 50 kHz) 51000 packets of 144 samples from 2015-12-03T19:39:18.159.999. Part 108/147

Processed Sat Dec 12 16:11:50 2015 by ELM ver.2012-10-06 from 001__elm20151203_193917__dat00.bin



ELMAVAN 3D WAVEFORMS (Measured data sampled at 50 kHz) 51000 packets of 144 samples from 2015-12-03T19:39:18.159.999. Part 22/147

Processed Sat Dec 12 16:11:51 2015 by ELM ver.2012-10-06 from 001__elm20151203_193917__dat00.bin



Channel 0
mn: -84
mx: 58
 μ : -10.7
 σ : 23.7

Channel 1
mn: -35
mx: -3
 μ : -19.7
 σ : 3.1

Channel 2
mn: -248
mx: 239
 μ : -23.3
 σ : 87.6