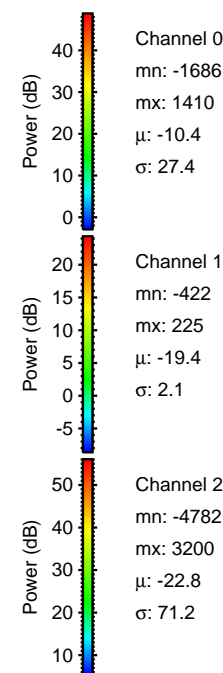
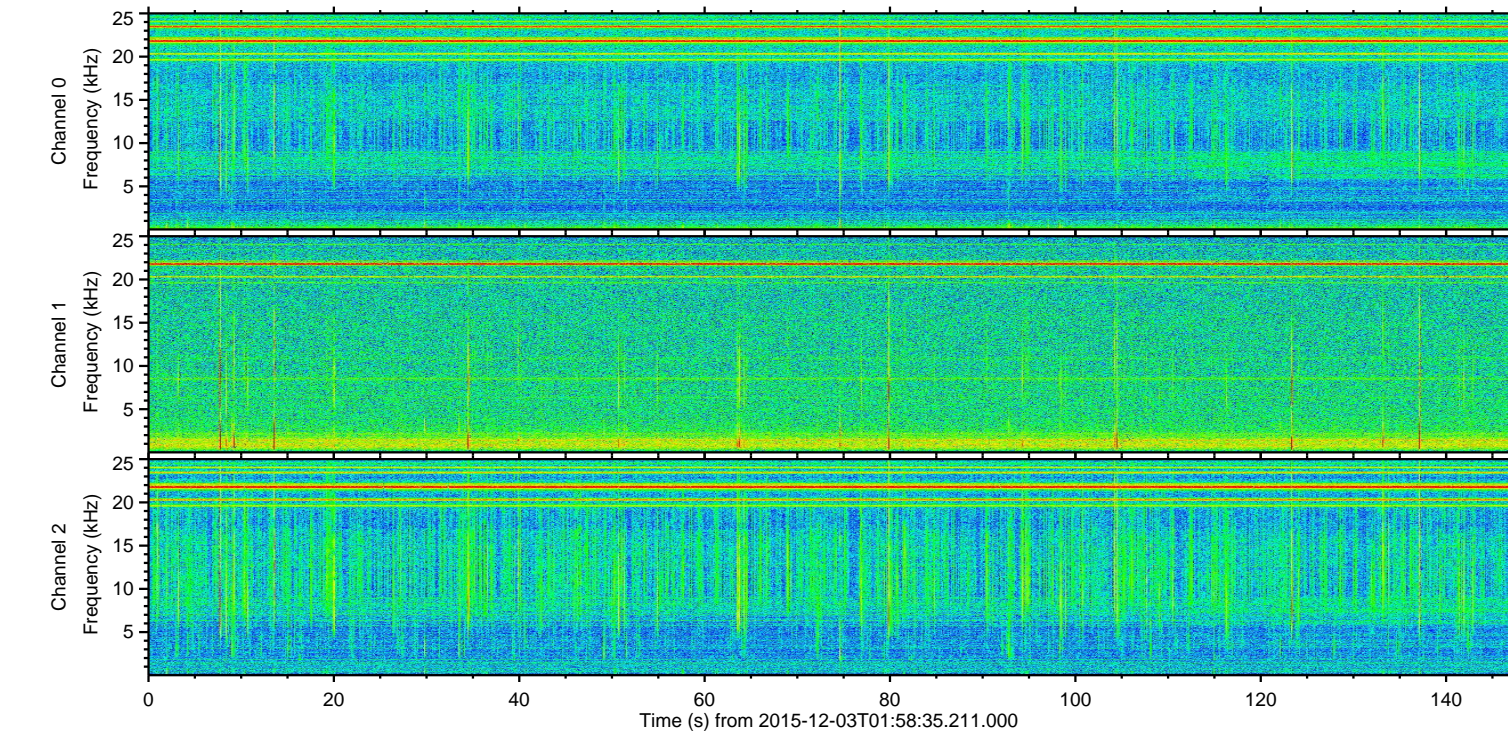
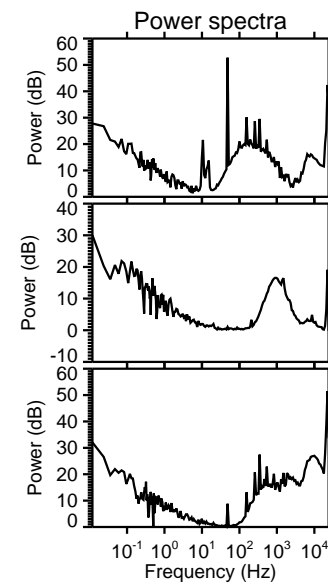
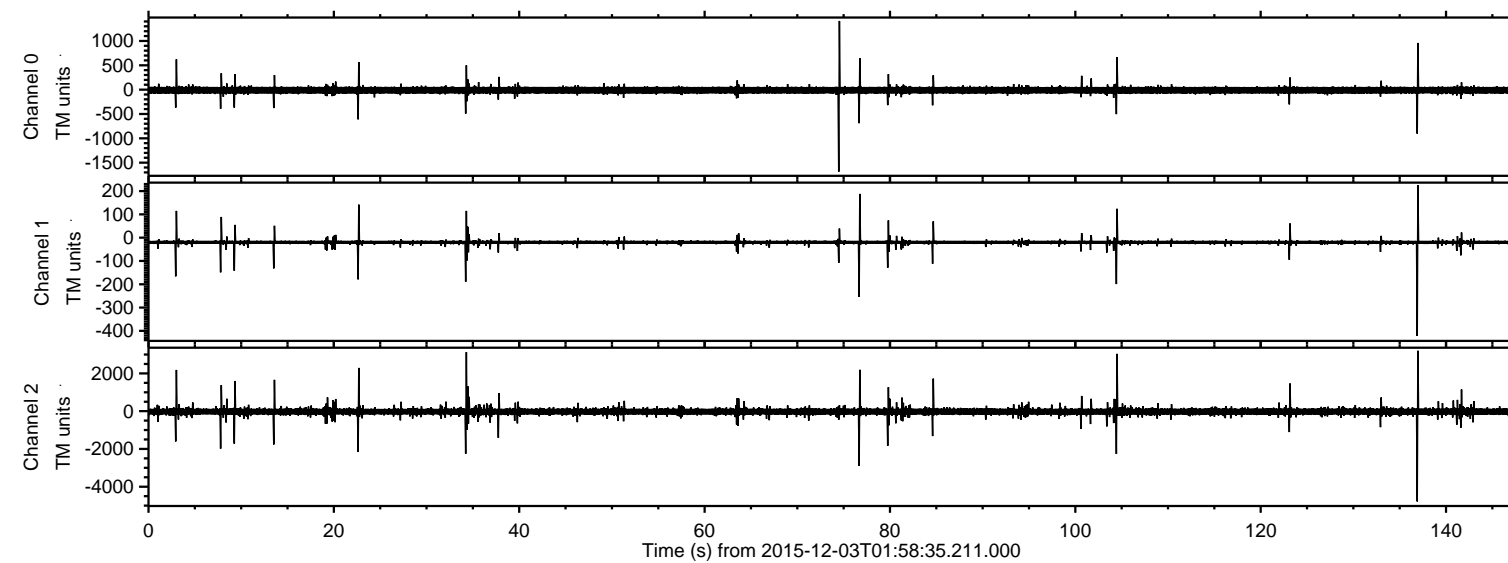


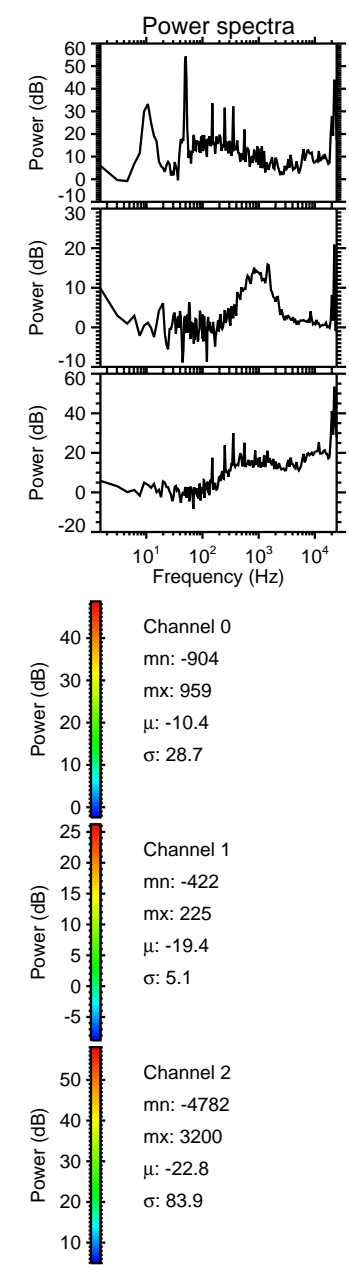
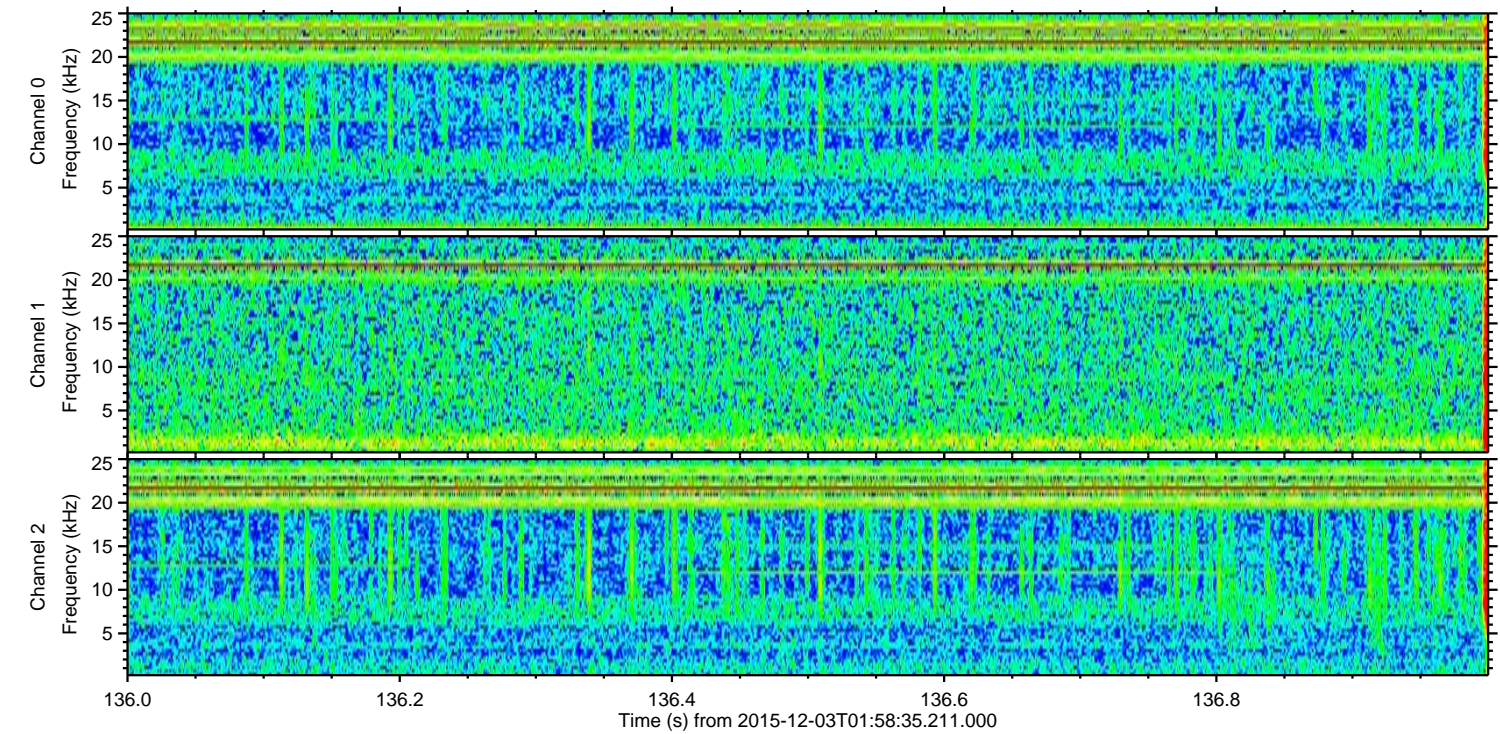
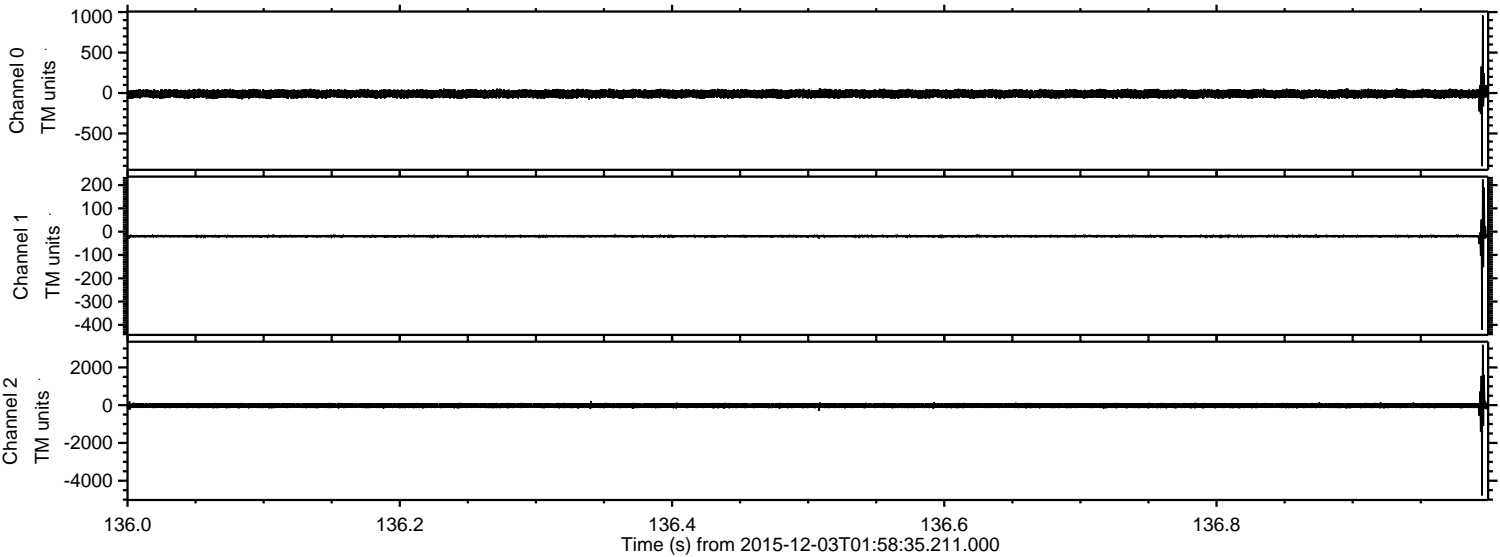
ELMAVAN 3D WAVEFORMS (Measured data sampled at 50 kHz) 51000 packets of 144 samples from 2015-12-03T01:58:35.211.000.

Processed Fri Dec 11 21:34:31 2015 by ELM ver.2012-10-06 from 001__elm20151203_015834__dat00.bin

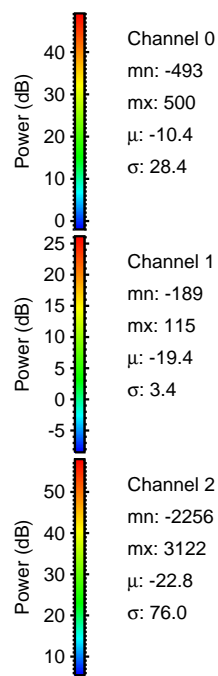
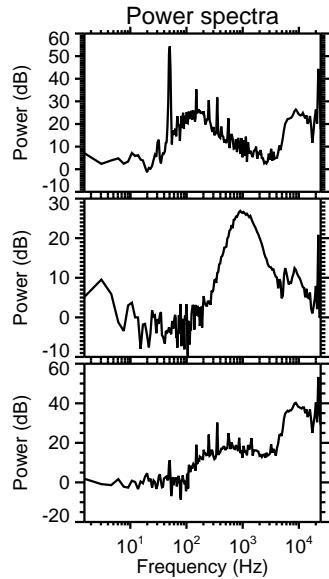
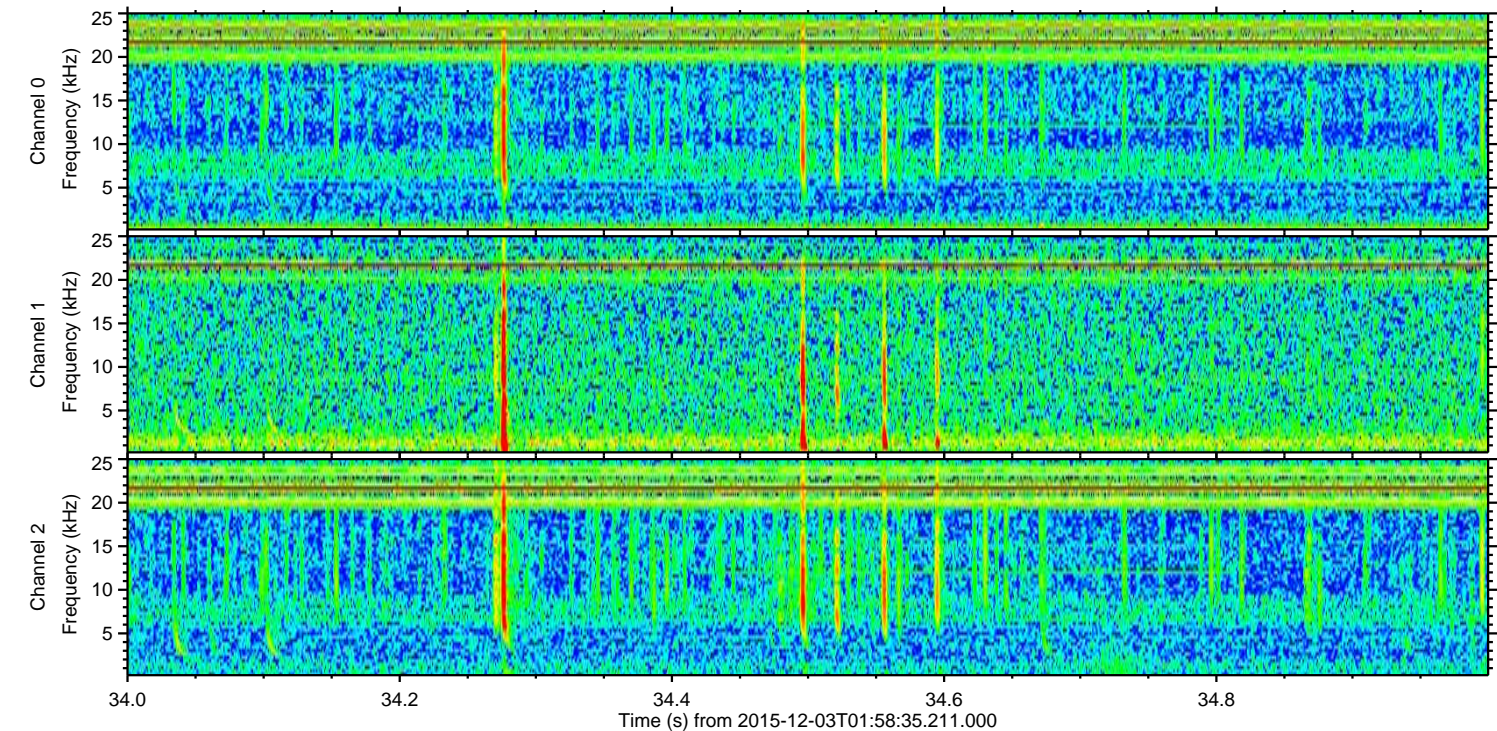
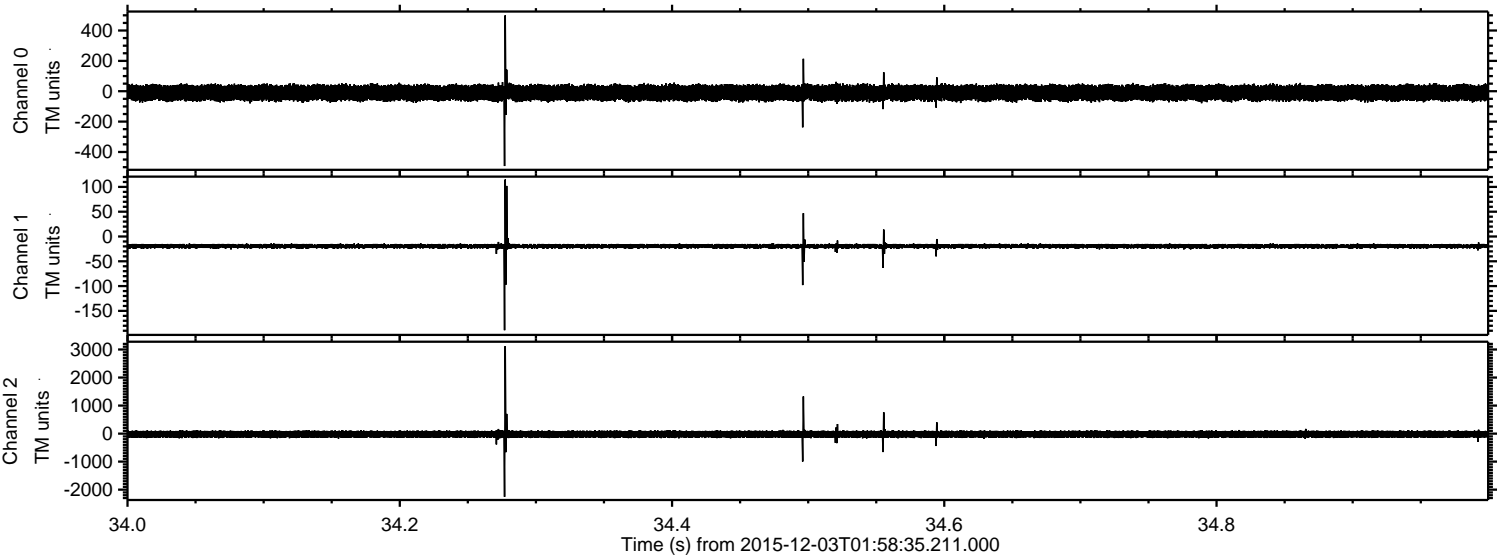


ELMAVAN 3D WAVEFORMS (Measured data sampled at 50 kHz) 51000 packets of 144 samples from 2015-12-03T01:58:35.211.000. Part 137/147

Processed Fri Dec 11 21:34:42 2015 by ELM ver.2012-10-06 from 001__elm20151203_015834__dat00.bin

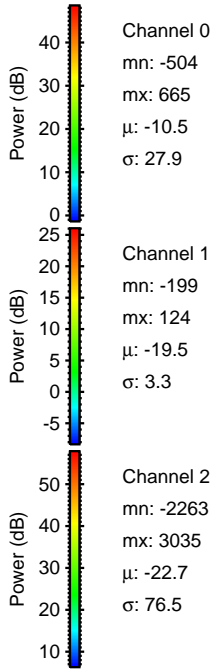
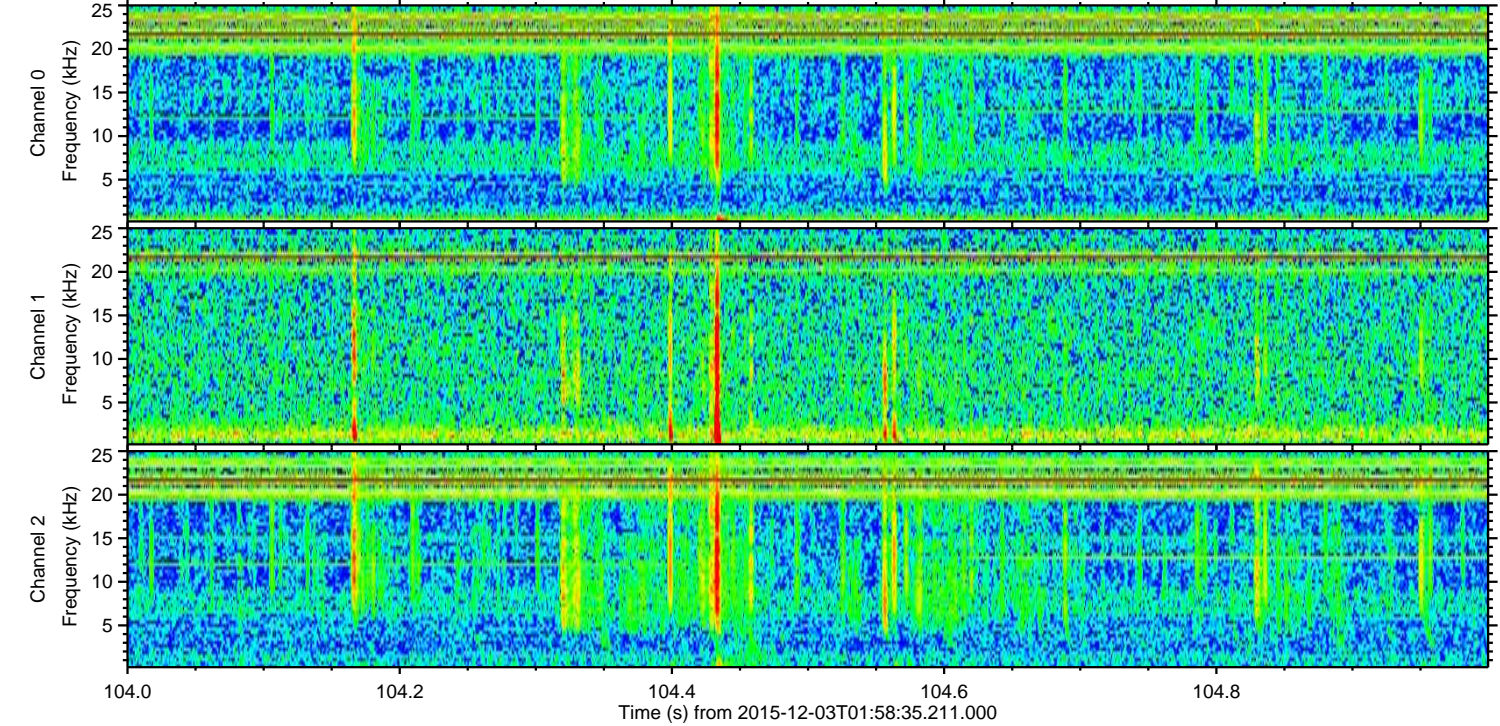
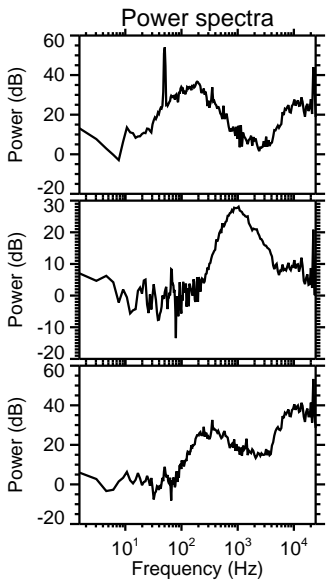
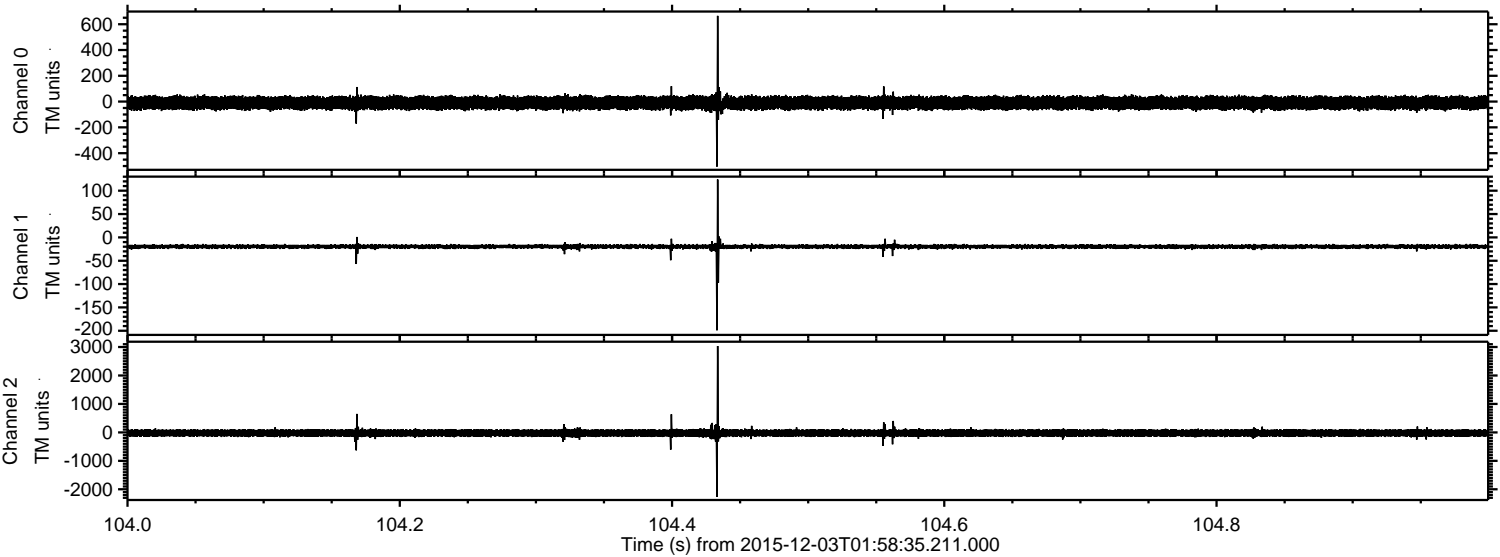


Processed Fri Dec 11 21:34:43 2015 by ELM ver.2012-10-06 from 001__elm20151203_015834__dat00.bin

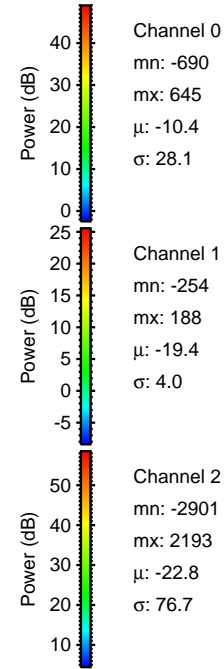
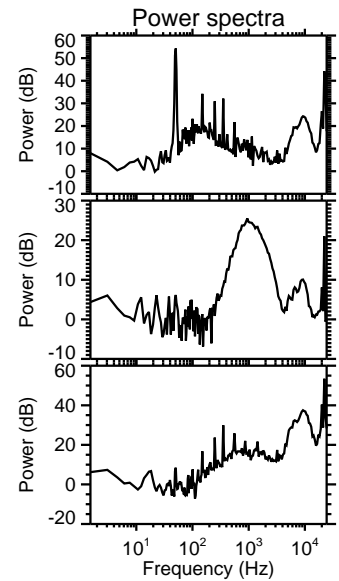
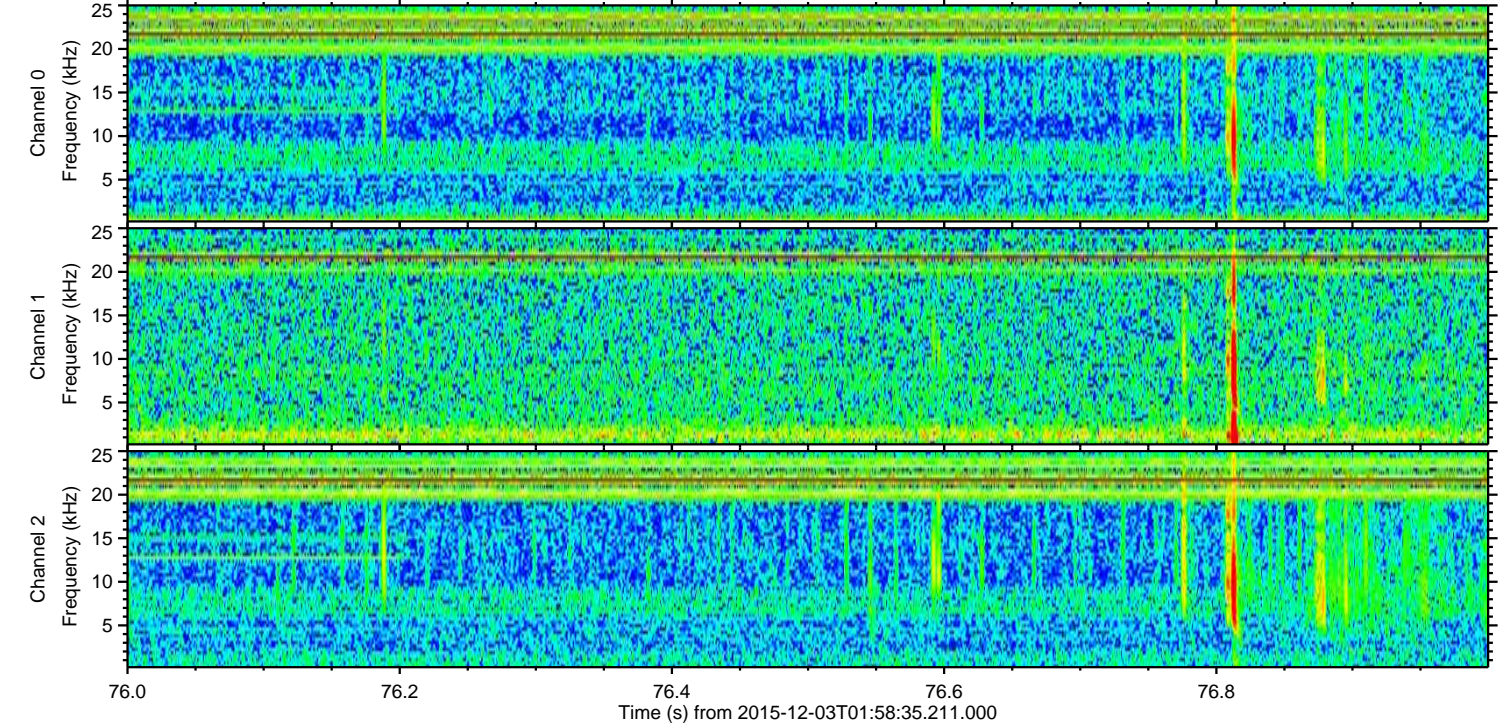
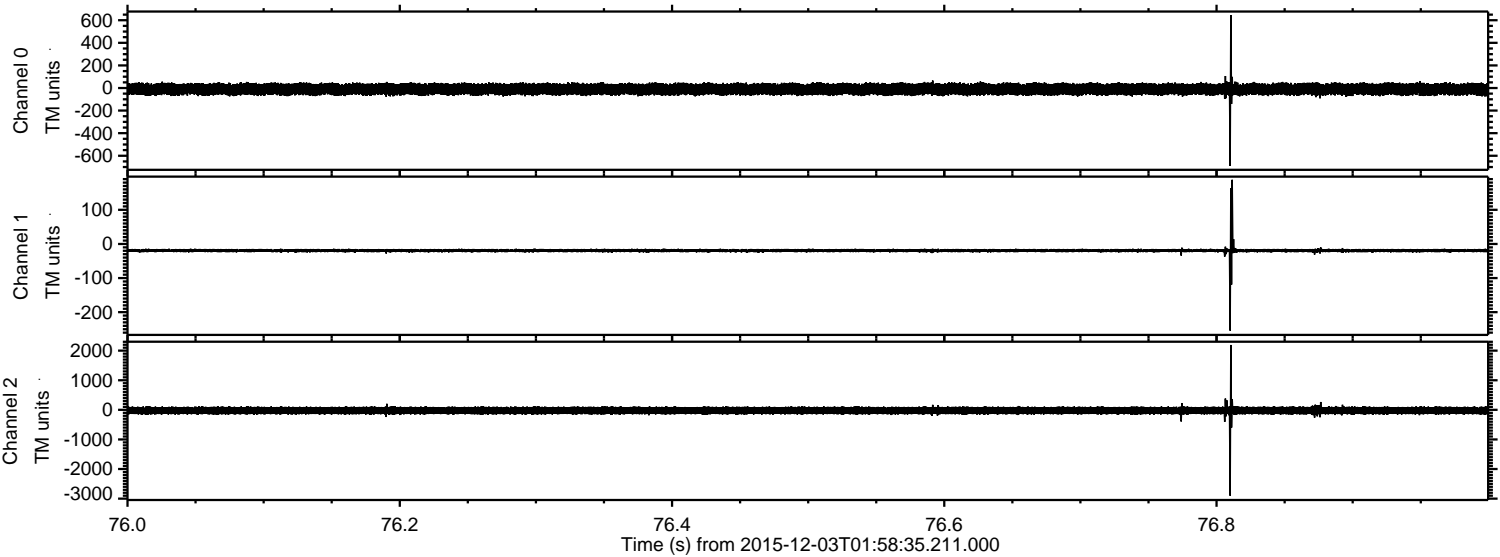


ELMAVAN 3D WAVEFORMS (Measured data sampled at 50 kHz) 51000 packets of 144 samples from 2015-12-03T01:58:35.211.000. Part 105/147

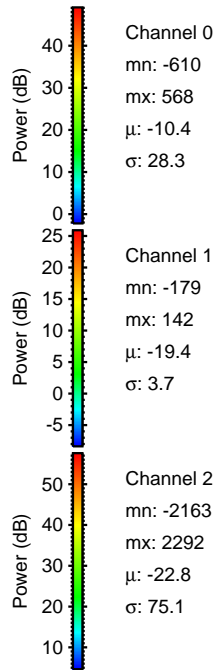
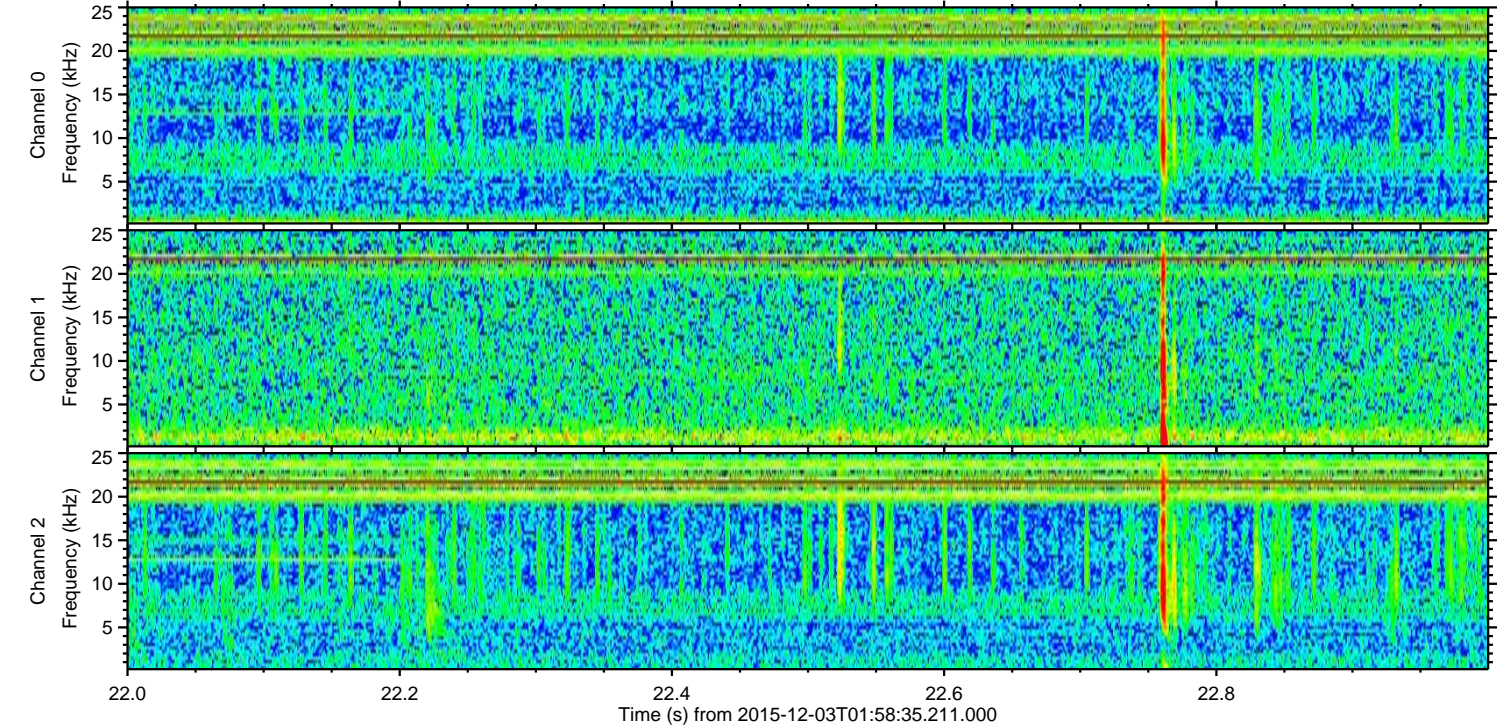
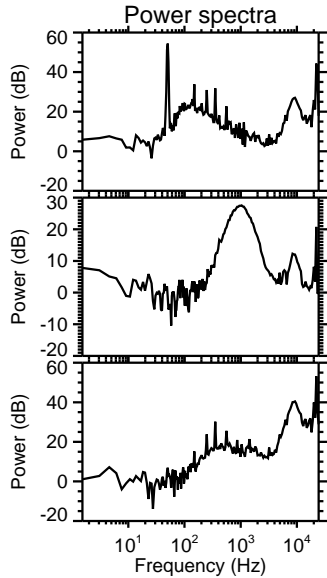
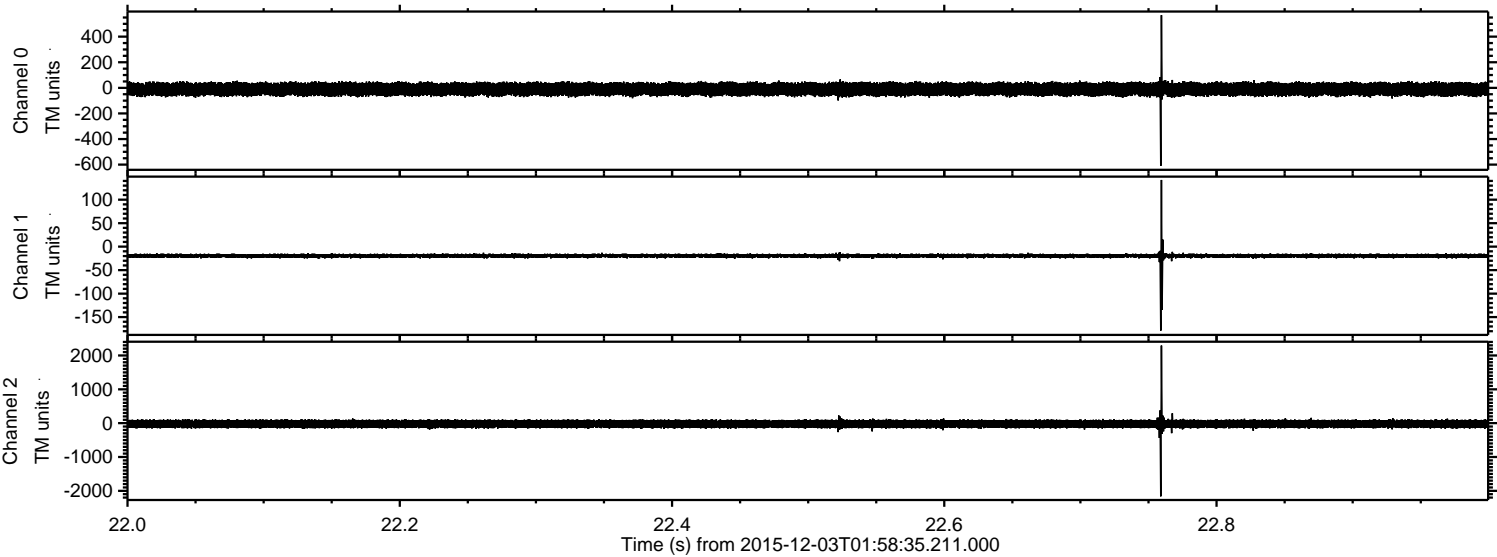
Processed Fri Dec 11 21:34:44 2015 by ELM ver.2012-10-06 from 001__elm20151203_015834__dat00.bin



Processed Fri Dec 11 21:34:45 2015 by ELM ver.2012-10-06 from 001__elm20151203_015834__dat00.bin

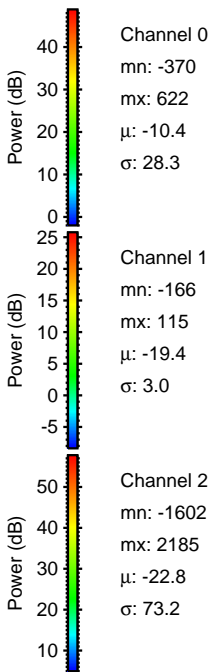
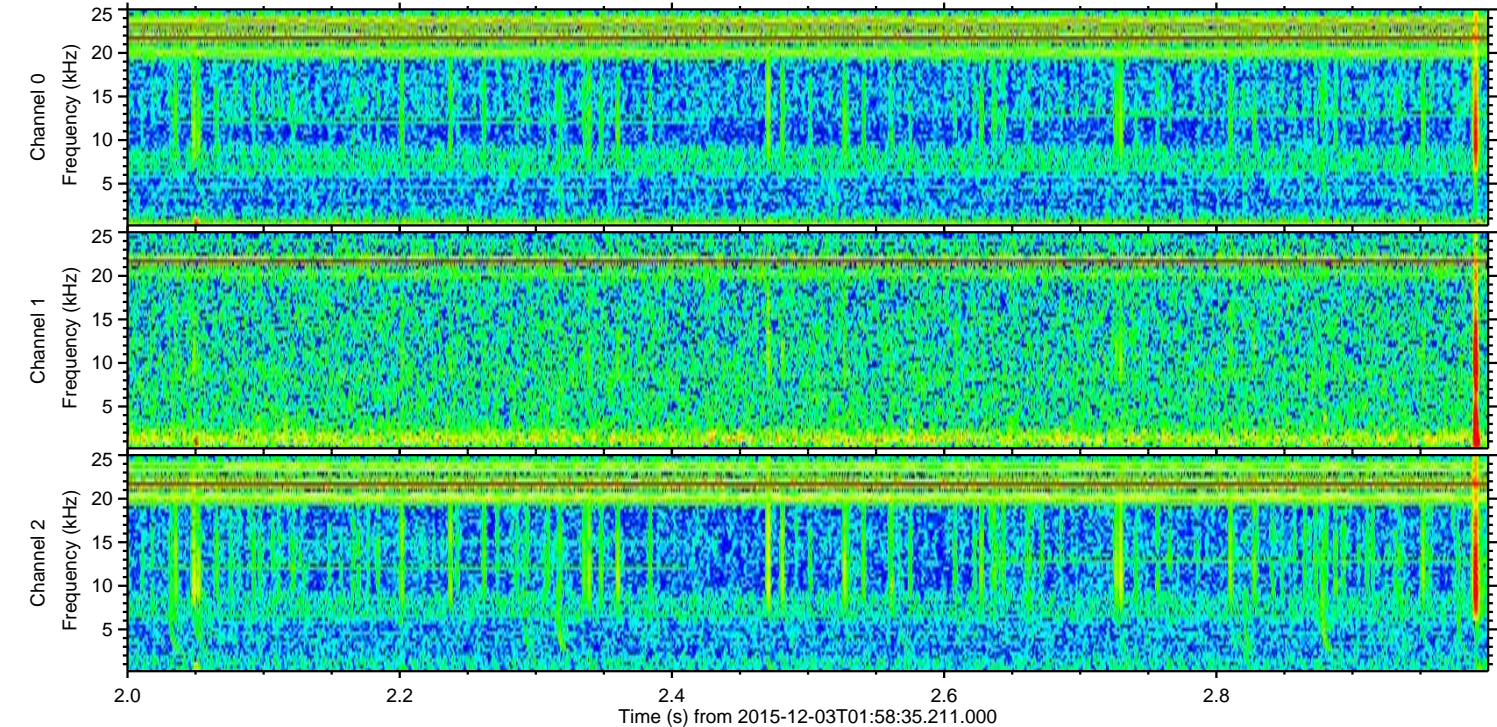
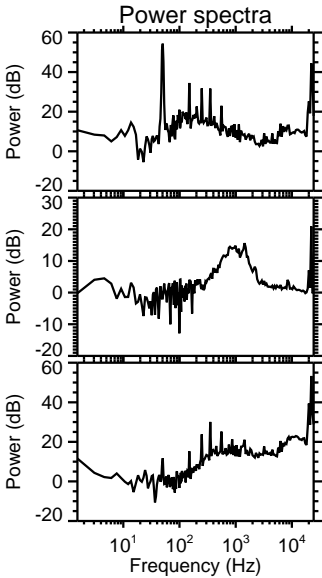
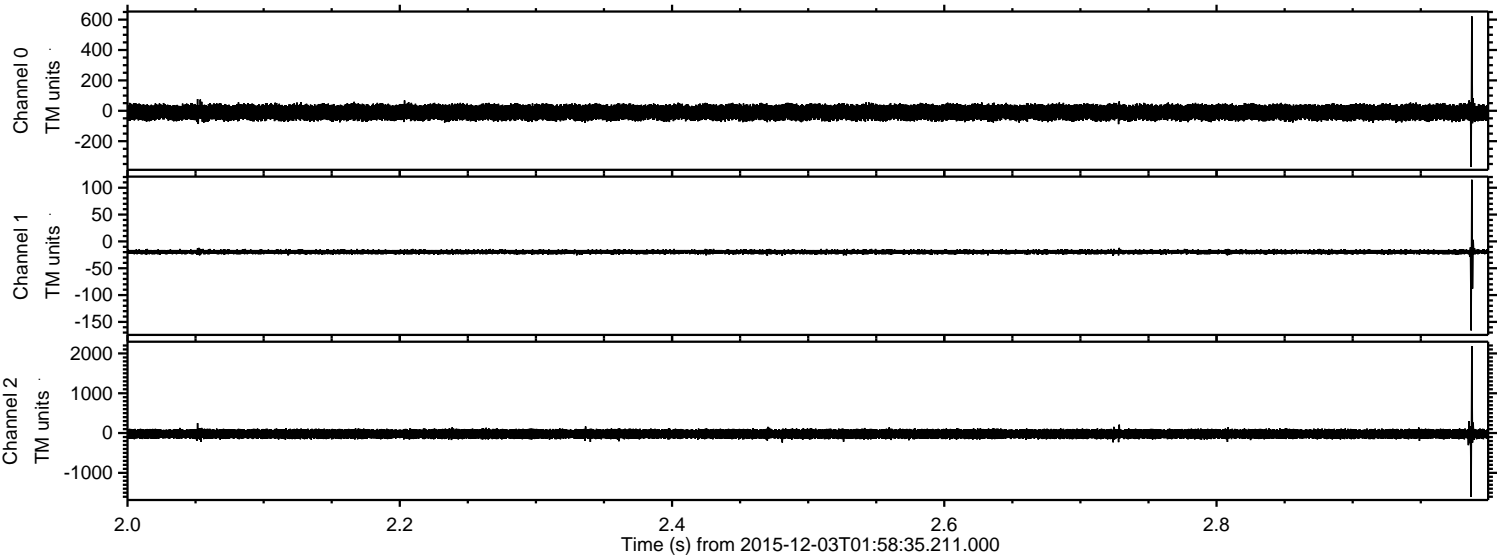


Processed Fri Dec 11 21:34:46 2015 by ELM ver.2012-10-06 from 001__elm20151203_015834__dat00.bin

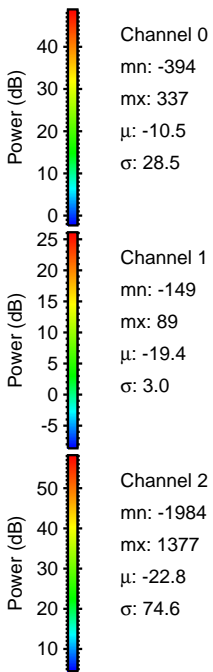
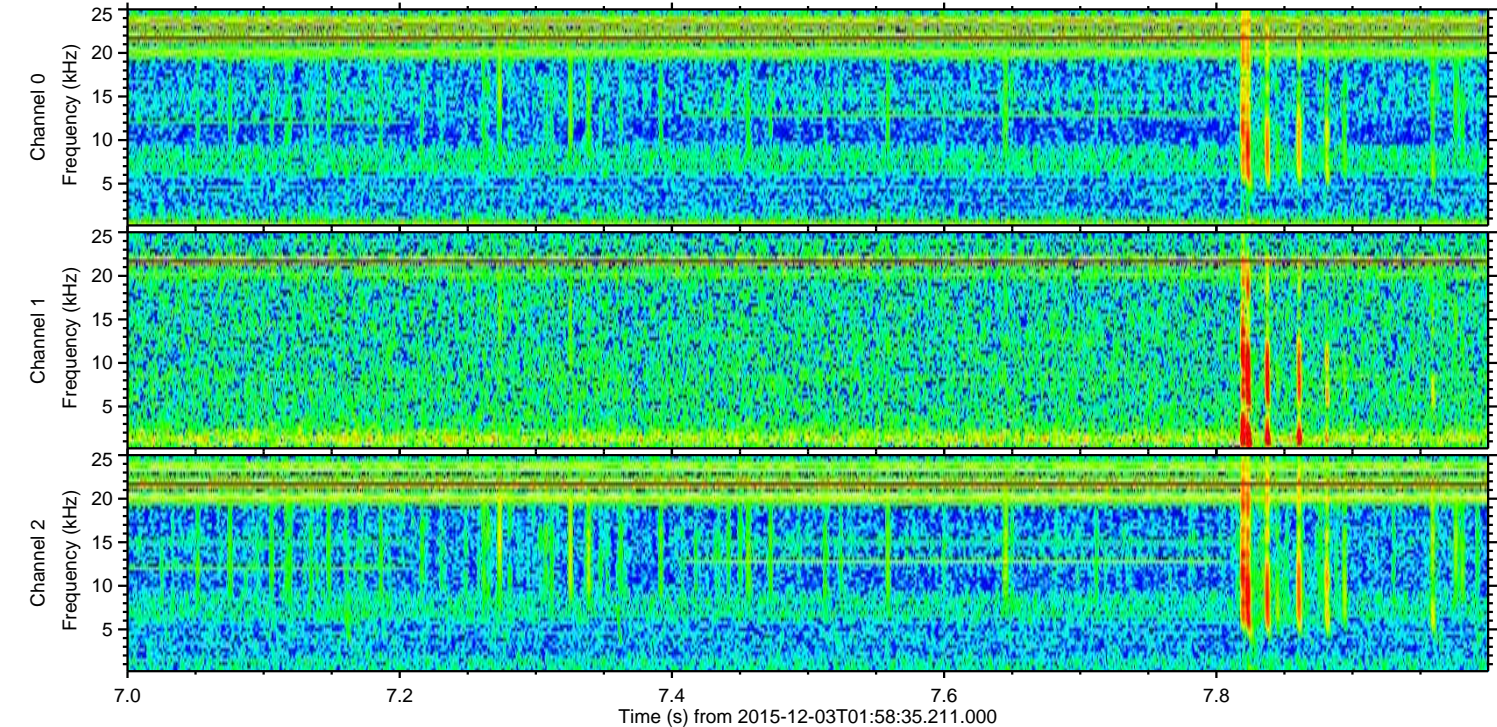
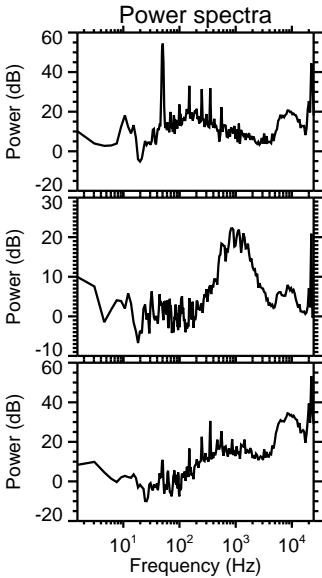
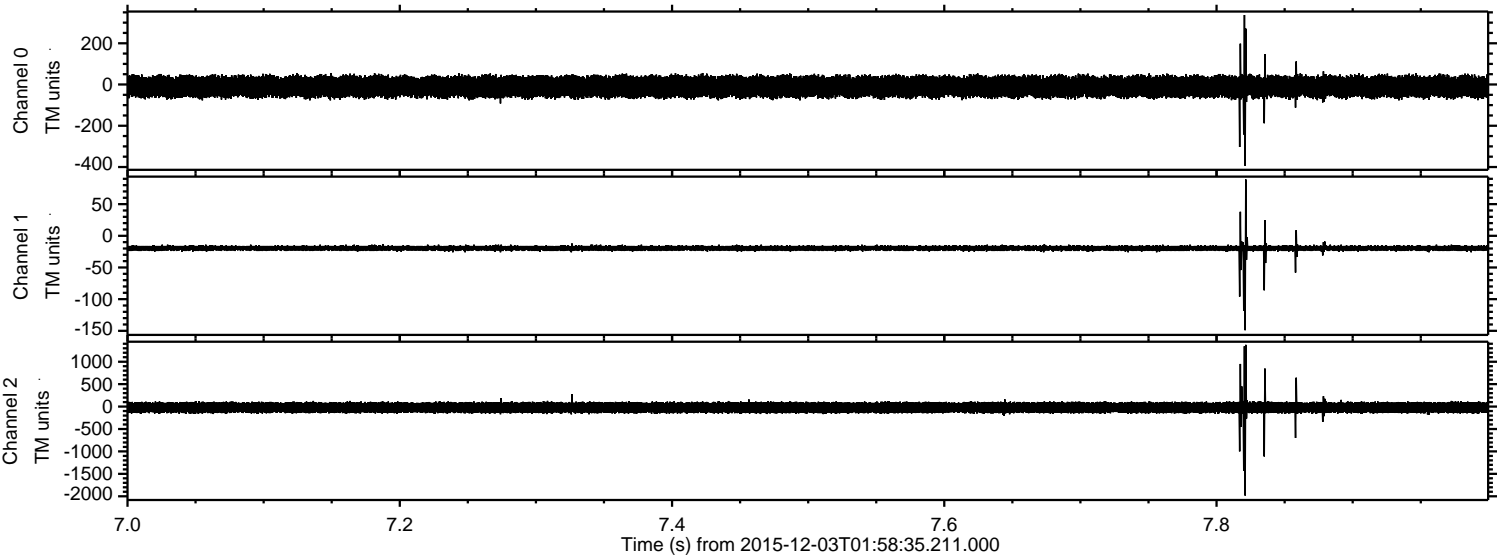


ELMAVAN 3D WAVEFORMS (Measured data sampled at 50 kHz) 51000 packets of 144 samples from 2015-12-03T01:58:35.211.000. Part 3/147

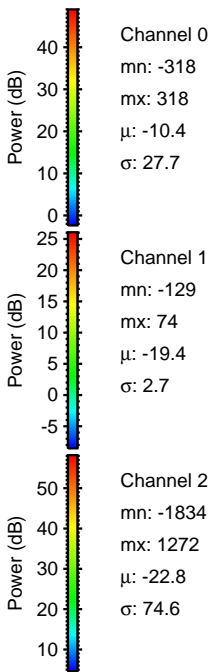
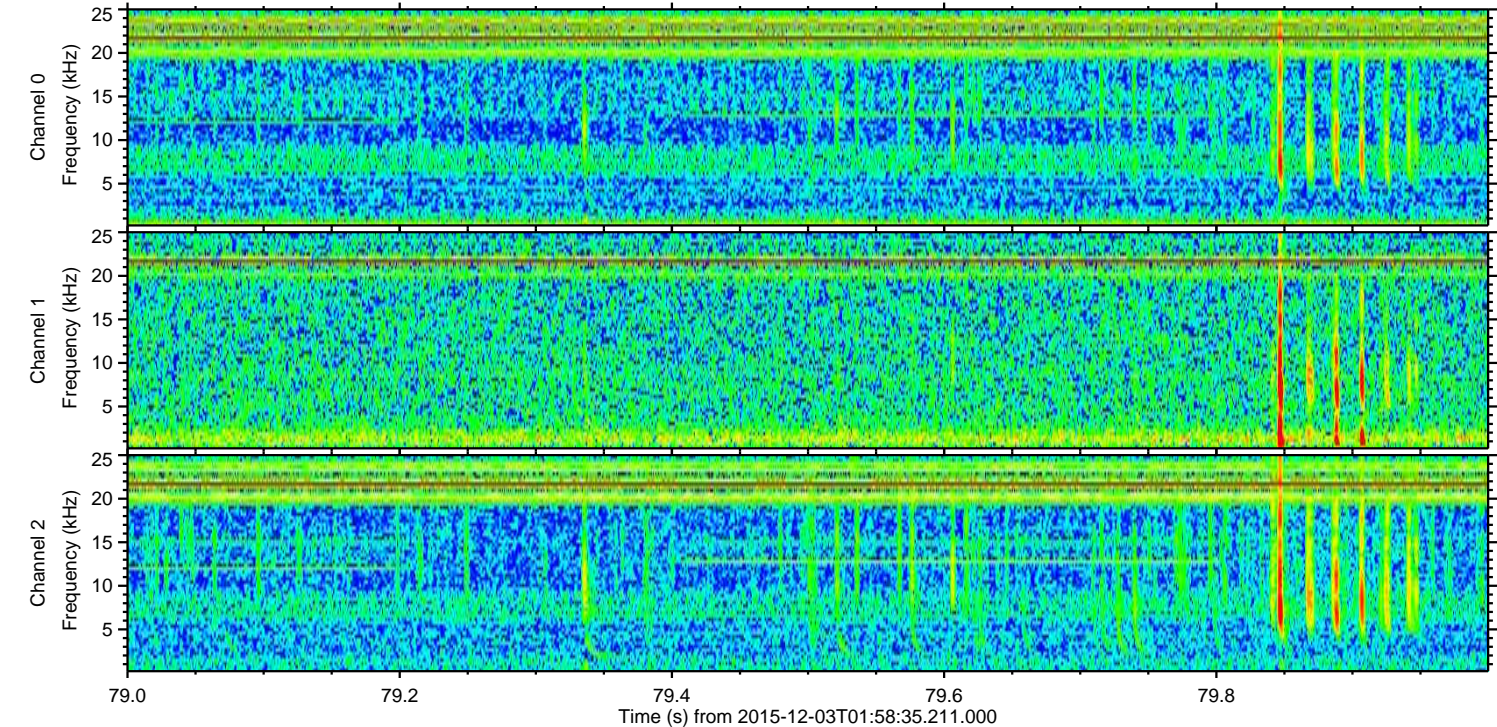
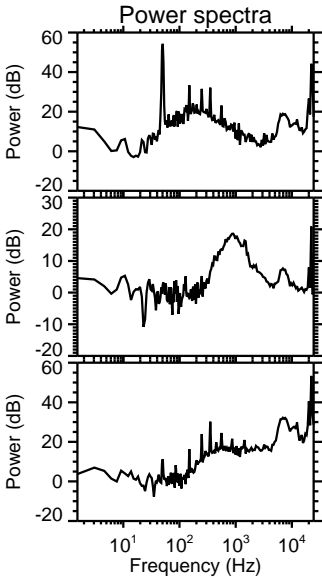
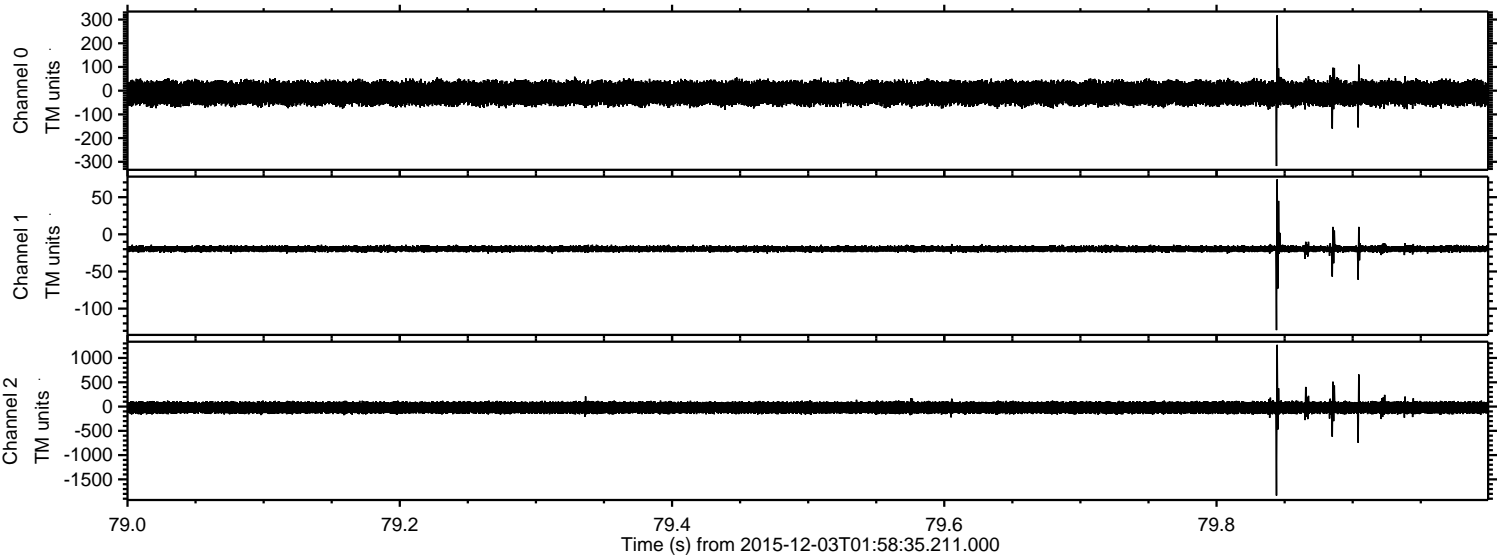
Processed Fri Dec 11 21:34:47 2015 by ELM ver.2012-10-06 from 001__elm20151203_015834__dat00.bin



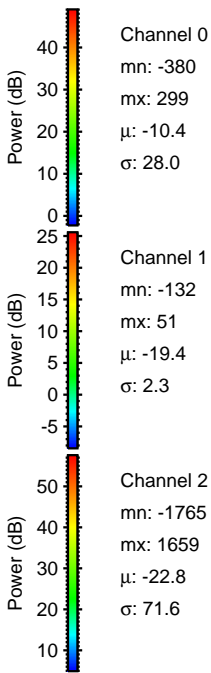
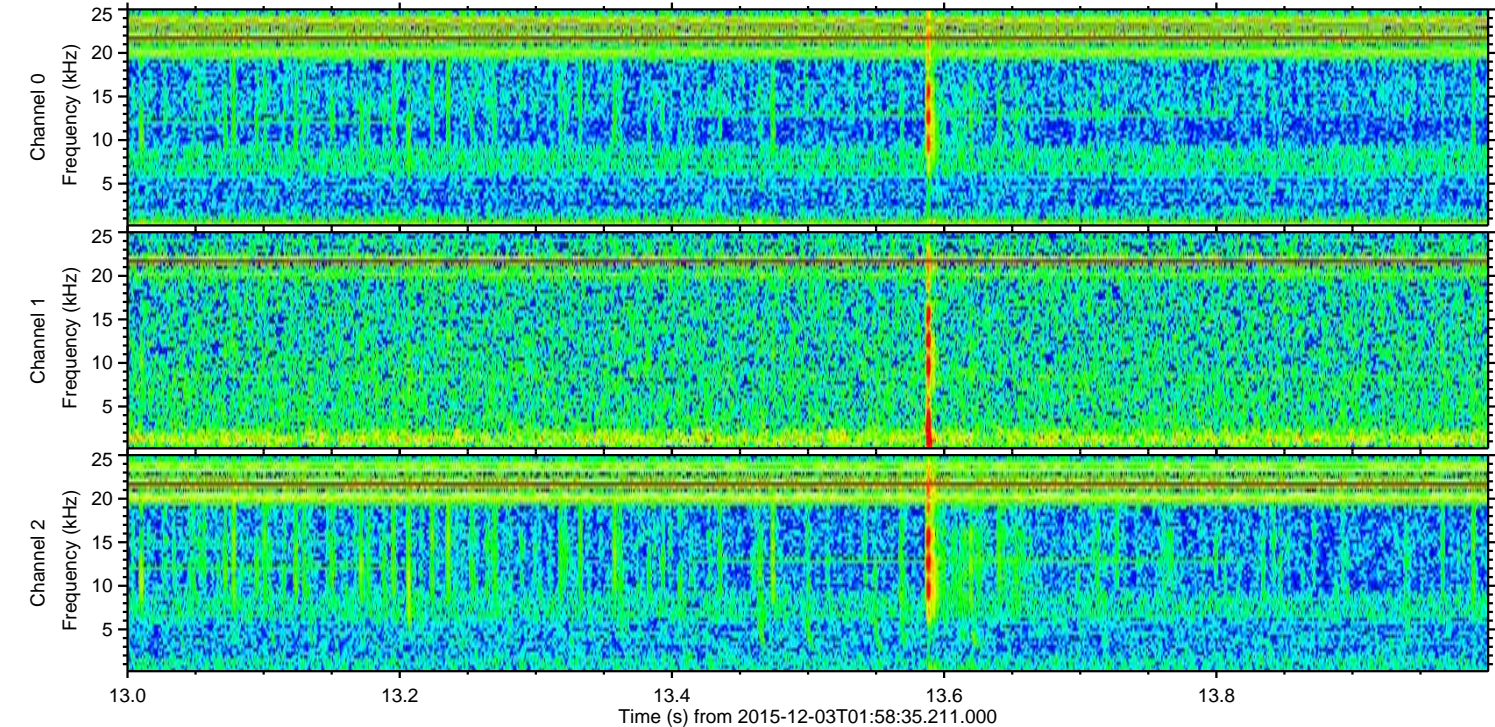
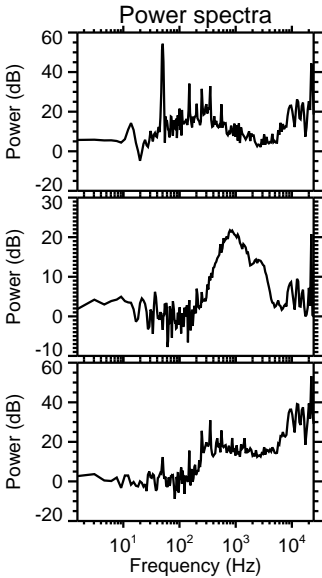
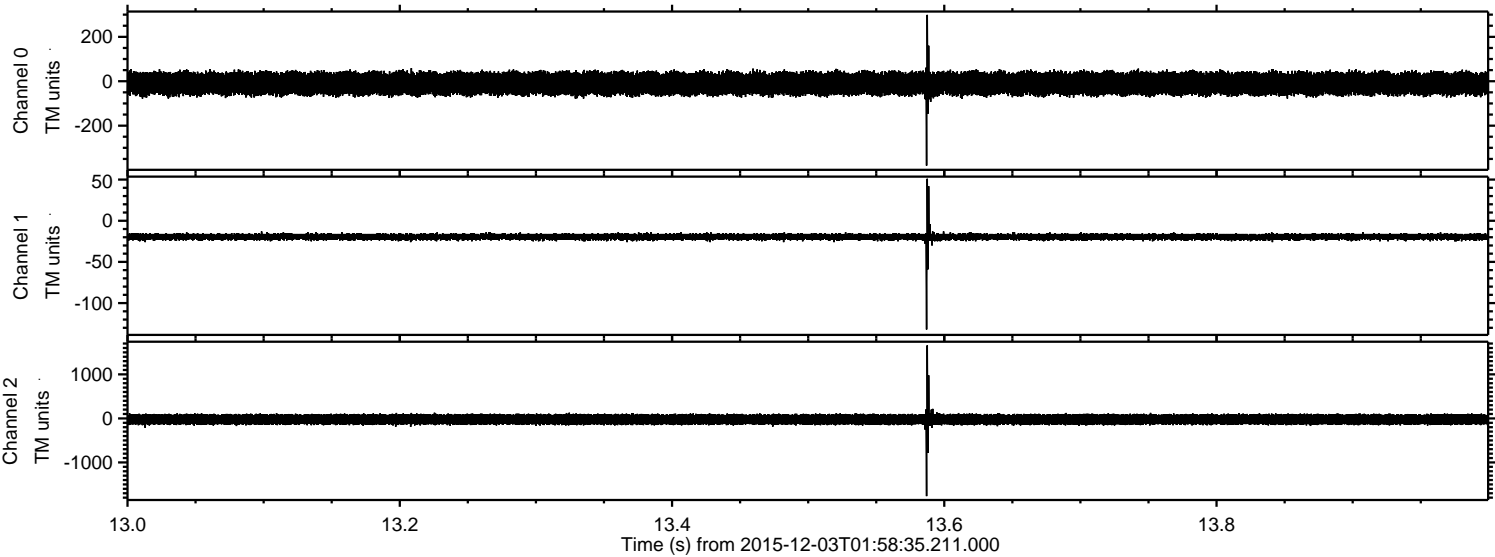
Processed Fri Dec 11 21:34:48 2015 by ELM ver.2012-10-06 from 001__elm20151203_015834__dat00.bin



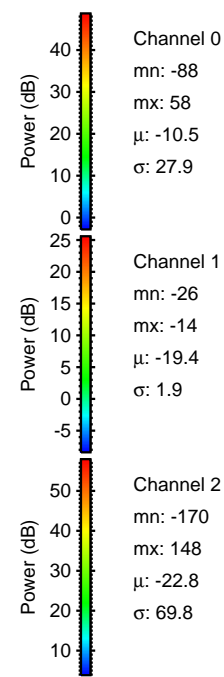
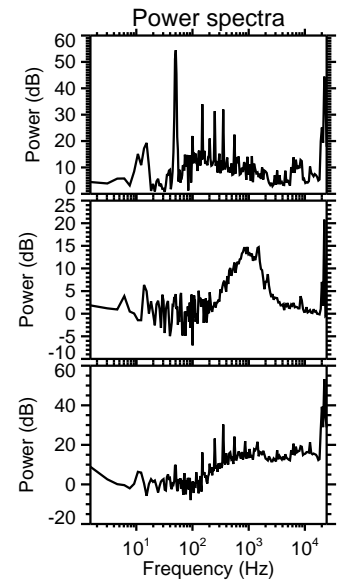
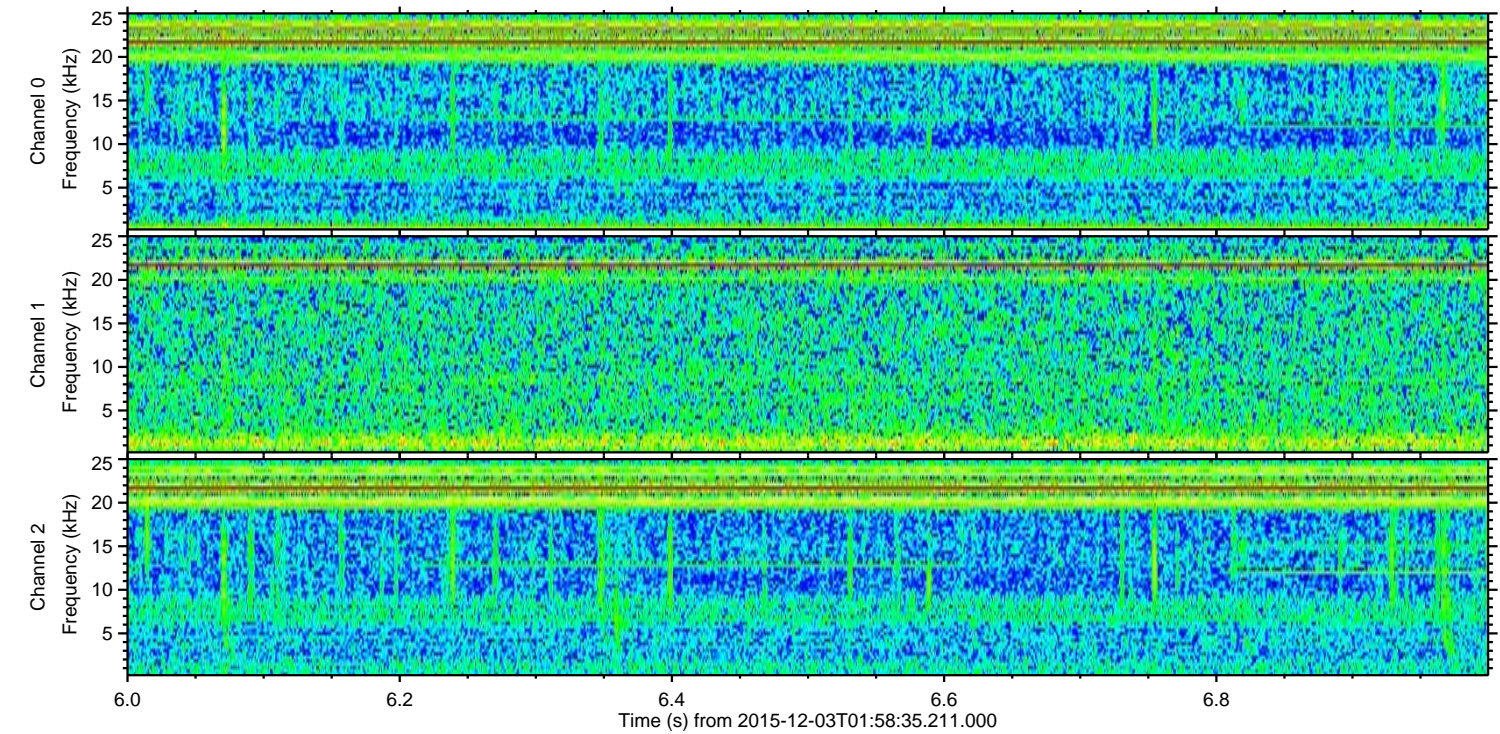
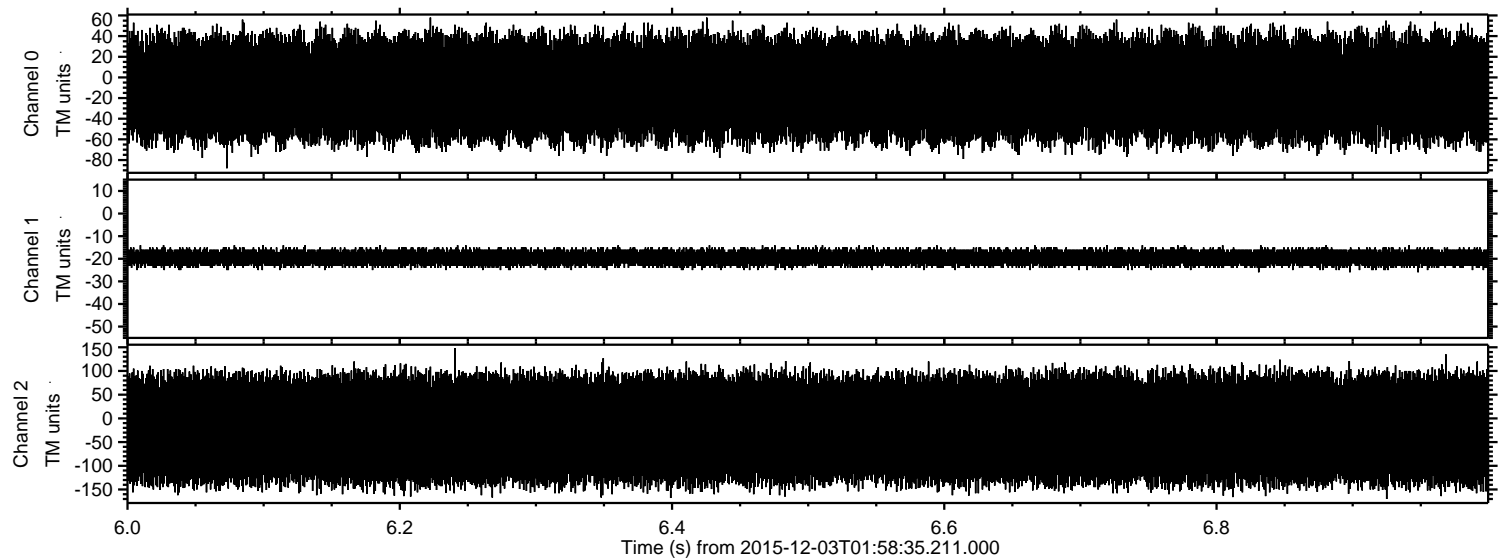
Processed Fri Dec 11 21:34:49 2015 by ELM ver.2012-10-06 from 001__elm20151203_015834__dat00.bin



Processed Fri Dec 11 21:34:50 2015 by ELM ver.2012-10-06 from 001__elm20151203_015834__dat00.bin



Processed Fri Dec 11 21:34:51 2015 by ELM ver.2012-10-06 from 001__elm20151203_015834__dat00.bin



Channel 0
mn: -88
mx: 58
 μ : -10.5
 σ : 27.9

Channel 1
mn: -26
mx: -14
 μ : -19.4
 σ : 1.9

Channel 2
mn: -170
mx: 148
 μ : -22.8
 σ : 69.8