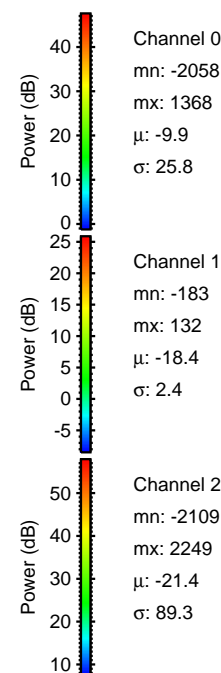
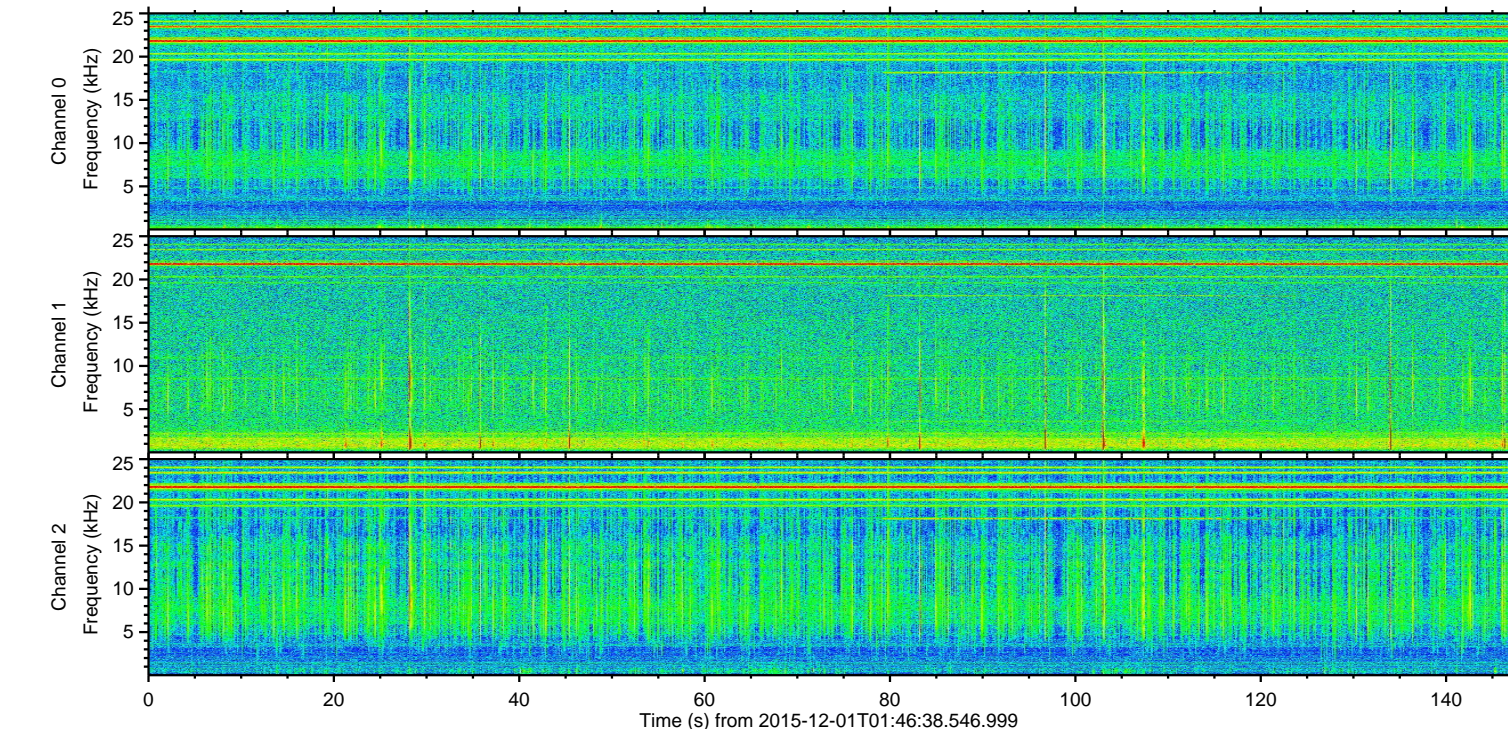
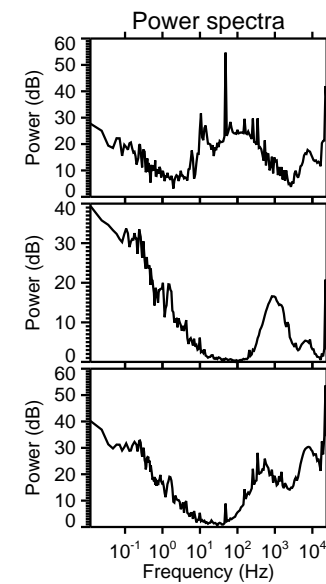
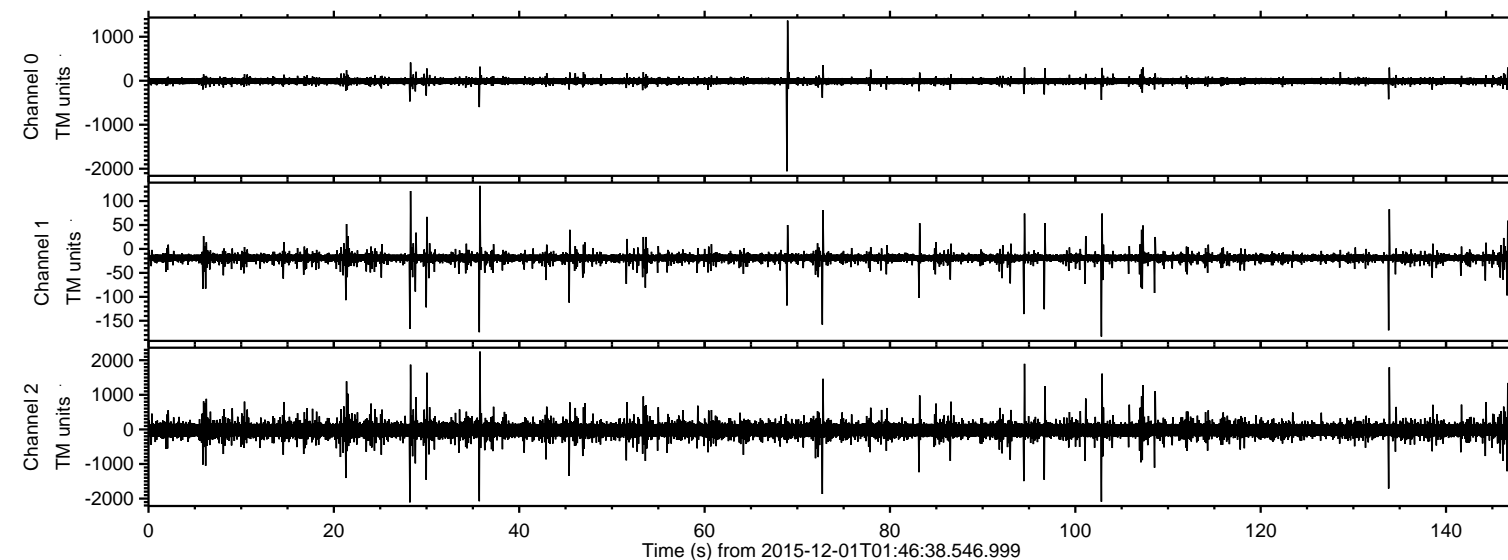


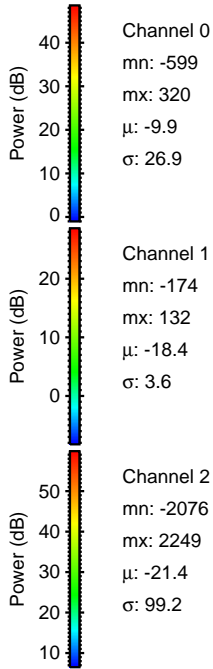
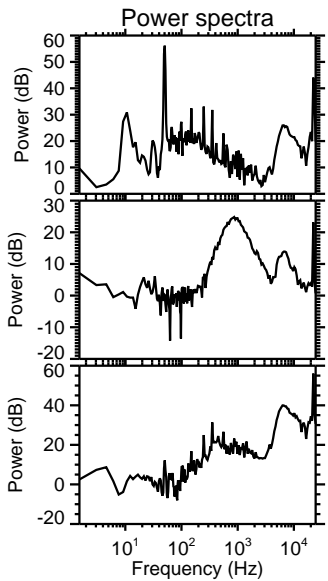
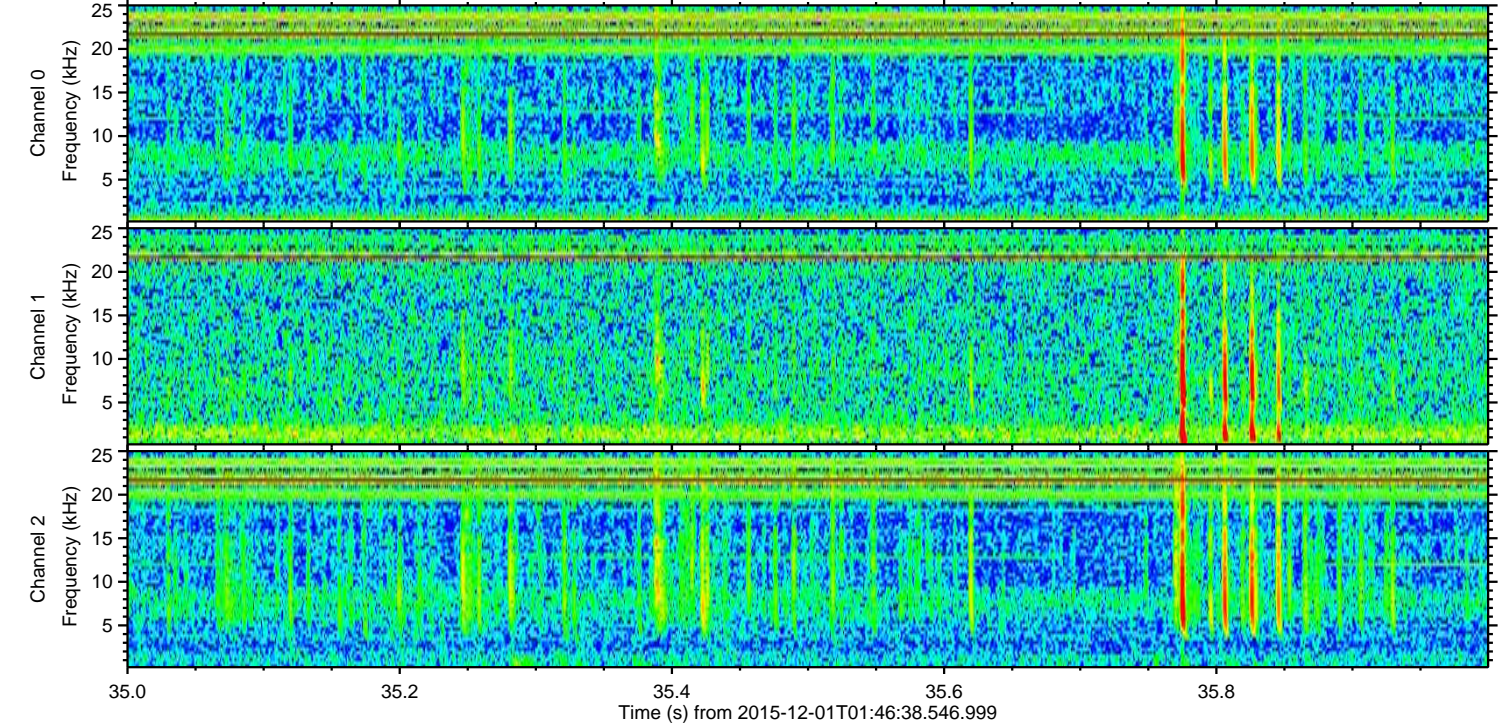
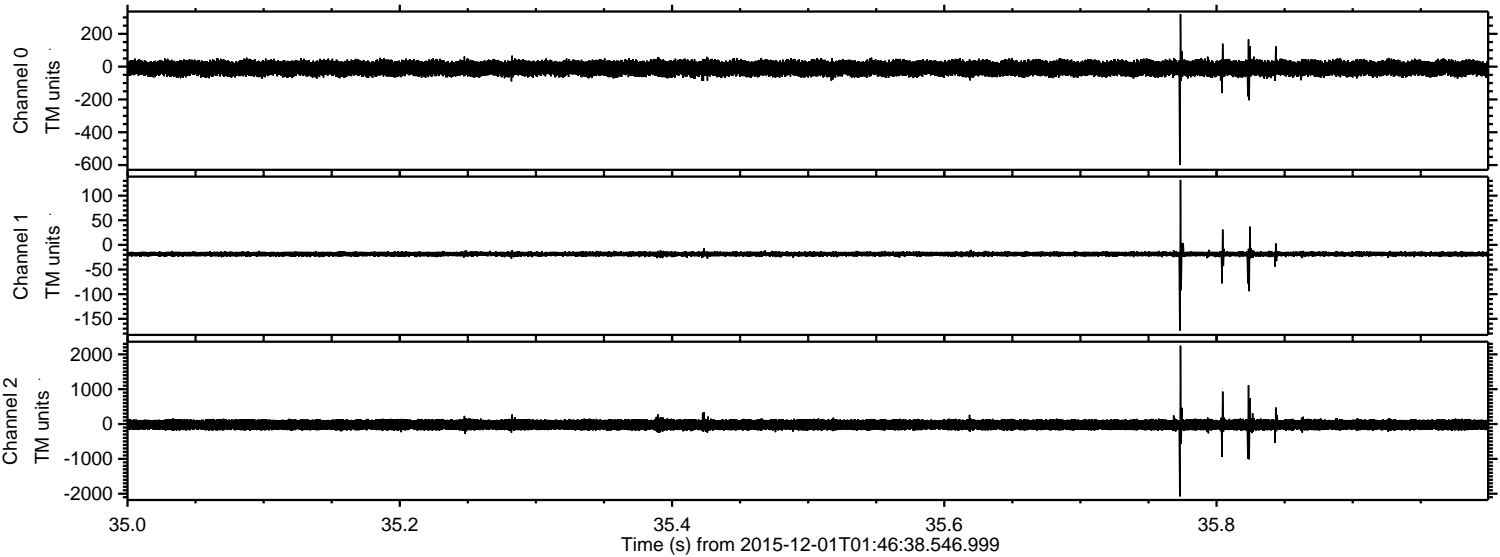
# ELMAVAN 3D WAVEFORMS (Measured data sampled at 50 kHz) 51000 packets of 144 samples from 2015-12-01T01:46:38.546.999.

Processed Thu Dec 10 13:02:29 2015 by ELM ver.2012-10-06 from 001\_\_elm20151201\_014637\_\_dat00.bin





Processed Thu Dec 10 13:02:41 2015 by ELM ver.2012-10-06 from 001\_\_elm20151201\_014637\_\_dat00.bin



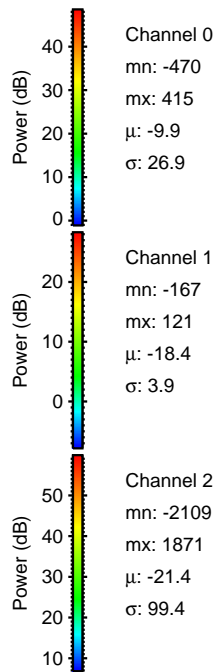
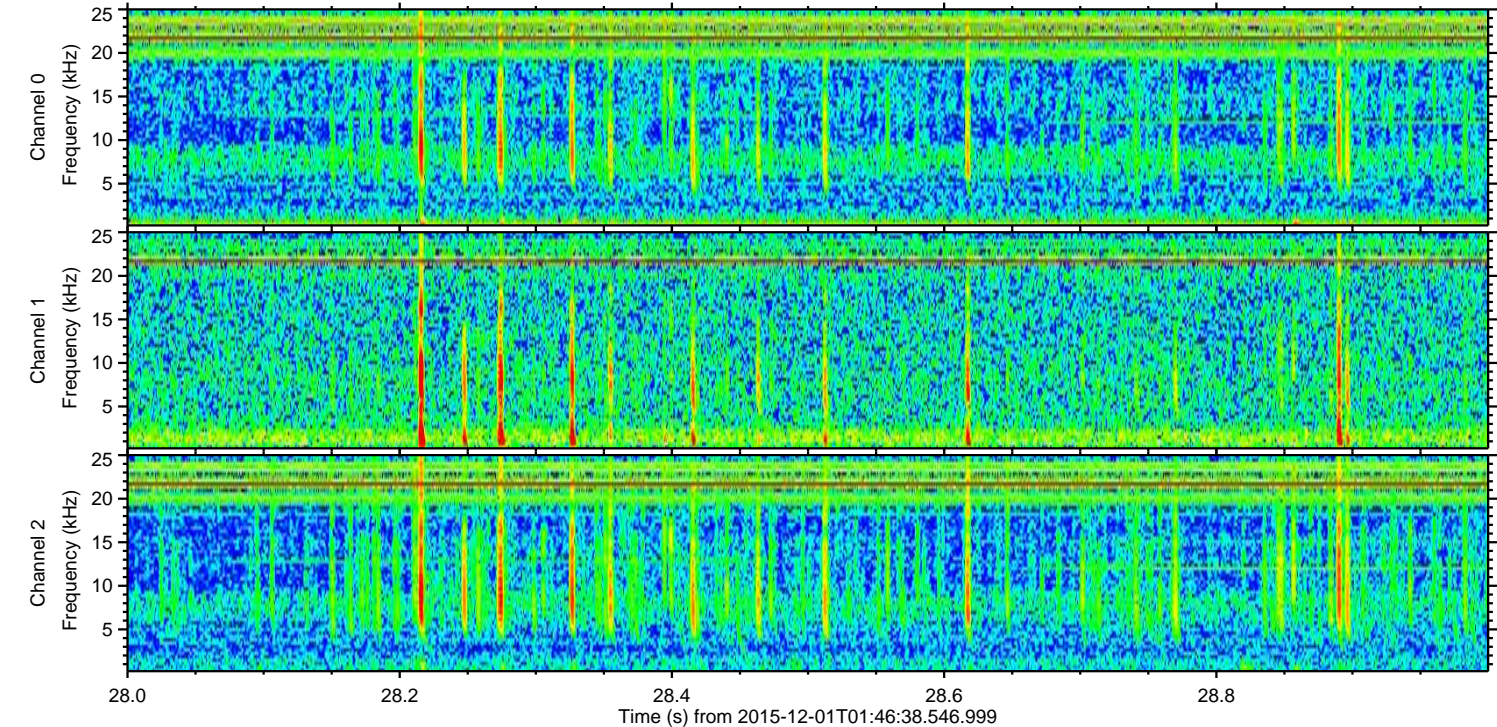
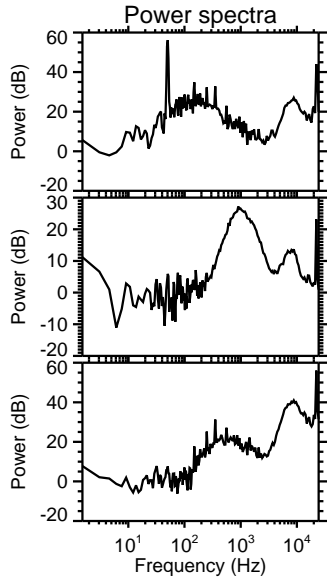
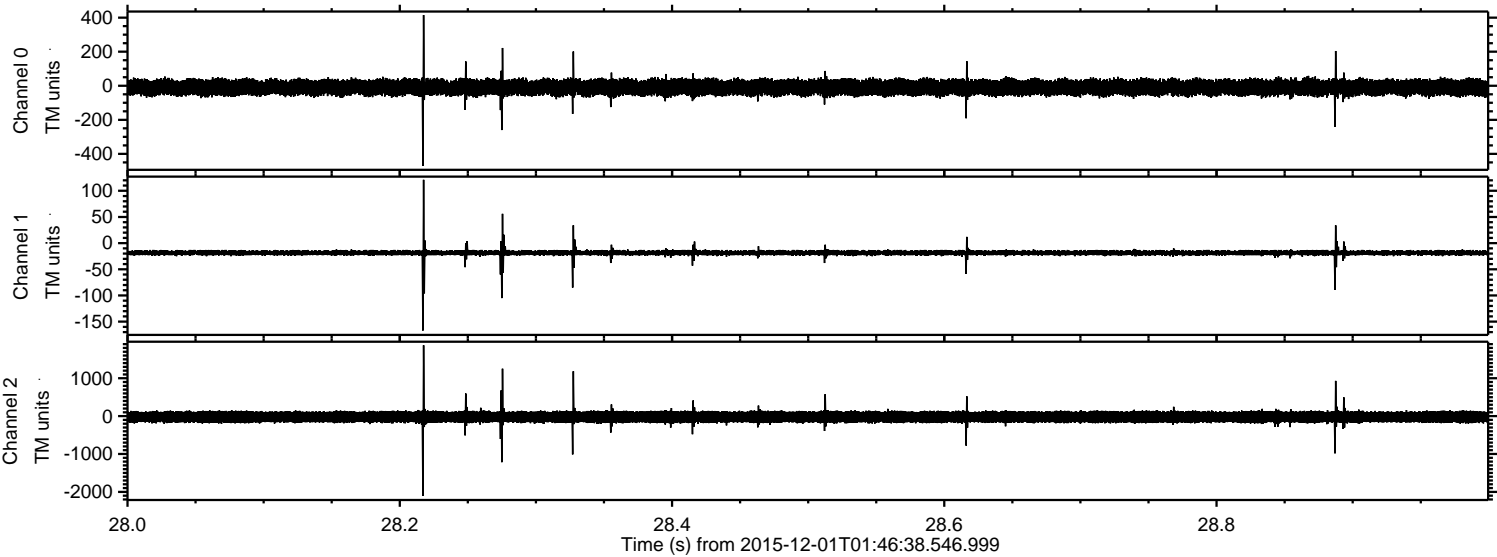
Channel 0  
mn: -599  
mx: 320  
 $\mu$ : -9.9  
 $\sigma$ : 26.9

Channel 1  
mn: -174  
mx: 132  
 $\mu$ : -18.4  
 $\sigma$ : 3.6

Channel 2  
mn: -2076  
mx: 2249  
 $\mu$ : -21.4  
 $\sigma$ : 99.2



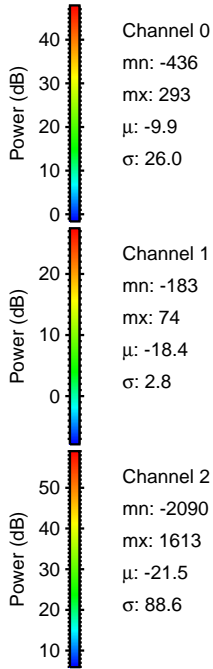
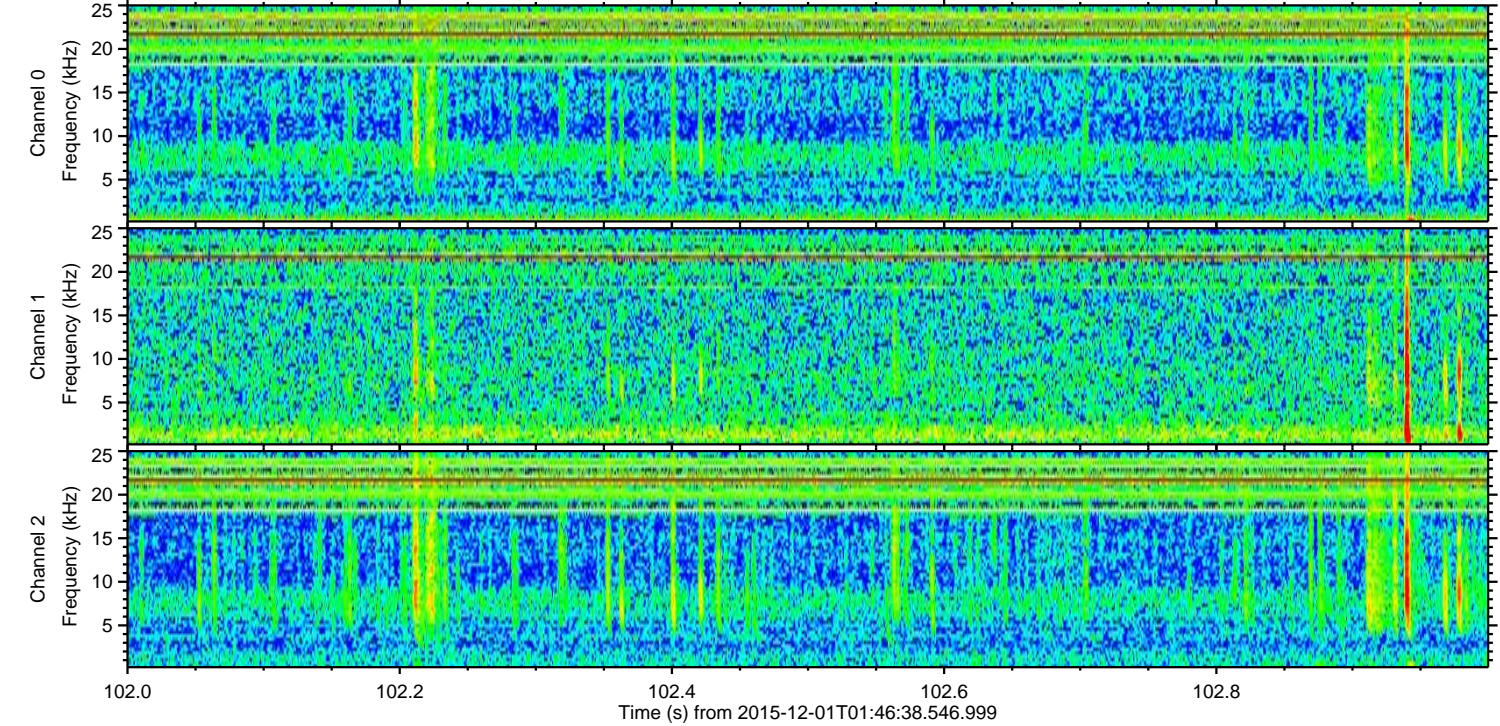
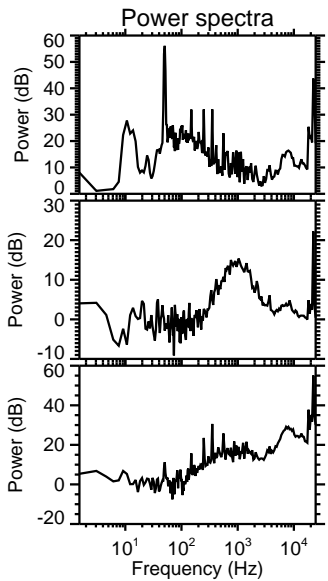
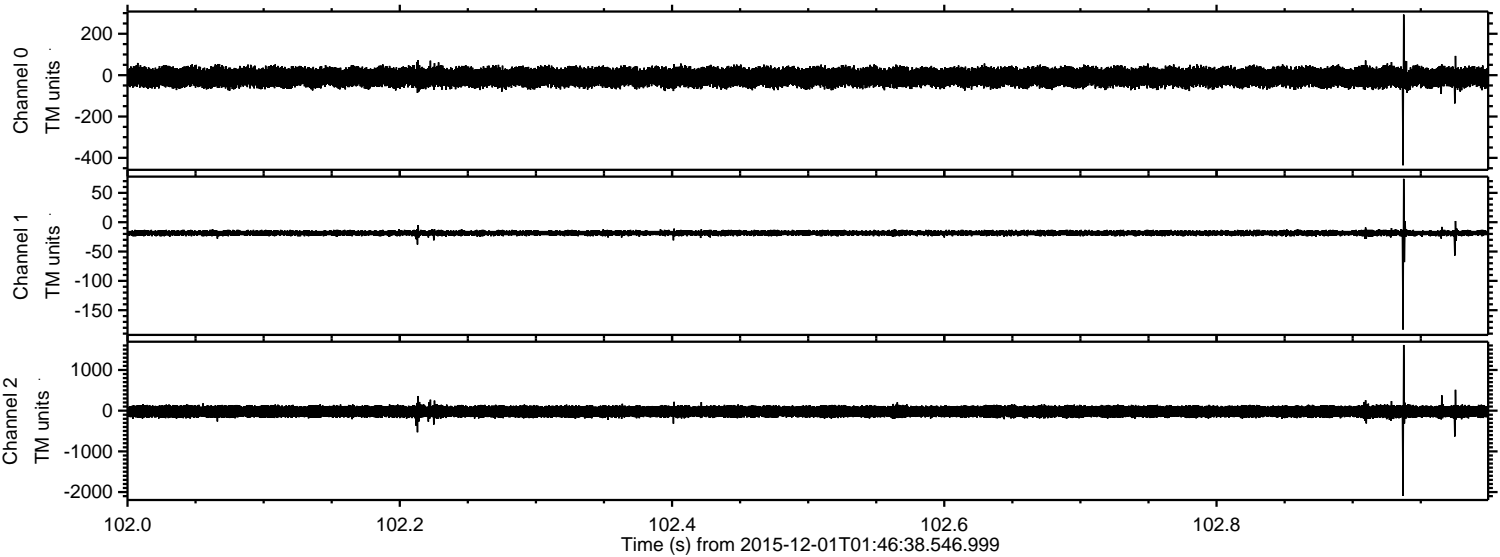
Processed Thu Dec 10 13:02:42 2015 by ELM ver.2012-10-06 from 001\_\_elm20151201\_014637\_\_dat00.bin





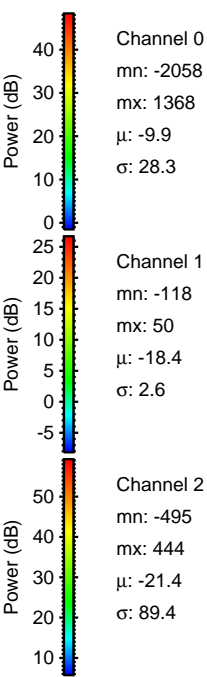
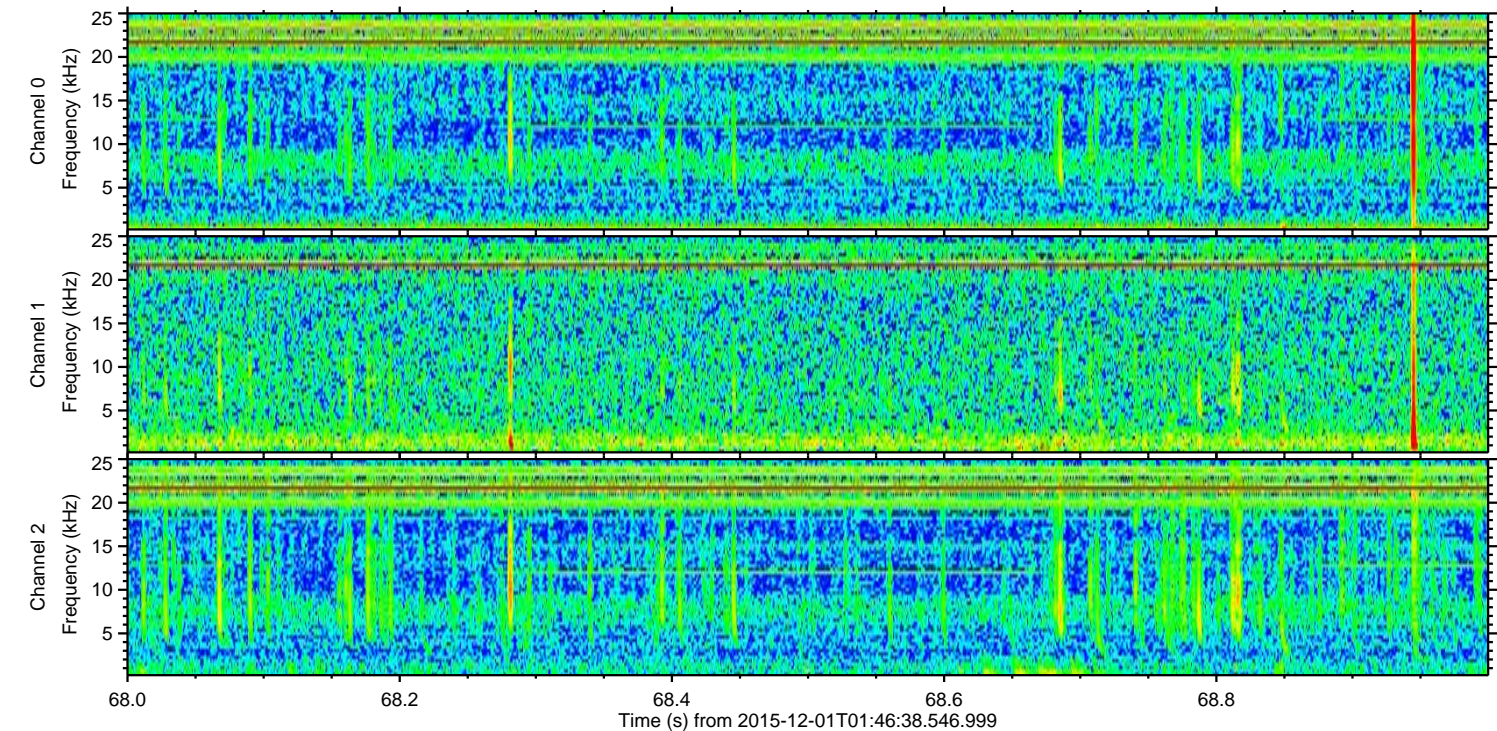
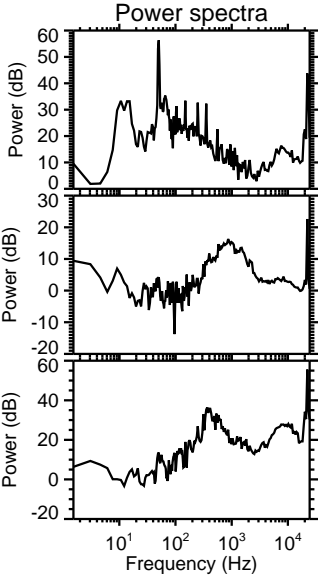
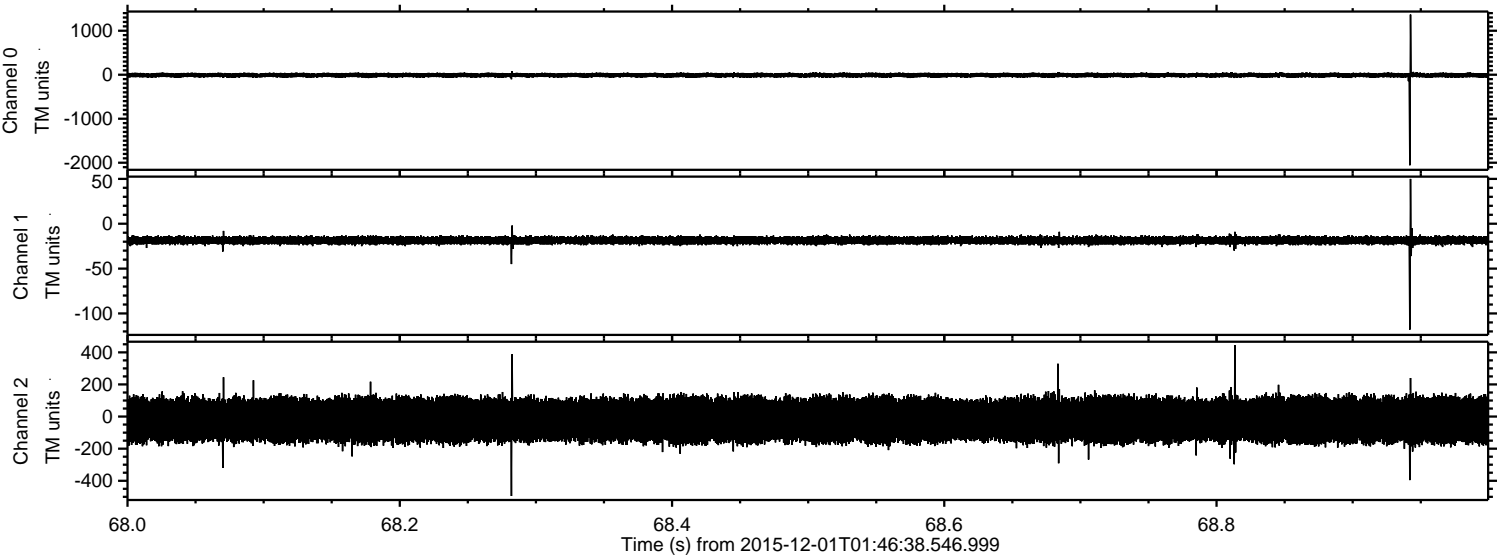
ELMAVAN 3D WAVEFORMS (Measured data sampled at 50 kHz) 51000 packets of 144 samples from 2015-12-01T01:46:38.546.999. Part 103/147

Processed Thu Dec 10 13:02:43 2015 by ELM ver.2012-10-06 from 001\_\_elm20151201\_014637\_\_dat00.bin



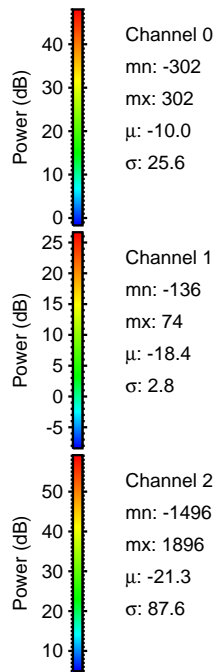
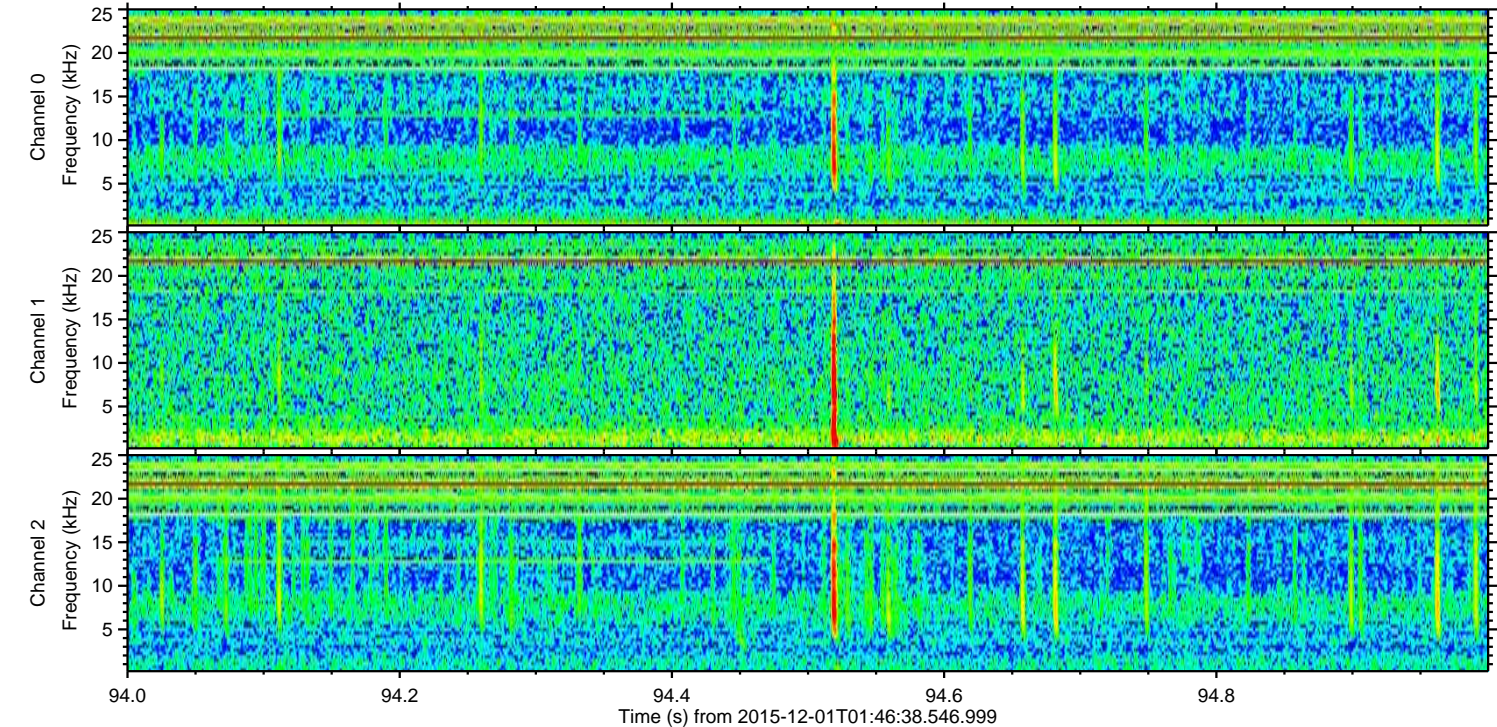
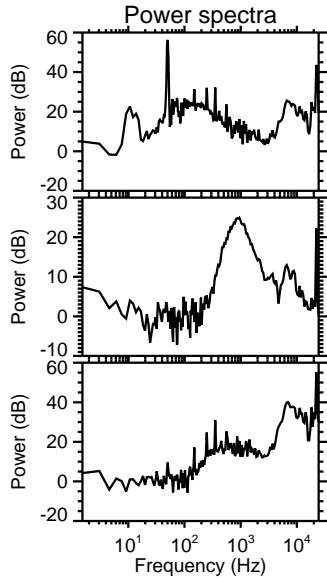
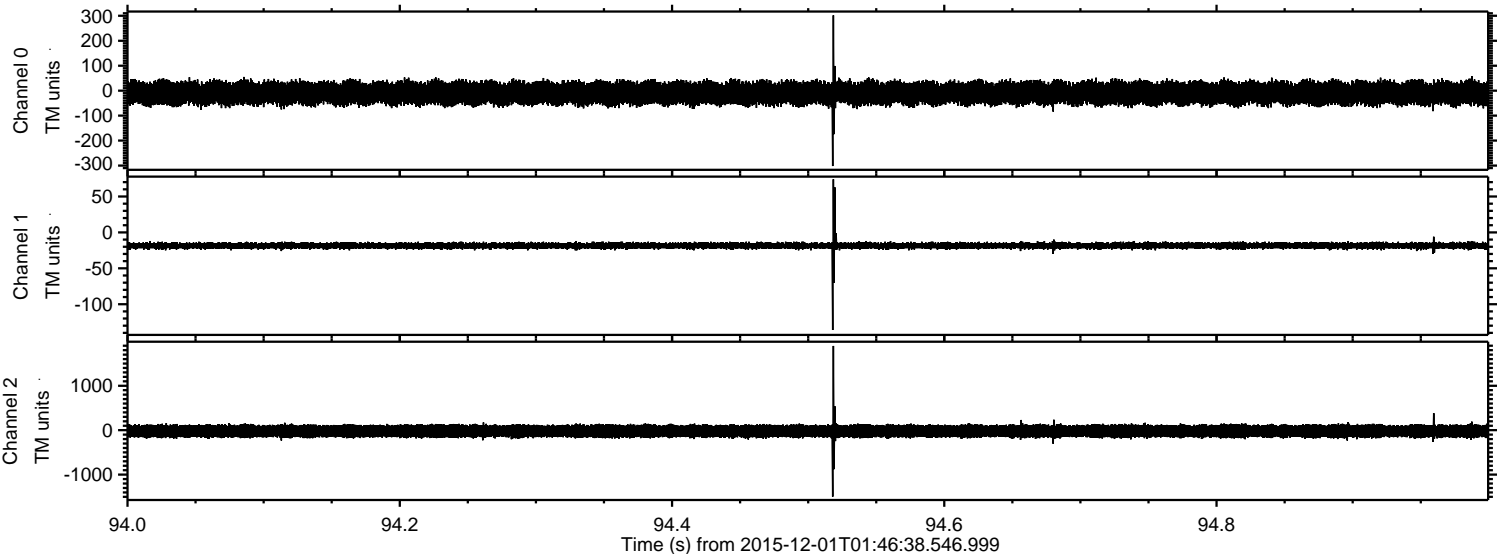


Processed Thu Dec 10 13:02:44 2015 by ELM ver.2012-10-06 from 001\_\_elm20151201\_014637\_\_dat00.bin



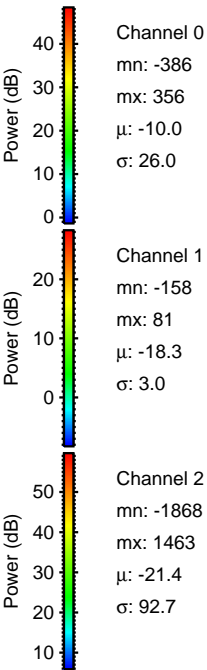
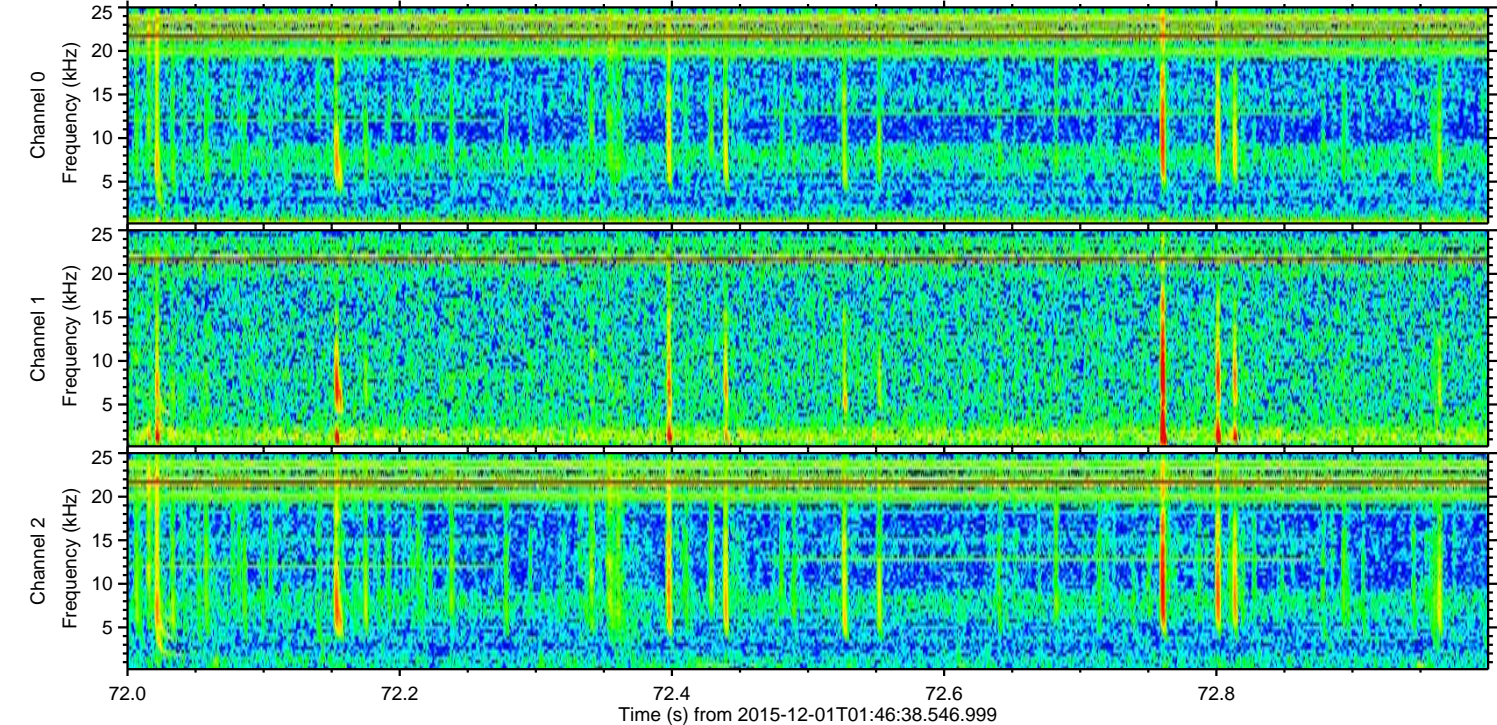
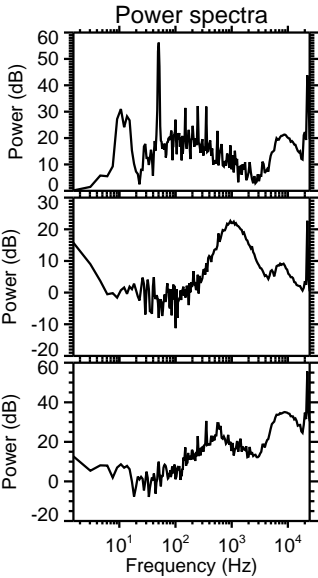
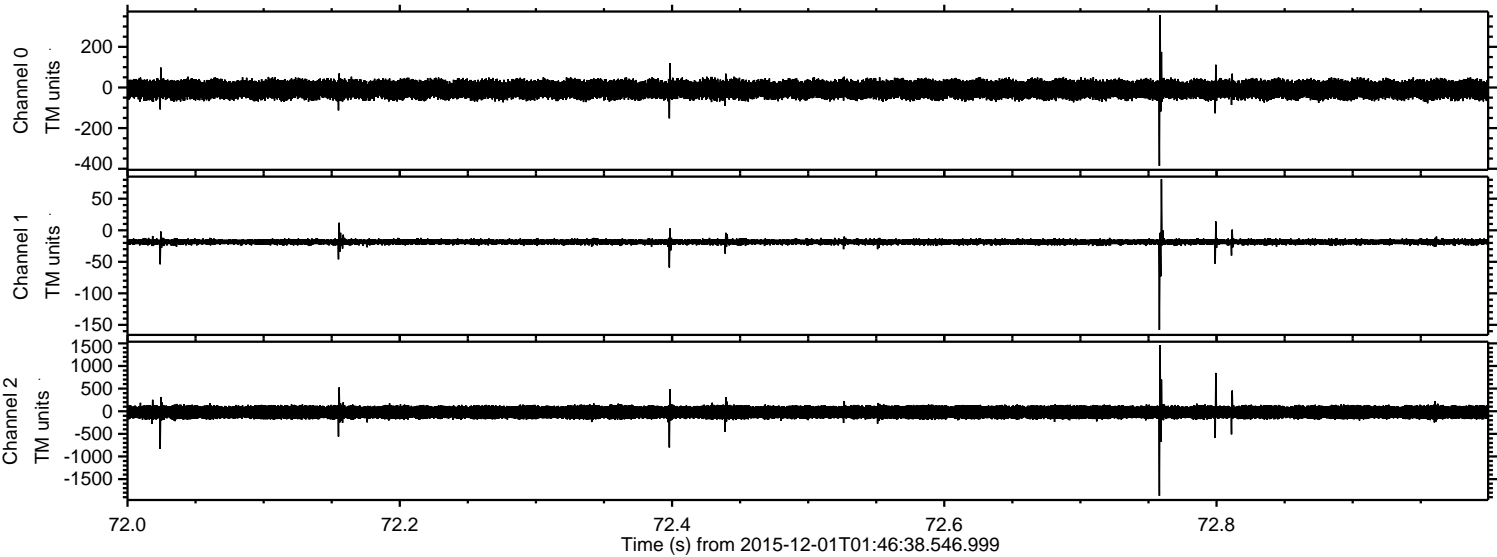


Processed Thu Dec 10 13:02:45 2015 by ELM ver.2012-10-06 from 001\_\_elm20151201\_014637\_\_dat00.bin





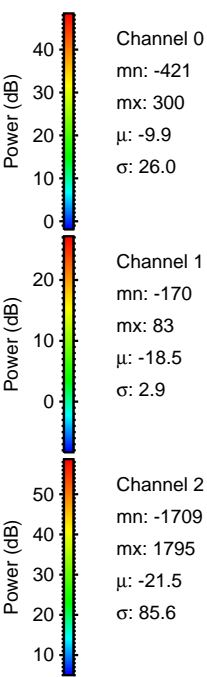
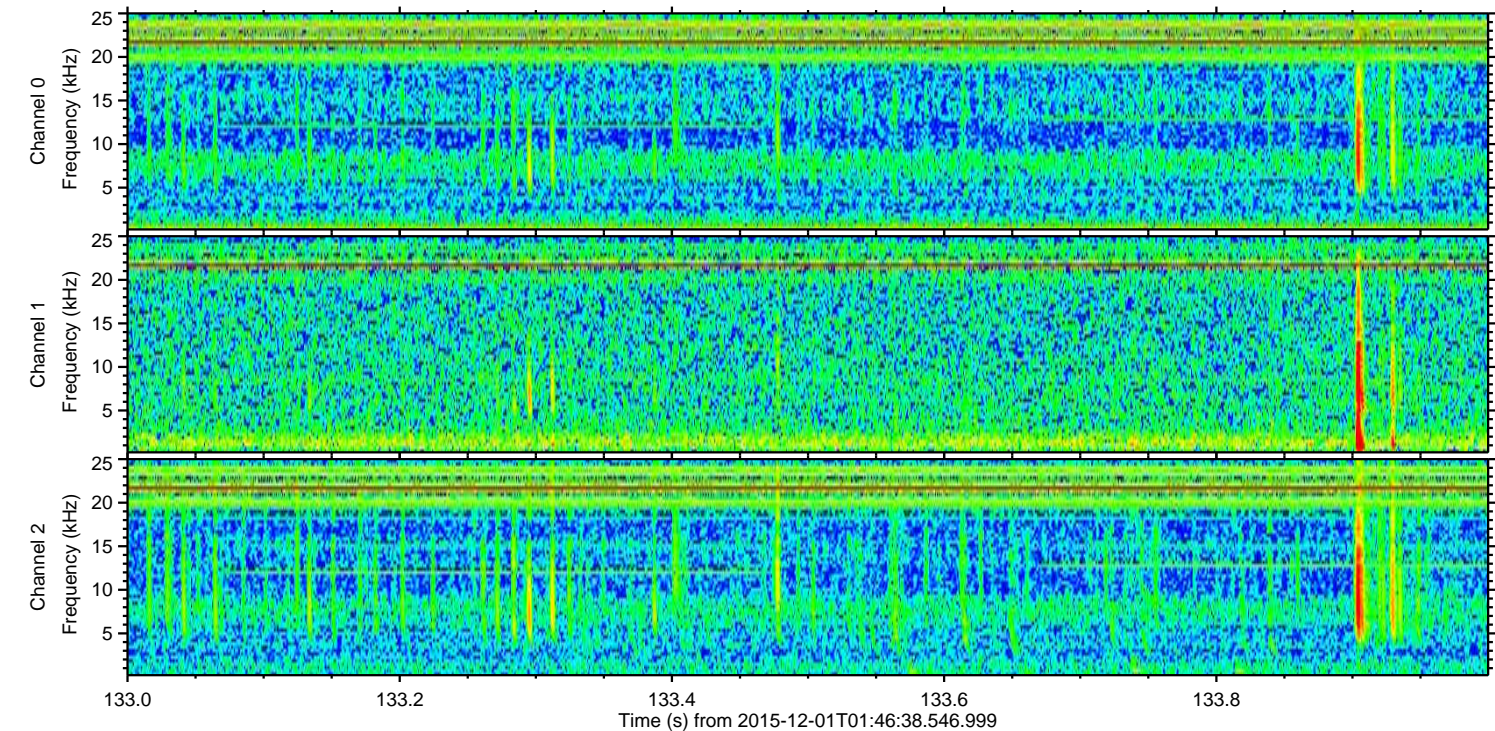
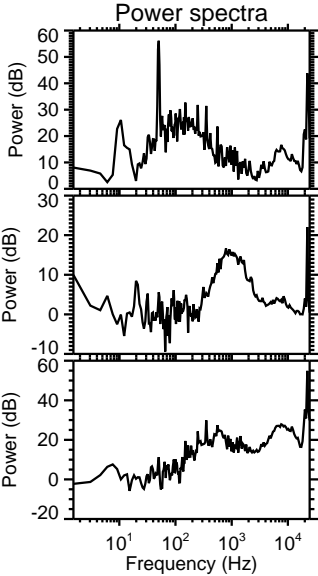
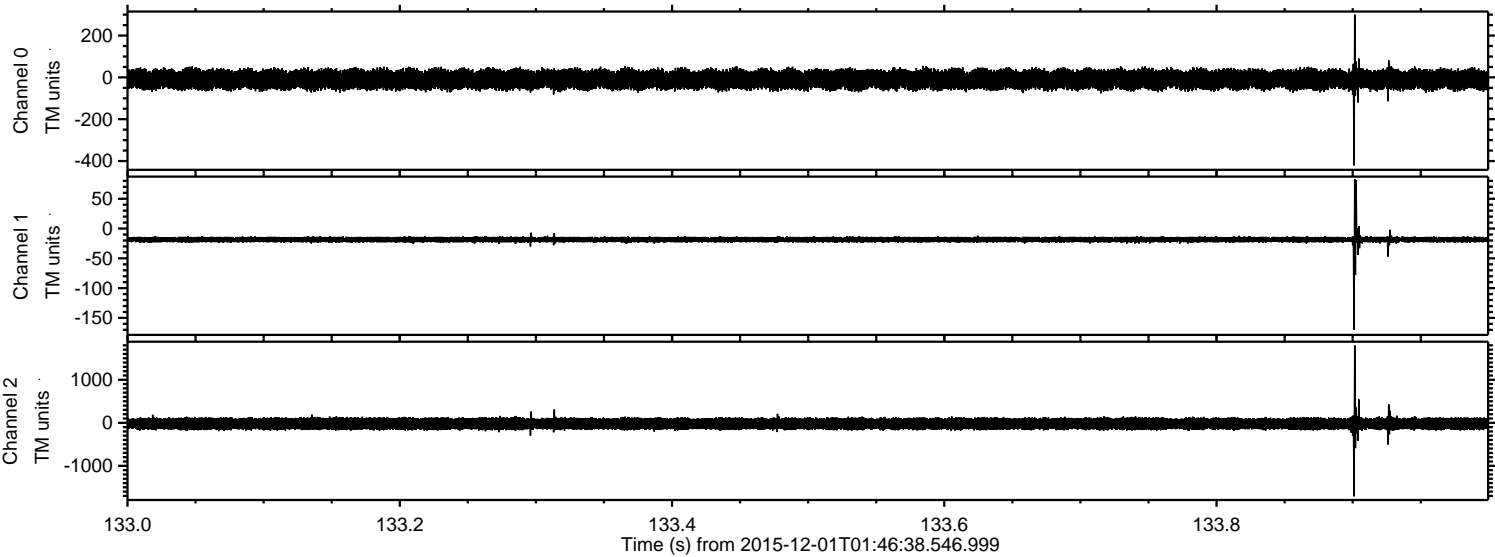
Processed Thu Dec 10 13:02:46 2015 by ELM ver.2012-10-06 from 001\_\_elm20151201\_014637\_\_dat00.bin





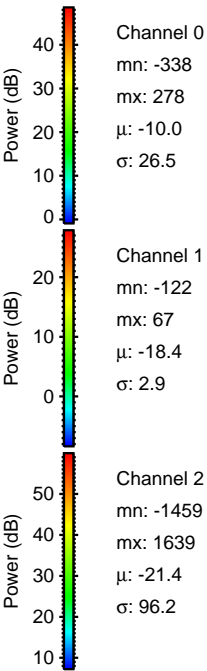
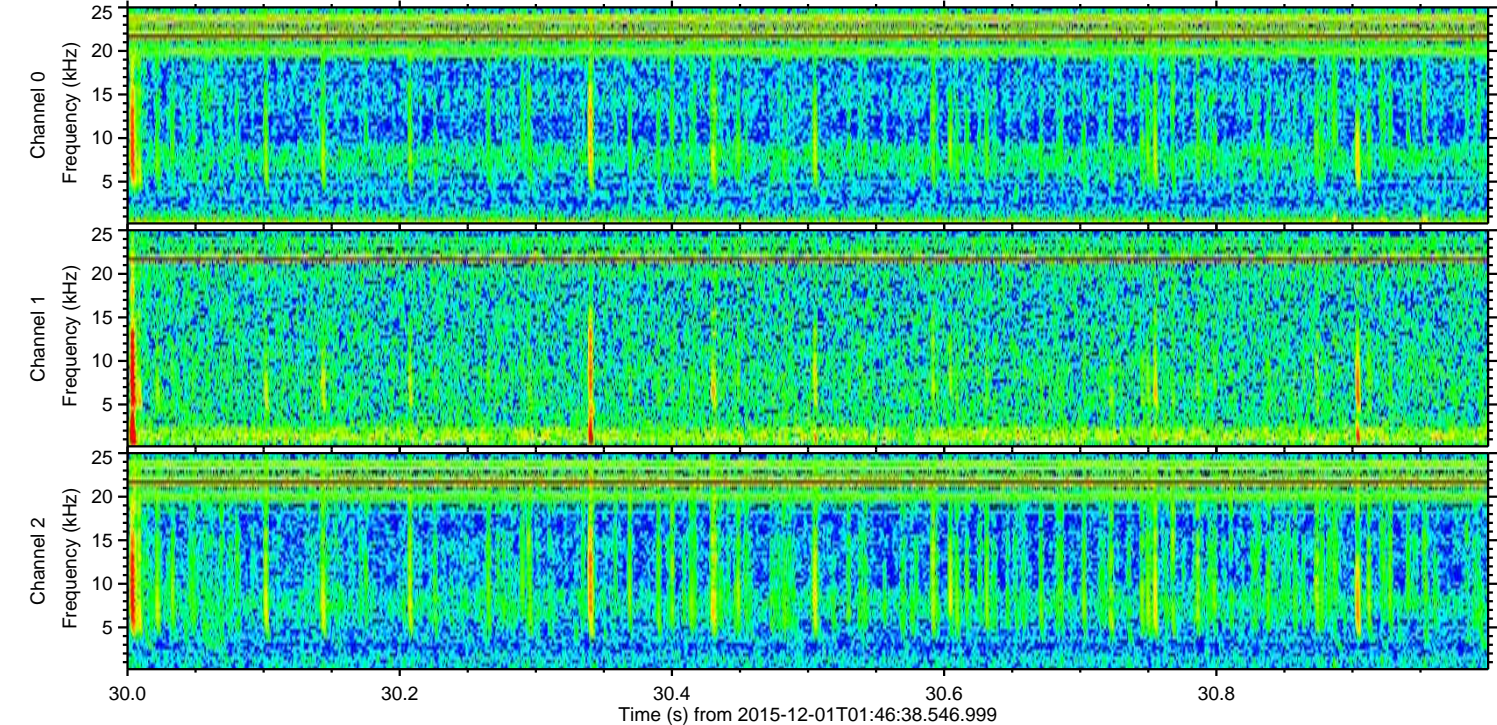
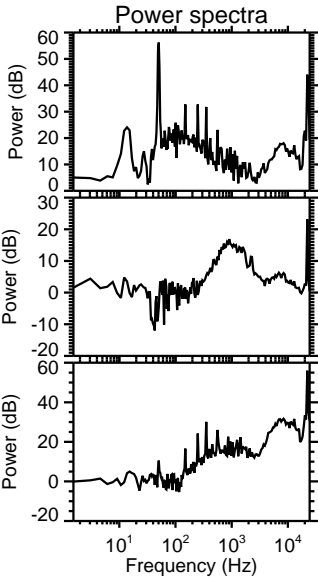
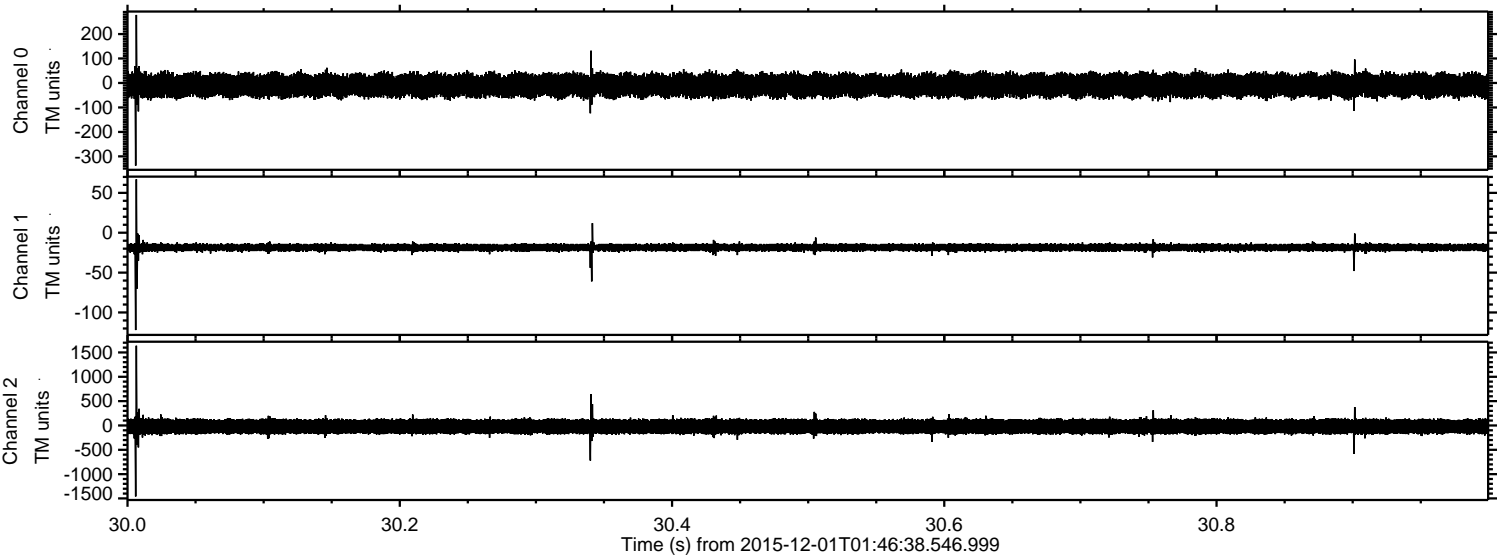
ELMAVAN 3D WAVEFORMS (Measured data sampled at 50 kHz) 51000 packets of 144 samples from 2015-12-01T01:46:38.546.999. Part 134/147

Processed Thu Dec 10 13:02:46 2015 by ELM ver.2012-10-06 from 001\_\_elm20151201\_014637\_\_dat00.bin



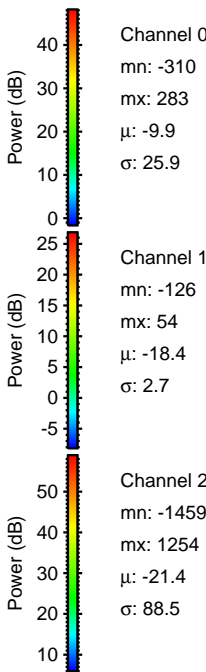
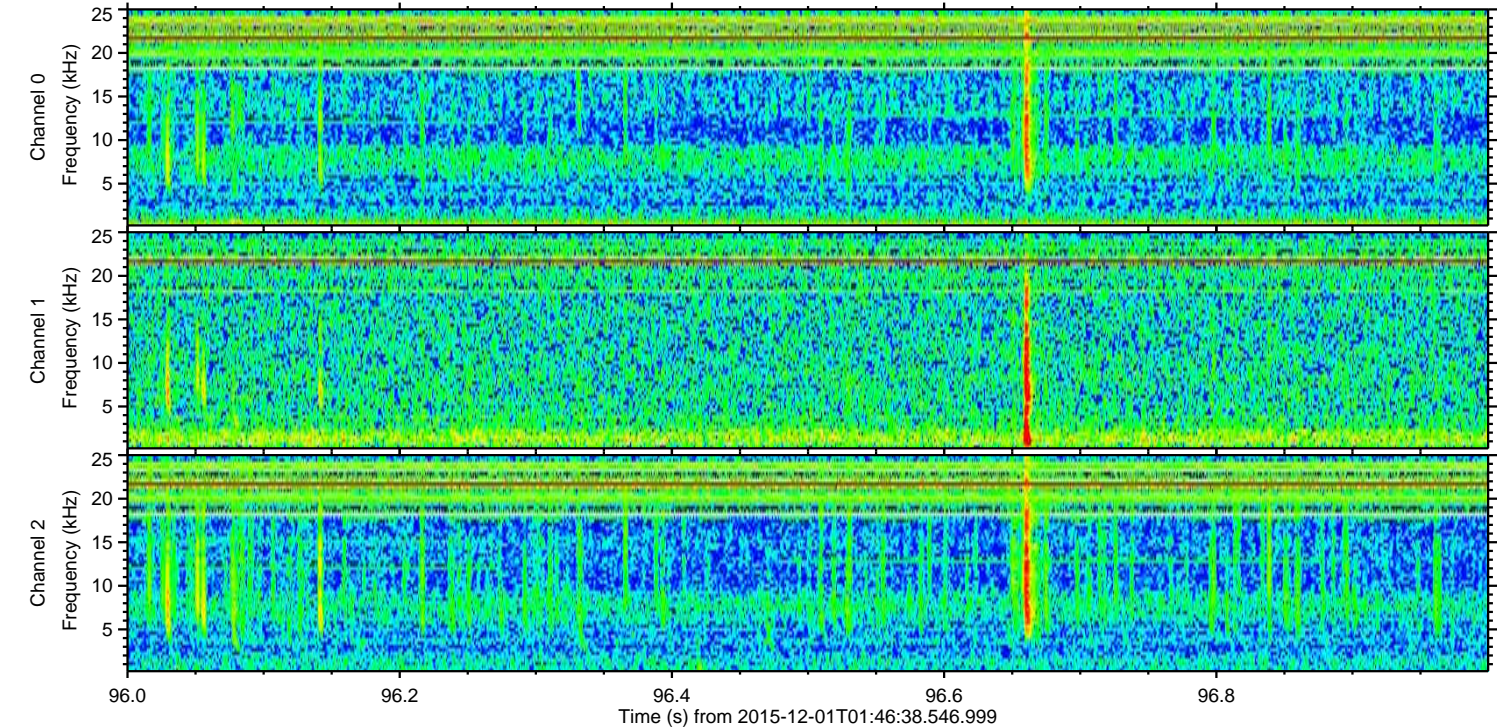
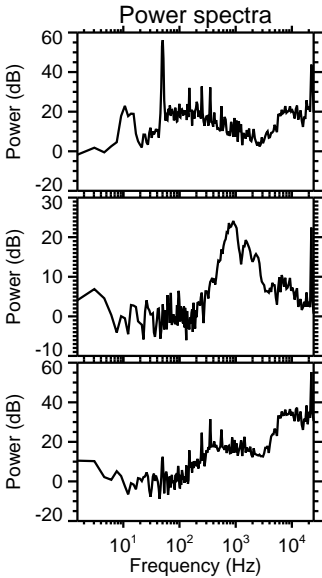
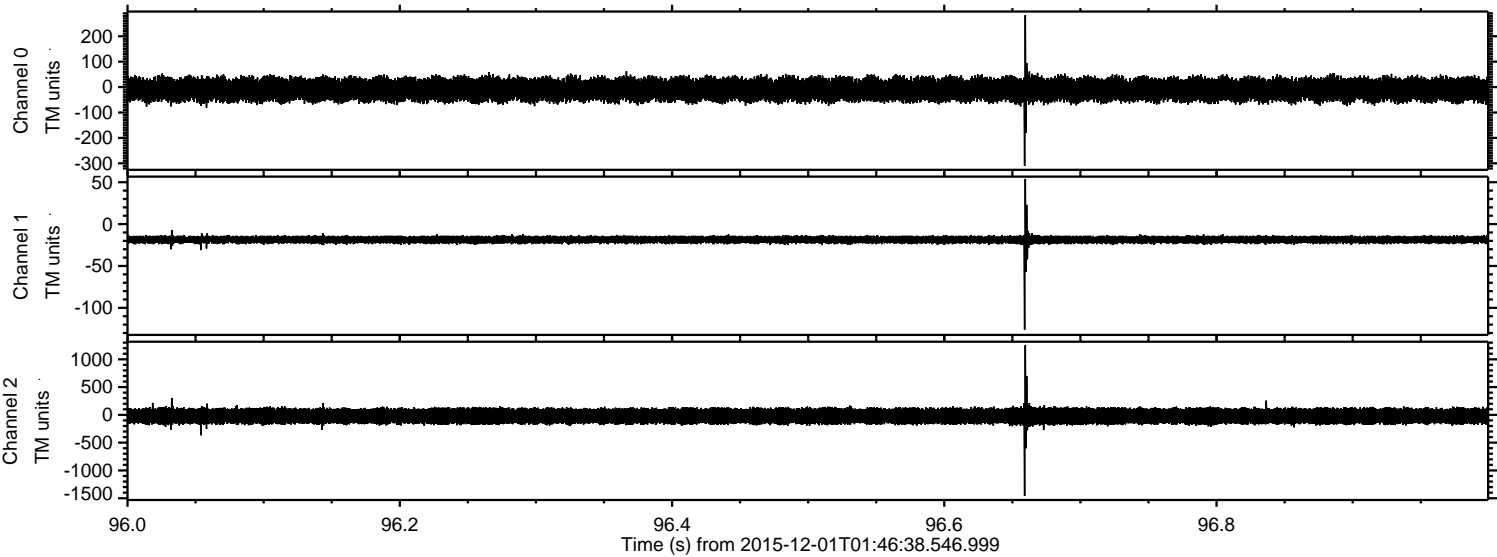


Processed Thu Dec 10 13:02:47 2015 by ELM ver.2012-10-06 from 001\_\_elm20151201\_014637\_\_dat00.bin





Processed Thu Dec 10 13:02:48 2015 by ELM ver.2012-10-06 from 001\_\_elm20151201\_014637\_\_dat00.bin





Processed Thu Dec 10 13:02:49 2015 by ELM ver.2012-10-06 from 001\_\_elm20151201\_014637\_\_dat00.bin

