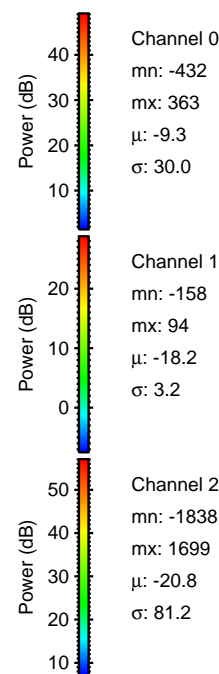
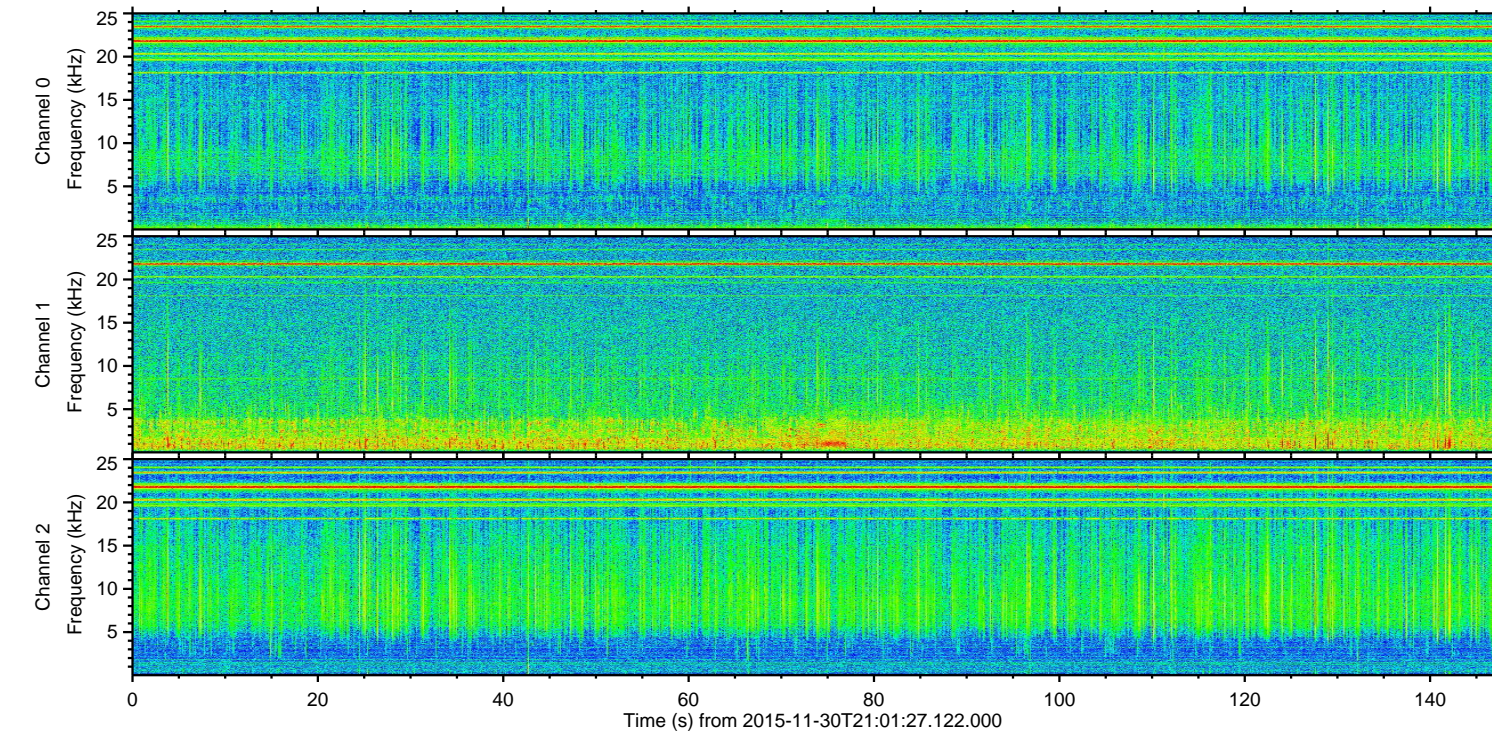
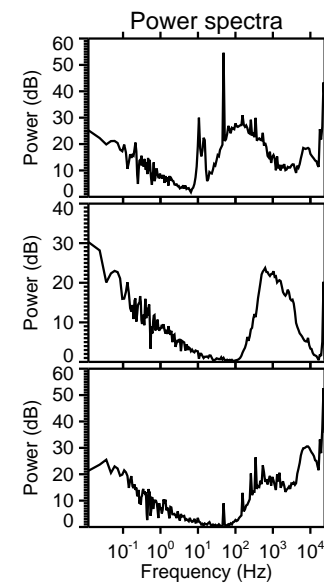
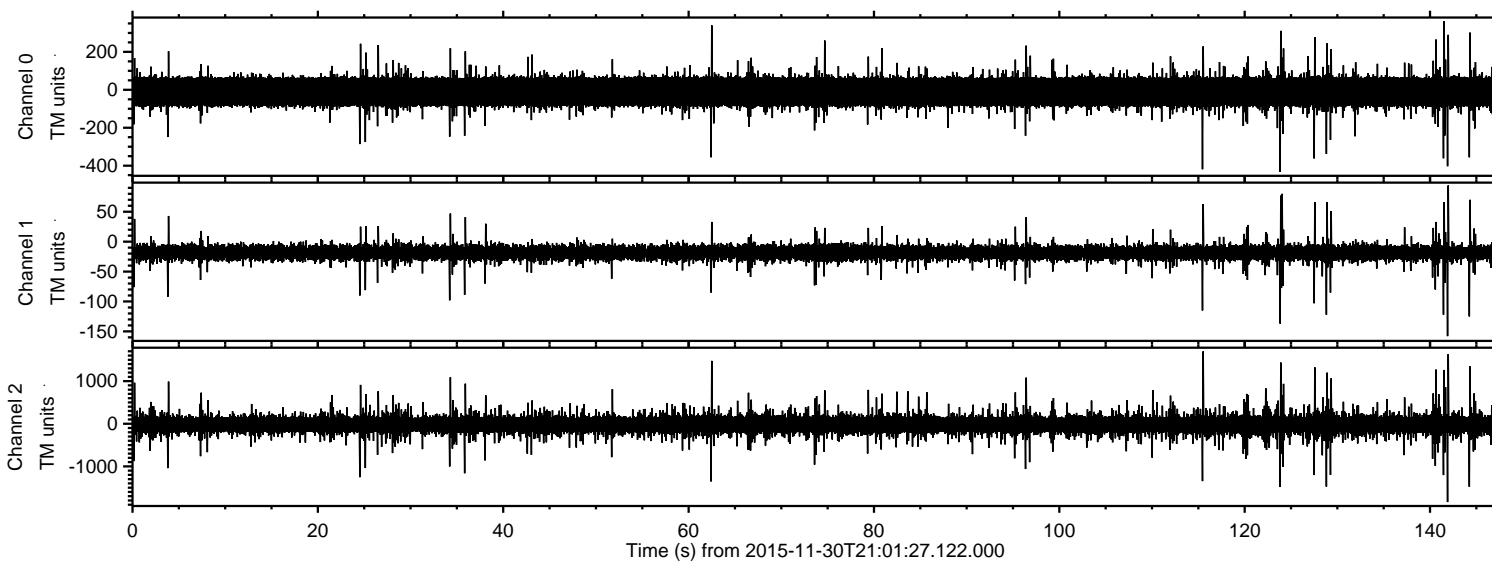


# ELMAVAN 3D WAVEFORMS (Measured data sampled at 50 kHz) 51000 packets of 144 samples from 2015-11-30T21:01:27.122.000.

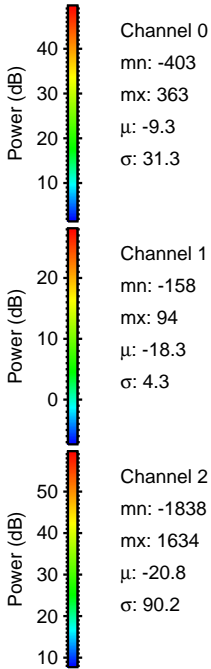
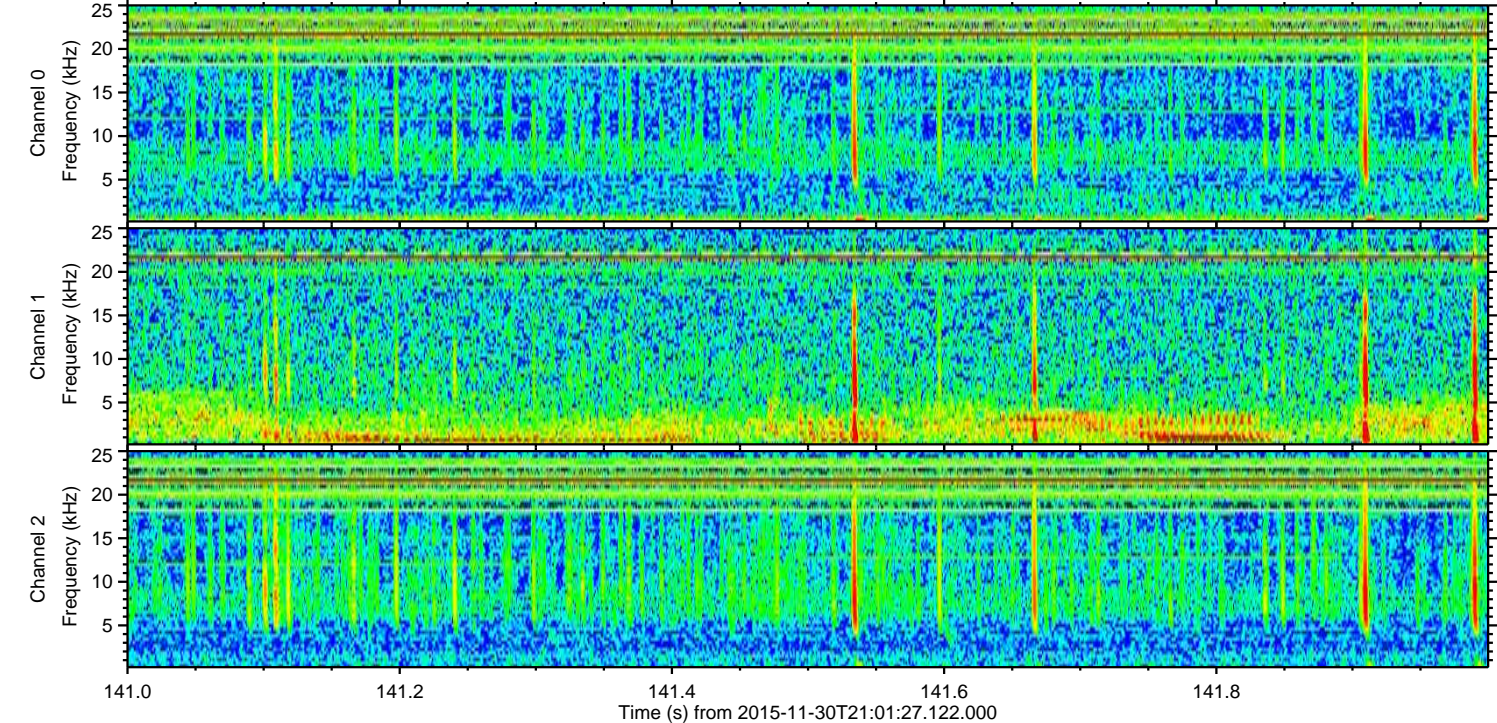
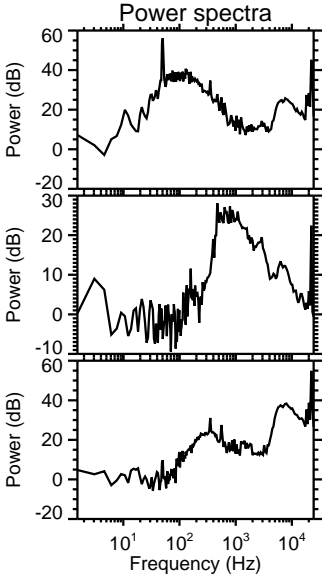
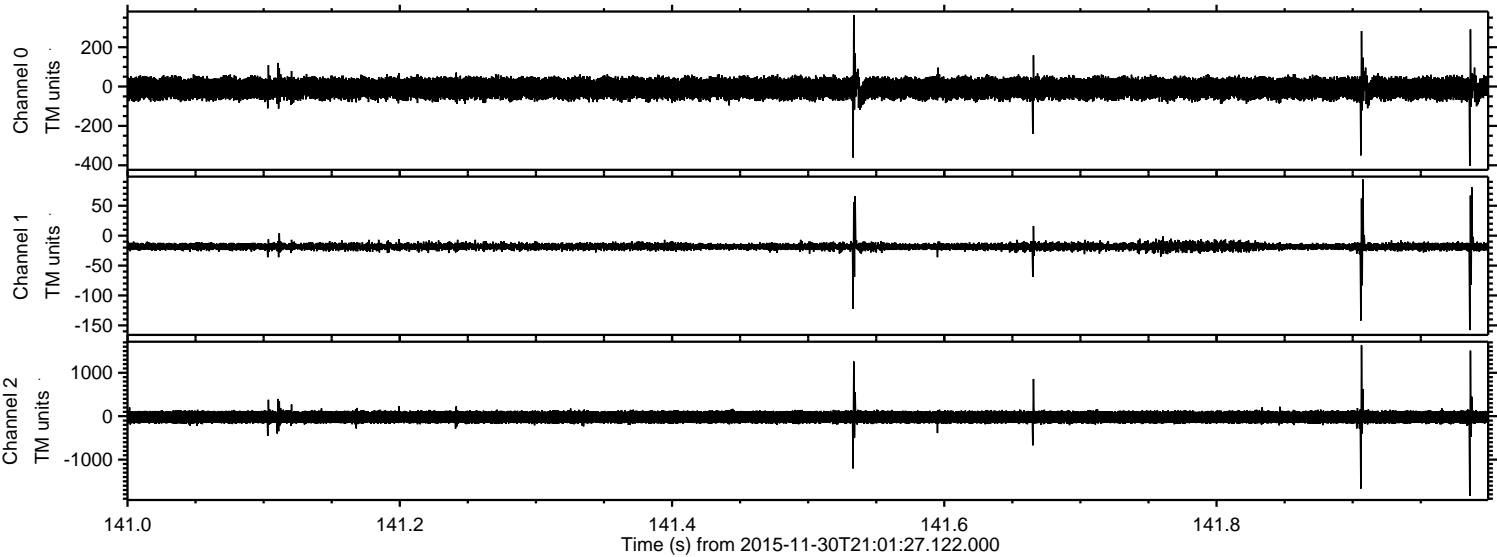
Processed Thu Dec 10 03:09:19 2015 by ELM ver.2012-10-06 from 001\_\_elm20151130\_210126\_\_dat00.bin





ELMAVAN 3D WAVEFORMS (Measured data sampled at 50 kHz) 51000 packets of 144 samples from 2015-11-30T21:01:27.122.000. Part 142/147

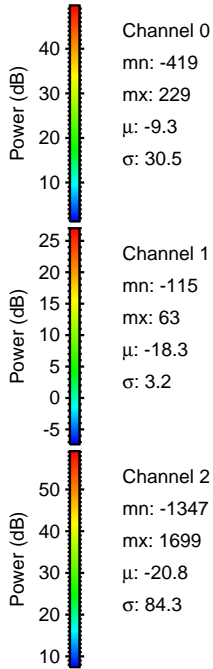
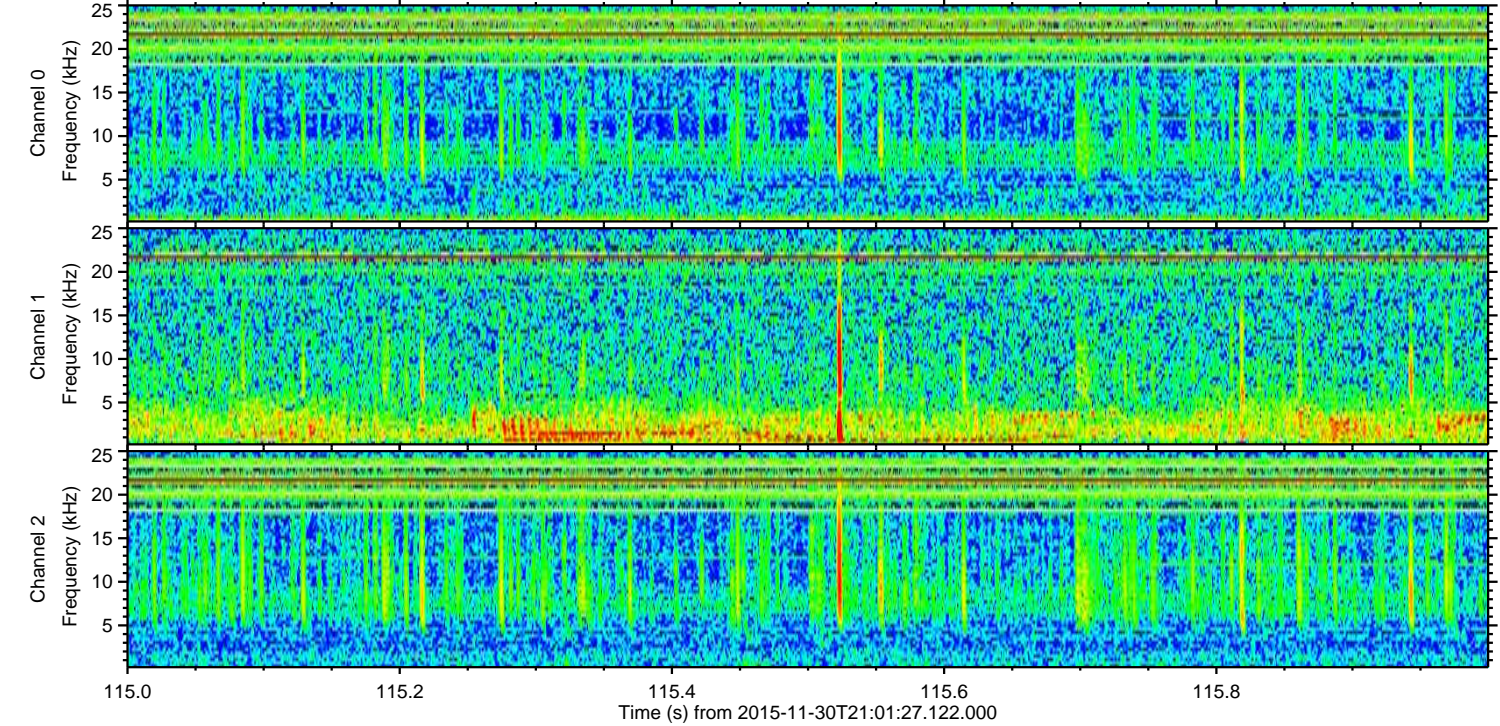
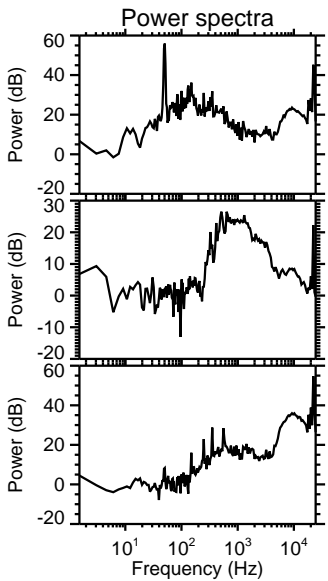
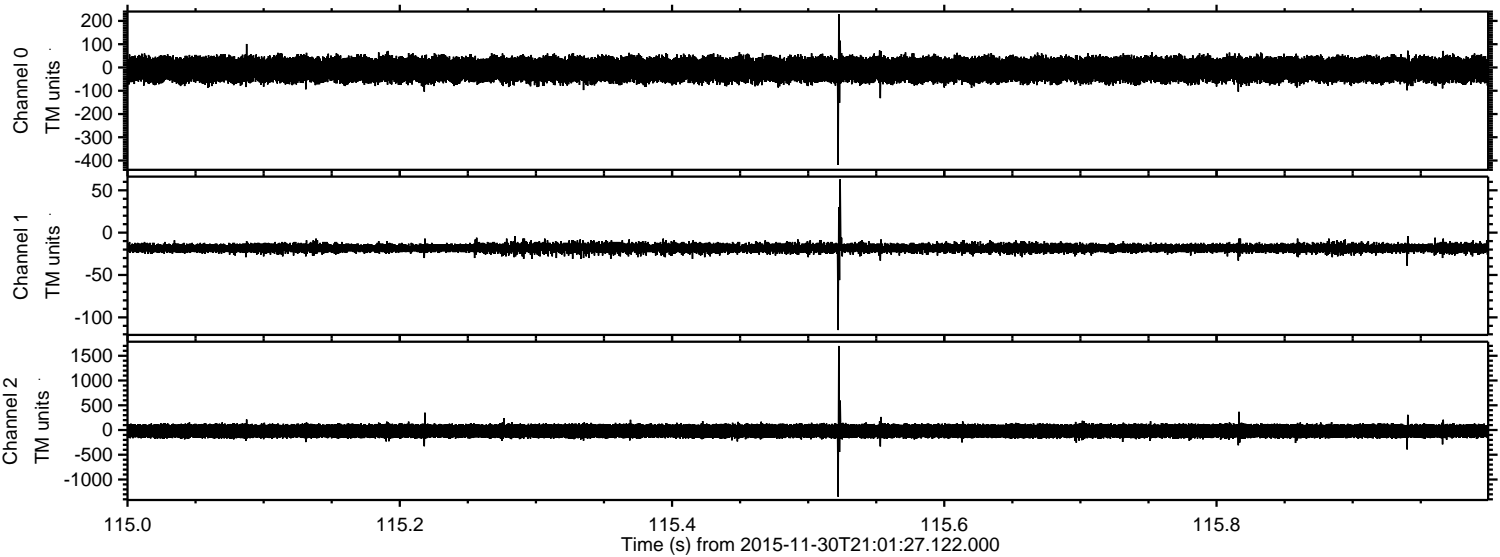
Processed Thu Dec 10 03:09:31 2015 by ELM ver.2012-10-06 from 001\_\_elm20151130\_210126\_\_dat00.bin





ELMAVAN 3D WAVEFORMS (Measured data sampled at 50 kHz) 51000 packets of 144 samples from 2015-11-30T21:01:27.122.000. Part 116/147

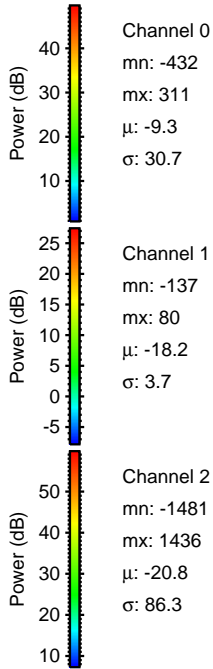
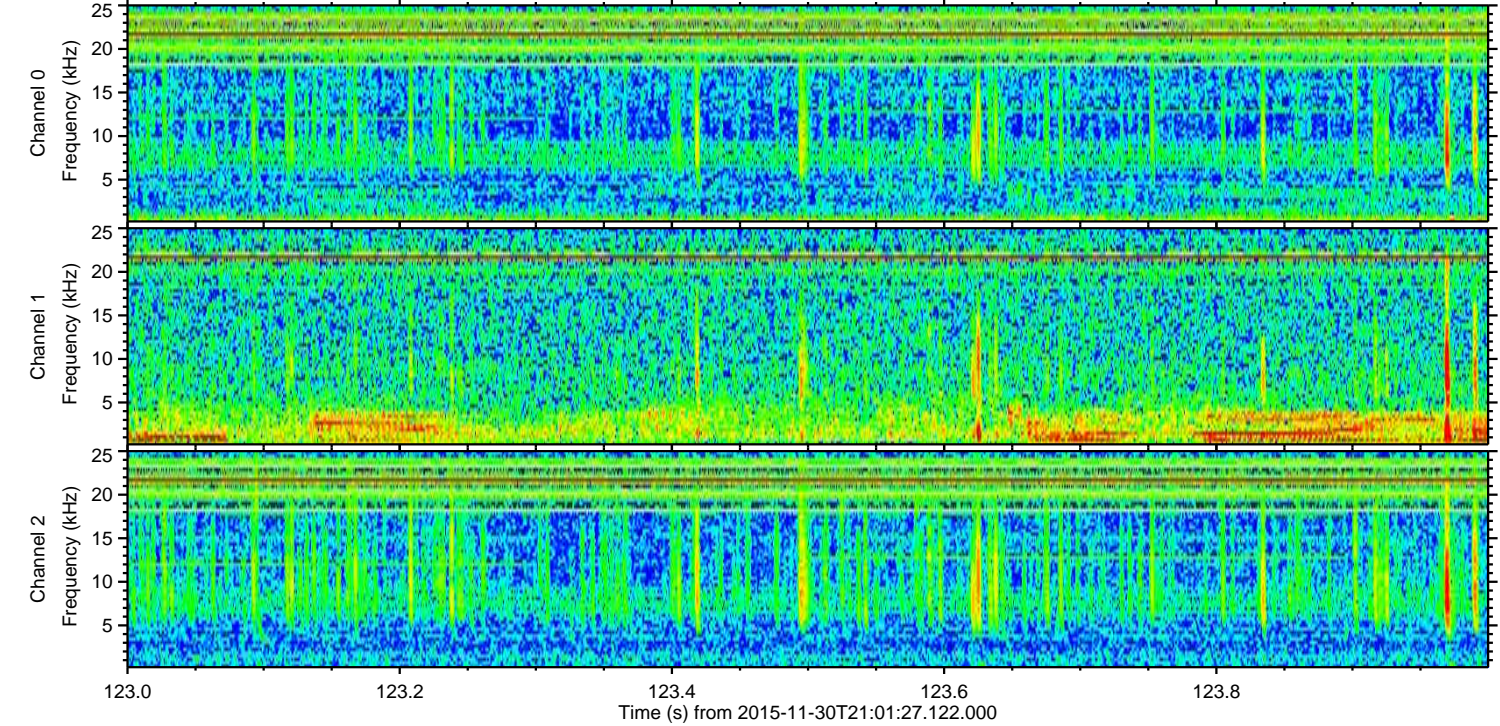
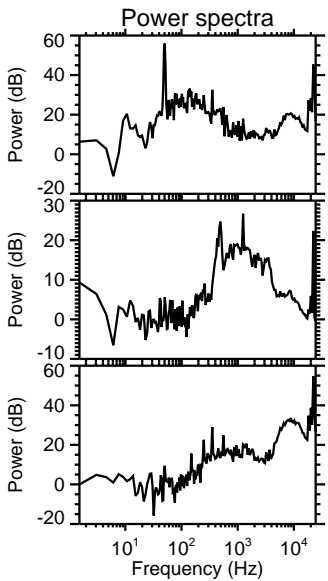
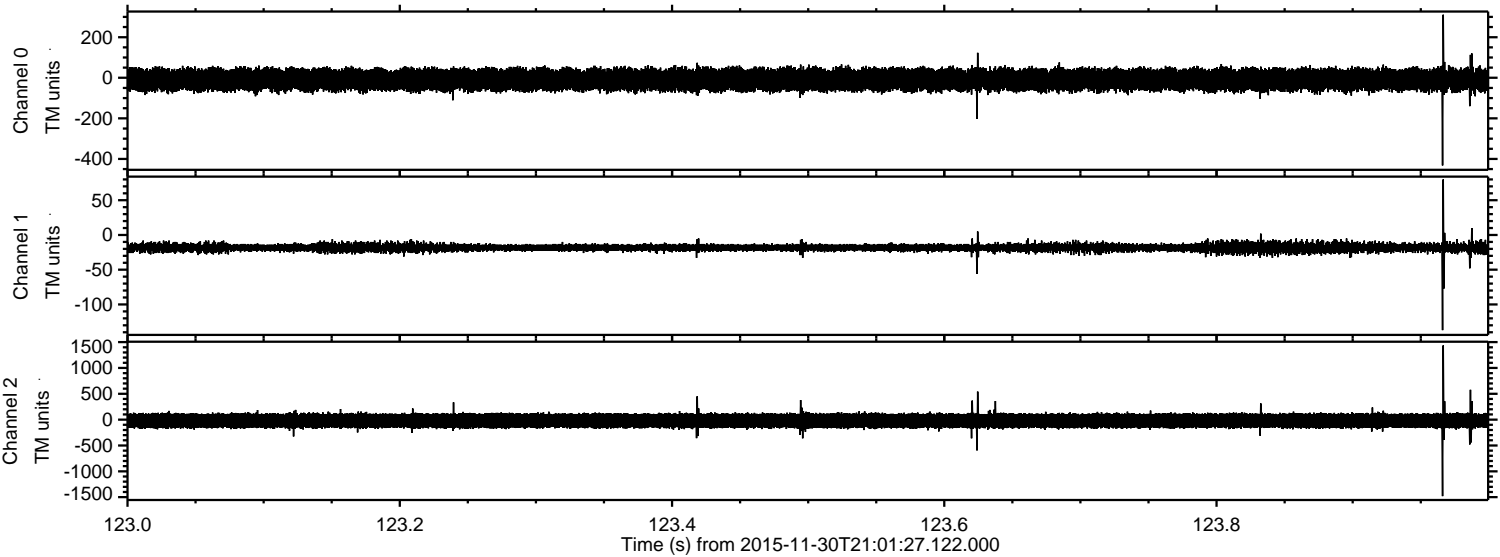
Processed Thu Dec 10 03:09:32 2015 by ELM ver.2012-10-06 from 001\_\_elm20151130\_210126\_\_dat00.bin





ELMAVAN 3D WAVEFORMS (Measured data sampled at 50 kHz) 51000 packets of 144 samples from 2015-11-30T21:01:27.122.000. Part 124/147

Processed Thu Dec 10 03:09:32 2015 by ELM ver.2012-10-06 from 001\_\_elm20151130\_210126\_\_dat00.bin



Channel 0  
mn: -432  
mx: 311  
 $\mu$ : -9.3  
 $\sigma$ : 30.7

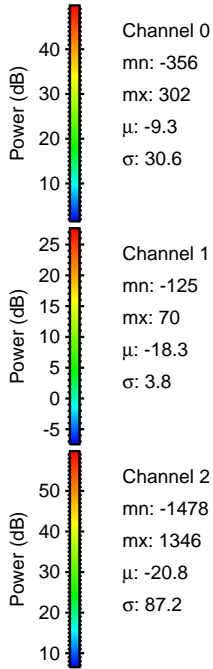
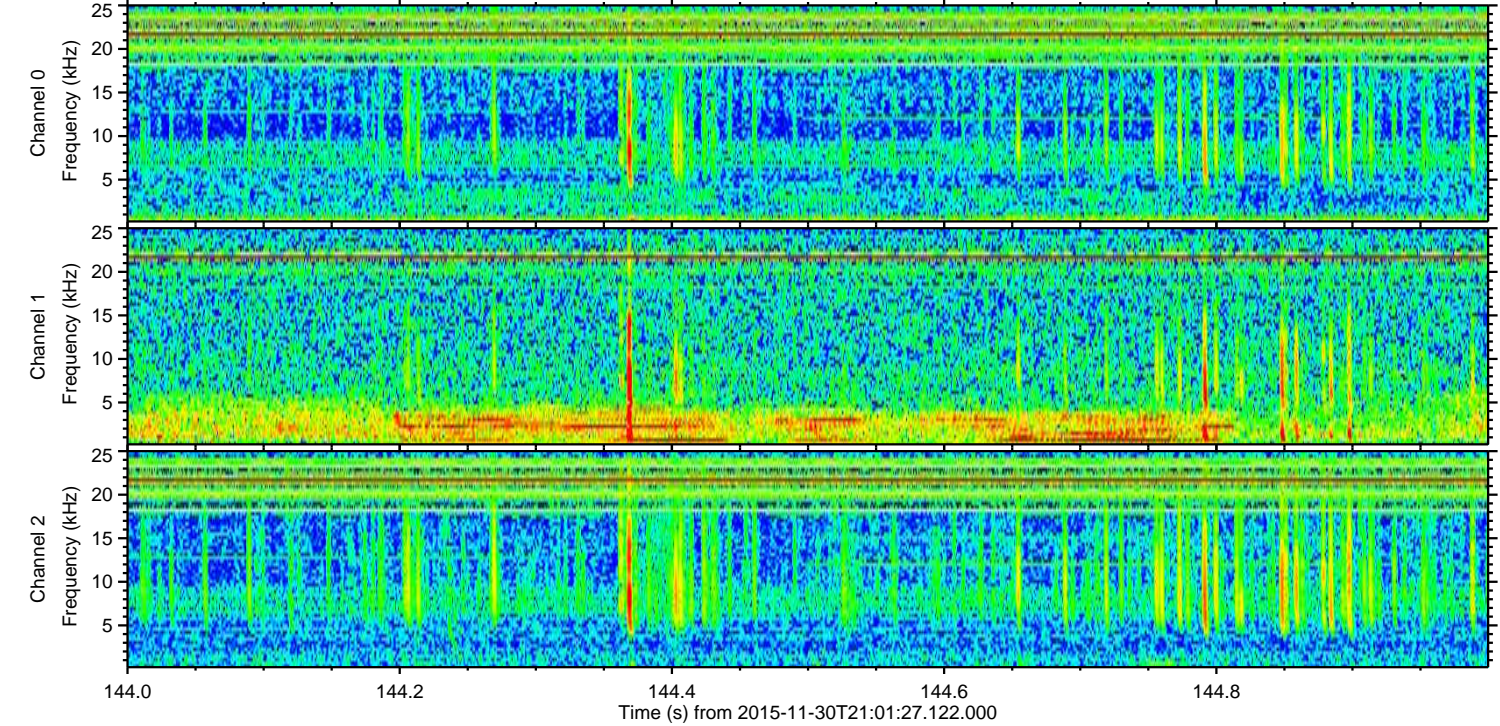
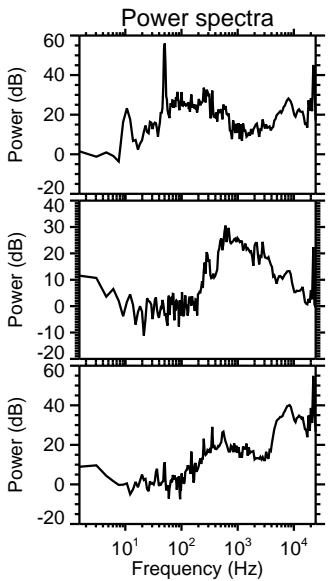
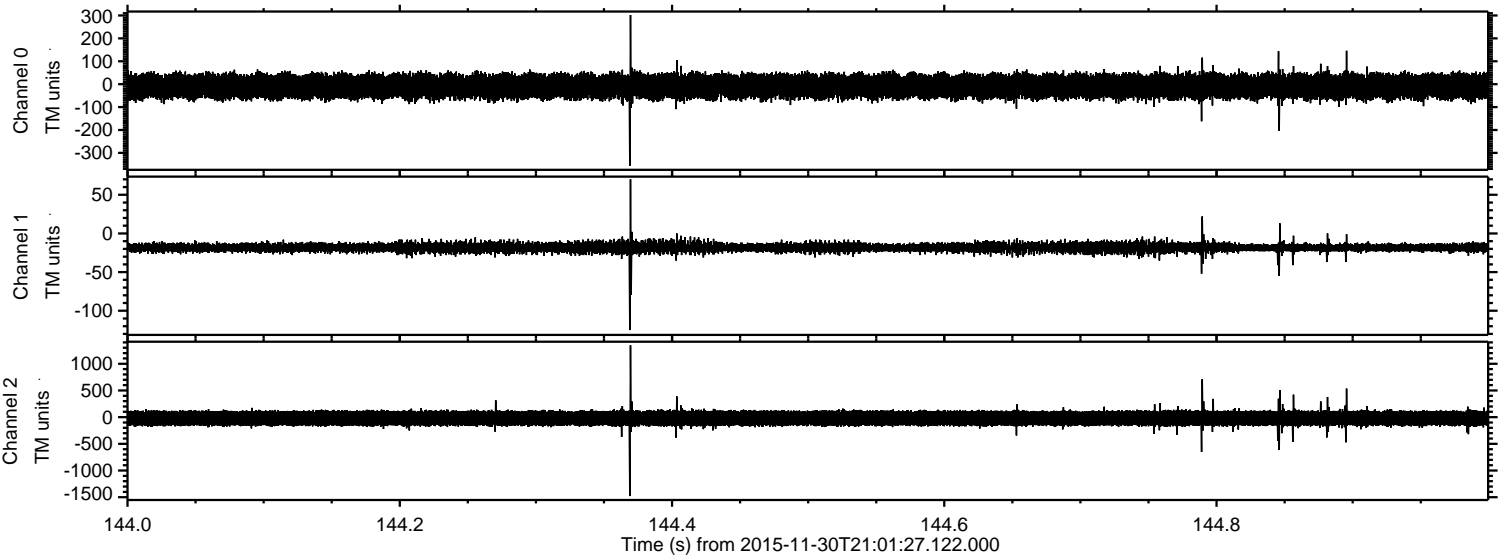
Channel 1  
mn: -137  
mx: 80  
 $\mu$ : -18.2  
 $\sigma$ : 3.7

Channel 2  
mn: -1481  
mx: 1436  
 $\mu$ : -20.8  
 $\sigma$ : 86.3



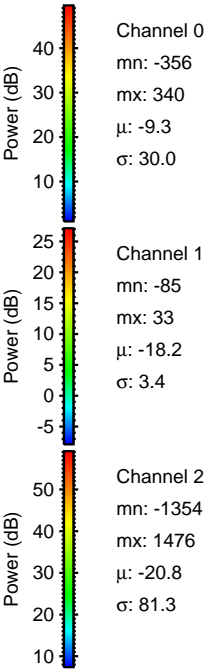
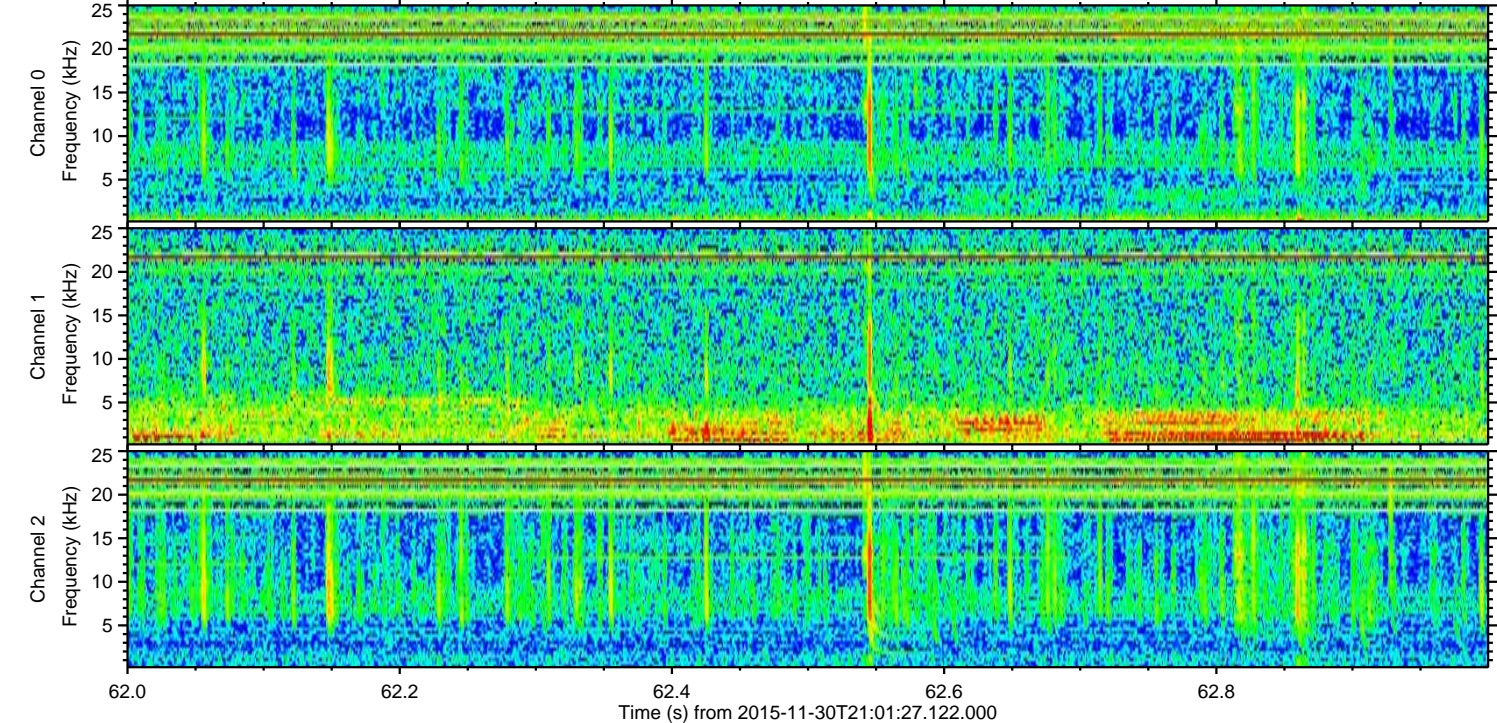
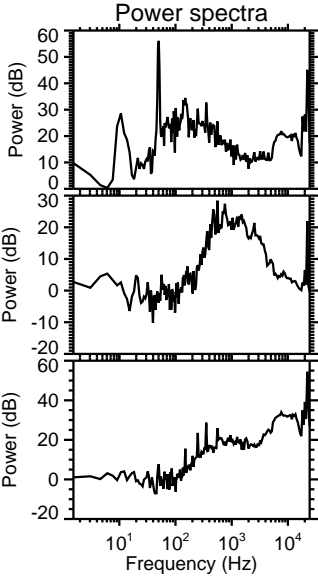
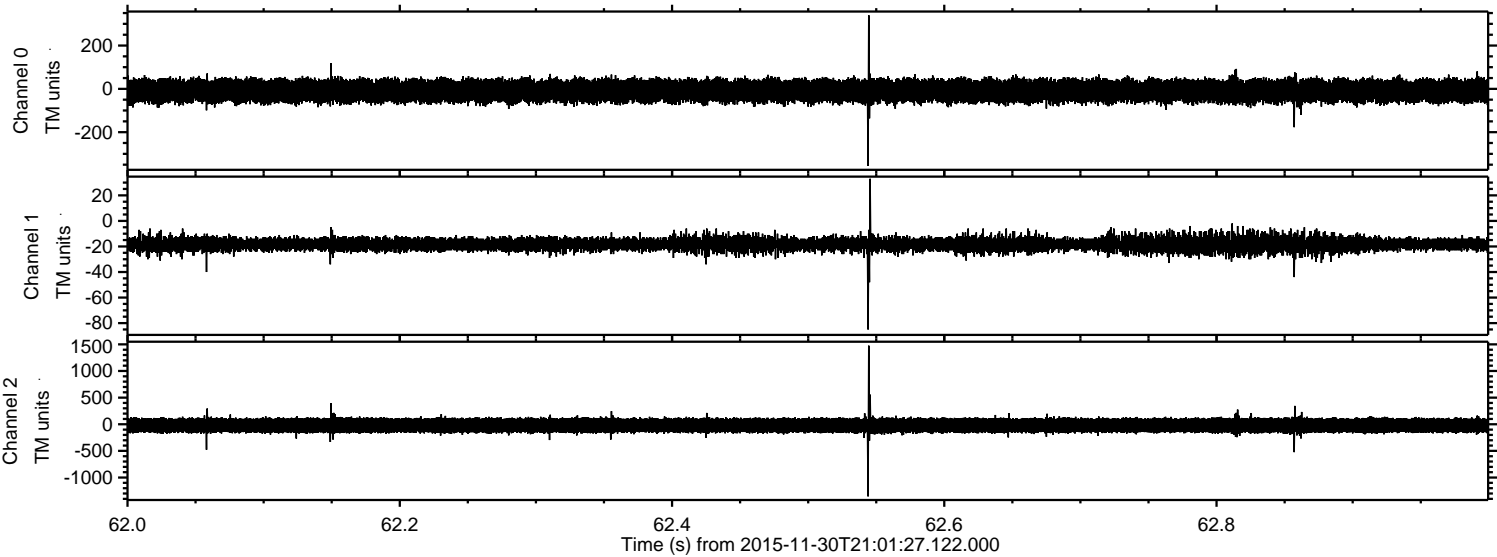
ELMAVAN 3D WAVEFORMS (Measured data sampled at 50 kHz) 51000 packets of 144 samples from 2015-11-30T21:01:27.122.000. Part 145/147

Processed Thu Dec 10 03:09:33 2015 by ELM ver.2012-10-06 from 001\_\_elm20151130\_210126\_\_dat00.bin





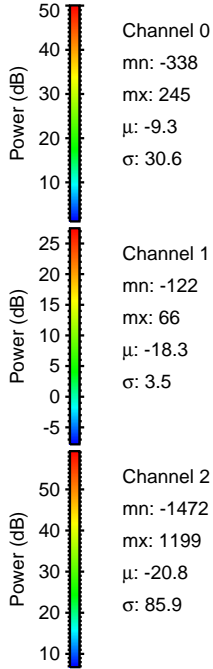
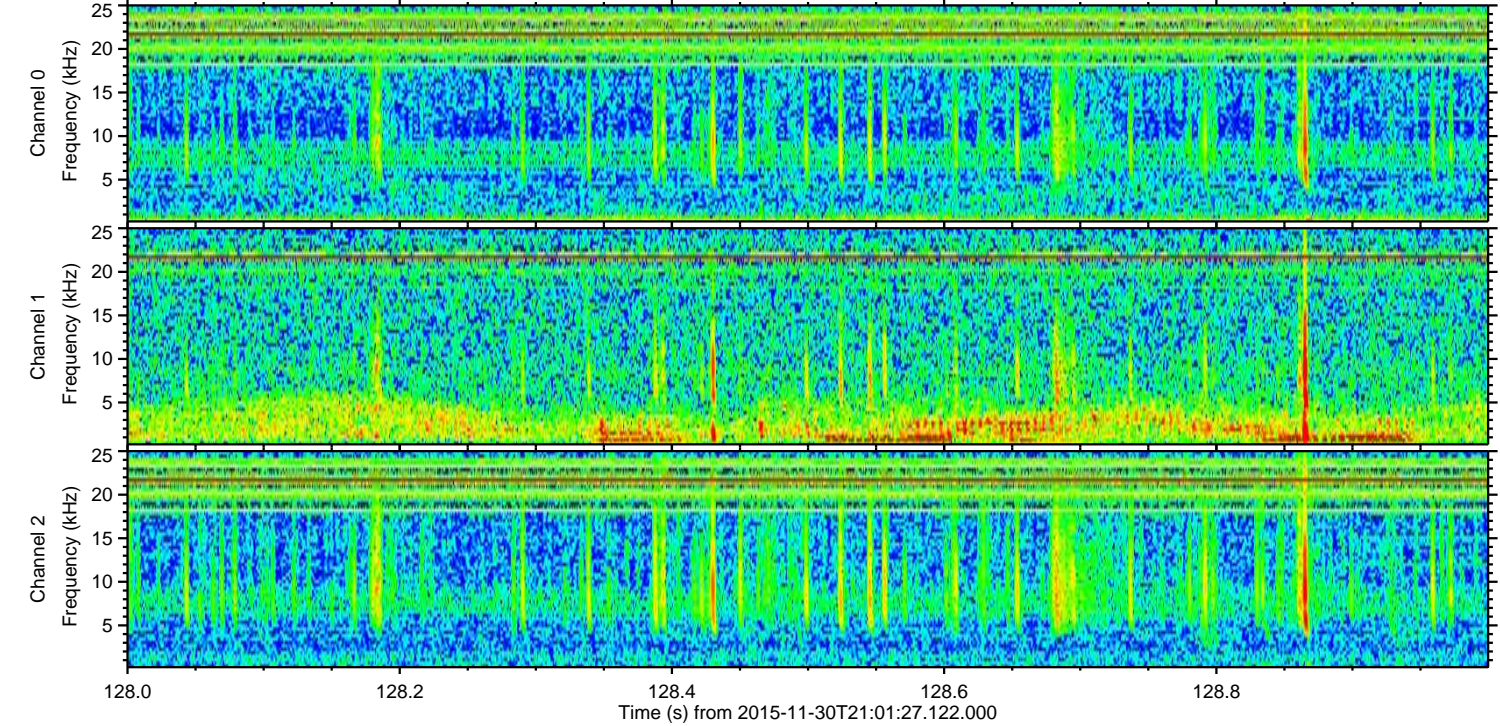
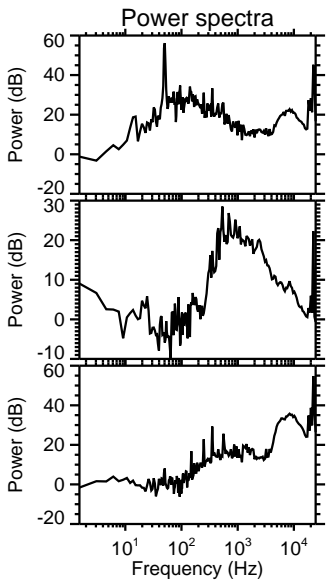
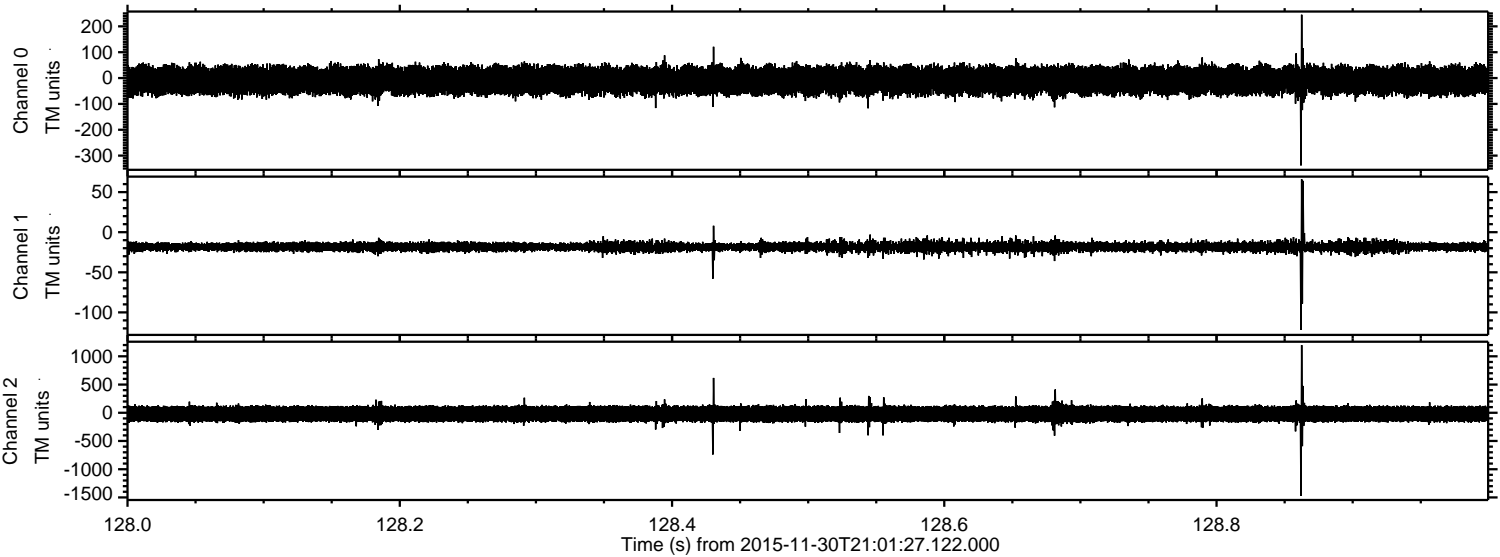
Processed Thu Dec 10 03:09:34 2015 by ELM ver.2012-10-06 from 001\_\_elm20151130\_210126\_\_dat00.bin





ELMAVAN 3D WAVEFORMS (Measured data sampled at 50 kHz) 51000 packets of 144 samples from 2015-11-30T21:01:27.122.000. Part 129/147

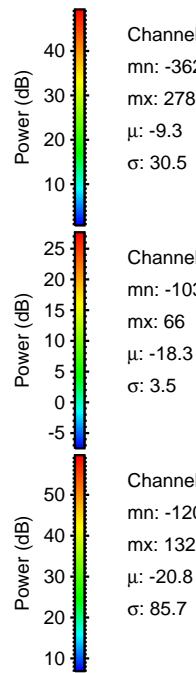
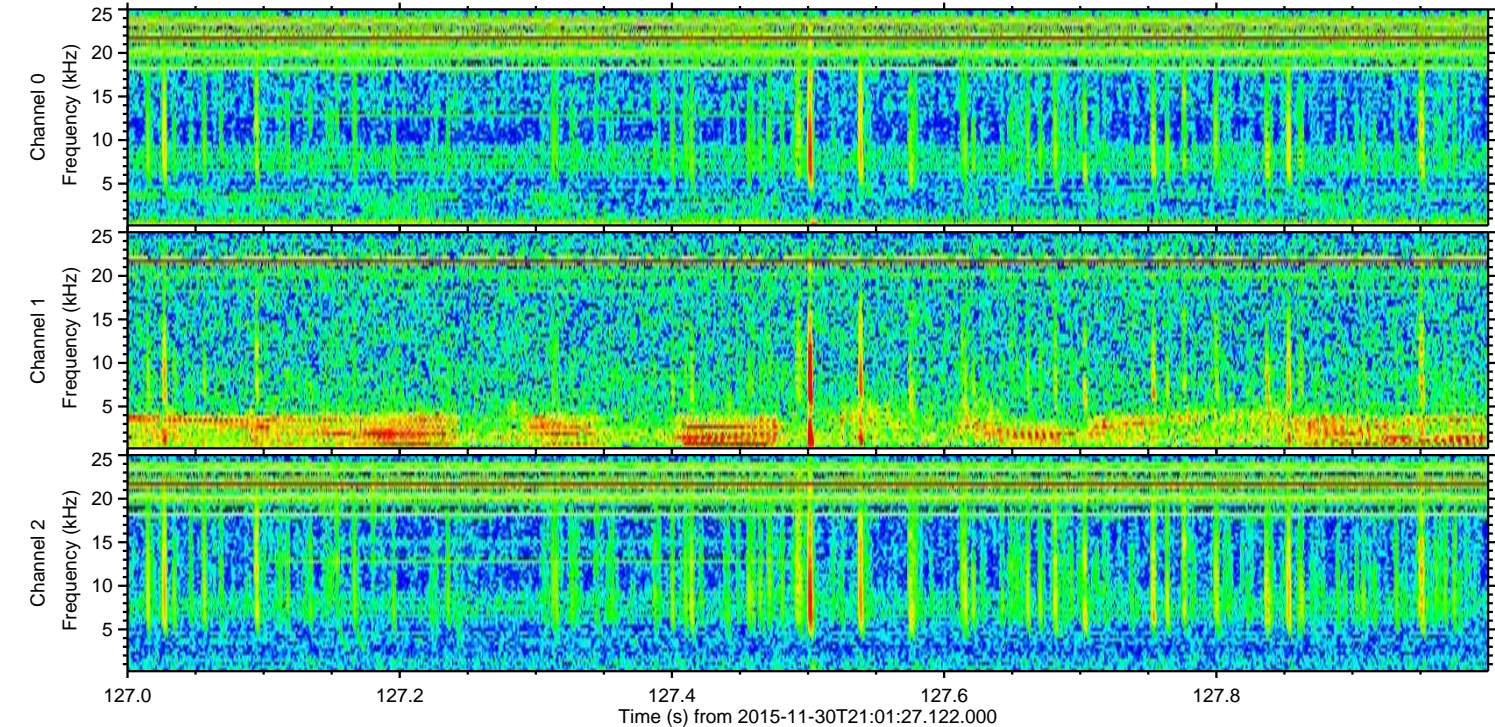
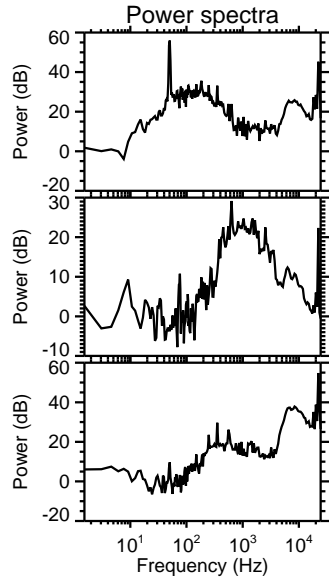
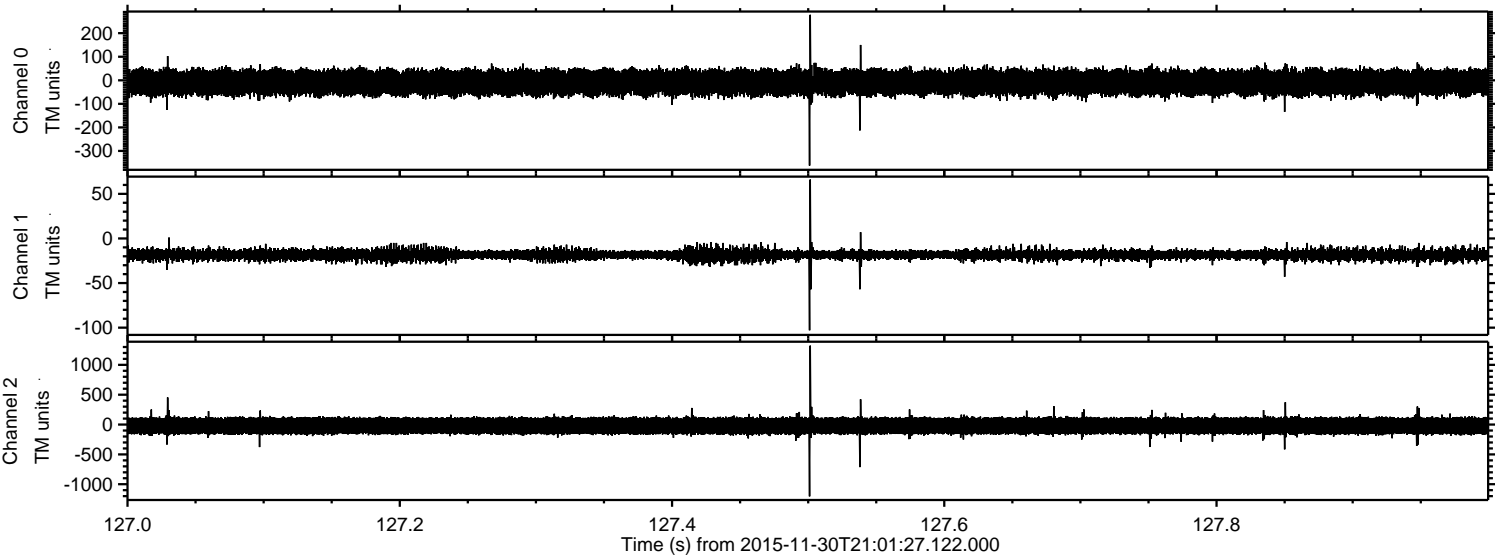
Processed Thu Dec 10 03:09:35 2015 by ELM ver.2012-10-06 from 001\_\_elm20151130\_210126\_\_dat00.bin





ELMAVAN 3D WAVEFORMS (Measured data sampled at 50 kHz) 51000 packets of 144 samples from 2015-11-30T21:01:27.122.000. Part 128/147

Processed Thu Dec 10 03:09:36 2015 by ELM ver.2012-10-06 from 001\_\_elm20151130\_210126\_\_dat00.bin



Channel 0  
mn: -362  
mx: 278  
 $\mu$ : -9.3  
 $\sigma$ : 30.5

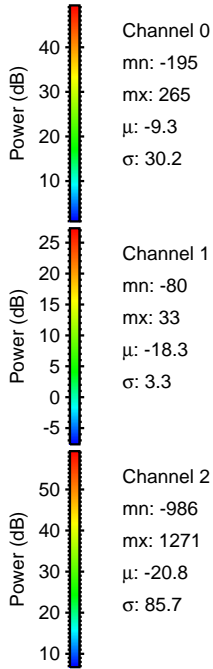
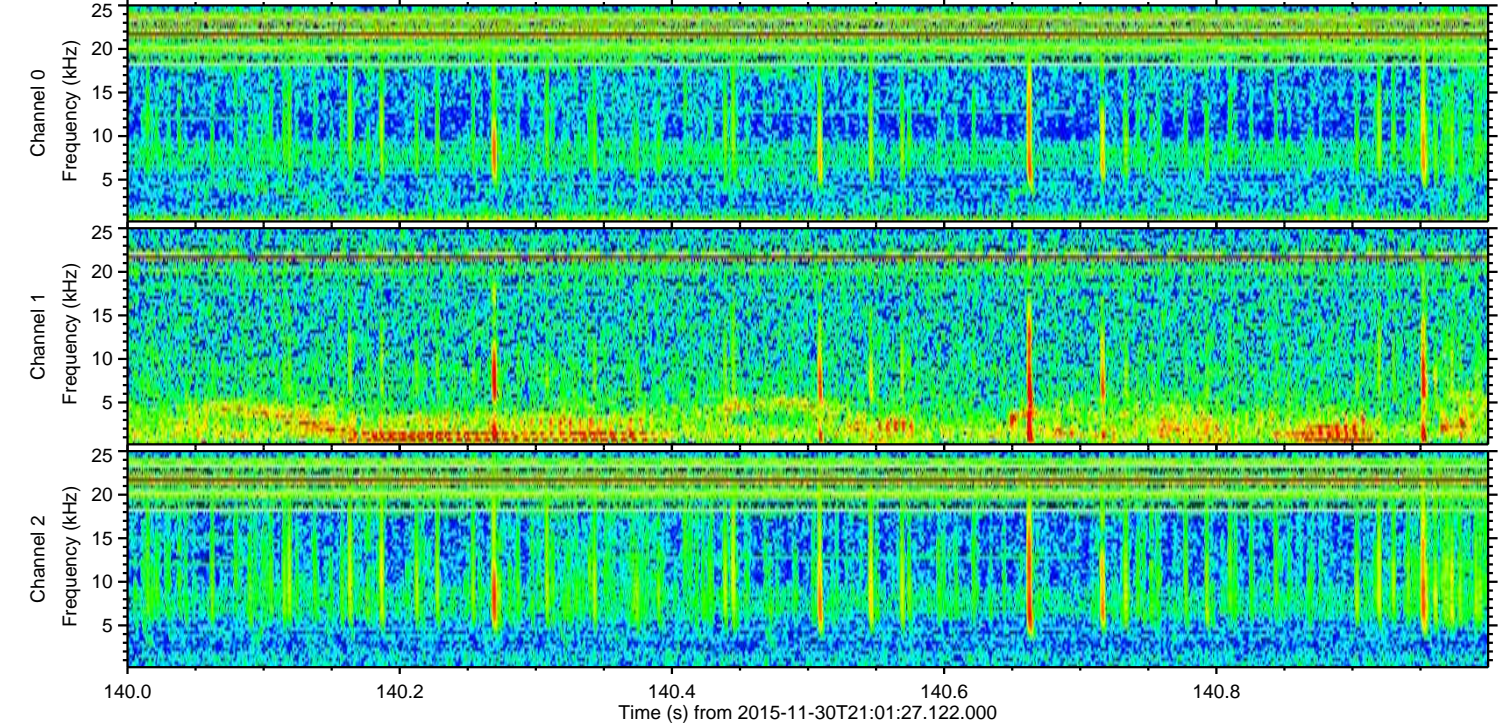
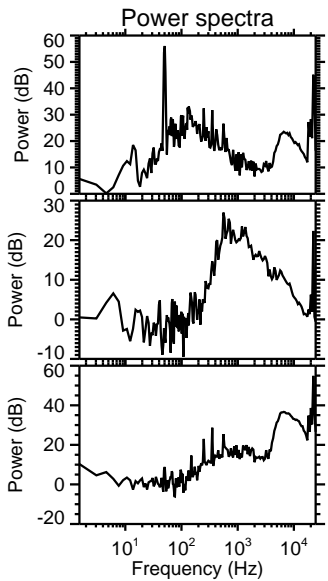
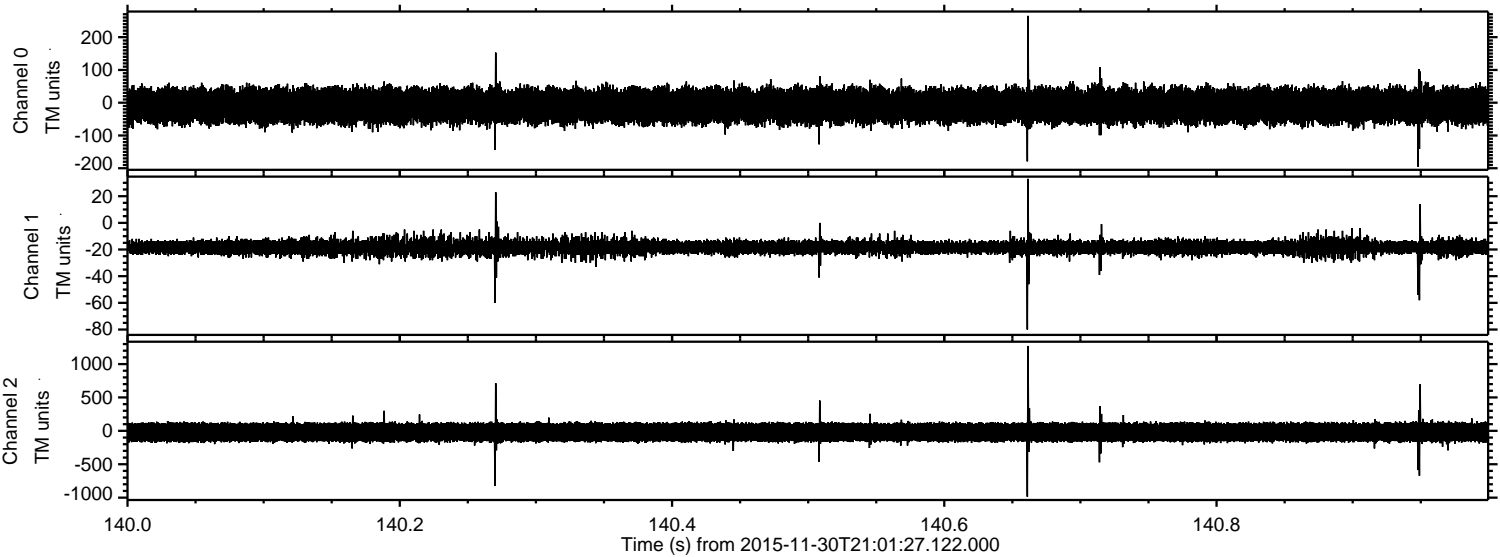
Channel 1  
mn: -103  
mx: 66  
 $\mu$ : -18.3  
 $\sigma$ : 3.5

Channel 2  
mn: -1204  
mx: 1322  
 $\mu$ : -20.8  
 $\sigma$ : 85.7



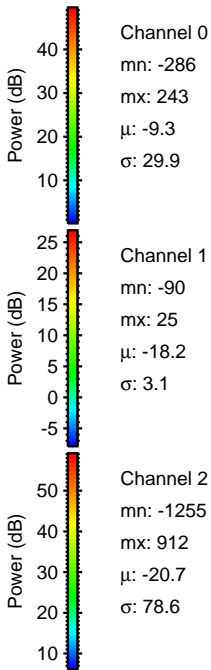
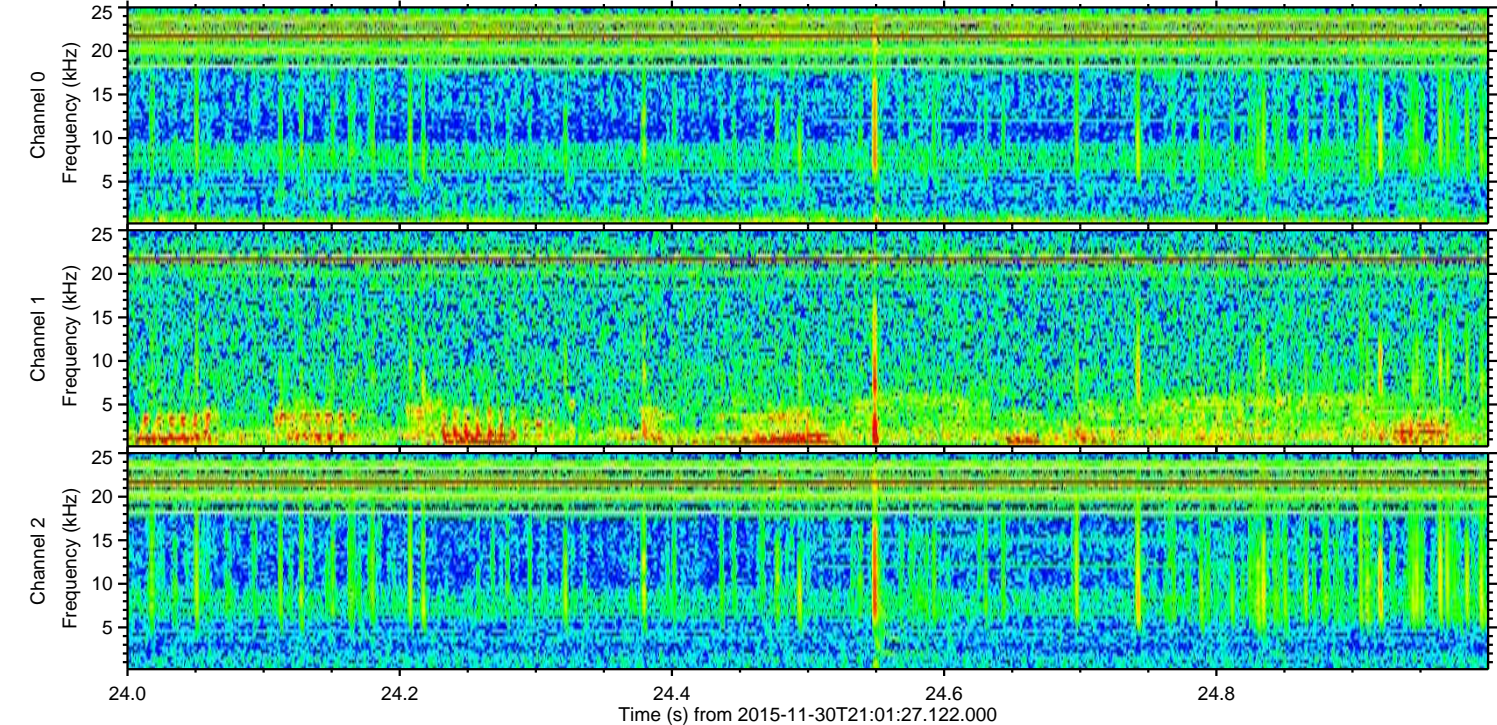
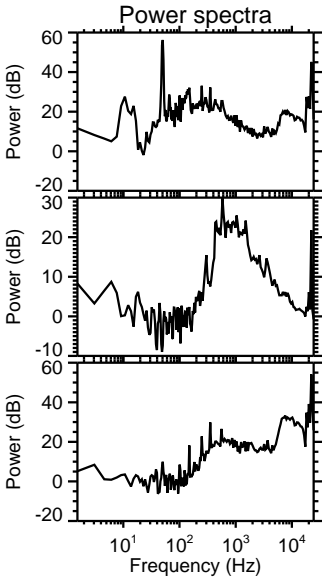
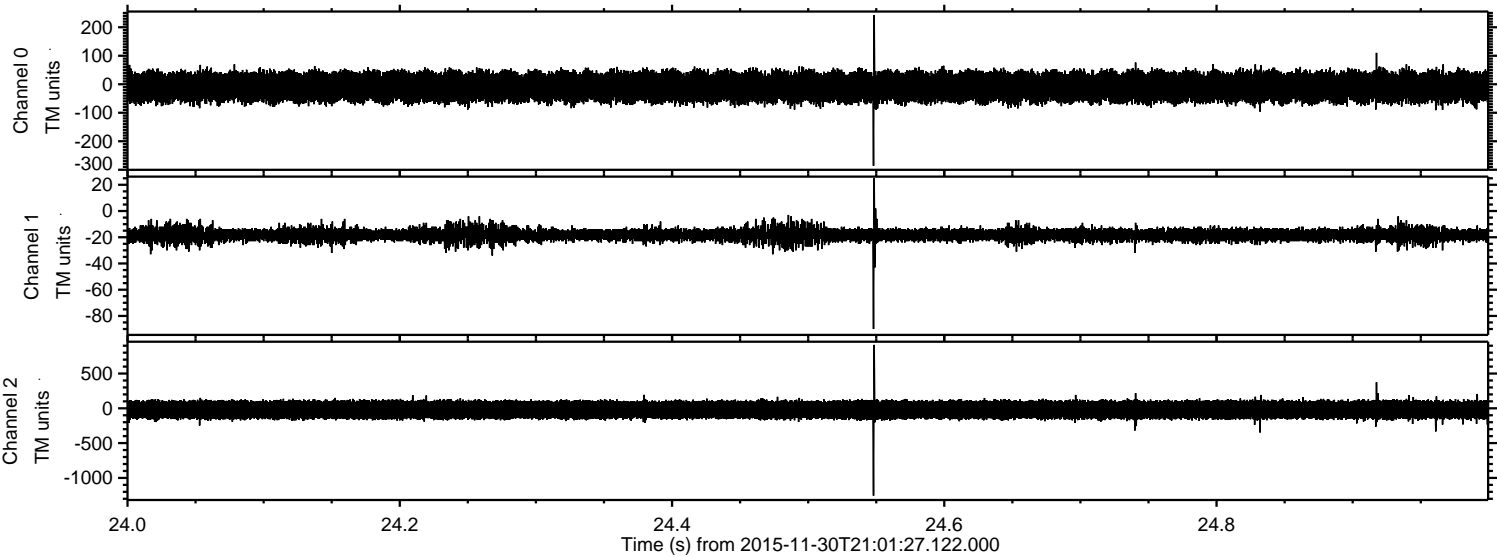
ELMAVAN 3D WAVEFORMS (Measured data sampled at 50 kHz) 51000 packets of 144 samples from 2015-11-30T21:01:27.122.000. Part 141/147

Processed Thu Dec 10 03:09:37 2015 by ELM ver.2012-10-06 from 001\_\_elm20151130\_210126\_\_dat00.bin





Processed Thu Dec 10 03:09:38 2015 by ELM ver.2012-10-06 from 001\_\_elm20151130\_210126\_\_dat00.bin





ELMAVAN 3D WAVEFORMS (Measured data sampled at 50 kHz) 51000 packets of 144 samples from 2015-11-30T21:01:27.122.000. Part 20/147

Processed Thu Dec 10 03:09:39 2015 by ELM ver.2012-10-06 from 001\_\_elm20151130\_210126\_\_dat00.bin

