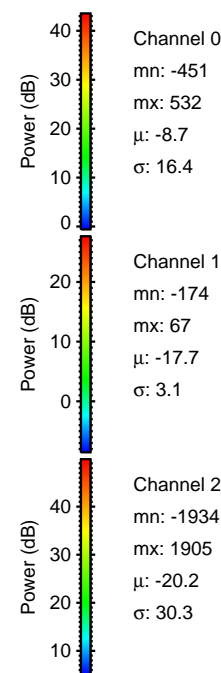
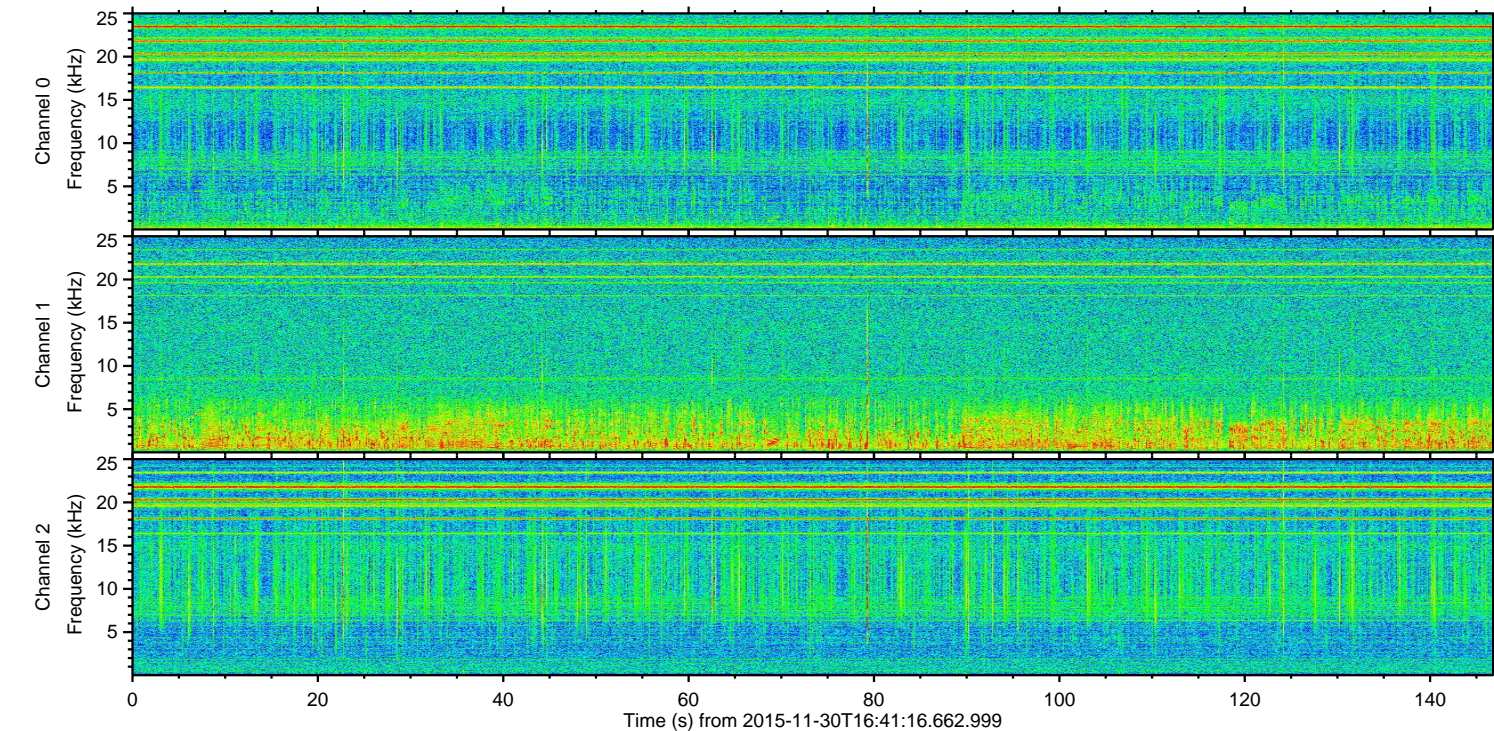
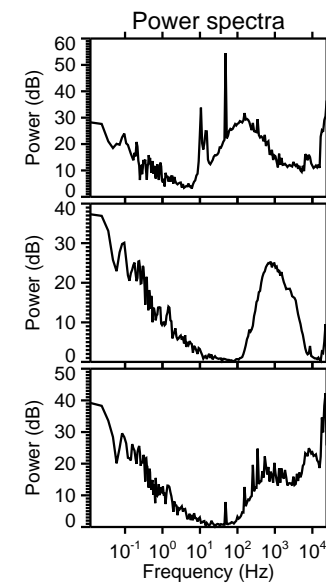
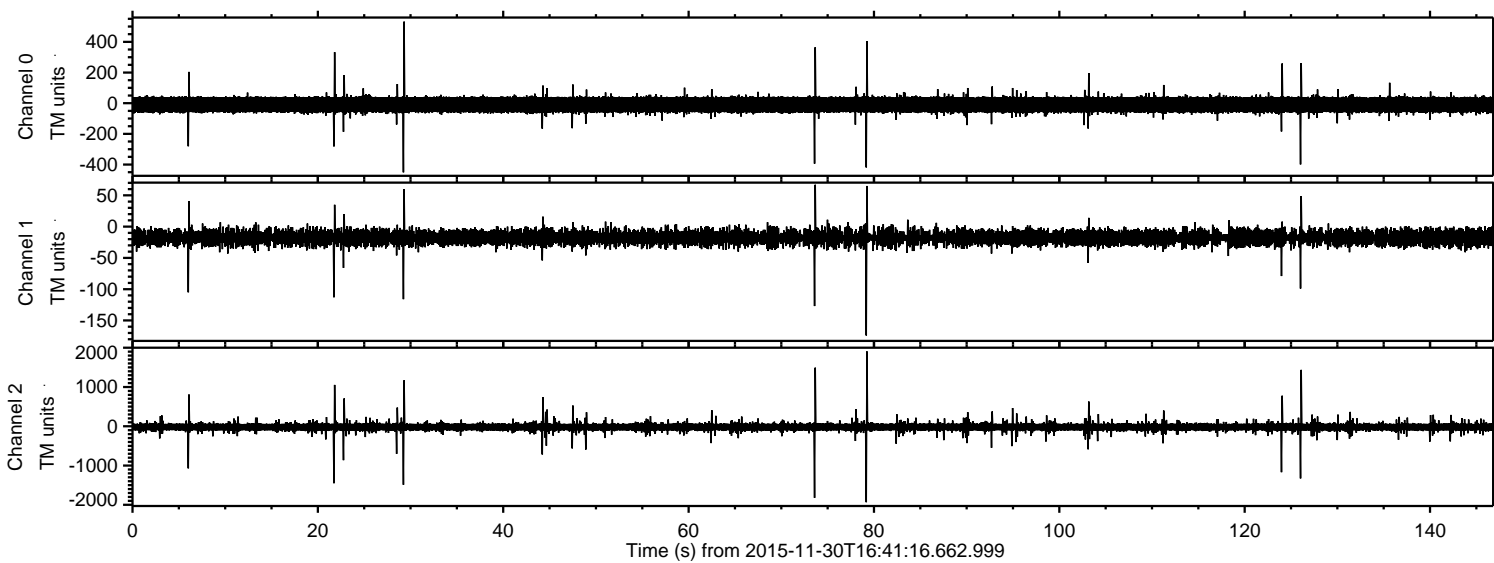
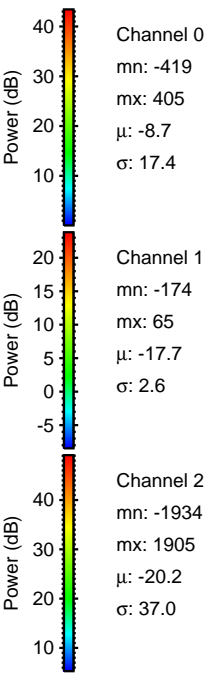
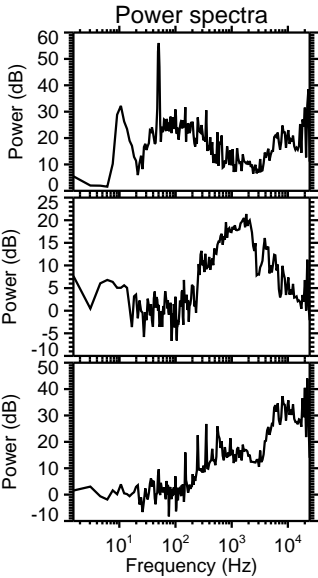
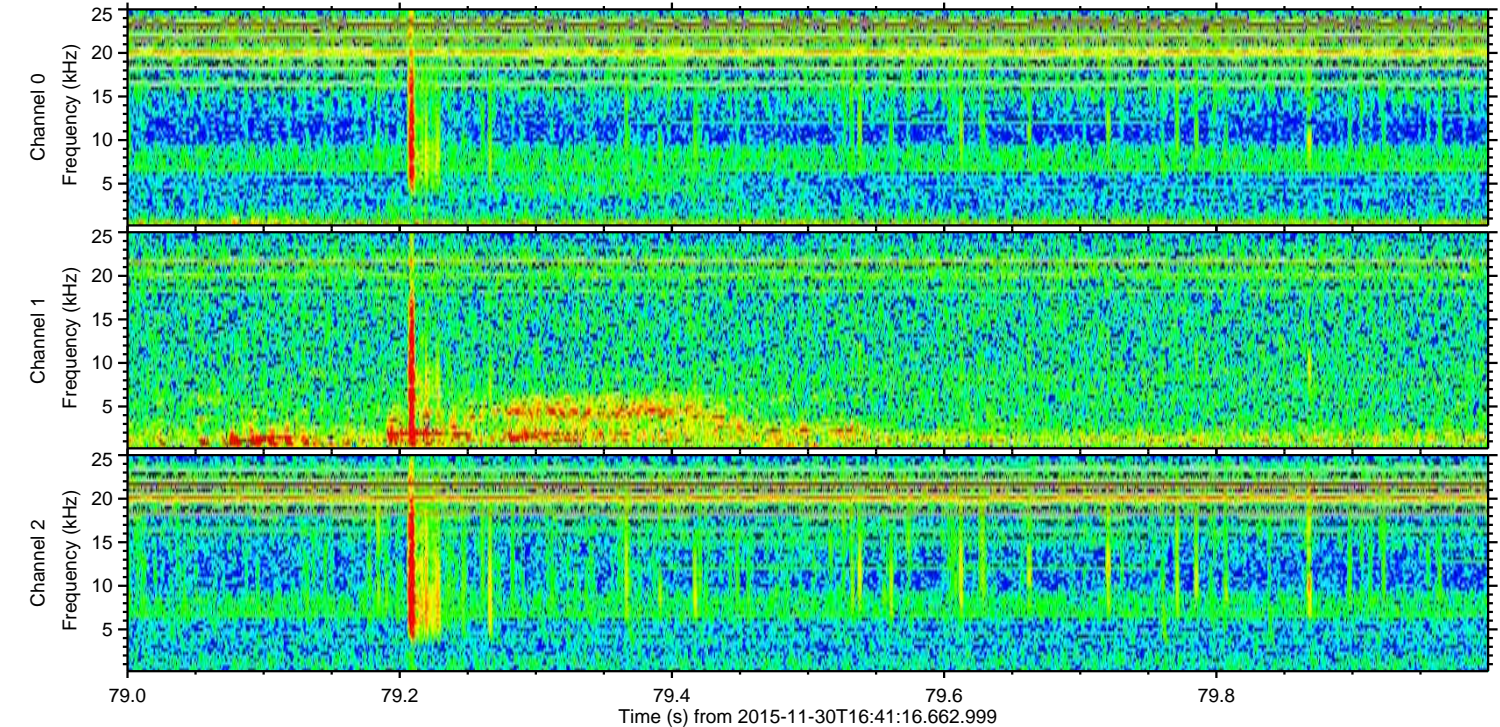
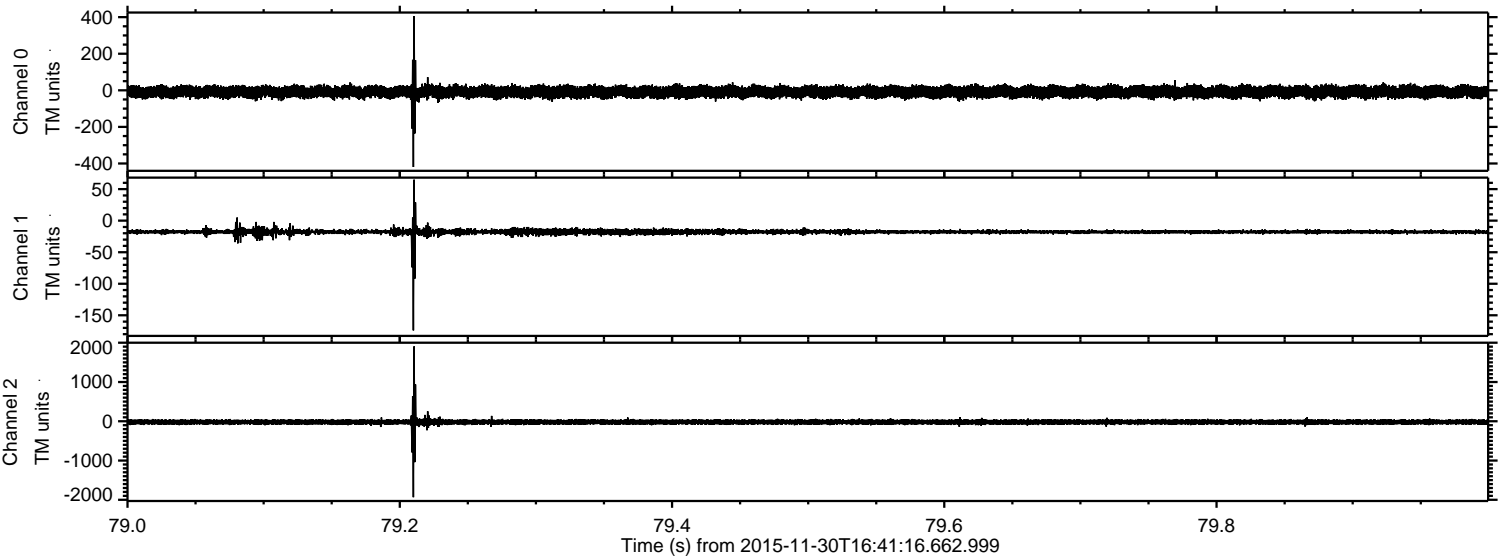


ELMAVAN 3D WAVEFORMS (Measured data sampled at 50 kHz) 51000 packets of 144 samples from 2015-11-30T16:41:16.662.999.

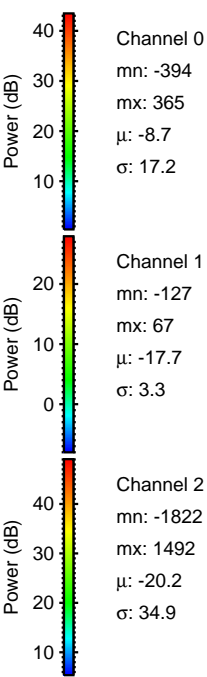
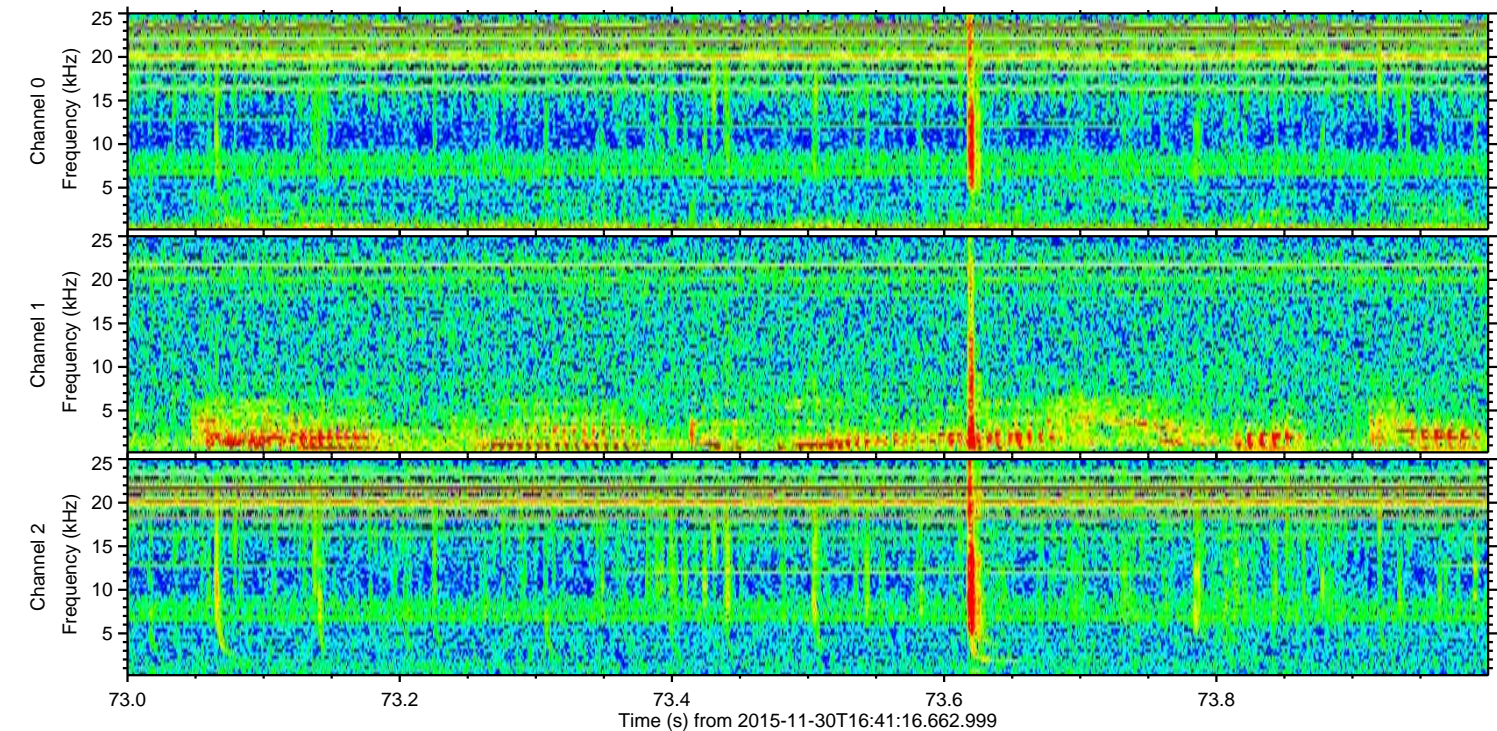
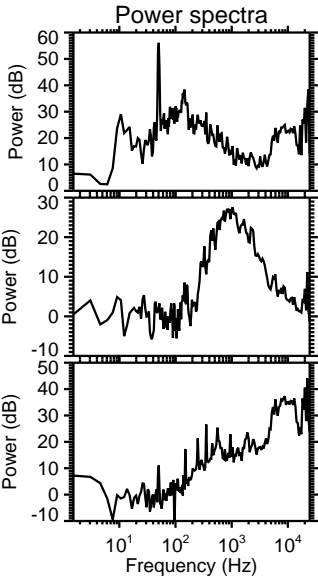
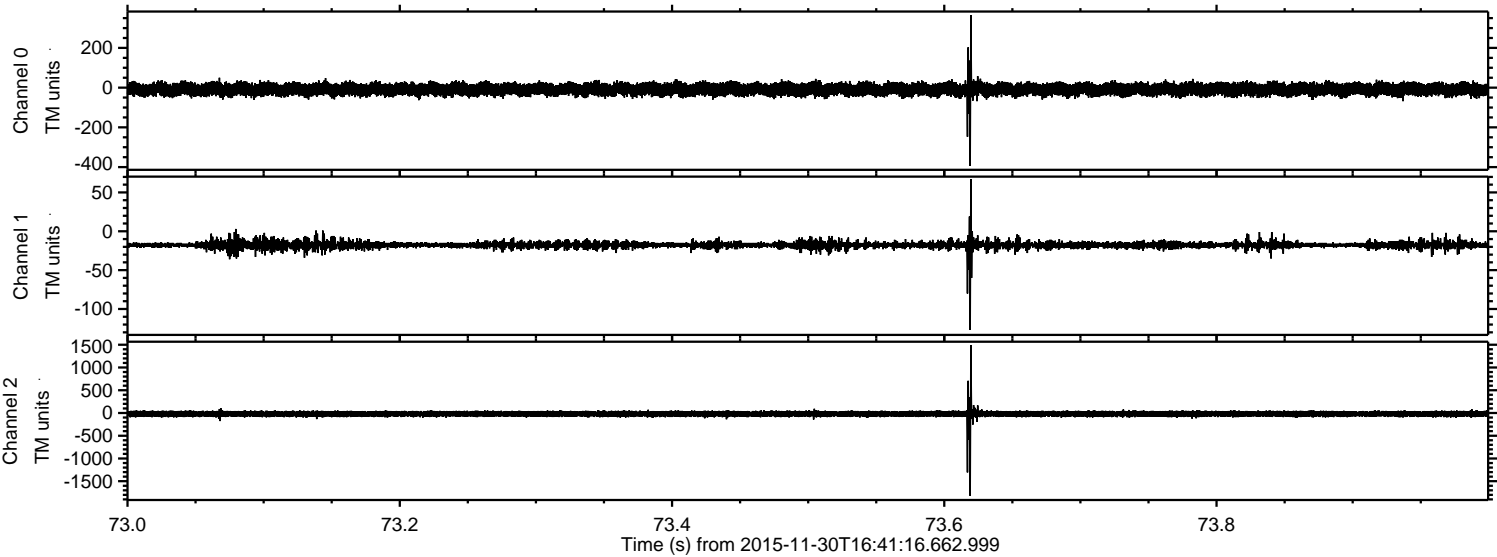
Processed Wed Dec 9 22:00:19 2015 by ELM ver.2012-10-06 from 001__elm20151130_164115__dat00.bin



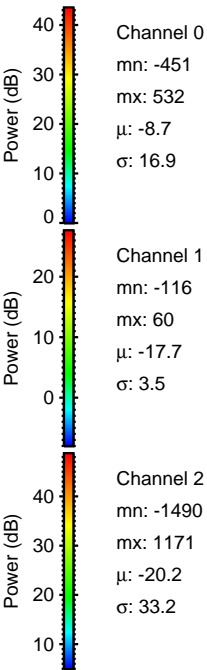
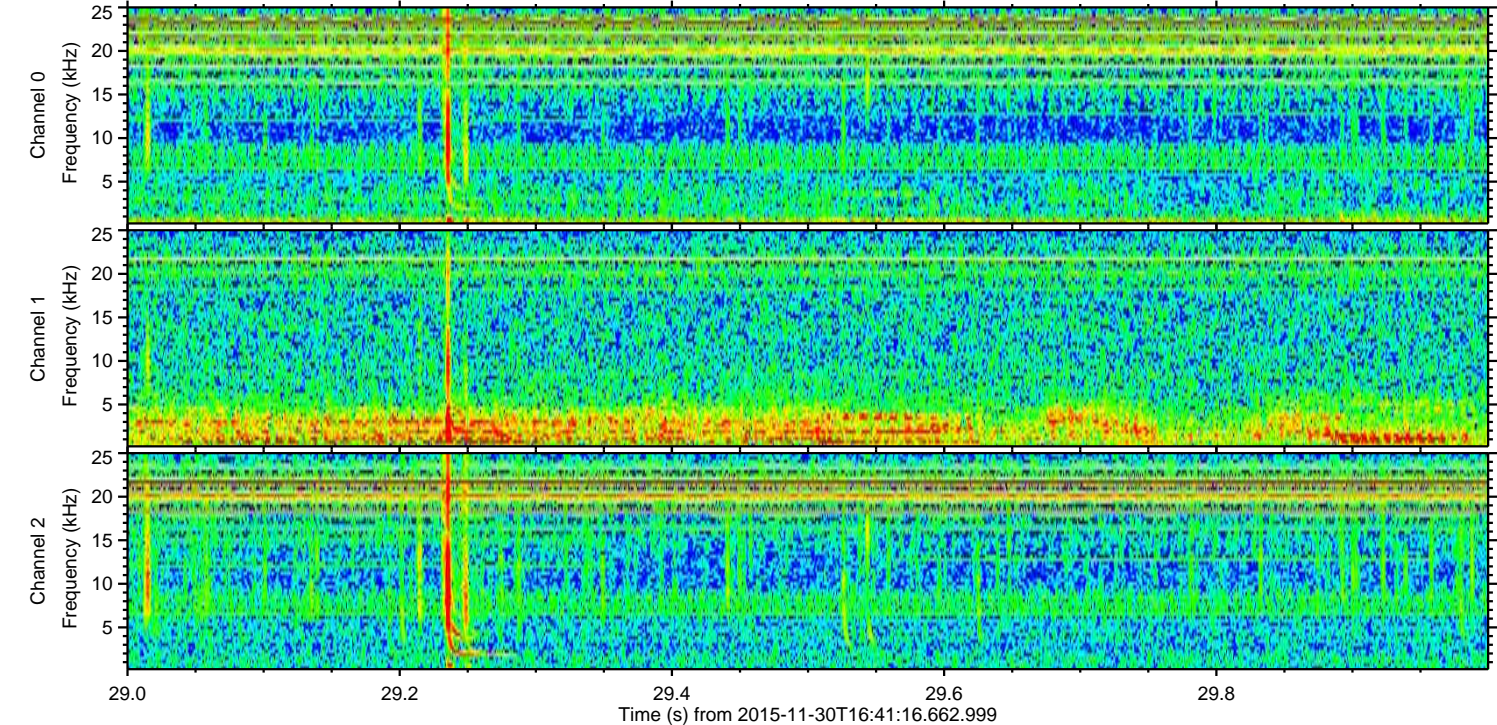
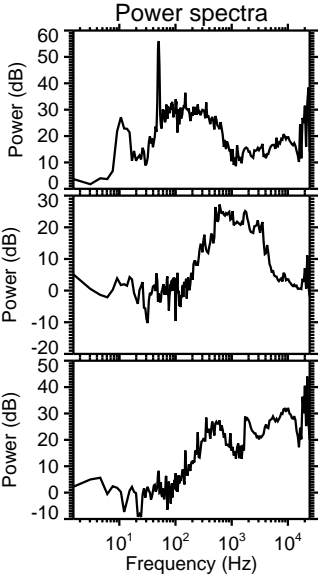
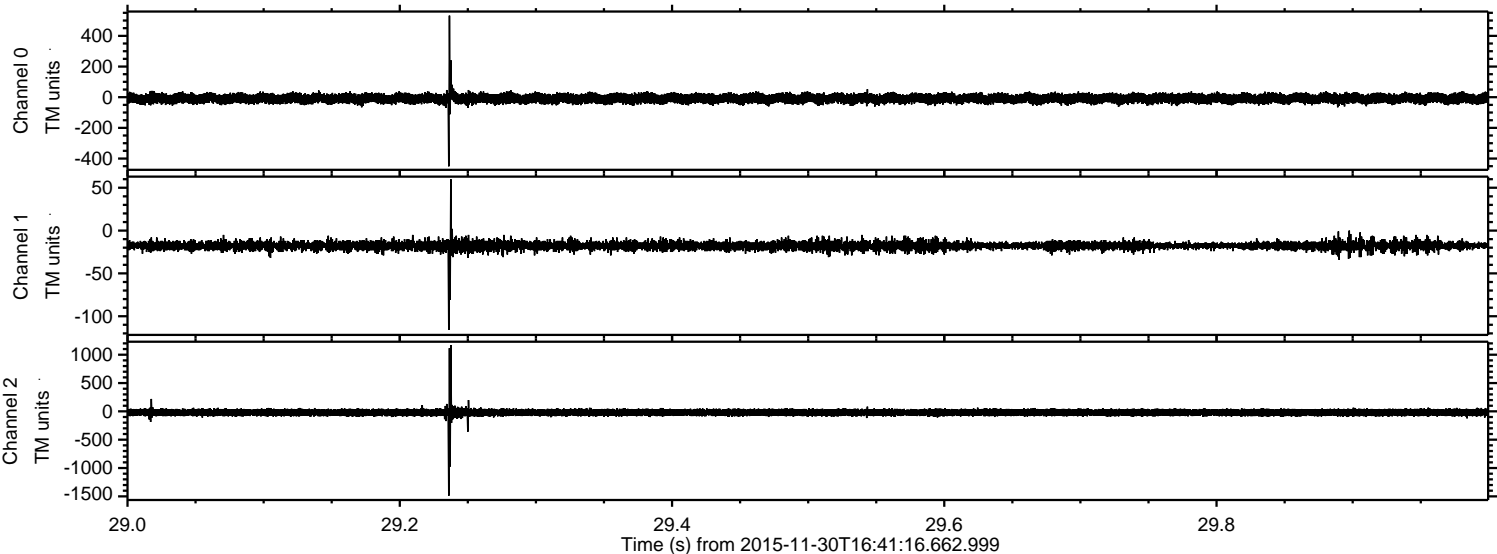
Processed Wed Dec 9 22:00:30 2015 by ELM ver.2012-10-06 from 001__elm20151130_164115__dat00.bin



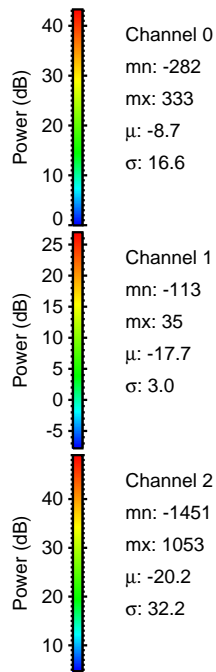
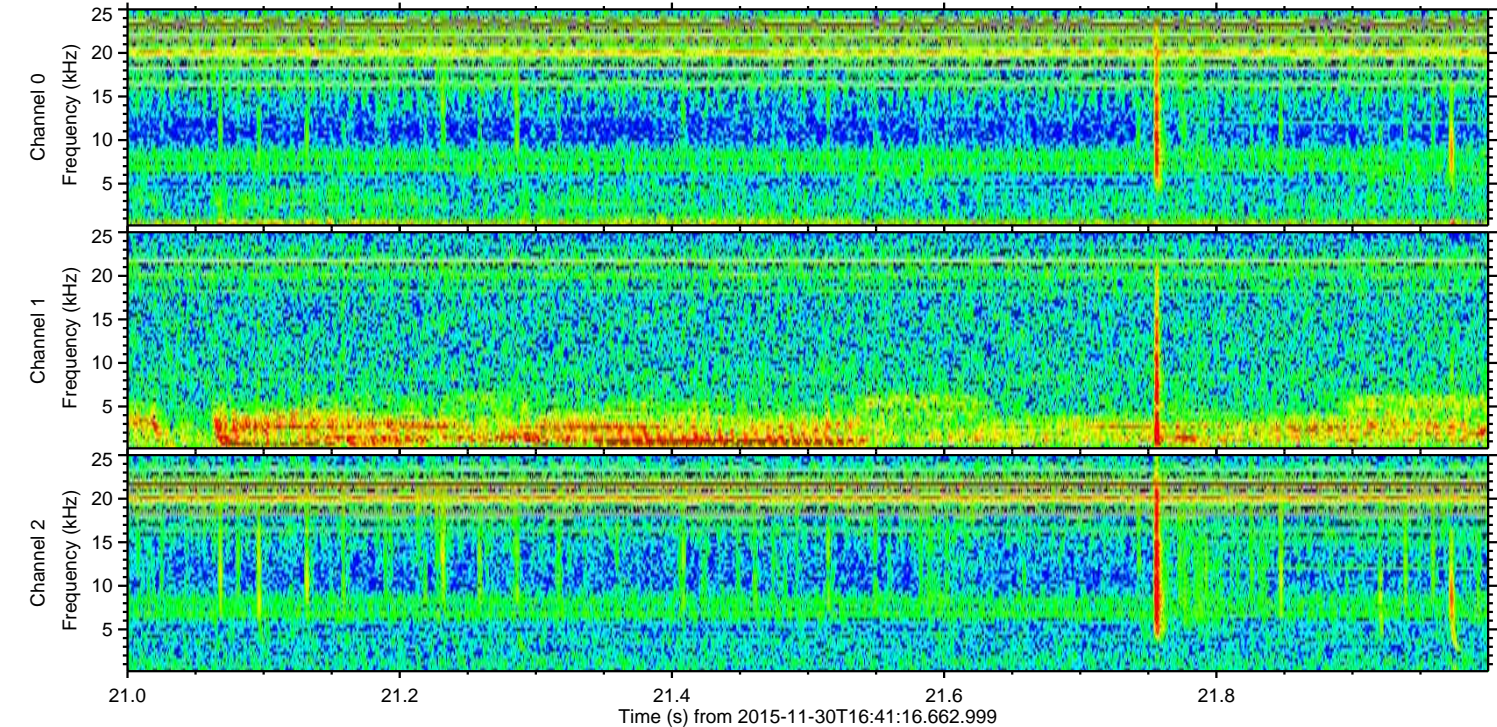
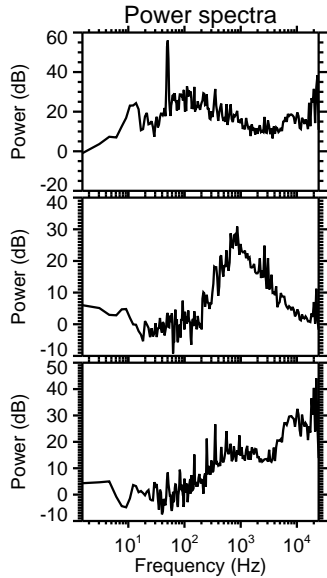
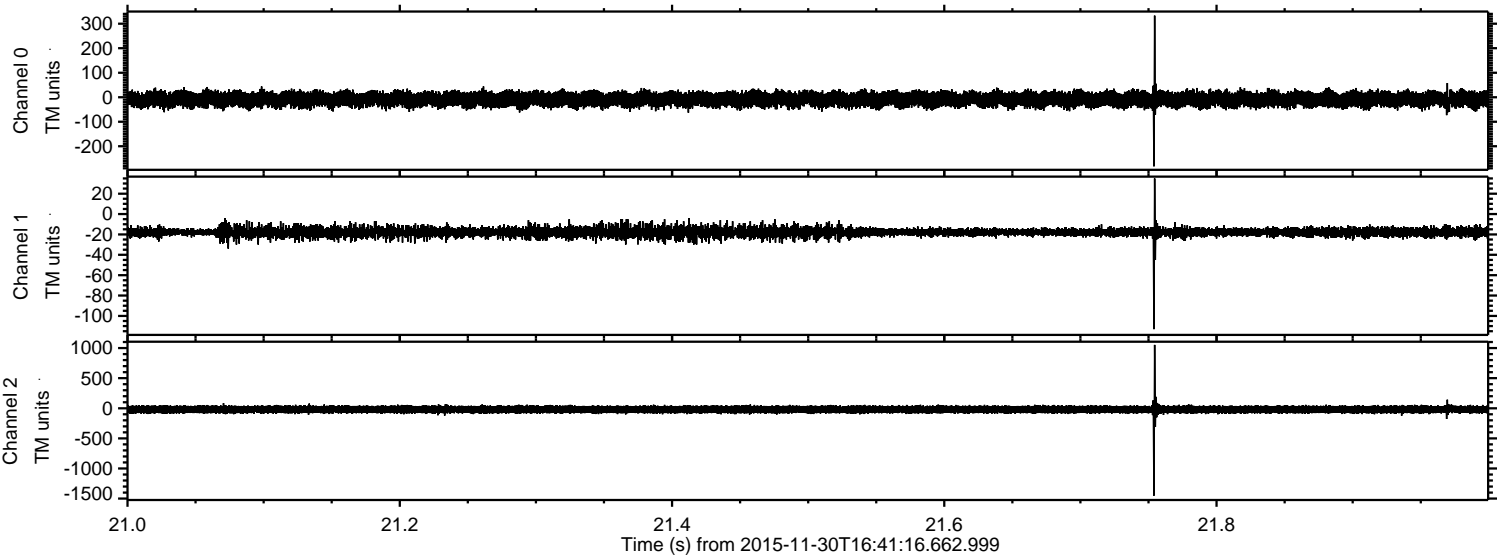
Processed Wed Dec 9 22:00:31 2015 by ELM ver.2012-10-06 from 001__elm20151130_164115__dat00.bin



Processed Wed Dec 9 22:00:32 2015 by ELM ver.2012-10-06 from 001_elm20151130_164115__dat00.bin

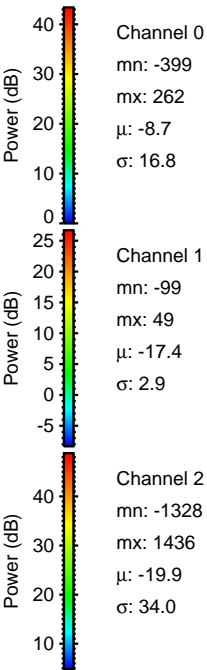
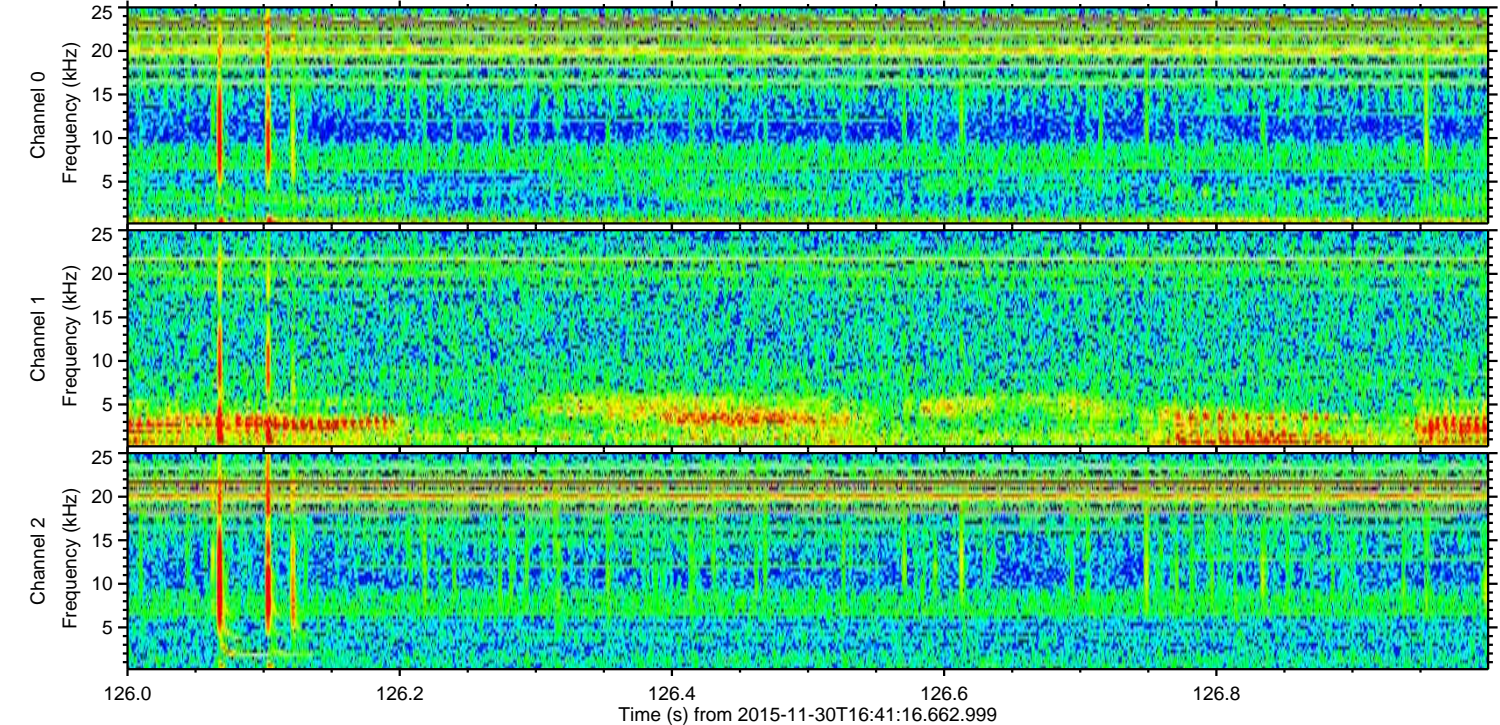
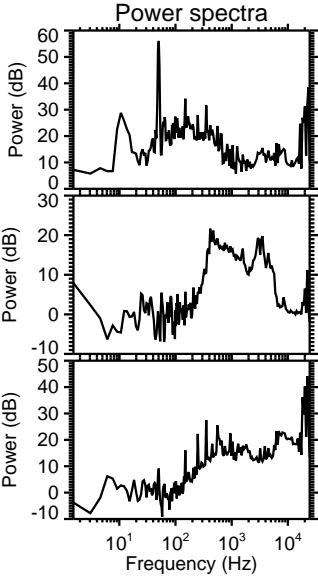
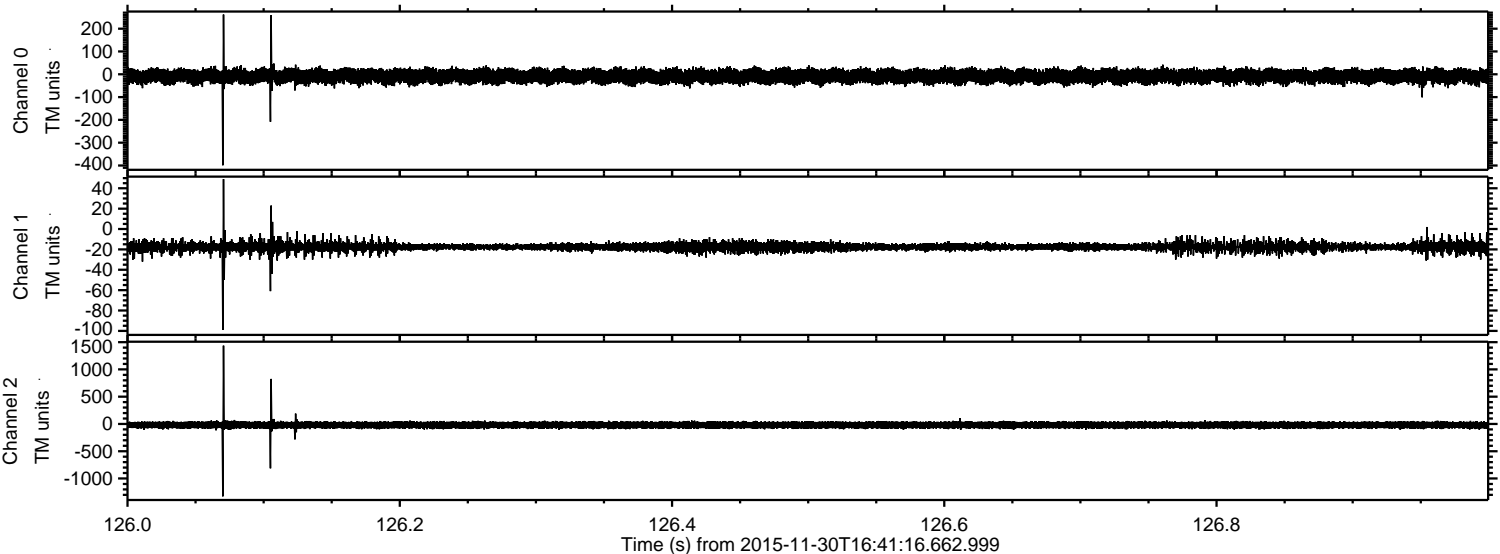


Processed Wed Dec 9 22:00:33 2015 by ELM ver.2012-10-06 from 001__elm20151130_164115__dat00.bin



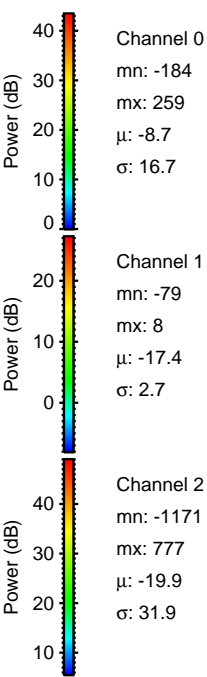
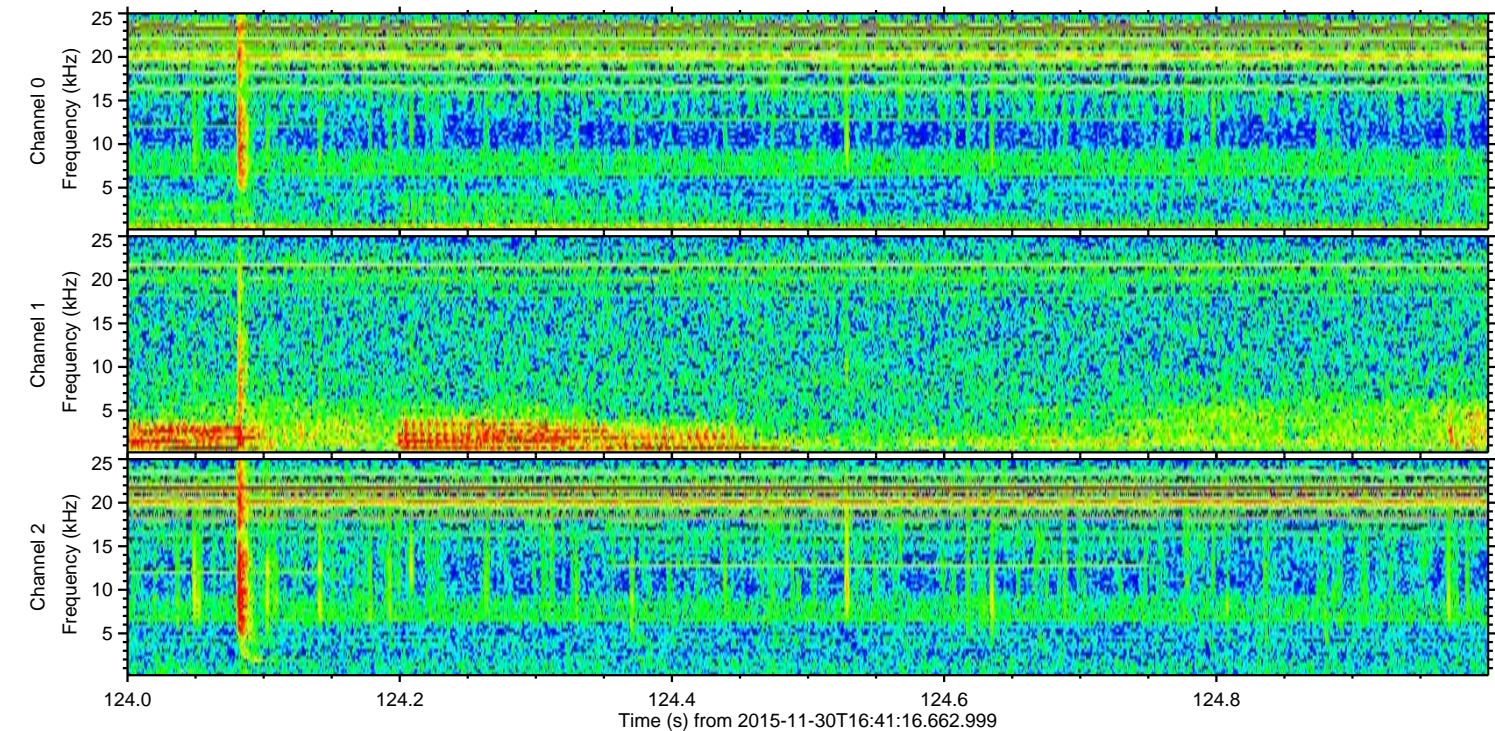
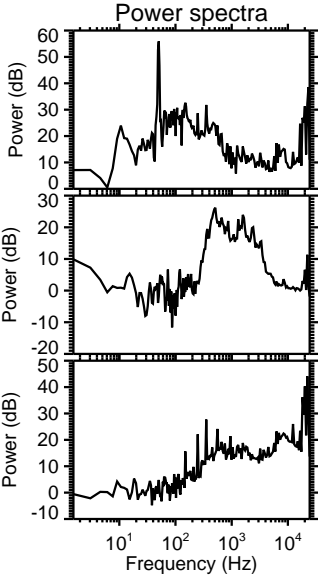
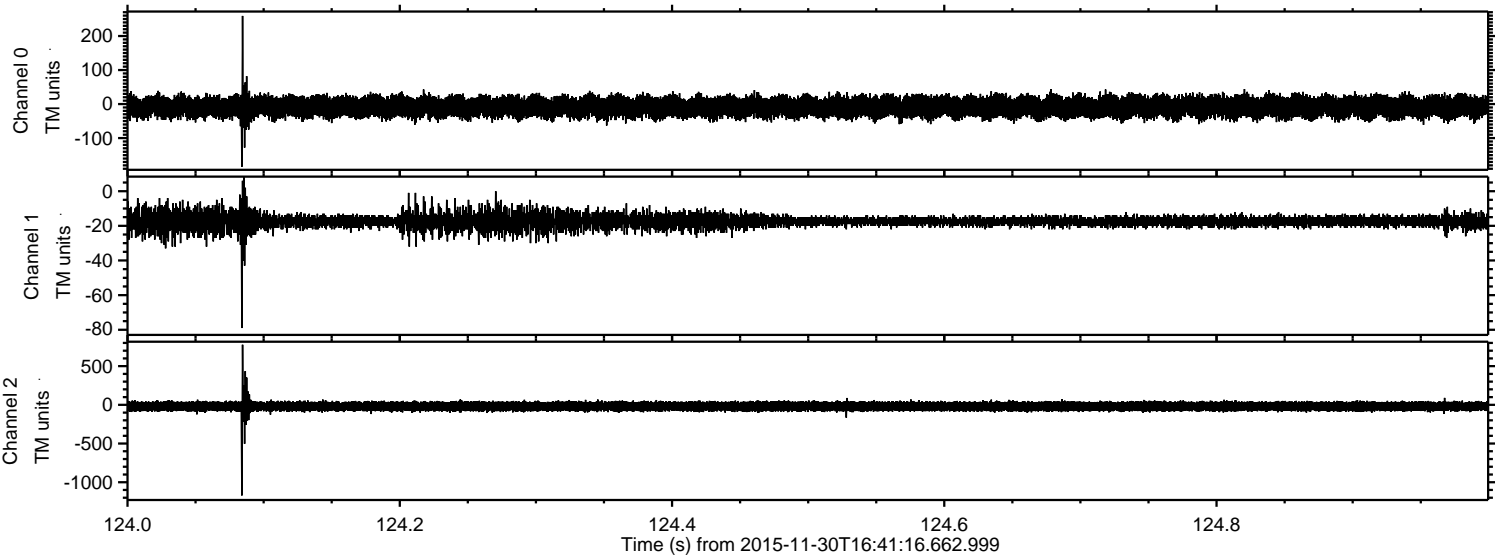
ELMAVAN 3D WAVEFORMS (Measured data sampled at 50 kHz) 51000 packets of 144 samples from 2015-11-30T16:41:16.662.999. Part 127/147

Processed Wed Dec 9 22:00:34 2015 by ELM ver.2012-10-06 from 001__elm20151130_164115__dat00.bin



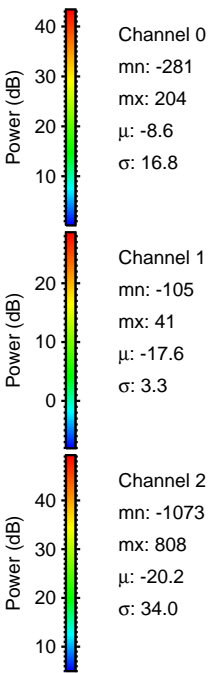
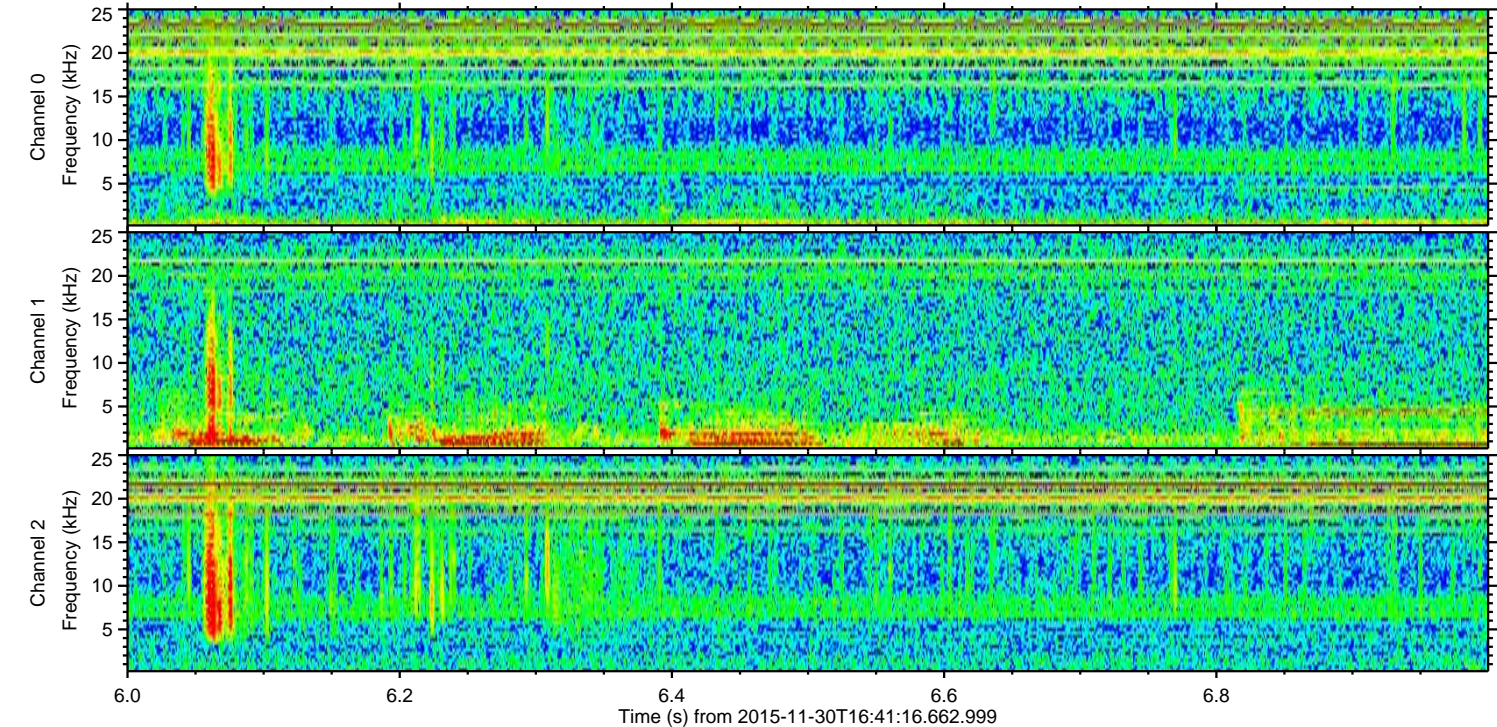
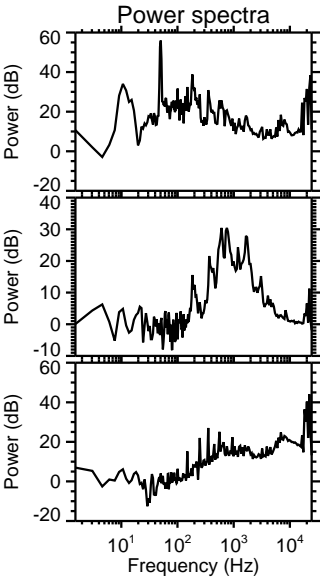
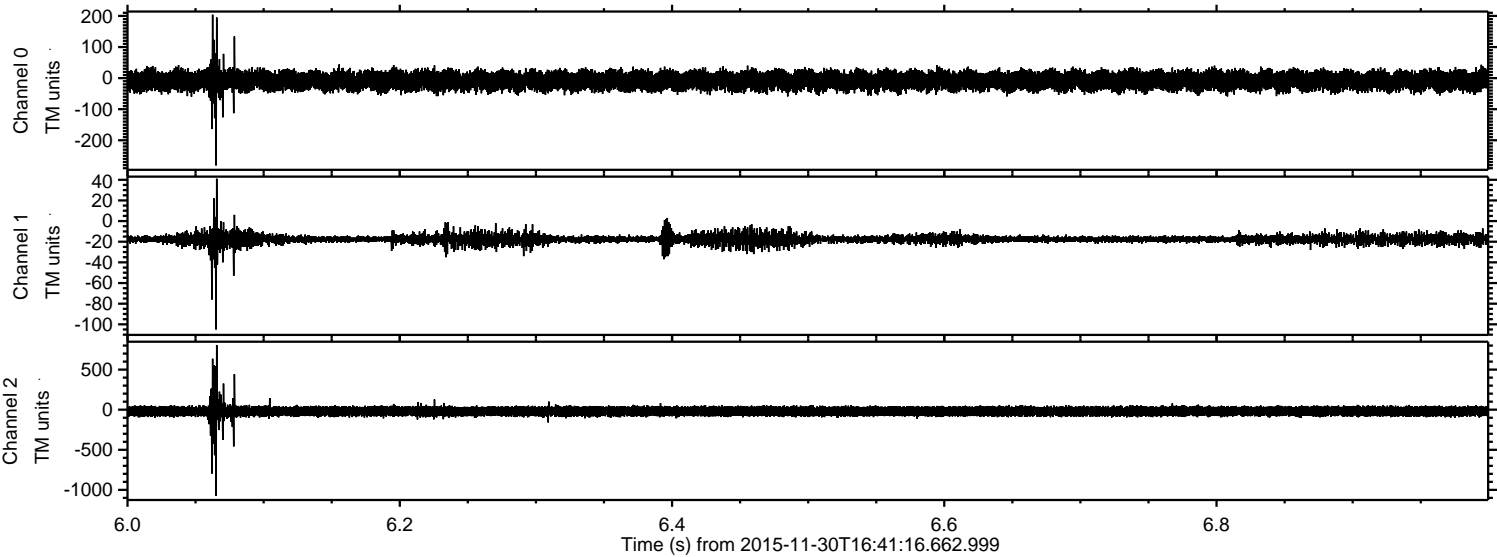
ELMAVAN 3D WAVEFORMS (Measured data sampled at 50 kHz) 51000 packets of 144 samples from 2015-11-30T16:41:16.662.999. Part 125/147

Processed Wed Dec 9 22:00:35 2015 by ELM ver.2012-10-06 from 001__elm20151130_164115__dat00.bin

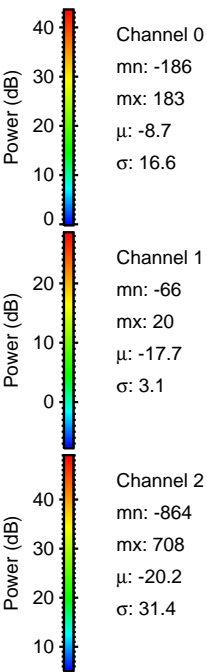
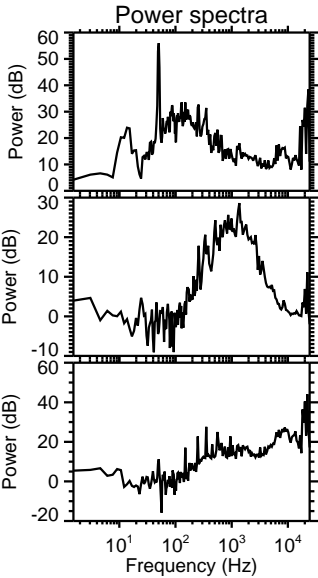
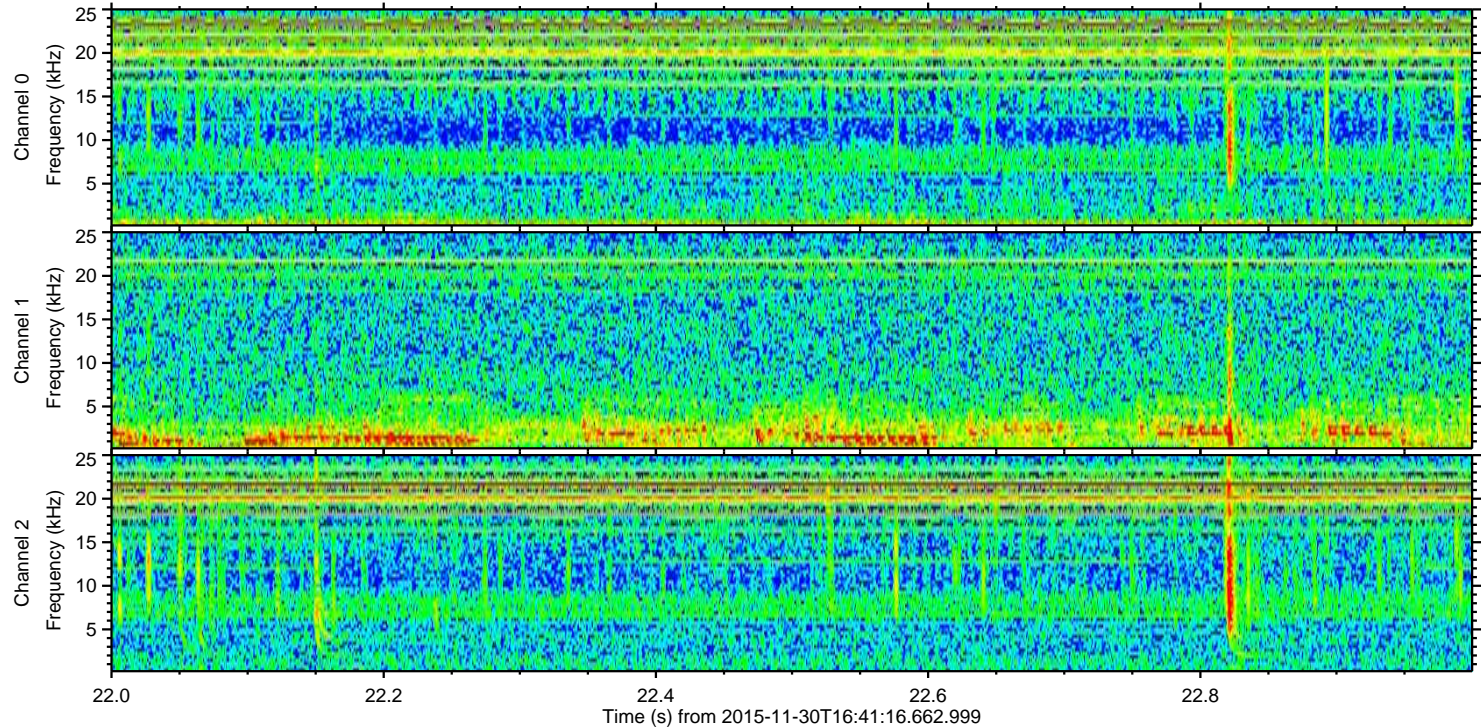
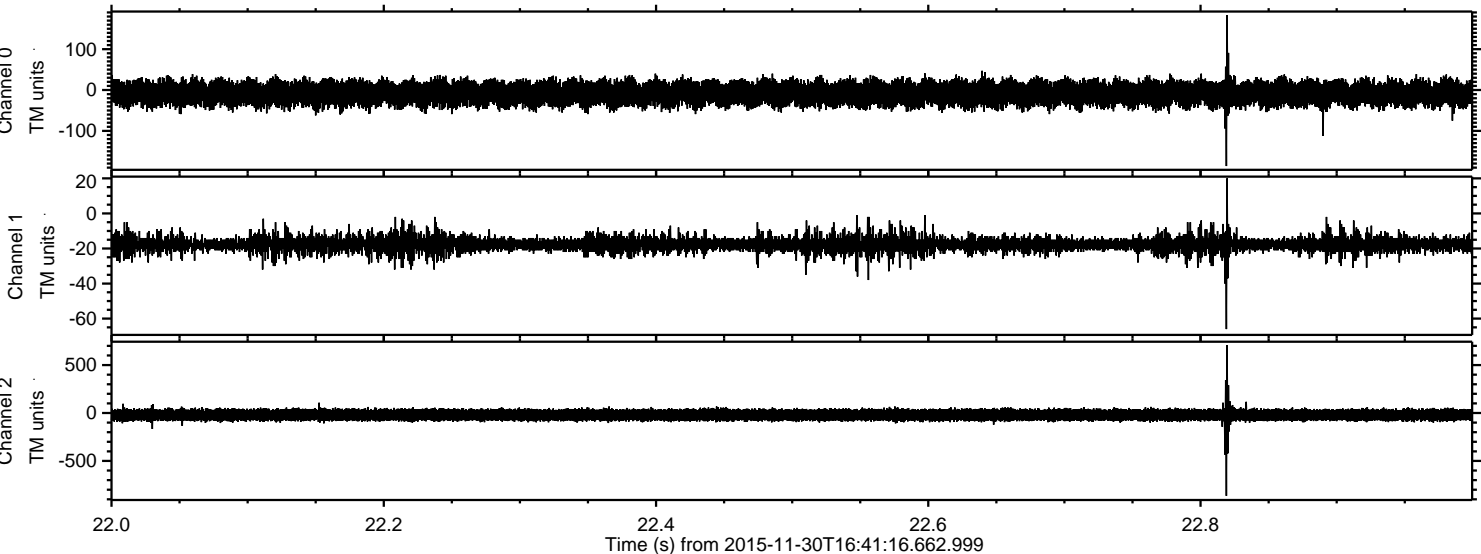


ELMAVAN 3D WAVEFORMS (Measured data sampled at 50 kHz) 51000 packets of 144 samples from 2015-11-30T16:41:16.662.999. Part 7/147

Processed Wed Dec 9 22:00:36 2015 by ELM ver.2012-10-06 from 001__elm20151130_164115__dat00.bin



Processed Wed Dec 9 22:00:37 2015 by ELM ver.2012-10-06 from 001__elm20151130_164115__dat00.bin

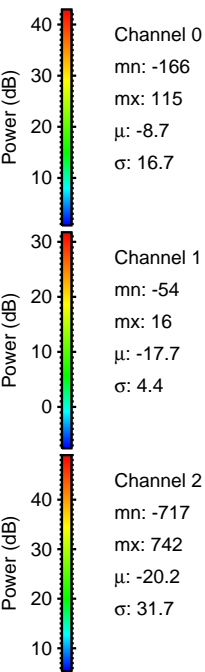
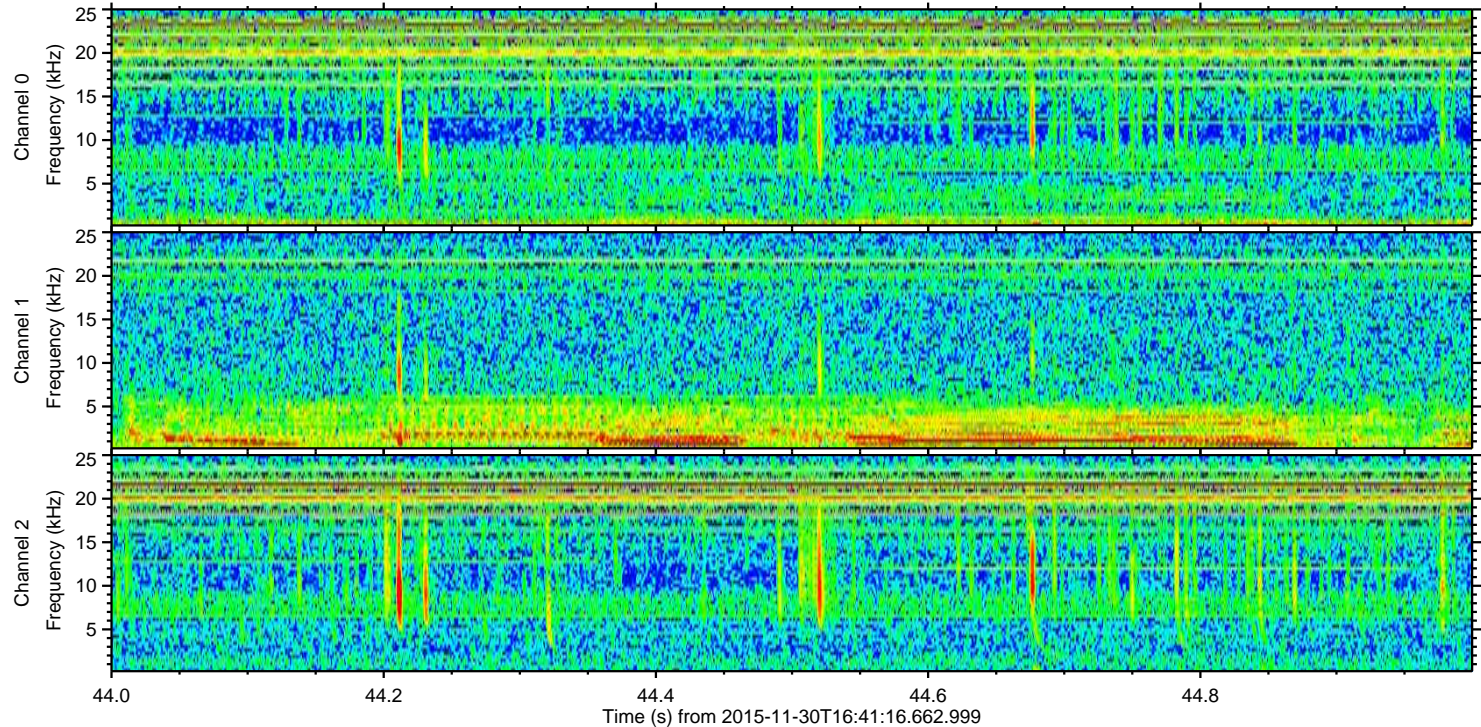
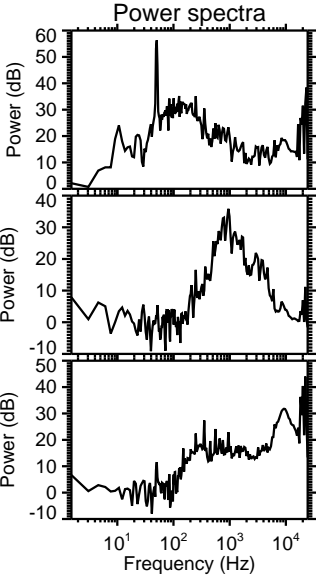
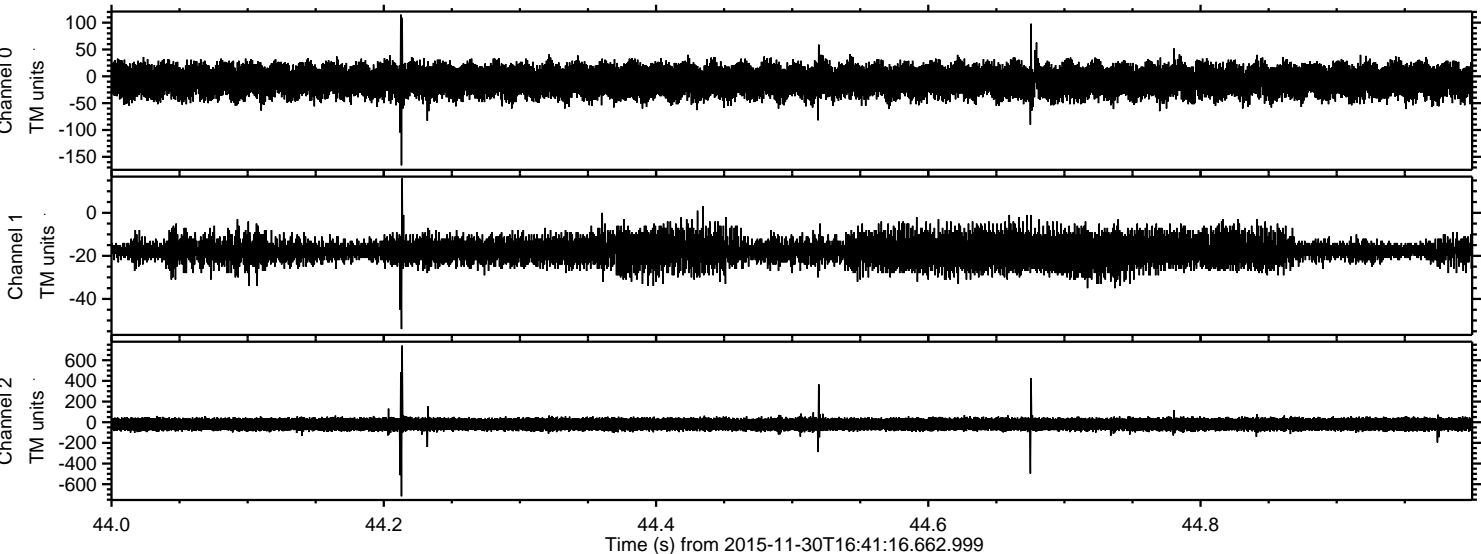


Channel 0
mn: -186
mx: 183
 μ : -8.7
 σ : 16.6

Channel 1
mn: -66
mx: 20
 μ : -17.7
 σ : 3.1

Channel 2
mn: -864
mx: 708
 μ : -20.2
 σ : 31.4

Processed Wed Dec 9 22:00:38 2015 by ELM ver.2012-10-06 from 001__elm20151130_164115__dat00.bin



Processed Wed Dec 9 22:00:39 2015 by ELM ver.2012-10-06 from 001__elm20151130_164115__dat00.bin

