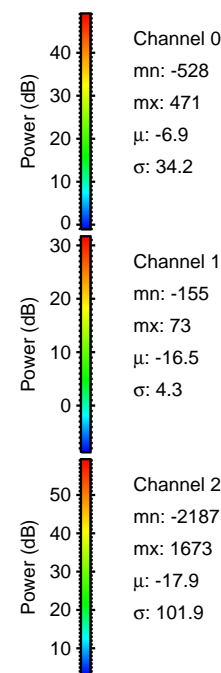
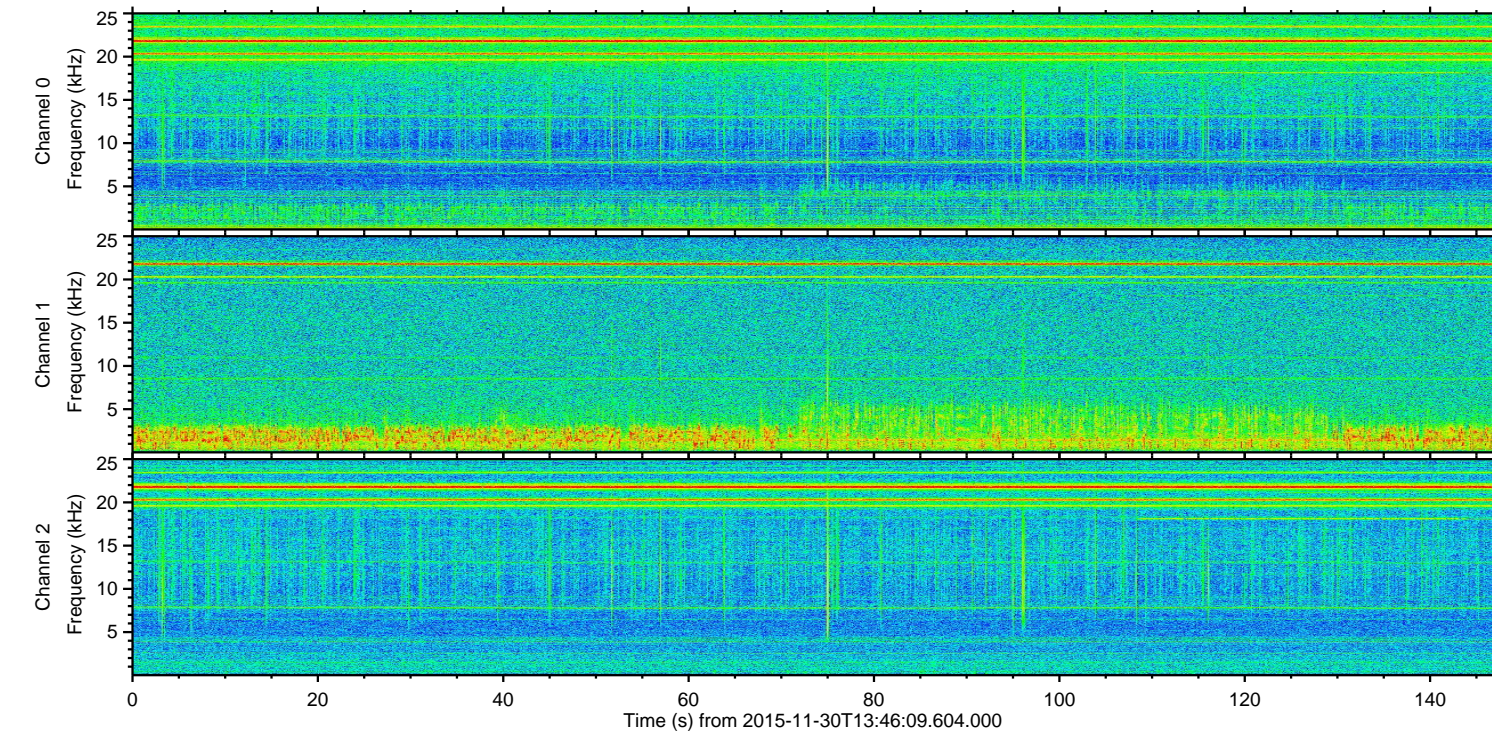
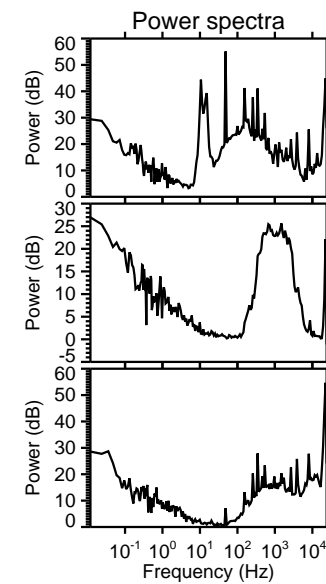
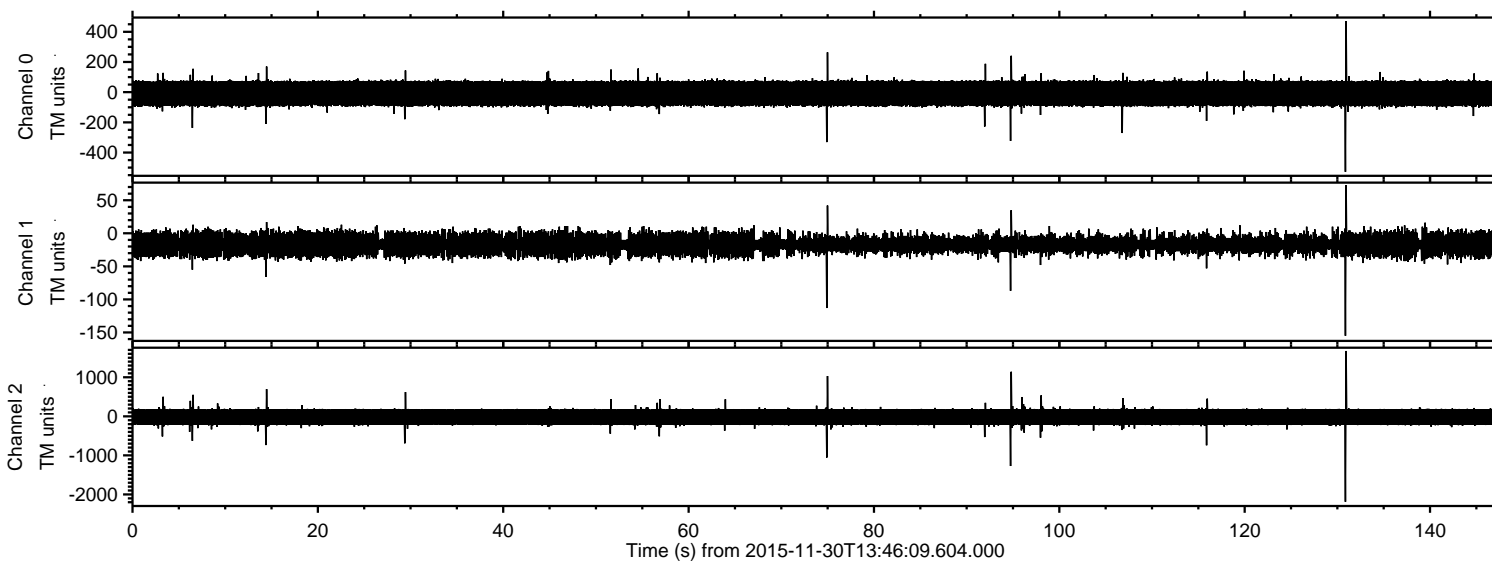


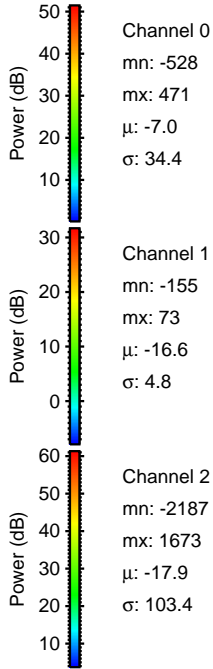
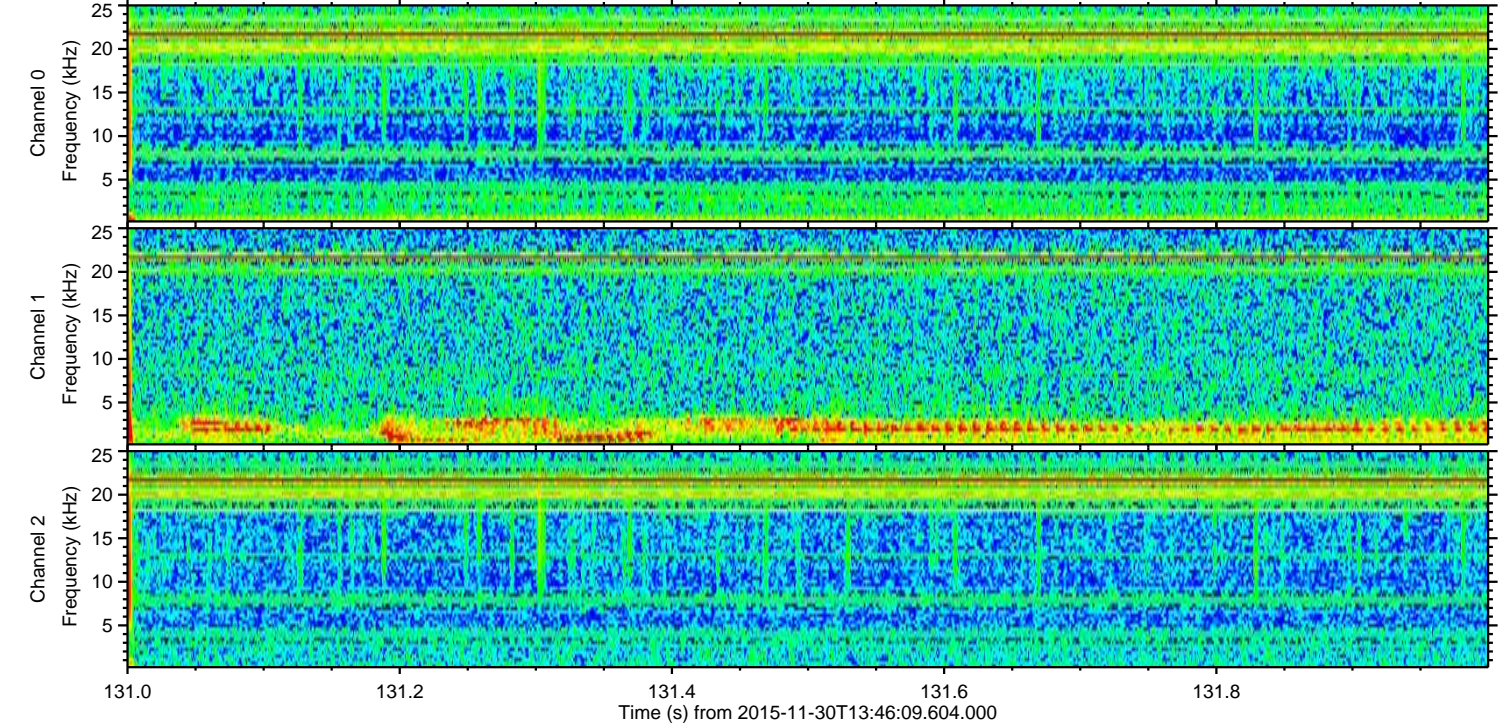
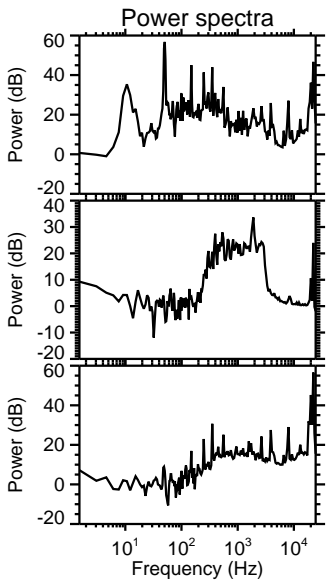
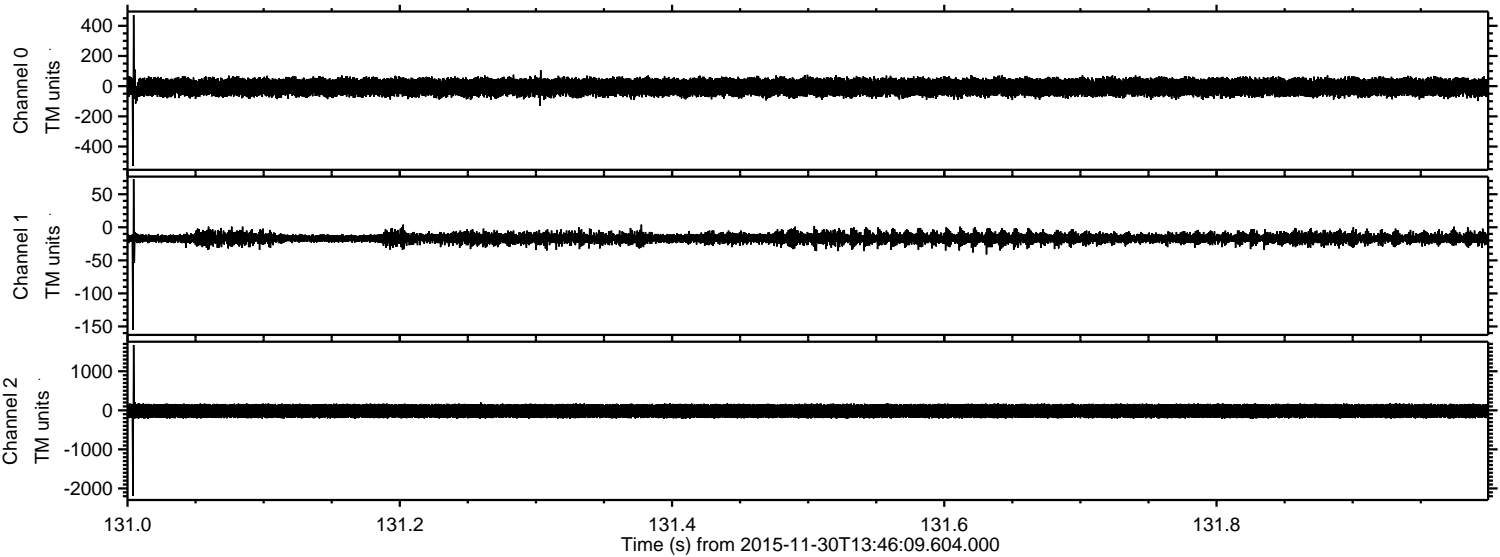
ELMAVAN 3D WAVEFORMS (Measured data sampled at 50 kHz) 51000 packets of 144 samples from 2015-11-30T13:46:09.604.000.

Processed Wed Dec 9 19:52:10 2015 by ELM ver.2012-10-06 from 001__elm20151130_134608__dat00.bin

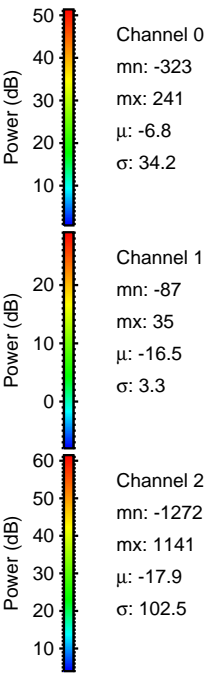
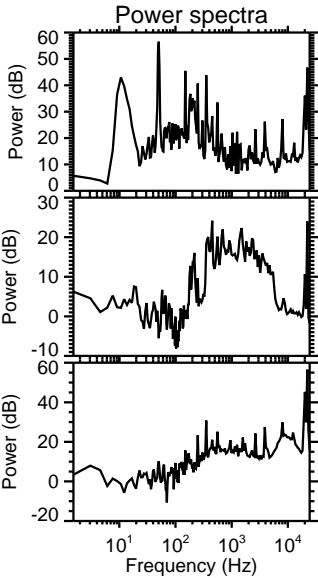
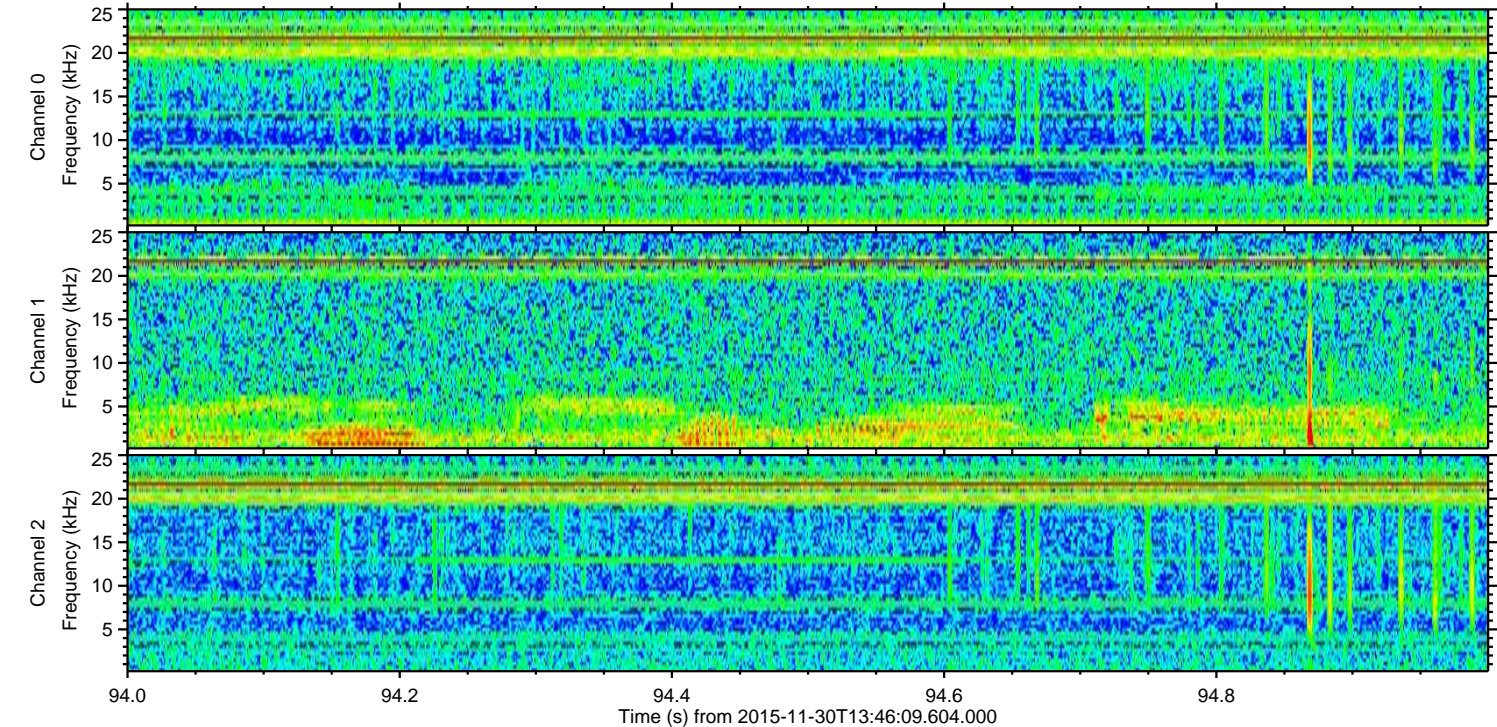
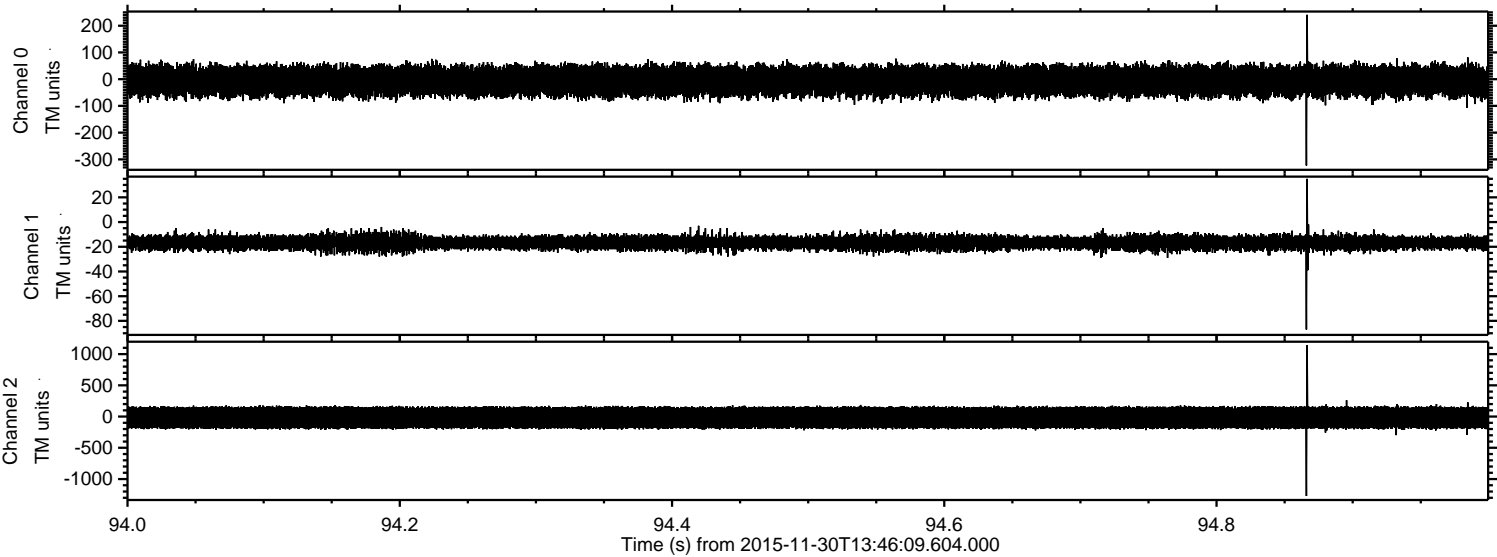


ELMAVAN 3D WAVEFORMS (Measured data sampled at 50 kHz) 51000 packets of 144 samples from 2015-11-30T13:46:09.604.000. Part 132/147

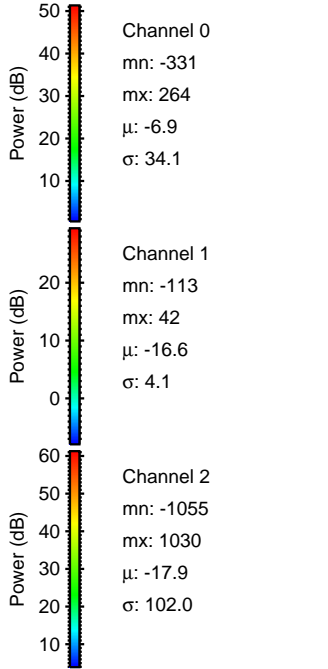
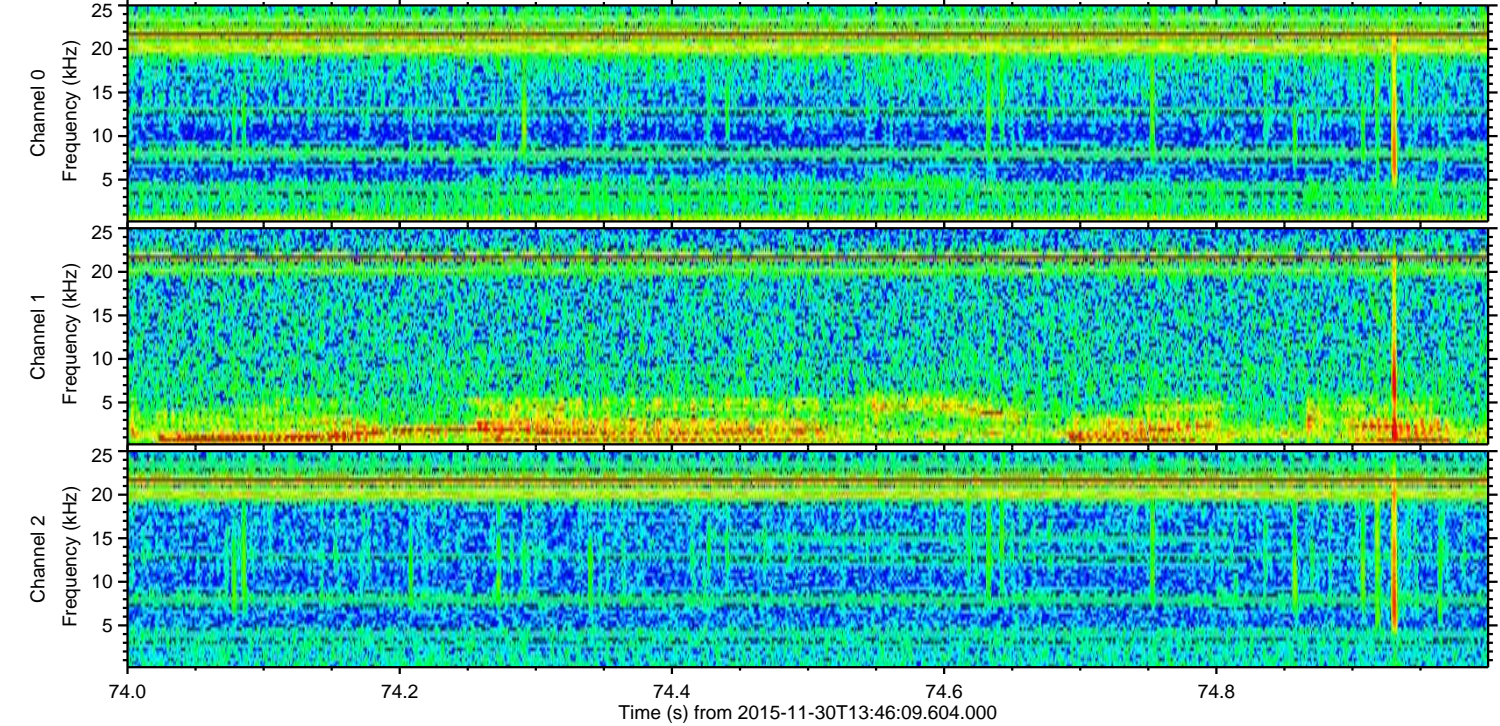
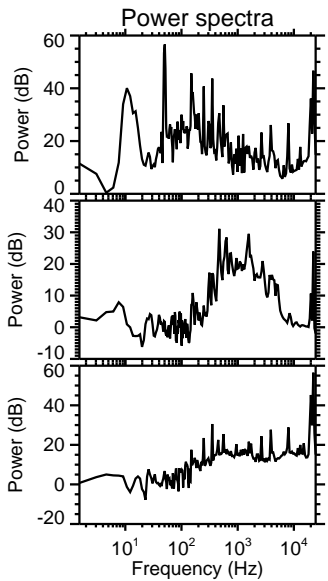
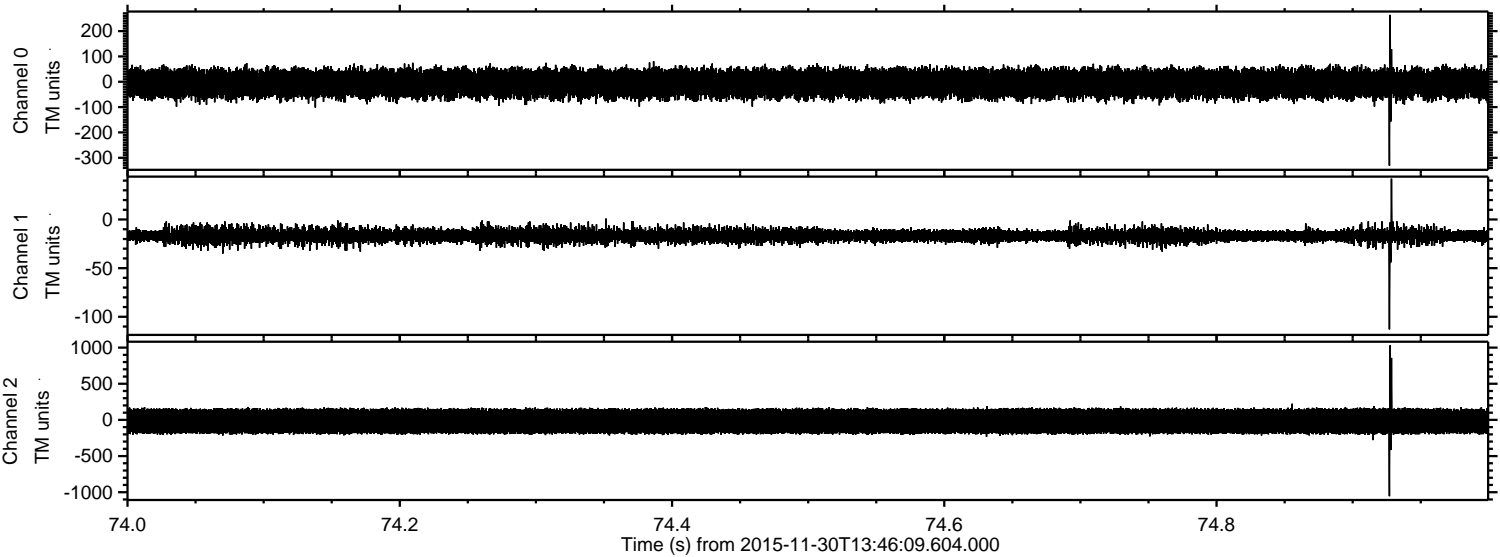
Processed Wed Dec 9 19:52:22 2015 by ELM ver.2012-10-06 from 001__elm20151130_134608__dat00.bin



Processed Wed Dec 9 19:52:23 2015 by ELM ver.2012-10-06 from 001__elm20151130_134608__dat00.bin

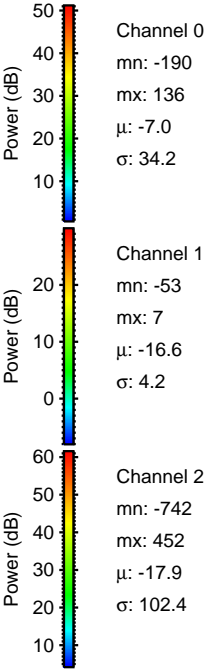
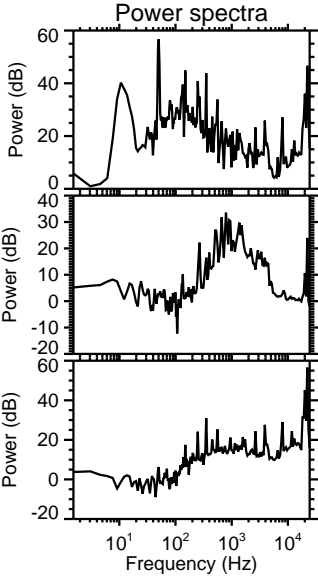
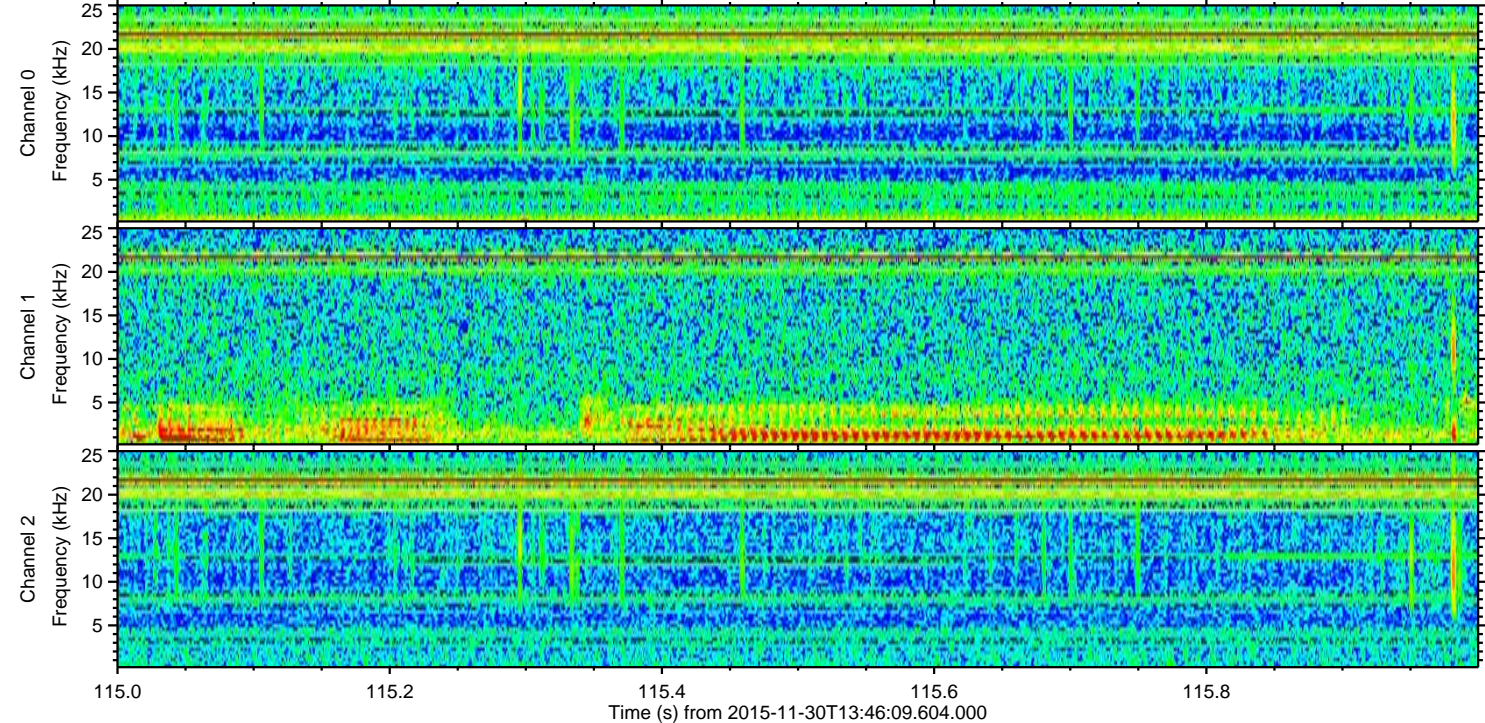
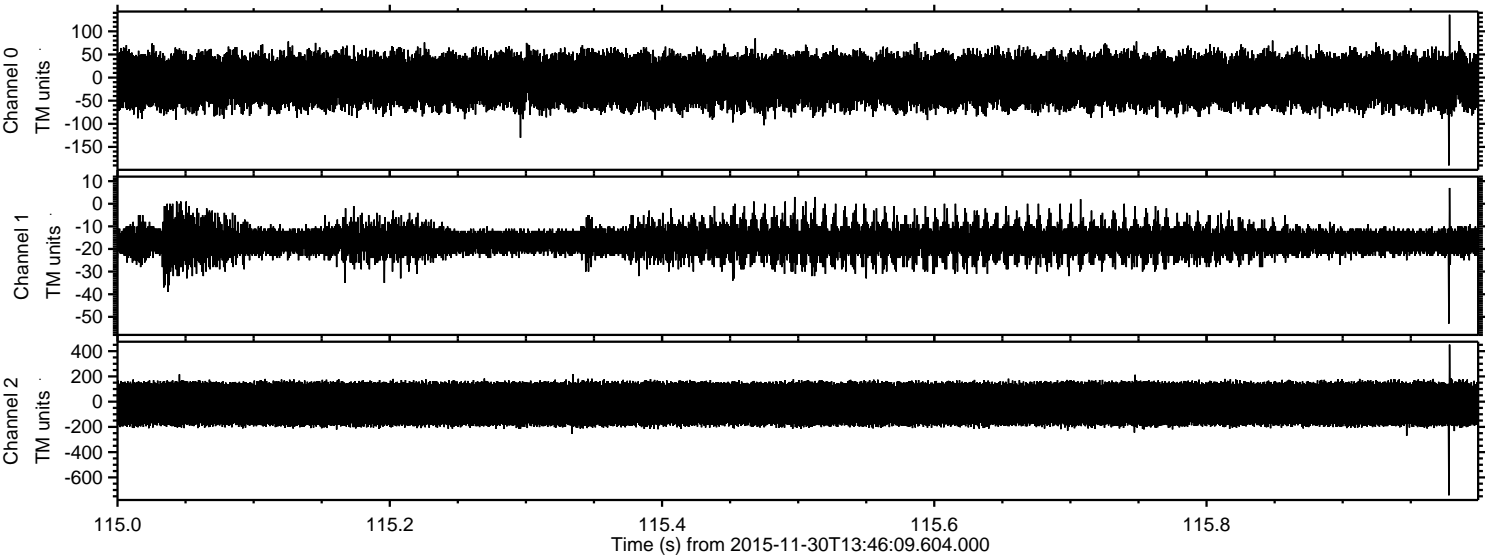


Processed Wed Dec 9 19:52:24 2015 by ELM ver.2012-10-06 from 001__elm20151130_134608__dat00.bin



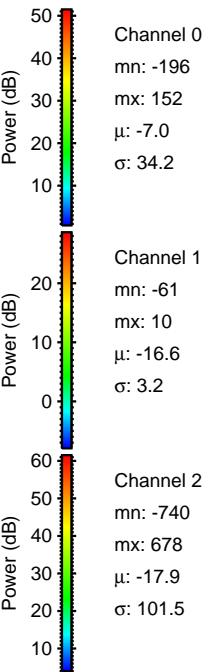
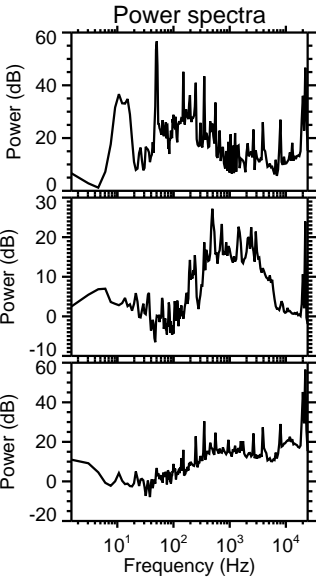
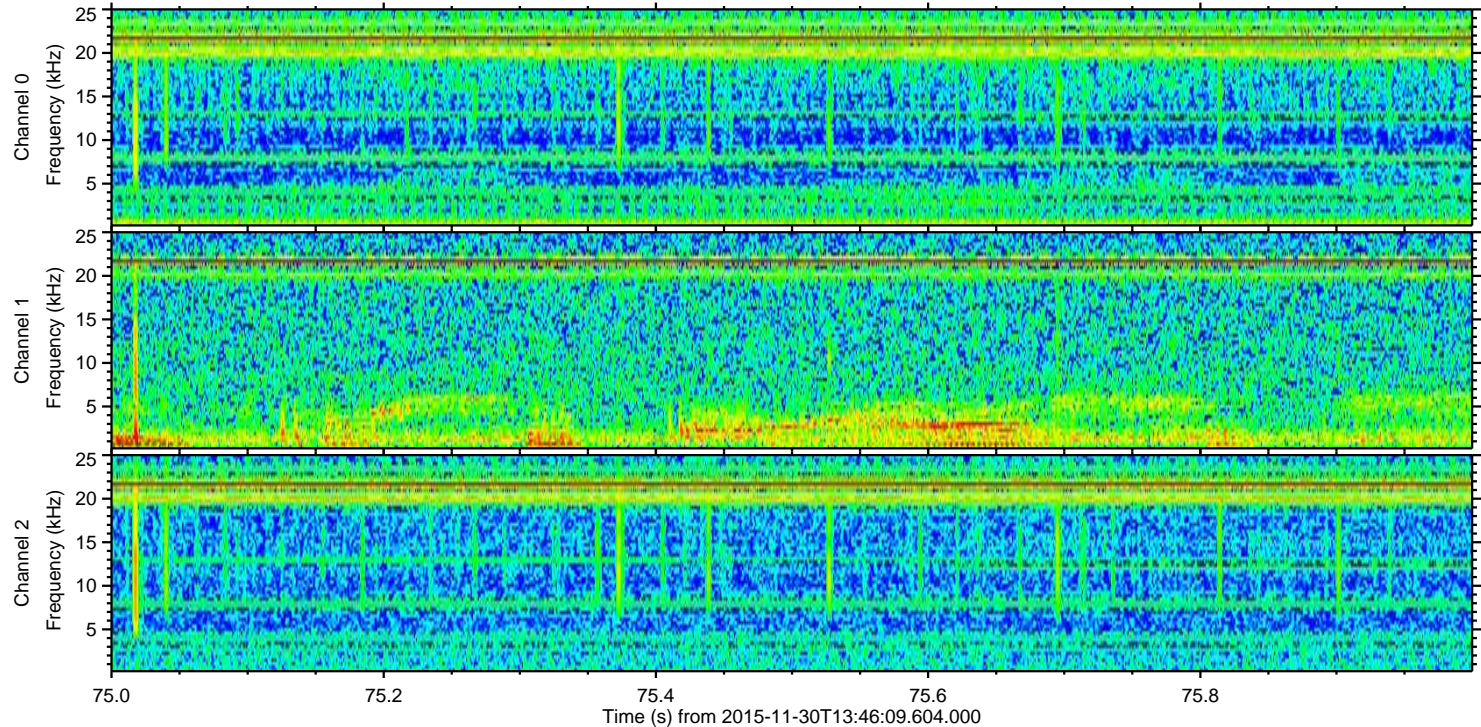
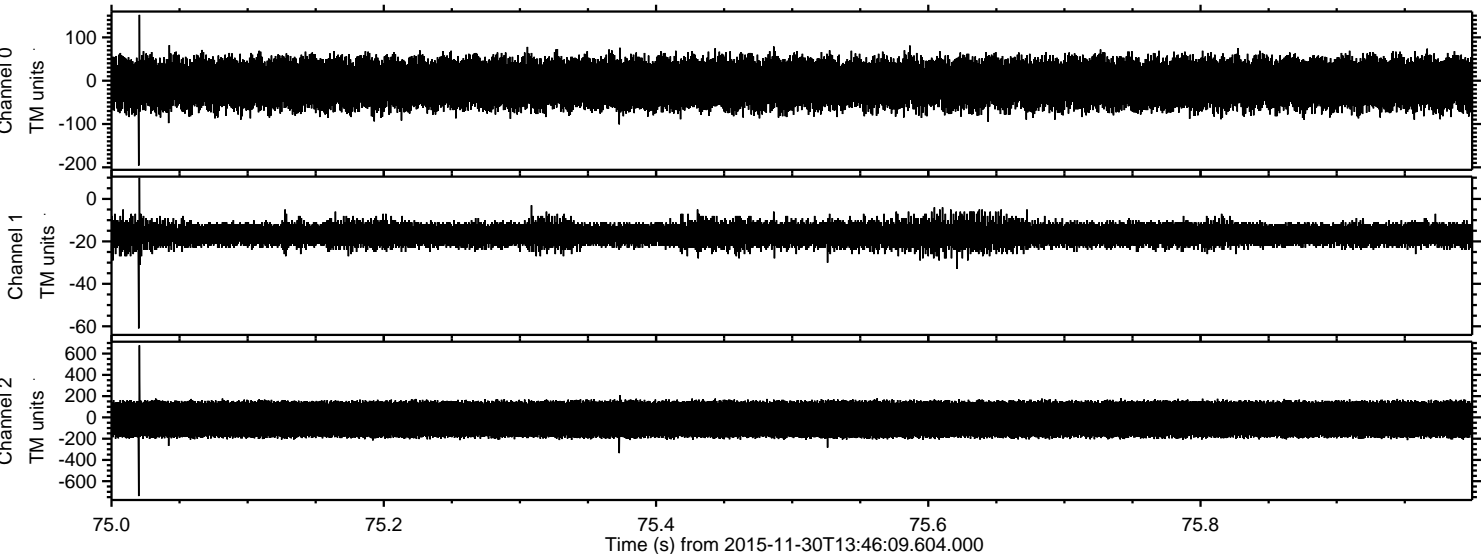
ELMAVAN 3D WAVEFORMS (Measured data sampled at 50 kHz) 51000 packets of 144 samples from 2015-11-30T13:46:09.604.000. Part 116/147

Processed Wed Dec 9 19:52:25 2015 by ELM ver.2012-10-06 from 001__elm20151130_134608__dat00.bin

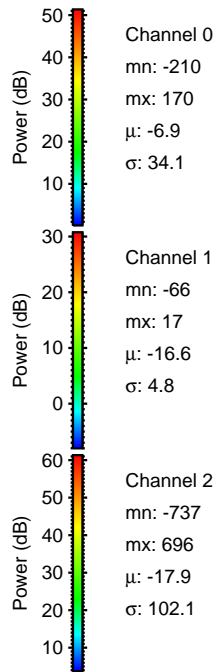
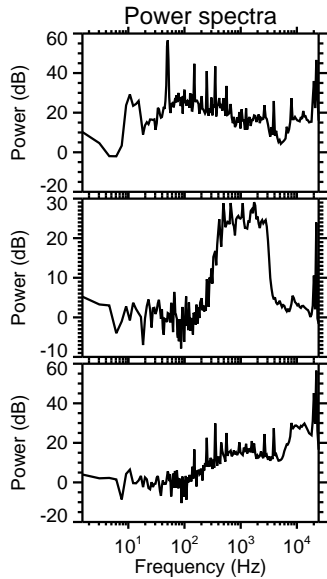
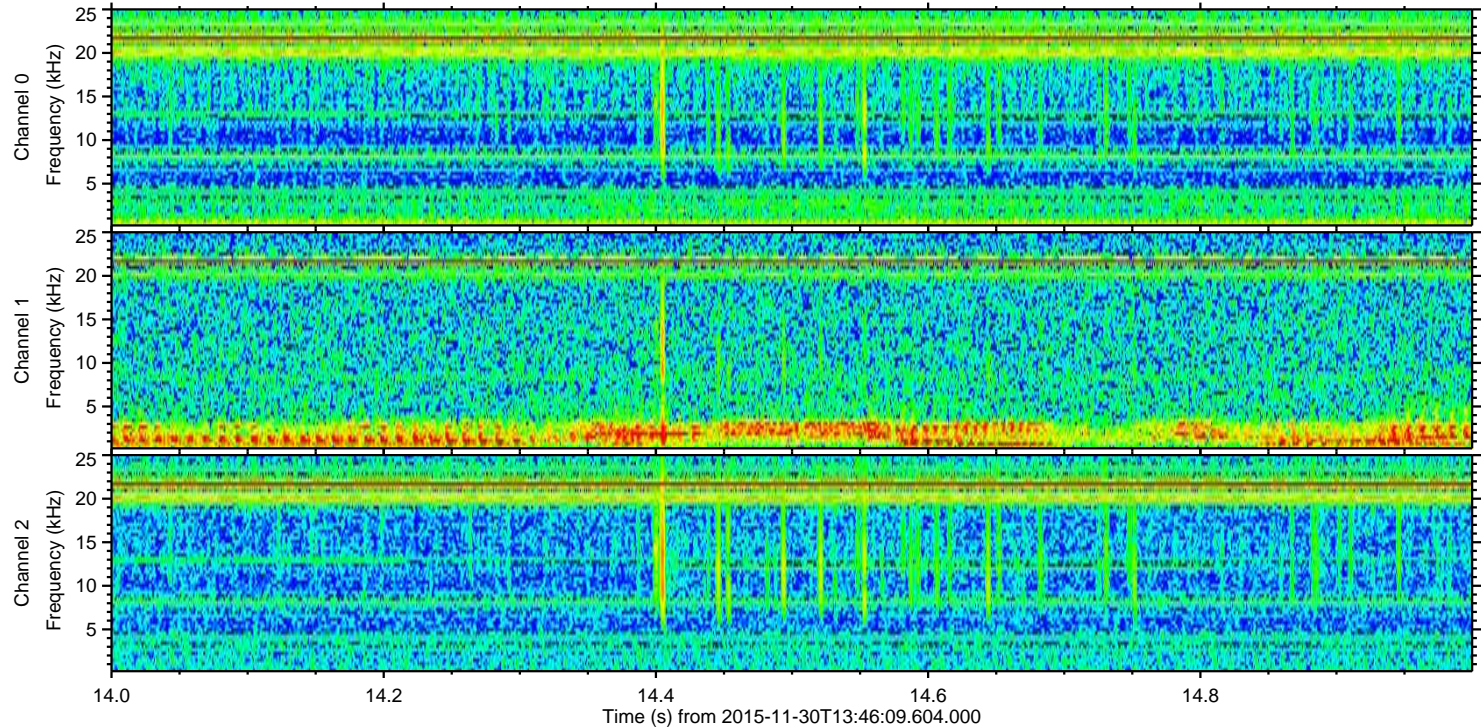
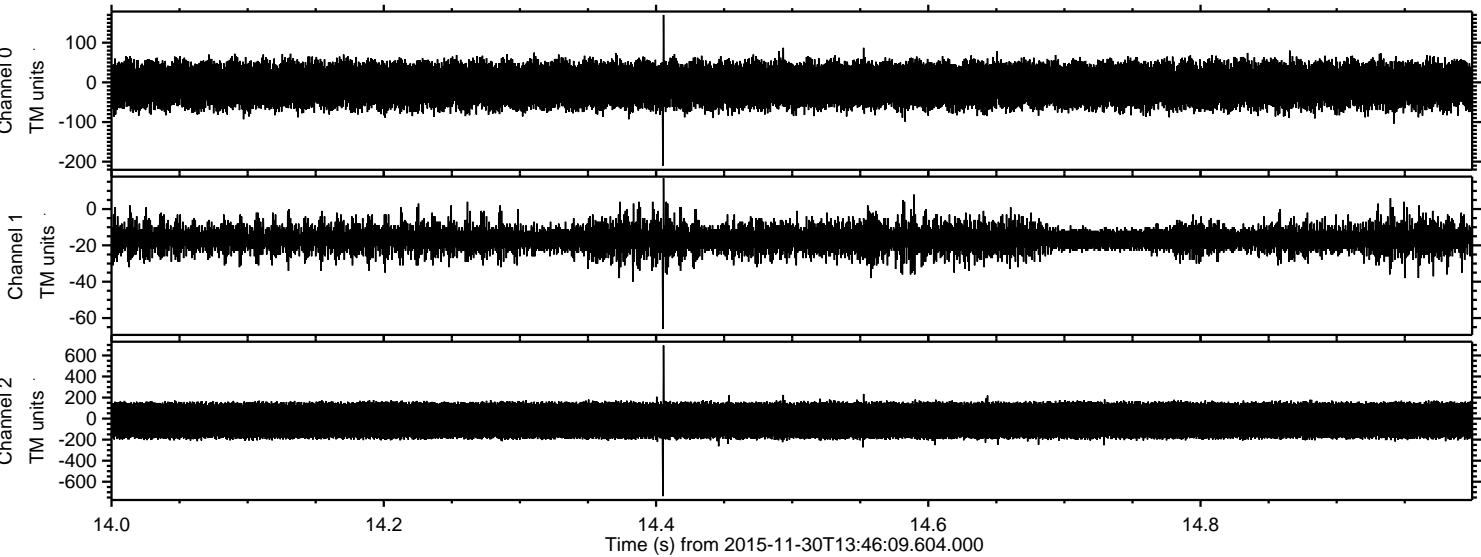


ELMAVAN 3D WAVEFORMS (Measured data sampled at 50 kHz) 51000 packets of 144 samples from 2015-11-30T13:46:09.604.000. Part 76/147

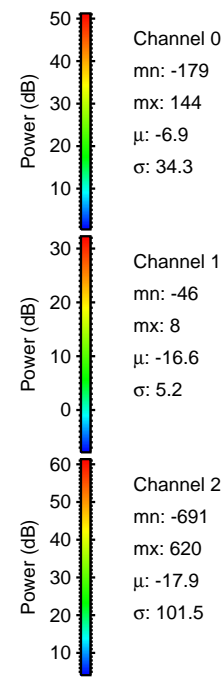
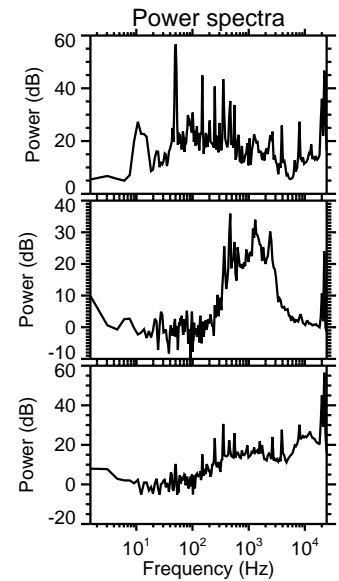
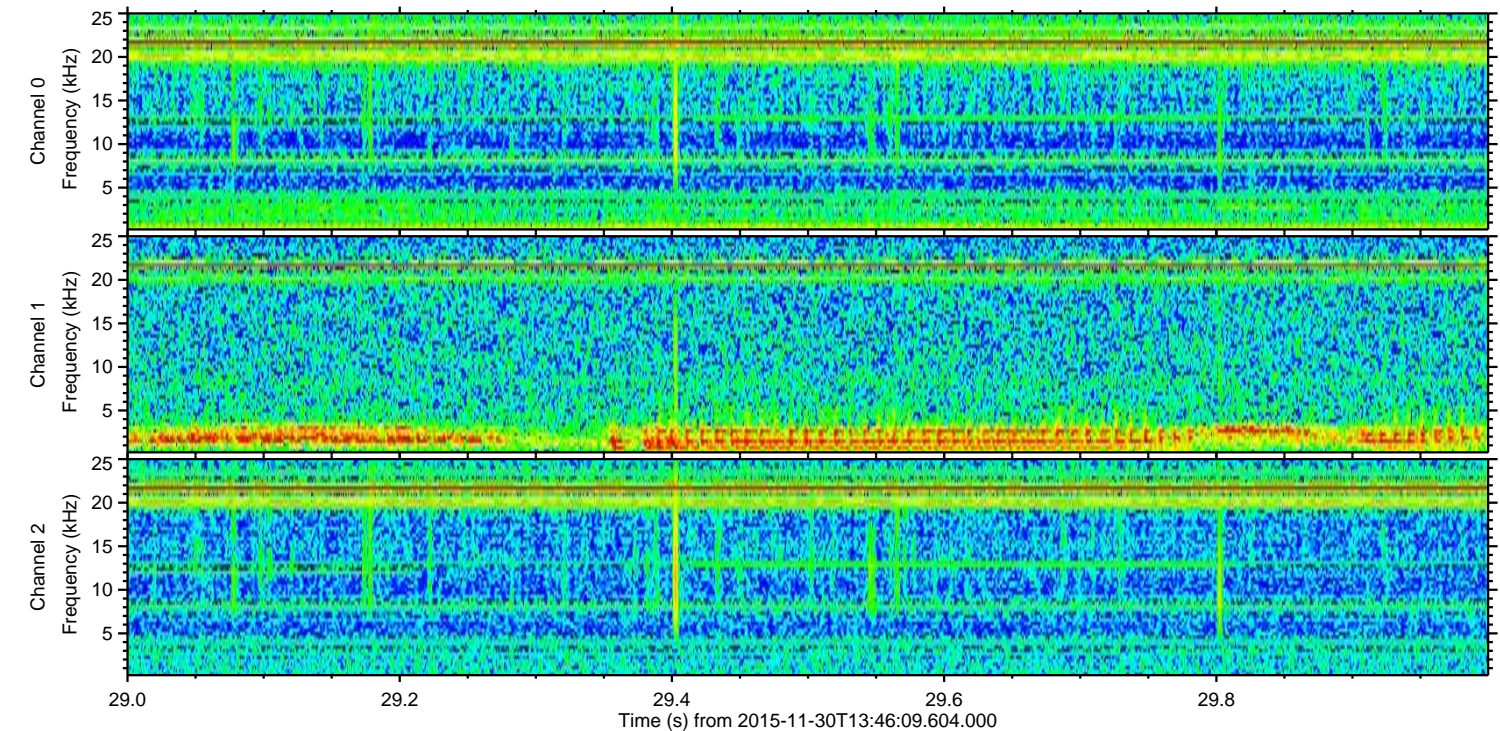
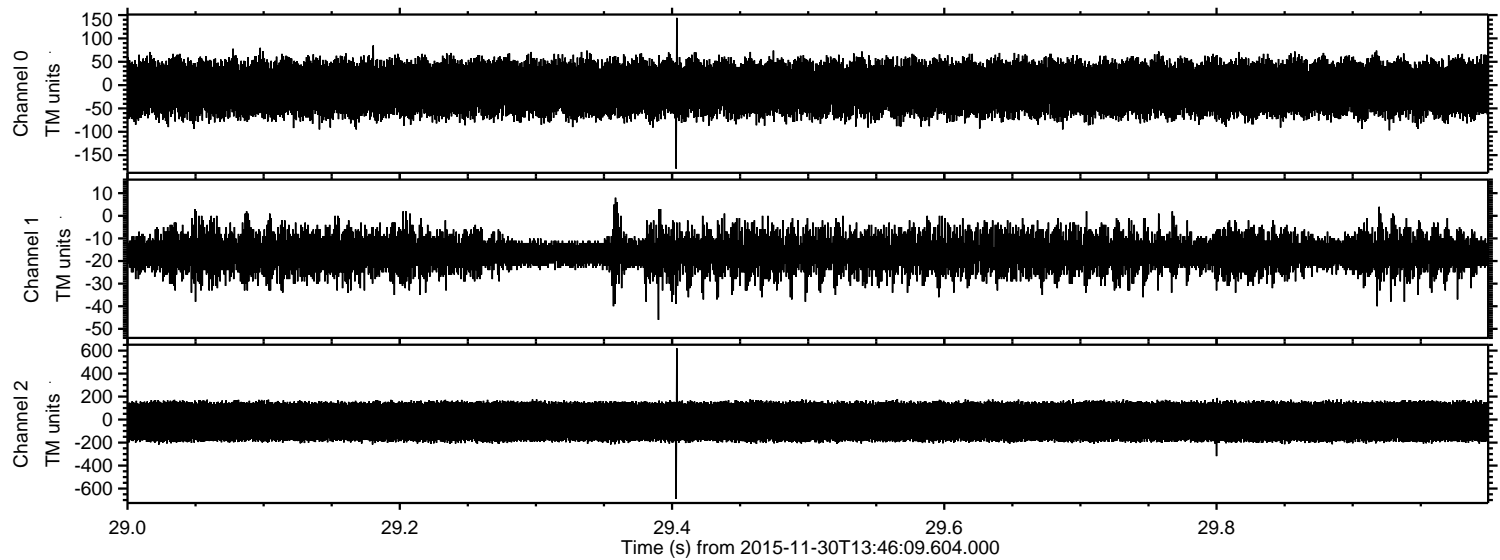
Processed Wed Dec 9 19:52:26 2015 by ELM ver.2012-10-06 from 001__elm20151130_134608__dat00.bin



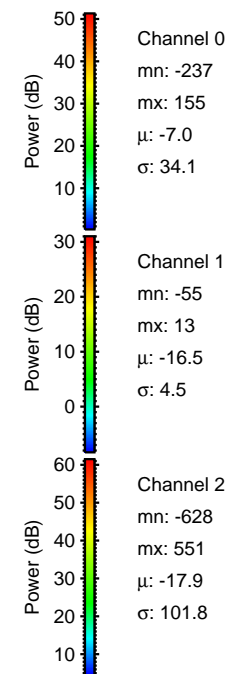
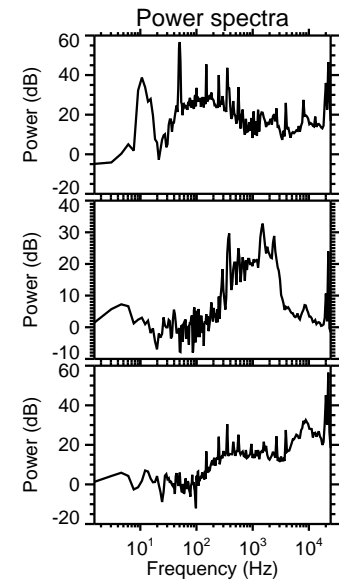
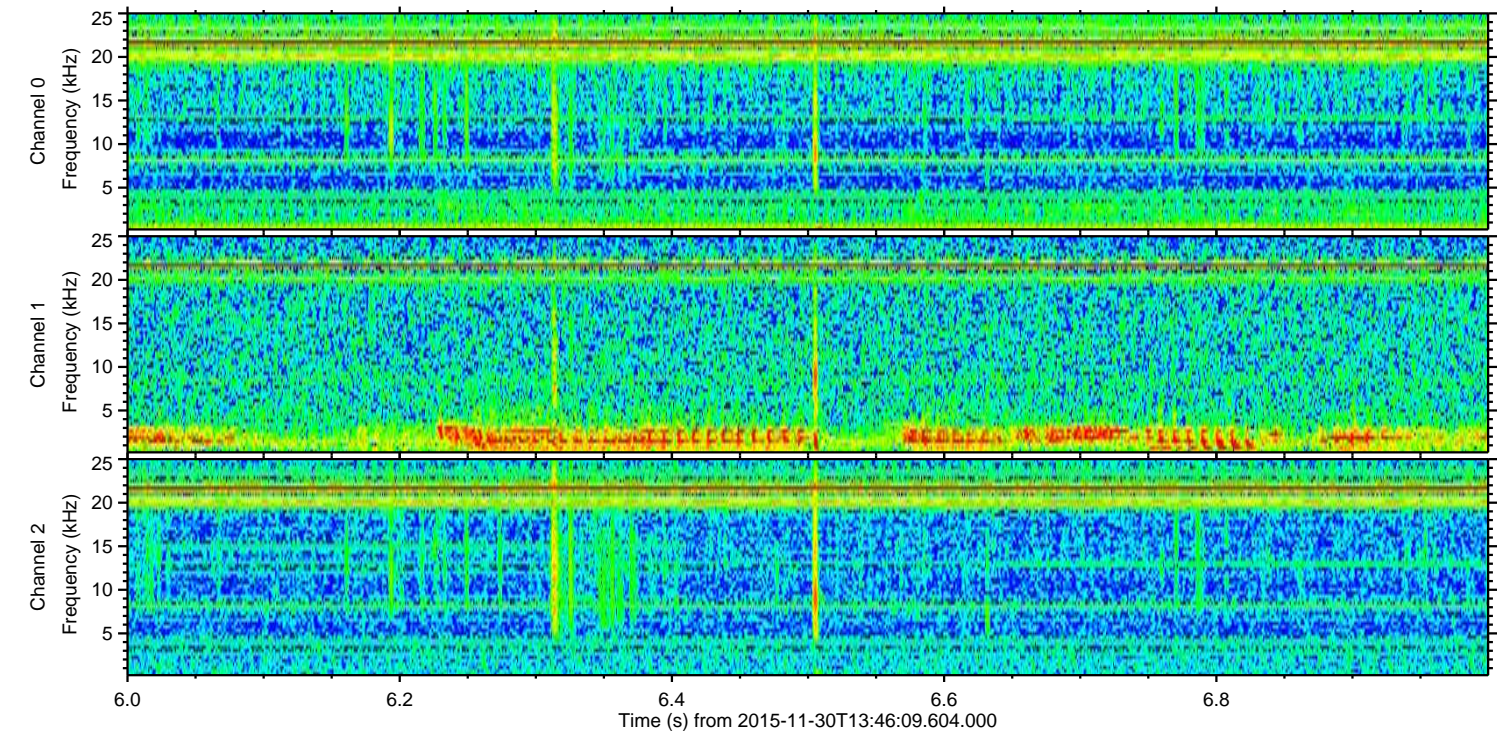
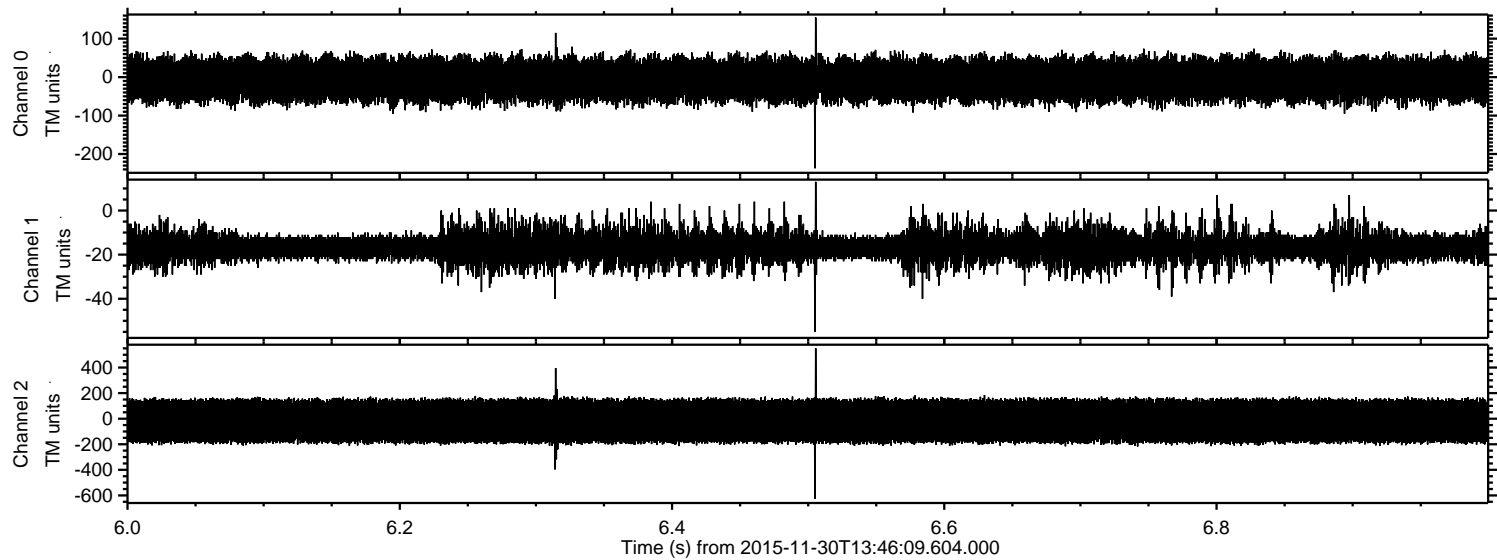
Processed Wed Dec 9 19:52:27 2015 by ELM ver.2012-10-06 from 001__elm20151130_134608__dat00.bin



Processed Wed Dec 9 19:52:27 2015 by ELM ver.2012-10-06 from 001__elm20151130_134608__dat00.bin



Processed Wed Dec 9 19:52:28 2015 by ELM ver.2012-10-06 from 001__elm20151130_134608__dat00.bin

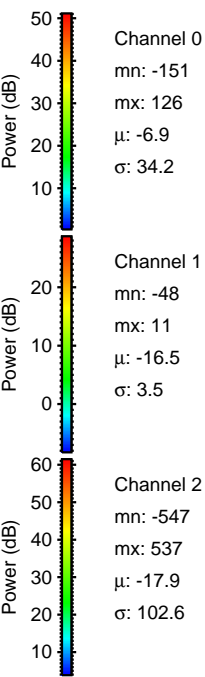
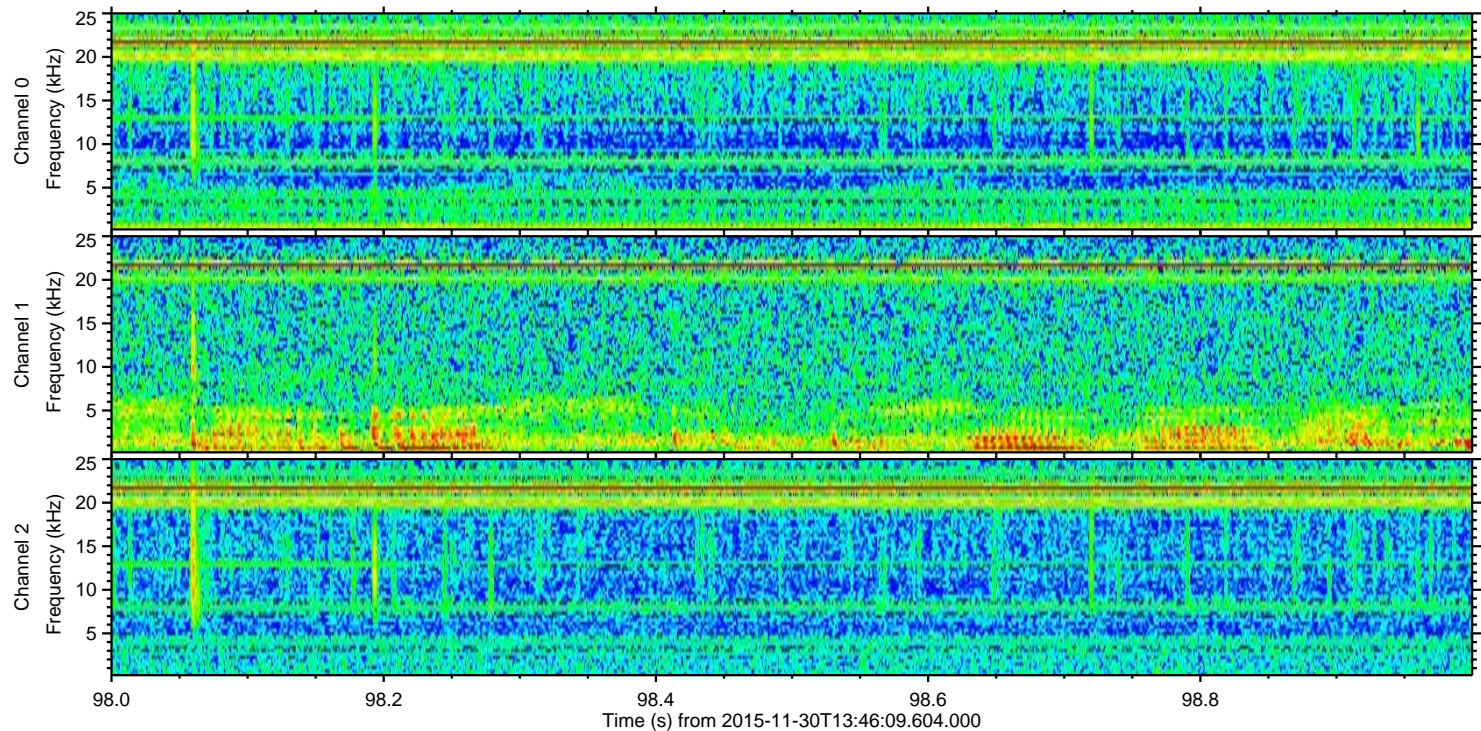
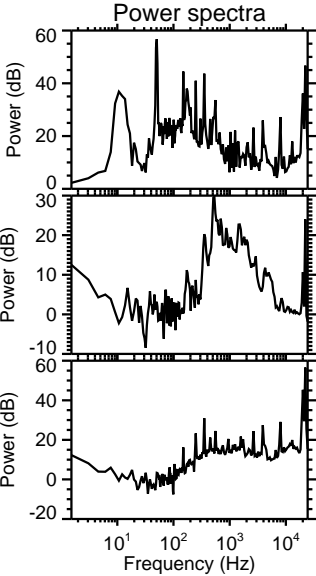
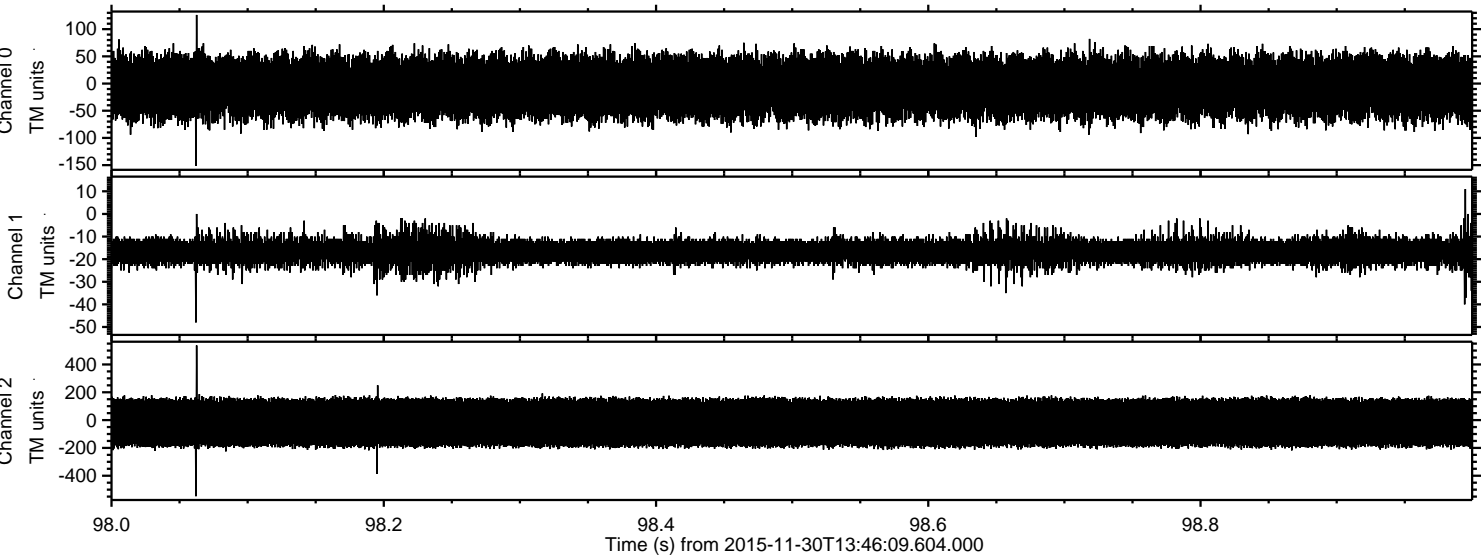


Channel 0
mn: -237
mx: 155
 μ : -7.0
 σ : 34.1

Channel 1
mn: -55
mx: 13
 μ : -16.5
 σ : 4.5

Channel 2
mn: -628
mx: 551
 μ : -17.9
 σ : 101.8

Processed Wed Dec 9 19:52:29 2015 by ELM ver.2012-10-06 from 001__elm20151130_134608__dat00.bin



Processed Wed Dec 9 19:52:30 2015 by ELM ver.2012-10-06 from 001__elm20151130_134608__dat00.bin

