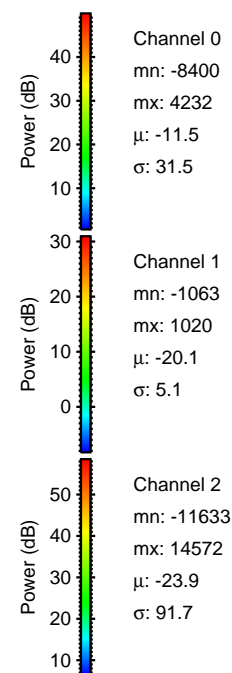
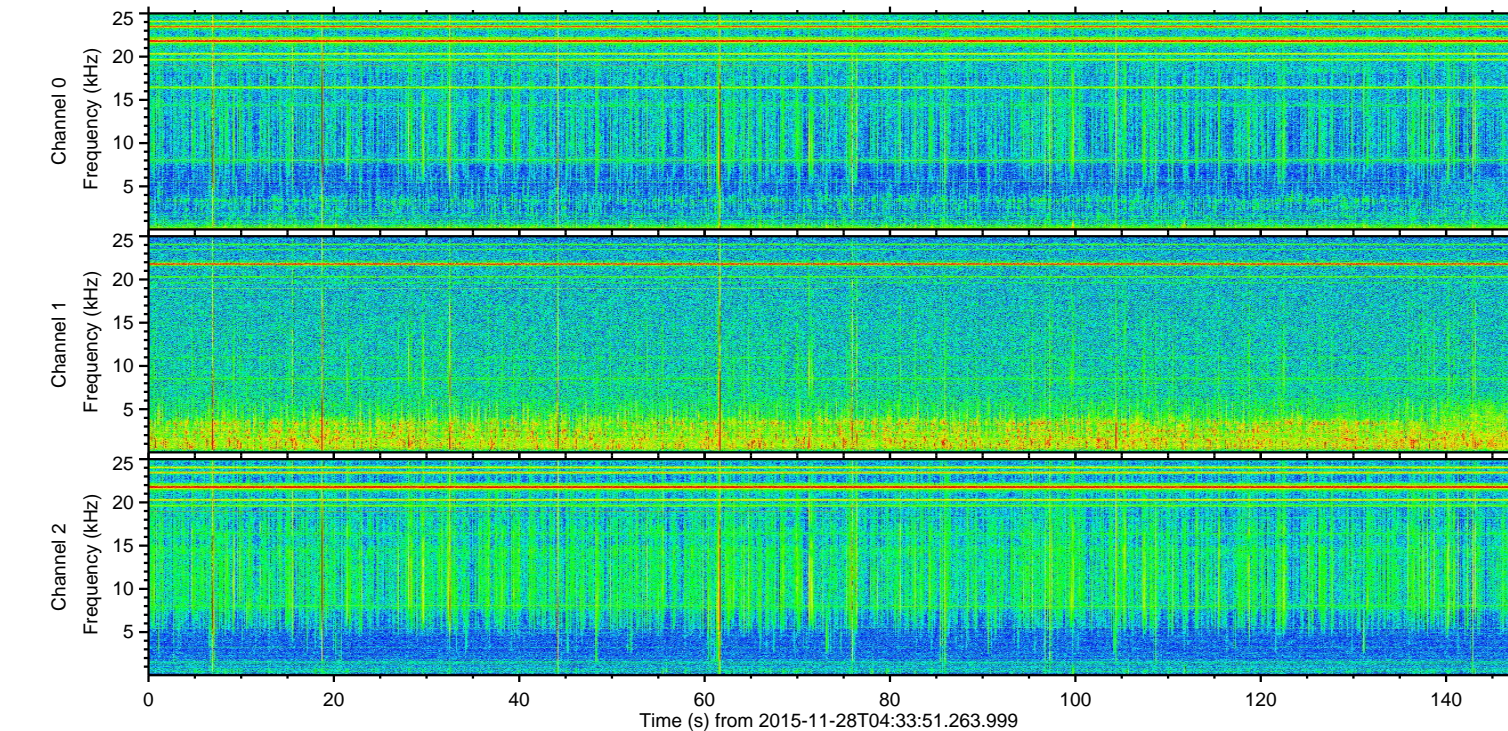
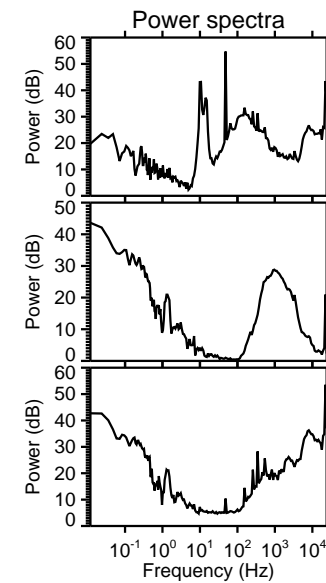
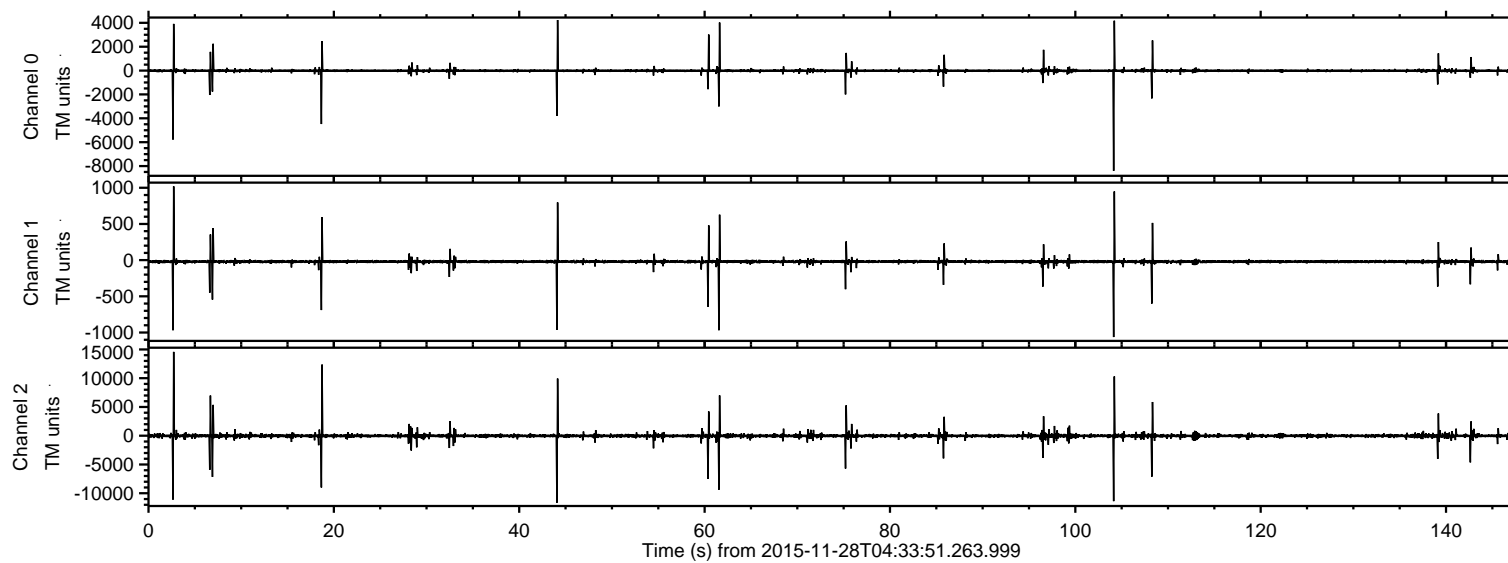


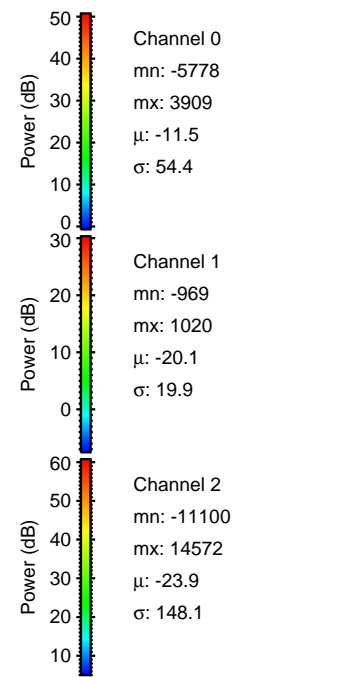
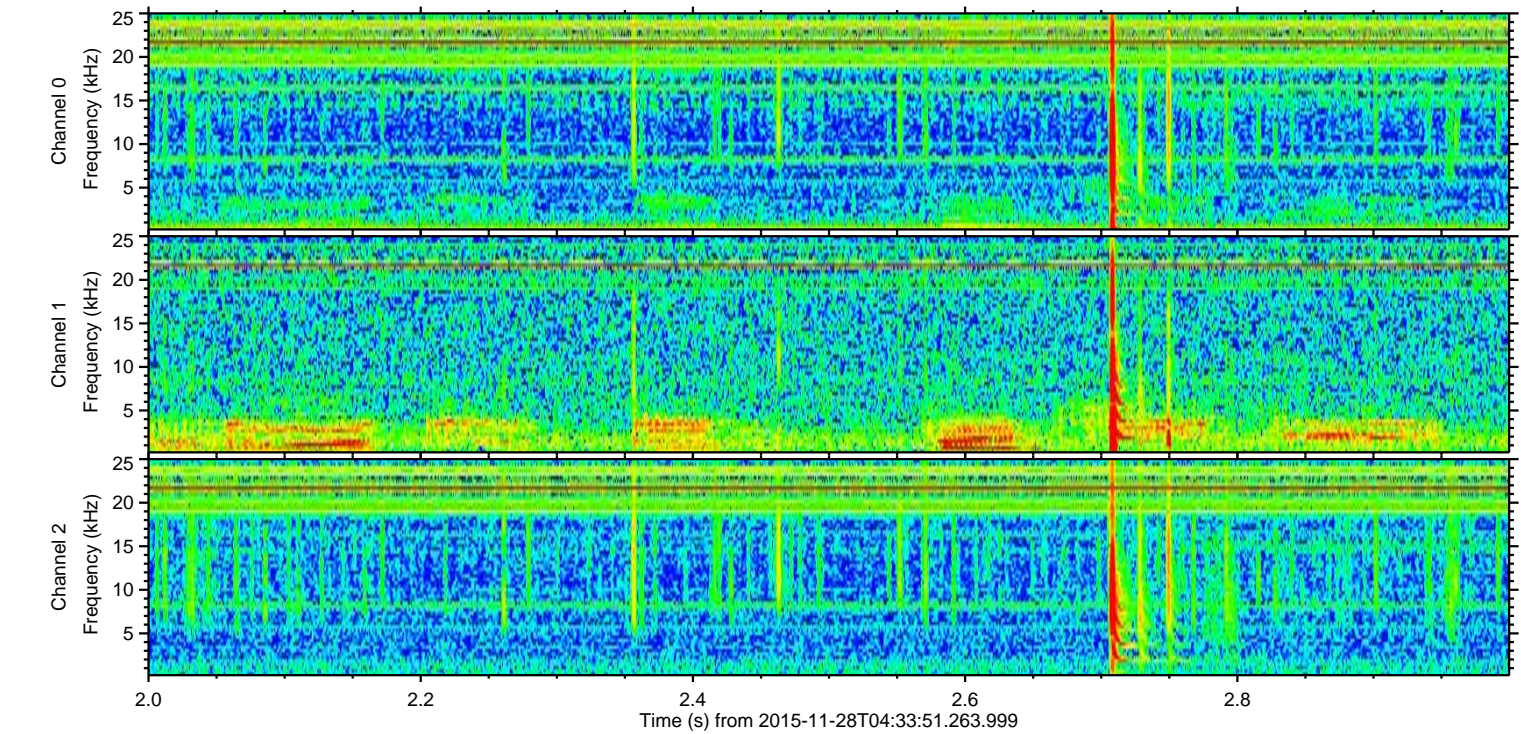
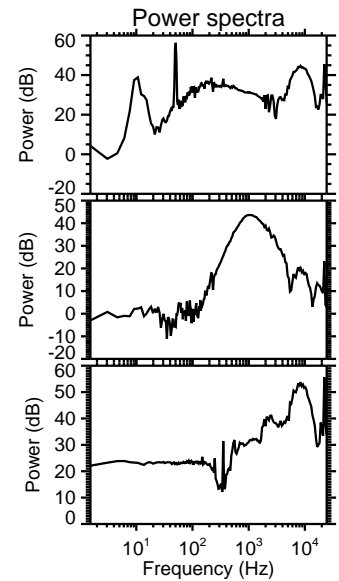
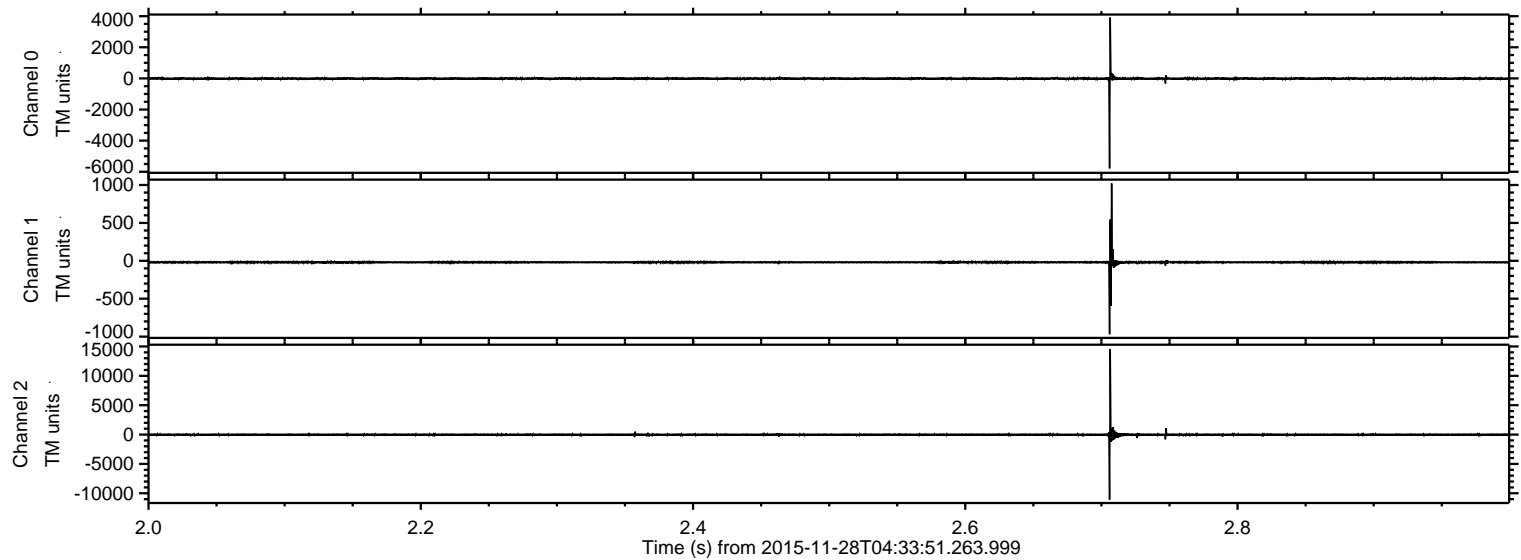
ELMAVAN 3D WAVEFORMS (Measured data sampled at 50 kHz) 51000 packets of 144 samples from 2015-11-28T04:33:51.263.999.

Processed Thu Dec 3 11:20:08 2015 by ELM ver.2012-10-06 from 001__elm20151128_043350__dat00.bin



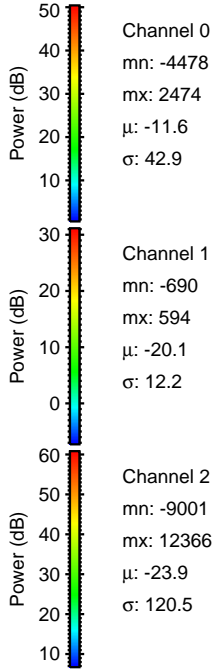
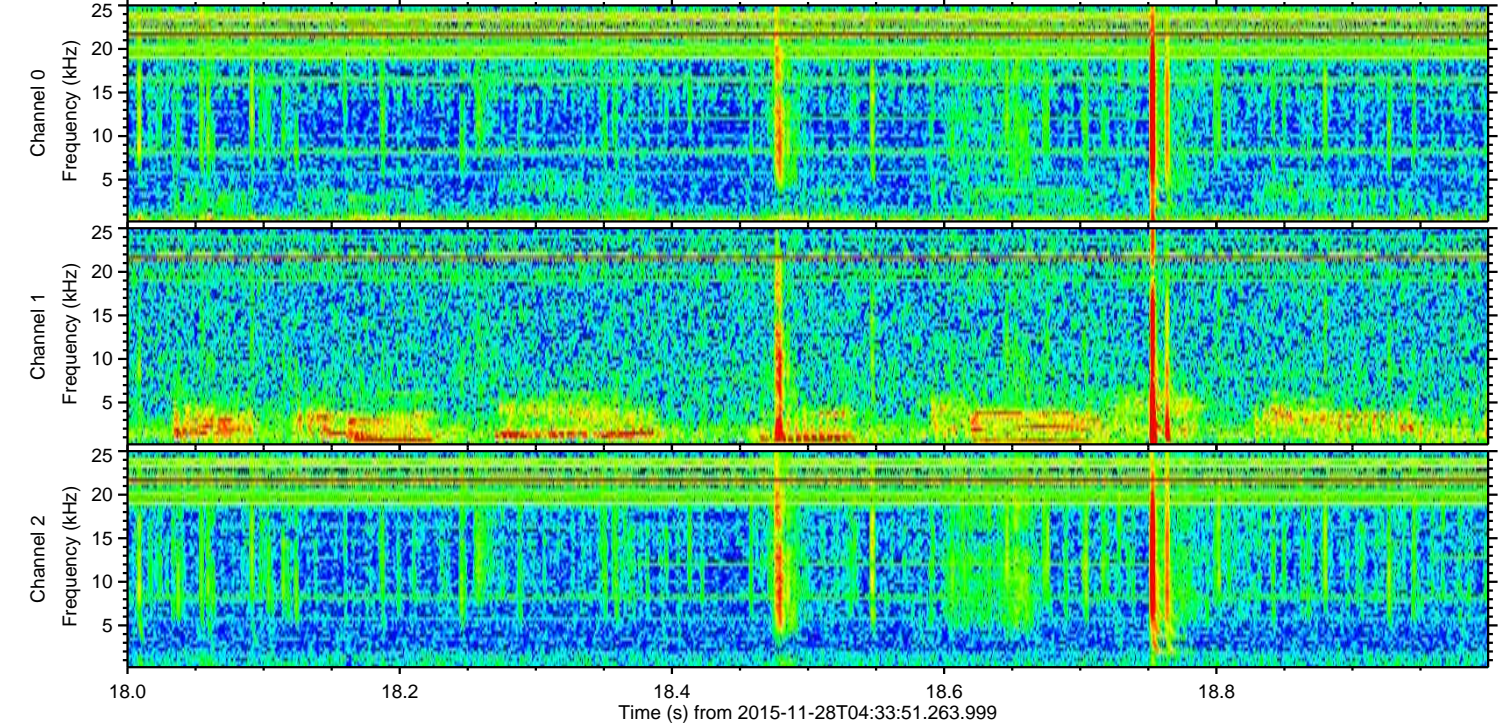
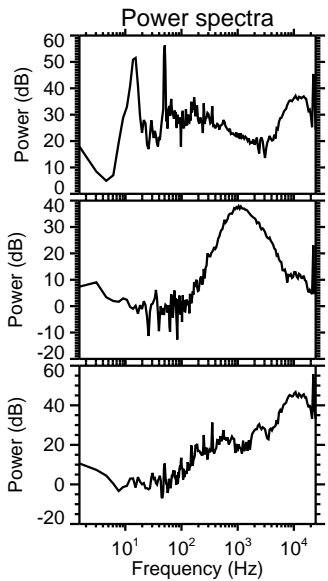
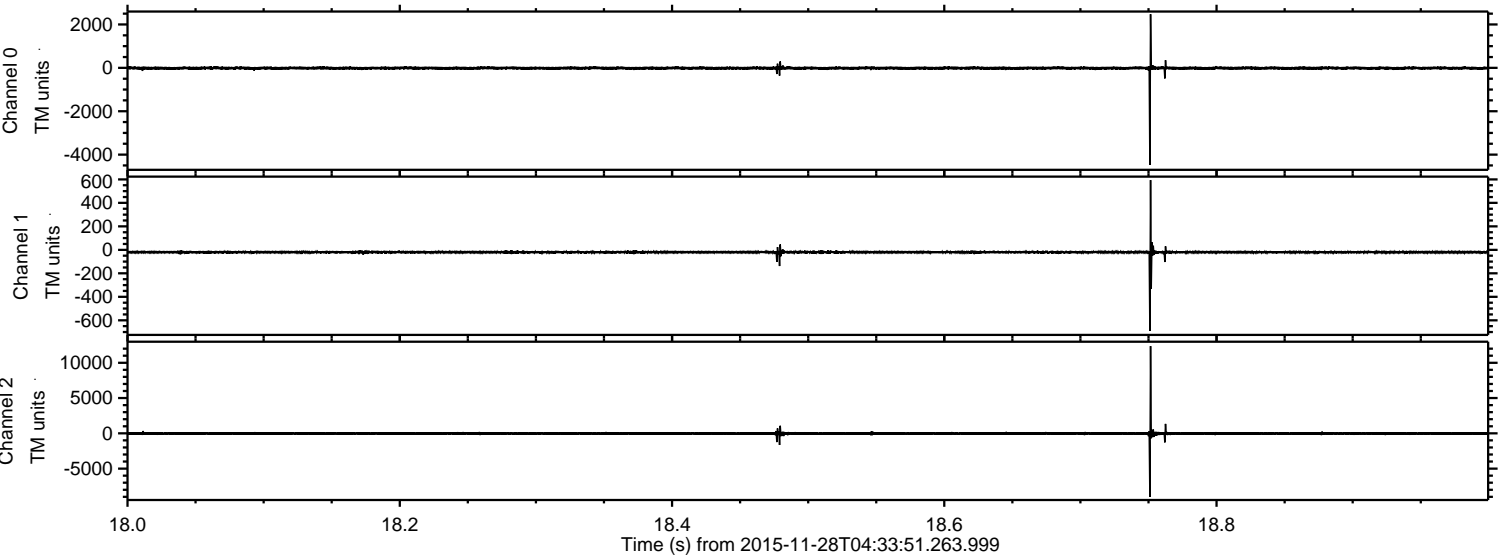
ELMAVAN 3D WAVEFORMS (Measured data sampled at 50 kHz) 51000 packets of 144 samples from 2015-11-28T04:33:51.263.999. Part 3/147

Processed Thu Dec 3 11:20:20 2015 by ELM ver.2012-10-06 from 001__elm20151128_043350__dat00.bin



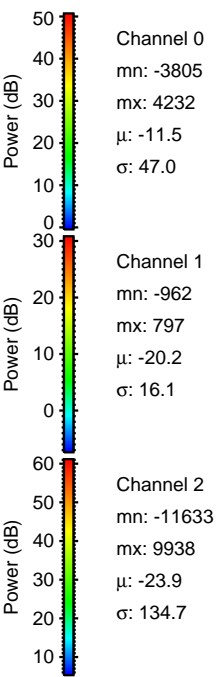
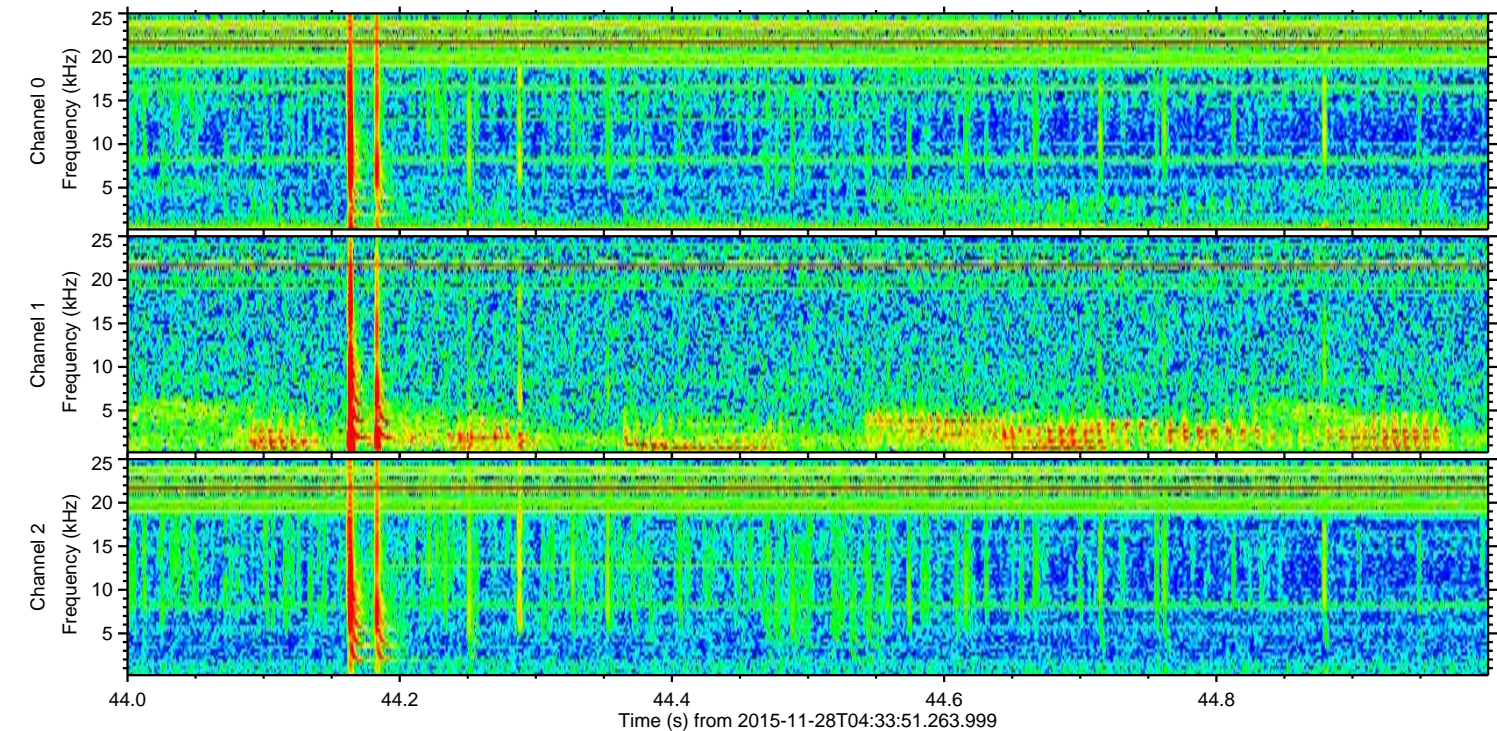
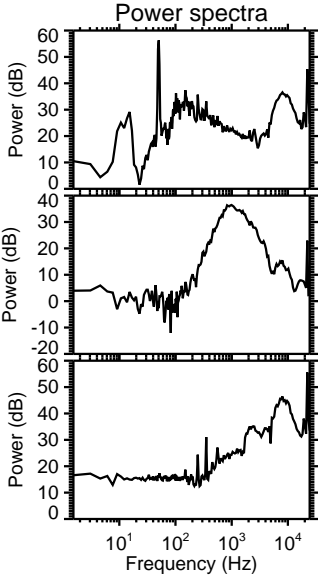
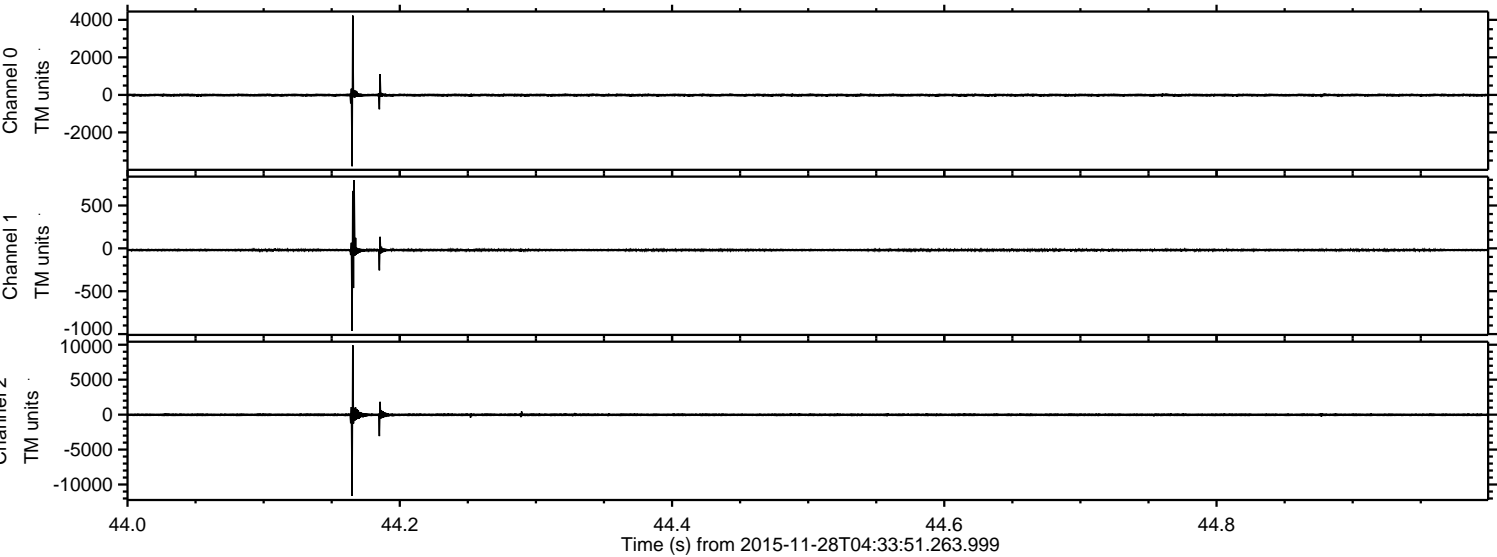
ELMAVAN 3D WAVEFORMS (Measured data sampled at 50 kHz) 51000 packets of 144 samples from 2015-11-28T04:33:51.263.999. Part 19/147

Processed Thu Dec 3 11:20:21 2015 by ELM ver.2012-10-06 from 001__elm20151128_043350__dat00.bin



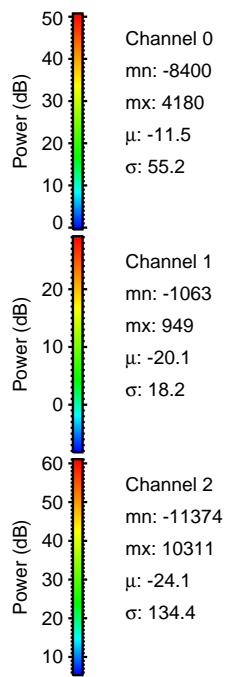
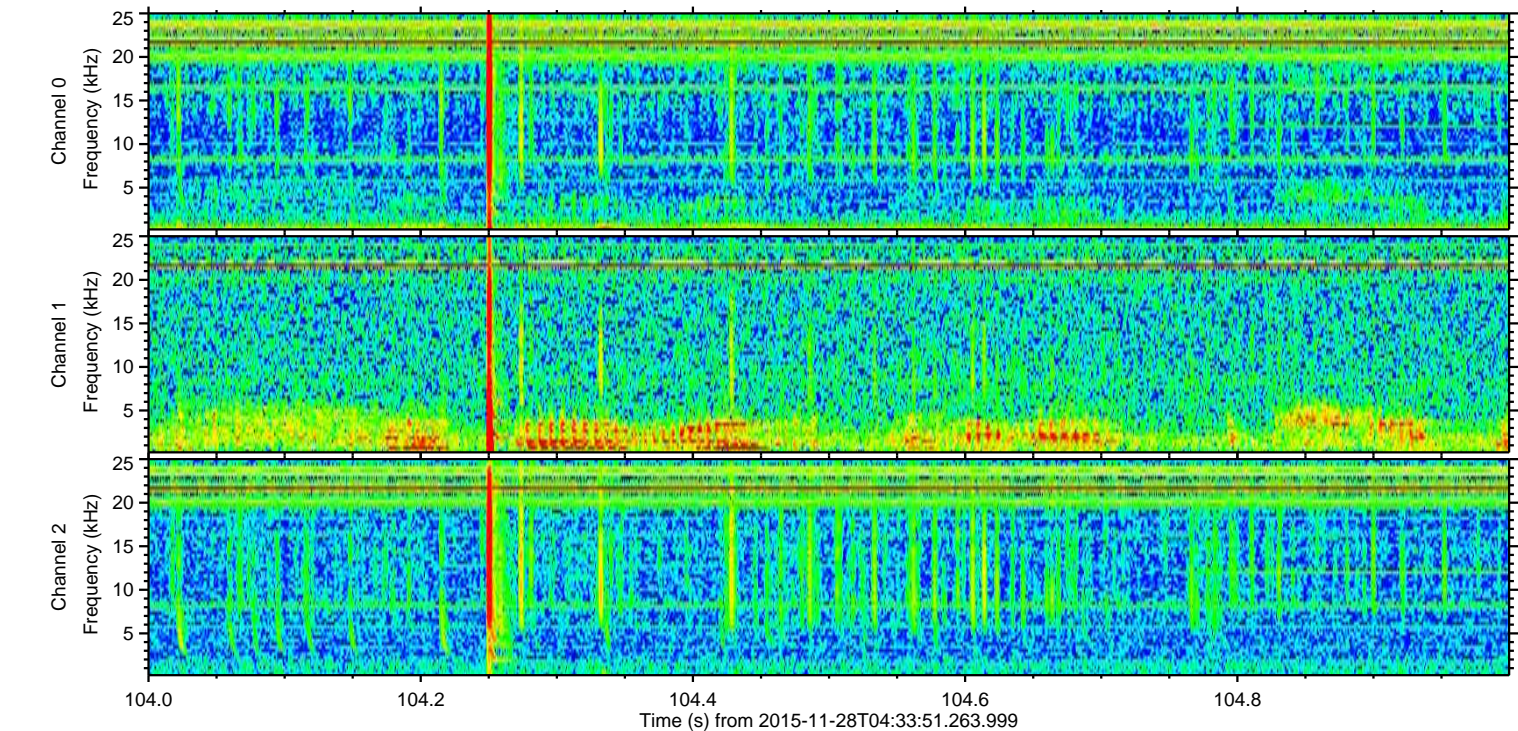
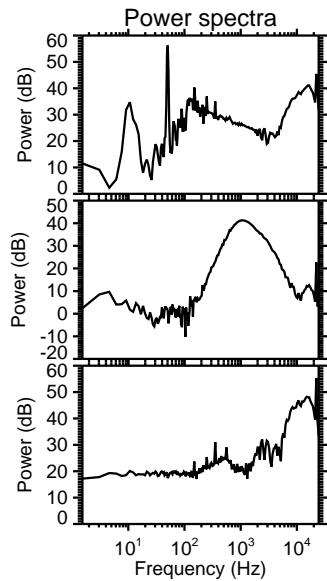
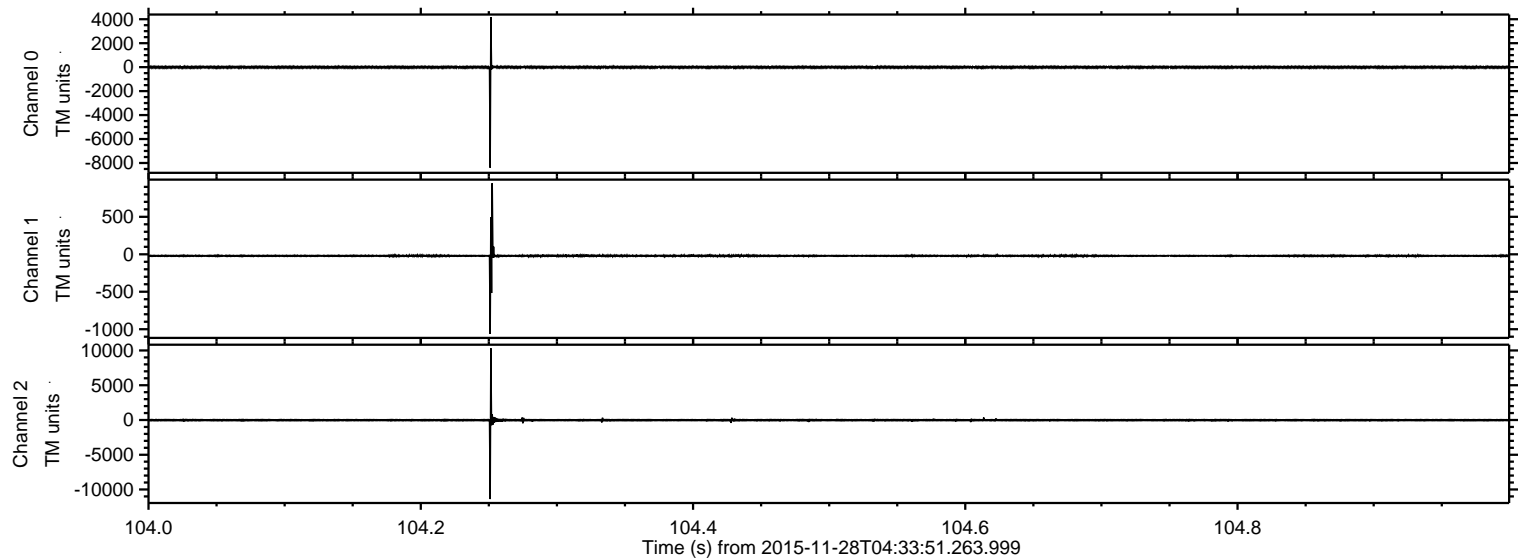
ELMAVAN 3D WAVEFORMS (Measured data sampled at 50 kHz) 51000 packets of 144 samples from 2015-11-28T04:33:51.263.999. Part 45/147

Processed Thu Dec 3 11:20:22 2015 by ELM ver.2012-10-06 from 001__elm20151128_043350__dat00.bin



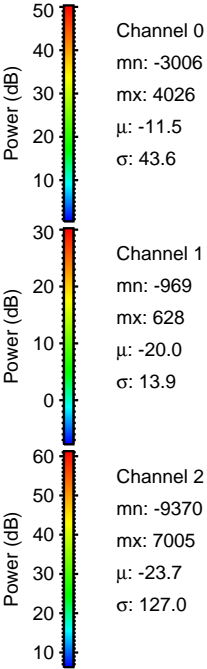
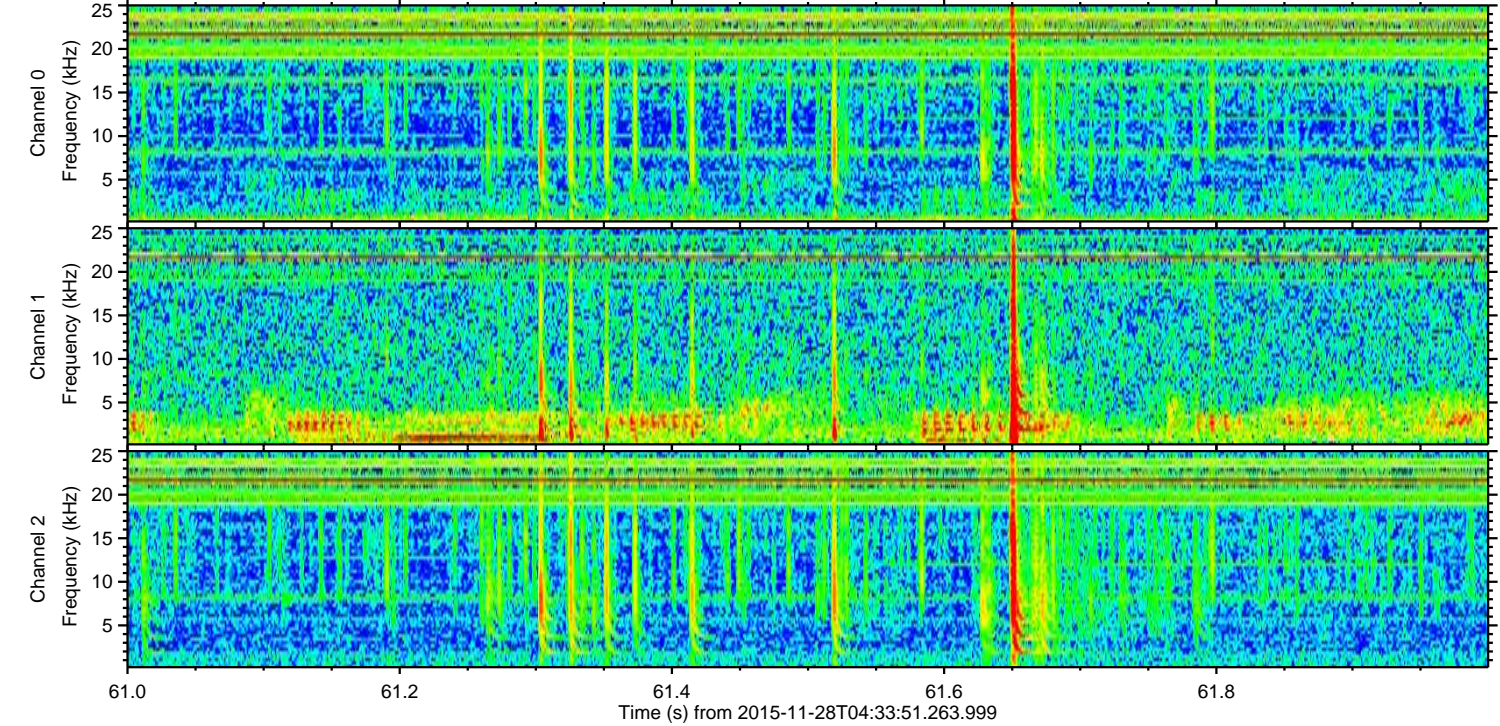
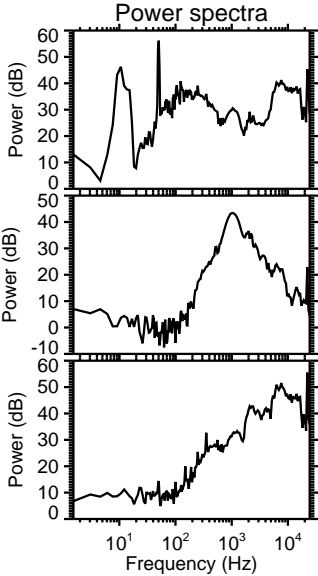
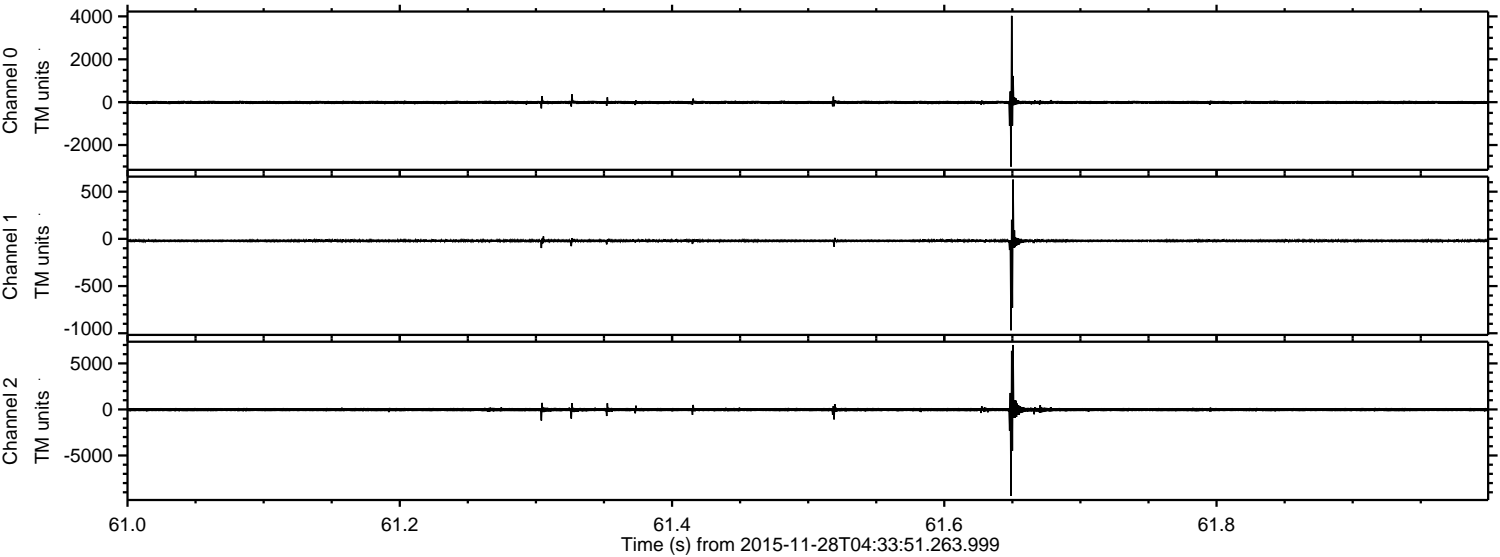
ELMAVAN 3D WAVEFORMS (Measured data sampled at 50 kHz) 51000 packets of 144 samples from 2015-11-28T04:33:51.263.999. Part 105/147

Processed Thu Dec 3 11:20:23 2015 by ELM ver.2012-10-06 from 001__elm20151128_043350__dat00.bin



ELMAVAN 3D WAVEFORMS (Measured data sampled at 50 kHz) 51000 packets of 144 samples from 2015-11-28T04:33:51.263.999. Part 62/147

Processed Thu Dec 3 11:20:24 2015 by ELM ver.2012-10-06 from 001__elm20151128_043350__dat00.bin

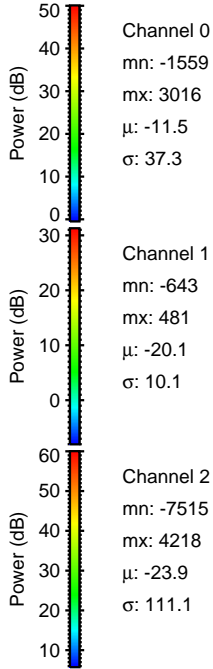
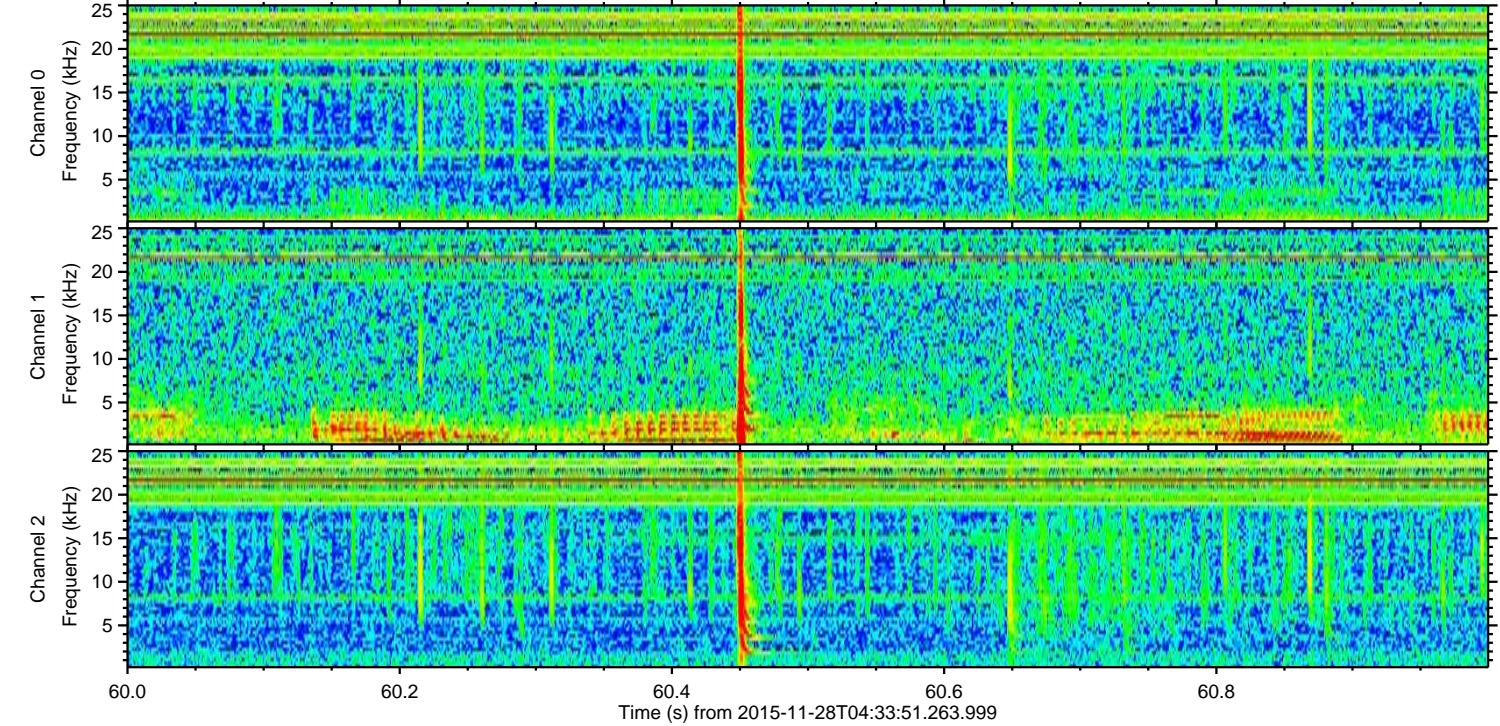
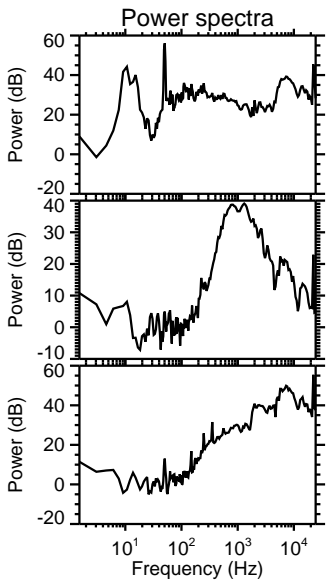
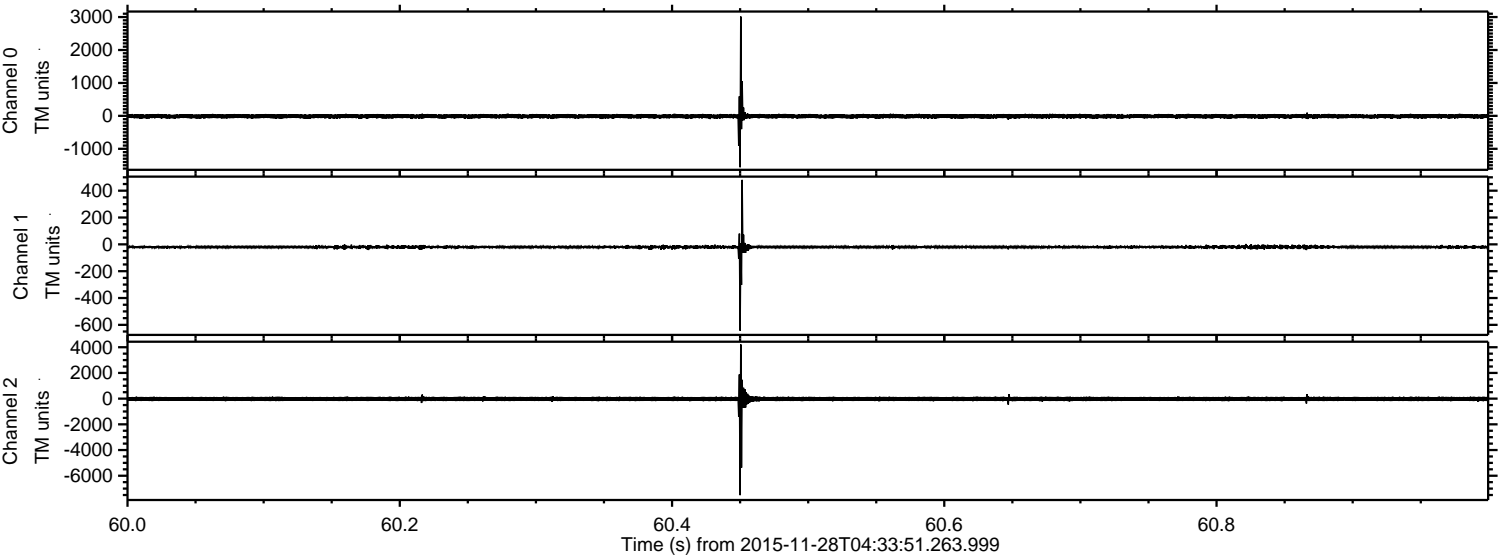


Channel 0
mn: -3006
mx: 4026
 μ : -11.5
 σ : 43.6

Channel 1
mn: -969
mx: 628
 μ : -20.0
 σ : 13.9

Channel 2
mn: -9370
mx: 7005
 μ : -23.7
 σ : 127.0

Processed Thu Dec 3 11:20:25 2015 by ELM ver.2012-10-06 from 001__elm20151128_043350__dat00.bin



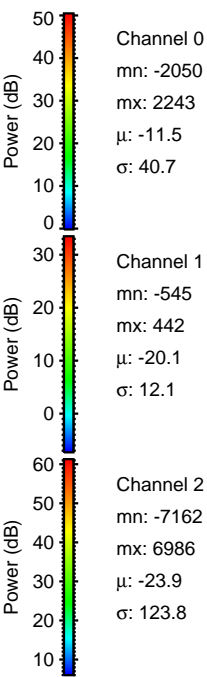
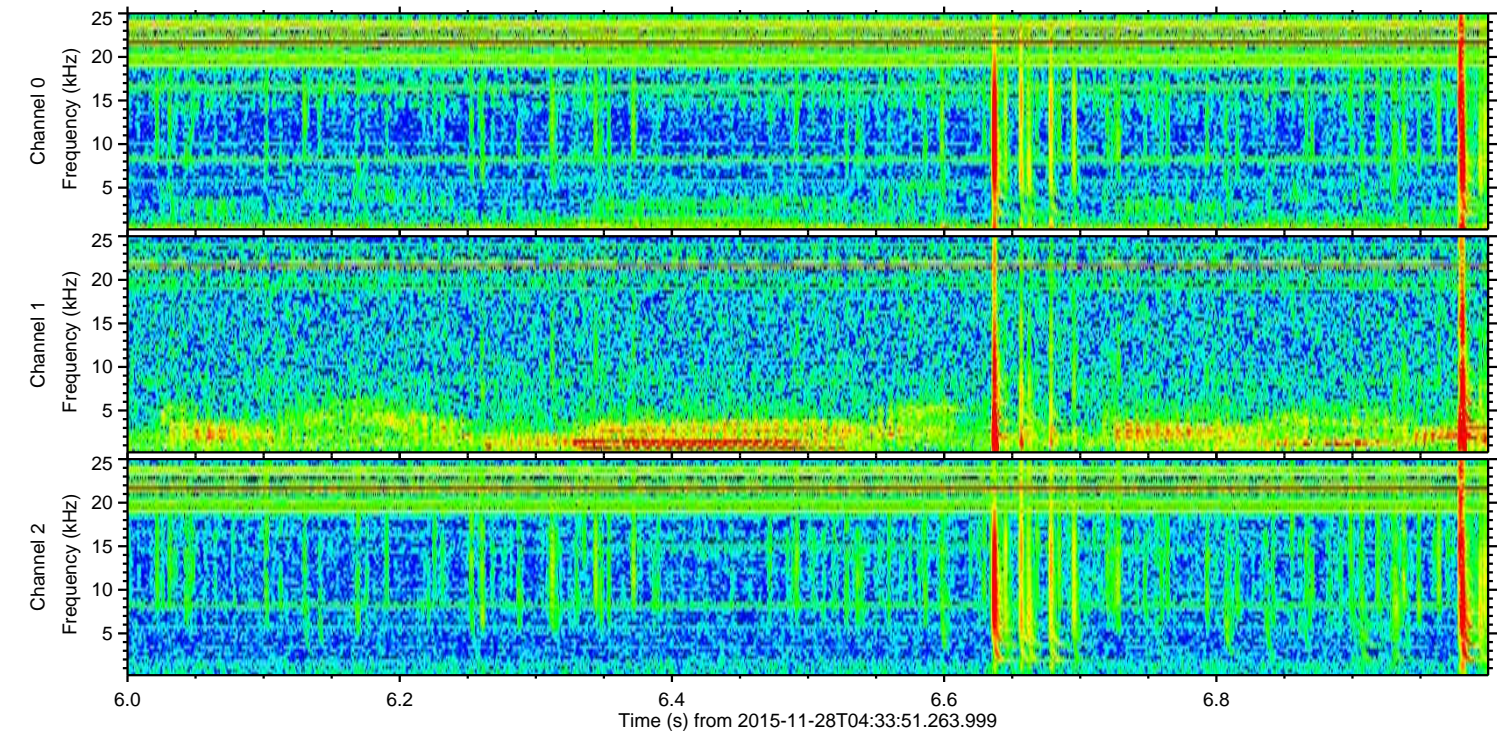
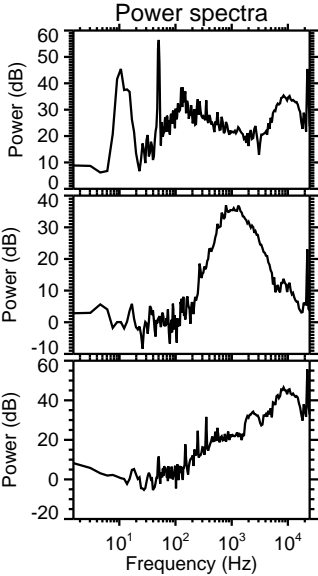
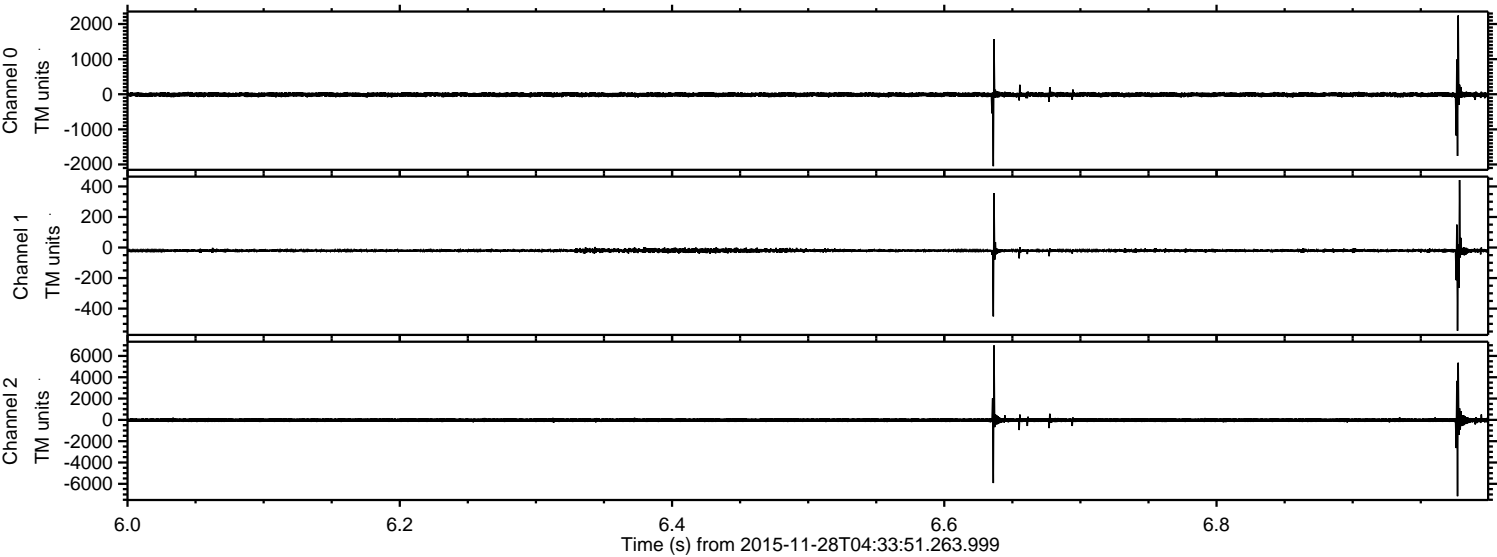
Channel 0
mn: -1559
mx: 3016
 μ : -11.5
 σ : 37.3

Channel 1
mn: -643
mx: 481
 μ : -20.1
 σ : 10.1

Channel 2
mn: -7515
mx: 4218
 μ : -23.9
 σ : 111.1

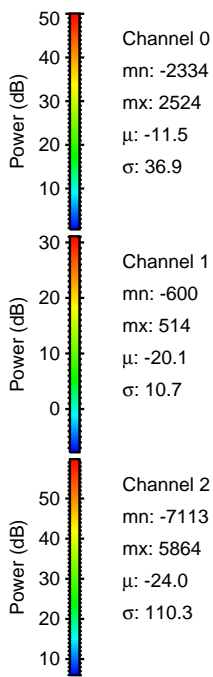
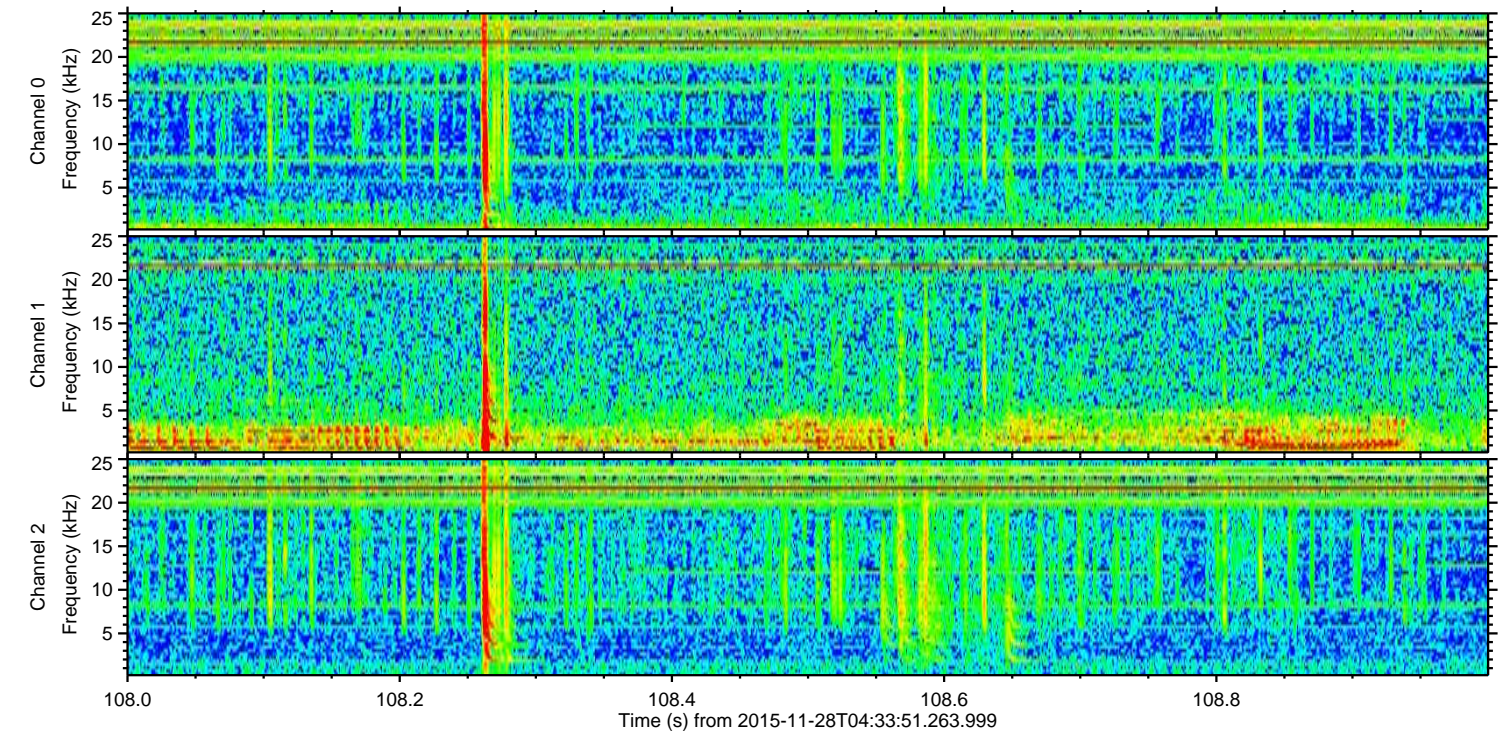
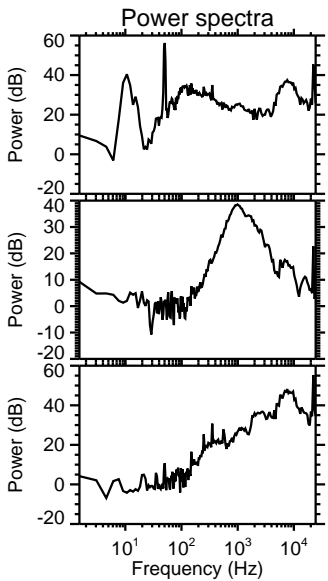
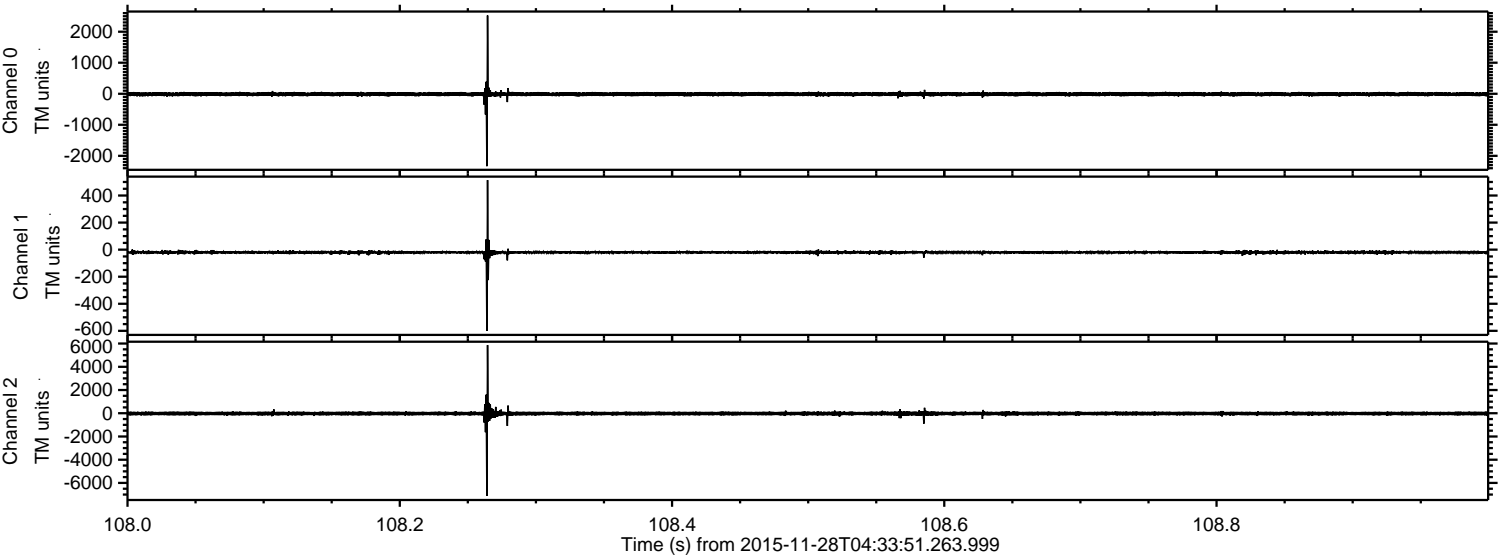
ELMAVAN 3D WAVEFORMS (Measured data sampled at 50 kHz) 51000 packets of 144 samples from 2015-11-28T04:33:51.263.999. Part 7/147

Processed Thu Dec 3 11:20:26 2015 by ELM ver.2012-10-06 from 001__elm20151128_043350__dat00.bin



ELMAVAN 3D WAVEFORMS (Measured data sampled at 50 kHz) 51000 packets of 144 samples from 2015-11-28T04:33:51.263.999. Part 109/147

Processed Thu Dec 3 11:20:26 2015 by ELM ver.2012-10-06 from 001__elm20151128_043350__dat00.bin



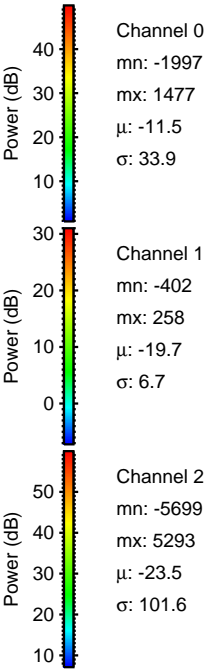
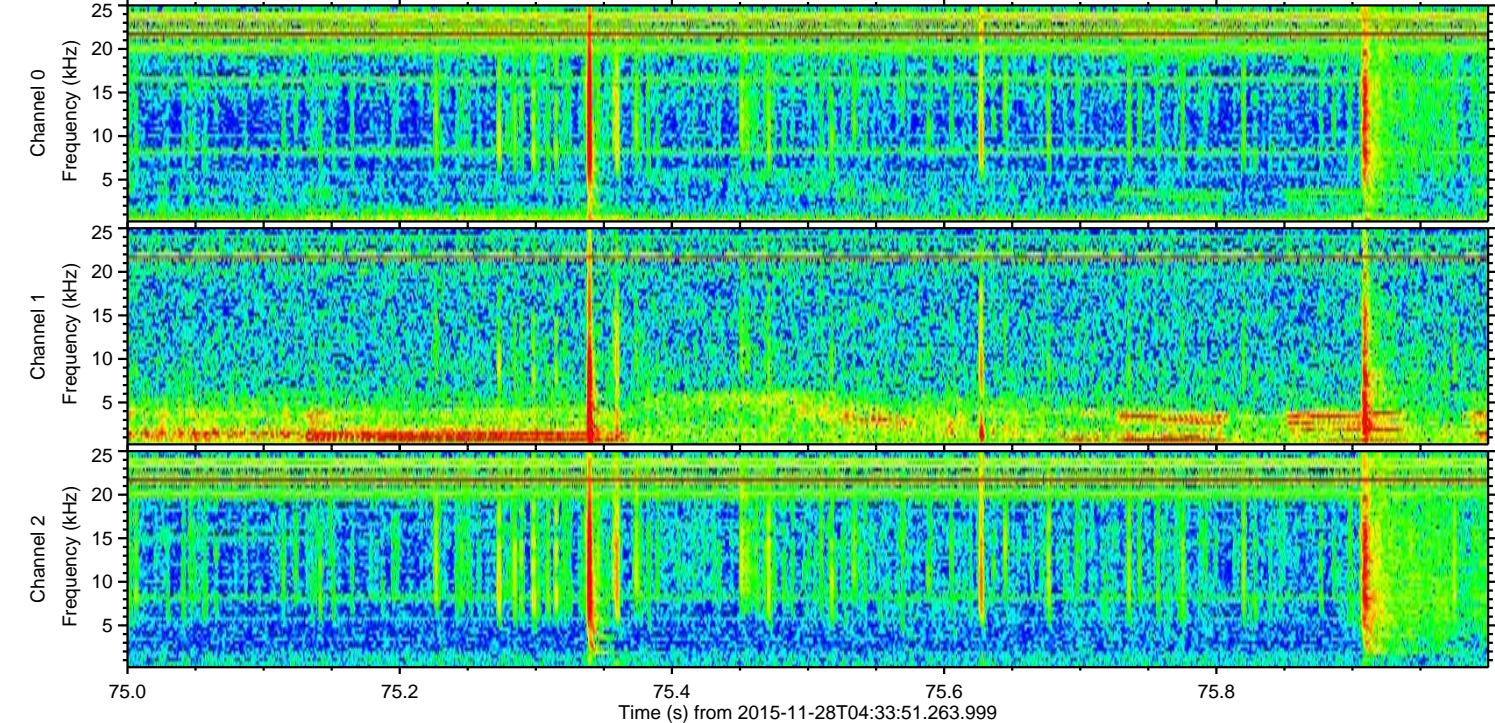
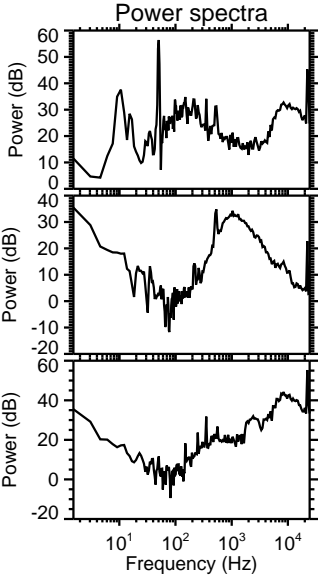
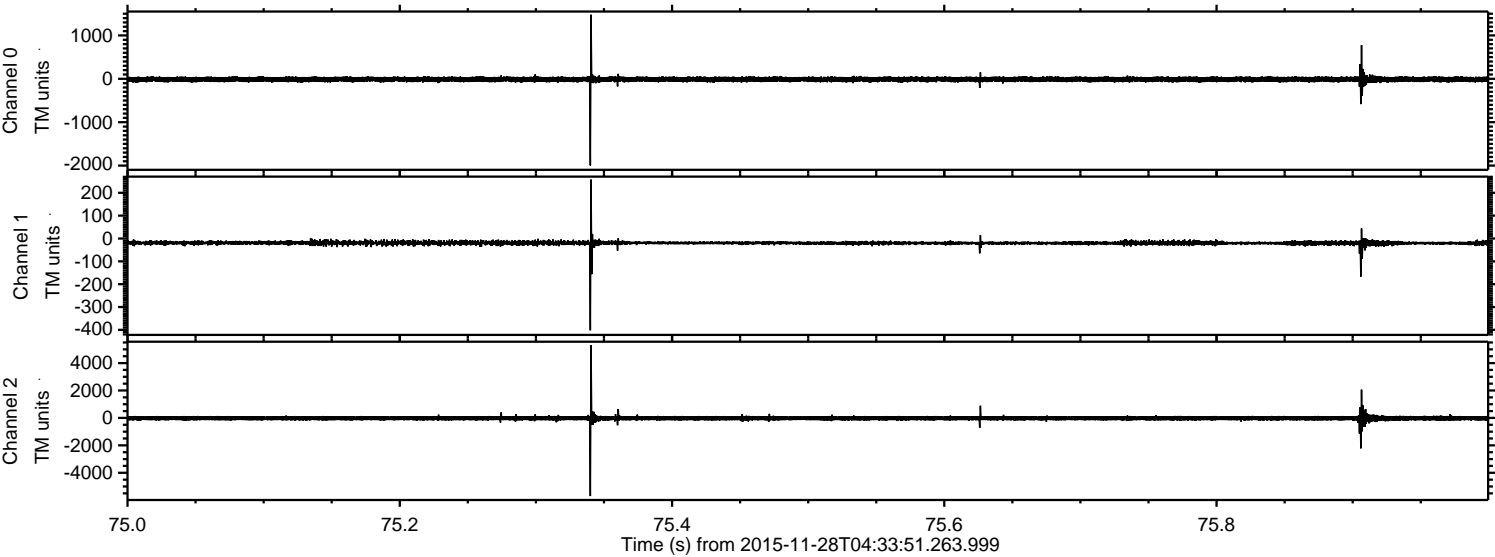
Channel 0
mn: -2334
mx: 2524
 μ : -11.5
 σ : 36.9

Channel 1
mn: -600
mx: 514
 μ : -20.1
 σ : 10.7

Channel 2
mn: -7113
mx: 5864
 μ : -24.0
 σ : 110.3

ELMAVAN 3D WAVEFORMS (Measured data sampled at 50 kHz) 51000 packets of 144 samples from 2015-11-28T04:33:51.263.999. Part 76/147

Processed Thu Dec 3 11:20:27 2015 by ELM ver.2012-10-06 from 001__elm20151128_043350__dat00.bin



ELMAVAN 3D WAVEFORMS (Measured data sampled at 50 kHz) 51000 packets of 144 samples from 2015-11-28T04:33:51.263.999. Part 131/147

