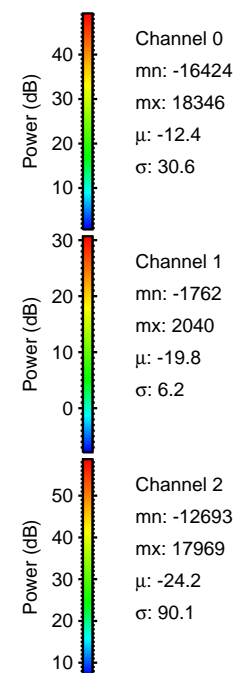
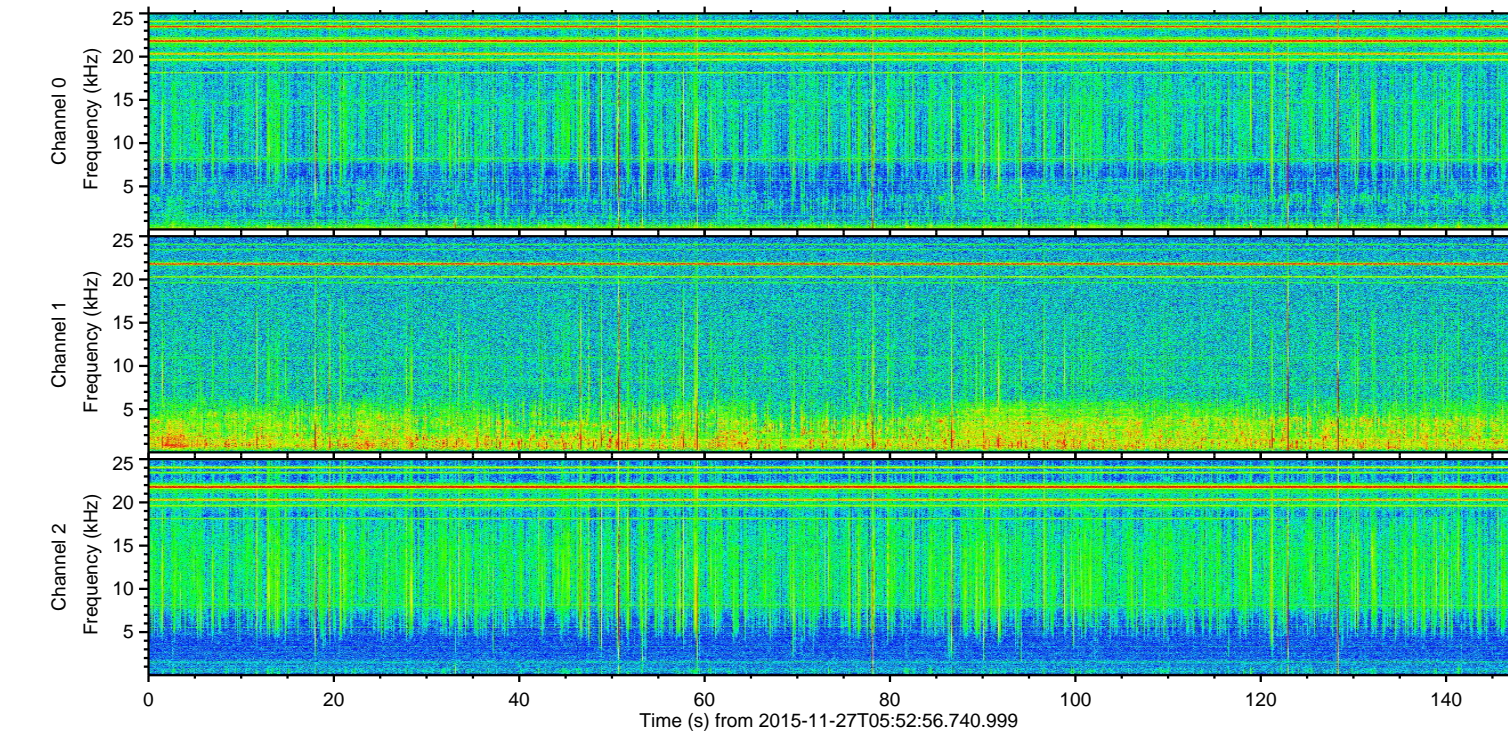
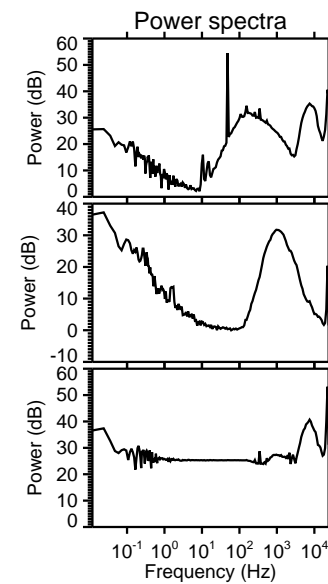
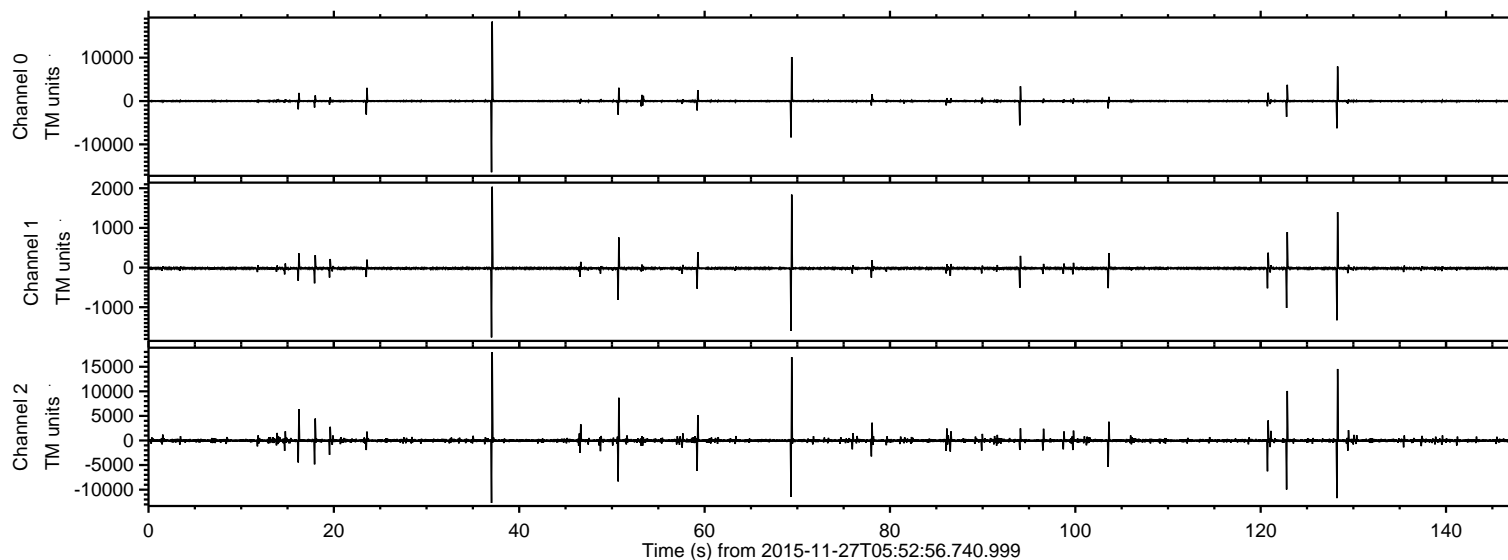


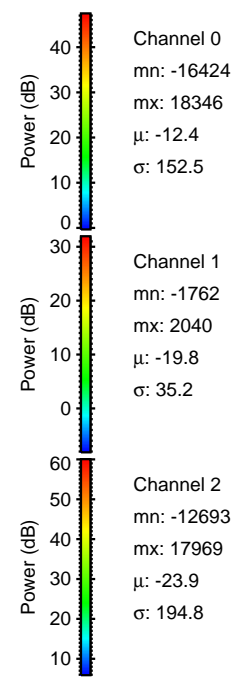
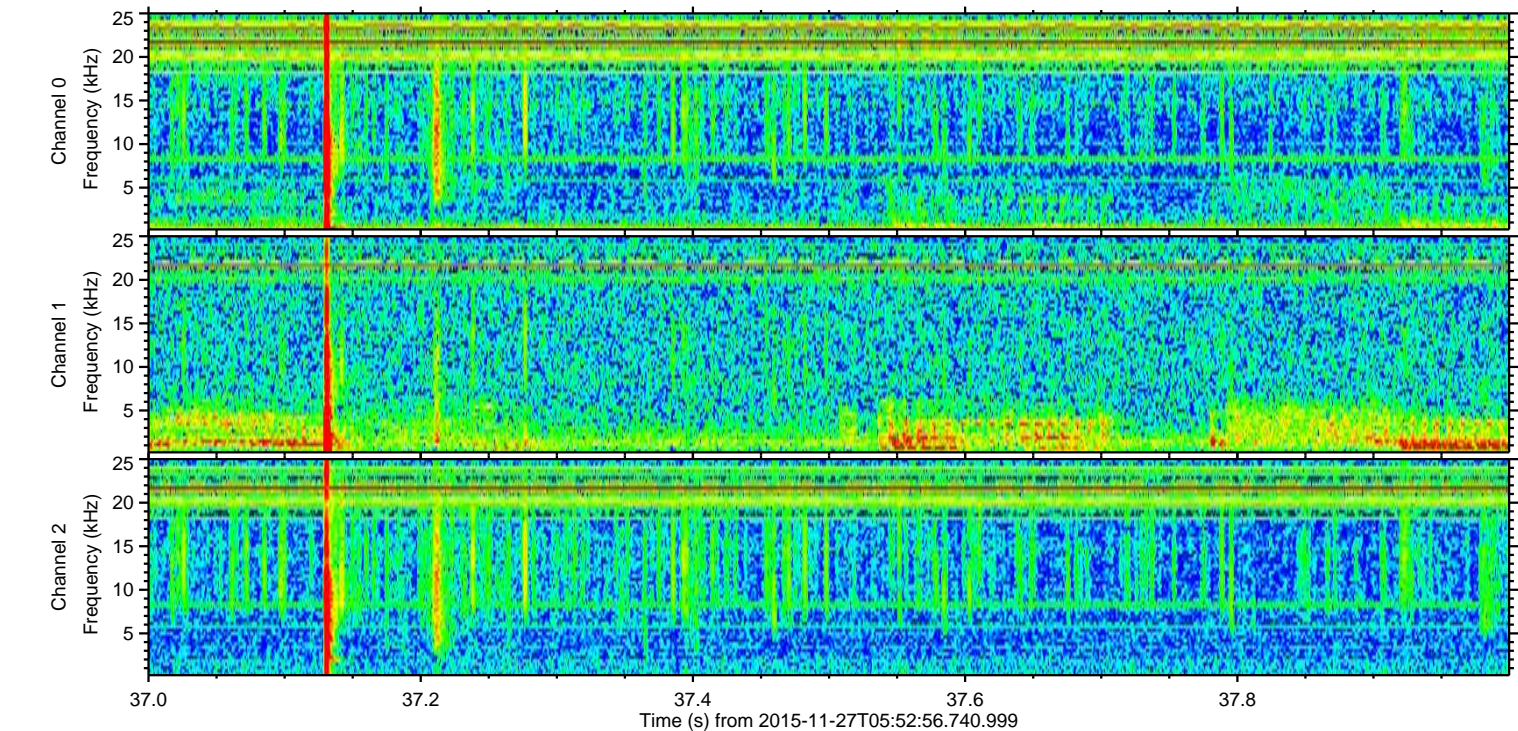
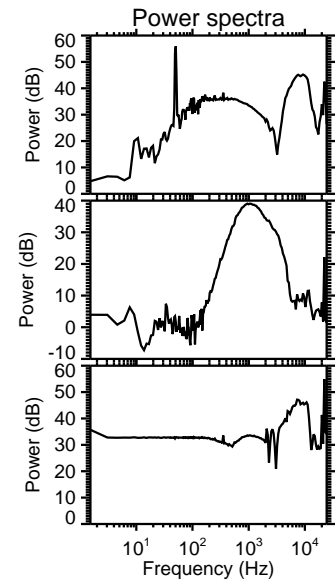
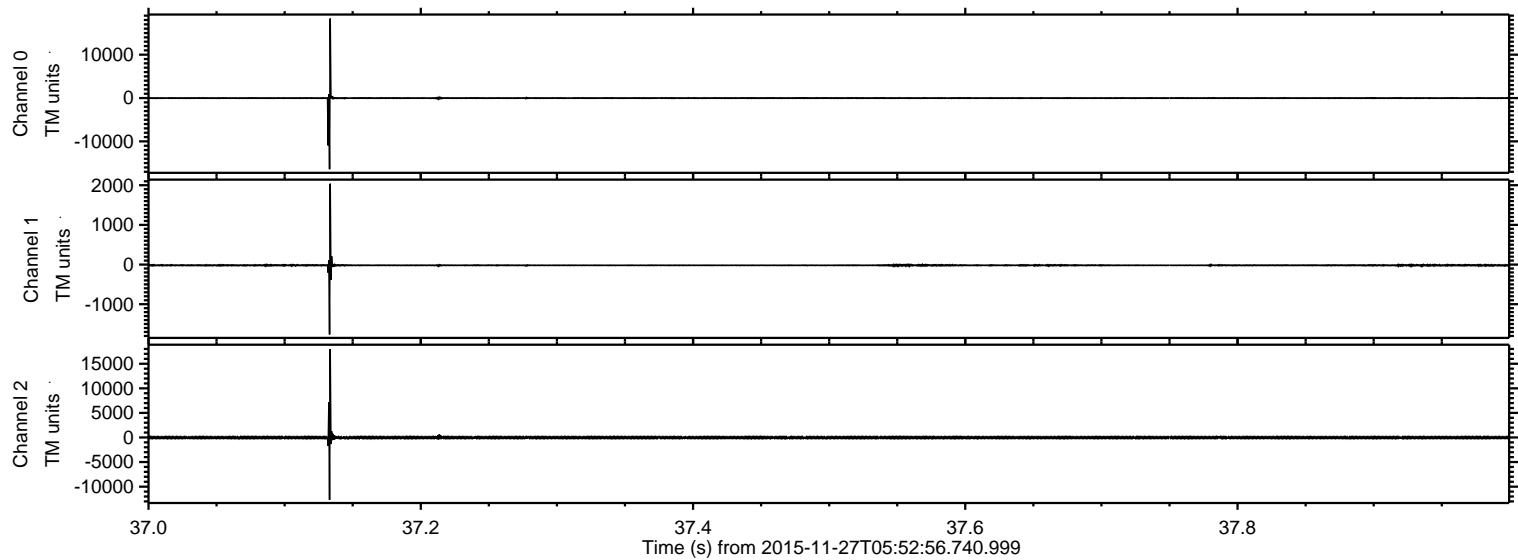
ELMAVAN 3D WAVEFORMS (Measured data sampled at 50 kHz) 51000 packets of 144 samples from 2015-11-27T05:52:56.740.999.

Processed Wed Dec 2 21:48:52 2015 by ELM ver.2012-10-06 from 001__elm20151127_055255__dat00.bin



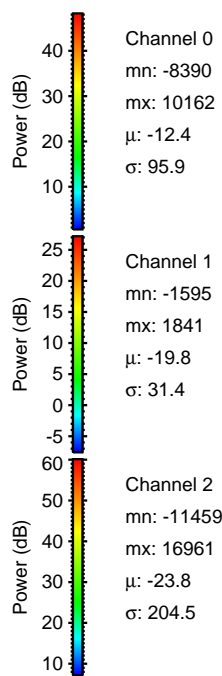
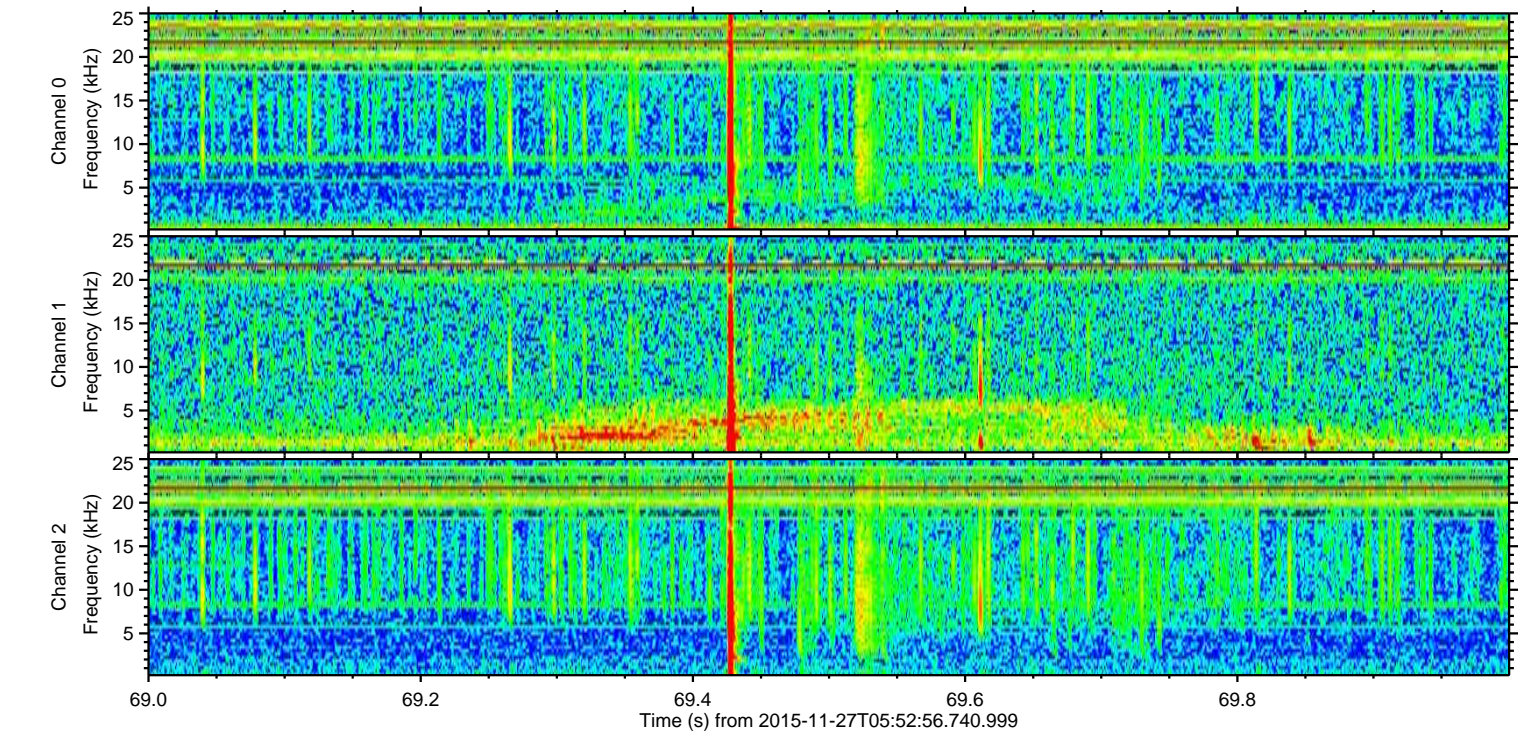
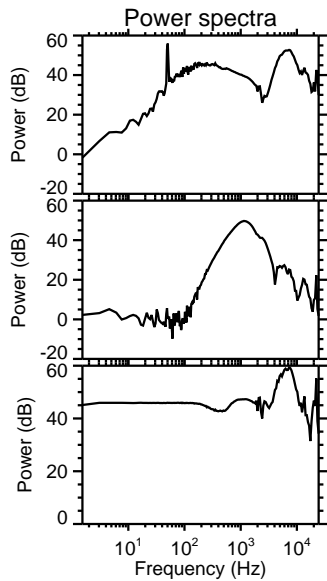
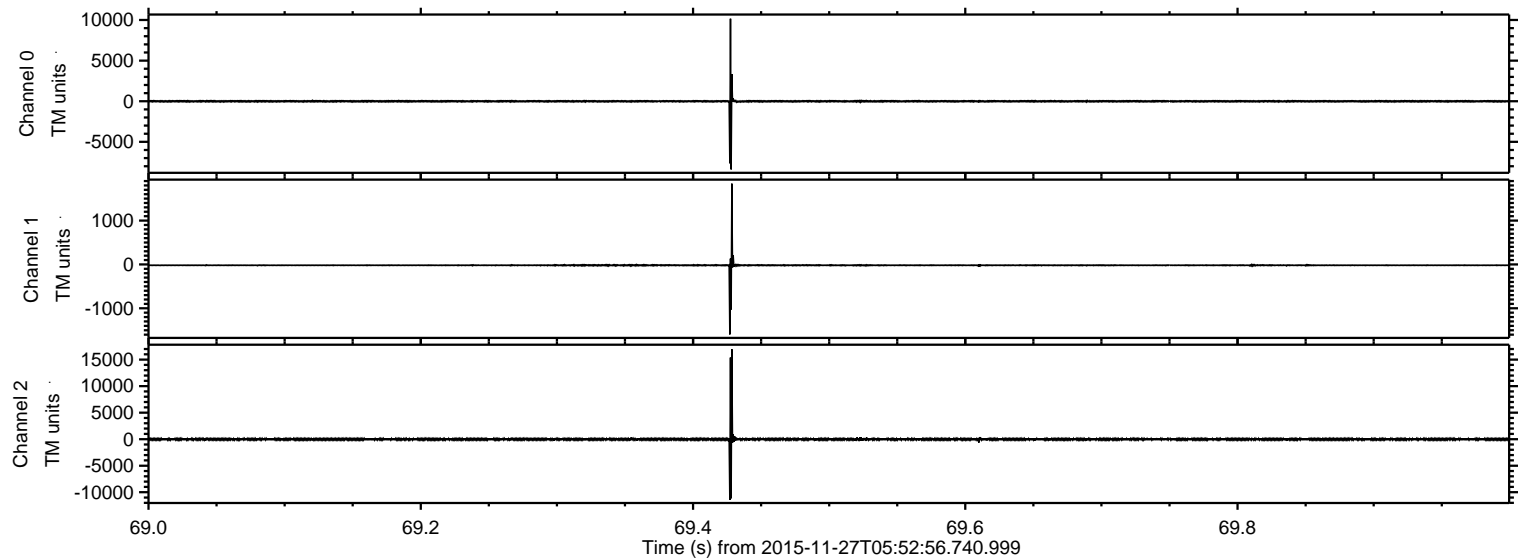
ELMAVAN 3D WAVEFORMS (Measured data sampled at 50 kHz) 51000 packets of 144 samples from 2015-11-27T05:52:56.740.999. Part 38/147

Processed Wed Dec 2 21:49:08 2015 by ELM ver.2012-10-06 from 001__elm20151127_055255__dat00.bin



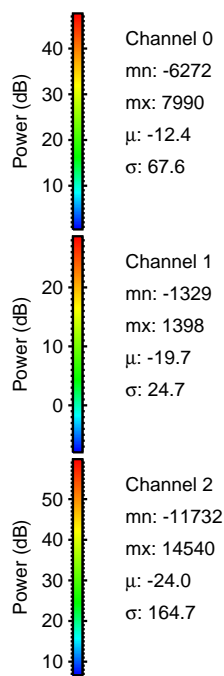
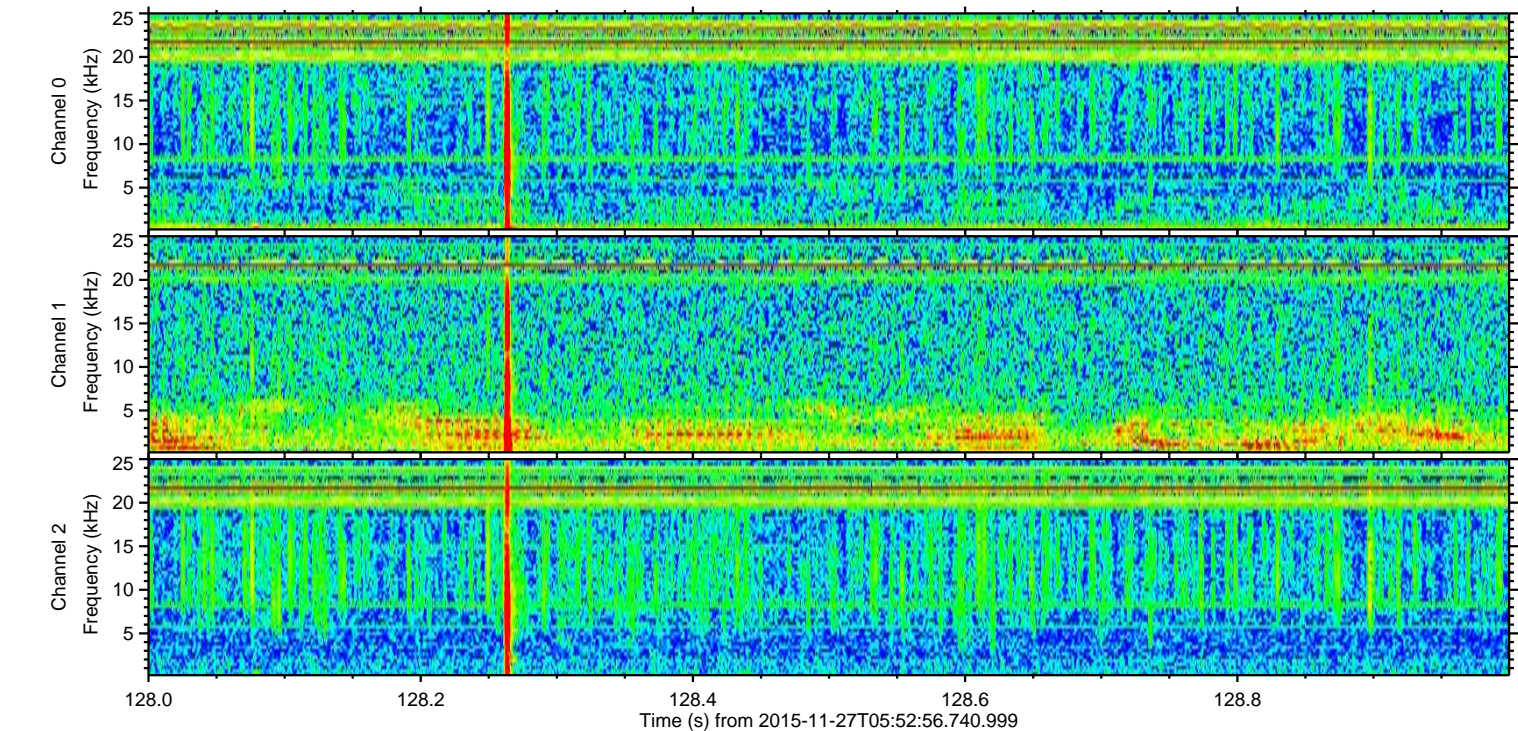
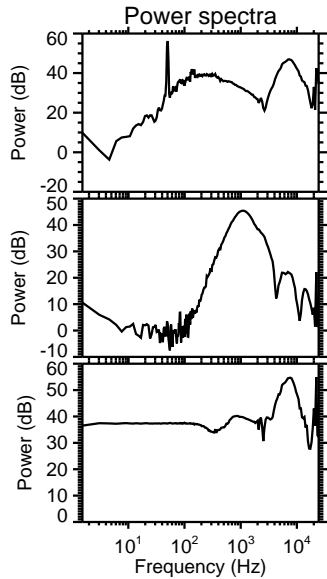
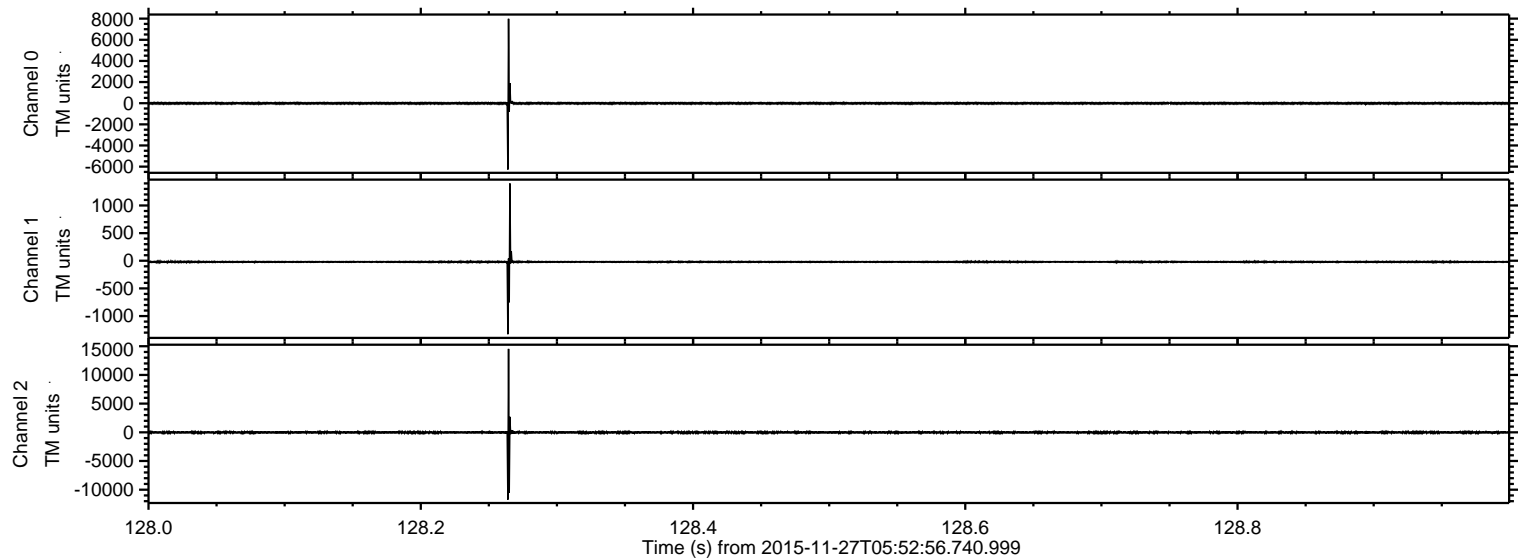
ELMAVAN 3D WAVEFORMS (Measured data sampled at 50 kHz) 51000 packets of 144 samples from 2015-11-27T05:52:56.740.999. Part 70/147

Processed Wed Dec 2 21:49:09 2015 by ELM ver.2012-10-06 from 001__elm20151127_055255__dat00.bin



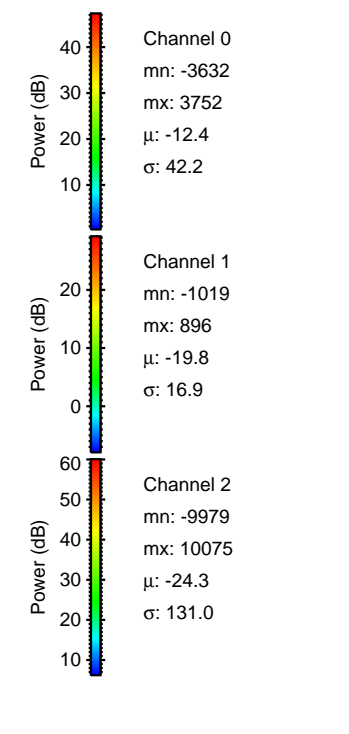
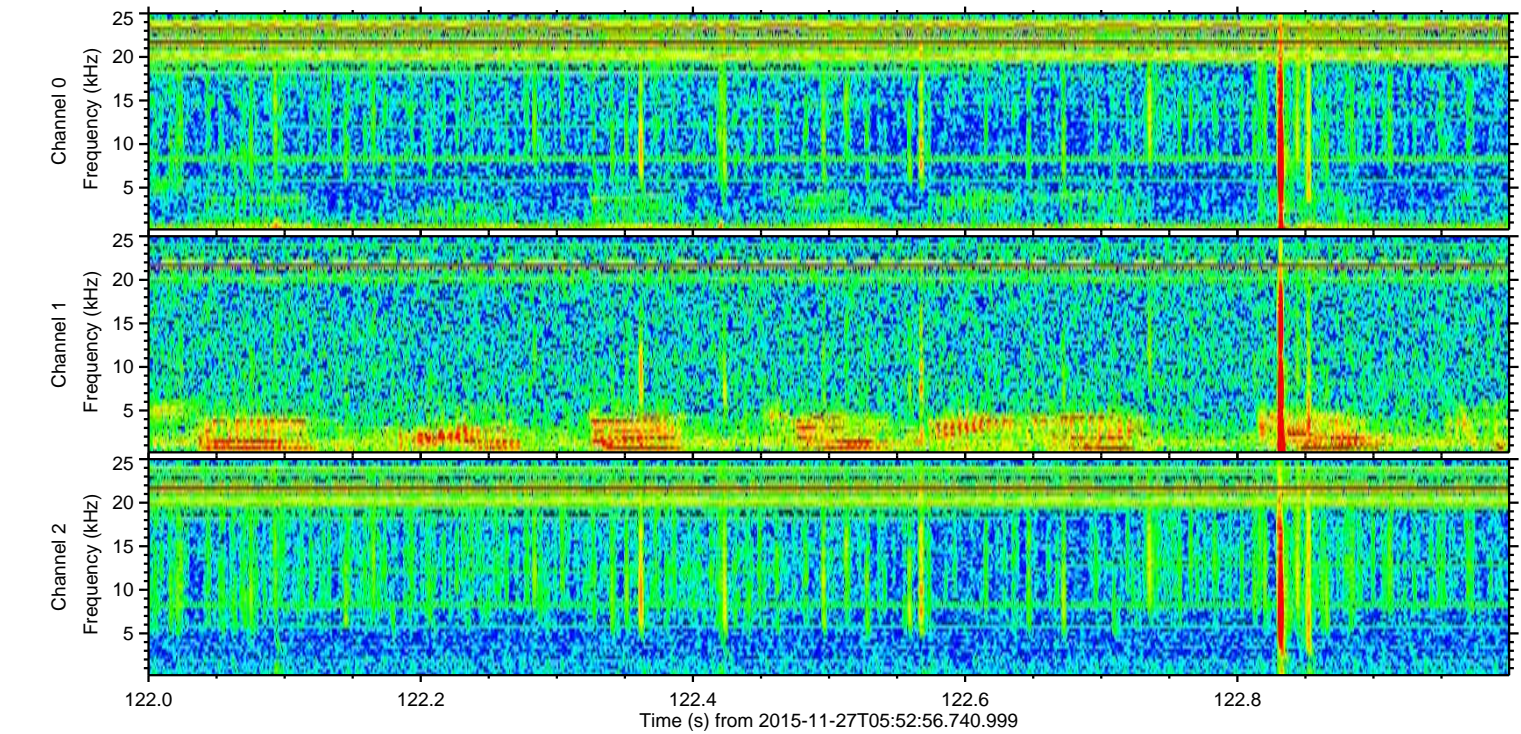
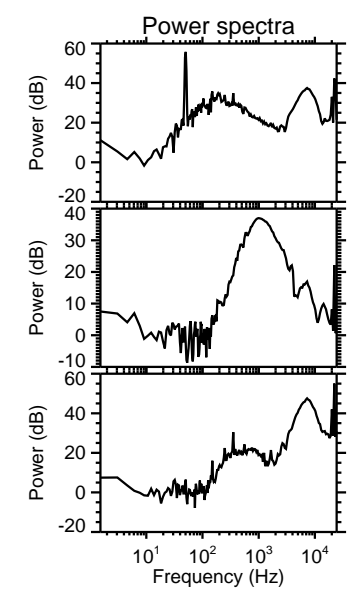
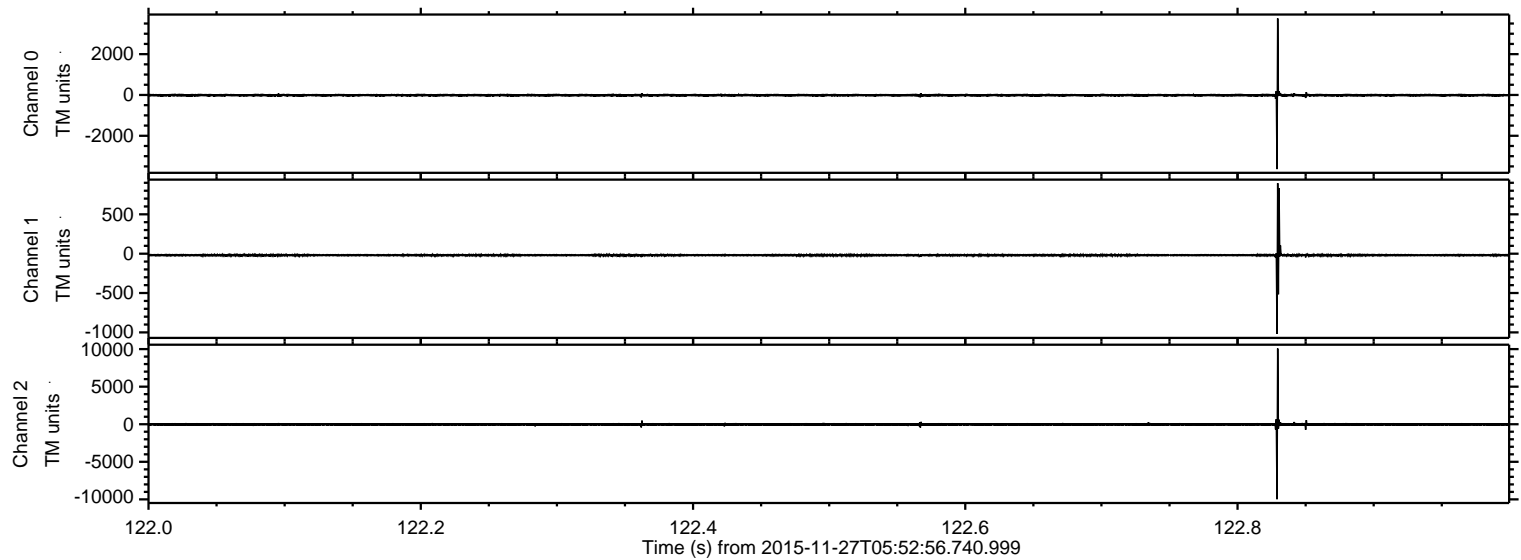
ELMAVAN 3D WAVEFORMS (Measured data sampled at 50 kHz) 51000 packets of 144 samples from 2015-11-27T05:52:56.740.999. Part 129/147

Processed Wed Dec 2 21:49:10 2015 by ELM ver.2012-10-06 from 001__elm20151127_055255__dat00.bin

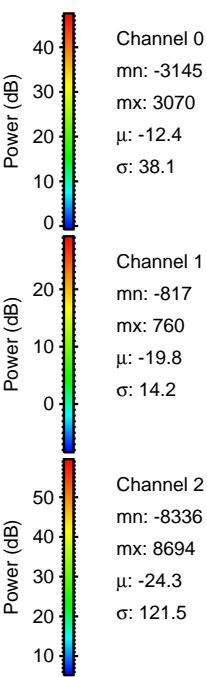
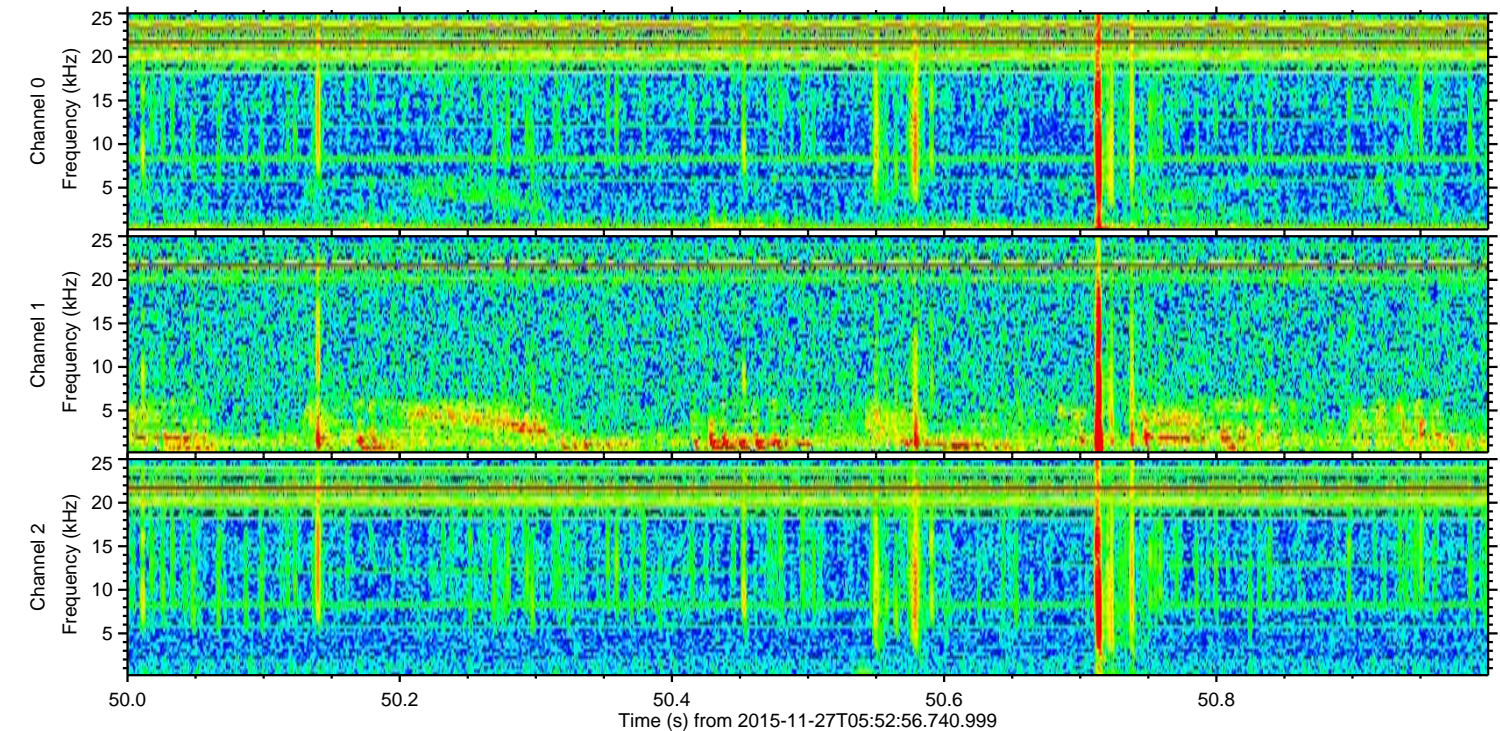
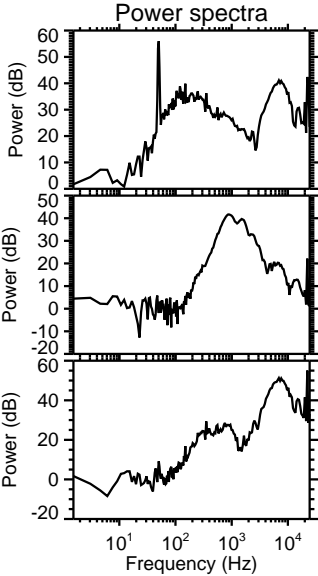
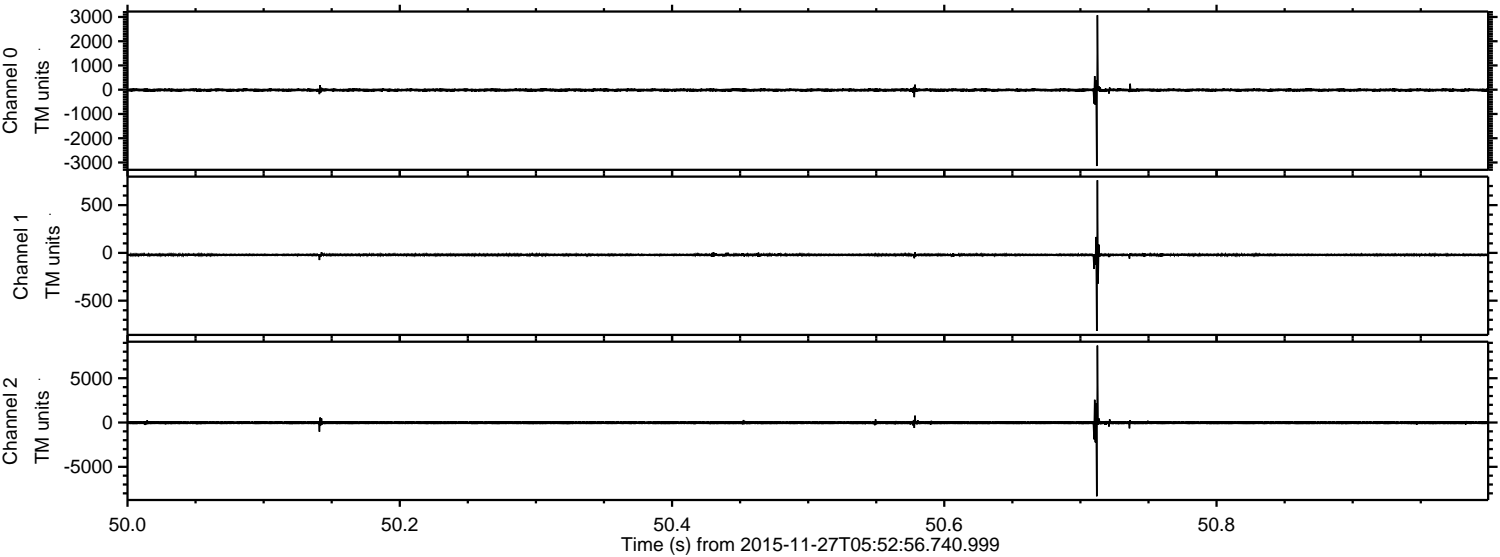


ELMAVAN 3D WAVEFORMS (Measured data sampled at 50 kHz) 51000 packets of 144 samples from 2015-11-27T05:52:56.740.999. Part 123/147

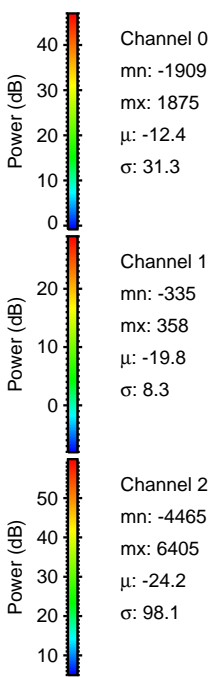
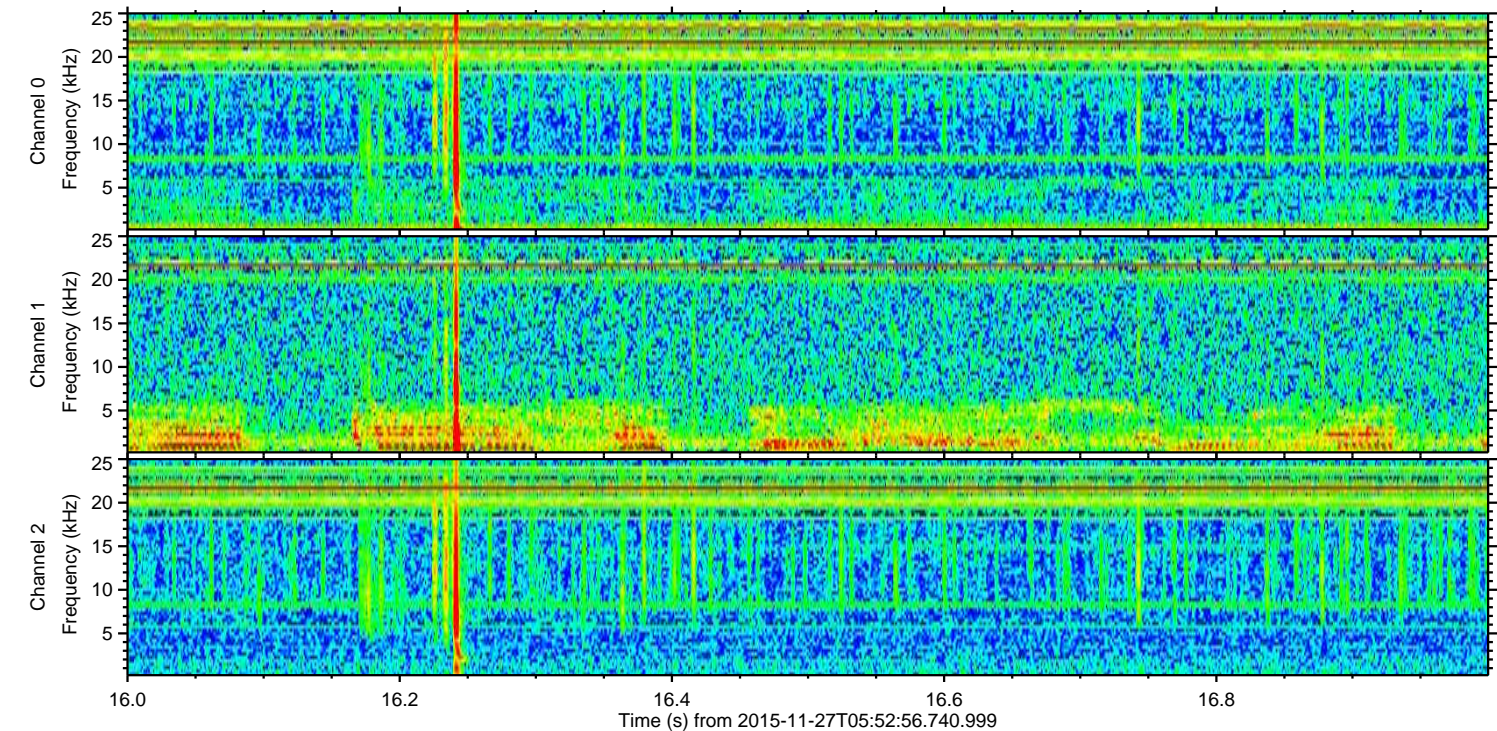
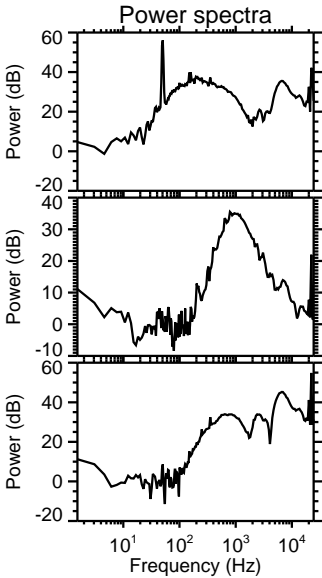
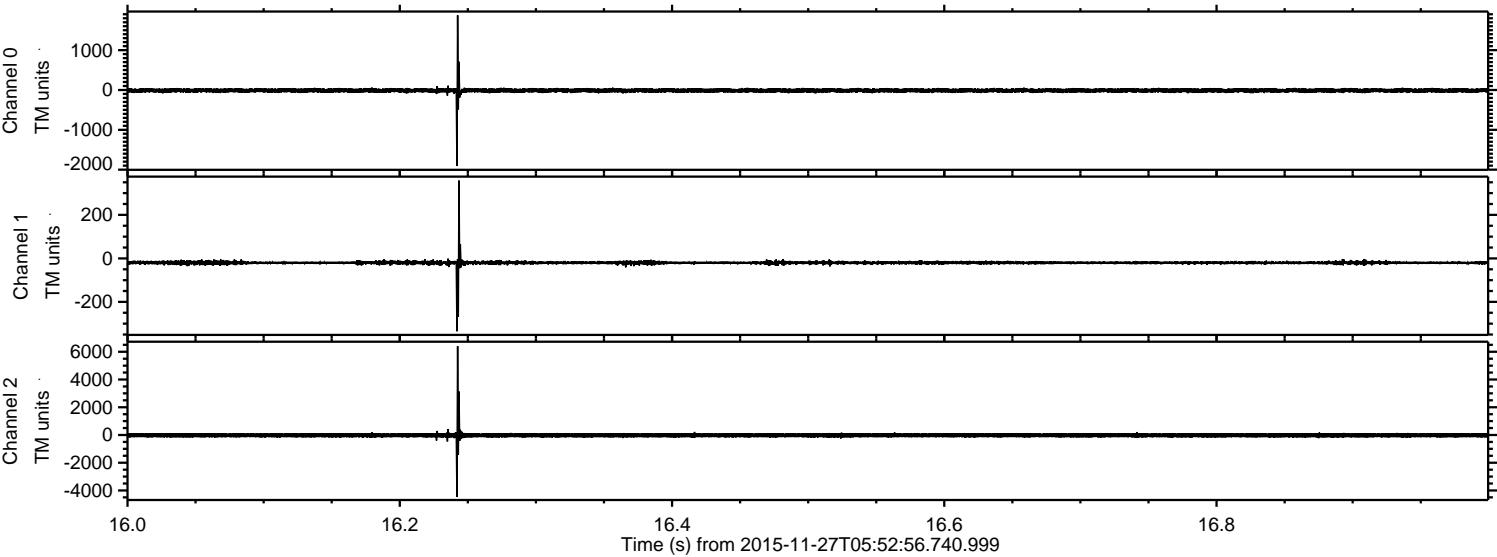
Processed Wed Dec 2 21:49:11 2015 by ELM ver.2012-10-06 from 001__elm20151127_055255__dat00.bin



Processed Wed Dec 2 21:49:12 2015 by ELM ver.2012-10-06 from 001__elm20151127_055255__dat00.bin

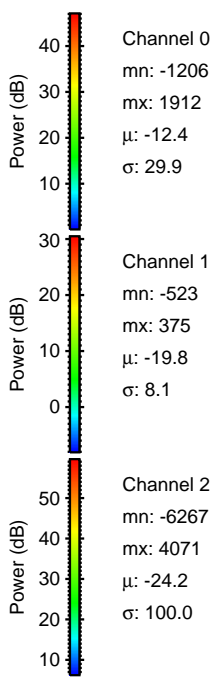
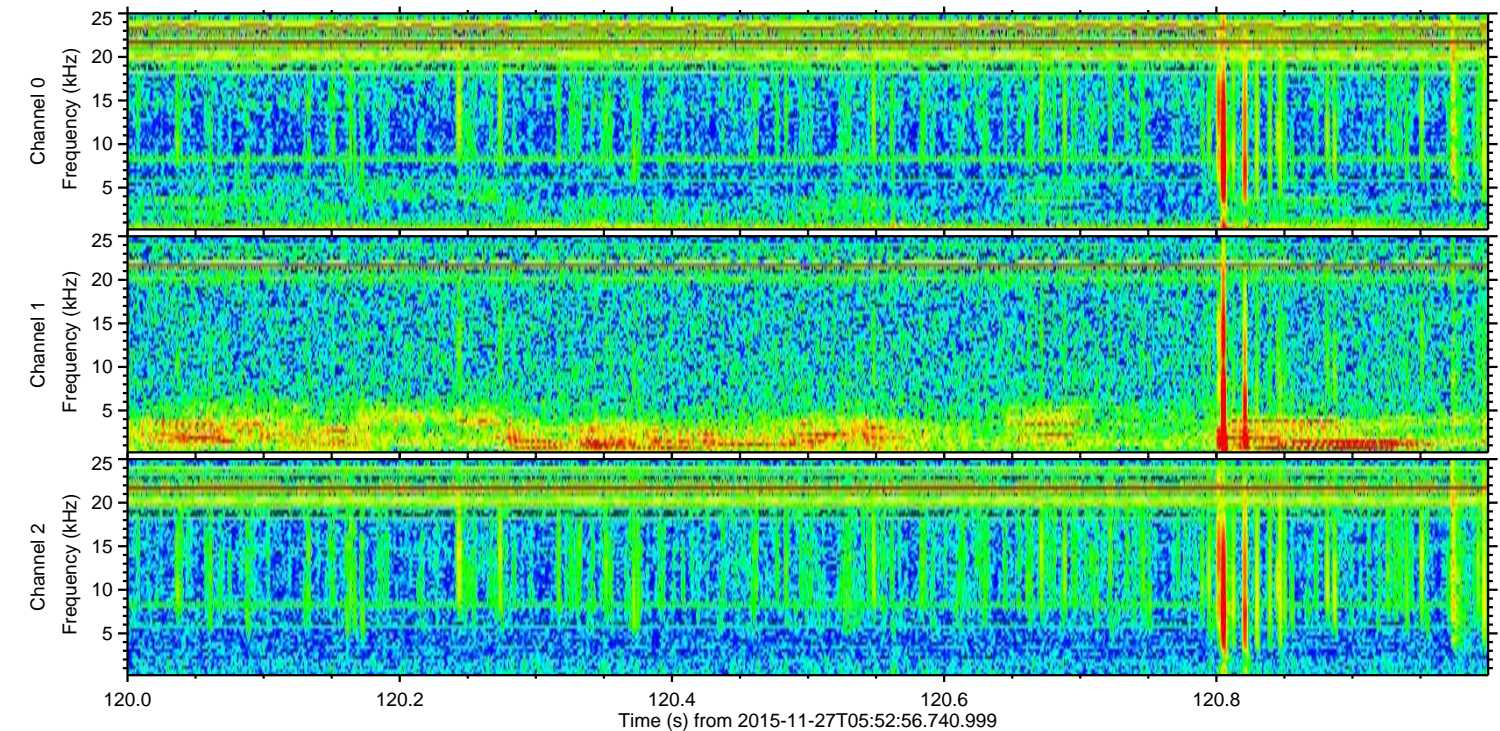
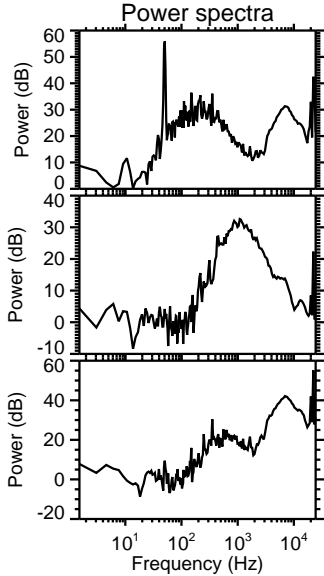
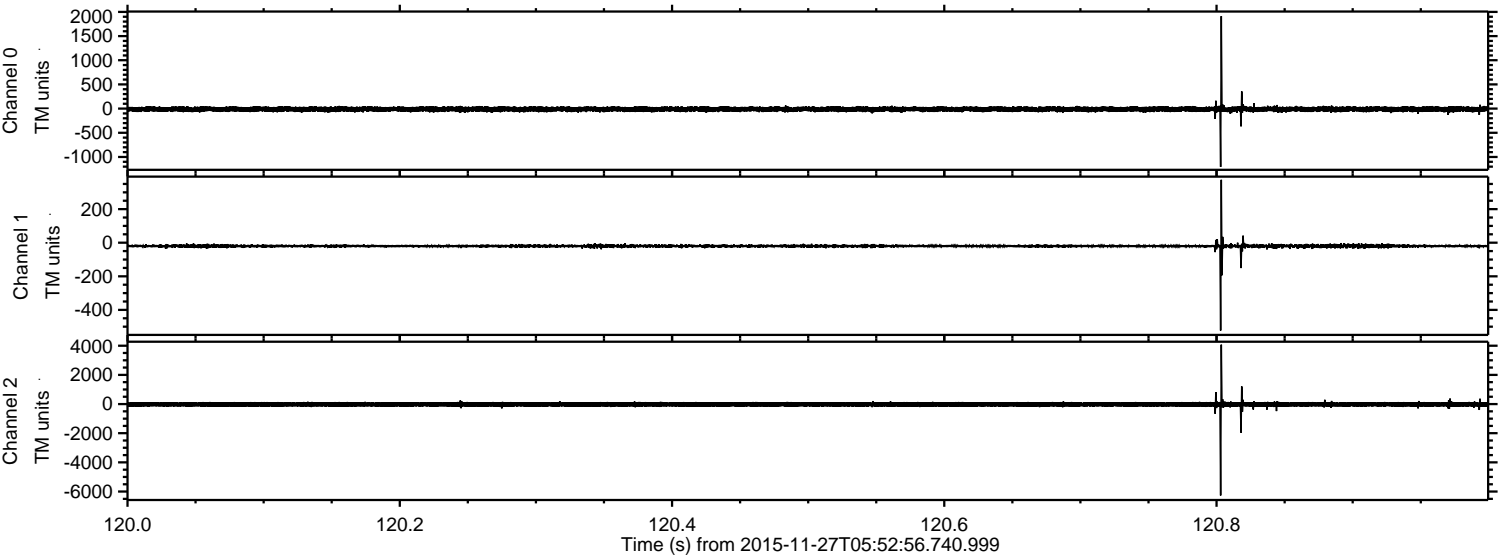


Processed Wed Dec 2 21:49:14 2015 by ELM ver.2012-10-06 from 001__elm20151127_055255__dat00.bin



ELMAVAN 3D WAVEFORMS (Measured data sampled at 50 kHz) 51000 packets of 144 samples from 2015-11-27T05:52:56.740.999. Part 121/147

Processed Wed Dec 2 21:49:15 2015 by ELM ver.2012-10-06 from 001__elm20151127_055255__dat00.bin

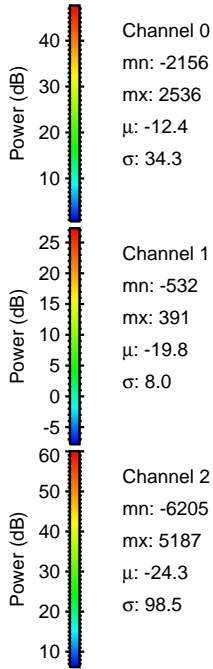
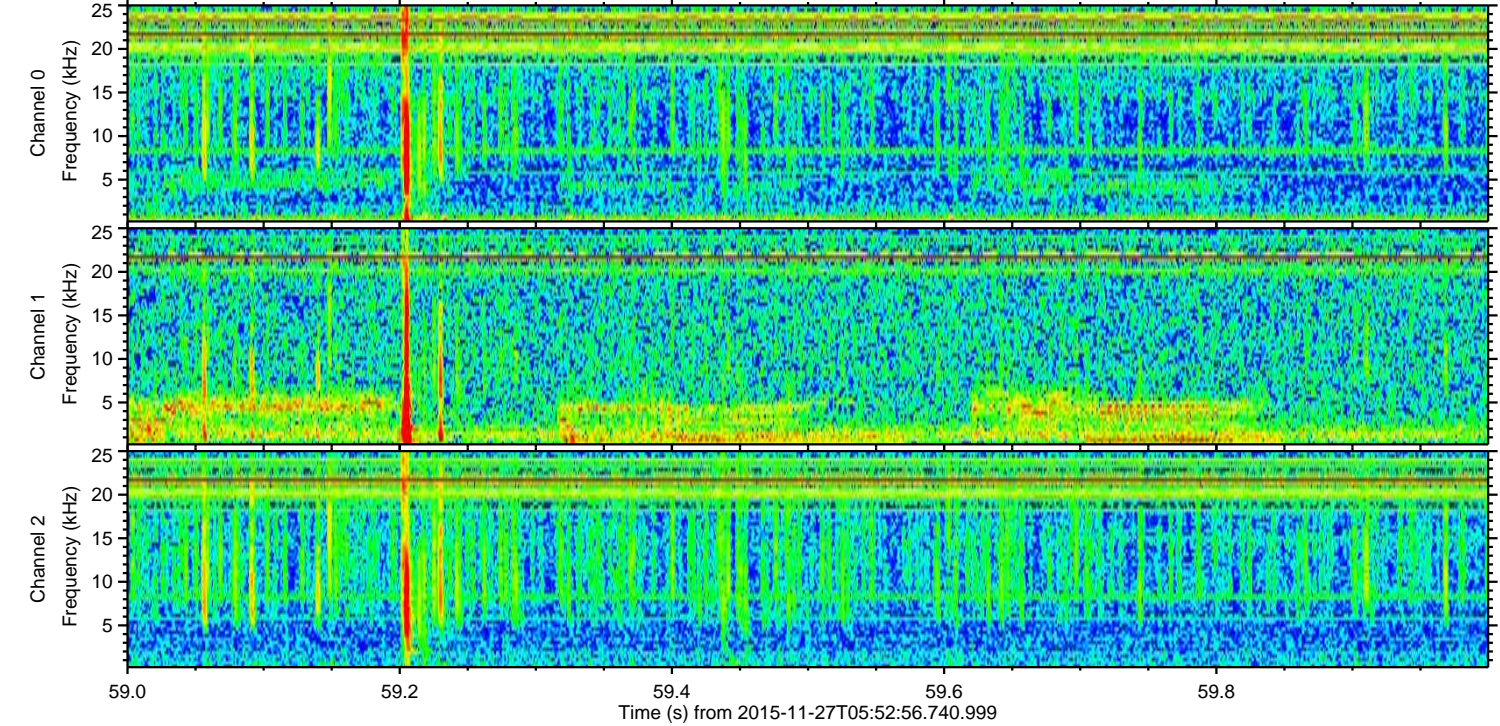
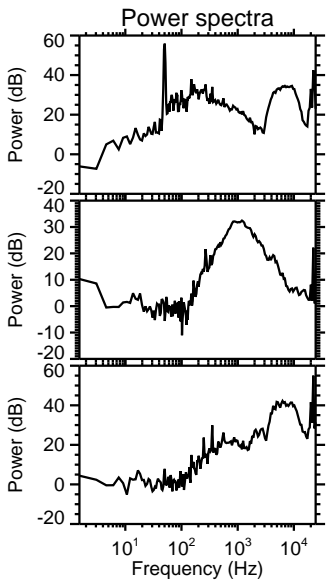
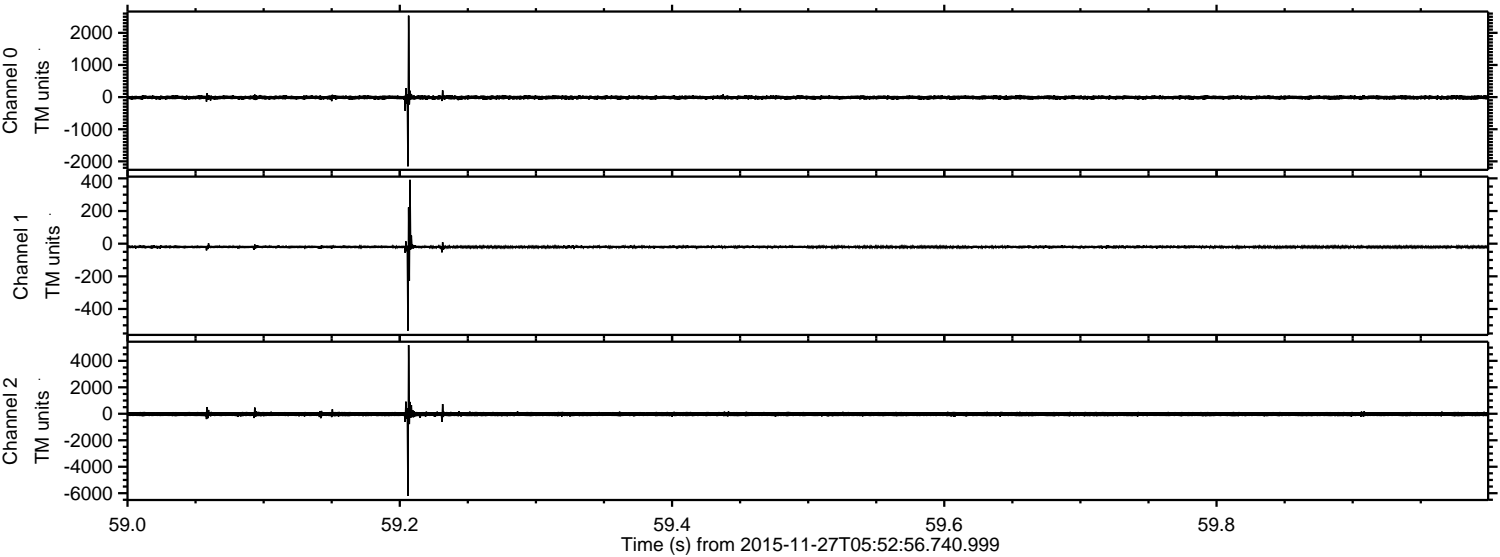


Channel 0
mn: -1206
mx: 1912
 μ : -12.4
 σ : 29.9

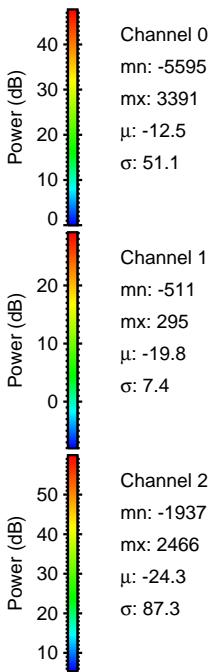
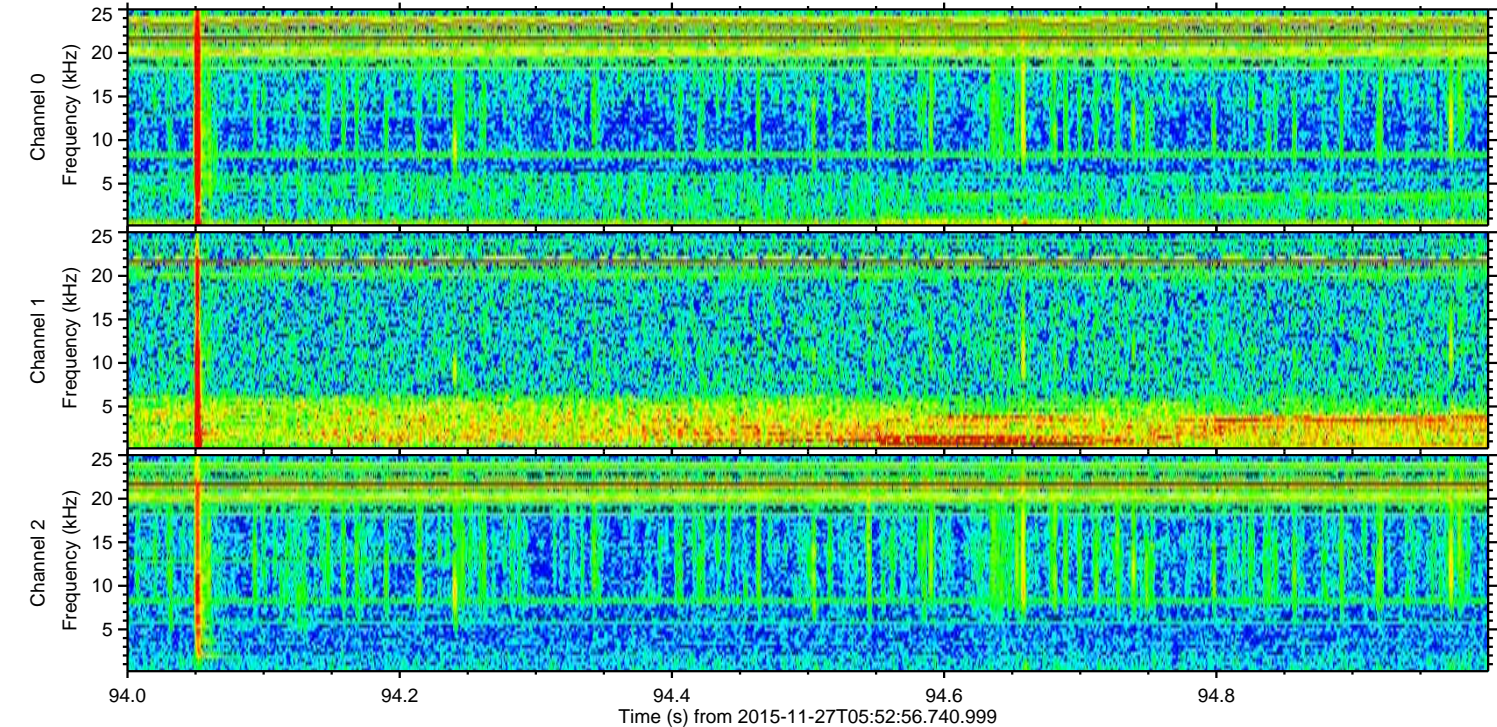
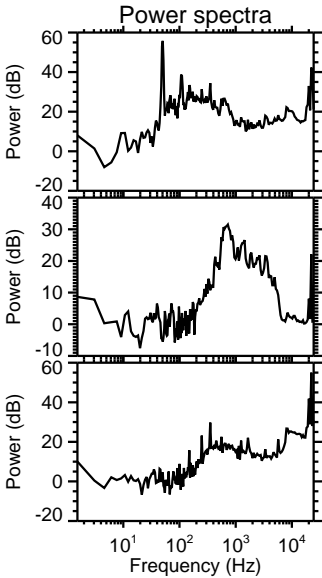
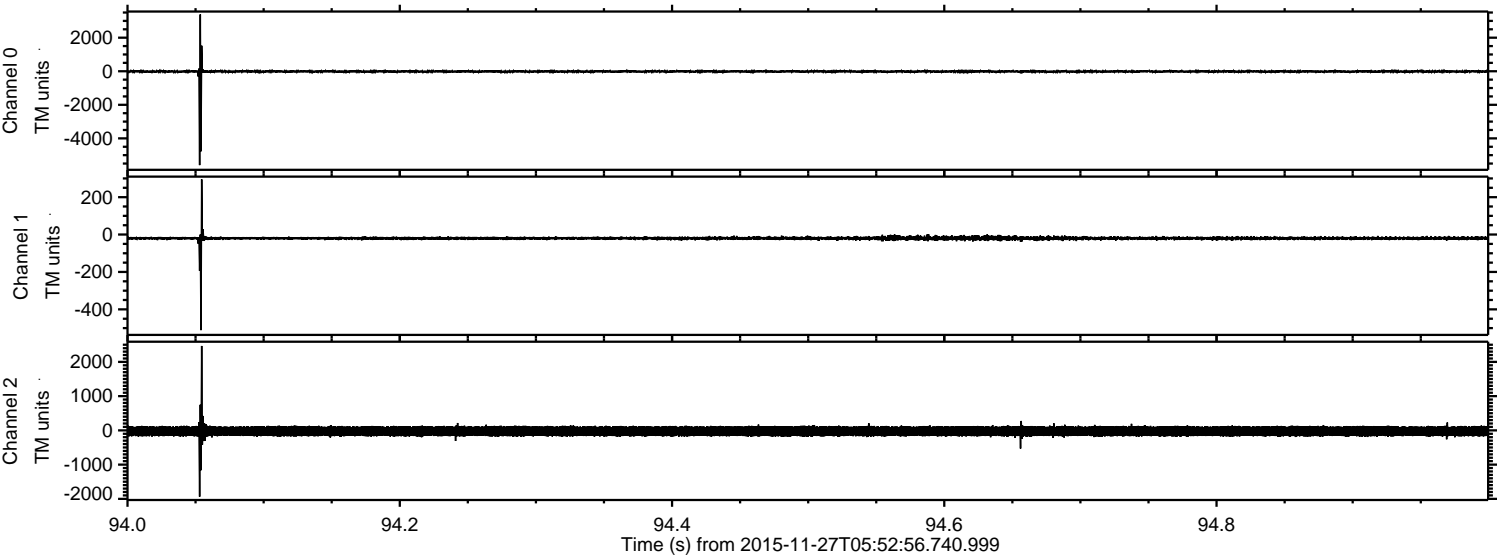
Channel 1
mn: -523
mx: 375
 μ : -19.8
 σ : 8.1

Channel 2
mn: -6267
mx: 4071
 μ : -24.2
 σ : 100.0

Processed Wed Dec 2 21:49:16 2015 by ELM ver.2012-10-06 from 001__elm20151127_055255__dat00.bin



Processed Wed Dec 2 21:49:17 2015 by ELM ver.2012-10-06 from 001__elm20151127_055255__dat00.bin



Processed Wed Dec 2 21:49:18 2015 by ELM ver.2012-10-06 from 001__elm20151127_055255__dat00.bin

