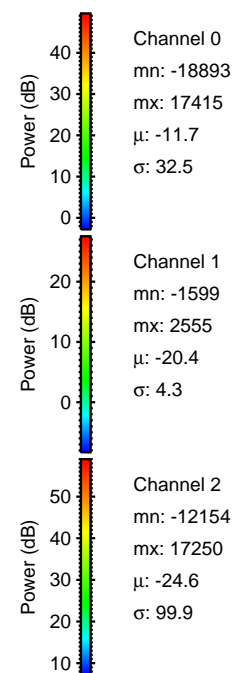
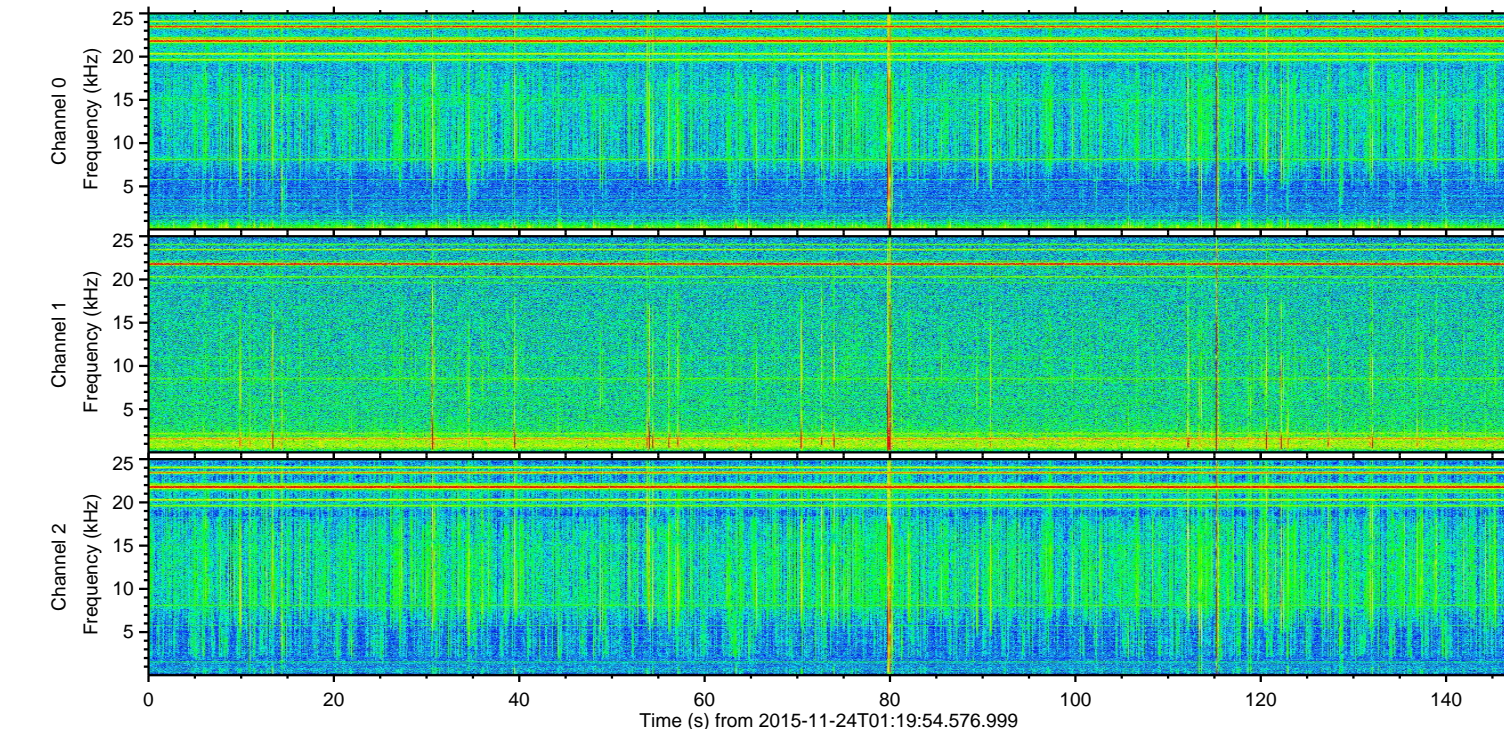
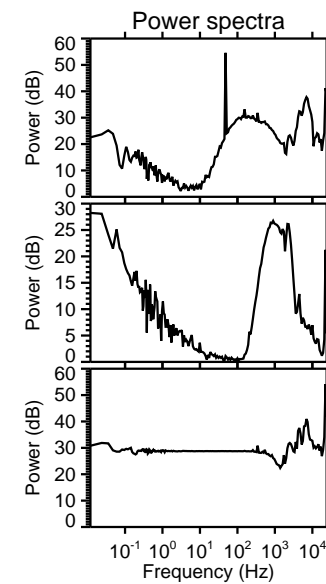
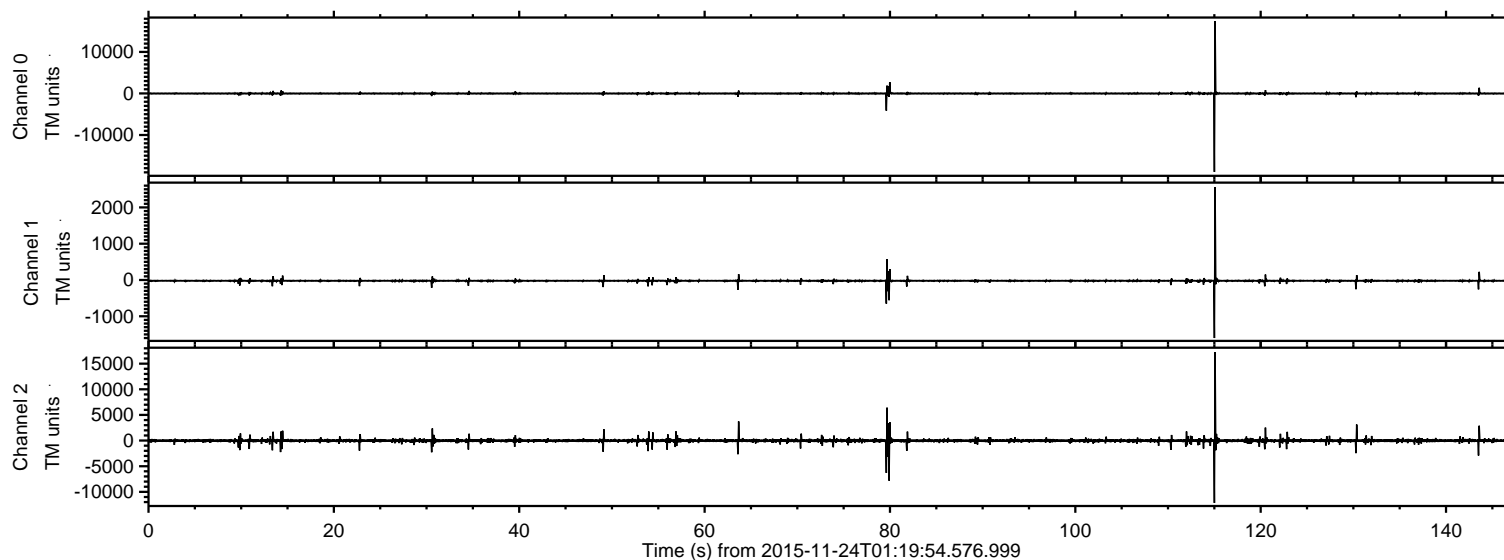


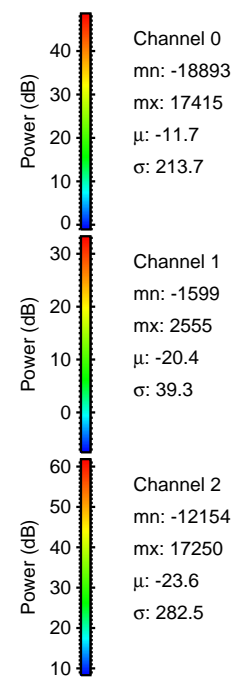
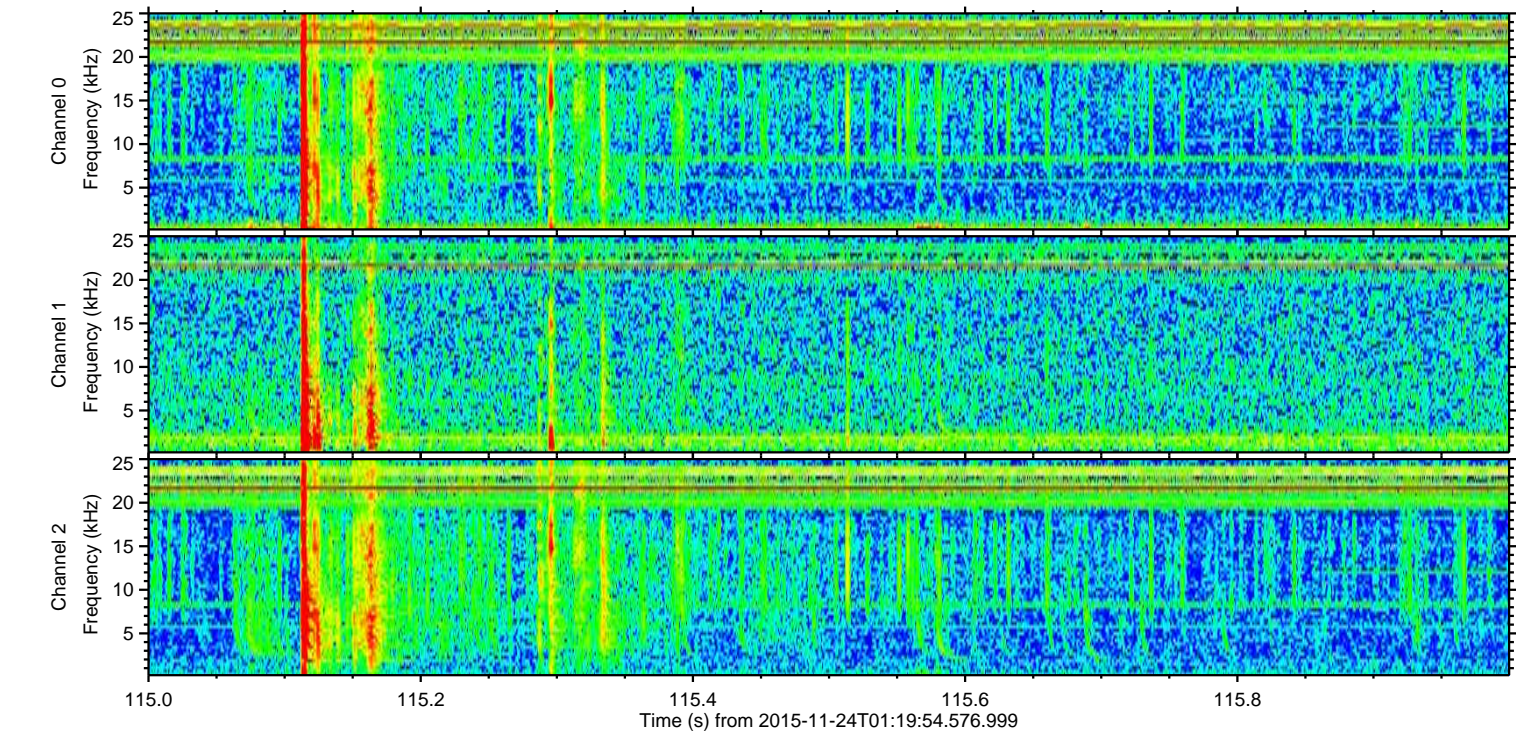
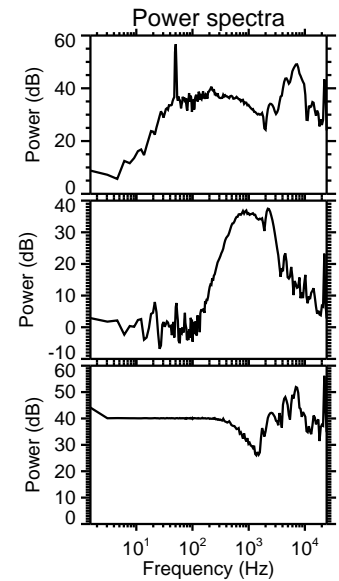
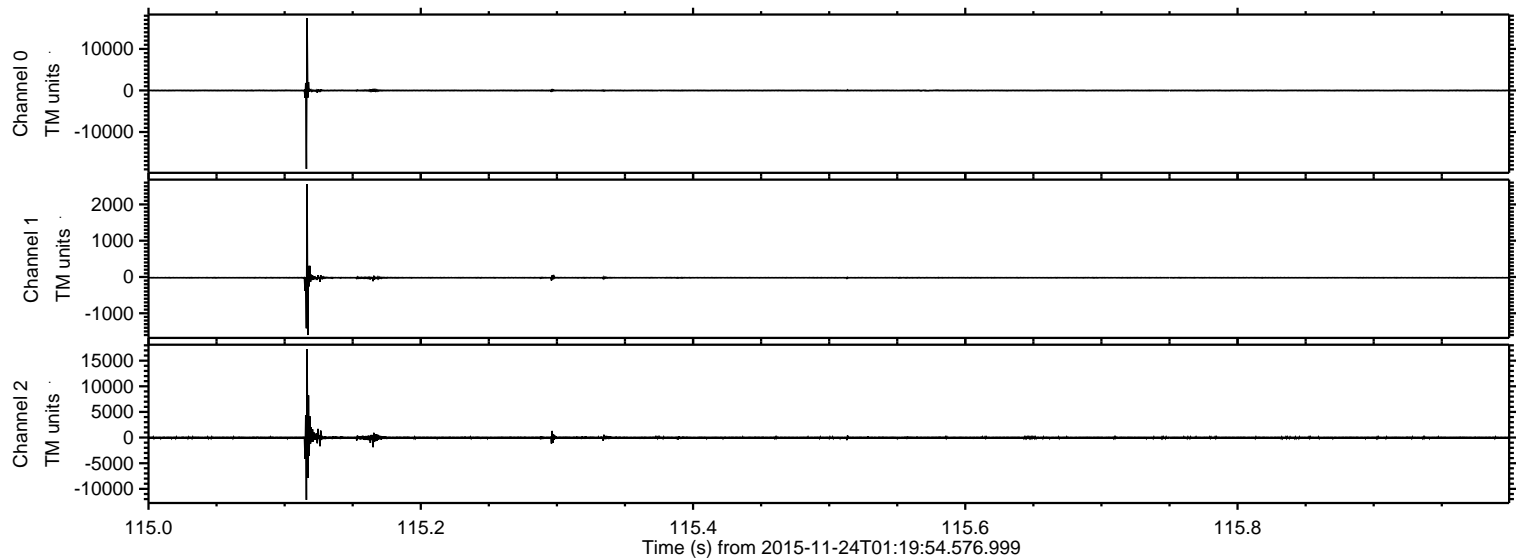
ELMAVAN 3D WAVEFORMS (Measured data sampled at 50 kHz) 51000 packets of 144 samples from 2015-11-24T01:19:54.576.999.

Processed Tue Dec 1 18:52:09 2015 by ELM ver.2012-10-06 from 001__elm20151124_011953__dat00.bin



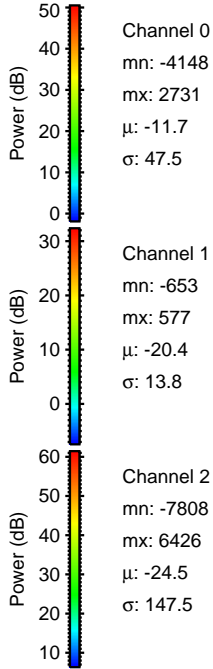
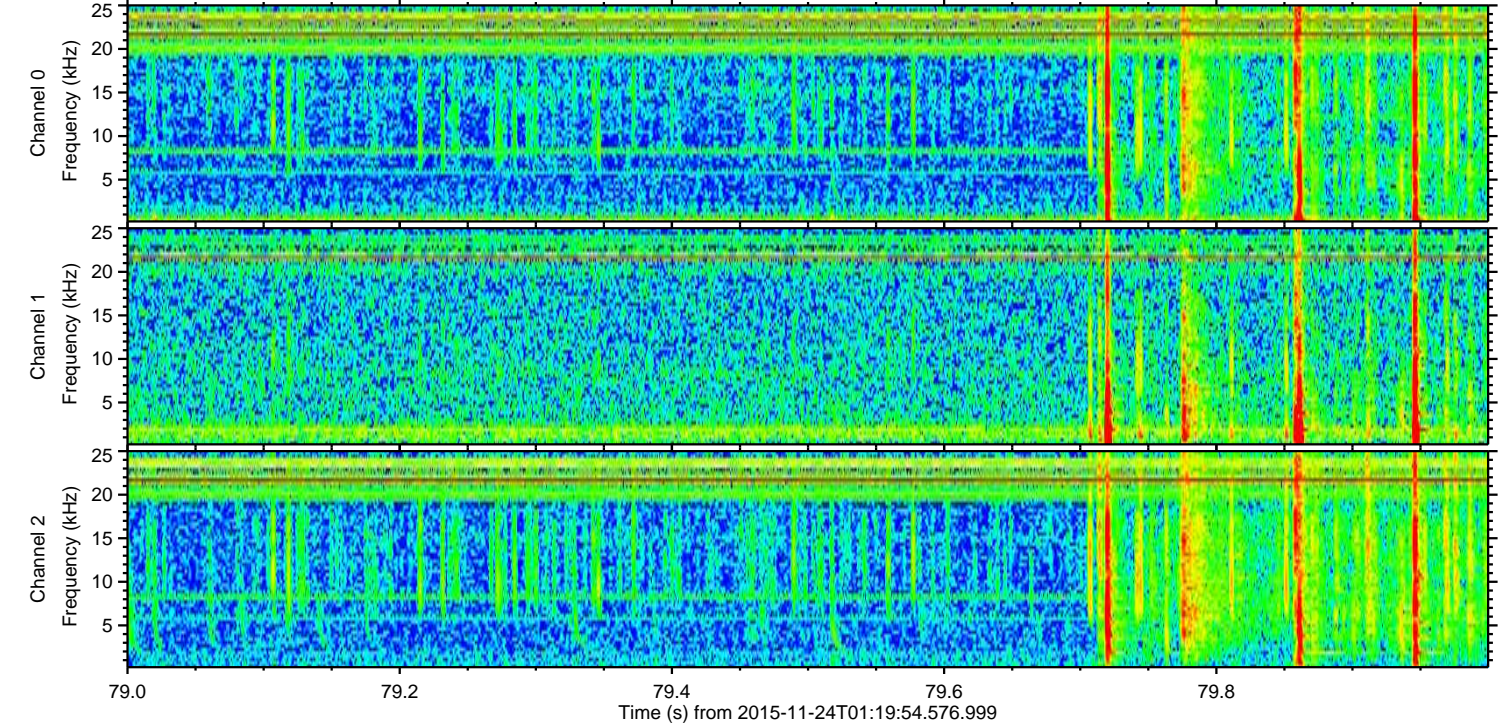
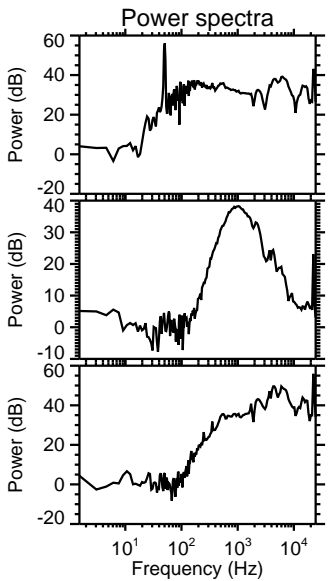
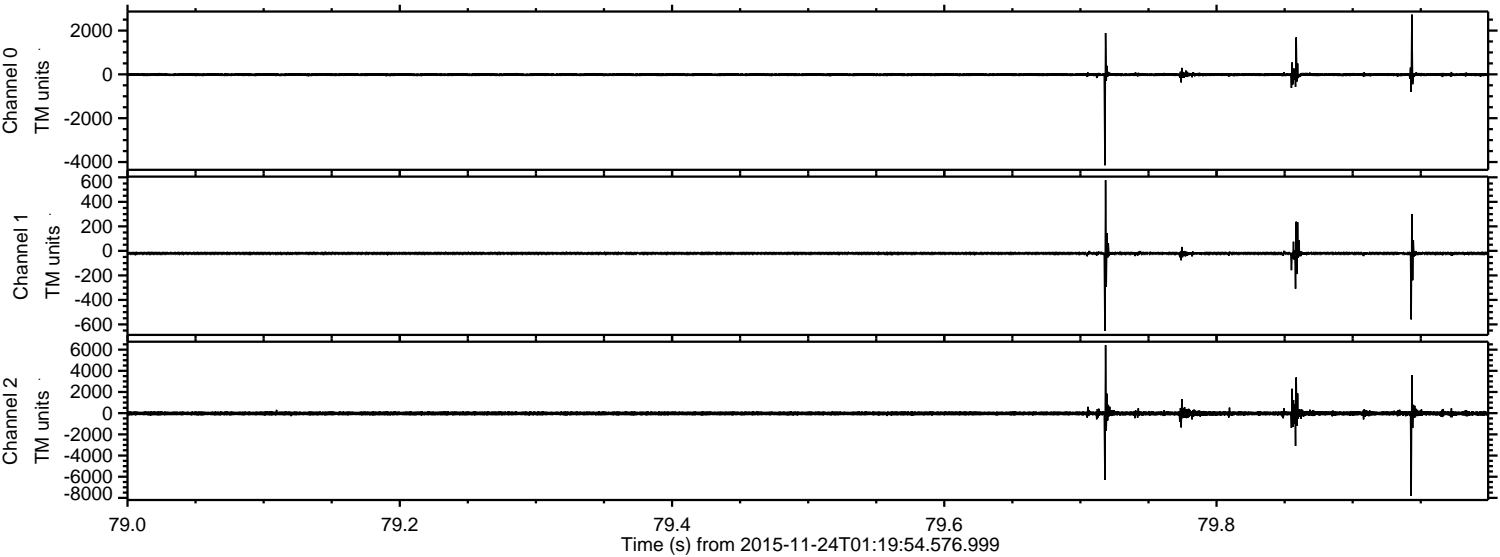
ELMAVAN 3D WAVEFORMS (Measured data sampled at 50 kHz) 51000 packets of 144 samples from 2015-11-24T01:19:54.576.999. Part 116/147

Processed Tue Dec 1 18:52:21 2015 by ELM ver.2012-10-06 from 001__elm20151124_011953__dat00.bin

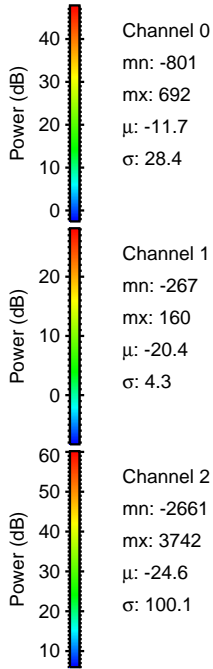
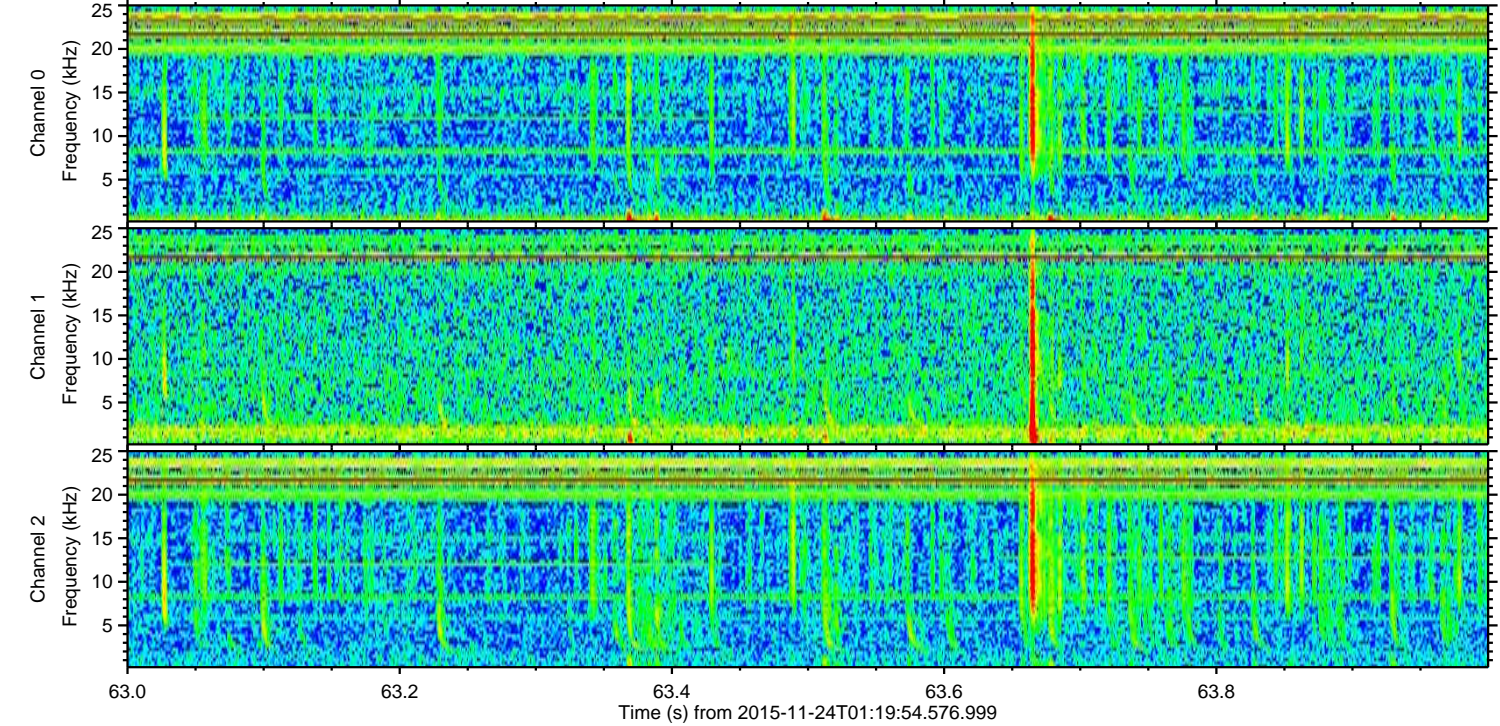
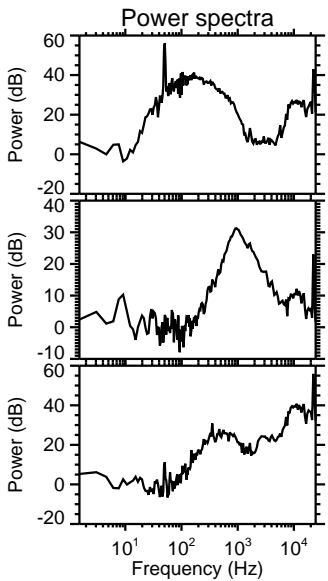
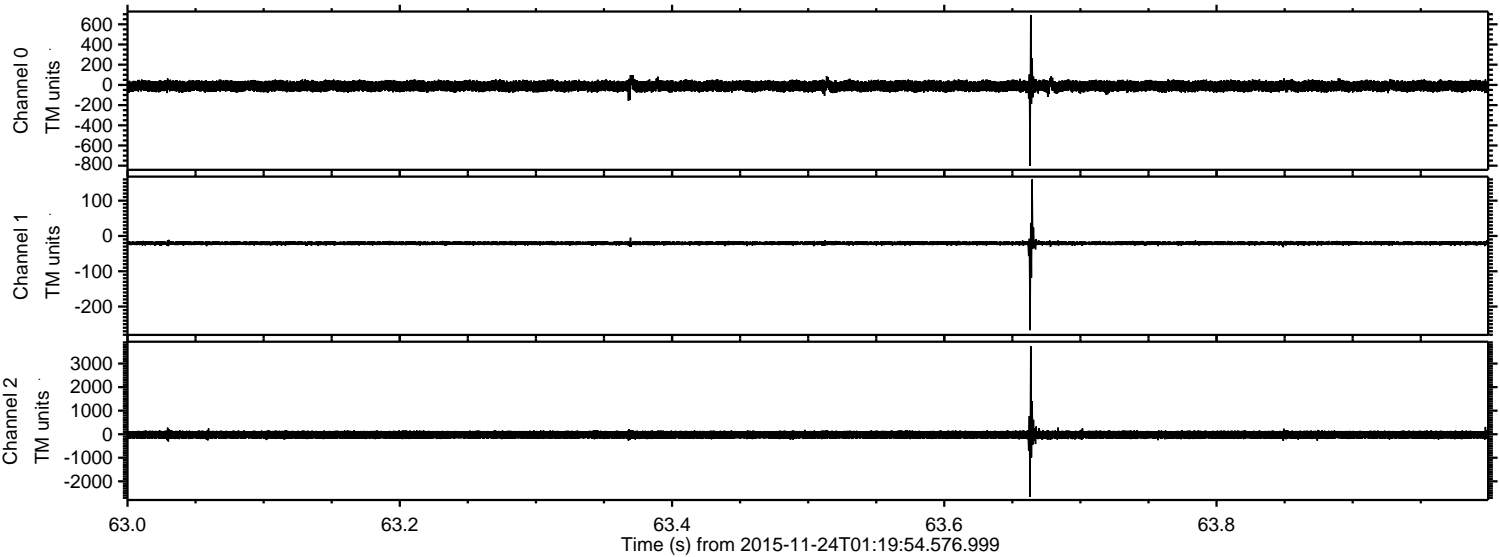


ELMAVAN 3D WAVEFORMS (Measured data sampled at 50 kHz) 51000 packets of 144 samples from 2015-11-24T01:19:54.576.999. Part 80/147

Processed Tue Dec 1 18:52:22 2015 by ELM ver.2012-10-06 from 001__elm20151124_011953__dat00.bin

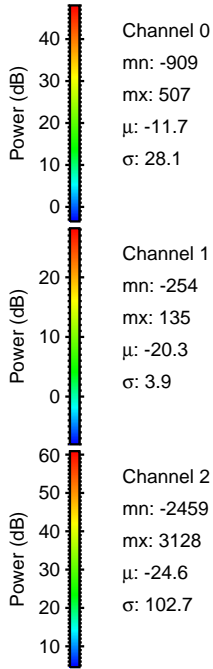
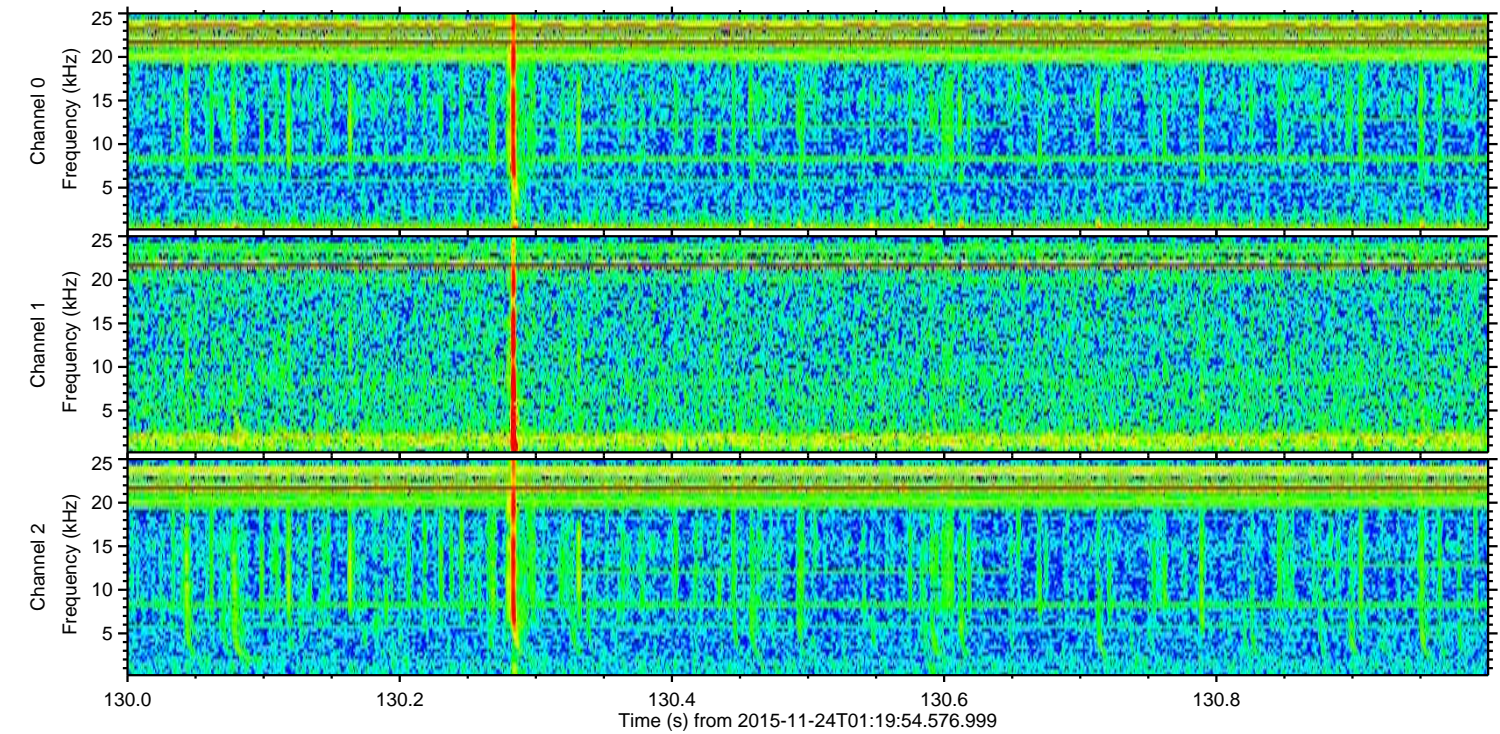
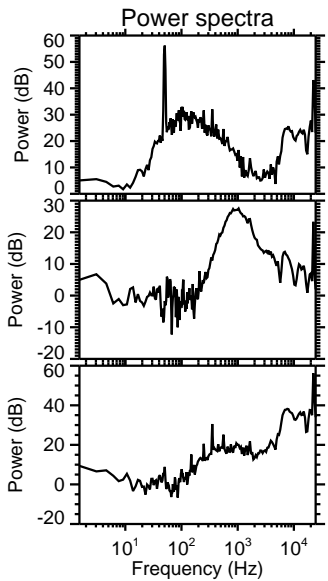
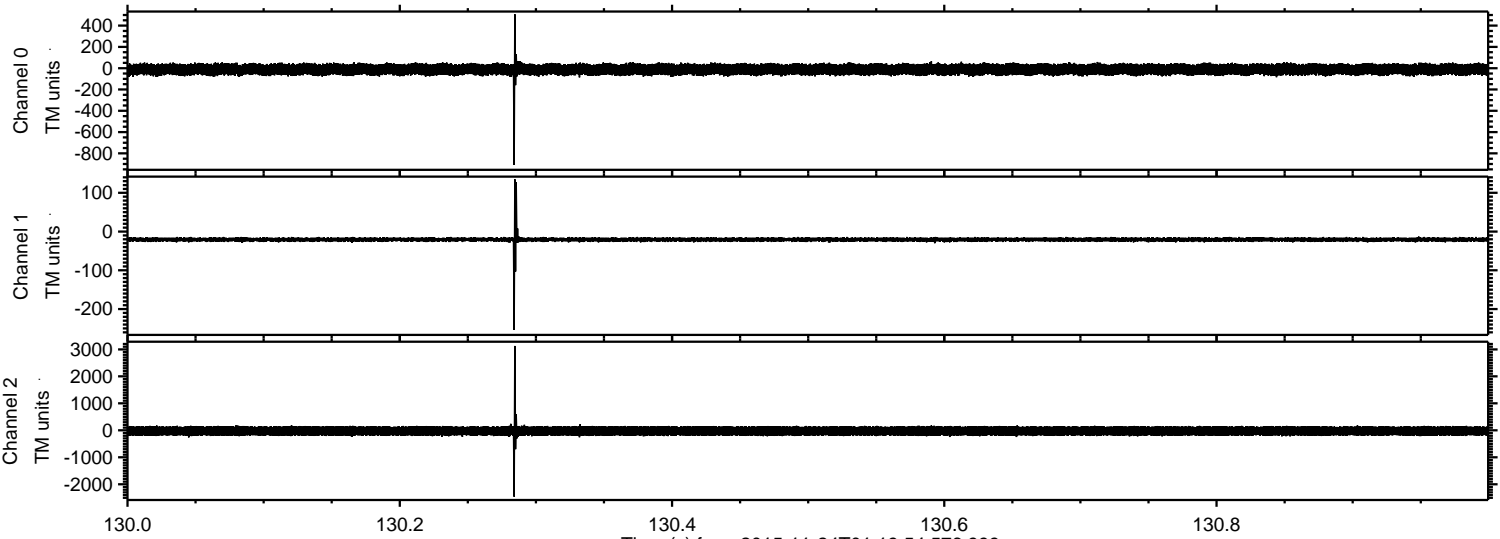


Processed Tue Dec 1 18:52:23 2015 by ELM ver.2012-10-06 from 001__elm20151124_011953__dat00.bin



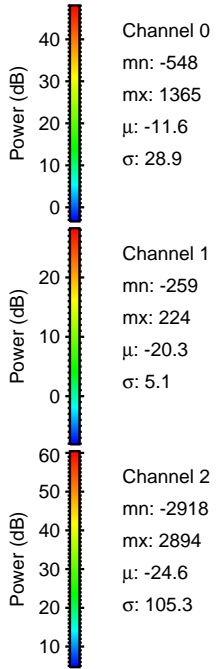
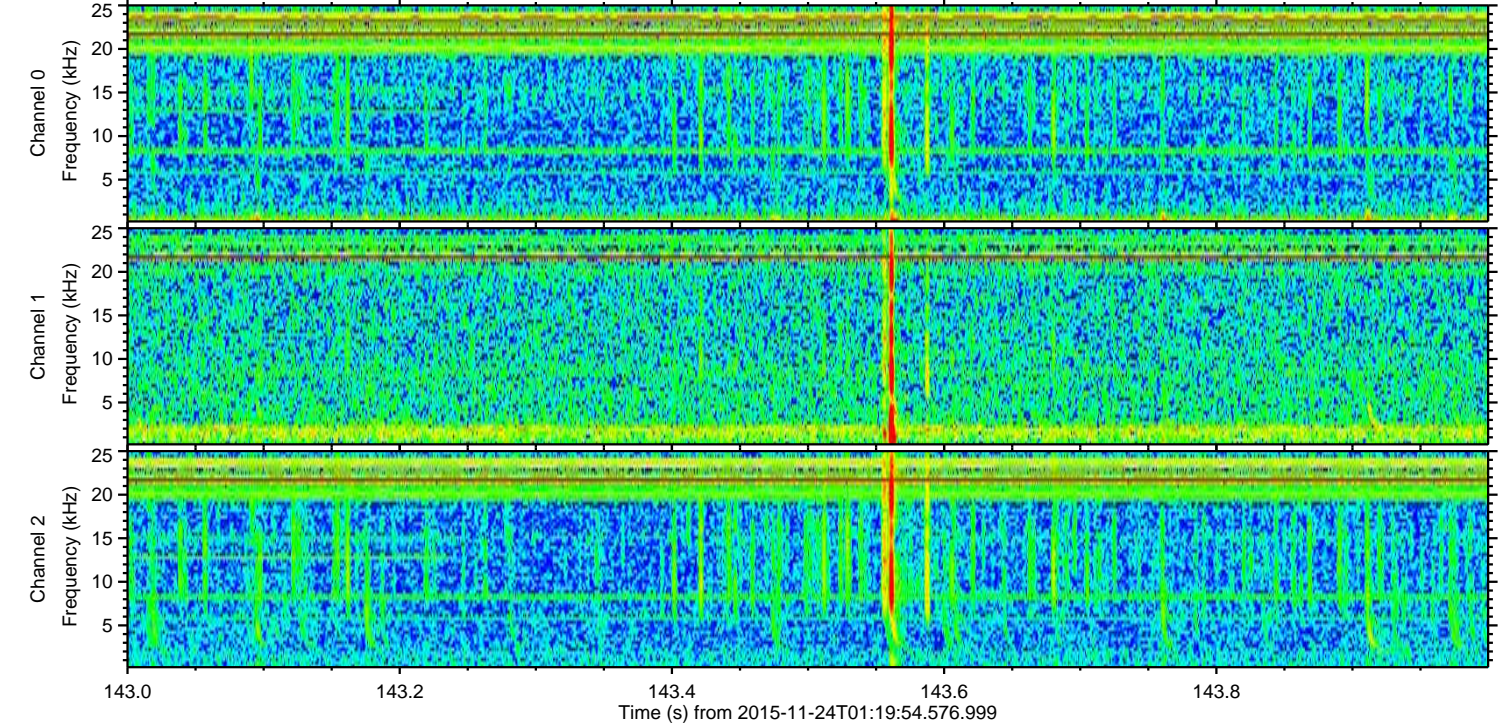
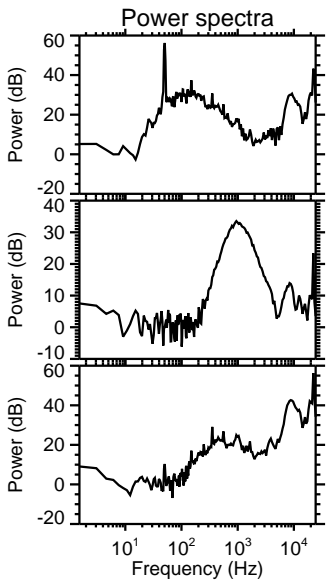
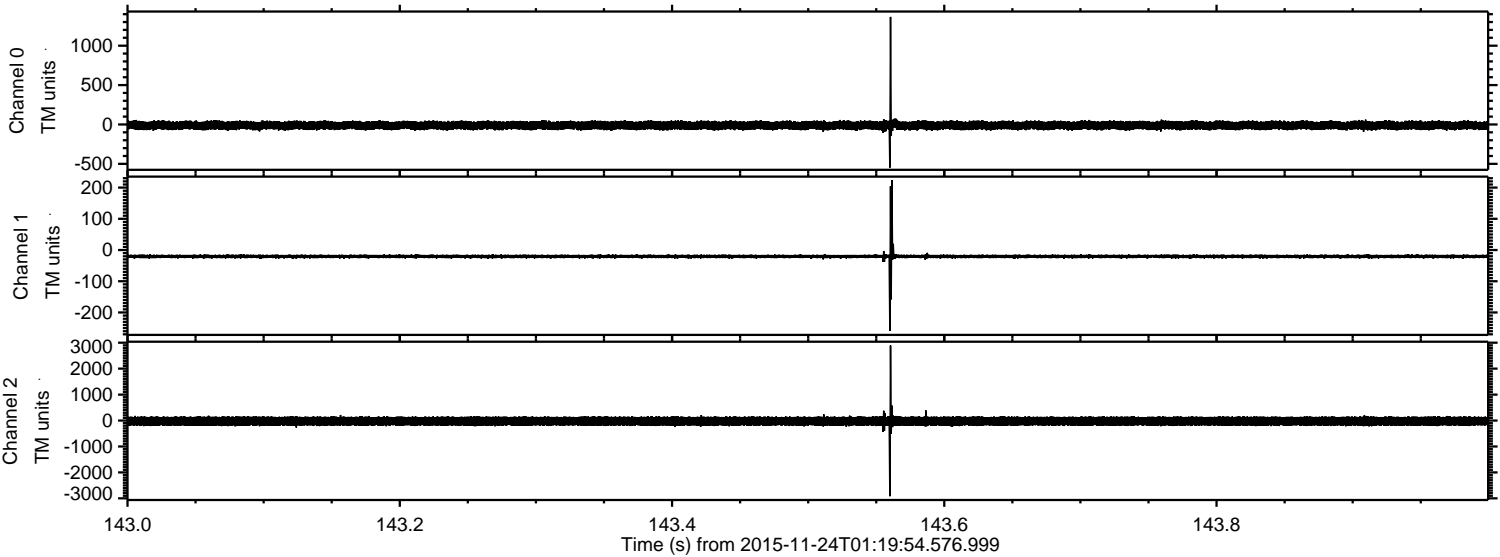
ELMAVAN 3D WAVEFORMS (Measured data sampled at 50 kHz) 51000 packets of 144 samples from 2015-11-24T01:19:54.576.999. Part 131/147

Processed Tue Dec 1 18:52:24 2015 by ELM ver.2012-10-06 from 001__elm20151124_011953__dat00.bin



ELMAVAN 3D WAVEFORMS (Measured data sampled at 50 kHz) 51000 packets of 144 samples from 2015-11-24T01:19:54.576.999. Part 144/147

Processed Tue Dec 1 18:52:25 2015 by ELM ver.2012-10-06 from 001__elm20151124_011953__dat00.bin



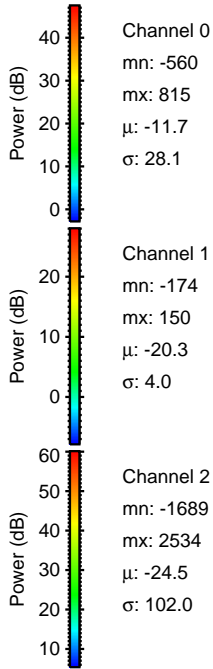
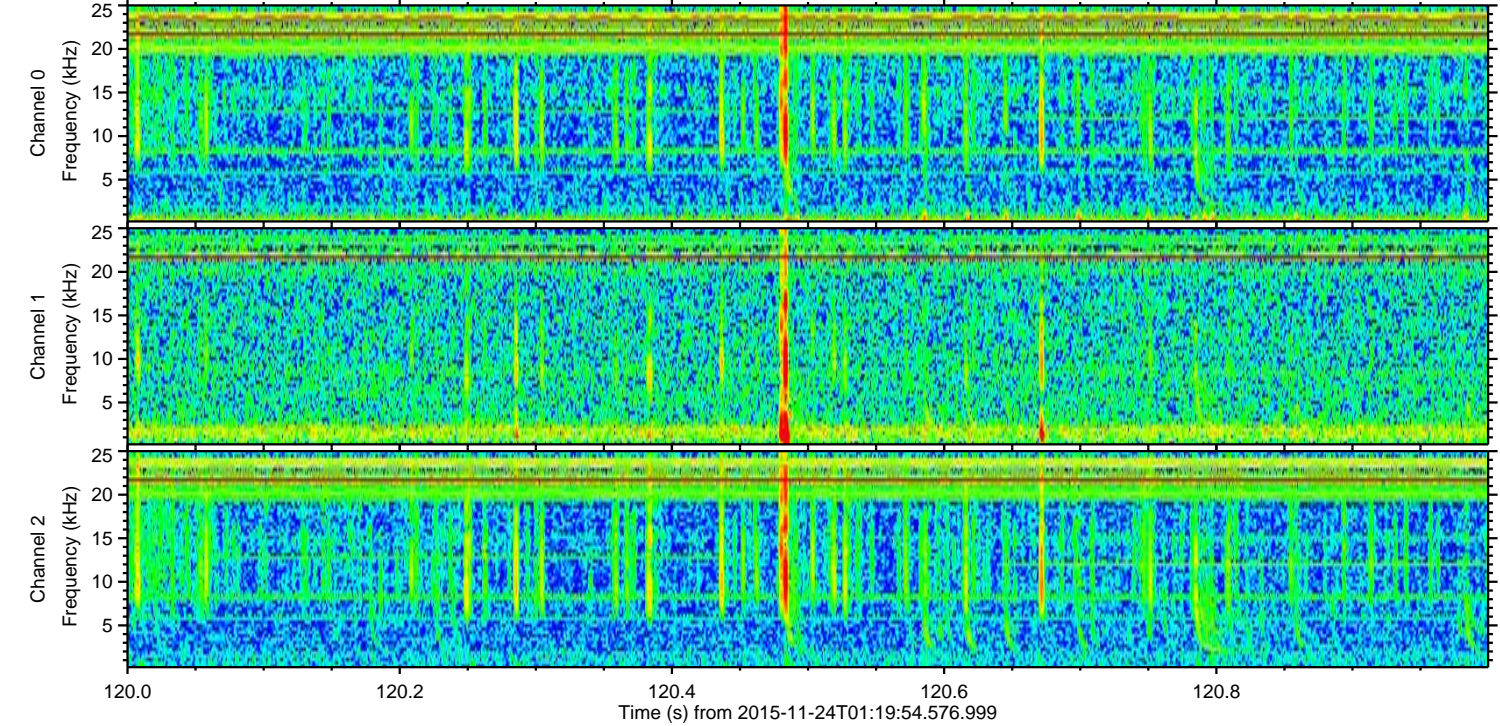
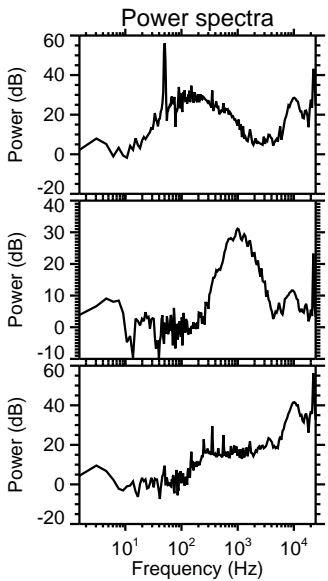
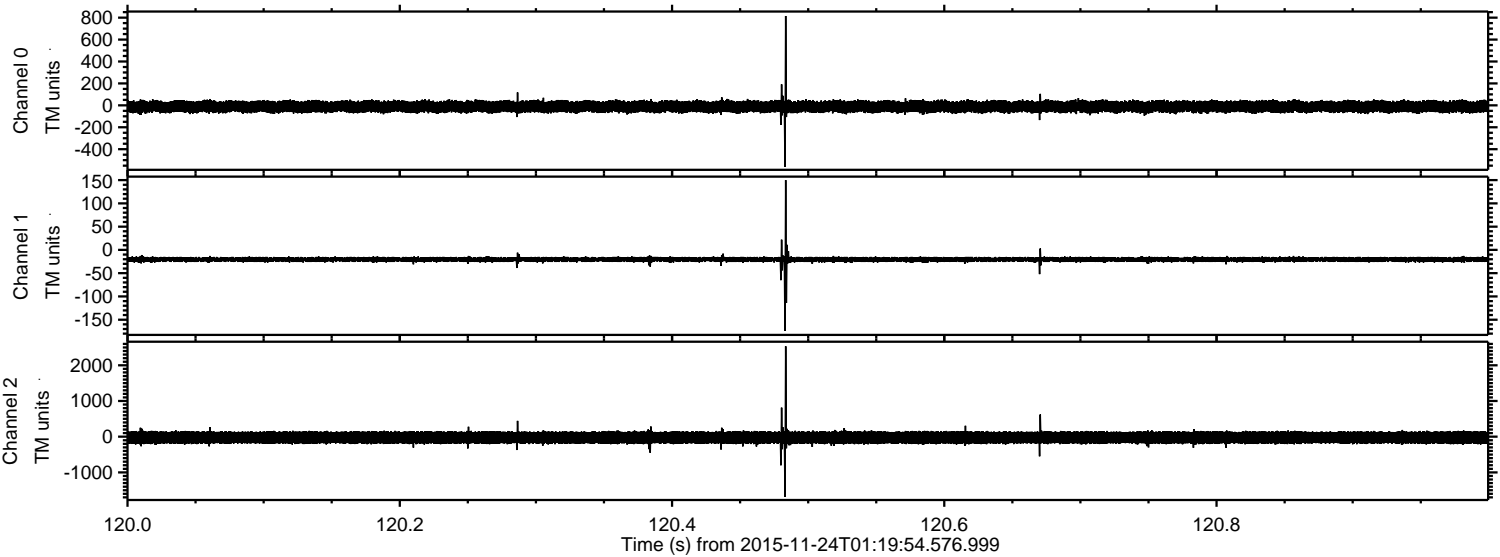
Channel 0
mn: -548
mx: 1365
 μ : -11.6
 σ : 28.9

Channel 1
mn: -259
mx: 224
 μ : -20.3
 σ : 5.1

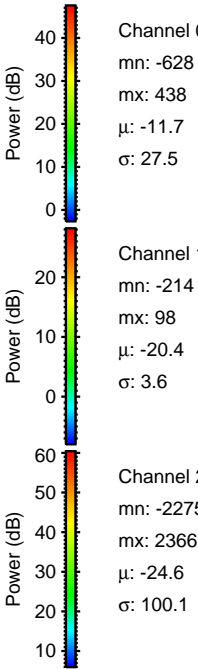
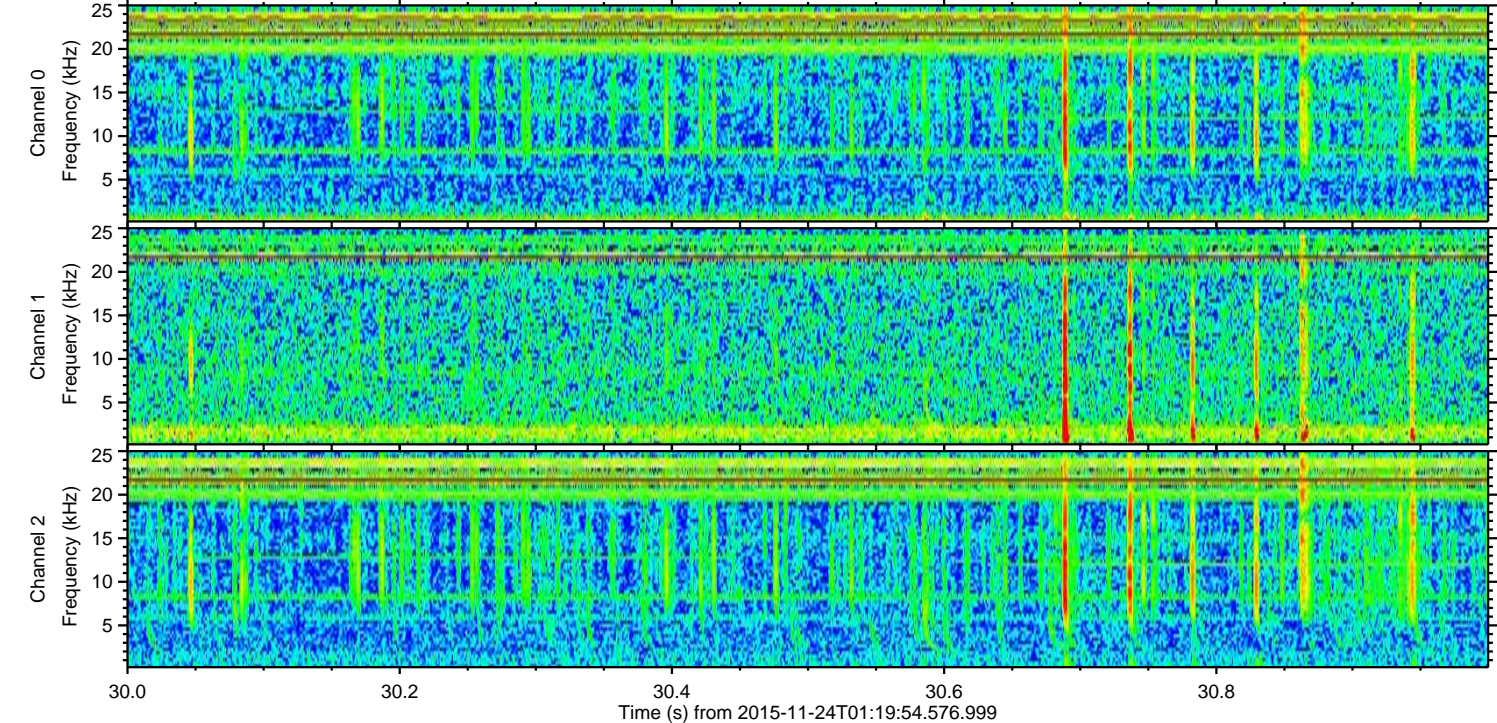
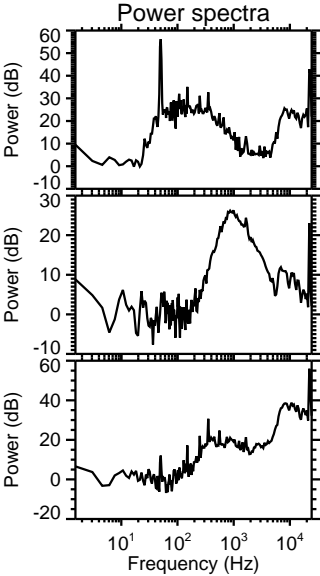
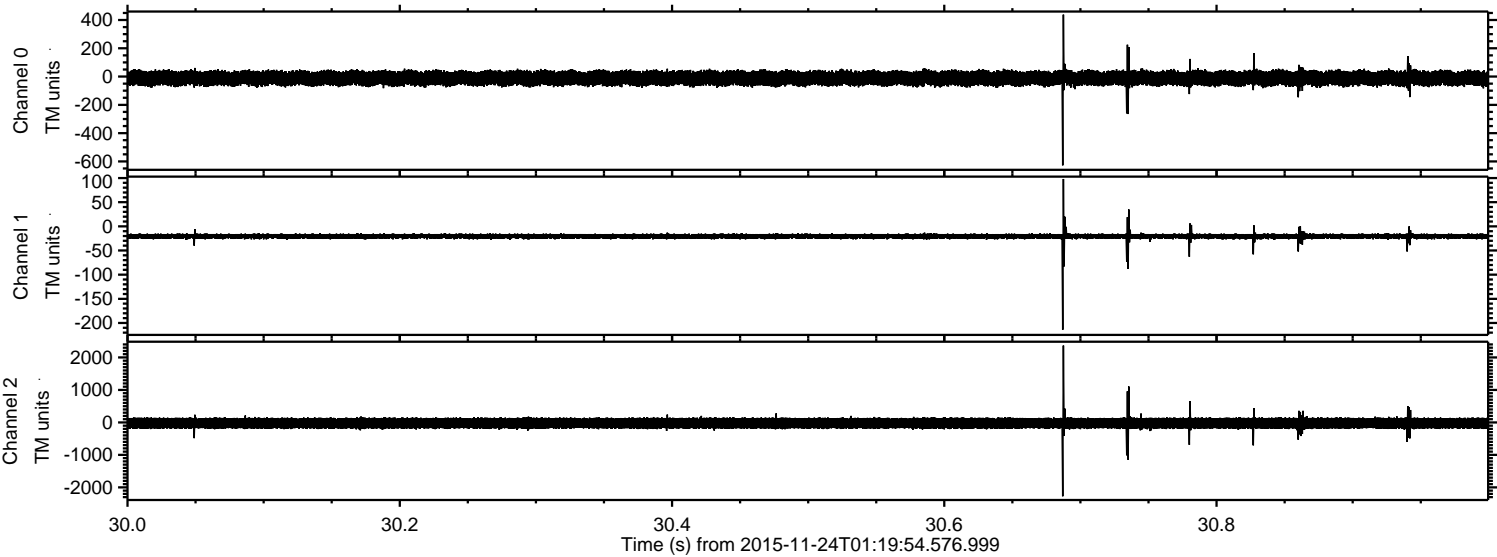
Channel 2
mn: -2918
mx: 2894
 μ : -24.6
 σ : 105.3

ELMAVAN 3D WAVEFORMS (Measured data sampled at 50 kHz) 51000 packets of 144 samples from 2015-11-24T01:19:54.576.999. Part 121/147

Processed Tue Dec 1 18:52:26 2015 by ELM ver.2012-10-06 from 001__elm20151124_011953__dat00.bin



Processed Tue Dec 1 18:52:26 2015 by ELM ver.2012-10-06 from 001__elm20151124_011953__dat00.bin



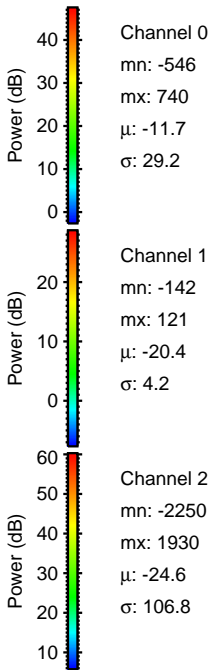
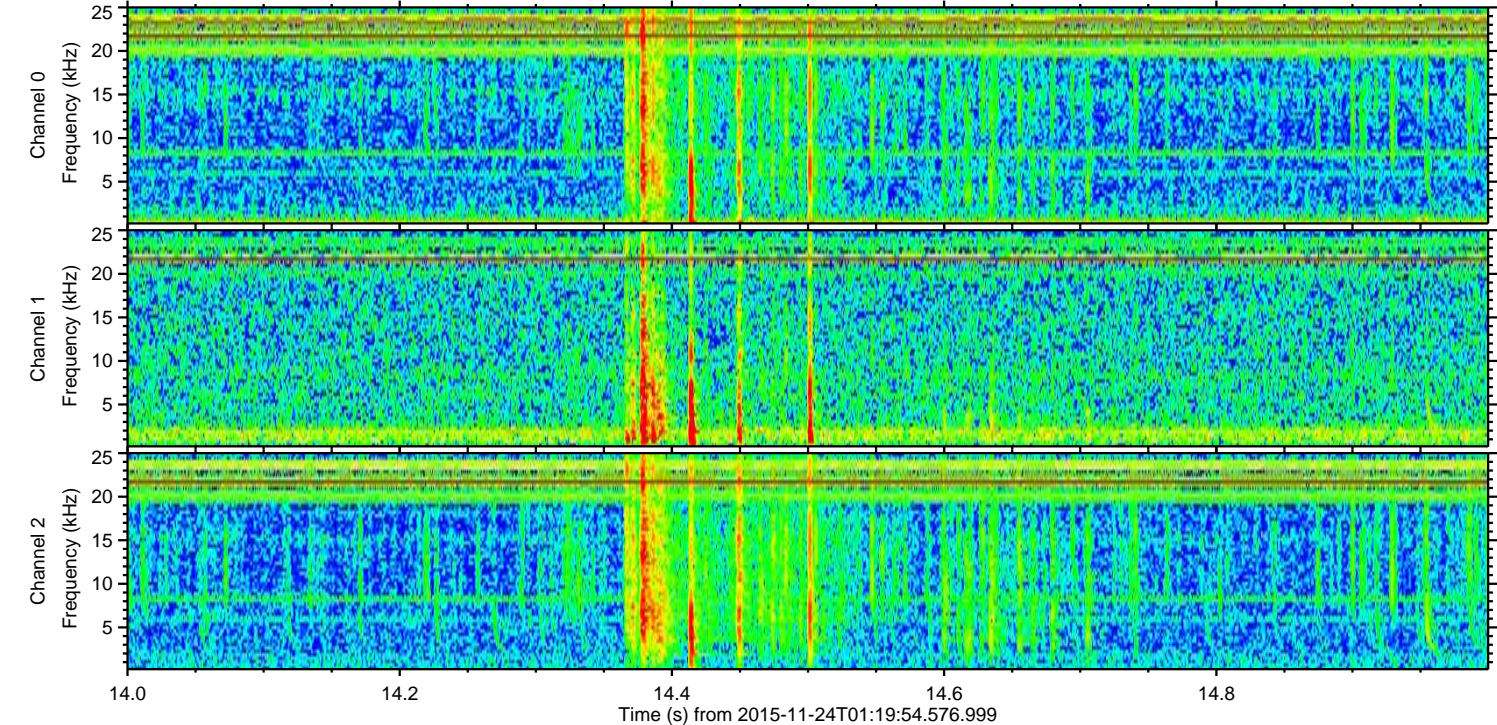
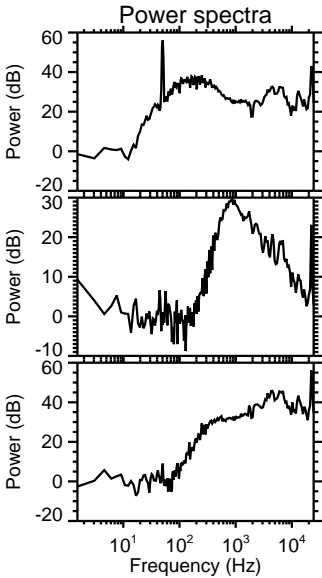
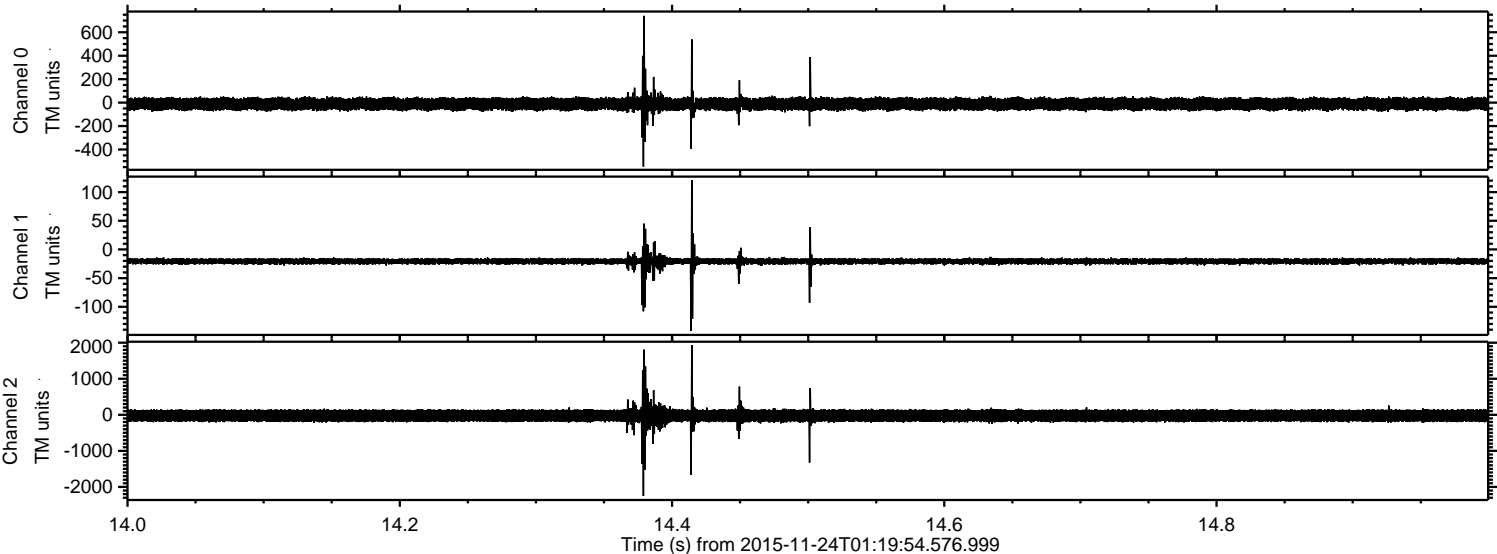
Channel 0
mn: -628
mx: 438
 μ : -11.7
 σ : 27.5

Channel 1
mn: -214
mx: 98
 μ : -20.4
 σ : 3.6

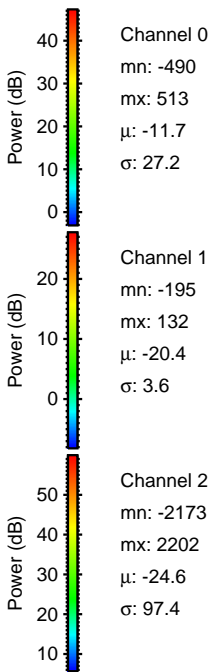
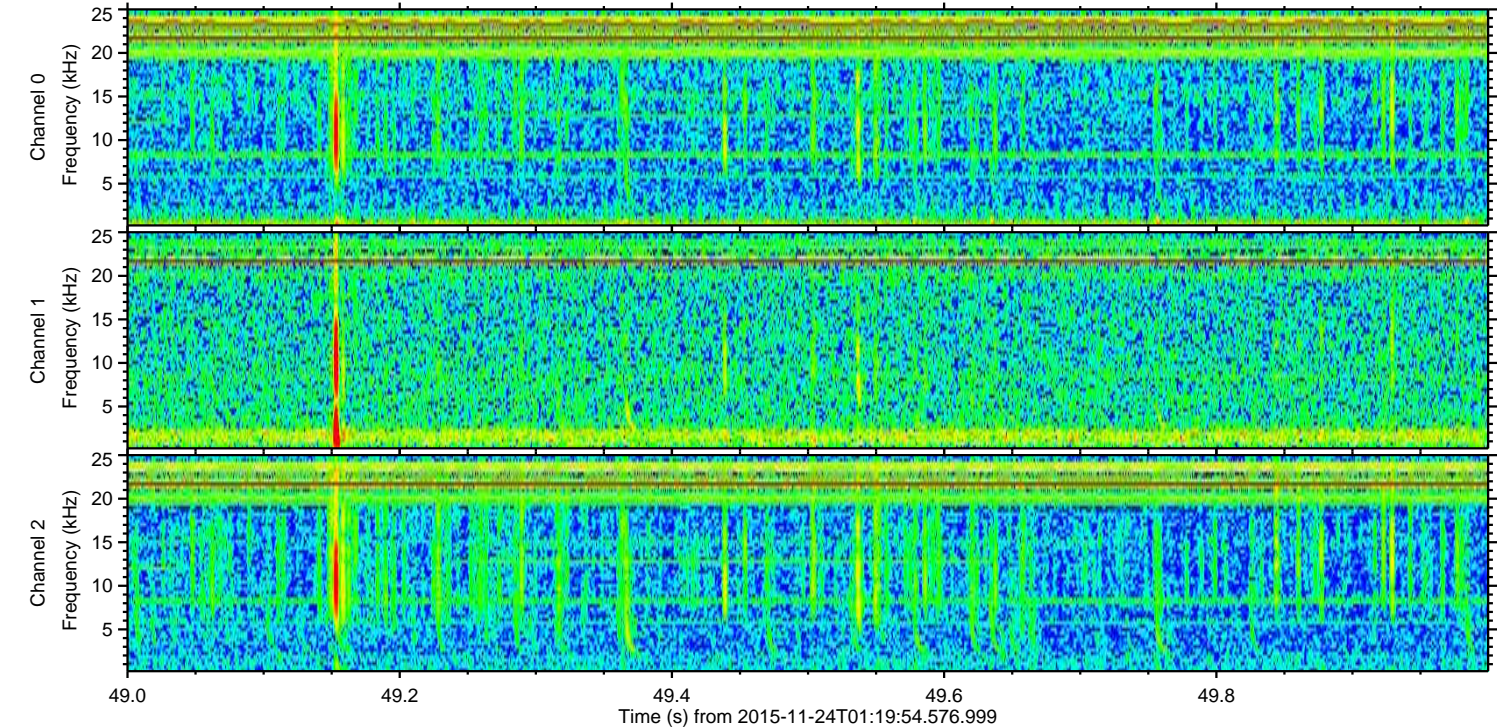
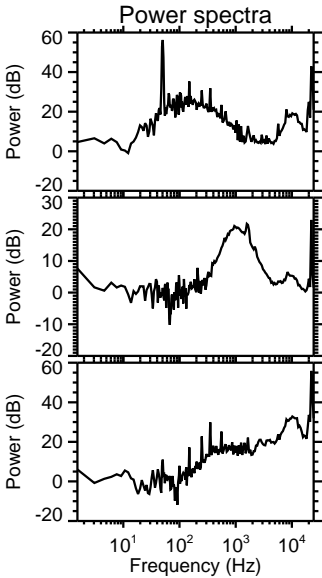
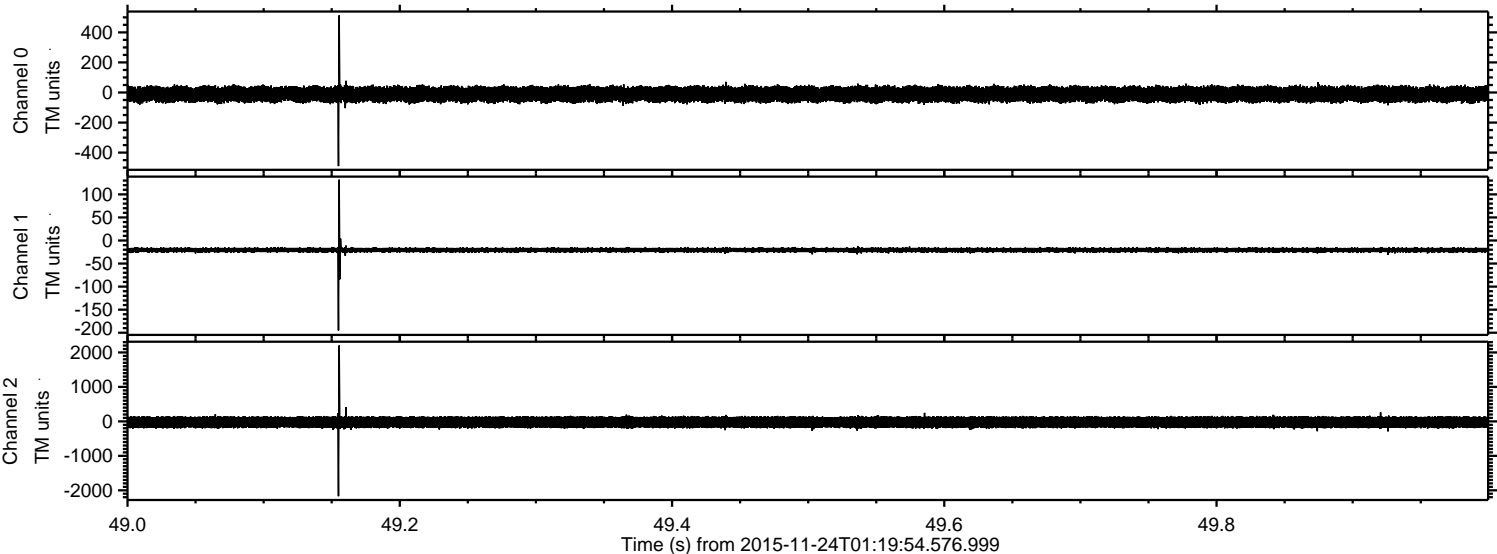
Channel 2
mn: -2275
mx: 2366
 μ : -24.6
 σ : 100.1

ELMAVAN 3D WAVEFORMS (Measured data sampled at 50 kHz) 51000 packets of 144 samples from 2015-11-24T01:19:54.576.999. Part 15/147

Processed Tue Dec 1 18:52:28 2015 by ELM ver.2012-10-06 from 001__elm20151124_011953__dat00.bin



Processed Tue Dec 1 18:52:29 2015 by ELM ver.2012-10-06 from 001__elm20151124_011953__dat00.bin



Processed Tue Dec 1 18:52:30 2015 by ELM ver.2012-10-06 from 001__elm20151124_011953__dat00.bin

