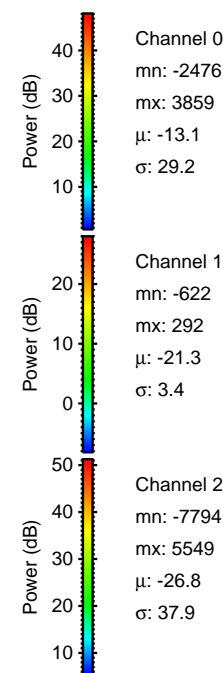
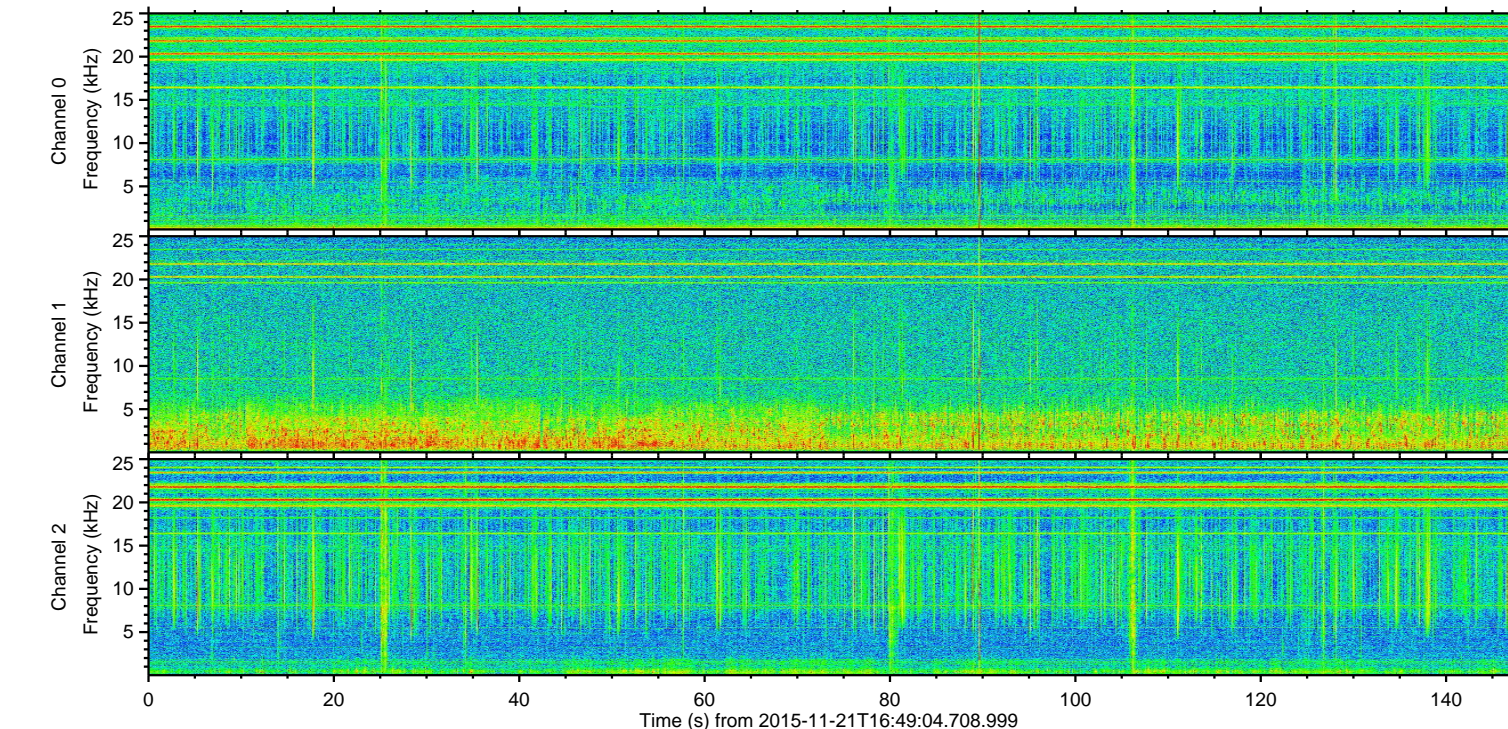
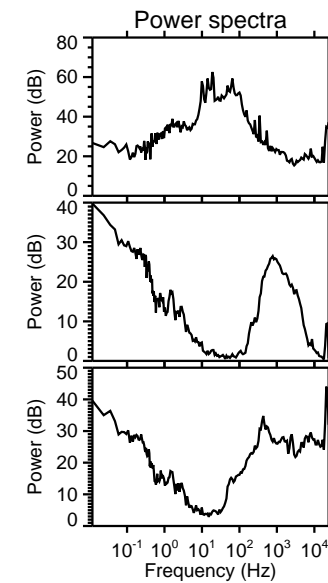
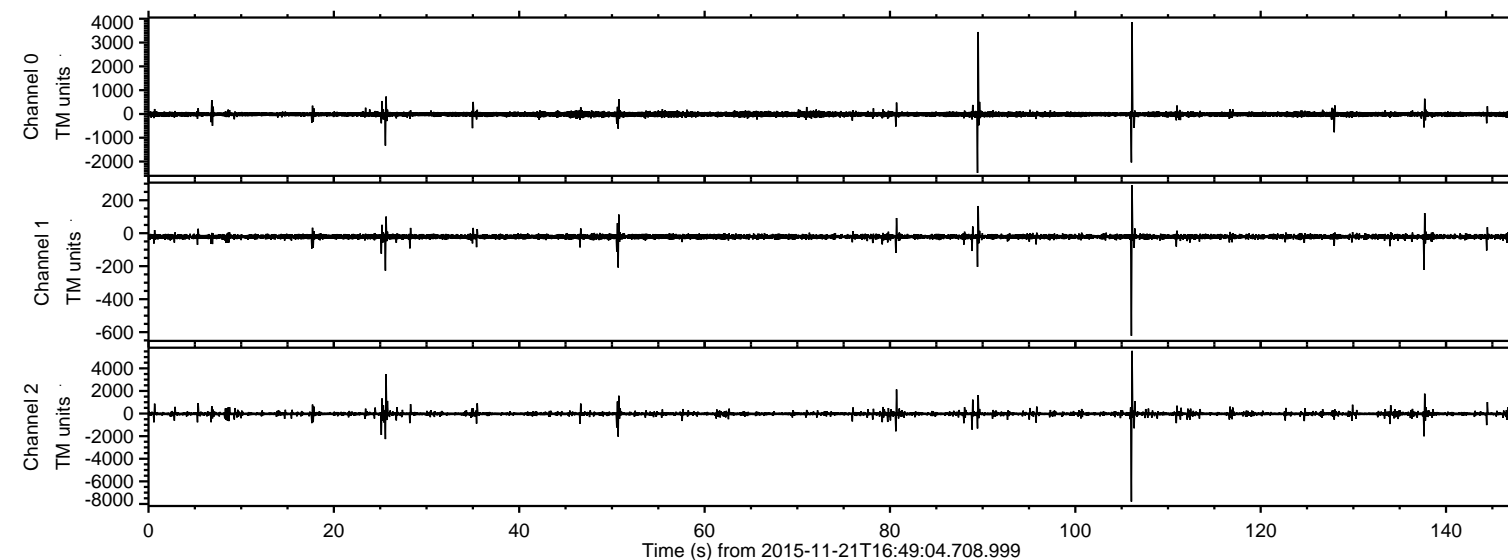


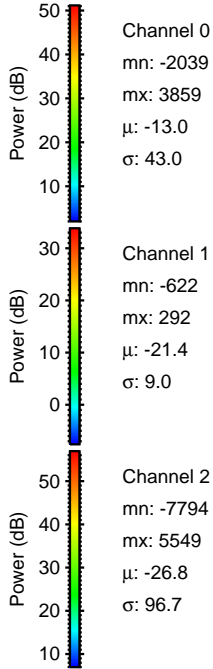
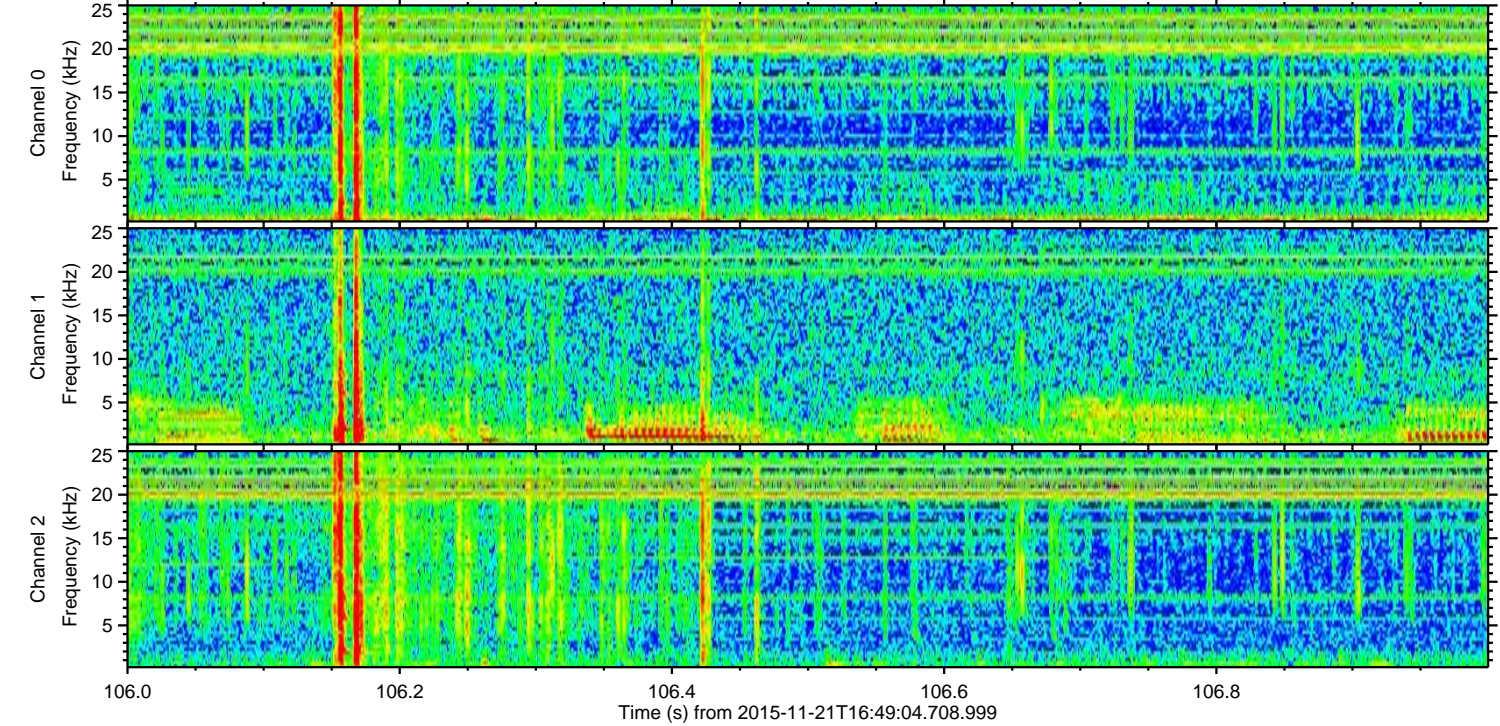
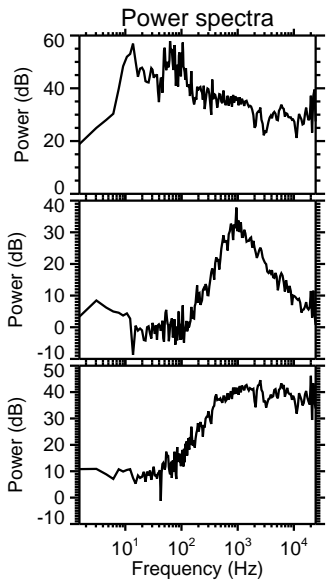
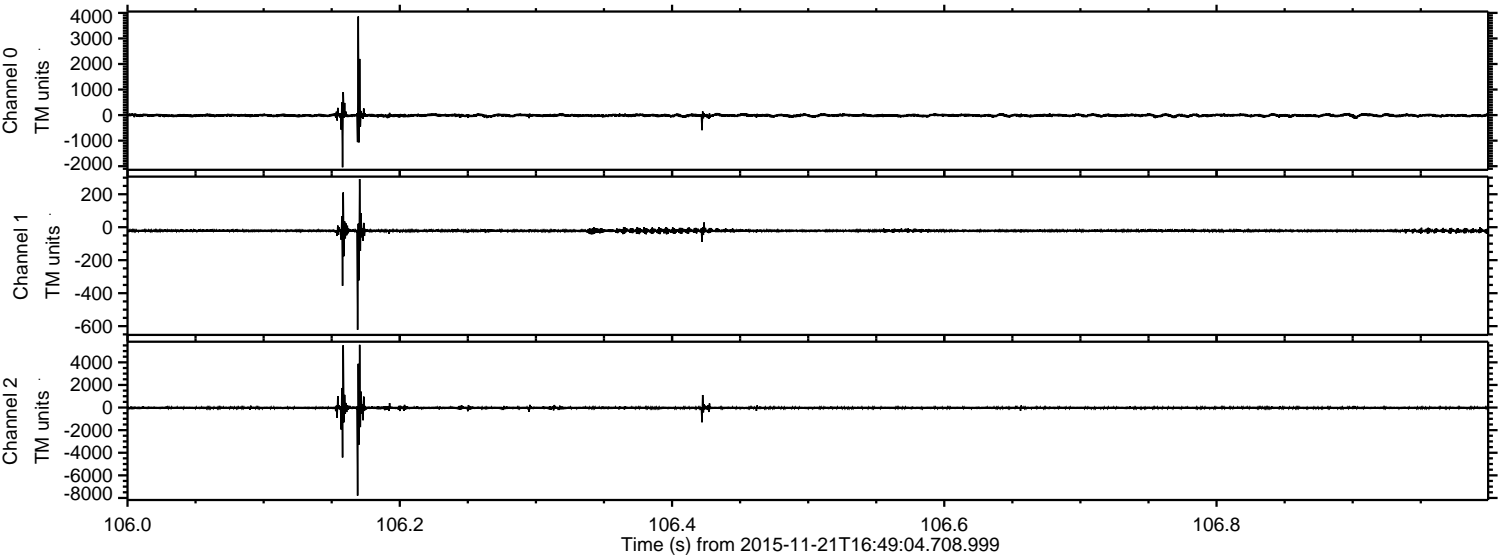
ELMAVAN 3D WAVEFORMS (Measured data sampled at 50 kHz) 51000 packets of 144 samples from 2015-11-21T16:49:04.708.999.

Processed Tue Nov 24 13:49:26 2015 by ELM ver.2012-10-06 from 001__elm20151121_164903__dat00.bin



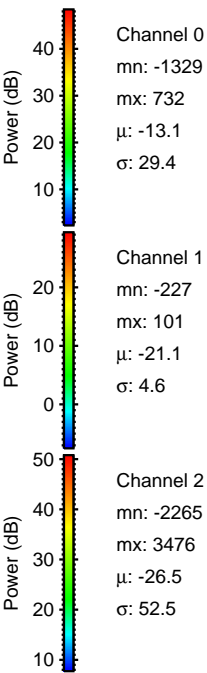
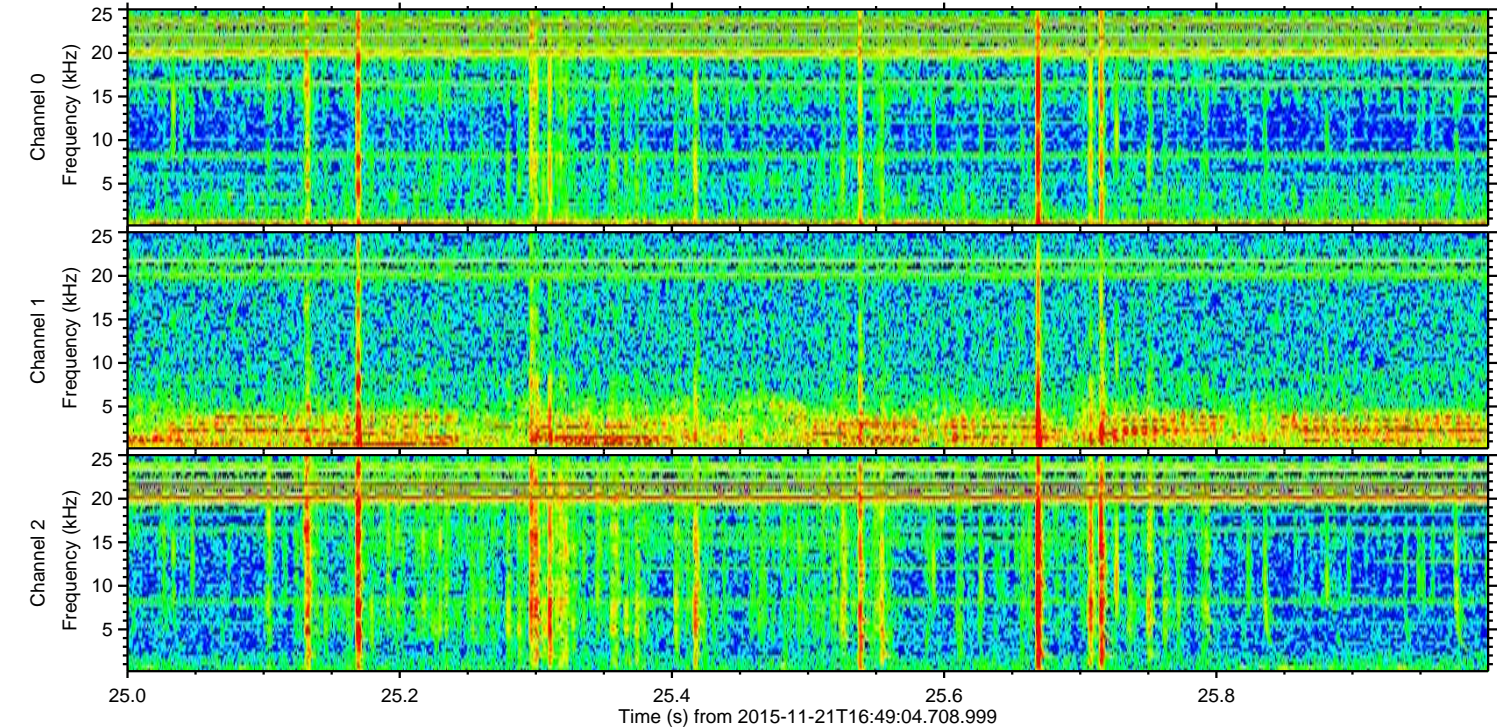
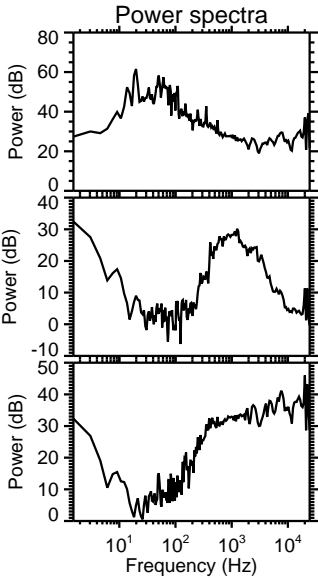
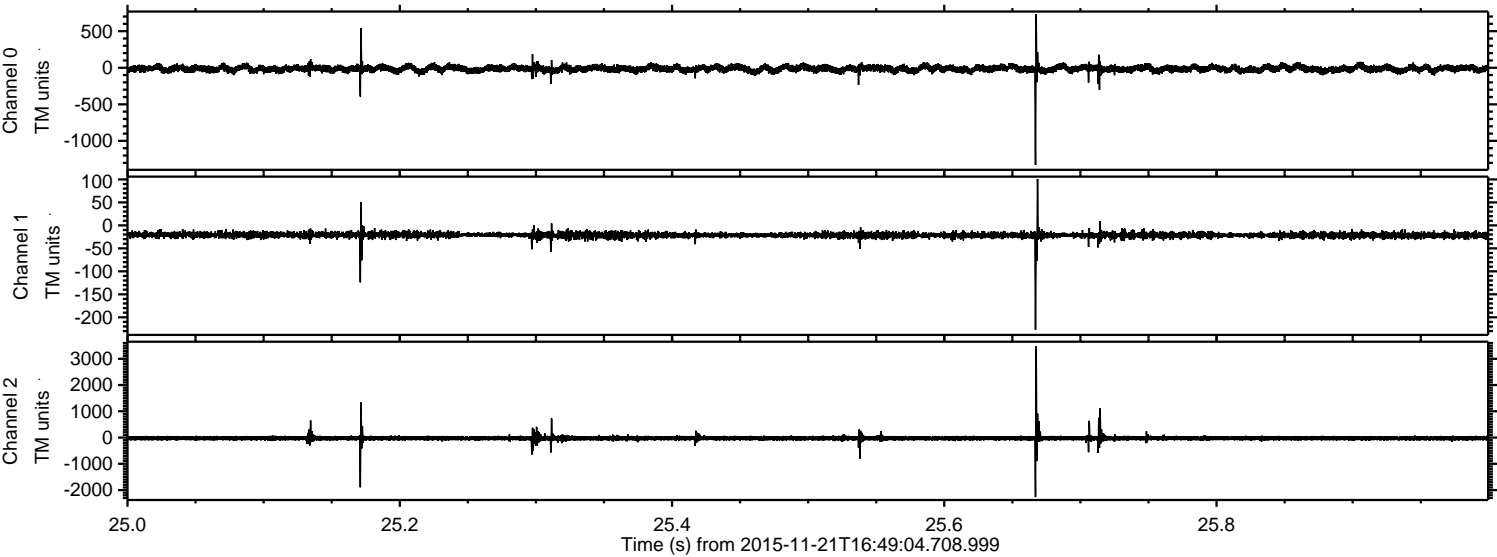
ELMAVAN 3D WAVEFORMS (Measured data sampled at 50 kHz) 51000 packets of 144 samples from 2015-11-21T16:49:04.708.999. Part 107/147

Processed Tue Nov 24 13:49:37 2015 by ELM ver.2012-10-06 from 001__elm20151121_164903__dat00.bin

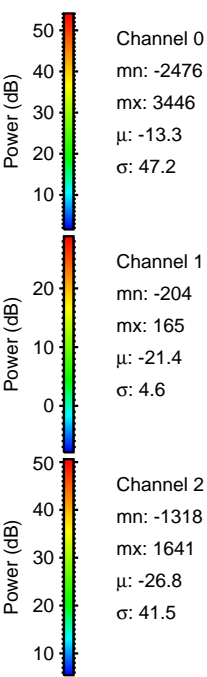
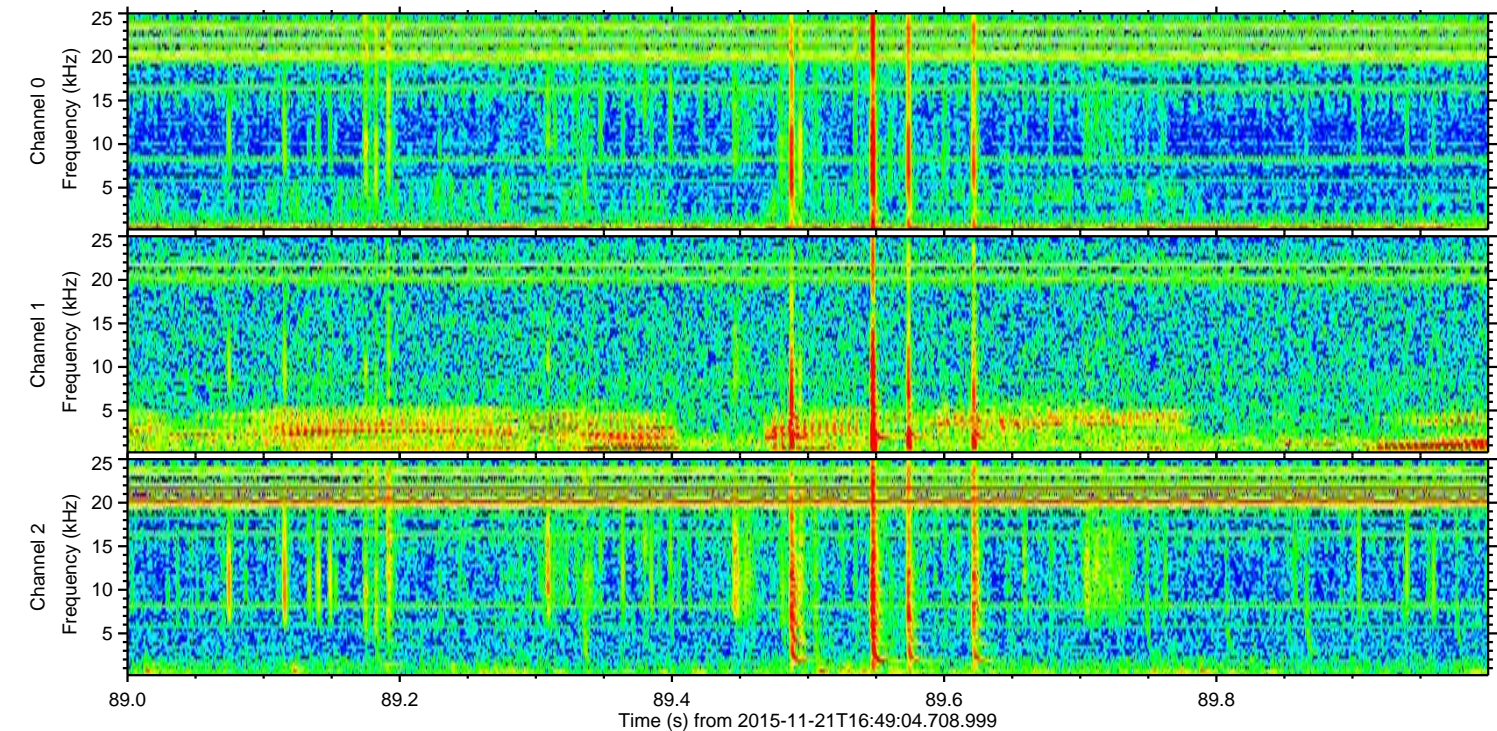
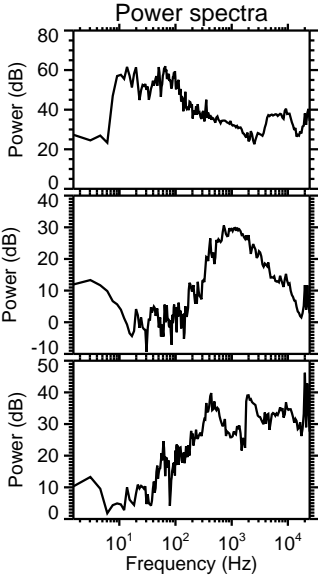
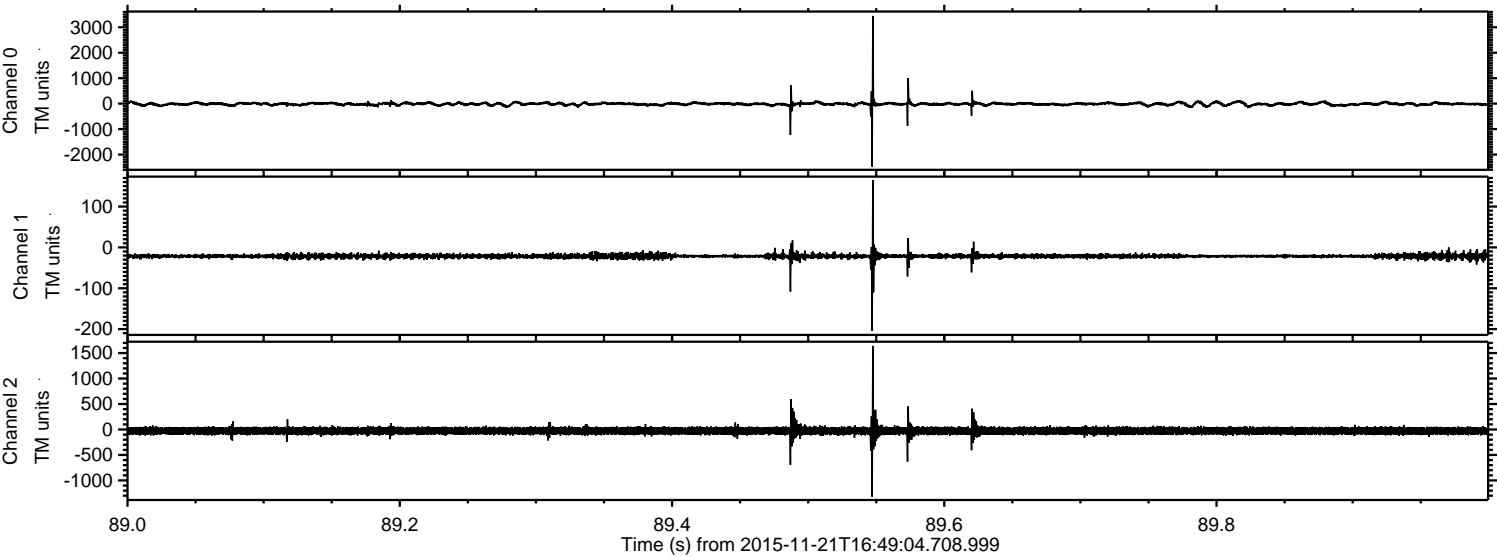


ELMAVAN 3D WAVEFORMS (Measured data sampled at 50 kHz) 51000 packets of 144 samples from 2015-11-21T16:49:04.708.999. Part 26/147

Processed Tue Nov 24 13:49:38 2015 by ELM ver.2012-10-06 from 001__elm20151121_164903__dat00.bin

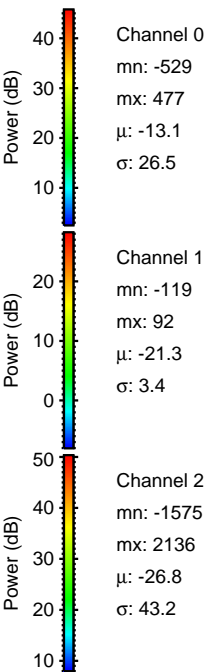
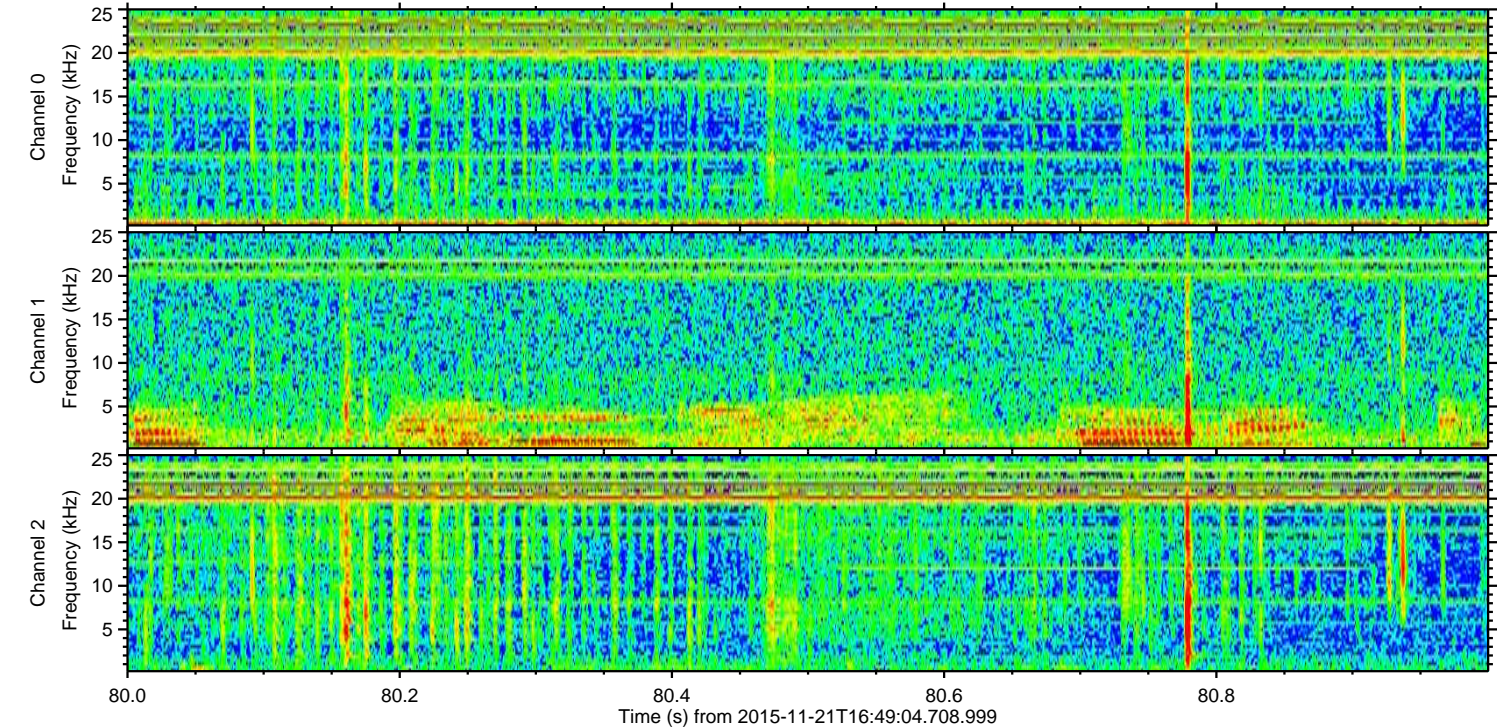
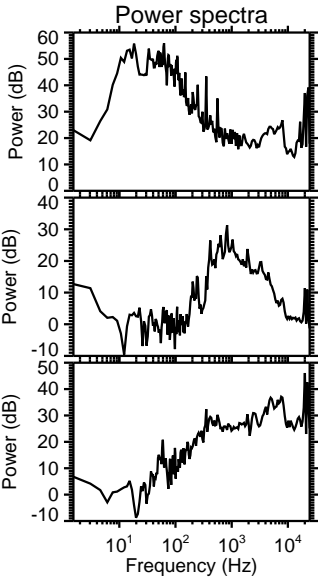
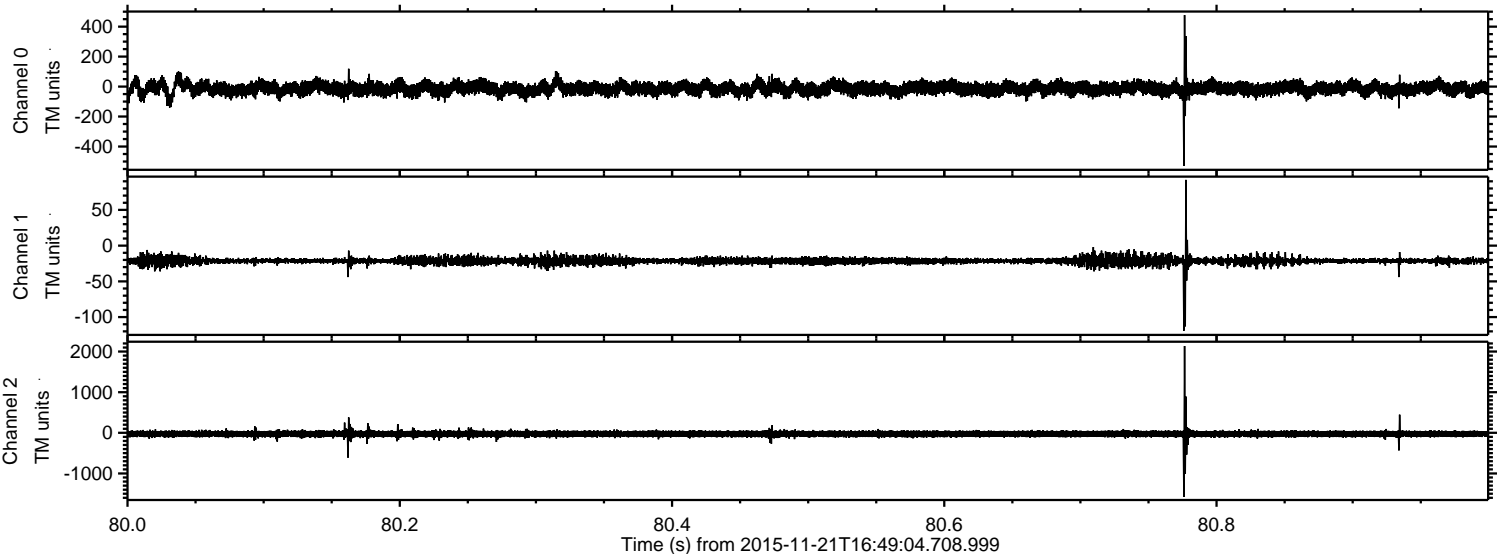


Processed Tue Nov 24 13:49:39 2015 by ELM ver.2012-10-06 from 001__elm20151121_164903__dat00.bin



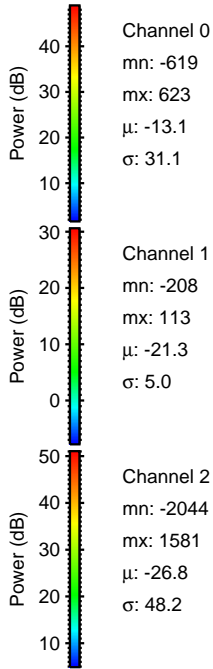
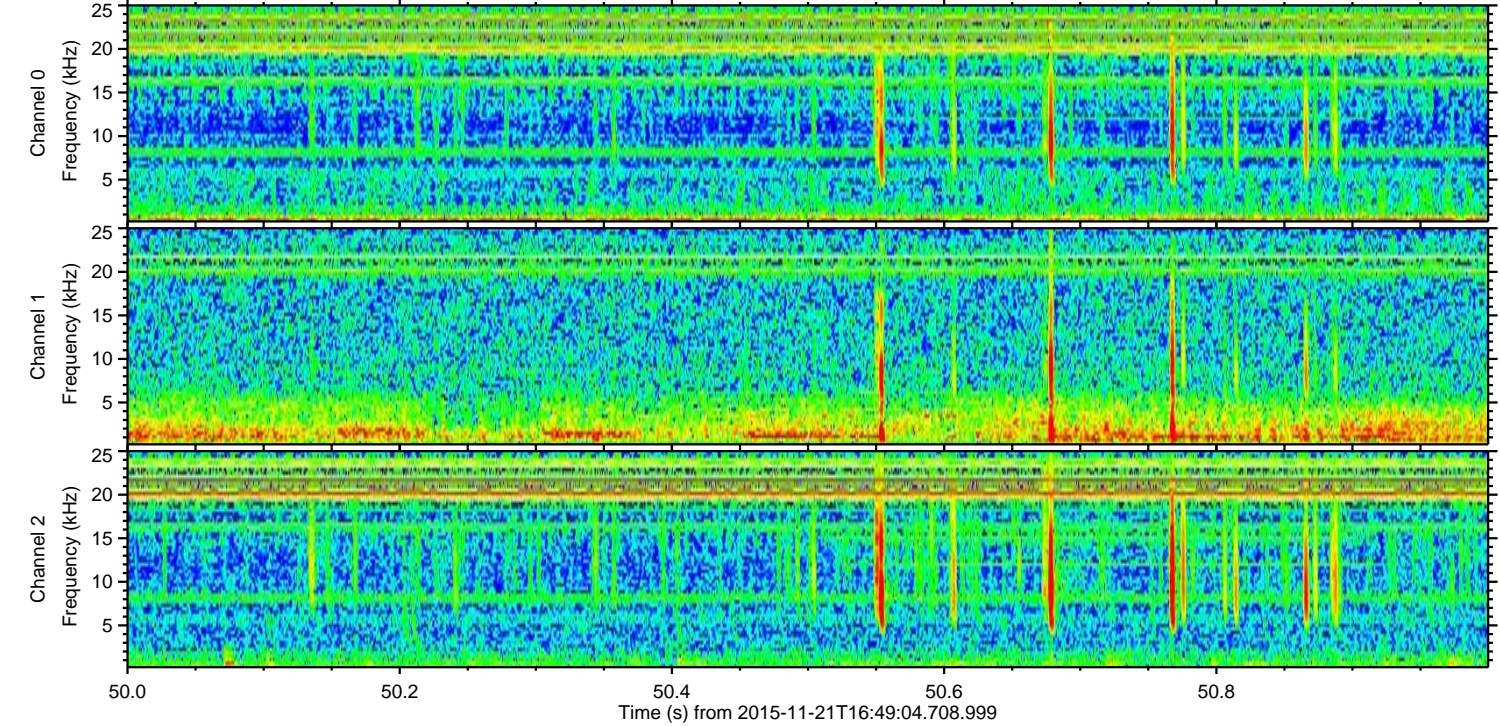
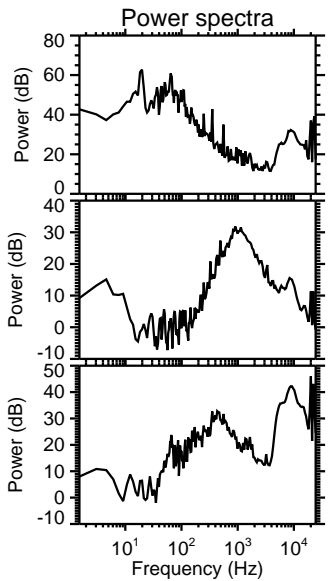
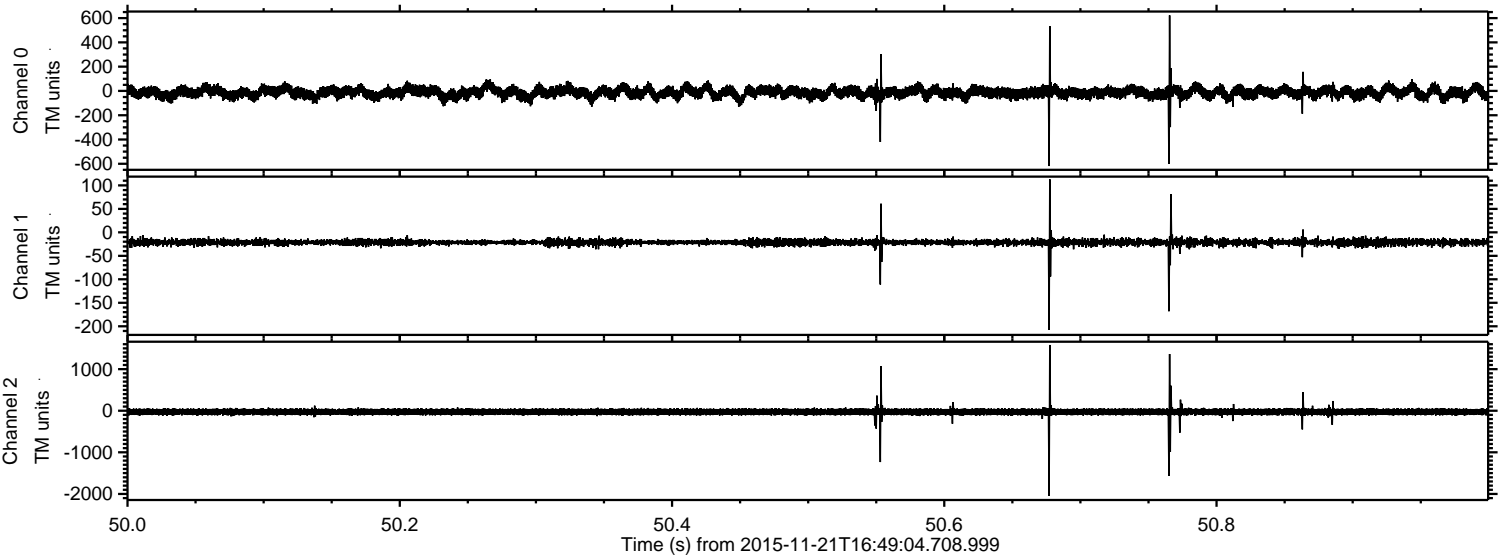
ELMAVAN 3D WAVEFORMS (Measured data sampled at 50 kHz) 51000 packets of 144 samples from 2015-11-21T16:49:04.708.999. Part 81/147

Processed Tue Nov 24 13:49:40 2015 by ELM ver.2012-10-06 from 001__elm20151121_164903__dat00.bin



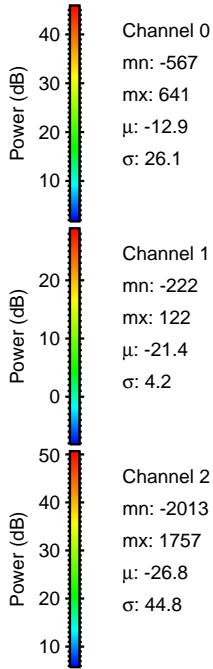
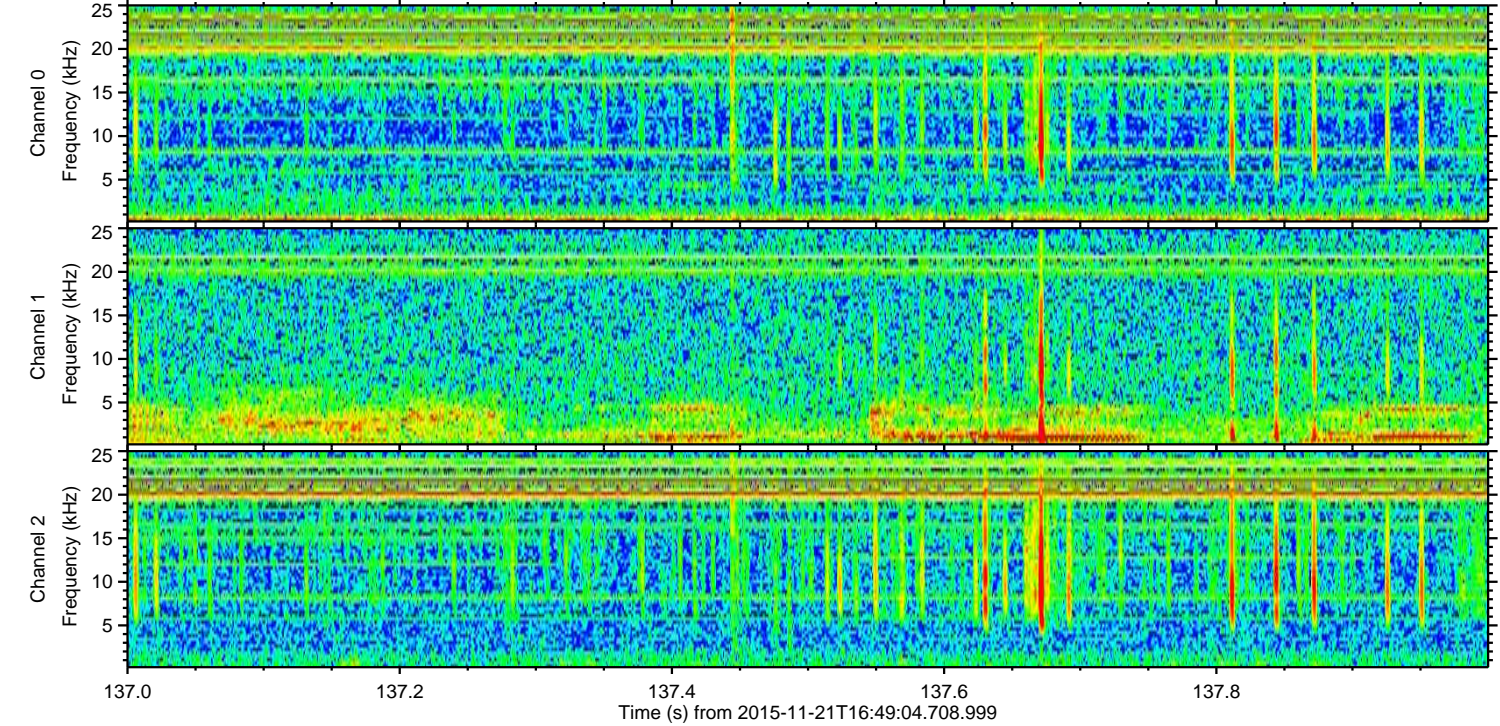
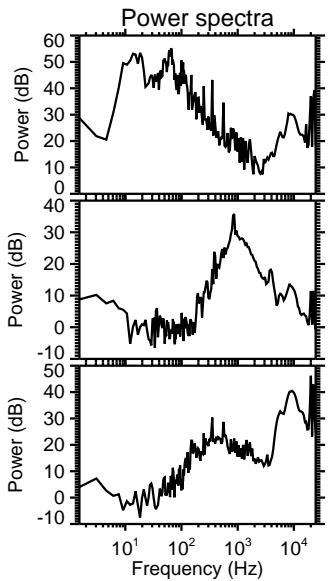
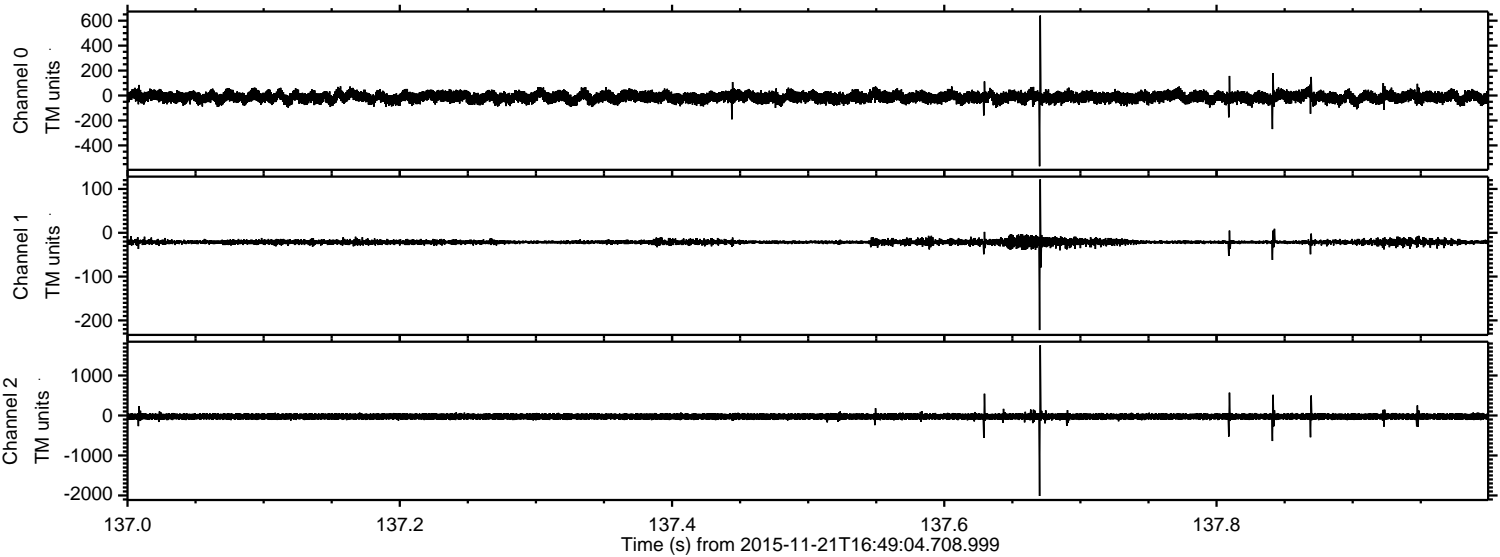
ELMAVAN 3D WAVEFORMS (Measured data sampled at 50 kHz) 51000 packets of 144 samples from 2015-11-21T16:49:04.708.999. Part 51/147

Processed Tue Nov 24 13:49:41 2015 by ELM ver.2012-10-06 from 001__elm20151121_164903__dat00.bin



ELMAVAN 3D WAVEFORMS (Measured data sampled at 50 kHz) 51000 packets of 144 samples from 2015-11-21T16:49:04.708.999. Part 138/147

Processed Tue Nov 24 13:49:42 2015 by ELM ver.2012-10-06 from 001__elm20151121_164903__dat00.bin

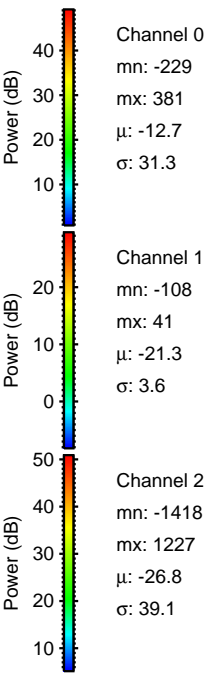
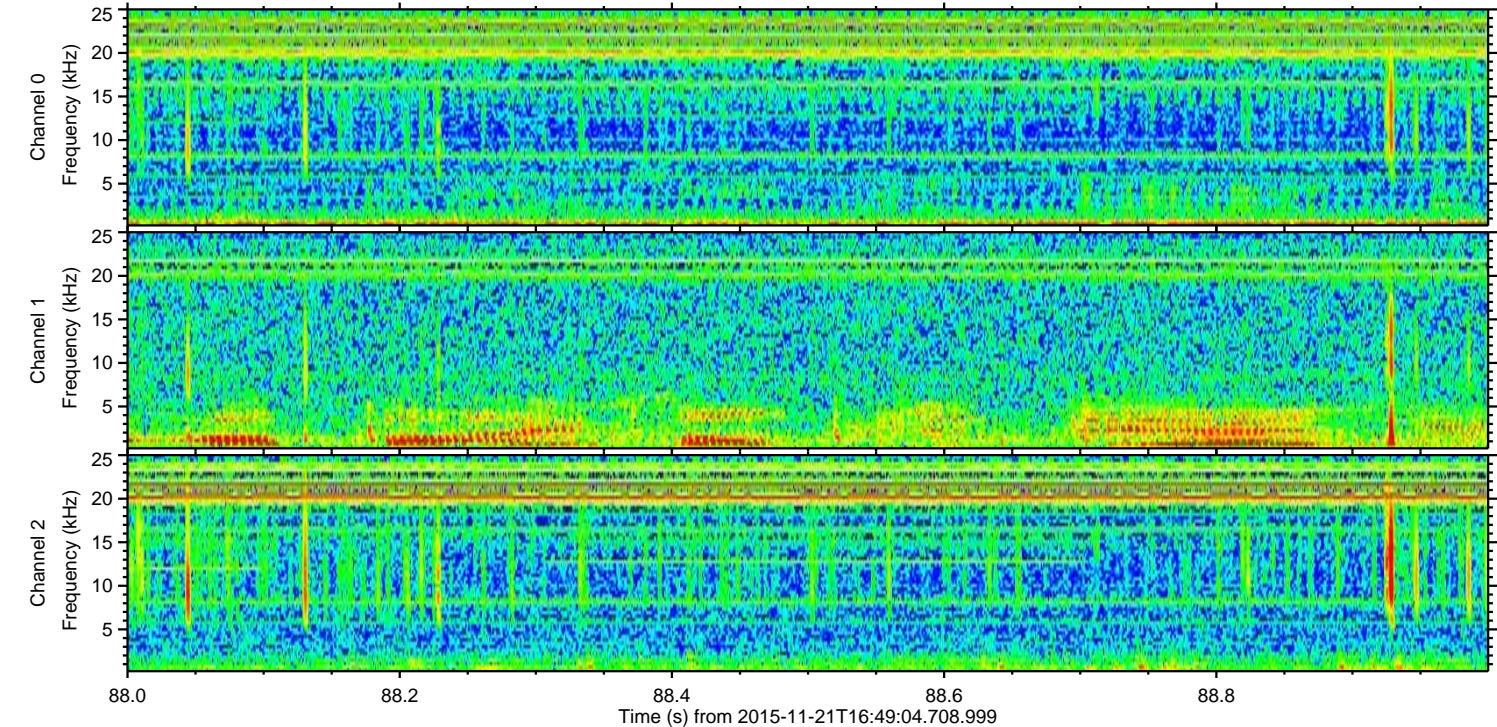
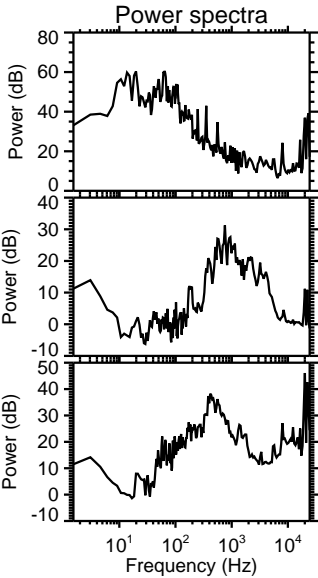
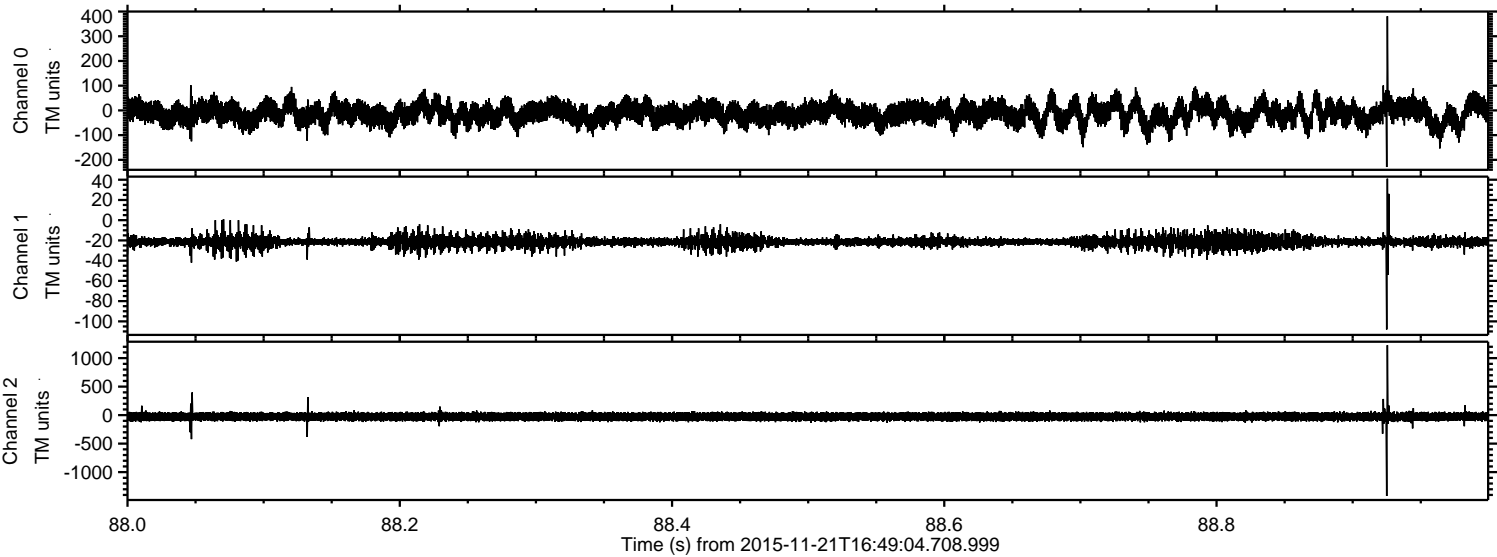


Channel 0
mn: -567
mx: 641
 μ : -12.9
 σ : 26.1

Channel 1
mn: -222
mx: 122
 μ : -21.4
 σ : 4.2

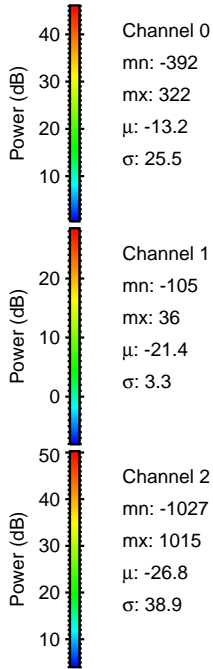
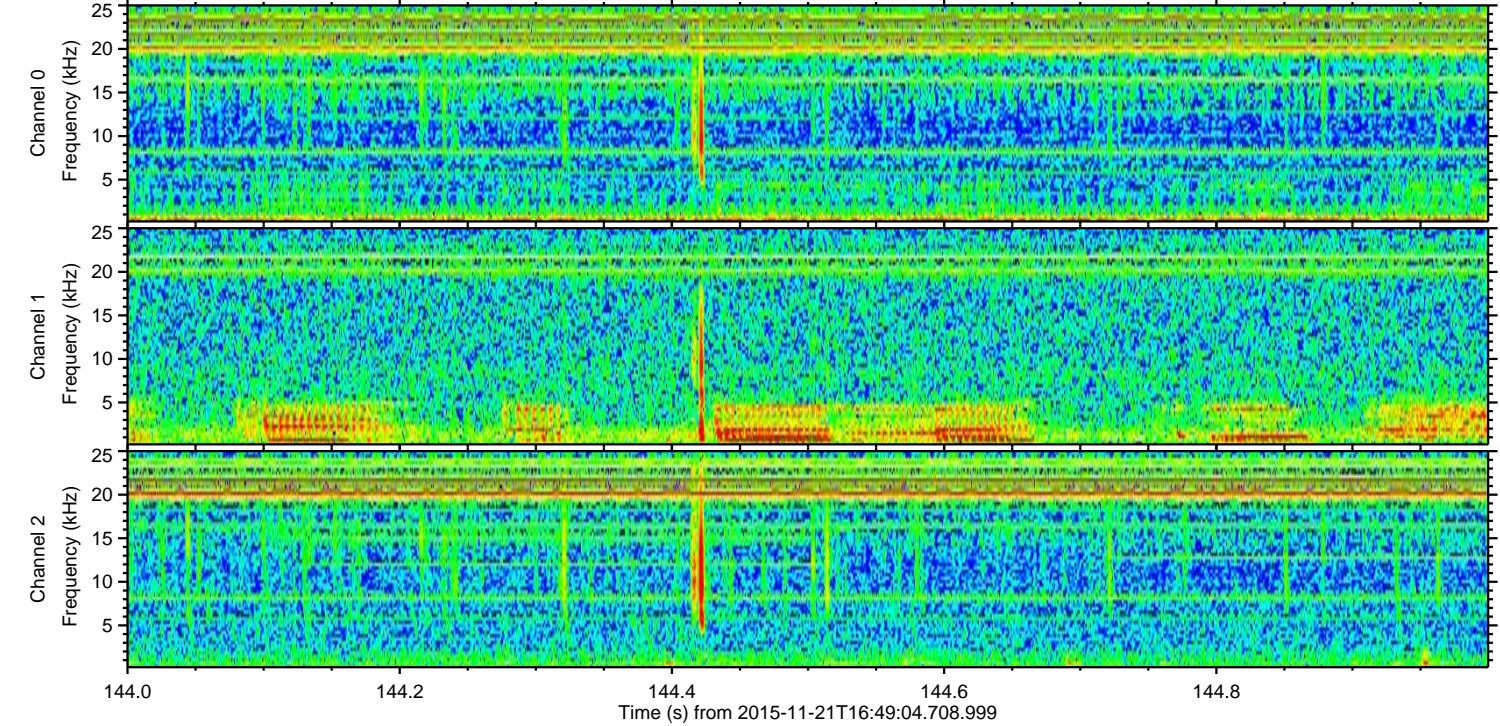
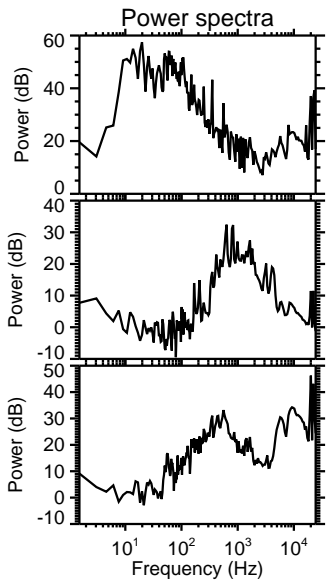
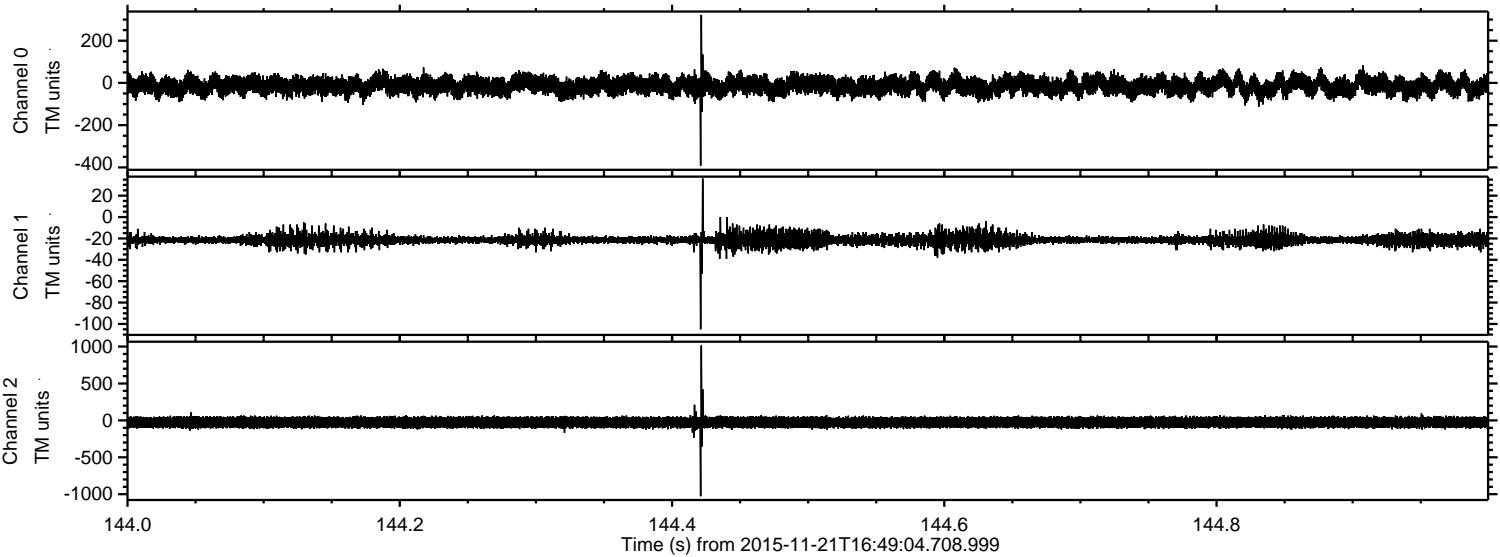
Channel 2
mn: -2013
mx: 1757
 μ : -26.8
 σ : 44.8

Processed Tue Nov 24 13:49:43 2015 by ELM ver.2012-10-06 from 001__elm20151121_164903__dat00.bin



ELMAVAN 3D WAVEFORMS (Measured data sampled at 50 kHz) 51000 packets of 144 samples from 2015-11-21T16:49:04.708.999. Part 145/147

Processed Tue Nov 24 13:49:44 2015 by ELM ver.2012-10-06 from 001__elm20151121_164903__dat00.bin

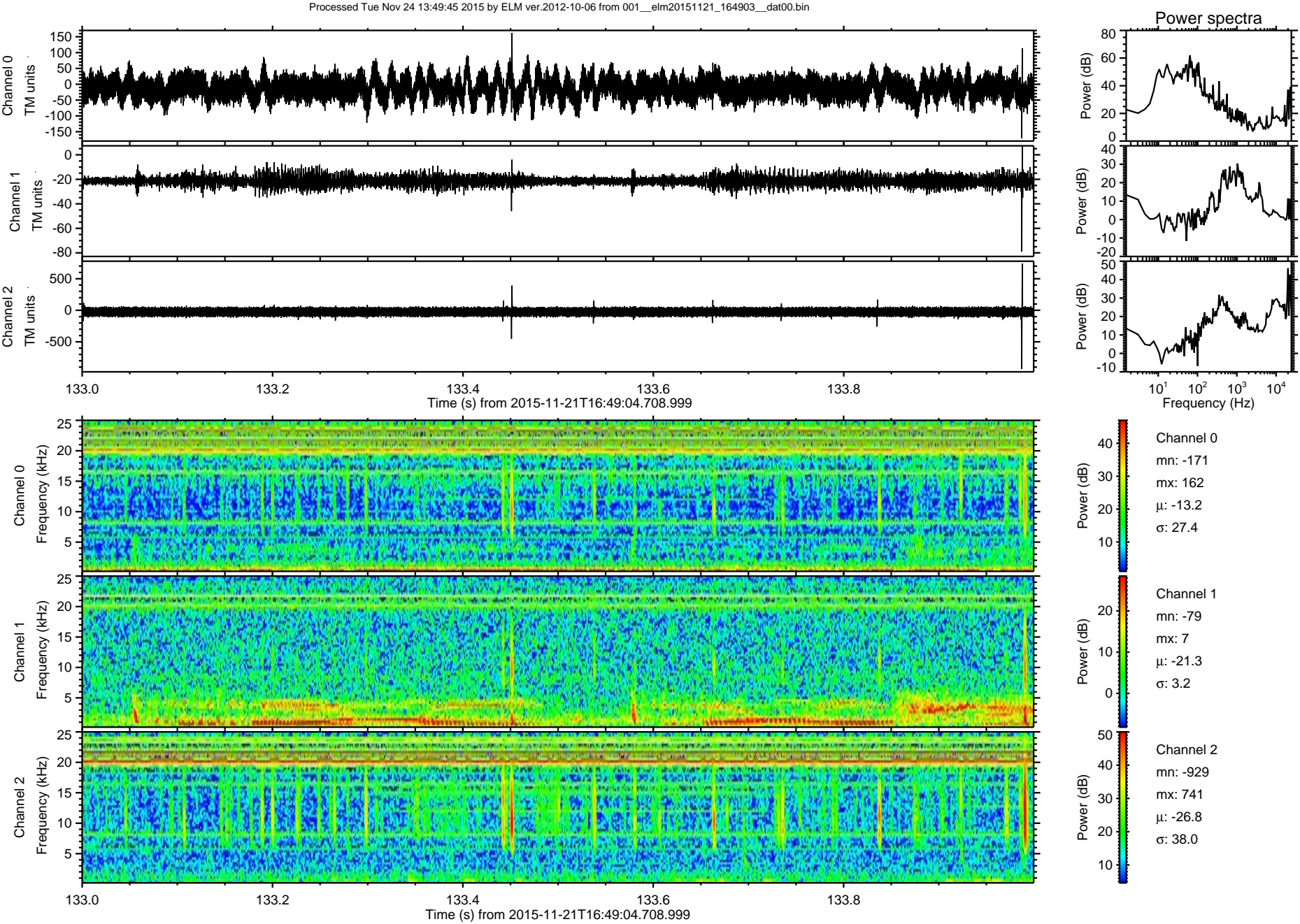


Channel 0
mn: -392
mx: 322
 μ : -13.2
 σ : 25.5

Channel 1
mn: -105
mx: 36
 μ : -21.4
 σ : 3.3

Channel 2
mn: -1027
mx: 1015
 μ : -26.8
 σ : 38.9

ELMAVAN 3D WAVEFORMS (Measured data sampled at 50 kHz) 51000 packets of 144 samples from 2015-11-21T16:49:04.708.999. Part 134/147



Processed Tue Nov 24 13:49:46 2015 by ELM ver.2012-10-06 from 001__elm20151121_164903__dat00.bin

